

ARMEN WILL VISIT HERE

MONTHLY TRADES DAY IS SUGGESTED FOR LITTLEFIELD; NO DEFINITE ACTION TAKEN

ARRIVING FRIDAY FOR TWO-DAY STAY IN CITY

LD POSSIBLY OF BENEFIT LOCAL BAND

Consideration To Be Given Proposal Within Next Few Days

A suggestion has been made that Littlefield have a monthly Trades Day and that such an event be carried on some Monday in the month. No definite action has been taken. It is expected that full consideration will be given to the proposition within the next few days. Conducting of a Saturday day is regarded as unnecessary because of the fact that large numbers of persons visit this city every Saturday, and the day is crowded with capacity with the transacting of general business and in shopping. A suggestion has been made that Monday Trades Day could be carried out with virtually no expense to merchants beyond whatever it is considered should be in prizes. Any program which keeps the visitors from visiting the city throughout the day is being met with disfavor. However, it is suggested that the Littlefield band could be employed to provide entertainment.

Littlefield is to have a band. Plans will have to be taken to secure the necessary funds, and it is expected that some financial support will be given the band by having organization participate in a Trades Day, held once each

J. L. PATE AWARDED PRIZE IN LEADER CONTEST

\$15 IN GROCERIES FROM RENFRO BROS. STORE.

J. L. Pate was overjoyed at his second prize in the Lamb County Leader contest for the month of Thursday, Friday and Saturday of last week. This total of \$15.00 worth of groceries from the Renfro Brothers Grocery store, which Mrs. Pate loaded in her car Monday morning. The brothers, always noted for courtesy and service, allowed Pate to choose her groceries at special Friday and Saturday

commenting on the pleasure it gave her to win this prize, and on the generosity of this grocery and store, she said: "I never got such a bill of groceries in all my life. How going to boost those boys every way I can."

Mrs. Pate also requested the Leader to ask all the good people of this and adjacent territory for mak-

BEST CLASS OF LITTLEFIELD HIGH SCHOOL TO PRESENT THREE-ACT PLAY SCHOOL AUDITORIUM MONDAY NIGHT

The Junior Class of the Littlefield High School will present a three-act play, "Two Girls and a Fellow," in the school auditorium Monday night, April 11, at 8:00 o'clock. The annual Junior class play, the proceeds will go to defraying the expenses of the school, which it is the custom of the Junior class to honor the graduating class of the school.

Monday is brimming with excitement when Mr. John C. Cuddally, poor relations to each other,

LITTLEFIELD—THE PULSE OF THE PLAINS

WATCH LAMB COUNTY GROW

LAMB

LAMB—COUNTY OF OPPORTUNITY

COUNTY LEADER

Official Newspaper of Lamb County, Texas

VOL. 9 LITTLEFIELD, LAMB COUNTY, TEXAS, THURSDAY, APRIL 7, 1922 NO. 52

RECORD VOTE POLLED IN SCHOOL ELECTION

REPRESENTATIVE LOCKHART SEEKS STATE SENATORSHIP

FAVORS REDUCTION OF EXPENSES IN OPERATION OF STATE

Representative G. E. Lockhart of Lubbock, who is a candidate for state senator, Wednesday authorized the Lamb County Leader to publish his official announcement.

Mr. Lockhart issued the following statement:

"TO THE VOTERS OF THE 30TH SENATORIAL DISTRICT:

"In announcing myself as a candidate for the office of state senator, I am not unmindful of the duties and responsibilities that naturally go with this office.

"I feel that from the experience that I have had as a member of the House of Representatives that I am qualified to discharge the duties of this high office to the satisfaction of a majority of the voters of this district, and especially with the experience that I have had, I feel that I am better qualified to perform the duties of this office than someone who has not had this legislative experience.

"To those who may not know me, I will say that I have lived in Lubbock and in adjoining counties for more than twenty-five years and have been actively engaged in the practice of law for more than twenty years. I was elected to the office of district attorney of the old 72nd district, composed of Lubbock and nine other

(Continued on Page Three)

IS ROTARY CLUB SPEAKER

Don Knight had charge of the program at last Thursday's luncheon of the Littlefield Rotary club. Mr. Knight gave a very interesting talk on the progress being made in aviation.

ing it possible for her to win, as without their co-operation, she could not have carried off a prize.

W. E. Heatly Is Candidate For County Judge

W. E. Heatly, superintendent of Hart's Camp school, Wednesday informed the Lamb County Leader that he will be a candidate for county judge.

Mr. Heatly's official announcement will appear in next week's issue of the Leader.

Mr. Heatly has been a resident of Lamb county for three years, all of that time employed as superintendent of the Hart's Camp school. He also owns a farm in the Hart's Camp section.

Since coming to Lamb county Mr. Heatly has taken a very active interest in all matters in the interests of the progress of this county.

Mrs. Dr. Pirtle of Anton was in Littlefield on business Tuesday.

Spring Clean-Up Campaign

The Board of Insurance Commissioners, Austin, Texas, has designated April 3 to 9 as Spring Clean-Up week and is asking the co-operation of all city commissions, local fire prevention boards, and the public in general.

Desiring to co-operate with them in the fullest our mayor has issued and caused to be published a proclamation designating this week as Clean-Up week for Littlefield.

"That we might further co-operate in this campaign a meeting of the local Fire Prevention board has been called and plans for a full and complete inspection of all property within the city limits ordered. This inspection will be carried out this

WORK STARTS IN INCREASING SPACE AT POST OFFICE

NEELY AND WILLIAMS ARE THE GENERAL CONTRACTORS

Actual construction of the new addition to the Littlefield postoffice was underway Monday, and according to George D. Neely and Will Williams, contractors in charge, the building, which will be a 25x55 addition to the present postoffice building, will be rushed to completion.

Building materials are being furnished by the Foxworth-Galbraith Lumber company.

The sub-contractors are L. C. Cawthorn, plumbing; Joe Wells, brickwork; J. H. McGavock, Spade, cement work.

The contract for the installation of the electrical wiring has not been awarded.

W. E. Heatly Is Candidate For County Judge

The New Ford is large, long, roomy, fast, powerful and alert. Its V-8-cylinder engine develops 65 horsepower and it is capable of 75 miles an hour.

Fourteen body types of modern, streamlining design are offered. A four-cylinder engine developing 50 horsepower also can be supplied with any of these body types at a lower price.

Numerous mechanical advances are incorporated in the new car. These embrace a synchronized silent gear shift and silent second gear, rubber engine mountings, down-draft carburetor and carburetor silencer, automatic spark control, fuel pump and rear fuel tank. Other improvements include a newly-designed rear spring, thermostatically-controlled Houdaille

(Continued on Last Page)

NEW MEMBERS OF BOARD WIN BY LARGE MAJORITY

Jeffries, Brannen, Blessing Compose Winning Ticket

W. E. Jeffries, J. E. Brannen, and J. M. Blessing were Saturday elected to the board of the Littlefield Independent School district.

These men succeed J. T. Elms, Albert Neuenschwander and J. L. Dow, whose terms had expired.

The others whose names were on the ballot were Mr. Elms, Mr. Neuenschwander, and R. L. Byers.

The vote Saturday was the largest ever polled in the Littlefield Independent School district, more than twice as many persons casting their

(Continued on Last Page)

COMPLETE DRESS OUTFIT WON BY MRS. CLEMENTS

SELECTED FROM STOCK OF J. H. WARE DRY GOODS CO.

A complete ladies wearing apparel outfit from the J. H. Ware Dry Goods Co., was awarded to Mrs. C. C. Clements as a first prize in the special period of the Lamb County Leader circulation contest which closed Wednesday night of last week.

Mrs. Clements was allowed to make her selection from the entire high grade stock of the J. H. Ware Dry Goods Co., consisting of many nationally advertised exclusive brands of merchandise.

The prize consists of a dress, hat, shoes, hose, set of Munsingwear undergarments and a purse.

Mrs. Clements expressed her thanks to her many friends for their loyal support in helping her to win this prize.

MRS. MAX TOUCHON IS WINNER OF THE LEADER \$25.00 CASH PRIZE

STATE AID IS GRANTED SCHOOLS

Efforts of two Lamb county cities, Littlefield and Olton, to obtain state aid in the operation of school buses, has proven successful.

Littlefield and Olton were the only two schools in the county which were not allowed state aid without a protest.

Olton is to receive \$2,000 immediately, and has been promised \$2,000 more in June or July.

Littlefield is to receive \$2500 immediately, and has been promised \$2,500, or as much as the State De-

NEW MEMBERS OF BOARD WIN BY LARGE MAJORITY

Jeffries, Brannen, Blessing Compose Winning Ticket

W. E. Jeffries, J. E. Brannen, and J. M. Blessing were Saturday elected to the board of the Littlefield Independent School district.

These men succeed J. T. Elms, Albert Neuenschwander and J. L. Dow, whose terms had expired.

The others whose names were on the ballot were Mr. Elms, Mr. Neuenschwander, and R. L. Byers.

The vote Saturday was the largest ever polled in the Littlefield Independent School district, more than twice as many persons casting their

(Continued on Last Page)

COMPLETE DRESS OUTFIT WON BY MRS. CLEMENTS

SELECTED FROM STOCK OF J. H. WARE DRY GOODS CO.

A complete ladies wearing apparel outfit from the J. H. Ware Dry Goods Co., was awarded to Mrs. C. C. Clements as a first prize in the special period of the Lamb County Leader circulation contest which closed Wednesday night of last week.

Mrs. Clements was allowed to make her selection from the entire high grade stock of the J. H. Ware Dry Goods Co., consisting of many nationally advertised exclusive brands of merchandise.

The prize consists of a dress, hat, shoes, hose, set of Munsingwear undergarments and a purse.

Mrs. Clements expressed her thanks to her many friends for their loyal support in helping her to win this prize.

MRS. MAX TOUCHON IS WINNER OF THE LEADER \$25.00 CASH PRIZE

STATE AID IS GRANTED SCHOOLS

Efforts of two Lamb county cities, Littlefield and Olton, to obtain state aid in the operation of school buses, has proven successful.

Littlefield and Olton were the only two schools in the county which were not allowed state aid without a protest.

Olton is to receive \$2,000 immediately, and has been promised \$2,000 more in June or July.

Littlefield is to receive \$2500 immediately, and has been promised \$2,500, or as much as the State De-

Transcontinental & Western Air Officials Coming Here At Leader's Invitation

Jack Lyman, district traffic manager of the Transcontinental & Western Air line, with offices in Amarillo, will visit Littlefield Friday and Saturday in interests of aviation.

He will be accompanied by J. L. Graham, field manager for the American Airways, at Amarillo.

The Leader is advised that they will arrive at the local port about 11 a. m. in a Spartan three-place ship, one of the very latest models and one of the fastest airplanes on the American market.

The public is invited to come out and look the ship over, and will be privileged to take a spin in the air Friday evening and Saturday at a nominal charge. Here's your opportunity of a lifetime to ride with a pilot of one of our greatest airway lines.

Mr. Lyman is coming to Littlefield at the invitation of the Lamb County Leader, to visit the fastest growing and most progressive city in the state of Texas.

The public knows all about the fact that the second prize winner in the Lamb County Leader circulation contest will travel the Transcontinental & Western Air from Amarillo to Los Angeles and return. The contest will close April 16, and the winner will depart about April 18.

New Ford Eight.

John Arnett, of the John H. Arnett Motor Co., advises that he is expecting a carload of these new cars immediately, and invites everyone to come by and look over the new car.

Contestants' Standing.

The candidates are working hard and going places in these last days of the contest, and due to the interest of the public, the Leader is giving the position of the contestants:

Mrs. Max Touchon.
Mrs. C. C. Clements.
Mrs. J. L. (Luther) Pate.

The campaign will close promptly at 8 p. m., Saturday, April 16. Watch for the announcement of the closing place and come down to see the close.

JESS LEVENS IS SEEKING ELECTION AS STATE SENATOR

REDUCTION OF TAXES IS CHIEF PLANK IN PLATFORM

J. C. (Jess) Levens of Lubbock, candidate for state senator, Wednesday authorized the Lamb County Leader to publish his official statement to the voters.

Mr. Levens' statement follows: "I was born in the State of Georgia. I moved with my parents to Alabama when I was ten years of

(Continued on Page Four)

MRS. MAX TOUCHON IS WINNER OF THE LEADER \$25.00 CASH PRIZE

STATE AID IS GRANTED SCHOOLS

Efforts of two Lamb county cities, Littlefield and Olton, to obtain state aid in the operation of school buses, has proven successful.

Littlefield and Olton were the only two schools in the county which were not allowed state aid without a protest.

Olton is to receive \$2,000 immediately, and has been promised \$2,000 more in June or July.

Littlefield is to receive \$2500 immediately, and has been promised \$2,500, or as much as the State De-

LAMB COUNTY LEADER

Published every Thursday afternoon at Littlefield, Texas.
Subscription: \$1.50 per year; 75 cents for six months.
Advertising rates given upon application.

No. 57 Entered as second class matter May 24, 1923, at the post office at Littlefield, Texas, under the Act of March 3, 1897.

MORLEY B. DRAKE Editor and Publisher
E. M. DRAKE Business Manager

Subscribers who change their addresses, or fail to get their paper, should immediately notify this office, giving both new and old addresses.

Communications of local interest are solicited. They should be briefly written, on only one side of the paper, and must reach this office not later than Wednesday noon of each week. The right of revision or rejection is reserved by the publisher.

Advertising that does not show in its text or typography that it is paid for must be marked as an advertisement. All local advertisements remain in this paper for the time specified or until ordered out. All notices, it matters not by whom nor for what purpose, if the object is to raise money by admission fee or otherwise, is an advertisement and when sent in for publication must be paid for at the regular advertising rate per line for each issue printed.

Obituaries, cards of thanks, and resolutions of respect will also be charged for at the same rate.

Any erroneous reflection upon the character, standing or reputation of any person, firm or corporation which may appear in the columns of the Lamb County Leader will be gladly corrected upon its being brought to the attention of the publisher.

In case of errors or omissions in local or other advertisements, the publisher does not hold himself liable for damage further than the amount received by him for such advertisement.

THE MAJOR LITTLEFIELD MEMORIAL

It was in keeping with his love for the South and the men who performed heroic deeds for their homeland that the late Major George W. Littlefield, cattleman and banker of Austin, donated to the University of Texas, more than ten years ago, the sum of \$250,000 for the erection at the south entrance to the original 40-acre campus of that institution a memorial designed to keep alive in the youth of today the spirit and sentiment of these leaders of a past generation.

The fund given by Major Littlefield is finally to be used for the purpose for which it was designated, after being held in trust for a decade.

Major Littlefield was the owner of the land on which the city of Littlefield is located, and it was he who was the founder of this city. The Littlefield memorial is therefore of especial interest to the people of this city and section.

The contract for the erection of the Littlefield Memorial, as it is called, has just been awarded by the Board of Regents to J. F. Johnson of Austin for \$118,600, and the construction work will be started immediately. This sum will be largely used to pay the cost of the masonry which is a part of the design. The heroic bronze statues for the memorial were moulded and cast by the famous sculptor Pompeo Coppini who will receive \$125,000 for this work. The remainder of the \$250,000 has been more than taken up in payment of freight on the statues which will ornament the stone structure, including those of James Stephen Hogg and John H. Reagan. During the last few years these great bronze figures have stood in the main rotunda of the State Capitol where they have attracted much attention of visitors.

Other sculptor figures to ornament the memorial have been designed and cast by Mr. Coppini and are ready for immediate shipment from New York it was stated. The original plans for the unusual monument were made some years ago. To meet the present architectural layout of the 40-acre campus these plans have been revised by Robert Leon White, University architect, and Paul Crest of Philadelphia, consulting architect.

EIGHT YEARS AGO IN LITTLEFIELD

(Excerpts from Littlefield Leader)

L. Huber of Lawton, Okla., is this week laying the foundation for a new store building to be erected just south of the Dixie Cafe. When completed it will contain a stock of hardware, furniture and harness.

Mr. and Mrs. F. L. Sturges are happy over the new girl which came to make her home with them last Sunday. Mother and child are in Lubbock doing well. Father is still able to cut meat and sell groceries.

In this issue of the Leader will be found the announcement of E. S. Powell of Sudan for Public Weigher of Precinct No. 2. Mr. Powell is a property owner, and has been a resident of Sudan for the past two years.

Ever awake to the interest of development, the proponents of Amherst and surrounding community are this week reading the first issue of the "Amherst Advocate," a newsworthy four page, six column newspaper, which began this week.

Mrs. B. C. Linn, one of the prominent ladies of that place, is the editor, and judging from the line of news she has in the first issue, also the advertising contained therein, she

is going to make a success of it.

The Gulf Refining company are this week laying the foundation for a big warehouse alongside the Santa Fe tracks near the elevator. They have a car of oil and one of gas in transit, and expect to be open for business in the very near future. T. L. Matthews, who has been connected with the Littlefield Service Station, will have charge of the new business.

The Lorenzo band, under the direction of Monte Bowron, will give a concert at the school house Friday night of this week.

Preparations are this week being made for the erection of a new cotton gin in Littlefield. L. E. Davanay, a ginner of many years experience, who purchased a site here some two months ago, is the owner of the new business, and contract for erection has been let to S. R. Thompson of Malakoff, Texas.

C. A. Joplin, one of the sturdy, dependable citizens of the southern part of the county, is this week announcing himself as a candidate for the office of County Commissioner in Precinct No. 4.

A caucus of citizens was held last week in the Masonic hall room and selected Pat Boone, F. A. Butler, and W. O. Gray to run as trustees for the Littlefield Independent School District. It is also understood that B. L. Cogdill is being favorably mentioned for a place in the election Saturday.

Rev. S. W. Smith of Plainview oc-



WILL "PLAYING OSTRICH" BLIND YOUR COMMUNITY TO THE INJURY OF SENDING YOUR DOLLARS TO NEIGHBORING TOWNS?

cupied the pulpit of the local Baptist church last Sunday, both morning and evening, delivering two excellent services.

W. R. Welch and son, who are putting up the building for the Whaley Lumber Co., have become so attracted to Littlefield they have decided to make this their permanent home.

The Law Relative To State Aid In School Truck Operation

Because of the activity underway in Lamb county to obtain the amount of money which the school districts regard as their legal right in connection with the operation of school trucks, especial interest is attached to the section of the public school laws of Texas, which deals with transportation aid.

"Sec. 357 TRANSPORTATION AID—Consolidated districts, formed, in accordance with Section 11 of this act, and all consolidations formed prior to September 1st, 1931, and all other districts embracing territory in excess of fifty square miles, which make provision for transportation of pupils to and from schools at public expense, may be granted from this

appropriation a sum equal to one-half of the cost of transportation, not in excess of four hundred (\$400.00) dollars, for each automobile truck required, provided contracts for such transportation have been approved by the State Superintendent; provided, there is levied and collected annually a tax of not less than seventy-five cents on the one hundred (\$100) dollars of property valuation for school purposes in the entire district."

"The Littlefield Independent School District conforms to all the conditions and provisions of this law," Mr. Duggan announced Wednesday.

"There are more than fifty square miles in its territory (many more); we assess \$1 taxes when only seventy-five cents is required; our transportation contracts have all been approved; the inspector for the Educational department has been here and recommended the aid that we must have in order to pay our bus

drivers this year. ing denied this RE-ELECTED Itubin Fisher, the Spade school ed for another year. Subscribe for



our pleasant, cool fountain and let us fix you up a drink in a jiffy. They really make you feel better.

Stokes-Alexander Drug Co.

LITTLEFIELD, The Rexall Store
"In Business For Your Health"

YOURS MAY BE A

Well Lighted Home

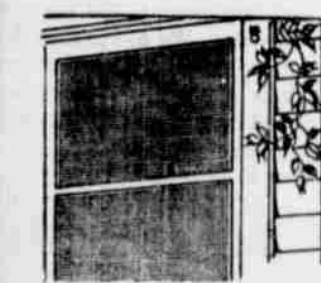
—and at very moderate cost

—In your rounds of shopping, do not forget that the well-lighted home can be accomplished at a most moderate cost, and that bright, cheerful surroundings add charm to the rooms, charm to the hostess, and comfort to your family and your guests.

—And let us remind you that the ever-increasing use of electric energy brings an ever-lowering cost per unit.

Texas Utilities Co.

"YOUR ELECTRIC SERVANT"



Screens

—Keep out disease bearing insects—

DANGER Ahead! If you don't provide early protection against those dreaded carriers of disease, the insects. Play safe. Buy your screens NOW. TODAY!

Model A FORD TRUCK FOR SALE!

Higginbotham-Bartlett Co.

"Good Lumber"
Littlefield, Texas

Jake De' Cake



HOT DOG, SPRING IS HERE. I'LL HAVE TO GO IN AND SEE ABOUT GETTIN' ME A NEW SPRING SUIT

In The Spring A Young Man's Fancy



AND WHAT KIND OF SUIT DO YOU PREFER?

ONE LIKE YOU GOT ON

COMBINATION LEMON AND KNOCK OUT DROPS 5¢



A VERY GOOD SELECTION, MR. DE CAKE. THIS SUIT HAS TWO PAIR OF PANTS. STEP INTO THE DRESSING ROOM AND TRY IT ON.

BULLET PROOF VESTS 50¢ EXTRA

By M.L.



THEN I GUESS I'LL HAVE TO TAKE SOMETHING ELSE BECAUSE I ONLY GOT ONE BELT.

Natural Gas Service and - Just Natural Gas

If you could go to the corner grocery or out to a gas well, get a sackful of gas, pay cash for it and carry it home, you could buy a huge volume of it for 5 cents.

Of course your gas sack would have to be large and it would have to be good and tight. That might add somewhat to the cost.

Just when you happened to need the gas, the weather might be unpleasant outside, too.

When you got your sack of gas home, you would have quite a merry time trying to get the gas fed into the burners of your stove.

It is then that you would realize that you had bought the wrong thing. You wanted GAS SERVICE and you had bought just gas.

Gas without service is a vapor that cannot be handled by ordinary means. It is of little use to anyone.

GAS—WITH SERVICE—is a clean, efficient, reliable fuel—ready to do your instant bidding when and where you want it.

It is GAS SERVICE, rather than just gas, that you buy, use and pay for.

West Texas Gas Co.

Office Supplies at Leader Office

I.C.C. DECISION ON T. & P. RAILROAD EXPECTED SOON

Littlefield, together with other towns and communities interested in the proposed Texas and Pacific Northern railway, will not have long to wait before a decision is given out by the Interstate Commerce commission.

A decision is expected before May 1, according to Garland Woodward, Big Spring attorney, who was a visitor in Littlefield recently.

Mr. Woodward represented intervening towns at the hearing in Lubbock.

The Texas and Pacific Northern has applied for permission to build a 333 mile line north from Big Spring.

"In my opinion the road will be built substantially as applied for," Mr. Woodward said. "The Texas and Pacific is anxious to build the line and if granted permission to do so, construction work will start in very short time after the I. C. C. grants the authority."

Texas and Pacific officials have

indicated that they will build what the I. C. C. authorizes, in the event the entire permit is not granted. Mr. Woodward said in pointing out that the examiner's report was favorable only for a portion of the line from Big Spring to Brownfield and Lubbock. By the time that work is finished, he said, if economic conditions are "right" the rest of the permit will be authorized.

"Eventually, he added, the entire line as asked by the railroad will be constructed.

Costs today, he said, are lower than when the permit was asked. "I am told that it will cost two million dollars less now than it would have cost a year and a half ago," the attorney added. "That means that the road could be finished for about \$11,000,000."

When the hearing was held in Lubbock, two weeks was taken up in the hearing of testimony before Haskell C. Davis, chief examiner. Opposition to the permit was made by the Santa Fe, Rock Island and Fort Worth and Denver. Nearly 200 witnesses and about as many exhibits were offered. The testimony covered approximately 2,500 pages.

Lockhart—

(Continued from Page One)

counties, and held this office for six years. In 1930, I was representative of the 119th representative district and filled that position through the regular and special sessions of the 42nd legislature and the record that I made while a member of the House of Representatives, I am ready to defend. And if I am elected to the Senate, I promise my constituents that I will always be found in the front ranks fighting the battle for the masses and against the classes. I will always take a stand on any pub-

lie question and while I may be wrong on some of these questions, you will never find me to be a "pussyfoot," neither will you find me playing politics on any public question that must be settled.

"It is a matter of record that the State expenditures are nine times greater today than they were twenty years ago. The taxpayers have reached the point where they are unable to bear the cost of the State government. Almost every industry as well as individuals have reduced operating and living expenses and there is no reason on earth why the cost of running the State government should not be reduced and the taxpayers saved millions of dollars. The question naturally arises 'How can this be done?' It can be done in many ways, but I would first be in favor of trimming the salaries of the State officers and employees, approximately twenty-five per cent. The present salaries were set when conditions were entirely different from what they are today and, at least, a million dollars annually can be saved the taxpayers by reduction of salaries twenty-five per cent. I would be inconsistent if I favored reducing the salaries of all State officers and not reduce my own, should I become a member of the Senate, therefore, I will favor the reduction of the salaries of the senators and representatives and all employees of the Legislature twenty-five per cent. Unquestionably the matter of reducing State expenditures will be one of the most vital questions to be settled by the 43rd Legislature.

"I am in favor of and will support a program of tax reduction, while I am not in favor of the complete abolition of the ad valorem tax, yet, I think the advalorem tax could and should be reduced at least fifty per cent. And I am in favor of levying taxes on luxuries sufficient to reduce the ad valorem tax to that extent. I believe that taxes should be paid by those most able to pay and I am in favor of an intangible tax law that will require the payment of taxes on millions of dollars of property that are now escaping taxation.

"I am opposed to the State interfering with private business so long as such business is lawfully conducted, and I am opposed to the Governor of the State calling out the State Militia and maintaining a standing army for the benefit of any particular class of business or industry at the expense of the taxpayers of the State, and if I am elected, I will be in favor of so limiting the appropriations to the Adjutant General's Department so that these funds cannot be used for such purposes.

"I still believe that a man has and ought to have the right to plant his crop without the interference of any person or any officer and I am opposed to any law that requires the farmer to go to a law book to find out how much cotton, wheat and corn he can plant and how many chickens and hogs he can raise. I was opposed to the passage of the so-called cotton reduction law passed at the second called session of the 42nd Legislature, and the action of the courts in holding this law unconstitutional proves beyond question that I was right.

"As a member of the House of Representatives, I opposed the passage of the truck laws passed at the regular session of the Legislature.

These laws have thrown out of employment thousands of people and if enforced to the letter would put every truck in the State of Texas off of the highway that hauls for hire.

"I favor a reasonable regulation of the truck industry, but I am unalterably opposed to any law that has for its object the killing of the truck industry for the benefit of the railroads, and to that end, if I am elected, I will favor an amendment or the repeal of the present truck law.

"I am in favor of and, if elected, will introduce a bill giving any person who has lost his land by foreclosure the right to redeem the same at any time within two years from date of sale.

"I am in favor of the passage of adequate laws that will protect the people against the excessive rates exacted by the public utilities, and I am opposed to the creation of the high-powered and high-salaried Utilities Commission to regulate the utilities.

"I am in favor of the State maintaining the public school system without the necessity of the levying of local taxes to support the same, and to that end, I will be in favor of an income tax and a tax on luxuries sufficient to maintain the public schools of the State, and to eliminate all local taxation for the purpose of maintaining the public school system.

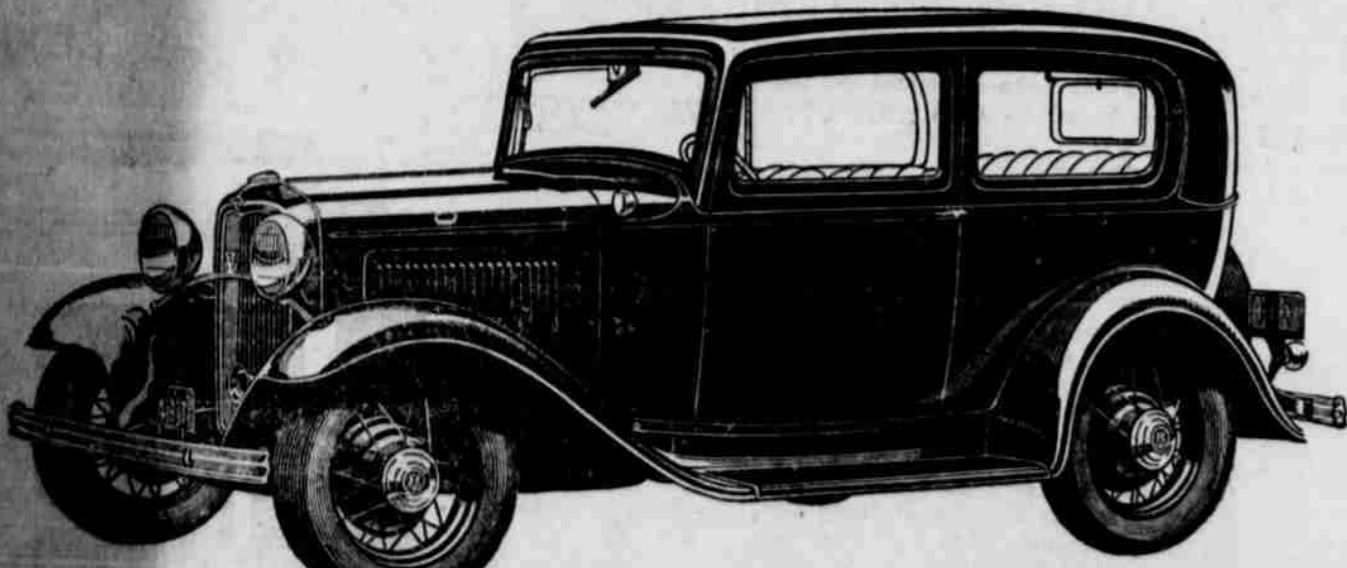
"I am in favor of and will introduce a bill that will adequately protect the depositor in failed banks. The person who puts his money in a bank certainly should have some protection if such bank should fail.

"If you think I am right, vote for me and ask your neighbor to do so and the same will be greatly appreciated.

"Sincerely yours,
"G. E. Lockhart,
Lubbock, Texas."

Convenient As Your Telephone
Ship Via Truck
LITTLEFIELD TRUCK LINE
LITTLEFIELD to LUBBOCK
Via Anton, DAILY
Littlefield Phone 169
LUBBOCK Phone 166
MAX E. TOUCHON
Owner and Operator

ANNOUNCING THE NEW FORD V-8 Cylinder



THE NEW FORD EIGHT De Luxe Tudor Sedan

- Eight-cylinder, 90-degree V-type, 65-horse-power Engine * Vibrationless
- Roomy, Beautiful Bodies * Low Center of Gravity * Silent Second Gear
- Synchronized Silent Gear Shift * Seventy-five Miles per Hour * Comfortable
- Riding Springs * Rapid Acceleration * Low Gasoline Consumption * Reliability

self-adjusting Houdaille double hydraulic shock absorbers with automatic control . . . New rear construction . . . Automatic carburetor control . . . Down-draft carburetor . . . Bore, 3 1/16 inches. Stroke, 3 3/4 inches. Displacement, 221 cubic inches. 90-degree counterbalanced pistons . . . Large, effective fully enclosed four-wheel brakes . . . Distinctive steel-spoke wheels with large hub caps . . . Handsome V-type radiator . . . Graceful new roof line and slanting windshield of clear polished plate safety glass . . . Single-bar bumpers, chromium plated . . . Low, drop center frame . . . Mechanically operated pump drawing fuel from fourteen-gallon gasoline tank in rear . . . Choke on instrument panel . . . Individual inside sun visors . . . Cowl ventilation . . . Adjustable driver's seat . . . Choice of Mohair, Broadcloth or Bedford Cord upholstery in all de luxe closed types.

THE NEW FORD FOUR-CYLINDER CAR
An improved Ford four-cylinder, 50-horse-power engine, operating with new smoothness, is available in fourteen body types at \$50 less than the corresponding V-8 prices listed below.

GREAT NEW CAR AT AN UNUSUALLY LOW PRICE

\$460 Coupe	\$490 De Luxe Roadster	\$500 De Luxe Tudor	\$550 De Luxe Fordor	\$645 Victoria
495 Sport Coupe . .	535 De Luxe Phaeton	545 De Luxe Coupe	575 Cabriolet	600 Convertible Sedan
500 Fordor Sedan . .	590		610	650

Freight and delivery. Bumpers and spare tire extra. Economical terms through Authorized Ford Finance Plans of Universal Credit Co.)

Wanted

CLEAN COTTON RAGS

WILL PAY
5c
PER POUND

Will not accept overalls, unionalls or heavy rags. No small rags accepted. Must be free from buttons.

LAMB COUNTY LEADER

A Strictly Home-Owned Institution

Twenty-eight of the leading business men of Littlefield and Lamb County comprise the officers and stockholders of this institution.

These twenty-eight men are working in your interests . . . for the betterment and the upbuilding of this county. They ask your co-operation in this strong, conservative institution, not for their personal material gain, but that they may better serve Littlefield and Lamb County.

Serving Littlefield and Lamb County

THE FIRST NATIONAL BANK

Littlefield Texas

Levens—

(Continued from Page One)

age and to West Texas when I was sixteen. I am forty-six years of age and have lived in West Texas for the past thirty years. I am now practicing law in the city of Lubbock, being a member of the firm of Levens, McWhorter & Howard.

"Thirty years in West Texas have made West Texas my country first, last and all the time, and have made West Texas people my friends, neighbors and co-laborers.

"The real issue in Texas politics today and the first issue that should have the attention of the legislature is the reduction of taxes. The present system employed by our federal, state, county and local governments of collecting from the farmers, small merchants, cowmen, doctors, lawyers, etc., all of the expenses of government is little short of extortion. Likewise the lavish expenditure of the taxpayers' money on useless bureaus, commissions, tax gatherers and snoopers is little short of a crime.

"Our tax gatherers collect from the people of the State more than one hundred million dollars each year in direct taxes, sales taxes, fees and commissions, and spend every cent of it in the operation of thirty-two major and eighty-eight minor depart-

ments, bureaus and commissions; one hundred twenty-nine courts; eighteen eleemosynary institutions; nineteen higher educational institutions three penal institutions; rural and public schools, besides maintaining a legislature of one hundred eighty-two members. The thirty-two major departments above mentioned could maintain the affairs of State much more efficiently without the aid of the eighty-eight minor departments, bureaus and commissions; so why not eliminate all minor departments entirely and save for the tax payers the enormous sum of money expended by them? By proper curtailment of the expenditures of the State the tax payers can be saved at least twenty-five million dollars and the institutions of the State maintained much more efficiently. I am in favor of reducing such expenditures that amount, and this can and must be done without impairing the efficiency of our present public free school system.

"In Texas we have twenty-five billion dollars in wealth, based on assessable valuations. Yet it is a matter of record that four billion dollars of such wealth pays all of the direct taxes. In other words, there are twenty-one billions in wealth that contributes nothing to the support of the government, while four billions carry all the burdens of taxation. It is an insult to the intelligence of the people to say that a condition like the above cannot be corrected, and I say to the people of the 30th Senatorial District that if I am elected to the State Senate I propose to see that our full twenty-five billions in wealth pays its just proportion of the cost of government. I know how to reduce taxes, I have the ability to do it, and whether or not I am elected to the office of State Senator, I intend to have necessary measures introduced in the legislature at its next session to get the reductions we are entitled to.

"History reveals that an era of excessive taxation has preceded the downfall of every nation in the past. Are we willing to sit idly by and permit our governmental expenses to bankrupt the nation and its people?"

FARMERS WILL DISCUSS FEEDING OF DAIRY COWS

Local farm problems were discussed by farmers of the Littlefield community in a meeting at the Littlefield High School building, Tuesday, April 5, for the purpose of deciding upon the problems that will be taken up in a farmers' evening school in this community by R. A. Box, teacher of vocational agriculture in the local high school.

Ten or more meetings, two each week, will be held to cover the 10 problems suggested at this first meeting. The group will meet on Tuesday and Friday nights at 8:00 o'clock in the agricultural classroom.

The problem of feeding hogs was discussed at the first meeting, and the conclusion reached that grain should be fed with a protein supplement in a self feeder to get maximum gains and to cut the labor and expense to the lowest point. At the next meeting Friday night, April 8, feeding dairy cows will be discussed.

AN APPRECIATION

I wish to express my very deep appreciation of the very fine volume of business extended me in the operation of Lon's Lunch Room, which I recently closed because the landlord desired the use of the building. I am very much pleased to state that I have always enjoyed a very good volume of business on the several occasions in which I have engaged in business in Littlefield. Should I again enter business I hope to have the pleasure of serving my former customers and of making many new friends and customers.

Sincerely, LON CAMPBELL

J. T. Gattis, 86, Dies March 30 At Mulberry, Tenn.

Roy Gattis was recently advised of the death of his father, J. T. Gattis, who died at Mulberry, Tenn., on March 30, at the age of 86 years.

Mr. Gattis was a resident of the Littlefield section for four years, living on one of Roy Gattis' farms, located four miles east of Littlefield. He returned to his home in Mulberry last fall.

Surviving the deceased, in addition to Roy Gattis, are a daughter and two sons. The daughter is Miss Ina Gattis of Mulberry, and the sons are W. M. and C. M. Gattis of Georgetown, Texas.

Banquet to be Held At Whitharral To Raise Piano Funds

The Methodist ladies of Whitharral and district are sponsoring a banquet Friday night, April 15, for the purpose of raising funds to purchase a piano for the new Methodist church, which is now under construction at Whitharral. Work started Tuesday on the building, which is being built by the members of the Methodist church.

State and county candidates are expected to be present at the banquet, and an enjoyable time is promised. A charge of 35 cents will be made.

STATE AID—

(Continued from Page One)

partment of Education can spare, in June or July, when the cigarette, sales tax, and other taxes, are paid.

test being made to the State Department of Education.

Amherst and Sudan have received \$1,800 each and each have the promise of \$1,800 more in June.

When state aid was not forthcoming for Littlefield, a protest was entered with S. M. N. Marrs, state superintendent of public instruction. Subsequently a letter was received from the department stating that \$1,500 had been recommended. Following the receipt of the letter, Arthur P. Duggan, president of the board of the Littlefield Independent School district, went to Austin, with the result that a total of \$2,500 has been approved for immediate payment, and an additional \$2,500 has been promised.

The total amount which the Littlefield Independent School district is entitled to is \$7,000, according to Mr. Duggan.

Representatives of Olton went to Austin last week and presented the claims of the Olton School district.

Political Announcements

For Sheriff: ALBERT A. ANDERSON, E. G. COURTNEY, LEN IRVIN, BOB MILLER

For County Treasurer: MISS BESSIE BELLOWY (Re-election)

For Commissioner, Precinct No. 4: ELLIS FOUST.

For Public Weigher, Precinct No. 4: W. H. BELL, JIM ETTER, W. W. MATTHEWS.

For Commissioner, Precinct No. 3: C. E. STRAWN (Re-election), J. C. (Jim) GRACE

For Justice of Peace, Precinct No. 4: J. B. SIKES (Re-election), B. L. (JOSH) COGDILL

For District Clerk: MALLORY ETTER (Re-election)

For Tax Assessor: ROY GILBERT (Re-election)

For Constable, Precinct No. 4: FRED HOOVER (Re-election), SAM HUTSON, J. O. CONNELL

For County Attorney: J. E. (BERT) DRYDEN (Re-election)

HERBERT C. MARTIN, WALKER BARTON.

For County Judge: A. H. McGAVOCK, SIMON D. HAY (Re-election)

For County Clerk: E. Z. (ZEB) PAYNE, J. W. (Jake) HOPPING, STANLEY A. DOSS, MRS. W. W. GILLETTE.

For Tax Collector: GASTON PATTERSON (Re-election)

A. L. PORTER, T. L. (TOM) MATTHEWS.

For State Representative: M. R. AVERY.

For State Senator: ARTHUR P. DUGGAN, CLYDE E. THOMAS, G. E. LOCKHART, J. C. (JESS) LEVENS

For District Attorney: MEADE F. GRIFFIN (Re-election)

CHURCHES

METHODIST CHURCH

Sunday school 9:45 a. m. Epworth Leagues 7:15 p. m. Worship services 11:00 a. m. and 8:00 p. m.

Last week was a most profitable one for the work of the church. The Standard Training school was well attended and everyone seemed to gather great inspiration for the school. There were a good number of credits issued in the different classes. We hope to have some other Training courses during the year. Trained leaders is a very essential factor in the program of the church work today. Last Sunday was a good day in the services for the church. Had good attendance at Sunday school and at both preaching services. We are glad that spring is here and now people can come to church with a more regularity. We are counting on a decided increase in attendance upon all the services of the church.

The Epworth leagues are growing in interest and attendance. The date for our summer revival is August 7 to 21. Let us pray for the kind of revival that brings us closer to God.

Let every one go to church somewhere next Sunday. If your church is not represented in town go to some other church and enter into the worship of the hour. You are welcome at the services at the Methodist church.

Joe E. Boyd.

NAZARENE CHURCH

A Nazarene revival will be conducted at the Presbyterian Church here, commencing Friday evening, May 20. Rev. Lee L. Hamric of Hamlin, Texas, will do the preaching, and will be assisted by a song leader, pianist, and others. A cordial invitation is extended the public.

CHURCH OF CHRIST

We want everybody in town and in the country at the Church of Christ, Friday night, April 8, to begin with us in the study of a series of lessons on the subject of "Salvation."

We will begin our study with the "Fall of Man," and fellow man, in light of God's dealings with him, till we have established, beyond doubt, the great scheme of Redemption.

We believe this method of study to be the greatest and most profitable method possible.

If you have never beheld the beauty, harmony and simplicity of the Bible and have never understood it as you would like to understand it, be sure to attend this meeting. We believe that if you will attend one time and do not feel well paid for your time, we should not ask for any more of your time.

So, we only ask that you attend one service, perfectly confident that we will not need to invite you to come again.

We would not appear boastful in our statements, for we speak in humble and modest spirit, but very honest and confident in our statements, willing for you to come and judge for yourself. Come and see.

Come to the first service and see what an insight the lesson will give you to the harmony of God's plan, and also note the many things suggested by the thoughts of the lesson. Each lesson will, within itself, tell a complete story, and also will prepare the mind for a profitable study of future lessons which it suggests. Come and see.

The following lessons will be at-



Baseball Equipment

Better equipment means a better game. Get your supplies at this store... they are of proven quality.

- Baseballs
—Bats
—Gloves
—First Base Mitts
—Shoes

Thaxton Bros. Hardware

Littlefield

died in their respective order:

The Fall of Man; The Mission of Christ; Types of Christ and of Things Provided by Him for the Redemption of the Fallen Race; The Law and the Gospel, In Contrast; The Beginning of the Gospel; Conditions of Salvation, As Revealed by the Gospel; The Conclusion of the Whole Matter, or Twelve Things by Which We Are Saved; Christ, the Only Way; The Church, What Is It, What Composed of and What It Contains; Undenominational Christianity.

We invite all to ask any Bible question you may wish to ask. E. H. Garauer, Minister.

FIRST BAPTIST CHURCH

Sunday, April 10. Hear Rev. Jarry Cox of Oklahoma at the First Baptist church Sunday at 11:00 a. m. and 8:00 p. m. The pastor, Rev. J. F. Grizzle, will also be present.

Sunday school 9:45 a. m. B. T. S. 7:30 p. m.

A special organization and membership Sunday school campaign began Wednesday evening, and will continue until Sunday, April 17. We are expecting many new members.

At the close of this campaign our spring revival will begin. Joe F. Grizzle, Pastor.

FIRST PRESBYTERIAN CHURCH

Sunday, April 10. Sunday school 9:45 a. m. There will be no services Sunday, but Rev. J. R. Sharpe of Canyon is expected to occupy the pulpit the following Sunday.

MRS. G. R. CRIM ILL

Mrs. G. R. Crim, wife of Sheriff Crim, is undergoing treatment at the Lubbock Sanitarium. Mrs. Crim was taken to the sanitarium a week ago Friday and will continue at the institution for six weeks.

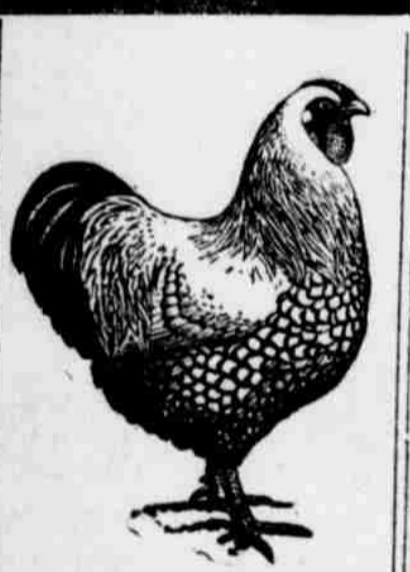
Named Managers of Consumers Supply Co.

Roy Blessing and Roy Gattis have just been appointed managers of the Consumers Supply Co. automobile service station on Highway No. 7, at the ice plant of the Texas Utilities Co. This is a locally owned concern, with large numbers of business men and farmers as stockholders. The Consumers Supply Co. handles gasoline, oil, kerosene, coal, and automobile equipment.

SCOUT MEETING

We are expecting a good meeting of scouts Friday night. All scouts be sure and come. Bring flags, books and ropes with you. E. Latimer, Scoutmaster.

CURB SERVICE—Stop and Honk at the Palace Confectionery. 52-11c



Is It Any Advantage To You To Have A Steady, Reliable Market for Farm Products?

Any day in the week, and under all market conditions, we are ready and willing to purchase all kinds of farm produce—and at the very highest prices it is possible to pay.

The farmers of this territory are invited to keep in touch with the market through our office, in order that they may determine when is the best time to market their produce.

REMEMBER—We are always fighting for higher prices for the products of the farm.

Littlefield Poultry & Egg Company WEST OF POSTOFFICE IN BELLOWY BUILDING

SELL YOURSELF GASOLINE OIL KEROSENE COAL AUTOMOBILE EQUIPMENT ---AND SAVE MONEY

You can do that by becoming a member of the CONSUMERS SUPPLY CO. Inquire about our plan.

A SAVING OF TWO CENTS PER GALLON ON GASOLINE—SUBSTANTIAL SAVINGS ON OTHER PURCHASES

Talk to Roy Blessing or Roy Gattis at the station. They will be glad to tell you about the CONSUMERS' MONEY SAVING PLAN.

Consumers Supply Co.

On Highway No. 7 at the Texas Utilities Co. Ice Plant

Chevrolet advertisement featuring a large '\$1.00' graphic and text: 'SPECIAL FOR WEEK OF APRIL 11th ONLY', 'REGULARLY \$', 'for the best MOTOR TUNE', 'a Chevrolet owner can buy', 'This price of \$1.00 is absolutely the lowest which you can get your Chevrolet tuned properly!', 'HEWITT CHEVROLET CO. LITTLEFIELD'

Vertical advertisements on the right edge including 'ENTERTAINMENT', 'HERO', 'NEW LOW PRICES', 'GOOD SPEED', 'Garland Auto', and 'Littlefield'.

THE CLASSIFIED SECTION

BUY AND SELL HERE

When
Your Meat Tooth Calls for Meat,
Your Wisdom Tooth Says—
the Royal

ROYAL CAFE
"The Home of Good Eats"

Money to Loan At
5 1/2%
on Farm Loans.
Why Pay More?
See J. S. Hilliard,
Secretary-Treasurer
Littlefield National
Farm Loan
Association
Office, City Hall Bldg.

MOODY'S CAFE
"Nothing Over 25c"
Famous for Barbecue
Buy it By the Pound

IN NEW LOCATION
I have moved my barber shop to
302 Phelps Ave., next door south
of Renfro Bros. Grocery & Mar-
ket. I hope to continue to serve my
present patrons and to make many
new customers.

CLAUDE CLARK

BILLS & HAZEL
Lawyers
Office upstairs in First National
Bank Building
LITTLEFIELD, TEXAS

T. WADE POTTER
Attorney at Law
Office in First National Bank
Building.
Littlefield, Texas

C. C. CLEMENTS
Dentist
X-Ray Machine in Connection
Office in First National Bank
Building.

**Lubbock
Sanitarium & Clinic**
Dr. J. T. Krueger
Surgery and Consultation.
Dr. J. T. Hutchinson
Eye, Ear, Nose and Throat
Dr. M. C. Overton
Diseases of Children
Dr. J. P. Lattimore
General Medicine
Dr. F. B. Malone
Eye, Ear, Nose and Throat
Dr. J. H. Stiles
Surgery
Dr. H. C. Maxwell
General Medicine
Dr. Olan Key
Urology and General Medicine
Dr. R. L. Powers
Obstetrics and General Medicine
Dr. Jerome H. Smith
X-Ray and Laboratory
C. E. Hunt J. H. Felton
Superintendent Business Mgr.
A chartered training school for
nurses is conducted in connec-
tion with the sanitarium.

DIXIE TOURIST CAMP
One Mile West of Littlefield on Highway No. 7
GROCERIES
—WATCH OUR BULLETIN BOARD FOR SPECIALS—
Phone 277B We Deliver
Will Pay Market Price for Eggs
Firestone Tires Magnolia Gas and Oil

WHEN IT'S AN

And Now You Can Enjoy
EXIDE Dependability
for as low as
\$6.95
We Service and Repair
All Makes of Batteries
**Garland-White Auto
Supply**
Littlefield Phone 138

**DAY and NIGHT
SERVICE**
—We Never Close—
Magnolia Gasoline and Oils
**LUCKY TIRE
SERVICE STATION**
W. J. BOYKIN, Prop.

HERBERT C. MARTIN
LAWYER
Office over Sadler's
Drug Store
LITTLEFIELD, TEXAS

 **A. F. & A. M.**
Meets every first Thursday of each
month.
F. O. Boles, W. M.
Dr. C. C. Clements, Secretary

DR. M. V. COBB
CHIROPRACTOR
Offices—Ground floor of the Corp-
er Apartments (formerly Seale
Apartments) 506 East Fifth St.,
one block east of Eagle Drug
Store.

J. E. Dryden
LAWYER
Office Court House
OLTON, TEXAS

DR. J. R. COEN
OBSTETRICS
AND
MEDICINE
Office 51-J PHONES Res. 61-M
Office over Sadler's Drug Store

Hopping Bros.
Agency
Insurance and Bonds
Automobile Loans
338 Phelps Ave.
Littlefield, Texas

RATES
Want ads, Rentals, Lost and
Found, Exchanges, Lands and
Stock, Miscellaneous, etc.
RATES: Classified, first inser-
tion, 10c per line, minimum 25c;
subsequent insertions, 7 1/2c per
line; obituaries, 5c per line; poetry,
10c per line. Unless advertiser has
open account, cash must accom-
pany order

FOR SALE
FOR SALE—Baby chicks. Why take
chances? Buy where you can see the
flock. Many breeds available, prices
reasonable. Littlefield Hatchery.
46-1te
FOR SALE: Second Year Certified
Rep Top Cane Seed that made 1750
pounds per acre this year at 1c per
lb. W. R. Geistman, 1 1/2 miles west
of Littlefield 51-3t-p

**CHICKS OF QUALITY AT NEW
LOW PRICES**—Most all leading
breeds and varieties. Readers of this
add specially invited to visit our
mammoth hatchery and brooding
plant. J. V. Lynch Hatchery Co.,
Hale Center, Texas. 51-4tc

FOR RENT
BUSINESS BUILDING FOR RENT:
Ideally located brick building modern
in every respect, available at exceed-
ingly reasonable rent on two year ba-
sis. Concrete floor, metal ceiling, two
fronts and one of best in city. One
of best propositions submitted in re-
cent years. A. G. Hemphill. 51-2tp

FOR RENT—Five-room house, mod-
ern, close in. Inquire at Renfro
Bros. 52-1tp

LOST and FOUND
LOST—Large black and white Per-
sian cat. Reward for return to J.
V. Eagan. 52-1tp

WANTED
WE BUY
Furniture, implements, livestock, or
anything of value. See Lynn & Cok-
er, Auctioneers. 45-4tc
WANTED—Custom hatching, very
reasonable prices. Littlefield Hatch-
ery. 46-1te
WANTED: Plain or fancy quilting
work done reasonable. Call at 716
E. 5th St. 52-1tp

FOR TRADE
FOR TRADE—120 acre improved
farm near Tahoka, Texas, for im-
proved acreage near Littlefield. Box
65, Sudan, Texas. 52-2tp

FAVOR PAYING SOLDIERS
Allen Brothers post No. 148 of the
American Legion, Lubbock, and the
Lubbock Chamber of Commerce have
joined other South Plains posts and
chambers in expressing disapproval
of West Texas Chamber of Commerce
opposition to full payment of adjust-
ed service certificates.

**A Few of the Many
Items in Office Sup-
plies We Now Have
In Stock**
—Copy and Drawing Pencils.
—Paper Clips.
—Paper Clasps.
—Invoice Files.
—Letter Files.
—Pencil Sharpeners.
—Inks.
—Stamp Pads.
—Stamp Pad Ink.
—Shipping Tags.
—Shipping Tag Wires and Hooks.
—Typewriter Ribbons.
—Adding Machine Ribbons.
—Debit and Credit Slips.
—Carbon Paper.
—Vertical Folders.
—Second Sheets.
—Pin Tickets.
—Index Filing Cards.
—Scratch Pads.
—Coin Envelopes.
—Scale Books.
—Receipt Books.
—Rubber Bands.
—Promissory Notes.
—Legal Blanks.
—Commercial Pads.
—Adding Machine Paper.
—Cash Books.
—Journals.
—Cardboard.
—Transfer Paper.
—Fidelity Onion Skin.
—Sheerleaf Onion Skin.

We Now Handle the Royal
Portable Typewriter—the
World's Greatest Portable
Typewriter Value.
**LAMB COUNTY
LEADER**
Phone 27

**Wayland College
Reduce Tuition
Rates To Students**

A very important meeting of the
Board of Trustees of Wayland Col-
lege was held recently in the
office of the President of the Col-
lege. There were many important
matters before the Board but one of
great importance to the public is that
of the rate charged students. Here-
after, any student may have the full
nine months in Wayland for the
small sum of \$299.00. This will cover
room, board tuition and all fees;
in fact, if a student spends more
than the above amount it will be their
own extras and nothing connected
with the college. This places the rate
slightly under \$100.00 per term. A
special publicity campaign for the
college will be waged through the
Plains country beginning at once.

**Final Ginning
Figures Announced**

The final ginning figures for the
past season have been announced by
the census bureau at Washington.
The 1931 cotton crop amounted to
16,595,780 running bales, or 17,060,
772 equivalent 500-pound bales.
The 1930 crop was 13,755,518 run-
ning bales, or 13,931,997 equivalent
500-pound bales, and the 1929 crop,
14,547,791 running bales, or 14,824,
861 equivalent 500-pound bales.
Round bales, counted as half bales,
included were 621,060 compared
with 524,277 in the 1930 crop and
572,227 in the 1929 crop.
State Total Given.
Cotton remaining after the March
census to be ginned was estimated
at 96,895 bales, compared with 11,
965 a year ago.
The 1931 crop, in equivalent 500-
pound bales, by states was:
Alabama, 1,419,527; Arizona, 114,
300; Arkansas, 1,892,053; California,
175,962; Florida, 43,164; Georgia,
1,393,334; Louisiana, 899,274; Missis-
sippi, 1,744,295; Missouri, 288,189;
New Mexico, 98,127; North Carolina,
756,237; Oklahoma, 1,260,745; South
Carolina, 1,004,786; Tennessee, 594,
451; Texas, 5,321,987; Virginia, 42,
434; all other states, 11,907.

NOTICE
A meeting of the stockholders of
the First State Bank, Littlefield, Tex-
as, is hereby called to meet on May
18, 1932, for the purpose of voting
upon the proposition to close the
business of the above named bank
and to surrender its corporate fran-
chise, in conformity with the pro-
visions of Article 539-540, R. C. S.
of Texas.
M. C. FARRISH,
M. H. REED,
C. B. SULLIVAN,
HUGH SULLIVAN,
D. K. WOODWARD, JR.,
Directors.
(8-10 to 5-12)

SEE
**JIM T.
DOUGLASS**
Littlefield
FOR
**FARMS
CITY PROPERTY
HOUSES AND
FARMS
FOR RENT**

CANDIDATES
Ride Into
Office on
That Good
GULF
GASOLINE
Gulf Service Station
Bill Yeary, Manager
Across from City Hall

SEE US!
LYNN & COKER
AUCTIONEERS
It will be to your advantage to
see us if you have Furniture, Im-
plements, Livestock, or anything
of value to sell
SEE US!

**Vocational Students
Exhibit And Sell
Pigs At Show**

Three agriculture students, John
Jones, Bill Dorman, and James Wal-
den, exhibited and sold their pigs at
the Fat Calf and Pig Show at Lub-
bock, March 25. These pigs were fed
as projects in vocational agriculture
by these boys during the last six
months. They averaged 250 pounds
in weight, and had been fed a bal-
anced ration of home grown grain
and a protein supplement of half
cotton seed meal and half tankage,
or skim milk.
Although the pigs sold for \$4.25
per hundred, the boys showed a prof-
it on the venture and demonstrated
that pigs even at present prices fur-
nish an outlet for low priced grains
produced in our section.

**Flowering Geraniums
Add Much Charm To
Gas Co.'s Offices**

The West Texas Gas Company
should be complimented on the sum-
mery and cheerful appearance of
their offices, brought about largely
by three large window boxes of de-
lightful green geraniums in blossom.

Home Cooked Meals
... the kind that bring you back
to the same table when the next
meal comes around.

PAUL VAUSE
Littlefield Hotel Dining
Room

Dr. Ira E. Woods
Optometrist
Office in Eagle Drug Store
Littlefield.
Careful Eye Examination—
Comfortable Glasses


**DOING GOOD WORK IS
A PLEASURE TO US**
We specialize in store fronts, cab-
inet work, and other kinds of con-
struction that requires extra good
workmanship.

H. W. TEETERS
General Contractor
Littlefield.

Feed Grinding!

Balanced and Supplemen-
tary Feeds
Grind with us and let us,
without charge, help you
Balance Your Home
Feds!
PHONE 242
Courtney & Myrick
XIT Drive—One Block South of
City Hall
Littlefield - Texas

Dr. T. B. DUKE
Physician and Surgeon
OFFICE OVER SADLERS
DRUG STORE
Residence Phone, No. 198


PHILL-UP & FLY WITH
'PHILLIPS 66'
Highest Test at the Price of Ordinary
PHILLIPS PETROLEUM CO.
P. O. Box 66

THE WINSTON INSURANCE AGENCY
INSURANCE
Bonds - - - - - Notary Public
Phone 233

which grace the
These have such a
appearance, and
Brown, the manager
managed to keep
green and growing
that he "just won't
was all.
For Office Supplies
call the Lamb County
27.

STREET &
Complete

Fire, Tornado, Life
Casualty

**Shoe
Repair**

Extra months of wear
shoes by timely re-
pairs.
We are equipped to
pairing—the kind to
your shoes many new
wear.

CITY SHOES
J. A. LILLY

**NEW
and
Second-Hand
Furniture**
J. W. PURVIS
Successor to Egan

WALKER BARNETT
Attorney-At-Law
Office Over Sadler's
Littlefield, Texas

HOME BAKERY
FRESH BREAD
HOT ROLLS
AND PIES
WHOLE WHEAT
HAM BREAD MARK
DAY
HOME BAKERY

HAMMON
Furniture & Undertaking
418 Phelps Ave.
P. O. Box 66
Licensed Embalmer
Day Phone 64 - - - Night

**Read!
Ponder!
Act!**
Close Up the House; Borrow Money, If Necessary, BUT—**BE HERE WITHOUT FAIL!**

**Closing
Out....**

SALE!

**Dramatic!
Startling!
Sensational!**
... are the bargains we offer you in this **CLOSING-OUT SALE** You Just Can't Afford to Miss It!

GOOD BYE LITTLEFIELD FAREWELL FAIR STORE

The Great Western Salvage Co., of Amarillo, Texas, buys The Fair Store from Monnig Bros. Wholesale Dry Goods Co., of Fort Worth, FOR LESS THAN 40c ON THE \$1.00. CAN WE SAVE YOU MONEY? WILL WE GIVE YOU VALUES? WOW! AND HOW!!

FOLKS!—Never before has so much been offered for so little—Never Before has such matchless price concessions been made since Lamb County was on the map. It is an astonishing underselling event of vital interest to every man, woman and child in Littlefield and surrounding country. This Spectacular Sale, so comprehensive, so vast, so different from anything the people of this community have ever experienced, will make all past merchandise sales pale into insignificance. If you are interested in the welfare of your family, and care to Save **BIG MONEY** on your Spring and Summer needs, **NAIL THIS OPPORTUNITY!**

DOORS OPEN 9 A. M. SATURDAY, APRIL 9

READ!—Prices That Will Make You Sit Up and Take Notice—READ!

WORK SHIRTS
Men's extra heavy blue work shirts. Extra well made and cut full. Regular 89c value. Closing Out Price, only—
48c

BOYS' SUITS
Choice of Best Suits with 2 pairs pants, values to \$12.50. Choice ----- **\$4.98**
\$6.50 to \$8 Boys' Suits, while they last,
only \$2.98

MEN'S HATS
1 lot dress hats, values to \$3.95, choice ----- **\$1.48**
\$3.95 Hats, all newest styles, in wanted light colors. **\$2.48**
\$7.50 to \$10 Stetson Dress Hats, choice ----- **\$4.00**
\$10.00 large shape Stetsons ----- **\$5.75**

Athletic UNION SUITS
only 19c
Small Sizes Only

MEN'S SHOES
\$1.75 Work Shoes ----- **\$1.15**
\$1.98 Work Shoes ----- **\$1.29**
\$2.98 Dress Shoes ----- **\$1.98**
\$4.50 Dress Shoes ----- **\$2.75**

Ladies' High Grade **OXFORDS and PUMPS**
\$3.45 values, choice, now—
\$1.98

MEN'S FANCY SOX
Men's 20c fancy Sox now **9c**
Mens 25c fancy Sox now **13c**
Mens 35c fancy Sox now **19c**
Mens 50c fancy Sox now **28c**
Heavy Work Sox, while they last, only ----- **5c**

BOYS' WASH SUITS
Values to \$1.75, choice, only
49c

SHIRTS and SHORTS
30c and 35c values, choice
19c

GARZA 9-4 SHEETING
Bleached or Unbleached only—
19c yard

TURKISH TOWELS
18x30 size, only—
7c each

HOUSE DRESSES
One big lot of Ladies' house Dresses, values to \$1.45. Choice—
48c

Ladies' Felt House Shoes
While they last, only—
23c

PRINTS
15c fast colored, yard wide Prints ----- **8c**
25c fancy Broadcloth Prints, beautiful styles, only **12½c**

ATTENTION, LADIES
We have a big line of all kinds of Piece Goods. Most any kind you could wish for. And at a price that will make your purse laugh.

SPECIAL FOR MONDAY ONLY
12½c and 15c Ginghams, Choice—
6c
Limit 10 Yards

LADIES' DRESSES
One lot Silk Dresses, values to \$4.50, choice ----- **\$1.48**
One lot Silk Dresses, values to \$8, choice ----- **\$2.98**
\$10 to \$15 Silk Dresses, choice now ----- **\$5.98**

ONE BIG LOT LADIES' SHOES
Values to \$4.50, choice, now
\$1.25

LADIES' UNDERWEAR
1 lot Step-Ins and Bloomers, choice ----- **25c**
59c extra size Bloomers, only ----- **35c**
95c Bloomers, on sale -- **59c**
\$1.75 Rayon Gowns -- **98c**

Boys' Shoes and Oxfords
Values to \$3.95. Choice of entire lot for only—
\$1.75

LADIES' RAYON HOSE
While they last—
19c

Men's DRESS SHIRTS
79c fancy and plain broadcloth, choice ----- **49c**
\$1.45 Dress Shirts ----- **85c**
Choice of all Manhattan Shirts for ----- **½ price**

KNOCKOUT LIST
10c Bias Tape, 3 for ----- **10c**
5c Lace, choice ----- **1c**
10c Canvas Gloves ----- **5c**
Corticella Spool Silk, Pick 'em, 3 for ----- **10c**
10c Buttons, 3 cards for **10c**
6 strand Embroidery Thread now, 3 skeins for ----- **5c**
Red Bandanna Handkerchiefs, big size, 10c values, now ----- **5c**
Genuine Napa Goat Gloves, only ----- **25c**
Good Pillow Slips ----- **10c**
Seamless Bed Sheets, 81x90 ----- **49c**
Yard wide Bleaching ----- **5c**
Choice of Ladies' Hats ----- **98c**
Good grade 36-inch Outing, light and dark patterns ----- **9c**

No Matter Where You Live—Come to This Great Closing Out Sale —BARGAINDOM'S GREATEST VENTURE!

A Startling Exhibition of Matchless Value-Giving and Matchless Money-Saving That Will Shake This Community From Center to Circumference. It Will Be Heard for Miles and Miles Away, and When the Curtain Rises—

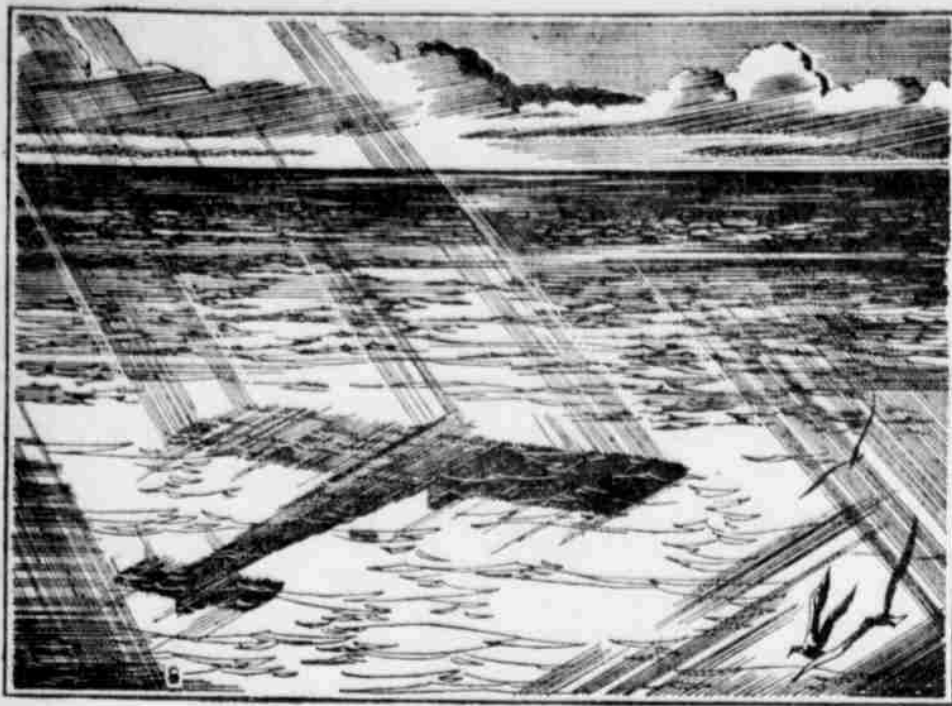
SATURDAY MORNING, APRIL 9 AT 9 O'CLOCK

Upon This Scene of Wonderful Bargains, It Will Be the Signal for the Greatest Bargain Carnival ever placed before the people of Littlefield and Vicinity. **ATTEND THIS SALE OPENING DAY—COME EVERY DAY—You Are Always Welcome, Whether You Buy or Not.**

Remember, this stock must be sold out to the bare walls and empty shelves. It's a real, genuine Closing - Out Sale, and every item is **PRICED TO SELL!**

Great Western Salvage Co.
Of Amarillo, Texas, Closing Out the Entire Stock of
Fair Store
LITTLEFIELD, TEXAS

GET IN LINE
Follow the crowds. They will all be bound for the big **BARGAIN EVENT**
Come and See Us—We Are **Rearing to Go!**



THE SECOND GRAND PRIZE OVER TRANSCONTINENT & WESTERN AIR, INC.

The Winner of This Prize Will Fly to California Over This Great Air Line, Departing Daily from Amarillo p. m. Arriving Los Angeles 8:53 p. m. —Dick Beisel's Plane, "The Gypsy", will Transport the Winner to Amarillo

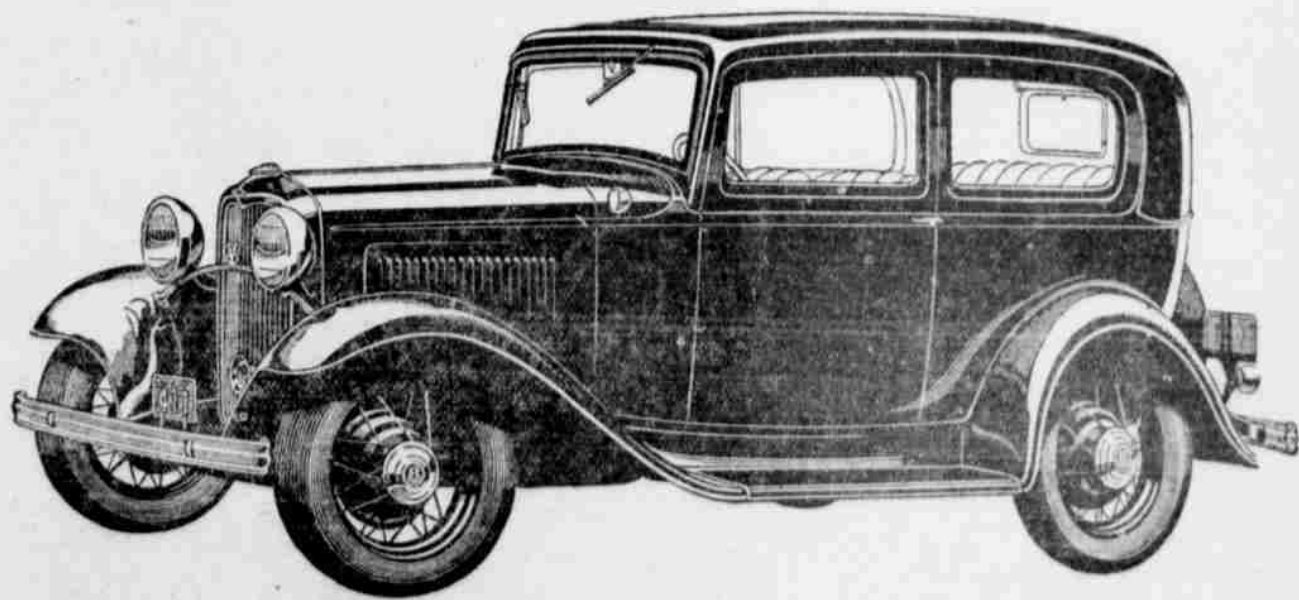
ONLY TEN MORE DAYS!... Campaign Closes April 16, 8 p. m.

FOLKS! Pay Up That Subscription Now! Help Your Favorite Be the Winner. Do Your Bit, for you May Be Selling Campaigning Yourself Some Day.

FIRST GRAND PRIZE!

THE NEW FORD

V-8 Cylinder



Eight-cylinder, 90-degree V-type, 65-horse-power Engine * Vibrationless
 Roomy, Beautiful Bodies * Low Center of Gravity * Silent Second Gear
 Synchronized Silent Gear Shift * Seventy-five Miles per Hour * Comfortable
 Riding Springs * Rapid Acceleration * Low Gasoline Consumption * Reliability

Will Be On Display At The

John H. Arnett Motor Co

News of Lamb County Cities - - - Communities

CHARLIE HAUKE OF WHITHARRAL IS COMPLIMENTED AT BIRTHDAY PARTY

A beautiful home of Mr. and Mrs. Charlie Hauke of Whitharral was the scene of much merriment Monday, March 28th, the occasion of the forty-fifth birthday of Mrs. Hauke.

Miss Ruby Ball, the sponsor of the Junior class of Bula High school gave a party March 19 in honor of the Juniors.

BULA NEWS

Miss Ruby Ball, the sponsor of the Junior class of Bula High school gave a party March 19 in honor of the Juniors. All were present except two, Mozelle Noriyyke and D. L. Seifres.

ANTON

On Thursday, April 7, the Band will sponsor an "Old Maids Sale," from the stage at the Anton High School auditorium.

The Band is also selling tags to the boosters of the Band, which tags will admit you to two hours entertainment—the date to be announced soon.

Subscribe for the Leader.

FOR SPRING



SUIT FOR \$100

That's the way it will look to you when we return it. Cleaned, pressed and restored to original color and styling.

Ladies Dresses A Specialty

Littlefield Tailor Shop

Phone 101

Your Palace Theatre Presents

TONIGHT (THURSDAY)—Clark Gable and Marion Davies in POLLY OF THE CIRCUS. Also Comedy and Paramount News. FRIDAY AND SATURDAY—Charles Bickford and Rose Hobart in a great action picture—EAST OF BORNEO.

ENOCHS' BREEZES

The two small children of Mr. and Mrs. L. A. Corbell were badly burned on their feet Tuesday afternoon, when they attempted to start a fire with gasoline.

Dorothy Nell, the 28-month-old daughter of Mr. and Mrs. Clabe Cox, died at her home Sunday at 3:00 a. m., with diphtheria, following a very short illness.

Mrs. Roy Bench, small daughter, Mrs. Glynn Roper and son, of Littlefield, are visiting with Mrs. J. D. Blalock this week.

Mrs. Roy Helson spent the week-end in Littlefield with relatives.

The Enochs Cafe has closed for the season.

The Enochs gin closed down Saturday until the coming year.

The Enochs ball club had a called meeting Wednesday night and appointed Roy Helson financial manager of the ball club.

EARTH NEWS

R. L. Roach of Earth is putting in a grist mill in Earth. His new building is now under construction.

Mrs. J. F. Simons recently returned from a visit with her daughter at Odessa, Texas.

Miss Gladys Henderson, one of the Sunday School teachers, took her class for a picnic to the Sand Hills.

Earth is building a croquet court. Patsy Welch and Watson Welch has hauled the sand, and will start the wash soon.

H. C. Holt has gone to Muleshoe to visit his relatives.

Mr. and Mrs. Chanler of Spring Lake community are the happy parents of an Easter baby girl.

An astrologer predicted that a United States Senator will lose his mental balance during 1932, which is our idea of a prophet playing safe.

SOUTHEAST NEWS

By Edna Byers.

Mr. and Mrs. Sam Walker, who were married March 29th, were honored with a shower Thursday evening in the Carter home.

Edna Byers entertained with a party Thursday evening, honoring her house guest, Aline Shirley of Falls.

Mr. and Mrs. Lee Castle visited Mr. and Mrs. George Ross Sunday.

OLTON

Joe Kennedy reports that he will open a furniture exchange and repair shop here about April 15. Mr. Kennedy is an experienced furniture repair man and furniture refinisher from Oklahoma City.

Mrs. H. C. Buck, formerly of Olton, underwent an operation at the Plainview Sanitarium recently, and is doing nicely.

J. L. Jones last week improved his garage building by laying a new concrete floor.

See it NOW

THE NEW ROYAL

PORTABLE TYPEWRITER



This is the best portable typewriter that money can buy. See it at the—

LAMB COUNTY LEADER

Exclusive Royal Portable Agents for Lamb County

SUDAN

A recent addition to the business circle of Sudan is the Arvain Dry Goods Store located in the Holden building.

U. H. Mileur, manager of the Sudan Chick Hatchery, has just installed a new 7,000 capacity Jameswat Turkey Egg Hatching machine at the hatchery this week.

Mr. and Mrs. J. G. Bishop, who called here on account of the death of Mrs. Bishop's sister, Miss Ada Caruth, have returned to their home in Colorado. Mr. Bishop is county agent of Kiowa county, Colo., and was agricultural teacher in the Sudan school several years ago.

Subscribe for the Leader.

After Meals, a Pinch of Black-Draught

for Indigestion

If bothered with indigestion, gas, or distress after meals, try taking a pinch of Theodor's Black-Draught. By helping to cleanse the bowels of undigested food and waste matter, Black-Draught brings relief to many sufferers.

25 DOSES IN A 25c PACKAGE



When You Figure Costs... It Will Pay You to Call 81 For Detailed Information

Lamb County Lumber Company

REMEMBER: "Working Dollars Mean Working Men"

Littlefield

Transcontinental & Western Air, Inc.

J. B. LYMAN, D. T. M., Office Herring Hotel, Phone 5600, Amarillo, Texas

EXECUTIVE OFFICES, 923 GRAYBAR BLDG., 420 LEXINGTON AVE., NEW YORK, N. Y. GENERAL OFFICES, 10 RICHARDS ROAD, MUNICIPAL AIRPORT, KANSAS CITY, MISSOURI

Table 34: 36-HOUR COAST TO COAST SCHEDULES. Includes flights from New York to Los Angeles via Philadelphia, Harrisburg, and other intermediate cities.

Table 37: 2 3-4-HOUR SAN FRANCISCO-LOS ANGELES SCHEDULES. Includes flights from San Francisco to Los Angeles via Bay Air Dome and other routes.

Table 38: 3 1/2-HOUR ST. LOUIS-TULSA SCHEDULES. Includes flights from St. Louis to Tulsa via Lambert Field and other routes.

Table 39: 12-HOUR TULSA-CALIFORNIA SCHEDULES. Includes flights from Tulsa to California via Albuquerque and other routes.

Table 35: 8-HOUR NEW YORK-CHICAGO SCHEDULES. Includes flights from New York to Chicago via Philadelphia and other routes.

Table 40: 24-HOUR CHICAGO-LOS ANGELES SCHEDULES. Includes flights from Chicago to Los Angeles via various routes and airlines.

Table 36: 3 1/2-HOUR NEW YORK-PITTSBURGH SCHEDULES. Includes flights from New York to Pittsburgh via Philadelphia and other routes.

Greyhound Bus Lines now offer convenient connecting schedules to all cities and towns in the territory tributary to T. & W. A. Combination air-bus tickets may be secured at any T. & W. A. or Greyhound Ticket Office

LEGION POST WILL MEET MONDAY NIGHT

Richard New Post, American Legion, will meet Monday night, April 11, at the Legion Home. Special business will be transacted, and good entertainment provided. All Legionnaires are urged to attend.

OLD FASHIONED MILK SHAKE, 5c—Palace Confectionery. 52-11c

FARMERS!

We Want Your Cream, Poultry, Eggs and Hides

Highest Prices Paid At All Times

Open Early and Late Efficient and Courteous Service

Porcher Produce Co.

SPARTAN

3-Place Cabin

MONOPLANE

HERE FRIDAY

Bringing two air officials, and will be available for hire.

SHORT RIDES

Friday Afternoon and Saturday

School Elections—

(Continued from Page One)

ballots as in any previous election. A total of 1051 voters cast their ballots.

There were two tickets in Saturday's election, one composed of Mr. Elms, Mr. Neuschwander and Mr. Byers, and the other made up of Mr. Jeffries, Mr. Brannen and Mr. Blessing. The latter ticket won out by almost a 100 per cent majority.

The vote was as follows: J. T. Elms 347, Albert Neuschwander 359, R. L. Byers 350, W. E. Jeffries 717, J. E. Brannen 683, J. M. Blessing 660. Three others whose names were written into the ballot received a total of six votes.

Jack Crawford and G. W. Locke were elected trustees of the Olton Independent School district at elections held here Saturday. They succeeded A. J. Walling and Guy Willis. Mr. Walling's name made the third on the ballot.

The vote was as follows: Walling 105; Locke 212; Crawford 186. A total of 254 votes were cast.

Church Edgin, J. H. Moore and L. J. Grimes were elected to board of the Amherst Independent School district, in the election Saturday. They succeeded Ira Holland, Jeff Cook and Milliard Phillips, who did not seek reelection. Others on the ticket were Newt Cantrell, Ben J. McGee and Andy Lee. The candidates and the votes they received were as follows: Newt Cantrell, 102; Ben J. McGee, 83; Andy Lee, 74; Church Edgin, 263; J. H. Moore, 251, and L. J. Grimes, 254.

S. J. Huff, I. J. Rice, E. E. Wells and Homer Hukill received votes in the election Saturday to select trustees for the board of the Hart's Camp Independent School district. The election was for the selection of three trustees. The candidates and the votes they received were as follows: S. J. Huff, 53; I. J. Rice, 51; E. E. Wells, 51, and Homer Hukill, 48.

CARD OF THANKS

I wish to extend to the people of the Littlefield Independent School District my deepest appreciation for their splendid support and liberal vote cast for me in the recent school election. I did not seek this office, but since the people have seen fit to elect me as a member of the school board, I promise to work for the benefit of all, and do the very best I can by all concerned.

Wm. E. Jeffries, Sr.

Ford—

(Continued from Page One)

double-acting hydraulic shock absorbers, large four-wheel brakes, newly designed electrically welded steel-spoke wheels with large hubs and hub caps and large tires. The chassis and running gear are cushioned by rubber insulators in the spring shackles and shock absorber links. The body is insulated from the frame by rubber pads.

The new bodies are fresh and modern from the gracefully rounded V-type radiator to rear bumper. The air-flow lines are carried out by the long hood with its rustless steel center strip, the slanting safety glass windshield, and rounded roof line. The convex lamps, full-crowned fenders and long, low running board harmonize with the balance of the design.

Body interiors are roomy and richly furnished. Seats are of new style, designed for utmost comfort. Driver seats in all closed cars are adjustable. A large ventilator is provided in the cowl. The oval instrument panel is in engine-turned finish and has a rustless steel mounting strip. Inside sun visors, which fold out of the way when not in use, are provided in all closed cars.

Smooth Operation.

The New Ford V-8 engine is remarkably free from vibration. Frequent and overlapping impulses deliver the power in a smooth constant flow.

The engine is of the 90-degree V-type, developing 65 brake horsepower at 3400 f.p.m. The 65-pound crankshaft is of the 90-degree type, with its four cranks at right angles to each other.

The crankshaft is statically and dynamically balanced and its throws counterbalanced. The crankshaft, the connecting rods and pistons also are in balance so that the engine operates with remarkable smoothness at all engine speeds. Pistons are of aluminum alloy and have three rings, the lower acting as an oil-control ring.

Cylinder blocks and crankcase are cast in one unit, giving exceedingly rigid engine construction. New type, one-piece valves, which eliminate tappets, operate directly from the crankshaft without pushrods.

Connecting rods from opposite pistons are placed side by side on each 90-degree crankshaft throw. These are mounted on new floating steel bushings, babbitted inside and out, which serve to give the benefit of the full crankpin bearing area to each connecting rod thus affording longer wear.

A cast aluminum cover embracing the intake manifold forms the top of the engine, giving it an unusually finished appearance. The down-draft carburetor and the fuel pump are mounted on this cover.

The gas is preheated in the intake manifold by a hot spot created by hot exhaust gases surging back and forth through a small passage in the manifold cover plate. Exhaust ports are on the outside of the engine blocks, the left exhaust pipe being carried around the front of the engine.

The distributor operates directly from the front end of the camshaft eliminating the use of interposed gears. Spark control is automatic. The crankshaft and crank pin bearings are lubricated by pressure as are the main

bearings of the camshaft. Pistons and valves are oiled by spray and splash. A fan of airplane propeller type and two centrifugal water pumps together with the large surface of the radiator insure ample cooling under all driving conditions.

The rugged new double-drop frame is formed to the shape of the body and, with the new low rear spring, provides a low center of gravity, with consequent increase in roadability.

Riding Comfort Big Feature. The riding comfort of the cars is due to many factors, but particularly to the new flexible transverse cantilever springs, larger tires, rubber insulation and the newly designed shock absorbers.

Two new features have been incorporated in the Bendable hydraulic double-acting shock absorbers. One, a thermostat control which compensates for varying temperature conditions, and the other, a special valve

which automatically lessens the effect of sudden road shocks. The Ford rear spring is of new design, being flatter and lower. It is mounted on perches at the rear of the axle housing and bowed out so as to clear the differential housing.

The new brakes have a braking surface of 186 square inches. Wheels are 18 inches in diameter. The large hubs enclose the bolts which attach the wheel to the drum. There are 32 steel spokes, sharply pitched and elec-

trically welded and hub shells are strong unit. Each is "tramped" or speeds. The Ford torque shaft being of

ENTERTAIN the Palace Comable booths.

"Just-Right" Poultry and Livestock

... WILL GET THE JOB DONE. We are now manufacturing this refined feeds from a time-tried formula in which the best milk powders are used. A difference for all requirements. Before offering for sale we made a number of feedings obtained excellent results.

With the exception of the animal grown feeds are used exclusively in the culture of "Just-Right" products. When "Just-Right" feeds you are helping in the raising of home grown products.

We invite you to try "Just-Right" feeds. You know that you will be well satisfied.

MYRICK GRAIN & FEED

Littlefield One Block South of

ICE. Our ice vault is open from early morning until 9 p. m., every day, including Sunday. HI-WAY GROCERY. W. H. HEINEN, Prop. On Highway No. 7, a short distance East of the Santa Fe Depot.

ALL ROADS LEAD TO.... REPLIN

Spring Showings

—Opening Display Starts Saturday

MEN'S SOCKS First Quality 4c Limit 2 Pairs. 81x90 SHEETS Bleached 47c Limit 2. Ladies' Full-Fashioned Hosiery Special Pretty Colors to Choose From 49c. MEN'S BLUE Covert Pants Extra Special Saturday and Monday 59c. 50c Tie — FREE! — 50c Tie With every Dress Shirt sold Saturday. Guaranteed Fast Colors. Come Early 98c Only 120 Ties. NEW SPRING DRESSES \$2.98. Quilt Patch Rolls 2 lbs., 15 yards of Goods, only— 33c.

THIS IS A COUPON! Don't Throw It Away; It Can Be Worth Several Dollars to You! Two Photographs for the Price of One. Bring this coupon to our studio any time during the month of April and we will make two photographs for the price of one. This liberal offer includes any size photograph from a 4x6 to a 11x14 in either black and white or hand colored portraits. This offer does not include groups. Reduced Prices During April on Additional Quantities. Mother's Day is Sunday, May 8. What would your mother appreciate more than your photograph? CHISHOLM'S STUDIO & GIFT SHOPPE LITTLEFIELD

YELLOW HOUSE —AND— SPADE LANDS. In the Famous Littlefield-Levelland Section of the South Plains. LARGE NUMBER OF 100 PER CENT FARM TRACTS A FEW IMPROVED FARMS. Splendid combination acreage in any size tracts right in the center of development, surrounded by farms and plenty of feed, at prices and terms that will appeal. 14,000 Acre Ranch Fenced. 4,500 Acre Ranch Fenced. A FEEDER-BREEDER PARADISE. —Come and Let Us Show You— Yellow House Land Co. OWNERS LITTLEFIELD TEXAS

LADIES' SMARTLY STYLED SPRING HATS Values to \$2.00 98c. TENNIS SHOES 49c. All Sizes, in Whites and Suintans. All Remaining SPRING COATS At Cost! BARGAINS IN WASH GOODS! 36-INCH DRESS PRINTS Tub Fast, Beautiful New Colors. 8c Yd. SHIRTING CHAMBRAY Fast Indigo Dye 9c 15c Val. 36-inch Solid BROADCLOTH Fast Colors 10c. Leather Work Gloves 47c. LARGEST SELECTION OF SPORT OXFORDS AT THE LOWEST PRICES IN TOWN! Child's Oxford 79c. It Pays to Trade Where Your \$ Buys the Most REPLIN'S Is Little's Greatest Giving