

WEATHER

December 3	60	21	.00
December 4	49	21	.00
December 5	41	27	.00
December 6	47	37	.00

BAILEY COUNTY JOURNAL

'The Community Of Opportunity-Where Water Makes the Difference'



Vol. 24 No. 49

10 Pages Today

Published Every Sunday at Muleshoe, Bailey County, Texas 79347

20¢

Sunday, December 7, 1986

1986 Disaster Program Guidelines Released

Three County Meetings Set To Explain 87 Farm Program

Danny Noble, county executive director of the Bailey County ASC, has released the guidelines for the 1986 disaster program.

Noble says any producer that expects the yield on any program crop to be less than 50 percent of their payment yield, should file an ASCS-574 and report their production and/or disposition of the 1986 disaster affected crop by December 15, 1986.

"The crops included as program crops for this program are wheat, corn, grain sorghum, barley, oats, cotton, peanuts, soybeans, and sugarbeets," added Noble. "The disaster payment yield for wheat, feed grains, and cotton is the 1986 farm program payment yield."

"Peanuts is the established farm yield. Soybeans and sugarbeets are the highest yield per harvested acre for the years 1983, 1984, or 1985, if available. If the yield is not available for 1983 through 1985, the yield will be the average of the county average for 1981 through 1985, as determined by SRS," he continued.

The disaster payment acreage for wheat, feed grains, and cotton is the 1986 planted acreage, for each crop, not to exceed the 1986 permitted acreage. For peanuts, soybeans, and sugarbeets is the 1986 planted acreage, for each crop, not to exceed the 1985 planted acreage for that crop.

In determining the eligibility for a disaster payment for wheat, feed grains, and cotton, the farm must be enrolled in the 1986 farm program and in compliance for the respective disaster affected crop.

Any producer that expects the yield on any nonprogram crop to be at least a 50 percent loss, should also file their 1986 actual production for all commodities on all farms in which the producer has a farming interest, continued the ASC executive.

The crops included as non-program crops for this program are commercial crops, such as sunflowers, alfalfa, vegetables, and others. The disaster payment yield for nonprogram crops is the highest actual yield per harvested acre for the years 1983 through 1985, if available.

If the yield is not available for these years, said Noble, the yield will be the average of the county average yields for 1981 through 1985.

"The disaster payment acreage for each nonprogram crop is the 1986 planted acreage, for each crop, not to exceed, the 1985 planted acreage," he added.

Disaster determinations for

nonprogram crops will be made for a producer's entire operation in the county. The producer must be determined to have suffered an economic emergency, which is at least a 50 percent loss of income for all program and non program crops.

Disaster determinations for program crops will be made on each crop separate. Each program crop stands on its own in determining a loss of 50 percent or greater.

Payments will be computed as follows: Multiply 50 percent of the disaster payment yield times the disaster payment acreage. Subtract the 1986 actual production from the gross eligible production. Multiply the net eligible production times the disaster payment rate times the producer's share minus the net crop insurance benefits for the crop.

The sum of a producer's payments for all program crops cannot exceed \$100,000 and the sum of nonprogram crops cannot exceed \$100,000.

Noble also said 1986 actual production will not consider quality of production and will include appraised production

Cont. Page 6, Col. 1



Be sure to take your new, used, or handcrafted toys for boys or girls to the Bailey County Ambulance Service at 708 West Second before December 24.

CofC Selling Specialized Christmas Cards

Toni Eagle, manager of the Muleshoe Chamber of Commerce and Agriculture has issued a reminder that "Muleshoe Christmas Cards" are on sale now at the Chamber office.

"These cards are a special product of the talents in Muleshoe, for every phase of the card was developed here," she said. "All money made from the cards will be used in Muleshoe on needed projects."

The cards are 75 cents each, or can be purchased on special now at \$4.50 for eight or \$8.50 for sixteen cards.

"Come by the Chamber office and pick up your supply now," Mrs. Eagle concluded.

Muleshoe Auxiliary Starts Annual Project

It's getting underway a little late this year, -- but the annual Muleshoe Nursing Home Auxiliary has its annual Christmas Card Project started.

After being forced to wait for a settlement concerning whether or not the Nursing Home would be open at Christmas time, the Auxiliary said they realize the project is a little late this year.

However, they also said that after being so 'up in the air' for so long, the residents of the Muleshoe Nursing Home are due something 'special' to help brighten their days. This year, the money collected in the Christmas Card Project will be used to help make the nursing home more attractive for the residents and their visitors.

Please remember that your Christmas greeting to your business associates, your friends and neighbors will be included in the giant Christmas Card to be included in the Sunday, December 21, 1986 edition of the Bailey County Journal.

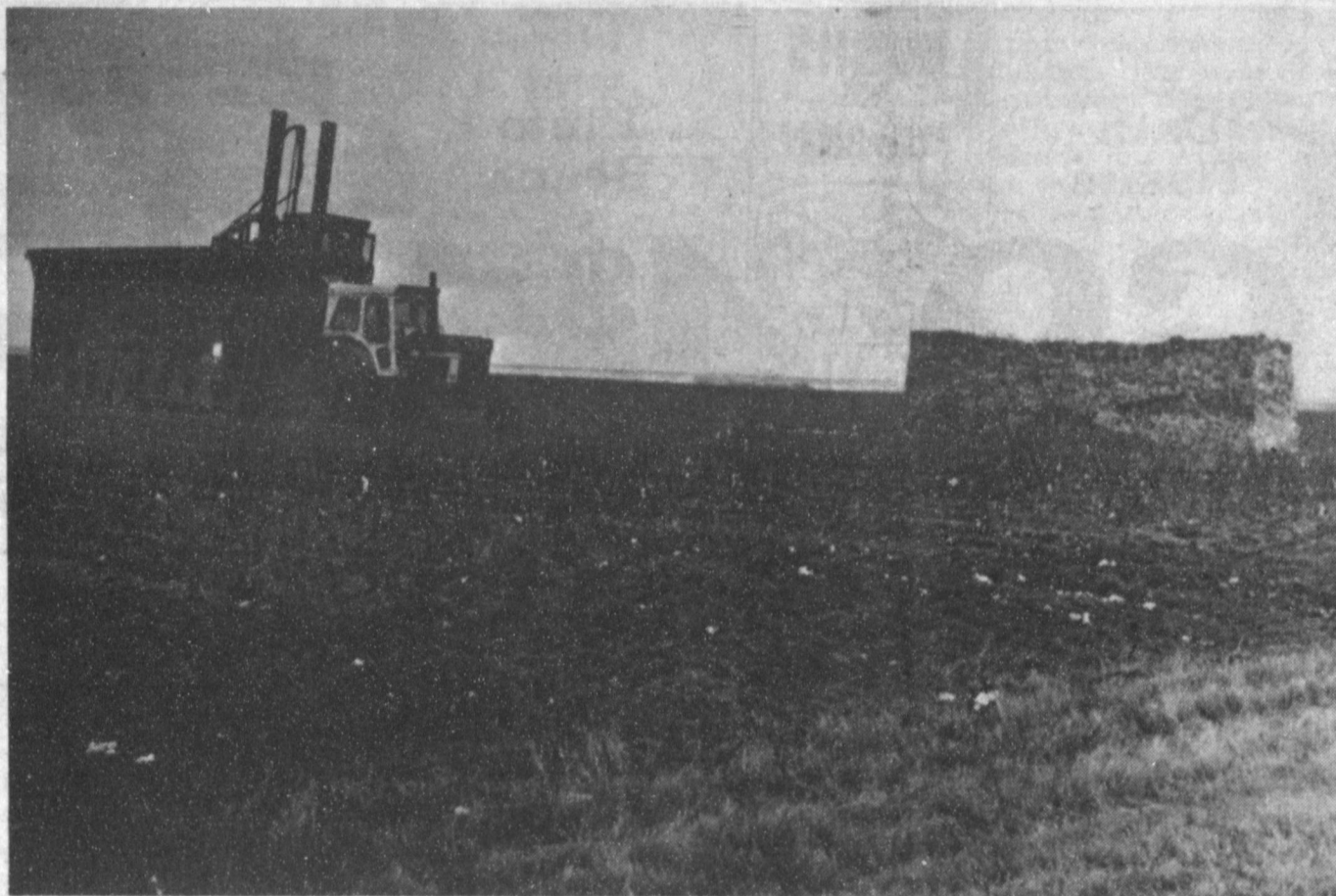
Deadline for getting your check in for your Christmas Card this year will be Wednesday, December 17 at 5 p.m.

You may leave your contribution with any member of the

Muleshoe Nursing Home Auxiliary, or mail it to the Muleshoe Nursing Home Auxiliary at 708 South First St., Muleshoe, TX 79347. Both banks are also accepting your Christmas Card Project money also.



DISTRICT SWEETHEART----- Lisa Black was elected FFA District Sweetheart during a district FFA Banquet in Muleshoe Monday night. She is a student at Muleshoe High School.



SIGNS OF THE TIMES--As the cotton harvest for Bailey County begins to wind down, cotton modules are being moved from the fields to area cotton gins. Not all gins opened in the county for this year and one major gin, who ginned more than 20,000 bales of cotton two years ago, and 11,000 bales last year, said he would do well to gin 3,500 bales this year. Weather held the cotton production to a minimum in Bailey County.

Three Way Eagles Pack District 1A All-District Team

With the conclusion of the football season for the Three Way Eagles, the District 1A Six-Man All-District teams were

Three Way Schools Honor Students For 1986-87

Recently, at the Three Way School, the student body named several students for special honors.

Elected for Mr. THS was Oscar Guillen; Miss THS, Monica Locke; Most Handsome, Oscar Guillen; Most Beautiful, Dolle Barker; Sports Favorites Oscar Guillen and Linda Belez.

Voted for honors by the faculty were Robert Zamora and Dolle Barker, Most Dependable, Most Courteous, Robert Zamora and Shelia Tucker; Most Studious, Robert Zamora and Dolle Barker; and Most Loyal, Matt Sowder and Melinda Turney.

Names to Who's Who for 1986-87 from Junior High were Carrie Kindle and Norma Rubalcava and named to the Who's Who for 1986-87 for High School were Shelia Tucker, Melinda Turney, Dolle Barker, Jarrod Sowder, Matt Sowder and Robert Zamora.

announced Thursday morning. Offensive Ends, first team, were Chuck Smith, New Home and Oscar Guillen, Three Way.

Offensive Ends, second team, Heath McGehee, Southland and Sloan Grabbe, Silverton.

Offensive Ends, honorable mention, Shawn Walls, Three Way and Robert Zamora, Three Way.

Center, first team, Fritz Speckman, New Home.

Center, second team, Corey Turley, Southland.

Center, honorable mention, Matt Sowder, Three Way.

Quarterback, first team, Lloyd Cabellero, New Home.

Quarterback, second team, Corey Robertson, Silverton.

Offensive Backs, first team, Gilbert Armendariz, Southland; Lonnie Asher, Texline and Jimmy Wyatt, New Home.

Offensive Backs, second team, Arthur Price, Amherst and Neal Edwards, Silverton.

Offensive Backs, honorable mention, Jose Rubalcava, Three Way.

Deep Back, first team, Saul Guillen, Three Way.

Deep Back, second team, Jim Helms, Smyer.

Kicker, first team, Kevin Driver, Whitharral.

Kicker, second team, Sloan Grabbe, Silverton.

Kicker, honorable mention, Curtis Tucker, Three Way.

DEFENSE

Defensive Linemen, first

Con't Page 6, Col. 4

Homes, Businesses Will Be Judged For Decorations

Again this year, the Muleshoe Chamber of Commerce and Agriculture is sponsoring the "Annual Christmas Decorating Contest" for all Muleshoe businesses and homes.

Toni Eagle, manager of the CofC said businesses need to decorate, then urge their customers to call the Chamber office and cast their vote. Once a business has their first vote, the business will be officially entered.

Home entries need to call the Chamber office and give your name and address. These addresses will be given to the media so interested citizens may drive by your house and then call their votes in for the home of their choice.

Mrs. Eagle said voting ends December 22 at 5 p.m. and winners will be announced on December 23.

School Board Agenda Full For Meeting

On Monday night, December 8, members of the Muleshoe Independent Board of Trustees will meet in regular session in the school business office, with the following items to consider:

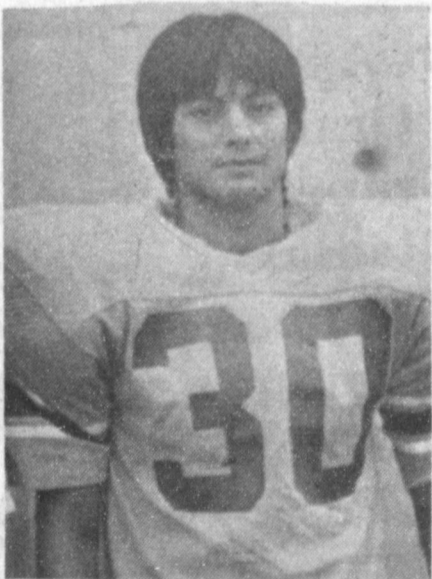
Under informational reports will be the Mighty "M" Band Program report and update; presentation of MultiPro -- Muleshoe Teacher Incentive Program; update on renovation and construction of the all-weather track and review plans for expanding the administrative building.

Financial reports will be to review the bank balances and fund balances, and consider approval of payment of current bills.

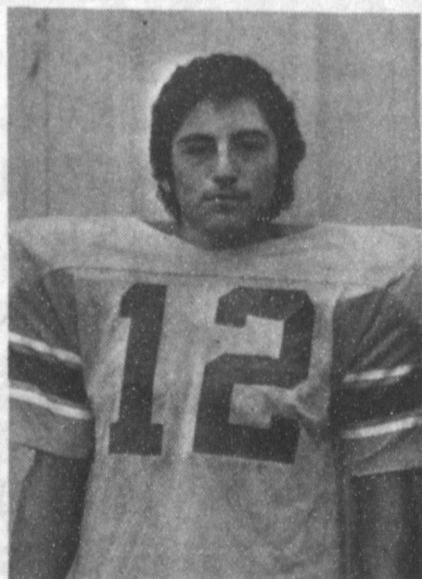
Following an executive session on personnel matters, the board will make appropriate action following the session.

Business items will be to consider approval of a request to place a local music guild on the approved extra-curricular list; consider approval of school auditors for the 1986-87 school year and approval to order two new school buses for the 1986-87 school year.

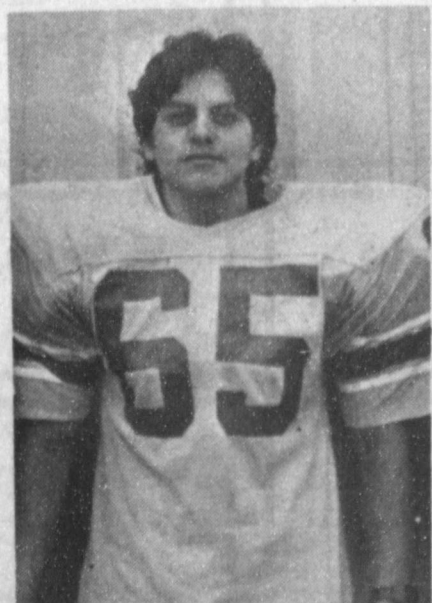
Following tax collection reports, special reports will be given concerning the board president, superintendent of schools and the school and community.



ROBERT ZAMORA



OSCAR GUILLEN



JOSE RUBALCAVA



SAUL GUILLEN



Youth of the Calvary Baptist Church have a project to obtain money for camp and other church activities. The youth will babysit for holiday parties, or will clean up after your holiday party.

If you would like some help in decorating for the holidays, the youth are also available. And, they are taking orders for your holiday baking at this time.

To place an order for any of the services, call Della at 272-3738; Barbara at 272-5319 or Lela at 272-3600.

Lt. Wayne Holmes of the Muleshoe Police Department will be conducting another Defensive Driving Course on Tuesday, December 16 and Wednesday, December 17.

Classes will be conducted in the training room at the Muleshoe City Police Department from 6:30-10:30 p.m. each of the two nights.

Registration is \$5 for the school. Call the dispatcher at the MPD for further information or to sign up for the classes.

Other DDC classes will be conducted in January, March and May, 1987.

The regular meeting of the Muleshoe Activities Committee will be Thursday, December 11 at 10 a.m. in the City Council Chambers of the Muleshoe City Hall.

All members are urged to attend and bring at least one guest with them.

All interested people are invited as plans for 1987 will be discussed.

Mark your calendar now, December 11 at 10 a.m. for MAC. Coffee and spudnuts will be served.

Bailey County Commissioners Court will meet in regular session in the Bailey County courthouse on Monday, December 8, at 10 a.m.

Items on the agenda include payment of routine county bills, review county treasurer report for November, review departmental reports and miscellaneous items.

At this time, the Muleshoe Chamber of Commerce and Agriculture is working on organizing a 1987 Pheasant Hunt in this area.

Toni Eagle, manager, said the CofC is in need of land for 1987.

She explained that they are putting together a hunter's packet to be distributed this year to hunters in the area concerning a 1987 hunt.

If you have land you will lease for hunting in 1987, please call the CofC right away. Hunters will be able to make their plans for next year, and it will put a few more dollars in the pocket of farmers, said Mrs. Eagle.

More than 800 students at Texas Tech University completed degree requirements at the end of the 1986 summer session.

Degree recipients included Arnoldo Muyschondt, Muleshoe, bachelor's degree in mechanical engineering and James Lee Simpson, Goodland, master's degree in entomology.

Bailey County farmer, John Tucker, from the Maple area, is the featured spokesman in an

Con't Page 6, Col. 4



Letters To The Editor

(Editor's Note: Not only are area adults concerned about the closing of the hospital in Muleshoe.

(The following letters were written by sixth and eight grade students of Kristi Phelps at Watson Junior High School. Their concerns about the lack of a hospital are well thought out.)

Rt. 2 Box 1343
Muleshoe, TX 79347
December 3, 1986

Muleshoe Journal
304 W. 2nd
Muleshoe, TX 79347

Dear Editor:

I think we need the hospital reopened. We need the hospital open because of emergencies. The doctors need to use our hospital. Without the hospital, the doctors will leave town. People need the hospital for emergency operations. Our hospital has many uses and can still have uses.

Yours truly,
Jennifer Johnson

1903-W-Ash
Muleshoe, TX 79347
December 3, 1986

Muleshoe Journal
304 W. 2nd
Muleshoe, TX 79347

Dear Editor:

As a member of this community I think the hospital needs to be opened because of all the emergencies we have been having lately. If somebody in your family has a very bad wreck, the closest hospital is twenty five miles from here. It will take at least thirty minutes to get there. If your wife or someone you know is fixing to have a baby, where will she go? One will want to go to the closest hospital. The woman will probably have to have it on the way to the hospital or at home. If she has it on the road, the baby can get sick. If the nursing home closes, where will all the elderly people go? I do not think sending all the people to a different nursing home is fair. That will probably make them feel unwanted. If the hospital closes, all the doctors may move away. When the hospital reopens, it will be hard to find doctors again. Lots of people may not trust the new doctors. People may feel very uncomfortable. These are all my reasons for the hospital being opened again.

Sincerely,
Sonya Cisneros

914 Ivy
Muleshoe, TX 79347
December 3, 1986
Muleshoe Journal

304 West 2nd
Muleshoe, TX 79347

Dear Editor:

I think we need a hospital in Muleshoe. We need a hospital for emergencies, illness, operations, and for the elderly. I hope we can get the hospital reopened.

Yours truly,
Michael Cuarley

Rt. 2 Box 255
Muleshoe, TX 79347
December 3, 1986

Muleshoe Journal
304 W. 2nd
Muleshoe, TX 79347

Dear Editor:

I think we need a hospital very badly. In case of emergencies, people need someone to call. If children swallow something or something gets caught in their throat, they need somewhere to go. If people need operations and they do not have them done quickly, they may have to go to Ellis Funeral Home instead of a hospital! We need a hospital to save many

people's lives!

Yours truly,
Mandy Shipman

1913 W. Ave. D
Muleshoe, TX 79347
November 20, 1986

Muleshoe Journal
304 W. 2nd
Muleshoe, TX 79347

Dear Editor:

As a citizen of this community, I think this community needs a hospital. An accident can happen any time. There can be an emergency any time. With so many elderly people, we need a local hospital. Someday someone may need an emergency operation. This community desperately needs a hospital!

Yours truly,
Cory Welch

Rt. 2 Box 450
Muleshoe, TX 79347
November 26, 1986

Muleshoe Journal
304 W. 2nd
Muleshoe, TX 79347

Dear Editor:

As a Muleshoe citizen, I really think we need a hospital. Muleshoe is a small town, but we do have emergencies. Just think of our poor doctors! They are all out of work. The closest hospital is in Amherst. Please take these things into consideration! The elderly, necessary operations, serious illnesses, and pregnant women. Muleshoe needs a hospital. I hope it is reopened!

Yours truly,
Kristin Chitwood

P.O. Box 25
Muleshoe, TX 79347
November 26, 1986

Muleshoe Journal
304 W. 2nd
Muleshoe, TX 79347

Dear Editor:

As a citizen of this community, I think we need a hospital. We need a hospital for emergencies like heart attacks, strokes, and having babies. What about the elderly people? If the nursing home closes, where will they go? What will happen to the people who work there? I hope the hospital will reopen!

Yours truly,
Stacey Langfitt

Route 5 Box 410
Muleshoe, TX 79347
December 2, 1986

Muleshoe Journal
304 West 2nd
Muleshoe, TX 79347

Dear Editor:

I think we need a hospital because we have many sick people here in Muleshoe. The people in our town have many illnesses like asthma and heart diseases. I think everybody in this town will appreciate your help in voicing our opinion.

Sincerely,
Vanessa Greenhouse

1814 W. Ave. D.
Muleshoe, TX 79347
December 3, 1986

Muleshoe Journal
304 W. 2nd
Muleshoe, TX 79347

Dear Editor:

As a member of the community, I think we should keep the hospital open. If an elderly person or any person was to have an accident and needs a hospital, where will they go? Amherst is about 25 miles away! That many minutes can be the difference in a person's life! For the people of our community, I think we need a hospital!

Yours truly,
Angie King

1806 W. Ave. I.
Muleshoe, TX 79347
December 3, 1986

Muleshoe Journal
304 W. 2nd
Muleshoe, TX 79347

Dear Editor:

I think we need a hospital. The elderly need a hospital for emergencies such as heart attacks or asthma. The elderly are also in desperate need of a hospital because of accidents. They may fall and break a leg, and they do not have a hospital to go to for treatment. We need a hospital because a child may choke on a piece of food or small toy and there is no place to rush them. Our doctors may move away, and when we decide to reopen the hospital, we will not have any doctors to work there. We will have to close the hospital again until some doctors will come to work in Muleshoe. Our community desperately needs a hospital!

Sincerely,
April Hugg

715 W. Ave. F
Muleshoe, TX 79347
November 20, 1986

Muleshoe Journal
304 W. 2nd
Muleshoe, TX 79347

Dear Editor:

As a member of this community, I think we should have a hospital. If we have emergencies, and someone is dying, what are we supposed to do? We do have a clinic, but when it closes at 11:00 p.m., we will have to go out of town. When we reach another town, the person may already be dead. I think it is very important Muleshoe reopens the hospital.

Sincerely,
Candy Tighe

902 Juniper St.
Muleshoe, TX 79347
November 26, 1986

Muleshoe Journal
304 W. 2nd
Muleshoe, TX 79347

Dear Editor:

I think we should open the hospital to benefit the citizens of Muleshoe and other surrounding towns. The elderly might have to move away from their friends and family if they close down the nursing home, too. It would be a comfort to

known there was a hospital nearby. Let us benefit the community and doctors by opening the hospital.

Sincerely,
Burnley Riley

Rt. 1, Box 680
Muleshoe, TX 79347
November 25, 1986

Muleshoe Journal
304 W. 2nd
Muleshoe, TX 79347

Dear Editor:

As a citizen of Muleshoe, I feel the hospital needs to be reopened for several reasons. The first reason is for emergencies. In case of any emergency, we need doctors close by to aid someone wounded. The second reason is the elderly people may have illnesses that cannot be cured in a small clinic. I feel the hospital needs to be reopened.

Sincerely,
Rose Espinoza

Rt. 1, Box 960
Muleshoe, TX 79347
December 2, 1986

Muleshoe Journal
304 W. 2nd
Muleshoe, TX 79347

Dear Editor:

I, a member of this community, think we need a hospital. We need a hospital in case of an emergency. Many major crises can happen, and people may not make it to another town. With a hospital in our town, people can be immediately helped. Having a hospital is a necessity in Muleshoe!

Sincerely,
Stacy Knowlton

1616 W. Ave. C
Muleshoe, TX 79347
December 2, 1986

Muleshoe Journal
304 W. 2nd
Muleshoe, TX 79347

Dear Editor:

Our hospital desperately needs to be reopened. Having a

hospital in our town could decide between life and death for someone. Our community needs a hospital, emergency service, and doctors. Many people lost jobs and money when the hospital was closed. If the nursing home closes also, many of our elderly citizens will have to find a new place to live. People do not want to live in a town that does not have a hospital. If our hospital does not reopen, our community could decrease in size.

Sincerely,
Collin Robison

818 South Main
Muleshoe, TX 79347
November 20, 1986

Muleshoe Journal
304 W. 2nd
Muleshoe, TX 79347

Dear Editor:

I think the hospital should be opened again. The citizens of Muleshoe really need a hospital. A serious accident may occur and without a hospital, the person from the accident will probably die. If a person becomes ill, he or she may go to another hospital nearby, but it is an inconvenience situation to go out of town to another medical facility. The city needs a place for doctors to treat illnesses and injuries. Muleshoe really needs its hospital open again.

Sincerely,
Ruben Garcia

Rt. 2 Box 1045
Muleshoe, TX 79347
December 2, 1986

Muleshoe Journal
304 W. 2nd
Muleshoe, TX 79347

Dear Editor:

I think the hospital needs to stay open. Many employees work for the hospital, and they will have to move if this continues. Most of the employees have become attached to Muleshoe and its citizens. Their children want to continue in our community's schools where some have lived all their lives. The hospital, if it will open

again, can keep people who live here employed. It can also create new jobs which will increase the population.

A concerned citizen,
Steven A. Garcia

1905 W. Ave. E.
Muleshoe, TX 79347
November 26, 1986

Muleshoe Journal
304 W. 2nd
Muleshoe, TX 79347

Dear Editor:

I think the hospital should reopen for many reasons. If there are emergencies, people will have to drive to another town which may be fatal. If the hospital closes, the doctors will not be making enough money which will cause them to move to another town. If someone needs to have an operation, they will have to make a long and possible painful trip to another hospital. These are some of the reasons our hospital needs to be reopened.

Sincerely,
Jeremy Bruns

Rt. 3 918 Ivy
Muleshoe, TX 79347
December 3, 1986

Muleshoe Journal
364 W. 2nd
Muleshoe, TX 79347

Dear Editor:

I think we need a hospital. There are many reasons why I think the hospital needs to be reopened. When emergencies happen, people need immediate attention. If there is an emergency, people can go to the hospital here and not travel to Amherst. This would be much quicker! Also, if a woman goes into labor, she can come to this hospital not go to another. I think we need a hospital!

Yours truly,
Dayna Hamilton

Kindness has never yet done anyone serious harm.

Bailey County Journal USPS 040-200
Established March 31, 1963. Published by Muleshoe Publishing Co., Inc. Every Sunday at 304 W. Second, Box 449, Muleshoe, Texas, 79347. Second Class Postage paid at Muleshoe, Texas 79347.

TEXAS PRESS ASSOCIATION
AWARD-WINNING

1986
L.B. Hall - President & Publisher
Sammye Hall - Vice President & Controller
Clara Williams - News
Fuchene Harris - Society
Bobbie Millcup - Advertising
Lillie Nino - Bookkeeping

SUBSCRIPTIONS:
Muleshoe Journal and Bailey County Journal
Bailey and surrounding counties \$14.75
Muleshoe Journal and Bailey County Journal
Elsewhere in Texas \$14.75
Muleshoe Journal and Bailey County Journal
Outside of Texas \$16.50
Yearly by Carrier \$12.50
Advertiser rate card on application.

Ed Scarbrough
Is now handling
all Hochheim Prairie Farm Mutual
& Casualty Insurance
formerly handled by Barbara Scarbrough.
For More Information Call:
Ed Scarbrough
806-293-5485

Texas Customers of SPS.*

Check your electric bill carefully this month.

SPS
SOUTHWESTERN PUBLIC SERVICE COMPANY
111 WEST 10TH ST. PHONE 264-4444

ACCOUNT NO. 123456789
METER NO. 12345
METER READING 12345
METER RATE \$0.0015 PER kWh
METER CHARGE \$18.52
METER MAINTENANCE CHARGE \$2.00
METER RENT \$1.00
METER REPAIR \$0.00
METER TOTAL \$21.52

FUEL COST REFUND - INTEREST - TAXES \$12.90

AMOUNT DUE \$31.21

It's your refund due to our fuel-cost savings.**

You will find a credit on your electric bill this month. It's your share of savings resulting from our obtaining lower prices for the coal and natural gas used to generate your electricity. We have also increased the efficiency of our power plants.

At SPS, we are doing everything we can to keep the cost of your electricity as low as possible.



SOUTHWESTERN PUBLIC SERVICE COMPANY

*SPS customers in New Mexico, Oklahoma and Kansas have already been enjoying reduced fuel costs through their automatic fuel-cost adjustments.
**This is a one-time credit. It reconciles the fuel revenue with the fuel cost since October 1985. We're returning this savings to you with interest at 11.70%.

A&M FivePoint

\$9.00
50 Lb. Bag

HI PROTEIN DOG FOOD

- A 26% crude protein dog food
- Formulated for hard working dogs
- For Peak conditioning and performance.

Dr. Carol D. Haire
cordially invites you and your guests to an
Open House
to celebrate the opening of the new
Haire Speech, Language, and Learning Center
at 1925 Hospital Place
Abilene, Texas 79606
on Sunday, December 7, 1986
from 2:00 p.m. until 4:00 p.m.
(915) 694-5490

Marsha Stone Honored With Bridal Shower

The home of Mrs. Hazel May was the scene of a bridal shower Saturday morning Marsha Stone, bride elect of Barry Wiseman.

A lace table cloth over blue covered the serving table, which was accented with a blue and yellow silk floral arrangement.

Sweet breads, fruit, coffee and spiced tea were served from crystal and silver appointments.

Judy Wiseman, sister of the prospective groom registered the gifts.

Special guests included: Mrs. Betty Stone of Bryson, mother of the honoree; Mrs. Jane Wiseman of Sudan, mother of the prospective groom; Mrs. Betty Barber of Amarillo, and

Mrs. Lou Young of Lubbock, aunts of the prospective groom.

Also Mrs. Carol Horne and Michelle, Mrs. Emily Barber and Maria of Amarillo, Mrs. Wendy Branson and Andy of Wolforth, Mrs. Rebecca Wiseman, Mrs. Donna Durham and Kayla, Mrs. Sandra Johnson and Tyler of Lubbock, Mrs. Marie Corley and Stacey of Littlefield, and Mrs. Kathy Schaffner of Shallowater.

The hostesses gift was a reversible comforter. Hostesses for the occasion included: Susan Baker, June Bartley, Jo Boyles, Winona Dudgeon, Sandra Franks, Wanda Hill, Verna Ingle, Lucy Kent, Linda Locke, Hazel May, Maxine Nichols and Quinelle Pickrell.

Also Yvonne Pierce, Georgeann, Rasco, Peggy Ray, Edith Reed, Loretta Reid, Mickey Stephens, Wanda Swart, LaDelta Vernon, Charls Ann Williams, Pauline Williams, Elsie Wilson and Bette Withrow.

TOPS CLUB

Muleshoe TOPS Club, Chapter No. 34, met at 6:30 p.m. Thursday, Dec. 4, in the meeting room of Bailey County Electric.

Laverne James, leader, called the meeting to order. The TOPS pledge was recited and the fellowship song sung. Jewell Peeler called the roll with 11 members present.

Minutes of the previous meeting were read by Rose Sain, secretary. They were approved as read.

Best loser for the week was a tie between Orvide Burris and Laverne James. Evelene Harris was first runner-up and Wanda Kemp was second runner-up.

Ruth Clements was named best loser for the month. Runners-up were Orvide Burris, first, and Wanda Kemp, second.

The meeting was closed with the singing of the goodnight song.

Rebekah Lodge

Muleshoe Rebekah Lodge No. 114 met Tuesday, Dec. 2 at 7:30 p.m. with Renee Rudd Noble Grand in charge. Novella Price, chaplain gave the opening prayer followed by the roll call and the minutes of the previous meeting.

Draping of the Charter was held. Those participating in the draping for Alpha Laney were: Ona Berry, Terie Snell, Lena Hawkins, June Green and Pat Langfitt.

Election of officers was held with Terie Snell being elected Noble Grand. Other officers elected include: Pat Langfitt, vice grand; June Green, secretary; Ina Wilemon, treasurer; Sandi Robinson, representative; Thursie Reid, alternate; and Ruby Green, team captain.

Mildred Kindrick gave the closing prayer and refreshments were furnished by Renee Rudd, Jessie Robinson and Lena Hawkins.

Our Own Advice: When anyone asks you about your health, don't take it seriously.



SMALLWOOD SCHOLAR HONORED--Vana Pruitt, a 1986-87 Smallwood Scholar at South Plains College, was honored, along with her parents, Mr. and Mrs. Ja.rell Pruitt, of Muleshoe, at a recent scholars luncheon at SPC. A graduate of Muleshoe High School, Miss Pruitt is a sophomore business accounting major at SPC. Smallwood Scholars receive a \$2,000 stipend during their two years of studies at SPC.

Hooten Home Setting For Christmas Social

The Muleshoe Branch of AAUW met in the home of Mrs. Robert Hooten, Monday, December 1 at 7:00 P.M. Co-hostesses were Julie Cage, Debra Redwine, Hollye Hooten and Elizabeth Watson who served members a Christmas meal. The house was festively decorated in the holiday decor.

Virginia Bowers, president, conducted a short business session and the members selected Melissa Martel, daughter of Mr. and Mrs. Larry Martin as the December AAUW Girl of the Month. Elizabeth Posadas, daughter of Mr. and Mrs. Alfonso Posadas as the January Girl of the Month.

Hollye Hooten directed the group in several table games before Julie Cage distributed gifts in a unique fashion. Each person was given the first line of a well-known poem or song and the second line was attached to a gift. If the two lines matched, the gift was granted.

Members attending were

Jean Allison, Virginia Bowers, Jackie Bradley, Julie Cage, Joyeline Costen, Margaret Gleason, Pam Hancock, Hollye Hooten, Maurine Hooten, Martha Kent, Cindy Purdy, Debra Redwine, Lucy Faye Smith, Wilma Smith, Elizabeth Watson and Mabel Wolfe.

NOTES... COMMENTS

Excuses fool few people. Smart people don't do all the talking.

Nursing Home News by Joy Stancell

Tuesday, members of the Auxiliary were very busy in the Nursing Home, doing just about everything from A-Z. Their visit did make a 'beautiful' change in our Nursing Home and our lady residents. When they left, in the late afternoon, the Nursing Home was decorated for Christmas, the ladies' hair had been shampooed and set and their nails were sparkling from their new manicures. Thank you, Auxiliary.

We are planning on having our annual Christmas Party, Friday, December 19, at 2:30 p.m. We invite our families and friends to attend. The host will be our Auxiliary.

The monthly birthday party hosted by the Needmore Com-

munity Club will be Thursday, Dec. 18th, at 3 p.m.

Residents celebrating a birthday this month are Lewis Shafer, 12-18-1904; Ora Roberts, 12-9-1900 and Effie Smith, 12-2-1902.

Sunday afternoon, the Gospel Notes quartet came to sing gospel music to the residents.

Lewis Shafer was taken to the hospital in Amherst Wednesday morning. Please remember him in your prayers.

The Muleshoe 4-H girls came Monday to visit the residents and hang door decorations that they had made on the resident's doors. After their visit, our halls were really 'decked.'

Among those visiting Effie Smith this week were Mrs. Hennington, Mr. McCormick, Curtis Shelburne, Billie Jean, Mr. and Mrs. Scarbrough and Mrs. Mullins.

Have A Happy Holiday Season With A Tree From Baker Farm Supply



- Flocked Trees
- Green Trees
- Tree Stands
- Pine Cones
- Christmas Greenery
- Christmas Flowers
- Tree Preservatives

Baker Farm Supply

1532 W. Amer. Blvd.

272-4613

Sun. & Mon. Entire Stock

Prices Good

Dec. 7 - Dec. 8

25% Off

Regular Price

FREE
Gift Wrapping

No
Layaways

25% off Applied Toward
Regular Price

25% off Does Not Include
Yellow Ticket Price

AMERICAN EXPRESS Welcome

Mon. - Sat. 8-6
Sun. 1-5

ANTHONY'S

321 Main 272-3478



MELISSA MARTEL

Melissa Martel Selected AAUW Girl Of Month

The members of the Muleshoe Branch of the American Association of University Women have selected Melissa Martel as the December Girl of the Month.

Melissa is the daughter of Mr. and Mrs. Larry Martin and is a senior at Muleshoe High School. She has been active in the Theatre Department all four years in high school. She was publicity chairperson her junior year and is currently serving as secretary-treasurer. She has also served as an officer of the Speech Department as a junior and senior.

As a member of Future Teachers of America, Melissa has served as historian and played Powder Puff football this year. She is a member of the annual staff, is editor of the Mule's Tale and producer of "Mule's Bray."

Miss Martel is a member of the National Honor Society and Student Community Action Club.

Among the scholastic awards she has received are Physical Science, Algebra I, Biology I, Geometry, Chemistry, and English II and III.

This very active young lady is an Ambassadorette for the Muleshoe Chamber of Commerce. Melissa is a member of the 16th and D Church of Christ.

The members of AAUW congratulate Melissa for being selected as Student of the Month because of her active participation in her school, church and community.

Makes feet feel fit as a fiddle!

SIZES 5 1/2 - 15
A-EEE
MADE IN U.S.A.

1177

Fair Store
272-3500 210 Main

RED-WING SHOES

"There's nothing wrong with my hearing!"

Heard that one before?

You probably have. First of all, it takes people a long time to realize they have a hearing problem. It happens gradually. Then they think they can compensate for it. You know the signs...the loud television, the cupped ear and, oh yes, the unending "What'd you say?"

It's difficult to live with a hearing loss. Whether it's yours or a loved one's. You don't have to. Most hearing losses can be helped.

Make an appointment now for a free Beltone hearing test for someone you love. You'll all be better for it.



Free Hearing Tests

Dec. 12

10 a.m. - 12 p.m.

Bailey County Coliseum

272-4114

Beltone®

Call Now For An Appointment To Avoid Waiting



HOMECOMING QUEEN--Miss Jeanna Nix, sophomore student at Cisco Junior College, was among 12 nominees for Homecoming Queen. Miss Nix was crowned queen by Clint Cotton of Abilene, president of the CJC student body, and presented a bouquet of roses. She is the daughter of Mr. and Mrs. James Nix of Sudan, and is a member of the Lady Wrangler Basketball team and went to Cisco after being a standout in four sports at Sudan High School. She was district golf medalist, ran on the school cross-country team, finishing second in state and was a member of the mile relay team that won the state title and was a member of the 1983 basketball team that won state. She was also an all-star member and won numerous other regional awards.

Check Christmas Tree Lights For Safety

In many families using the same Christmas tree decorations year after year is a tradition. When it comes to Christmas tree lights, however, this could be an unsafe practice, says home safety expert Dr. Peggy Owens.

"When you unpack stored tree lights take the time to check each set," she advises. "Inspect the bulbs to make sure they operate and then remove the plug from the socket and inspect the wires."

The Texas A&M University Extension Service housing specialist suggests checking the string of lights from one end to the other, looking for cracked insulation or bare and broken wires, especially where the wires enter a light socket.

"If you find cracked insulation, bare wires and cracked sockets, discard the lights, no matter how much you like them," Owens cautions. "They could be a fire hazard."

Also check the plug to make sure the connections are good. She says one way to tell without getting a shock is to plug the set into the add-on connector or a second set of lights and plug that set into the connector of the first set.

The housing specialist explains that all strings of lights are not the same. Lights may be wired in a series or in parallel circuits. If a bulb goes out on a series circuit, all the lights go off. In a two-wire parallel set, the remaining lights continue to burn when one burns out.

If you have miniature Christmas tree lights on a parallel circuit, replace any

burned out lamps with a bulb of the proper voltage size. Although the other lamps will continue to work if you don't replace burned out bulbs, Owens says they will be subjected to increased electrical power, shortened life and could become a fire hazard in your home.

When you decorate your tree, don't connect more than 200 miniature lights, or more than 50 large lamps together through one string or cord, advises the specialist.

Large lamp sets should not be connected through miniature lamp sets and indoor lights shouldn't be used outdoors.

Use extension cords that are capable of transmitting the

current to the lights without overloading the cord, triggering circuit breakers or blowing protective fuses.

A circuit breaker or fuse which blows when you connect the lights is signaling something is electrically wrong, Owens emphasizes. Don't use that string of lights until you know the extent of the problem and can correct it. If you're in doubt, throw the set away.

If you're buying new miniature Christmas tree lights, she suggests looking for certification on the package, such as an Underwriter's Laboratory or "UL" label, that shows the set meets the performance specifications of an independent testing laboratory. These sets will have passed a series of performance tests designed to eliminate hazards.

"Once you put the lights on the tree, safety precautions are still necessary," Owens remarks. "Remember to always turn the lights off when you leave home or go to bed."

Nursing Home News

by Joy Stancell

Eric Smith's family, Lucy Faye, Chuck and Patricia Thatcher, brought and ate Thanksgiving dinner with him in his room. ****

Lois Ethridge was visited by Peggy and A. J. Buhman. ****

Several of our residents went out to visit with their families over the Thanksgiving holidays. Among those going out were Bertie Hendrix, Lynn Bratcher, Emma Schuster, Clemmie Ladd, Ella Faubus, Clara Weaver and Stella Morgan. ****

Mamie Askew played '42' Wed. afternoon with her sister-in-law and brother-in-law from Arizona. Her daughter, Irene Splawn, and Effie Smith played with them. ****

We have two new residents and they are Thurlo Branscum and Floss Baldwin. We welcome them to our nursing home family.

Across The Fence

By Deana Finck

County Extension Agent

Before you choose a spot for a microwave oven, ask yourself who will use the microwave? How often? And, for what type of cooking will it be used? The answers to those questions will help you find a location that fits your needs. Keep in mind that there will be some pros and cons to almost everywhere you decide to put it.

The food preparation and mixing center area of the kitchen is the most common place to put a microwave oven. Usually it goes between the refrigerator and sink so the ovens use will fit with other nearby activities. That frees up space near the conventional oven to make two separate cooking areas for two cooks. But, it also means that cabinet or counter space must be sacrificed.

Placing the microwave at eye level above a conventional oven is the most efficient use of space. It concentrates cooking in one area if there is only one cook. But this placement can cause a traffic jam if more than one person is involved in meal preparation.

Putting the microwave in a serving area away from the kitchen is a good choice if it is used primarily for heating and reheating. The breakfast area is

often selected in this case.

When the kitchen is small, placing a microwave which incorporates a range hood above the cook top may be the only option. However, the oven may be too high for many cooks and has the disadvantage of being above a hot surface.

Never place a microwave oven behind closed doors or in a pantry. Remember that air circulation is required around the sides and back of most microwaves. Place the oven at a height that's easy for you to reach, usually the cooking shelf should be from two inches below to 10 inches above your elbow height. The shelf shouldn't be any higher than your shoulder.

Open the door fully before installing to make sure the location is workable or position the microwave so you have sufficient work space below or beside the oven.

W.M.U. Report

WMU of the Trinity Baptist Church met Tuesday, Dec. 2 at the church for Bible study. Each one present took part in the royal service, which was about "We Must Make Christ Known."

Those present included: Clara Coffman, Maxine Carter, Pearl Dunlap, Eva Ashford and Wenona Spears.

Ms. Spears reported that this was Week of Prayer and they had a very rewarding day.

In Fashion

Shoulder bags in leather goods enjoy a renewed popularity this year. Fashioned in soft calfskin and suedes, they give an elegant and enduring look. Totes of genuine leather are designed for the professional woman. Wide leather belts cinch the popular flair dress or sporty jacket.

Muleshoe Art Association Will Meet Tuesday

Muleshoe Art Association will meet Tuesday, Dec. 9 at the library. Laverne Elliott, program chairman, will bring a member participation program on painting Christmas cards. She will have cards and the members are asked to take their paints.

Elsie McMillen of Earth has been named December Artist of the Month at the Muleshoe Public Library.

All members are asked to take paintings to hang at the Hungry Mule. Earld Gross reported that visitors are always welcome to the meetings.

Announcing
Jerry Hutton Is Now The New Manager Of Little Gulf.
We Offer Full Service On Gas, Wash, Grease & Oil Changes.
Starting Monday Register For A FREE Wash & Grease & 50 Gallons Of Gas During Our Grand Opening Special.

Little Gulf
 202 W. Amer. Blvd. 272-4918

True Value

HARDWARE STORES

'86 Hardware Gifts

Your local independently owned True Value® Hardware Store has national chain-buying power.

Stop in and pick up your FREE copy of our Hardware Gift Circular

<p>49.99 70-Pc. 3/8-In. Drive SAE & Metric Socket and Wrench Set also incl. spinner, speeder, torque wrench, ratchets. 3870</p>	<p>27.99 3/8-In. Variable-Speed Reversing Drill runs up to 2,500 rpm. With a locking trigger switch and a built-in chuck key storage. MM560</p>	<p>17.99 Cordless Screwdriver with charging base. Makes fast work of do-it-yourself projects. With convenient bit storage inside. 2105</p>	<p>26.88 Rescuer™ Emergency Communication System receives AM/FM radio and TV bands. Incl. a powerful light with siren. ER1</p>
<p>14.99 Toolbox with deep storage for odd-shaped equipment. 15 compartments organize a variety of tools. With secure latches. TDS833</p>	<p>9.98 Magneflex™ Work Light attaches to any metal surface from its strong magnetic base. Adjusts to any angle w/swivel lock. 7485-25</p>	<p>8.99 7-Pc. Screwdriver Set of durable chrome vanadium features tempered-steel blades and jumbo handles for easier turning. MM77</p>	<p>9.99 2-Pc. Slicing Knife Set incl. 8-in. bread/cake knife and 4-in. utility knife with serrated edges for multi-purpose slicing. 185</p>
<p>4.99 Li'l Sticker Mini Glue Gun eliminates messy glue bottles and tubes. Compact, for work in tight spaces. Incl. 3 glue sticks. GR-30-K</p>	<p>3.99 Your choice Energizer® Super Cells. Choose a 6-pk. of C or D cells or an 8-pk. of AA batteries for long-lasting power. E93/5-6/E91-8</p>	<p>4.99 Master Mechanic® IROC-Z Car is an authentic replica of the exciting race car. With a roll cage, window netting and graphics. TV12</p>	<p>1.99 True Value Happy Holidays Cassette or Album. Volume 21 in this collectors' series includes 12 holiday favorites. Vol. 21</p>

Fry & Cox, Inc.

401 S. 1st Muleshoe, Tx 272-4511



RIBBON CUTTING AT TROPHIES AND MORE--Braving foggy, damp weather Friday morning, a group of local business people and Chamber of Commerce and Agriculture members showed up for ribbon-cutting ceremonies at Trophies and More on Main Street. Muleshoe Mayor Darrell Turner performed the ribbon cutting following brief remarks to welcome the new business to Muleshoe.

Cattle Trained For Winter Grazing

"Grazing management" for winter pastures can be as simple as opening a gate, says Spencer Tanksley, county agent with the Texas Agricultural Extension Service, the Texas A&M University System.

Since cold weather will limit growth of winter pastures, they

must be used efficiently, emphasized Tanksley. This means some type of grazing management to stretch pastures for more animals.

Which system is used dictates the degree of management required.

A simple rotation grazing system with two or more pastures is easy to implement, explains Tanksley. All animals are put on one pasture while the other pastures grow more forage. When the first pasture has been fairly well grazed, the herd is moved to a second pasture for grazing, and so on. With total rest, grazed pastures should produce some regrowth for later grazing.

For a more intensive grazing management system, a type of limited grazing may be a good choice, suggests Tanksley. Dry cows can be grazed for two to four hours every other day on winter pastures. Some other forage like hay would be necessary while animals are off pasture. In effect, winter pasture would be the protein supplement for these animals.

Cows with calves, steers or growing heifers should be allowed to graze high quality winter pasture every day, for about two hours.

With such a system, weight gains will not be great but should occur, notes the county agent. The important feature is that grazing days per acre can

be increased by limited grazing.

According to Tanksley, livestock will become trained to the type of grazing management selected. Under rotation grazing, livestock will be more than willing to change pastures once the pasture they are on is grazed down.

Under any form of limited grazing, livestock become trained in about two weeks. After being herded off to pasture regularly for several weeks, they become trained and start leaving on their own accord. Thus, actual work involved becomes minimal.

Between rotation grazing and several variations of limited grazing, some type of grazing management can be adapted to anyone's use, believes Tanksley. It may stretch winter pastures enough to last the season.

Toys Recalled

More than a million of the popular Voltron Lion robot toys are being recalled because of illegal amounts of lead in the paint on metal parts, the Consumer Product Safety Commission said. Matchbox Toys (USA) Ltd. of Moonachie, N.J., is recalling Voltron Lion toys made in Taiwan, the commission said.

Terracing Saves Time And Money

By: Warren A. Givens, SCS Technician
The three primary objectives of a parallel terrace system are erosion control, farmability and moisture conservation.

A parallel terrace system consists of evenly spaced ridges, usually no more than 1.4 feet in height. Terraces are spaced according to the slope of the land and fit the equipment used on that particular farm.

the same due to the cutting and filling involved in building terraces.

Washes can be prevented and gullies controlled with parallel terraces.

Anyone interested in terraces, or who would like more information, should contact Warren A. Givens, SCS Technician, at 111 East Ave. D in Muleshoe.

Muleshoe...

Cont. from Page 1

ad campaign created for the Tye Company of Lockney. Tye manufactures seed drills and markets them around the world. Tucker will appear in a print advertisement Tye will run in various farm publications and in a direct mail brochure sent to farmers throughout Kansas and Texas. The ad campaign was created and executed by WC Griffin Advertising, Lubbock.

Tucker was selected spokesman because of his experience in grass planting, plus his background with Tye drills. Tucker has been farming in the Maple area since 1977. He planted approximately 6,000 acres of grass last year.

About one third of the distance between the ridges is level with a minimum of blocks. The average crop yield is increased by one third or more after the first year.

This is because rainfall stays on the field instead of running off, which is the difference in some years between having a crop or not.

The first year after installation, crop yields will be about

If You Need An Ambulance Call 272-4200

Disaster...

Cont. from Page 1

and COC assigned production.

Producers who have crop insurance must file their insurance policies and benefits.

He concluded, "Payments will be made with CCC-6's."

COUNTY MEETINGS ON 1987 FARM PROGRAM

Muleshoe State Bank - Wednesday, Dec. 10, 8 a.m.

Maple Co-op Gin - Thursday, Dec. 11, 8 a.m.

Bula School House - Thursday, Dec. 18, 6:30 a.m.-Breakfast. Danny Noble also said everyone is urged to attend one of these meetings. It will be of some help to each and everyone, he added.

Topics to be discussed will be the 1987 farm program, 1986 disaster program, CRP, Commodity Loans, and the Sodbuster/Swampbuster provisions.

RECONSTITUTIONS

"We need to know now of any changes that would cause a farm or farms to be combined or divided for the 1987 program year," continued Noble.

1986 CROP

LOAN DEADLINE

The final date for placing 1986 crops in the loan are as follows: Wheat - March 31, 1987. Soybeans, cotton, corn, and grain sorghum is May 31, 1987.

DON'T WAIT

If you are planning to place your 1986 crops in the loan and receive the proceeds by December 31, 1986, don't wait till the last few days and expect your money, because we will be up to our necks in alligators and loans, cautioned the ASC executive.

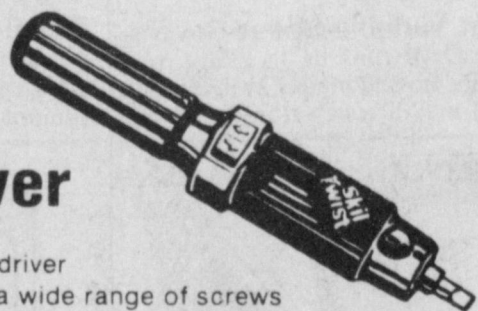
INTEREST RATE

The loan interest rate for December is 5.750 percent.

OFFICE CLOSED

The ASC office will be closed December 25, 1986 (Christmas Day) and January 1, 1987 (New Year's Day).

Skill Twist Cordless Screwdriver



- 1/4" hex collet
- Unique power screwdriver
- Drives and removes a wide range of screws
- Convenient—always ready to use
- Phillip/slotted bit included
- Stores in handy recharging stand

MODEL 2105
ONLY \$17.99 a perfect gift!

POYNOR'S
HOME & AUTO STORE

103 Main 272-4552

WISE IS THE HOUSEWIFE WHO CLEANS HOUSE WITH A CLASSIFIED!



Talk to thousands via a classified ad! Tell them all about what you have to sell and then wait for the phone to ring! Sweep up extra savings buying and selling through the classifieds! Call one of our friendly classified ad representatives now!

Muleshoe & Bailey County Journals
CALL CLASSIFIED 272-4536

FAMILY-CENTERED MATERNITY PROGRAM

If you are expecting a baby... You can expect the following services...

- Tour of Labor & Delivery Area
- Free Infant Car Seat
- Candle Light Dinner
- Optional Birthing Bed
- Childbirth Education Classes (Lamaze, Sibling Preparation, etc.)
- Physician Referral Service
- Flat Rate Delivery Charge

Cook Memorial Hospital in Levelland offers this and much more. To receive more information, clip and mail the coupon below.

Please send me more information on the Family Centered Maternity Program at Cook Memorial Hospital, 1900 College Ave., Levelland, TX 79336.

Name _____

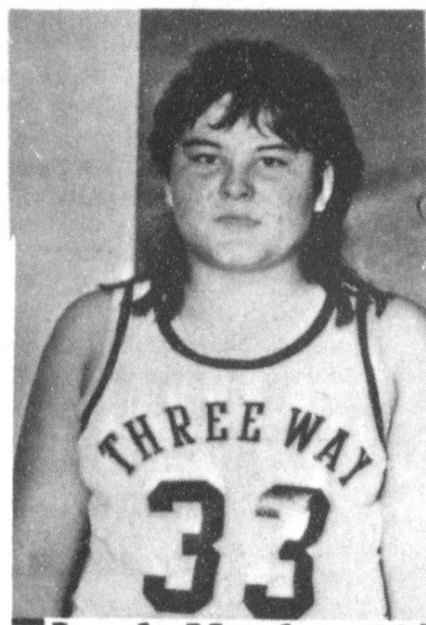
Address _____



COOK MEMORIAL HOSPITAL
1900 College Avenue, Levelland, Texas 79336 (806) 894-4963

3-Way Eagles

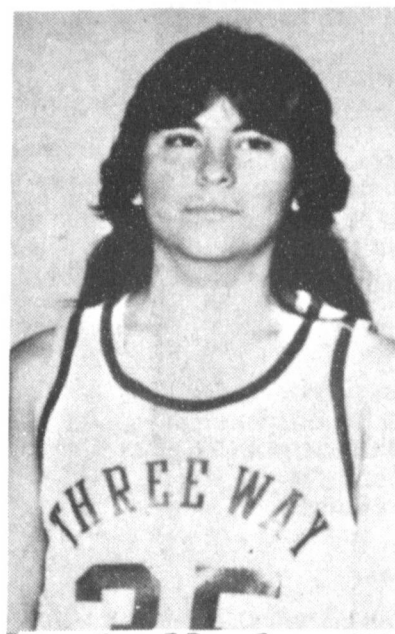
Girls Basketball Team



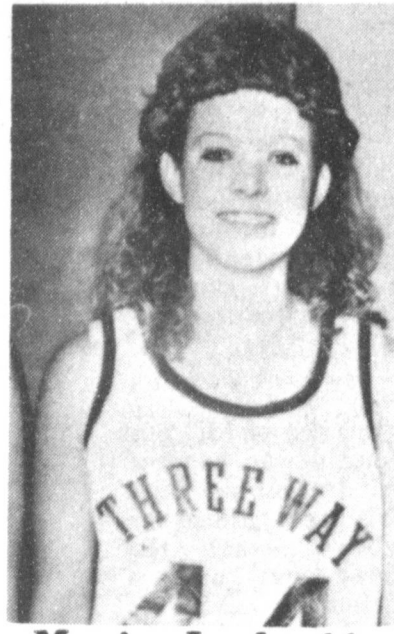
Lynda Mendoza-33



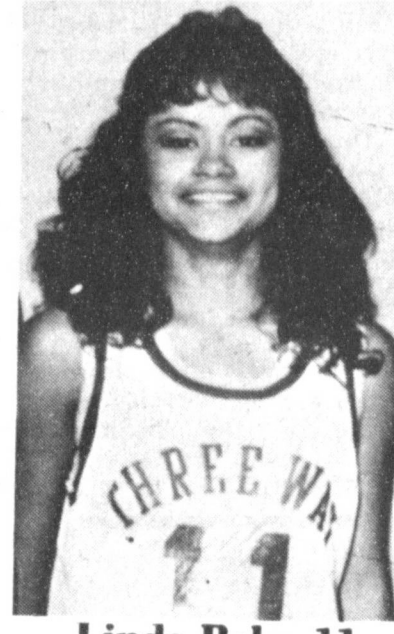
Melinda Turney-12



Sandra Mendoza-35



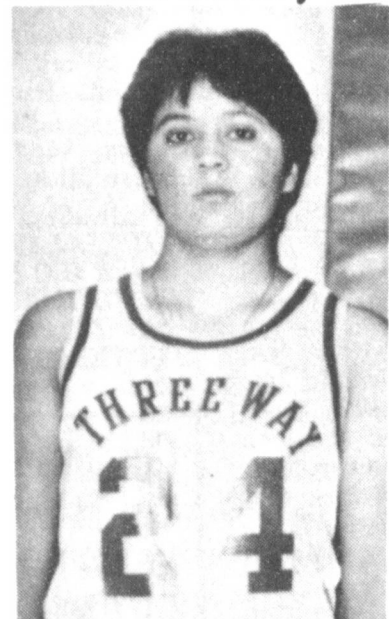
Monica Locke-44



Linda Belez-11



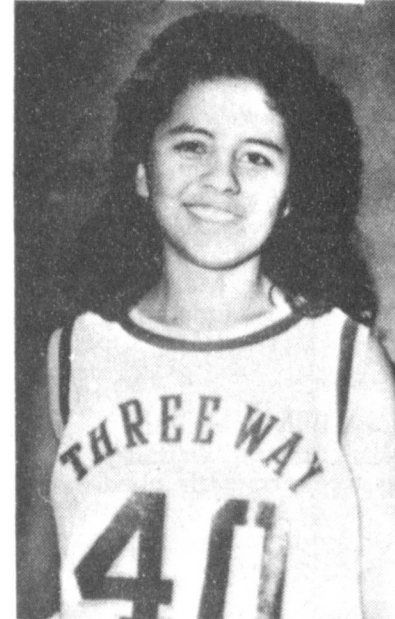
Shelia Tuckex-50



Elva Flores-24



Isabelle Gomez-20



Margaret Gomez-40



Lydia Gomez-30



Selene Medina-25



Coach Williams



Coach Jeffcoat



Proudly Sponsored By The Following:

Claunch Gin

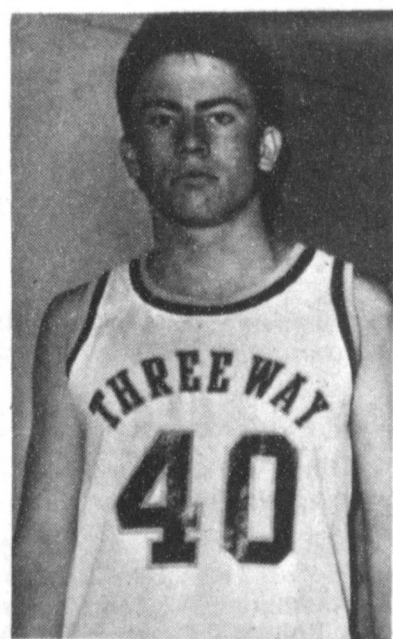
Maple Co-op Gin

Farmers Co-op Elevators

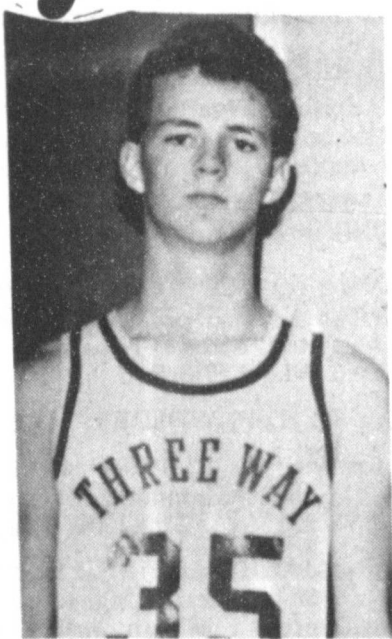
Farmer's Co-op Association of Enoch's

Five-Area Telephone Cooperative Association

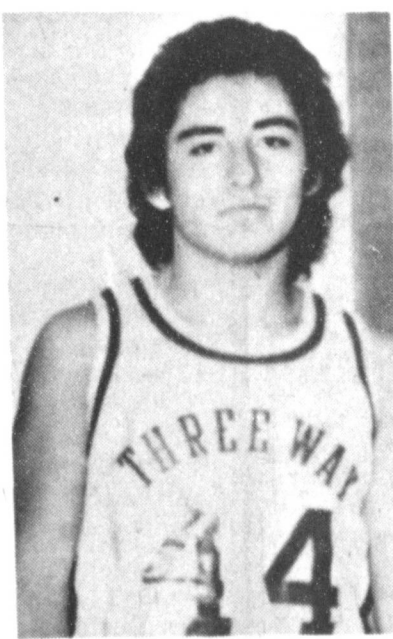
Boys Basketball Team



Kelly Tucker-40



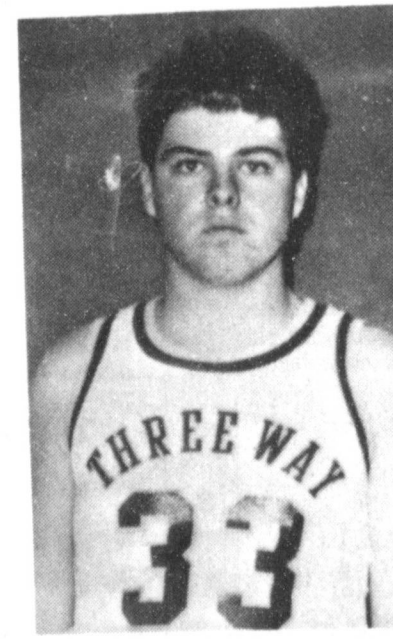
Matt Sowder-35



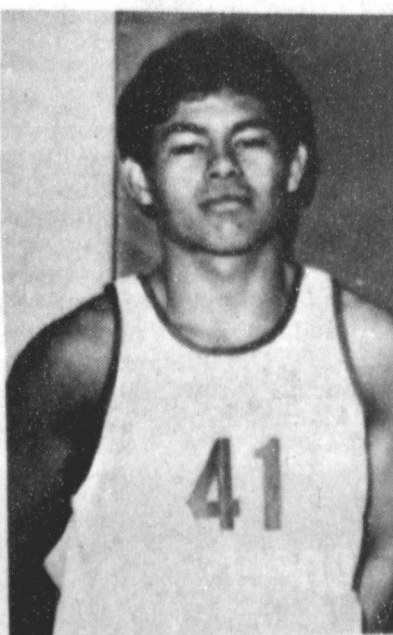
Oscar Guillen-44



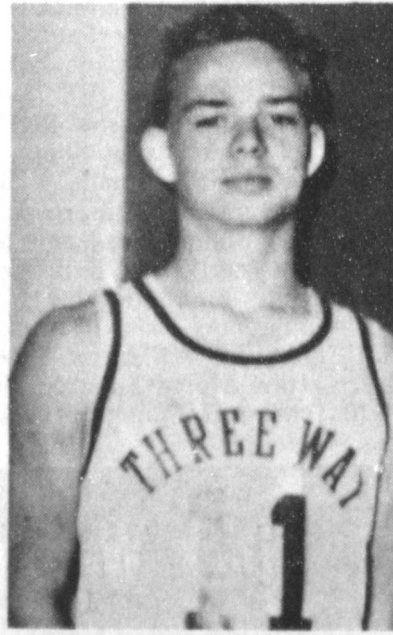
Ron Folex-43



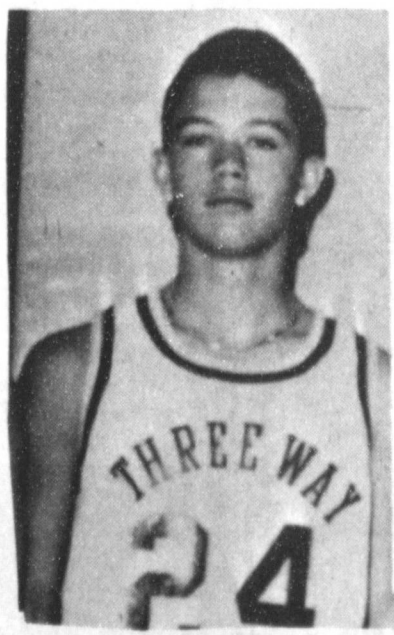
Curtis Tucker-33



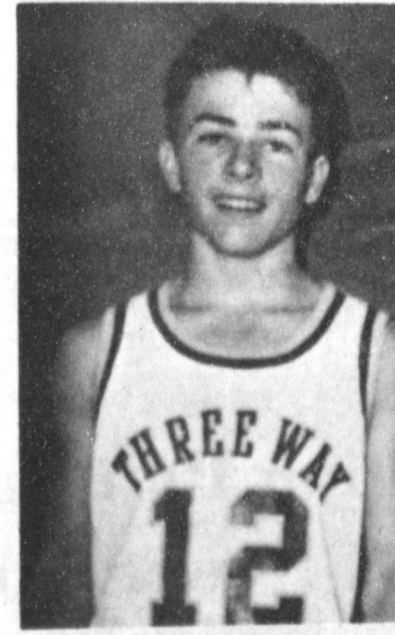
Albert Belez-41



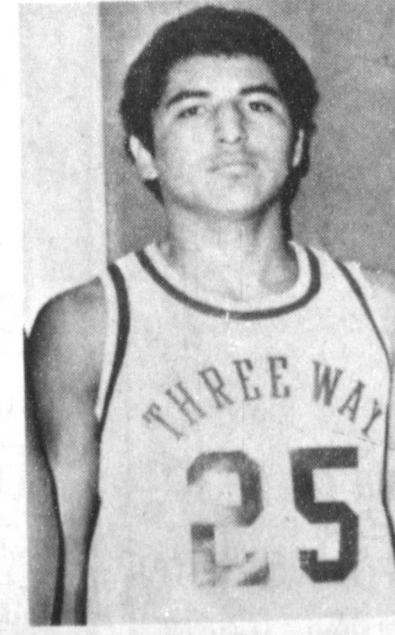
Jarrod Sowder-11



Bryan Kindle-24



Michael Williams-12



Saul Guillen -25

Sudan News

by
Evelyn Ritchie

Mr. and Mrs. Mike G. Nix Kaylenn and Aaron of Belton visited during the Thanksgiving holidays with their parents, Mr. and Mrs. Frank Lane & Mr. and Mrs. Matt Nix. Also visiting the Nix's were their daughter, Debbie Norwood and family of Austin.

Mr. and Mrs. Lynn Drum of Caddo Mills have been here with her mother Mrs. Mary Lena Maxwell and other family members and were here to attend funeral services for Bessie Lee Maxwell. Others here with the Maxwell family were Debra and Tosha Drum and Jannette Testerman all of Lubbock.

Gary Fields was home from Tarleton State University in Stephenville for the Thanksgiving holidays with his parents, Mr. and Mrs. L.S. Fields and

Three-Way Menu

MONDAY
Breakfast - Cereal, juice and milk.

Lunch - Spaghetti and meat sauce, June peas, salad, hot rolls, milk and honey and butter.

TUESDAY
Breakfast - Toast and jelly, juice and milk.

Lunch - Stew, cheese stick, celery and carrot sticks, corn bread, milk and cobbler.

WEDNESDAY
Breakfast - Cinnamon Toast, juice and milk.

Lunch - Enchilada Casserole, cream potatoes, green beans, hot rolls, milk and cakes.

THURSDAY
Breakfast - Bacon, gravy, biscuit, jelly, juice and milk.

Lunch - Goulash, corn, salad, hot rolls, milk and fruit.

FRIDAY
Breakfast - Waffles, syrup, juice and milk.

Lunch - Pimento cheese sandwiches, fries, salad, pickles, milk and cookies.



"TRUST AND OBEY"
102337
©1986 Samuel J. Butcher. All rights reserved worldwide. Licensed Enesco Imports Corp.

"PRECIOUS MOMENTS ARE MADE TO BE SHARED"
A PRECIOUS MOMENTS™ gift is an expression of love that will be remembered long after the occasion for giving is past.
We have figurines for all the "Precious Moments" occasions in your life. Why not stop in and see our selection of these superbly crafted porcelain bisque figurines?



"ANGEL OF MERCY"
102482
©1986 Samuel J. Butcher. All rights reserved worldwide. Licensed Enesco Imports Corp.

Poynor's Home & Auto
272-4552 - 103 Main

also his brother, Jim Fields and family and Debbie Dingham & Allyson of Lubbock

Mr. and Mrs. Cliff Watson of Longview and Jeannia Nix of Cisco Junior College were Thanksgiving holiday visitors with their parents, Mr. and Mrs. James Mike Nix and Melissa.

Mr. and Mrs. David Doty of Littlefield have visited a few days recently with his parents, Mr. and Mrs. Wayne Doty.

Mrs. Debra Jaymerson of Memphis, Tenn. visited during the Thanksgiving holidays with her grandmother, Mrs. Ouida Parrish.

Sudan received a little moisture Sunday in the form of a wet snow and sleet. Much sunshine is needed for the completion of harvesting the crops.

Lance Martin, son of Mr. and Mrs. Kyle Martin was honored Sunday, Nov. 16 on his third birthday with a party held in the home. "Cowboys" was the theme carried out and a "Cowboy & Indian" cake, ice cream and punch were served after he opened his gifts. The group played for awhile also.

Attending were his grandparents, Mr. and Mrs. Eugene Young and great grandmother, Mrs. Mary Lance all of Amherst; his aunts and cousins Roxanne Plank, Amber and Matthew of Lubbock, Gina Grant, James and Natalie of Whitharral and Debbie Martin, Errin, Nicholous and Lindzi of Shallowater.

Mr. and Mrs. Billy John Ford and boys of Lubbock visited Thanksgiving weekend with his parents, Mr. and Mrs. Byron Ford and his brother Mr. and Mrs. Jimmy Ford & girls.

Mr. and Mrs. Steve Smith, Charlie & Joe were in Bovina Thanksgiving Day with her parents, Mr. and Mrs. William Gramowsky & family.

Pam Wiseman is home following a few days in the Littlefield Medical Center last week for tests.

Stephen Clark Services Held In Artesia

Funeral services for Senior Airman Stephen D. Clark, 21, of Hahn Air Base, West Germany, were held at 2 p.m. Saturday in Freewill Baptist Church in Artesia, N. M. with the Rev. Wilford Bristol, chaplain of Holloman Air Force Base in Alamogordo, N. M., officiating.

Military graveside services were held in Twin Oaks Memorial Park with burial under direction of Terpening and Son Mortuary. Clark died November 28 in West Germany. Military officials have not released the cause of death.

He was born in Albuquerque, N.M. and had been in the U. S. Air Force since June 1983. He graduated from Artesia High School in 1983.

Survivors include his parents, Smitty and Susy Clark of Ruidoso Downs, N. M.; maternal grandparents, Wylie and Dorothy Lee of Matador; three sisters, Laura, Ruidoso Downs, N. M.; and Tammy and Rita, both of Albuquerque, N. M.; and a brother, Harold "Buddy" of Jones Port, Maine.

The family suggests memorials to the Stephen D. Clark Memorial Scholarship Fund in care of Western Bank, Artesia, N. M. 88210.

Rex Boyles of Lubbock assisted at the Youth Rally last week and it was termed a great success. "Best Friends" the singing group, did a fantastic job and Mike McDonalds, Sudan Church of Christ minister would like to thank all who participated in any way.

Mr. and Mrs. Glenn Cardwell have been in Greenville with his parents, Mr. and Mrs. Hal Cardwell. His dad, Hal is seriously ill.

Mrs. Deborah King visited during the Thanksgiving holidays in Wichita with friends and in Kansas City, with her mother, Mrs. Donnie Caldwell.

Mr. and Mrs. Byron Ford visited during the weekend in Chillicothe with his brother, Mr. and Mrs. Elbert Ford and also in Paris with his aunt, Macie Ford.

Mr. and Mrs. David Quisenberry, Sarah & Leah spent the weekend in Tahoka with her parents, Mr. and Mrs. Jerry McKibbin and family.

Blake Laceywell of WTSU and Wade Donnell of TT were among college students home for the weekend.

Ouida Parrish returned home Sunday from Pasadena, Calif. where she had been the past several days with her sister, Wilda and family, and to attend funeral services for her brother-in-law, Morrie Freeman, 70, who died Nov. 13. Services were held Nov. 18 at Forest Lawn in Glendale. His wife, Wilda, is a former Sudan resident.

Brad Smith of Angelo State University spent the Thanksgiving holidays with his parents.

Shirley Martin was in Seminole during the weekend to visit relatives.

Muleshoe School Menu

December 8-12
BREAKFAST

Monday - Milk, toast, cereal and fruit.
Tuesday - Milk, honey buns and juice.
Wednesday - Milk, Cheese toast and fruit.
Thursday - Milk, toast, jelly and fruit.
Friday - Milk, breakfast burritos and fruit.

LUNCH

Milk, Pizza, mixed vegetables, pickles, fruit.
Tuesday - Milk, juicy burgers, lettuce and tomato, pickles and onions, tater tots, cookies.
Wednesday - Milk, beef and gravy, creamed potatoes, English peas, hot rolls, fruit.
Thursday - Milk, burritos, cheese stick, tater tots, fruit, cake.
Friday - Milk, turkey and dressing, giblet gravy, creamed potatoes, green beans, hot rolls, fruit salad.

COMBO

Monday - Milk or Tea, steak and gravy, creamed potatoes, green beans, hot rolls, fruit.
Tuesday - Milk or tea, hamburgers, lettuce and tomato, pickles and onions, tater tots, cookies.
Wednesday - Milk or tea, Spaghetti with meat sauce, cole slaw, corn bread, corn and fruit.
Thursday - Milk or tea, Hot dogs, pork and beans, tater tots, cake.
Friday - Milk or tea, turkey and dressing, giblet gravy, green beans, creamed potatoes, hot rolls, fruit salad.

Visiting during the Thanksgiving holidays with Mr. and Mrs. Truman Parrish have been their son, Mr. and Mrs. James Arnold and family of St. Louis, Mo. and daughter Mr. and Mrs. Gary Reeves and family of Olney. Joining them were also their other daughter Mr. and Mrs. Donald Powell of Sudan.

HUSTLIN HORNET Honor went to Ronald Williams, 31, who gained over 100 yards rushing and returned two kick-offs for a total of 65 yards and scored the only touchdown during the Bi-District play-off in their 26-7 loss to Sunray Friday night. Hornets closed their season with a 11-1 record.

Judy Wiseman of WTSU was home during the weekend with her parents Mr. and Mrs. Calvin Wiseman and attended the



Dear Santa Claus:
My name is Jeffrey Cox. I am 3 years old. For Christmas this year I would like to have a Power-Wheel. Gran-Gran said you were out, but I would like for you to find one more, so I can have one. I would also like Teddy Ruxpin. I have a brother, Caleb. He is 17 months old. Caleb would like a Power-Wheel too! Tell the Reindeers hello for us.

Love from
Jeffrey and Caleb Cox

Dear Santa
I'm going to mind my Grandma, Meme, & my Moma. I will be nice. Please bring me some toys.

Tell your elfs and Mrs. Claus hello.
My moma made you some Christmas cookies & I will leave some by my Christmas Tree. My Christmas tree is real pretty. I helped my Moma decorate it.

Please be careful on your way to Muleshoe & don't let your reindeers have a wreck.

Merry Christmas
I love you,
Kolby Kimbrough
4 yrs.

bridal shower Saturday for Marsha Stone, bride-elect of her brother, Barry.

Jimmy Williams of Medicine Mound was home during the weekend with his parents, Mr. and Mrs. John Williams and sister, Mr. and Mrs. Jay Ford & Jackelyn and grandmother, Mrs. Estelle Lowe.

Lazbuddie School Lunch

LAZBUDDIE MENU
DECEMBER 8-12

BREAKFAST
MONDAY

Cereal, Juice, Milk

TUESDAY

Cinnamon Rolls, Fruit, Milk

WEDNESDAY

French Toast, Bacon, Juice, Milk

THURSDAY

Doughnuts, Juice, Milk

FRIDAY

Biscuits, Sausage, Juice, Milk

LUNCH
MONDAY

Hamburger Goulash, Green Beans, Salad, Hot Rolls, Fruit, Milk

TUESDAY

Taco's, Pinto Beans, Green Salad, Cookies, Milk

WEDNESDAY

Chicken on a Bun, Tator Tots, Lettuce, Pickles, Cake, Milk

THURSDAY

Turkey and Dressing/Gravy, Green Peas, Cranberry Sauce, Hot Rolls, Pecan Pies, Milk

FRIDAY

Sloppy Joes, French Fries, Cheese Sticks, Pickles, Pudding, Milk

THE SALAD BAR WILL BE SERVED ON MONDAY, TUESDAY, AND WEDNESDAY ONLY! NO SALAD BAR SERVED ON THURSDAY OR FRIDAY!

Coming Soon:

Custom Homes For You:
1750 SQ FT Brick 3 Br- 1 office;
2 1/2 Bath; 2 car garage;
Fireplace \$62,800 + Lot; VA; FHA;
Conventioned 10 yr. HDW
Warranty-Achievement Homes,
Inc. 745-0234

LEVELLAND WOMEN'S CLINIC

894-2945

**FREE Pap Tests
FREE Pregnancy Tests**

Call For Appointment

Tues.
Dec. 9

Auction

11:00
A.M.

TRACTORS* SIDEROLL
°1978 John Deere, 4440°1975 IHC 966°1972 Case 1070°1970 Case 970°John Deere 4020°IHC 560 diesel John Deere 3010 Diesel°John Deere. 420°IHC 450°John Deere 70°John Deere 8 Row Highboy°John Deere 95 Combine

PIVOT SPRINKLER SIDEROLL
° 1/4 mile Zimmatic, 11 tower, low pressure drops, 5 1/2" line, electric drive, S/N A11682. Can be seen 1 1/2 miles NW of Littlefield City Limits on Hwy. 84, then go North 1 mile, look West. (Will be sold at 2:00 P.M. at Sudan)°1/4 mile sideroll sprinkler, S/N 572535Y

IRRIGATION PIPE* MOTORS* BOOSTERS* FLOAT* ETC.
° 20 Joints 7" gated 40"°9 Joints 6" gated 40"°86 Joints 6" flowline°80 Joints 5" flowline°Lot hydrants, fittings°Lots misc.5,7,8" pipe°1980 Berkley booster pump°Westinghouse 15 HP Electric Booster pump°Chevrolet (7) 292, (1) 454 motors°Chrysler: (1) 413, (2) 383, (1) 85, (1) 4 cyl., 64 hp°Ford 428°IHC 164°Shopmade 8'x24' land plane°Eversman 3 point ditcher°Big OX 8'3 point blade°15 HP Electric motor, Belt Drive

COTTON*STRIPPERS
° 1980 John Deere 283 stripper°IHC 85,22,21 strippers°(3) 1980 Shopmade 36' steel°(6) 1980 Shopmade 24' steel°(8) Big 12 steel bed°(4) Nico steel bed°Big 12 grain bed°(6) Cobey and Big 12 wood bed Cotton Trailers°6 Wheel Flat Bed

PICKUP, WELDER, LIVESTOCK ITEMS
°1973 Cheverlot V8 1/2 ton with 1979 cab°Lincoln 200 amp Portable Welder on WHEELS° Fulton H.D. Cattle chute°Shopmade 14' and 12' Stock trailers°1971 Wetmore Feed grinder, 2 wheel°1978 Ford V8 351M 1/2 Ton°2000' soft line°1/2" Calbe

MACHINERY AND EQUIPMENT
°1982 John Deere 8 row 6100 planter°10 Massey Ferguson flex planters°1982 John Deere 8 row Buster planter°(2) John Deere 4 row planters°(2) Lilliston 8 row Rolling cultivators°Lilliston 6 row rolling Cultivator°Hamby, IHC and Shopmade 8 row Rolling cultivators°(2) John Deere 4 row f.e. Cultivators°(2) John Deere 3 Bottom Rollover plows°packer°(2) Krause 18' oneways°John Deere 14' one-way°Rotocycle and Calwell 4 row shredders°John Deere and Servis 2 row shredders°Shopmade 8 row Bedknifer°Sam Stevens 7 row crop knifers°Case 14' Offset disc°Big 12 8 row Rod Weeder°(2) Shopmade 8 row Double Tool Bars° Disc°Modline 10' °Case 14' Offset disc° Offset disc°(2) 14' IHC Tandem Discs°Phares Wilkins 21' Tandem Disc°Modline 10' TANDLEM Disc°Big 12 8 row Rod Weeder°(2) Shopmade 8 row Double Tool Bars°(2)Shopmade 6 row Tool Bars°5 row Shopmade Tool Bar°John Deere 4 row Wheat Drill°(2)Johnson Grass killers, 4 row°Shopmade 9 row Lister°IHC 5 row Lister°Modline 5 row Lister°(2) Sets Markers°(2) Shopmade 112 row Sandfighters°(6) 9 row Sandfighters°(4) Shopmade 5 row Stalkcutters°(1) Shopmade 4 row Stalkcutters°Four 22' Diamond Bars°4 ton pickup Bed Trailer°John Deere 8 row Wheat Drill°Kent 36 ft. Spring Toothed Harrow°Case 22 ft. Tandem Disc°4" Submergible Pump°Berkley 6" pump°IHC 6 row Rotary Hoe°(2) Sets 18.4-38 Duels°8 row Crustbusters°7 row Bed knifer°5 row Bedknifers°5 row Stubble Mulcher°300 gallon Diesel Tank°Caldwell 2 row Shredder°6-Big 12 OTTON Trailers°(3) Cobey Cotton Trailers°Ford 300 Irrigation Motor°2 Pierce Sideroll Sprinklers°(2) 6 row Stalkcutters 30 hp Electric Motor°Case 830 Tractor Horsepower°Lots and Lots of Aluminum pipe and fittings, assorted sizes.



Dick Watson Auctioneers

P.O. Box 717 806/285-2593 Onon, Texas 79064

Aqua Spa
Now In Stock
Irrigation Pumps & Power Inc.
Muleshoe W. Hwy. 84 Muleshoe 272-4483 Earth 257-3855 Earth Hwy. 70

Bailey County Journal

Classified

Call 272-4536

CLASSIFIED RATES
First Insertion Per Word.....\$15
Minimum Charge \$2.30

Consecutive Insertions Per Word.....\$13
Minimum Charge \$2.00

CLASSIFIED DISPLAY RATES
\$1.75 Per Column Inch

Blind Ad Rates 50% More

DEADLINES
12 Noon Tues. For Thursday Paper
12 noon Friday For Sunday Paper
We reserve the right to classify, revise, or reject any ad. Not responsible for any error after ad has run once.

1. Personals

FOR SALE - Nice 3 bedroom, 1 1/2 carport, large utility, cent. heat, evap. air, new patio cover. **PRICE TO SELL**, 507 W. 5th, 272-5038. w8-40s-stfc

Lathe & Stucco work. Small or big jobs, fences, arches, etc. Call 965-2871. s1-44t-tfc

CONCERNED About Someone's Drinking? **HELP IS AVAILABLE** through Al-Anon. Call 227-2350 or 965-2870 or come to visit Tuesday nights, 8:00 p.m. or Saturday mornings at 10:30 a.m. at 1116 W. American Blvd., Muleshoe

MARY KAY COSMETICS Josie Flowers 272-3865. fl-49s-tfc

MATURE woman to keep baby. Call 272-4902 Sunday, all day, 5 to 9 p.m. weekdays. k1-49s-2tc

3. Help Wanted

NURSING OPPORTUNITIES RN's needed day & night shifts. Small rural hospital. Excellent benefits, competitive salary, relocation reimbursement. Contact Jay Fluhman Director of Nursing County General Hospital, P.O. Box 489 Clayton, N.M. 88415 505-374-2585 EOE. 3-47s-5tp

4. Houses For Rent

RUIDOSO CHALET: 4 bedroom for rent by day, weekend, or weekly. Call 505-257-2622. Owner Dr. Albertson. a4-49t-tfc

NICE 2 bedroom mobile home for rent on Pasadena inquire 112 Pasadena. 8-48s-3tp

2 BDRM, 1 bath house for rent, \$225.00 per month, \$100 deposit call 272-5171. m4-49s-4tc

4. Houses For Rent

FOR RENT 2 bdrm house, 272-3817. k4-49s-tfc

5. Apts. For Rent

FOR RENT 1 bedroom, furnished apt. water paid. See 202 W. 8th call 272-3901 after 5:30 p.m. c5-47s-tfc

FOR RENT unfurnished 2 bedroom apartment call 965-2188 or 272-4754. s5-37t-tfc

8. Real Estate

FOR SALE: 2000 sq. ft. 3 bdrm., 1 1/2 bath, with basement & fireplace plus combination 2-car garage, storage room, shop building, at Amherst 246-3665. n8-48s-4tp

HOUSE FOR SALE located in Lazbuddie 3 bdrm, 2 baths, utility, garage, brick, big lot, private well. If interested call 965-2126 or 965-2191. f8-32s-tfc

NO MONTHLY payment until March 1, 1987 on any new or used mobile homes purchased during Dec. 2.9 APR financing available on new homes for information call A-1 Mobile Homes 806-376-5363. a8-49s-4tc

\$99-TOTAL down payment \$138 per month for 5 years 11.75 APR free delivery & set up. Call Marina at 806-376-5365. a8-49s-4tc

CHARLOTTE PIERCE BROKER
PIERCE REAL ESTATE
482-9188
TEXICO, N.M.
(505) 482-9188
Fully Licensed in New Mexico & Texas

OWNER MOVING and must sacrifice to sell a very nice 3-bedroom brick home at 914 Hickory. Price reduced to 34,000. Could qualify for any type loan, including FmHa, or existing loan could be assumed with individual lienholder's approval. If interested, lets negotiate!

HENRY REALTY
111 W. Ave. B
Muleshoe, Texas
272-4581

BRICK Home North of Muleshoe on Hwy 214. 3 bedroom, 2 bath, fireplace, central air/heat. One acre. Large Hobby Shop and apartment on premises. Fruit Trees.

4 Br, 2 bath, 2 car garage, central heat/air, large utility, carpet, near down-town. Excellent condition.

ONE ACRE sites for home construction. 3 miles East of Muleshoe on HWY. 3 lots remain.

JUST COMPLETED 3 bedroom, 2 bath, large living room, kitchen and dining. Excellent condition, near high school. Priced to sell.

COMPLETELY remodeled 2 bedroom home. Ideal first home, must see to appreciate. Nice location with F.H.A. loan.

COMMERCIAL PROPERTY on Main Street, over 4,000 sq. ft., income producing property.

COMMERCIAL PROPERTY-Excellent rental income from 4 separate offices. Lease agreements in force.

3 Br, 2 bath, spacious home outside city limits, near city on highway. 29'x40' metal building. Lot 85'x62'.

3 Br, 1 bath, completely remodeled, edge of city on highway.

VACANT LOT for Mobile home immediate possession.

COMMERCIAL PROPERTY on West American Blvd. ideal location Building ready for occupancy.

BAD CREDIT, slow pay, guaranteed credit approval in mobile home. Let me help you call Frank 806-376-4612. a8-49s-4tc

3 BDRM, 2 bath mobile home for only \$147 per month free delivery & set up includes storm windows & central air conditioning, 14.875 APR at \$108 month, \$970 down payment, call Art 806-376-5330. a8-49s-4tc

FOR SALE by owner: Brick home with over 3,000 sq. ft., 2 1/2 baths, double car garage with openers, sprinkler system, sun porch, regrid. air. Must see to appreciate. Shown by appointment only. Call 272-4361 or 272-3073. j8-47s-tfc

2,048 SQ. FT. Brick 3-2-2 1 acre tract 30x40, fab steel barn, paved drives, 6 ft. block fence. Nicely landscaped. Located Intersection highway 54 & Farm market 1731- 1 1/2 north of Maple. 806-927-5418. 18-43s-tfc

HOUSE FOR SALE 3 bdrm., 2 bath, storage shed, Geo-thermal heat & air conditioning, in ground swimming pool. 272-3117. L8-48s-8tc

9. Automobiles For Sale

FOR SALE: One owner, 77 Caprice 4-door. Jeef Peejer 272-4696. p9-49t-3tc

FOR SALE: '79 Black Pontiac Trans Am T-Top, call 965-2637 or 965-2251. r9-49s-7tc

11. For Sale Or Trade

FOR SALE - Small square bales of Hay grazer hay. \$45 per ton. Will deliver for reasonable price. Phone 272-4764. w11-49t-3tc-11tc

TABLES and chairs, freezer, 2 compartment cabinet sink, will sell together or separate. 815 W. 3rd. c11-47t-tfc

FOR SALE: Dry split oak firewood. We will deliver call 806-272-3987 after 6:30 p.m. w1-48t-tfc

FOR SALE 3 yr old Harvest Gold Combination GE electric range & microwave, self cleaning oven, temperature control. Must see to appreciate. 965-2756. L12-49s-2tc

FOR SALE: New posts and rails for wood yard fence. Call after 6 p.m. 965-2732. p11-31t-tfc

15. Misc.

FREE PUPPIES, 1/2 Labrador, call 272-4585 after 6:00 call 965-2886. s15-46s-tfc

ENERGY EFFICIENT BRICK HOME

Beautiful view on top of hill. Southside of Muleshoe Park. 3300 Sq. Ft. under Roof, 3-2-2. Den with fireplace kitchen/dining room, finished basement, study, attached shop, 2 porches. 1515 W. Ave. J. 272-5334. b8-25s-stfc

I WILL NOT be responsible for any debts other than my own. Loyce Lott 115-49t-3tp

Money is rather expensive when it gets scarce.

STORAGE Rooms Available For Storage \$25.00 - \$30.00 per month Ted Barnhill 272-4903 b1-42s-tfc

DAVIS COMMERCIAL PUMPING SERVICE
Cess pools, Grease pits, Mud pits, Septic tanks. 20 ft. elevator boots. Bacteria & Enzyme. Digestant stocked.
We stress maintenance for your best results. Call us. 806-272-4673 806-272-3467 Muleshoe, Texas TX. Dept. of Health reg. #TDH-02009 1-8s-stfc

SMALLWOOD REAL ESTATE BROKER
232 main 272-4838

3 Bedroom, 2 bath, stucco. Central heat, evaporative cooling, carpeted, 1360 sq. feet. \$24,500. This is a good price.

Investment Property
ON one lot-2 Bedroom, 1 Bath, New Carpet in living room, and 1 Bedroom Furnished. Both are now rented.

Whitt - Reid ● Homes ● Farms ● Ranches ● Commercial
Real Estate & Insurance Securities - Investments
201 Main-Ph. 272-3611

4-2-2 carport-stucco large living room w/fireplace, very nice kitchen w/microwave, dishwasher, disposal, compactor & range oven over 2000 sq. ft. 50H-14

3-1-2 detached garage stucco, tile dining room, tile & carpet, evap. air ducted in hall 25H-25

2-1-1 carport, double wall heater, large kitchen with lots of cabinet space, dishwasher, range-oven, ceiling fan, drapes, fruit trees & fenced back yard. Very nice & clean 25H-27

2-2 1/2-double carport brick, den or game room, dining, dishwasher, range-oven, free standing fire place, storage building & storm cellar, nice location 50H-10

Have buyer for acre or so with 3 br house & well in country close to town.

"If You Want It Sold - See Us"
Roy Whitt Broker, 272-3058
Thursie Reid 272-5318
Joy Whitt 272-3058

Sudderth Realty, Inc.
Realtors/Auctioneers
Farwell, Texas
481-3288
Drawer 887 109 5th St

Licensed in Texas, New Mexico and Oklahoma Certified Appraisers
J.B. Sudderth, Broker Daren Sudderth, Broker
Jimmie Mace, Sales Associate

SOLD OUR LISTINGS!
WE NEED YOUR HOME OR FARM LISTINGS NOW!

Country living at it's best. 10 acres with extra nice brick, 4 bedroom, 3 bath 2 car garage, T.V. Dish, large shop building, barn with fence, storm cellar, sprinklers pipe. Located near Muleshoe City limits. Priced to sell immediately.

On one acre nice 2 bdrm, 1 bath home with garage, large shop building and large storage building on hwy West of Muleshoe priced for immediate sale.

316 acres on Hwy lays good appr. 9 miles North of Bovina, priced to sell at 325.00 per acre.

1. Personals

SWATHING, baling & hay hauling small square or large round bales call Larry Plummer 505-276-8379, Arch, N.M. p1-48t-4tp

HOME REPAIRS R.M. Saldana Construction, licensed and bonded plumber. Specialized in cement, carpenter work, remodeling, painting, acoustical ceilings, 272-4955. s1-16s-tfc

JERRY'S ROOFING & Painting, Roofing & painting - all types. Call for free estimate. Jerry Helton 272-3836. h1-21t-tfc

UNEMPLOYED? LOW INCOME? New cosmetology program. Federal Funds available to those who qualify call Florine at (505) 762-4732 for more details. v1-46s-9tp

BURROWS Furniture repair & upholstery. Now located at 303 E. Cedar. Free estimates, Call 272-5722. b1-38s-tfc

CUSTOM ROUND baling call Larry/Free 925-6739. fl-45s-8tp

I WILL do crocheting for baby gifts, sweaters, afghans, etc. Call 272-5607 after 6 p.m. or on weekends.

JAMES F. HAYES & CO. AGRICULTURAL REAL ESTATE
Vic Coker-Agent
(806) 965-2468

640 Acres-Near Tamm Anne-Good water, tailwater return system, Excellent soils, very clean, very good yields. \$475/Acre.

335 Acres-Southwestern Castro County Good soils, excellent water, nice home on pavement, Look and make an offer!

160 Acres Lazbuddie. Beautiful 3000 sq. ft. brick home on pavement. Land lays like a table top, 2 wells, Excellent soils. House and acreage can be sold separately.

80 Irrigated Acres in Lamb County on Bailey County Line. Good prospect for part time cattleman or farmer. \$400/Acre.

639 Acres Northwest of Earth very good water, good soils, 2 electric sprinklers, Home, corrals, small feed lot. Barn & other out buildings. \$550/Acre.

Country Elevator-Pleasant Valley, 138,000 bushel capacity, round tanks with hopper bottoms, 3000 bu./hr. leg. excellent aeration system, cyclone fenced, and also has a 80'x90'x16' steel barn with 30 foot doors, office, rest rooms. ect. Whole facility has had very little use. \$80,000.

1-15,000 Head feed yard complete with mill, homes, 1000 Acres of grass modern FACILITY.

5 Sections-adjacent to above feedlot. Excellent soils, good water, 3 sprinklers. Combined with feedlot, this is a vertically integrated operation. Call Vic for details.

116 E. Ave. C. BINGHAM & NIEMAN REALTY 272-5285 --- 272-5286

We have homes for as little as \$600.00 total move-in cost in payment scheduled according to income for qualified buyers!!!!

COUNTRY HOMES

3-1-1 Home on 1 acre, workshop-storage. \$30's..

3-1-2 Home on pavement, 1 acre, Owner-financing..

3-2-2 Brick, 3.3 acres, built-ins, barn & pens!!!

3-3-2 Brick, 3.86 acres, Geothermal A&H, built-ins, loads of extras, energy efficient!!!

3-2-3 carport home, built-ins, Geo. A&H, storm cellar, barns, corrals, 11 acres...

RICHLAND HILLS

IMMACULATE 3-2-2 Brick, corner lot, Cent. A&H, built-ins, FP, energy efficient, loads of storage & closet space, sprinkler sys.!!!

3-1-1 Brick, Cent. heat, Evap. air, built-ins, fenced yard. \$40's...

COUNTRY VIEW-3-2-2 Brick, corner lot, total elec., built-ins, Cent. A&H, & more!!!

3-1 3/4-2 Brick, corner lot, Cent. A&H, built-ins, fireplace, utility, nice home \$70's...

3-1 3/4-2 Brick, heat, Evap. air, fireplace, fenced yard, walk to school. \$50's!!

LENAU ADD

3-1 3/4-1 carport home, fenced yard \$30's

2-1 3/4-2 Brick, Cent. A&H, built-ins, fireplace, sprinkler system. PRICED TO SELL!!!

2-1-1 Wall furnace heat, evap. air, carpeted, fenced yard, \$20's...

4-2-2 carport home, built-ins, fireplace, many more extra's. CALL FOR DETAILS..\$50's...

3-2-2 carport, corner lot storm windows & doors, concrete cellar. \$30's...

JUST LISTED-3-2-2 Brick, cent. evap. air, cent. heat, built-ins, fenced yards. \$40's...

COUNTRY CLUB

3-2-2 Brick, Cent. A&H, Built-ins, fireplace, covered patio, fenced yard, & more!!!

GEORGE NIEMAN, BROKER
"WE APPRECIATE YOUR BUSINESS"

HIGH SCHOOL AREA

3-1 3/4-2 Brick, Cent. A&H, built-ins, fenced yard, basement with fireplace. PRICED TO SELL!!!

3-1-1 carport, corner lot, wall furnace, evap. air, fenced yd., storage bldg. \$30's...

3-1 3/4- Brick, Cent. A&H, built-ins, beamed ceiling, 2 fireplaces, spacious. \$70's...

2-1-1 carport, corner lot, built-ins, plenty of cabinet space, fenced yd, \$20's...

3-1-2 wall furnace heat, evap. air, MAKE AN OFFER...\$20's

3-1-1 corner lot, Cent. heat, Evap. air. \$30's

2-1 pm 20 acres, 20 hp sub. pump, barns & corrals, many more extras...\$42,500

3-2 3/4-2 carport, nice extra large home, concrete cellar...\$40's...

WELL IMPROVED 40 acre cattle set-up PRICED TO SELL!!!

3-1-1 Stucco, carpet & vinyl flooring. \$20's

3-2 large home with Cent A&H, gas grill, storage bldg. & more...\$30's...

LARGE BLDG. on 2 lots, Paved parking...

PRICED TO SELL- Office Bldg. across from courthouse...

YL-Well-Improved 400 irrig. acres, 3-2-2 it home, shop, barns, UG tile.

3-1 1/2 home, Cent. A&H, insulated, workshop, REDUCED: \$35,000.00

3-1 3/4-2 Brick, Cent. A&H, built-ins, workshop, & more. \$50's...

3-1 3/4 home, corner lot, Cent. A&H, large rooms...\$50's...

Approx. 32 acre **SOLD** vement, close to town, in domestic well. Priced to sell.

DIANNE NIEMAN, BROKER