

Lamb County Leader

Serving Texas' Second Largest Agricultural Producing County

18 Pages

10c

VOLUME 91

LITTLEFIELD, LAMB COUNTY, TEXAS, THURSDAY, APRIL 28, 1966

NUMBER 51

TOTALS OVER \$36 MILLION

Deposits Show Big Increase

Deposits in the six Lamb County Banks and the Citizens State Bank at Anton which is considered in the Lamb County trade area showed a healthy increase from a year ago as deposits in the seven banks totaled \$36,809,703.00 on a call for bank reports with the bank call being for the close of business of April 5.

The April 5 deposits for the seven banks showed an increase of \$3,322,493 over the figure for the seven banks at this time last year.

All of the banks showed an increase of almost a million dollars in deposits from the April 1965 figure.

Increases at the other banks throughout the county ranged from slightly over \$300,000 to an almost \$900,000 increase in deposits at the Olton State Bank. The total deposits were the highest in the past three years as they also exceeded the April 1964 totals by over a million dollars, when the deposits in the seven banks was nearly \$35 million.

Loans and discounts, in which are included Commodity Corporation Loans on cotton or grain totaled \$23,046,323.74 for the seven banks.

The Littlefield Federal Savings and Loan also showed a substantial increase in savings from the 1965 figure as their deposits totaled \$10,266,657 at the close of business on March 31 compared to \$9,085,177 at the same period in 1965.

By banks, the April 5, 1966 total deposits and loans and discounts and their comparison with the call April 26, 1965 are:

Security State -- Total deposits - \$8,957,148.23; L&D \$5,573,056.11 compared with deposits of \$7,959,208.24 in April 1965, an increase of \$997,940.

First National Bank of Littlefield - Total deposits - \$6,602,881.20; L&D \$4,687,019.63 compared with deposits of \$5,965,657.58 in April 1965, an increase of \$637,224.

First National Bank of Sudan - Total deposits - \$3,314,936.81; L&D \$1,731,364.23 compared with deposits of \$2,877,819.27 in April 1965, an increase of \$437,117.

First National of Amherst - Total deposits - \$4,147,524.13; L&D \$2,312,125.64; compared with deposits of \$3,612,979 in April 1965, an increase of \$534,545.

Citizens State Bank of Earth - Total deposits - \$3,313,255.01; L&D \$2,725,362.69 compared with deposits of \$2,711,571 in April 1965, an increase of \$601,684.

Olton State Bank - Total deposits - \$7,548,366.72; L&D \$4,378,975.84, compared with deposits of \$6,656,104 in April 1965, an increase of \$892,262.

Citizens State Bank of Anton - Total deposits - \$2,928,590.90; L&D \$1,638,419.60, compared with deposits of \$2,604,304.45 in April 1965, an increase of \$324,286.

Crippled Children's Clinic Is Set

The quarterly session of Crippled Children's Clinic for South Plains children will be conducted this Saturday, April 30, from 1 to 5 p.m. at St. John's Methodist Church, 15th & College Ave., Lubbock.

The clinic is free for crippled children of Lubbock and the surrounding area through cooperation of doctors and the sponsor, Fellowship Class of St. John's Church. Four orthopedic surgeons will be present to examine children Saturday. City-County health nurses from several counties are to assist. Clinic personnel will arrange for braces and further care when necessary.

At the previous clinic in February, 96 children were examined, 30 of whom were new cases. Since that time, 8 of these patients have received corrective surgery. Children being taken to the clinic for the first time are to be accompanied by parent or guardian.



OPEN HOUSE SUNDAY -- The directors and employees of the Lamb County Electric Cooperative will host an Open House at their new half-million dollar headquarters building on South Phelps Ave. just south of Marshall Howard Boulevard from 1 to 4 p.m. Sunday afternoon. Tours of the facilities will be available and free refreshments will be served.

Lamb County Electric To Hold Open House

The Lamb County Electric Cooperative will hold an open house Sunday, May 1 from 1 to 4 p.m. to celebrate the official opening of their recently completed nearly one-half million dollar plant.

The main building which encompasses 32,000 square feet and the other facilities including a warehouse are located on the southwest edge of town at South Phelps Avenue and Marshall Howard Boulevard (Highway 84 by-pass).

To help celebrate the growth of the REA the directors and the employees will serve as host to the public during the open house. Manager J.H. (Dick) Carl stated that he hopes everyone in this area will take advantage of the opportunity to view the facilities of the headquarters building, refreshments will be served.

Plans were announced for the new plant, which covers ten acres in late 1964 and construction started in June 1965 with the doors to the new facilities being opened to the public for the first time April 18 as the move was completed from the previous location at 313 West 4th Street which housed the business for the past 14 years.

Welcome Rain Hits County

Nearly four inches of rain fell in certain areas of Lamb County during the past week with the southern part of the county receiving the greatest amounts of moisture from the rains that started early last Friday morning and continued through Monday.

The dry land farming areas of the county received between three and half to four inches of moisture during the period as farmers in both the Pep and Bula area reported rains ranging between three and four inches.

The Whitharral area also received nearly three inches of moisture during the four days and the heavier rains also extended northwest from Littlefield as both Sudan and Amherst areas reported over three inches of rain and John D. Smith reported that over two and a half inches fell on his dry land farm located at the very western edge of Lamb County.

The rains were lighter in the northern area of the county as most farmers near Olton and in the Springlake-Earth area reported slightly over two inches of rain fell on their farms.

The rains also hit the eastern part of the county with the Spade area also receiving better than three inches of moisture.

Many farmers throughout the county stated that they are ready for the ground to dry out and will start planting while others especially in the northern portion of the county where the rain was lighter said that another rain in the near future would be welcome, as they feel it is not quite planting time.

Buddy Logsdon, Lamb County agent reported that several farmers have already started working some sandy areas and that many were busy getting prepared to plant starting early next week if the warm weather continues through the weekend.

Logsdon stated that one of the most beneficial factors of the rain being so general throughout the county that it will enable the vast majority of farmers to plant at nearly the same time and should help prevent wind damage by keeping dirt from a farm not yet planted onto one already planted.

"The farmers that I have talked to practically all of them have reported that the land is in good shape and in very much better condition than it was at the corresponding time last year. Several have said that they did not get as much rain as hoped for but the amounts their farms did get was certainly beneficial," stated Logsdon.



CRESCENT PARK LAKE -- Following the rains over the weekend and Monday morning Littlefield had its own take as a big portion of Crescent Park was under water but the photographer found out that it is much easier to attempt to

shoot a Mallard Duck with a shotgun than with a camera. There were eight to ten Mallards on the lake but only several can be seen in the center of the picture.

--- LEADER STAFF PHOTO

Peyton Reese Seriously Hurt In Auto Crash

L. Peyton Reese, well-known Littlefield real estate man was seriously injured in a two car accident Monday afternoon three miles west of Lubbock.

Also injured in the accident were Elois Hamil of Levelland and Clara McLemore of Reese Air Force Base.

Reese is in serious condition and in the intensive ward unit at Methodist Hospital in Lubbock. He suffered a skull fracture and possibly several broken bones. He also suffered a 14 inch laceration on the top of his head in the accident.

Wednesday morning he was reported to be improved and is expected to be moved from the intensive care unit later this week.

The accident occurred at the intersection of Farm to Market road 179 and FM 2255 about 5:15 p.m. Monday afternoon. Highway patrolman C.R. Andrews reported Reese was headed north on FM 179 and Mrs. McLemore west on 2255 when the cars collided. Reese had apparently stopped at a stop sign and then pulled onto FM 2255 into the path of the other vehicle.

The front of the McLemore car struck the right front fender of the Reese vehicle and both continued into a ditch.

Mrs. Hamil, a passenger in the Reese car suffered several broken bones including a broken shoulder and collar bone which were set Wednesday in Methodist Hospital.

Mrs. McLemore is in Reese AFB Hospital with possible internal injuries and possible broken bones.

Baseball Season Opens Friday

The Pony League baseball season will get underway Friday night at the Pony League Park with Sudan meeting Roden Drug with the game starting at 8 p.m.

Saturday night KZZN will battle Amherst on the Amherst diamond and the two remaining teams, Ware-Richey and Dairy Queen will open their season a week from tomorrow night on the Pony League field here.

Amherst is the defending champion while Ware-Richey had the best record of the Littlefield teams last year. The teams will each play a fifteen game schedule meeting each of the other teams in the league three times.

FOUR MONDAY

Cash And Merchandise Taken In Break-Ins

Four Littlefield firms were the victims of burglaries Monday night while another firm was broken into Saturday night with the total taken in merchandise and cash from the five concerns valued at over \$1500.

Monday night, the Pratt's Jewelry and West Drug building; John Richey's Inc. and Dave's Conoco were all victims of the burglaries while Saturday night The Littlefield Motor Parts building was broken into.

Pratt's suffered the largest loss as 33 watches valued at \$1030.40 were taken from two display cases in the store. The watches were the only items taken and the thieves over looked money in the cash register.

Nothing was taken from the West's Drug store portion of the building though a case of coke glasses was broken, and a wall was damaged where the thieves gained entrance from

one store to the other. The police are investigating the possibility that someone hid in one of the stores when they closed for the evening as no means of forced entry was found in either of the two stores.

Entry was gained into Richey's by breaking the window on the north side of the station. Taken in the robbery was approximately \$88 in cash, seven checks totalling over \$50, an electric Remington razor and five cans of STP.

STP was also taken at the break-in at Dave's Conoco as twenty cans of it were taken in addition to a carton of cigarettes.

Taken in the burglary were a timing light valued at \$40, Throssen hand tools valued at \$150, an oil gage valued at \$80 and hand tools with a value of \$5.

SET MAY 5

Retail Council Sets Parade, Dances For Thursday Night

Members of the Retail Council of the Littlefield Chamber of Commerce voted to have a parade through the downtown district with two dances later in the evening as the featured attractions of the first Thursday night opening for many Littlefield businesses on Thursday, May 5.

The May 5 night opening will kick-off a program in which members of the Retail Council voted to have the retail firms in Littlefield stay open until 9 p.m. each Thursday evening for the next six months, to enable the merchants to better serve both the area customers and provide a better opportunity for family shopping.

The parade which will go down XIT and then up Phelps Ave.

will start at 5:30 p.m. and will feature the Lamb County Sheriff's Posse, floats carrying all the Little League and Pony League baseball teams, the possibility of several high school bands and other participating groups.

The members of the Council attending the Tuesday meeting voted to have the stores close at 5:30 p.m. and then re-open immediately following the parade and remain open until 9 p.m.

The two dances will start at 8:30 p.m. and last until 10:30. Square dancing will be held on Fourth Street between Phelps Ave. and XIT Drive and the teenage dance will also be held on Fourth Street between Littlefield Drive and Phelps Ave.

County Cotton Acreage Declines By 53,412 For 1966

Farmers in the 23 Texas High Plains counties have signed up to plant 1,451,407 acres of cotton in 1966 -- 28.2 percent or 570,223 acres less than the 2,021,630 final planted acres on the Plains in 1965. This will be by far the lowest planted acreage for the area in many years.

In Lamb County there were 174,998 acres planted in 1965 and the intended acres for 1966 has dropped to 121,586 a reduction of 53,412 acres, and a 30.5 percent reduction from the 1965 totals.

The County will have 184,737 eligible acres for 1966 with 63,151 of these being diverted for a reduction of 34.2 percent.

However the county has gained 1,347 acres from allotment transfers.

The 1966 planting intentions were given to PCG by the State Agricultural Stabilization and Conservation Service office at College Station. The figures were compiled from county ASCS reports on farmer sign-up in the 1966 cotton program through April 1. The actual sign-up period was extended through April 8, but virtually all Plains farmers who intended to participate in the program had signed up by April 1, so for all practical purposes, the figures are final.

Producers in the area indicated they would divert 704,809 of the 2,156,216 acres that were eligible for the annual program. That comes to 32.7 percent, as compared to the state average diversion of 31.6 percent.

Many observers, including the writer, had previously calculated that the overall 1966 acreage reduction from 1965 would be very close to the 35 percent maximum diversion permitted under the new law. And the drop from the 1965 effective allotment for the area is, in fact, 803,738 acres or a little over 35 percent. But this figure is not too meaningful in view of the fact that 233,615 acres of the area's allotted 2,255,245 acres were not planted in 1965, but were in the old soil bank or were (See COTTON Page 8)

who in addition to having been on the program, took time out to visit with the people at the meeting. In the course of the meal we had an opportunity to visit, at length, with the personable Haney who, in making an observation on the recent heart operation down in Houston, said with much emotion, "It's a fitting tribute to the city that has been the base for many heart stopping flights. This observation from a man which has a tremendous responsibility in his own field, we think is an insight to the calibre of men we have working in our space program, which will one day soon land an American on the moon, and after that who knows.

while at the meeting up Amarillo way, this past weekend we had lunch with the "Voice of Astronauts" Paul Haney.

THEY WENT THROUGH HERE -- A piece of the wall separating West Drug and Pratt's jewelry store was torn down by burglars Monday night as they gained entrance into the jewelry store. The thieves stole 33 watches valued at over a thousand dollars from

Pratt's Jewelry & West Drug

at last the rains came. Just in time for the many farmers who are getting ready to plant, and in time for some of the growers to shut off their eyes for awhile.

It's amazing what a difference rain can make. We were looking around town the other afternoon, after the four inch fall, and all of a sudden everything looked greener and better.

Our friends at city hall are the business to sell water. We don't think their water compare with the good old water for making things grow turn green, it's all right drinking, but give us the falling rain for the yard, it's better.

Talking about things being and the value of rain, had the opportunity this weekend to take a tour of Texas and went from the handle country to the Sandhills of Monahans, and from the Coast to the tall pines of Texas.

The course of the trip we returned with a renewed appreciation for what we have in Texas, and the importance of the retention of the State's natural beauty.

We made this trip from a Amarillo, via a tremendous slide presentation on the Texas Wild Life and Department called "The Order of Silence".

The graphic presentation was with slides and music, and what our State has and through abuse, are losing natural beauty. You never see what a discarded can looks like, along a roadside, until you see them together, nor do you think much about a piece of paper carelessly thrown down.

You see a once beautiful area littered with debris, a presentation showed how city dwellers are anxious to place to visit, and how they will travel for miles to the country side and camp out in the country air, through the unthinking acts of others, who had previously selected the spot, selected, the actions are becoming less active and are being left to grow into weeds and brush.

Observing a few rules we prevent the erosion of the land of Texas and can retain the beauty of the roadsides. We wish to thank the Parks and Wildlife Department for what they are doing and to encourage that we join with them in helping Texas grow and promote more attractions for visitors and homefolks, by keeping areas clean.

The weather that has bathed countryside since the rains have been all anyone could ask for and it won't be long before farmers will be getting into the fields and planting will be on its way.

We are now entering the best of the most beautiful time of the year in the area, and on all the fields will be coming out in a new coat of green, which will soon turn to gold and then the harvest will be upon us...then it starts all over again...it's a wonderful life isn't it?

We in this country have much to be thankful for. *****



YOUNG PEOPLE MEET HERE -- The annual talent quest of Walther Leaguers of this zone was held Sunday afternoon at Emmanuel Lutheran Church here, with approximately 125 persons registering. At the time the above picture was made the oratorical part of the contest was in progress. Other talent included vocal and instrumental numbers, hand work, collections of hobbies, etc. The young people from Plainview were awarded a trophy for having the most points.

Local Church Is Scene Of Zone Talent Quest Sunday

Approximately 125 persons attended the annual Zone Walther League Rally Sunday at Emmanuel Lutheran Church here. Following registration and the opening devotion a business meeting was held at which time three new zone officers were elected. They were Russ Stansell of Lubbock, president; Claire Robbins, Lamesa, secretary; Marilyn Neunaber, Lubbock, treasurer; and Randy Schoppa, Plainview, vice president. Events in the talent quest included dramatic readings, orations, Bible story telling, vocal and instrumental events; hand work, art work, photography, collections, etc. Members of the Lutheran Women's Missionary League served a spaghetti supper to those attending.

Mrs. Hardin Is Circle Hostess

"My Family: Witnessing to Each Other" was the program Monday evening for the Mary Frances Nichols WMU Circle of the First Baptist Church. Mrs. Jack Hardin was hostess for the meeting. Mrs. G.V. Walden read the calendar of prayer and offered prayer for the missionaries listed on the calendar. The Royal Service program was led by Miss Clara Jarmon.

Church News

ST. MARTIN LUTHERAN
Tonight at 8 p.m. the Sunday School teaching staff will hold its monthly meeting in the main assembly room of the educational building. Tomorrow morning the representatives of the WOC will leave for Gruver, (near the Oklahoma border) to attend the Northwest Conference spring meeting of the WOC of the Southern District of the American Lutheran Church. The Catechism class will meet Saturday at 10 a.m. Before class the Luther League will meet at 9 a.m. to practice for the play to be performed for the Sunday School later in the month. New devotional books may be picked up in the Narthax of the church for May through July. Next Sunday Holy Communion will be offered.

Cotton terry towels make ideal curtains for a bathroom window over a tub with shower. The towel curtains will dry quickly when wet by the shower, and they can be machine-washed and dried without needing ironing. Coordinate towel curtains with your other bath towels.



Mr. Farmer - Mr. Rancher:

Too many short-term debts can cripple your total credit program, tie up operating capital and cause you to miss opportunities that require immediate funds. For these reasons, it can pay you to consolidate your short-term obligations with a long-term, low cost Land Bank loan on your farm or on your ranch.

FEDERAL LAND BANK ASSOCIATION OF LITTLEFIELD
W.H. McCown, Manager
Phone 385-4425
504 Phelps Ave., P.O. Box 1106, Littlefield, Texas 79339

AMHERST NEWS BY MRS. LESTER GRANGE

Lions Attend Convention

Lion President Gene Campbell and Mrs. Campbell, Lion Clarence Black, Mrs. Black and daughter Elaine, who was a queen candidate attended the Lions Club 2-T2 District convention held at the Koko Palace in Lubbock Friday and Saturday. Other Lions and wives there for the banquets Friday or Saturday nights were the Arthur Hedges, Leroy Maxfields, Cleon Johnsons, Charles Mixons, Lamar Kellys, Don Carters, and Gary Johnson, Eddie Hedges and Johnny Norwood. Lion Kelly, a cabinet member, serves as a deputy district governor.

Mrs. Veta Tadlock and daughters of Ruidoso were weekend guests of her parents, Mr. and Mrs. Lee Payne, The Bob Payne family of Shallowater came up to visit them Saturday.

Guests of Mrs. R.O. Shavor Saturday and Sunday were her daughter, Mrs. Ray Dickinson and Yanci of Tatum, N.M., Mr. and Mrs. S.E. Lance, Mrs. Eugene Young and girls were Sunday guests of Mr. and Mrs. G.W. Jones and Kathy in Friona.

Saturday guests of his parents, the Ernest Colemans, were Mr. and Mrs. Eugene Coleman and children of Lubbock. Mrs. Verdell Burton, Mrs. Eugene Young and Mrs. Winston Ferguson represented the local Parent-Teacher Association at the District 14 Conference of PTA in Lubbock Tuesday. Rev. Raymond Quick con-

ducted the spring revival services at the Hart Camp Baptist Church last week. Larry Branscum, music and education director at the local church, directed the song services at a revival in Vega last week. Mr. and Mrs. Allan White were in Las Vegas, N.M. Friday to Sunday.

Mrs. Bill Taylor and Mrs. Lige Griffin visited their sons, Bill Jr. and Eugene Griffin and families in Muleshoe Thursday. Lewis Settle, son of Mr. and Mrs. James Settle, was home from Texas Tech for the weekend. He was accompanied by Carmen Starcher of Spur who also attends Tech.

Mrs. Leslie Morrow and her mother, Mrs. Alvin Mote, visited their daughter and sister, Mrs. James Timian and family in Littlefield Sunday.

Guests of Mr. and Mrs. A.L. Mixon Sunday were Mr. and Mrs. John Campbell of Olton. They visited Ivan Clawson of Sudan, a patient in the hospital.

Mr. and Mrs. F.W. Gardner are visiting relatives in Shreveport, La.

Mr. and Mrs. Sam Harmon and Kim and Mr. and Mrs. Leroy Maxfield and Rodney visited Mrs. Harry Henderson who is a patient in Northwest Texas Hospital in Amarillo Sunday. Mrs. Henderson is critically ill. Mr. and Mrs. Henderson lived in Amherst and Littlefield before moving to Amarillo. He was superintendent for the Missouri Valley Construction Com-

pany when the first unit of Plant X was built for the Southwestern Public Service Company.

Wanda Carol Durham visited friends in Canyon Sunday. She accompanied the Maxfields and Harmons as they went to Amarillo.

Mrs. R.H. Campbell and daughter, Mrs. Otis Holliday and

girls of Olton were dinner guests of their son and brother, Gene Campbell and family Sunday. Rev. Campbell was guest speaker at the Methodist Church and was guest of his son and family while here.

Guests of Mr. and Mrs. W.E. Bennett for the weekend were her brothers, L.J. Cantrell and wife of Washington, D.C., R.J. Cantrell of Hemet, Calif., Dr. A.L. Cantrell of Denton and R.M. Cantrell of Fort Worth. They were guests of their niece, Mrs. Jim Nix and nephew, Paul D. Bennett in Littlefield and fam-

ilies, also while here. Mrs. G.B. Stewart visited Sam Rayburn Library recently. She saw the book page historical mementoes collected by the late Speaker Sam Rayburn during his more than fifty years of service to his country.

Cotton bias tape now comes in stylish prints, which include diagonal stripes, small floral and tiny florals. Use the bias tape to trim dresses, pillows, place mats, etc. towels.

Re-ELECT JACK HIGHTOWER OF WILBARGER COUNTY State Senator FOR THE 30th DISTRICT

Democratic Primaries

- ★ Well-known and respected leader in Texas government. An active Democrat.
- ★ World War II veteran. Native of Hall County. Wife is native of Swisher County. Three children.

- ★ An experienced, capable and dedicated legislator who has served in both House of Representatives and Senate.
- ★ An effective Senator who works with individuals and communities of his district on problems and projects of all kinds.

Political Advertisement Paid for by Jack Hightower

Mrs. Brock To Give Club Program

Mrs. Olene Gibson will be hostess for the Forum Club tonight (Thursday) at 8 p.m. Mrs. Charles Russell is program chairman for the meeting. She has asked Mrs. BHL Brock to present the program on "Antiques of Tomorrow". All members are urged to attend.

CITY BIT

Mr. and Mrs. Carl Pillion of Amarillo spent the weekend with their daughter and family, Mr. and Mrs. Bill Brantley and children. Ken Brantley had spent the week in Amarillo with his grandparents.

FASHION CLEANERS
210 WEST DELANO

SPECIALS APRIL 25 TO 30 TH

MEN SUITS	89¢
PANTS	39¢
<i>CASH AND CARRY</i>	
LADIES PLAIN DRESSES	95¢
SLACKS	39¢

COIN-OP - TYPE CLEANING BY A PROFESSIONAL **4 POUNDS \$1**



IT'S A FAMILY AFFAIR

Dependability? You bet! Dad goes for it. Safe? Check! Mom really likes to drive an Ariens Riding Mower (all Ariens mowers meet American Standards Association safety standards). Four-speed shift and power reverse? Right! There's something for everyone in the family with an Ariens. Heavy-duty construction and rear-mounted Ezee Start engine makes mowing a pleasure. Look over these Ariens Riding Mowers. And remember, it's a family affair.



Ariens GARD-N-YARD® POWER EQUIPMENT

Duncan Auto Service
1002 HALL AVENUE

Waited all winter to buy a big Chrysler?
Time's up.



Move up...
Move now...



Now you can get a spring special Chrysler priced just a few dollars a month more than the most popular smaller cars, comparably equipped. By equipped, we mean automatic transmission, power steering, power brakes, radio, heater and a big V-8. Still in doubt? Cut this ad out, bring it in and make us put our money where our mouth is!

Buy Chrysler

AUTHORIZED DEALERS **CHRYSLER** MOTORS CORPORATION

Garland Motor Company, Chrysler-Plymouth

710 E. THIRD ST.

LITTLEFIELD, TEXAS

Torrow-Ruland Exchange Vows

HERST -- Miss Karen Ruland and Kenneth Ray Ruland exchanged double wedding rings in an 8 p.m. ceremony in First Baptist Church, April 27, Raymond Quick, pastor of church, officiated.

Mr. and Mrs. Leslie Morrow, Mr. and Mrs. Alvin Henley, Mr. and Mrs. Ruland of Hereford are the guests.

The bride, given in marriage by her father, wore a floor length gown of white peau de chamois with a fitted bodice and a full skirt of imported lace and a high neckline. Her elbow length veil of silk illusion was held to a crown of seed pearls. Her bridal bouquet of white, feathered carnations and gerberas was carried atop a blue and white penny in her shoe.

The bride's sister, Mrs. Bob Levelland, was her attendant and Leon Martin of Hereford was her best man. Ushers were Fred Ruland, brother of the groom, and Douglas Ruland, his brother, both of Hereford. Cantors were Ronnie Mote and Danny Morrow, cousins of the bride.

Miss Vivian Merrifield of Littlefield registered guests. Miss Clayton presented traditional wedding music and accompanied Miss Janie Young.

The reception followed in Fellowship Hall of the church. Cousin of the bride, Miss Jalee and Mrs. Vivian Merrifield presided at the bride's table.

After a short wedding trip, the couple is at home in Hereford where he is employed. The bride is attending Jessie Lee's school of Beauty Culture in Lubbock.



MRS. KENNETH RAY RULAND

News of Women

LOIS VRUBEL.....SOCIETY EDITOR

Bridal Shower Given Mrs. Alvin Henley

WHITHARRAL -- Mrs. Alvin Henley, the former Carol Ann Davis of the Hodges Community, was named honoree Thursday from 2 to 5 p.m. with a bridal shower at the Park Drive Baptist Church in Levelland.

Hostesses for the courtesy were Meses, W.H. Shackelford, Olen McDonald, H.B. Isaacks, J.A. Pence, Don Overman, David Mitchell, Glen Butler, Earl Patterson, Doug Kauffman, James Sullivan, James Marrow and Bobby Vinson.

The refreshment table was covered in white with pleated net flounces around the edges. A blue heart centered with a miniature bride completed the

decor. Appointments were in crystal and silver. The hostesses alternated at the silver coffee service and the punch bowl. Dainty cookies were also served.

Mrs. Vinson registered the guests at a small table covered in white and decorated with miniature floral arrangement.

Fifty guests called or sent gifts. The hostess gift was an electric mixer. Out-of-town guests included Mrs. C. E. Campbell, mother of the groom and Mrs. Charles Loring of Anton, Mrs. Arzie Martin of Ropesville and Mrs. Billy Ray Martin of Meadow.

Eastern Star Conducts Election Of Officers

Frances Ricks was elected worthy matron and Bill Weige worthy patron of the Littlefield Order of Eastern Star Thursday night when election of officers was conducted at the Masonic Hall.

Other elected officers include Mary Davis, associate matron; Edwin Coffman, associate pa-

tron; Betty Melton, secretary; Edith Bridges, treasurer; Sonja Ball, conductress; Maxine Spencer, associate conductress.

Officers appointed by the new worthy matron were Pat Lang, chaplain; Mary Beth Willey, marshal; Norma Phillips, organist; Sheryl Smith, Adah; Joyce Branham, Ruth, Tam McKeown, Esther; Katherine Jones, Martha; Jennie Coffman, Electa; James Ball, Warde; and Tom Matthews, sentinel.

A short program was presented by Maxine Spencer. She expressed the appreciation of the Rainbow Girls for the participation and cooperation given by members of the Eastern Star.

Refreshments were served in the dining room of the hall. Minnie Matthews was hostess, assisted by Katherine Jones. The installation of new officers will be June 11.

Sorority Sets Dance Saturday

A Ship Wreck Dance sponsored by the Tau Chi Chapter of Beta Sigma Phi will be held at the Lamb County Community Center Saturday from 8 to 12 p.m.

Proceeds will be used for sending Trudie Grizzle on the All-American Choir tour this summer.

Music will be furnished by the Lamplighters, a local band. All high school students and their dates are invited.

Engagement Announced

OLTON -- Mr. and Mrs. Ollie Smith announce the engagement of their daughter, Oleta Sue, to Jimmy Wayne Bennett, son of Mr. and Mrs. Bill Bennett, all of Olton.

The bride-elect is a 1965 graduate of Olton High School and is attending Adelle's Beauty School in Plainview. Her fiancé attended Olton High School and is presently serving with the U.S. Navy.

The wedding date has not been set.

When a recipe calls for a cup of cooked prunes, you'll need to cook 1/4 pound of dried fruit.

MOTHER-TO-BE
NEW EXCITING SPRING FASHIONS ARRIVING DAILY

MATE SHIRTS SHOP
50TH AND FLINT
LUBBOCK, TEXAS

Plan August Marriage

The wedding plans of Miss Norma Lou (Robin) Hood and William Allen Mote have been announced by her parents, Mr. and Mrs. L.M. (Tub) Hood of Duncanville, Tex.

August 20 is the wedding date selected by the couple. They will exchange vows in the First Methodist Church of Duncanville.

The bride-elect is a graduate of Duncanville High School, now attending Texas Tech as a junior majoring in speech and drama. The prospective bridegroom is a graduate of Littlefield High School graduated from Texas Tech in 1963 with a BS in agriculture education. He is employed by the United States Department of Agriculture with the Soil Conservation Service.

Mote is the son of Mr. and Mrs. Edd Mote of Plainview, formerly of Littlefield.



NORMA LOU HOOD

Dear Friends of El Monterrey:

As you have perhaps noticed, I am no longer associated with El Monterrey, as of April 1st, 1966.

To our kind friends everywhere -- especially of Clovis, Portales, Muleshoe, Hereford, Bovina, Friona, Sudan, Littlefield, etc., may I express my appreciation for your past patronage -- Not only for the past 8 years, during my ownership, but also for the previous 12 years when my father (Col. Weede) was associated with the Gray Reed's. As you know, my Aunt & Uncle (Sis & Gray Reed) were the original founders some 30 years ago.

Although I've sold all my interest in El Monterrey, I have retained the right to enter any business in any location -- even to direct competition to El Monterrey.

Sincerely
James A. Weede Jr.
& Family
Of Clovis, New Mexico

TOPS Members Receive Awards At State Meet

Eight members of the Belle Fourche TOPS Club attended the Recognition Day over the weekend in Galveston. They left Friday morning by chartered bus from Lubbock and returned Sunday night.

Miss Holly, who is the first (Keep Off Pounds) of the club, was in the graduation ceremonies. In order to keep a KOP, you must keep off pounds for at least three months.

Miss Long was recognized as (Kops in Waiting). She was elected Queen of the Year for the club and was in the Queen's Parade at the state meeting.

Miss Street, who was Queen of the Year for the local club and was in the Queen's Parade at the state meeting. Ora Street, who was Queen of the Year for the Be-Trim Club, was also in the Queen's Parade.

Regional director, Doris Howard of Kansas City, and Sarita Taylor, Kansas City, made the special presentations.

Highlights of the meeting included the coronation banquet and fun night. Pat McMahan received a door prize of decorative wall plaques.

Six hundred sixty-one persons attended the meeting. An announcement was made that 32,000 pounds were lost by TOPS members in Texas during 1965.

Local members making the trip were Devela Hensaw, Marvone Jones, Hazel Davis, Pat McMahan, and Audrey Long and Berta Pugh, Armerst, and Ora Streety and Violet Holly, Spade.

CITY BIT

Mr. and Mrs. Fred Lichte and Mrs. Ellen Will visited Sunday in Amarillo with Art Lichte, who is a patient in the VA Hospital there. They also visited Mrs. Lichte's sister and brother-in-law, Mr. and Mrs. Jim Witcher, of Amarillo.

SS Class Meets, Honors Teacher

WHITHARRAL -- The regular monthly business meeting of the Dorcas Sunday School Class was held Tuesday evening in Fellowship Hall at Whitharral Baptist Church. Each guest registered on a blackboard as she entered for a "drawing", which was a surprise shower of get-well gifts for their teacher, Mrs. Elva T. Crank, who had been hospitalized for ten days.

Mrs. Hugh Montgomery opened the meeting with prayer, Mrs. H.G. Walden presided for a short business meeting, Mrs. Henry Jones gave the devotional and a poem, "Too Swift the Way, Too Fast the Day."

Mrs. Fred Newsom, Henry Jones, W.R. McDaniel, T.E. Howard, James Mixon and H.G. Walden sang two songs.

Mrs. Crank conducted a Bible quiz. A salad supper followed with Mrs. Newsom giving the invocation.

Present were Meses, Montgomery, Crank, Newsom, Jones, Mixon, Walden, McDaniel, Howard, John Waters, O.L. Martin, Martin Moore, Vick Matthews, J.D. Waters, Will Raines, Susie Bickley and W.H. Kilgore.

Committees for the May 17 meeting are: program, Mrs. J.M. Mixon and Mrs. W.R. McDaniel; drinks, Mrs. Vick Matthews and Mrs. W.H. Kilgore; and table, Mrs. John Waters and Mrs. Henry Jones.

Mrs. Wade To Attend Spring Veteran's Clinic

Mrs. Roy Wade, service officer for Lamb County, will attend a regional service officer's clinic at Lubbock today (Thursday) and Friday at the American Legion Post 148, 2412 Avenue Q.

It is to be a Spring Veterans Clinic. Area director Greely Aston, Taylor County service officer, will be in charge.

Ever bake pork chops with onions and apples? Delicious combination. A meat pie also benefits from a pork, onion and apple filling.

VOTE FOR EXPERIENCE AND INTEGRITY MAY 7!

CRAWFORD MARTIN

FOR ATTORNEY GENERAL

(Pol. Adv.-Pd. for by Crawford Martin Campaign Committee, Geo. Cowden - Chairman)

DOUBLE FEATURE
"Don't Worry-We'll Think Of A Title"
ALSO
"Billie"
XIT Friday-Saturday
DRIVE-IN THEATRE Sunday

WALT DISNEY presents
THE UGLY DACHSHUND

STARRING
DEAN JONES
AND
SUZANNE PLESHETTE

A Honey Moon Goes To The Dog.

ONE WHOLE WEEK
SUNDAY THROUGH
SATURDAY

Technicolor **PALACE**

Calendar of Events

- THURSDAY**
4 p.m. Ladies Bible Class at Crescent Park Church of Christ
5 p.m. Lions Club meets in New REA Building for barbecue
6 p.m. Rocky Ford Home Demonstration Club meets
6 p.m. Rainbow Girls meet in Masonic Hall
7 p.m. Cub Scout Pack 667 meets in Community Center
8 p.m. Church Council meets at Emmanuel Lutheran Church
9 p.m. Forum Club meets in home of Olene Gibson
9 p.m. WOW meets in Lodge Hall
10 p.m. Sunday School staff meets at St. Martin Lutheran Church
 - FRIDAY**
4 a.m. Members of WOC of St. Martin Lutheran meet at church to leave for convention
6 p.m. Emmanuel Lutheran LWML Social in home of Mrs. V.J. Hobratschek
7 p.m. Youth of Littlefield Missionary Baptist meet at church to leave for Youth Fellowship at Brownfield
8 p.m. Western Amonia meeting in Lamb County Community Center
 - SATURDAY**
4 a.m. Luther League of St. Martin Lutheran Church meets
8 a.m. Catechism Class meets at Emmanuel Lutheran
9 a.m. Catechism Class meets at St. Martin Lutheran
10 p.m. Beta Sigma Phi Ship Wreck Party in Lamb County Community Center
 - SUNDAY**
4 p.m. OPEN HOUSE AT NEW REA BUILDING
7 p.m. Ex-Communist Speaks at Littlefield Missionary Baptist Church
- VFW Post 4854 meets each second and fourth Monday at 8:30 p.m. at the VFW Hall

SEE AND HEAR THE BIGGEST BASH EVER!

ROGER MILLER
RAY CHARLES AND HIS BAND
JOAN BAEZ
DONOVAN
PETULA CLARK
DAVID McCALLUM

The BIG TNT SHOW

PLUS 7 MORE GREAT ACTS FROM AMERICAN INTERNATIONAL

PALACE Friday & Saturday

Penneys
ALWAYS FIRST QUALITY

Tomorrow's the day for big bargains at Penney's! We've gathered wanted merchandise from every department all month, and reduced prices for a fast sell-out! Hurry in -- don't miss a single bargain... charge 'em!

end-of-month clean-up!

WOMEN'S DRESSES

REDUCED!

Originally 5.98 & 6.98
Group I \$3

Originally 7.98 & 8.99
Group II \$5

Originally 12.98 & 13.98
Group III \$8

WOMENS DRESS BELTS
Several Colors - Originally 2.00 NOW **\$1**

GIRLS EASTER DRESS HATS
Only 11 - White With Yellow Daisy NOW **10¢**

WOMENS CANVAS SHOES
Only 17 Pr. - Black & Beige Originally 1.98 NOW **\$1**

DECORATOR TOSS PILLOWS
One Group - Satin & Corduroy Originally 1.50 NOW **2 For 1.50**

GIRLS DRESSES
Good Selection - Sizes 2 to 14's, Dressy & Casual Styles - Originally 3.98-4.98-5.98-7.98 NOW **\$2-\$3-\$4-\$5**

WOMENS TERRY CLOTH ROBES
Only 9 - Sizes Small - Med. - Large Originally 5.98 NOW **\$4**

WOMENS SKIRTS
4 Styles - Petites, Avg. & Tall - Many Colors Originally 3.99 - 4.98 - 5.98 NOW **\$3**

WOVEN SEERSUCKER YD GOODS
500 Yds. - 45 In Wide - Several Patterns **50¢ YD.**

WELCOME TO LITTLEFIELD

Manager Of ISC Moves To Littlefield From Odessa

This week's newcomer feature will probably attract quite a few, as our newcomer is a bachelor and says he has no plans for marriage as yet.

Walter Wagner, new branch manager of Interstate Securities Company, moved here April 4 from Odessa. He resides in an apartment at 600 West 1st Street.

Born in Oklahoma, he graduated from Stigler High School, and attended Eastern Oklahoma A&M, Wilburton and Panhandle A&M at Goodwell, Okla. He was in the Air Force four years and stationed in Korea one of them.

He was reared in a family of five boys. His parents live in Tulsa. Favorite activities enjoyed by Wagner are outdoor sports, including golf, hunting, fishing and water skiing. He feels he won't have as much of an opportunity for hunting and fishing around Littlefield as he has had at former places of residence. He really enjoyed deer hunting while living in Alabama.

Wagner has been with ISC seven and one-half years. Before moving to Odessa he worked at Pensacola, Fla.

He is a Baptist, and belonged to the Junior Chamber of Commerce and Civitan Club in Odessa.



WALTER WAGNER
...new resident here

Peace Corp Test Here May 14

Lamb County area residents interested in putting their skills to use in developing nations around the world are invited to take the Peace Corps Placement Test at 9 a.m. on Saturday, May 14 at the Littlefield Post Office.

The Peace Corps uses the Placement Test to determine how an applicant can best be utilized overseas. The test measures general aptitude and the ability to learn a language, not education or achievement. (If test scores indicated a limited language-learning ability, for example, the Peace Corps tries to place the applicant in an English-speaking country.) The Placement Test requires no preparation and is non-competitive -- an applicant can neither pass nor fail.

The application form, not the Placement Test, is the most important factor in the selection of Volunteers. Persons interested in serving in the Peace Corps must fill out an application, if they have not already done so, and present it to the tester before taking the test. Applications may be obtained from local post offices or from the Peace Corps, Washington, D.C.

Honor Society Holds Election Of Officers

AMHERST - The National Honor Society met Wednesday afternoon April 21 with the president, Billy Sherrill presiding. The business at hand was ordering gold honor cards for

WOC To Attend Convention

The Women of the Church of St. Martin Lutheran Church are planning to attend the WOC Northwest Conference Convention of the Southern District of the American Lutheran Church Women, in Gruver Friday. Gruver is north of Amarillo near Oklahoma.

Those expected to attend include Pastor Brian V. Engel, Mrs. J.E. Wade, Mrs. J.W. Wells, Mrs. W.P. Neinst, and Mrs. Aubrey Neinst.

Beni Amer tribesmen of Ethiopia use melted butter to hold their frizzy hair in place.

graduating members of the society. A trip to Plant X will be made with the chemistry class, the date to be set soon.

Officers were elected for 1966-67. They are, president, Johnny Norwood; vice president, Mike Peel; secretary, Elaine Black; treasurer, Jalee Mote; reporter, Donna Gilliland; parliamentarian, James McAdams; sergeant at arms, Leon Hardwick.

The society will present an award pin in each department for the highest ranking, at an assembly program before the closing of school. A committee was appointed to arrange for the installation of the incoming officers at the next and final meeting of the society for the school year. To serve on the committee are Neil Duffy, Linda Floyd and Darlene Peel.

The program was in the form of a debate on Unions by Roy Simmons and Neil Duffy. Twenty-two attended the meeting.

Officers Elected By Whitharral Lions Club

WHITHARRAL -- J.W. Borders, Jr. and Gene Wynn discussed the importance of a fire department in Whitharral at the meeting of the Lions Club Thursday evening.

H.G. Walden gave the invocation for the meal, prepared and served by Mrs. John Waters and Mrs. J.D. Waters. Buck Bryant led the group singing. Officers to be installed in July were elected as follows: president, Rafe Rodgers; vice-president, Ralph Wade; second vice-president, Marion Polk; third vice-president, Pervadus Wade, secretary-treasurer;

Robert Avery; tall twister; Woodrow Howard; lion tamer, John Williams; new directors; J.W. Borders Jr. and Ed Johnson; other directors are George Wade Jr. and Don Reding.

Jim Hobgood of Anton and Gene Wynn were visitors. Other members present were Robert Avery, J.W. Borders, R.H. Bryant, Coy Grant, Lowell Hering, Woodrow Howard, Ed Johnson, Joe Minter, E.E. Pair, Marion Polk, Rafe Rodgers, F.E. Sadler, Archie Sims, George Sims, George Wade, C.E. Thorckmorton, Pervadus Wade, H.G. Walden and John Williams.

HOSPITAL NEWS

LITTLEFIELD HOSPITAL AND CLINIC

April 16
ADMITTED: Cathy Caddell, J.C. Hall Jr.

DISMISSED: Robert Wilson, Lester Wormly, Mrs. Eula Wright, Pascual Sierra, Mrs. Helen Berry, Mrs. Lucille Smith, Lois Rudd, Mrs. Julia Lopez and infant.

April 17
ADMITTED: Garcia Jesus Torres, Mrs. Willie Thornton, Joe Scarborough, Lorie Ann Dicker, Mrs. Lynn Ivey, Rosa Rodriguez, Claude Carothers, Kay Lynn Lott, Pitt Cowan, Mrs. Viola Wood, Mrs. Barbara Overman, Dollie Sanders.
DISMISSED: Bill Eubanks II, Clyde Chappell, Mrs. Christina Parker, Mrs. Ethel Sevier.

April 18
ADMITTED: Mrs. Martha Parks, Mrs. Margie Ashley, Mrs. Geneva Lewis, Mrs. Mae Frances Coston, Carl Sanderson.
DISMISSED: Jessie Ortiz, Garcia Jesus Torres, Cathy Caddell, Mrs. Frances Parker, Mrs. Sarah Moore, Dale Wheatley, Mrs. Lynn Ivey, Kay Lynn Lott.

April 19
ADMITTED: Mrs. Shirley Digby.
DISMISSED: Lorrie Ann Dicker, Mrs. Martha Parks, Eloysa Martinez, Mrs. Billie Fiedls, Mrs. Rosa Rodriguez and baby, Mrs. Donna Townsend, Mrs. Johnnie Williams, Mrs. Janette Vernon.

April 20
ADMITTED: Ellis J. Foust, Sr., Mrs. Marie Gardner, Mrs. Faye Brown.
DISMISSED: Marion Phillips, James Downs, Jay Phillips, Pitt Cowan, Mrs. Viola Woods, Mrs. Geneva Lewis, Carl Sanders.

April 21
ADMITTED: Merlene Berry, Howard Reck, Mrs. Imogene Franklin, Sheree Campbell, Joe Ellis.
DISMISSED: Merlene Williams, Mrs. Mae Frances Coston and infant, Claude Carothers, Mrs. Shirley Digby, Mrs. Susie Shockley.

April 22
ADMITTED: Mrs. Shirley Logsdon, Mrs. Eula Wright, Mrs. Armidell Monroe, Mrs. Marie Bibby.
DISMISSED: Mrs. Faye Brown, Howard Reck, Sheree Campbell, Mrs. Barbara Overman, Carl Sanderson.

ADMITTED: Mrs. Ernest Martinez, a boy, Ernesto Jr., weighing 8 pounds, 14 ounces, April 16, 1966 at 1:11 a.m.

Born to Mr. and Mrs. Jackie Ivey, Lubbock, a boy, Terry Lynn, weighing 7 pounds, 3 ounces, April 17, 1966 at 2:00 p.m.

Born to Mr. and Mrs. Holbert Ray Coston, a boy, Steve Alan, weighing 6 pounds, 12 ounces, April 19, 1966 at 7:24 a.m.

Born to Mr. and Mrs. Ernest Martinez, a boy, Ernesto Jr., weighing 8 pounds, 14 ounces, April 16, 1966 at 1:11 a.m.

Born to Mr. and Mrs. Jackie Ivey, Lubbock, a boy, Terry Lynn, weighing 7 pounds, 3 ounces, April 17, 1966 at 2:00 p.m.

Born to Mr. and Mrs. Holbert Ray Coston, a boy, Steve Alan, weighing 6 pounds, 12 ounces, April 19, 1966 at 7:24 a.m.

Watzell Kennedy Is Named To "Who's Who"

Watzell Kennedy, Littlefield, was recently honored at special ceremonies at West Texas State University.

Shingles, or certificates of membership in the 1965-66 edition of "Who's Who Among Students in American Universities and Colleges," were presented to 36 students by Randy Chennault, Odessa senior and outgoing president of the student body.

Miss Kennedy, senior elementary education major, was a member of Alpha Chi, national honor society, and Kappa Delta Pi, honorary education sorority.

Daughter of Mr. and Mrs. Leo Kennedy, she was president of Buffalo Gals, a women's service organization.



WATZELL KENNEDY

Representatives from WTSU in "Who's Who" are chosen from a list of nominees submitted by campus organizations and by all departments of instruction in the university.

A Student Honors Committee makes a final selection of nominees whose names are approved by a national committee for the honor directory of the nation's student leaders.

Scholarship, campus leadership, participation in campus affairs, and qualities denoting future potential are considered in the selection.

A total of 36-8 juniors and 28 seniors--was picked to represent the university in the 1965-66 edition of "Who's Who."

Air Force Training Period Is Reduced

The Air Force has reduced the basic training period to four weeks at both Lackland and Amarillo Air Force bases announced Staff Sergeant Clifton W. Harr, local Air Force Recruiter. The change was made as a result of an expected build-up in the Air Force.

Sgt. Harr also stated that immediate openings in the Air Force are available for persons interested in the mechanical, administrative and electronics career fields. Complete information on the new training schedule and various career fields available to Air Force enlistees may be had by visiting the recruiting office at 1006 13th Street in Lubbock or by phoning POS-8541, Extension 210.

Sgt. Harr also stated that he will now be in Littlefield the first and third Thursday's of each month. He will be available from 10 a.m. to 4 p.m. in the Red Cross room in the Lamb County Courthouse.

To make dry, brittle hair manageable and glossy, give it a simple oil treatment before shampooing. Warm half a cup of salad oil and apply with cotton cosmetic balls to scalp. Part hair at intervals to soak roots with the oil. Wrap your head in a towel for about fifteen minutes. Then shampoo with three latherings.

Questions & Answers

Q -- How long will my return take? I got my return under the April 15 deadline.

A -- If your return is complete and accurate, and selected for audit before the fund is issued, then you will receive it within 6 to 8 weeks from the date you mailed (Remember, however, that could take longer, depending upon how many people are waiting until April 15th to file.)

Q -- My brother-in-law has returned a week after his return has already been received. Mine hasn't come yet.

A -- A number of returns have been incomplete or incorrect and is therefore in process of being perfected. It would be the case, if, for example, you did not list your Social Security number or made an inaccurate one.

Another possible reason for the delay in your refund is it might have been selected for a pre-refund audit. Some returns are audited before the fund is issued while others are audited after the refund has been sent.

You should receive your refund check, or a letter within six to eight weeks after you filed.

Q -- When do you start holding at the new rates?

A -- Graduated withholding goes into effect on wages payments made on and after May 1. To see how it will affect your ask your employer for a copy of our Document No. 5662.

Q -- I got my refund yesterday but it was different from the amount I expected. Why that?

A -- It could be that you made a mathematical error. You should receive an explanation the mail within the next 30 days stating why the refund is different from the amount applied for.

Q -- I forgot to enclose part of the Schedules required of my return. What should I do?

A -- Please hold it until you are contacted. You will be notified to supply this Schedule and other information needed to process your return.

You're Invited to hear...



DR. WILLIAM BENNETT, Chief Agronomist



DR. NORMAN NOSSAMAN, Agronomist

Fertilizer Information Meeting

"Increase Side Dress Profits"

FRIDAY, APRIL 29
COMMUNITY BUILDING
LITTLEFIELD, TEXAS

8:00 P.M.

Don't bother to eat anything before you come. Western Ammonia has some snacks planned for you.

QUESTION AND ANSWER PERIOD

SPONSORED BY
Western Ammonia
Dimmitt, Texas

CHARTER No. 12824

REPORT OF CONDITION OF THE

FIRST NATIONAL BANK

OF LITTLEFIELD IN THE STATE OF TEXAS, AT THE CLOSE OF BUSINESS ON APRIL 5, 1966 PUBLISHED IN RESPONSE TO CALL MADE BY COMPTROLLER OF THE CURRENCY, UNDER SECTION 5211, U.S. REVISED STATUTES

ASSETS

Cash, balances with other banks, and cash items in process of collection	1,933,378.49
United States Government obligations, direct and guaranteed	410,287.50
Obligations of States and political subdivisions	193,214.73
Loans and discounts	4,582,045.22
Fixed assets	19,000.00
Other assets	10,525.95

TOTAL ASSETS 7,148,451.89

LIABILITIES

Demand deposits of individuals, partnerships, and corporations	5,127,084.42
Time and savings deposits of individuals, partnerships, and corporations	471,141.75
Deposits of U.S. Government	48,064.37
Deposits of States and political subdivisions	920,115.93
Certified and officers' checks, etc.	36,474.73
TOTAL DEPOSITS	\$6,602,881.20
(a) Total demand deposits	\$5,869,939.45
(b) Total time and savings deposits	\$732,941.75

TOTAL LIABILITIES 6,602,881.20

CAPITAL ACCOUNTS

Common stock -- total par value	100,000.00
No. shares authorized 1000	
No. shares outstanding 1000	
Surplus	200,000.00
Reserves	245,570.69
TOTAL CAPITAL ACCOUNTS	\$45,570.69
TOTAL LIABILITIES AND CAPITAL ACCOUNTS	7,148,451.89

MEMORANDA

Loans as shown above are after deduction of valuation reserves of 104,974.41

I, Robert Bridges, of the above-named bank do hereby declare that this report of condition is true and correct to the best of my knowledge and belief.

Robert Bridges

We, the undersigned directors attest the correctness of this report of condition and declare that it has been examined by us and to the best of our knowledge and belief is true and correct.

Don Bell
Verlin Farr
T. Wade Potter
DIRECTORS

WAGGONER CARR



PROVEN LEADERSHIP

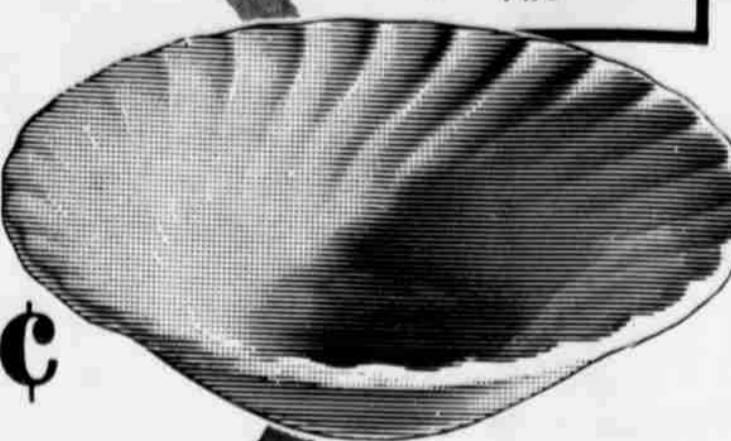
Legislator:
5 terms;
Speaker of House, 2 terms;
Led legislative effort for improved care for mentally and physically ill; worked to gain improved education at all levels; led way to better care for Senior Citizens, adult blind, and homeless children.

TWICE ELECTED ATTORNEY GENERAL by the largest total vote in Texas history

VOTE FOR DEMOCRAT
WAGGONER CARR
FOR U.S. SENATE
MAY 7TH DEMOCRATIC PRIMARY
(Ed. for by Carr for Senate Comm., Tommie Butler, Chmn.)

This week
 GET YOUR **Sheffield**
 BONE WHITE
Dessert Dish
 Each week a piece of Sheffield Dinner will be featured for just 9¢. For each \$5 in grocery purchases, you are entitled to one piece at this low price. There's no limit . . . with a \$10 purchase you can get two pieces . . . and so on.
9¢
 only
 with every \$5 purchase

Completer Pieces
 Lg. Sup. Plate 99¢
 Ash Tray 4 TO PKG 99¢



PIGGLY WIGGLY FRUITS & VEGETABLES!
 CALIFORNIA, LARGE SIZE
AVOCADOS 3 FOR 29¢
 RIPE BUBBLE PACK
TOMATOES EACH 15¢
 OTHER FINE PIGGLY WIGGLY SPECIALS!
 CAULIFLOWER, BROCCOLI, PARSLEY, BOSTON LETTUCE, WATERCRESS, ENDIVE.
 THESE PRICES GOOD IN LITTLEFIELD APRIL 28-29-30-1966

UM, BUTTERMILK OR SWEETMILK
SCUITS 4 10 CT. CANS 29¢
 SCOTT
MIXED NUTS 13 OZ. CAN 49¢
 ON'S BRISK
EA 1/4 LB. PKG. 39¢
 TE HOUSE
PPLESAUCE 3 25 OZ. JARS \$1

Piggly Wiggly Meats Are Always Top Quality At Low Low Prices!!

FRYERS 33¢
 U.S.D.A. GRADE A WHOLE POUND



Pork Chops LEAN NORTHERN PORK, FIRST CUTS POUND 69¢
Ground Beef LEAN 100% ALL BEEF, DATED TO ASSURE FRESHNESS 2-LBS. 79¢

SLICED BACON BUTCHER BOY, THICK OR THIN 2-LB. PKG. 1.59
SHOULDER ROAST USDA CHOICE, AGED, HEAVY BEEF, VALU-TRIMMED POUND 89¢
SWISS STEAK USDA CHOICE, AGED, HEAVY BEEF, VALU-TRIMMED POUND 79¢
RIB STEAK USDA CHOICE, AGED, HEAVY BEEF, VALU-TRIMMED POUND 79¢
PORK ROAST LEAN NORTHERN PORK PICNIC CUT POUND 39¢

LEAN NORTHERN PORK PORK STEAKS POUND 69¢
FISH STEAKS ICELANDIC COD OR PERCH 12 OZ. PKG. 49¢
LONGHORN CHEESE HALF MOON 8 OZ. PKG. 39¢
BEEF LIVER SLICED, BABY POUND 39¢
NEW YORK STEAKS USDA CHOICE, AGED, HEAVY BEEF, VALU-TRIMMED POUND 1.69

FRESH FRYER PARTS!
 100% ALL WHITE MEAT
BREAST POUND 59¢
THIGHS JUICY DARK MEAT POUND 49¢
DRUMSTICKS CHILDREN'S FAVORITE POUND 49¢
BACKS & NECKS FOR STEWING OR DUMPLINGS POUND 19¢
WINGS JUICY WHITE MEAT POUND 23¢

Health & Home Needs!
 PRELL. 9¢ OFF LABEL REG. 91¢
HAMPOO LARGE SIZE TUBE 63¢
 RET CREAM, 6¢ OFF LABEL
ODORANT REG. 73¢ LARGE SIZE JAR 59¢
 .95¢
FFERIN 60 CT. BTL. 73¢
 ONET, VINYL, 8 YR. GUARANTEE, 1/2" DIAMETER, 50' LONG REG. 1.79
RDEN HOSE 1.29

MELLORINE PLAINS OR HOMETREAT 1/2 GALLON 39¢
GREEN PEAS DEL MONTE FANCY 5 NO. 303 CANS \$1
GREEN BEANS DEL MONTE CUT 3 NO. 303 CANS 69¢
SUGAR C&H, HOLLY OR IMPERIAL 5 LB. BAG 49¢
JUICE SWANK, UNSWEETENED GRAPEFRUIT 3 46 OZ. CANS \$1
TUNA DEL MONTE CHUNK STYLE 3 NO. 1/2 CANS 1
PRESERVES 18 OZ GARDEN CLUB, PEACH, GRAPE APRICOT, RED PLUM, MIX OR MATCH 3 FOR \$1
TOMATO JUICE TEXSUN 46 OZ CAN 4 FOR \$1

Garden & Lawn Supplies
FERTILIZER PHILLIPS' SULPHATE FOR YOUR LAWN 80 LB. BAG 269
PEAT VITA HUME MOSS 50 LB BAG 89¢

ORIGINAL OIL PAINTING REPRODUCTIONS
KING SIZE T.V. TRAYS
Only 88¢
 WITH EACH'S 50¢ PURCHASE



Piggly Wiggly Frozen Foods!
 BANQUET CHOCOLATE, BUTTERSCOTCH, STRAWBERRY, NEOPOLITAN
CREAM PIES 3 FAMILY SIZE \$1
DRINK BREAKFAST HI-C ORANGE 3 9 OZ. CANS \$1
ENCHILADA DINNERS BANQUET BEEF 12 OZ. PKG. 2/89¢
BREAD DOUGH RANCH OVEN 1-LB. LOAVES 2/69¢

Lowest Prices . . . Greatest Variety . . . always at
Piggly Wiggly



So, there's a job to be done...

and nobody to do it?



Juggle all the possibilities...



In every direction.



You could do it yourself...



Or, tear your hair...



Or, make a speech...



Or...just hide in a barrel.



But here's what gets results

THE LAMB COUNTY LEADER AND COUNTY WIDE NEWS
Classified Advertising Pages

The Lamb County Leader
AND
County Wide News

TO PLACE YOUR AD OR ASK FOR HOME DELIVERY CALL 385-4481

Shopping at **Furr's** is More Exciting than Twin Babies in the House



GEORGE EDGAR MOORE

Funeral Services Held Wednesday

George Edgar Moore, 81, resident of Littlefield for 36 years, died Tuesday about 3:30 p.m. in Littlefield Hospital-Clinic, following a lengthy illness. Funeral services were conducted at 3:30 p.m. Wednesday at Hammons Funeral Home Chapel. The Rev. J.L. Bass officiated, assisted by Rev. J.B. Cagle, pastor of Littlefield Missionary Baptist Church. Burial was in Littlefield Cemetery under direction of Hammons Funeral Home. Mr. Moore was born June 27, 1884 at Brad, Texas. He had lived at Knights of Home here several months. He was a member of Missionary Baptist Church and formerly had belonged to the WOW and Odd-fellow Lodges. He was a retired center.

Survivors include his wife, one daughter, Mrs. Jess Spade, four sons, L.E. Forrest, Littlefield; Delbert, National City, Calif.; and Ward, Mineral Wells; 12 grandchildren and 16 great-grandchildren.

Funeral Services Set For Mrs. Gardner

Funeral services for Mrs. Vera Gardner, 63, Spade, will be conducted at 2 p.m. Friday at the Sacred Heart Catholic Church with Father Stanley Croliola, St. Phillips' Catholic Church officiating. Burial will be in Littlefield Memorial Park under direction of Hammons Funeral Home. Mrs. Gardner died at 3:30 p.m. Monday at Littlefield Hospital-Clinic. She had resided in Spade community a number of years.

Former Resident of Amherst Dies

Funeral rites for Robert Dee Baker, 78, former Amherst resident and retired blacksmith, were conducted at 11:30 a.m. Sunday in Bueler Chapel, Chandler, Ariz. Burial was in Mountain View Cemetery, Mesa, Ariz.

Mr. Baker, who lived in Amherst from 1937 to 1953, before moving to Chandler, died April 21 at his home.

Survivors include his wife, two daughters, Mrs. Maureen C. Phoenix, Ariz., and Mrs. William E. Elms, Amherst; three sons, Clarence A. Baker, Robert W., both of Chandler, and James W., of Casa Grande, Ariz.; two brothers, Jessie Willis of Chandler, eight grandchildren, and three great-grandchildren.

Funeral Services Held For John Wozencraft

Funeral services for John C. Wozencraft, 79, former Olton resident who died Saturday morning in Truth or Consequences, N.M., were conducted at 2 p.m. Sunday in the Olton First Baptist Church.

The Rev. John E. Lewis and the Rev. J.R. Jennings officiated. Burial was under direction of Parsons Funeral Home. Wozencraft lived in Olton 23 years before moving away in 1953. He had resided in Truth or Consequences for the past 12 years.

Survivors include the wife, a daughter, four sons, a sister, and 16 grandchildren and 22 great-grandchildren.

Funeral services were held at the home of Elbert Hoover, Carl Hoover, Cloys Fanner, A.J. Huguley, Tom McGill, and Vernon Nixon.

CRAWFORD MARTIN

ATTORNEY GENERAL Pol. Adv. - Pd. for by Crawford Martin Campaign Committee. Geo. Cowden - Chairman

DINNERS

Morton, fresh frozen, chicken, beef, turkey, Salisbury steak, or meat loaf, your choice. **2 FOR 79¢**

MILK EGGS

FOOD CLUB TALL CAN **3 FOR 39¢**

FARM PAC USDA GRADED A MED DOZ **45¢**

MORTON FRESH FROZEN CREAM PIES ASS'T **3/\$1**

FOOD CLUB CUT GREEN BEANS NO 303 CAN **19¢**

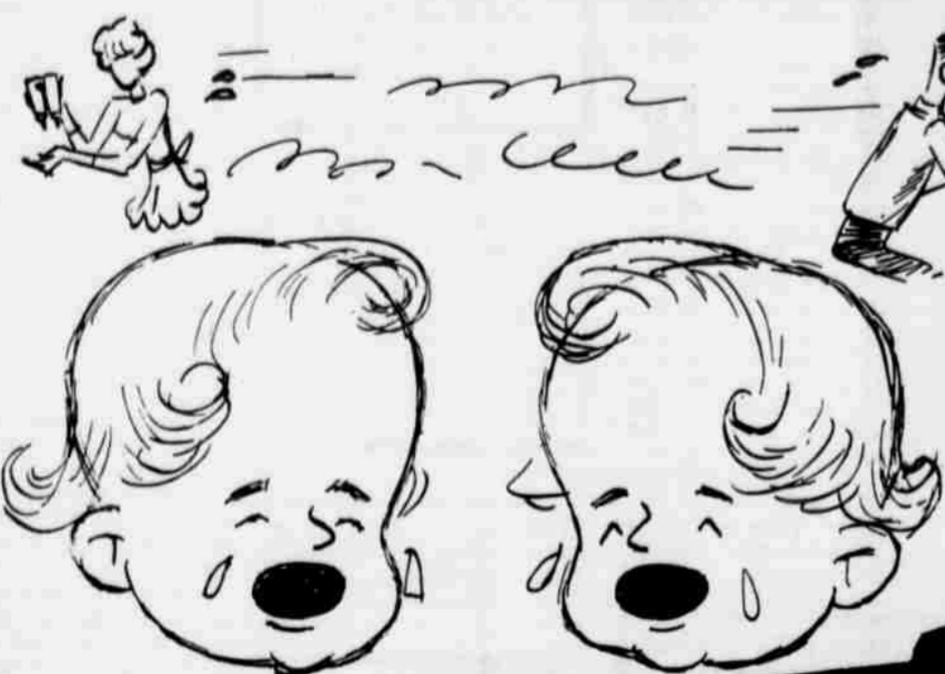
DUNCAN HINES ASSORTED LAYER CAKE MIX **3/\$1**

HERSHEY 5¢ OFF 12 OZ **39¢** 2¢ OFF 6 OZ **23¢**

MARYLAND CLUB ALL GRINDS COFFEE 1-LB CAN **69¢** 2-LB CAN **1.37**

RITZ CRACKERS 12 OZ **37¢**

FOLGERS INSTANT COFFEE 10 OZ **1.49**



FOOD CLUB **BABY FOOD** ASSORTED FLAVORS STRAINED OR UICE **3 FOR 27¢**

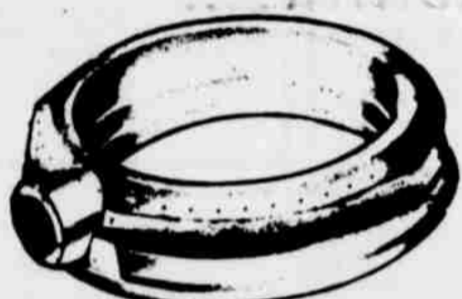
WE GIVE FRONTIER STAMPS

WIN UP TO \$1,000 IN FURR'S DIVIDEND SWEEPSTAKES DURING NATIONAL BABY WEEK

RECENT WINNERS

- James Graham, Lubbock
- Mrs. Robert Phillips, Levelland
- Mrs. W.H. McCulloch, Lamesa
- Mrs. Jack Compton, Littlefield
- Kenneth Shields, Lubbock
- Pearl Oma Smith, O'Donnell
- Pauline Stroud, Lubbock
- Mrs. Clyde Kirk, Plainview

MORE GENERAL MERCHANDISE SAVINGS



LAWN SPRINKLER ROUND PLASTIC EACH **67¢**

DANDELION KNIFE EA **39¢**

CAR WASH BRUSH LONG HANDLE **77¢**



GASOLINE CAN 2½ GAL PLASTIC EACH **99¢**

DECANTER PLASTIC ½ GAL **21¢**

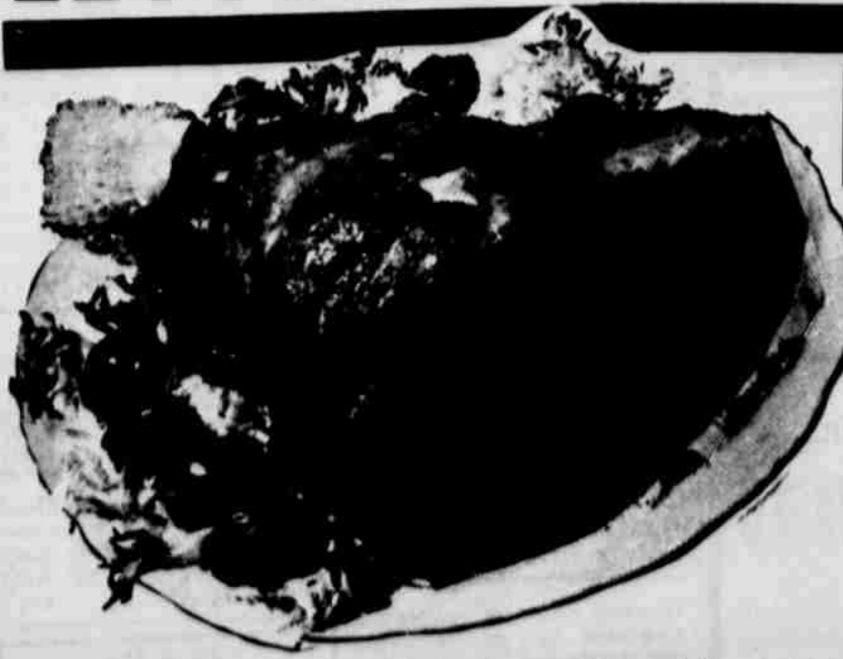
LAWN MOWER 20" ROTARY 4 CYCLE 3½ H.P. RIGGS & STRATTON ENGINE **39.99**

77¢

ENJOY FURR'S FRESH PRODUCE

CANTALOUPE FRESH VINE RIPE LB **12½¢**

LETTUCE CALIF FIRM GREEN HEADS LB **12½¢**



CHUCK ROAST

HAMS

FARM PAC HICKORY SMOKED BUTT CUT, LB **59¢**

SHANK CUT LB **53¢**

USDA INSPECTED FARM PAC BLUE RIBBON OR GRADED CHOICE LB **53¢**

USDA INSP. FARM PAC BLUE RIBBON OR CHOICE ROUND BONE LB **69¢**

USDA INSP. FARM PAC BLUE RIBBON OR CHOICE ROUND BONE LB **89¢**

FARM PAC SWEET MILK OR BUTTERMILK BISCUITS CAN **4/29¢**

FOOD CLUB CINNAMON ROLLS CAN **4/\$1**

FRONTIER SLICED BACON LB **69¢**

Shortening JEWEL 3 LB CAN **59¢**

Apple Sauce FOOD CLUB NO 303 CAN **6 FOR \$1**

Grape Drink MONARCH 32 OZ CAN **3 FOR 69¢**

SUGAR HOLLY BEET IMPERIAL OR C&H 5 LB BAG **49¢**

MELLORINE DARTMOUTH ASSORTED ½ GAL **3 FOR \$1**

TOWIE STUFFED MANZ OLIVES 5 1/4 OZ TUMBLER **39¢**

TOWIE MARASCHINO CHERRIES 10 1/2 OZ **3/\$1**

BETTY CROCKER FROSTING MIX 17 1/2 OZ PKG **45¢**

GOLDEN GLO OLEO 1-LB PKG **49¢**

ALCOA ALUMINUM FOIL 25 FT **35¢**

IDEAL DOG FOOD NO 1 CAN **2/35¢**

IDEAL CHICKEN ON SUNDAY PET FOOD NO 1 CAN **2/35¢**

DASH GT SIZE **81¢**

CASCADE 20 OZ **47¢**

COMET 14 OZ **2/37¢**

ZEST BATH BAR **2/47¢**

CHUN KING CANTONESE FOODS

NOODLES No. 21/2 Can **33¢**

LARGE DIVIDER PACK CHICKEN, CHOW MEIN BEEF CHOP SUEY MUSHROOM CHOW MEIN PORK CHOP SUEY **99¢**

FLOUR ELNA 25 LBS BAG **1.69**

FRESH FROZEN FOODS

POT PIES Morton Fresh frozen chicken, beef, turkey, 8 oz. pkg. **2 FOR 35¢**

TOP FROST FRESH FROZEN CHOPPED OR LEAF SPINACH 10 OZ **12½¢**

TOP FROST GRAPEFRUIT 6 OZ CAN **19¢**



TRADE CLASSIFIED SELL BUY ADS LEAS

LEADER and NEWS CLASSIFIEDS SELL!

TO USE THEM 5-4481 AND ASK FOR AD TAKER JUST CALL

— CLASSIFIED RATES —

- First insertion, per word 5c
- Second Insertion, word 4c
- All Additional Insertions, word 3c
- Minimum Charge For First Ad run, \$1; minimum charge per subsequent insertion, 50c.
- MONTHLY RATE, per word 30c**

(All editions of Leader and News, two copy changes monthly)

DEADLINES FOR INSERTION:

LAMB COUNTY LEADER
10: a. m. Wednesday

COUNTY WIDE NEWS
10:00 a. m. Saturday

Help Wanted A-1

PERSON WANTED to supply Rawleigh products to consumers in Lamb Co. or Littlefield, Good time to start. See P.W. Roach, 1410 W. 8th St., Plainview or write Rawleigh TX D 282 28, Memphis, Tenn, 6-9G

Needed immediately ladies to help gather information for the Littlefield City Directory. Work both interesting and profitable. Send all replies to Johnson Publishing Co., c/o Littlefield Publishing Co., Box 72, Littlefield, Texas. 5-5J

Houses to Rent B-3

FOR RENT: 2 bedroom house on Kirk Street. Phone 385-3654 after 6:00 p.m. TF-C

FOR RENT: 2 bedroom house at 517 East 1st Street. See J.W. Emfinger, 314 East 14th or call 385-3723. TF-E

2 bedroom, redecorated, storm windows, fenced back yard, 916 East 6th. Call 385-3112 or 385-5066. TF-G

FOR RENT: 2 and 3 bedroom houses. Some furnished. Also furnished apartments. Call K. Houk, 385-3492 or 385-4830. TF-H

TELEPHONE SOLICITOR

Part time 6 to 9 p.m.
1.25 per hour - bonus.
Write particulars to
2109 Ave. Q, Room 216,
Lubbock, Texas

FOR RENT - nice 2 bedroom house, fenced back yard, carpeted. Close in. Call 385-4785 or 385-3233. TF-T

Two bedroom unfurnished house, 928 West 4th. Garage attached and fenced back yard. Phone 385-3474. TF-C

FOR RENT OR SALE - 2 bedroom house, well located, newly refurnished inside. PLAINS REAL ESTATE, Ph. 385-3211, night, 385-3009. TF-P

Business Opp. A-3

SALES EXECUTIVE

\$10,000 plus bonus. Texas consultant firm desires local representative to counsel new client accounts. Quarterly bonus profit sharing and other profit sharing fringe benefits, in addition to

FOR RENT

3 bedroom house, living room, dining room, den, carpeted throughout, garage, carport, fenced in back yard. Close in. See Ernest Conell.

UNUSUAL GROWTH OPPORTUNITY

to qualify you must be between 30 and 45 years old. Happily married, able to establish a minimum of 2 years successful outside selling experience. Bondable.

CALL LUBBOCK COLLECT PO-2890 OR WRITE BOX 1642

Rooms for Rent B-5

FOR RENT - Furnished bedrooms. Close to town. Phone 385-5151. TF-M

Comfortable bedrooms for men. New home, heated rooms. Phone 385-3604, 204 East 9th St. TF-A

Personal Services A-8

Safe competent child care. Happy Day Nursery, 705 W. 2nd, 385-5031 or 385-3738. 5-5H

Offices for Rent B-6

FOR RENT - extra choice office space. Contact L. Peyton Reese. TF-R

Apts. for Rent B-1

Furnished apartment. Clean. Close in. Bills paid. 410 East 8th. TF-N

Nice clean furnished apartment for rent. Bills paid. Contact at 816 West 10th. 5-5F

Houses For Sale C-1

HOUSE FOR SALE: 2 bedroom. Call at noon or after 6:00, 385-3489. 4-28B

All brick home, attached garage, plenty of storage, low move in cost. Call 385-4930. TF-J

FOR SALE - large 3 bedroom, over 2,000 feet floor space, \$6,500 total price - will take trade. 714 West 6th. TF-E

We cut our price on 3 bedroom brick home facing Crescent Drive. Phone 385-3252 or 385-3286. TF-B

HOUSE FOR SALE - Cannon Terrace, nice 3 bedroom, 1 bath brick home, 6 foot stockade fence, low equity, 1315 West 13th. Phone 385-3201. 4-28B

3 bedroom brick house for sale, double carport at 517 E. 17th, Littlefield. Take up payments of \$78.01 with small down payment. Call Leonard Sanders, Olton, 285-2751. TF-S

HOUSE FOR SALE: Duggan addition, 3 bedroom, 1 3/4 baths, den, carpeted throughout, central heat, central air, 8 years remain on loan, small equity. Call 385-4781 after 5:30 p.m. on weekdays. TF-L

Houses to Rent B-3

FOR RENT: 2 bedroom brick home. Close in. Carpeted and draped, with garage, and extra storage. Call Mrs. O.C. McBride, 385-4394 or Mrs. A.J. Lenderson, 272-3038, Muleshoe. TF-L

Houses For Sale C-1

FOR SALE - 2 bedroom house. A bargain. L. Peyton Reese. TF-R

Real Estate For Sale C-6

FARM LOANS

L. PEYTON REESE
110 YELLOW HOUSE BUILDING
PHONE 385-5363

Bus. Services D-3

Rent convalescent equipment at Brittain Pharmacy. Wheelchairs, crutches, hospital beds, other items. Complete lines of convalescent needs.

Our specialties are all types alterations, covered buttons, buckles, belts-including contour, button holes, decorative stitching and men's unclaimed tailor made suits. Mr. and Mrs. G.F. Seifres Drive-In Cleaners, Levelland Highway. TF-S

Farm Equipment E-1

FOR SALE

806 Diesel Fomall Tractor, 600 Hours.
L. C. Grissom,
385-3198

Moved to Lubbock, brick 3 bdr., 1 3/4 bath, 22' x 28' den, 2 car garage, playroom, cellar, ref., air. LOFLIN COMPANY SW2-3092. 5-1L

FOR SALE - OWNER LEAVING TOWN - large 2 bedroom house. Would consider some items as trade in. Call 385-4853 or come by 411 East 16th. TF-C

HOUSE FOR SALE to be moved. 24 x 36, 2 bedrooms, storm doors and windows. Phone 385-5319, Orville Steffey, 5-5S

HOUSE FOR SALE - 3 bedrooms, 2 baths, near high school, with storm cellar. Call 385-3842 between 5 and 8 p.m. TF-T

FOR SALE IN CRESCENT PARK: 2 bedrooms, 1 1/2 baths, den and kitchen combination, fireplace, double car garage and fenced back yard. Phone 385-4084. TF-E

Will sell or trade for anything of value Cannon Terrace 3 bedroom, 2 bath brick home, large corner lot, fireplace, central heat and air conditioning, extra large bedrooms. Phone 385-5032. TF-D

3 bedroom brick Gold Medalion in Cannon Terrace, carpet, 2 baths, large family room, 2-car garage, fenced, 1600 ft. living space, large lot, owner leaving town, 1307 W. 12th. Phone 385-3042. TF-C

Farms, Ranchland C-7

172 ACRE COTTON ALLOTMENT

1,076 acres for sale in northeast Texas. This area produces 5,000 to 6,000 pounds of grain sorghum per acre without irrigation. Abundance of water with 45 inch rainfall. Entire 1,076 acres has been in cultivation. 172 acre cotton allotment can be transferred to any county in Texas. Present operation is: 500 acres in grain and alfalfa. Balance of acreage in clover and native grasses. Can run 250 cows. Entire 1,076 acres is fenced and cross-fenced with government built pools in each pasture. Three barns and corral. Excellent location. Fronts on two state highways midway between Paris and Sulphur Springs. Shopping, school and churches, five miles. One modernized three bedroom house with all utilities. Two other tenant houses. All on pavement. School bus stops. Possession now. Priced to sell at \$200 per acre.

Real Estate For Sale C-6

FOR SALE - 3 acres close in to town, L. Peyton Reese. TF-R

53 acres near Littlefield, on pavement, two irrigation wells, one 5" and one 4" tied together with underground tile. Good cotton and maize allotments and yield. This farm has good soil in excellent condition and is ready to plant. The nice home is on the highway just the right distance from town. Priced to sell quickly at \$625 with small down payment and easy terms on the balance.

4 bedroom house just redecorated inside and out, concrete stormceller, nice backyard with fruit trees. Located in a very good neighborhood on a 75' lot at 117 East 11th Street. \$8,000.

BROKER PROTECTED ACT TODAY

JOE BLACKWELL, OWNER

COOPER, TEXAS

Bus. Services D-3

Bill Miller

The Kirby Man

PH. 385-3357

COMPLETE EXTERMINATION SERVICE: household pests as roaches, mice, rats, termites, etc. Tree and lawn spraying, bird repellent, moth proofing. One year written service warranty. Low rate, \$2.00 a room crawling insects. Day or night call collect: Levelland 894-3824, Davidson Pest Control. 15 years experience. TF-D

AUTOMOTIVE SUPPLY HEADQUARTERS

700 E 4th - PH 385-4431

- Car • Truck
- Tractor Industry
- Irrigation
- Motor Rebuilding
- Precision Machine Service

G & C AUTO SUPPLY

CHANDLER'S MOTOR MACHINE & SUPPLY STORES in Littlefield, Anton, Sudan, Earth

B&C PUMPS & Machine Works

W. H. "DUB" BERRY - JOHN M. CLAYTON - Owners

COMPLETE IRRIGATION SERVICE

- WELL CLEAN-OUT
- PUMP PULLING
- PUMP SETTING
- COMPLETE PUMP REPAIR

Western Pump Co. Tube line New Guaranteed 5 Years

PHONE 385-5137

Nights 385-3118 or 385-4185

304 Lake Ave. LITTLEFIELD 894-5025 LEVELLAND

Pets F-1

FOR SALE - nice Palomino gelding, gentle for children or ladies. Guaranteed to be sound. Lloyd Pryor, 246-3460, Amherst. 4-28P

Seeds, Plants F-5

Certified Hiinn soybean seed and fuzzy Gregg cotton seed, 1st year from registered. Eldon Gohlke, 385-4023. 5-5G

Acala 15, 17 and BR2, acid delinted cotton seed, grown from registered seed, germination 90 and above. Ed M. Hart, Anton, Texas. 4-28H

Rikot 90 cottonseed, first year from white sack, 90% germination 9¢ per pound. Wayne Swart, Phone 933-2541, Bula. TF-S

HYBRID SUDAN \$6.50 FOR HAY OR GRAZING

For sale by growers part of about three million pounds of high quality seed. Purity 98%, germination 85% or better. Cleaned and sacked in lots of one thousand pounds or more. \$6.50 per hundred at Muleshoe.

PREPURE SEED FARMS

Box 512, Muleshoe, Texas
Phone Area 806 272-3961
965-2981
965-2316

Furniture, Appl. (Used) H-2

Will sacrifice nice 5 piece dinette suite. Call 385-5528 after 6 p.m. TF-M

We can really save you money on a good used refrigerator or freezer. See us before you buy. Phone 395-4322. Hill Rogers Furniture. TF-R

Misc. For Sale H-3

FOR SALE: Good used batteries, ANDERSON WRECKING. TF-A

Luzier Cosmetics consultant, Mrs. Curtis Chisholm, 500 East 12th Street, Littlefield, 385-3425. TF-C

FOR SALE: good used generators, ANDERSON WRECKING. TF-A

100 named and sprouted Dahlia bulbs ready to plant, 3 for \$1.00, 385-3951, Wilma Broadus. 5-1B

Mr. President Canna bulbs, \$1.50 a dozen. Marie Hukill, AN2-4344 or AN2-4364, Fieldton. 5-1H

FOR SALE - good Dahlia bulbs - large - priced three for a \$1. 1323 Monticello. 5-1S

Used televisions priced from \$24.50, good pictures and cabinets. Television Corner, 601 West Delano, Phone 385-3831. 5-1T

FREE WATER ANALYSIS! Why worry? "It's the water that counts". Let us solve your water problems. For free water analysis call Hutchins Building Supply, 385-5588. TF-H

New General Electric portable televisions. Prices start at \$77.50 for 12", \$98.50 for 16", \$109.50 for 19", \$149.95 for 23". Color prices start at \$249.95, T.V. Corner, 601 West Delano, 385-3831. 5-1T

To party with good credit: Repossessed late model Singer sewing machine in console cabinet, Will zig-zag, blind hem, fancy stitches, etc. 5 payments at \$5.62 or will discount for cash. Write Credit Manager, 1114-19th Street, Lubbock, Texas. TF-L

--- COTTON

(Continued From Page 1)

diverted under the 1965 domestic allotment program. And in all likelihood, all of the acreage that farmers have said they intend to plant in 1966 won't actually be planted. There will be some degree of underplanting by most farmers to avoid the stiff penalties attached to any acreage planted above the producer's signed intentions. This will amount to no more than an acre or two per farmer, however, and final planted acres should still add up to over 1,400,000.

It was necessary this year to include several new factors in the acreage calculations. The original 23-county allotment was 2,122,770 acres. But there were 13,324 of these in the soil bank or in the new cropland adjustment program, leaving only 2,109,446 acres of the base allotment eligible for the annual sign-up.

Still, the total acreage available for the sign-up was reported by the state ASCS office to be 2,156,216 -- considerable more than was eligible from the

base allotment. This presumably accounted for a net gain of 46,770 acres. The Plains from purchasing lesser acreage transfers to farms of the same owner. Such transactions were permitted for the first time this year under the new cotton law.

It had been estimated that Plains got somewhere between 50,000 and 60,000 acres through purchases and leases, and estimate is probably about right, even though the gain in acres was only 46,770. This is because virtually all allotment transfers within an area between farms of the same ownership were from low-yield farms to high-yield farms causing a reduction of the deferred acreage. For example, three High Plains counties usually lost acres by way of transfers.

Not included in the 1966 are any that may be produced under the export acreage provisions of the program. These are not expected to be enough to materially affect Plains output for 1966, but is considered in the isn't too late for allotment to be placed in the crop adjustment program. But isn't likely to have any effect either.

There are some who feel that substantial increases per-acre yields from the reduced acreage this year will be the effect on number of bales produced. Others maintain that a big portion of the come from direct government payments, producers will the bone costs on planted acreage and per-acre yields actually go down. Both are probably right in some instances and wrong in others.

So, for such an early production estimate, it's just as well to assume yield similar to those of 1965 and produce production by the percentage as the indicated acreage cut -- 28.2 percent. Production in 1965 came to 2,209,787 bales. So as good a guess as any that we'll raise 583,260 bales in 1966 -- 837 less than last year. We can always change our guess if it rains.

IF YOU KNEW ALL THREE, YOUR CHOICE WOULD BE

CRAWFORD MARTIN

FOR ATTORNEY GENERAL
(Pol. Adv.-Pd. for by Crawford Martin Campaign Committee, Geo. Cowden - Chairman)

Legal Notices

South Plains Hospital Clinic, Amherst, Texas, accepting bids for building to be moved, approximately 3,510 sq. ft. floor space, 15 rooms. Bids will be opened May 2, 1966. Hospital reserves the right to reject any or all bids.

BID PROPOSAL ANNOUNCEMENT

SEALED BIDS WILL BE RECEIVED IN THE OFFICE OF THE SUPERINTENDENT OF SCHOOLS at 105N. Lake Avenue on or before 3:00 P.M. June 10, 1966 for the sale of three used 1958 Chevrolet school bus chassis. Bids will be received on one, two, or three chassis which may be inspected at this school or/and at Southwest Body Works, Sweetwater, Texas.

This school reserves the right to either accept or reject any or all bids submitted.

The descriptions and identifications of the vehicles offered for sale may be had by request.

He's the only MAN in TOWN

who doesn't use WANTED-ADS

CALENDAR POLITICAL

STATE SENATOR
30TH DISTRICT
JACK HIGHTOWER

STATE SENATOR
ANDY ROGERS

STATE SENATOR
JIM RAY

COUNTY CLERK -
LAMB COUNTY
CHARLES D. JONES

DISTRICT CLERK
ERNEST OWENS

DISTRICT CLERK
RAY LYNN BRITT

COUNTY SCHOOL SUPERINTENDENT
C. ROY STEVENS

COUNTY SCHOOL SUPERINTENDENT
EDWIN HALL

COUNTY JUDGE
JIM MANGUM

COUNTY JUDGE
J.B. DAVIS

Blacksmith, Welding & Hard Servicing With All New Equipment

803 EAST 4TH BOBBY TAYLOR WELDER AND BLACKSMITH

MR. FARMER BEFORE YOU BUY, ALUMINUM IRRIGATION PIPE BE SURE TO CHECK OUR PRICES WE PROBABLY CAN SAVE YOU MONEY BESIDE AN 80 MILE HAUL.

GIFFORD-HILL ROW KING GATED AND FLOW PIPE - GIFFORD-HILL TUF TUBE AND THE FAMOUS PIERCE FITTINGS AND GASKETS -

J.D. HAGLER

310 DELANO - LITTLEFIELD - PH. 385-5718

PLAINS REAL ESTATE PH 385-3211

JIM MILLS REAL ESTATE

PHONE 385-5989
TWITCHELL & 4th at LFD DRIVE

YOU'LL LOVE THE NEIGHBORHOOD

Small down payment, excellent terms on this cute 3 bedroom and paneled den, nice living room, kitchen with electric built-ins, 1 3/4 bath, fenced back yard, yes, we have central heating and REFRIGERATED air conditioner, large double garage, utility room. Call today as this place will sell soon, Exclusive, #105 Crescent Park Addition.

EXCLUSIVE, in Crescent Park, nice 3 bedroom, living room, kitchen with GE built-ins, snack bar, also dining area, 1 and 3/4 bath, central heat, solid concrete cellar, new yard fence, Small down, and assume low interest loan.

EXCLUSIVE, Duggan add., on 13th Street. 2 bedroom, den, nice kitchen, large closets, air conditioned, fenced back yard, lots of beautiful trees on this 70 x 140 foot lot, small down, assume \$68.00 per month payments, including taxes and insurance, Call me soon on this, as will not last long at this price and terms. Residents Phone L. D. Onstead - 385-3009 Roy Wade - 385-3790 C.R. Onstead - 385-4879

WHITHARRAL NEWS by MRS. ELVA T. CRANK

Fashion Show Presented At Coffee

M.A. Moore was hostess home Friday morning coffee. Mrs. Claudine of Levelland presented a show. There was a cake and a snack tray served to Mmes. Fields, Jack Grant and Max of Levelland; J.M. Horne of Fyke, Ralph Wade, Valentine, Joe Pelfrey, Jones, B.E. Hayes, Tom V.O. Jennings, L.C. Fred Smith, John Wade Johnson, H.G. Walden, Stephenson, W.R. McDunn, Raines and Miss Lena Moore.

Guests of Mr. and Mrs. Fred Smith were her sister, Mrs. M.J. Strube and Mrs. Archie Sims, and Mrs. Joe Minter and Mrs. Lowell Herring. A dinner meeting of the Association of School Administrators in Levelland Wednesday evening.

Carrie Eller came home from Littlefield Thursday she had been ill at the home of her son, Mr. and Mrs. Eller and family. She spent the Ellers to Big Saturday for a weekend with Miss Myrtle Eller. Mrs. Kathy Wade is home several days' illness at Levelland Clinic and Hospital.

Lutheran Men Meet At Church

An outstanding film on the production of First National of Dallas was shown to men of the Church of St. Lutheran Church Monday night.

Refreshments were served by Vasek. For recreation, game dominoes were played. Present for the meeting Pastor Brian V. Engel, Vasek, Joe Vasek, Clay Neinst, W.P. Neinst, Cecil Price, Ben Brandt, Lee Holkamp.

TAX MAN SAM SEZ:

Every year the Internal Revenue Service has thousands of rechecks returned because taxpayer moves after filing tax return. If you have moved, file your new address to Internal Revenue so they can forward your refund check. It is also a good idea to include your Social Security number so they can make sure that it is the person to whom the check belongs.

have been attending the latter's brother, Bob Armstrong of Littlefield at the Methodist Hospital in Lubbock. He has undergone extensive tests there since Thursday.

Mr. and Mrs. O.L. Martin were in Plainview Wednesday and Saturday. Accompanying them home for the weekend were Mrs. Donnie Blackman, Debbie and Dennis.

Mr. and Mrs. Russell Griffin, Russell, Mark and Lori of San Antonio arrived Thursday for a visit with his sister, Mr. and Mrs. V.D. Hodges, and his parents, Mr. and Mrs. John T. Griffin at Littlefield.

Spending the weekend in Odessa were Mr. and Mrs. H.J. Dobson.

Mrs. Bird Hutson is a patient in the South Plains Hospital at Levelland.

Mrs. John Paul Jones and Allen of Bovina spent several days recently with her parents, Mr. and Mrs. John L. Burnett.

Mr. and Mrs. Bobby Toler and children of Aztec, N.M. are visiting the latter's parents, Mr. and Mrs. Tom Doshier and other relatives.

Sunday guests in the home of their parents, Mr. and Mrs. Will Raines, were Mr. and Mrs. Bill O'Neal, Kathy, Stephen and Laura and Mr. and Mrs. Clifford Tuttle and Kimberley, all of Lubbock.

Mrs. Ella Hewitt has returned from Marfa where she visited her brother-in-law, Doyle Hewitt who is seriously ill. She made the trip with her son, Mr. and Mrs. Doyle Hewitt of Littlefield.

Sunday guests in the home of Mr. and Mrs. E.E. Pair were their children, Mr. and Mrs. Gerald Pair and children of Dalhart. Mr. and Mrs. Derald Coomer and children, recently of Wichita Falls, and Mr. and Mrs. Jackie Lewelling and children of Lubbock. Coomer leaves Thursday for Thailand, where he will be stationed. Mrs. Coomer will remain here for an extended time.

Roscoe Brown is a patient in the Levelland Clinic and Hospital.

IF YOU KNEW ALL THREE, YOUR CHOICE WOULD BE

CRAWFORD MARTIN
FOR ATTORNEY GENERAL
(Pol. Adv.-Pd. for by Crawford Martin Campaign Committee, Geo. Cowden - Chairman)

REPORT OF CONDITION
SECURITY STATE BANK
LITTLEFIELD IN THE STATE OF TEXAS AT THE CLOSE OF BUSINESS ON APRIL 5, 1966

STATE BANK NO. 1788
FEDERAL RESERVE DISTRICT NO. 11

ASSETS	
Cash, balances with other banks, and cash items in process of collection	1,488,025.71
United States Government obligations, direct and guaranteed	1,459,026.40
Obligations of States and political subdivisions	999,746.68
Other loans and discounts	5,573,056.11
Bank premises, furniture and fixtures, and other assets representing bank premises	320,000.00
Other assets	9,503.66
TOTAL ASSETS	9,849,358.56
LIABILITIES	
Demand deposits of individuals, partnerships and corporations	4,707,174.72
Time and savings deposits of individuals, partnerships, and corporations	3,421,320.10
Deposits of United States Government	40,272.29
Deposits of States and political subdivisions	690,416.80
Certified and officers' checks, etc.	97,964.32
TOTAL DEPOSITS	\$8,957,148.23
(a) Total demand deposits	\$5,308,228.13
(b) Total time and savings deposits	\$3,648,920.10
Other liabilities	23,251.68
TOTAL LIABILITIES	8,980,399.91
CAPITAL ACCOUNTS	
Common Stock -- total par value	250,000.00
No. shares authorized 25,000	
No. shares outstanding 25,000	
Surplus	250,000.00
Undivided profits	368,958.65
TOTAL CAPITAL ACCOUNTS	868,958.65
TOTAL LIABILITIES AND CAPITAL ACCOUNTS	9,849,358.56

I, James D. Copeland, Cashier, of the above-named bank, do solemnly swear that this report of condition is true and correct, to the best of my knowledge and belief.

Correct-Attest: James D. Copeland

Paul Hyatt
J.C. Hilbun
P.A. McCormick
DIRECTORS

State of Texas, County of Lamb, as:
Sworn to and subscribed before me this 27th day of April, 1966, and I hereby certify that I am not an officer or director of this bank.
My commission expires June 1, 1967

Gloria Jackson, Notary Public

Whitharral School Menu
Monday - Roast beef w/ brown gravy; rice; buttered English peas; hot rolls, butter; apple sauce cake and milk.
Tuesday - Pinto beans w/ relish; buttered spinach; hominy; cornbread and butter; cherry cobbler; and milk.

panied Mrs. Bob Crank and son Robbie Olcay to Irving and Dallas Monday for a week's visit with relatives.

WEDNESDAY - Oven-fried chicken; creamed potatoes; tossed salad; green beans; hot rolls and butter; honey, and milk.
THURSDAY - Meat loaf; candied yams; blackeyed peas; tomato wedges; hot rolls and butter; fruit jello; and milk.

FRIDAY - Hamburgers on a bun; lettuce, tomato and onion; potato chips; rolled wheat chocolate no-bake cookies; and milk.

WEDNESDAY - Oven-fried chicken; creamed potatoes; tossed salad; green beans; hot rolls and butter; honey, and milk.
THURSDAY - Meat loaf; candied yams; blackeyed peas; tomato wedges; hot rolls and butter; fruit jello; and milk.

DEL MONTE GARDEN SHOW

Fruit Cocktail 4 NO 303 CAN FOR \$1	PEACHES SLICE OR HALVES 2 1/2 3 FOR 89¢
TUNA CHUNK LIGHT NO 1/2 CAN 2 FOR 69¢	PRUNES RIDE-TO-EAT LGE 1 LB 2 FOR 69¢
NESTEA Mix 4 OZ 69¢	CORN CREAM STYLE GOLDEN 303 5 FOR \$1
CHEESE SHURFRESH SLICED 6 OZ 33¢	SHORTENING SHURFINE 3 LB CAN 69¢
DOG FOOD ROXEY 3/27¢	CATSUP DEL MONTE 20 OZ 3 FOR 79¢

MIX & MATCH Fruit Cocktail, Cut Green Beans, Seasoned Green Beans, Tiny Whole Beets, Early Garden Blended Sweet Peas Buff Can..... 6/\$1.00
DOUBLE STAMPS WEDNESDAY WITH 2.50 OR MORE

DEL MONTE CUT GREEN BEANS
EARLY GARDEN BLENDED PEAS
4 303 CAN \$1.

Meat Buys NO BETTER AT ANY PRICE

HAM
PINKEY DELICIOUS
12 TO 15 LB
WHOLE LB 49¢

HAMBURGER
FRESH GROUND 3 LB \$1

CHOICE CHUCK ROAST LB 65¢

RANCH STYLE STEAK LB 69¢

PORK CHOPS FIRST CUT LB 69¢

SWIFT PREMIUM HENS LB 49¢

WIENERS 2 LBS 79¢

DEL MONTE PINEAPPLE JUICE 46 OZ 3/\$1

DEL MONTE CRUSHED OR SLICED PINEAPPLE NO 1 FLAT 5/89¢

FRUITS & VEGETABLES

WINE SAP APPLES	LB	15¢
RUBY RED GRAPEFRUIT	EACH	3/29¢
YELLOW SQUASH	LB	15¢
GREEN ONIONS	BUNCH	7 1/2¢
VINE RIPE TOMATOES	LB	19¢

PIONEER SUPER MARKET
3RD & XIT DRIVE



HIGHTOWERS VISIT HERE -- State Senator Jack Hightower, seeking re-election from the 30th District and his wife Colleen visited Littlefield Tuesday afternoon and met with constituents at a coffee. Shown above chatting with the Hightowers are (L-R) C.A. Duval, Mrs. James Shotwell, Dr. Shotwell, Mrs. Hightower and the Senator.

OLTON NEWS by MRS. W.B. SMITH JR.

Valedictorian Named

Susan Norfleet, daughter of Mr. and Mrs. Owen Norfleet, is valedictorian of Olton High School's 1966 graduating class. Salutatorian of the class is Charles Church, son of Mr. and Mrs. M.C. Church.

Miss Norfleet has a grade point average of 94.093. Church has an average of 94.073.

High point boy is Dennis Hines, 93.785, and high point girl is Cheryl Yandell, 93.270. Dennis is the son of Mr. and Mrs. Milton E. Hines and Cheryl is the daughter of Mr. and Mrs. A.C. Yandell.

Miss Norfleet, who plans to attend Texas Tech, has been active in the band for four years, a twirler for three years, in FHA four years, in FTA three years and in the choir for one year.

She has played basketball four years and was captain one year, on the tennis team four years and on the volleyball team four years.

She has served as student council secretary and has been in National Honor Society for three years.

She was named freshman favorite, annual queen, best all-around girl, Miss OHS, Lions Club Sweetheart, outstanding freshman, sophomore and junior girl and was a candidate for most beautiful for three years.

She is a member of First Methodist Church, Olton.

Church plans to attend Texas A&M University to major in veterinary medicine.

During his high school years, he has played football four years and basketball three years, serving as 1966 captain.

In the FTA three years, he was 1966 parliamentarian. He has been in National Honor Society three years and is vice-president. He has also been in the band four years, in the stage band four years and is on the band council.

He was pep squad king candidate, treasurer of his sophomore class, vice-president of his junior class and Prince

Charming of the FHA. In addition to his other activities, he is also an outstanding pianist.

Church is a member of the First Methodist Church, Olton.

Hines plans to attend New Mexico University at Las Cruces, N.M., and Major in electrical engineering.

Miss Yandell plans to attend Bethany Nazarene College to major in biology.

Eight other graduating seniors have an average of 90 and above. They are: Richard Redinger, Joe Priest, Iva Tanner, Mike Bodkin, Mary Aigaki, Cherry Caddell, Linda Collins, and Belva Howard.

Olton High School's best citizens for the fifth six weeks of school are Kathie Kidd, daughter of Mr. and Mrs. George Kidd and David Britton, son of Mr. and Mrs. Vernon Britton.

Texas South Plains and Eastern New Mexico Peace Officers Association held their Spring meeting at Lincoln Hotel in Odessa, April 20-21.

Serving as host to the group was Jess L. Cariker, Chief of Police, Odessa.

Registration was Wednesday afternoon from 4-6 p.m. and 8 a.m. Thursday morning.

Major Harry Hutchison, president, Department of Public Safety, Lubbock, called the group together, Dr. John S. Rasco, pastor, First Baptist Church, Odessa gave the invocation.

Welcome address was given by Hon. Preston Parker, Mayor of Odessa and W.E. Routh, City Manager, Odessa.

Discussing "Police Problems" was Robert V. Hancock, Special Agent in Charge, FBI, in El Paso.

Agent Jack Salter, U.S. Customs, El Paso discussed "Smuggling".

Following lunch, Major Leo Gossett, Regional Commander, Region 4, Texas Department of Public Safety, Midland, talked on "Police Need Proper Tools."

The afternoon address was given by Honorable Patrick F. Hanagan, District Attorney of

Roswell, N.M.

A new assistant city secretary was named by the Olton City Council recently.

Mrs. Earl (Awa) Robertson was named to the post by the council members. Starting salary is \$225 per month.

She began work Monday, April 25 and replaces Mrs. James (Billie) Hall who is moving to Plainview.

City Engineer Bill McMories met with the council and the group went over street paving and repair needs in the city.

Fire Chief Tom Smith also met with the council and was given the go-ahead to look for a better siren for the community. The aim is to get the new siren in time for use as a tornado warning device.

Robert Frias of Odessa showed slides and made comments on "Berkeley Riots and Watts Riot."

Following the program a short business session was held.

Attending from Olton were Deputy D.E. Beadle and Judge W.B. Smith Jr.

Attending from Earth was Earth City Marshal, Troy Coon.

The Olton Garden Club met Thursday morning at 10 a.m. in the Women's Clubhouse for an all-day meeting.

Workshop Scheduled For Olton Friday

A Masonic Workshop meeting has been scheduled for officers and members of five Lodges at 8:00 p.m., April 29, in Olton Lodge 1257, Olton.

L.B. Montgomery of Littlefield, who is chairman of the six-county Masonic Workshop Area E-7, will conduct the meeting. He said that Littlefield, Muleshoe, Sudan, Earth and Olton Lodges are invited to attend.

Nearly 200 Workshop meetings are held semi-annually for officers of over 970 Masonic Lodges.

The meetings are authorized by H.W. Fullingim of Odessa, who holds the highest Masonic Position in the state as Grand Master of Masons in Texas.

The Masonic Order is the state's largest fraternal organization with nearly 250,000 members.

Agent Gives Program For Whitharral Club

WHITHARRAL -- Mrs. Jewel Robinson, county HD agent discussed "Management in Family Living" in the home of Mrs. D.C. Theford for the April 19 meeting of the Whitharral Home Demonstration Club. Using mimeographed statements she based her talk on the family and individuals learning to manage through planning, organization, motivation, control and evaluation as to the best results in light of the family's plans and goals. She concluded with a book review of Mary Bowman's "Hey! Mom!" and the poem "Telling on Yourself".

Mrs. John Waters opened the meeting with "A Definition of Success." Mrs. L.C. Lewis presided. Roll call was answered with "The most useless thing I have in my purse".

Mrs. V.O. Jennings received the hostess gift, a set of plastic mixing bowls, Mrs. Fred Smith will host the May 3 meeting at her home north of town.

Chips and dips, cookies, coffee and cold drinks were served to Mmes. Robinson, Lewis, Waters, S.J. Clevenger, Ross Kennedy, E.E. Pair, James Mixon, Fred Smith, Vera Rodgers, Elva T. Crank, W.H. Kilgore, E. G. Wade, Sr., H.J. Dobson, R.L. Hicks, Joe Pelfrey, C.G. Landers, O.L. Martin, D.H. Montgomery, V.O. Jennings, Eula Fyke and Miss Lena Maxey.

Junior-Senior Banquet Held

WHITHARRAL -- The Whitharral Junior Class hosted the annual Junior-Senior banquet at the Spot Restaurant last Tuesday evening in Levelland. Candlelight formed the setting for the event. A fruit arrangement centered the head table. Miss Sandra Gage welcomed the guests who were introduced by Miss Paula Reding. Miss Cathleen Howard gave the response. Louis McCormack gave the invocation.

Furnishing the entertainment were the Levelland Seven Winds, folk singers; Ray Alexander, Dickie Sisk, Eddie Johnson, Gerry Geistman, Mary Collins, Carolyn Smith, and Susan Dement.

John Yates, guidance and counselor of South Plains College, was the guest speaker.

Present were Cathleen Howard, Johnny Tipton and Charlotte Caldwell, Mike Sadler, Glenn Throckmorton, Floyd Salinas, A.W. Hunter, Kay Lynn Lott and Sammy Pair, Sandra Gage and Ronnie Melton, Paula Reding, Carolyn Polk, Mary Jane Pence, John Villaneuva, Walter Caldwell, Also Messrs. and Mmes. Archie Simms, Joe Minter, O.L. Harris, Louis McCormack, John W. Hall, John W. Hall, John Claborn, Ed Johnson, C.E. Throckmorton, Rafe Rodgers, Bob Grant, F.E. Sadler and Clifford Williams.

Baseball Meeting Set Tonight

A meeting will be held at 8 p.m. tonight in the XII Room of the Security State Bank for all Little League, Pony League, and Colt League managers, coaches and officers.

Jim Copeland, commissioner of the boys baseball program this year, stated that several very important items will be discussed at the meeting.

FIND SOLACE FOR YOUR SORROW THROUGH... QUIETUDE

FEEL FREE TO CALL ON US AT ANY HOUR

Hammons Funeral Home

Thar She Blows!

FINANCIAL HOUSE MONEY can lift a whale of a load off your mind when an emergency brings unexpected expenses; Manager Walter Wagner, understands why folks can need money quickly. He also understands how to provide that money on a practical budget, thanks to his financial knowledge, experience and training, call the Understanding Man now!

Interstate Securities Company of Texas financial house

as advertised in TIME

425 Phelps 385-3822 See Walter Wagner... He Understands!

For Some People God Might As Well Be Dead

There's nothing new about the "dead God" premise.



A hymn written in the seventeenth century by Johann Rist proclaimed, "O great tragedy: God himself is dead!"

Nietzsche, in the last century, had a character in "The Gay Science" say, "Verily, verily, God is now dead."

Also in the last century, Thomas Hardy wrote a poem called, "God's Funeral."

So the patently metaphorical phrase is not new. What is shocking is that the phrase is now being parroted by Protestant theologians.

As I understand what these presumably sincere scholars are saying, they are saying several different things; they are not in agreement with one another.

All I know for sure is that, for some people, God might as well be dead.

Certainly I do not mean this irreverently. I echo Billy Graham: "My God is a living God; I talked to Him this morning."

But if there is anything more absurd than attacking God, it would be defending Him. That I shall not presume to do.

Recently I visited with Dr. H.J. Flanders, Jr. of Waco, Texas' First Baptist Church, when

the students from nearby Baylor University, intrigued by the "God is dead" hypothesis, bring the question to him -- they do not want an obtuse explanation. They want this Christian scholar to reply in kind -- with a succinct and explicit retort to this shocking challenge to the faith of their fathers.

And it was Dr. Flanders who said, "If we live our lives as though God is dead, God is not the fatality; we are."

And he explained:

"A little girl was forbidden to touch the sweets stashed in the kitchen cabinet. While mother was absent, she entered the kitchen, climbed up on a chair, reached for the cookie jar..."

"At that instant she noticed a Christian calendar on the nearby wall. A likeness of Christ was watching her."

"The little girl climbed down, went over and turned Christ's picture to the wall -- hiding His face -- so that He could not observe her mischief."

But she did not blind God, neither did she kill Him.

None of us likes to stand before a living God. We resort to almost any stratagem to escape

His gaze. In our thoughts and plans, actions, God is too often out.

We make most of our lives and determine our behavior without even asking, "difference does this make God?"

From the daily newspaper should be obvious that the difference He makes in our lives -- God might as well be dead.

No, I cannot deny that God longer a reality in the lives of today's masses.

But you are not going to determine whether God is accepting the decree of the full, or even by a majority on the subject...

Nor can we escape His judgment by turning His picture to the wall.

(T-M, WRR Gen. Fea. Co.)

IF YOU KNEW ALL THE CHOICE WOULD

CRAWFORD MARTIN

FOR ATTORNEY GENERAL
(Pol Adv.-Pd. for by Crawford Martin Campaign Committee, Geo. Cowden - Chairman)

FREE ESTIMATE

BODY REPAIR

ALL MAKE

JONES MOTOR

SURPRISE OFFER FOR 1962, '63, '64 CAR OWNERS!

NO LESS THAN \$11 PER TIRE

Off Our No-Trade-In Price Towards TIGER PAWS™

The present tires on your car, regardless of condition, are worth no less than \$11.00 each off our no-trade-in price on

U.S. Royal Tiger Paws

• 4-PLY NYLON • TESTED AT 120 M.P.H.
• THE RED STRIPE TIRE SUSTAINED HIGH SPEED

HURRY... BRING IN THIS COUPON & YOUR TIRES TODAY for these allowances off our no-trade-in prices!			
\$11 ea.	\$12 ea.	\$13 ea.	\$15 ea.
towards Tiger Paws	towards Tiger Paws	towards Tiger Paws	towards Tiger Paws
6.50-13	7.75-14	8.25-14	8.55-14
7.00-13	7.50-14	8.00-14	8.50-14
6.95-14	7.75-15	8.15-15	8.45-15
7.25-14	8.70-15	7.10-15	7.60-15
7.35-15			
6.50-15	\$16 ea.	towards 8.55-14	8.85/9.00/9.00-15 9.15-15 8.00/8.20-15

HERE'S A SAMPLE TRADE-IN DEAL: (650x13 TUBELESS RED STRIPE)

NO TRADE IN PRICE \$37.75

DEDUCT 11.00

YOU PAY..... 26.75 plus tax

BLACKWALLS EVEN LESS

THURSDAY-FRIDAY SATURDAY YOUR CHOICE

1. Wheel Balance
2. Brake Adjustment
3. 5-Tire Rotation

99¢ EACH

Littlefield Tire Service Inc

"If You Bought It Anywhere Else You Paid Too Much"

18th & Levelland Highway

385-5175

Lamb County Leader

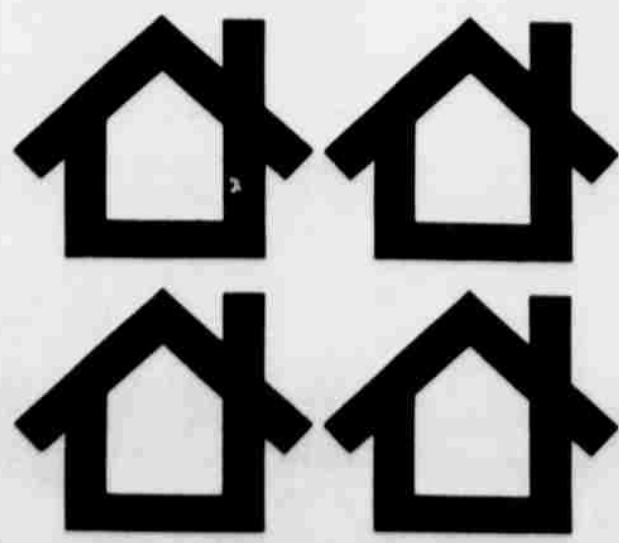
Published every Thursday morning by the Littlefield Publishing Co., 506 Phelps Avenue, Littlefield, Texas, 79339. Entered as Second Class matter at the U.S. Post Office, Littlefield, Texas, 79339, Under the Acts of March 3, 1879.

Dave Kucifer General Manager
Tom Donnelly Managing Editor
J.B. (Mac) McShan Advertising Mgr.

Subscription rates: by mail in Lamb and adjoining counties, \$5.10 per year. Elsewhere in Texas, \$7.10 per year. In City carrier delivery 70¢ per month.

Member 1966 TEXAS PRESS ASSOCIATION

Ooohhh, ahhh... just what you're looking for. Find REAL ESTATE fast in the YELLOW PAGES. Where your fingers do the walking.

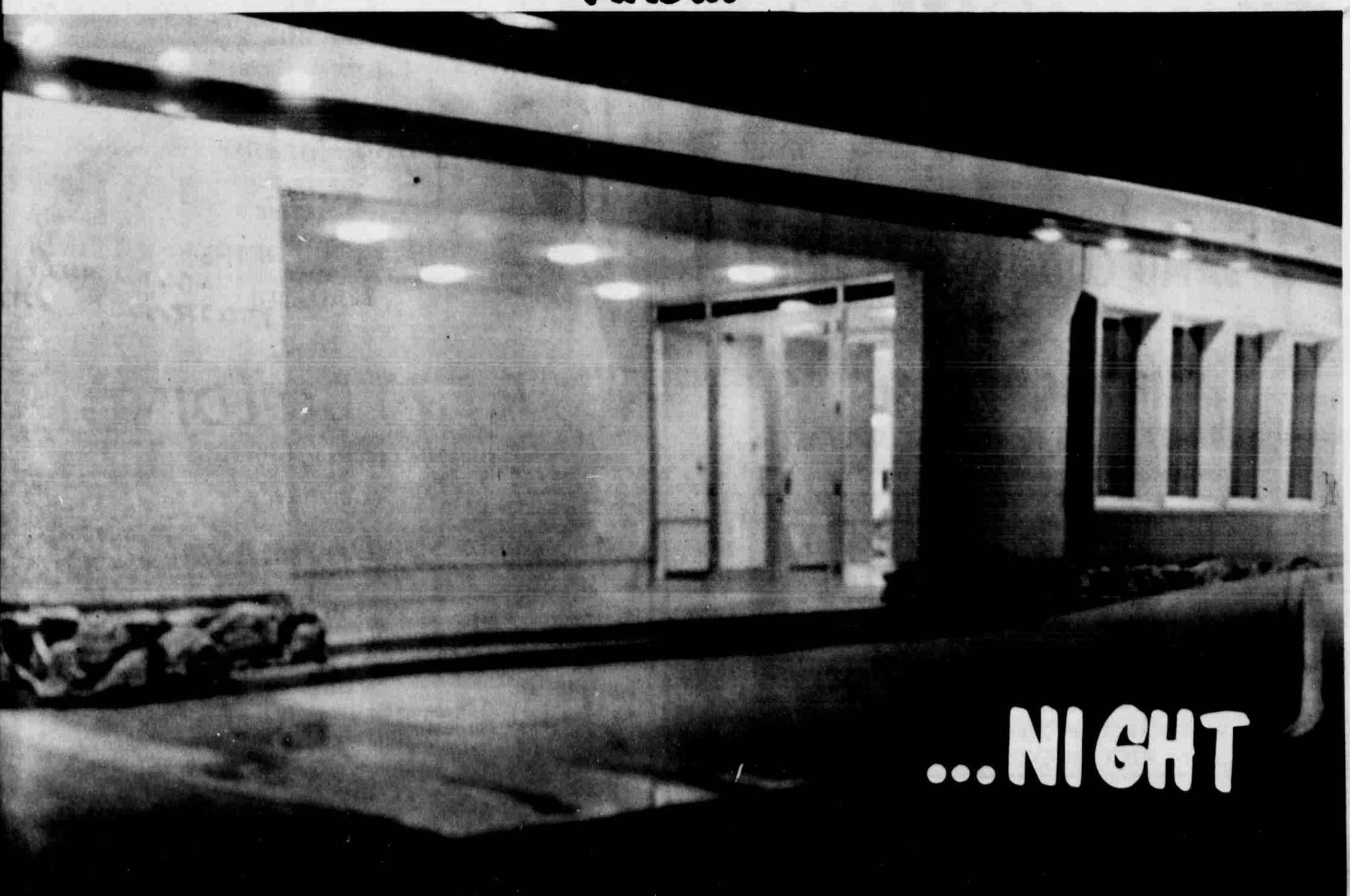


THE LAMB COUNTY ELECTRIC SERVES YOU ...



... DAY

AND...



... NIGHT



REA DIRECTORS -- Seated around the table in the directors' room in the new REA building are the nine men now serving on the board of directors for Lamb County Rural Electric Cooperative. Left to right are R.V. Allcorn, Olton, secretary-treasurer; T.C. Ivey, Levelland; V.M. Peterman, Amherst; V.D. Hodges, Levelland; T.C. Faver, vice president, Anton; J.H. Carl, manager; Joe Fisher, Sudan; Jack Grace, Anton; Ernest Goertz, Littlefield; and V.H. Diersing, president, Pepp.

Directors Govern Lamb County REA

V.H. Diersing, well known farmer of the Pep community, is president of the Lamb County Electric Co-Op. Mr. Diersing has advocated for many years the expansion and growth of the REA, working and supporting progress in rural electrification.

T.C. Faver of Route 1, Anton, is vice president, while R.V. Allcorn of Olton serves as secretary and treasurer.

Included on the board of directors are such well known farmers as V.M. Peterman of Route 1, Amherst, Joe Fisher of Route 2, Littlefield, Jack Grace of Route 1, Anton, V.D. Hodges of Route 2, Levelland and T.C. Ivey of Route 3, Levelland.

In San Francisco during 1965 the Giants beat the Houston Astros eight times in nine games.

Lamb County Electric Cooperative Expands Considerably Since Beginning

"Judge" E. A. Bills and the late Ben Gann played important roles in the securing and organizing the Lamb County Electric Co-Op Inc. for this area. Mr. Bills represented the REA as an attorney from its beginning in the thirties until he retired a few years ago.

The Lamb County Rural Electric was organized in 1938 and began operation the following year. O.K. Woodall, first manager opened the organization March 18, 1938. The company was located at 305 West 4th Street and supplied power to 339 members when the lines were energized in April of 1939. In the first year of operation there were only 120 miles of lines and just 240 members.

This organization has expanded and grown each year until

today it serves almost 3,000 customers with 5500 meters in operation. As more and more irrigation wells are placed on electricity the number of meters in use continue to grow each year.

The organization opened with three office employees, Mr. Woodall, manager; Edna Sisson, bookkeeper; and J.H. Carl, line-man. At the present there are nearly 50 employees, with more being added as the work increases.

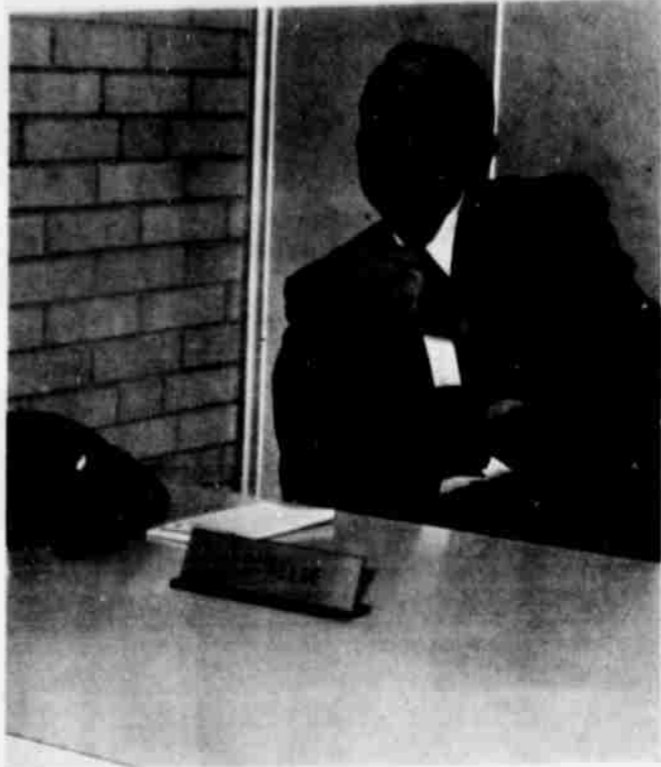
Lamb County Electric Cooperative, Inc. now located at South Phelps Avenue and Marshall Howard Boulevard, supplies power to the better part of six counties; Lamb, Hockley, Bailey, Cochran, Hale and Castro counties, with electric current.

The cooperative is governed

by a board of directors, V.H. Diersing, president; T.C. Faver, vice president; R.V. Allcorn, secretary, and V.M. Peterman, Joe Fisher, Ernest D. Goertz, Jack Grace, V.D. Hodges, and T.C. Ivey.

The new modern plant is the newest of 85 Electric Cooperatives in Texas all using as their theme "Helping Texas Grow."

Today, as our country grows, rural electric such as ours, with the continuing help of Rural Electrification Administration loans, are working hard to make sure electricity is available for whatever needs arise in the area we serve...for the increasing demands of rural families, for defense installations, for the new communities springing up in rural areas.



HOWARD REESE
...Electrification Advisor

Howard Reese, longtime Littlefield resident has for the past three years been Electrification Advisor for the Lamb County Electric Cooperative.

Formerly in the drug business here and with Western Auto Company, Reese stated that his duties are primarily in the realm of public relations.

A native of Plainview, he and his wife Evelyn reside at 612 West 2nd Street with their three sons, Dalton age 19, a student at South Plains College; Larry age 17, a junior at Littlefield

High School, and Johnny age 15 a freshman at Littlefield Junior High.

A 32nd Degree Mason, Reese holds the office of High Priest of the Littlefield Chapter RAM 438. Though he lists gardening as his hobby he has also been very active in the boy's baseball program here including being president of the Colt League in 1965.

The Reese family are members of the First Baptist Church.

Award Received By Spade Student

Bill Adams, Spade senior, has been announced as the winner of the 1966 De Kalb Agricultural Accomplishment Award given to outstanding seniors in vocational agriculture departments. To receive this award, he excelled in scholarship, leadership, and farm program ac-

tivities during his four years in high school.

Bill is the son of Mrs. W.O. Adams and the late Mr. Adams. He has been president and vice president of the FFA. His farming program consisted of raising registered Duroc hogs and crops.

After high school Bill plans to attend Texas Tech majoring in agricultural education.

A MESSAGE FROM YOUR LOCAL RURAL ELECTRIC SYSTEM

Rural electric systems are in a real and practical "grass-roots" organizations. Each local system is owned and operated by the people it serves. Each person who receives electricity from the system is a "member-consumer" and has one vote in electing directors. The directors set policy and hire a manager and staff to run the electric system. This is the cooperative way, where each person has a share in the organization.

While we certainly don't suggest that every business should be run in this fashion, we know that a rural electric system is a unique type of institution that lends itself to the principle of cooperation in a highly successful way.

We are proud of our role in this community. In addition to providing electric service in the rural areas, we provide various kinds of goods and services locally, as well as a regular local payroll. All this adds up to a significant factor in the economic life of this area and its people.

Best Wishes On Your OPEN HOUSE SUNDAY 1 TO 4 PM

WE WERE PLEASED TO HAVE INSTALLED THE LAWN AND SPRINKLER SYSTEM PLAINS UTILITY CO. J.W. MOORE JR.

2201 E. 50TH PH. SH 4-6105 LUBBOCK TEXAS



We Wish To Extended Our Congratulations To **LAMB COUNTY ELECTRIC** ON THE OPEN HOUSE OF THEIR BEAUTIFUL NEW **HEADQUARTERS** SUNDAY 1 To 4 PM MAY 1ST

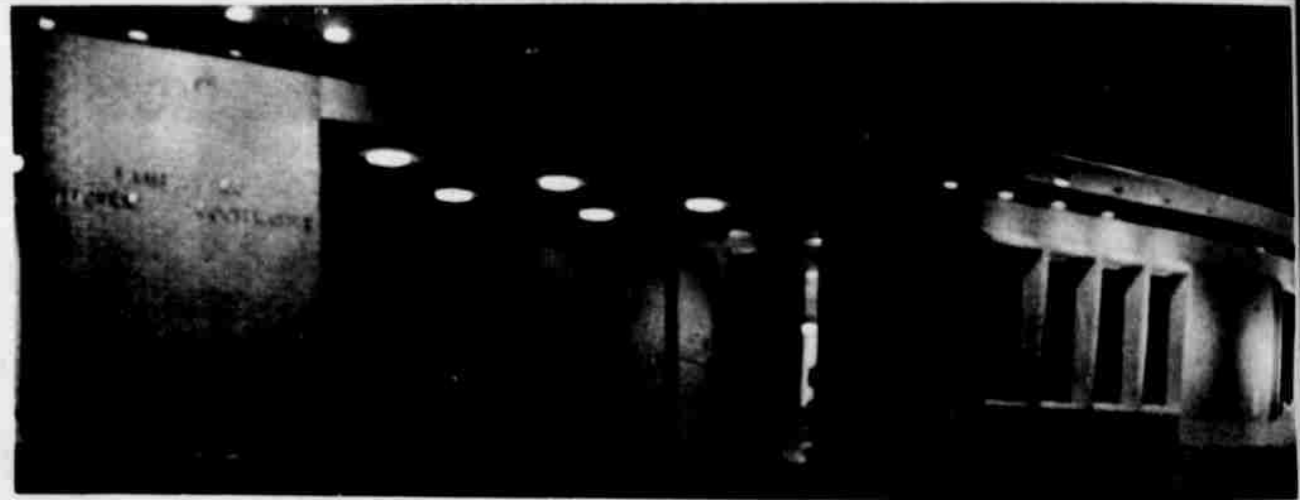
THE LAMB COUNTY ELECTRIC HAS CONTRIBUTED MUCH TO THE GROWTH AND PROGRESS OF OUR COMMUNITY, AND WE WISH TO COMMENT THE DIRECTORS AND PERSONNEL FOR THEIR SPLENDID EFFORTS.



WE ARE PROUD THAT MOBILE GASOLINE WAS SELECTED TO BE USED IN ALL CARS AND TRUCKS OF THE REA

D. W. BAWCOM

MOBILE PRODUCTS Spade Highway Phone 385-3000



Bob Hopper Electric IS PROUD OF THE BEAUTIFUL NEW R.E.A. BUILDING AND JOINS IN INVITING YOU TO SEE IT SUNDAY MAY 1 1-4PM

YES. BOB HOPPER IS PROUD TO HAVE BEEN CHOSEN TO BE ELECTRICAL CONTRACTOR OF THIS MAGNIFICENT ALL ELECTRICAL BUILDING. IT IS INDEED AN OUTSTANDING BUILDING. SEE IT. FOR COMMERCIAL AND INDUSTRIAL INSTALLATIONS SEE

Hopper Electric Co

1119 19 ST. LUBBOCK SH4-9402

Our Best Wishes
 TO THE
LAMB COUNTY ELECTRIC
 ON YOUR
OPEN HOUSE
MAY 1ST
1 To 4 PM



We Wish To Congratulate
 The Directors And Personnel
 Who Planned And Worked
 So Hard To Make These
 Modern Facilities Possible

It Is Truly An Outstanding
 Project In Our Community,
 And We Join This Area In
 Extending Congratulations



IN 1938 RURAL RESIDENTS OF THIS AREA HAD MUCH THE SAME HOME CONVENIENCES THAT EXISTED 50 YEARS AGO. THEN THE REA, NON CITY RESIDENTS ENJOYED ALL THE ADVANTAGES OF ELECTRICITY. . . FOR HOMES. . . FOR FARM WORK. . . FOR IRRIGATION. . . FOR A BETTER WAY OF LIFE. WE TAKE PRIDE IN RECOGNIZING THE GROWTH AND PROGRESS OF THE LAMB COUNTY ELECTRIC.

R.E.A.

- The Farmer's Line
- The Farmer's Servant

In Banking
Think FIRST
 Of The First

Member
 FDIC

First National Bank



MODERN LOUNGE -- The three women shown above, all employees at Lamb County Rural Electric Cooperative, really appreciate the convenience of the attractive lounge located in the new REA building. The lounge contains three round formica tables with roll-out chairs attached to the table, a range, Coke machine, metal cabinets, stainless steel sink, and terrazzo flooring. Accent colors of blue, orange and charcoal are used. Pictured left to right are Marilyn Wells, Jane Shipley and Mary Lou Whitsett.



ALL ELECTRIC KITCHEN -- Shown above is a portion of the modern electric kitchen located in the auditorium of the new REA building. The woodwork is all walnut, the upper cabinets are metal, appliances, including refrigerator, freezer, washer dryer, range, and oven are Frigidaire. The Kitchen-Aid dishwasher is walnut paneled. A unique feature is the large mirror located directly above the demonstration table, which can be tilted to allow persons to view the demonstration (note: the items on the table seen in the mirror).

REA Garage Has Complete Facilities

Among some of the more unique features of the new Lamb County Electric Company facilities, is the complete service garage for the company's vehicles.

In the all brick building, company maintenance personnel will be able to handle all of the company vehicle minor repairs as well as taking care of the washing and greasing.

The shop, which sets apart from the main building, includes two grease racks, and a wash pit, four overhead doors makes for easy access. The chief maintenance man for the shop

is Bennie Ross, long time resident of the area, who has recently joined the staff of Lamb County Electric. Ross will be in charge of all vehicle maintenance including minor repairs, tire repair, washing and greasing.

The building is equipped to handle four vehicles at a time for the sake of convenience. It will also serve as the headquarters for the fuel needs of the company's trucks and cars sitting atop a gasoline storage tank which has the capacity of storing a complete transport load of fuel.

ONE CALL DOES IT ALL. A yard light is as near as your telephone. Call or write today for more information. Better still, why not let us send a representative to survey your lighting needs. THERE IS NO OBLIGATION ON YOUR PART.

Wonders Of New Lamb County Electric Building Are Many

It is impossible to adequately describe the beauty and convenience of the new 32,000 square foot modern building of Lamb County Electric Cooperative, which will observe Open House Sunday from one to four p.m. Nothing has been overlooked in making this one of the most modern and up-to-date buildings of its kind in the area.

The following is a word tour through the building, located at South Phelps Avenue and Marshall Howard Boulevard.

Upon entering the double glass doors from the covered entrance on the east, you step into a glass vestibule and then into the spacious lobby. One immediately notices the pleasing decor, with white and gold terrazzo tiling, light brick walls, acoustical ceiling, walnut tables with formica tops, walnut chairs in colors of blue and orange, and attractive loose-woven beige draw drapes.

The same flooring, ceiling, drapes and color scheme is used throughout the entire building. Approximately half of the walls are covered in either beige or gold vinyl covering with others being light brick walls. Still others are paneled in walnut plant wood, which is a fabric-backed veneer.

Located directly in front of the entrance-way is the walnut reception desk with a white formica top. Blue and orange ash trays accent the general color scheme.

To the left of the reception desk is the office of Mrs. Tommy Brawley, who is secretary to J.H. Carl, manager. Furniture in her office, as in the other front offices, features the colors of blue and orange. Her desk and other executive desks are black.

Three rooms that may be entered from Mrs. Brawley's office are the manager's office, manager's assistant's office and directors' room. The directors' room, where the regular meetings of the board of directors are held, has a very pleasant, cherry atmosphere. Around the long walnut table are placed chairs covered in a bright royal blue fabric.

Immediately behind the reception desk are five individual booths, separated by metal dividers of gray and gold. The desks are blue. The entire area is well lighted with recessed fluorescent lights.

Offices in this front part of the building are similarly designed. Besides those mentioned are the office manager's office, billing clerk's office, a work room for cutting stencils etc., a large vault, an office for the electrical advisor and another for a home economist.

An elevator, believed to be the only one in an REA building, may be ridden to the basement, which contains the giant electrical system for the entire building, the telephone equipment, and records. This basement meets the qualifications for a fall-out shelter.

Offices located on the west side of the building include those of the line superintendent, David De Busk; a safety meeting room; a meter lab; the office of line foreman, C.V. Ray; and material records supervisor, Mrs. Ray Ely.

A locker room and rest room is located just off the safety room. Since moving to the new facilities, each of the 35 linemen have been given a number. This same number is used for each man's locker, pickup, work report drawer, pickup stall, etc. Having the same number on everything avoids quite a bit of confusion. Rain gear, over shoes, first aid kits, etc. are kept in each man's locker.

In the office of the line superintendent and line foreman, the walls are of cork under the vinyl covering, thus allowing maps etc. to be tacked on the walls. David De Busk has been line superintendent about two years. Mary Lou Whitsett, clerk in his office, has been an REA employee about two years.

C.V. Ray, line foreman, began working with Lamb County Electric Cooperative 21 years ago. He has charge of all connects and disconnects and anything pertaining to outdoor work.

Material Records Supervisor, Mrs. Ray Ely, who has nearly nine years of service with the REA, is in charge of all warehouse materials, and all materials issued to the linemen. All work orders are completed in this office. Mrs. Ely is assisted by Gayle Lynch, an employee for about a year. Gayle also figures all the time cards for the linemen.

Don Stubbs is supervisor of the warehouse which is located just off the office of Mrs. Ely. Wane Donald repairs all meter equipment and regulators in the meter lab. He has been with REA a little more than a year.

AUTOMATIC DAYLIGHT ALL NIGHT -- An "electric eye" turns on your modern luminaire at dusk and turns it off automatically in the morning, relieving you of remembering or bother, whether you are home or away.

Open House To Be Held From 1 To 4 Sunday

Sunday, May 1, area residents will have an opportunity to view the new ultra-modern facilities of the Lamb County Electric Cooperative as they officially open their new nearly one-half million dollar plant, located on the southwest edge of town at South Phelps Avenue and Marshall Howard Boulevard (Highway 84 by-pass).

To help celebrate the milestone in the growth of the REA, the directors and employees will play host to the public with Open House from 1 to 4 p.m. J.H. (Dick) Carl said he hopes everyone in the area will take advantage of this opportunity to view the facilities of the new Headquarters Building and stressed it was the patronage of the many customers through the years which has made this move possible. Refreshments will be served.

Manager Carl stated the organization came into being to provide service and it continues to exist today for the same reason.

Office hours are from 8 a.m. to 5 p.m. five days a week. The drive-in window adds to the convenience of persons who want to pay their bills without leaving their car. Someone is on call 24 hours a day seven days a week in case of emergencies. Someone is in the

plant constantly. Office personnel work from 8 a.m. until 5 p.m., garage men work from 4 p.m. until midnight, servicing the approximately 30 trucks and pickups, and the janitor has hours from midnight until 8 a.m.

The doors to the new facilities opened to the public for the first time April 18 as the move was completed from the previous location at 313 West 4th which housed the business for 14 years.

More species of flowering plants are found in California than any other state. Of some 30,000 different plants in the United States, a sixth grow in California.

We Installed Hollow Metal Doors And Finish Hardware In The Beautiful New R.E.A. BUILDING

COME SEE IT SUNDAY 1 TO 4 P.M.

IT'S A CREDIT TO THIS AREA

PLAINS BUILDER SUPPLY

608 BROADWAY PO 5-9439 LUBBOCK, TEXAS

THANKS REA

Painting And Finishing

WE JOIN IN EXTENDING BEST WISHES ON OPEN HOUSE SUNDAY 1 TO 4 PM

WE ARE PROUD TO HAVE HAD A PART IN THE CONSTRUCTION OF THIS BEAUTIFUL BUILDING.

H.N. RINEHART
5699 BROWNFIELD HIGHWAY
SW 9-3724 LUBBOCK, TEXAS

Sincere Congratulations...
and all good wishes to

Lamb County Electric Coop Inc

ON YOUR **OPEN HOUSE**

SUNDAY
MAY 1ST 1-4 PM

We are truly proud to join in extending best wishes to the directors and employees of the Lamb County Electric Co-op on the formal opening and showing of this beautiful new headquarters. Everyone is to be commended on the planning and construction of such a fine building.

CUMMINS SUPPLY

513 NORTH NELSON AMARILLO, TEXAS

Beauty And Practicality Combined In Auditorium

The all new 150 seat auditorium of the Lamb County Electric Company's new home combines beauty and practicality in the first order and provides the Littlefield area with a completely air conditioned, easily accessible meeting place for clubs, programs and town meetings. On the practical side the auditorium is furnished with a complete Frigidaire kitchen including matching washer and dryer, cook top and built in oven, refrigerator and freezer. Also included is a Kitchen Aid dishwasher.

All these features are arranged behind, and around a demonstration table over which hangs an electrically operated mirror which makes every seat in the house, a good seat for viewing cooking demonstra-

tions. The mirror can be positioned to allow everyone to look on as the home economist gives lessons on how to prepare certain foods and allows the spectators to feel they are at the demonstration table with the one conducting the program. Also provided in the spacious 2200 square foot area is an overhead movie screen which can be raised and lowered automatically, for programs which would include movies or slides. The kitchen and demonstration area can be completely closed off from the main part of the room by sliding walnut finished doors, which match the other wood work of the room. Illumination for the room is provided by an entire ceiling of four foot lighting fixtures, and indirect side lighting which can

be adjusted to meet the need of the audience.

The auditorium is accessible from the outside of the building, allowing meetings to be conducted after business hours, or even during business time without interrupting the employees or the business operation.

Manager Dick Carl said the inclusion of the auditorium is one of the things he and the directors insisted on while the plans of the new building were being drawn. "We hope the people of the area will use the auditorium and as time passes it will be one of the most popular meeting places in the community. We have already booked the use for the Chamber of Commerce Tourist Clinic in May, and feel it will not be long before the demand will exceed the availability. We would encourage anyone who would like to use the auditorium to get their reservations in

early enough to assure it will be available for their meeting time."

LONGER DAYS -- This means more productivity for you, whether it be business or pleasure you can finish "after dark", or get a head start early in the morning.

BEST PROTECTION -- An automatic yard light or two is the best possible protection for your home, farm, business, equipment sheds or yards. Adequately lighted property will discourage prowlers and greatly reduce the threat of theft.

WORKERS AND MERCHANDISE ARE PROTECTED in all kinds of weather with roofed areas connected to the warehouse. The open sheds are also used to store pickups and trucks out of the weather at night. There are two of these areas on the east and west sides of the warehouse.



ROBBIE PASS
...Head Bookkeeper

We Wish To Extend Best Wishes
To The Directors
And Personnel
LAMB COUNTY ELECTRIC
BRASHER - GOYETTE & RAPIER
ARCHITECTS - ENGINEERS
LUBBOCK, TEXAS

Your Lathe And Plaster Contractor

LATTIMORE
LATH & PLASTER
2620 28th
PO2-8435
Lubbock

Joins In Welcoming
You To The
Open House
Of The Beautiful
New REA Building
SUNDAY MAY 1ST

We're Proud Of Our
Part In Its Construction

OF COURSE

FURNISHINGS BY CONNELL'S

We Are Proud To Have Been Selected To Supply A Complete Installation Of Office Furniture, Reception Furniture, Office Accessories, Tables and Chairs and Warehouse Equipment In The Beautiful New Lamb County Rural Electric Building.



CONNELL'S OPENED IN 1936 - JUST 3 YEARS EARLIER THAN R.E.A. WE, TOO, HAVE GROWN AND EXPANDED WITH THE AREA.

WE SERVICE
WHAT WE SELL

OUR BEST WISHES TO THE DIRECTORS - EMPLOYEES AND MEMBERS OF THE REA ON YOUR

OPEN HOUSE
SUNDAY MAY 1ST
1 To 4

We Urge Everyone To Attend!

The Enlarged Business Man's Department Store

CONNELL'S

OFFICE SUPPLIES

MACHINES & FURNITURE

116 EAST 10th

LITTLEFIELD, TEXAS





RECEPTION COUNTER -- Marilyn Wells is shown above at the reception counter located directly in front of the vestibule as you enter the new REA building. The lower portion of the counter is walnut and the upper part is white formica. To the rear left of the picture is the office of Mrs. Edna Sisson, office manager, and at the back of Marilyn are five individual work areas for the bookkeepers.

REA Contributes To Area Economy

In addition to providing electric service in the rural areas, the Lamb County Rural Electric purchases various kinds of goods and services locally, as well as meeting a regular payroll. The Lamb County Electric has one of the largest payrolls in the county, and contributes materially to the economy of the area.

Over \$350,000 is spent locally in salaries to people who live and reside in the area, and contribute substantially to the community.

The personnel of nearly 50 persons include A.J. Bankston, Earl Box, Sharon Brawley, Paul Byrne, Wayne Cooper, Floyd Cox, J.D. Cox, Frank Crone, David Debusk, Wayne Donald, Jimmy Duke, Margaret Dodd, Johnny Eddings, Bill Ellis, Evelyn Ely, Joe Gilbert, Jimmy Glasscock, Kenneth Griffin, Jimmy Holmes, Travis King, Gayle Lynch, Wayne Mansell, Jack Milligan, Burl McCormick, Robbie Pass, Barbara Pierce, Charles Powell, Jerry Rainbolt, C.V. Ray, H.D. Reese, Stanley Scott, Jane Shipley, Edna Sisson, M.H. (Hack) Stephens, Donald Stubbs, Arnold Vance, Virgil Vaughn, Marilyn Wells, Edwin Wheeler, Mary Lou Whitsell and Charles Young.

Many of these employees have been associated with the REA

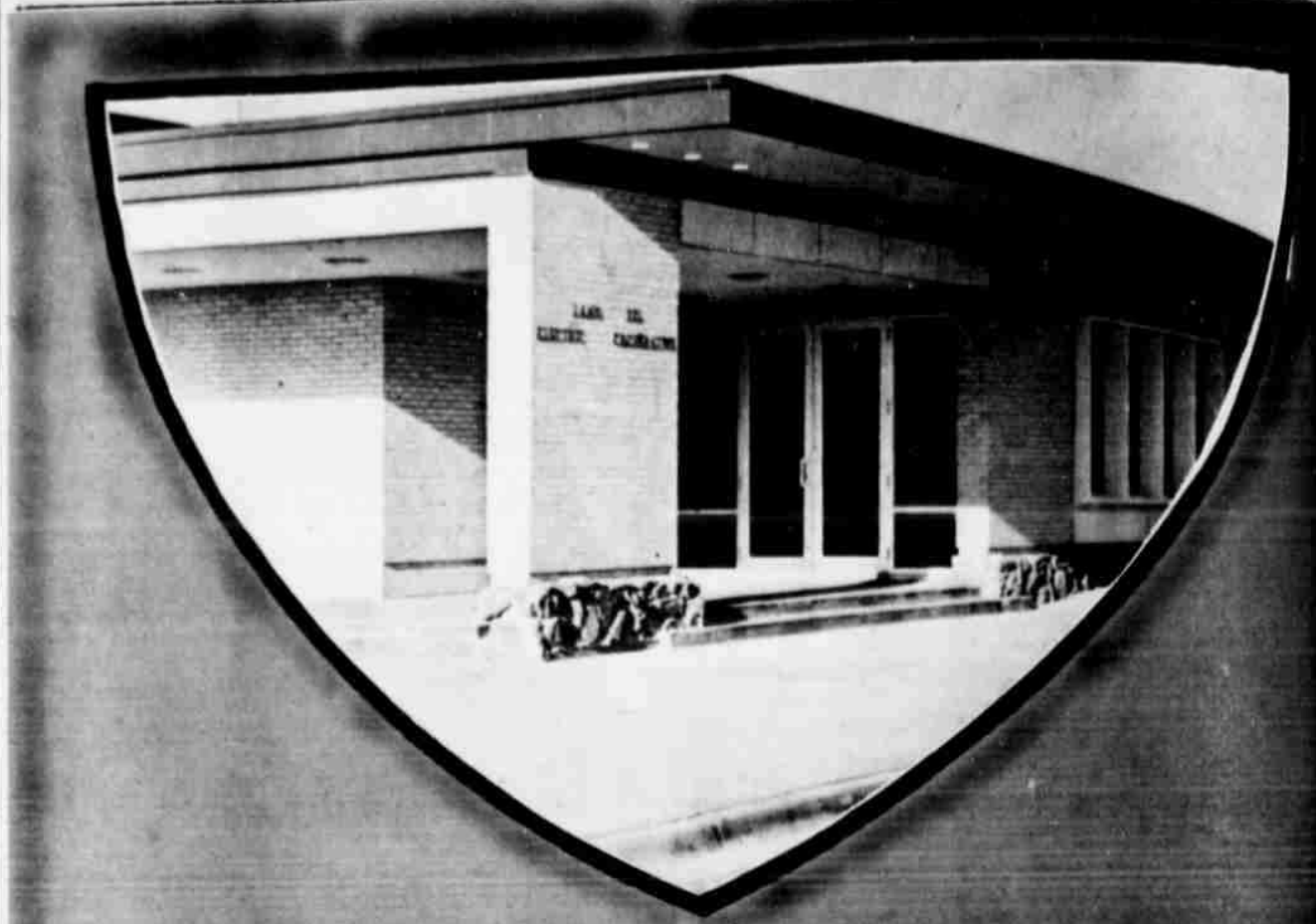
for a number of years some as long as 28 years.

J.H. Carl, manager, has been associated with the REA for 27 years. Mrs. Mitchell Sisson,

office manager, is the employee with the longest tenure of office. She began work with the company when it opened in 1938. C.V. Ray, maintenance line

foreman, began work with the company 21 years ago. Joe Gilbert, manager's assistant, has had 18 years with the REA. David De Busk is line sup-

erintendent; Ed Wheeler, construction line foreman; Ed Ely, material records supervisor and Howard Reese, certification advisor.



We Wish To Extend Our Best Wishes

To The

LAMB COUNTY ELECTRIC

AT THE OPEN HOUSE
OF THE SPACIOUS NEW
HEAD QUARTERS

SUNDAY 1 To 4 PM MAY 1ST

Southern Farm Supply

Association Inc.

AMARILLO

TEXAS



EDNA SISSON
...Office Manager

Mrs. Mitchell Sisson Is REA Office Manager

Mrs. Mitchell Sisson, office manager for the Lamb County Electric Cooperative, came to Littlefield in July, 1937, while attending Draughon's Business College, and planned to stay about a week. Instead she has made her home here and has been employed by REA longer than any of the other employees.

Her first employer was E.A. Bills, at that time a lawyer, who was instrumental in drawing up the charter for the Lamb County Electric Cooperative. She became bookkeeper for the REA when it opened in September, 1938.

Edna is the wife of Mitchell Sisson, owner of S & J Sales. They have a daughter Jan, who is eight years old. The Sissons belong to the First Baptist Church. He has long been an active member of the WOW and was recently named "Mr. Woodman". He is also a member of the VFW. Edna belongs to the Women of Woodcraft. The Sissons enjoy square dancing for a favorite pastime.

Jan's favorite pastime is singing. Her mother said she started singing almost before she could talk. She has appeared on the Lions Club Hootenany the past two years and two weeks ago was on television on the Mathis Furniture Show. She started taking voice

lessons about two months ago.

Edna returned Saturday from attending the state meeting of Texas Electrical Accounting Association in Dallas, so has only been in the office a few days since the move to the new facilities. She says she is still trying to find her way around.

Children and dirt have always gone together but a little soap and plenty of hot water can do wonders to separate them! As a matter of fact, having plenty of hot water always available makes many of your everyday chores so much easier.

That's why more and more families insist on an electric water heater...the surest way of having all the hot water you want...when you want it. An electric water heater is one of the wisest investments you'll ever make for your family's health, safety and comfort.

Doing our share to power America are one thousand rural electric systems...cooperatives and power districts that serve more than five million homes, businesses and institutions in more than 2700 of the country's 3100 counties. We serve where no other power supplier would.

Rural Areas Ideal Sites For New Plants

"American businessmen can help ease the Nation's farm unemployment and urban congestion problems by locating more plants in rural areas," according to Mr. W.B. Murphy, chairman of the Business Council and president of Campbell Soup Company. Mr. Murphy spoke at a recent meeting of the National Advisory Committee on Rural Areas Development.

Mr. Murphy said that his company, which has built 20 of its 26 plants in rural areas, found a large number of skilled workers, and many others that can be trained in most communities. "In Paris, Texas, for example, it took only seven months to get a plant built and into full scale operation," Mr. Murphy told the committee.

Company executives who once worked in urban plants find that they like the advantages of living in a small town. Mr. Murphy said, "It isn't long before we have a real difficult time transferring our executives from the country. One big advantage is that it only takes about 10 minutes to get to work".

Warehouse Area To Improve Service

The completely air conditioned 96' x 24' warehouse area in the new home of Lamb County Electric is expected to be the prime factor in increased service for the patrons of the company.

Manager Dick Carl said under the new warehousing arrangements they can now keep more equipment on hand and get the material out at a faster pace. One of the problems which existed at the old location was the warehousing. "Now," Carl said, "we think we have got the problem whipped."

In addition to 2300 square foot under roof, an additional acre or so is available for the storage of equipment too large to go into the warehouse area, this includes poles, large anchor rods, and spooled wire.

Operation in all types of weather is insured by a covered dock area which spans the warehouse area. Ease of operation is provided by electrically operated overhead doors, which if needed can be opened to allow a truck to move inside the warehouse proper.

THANK YOU ...

Lamb County Electric Inc



WE WISH TO TAKE THIS OPPORTUNITY TO THANK THE LAMB COUNTY ELECTRIC FOR THE FAITH THEY HAVE SHOWN IN US BY ALLOWING US TO TAKE PART IN THE CONSTRUCTION OF THIS BEAUTIFUL BUILDING.

CONGRATULATIONS

ON YOUR OPEN HOUSE

SUNDAY

MAY 1 ST

KNOX - GAILEY - MEADOR

PO 3-0418

GENERAL CONTRACTOR

LUBBOCK, TEXAS

In The REA Building
The Ceramic Tile Was By

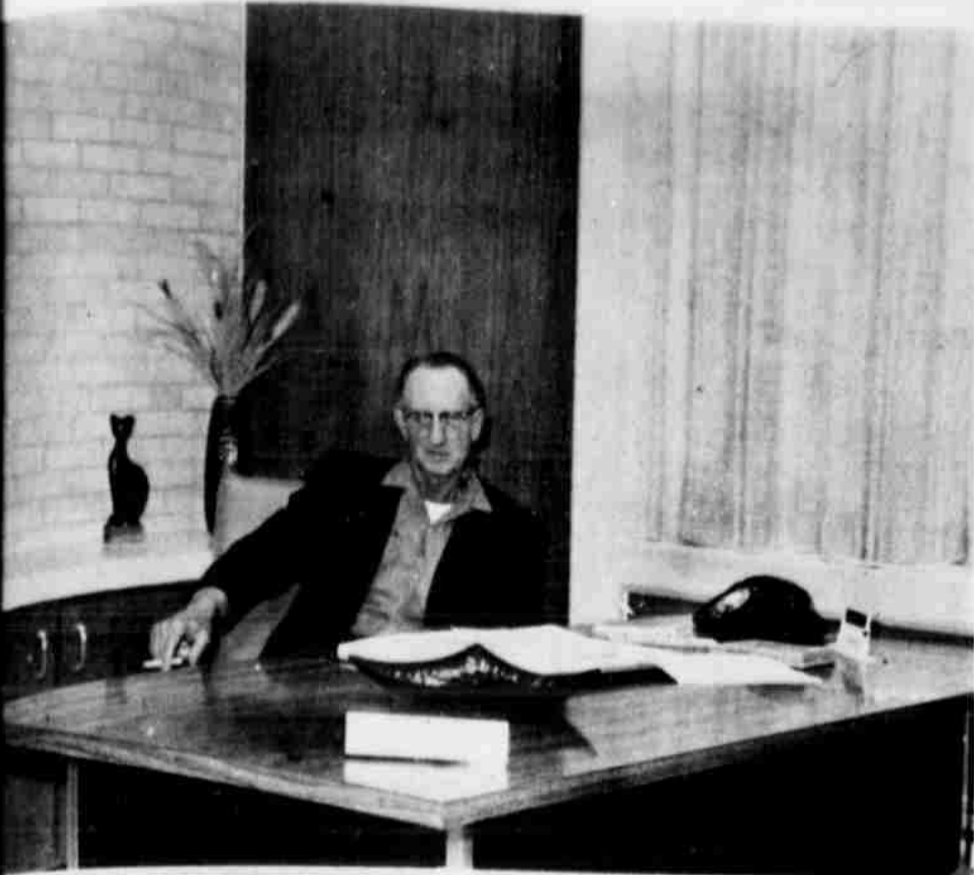
Hub City Tile

HARVEY NOSSUM

1517 39TH ST - SH 4-1068

LUBBOCK,
TEXAS

See This Beautiful New Building - Sunday 1-4



MANAGER — J.H. (Dick) Carl, manager of the Lamb County REA for 20 years, is pictured above in his new office with modern office

facilities. The walls are of fabric-backed walnut veneer and brick. Accent colors are blue and orange.

Carl Is REA Manager For Past Twenty Years

J.H. (Dick) Carl has been manager of the Lamb County Electric Cooperative for the past twenty years. He started with the company as a line worker in 1938 and returned to the company in 1945 after serving 4 years in the United States

Army in Gentry, Ark. In 1917, he started line work through the aid of a good friend, as were very hard to find at the time. After following this line of work in several states,

working, grinding, and feeding the line at the flip of a switch. Electricity now takes on another meaning... saving your money, your back, and your money. An Automatic Feed Proving Unit measures the grain in overhead bins (in proportion you set on the dials) mixes and grinds the amount you "set"... and shuts it off. You are free to do other jobs. The cost of the unit is less than a penny per 100 pounds.

We're carrying our share of the power load so that children growing up all over America will inherit a nation able to meet the demands of a great and growing society.

he entered the United States Navy at the beginning of World War II. He served aboard the USS Chester as Petty Officer First Class Electrician and was in the Guadalcanal Operation, Leyte, Coral Sea Operation, Attu and Adiatric Operation.

When he was first employed with the Lamb County REA there were only two other employees. Mr. Woodall, the manager, and Mrs. Mitchell Sisson, the bookkeeper. He has seen the company grow from one pickup truck to 21 vehicles. He threw the switch when the current was first turned on April 16, 1939.

Mr. Carl married the former Johnnie Pass, June 1, 1941. They have one son, John Dick who is 19 years of age and is attending Texas Tech majoring in electrical engineering. The year 1946 was a big year for Dick Carl as that is the year he became manager of REA and also the year his son was born.

Mrs. Carl is a second grade school teacher with the Littlefield School System.

They are members of the Methodist Church. He is a Rotarian and Johnnie is an active member of the Forum Club. Dick is an ardent fisherman and he and his dog Rip get their share of game during hunting season.

Rural Electric Have New Theme

Texas rural electric systems will be sparking a new image during the next three years as they emphasize and implement the "Helping Texas Grow!" theme their leaders adopted at the statewide annual meeting in August.

The new image really began generating in January as some 300 rural electric leaders attended four day-long area meetings at Tyler, Waxahachie, Big Spring, and San Antonio.

Specifically, this quartet of meetings concentrated on the implementation of "Helping Texas Grow!" the all-important subject of wholesale power supply, and a new financial proposal that will be put to a vote at this month's national meeting in Las Vegas.

J.R. Cobb, general manager

Much of the nation's food and fiber comes from the nation's farms which are served by rural electricians. And in many communities, local industries meeting local payrolls have been developed with the help of rural electricians.

of TEC, challenged the audience to channel its thinking through-out the sessions on the "Helping Texas Grow!" theme. To emphasize the theme, copies of "Helping Texas Grow!"

a new looseleaf handbook with a striking red and white cover, were distributed to those present. A slogan on the cover, "If it's important to people... It's important to us!" challenged the reader to look inside.

There, in some dozen sections, co-op members were given a series of guidelines and ideas stimulation "for those who seek to apply themselves effec-

tively in the area of community development to the end that more rural people live better for having been helped to share more equitably in the prosperity of our Nation."



JOE GILBERT ...Assistant to the Manager

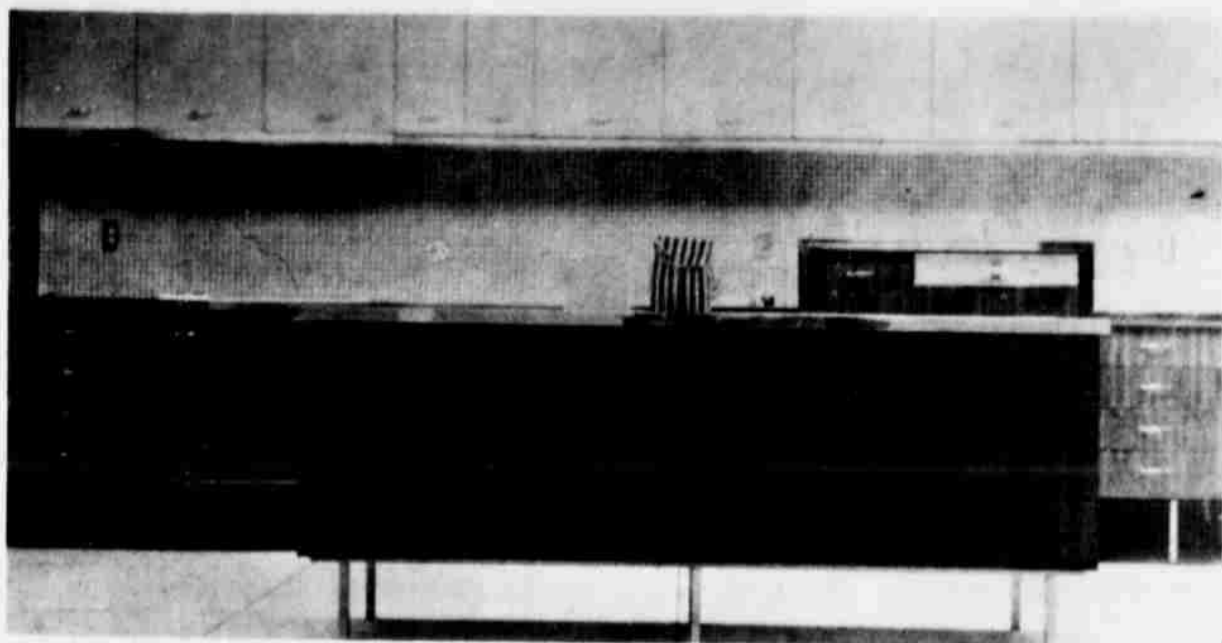
An employee of the Lamb County Electric Cooperative for 18 years, Joe Gilbert is the manager's assistant.

Gilbert was born November 21, 1924 in Normangee, Tex. He moved to Littlefield in 1942 and has lived here since that time, with the exception of two

years while he was in the United States Navy.

He and his wife, Fern, have three children, Linda age 17; Joe, 16; and Jana, 13 all attending Littlefield schools.

They are members of the Ninth Street Church of Christ.



Congratulations To Lamb County Electric

ON OPEN HOUSE

Of Your Beautiful New Building

We're Very Happy To Have Had A Part With The Installation Of The Kitchen Cabinet Equipment. Be Sure To See It Sunday From 1 To 4 PM

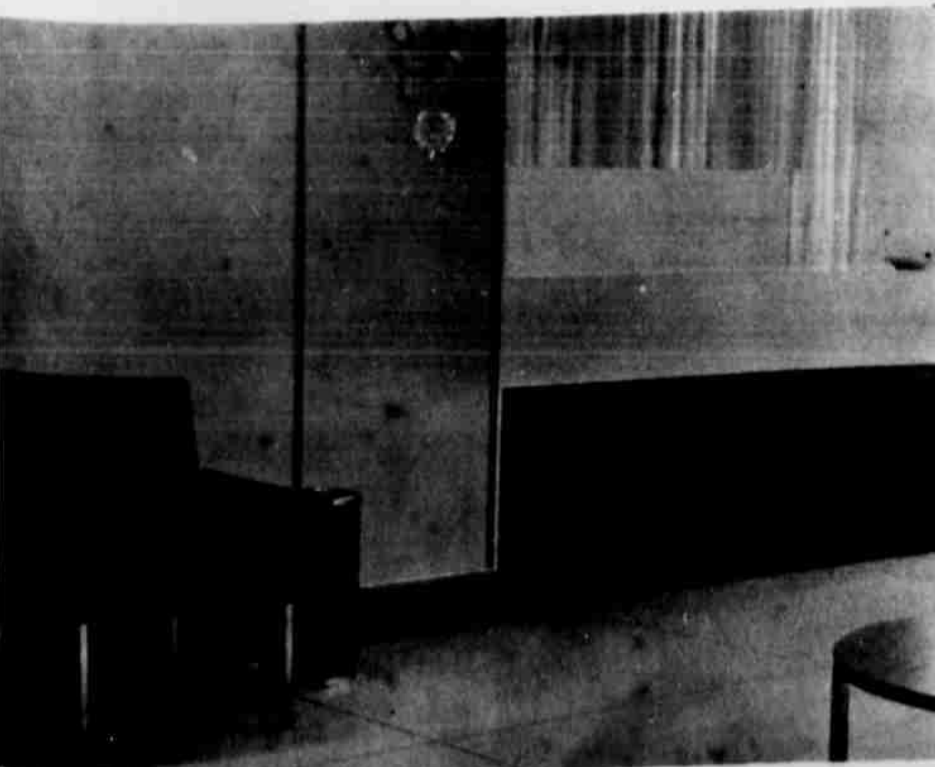
CUSTOM KITCHEN INC

3033-34TH ST. SW-54371 LUBBOCK, TEXAS

Our Best Wishes To The LAMB COUNTY ELECTRIC INC.

On Your OPEN HOUSE Of Your Beautiful New Headquarters

Sunday 1 -4 PM



Littlefield Federal Savings And Loan Association

Congratulations

TO THE DIRECTORS - PERSONNEL AND MEMBERS OF THE LAMB COUNTY ELECTRIC ON YOUR OPEN HOUSE

SUNDAY MAY 1ST - 1 -4 PM

IT IS A SYMBOL OF YOUR BELIEF IN THE FUTURE OF OUR AREA - AND WE JOIN IN EXTENDING OUR BEST WISHES



YOUR CHEVROLET DEALER

ARMES CHEVROLET CO.

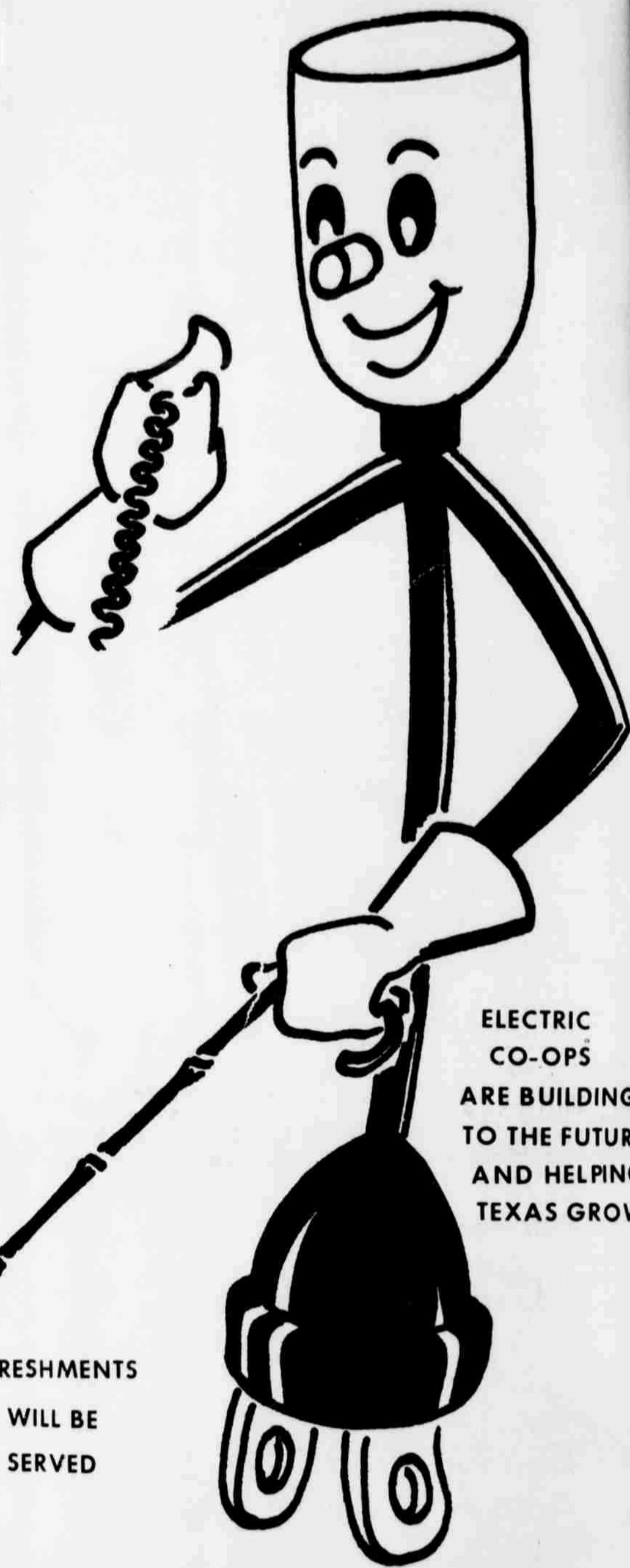
LITTLEFIELD

TEXAS

We Cordially
Invite
You
To Attend

An

OPEN HOUSE
IN OUR NEW HOME
SUNDAY **MAY**
1 TO 4 PM **1 ST**



ELECTRIC
CO-OPS
ARE BUILDING
TO THE FUTURE
AND HELPING
TEXAS GROW

REFRESHMENTS
WILL BE
SERVED



Our organization came into being to provide service and it continues to exist today for that same reason. In addition to being proud of our role, we are grateful for being permitted to make what ever contributions we can to the social and economic progress of this community and the nation.

- PRESIDENT
V.H. DIERSING -----PEP
- VICE PRESIDENT
T.C. FAVER ----- RT 1 ----- ANTON
- SECRETARY
R.V. ALLCORN -----OLTON
- DIRECTORS
V.M. PETERMAN ----- RT 1 -----AMHERST
JOE FISHER ----- RT 1 -----SUDAN
ERNEST D. GOERTZ -----RT 2 ----- LITTLEFIELD
JACK GRACE -----RT 1 ----- ANTON
V.D. HODGES-----RT 2 ----- LEVELLAND
T.C. IVEY -----RT 3 -----LEVELLAND

DICK CARL
MANAGER

Lamb County Electric Cooperative Inc.

PHELPS AVENUE-MARSHALL HOWARD BOULEVARD

PHONE 385-5191