

Market Place for  
Littlefield  
Area"

# Lamb County Leader

VOLUME 23

LITTLEFIELD, LAMB CO., TEXAS, THURSDAY, JANUARY 12, 1956

NUMBER 33

22 Pages

10 Cents

## Notes From The School Board Meeting

# School Board Promises Decision On Integration At Next Meeting



Rita Ann Sanchez insists that everyone follow suit and give dimes in the March of Dimes containers. Rita Ann Sanchez with dolls in June of 1954. She will be six years old in March. (Staff Photo)

## Wide Religious Census To Be January 29

Littlefield Ministerial Association has set January 29 for the most complete census ever made of every church in the area. Representatives of every church in the area will meet in the parlors of the Baptist Church immediately following morning services for lunch and instruction. Census takers will be the ladies of the Baptist Church who will furnish for a brief period for lunch and instruction. Census takers will be the ladies of the Baptist Church who will furnish for a brief period for lunch and instruction. Census takers will be the ladies of the Baptist Church who will furnish for a brief period for lunch and instruction.

## Larkin Dies Of Heart Attack As Car Crashes Through Window

L. Larkin, 51, who operated a furniture store in the corner of Duquesne and Third Street, died of a heart attack Wednesday afternoon at 2 p.m. Larkin was pronounced dead on arrival at Medical Arts Hospital and Clinic. R. Fain, who had evidently started to load a small trailer on to a 1951 Ford coupe, had the attack and the car crashed through the window of the building which is directly across the street, or whether he had that his brakes had failed during the accident brought on was not determined. It is said that the accident occurred so quickly, and since Larkin was pronounced dead, that how it happened is not known. Larkin was the same height



Employees of Garland Motor Co. examined a hole in the East side of the building made by a Ford coupe when Larkin was pronounced dead on arrival at Medical Arts Hospital. (Staff Photo)

## Nearly News

By DOUGLAS POE

Seems I misunderstood Bob Manley about Security State's cash dividend. They've been paying stock dividends instead of cash lately and this is the first cash one since Bob joined the organization. But they've had cash dividends before.

Local television repairmen have kept busy just answering the telephone the last couple of days since Lubbock's channel 13 station had a north-south transmission line go out, which has reduced their signal east and west of Lubbock. They say they're flying in an engineer to make repairs. Meanwhile, if your picture is haywire, repairmen suggest that you check it on both channels before deciding there is something wrong with your set.

SEEN—This week's best dressed man—J. O. Gardington.

Pete Pituitary says that "progress" seems to be mostly just the slow process of falling into line with the schemes of various minorities.

## Kerry King Is Finalist In Exams

Glenn Reeves, principal of Littlefield high school, has announced that Kerry King, son of Bro. and Mrs. Jack King of Littlefield, was in the top three per cent in Texas in the recent examinations given by the National Merit Council.

Kerry will compete Saturday, Jan. 14 with other semi-finalists in Pampa. Announcement of the winners will likely not be made before May.

Should Kerry win a scholarship, he can attend any four year college in the United States and take any subject he chooses.

Kerry is president of the National Honor Society and the Senior class.

Reeves said, "This is certainly an honor for Littlefield high school. We think this is tops."

## ASC Offices Are Moved To Courthouse

The ASC offices for Lamb County were moved into the east side of the basement of the Lamb County Court House Monday.

The offices were formerly located in Amherst. Charlie Hill is in charge of the office.

## National President Of WOW To Visit Littlefield

The local camp of the Woodmen of the World, Number 3871, will meet January 19 at 7:30 p.m. at the Youth Center. The following new officers of the local camp will be installed at that time. Consul Commander, Sam Hutson; Past Consul Commander, Merb Beard; Adviser Lieutenant, Bob Kirk; Banker, L. D. Stanaford; Escort H. W. Terrell; Camp Physician, Dr. W. C. Nowlin; Auditor, Claud Oliver; Watchman, Floyd Rogers; and Sentry, Bob Bridges.

Howard M. Lundgren, National President of the Woodmen of the World will fly to Littlefield for this installation, and will be the speaker of the evening. All members of the Camp, their families and friends are invited to this meeting. A ranch style supper will be served.

Howard M. Lundgren will spend the day in Littlefield visiting the Rotary at noon as their guest speaker, and speaking over KVOW radio station sometime during the day. He will fly to Dallas the following morning with Robt. Kirk, Chairman, National Legislative Committee of the Woodmen of the World, where they will attend a meeting of members of the Woodmen of the World there.



HOWARD M. LUNDGREN

## Services For G. W. Chesher To Be Held Today

George William Chesher, 82, passed away Wednesday morning at 4 a.m. in the Medical Arts Hospital in Littlefield.

Chesher operated a theatre in Sudan many years. He had retired several years ago and had been making his home with a daughter, Mrs. Ed Hart of Anton. He had been ill for several months.

Services will be Thursday afternoon at the First Methodist church in Littlefield. Rev. W. H. Vanderpool Jr., will officiate. Interment will be in the Littlefield Memorial cemetery under the direction of Hammons Funeral Home.

He is survived by three sons, A. C. and W. J. (Bill) of Littlefield, Lloyd of Washington state, and one daughter, Mrs. Ed Hart of Anton.

He is also survived by seven grandchildren.

## SCHOOL ADMINISTRATORS MEET AT SPADE

The Lamb and Bailey County School Administrators will meet at Spade Monday, Jan. 16 at 7:00 p.m. Problems pertaining to local schools will be discussed. Also the time and place will be determined for the Lamb County Spelling Bee sponsored by the Avalanche.

## Company Says Phone Strike Gained Little; Cost \$150,000

Details of the contract settlement which ended the six day strike of General Telephone employees were made public yesterday by F. E. Hightower, public relations director for the company.

A company spokesman said the new contract is substantially the same as that which was offered by the Company prior to the strike. He estimated employees not working lost \$25,000 per day in wages during the strike.

The new contract, which will be in force 15 months, includes the following major changes over the old contract:

1. Wage increases totaling \$175,000 annually which, when added to the wage adjustment granted in November, 1955, result in an hourly increase per employee equivalent to the wage increase received throughout the telephone industry.
2. Different plant areas for wage schedules were established. The number of traffic and commercial areas for wage schedule purposes were reduced.
3. Increases in the board and lodging allowances for unlocated construction personnel of \$1 per week.
5. Increases from 75 per cent to 100 per cent in on-the-job injury benefits.

The strike started at midnight December 31 when the former Union-Company contract was terminated by the Union. It was the first authorized Company-wide strike in the history of the Company.

Have You Had Company, been visiting, or had a party? If So, Call WILDA at 26 or 27 and give her the details.

## New Idea Enlivens Toastmasters' Club

Jim Tom Brittain was toastmaster at Monday evening's meeting of the Littlefield Toastmasters' Club. Five minute speakers were Kenneth Ware, Douglas Poe and Viggo Peterson. Evaluators were Dr. James Showell, Howard Horne and Tommy Williams. Cups were won by Poe and Williams.

Dr. Glenn Burk was topicmaster. He introduced a new idea. A small sack was placed at each plate and was not to be opened until two minutes before that member was to get on his feet for his two minute topic talk. His talk was then to be on the item he found in his sack.

## Rev. Anderson To Hold Meeting In Lubbock

Rev. William Anderson, pastor of the First Church of the Nazarene in Littlefield, will be speaker for weekend revival services at 7:30 Wednesday through Friday and again on Sunday at the Williams Memorial Church of the Nazarene, 2728 Duke Street in Lubbock.

The revival is sponsored by the youth of the church, but attendance is expected from all age groups.

Rev. Anderson will sing each night before he speaks. Rev. James C. Holman is the pastor of the church in Lubbock.

## Pit Is Completed For New Oil Well

Western Drilling Company has completed the slush pit for a new oil well to be drilled shortly on the Doyle Dean property just northwest of the city limits.

Tras Company was drilling at 1800 feet in the L. C. Hewitt Trust No. 3 on the northeast edge of town. This is the tract which was purchased by a group of local people to be made available to any manufacturer who might become interested in locating a plant here. There are two wells presently producing on the tract.

## Company Says Phone Strike Gained Little; Cost \$150,000

Details of the contract settlement which ended the six day strike of General Telephone employees were made public yesterday by F. E. Hightower, public relations director for the company.

A company spokesman said the new contract is substantially the same as that which was offered by the Company prior to the strike. He estimated employees not working lost \$25,000 per day in wages during the strike.

The new contract, which will be in force 15 months, includes the following major changes over the old contract:

1. Wage increases totaling \$175,000 annually which, when added to the wage adjustment granted in November, 1955, result in an hourly increase per employee equivalent to the wage increase received throughout the telephone industry.
2. Different plant areas for wage schedules were established. The number of traffic and commercial areas for wage schedule purposes were reduced.
3. Increases in the board and lodging allowances for unlocated construction personnel of \$1 per week.
5. Increases from 75 per cent to 100 per cent in on-the-job injury benefits.

The strike started at midnight December 31 when the former Union-Company contract was terminated by the Union. It was the first authorized Company-wide strike in the history of the Company.

## National Honor Society Initiates Four Students

In a candle-light ceremony held Wednesday morning in the auditorium of Littlefield high school, four new members were initiated into the National Honor Society. They are Parker Anderson, Betty Ayres, Norma Witcher, and James Durham.

John Clayton, vice president of the society, administered the oath, and Leta Merle Roberts gave the charge to the four students. Pins were presented to them by the

## Hire Lawyer To Defend Title To Fieldton School Property

Three colored members of the committee which studied the local integration question last spring attended the school board meeting Monday evening. They came to find out whether or not the board had decided what to do about this matter next year.

They first made it clear that they were not opposed to integration, but indicated that as far as they were personally concerned they would prefer to keep Dunbar in operation as long as possible, if they could get better facilities for it. They also expressed a hope that if the board should decide to integrate next fall, they would try to use some of the colored teachers who have been in the system a long time.

Board members indicated that they thought the teacher situation was impossible and that no more bonds could legally be issued at this time to pay for new buildings for Dunbar.

They said they would think it over this month and talk it over with citizens of the school district and make a decision at the February meeting.

The three visitors were D. C. Stewart, Herbert McCarty and Rev. Walter Griffin.

## Country Club Elects New Directors

Members of the Littlefield Country Club met at the clubhouse Monday night, Jan. 9, and elected four new directors.

Elected were L. C. Hewitt, J. H. Farmer, Marshall Howard and Dr. Wm. N. Orr.

Outgoing directors are Oscar Wilmon, Bill Sibiky and Jim Crump.

The members of the board will meet next Tuesday night, January 17, at which time a president and vice president will be elected.

No action was taken to change any of the policies of the club regarding non-members who are residents of Lamb county.

## TECH TENNIS COURTS TO BE READY FOR MEET

There's good news for West Texas high school tennis players aspiring for berths in the Region I Interscholastic League Meet at Texas Tech in April.

Counting seven tennis courts due to be finished by the Spring semester, Tech will have 11 first-rate courts for use in the meet.

## County Banks Have Over \$23,000,000 On Deposit

On January 1, 1956 more than twenty-three million dollars was on deposit in the six banks in Lamb county. In the first week of 1956 the banks were busy taking deposits from farmers who had not sold cotton and feed in 1955. Earth banker, Bill Stockard, reported that in the first two days of 1956 his bank received over \$700,000 in deposits. This indicates that several million dollars has probably been deposited in Lamb county banks since the first of the year.

The First National Bank and the Security State bank of Littlefield show a three and one-half million dollar increase over the third quarter of 1955.

The deposits by banks on January 1, 1956 are: The Earth State Bank, \$2,000,000 (round figures). The Olton State Bank, \$4,788,476.02. The First National Bank of Amherst, \$3,972,300.42. First National Bank of Sudan, \$1,800,990.87, the Security State of Littlefield, \$5,460,477.14, and the First National Bank of Littlefield, \$5,122,918.07.

## RAINBOW OF DESIRE



Kerry King, Leta Merle Roberts and John Clayton stand in the background after initiating Norma Witcher, Betty Ayres, Parker Anderson, and James Durham into the National Honor Society. (Staff Photo)

member standing directly behind them, as each held a lighted candle.

The ceremonies were held at a special student assembly. The program was closed by Hugh Ellison, chorus director for the schools, singing "The Lord's Prayer."

Membership in the society is given on character, leadership, scholarship, and loyalty.

Parents of the students are: Betty Ayres, Mr. and Mrs. S. E. Ayres, Littlefield; James Durham, Mr. and Mrs. J. E. Durham, Rt. 1, Littlefield; Norma Witcher, Mr. and Mrs. C. C. Teeterman, Rt. 1, Sudan; and Parker Anderson, Mr. and Mrs. J. B. Anderson, Rt. 2, Littlefield.



A group of ginners and farmers from the Littlefield area attended a Field Day sponsored by the Northern Star Feed Farms Monday. They are pictured inspecting a field of cotton on the A. G. Ellis farm near O'Brien. The Northern Star No. 11 cotton was planted June 14.

### County School Men Attend Austin Meet

Carl Macon, Superintendent of the Olton school, O. E. Lumsden, Superintendent of Schools, Springlake; Ralph Schilling, Superintendent of Schools, Littlefield, and J. A. Lumsden, Lamb County School Superintendent, attended the mid-winter School Administrators meeting in Austin that was held January 5 and 6. A study of the following topics was made in group meetings by representatives of schools state-wide:

1. State policy of VISUAL EDUCATION materials.
2. COUNTY SUPERINTENDENTS STUDY.
3. Problems related to SPECIAL EDUCATION services.
4. SCHOOL DISTRICT ORGANIZATION problems.
5. SCHOOL BUILDINGS - Construction, Facilities.
6. Evaluation of STATE LEVEL services.
7. TEXT BOOK ADMINISTRATION from local level.
8. A state plan for TEACHER RECRUITMENT.
9. Developing SCHOOL BOARD POLICIES.
10. SCHOOL LAW - Common legal questions.
11. Interpreting the SCHOOL PROGRAM to the community.
12. Evaluation of AGENCY REPORTING PROCEDURES.

Some men live to die a natural death, while other get the wrong end of a love triangle.

### 84 Drive In Amherst, Texas

THURSDAY ONLY

The true story of TEEN-AGE HOODLUMS LIVING FOR KICKS!

### MAD AT THE WORLD

FRIDAY & SATURDAY

The IMPASSIBLE RETURN OF JACK SLADE

JOHN CRISSEN, MARY BLANCHARD, NEVILLE BRAND

AN ALLIED ARTISTS PICTURE

### Mass Is Read Wednesday For Mrs. C. Sanchez

Mass was said at the Sacred Heart Catholic church in Littlefield at 9 a. m. Wednesday morning for Mrs. Christina Sanchez, 63, who died of a heart ailment Monday morning at her home two miles west of Anton.

She is survived by six sons, Frank and George of Sabinal, Cornelio of Anton, Alex. Joe and Ruben of Littlefield.

Mrs. Sanchez was born in San Marcos. Her home is on the Jack Gracey place near Anton.

Burial was in the Sacred Heart Cemetery in Littlefield, under the direction of Hammons Funeral Home.

### COTTON SURVEY NOT MADE YET

No survey has been made on the total bales of cotton-crown in Lamb county this season, Huston Hoover, local manager of the Union Compress, predicts that the figure will be 143,000 bales.

Depending on the viewpoint of the pessimist you talk to, a "hard" winter can be one with stacks of snow blocking communication and transportation, or one with no snow to be followed most certainly by summer drought. You pay your money but you get no choice—either way, it's always a "hard" winter.

The Interstate Commerce Commission recognizes three classes of railroads: Class I which has more than a million dollars a year operating revenue, Class III which has less than \$100,000 a year, and Class II which is between the others.

### MARCH OF DIMES

FIGHT INFANTILE PARALYSIS

JANUARY 3-31

### Services Are Held Wednesday For Amherst Pioneer

Another of Lamb County's pioneers has passed away. Services were conducted at the First Baptist Church in Amherst at 2:30 p. m. Wednesday for J. F. Stephens, 77, who passed away Monday in Muleshoe. He had suffered a heart ailment for the past four years.

Officiating at the services was Rev. John Rankin, pastor of the First Baptist Church in Amherst. Stephens moved with his family to Amherst in 1924 where he farmed until his retirement several years ago.

Stephens was born in Tennessee August 26, 1879. His first wife passed away in 1934. He and Mrs. Stephens, who survives him, were married in 1935. They have resided in Amherst ever since.

Stephens is survived by six daughters, Mrs. Beatrice Phillips, Melano, California, Mrs. Imogene Beason, Amherst, Miss Maxine Stephens, Whittier, Calif., Mrs. Ethyl Johnson, and Mrs. Edith Thompson both of Bakersfield, Calif., and Mrs. Ruby Ward of San Jose, Calif.; three sons, L. C. and Leo Stephens of McFarland, Calif., and Haskell Stephens of Utah, and stepson, Sherman Vance of Carlsbad, New Mexico.

Burial was in the Amherst cemetery under the direction of Lee Payne Funeral Home.

The menu in a hotel in Reyjavik, Iceland, was in English except for a line of Icelandic across the bottom. Curious, I asked the waiter what it meant.

"Oh, that's Icelandic," he said, starting away.

"I know," I said, "but what does it mean?"

Reluctantly he translated, "Ten percent will be added to your check for service. No tipping, please."

### HAVING TROUBLE WITH YOUR BATTERY!

WE HAVE NEW BATTERIES AS LOW AS \$7.45

### WALKER BATTERY & ELECTRIC

9th & LFD Drive Phone 940  
2 blocks south of Postoffice

### Legal Notices

#### NOTICE BY PUBLICATION OF FINAL ACCOUNT

THE STATE OF TEXAS TO THE SHERIFF OR ANY CONSTABLE OF LAMB COUNTY, TEXAS: GREETING:

Jim Fulcher, administrator of the estate of Beulah Fulcher, deceased, having filed in our County Court this final account of the condition of the estate of the said Beulah Fulcher, deceased, which is numbered 793 on the Probate Docket of our Court, together with an application to be discharged from said administration, you are hereby commanded, that by publication of this writ, once in a newspaper regularly published in the County of Lamb, and said publication shall be not less than ten days before the return date thereof, you give due notice to all persons interested in the account for final settlement of said estate, to file their written objections thereto, if any they have, and to appear and contest the same if they see proper, in said Court on or before Monday, the 23rd day of January, A. D. 1956, when said account and application will be considered by said Court.

Forein fail not, but have you this writ before said Court at the time aforesaid with your return thereon, showing how you have executed the same.

Witness, Charles D. Jones, Clerk of the County Court of Lamb County, Texas.

Given under my hand and seal of said Court, at office in Littlefield, Texas, this 11th day of January, A. D. 1956.

Charles D. Jones, County Clerk, Lamb County, Texas.

I hereby certify that the above and foregoing is a true and correct copy of the Original Writ now in my hands.

Dick Dyer, Sheriff, Lamb County, Texas.  
(Publ. January 12, 1956, in the Lamb County Leader).

### City-Wide

(Continued from Page One)

of the local group, will contact the Brownfield Methodist district pastors group at Ceta Canyon Jan. 16, and Rev. Arthur Hunt, vice-president of the local group, will discuss the situation with Dr. Dudley Strain, president of the Lubbock Ministerial Association and chairman of the Disciples of Christ Social Action Committee.

Ministers attending the meeting Tuesday were Vanderpool, Hemphill, Hunt, Rev. Bill Anderson, Lt. Rolan Chambless, and Rev. Kenneth Hill.

### "Hot Flashes Stopped"

or strikingly relieved in 63-80% of cases in doctors' test:

- If you're miserable from the "hot flashes" and accompanying irritable, restless feelings of "change of life"—you may be suffering unnecessarily!
- For... in tests by doctors... Lydia E. Pinkham's Compound and Tablets brought relief from such functionally-caused suffering to 63% and 80% (respectively) of the women tested! Complete or striking relief!
- Yes! Research has proved these medicines thoroughly modern; in action... has shown you where to look for relief from those distressing nervous, "out of sorts" feelings of mid-life "change of life"!
- So... get Lydia E. Pinkham's Vegetable Compound—or new, improved Tablets with added iron! (Wonderful, too, for the functional pains of menstrual periods!)
- It acts through a woman's sympathetic nervous system to relieve distress of those awful "hot waves"!

### Services Held For Littlefield Kin

Funeral services were held at 10 a. m. Tuesday, for Mrs. H. W. Moore of Lubbock, aunt of Mrs. Charles Smith, Jr., and Mrs. Alvin Webb of Littlefield.

Mrs. Moore, 59, died at her home at 2:15 Sunday. Services were conducted at the Rix Funeral Home in Lubbock by Rev. Harry Purviance, pastor of the Lubbock View Christian Church.

Mrs. Webb accompanied the family to Bunceton, Mo., where interment was held. Among the out-of-state relatives attending the funeral services was Mrs. Roy Blank of Bunceton, mother of Mrs. Smith and Mrs. Webb.

### School Board

(Continued from Page 1)

Dunbar coach was accepted effective December 23. Chaney said his resignation was due to his wife's illness.

New two years contracts were extended to eight administrative persons, and a three year contract to Superintendent Ralph Schilling. They were High School Principal Glenn Reeves, Junior High Principal Forrest Martin, Elementary Principal D. C. Lindley, Primary Principal James Hine, High School Co-ordinator William Brune, Grade School Co-ordinator Paul I. Jones, Business Manager Sid Hopping, and Coach Gene Mayfield.

### Well Is Weak

Schilling reported that the well at the site of the new stadium is disappointing. It is pumping only a 2 1/2" stream. The board decided to go ahead and equip it and see if it will be sufficient to maintain a good sod on a playing field and a practice field, plus water for showers, etc. If not they will either supplement it with city water or drill a second well.

At request from the city manager that the city and the school district carry out a joint appraisal

Drs. Woods & Armistead  
OPTOMETRISTS

B. W. Armistead, O.D.  
Glenn S. Burk, O.D.  
Ira E. Woods, O.D.

406 LFD Drive Phone 1000  
Littlefield, Texas

of city property for assessment purposes was discussed. The school already has such an appraisal of city property almost two thirds completed.

They decided to ask representatives of the city government to be present at the February meeting to see if an agreement can be reached on this matter.

The superintendent was authorized to ward one half unit of credit to students who successfully complete the driver training class. First classes will begin the first of the next semester.

The Highway Patrol recently completed an inspection of the

fleet of buses and made several recommendations which Schilling says will be carried out.

### Pick Up Crippled Child

The board labored over the problem of what to do about a crippled child living in the southeast part of town who has to walk nearly two miles to school. It was pointed out that in bad weather he is unable to attend and even in good weather it is a major effort for him to walk the almost four miles a day to and from school.

The board decided to modify the two miles rule in his case and allow the child to board one of the buses as it comes into town on

its regular route. They were that it would open the flood of requests from children living just inside the mile limit, but decided the thing should be done for the case, regardless of the it may bring down on the members.

### Christian And Moss

File For Re-election  
President Troy Moss and former President Jack Christian affirmed their previous not to file for re-election. Both gave as their reason that they will not have school next year.



You CAN Pick Your CANDIDATE BUT... THE RIGHT TO VOTE IS YOURS ONLY IF You...

PAY YOUR POLL TAX!

Built For More Service . . . the New

## STUDEBAKER PICK-UP

New in Studebaker's line of Transtar trucks for 1956, is this half-ton pickup model of 5,000 pounds gross vehicle weight with a 122-inch wheel base and widest clear space pickup body in the industry.

Largest payload for these light duty models in company history has been achieved with increases of as much as 20 per cent in volume capacity. Two stage rear springs, a new 12-volt electrical system, ignition key starter, and oil bath air cleaner, all become standard equipment on the light duty models. Power plants for the new half-ton models, volume leaders in the line, are 224.3-cubic inch V8 engines of 140 or 160 horsepower.



# WALKER BATTERY And ELECTRIC

9th And Littlefield Drive

REESE'S DRUG STORE

## THIS WEEK'S SPECIALS AT REESE DRUG

Large Assortment  
**Tooth Paste 19c**  
Only

**ALKA-SELTZER**  
Regular 39c  
60c

**KOTEX . . . . . 27c**

**ASPIRIN 3c**  
5 Grain Only

**View Master Reels 3 for \$1.00**

**HALO SHAMPOO**  
Regular \$1.00 59c

Honey & Almond Hand Cream  
**HINDS 74c**  
2 Bottles

**Revlon Satin Set 93c**  
Regular \$1.35

Yardley's Shave  
**CREAM 17c**  
Reg. 50c, Only

**VETO DEODORANT**  
Regular \$1.00 59c

Miss Curly  
**DOLL 43c**  
Only

**Penetro RUB 19c**

**BABY PANTS 59c**  
Playtex Regular 89c

**COUGH SYRUP 39c**  
Glesco Regular 60c

**Beau-Cake 29c**  
Reg. \$1.49

**TISSUE**  
Only . . . . . 4c

**SOAP 39c**  
Reg. \$1.25 & \$2.00 Only

# REESE'S

PHONE 500



WINIFRED SCOTT

### Wiggy Manager's Polaroid Camera

Stout, manager of the Wiggy store admires the Polaroid Land Camera that he used to take a recent contest sponsor's pictures of Swanson Boned Chicken and Turkey.

A display was made up of ten Polaroid pictures of the Swanson Boned Chicken and Turkey. It tied in with the contest sponsor's display.

Ernest Gohlke of Littlefield has been elected pledge captain of the Industrial Arts Club for the spring semester at North Texas State College.

The son of Mr. and Mrs. H. E. Gohlke, Route 1, Littlefield, he is a member of the Student Religious Council.

Wife addressing Christmas cards to husband: "We sent them one last year and they didn't send us one so they probably won't send us one this year because they'll think we won't send them one because they didn't send us one last year; don't you think, or shall we?" - from Punch.

A total of 58,421 colonies of bees were inspected during the 1954-55 season and only 430 or .74 percent were found to be infected with American foulbrood.

## News From Whitharral Baptists End Course, Revival Is January 30

By MRS. ELVA T. CRANK  
JUNIOR CLASS OF FFA HAVE TEA AND STYLE SHOW

The third year class of Home Economics sponsored a tea and style show in the Cottage here Thursday afternoon with Miss Jean Bryant announcing.

Modeling sport dresses, suits and "date" dresses were Misses Vonnell Willett, Barbara Montgomery, Lavana Durrett, Jorrie Gravitt, and Hazel Collins.

Misses Sharon Davis, Alice Molina, and Mary Jo Hicks, second year class, served tea and frosted cakes to Mesdames G. E. Loft, Hugh Buckner, L. H. Durrett, W. C. Hawks, D. H. Montgomery, Elva T. Crank, and Alvis Jones, Home Ec sponsor.

### WHITHARRAL BAPTIST END STUDY COURSE

The study course held last week at the Whitharral Baptist church ended Friday evening with an enrollment of 73.

Rev. Fred Thomas, pastor, taught the adult group. B. F. Johns taught the junior group with Jack Milburn teaching the intermediate group.

A roll call of all members of the church will be made Sunday, Jan. 22, at the morning service.

A series of revival services will be held from Jan. 30-Feb. 5 with Rev. Dan Vestal of Ft. Worth to do the preaching.

### Ernest Gohlke Is Pledge Captain At WTSC

Ernest Gohlke of Littlefield has been elected pledge captain of the Industrial Arts Club for the spring semester at North Texas State College.

The son of Mr. and Mrs. H. E. Gohlke, Route 1, Littlefield, he is a member of the Student Religious Council.

Wife addressing Christmas cards to husband: "We sent them one last year and they didn't send us one so they probably won't send us one this year because they'll think we won't send them one because they didn't send us one last year; don't you think, or shall we?" - from Punch.

A total of 58,421 colonies of bees were inspected during the 1954-55 season and only 430 or .74 percent were found to be infected with American foulbrood.

La., and points in Florida.

Mr. and Mrs. Elton Moreland, who have resided here for several years, are moving to Wilcox, Ariz.

Recent guests of Mr. and Mrs. E. P. Havins were Mr. and Mrs. Clarence Key and son of Crane, Mrs. Edna B. Yantis and A. C. Yantis of Anson.

Mr. and Mrs. A. B. Harper and Miss Sue Harper left Thursday for Lincoln, Ark., where they will make their home.

Mr. and Mrs. Clifford Williams and daughter have moved to Littlefield. Mr. and Mrs. Billy Williams and children of Sudan will move to the farm vacated by the C. Williams.

Mr. and Mrs. R. H. Davis arrived Friday from Wilson, Okla., for a week's visit with their parents, Mr. and Mrs. J. H. Davis, and family east of town.

Mrs. Bob Smith left Friday for Yuba City, Calif., to join her husband in trying to re-clean their home from the recent flood there. The three sons will remain with their grandparents, Mr. and Mrs. E. G. Wade.

Miss Maude Hicks and Mrs. Elva Crank were in Lamesa Saturday where they visited Jake McFarren, who suffered a broken bone in his right arm just above the wrist there Monday night while playing basketball. McFarren was formerly coach here.

Mr. and Mrs. Royce Gene Clark of Lubbock visited the latter's sister, Mr. and Mrs. Ralph Wade. Mrs. Clark is the former Bobbie Fae Hudson, before her recent marriage to Clark. The Clarks will reside near Muleshoe where Clark will farm.

Mr. and Mrs. Cecil Bolton and children have moved to San Diego, Calif. Mr. and Mrs. W. D. Terry and daughters have moved to the farm vacated by the Boltons, on the Anthon Highway. Mr. and Mrs. G. O. Key and daughter of Farwell have moved to the Rochelle farm vacated by the Terrys.

Mrs. Mattie Sewell of Littlefield has been with her daughter, Mrs. D. H. Montgomery and family since she sustained a broken arm recently.

Mr. and Mrs. Harvey Hoelscher have returned from Lake Worth, Fla., where they visited their daughter, Mr. and Mrs. Chester Burnett and their infant daughter, Melanie Gail, born Dec. 31. Mrs. Burnett is the former June Hoelscher.

Mr. and Mrs. Roy Taylor returned Thursday from an extended visit in Monroe and New Orleans.

Mrs. David Walker of Lubbock

### LAFF - A - DAY



"It isn't the lost mink coat I'm worrying about, it's the blonde that's in it!"

was a guest of her parents, Mr. and Mrs. L. E. McDonald, Sunday.

Rev. and Mrs. A. H. Henderson of Lubbock, were here Sunday. Rev. Henderson, the district superintendent, preached at the M. E. church.

Mr. and Mrs. C. M. Vining and children of Floydada visited Mr. and Mrs. C. C. Overman and family here Sunday.

Born to Mr. and Mrs. Paul Boyer a daughter, La Nita Carol, in Ontario, Calif. The Boyers formerly resided here.

Supt. Chester Borders has returned from an administrators meeting in Austin.

Mr. and Mrs. B. K. Grant, and Mrs. Norman Hodges were Lubbock visitors Monday.

Jack Milburn went to Waco Monday to attend the annual Farm Bureau President's conference. Milburn is president of the Hockley county Bureau.

Mrs. H. G. Walden was shopping in Lubbock Monday.

Rev. Fred Thomas and Vernon Cox left Monday for the Evangelistic Conference in Ft. Worth. They were accompanied by Mrs. Thomas and children who will visit her parents, Mr. and Mrs. E. S. Haw-

kins, there.

Mrs. J. W. Borders Jr., is a patient in a San Angelo hospital. She and Mr. Borders went down to be with his mother who underwent surgery there the weekend, when she became ill. Both of the ladies are improving.

Mrs. Jeanette Davis visited the Ralph McClures Monday enroute from Lubbock and Slaton to her home in Portales, N. M.

An assignment in my sociology class called for getting some first hand information on neighbors. To do this, I went from door to door interviewing people. I put my first question to one man, "What do you especially like about living in this neighborhood?"

The man answered slowly, "It's nice and friendly," he said. "Folks are always coming to visit us and we visit them. And there are a lot of kids around."

"And what are the things you don't like about it?" I asked next. The man thought about it, and then said, "same things, I guess."

Finding an honest, responsible, well-trained and intelligent public official to write about in the days news is like being offered a cool, tangy, drink of fresh lemonade after a potful of bitter, stale and tepid coffee.

## County Boys Will Show Steers In Ft. Worth Show

Among the hundred of entries in the junior steer show at the Southwestern Exposition and Fat Stock Show in Fort Worth, Jan. 27 thru Feb. 5, are:

Graham—H. K. Jones Jr., Angus; Bobby Banks, Angus.

Hamlin—Estel Jameson, Hereford.

Henrietta—James W. McAdams, Angus and Hereford; Jimmy Ingram, Hereford; Henry Scheer Jr., Hereford.

Iowa Park—Jim Barbour, Angus.

Jolly—Ann Avis, Angus.

Lamesa—R. C. Barron, Short-horn; Roy Ed Match, Angus; Sandra Adams, Angus; Bryan Adams, Angus.

Leuders—Nita Harvey, Hereford.

Littlefield—Wayne Loman, Angus; Alan McAnelly, Angus; Douglas Walden, Hereford.

Miami—Bill Bredelme, Hereford; Bill Ed O'Loughlin, Hereford.

Muleshoe—Royce Turner, Hereford.

Munday—Mary Ann Renuau, Angus; Ava Mary Taylor, Angus; Rodney Taylor, Hereford.

O'Donnell—Tommy Gardenhire, Angus.

Old Glory—Dean Litz, Hereford; Ramona Gail Hize, Hereford.

Ringold—Jimmie Franklin, Hereford.

Roby—Shirley Whitworth, Hereford.

Seymour—David Wilson, Hereford; Larry Ware, Hereford; Danny Ryan, Hereford; August Peters, Hereford; Robert Malone, Hereford; Margie Malone, Hereford; Bernard Knezek, Hereford; Jimmy Couch, Hereford; Jerry Butler, Hereford and Angus; James Butler, Hereford and Angus.

Stanton—Bobby Sale, Hereford.

Sunset—Douglas Younger, Hereford; John Younger, Short-horn.

Sweetwater—Walt Davis, Angus.

Tulia—David Finch, Angus; Norman Lynn Burk, Angus; Terry McAnelly, Angus; Dennis Love, Angus.

Wichita Falls—Flynn Stewart II, Angus; Mary Ann Stewart, Angus; Roland Stewart, Angus; Edward Brock, Angus; Frank Morton, Angus; Roland Stewart, Angus; Edward Brock, Angus; Frank Morton, Angus and Hereford; William Morton, Angus.

Windthorst—Sharon Thurber and Junior Sternsdel, Hereford; Speedy Hander and Jimmy Hig-

gins, Hereford.  
Avoca—Darryl Schoonmaker, Short-horn.  
Weiner—Jerry King, Angus and Hereford.

### HINTS ON FOOD ECONOMY

Saving on food not only means spending less, but using everything you buy as well. Here are a couple of hints that will enable you to use your foodstuffs to a maximum degree.

Fresh greens should be covered when placed in a refrigerator to avoid drying out.

Keep bread in a cool, well-ventilated bread box.

### GIVE YOUR DIMES!

"LIFE NOT SO SHORT BUT THAT THERE IS ALWAYS TIME FOR COURTESY"

Copyright 1955 (11W2)

The Code of Ethics of Pharmacy assures you that you will always receive the best and freshest of medicines, and get exactly what your Physician specifies.

We also believe that friendly service is important. Therefore please expect from us courteous attention. We sincerely appreciate the confidence you show in choosing us to be "Your Pharmacists." We always have time to serve you courteously.

YOUR PHYSICIAN CAN PHONE WHEN YOU NEED A MEDICINE

Pick up your prescription if shopping near us. A great many people entrust us with the responsibility of filling their prescriptions. May we compound yours?

MADDEN - WRIGHT DRUG Littlefield, Texas

\*Quotation by Ralph Waldo Emerson (1803 - 1882)



## It tells the world you've arrived

A BLUE CHIP GMC helps its owner achieve the prosperity it advertises. Its operating costs are low because the 155-h.p. V8 engine's a fuel miser—its Hydra-Matic Drive's a maintenance shrinker—its rugged construction's a life stretcher. Come in and see one!

\*Hydra-Matic standard on many models, optional at extra cost on some others

See us, too, for Triple-Checked used trucks

# SUMRALL-MAPLES PONTIAC

## Just Received Big Shipment Of Fitted Sheets At Same January Low Price



PENNEY'S NATION WIDE

### AMONG AMERICA'S TOP SELLERS, FITTED NATION-WIDE MUSLINS!

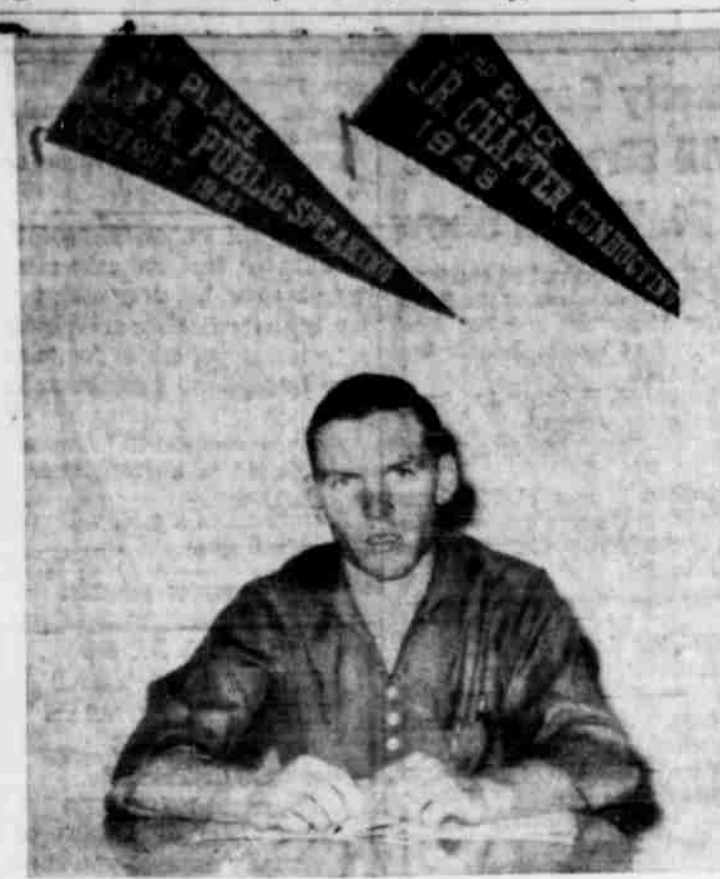
Laboratory-Tested perfects... Sanforized for lasting good fit... famous sheets sold at Penney's only! Easy-on tailoreds, they fit over your mattress like a second ticking... stay on smooth while you sleep, need no daily "making up" and no ironing. Another quality-packed Penney bargain.

# 163

Full Size

Pencale, White Fitted Sheets Double Bed Size **\$2.07**

TWIN SIZE \$1.47 Pillow Cases 37c



Ronnie Fisher, president of Sudan Chapter FFA. (Scott Photo)

## President Of Sudan FFA Has Successful Year

By MRS. EVELYN M. SCOTT

Ronnie Fisher, president of the Sudan FFA Chapter, placed the emphasis on farming last year for his FFA Supervised Farm and Livestock projects. Farming is nothing new to this sixteen year old lad, the oldest of the three Fisher boys, who has given a hand around the family farm for as long as he can remember.

From a gross income of \$1,085.71 in his farming and livestock projects, Ronnie received a labor income of \$768.72.

Included in his ten acres of irrigated farm was five acres of cotton and five acres of grain sorghum. His cotton yield per acre was 752 lbs. of lint. His grain averaged 2,000 lbs. per acre. He found his biggest expense to be the watering twice of his land; once before planting and once afterwards. The great cost for watering the land was \$118.75. The land had, the previous year, been broken and commercial fertilizer applied to it.

Other expenses included the rent for use of the family tractor, defoliating of the cotton and the harvesting of both the cotton and grain.

Besides doing all the work on his ten acres, Ronnie helped with the farming of the four family labors, including one irrigated place. In his livestock project he had one sow, one gilt, and fed out three pigs. He showed his hogs in the Sudan, Littlefield, and Lubbock FFA livestock shows and was one of the boys in the Sudan Chapter eligible for the trip to Houston, a prize awarded at the Littlefield FFA show.

Ronnie enjoys his duties as president of the chapter, although he stressed he didn't care too much for the public speaking that goes with it. He is a member of the Junior class of Sudan high, and is the son of Mr. and Mrs. Joe Fisher. He served last year as a student council representative of the sophomore class and was also class favorite. At present he is planning an even bigger farm project for this year's program, and plans to farm a complete labor of dry land.

Overheard: "He's an unforgettable character that I would like to forget."

## Anton News Anton Chapter Of OES Entertains Officers

By MRS. E. M. SHEPPERD  
DEPUTY GRAND MATRON VISITS ANTON OES

Anton Chapter, Order of the Eastern Star entertained the Deputy Grand Matron of District 2, with a 6 o'clock dinner at the Lariat, after which all met in regular session at the Masonic Hall with Mrs. Wayne George, Worthy Matron, and Wayne George, Worthy Patron, presiding. Mrs. Billie Coanough, Deputy Grand Matron of District 2 was introduced by the Worthy Matron, Mrs. Wayne George. Mrs. Clara Keefe presented her with a gift from the Chapter.

It was also Past Matrons and Past Patrons night. Mrs. Royce Womack dedicated a song to them, and Mrs. Wayne George presented each with a corsage.

A number of members and guests were present. Hostesses for the occasion were Mrs. Beula Pirtle and Mrs. Idella Teague.

Mr. and Mrs. Monroe Parker and children returned home Monday morning after attending the Golden Wedding Anniversary celebration of Monroe's parents, Mr. and Mrs. Jim D. Parker, who reside at Ed Couch, Texas.

Mr. and Mrs. Parker were residents of Anton for many years.

Mr. and Mrs. Fred Ivey of Smyer visited in the M. M. McReynolds home Sunday afternoon. Mrs. Thelbert McReynolds is a niece of the Iveys.

Guests in the home of Mrs. E. M. Shepperd Sunday were her son, Clifford and family of Lubbock, and Mr. and Mrs. Loyd Hasting and son Morris of Stanton. Loyd Hasting is a nephew of Mrs. Shepperd.

The Rev. C. T. Jordan of Earth brought the message at the First Baptist church Sunday morning and Sunday night.

Mrs. W. M. Lucas and Mrs. W. O. Wilson are spending a few days visiting their children, W. D. Inglis and family, T. J. Wilson and family, and Roy Wilson, at Pecos.

and Mr. and Mrs. Alton Bullington, were guests in the home of Mr. and Mrs. G. C. Reed for lunch Sunday.

Mrs. Bettie Coltharp, of Lubbock, visited Mr. and Mrs. C. D. Nelson early this week.

Mr. and Mrs. D. T. Teague visited Mr. and Mrs. A. L. Bell and children.

Mr. and Mrs. G. H. Whitaker visited Mrs. Emmett Shreaves in Hereford Sunday afternoon.

The attendance at the First Baptist church Sunday school, Sunday morning, was 200 and in Training Union, 83.

### MARY LEE STONE HONORED ON BIRTHDAY

Mr. and Mrs. Lee Stone, Vernon Stone, Mr. and Mr. Bud Stone, and Mr. and Mrs. Donald Stone and daughters, Mr. and Mrs. Guy Ellis and Mr. and Mrs. Melburn Arnold and girls, of Dimmitt, enjoyed a birthday party in the home of Mr. and Mrs. J. W. Stone, honoring their daughter, Mary Lee, on her sixth birthday.

Mr. and Mrs. J. L. Harris and children, of Amberst, and Mr. and Mrs. Charles Smith and children of Lubbock, visited in the home of Mr. and Mrs. M. M. Tidwell, Sunday. Mrs. Harris and Mrs. Smith are daughters of the Tidwells.

### PARKER ON LEAVE FROM COLORADO SPRINGS

Charles Parker, who is in the Army, and stationed at Colorado Springs, Colo., was at home for a very short visit recently.

### CONNER FAMILY HAS REUNION DINNER

Mrs. C. E. Conner had all of her children for dinner on Sunday. Those attending were Mr. and Mrs. Dewey Dunlap of Levelland, Mr. and Mrs. Arthur Evtit, Mr. and Mrs. Bruce Reagan and children, and Mr. and Mrs. James Jolley of Littlefield, Mr. and Mrs. Lynn Williams and Bonnie, and Mr. and Mrs. Mitchell Evtit, all of Anton.

The attendance at the Methodist church Sunday school, Sunday was 158.

Attendance at the Bible School of the Laurence Street Church of

## All-District Team Is Selected Monday Night

Six coaches of District 2AA met Monday night in Olton with representatives of each school and selected the All-District Football Team for the 1955 season.

The following boys were selected as members of the District 2AA All-District Football Team, 1955 season.

OFFENSIVE FIRST TEAM			
Pos.	Name	School	Class
E	Wayne Wicker	Littlefield	Senior
T	Don Cheek	Dimmitt	Senior
G	James Lee	Littlefield	Senior
C	Billie Gafford	Dimmitt	Senior
G	Carol Herring	Dimmitt	Senior
T	Joe Hoover	Littlefield	Junior
E	Jarrell Edwards	Olton	Senior
B	Mike Greer	Littlefield	Junior
B	Alton Bates	Dimmitt	Senior
B	Jackie Gray	Olton	Senior
B	Teddy Estes	Olton	Junior
DEFENSIVE FIRST TEAM			
Pos.	Name	School	Class
E	Jackie Tidwell	Muleshoe	Senior
T	Ben Ballard	Lockney	Senior
C	Paul Yarbrough	Lockney	Junior
G	Weldon Jones	Littlefield	Senior
G	Charles Pool	Muleshoe	Senior
T	Edward Featherngill	Olton	Senior
E	Donald Powell	Olton	Senior
B	Jerry Brown	Dimmitt	Senior
B	Billie Chandler	Tulla	Senior
B	Wayne Potter	Tulla	Senior
B	Max Morris	Littlefield	Junior

**HONORABLE MENTION**  
Ends: Doyle McAda, Lockney; Joe Bill Mitchell, Dimmitt. Tackles: Davis Williams, Littlefield; Jim Cole, Dimmitt. Guards: Richard Dalluge, Tulla; Max Wozencraft, Olton; Roger Lowe, Littlefield; Doyle Henry, Muleshoe. Center: Jerry Workman, Lockney; Jerry Edmonson, Olton. Backs: Don Mobley, Dimmitt; Wally Stewart, Olton; Jeff Carlisle, Tulla; George Washington, Tulla; Jerry Williams, Lockney; Gene Ahndley, Lockney; John Clayton, Littlefield; Alton Whitworth, Dimmitt; John Young, Muleshoe, G. R. Howell, Muleshoe.

## TOO LATE TO CLASSIFY

FOR SALE LATE Bundled hegira, no grain, but mostly headed. \$6.00 a ton. J. W. Emfinger. 1-22-E

FOR SALE USED upright piano. Good condition. Mrs. Ben Brandt. 1115 Monticello Ave. Call 441-M. 1-22-B

FOR RENT FURNISHED four room house. Call 36 or 148. E. S. Rowe. 1-1-R

WANTED IRONING wanted 50¢ an hour. 1705 East 5th St. 1-22-N

FOR SALE WAREHOUSE building at McCormick's Service Station. Make us an offer. Contact Paul McCormick. Phone 153. 1-1-H

## INCOME TAXES MADE OUT COMPLETE AND SATISFACTORY

15 years experience in the business. Saves you money, and will appreciate same.  
C. LAND, LAWYER  
Yellow House Bldg.  
Littlefield, Texas

## REPORT OF CONDITION OF THE FIRST NATIONAL BANK

Charter No. 12824 Reserve District  
Published in response to call made by comptroller of the state under section 5211, U. S. revised statutes.

In the State of Texas, at the close of business on December 31, 1955

ASSETS	
Cash, balance with other banks, including reserve balance, and cash items in process of collection	\$1,070.00
United States Government obligations, direct and guaranteed	520.00
Obligations of States and political subdivisions	50.00
Other bonds, notes, and debentures	100.00
Corporate stocks (including \$6,000 stock of Federal Reserve bank)	2,000.00
Loans and discounts (including \$10,721.24 overdrafts)	2,600.00
Bank premises owned \$15,000.00, furniture and fixtures	2,500.00
Other assets	100.00
<b>TOTAL ASSETS</b>	<b>5,670.00</b>

LIABILITIES	
Demand deposits of individuals, partnerships, and corporations	4,480.00
Time deposits of individual, partnerships, and corporations	1,000.00
Deposits of United States Government (including postal savings)	100.00
Deposits of States and political subdivisions	100.00
Other deposits (certified and cashier's checks, etc.)	100.00
<b>TOTAL DEPOSITS</b>	<b>\$5,122,918.07</b>
Other liabilities	547.00
<b>TOTAL LIABILITIES</b>	<b>5,670.00</b>

CAPITAL ACCOUNTS	
Capital Stock (Common stock, total par \$100,000.00)	100,000.00
Surplus	2,000.00
Undivided profits	2,000.00
<b>Total Capital Accounts</b>	<b>104,000.00</b>
<b>Total Liabilities and Capital Accounts</b>	<b>5,670.00</b>

**MEMORANDA**  
Assets pledged or assigned to secure liabilities and for other purposes  
Loans as shown above are after deduction of reserves of  
Loans to farmers directly guaranteed and redeemable on demand by the Commodity Credit Corporation and certificates of interest representing ownership thereof

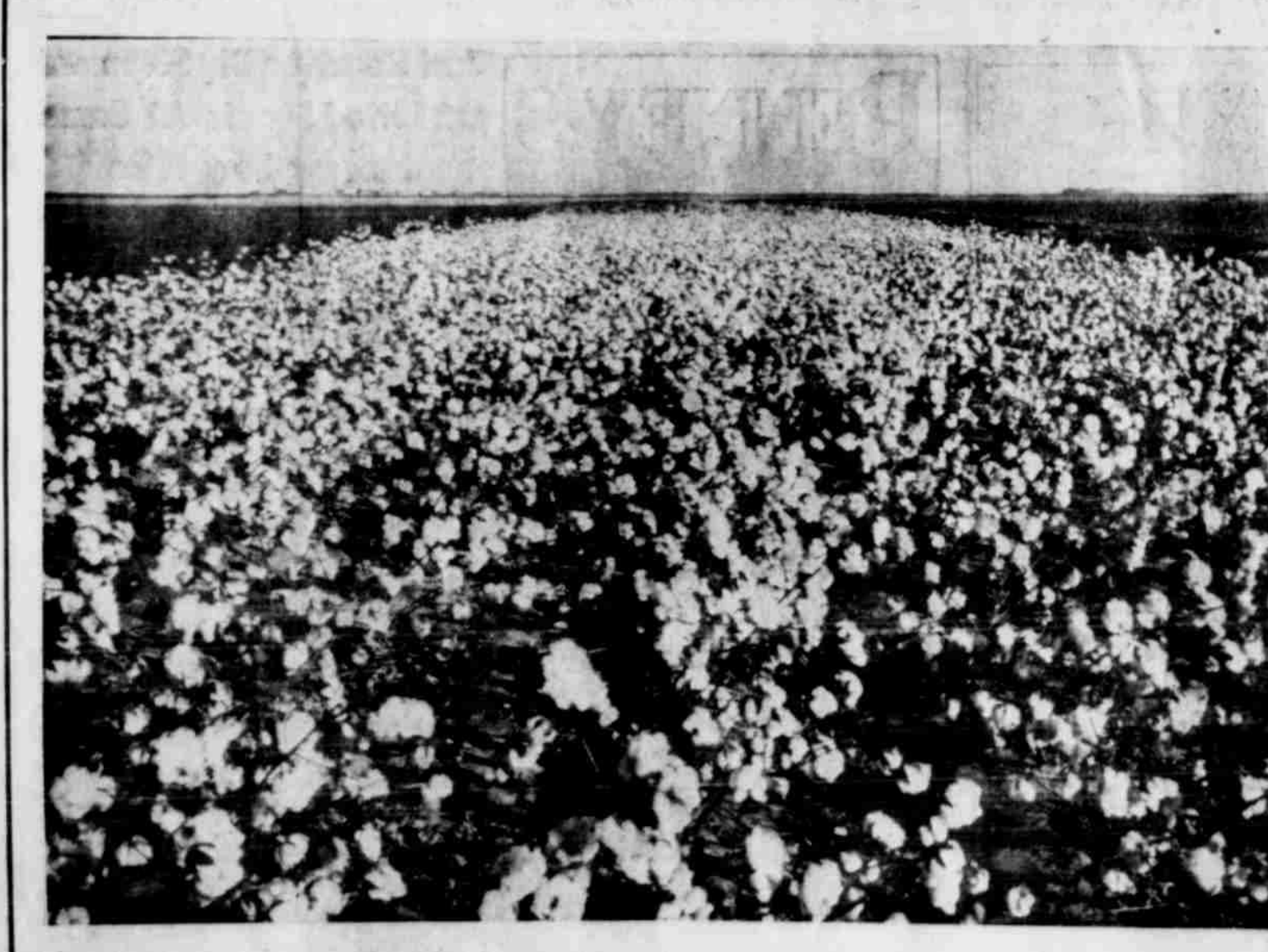
I, Robert Bridges, Cashier, of the above-named bank, do swear that the above statement is true to the best of my knowledge and belief.

Robert Bridges  
Cashier

Correct—Attest:  
Don Bell  
T. Wade Potter  
V. C. Stone  
Directors

State of Texas, County of Lamb, ss: Sworn to and subscribed by me this 9th day of January, 1956, and I hereby certify that I am an officer or director of this bank.

Sam Hutson  
Notary Public



Pictured above is a field of Northern Star Cotton as it appeared last Monday when farmers and ginners attended a Field Day on the W. G. Ellis farm near Oliver, Texas. The field of No. 11 Northern Star Cotton was planted June 14. Note the quality of the cotton and how it has clung to the burr in spite of the wind, rain and snow.

GET NORTHERN STAR SEED AT YOUR LOCAL GIN

# NORTHERN STAR SEED FARMS

O'Brien, Texas

GET THE MOST FROM YOUR REDUCED ACREAGE WITH

## NORTHERN STAR NO. 11 COTTON

- Strong Germinating Seed
- Heavy Fruiting
- Early Maturing Plants
- Large Bolls Which Hold Their Seed Cotton
- Easy To Pick, Snap or Strip
- Hard Fiber Which Cleans Well In Ginning

● Yields More Dollars Per Acre



OUR GREATEST JANUARY . . .

# CLEARANCE

SALE BEGINS 9 A. M. FRIDAY — NO EXCHANGES, NO REFUNDS — ALL SALES FINAL

**LADIES' SLIPS**  
\$3.98 Value **\$1.88**

Men's and Boys'  
**DRESS SUITS**  
Your Choice **\$12.88**

One Group  
**LADIES' PANTIES**  
Rayon **38c**  
Nylons **58c**

**LADIES' DRESSES**  
\$7.95 Value **\$3.88**  
\$8.95 Value **\$4.88**  
\$10.95 Value **\$5.88**  
Other Values To \$17.95 **\$10.88**

**LADIES' TOPPERS**  
One Group **\$4.88**  
One Group **\$8.88**



One Group  
**Toppers and Long Coats**  
**1/3 OFF**

**CHILDREN'S COATS**  
All Values To \$9.95 **\$4.88**  
All Other Values **\$8.88**

**CHILDREN'S DRESSES**  
\$2.98 Values **\$1.88**  
\$3.98 Values **\$2.58**  
\$4.98 And \$5.95 Values **\$3.88**

**LADIES' SKIRTS**  
One Group **\$1.00**  
One Group **\$2.88**

**OUTING FLANNEL**  
Heavy Quality **28c Yd.**

**BLANKETS**  
Fancy Sheet Blankets **\$1.18**  
White Sheet Blankets **\$1.48**  
5 Per Cent Wool—Size 66 x 80 **\$2.98**  
\$2.98 Value—Part Wool **\$2.38**  
Indian Blankets **\$1.88**  
All Wool, \$4.98 Value **\$3.88**  
Part Nylon Washable Blankets—Many Colors **\$3.28**

Ladies' And Children's Flannel  
**GOWNS & PAJAMAS**  
Values To \$2.79 **\$1.48**  
Values To \$2.98 **\$2.18**  
Values To \$3.98 **\$2.68**  
Values To \$4.98 **\$3.28**

**COLORED SHEETS**  
Fine Quality In 4 Colors  
81 x 108, Each **\$2.18**  
Pillow Cases To Match **48c**

Good Selection Of  
**FINE MATERIAL**  
Values To \$98c Yard **48c**

**TOWELS**  
Good Selections  
Bath Size **23c**  
Face Size **13c**

**CHENILLE SPREADS**  
\$3.98 Value, Only **\$2.38**

**THROW RUGS**  
Values To \$3.98 **88c**

Large Selection  
**BATH SETS**  
Beautiful Chinele **88c**

**NYLON HOSE**  
Fine Quality Patricia Hose  
68c Value **59c**

**BOBBY PINS**  
25c Cards Only **10c**

**SCISSORS**  
\$2.98 Value **88c**

Large Selection  
**FINE MATERIAL**  
Yard Only **28c**

**MEN'S CAPS**  
Corudroy **68c**  
Leather **\$1.28**  
Boys' Caps (With Flaps) **98c**

**MEN'S HATS**  
One Group **\$1.98**  
One Group \$8.00 Resistol Hats **\$4.88**

**MEN'S SPORT COATS**  
Large Selection Of Fine Coats  
\$18.98 **\$10.88**  
\$22.50 Values **\$13.88**  
\$24.95 and \$27.50 Values **\$17.88**  
All Corduroy Sport Coats **\$4.88**

**BIG SMITH JEANS**  
Men's—\$3.39 Value **\$2.88**  
Boys'—\$1.98 Values **\$1.68**

**"Billy the Kid JEANS**  
\$2.98 Values (Regular Only) **\$1.88**

**DENIM WESTERN SHIRTS**  
Good Value **\$2.28**

**KHAKI PANTS**  
\$2.98 Value **\$2.39**

Big Smith  
**BROWN KHAKIS**  
\$3.98 Value **\$2.88**  
Shirts To Match **\$1.98**

**MEN'S DRESS PANTS**  
Values To \$6.95 **\$3.88**  
8.95 Values **\$4.88**  
\$10.95 Values **\$6.88**  
\$12.95 Values **\$8.88**

**BOYS' DRESS PANTS**  
\$3.98 Values **\$2.88**  
\$4.98 And \$5.98 Values **\$3.88**  
One Group **\$1.88**

**JACKETS**  
Men's And Boys'  
Choice **1/3 OFF**

**SWEAT SHIRTS**  
White Or Grey—\$1.49 Value **88c**  
Boys' **58c**

— **SHOES** —  
**SUEDE SHOES**  
All Ladies' **\$1.00** Pair  
Real Buy At  
Large Selection Of The Following Shoes  
**MOCCASINS . . \$1.00**  
**Childrn's Shoes . . \$1.88**  
Cushionized \$9.95 Values  
**DRESS SHOES . . \$5.88**  
Life Guard \$7.95 Values  
Arch Support **SHOES \$2.88**  
Men's \$7.95 Values  
**DRESS SHOES . . \$3.88**  
Men's \$9.95 Values  
**DRESS SHOES . . 5.88**  
**Nacona Boots . . \$10.88**  
Only Small Sizes Left  
Boys' Values To \$7.95  
**DRESS SHOES . . \$3.88**

**MEN'S SPORT SHIRTS**  
All Gabardines and Flannels, Only **\$1.88**  
Corduroys **\$2.58**  
Broadcloth, \$2.98 Value **\$1.88**  
\$5.00 and \$5.95 Values **\$3.58**

**BOYS' SPORT SHIRTS**  
Flannel Shirts **\$1.18**  
Broadcloth and Gabardine, \$1.98 Value **\$1.38**  
\$2.98 Value **\$1.88**

**SOCKS**  
\$1.00 Value—Sport Socks **68c**  
55c Value—Sport Socks **38c**  
Work Socks **12c**

**SHORTS & VESTS**  
49c Value **33c**

**MEN'S DRESS GLOVES**  
Large Selection  
Values To \$2.98 **\$1.38**

**WINTER UNDERWEAR**  
Hanes Unions **\$1.88**  
Hanes Drawers And Undershirts **\$1.28**



# THE COUNTY WIDE NEWS

Member:

Texas Press Association-1955

Entered as Second Class Matter at the Postoffice at Littlefield, Texas, Under the Acts of March 3, 1879



Published Sunday of each week

at 506 Phelps Avenue, Littlefield, by Littlefield Press.

Douglas Poe, Publisher  
 Mrs. J. D. Clarida, News Editor

Subscription Rates:  
 County Wide News and Lamb County Leader  
 Lamb and adjoining counties, per year \$4.00  
 elsewhere, per year \$5.00

Any erroneous reflection upon the character, standing or reputation of any person or corporation which may appear in the columns of this paper will be promptly corrected upon being brought to the attention of the publisher.

"To sin by silence when they should protest makes cowards of men."  
 —Abraham Lincoln

## Do We Vote?

Wherever you drive in Texas these days you will find highways being widened to four lanes. Both federal and state money are being expended on both sides of the highway. This is the highway that traverses Lamb County through Olton, Springlake and joins the Lbbock to Clovis highway No. 84 at Mule-  
 No. 84 already has money set aside to extend its four lanes from Shallowater on through to Clovis. Most of the money along the way have already agreed to buy the highway.

In this county we have talked a good deal about signing a petition so that the people can vote on whether or not to buy the highway to widen our two traffic arteries, but nothing has happened. We don't do it before, we certainly ought to give the people a chance to express themselves on this matter in the primary this summer. Citizens don't usually like to have such matters come up at the time as the primaries because it sometimes forces them to take a stand on the question. If they don't want this to be the primary, then they ought to get busy and get an alternate called right a way.

## Highlights and Sidelights From Your State Capitol

By VERN SANFORD  
 Texas Press Association

It seems that all areas of government—executive, legislative, administrative and judicial—are affected by the inflation. There are Federal actions too—and of course

actions were numerous as removed to close five moves or related firms and another under state conservatorship. All this in the wake of the \$6,000,000 U. S. Trust and Guaranty Co.

reaching also was the Board of Insurance Commissioners for re-examination of Texas insurance companies, completed.

Under way, at the request of the commission, is a vast investigation sponsored by the Certified Public Accountants. Auditing costs will be assessed on the companies. Any insurance company refusing to open its books to official examiners will have its license suspended immediately.

Official examination of such companies will start within 48 hours. Allan Shivers commended the step and gave his endorsement.

In compliance with the requirements of the law the Insurance Commission named a new chairman for a three-year term. Casualty Commissioner J. Byron Saunders was named. He succeeds Garland A. Smith, who was chairman for the past two years.

One of the first moves of the new commission was to suspend the license of the U. S. Life Insurance Co. of Dallas. It is one of the companies under the direction of A. S. Trust and Guaranty Co., which is president of the U. S. Life Insurance Co. as U. S. Automotive Secretary. Both of these firms now are under conservatorship.

Under the conservatorship, the Medical and Hospital Service was placed in conservatorship. This means that a state conservator—virtually the same as a liquidator—will operate the service until the insurance board takes further action. Possible selection of new management.

ment. Licenses also were revoked for Dallas Fire and Casualty Co. and American Atlas Life Insurance Co. of Dallas. American Atlas appealed to the district court. This suspends the order against them pending a court hearing on the appeal.

While the Insurance Commission was taking action, Secretary of State Tom Reavley seized the books and records of the Mercantile Investment Corporation, a holding firm, and Merchants National Security Corporation, its subsidiary, for investigation of their sales of securities. Both firms are in Dallas.

In Austin, District Judge J. Harris Gardner instructed a grand jury to make a full investigation of insurance affairs.

Several legislators had urged either grand jury action or a special session of the Legislature to consider insurance matters.

The Senate general investigating committee is resuming its investigation of the U. S. Trust and other insurance matters. House general investigating committee members will hold a three-day session beginning January 19.

Atty. Gen. John Ben Shepperd wrote district and county attorneys in the 13 counties in which U. S. Trust and Guaranty Co. operated, reminding them that a grand jury inquiry into possible criminal violations need not wait for completion of the state audit.

Federal agencies disclosed that they have begun investigations of the interstate operations of U. S. Trust and Guaranty Co.

And in Washington, U. S. Senator Price Daniel called on Federal agencies to determine if use of "U. S." in the trust company's name violated any Federal law or regulation.

Four Insurance Department examiners have been promised a quick hearing on charges they conspired to defraud the public. Suspended without pay by the Board are Larry W. Blanchard, Robert R. Butler, William J. Noad, and Lee L. Pfeifferkorn. They were charged in an Austin district court with knowingly mak-

ing a false examination report in 1952, showing the now defunct General American Casualty Company to be solvent.

Other defendants named in the suit by the state's insurance liquidator were the officers and directors of General American and the banks and surety companies involved in its operation.

Insurance Commission agents are being sent to all Texas military installations to check reports of insurance being sold at higher than state-prescribed rates.

Some servicemen, the commission was told, were paying as much as three times the state rate for automobile insurance.

With candidates for top political offices already talking it up, more stringent regulation of insurance companies will play an important part in the campaign platforms of 1956 in Texas.

### SHORT SHORTS

More than 6,000 Texas motorists were arrested by highway patrolmen the past 30 days for traffic violations. Of these, 3,620 never had owned a driver's license and 2,638 were driving with expired licenses or without licenses. Nearly 180,000 drivers' licenses were checked at various hours of the day and night, on highways and farm-to-market roads. Over \$7,000,000 will be spent by the Texas Highway Department in 1956 in an attempt to reduce highway accidents. Joe McMinn of Ft. Worth has been named by Atty. Gen. John Ben Shepperd as an assistant in the veterans land division.

Rain is needed over all parts of Texas, says the US Department of Agriculture. Dryland wheat in the northwest is holding on surprisingly well, even though surface moisture is depleted. High Plains irrigated wheat is in good condition. In the blacklands, Central and East Texas, most small grains have fair to good color, but vegetable growth is short and rain is needed urgently. Heavy supplemental feeding of livestock continues over most of Texas. Twelve-month school terms and larger classroom units were among suggestions discussed by a committee of 40 citizens named by the State Board of Educa-

tion to consider ways and means of better utilization of school personnel and facilities. Lt. Col. Morris S. Schwartz, state selective Service director, says the Army will draft 280 Texans in February as its share of some 6,000 men to be called into service nationally. Only boards having a preponderance of older men will be asked to fill the quota. Texas construction projects totaled \$949,213,349 for 1955, making it the fifth best year on record. An all-time high \$174,600,000 program of road building scheduled by the Texas Highway Department brightens the construction industry's outlook for 1956. Travis County's three district courts, in which venue of nearly all state cases is placed, are overflowing with veterans land, insurance and other state cases. District Judge D. B. Wood of Georgetown has been assigned to Austin in an effort to catch up with the overloaded dockets.

### SCHOOLS—THE AWFUL TRUTH

Ten years from now 23% more children will be entering elementary schools than today, 55% more in high schools and 40% more in colleges. We will need some 600,000 more classrooms to accommodate them—a jump of about 60%. We'll also need 200,000 more teachers every year for ten years to cover school growth and to replace those who quit or retire.

The main problem, of course, is money, which in the end means more taxes. The total cost of schools, public and private, now is eight to ten billion dollars a year. In the next ten years this may double and most of it must come from taxes.

What kind of taxes will support the schools? Mostly property taxes for already nearly 45% of the property taxes collected in states go to the schools. So there will be higher local taxes, higher property assessments, and fewer exemptions.

Although only 63 per cent of American families live in single family homes, 90 per cent of all home accidents occur in such homes.

## Look Who's Pulling The Strings



### Letters To The Editor

Jan. 6, 1956

Dear Editor:

Because of the serious illness of Mr. Kenneth Fink, Director of the Princeton Research Service we are discontinuing for the time being the United States Poll.

On Mr. Fink's recovery, we hope and expect to again carry on the work of the United States Poll.

Margaret Spence,  
 Associate Director

Lamb County Takes Care Of It's Own—Give Your Dimes.

### Letters To The Editor

Jan. 4, 1956

Littlefield Press,  
 Box 72,

Dear Sir:

Enclosed you will please find check for the most wonderful paper printed in our fair city.

I am certainly grateful for your reminder that my subscription is about to expire. You see I call it my health paper. Before I retire at night I always eat a bowl of cereal while reading your paper. That way I don't have much on my stomach or not a hell of a lot on my mind.

T. C. Faver.

## Lipstick Logic

By Louise C. Allen

Like most housewives, we understand about as much of world politics as we do of nuclear fission. And what happens in East Germany or Indonesia is of much less actual concern to us than a car wreck down the street.

But twice lately we've been surprised into thinking about these distant places as though they were real.

Once was a visit to our town by a German editor. Healthy and cheerful and well-groomed, he looked like another successful American business man. But when he said so matter-of-factly that West German editors had learned to be careful or they'd be spirited away by the Communists and placed under arrest, we shuddered as if we'd been plunged suddenly into cold water. Here was a man who had not learned these horrors from movies and books and radio programs. He knew them first-hand! For the first

time, we realized that the freedom we take for granted is something to be joyful over day by day.

The other reminder of faraway places was a small, unassuming newspaper man from Indonesia, also in our town. For us Indonesia was a word, not a real country with real people in it. Asked why his small, courageous little country avoids military alliances, he said it was because they do not believe in crushing an enemy, just in doing a thing better themselves. And if we could explain why the U. S. maintains diplomatic relations with Moscow, but asks Indonesia to have nothing to do with Red China, then perhaps he could explain why his government didn't like military pacts. He didn't add that he could have asked his question in six different languages, but we could answer in only one.

With those two visitors to our town, our small world suddenly seems disturbingly large!

Lamb County Takes Care Of It's Own—Give Your Dimes.



## At Your Service Always!

The Roden Drug is always ready for any emergency that may come up. You can count on the Roden Drug to come to your aid at any time, day or night, with professional prescription service in keeping with the Roden Drug tradition.

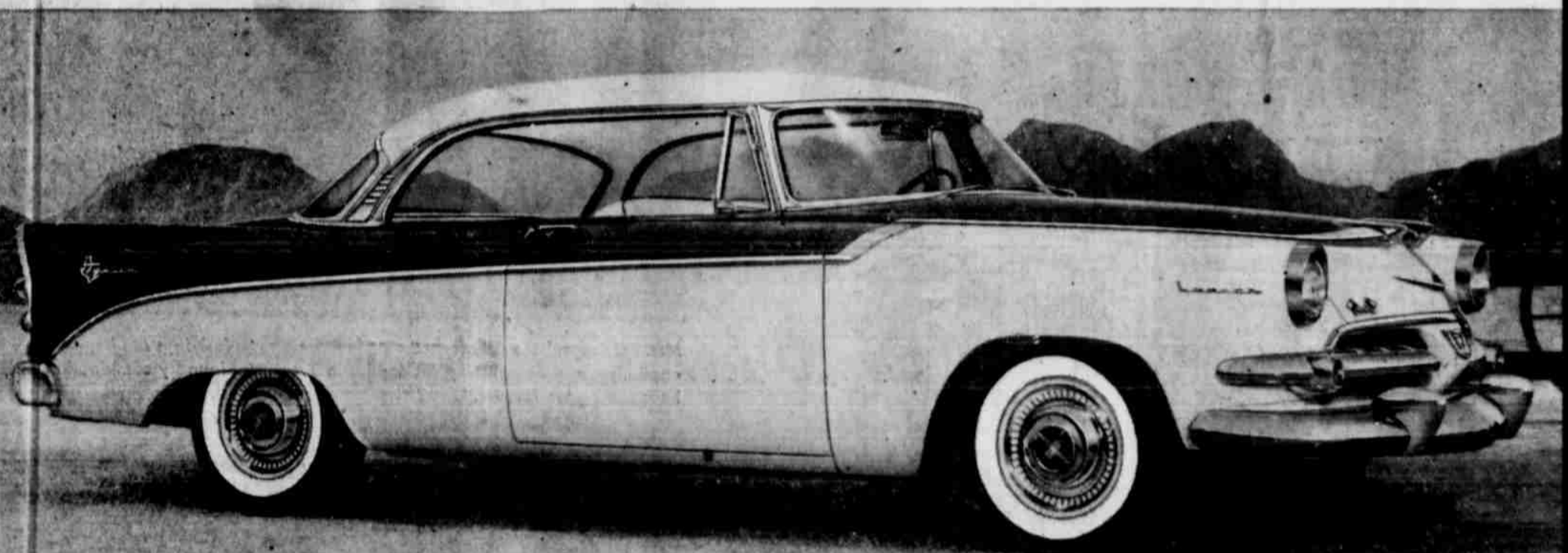
"Where Pharmacy Is A Profession"

**RODEN'S Rexall DRUG**

WE GIVE FRONTIER STAMPS

# Texas...meet "The Texan"

STYLED FOR THE BOULEVARDS BUT AT HOME ON THE RANGE!



Choice of this dashing Lancer Hardtop or the big, rangy 4-Door Sedan

Now available at your Dodge dealer's is the snappy 2-door Lancer hardtop pictured above, and also the universally popular 4-door sedan... both easily distinguished by specially designed, gold-plated insignia on front, rear quarter panels and deck lid.

Go see them... see how big and roomy they are... just like the proud State they represent! Actually drive a Dodge "TEXAN" and discover the thrill everyone feels behind those high-spirited Dodge Super Red Ram V-8 engines that give you up to 230 horsepower. You'll say these cars are as sensitive to your commands... as sure-footed and easy to maneuver as a prize-winning quarter horse. Yet, snappy as they are in action, Dodge also promises you traditional dependability and rugged-

ness in every feature of these "TEXAN" bodies and frames. They're every bit as husky as a Brahma Bull. And they're priced 'way down to offer you more power, more comfort, more "class" at scarcely more than the so-called "low-priced" three.

Today, if possible, see these two handsome "TEXANS" close up. Note especially their dynamic Jet-Fin styling, their snappy insignia, their fresh colors with exclusive complementary interior trims, their jaunty twin exhausts indicating power aplenty. Then actually ride in one with Magic Touch Push-Button Control for PowerFlite automatic driving. That's when you'll surely agree that these special models will carve a niche "deep in the heart of Texas."

IN EVERY DETAIL OF STYLING AND MECHANICAL ADVANCE,

"The Texan" IS A PURE-BRED...

**DODGE**

SOLD BY YOUR FELLOW-TEXAN—YOUR DODGE DEALER

**GARLAND MOTOR CO.**

720 EAST THIRD

TELEPHONE 701

### Fieldton Facts

**By MRS. R. A. REED**

L. H. Pickrell made a business trip to South Dakota last week.

Mrs. C. G. Hough is home after spending a month at Paul's Valley, Okla., with two of her daughters, Mrs. Cora Goggins, and Mrs. Buck Goggins and family.

Mr. and Mrs. Fred Müller and their son, Mr. Louis Cox, from Hereford, were visitors in Fieldton Wednesday. Mrs. Müller attended the shower for Mrs. Don Müller at the home of Mrs. Kon Mahaffey.

Mr. and Mrs. J. C. Franks, and children, visited Sunday with Mr. and Mrs. Royce and sons, and Mrs. C. G. Hough, grandmother of J. C.

Mr. and Mrs. A. Howell and their son and daughter, moved Sunday, to a farm near Post. He was the winner at the Co-op gin for part of the ginning season. He will farm this coming year.

### LAFF - A - DAY



Engagement rings?"

### Readers' Digest Carries Largest Insurance Ad Which Has Ever Run

The biggest insurance ad ever printed in any magazine is a feature of the January issue of READERS' DIGEST, according to F. L. Newton, local agent for State Farm Mutual Automobile Insurance Company.

Telling the complete story of State Farm Mutual's service and plan of operation, this is the first multiple-page ad ever run in READERS' DIGEST since the publication inaugurated its policy of accepting a limited amount of advertising. Occupying six pages, the single ad required two whole carloads of paper for its printing in the magazine's more than 10,000,000 copies.

The State Farm story appeared in pictorial form in a 3-page ad in LIFE magazine January 31, 1955. The current 6-page ad feature, F. L. Newton said, launches a bigger than ever advertising campaign to bring the unique features of State Farm's protection and service to the attention of more car owners during 1956. As the springboard for his campaign, State Farm Mutual, with the world's largest family of policyholders, chose the magazine with the world's greatest circulation.

A State Farm agent for the past 10 years, F. L. Newton said: "This is the biggest year in the company's history, with over 4,000 new members joining every working day. This ad tells why State Farm insurance is so popular that we are just about to reach the mark of 4,000,000 cars insured, far more than any other company."

My son in college had been dating a pretty, vivacious young blonde and had even brought her home one weekend for us to meet. Then, suddenly, the whole thing was off. When I asked him what happened he showed me a letter she had written him setting forth what she expected of marriage: a beautiful home, trips abroad, a convertible and more.

"How in the world did you answer the letter?" I asked.

"Oh," he replied casually, "I merely told her that when I married I hoped to have children—but I didn't want my wife to be one of them."

**GIVE YOUR DIMES!**

**WANTED** careful drivers

**REWARD** low net cost auto insurance

See or Call F. L. NEWTON



is via a low cost mortgage loan, tailored to fit your special financial needs. Every payment brings you closer to your goal! Come in today and discuss your particular problem with us. No obligation!

### KEITHLEY & COMPANY

### E. B. GREEN IS BURIED IN SULPHUR SPRINGS

Mr. and Mrs. Paul Green returned home Friday after attending funeral services for his father, E. B. Green of Sulphur Springs. He was the father of 10 children, all of whom were present for the service except one daughter. Mr. Green had been ill for some time. He was 81 years of age and died just a block and a half from the place of his birth. With the exception of five years in West Texas, he had lived in Sulphur Springs all of his life.

Those attending the funeral services from here were Wayne Cowen, Bubba Stewart, Floyd Rogers and Roy Osmus of Littlefield. Those sending flowers were Mr. and Mrs. L. H. Pickrell, Mr. and Mrs. H. C. Pickrell, Mr. and Mrs. Vernon Qualls, Mr. and Mrs. W. J. Aldridge, and Mr. and Mrs. Sam Hutson of Littlefield.

Rev. Fred Smith attended the Baptist Evangelistic Conference at Ft. Worth, from Monday until Wednesday.

### Brother Of Littlefield Woman Dies

Funeral services for J. W. Blackwell, 77, of Plainview, were held Tuesday at 2 p.m. in the First Baptist church chapel, Plainview. Rev. R. C. Malone, Plainview Baptist minister and Rev. Pete Adcock, Four Square Gospel church of Spur pastor, officiated. Blackwell was the brother of Mrs. Lucy Todd of Littlefield.

He was a retired farmer. He came to Plainview from Swisher county in 1944. He was married June 1, 1902, to Aquilla C. Huie at Lueders.

He served as trustee of the Center Plains School in Swisher county for several years. He was a member of the Baptist church for 37 years.

He is survived by his wife; five daughters, Mrs. Monroe Gaur, Plainview; Mrs. V. M. Collins, Mule shoe; Mrs. Clifton Reed, Kress, Mrs. Walter Young, Seagraves, and Mrs. Loyd Gildewell, Dimmitt; three sons, Lynn, Plainview, James E., Englewood, Calif., and Ben, Waco; a brother, Jake, Montague; two sisters, Mrs. Lucy Todd, Littlefield, and Mrs. Winnie Setor, Levelland; a half sister, Mrs. Joe Denton, San Angelo; 18 grandchildren and 17 great-grandchildren.

Burial was in Kress cemetery directed by Lemons Funeral Home of Plainview.

Scientists estimate that 400 billion tons of carbon dioxide from the air are absorbed by ocean plants every year.



## "WE'RE AN ALL-ELECTRIC FAMILY!"

say MR. & MRS. L. T. PATE  
DENVER CITY, TEXAS

### FROM DISHWASHING TO FOOD FREEZING . . . . .



Mrs. Pate says: "The dishwasher is my favorite appliance, and dishwashing drudgeries in our house are gone forever."



"Washdays are happy days with this wonderful laundry combination, and, of course, it's electric."



Mr. Pate is enthusiastic over the all-electric Weathertron which heats in winter and cools in summer. It will even heat and cool in the same day automatically, maintaining perfect comfort, regardless of outside temperature.



"Another favorite appliance of mine," says Mrs. Pate, "is my electric range. It's fully automatic, and so easy to use."



Modern water heating . . . electric water heating . . . is another feature of the Pate's home. "Our water heater is always clean, safe, dependable, and soot free." It's economical to operate, too."



"We always have plenty of food on hand with our electric freezer, and it eliminates shopping worries." Eliminate old-fashioned living at your home, and live as the Pates do, the modern electric way.

Enjoy traditional western hospitality at

## The WESTBROOK

"FORT WORTH'S FRIENDLY HOTEL"

Conveniently located in the heart of Fort Worth's downtown business district. 300 modern rooms . . . tastefully decorated, comfortably furnished . . . for luxurious living. Delightful Coffee Shop and Grill, featuring marvelous food at sensible prices.

NEWLY AIR-CONDITIONED

RATES \$250 FROM

GEO. W. PUTNAM, Mgr.

### FORT WORTH

TEXAS

Main to Houston at 4th St.

Visitors in the home of Mr. and Mrs. E. A. Reed, Sunday, were a cousin of Mrs. Reed, Mrs. Jack Hornsby and husband of Lubbock, their daughters and families, L. and Mrs. G. A. Becker Jr., and Vernon, Reese Air Base, Mrs. J. E. Lassiter, John Reed, Ray and Kay, Mr. and Mrs. Gene Williams, and Gene, of Littlefield.

Mr. and Mrs. H. C. Pickrell visited Sunday afternoon with Mr. and Mrs. G. M. Vann of the Spade community. Vann was suffering from gout.

**BARBARA BLACKMAN WILL UNDERGO SURGERY**

Mrs. May Chamey is in Ft. Worth with her son and his family to visit her granddaughter, Barbara Blackman, who is a patient in the Scottish Rite Hospital.

Barbara was to undergo a second operation on her spine today. She was to have had the operation last week but the doctors postponed it as she had a slight cold. Mrs. Chamey and her daughter, Barbara's mother, Mrs. Bill Blackman, went to Dallas Saturday.

Volume of gas sales in October was 124 per cent above a year ago, American Gas Association reports.



"Stick with me Baby, and someday we'll have an OK Used Car!"



Young fellows out to make an impression prefer OK Used Cars. They can be proud and confident, too, because OK Used Cars are reconditioned and dealer-warranted in writing. Wider choices are always available at Chevrolet dealers. There's always heavy trading for the nation's number-one car—and that means volume savings passed on to you.

LOOK FOR THE OK TRADEMARK!

Sold only by an Authorized Chevrolet Dealer

## ARMES CHEVROLET COMPANY

LITTLEFIELD

SEE YOUR REDDY KILOWATT APPLIANCE DEALER



## PUBLIC SERVICE COMPANY



# a Whole Wide World of Foods FROM WHICH TO CHOOSE!

SELECTED FROM THE GARDEN SPOTS OF THE WORLD!

FURR'S FRESH FRUITS & VEGETABLES  
Selected from Furr's unlimited variety! Look for special items like rhubarb, endive, romaine, broccoli, Chinese cabbage, acorn-squash, artichokes, chives, brussel sprouts, watercress, mushrooms, savoy cabbage, grapes, parsley and limes.

**GRAPEFRUIT**  
TEXAS SEEDLESS WHITE, LB. **7 1/2c**



**Corn Cakes and Sausages**

Sift together 1 cup sifted flour, 1 1/2 tsp. baking powder and 1/4 tsp. salt. Combine 1 well beaten egg, 1 cup (8 oz. can) cream-style corn and 1 cup milk; stir into dry ingredients with 2 tbsp. melted butter or margarine. Bake on lightly greased griddle or in frying pan until golden-brown, turning once. Put pancakes in warm oven to keep hot until all cakes are baked. Serve hot with heated, canned maple syrup and 1 can (8 oz.) breakfast sausages heated according to label directions. (Note: Or you may use 1 can sliced bacon in place of sausages for a quick variation.)

**CAULIFLOWER** FRESH SNO WHITE LB. **5c**  
**YELLOW ONIONS** SPANISH SWEETS LB. **5c**

**SQUASH** FANCY YELLOW LB. **5c**  
**Green Onions** Nice and Fresh Bunch **7 1/2c**

**SALAD LETTUCE** Romaine Bunch **15c**  
**NICE AND FRESH ARTICHOKES** Each **15c**  
**NICE AND FRESH RADISHES** Bunch **7 1/2c**  
**WASHINGTON D'ARJOR PEARS** Lb. **19c**  
**LONG GREEN SLICERS CUCUMBERS** Lb. **12 1/2c**  
**FANCY PINKS TOMATOES** Cello Carton **19c**  
**CALIFORNIA ICEBERG LETTUCE** Lb. **12 1/2c**  
**FULL GREEN TOPS Turnips & Tops** Bun. **10c**

**APRICOTS** GAYLORD IN HEAVY SYRUP No. 2 1/2 CAN **25c**  
**PEARS** GAYLORD IN HEAVY SYRUP No. 2 1/2 CAN **35c**  
**TUNA FISH** HI-NOTE GRATED CAN **19c**  
**CHILI** Paito Beef No. 303 Can **33c**  
**PICKLES** Star Sweet Quart **39c**  
**TAMALES** Gebhardt's Tall Can **19c**  
**POTTED MEAT** Taste No. 1-4 Can **5c**

**FRUIT COCKTAIL** FOOD CLUB IN HEAVY SYRUP NO. 2 1/2 CAN **33c**  
**MIRACLE WHIP** SALAD DRESSING PINT **27c**

**ORANGE DRINK** REALEMON 46 OZ. CAN **19c**  
**JELLIES** FOOD CLUB Pure Fruit, Apple, Blackberry, C. ab Apple, Currant, Grape, Mint. 12 OZ. GLASS **20c**  
**FLOUR** Elma 10 Lb. Bag **69c**

**Try Furr's Candies**  
MEL-O SWEET CANDY CORN 16 Oz. **23c**  
MEL-O SWEET Orange Slices 2 Lb. Pkg. **45c**  
CURTISS FRUIT DROPS 6 Packs **15c**

ELNA CATSUP 14 Oz. Bottle **17c**  
TOWL, STUFFED OLIVES 7 3-4 Oz. Jar **39c**  
BABY SOFT, COLORED TISSUE Roll 4 For **49c**  
EO PEEP TOWELS Paper Roll **19c**  
FURR'S WAX PAPER Roll **19c**  
AUNT JEMIMA MIX Pancake, Medium Package **19c**  
DOG CLUB DOG FOOD 2 For **15c**

SWIFT PREMIUM **BACON 43**

ARMOUR STAR SAUSAGE Lb. **29c**  
SHOULDER CUT PORK ROAST Lb. **33c**  
U. S. GOV'T GRADED CHOICE ROAST Round Bone Arm, Lb. **49c**  
U. S. GOV'T GRADED COMMERCIAL STEAK Round Lb. **69c**  
FULL CREAM LONGHORN CHEESE Lb. **49c**

BOSTON BUTT FORK STEAK Lb. **39c**  
U. S. GOV'T GRADED CHOICE ROAST Chuck Lb. **43c**  
U. S. GOV'T GRADED CHOICE STEAK Sirloin Lb. **69c**  
U. S. GOV'T GRADED COMMERCIAL STEAK Rib Chops Lb. **55c**  
MEDIUM JUMBO SHRIMP Lb. **89c**



Try **Snapjacks**  
the brand new breakfast treat made with INSTANT RALSTON . serve with MAPLE SYRUP ... PIG SAUSAGES ...



**Quick Eggs Benedict**

Heat 1 can (8 1/2 or 9 oz.) cheese rarebit in top of double boiler over boiling water. Split and toast 4 English muffins; spread with 2 cans (2 1/4 oz. each) deviled ham. Just before serving top each muffin half with 1 hot poached egg; spoon hot rarebit over eggs. Serve at once, two halves per person (Note: Or use 1 cup of your favorite cheese sauce in place of rarebit.)

CALIFORNIA AVOCADOS Calvo Each **10c**  
NICE AND FRESH BELL PEPPERS Lb. **15c**

**SAVE FRONTIER STAMPS**  
DOUBLE STAMPS ON TUESDAY

**Fresh Frozen Foods**

PEACHES FOOD CLUB FRESH FROZEN 12 OZ. PKG. **15c**  
DARTMOUTH, FRESH FROZEN CORN 10 OZ. PKG. **10c**  
OKRA Whole, Food Club, Fresh Frozen 10 Oz. Pkg. **19c**  
SPINACH Leaf, Food Club, Fresh Frozen 12 Oz. Pkg. **17c**  
GRAPE JUICE Food Club, Fresh Frozen 6 Oz. Can **19c**  
LEMONADE Food Club, Fresh Frozen 12 Oz. Can **29c**  
ORANGE JUICE Dartmouth, Fresh Frozen, 6 Oz. Can **15c**  
RASPBERRIES Food Club, Fresh Frozen, 10 Oz. Pkg. **23c**  
BLACKBERRIES Food Club, Fresh Frozen, 12 Oz. Pkg. **27c**  
PIES Fruit, Morton fresh frozen, Apple, Peach Cherry or Pumpkin, 24 Oz. **49c**  
BARBEQUE Fresh Frozen, Underwood's 16 Oz. Pkg. **79c**

\$1.00 SIZE WOOLBURY LOTION **50c**  
SHAMPOO MODART CREAM 87c SIZE **36c**  
SPRAY NET Nestle's \$1.25 Size **89c**  
CREAM OIL Wildroot 60c Size **49c**  
TIP TONI Regular, Gentle, and Super \$1.25 Size **98c**  
AERO SHAVE In Pressurized Can Only **59c**  
NOTEBOOK PAPER 50c Size **33c**

# FURR'S



# Ware's JANUARY

# CLEARANCE

## LADIES READY - TO - WEAR

LADIES' Winter Coats	
Regular \$ 39.95	<b>\$26.90</b>
Regular 49.95	<b>32.90</b>
Regular 55.00	<b>34.90</b>
Regular 60.00	<b>39.90</b>
Regular 65.00	<b>42.90</b>
Regular 85.00	<b>55.90</b>
Regular 125.00	<b>84.90</b>
Regular \$29.95 (4 Only)	<b>\$19.90</b>

Ladies' Slacks	
ONE GROUP	
Values To \$24.95	<b>\$8.90</b>

BETTER DRESSES And AFTER FIVE	
Regular \$24.95	<b>\$14.90</b>
Regular 29.95	<b>18.90</b>
Regular 32.95	<b>19.90</b>
Regular 34.95	<b>21.90</b>
Regular 39.95	<b>24.90</b>
Regular 49.95	<b>31.90</b>

Ladies' Skirts	
Regular \$ 7.95	<b>\$4.90</b>
Regular 9.95	<b>5.90</b>
Regular 10.95	<b>6.90</b>
Regular 12.95	<b>7.90</b>

Ladies' Hats	
Values to \$ 7.95	<b>\$2.00</b>
Values to 14.95	<b>3.00</b>

Ladies' Knit Suits	
Regular \$22.95	<b>\$16.90</b>
Regular 39.95	<b>22.95</b>

Junior Dresses	
5 to 15 — Cotton — Taffetas — Failles	
Regular \$ 8.95	<b>\$ 5.90</b>
Regular 10.95	<b>6.90</b>
Regular 12.95	<b>7.90</b>
Regular 14.95	<b>8.90</b>
Regular 17.95	<b>11.90</b>

Ladies' Suits	
Regular \$34.95	<b>\$21.90</b>
Regular 39.95	<b>26.90</b>
Regular 49.95	<b>32.90</b>
Regular 55.00	<b>34.90</b>
Regular 59.95	<b>39.90</b>
Regular 65.00	<b>42.90</b>
Regular 85.00	<b>55.90</b>

Ladies' Sweaters	
Regular \$ 3.95	<b>\$ 2.90</b>
Regular 4.95	<b>3.90</b>
Regular 7.95	<b>5.90</b>
Regular 10.95	<b>6.90</b>
Regular 12.95	<b>8.90</b>
Regular 14.95	<b>9.90</b>
Regular 17.95	<b>12.90</b>
Regular 19.95	<b>13.90</b>
Regular 24.95	<b>16.90</b>

Sub-Teen Skirts	
Regular \$8.95	<b>\$5.90</b>
Regular 7.95 & \$6.95	<b>4.90</b>
Regular 5.95	<b>3.90</b>
Regular 4.95	<b>2.90</b>

LADIES' Fall Dresses CASUAL and COTTON	
Regular \$ 8.95	<b>\$ 5.90</b>
Regular 10.95	<b>6.90</b>
Regular 12.95	<b>7.90</b>
Regular 14.95	<b>8.90</b>
Regular 17.95	<b>11.90</b>
Regular 19.95	<b>12.90</b>
Regular 24.95	<b>14.90</b>
Regular 29.95	<b>18.90</b>
Regular 34.95	<b>21.90</b>
Regular 39.95	<b>24.90</b>

Belts	
Regular \$1.25	<b>\$ .90</b>
Regular 2.00—\$3.00—2.50	<b>1.40</b>
Regular 3.00—3.50	<b>1.90</b>
Regular 4.00—4.95	<b>2.90</b>
Regular 5.95	<b>3.90</b>

Ladies' Blouses	
Regular \$ 8.95	<b>\$5.90</b>
Regular 7.95—\$6.50	<b>4.90</b>
Regular 5.95—4.95	<b>3.90</b>

Ladies' Robes	
Regular \$14.95	<b>\$ 9.90</b>
Regular 17.95	<b>11.90</b>
Regular 24.95	<b>14.90</b>

Tommy Pajamas ROBE and PAJAMAS	
Regular \$15.95 (8 Only)	<b>\$8.90</b>

Gloves WOOL and FABRIC	
Regular \$3.00—\$3.50	<b>\$1.90</b>

LADIES' WESTERN Leather Jackets	
Regular \$29.95—\$34.95	<b>\$14.90</b>

Milco Plastic Coats	
Regular \$10.95	<b>\$4.90</b>

LINGERIE	
Gowns by Carter NYLON IN PASTEL SHADES	
Regular \$ 7.95	<b>\$4.90</b>
Regular 8.95	<b>5.90</b>
Regular 10.95	<b>6.90</b>
Regular 12.95	<b>8.90</b>

Slips	
Regular \$ 7.95	<b>\$4.90</b>
Regular 8.95	<b>5.90</b>
Regular 10.95	<b>6.90</b>
Regular 12.95	<b>8.90</b>

ONE GROUP Helene Bras NYLON and COTTON Black and White	
Regular \$3.50—2.75	<b>\$1.90</b>

Carter & Gordon PAJAMAS and GOWNS	
Regular \$4.00	<b>\$2.90</b>
Regular 5.00	<b>3.90</b>
Regular 6.95 & \$7.95	<b>4.90</b>

Nylon Neglige	
Regular \$19.95	<b>\$ 9.90</b>
Regular 29.95	<b>12.90</b>

## SALE BEGINS FROM Three Big Days - From NO APPROVALS - EXCHANGES

### MEN'S DEPARTMENT

Men's Jackets BUCKSKIN JOE and Mcgregor	
Regular \$16.95	<b>\$10.90</b>
Regular 17.95	<b>11.90</b>
Regular 22.95	<b>14.90</b>
Regular 25.00	<b>15.90</b>

MEN'S Curlee Sport Coats	
Regular \$29.95	<b>\$21.90</b>
Regular 32.50	<b>22.90</b>

MEN'S Curlee Suits	
Regular \$49.50	<b>\$31.90</b>
Regular 55.00	<b>\$34.90</b>

Men's Hats	
Regular \$ 5.00	<b>\$3.90</b>
Regular 7.50	<b>4.90</b>
Regular 10.00	<b>6.90</b>
Regular 12.50	<b>8.90</b>
Regular 15.00	<b>9.90</b>

Men's Ties BOWS and FOUR-IN-HAND	
Regular \$1.00 to \$1.50	<b>\$ .90</b>
Regular 2.50 to 3.50	<b>1.90</b>

Men's Overcoats	
Regular \$45.00	<b>\$29.90</b>

Men's Slacks Including Mcgregor and Curlee	
Regular \$ 7.95	<b>\$ 4.90</b>
Regular 8.95	<b>5.90</b>
Regular 9.95	<b>6.90</b>
Regular 15.00 and \$15.95	<b>9.90</b>
Regular 17.50 and 19.95	<b>13.90</b>

MEN'S SUEDE Jackets & Coats	
Regular \$24.95	<b>\$14.90</b>
Regular 31.95	<b>19.90</b>

Men's Sweaters	
Regular \$6.95	<b>\$4.90</b>
Regular 8.95	<b>6.90</b>

MEN'S Western Shirts	
Regular \$3.95	<b>\$1.90</b>
Regular 4.95	<b>2.90</b>
Regular 5.95	<b>3.90</b>
Regular 6.95	<b>4.90</b>

Boys' Winter Coats	
Regular \$1.95	<b>\$1.90</b>

ONE GROUP Men's Dress Shirts	
Regular \$3.95	<b>\$1.90</b>

Town & Country Wedgies, Flats, Heels	
Regular \$ 8.95 & \$9.95	<b>\$4.90</b>
Regular \$10.95	<b>5.90</b>

Heyday	
Regular \$10.95	<b>\$4.90</b>

Paramount	
Regular \$12.95 & \$13.95	<b>\$4.90</b>

Children's Shoes POLL PARROT, & JUMPING JACK Lonfers, Straps and Pumps	
Regular \$4.98	<b>\$2.90</b>
Regular 5.95 & \$6.95	<b>3.90</b>
ONE TABLE ODD SHOES	<b>\$1.90</b>

# CE SALE

**We WILL BE CLOSED**  
All Day Thursday In Preparation For This Great Event

**JAN. 13, 9 A. M.**

**Saturday, Monday**

**ALL SALES FINAL**

## CHILDREN'S DEPARTMENT

**CHILDREN'S Nylon Panties**  
1 to 16  
\$1.25-\$1.50 ..... **1.40**  
2.50

**Children's Dresses**  
— TAFFATA — VELVET  
1 to 12 — Children  
8 to 14 — Pre-Teens  
\$ 2.98-\$3.98 ..... **\$1.90**  
4.98 ..... **2.90**  
5.95 ..... **3.90**  
6.95 ..... **4.90**  
7.95 ..... **5.90**  
8.95 ..... **6.90**  
10.95 ..... **7.90**  
12.95 ..... **8.90**  
14.95 ..... **9.90**

**Corridor Sets**  
VELVET and POPLIN  
\$14.95 ..... **\$ 9.90**  
24.95 ..... **13.90**

**ONE GROUP TRED and SCAMPEROOS**  
**Slippers & Heels**  
— SUEDES and CALFS  
\$4.95 ..... **\$2.90**  
6.95 ..... **4.90**  
\$9.95 & \$10.95 ..... **\$5.90**

**Rustic Aire**  
Black, Tan, Red and White  
\$8.95 ..... **\$3.90**

**Men's Shoes**  
Rand and Randcraft  
\$8.95-\$9.95 ..... **\$ 5.90**  
7.90  
FLOURSHEIN  
\$18.95 ..... **10.90**

**Robe Sets**  
COTTON and CORDUROY  
3 to 8  
Regular \$4.95 ..... **\$1.90**  
Regular 7.95-\$8.95 ..... **5.90**  
Regular 10.95 ..... **7.90**

**Children's Skirts**  
COTTON and WOOL  
Regular \$ 4.00 ..... **\$1.90**  
Regular 4.95 ..... **2.90**  
Regular \$5.95 ..... **3.90**  
Regular 6.95 ..... **4.90**  
Regular 7.95 ..... **5.90**  
Regular 9.95 ..... **6.90**  
Regular 10.95 ..... **7.90**

**Sweaters**  
Hollywood Crest 3 to 6X, Preteens 7 to 14  
Regular \$10.95 ..... **\$6.90**  
Regular 12.95 ..... **8.90**  
Regular 14.95 ..... **9.90**

**SPECIAL ONE GROUP**  
Children's White Crest Sweaters  
Slightly Soiled  
Values to \$14.95 ..... **1/2 Price**

**GIRLS' Wool Coats**  
Regular \$14.95 ..... **\$ 8.90**  
Regular 16.95 ..... **10.90**  
Regular 18.95 ..... **16.90**  
Regular 22.50 ..... **18.90**  
Regular 27.50 ..... **22.90**  
Regular 34.95

## MISCELLANEOUS

**ONE GROUP Costume Jewelry**  
**1/2 Price**

**Bates Bedspreads**  
TWIN and DOUBLES  
Regular \$12.95 ..... **\$6.90**  
Regular 6.95 ..... **3.90**  
Regular 8.95 ..... **4.90**

**ONE GROUP Towels**  
20 x 40  
Regular 49c ..... **29c**

**Boudoir Lamps**  
Regular \$9.90 Set ..... **\$4.90**

**Place Mats**  
RUSSEL WRIGHT  
Regular 89c ..... **44c**

**VENYLITE PLASTIC Table Cloths**  
54 x 54  
Regular \$2.00 ..... **\$1.00**

**Hollywood Dolls**  
Regular \$1.50-\$1.95 ..... **\$ .90**  
Regular 2.25- 2.50 ..... **1.40**  
Regular 4.00 ..... **1.90**

**MEN'S Sport Shirts**  
MANHATTEN and McGREGGOR  
Regular \$ 2.95 & \$3.50 ..... **\$1.90**  
Regular 3.95 ..... **2.90**  
Regular 4.95 & \$5.95 ..... **3.90**  
Regular 6.95 ..... **4.90**  
Regular 7.90 & \$8.90 ..... **5.90**  
Regular 11.95 ..... **7.90**

**CHILDREN'S Corduroy Sets**  
CAP — OVERALL — JACKET  
Regular \$10.95 ..... **\$4.90**

## BOYS' DEPARTMENT

**Boys' Suits**  
SIZES 2 to 12  
Regular \$ 9.95 ..... **\$ 6.90**  
Regular 10.95 ..... **7.90**  
Regular 12.95 ..... **8.90**  
Regular 14.95 ..... **10.90**

**Boys' Sport Coats**  
SIZES 2 to 18  
Regular \$ 8.95 ..... **\$ 6.90**  
Regular 10.95 ..... **7.90**  
Regular 11.95 ..... **8.90**  
Regular 14.95 ..... **10.90**  
Regular 18.95 ..... **12.90**

**Boys' Overcoats**  
AND SUBURBAN COATS  
Regular \$10.95 ..... **\$6.90**  
Regular 12.95 ..... **7.90**  
Regular 14.95 ..... **9.90**

**Boys' Knit Shirts**  
LONG SLEEVES  
Regular \$1.95 ..... **\$1.20**  
Regular \$2.95 ..... **1.90**

**BOYS' CORDUROY Pants & Jackets**  
Barry Boys' and Dottie Dan  
Regular \$2.95 & \$3.50 ..... **\$1.90**  
Regular 3.95 & 4.95 ..... **2.90**  
Regular 5.95 & 6.95 ..... **4.90**

**Boys' Jackets**  
SIZES 6 to 12 and 14 to 20  
Regular \$6.95 ..... **\$4.90**  
Regular 7.95 ..... **5.90**

**INFANTS' DEPT.**  
INFANTS' Topper Sets  
NYLON  
Regular \$3.95 ..... **\$1.90**

**Infant's Sweaters**  
Regular \$3.50 ..... **\$1.90**

**INFANTS' Wool Caps**  
Regular \$2.00 ..... **\$ .90**

**Students' Suits**  
SIZES 13 to 18  
Regular \$16.95 ..... **\$11.90**  
Regular 18.95 ..... **12.90**  
Regular 25.00 ..... **16.90**  
Regular 27.50 ..... **18.90**

**BOYS' Heavy Coats**  
Sizes 1 to 6 — 6 to 12 — 12 to 18  
Regular \$18.95 ..... **\$12.90**  
Regular 6.95 ..... **4.90**  
Regular 8.95 ..... **5.90**  
Regular 12.95 ..... **7.90**  
Regular 14.95 ..... **9.90**

**BOYS' SHIRTS Western and Sport**  
Corduroy, Flannel, Broadcloth  
Regular \$1.95 ..... **\$1.12**  
Regular 2.95 ..... **1.90**  
Regular 3.95 ..... **2.90**

**BOYS' Dress Slacks**  
Regular \$2.95 & \$3.50 ..... **\$1.90**  
Regular \$3.95 ..... **2.90**  
Regular 4.95 & 5.95 ..... **3.90**  
Regular 6.95 ..... **4.90**

**BOYS' Heavy Jackets**  
Regular \$ 8.95 ..... **\$5.90**  
Regular 12.95 ..... **7.90**  
Regular 14.95 ..... **9.90**

**GIRLS' LEATHER Western Jackets**  
8 to 16  
Regular \$19.95 ..... **\$11.90**  
Regular 29.95-\$34.95 ..... **14.90**

**CHILDREN'S Fun Suits**  
Regular \$ 6.95 ..... **\$4.90**  
Regular 7.95 ..... **5.90**  
Regular 9.95 ..... **6.90**  
Regular 10.95 ..... **7.90**

**Children's Sox**  
3 Pair ..... **\$1.00**

**Ware's**  
"We Give Gunn Bros. Stamps"

## Spade News

By MRS. JOE PRATER

The high school girls and boys were defeated by Bula at Spade in basketball games played at Spade last Friday night.

Dinner guests in the home of Mr. and Mrs. W. E. Mitchell Sunday were his uncle, Ed Abney of Paris, and Mr. Abney's son Gaco of Lubbock. Afternoon guests were Mr. and Mrs. B. H. Cyfert and their son and family, Mr. and Mrs. Earl Cyfert and daughter of Lawrence.

This week is mid-term examination week.

Mr. and Mrs. Jack Stubblefield are parents of a girl born last Friday. The grandparents are Mr. and Mrs. R. L. Stubblefield. This is their third daughter.

### LAQUITA ELDER IS HONORED ON BIRTHDAY

Mrs. Otis Elder honored her daughter, Laquita, with a party in her home last Friday on her eleventh birthday. Refreshments of cakes, coffee, mints and fruit were served to Ada Anderson, Travis Anderson, Charles Ramage, Larry Pierce, Joan N. Linda Lockwood, Francis Crump, Judy Bradley, Douglas Taylor, Tommy Cantrell, Mary Beth Tomlinson and Barbara Brown.

Mr. and Mrs. H. Harvey returned last week from a visit with relatives in Big Spring, San Antonio and other points.

### BAPTIST CIRCLES MEET

All circles of the W.M.U. met in the Baptist church Jan. 9 at 2 p. m. with Mrs. W. F. Smith in charge of the Royal Service program "We Give Thine—But Thine Own." Mrs. Joe Prater, Mrs. Doc Vann, Mrs. W. F. Smith, and Mrs. J. R. Matthews gave the devotionals. Those on the program were Mesdames Marie Hamilton, H. Harvey, Doc Vann, Arthur Turner, Joe Prater, and Ernest Savage.

The group voted to go to Luna Chapel Jan. 30, where Mrs. Doc Vann will teach "The Tribes Go Up" to both societies. The meeting begins at 10 a. m.

Rev. W. F. Smith, pastor of the Baptist church, attended the State-wide Baptist conference in Ft. Worth.

Mr. and Mrs. Bob Wisnoki of Amarillo visited her parents, Mr. and Mrs. H. Harvey, Sunday.

Mr. and Mrs. Arthur Turner spent Saturday night with her brother and sister-in-law, Mr. and Mrs. Orville Bynum, of Lubbock. Both couples went to Odessa Sunday to visit another brother and his wife, O. B. Bynum.

### MYP ATTENDS SERVICES AT LUBBOCK

The 10 of MYP attended services in the First Methodist church at Lubbock, Sunday. They also had lunch before returning home. Those attending were Ann Adams, Gloria Gray, Ruby Jaught, Joyce

Hodges, Gene Loman, Faye Tate, Dennis Vaughn, Mary Lois Tate, Elaine Scygley, Jac's Blessing, Betty Byars, Wayne Loman, Francis Davis, Charles Patterson and their sponsor, Mr. and Mrs. Roy McQuintess Jr., and Martha Sue.

M. F. Nix is a patient in the Littlefield Hospital and was quite ill with pneumonia, Saturday. He was reported much improved Monday. Mr. Nix lives about 1 1/2 miles east of Spade.

Mrs. G. G. Vandover underwent surgery in the Littlefield Hospital last week. She expects to return home the first of this week.

The baby daughter of Mr. and Mrs. Jack Stubblefield weighed 8 lbs and 2 ozs. Her name is Kathy Irene. Mother and baby returned home from the Littlefield Hospital Monday.

When the W.S.C.S. met in the Methodist church Monday at 2 p. m., twelve ladies attended. Mrs. Dan Tinsley led the lesson on "Women and the Church—Through the Centuries."

### FAT POINTER HAS SLUMBER PARTY

Miss Fat Pointer entertained with a slumber party last Friday night. Those present were Lu Stubblefield, Kay Hoelscher, Wanda Bryant, Betty Byars, Tam Pointer and the hostess.

Mr. and Mrs. Leonard King and family have moved to the Duggan farm four miles west and 1 1/2 miles south of Spade. The farm was formerly occupied by Boyd Montgomery and family, who moved north of Littlefield.

**IT'S THE LAW**  
in Texas  
A public service feature of the State Bar of Texas

**INCOME TAX FACTS**  
Under the 1954 Internal Revenue Act, all persons who have a gross income over \$600 must file income tax returns, except if the taxpayer is 65 or older he need not file a return unless he has gross income over \$1,200. This is because persons who are 65 or older have two exemptions which automatically

eliminate any tax liability for income under \$1,200.

The old established date of March 15 by which income tax returns must be filed was abolished effective last year. All federal tax returns for individuals may now be filed on or before April 15. Although many persons believe that a tax return need only be postmarked by the due date, such is not the intent of the statute. Tax returns are supposed to be in the office of the Internal Revenue Service by the due date specified.

Tax forms and instructions will be received by most persons during January. The instructions being distributed this year contain the following statement: "The Internal Revenue Service will mail Form 1040 ES, as far as is practical, to each person who may need it. Anyone else required to file should obtain the form from an Internal Revenue Service office in time to file by April 15, 1956."

Declarations of estimated tax are required from all persons who expect gross income of more than \$400, plus \$600 times the number of exemptions which may be claimed, if more than \$100 of the income will not be subject to withholding.

Single persons with more than \$5,000 and married persons with more than \$10,000 expected gross income must file declarations of estimated tax even though all of the income is subject to withholding.

Declarations of estimated tax, except those for farmers, must be filed by April 15. Like the income tax return, this date is one month later than the deadline for years before the new Revenue Act went into effect. However, the quarterly installment payment dates remain the same—June 15, September 15, and the last one on January 15 of the following year.

If a person, other than a farmer, desires to file his income tax return and pay his tax in full, he may do this on or before January 15 instead of paying his last quarterly installment. It does not relieve anyone from filing the original declaration of estimated tax and making three payments on it. However, in most cases this provision does remove the possibility of a penalty for an under estimate of tax liability.

Farmers have special provisions concerning declarations of estimated tax, and may postpone the filing of any estimate until January 15 of the following year.

The penalty for underpayment of tax was reduced by the 1954 act. There is now no underpayment if the taxpayer remits at least

70% of his tax as shown on his final tax return. If there is an under payment, the penalty is 6% per annum interest on the additional amount which should have been remitted. It is expected that there will be more strict enforcement of this provision in the future by the Internal Revenue Service.

## Cotton Letter

By SMITH B. COLEMAN  
of V. R. Jones & Co.

The U. S. State Department has announced that the United States and Great Britain have assured Egypt that they will contribute to the cost of the \$1,300,000,000 Aswan Dam on the upper Nile River. Unofficial sources indicate that joint U. S.-British financial assistance will include grants of \$200,000,000 plus a \$200,000,000 loan from the International Bank, primarily financed by America.

It is estimated that upon completion, the Aswan Dam will irrigate more than 2,000,000 acres of now arid desert land. It is feared that much of this acreage will go into production of cotton. Such increased foreign acreage will greatly nullify and hamper efforts of our cotton farmers who are planting drastically curtailed acreages in an effort to reduce the present cotton surplus. Many of our present day American cotton problems are the result of our governments financial and technical aid to increase the production of foreign cotton.

The future of our agricultural economy is primarily dependent upon the export of cotton surpluses. The proposed Aswan Dam project constitutes another definite threat to the American cotton farmer's economic survival inasmuch as it will jeopardize our foreign export market.

We realize that Aswan Dam project is an effort by Great Britain and ourselves to offset increasing Russian influence in the Middle

East. However, we know that in the last decade American taxpayers have spent in excess of \$50,000,000,000 on foreign aid. We feel that our government should consider the welfare of its own citizens first.

## Jay-cees Attend Convention

Twelve members of the Littlefield Jaycees attended the Winter Tri-Regional Convention at the Herring Hotel in Amarillo, January 7th and 8th. Bill Wilson, of Muleshoe, was elected vice president of Region II.

Saturday's agenda included din-

ner and a dance for members attending. A business meeting was held Sunday morning followed by a luncheon with the State President, Ed Stumpf as speaker.

At left: Jaycees attending were Max Bagwell, Slick Chandler, Clayton Cowan, Luther Cunningham, Billy Duncan, Cecil Harp, Donald Hull, Earl Pierce, Billy Smith, John D. Smith, Skipper Smith, Jack Thomas, and Marion Williams.

### MARRIAGE BOOM AHEAD

Only 1.5 million marriages occurred in 1955, as compared with 2.3 million in postwar 1946. But by 1960, there will be a new wave of marriages resulting from the boom in births in the 40's. About 2 million a year.



## God And Your Salvation

God's love is shown in that he is able, willing, and has even promised to redeem man from the consequences of man's own sins.

### God's Power to Save

Isaiah 59:1: "Behold, the Lord's hand is not shortened, that it cannot save; neither his ear heavy, that it cannot hear."

### God's Willingness to Save

2 Peter 3:9: "The Lord is not slack concerning his promise, as some men count slackness; but is long suffering to us—ward, not willing that any should perish, but that all should come to repentance."

### Only Man's Unwillingness Can Bring Loss

John 5:40: "And ye will not come unto me, that ye might have life."

### God's Promise of Salvation

Acts 2:39: "For the promise is unto you, and to your children, and to them that are afar off, even as many as the Lord our God shall call."

### Faithful Obedience Required of Man

Hebrews 5:9: "And being made perfect, he became the author of eternal salvation unto all them that obey him."

Church of Christ West Ninth Street Littlefield, Texas

NOW ONLY

# \$129<sup>95</sup>

BUY A BRAND NEW '56

## NORGE

AUTOMATIC ELECTRIC DRYER

Model AI-600A

- Full Size—not a "Junior" Model—dries a big load of clothes fast.
- More Air — Less Heat — Safe for all fabrics—laundry everything washable.
- Knee-Action Door Latch — Pushbutton operates easy to open when carrying clothes.
- 30-Day Money-Back Guarantee—Your money cheerfully returned if you're not 100% satisfied.

**Bill Smith Electric**  
913 S. Westside Ave. Phone 521

# Speaks softly and packs a powerful wallop!



THE BEL AIR SPORT COUPE—one of 19 high-priced-looking Chevrolets, all with Body by Fisher.

Whether idling at curbside or cruising, this new Chevrolet talks in a well-mannered whisper. You scarcely ever hear more than a soft undertone of power from its deep-chested V8. (One reason is the hydraulic-hushed valve lifters now in all Chevrolet engines—V8 or 6.)

Soft-spoken, yes—but this handsome traveler packs a wallop that ranges up to 205 h.p.! It's charged with sheer action!

Action that can save you precious seconds for safer passing on the highway! Action that lets you take steep hills in stride!

Action that helps you zoom out of trouble spots almost as quickly as they develop!

And action isn't all. Chevy holds the road like part of the pavement! You feel added assurance in the way it clings to curves.

Of course, Chevrolet brings you the security of safety door latches in all models. Instrument panel padding and seat belts, with or without shoulder harness, are offered at extra cost.

Come in and drive a new Chevrolet. We've got one ready and waiting for you.



## Christ-Centered Revival

Dynamic Preaching — Wonderful Music



HOMER MARTINEZ

January  
15 - 22

Morning Service  
10:00 A. M.

Evening Service  
7:30 P. M.

Nursery Open  
Each Service



Emmett (Buddy) Johnson

— Everyone Welcome —

## FIRST BAPTIST CHURCH

Littlefield, Texas

## ARMES CHEVROLET COMPANY

610 EAST 4th

PHONE 123

Springlake

**MRS. W. T. CLAYTON**  
Mrs. W. T. Clayton and  
Mrs. Watson visited in the  
home of Mrs. W. O. Wat-  
son last night.

William Neinaat visited in  
the home of Mrs. Elma Criswell,  
Friday afternoon.

Coed Browns' mother and  
visiting in the Brown home  
Friday. Mrs. Browns' parents  
lived in Littlefield for sev-  
eral years, but are now moving  
west.

and Mrs. Ernest Baker spent  
the day in Lubbock.

Mr. and Mrs. Springlake foot-  
ball team visited in the V. T.  
home Wednesday evening.

**MRS. MRS. HIGGINS**

visiting in the Springlake  
home on Sunday morning.

Mrs. Douglas Higgins  
visiting in the home  
of Mr. and Mrs.  
Higgins, Mrs. Iola Sanders  
of Lubbock, and Richard  
Higgins.

A. J. Phillips visit-  
ing in the home of their  
parents, Mr. and Mrs. Almon Whit-  
comb and Mrs. Phillips.

Mr. and Mrs. Avery and daugh-  
ter are visiting in the  
home of Mrs. H. A.  
Douglas while Douglas was  
on a fishing trip.

**Funeral Services for**

**MR. FERGUSON**  
Funeral services for Springlake  
resident Mr. FERGUSON, were held  
at the home of Mrs. John T. Williams, Mr.  
Ernest and Mrs. Albert

Ferguson is one of the pio-  
neers of this section, locating out  
in the Springlake community in  
1904 and was a member of the Springlake  
United Methodist church, until  
5 months ago when her health  
became serious. She died Friday  
morning in a Littlefield hospital  
and was buried in the Dimmitt  
cemetery.

Jewel Kuhel and daughter,  
Jewel, of Pampa, visited in  
the home of Mr. and Mrs. W. T.  
Clayton Saturday and Sunday.  
Jewel is a cousin of Mrs.

Boles has been spending  
the last two days in Sudan with  
other who is ill.

Jack Loitis suffered an in-  
fant.

and Mrs. Leslie Watson and  
Mrs. W. T. Clayton were  
here last Thursday and in  
Friday on business.

Harlen Watson had as dis-  
tinct Sunday her father and  
mother, Mr. and Mrs. G. Kellar,  
attended the funeral service  
for Mr. A. Ferguson Sunday.

J. B. James is on the sick  
list.

**CHILDREN ARE BAPTIZED**

Sunday night the Spanish people  
attended at the Springlake Bap-  
tist church for their baptismal ser-  
vice. 10 Spanish people were bap-  
tized.

**BOZEMAN IS CHAIRMAN**

of Search of Dimes  
Frank Bozeman is to head  
the Search of Dimes' polio drive  
in town and surrounding  
community.

**CONOCO TIPS**

By  
St Reeves



When the grease life is broken

Go all out to give ser-  
vice nothing magical about  
it now how and it is our  
job to do a BETTER job  
for you.

CONOCO SERVICE

Enough to Accommodate—  
Enough to Appreciate



**Get Your  
Gunn Bros.  
STAMPS  
Here!**

<b>JELLO</b> Assorted Flavors Box	<b>7 1/2c</b>	<b>Shortening</b> Shurfine 3 Lb. Can	<b>67c</b>
<b>COCOA</b> Hershey's 1/2 Lb. Box	<b>35c</b>	<b>LARD</b> Pinkney's 3 Lb. Carton	<b>45c</b>
<b>GUM</b>	<b>3 For 10c</b>	<b>SARDINES</b> Can	<b>10c</b>
<b>CANDY</b> All 5c Bars	<b>6 For 25c</b>	<b>Tuna Fish</b> Tuxedo, White & Flakes. Can	<b>19c</b>
<b>MILK</b> Shurfine Tall Can	<b>12 1/2c</b>	<b>CHILI</b> Wolf Brand No. 2 Can	<b>43c</b>
<b>BROOMS</b> Our Leader 5 Strand	<b>98c</b>	<b>PIC-NIC, TALL CAN</b>	
<b>BEANS</b> Pinto No. 303 Can	<b>10c</b>	<b>Pork &amp; Beans</b> 3 For	<b>25c</b>
		<b>CLOROX</b> Quart	<b>17c</b>

**FROZEN FOOD SALE**

9 OZ. CAN • Broccoli Spears  
8 OZ. CAN • Brussel Sprouts  
10 OZ. CAN • Cauliflower  
9 OZ. CAN • Cut Corn  
9 OZ. CAN • Green Beans

10 OZ. CAN • Baby Lima Beans  
10 OZ. CAN • Mixed Vegetables  
10 OZ. CAN • Peas  
12 OZ. CAN • Leaf Spinach

**15c**

**SUGAR**  
**COFFEE**  
**TIDE**  
**CAKE MIX**

<b>IMPERIAL PURE CANE 5 LB. BAG</b>	<b>48c</b>
<b>FOLGER'S DRIP OR REGULAR LB.</b>	<b>89c</b>
<b>GIANT BOX</b>	<b>69c</b>
<b>WHITE, SPICE, GOLDEN OR DEVIL'S FOOD BOX</b>	<b>22c</b>

<b>TOMATO JUICE</b> Shurfine 46 Oz. Can	<b>25c</b>
<b>HOMINY</b> Shurfine No. 303 Can	<b>3 For 25c</b>
<b>COCA COLA</b> or Dr. Pepper 12 Bottle Carton	<b>39c</b>
<b>LUNCHEON MEAT</b> Oscar Meyer Can	<b>33c</b>
<b>TOILET TISSUE</b> Northern 3 For	<b>25c</b>
<b>PAPER NAPKINS</b> Northern, Luncheon Cello, Pkg.	<b>15c</b>
<b>REYNOLDS FOIL</b> 25 ft. x 12 inches Roll	<b>29c</b>

**SHURFINE, 25 LB. PRINT BAG**

**FLOUR . . . \$1.69**

10 LB. BAG **69c**      5 LB. BAG **39c**

**TENDER CRUST BREAD**

LARGE LOAF **23c**



**IT MUST PLEASE OR YOUR MONEY BACK**

**SAUSAGE** PURE PORK NICE AND LEAN LB. **19c**

MILD SUGAR CURED  
**PICNIC HAM** Wilson's Certified **26c**

**HENS** 2 to 3 LB. AVG. YOUNG & TENDER **37c**



CHUCK FROM ARMOUR USDA CHOICE STEER  
**ROAST** LB. **39c**

**HAMBURGER** Ground Fresh From Fresh Choice Meat, Lb. **25c**

**OLEO** SHURFRESH 4 YELLOW QUARTERS **15c**

ARMOUR STAR SLICED, 1 GRADE  
**BACON** LB. **43c**

**FRESH PRODUCE**

<b>Celery</b> PASCAL NICE & FRESH STALK	<b>5c</b>
<b>Cranberries</b> CELLO BAG	<b>19c</b>
<b>Oranges</b> CALIF. SUNKIST LB.	<b>12 1/2c</b>
<b>Bananas</b> GOLDEN RIPE LARGE FRUIT LB.	<b>12 1/2c</b>
<b>Tangerines</b> FULL OF SWEET JUICE LB.	<b>15c</b>
<b>Grapefruit</b> MARSH SEEDLESS RIPE, FULL OF JUICE, LB.	<b>5 1/2c</b>

**DRUG SPECIALS**

<b>Hair Arrainnger</b> 60c SIZE	<b>49c</b>
<b>Alka Seltzer</b> LARGE SIZE	<b>49c</b>
<b>Baby Magic</b> 59c SIZE	<b>37c</b>
<b>Gillitte Razor</b> REGULAR, LITE HEAVY EACH	<b>\$1.00</b>
<b>Lotion</b> WOODBURY \$1.00 SIZE	<b>50c</b>
<b>Tooth Paste</b> COLGATE 50c SIZE	<b>33c</b>

**Plenty Of  
FREE  
PARKING**

We GIVE  
Double Stamps  
On Tuesday  
**Gunn Bros.  
STAMPS**

**Renfro Bros**  
**FOOD MARKET**  
ESTABLISHED IN 1929  
Raymond PHONE 74 Norman



### Olton News

By MRS. GERALD BIZZELL  
MRS. MILLER IS SHOWER HONOREE

Mrs. Ray Caldwell entertained Mrs. Henry Miller III with a birthday shower in her home recently. The receiving rooms were done in the Christmas decorations and Mrs. Miller, the former Miss Louella Moran opened her gifts in front of the Christmas tree. Mesdames Bill Hankins, Cecil Jolly, Linsey Dennis, and Miss Ann Pollard presided at the serving table. Assisting in the shower were Mesdames Hankins, Ray Rucker, Russell Rucker, T. Agaki, Leon Blackwell, Virgil Gray, Frank Mandrell and Mrs. Caldwell.

#### JOHN DEERE EMPLOYEES HAVE PARTY

Mr. and Mrs. E. L. Thompson entertained the employees of the John Deere house with a party in their home on Friday night, Dec. 23. The entertaining rooms were done in traditional Christmas fashion. Games were enjoyed and a gift exchange was held at the close of the evening. About 30 guests were present. Fruit cake and coffee were served.

Olton still needs another fire truck. Donations have reached over \$2,000 but it takes much more to get a truck. The fire department will discuss plans to raise money for the project at their meeting on Jan. 3.

Tom Smith, fire chief, states it is against the fire ordinance for the one truck to be taken out of the city limits leaving Olton without protection.

Mr. and Mrs. Dewey Moses and Mr. and Mrs. John Moses have been in Commerce, Texas, visiting the boys father.

Mr. and Mrs. Alward Price and family spent the weeks in Shamrock with relatives. Mr. Price is educational director at the Baptist church and Mrs. Price is church secretary.

#### THOMAS FAMILY HAS NEW HOME

Mr. and Mrs. Roscoe Thomas

and Mr. and Mrs. Bill Holly moved into their new home in Hillcrest addition this week. Four other houses are under construction there.

Weekend guests in the home of Mr. and Mrs. Gerald Bizzell and wife were Mr. Bizzell's parents, Mr. and Mrs. Harry Bizzell of Foss, Okla., and his sister and family, Mr. and Mrs. Billy Joe Hoffman of Palmdale, Calif., and Mrs. Lovetta Bates and son of Los Angeles. Tuesday the family visited in Lubbock with Mr. and Mrs. Chester Herring.

Mr. and Mrs. Ezra Whittington and daughter, Mrs. Margie Carlisle and Melodie, were Littlefield visitors this week.

Mrs. Daisey Crawford is the new clerk in Ann's Whatnot shop.

Mrs. R. H. Campbell has been on the sick list this week but feels better now.

Mrs. Elaine Pinchert has decided to be a housewife for a while. She worked at the Sherman Food for two years.

#### EDWARDS FAMILY TO MOVE FROM OLTON

Mr. and Mrs. Paul Edwards and Pam plan to move from Olton about January 15. They have been in the Olton Farm Supply with Don Spain. Don plans to continue the operation of the firm.

#### HOLLOWAYS ARE PARENTS OF BABY GIRL

Rev. and Mrs. Harley Holloway are the parents of a baby girl born in a Brownfield hospital. Harley is an Olton boy. His parents are Mr. and Mrs. John Holloway.

Mrs. Gayland Finney brought Gayland home this week from a stay in a Plainview hospital. He had major surgery, and is now doing fine.

Mr. and Mrs. Sammy Hale spent the weekend in Dallas and Rockester with her folks. They attended the game New Year's Day in Dallas.

Mrs. C. M. McCraw who has been working in Plainview this fall is home in Olton. She plans

### LAFF - A - DAY



"I'd like to have them lengthened for the winter."

#### OWENS OBSERVE GOLDEN ANNIVERSARY

Calling hours are from 2 to 5 p. m. for the Golden Wedding Anniversary for Mr. and Mrs. C. M. Owens in the home of their daughter, Mrs. E. C. Jones. The public is cordially invited. The Owens son and wife, Mr. and Mrs. Douglas Owens who are stationed in Maryland also visited her parents in Littlefield. Mr. and Mrs. O. C. Owens.

#### Farm Operators Tax Due Before April 15, 1956

COLLEGE STATION — Self-employed farmers and ranches can become eligible for insurance benefits under the social security law by mid 1956 if they have earned as

much as \$400 from farming in both calendar years 1955 and 1956. A. B. Wooten, extension economist, reminds Texas farm operators.

Along with this goes the responsibility to report earnings from farming and pay the 3 percent social security tax not later than April 15, 1956. The Social Security Administration has suggested that payments be made as early as possible after January 1.

The form for making a report

and remitting the required tax for social security insurance (Schedule "E") comes with the Federal Income Tax Return, form 1040. If your net earnings from farming were as much as \$400 in 1955, you are obliged to fill out and file this return and pay the social security tax, according to Wooten, even if you do not owe any Federal income tax for 1955.

Older farmers—those 65 or over—can retire after mid 1956 and start getting monthly old-age insurance payments if they have met the earnings requirements and paid the tax. Other farmers, regardless of age, will acquire family protection in the form of monthly payments to surviving dependents in the event of their death, provided they meet the same requirements.

In either case, the payment of the social security tax must accompany your income tax declaration or return. This responsibility is required by law.

Further information on social security taxes may be obtained at your nearest Internal Revenue Service office or from the local county agent. Information about benefits can be obtained from your social security district office. If you do not know where these offices are, your postmaster can tell you, says Wooten.

For Dual Muffler Sets . . . Fender Skirts and Lowering Blocks come to . . .  
**MCCORMICK BROS.**  
Auto Parts  
Main Street Phone 157

### Bennett Chiropractic Clinic

C. W. Bennett, D. C. Crystelle Bennett, Office Mgr.  
X-RAY  
Hours: 9 to 12 — 1 to 5  
Saturday 9 to 12  
106 East 10th Phone 588  
(Our 10th Year in Littlefield)

# Dunlap's WEEKEND SPECIAL

Littlefield

## White Elephant TABLE

CONSISTS OF MERCHANDISE THAT WE DON'T INTEND TO INVENTORY FROM ALL DEPARTMENTS. MARKED AT A DRASTIC LOW PRICE!

### Shop Early

## Chenille BED SPREADS

Regular \$5.95  
Special \$3  
Manufacturer's Purchase

## ONE RACK ALL NEW FALL DRESSES

Paul Sachs, Mondels, Carol King, Levine's  
\$32.95 and \$29.95 For Only **\$19.77**  
\$27.95 For Only **\$18.77**  
\$24.95 and \$22.95 For Only **\$16.77**  
\$17.95 For Only **\$12.77**

1000 yards 80 Sq Cotton Prints. Values To 69c **3 yds.**  
2000 yds better Cottons, Plaids Stripes & Prints. Values to \$1.49 **2 yds.**  
One Group Including Broadcloths, Nylons, Jerseys. Values To \$2.98 **1 yd.**

## SEE WHAT YOUR DOLLAR WILL BUY IN OUR BIG LINGERIE DEPARTMENT

- LADIES' BABY DOLL PAJAMAS
- LADIES' GOWNS, RAYON TRICOT KNIT
- LADIES' RAYON HALF SLIPS
- LADIES' BEST FORM BRAS
- LADIES RAYON PANTIES — 3 FOR
- CHILDREN'S NYLON PANTIES — 2 FOR
- CHILDREN'S RAYON PANTIES — 3 FOR
- LADIES' RAYON PANTIES — 4 FOR
- LADIES' NYLON PANTIES — 2 FOR

## BELIEVE IT OR NOT YOUR DOLLAR WILL BUY THESE GREAT BARGAINS

- MEN'S NYLON STRETCH SOX — 2 FOR
- BOYS' NYLON STRETCH SOX — 2 FOR
- MEN'S SWEAT SHIRTS
- MEN'S CHAMBRAY WORK SHIRTS
- MEN'S WORK SOX — 4 PAIR
- MEN'S LARGE HANDKERCHIEFS — 10 FOR
- MEN'S BROADCLOTH SHORTS — 2 FOR
- MEN'S KNIT UNDER SHIRTS — 2 FOR
- MEN'S KNIT BRIEFS, S-M-L — 2 FOR

Ladies' Coats and Suits  
Ladies' Dresses, National Adv.  
Children's Dresses  
Children's Coats  
Ladies' Beaded Sweaters  
Girls' Blouses  
Girls' Blue Jeans  
**1 1/2**  
PRICE

THIS IS NOT DAMAGED GOODS, BUT OUR REGULAR STOCK

ONE 5-MILE DRIVE WILL PROVE IT  
**Your driving is easier — you feel safer — in THE BIG M**



The stunning Mercury Montclair 2-door hardtop with distinctive low profile and Flo-Tone color styling.

Easier riding and handling on sharp turns—new comfort on bumpy roads—widest choice of safety features in its field help explain why THE BIG M is the big buy for 1956.

Riding is so much better than reading. That's why we invite you to take a demonstration drive in our BIG M.

Then you'll feel THE BIG M's reflex action firsthand—how ball-joint front suspension adjusts itself instantly to rough roads, ruts, and curves.

And you'll experience the reflex-action response of THE BIG M's new SAFETY-SURGE V-8 engine—how it takes the tension out

**BIG 4 OF THE BIG M**

- 1 NEW REFLEX-ACTION PERFORMANCE.** THE BIG M responds to your every command—go, stop, climb, pass—quick as an athlete's reflex. On all roads and curves, Mercury adjusts instantly, automatically, for your ease and comfort.
- 2 BIG M BEAUTY.** New long, low profile. Distinctive Flo-Tone color styling. Clean-lined beauty for young-minded people.
- 3 NEW SAFETY-FIRST DESIGN.** Widest choice of safety features; impact-absorbing steering wheel, safety door locks at no extra cost; padded instrument panel, safety belts, optional.
- 4 PROVABLE VALUE.** Low price when you buy—low cost while you drive. For 4 years best resale value in its field. Many dividend features for greater performance and convenience.

For 1956—the big move is to THE BIG MERCURY

Don't miss the big television hit, "TOAST OF THE TOWN" with Ed Sullivan, Sunday evening, 6:00 to 7:00, Station KDUB-TV, Channel 13.

**HOMER GARRISON MOTORS, Inc.**  
FIFTH AND XIT DRIVE

"Market Place for  
The Littlefield  
Area"

# Lamb County Leader

Section Three

VOLUME 23 LITTLEFIELD, LAMB CO., TEXAS, THURSDAY, JANUARY 12, 1956 NUMBER 33

## Sudan Sidelights March Of Dimes Program Well Underway In Sudan

Mrs. EVELYN M. SCOTT and Mrs. Henry Gilbert were in Phoenix, Ariz., this week to be with Mrs. Gilbert's sister, Mrs. J. Blakely, who was seriously ill. Accompanying the Gilberts were their sisters, Mrs. Joe Cohorst of Dallas, Mrs. M. D. Boatright, and Mrs. E. Jones of Morton.

Mrs. Lee Roy Cole is confined this week in a Hereford hospital following surgery there last week. Patsy Gilbert is a guest this week in the A. S. Powell home, while her parents are Arizona visitors.

## DESTROYED FISHER BARN

Fire partially destroyed a shed and barn with grain Saturday, at the Jack Fisher farm near town.

## STUDY IS CONCLUDED

A Bible Study course was concluded Thursday evening by study groups at the First Baptist church when the course topic was "Teaching of Jesus" taken from Matthew through 7.

## FERGUSON IS NAMED CHAIRMAN OF MARCH OF DIMES

Forrest Ferguson has been named as chairman of the March of Dimes drive in Sudan. This is Ferguson's second year to be chairman. The drive got underway here this week when speakers were placed in business meetings.

## BAPTIST CHURCH HAS GUEST SPEAKER

Guest speaker at the Sunday morning services of the First Baptist church was E. Woodrow Crews of Fort Worth, chairman of Speakers Group Bureau of Texas Alcohol and Narcotics Education. The program is part of a Field Day conducted by the organization.

## man can give you dependable delivery of THE CHRISTIAN SCIENCE MONITOR

Housewives, businessmen, clerks, and students all over the world read and enjoy this international newspaper, published daily in Boston. World news for constructive news and penetrating editorials. Features for the whole world.

Mr. and Mrs. E. B. Dick and Bobby Joe, have purchased and moved to the O. L. Williams home south of town. Before moving to the Sudan community the Dicks resided at Whitharral.

Former Sudan resident, Mrs. E. Jones of Muleshoe, underwent surgery last week in a Hereford hospital.

and Mrs. Wayne Perry and Mr. and Mrs. Earl Chester.

Sunday afternoon guests in the Hubert Dykes home were the Leon Smith family and Mr. and Mrs. J. V. Bolan of Lubbock.

Among Sudanites to attend the Cotton Bowl game in Dallas last week were the F. M. Smiths, the Doyle Watkins and Carol Ann, the E. J. Stones, Milton Wisemans, and Colman Terrells.

A number from Sudan left this week for fishing near Nettles, Calif. Among those going were Drew Watkins, Ray Wood, Frank and Al Bryant of Lubbock, Mr. and Mrs. Arnold Reed, Clifton and Mac Reed and M. S. Gatewood.

Mr. and Mrs. C. E. Nichols and Mr. and Mrs. Dewey Haragan visited Sunday with Mrs. Lee Roy Cole in a Hereford hospital. Also visiting with Mrs. Cole were Mr. and Mrs. Tommy Cate.

Mrs. A. E. Perkins honored her husband with a birthday dinner Sunday when Mrs. Johnny Serratt and Melvyn were guests for the occasion.

Mrs. A. E. Perkins honored her husband with a birthday dinner Sunday when Mrs. Johnny Serratt and Melvyn were guests for the occasion.

Mike Smith was honored with a birthday supper and theater party Wednesday evening for his ninth birthday, by his mother, Mrs. F. M. Smith. Following the supper, served in the Smith home, the group attended a show in Muleshoe. Guests for the occasion were Dale Savage, Tommy King, James D. Leech, Kenzil May, Robert Earl Williamson.

Sunday guests in the home of Mr. and Mrs. G. B. Salyer of Enochs, were Mr. and Mrs. Loyd Robinson and Mrs. W. A. Loecker.

Mr. and Mrs. Hubert Dykes were Hereford visitors Friday.

Supper guests Saturday evening in the Toxico home of Mr. and Mrs. Homer Dykes were Mr. and Mrs. T. P. Wingo and Scrappy, Mr. and Mrs. Hubert Dykes and Butch, Mrs. Wayne Howell and Waynette.

In Hereford Saturday night to visit Mrs. Lee Roy Cole were Rev.

rel Harlin of Hattisburg, Miss. Miller.

**HARLINS ARE NEW RESIDENTS**  
New Sudan community residents are the Percy Harlins, formerly of Littlefield. They moved to a farm west of town.

**SALEMS ATTEND BOARD**  
Mr. and Mrs. Joe Salem were in Lubbock Friday evening to attend a dinner of the Methodist Hospital Board of Trustees, when Phil Carter of Albuquerque, N. M., was honored as the new administrator of the hospital. The dinner was held in the Club room of the Caprock Hotel and Mr. and Mrs. Paul Cates of Lubbock were hosts.

**KAREN MILLER IS HONORED**  
Miss Karen Miller, daughter of Mr. and Mrs. Jay Miller, entertained with a tea party on the occasion of her seventh birthday Thursday afternoon at 4.

Acting as hostess Karen served cake and punch to her guests, Nancy Nix and Brenda Drake.

Mr. and Mrs. E. W. Baccus were Wednesday night guests in the Plainview home of their daughter and family, Mr. and Mrs. Harold

Miller.

Mrs. Jay Miller honored her daughter, Kandy, with a birthday dinner, Sunday for the occasion of her tenth birthday. Guests for the occasion were Dyanne Curry and Eloise Ingram.

Mrs. R. A. Lance honored her daughter, Connie, with a trip to Lubbock and a visit to TV playtime for the occasion of her fourth birthday Saturday afternoon. Appearing on the program with Connie, who made a birthday wish, was her sister, Nancy.

Weekend guests in the home of Mr. and Mrs. S. D. Hay, were Mr. and Mrs. Norman Cook and Miss Helen Hodgkinson of Ottawa, Ill. The group were enroute to California.

Mr. and Mrs. Billy Jo Gerik and Mr. and Mrs. Forrest Ferguson were in Clovis Saturday evening for dinner at the El Monterrey.

**MR. AND MRS. PRAUSE HAVE NEW SON**  
Mr. and Mrs. D. D. Prause, of Valley Mills have a new son, weight 6 lbs., and 9 ozs. The infant was

born Dec. 31, and was named Jerry Glenn. Mrs. Prause is the former Faye Workman, a former resident of Sudan.

Maternal grandparents are Mr. and Mrs. Kermit Workman of Arlington. Paternal grandparents are Mr. and Mrs. D. Prause of Valley Mills.

"Marketing Texas Wool on a Quality Basis" is the title of a new bulletin just released by the Texas Agricultural Experiment Station and Extension Service. It is available at county extension offices or from the Agricultural Information Office, College Station, Texas.

## 4-H Club Meets Mon. Afternoon At Junior High

Littlefield Junior high 4-H club met Monday afternoon. Club books were distributed and a program on bedroom improvements was presented for the girls division. Mrs. Hazel Hickman, Lamb County Home Demonstration Agent, directs the girls activities of the 4-H clubs.

Bob Haney, assistant Lamb County Agent, is in charge of the boys activities of the 4-H clubs. In the meeting Monday afternoon the boys and Haney held a round table discussion on how to choose club calves. The feeding and care of calves was discussed. Boys also gave reports on the calves that they are feeding at the present time.

Accidents cause the deaths of about 6,000 school-age children a year in the United States.

About 11,000 people are killed by fire every year in the United States.

**Alvin C. Webb**  
Certified Public Accountant  
Announces The Removal Of  
Office To New Building Location  
At 823 LFD Drive  
Phone 190 Littlefield, Texas

*We've Moved*  
to our new location  
**410 Phelps**  
We Invite you to come by  
and inspect our new modernistic  
building.  
(First Door South Of Penney's)  
**JOHN NAIL STUDIO**

# This is the Month to Buy Used Cars.. Hall Motor Is The Place To Buy Them

There is no better month than January to buy good used cars at lowest prices. The selection is always at its best since many people trade for new cars immediately after the new models are shown. Since the supply is large, prices are low.

And you'll find no better place to buy than at Hall Motor Co. Our rough used cars are "Wholesaled" to an out-of-county dealer. Therefore... you can be assured that all cars on our lot are A-1 Used Cars. We guarantee that our prices are consistently below the market value. You have learned to depend on our salesmen telling you only the true facts about our used cars.

**Due To These Policies, We Sell MORE Used Cars Than Anyone In Town!**

Check These Prices	
1954 Ford Crestline 4-Door, Ford-A-Matic, Air conditioner, Perfect Car	<b>\$1495.</b>
1954 Ford 4-door station wagon. Extra clean, low mileage, new tires.	<b>\$1595.</b>
1953 Mercury 4-door. Local owner. Low Mileage.	<b>\$1195.</b>
1953 Ford 4-door, standard transmission, radio & heater. Good economical transportation.	<b>\$995.</b>
1953 Ford pickup, Custom cab, heater, 31,000 actual miles. Extra clean.	<b>\$795.</b>
1951 Ford sport coupe. Ideal second car.	<b>\$495.</b>
1949 Ford pickup. Best irrigation buy in town.	<b>\$295.</b>

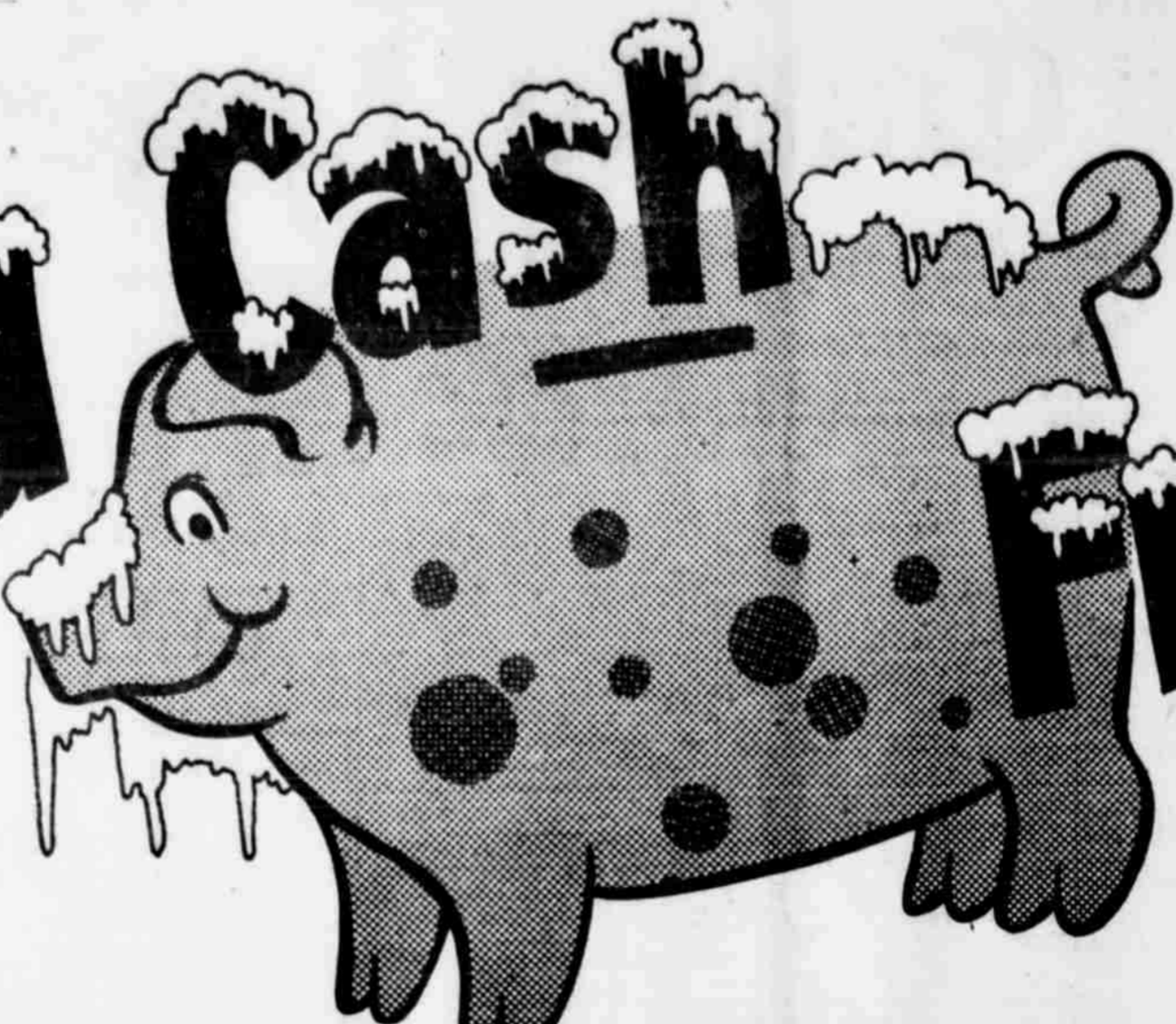
Many Others To Choose From — All A-1 In Quality, Value And Price  
WE SELL FOR...  
**CASH or TERMS**  
With Or Without Trade - In

# HALL MOTOR COMPANY

YOUR FRIENDLY FORD DEALER 20 YEARS IN LITTLEFIELD

Division Science Monitor  
Every 5¢, Boston 15, Mass.  
of your newspaper for the time  
and. Enclosed find my check or  
order.  
\$14 ☐ 3 months \$39 ☐  
6 months \$64 ☐  
Name \_\_\_\_\_  
Address \_\_\_\_\_  
City \_\_\_\_\_ State \_\_\_\_\_

# SAVE CASH ON THESE... COLD FROZEN FOODS



Every home-maker appreciates the convenience and economy of delicious, nutritive frozen foods. Now is the time to really stock your home freezer with all the family's favorites. You'll enjoy substantial savings on top quality items throughout our entire selection of famous brand frozen foods. Shop today — for better values in finest frozen foods. Receive S & H Green Stamps with every purchase!

- REAL PRUNE, 24 OZ. BOTTLE **PRUNE JUICE** 29c
- SUNSHINE, 1 LB. BOX **HI HO CRACKERS** 35c
- SUNNY HILLS, 12 OZ. BOTTLE **CATSUP** 17c
- CURTISS, 10 OZ. PKG. **MARSHMALLOWS** 19c
- PINT SIZE **WESSON OIL** 32c
- BATH SIZE **DIAL SOAP** 2 For 37c
- NORTHERN **TISSUE** 3 For 25c
- NORTHERN, 80 COUNT **NAPKINS** 12 1/2c

**GLEEM**  
TOOTH PASTE 50c SIZE **33c**

- LUSTRE CREME, 4 OZ. JAR **SHAMPOO** 69c
- JOY, SUDS, 1 LB. BOX **BUBBLE BATH** 25c
- BOYER, 60c SIZE **HAIR ARRANGER** 43c

## BANANAS

- FIRM HEADS **LETTUCE** Lb. 12 1/2c
- FRESH BUNCH **GREEN ONIONS** 7 1/2c
- FRESH, CARTON EACH **TOMATOES** 19c

## MIRACLE WHIP COCKTAIL

- IRELAND'S, NO. 2 CAN **CHILI** 43c
- LIBBY'S, NO. 353 CAN **GARDEN LIMAS** 29c
- HUNT'S, NO. 300 CAN **PEACHES** 22c
- LIBBY'S, NO. 9 CAN **DEVILED HAM** 21c
- PATIO, NO. 300 CAN **TAMALES** 19c

## SALMON

HILLS OF HOME FROZEN, 10 OZ. PKG. **WHOLE OKRA** .15<sup>c</sup>

LIBBY'S FROZEN, 10 OZ. PKG. **STRAWBERRIES** ... 25<sup>c</sup>

WHOLE SUN FROZEN, 6 OZ. CAN **ORANGE JUICE** 15c

LIBBY'S FROZEN, CHICKEN, BEEF OR TURKEY **POT PIES** 2 45c

LIBBY'S FROZEN, 10 OZ. PKG. **CAULIFLOWER** 25c

LIBBY'S FROZEN, 6 OZ. CAN **GRAPE JUICE** 19c

MORTON'S, APPLE, CHERRY, OR PEACH **FRUIT PIES** 24 Oz. Pkg. 49c

PATIO FROZEN, 16 OZ. PKG. **MEXICAN DINNER** 59c

HILLS OF HOME FROZEN, 12 OZ. **SPINACH** 15c

LIBBY'S FROZEN, 10 OZ. PKG. **CREAM STYLE CORN** 17c

**PINEAPPLE** JUICE DOLE, FROZEN 6 OZ. CAN 12 1/2<sup>c</sup>

- KRAFT, 1 LB. BAG **CARAMELS** 39c
- HINSAN'S, 1 LB. CAN **COFFEE** 79c
- NATIONAL **GEM BROOMS** \$1.57

- GOLDEN **FRUIT** LB. 12 1/2<sup>c</sup>
- TEXAS, 5 LB. BAG **ORANGES** 29c
- CALIF., EACH **CALAVOS** 12 1/2c
- FRESH BUNCH **RADISHES** 7 1/2c
- MARYLAND SWEET **POTATOES** Lb. 10c
- FRESH BUNCH **TURNIPS & TOPS** 10c
- FRESH BUNCH **MUSTARD GREENS** 10c

- FRUIT LIBBY'S NO. 308 CAN **APRICOTS** 25c
- HUNT'S, NO. 2 1/2 CAN **PEARS** 25c
- GLADIOLA, 5 LB. BAG **MEAL** 37c
- LIBBY'S, NO. 308 CAN **PUMPKIN** 14c
- CAMPFIRE, NO. 5 CAN **VIENNAS** 10c
- SWANSON'S, 5 OZ. CAN **CHICKEN SPREAD** 21c
- DURAND'S WHOLE, NO. 3 SQUAT CAN **SWEET POTATOES** 25c
- HUNT'S, NO. 2 1/2 CAN **PRUNE PLUMS** 25c
- LIBBY'S, 24 OZ. CAN **BEEF STEW** 43c
- GEBBER'S, STRAINED **BABY FOOD** 3 For 27c

## HENS

LIGHTS FRESH FROZEN LB. 39c

- MAYFLOWER, NO. 303 CAN **CORN** ... 12 1/2<sup>c</sup>
- TOMATO, HUNT'S NO. 300 CAN **JUICE** ... 10c
- GOLDEN WEST, 10 LB. BAG **FLOUR** ... 69c
- DARICRAFT, TALL CAN **MILK** ... 12 1/2<sup>c</sup>
- LUCKY STRIKE, CHUNK STYLE, 1 1/2 CAN **TUNA** ... 29c
- SWIFT JEWEL, 3 LB. CAN **SHORTENING** 69c
- MARSHALL'S, NO. 300 CAN **PORK & BEANS** 3 For 25c
- LAZY A CUT, NO. 303 CAN **GREEN BEANS** 12 1/2<sup>c</sup>
- PAR. PEACH OR APRICOT, 20 OZ. **PRESERVES** 37c
- BETSY BOSS, 24 OZ. BOTTLE **GRAPE JUICE** 29c

## PICNICS

- FRESH SHOULDER **PORK ROAST** Lb. 39c
- GOVT GRADED GOOD **RIB STEAK** Lb. 59c
- FRESH GROUND **HAMBURGER** Lb. 29c
- GOVT GRADED GOOD **BEEF RIBS** Lb. 19c
- WILSON'S CERTIFIED **HALF OR WHOLE** LB. 29c
- END CUTS **PORK CHOPS** Lb. 39c
- GOVT GRADED GOOD **ARM ROAST** Lb. 49c
- KRAFT'S, LONGHORN **CHEESE** Lb. 49c
- FRESH SLICED **PORK LIVER** Lb. 15c

## BACON

WILSON'S CORN KING SLICED, LB. 39c

**DOUBLE YOUR GREEN STAMPS EVERY TUESDAY!**

WITH \$2.50 PURCHASE OR MORE 5+H GREEN STAMPS ARE GIVEN AND REDEEMED NATIONWIDE





# Meet The Correspondents



MRS. JUNIOR MULLER

## Hart Camp's Community Editor Leads Busy Life

was born Lila Ruth Monroe, on January 19, 1931. My parents were Mr. and Mrs. H. R. Monroe, who lived at the time near Vernon, Texas. I am the oldest of three children. My brothers are Clarence and Wayne. They are still residing at home. I attended school at Charlie, Texas, and Burk Burnett, Texas. I graduated from Spade high school in 1948. I was married to Junior Muller on January 27, 1950. My oldest son, Mark Clifton Muller, arrived on December 13, 1951, and our youngest daughter, Patricia Bess, was born on November 6, 1954. My mother passed away on June 15, 1953. She was a cancer victim. My husband is a farmer. He operates a half-section of farm land near Hart Camp. We reside one-half mile east of Hart Camp. We are members of the Hart Camp Baptist church, where my husband is an assistant teacher in the junior department. I teach the young people's Sunday School class. I am the chairman of the Ida Davis circle of the WMS of the church. We are also members of the Hart Camp Farm Bureau. Writing the news for our community is a hobby I enjoy very much. We have no telephones so this work necessitates personal contacts. I reported for the Olton Enterprise for the year of 1954. I am reporter for the Hart Camp Farm Bureau. My favorite pastime is reading.

John R. Byers, all of Odessa, Mrs. Walter Jones of Amarillo, Mr. and Mrs. Ralph Martin of Hereford, and the host and hostess. Games of 42 and monopoly were played.

Mr. and Mrs. Ludge Griffin of Rocky Ford visited her parents, Mr. and Mrs. H. B. Weaver, Sunday afternoon.

J. B. Martin and R. C. Martin were in Plainview and Lubbock on business Wednesday.

Mr. and Mrs. T. C. Martin spent Sunday night and Monday in Hereford with Mr. and Mrs. Ralph Martin.

Mrs. Lena D. H. will leave Tuesday for Louisiana, where she will be doing missionary work. Mrs. Hite spent five months last year in this same work.

**DONAL YANDELL HAS PARTY**  
Mrs. Reed Yandell gave a birthday party for her son, Donal Saturday afternoon, on his 9th birthday.

**FREDY GUY KELLY IS HONORED ON BIRTHDAY**  
Fredy Guy Kelly was honored with a birthday party in his home Saturday on his 8th birthday.

The Brotherhood of the First Baptist church gave a "send off" breakfast, Monday morning at 6 a.m., for a group leaving for the Evangelistic Conference in Ft. Worth.

**RA BOYS ATTEND MEET IN ABILENE**

Lyndell Jaquess, Noel Gilmore and Alvin Upchurch were among a group of RA boys from the West Plains Association who attended the Royal Ambassador State meeting held in Abilene, the 29th and 30th of December. Bro. Rankin, from the First Baptist church of Amherst was sponsor for this trip with the boys.

Mr. and Mrs. R. C. Martin and Sandra Kaye visited her brother and family, Mr. and Mrs. R. C. Stewart in Cone, Texas, Sunday afternoon.

**ROPING CLUB MEMBERS ATTEND CONVENTION**

Those from Earth attending the Roping Club convention at the Caprock Hotel in Lubbock Saturday night were Mr. and Mrs. T. V. Murrell, Mr. and Mrs. Lynn Glasscock, Mr. and Mrs. Barney Glasscock, Mr. and Mrs. Ray Glascock, Mr. and Mrs. Clyde Knight, and Mr. and Mrs. Bob Knight.

**SANTA FE CARLOADINGS INCREASE**

Santa Fe carloadings for week ending January 7, 1956 were 21,338 compared with 20,208 for the same week in 1955. Cars received from connections totaled 10,211, compared with 10,140 for the same week in 1955.

Total cars moved were 31,549 compared with 30,348 for the same week in 1955.

Santa Fe handled a total of 30,256 cars in preceding week of last year.

receiving medical treatment at a Plainview hospital.

**SCOTT'S ARE HOSTS AT SUPPER**

Mr. and Mrs. Travis Scott entertained Saturday night with a supper. Those attending were Mr. and Mrs. Reed Yandell, Don and Ron, Mr. and Mrs. Tommy Gattis and Pam, Mr. and Mrs. Travis Jaquess, Alice, David and Judy.

J. G. Cole of Olton, Mr. and Mrs. T. C. Martin Mr. and Mrs. Clifford Bills, all of Earth, and Mrs. Ralph Martin of Hereford, were dinner guests in the R. S. Cole home, Sunday.

Mr. and Mrs. Floyd Bills, Hilda and Doyle were in Lubbock on business, Saturday.

**J. B. MARTIN IS HONORED ON BIRTHDAY**

Mrs. J. B. Martin entertained with a birthday party Saturday night in her home for her husband. Refreshments of coffee, spiced tea, and cake were served to the following guests: Mr. and Mrs. T. C. Martin, Mr. and Mrs. R. S. Cole and Regina, Mr. and Mrs. R. C. Martin and Sandra, Mr. and Mrs. C. R. Miller, Mr. and Mrs. Bill Stevens, all of Earth, Mr. and Mrs. John Byers, and sons, Bobby and Ronny, Mr. and Mrs. Ray Cargo and Ray Lynn, Mr. and Mrs. Billy Byers and Ricky, all of Hereford, Mr. and Mrs. Don Presley, Katrina and Garry, Mr. and Mrs.

## SOIL CONSERVATION DISTRICT NEWS



### OUR SOIL ★ OUR STRENGTH

Conservation strategy for 1956. Speedup of upstream flood prevention work, and water legislation for Texas will be the big topics of discussion when farmers and ranchers from all over the state meet in Lubbock on January 18, 19 and 20 for the 15th annual convention of the Association of Texas Soil Conservation District Supervisors.

Dr. C. H. Wadleigh, chief of USDA's Soil and Water Conservation Research Branch, the main speaker, is expected to discuss research for better control of wind erosion and better use of water in crop production.

L. L. Males, Cheyenne, Okla., will tell about the first completed upstream flood prevention project in the United States—the system of small dams and land treatment measures on Sandstone Creek Watershed in western Oklahoma.

Bill Durham, Fort Worth Star-Telegram farm editor and a recent appointee to USDA's new Soil and Water Conservation Advisory Committee, will report on the committee's activities. Nolen Fuqua, Duncan, Okla., president of the National Association of SCD's, will discuss NASCD problems and objectives.

Mrs. Eunice Johnson Halbert of Foard City, first woman to win the state SCD speaking contest, will deliver her prize-winning oration. A full program of ladies ac-

tivities is scheduled including lunches, teas, style shows, tours of the city and of Lubbock homes, and visits to Texas Tech's museum and art gallery.

Billed as a "working convention," there will be plenty of time for committee work and floor discussion of the many soil and water problems facing Texans.

This year's SOIL AND WATER SHOW, a feature of the convention, will present one of the largest displays of irrigation, land-leveling, earth-moving, brush-control, and other conservation equipment for farms and ranches ever assembled in Texas.

Both the show and the convention will be held in Lubbock's Fair Park Coliseum. Admission is free, and supervisors are extending a hearty invitation for all interests folks to attend, visit the exhibits, and participate in the convention. Farmers and ranchers of the Plains Area will be especially interested in the exhibits of equipment.

Supervisors of the Lamb County Soil Conservation District planning to attend the Lubbock Convention are: Thurlo Branscum of Pleasant Valley, Wallace Gosdin of Sudan, C. E. Jones of Littlefield, Euel C. Jones of Olton, and Albert Lockwood of Spade.

# NOTICE

I will be at the City Hall in the following towns in the dates indicated for the purpose of collecting State and County taxes:

- OLTON . . . Jan. 16 & 17
- EARTH . . . Jan. 18
- SUDAN . . . Jan. 19
- AMHERST . Jan. 20

Poll Tax receipts may be obtained from the City Secretary at the City Hall in each of the above named towns all through the month of January.

Herbert Dunn,  
Tax Assessor - Collector  
Lamb County

## News

### Three Earth Residents Honored On Birthdays

**MRS. R. S. COLE**  
Mrs. Lexie Branscum of Earth spent last week with her son, Mr. and Mrs. Thurlo Branscum.

Mr. and Mrs. Arlie Robertson returned recently from a visit in Oklahoma. Miss Robertson returned home to her parents. She has been attending school in Oklahoma, while with a sister.

Mr. and Mrs. Thurlo Branscum spent last week, from a visit in Dallas with his brother, Mr. Branscum, who underwent surgery recently. He is improving.

Edison Vaughn's returned last week from a visit with relatives in Dallas.

H. W. Kenrick and Mrs. Gregory were in Muleshoe on Tuesday.

Clifford Bills shopped in Dallas Tuesday and Friday of last week.

Thurlo Branscum, Mrs. Branscum and Mrs. Clifford were in Farwell on business Saturday.

R. S. Cole and Wayne were in Dallas on business Saturday.

Mr. and Mrs. Ray Glasscock were in Plainview Friday. Ray is



Best dressed WITH the one and only Miracle Whip SALAD DRESSING

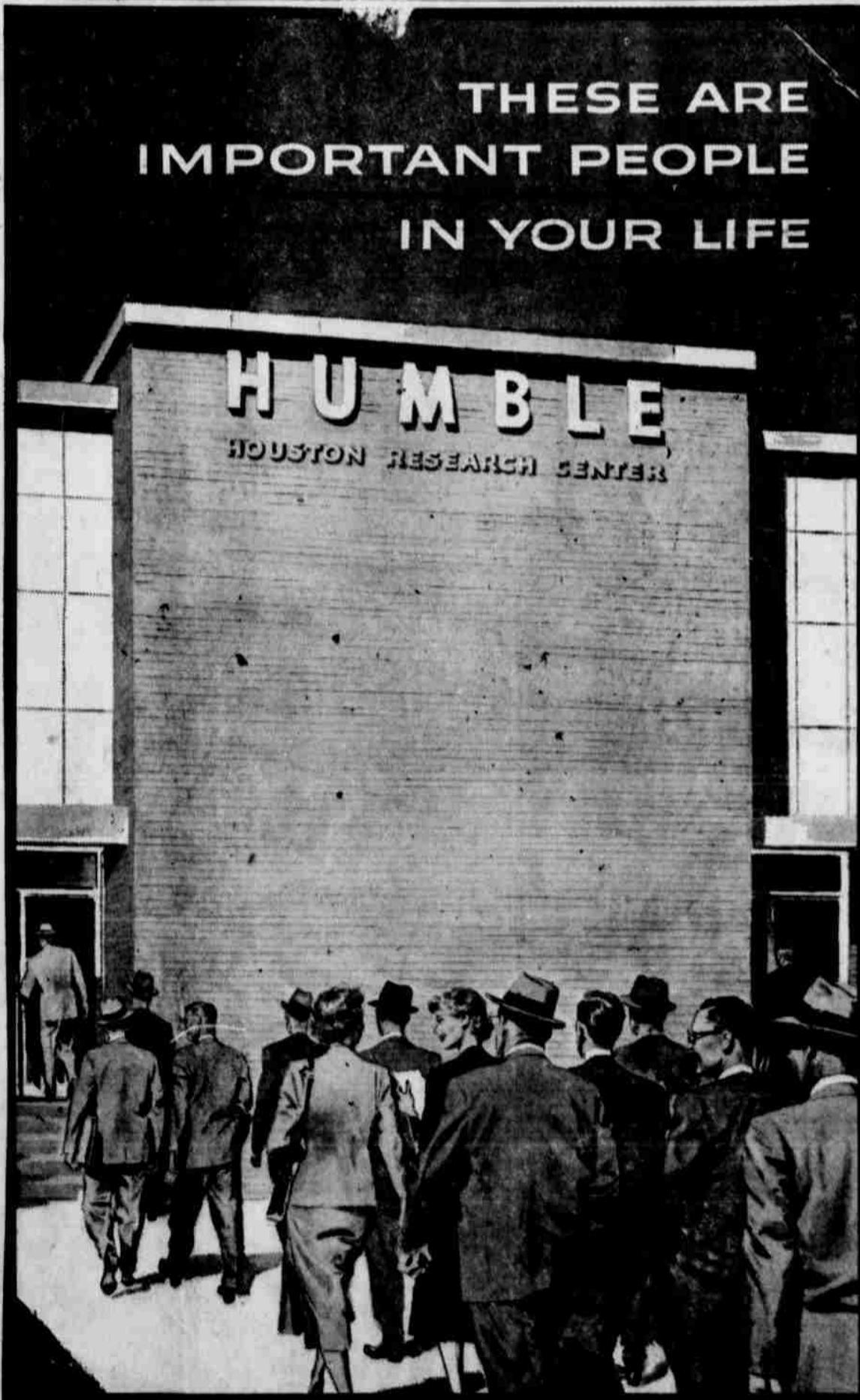
## CORRECTION

THE PRICE OF A BRAND NEW 56

### NORGE DRYER

IS \$129<sup>95</sup> AT

BILL SMITH ELECTRIC



THESE ARE IMPORTANT PEOPLE IN YOUR LIFE

Dear Friends

The people in the picture in this advertisement are Humble researchers on their way to work in Humble's Houston Research Center.

They are important people in your life, because their studies and their constant experimentation have only one purpose: to supply your increasing needs for oil and natural gas.

At the Houston Research Center, they pool their efforts to make the finding and production of oil and natural gas more efficient. And since they are top people in their different fields, their work has met with notable success.

It has helped to make the Humble Company not only the largest but also one of the most efficient producing companies in the country.

The new ideas, new methods and new practices developed by Humble researchers have resulted in the discovery of new reservoirs of a valuable natural resource; in making these reservoirs more productive; and in prolonging their life for your future benefit.

Sincerely

HUMBLE OIL & REFINING CO.



## DIKAREN'S SERVICE STATION

Dealer in Humble Products

Phone 719-X

LITTLEFIELD, TEXAS

Corner of Highways 33 & 54

for peace of mind...

Our aim is to always provide funeral services that are beautiful and reverent... truly the perfect tribute. Anytime, day or night, our experienced staff is at your call, to help in your hour of need.

HAMMONS General Home

### Services For Mrs. Moore Held Tuesday

Mrs. Louise Moore, 33 of 1st St., died Tuesday at 3:05 p.m. at her home at 3205 37th, Lubbock. She was the wife of Mrs. Ann Nell Alford of Lubbock.

Funeral services were held at the First Methodist church at 2:30 p.m. Tuesday. The Rev. A. O. Graydon, pastor, and Rev. A. O. Graydon, assistant, officiating. Burial was under the direction of Sanders Funeral Home.

Mrs. Moore, the former Miss Hingene Boyd, was born near Lubbock and is a graduate of Lubbock High school and Texas Tech and was married to Lucian Moore, August 5, 1949.

She is survived by her husband; three sons, Don, Dex, and Dan; two stepdaughters, Mrs. Grady Allen and Miss Garry Moore; one grand son, Don Allen; her parents, Mr. and Mrs. L. C. Boyd, Lubbock; three sisters, Mrs. Corrine McDonald, Abilene, Mrs. Lena Mae Morris, Houston, and Mrs. Ann Nell Alford, Anton; and four brothers, W. C. Boyd, Plainview, Curtis Boyd, Lubbock, L. C. Boyd Jr., Tulla, and Clinton Boyd, Hale Center.

### Farmers May Have Social Security Advice

Our representative will be in Littlefield at the Employment Office at 1:30 p.m., on January 19, and will be glad to assist in all matters pertaining to Social Security.

Now that the crops are laid by, many farmers are turning their attention toward Federal tax filing time in January, according to John G. Hutton, manager of the Lubbock Social Security office.

Mr. Hutton explained that many farmers will be required to file two types of tax returns in January, 1956, for the 1955 calendar year: (1) the farmer who is self-employed will be required to file an income tax report and pay his social security tax if net earnings for 1955 are at least \$400 and the gross income is at least \$800; and (2) the farmer who has paid one or more of \$100 or more to any employer in 1955.

Mr. Hutton pointed out that employees of the Social Security Administration are not authorized to give in the preparation of a tax return. He advised that such assistance should be secured from the District Director of Internal Revenue or someone who specializes in filing tax returns. However, questions as to benefits payable under the Social Security law will be gladly answered by his office.

### FORT WORTH STOCK SHOW AND RODEO

OPENS FRIDAY NIGHT JANUARY 27

FOREMOST SPECTACLE OF THE SOUTHWEST!  
See RODEO AT ITS BEST  
Combined With Beautiful HORSE SHOW  
In Will Rogers Coliseum  
2 and 8 P. M. Thru Feb. 5  
Rodeo Tickets \$2.50 Including Reserved Seat and Adm. to Stock Show Grounds

50th Annual SOUTHWESTERN EXPOSITION and FAT STOCK SHOW  
See Over 8,000 Head of Finest Livestock In Clean, Modern Buildings

Ranch and Farm Show  
See what's new for better farming and living  
New Commercial Exhibit Bldg.

"ROSALINDA" MUSICAL COMEDY  
WILL ROGERS AUDITORIUM  
Feb. 2, 3, 4 at 8:15 P. M.—Feb. 5 at 3:15 P. M.  
Reserved Seats \$1.20; \$1.00; \$2.70; \$1.40

CARNIVAL MIDWAY  
Adm. to Grounds 50c; Children 25c  
NO EXTRA CHARGE for Admission to Livestock Exposition; Commercial Exhibits, Carnival

ORDER TICKETS NOW!  
For best seats to RODEO and "ROSALINDA" write BY MAIL TODAY. Specify exact performance desired. Enclose check or money order. MAIL ORDERS to: Southwestern Exposition and Fat Stock Show, Anne Carter Square & Box 150 & Fort Worth

# Fireside Favorites

- ORANGE DRINK III - C 46 OZ. CAN 25c
- PEACHES SHURFINE NO. 2 1/2 CAN 29c
- FLOUR SHURFINE 10 LB. SACK 73c
- COCA-COLA HANDY 12 BOTTLE CARTON 39c

**Shampoo** New Woodbury \$1.00 Size **59c**

**LOTION** Woodbury \$1.00 Size **49c**

**Spray Net** Helen Curtis \$1.69 Size **\$1.49**

**TONI** Home Permanent \$2.00 Size **\$1.49**

**BYRL CREAM** **59c**

**Baby Powder** Mennen's \$1.00 Size **49c**

**Pepio Bismol** **79c**

- JUICE Libby's Tomato 46 Oz. Can 25c
- Vel Beauty Bar 23c
- Dog Food Old Pal 3 For 25c
- Pickles Elmdale Sour or Dill Quart 29c
- Stride Wax Johnson Pint 79c
- Rug Cleaner Glamorine 29 Oz. Jar 89c
- Vel Large Size 26c
- Jam Bama Red Plum 2 Lb. Jar 43c
- Macaroni Or Spaghetti Skinner's, Box 12 1/2c
- Spaghetti With Meat Balls Austex, 1 Lb. Can 26c
- Candy Pe-Co-Pi 11 Oz. Pkg. 39c
- Cookies Supreme, Cononut Chocolate Drops, 1 Lb. 49c

- Salad Wafers Supreme 1 Lb. Box 28c
- Sugar Pops Kellogg's Large Size 25c
- Tuna Tuxedo Can 21c
- Chopped Beef Armour's 12 Oz. Can 37c
- CHILI With Beans, Armour's Tall Can 29c
- Kleenex White Or Colored 400 Count 27c
- Napkins Northern 80 Count 12 1/2c
- Tissue Delsey Roll 2 For 27c
- Pancake Mix PIONEER REGULAR SIZE 15c
- VEL LIQUID DETERGENT REG. SIZE 39c

## GUNN BROS STAMPS

SAVE FOR Beautiful Gifts!



Double On Tuesday

## PICNIC HAMS

PINKNEY'S LB. 29c

FRESH COUNTRY STYLE Backbone LB. 39c

PINKNEY'S CHOICE SIRLOIN LB. 79c

PINKNEY'S CHOICE T-BONE LB. 79c

PINKNEY'S Weiners LB. 39c

CHOICE CUTS PORK CHOPS LB. 39c

BACON

ARMOUR'S STAR LB. 49c

FISH

FROZEN BONELESS PERCH LB. 39c

- PINEAPPLE SWEET - TREET NO. 2 CAN 19c
- LUNCHEON MEAT OSCAR MEYER 12 OZ. CAN 31c
- COFFEE BIXON'S LB. 73c

### Vegetables

APPLES	DELICIOUS LB.	19c
ORANGES	TEXAS JUICY 5 LB. BAG	39c
CELERY	LARGE STALK	15c
RUTABAGAS	WAXED LB.	9c
CARROTS	FANCY CELLO PKG.	12 1/2c

## PIONEER SUPER MARKET

(Formerly Lyman's)

# Boys Will Sell Basketball Tournament

**WESTER LA GRANGE** FA boys will see that the basketball tournament, Thursday, Friday and Saturday, will have plenty to eat. Chili, soup, pie and coffee will be served in the gymnasium. Supper will be served between four and eight o'clock. Tickets will be one dollar for adults and 75 cents for children.

Mrs. Pete Templeton and her father, Mr. Bill Templeton, will have a birthday dinner, at 7 o'clock, Friday.

Guests among the boys were Mr. and Mrs. J. J. Davis and baby, Mr. and Mrs. Gene Templeton, Mr. and Mrs. Gene Templeton, Mr. and Mrs. Gene Templeton, and Mr. and Mrs. Gene Templeton.

Mrs. J. E. Mayfield were visitors Wednesday.

**FRANK JOHNSON** in California. Mrs. Davis, daughter of Mr. J. J. Davis and Frank Johnson, married December 8, at Wayland College, Plainview.

Mr. and Mrs. J. E. Mayfield were visitors Wednesday.

Mr. and Mrs. J. E. Mayfield were visitors Wednesday.

Mr. and Mrs. V. G. Wood of Dimmitt visited her sister, Mrs. J. P. Brantley and family during the weekend.

Lester Stephens and Mrs. Kenneth Phillips of Bakersfield, Calif., arrived during the weekend due to the critical illness of their father, J. F. Stephens.

Mrs. T. H. Pennington returned recently from Cone, where she visited her daughter, Mrs. Alfred Clark and family.

Mr. and Mrs. Jack Cummings and little daughter, Cheryl, of Port Arthur, are visiting her parents, Mr. and Mrs. Ed Schovasa, and his parents, Mr. and Mrs. Frank Cummings of Littlefield.

Mr. and Mrs. I. N. Griffing and Carolyn Louise, were recent guests of Mr. and Mrs. Edward Phillips in Whitharral.

Mr. and Mrs. Comer Hall spent the weekend with his parents in Post.

Mr. and Mrs. E. E. Gee and Jerry, spent Sunday with relatives in Lockney.

Mrs. Jetty Brown left last week for Grand Junction, Colo., after a holiday visit here with her son, Henry and family. She spent a few days with Clovis relatives before going to Colorado.

**Pvt. SHIRLEY SPENDS FURLOUGH HERE**  
Pvt. Jerry Shirley, son of Mr.

## LAFF-A-DAY



"Well, what's your excuse THIS time?"

and Mrs. W. I. Shirley, and Pvt. Bill Peagley, son of Mr. and Mrs. Bob Peagley, returned to Ft. Hood last week after two-weeks furlough here.

Pvt. Peagley and Miss Gwyndolin Reed of Spade were married at Clovis, N. M., December 23.

Mr. and Mrs. Millard Phillips have as their guests her sister and husband from Kansas.

Mrs. S. E. Counts of Canute, Okla., visited her niece, Mrs. W. T. Attaway, Wednesday of last week. She came with her brother, W. L. Peters and cousin, Mrs. Ruth Oliver of Lubbock, with whom she was visiting there. Mrs. Attaway returned with them to Lubbock for a few days.

S-Sgt. Gerald Enloe, who is stationed with the Air Force in Shreveport, La., spent a few days recently with his parents, Mr. and Mrs. Gene Enloe.

Claude Coffey of Farwell was an Amherst visitor Friday. Mrs. Coffey is a teacher in the Farwell school. They are former residents here.

Mr. and Mrs. Larkin Nix left Saturday for El Paso.

Mrs. Velma Melton visited her daughter, Mrs. DeJmer Hill and family, near Plainview, last week.

Mrs. Ronald Jedlike and Miss Vonna Beth Davis took Miss Glen-

Leonard McNeese, county, served on this committee. A Study Committee, made up of representatives from many communities in this section, has been meeting since September to make a plan of work and budget for the proposed council's first year of operation. Mrs. Duster Owens, Mrs. Leonard McNeese, Mrs. Paul Burrus, Mrs. C. S. Silcott from Lamb

and registration, and opportunities for girls to enjoy adventurous camping experiences through day, troop and established camps. It is the plan of the National Girl Scout Organization that ultimately every community in the county will be included in the jurisdiction of a council. "Experience shows that only in this way can Girl Scouting be more available to all girls who want to belong," says Miss Virginia Burgess, National Field Staff member. Miss Burgess, who has been working with the Study Committee, will be in Littlefield on Jan. 17, to help explain the services of the new council.

### FINANCIAL STATEMENT

#### Littlefield Federal Savings & Loan Ass'n

#### December 31, 1955

ASSETS	LIABILITIES
First Mortgage Loans	Savings Capital
\$1,782,816.14	\$1,829,825.76
Share Loans	Loans in Process
2,675.00	6,500.00
Stock in FHLB	Other Liabilities
28,400.00	167.88
U. S. Treasury Bonds	Advances from FHLB
74,148.44	50,000.00
Cash on Hand and in Banks	Other Borrowed Money
142,623.36	20,000.00
Office Equipment	Contingent Reserves
674.09	79,448.58
Office Building Site	General Reserves
18,000.00	25,855.22
Real Estate Owned	Specific Reserves
4,340.69	6,517.49
Total	Surplus
\$2,053,722.72	35,407.79
	Total
	\$2,053,722.72

MEMBER: Federal Home Loan Bank System

Savings Insured By Federal Savings & Loan Insurance Corporation.

Current Dividend 3% Per Annum

# DRIVE IT!

1956 SUPER 88 HOLIDAY COUPE.

# PRICE IT!

Once again, Olds sets the trend for tomorrow with a brand-new, double-duty "Intagrille Bumper" design!

Give Oldsmobile a thorough going-over for every detail you demand in your new car. You'll find Olds out ahead in every way! Stunning Starfire styling with the functional beauty of new "Intagrille Bumper" design! Plus the new Rocket T-350 Engine for pace-setting power and performance! New smoothness, too, in the split-second response of Jetaway Hydra-Matic\*. Then, get set for the biggest and best surprise of all! Get our price! See us today... make this your year to rocket away!

\*Standard on Ninety-Eight models; optional at extra cost on Super 88 models.

# OLDSMOBILE

VISIT THE "ROCKET ROOM" ... AT YOUR OLDSMOBILE DEALER'S!

## ONES MOTOR CO. E. 8th and Levelland Highway

LITTLEFIELD, TEXAS

Dan Dailey stars in a gay new 90 minute musical comedy for Oldsmobile, Saturday, January 21, NBC-TV

## To market... BURNETT'S... to save and

# SAVE AGAIN!

### Under New Ownership -- Burnett's Grocery - Station Formerly Brown's Grocery & Station

Be sure to come in and register for free prizes to be given away at our formal opening, to be held Saturday Afternoon, the 4th of February at 5:00 P. M.

# FREE

(One Person Not Eligible But For One Prize)

You Do Not HAVE TO BE PRESENT to Win

1st PRIZE—Set of 670-15 White Side Wall Tires

2nd PRIZE—Sunbeam Mix Master

3rd PRIZE—G. E. Portable Radio

4th PRIZE—G. E. Electric Skillet

(And Other Valuable Prizes)

### Specials For Friday, Saturday -- Jan. 13th & 14th

<b>CHEER</b> Box	29c	<b>GREEN BEANS</b> Del Monte Cut, Can	22c
<b>COFFEE</b> White Swan Lb.	89c	<b>CORN</b> Del Monte, Cream Style Can	17c
<b>MELLORINE</b> Bell 1/2 Gallon	53c	<b>SPUDS</b> Red and White Lb.	4 1/2c
<b>TISSUE</b> Northern 3 Rolls	25c	<b>LETTUCE</b> Head	10c
<b>CHILI</b> Wolf Brand No. 2 Can	47c	<b>OLEO</b> Lb.	19c
<b>FLOUR</b> Gladiola 5 Lb. Bag	49c	<b>BEANS</b> Pinto 4 Lb. Sack	39c
<b>KLEENEX</b> 200 Count 2 For	29c	<b>TUNA</b> Chicken of The Sea Can	3 For \$1.00
<b>BACON</b> Slab Lb.	25c	<b>T-BONE</b> U. S. Choice Lb.	63c

WE GIVE FRONTIER STAMPS — DOUBLE ON TUESDAY — COME AND SHOP EVERY DAY LOW PRICES AT

## BURNETT GRO. & STATION — Spade

WHERE "PRICES ARE BORN, NOT RAISED"



**KERRY DRAKE**



**KERRY DRAKE**



**KERRY DRAKE**



**RACE HANK**



Roy Franklin home.

Waylan Hukill is doing some practice work at Amarillo in the telegraph course he is taking at Daughon's Business college.

Yvonne Huff accompanied Don of Hale Center to Canyon... while there.

W. C. Hull and Yvonne and R. O. and Don of Hale Center... basketball games at Col...

The M. W. Wheeler's spent the weekend with Mr. and Mrs. Jim Taylor near Carlsbad, N. M.

The C. E. Timmons have moved into the home on the Bobbie Sager farm.

The Paul Hukills are purchasing a ready-built house.

The M. W. Wheelers and Mrs. H. R. Monroe and Wayne, visited Mr. Monroe in the West Plains Hospital at Muleshoe Thursday night.

**PARTIES HONOR PFC. AND MRS. MULLER**  
A round of dinner parties over the weekend honored Pfc. and Mrs. Don Muller of Villa Park, Ill.

Mrs. Junior Muller and family entertained in their home Saturday. Mr. and Mrs. Bruce Porcher of Littlefield, Mr. and Mrs. Gerry Langford and Kathy of Leveland, Mr. and Mrs. J. C. Muller, and Pfc. and Mrs. Don Muller.

Sunday Mr. and Mrs. Bruce Porcher of Littlefield were hosts and the guests were Mr. and Mrs. Gerry Langford and Kathy, Leveland, Mr. and Mrs. Junior Muller, Mark and Patti, and Mr. and Mrs. J. C. Muller of H. C., and Pfc. and Mrs. Don Muller.

Guests in the J. C. Muller home Monday were Mrs. J. W. Porcher Sr., Mrs. John Porcher, Mrs. George Porcher, Mr. and Mrs.

Bruce Porcher and Cardace of Littlefield, Mr. and Mrs. Roy Muller and Perry, and John Muller of Fieldton, Mr. and Mrs. Junior Muller and family and Pfc. and Mrs. Don Muller.

Daryl Moore of Lubbock spent Sunday in the R. S. ... and Mrs. W. L. ... and guests of a S. Moore home also.

Mr. and Mrs. Boyah Kimbell of Quaque will move here soon to the home on the Virginia Parkey farm which is operated by Dewey Parkey, Mr. and Mrs. Jimmie Lee Robinson and son, who now reside in the home, are moving to Fieldton.

**WMS CIRCLES MEET**  
Both circles of the WMS met at the H. C. Baptist church Monday afternoon. The Royal Service program was "We Give Thee But Thine Own" which was on stewardship. Mrs. Homer Worley presided. Letters of recognition were read from the Backers Orphans Home at Dallas and the South Texas Childrens Home at Beeville, for the Thanksgiving and Christmas boxes they received from the circles. Present were Mrs. Charles Vanlandingham, Mrs. L. W. Sullivan, Mrs. Homer Worley, Mrs. Junior Muller, Mrs. R. S. Moore, and her guest, Mrs. Weldon Moore.

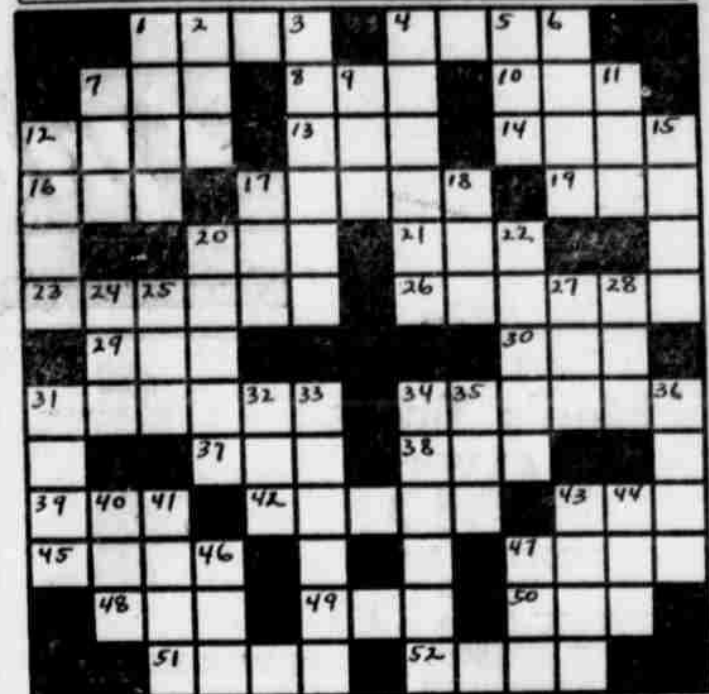
Mr. and Mrs. Homer Worley spent the weekend in Midland with relatives. Phyllis Worley spent the weekend with Yvonne Shackelford at Cotton Center. Barbara Worley had as her guests, Laura Jean Sager of Cotton Center over the weekend.

Rev. C. H. Vanlandingham accompanied Rev. Fred Smith and Mr. Testerman of Fieldton, and Rev. Smith of Spade, to the Evangelistic Conference at Ft. Worth Monday through Wednesday.

Mr. and Mrs. H. R. Monroe visited her mother, Mrs. Cody, at Springlake Monday.

Barbara and Yvonne Huff were in

**CROSSWORD** By A. C. Gordon



- ACROSS**  
1 - Summon  
4 - Glide  
7 - Favoring  
8 - Container  
10 - Put on  
12 - Transfer  
13 - Poem  
14 - Bard of ...  
16 - Unit  
17 - Beg  
19 - Ram's wife  
20 - Tune airplane motor  
21 - Nautical diary  
23 - Complete  
26 - Initiates  
29 - Period of time  
30 - Vegetable  
31 - Perceives  
34 - Thoraxes  
37 - Self
- DOWN**  
1 - System  
2 - Vexation  
3 - Deduce  
4 - Purloins  
5 - Girl's name  
6 - Disturb  
7 - Bog  
9 - Citric drink  
11 - At once  
12 - To condense  
15 - Information  
17 - Through  
18 - Point  
20 - Wash  
22 - Starer  
24 - Born  
25 - Weight unit  
27 - Legal thing  
28 - To lace  
31 - Hied  
32 - Ovum  
33 - Tones  
34 - Rebounds  
35 - Secreted  
36 - Furnished with shoes  
40 - Hazard  
41 - Perceptive  
43 - Troubles  
44 - Equestrian direction  
46 - Behold  
47 - Sip

ill over the weekend.  
The H. V. Lynchs who are living in their trailer home until spring at Phoenix, Ariz., reported that Mr. Lynch will start directing the eliminations for state shuffleboard championship soon.

**SHOUT IT FROM THE WANT ADS**

**Help Wanted**  
NEED pump salesman. 881 after 6. t-A

**B--For Sale or Trade**  
'50 MODEL Ford tractor and equipment for sale or will trade for equity in house. 205 E. 18th. 1-15-A

**Want To Buy**  
INTERESTED in small irrigated farm or dry land in irrigated district of Lamb county. Call 929W1, H. R. Bevell, Rt. 2, Littlefield, Texas. 1-19-B

**Want To Rent**  
WANT to Rent 160 acres dry land, near Anton. See Louis Haemel, 2 miles north, 1/2 mile east, Rt. 1, Anton. 1-22-H

**13--Wanted**  
IRONING to do. Mrs. De Sautell, 1017 E. 5th St.

**Lamb County Takes Care Of It's Own--Give Your Dinnes.**  
A thousand turkeys will drink between 60 and 70 tons of water a season.

**Let's Swap**

Items for trade only will be run for individuals in two consecutive issues at no charge. Just phone 27 and tell us what you have to trade and what you will take in exchange.

WILL swap stamp books for used wool rug. Phone 806RX. 1-12

WILL trade: 9 books Gunn Bros. stamps for Frontier; pair of canaries for 3 books stamps; parakeet for one book stamps. Mrs. Wren, 912 W. 11th. Phone 831-R. 1-15-W

**News From Hart Camp**

**"OPERATION SWITCH"**  
Four H. C. families moved Wednesday but they all still reside in the community. The families are related and the move might be called "Operation Switch," of fruit-basket turn over. W. O. Hendricks moved into the house formerly occupied by Mr. and Mrs. Ivy Thompson on the Hendricks farm. Mr. and Mrs. Ivy Thompson moved into the house on the Mitchell farm formerly occupied by Mr. and Mrs. James Ball. Mr. and Mrs. James Ball moved to the house formerly occupied by the Roy Hendricks on the W. O. Hendricks other farm and Mr. and Mrs. Roy Hendricks and Sharon moved into the W. O. Hendricks house on his farm north of H. C.

Mr. and Mrs. Garland Adams of Dimmitt were visitors in the J. C. Muller home Wednesday night.

Mr. and Mrs. Junior Muller, Mark and Patti, and Wayne Monroe, visited H. R. Monroe in the West Plains Hospital at Muleshoe Wednesday evening.

Dewey Parkey and Gary, visited his father near Floydada Thursday evening. Mr. Parkey has been ordered to bed for three weeks after a heart attack.

Mrs. Roy Osthus and sons spent last week in Ruidoso, N. M., with her parents, Rev. and Mrs. Walter Brian and her sister and family. Rev. and Mrs. Tavis McMin and Debra, Roy Osthus went to Ruidoso Friday night to return his wife and sons home Sunday.

Mr. and Mrs. Aubrey Neinaast and Ramona, returned home Thursday after spending the holidays in Georgia, with relatives.

Detty Frankma and her fiancée, of Lubbock, spent Sunday in the

**No Down Payment!**  
Up to 15 months to pay can be arranged  
**NEW MOTOR GUARANTEE**  
DODGE or PLYMOUTH \$149.50  
FORD or MERCURY '41 '52 \$149.50  
CHEV, Insert, Rods & Alum Piston \$139.50  
Similar low prices on other makes and models...  
Prices include installation, Labor, Oil Gaskets Nothing else to buy... (Motor Exchange Prices).

**DALTON MOTOR EXCHANGE**  
3107 Avenue H, Lubbock Dial SH4-2085

**Not Wealthy... Just Wise!**

Most people think that the gentleman who owns and drives a new Cadillac must necessarily be blessed with an abundance of this world's goods.

But the truth of the matter is that a great many motorists of relatively modest means—like the happy man you see here—sit at the wheel of the "car of cars."

For wisdom and practicality lead to Cadillac—just as surely as prominence and prosperity!

Listen, for a moment, to this remarkable assembly of facts—and see if you don't agree.

The Series Sixty-Two Coupe... the beautiful and inspiring motor car pictured above... costs just a few dollars more than many cars in the "medium-price" bracket.

Cadillac's dependability is so extraordinary that the car is virtually free from all but the purely routine requirements of service.

A Cadillac stretches a gallon of gasoline over so many miles that it is actually the rival of much smaller, lighter cars in this regard.

And a Cadillac will retain its value over the years better than any other automobile in the land.

The conclusion is, we think, self-evident: Cadillac ownership is not only wonderful and thrilling—but sound and sensible as well.

Why not stop in soon for a look and a ride? You'll discover the most beautiful Cadillac ever built... the finest-performing Cadillac of all time... and the greatest value in Cadillac history.

That's Cadillac's magical combination for 1956—and it's waiting for you now in our showroom.

**JONES MOTOR CO. E. 8th and Levelland Highway LITTLEFIELD, TEXAS**  
PHONE 625

**Anthony's**  
C. R. ANTHONY CO.

**JANUARY**

**CLEARANCE**

144 PAIR  
**Men's Dress PANTS**  
REGULAR \$6.90 VALUE



62 PAIR MEN'S  
100% ALL WOOL  
**FLANNEL SLACKS**

SIZES 32 to 42  
REGULAR \$9.90

**\$4.**

40 MEN'S  
**FUR FELT HATS**  
REGULAR \$7.50 VALUE

**\$3.**

**MEN'S SPORT SHIRTS**  
One Table



**\$1.88**  
REGULAR \$2.98 VALUE

**BOYS' COATS**  
GABARDINE BOMBER JACKETS  
SIZES 4 to 16  
REGULAR \$3.98 VALUE



**\$2.**

**BOYS' SURCOATS**  
REGULAR \$6.90 TO \$3.90 VALUE

100% WOOL  
**PLAID Mackinaw**  
SIZES 4 to 16  
Regular \$9.90 Value

**\$4.**  
**\$6.**

300 Yards Of "Make It Yourself"

**PRINTS** APRON PATTERNS  
DOLL PATTERNS  
TEDDY BEAR PATTERNS

Several Colors In Each Pattern

**25** Yd.

**Pajamas** LADIES' CHALIS 32 TO 40  
LONG SLEEVES — LONG LEGS  
REGULAR \$2.98 VALUE

**\$2.**

**Tea Towels** LAUNDRED SIZE 30" x 39"

**4** For **\$1.**

**Coat Sweater** MEN'S 100% WOOL  
SIZES 38 to 44  
REGULAR \$2.98 VALUE

**\$2.**

MEN'S WESTERN **SHIRTS** GABARDINES — FLANNELS  
REGULAR \$3.98 AND \$4.98

**\$3.88**

**GOWNS** WOMEN'S FLANNEL  
REGULAR \$1.98 AND \$2.98

34 TO 42

**\$1.50**

**HOSE** LADIES' NYLON  
51 And 60 GAUGE  
SIZES 8 to 11

**2** Pair **\$1.**

BOYS' ONE SIZE STRETCH **Nylon Anklets** LIMITED QUANTITY

**3** Pair **\$1.**

MEN'S And BOYS' **CAPS** CORDUROY And WOOL  
REGULAR 98c And \$1.98 VALUES

**66c**

**WORK SHIRT** MEN'S CHAMBRAY BLUE And GRAY  
SIZES 14 to 17

**94c**

46 **DOLLS** VALUES FROM \$4.98 to \$10.90  
ALSO **DOLL BUGGIES**  
TAKE YOUR CHOICE

**1/2** PRICE

**BICYCLES TRICYCLES RIDING CARS ALL OTHER TOYS**

10 OUNCE VAT DYED **GRAY JEANS**  
SIZES 4 to 12



**\$1.44**  
REGULAR \$1.98

**Cotton Slips** Grand slip buy for this thrifty price. 3" eyelet embroidery trim top and bottom, fine first quality 68x72 cotton, 4 gore model. Sizes 32 to 44.



**77c** or Half Slips  
SIZES: SMALL, MEDIUM, LARGE — 32 to 42

**LADIES' PURSES** REGULAR \$1.98 and \$2.98 VALUE  
LARGE SELECTION OF COLORS — SEVERAL STYLES

**\$1.**

LADIES' **COTTON FROCKS**  
78 OF THESE  
Regular \$2.79 Value  
SIZES 10 — 20 AND 14 1/2 to 24 1/2



**\$2.**

400 PAIR OF LADIES' **FLATTIES**  
BLUE, BLACK, BLACK PATENT, AVAÇO BEIGE And TAN



**\$1.66**

100% ORLON **Cardigan COAT SWEATER**  
REGULAR \$4.98



**\$4.**

100% ORLON **Slip Over SWEATERS**  
REGULAR \$3.98 VALUE

**\$3.**

SIX RACKS OF **LADIES' DRESSES**  
\$2, \$3, \$4, \$6, \$8

CHILDREN'S 2-PIECE **Knit Sleeper**  
2-piece interlock sleeper with attached. Will hold their shape after laundering. Colors of Blue or Maize. Buy them now at this sale price.



● Size 0 to 3  
● Pink-Blue Maize

**88**

**TWO BIG DAYS -- Friday & Saturday Only**