

Church News

ST. MARTIN LUTHERAN
Next Sunday, guest preacher at St. Martin Lutheran will be Mr. Jim Cooksey, from Gruver, Texas. Members wishing to host two youth of the Youth Choir from Sweden on July 3rd, are asked to contact Mrs. J.E. Wade, who is compiling a list of hosts.

Luther Leaguers are urged to complete their part in plans for the Concert on July 3rd. All committees are requested to keep the president, Steve Brandt informed of developments.

Visitors at St. Martin last Sunday included Mrs. Luckhard, Barbara and Delbert, of Claremore, Okla.; Mr. and Mrs. Charles Henderson of Lubbock; Mrs. Marie Fielding and Carolyn Fielding of Waldron, Ark.

Guest preacher at St. Martin Lutheran Church last Sunday and this coming Sunday is Mr. Jim Cooksey, from Gruver, Texas. He has completed his college work at Texas Lutheran College, Seguin, Texas, and in the fall will enter seminary in preparation for entering the ministry in The American Lutheran Church. He is preach-

ing in the absence of Pastor Brian V. Engel, who is in New York on business.

The Bible School Closing program at St. Martin Lutheran Church will be held Friday, at 7:30 p.m. The theme of this year is, I Learn About Jesus. Of special interest will be the handwork projects completed by the classes. The community is invited to attend.

News Bulletin

The Littlefield Chapter, No. 742, Order of the Eastern Star will meet at 8 p.m. tonight in Masonic Hall. All members are urged to attend.

Mrs. Smith Celebrates 82nd Birthday

OLTON -- Mrs. W.B. Smith Sr., longtime resident of Hale Center, celebrated her 82nd birthday Sunday at her home in Hale Center.

She and her late husband were married in 1908. They settled on a farm 3 1/2 miles west of Hale Center.

When W.B. Smith Sr. passed away in December 1960, Mrs. Smith moved into the town of Hale Center. She still owns the land west of town.

Mr. and Mrs. Smith were both charter members of the First Baptist Church in Hale Center. Mrs. Smith and three of her children attended services at First Baptist Church Sunday.

Present Sunday for the birthday dinner were Mrs. Chester Pearee and two daughters, Janie Sue and Linda of Abernathy; Mrs. R.D. Wheeler and two daughters, Jan and Kathy of Monahans; and Mr. and Mrs. W.B. Smith, Jr. and son Billy Roy of Olton.

Families in America today are using almost twice as much hot water as they did 10 years ago. Gas water heaters have been installed at approximately the rate of 3,000,000 annually for the past 10 years.

Cotton can be constructed to give warmth without weight.

Sunbeam Band Is Organized

SPADE -- A Primary Sunbeam Band for children ages 6 to 8 was organized last Wednesday night at the local Baptist Church. Mrs. J.R. Hodges and Mrs. J.J. Terry met with the children at that time to begin the organization, which will be sponsored by the Women's Missionary Union.

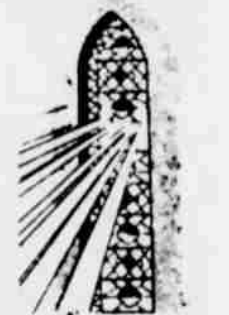
The names of the missionaries on the prayer calendar were read and a special prayer time was held for them. Mrs. Hodges then used posters and pictures to tell the children about the current theme of Sunbeams and to explain its purpose. The pictures emphasized the themes "Giving is Telling", "Praying is Telling", and "Loving is Telling".

The ladies served refreshments of cookies and punch to those present. Present were Mark and Lynn Cowan, Vivian Thompson, Kim Caldwell, Mrs. Terry, Mrs. Hodges, Mrs. Bill Thompson and a guest Terry Williams. Glenn Ivins, although not present, was enrolled as a member.

The Sunbeam Band will meet each Wednesday evening at 7 p.m. at the church. All children of this age group are invited to attend.

The island of Madagascar lies only 250 miles off Africa's southeast coast, but anthropologists believe its original inhabitants came from Melanesia and Indonesia 4,000 miles away.

FIND SOLACE FOR YOUR SORROW THROUGH... QUIETUDE



FEEL FREE TO CALL ON US AT ANY HOUR

Hammons Funeral Home



THIS SUNDAY --- The Collegiate Quartet of Nazarene College will sing at the church of the Nazarene Sunday morning, June 19. Bob Rist, Charles Isbell, Gene Coburn, and Howard Hays make up the group. The quartet makes over 250 appearances annually.

Special Service To Be Held Sunday

Dr. Curtis Smith will be guest speaker at the First Church of the Nazarene Sunday morning, June 19.

Dr. Smith has been in charge of Development at Bethany Nazarene College since 1952. He is a graduate of the school, with both A.B. and Th.B. Degrees, and has finished residence graduate study at Boston University. In 1963 the college conferred on him the D.D. Degree. In his work he has traveled extensively through the seven state college educational zone.

An experienced and vital minister, he has served pastorates in Dallas, Corpus Christi, Greenville and Port Arthur, in Texas, and at Tulsa, Oklahoma. For ten years during his pastoral ministry he was district president of Nazarene Young People's Societies. He has been an effective minister in youth camps, summer camp meetings and evangelistic campaigns.

The Collegiate Quartet, student representatives of Bethany Nazarene College at Bethany, Oklahoma, will also appear at the First Church of the Nazarene Sunday, June 19.

The quartet makes over 250 appearances annually for the school in churches, civic clubs, summer youth camps, church conferences and campus activities.

Bob Rist, singing first tenor, is from Kansas City, Kansas. He is a sophomore music education major.

Charles Isbell, second tenor in the group, is a senior majoring in religion. Charles' home town is Crowley, Louisiana. Gene Coburn, baritone, is president of the freshman class. He is from Bethany, Oklahoma, and is majoring in political science.

Howard Hays sings the bass notes, and is a freshman religion major from Scottsbluff, Nebraska.

Bethany Nazarene College is

located just northwest of Oklahoma City. The four-year college is an accredited member of the North Central Association. Its 1700 students come from 30 states and 33 denominations. B.N.C. is one of seven colleges operated by the Church of the Nazarene in the United States and Canada. Courses are offered in Fine Arts, education, science, social sciences, and religion. Dr. Roy H. Cantrell is president of the school.

Correction

The Palette Club will meet today at 1 p.m. in the Reddy Room. The time was stated as 7 p.m. in the Calendar of Events instead of 1 p.m.

MYF Will Host Ice Cream Supper

AMHERST -- The Methodist Youth Fellowship will serve an "ice cream supper" in the fellowship hall of the church Saturday, beginning at 6 p.m. Adults will be charged \$1.00 and children, 75¢ for all the homemade ice cream and cake they can eat. Everyone is invited to attend.

WMS Meets For Mission Study

SPADE -- The Women's Missionary Society of the local Baptist Church met at the church last Monday afternoon for mission study. Mrs. Arthur Turner read the calendar of prayer to begin the program and led in prayer for the missionaries listed on the calendar.

Mrs. Arwin Turner was in charge of the program which was the conclusion of the study on the book "Meet the American Jew". Mrs. Turner briefly reviewed the book already studied and conducted a question and answer period which questioned the attitude of the members and their feelings toward the Jewish people. Mrs. J.R. Hodges also presented part of the program, giving the current trends of the Jewish people in America.

It was announced that a nominating committee would be appointed at the Society's next meeting. The meeting was then dismissed in prayer by Mrs. J. J. Terry.

Those present included Mrs. Doc Vann, Mrs. Hodges, Mrs. Arwin Turner, Mrs. Terry, Mrs. J.R. Inklebarger and Mrs. Arthur Turner.

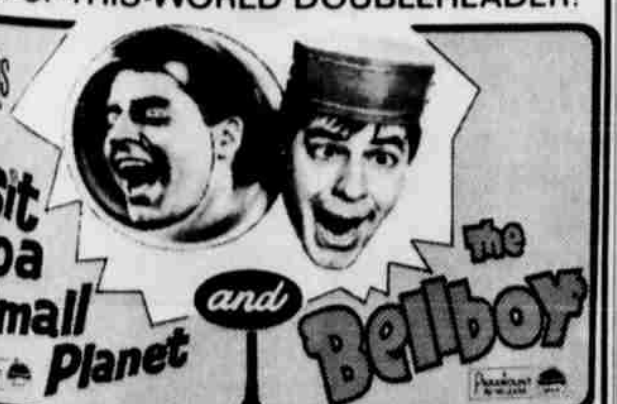


DR. CURTIS SMITH



SUN-MON TUE-WED PALACE

JERRY LEWIS



XIT Friday-Saturday
DRIVE-IN THEATRE NOW OPEN 7 NIGHTS A WEEK



XIT SUN-MON
DRIVE-IN THEATRE (OPEN NIGHTLY)

Penneys

ALWAYS FIRST QUALITY

Every kind of shirt he'll need for summer! All Towncraft—Penney's exclusive brand. Short sleeve white dress shirts and sports shirts in fine polyester-cotton blends—Penn-Prest... they never need ironing when tumble dried! Handsome wash-and-wear knits! Unexcelled quality at the price.

Open 9 AM To 9 PM Thursday

TOWNCRAFT SHIRT SAFARI

FATHER'S DAY IS SUNDAY JUNE 19th

Vycron® polyester-combed cotton knit; fashion collar, long tail, slit sides.

2.98

Penn-Prest Dacron®-polyester-cotton broadcloth; short point collar. White.

3.98

Penn-Prest 'Grand Vino' polyester-combed cotton; assorted solid tones.

3.98

WASH & WEAR 100% Pima Cotton; short point collar. White.

2.98

TONIGHT

SHOP THESE TERRIFIC MONEY SAVINGS SPECIALS 6 TO 9 PM ONLY

JUNE 19 Father's Day!

ULTRA SPECIAL

NOW—CORDLESS SHAVING!

REMINGTON LEKTRONIC IV

Energy cells recharge almost anywhere on AC current. Shaves clean with 6 types of trimmer. Sharper shaving heads. Trims sideburns. Tougher-than-metal ARMORSHIELD housing and head case. Shuts carrying case.

24⁸⁸

6 TO 9

12" T.V. 69⁸⁸

VERY SPECIAL

6 TO 9

ONE GROUP OF SHOCK-WATER DUST-PROTECTED WATCHES **8⁸⁸**

REGULAR 19.95

6 TO 9

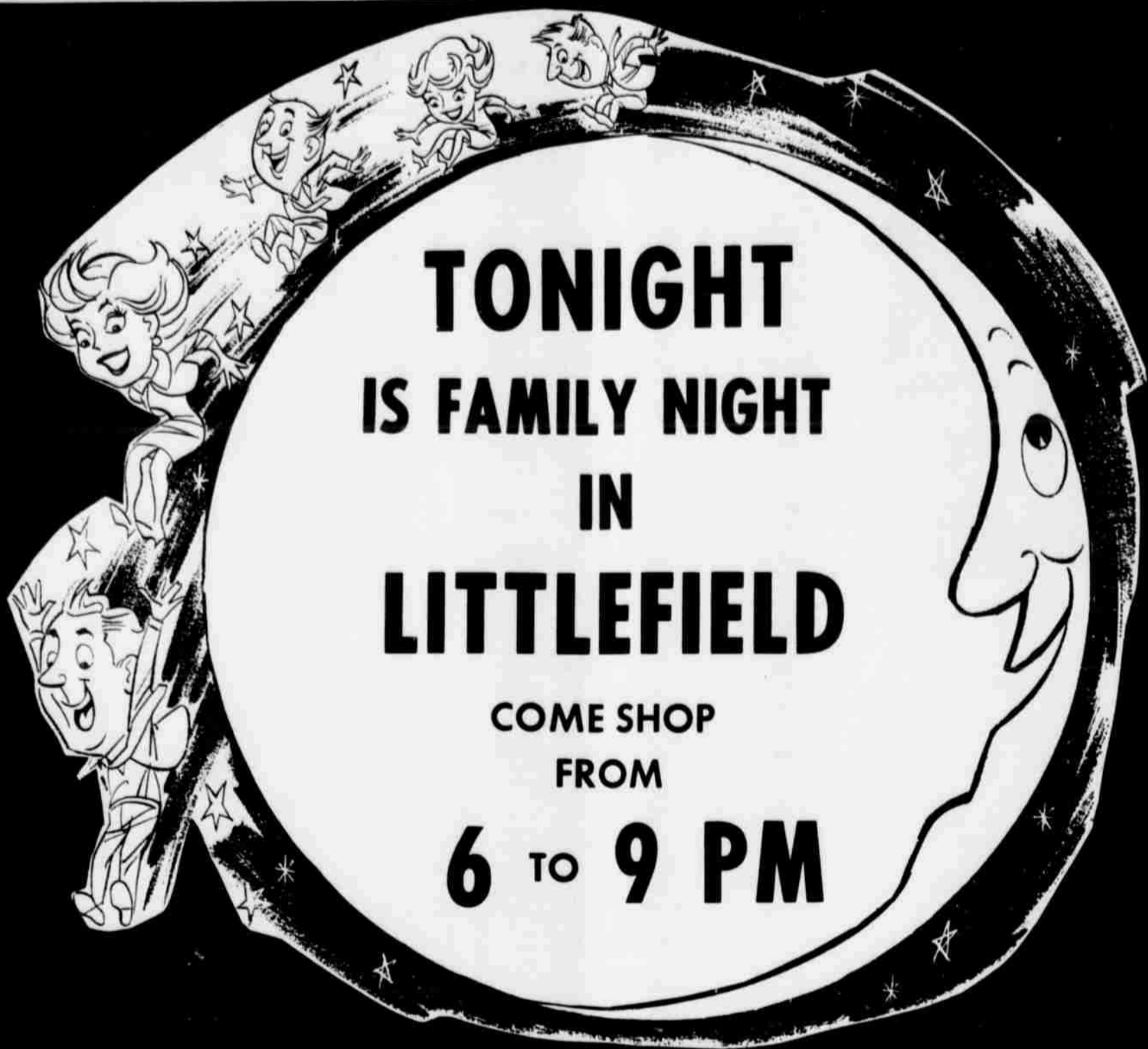
ZIPPO LIGHTERS 2⁹⁹

REGULAR 3.50

Gifts for popular Pops

<p>\$1 Group</p> <p>TIE SETS</p> <p>CIGARETTE LIGHTERS</p> <p>MANICURE SETS</p> <p>KEY CHAINS</p> <p>\$2 Group</p> <p>COLOGNE</p> <p>WATCH CHAINS</p> <p>TIE TACKS</p> <p>CIGARETTE LIGHTERS</p> <p>\$3 Group</p> <p>BRUSH & COMB SETS</p> <p>WATCH BANDS</p> <p>MONEY CLIPS</p> <p>\$4 Group</p> <p>CCLOGNE</p> <p>AFTER SHAVE</p> <p>BILLFOLDS</p> <p>DESK SETS</p> <p>JEWELRY BOXES</p> <p>MONEY CLIP</p> <p>KEY CHAINS</p> <p>WATCH BANDS</p> <p>\$6 To \$7 Group</p> <p>MANICURE SETS</p> <p>CIGARETTE BOXES</p> <p>WATCH BANDS</p> <p>DAD'S KNIFE WITH ENGRAVING CHILDREN AND GRAND CHILDREN</p> <p>\$8 To 8.50</p> <p>BILLFOLDS</p> <p>TRAVEL KITS</p> <p>DIAMOND TIE TACKS</p> <p>WATCH BANDS</p>	<p>\$10 Group</p> <p>JEWELRY BOXES</p> <p>SMOKE STANDS</p> <p>OVER NIGHTER</p> <p>CIGARETTE LIGHTER</p> <p>BAROMETER SETS</p> <p>\$15 Group</p> <p>BELTS</p> <p>BILLFOLDS</p> <p>WATCHES</p> <p>17.50 Group</p> <p>PEN SETS</p> <p>TRAVEL BAR</p> <p>CIGARETTE LIGHTER</p> <p>\$20 Group</p> <p>RADIOS</p> <p>SHAVERS</p> <p>WATCHES</p> <p>BIRTHSTONE TIE TACKS</p> <p>MASONIC RINGS</p> <p>\$25 Group</p> <p>RADIOS</p> <p>SHAVERS</p> <p>WATCHES</p> <p>BIRTHSTONE AND ASSORTED RINGS</p> <p>\$35 To 50 Group</p> <p>RADIOS</p> <p>RINGS</p> <p>DIAMOND RINGS</p> <p>WATCHES</p>
---------------------------------------------------------------------------------------------------------------------------------------------------------------------------------------------------------------------------------------------------------------------------------------------------------------------------------------------------------------------------------------------------------------------------------------------------------------------------------------------------------------------------------------------------------------------------------------------------------------------------------------------------------------------------------------------------------------------------------------------------------	-------------------------------------------------------------------------------------------------------------------------------------------------------------------------------------------------------------------------------------------------------------------------------------------------------------------------------------------------------------------------------------------------------------------------------------------------------------------------------------------------------------------------------------------------------------------------------------------------------------------------------

Pratt's JEWELRY





Allen Roberts Features These 2 Big 6 To 9 PM Specials

Entire Stock Of Lovely
FLOWER ARRANGEMENTS
25% OFF

3 Piece Extra Wide
PLASTIC DRAPES
77¢


OVER 400 PAIR ON SALE TONIGHT


Ben Franklin
Allen Roberts
309 Phelps

Say it with 
SLIPPERS
ON FATHER'S DAY! 
TONIGHT FROM 6 TO 9 PM ONLY

ODDS AND ENDS IN MEN'S

House Shoes
VALUES TO 3.90 TONIGHT **1.50**

Instant Credit At
Abe's SHOES 

 **Bargains for Sleepwalkers**

6 TO 9PM TONIGHT

4,000 YARDS OF BEAUTIFUL LACE VALUES TO 59¢ YD. 7¢	Woodbury HAND LOTION WITH DISPENSER 10 OZ. \$1 VALUE 37¢
------------------------------------------------------------------------	------------------------------------------------------------------------------

PERRY'S
KNOWN FOR BETTER VALUES

TONIGHT 6 TO 9 - A RECORD RIOT

DOLLARAMA
STEREO AND HI-FI

ALBUMS \$1
REG 3.79 & 4.79



Brand New! Never On Sale Before
Dean Martin
Eddie Arnold
Sammy Davis
& Others.

NEW 45'S
2 FOR 49¢

Pratt's Jewelry

RED TAG AIR CONDITIONING SALE!
You Don't Need Cash To Keep Cool!

Big 18,000 BTU Wizard Citation Air Conditioner!

Thousands Sold Previously for \$226.35! But Now at Western Auto You Pay Only...

226.35 As Low as 2.50 Week!

Dehumidifies! Removes Over 39 Gallons of Water Per Day!

- Utilized Construction! More rugged and vibration-free!
- Whisper-Quiet Cooling! Sound-muffling insulation!
- Weatherproof Galvanized Cabinet, Chassis! Rust-free!
- Efficient, Washable Scottfoam Filter! 6J1554

22,000 BTU Wizard Air Conditioner. 6JC1456 ... 268.36

WESTERN AUTO
JOHN POLONE

6 TO 9 ONLY
DOWNTOWN LITTLEFIELD

Penneys
ALWAYS FIRST QUALITY

MEN'S SHORT SLEEVE SPORT SHIRTS

Regular Priced 1.25 To 1.90 Rayon Or 100% Cotton Regular Or Shirt-Jac Models

99¢

REMEMBER
FATHERS DAY - SUNDAY JUNE 19

OLTON NEWS by MRS. W.B. SMITH SR.

Classes Now In Session For Pre-School Latin American Children

Classes are now in session at Olton for all pre-school Latin American children. There are 26 now enrolled.

Mr. Fred Gordon, elementary principal, reports that there is still room for others wishing to attend.

The purpose of the program is to teach non-English speaking children words and some of the things which will be expected of them as first graders. The children who attend summer school have a head-start when the regular school session begins next fall.

Classes are from 8 till 11 each morning, Monday through Friday, and are taught by Mrs. Brenda Giles.

The annual Lions Club Carnival in Olton has been scheduled for July 6-9. The carnival will be held on the south side of the square, as in the past. The S.B. Rhodes' Carnival, again, has been contracted for the rides and games.

Miss Priscilla Ann Ragle, daughter of Mr. and Mrs. Ernest Rangel of Plainview, is home for summer vacation from Maryland Park, Md., where she is a graduate student and instructor in English at the University of Maryland. Mr. and Mrs. Ernest Ragle are former Olton residents.

Rev. Tommy E. Nelson has moved to Olton from Forest Hill Methodist Church in Amarillo. He replaced the Rev. Cecil Hardaway, who will pastor the First Methodist Church in Hamlin.

Mrs. John H. Baumgardner, Pasadena, as guest preacher. He has served ten years as pastor of the South Main Baptist Church in Pasadena and has also been pastor at Ballinger and Childress. Bud Lovell of Vero Beach, Fla., will be in charge of music. Lovell formerly worked with the Olton Church for a two-year period and is currently employed as a music-youth director at the First Baptist Church, Vero Beach. He is a former student of Wayland College. Accompanists for the revival are Mrs. Bob Allford and Harold Carson. Pastor of the local church is the Rev. John E. Lewis. Week-day services will be held at 10 a.m. and 8 p.m. Sunday services are set for 11 a.m. and 7 p.m. The public is invited to attend; and the nursery will be open.

A community weight-lifting program is scheduled to start in Olton June 14 for ages 12 and

up with no maximum age. Classes will be held each Tuesday and Thursday from 8:30 to 9:30 p.m. in the apparatus room in the high school gym. Coach Don Beck announced that barbells of all sizes will be used and classes will be taught by a qualified instructor. The entire community is invited to participate. Weight lifting, only, will be taught. Beck added that the school will not be responsible for any injuries.



ILLING AND READY TO GO -- These Lamb County 4-H members are in Levelland this week for the annual District Two Junior Leadership Workshop for 4-H. They are (Bottom Row, L-R): Mrs. John Bridges, Springlake, the group's leader; Laura Wheeler, Olton; Jenine

Plains Farmers Should Check Pump Efficiency

The decline of the water table produced a situation in which Plains farmers need to re-evaluate the efficiency of their irrigation pumps, says Extension Irrigation Specialist Bill Lubbock.

Most pumping plants in the area were originally designed for greater discharge and short-pumping lift, he says. The wastefulness has changed so the per unit of water pumped is unnecessarily high.

Old, worn pump bowls contribute to the problem. In some cases, Lyle says pumps are improperly matched to the well when they were first installed.

per kilowatt hour.

Lyle says water-horsepower produced by a pumping plant is found by multiplying gallons per minute time total pumping head in feet and then dividing the product by a conversion factor of 3,960.

He says the total pumping head, neglecting friction loss, may be assumed to be pumping lift in feet plus discharge pressure in feet. You can change pressure expressed pounds per square inch to pumping head expressed in feet by multiplying by 2.31.

EXAMPLE DEVELOPED

For example, Lyle said a pump discharging 400 gallons per minute with a total pumping head of 130 feet would produce 13.1 water horsepower.

EFFICIENCY DISCUSSED

Twenty to 80 percent operational efficiency is about the maximum attainable with deep-well pumps even when they are carefully selected and matched to the well, according to the irrigation engineer.

Studies by the agricultural engineering department at Texas Tech indicate only a small percentage of the pumps on the High Plains operate in the 70 to 80 percent efficiency range.

His studies show some pumps are operating at only 20 percent efficiency, Lyle said.

FARMERS CAN CHECK PUMPS

Farmers who would like to get a rough idea of their pumps' efficiency can use a performance criteria developed by Nebraska engineers which relates fuel consumption of the pump to water horsepower at the discharge pipe.

If the fuel used is natural gas and the pumping plant is 75 percent efficient, Lyle says the fuel consumption for one hour should be about 197 cubic feet. (Nebraska says 1,000 cubic feet of gas produces 66.7 whp-hr. 13.1/66.7 x 1000 equals 197 cubic feet)

If the actual fuel consumption is 400 cubic feet per hour, the plant is about half as efficient as it should be or about 37 percent efficient, Lyle said.

"In a case like this," he says, "you would be losing about 50 cents of every dollar to wasted fuel."

The farmer with a highly inefficient pump should consult his pump dealer, Lyle says. The dealer may suggest replacing or modifying the pumping plant so it will be better matched to the situation.

After visiting the dealer, the farmer can decide if the investment will be justified in the long run by decreased pumping cost.

Lyle believes many farmers will find that they can lower their overall irrigation expenses with better designed pumping systems.

The Nebraskans used the average fuel consumption of engines as obtained from their well-known tractor tests and from the manufacturers to get average power plant efficiencies for each common fuel, Lyle said.

This fuel-use data was compared with an average pump efficiency of 75 percent to create a table showing the water-horsepower-per-hour developed at the discharge pipe by a unit of fuel or electricity.

FORMULA EXPLAINED

They figure one gallon of gasoline should produce 8.66 water-horsepower-per-hour (whp-hr). The whp-hr from other sources is as follows: Diesel, 10.94 per gallon; butane, 7.65 per gallon; propane, 6.89 per gallon; natural gas, 66.7 per 1,000 cubic feet; and electricity, .885

The majority of back troubles result from unsafe lifting acts. Aetna Life & Casualty safety experts recommend that men should not lift over 75 pounds, or half their weight, which ever is less, and women should not lift over 35 pounds without help.

4-H Members Go To Levelland Meet

Several Lamb County 4-Hers and sponsors are attending the District Two Junior Leadership Workshop in Levelland this week. They will return today.

The 4-H members will go to group sessions on recreation, 4-H meetings, junior leadership and method demonstrations.

Purpose of the workshop is to help junior leaders gain experience and ideas and return to their local clubs and more efficiently work in them.

The Lamb County 4-Hers will be among approximately 160 members and sponsors at the workshop. The young people will stay at South Plains College in Levelland and eat in the college's dormitory cafeterias.

The workshop is an annual affair for the district, which is composed of some 20 counties on the plains.

King Enrolls In First Summer Session At LCC

Jack King, son of Mrs. Jack W. King Sr., of Littlefield, has enrolled in the first summer school session at Lubbock Christian College.

King is a 1966 graduate of Littlefield High School, where he was active in band, choir, debate, radio and drama and the Latin Club.

As a speech major, he will be on a speech scholarship beginning with the fall term.

Have Fun!

Relaxing is good for you and your family! You'll find Manager Walter Wagner...who enjoys golf, hunting and fishing...is doubly understanding. He knows that fun often requires extra funds...and he knows how to provide you with the money you want on a sensible basis. His financial knowledge and experience is at your service. Call Understanding Walter at financial house for your Personalized Plan.

Interstate financial house
SECURITIES COMPANY OF TEXAS
425 Phelps 385-3822
See Walter Wagner... He Understands

Father's Day SHIRT SALE

THURSDAY - FRIDAY And SATURDAY

SPECIAL REDUCED PRICES

ON ENTIRE STOCK OF SPORT & DRESS SHIRTS

OVER 2000 TO CHOOSE FROM

Amos Ward has assembled one of the greatest assortments of shirts for Father's Day gifting in Littlefield. White dress shirts in short and long sleeve...famous Van Heusen no iron shirts... Sport shirts in the newest fabrics, patterns and collars.

We urge you to visit Amos Ward's and save money on a Father's Day Gift.

REGULAR 2.98 VALUES	2 FOR \$5
REGULAR 3.98 VALUES	2 FOR \$7
REGULAR 4.98 VALUES	2 FOR \$9
REGULAR 6.00 VALUES	2 FOR \$11

THIS SALE INCLUDES LONG AND SHORT SLEEVE SHIRTS AND THE FAMOUS VAN HEUSEN NEVER IRON SHIRTS.

TONIGHT 6 TO 9 REG. 4.95-5.95-7.95 WESTERN SHIRTS ENTIRE STOCK 3.99	TONIGHT 6 TO 9 LADIES REGULAR 69¢ NYLON HOSE (Limit 2 Pairs) Ea. 25¢	TONIGHT 6 TO 9 LADIES ONE EYELET CANVAS SHOES SIZE 4 1/2-11 1.66	TONIGHT 6 TO 9 REG. 1.29 FEATHER PILLOWS ON SALE \$1
-----------------------------------------------------------------------------------------------	---------------------------------------------------------------------------------------------------	-----------------------------------------------------------------------------------------	-----------------------------------------------------------------------------

CHARGE IT... TAKE UP TO 13 MONTHS TO PAY

AMOS WARD'S

it's Father's Day every morning when you give him **BRITISH STERLING**

The after-shave that starts each day with confidence... the cologne that lasts from dusk to dawn. Worn by world's most knowing men. So fine it's sold in jewelry stores. Give him one or both... in distinctive flasks.

from 3.50 to \$10

OPEN TONIGHT TIL 9 PM

PRATT'S JEWELRY

Furr's
SUPER
MARKETS

INVITES YOU
TO PLAY...

"Let's Go to the Races"

A New And Exciting Way To Win **FREE** Prizes



TV POST
TIME
KLBK-TV
CHANNEL 13 LUBBOCK
WEDNESDAY
7:30 PM

FIRST SHOW JUNE 22 - GET FREE CARDS NOW.
WIN FROM \$5 TO \$250 BY MATCHING WINNING
HORSE NUMBERS IN TV SHOW RACES WITH
WINNING HORSE NUMBERS OF FREE CARDS
GIVEN AT FURR'S.

HERE'S HOW TO PLAY

1. Pick up your FREE card each week at your nearby Furr's Super Market. No purchase necessary. Cards for each of the weekly races will be a different color.
2. Five complete races will be shown in color on the channel in your area shown above each Wednesday night. You'll enjoy plenty of color and excitement as you watch these races.
3. After each race the number of the winning horse will be shown on your TV screen. Compare the win number on your card with the number of the winning horse in each race.
4. If the win number on your card matches the number of the horse winning that race... YOU HAVE A WINNING CARD! Circle the number and take it to your nearby Furr's Super Market for your cash prize.
5. You do not have to watch the TV show to be a winner. The winning numbers for each of the five races will be posted at your nearby Furr's Super Market each Thursday morning thru Saturday night.
6. IMPORTANT--Winning cards must be presented to the Furr's Manager for verification Thursday, Friday or Saturday following the show.



HAMS

Farm Pac Fully Cooked
Shank
Cut, Lb **45¢**
Whole Or
Butt Cut Lb **49¢**

Roast Chuck
USDA INSP FARM PAC BLUE RIBBON OR GRADED CHOICE LB **53¢**

Lunch Meat
PICKLE PIMENTO OLIVE OR BOLOGNA 3 PKG FOR **87¢**

Canned Ham
ARMOUR STAR BONELESS 3 LB CAN **2⁸⁹**

HAMBURGER

NEW YORK STEAK
USDA INSP FARM PAC BLUE RIBBON OR CHOICE THICK CUT FOR YOUR OUTDOOR COOK OUT LB **1⁶⁹**

FRESH GROUND LB FOR **88¢**
BONELESS SIRLOIN
USDA INSP FARM PAC BLUE RIBBON OR CHOICE, BONELESS BUTT TOP CUT, THICK FOR BROWLING LB **1²⁹**
SIRLOIN STEAK
USDA INSP FARM PAC BLUE RIBBON OR CHOICE PINBONE LB **85¢**



After Shave Right Guard
COMMAND REG \$1.00 **29¢**
DEODORANT 7 OZ SIZE **89¢**
HAIR DRESSING Groom & Clean REG 1.09 **69¢**
GILLETTE SLIM ADJUSTABLE Razor REG 1.50 **99¢**
TABLETS Anacin REG 1.33 100'S **99¢**
HEAD & SHOULDERS LIQUID Shampoo REG 1.45 **89¢**

CAR WASH BRUSH

LONG HANDLE

EACH **59¢**

GARDEN HOSE
PLASTIC 7/16" X 50' **1⁰⁹**

LAWN CHAIR
6X4X3 VINYL WEBBING EACH **2⁶⁶**

PICNIC TABLE 24" X 60" FOLDING **5.88**
BAR-B-QUE Table Cloth 54X72 EA. **69¢**
Garden Tools TROWEL, CULTIVATOR, TRANSPLANTER **12 1/2¢**

CHARCOAL LIGHTER
ELECTRIC EACH **99¢**



BARBEQUE GRILL
25" FOLDING WITH HOOD & SPIT

8⁸⁸

WELCHADE DRINK 46 OZ CAN **2 FOR 79¢**

CREAM PIES MORTON FRESH FROZEN ASSORTED EACH **29¢**

COFFEE FOOD CLUB ALL GRINDS 2 LB CAN **1³⁷** 1 LB CAN **69¢**

EGGS FARM PAC USDA GRADE A MEDIUM DOZEN **3 FOR \$1**

TISSUE DELSEY 4 ROLL PKG **39¢**

DEL MONTE
CATSUP Barbeque, 23¢ 14 oz, 23¢
CATSUP 14 oz, 23¢
TOMATO SAUCE 8 oz 3/35¢
STEWED No. 303 TOMATOES can 29¢
KLEENEX
DESIGNER TOWEL Each 37¢
DESIGNER TOWEL Twin 47¢
DESIGNER TOWEL Dinner Napkins 50 Cr. 29¢

HAIR SPRAY
RAYETTE HARD TO HOLD, OR REG 13 OZ **53¢**



PEACHES CALIFORNIA POUND **12 1/2¢**

CHARCOAL BAR-B-QUE TIME 10 LB. BAG **39¢**

Chaise Lounge 7X5X9 **5⁹⁹**

JUNE DAIRY MONTH SPECIAL

BUTTER MILK BORDENS 1/2 GALLON **39¢**

ICE CREAM BORDENS 1/2 GAL ASSORTED FLAVORS **69¢**

BORDEN'S COTTAGE CHEESE 2 LB PKG **49¢**
BORDEN'S SOUR CREAM 8 OZ PKG **25¢**
BORDEN'S WHIPPING CREAM 1/2 PINT **29¢**
BORDEN'S ASSORTED FLAVORS SHERBET 1/2 GALLON **69¢**

PILLSBURY ASSORTED FLAVORS CAKE MIX PKG **3/\$1**
WHITE OR PINK PRINCESS SOAP REG BAR **2/37¢**
CORN KIT CORN BREAD MIX 10¢ PKG **3/19¢**
BISKIT BISCUIT MIX 10¢ PKG **3/19¢**

POTATOES CALIF RED 1 CLB BAG **39¢**
FRESH FROZEN FOODS

DINNERS
MORTON FRESH FROZEN CHICKEN, BEEF, TURKEY SALISBURY STEAK, MEAT LOAF, YOUR CHOICE **3 FOR \$1**
Morton Apple Rings, Cinnamon Raisin Rings, Danish Pecan Twist **69¢**
Morton Honey Buns Fresh Frozen 9 oz. **29¢**
Top Frost, Potatoes Fresh Frozen French Fries, 16 oz. **25¢**



Play QUIK CASH...Win up to \$1,000 Cash!

LATEST WINNERS

- OLEDA BRUTAN
- MARY JOHNSON
- W.T...MAUK
- ROSIA WASHINGTON
- ED BLACKWELL
- PAT STREET
- E.L. ROSS
- PAT STREET
- ENLOE SMITH

- ### SUMMERTIME COOKOUT SPECIALS
- ALCOA HEAVY DUTY, 10¢ OFF LABEL
ALUMINUM FOIL 59¢
 - SCHILLINGS
HAMBURGER SEASONING 3 OZ. 29¢
 - SCHILLING
BLACK PEPPER 4 OZ. CAN 45¢
 - OPEN PIT, 3¢ OFF LABEL
BARBECUE SAUCE 18 OZ. BOTTLE 36¢
 - OLD BLACK JOW
HICKORY CHIPS 8 LBS. 69¢
 - SCHILLING
GARLIC SALT 6 1/2 OZ. SIZE 29¢
 - GULFLITE
CHARCOAL LIGHTER 1/2 GALLON 69¢

QUALITY MEATS AT PIGGLY WIGGLY

- SIRLOIN STEAK** 98¢
- USDA CHOICE, AGED, HEAVY BEEF, VALU-TRIMMED POUND
- GRADE A - IDEAL FOR COOKOUTS
- SPLIT BROILERS** POUND 39¢
- USDA CHOICE, AGED, HEAVY BEEF, VALU-TRIMMED POUND 1.09
- T-BONE STEAK** POUND 1.59
- USDA CHOICE, AGED, HEAVY BEEF, VALU-TRIMMED BONELESS
- RIB STEAK** POUND 79¢
- LEAN NORTHERN PORK, CENTER CUT RIB CHOPS
- PORK CHOPS** POUND 89¢
- LEAN NORTHERN PORK, CENTER CUT LOIN CHOPS, CUT THICK FOR BROILING
- PORK CHOPS** POUND 98¢
- USDA CHOICE BEEF BONELESS
- CUBE STEAK** POUND 59¢
- USDA CHOICE, AGED, HEAVY BEEF, VALU-TRIMMED
- FAMILY STEAK** POUND 79¢
- PINKNEY ALL PORK
- SAUSAGE** 2 POUND PKG. 49¢
- RATH'S BLACK HAWK ALL MEAT
- FRANKS** 12 OZ. PKG.



- GROUND CHUCK** 2 LB PKG. \$1
- LEAN, DATED TO ASSURE FRESHNESS
- LEAN, NORTHERN PORK
SPARE RIBS POUND 59¢
- USDA CHOICE, AGED, HEAVY BEEF VALU-TRIMMED POUND
NEW YORK STEAK 1.69



- ## FRUIT COCKTAIL
- LIBBY'S FANCY 3 NO. 303 CANS 68¢

- ### ESPECIALLY FOR BABY
- Asst. Flavors
Baby Cereals 8 Oz. Box 21¢
 - Gerber's
Biscuits 4 1/2 Oz. Pkg. 25¢
 - Formula
Modilac 13 Oz. Can 25¢
 - BANANA Kanana
Flakes 2 Oz. Can 25¢

- ### LOOK WHAT 10¢ WILL BUY
- Western, Plain or Iodized
SALT 26 Oz. Box 10¢
 - Campfire, Early June
PEAS No. 300 Can 10¢
 - Stokley's
TOMATO SAUCE 8 Oz. Can 10¢
 - Libby's
PINEAPPLE JUICE 6 Oz. Can 10¢

- ### HEALTH & HOME AIDS!
- LAWN CHAIR** \$2.99
Kellar, Aluminum Folding, Extra Heavy Webbing, Extra Construction, Wide Arm Rest, Tubular Reg. 3, 4, 9 Each
 - Chaise Lounger** Each 5.99
Mum Cream Reg. 79¢
 - Deodorant** Large Jar 69¢

- ### LIBBY'S UNSWEETENED
- Orange Juice** 2 46 OZ. CANS 78¢
 - LIBBY'S CREAM STYLE OR WHOLE KERNEL
Golden Corn 4 NO. 303 CANS 88¢
 - LIBBY'S FANCY
Sweet Peas 3 NO. 303 CANS 68¢
 - LIBBY'S DILL OR KOSHER DILL
PICKLES 2 22 OZ. JARS 68¢
 - LIBBY'S HALVES
PEARS 2 NO. 303 CANS 68¢

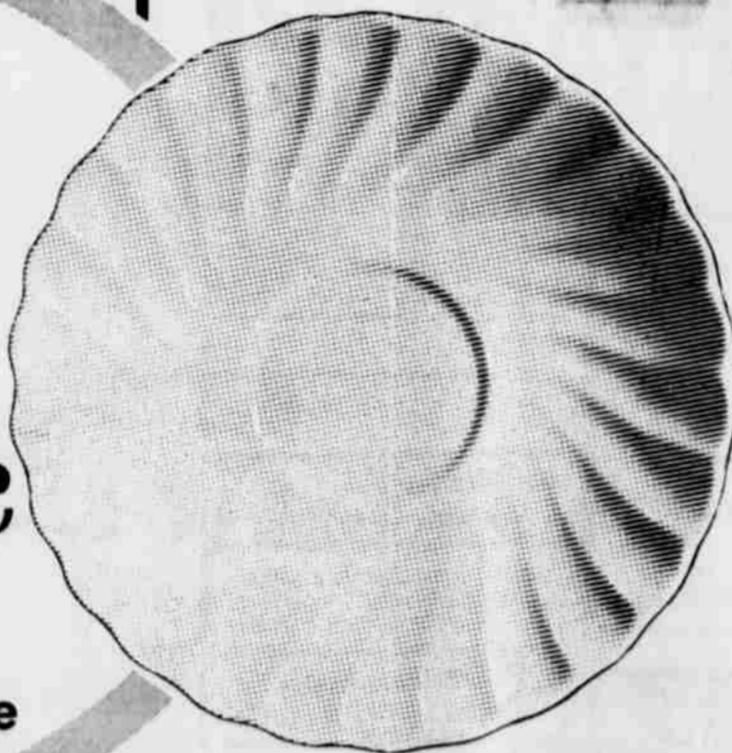
-
- ## GREEN BEANS
- LIBBY'S CUT 3 NO. 303 CANS 58¢
- WE RESERVE THE RIGHT TO LIMIT QUANTITIES

This week
GET YOUR **Sheffield**
BONE WHITE
Saucer

Each week a piece of Sheffield Dinner will be featured for just 9¢. For each \$5 in grocery purchases, you are entitled to one piece at this low price. There's no limit... with a \$10 purchase you can get two pieces... and so on.

only **9¢**

with every \$5 purchase



THESE PRICES GOOD IN
LITTLEFIELD JUNE 16-17-18-1966

PIGGLY WIGGLY PRODUCE!

- ## PEACHES
- CALIFORNIA EXTRA FANCY POUND 19¢



- CALIFORNIA, RED OR GREEN TIP
LEAF LETTUCE EACH 2 FOR 29¢
- CALIFORNIA, FRESH
SPINACH CELLO BAG 29¢

- ### CELERY
- CALIF. FRESH GREEN PASCAL 2 FOR 25¢

- EGGS** IDEAL, GRADE A MEDIUM 3 DOZEN \$1
- SUGAR** C&H, HOLLY, OR IMPERIAL 5 LB BAG 49¢
- COKES** Regular or King Size, Plus Deposit 6 BTL. CTN. 35¢
- FLOUR** SUNLIGHT FULLY GUARANTEED 5 LB. BAG 39¢



- ### VIENNA SAUSAGE
- LIBBY'S ALL MEAT 3 NO. 1/2 CANS 68¢

LEMONADE

- LIBBY PLAIN 4 12 OZ. CANS 78¢
- MEAT PIES** SPARETIME 6 6 OZ. PKG. \$1
- ORANGE JUICE** LIBBY 12 OZ. CAN 49¢
- CREAM PIES** Coconut, Butterscotch, Chocolate Banquet, Strawberry, Lemon, Neopolitan, Banana, Family Size 3 FOR \$1
- POTATOES** SIMPLOT, SHOESTRING 3 20 OZ. PKG. \$1
- CORN** LIBBY, CREAM STYLE OR WHOLE KERNEL 4 10 OZ. PKG. 88¢
- PEAS** LIBBY, GREEN 4 10 OZ. PKG. 88¢
- MEXICAN DINNERS** BANQUET 15 OZ. PKG. 2/89¢
- BROCCOLI** LIBBY CHOPPED 5 10 OZ. PKGS. 88¢

- Towel, Stuffed, no. 609
OLIVES 6 Oz. Bottle 55¢
- Blackburn's Waffle,
SYRUP 32 Oz. Bottle 39¢
- Libby's
SLOPPY JOE'S No. 300 Can 67¢
- Libby's Fancy
RED SALMON No. 1/2 Can 73¢
- Wishbone, Italian
DRESSING 8 Oz. Bottle 41¢

"DAIRY DELIGHTS"

- Golden Korn, Corn Oil
MARGARINE 3 1-Lb. Pkgs. \$1
- Kraft's Cheese Food
VELVEETA 1-Lb. Loaf 75¢
- Kraft's Grated
PARMESAN CHEESE 3 Oz. Can 35¢
- Pillsbury, Apple, Cherry, or Blueberry
TURNOVERS 14 Oz. Pkg. 59¢

- Franco American
SPAGHETTI Boy-Ar-Deo, With Meatballs 2 No. 1 Cans 33¢
- SPAGHETTI DINNER** 25 Oz. Can 83¢
- Appian Way, Cheese
PIZZA MIX 14 Oz. Box 53¢
- Renown
CHICKEN & DUMPLINGS 21 Oz. Size 55¢

Lowest Prices... Greatest Variety... always at

Piggly Wiggly



LOST • RENT • SELL • BUY • HIRE • TRADE

"YOU'LL FIND IT IN THE WANT ADS!"

FOUND • SERVICE • EMPLOYMENT • PERSONAL



LEADER and NEWS CLASSIFIEDS SELL!

TO USE THEM JUST CALL **5-4481** AND ASK FOR AD TAKER

— CLASSIFIED RATES —

First insertion, per word **5c**
 Second Insertion, word **4c**
 All Additional Insertions, word **3c**

Minimum Charge For First Ad run, \$1; minimum charge per subsequent insertion, 50c.

MONTHLY RATE, per word **30c**

(All editions of Leader and News, two copy changes monthly)

DEADLINES FOR INSERTION:

LAMB COUNTY LEADER
10: a. m. Wednesday

COUNTY WIDE NEWS
10:00 a. m. Saturday

● Help Wanted A-1

Lady to live in with elderly couple, Phone 385-3018, 6-19C

● Work Wanted A-2

Wanted - Lawns to mow and/or edge, Mike Morris, 385-4826, TF-H

● Personal Services A-8

Will do ironing in my home, Call 385-3981, TF-H

Safe competent child care, Happy Day Nursery, 117 S. Westside, 385-3738, TF-H

Call 385-4481

● Card of Thanks A-10

Words fail to express our gratitude to all our friends and neighbors for their prayers and gifts of comfort during our bereavement. Our thanks to all who prepared and served food, and to Rev. Roland Burnett and Hughman Gumprey for reassurance of hope and consolation and for the beautiful songs and to George Price for the beautiful service rendered.

The Family of Elva T. Crank, Mr. and Mrs. Bob Crank & Family
 Mr. and Mrs. Norman Hodges & Robin
 Mr. and Mrs. Joe Ben Crank & Family
 Richard Crank
 Mrs. Will Bryant & Family
 Mrs. Viva Piner

● Apts. for Rent B-1

Furnished apartments, carpeted, air conditioned, garage and plumbed for washing machine, Phone 385-4460, TF-J

● Houses to Rent B-3

FOR RENT - 2 bedroom houses, Reasonable. Call 385-5297 or 385-4844, TF-C

Extra nice 2 bedroom house on Cooke Street, Would sell, Box 1021, Bill Langford, 6-23L

Four room and bath for rent on 16th with garage. Clean, Phone 385-4298, TF-F

One bedroom furnished house at 403 Westside, Phone 385-4526 or 385-4054, TF-S

FOR RENT - nicely furnished 6 room house, air conditioned, close in, Call 385-5151, TF-S

FOR RENT - 2 bedroom house at 705 West 2nd with fenced back yard, Call 385-3112 or 385-5060, 6-26G

Nice clean 2 bedroom, bath, attached garage for rent, \$65 per month, 1001 West 9th, Phone 385-4934, TF-R

FOR RENT, SALE OR TRADE: 2 bedroom house in Amherst and 1 brick store, 25 x 120 ft. Phone 246-3228, Amherst, 7-10K

FOR RENT - 3 bedroom, fully carpeted, completely redecorated, carport, storm cellar and fenced yard, \$65, Phone 385-5804, 6-19T

● Houses For Sale C-1

HOUSE FOR SALE - 3 bedrooms, 2 baths, near high school, with storm cellar, 1300 West 12th. Would consider items of trade for equity, Call 385-3842 between 5 and 8 p.m., TF-T

Three bedroom, 1 3/4 bath. Large double garage, living room, den, at 217 East 21st Street. 30 year FHA loan - \$15,850. Extra low down payment. Phone 385-4236, TF-J

FOR SALE OR RENT: 2 bedroom, carpeted, garage, plumbed for washer dryer and rooftop evap. cooler, large lot, fenced back yard, 210 East 13th, J.D. Thomas, 385-3064, TF-T

FOR SALE - four bedrooms, three baths, central heating, air conditioned, carpeted. On school bus route just outside city limits. With barn and front acre of land. Low equity. Call Dr. Hinckley, Muleshoe, 272-4581 or 272-4208 after 6 p.m., TF-H

● Personals C-2

Would like to take turns driving with man working in Lubbock. Working hours - 8 to 5:30 p.m. Monday thru Friday, Saturday till noon. Call 385-3420, after 6:30 p.m., TF-R

● Farms, Ranch-land C-5

177 acre irrigated farm, located 3 miles north of Amherst. Has to be sold to settle estate. Contact E.S. Kelton, 112 N. Margaret, Carlsbad, N.M., phone TLU-8364, 6-16K

● Real Estate for Sale C-6

FOR RENT: 2 bedroom brick home. Close in. Carpeted and draped, with garage, and extra storage. Call Mrs. O.C. McBride, 385-4394 or Mrs. A.J. Lenderson, 272-3088, Muleshoe, TF-L

FOR RENT

3 bedroom, living room, dining room and den, 1 bath, carpeted throughout, fenced in back yard, large covered patio, double carport, gas bill and water bill paid. See Ernest Connell.

● Miscl. For Rent B-4

FOR SALE OR RENT - large warehouse on highway, would be suitable for certain type business. Size - 50 x 108 ft. Also, a building at rear. Size 36 x 66 ft. with dock height floor and loading dock. Will sell or lease either or both reasonable. See I.D. Onstead at Onstead Furniture, TF-C

● Rooms for Rent B-5

FOR RENT - Furnished bedrooms, Close to town, Phone 385-5151, TF-M

Comfortable bedrooms for men, New home, air conditioned, Phone 385-3604, 204 East 9th St., TF-A

● Houses For Sale C-1

FOR SALE - large 3 bedroom, over 2,000 feet floor space, \$6,500 total price - will take trade, 714 West 6th, TF-E

five bedroom, 2 bath, living room, dining room & den, 2500 sq. ft. with 2000 sq. ft. building in rear. 1218 West 2nd St., 7-10H

OWNER BEING TRANSFERRED - HOUSE FOR SALE - 3 bedroom at 111 East 18th. Good condition. Good location. Low monthly payments. Phone 385-5291, TF-M

Three bedroom brick, large paneled den, coppertone built-in including dishwasher, utility and double garage. No qualifying, buy equity and assume FHA loan, 1300 W. 14th, TF-M

CASH TALKS
3 bedroom house on Crescent Drive, assume equity or buy outright. See Allen Roberts at Ben Franklin, Phone 385-3286 or 385-3252, TF-B

FOR SALE IN CANNON TERRACE - 3 bedrooms, 1 1/4 baths, double garage, paneled den, utility room, built-ins, dishwasher. Extra nice inside. 1311 West 14th, Phone 385-4343 or 385-4220, 6-26H

SEE I.D. Onstead
Roy Wade
C.R. Onstead

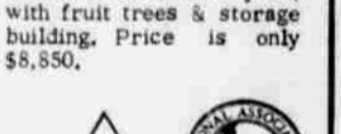
SEE I.D. Onstead
Roy Wade
C.R. Onstead

● Real Estate for Sale C-6

Neat 3 bedroom, two bath on large fenced lot. 1340 sq. ft. of living area for \$11,700. No down payment for qualified buyer. This attractive home has central heating and evap. cooling, plenty of storage and nice utility room.

Six room & bath, concrete cellar, garage, 75 ft. lot, new roof, new paint, \$8,000 with good terms, would take car, pickup, small house or lot as trade in. Located in good neighborhood on shaded lot.

Three bedroom, one bath, on quiet street, carport, storm cellar, nice yard, with fruit trees & storage building. Price is only \$8,850.



JIM MILLS
REAL ESTATE
REALTOR 385-5989
4th & Twichell at L.F.D. Dr.

● Bus. Services D-3

Our specialties are all types alterations, covered buttons, buckles, belts-including cap-tour, buttonholes, decorative stitching and men's unclaimed tailor made suits. Mr. and Mrs. G.E. Scripps Drive-In Cleaners, Levelland Highway, TF-S

Bill Miller

The Kirby Man
PH. 385-3357

MATRESS REBUILDING: complete renovating - convert your old bedsprings into modern boxsprings. Call Mrs. Claud Steffy, 385-3386, day or night, or Sewing Center, 385-3140. Agents for A & B Mattress Co., Lubbock, TF-A

REFRIGERATION & AIR CONDITIONING

TUNNEY'S
REFRIGERATION SERVICE
912 EAST 7 TH ST.
PHONE 385-5932

AUTOMOTIVE SUPPLY HEADQUARTERS

700 E 4th - PH 385-4431
● Car ● Truck
● Tractor Industry
● Irrigation
● Motor Rebuilding
● Precision Machine Service

G & C AUTO SUPPLY

CHANDLER'S MOTOR MACHINE & SUPPLY STORES In
Littlefield, Anton. Sudan, Earth

B & C PUMPS & Machine Works

W.H. "Dub" BERRY-JOHN M. CLAYTON - Owners
COMPLETE IRRIGATION SERVICE
● WELL CLEAN-OUT
● PUMP PULLING
● PUMP SETTING
● COMPLETE PUMP REPAIR

WESTERN PUMP CO.

Tube Line Non Guaranteed 5 Years
PHONE: 385-5137
Nights 385-3118 or 385-4185
304 Lake Ave. LITTLEFIELD
894-5025 LEVELLAND

● Bus. Services D-3

Experienced, qualified refrigeration and air conditioning repairs. Call 385-3219, 7-3P

Rent convalescent equipment at Brittain Pharmacy. Wheelchairs, crutches, hospital beds, other items. Complete lines of convalescent needs.

COMPLETE EXTERMINATION SERVICE, household pests as roaches, mice, rats, termites, etc. Tree and lawn spraying, bird repellent, moth proofing. One year written service warranty. Low rate. \$2.00 a room crawling insects. Day or night call collect: Levelland 894-3824, Davidson Pest Control, 15 years experience, TF-D

● Insurance Service D-4

STANDARD LIFE AND ACCIDENT
Life - Hospitalization - Income Protection
Local Representative
VELDEN D. CARROLL
911 E. 9th St.
Littlefield, Texas
Ph 385-5988 For Appointment

● Feed-Seed E-2

4 KINDS of cotton seed, 1st year out of white sacks. Bargain. Bill Langford on Spade Highway, 6-23L

● GUAR SEED FOR SALE

Brooks, new improved variety from 1965 certified seed. Excellent soil builder. Located at the following seed dealers: Byers Feed and Grain Co.; Farmers Grain Co.; Littlefield Grain Co., Littlefield, Texas. You can sell Guar seed for fall delivery at \$3.90 per 100 lbs.

● Pets F-1

Pekingese for sale. Phone 385-5940, 7-16D

● Cattle, Hogs, Horses, Sheep F-3

Horses, new and used saddles and 1 good stock trailer for sale. Kilby, 385-4795, 6-30K

● Furniture, Appl. (Used) H-2

We can really save you money on a good used refrigerator or freezer. See us before you buy. Phone 385-4322. Hill Rogers Furniture, TF-R

● Miscl. For Sale H-3

REPAIR SALE & SERVICE REPAIR. SW2-4460, 3104-31st Street, Lubbock, Texas. 6-19S

Air conditioner and venetian blind repair. RADIO & TV LAB, 8th & Levelland Highway, Phone 385-3633, TF-R

Good used air conditioners and late Maytag automatic washers. HILL ROGERS FURNITURE, 385-4322, 6-19R

FOR SALE - Dearborn 4500 BTU air conditioner. Used approximately 2 months. See at 119 E. 18th after 5 p.m., 6-19D

CLEANINGEST carpet cleaner you ever used, so easy too. Get Blue Lustre. Rent electric shampooer \$1. Nelson Hardware & Supply, 6-19N

Air conditioner pads now in season. Bring your sides by and shop and we will pack them for you free of labor. T.V. Corner, 385-3831, 601 West Delano, TF-T

Need party with good credit in Littlefield area to take over payments on late model Singer sewing machine, cabinet optional. Will buttonhole, zig-zag, fancy designs, \$26.50 cash or 5 payments at 5.72. Write Credit Manager, 1114-19th Street, Lubbock, Texas, TF-L

● Miscl. For Sale H-3

Upright piano - \$100.00, GoKart - make offer. Phone 385-5086, 6-16T

FOR SALE - fishing rig-16 ft. Star boat and trailer - tarp 15 horse Evinrude motor. See at 616 Hall Ave. or phone 385-3177, Mrs. Love Hall, 6-30H

PHILCO COLOR TV - PRICED 100% UNDER COMPETITION AND GUARANTEED ONE FULL YEAR - HILL ROGERS FURNITURE - 385-4322. WE DEAL!! 8-14H

● Articles Wanted H-4

GOOD USED HOG WIRE. Call Tommy McKinnon, phone 385-3323, TF-M

Cottonseed meal is an excellent fertilizer.

● Bel Canto Singers Scheduled To Sing

OLTON -- The nationally known Bel Canto Singers from Boles Home are scheduled to sing at the Main Street Church of Christ Wednesday, June 22 at 8 p.m.

The Singers are currently on their seventeenth annual summer tour. The present three-month tour includes appearances in many cities throughout

● Autos, Trucks For Sale J-1

FOR SALE - '59 Chevrolet Impala 2-door sport coupe, standard transmission. Extra clean. '59 Chevrolet Belair, 4-door Extra Clean. Call 385-4062, 6-23H

Texas, New Mexico, Arizona, California, Oregon, Washington, Wyoming, Idaho, Utah, Colorado.

The Bel Canto Singers, a cappella group specializing in inspirational hymns, spirituals and other familiar church songs, present seven concerts each week, under the direction of Dan Parkerson.

The Bel Canto Singers plan to arrive at the Olton church building about 5 p.m. on June 22, and will leave the next afternoon at 2 p.m. With a group there will be 16 girls, 11 boys, and two adults, Mrs. Dan Parkerson and Lucille Perkins.

The pre-schooler will be scribbling when he sees the other ones doing their homework. Provide him with a place for scribbling by thumbtacking a large piece of cardboard to the bedroom or the wall of the playroom. This will save your walls from being marked up.

Our GIFTS belong to DADDY!

UNCONDITIONALLY GUARANTEED

1/4" & 1/2" SQUARE DRIVE 39-PIECE TOOL SET 18.88

20-PC SOCKET SET 12.88
1/4" and 3/8" set includes 14 sockets, spinner handle, spark plug socket, extension, adaptor, ratchet, metal box. 712/S85160TT

11-PC SOCKET SET 9.99
3/8" drive wrench set, 7 sockets, swing head handle, ratchet, extension, box. 713/S85158TT

(A) HACK SAW
Pistol grip frame is adjustable for 8 to 12" blades. 4 cutting angles. W/blade. 679/50S 79c

(B) ADJUST-A-BOX WRENCH
8" wrench gets into tightest areas, while adjustable for sizes from 3/4 to 1". 682/ABBC 3.98

(C) UTILITY PLIER
Water pump plier with slip joint for adjustable openings. Drop forged. 3/4" 681/912WP 1.29

(D) HOLDING CLAMP
Spring-action clamp holds wood or steel parts for gluing, nailing, drilling. etc. 715/1261 49c

(E) FLARING TOOL
Produces a clean, professional flare on copper or aluminum tubing. 7 sizes. 670/GF83S 3.99

(F) RATCHET CHAIN WRENCH
Re-grip without removing. 15" chain. 716/GP87 3.98

(G) POP RIVET TOOL KIT
Make many neat repairs without screws, bolts, or soldering. 2 nos. pieces. 680/K110 4.49

(H) ADJUSTABLE WRENCH
6" mechanic's wrench economy priced. 674/GTT 1.19

8" wrench. 675/8TT 1.79

(I) GRIP WRENCH
Adjustable to grip, clamp, twist, bend, pull, turn, and cut! Non-slip. 10". 669/E108 1.44

(K) SLIP JOINT PLIER
Drop forged polished pier made with precision milled jaws. 6" size. 676/195TT 66c

(L) LONG NOSE PLIER
Cutting plier with extra sharp edges. Comfortable vinyl grip handle. 5 1/2". 668/192-5TT 1.69

(M) HEX KEY WRENCH SET
18-piece set of standard and extra long shanks. Hi-carbon steel. Plastic case. 714/HK118 89c

Pocket Knives - Lawn Chairs - Fishing And Hunting Equipment Power Tools Are Just Some Of The Other Gifts At

Nelson's True Value

HARDWARE STORES
1001 BOX 841 Littlefield, Texas 79339

STATE CAPITAL Highlights AND Sidelights by Vern Sanford

State Board of Insurance is disturbed over the "growing tendency" of some insurance companies to cancel out or refuse to renew auto coverage on certain classes of drivers.

At its mid-week (June 15) rate hearing, Board debated whether it should ask for new legislation or put into effect new administrative regulations to deal with the situation.

Board Chairman Wm. Hunter McLean said more and more drivers are being forced into higher-cost "assigned risk plan" coverage because of "unwillingness of companies to voluntarily issue insurance to young drivers, older drivers and drivers with poor driving records."

Another insurance rate boost is anticipated due to increasing deaths, and higher repair and hospital costs. Rates were boosted 13.4 per cent in 1965.

McLean placed these among items for consideration at the mid-week meeting:

- Revival of a "penalty system" based on number of accidents and serious traffic vio-

lations in figuring rates. A version of the system was abandoned four years ago after a brief trial and strong public opposition.

- Alteration of the assigned risk plan to force all companies to take a proportionate share of "sub-standard" risk coverage.
- Action to curb mass cancellation due to class, age, territory or agency and individual cancellations of policies of those who have no record of accidents of moving traffic violations.
- Request for more uniform traffic regulations and enforcement procedures from county to county.
- Modifications in methods of classifying drivers.

Board wants to find a way to "avoid further 'drying up' of the insurance market," emphasized McLean.

Companies writing auto insurance in Texas lost \$13,000,000 last year on the coverage. McLean calculated earned premiums at \$417,200,000, net premiums at \$388,000,000 losses at \$233,200,000, loss settlement, adjustment and litigation expenses at \$42,600,000 and company "expenses" at \$125,000,000.

He termed "an all-out, effective traffic accident prevention program" the state's "single greatest need."

McLean said he would urge the insurance industry to take the lead in "bringing safety to our streets and highways."

NEW TAXES? — A state tax rate boost next year is inevitable, according to House Speaker Ben Barnes.

He predicted the 70th Legislature will "definitely face tax legislation."

Barnes declared that increasing cost of education alone will "require additional monies raised by taxes." Forty-eight per cent of every tax dollar paid to the state goes to education, he noted.

In a brief preview of his own ideas for legislative action, Barnes said he will ask an increase in juvenile parole officers to help curb teenage crime. He noted a study committee is exploring possible need of legislation dealing with obscene and pornographic publications.

STATE PAY BOOST FAVORED — Three state officials with most influence over the Legislature are united in pledging high priority backing for a "substantial" state employees' pay boost in 1967.

Lt. Gov. Preston Smith and House Speaker Barnes made strong public commitments to that effect last week. Gov. John Connally earlier had stated that a salary boost for the 44,000 state workers will be "one of (his) strongest recommendations to the next legislature."

Texas Public Employees' Association has agreed generally on a revision plan which would cost about \$70,000,000 overall for the next biennium — \$21,000,000 from general revenue. This would mean something like eight per cent more for lower bracket employees up to 25 per cent more for high echelons.

School teachers are pushing hard for a "national average" pay level, but Connally and Barnes indicate they think the state employees are in greater need.

AG RULES — Corporations providing television cable service are public utilities and have a right to place their cables along state highway right-of-way, Atty. Gen. Waggoner Carr said in an official opinion.

In other opinions, Carr concluded that:

- Investment of state employee retirement funds in corporate securities is subject to discretion of Employees Retirement System Board of

Trustees and not that of University Board of Regents. Boards have right to exercise independent judgment in investing their respective trust funds.

- State can pay the expenses of replacing an employee's eye-glasses destroyed in an on-the-job accident.
- Control of building and grounds purchased with Texas Employees Retirement System Trust funds is within jurisdiction of Board of Trustees of Texas Retirement System.
- Grayson County can accept a deed to the bridge over Red River nine miles east of Denison and spend the tax money to operate and maintain span.

RESTORATION TOUR SET — Members of a legislative survey committee will tour historic forts and missions June 23-25 with a view to restoring them. Itinerary will include Fort Parker at Mexia, Fort Richardson at Jacksboro, Fort Griffin at Albany, Fort Chadbourne at Bronte, Fort Concho at San Angelo, Fort McKavett at Menard, Presidio San Saba, Mission San Juan Capistrano (already restored) and La Bahia Mission, Goliad, (now being restored).

A report on its views on state-supported restoration will be made to the 1967 Legislature.

SHORT SNORTS

Sabine River Basin preliminary study, first detailed basin plan released under the new statewide water planning program, proposes three additional reservoirs at estimated cost of \$49,600,000. Hearings on it will be conducted at Longview on June 20 and Orange on June 22.

Lieutenant Governor Smith has appointed Sen. George Parkhouse of Dallas to the interim Committee to Study the Nursing Profession to fill the vacancy caused by resignation of Sen. Martin Dies Jr. of Lufkin.

Texas Education Agency has recommended that Eagle Pass Independent School District be given additional time to correct accreditation deficiencies.

U.S. Public Health Service has approved initial grant applications for medical facilities at Fort Worth, Port Arthur and Amarillo.

Unemployment in Texas hit lowest point in decade — 121,000 — at mid-April.

James Meredith, just before he was shotgunned, told a meeting in the town square of Hattiesburg, Mississippi, "We're going to make the President do what he says he's going to do or admit he's lying!"

The first reaction to such an unbecoming utterance is to rally to the defense of the President. But he has not recently been much help to his defenders.

In April, 1964, President Johnson promised to hold at least one press conference a month. In the 26 months since, he has held ten.

April 27, 1965, President Johnson stated, "I have always opposed the poll tax. I am opposed to it now."

But a study of 16 roll call votes between 1942 and 1960 reveals that Lyndon Johnson, as Congressman and Senator, voted 14 times in favor of retaining the poll tax.

Similarly, President Johnson sought to ramrod through Congress repeal of the "right-to-work" provision of Taft-Hartley, though as Congressman in 1948 he had vehemently opposed "repeal or softening of the Taft-Hartley Bill."

"I will never vote to repeal this law!"

Have we been "lied to" by the Administration about Vietnam? Or was it just less than the whole truth when Secretary McNamara prophesied in October, 1963, that the major part of the military task in Vietnam would be completed by the end of 1965?

August 4, 1965, McNamara also testified that all army divisions were combat ready "without any qualifications whatever."

Subsequent investigation revealed that one division was at 55 per cent authorized strength, another was 70 per cent.

April 25, 1966, Secretary McNamara was accused of misleading Congress by implying that the Joint Chiefs agreed with him on bomber strategy.

McNamara, still staunchly backed by the President, called talk of bomb shortages "baloney!"

Subsequent investigation revealed we'd had to borrow 18,000 bombs from half a dozen allies.

Last December, Secretaries

Crisis Of Confidence



James Meredith, just before he was shotgunned, told a meeting in the town square of Hattiesburg, Mississippi, "We're going to make the President do what he says he's going to do or admit he's lying!"

McNamara and Rusk assured NATO that no major combat units would be removed from West Germany.

Four months later, 15,000 highly trained combat and support troops were ordered "out by June 30."

Later the figure was raised to 30,000 still later to 45,000. And about casualties in Vietnam...

Official Washington's claims of the cumulative total of Vietnam wounded finally reached such an unrealistic figure last May — 365,000 — that the Defense Department quietly reduced the figure to 182,000.

President Johnson, in repeated statements, said the enemy in Vietnam has not shown the slightest interest in negotiations. The late Adlai Stevenson was quoted as saying that an offer from the Hanoi Government to meet with UN representatives in Rangoon had been relayed to him in late 1964, but that "someone in Washington" insisted that it be postponed until after the 1964 election.

Republican Congressman H. R. Gross of Iowa says these "contradictions" have created a "crisis of confidence." He asks, "As the list goes on and on, is it any wonder that our people don't know what to believe?"

Services were held Saturday at 2 p.m. at the Street Assembly of God with the Rev. Joe Newell officiating. Interment was at East Park Cemetery with Mathews-Peters Funeral in charge of arrangements. Survivors served as pallbearers include his four sons, J.D. Williams of Greenville, L.N. Williams of Dallas, T.J. Williams of Dallas, and E.D. Williams of Dallas; three daughters, Clyde McClanahan of Dallas, Mrs. Callie Mitchell of Fort Worth; one sister, Zumer Stedham of Dallas; 20 grandchildren and 18 grandchildren.

Services Held For Father Of Resident

William Jefferson Williams, 82, former Greenville resident and the father of Mr. E.D. Williams of Littlefield, died Thursday, June 9, at 9:30 a.m. in an Oklahoma City hospital following an illness of one month.

Mr. Williams was a yardman for an oil company in Oklahoma City, where he made his home after moving from Greenville seven years ago.

He was born July 20, 1883, at Caddo Mills, the son of John Williams and Carolina Isaham Williams. He married Uzzie Perdue; and she preceded him in death in 1945. He married Viola Hughey September 11, 1946. He was a member of the Assembly of God Church.

The first successful continental auto trip from Francisco to New York completed July 26, 1903, Nelson Jackson and Sewall Coker made the journey in a 2-cylinder



James Garner is a frontier scout in Ralph Nelson's western epic "Duel at Diablo," United Artists release in Color by DeLuxe, opening Sunday at the Palace Theatre. Also starred is Sidney Poitier. Bill Travers and Dennis Weaver are co-starred and the new film introduces Bibi Andersson. Nelson and Fred Engel produced.

Visit Our Shoe Department From 6 To 9 Tonight And You'll See Such Buys As

ONE RACK OF LADIES SHOES	VALUES TO 4.98	\$1
ONE GROUP OF CHILDRENS SHOES	VALUES TO 4.98	\$1
ONE GROUP GIRLS SHOES	REG 3.99 8 1/2 TO 3	1.99
LADIES DRESS HEELS	VALUES TO 8.95	\$4

SEE OUR BIG VALUES IN SHIRTS FOR FATHERS DAY

Anthony's

C. R. ANTHONY CO.

Hungry For Good Things To Eat?

CALIFORNIA BING CHERRIES 3 LBS \$1

AVOCADOS EACH 5¢

POTATOES 10 1/2 lb. Bag 39¢

RUSSET

CUCUMBERS EACH 5¢

EXTRA LARGE CANTALOUPE 3 FOR \$1

We Have ICE COLD Red And Yellow Meated MELONS

CITY FRUIT MARKET

BILL AND BETTY SMITH

Great Gifts for a Great Guy!

REMEMBER! Sunday June 19 is Father's Day!

styled for today and all the tomorrow

JAGUAR

Kreiser

Another style-step forward... Another Kreiser original. Combines Kreiser's meticulous craftsmanship and bold design in every glittering facet. Jaguar conceals the tube end, permitting the design to "hug" the watch. And Kreiser's incomparable expansion center provides maximum comfort and wear-ability.

Yellow or white gold filled tops and stainless steel backs. For round or rectangular \$10.95 F.T.A.

CONVENIENT CREDIT TERMS

OPEN TONIGHT TIL 9

Distinctively styled for round or rectangular watches. STAINLESS STEEL \$4.95 No Tax

Also available in yellow gold-filled top stainless steel back \$6.95 F.T.A.

the ultimate in Butane Lighter precision and performance

Kreiser

BUTANE POCKET LIGHTERS

featuring the "Four-Times Longer" flint

Engine Turned Ribbon Stripes on Bright Chrome. \$10.95 Luxurious gift package.

CONVENIENT CREDIT TERMS

PRATT'S JEWELRY