



BAILEY COUNTY JOURNAL

'The Community of Opportunity-Where Water Makes the Difference'

Weather

	HIGH	LOW	PREC.
Oct. 23	65	52	
Oct. 24	62	50	1 Inch
Oct. 25	72	50	
Oct. 26	65	40	
Rainfall To Date:	17.97		

Vol. 11 No. 43

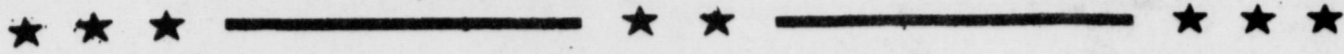
18 Pages

Published Every Sunday at Mulshoe, Bailey County, Texas 79347

10 CENTS

Sunday, October 27, 1974

Area Deposits Increase \$12 Million



Schools To Observe Education Week

Neal B. Dillman, superintendent of Mulshoe Schools, urges everyone to "Stay Involved" by visiting the schools during American Education Week October 27-November 2.

This special week which has been observed annually since 1921, seeks to encourage local citizen support and active participation in the improvement of education. This year the program will stress learning more about the schools as a basis for active and continued personal involvement.

Fred Mardis, principal of Mulshoe High School, and Wayland Ethridge, principal of Mulshoe Junior High, announce that Open Houses will be held on their respective campuses Monday, October 28 from 7:00 - 9:00 P.M. Parents and all interested citizens are invited to visit the classrooms and confer with teachers.

On Tuesday, October 29, Milton Oyler, principal of Richland Hills Primary (K-2) says that Open House will be from 6:30 - 8:30 P.M. in his building. Bill Taylor, principal of Mary DeShazo Elementary, says that the Open House for his Building will be from 7:00 - 9:00 P.M.

As stated in the proclamation there is a widespread need for better communication and more cooperative relationships between professional educators and the community.

District Sew It With Cotton Contest Set

The Bailey-Lamb Women's Cotton Promotion Association will be host to the District Sew It With Cotton Contest and Style Show on November 2 in the Littlefield High School auditorium. Judging will begin at 4 p.m. and the style show will follow at 7:30 p.m.

Eight counties have entries in the contest. Prizes of \$50, \$35, and \$25 will be given in each of the categories of the contest. Approximately 96 entrants are entered in the contest.

The Littlefield and Mulshoe Chambers of Commerce are working together with the Lamb-Bailey Association on this contest. The stage will be decorated by Anthony's, Inc.

The public is urged to attend and there is no charge. Door prizes will be given away. These prizes were donated by merchants and interested persons in the District

Spring Forward ...Fall Back

Once again the time will change on Sunday, October 27 at 2 a.m.

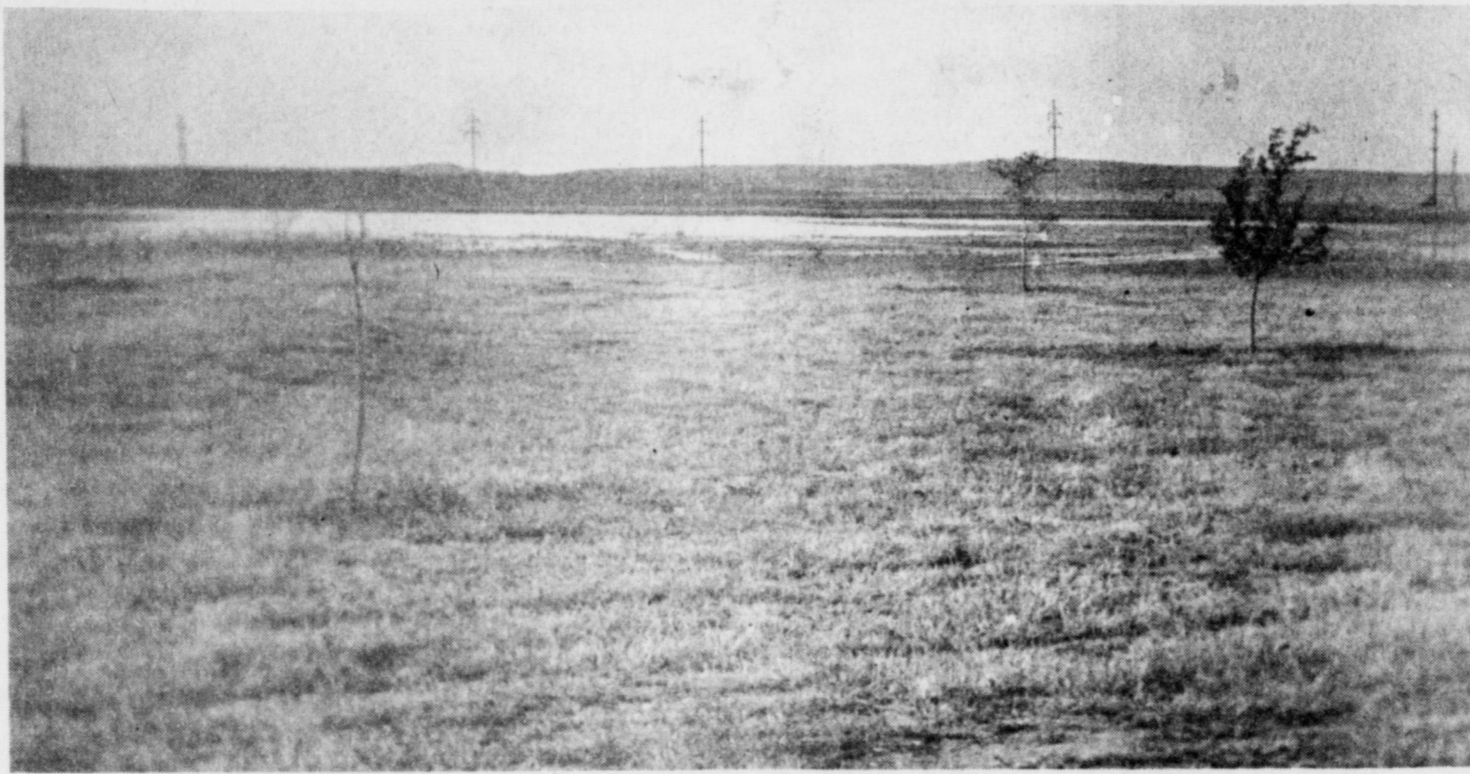
The clocks will be turned back one hour at this time. If you can't remember which way to turn the clock, just think Spring Forward and Fall Back and turn the clock back one hour.

around mulshoe with the journal staff

HT3 Jerrell C. Otwell, son of Mr. and Mrs. Jerrell Otwell of Mulshoe, returned from a five month tour aboard the USS Bradley serving in the Philippines on September 19, he sustained first and second degree burns over his arms and legs. He was using an experimental nozzle to put out a fire from the explosion of a jet fuel tank. There was no permanent damage.

HT3 Otwell spent the weekend with his parents returning to Sand Diego where he is home-pored.

Karen Cargile, daughter of Mr. and Mrs. Preston Cargile is a Freshman at South Plains College and is a candidate for Homecoming Queen at South Plains.



WATER, WATER EVERYWHERE..... After the deluge of rain Tuesday night and Wednesday in Mulshoe, water could be seen standing in many places all over town. The new city park was virtually a lake Wednesday during the heavy downpour. The city has

recorded over two inches of rain this week and some of the surrounding areas have reported three inches and over. Crop harvesting is virtually at a standstill this week while farmers await the drying conditions needed to get back in the fields.

Trider To Headline Fall Show Nov. 12

Seldom do area citizens get to see a famous celebrity, and almost never one who is a home town boy. Larry Trider is called home town because he was raised at Lazbuddie. Larry had the first "e" dropped from

his name because people kept mispronouncing it. Trider attended school at Lazbuddie and his family still resides there.

Trider will headline the BAC Fall Show Tuesday, November 12, at the Mulshoe High School auditorium beginning at 7 p.m.

This will be his first appearance in Mulshoe since he became so popular in the entertainment field.

Many have seen him at the Koko Inn, the Cow Palace and other clubs in Lubbock. He has also appeared at the LaVista and Boothill in Clovis.

Trider has traveled throughout the states and now records for Ranwood Records, Inc. of Hollywood. He used Las Vegas as home base for his five piece band.

He is best known as Larry Trider the "Country Soul Man". At this time he has several albums out and the Journal has been informed that he will have about an hour's entertainment that night.

Another attraction of the show will be the appearance of Judy Mallett, Miss Texas for 1973. She is going strong in the entertainment field with her nationwide popular violin where she is referred to as a "downhome fiddler".

Millions of people have seen her on the Jimmy Dean Show, the Tonight Show with Johnny Carson and she appeared with the University of Texas Longhorn Band at half time of Super Bowl 8 which was viewed by one of the largest television audiences in history.

She is continually being sought after by cities throughout the United States to perform with her famous fiddlin', foot stompin' music.

Appearing on the same show is the Caison Trio of Hereford. Sandy, DeeAnne and Rodney comprise the trio. Sandy was one of the top ten finalist in the Miss Texas Pagenat of 1973, and was one of the talent award winners.

Dee Anne was in her home town Little Miss Pagenat, finished on to the Texas Pagenat, finished on to the World's "Our Little Miss" where she received the talent award two years in a row. Rodney has played the drums in their group for five years and is only 14 years old now.

Any of these performances alone will be well worth the price of admission. It is definitely the biggest show ever to come out of Mulshoe. There is parts that will be of interest to all ages.

There will be only 100 reserved seats available which can be purchased at the Chamber of Commerce office. General admissions tickets can be purchased from several locations in town.

Reserved seats are priced at \$3.75, general admissions for adults will be at \$3 and children will be \$2. These are advanced

Cont. on Page 3, col. 4

Golden Gloves Will Host Fight Saturday

The Mulshoe Golden Gloves Boxing Club will fight Saturday, November 2, at 8 p.m. at the Mary DeShazo Gym.

They will be fighting boxers from Hereford, Levelland, Olton, and Tulia.

The Golden Gloves is sponsored in Mulshoe by the Mulshoe Rotary and Kiwanis Clubs. Harmon Elliott reports that

all of these out of town clubs have some experienced fighters that should make some exciting fights.

At this time the Golden Gloves Boxing Club is working on an extra fighting card to be drawn up here sometime in November. If this is worked out, all proceeds from the fights will go to the Hospital Action Fund in Mulshoe.

Farm Bureau Launches Campaign

The Texas Farm Bureau this week launched a statewide gift certificate campaign to increase the consumption of meat, poultry and dairy products.

TFB President J. T. (Red) Woodson said this is a "positive approach to moving agricultural commodities which are in serious trouble at this time.

In a letter to all 210 organized Farm Bureaus, Woodson said the promotion involves Christmas gift certificates for these food products. Theme of the campaign will be "Give meat, poultry, and dairy products for an old-fashioned farm and ranch Christmas.

"What better way to express the true spirit of Christmas than by giving a gift certificate for these foods, the farm leader said. "We believe that the concept will catch on. The American Farm Bureau Federation has been asked to carry the idea nationwide.

Woodson said Farm Bureaus would seek the cooperation of other agricultural groups, food chains and independent grocers, as well as top state government officials.

He said county Farm Bureaus

will be asked to form special

Cont'n on page 3, col. 5

Perryton Upsets Mules Friday In First Conference Game

Friday night, Mulshoe traveled to Perryton to play their district opener. But they lift a very important part of their game at home-the offense. The defense played their usual free game and were responsible for allowing only seven points of 21 that Perryton scored in the 21-0 win.

The tempo of the game was established in the first quarter as the defense of both teams thwarted any attempted drives.

In the second quarter, Perryton blocked a Mulshoe punt and recovered at the Mules' seven with Ranger Perry Kennedy eventually getting the score from the one. The PAT was good.

In the third quarter, Chuck Bohner returned a punt 55 yards for a touchdown making the score 14-0 in the third quarter. Later in the contest Bohner capped a 50 yard drive by running the ball

in from the third. With the PAT, the score was 21-0 and

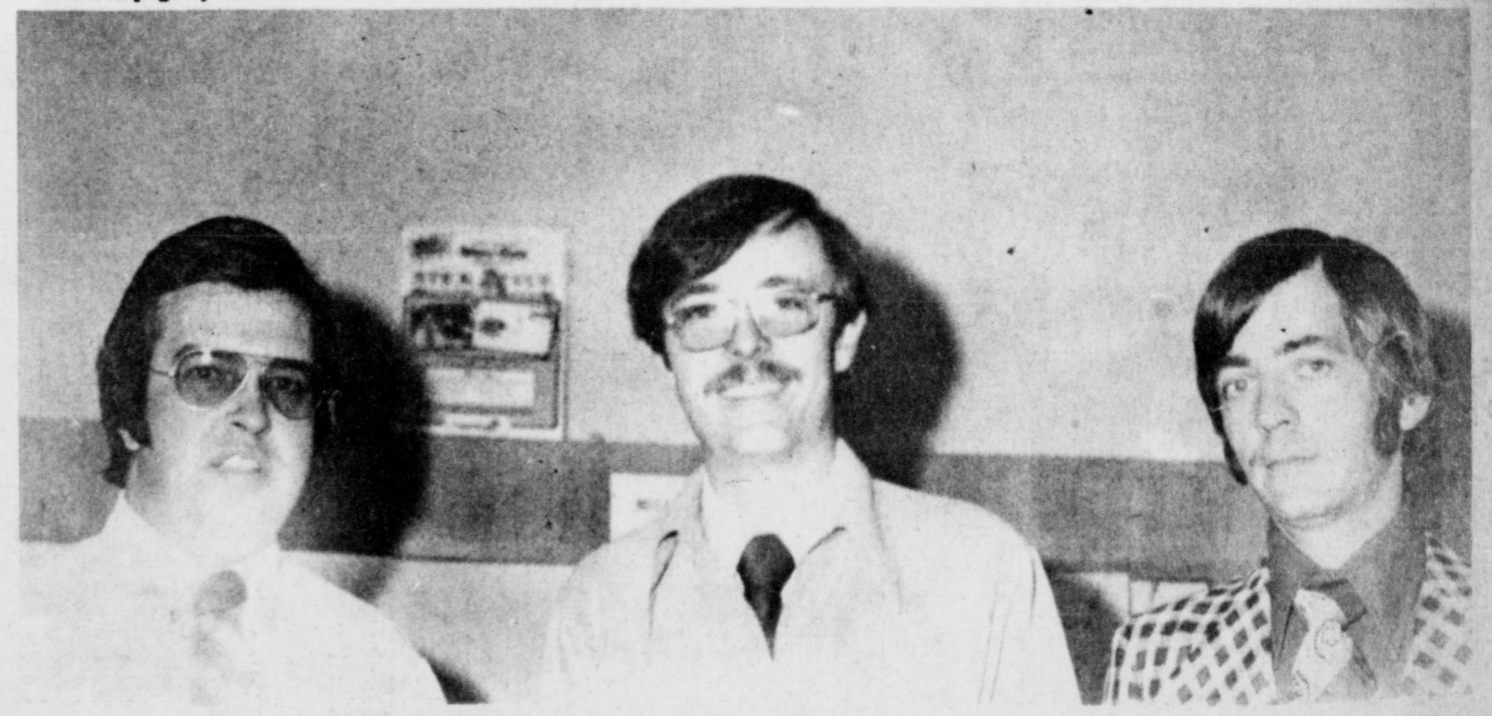
the game was iced for Perryton.

Mulshoe had eight first downs, 78 yards rushing and

26 yards passing. Perryton had 18 first downs, 240 yards rushing and 51 passing yards. Mulshoe's next game will be against Levelland at Levelland.



AMERICAN EDUCATION WEEK. Mayor Alex Williams is shown signing a proclamation declaring October 27-November 2 as American Education Week in Mulshoe. The proclamation stated "Whereas, the schools represent the best efforts of the community, the state, and the nation to improve the quality of life and Whereas defining the schools' goals and evaluating their results are the responsibilities of an informed and involved citizenry; and whereas there is widespread need for better communication and more cooperative relationships between professional educators and the community American Education Week is declared. Pictured with the Mayor is Mulshoe Schools Superintendent Neal Dillman.



EMPLOYEE OF THE MONTH. Bob Addison, a pharmacist at Danron Drug, was named as the Employee of the Month for October this week. Ted Barnhill, left, and Tommy Black, right, are shown presenting Addison with a plaque naming him Employee of the Month. This is a project of the Business Activities Committee and the Chamber of Commerce.

L'Allegra Club Antique Show

For a fascinating look at the past, don't miss L'Allegra Study Club's second annual antique show and sale. The show will be held at the Hereford Community Center Friday and Saturday, November 1 and 2, 10 P.M. and Sunday, November 3, 1 to 6 P.M. Fifteen dealers from Texas, Missouri, New Mexico, Oklahoma, and Nebraska will display their

colorful collections of furniture, art glass, jewelry, primitives, clocks, player pianos, tokens and china.

Admission charge is one dollar. Tickets may be purchased at the door or prior to the show from club members, both Hereford banks, Mrs. J.H. McCrary, project chairman at 364-0573, or Mrs. Cameron Gault, chairman at 364-2330. Proceeds

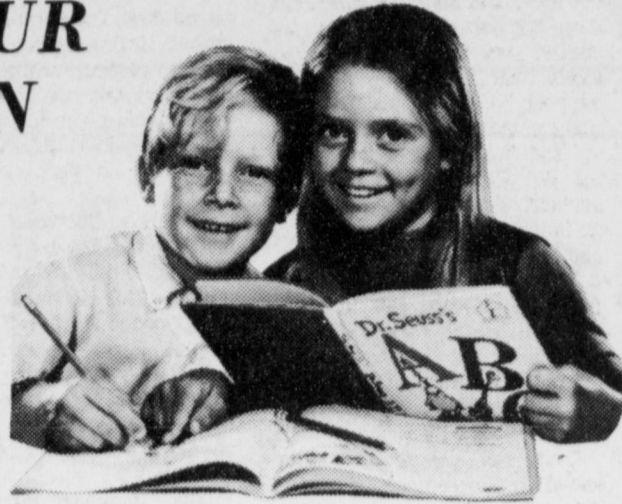
from the first show benefited the Deaf Smith County Hospital for a fetal heart monitor. This year's proceeds will go to the Hereford Community Center.

Remember the L'Allegra Study Club's second annual antique show Friday, Saturday, November 1 & 2, 1 to 10 P.M., and Sunday November 3, 1 to 6 P.M., at the Hereford Community Center



L'ALLEGRA ANTIQUE SHOW. Left to right are Mrs. Cameron Garret, co-chairman; Mrs. J. H. Nillany, chairman; and Maari Hatto, Hereford antique dealer that owns the candlestick pictured.

WATCH OUR CHILDREN GROW BY ATTENDING THE OPEN HOUSE OF OUR PUBLIC SCHOOLS



TEXAS ANNUAL PUBLIC SCHOOL WEEK
OCTOBER 27-NOVEMBER 2

PLEASE SUPPORT AN ACTIVE PARTICIPATION IN THE IMPROVEMENT OF EDUCATION

HIGH SCHOOL AND JUNIOR HIGH- MONDAY OCTOBER 28, 7-9 P.M.

MARY DESHAZO TUESDAY- OCTOBER 29 7-9P.M.

RICHLAND HILLS TUESDAY -OCTOBER 29, 6:30 -8:30

BAILEY COUNTY ELECTRIC COOPERATIVE ASSOCIATION

Freezing Prepared Foods

COLLEGE STATION--Home-frozen main dishes are a boon to the busy homemaker, one nutritionist said this week.

"Frozen combination-main dishes can add variety to your menu, offer quick meals for unexpected guests and provide appetizing, nutritious foods on busy days," Frances Reasonover, foods and nutrition specialist with the Texas Agricultural Extension Service, The Texas A&M University System, noted.

In spite of the variety of frozen prepared foods on the market, Miss Reasonover pointed out that it is usually more economical to make your own. You can cook enough for several meals when you have time and then serve the family favorites even on busy days, she said.

"You can freeze all of the prepared food in meal-size packages or serve part of the food immediately and freeze the rest."

Turning to specific directions, the specialist said, "Place food to be frozen in the dish in which it is to be cooked, but first line the pan with heat-resistant freezer wrap.

"Press the food to the slope of the container to prevent air pockets. Pull the wrap over the food. Put edges of the wrap together and fold several times so the wrap lies directly on top of the food.

"Fold ends of the freezer wrap and seal with freezer tape. Label with the name of the food, date frozen and last date the food should be used for best eating quality. Freeze it immediately.

"After it has frozen, it may be removed from the container and returned to the freezer. Then when you are ready to

use the food, remove the wrap and return to the container in which it is to be cooked. Cook the food without thawing," the specialist said.

She suggested some main dishes that freeze well are baked beans, lasagna, meat loaf dishes may be stored in the freezer for six months at 0 degrees F. and below.

Courthouse News

NEW CARS:

Walter Kaltwasser, 1975 Ford, Muleshoe Motor Company. Earl Whitten, 1975 Pontiac Town and Country Auto, Fidel Mendoza Orozco, 1975 Pick-up, Muleshoe Motor Co. H.G. Holt, 1975 Mercury, Muleshoe Motor Co. Jim Pat Claunch, 1975 Chevrolet, Ames Chevrolet.

JUDGEMENTS:

Bobby Earl Blackburn and Jo Ann Blackburn, divorce. Billy Coy Vinson and Bessie Joy Vinson, divorce.

Irene Anzaldua and Ruben Anzaldua, divorce. John Ray Warren and Janice Louise Warren, divorce.

Rheata White and Herman White, divorce. Charles Lance Puckett and Brenda Joyce Puckett, divorce.

Mark Hugh Collis and Linda Jean Collis, divorce. State vs- Fredrick L. Henton, forgery.

MARRIAGE LICENSE:

Richard Lee Whitley, Muleshoe and Barbara Jeanne Morris, Muleshoe.

Jeri Dan Wiedebush, Muleshoe and Dianne B. Heathington, Muleshoe.

Abel Avila Vega, Hereford and Sofia Gutierrez, Hereford. Royce Earl Harris, Muleshoe and Kay Lynn Bynum.

WARRANTY DEEDS:

Raul Ybarra and wife, Mari Ybarra, to Porfirio B. Carrasco and wife, Auelia Castillo Carrasco, a part of Tract No. 108, League No. 182, Floyd County School Land, Bailey County.

Bobby Ray Wilson and wife, Alberta L. Wilson to Terry G. Field and wife, Charlotte Field, a rectangular tract 74.6 feet by 190 feet out of Section No. 39, Block Y, W.D. and F.W. Johnson's Subdivision No. 2.

Vernice Carl White and wife, Lola Beth White to Mary Stevenson, all of Lot No. 6, and the northwesterly one half of Lot No. 5 in Block No. 6, Highland Addition.

Robert Blackwood and wife Cozette Blackwood and Joe L. Smallwood and wife Zuma Jarree Smallwood to Tommy Lee Gibbons and wife Phyllis Jane Gibbons, all of the northwesterly 45 feet of Lots No. 1, 2, and 3, Block No. 39, Original Town of Muleshoe.

V.T. Tanner and wife Mildred L. Tanner to V.T. Tanner, Inc. Lots Nos. 26, 28, 30 and 32 on

Block 3, Apple Street; Lots Nos. 38, 42, Block 4, Pear Street; and Lots 37, 39, 41 on Block 4, Prune Street.

Ruby Wilman to Robert C. Stovall and wife all of northwesterly 27 feet four inches, Lot 21, Block 4, Original Town of Muleshoe.

Billy Carroll White and Dennis Gordon White to Herman White, all of Lot 1 and 2, in Block No. 3, Stewart Subdivision out of the Warren Acreage Subdivision Tract No. 3.

Herman W. White and wife Rheata White to D.M. Obenhaus and wife Mary B. Obenhaus all of Lots No. 1 and 2 on Block 3, Stewart Subdivision, Muleshoe. James W. McPherson to Don G. Furr and Roy K. Furr, Labor 10, League 195, Ford County School Land, Bailey County.

Out of Orbit



IT'S A CLEAR CASE OF LOVE AT FIRST FLIGHT!

VISIT OUR SCHOOLS ANNUAL TEXAS PUBLIC SCHOOL WEEK



October 27 - NOVEMBER 2, 1974

OPEN HOUSE

MULESHOE HIGH SCHOOL AND MULESHOE JUNIOR HIGH MONDAY-OCTOBER 28, 7-9A.M.

MARY DESHAZO ELEMENTARY TUESDAY OCTOBER 29, 6:30 8:30P.M.

RICHLAND HILLS PRIMARY TUESDAY OCTOBER 29 6:30 -8:30P.M.

FIRST NATIONAL BANK OF MULESHOE

PARENTS ARE URGED TO VISIT OUR SCHOOLS AND TEACHERS TO VIEW EACH CHILDS WORK

CARNIVAL

STOCK UP NOW...SAVE ALL WINTER!

IMPERIAL SUGAR

5 lb. BAG \$1.99

<p>SHURFRESH HAMS \$3.39 3 Lb. CAN</p>	<p>BALOGNA SURFRESH 49¢ 12oz. Pkg.</p>	<p>RACON BACON 59¢</p>
---	---	-----------------------------------

<p>Shurfine 16 oz. APPLE SAUCE 3/\$1</p> <p>Shurfresh Butmlk./Swmlk. 8 oz. BISCUITS 10/\$1</p> <p>Shurfine Bathroom Asstd. 2 Fly 8 Roll Pak TISSUE 98¢</p> <p>Shurfine Fresh-Shelled 15 oz. BLACKEYES 4/\$1</p> <p>Shurfresh Hlflm. Colby Longhorn 13 oz. CHEESE 79¢</p> <p>Shurfresh 16 oz. CRACKERS 39¢</p> <p>Shurfine Strained or Whole 15 oz. Cranberry SAUCE 3/89¢</p> <p>Shurfine Evaporated 14 1/2 oz. MILK 4/\$1</p> <p>Shurfine Enriched 5 lb. Paper Bag FLOUR 68¢</p> <p>Shurfine 16 oz. FRUIT COCKTAIL 3/\$1</p> <p>Shurfine 3 Sv. Cut 16 oz. GREEN BEANS 4/\$1</p> <p>Shurfine Fancy 45 oz. TOMATO JUICE 59¢</p> <p>Shurfine Chunk Style 6 1/2 oz. TUNA 2/89¢</p>	<p style="text-align: center;">FOLGERS</p> <p style="text-align: center;">COFFEE</p> <p style="text-align: center;">\$ 2.99</p> <p>3 lb. CAN</p>
---	--

<p>Shurfine Nat-Pink Texas Pak 46 oz. Grapefruit Juice 2/89¢</p> <p>Shurfine 16 oz. Vegetables Mixed 3/79¢</p> <p>Shurfresh Reg. Quarters 16 oz. Margarine 2/\$1</p> <p>Shurfine Pieces & Stems 4 oz. Mushrooms 3/\$1</p> <p>Shurfine Froz. 6 oz. Orange Juice 6/\$1</p> <p>Shurfine Sweet Early Harvest 17 oz. PEAS 3/\$1</p> <p>Shurfine 16 oz. Pork & Beans 4/\$1</p> <p>Shurfine Whole Irish 16 oz. Potatoes 3/89¢</p> <p>Shurfine Strawberry 18 oz. Preserves 79¢</p> <p>Shurfine Medium Grain 2 Lb. Bag RICE 69¢</p> <p>Shurfine 15 oz. SPINACH 4/89¢</p> <p>Shurfresh 10 oz. Vanilla Wafers 3/\$1</p>	<div style="text-align: center;"> <p>OPEN 24 HOURS 7-DAYS</p> <p>CONVENIENCE STORES</p> <p>Prices Effective Oct. 28 Thru Nov. 9, 1974</p> <p>314 WEST AMERICAN MULESHOE</p> </div>
--	---

Wholesale Price Index

WASHINGTON-- The Wholesale Price Index for All Commodities showed little change from August to September, it was announced by the Bureau of Labor Statistics, U.S. Department of Labor.

Before seasonal adjustment the index declined 0.1 percent and, after seasonal adjustment, it rose 0.1 percent.

The Wholesale Price Index for All Commodities decreased 0.1 percent from August to September as a substantial decline for farm products and processed foods and feeds more than offset the effects of price increases for industrial commodities.

The index for farm products dropped 3.4 percent, chiefly because of lower prices for livestock, grains, and oilseeds; processed foods and feeds moved down 1.6 percent almost entire-

ly as a result of decreases for manufactured animal feeds. Meats and fats and oils also were lower but all other major categories of food increased.

The index for industrial commodities rose 0.8 percent with machinery, chemicals, metals, and furniture and household durables accounting for most of the upward movement.

On a stage of processing basis, consumer finished goods, a selection of food and nonfood commodities similar to those in the commodity component of the Consumer Price Index moved up 0.7 percent. Producer finished goods rose 1.9 percent.

Of the 15 major commodity groups measured by the Wholesale Price Index, 10 increased from August to September, and five were lower.

In September, the All Commodities WPI was 167.2 (1967-100), 19.7 percent above a year earlier. The industrial commodities index was 27.9 percent higher than in September 1973.

The index for farm products was down 8.8 percent over the same period, but that for processed foods and feeds was up 13.1 percent.

On a seasonally adjusted basis, the Wholesale Price Index for All Commodities rose 0.1 percent in September, following an increase of 3.7 percent in July and 3.9 percent in August.

The industrial commodities index rose 1.0 percent, less than in recent months. The index for farm products and processed foods and feeds declined 1.9 percent, following advances in July and August.

Over the calendar quarter ended in September, the WPI increased at a seasonally adjusted annual rate of 35.2 percent. This was up from the second quarter rate of 12.2 percent of 24.5 percent.

The index for farm products and processed foods and feeds rose sharply in the third quarter following a substantial decline in the second quarter.

The index for industrial commodities rose at a seasonally adjusted annual rate of 28.3 percent compared with annual rates of 32.3 in the first quarter.

On a stage of processing basis, finished goods increased 1.1 percent (after seasonal adjustment) from August to September. Consumer finished goods were up 0.8 percent. Producer finished goods rose 2.1 percent.

Prices of consumer foods edged down 0.3 percent in September, following two months of rising prices, while prices of consumer nonfood finished goods continued to rise. Consumer nonfood finished goods were up 1.2 percent over the month.

Gasoline, footwear, apparel, and beverages were responsible for most of the 0.7 percent advance for nondurables. Prices of consumer durables moved up 1.6 percent, primarily because passenger car prices did not decline as they normally do in Sept. Household furniture and household household furniture were higher.

The increase for producer finished goods was due primarily to continued widespread price rises for machinery and equipment. However, the increase was less than in August. Prices of metal commercial furniture and aircraft also were up.

The index of intermediate materials, supplies, and components (excluding foods and feeds) rose 0.8 percent in September. The increase was considerably less than in the recent months.

Crude materials for further processing (excluding foods, and fibers) were unchanged on average in September. Quotations were lower for nonferrous scrap metals. Prices rose for bituminous coal and natural gas.

Experience is knowing a lot of things you shouldn't do.

-Gazette, Sabula, Ia.

He Should

A practical politician should make a good housekeeper, because his bunk is always made up.

-Times, Louisville.

processing (excluding foods, and fibers) were unchanged on average in September. Quotations were lower for nonferrous scrap metals. Prices rose for bituminous coal and natural gas.

Experience is knowing a lot of things you shouldn't do.

-Gazette, Sabula, Ia.

He Should

A practical politician should make a good housekeeper, because his bunk is always made up.

-Times, Louisville.

WHAT NEWSPAPER DID YOU SAY?

WHAT NEWSPAPER DID YOU SAY?

WHAT NEWSPAPER DID YOU SAY?

WHAT NEWSPAPER DID YOU SAY?

WHAT NEWSPAPER DID YOU SAY?

WHAT NEWSPAPER DID YOU SAY?

WHAT NEWSPAPER DID YOU SAY?

WHAT NEWSPAPER DID YOU SAY?

WHAT NEWSPAPER DID YOU SAY?

WHAT NEWSPAPER DID YOU SAY?

WHAT NEWSPAPER DID YOU SAY?

WHAT NEWSPAPER DID YOU SAY?

WHAT NEWSPAPER DID YOU SAY?

WHAT NEWSPAPER DID YOU SAY?

WHAT NEWSPAPER DID YOU SAY?

WHAT NEWSPAPER DID YOU SAY?

WHAT NEWSPAPER DID YOU SAY?

WHAT NEWSPAPER DID YOU SAY?

WHAT NEWSPAPER DID YOU SAY?

WHAT NEWSPAPER DID YOU SAY?

WHAT NEWSPAPER DID YOU SAY?

WHAT NEWSPAPER DID YOU SAY?

WHAT NEWSPAPER DID YOU SAY?

WHAT NEWSPAPER DID YOU SAY?

WHAT NEWSPAPER DID YOU SAY?

WHAT NEWSPAPER DID YOU SAY?

WHAT NEWSPAPER DID YOU SAY?

WHAT NEWSPAPER DID YOU SAY?

TEXAS CATTLEMEN



I'M A MITE TIRED OF THIS HERE GRASS DIET

BAC...

Cont. from Page 1

tickets and all seats, if any are remaining will be priced at \$3.75 at the door.

Also during the entertainment, there will be the annual candy sales with prizes donated by the area businesses. Also, a Muleshoe coin Collection will be auctioned off.

Due to the activities, the show will start promptly at 7 p.m.

Film...

Cont. from Page 1

ent return.

"The Road to Armageddon" is now being premiered in churches throughout the United States and Canada and is soon to be released in Europe.

The public is cordially invited to this special presentation scheduled to begin at 7:30 p.m., Tuesday, October 29 in the First Assembly of God Church located in Muleshoe.

Admission is free.

Bureau...

Cont. from Page 1

committees to call on local grocers and to promote the program locally. Woodson said most food chains have their own gift certificates and that these could be used in the promotion. Certificates will be furnished to stores that do not have them.

Special envelopes and message cards will be provided for persons wishing to send checks or money orders instead of gift certificates. These will be available at county Farm Bureau offices.

W.D.HOWARD, Texico, N.M.

Dub says, 'My Weather Master is the finest corn I have ever planted.'

Picture taken Oct. 3, 1974

Average yield
DRY WEIGHT 12,323
lbs. per acre.

Recommended for our area

888
EP97
EPX12
EPX12A



Weather tolerance helps fill ears from butt to tip

To be assured you plant the best in 1975 come by Interstate Fertilizer and early book your WeatherMaster corn seed. The supply is limited.

INTERSTATE FERTILIZER

800 Ave. A Farwell Tx. 481-3838

Bailey County Journal
Published by Muleshoe Publishing Co., Inc.
Every Sunday at 24 N. Second Box 460
Muleshoe, Texas 79347
Second class postage paid at Muleshoe, Texas and elsewhere in Texas.
1974
L.R. Hall, President
James P. Hall, Sec.-Treas.
L.R. Hall - Managing Editor
Katie Beckwith-News Reporter
Dobbie Kerr, Society Reporter
Polly Crowl, Office
Sherri Hunsicker-Advertising
SUBSCRIPTIONS:
The Muleshoe Journal and Bailey County Journal
Bailey and surrounding Counties \$8.50
The Muleshoe Journal and Bailey County Journal
Elsewhere in Texas \$10.00
The Muleshoe Journal and Bailey County Journal
Outside of Texas \$12.00
Yearly by carrier \$14.50
Monthly, by carrier, 75¢
Advertising rate card on application

SALE STARTS Monday AND RUNS THRU Thursday
4 BIG BARGAIN DAYS, ODDS AND ENDS, DISCONTINUED STYLES, LEFTOVERS FOR A FRACTION OF THEIR FORMER PRICES.

SALE OF Leftovers

MENS DENIM JEANS
OR CASUAL PANTS
VALUES TO \$14.99 **\$5**

YOUTH FAMOUS BRAND FLARE DENIM JEANS
IRREGULARS OF REGULAR \$13.50 **\$5**

BIG THIRSTY BATH TOWELS
FAMOUS BRANDS
VALUES UP TO \$3.49 **\$2 EA.**

MENS OR BOYS CASUAL OR DRESS SHOES
VALUES TO \$16.99 **\$5**

SPECIAL PURCHASE CONE WOVEN BED SPREADS
REGULAR \$12.99 to \$15.99
FULL OR TWIN **\$10**

SPECIAL GROUP LADIES & TEENS SHOES
VALUES TO \$14.99 **\$5**

GIRLS DRESSES
ENTIRE STOCK 4 TO 14 Yrs.
VALUES TO \$7.99 **\$2 EA.**

SPECIAL GROUP NON SLIP NYLON BATH SETS
REGULAR \$3.99 & \$4.99 **2 FOR \$5**

MENS DACRON DOUBLE KNIT OR BLEND DRESS SLACKS
VALUES TO \$16.99 **\$6 PR.**
CLEARANCE PRICE

MENS NO IRON CASUAL OR DRESS SHIRTS
VALUES TO \$8.99
CLEAN UP SALE PRICE **3 FOR \$10**

LADIES OR JR. LONG SLEEVE TURTLE NECK PULLOVERS
REGULAR \$6.99 \$3.88 **2 FOR \$7**

BOYS NO IRON DRESS OR SPORT SHIRTS
VALUES TO \$5.00 **2 FOR \$3**

BOYS HOODED SWEAT SHIRTS
REG. \$3.99 **2 FOR \$6**

310 MAIN ST. MULESHOE

"STAY INVOLVED"

BY ATTENDING OPEN HOUSE DURING AMERICAN EDUCATION WEEK

October 27-November 2

MULESHOE HIGH SCHOOL
MONDAY OCTOBER 28 7-9 P.M.

MARY DESHAZO ELEMENTARY
TUESDAY-OCTOBER 29 7-9 P.M.

RICHLAND HILLS-TUESDAY
OCTOBER 29 6:30-8:30 P.M.

SUPPORT OUR TEACHERS

MULESHOE STATE BANK

MEMBER FDIC



Mrs. Copley Honored At Baby Shower

Mrs. John Copley was honored with a Pink and Blue Shower Wednesday night, October 23 at the Tri-County Community Room.

Corsages of yellow bows and rattlers were presented to Mrs. Bill Stovall and Mrs. W.T. Copley. A corsage of pink and yellow baby socks boxed in rose buds was given to the honoree, Mrs. John Copley.

Morning Star Sings To Students

The Morning Star from McMurray College sang at Muleshoe High School, Thursday, October 24 at 11:30 a.m. There were thirteen members to this group.

They sang many religious songs and popular songs. Some of the selections included songs from the movie "God Spell", such as "Day by Day" and many more. Popular songs included "Joy To The World", "Annie's Song", "Mame", and "Top of the World", and others.

This group was directed by David Blackburn of McMurray College.

Give a little love to a child, and you get a great deal back.

-John Ruskin.

The refreshment table was laid with a pink cloth overlaid with white cloth. Centerpiece was a night light with strawberry punch and a white sheet cake trimmed in pink and blue, mints and nuts were served.

The gift table was laid with a heirloom white crochet bedspread belonging to Mrs. Elmer Davis underlined in green cloth.

Hostess gift were a high chair, night light, large blanket, bottle warmer and infant feeder.

Hostesses for the occasion were Mrs. Elmer Davis, Mrs. Forist Williams, Mrs. Jack Milburn Mrs. John Blackwell, Mrs. Bill Dale, Mrs. Vernon Puckett, Mrs. Fred Stigalde, Mrs. Earl Peterson, Mrs. Roy Clayton, Mary Francis Benecheck, Mrs. Dwaine Wheat, Mrs. Willie Jones and Mrs. Marshall Head.



COUPLE PLANS LATE NOVEMBER WEDDING. . . . Mr. and Mrs. Jim Robbins of Earth announce the engagement and approaching marriage of their daughter Lynda Gail to Gerald Wayne Cunningham son of Mr. and Mrs. Carl Cunningham of Goodland. Miss Robbins is a 1970 graduate from Springlake-Earth and is presently employed at Jim's Pay 'N' Save in Muleshoe. Wayne is presently employed at Bill James Trucking Company in Hereford.

Mrs. Harp TOPS Queen

TOPS Chapter Number 34 met Thursday evening, October 24 at 6:00 p.m. in the meeting room at Bailey County Electric with 22 members weighing in.

Mrs. Ed Harp was named weekly queen. First runner-up was Mrs. Lewis Shafer and a tie for second was Mrs. J.R. Otwell and Mrs. Raleigh Mason.

They discussed the Halloween workshop which will be held Thursday, October 31. Also, they received an invitation from the TOPS of Plainview to attend their open house, Sunday, October 27.

Members who are going to attend the ARD at Dimmitt on November 9 are Mrs. J.O. Parker,

Mrs. Buria Vinson, Mrs. Ronnie Gardner, Mrs. Roy Clark, Mrs. George Chambliss, Mrs. Billy Vinson, Mrs. Pat Vinson, Mrs. Bobby Newsom, Mrs. Walter Saij and Mrs. Jeff Peeler.



FINAL PREPARATIONS FOR HOEDOWN. Left to right are Mrs. Mike Armstrong, Mrs. H. E. Reeder, and Mrs. Wayne Robinson met in the home of Mrs. Jerry Hulcy to make red garters for the Llano Estacado Members to wear at the Hoedown.

West Plains Hospital Hospital Briefs

ADMITTANCE: October 22: Mrs. Michael Bomer October 23: Mrs. Joe Vela, Lut-

her Bonta, Mrs. Ernest Perez, Mrs. Raymond Caballero, Mrs. Ruben Soliz and Herman White, October 24: W.O. Williams, D. SMISSALS: October 22: Mrs. Ed Edmiston and Mrs. Jessie Lewis, October 23: Jerry Hernandez, October 24: Mrs. Michael Bomer and baby son.



Dante Ernesto

Mr. and Mrs. Ernest Perez of Muleshoe are the proud parents of a new baby boy born October 23 at 1:34 p.m. in the West Plains Memorial Hospital of Muleshoe. The baby weighed four pounds and fifteen ounces and was named Dante Ernesto Perez.

Perez Jesuita

Mr. and Mrs. Reynald Lucero, Sr. of Morton, Texas are the proud parents of a new baby girl born October 23 at 12:00 noon in the Memorial Hospital of Muleshoe. The baby weighed eight pounds and four ounces and was named Jesuita Lucero. She is the couple's second child.

Michael Shannon

Mr. and Mrs. Michael Don Bomer of Muleshoe are the proud parents of a new baby boy born October 22 at 3:27 p.m. in the West Plains Memorial Hospital of Muleshoe. The baby weighed six pounds and thirteen ounces and was named Michel Shannon Bomer. He is the couple's first child.

By Sarah Anne Sheridan

Nutritionists tell us to serve leafy vegetables at least once a day. The vitamins that we must have are abundant in greens.

Spinach Supreme

Eggs
Seasoning
1 T margarine
1 T flour
3/4 c milk

Line custard cups with cooked, well-seasoned spinach. Break whole egg into each spinach mold. Bake in an oven 350 degrees until eggs are set. Turn out upside down and cover with seasoned cream sauce made with the margarine, flour and milk.

Sears, Roebuck Speaks On Economy

The role of Sears, Roebuck and co. in the economy of Texas was highlighted by Iris Clements, manager of the company's catalog sales store here in Muleshoe.

Mrs. Clements said that Sears, the nation's largest retailer:

* Buys merchandise from 419 suppliers in Texas. In 1973 alone -- the last full year for which figures are available -- purchases from these suppliers totaled \$350,387,000, an increase of \$131,095,000 or 59.7% during the past five years.

* Employs more than 400,000 nationally, including 27,531 in Texas.

* Operates a total of 287 sales and service facilities in Texas (including one store in the Muleshoe area) plus a large Catalog Merchandise Distribution Center in Dallas.

* Has 490,000 shareholders, including more than 25,941 in Texas. These shareholders, including Sears employees, own 4,960,000 shares of Sears stock.

"As the company begins its 89th year of operation, Sears has more than 12,000 domestic suppliers," said Mrs. Clements. "These suppliers are located in every state and provide the company with 93 per cent of the merchandise it sells."

"Buying goods from communities in which our sales units are located has been a longstanding company policy," he continued. "We feel this policy directly benefits the com-

pany, local communities and their residents.

"While the number employed by Sears suppliers has not been compiled, it is obvious that hundreds of thousands are employed producing the merchandise we sell," he said. "For the residents of this area, this means continued employment and maintained purchasing power."

Some 327,000 of the Sears shareholders nationally are employees who are members of the employee profit sharing fund. These company employees own nearly 13 per cent of outstanding Sears stock.

In addition to Sears financial impact on the community, Mrs. Clements said, "The company believes in being a good corporate citizen in each community it serves. We take great pride in the voluntary contribution of time and money by Sears employees to civic, community and welfare efforts throughout the nation."

Brussels Sprouts

1/4 c melted butter
2 T minced parsley
1 T lemon juice

Place sprouts in a saucepan, add 1 inch of boiling water with salt, then boil until tender. Do not overcook. To the melted butter add minced parsley and lemon juice. Pour over the sprouts and serve.

REMEMBER TO VOTE NOVEMBER 5

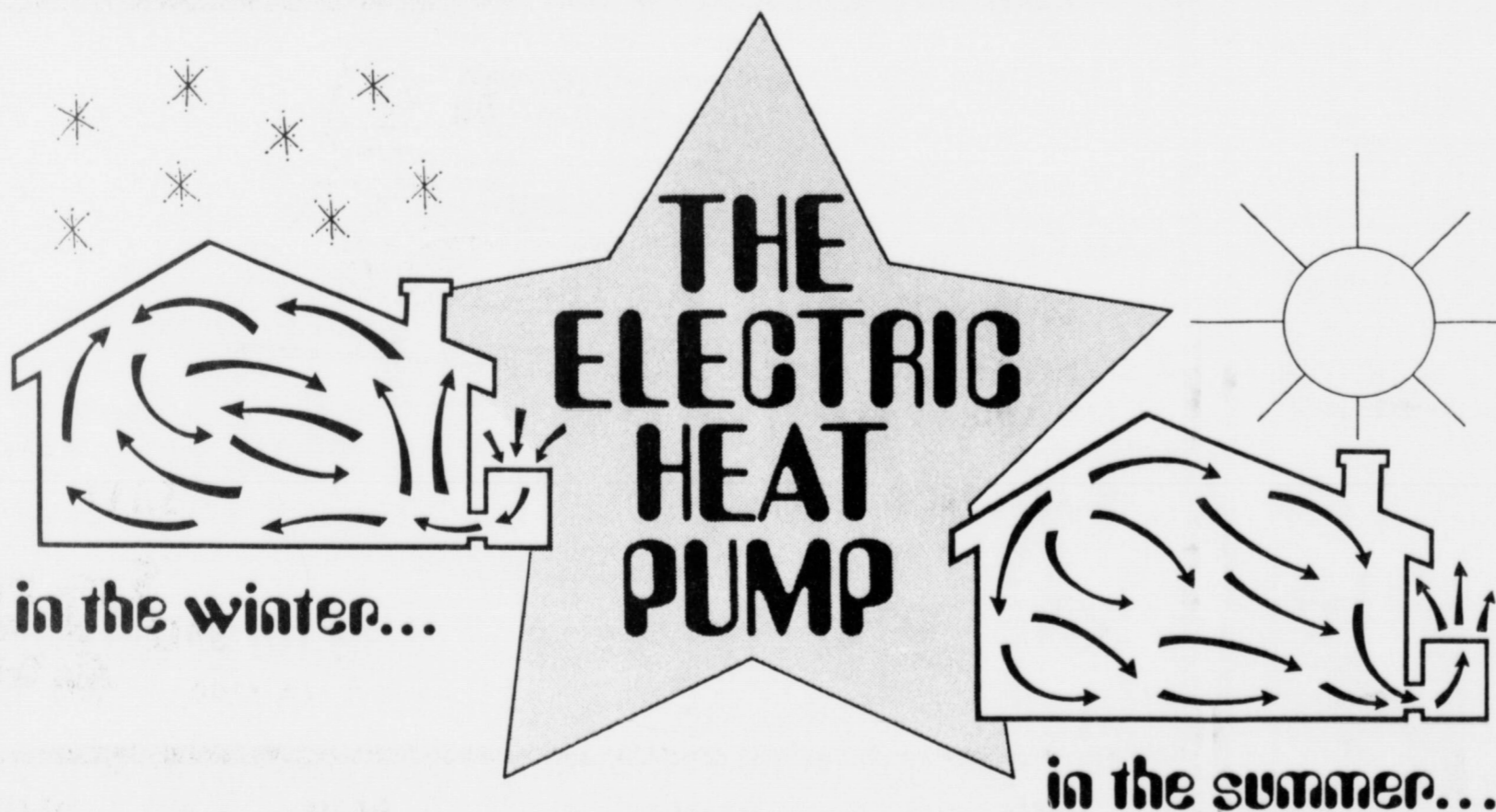
Vote For Rudolph Morrow For Re-Election-Commissioner Of Precinct 4



"I HAVE SERVED ONE TERM AS YOUR COUNTY COMMISSIONER AND REMEMBER THAT EXPERIENCE COUNTS"

Paid Political Adv.

Enjoy All-Season Comfort...



in the winter...

in the summer...

Seasonal changes won't bother your family . . . not when you can enjoy the clean comfort in your home provided by an electric heat pump. The heat pump does it all . . . heats . . . cools . . . dehumidifies . . . with one convenient, dependable unit! The heat pump is economical and energy

efficient because it uses otherwise wasted heat and electricity to maintain a constant comfortable climate in your home.

For more information on the heat pump . . . call us for a free electric home heat-

ing survey for your own home . . . this week!



The Future Is Electric!

22-4

Fashions For The Junior Sophisticates



Looks like Terry Crane has the right idea for that special occasion this fall in this Vicki Vaughn creation. This long dress is designed especially for the junior lady who has a flair for fashion, and appreciates fine fabric, fit and workmanship. The top is of 100% rayon, in black and the skirt is of 100% acetate. The dress is accented by gold sandals and a Gull teardrop necklace.

St. Clair's has many styles and fashions in this same line to suit any occasion this fall.

"We congratulate Terry on being the 1974 Football Queen of Muleshoe High School"

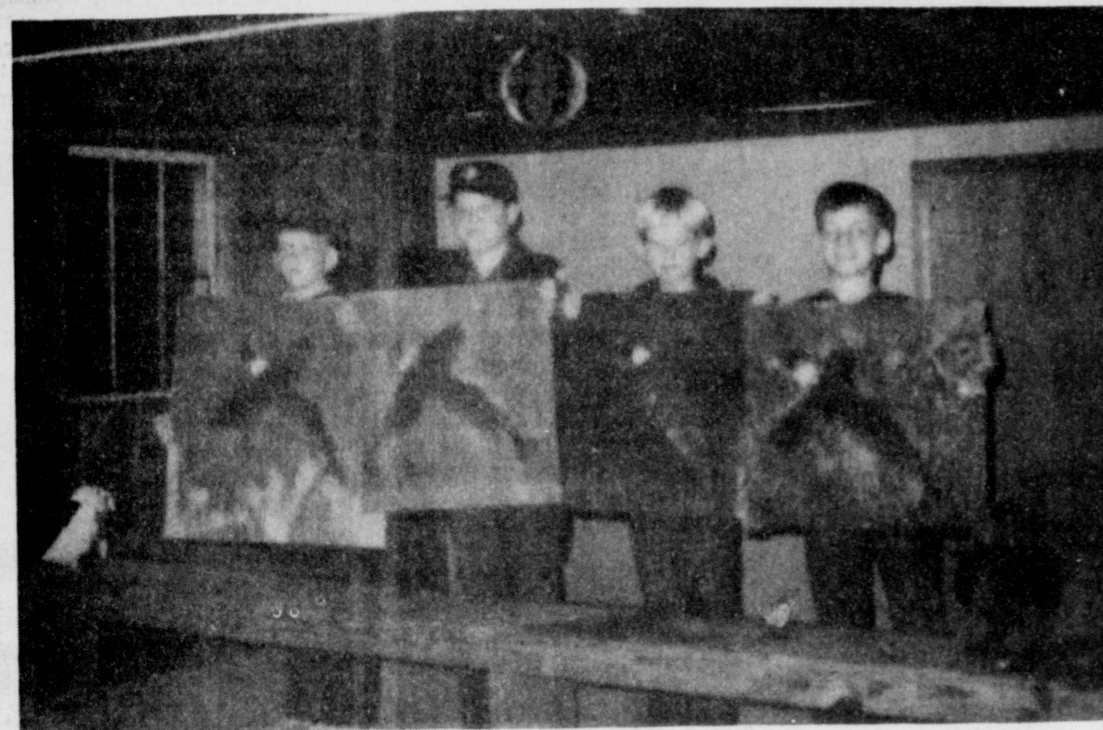
St. Clair's

Muleshoe

272-4453



BOY SCOUTS MEET. The Boy Scout Troop Number 622 met Tuesday, October 22, for their monthly meeting.



PHEASANTS COMPLETED. The Boy Scouts, Den three made these pictures. They made these out of spaghetti and macaroni and glued it to a cardboard pattern. Then mounted it on a painted board and spray painted the bird. Left to right are Perry Flowers, Troy Ellison, Danny Seals, and David Pruitt.

Cub Scouts Pack 662 Meets

Cub Scout Pack 622 met Tuesday night, October 22 for the monthly pack meeting and awards assembly.

The Pledge of Allegiance was led by Craig Hunt. Cub Master Jack Hysinger presided over the meeting. He introduced the Den Mothers as follows: Den One Mrs. Roy Baker; Den Two, Mrs. Billy Seales, Den Three, Mrs. Carter Reed, Den Five, Mrs. Carlson, Then the Den Mothers Coach, Mrs. Bennie Bickel; Advancement Chairman, John Stevens; Enrollment Chairman, Roy Baker; Treasurer, Charles Isaac; Publicity Chairman, Hay Gerald Pruitt were introduced.

Den Two had on display Halloween Masks they had made in crafts as a den project. Den Three displayed the pheasants they had made in their den meeting. The pheasant was made of spaghetti and macaroni.

Scout-O-Rama ticket chairman, Hal Bynum presented scarf slides to the boys that participated in ticket sales last year. Tickets for the 1974 Scout-O-Rama to be held in Levelland November 16 were distributed.

The 22 boys that worked in helping clean up the scout grounds were recognized and will receive a Bi-Centennial patch. The boys were Sonny Bennett, Lee Free, Robert Hobbs, Jessie Guana, Lance Free, Trent Hysinger, Chad Williams, Bradley Bickel, Roby Wilson, Tommy Carlson, Terry Baker, Gilbert Ybarra, Randall Stevens, Perry Flowers, David Pruitt, Danny Seals, Troy Ellison, Glen John-

son, Greg Reed, Tracy Tunnal, Derrie Magby and Cris Hoppings. Gold Arrow Points were earned by Randall Stevens, Sonn Bennett and Michael Isaac. Bobcat pin was presented to John Isaac.

Advancement ceremony for advancement into the Webelo Scouts was conducted for David Pruitt, Troy Ellison and Robert Hobbs. In the Webelo Scouts the Outdoors man and Frontier badges were earned by Mony Hysinger. Author Recio earned

the Athletic badge. The traveling dog trophy was again presented to the Webelo's.

Not Love

"Your wife must be a very affectionate woman. She always kisses you when you come home."

"That's not affection. She just wants to see if I've been drinking."

Lazbuddie News

By Susan Mimms

Lazbuddie basketball girls traveled to Smyer last Tuesday. In the first game, Lazbuddie's "B" team defeated Smyer "B" team 36-24. The varsity girls were defeated by a score of 46-39. The White-face A and B girls came to Lazbuddie Monday night. Both A & B girls came to Lazbuddie Monday night. Both A & B teams lost.

Many of the seniors were out of town and on college campuses this weekend to take the ACT examination. The tests were taken at South Plains, ICC, WTSU, and Clovis High School.

The Lazbuddie 4-H Club met last Monday and discussed the results of the Parmer County 4-H Fair and achievement banquet. The program was on Parliamentary procedure and was given by Home Demonstration agent, Jana Pronger. Games were played and refreshments served. At the 4-H Achievement Banquet, held Saturday the 12th, Lazbuddie was presented the team trophy for the fair. Lazbuddie members who turned in records and record pins were: First year pin, Billy Jo Bratley, Kim Gregory, Lori Ivy, Barbie Ivy, Perry Steinbock, Frank Jesko, Second year pins: David Lust, Dennis Steinbock, Charles Steinbock, Jana Briggs, Todd Gregory, Third year: Russell Windham, Dennis Johns, Quentin Mimms, Andy Rogers, Terri Clark, Angela Matthews, Joe Dan Briggs, Judy Lust, Sixth year: Michael Mimms, and Eighth year: Susan Mimms. Fair trophies were presented to Terri Clark-Poultry, and Russell Windham-Agriculture. Lazbuddie members who received trophies for winning county events were: David Lust, Frank Jesko, Judy Lust and Susan Mimms - Food Show. Judging team-Mike and Russell Windham. Food Demonstration - Judy Lust, Team Horse demonstration - Lisa and Kathy Menefee, Dress Revue-Susan Mimms; Conservation Demonstration - Mike Windham.

County and local awards were presented for record books. Beef - Michael Mimms and David Lust; Clothing - Angela Matthews, Billy Jo Bratley, Susan Mimms, local clothing-Barbie and Lori Ivy. Food records - Judy Lust, local Frank Jesko, Quentin Mimms.

Swine - County award went to Charleson Steinbock, local awards to Dennis and Terry Steinbock. County horse awards - Terri Clark, Jana and Joe Dan Briggs, local Andy Rogers, Russell Windham, Local Sheep awards were received by Mike Windham and Dennis Johns. This year's Gold Star boy was Rocky Bartlett of Bovina and Gold Star Girl was Susan Mimms. Both were presented with trophies.

The Junior class will present the Harvest festival and coronation, followed by the Halloween carnival, this Saturday night. The queen's coronation is divided into three divisions: Kindergarten - 4th grade will be competing for Prince and Princess. Candidates in this group include, Lisa McGehee, Andy Copley - first; Wendy Jarmon, Todd Daniels - first; Second grade-Rhonda Waddell, Paul Stanley. Third - Lonna Brockman, Lee Scott; fourth grade - Kim Gregory, Danny Powell. Running in the Duke and Duchess division are Kay Elliot, Shawn Smith - Fifth grade; Angela Jesko, Russell Windham - Sixth; Tammy Wall, Quentin Mimms - Seventh grade. Eighth grade candidates are Trina Nash and Jim Standridge. In competition for King and Queen are: representing the sophomores, Karen Scott, escorted by Michael Mimms; Jamie Campbell escorted by Greg Crim - Juniors; and Seniors, Reta Davis and Mike Eubanks, Crownbear-

ers are Dusty Joiner, Ginger Jesko, Jonessa Jennings, Brad Johnson, Crystal Angeley. Some of the attractions of the carnival include the Marriage booth, FHA's General Store, Cake Walk, Dart throw, Bingo, Basketball and Football throws, concessions, etc.

ers are Dusty Joiner, Ginger Jesko, Jonessa Jennings, Brad Johnson, Crystal Angeley. Some of the attractions of the carnival include the Marriage booth, FHA's General Store, Cake Walk, Dart throw, Bingo, Basketball and Football throws, concessions, etc.

BIBLE VERSE

"Let your speech be always with grace, seasoned with salt."

1. What is the above verse warning against?
2. Who was the author of the above warning?
3. To whom was he writing?
4. Where may it be found?

Answers To Bible Verse

1. A warning against unclean speech, swearing or profanity.
2. Paul the Apostle.
3. The Christians at Colosse.
4. Colossians 4:6.

Golden Gleams

It is the great end of education to raise ourselves above the vulgar.

-Richard Steele.

The great secret of education is to direct vanity to proper objects.

-Adam Smith.

WILSON APPLIANCE

MARATHON WHIRLPOOL

LIMITED SUPPLY 5 DAYS ONLY MON. THRU FRI.

WHIRLPOOL WASHERS-DRYERS DISHWASHERS-FREEZERS REFRIGERATORS

NOTICE
IF YOU'RE PLANNING ON BUYING A NEW WASHER OR DRYER IN THE NEXT 6 MONTHS, SEE US BEFORE THE PRICES GO UP FURTHER



WHITE ONLY
SAVE 25 SPEED 3 CYCLES
Reg. 229.95
SALE \$168



SAVE 3 CYCLES 3 TEMPERATURES FOR PERMANENT PRESS
Reg. 269.95
SALE \$198



SAVE 25 SPEED 4 CYCLES WITH SPECIAL COOL DOWN FOR PERMANENT PRESS
Reg. 289.95
SAVE 51.95
SALE \$238

PLUS FAST FRIENDLY SERVICE PLUS VARIETY OF CREDIT PLANS PLUS WHIRLPOOL WARRANTY MOVES WITH YOU PLUS FREE LOCAL DELIVERIES

MULESHOE PH. 272-5532 272-5531
117 MAIN STREET

OPEN DAILY 9A.M.-8P.M. WEEKDAYS CLOSED SUNDAYS

PRICES GOOD OCTOBER 28 THRU OCT. 30

1723 W. AMERICAN BLVD.

5 NEW ALBUMS & TAPES

JOHNNY CASH
The junkie and the juicehead minus me
including:
Lay Back With My Woman, Keep On The Sunny Side, Don't Take Your Guns To Town, I Do Believe, Crystal Chandeliers, And Burgundy

KC 33086*

NEW AND ON SALE NOW

SONNY JAMES
THE SOUTHERN GENTLEMAN
A Mi Esposa Con Amor (To My Wife With Love)
including:
Whoever Finds This, I Love You, A Poor Man's Gold, Home Style Lovin', Take These Chains From My Heart, I Can See The End From The Beginning

KC 33056*

GEORGE JONES
THE GRAND TOUR
including:
Once You've Had The Best, The Weatherman, She'll Love The One She's With, Borrowed Angel, Our Private Life

KE 33083*

BARBARA FAIRCHILD
Standing In Your Line
including:
You're The One I'm Livin' For, I'm Not Weak, I'm A Woman, This Stranger, My Little Girl, I Know, Standing In Your Line

KC 33058*

Mac Davis
I Believe In Music
including:
Something's Burning, Watching Scuffy Grow, A Little Less Conversation, Christmas Carol, Wednesday And You

C 30926

TAPES ALBUMS
MFG. SUGG. \$4.77 RET. \$6.98
MFG. SUGG. \$3.77 RET. \$5.98

SCHEDULE OF EVENTS

OCTOBER 26 DANCE AT YOUTH CENTER 9 P.M.

MONDAY, OCTOBER 28 Veterans Day 12 noon - Jaycees, XIT 7:30 p.m. - Rainbows

TUESDAY, OCTOBER 29 12 noon - Rotary, Catholic Church, 7:30 p.m. - Rebekah's, Odd-fellow Lodge Hall, 7:30 - O.E.S., Masonic Hall, 7:30 p.m. - DeMolay, Masonic Hall.

WEDNESDAY, OCTOBER 30 6:00 p.m. - TOPS, Bailey County Electric Meeting Room, 5:30 p.m. - Weight Watchers, Presbyterian Church.

FRIDAY, NOVEMBER 1 7:30 - Kiwanis, XIT 7:30 - Football Game, Levelland, Muleshoe vs Levelland, There.

MULESHOE STATE BANK
Member FDIC



**Shur
fine**

CARNIVAL

SHURFRESH CANNED
HAM

\$3³⁹

3 LB.
CAN
EACH



SHURFRESH FULLY COOKED BONELESS

CANNED HAM 5-Lb. Can **\$5⁵⁹**



SHURFRESH BOLOGNA, PICKLE-PEPPER LOAF, OLIVE LOAF, SALAMI, LUNCHEON LOAF MIX & MATCH

LUNCH MEAT 3 6-Oz. Pkgs. **\$1**

SHURFRESH PIMENTO OR JALAPENO

CHEESE SPREAD 7 1/2-Oz. Cup **69¢**

SHURFRESH QUALITY

SLICED BOLOGNA 12-Oz. Pkg. **59¢**

SHURFRESH

FRANKS 12-Oz. Pkg. **59¢**

SHURFRESH REG. OR THICK
SLICED BACON

99¢

1-LB.
PKG.



WE GIVE C
DOUBLE STAMPS WF
WE REDEEM AND
WE SELL TRAVELERS EXPRESS
515 W. AMERICAN
201 S. FIRST 8 A.M. 1
SPECIALS GOOD MON. OCT

SHURFINE QU
**FRUIT
COCKTAIL**

SOFLIN 2 PLY/WI
**BATHROOM
TISSUE**

POT

YELLOW CLING-SLICED OR HALVES

**SHURFINE
PEACHES**

2 88¢
29-Oz. Cans

SHURFINE QUALITY
**EVAPORATED
MILK**

4 \$1⁰⁰
14 1/2-Oz. Cans

SHURFINE FROZEN BROCCOLI SPEARS-CAULIFLOWER OR MIXED
VEGETABLES
3 MIX & MATCH **\$1⁰⁰**
10-Oz. Pkgs.

- SHURFINE **PORK & BEANS** 4 16-Oz. Cans **\$1**
- SHURFINE **SLICED BEETS** 3 16-Oz. Cans **79¢**
- SHURFINE MIXED **VEGETABLES** 3 16-Oz. Cans **79¢**
- SHURFINE FRESH SHELL **BLACKEYES** 4 15-Oz. Cans **\$1**
- SHURFINE EARLY HARVEST **SWEET PEAS** 3 17-Oz. Cans **\$1**
- SHURFINE WHOLE **IRISH POTATOES** 3 16-Oz. Cans **89¢**

- SHURFINE **TOMATO SAUCE** 3 15-Oz. Cans **79¢**
- SHURFINE **TOMATO SOUP** 6 10 3/4-Oz. Cans **\$1**
- SHURFINE PIECES & STEMS **MUSHROOMS** 3 4-Oz. Cans **\$1**
- SHURFINE **APPLE BUTTER** 2 28-Oz. Cans **\$1**
- SHURFINE STRAWBERRY **PRESERVES** 18-Oz. Jar **79¢**
- SHURFINE **WAFFLE SYRUP** 32-Oz. Jar **79¢**
- SHURFINE FRESH PAK **CUCUMBER CHIPS** 16-Oz. Jar **39¢**
- TASTY & CRISP **SHURFRESH CRACKERS** 16-Oz. Box **39¢**
- SHURFINE **VANILLA WAFERS** 3 10-Oz. Pkgs. **\$1**

- MC*2 ALL PURP
DETER
- SHURFINE **COFFE**
- SHURFINE **PANC**
- 8-OZ. CHILI TOM
- SHUR
- SHURFINE QUAI
- MAC**
- SHURFINE
- APPL**
- SHURFINE
- MAN**
- SHURFINE-STR
- CRA**
- CRUSHED-CHUP
- SHUR

THE GREATEST FOOD SALE ON EARTH!

Emmett Kelly, Jr.
Star of television and
his own colossal circus



SHURFINE 100% PURE FLORIDA
ORANGE JUICE 6 6-oz. Cans **\$1.00**

SHURFINE ENRICHED
FLOUR 5-Lb. Bag **68¢**

SHURFINE GREEN
3 SIEVE CUT
BEANS 4 16-oz. Cans **\$1**



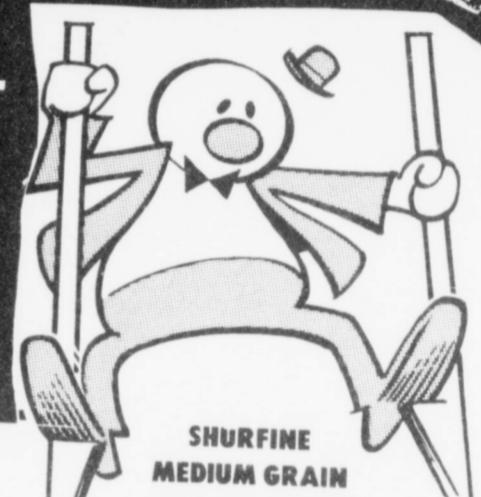
Save
SERVICE

PROS STAMPS
BUY WITH \$2.50 OR MORE PURCHASE
STAMPS ON FOOD STAMPS
ORDERS, PAYROLL CHECKS CASHED
8 A.M. TILL 11 P.M.
P.M. 7 DAYS
THRU NOV. 9

3 16-oz. Cans **\$1**

GOLDEN RIPE
BANANAS 2 LBS. **25¢**

E-YELLOW-PINK-AQUA
8 Roll Pack **98¢**



SHURFINE MEDIUM GRAIN
RICE 2-Lb. Bag **69¢**

SHURFINE ORANGE-GRAPE-FRUIT PUNCH
DRINKS 3 MIX & MATCH 46-oz. Cans **\$1**

ALL PURPOSE RUSSET
POTATOES 10 LB. POLY BAG **79¢**

SHURFINE REG.-DRIP-ELEC. PERK
COFFEE 16-oz. Vac Pac Can **98¢**

- SHURFINE **EGG** 49-oz. Box **79¢**
- CREAMER** 11-oz. Jar **69¢**
- CAKE MIX** 32-oz. Box **59¢**
- MEAT DINNERS** Ea. Pkg. **49¢**
- CHEESE DINNER** 4 7½-oz. Pkgs. **\$1**
- SAUCE** 3 16-oz. Cans **\$1**
- CARIN ORANGES** 3 11-oz. Cans **\$1**
- BERRY SAUCE** MIX & MATCH 3 16-oz. Cans **89¢**
- WHOLE PINEAPPLE** MIX & MATCH 3 15¼-oz. Cans **\$1**

SHURFRESH SWEETMILK OR BUTTERMILK
BISCUITS 10 8-oz. Cans **\$1.00**

- SHURFRESH QUALITY-REGULAR QUARTERS
MARGARINE 2 16-oz. Pkgs. **\$1**
- SHURFRESH HALFMOON LONGHORN
COLBY CHEESE 10-oz. Pkg. **79¢**
- SHURFINE NATURAL PINK
GRAPEFRUIT JUICE Texas Pak 2 46-oz. Cans **89¢**
- SHURFINE FANCY
TOMATO JUICE 46-oz. Can **59¢**
- SHURFINE CUT GREEN
ASPARAGUS SPEARS 14½-oz. Can **55¢**

SHURFINE
SPINACH 4 15-oz. Cans **89¢**

SHURFINE CHUNK STYLE
TUNA 2 6½-oz. Cans **89¢**

WE RESERVE THE RIGHT TO LIMIT.
AFFILIATED
STOCK UP NOW...
SAVE
ALL WINTER!



SAVINGS NOW EARN INTEREST COMPOUNDED DAILY FROM DATE OF DEPOSIT TO DATE OF WITHDRAWAL!

EARN **5 1/4 %** PER ANNUM **PASSBOOK SAVINGS**

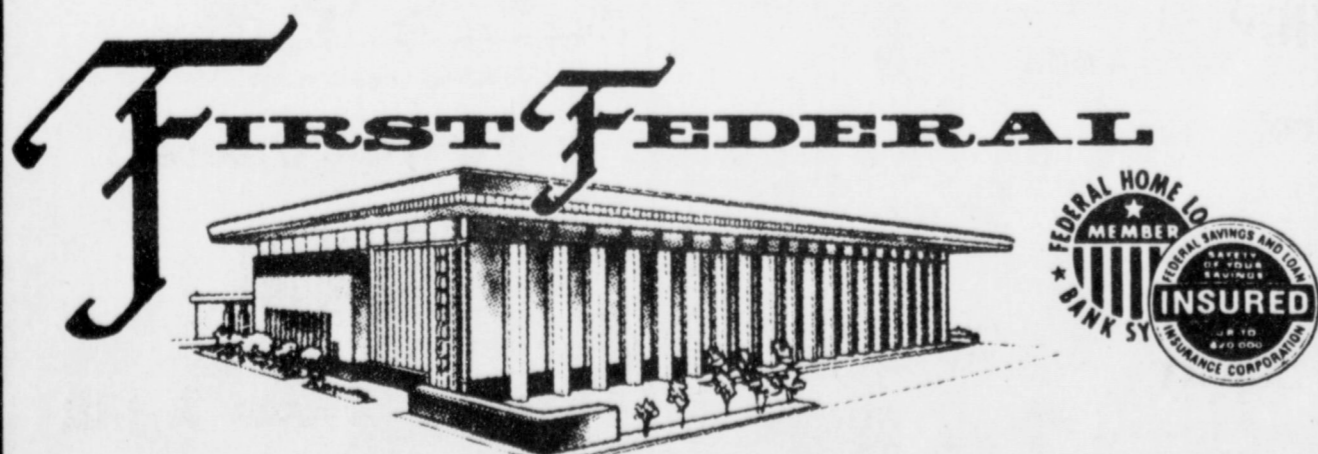
UP TO **7 1/2 %** PER ANNUM **ON CERTIFICATES**

Which Plan is Right for You?

TYPE OF ACCOUNT	ANNUAL RATE	* ANNUAL YIELD	MINIMUM TIME	MINIMUM AMOUNT
Passbook	5.25%	5.39%	—	—
Certificate	5.75%	5.92%	90 Days	\$1000.00
Certificate	6.50%	6.72%	1 Year	\$1000.00
Certificate	6.75%	6.98%	2 1/2 Years	\$1000.00
Certificate	7.00%	7.25%	4 Years	\$1000.00
Certificate	7.50%	7.79%	4 Years	\$5000.00

* Compounded Daily

FOR EARLY WITHDRAWAL CERTIFICATE INTEREST WILL BE PAID AT PASSBOOK RATE PLUS PENALTY OF 90 DAYS INTEREST AT PASSBOOK RATE.



SAVINGS & LOAN ASSOCIATION of CLOVIS

HOME OFFICE: 801 Pile St. CLOVIS, N. MEX. BRANCH OFFICE: 2nd and Abilene St. PORTALES, N. M.

"SERVING CLOVIS AREA SINCE 1934"

The Sandhills Philosopher

Editor's note: The sandhill Philosopher on his Johnson grass farm tires to read a financial statement this week, we suppose.

Dear editor:
Human nature being what it is, people have a natural curiosity about other people's money, such as how much do you reckon ole so-and-so is really worth, did you hear what's his-name borrowed his limit at the bank and is having trouble paying his bills? Things like that.

So naturally everyone in the country was interested in how much money Nelson Rockefeller has, and many were delighted to have him nominated for Vice-President just to find out. Rockefeller was pleased to because up to now he wasn't sure how much he was worth either.

Anyway, just to be doing, I read his financial statement which all the newspapers published and despite the fact he has a net worth of 218 million dollars or 116 million or something, more or less, depending on what stocks are worth today, the price of cattle in Argentina, what you can get for vacant lots in New York, paintings by the old masters, and that sort of thing, still, down at the bottom of one column under Liabil-

Wise Youth

Fly Fisherman--Did you catch all those trout with nothing but worms?

Boy--Oh, no! There was brains at 'other end of the line.

Out of Orbit



"YOU GOT SOME INSIDE POOP ON THE TEMPERATURE OF THE MOON THAT WE DON'T HAVE?"

ities was: notes payable \$1,667, 600.
I nearly fell over. You mean to tell me that Rockefeller owes money at the bank? Does he buy on time? I knew times were hard and money tight, what with inflation and all, but I didn't know we were in that shape, I guess we've all got our problems.

is staring us in the face. All right. Say it happens, everybody and every country goes under. What I want to know is, if the whole world goes broke, who gets title to the property? It's something to think about. Yours faithfully, J.A.

Welcome To Muleshoe



Paula Kay Norris

We would like to welcome Paula Kay Norris to Muleshoe who is a native of Lubbock, Texas. She received her BS degree in Home Economics, at Texas Tech University in Lubbock. She is now teaching Home Economics at Muleshoe High School. She enjoys tennis, skiing, and sewing. She is a member of the Church of Christ, and also she did her student teaching in Muleshoe last year.

THE FOLLOWING FIRMS WELCOME THE NEWCOMER TO MULESHOE

James Crane Tire Co. GOODYEAR	MULESHOE STATE BANK MEMBER FDIC
DAMRON DRUG CO. REXALL 308 MAIN	HENRY INS. AGENCY 111 W. AVE. B.

INTERNATIONAL 95 SELF PROPELLED COTTON HARVESTER



Big diesel engine delivers 106 hp to keep you on the move in any field condition.

Hydrostatic Drive, standard, lets you precisely match ground speed to crop and harvesting conditions for maximum productivity.

Huge basket holds 655 cu. ft. . . . dumps into 12 ft. high trailers . . . basket distributor attachment available to increase capacity.

Engine . . . IH D310 diesel; delivers 106 hp at 2700 rpm
Green boll catcher . . . 12 cu. ft. capacity lever controlled dumping

ALSO IN STOCK
IHC #90 HIGH CAPACITY TRAILER MOUNTED COTTON STRIPPER
With hydraulic row sensors and high capacity basket.

ALL IN STOCK AND WE'RE READY TO TRADE

WOOLY-HURST, INC.

CLOVIS ROAD

PH. 272-5514



OCT. 28, 1974

VETERAN'S DAY



OCT. 28, 1974

*To The Men Who
Preserved
Us A Nation...*

Today let us remember
the men who fought
on foreign soil
to guard a homeland
thousands of miles away.

Men who put their
lives on the line to uphold our
nation's honor.



SPONSORED BY THE FOLLOWING PATRIOTIC MERCHANTS

Casey Ins.

Plains Auto

City Cleaners

Harmon-Field Ins.

First National Bank

John's Custom Mill

Wooley-Hurst, Inc.

Ranch House Motel

Protein Processors

Cobb's

Lowe Pump Service & Supply

Ray Griffiths & Sons Elevator

Muleshoe Co-op Gins

Swap Shop

perry's

Art Craft Printing

Dinner Bell Cafe

Western "66" Co.

Beaver's Flowerland

TENNIES BEAUTY SHOP

White's Cashway Gro.

Muleshoe State Bank

Williams Bros. Office Supply

CROW/CHEVROLET COMPANY
MULESHOE, TEXAS • Telephone 272-3100

Bailey County Electric Cooperative Association

Dari-Delite

Western Drug

Bob's Safety Center

Lenau Lumber Co.



Margie Hawkins, Manager
272-3412

West Sixth Texaco

Blackwater Fertilizer

First Street Conoco

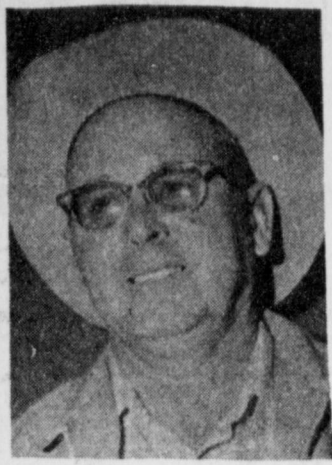
GIBSON'S

Muleshoe Floral & Gift

Higginbotham-Bartlett Co.

Baker's Maytag Launderette

I WANT YOUR VOTE!



ROY MILLER
Democrat, Precinct 4,
Pomer County

ROY MILLER HAS SERVED AS DIRECTOR OF THE LAZBUDDIE COOPERATIVE SUPPLY FOR THE PAST SIX YEARS, AND SERVED ON THE LAZBUDDIE SCHOOL BOARD FOR NINE YEARS

"I WILL TRY TO REPRESENT ALL THE PEOPLE AND DO THE BEST JOB TO MY ABILITY" YOUR SUPPORT AND INFLUENCE WAS GREATLY APPRECIATED LAST YEAR AND I WOULD APPRECIATE YOUR SUPPORT MAY 5th, 1974

Paid Political Adv.



On Wall Street

By Bob Hill
Lentz, Newton & Co.

There is a frantic race by the world's largest mining companies to tap the fabulous mines of the ocean deeps which contain metals potentially worth trillions of dollars, and that's just the beginning. Scientists and mining experts have known for years that certain areas of the ocean floor are covered with potato-sized nuggets, called nodules, rich in copper, nickel, manganese and other minerals. Until recently, the idea of scooping up these nodules and refining the metals from them seemed like something out of Buck Rogers and the 21st Century. Not so today. The best deposits of copper and nickel on land have already been found and the expenses of mining continue to skyrocket. The cost of the equipment necessary to mine these land reserves has doubled in just five

years, making the ocean nodules more valuable every day. In a 1 1/2 million square mile area of the Pacific Ocean alone, there is a conservatively estimated 50-million tons of the nodules which would yield 1 1/3 times the world's land reserves of copper, 13 times the land reserves of nickel, and 10 times the land reserves of manganese. Just the copper and nickel alone in that one area of the Pacific would be worth \$3-trillion at today's prices. The problem is how to get the nodules off the ocean floor in water depths of 15,000 feet. A chain and bucket system was tested several years ago but was found to have the disadvantage of tangling lines and difficulty in finding a cable strong enough to heft that much weight over three miles. Most of the harvesting techniques use compressed air or pumps attached to dredge heads moving along the ocean floor. A major obstacle is the huge amount of sediment which has to be lifted in order to get the nodules to the surface. The mining companies are highly secretive about the dredge heads used to get the nodules off the ocean floor. One unit, constructed by Lockheed Corp., is composed of a barge with a tracked vehicle carried inside which leaves the barge at the end of a long extending arm, once the barge is on the ocean floor. The tracked vehicle then circles the barge, picking up nodules and sending them back to the barge through the extending arm. The nodules are then pumped to the surface from the barge.

Offspring Of Pheasants Release In Panhandle

PAMPA—Ringnecked pheasants have been slowly expanding their range in the Texas Panhandle over the past few years but not fast enough to suit biologists at the Texas Parks and Wildlife Department. On Oct. 16, some 125 of the colorful Asian birds were released in Carson and Grey Counties. The release was part of the TP&WD program of accelerating the expansion of pheasant range in the area using the progeny of wild broodstock trapped in the Panhandle. This is the first time for such a release. During the first part of 1974, 44 adult pheasants were trapped in the Hereford area and transported to the department's Management and Research Station at Tyler. At the M&R Station the adults produced some 204 young pheasants.

Of this number, 100 10- to -16-week-old birds were released Oct. 16 in the grain fields of the Panhandle along with 25 adults. The remaining young pheasants and 19 adult cocks will be retained at the M&R Station as broodstock for future production and releases. Biologists at the station are hopeful for an even greater pheasant production next year to bolster the ringnecks' numbers in the northernmost part of the states.



THE COMPTROLLER OF THE CURRENCY · UNITED STATES TREASURY

COPY FOR THE PRINTER

THIS COPY SHOULD NOT BE PREPARED BEFORE COMPLETION OF REPORT OF CONDITION

Call No. 491 Charter No. 14745 National Bank Region No. 11

REPORT OF CONDITION, CONSOLIDATING DOMESTIC SUBSIDIARIES, OF THE

The First National Bank of Muleshoe, Texas

IN THE STATE OF Texas AT THE CLOSE OF BUSINESS ON October 15, 1974

PUBLISHED IN RESPONSE TO CALL MADE BY COMPTROLLER OF THE CURRENCY, UNDER TITLE 12, UNITED STATES CODE, SECTION 161.

	ASSETS		LIABILITIES	
	Dollars	Cts.	Dollars	Cts.
Cash and due from banks (including \$ 830.41 unposted debits)	2 461	812 34	5 580	758 10
U.S. Treasury securities	200	025 56	5 486	637 51
Obligations of Federal Financing Bank			40	086 30
Obligations of other U. S. Government agencies and corporations	397	937 50	762	661 53
Obligations of States and political subdivisions	3 810	648 81	None	None
Other securities (including \$ None corporate stock)	24	000 00	25	000 00
Trading account securities	None	None	104	119 28
Federal funds sold and securities purchased under agreements to resell	None	None	None	None
Loans	6 667	318 29	None	None
Bank premises, furniture and fixtures, and other assets representing bank premises	103	062 91	None	None
Real estate owned other than bank premises	126	109 24	None	None
Investments in unconsolidated subsidiaries and "associated companies"	None	None	None	None
Customers' liability to this bank on acceptances outstanding	2	385 87	None	None
Other assets (including \$ None direct lease financing)	None	None	None	None
TOTAL ASSETS	13 793	300 52	12 608	201 29
RESERVES ON LOANS AND SECURITIES				
Reserve for bad debt losses on loans (set up pursuant to IRS rulings)	161	768 51	None	None
Other reserves on loans	None	None	None	None
Reserves on securities	None	None	None	None
TOTAL RESERVES ON LOANS AND SECURITIES	161	768 51	None	None
CAPITAL ACCOUNTS				
Capital notes and debentures	None	None	None	None
Equity capital-total	1 023	330 72	None	None
Preferred stock-total par value	None	None	None	None
Common Stock-total par value	300	000 00	None	None
Surplus	500	000 00	None	None
Undivided profits	178	216 76	None	None
Reserve for contingencies and other capital reserves	45	113 96	None	None
TOTAL CAPITAL ACCOUNTS	1 023	330 72	None	None
TOTAL LIABILITIES, RESERVES, AND CAPITAL ACCOUNTS	13 793	300 52	None	None
MEMORANDA				
Average of total deposits for the 15 calendar days ending with call date	11 639	191 49	None	None
Average of total loans for the 15 calendar days ending with call date	6 731	841 24	None	None
Interest collected not earned on installment loans included in total capital accounts	None	None	None	None
Standby letters of credit	None	None	None	None

I, Ted Barnhill, Cashier, of the above-named bank do hereby declare that this report of condition is true and correct to the best of my knowledge and belief.

We, the undersigned directors attest the correctness of this report of condition and declare that it has been examined by us and to the best of our knowledge and belief is true and correct.

/s/ M.D. Gunstream
/s/ W.M. Pool, Jr.
/s/ Guy Nickels

Directors.

Form 64p (State) - Revised June, 1974

State Bank No. 1631

PUBLISHER'S COPY

Consolidated Report of Condition of "Muleshoe State Bank" of Muleshoe in the State of Texas and Domestic Subsidiaries at the close of business on October 15, 1974.

	ASSETS		LIABILITIES	
	DOLLARS	Cts.	DOLLARS	Cts.
1. Cash and due from banks (including \$22,623.02 unposted debits)	1 912	964 94	6 987	721 24
2. (a) U.S. Treasury securities	xxx	xxx	7 713	473 45
(b) Obligations of Federal Financing Bank	1 043	987 51	74	388 75
3. Obligations of other U.S. Government agencies and corporations	400	000 00	1 062	451 93
4. Obligations of States and political subdivisions	3 023	691 71	None	None
5. Other securities (including \$ None corporate stocks)	None	None	46	847 66
6. Trading account securities	None	None	None	None
7. Federal funds sold and securities purchased under agreements to resell	1 000	000 00	None	None
8. Other loans	9 604	550 96	None	None
9. Bank premises, furniture and fixtures, and other assets representing bank premises	563	762 16	None	None
10. Real estate owned other than bank premises	None	1 000 10	None	None
11. Investments in subsidiaries not consolidated	None	None	None	None
12. Customer's liability to this bank on acceptances outstanding	None	None	None	None
13. Other assets (item 6 of "Other Assets") (including \$ None direct lease financing)	288	860 68	None	None
14. TOTAL ASSETS	17 837	819 86	16 216	850 20
RESERVES ON LOANS AND SECURITIES				
30. Reserve for bad debt losses on loans (set up pursuant to Internal Revenue Service rulings)	232	768 38	None	None
31. Other reserves on loans	None	None	None	None
32. Reserves on securities	None	None	None	None
33. TOTAL RESERVES ON LOANS AND SECURITIES	232	768 38	None	None
CAPITAL ACCOUNTS				
34. Capital notes and debentures (specify interest rate and maturity of each issue outstanding)	None	None	None	None
35. Equity capital, total	1 388	201 28	None	None
36. Preferred stock-total par value (No. shares outstanding None)	None	None	None	None
37. Common stock-total par value (No. shares authorized 20,000) (No. shares outstanding 20,000)	400	000 00	None	None
38. Surplus	500	000 00	None	None
39. Undivided profits	488	201 28	None	None
40. Reserve for contingencies and other capital reserves	1 388	201 28	None	None
41. TOTAL CAPITAL ACCOUNTS	1 388	201 28	None	None
42. TOTAL LIABILITIES, RESERVES, AND CAPITAL ACCOUNTS	17 837	819 86	16 216	850 20
MEMORANDA				
1. Average of total deposits for the 15 calendar days ending with call date	15 539	204 72	None	None
2. Average of total loans for the 15 calendar days ending with call date	9 606	642 52	None	None
3. Unearned discount on installment loans included in total capital accounts	None	None	None	None

I, Robert E. Finney, of the above-named bank, do solemnly swear that this report of condition is true and correct, to the best of my knowledge and belief.

Correct-Attest: Robert E. Finney
James A. Cox
B. E. Loyd
H. J. Griffiths } Directors.

Notary Public
Bailey County, Texas

State of Texas, County of Bailey, I do hereby certify that I am not an officer or director of this bank. My commission expires June 1, 1975.



MULE'S TALE



Official Publication of Muleshoe High School Written and Edited by Students of the Muleshoe Schools

VOL. 9 NO. 24

EDITOR STEVE VAN ZANDT

SUNDAY, October 27, 1974

FFA Exhibits Stock At State Fair Junior, Sophomore Mules Featured

Eight Students Show Swine And Calves



HAPPY HALLOWEEN

October Honor Students Selected

The National Honor Society is proud to feature the Honor students for the month of October.

Senior student is Judy Dearing. Judy is the daughter of Mr. and Mrs. B.A. Dearing. Her activities include FHA officer, National Honor Society, Junior Classical League and HECE. She attends the Catholic church where she is the organist. She is also employed at Cobbs.

Junior student is Lucy Gutierrez. She is the daughter of Margarito and Adelina Gutierrez.

Sophomore student is Laura Beene. She is the daughter of Mr. and Mrs. Eddie Beene of Needmore. Her activities are J.V. Basketball, Student Council Representative for the Sophomore class and F.T.A.

Freshman student is Randall Hamilton. He is the son of Mr. and Mrs. Elbert Hamilton. His activities include Stage Band, Marching Band, Speech and Choir.

Sheryl Bass Named Best Of MHS

Sheryl Bass has been selected by the Thespians as "Best of MHS" for this week. Sheryl is 17 years old and is a Senior at MHS. She is the daughter of Mr. and Mrs. E.A. Bass Jr. Sheryl is involved in FTA, she is the MYF historian, the DECA Reporter, and she is also reporter for the Art Club.

When ask for her comments on art, she replied "I have really enjoyed working in the art class and I hope I can reach higher levels of art in school."

Sheryl was chosen as Best of MHS because of her outstanding accomplishments in Art. CONGRATULATION!

A child's education should begin at least one hundred years before he is born.

-O.W. Holmes.



JUDY DEARING



LUCY GUTIERREZ



LAURA BEENE



RANDALL HAMILTON

Special Events At MHS

Monday, October 21, the student body was presented the



SHERYL BASS

The Mulestail Staff takes great pride in featuring the Junior and Sophomore Varsity players this week. The players have a great deal of ability and enthusiasm. It is with great pleasure we now present these boys:

Julian Dominguez is a Sophomore this year at Muleshoe High and he is the son of Mr. and Mrs. Julian Dominguez.

Julian plays Linebacker for the Mules and when asked for his comments he had this to say, "I feel like we have started off at a slow pace but we are getting better and I feel we will do better in our district games."

Tony Vela is the 15 year old son of Mr. and Mrs. Joe Vela. Tony is a Sophomore this year at Muleshoe High School.

Tony plays Quarterback and Tailback for the Mules, he had this to say about the Mules, "We have started off slow but with our steady improvement I feel we will win our district games."

Gary Wrinkle is the 16 year old son of Mr. and Mrs. Roy Wrinkle. Gary is a Junior this year at Muleshoe High.

Gary plays Tight end on offense and Weak Corner on defense. When asked for his comments he had this to say about the Team, "I think this years team is a lot better than some people think. Mistakes have been our main problem. With each work out things go better though and so Muleshoe could still have a winning team if the Mules fans will keep backing us."

Dick Pena is the 16 year old son of Mr. and Mrs. Fele Pena. Dick is a Junior this year at Muleshoe High School.

Dick plays the position of Fullback for the Mules this year and he has this comment about the team, "We had a slow start but the second half should be a lot better for us."

James Cook is the 16 year old son of Mr. and Mrs. Marshall Cook. James is a Junior this year at Muleshoe High School.

James plays Tackle and Defensive End for the Mules this year. When asked what his comments were for this years team he said, "I think that we are going to do good from here on out because we are finally getting it all together."

Hector Posadas is a Junior this year at Muleshoe High and he is the 17 year old son of Mr. and Mrs. Alfonso Posadas. Hector is Offensive Tailback and Defensive Strong Safety for

Student Council Announcements

The Student Council meeting was a little different this week. Robert Shafer, Vice-President, conducted the meeting in order to give Mike Bland a little rest!

The Halloween Carnival was discussed, and it was definitely decided to have Marriage Booths. There are going to be three different departments. The set-up committee is Mike Bland, Dusty Davis, Gary Gunter, John Gunter, Brent Gunter, Robert Shafer, Billy Donaldson, Hector Posados, Bobby Henry, and Carey Sudduth.

Working in the Athletic Department is Dusty Davis, Dan Dunham, Jan Harlin, David Watson, Perri Poyner, and Robert Shafer. Working in the Hippy Department is Carey Sudduth, Susie Cousatte, Gary White, Shea Penna, Keith Rempe, and Vicki Williams. Working in the Stoney Department is John Gunter, Connie Harmon, Gary Gunter, Maribeth Dillman, Tara Tate, and Brent Gunter. The members working in front are Mike Bland, Pam Loyd, Jonice Killough, Belinda Throckmorton, and Mark Washington. The clean-up committee is Mike Bland, Robert Shafer, Dusty Davis, John Gunter, Gary Gunter, Brent Gunter, Gary White, Hector Posados, Bobby Henry, and Carey Sudduth.

the Mules this year, Hector had this to say about the Mules, "We have been working hard to get ready for our district games, and I think we will do great."

Carey Sudduth is the 16 year old son of Mr. and Mrs. David Sudduth. Carey is a Junior this year.

Carey is Quarterback and Safety for the Mules, Carey had this to say about the team, "We are improving each week and none of us are ready to quit. We have done a lot of hard work the last 8 weeks and we are not going to let that go. We haven't lost a district game yet, so we still have a chance to win it."

Reuben Gonzales is a Junior at Muleshoe High this year and he is the son of Mr. and Mrs. Pinedo. Reuben is 17 years old.

Reuben plays Split-end and Weak Safety, when he was asked for his comments Reuben replied, "We have a good chance for district this year and we are working together for that purpose."

Billy Balderas is the 16 year old son of Mr. and Mrs. Manuel Balderas. Billy is a Junior at Muleshoe High this year.

Billy plays the positions of offensive guard and defensive line backer. Billy had this comment about the team, "I believe that we are capable of going far because we are working harder than ever."

Robert Shafer is a Junior this year at Muleshoe High School. He is the 16 year old son of Mr. and Mrs. Lewis Wayne Shafer.

Robert plays Fullback for the Muleshoe Mules. When asked what he thought about the team this year he said, "This year we have got to a slow start but we are getting better every day. The people that are on our team, have all got one thing in common; they all want to play and win. The second half of this year will be a lot better than the first."

Rickey Grogan is a Junior at Muleshoe High School this year. Rickey is the 16 year old son of Mr. and Mrs. Arvis Grogan.

Rickey plays Wingback and Corner for the Mules, and when asked for his comments he replied, "I believe we are beginning to work as a team, and this is what we need to do to win district."

Tommy St. Clair, the 16 year old son of Mr. and Mrs. Bill St. Clair is a Junior this year at Muleshoe High School.

Tommy plays Linebacker and Tailback for the Muleshoe Mules. When asked for his comments for this year Tommy said, "The District is still open and through hard work and deter-

LUNCH MENU

- School Menu
- MONDAY
 - Milk
 - Macaroni Beef Tomato Casserole
 - Cabbage and Pepper Slaw
 - Hot Rolls
 - Peanut Butter Honey Whip
 - Fruit Cup
 - Milk
- Tuesday
 - Charburgers
 - Pickles and Onions
 - Lettuce Tomato Salad
 - French Fries
 - H.B. Buns
 - Peach Slices
- WEDNESDAY
 - Milk
 - Baked Ham
 - Candied Yams
 - Green Beans
 - Oatmeal Batter Bread
 - Apple
- THURSDAY
 - Milk
 - Corn Dog Mustard
 - Crackers and Peanut Butter
 - Veg. Beef Soup
 - Cinnamon Rolls
 - Orange Juice
- FRIDAY
 - Milk
 - Chicken Enchilladas
 - Beans
 - Tortillas
 - Corn Bread
 - Cookie
 - Applesauce

mination we could win it. Randy Norman is the 18 year old son of Mr. and Mrs. Jim year at Muleshoe High School.

Randy plays the position of Wingback for the Mules. When asked for his comments he said, "We have had a very bad start this year, but from our first win over Morton, it isn't impossible for us to beat Perryton and the others. Our defense has played great football, now it is time for our offense to get started."

Larry Sexton is a Junior this year at Muleshoe High, and he is the 17 year old son of Mr. and Mrs. Thomas Sexton.

Larry plays Tailback for the Mules, and he had this to say about the team as a whole, "I think that the Mules have a lot of work to be done. This week the Mules start the District playoffs with the Perryton Rangers. Everybody is looking forward to playing Perryton and the other district games as well."

Rene Torres is a Junior this year at Muleshoe High School, and he is the 17 year old son of Mr. and Mrs. Gregorio Torres.

Rene plays Middle Linebacker for the Mules, when asked for his comments he replied, "I think our team is really improving more and more as the weeks go by, and with the improving we have been making, it is going to help us in district play."

Professionals Speak To MHS Classes

Mrs. Kramer's business law class and Mr. Murphy's civics classes had as guest speakers this past week Mr. Corky Green, Mr. Ernest Kerr, and Mr. Alex Williams.

Mr. Corky Green, a local lawyer, spoke on a citizen's legal rights and court procedure. Mr. Ernest Kerr, an election judge, presented the legal aspect of voting as well as election laws. Mr. Alex Williams, Mayor of Muleshoe, informed the classes of the structure of our local city government.

There was also an informative question and answer period following each presentation.

Staff Will Attend Workshop

Friday, November 1, the 16 Journalism Staff members will attend a Yearbook Workshop at the Muleshoe State Bank. During the workshop, the students will learn the procedures to be used while producing the '75-76 Muleshoe Yearbook. The Muleshoe Yearbook will be published by this company and the Staff Members are eager to study the new techniques. The annual's construction will begin immediately after the workshop.

Hero Chapter Installs Officers

On October 17, the Hero Chapter met at the XII Steak House to install their new officers for the 74-75 school year. The girls wore long dresses for the special event, and had a very enjoyable evening. Following dinner, the installation of officers was held. Each officer repeated the duty or responsibility of her office in the Hero Chapter. The officers installed were: President - Ruth Ramm, Vice President - Cindy Harvey, Secretary - Donna Burris, Treasurer - Faith Free, Historian - Debbie Hunter, and Student Council Representative - Chelsea Williams. Mrs. Wanda Gramling is the Advisor for The Hero FHA Chapter.

October 12-18 was a busy week for several Muleshoe FFA members as it was the week the State Fair of Texas was held in Dallas. Five FFA members exhibited calves.

Marshall Pool, the son of Mr. and Mrs. W.M. Pool 11, exhibited the second place Yorkshire barrow of the heavy-weight class.

Rickie Claybrook showed a fifth place Yorkshire barrow in the heavy-weight class. He also showed a fourteenth place Yorkshire barrow in the middle-weight class. Rickie is the son of Mr. and Mrs. Bennie Bickel.

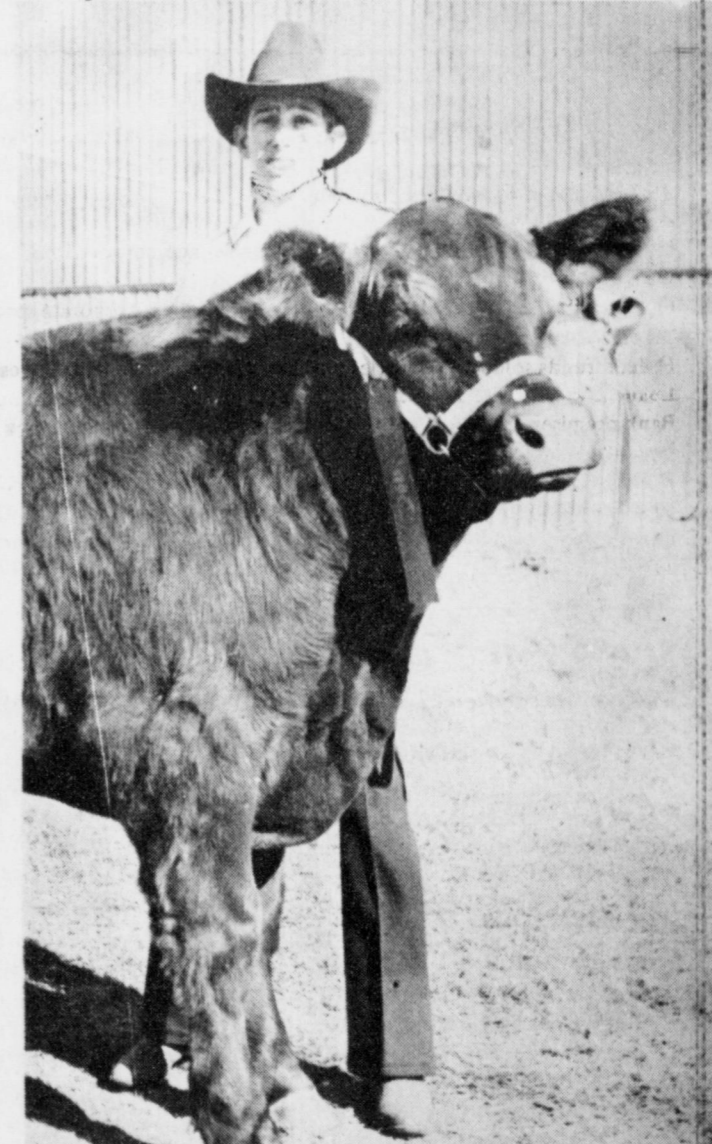
John Saylor, the son of Mr. and Mrs. C.L. Saylor, exhibited a sixth place Yorkshire barrow in the light-weight class.

Robbie Young exhibited the seventeenth place Hampshire barrow in the middle-weight class. Robbie is the son of Mr. John Young.

Nicky Bamert exhibited the fourteenth place steer in the blue-ribbon class. Nicky is the son of Mr. and Mrs. Carl Bamert.

Robert Martin's steer was in the blue-ribbon class. He is the son of Mr. and Mrs. Ernest Martin. Larry Martin's steer was in the white ribbon class. Larry is also the son of Mr. and Mrs. Ernest Martin.

Dee Buckner exhibited the twelfth place dairy heifer at the State Fair. He is the son of Mr. and Mrs. Buddy Buckner. The dairy show was held October 9-13.



STATE FAIR PARTICIPANT... Pictured above is Robert Martin, son of Mr. and Mrs. Ernest Martin, along with his blue ribbon class steer he entered at the Dallas State Fair.

Mulette Maneuvers

The Mullettes are looking forward to the upcoming Basketball season and have been practicing with great enthusiasm and determination.

The season opens for the Varsity and J.V. teams Saturday, November 16, at New Deal.

The Mullettes lost only one starter from last year's team and hope to improve on last year's record of seven wins and 15 losses.

The following girls are competing for starting positions on the Varsity this year: GUARDS: Diane Dale, Ellen Shafer, Joie Carpenter, Laverne Carpenter, Jana Garrett, and Belinda Throckmorton. FORWARDS: Jan Harlin, Jonice Killough, Sarah Patterson, Tanya Burton, Cynthia Isaac and Sheryl Stovall.

The J.V. team will probably consist of: Jana Bruns, Laura Beene, Tammy Bruns, Jo Roming, Patti Poyner, Julia Hettling, Sherry Washington, Milti Maridis, Nancy Ramm, Teresa Hamilton, Carol Ware, Donita Dale, Tammy Hicks, Cindy Dodd, and Cynthia White. Managers for this season are Alta Ramm, Connie Griffin and April Hofield.

The girls ordered new black practice uniforms for this season and are enjoying them very much. The Varsity will have new Game Warmp uniforms and

the J.V. will have new game tops for this season.

The Freshmen girls have been working hard this year on various fundamentals. The following girls are out for the Freshmen team: Morgan Pena, Beth Whit, Dani Dunham, Elizabeth Isaac, Stephanie Brantley, Janice Posey, Shae Penna, Susan Grittendon, Evelyn Graves, Connie Harmon, Terri Durben, Sharla Farmer, Connie Berggren, Rhonda King, Melody Mauldin, Anna Hernandez, and Janie Posados. The Freshmen Managers are Chery Lee Bryant and Elizabeth Torres.

Schedule

- MONDAY, October 28: High School Choir Program 11:30
- American Education Week, Open House 7:00-9:00 High School and Junior High, High School Choir Program Entertains, 8:00-8:30. Everyone is Welcome.
- THURSDAY, October 31: 9th and Junior Varsity Football, here 5:30, FRIDAY, November 1: Seniors order invitations 8:30, Varsity Football game, Level-land here 7:30, SATURDAY, November 2: Coronada SAT test, Muleshoe Speech Tournament,

Enochs News
By Mrs. J.D. Bayless

Mr. and Mrs. Bob Newton honored Mrs. Winnie Byars, Eastern Star Worthy Matron, and Harold Toombs, Worthy Patron of the Morton Lodge, with a Tea Sunday afternoon at their home. They were pre-

sented gifts, cake, punch and coffee were served to the 16 guests present.

Rev. and Mrs. Charlie Shaw, Mrs. Bill Key, Mrs. Alma Altman, Mrs. J.W. Layton, and Mr. and Mrs. C.C. Snitker attended the 14th Annual meeting of the Llanos Altos Baptist As-

sociation at the First Baptist Church in Farwell 9:30 to 2:00 p.m., Friday.

Mr. and Mrs. Lawrence Hall from Anaheim, Calif., came Tuesday for a visit with her mother, Mrs. Jocyn Vanlandingham, his father, Carl Hall and other relatives.

Mr. and Mrs. Orbe Phillips are home from a trip down in the Ft. Worth area they visited an aunt Mrs. Lizzie Stork, also an uncle, Mr. and Mrs. George

Henderson at Azle.

Mr. and Mrs. Ray Seagler spent Sunday night October 6, at Midland with a daughter, Mr. and Mrs. Royce Lane, then went on a vacation down in the Waco area, where they did some fishing at Nairorro Mills and Buckeans Lakes, they also visited with her brothers, the George Smiths, Martain and Melvin Smiths, before returning home Wednesday night, October 16,

Rev. and Mrs. Harold Abney

and baby of Channing visited her parents, W.B. Petersons, one week.

Mr. and Mrs. Tom Byars and son, Scott of Friona, spent the weekend visiting his mother, Mrs. Winnie Byars and friends.

Rev. and Mrs. Charlie Shaw drove to White Deer, Friday afternoon where he performed a wedding of Billie Shaw and Diane Clifton at her parents home there at 6:00 p.m.

Visiting in the home of Mr. and Mrs. Guy Sanders, is her sister, Mrs. Nettie Weaver of Okla. She is also visiting her mother, Mrs. Mary Hardin at the West Plains Rest Home in

Muleshoe, and another sister, Mrs. Morris Phillips and husband.

Mr. and Mrs. Bill Key and grandsons, Mr. and Mrs. Bobbie Adams and daughters, and a sister-in-law, Mrs. Ophila Fort from Brownwood were dinner guests in the home of her mother and sister, Bonnie, Sunday.

Mr. and Mrs. James Crocker and sons of Tucumcari, N.M. visited with her father, Bro. Charlie Shaw, Saturday.

Dinner guests in the home of, Mr. and Mrs. J.E. Layton, Sunday was her brother, Mr. and Mrs. Lawrence Hall of Calif. and sister, Mr. and Mrs. Bill

Burris and family of Willman and her father, Carl Hall,

Mr. and Mrs. Junior Austin and sons, Greg, Carey and Jeff visited with relatives during the weekend and Jeff stayed till Monday with his aunt, Mr. and Mrs. Harold Layton.

Mr. and Mrs. W.M. Bryant returned home last week from a visit with relatives, Mr. and Mrs. J.C. Bryant in Alex, Okla. Mr. and Mrs. Jewel Bryant at Quanah, her sister and husband Mr. and Mrs. J.M. Whittington from Louisiana, visited with them while they were in Okla.

Mr. and Mrs. Dale Nichols visited Mrs. John Steele at the Cook Memorial Hospital in Levelland Friday, Mr. and Mrs. Steele were involved in a car

wreck at Merkle a week and a half ago.

E.C. Gillman was admitted to the Morton Memorial Hospital Sunday and Mrs. Gillman is still a patient in the hospital in Lubbock.

Mr. and Mrs. Chester Petree were supper guests in the home of a son, Mr. and Mrs. Kenneth Petree,

ATTENTION MULESHOE AREA CATTLEMEN

.....In regard to dead stock removal..... If you have had a problem with service..... whether in the feed yard or on the farm..... Please give US a chance! Thank you.....

Your local used cow dealer is muleshoe-bi-products

Phone-965-2903 Mobil Phone 965-2429

TELEX Hearing Aids

Clovis Hearing Aid Center

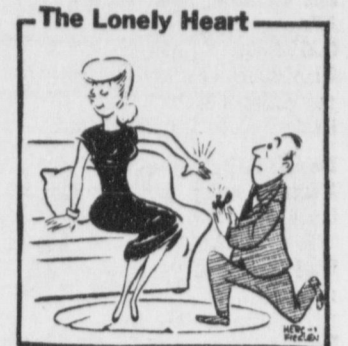
Batteries & Molds. Free Tests. Service All Makes.

416 Mitchell Phone 763-6900 Clovis, N.M.

Singleton-Ellis Funeral Home

24 Hour Ambulance Service

Ph. 272-4574 Muleshoe



SPAG To Provide Radio Equipment

In ceremonies held Wednesday, October 23, 1974 in Lubbock's City Hall, South Plains Association of Governments' President Carolyn S. Jordan signed a \$1,078,770.00 contract with General Electric, Inc. to provide new radio equipment for all Law Enforcement Agencies in the 15-county SPAG Region. The radio communications system will be funded in part through a grant from the Governor's Office, Criminal Justice Division. Participating agencies will pay 25% of the total cost for the new equipment. The project will replace

present obsolete equipment with a modern, four-channel system, for radio communications. The overload on the 37,180 frequency currently used by most agencies in the area will be relieved with each agency being assigned a separate frequency. The Multi-channel system will allow agencies to monitor other departments within the county, while maintaining clear transmission and reception on other channels. Implementation of the system is expected to begin within thirty days, and will be completed within one year.

An investment in Your Future

ATTEND CHURCH

"For where your treasure is, there will your heart be also"

- FIRST UNITED METHODIST CHURCH MULESHOE-YL PARISH C.B. Melton - Pastor Russel Byard - Minister & Training YL, Route 1, Muleshoe 507 West Second, Muleshoe
- ZION LUTHERAN PRIMITIVE BAPTIST CHURCH 207 E. Ave. G Glen Williams, Elder
- PRIMITIVE BAPTIST CHURCH 621 S. First Afton Richards, Elder
- FIRST CHRISTIAN CHURCH 130 W. Ave. G Rev. Walter Bartholt Sunday School 9-45 Worship 11:00
- LATIN AMERICAN METHODIST MISSION Ave. D & 5th Street Esteban Lara, Pastor
- FIRST PRESBYTERIAN Morton Highway Edwin L. Manning, Pastor Sunday Morning Service
- CHURCH OF THE NAZARENE Ninth & Ave. C
- CALVARY BAPTIST CHURCH 1733 W. Ave. C Charles Kenneth Harvey, Pastor
- TRINITY BAPTIST CHURCH 314 E. Ave. B V.L. Huggins, Pastor
- MULESHOE ASSEMBLY OF GOD 517 S. First H.D. Hunter, Pastor
- JEHOVAH'S WITNESS Friona Highway Boyd Lowery, Minister
- RICHLAND HILLS BAPTIST CHURCH 17th & West Ave. D Gerald Pepper, Pastor

Where have the LEAVES Gone?

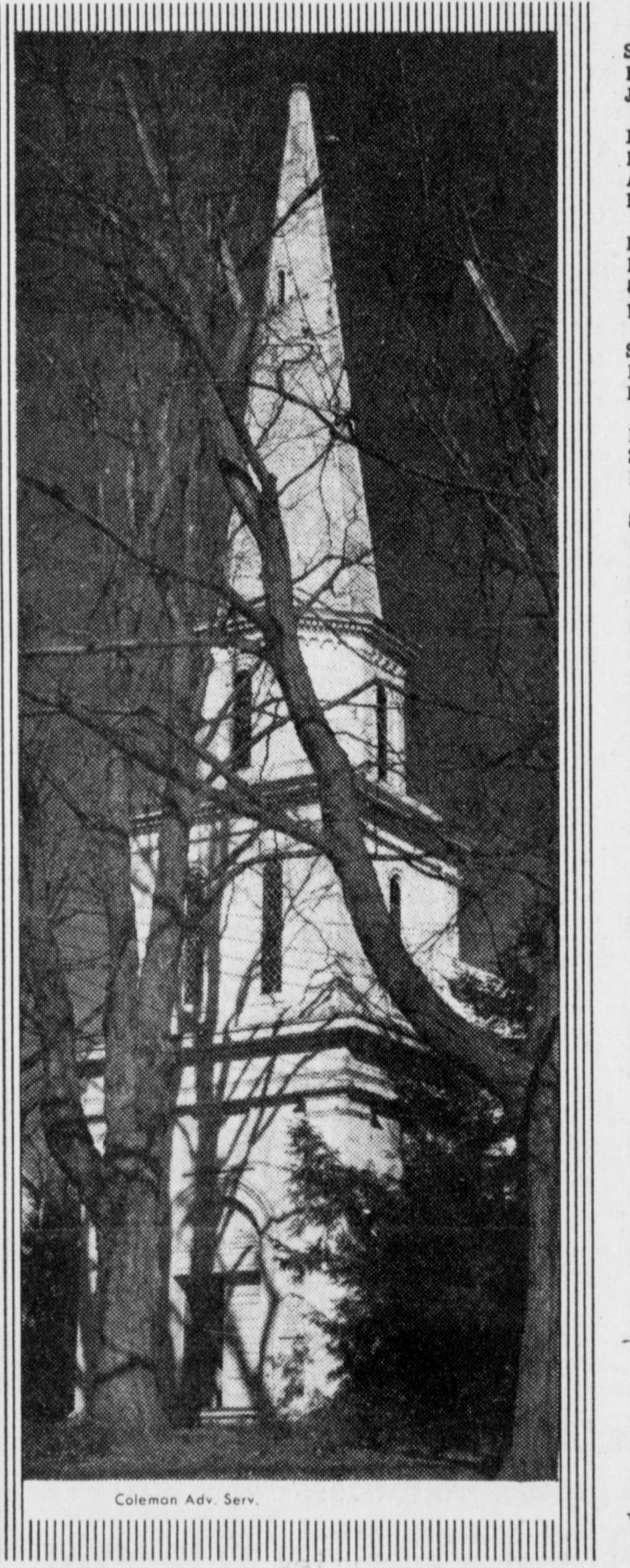
Trees without their leaves, are like a Church building without the people. The real warmth, friendliness, and welcome atmosphere are created by the people. All of these things are a real aid to worship.

"Give unto the Lord the glory due unto his name; worship the Lord in the beauty of holiness."

Come, be one among many to share in the joy of worshiping in the Lord's house

EVERYONE IN THE CHURCH THE CHURCH IN EVERYONE

The Church is God's appointed agency in this world for spreading the knowledge of His love for man and of His demand for man to respond to that love by loving his neighbor. Without this grounding in the love of God, no government or society or way of life will long persevere and the freedoms which we hold so dear will inevitably perish. Therefore, even from a selfish point of view, one should support the Church for the sake of the welfare of himself and his family. Beyond that, however, every person should uphold and participate in the Church because it tells the truth about man's life, death and destiny; the truth which alone will set him free to live as a child of God.



- SPANISH BAPTIST MISSION E. 3rd and Ave. E John Jaquez, Pastor
- PROGRESS SECOND BAPTIST CHURCH Arthur Hayes, Pastor 1st and 3rd Sundays
- MULESHOE BAPTIST CHURCH 8th Street & Ave. G Rev. Bob Dodd, Pastor
- ST. JOHN LUTHERAN Lariat, Texas Rev. Martin M. Platzer, Pastor
- FIRST BAPTIST CHURCH 220 W. Ave. E Douglas DuBose, Pastor
- SPANISH ASSEMBLY OF GOD East 6th and Ave. F Rev. Hipolito Pecina
- ST. MATTHEW BAPTIST CHURCH W. Third E. McFrazier, Pastor
- NORTHSIDE CHURCH OF CHRIST 117 E. Birch Street
- PROGRESS BAPTIST CHURCH Progress, Texas Murrell Johns, Pastor
- SIXTEENTH & D CHURCH OF CHRIST Sunday - 10:30 a.m. Evening - 6 p.m. Wednesday - 8 p.m. Ivan Woodard, Minister
- IMMACULATE CONCEPTION CATHOLIC CHURCH Father Timothy Schwertner Northeast of City in Morrison Edition
- MULESHOE CHURCH OF CHRIST Clovis Highway Royce Clay, Minister

Quasar Portable Color TV

Instant Picture and Sound

19" diagonal

- Modular Solid State Chassis (except 4 chassis tubes)
- Replaceable plug-in circuit modules
- Bright Picture Tube
- 70 detent "click" UHF tuner
- Instant Picture and Sound
- Energy Saver Switch

\$339.95

(Model WP5520LW) Walnut grain finish on high impact plastic cabinet

HARVEY BASS APPLIANCE

Lazbuddie School Menu

Oct. 28-Nov. 1 MONDAY

Pizza
Buttered Corn
Mixed Green Salad
Chocolate Pudding
Cornbread - Butter
1/2 pt. Milk

TUESDAY
Fried Chicken
Mashed Potatoes
Cream Gravy
Green Beans
Yeast Biscuits
Butter - Jelly
1/2 pt. Milk

WEDNESDAY
Beef & Cheese Tacos
Pinto Beans
Green Salad
Sliced Peaches
Cornbread - Butter
1/2 pt. Milk

THURSDAY
Hamburgers & Sloppy Joes
French Fries
Dill Pickles
Lettuce
Strawberry Shortcake
1/2 pt. Milk

FRIDAY
Barbeque Beef
Potato Salad
English Peas
Carrot Sticks
Hot Rolls
Butter - Jelly
1/2 pt. Milk

- St. Clairs** 110 Main
- Spudnut Shop** 328 Main 272-3542
- First National Bank** "Home Owned" 224 South First
- Bratcher Motor Supply** 107 E. Avenue B. 272-4288
- Dairy Queen** Margie Hawkins, Manager 272-3412
- San Francisco Cafe** "Tortilla Factory" 121 Main Street, 272-3502

- Fry & Cox** 401 S. First
- Western Drug** 114 Main
- Howard I. Watson** Alfalfa - Hay 272-3552 272-4038
- Muleshoe Motor Co.** West American Blvd.
- West Planes Repair** Bengier Air Park--Friona 247-3101
- White's Cashway Grocery** "Where Friends Meet and Prices Talk" 402 Main
- Lambert Cleaners** Steam Carpet Cleaning Drapery Cleaning 123 Main Street. 272-4726
- GIBSON'S DISCOUNT CENTER** 1723 West American Blvd. 272-4306
- Beavers Flowerland** "Flowers for all occasions" 272-3116 or 272-3024
- Main Street Beauty Salon** 115 Main 272-3448
- Muleshoe Co-Op Gins**
- Toro Grain** Division of Oltan Feed Yards, Inc. Oltan, Texas
- Whitt-Watts & Rempe Implement** "John Deere Dealers" Muleshoe, Texas 272-4297

LOSE WEIGHT THIS TIME ENJOY IT!

No Drugs No Chemical Safe Effective Inexpensive No Hunger Pains No Exercise No Starvation Diets!

The Product is A Special Blends Of Foods Containing All Essential Amino-Acids And Over 40 Of The Daily Nutrients- The Product Is Designed To Curb The Appetite And Burn Off The Calories Without Drugs Or Chemicals More And Better Energy Better Sleep Better Nerve Condition

For More Information About This Fine Product Dealerships Contact -President

Get Slim International, Inc.

Doris Or Mel Billings-Pho. 655-0514 Suite 3-Trust Bldg San Angelo, Tex-76901

Enochs News
By Mrs. J.D. Bayless

Mr. and Mrs. Bob Newton honored Mrs. Winnie Byars, Eastern Star Worthy Matron, and Harold Toombs, Worthy Patron of the Morton Lodge, with a Tea Sunday afternoon at their home. They were pre-

sented gifts, cake, punch and coffee were served to the 16 guests present.

Rev. and Mrs. Charlie Shaw Mrs. Bill Key, Mrs. Alma Altman, Mrs. J.W. Layton, and Mr. and Mrs. C.C. Snitker attended the 14th Annual meeting of the Llanos Altos Baptist As-

sociation at the First Baptist Church in Farwell 9:30 to 2:00 p.m., Friday.

Mr. and Mrs. Lawrence Hall from Anaheim, Calif. came Tuesday for a visit with her mother, Mrs. Joey Vanlandingham, his father, Carl Hall and other relatives.

Mr. and Mrs. Orbe Phillips are home from a trip down in the Ft. Worth area they visited an aunt Mrs. Lizzie Stork, also an uncle, Mr. and Mrs. George

Henderson at Azle.

Mr. and Mrs. Ray Seagler spent Sunday night October 6, at Midland with a daughter, Mr. and Mrs. Royce Lane, then went on a vacation down in the Waco area, where they did some fishing at Nairorro Mills and Buckeans Lakes, they also visited with her brothers, the George Smiths, Martain and Melvin Smiths, before returning home Wednesday night, October 16,

Rev. and Mrs. Harold Abney

and baby of Channing visited her parents, W.B. Petersons, one week.

Mr. and Mrs. Tom Byars and son, Scott of Friona, spent the weekend visiting his mother, Mrs. Winnie Byars and friends.

Rev. and Mrs. Charlie Shaw drove to White Deer, Friday afternoon where he performed a wedding of Billie Shaw and Diane Clifton at her parents home there at 6:00 p.m.

Visiting in the home of Mr. and Mrs. Guy Sanders, is her sister, Mrs. Nettie Weaver of Okla. She is also visiting her mother, Mrs. Mary Hardin at the West Plains Rest Home in

Muleshoe, and another sister, Mrs. Morris Phillips and husband.

Mr. and Mrs. Bill Key and grandsons, Mr. and Mrs. Bobbie Adams and daughters, and a sister-in-law, Mrs. Ophila Fort from Brownwood were dinner guests in the home of her mother and sister, Bonnie, Sunday.

Mr. and Mrs. James Crocker and sons of Tucumcari, N.M. visited with her father, Bro. Charlie Shaw, Saturday.

Dinner guests in the home of, Mr. and Mrs. J.E. Layton, Sunday was her brother, Mr. and Mrs. Lawrence Hall of Calif. and sister, Mr. and Mrs. Bill

Burris and family of Willman and her father, Carl Hall.

Mr. and Mrs. Junior Austin and sons, Greg, Carey and Jeff visited with relatives during the weekend and Jeff stayed till Monday with his aunt, Mr. and Mrs. Harold Layton.

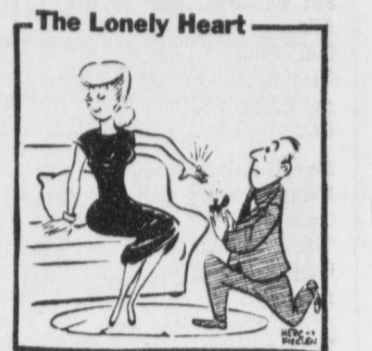
Mr. and Mrs. W.M. Bryant returned home last week from a visit with relatives, Mr. and Mrs. J.C. Bryant in Alex, Okla. Mr. and Mrs. Jewel Bryant at Quanah, her sister and husband Mr. and Mrs. J.M. Whittington from Louisiana, visited with them while they were in Okla.

Mr. and Mrs. Dale Nichols visited Mrs. John Steele at the Cook Memorial Hospital in Levelland Friday. Mr. and Mrs. Steele were involved in a car

wreck at Merkle a week and a half ago.

E.C. Gillman was admitted to the Morton Memorial Hospital Sunday and Mrs. Gillman is still a patient in the hospital in Lubbock.

Mr. and Mrs. Chester Petree were supper guests in the home of a son, Mr. and Mrs. Kenneth Petree.



ATTENTION MULESHOE AREA CATTLEMEN

.....In regard to dead stock removal.....
If you have had a problem with service..... whether in the feed yard or on the farm.....
Please give US a chance! Thank you.

Your local used cow dealer is muleshoe-bi-products

Phone-965-2903 Mobil Phone 965-2429

TELEX Hearing Aids

Clovis Hearing Aid Center

Batteries & Molds. Free Tests. Service All Makes.

416 Mitchell Phone 763-6900
Clovis, N.M.

Singleton-Ellis Funeral Home

24 Hour Ambulance Service

Ph. 272-4574 Muleshoe

An investment in Your Future

ATTEND CHURCH

"For where your treasure is, there will your heart be also"

- FIRST UNITED METHODIST CHURCH MULESHOE-YL PARISH
C.B. Melton - Pastor
Russel Byard - Minister & Training
YL, Route 1, Muleshoe
507 West Second, Muleshoe
- ZION LEST PRIMITIVE BAPTIST CHURCH
207 E. Ave. G
Glen Williams, Elder
- PRIMITIVE BAPTIST CHURCH
621 S. First
Aton Richards, Elder
- FIRST CHRISTIAN CHURCH
180 W. Ave. G
Rev. Walter Bartholt
Sunday School 9:45
Worship 11:00
- LATIN AMERICAN METHODIST MISSION
Ave. D & 5th Street
Esteban Lara, Pastor
- FIRST PRESBYTERIAN
Morton Highway
Edwin L. Manning, Pastor
Sunday Morning Service
- CHURCH OF THE NAZARENE
Ninth & Ave. C
- CALVARY BAPTIST CHURCH
1733 W. Ave. C
Charles Kenneth Harvey, Pastor
- TRINITY BAPTIST CHURCH
314 E. Ave. B
V.L. Huggins, Pastor
- MULESHOE ASSEMBLY OF GOD
517 S. First
H.D. Hunter, Pastor
- JEHOVAH'S WITNESS
Friona Highway
Boyd Lowery, Minister
- RICHLAND HILLS BAPTIST CHURCH
17th & West Ave. D
Gerald Pepper, Pastor

Where have the LEAVES Gone?

Trees without their leaves, are like a Church building without the people. The real warmth, friendliness, and welcome atmosphere are created by the people. All of these things are a real aid to worship.

"Give unto the Lord the glory due unto his name; worship the Lord in the beauty of holiness."

Come, be one among many to share in the joy of worshipping in the Lord's house

EVERYONE IN THE CHURCH

THE CHURCH IN EVERYONE

The Church is God's appointed agency in this world for spreading the knowledge of His love for man and of His demand for man to respond to that love by loving his neighbor. Without this grounding in the love of God, no government or society or way of life will long persevere and the freedoms which we hold so dear will inevitably perish. Therefore, even from a selfish point of view, one should support the Church for the sake of the welfare of himself and his family. Beyond that, however, every person should uphold and participate in the Church because it tells the truth about man's life, death and destiny; the truth which alone will set him free to live as a child of God.



Coleman Adv. Serv.

SPANISH BAPTIST MISSION
E. 3rd and Ave. E
John Jaquez, Pastor

PROGRESS SECOND BAPTIST CHURCH
Arthur Hayes, Pastor
1st and 3rd Sundays

MULESHOE BAPTIST CHURCH
8th Street & Ave. G
Rev. Bob Dodd, Pastor

ST. JOHN LUTHERAN
Lariat, Texas
Rev. Martin M. Platzer, Pastor

FIRST BAPTIST CHURCH
220 W. Ave. E
Douglas DuBose, Pastor

SPANISH ASSEMBLY OF GOD
East 6th and Ave. F
Rev. Hipolito Pecina

ST. MATTHEW BAPTIST CHURCH
W. Third
E. McFrazier, Pastor

NORTHSIDE CHURCH OF CHRIST
117 E. Birch Street

PROGRESS BAPTIST CHURCH
Progress, Texas
Murrell Johns, Pastor

SIXTEENTH & D CHURCH OF CHRIST
Sunday - 10:30 a.m.
Evening - 6 p.m.
Wednesday - 8 p.m.
Ivan Woodard, Minister

IMMACULATE CONCEPTION CATHOLIC CHURCH
Father Timothy Schwertner
Northeast of City in Morrison Edition

MULESHOE CHURCH OF CHRIST
Clovis Highway
Royce Clay, Minister

Fry & Cox
401 S. First

Western Drug
114 Main

Howard I. Watson
Alfalfa - Hay
272-3552 272-4038

Muleshoe Motor Co.
West American Blvd.

West Planes Repair
Benger Air Park--Friona 247-3101

White's Cashway Grocery

"Where Friends Meet and Prices Talk" 402 Main

Lambert Cleaners
Steam Carpet Cleaning
Drapery Cleaning
123 Main Street. 272-4726

St. Clairs
110 Main

Spudnut Shop
328 Main 272-3542

First National Bank
"Home Owned"
224 South First

Bratcher Motor Supply
107 E. Avenue B.
272-4288

Dairy Queen
Margie Hawkins, Manager
272-3412

San Francisco Cafe
"Tortilla Factory"
121 Main Street, 272-3502

GIBSON'S DISCOUNT CENTER
1723 West American Blvd. 272-4306

Beavers Flowerland
"Flowers for all occasions"
272-3116 or 272-3024

Main Street Beauty Salon
115 Main 272-3448

Muleshoe Co-Op Gins

Toro Grain

Division of Olton Feed Yards, Inc.
Olton, Texas

Whitt-Watts & Rempe Implement

"John Deere Dealers"
Muleshoe, Texas 272-4297

SPAG To Provide Radio Equipment

In ceremonies held Wednesday, October 23, 1974 in Lubbock's City Hall, South Plains Association of Governments' President Carolyn S. Jordan signed a \$1,078,770.00 contract with General Electric, Inc. to provide new radio equipment for all Law Enforcement Agencies in the 15-county SPAG Region. The radio communications system will be funded in part through a grant from the Governor's Office, Criminal Justice Division. Participating agencies will pay 25% of the total cost for the new equipment. The project will replace

present obsolete equipment with a modern, four-channel system, for radio communications. The overload on the 37,180 frequency currently used by most agencies in the area will be relieved with each agency being assigned a separate frequency. The Multi-channel system will allow agencies to monitor other departments within the county, while maintaining clear transmission and reception on other channels.

Implementation of the system is expected to begin within thirty days, and will be completed within one year.

Quasar Portable Color TV

Instant Picture and Sound

19" diagonal

- Modular Solid State Chassis (except 4 chassis tubes)
- Replaceable plug-in circuit modules
- Bright Picture Tube
- 70 detent "click" UHF tuner
- Instant Picture and Sound
- Energy Saver Switch

\$339⁹⁵

(Model WP5520LW)
Walnut grain finish on high impact plastic cabinet

HARVEY BASS APPLIANCE

Lazbuddie School Menu

Oct. 28-Nov.1 MONDAY
Pizza
Buttered Corn
Mixed Green Salad
Chocolate Pudding
Cornbread - Butter
1/2 pt. Milk

TUESDAY
Fried Chicken
Mashed Potatoes
Cream Gravy
Green Beans
Yeast Biscuits
Butter - Jelly
1/2 pt. Milk

WEDNESDAY
Beef & Cheese Tacos
Pinto Beans
Green Salad
Sliced Peaches
Cornbread - Butter
1/2 pt. Milk

THURSDAY
Hamburgers & Sloppy Joes
French Fries
Dill Pickles
Lettuce
Strawberry Shortcake
1/2 pt. Milk

FRIDAY
Barbeque Beef
Potato Salad
English Peas
Carrot Sticks
Hot Rolls
Butter - Jelly
1/2 pt. Milk

LOSE WEIGHT THIS TIME ENJOY IT!

No Drugs No Chemical
Safe Effective Inexpensive
No Hunger Pains No Exercise
No Starvation Diets!

The Product is A Special Blends Of Foods Containing All Essential Amino-Acids And Over 40 Of The Daily Nutrients- The Product Is Designed To Curb The Appetite And Burn Off The Calories Without Drugs Or Chemicals More And Better Nerve Condition

For More Information About This Fine Product Dealerships Contact -President

Get Slim International, Inc.

Doris Or Mel Billings-Pho. 655-0514
Suite 3-Trust Bldg San Angelo, Tex-76901

WANTEDS

OPEN RATES
 1st insertion, per word - 9¢
 2nd and add., per word - 6¢
NATIONAL RATES
 1st insertion, per word - 11¢
 2nd and add., per word - 7¢
 Minimum Charge - 50¢
CARD OF THANKS - \$2.00
 Classified Display \$1.25 per column inch.
 Double Rate for Blind Ads -
DEADLINE FOR INSERTION
 Noon Tuesday for Thursday
 Noon Friday for Sunday
WE RESERVE THE
 Right to classify, revise or
 reject any ad,
NOT RESPONSIBLE
 For any error after ad has
 run once.

PERSONALS

FOR YOUR Stanley Home Products, Jewel Broyles, call 965-2481. 1-16t-tfc

LOST OR STRAYED from the FFA Ag. farm, 1 flat bed trailer, if whereabouts of said trailer is known call, 806-272-3332 or 806-272-3283 1-43s-3tp

HELP WANTED

WANTED: Typist, must type 50 words per minute at least. Inquire in person at Journal. 21s-3tp

ACCEPTING Applications for R.N. at Plains Memorial Hospital at Dimmitt, Texas. Call 647-2191 and ask for Verle West, Administrator or A'Llan Bradley, Shift preference will be considered. 3-25s-tfc

WANTED: 2 mechanics. Excellent opportunity and working conditions. Apply in person, Town & Country Auto Inc., Clovis Highway. 3-32t-tfc

WANTED: L.V.N. Floor supervisor. Top pay. Jewel's Hospitality House, 806-385-5512. 3-42t-tfc

HOUSES FOR RENT

FOR RENT: Nice 2 bedroom house, couple or mature adult only. Call 806-272-4663. 4-42s-3tc

APARTMENTS FOR RENT

FOR RENT: 2 bedroom unfurnished apartment. Phone 272-4838, Smallwood Real Estate. 5-47s-tfc

FRIONA APTS. now have available 1, 2, and 3 bedroom, \$145.00. Call 247-3666 or come by 1300 Walnut Street, Friona. Sorry no pets. 5-24s-tfc

WANTED TO RENT

Would like to lease wheat pasture and stalks for 1,000 head of cattle. Call Randy Johnson, 806-272-3056 or 806-965-2224. 7-41s-tfc

WANTED: Irrigated land to rent or buy. A.E. & Bobby Redwine. Phone 806-965-2437 or 806-965-2845. 7-41t-tfc

WANTED TO RENT or lease irrigated land. Call 806-965-2160. John Mitchell. 7-38s-tfc

REAL ESTATE FOR SALE

FOR SALE: 2 A with 5 room house, carpeted. House, cellar and barn. Call 806-946-2567. F.O. Warren 8-43s-6tp

FOR SALE: 356 A irrigated farmland, 2 wells, 1-6', 1-8' Good allotments and good yields. Wheat, cotton and feed. Call 806-946-2612 8-43t-4tp

FOR SALE: 3 bedroom brick 2 bath, 2 car garage, 401 Commerce, Sudan, Texas. Call 806-227-4591. 8-42t-4tp

FOR SALE: 2 bedroom brick, 1 bath, livingroom, den and kitchen, utility room, garage, fenced back yard. Call 806-272-5564. 8-41s-tfc

FOR SALE: 2 bedroom house, 1 bath, livingroom, carpeted. Call 806-272-4459 or 806-272-3182. 8-42t-6tc

FOR SALE: Nice 2 bedroom house in Lenau Addition. Call 806-272-3749. 8-42t-4tc

FOR SALE BY OWNER: 216 acres 4 miles E. 1 North, 1/4 E. of Muleshoe. See Harlan Reese, 806-965-2760, or Morris McMillip 806-965-2765. 8-43t-11tp

FOR SALE: 3 bedroom, 1 3/4 bath, brick home with fenced backyard, located in Richland Hills near school. Call 806-272-4375. 8-42t-tfc

FOR SALE: Beauty shop, call 965-2660 or 272-4375. 8-33s-tfc

FOR SALE: 65' Mobile Home. Also 3 bedroom house. Call 806-272-4411 5 p.m. to 8 p.m. 8-42s-8tp

FOR SALE: 3-320 A tracts all cult. level irrig. wells, nat. gas, tilled, 5 mi. to town price 350-400 & 450 per A. Other tracts if interested. Friona Realty. L.R. White, Friona, Texas. Phone 806-247-3156. 8-438-2tp

AUTOMOBILES FOR SALE

FOR SALE: 1970 Rambler Station Wagon. Good condition and good gas mileage. Call Gary McCray at 806-925-3433. 9-42s-4tp

FOR SALE: 1965 Chevrolet; 6 cylinder, 4 speed pick-up. Good condition. Call 806-925-3510. 9-38t-tfc

FOR SALE

FOR SALE: J.C. model 282 brush cotton stripper with row sensors and model 70 basket in very good condition. \$5,000.00. Call 806-965-2468. 10-42s-tfc

FOR SALE OR TRADE

OR SALE: 4 apartment complex, 300 block west 20th, good income, good tax possibilities. Phone 272-4284 after five 272-4491. 1120t-tfc

FOR SALE OR TRADE: Layne Apartments. See Mrs. Layne at 524 S. 1st Street. 11-25s-tfc

HOUSEHOLD GOODS

Pianos, organs, band instruments, new and used. Professional repairs, sheet music, rentals, terms. Phillips House Of Music 118 Main, Clovis, N.M. Phone 505-763-5041 12-34s-tfc

MISCELLANEOUS

WANTED TO BUY: Damaged corn in the shuck. Hugh Collis, 806-965-2920 or 806-965-2746 evenings. 15-41s-tfc

FOR SALE: 10 X 54 Mobile Home. Completely carpeted and appliances. Good condition. Call 806-272-4458 between the hours of 8 a.m. and 7 p.m. 15-42t-tfc

FOR SALE: Honda 175 C.C., good condition. Perfect for irrigating. Call 806-925-3536 after 7 p.m. 15-39t-tfc

CUSTOM STONE: Ground Corn meal. 313 W. Washington, Morton, Texas. 806-266-8941 15-43t-4tp

ANTIQUEN SHOW & SALE

Fri. & Sat., November 2 & 3, 1 to 10 P.M., Sun., Nov. 3, 1 to 6 P.M. L'Allegria Study Club, Hereford Community Center. 15-43s-tfc

FOR SALE: 1970 Melody Mobile Home. 2 bedroom, 1 1/2 bath, partially furnished. Call 806-272-3252 15-43s-2tc

Card of Thanks

To our friends and neighbors, a sincere "Thank You" for your prayers, cards and flowers, in acknowledgement of the loss of our loved ones; David and Brent Kennemer. Mr. and Mrs. Darrell Kennemer 15-43s-ttc

Several good tracts of land for sale. Some at 29% down. Good water. 8-37s-tfc

POOL REAL ESTATE
 214 E. AMERICAN BLVD
 PHONE 806-272-4716

All type roofing & building repair. FREE ESTIMATES
 Phone 806-272-3756
DON'S ROOFING CO.

HORSE
 Breaking, Training, and Showing. For all Western Events. Call LARRY GOREE 272-4033 or ALTON GOREE 806-889-3860 15-41t-8tc

FOR SALE
 New & Rebuilt Kirbys
 Carolyn Duncan
 Ph. 272-4182 220W.10

Shop at home for Shaklee Household Cleaners... Food Supplements... Beauty and Grooming Aids... Baby and Pet Care Products. Just call us...
 We'll call on you.
 the Shaklee Family
 J.D. Or Leana Evans
 272-4120
 Muleshoe

Cess Pool Cleaning
 Cesspools pumped with a MUD-PUMP & treated with bacteria & enzymes to liquify solids & loosen sides for better drainage. Dipping vats drained and liquids hauled to your disposal pit. Grease pits drained & treated. Molasses pits drained. Phone 272-3677 or 272-3467 ELMER DAVIS

FOR SALE: Mesquite firewood. Phone 806-272-4842 15-43t-tfc

LIVESTOCK

Calves 7 to 14 days old. Healthy and started on bottle. Free delivery of 10 or more. Call 214-223-5171 after 7 p.m. 1628s-24tc

REAL ESTATE TOONS

BY K.K. KREBBS
 On Our Fine Homes You Can't Go WRONG Come Out And Bring The Kids ALONG.
KREBBS REAL ESTATE CO.
 Service Beyond The Contract
 Phone 272-3191
 210 So. 1st Muleshoe

LEASE A SELF-PROPELLED VALLEY SPRINKLER SYSTEM
 Available now for wheat planting season. Call or come by and let us explain the advantages of leasing a valley sprinkler.
AVI INC.
 W HWY 84 272-3565

USED IRRIGATION EQUIPMENT
 Pivot systems; side roll systems; traveling volume guns; tri-matics.
AVI INC.
 Phone 806-272-3565

HELP WANTED:
 Amarillo Daily News Needs A Carrier For The Muleshoe Area.
 Contact Buck Creamer 806-272-3265 OR
CALL COLLECT 806-376-4488 IN AMARILLO

Services Held Friday For Regina Vela


Graveside services for Regina Vela, daughter of Mr. and Mrs. Joe Vela, Sr., were held Friday morning at 10:30 a.m. at the Muleshoe Cemetery. Fat-

her Timothy Schwertner officiated. She was stillborn Thursday morning at West Plains Memorial Hospital. Survivors include the parents;

grandparents, Mrs. Regina Vela of Lubbock and Jose Carrasco of Lubbock; three sisters, Mrs. Susan Garcia of Houston and Christine and Rebecca, both of the home; and 10 brothers, Capt.

Joe Vela, Jr. with the U.S. Army at Fort Leavenworth, Kansas, Julian of Dallas, PFC Charlie Vela with the U.S. Army at Fort Bliss, Robert of Houston, and Danny, Tony, Earnest, George, Freddie and David, all of the home.

When you wonder if the life insurance you have is all the life insurance you really need, whom should you ask? A professional.



VIC BENEDICT
 721 W. Ave. C
 Ph. 272-3218

Southwestern Life
 Happiness is what we sell

Tri-County SAVINGS AND LOAN ASSOCIATION

MULESHOE
 232 Main---Phone 272-4521


Assets and Liabilities

Assets	September 20, 1974	December 31, 1973
First Mortgage Loans	\$ 5,390,105.96	\$ 4,735,277.64
Loans on Savings Accounts	449,739.91	240,011.60
Other Loans	4,572,851.27	4,051,190.81
Stock in FHLB	67,100.00	54,200.00
Accrued Interest Receivable	79,640.30	89,302.70
Cash and U. S. Gov't Obligations	541,025.35	700,814.27
Land, Building & Equipment	229,646.28	115,381.71
Deferred Charges to Expense	27,131.49	13,294.19
Other Assets	94,566.79	77,297.87
Total Assets	\$11,451,807.35	\$10,076,770.79
Liabilities and Capital		
Savings Capital	9,137,574.20	7,656,844.02
Borrowed Money	1,054,200.00	1,175,000.00
Loans in Process	13,578.79	73,980.23
Borrowers' Trust Funds	62,344.96	31,447.24
Other Liabilities	62,914.27	47,626.96
Unearned Discounts	425,119.18	412,719.17
Reserve for Pymt of Dv.-Savings	142,711.99	106,992.15
Capital, Surplus & Reserves	553,363.96	572,161.02
Total Liabilities & Capital	\$11,451,807.35	\$10,076,770.79

Officers
 DONALD W. HARMON
 President & Chairman
 Of Board
 LINDAL MURRAY
 Secretary

Directors
 FRANK H. ELLIS
 DONALD W. HARMON
 LINDAL MURRAY
 ALEX H. WILLIAMS

Glen's BACKHOE SERVICE
 806/272-4811
 GLEN WATKINS



STATE CAPITAL Highlights AND Sidelights

by Lyndell Williams
TEXAS PRESS ASSOCIATION

AUSTIN — Statewide interest in the general election may be running at a near low, a check of local officials across Texas indicates. Even optimistic forecasters place the turnout in the 50 per cent range. Many doubt the 30 per cent showing of last May's primaries will be improved on much. There are an estimated 5.5 million registered voters. About 55 per cent of eligible voters participated in the 1970 off - presidential - year election, 48 per cent in 1966. The spotcheck produced

these estimates on the turnout: Harris County (Houston) —40 per cent. Dallas County—35 to 50 per cent. Tarrant County (Fort Worth)—30 per cent. Bexar County (San Antonio)—35 to 40 per cent. Travis County (Austin)—45-50 per cent. El Paso—Fewer than 30 per cent. Even in counties where local candidates are slugging it out, voters don't seem turned on. The governor's race

between Democratic incumbent Gov. Dolph Briscoe and Republican Jim Granberry has attracted limited attention. Observers report voters are burned out politically by Watergate scandals and President Nixon's hasty departure from the White House under fire. Many voters are said to distrust politicians and proposed political solutions to such major issues of concern as runaway inflation. So—apparently—they will sit home November 5, and leave it to a minority to decide who gets elected. INSURANCE HIKE DUE—State Insurance Board staff members recommended a whopping 16.8 per cent increase in auto insurance, but the Board indicated it may not go for the full amount. The insurance industry asked for 18.3 per cent average state increases on private auto coverage. Board Chairman Joe Chris-

tie noted that accident and claim data used by the staff cut off Dec. 3, 1973—before speed limits were reduced from 70 to 55 miles per hour and before peak of the winter gasoline shortage. He used consideration of more-recent data. No decision will be made on the rates, to be effective January 1, until late November, Christie indicated. Under the recommendations, full coverage comprehensive policies would increase 22.3 per cent on the statewide average, property damage liability 21.4 per cent, bodily injury liability eight-tenths of one per cent and no-fault medical payments 2.8 per cent. Uninsured motorist coverage cost would be reduced 20.1 per cent. ALLOWABLE UNCHANGED—The November state oil production allowable will remain at 100 per cent of potential for the 32nd straight month. Texas Railroad Commission agreed on that last week aft-

er noting that major buyers asked for 17,582 barrels a day (4,075,201 barrels) less than in October. Commission Chairman Jim Langdon said leased acreage for exploration is about as high as it has been in 15 years and drilling applications have increased 40 per cent. Actual increase in drilling is about 15 per cent. Langdon said the increase would be far greater if it were not for a shortage of pipe and drilling rigs. AG OPINIONS—Waiver of a city-owned utility's obligation to make payments to the parent city is not an unconstitutional gift but merely a rate reduction, Atty. Gen. John Hill held. In other recent opinions, Hill concluded: • Copies of tests and test results on mobile home tie-downs should be made public on request. • Public officials must confer with employees over grievances. • Child care facilities oper-

ated by local mental health units or other political subdivisions are exempt from licensing requirements. CROPS FORECAST—Texas upland cotton production this year is expected to decrease more than 1.5 million bales from 1973, to a level of 3.1 million bales, according to Agriculture Commissioner John C. White. However, White said the October outlook for most Texas grains—rice, corn, sorghum and soybeans—remains good. Rice production is expected to top 25 million hundred weight bags in the state—an increase of 23 per cent from 1973 totals. The Commissioner sees corn production at 69.7 million bushels and soybeans at 6.5 million bushels. He said 1974 will be a good year for pecan production, estimated at 40 million pounds. Weather—drough, followed by a cool, wet September—was blamed by White for the decline in the cotton yield.

HERITAGE DAY OBSERVED—October 14 was Family Land Heritage Day honoring Texas farmers and ranchers whose families have worked the same land for 100 years or more. Nearly 1,500 attended special ceremonies at the Department of Agriculture Food and Fiber Pavilion at the State Fair in Dallas. Five hundred and sixty two individuals and families have qualified for the inaugural program. Registration for the 1975 Family Land Heritage Program will open next spring. RECORDS SET—The state last year received the highest annual oil and gas royalty income from its lands—a 64 per cent increase—in history, according to Land Commissioner Bob Armstrong. The receipts increased from \$27.7 million last year to \$43.3 million for 1973-74 on school lands. Armstrong said the figure reflects higher prices for stripper oil, new oil prices, and settlement of

six fair market value lawsuits against major oil and gas producers. Oil and gas receipts on University lands increased by 75 per cent, from \$18.3 million to \$32 million, Armstrong said. SHORT SNORTS Fifteen more Texas cities and counties were designated National Bicentennial Communities. They are Ballinger, Beaumont, Breckenridge, Commerce, Farmers Branch, Flower Mound, Greenville, Jefferson, Killeen - Harker Heights, Marshall, Moody, Port Arthur, Weslaco, Wheeler County and Winkler County. Governor Briscoe asked Secretary of Agriculture Earl Butz to declare Bee, Presidio and El Paso Counties disaster areas due to recent winds, hail and rains. October 20 was set as deadline for plow-up and stalk destruction by cotton farmers in the Upper Gulf Coast area.

PIGGLY WIGGLY

STORE HOURS 8AM-10PM DAILY 9AM-9PM SUNDAYS

We Welcome Food Stamp Customers

Quarter Pork Loin, 9 to 11 Chops
Pork Chops \$1.19
Lb.

Piggly Wiggly Chub Pack Fresh
Ground Beef 79c
Lb.

Fresh Picnic Cut
Pork Roast 69c
Lb.

USDA Good
Round Steak \$1.09
Lb.

Ranch Style Sliced
Smoked Bacon 1.19
Lb.

Blue Morrow Breaded And Cooked
Beef Patties, Steak Fingers, Pork Choppettes \$1.09
Lb.

USDA Inspected, Grade A, 9 to 11-Lbs.
Armour Star Self Basting Turkeys 65c
Lb.

Fresh Lean Boston Butts
Pork Roast 89c
Lb.

Creamy
Avocados 59c
Ea.

Nutritious
Broccoli 59c
Lb.

Solid Heads
Cauliflower 59c
Lb.

Sweet
Potatoes 19c
Lb.

Romaine
Lettuce 49c
Lb.

HORMEL CURE "81"
Boneless Ham \$2.39
Lb.

Country Manor Fully Cooked
Canned Ham \$4.89
3-Lb.

Decker
Jumbo Franks \$1.19
Lb.

Hormel Kolbase
Polish Sausage \$1.39
12-oz Pkg.

Cut From Lean Boston Butts, Fresh
Pork Steak 88c
Lb.

Mr. Boston
Codfish Sticks 59c
Lb.

USDA Inspected, Grade A, 12-Lbs
Yearling Turkeys 59c
Lb.

Lean Boneless
Stewing Beef \$1.29
Lb.

Juicy Texas
Oranges 79c
Bag.

Delicious
Bulk Nuts 98c
Lb.

Delicious Smoked
Hot Links 98c
Lb.

USDA Inspected, Grade A, 12-Lbs. And Up
Honeysuckle Turkeys 79c
Lb.

Piggly Wiggly
All Meat Franks 69c
12-oz. Pkg.

Borden's Sliced
Lite Line Cheese \$1.19
12-oz. Pkg.

Laundry Detergent
Tide 99c
49-oz. Box

Red DELICIOUS
Apples \$1
4 Lb.

Cherry
Tomatoes 29c
2 Pkg.

Crisp
Radishes 29c
2 Pkg.

Tender
Green Onions 29c
2 Bu.

Tangy
Cranberries 49c
Lb.

6 Bottle 32 oz. Plus Deposit
Coca Cola \$1.59

Regular or With Iron
Enfamil Formula 49c
13-oz. Can

Piggly Wiggly Evaporated
Canned Milk 30c
13 1/2-oz. Can

Ranch Style
Blackeye Peas 39c
15-oz. Can

Enriched Flour
Gold Medal 69c
5-Lb. Bag

Beauty Aids
General Electric Soft White
60-75-100 Watt
Light Bulbs 99c
4-Pk.

Fresh Dairy
Piggly Wiggly
Sweetmilk or Buttermilk
Biscuits \$1
10-Ct. Cans

Frozen Foods
Mrs. Smith 8"
Pumpkin Pie 89c
26-oz.

Piggly Wiggly
Facial Tissue 3 \$1
200-Ct. Boxes

Antiseptic
Listerine 99c
14-oz. Btl.

Hair Spray
Alberto \$1.09
9-oz. Can

VO 5
Jergens Hand Lotion \$1.29
15-oz. Btl.

EL JACOLITO TORTILLAS
\$1.59

Delicious
Elgin Oleo \$1
5 8-oz. Patties

Piggly Wiggly
Whipped Topping 57c
10-oz. Ctn.

Piggly Wiggly
Frozen Waffles 25c
5-oz. Pkg.

Piggly Wiggly, On The Cob
Corn 83c
4 Ear Pkg.

All Varieties, Patio
Mexican Dinners 39c
12-oz. Pkg.

Piggly Wiggly
Grape Juice 69c
24-oz. Btl.

Bonne, Heavy Duty
Laundry Detergent 79c
49-oz. Box

ON SALE THIS WEEK

La Mesa Dinner Plate 49c With Each \$3.00 Purchase	Maria Grande Teaspoon 33c With Each \$3.00 Purchase
---	--