

# LAMB COUNTY LEADER

Official Newspaper of Lamb County, Texas

LITTLEFIELD, LAMB COUNTY, TEXAS. THURSDAY, JANUARY 21, 1926.

NO. 40

## LITTLEFIELD IS TO GET A BIG \$60,000 COTTON COMPRESS

### TO FINANCE CLUB FOR THE LITTLEFIELD BOYS

At meeting of the Chamber of Commerce, an organization of business men, a club for the boys was decided upon. Messrs. C. Harden and E. ... were appointed as a committee to make arrangements for the club.

Arrangements were made this morning and the committee instructed to purchase 20 pure bred pigs, which were made of pure bred Duroc ...

Littlefield State Bank and The National Bank are endorsing the club by agreeing to finance the same to ten boys each phase of pigs.

Price of hog prices is better than any corresponding time in five years, and in as much as there are in the hog business money since the very early 1923, the days ahead are promising for the west Texas than ever before.

Young boys have already been selected as members who are enthusiastic in the prospect. John Lacy, Howard Harrell, Mitchell, Vernive Lane, L. C. Strawn, Ferrell and Howard Reid.

### PARNELL HAS NIGHT COURSE IN AGGR.

School class in agriculture, instruction of Prof. E. R. ... was given at the school building last Thursday night with ten farmers at the first lesson was on "Hogs," in which all present in the discussion, much pleasure and benefit.

At the beginning of the session, Mr. R. L. Speight made a report to the farmers present, explaining the purpose of the class. He then outlined the course to be pursued and discussed the time of meeting. It was decided that such a course would be held every Thursday night.

The lesson discussed for more than an hour, at the close of the discharging his interest in the continuation of being present at the meeting of the class.

At the next meeting the subject "Poultry" will be discussed, and members of this vicinity are invited to be present. Prof. E. R. ... of A. & M. College, is to be present at the next meeting and his address alone will be given at the attendance.

NEW STATION  
University To Begin Programs January 20th.

It is expected that the program for opening of the University broadcasting station, KUT, January 20, will appeal to former students of the University in Texas and throughout the states. The musical numbers interspersed with short talks by W. M. W. Splawn, deans and others. The program will go on the air at 8 o'clock on the 20th, beginning with the University orchestra, Girls' Glee Club and Glee Society, all of the ...

Why does a big husky man take to stealing, while a little fellow can't work?"  
"Well, Sir; you see my big man can't work."

### MA'S NIGHTMARE

By A. B. CHAPIN

AFTER TRYING TO SATISFY DAD'S APPETITE FOR BUCKWHEAT CAKES ON A COLD JANUARY DAY —



### "DON'T QUIT"

When things seem so wrong, as they sometime will,  
When the road you are treading seems all up hill,  
When the days are long and the nights are high,  
And you want to smile, but you have to sigh,  
When care is pressing you down a bit,  
Rest, if you must, but don't you quit.  
Life is queer with its twists and turns,  
As everyone of us sometimes learns,  
And many a failure turn about  
When he might have won had he stuck it out;  
Don't give up, though the pace seems slow—  
You might succeed with another blow.  
Often the goal is nearer than  
It seems to a faint and faltering man.  
Often the struggler has given up  
When he might have captured the victor's cup,  
And he learned too late, when the night slipped down,  
How close he was to the golden crown.  
Success is failure turned inside out—  
The silver tint of the clouds of doubt,  
And you can never tell how close you are,  
It may be near when it seems afar;  
So stick to the fight when you're hardest hit—  
It's when things seem worst that you mustn't quit.

### BASKET BALL GAMES

Littlefield Wins In Tripple Header Games Here.

The Littlefield High School basketball teams were victorious in three games here Friday night in the gymnasium, in practice games for the tournament to be held here the 29-30 of this month.

The scores for the games were as follows: Levelland boys vs. Littlefield boys, 42-21; Olton boys vs. Littlefield boys, 13-14 and Littlefield girls vs. Amherst girls, 36-3.

### DEATH AT ANTON

Child of Mr. and Mrs. W. F. Flowers Died of Pneumonia.

Bettie Ruth Flowers, age 3 years, 4 months and 10 days, daughter of Mr. and Mrs. W. F. Flowers, of Anton, succumbed to pneumonia here Friday evening at 8:30 o'clock.

The remains were taken to Lubbock by Burleson-Mason Company where funeral services were conducted by Rev. W. A. Bowen, pastor of the First Baptist church, of that city. Interment was made in the Lubbock cemetery at 4:30 o'clock.

Buy it in Littlefield!

### FIRE DEPARTMENT MEET

Carl Arnold Elected to Succeed C. D. Smith as Chief.

The Littlefield Volunteer Fire Department met in regular session Wednesday night with the largest number in attendance since the organization of the department.

Considerable business was transacted, wherein the resignation of C. D. Smith, former chief was accepted and Carl Arnold was elected to fill the vacancy. Bob Smith was elected assistant chief and W. H. Mayhew as president to take the place formerly filled by Carl Arnold.

Each Thursday was voted as practice day from one to two o'clock.

The next regular meeting will be held Wednesday night, January 27th, at the new White Rose Cafe in a round table meeting with the city council in attendance. After the meeting will all partake of a banquet.

All members, who were not present at the last meeting, are requested to be present at the next meeting without fail.

Forgetting to mail your wife's letters may not, after all, be as serious as forgetting to burn one you don't want her to see.

### IS OUT FOR CO. TAX ASSESSOR

Mr. Burford, of Littlefield vicinity is this week announcing to the public his aspirations for nomination and election to the office of Tax Assessor, of Lamb County.

Mr. Burford has been a citizen of the South Plains country for the past 25 years, the later eight years of which have been spent in Lamb county. He is a property owner of the county and resides about a mile east of Littlefield.

Mr. Burford is well and favorably known throughout the southern portion of the county as an estimable gentleman, good citizen and loyal patriotic supporter of every good and worthy interest of his community, county and state. He has always been a Democrat and believes firmly in the principles of that party organization. During his eight years residence in this county he has had abundant opportunity to keep posted as to its development and values, and believes his information along this line will be of exceptional value to him in discharging the duties of the office to which he aspires. This is the first time he has ever appealed to the public, and, if elected, assures his constituents he will give of his very best ability toward the faithful discharge of his duties.

### GOOD CLEAN-UP

Civic League Get \$73.50 To Provide Waste Cans.

Mesdames E. A. Bills and A. C. Chesher, members of the civic improvement committee from the Civic League, were busy the latter part of last week collecting funds from the business men of Littlefield to go toward buying trash cans, which will be placed on each business block of the city.

Practically every business firm in Littlefield subscribed and a total of \$73.50 was realized from their efforts.

Mayor L. R. Crockett conducted a brief clean-up campaign Friday morning, whereby the appearance of the streets was greatly improved.

A number of business firm over the city are disposing of the rubbish on their premises, in an effort toward civic betterment for Littlefield.

### S. UNDERWOOD, OWNER OF 17 OTHER COMPRESSES IN TEX. S WILL BE READY TO OPERATE HERE BY THE FIRST SEPTEMBER

That Littlefield will have a cotton compress in operation here by the first of next September, or when the cotton crop is ready for marketing, is the text of a telegram received Tuesday by committee members of the local Chamber of Commerce, who have been negotiating with interested parties regarding such a business concern for the past 30 days.

A. S. Underwood, of Athens, Texas, is this week closing a deal with Judge R. C. Hopping, of this city, for three acres of land lying alongside the Santa Fe railroad tracks on the north, on which the compress will be located. He has also made arrangements to lease a large strip of the railroad right-of-way abutting the property, and it is understood that the railroad company will build a traffic switch to the compress, same to be about one-half mile long.

The compress is to be a Webb-30, the same size as is now located at Lamesa, and capable of pressing approximately 1,200 bales of cotton daily. Work on its construction will begin as soon as the details of arrangement are completed, and it is stated the new enterprise will be ready for operation by September 1st, which is about the time the cotton crop of this section begins to mature for market.

Underwood is one of the state's largest compress owners, now having seventeen of these big presses located in various part of Texas, four of which are in the western portion, namely, Shamrock, Plainview, Lamesa and Big Springs.

### T. WADE POTTER ANNOUNCES FOR COUNTY ATT'NY

In this issue of the Leader appears the announcement of T. Wade Potter for the office of County Attorney of Lamb County, subject to the favorable action of the voters of the Democratic party, of which Mr. Potter expects to receive a large majority.

Mr. Potter is one of Littlefield's very best citizens, a gentleman of very high ideals, a successful lawyer, and with a large host of friends who will gladly lend their vote and influence toward his support of the office of his aspiration.

Mr. Potter is a graduate of the Cumberland University, law department, at Lebanon, Tennessee, class of 1923. Prior to moving to Lamb county he was connected with the firm, Smith, Dedman, Marks, Potter and Smith, of Fort Worth. Coming to Littlefield in October, 1924, the second lawyer to locate in this country, he has enjoyed a lucrative and successful career in his profession.

Mr. Potter is a man of keen intellect, capable of the most minute discrimination in legal technicalities, aggressive and industrious in his work, a man of congenial disposition and a pleasant forceful speaker, possessing many of the desirable qualities commending him for a successful career in the office to which he aspires.

### LOCAL FARM LOAN ASSOCIATION HAS GOOD PAST RECORD

The Littlefield National Farm Loan Association met Tuesday evening of last week at the City Hall with 19 stockholders present, namely, N. T. Dalton, B. B. Moulton, C. W. Toews, F. J. Powers, L. D. Hudgins, H. L. Davenport, Phillip Stockinger, H. S. Hilliard, F. W. Lichte, C. R. Isbell, Fred Kraushaar, E. Mueller, L. A. Corbell, W. G. Terrel, T. M. Springer, J. L. Dow, F. M. Dodd, E. C. Logan and F. R. Hendrix.

A report from the secretary was read and approved, it showing that the association has made loans to 53 farmers and for the amount of \$154,770.

Stock owned by the stockholders, \$6,754.00, delinquent none, and dividends paid out to stockholders since the beginning of the association \$1,704.96.

After the stockholders meeting, the board of directors met and elected B. B. Moulton as president; E. C. Logan, vice-president and E. C. Cundiff, secretary-treasurer, and a local committee composed of B. B. Moulton, F. W. Lichte and J. L. Dow was appointed.

The directors declared a five percent dividend for the past six months on all capital stock.

The board of directors also went on record as willing to co-operate and assist the Littlefield Chamber of Commerce or any other body of men or person, in putting on each farm in this district of the Littlefield National Farm Loan, a brood sow, 200 hens, and five milk cows.

It was shown by the records that those who milked cows, kept chickens and a hog or more, had always been prompt in meeting their payments.

Experience isn't such a great teacher after all if you spend all your time on the same lesson.



# LAMB COUNTY LEADER

Published every Thursday afternoon at Littlefield, Texas.  
Subscription: \$1.50 per year; 75 cents for six months.  
Advertising rates given upon application.

Entered as second-class matter May 24, 1923, at the post office at Littlefield, Texas, under the Act of March 3, 1897.

JESS MITCHELL, Editor and Publisher  
MEMBER National Editorial Association, Texas Press Association

Subscribers who change their addresses, or fail to get their paper, should immediately notify this office, giving both new and old addresses. Communications of local interest are solicited. They should be briefly written, on one side of the paper, and must reach this office not later than Thursday noon of each week. The right of revision or rejection is reserved by the publisher. Advertising that does not show in its type or typography that it is paid for must be marked as an advertisement. All local advertisements remain in this paper for the space specified or until ordered out. All notices, matters not by whom nor for what purpose, if the object is to raise money by admission fee or otherwise, is an advertisement and when sent in for publication must be paid for at the regular advertising rate per line for each issue printed. Resolutions, cards of thanks, and resolutions of respect will also be charged for at the same rate. Any erroneous reflection upon the character, standing or reputation of any person or corporation which may appear in the columns of the Littlefield Leader will be gladly corrected upon its being brought to the attention of the publisher.

## As the Editor Sees It

### MONEY MAY BE SCARCE BUT YOUR POLL TAX IS WORTH THE PRICE. PAY IT!

#### A THOUGHT FOR TODAY

Confidence in an unfaithful man in times of trouble is like a broken tooth and a foot out of joint—Prov. 25:19.

Confidence can not be won in a day—German Proverb.

#### SOME 1926 ADVICE

Secretary Hoover, in giving out a statement to the newspapers of the country on the outlook for business in 1926 is quoted as saying that "on the whole, both our own country and the rest of the world face a more favorable outlook at this time of the year than for a long time past. All signs indicate that if we will temper our optimism with a sprinkling of caution we shall continue our high level of prosperity right on through the year 1926."

We feel sure that citizens of Littlefield and vicinity will get a good deal of satisfaction out of Secretary Hoover's statement.

es from fires are finally figured up it is going to run far into the millions.

No matter how efficient a town's fire equipment is reported to be not every house that catches fire can be saved. Some fires are more difficult to fight than others and regardless of how hard men may fight there are times when they are going to lose. Until the time arrives when everyone learns that fire insurance is the surest safeguard against loss—if that time ever does come—there is but one thing to do, and that is to be constantly on guard, constantly vigilant to see that your own home is not subject to a fire that could have been prevented.

If a man didn't have to propose to the girl, they might keep their engagement secret.

#### THE RICHEST BLESSING

Happiness comes not from place nor from possession—it is a state of mind and heart.

Col. Robert G. Ingersol, in one of his matchless orations, once said: "Happiness is the blossom of the fruit of good and noble actions."

"It is not a gift; it must be earned by man—must be deserved. The time to be happy is now. The place to be happy is here. The way to be happy is to make others so."

While we Americans excel the French in many ways, they far surpass us in the gentle art of finding happiness. Rich and poor alike have their little holidays and feasts. And, in happy forgetfulness of trials and privations which the mortal row may bring to them, they gather around the festive board and drink the friendly cup of wine. There are the smiles and cheerful words of kindred spirits, for the moment they forget the frugality of their existence. We too, should sometimes forget. As we hurry down the path of life, let us linger a moment among its flowers. Give a word of cheer to those who falter in the way—and, with it all, a little play. And thus, by living, we will become divinely happy.

A good way to keep your husband home when you go out is to leave the baby with him.

#### A 13-MONTH YEAR

In New York City there is a movement to create a 13-month year, certain business men arguing that 13 months of 28 days each would better subserve their purpose. That may be all right for New York, but speaking for Littlefield, we are satisfied to let the calander stand as it has for ages.

Isn't it hard enough to pay rent for 12 months in a year without adding still another one? Isn't every business calculation—and especially 30 day notes—based on a 12-month year? If we change the calendar it will take years to readjust matters to fit it. We would even have to recalculate our own ages (Lord pity some of the old maids) make over some of the old insurance plan, and, in fact, revolutionize all civilization. It would be too much of a job for the benefit we would get out of it so, speaking for our part of the world, we are satisfied to let well enough alone.

The fiction writers have quit writing novels. There's more money nowadays writing real estate book-lets.

#### KEEP THE RECORD

The Leader believes it is none too early to begin the collection of historical material regarding Littlefield and Lamb County. During the years past there has already been much of interesting history. This should be collected now while many of the older citizens are still alive and able to furnish it. In a few years some of them will be gone.

There is much of personal and historic interest in every county that is ultimately lost because no action toward assembling and perpetuity is taken. This should not be the case of this county.

We would like to suggest that some of the study clubs or parent-teachers take this matter up and carry it out.

#### PAVEMENT PICKUPS

Prof. Parnell says there is always room at the top. Sabe?

C. J. Duggan says the kind of deal most men are looking for is an ideal, but in most instances they get a misdeal.

It is said that Littlefield has a citizen who is so absent minded that he recently tried to light the kitchen fire with asparagus and cook the kindling.

Father: "Say, young man, didn't I see you kissing my daughter?"

High School Boy: "Maybe you did, sir, I was too busy to notice."

The story comes from California that man out there was cured of paralysis by being struck by lightning. Now let C. E. Cooper tell us one about Florida.

"Every old maid," declares (well, we don't dare call her name) thinks it is perfectly shameful the way married woman fail to manage their husbands."

"When his women folks persuade him to have his picture taken," says 'Shorty' Sanders, "the middle-aged man hopes it won't look any funnier than is absolutely necessary."

It is reported that a local painter fell off a scaffold yesterday and they took him to one of the Lubbock hospitals. The doctor x-rayed him.

friend hubby even makes an insinuation about their own scanty wearing appare.

#### Popitital Announcements

The Leader is authorized to announce Charles Clements, of Plainview, as a candidate for the office of District Judge, 64th Judicial District, subject to the action of the voters of the district at the Democratic primary.

The Leader is authorized to announce W. E. Huffines, of Floydada, as a candidate for the office of District Attorney, 64th Judicial District, subject to the action of the voters of the district at the Democratic primary.

The Leader is authorized to announce E. N. Burrus, of Olton, as a candidate for re-election to the office of County Judge, Lamb County, subject to the action and will of the voters as expressed in the Democratic primary, July 24th.

The Leader is authorized to announce the candidacy of J. L. (Len) Irvin for election to the office of Sheriff and Tax Collector, of Lamb county, subject to the will of the voters as expressed at the Democratic primary to be held July 24th.

The Leader is authorized to announce S. M. Davis, of Olton, as a candidate to the office of Tax Assessor, of Lamb County, subject to the will of the voters as expressed in the Democratic primary, July 24th.

The Leader is authorized to announce Walter O. Burford, of Littlefield, for the office of Tax Assessor of Lamb County, subject to the decision of the voters at the Democratic primary to be held July 24th.

The Leader is authorized to announce T. Wade Potter, of Littlefield, as a candidate for the office of County Attorney, of Lamb County, subject to the will of the voters of the Democratic party as expressed at that primary to be held July 24th, 1926.

#### KING HIRAM TOMB TO BE EXCAVATED SOON

Masonic scholars and devotees throughout the world look forward with anticipation to the proposed excavation of the site of the tomb of Hiram, King of Tyre. It is hoped that the "Mason's Mark" may be found in the corner stone of the tomb with other important links in the historic chain that connects the Craft with the builders of King Solomon's Temple, 1,000 years before the Christian era. Arrangements have been made to organize the expedition for the scientific exploration of the site. Previous attempts have been made to locate the tomb of Hiram, King of Tyre, but without success. The secrets of the tomb also make possible the location of the site of the king who figures in the traditions of the Masons. Hiram of Tyre is the only Grand Master of the Masons.

### Builder's Hardware

Finishings are of the utmost importance in the good building and we have the nicest line of Builder's Hardware to be had in town. Whether you are building a new home or repairing an old one, you will want us to show you our stock.

Farmers needing repairs for Planners and other farm chinery, are urged to place their orders with us, thus avoiding appointment of delay during the rush season.

We have a full line of Harness and Harness Findings for the new settler who comes here on the trail. Just lay your order and we will outfit it ready for work.

If in need of Furniture, we have some bargains you can't afford to overlook. We also have some Heating Stoves that are worth the money.

## J. W. Robertson

INTERNATIONAL SYSTEM

### LONE STAR PORTLAND CEMENT

### ENERGY-PLUS

Milk is a recognized necessity for children and a most wholesome diet for adults. Milk drinkers have greater force, more vitality and more energy, but be sure the milk is PURE!

You are assured of pure milk when it comes from our dairy—rich, creamy, body-building milk from healthy cows, bottled with the utmost care and under the most sanitary conditions.

DELIVERED FRESH DAILY  
HOME DAIRY  
B. B. MOULTON, Prop.  
One Mile East of Littlefield

### Sign Your Name— Let the Chemist Weigh

The above illustration shows one of the most accurate balances in use today.

Hand the chemist a small piece of paper. Let him weigh it. Then write your name and let him weigh it again. He can tell you the weight of your signature within one ten-thousandth of a gram. (Twenty-eight and three-tenths grams equal an ounce.)

It is by such precise tests that the chemists of the Texas Portland Cement Company determine the exact proportions of the raw materials used in the manufacture of LONE STAR Cement.

This exacting supervision is maintained at every step in the process—in the wet-blending—in checking and rechecking—in the burning and final grinding.

Guess-work is eliminated. In fact, the chemist and superintendent know the exact condition of the material step by step during the entire nine-hour process. They invariably get within one-tenth of one per cent of the high quality that they aim.

Result—a super-grade cement that has established a record for uniformity.

Yet LONE STAR Cement costs no more.

It has our unqualified endorsement.

LITTLEFIELD DEALERS  
Higginbotham-Bartlett Co., Whaley Lumber Co.  
Cicero Smith Lumber Co.

LONE STAR Cement Lumber  
Paint Lime Brick Roofing

Ask us for cost figures and other facts on repairs, improvements and of any kind. Valuable information supplied without obligation.

### LITTLEFIELD HOTEL

AMERICAN PLAN  
Courtesy and Service

WHICKER and THOMAS Proprietors

#### LITTLE LEADERS

Any Littlefield man who has ever been hungry can tell you that one hotdog is worth a whole truck load of advice.

The Littlefield man who can't afford a car at least can buy a few of those bathing girl pictures and stick up in his window.

More than one Littlefield man can tell you that he would have missed a good deal of misery if he hadn't been afraid he'd miss a little fun.

Littlefield people have learned to look for a funeral when a motorist is so stingy he won't divide his denatured alcohol with his radiator.

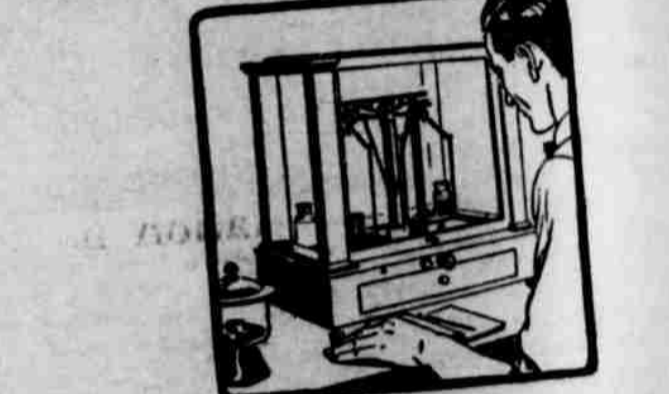
It's sometimes hard for a Littlefield resident to tell whether it is opportunity knocking at the door or just another house-to-house canvasser.

When you hear of a Littlefield man getting stung by a fake stock salesman you can bet it is one of those fellows who hasn't time to read newspapers.

There would be some heartaches prevented in this country if some of the Littlefield girls cared as much about a young man's morals as she does his manners.

It is also a mighty good thing for the country that it isn't a penitentiary offense for any of our citizens to tell a lie about how many they can get out of a gallon.

If some of the Littlefield husbands went out in the cold dressed as their wives dress, said wives would think they were trying to commit suicide—yet they raise a terrible howl if





**EARLY MATURING COTTON PLAINS COUNTY, IS CLAIM REASONS MUST BE CONSIDERED**

In the past fourteen years of cotton best carried on by the Experiment Station has and year out the smaller strains with a one inch and better than the staple cotton, according to D. L. Jones, superintendent of the Lubbock Experiment Station. The early maturing varieties have several advantages over other varieties in this section. In the first place official weather reports kept by the station reveal the fact the average length of growing season for cotton is 206 days. Experiments show that

the first picking is about 135 days after the planting date on some of the early varieties. This makes it necessary that the cotton be planted as early as possible in order to avoid the possibility of a killing frost or a freeze damaging the crop. Earlier maturing cottons planted this year have proven their worth, according to Jones. He states that the cotton crop on the experiment station will average about one-third to one-half bale per acre on the entire 48 acres planted to cotton which includes all varieties, although the bulk is planted to early maturing,

short staple cotton. According to the records of the station, the average date for the last killing frost in the spring is April 10. On one year the last freeze came March 11, while another one came as late as May 6. The earliest killing frosts in the fall of the year in the past fourteen years coming October 19, with the latest coming November 13, with the average October 30. The freeze which has caused so much damage this year came October 28, only two days earlier than the average killing frost. The drouth held the growth of the cotton back last summer and when the August rains did get the crop growing the heavy rains of September retarded it with an over supply of moisture and when the freeze came, the crop was not matured. This condition depends entirely upon the weather according to Jones and is likely to happen any year. Farmers have no control over the moisture. The only thing they can do is plant varieties of cotton that will mature early and try to get the plant started to growing as early as possible. May is about the best time to plant cotton, according to the results of the experiment station. Another advantage of the early maturing varieties is that the farmer usually can get his picking crew together and be picking before the farmer growing the longer maturing varieties needs any pickers and in this way the former man has his crew at work for the season before the shortage is felt and before it becomes difficult to secure labor. The early cotton is generally a little better grade also because it doesn't have as many leaves as the late cotton. "Farmers should not buy any cotton seed before it has been "germinated," Mr. Jones stated. "If a farmer has some seed he should not plant it before making the germination test. Next year with the season we have in the ground, we ought to get our cotton up early and the moisture ought to subtain it fairly well with only a few showers throughout the summer but if only fifty per cent of the seed germinate, leaving only about a half stand, the farmer will not be able to leave the crop." It will be hard to secure good seed this year, Jones believes, because of the drouth in the eastern and southern portions of Texas, and because of the



Here is Congressman Nicholas Longworth, new speaker of the House of Representatives, showing his little daughter Paulina the Capitol in Washington, where her grandfather Theodore Roosevelt made history.

**Economical Transportation**



**Improved!**

**A Revelation in Low Priced Transportation**

A type of performance never before

new flexibility  
 swiftness of acceleration—new beauty—new comfort—these have been added to its already world-famous power and economy to make the Improved Chevrolet a revelation in low-priced transportation.

Just take one ride in this remarkable car—and you will be amazed to find that qualities heretofore the chief advantages of owning costlier cars are now obtainable in a car of very low price.

The introduction of the Improved Chevrolet marks an outstanding achievement in the automobile industry.

**New Low Prices!**

Touring . . . \$510	Sedan . . . \$735
Roadster . . . 510	Landau . . . 765
Coupe . . . 645	1/2 Ton Truck 395
Coach . . . 645	1 Ton Truck 550

All Prices I. O. O. Plus, Michigan

**McGillette Chevrolet Co.**  
**QUALITY AT LOW COST**

early freeze here. Farmers should use the greatest of care in buying seed for planting on this account, Jones stated.

**NATIONAL RADIO FADING TESTS TO START FEB. 9th**

Dates for the National tests of the radio reception to determine the causes of static and fading were announced today after 4,000 of the 4,500 designated observation stations had expressed a willingness to take part in the survey, which is being conducted by the Stewart-Warner Speedometer Corporation in co-operation with the Northwestern University. The first test will be held on the night of February 9th, from 8 to 11 o'clock central standard time. The second and third will be on the two succeeding nights at the same hours. Subsequent trials will be held throughout the winter, should the data obtained indicate that real progress in a search for the causes of these two major radio annoyances is possible. It was originally planned to hold these tests in January, but because of

fading and static tests at a later date. Most of the observations will be made by broadcast listeners using standard receiving sets and depending for the accuracy of their reports upon their own ears. However, to insure the scientific accuracy of the results, twenty control stations equipped with electrical measuring devices and automatic recorders will be placed in the principal broadcasting centers of the country.

**The First One**  
 Teacher:—"Now, children, how many voyages did Commodore Deane make around the world?"  
 "Three."  
 Teacher:—"That's right, now can you tell me on which one he was drowned?"  
 The French nation knew we Americans appreciate a good joke all right. Didn't they send us the Statue of Liberty?  
**Your Fired**  
 Mistress:—"Have you polished my husband's watch?"  
 New Maid:—"No mam, I looked high and low, but I can't find any brass polish."  
 \$1.50 a year.

**WAIT!**

**Don't Buy Dry Goods Now! Wait for the Big Sale at**

**C. E. ELLIS**

**It Begins Friday January 29th**

**Watch For Our Circulars and Paper Ad.**



# Society

## MRS. STONE ENTERTAINS

Mrs. C. O. Stone delightfully entertained the Sunshine 12 Club, Thursday afternoon at her home.

Three tables were arranged for "42" and a very pleasant hour was spent in the game, at the close of which refreshments were served in two courses to the following guests: Mesdames B. L. Cogdill, McBurnett, W. B. Phipps and club members, Mesdames Lindley, Van Clark, E. D. Parnell, Cook, Star Haile, Frank Mauldin, G. B. Mauldin, C. C. Clements, Madry and the hostess.

## MISS LIGHTFOOT HOSTESS

The Tau-Nu-Tau met Friday evening with Miss Helene Lightfoot in a

business session. With Miss Lil Bowman in charge the purpose of the sorority was explained.

Small badges of orcid ribbon with hand painted letters T. N. T. were given three new members, who were initiated at the meeting.

## MRS. SADLER WITH BRIDGE

The Senior bridge club was delightfully entertained Saturday afternoon, when Mrs. F. G. Sadler was hostess at her apartment in the Littlefield State Bank building.

At the close of a number of rounds of bridge the hostess with her guests repaired to the La Nell Confectionery where refreshments consisting of a salad course, angel food cake and coffee, carrying out an orange and white color scheme and dainty spring time place cards were placed at four tables for the following: Mesdames E. S. Rowe, Bessie Baze, C. E. Cooper, A. C. Chesher, W. G. Street, B. L. Cogdill, Ray B. Jones, R. S. Thomas

Lena Howard, J. M. Stokes, P. W. Walker, W. D. Arnett, Pat Boone, J. C. Whicker, E. L. Maxey and the hostess.

## Invents Rubber



Harry H. Culmer, chemical engineer of Chicago, claims he has invented synthetic rubber, which can be derived from various products including garbage. If true it stands to stretch the rubber industry all out of joint.

## WHAT'S DOING IN WEST TEXAS

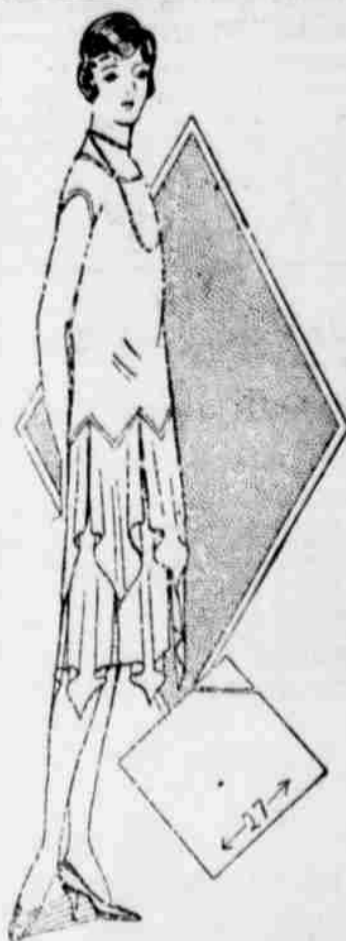
Cisco—Texas must do everything possible to validate the Highway bonds that have been sold in the past is the opinion of R. Q. Lee, president of the West Texas Chamber of Commerce. He declares that the honor and the credit of the state is at stake and must be protected.

Midland—An intensive campaign is being put on in this district in preparation for the district convention of the West Texas Chamber of Commerce which meets here Jan. 26th. A new feature will be a contest among the high school boys with a substantial cash prize offered to the boy who makes the best five minute address on the subject "My Town."

Stanton—The Martin County

## Practical Instructions In HOME SEWING

By Ruth Wyeth Spears



Flowerlike Chiffon Skirt for Evening Wear.

The bodice of the dress is fitted very slightly to the figure and cut in six pointed scallops at the bottom. These scallops are finished with bias bindings.

The dress is made with a plain foundation of the chiffon. There are two tiers of the chiffon draperies, six on each row. The easiest way to shape these drapery pieces is to cut squares of twenty-seven inches dimensions. Then cut off the upper corner of each square as shown in the diagram at the right. The drapery pieces are then sewn in place at the top only, the rest being allowed to fall as it will. The edges may be picoted or rolled and whipped.

One and one-half yards of the crepe de Chine and five and a half yards of fifty-four inch chiffon will be needed to make this dress.

We have also noticed that a willing weeper can always get what she wants and yet is never satisfied with what she gets.

Some women's idea of economy is

to buy a lot of things to pay cash for.

Why is it when a man and finds a lead quarter he acts as the his wife

# PROFIT BY EXAMPLE

Those who can spend are those who save. Holidays are merrier and happier—if their vacations are more enjoyable—it is because they made them so by saving that they might have which suited their fancy.

PROFIT BY THE EXAMPLE OF THOSE WHO GET ALONG WELL, SAVE NOW THAT YOU MAY ENJOY THE FRUITS OF YOUR SAVING LATER ON

—WHY — PUT — IT — OFF!—

Don't postpone prosperity. Don't aside happiness that money can buy. Don't wait for it to rain before patching the roof!

Come in and let us surprise you by telling you how little it takes to start saving, and how it profits those who have already started.

## First National Bank

MEMBER TEXAS QUALIFIED DRUGGISTS' LEAGUE

## A COMPLETE LINE OF DRUGS & DRUG SUNDRIES

Legally Registered Pharmacist

Candies, Cigars, Toilet Goods  
Prescriptions — Properly Prepared  
We handle Celebrated Lincoln Climatic Paint

## SADLER DRUG STORE

"Quality and Service"



## This Is The Place!

Where you can get real values in groceries. Quality and Service is our hobby—and we live up to it.

Porter Grocery Co.

## PORTER Grocery Co.

In New Cole Bldg., on Corner, South Ford Garage

—A NICE CLEAN—

## Stock of Groceries

PURE FRESH AND WHOLESOME

Sold at "Live and Let Live Prices"  
FRUITS, VEGETABLES AND CANDIES

Try A Sack of Our  
TEXAS BEAUTY FLOUR  
Every Sack Guaranteed  
We Buy Produce

## Beisel's Cash Grocery

"Sell It For Less"



## Responsibility

Is YOURS

Efficiency is of the utmost importance in compounding drugs. You never take medicine for fun—you take it to get well—in the quickest possible time. And unless your prescription is compounded of only the finest, most pure drugs, you are defeating your own purpose when you take it.

The Model Drug store realizes the responsibility attached to prescription compounding, and every prescription—or any other drug—that goes out of this store is Grade A1. We have in our service a skilled pharmacist of several years successful experience who will promptly and carefully supply your needs. We are willing and anxious to render you personal service day or night.

## MODEL DRUG STORE

CLAUDE FERREL, Prop. Cooper Bldg., Littlefield, Texas

organization here. A temporary organization has been effected with C. Wedgworth as secretary. A meeting is to be held here Thursday night January 21.

Eastland—Fertilization pays handsome dividends when properly carried out. This fact was proved by experiments conducted in this county and which were closely checked by H. R. Bush, County Agent. Several carloads of commercial fertilizer were used during the past year and the results showed that fertilization doubled the yield in almost every case.

Childress—Cotton burrs are of great value as fertilizer and have value as feed. This fact has been recently discovered by Childress farmers. Formerly the gins had to hire the burrs cleaned from cotton hauled away and were put to considerable expense. Now however, farmers eagerly pounce on all burrs expelled from the gin and declare they are of great value. One authority declares that gins will soon be grinding these burrs to sell as feed. He points out that a comparatively few years ago cotton seed were considered a nuisance at gins and farmers were stopped by law from dumping cotton seed in creeks.

Claude—A movement has been launched to perpetuate as a park the famed Goodnight Buffalo and Cattalo Park at Goodnight. This park and the herd of Col. Goodnight present the last opportunity for Texas to perpetuate the buffalo which formerly ranged the Plains of Texas, in countless herds and Mrs. Phebe K. Warner is leading the move to take the historical old place as a park.

Shamrock—A commercial hatchery is to be installed here at once. The poultry industry is expanding rapidly in Wheeler County and the hatchery has become a necessity. Col. R. Q. Lee, president of the West Texas Chamber of Commerce started the movement for a hatchery here when he delivered an address here last August.

Merkel—This city plans to go after the next district convention of the West Texas Chamber of Commerce and will send a big delegation to Midland on January 26, to the district convention there. It is planned to take the Simmons Cow-Boy Band of Simmons University to help land the next meet.

Lockney—A meeting of all towns along the route of the proposed extension of the Denver Road will be held here in the near future. The meeting is for the purpose of urging haste on the application of the Denver to make the extension.

Knitchebellian and smile.

we need the money. Clyde Shofer, city clerk.

# The TEXAS UTILITIES CO

## Electrical Store, de Luxe

All Kinds of Electrical Equipment And Appliances



With the new high line service now running into Littlefield there will be plenty of electrical power for everyone and for every purpose. Included in our new stock of electrical goods will be a nice line of Electric Stoves, Washing Machines, Vacuum Cleaners, and various kinds of smaller articles, such as coffee percolators, table stoves, toasters, hair curlers, etc., together with a nice line of fixtures of all kinds and a wide variety of supplies for everything electrical.

We will sell you an electric stove or washing machine on the instalment plan, and, without extra steps, you can make your monthly payments when paying your light or power bills, as our business office will also be located in this new store.

## TEXAS UTILITIES COMPANY

R. E. McCASKILL, Manager, Cooper Bldg., Littlefield, Texas

"COURTESY AND SERVICE"



## ER AUTOMOBILES

themselves, having all super-re-  
experiences and accessibility. Pick-up  
endurance, comfort and durability  
let us demonstrate to you.

## STAR CARS

of the STAR is undimmed by any  
class on the market today. This car  
biggest buy for the money anyone  
make. Let us show them to you!

**BLAIR MOTOR COMPANY**

THE LAMB COUNTY LEADER, NOW

## WILL DEMAND VERY MUCH

Service of the Panhandle Telephone

that has just closed was a constructive  
community and the state made great  
in doing it called upon the Telephone  
much expansion and improvement.

Year promises to see still greater  
is essential public service. This com-  
rowing and new uses and extended re-  
upon the Telephone service to aid in  
development show increasing need for  
and understanding between the peo-  
and the Telephone service.

rests of this company and of this com-  
e the same—neither can prosper and  
e fullest extent without the aid of the

ake 1926 a year of understanding and  
nt by working together for the good of  
y.

## handle Telephone System

Amherst, Sudan, Anton, Pep, Morton, Lehman  
Distance Connections All Over the United States

## PERSONAL ITEMS

H. J. Woodul, of Lamesa, was here  
on business Wednesday.

R. P. Turner, of Winnboro, was  
here Wednesday prospecting.

L. C. Campbell, who has been quite  
ill, was taken to a Lubbock sanitar-  
ium the first of the week.

Mrs. S. C. Lloyd and daughter,  
Miss Stella, moved into their new  
home in the south part of town this  
week. Mrs. and Mr. E. A. Bowman  
are occupying their former home.

C. E. Farmer, who lives 10 miles  
southwest of Littlefield, is adding  
some new improvements to his place  
this week.

H. E. Boles, from Young county,  
has recently moved to his farm on the  
Spande lands, and is erecting some  
new improvements.

J. L. Thompson, who has been visit-  
ing his brother, Ed. F. Thompson,  
left Monday for his home at Lake  
Victor.

Mr. and Mrs. G. B. Richeson left  
Tuesday for Dallas, where they will  
make their future home.

J. W. Simpson was reported quite  
ill the first of the week.

## Typical American Boy?



The Boys' Club of Washington,  
D. C., chooses in the person of  
Joseph Nevins, thirteen years old,  
"the most typical American boy."

**ARTHUR BRISBANE,**  
famous editorial writer, says—  
Joseph is a fine young boy, but  
there ISN'T ANY TYPICAL  
AMERICAN BOY. There are tall,  
thin boys, and short, fat boys  
that will be leaders of men later.  
There are blue-eyed, brown-eyed,  
pink-skinned and dark-skinned  
boys; thin, fat, tall, short, concen-  
trated and dreaming, and any one  
of them may turn out to be THE  
great man of the United States  
thirty years hence.

It is some little thing, probably  
smaller than the head of a pin, lo-  
cated somewhere in the brain, that  
makes greatness, and it always  
goes with the power to stick at  
your job."

## MEMORIAL COINS TO BE AUCTIONED SAT. AFTERNOON

That Littlefield and Lamb County  
will far exceed its quota in the sell-  
ing of Stone Mountain Confederate  
Memorial contest 50 cent pieces, is  
the statement of Mrs. A. C. Cheser,  
campaign manager for this county.  
Littlefield was only apportioned 88  
of these silver pieces to sell, but al-

orders have been  
an \$300 of them,

indications are that  
will be sold before the campaign closes.  
An auction coin bearing the No.  
"237" and the word "Texas" will be  
sold at auction Saturday afternoon,  
at four o'clock. Judge E. A. Bills  
will, at that time, outline the purpose  
of the auction and the selling will be  
done by Col. C. Harden. The auc-  
tion will be held on the street be-  
tween the Littlefield State and the  
First National bank buildings.

The coins are being sold by Mrs.  
Clayborne Harvey, sponsored by the  
Retail Merchants' Association, and  
Miss Nell Ruth Earnest, sponsored by  
the Masonic lodge, the Eastern Star  
and the Study Club. These two wo-  
men will be contestants for high hon-  
ors in the campaign.

The first prize to be given the suc-  
cessful contestant will be a gold lov-  
lier coin and the second prize will be  
a silver lovlier coin. Two winners  
from each count are tendered and  
invitation to a reception to be given  
at Austin, January 23rd, by Governor  
Miriam A. Ferguson, state director  
of the campaign.

Mrs. Harvey and Miss Earnest, ac-  
companied by several of the local  
school girls, will go to Amherst and  
Sudan Friday afternoon, where they  
will sell coins. These coins are also  
on sale at both of the local banks.

## WANTED TO BE SAFE

Doctor:—"Where is the medicine.  
Put two drops in each eye twice a  
day."

Old Henry:—"Befoah or aftah eat-  
in'?"

## Don't Get Personal.

Lawyer:—"What caused all this  
fighting?"

Accused:—"He was shouting, 'You  
dumb idiot, 'You stupid ass!'"

Judge:—"Don't talk to me—ad-  
dress the jury."

## I CAN'T AFFORD IT

Sometimes a man will let slip such  
as the above statement without think-  
ing. Sometimes leaving the impres-  
sion that dues paid to the Chamber  
of Commerce is a "donation" instead  
of an investment.

There have been men who have  
thought that they could not afford  
electric lights in their stores. They  
used kerosene lamps until they either  
burned out or the sheriff came after  
them.

There have been men who thought  
they couldn't afford to advertise.  
Their creditors closed down on them  
in time.

There are a few men in Lamesa

## GOOD FOOD

At all hours of the day  
together with good  
service.

## WHITE ROSE CAFE

Ray B. Jones, Prop.

## COTTON

Selected Mebane Cot-  
ton Seed for sale at—

## W. H. HEINEN

Littlefield, Texas



## The Kid's Clever

Not only in the way he  
can handle the "uke"—  
but in figuring it out  
that the way to a girl's  
heart is through her  
"sweet tooth."

So he "fetches" her ev-  
ery week to our Soda  
and Candy Emporium  
for a Sociable half-hour.  
You know—a hot Choc-  
olate, Soda or Sundae  
and a box of our Choco-  
late Creams.

The Thoughtful young  
gains—and married  
ones too—should heed  
this hunch.

## La Nell

Nell Ruth Earnest, Prop.

doing good business who think they  
can not afford to be a member of  
Chamber of Commerce. If all men  
were like them there wouldn't be any  
Chamber of Commerce. Our rival  
communities would rejoice in that  
condition.

Lamesa, as has been true of other  
towns, would soon be ready for a  
receiver if the City Business men  
didn't have spirit enough to give a  
little of their time and money to or-  
ganize in Community development.

Many of our public spirited busi-  
ness men count a membership in the  
Chamber of Commerce a mark of dis-  
tinction and as necessary to their  
business as light, telephone, heat and  
advertising and with these are some  
of Lamesa's most successful business  
men.

The most potent constructive in-  
fluence in a community is a body of  
business and professional men band-  
ed together for the purpose of improv-  
ing its citizenship.

No citizen takes a real interest in  
his town until he does something for  
his town.

It depends upon the people wheth-  
er the town stands still or goes a-  
head. Community progress is synon-  
ymous with community effort.

There is bound to be growth where  
there is action. People are attracted  
to a community that is alive.

Abraham Lincoln said, "I believe  
that a man should be proud of the  
city in which he lives, and that he  
should so live and act that his city  
will be proud that he lives in it."  
Dawson County Journal.

## To Automobile Owners

Having leased the shop of the Littlefield Service  
Station, we are in a position to take care of all  
your automobile work.

Experienced in General Garage Business.

## Littlefield Service Station Garage

CARL SMITH

LOYD GENTRY



## WOMEN'S AND MISSES FROCKS

A wonderful collection of spring dresses and  
coats priced from \$12.75 to \$45.00.

Hats priced from \$4.95 to \$8.50.

A new shipment of ladies' wearing apparel  
every week.

## THE STYLE SHOP

## A Sale of OVERCOATS!



There are many more weeks  
ahead to enjoy the warmth of  
an Overcoat. You will save by  
investing in one of our fine  
Coats now—

- H. F. and M. Overcoats, regular \$40.00 value, ... \$27.50
- Curlee Overcoats, regular \$35.00 value, ... \$22.50
- Curlee Overcoats, regular \$32.50 value, ... \$20.00
- E. and W. Overcoats, regular \$25.00 value, ... \$17.50
- E. and W. Overcoats, regular \$22.50 value, ... \$15.00
- E. and W. Overcoats, regular \$20.00 value, ... \$14.00
- E. and W. Overcoats, regular \$15.00 value, ... \$12.50
- E. and W. Overcoats, regular, \$12.50 value, ... \$9.50

—A SUIT SALE TOO—  
Great Saving in Men's and  
Boys' Suits, Come see!



## Cuenod's

Phone 166 Hopping Bldg.

Dry Goods  
Company  
Littlefield, Texas

## Some Men are more Thankful!

ry man is thankful for the roof over his  
ut men who have bought the roofing for  
nes from our concern are especially thank-  
ey have reason to be, for they do not face  
nse of early replacement.

roofings are guaranteed. They are easy  
—and once there—will last almost a life-  
Ve also have the best grade of shingles  
et affords.

roofings are only one item in our line of  
materials. No matter what you plan on  
we have all the materials in first grade  
and priced as low as they can be had

submit plan books to those undecided  
on the kind of construction  
desired.

## A. Butler Lumber Co.

In a Hurry



**Professional Cards :-:**

**E. S. ROWE**  
Attorney

General Practice in All Courts  
Office in Littlefield State Bank Building.  
Littlefield, Texas

**E. A. BILLS**

Attorney and Counselor at Law  
Littlefield, Texas  
Office upstairs in Littlefield State Bank Building  
General Practice in all Courts. Special Attention given to Land Titles.

**J. D. SIMPSON**  
PHYSICIAN

Simpson Sanitarium  
Phone 131  
Littlefield . . . . . Texas

**C. C. CLEMENTS**  
Dentist

Office in Littlefield State Bank Building.

**Arthur Mueller**

Representing  
**SOUTHWESTERN LIFE INSURANCE COMPANY OF DALLAS**  
Office: Room 10, Duggan Bldg.  
Littlefield, Texas

**DR. THOMAS D. COX**

Registered Optometrist  
Exclusive Optical Office  
Balcony Shepherd Smith Drug Co. 918 Main St.  
Lubbock, Texas  
Office With Dr. C. C. Clements  
Littlefield State Bank Bldg.

**ABSTRACTS**  
Insurance

6 Per Cent Loans  
**THRUSTON LOAN COMPANY**  
Olton, Texas

**FARM RADIO FEATURES ARE PLANNED BY THE DEPARTMENT OF AGRICULTURE**

The vast fund of popular and scientific agricultural information that originates on the farms and in the laboratories of the United States Department of Agriculture will soon be tapped in a new place. This is the announcement made by Sam Pickard, chief of the newly created radio service in the department. Steps will be taken immediately, he said, to furnish a variety of agricultural program material to commercial broadcasting stations serving farmer audiences.

Much of the material furnished by the radio service will be prepared for presentation in a radically different manner than the present almost universal practice of reading manuscripts. Broadcasting stations co-operating will be asked to provide personalities who have unmistakable qualifications to voice the information and material which in most cases will be presented in popular style and in the form of dialogue or questions and answers.

"Uncle Bert" the garden expert, one of Mr. Pickard's phantom characters, will entertain and instruct the boys and girls of the Radio Order of Junior Gardeners with nature-study information. Some of the juniors themselves will be heard over the radio as they ask questions of Uncle Bert.

"Fifty Farm Flashes" will soon be offered as a regular feature on the air. The "flashes" will consist of interesting current information hit out by farmers through the several thousand letters received each week by the department.

Other special feature programs are under consideration, among which are the "Housekeeper's Half-hour," and the "National Farm School." In the latter the farm will be considered as the student's laboratory. Timely letter courses which dovetail with the daily farm work will be developed, and laboratory assignments will be made which necessitates putting into practice the subject matter taught. These will be supplemented with a file of bulletins dealing with the subject matter broadcast.

**COL. OUSLEY ON SPEAKING TRIP TO LAMB COUNTY**

Col. Clarence Ousley paid his respects to Lamb County last week, making addresses at both Littlefield and Olton, under direction of the local organization of the Texas Farm Bureau Association, the arrangements for the speaking being sponsored by J. W. Hammock, of Sudan.

Col. Ousley gave the farmers of this county one of the most inspiring talks it has been their pleasure to hear for some time. Among some of the things he said: "You farmers would not buy a year's supply of clothing or groceries unless you knew you were getting a bargain. Yet the old time system of farming is not giving the farmer a fair profit." He explained that the average bank director did not know the value of call money in New York or the value of foreign money, yet he hired men to work for him who did not know about such matters. The average farmer and very few buyers know the value of the cotton they raise or sell. However, through co-operative marketing in large quantities, as in the case of the Cotton Association, they hire men who not only know the value of any kind of cotton instantly, but have some idea where that particular cotton can be sold to the best advantage, thereby making a saving to every one concerned.

He stated in plain words it was to the interest of every individual cotton association member to resign at the earliest possible day, as they had cotton still unsold in Houston and other cotton centers, waiting for a better demand. When the report goes out that the old members have resigned to an extent to be equal to or above the old five year contract, a material rise in prices will take place, as they will then know that the association is in business for five more years, stronger than ever.

Col. Ousley explained the production credit for the Texas members in such a way that the matter was clear to every one present. As the cotton association has kept one per

up earlier in the spring  
6. The plowed land may work easier in the spring.  
7. The land may be ready to plant earlier.

**No Wife—No News**

"John Brown's house was entered by thieves last night! Hear about it?"  
"No!"  
"That's strange. It happened on your street!"

"I know, but I didn't hear about it."  
"Smatter, your wife away?"

**ITCH!**  
Money back without question if HUNT'S GUARANTEED SKIN DISEASE REMEDY (Hunt's Salve and Soap), fail in the treatment of Itch, Eczema, Ringworm, Tetter or other itching skin diseases. Try this treatment at our risk.  
**SADLER DRUG STORE**

**Farm and Ranch Loans 6 per cent Improved City Loans 7 per cent ON EASY TERMS**

DUGGAN ANNEX  
LITTLEFIELD TOWNSITE LOTS  
LOTS IN SOUTHMOOR ADDITION  
ACREAGE TRACTS IN BROAD ACRES  
CONVEYANCING & NOTARY WORK  
C. J. DUGGAN, LITTLEFIELD, TEXAS

**MAGNOLIA GASOLINE**

**Magnolene Oils and Greases 'The Dependable Lubricant'**

Real Quality Products  
Demand them from your Dealer

**Magnolia Petroleum Company**  
G. W. Hargrove, Agent. Littlefield, Texas

Home Killed Meats Range Raised

**THE STAR CASH MARKET**

FRED HOOVER, Proprietor

Where Quality Tells and Price Sells

Littlefield, Texas

**BERL LUMBER**

Everything you need, all quality material. Building supplies for Home, Business or other location and our expert advice and assistance cheerfully given on your estimates.

**NIGGER HEAD COAL.**

Winter is now here in dead earnest. Better fill your coal bins before our supply is exhausted.

**CICERO SMITH LUMBER CO.**

Littlefield, Texas

**MONEY TO LOAN—**

ON BUSINESS AND RESIDENCE PROPERTY.  
From \$500.00 up, and you pay the loan off at less than rent, on the following plan:  
**PLAN A**  
\$17.00 per month per thousand the first 18 months  
\$16.50 per month per thousand the next 12 months and reduces down to  
\$10.90 per month, this pays both principal and interest in ten years.  
Total interest and expenses—just 40 cents more than the interest cost (alone) of a term loan for a similar period at 6 per cent  
We write all Lines of Insurance.

**HEMPHILL & BARNES**

Littlefield State Bank Building Littlefield, Texas

**Little—But Oh My!**

That is the remark frequently heard by new customers coming in to our store. "A regular mutton en parvo," remarked a recent visitor. "I don't see how you get so much goods in such a small place."

Yet we have a good assortment of all the goods to be found in a modern and up-to-date drug store standard patent and proprietary preparations, toilet articles, perfumes, candies, cigars and tobaccos. Soda fountain in connection.

You will appreciate the goods you buy at our store, because they are all fresh and pure, sold at reasonable prices by a firm that appreciates your business and endeavors to show their appreciation in the service given and the quality offered.

**Little Drug Store**

Save the Surface and You Save All  
"Women are much more beautiful than men."  
"Certainly, that's natural."  
"No, it's artificial!"

**RAINBOW ASSEMBLY**  
Meets every 1st and 3rd Wednesday night at 7:00  
MRS. A. C. CHESHER, Mother Advisor.

**AT THE CHURCHES**

**METHODIST CHURCH**  
The Small Church With A Large Purpose  
Sunday school, 10:00 a. m.  
Preaching, 11:00 a. m., and 7:30 p. m.  
Prayer meeting Wednesday evening, 7:30 p. m.  
Women's Missionary Society, Monday afternoon.  
H. G. Scoggins, Pastor

**PRESBYTERIAN SERVICES**  
The First Presbyterian church, the "home folks church," extends a cordial welcome to all worshipping Christians to come and worship with us.  
Sunday school, 10:00 a. m.

**BAPTIST SERVICES**  
Sunday school at 9:45 a. m.  
Preaching at 11:00 and 7:30 p. m.  
B. Y. P. U., at 6:30 p. m.  
Prayer meeting, Thursday, 7:00 p. m., followed by a business meeting. Please be on time.  
W. M. U. meets Tuesday at 3:00 p. m.

**CHURCH OF CHRIST**  
Bible Study every Lord's Day, beginning at ten o'clock. Preaching services upon announcement until regular pastor is secured.

**Church of Christ**  
Cor. 9th & Park Ave.  
Preaching at 11:00 A. M. on every Lord's day. Everybody invited.

**Whitharral.**  
Sunday school each Sunday. Everybody invited to attend and take part. Preaching twice each month, at 3:00 p. m.

**Progressive Christian Church**  
Meets every Sunday morning at 10:00 o'clock in church building for Bible Study.

Cotton Association  
cent each season on all cotton shipped through them in the past five years, they now have on hand something like \$3,000,000 of their own money. They have arranged to take this money, together with the notes of association members well secured by personal security, as well as crop mortgages, and place them with the intermediate credit bank at Houston and borrow to the amount of three million dollars to loan out for the production of cotton. The details of this plan will not be worked out until after the January convention at Dallas, which is on the 21st and 22nd.

**PREPARE GARDEN PLOT NOW**

Apply a good covering of barn yard manure to the garden plot in early fall, so that it may be plowed under, mixed with the soil and decayed during the winter. Give the garden plot a good deep plowing during the winter.

1. Insects, especially cut worms, may be turned up and exposed to the weather.
2. Vegetation and manure may have a longer time to decay and make plant food available before the ground is planted.
3. The land may catch and retain more moisture from the winter rains.
4. The heavy soils may be loosened by freezing and thawing.
5. The plowed land may warm

Treasury Department

Office of Comptroller of the Currency  
Washington, D. C., Sept. 19, 1925  
Whereas, by satisfactory evidence presented to the undersigned, it has been made to appear that "The First National Bank of Littlefield," in the town of Littlefield, in the county of Lamb, and State of Texas, has complied with all the provisions of the Statutes of the United States, required to be complied with before an association shall be authorized to commence the business of banking;  
Now therefore, I, J. W. McIntosh, Comptroller of the Currency, do hereby certify that "The First National Bank of Littlefield," in the town of Littlefield, in the county of Lamb, and State of Texas, is authorized to commence the business of banking as provided in section Fifty One Hundred and Sixty-Nine of the Revised Statutes of the United States.  
In testimony whereof, witness my hand and seal of office this nineteenth day of September, 1925.  
(SEAL) J. W. McIntosh,  
Comptroller of the Currency.  
Dec. 3, 10, 17, 24, 31, Jan. 7, 14, 21.

**Appropriate Gifts**

can find the appropriate gift at for every day in the year. We complete line of necessary art- the bridge party, hand paint- elties, and stamped embroidery of various kinds.

We also do hemstitching

EVERY DAY A GIFT DAY

**& Art Shop**

**Abilene Business College**  
Abilene & Wichita Falls, Texas  
A big salary is what counts on the road to success. We quickly train you for a good position in a home, may enable establishment, and the like for you. Coupon will bring SPECIAL information Mail Address



# JANUARY

**Extra  
Specials!**

To the first 25 customers entering our store Friday morning, January 22nd, we will sell 5 yards of Outing Flannel worth 25c a yard for..... 25c



**Extra  
Specials!**

Saturday at 10 M., January 23rd will sell five yards of Gingham worth 25c per yard, for 10c long as it lasts. Come, first serve.

## Sale Starts Friday, January 22nd Continues for 15 Days - - - Doors Open 9:30 A. M.

January is the month of sales—the month of opportunity for thrifty buyers. This is the month when we “clean house”—disposing of odds and ends, lots, etc. But this year we are offering a full assortment of merchandise such as was never your opportunity to buy before in Littlefield at this time of the year such reduced prices.

We have no hesitancy in telling you we bought too much Fall and Winter goods; but no one could foretell the unprecedented freeze that was coming. Frequently, we have on hands a large quantity of the very finest Merchandise that MUST be sold regardless of cost or profit.

We must clear our shelves for the big stock of Spring Goods soon coming in. We must have more room to place and display them. Our loss will be profit. If you are wise you will not allow this opportunity to pass without taking advantage of it.



**MEN'S DRESS SHIRTS**  
Men's Broadcloth Dress Shirts, regular \$2.75 values, for ..... \$1.98  
Men's Broadcloth Dress Shirts, regular \$1.50 values, for ..... 98c

**HATS AND CAPS FOR MEN**  
Men's Dress Caps, worth \$1.50, going at 98c  
Men's Dress Caps, worth \$2.25, going at \$1.49  
Men's Stetson Hats, worth \$10.00, going at \$6.95  
Men's Stetson Hats, worth \$13.50, going at \$10.95  
Men's High Grade Hats, worth \$6.50, going at \$4.49

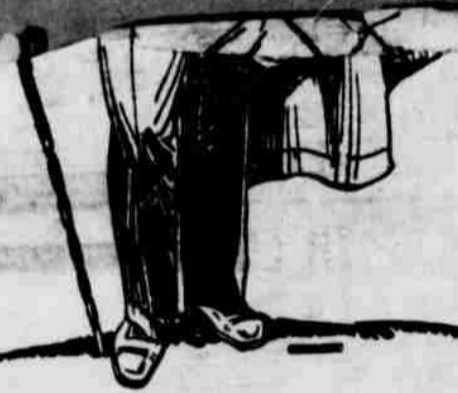
**MEN'S LEATHER GLOVES**  
Men's Leather Gloves worth 65c per pair, now 49c



**MEN'S AND BOYS' UNDERWEAR**  
Men's Underwear, Haynes brand, worth \$2.00 per pair, now ..... \$1.49  
Men's fine Union Suits, worth \$1.25 per suit, now ..... 98c  
Good Union Suits, worth \$1.25 per pair, now ..... 89c

**FINE QUALITY SHEETING**  
9-4 Sheeting Bleached or Unbleached, regular 55 cent seller, special ..... 39c  
10-4 Bleached Sheeting, regular 65 cent seller, special ..... 49c

**COTTON PICKING SACKING**  
Cotton Sacking, regular 8-oz duck. Buy all you want for ..... 10c



### BARGAINS IN MEN'S AND BOYS' WEAR

Here is a list of values that represent the saving of many dollars. There will be weeks of real service in these goods this winter, after which they can be laid away and kept for the season next year. Some of these savings represent as much as 80 per cent. Don't fail to cash in on them!

Men's Leather Coats, \$12.50 values, going at \$5.95  
Men's Leather Coats, \$11.50 values, going at \$7.95  
Men's Sheepskin Coats, \$14.50 values, going at \$9.49  
Men's Sheepskin Coats, \$12.50 values, going at \$7.49  
Men's Suits, \$30.00 values going at \$16.95  
Men's Overcoats, \$25.00 values, going at \$13.95  
Boys' Suits, \$13.50 values, going at \$8.95  
Boys' Suits, \$10.00 values, going at \$5.98  
Men's Corduroy Pants, \$4.50 values, going at \$2.98  
Men's Moleskin Pants, \$4.00 values, going at \$2.60  
Men's Overalls, \$2.00 values, going at \$1.79  
Men's Overalls, \$1.75 values, going at \$1.29  
Men's Khaki Pants, \$1.75 values, going at \$1.29  
Men's Wool Shirts, \$3.00 values, going at \$1.79  
Men's Wool Shirts, \$3.50 values, going at \$2.29  
Men's Lumber Jacks, \$7.50 values, going at \$4.49  
Men's Wool Shirts, \$2.25 values, going at \$1.49  
Men's Buckskin Dress Shirts, \$4.50 values, going at \$2.98  
Men's \$1.50 Work Shirts, for \$1.19  
Men's \$1.25 Work Shirts, for 89c  
Men's \$1.00 Work Shirts, for 69c  
Men's and Boys' Cotton Sweaters, \$1.75 values, going at 98c  
Men's and Boys' Wool Sweaters, \$6.50 values, going at \$3.98

### SHOES—FOR MEN AND WOMEN

Ladies' fine strap and pump Shoes, regular \$9.25 values, special ..... \$6.98  
Ladies' top-notch Oxfords, regular \$4.25 values, special ..... \$3.29  
Ladies' classy Oxford, regular \$3.95 values, special ..... \$2.98  
Ladies' House Shoes, buy all you want, any size for ..... 64c  
Men's Dress Shoes, regular \$9.50 values, special ..... \$7.98  
Men's Dress Shoes, regular \$6.25 values, special ..... \$4.95  
Men's Oxfords, regular \$6.50 values, special ..... \$4.98  
Men's Oxfords, regular \$5.00 values, special ..... \$3.89  
Men's Work Shoes, regular \$2.50 values, special ..... \$1.98  
Men's Army Shoes, regular \$5.50 values, special ..... \$3.98



### COTTON YARD GOODS

Percalé, 36 inches wide, regular 25 cent value, now offered at per yard ..... 17c  
Percalé, assorted patterns, regular 15 cent values, now offered at per yard ..... 9c  
Red Seal Gingham, regular 35 cent value, now offered at ..... 19c  
Gingham, regular 20 cent value, now offered at ..... 10c  
Outing Flannel, regular 20 cent value, now offered at ..... 15c  
Outing Flannel, regular 25c values, now offered at ..... 18c  
Outing Flannel, various colors, 1 yard wide, was 35 cents, now offered at per yard ..... 21c



Follow  
The  
Crowd  
To  
Our Store

Men's Dress Socks, regular \$1.25 values, special ..... 89c  
Men's Dress Socks, regular 75c value, special ..... 49c  
Men's Dress Socks, regular 50c value, special ..... 39c  
Men's Lisle Socks, regular 35c value, special ..... 22c  
Men's Wool Socks, regular 65c value, special ..... 39c  
Men's Wool Socks, regular 50c value, special ..... 27c  
Men's every day Socks, regular 20c value, special ..... 10c  
Men's every day Socks, regular 15c value, special ..... 9c  
Children's Mercerized Hose, all colors, regular price 65c now ..... 42c  
Children's novelty stitch Hose, regular price 50c now ..... 39c  
Children's novelty stitch Hose, regular price 35c, now ..... 26c  
Children's Cotton Hose, all colors, regular 25c, now ..... 17c



### HOSIERY—MEN, WOMEN AND CHILDREN

Here is an opportunity to equip the entire family with hosiery. It wouldn't be a bad idea to buy a whole year's supply at these prices. Just figure out what a saving this will mean.  
Ladies' County Club Silk Hose, regular \$3.00 values, in this sale for ..... \$2.49  
Ladies' Country Club Silk Hose, regular \$2.50 values, in this sale for ..... \$1.98  
Ladies' Country Club Silk Hose, regular \$2.25 values, in this sale for ..... \$1.79  
Ladies' Country Club Silk Hose, regular \$2.00 values, in this sale for ..... \$1.49  
Ladies' Country Club Silk Hose, regular \$1.25 values, in this sale for ..... 89c  
Ladies' Country Club Silk Hose, regular 75c values, in this sale for ..... 49c  
Ladies' Wool and Cotton Hose, regular 65 cent values, in this sale for ..... 39c  
Ladies' fine Lisle Hose, regular 65 cent values, in this sale for ..... 39c

### LADIES COATS AND DRESSES

Never before have you heard of slaughter as in this. Every Coat and Dress listed here is real reasonable goods, styles and fabrics—and at less than what you pay for them.  
Ladies' Coats, \$29.50 to \$32.50 values, going out at ..... \$16.00  
Ladies' Coats, \$13.50 to \$16.00 values, going out at ..... \$8.00  
Ladies' Dresses, \$13.50 to \$18.00 values, going out at ..... \$7.50  
Ladies' Dresses, \$18.50 to \$22.50 values, going out at ..... \$10.00  
Ladies' Dresses, worth \$10.00, all closed out at ..... \$5.00  
Ladies' Dresses, worth \$7.50, all closed out at ..... \$3.50

### LADIES' WOOL SWEATERS

Ladies' Wool Sweaters, regular \$7.50 values, going at ..... \$4.95  
Ladies' Wool Sweaters, regular \$4.50 values, going at ..... \$2.98

### BARGAINS IN HOUSE DRESSES

\$2.50 Ladies' House Dresses, going at \$1.25  
\$1.25 Ladies' House Dresses, going at 69c  
Buy all you want!

### CLOSING OUT ON WOOL YARD

For the woman who does her own making, these prices will be vitally important.  
Wool Flannel, 54 inches wide, regular value, closing out at per yard ..... 25c  
Wool Crepe, a real value, regular \$2.50 value, closing out at per yard ..... \$1.25  
Wool Crepe, nifty patterns, regular value, closing out at per yard ..... \$1.25  
Wool Mixed cloth, beautiful designs, 65 cents, closing out at per yard ..... 35c

### TRUNKS AND SUIT CASES

Genuine Leather Traveling Bag, worth \$4.50, for \$2.98  
Leather Suit Cases, worth \$4.50, for \$2.98  
\$18.50 Heavily bound Trunks, going at \$11.95  
\$7.50 Auto Trunks, going at \$4.95

### CLOSING OUT ON BLANKETS

Fine Wool Nap Blankets, worth \$5.50, for \$3.98  
Fine Cotton Blankets, worth \$3.00, for \$1.98

You don't have to be a business man or a business woman to know that the prices quoted here mean business—and they are just a few of the many values to be found at our store during this sale. Your instinct for values, that you use in your own affairs, tell you these are money-savers. You are looking for a proposition that is genuine—something that has real bargains in it for you—and here it is. When we cut prices, we prove it. Everything in our store is marked in plain figures—one price to all.

# THE FAIR STORE

LITTLEFIELD,  
PLENTY OF CLERKS TO WAIT ON YOU

WHERE YOUR DOLLAR HAS THE MOST VALUE



## LOCAL HAPPENINGS

Mr. and Mrs. Jess York spent Sunday in Lubbock.

John Smith, of Morton, was here on business Friday.

Harry Barber, of Goodland, was in Littlefield Saturday.

W. V. Tolbert is spending several days in Panhandle on business.

Mrs. C. D. Smith, who was very ill last week, is able to be up again.

E. A. Logan, who was quite ill last week, is able to be about his duties.

Lem Shipman, of Morton, was transacting business in Littlefield Friday.

C. W. Alexander, of Lubbock, passed through Littlefield Sunday, en route to Pep.

Mr. and Mrs. J. E. Whicker, of Bledsoe, spent the week end in Littlefield.

Eugene Witcher, of Louisville, Ky., is here visiting his brother, B. J. Witcher.

Misses Alyne Arnett and Jack Shipman made a trip to Lubbock Saturday.

W. S. Hulse is making extensive improvements on his farm southeast of town.

S. Replin, of Lubbock, was looking after business interests here Monday.

Mrs. Cuma Wilkerson, of Lubbock, was here Monday visiting her sister, Miss Bobbie Nix.

C. C. David, of Dallas, is now making improvements on his land northeast of town.

G. C. White is building a set of improvements on his farm eight miles south of Littlefield.

Miss Ruth Courtney has accepted a position in the office of the Shaw-Arnett Company.

Messrs L. R. Crockett and Carl Smith made a business trip to Lubbock Monday.

M. T. Taylor, representing the Fort Worth Well Machinery Company, was in Littlefield Monday.

R. H. Easley, of Post, has just completed a residence on his farm land northeast of Littlefield.

G. W. Smith this week hauled out a bill of lumber for improvements on his land near Morton.

Mrs. Alton Barton and son, Joe, have returned home after a three weeks' visit with relatives in Monday.

J. A. Brogton purchased material here the first of the week for a set of improvements for his farm near Pep.

Mr. and Mrs. P. W. Walker had as their guests Sunday, Miss Vernon Brown, and Billie Harris of Amherst.

Messrs. L. T. Austin and Roy G. Bernard, with their families, arrived here Monday from Electra, to make

their future home. Both gentlemen will be associated with the Blalock Lumber Company.

Mrs. Jimmie Brittan and little son, James Edward, who have been visiting relatives in Seymour, returned home Friday.

J. J. Walk and J. E. Griffith are this week making improvements on land recently purchased in the Bula community.

W. B. Kern, and J. W. Pkens, of Healdton, Okla., are now making improvements on their land south of Littlefield.

Mrs. Ted Duncan is in Amarillo, where she was called the latter part of last week to the bed side of her sister who is very ill.

Bailey, the nine-year-old son of Mr. and Mrs. H. S. Watkins, who live seven miles north of Littlefield, is reported quite ill with pneumonia.

Marvin Fergus, of Killein, who has been visiting in the home of Mr. and Mrs. J. T. Elms, has accepted a position with the First National Bank.

Miss Chivoean Lindley, who has been attending school here, will leave Friday for Memphis, where she will complete the term in the Memphis High School.

Mr. and Mrs. A. C. Chesher, accompanied by Mrs. Hessa Bivins and Loyd Chesher made a trip to Anton to visit Mrs. G. W. Chesher, who is very ill.

Mr. and Mrs. W. H. Gardner, accompanied by their niece, Miss Mamie Burke, were guests of the latter's parents, Mr. and Mrs. H. P. Burke, who

live 14 miles north of Littlefield, Sunday.

LOCALS—

Lem Shipman, of Morton, was here on business Wednesday.

Messrs C. W. Smiley and Hyatt, of Guthrie, were here on business Wednesday.

Mrs. Alex Reeves returned Sunday, from Fort Worth, where she has been visiting her mother.

W. T. Sharp is adding some new improvements to his farm eight miles southwest of Littlefield.

Kay Arnett was taken to a Lubbock Sanitarium the first of the week, at a late report he was much improved.

E. C. Campbell, of Tipton, Oklahoma, purchased material here the first of the week for improvements on his farm four miles west of town.

Mayor R. L. Crockett this week let a contract to Messrs. Reed and Bird for the erection of a modern 9-room residence on property west of the Cicero Smith lumber yard.

Miss Nell Ruth Earnest, Earl Hopping made a trip to Lubbock Sunday to visit the former's father, who is in a sanitarium there.

E. W. Henry, of Winters, purchased material here the first of the week to build improvements on his farm near Morton.

A. J. Webb, of Wilson, Oklahoma, was here Tuesday, purchasing material for improvements to be erected on his farm five miles south of Littlefield.

Mr. and Mrs. J. W. Fowler, Jr., and family left Tuesday for Colorado, Texas, where they will make their future home. Mrs. Fowler and daughter, Miss Alyne and son, Leon, will enter Simmons University in the summer.

**CHEV. DEALER HAS MODERN HOME OF THE SPANISH STYLE**

Seldom does any city much larger than Littlefield embrace as many modern dwellings as are now appearing in various parts of the city. Among the most recently occupied homes is that of W. W. Gillette, in the south part of Littlefield.

The exterior is of concrete, with a flat roof, fashioned after the Spanish Mission style, resembling that of types of homes often portrayed in civic bulletins of Old Mexico, of which they are justly proud. Spanish columns enclose a comfortable veranda, on the east, where one might enjoy the sunshine of winter mornings and the cool of the summer afternoons. Leading from the veranda one enters the living room, built 14x18, with north and east exposure, from the living room, French doors connect the dining room and a door also leads to a guest room 12x14. A long hallway through the center of the house, opening into the living room, reaches directly every room in the house, except the dining room.

The house is lined with sheet rock throughout, calcimined, and the floors are of edge grain, finished in light oak, as well as the wood work throughout.

The house is lined with sheet rock, in ivory and Chinese blue, while the three bed rooms are in harmonizing blends of buff.

In the large kitchen an excellent feature is the built-in cupboard and sink in connection. Just off the kitchen is a cozy breakfast nook, finished in ivory and Chinese blue.

The back entrance leads into the kitchen through an enclosed back porch, in the corner of which is built a closet, where house cleaning facilities are kept. Each bed room encloses a well built clothes closet, and the line closet opens into the hallway, making it quite accessible to any part of the house.

The residence is connected with the city water and power, an electric range is installed in the kitchen and an electric heater is placed in the bath room.

At the rear of the building is a garage, fashioned after the Spanish style.

Mr. Gillette has purchased shrubbery, trees and a hedge to improve the lawn, which will be set out as soon as the weather is permissible.

of the W. T. S. T. yon discussed the of the teacher.

With Prof. Ryan siding, a business wherein it was county meet at 27, also to charge of 25 cents for each go for defraying the meet.

All entries must be 20th, on which date executive committee final arrangements be made.

Superintendent, L. Amherst, was chairman and F. O. Bole, lotie, at the meet.

**LOCAL BOO EXTOL NE THEIR HO**

D. C. Houk and Yelverton, prominent estate men, were looking after business with colonization planned by them.

The Littlefield has been hurt because of the cotton being made for the of new land to be of this spring of farming outfits are the ranch lands in that section has as a farming concern.

Messrs Houk and made large investments in the Littlefield of the opinion that time are lower be the case again, ing for another graduation to the Plains months of this year.

Littlefield, according is making unexpected time, brick business construction, displac structures that were to meet demands of time did not permit more substantial structures an atmosphere of a wholesome effect.

The Littlefield ed with the final book as reflected here, and believe expectations of the fidence in the future the South Plains Lubbock Avalanche.

B. Y. P. U.

Large number of Men Take

Last Sunday U. Met in the H ever held by that

Forty-one young were there eager, tive. An inspiration who have been

Mrs. W. L. Johnson Paul Johnson as the Busher and Mrs. secretary and and Mrs. McCask outlook for a coming year.

All young men leader are all ent not associated who are cordially invited meetings each Sunday 6:30.

# Littlefield and

## Spade Lands

### 400 Choice Farms Now on the Market

6 per cent Interest. - - - Liberal Terms

The famous South Plains country is now merging into one of the greatest agriculture centers of the entire South.

NOW IS THE TIME

To take advantage of this opportunity to own a good home at a reasonable price, convenient to Railroads, Schools, and Highways, located in the midst of this wonderful agricultural development.

## Yellow House Land Company

Littlefield,



Texas

## Chevrolet Price Reduction

A reduction in the price of the Coupe, Sedan, Coach, Touring, Roadster commercial chassis took effect the first month.

Come in and let us explain to you the exact reduction on all cars.

B. L. Gillette Chevrolet Littlefield,