

Lamb County Leader

16 Pages

Serving Texas' Second Largest Agricultural Producing County

10c

VOLUME 32

LITTLEFIELD, LAMB COUNTY, TEXAS, THURSDAY, MAY 12, 1966

NUMBER 1

Vote Canvass Certifies Returns

Mangum And Britt Nominated By Demos

A canvass of ballots, from last Saturday's Democratic Primary, by the County Democratic Committee Tuesday night certified the returns and confirmed the nomination of O.J. (Jim) Mangum for County Judge and Ray Lynn Britt as District Clerk.

These two elections received the closest scrutiny of the committee, since the apparent margin in the contest between Mangum and incumbent J.E. Davis was a mere six votes and the difference between Britt and incumbent Ernest Owens was only 27 votes.

County Democratic Chairman Glenn Batson said prior to the canvass the committee felt the returns, in the two races were accurate, but an official announcement could not be made until the votes were canvassed Tuesday night. Final and official count gave Mangum 1531 votes while incumbent Davis received 1525.



O.J. (JIM) MANGUM ... Demo County Judge Nominee

Final tally in the District Clerk's race showed Britt with 1521 and Owens with 1494.

To old timers in the area the results of the canvass and balloting brought back memories of a County Judge contest held in 1934 between Simon D. Hay, A.H. McGavock and O.H. Reeves in which Reeves received 1203 votes to McGavock's 1202, and after a lengthy battle Reeves was declared the winner and faced Hay in a run-off election, losing by 200 votes, 1807 to 1607.



RAY LYNN BRITT ... Demo District Clerk Nominee

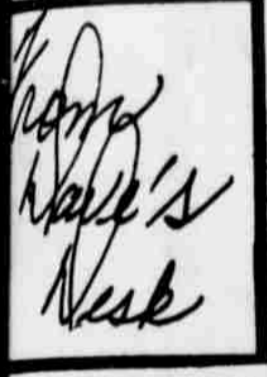
Several changes, all minor, in the official count, resulted from the canvass. The biggest differences came in the Governor's race where a difference of 100 votes were noted. Unofficially Governor Connally received 2414 votes in the Lamb Primary, the official count gave the Governor 2314. Other changes resulting from the canvass showed Williams losing two votes, in a race for Land Commissioner; Bryon Tunnell picked up

(See CANVASS Page 6)

(See HOSPITALS, PAGE 6)



SHOPPERS FLOOD STORES -- The Thursday night opening, by Littlefield merchants, last week provided numerous examples like the one above as the residents of the area were provided with an opportunity to shop late in Littlefield. The stores will remain open until 9, tonight for the convenience of area shoppers.



Final outcome of the Primary election gives us an opportunity to editorialize on the result of your vote, which can be a victory or defeat for a candidate. We will be the first to admit that the closeness of the County Judge's race to the District Clerk's contest is most unusual, and that really when over 3000 votes cast the margin is greater than a few votes, yet as was mentioned in the Saturday edition it can happen.

Often we become complacent and do not take the time to go to the polls and cast ballots, saying it makes no difference how we vote. This attitude that gets our country in trouble. Barring things in offices and an array of public opinion, the priority of the people do not have an opportunity to express their feelings, on governmental matters, except at election time, and then only a small percentage take the time to express their feelings at the polls.

The two local races, which were officially decided when the votes were canvassed, one can't wonder why only six votes, rather by 27. In the two races there were over 3000 votes which represented 59 percent of the qualified voters in the county. While it is real-likely no election will turnout 59 percent of the people interested enough in the affairs of our local government, get out and cast their ballots.

On June 4, there will be an election, this time it will be a run-off for Attorney General. We feel good government begins on the precinct level, here is where the attention should be, for without local interest we cannot expect our state and national governments to function in a truly representative fashion.

While many voters were turned out in the Saturday primary, cast ballots for their favorite candidate...one voter with a sense of humor turned out to vote in the Lamb County Democratic Chairman's race, and cast his vote for Pat Downs, of Littlefield, who helped officiate the Republican primary which was held Saturday. We know what attitude Buddy Spade will take, but we have felt Pat would make a good Democrat and in a few years might be ready for the chairmanship.

This year some 5,000 American communities, including Littlefield, will actively compete in a game of "Industrial Musical Chairs" to grab a share of a \$13 billion jackpot. That conservatively is what the industry will pay in for new or expanded plants. Industrial Parks are now the rage. Every hamlet seems of spawning a bustling industrial center, practical advice on this subject is given by L.S. Shealy of Star Manu-

(See DESK Page 6)

County Cancer Crusade Sets Record

Mrs. J.R. Fain, chairman of the 1966 Lamb County Cancer Crusade, announced this week, efforts of workers had pushed the Cancer drive over the top and established a new record of \$7,523.50, for the month long fund raising program. The efforts in the drive bettered last year's mark by over \$1300.00 and Mrs. Fain said contributions are still coming in. Contributions from the communities include Littlefield which raised \$1998.00 in the business drive and \$1343 in the house to house canvass for a total of \$3342; rural Littlefield had a total contribution of \$528.

Contributions from areas outside Littlefield were: --Fieldton \$102.00 --Spade, Hart Camp \$352.00 --Rocky Ford \$53.00 --Olton \$1040.00 --Earth \$763.00 --Pleasant Valley \$131.00 --Sudan \$547.00 --Amherst \$437.00 --Springlake \$225.00.

Student Transfer Deadline May 31

County School Superintendent C. Roy Stephens announced this week only 21 days remain for applications to transfer students from one school to another in the county.

Stephens said each year there is a period provided when parents can make applications to transfer their children from one county school to another school in the county.

Deadline for making the request to the county school superintendent's office in the County Court House is Tuesday, May 31.

The office will be open to take applications from 9 to 5 daily.

County Demo Convention Saturday Night

County Democratic Chairman Glenn Batson announced this past week the county convention would be held Saturday at 8 p.m. in the District Courtroom.

Batson said the reason for the change in time is due to a request by members of various precinct delegations and by members of the county committee, who felt attendance might be better if the meeting was held at night rather than in the afternoon. He said, "We will try a night meeting this time and if it doesn't work out, we will likely go back to meeting in the afternoon."

The delegates to the convention are expected to go along with the trend set last week, when precinct conventions adopted resolutions supporting Governor John Connally, and backing his platform which would keep Texas government on a conservative basis.

Batson also announced there would be no resolution committee appointed at the convention, but that suggestions for resolutions would be taken from the floor, this way he said more of the delegates would have an opportunity to be heard and to make recommendations to the convention. While Batson would make no predictions as to what resolutions might be adopted he said he felt the unit rule would be adopted, indicating that most of the reports received from the precincts favored the unit rule system.

From the convention will come Lamb County's delegates to the State Demo Convention to be held this Fall.



SANDHILL TROUT -- Not really, but they were caught in the sandhills, only 14 miles north of the Littlefield city limits, at the newly opened Dreamland Playground. Buck Ross, and grandsons Randy, 9, and Artie, 7, take the opportunity to display a string of six Rainbow Trout they caught in a brief time, at one of the Park's four fishing lakes.

OUTDOOR FUN

Dreamland Playground Opens

With the opening of the Dreamland Playground, 14 miles north of the Littlefield City Limits, on U.S. Highway 385, residents of the area now have an opportunity to fish, swim, horseback ride, and play miniature golf without leaving the county.

The 90 acre outdoor fun center, officially opened last weekend, features all types of outdoor activity including four completely stocked lakes for fishing, and a single lake for swimming. The new facilities are owned and managed by Roger Bartling and Fred Berversdorf.

In addition to the sporting aspects of the center, the owners have planted a truck garden of organic fruits and vegetables, which when in season will be sold to visitors at the park.

Fishing enthusiasts can choose from lakes containing Bass, Rainbow Trout, Catfish, or Pan Fish, while those inclined to swim can take advantage of the big sandy bottom swimming pool at the entrance to the playground.

Berversdorf and Bartling, the owners of the installation, said they realize there is still a lot of work to be done on the site, and that if their plans develop their building program will never be completed, included in the long range plans is an adobe motel, camping areas and a chapel, as well as facilities for hay rides and parties.

"We know," Bartling said, "there is still a lot to do before we will have the area near completed, but we decided to go ahead and open now before the weather got too hot, and to continue our building after we opened."

"In putting in this type of installation in the area we hope to give the residents the type of facilities that they will use for their outdoor activity and it will become part of the community just as we intend to, as soon as we get things in shape to move our families to Littlefield," the owners said.

According to the partners, annual memberships will be sold

for \$25.00 per family per year. Each membership will be good for \$35.00 worth of activity in six different areas of the park and when a portion of the card has been used for one activity, the holder of the card will be entitled to a 10 percent discount on additional activities. The playground will be open from sun-up until 10 p.m., daily and from noon Sunday until 10

The developers of the playground hope to have a nine hole miniature golf course completed by the weekend and have it extended to a full 18 holes by the end of the summer.

Upon completion, some three years away, the playground will have complete camping facilities, a motel, and service station, as well as expanded recreational area.

HOSPITAL WEEK

Hospitals--A Valued Community Asset

It is not often that people of the county take the opportunity to view area hospitals with any degree of objectivity, yet to Lamb County its hospitals would have to rate as one of the communities greatest assets.

Today there are four completely equipped modern hospitals in the county. In addition to these, there is still another clinic which provides service for the residents of the community.

Littlefield, the county seat, leads the area in medical facilities with two completely equipped hospitals which have a total of 85 beds. These hospitals, Medical Arts Hospital and Clinic, and Littlefield Hospital, are staffed with 10 doctors and nearly 100 full and part time nurses. Both hospitals have adequate facilities to handle almost any type of situation, and each has doctors on call, 24 hours daily to provide treatment.

Amherst, six miles west of Littlefield, has a single 50 bed hospital with a staff of two doctors and one dentist. Like the two hospitals in Littlefield and the one in Olton, it is completely equipped with operating room, emergency room, and a trained staff to administer aid when needed.

The Community Hospital and Clinic in Olton serves a large segment of the population in the northern portion of the county as

two doctors staff a 30 bed hospital. Not only do the hospitals of the county fill the need of healing, they provide jobs for a large number of residents and comprise an important role in the economy of the community.

In Littlefield residents have the 24 hour service of two complete modern equipped hospitals which employ 150 persons in various capacities, from doctors to dietitians and office personnel. While both the local hospitals were founded in the late 1930's, each has kept up with the constant advancements in medical technology and are today offering as fine of care as is available in the entire area.

There recently appeared in a Dallas newspaper a story of a woman who "died" 27 times from heart attacks, and yet at the time the story was printed still lived.

A similar scene took place in one Littlefield hospital about the same time. The individual concerned "died" in the waiting room of the hospital, and yet one week later was reported to be improving and on the road to recovery.

Like the hospital in Dallas, doctors here used a machine known as a defibrillator, which actually stops the action of the heart, and allows the body to catch up with the normal pulsations.

(See HOSPITALS, PAGE 6)

Talent Contest To Highlight Night Shopping

A big talent contest, featuring local groups, will highlight the second week of Thursday night shopping in Littlefield. The contest will get underway at 8:30 on the parking lot, behind Pratt's Jewelry, in the four hundred block of XIT Drive. Admission to the contest, as well as parking on Littlefield streets will be Free.

According to an spokesman for the merchants, groups from all over the county will be in Littlefield to entertain shoppers. Some of the groups expected to participate in the contest include "The Possibilities", from Earth, "The Jesters", "The Lamp Lighters" and "The Bratts", all of Littlefield, and numerous other singing and entertainment groups. Prizes will be awarded for the best talent in the contest.

AG INSTRUCTOR

Services Held For W.W. Hall

Funeral services were held Tuesday in the First Baptist Church for William Wyatt Hall, 55, longtime area resident and veteran Lamb County school teacher, who died Sunday evening of an apparently self-inflicted gun shot wound.

According to investigating officers and Justice of the Peace J.N. Bowen, Hall died as the result of a single shot from a .22 calibre rifle, which was found near the body.

Investigating officers said Hall's body was found on the floor of the dining room at the Hall residence, 616 Hall Avenue, by his wife and daughter at about 8:15 Sunday night. He was pronounced dead at the scene by JP Bowen, who said Hall had been dead for sometime.

A native of Naravans, New Mexico, Hall came to Littlefield from Olton in 1950, to be instructor in the vocational agricultural department of Littlefield High School. The deceased had been a resident of Littlefield for the past 15 years and was a veteran of World War II.

Long active in the agricultural program of the area, Hall was a graduate of Texas Tech and for the past 29 years had been a teacher in both Olton and Littlefield. He had taken an active part in the FFA, Young Farmers, and Lamb County Stock Show programs, and was constantly working with the



WILLIAM WYATT HALL

youth of the area to develop a more profitable and better high school agricultural program.

Hall is survived by his wife Joyce; one daughter, Nancy; two brothers, Owen of Lubbock, and Edsel of Halfway and one sister, Mrs. Irene Downey of Halfway.

Services were held Tuesday afternoon in the First Baptist Church in Littlefield, Rev. Robert D. Longshore officiated. Burial was in Littlefield Memorial Park, under the direction of Hammons Funeral Home.

DAMAGE LIGHT

Hail, Winds, Rain Rake Wide County Area

A late afternoon thunder storm, Tuesday, raked a wide portion of Southeast Lamb County, with hail, rain and gusting winds which reached 40 M.P.H. at times.

The brief turbulence dumped an estimated one inch of rain in a 20 minute period, and hail, ranging from marble to golf ball size sent residents scurrying for cover. Winds, which at their peak, reached 40 miles per hour, blew down limbs and uprooted small trees, but no heavy damage was reported. At the height of the turbulence, Mrs. Lindell Holly, who lives 2 miles west and 1 mile south of Spade reported a small, but

destructive twister dipped down on their farm, uprooting trees, and scattering debris over the area.

The heaviest losses from the storm were reported by Littlefield residents, as the varying size hail stripped fruit trees and pitted automobile windows. One report of a car window being knocked out was received. Farmers of the area stated, Wednesday morning, they were fortunate in that they had not planted when the hail hit.

Last week's rain, and the following cool weather has prevented the planting of 1966 crops. Had crops been planted (See HAIL, WINDS Page 6)

WHEN THE MOON COMES UP - THE BARGAINS GO OUT IN LITTLEFIELD

THURSDAY NIGHT OPENING

IF YOU LIKE BARGAINS - SHOP THE 6 TO 9 SPECIALS

CHECK EACH ADV. ON THE FOLLOWING PAGE



MAY BREAKFAST -- Frank Benson, left, was guest speaker at the May Breakfast Saturday morning at the Crescent House Restaurant sponsored by the Woman's Club. Pictured with him are Mrs. T.L. Dunlap, toastmaster, and Mrs. James Joyner, Woman's Club president. Approximately 180 persons attended. Mr. Benson is a renowned millinery designer.

Hat Designer Is Guest At Woman's Club May Breakfast

The Crescent House Restaurant was the setting Saturday morning for the annual Women's Club Breakfast. "Hats" was the theme of the program and Frank Benson, famous hat designer, was the guest speaker.

Table decorations included styrofoam dolls with decorative

hats, and spring flowers. Approximately 200 hats, all belonging to Mrs. T.L. Dunlap, decorated the walls.

The invocation was given by Mrs. H.A. Mitchell. The Woman's Club president, Mrs. James Joyner, gave the welcome. Mrs. T.L. Dunlap served as toastmaster. Special

guests were introduced by Mrs. Roy McQuatters.

Entertainment was furnished by three high school students, Misses Trudie Grizzle, Glenda Parrott and Phyllis Giles. The girls sang a number together followed by solos by Miss Grizzle and Miss Parrott.

Mrs. S.E. Ayres, past president of the Woman's Club, presented the scholarship to Miss Susan Parker, daughter of Mr. and Mrs. Larry Parker. She is one of the ten honor graduates this year, a member of the National Honor Society two years, received sweater awards four years in foreign languages. She is president of Future Teachers of America, and has served in other officers of that organization. She was recipient of the Woman's Club Safe-Driving Award last year. Miss Parker plans to attend Texas Tech this fall, majoring in foods and nutrition.

Mrs. W.D.T. Storey recognized the two presidents who have served during this term of office. Mrs. Kenneth Reast and Mrs. Joyner, and presented them gifts of appreciation. Door prizes, furnished by Littlefield merchants, were presented by Mrs. Reast.

Trudie Grizzle sang the benediction, "May the Good Lord Bless and Keep You". Approximately 180 persons attended.

Kindergarten Students Visit McKinnon Farm

The pupils of Williams Kindergarten took an interesting trip Thursday morning for an end-of-school party. They visited the McKinnon Game Farm and were taken on a tour by Mr. and Mrs. Tommy McKinnon.

Sheep and lambs, pheasants, quail, baby puppies and the incubators for baby birds were most enjoyable sights for the children.

Returning to the park to play for the remainder of the morning, the children were surprised to find a birthday party prepared for them by Mrs. Bob Wilson in honor of her daughter Tammy. Cupcakes and punch were served.

Since "Jack and the Beanstalk" had been a favorite story of Tammy's, she chose golden eggs for her favors. Each egg was filled with candy and toys.

Piano Auditions Given Students

Forty piano pupils of Mrs. Buster Owens, Mrs. Charles Traylor, Mrs. Don Taylor and Mrs. Martha Schein of Littlefield and Mrs. George Laing of Earth participated in the National Piano Playing Auditions here Thursday and Friday.

The auditions were conducted by Frederick Thiebaud of the Elementary II School. Mr. Thiebaud is head of the Music Department of Howard Payne College, Brownwood.

CITY BITS

Sunday guests of Mrs. W.A. Hutto were three of her sons and her daughter and their families: Mr. and Mrs. J.W. Harris and family of Bovina, Mr. and Mrs. Ed Hutto and Mr. and Mrs. Bill Hutto, Bovina; Mr. and Mrs. L.R. Hutto, Tulsa; and Mr. and Mrs. Doyce Hutto and family, Littlefield.

Mrs. Viola Ivey returned home Friday after visiting for 10 days with her son and family, Mr. and Mrs. James E. Ivey and son, William at Hamilton.

Linda Walker, granddaughter of Mrs. Linda Weschke, 601 Wicker Avenue, was among 21 Texas Lutheran College students at Sequin who received awards at the first annual Creative Writing Day program in Wupperman Little Theater recently. Linda received the \$25 Swift Award for best satire in prose or poetry given by Dr. and Mrs. Erwin Prouse of Austin.



MARSHA LYNN GOLDSMITH

Wedding Plans Told

Mr. and Mrs. R. Richard Goldsmith of Houston announce the engagement and approaching marriage of their daughter, Marsha Lynn, to Ralph Franklin Schilling III, son of Dr. and Mrs. Ralph Schilling of McAllen.

The wedding will be solemnized June 18 at Bellaire Christian Church in Houston.

Miss Goldsmith is a sophomore at the University of Houston where she is a member of Chi Omega Sorority.

Mr. Schilling was graduated from Rice University, and is presently attending Texas A&M graduate school, working toward a Ph. D. in Physics. The prospective bridegroom's father is president of Pan American College in Edinburg, Texas, and is Superintendent of Schools at Littlefield from 1954 to 1960.

Luther League To Meet In Muleshoe

Sunday evening the Luther League of the St. Martin Lutheran Church will meet with the Luther League of St. Paul Lutheran Church, Muleshoe, and the young people of First Presbyterian Church, Muleshoe, in the home of Dr. and Mrs. Ted Hufford in Muleshoe.

Presiding over the meeting will be Steve Brandt of Littlefield, who is president of St. Martin Luther League. Recreation will be in the game of the Hufford home. Also a film concerning travel will be shown. Refreshments will be served by Dr. and Mrs. Ted Hufford.

The Luther League of St. Paul Lutheran Church will be welcomed as a new young people's group in the Luther League of the American Lutheran Church.

Whitharral Young Homemakers Shares Meatball Recipe

Mrs. John Wayne Hall of Whitharral, an active homemaker and mother of three children, shares her recipe for spaghetti and meatballs with us this week. Frances says this recipe makes enough for about eight servings. She usually serves it with a salad and dessert for a complete meal.

Frances is a licensed cosmetologist and hairdresser but is not working at present. She does, however, fill in at her mother's shop in Levelland, when she is needed. Frances is a graduate of Levelland High School and the daughter of Mr. and Mrs. James H. Pope of Levelland.

Her husband is a teacher and coach at Whitharral. His parents are Mr. and Mrs. J.B. Hall, Pettit. He has a degree in government from West Texas State University. He coaches football, basketball, and track, as well as teaching at Whitharral High School.

The Halls have twin boys, Gy and Ty, who are four years old, and a daughter Vickie, age nine. When questioned about hobbies or favorite pastimes Frances replied they really don't have much time for hobbies. They are kept busy going to ball games. Her husband does enjoy golf as well as any kind of sport. Frances likes various kinds of handwork. She belongs to the National Society of Handicraft and receives through the mail each month some type of handicraft to assemble. She says this is very interesting and these items make nice gifts.

Frances is the foods leader for a group of 4-H girls, a member of the PTA, and is currently serving as secretary-treasurer of the Whitharral Young Homemakers.

She and her husband are members of the First Baptist Church. They have lived at Whitharral three years.

ITALIAN SPAGHETTI AND MEATBALLS

- 1 cup cracker crumbs
- 1 pound ground lean beef
- 1 can tomato paste
- 1 egg (beaten)
- 1 onion (chopped)
- 3 cloves garlic (chopped very fine)

- salt and pepper
- 2 or 2-1/2 cups water
- 1 can mushrooms
- 1 cup olive oil
- 1 tablespoon sugar

Crumble crackers in bowl and add enough water to moisten. Add ground meat, beaten egg, salt and pepper. Mix well. Roll into balls about the size of a small egg and fry until very brown in olive oil. Remove meatballs from fat, drain off olive oil until about 1/2 cup remains. Fry onions until golden brown, adding garlic just before onions are brown. Add tomato paste, sugar, salt and pepper to water. Add this to olive oil, onions, garlic and mushrooms. When this mixture begins to bubble, add meatballs and simmer slowly until sauce is thick. Serve meatballs and sauce over boiled spaghetti. Serves eight.



MRS. FRANCES HALL

Chain him with an *Anson* Hide-Away Initial I-D \$6.95 Gift Boxed

It Keeps Secrets!

As seen in *seventeen*

Nobody sees that it can be opened . . . that it hides a secret space for photos, phone numbers, personal messages, private communication between two people. See the new Anson Hide-Away I-D with patented "Twin-Lock" today! Gift boxed with "Secrets" booklet. Free initials inserted while you wait.

PRATT'S JEWELRY

Mrs. W.T. Clayton Is Honored At Wayland

Mrs. W.T. Clayton of Springlake, mother of Representative Bill Clayton, was honored at a Merit Award Banquet at Slaughter Memorial Center, May 2nd at Wayland Baptist College in Plainview. Dr. Neil Record, assistant to the college president, was master of ceremonies.

Wayland Inspirational Hour Choir, directed by Russell Hughes, rendered three special

numbers. Dr. R.A. Springer, Treasurer of Baptist General Convention of Texas brought the address.

President Roy McClung presented the award. The award was presented for Mrs. Clayton's support of the college through prayer, close association, gifts of money and most recently, through the "Women For Wayland" organization.

Mrs. Clayton was a member of the original council called together by President McClung to formulate plans and to write a constitution and by-laws for an organization for enlistment of women in support of Wayland and its program. She served as the first president of the organization and in that capacity led the women in the selecting and funding of their first project for the improvements on the campus -- a walk-in freezer for Slaughter Memorial Center. She conceived and promoted the idea of an annual Birthday Tea for VanHowling Memorial Library for the purpose of enlarging the book holdings, vital educational facilities at the college.

Mrs. Clayton was the first contributor to the Scholarship Equivalent Plan, her gift, a memorial to the son of her pastor, another example of her Christian dedication for education for the youth of West Texas.

Historical Group Hears Book Review Friday

Mrs. T.L. Matthews of Littlefield, president of the Lamb County Historical Survey Committee, conducted the meeting of the group Friday afternoon in the Fellowship Hall of the Amherst Methodist Church.

A book review was presented by Mrs. David Harmon.

Mrs. Ann Rutledge was elected secretary to replace Mrs. C.O. Stone, who resigned. Representatives were present from Sudan, Littlefield, Earth, Olton, Fieldton and Amherst.

Mr. and Mrs. Lester LaGrange were hosts and served refreshments to the 20 persons attending.

Have A Cap and Gown
Portrait Made at JOHN NAIL STUDIO 521 Phelps Phone 385-4340

GRADUATION SPECIAL
1- 8x10 Black & White and 6- Wallets \$4.90

THURSDAY NIGHT SHOPPING SPECIALS

Guitar Specials!

Tru-tone Western-Spanish Guitar **23.44** Now!

Get in on the fun with this full-size guitar. Slim-neck -- easy for beginners! 50C9312

Tru-tone Electric Guitar **45.55** Now!

Separate volume & tone controls -- full range of resonant tones! Now! 50C9330

Tru-tone Electric Guitar Amplifier **31.95** Now!

4-watt output, separate controls! 50C9338

Save Now! All Transistor!

No Money Down! Buy Now At W.A.

24.44 Now!

Tru-tone 5-Transistor Tape Recorder For work or play -- take it anywhere, record and play anywhere! Full feature cassette -- so easy to use! With earphone, microphone, 3" reel of tape! 40C7503

SHOP TONIGHT UNTIL 9 P.M. AT **WESTERN AUTO**

Raise the roof with **Coronet**

Dodge Coronet 500

Come out in the open, fun-lovers. It's time to swing into a Dodge Coronet 500 convertible. You're tired of the ho-hum habit. You want new looks . . . not look-alikes. Inside, you want bucket seats, smart center console, full carpeting. You're the kind that likes lots of room and comfort in your car. You want Dodge Coronet 500. The convertible that gives you what you want without your asking for it. And even some extras you didn't expect. It's convertible time . . . time for you to join the Dodge Rebellion.

JOIN THE DODGE REBELLION DODGE DIVISION CHRYSLER MOTORS CORPORATION

Garland Motor Company
720 EAST THIRD LITTLEFIELD, TEXAS

"SEE MAJOR LEAGUE BASEBALL ON NBC-TV SATURDAY. CHECK LOCAL LISTINGS FOR TIME AND STATION."

LOOK LADIES

WE HAVE PURCHASED 400 PAIRS OF FAMOUS LABEL LADIES DRESS HEELS FROM AN EXCLUSIVE DALLAS DEPARTMENT STORE

THESE SHOES ORIGINALLY SOLD FROM 10.95 TO 19.95 AND IS A RARE OPPORTUNITY TO BUY AT BELOW COST. COME! SEE!

SALE STARTS 9 AM THURSDAY

YOU HAVE A SELECTION OF THESE FASHIONABLE DRESS HEELS IN BLACK AND COLORS -- ALL SIZES UP TO 4 A'S

\$5

We'll Be Open Till 9 PM For This Unusual Sale

Abe's SHOES Littlefield

327 Phelps-Littlefield 1817 Parkway Shopping Center--Lubbock



CONGRATULATIONS -- Pretty Miss Jenny Turner, daughter of Mr. and Mrs. James Turner, was named Area I Sweetheart Saturday at the Area meeting in Lubbock. She was congratulated by Kenny Carr, vice president of Littlefield FFA. Miss Turner will be entered in state competition for 13-15 in Austin. She was raised on a farm, says sports, swimming, tennis and golf, are her favorite pastimes. She also enjoys reading. Miss Turner is a junior at Littlefield High School. Members of the Littlefield FFA Chapter giving Lone Star Farmer Degrees in Lubbock Saturday were David Hill, David White, Wendell Ogerly, Dale Graves, Dwight Jones and Kenny Carr.

Linda Williams Receives Scholarship

Linda Williams, a Littlefield High School senior and daughter of Dr. and Mrs. Aaron Williams, 101 East 20th, has received a scholarship to attend Rice University. She will enroll for fall term. During her four years in high school Miss Williams has been member of the National Honor Society and received sweaters in general science, biology, chemistry, and math. She had sweetheart this year

Alice Gordon Is MU Hostess

Mary Frances Nichols of the Circle of First Baptist Church met Monday evening in home of Miss Alice Gordon. E.G. Brunson taught the study from the Books of Isaiah and Jonah.

Hostess, assisted by Mrs. Boyd, served refreshments. Ken Houk, J.W. Har- G.V. Walden, Katherine Jo- C.E. Daniels, J.L. Barnard, Lindley, Jessie Jordan, Evans, E.G. Brunson and Clara Jarnon.

2 Colorful Glass Kerosene Lamps

DECORATIVE USEFUL.



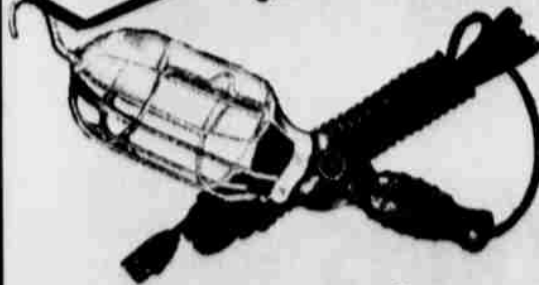
\$1.00

You won't be caught in a blackout, in an electric power failure.

Trouble Light

\$.98

EVERY HOME SHOULD HAVE ONE



15' Extension cord. Two tool outlets. Shockproof.

SHOP TONIGHT UNTIL 9 P.M.

ONSTEAD FURNITURE

Former Anton Resident Is Married In Dallas

ANTON -- Miss Arden Linda Sanderson and Jerry D. Henegar, both of Dallas, were united in a double ring ceremony at 7 p.m. April 29 in Tension Park Baptist Church, Dallas. Rev. H. D. Bennett, pastor of the church, and former pastor of Central Baptist Church of Anton, officiated. Mary Ann Sanderson was her sister's only attendant. Jim Wedgewood served the groom as best man.

The couple is at home in Dallas where the groom is employed at Jamison Film Company and Mrs. Henegar is employed by Gulf Insurance Company. The bride is the daughter of Mr. and Mrs. Arden Sanderson of Dallas, former residents of Anton, and the granddaughter of Mrs. C.D. Nelson, Anton.

Officers Installed By Teachers' Sorority

The Alpha State Epsilon Delta Chapter of the Delta Kappa Gamma Society met for a Founder's Day dinner and installation of officers Saturday in the Crescent House dining hall.

Mrs. Linnie Campbell gave a Founder's Day tribute and new officers were installed by Mrs. Ruth Ford of Olton. They are Mrs. Blanche Johnson, president; Mrs. Daphne Smith, first vice president; Mrs. Maxine Nichols, second vice president; Mrs. Iona Donnelly, recording secretary; Uleta Jenkins, corresponding secretary; Mrs. Joyline Costen, treasurer; and Florice Blessing, parliamentarian.

Delta Kappa Gamma was organized by twelve Texas women

Beta Sigma Phi Officers Installed Monday Night

Jennie Aten, past president of the Beta Sigma Phi, and now member-at-large, installed the new officers of Tau Chi Chapter of Beta Sigma Phi Monday night. The meeting was held in the hospitality room of Security State Bank.

Vada Walker was installed as new president. Other officers include Carolyn West, first vice president; Terri Miller, second vice president; Willyne Stanislaw, recording secretary; Pat Waldrop, corresponding secretary; and Ann Pullig, extension officer. Paula Schroeder and Donna

McCarty presented the program on "Sculpture and Painting". Pat Waldrop and Willyne Stanislaw spoke on "The Printed Word and Your Life."

Hostesses Kay Monzingo, Kay Nelson, Claire Sawyer and Joan Johnson, served refreshments. Attending were Linda Barker, Joyce Branham, Myrlene Bridwell, Carol Howle, Joan Johnson, Linda Martin, Donna McCarty, Kay Nelson, Ann Pullig, Paula Schroeder, Willyne Stanislaw, Katherine Thrash, Vada Walker, Carolyn West, Pat Waldrop, Judy Drieth, LaVerne Franklin, Linda Pickrell, Claire Sawyer and Susie Swafford.

CITY BITS

Rev. and Mrs. Jack Ellzey and John. Mr. and Mrs. Ed Blackwell, and Mr. and Mrs. James Blackwell were all guests for Mother's Day of Mr. and Mrs. Billy Blackwell of Lubbock.

Guests in the home of Mrs. Jimmie Brown and Jerry over the weekend were Mr. and Mrs. Haley Reynolds, Pam and Pat Byrd and J.W. Banks of Lubbock, Mr. and Mrs. Dewey McNein of Sundown, Mr. and Mrs. Monte Cookston and daughters, Carma and Candance of Level- land, Mr. and Mrs. Ed Underwood, Dimmitt, Mrs. J.W. Brown, Mr. and Mrs. Bobby Brown and Bret of Littlefield.

Mrs. Victor Neinaast and children of Dateland, Ariz, has returned home after spending some time here visiting her sister, Virginia Gage, her mother-in-law and father-in-law, Mr. and Mrs. W.P. Neinaast and other relatives.

Mrs. Lela Henson visited her son and family, Mr. and Mrs. Trenton Dale Stone and four children of Lubbock over the weekend.

Mrs. W.A. Hutto has recently returned from spending a month in California visiting her sister, Mrs. Ethel Hunt, in St. Paula and two nieces and their families, Mr. and Mrs. George Smith, Manhattan Beach, and Mr. and Mrs. Marvin Walker at Inglewood.

Mr. and Mrs. Bill Moore and children of Midland visited over the weekend with her mother, Mrs. Arthur Jones.

Mr. and Mrs. Bill Cape have returned from a two weeks vacation in Alabama and Tennessee. They visited their son and daughter-in-law, Mr. and Mrs. Bobby Cape of Huntsville, Ala. Bobby is an Industrial Engineer for Brown Engineering Co. of Huntsville.



ENTERTAIN AT BREAKFAST -- The three lovely young ladies shown above, left to right, Phyllis Giles, Glenda Parrott and Trudie Grizzle, sang a vocal selection at the Woman's Club May Breakfast Saturday morning. They are wearing original hats by Frank Benson, the famous hat designer, who was guest speaker for the banquet. All three are students at Littlefield High School.

Banquet And Prom Held By Juniors And Seniors

AMHERST -- The annual junior-senior banquet and prom were Saturday night. The luncheon personnel served the menu of chicken fried steak, baked potato, beans, salad, rolls, strawberry shortcake and iced tea to 55 attending.

"Space" was the theme of the banquet and decorations were globes and rockets, stars and planets were suspended from the ceiling. On the main wall a huge rocket had the appearance of passing through a cloud. James McAdams president of the junior class was master of ceremonies. A sextette of high school students sang several numbers.

Gary Johnson was narrator when films of the senior and junior classes throughout their

years in school, were shown, causing much merriment.

Junior sponsors, Mr. and Mrs. Bert Grimes and Mr. and Mrs. Arthur Camp, and senior sponsors, Mr. and Mrs. Howard Cummings and Mr. and Mrs. Billy Pierce and other high school faculty members attended.

Penneys summer fashion festival!



news in print... carefree Dacron® crepes Give full swing to your fashion flair this summer with our light-as-air Dacron® polyester textured crepes! Find delicate watercolor effects, slim stripes, gay florals and more. Their carefree ways are really something to talk about -- just dip and drip 'em dry!

A. Scoop neck dress. Blue, pink, green. Misses' sizes 10-20.
B. Jewel neck sheath. Assorted colors. Misses' sizes 8-18. 8.98

SHOP TIL 9PM
THURSDAY
SPECIALS IN EVERY DEPARTMENT

SCREAM THROUGH EVERY SECOND OF THEM!

RASPUTIN - THE MAD MONK CINEMASCOPE COLOR BY DELUXE

THE REPTILE COLOR BY DELUXE

XIT Friday-Saturday
DRIVE-IN THEATRE Sunday

Starring GARY CLARKE CHRIS NOEL SPECIAL GUEST STARS! JAY IN AMERICANS BEAU BRUMMELS DICK AND DEE DEE THE ASTRONAUTS JACKIE AND GAYLE

WILD WILD WINTER 6 WILD SONGS Technicolor

A PATTON WEINRIB PRODUCTION • A UNIVERSAL RELEASE
PALACE Thursday-Friday-Saturday

NINE MEN OF TELEMAR, NORWAY... THEIR MISSION: Stop the Nazis from developing the atom bomb!

RICHARD HARRIS
KIRK DOUGLAS
ANTHONY MANN'S **THE HEROES OF TELEMAR**
ULLA JACOBSSON MICHAEL REDGRAVE
Screenplay by IVAN MOFFAT and BEN BARZANAN. Produced by S. BENJAMIN FISZ Directed by ANTHONY MANN. PANAVISION COLUMBIA COLOR

PALACE Sun-Mon Tue-Wed

COME OUT TONIGHT And DISCOVER These Great 6 To 9PM Door Busters

Featuring This Week Wonderful Gifts For The Graduate

ONLY A FEW **SHAEFFER PEN SETS**

Values to 15.00 - - - - - 7.99
Values to 10.00 - - - - - 4.99

REGULAR 2.98 SHAEFFER **CARTRIDGE PEN 89¢**

TIE TACS ONE GROUP UP TO 2.50 89¢

A Clean Up Of 6-8 And 10 **TRANSISTOR RADIOS** From \$9.95 To \$20.00 **1/2 PRICE**

TONIGHT PRATT IS OFFERING **BIRTHSTONE RING** VALUES TO 29.95 **5.88**

COURIER II BY SMITH CORONA DELUXE MODERN LIGHTWEIGHT PORTABLE TYPEWRITER

- Office size keyboard • Pre-set tabulation
- Multi-color ribbon • Cyclocac Jacket 3H-11 with not wear, chip or rust • Finger tip margin control • Touch selector • Dual line lock • 1/2 space for error control
- Unified base and case • Unprecedented 5 year parts warranty

Reg. \$69.95 **57.88** NO MONEY DOWN

travel alarm 5.95 VALUES 6 TO 9 PM **2.88**

DIAMOND PRINCESS **DINNER RING** BEAUTIFUL 14K **9.88**

PRATT'S JEWELRY

C.A. Aldrich Rites Conducted

Funeral services for Charles Addison Aldrich, 69, 408 West 2nd, were conducted at 10 a.m. Monday in Hammons Funeral Home Chapel with the Rev. Robert D. Longshore, pastor of the First Baptist Church, officiating.

Buri was in Littlefield Memorial 1 Park under direction of Hammons Funeral Home. Aldrich was dead on arrival Saturday morning at Medical Arts Hospital. He had been in ill health a number of years.

Born at Crockett, January 17, 1897, he was a member of the First Baptist Church, the American Legion and The Baracks, which is an organization of World War I veterans. He was a retired salesman for Hall Motor Company.

He is survived by his wife, Marian; three sisters, Mrs. Lucy Golsby, Dallas; Mrs. H. H. Gaston, San Angelo; and Mrs. E. L. Green, Raton, N.M.; and two brothers, M.C., Temple, and J.H., San Angelo.

Pallbearers were Higdon Gaston, Earl Green, Elbert Aldrich, Jamie Green, Alton Green, and Foy Aldrich.

Services Held For M.H. Winningham

Mack Henry Winningham, 1211 Monticello, died Sunday at his home. Funeral services were in the First Methodist Church of Littlefield at 4:30 p.m. Tuesday. The pastor, Rev. Jack Elzey, officiated. Burial was in Littlefield Memorial Park under direction of Hammons Funeral Home.

Born August 11, 1874 in Nashville, Tenn., he had lived in Littlefield since 1942, moving here from Lubbock.

Survivors include his wife, Lizzie Ellen; three daughters, Mrs. Irene Cain, Lubbock, Mrs. Frances Walser, Dallas, Mrs. Edna Simmons, Irving; two sons, L.A., Black, Tex., and H.G., Lubbock; 11 grandchildren and 31 great-grandchildren.

Grandsons were pallbearers.

Resident Dies In Oklahoma

Word has been received of the death of Richard Stripe of Vici, Okla. formerly of Littlefield. Funeral services will be today at 2 p.m. at Vici.

Mrs. Stripe was the first custodian of the Littlefield Post Office, holding the job for 17 years. He moved to Vici in 1958 when he retired.

He is survived by his wife and several children.

Mr. and Mrs. Oscar Hollingsworth left Wednesday to attend the services.

Services Pend For Mrs. Ed Ray

Funeral services are pending at Hammons Funeral Home for Mrs. Emma Gertrude Ray, 77, Star Route 1, Sudan.

Born December 16, 1888, in Stephenville, Tex., Mrs. Ray died Tuesday in a local hospital after being hospitalized two days.

Survivors include her husband, Ed Ray, Sudan; four daughters, Eleanor Blevins, Lovington, N.M., Mrs. Elta Mae Blevins, Littlefield, Mrs. Connie Rendleman, Lubbock, Mrs. Lorine Lambert, West Corina, Calif.; three sons, Alvin Ray, Morton, Bethel Ray, Corvallis, Ore., and Jerry Ray, Sudan; 23 grandchildren and 19 great-grandchildren.

Class Favorites Are Announced

Grade school class favorites have been announced at Whitharral. They are as follows:

Grade one, Mary Coronado, Jose Martinez, Cheri Hisaw and Bobby Avery; grade two, Charlotte Pelfrey and Joe Cleverger; grade three, Beth Epps and Gary Hayes; grade four, Kathy Claborn and Benito Lopez; grade five, Beth Pelfrey and Johnny Bradley; grade six, Cheryl Epps and Tony Estorga.

Open House Held At Parsonage

OLTON -- Open house was hosted at the new Olton Methodist Parsonage Sunday afternoon. Approximately 100 guests attended from Olton, Edmonson and Plainview. Rev. and Mrs. Cecil Hardaway greeted the guests.

The serving table was laid with a white cutwork cloth centered with an arrangement of yellow carnations. Mrs. Aubrey Smyth, Mrs. Rex Chitwood, Mrs. Robert Meinecke and Mrs. Garland DePrang served punch and cake to the guests.

Serving as tour guides were Mrs. A.D. Melton, Mrs. Gene Trotter and Mrs. Truett Sides. Mrs. Don Spain registered the guests.

Dr. J.E. Shewbert of Plainview conducted a consecration service at 2:30 p.m. for the new parsonage.

WHITHARRAL NEWS by MRS. EVA V. CRANK

Hodges Have Weekend Guests

Weekend guests in the home of their sister, Mrs. V.D. Hodges, and Mr. Hodges were Mr. and Mrs. Hartley of Big Spring, Mrs. E.O. Bart and Patricia of Dallas, Mr. and Mrs. Pruitt Mason of Wichita Falls, Mr. and Mrs. Homer Griffin of Lamesa. They visited their parents, Mr. and Mrs. John T. Griffin who are ill in Littlefield, Mr. Griffin, age 91, entered Hospital Medical Arts Hospital Saturday.

Mr. and Mrs. Leslie Hulse and children have moved to the Floyd Brown farm four miles north of Whitharral. Mrs. Brown recently moved to Littlefield to make her home.

Mr. and Mrs. V.C. Eslinger

are visiting relatives in Fort Smith, Ark.

Rafe Rodgers took his mother, Mrs. Vera Rodgers to Big Spring Friday to visit her brother, Ben Jackson, who is critically ill in the Veterans Hospital there. She returned Monday.

Mr. and Mrs. Joe Al Bryant of Garland visited the former's parents, Mr. and Mrs. Jack Bryant here Friday and Saturday. Joining them for the day Saturday were Mr. and Mrs. Steve Bryant and baby and Mr. and Mrs. Travis Bryant and children of Lubbock and Mr. and Mrs. Driscoll Bryant and children.

Mrs. John Paul Jones and Allen of Bovina spent Saturday here with her parents, Mr. and Mrs. John L. Burnett, Sunday

guests were Mr. and Mrs. Jim Lewis of Amarillo, Mr. and Mrs. Jerry Burnett, Rynn and Nancy, and Mr. and Mrs. Marvin Burnett of Levelland, Mr. and Mrs. Kenneth Odom of Ralls, and Mr. and Mrs. J.N. Burnett and Sammy of Morton.

Mr. and Mrs. Hill of Morton accompanied Mr. and Mrs. Henry Dobson to Eldorado, Ark. for the weekend. The Dobsons went to Odessa Monday to be with their daughter, Mrs. Wayne Howard who underwent surgery that day.

Mr. and Mrs. C.E. Theford of Alpine were here for the weekend with Mr. and Mrs. D.C. Theford. Sunday guests were Mrs. Jack Lauderdale of Levelland, Mr. and Mrs. Billy Theford, Terry and Carry of Anton, Mr. and Mrs. Norman Theford, Kathy, David and Scott, Miss Kay Lynn Lott and Sammy Pair.

Mrs. Carrie Eller had as her guests for the weekend and Sunday Miss Cynthia Mae Eller of Carlsbad, N.M., Miss Myrtle Eller of Big Spring, Mr. and Mrs. Jack Eller, Mike and Ann of Lubbock, and Mr. and Mrs. J.E. Eller and children of Littlefield.

Sunday guests in the home of Mr. and Mrs. W.R. McDaniel included Mr. C.T. Mason of Olton, Mr. and Mrs. Dale McDaniel and newly-adopted son, Billy Ray of Seminole, Mr. and Mrs. Joseph Ancinec, Gail, Greg and Brad of Plains, Mr. and Mrs. Lynn McDaniel, Lynn and Gary,

and Mr. and Mrs. Kenneth McDaniel of Lubbock.

Mr. and Mrs. Aubrey Kirby, Cheryl, Mike and Joyce have returned to their home at Walsh, Colo. after a weekend visit here with Mrs. Kirby's parents, Mr. and Mrs. Vick Matthews.

Mr. and Mrs. Joe Wade and children of Dumas visited relatives here and at Levelland for the weekend.

Mr. and Mrs. Claude Lee Horton, Jim and Brad of Andrews spent Sunday with Mr. and Mrs. J.M. Mixon.

Guests of Mrs. P.B. Harbin and other relatives here Sunday were Mr. and Mrs. Ralph Harbin and children of Canyon, Mr. and Mrs. Lavern Taylor and Tinker of Plainview, Mr. and Mrs. J.B. Harbin, Jay Ellen and Paul of Levelland, Mrs. Elam Harbin, Miss Inez Harbin and Mrs. Julius Harbin of Lubbock. Weekend and Sunday guests in

the Ralph Wade home were Mr. and Mrs. Charlie James, Wesley, Leslie and Barbara, Mrs. Allen Hudson, and Mrs. Bobbie Clark, Doris and Charles of Monahans; Mr. and Mrs. Melvin Copans, Marvin, Kay and Julie of Lubbock and Mr. and Mrs. Claud Hudson, Vickie, Trina and Carla.

Mr. and Mrs. Dee Burrus of O'Donnell and Mr. and Mrs. Buford Goode, Gwen and Barbara of Pampa visited Mr. and Mrs. Tom Burrus and Gayle Sunday.

Mr. and Mrs. Johnnie Miller are home from a recent visit in Dalhart with Mr. and Mrs. Wade Strother and Wandell.

Mrs. Tom Drinkard was released Monday from a stay in the West Texas Hospital in Lubbock.

Mr. and Mrs. J.M. Mixon spent Monday in Dimmitt with Mr. and Mrs. Hub Spraberry.

Mrs. Eula Fyke, Miss Lena Maxey and Mrs. L.C. Lewis accompanied Mrs. Lee Lewis of Levelland to Slaton Monday to attend the funeral of a friend.

WHITHARRAL SCHOOL MENU
May 16-20
MONDAY: Roast beef with brown gravy, rice, candied yams, buttered english peas, hot rolls and butter, jelly or honey, milk.
TUESDAY: Pinto beans, onions, buttered spinach, cornbread and butter, apple pie, milk.

WEDNESDAY: Tuna fish cheese sandwiches, pickled potato chips, ice cream.
THURSDAY: Barbecued mashed potatoes, black peas, hot rolls, and cherry cobbler, milk.
FRIDAY: Hot dogs with kles, onions and chile, salad, crackers, oatmeal, ies, milk.

Facts About Grain Sorgum Future Given

In recent weeks the grain trade people and some national and area farm people have looked toward the grain industry as a whole with some misgivings. It seems they are beginning to have doubt about the future of their industry. Upon close examination, however, the problem seems to be in the real of a breakdown in communications. By this, we mean that incorrect or misleading information has been disseminated, and being human, many have begun to have doubts or disbeliefs about the future of the grain industry.

Elsewhere in today's issue of the Lamb County Leader can be found an advertisement entitled "Some Facts About Milo Grain Sorghums." This advertisement tells about the 'myths' which have been created, and then states the 'facts' as revealed in the latest grain sorghum statistics just out.

No one thing can do more damage to a person, company or industry than base falsehoods. Your are urged to read the above-mentioned advertisement and then if you have additional questions, go to someone in the 'trade' for correct information. As an example, The MYTH exists that "there will be a 30% decrease in milo production in 1966 because of the big sign-up."

However, the FACT is "the number of sorghum acres out of the government program will expand more than acres in the program. With normal weather and usual yield increases, 1966 sorghum production is expected to equal or surpass the 1965 record crop. Feeding and exports will both be up a little more so the carry-over may be less and the market strong."

The farmer, the grain buyer,

and the grain industry in general, know that is is one industry in agriculture that is growing. When an industry is on the grow, there are bound to be problems--it'll have its ups and downs. The main thing to remember is not to be stampeded into doing the wrong thing. This advertisement reminds us: "God gave us two ends, one to think with and one to sit on. The future of our industry may depend on which we use. 'Heads' we win, 'Tails' we lose."

THANK YOU

I wish to express my appreciation to the people of Lamb County for the excellent vote you gave me in the May 7, Democratic Primary Election.

Your vote and influence were greatly appreciated, and I hope that I am deserving of your trust. I shall do my best to serve you with prompt and courteous service at all times. If I can be of service to you on any school question, please do not hesitate to call on me.

I should also like to thank my opponent for a very clean and courteous association during the campaign.

C. Roy Stevens

May 9, 1966

Pol. Adv. Paid For By C. Roy Stevens

Why Stand There and Watch?

COME FLY!
IT'S PIPER FUN-to-FLY TIME

NO NEED to envy those people you see getting in their Pipers and flying off in all directions. They're just ordinary automobile drivers like yourself who've discovered the fun of flying.

SPECIAL \$5 INTRODUCTORY FLIGHT LESSON Come fly with us. With an expert government-rated flight instructor, you'll handle the controls yourself! No better time than right now.

FLY in the PIPER CHEROKEE with modern low-wing—seven ways better:

1. Better visibility.
2. Better stability.
3. Air cushion landings.
4. Lower center of gravity.
5. Wider landing gear.
6. Greater comfort.
7. Ample reserve power and performance.

MANER FLYING SERVICE
LITTLEFIELD MUNICIPAL AIRPORT
LITTLEFIELD, TEXAS

PIPER SALES AND SERVICE

The worldly gift for the graduate...



BRITISH STERLING
EXCLUSIVE TOILETRIES FOR MEN
MADE IN U.S.A.

Exclusive toiletries "a cut above" the rest, that show you consider him a cut above other young men... A smashing after shave. A cologne that lasts from dusk to dawn.

Give our British Sterling. Its rich flask of silvery metal over glass sets this most fashionable gift apart from all others.

- 4 oz. After Shave \$ 3.50
- 6 oz. After Shave 4.50
- 4 oz. Cologne 5.00
- 6 oz. Cologne 7.00
- 2 pc. Gift Set 8.00
- 3 pc. Gift Set 10.00
- Aerosol Cologne 5.00
- 2 oz. Aerosol Deodorant 2.50

PRATT'S JEWELRY

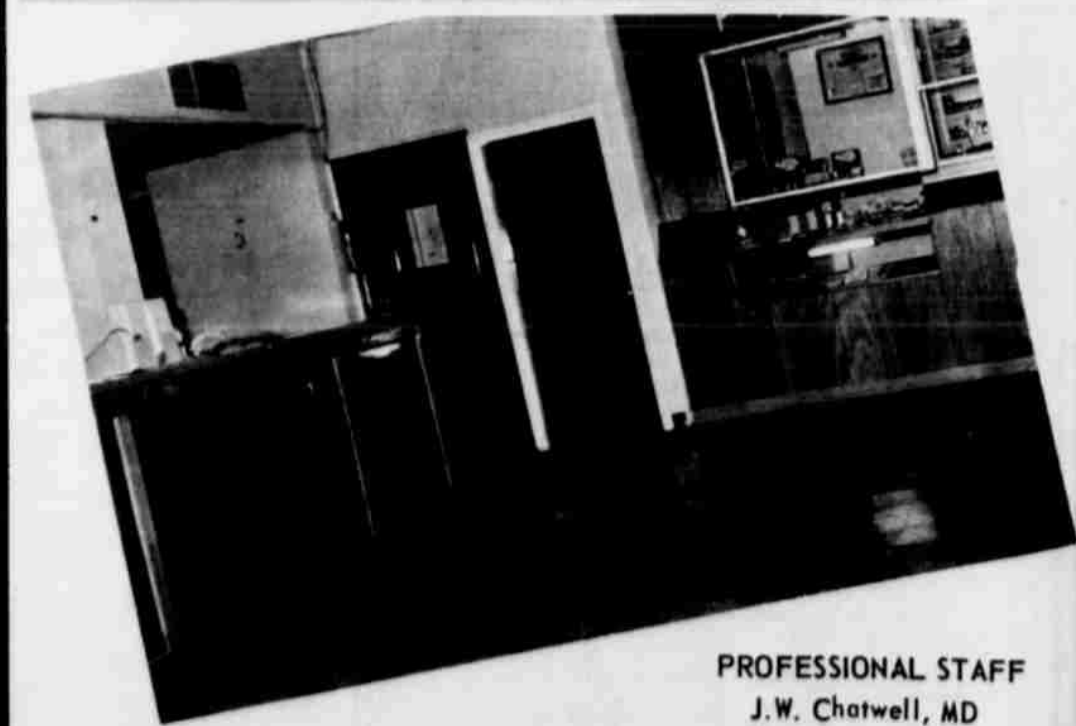
National Hospital Week

WE PAUSE DURING THIS SPECIAL WEEK OF EMPHASIS ON HOSPITALS TO INVITE YOU TO JOIN WITH US IN OBSERVING NATIONAL HOSPITAL WEEK.

YOU ARE INVITED TO VISIT OUR MODERN HOSPITAL AND CLINIC, AND SEE THE MANY IMPROVEMENTS WE HAVE MADE, AND GET BETTER ACQUAINTED WITH THE STAFF OF PERSONS WHO MAINTAIN THE HIGH STANDARDS OF THE MEDICAL PROFESSION THROUGH CONSTANT WORK AND DILIGENCE.

WE ARE PROUD OF OUR QUALIFIED STAFF AND FACILITIES AND CONSIDER IT A PRIVILEGE TO HAVE SERVED SO MANY OVER THE PAST 25 YEARS.

YOUR SUPPORT AND COOPERATION IS GREATLY APPRECIATED.



PROFESSIONAL STAFF

- J.W. Chatwell, MD
- Dr. Kantor, MD
- John Dodge, DDS
- Virginia Grisham RN (Superintendent Of Nurses)
- Pete Wilson (X-Ray Lab. Technican)
- George Britton (Pharmacist)

FLOYD ROWELL
Adminstrator

SOUTH PLAINS HOSPITAL - CLINIC
AMHERST, TEXAS

Fish Fry Hosted By Herschel Chisholms

Mrs. Herschel Chisholm and Hubert Chisholm just returned from a fishing trip to Buchanan. They were to a fish fry at their home on 712 East 13th, Sunday, and Mrs. Chisholm and Mr. Chisholm were Mr. and Mrs. Beavers, Mr. and Mrs. Sebring, Mr. and Mrs. Paul Chisholm and family, Mr. and Mrs. Paul Chisholm and family, Mr. and Mrs. De- Powell and daughters, Mr. and Mrs. Coleman Ter- Miller, M.L. Chi- and Michael Chisholm, Mr. and Mrs. Richard Powell and Mrs. E. Edwards and sons, all of Mr. and Mrs. A.F. Sla- Mr. and Mrs. Terrill and Lynn, Spade; Mr. Mrs. Albert Lynch and



SUCCESSFUL FISHING TRIP -- Mr. and Mrs. Herschel Chisholm, 712 East 13th, are pictured above with a portion of the fish they caught recently at Lake Buchanan. They were hosts to a fish fry at their home with approximately 90 per- attending.

Students Receive Honor At Tech

Selected for membership May 5 in the Texas Tech chapter of Phi Kappa Phi, national academic honorary were Evelyn Joyce Thompson, daughter of Mr. H.G. Thompson, 709 East 12th Street, and Johnny Thad Minyard, son of Mr. and Mrs. J.F. Minyard. Miss Thompson is a junior at Tech and Minyard is a senior. The honor was announced at an initiation banquet in the Tech Union honoring 179 students representing all six of Tech's Schools. Requirements for membership in the select honorary in-

FREE ESTIMATES
BODY REPAIR
ALL MAKES
JONES MOTOR

LOOK FOR THE BARGAIN
TABLES TONIGHT
From 6 To 9 P.M.

LADIES GOOD QUALITY
Seamless Hose
2 PAIR 49¢
(2 PAIR IN PACKAGE) LIMIT 4 PAIRS

TOWELS

SOLIDS 15X24 17¢
STRIPES (LIMIT 6 TO A CUSTOMER)

PERRY'S
KNOWN FOR BETTER VALUES



TONIGHT IS THE BIG NIGHT

And When The Moon Comes Out..

AMOS WARD

PUTS OUT HIS

BIG BARGAINS

GET YOUR SHARE OF THESE

6 TO 9 PM SPECIALS

MEN'S NEW SHORT SLEEVE
SPORT SHIRTS
REGULAR 2.98
TONIGHT THE PRICE IS (2 FOR \$3) **1.66**

MEN'S WESTERN
STRAW HATS
REGULAR 2.98
ON SALE 6 TO 9 P.M. **\$2**

CANVAS SHOES \$1

CHILDREN'S IDEAL PLAY SHOES -
SIZES 4 TO 8½ TO 12 - 12½ TO \$3.
RED - BLUE - WHITE
6 TO 9 P.M.

WOW! WHAT VALUES

IN TIMELY FASHIONS
200 DRESSES TO GO

REG.	SALE
14.98	7.00
16.98	7.00
17.98	8.00
10.95	5.00
12.98	7.00
11.98	5.00
24.95	12.00
10.98	6.00
34.95	15.00
19.95	9.00



SALE PRICES BEGIN AT 6 P.M.

HEIRLOOM WOVEN BEDSPREADS

WHITE AND BONE.
OUR REGULAR PRICE IS 9.95 - BUT TONIGHT YOU CAN BUY FOR

4.99

LOOK FOR OUR BARGAIN TABLES

A CLOSE OUT!

MAIDEN FORM
BRAS
REGULAR \$2 TO 4.50 - TONIGHT

1/2
PRICE

100% WOOL TRIEST WOMENS

3 PIECE SUITS
REGULAR \$40.
BUT TONIGHT WE'VE CUT THAT PRICE IN HALF **\$20**

BIG BOYS SHOES

RED GOOSE
WEATHER BIRD
LOAFER & OXFORDS
SIZE 12½ - 3
3 TO 6
6.95 - 7.95 VALUES

2.99

LADIES NYLONS 1/2 SLIPS

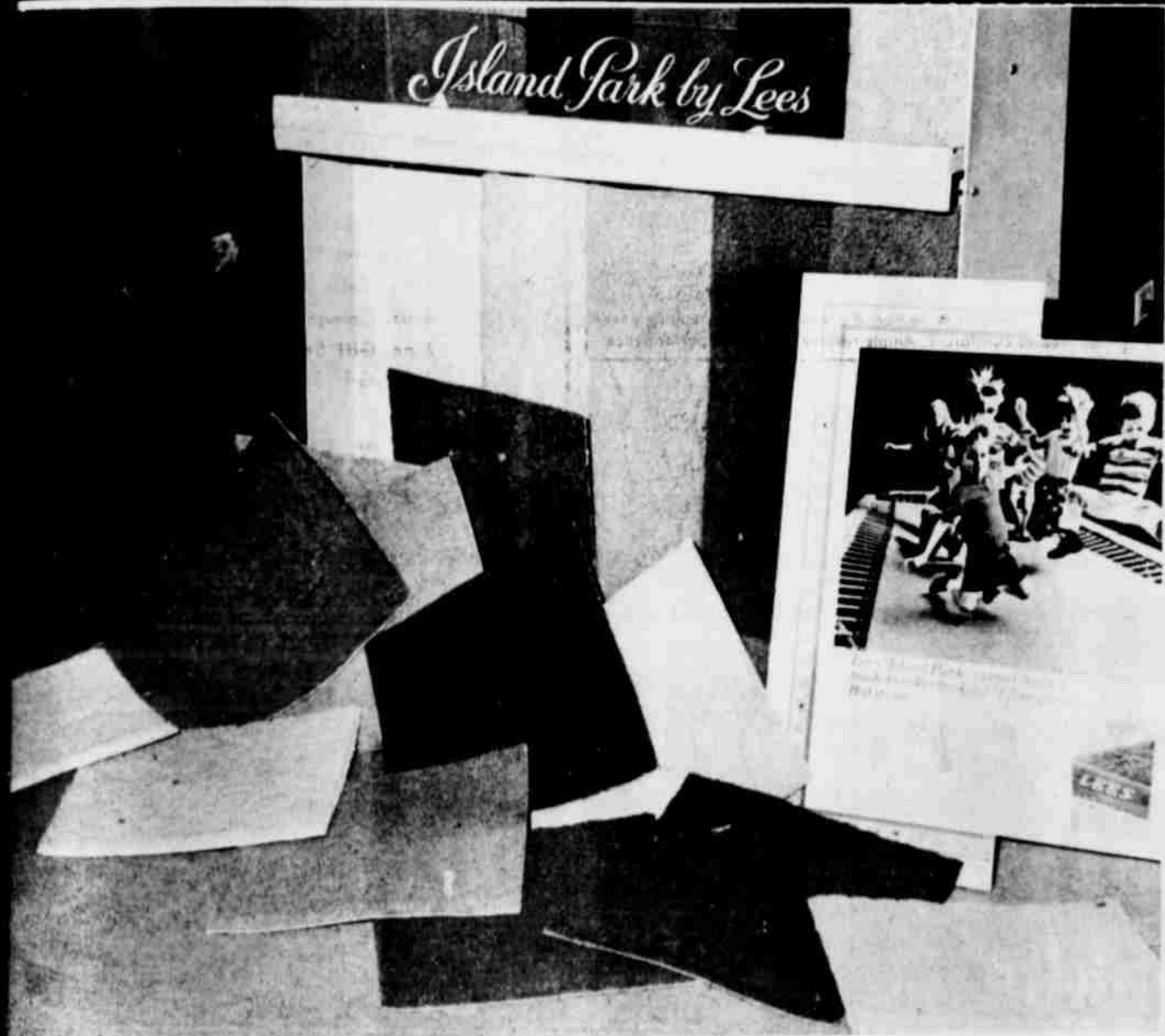
A 1.59 Value
But It's A Sell
Out Tonight
For Only

47¢

ASK ABOUT OUR
CHARGE PLAN
13 MONTHS
TO PAY

AMOS WARD'S

Island Park by Lees



Lees "Island Park" Carpet Wasn't Made To Take Six Jumping Kids And A Dog But It Can -

No! "Island Park" wasn't really made for this sort of thing. It was made to take only common everyday mayhem, and look great while doing it.

Which is why Lees made it of tough heavy filament nylon. Packed good and thick to give "Island Park" a deep dense pile.

We inspected it 27 times to make sure there were no skips, flaws, ravel, or mis-weaves.

We even inspected our inspectors.

When we were finished, "Island Park" was stain-resistant. Spill-resistant. Just about everything resistant.

After hours of jumping and tumbling on our trampoline, the kids and the dog pooped out.

"Island Park" didn't.

You'll probably never use "Island Park" on your trampoline

But if you have one of those bouncy families, shouldn't you have it on your floor?

You Can, for less than \$9.00 a square yard.

See the new "Island Park" carpeting today at....

OPEN THURSDAY UNTIL 9

Onstead Furniture, Inc.
A SAFBI STORE

--- DESK

facturing Company, whose re-engineered steel building firm has been close to the industrial development of numerous communities.
The first bit of advice, given by Shealy, has to do with research and with each citizen knowing the assets and liabilities of his community. Second "The classic recipe for rabbit stew begins, 'first catch a rabbit'."
While there were several more good recommendations, the one which caught our eye was community attitude, for without it, Shealy said, the rabbit will get away.

--- CANVASS

(Continued From Page 1)
one vote in the Rail Road Commissioners race, for a total of 1910; Judge McDonald added 10 votes for a 1470 to 1178 victory over Onion. The only change, from the reported figure, in local contest came in the County School Superintendent race where C. Roy Stephens' victory over Edwin Hall was shaved five votes, for a 1681 to 1187 victory.

The county committee did not record any changes in the precinct elections, nor in any uncontested county races.
In addition to the Judge and District Clerk's race, other county officials nominated Saturday include: Charles Jones, County Clerk; Lucy Moreland, County Treasurer; J.N. Bowen, Justice of the Peace, Precinct 4; and Judge Pat Boone Jr., District Judge.

Glenn Batson was named County Democratic Chairman, winning over Charlie Duval, 1509 to 1029.
JP WRITE-IN DISALLOWED
A ruling by the County Committee, on the Justice of Peace race in Precinct 5 (Sudan), has voided the write-in election, and has eliminated a June 4 run-off between C.T. Wright and W.T. Vereer, who led the field of five candidates receiving write-in votes. Batson said the ruling was based on Section 13.09 of the Revised Texas Election Code, which states, "When there is no announced candidate for a post, other than County Chairman or Precinct Chairman, the office for which the vacancy exists will not be printed on the ballot and no write-in votes for that office will be counted."
This ruling, according to the Election Code, applies only to ballots cast in a primary election. Write-ins are admissible in a General Election.

The decision by the executive committee means no decision on the Precinct 5 JP position will be reached before the General Election in November.
With the primaries past voters of the county will now turn their attention to the June 4 run-off in the Attorney General's race, where Crawford Martin faces Franklin Spears. Martin carried the county in the primary and is expected to pick up a large number of votes received by Galloway Calhoun, who Tuesday came out in his support after being the low man in the three-man race.
A complete breakdown of the unofficial returns from Saturday's Primary is included in today's Lamb County Leader on page 16.

Andy Rogers Carries County-Loses Post

Andy Rogers, one of two incumbents in the three man race for the State Senate seat, from the 30th Senatorial District, piled up an early lead in Lamb County and then held on to carry the county, as he downed his nearest opponent, Jack Hightower, 1476 votes to 969 votes.
Many political observers felt the third man in the race, Jim Ray, who received 484 votes in the county, would force a runoff between Rogers and Hightower but returns from the big population areas of Hale and Wichita Counties gave Hightower, the other incumbent, a 10,000 vote victory.
As a result of recent legislation, redistricting the state, Rogers, a State Senator for 14 years and Hightower, who had been in the Senate for two years, were thrown into a head-on battle for the single seat for the enlarged district.

--- HOSPITALS

(Continued From Page 1)
Several years ago this individual would not have had a second opportunity, yet because of the complete medical facilities in Littlefield, help was available and life was extended.

The most competitive business in America today is industrial expansion, and one of the prime considerations of prospective industries is the type of medical facilities a community offers. In this respect, Lamb County would have to rank as excellent because a few far sighted individuals had a vision of complete medical care for the area and set out to provide the finest of facilities for the residents.
It would be difficult to estimate, in terms of benefit to the community, the value of our medical facilities. It would also be difficult to evaluate the number of people who, each year use the hospitals of the county, or to give an accurate report on the number of lives which have been saved through the efforts of dedicated hospital personnel.
Each citizen of the area should be proud of their hospitals and should realize the many services they render to the residents and to the county.

--- HAIL, WINDS

(Continued From Page 1)
at the time the weather hit, damage could have run high. The one inch of rain received Tuesday brings Littlefield's total moisture level to 4.3 inches in a two week period.

SOMEONE FOR POLO

Cecil Smith is universally known as the greatest polo player the world has ever known. A favorite mallet and helmet of Smith's are among the many mementos on display at the Texas Sports Hall of Fame, a free display adjacent to the Wax Museum at State Fair Park in Dallas.
The first subway was opened in Boston in 1897.

The Voice From Behind The Curtain

Chicago hoodlums hide behind "fronts," usually a quasilegitimate business.
This expedient derives from the "net-worth" tax laws; a high-living hood has to be income source.



When the underworld overlords have solved their tax problems, most seek next for "respectability."
The hoodlum's quest for respectability gets pretty funny sometimes. They donate too lavishly, throw white-tie parties in the afternoon and pretentiously parade their political friends in church.
As a long-time Chicagoan, however, I have discovered it is not always "funny" as it appears. Sometimes the bad guys quietly crash "nice" society, ultimately to corrupt it.
The international gangsters are similarly motivated.
Communists in the United States recent years have sought to hide behind false "fronts" largely because they needed the dues which could thus be raised to support their cause.
Since the Supreme Court ruling of last November -- abrogating the Internal Security Act of 1950 -- the Reds have come out into the open.
Now they seek "respectability."

Now it is the purpose of the Communist conspiracy in the United States to represent itself as a bona fide political party. To foster such an image, they will hold their own "political convention" the end of June in Webster Hall, New York City.
Further to create the impression that they constitute a political party -- like the Democrats and the Republicans -- these homefront Reds are releasing a torrent of propaganda from their national headquarters, 23 West 26th Street, New York City.
They are distributing a "Communist Program" in the form of a political party platform.
They are addressing hundreds of university and college publications, requesting help in getting Communist speakers on

campus "during this political season."
Comrades are instructed to place copies of this "Program" in school and other libraries, on newsstands, and each is to "pass along at least ten copies to fellow workers, neighbors, friends, relatives and others in non-Communist organizations."
When our country has been flooded with this softening-up propaganda, you will next hear that persons of prominence have been invited to address or attend the "convention" in June. Some guests and visitors will not be members of the "Party", further to enhance the spurious claim that this is all domestic "politics".
The Communists subsequently intend to run candidates for public office and to participate fully in the political life of the United States. There is nothing new about the technique. It is thus that they have infiltrated and subverted satellites to date.
Ironically that the totalitarian types often use election machinery to abolish the election process.

campus "during this political season."

When our country has been flooded with this softening-up propaganda, you will next hear that persons of prominence have been invited to address or attend the "convention" in June. Some guests and visitors will not be members of the "Party", further to enhance the spurious claim that this is all domestic "politics".
The Communists subsequently intend to run candidates for public office and to participate fully in the political life of the United States. There is nothing new about the technique. It is thus that they have infiltrated and subverted satellites to date.
Ironically that the totalitarian types often use election machinery to abolish the election process.

VFW Sets Spring Convention

The Veterans of World War I, U.S.A., Inc., and the Ladies Auxiliary to Veterans of World War I, U.S.A., are making plans and preparations for the 19th District Department of Texas spring convention which will be held in Lubbock, Texas, May 22, 1966, with the Hub O' the Plains Barracks No. 1489 and the Ladies Auxiliary No. 1489 as host and hostess to the group. The convention will be held at the Hodges Community Center, 41st Street and College Avenue. Registration will begin at 8 a.m., and the joint meeting of Barracks and Auxiliaries will start at 9:30 a.m. The registration fee will be \$1.00 per person. A number of distinguished guests of the Department of Texas are expected to be present. A memorial service is to be held for those Buddies and Sisters in District 19 who have passed away during the year 1965-66. This session will close at 11:30 a.m., and everyone will go out to lunch and return to the Community Center at 1:30 p.m., when the Barracks and Auxiliaries of District 19 will have

Hunters in the United States outnumber golfers nearly 3 to 1.

their business session. Officers for the year 1966-67 will be elected and installed at the afternoon sessions.
All Buddies and Sisters of District 19 are urged to attend this convention. All Veterans of World War I and their wives and daughters are invited to attend the joint meeting in the morning. Come, meet new friends, and renew old friendships with this wonderful group.
The Department of Texas representatives of Veterans of World War I, and the Department Ladies Auxiliary to Veterans of World War I are:

SOME FACTS ABOUT
Milo Grain Sorghum
SEVERAL MYTHS Regarding The Current Grain Sorghum Situation Are Developing Among Some National And Area Farm And Grain Trade People. This Could Be Exceedingly Damaging To Producers And The Trade Serving Them If Decisions On Future Production, Marketing Or Financial Plans Were To Be Based On The Myths Rather Than Facts As Reflected In The New Grain Sorghum Statistics Just Out.

MYTH #1. Government programs causing cutbacks in grain sorghum production is the cause of reduced grain stocks.

FACT #1. EITHER FROM THE STAND POINT OF ACREAGE OR BUSHELS, THE PRODUCTION OF GRAIN SORGHUM IS EXPANDING BOTH IN TEXAS AND THE NATION -- SINCE 1956. MAXIMUM GRAIN SORGHUM ACREAGE IN TEXAS WAS 7.6 MILLION IN 1958, BUT PRODUCTION WAS ONLY 251 MILLION BUSHELS -- 37 MILLION BUSHELS LESS THAN THIS PAST YEAR.

TEXAS		
YEAR	ACREAGE	PRODUCTION
1956	4.7 MILLION	124 MIL. BU.
1961	5.1 MILLION	229 MIL. BU.
1965	5.4 MILLION	285 MIL. BU.

NATION		
YEAR	ACREAGE	PRODUCTION
1956	9.2 MILLION	224 MIL. BU.
1961	10.9 MILLION	479 MIL. BU.
1965	13.3 MILLION	666 MIL. BU.

MYTH #2. Exports are the principal drain on current stocks and main cause of reduced carryover and that grain sorghum exports have been unduly increased as compared to other feed grains.

FACT #2. EVEN WITH STRONG PROMOTION EFFORTS, SORGHUM EXPORTS HAVE NOT INCREASED AS FAST AS CORN EXPORTS. CORN EXPORTS IN 1959 WERE 211 MILLION BUSHELS, IN 1965 THEY WERE 570 MILLION BUSHELS -- UP ABOUT 3 TIMES; SORGHUM EXPORTS IN 1959 WERE 98 MILLION BUSHELS, IN 1965 THEY WERE 200 MILLION BUSHELS, UP 2 TIMES. THE BIGGEST INCREASED USE OF SORGHUM HAS BEEN IN AREA AND OTHER DOMESTIC LIVESTOCK FEEDING, UP FROM 172 MILLION BUSHELS IN 1956 TO 435 MILLION BUSHELS NOW. OVER TWICE AS MUCH GRAIN SORGHUM IS FED AS IS EXPORTED.

MYTH #3. There will be a 30% decrease in milo production in 1966, because of the big sign-up.

FACT #3. THE NUMBER OF SORGHUM ACRES OUT OF THE GOVERNMENT PROGRAM WILL EXPAND MORE THAN ACRES IN THE PROGRAM. WITH NORMAL WEATHER AND USUAL YIELD INCREASES, 1966 SORGHUM PRODUCTION IS EXPECTED TO EQUAL OR SURPASS THE 1965 RECORD CROP. FEEDING AND EXPORTS WILL BOTH BE UP A LITTLE MORE SO THE CARRYOVER MAY BE LESS AND THE MARKET STRONG.

MYTH #4. Increased aid and trade demand an immediate release of sorghum and other feed grain acreage to production, and farmers look only to these increased sales for maintaining or expanding income.

FACT #4. SECRETARY FREEMAN SAID THAT, "EVEN IF FOOD AID IS INCREASED, IT WILL HAVE LITTLE EFFECT ON CORN AND GRAIN SORGHUM EXPORTS, FOR HUNGRY NATIONS DON'T FEED LIVESTOCK." TRADE FOR FEED GRAINS WILL CONTINUE TO DEVELOP AT ABOUT THE SAME RATE AS IN THE PAST FEW YEARS. THESE DEMANDS COULD HAVE A STRONG EFFECT ON SORGHUM GROWERS IN 10 TO 15 YEARS -- BUT WHAT ABOUT THIS YEAR'S AND NEXT YEAR'S NEED FOR INCOME -- WITH CURRENT FREIGHT AND PORT SITUATIONS, IT DOESN'T APPEAR THAT LOOKING ABROAD FOR IT IS THE ANSWER AND THAT KEEPING SOME SOUNDNESS IN THE ADMINISTRATION OF CURRENT FARM PROGRAMS HOLD GREATER PROMISE.

The stated purpose of the current reserve commodity bill which indicates that the principal purpose of a reserve should be to protect consumers against price rises in grain.

GRAIN SORGHUM PRODUCERS -- and the related businesses serving them -- are in one of the few growth industries in American agriculture. This doesn't mean we don't and won't have problems! In fact, our very growth rate itself is a problem. As we continue to strive to bring order to this expanding industry let's keep in mind that "God gave us two ends, one to think with and one to sit on. The future of our industry may depend on which we use. 'Heads' we win, 'Tails' we lose."

SPONSORED AS A PUBLIC SERVICE BY
Goodpasture, Inc. Grain
LITTLEFIELD, TEXAS 385-4511

APPRECIATION SALE
25% OFF
On Any And Every Item In The Store All Appliances - House Ware Goods Lingerie Sewing Notions - Flowers - Arrangements - 1500 Pairs Of Shoes - Dishes - Nylon Hose - Garden Hose - Swim Suits And Hundreds Of Other Items.

WE WANT TO SHOW OUR APPRECIATION OF YOUR PATRONAGE - COME IN WITH THE FAMILY THURS. NIGHT.

We Will Be Closed Thursday Morning To Prepare For This Big Sale.

DOORS OPEN THURS NOON Continues Until 9 PM

Ben Franklin

Lamb County Leader
Published every Thursday morning by the Littlefield Publishing Co., 506 Phelps Avenue, Littlefield, Texas, 79339. Entered as Second Class matter at the U.S. Post Office, Littlefield, Texas, 79339, Under the Acts of March 3, 1879.
Dave Kucifer, General Manager
J.B. (Mac) McShan, Advertising Mgr.
Subscription rates: by mail in Lamb and adjoining counties, \$5.10 per year. Elsewhere in Texas, \$7.10 per year. In City carrier delivery 70¢ per month.
Member 1966 TEXAS PRESS ASSOCIATION

Thar She Blows!

FINANCIAL HOUSE MONEY can lift a whole of a load off your mind when an emergency brings unexpected expenses: Manager Walter Wagner, understands why folks can need money quickly. He also understands how to provide that money on a practical budget, thanks to his financial knowledge, experience and training, call the Understanding Man now!

Interstate financial house
SECURITIES COMPANY OF TEXAS
as advertised in TIME
425 Phelps 385-3822
See Walter Wagner... He Understands!

Dairy Queen
1001 EAST 9TH
THURSDAY AND FRIDAY

malt & shake sale 19¢
Your favorite flavor
Now! Enjoy a thick 'n refreshing Dairy Queen malt or shake and save! But hurry -- offer for a limited time only.



WIN! EASY MONEY!

PLAY PIGGLY WIGGLY'S NEW EXCITING, FUN, CASH GAME....

QUIK CASH

39,000 WINNERS
\$175,000 IN CASH PRIZES!
 WIN UP TO **\$1,000.00**

HERE'S HOW YOU CAN BE A WINNER!
 Just stop in at your friendly Piggly Wiggly and pick up your free Quik Cash Card. Erase the gold spot on the front of the card with a pencil eraser. Underneath you will find one, two, or three letters. Save these letters until you can spell one of the words on the back of the card (Thousand, Hundred, Twenty, Ten, Five, or One) . . . then take the cards to your manager for your cash prize!

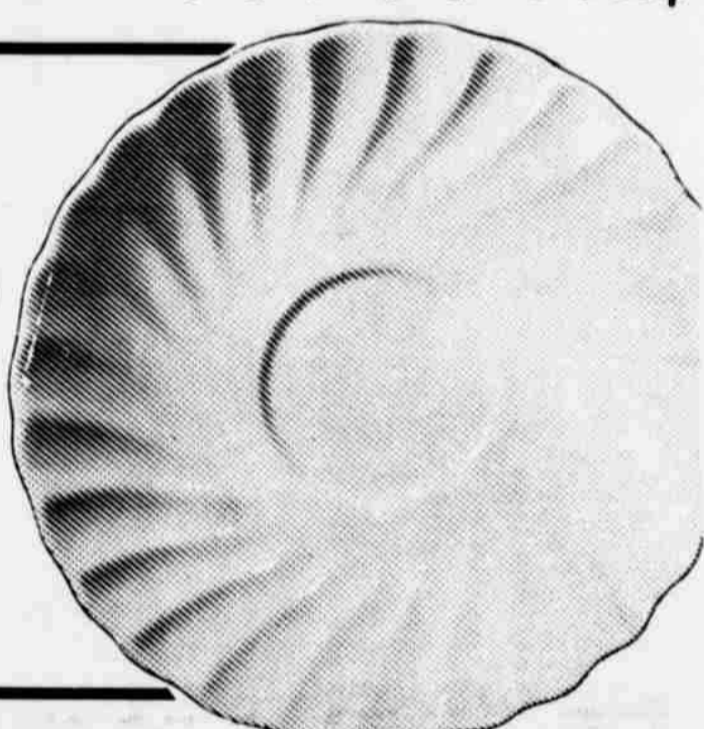


THESE PRICES GOOD IN LITTLEFIELD MAY 12-13-14-1966
 WE RESERVE THE RIGHT TO LIMIT QUANTITIES



- SUGAR** C&H, HOLLY, IMPERIAL 5 LB. BAG **49¢**
- CHARCOAL** CHEF CHOICE HARDWOOD BRIQUETS 10 LB. BAG **39¢**
- PINEAPPLE** SANTA ROSA CRUSHED NO. 300 CAN **19¢**
- FRUIT DRINKS** CIRCUS ALL FLAVORS 3 46 OZ. CANS **69¢**

This week
Sheffield
Saucer
9¢
 only



- CATSUP** HUNT'S FANCY TOMATO BIG 20 OZ. BTL. **25¢**
- EGGS** IDEAL, GRADE A, MEDIUM DOZEN **39¢**

- Health & Home Needs!**
- Dressing** BOYER H.A. REG. 79¢ 4 OZ. BTL. **49¢**
 - Shampoo** WOODBURY 10 OZ. BOTTLE **69¢**
 - Bath Oil** CHARM BUBBLE 22 OZ. BTL. **49¢**
 - Aspirin** BAYER 50 CT. **47¢**
 - Gloves** BLUETTE RUBBER REG. 1.69 **1.29**

- GREEN BEANS** LIBBY'S CUT 4 NO. 303 CANS **\$1**
- INSTANT MILK** BELLE, NON FAT 14 QT. BOX **99¢**
- CHARCOAL LIGHTER** GULF QUART CAN **39¢**

PIGGLY WIGGLY TOP QUALITY MEATS!

PORK ROAST LEAN NORTHERN PORK, PICNIC CUT 35¢ POUND	RIB STEAK USDA CHOICE, AGED, HEAVY BEEF, VALU-TRIMMED 79¢ POUND
----------------------------------------------------------------------------	----------------------------------------------------------------------------------------

BEEF STEAK BLUE MORROW'S THRIFT 20 OZ. PKG 89¢	PORK ROAST LEAN NORTHERN PORK CENTER CUT SHOULDER POUND 45¢
FAMILY STEAK USDA CHOICE, AGED, HEAVY BEEF, VALU-TRIMMED POUND 69¢	FRANKS BUTCHER BOY, ALL MEAT, VACUUM PAK LB. PKG. 59¢
CUBE STEAK USDA CHOICE AGED, HEAVY BEEF BONELESS POUND 98¢	FISH STICKS SEA STAR 3 8 OZ. PKGS. 87¢
GROUND CHUCK LEAN, DATED TO ASSURE FRESHNESS POUND 59¢	SHORT RIBS USDA CHOICE, AGED, HEAVY BEEF, VALU-TRIMMED POUND 23¢
PORK CHOPS FAMILY PAK, 1/4 PORK LOIN, CENTER CUT RIB, LOIN & FIRST CUT CHOPE, 2 1/2-3 1/2 LB. AVG. POUND 79¢	SLICED BACON HORMEL'S BLACK LABEL POUND 79¢
PORK STEAK LEAN NORTHERN PORK POUND 59¢	FISH STEAKS ICELANDIC, COD OR PERCH. BREADED, READY TO COOK 12 OZ. PKG. 53¢

PIGGLY WIGGLY PRODUCE!

STRAWBERRIES
 CALIFORNIA, EXTRA FANCY RED RIPE PINT **29¢**
 CALIF. FRESH GREEN 2 LGE. STALK **19¢**

FRESH RHUBARB, CHERRY TOMATOES, WATERMELONS, HONEYDEW MELONS, BOSTON LETTUCE, CHINESE CABBAGE.

COMBINATION SERVING CART and TRAY RACK
Only \$1.49 EACH
 WITH EACH 15.00 PURCHASE

- PIGGLY WIGGLY FRESH FROZEN FOODS!**
- CREAM PIES** BANQUET BANANA, COCONUT, LEMON 3 FAMILY SIZE PKGS. **\$1**
 - GRAPE JUICE** SENECA 2 6 OZ. CAN **37¢**
 - CHOPPED BROCCOLI** SLIVER DALE 2 10 OZ. PKG. **35¢**
 - CORN** LIBBY WHOLE KERNEL OR CREAM STYLE 2 10 OZ. PKG. **49¢**

Lowest Prices . . . Greatest Variety . . . always at . . .

Piggly Wiggly

Olton Seniors Set Baccalaureate

OLTON -- Baccalaureate service for Olton High School graduating class of 1966 will be Sunday, May 15 at 8 p.m. in the high school auditorium. The sermon will be delivered by the Rev. Cecil Hardaway, pastor of First Methodist Church.

J.D. Lancaster, minister of the Main Street Church of Christ, will give the invocation and the Rev. John E. Lewis, pastor of First Baptist Church, will give the benediction.

Processional and recessional music will be by Harold Dean Carson. Music will be presented by the Olton High School Choir, directed by Mrs. Bob Allford.

Ushers will be Valda Jones, Donna Smith, Roger Thompson, and Dale DeBerry. Class motto is "With God

All Things Are Possible". Class colors are blue and silver and the class flower is the chrysanthemum.

There are 53 members in this year's class. Class sponsors are Mrs. Tom Hamilton, Miss Sandra Meadows and Mr. Calvin Horn.

Graduation exercises are set for Friday, May 20 at 8 p.m. in the high school auditorium with an address by Dr. Roy McClung, President of Wayland Baptist College, Plainview.



RECEIVE SAFE DRIVER AWARDS -- Alan Waldrop, far right, district manager of General Telephone Company, presented safe driver awards to 18 employees Tuesday, who have over 5,000 miles of accident-free driving of company vehicles during the past year. Front row, (L-R) are Archie Cantrell, A.T. White, Ken Bridwell and Alan Waldrop; second row, George Chapman, Muleshoe; Tommy Mackey, Jack Rylant, Earth; Denver Offield, Olton; and A.R. Massingill, Muleshoe; back row: Glen Kenemer, W.S. Pence, R.B. Porter, E.H. Wesley, and W.S. Willis. Receiving awards, but not pictured were D.G. McClelland, and G.R. Shavor, Friona; R.K. Geissler, Earth, K.R. Harrell.

Olton 8th Grade Graduation Set

OLTON -- Graduation exercises for 85 eighth grade students are scheduled Friday, May 20 at 10:30 a.m. in the Olton High School auditorium. Leslie Holaday is valedictorian and Brenda Leonard is salutatorian. Officers of the class are Ronnie Truelock, president; Barry

Cowart, vice-president; and Jan Scruggs, secretary-reporter. Sponsors are Mrs. Marshall Campbell, Mrs. John Lewis and Mr. Harry Ford. Processional and recessional will be by Mrs. Bob Allford, Margaret Thomas will read "Class History."



Go see your Buick dealer. Go get a '66 Buick Special. Going 1st class was never easier. (Or smarter.)

Delivery? Right now!



Deals? Couldn't be better!

Choose from a wide range of body styles, colors and options. 4 out of 5 new-car buyers pay Special prices—make sure you get the Special!

WINNER—Its class, Pure Oil Performance Trials.
WINNER—Popular Science Gold Cup for outstanding braking performance in Pure Oil Trials.
AT A WINNER OF A DEAL!

Wouldn't you really rather have a Buick Special right now? (When the getting's so great?)

See your Buick dealer during his Par-Busting Sale.

RAY KEELING BUICK CO. 800 E. 4th St. LITTLEFIELD, TEXAS

Four for fun!



Ariens Fairway-4 RIDING MOWER



The easier way to mow is the ride way... with a quality-built Ariens Fairway-4 Riding Mower. This 4 h.p. beauty cuts a 26" path... mower pan floats over uneven turf, cuts easily, smoothly. 4 forward speeds and power reverse. Maneuvers sharply for close-in mowing. Come in... test ride the Ariens Fairway-4.



Duncan Auto Service
1002 HALL AVENUE

Mrs. Dykes Installs PTA Officers At Pep Tuesday

The officers of the Pep PTA were installed Tuesday evening by Mrs. Ernest Dyke, a member of the unit, at the final meeting of the year held in the school library. Installed were: Mrs. J.W. Walker, president; Mrs. Charlie Landers, vice president; Mrs. Marshall Campbell, secretary and Mrs. John Shannon, treasurer.

Mrs. J.W. Walker, president, presided during the business

session, at which the standing committees reported on their work.

Mrs. Frank Simmacher, Mrs. Ernest Dyke, and Mrs. J.W. Walker, gave reports on the workshops they attended at the PTA conference in Lubbock recently.

The motion was made and carried to pay for the T.B. testing here May 1965, and Mrs. Frank Simmacher for expenses on the films of the PTA play. Mrs. J.W. Walker thanked the committees, the cast of the PTA play and directors, and all other members for the work they have done in the past year.

Committee chairmen named by the president to serve for 1966-67 are: Mrs. Charlie Landers, program; Mrs. Wilbert Rohmfeld, publications; Mrs. Ernest Dyke, hospitality; Mrs. Charles Burt, finance and budget; Mrs. Leonard Albus, refreshments; L.V. Hogue, membership; John Shannon, parliamentarian; A.G. Jungman, historian; Wilbert Rohmfeld, legislation; Mrs. Paul Albus, fam-

DISCOVER THE WONDERFUL WORLD OF MATERNITY FASHIONS

MATERNITY SHOP
504 E. 4th St.
LITTLEFIELD, TEXAS



To a motorist who still hasn't put a Tiger in his tank.



You're a skeptic. Good. Then you're going to be a good customer, if we can ever win you. We showed you proof on television that High-energy Enco Extra cleans your carburetor while you drive.

(Probably you said, "So what? My car still runs.")

We told you it improves firing power, helps

prevent hot spots and mistfiring and gives you the high octane to help you take off like a cat.

(You drove right on by.)

It's frustrating to develop a gasoline that gives this kind of performance and then not even have you try it.

Did you know new High-energy Enco Extra is more powerful than aviation gasoline of just a few years ago?

That the Tiger is now the favorite of motorists all over the world? And that Jimmy Clark became the World's Champion Race Driver with a Tiger in his tank?

So why not "Put a Tiger in Your Tank*!" "Happy Motoring!"

HUMBLE
OIL & REFINING COMPANY
AMERICA'S LEADING ENERGY COMPANY



CRESCENT PARK SWIMMING POOL

OPENING SATURDAY

OPEN SATURDAY AND SUNDAYS UNTIL JUNE 1ST THEN OPEN DAILY

MAY 14 - 15 OPEN 1 P.M.
MAY 21 - 22
MAY 28 - 29 UNTIL 6 P.M.

OPEN 7 TILL 10 P.M. FOR PRIVATE PARTIES
CALL 385-3655 OR 385-5309 FOR RESERVATIONS

POOL IS HEATED FOR YOUR ENJOYMENT

Admission
40¢ UNDER 12
50¢ OVER 12

TOMMY BRAWLEY
MANAGER

Season Tickets
UNDER 12 --- \$20
OVER 12 --- \$25

Ever notice how when Products compete with each other they get better.



The Better the products get the more they appear at . . .



SHOP DURING BRAND NAMES WEEK and SEE!

FASTER at FURR'S

EVERY CARD IS A WINNER! Pick up your card today at Furr's. No purchase necessary. Have them properly punched and you are a winner. Every week hundreds of winners receive big prizes including \$1,000 cash, \$500. in merchandise, \$250. cash, color TV sets, \$100. in merchandise and Frontier Stamps (5 books, one book, 100 stamps or 10 stamps). There's more excitement at Furr's. It's the store that EXTRA CARES for you with more excitement and more savings.



WIN UP TO \$1,000.00 CASH!

RECENT WINNERS

- \$1,000 Cash Winner Mrs. Aaron Kinslow, Lubbock
- \$500.00 Merchandise Winner Mrs. A.E. Mann, Littlefield
- \$25.00 Merchandise Winners Mrs. M.J. Meador, Lubbock; Jesus Campos, Lubbock; Mrs. A.W. Veach, Littlefield; Mrs. N.C. Horn, Littlefield; Mrs. Ed Johnson, Levelland; Mrs. Troy Phillips, Brownfield; Jan Field, Plainview

IN FURR'S EXCITING DIVIDEND SWEEPSTAKES WIN A COLOR TV, FREE MERCHANDISE OR FRONTIER STAMPS



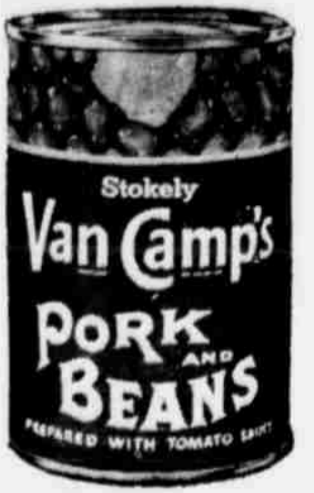
CLOROX BLEACH

GALLON **49¢**

BEANS

PORK & BEANS, VAN CAMPS NO 300 CAN

2 FOR 25¢



EGGS

FARM PAC

USDA GRADE A

MED. DOZ

39¢

SOUP

TOMATO SOUP CAMPBELLS CAN

10¢

MIRACLE WHIP INSTANT NESTEA ENCHILADA DINNER COFFEE

SALAD DRESSING QT. JAR

49¢

50¢ OFF LABEL 3 OZ JAR

79¢

PATIO FRESH FROZEN 12 OZ PKG

3 FOR \$1

DIP & CHIP

BELL 8 OZ CARTON

25

FRESH FROZEN FOODS

DINNERS

MORTON FRESH FROZEN CHICKEN, BEEF, TURKEY SAUSBURY STEAK, OR MEAT LOAF, EACH

3 FOR \$1

- SCHILLING 4 OZ CAN **35¢**
- BLACK PEPPER 4 OZ CAN **35¢**
- STOKELY'S CUT NO 303 CAN **23¢**
- GREEN BEANS NO 300 CAN **2/39¢**
- HUNT'S TOMATO SAUCE NO 300 CAN **75¢**
- IRELAND CHIP OR SLICED BARBECUE BEEF NO 300 CAN **1.69**
- FILLSBURY SWEET 10 6 OZ SIZE **89¢** 12 OZ SIZE **1.69**
- IDEAL DOG FOOD NO 1 CAN **2/35¢**
- CHICKEN ON SUNDAY NO 1 CAN **2/35¢**
- PET FOOD NO 1 CAN **2/35¢**

- REGULAR OR PINK TREND LIQUID 22 OZ SIZE **47¢**
- TEXSUN PINK GRAPEFRUIT JUICE 46 OZ CAN **39¢**
- MORTON FRESH FROZEN APPLE, PEACH CHERRY OR COCONUT FRUIT PIES EACH **3/\$1**
- DEL MONTE SPINACH NO 303 CAN **2/35¢**
- MORTON FRESH FROZEN CHICKEN, BEEF OR POT PIES TURKEY, 8 OZ **6/\$1**
- MARGARINE CHIFFON 1-LB PKG **49¢**

We Give FRONTIER SAVING STAMPS



COOKIES SUPREME, ICED SANDWICH 15 OZ, SWEDISH KREME 14 OZ YOUR CHOICE **49¢**

FRYERS LB 33¢ PORK ROAST



- FRYER PARTS
- Breast LB **59¢**
 - Thighs LB **49¢**
 - Drumsticks LB **49¢**
 - Backs & Necks LB **19¢**
 - Wings LB **23¢**

- PICNIC CUT LB **39¢**
- Pork Chops FIRST CUT LB **69¢**
 - Pork Chops CENTER CUT LB **79¢**
 - Franks FARM PAC 12 OZ **49¢**

FRONTIER SLICED BACON LB **69¢** BOSTON BUTT PORK STEAK LB **59¢**

CALIF..FRESH GREEN HEADS LB **10¢**

TOMATOES

FANCY PINK CELLO CARTON

2 FOR 29¢



STYRO FOAM **Ice Bucket** 4 QT. **19¢**

CHARCOAL **Lighter Fluid** QT. **33¢**

HOUSEWARES

- Plastic Oval Laundry Basket **88¢**
- 14 QT. TWIN PAIL
- 14 QT. WASH & RINSE PAN
- 3 PC. MIXING BOWL SET
- 42 QT. WASTE BASKET
- 26 QT. WASTE BASKET, CHOICE

LAWN CHAIRS

- 6X4X3 VINYL WEBBING EACH **2.99**
- JUBILEE TUMBLER BY ANCHOR 25 OZ **15¢**



Questions & Answers

I didn't have a Social Security number when I filed. I got one. Do you want me to amend it in?

The lack of a number on your return will be noticed when processed. You will be notified and asked to supply it at the time.

THE FAMILY LAWYER

Liability to Animals
To brighten up a dull afternoon, I went to an oil can to a dog's and set the oil on fire. At the time it seemed hilarious. But the dog did not laugh when they were taken into court and found guilty of liability to animals.
One of us today would quarrel with the court's ruling. Yet, until comparatively recent years, cruelty to animals was not a crime at all. Common law did protect the property rights of an animal's owner, but did not protect the animal itself. Thus, if A abused B's horse, B, who suffered an injury to his property, could collect damages from A. But suppose B abused his horse. Or suppose the horse was a stray, with no owner to be



scared. Then the law kept the dog. Nothing stayed the brutal act. If the common law did not condemn, common decency finally did. In a striking shift of public opinion, cruelty to animals—in its many guises—has now been branded everywhere as a crime.
Economics has nothing to do with it. When a man was fined for letting an old horse out to starve, the court spoke not of the dollar value of the horse but of the moral wrong to one of God's creatures. True, we may still inflict harm on an animal for an honorable purpose. Thus we may kill an animal—humanely—for food.
"Otherwise," a judge noted, "one would not slaughter a pig or ox for market, and man could eat no more meat."
Furthermore, we may hit an animal in self defense. A man who was attacked by a frenzied cat, which had a firm grip on his hand, was held liable for acting within the law.
Also we may chastise an animal as a matter of training—or even surgery on it as a matter of health. Nor are cruelty laws held to unreasonable extremes. Only if it is no crime to swat a fly with a hook with a worm.
What the law does denounce is conduct that affronts the modern conscience. One court put it this way: "Animals whose lives are devoted to our use and pleasure deserve only humane treatment. The dominion of man over them, if not a moral one, has a better significance than the development of malignant passions and cruel instincts. Human beings should be kind and just to dumb brutes, if for no other reason than to learn how to be kind and just to each other."

FIND SOLACE FOR YOUR SORROW THROUGH... QUIETUDE

FEEL FREE TO CALL ON US AT ANY HOUR
Hammons Funeral Home



RECEIVES \$25 CHECK -- Mrs. B.D. Ricks, 1120 West 9th Street, was presented a check in the amount of \$25 Tuesday for having a Cloverlake Dairy product in her home when the "Mystery Man" called. The "Mystery Man" in this case was Jack Barker of Plainview, sales manager for Cloverlake.

Air Force Seeks Prior Servicemen

The increased need for prior servicemen has resulted in many changes in the Prior Service Program announced Staff Sergeant Clifton W. Harr, local Air Force Recruiter whose office is located at 1006 13th Street in Lubbock.

For example, an individual who was honorably discharged from any branch of the services, who is trained in a technical field which can be utilized by the Air Force and separated less than two years may not only enlist in the grade at which he was discharged, but selects his base of choice, may take up to a 30 day leave and will undergo no basic training. The grade authorized for enlistment has also been eased for those separated for more than 2 years.

Many vacancies exist in the administrative, aircraft maintenance and mechanical, medical, food service, air police, communications, electronics plus a host of other fields.

The above changes are expected to be in effect through June 1966.

STATE CAPITAL Highlights AND Sidelights

by Vern Sanford
TEXAS PRESS ASSOCIATION

Although the poll tax now is officially dead, as a voting requirement, the fight over registration procedures continues. U.S. Supreme Court, as expected, agreed with a three-judge federal court here that the 74-year-old levy is unconstitutional. Court already had stated in a Virginia case that a state is prohibited from placing a charge on the right to vote.

Action, however, was necessary to place in full effect the voter registration law passed by the Texas Legislature in special session last February.

Texas voters still will cast ballots next November on proposed state constitutional amendment to "repeal" the poll tax. Same amendment provides that an annual registration system will replace the levy.

Some groups are urging defeat of the November amendment. This so that annual registration will not be built into the state constitution. They will continue their drive for a permanent registration plan, whereby a voter once registered remains eligible simply by voting regularly in elections.

New Election Law Study Committee indicated it will devote much of its effort to improving the system enacted under emergency circumstances. Committee has requested that suggestions in general for amending Texas election laws be submitted to the Texas Legislative Council before June 30.

COURT SPEAK -- Should federal court-ordered principle of equal population for congressional and legislative districts apply to county commissioners precincts as well? State Supreme Court heard arguments on the question in a suit filed by Midland Mayor H.C. (Hank) Avery to bring the one-man-one-vote theory to precinct level. If court agrees, major changes could result in county government throughout Texas.

Opponents said Texas Constitution provides that precincts will be created "for the convenience of the people."

High Court also agreed to review a May 25 suit to void Jefferson County contracts for replacement of Pleasure Island Bridge at Port Arthur.

After a 13-week trial, a Travis County District court jury held that more than \$1,000,000 was "misappropriated" from Lumberman's Insurance Corporation of Dallas as the result of a scheme involving bankers and an insurance agency owner.

AG RULES -- Texas State Library and Historical Commission may make direct monetary grants to local public library units under federal act, subject to approval of state plan. Atty. Gen. Waggoner Carr held.

In other opinions, the attorney general has ruled that:

* Cigarette vending machines operated on a military reservation are subject to the regular permit fees.

* Residence in which the Cameron Independent School District superintendent lives is tax exempt, since it is owned and maintained by the district to encourage qualified personnel, and therefore serves a "public purpose."

* Acquittal of the charge of driving while intoxicated, second offense, would bar a subsequent prosecution for driving while intoxicated, first offense.

* Registration fees may be paid by state for Veterans Land Board appraisers attending an appraisal school at Texas A&M.

* Trust agreement for investment of perpetual care funds

may be amended to permit investment in corporate stocks and other investments authorized by Texas Trust Act.

DPS NEEDS RECRUITS -- Col. Homer Garrison, director for the Department of Public Safety, is looking for applications for the next DPS training school for patrolmen. Application deadline is June 6.

Garrison said training pay has been increased from \$375 to \$400 a month. Pay will be \$468 to \$484 upon graduation. Men between 21 and 35 are accepted for the 16-week training program. They pick their branch of service and are assigned to posts throughout the state.

FLOOD AID SOUGHT -- Gov. John Connally has requested the President to declare 19 northeast Texas counties as part of a major disaster area as a result of heavy rains and floods.

His initial request for federal emergency relief funds for rehabilitation of public facilities total \$1,500,000.

The 19 counties included are Bowie, Camp, Cass, Collin, Fannin, Freestone, Gregg, Harrison, Henderson, Lamar, Marshall, Morris, Navarro, Rains, Red River, Rusk, Shelby, Titus and Upshur. Others may be added in a supplemental request when damage estimates are complete. At least 13 other counties suffered flood damage.

Connally pointed out that rains and flooding in the lower Rio Grande and along the Texas coast may require assistance to that area. Allocation of funds is made on the basis of surveys conducted jointly by local, state and federal agencies.

WATER -- Texas Water Development Board decided to enter a master agreement with the Sulphur River Municipal Water District, North Texas Municipal Water District, the City of Irving and the U.S. Corps of Engineers to pay part of the cost of construction of Cooper Dam Reservoir and Texarkana Reservoir.

Board of Engineers for Rivers and Harbors, Army Corps of Engineers, has approved the Aquilla Reservoir on Aquilla Creek.

Board recommended construction of a \$23,600,000 dam and reservoir for flood control, water supply, recreation and fish and wildlife enhancement between Hillsboro and Waco.

Texas Water Rights Commission announced plans and specifications for Livingston Dam and Reservoir in Polk and San Jacinto Counties. Design calls for construction of an earthen embankment on an over-consolidated, low-strength clay. Project would be major water source for Houston.

SHORT SNORTS

Attorney General Carr reported a decrease in Texas juvenile crime in 1965 for the first time since statistics were compiled in 1959. June Hearings are set by Railroad Commission for oil and gas operators to show why they should not stop using earthen pits for disposal of salt water in Calahan, Concho, Runnels, Knox, Harris and Jackson Counties. Governor Connally has approved new war on poverty grants for Austin, Uvalde, Bowie County, San Saba, Mason, Llano and Mills Counties, Robertson County, Williamson-Burnet Counties, Amarillo and Borger, Laredo and Webb County and Robstown.

Special Guests Attend Annual Gin Meeting

AMHERST -- The annual meeting and banquet of the Farmers Co-Op Gin was held in the school lunchroom Friday night.

President of the Board, Doc Shavor, presided and manager, Paul D. Bennett, introduced guests. Otha Key, assistant manager of the Plains Co-Op Oil Mill; Tom Brown, general manager of Farmers Co-Op Compress; Bill Blackledge, attorney for Plains Cotton Marketing Association and Stanley Pace, assistant manager of Growers Seed Association, all of Lubbock.

The four long tables where guests were seated were decorated suitably for the occasion. Runners of fringed cotton bagging were laid the length of each table. Potted red geraniums in containers covered with burlap were alternated with red candles burning in old-fashioned lamp chimneys.

The main attraction was the wives of the seven directors and the manager and ginner, dressed identically in shift dresses of white hosiery, stitched in red each with the wearer's monogram in red. They were Mmes. Paul D. Bennett, Verdel Burton, Sam Harmon, Bennie Harmon, Leroy Maxfield, Loyd Seymore, Doris Shavor, Dale Weaver and James Holland. Three director's terms expired, Leroy Maxfield, Bennie Harmon and James Holland. They were re-elected unanimously.

A complete report and audit was given and \$52,230.00 in cash was distributed to stockholders.

The meal was served by Byrnes Catering service of Lubbock to approximately 150 attending.

AF Enlisting Non-High School Graduates In May

The Air Force is now accepting enlistments for the month of May from male non-high school graduates who are at least 18 years of age and who can meet the physical and mental standards. Enlistees will be trained in one of over 400 highly skilled jobs. Based on the results of aptitude tests administered prior to their enlistment, they may select the field of their choice whether it be mechanical, administrative general or the electronics fields.

Interested persons should visit the Air Force recruiting office at 1006 13th Street in Lubbock.

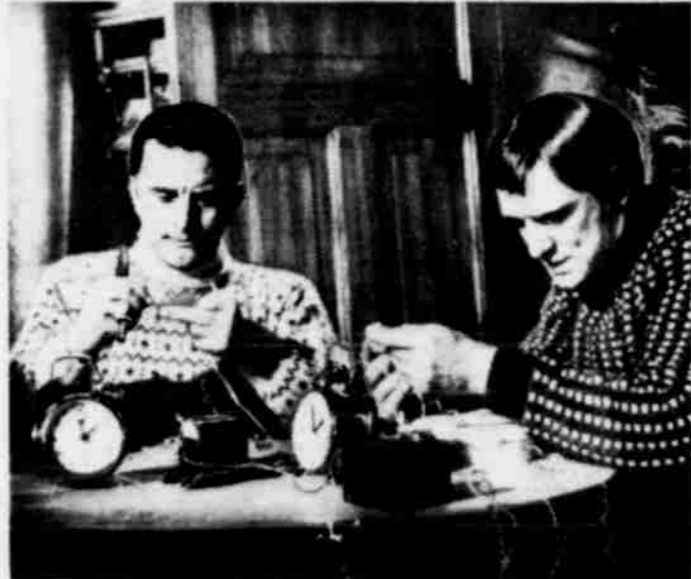
Olton Instructor Receives Honor

OLTON - Paul Walden, head of the science department at Olton High School, was named outstanding educator connected with the South Plains Regional Science Fair at Texas Tech, recently.

At the end of the Fair the Texas Tech science council presented Walden with a set of research books.

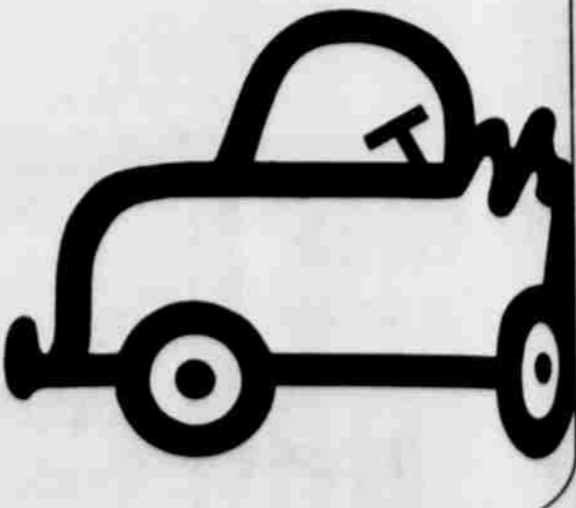
The Olton instructor was also elected science director for the 1966-67 science fair and he will be area representative to the international science fair May 11-14 in Dallas.

Walden and his family moved here last June from LeFores, where he was head of the science department.



KIRK DOUGLAS, left, and Richard Harris make time-bombs for sabotage purposes in Antony Mann's "The Heroes of Telemark." Columbia Pictures release also starring Ulla Jacobsson and Michael Redgrave in Panavision and Columbia color. They play Norwegians in World War II, who prevent the Nazis from producing an atomic bomb. "The Heroes of Telemark" opens Sunday at the Palace.

Crrrrunnnch! Unbend. Find AUTOMOBILE REPAIRING; AUTOMOBILE DEALERS fast in the YELLOW PAGES. Where your fingers do the walking.



LOOKING FOR... EQUIPMENT OR PROFESSIONAL HELP?

You don't have to pound the pavements looking for experts in repair, service or maintenance. And you don't have to buy expensive equipment. Simply look in the business service directory of your want ad sections for expert assistance and equipment rentals. Let want ads be your number one helper.

READ and USE WANT ADS REGULARLY

Area Church News

LUMS CHAPEL BAPTIST

The WMU of the Lums Chapel Baptist Church will honor the Littlefield High School seniors who live in the Lums Chapel community Sunday.

Following church services Sunday evening a program will be presented and refreshments will be served. The theme of the program will be "Pressing Toward the Mark".

Students to be honored will be Pansy Wheeler, Judy Smith,

Frank Herrera, Elva Aleman and Carol Sisson, formerly of Littlefield, now of Lubbock.

ST. MARTIN LUTHERAN

Visitors Sunday at St. Martin Lutheran Church included John

McMurray and Tammy of Levelland and Miss Sharla Wells of Levelland. Confirmed in the rite of adult confirmation during the worship service was Mrs. Richard Beisel.

Tonight the Faith Circle of the WOC will meet in the main auditorium of the educational building at 7:30 p.m. Mrs. Brian Engel will serve as hostess.

Saturday the Catechism class will meet at 10 a.m. Sunday the congregational dinner and religious survey of Muleshoe will begin with a meal in the educational building following the service, followed by a trip to Muleshoe where the religious survey will be held. The Luther League will remain in Muleshoe for the evening to meet with the Luther League of St. Paul Lutheran Church, Muleshoe, and the young people of the First Presbyterian Church in Muleshoe.

EMMANUEL LUTHERAN
Rev. William H. Remmert assisted Rev. Elmer Neunaber of Lubbock vice president of the district; and Rev. O. Rast of Austin, director of the Board of Missions, conduct a meeting Wednesday night at Emmanuel Lutheran Church, Hereford. The meeting was to discuss the possibility of a dual parish for Hereford and Tulla. Rev.

Remmert is now serving as vacancy pastor at Hereford.

FIRST METHODIST
Receiving a corsage in honor of being the eldest mother present at the First Methodist Church Sunday morning was Mrs. Pearl Herman.

Sunday will be Church Loyalty and Pledge Sunday.

FIRST CHURCH OF THE NAZARENE
Recently elected officers for

the coming year include: Stewards, Bobbie Wesley, Lula Dickenson and Irene Lynn; Trustees, Kenneth Lynn, Eddie Wesley and W.J. Ward; Sunday School Superintendent, Kenneth Lynn; Nazarene Young People's Society, Bobbie Wesley, president; Nazarene World Missionary Society, Lula Dickenson, president; Secretary of Church Board, Bobbie Wesley; Treasurer of Church Board, Irene Lynn; Christian Service Training director, Irene Lynn.

Meeting Slated

A regular meeting of the Lamb County Chapter American Legion will be held Friday, reports were received from the following communities on the March 17: Spade, Fieldton, Ambrose, Pleasant Valley, Sudan, Englelake, and Earth.

June 17 was approved for the next meeting. The public is invited to attend. The election of officers, reports of the year's accomplishments and special recognition of volunteers will be a part of the program. The meeting will be held at 4 p.m. Refreshments will be served.

Honor Roll Is Released

WHITHARRAL-- The honor roll for the Whitharral fifth grade has been announced. High school principal, Joe Hunter and elementary principal, Lowell Herring as follows:

School "A" Honor Roll: Michael Sadler and Jerry Dpton; Juniors: Kay Lott and John Villanueva; Sophomores: Leroy Bradley, Ashley Sadler, Judy Wade, Ann Denney, Karren Mason, Claudia Wade and Sharon Wade.

and Sharon Throckmorton and Kativ White.

Grade School "A" Honor Roll Eighth grade: Kathy Pelfrey; Seventh: Christy Clevenger, Cynthia Dukatnik, Johnny Graham, Marla Sadler, Linda Wade and Kathy Lynn Williams; Sixth: Sylvia Cardenas and Cheryl Epps; Fifth: Johnny Claborn and Beth Pelfrey; Fourth: Kathy Claborn, Joli Grant and Terri Howard; Third: Donna Avery, Beth Epps, Connie White and Debbie Williams; Second: Cindy Doshier, Charlotte Pelfrey and Kathy Theford; First: Cheri Hisaw.

Grade School "B" Honor Roll Eighth grade: Linda Andrade, Rex Avery, Gayle Burrus, Jonnie Caldwell, Karen Hayes and Bobb Cardenas; Seventh Grade: Rita Avery, Lilia Barrera, Celia Estorga, Neal Pelfrey, Robert Salinas, Gordon Wade and Kathy Williams.

Calendar of Events

THURSDAY
Optimist Club meets at Crescent House Restaurant
Ladies Bible Class meets at Crescent Park Church of Christ
Rocky Ford Home Demonstration Club meets First Baptist GA Mother-Daughter tea in church parlor
Rainbow Girls meet in Masonic Hall
Faith WOC Circle meets at St. Martin Lutheran Church
WOW meets in Lodge Hall

FRIDAY
LWML meets at Emmanuel Lutheran Church

SATURDAY
Junior Confirmation Class meets at Emmanuel Lutheran Church
Catechism Class meets at St. Martin Lutheran Church

SUNDAY
Baccalaureate Service at Spade School auditorium
American Legion Zone meeting at Reddy Room
Baccalaureate Service at Olton High School auditorium

VFW Post 4854 meets each second and fourth Monday at 8:30 p.m. in VFW Hall

SAVE FOOD DOLLARS HERE!

LIGHT CRUST FLOUR 25 LB PAPER SACK **\$1.89**

SHURFINE TEA 1/4 LB **29¢**

HOLLY SUGAR 5 LBS **49¢**

SHURFINE SLICE OR HALVES PEACHES 2 1/2 **29¢**

SHURFINE ALL GREEN ASPARAGUS 300 CAN **31¢**

SHURFINE VAC PAK CORN 12 OZ **23¢**

ADAM GUM 10 PKG **39¢**

DIXIE BELL CRACKERS LB **25¢**

ROXEY DOG FOOD TALL CAN **3/27¢**

SHURFINE PEANUT BUTTER 12 OZ **41¢**

NABISCO OREO 11 OZ **39¢**

SHURFINE STEWED TOMATOES 303 **23¢**

SHURFINE MILK TALL CAN **2/31¢**

ENERGY BLEACH QT **19¢**

WOODBURY SHAMPOO 10 OZ SIZE **59¢**

DEL MONTE Catsup 20 OZ **3 FOR 79¢**

ZESTEE PRESERVES JELLY STRAWBERRY PEACH PLUM GRAPE

18 OZ TUMBLER **3 FOR \$1**

Flip Your Lid For The USO!

Drip Or Reg LB **69¢**

DOUBLE GUNN BROS STAMPS WED.

SHOP TONIGHT TILL 9 P.M.

Beginning MONDAY! 9 Oz On-The-Rocks **FREE** SORENO AVOCADO WITH \$5 PURCHASE

ESPECIALLY FOR Graduates

Ready for Mailing! **3 ounces of Happiness**

JEWEL GREETINGS by Anson

When you want to give more than a card... Jewel Greetings are ready for instant mailing! Nicest surprise - any cheerful occasion. Choice of 12 fine jewel greeting gifts with handsomely embossed greeting cards. Pre-packed for immediate mailing... all you do is add the stamp! From \$2.50

WE'LL BE OPEN TILL 9 P.M. TONIGHT WITH A GREAT SELECTION OF GRADUATION GIFTS.

McAnally Jewelry 323 PHELPS

SLICED BACON SHURFRESH 1-LB. PKG **79¢**

PINKNEY WIENERS 2 LBS **69¢**

SIRLOIN STEAK LB **89¢**

FRESH GROUND HAMBURGER 3 LBS **\$1**

FLORIDA TOMATOES LB **19¢**

BELL PEPPER LB **19¢**

GREEN ONIONS BUNCH **3/19¢**

GRAPES EMPEROR RED LB **19¢**

3RD & XIT DRIVE

PIONEER SUPER MARKET

TEC Manager Urges Summer Job Availability

Billy L. Lynch, manager of the local Texas Employment Commission Office, this week urged local citizens to make plans to use youth whenever possible during the summer vacation.

"With the end of school, hundreds of youth will be seeking summer jobs, and our ability to help them will be determined by the number of jobs for youth we have listed in our files," Lynch declared.

The TEC manager explained that homeowners, housewives, farmers, and public agencies can often find constructive work for youth in the home or the community. He pointed out that short-term jobs lasting one day or less can mean a great deal.

"I wish we had 500 short-term jobs for youth in our files to supplement the week-long, month-long, or summer-long jobs, which are rather scarce," Lynch said.

He cited such jobs as cleaning a weed-covered lot, painting a fence, cleaning out an attic or basement, and washing a car as jobs which will give youth a constructive work experience and an opportunity to earn needed money.

"We will be as happy to place such job orders in our files as we are to take orders for summer long jobs, and we urge every citizen or group who might have a job for youth of any duration to give us an order as early as possible so that we can be of maximum assistance to youth this summer," the TEC manager said.

The Texas Employment Commission number is 385-5107.

Judging Team To Compete In State Meet

AMHERST -- The Amherst FFA Poultry Judging team placed seventh in the Area 1 judging contest and qualified for the State Contest to be held at Texas A & M May 14. The poultry boys also won first place in the Littlefield FFA District. Team members are: Darrel Moates, Carty Mac Shipley, Pat Duffy and Royce McAdams.

Each member has to grade 24 eggs on exterior quality, 24 eggs on interior quality, 20 chickens to cull for breeding stock, 2 classes of four hens each to be judged and placed, 10 live broilers to be graded and 10 dressed birds to be graded.

Other Amherst teams in the Area 1 contest were: meats, Mike Slate, Bobby Kittrell, and Danny Morrow; livestock, Ronnie Hedges, Rodney Maxfield, Paul Holland and Glen Swartz; dairy cattle, Jimmy Allensworth, Darrel Roberts, Ray Dunn and Mike Coffey; grass judging, Neil Duffy, Billy Sherrill, and Roy Simmons; dairy products team, David Heim, Bruce Nicholson, and Tommy Kelton.

AMHERST NEWS by MRS. LESTER GRANGE

Wagners Have Weekend Guests

Mr. and Mrs. H.K. Onstott of San Dimas, Calif. visited his sister, Mrs. O.G. Wagner and Mr. Wagner during the weekend. They went to Hobart,

Okla. where they attended a family reunion of her family the Duggans, and will return by Amherst for a longer visit. Patty Faust of Muleshoe spent

the weekend with her grandparents, Mr. and Mrs. John Faust. Mr. and Mrs. Delvin Batson were in Ruidoso, N.M. for the weekend at their cabin.



DONNA CRUME
Salutatorian



MARGARET RICHARDSON
Valedictorian

Eighth Grade Honor Students Announced

BULA -- Valedictorian of the Bula eighth grade graduating class is Margaret Richardson, daughter of Mr. and Mrs. Ashel Richardson. She is secretary-treasurer of her class, on the basketball team, and was chosen grade school football sweetheart for 1965-66.

Her grade average was 95. Salutatorian is Donna Crume, daughter of Mr. and Mrs. Edd Crume. Donna is president of her class, and a member of the basketball team. Her grade average was 92. The commencement exercises will be May 19 at 8 p.m.

Stone's mother, Mrs. Lula Hardin, also of Amarillo.

Mr. and Mrs. Jim Nix were guests of their daughter, Mrs. Ross Brock and family in Earth on Mother's Day.

Mrs. Lula Hardin of Amarillo is spending the week with her daughter, Mrs. W.P. Stone and Mr. Stone.

Here for the weekend with his parents, Rev. and Mrs. James Patterson, were Mr. and Mrs. Wendall Patterson. She is employed in Abilene and he is in Officers' Candidate School at Fort Knox, Ky. He is to report back to school this week. Virginia Floyd was home from Lubbock Christian College for the weekend.

Guests of their mother, Mrs. Ed Love, and sister, Mrs. Laverne Long, for Mother's Day were Mr. and Mrs. Alvin Baker and son Johnny and daughter, Mrs. Larry Kite and family of Hobbs.

Mrs. V.A. Hinds has returned home after spending two weeks with her daughter, Mrs. Don Glocker and family in Baltimore, Md. She was there to welcome their new grandson, Arthur Allen Glocker.

Mrs. Howard Campbell and Barbara were recent guests of her mother, Mrs. Elsie Great-house in Abilene.

Weekend guests of her father, W.E. Byrd were Mr. and Mrs. A.N. Cawthon of Tucuman, N.M.

Chad Schroeder of Lubbock was here for the weekend with his grandparents, Mr. and Mrs. Alfred Schroeder.

Guests in the W.P. Stone home Sunday were her sister, Mrs. E.L. Carroll and family of Amarillo. They were accompanied by Miss Elizabeth Peal and Mrs.

a visit with her sister, Mrs. Effie Tapley.

Mr. and Mrs. Bobby Hayworth and family of Lubbock were here for Mother's Day with her parents, Mr. and Mrs. Ed Schovajsa. Another daughter and family, Mr. and Mrs. Jack Cummings and family were here Saturday.

Mrs. Effie Tapley is spending a few days with her granddaughter, Mrs. Clinton Byers in Littlefield.

Mrs. Mat Nix Sr. and Mrs. Gladys Glenn attended church service in Sudan Sunday morning. Mrs. Nix went home with her daughter, Mrs. Joe Burt Markham and Mrs. Glenn with her daughter, Mrs. Mat Nix Jr. for the remainder of the day.

In Earth for Mother's Day with her parents, Mr. and Mrs. J.E. Williams were Mr. and Mrs. Raymond Duvall, Eddie and Sandra.

James Suiter of Hale Center was a recent guest in the Lamar Kelly home.

W.E. Bennett and daughters, Mrs. Jim Nix and Mrs. Sue T. Norman of Lubbock attended funeral services for his sister, Mrs. Maud Cantrell, 80, in Portales Friday. She died in the

Truth or Consequences, N.M. Mr. and Mrs. Corky Jones and daughter of Shallowford attended his grandparents, Mr. and Mrs. W.E. Bennett Sunday. Mother's Day guests of Mrs. Lee Payne were her son Bob and family at Shallowford.

I want to thank the people of Littlefield and Lamb County for their support given me in the first primary.

Ernest L. Owens

WHILE SUPPLY LASTS
6 P.M. TO 9 P.M. ONLY
ELECTRIC KNIVES
1/2 PRICE
CARVING FORKS 1/2 PRICE
OPEN THURSDAY NIGHT UNTIL 9 P.M.
SEARS & ROEBUCK

TO THE PEOPLE OF LAMB COUNTY

I Would Like To Take This Opportunity To Express My Appreciation For The Hours Of Work And Support You Rendered In My Campaign For Judge Of Lamb County.

I Feel It Is An Honor To Have Been Selected The Democratic Nominee And If Elected In November Will Devote My Entire Efforts To Lamb County And Its Continued Development And Influence In Our State.

Jim Mangum
Democratic Nominee For County Judge

What's the best 5-letter word for fertilizer?

NIPAK

And for cotton—NIPAK 45.

Get better cotton production and earn bigger profits. Sidedress your cotton with NIPAK 45 right now—for greater yield. (You may get more than the average \$6 return for every \$1 invested in fertilizer, depending on your farm. Experimentation tests averaged this.) NIPAK 45—45% nitrogen fertilizer from Urea—gives you one-third more nitrogen per pound than any other form of solid nitrogen fertilizer—

which enables you to handle less fertilizer and cover more ground in less time. NIPAK 45 is uniformly prilled, too. It flows easily, won't cake, clog or corrode your equipment. NIPAK also dissolves in the soil moisture and moves quickly to the root zone where it stays put until your crops need it. So for more grow power, ask your local NIPAK dealer about NIPAK 45. He can help you plan a complete fertilizer program because he can provide a complete fertilizer service.

NIPAK FERTILIZER

Everything else is growing. So why not you?

Move up... Move now...

300 2-Door Hardtop

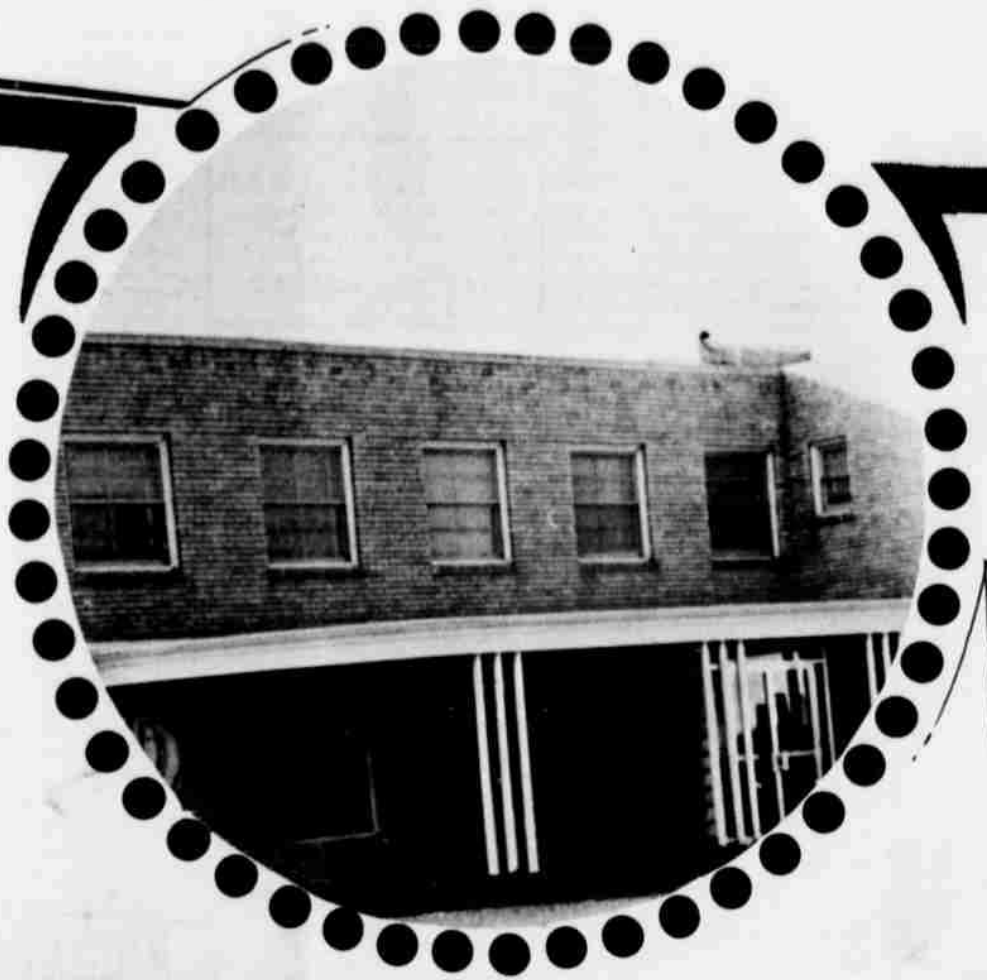
Grow a little this spring. It's easy. Five full-sized Chrysler Newports are priced just a few dollars a month more than you'd spend on one of the most popular smaller cars, comparably equipped. With automatic transmission, power steering, power brakes, radio, heater and a big V-8. Move up to Chrysler. Driving will never be the same.

Buy Chrysler

AUTHORIZED DEALERS CHRYSLER MOTORS CORPORATION

Garland Motor Company, Chrysler-Plymouth
710 E. THIRD ST. LITTLEFIELD, TEXAS

We Salute NATIONAL HOSPITAL WEEK



R.E. Maurer, MD

I.T. Shotwell, MD

Larry G. Shipp, MD

Gordon T. Stewart, MD

Bernard Perlman, MD

THE PATIENTS RECOVERY IN THE HOSPITAL OF TODAY IS AIDED BY MANY HANDS AND MANY SKILLS THAT NEVER MERGE FROM BEHIND THE SCENES.

WHILE THE PATIENT IS WELL AWARE OF THE CARE OF NURSES, DOCTORS AND TECHNICIANS WHO COME TO HIS BEDSIDE, THERE ARE MANY OTHERS NEVER SEEN BY HIM WHO ALSO CONTRIBUTE TO HIS RECOVERY. FOR HOSPITAL PATIENT, FOOD IS COOKED, COMPLETE RECORDS OF HIS CARE AND PROGRESS ARE KEPT UP TO DATE, LABORATORY TESTS ARE RUN, X-RAY FILMS ARE DEVELOPED.....ALL OF THESE TASKS ARE PERFORMED BY HANDS AND SKILLS BEHIND THE SCENES.

MEDICAL ARTS CLINIC AND HOSPITAL HAS A WELL TRAINED SURGICAL AND MEDICAL STAFF AND IS EQUIPPED TO DO MOST PROCEDURES, SERVING THIS NEED FOR THIS ENTIRE AREA.

THE DOORS OF THE MEDICAL ARTS CLINIC-HOSPITAL HAVE BEEN OPEN CONTINUALLY SINCE ITS BEGINNING IN 1938...AND BESIDES MAINTAINING AROUND THE CLOCK HOSPITAL AND MEDICAL SERVICE, IT HAS BEEN A DEFINITE PART OF THE COMMUNITY LIFE AND COMMUNITY PROGRESS.

THE MANAGEMENT AND STAFF OF THIS HOSPITAL ARE PROUD TO BE OF SERVICE TO THIS COMMUNITY AND AREA...HOUR AFTER HOUR.. YEAR AFTER YEAR.

MEDICAL ARTS CLINIC HOSPITAL

BUY! SELL! SWAP!

READ and USE THE

WANTED

CLASSIFIED ADS. In this section, you can find...
 CLASSIFIED ADS. In this section, you can find...
 CLASSIFIED ADS. In this section, you can find...

LEADER and NEWS CLASSIFIEDS SELL!

TO USE THEM JUST CALL **5-4481** AND ASK FOR AD TAKER

— CLASSIFIED RATES —

First insertion, per word **5c**
 Second insertion, word **4c**
 All Additional Insertions, word **3c**

Minimum Charge For First Ad run, \$1; minimum charge per subsequent insertion, 50c.

MONTHLY RATE, per word **30c**
 (All editions of Leader and News, two copy changes monthly)

DEADLINES FOR INSERTION:
 LAMB COUNTY LEADER
 10: a. m. Wednesday
 COUNTY WIDE NEWS
 10:00 a. m. Saturday

Help Wanted A-1

WANTED: young married man to learn office machine repair. See Ernest Connell. TF-C

Help Wanted - Experienced auto mechanic to work in Ford dealership, good working conditions and paid vacation. Call 385-5164 for Bill Blackman, Service Manager, Mitchell-Ford Inc., Littlefield, Texas. 5-12M

WANTED: alteration lady at Littlefield ready to wear shop in Littlefield, Texas. Full time employment. Write - W. B. Little, 3424-34th St., Lubbock or call SW9-7536 or SW9-0505. Lubbock, Texas. 5-15L

PERSON WANTED to supply Rawleigh products to consumers in Lamb Co. or Littlefield. Good time to start. See P.W. Roach, 1410 W. 8th St., Plainview or write Rawleigh TX D 282 28, Memphis, Tenn. 6-9G

Houses to Rent B-3

Nice 2 bedroom home, partly furnished. Paul Carmickle Real Estate, phone 385-4935 or 385-5131. TF-C

CRESCENT PARK - 3 bedroom and den, double garage, new carpet, 6' stockade fence. Don Avery, 299-4395, Whitharral. TF-A

FOR RENT: 2 bedroom brick home. Close in. Carpeted and draped, with garage, and extra storage. Call Mrs. O.C. McBride, 385-4394 or Mrs. A.J. Lenderson, 272-3038, Muleshoe. TF-L

FOR RENT - four bedroom, three baths, central heating, air conditioned, carpeted. On school bus route just outside city limits. Call Dr. Hinckley, Muleshoe, 272-4581 or 272-4208 after 6 p.m. TF-H

Business Opportunities A-3

Business Opportunity. Farm and Light Industrial Equipment. Dealer wanted for Littlefield and Olton. Complete Wholesale and Retail Financing furnished by Company. Write or call J.I. CASE COMPANY, 21 East Main, Okla. City, Okla. Phone Central 5-1301.

Rooms for Rent B-5

FOR RENT - Furnished bedrooms. Close to town. Phone 385-5151. TF-M

Comfortable bedrooms for men. New home, heated rooms. Phone 385-3604, 204 East 9th St. TF-A

Card of Thanks A-10

To our Whitharral friends this is to express our very sincere appreciation for your thoughtfulness in honoring us with the plaque and gift at the athletic banquet. It is a pleasure to be associated with families such as you.

Coach John Wayne Hall and family

Offices for Rent B-6

FOR RENT - extra choice office space. Contact L. Peyton Reese. TF-R

Apts. for Rent B-1

Nicely furnished apartment, all carpeted, with garage, back yard fenced. Call 385-4460. TF-J

3 room furnished apartment. Bills paid, 123 North West-side Avenue. Phone 385-4059, after 1 p.m. 5-9B

Houses For Sale C-1

FOR SALE - 2 bedroom house. A bargain. L. Peyton Reese. TF-R

FOR SALE - large 3 bedroom, over 2,000 feet floor space, \$6,500 total price - will take trade. 714 West 6th. TF-E

All brick home, attached garage, plenty of storage, low move in cost. Call 385-4930. TF-J

3 Bedroom, den, 2 bath, garage, carpet, \$400.00 down payment and take up payments, 1314 West 14th, 385-5700, 5-12S

FOR SALE - 3 bedroom house, small down payment - small monthly payments, Hutchins Building Supply, 100 Sunset Avenue. Phone 385-5588. TF-H

Moved to Lubbock, brick 3 bdr., 1 3/4 bath, 22' x 28' den, 2 car garage, playroom, cellar, ref. air. LOFLIN COMPANY SW2-3093, 5-29L

FOR SALE IN CRESCENT PARK: 2 bedrooms, 1 1/2 baths, den and kitchen combination, fireplace, double car garage and fenced back yard. Phone 385-4084. TF-E

FOR SALE OR RENT: three bedroom home in the country. Large kitchen, separate utility room, Carpeted, Redecorated bath. Phone Whitharral 299-4185, 6-2R

CASH TALKS
 3 bedroom house on Crescent Drive, assume equity or buy outright. See Allen Roberts at Ben Franklin, Phone 385-3286 or 385-3252. TF-B

Three bedroom brick, large paneled den, coppertone built-ins including dishwasher, utility and double garage. No qualifying, buy equity and assume FHA loan. 1300 W. 14th. TF-M

Houses to Rent B-3

FOR RENT: 2 bedroom house on Kirk Street. Phone 385-3654 after 6:00 p.m. TF-C

2 bedroom, redecorated, stor windows, fenced back yard, 916 East 6th. Call 385-3112 or 385-5060. TF-G

FOR RENT: 2 bedroom house at 517 West 1st Street. See J.W. Emfinger, 314 East 14th or call 385-3723. TF-E

Two bedroom furnished house for rent, 1 1/2 blocks from new high school. See J.C. Smith, Sr., 1005 West 10th, phone 385-4643. TF-S

FOR RENT: 2 and 3 bedroom houses. Some furnished, also furnished apartments. Call K. Houk, 385-3492 or 385-4830. TF-H

FOR RENT OR SALE - 2 bedroom house, well located, newly refinished inside. PLAINS REAL ESTATE, Ph. 385-3211, night, 385-3009. TF-P

Houses For Sale C-1

FOR SALE - OWNER LEAVING TOWN - large 2 bedroom house. Would consider some items as trade in. Call 385-4853 or come by 411 East 16th. TF-C

HOUSE FOR SALE - Cannon Terrace, nice 3 bedroom, 1 bath brick home, 6 foot stockade fence. Low equity, 1315 West 13th. Phone 385-3201. 5-12B

FOR SALE - A BARGAIN - nice three bedroom, two bath brick; in Crescent Park, Fenced back yard. House new in 1963, Roy Wade, phone 385-3790, Plains Real Estate. TF-W

REDUCED EQUITY, MUST SELL, 3 bedroom, 2 bath brick with den, double garage, utility room. A good buy. See at 1307 W. 12th in Cannon Terrace, phone 385-5042. TF-C

Will sell or trade for anything of value Cannon Terrace 3 bedroom, 2 bath brick home, large corner lot, fireplace, central heat and air conditioning, extra large bedrooms. Phone 385-5032. TF-D

Real Estate for Sale C-6

PLAINS REAL ESTATE PH 385-3211

YOU'LL LOVE THE NEIGHBORHOOD

Small house, close in, on two lots, plenty of room to expand, within walking distance of downtown, a real good buy at \$5,000.00

Nice large 2 bedroom house, 1300 block West 6th Street, only \$4,750.00

Small 2 bedroom, repainted inside, nice, at \$3,600.00. West 5th Street, small down, small monthly payments

Excellent 3 bedroom, 1 3/4 ba's, den, kitchen with electric built-ins, living room, wired and plumbed for washer and dryer, double garage, fenced-in back yard, nice lawn, also refrigerated air conditioner, located on 21st Street, priced reasonable for quick sale, possession now, you will need to see this house to appreciate the value, loan already established, call today to see.

Nice 3 bedroom brick, only 2 years old, on 22nd Street. 2 full baths, air and central heat, family room, living room, kitchen with breakfast bar, drapes, fenced in back yard, 1227 sq feet of living area, less than \$10.00 per foot.

2 bedroom, refinished inside and out, located on 15th Street, corner lot, a good buy at \$4,850.00, terms, small down.

We still have this nice house on 13th Street, payments only \$68.00 per month, after down payment, owner being transferred.

Residents Phone
 L. D. Onstead - 385-3009
 Roy Wade - 385-3790
 C. R. Onstead - 385-4879

Bus. Services D-3

Rent convalescent equipment at Brittain Pharmacy, Wheelchairs, crutches, hospital beds, other items. Complete lines of convalescent needs.

Bill Miller The Kirby Man PH. 385-3357

MATTRESS REBUILDING: complete renovating - convert your old bedsprings into modern boxsprings. Call Mrs. Claud Steffey, 385-3386, day or night, or Sewing Center, 385-3140. Agents for A & B Mattress Co., Lubbock. TF-A

Our specialties are all types alterations, covered buttons, buckles, belts-including contour, button holes, decorative stitching and men's unclaimed tailor made suits, Mr. and Mrs. G.F. Seifres Drive-In Cleaners, Levelland Highway. TF-S

COMPLETE EXTERMINATION SERVICE, household pests as roaches, mice, rats, termites, etc. Tree and lawn spraying, bird repellent, moth proofing. One year written service warranty. Low rate, \$2.00 a room crawling insects. Day or night call collect: Levelland 894-3824, Davidson Pest Control, 15 years experience. TF-D

Cattle, Hogs, Horses, Sheep F-3

FOR SALE: 17 black calves that are good, 300 to 400 pounds. Also, 1 1/2 corner lots on 17th Street across from the Church of Christ in Littlefield, and 960 acres, 26 miles east of Colorado Springs, Colorado. A.G. (Preacher) Dickson, Amherst, Texas, Phone 246-3250. TF-D

Misc. For Sale H-3

Hutchins Building Supply is having the spring paint sale - big discounts. We have Spread Satin in stock, 100 Sunset Avenue. Phone 385-5588. TF-H

IF carpets look dull and dreary, remove the spots as they appear with Blue Lustre, Rent electric shampooer \$1, Nelson Hardware & Supply. 5-15N

Air conditioner pads now in season. Bring your sides by the shop and we will pack them for you free of labor. T.V. Corner, 385-3831, 601 West Delano. TF-T

Young Lark Cosmetics, reasonably priced, satisfaction guaranteed. Also, personalized and decorated notes and stationary and all varieties of cards. Call Mrs. Bob Barker, 385-3618 from 7 to 8:30 a.m. and 6 to 8 p.m. 5-15B

Health & Safety Tips

As the outdoor swimming season approaches once again, safety experts predict with certainty that more than 6,000 Americans will drown in the swimming pools.

They will drown in swimming pools, in lakes and streams, at ocean beaches. They will drown while in or near a refreshing swim and others will fall out of boats or off docks and piers.

Many, if not most, of the drownings need not happen. Today's Health, the fraternal magazine of the American Medical Association offers the following basic safety rules that will avoid a tragic water accident for your family.

- Learn to swim and to swim in the water.
- Never swim alone.
- Do not swim when tired or when the water is extremely cold.
- Do not over estimate your ability and endurance.
- Swim at protected pools, beaches under the supervision of a trained lifeguard.
- If a boat overturns, with it and don't try to swim a long distance to shore.
- Never dive into waters of unknown depth.
- Try new activities, such as water skiing or scuba diving only after learning the skill from qualified instructors.
- Many families will do more their swimming this season at private pools, in their own yards or in those of a friend or neighbor. There are some special safety precautions for private pools--
 - Make certain the pool is kept clean and the water chemically purified.
 - Walk, don't run, about the pool. Horseplay should be forbidden.
 - Fence the pool, and keep the gate locked to keep small children.

Help Wanted A-1

WANTED: young married man to learn office machine repair. See Ernest Connell. TF-C

Help Wanted - Experienced auto mechanic to work in Ford dealership, good working conditions and paid vacation. Call 385-5164 for Bill Blackman, Service Manager, Mitchell-Ford Inc., Littlefield, Texas. 5-12M

WANTED: alteration lady at Littlefield ready to wear shop in Littlefield, Texas. Full time employment. Write - W. B. Little, 3424-34th St., Lubbock or call SW9-7536 or SW9-0505. Lubbock, Texas. 5-15L

PERSON WANTED to supply Rawleigh products to consumers in Lamb Co. or Littlefield. Good time to start. See P.W. Roach, 1410 W. 8th St., Plainview or write Rawleigh TX D 282 28, Memphis, Tenn. 6-9G

Houses to Rent B-3

Nice 2 bedroom home, partly furnished. Paul Carmickle Real Estate, phone 385-4935 or 385-5131. TF-C

CRESCENT PARK - 3 bedroom and den, double garage, new carpet, 6' stockade fence. Don Avery, 299-4395, Whitharral. TF-A

FOR RENT: 2 bedroom brick home. Close in. Carpeted and draped, with garage, and extra storage. Call Mrs. O.C. McBride, 385-4394 or Mrs. A.J. Lenderson, 272-3038, Muleshoe. TF-L

FOR RENT - four bedroom, three baths, central heating, air conditioned, carpeted. On school bus route just outside city limits. Call Dr. Hinckley, Muleshoe, 272-4581 or 272-4208 after 6 p.m. TF-H

Real Estate for Sale C-6

PLAINS REAL ESTATE PH 385-3211

YOU'LL LOVE THE NEIGHBORHOOD

Small house, close in, on two lots, plenty of room to expand, within walking distance of downtown, a real good buy at \$5,000.00

Nice large 2 bedroom house, 1300 block West 6th Street, only \$4,750.00

Small 2 bedroom, repainted inside, nice, at \$3,600.00. West 5th Street, small down, small monthly payments

Excellent 3 bedroom, 1 3/4 ba's, den, kitchen with electric built-ins, living room, wired and plumbed for washer and dryer, double garage, fenced-in back yard, nice lawn, also refrigerated air conditioner, located on 21st Street, priced reasonable for quick sale, possession now, you will need to see this house to appreciate the value, loan already established, call today to see.

Nice 3 bedroom brick, only 2 years old, on 22nd Street. 2 full baths, air and central heat, family room, living room, kitchen with breakfast bar, drapes, fenced in back yard, 1227 sq feet of living area, less than \$10.00 per foot.

2 bedroom, refinished inside and out, located on 15th Street, corner lot, a good buy at \$4,850.00, terms, small down.

We still have this nice house on 13th Street, payments only \$68.00 per month, after down payment, owner being transferred.

Residents Phone
 L. D. Onstead - 385-3009
 Roy Wade - 385-3790
 C. R. Onstead - 385-4879

Real Estate for Sale C-6

FOR SALE - 3 acres close in to town, L. Peyton Reese. TF-R

Downtown building on 200 block Phelps Avenue. Contact O.T. Vinson at Palace. 6-2V

Farms, Ranch-land C-7

172 ACRE COTTON ALLOTMENT

1,076 acres for sale in northeast Texas. This area produces 5,000 to 6,000 pounds of grain sorghum per acre without irrigation. Abundance of water with 45 inch rainfall. Entire 1,076 acres has been in cultivation. 172 acre cotton allotment can be transferred to any county in Texas. Present operation is; 500 acres in grain and alfalfa. Balance of acreage in clover and native grasses. Can run 250 cows. Entire 1,076 acres is fenced and cross-fenced with government built pools in each pasture. Three barns and corral. Excellent location. Fronts on two state highways midway between Paris and Sulphur Springs. Shopping, school and churches, five miles. One modernized, three bedroom house with all utilities. Two other tenant houses. All on pavement. School bus stops. Possession now. Priced to sell at \$200 per acre.

Furniture, Appl. (Used) H-2

Will sacrifice nice 5 piece dinette suite. Call 385-5528 after 6 p.m. TF-M

Good used butane or gas Tappan cook stove, \$35.00. Phone 385-4616, 1021 East 6th. 5-15V

TAKE UP PAYMENTS on Re-possessed 1965 14 Ft. Chest Freezer. Excellent condition, 385-4215. 5-29S

FOR SALE - Kelvinator refrigerator, 6 cubic feet, \$35.00. Phone 385-5188 or 385-5760. 5-15S

We can really save you money on a good used refrigerator or freezer. See us before you buy. Phone 394-4322, Hill Rogers Furniture. TF-R

Misc. For Sale H-3

FOR SALE: good used batteries, ANDERSON WRECKING. TF-A

1965 model Honda 65, just like new - in excellent condition. Steve Smith, phone 227-3271, Sudan, 5-12S

FOR SALE: good used generators, ANDERSON WRECKING. TF-A

Overstocked on steel plates, 1955 prices. Angles, rounds, flats and sheets. Good used pipe. Littlefield Welding Works, 5-19L

Legal Notices

NOTICE TO BIDDERS

Notice is hereby given to the Commissioners' Court of Lamb County, Texas, will receive sealed bids for purchase of the following described equipment until 10:00 A.M., Tuesday, May 13, 1966, at which time bids will be opened and read aloud; said bids for purchase of the equipment as follows:

One (1) Used Diesel Powered Tandem Drive Motor Grader with not less than 115 H.P., equipped with heater, 1300 x 24 tires front and rear, 14-Ft. hydraulic sidehitch mold board. Equipment must be in good repair and in good working order. Lamb County, Precinct No. 4 offers in trade One (1) Used Caterpillar No. 12, and bid in cash. For further information contact Hubert Dylak, Commissioner, Precinct No. 4. All bids shall be sealed with the above date and time.

The Commissioners' Court reserves the right to accept or reject any or all bids.

J. B. Dylak
 County Judge
 Lamb County, Texas

Business Opportunities A-3

Business Opportunity. Farm and Light Industrial Equipment. Dealer wanted for Littlefield and Olton. Complete Wholesale and Retail Financing furnished by Company. Write or call J.I. CASE COMPANY, 21 East Main, Okla. City, Okla. Phone Central 5-1301.

Rooms for Rent B-5

FOR RENT - Furnished bedrooms. Close to town. Phone 385-5151. TF-M

Comfortable bedrooms for men. New home, heated rooms. Phone 385-3604, 204 East 9th St. TF-A

Real Estate for Sale C-6

FOR SALE - 3 acres close in to town, L. Peyton Reese. TF-R

Downtown building on 200 block Phelps Avenue. Contact O.T. Vinson at Palace. 6-2V

Farms, Ranch-land C-7

172 ACRE COTTON ALLOTMENT

1,076 acres for sale in northeast Texas. This area produces 5,000 to 6,000 pounds of grain sorghum per acre without irrigation. Abundance of water with 45 inch rainfall. Entire 1,076 acres has been in cultivation. 172 acre cotton allotment can be transferred to any county in Texas. Present operation is; 500 acres in grain and alfalfa. Balance of acreage in clover and native grasses. Can run 250 cows. Entire 1,076 acres is fenced and cross-fenced with government built pools in each pasture. Three barns and corral. Excellent location. Fronts on two state highways midway between Paris and Sulphur Springs. Shopping, school and churches, five miles. One modernized, three bedroom house with all utilities. Two other tenant houses. All on pavement. School bus stops. Possession now. Priced to sell at \$200 per acre.

Automotive Supply Headquarters

700 E. 4th - PH 385-4431

- Car • Truck
- Tractor Industry
- Irrigation
- Motor Rebuilding
- Precision Machine Service

G & C AUTO SUPPLY
 CHANDLER'S MOTOR MACHINE & SUPPLY STORES in
 Littlefield, Anton, Sudan, Earth

Sorghum Sudan Grass Hybrid 6.50

For sale by growers part of about three million pounds of high quality seed. Purity 98%, germination 85% or better. Cleaned and sacked in lots of one thousand pounds or more, \$6.50 per hundred at Muleshoe.

PREURE SEED FARMS
 Box 512, Muleshoe, Texas
 Phone Area 806 272-3961
 965-2981
 965-2316

LOOK !!

Someone in this area needed to assume remainder of very small payments on fine SPINET PIANO

Nothing down - extended 1st pmt. Write immediately: John Elliott "Credit Mgr.," 1436 E. McDowell Phoenix, Ariz.

Legal Notices

NOTICE TO BIDDERS

Notice is hereby given to the Commissioners' Court of Lamb County, Texas, will receive sealed bids for purchase of the following described equipment until 10:00 A.M., Tuesday, May 13, 1966, at which time bids will be opened and read aloud; said bids for purchase of the equipment as follows:

One (1) Used Diesel Powered Tandem Drive Motor Grader with not less than 115 H.P., equipped with heater, 1300 x 24 tires front and rear, 14-Ft. hydraulic sidehitch mold board. Equipment must be in good repair and in good working order. Lamb County, Precinct No. 4 offers in trade One (1) Used Caterpillar No. 12, and bid in cash. For further information contact Hubert Dylak, Commissioner, Precinct No. 4. All bids shall be sealed with the above date and time.

The Commissioners' Court reserves the right to accept or reject any or all bids.

J. B. Dylak
 County Judge
 Lamb County, Texas

Card of Thanks A-10

To our Whitharral friends this is to express our very sincere appreciation for your thoughtfulness in honoring us with the plaque and gift at the athletic banquet. It is a pleasure to be associated with families such as you.

Coach John Wayne Hall and family

Offices for Rent B-6

FOR RENT - extra choice office space. Contact L. Peyton Reese. TF-R

FARM LOANS

L. PEYTON REESE
 110 YELLOW HOUSE BUILDING
 PHONE 385-5363

B&C PUMPS & Machine Works

W.H. "Dub" BERRY - JOHN M. CLAYTON - Owners
COMPLETE IRRIGATION SERVICE

- WELL CLEAN-OUT
- PUMP PULLING
- PUMP SETTING
- COMPLETE PUMP REPAIR

WESTERN PUMP CO.
 Tube Line Now Guaranteed 5 Years
 Phone 385-5137
 Nights 385-3118 or 385-4185
 304 Lake Ave. LITTLEFIELD
 894-5025 LEVELLAND

Insurance Service D-4

BOAT INSURANCE
 FOY WATSON
 PH. 385-4268
 F. O. BOX 848

Farm Equipment E-1

FOR SALE
 806 Diesel Fomall Tractor, 600 Hours.
 L. C. Grissom
 385-3198

Misc. For Sale H-3

FOR SALE: good used generators, ANDERSON WRECKING. TF-A

1965 model Honda 65, just like new - in excellent condition. Steve Smith, phone 227-3271, Sudan, 5-12S

FOR SALE: good used generators, ANDERSON WRECKING. TF-A

Overstocked on steel plates, 1955 prices. Angles, rounds, flats and sheets. Good used pipe. Littlefield Welding Works, 5-19L

G & B LUMBER CO.

FLINTKOTE GYPSUM WALLBOARD

PRIMED HARDBOARD SIDING \$18.95

GYPSUM WALLBOARD

1/4" 69c
 3/8" 74c
 1/2" \$1.09

FLINTKOTE ROOFING

25 lb. Roll \$5.99
 35 lb. Roll \$7.99
 50 lb. Roll \$11.99

2207 Clovis Rd. PO3-3244

Legal Notices

CONTRACTORS' NOTICE TEXAS HIGHWAY CONSTRUCTION

Sealed proposals for construction 12,491 miles of Gr., Str., Base & Surf. LIMITS: From Intersection FM 34, South to US 84 and from FM 746, South to FM 298, 0.5 Miles West of Baileyboro on F.M. Road 5 2487, covered by 5 2487 (1) A & A 1252-1-6 in Lamb County, will be received at the Highway Department, Austin, until 9:00 A.M., May 25, 1966, and then publicly opened and read.

The State Highway Department in accordance with the provisions of Title VI of the Civil Rights Act of 1964 (78 Stat. 252) and the Regulations of the Department of Commerce (16 C.F.R., Part 8), issued pursuant to such Act, hereby notifies all bidders that it will affirmatively insure that the contract entered into pursuant to this advertisement will be awarded to the lowest responsible bidder without discrimination on the ground of race, color, or national origin.

Plans and specifications including minimum wage rates as provided by Law are available at the office of Rhea E. Bradley, Resident Engineer, Littlefield, Texas, and Texas Highway Department, Austin. Usual rights reserved.

Apts. for Rent B-1

Nicely furnished apartment, all carpeted, with garage, back yard fenced. Call 385-4460. TF-J

3 room furnished apartment. Bills paid, 123 North West-side Avenue. Phone 385-4059, after 1 p.m. 5-9B

Houses For Sale C-1

FOR SALE - 2 bedroom house. A bargain. L. Peyton Reese. TF-R

FOR SALE - large 3 bedroom, over 2,000 feet floor space, \$6,500 total price - will take trade. 714 West 6th. TF-E

All brick home, attached garage, plenty of storage, low move in cost. Call 385-4930. TF-J

3 Bedroom, den, 2 bath, garage, carpet, \$400.00 down payment and take up payments, 1314 West 14th, 385-5700, 5-12S

FOR SALE - 3 bedroom house, small down payment - small monthly payments, Hutchins Building Supply, 100 Sunset Avenue. Phone 385-5588. TF-H

Moved to Lubbock, brick 3 bdr., 1 3/4 bath, 22' x 28' den, 2 car garage, playroom, cellar, ref. air. LOFLIN COMPANY SW2-3093, 5-29L

FOR SALE IN CRESCENT PARK: 2 bedrooms, 1 1/2 baths, den and kitchen combination, fireplace, double car garage and fenced back yard. Phone 385-4084. TF-E

FOR SALE OR RENT: three bedroom home in the country. Large kitchen, separate utility room, Carpeted, Redecorated bath. Phone Whitharral 299-4185, 6-2R

CASH TALKS
 3 bedroom house on Crescent Drive, assume equity or buy outright. See Allen Roberts at Ben Franklin, Phone 385-3286 or 385-3252. TF-B

Three bedroom brick, large paneled den, coppertone built-ins including dishwasher, utility and double garage. No qualifying, buy equity and assume FHA loan. 1300 W. 14th. TF-M

FARM LOANS

L. PEYTON REESE
 110 YELLOW HOUSE BUILDING
 PHONE 385-5363

Warehouses and business for sale with or without inventory. Three large buildings on three lots.

Investment property - 50 ft. business bldg. leased to reliable concern for 4 more years. Gross income 12 percent, plus percentage of sales.

25 ft business bldg. leased to large chain company. Gross income over 20% per year, 3 years left on present lease.

Business building for sale - 25' x 140' bldg. on well located corner lot.

3 bdrm. 2 bath on corner lot, large sunken den, large living room with fireplace, unique island kitchen, good location.

50' residential lot in Duggan Annex. Good location.

Large home on corner lot, 3 bedrooms, 2 1/2 baths, double garage, Sunken den with high fireplace.

2 bedroom on corner, carpet, panel-ray hat, good terms, Duggan Annex.

2 bedroom on West 1st St., with rental apt in back.

BROKER PROTECTED ACT TODAY

JOE BLACKWELL, OWNER
 COOPER, TEXAS

B&C PUMPS & Machine Works

W.H. "Dub" BERRY - JOHN M. CLAYTON - Owners
COMPLETE IRRIGATION SERVICE

- WELL CLEAN-OUT
- PUMP PULLING
- PUMP SETTING
- COMPLETE PUMP REPAIR

WESTERN PUMP CO.
 Tube Line Now Guaranteed 5 Years
 Phone 385-5137
 Nights 385-3118 or 385-4185
 304 Lake Ave. LITTLEFIELD
 894-5025 LEVELLAND

Misc. For Sale H-3

FOR SALE: good used generators, ANDERSON WRECKING. TF-A

1965 model Honda 65, just like new - in excellent condition. Steve Smith, phone 227-3271, Sudan, 5-12S

FOR SALE: good used generators, ANDERSON WRECKING. TF-A

Overstocked on steel plates, 1955 prices. Angles, rounds, flats and sheets. Good used pipe. Littlefield Welding Works, 5-19L

G & B LUMBER CO.

FLINTKOTE GYPSUM WALLBOARD

PRIMED HARDBOARD SIDING \$18.95

GYPSUM WALLBOARD

1/4" 69c
 3/8" 74c
 1/2" \$1.09

FLINTKOTE ROOFING

25 lb. Roll \$5.99
 35 lb. Roll \$7.99
 50 lb. Roll \$11.99

2207 Clovis Rd. PO3-3244

Legal Notices

CONTRACTORS' NOTICE TEXAS HIGHWAY CONSTRUCTION

Sealed proposals for construction 12,491 miles of Gr., Str., Base & Surf. LIMITS: From Intersection FM 34, South to US 84 and from FM 746, South to FM 298, 0.5 Miles West of Baileyboro on F.M. Road 5 2487, covered by 5 2487 (1) A & A 1252-1-6 in Lamb County, will be received at the Highway Department, Austin, until 9:00 A.M., May 25, 1966, and then publicly opened and read.

The State Highway Department in accordance with the provisions of Title VI of the Civil Rights Act of 1964 (78 Stat. 252) and the Regulations of the Department of Commerce (16 C.F.R., Part 8), issued pursuant to such Act, hereby notifies all bidders that it will affirmatively insure that the contract entered into pursuant to this advertisement will be awarded to the lowest responsible bidder without discrimination on the ground of race, color, or national origin.

Plans and specifications including minimum wage rates as provided by Law are available at the office of Rhea E. Bradley, Resident Engineer, Littlefield, Texas, and Texas Highway Department, Austin. Usual rights reserved.

Houses to Rent B-3

FOR RENT: 2 bedroom house on Kirk Street. Phone 385-3654 after 6:00 p.m. TF-C

2 bedroom, redecorated, stor windows, fenced back yard, 916 East 6th. Call 385-3112 or 385-5060. TF-G

FOR RENT: 2 bedroom house at 517 West 1st Street. See J.W. Emfinger, 314 East 14th or call 385-3723. TF-E

Two bedroom furnished house for rent, 1 1/2 blocks from new high school. See J.C. Smith, Sr., 1005 West 10th, phone 385-4643. TF-S

FOR RENT: 2 and 3 bedroom houses. Some furnished, also furnished apartments. Call K. Houk, 385-3492 or 385-4830. TF-H

FOR RENT OR SALE - 2 bedroom house, well located, newly refinished inside. PLAINS REAL ESTATE, Ph. 385-3211, night, 385-3009. TF-P

Houses For Sale C-1

FOR SALE - 2 bedroom house. A bargain. L. Peyton Reese. TF-R

FOR SALE - large 3 bedroom, over 2,000 feet floor space, \$6,500 total price - will take trade. 714 West 6th. TF-E

All brick home, attached garage, plenty of storage, low move in cost. Call 385-4930. TF-J

3 Bedroom, den, 2 bath, garage, carpet, \$400.00 down payment and take up payments, 1314 West 14th, 385-5700, 5-12S

FOR SALE - 3 bedroom house, small down payment - small monthly payments, Hutchins Building Supply, 100 Sunset Avenue. Phone 385-5588. TF-H

Moved to Lubbock, brick 3 bdr., 1 3/4 bath, 22' x 28' den, 2 car garage, playroom, cellar, ref. air. LOFLIN COMPANY SW

Texas Unemployment Shows Decline

estimates for released this week by the Texas Employment Commission in its "Texas Labor Market" report for the month and year. Unemployment rate during the last month during the last year.

March was more than twice the usual February-to-March reduction.

"Tentative hiring plans reported by employers to TEC offices in the 22 major employment centers indicate that employment will continue to expand between March and May," the report said, predicting an increase in nonfarm employment of some 32,000 by mid-May.

The report attributes major nonfarm employment gains to transportation equipment manufacturers, defense contract outlays in defense plants, and apparel manufacturers, with other factory gains also "slightly better than seasonal." Among

nonmanufacturing industries, favorable weather boosted construction employment, while trades and government also registered increases.

An estimated 1.6% of the approximately 2.1 million Texas workers covered by unemployment insurance were unemployed in March, compared to 2.5% in March of 1965 and a national mid-March insured unemployment rate of 3.1%. The percentage of claimants who were men decreased slightly from 65% last March to 63.8% last month, while the percentage of claimants under 45 years of age dropped significantly from 64.2% to 58.9%.

Texas areas and industries were reported this week by the Texas Employment Commission in its "Texas Labor Market" summary of March employment.

"Most of the major employment centers report shortages in various professional, technical, and skilled occupations; (and) persistent shortages of qualified applicants in the engineering fields remain a dominant feature in the labor supply situation," the report explains.

Among the skilled occupations, TEC reports that machinists, mechanics, and construction trades are among the hard-to-fill jobs, with the tightest situation prevailing in the metal working industries.

Major labor area classified in the low unemployment, or Class B, category included Dallas (2.5%), Houston (2.3%), and Austin, which registered the state's lowest unemployment rate at 2%. Other areas employing 80,000 or more were classified as Class C, or areas of moderate unemployment, including Beaumont-Port Arthur-Orange (4.1%), Corpus Christi (3.7%), El Paso (4.5%), Ft. Worth (2.7%), Midland-Odessa (2.9%), and San Antonio (4.2%).

Of the smaller labor market areas, San Angelo had the lowest rate (3.0%) while Laredo's rate was 11.5%. All other areas were under 5%, except Brownsville - Harlingen - San Benito (6.2%) and McAllen (6.3%).

The average factory work-

week increased by .2 hour to 42.0 hours between February and March, with fabricated metals, textiles, and leather products averaging 44 or more hours. Average factory earnings remained unchanged at \$2.52 per hour, while average weekly earnings rose 50¢ to \$105.84 due to the longer workweek. In March of 1965, average weekly earnings were \$101.82.

To look fresh, feminine, and stylish, be a white-collar girl. Many new spring outfits are accented with crisp white collars. You might sew washable collars made of cotton organdy or pique on dresses already in your wardrobe.

There is a Spanish saying: "The Catalan saves, the Galician is homesick, the Andalusian sings, the Basque acts, the Extremaduran fights and the Castilian dreams."

Rub a leg of lamb before roasting with salt, pepper, paprika, crushed rosemary and garlic. Another time try rubbing the leg with salt, pepper and curry powder.

We, my husband Roger and I, our children, Barbara, Gary and Donald, wish to express our sincere appreciation to each of you for your vote, your support, your encouragement and your help in electing me as the Democratic nominee for District Clerk of Lamb County.

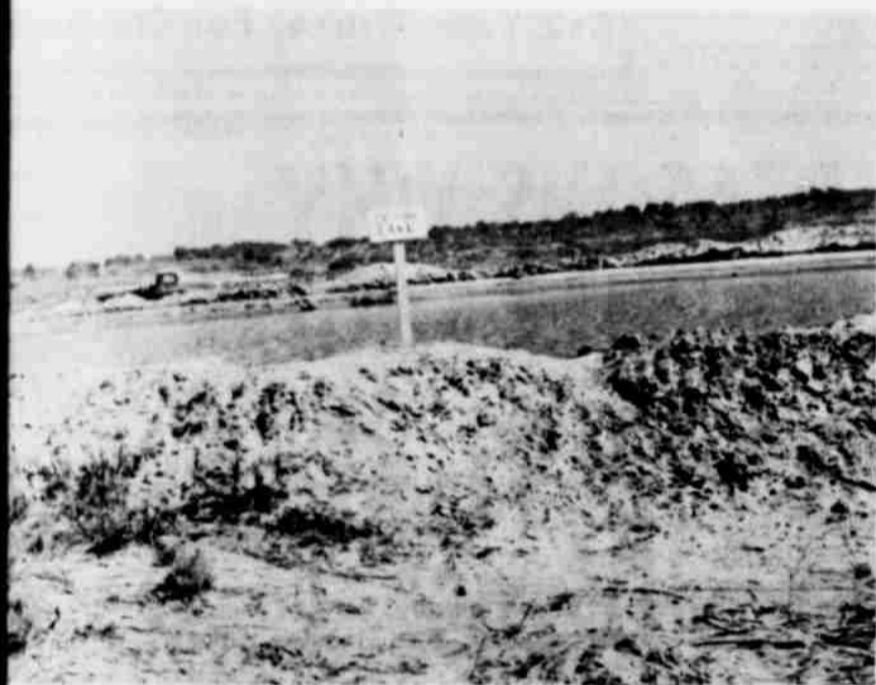
The office of District Clerk is your office. It will be my desire, my purpose and my pleasure to serve each of you in every possible way. The office will always be open to you at any time.

I hope to be able to help you in the future as you have helped me in obtaining this nomination. Thank each of you again for your vote and support.

Ray Lynn Britt
Democratic Nominee for District Clerk

LET'S GO FISHING

RIGHT IN LAMB COUNTY



CATFISH LAKE



BUCK ROSS AND GRANDSONS

GREAT NEWS!

OPENING FRIDAY AND SATURDAY

THE RECREATION SPOT THAT'S JUST A FEW MINUTES DRIVE

GUARANTEED FISHING

- RAINBOW TROUT
- PAN FISH
- BASS
- CATFISH

HORSE BACK RIDING

- SADDLE HORSES
- HAY RIDES

CAMPING

BY NIGHT OR THE WEEK
SPECIAL RATES FOR BOY SCOUTS,
GIRL SCOUTS, CHURCH GROUPS,
SCHOOL CLASSES.

SWIMMING

And Many Other Attractions

Organic
VEGETABLES & FRUITS
IN SEASON
MINATURE
GOLF



ROGER BARTLING AND FRED BEVERSDORF



1,500 TROUT ARE IN THIS POND

ROGER BARTLING - FRED BEVERSDORF
FOR THE TIME OF YOUR LIFE DRIVE OUT TO....

DREAMLAND PLAY GROUND

14 MILES NORTH OF LITTLEFIELD ON HIGHWAY 385

DEM	GOVERNOR		LT. GOVERNOR		U.S. SENATOR		ATTORNEY GENERAL			CO. SCHOOL SUPT.		CO. JUDGE		DIST. CLERK		STATE SENATE			RAILROAD COMMISSIONER			CO. DEMO CHAIRMAN		JUDGE COURT CRIMINAL APPEALS			COMM. - LAND OFFICE
	Hackworth	Woods	Connally	Hollowell	Smith	Willoughby	Carr	Martin	Calhoun	Spears	Hall	Stevens	Mangum	Davis	R. L. Britt	E. Owens	Hightower	Rogers	Ray	Ervin	Haring	Tunnell	Batson	Duval	McDonald	Onion	
1 Olton	30	125	460	64	454	91	422	241	82	157	235	225	337	183	231	279	172	256	73	101	50	299	243	135	229	231	396
2 Earth	3	40	110	17	135	24	127	63	24	54	80	63	49	105	76	80	66	74	13	19	19	95	69	50	80	54	106
3 Spade	0	8	98	12	105	11	94	61	18	20	32	71	39	70	65	43	31	50	23	18	11	66	64	29	53	40	89
4 W. Lfd	0	9	46	6	49	3	53	27	15	13	21	35	22	33	23	32	20	22	14	7	8	38	26	25	36	18	47
5 Sudan	11	50	168	24	208	27	202	121	29	72	83	128	112	108	95	123	48	135	45	36	12	167	99	84	123	69	187
6 P. Valley	0	5	5	7	3	4	6	3	1	5	4	5	4	5	4	3	8	2	0	1	1	8	8	0	6	4	7
7 N. Sudan	2	4	9	2	13	5	10	4	3	7	6	7	5	9	7	7	1	8	6	2	2	8	4	3	10	2	12
8 Amherst	6	42	129	14	167	22	157	83	23	59	32	149	88	91	110	70	39	117	22	28	13	117	121	46	84	75	131
9 Fieldton	0	3	52	1	56	8	48	30	8	9	15	36	24	35	33	20	12	34	7	3	3	40	35	12	21	22	43
10 Sod House	0	0	16	0	17	0	17	9	1	4	0	18	5	12	9	9	3	12	1	4	0	10	14	4	12	5	16
11 S. Olton	2	4	12	3	16	5	13	12	2	3	4	17	7	12	10	11	392	494	211	177	98	745	573	448	518	482	859
12 Lfd	27	198	918	85	1044	143	999	635	174	264	441	663	598	580	601	551	4	27	2	5	5	22	18	12	23	8	30
13 Beck Gin	0	5	27	0	33	8	24	25	4	4	15	17	11	22	17	15	11	21	2	9	5	19	16	9	19	12	25
14 Hart Camp	1	10	26	3	35	4	30	23	5	7	15	20	22	14	17	21	11	21	2	4	3	30	22	10	33	9	33
15 Springlake	5	7	30	1	41	4	39	23	5	9	29	9	23	18	27	14	19	23	1	4	20	118	91	99	101	79	147
16 N. Lfd	7	40	155	17	188	26	181	99	37	57	92	111	111	103	104	109	66	92	46	45	20	118	91	99	101	79	147
17 W. Springlake	0	11	35	8	39	10	37	29	6	10	33	11	20	27	31	14	16	29	1	7	6	33	18	17	29	12	32
Absentee	2	26	118	15	124	19	124	74	25	29	50	101	54	98	60	93	58	67	14	35	4	85	78	41	73	53	113
	96	587	2414	265	2727	414	2583	1564	461	783	1187	1686	1531	1525	1520	1494	969	1476	484	504	263	1909	1509	1029	1460	1178	2285



KINDERGARTEN GRADUATION -- The Williams Kindergarten was the setting for the graduation exercises of the kindergarten students Friday night. Shown in the above picture are a number of students who presented a portion of the program. Mrs. Billy Williams, left, is looking on. Left to right are: Michael Williams, Tonya Haire, Angie Franklin, partially shown, Kelly Messer, Darla Bales and Freddy Martinez. About 250 persons attended the commencement.

Kindergarten Pupils Have Graduation Exercises

Graduation exercises for students of Williams Day Kindergarten were held at the Kindergarten Friday night. The students presented a program for their parents and other visitors prior to receiving their diplomas. Included on the program were songs, poems, nursery rhymes, stories, etc.

Receiving diplomas were the following: Susan Clark, Craig Armstrong, Greg Lavo, Scott Carter, Allen Bales, Marc Giles, Michael Williams, Tonya Haire, Dana West, Angie Franklin, Kelly Messer, Darla Bales, Freddy Martinez, Mitzi McGhee, Gary Woodward, Karen Whitson, Tonya Haire, Annette Pence, Ben Davidson.

Also Cara Joye Adkins, Brett Middlebrooks, Pat Donnelly, David Jones, Tim Smith, Russ Waldrop, Tonya Tunnell, Dana Bassett, Shalyn Grant, Kimberly Fisher, Jaquita Eoff, Joe Mark Roden, Jay Carl Wilson, Polly Compton, Brenda Sterling, Kimberly Fisher, Chris Duroy, Suzie Beck, Stan Jackson, Debbie Burks, Shauna Clayton, Cynthia Embry.

And Shawna Barker, Brenda Sterling, Daryll Wayne Glass, David Goen, Tony Heinen, Darren Richards, Greg Moreland, Freda Crabb, Lota Sue Zoth, Stacy Cline, Tammy Wilson and Polly Compton.

The program closed by Lota Sue Zoth singing the "Prayer Hymn" and the group singing "The Good-Bye Song".

53 Olton Seniors To Graduate May 20

OLTON -- High school graduation diplomas will be handed to 53 students here Friday night, May 20 at 8 p.m. in Olton High School auditorium.

Presentation of diplomas will be by Winston Bley, president of school board and Ray Schultz, superintendent.

The valedictory will be given by Susan Norfleet and salutatory will be given by Charles Church.

Joe Turner, high school principal, will introduce the speaker, Dr. Roy McClung, president of the Wayland Baptist College, Plainview.

Music will be presented by Richard Redinger and the high school choir, under direction of Mrs. Bob Allford. The seniors will sing the school song.

Professional and recreational music will be by Harold Dean Carson.

Ushers will be Gayle True-lock, Karen Hipp, Jimmy Huckabee and Jim Smith.

Class sponsors are Mrs. Tom Hamilton, Miss Sandra Meadows and Calvin Horn.

Honor graduates and members of the National Honor Society are: Mary Aigaki, Mike Bodkin, Sherry Caddel, Charles Church, Linda Collins, Belva Howard, Dennis Hines, Shirley Leonard, Susan Norfleet, Joe Priest, Richard Redinger, Iva Tanner and Cheryl Yandell and Don Mitchell.

Students To Get WTSU Degrees

Two Littlefield students, Bobby Barker and Watzell Kennedy, are among more than 400 candidates who expect to receive degrees at the May 22 convocation at West Texas State University, Canyon.

Activities for graduating students open May 21 with a reception by President and Mrs. James P. Cornette, and the convocation at 5 p.m., May 22. Final examinations for regular students are May 23 through 26.

Barker, son of Mr. and Mrs. H.J. Barker, Route 2, is a candidate for the Bachelor of Science. He is majoring in agriculture.

Miss Kennedy, daughter of Mr. and Mrs. Leo Kennedy, is also a candidate for the Bachelor of Science. Her major is elementary education.

Avery Appointed Alamo Life Agent

Donald R. Avery, Route 2, Littlefield, has been appointed a General Agent for the Alamo Life Insurance Company of San Antonio. Avery is current president of the Littlefield Lions Club, presently a member of the Life Underwriters Association of Lubbock, and is very active in the Church of Christ. He was Rookie of the Year in 1962 for his company. This is a participation program with the South Plains Life Insurance Underwriters Association located in Lubbock. He is the Membership Chairman of the Littlefield Chamber of Commerce and the past Lt. Governor of the Texas-Oklahoma District for the Circle K International. He is a graduate of Texas Tech. While at Tech, he was President of Texas Tech Veterans, also a member of the Kappa Sigma Social Fraternity. He is married and lives at Route 2, Littlefield, Texas. He has been active in the insurance field since 1961.

Cotton cushioning now comes in a new moldable form.

\$25

The Mystery Man Will Knock On More Doors In Littlefield This Week - It May Be Your House.

MRS. J.T. TRIMMER
109 EAST 12TH.

RECEIVED \$25. CASH FOR HAVING A CLOVERLAKE DAIRY PRODUCT IN HER HOME.

Ask Your Grocer For Cloverlake

Time Value
HARDWARE STORES

Grip 'n Whip

ALL-IN-ONE MIXING BOWL

- Measuring
- Heating

West Bend 3 QUART

- Mixing
- Pouring

Stainless steel bowl holds 3 quarts. Convenient side handle lets you mix without hanging on to slippery rim. Pouring lip stops messy dripping. Saves washing dishes.

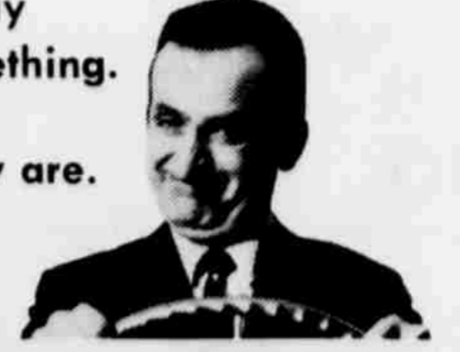
\$3.50 Value NOW ONLY 1.77

Nelson's Time Value



Chevelle Malibu Sport Coupe—with eight new standard safety features, including outside rearview mirror and shatter-resistant inside mirror. Always check both mirrors before pulling out to pass.

The way people are snapping up buys on new Chevelle V8's at your Chevrolet dealer's... you'd think they're really getting away with something.



They are.

The getting's never been better. And your Chevrolet dealer's giving the May buys that are making it that way. Buys on all the racy '66 Chevilles, including the wide choice of Malibu models you can order with V8's that put out up to 275 hp. And SS 396's you can order with new Turbo-Jet V8's that put out up to 375 hp (red-stripe tires, special flat-coring suspension and floor-mounted shift are standard). Just drop in, pick out the new Chevelle you want with the power and equipment you want. And get away with something yourself—a great May buy, no less, on America's favorite mid-size car.



CHEVROLET CHEVELLE, CHEVY II, CORVAIR AND CORVETTE

GM Move out in May See your Chevrolet dealer! the Chevrolet Way

ARMES CHEVROLET CO.
LITTLEFIELD, TEXAS

5 BIG REASONS WHY YOU SHOULD SHOP

Anthony's Tonight

SPECIALS GOOD 6 PM - 9 PM ONLY

Men's Discontinued Colors
STA-PRESS SLACKS

ALL SIZES - REGULAR 6.99

\$ 5

Ladies Textured
NYLONS

ON SALE TONIGHT

25¢

BOYS
JEANS

SIZES 3 TO 8

\$ 1

Boy's Knit Muscle
SHIRTS

SIZE 4 TO 16

\$ 1

One Group Of Men's Women's Childrens
SHOES

COME A RUNNING

\$ 1