

Hospital to increase room rates at nursing home

By Helena Rodriguez

The Muleshoe Area Medical Center Board of Directors heard a report on the status of the nursing home during a meeting Thursday night.

The nursing home lost approximately \$4,516.86 during the month of February and ex-

perienced a decrease in the census.

However, Richard Murphy, hospital administrator, said that February is always a slow month for the nursing home because it is short.

According to Murphy the loss may not reflect the nurs-

ing home's financial situation throughout the year.

During the meeting Thursday Murphy also said, regarding the loss, that "The issue is Medicaid patients because we receive a fixed payment on them."

When asked about the

nursing home room rates compared to other nursing homes, Rita Walker, administrator of the nursing home said, "It (our price) is actually lower than other places."

However, the board did approve a \$5.75 percent increase for the nursing home room

rates, effective May 1.

The board gave Murphy the go ahead to begin searching for new anesthesia equipment.

The company which services the current anesthesia equipment owned by the hospital has announced they will

not be able to service the equipment anymore after Oct. 1.

Anesthesia equipment is used to administer anesthesia to patients, to put them to sleep before surgery.

Continued on page 2

Around Muleshoe

Horsley to be featured on CBS movie tonight

Former Muleshoe resident and current actor Lee Horsley will be featured on CBS on Sunday, March 27.

Horsley will appear in the movie "The Corpse Had a Familiar Face," with actress Elizabeth Montgomery. The show will air from 9-11 p.m.

Horsley, who will play the part of a villain, will not be featured with a mustache. Horsley appeared in the Fall 1994 Frontier Adventure series "Hawkeye."

Workshop to focus on learning disabilities

An "Understanding Learning Disabilities" workshop will be held on April 5 at the Muleshoe High School Cafeteria from 6-8 p.m.

Facilitator will be Debra Gafford, a learning specialist from Region XVII Education Service Center in Lubbock.

Sandwiches will be served and babysitters will be available. Translators will also be provided. For more information call 272-5239.

Scholarship applications are now available

Applications for the Kristy Landers Memorial Scholarship are available at the Muleshoe High School's counselor's office. The deadline to apply is April 4.

For more information call 272-4488 at night.

Music ministry scheduled

The Keith Blake Family will present a musical ministry on

Continued on page 2



All-District selections

Lady Mules (from left) Kristin Holmans, Misti Davenport and Brenna Wheeler, and Mule Mark Miller (below) have been named to the All-District 2-3A basketball team for 1993-94. All four players are seniors.

Four MHS athletes named All-District

Four Muleshoe High School athletes have been named to the All-District 2-3A teams.

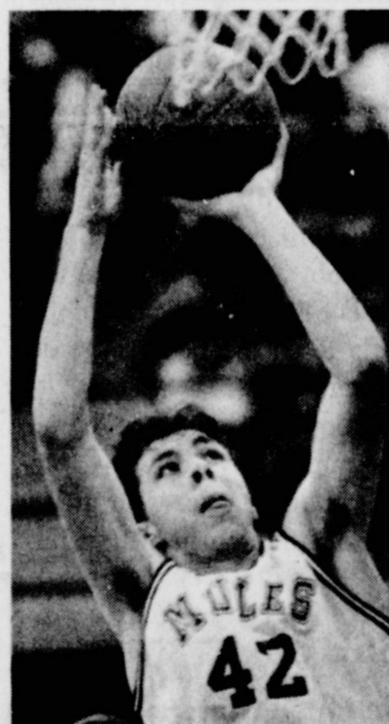
Three Lady Mules, seniors Krisin Holmans, Misti Davenport and Brenna Wheeler, and Mule senior Mark Miller were chosen in a vote of the district coaches.

Holmans, Davenport and Wheeler helped lead the Lady Mules to a 21-10 mark in

1993-94. Muleshoe won its first District 2-3A title in 32 years, going on to beat Perryton in the bi-district round. Muleshoe was finally eliminated from the playoffs in the area round by Graham.

Davenport and Holmans were All-District picks last year as well, while Wheeler was an honorable mention

Continued on page 2



Meeting to address issues in county

The Bailey County Extension Service and Bailey County Extension Program Council will conduct a meeting concerning major issues facing Bailey County in the future.

This will include a discussion of needs of the economy, youth, family and environmental surroundings.

The meeting will be held Tuesday, March 29 at 7:30 p.m. in the arena area at the Bailey County Coliseum.

Input from the public is being sought.

The meeting will include a presentation on current and emerging conditions that are likely to affect Texas and Bailey County in the next five years. Following the session, small discussion groups will be formed to receive input into these critical issues.

Discussion will center on issues that relate to the Texas Agricultural Extension Service's statewide goals:

-Issues affecting the health,

Continued on page 2

School board to hear report on textbooks

The Muleshoe Independent School District Board of Trustees will meet Monday, March 28 at 7 p.m. at the Administration Office Building.

During the meeting, the board will recognize the support staff member of the month.

The board will approve a calendar for the 1994-95 school year and receive a report and take appropriate action from the District Textbook

Committee.

Reports will also be given by the board president, superintendent, assistant superintendent for instruction and assistant superintendent for operations.

An executive session is planned in order for the board to receive resignations, consider hiring new personnel and consider contracts of the professional staff for 1994-95.

Price, Shelburne may run uncontested in school election

By Helena Rodriguez

Two Muleshoe Independent School District Board of Trustees will run uncontested in the upcoming School Trustee Election on May 7.

Wednesday was the deadline for candidates to file ap-

plication for a place on the ballot in May. Arnold Price, incumbent for District #1 and Curtis Shelburne, incumbent for District #4, were the only candidates who filed.

The seats they are seeking re-election to are both for three-

year terms.

Price has been on the school board for six years, having served two terms to date. Price is owner of Pivot Products Distributor Inc. in Muleshoe.

Shelburne has been on the school board for six years,

having served two terms. He is currently serving as board secretary.

He is pastor of the 16th and Ave. D Church of Christ.

Additional people who still may want to run for election must file as a write-in candidate

before the April 7 deadline at the School Administration Building.

Important dates to keep in mind for the upcoming election are April 7, which is the last

Continued on page 2

Crim predicts forecast for spring

(Editor's note - Weldon "Chief" Crim of Lazbuddie has been predicting the weather for the spring season since 1983, following a Crim family tradition.)

By Scott Robinson
Special to the Journal

No guarantee is involved, just a history of being on the nose.

Weldon "Chief" Crim claims to be quite accurate with his annual weather forecast.

He does not claim to be 100 percent correct, only 80 to 85 percent. No cash will be handed out if the prediction doesn't come true.

So there is some hope for the local farmers. If the forecast

was guaranteed, you might as well give up this year.

"Heap of bad medicine," said Crim as he watched the smoke from this year's fire burning.

"Load up the squaw and move to Oklahoma."

But for every 80 percent right, there has to be a 20 percent chance of being wrong. Last year was a prime example of that.

After bragging a bit on his string of correct forecasts, the good Chief took a little razzing last year.

His 1993 predictions called for a good crop season. You don't have to talk to many folks to find out that most local

farmers didn't have a good year.

But if history repeats itself, then this year's forecast will once again be on target. The tradition of fire burnings began in the Crim family in 1910.

Taylor Crim, Weldon's grandfather, picked up the ritual by observing Indian customs.

This family tradition was carried on by his son, J.W., who did the burnings for 60 years.

He became known as the "Parmer County Weather Prophet," and J.W. continued the ritual until his death in 1980.

After a three-year hiatus,

Continued on page 2



SPRING FORECAST - Following a family tradition, which is based on ancient Indian customs, Weldon "Chief" Crim of Lazbuddie does a spring weather forecast every year.

Journal to print complete public record

Beginning Sunday, April 3, the Bailey and Muleshoe Journals will begin publishing a complete list of Bailey County Sheriff and Muleshoe Police Department reports. Information to be published will include the names of individuals in order to better inform our readers.

Reports which will begin being published on April 3 will begin from police records filed on the week of March 28 to April 3.

As a public service, the Bailey and Muleshoe Journals

Continued on page 2

Texas Corn Board approves research aimed at monitoring insect problems

Corn research aimed at monitoring and evaluating the major insect problems in a six-county high corn production area has again been funded thanks to the half-cent per bushel corn checkoff program.

For 1994, the Texas Corn Producers Board (TCPB) has approved a \$7,500 program for insect evaluation and monitoring in Castro, Lamb, Swisher, Hale, Bailey, and Farmer counties. It is part of nearly \$120,000 in research programs approved by TCPB for 1994, says Carl King, TCPB executive director. Another

\$25,000 in additional mite research has also been approved for the Panhandle-South Plains area.

"These counties have always been in the heart of Texas' largest corn producing area," says King. "About one-third of the state crop comes from these counties. TCPB is dedicated to

making sure that efforts to control and hopefully alleviate major corn insect problems receive the utmost attention. And that is made possible by the statewide checkoff pro-

gram."

The pest management programs will be conducted by Texas Agriculture Extension Service pest management specialists Greg Cronholm of Plainview, Andy Williams of Dimmitt and Brant Baugh of

Farwell, as well as Pat Morrison, extension entomologist at the Lubbock TAEX station. The programs include:

- Evaluation of miticides for spider mite control using aerial and chemigation applications. Evaluations will look at mixtures of dimethane and Capture

and dimethane and Asana and early season applications of Comite.

- Monitoring for flight of Southwestern corn borer through the use of 20 pheromone traps. Information from this and other monitoring programs will be reported weekly in an area extension pest management newsletter.

- Monitoring of potential infestations of European corn borer using more labor intensive blacklight traps.

- Data collection to meet requirements for a potential

Capture Sec. 18 temporary use permit. In 1993, each county in which Capture was used was allowed to certify that at least one field was economically infested. Additional data collected this year could help meet new requirements that could be more stringent.

- Monitoring corn earworm adults using traps. This is a continuation program due to the sometimes high populations of earworms in the region.

- Evaluation of Western corn rootworm insecticides, namely

a trial using Furadan 4F as a post emergence rescue treatment will be evaluated if rootworm pressure is great enough.

•Corn herbicides will be evaluated in Castro and Lamb counties to determine if both broadleaf and grass weeds can be treated by preplant, preemergence and post-emergence from both ground-rig and chemigation applications.

For further information on programs funded by the statewide corn checkoff program, contact the TCPB office at 1-800-647-CORN.

Producers reminded of irrigation laws during pre-plant season

LUBBOCK - Many High Plains producers are busy applying a last-minute pre-plant irrigation to wet the soil profile for 1994 planting.

Unfortunately, some of this irrigation water is escaping from fields. This is against both state law and High Plains Underground Water Conservation District #1 rules.

Water District rules define tailwater as ground water pumped for irrigation that escapes...onto land other than that of the owner of the well, unless permission has been granted by the occupant of the land receiving the discharge.

The permission must be in the form of an agreement signed

between the parties on a form acceptable to the Water District.

Potential parties to such an agreement are warned that it may obligate the provider to provide a specified supply of water into perpetuity and/or the recipient to accept runoff in whatever quantities at whatever time the provider chooses.

Provisions of any agreement entered into must comply with Rule 1 (h) (5).

Rule 1 (h) (5) defines water waste as "Willfully or negligently causing, suffering, or permitting underground water to escape into any river, creek, natural watercourse, depression, lake, reservoir, drain, sewer, street, highway, road or road

ditch, or onto land other than the owner of the well."

Allowing this water to escape not only contributes to unnecessary depletion of the ground water stored in the Ogallala Aquifer, but it also erodes topsoil and causes safety hazards.

When a tailwater report is received, Water District personnel investigate the water waste and document it with written memorandums and photographs.

In addition, they contact the landowners and/or operators and ask these parties to stop the water waste. Follow-up investigations are conducted to make sure the water waste has been halted.

The Water District works

with farmers to address problems. If that doesn't work, they then seek a court injunction.

Under an injunction, continued tailwater waste is considered contempt of court and carries a maximum penalty of a \$500 fine and/or six month jail sentence per occurrence.

If violations continue under the injunction, the District Court may also order the county sheriff to padlock the water well to prevent further waste.

Violators can also be held liable for damages resulting from their water waste.

For additional information about tailwater abatement,

contact Ken Carver, High Plains Underground Water Conservation District #1, 2930 Ave. Q, Lubbock, Tx, 79405-1499 or call (806)762-0181.

District

Continued from page 1

selection.

Davenport was recently named to the Lubbock Avallanche Journal Class 3A All-South Plains team, while Holmans was a Region 1-3A second team selection.

Miller led the Mules in scoring and rebounding during a 6-20 campaign in 1993-94.

Nursing

Continued from page 1

The current machine the hospital has is certified and is being operated, according to Murphy.

A new anasthesia machine is expected to cost about \$19-20,000.

An audit of the hospital was presented by Durbin & Company. It was not approved Thursday night though, due to typographical errors. The board is expected to approve the audit at the next meeting on April 19.

Shop
Muleshoe
First!

Muleshoe

Continued from page 1

Friday, April 1 at 7 p.m. It will be held at Calvary Baptist Church, 18th & Ave. C.

Calvary Baptist plans Easter Sunday services

Calvary Baptist Church will hold Easter Services on Sunday, April 3 at the church, located at 18th & Ave. C in Muleshoe.

Sunday school will begin at 10 a.m., followed by morning worship at 11 a.m. with pastor Ben Davis. There will be an Easter Egg Hunt for the children following the services.

Election

Continued from page 1

day a person can register to vote in the May 7 election.

April 7 is also the last day a voter who has moved to a different county election precinct within the county may submit a transfer of registration to be eligible to vote in the precinct of their new residence.

Forecast

Continued from page 1

J.W.'s youngest son Weldon re-established the tradition at the urging of his family and neighbors.

The actual forecast comes by way of setting fire to a teepee shaped stack of wood at sunrise on March 22.

The direction the wind blows the smoke actually signals the spring forecast.

No, his name is not "Doppler" and he doesn't have any modern technology, but Weldon Crim has proven he can accurately predict the local weather.

But if his forecast is correct, don't blame the messenger. Crim is just carrying on the family tradition.

Howard named to dean's honor roll

Eddie Howard of Muleshoe, was named to the Texas State Technical College Amarillo Dean of Instruction's Honor Roll with a 3.5 or greater grade point average for the fall quarter.

Texas State Technical College Amarillo is a non-profit technical college, created in 1970 by the Texas Legislature. The school offers 19 technical programs, including three new programs: chemical technology, metrology, and telecommunica-

tions. **Educators, students of week are announced**

Watson Junior High Principal Bob Graves has named Myrlene Read as educator of the week. Read teaches 7th grade reading.

Junior high students of the week are: Toby Kitchens, 6th grade; Larkin Price, 7th grade and Chris Shelburne, 8th grade.

Issues

Continued from page 1

safety, productivity and well-being of people

- Issues affecting the stewardship of the environment and the natural resources of the county and Texas

- Issues affecting economic competitiveness, community viability and family stability for Texans and the country

- Issues important to the development of life skills and leadership qualities in youth and adults.

YES!!

We'll Be Open For Our Sunday Buffet

Easter Sunday

Don't Forget--LaVonne Can Fix

You A Few Of Your Favorite Things

(Like Pies, Cakes, Cookies, Catered Items)

A Carrousel OF GOOD FOOD

1902 W. AMERICAN BLVD MULESHOE

272-4131 OR 272-4450

Record

Continued from page 1

also publish information on births, marriages, hospital admissions, obituaries and courthouse news.

All of these records, including the sheriff's and police department records, are a matter of public record.

All items will be published under the heading "Public Record."

The Public is Invited To The

Grand Opening of

Shades of Willow

&

Copley Tractor & Equipment

Tuesday, March 29, 9:30 a.m.

1301 W. American Blvd. Muleshoe

NEW FOR 1994 AND BEYOND...

CELLULAR 3 IS NOW PLATEAU CELLULAR NETWORK

Due to the vastness of coverage and the ever-increasing number of communities served, the communication specialists at Cellular 3 have determined the name Plateau Cellular Network better represents this exceptional growth. Plateau Cellular Network will continue to provide the fine service their customers have grown to depend upon.

"REACHING A NEW LEVEL IN COMMUNICATION"

PLATEAU CELLULAR NETWORK

Public Record

Births

Jordon Glynn Stroud

Scott and LaTonia Stroud of Muleshoe are the proud parents of a new baby boy, Jordon Glynn Stroud.

He was born at Methodist Hospital in Levelland on March 17, 1994 at 8:20 p.m., weighing 8 pounds and 15 ounces, and measuring 21 inches long at birth.

Grandparents are Glynn and Carlene Stroud and Jeanette Humiston Daniels, all of Muleshoe.

Great-grandparents are Elva Deene Kernell of Morton and Goldman and Roxie Stroud of Enochs.

Hospital

Hospital

March 18

Theresia Davis, Maria Marrufo, Harmon Elliott

March 19

Theresia Davis, Maria Marrufo

March 20

Maria Marrufo

March 21

Nora Burris, Maria Marrufo

March 22

Clay Pena, Nora Burris, Juanita Shannon

March 23

Andrew Garcia, Gilbert Recio, Juanita Shannon, Hattie Jones, Lucy Lucero

March 24

Juanita Shannon, Gilbert Recio, Hattie Jones, Lucy Lucero

Obituaries

Mike Enos

Services for Mike Enos, 69, of Morton were held Saturday, March 26 at First Baptist Church in Morton, with Rev. Dale Cain, Lubbock Baptist Minister, Rev. Danny Jackson, pastor of First Baptist Church of Morton, officiating.

Burial was in Morton Memorial Cemetery, under direction of Ellis Funeral Home, Morton.

Enos died March 24, 1994 at Methodist Hospital in Levelland.

He was born March 21, 1925 in Ryan, Okla.

He married Louise King on February 7, 1947 in Montague, Tex.

Enos had lived in Morton since 1948, moving from Waurika, Okla. He was a retired farmer and a member of the First Baptist Church of Morton.

Survivors include his wife, Louise Enos of Montague; one son, Robert Mike Enos of Amarillo; one brother, Monroe Enos of Tyler; one sister, Estell Seibold of Seminole, Okla.; four grandchildren, Kristi and Grady Enos, Jeremy and Jennifer Hollar; and one great-grandson, Hunter Lucas.

The family suggests memorials to Hospice of the Plains, 4416 Rd., Plainview, Texas.

Dud Winders

Services for Dud Winders, 66, of Earth were held Friday at 4 p.m. at the First Baptist Church in Lazbuddie, with Rev. Curtis Wood and Rev. Gary Wilcox officiating.

Burial was in the Lazbuddie Cemetery.

Winders died March 23, 1994 at Veterans Administration Hospital in Amarillo.

He was born October 20, 1927 in Castro County.

He married Evelyn McLeod on October 23, 1954 in Clovis, NM.

Winders had lived in the Lazbuddie area all of his life. He was a farmer and rancher.

He was also a charter member of the Earth Roping Club, and a Veteran of the Korean War, serving in the U.S. Airforce.

Survivors include his wife, Evelyn Winders of Earth; three sons, Mike Winders of Lazbuddie, Kent Winders of Elida, NM and Kerry Winders of Dodd; three brothers, Leon Winders of Clayton, NM, Lewis Winders of Gilroy, CA, and Dale Winders of Dimmitt; five sisters, Cleacy Layman of Lubbock, Pauline Simmons of Amarillo, Madge Kennedy of Bryan, Jo Brinkerhoff of Denver, and Gene Faulkner of Lubbock; and 9 grandchildren.

The family suggests memorials to Ronald McDonald House in Amarillo and Gideons International.

Dorothy Lula Belle Griffiths

Services for Dorothy Lula Belle Griffiths, 89, of Westgate were held at 10 a.m. Saturday, March 26, 1994 at Temple Baptist Church in Hereford, with Rev. Dennis Griffiths, Rev. Leonard Griffiths, and Rev. H.W. Bartlett, pastor officiating.

Burial was in Muleshoe Memorial Park Cemetery, under direction of Gilliland-Watson Funeral Home, Hereford.

Griffiths died March 23, 1994 in Hereford Regional Medical Center.

She was born March 20, 1905 in Indianola, Okla. (Pittsburg County).

She married O. Bernie Griffiths on October 19, 1976 in Littlefield. He died on April 24, 1992.

Griffiths came to Deaf Smith County in 1983, moving there from Canon City, CO.

She was a homemaker and a member of Temple Baptist Church in Hereford.

Survivors include six sons, Dale Griffiths of Colorado Springs, CO, Lynn Griffiths of Winthrop Harbor, ILL, Dennis Griffiths of Ft. Worth, TX, Johnie Griffiths of Four Lakes, WA, Rex Griffiths of Ocate, New Mexico and Leonard Griffiths of Tucson, Ariz.; one daughter, Reba Jo Hitchcock of Camp Verde, Ariz.; one sister, Floye DeWeese of Rocky Port, Colo.; 12 grandchildren and 16 great-grandchildren.

Vesta Perkins

Services for Vesta Perkins, 68, of Amarillo, were held Saturday, March 26, at 11 a.m. in the Earth Church of Christ, with Cecil Bunch and Danny Sneed officiating.

Burial was in Springlake Cemetery under direction of Parsons-Ellis Funeral Home, Earth.

Mrs. Perkins died March 23, 1994 at St. Anthony's Hospice in Amarillo.

She was born August 31, 1925 in Lowry, Ark.. She married Carl Perkins on September 27, 1943 in Memphis. He died on April 23, 1983.

Vesta had been a resident of Amarillo for two years. She had lived in Springlake from 1953 to 1992, moving there from Hall County.

She had worked as a manager at Springlake-Earth School Cafeteria until her retirement in 1992 after 23 years.

She was a member of Lawndale Church of Christ in Amarillo and had been a member of Earth Church of Christ for 40 years.

Three brothers preceded her in death, Don Hilger, Sam Hilger, and Baby Brother Hilger. Also a step grandson preceded her in death, Darryl Riggs.

Survivors include one son, Carl M. Perkins of Germany; two daughters, Sandra Riggs of Frisco, and Judy Gallegos of Eagle Pass; three brothers, John Hilger of Brookings, Oreg., Charlie Hilger of Okay, Okla., and James Hilger of Ft. Gibson, Okla.; six sisters; Norma Bartlett of Napa, Calif.

, Velma Shimmel of Napa, Calif. Mary McLeod of Placentia, Calif., Clara White of Montana, and Martha Brown of Ft. Gibson, Okla. and Joann Martin of Ft. Gibson, Okla.; four grandsons; one step grandson one step granddaughter; and two great-grandchildren.

W.T. "Bill" Hankins

Funeral services for W.T. "Bill" Hankins, 85, were held Saturday, March 26 at 2 p.m. at Olton's First Baptist Church.

Hankins died Wednesday, March 23, 1994 at Muleshoe Medical Center following a lengthy illness.

The Rev. Mike Wilcox, pastor will officiate. He will be assisted by the Rev. Ben Davis, pastor of Calvary Baptist Church in Muleshoe.

Burial will be held at Olton Cemetery. Funeral arrangements are under the direction of Foskey Funeral Homes in Dimmitt.

He was born June 29, 1908 in Jackson County, Okla. He had lived in Olton since 1943 and moved to Muleshoe in 1992.

He married Dorothy Hudson on Jan. 11, 1929 in Eldorado, Okla. She died on Feb. 6, 1993. He was a retired farmer.

He is survived by a daughter, Joline Franklin of Muleshoe; two sons, Hayden Hankins of Azle and Tommy Billy Hankins of San Antonio; three brothers, Tommy and Fred Hankins of Eldorado, Okla., and Glenn Hankins of Marietta, Okla.; six grandchildren and 11 great-grandchildren.

The family suggests memorials be made to the Running Water Draw Care Center, P.O., Box 409, Olton, Texas, 79064 or to the Olton Ambulance Association, C/O Olton State Bank, P.O. Drawer X, Olton, Texas, 79064.

Bailey County Journal USPS 040-200
Established March 31, 1963. Published by Triple S Publishing, Inc. Every Sunday at 304 W. Second. Box 449, Muleshoe, Tx. 79347. Second Class Postage paid at Muleshoe, Tx. POSTMASTER: Send address changes to the Bailey County Journal, P.O. Box 449, Muleshoe, Tx. 79347.

We Are Qualified Members Of:
Panhandle Press Association, National Newspaper Association, West Texas Press Association and Texas Press Association.

NNA MEMBER 1994
National Newspaper Association

TA MEMBER 1994
TEXAS PRESS ASSOCIATION

© 1990

PPA
PANHANDLE PRESS ASSOCIATION

Scott Stinnett, Publisher
Lisa Stinnett, Vice-President/Comptroller
Evelene Harris, News
Annette Bottelman, Society
Holly Millsap, Advertising

WEST TEXAS PRESS ASSOCIATION

Subscriptions
Muleshoe Journal and Bailey County Journal
By Carrie Yeasly - \$15.00
Bailey and surrounding counties
By Mail - \$16.75
Elsewhere - \$18.50

Advertising Rate Cards on Application

*Advertisers should check their ads the first day of insertion. The Journal will not be liable for failure to publish an ad or for a typographical error or errors in publications except to the extent of the cost of the ad for the first day of insertion. Adjustment for errors will be limited to the cost of preparation of the ad where the error occurred.

CCC Holds Talent Contest

Does being on stage in front of a live audience appeal to you? Would you like to be in the audience for an evening of live entertainment? The opportunity for both will be a Talent Contest hosted by Clovis Community College as part of Community College Month. The show will take place Friday, April 22, at 7 p.m. in the CCC Town Hall.

Winners of the contest will receive \$50 for first place and \$25 for second place. Hopeful participants should apply for an audition at the CCC information desk through April 15. Audition will be in Town Hall Wednesday, Thursday, and Friday; April 6, 7, and 8. Dress rehearsal will be Thursday, April 14, at 5:15 p.m. A CCC student or employee must be in the act, which must be a maximum of seven minutes. Musical accompaniment must be provided by the participants.

Tickets for the Talent Contest can be purchased from members of the CCC Student Senate, the Black Advisory Council, or at the door the evening of the show. Children under 5 will be admitted free. Proceeds will be divided between the sponsors of the event; the CCC Student Senate and the Black Advisory Council.

Call (505) 769-4085 for more information.

Classifieds Work
Call
272-4536

*Just In Time
For
Easter*

**30% off
Selective Rack
Of Spring
Merchandise**

Lookin' Good

206 Main Muleshoe 272-5052

*The luxury of a
stylish sofa and
loveseat with the
comfort and quality
of a LA-Z-BOY!*

LA-Z-BOY

"NEW GENERATION"
**CHAISE RECLINA-WAY®
FULL RECLINING SOFA & LOVESEAT**
Designed for kicked-back conversing or curling up with a good book, this sofa and loveseat stylishly combine the luxury of channel stitched details with full reclining comfort. Features include pillow-padded arms and chaise seat pads for full-body comfort.

Chaise Reclina-Way® Sofa No. 30-565
H 38" W 83" D 37"

Chaise Reclina-Way® Loveseat No. 32-565
H 38" W 62" D 37"



Chaise Reclina-Way Sofa \$849⁹⁵

Chaise Reclina-Way Loveseat \$749⁹⁵

Calton Furniture

507 East 2nd

Portales, NM

(505) 359-1442

Engagements

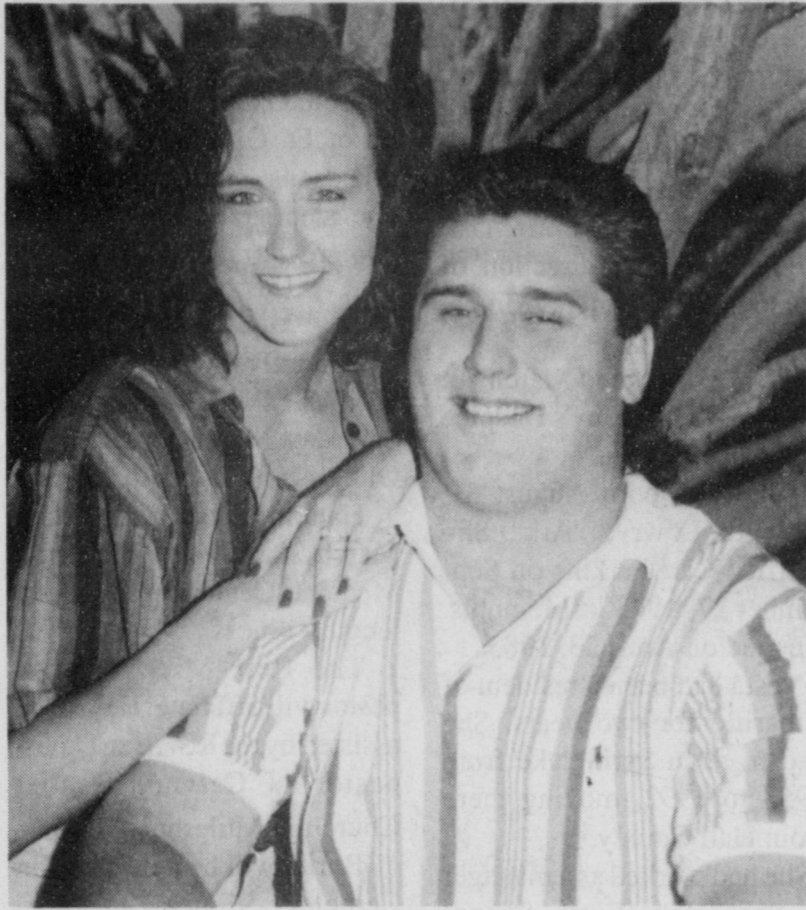
Hunt — Dunham

Together with their parents, Denise Hunt and Michael Dunham announce their engagement and upcoming marriage.

Denise is the daughter of Nadine Hunt of Anton, and Kenneth Hunt of Taylor. She is a graduate of Anton High School and West Texas State University. She is employed by the Muleshoe School District as a teacher/coach.

Michael is the son of Jack and Bobbie Nell Dunham of Muleshoe. He is a graduate of Muleshoe High School. He is employed by the A.S.C.S. office in Farwell.

The couple will marry in Negril, Jamaica on June 18, 1994. After their marriage, the couple will live in Muleshoe.



Denise Hunt and Michael Dunham



Elsa Mendoza and Johnny Garcia

Mendoza—Garcia

Mr. and Mrs. Alfonso Mendoza of Muleshoe announce the engagement and approaching marriage of their daughter, Elsa Mendoza to Marine Sargeant Johnny Garcia, son of Mr. and Mrs. Manuel Garcia of Muleshoe.

Vows will be exchanged on July 16 in the Immaculate Conception Catholic Church.

The couple will make their home in Kansas City, Missouri.

Elsa attended Muleshoe High School, and Johnny is a 1988 graduate of Muleshoe High School.

CCC offers CFC certification training and testing

If you work with refrigerants you are required to have an Environmental Protection Agency/Industrial Chlorofluorocarbon certification by April 23, 1994. Clovis Community College wants to help you with this requirement. CCC is offering training and testing for

CFC certification Friday, April 15, from 5 to 9 p.m. and Saturday, April 16, from 9 to 11 a.m. Enrollment is limited to 25 and there is a fee for the training and testing. Register at the CCC information desk on Monday, Wednesday, Thursday and Friday from 8

a.m. to 4 p.m. or Tuesday from 8 a.m. to 6:45 p.m. In order for CCC to obtain tests by the class date, registration must be completed by April 1.

Call (505) 769-4012 or 769-4147 for more information.

Enochs News

By Mrs. J.D. Bayless

Mrs. Kay Abney of Lockney spent Tuesday till Thursday with her mother, Mrs. Margie Peterson. Other guests Friday were sisters Mrs. Martha Leake and son, Jackie from Pagosa, Springs, CO and Mrs. Lucile Smith from Hart. Mrs. Leake spent the night.

Mr. and Mrs. Dale Nichols and son, Mr. and Mrs. Jerry Nichols and children, Kristen and Landon went to Mena, Ark. Friday. Mr. and Mrs. Sammie Nichols from Claremore, Okla.; Paula, Tonya, Brina, Tina, Megon, Chenwen met them at Mena, where they did some sight seeing and climbed Nichols mountain. Visited Rev. and Mrs. A.C. Lyle, Kenneth Hasteley, a former resident of Bula also John Smith. In route home Dale and Rose visited aunt Audie and Darrell Nichols at Burkburnett.

Craig Austin from Calif. visited his parents, Mr. and Mrs. Junior Austin recently, had been three years since he had been home.

Mrs. Ellen Bayless was in Muleshoe to see about her glasses and visited Mrs. Blanche Aubrey, Mrs. Nannie

Blackman, and Mrs. Jim Claunch at the nursing home. Also visited in the home of Mrs. Alta Odam, and Mrs. Louise White.

Mr. and Mrs. Ronald Beasley and son visited his grandmother, Mrs. Inez Sanders during the weekend.

Rogers Jones and son, Brady of Luders, Mrs. Susie Shields and daughter Patrick Wheatley and children of Lelia Lake visited their mother and Wendell Jones the past week.

Sam Austin of Lubbock spent the week with his grandparents, Mr. and Mrs. Junior Austin.

Mrs. Ima Roberts and Mrs. Wilma Petree of Lubbock visited in the home of the Dale Nichols Saturday afternoon and spent the night with Mr. and Mrs. Bill Key and attended church at Three Way Baptist Church, Sunday afternoon. Mrs. Key, Ima and Wilma visited Mrs. Ellen Bayless and drove to Morton to visit at the nursing home and visited Mrs. Florence Fine and Mrs. Naoma from Muleshoe.

Mrs. Alene Coffman of Big Spring underwent gallbladder surgery Thursday at Methodist Hospital in Lubbock. She is a sister-in-law of Mrs. Ellen Bayless and Mrs. Clara Coffman.

Photography By Lonnie

Lonnie & Sue Gibson

Weddings, Anniversary, Birthdays, Special Events

Call 806-246-3337



Thank You

I wish to thank everyone for their vote and support in the March 8 Primary Election. I will continue to serve you to the best of my ability as County Commissioner of Precinct #4. Thanks Again, Bennie Claunch

The search is on for the world's greatest "granny"

YAKIMA, Wash. — The search is on to find the world's greatest granny. The Washington Apple Commission has announced the official beginning of its second-annual Search for Granny Smith - a nationwide hunt to find the perfect grandmother to promote the famous green fruit.

"We're looking for grannies on the go," said Vicky Scharlay,

vice-president of the Washington Apple Commission. "someone who personifies the healthful attributes of our apples."

A successful candidate should meet the following guidelines:

* Be sweet, but not too tart or mushy, and have good moral fiber

* Stem from a big family tree, hand-picked by children, grandchildren, spouse or friends

* Have beauty that's more than skin deep and just the right amount of maturity.

Those wishing to nominate their favorite granny should

write, in 100 words or less, why the nominee should be considered and enclose a photo.

Nominations should be sent to Granny Smith, P.O. Box 18, Wenatchee, Wash., 98807. They should be received no later than April 29.

Last year's winner was 63-year-old Ruth Ray of Lincoln, Mass., a children's dance instructor and TV producer. Ray was selected out of 7,000 entries from all 50 states.

Eight grandmothers and the person who nominated each of them will be chosen to participate in the "Granny Finale," which will be held Sunday, May 15 at the historic Capitol

Theatre in Yakima.

Finalists will be interviewed by a board of apple growers named Smith' to pick the national Granny Smith winner.

Vinsons to celebrate anniversary

Mr. and Mrs. Lewis P. (Pat and June) Vinson will be honored at a come-and-go reception honoring their 40th wedding anniversary on Saturday, April 2nd from 2 to 4 in the fellowship hall of the First Assembly of God Church at 6801 S. Bell in Amarillo.


The Vinsons, formerly of Muleshoe, now reside in Bracketville.

Their children, Larry of Amarillo, Pam Wood of San Antonio, and Diana Hency of Pueblo, Co. are welcoming friends to join them in honoring the Vinsons.

In lieu of gifts, the children are suggesting that anyone interested provide a short note to the couple which will be incorporated into a memory book.

Contact for more details: Larry Vinson, 6008 Norwich, Amarillo, TX 79109

Gear Up for GARDENING



Soil Conditioner
&
Fertilizer

Canna Bulbs
&
Onion Sets

Now In Stock

Kristy's Plants

710 E. American Blvd. Muleshoe 272-5536

Rip's

Easter Eggcitement...

in Texico
314 Wheeler
482-3363 or
1-800-748-2459
Hours: 9 a.m. to 6:30 p.m. CST

Se habla español

SAVINGS THROUGHOUT THE STORE!

For the Ladies... All 20% Off

- Sharon Young
- Alexander Campbell
- Carol Anderson
- Windridge
- Hill Country
- Hamilton
- Adrianna Papelle
- Juli
- Northern Isle

Accessories... All 20% Off

- Medallias
- Montana Silver
- Navasota
- T. Cappelli

For the Men... 20% Off

Suits
Sport Coats
Straw Hats




Nursing Home celebrates birthdays



Felicitas Leyja



Otille Wisian



Clara Weaver



Patricia Orozco

The March birthday party at the Muleshoe Area Healthcare Center was held on Thursday, March 24 in the Day Room of the nursing home.

Party host for the party was the United Methodist Ladies' Circle.

Entertainment was performed by Glenda Jennings and

Jonessa Brockman.

Flowers were provided by Lasting Impressions.

Ladies celebrating birthdays this month were Felicitas Leyja, 3/04/1914; Otille Wisian, 3/15/1905; Clara Weaver, 3/24/1919; and Patricia Orozco, 3/15/1901.

Wedel speaks to retired teachers

Doris Wedel, former tax consultant for H & R Block, briefed the Muleshoe Retired Teachers Association relative to filing tax returns for 1993.

Wedel is available for services, free of charge, to help senior citizens in filing their tax returns. Her office is in the Bailey County Courthouse.

Wilma Smith, president announced the Drive-In Conference to be in Plainview at Wayland University on April 27.

She also announced the reception for Speaker of the House, Pete Laney, March 21 at the Bailey County Coliseum. Hostesses for this meeting

were Pauline Guinn and Eloise Wilson.

Members present were Dorothy Beddingfield, Alene Bryant, Pauline Guinn, Margie Moore, Mary B. Obenhaus, Ann Oyler, Letha Patterson, Katherine Sanders, Wilma Smith, Elizabeth Watson, Eloise Wilson, Mabel Wolfe.

Summer class offered to teachers

Teachers from across the state have an opportunity this summer to learn more about conservation and how to teach it to students in the Texas Teachers' Conservation Institute.

Three six-day sessions are scheduled for this summer at the Piney Woods Conservation Center (PWCC) located 60 miles from Nacagdoches on a remote peninsula at Sam Rayburn Reservoir. Cost to the teacher is \$50 with sponsors picking up the additional costs to provide attendees with lodging at the PSCC, food and all teaching materials and instruction.

The program, which is in its fifth year, is sponsored by the Texas Forestry Association, Texas Forest Service and Stephen F. Austin State University.

"This is a unique opportunity for teachers to learn first-hand about one of the state's best natural resources - our timber. We work to provide the teacher not only with a better understanding of the timber industry but also a better understanding of conservation efforts here in Texas," said Ron Hufford, TFA executive director.

Up to 30 teachers attend each session. Participants apply for sessions based on the grade level they teach. First session, scheduled for June 26 through July 1 is for grades

kindergarten through sixth grade. Second session is scheduled for July 10 through 15 and is for teachers of grades seventh through twelfth. The final session is open for all teachers and is scheduled for July 24 through 29.

Teachers interested in attending must complete an application. First consideration is given to applicants interested in developing a science and natural resources curriculum. Teachers attending will earn 18 Advanced Academic Training credits along with

curriculum materials and certification in Project Learning Tree and Project Wild programs.

Instruction for the course is provided by 20 volunteer foresters, educators, conservationists and industry professionals. Some of the places the teachers will visit during the week include champion International's Lufkin paper mill, Champion's Corrigan plywood mill, Texas Forestry Museum in Lufkin, Temple-Inland's seed nursery in Silsbee and the International Paper Company seed orchard.

30 Color Photos **99¢ Deposit \$11.00 Due at Pick up (plus tax)**

\$11.99 WE USE KODAK PAPER

- 1 - 10x13 (Wall Photo)
- 1 - 8x10
- 2 - 5x7
- 2 - 3x5
- 16 - King Size Wallets
- 8 - Regular Size Wallets

AT **Anthony's**
321 Main
Fri. & Sat. April 1 & 2
9:30 a.m. - 6 p.m.
TWO DAYS ONLY!!

Group charge 99¢ per person

Present this ad to photographer at time of sitting & receive 4 extra 3 x 5's with purchase of your package.

Kodak PAPER for a Good Look
FOR CREATIVE COLOR PORTRAITS

Read The Classifieds In The Muleshoe Journal

They Work!!

Call 272-4536

Easter Savings

ALL Filled Easter Baskets
40% off

Easter Sunday is April 3!!!

Empty Baskets To Make Your Own
50% off

Dudleys Dazzlin Egg Coloring Kit
Color & Decorate No Mess Gel Sticks To Eggs
1/2 price

Individually Wrapped Hide & Seek Eggs
10 for \$1.00

Falcon Coconut Cream Egg
Reg. 1.19
77¢

Cadbury Cream Eggs
3 for \$1.00

Bumpy & Jumpy Popcorn Bunnies
2 for \$1.00

Marshmallow Pink or Yellow Bunnies
3 for \$1.00

Rainblo Eggs Bubble Gum
Reg. 1.19
79¢

Brachs Jelly Bird Egg Jelly Beans
12 oz. bag **99¢**

Cottontail Hollow Milk Chocolate Easter Bunnies
Reg. 1.89
99¢

Milk Chocolate Bunny With 1st Little Golden Book Book n Bunny
Reg. 2.29
\$1.49

Large Selection Sathers Easter Candy
Reg. 2 for \$1.00
3 for \$1.00

Hide & Seek Plastic Eggs
2 1/2" 12 Ct. **2 for \$1.00**

Solid Milk Chocolate Bunnies
1 oz.
3 for \$1.00

Sugarless Solid Chocolate Bunnies
1.5 oz.
\$1.39

M&M Holiday Plain & Peanut Candy
16 oz. Bag
reg. 2.59 **\$1.59**

Large Selection American Greeting Easter Cards & Novelty Items

Gummy Bunnies
By LifeSavers With Real Fruit
\$1.99

Plush, Assorted Spring Colors 22" Rabbits
Reg. 14.99
1/2 price

Ben Franklin®

Our Variety Shows

2104 W. American Blvd. Muleshoe 272-3855
Mon.-Sat. 8 a.m. - 8 p.m. Sun. 12 - 5 p.m.

Chamber News

If you think you are beaten, you are,

If you think you dare not, you don't,

If you like to win, but you think you can't,

It is almost certain you won't.

If you think you'll lose, you're lost,
For out of the world we find,

Success begins with a fellow's will...

It's all in the state of mind.

— Author unknown

In the last six years, I have worked with hundreds of troubled businesses. Some owners are able to weather the adversity and return to profit-

ability, while others fail. One key difference I've observed is their attitudes.

When the attitude is positive, there is hope. However, when the owner's attitude becomes negative, the end is near. With-

tempt to accomplish.

Doug Johnson, manager of the Office Furniture Outlet store in Amarillo, Texas, knows the value of keeping a good attitude. When a national discounter moved in less than

Minding Your Own Business

By Don Taylor

out an attitude adjustment, the business will fail.

By definition, attitude is the state of mind with which we approach a given situation. Our attitude dictates how we feel, how we look and what we do. In business, our attitude establishes the way we deal with our customers, fellow workers and even affects the tasks we at-

a block away, Johnson could have been discouraged. Instead, he looked on the bright side. "They'll make us run a better store," he said of his new competitor. He added, "We'll have to work harder to please our customers." Johnson has worked harder, and the business is doing well. Attitude makes the difference.

Stan Greil agrees. Greil is the city manager in Yukon, Oklahoma. He has observed the attitudes of entrepreneurs in several cities. "I deal with business and community leaders every day," says Greil. "Without a doubt, the ones with the most enthusiasm and the best attitudes are the most successful. A great attitude will take you to the top." Attitude is a habit.

Developing a positive attitude is not a one-time enlightenment. Attitude is a habit of thought. You can develop a positive attitude by focusing on the results you want. Then, your attitude will change to meet your expectations.

Good habits require time to develop. For example, establishing proper work habits may take several weeks. Begin by arriving at work on time and doing the most important tasks first. Take pride in everything you do. Even if no one else notices, you will receive great personal satisfaction from a job well done. Your attitude will change.

Respect and consideration for others also plays a key role in your on-the-job attitude.

Make sure others get credit for their work. Pitch in and help whenever you can. What goes around comes around, and you may need help the next time.

Be enthusiastic, because enthusiasm fuels progress. It also fuels your attitude. Since attitude is a habit of thought, have enthusiastic thoughts. Ralph Waldo Emerson said, "Nothing great was ever accomplished without enthusiasm."

It also takes a good attitude to overcome adversity. Dr. Robert Schuller said, "Tough times never last, but tough people do." Schuller was talking about an attitude adjustment when he made this world-famous state-

ment. His words later became the title and topic of a best-selling book.

If you concentrate on developing the habit of positive thinking, then what Schuller says will work for you. When tough times come, you will have a reserve of willingness to tackle the problem and the faith to conquer the adversity. Your good attitude will carry you through.

Proverbs 23:7 says, "As a man thinketh in his heart, so is he." Begin now to develop the right attitude and you will find life more meaningful, business more rewarding and the future more exciting.



VALLEY GRAIN NAMED BUSINESS OF THE MONTH— The Bailey County Chamber of Commerce & Agriculture has named Valley Grain Products /A.D.M. Milling as the Business of the Month for March. Valley Grain has operated since 1978 and has 52 employees. It is located on Highway 84, east of Muleshoe. Valley Grain manufactures corn-flour and caters to the snack-food and Mexican food industries. Pictured are some of the employees at Valley Grain. They include (back, left) Jerry Bruns, James Turnbow (division manager), and Jerry Barber. (front, left) Zel Roberson, Joanie Henson, Greta Donaldson, Vicki Stevens, Rosa Gonzales, and Gina Smith.

Farm and ranch computer training offered

Farmer's Home Administration, in cooperation with the Texas Agricultural Extension Service and the Texas A&M University System, is providing farm and ranch computer record keeping training at the Bailey County Coliseum meeting room in Muleshoe.

The course is based on the use of Quicken 7 software.

"Due to agriculture becoming more capital intensive and with profit margins failing, more planning and goal setting is required to keep an operation productive", FmHA County Supervisor Joyce Thompson said.

The local FmHA county committee felt that it would benefit the area farmers if automated records are kept. The Quicken program should save time and enhance most of the record systems that most of the farmers are keeping in the county." Thompson stressed this training is available to all Bailey County farmers or anyone that is interested in farm record keeping.

Jackie Smith, Ph.D., from the Lubbock Research and Extension Center will provide the program and training session. This program and a one day training session will be held on April 1st from 8:00 a.m. to

9:30 a.m. You need to contact the Muleshoe FmHA office at 272-5549 or the local extension service at 272-4583 for space is limited to 20 people to each session. There will be a \$40.00 fee, which will include software provided at the meeting (lunch will be included).

This will be hands-on training meeting where each farmer will bring his own computer

and printer in. The program will be put in the computer and the farmer will be shown how to use the program. "After the meeting the farmer just needs to take his computer home and plug it in," Thompson said.

Again we wish that area farmers would take advantage of this training. For additional information contact the Bailey County FmHA or extension office.

IRA'S Earn

5.50 Percent

Guaranteed for one year upon issue, subject to change on policy anniversary dates.

Superior ratings by prestigious independent organizations confirm our company's financial strength—

Southern Farm Bureau Life has been rated A+ (Superior) by A.M. Best for all the 17 years such ratings have been awarded.

Our Company has been rated 'A' by Weiss Research, Inc. which ranks us among the top 10 of all U.S. life and health companies with over \$1.5 billion of assets.

Information used by such independent rating services comes from each insurance company's financial statements. Such ratings are not a warranty of an insurer's ability to meet its contractual obligations.

Our current Flex II Annuity interest rate.

The guaranteed rate is 4% for life of your Annuity.

Southern Farm Bureau Life Insurance Company offers Flex II, a Flexible Premium Retirement Annuity designed for periodic as well as single premiums. Your contributions, less any applicable maintenance fees, accumulate wealth for the future. Early surrender charges apply.

Southern Farm Bureau Life Insurance Company
Jackson, Mississippi

Helping You Is What We Do Best.

Bailey County Farm Bureau
1612 W. Amer. Blvd. Muleshoe 272-4567

MULESHOE MOTOR COMPANY

"Car Capitol of The West Plains"

FORD
MERCURY

F150s
Grand Marquis
Taurus
Sable

2.9%*

All New Cars & Trucks
March 25-April 5, 1994

F350
CrewCabs
4X4s
Crown Victoria

*WAC 48 Months

1225 West American Blvd.
272-4251 Muleshoe, Tx. 1-800-432-7617

Springtime Savings

PRICES EFFECTIVE
MARCH 27-APRIL 2, 1994

318 W. American Blvd.
272-4862 Muleshoe

ALLSUP'S

DELICIOUS NEW BREAKFAST ITEM

HASH BROWN POTATO
EACH ONLY **39¢**

BEEF, CHEESE & GREEN CHILI

ALLSUP'S CHIMICHANGA
EACH ONLY **99¢**

ALLSUP'S 1.5 LB. LOAF SANDWICH BREAD
69¢ EACH OR **2\$1 FOR**

DECKER 4X6 COOKED HAM
10 OZ. PKG. **\$1.99**

SHURFINE WHOLE KERNEL GOLDEN CORN
16 OZ. CAN **39¢**

Tallsup
32 oz. **65¢**

HAM, EGG & BISCUIT FOR ONLY 99¢

SHURFINE BATHROOM TISSUE
4 ROLL PKG. **99¢**

SHURFINE PAPER TOWELS
JUMBO ROLL **59¢**

Enjoy COKE
ALL TYPES COCA-COLA
6 pk. 12 oz. cans **\$1.79**

Folgers 13 oz. 12 oz. can
Coffee Spam
\$1.99 \$1.99

COOKED FOODS SPECIAL OF THE WEEK

ALLSUP'S CORN DOG AND A 20 OZ. NR COKE FOR ONLY 99¢

GRANULATED SHURFINE SUGAR
4 LB. BAG **\$1.39**

Classifieds Work
Call
272-4536

ASCS News

No program benefits subject to limitation may be provided to any producer until the necessary payment limitation determinations are made. The producer will remain ineligible until all required forms are provided to the county office.

Payment limitation and payment eligibility determinations may be initiated by the County Committee or requested by a producer. If you request a determination, the request may be filed anytime before the final date for submitting CCC-502s.

There are satisfactory provisions that require entities earning benefits subject to limitation to:

- °provide the names, addresses, and ID numbers of the entities members to the County Committee by filing a CCC-501A.
- °inform entities' members of the requirements for designating "permitted entities."
- °"Permitted entities" must be designated on a CCC-501B by every member of the entity.
- °All CCC-501s and CCC-502s submitted by producers are subject to end of year review process. The producers selected for end-of-year review will be required to furnish detailed information to the

County Committee to prove their inputs used to: determine significant contributions to the farming operation, that contributions were at risk, the person determination was correct, permitted entities were properly designated, land ownership was accurately reported, and any other pertinent factors used in the original determination were correct.

A determination of "not actively engaged in farming" results in the producer being ineligible for: deficiency and diversion payments, gains from marketing loans and loan deficiency payments (except honey), CRP annual rental payments (if subject to 1-PL), wool and mohair payments, and any benefit requiring a determination of "Actively engaged in farming."

Record Changes

If you have had a change in ownership, operator, or tenant on your farm, we ask that you notify the ASCS office as soon as possible in order for us to better update our records. Farm changes requiring combinations or divisions will need to be reconstituted prior to signing up in the 1994 Farm program.



RIBBON CUTTING — The official ribbon cutting of High Plains Ceramics at 1218 W. American Blvd. was held to welcome the business to Muleshoe. Also presented to the owner was the first dollar of profit. Owners Nancy and Ron Lemons moved from Tularia, Calif. on Jan. 22, 1993 to Earth and moved to Muleshoe in October of '93.

Winn to be honored at reception

The Bailey County Chamber of Commerce will sponsor a reception honoring Laverne Winn on Wednesday, March

30, from 1-5 p.m. at the Bailey County ASCS office.

Laverne will be retiring on Friday, April 1. She has worked for ASCS for 33 years. Her dedication, concern, and hard

work for the producers of Bailey County has been greatly appreciated.

Everyone is welcomed to come by and help us wish her a happy retirement.



EMPLOYEE OF THE MONTH NAMED — Greg Williams has been named the Employee of the Month for March by the Bailey County Chamber of Commerce & Agriculture. Williams has worked at Leo's Blacksmith Shop for nine years. He is a 1981 graduate of Muleshoe High School and has two daughters, Ashley, age 7 and Randie, age 8.

Shop
Muleshoe
First!

Weather			
Date	High	Low	Soil
March 23	80	39	56
March 24	78	38	55
March 25	60	30	55

Attention:
Roger Clarkson of
Muleshoe Sod Farms
Has a new phone number!
965-2310
Now scheduling lawn work, landscaping & lawn spraying
Best time to call:
before 7:30 a.m. or after 7 p.m.

ROTARY CLUB
MULESHOE TEXAS

Award Recipient — Due to uncontrollable circumstances we're sure, the traveling L.B. Hall "I Forgot the Program" Award wasn't present to accept the honor. Therefore, there was no picture of Mark Morton available. From your fellow Rotarians, Mark, here's to you!

Garth Sheet Metal
1024 W. 2nd Street Muleshoe
806-272-3337

Metal Roofing For Your House & Carports

The newest way to beautify your home. It's durable, fireresistant, cost efficient and can be installed over existing roof. We also do metal and vinyl siding, soffit and fascia. We have a wide variety of colors to choose from. Steel roofing & siding is not only very attractive but is also quiet, solar reflective, non-combustible, hail & wind resistant and lightweight.

We give **FREE** measurements and estimates.

Garth Sheet Metal has been serving Muleshoe for 37 years and will appreciate your business.

Want to buy or sell?
Read the classifieds!

\$ MILLION \$
INVENTORY REDUCTION
SAVE ON OVER \$1,000,000 IN PREOWNED INVENTORY-NOW IN STOCK AT ALL THREE BIG COUNTRY FORD LOCATIONS!!!

SPECIAL OF THE WEEK
1993 TEMPOS (8 TO CHOOSE)

\$15846

\$SAVE INCLUDES A 48 MO/60,000 MILE POWER TRAIN WARRANTY

AUTO-PS-PB-PSEAT-PW-TILT-CRUISE-AM.FM CASS.-MORE.. .60 MOS-9.5% APR-OAC

1993 ESCORT (8 TO CHOOSE)

STARTING AT \$13326

Auto-PB-PS-Am/Fm -Cass-t-Air-#RR044- 60mos. 9.5% apr oac

'89 TAURUS SW \$10995 -3500 disc -57495 Auto-PS-PB-PSEAT-PW-PL-Cr.-T-A-AM/ FM-Cass 36 MOS -11.75% APR OAC #R072	'92 SUNBIRD \$9995 -2000 disc -72995 Auto-PS-PB-PL-AIR-TILT-AM/FM STEREO -48 MOS -10% APR OAC #R0441
'93 RANGER \$11295 -1800 disc -9495 Power Steering-Vinyl Bench Seat-Am/Fm Cassette- 60 MOS-9.5% APR OAC #R003	'93 TOPAZ \$11995 -3000 disc -8295 PS-AM/FM CASSETTE-CLOTH BUCKET SEAT- MORE..40 MOS -9.5% APR OAC #R004

BIG COUNTRY FORD
2400 MABRY DR.
CLOVIS, NM
1-800-748-3306
(505) 762-4427

CALL **CHARLES MAYHUGH**

A Tale of Two Sisters

One day Martha, the sister of Mary and Lazarus, invited Jesus to dinner. As Jesus came in and began to teach, Mary listened intently, but Martha was having a hard time listening at all. Her mind rehearsed the preparations to be made for the meal, and she scurried about getting it ready.

It is often carried on like a secular business, and in a mechanical or utilitarian spirit. It lacks the beautiful enamel of deep fervor and heartiness, the true mysticism, an appreciation of history and the church . . ." (*Christianity Today*).

We are probably far too much like Martha, for example, in our approach to worship. We fret too much about *our* puny part in it. Trying to cook a spiritually nourishing meal, we scurry about filling every nook and cranny, every second, with some "item of worship" we perform as if the most important part of worship is what we do instead of what God does. What we do best is scurry, and in worship we find periods of silence longer than a few seconds almost frightening.

Could we learn from Mary, sitting at the feet of Jesus in quiet calm simply opening her life to receive what Jesus would give her? More akin to Martha, we often live our lives with minds and bodies so busy scurrying about "serving God" that we couldn't possibly hear him should he desire to speak.

Mary chose "the better part." Surely in our worship and in our lives we too need times of silence and quiet meditation when we quit scurrying and simply listen for the voice of God as he speaks.

In 1845, after a visit to America, Swiss theologian Phillip Schaff told a German audience what American Christianity was like: "It is more like busy Martha than like the pensive Mary, sitting at the feet of Jesus. It expands more in breadth than in depth.

Focus On Faith
Curtis Shelburne

Curtis Shelburne is the minister of the 16th and Ave. D. Church of Christ in Muleshoe.

School Menus

Three Way

March 28-April 1, 1994

**MONDAY
BREAKFAST**

Two Pancakes, Juice, Milk
LUNCH

Beef Stew, Celery & Carrot
Sticks, Crackers, Apricots,
Milk

**TUESDAY
BREAKFAST**

Biscuit, Gravy, Juice, Milk
LUNCH

Tacos, Salad, Green Beans,

Peach Cobbler, Milk

**WEDNESDAY
BREAKFAST**

Malt o Meal, Toast,
Juice, Milk
LUNCH

Hamburgers, Fries,
Bananas, Milk

**THURSDAY
BREAKFAST**

Blueberry Muffins,
Juice, Milk
LUNCH

Frito Pie, Brussel Sprouts,
Ranch Style Beans,
Pineapple, Milk
FRIDAY

**BREAKFAST
Waffle, Sausage, Juice, Milk
LUNCH**

Corn Dogs, Vegetarian
Beans, Corn, Ice
Cream, Milk

Lazbuddie

**MONDAY
NO SCHOOL**

**TUESDAY
BREAKFAST**

Cereal, Toast, Juice, Milk
LUNCH

Nachos, Pinto Beans, Salad,

Cornbread, Applesauce, Milk

**WEDNESDAY
BREAKFAST**

Biscuits & Gravy,
Juice, Milk
LUNCH

Chicken Fried Steak, Mashed
Potatoes & Gravy, Green
Beans, Hot Rolls, Jello, Milk

**THURSDAY
BREAKFAST**

Scrambled Eggs, Toast,
Juice, Milk
LUNCH

Hamburger, Lettuce &
Pickles, French Fries,

Cookies, Milk

FRIDAY

NO SCHOOL

Salad Bar Served Daily

Complete Line
Monuments - Markers
Memorials
Granites - Bronze
Muleshoe Memorial
Park Cemetery, Inc.
232 Main P.O. Box 373
Muleshoe, TX
272-5727 or 272-4670

SPRING CLEANING?
Sell Those Unwanted
Items In The Classifieds!
272-4536

Pesticide handlers class offered

The TDA and the Texas Citrus and Vegetable Association are sponsoring a Worker Protection Standard (WPS) "train the trainer" program in Plainview on March 30.

Ag employers are responsible to make sure that pesticide handlers and workers who come in contact with Pesticide treated crops have received approved training. Five C.E.U.'s will be offered.

The program will be at the Ollie Liner Center in Plainview from 8:30 a.m. until 2 p.m. Wednesday, March 30.

Contact Rusty Ingram at Plainview Produce at 293-9543 to register by noon Monday, March 28. For more information, you may contact Curtis Preston, Bailey County Extension Agent at (806) 272-4583.

Tops Club Meets

*** Tops Chapter No. 34 met at the Muleshoe Church of Christ, Thursday, March 24 at 6 p.m. Leader Laverne James called the meeting to order. The Tops pledge was recited and the fellowship song was sung.

Betty Jo Davis, weight recorder, called the roll with 18 members answering with the amount they had lost or gained.

Minutes of the previous meeting were read by Aurora Mata, secretary, and approved as read.

Best loser for the week is Alma Robertson.

Runners up are Marian Wilson, first runner up and Mollie Davis, second runner up.

The meeting was adjourned with the singing of the good night song.

Three Way News

By Mrs. H.W. Garvin

George Tyson spent Monday night in Lubbock visiting his daughter, the Tommy Durhams.

Several from the community went on a short vacation while school was out for spring break.

The community needs rain very badly. Some farmers are watering, but most are waiting.

Nancy Castillo has been staying mornings with Mrs. H.W. Garvin until Mrs. Garvin regains her strength after her recent illness.

**Immaculate Conception
Catholic Church**
805 E. Hickory
Father Joseph Augustine

First Baptist Church
220 West Ave. E.
Pastor, Stacey Conner

**Emmanuel Baptist
Church**
Iglesia Bautista Emmanuel
107 East Third
Isaias Cardenas, Pastor

Trinity Baptist Church
314 E. Ave. B
Rev. Dale Berry, Pastor

**Circle Back
Baptist Church**
Intersection FM 3397 &
FM 298
Rev. Jessie Shaver
946-3676

**Calvary Baptist
Church**
1733 W. Ave. C
Pastor Ben Davis

**Progress Baptist
Church**
Progress, Texas

**Richland Hills
Baptist Church**
17th & West Ave. D
Rev. Terry Taylor

**St. Matthews
Baptist Church**
Corner of West Boston
& West Birch
Pastor, Floyd R. Monroe

**Progress Second
Baptist Church**
1st and 3rd Sundays
Rev. Arthur Hayes

**Primitive Baptist
Church**
621 South First
Elder Cleveland Bass, Pastor

1st Baptist Church
Lazbuddie, Tx.
Bobby Alexander, Pastor
965-2126



ALL NATURE Proclaims A RISEN SAVIOUR

AT EASTER... trees and flowers blossom into a new life. AT EASTER... we celebrate our Saviour's rising to a new life, and the promise that we shall have this new life too. Attend Church Easter Day and join others in celebrating this great victory.

Attend The Church Of Your Choice!

St. John Luthern
Lariat, Texas
Sunday School and Bible
Classes 9:30 a.m.
Church Services 10:30 a.m.
Rev. Richard Greenhaner

The Christian Center
Morton Hwy.
Reydon Stanford
272-5263 or 227-2136

**New Covenant
Church**
Plainview Hwy
Sunday 10:00 a.m.
Wednesday 7:00 p.m.
Jimmy Lowe, Pastor

**Lazbuddie Methodist
Church**
965-2121
G. Scott Richards, Pastor

**New Vision Church
Of The Nazarene**
814 W. Ave. C
272-3622
Pastor David R. McIntire

**Primera Iglesia
Bautista**
223 E. Ave. B
Roy Martinez, Pastor

**"Iglesia Pentecostal
Unida"**
207 East Ave. G
272-3636
Pastor: Wenceslado Trevino

**Lariat Church
of Christ**
Sunday School 10:00 a.m.
Worship 11:00 & 6:00
Wednesday Services 7:00 p.m.
Sam Billingsley, Minister

**Muleshoe Church
of Christ**
Clovis Hwy
Gary Montgomery, Minister

**16th & Ave. D
Church of Christ**
Sunday 10:30 a.m.
Evening 6:00 p.m.
Wednesday 7:30 p.m.
Curtis Shelburne, Minister
272-4619

**El Divino Salvador
Methodist Church**
E. 5th and E. Ave. D
Rev. Libney Peneda, Pastor

Throckmorton Refinishing Shop 319 E. Amer. Blvd. 272-5345	Wes-Tex Feed Yards, Inc. 272-7555	Bailey Gin Co. 946-3397	Bobo Insurance Agency 108 E. Ave. C 272-4264
American Valley, Inc. W. Hwy 84 272-4266	Decorator's Floral & Gifts 616 S. 1st 272-4340	Irrigation Pumps & Power W. Hwy 84 272-4483	Viola's Restaurant 2002 W. Amer. Blvd. 272-3838
James Crane Tire Co. 322 N. 1st 272-4594	First Bank Member F.D.I.C. 202 South First 272-4515	Attend The Church Of Your Choice	Bailey County Farm Bureau 1612 W. Amer. Blvd. 272-4567
5-Area Telephone Cooperative, Inc. 302 Uvalde 272-5533	Bob Stovall Printing 221 E. Ave. B. 272-3373	Martinez's Chevron 502 S. 1st 272-3251	Western Drug 114 Main 272-3106

CLASSIFIEDS 272-4536

CLASSIFIED RATES

15 Words & Under
Minimum Charge
\$2.30
Thereafter
\$2.00
16 Words & over
1st Insertion
15 cents per word
2nd Insertion
13 cents per word

CLASSIFIED DISPLAY RATES

\$1.75
Per Column Inch
DEADLINES
12 noon Tues.
For Thursday Paper
12 noon Friday
For Sunday Paper

To receive the reduced rate after the first insertion, ad must run continuously.

We reserve the right to classify, revise, or reject any ad. We are not responsible for any error after ad has run once.

CONCERNED
About Someone's Drinking?
HELP IS AVAILABLE
through **Al-Anon**
Call 272-5857;
927-5110 or
965-2870 or come to visit Tuesday and Thursday nights, 8:00 p.m. & through AA call 965-2870 or come visit Tuesday nights, 8:00 at 723 W. Ave. E, Muleshoe

For more information and assistance regarding the investigation of get-rich-quick, work-at-home and other financial/business opportunities. The Muleshoe and Bailey County Journals urges its readers to contact the Better Business Bureau, 1206 14th St., #901, Lubbock, TX 79401 or call (806)763-0459.

1. PERSONALS

Reduce safe and fast with **GO-BESE** tablets and **E-VAP "Water Pills"** Available **DAMRON DRUG.**
G1-13s-5p(s)

2. LOST & FOUND

Whoever borrowed my wheelbarrow. Bring it home. **WT.Millen.** Rt. 1 Box 685 Muleshoe. M2-13s-2c

NOTICE OF ESTATE

A stray horse has been reported to the Bailey County Sheriff's Office. The horse is described as: A sorrell gelding, has a star forehead with a streak down the face, is not branded, has white socks on both back feet and a white sock on left front foot, 8 to 10 years old, stands 15 hands high and weighs about 1100 lbs. Anyone missing a horse matching this description must contact the Bailey County Sheriff's Office to make arrangements to pay the feed bill and any other costs involved with this stray horse.

If this horse is not claimed by April 2, 1994, it will be sold at public auction, with proceeds of the sale going to the Bailey County General Fund.
Jerry N. Hicks
Sheriff
Bailey County
H2-12s-2c(s)

3. HELP WANTED

FIREFIGHTER JOBS
Entry level, M/F positions. Now hiring. \$11.58-\$14.29/hr. Paid training & benefits. Applicants call 1-219-736-4715, ext. A-8265, 8 am to 8 pm, 7 days. C3-13s-6tp(ts)

EXTRA INCOME '94
Earn \$200-\$500 weekly mailing 1994 Travel brochures. For more information send a self addressed stamped envelope to: Travel Network, P.O. Box 612530, Miami, FL 33161
S3-10s-25tc

4. FOR RENT

3 room furnished apartment. Water paid. Located at the back of 202 West 8th. 272-3901. C5-12t-ffc

8. REAL ESTATE

DESIRE TO LEASE
3 or 4 bdrm/2 bath home. Muleshoe/Sudan area. Miss family. Contact Dan Lusk 7am-5pm at 965-2194 (Tolk Station)
L8-13s-3tc

BUILDING LOT BY OWNER

Beautiful Parkridge Addition, Muleshoe. 103' x 125', paved streets, utilities. Great view! Owner finance. Reduced for quick sale!!(806)795-5409. W8-38s-tfc(ITS)

For Sale:

100 Acres!
Three wells with motors, house, barn, four side rolls, and various farm equipment. Next to a farm market road. Make offer to Tommy at: 806-272-4515. G8-2t-ffc

HOUSE FOR SALE

NICE, Newly Remodeled, Brick, 3 Bedroom, 2 Bath, 2 car garage, NEW heat pump, fenced backyard, storage shed. AND MUCH MORE! Country Club Edition. Call 272-5730 or 272-4390. B8-12s-4tc

MUST SELL!!!

Large two bedroom, one bath home. Central heat, utility, garage, large fenced backyard. FmHA Financing Available.
ALL REASONABLE OFFERS CONSIDERED
Phone: 272-5922 leave message. Or daytime hours, phone: 272-4536, ask for Annette

9. AUTOMOBILES

For sale 1991 Midnight Blue Honda Accord, fully loaded. Call 925-6777. P9-10s-tfc

11. FOR SALE

FOR SALE
IBM computer, w/ monitor, printer & 25,000 sheets of paper for \$800, or computer, monitor & keyboard for \$500. 272-4976
L11-113s-3tc

11. FOR SALE

Air Compressor 220 volt, 60 gallon tank. 272-4976. L11-11t-3tc

FOR SALE

80 AND 40 ACRES CLOSE TO TOWN IRRIGATED WITH UNDERGROUND PIPE. CALL 272-4677 OR 3022. H11-10t-7tc

#1 Alfalfa Hay for sale. Call Alex Aguirre at 272-5012. A11-11t-10tc

2 cemetery lots. Muleshoe Memorial Park. 272-4380. S11-10t-10tp

15. MISCELLANEOUS

NEW LISTING
Please call for details on food corn handling facility, with up to date cleaning equipment. Approximately 850,000 bushels. Muleshoe TX. Scott Land Company
Ben G. Scott Dimmitt TX 79027 806-647-4375 Day or Night. B15-8s-tfc(s)

MUST SELL!

91 FORD EXPLORER, 2 door, four wheel drive, Eddie Bauer pkg, 2 tone paint, automatic transmission, air conditioning, power windows, power door locks, cruise control, tilt steering wheel, AM/FM stereo cassette, luggage rack, and much more, **NO OLD CONTRACT TO ASSUME**, no back payments to make, just need responsible party to make reasonable monthly payments. **CALL DOUG HULDERMAN** in the Credit Dept, Friona Motors, 806/247-2701

MUST SELL!

93 MERCURY VILLAGER GS, 7 passenger van, V-6, automatic transmission, power windows, power door locks, tilt steering wheel, cruise control, AM/FM stereo cassette, and much more, **NO OLD CONTRACT TO ASSUME**, no back payments to make, just need responsible party to make reasonable monthly payments. **CALL DOUG HULDERMAN** in the Credit Dept, Friona Motors, 806/247-2701

MUST SELL!

93 FORD PROBE, 3 Door, 5 speed transmission, power windows, power door locks, cruise control, tilt steering wheel, remote keyless entry system, AM/FM stereo cassette, cast aluminum wheels, GT cloth bucket seats, AND MUCH MORE, **NO OLD CONTRACT TO ASSUME**, no back payments to make, just need responsible party to make reasonable monthly payments. **CALL DOUG HULDERMAN** in the Credit Dept, Friona Motors, 806/247-2701

HENRY REALTY

111 W. AVE. B 272-4581
Muleshoe, Tx.

West part of town, 3 bedroom, 1 bath, dining room, stucco, 2 car garage, storm doors and windows. Large lot. See to appreciate.

Near High School-3 Bedroom, 3 Bath, BV Central Heat, Ducted in Evaporative Air Cond., Carpet throughout, Large Den with rock fireplace, Top grade wood paneling throughout. Storm Windows and Doors. Insulation in ceiling. Large utility room and spacious storage area. Kitchen built-ins.

Country Club Addition, 2 bedroom, 1 bath, enclosed carport, new protective siding. Carpet throughout, wood fence, storm doors and some storm windows. Ceiling fans, new front porch and new back patio. Ample storage, storm cellar. Excellent condition.

Lenau Addition-4 bedroom, 2 bath, carport, central heat and air, carpet, dining area, in-dishwasher and stove. Covered patio, fence, storm doors and windows, drapes, curtains. One ceiling fan. Ample storage and shed for travel trailer.

Edge of town 3 bedroom, 2 bath, large den with fireplace, large utility room, heat pump, carpet, kitchen, builtins. Call for appointment.

RURAL-3 bedroom, 1 bath, 2 car garage, masonite siding, carpet throughout, central heat, evap. air cond. on roof ducted to all rooms. Built-in dishwasher. New roof. Additional acres available, owner financing to qualified buyer.

Reduced Price - Owner ready to sell. 2 bedroom, 1 bath, 1 car garage, carpet, wood fence, storm cellar.

Near High School-2 Bedroom, 1 bath, wood fence, carpet, storm doors, windows. Local financing could be arranged. Immediate occupancy.

COMMERCIAL PROPERTY
Ideal location on West American Blvd. 150' highway frontage. A great investment.
LEASED
West American Boulevard 150' frontage. Priced to sell.



Come See Why Your A Winner At Portales Mobile Homes Rated Nationally For Customer Satisfaction For Over 4 Years!
25 Years Home Owned & Operated
• Over 30 Beautiful Homes
• No High Pressure
• Professional Sales Staff
• Home Consultation
• Financing
Call Today 1-800-867-5639 356-5639

Corn and sorghum payments released

The five month national weighted average price for corn is \$2.47/bu. and for grain sorghum is \$2.36/bu. thus making the final deficiency payment rate for corn \$.28/bu. and .25 bu. for grain sorghum. The final payment rate for producers receiving payment on 0/92 acres is .72/bu. for grain sorghum.

Because the final payment rate for both corn and grain

sorghum was less than the advance rate, producers receiving an advance payment are overpaid. The .36/bu. advance received on corn was overpaid by .08/bu. and the .35/bu. advance received on grain sorghum.

Regulations state that when the advance payment rate is less than the final payment rate, any refund due CCC at the end of the applicable marketing

year. Therefore you will not be required to refund the overpayment on corn and sorghum until October.

However, producers who wish to repay the overpayment earlier may do so either by requesting in writing that the amount be withheld from any payments due, or by providing a check to CCC for the applicable amount.

Plainview Pioneer Round-Up planned

The Plainview Business and Professional Women's Club has announced Saturday, May 21 as the date for the 1994 Pioneer Round-up. This will be the 66th year the Club has sponsored this annual event, according to Lois Teller, President of the sponsoring club.

The Pioneer Round-Up was started as a method of honoring pioneers of this area. This continues to be one of the

purposes of the event, but in addition, it has become an entertainment feature for people of all ages in Plainview, Hale County and surrounding areas.

Activities will be held in the Ollie Liner Center on the south edge of Plainview. The reception will be held in the meeting room at the Center which begins at 10 a.m. on Saturday morning.

The traditional Pioneer

Round-Up parade will roll at 2:30 p.m.

The Saturday evening's program will begin at 6 p.m. when the chuck wagon supper will be served until 8 p.m. in the large assembly room at the Ollie Liner Center with the program to follow.

A square dance will conclude the day's activities.

James F. Hayes & Co.

AGRICULTURAL REAL ESTATE SERVICES
1200 Acres-in Castro County. 5 wells, 3 sprinklers, 2000 Head Feedyard, Cattle Operation for Wheat Pasture and Finishin Operation.

6400 Acres-in Western Deaf Smith County. 4600 Acres of grass. Balance in Cultivation. Nice home, Good Pens and Fences, Good Stock Water. Call for more details.

354 Acres-West of Muleshoe. Good Soil, Good Allotments, On Pavement. Owner will Carry.

800 Acres- of Prime Irrigated Land. 6 Center Pivot Sprinklers, 8 Wells, Machinery Barn, Grain Drying and Storage, Top Notch Operation. Call for Further Details.

160 Acres- at West Camp. Lays good, good soil, on pavement, fully allotted.

316 Acres- at West camp area. Lays good, good soil, lots of underground pipe, 1 center pivot sprinkler, located on pavement.

Vic Coker, Agent
310 Main Street, Suite 103
Office Muleshoe Home
272-3100 965-2468

Major Appliance and Minor Home Repairs!
Call 272-4450
HENDERSON SERVICE, CO.

Classifieds!
Bigger and Better Than Ever
272-4536

SMALLWOOD REAL ESTATE

232 Main 272-4838

3 Bedroom Brick, 1 3/4 Bath, 1 Car Garage, Fenced Back Yard.

11 Acres (Joins city limits), 76' x 14' Mobile Home, 672 sq. Feet built on, Carpet, 3 Bedrooms, Central heat and air, Barns and Sheds. 1 Horse power pump.

3 Bedroom Brick, 2 Bath, 1 Car Garage, Fenced Back Yard. Priced to sell.

Commercial, with large house. Storage or Apartments. Make repairs & more. This is for someone who can repair an In Contract owner financed.

Joe L. Smallwood, Broker

Nieman Realty

116 E. Ave. C George Nieman, Broker 272-5286 or 272-5285

RICHLAND HILLS

NICE RESIDENTIAL LOTS...\$5,000 UP

VERY NICE 3-21/2-2 Brick Home, High Efficiency Cent. A&H, built-ins, FP, covered patio, great game room w/ 1/2 bath & storage, area w/ dbl. gates for boat, etc.. fenced yd. MORE!!!\$80's!!!!HR-3

HIGH SCHOOL
JUST LISTED- VERY NICE 3-2-1 Home, Cent. A&H, built-ins, nice carpets, ceiling fans, nice pool & deck, st. bldg... fenced yd., MORE!!! \$30's HS-7

VERY NICE 3-2 Home Cent. A&H, built-ins, nice carpeted yd., MUCH MORE!!!

NICE 3-1-1 Brick A&H, st. bldg., fenced yd.

JUST LISTED- NICE 3-2-2 Brick, 2150'+ lv. area, Heat pump, built-ins, Ceiling fans, nice carpets, fenced yd. MORE!!! \$70K HS-6

VERY NICE- 3-1-1 Brick, Cent. A&H, built-ins, nice carpet, cov. patio, fenced yd. MORE!!!!\$30's HS-2

3-1-1 Brick, Cent. heat, evap. air. FmHA financing. \$20's!!!!HS-1
PRICE REDUCED 3-2 Remodeled, heat pump, built-ins, fenced yd., storage bldg. \$23,000!!! HS-3

3-1-1 carport Home, heat pump, storm windows & doors. MUCH MORE. \$20's!! HS-4

IMMACULATE 3-2-2 Brick, Cent. A&H, built-ins, FP, fenced yard, & MORE!!! \$50's HS-8

JUST LISTED- VERY NICE 3-1-1 Brick, built-ins, heat pump, fenced yd., FmHA Financing Available. \$20's!!!!HR-9

3-1 3/4 Home, wall furnace, heat, window evap. air, built-in stove, storage bldg.!! \$13,000 Cash "AS IS"!!!! HS-5

IMMACULATE-3-2-2 Home, built-ins, Cent. A&H, redwood deck, large workshop-storage. \$70's!!!! HS-10

HIGH SCHOOL
FmHA Financing To Qualified Buyer -NICE 3-1-1 Brick Home, Cent. A&H, ceiling fans, storage bldg., fenced yd. \$30's!!!!HL-3

LENAU ADDITION
JUST LISTED-2-2-1 Home, Cent. Heat, Evap. Air, built-ins in Contract yd.!!!

3-1 1/2-1 Home, Cent. Evap. Air, st. bldg., fenced yd. \$30's!!!!

VERY NICE 3-2-1 Home, Heat Pump, storm windows & doors, extra insulation, nice carpet, splkr. sys., & MORE!!!! \$30's!!!!L-2

JUST LISTED-Nice 2-1-1 Home, new interior paint, new carpet, fenced yd., storage bldg., MORE!!!!&20's!!!!L-4

JUST LISTED 2-1 1/2-1 Home, Heat Pump, built-ins, enclosed room, workshop-stor., fenced yd. \$30's!!!!L-3
RURAL HOMES

JUST LISTED-Nice 3-2-1 Home on 20 acres, close to town, 6" well, sideroll splkr., shop, & barns. \$50's!!!!HR-9

3-2-1 on 1 acre, Cent. Heat, Evap. Air, Remodeled, \$30's!! HR-6

3-1-2 Home on 1 1/2 acres storm cellar & storage bldg...\$20's!!!! HR-8

ESTABLISHED BUSINESS, 40+yrs., lot, bldg., furniture, fixtures, & inventory. Books open to qualified Buyer!!!!

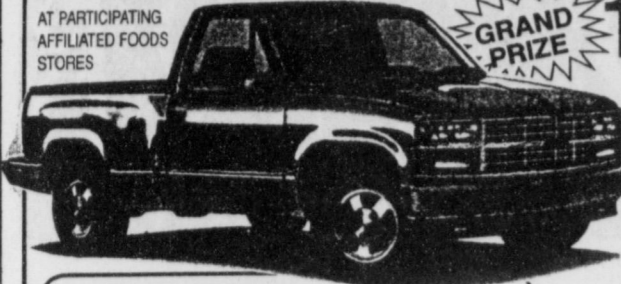
ASK ABOUT OUR COMMERCIAL LISTINGS!!!
Baileyboro- 708 acres, 110 acres CRP, balance native pasture. \$73K!!!!

PLEASANT VALLEY- 160 acres, 8" well Lindsey circle!!!!

REGISTER TODAY FOR OUR SPRING ROUND-UP SWEEPSTAKES!

THIS IS A PUBLICITY PHOTO ONLY AND MAY VARY FROM THE ACTUAL PRIZE PICK UP

AT PARTICIPATING
AFFILIATED FOODS
STORES



GRAND PRIZE
1994 CHEVROLET
C1500
Sportside
PICKUP

EQUIPPED WITH AIR CONDITIONING, AM-FM STEREO,
DELUXE FRONT END APPEARANCE, RALLY WHEEL TRIM,
15 INCH BLACKWALL TIRES, CRUISE CONTROL, TILT WHEEL,
RUNNING BOARDS, & HEAR BUMPER.

2ND PRIZE
TRIP FOR TWO
IN VIENNA AUSTRIA

A VIP TRIP FOR TWO
7 DAYS TO BEAUTIFUL
VIENNA AUSTRIA FROM
AUGUST 10-17, 1994

AFFILIATED
FOODS INC. **Spring Round-Up**
OFFICIAL ENTRY BLANK

NAME _____
ADDRESS _____
CITY _____ STATE _____ ZIP _____
PHONE NO. _____

REGISTER MARCH 13-APRIL 6, 1994. MUST BE 18 YEARS OF AGE OR OLDER.
NO PURCHASE REQUIRED TO REGISTER. AFFILIATED EMPLOYEES / STORE
EMPLOYEES AND IMMEDIATE FAMILY ARE NOT ELIGIBLE TO PARTICIPATE.
DRAWING WILL BE HELD WEDNESDAY, APRIL 6, 1994. WINNERS TO BE
ANNOUNCED ON APRIL 12, 1994.

Spring Round-Up
2ND BIG WEEK!

SHURFINE FRUIT COOKOUT BARTLETT PEAR HALVES YELLOW CLING PEACHES SLICED OR HALVES Shurfine Fruit 29 OZ. CAN 99¢	SHURFINE CREAMY OR CHUNKY Peanut Butter 28 OZ. JAR \$2.39	SHURFINE TOMATO Ketchup 28 OZ. BTL. 89¢	SHURFINE GRAY OR CHUNK Dog Food 40 LB. BAG \$5.69
--	--	--	--

SHURFINE FACIAL TISSUE 175 CT. BOX 69¢	SHURFINE SHIRT NAPKINS 2 68 CT. PKGS. 89¢	SHURFINE CARPET & FLUG DEODORIZER 18 OZ. CAN 99¢	SHURFINE DRY ROASTED PEANUTS 16 OZ. CAN \$2.29	SHURFINE LONG SPAGHETTI 16 OZ. BOWL 59¢	SHURFINE GRAPE JUICE 40 OZ. BTL. \$1.39	SHURFINE APRICOT NECTAR 48 OZ. CAN \$1.29	SHURFINE EVAPORATED MILK 12 OZ. CANS 2 \$1.99	SHURFINE INSTANT RICE 30 OZ. BAG \$2.29	PLAIN OR TOZZED SHURFINE SALT 2 28 OZ. CANS 69¢	SHURFINE DRY CAT FOOD 14 LB. BAG \$4.89	SHURFINE COFFEE CREAMER 22 OZ. JAR \$1.39	SHURFINE APRICOT NECTAR 48 OZ. CAN \$1.29	SHURFINE EVAPORATED MILK 12 OZ. CANS 2 \$1.99	SHURFINE INSTANT RICE 30 OZ. BAG \$2.29
--	---	--	--	---	---	---	---	---	---	---	---	---	---	---

Shurfine Bleach
REG. (LEMON / FRESH SCENT)
LIQUID GAL JUG
69¢

ASSORTED COCA-COLA \$1.69
6 PACK, 12 OZ. CANS

SHURFINE LAUNDRY REG. WITH BLEACH Ultra Detergent 98-110 OZ. BOX \$3.99	SHURFINE PURE VEGETABLE OIL 1.69	SHURFINE ASSORTED POTATO CHIPS 69¢	SHURFINE BASIC MED. LARG. Diapers 8 CT. BOX \$3.49	SHURFINE TRASH CAN LINERS 30 GAL. 10 CT. BOX 99¢	SHURFINE KITCHEN BAGS 20 CT. BOX \$1.99	SHURFINE DISH DETERGENT 10 OZ. BOTTLE \$1.19	SHURFINE KRAMER 40 SOFT POWER 40
---	----------------------------------	------------------------------------	--	--	---	--	----------------------------------

SHURFINE BATH TISSUE 9 ROLL PKG. \$1.69	SHURFINE 2-PLY PAPER TOWELS SINGLE ROLLS 2.89¢ FOR	SHURFINE CORN FLAKES 1.69	SHURFINE RAISIN BRAN CEREAL 1.69	SHURFINE CRISPY RICE CEREAL 1.69	SHURFINE SPRING WATER 15 LTR. BTL. 69¢	SHURFINE FRESH PACK CUCUMBER SLICES 18 OZ. JAR \$1.19	SHURFINE HAMBURGER SLICED CHILI FICKLES 30 OZ. JAR \$1.39	SHURFINE GARLIC SALT 5.25 OZ. BTL. 79¢	SHURFINE GARLIC POWDER 3.12 OZ. BTL. \$1.49
---	--	---------------------------	----------------------------------	----------------------------------	---	--	--	---	--

SHURFINE SLICED BACON 1 LB. PKG. \$1.49	SHURFINE SMOKED SAUSAGE 12 OZ. PKG. \$1.29	SHURFINE MEAT BOLOGNA 12 OZ. PKG. 79¢	SHURFINE PASTORAL SALAMI 12 OZ. PKG. 99¢	SHURFINE LUNCHEON MEATS 4 OZ. PKG. 89¢	SHURFINE SLICED HAM 1.5 LB. PKG. \$3.99	SHURFINE CHICKEN SALAD 7.5 OZ. PKG. 99¢	SHURFINE HAM SALAD 7.5 OZ. PKG. \$1.19	SHURFINE POTATO SALAD 14 OZ. PKG. 79¢	CORN KING MEAT FRANKS 12 OZ. PKG. 49¢	PEYTON PORK SAUSAGE 1 LB. PKG. 79¢
--	---	--	---	---	--	--	---	--	--	---

Round Steak

PREFERRED TRIM **\$1.59 LB.**

PILGRIM'S PRIDE BONELESS SKINLESS Breast or Breast Strips POUND \$2.69	SHURFINE FULLY COOKED Boneless Whole Ham POUND \$1.99	SHURFINE WHOLE HOG Pork Sausage 1 LB. ROLL \$1.49
PREFERRED TRIM Boneless Round Steak L.B. \$1.79	PREFERRED TRIM Boneless Rump Roast L.B. \$2.19	PREFERRED TRIM Boneless Sirloin Tip Steak L.B. \$2.49
Extra Lean Ground Beef L.B. \$1.99	WASHINGTON Red Delicious Apples 3 LB. BAG 99¢	TEXAS Rio Star Grapefruit LARGE 4 \$1
Super Select Cucumbers EACH 3 \$1	GARDEN FRESH Zucchini Squash POUND 69¢	Cello Spinach 10 OZ. BAG 99¢

RED RIPE Extra Large Tomatoes POUND **59¢**

NEW CROP Yellow Onions POUND **39¢**

SHURFINE PIMENTO 1.5 OZ. PKG. \$1.99	SHURFINE CHEESE SPREAD 7.5 OZ. PKG. \$1.19	SHURFINE WAFFER THIN MEATS 2.5 OZ. PKG. 35¢	SHURFINE PANCAKE SYRUP 32 OZ. BTL. \$1.19	SHURFINE COMPLETE PANCAKE MIX 32 OZ. BOX \$1.19	SHURFINE APPLE SAUCE 50 OZ. JAR \$1.79	SHURFINE TOMATO SAUCE 8 8 OZ. CANS 99¢	SHURFINE MEXICAN STYLE CHILI BEANS 2 15 OZ. CANS 89¢	SHURFINE DARK RED KIDNEY BEANS 2 15 OZ. CANS 89¢	SHURFINE WHOLE OR SLICED NEW POTATOES 2 16 OZ. CANS 89¢
---	---	--	--	--	---	---	---	---	--

HEALTH & BEAUTY CARE

WESTERN FAMILY Aspirin 100 CT. NON-ASPIRIN OR 250 CT. BOTTLE \$1.49	WESTERN FAMILY Childrens Chewables 100 PKG. \$1.89	WESTERN FAMILY Laxative Tablets 100 PKG. \$1.29	WESTERN FAMILY Baby Lotion 14.5 OZ. BTL. \$1.99	WESTERN FAMILY Baby Shampoo 14.5 OZ. BTL. \$1.39	WESTERN FAMILY Cotton Swabs 300 CT. PKG. \$1.69	WESTERN FAMILY Bismate Tablets 100 CT. PKG. \$1.99
--	---	--	--	---	--	---

Round-Up 2ND BIG WEEK!

SHURFINE FLOUR 5 LB. BAG 69¢	SHURFINE CRACKERS 16 OZ. BOX 59¢	SHURFINE DRESSING 16 OZ. BTL. 99¢	SHURFINE MAYONNAISE 16 OZ. BTL. \$1.49	SHURFINE ORANGE JUICE 12 OZ. CAN 69¢	SHURFINE VEGETABLES 15-17 OZ. CANS 399¢
-------------------------------------	---	--	---	---	--

DAIRY SPECIALS

SHURFINE QUALITY MARGARINE 1 LB. OTRS. 3.99¢	SHURFINE CINNAMON ROLLS 9.5 OZ. CAN 2 \$3	SHURFINE CHEDDAR CHEESE 16 OZ. PKG. \$2.49	SHURFINE AMERICAN SINGLES 12 OZ. PKG. \$1.49	SHURFINE ORANGE JUICE 84 OZ. JUG 2 \$3	SHURFINE MOZZARELLA CHEESE 8 OZ. PKG. \$1.39
---	--	---	---	---	---

Lowes' Pay-n-Save MARKETPLACE

515 W. Amer. Blvd. Mulshoe 272-4406
401 W. American Blvd. Mulshoe, TX 79347 (806) 272-4585

SHURFINE FLOUR 25 LB. BAG \$2.99	SHURFINE SUGAR 4 LB. BAG 99¢	SHURFINE COFFEE 30 OZ. CAN \$2.99	SHURFINE SOFT DRINKS 16 OZ. CANS 99¢
---	-------------------------------------	--	---

FROZEN SPECIALS

SHURFINE CRINKLE CUT FRIES 5 LB. BAG \$2.99	SHURFINE APPLE OR GRAPE JUICE 12 OZ. CAN 89¢	SHURFINE WHIPPED TOPPING 8 OZ. TUB 69¢	SHURFINE CRINKLE CUT CARROTS 16 OZ. BAG 89¢	SHURFINE MIXED VEGETABLES 8 OZ. CT. PKG. 89¢	SHURFINE ROUND WAFFLES 10 OZ. PKG. \$1.29
--	---	---	--	---	--

Lowes' Pay-n-Save MARKETPLACE
PRICES EFFECTIVE MARCH 24-30, 1994
WE RESERVE THE RIGHT TO LIMIT QUANTITIES IN TEXAS