

# LAMB COUNTY LEADER

THE SOUTH PLAINS GREATEST WEEKLY NEWSPAPER—SERVING THE FASTEST DEVELOPING AGRICULTURAL SECTION OF THE SOUTHWEST

15 OFFICIAL NEWSPAPER OF LAMB COUNTY, TEXAS LITTLEFIELD, LAMB COUNTY, TEXAS, AUGUST 19, 1937 16 PAGES TODAY NUMBER 20

## \$78,610 SCHOOL BUDGET APPROVED

### Leach Selects Department Heads For County Fair

#### CUNNINGHAM IS IN CHARGE OF AGRICULTURE

#### Parent Citizens To Aid Plans For County Fair

Cunningham, past president of the Lamb county fair will be chairman of agricultural and poultry exhibits at the county fair September 25, according to E. O. Cunningham, president of the Lamb county fair association. A chairman of the women's exhibits will be selected within a few days.

Cunningham was selected for his wide knowledge of agriculture and familiarity with county problems. He is also a director of the fair association.

Department superintendents with Mr. Cunningham are: Leach, agricultural education; Jess Elms, horses; Odell Rigor, individual exhibits; Bob May,

(Continued on Editorial Page)

#### RURAL POWER PROJECT SLOW

#### Leach Says Government Not Pepped Up Over Irrigation Idea

Members in Lamb county who are looking forward to having government aid in the construction of Rural Electrification lines are a long time to wait according to advice received here this morning from Congressman George Mahon, who represents this district.

According to Mahon the appropriation for this year for this type of project has been cut to thirty million dollars from fifty million. This thirty million must be divided up between eight states. It is also said

(Continued on Editorial Page)

#### FINES ONLY TOTAL \$215.65

#### Peaceful April, May And June Found To Be Most Peaceful

Littlefield is a peaceful city. For the year ending January 1st, 1937 to August 1st, 1938, the total fines collected by Secretary Street is exact-

ly \$215.65. January \$137.50 was collected; February \$50.15; March, April, and June brought no fines whatever. In July \$13 was collected and for the first nineteen days in August collections from the city have only been \$9.

#### LEACH RESIGNS TO SUPERVISE

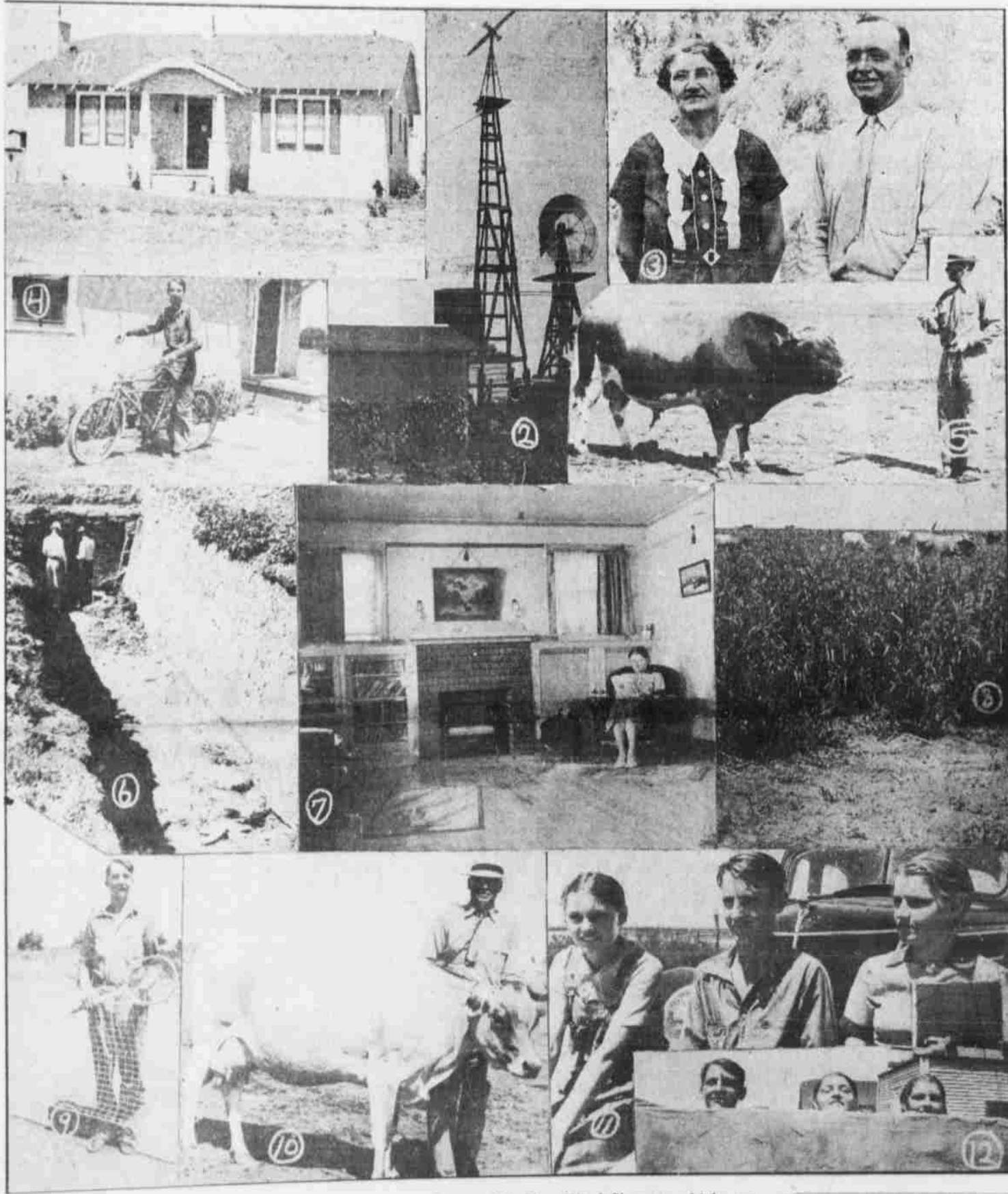
#### Former Vocational Teacher Here Receives Nice Promotion

The resignation of T. L. Leach, who has been in charge of Vocational work in the Littlefield school, was accepted Monday night by the Board of Education.

Although it is not the policy of the board to accept resignations of vocational teachers, the instructor desires to go to teach, it was understood that Leach is not resigning to teach

(Continued on Editorial Page)

### Views On The McQuatters Farm - - - Master Farm Award Winner



(1) The McQuatters home. (2) The Wind-Charger which provides the power to a small battery in the home which in turn furnishes electric lights, radio etc. (3) Mr. and Mrs. R. B. McQuatters. (4) Roy McQuatters, Jr. on his bicycle. (5) Mr. McQuatters with the farm bull. (6) Trench Silo on farm. (7) Interior view of the living room. (8) Stock grazing in Sudan grass. (9) Son Roy on the tennis court he constructed back of the house. (10) Mr. McQuatters with one of herd. (11) Veda, Roy and Vera. (12) Roy, Vera and Veda in the swimming tank right back of the house. (Photos by Burgess and Colvert.)

#### CROPS LOOK OK TO BADGER

#### Yellow House Land Co. Mgr. Here From Austin On Visit

W. H. Badger of Austin, manager of the Yellow House Land company, is spending this week at the local offices.

Mr. Badger, in an interview Tuesday, said that he had driven over the major portion of the Yellow House lands, and found the crops standing up good under the circumstances.

"Unless we get rain within the next ten or 15 days," added Mr. Badger, "the crops will be lighter than we expect. However, I saw that a few crops that were looking mighty well. I don't doubt for a minute that we are needing moisture, and I really think we will get rain. However, there is going to be quite a bit of cotton made

(Continued on Editorial Page)

Careful Eye Examination! Comfortable Glasses!

**DR. IRA E. WOODS**  
Otolmetrist—Littlefield

### Crockett To Aid In Fight For Highway 51

"I think the improvement of Highway 51 north from Littlefield, over the sand hills, one of the most important projects that could be undertaken. It will increase traffic through our county and give both the north and south parts of our county access to each other over a modern highway," said L. R. Crockett, Judge of Lamb county Tuesday night, when the Littlefield Chamber of Commerce Highway Committee met to discuss ways and means to have the road improved as soon as possible.

Judge Crockett indicated he would be glad to aid in taking the matter up with the State's Division Engineer, George Garrett of Lubbock. A telephone call was placed to Garrett Tuesday evening, but he was reported out of the city and due back first of the coming week.

Members of the Littlefield Chamber of Commerce Highway Committee will go to Lubbock sometime next week and discuss the matter with Garrett. Doing all in their

power to have the road improved.

J. W. Hilliard and Glenn Burgess, secretary of the Chamber of Commerce were in Austin recently and discussed the matter of having the road improved with a hard surface highway with Gibb Gilchrist, State Engineer. Gilchrist suggested they have their County Judge write him, asking that the road be officially designated as Highway 51.

Tuesday night Judge Crockett said he was under the impression the route had been already designated as Highway 51, but would be glad to aid other members of the committee in taking the matter up with state highway authorities, so it could be completed.

Gilchrist also advised Burgess and Hilliard that if Lamb, Castro and Deaf Smith counties would build the drainage and grade the route which has already been secured as the right-of-way, he felt the

(Continued on Editorial Page)

#### STUDENTS TO PAN-AM EXPO

#### May Have Special Train To Dallas If 300 Buy Tickets

September 28 and 29 has been set aside as Littlefield's day at the Greater Texas and Pan American Exposition, when school children, their teachers, parents and friends are expected to attend in large numbers.

In an interview with H. C. (Clay) Pumphrey, local Santa Fe Agent, Monday, he stated that providing he could sell between three and four hundred tickets to the Exposition that he would arrange a special train from Littlefield to carry those wishing to make the trip, and that the group rate would be \$7.88 each for the round trip.

When the group reaches the Exposition it will have the facilities of a service office near the main entrance gate. Their orders for group admission tickets at 25 cents each will be issued, special amusement concessions provided and information as to lodging furnished, all without charge. The Exposition, at this office, also will maintain a baggage checking service.

Governor James V. Allred has officially proclaimed these dates as school holidays. Full credits will be allowed the children who attend the Exposition.

#### COVERS SCHOOL EXPENSES FOR 1937-1938 TERM

#### \$37,114 To Go For Instructional Services

Although members of the Littlefield Independent School District Board of Education had advertised and invited the public to attend their meeting Monday night, when they were to consider the \$78,610.20 budget for the 1937-1938 school year, no one attended, therefore showing their complete confidence in the Board of Education.

The budget had been prepared by H. C. Arnold, Secretary of the school district and was presented to the board in detail. After some discussion it was approved.

Expenditures were listed as follows: Educational administration, \$2,000; business administration, \$600; assessing and collecting taxes, \$1,200; county administration, \$810; office supplies, truant officer and colored census, \$750.

(Continued on Editorial Page)

#### T. N. M. U. CO. TO EXTEND POWER

#### Irrigation Of Land To Be Provided For As \$300,000 Spent

The installation of additional electric generating equipment at Tucco Station near Abernathy will increase the capacity of that power plant 10,000 h. p. Abernathy is 30 miles east of Littlefield.

The estimated cost of a new steam driven turbine-generator, including boilers, auxiliaries and other improvements to be installed has been placed near \$300,000.00. All preliminary work incidental to the installation is finished and the machinery is expected to arrive at an early date.

(Continued on Editorial Page)

#### DISTRICT ROAD TAX THE SAME

#### Commissioner Lewis Moves To Increase Rate In Littlefield Area

Members of the Commissioners Court were in session at Olton Tuesday, discussing the county budget and tax figures.

Taxes for the coming fiscal year will not be raised. The tax rate being set as the same as this year.

Citizens living in the northern part of the county did receive a reduction of two cents though in road district No. 2. The rate on the bond issue for highway No. 28 was

(Continued on Editorial Page)

#### CONSTITUTION VOTE MONDAY

#### Monday Will Tell The Tale If Taxpayers Wish To Change Laws

Austin, Aug. 19.—The people of Texas will vote Aug. 23 on six proposals to amend the State Constitution.

Two would authorize financial assistance to adult needy blind and to destitute children and thereby enable Texas to participate in another phase of the federal social security program.

The others would eliminate dou-

(Continued on Editorial Page)

# The PENTHOUSE MURDER

by Cabot Johnson

## FOURTH INSTALLMENT

**SYNOPSIS:** A card game is in session in Elmer Henderson's penthouse atop a New York skyscraper. The players are: Henderson, Police Inspector, Flaherty, Martin Frazier, Archie Doane, Max Michaelis, and his friend Williams, a stockbroker.

They are waiting for Stephen Fitzgerald. When he fails to appear, a telephone call brings the information that he is out with a girl. Fitzgerald and Henderson are both romantically interested in Lydia Lane, the famous actress, but Archie Doane reveals that she is engaged to marry him.

Doane leaves the party early when Fitzgerald fails to appear. A short time later he telephones Inspector Flaherty with the frantic news that he has found Fitzgerald and Miss Lane dead in Lydia Lane's penthouse apartment.

When Flaherty and the medical examiner reach the apartment, they find that Miss Lane is still alive. She is rushed to a hospital where blood transfusions and care promise to restore her.

All circumstantial evidence points to Archie Doane as the murderer, especially when the murder gun is found carefully planted in the chimney clean-out in the basement.

"I opened that door and went out on the roof and around the elevator shaft to the door of Miss Lane's bedroom. You will find my foot-prints in the snow. The shades were drawn on both the windows and the glass door, but I could see that there was a light inside. I tapped loudly on the glass, but received no response. Then I tried that door, and found it unlocked.

"I opened the door and saw the bodies of Miss Lane and Stephen Fitzgerald lying just where you saw them!

"You can imagine the agony of my first thoughts. I did not at once perceive that they were dead; they seemed merely asleep. I closed the door softly and backed out on to the roof. My first impulse was to steal quietly away — to hide from the shame my betrothed had brought upon me. God forgive me for the thought! It was an echo of the jealousy I had been harboring all the evening, jealousy born of fear of Fitzgerald.

"For the moment I had forgotten Lydia's terrified call over the telephone. Then my mind cleared and I realized that a terrible tragedy had occurred. I reentered the bedroom and my worst fears were verified when I saw the bullet wound in Fitz's bosom.

"I reeled and felt as if I were about to faint, for a moment. Then I pulled myself together and tried to discover whether either was still alive. Both were apparently dead.

"My first conclusion was that Fitz had shot Lydia and then killed himself, rather than let her marry me. I saw no weapon, however, and the idea of suicide did not fit with Fitzgerald's character and temperament. Someone else must have come upon them and killed them both.

"I considered my own position. The case against me was clear. I had thought at first of running to the street and calling in the nearest policeman. But if I did that any anything should slip — someone else should come to the apartment, Miss Lane's maid return and find the bodies there—my departure might easily be interpreted as the beginning of a flight from the scene of my crime.

"I discarded that idea, and telephoned at once to Elmer Henderson's rooms, and reported to Inspector Flaherty. I noticed then that the telephone receiver was not on the hook but hanging from its cord.

"Between the time when I telephoned the Inspector and the arrival of the detective with the Medical Examiner I was careful to disturb nothing in the apartment, but made as good a search as I could without touching anything, in the hope of finding the pistol. I found nothing. I understand your detective has found no weapon?

"I had no means of telling how long Fitz had been lying there. Trying to figure it out, I came to the conclusion that he must have been shot early in the evening, and that Lydia, coming in late, had just discovered his body when she telephoned to me. She might have come first into the studio — this room — then gone into her dressing room and slipped into a kimono, and entered the bedroom to find Fitz's body on the floor. But that, of course, does not account for her own wound."

The Medical Examiner was the first to speak after Doane had finished his statement.

"It is impossible that Miss Lane may have been shot several hours ago," he said, "and her statement, when and if she recovers conscious-



"Archie, did you ever own a pistol?"

ness, will help us on that point. "I called up Henderson, too," he added, and gave him a report of the situation. He seemed overjoyed to learn that Miss Lane was still alive, and asked me to give you a word of sympathy and encouragement, Archie."

"Good of him," said Doane. "Can't I be of service at the hospital? Blood transfusion, you said? I'll give every drop in my body."

"They have a number of persons available whose blood has been analyzed and tested for just that pur-

pose," said the Medical Examiner. "It would take twenty-four hours to determine whether it would be safe to use yours, and by that time Miss Lane will either be out of danger or—"

"I hope she'll be able to talk," interrupted Inspector Flaherty. "Then we'll have something definite to go on. Meantime, we must see what we've got here."

"Meantime, I'm under arrest, I suppose?" said Doane.

"Not yet, my boy," said the Inspector. "Stick around, though. There'll be plenty of questions to ask you. Lie down, if you like, on the sofa, and rest your nerves. I'll call you if I want you."

"Gentlemen," he said to the others, "I'm going to push this investigation through as fast as possible. I propose to stay here until daylight, if necessary, to discover everything which the inanimate evidence can tell us. You, Max, and Martin, can stay or not, as you like."

"I'm going to stay," said Max Michaelis, and Frazier nodded his decision to do the same. "One or two questions I'd like to put to Archie before we do anything else," the lawyer went on.

"You say you came to the conclusion that Fitz must have been shot early in the evening. I wish you'd give us your process of reasoning that led to that conclusion."

"It was the snow that made me think of that," replied Doane. "It began to snow after eight o'clock; I know it had not begun when I got to Henderson's. It stopped snowing before eleven o'clock, for the sky was clear when I left my rooms to come up here."

"Verify the time of the snow from the Weather Bureau, Tony," interposed Inspector Flaherty. "Go on, Archie; I begin to get your drift."

"Well, look at Fitzgerald's shoes. From where I sat, most of the time on the stool by the telephone stand, I could see the soles of them plain-

ly. There are no overshoes or galoshes anywhere that I looked. A man wouldn't come out in thin patent leather shoes without overshoes if there were snow on the ground, it isn't likely. And there isn't a sign of moisture on Fitz's shoes. Therefore, he must have come here before the snow began."

"That sounds reasonable, but it doesn't prove that he was shot before the snow began," Inspector Flaherty objected.

"I realize that my theory is all wrong," said Doane. "What the Medical Examiner has told us pro-

ves that. I was merely told I had come to the conclusion he had been shot some time before the snow began. I don't believe—then he was figured, by some one who to the apartment some the way I came—and no tracks in the snow. "Look out on the rear den now, and you will tracks, but no others."

(Continued on personal)

## CHOICE FARM LANDS

Bailey and Cochran Counties, Texas

Attractive Prices and Terms

# I. C. Enochs

—Littlefield, Texas—

# FIVE FAMOUS POINTS OF QUALITY

**DRAIN AND FILL WITH COSDEN PARAFINE METALIZED PROCESSED MOTOR OIL**

Look for the Traffic Cop on the can

**COSDEN HIGHER OCTANE GASOLINE**

• • • a 70-octane, anti-knock, motor fuel for modern, high-speed, high-compression motors. Contains no lead or other artificial ingredients or stimulants. Provides quick starting; uninterrupted operation, fast pick-up and greater power.

VEHICLE DISTRIBUTORS

**1 HIGHER OCTANE**

COSDEN'S 70-OCTANE GASOLINE meets the exacting requirements of modern High-Speed, High-Compression motors. You'll enjoy greater motoring satisfaction by using this uniform, dependable product.

**2 STARTING EASE**

COSDEN'S HIGHER OCTANE GASOLINE starts like a flash—winter or summer—and maintains sustained operation without "spitting" or missing. Truly, an all-weather, high efficiency motor fuel that makes motoring a real pleasure.

**3 POWER AND PEP**

The exclusive process of distillation of COSDEN HIGHER OCTANE GASOLINE produces a motor fuel that will put pep into your motor and add immeasurably to its power. One tank full will convince you.

**4 EXTRA MILEAGE**

COSDEN HIGHER OCTANE GASOLINE has been justly termed the "economy gasoline." Not only does it keep your motor free from trouble but delivers MORE MILES PER GALLON. A tank full of "Higher Octane" is ALWAYS a bargain.

**5 PURITY**

Here is probably COSDEN HIGHER OCTANE'S greatest point. No lead or other artificial adulterants or poisonous stimulants of any kind are used in producing this superior motor fuel. It is equally safe and efficient in gasoline stoves and lamps.

TUNE IN ON THAT GREAT COSDEN RADIO SHOW . . .  
TUESDAY NIGHTS — 9:15 **WBAP**  
TO 9:45 P. M.—  
—THE SHORTEST HALF HOUR PROGRAM ON THE AIR!

## COSDEN'S 70 OCTANE Anti-Knock Gas

**McCORMICK BROS.**

PETROLEUM PRODUCTS

AUTO PARTS

**15c** Per Full Gallon

OPEN ALL NIGHT

# McQuatters Night at Palace Wednesday Aug. 25

## KNOWN LAMB COUNTY PEOPLE RECEIVED THE MASTER FARMER AWARD ARE TO BE HONORED GUESTS

Mr. and Mrs. R. B. McQuatters and family will be honored next Wednesday night, August 25th, by the Palace Theatre when that night will be officially known as McQuatters Night.

Manager Bill Chesher has secured a special matinee concerning farm life and also an educational matinee concerning the growth of the county.

McQuatters family have been honored by the management, Bill Perry, Lamb county demonstration agent and county farm agent.

It will be truly a "farm night" and all honors go to the McQuatters and farmers in this county.

"Hideaway" On Screen  
The name of the special farm matinee is "Hideaway", featuring the well known actor Fred Stone. The matinee in Lamb county is invited.

### HANES TAKES THE SHORT CAKE!



Keep your seats . . . in the front row. Climb into HANES Shorts. See what it means to sit pretty. Get enough room to sit, stoop and stretch without thinking you'll split.

Look at the legs on HANES, and you'll know that doesn't bind. HANES Shorts are an outshoot—a generous waist to hem. Plenty of room at the crotch. Genuine in the belt. Colors guaranteed. See a HANES Dealer today. Get some HANES Shirts too. P. H. Knitting Co., Winston-Salem, Carolina.

For Every Season  
Sell and Recommend "HANES"

REPLIN'S  
REAL WALKERS

## CONGRATULATIONS TO THE . . . McQUATTERS FAMILY

### MASTER FARMERS FOR 1937!

The soil of Lamb county is rich with the good things of life. A bright future is in store for the people in this South Texas region, who work hard and plan for the future. We are always happy to work with our citizens for the betterment of the community as a whole . . . FORWARD LAMB COUNTY!

## First National Bank LITTLEFIELD, TEXAS

## ALL FARMERS ALL

Be Our Good Friends . . . and We Take Pleasure in CONGRATULATING . . .

## Mr. & Mrs. R. B. McQuatters AND FAMILY

On Being Selected to Receive the MASTER FARMER AWARD

# McCormick Bros.

Auto Parts Petroleum Products

# Broadway Melody Opens At Palace Theatre Saturday Midnight, August 21. Great Show

## STAR IN "SLAVE SHIP"



Their honeymoon ship blazing with mutiny as it plunges to an ominous destiny, Warner Baxter (co-starred with Wallace Beery) and Elizabeth Allan enact stirring roles in "Slave Ship." It opens at the Ritz Theatre, Littlefield, Saturday midnight and continues through Sunday and Monday.

## SEA'S EPIC GRANDEUR NOTABLE SCREEN FARE IN "SLAVE SHIP" FILM

That notable bulwark of motion-picture grandeur, the sea, which has served the screen well both as arch-villain and as the scene of many stirring adventures, comes once again to the fore in an important production with "Slave Ship," starring Warner Baxter and Wallace Beery, which will show Saturday midnight Sunday and Monday at the Ritz Theatre.

Under the direction of Tay Garnett, who is Hollywood's most experienced practical yachtsman, the picture was designed to bring once more to movie audiences the tang of salt sea, the creaking of timbers under strain and the inherent melodrama and danger incident to sailing ships and pounding seas.

Garnett's aim was to re-create a historical episode which was of vital importance to the world, and to present in motion picture reproduction of the slave-running era of the early nineteenth century.

The era of slave-trading, roughly between 1750 and 1840, nurtured the most daring, most unscrupulous and most hardy breed of seafaring men in the entire history of sailing. These "blackbirders," as they were called, were recruited from the toughs who infested seaports.

It has been estimated that approximately 5,000,000 Negroes were landed on foreign shores as the result of this traffic. And yet this number, according to Garnett, who has delved deeply into slave research, represents only a third of the actual captives taken out of Africa.

"Slave traders," he says, "took

it for granted that only a third of their cargoes would survive the hardships of the passage from Africa. The most conscientious shippers used to allow a space two and a half feet wide and five feet long to each captive. This meant that the slaves were stored in 'spoon' fashion, with the legs of one overlapping the head of another."

Garnett, knowing the limitations imposed on screen fare, accepted these facts but did not dwell overlong on them, passing on to stress instead the romantic, hazardous phases of an adventure that never more can come to pass, an adventure rich in the conflict of man against man, and of man against the sea.

In "Slave Ship," Warner Baxter plays a Yankee sea captain who plans to give up the slave traffic, but who is double-crossed by his mutinous crew, under the influence of Wallace Beery. Thus, the voyage he planned as a honeymoon with his young bride, Elizabeth Allan, becomes a slave-running adventure, with the couple continually in danger of death.

Mickey Rooney, George Sanders, Jane Darwell and Joseph Schildkraut also appear in the film.

Robert Taylor was Eleanor Powell's lucky star.

She said just that between scenes on the "Broadway Melody of 1938" set, where she co-starred with Taylor in the Metro-Goldwyn-Mayer musical, which opens at midnight, August 21st, Palace Theatre and continues through Sunday and Monday.

Two years ago Miss Powell arrived on another "Broadway Melody" set, not as Eleanor Powell the star, but as the new-comer from Broadway who was going to have her first fling at acting for the screen.

Taylor, after a fashion, could also be called a new-comer although he did have a few roles on record for experience.

"I was really scared those first few days on the set," Miss Powell admitted, "and Bob knew it. But he didn't treat me like a new-comer. Instead, he said encouraging things."

"The first afternoon we had time for a chat while the cameras were being set up for a new scene, Bob

told me that I was very lucky to have had so much experience on the stage because it would be helpful on the screen. He lamented the fact that he had only done a few amateur plays in college.

"Not only did he encourage me with words but he also helped me in the scenes by keeping me completely at ease. If we were scheduled to work in the afternoon, Bob would suggest that we meet at the studio in the morning and go through our lines together.

"Bob said he did this because he needed the extra practice, but he knew that working out the scenes ahead of time had a great deal to do with putting me at ease when we finally went before the cameras," the dancer added.

Taylor, on the other hand, insisted that Miss Powell was his lucky star.

"It was the first picture in which I was called upon to dance and sing, and Eleanor helped me greatly with this," he said.

# COOL OFF!

ALWAYS COMFORTABLE  
**PALACE THEATRE**  
AIR CONDITIONED FOR YOUR COMFORT

Starts Midnight . . .  
—Saturday, Aug. 21st  
—Sunday, Aug. 22nd  
—Monday, Aug. 23rd

Thursday - Friday  
AUGUST 19-20  
"MOUNTAIN MUSIC"  
with  
Bob Burns, Martha Raye

10 Stars . . . 200 Dancing Beauties!  
. . . 1,000 Yum-Yum Girls! . . .  
It's M-G-M's Biggest Musical Fun Show!

## TAYLOR POWELL Broadway Melody 1938



with GEORGE MURPHY, BINKIE SARGES, BUDDY ESKEN, SOPHIE TUCKER, JUDY GARLAND, CHARLES HOOK GORIN, RAYMOND WALSBURN, ROBERT BENICKEY, WILLIE HOWARD, CHARLEY GRAPFORTH, ROBERT WILDMACK.  
Screen play by Jack McGowan

SATURDAY  
AUGUST 21  
"HOLLYWOOD COWBOY"  
A Real Western  
with  
GEO. O'BRIEN

TUESDAY  
AUGUST 24  
"THE 13TH CHAIR"  
with lovely  
MADGE EVANS  
Admission 15c

WEDNESDAY  
AUGUST 25  
McQuatters Night  
"HIDEAWAY"  
With Fred Stone  
Farm Night

# THEATRE RITZ THEATRE

SATURDAY  
AUGUST 21  
DICK FORAN  
"The Singing Cowboy"  
—in—  
"Empty Holsters"

Sunday-Monday  
AUG. 22-AUG. 23  
"SLAVE SHIP"  
with  
WARNER BAXTER  
WALLACE BEERY

## Piggly Wiggly

SALUTES THE FARMERS OF LAMB COUNTY—AND ESPECIALLY

## Mr. & Mrs. R. B. McQuatters

WHO WON THE 1937

# MASTER FARMER AWARD

# LAMB COUNTY LEADER

Published Every Thursday Afternoon at Littlefield, Texas  
Entered as second class matter May 24, 1923, at the Post Office at Littlefield, Texas, under the act of March 3, 1879.

MORLEY B. DRAKE, Editor and Publisher  
R. M. DRAKE, Business Manager

**SUBSCRIPTIONS**  
\$1 Per Year in  
Lamb and Adjoin-  
ing Counties.  
\$1.50 Per Year Out-  
side Lamb and Ad-  
joining Counties.



**Advertising Rates**  
Given Upon  
Application

Subscribers who change their addresses, or fail to get their paper, should immediately notify this office, giving both new and old addresses. Communications of local interest are solicited. They should be briefly written, on only one side of the paper, and must reach this office not later than Wednesday noon of each week. The right of revision or rejection is reserved by the publisher.

Advertising that does not show in its text or typography that it is paid for must be marked as an advertisement. All local advertisements remain in this paper for the time specified or until ordered out. All notices, it matters not by whom nor for what purpose, if the object is to raise money by admission fee or otherwise, is an advertisement and when sent in for publication must be paid for at the regular advertising rate per line for each issue printed.

## Cotton Must Bring A Parity Price

When it became apparent that influences were working toward a lower price for the south's cotton crop, J. E. McDonald, Commissioner of agriculture of Texas, stepped into the position of one laying down the challenge that such a trend was most unfair to the cotton growers and moreover contrary to the Government's program to establish and maintain a parity price for the products of the farm.

In response to numerous requests, Commissioner McDonald called a meeting of cotton growers and those interested with him for August 2nd at Dallas. Out of that meeting came resolutions strongly protesting the lowering of the price for cotton and urging the President and the Congress to put forth their efforts to the end that the year's cotton crop might not be sacrificed.

The contentions of that meeting were that the decline in the price of cotton was unwarranted; that there should be established and maintained a parity price on cotton; and that the Federal Government should make loans on the basis of fifteen cents per pound on tenderable cotton basis, not less than twelve cents of this to be paid when cotton is delivered to and placed in a bonded cotton warehouse, the remaining three cents per pound to be paid when the cotton grower had complied with the permanent government agricultural program.

That same mass meeting voiced the belief that whatever farm legislation which might be enacted should be economically sound. It was the conviction of those present that "prosperity will be affected by such action as will insure fair returns on the present crop," thus fulfilling the promise of the administration that is "parity prices for farm products."

Already Congress has taken note of the present cotton situation, and that Commissioner McDonald's efforts have been felt at Washington, even as it has been felt in Texas.

The Secretary of the U. S. Department of Agriculture has stated that the present parity price for cotton is seventeen (17) cents per pound. Commissioner J. E. McDonald realizes that the downward trend of the price for the south's cotton crop is out of line with the present trend in the price for other farm products and other goods, wares and commodities and he has thrown himself whole heartedly into the effort to fight against any exploitation of the cotton growers, contending that it is the duty of the Congress to make every possible effort to prevent a disruption of the nation-wide program for parity farm commodity prices.

OUR BEST WISHES  
TO THE  
**R. B. McQUATTERS**  
FAMILY  
Winners of the  
**MASTER FARMER AWARD**  
For 1937  
LAMB COUNTY FARMERS  
DESERVE TO WIN AWARDS  
**UNION**  
COMPRESS & WAREHOUSE CO.



### Who Said What?

Vacationists from this county who have gone through Austin this summer and gazed on the Red Granite State Capitol Building may have forgotten about the matter but some good Lamb county land went to help pay for said building.

Back in 1876, when the State Constitution was adopted, it provided that 3,050,000 acres of land in the Panhandle be handed over to defray the cost of the building. Nice generous slices of land from Lamb county and nine other counties in this section were "handed over" to help pay for the building.

Seems as if citizens in this section should be more welcome inside the State Capitol than citizens from other parts of the state. After all—didn't our land pay for it? Land from other parts of the state was not used. No Sir By-Gosh!

Now we can understand why all the men in Texas are not married. We have official figures saying that there are now 3,095,000 males in the state and only 3,022,000 females.

It just looks too bad for the state's 73,000 lonesome men.

J. O. Garlington, local Piggly Wiggly head was invited to attend a breakfast in New Orleans this coming Monday morning, but he won't be there. The Piggly Wiggly convention is being held there and some chilli firm is "throwing" the breakfast. They even invited the whole Garlington family but "J. O." says it's too far away. Maybe it's the chilli. We never did like chilli for breakfast and we guess "J. O." don't either.

### Members Of H. E. O. Club Meet With Mrs. B. C. Roundtree

Members of the H. E. O. club met with Mrs. B. C. Roundtree. The afternoon was spent chatting and embroidering. Two sets of cup towels and a luncheon cloth were worked on. No business meeting was held.

Refreshments were served to Mrs. Abbie Collins, Mrs. Ella Collins, Mrs. J. Cook, Mrs. Dillingham, Mrs. C. E. Moore, Mrs. J. Green, Mrs. S. Short, Mrs. Deger, Mrs. Downs, Miss Downs, Mrs. Rogers, Mrs. Williams, Mrs. Gibson and Mrs. Roundtree.

Miss Lois Lair, R. N., who has been visiting her parents, Mr. and Mrs. C. D. Lair, for the past few days, returned to her duties at Pampa Thursday. She is doing private nursing at that city.

Mrs. Will Bean of San Angelo arrived Wednesday for a few days visit with her mother, Mrs. Neal A. Douglass, and other relatives.

### Melver Selects—

(Continued from Page One)

swine and sheep; Viggo Peterson, dairy cattle; W. D. T. Storey, beef cattle; Frank Lehman, poultry; J. I. Bowling, community exhibits; and Roy McQuatters, individual farm exhibits.

Under the leadership of these men, the fair association expects to present the best agricultural exhibits Lamb county has ever known. A 48 page premium list is now being printed and will be mailed to 2,400 farmers in Lamb and adjoining counties.

New additions to the premium list are the poultry and sheep departments. Also the dairy and beef cattle, poultry and swine will be separated by breeds. Last year all dairy cattle were placed in the same classification, but this year these will be judged according to Jersey, Holstein, and other breed standards.

All the men selected as department superintendents are interested in special phases of agriculture. Mr. Cunningham is a grower of certified seeds. Mr. Peterson is manager of the South Plains Creamery and is vitally interested in the improvement of dairy cattle. Mr. Leach is the teacher of Vocational Agriculture in the Littlefield high school. Mr. Storey was in county agent work before assuming his duties as post master. Mr. Elma is both a stock farmer and banker.

Mr. May is one of the prominent swine breeders of the county. Mr. Bowling is one of the leaders of the Triple A program in Lamb county. Mr. Rigor is assistant soil conservationist, working with the County Agent's office. And Mr. McQuatters was selected by the Progressive Farmer as one of the nine master farmers in Texas this year.

## \$78,610 School—

(Continued from Page One)

Principals Salaries, \$5,900; elementary school salaries, \$19,067; senior high school salaries, \$12,916.80, and tuition \$100; transfers, \$500.

Elementary school salaries, colored, \$630; wages of janitors, engineers, etc., \$2,200; janitors supplies, \$600; fuel, light, water and telephone, \$1,900; other operation expenses \$100; upkeep of buildings and grounds, including repairs to equipment, \$2,000; transportation of pupils and school upkeep, \$13,000; libraries, new books and supplies, \$390; health inspection and supplies, \$250; athletic equipment, \$450 and insurance, \$1,260.

Under capital outlay was playground equipment to match parent-teachers association \$350; installment on clock and one new truck chassis, \$736 and text books, \$150. Under debt service were: interest on bonds, \$8,750; redemption of other bonds, \$4,000 and total payment of debt and interest (excluding the \$4,000)—\$12,750.

Total of the budget as given above is \$78,610.20.

### Detail On Revenue

Set aside on the budget from where the expected sources of revenue, they were:

Federal funds for vocational education, \$35,640; salary aid, \$2,380.35; high school tuition, \$150; state vocational education \$1,550; transportation received from county board, \$7,000; from local maintenance tax, \$15,600 and expected from delinquent local maintenance tax, \$3,600.

Non-revenue receipts were listed at \$10,800 balance in local funds on hand were \$1,889.85.

### T. N. M. U. Co.—

(Continued from Page One)

This improvement marks another forward step in the development of the high plains area of West Texas and assures the section ample power from a dependable and economical source.

Texas-New Mexico Utilities company serves 53 towns and communities in this part of West Texas and eastern New Mexico. Its transmission lines total more than 700 miles in length and bring central station power to the homes, farms and industries of many more sparsely settled areas and rural districts.

The development of rural electrification and the use of electric power for irrigation will demand large quantities of energy and under its policy of keeping abreast of the requirements of the territory served, the company is making this expenditure.

### Constitution—

(Continued from Page One)

ble liability for stockholders in state banks, give the Legislature power to prescribe a new system of remunerating district, county and precinct officials, permit a discount method of paying taxes and allow Harris county to levy a tax for a master road plan.

A peculiarity is that the election will be on Monday instead of Saturday as usually is the case in Texas.

### District Road—

(Continued from Page One)

reduced from five cents to three cents on a motion by Commissioner Paul Lewis. The Commissioners voted unanimously for this reduction. Commissioners in the northern part of the county agreed that if the lowered rate would not meet the expenses they would transfer funds from precinct accounts to meet the need.

Commissioner Paul Lewis made a motion to increase the tax rate in road district No. 2 (south side of county) from two cents to five cents and this was seconded by Commissioner Don Bryant. Commissioners Bell and Vann voted against this as did Judge L. R. Crockett.

### Rural Power—

(Continued from Page One)

the thirty million figure would be reduced at least ten percent.

Texas is scheduled to receive \$1,500,000, but this sum is quite inadequate. Applications with the government for electrification now totals \$6,000,000 in Texas, so someone is going to have to wait and wait a long time before electricity goes by their door.

Mahon has been on the job trying to get the sum for Texas and the South Plains area increased, but to date has not been successful. He was in the office of that department a few days ago and was advised that the prime purpose of the money was to supply electricity to homes and no special interest could be worked up with the "power-that-be" in Washington over the

### idea Lamb county needs electricity for the use of irrigation.

Mahon pointed out to them that it was needed in this county for both irrigation and domestic use, but the head of the electrification department said it would take a more expensive type of line construction if heavy irrigating motors were to be used besides domestic power.

Mahon says he will continue to lend his best efforts to secure rural electrification in Lamb county, who he represents at Washington.

### Leach Resigns—

(Continued from Page One)

elsewhere. The Board does have a policy though of not hiring married ladies to serve as instructors in the schools.

Leach has received a nice promotion, not only in salary but he will supervise vocational work in this area. His headquarters will be at Lubbock and he will work out of the vocational training office at Texas Tech, with no teaching being required. Just a case of a good man moving upward.

### Crockett To Aid—

(Continued from Page One)

state would then take it over and maintain it as a state highway. He also suggested that Littlefield have Division Engineer Garret inspect the right-of-way and officially approve the route that has been secured in Lamb county for the highway which will be No. 51.

According to Gilchrist it is the ultimate intention of the highway department to build Highway 51 from Dryden, Texas, on the Rio

### Grande River, north to homo State line.

From Littlefield the road goes north from the city past most residence to Springtown to Dimmitt, Hereford, Vining and on in to Dallas. The completion of road it was pointed out at the Tuesday would be of use fit to Lamb county and in West Texas, who at this time are not connected with the hard surfaced highway.

### Crops Look—

(Continued from Page One)

anyway, and if we get a crop the cotton crop will be good. Although Mr. Badger is home in Austin, he spends most of his time in Littlefield. He says he enjoys very much to be very interested and enthusiastic over the progress of Texas.

### CARD OF THANKS

We desire to express our ends and neighbors our gratitude to them for the acts of kindness and courtesies they rendered us during the illness of our dear and father, John R. Kelley. May God bless each one of you in our wish.

Mrs. Lucy Kelley,  
Mrs. Abiteen Humphreys,  
Mrs. Elva York,  
Mrs. Elsie Ferguson,  
Charlie L. Kelley,  
Arenda Kelley,  
Orlando Kelley,  
Isaac Kelley.

### WANT ADS GET RESULTS

WALTERS  
**Don't Let Your STOCK DIE BEFORE VACCINATING!**  
A few cents spent now may save an animal that is worth a great deal of money.  
We Have A Complete Line of Stock and Chicken...  
**VACCINE**  
DRUG STORE

### We Are Proud

To have constructed the new W. H. Heinen building — which will be used by the—  
**PORCHER COAL & PRODUCE CO.**  
Call Us For Free Estimates On Construction  
**T. M. Neely & Sons**  
GENERAL CONTRACTORS

Teachers-Students—  
**HAVE YOUR HAIR READY FOR SCHOOL!**  
One of Our Permanents Will Make You Attractive  
**PERMANENTS 1/2 PRICE!**  
In permanents as in everything else, it is important that you get the very best. Permanent waves given here are the best and the only make you not only look extremely well, but they are comfortable and distinguished by smart styling. Make an appointment for your permanent.  
**ODESSA'S BEAUTY SHOP**  
LITTLEFIELD  
Phone 38 "We Need Your Head in Our Business" Phone 38

# SPORTS

## Muleshoe Drops Ball Game 15-4

### Littlefield Scores 7 Runs In One Inning; Rain Stops Game In Eighth

Rain ended the baseball game here Tuesday night between Littlefield and Muleshoe in the eighth inning, but Littlefield was so far ahead that the rain made no difference. The score was 15 to 4 when the rain came down in torrents.

Aldridge and Duncan pitched the old tomato for Littlefield, with Ratliff catching.

Muleshoe brought a quartet of pitchers with them and they were needed. They used Pair, Burns, McWilliams and the ex-Littlefield player, Pitcher Hall. None of the four pitched good enough to write home about. Scott Prather did the catching for the visitors.

Littlefield scored seven runs in the sixth inning before they had an out against them. It was just a case of a good ball club defeating one not so good.

## Sudan Whips Littlefield 7-6

### Homer In Ninth Inning Causes Local Club The Ball Game

It took Sudan to knock the final props out from under Littlefield last week in the Amherst baseball tournament.

Sudan won the game 7 to 6 in a story book thriller.

The score was 6 to 5 in favor of Littlefield in the ninth inning with Sudan batters facing the pitcher.

Two men were out, a man was on base and up stepped Mr. Simmons, left fielder. He had two strikes on him and it looked as if the game was in the bag for Littlefield, but he then proceeded to knock a home run, scoring the man ahead of him along with himself.

The final score was 7 to 6 with the Littlefield team on the short end of the score.

## GOODLAND NEWS

The Home Demonstration club ladies entertained their husbands with a banquet Sunday night at the school house, and all reported a very enjoyable time.

Mr. and Mrs. Orval Beaty and Ping Evetts of Portales, N. M. spent the week end with home folks.

J. A. Johnson and son, Baker were in Muleshoe Friday.

Mr. and Mrs. O. C. Kirk and family spent Sunday with the E. Brumalaw family at Stegall.

Mrs. J. W. Franklin and son, Albert left Sunday morning for central Texas to be at the bed side of her sister, who is seriously ill.

Mr. and Mrs. Jud Goddy and sons are vacationing in South Texas.

O. C. Kirk and family and S. M. Brashear and family were in Portales, N. M. Saturday.

L. D. Sanderson, Sr. was in Muleshoe and Sudan Thursday.

## BOB FIFE SUFFERING FROM TYPHOID FEVER

Bob Fife was admitted to the Littlefield hospital Sunday suffering from typhoid fever. He was reported Wednesday to be resting fairly well.

## LITTLEFIELD TO ENTER TOURNAMENT

The Littlefield Panthers are expected to enter the baseball tournament which will be held at Muleshoe starting Friday afternoon.

Drawings for the tournament were made late Wednesday night, but at press time the schedule could not be secured.

More details of the tournament will be in the Leader next week.

## AMHERST WINS OVER PANTHERS IN FAST GAME

### Hanks' Home Run Counts, But Not Enough Of Them For Locals To Win

Littlefield took it's first licking in the Amherst baseball tournament Friday afternoon, when the Amherst Reds knocked them over 4-3.

First Baseman Hanks, of the Panthers slapped one over the fence for a home-run in the seventh inning. His was the second score for Littlefield. In the ninth, Littlefield made another score, but never could catch up with Amherst who had four runs.

Amherst batters collected eight hits from Duncan who pitched for Littlefield and Littlefield managed to get seven hits from Pitcher Bryant of Amherst.

It must be said that Pitcher Bryant of Amherst did a nice job. He caused Littlefield players to knock flies which were caught easily by the Amherst fielders.

A large crowd was present and fans yelled themselves hoarse over play after play.

## BAINER WHIPS OKLA. FLATS 19-11 WILL PLAY SUNDAY

Yellow House Switch baseball team (Bainer) defeated Oklahoma Flat 19 to 11 last Sunday when the two teams met at the Flats. Oscar Farlow did a nice job of pitching for the winners.

On Sunday, August 22nd, Oklahoma Flats will journey to Bainer and try and revenge the licking they received.

The game will start at 2 p. m. and a "red-hot" contest between the two teams is expected.

## South Plains Is Visited By Showers Tuesday Night

Showers over the South Plains Tuesday night at least gave temporary relief from the intense heat wave.

Littlefield received about an eighth of an inch of moisture, as did Amherst and Sudan, Spade and in that vicinity. Circleback reported half an inch, with Enochs, Morton Whitharral and that section about two inches.

## SON BORN TO MR. AND MRS. OTHA KEY

A son, Charles Edmund, was born to Mr. and Mrs. Otha Key of Sudan, Sunday morning, at Plains Hospital, Lubbock. He weighed seven pounds, three ounces.

## Too Late To Classify

FOR SALE—Grade A 3 year old Jersey Bull, 5 miles south and 2 miles west of Littlefield. 20-1tp

FOR SALE—Old Busher property, consisting of 1 acre, out buildings, windmill, fruit trees and other improvements on place. See Charlie Clark, Littlefield. 20-1tp

## Right On The Corner!

# RENFRO'S

## Right On The Price!

# Flour Everlite, 48-Lb. Sack **\$1.77**

- MUSTARD, 2 quarts ..... 25c
- BLACKBERRIES, gallon ..... 49c
- BROOMS, each ..... 29c
- Sugar 10-Lbs. .... 49c
- ROYAL GELATINE DESERT, pkg. .... 5c
- PALMOLIVE SOAP, 3 for ..... 20c
- KELLOGG'S CORN FLAKES, 2 for ..... 23c

# Salad Dressing

- Pints ..... 25c
- Quarts ..... 38c
- CUT BEETS, Libby's, No. 2 can, 2 for ..... 25c

# Corn Tendersweet, No. 2 can .... 10c

- BAKING POWDER, 32 oz. Gold Label ..... 17½c
- W-P COFFEE, 2 lbs. .... 35c

# Pure Jam Grape, 1-lb., 8 ozs. 33c

- ENGLISH PEAS (Dry Soaked) No. 2 can, 2 for .. 15c
- P & G SOAP, 6 for ..... 25c

# Lard 8-Lb. carton ..... \$1.12

- SMACKS, large size box ..... 17c
- TOMATOES, No. 2 can, 3 for ..... 23c
- CRACKERS, Saltines, lb. .... 17c

# MEATS

- SAUSAGE, lb. .... 15c
- LIVER, lb. .... 8c
- HAMBURGER, lb. .... 12½c
- LUNCHEON MEATS, (Assorted) lb. .... 25c

### PLENTY OF DRESSED FRYERS!



## You Can Depend On Reputation!

When an important choice must be made at an unhappy time, as is usually the case in the selection of a funeral director a basis reputation for reliability and superior service provide the basis for dependable appraisal. Such a reputation has been enjoyed by this concern for many years.

MOTOR EQUIPMENT  
AMBULANCE SERVICE  
24 Hours a Day



## HAMMONS FUNERAL HOME

**FAST RITES FOR JOHN R. KELLEY**  
3:30 P. M. SUNDAY

Passes Away At His Home In Broadacres Saturday

Riley Kelley, aged 83, passed away Saturday night, August 15, at 9:20 o'clock, at the home of his son and daughter-in-law, Mr. and Mrs. Charlie Kelley, in Broadacres Addition.

Funeral services were conducted at 10:30 a. m. at the Community Church Sunday afternoon, August 16, at 3:30 o'clock, and interment in charge of Hammons Funeral Home, took place in the Abernathy Cemetery.

Mr. Kelley passed away after a long illness from cancer. He was born in Washington county Iowa, November 25, 1853, and moved with his parents from that state to Lincoln, Nebr., and later to San Fernando, Calif., where he married Miss Lucy Josephine Finch April 2, 1885. Four sons and five daughters were born to this union, two of the girls dying in early childhood.

Deceased is survived by his wife, three daughters, Mrs. Elsie Ferguson of Tahoka, Mrs. Elva York of San Fernando, Calif., and Mrs. Abiteen Humphries of Wichita Falls, and four sons, Charles Kelley of Littlefield, and Isaac Kelley of Seagraves, Texas, and Orlando Kelley of Abernathy, Texas.

From California he moved to Iowa Park, later in 1924 locating at Abernathy, where he lived until about a year ago. He had been a member of the Church of Christ since 1923.

WANT ADS GET RESULTS  
WANT ADS GET RESULTS

# R. B. McQuatters Deserved Master Farmer Award

## WHAT THEY DID CAN BE DONE BY OTHER FARMERS; HARD WORK AND A BIT-OF-LUCK ALL DOES HELP

Tennis Court Built by Roy, Seventeen, Only Son; Twin Daughters Excell in Making Clothing And Doing Home Canning; All Work Hard

By Mrs. Ruth Evans Perry, County H. D. Agent

Where is the best place to live? On the farm! Mrs. Roy B. McQuatters believes this emphatically. No other place will allow a family to live more happily and will provide as many opportunities for developing character, ability to cooperate, good health, religion, independence, and good citizenship.

A silver plaque will be presented to Mr. and Mrs. McQuatters as an award of merit very soon. In June they received notice that they had won first place in the district contest which included nineteen counties.

The Master Farmer Award is based on participation in community activities, home life, farming methods, farm equipment, business methods, labor saving conveniences and sanitation.

### From Jack County

The McQuatters family lived in Jack county where Mr. McQuatters was gauger in the oil fields. In 1929 they bought a farm in Lamb county, 6 1-2 miles east of Littlefield.

Mrs. McQuatters has been active in Home Demonstration club work for 7 years. In 1935 she was poultry demonstrator, and in spite of the severe drouth she managed to have a well balanced poultry demonstration. In 1937 she brought her yard work to equal that of a demonstrator. She has served as council member and as club reporter. She is active in all community affairs.

### Have Three Children

The three children are of high school age. Roy, age seventeen, is a senior in Littlefield high school. He is a former 4-H club member. He plans to be a farmer and has won several awards in Future Farmer work. He likes to spend his leisure time swimming and

### ROY, VEDA AND VERA EACH HAS SOME FAVORITE OCCUPATION

Roy McQuatters, 17 years old is a prize winner of the first rank.

His specialty is public speaking and he has won several "firsts" in Future Farmers of America contests. He is a former 4-H club worker and plans to be a farmer when he finishes his schooling.

His twin sisters are also busy. Vera likes canning problems and has filled the McQuatters cellar. Veda excels in making clothing and knows what the well dressed young lady should wear.

Yes Sir! The McQuatters have three mighty fine and hard working children.

### playing tennis.

The twin girls, age 16, have different tastes. Veda excels in clothing work and she was sent to the State Home Economics Clothing Rally this year. Vera, 4-H club girl took entire charge of the canning in 1936 when her mother was ill. She filled the pantry and had more than their canning budget for each division of food. Vera is an active gardener. Veda likes to play tennis on their back yard court

## Well Rounded Farm Program Important Concerning Award

By EUGENE BUTLER, Editor, Progressive Farmer

It was nine years ago that Progressive Farmer began to make Master Farmer awards. Since that time the Master Farmer program has taken on national significance and has been accorded the recognition and approval of the President of the United States. Master Farmers have been selected in every state by Progressive Farmer and in many northern and Mid-western states by other farm publications.

During the four years, 1926 to 1929 inclusive, Progressive Farmer awarded this honor to 50 Texas farmers. It is highly significant that of the nine farm families

to which the award is made this year, only one of them is from a county to which an award has gone in previous years. This is convincing evidence that there are opportunities for profitable farming and the highest type of farm life in every section of Texas.

Recognizing the fact that success on the farm is a matter of team work between the farmer and his wife and family, this year for the first time Progressive Farmer is making the award to the family.

Through the Master Farmer award Progressive Farmer has emphasized the importance of a well rounded farm program. Men and women work and live on the land for the one purpose of building comfortable homes and living a well rounded happy life. Profitable farming is merely a means to that end. The farmer who lives only to make the land yield abundantly and profitably falls far short of the goal. He is a good farmer but not a Master Farmer. A Master Farmer is not only a money maker but with the help of his wife and family is a home maker in the truest and best sense of the word.

Not only do Master Farm families farm well and live well, but through example and personal leadership they contribute abundantly to the welfare of their communities. Departing this life they are remembered for their good deeds. They leave behind them living me-

rt while Vera prefers bicycling. Veda is also former 4-H club member.

### Have New Home

Modern conveniences are available in the country as well as the city. Mrs. McQuatters believes if only the home maker will take time to plan her needs. Their new home which was completed in the spring of 1937 is a modern six room house, well equipped with built in conveniences. The living room has built in cabinet on each side of the fireplace. One side is for books, but the other has place for the typewriter, writing materials, letters and extension bulletins. A large part of this same cabinet holds card tables and games for the children and grown ups.

### Home Convient

A built in solid clothes hamper, real farm sized, is just below the lines cabinet in the hall off the bath room. Every member of the family has a well equipped clothes closet with ample space for storage. The kitchen boasts built in cabinets with storage room for pressure cookers and real sized cooking utensels. Cleaning implements have a place of their own. The tank for fuel for the stove is in a special closet. A closet in the back entry holds bonnet, boots, lumber-jackets or anything needed in bad weather.

### Electric Lights

The wind charger provides electricity for lights and radio. A large tank, filled by the wind mill, not only furnishes water to irrigate the garden and lawn, but is a place for the children to swim. The over head tank provides running water for the house. Below this is the milk house and a concrete tank beside it with cold running water to cool the cream and milk.

WANT ADS GET RESULTS

## PRIZE WINNING FAMILY LOOK ON FARMING AS FUN; TEAMWORK IMPORTANT TO THEIR SUCCESS

By DONALD TURNER, County Agent

Recognizing the fact that success on a matter of teamwork between the farmer, his family, Progressive Farmer Magazine has awarded Farmer Honors to the R. B. McQuatters farm 6 1-2 miles east of Littlefield for outstanding accomplishments in farming, homemaking and citizenship. The McQuatters will receive an appropriately engraved silver plaque.

Farming with the McQuatters is a game of fun, with which teamwork plays an important part, yet like any other business is a serious business.

Evidence of a well-balanced farm and home program may be noticed from the McQuatters front yard to the extreme back side of the field. The modern 6 room stucco house was completed in the spring of 1937, and the comforts of every member of the family were considered when the plans were drawn. Well kept lawns, shrubs, and flowers add to the beauty of the home. A wind-charger furnishes electricity for lights and the radio. A large water storage tank furnishes irrigation water for the garden and is also used as a swimming pool for the children.

Mr. McQuatters believes in diversification. He milks a herd of 6 good jersey cows headed by a registered jersey bull. Sale of cream each week furnishes a part of the farm income. Two good brood sows furnish the family in pork and a few pigs are marketed each year.

Two trench silos on the McQuatters farm provides a form of feed insurance. His dairy herd is fed from one of the silos and the other is filled and held in reserve for years when feed crops are short.

Every foot of the McQuatters farm is terraced. A system of syrrup terracing is used on a part of the farm. Water drained from about

### MRS. McQUATTER TAKES ACTIVE PART IN HELPING HER THREE CHILDREN

Mrs. R. B. McQuatters, who is active in the Master Farmer award with her husband and three children has always been active in the community.

She sees to it that her children cooperate with all civic activities. If the children have a problem at school she is right there to help them and encourage them.

She endeavors to make the life of the children interesting. They will wish to continue on the farm and not go to other endeavors as so many children do who have been reared on a farm.

360 acres above the farm is distributed over the family.

The McQuatters family is a family. Each member of the family has his job. The three girls are in high school. Roy is a 4-H club member. He plans to be a farmer and has won several awards in Future Farmer work.

Veda excels in clothing work and she was sent to the State Home Economics clothing rally this year. Vera is a 4-H club girl took entire charge of the canning in 1936 when her mother was ill.

## It May Be Hot



... but we can always take the time to congratulate winners like the—

McQUATTERS FAMILY

PAYNE-SHOTWELL HOSPITAL and CLINIC

Littlefield, Texas

## "NICE GOING"

# Mr. & Mrs. R. B. McQuatters

We were mighty happy to learn that you and your family had been selected as one of the nine outstanding farm families in this great state.

We believe in the farmers of the South Plains and will always do our utmost to cooperate with them in every way.

By setting such an example we feel that every farmer in this region will eventually benefit and follow in your wake. Congratulations to you and your fine family.

# Texas-New Mexico Utilities Company

## YOU CAN AFFORD A Model Farm HOME

MR. & MRS. R. B. McQUATTERS AND FAMILY

LIVE IN A

Fine Home Constructed

WITH OUR

MATERIALS

NOW IS THE TIME TO BUILD!

LET US QUOTE

## PRICES

### Higginbotham-Bartlett Co.

—LUMBER and HARDWARE—

Littlefield, Texas

Phone 15

## Congratulations to the . . .

# McQuatters Family

. . . for winning the MASTER FARMER AWARD. Your successful farming operations and home management deserves this outstanding award.

## Hewitt Chevrolet Co.

PHONE 123

LITTLEFIELD, TEXAS

# PERSONALS

will reports receipt of from R. T. Badger from stating they were en- very much. Mr. and Badger and Mr. and Badger left here August until September 1.

He arrived Friday, remaining over until Monday. Mr. and Mrs. Otto Jones and children returned Wednesday of last week from Corpus Christi, where they spent a few days fishing and sightseeing. They also visited Mr. and Mrs. E. G. Courtney while there.

E. Perry, Lamb county demonstration agent, left Thursday on a two week trip. Badger of Austin arrived Saturday and is attending business matters at the Land company's office.

Mr. and Mrs. Glenn Burgess spent the week end at Vera, Texas, where they visited Mrs. Burgess' mother, Mrs. W. F. McGuire, and also spent some time at Gonzales, where they visited friends. They were accompanied to Vera by Miss Willie Belle Ford, cousin of Mrs. Burgess, who has been visiting in the Burgess home.

Mr. Oscar Wilemon visited in Littlefield Sunday. Miss Myrtle Marion Shaw and Cadet Tilden Wright were guests of Miss Ray Brownfield at a house party Friday last.

Miss Myrtle Marion Shaw and Cadet Tilden Wright were guests of Miss Ray Brownfield at a house party Friday last. Mrs. Dollie Eastridge of Glen Rose arrived Tuesday of last week for an extended visit with her daughter, Mrs. Velma Lowe.

Miss Willie Belle Ford of Vera, Texas, spent from Wednesday until Saturday in the home of Mr. and Mrs. Burgess. Miss Ford is a member of the school faculty at Port Lavaca, Texas.

Sam Batton attended a business meeting of the Texas-New Mexico Utilities company at Plainview Friday night. Mrs. John B. Pruden of Fort Worth arrived Sunday for a ten day visit with her sister, and brother-in-law, Mr. and Mrs. G. C. Pass.

Miss Blanche Lyons of Portales arrived Wednesday for a few days visit in the home of Mr. and Mrs. Sam Batton. Mrs. Ruth E. Perry, County Home Demonstration agent, left Amherst Thursday on a two weeks' vacation trip to Los Angeles, Calif.

Miss Blanche Lyons of Portales arrived Wednesday for a few days visit in the home of Mr. and Mrs. Sam Batton. Mrs. Ruth E. Perry, County Home Demonstration agent, left Amherst Thursday on a two weeks' vacation trip to Los Angeles, Calif. Mr. and Mrs. Charles Malone, of St. John, Kans., but who are temporarily of Andrews, Texas, were the guests of Dr. and Mrs. J. R.

M. Bostick and children of Hobbs, N. M. Friday. Mr. has been employed there some time, and the balance of his joined him last week. A. Henson was ill last week but has fully recovered.

Less Monthly Discomfort Many women, who formerly suffered from a weak, run-down condition as a result of poor assimilation of food, say they benefited by taking CARDUI, a special medicine for women. They found it helped to increase the appetite and improve digestion, thereby bringing them more strength from their food.

Mrs. George White returned Friday from a week's visit at Wells. Mrs. W. J. Chesher had guest over the week end, Robertson of Plains, Texas.

Naturally there is less discomfort at monthly periods when the system has been strengthened and the various functions restored and regulated. Cardui, granted by thousands of women, is well worth trying. If you are not benefited, consult a physician.

slipped out the front door of the apartment and down the stairs or the elevator while you were making up your mind to go in the back way," said Inspector Flaherty. "It's no good theorizing, but let's get down to the facts.

The door opening from the elevator landing into the foyer of Miss Lane's apartment proved to be equipped with two locks; one the regular Yale lock provided by the owners of the building, the other a special burglar-proof lock, which could not be fastened automatically by the closing of the door but had to be locked with a key from the outside or by means of a knob inside.

### Penthouse Murder—

(Continued from story page) "Someone might have been hiding in the apartment, a burglar lying in wait, for example. He might have

snow on the sills of the windows and the door, and on the little stretch of roof garden thus disclosed was level, fluffy and unbroken. A little ridge of snow fell inward from the door sill.

"Nobody has come in this way since the snow began," said the Inspector. "There isn't any way for anyone to get in from the front except by climbing the building, that I can see."

"Or over this penthouse roof above us," suggested Frazier, "and the snow on the edge of that is undisturbed, too."

"Before we look over the back roof," said Max Michaelis, "let me ask Archie a question or two. I think I know the answers, but I want to get them in the record."

"Archie, do you own a pistol? Did you ever own a pistol?" "Never," replied Doane. "I'm afraid of the things."

"You have had to handle pistols in your professional work as an actor haven't you?" "Yes; in fact I have to use one in the picture I am now making."

"Where is that pistol? Do you know?" "In the property room at the Highart Studio, as far as I know."

"When did you see it last?" "A day or two ago; Thursday, I

think, we shot the last scene in which I am supposed to use it." "What sort of a pistol is it? A revolver or an automatic?" "It's a revolver, nickel plated with a pearl handle. In the picture I am supposed to shoot a burglar with it."

"Do you know the caliber—the size of the bore?" "I think it is what they call a thirty-two."

"Did you ever fire that pistol?" "Only once. That was in the studio last Thursday."

"Is this picture you are working in a sound picture?" "Yes."

"Were any precautions taken to soften the sound of the shot?" "Yes; there was a silencer on the weapon."

"At Stephen Fitzgerald. He was directing the picture and also playing the part of the burglar."

"Did you load the pistol yourself when you fired it?" "No; the property man loaded it, I suppose."

"If you had desired to kill Stephen Fitzgerald, could you have substituted a loaded cartridge for the blank cartridge used in the picture and so have made it appear an accident?"

think, we shot the last scene in which I am supposed to use it." "What sort of a pistol is it? A revolver or an automatic?" "It's a revolver, nickel plated with a pearl handle. In the picture I am supposed to shoot a burglar with it."

"Do you know the caliber—the size of the bore?" "I think it is what they call a thirty-two."

"Did you ever fire that pistol?" "Only once. That was in the studio last Thursday."

"Is this picture you are working in a sound picture?" "Yes."

"Were any precautions taken to soften the sound of the shot?" "Yes; there was a silencer on the weapon."

"At Stephen Fitzgerald. He was directing the picture and also playing the part of the burglar."

"Did you load the pistol yourself when you fired it?" "No; the property man loaded it, I suppose."

"If you had desired to kill Stephen Fitzgerald, could you have substituted a loaded cartridge for the blank cartridge used in the picture and so have made it appear an accident?"

CONTINUED NEXT WEEK

# 1 OIL-PLATE YOUR ENGINE instead of just changing your oil



OIL-PLATING is a plain extra benefit that other oils do not even claim to give you! OIL-PLATING comes only from Conoco Germ Processed oil, which absolutely PLATES itself all over the insides of your engine, and stays there. I mean Oil-Plating can't get scraped off or pushed away while you're speeding along on sizzling hot days. And it won't go up in smoke, but lasts and lasts. Neither can Oil-Plating run down off the job while the engine's stopped... No ghost of a chance for Oil-Plating to be among the missing every time you

start the car. So your Oil-Plated engine is the big exception, when engineers say that bum oiling at the start—summer, same as winter—makes more than half of all engine wear. They positively don't mean you, with your engine Oil-Plated by Conoco Germ Processed oil. The longer life of your Oil-Plated engine naturally takes a little while to prove... but right now, from the minute I put in Germ Processed, you can't mistake the coolness and quiet due to Oil-Plating, or the way your oil level stays up.



## CONOCO GERM PROCESSED OIL

from Your Mileage Merchant

### Don't Forget! Oil Plating Protects Engines

**CONOCO** **George R. Sandidge**

Home Phone 119 LOCAL AGENT Office Phone 129

Stay Fresh and Lovely Throughout the Summer...

**SPECIAL PRICES ON PERMANENT WAVES!**

Reg. \$2 Permanent	\$1.00
Reg. \$3 Permanent	\$1.50
Reg. \$4 Permanent	\$2.00
Reg. \$5 Permanent	\$2.50
Reg. \$7.50 Permanent	\$3.50
Reg. \$10 Permanent	\$5.00

**DeLUXE BEAUTY SHOP**

IN REAR OF DeLUXE BARBER SHOP—

OPERATORS—Mrs. G. H. Fowler and Mrs. Gladys Zickfoose



Many Choice South Plains Farms Available

In the heart of the fertile South Plains there are still available many choice Yellow House farms. Many with favorable improvements... a large number of unimproved farms... but all are rich in highly productive soil. These choice farms are located with easy access to affiliated schools, sizeable towns with ample marketing facilities, and churches of all denominations.

Those who are seeking farm lands in the fertile South Plains—either as an investment or permanent home—we urge you to investigate the famous Yellow House farms.

**YELLOW HOUSE LAND CO.**

Producers and Developers of the Famous Yellow House Lands in The Littlefield-Levelland Section

LITTLEFIELD, TEXAS

There is a . . .

**DR. SCHOLL'S  
FOOT COMFORT**  
Appliance or Remedy  
for every Common  
Foot Trouble!



Dr. Scholl's Foot-Eazer stops foot pains; Eases feet, body and nerves. Relieves tired, aching feet. \$3.50 pair.



Pains; cramps or callouses at ball of foot indicate weak, broken-down arches. This condition can be relieved with Dr. Scholl's Adjustable Appliances.



Dr. Scholl's Arch Fitter with which his supports can be adjusted to meet any individual requirement.



**FREE PEDO-graph—Prints of Your Feet.** This is a valuable feature of Dr. Scholl's Foot Comfort Service. Prints of your stockings feet give the exact size and shape of the foot when the body's weight is placed upon it. This information eliminates all guess-work in shoe fitting and insures better results.

# STOP FOOT ACHES AND PAINS!

IF YOU are suffering with feet or with weak arches is your chance to obtain relief. By all means come in for a scientific check-up . . . on Dr. Pedro-graph. You step on this device without removing stockings. Your footprints reveal what is wrong with feet . . . and what is bringing you relief.

## WHAT ARE GOOD FEET WORTH TO YOU?

In every walk of life defective feet are a serious handicap. It is a well-known fact that they can affect one's health, looks, efficiency, disposition and personality and deprive one of the enjoyment of even ordinary pleasures of life.

Seldom does one appreciate strong, healthy feet until some trouble develops. Through abuses, hard surfaces on which we walk and stand, lack of exercise and poorly designed and ill-fitting shoes, it may be truly said that we are becoming a Nation of Foot Weaklings. Shoes alone cannot remedy this condition.

For the benefit of Foot Sufferers in this community we have arranged with Dr. Scholl, the Noted Foot Authority, to send to this store one of his Trained Factory Experts to conduct a

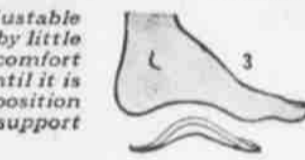
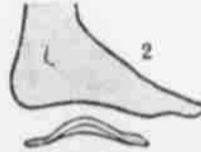
**Special Demonstration  
MONDAY  
AUGUST 23rd**



**Dr. Scholl's Foot-Eazer**  
Stops foot pains instantly. Eases the feet, body and nerves. Relieves pain caused by weak, broken-down arches. \$3.50 a Pair



These three illustrations show the progressive stages of building up a weak arch through the use of Dr. Scholl's Adjustable Arch Supports. Little by little without pain or discomfort the arch is elevated until it is restored to normal position at which time the support may be discarded.



Dr. Scholl's Factory Expert from Chicago knows feet, foot and shoe troubles and the most approved scientific methods of relieving such painful conditions through the use of Dr. Scholl's Foot Comfort Appliances and Remedies.

If you have weak, painful arches; weak ankles; rheumatic-like pains in the feet and legs; hot, burning callouses; inflamed bunions or a sore, irritated corn, you should not fail to take advantage of this demonstration.

It affords you an unusual opportunity of learning about your foot and shoe problems and what to do to secure a full measure of relief. The cost of comfortable, pain-free feet is so small that no one can afford to go through life with such a handicap.



Pains, cramps or callouses at ball of foot indicate that arch is weak or broken down.



How the bones of a foot look in a broken arch.



The same arch restored to normal position. Dr. Scholl Adjustable Support.



Pains; cramps and callouses at the ball of foot indicate weak, broken-down arches.



Weak, tipped-in ankles are usually the result of arch trouble. Such feet are painful and tire. Dr. Scholl's Adjustable Appliances quickly remedy this condition.

**Girls!**  
meet  
the  
**Pep  
Shoes**  
**Happy  
Hikers!**



See how smart they look—and how comfortable! So light and flexible you forget you have on them. They exercise your arches with every buoyant step. No wonder girls who get around simply rave about our peppy Happy Hikers!

**\$5.00**

be doubly  
*Smart*  
in  
**TRIM  
TRED**  
Health Shoes

Be smart—enjoy their comfort! Be smart—in the height of style! Choose these famous shoes that have solved the foot problem for active women everywhere. Come in now.



**\$5.95**  
AND UP

You'll  
**SAVE MORE**  
if you Buy their  
**SCHOOL  
SHOES**  
**NOW!**

No  
*Finer*

shoes are made than . . .

**Star Brand**

With school activities right at hand you will want to fit out the boys and girls in good lasting, stylish, all leather shoes.

In connection with our showing of fall shoes, we offer you a service on Monday, August 23, that comes only once a year.

Dr. Scholl's foot specialist will be here and all foot examinations are free. Bring your foot troubles to us.

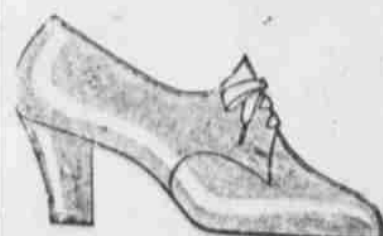


**"I'VE  
DISCOVERED**  
shoes that are really smart and comfortable! I feel so much livelier and walk more gracefully since my feet were properly fitted in marvelous Trim Tred Health Shoes!

Firm, restful arch support never lets you down . . . gives all-day-long comfort.

Correct lasts fit snugly but never cramp . . . keep the feet healthy, active.

**TRIM TRED**  
Health Shoes



**\$5.95**  
AND UP

*It's the  
Swing*  
OF THE TRIM  
AND THE COLORS



**\$3.98**

# WARE'S DEPARTMENT STORE



# PORCHER COAL & PRODUCE CO. IN NEW BUILDING

## Years In City Shows Progress For Dependable Firm

Progressing with Littlefield! Those words best express the progress made by Porcher Coal & Produce company, located on Highway No. 7, southeast of the Santa Fe R. R. station. Today they are housed in a fine new cement and building 30 by 60 feet built for them by the owner, H. Heinen. The Porcher organization have taken a lease on the building and have equipped it with the modern devices for the handling of cream and other goods dear to the hearts of the farmers.

**Apartments On Top**  
 H. Heinen & Sons had the contract for the new building which is very modern in appearance and well equipped. Although Mr. Porcher moved into the building it is not completed. On top of the building are two lovely apartments which will soon be completed. Each apartment will have a living room, bathroom, kitchenette. A porch 10 feet wide will be constructed on the two upper apartment of the building, when complete one of the outstanding commercial business-living properties in the city. The cost of the building is approximately \$6,000.

**To Give Service**  
 When interviewed yesterday Ben Porcher said, "Yes, we are getting located in our new quarters now, but still have many things to do before we are actually settled. We are not making much money, but just trying our best to get along. New quarters were necessary so that we could give our many farmer friends the service they deserve and service and prices they cannot better."  
 Ben Porcher came to Littlefield in 1926 and engaged in farming. Before coming here he had attended

### New Building



**BEN PORCHER**  
 —owner of the Porcher Coal & Produce company, who Saturday will hold open house in their new and modern building.

ed the University of Texas at Austin. He started in the Produce business back in October, 1931 and the farmers found he gave such good service that to continue his record

(Continued on back page)

### PORCHER WILL HAVE GIFTS SATURDAY FOR ALL THE LADIES

Leave it to Ben Porcher to think up something nice for his formal opening Saturday. Ben is feeling mighty good these days and naturally he thought of the ladies. Saturday he will have a lovely gift to present every lady who visits his place of business on Highway No. 7, just Southeast of the Santa Fe Station. What is it? Well he won't say, but the ladies of this community, in fact all the ladies in the South Plains are invited to visit him Saturday. If they will do that, he will make each of them a present of a most useful gift.

### FREE POULTRY ADVICE OFFERED TO EVERYONE

If you have any questions to ask about poultry you will be wise to visit the grand opening of the Porcher Coal & Produce company Saturday and consult the poultry specialists who will be there all day long.

It is none other than J. R. Newman, sales manager of the Economy Mills. Mr. Newman knows his stuff about poultry and will be glad to answer any question concerning poultry and all types of live stock.

You can learn at Porcher's Saturday.

### J. R. NEWMAN SUGGESTS USE OF 65-35 PLAN WHICH WILL SAVE FARMERS MONEY WITH PULLETS

**By J. R. NEWMAN, Economy Mills**  
 It is no longer necessary to stuff your pullets to keep them growing. The heavy heat producing mash, which produce growth in cold weather, have no place in the latest system of Summer Feeding.

Now you can give your pullets Special Summer Formula Feeds that keep them comfortable, healthy and growing at even less than it formerly cost to use heavy punishing mashes.

Recent tests have proven that much of the summer mortality and slow pullet growth is the result of improper mash feeding. Pulletts like human beings suffer from summer's heat, so why not a summer feed for them? However, in order to produce a healthy productive pullet, large quantities of grain must be fed. It is only by this method that the digestive system can be developed to care for such amounts of feed as will be necessary for future egg production. Hence to offset the heating property of the grains, it is necessary to have a growing mash—Bulkier—More Cooling—Richer in Mineral Vitamins and Protein—than has been available. Economy Mills are proud to offer such feed in their SUMMER-GRO (summer formula gro-mash) and SUMMER-LAY (summer formula egg mash). Due to the Extra Fortification of these mashes in mineral, vitamin and blended proteins you use less of them and still secure better growth and health.

**The 65-35 Plan**  
 This plan is simply the feeding of 65 percent grains and only 35 percent of mash to growing pullets of 12 weeks of age or older. By the use of mashes stepped up in essential body building and health protective elements the mash consumption of birds is reduced to 35 percent and the grain feeds increased accordingly. Summer-Lay, Summer-Gro and Summer-Seven Mashes are formulated to be fed to pullets according to this plan.

(Continued on Back Page)

**THIS WINTER JUST PHONE THE PORCHER Coal & Produce Co.**

FOR THESE QUALITY COALS

**SUNSHINE - MAITLAND**

**RAVENWOOD - NIGGERHEAD**

**To the Citizens of Littlefield:—**

We not only wish to congratulate the Porcher Coal & Produce Co. on their excellent new building, but wish to congratulate the people of Littlefield and Lamb county for having such a progressive Coal Merchant in their midst.

The Porcher Company have ample storage bins in which they keep the finest coal produced in this country. You will like their coal and you can save money by ordering your coal now!

**BUY NOW SAVE \$\$\$**

**THE VICTOR-AMERICAN FUEL CO.**  
 DENVER, COLORADO

**BEFORE A Hard Day's Work**

If you have a hard job to do—one that requires a lot of energy—start the day with plenty of butter on your toast and waffles.

- You can't run an engine without fuel, neither can you run the body without fuel foods.
- So, let's see that our families start the day right with plenty of energy foods, including a good-sized serving of butter.
- For, in addition to giving our bodies lots of energy, butter contains other good things we need. It is particularly rich in vitamin A, which is necessary for children to grow and to protect us all from sinus and mastoid and other "cold" infections.
- So, if your energy doesn't last until noon, if you have a hollow feeling along about 10 o'clock, try these waffles for breakfast . . . and for a spread, try adding a generous-sized piece of butter to your pitcher of maple syrup.

**GOOD BUTTER WAFFLES**

1 1/2 cups flour	1 cup rich milk
1 teaspoon salt	5 tablespoons melted butter
3 teaspoons baking powder	2 eggs, yolks and whites beaten separately

Sift together the flour, salt and baking powder. Add the milk, egg yolks and melted butter. Fold in the stiffly beaten egg whites last.

**THE BORDEN COMPANY**

PRODUCE DIVISION OF AMARILLO, TEXAS—SAYS:—

**CONGRATULATIONS**

**Porcher Coal & Produce Co.**  
 ON YOUR EXCELLENT NEW HOME

**FOR OVER SIX YEARS WE HAVE CONSIDERED IT A PLEASURE TO PURCHASE YOUR CREAM!**

# Why Sweet Cream is Thick or Thin-The Reason

## CREAM CONTAINS MILLIONS OF TINY DROPLETS OF FAT SUSPENDED IN SKIM MILK; TEMPERATURE HAS EFFECT

By J. C. HENING, Cream Authority

A number of factors affect the thickness of cream, such as the milk fat content, the temperature, the clustering of the fat globules, and pasteurization.

Most persons judge the richness of cream, or in other words, the percentage of milk fat in cream, by its thickness. This is the correct method of judging the richness of cream unless other factors upset this relationship. The milk fat content of cream plays an extremely

important part in affecting its thickness. What is known as "coffee cream" containing 18 to 20 per cent of milk fat is much thinner than "whipping cream" containing 30 to 35 per cent of milk fat.

### Fat Droplets Are Small

Milk fat exists in the form of an emulsion in cream, or in other words, cream contains millions of tiny droplets or globules of fat suspended in skim milk and as the milk fat content increases the skim

milk content decreases and the thicker the cream becomes. These fat droplets or globules are so small that approximately 10,000 of them placed against each other in a line would extend only an inch.

### Temperature Affects Body

The temperature of cream very markedly affects its body. Cream at room temperature is much thinner than cream at refrigerator temperature because the chilling of these fat droplets makes them firmer, thereby increasing the thickness of the cream. It requires about four hours to chill these globules completely and to obtain the maximum increase in thickness from this effect.

### Increases in Thickness

When raw and pasteurized creams are cooled to 40 degrees F. and held at that temperature for 24 to 48 hours, there is a gradual in-

crease in the thickness of the cream. The largest part of this increase occurs during the first 24 hours of holding and the raw cream increases in thickness to a much greater extent than does pasteurized cream.

When cream is held cold, especially raw cream, these fat droplets often come together to form many clusters of fat droplets and in this way increase the thickness of cream. Many years ago Dr. S. M. Babcock showed that the formation of fat clusters increased the thickness of cream.

### Pasteurized Cream

The greater part of all the sweet cream sold on the market today is pasteurized. Although this practice is a very desirable one, it has the one disadvantage of making the cream thinner than raw cream con-

taining the same amount of milk fat.

When cream is pasteurized and then cooled and held cold these tiny fat globules do not group together to form clusters as they usually do in raw cream. This lack of fat clustering is pasteurized cream, therefore, is an important factor in making pasteurized cream thinner than raw cream.

In studying this problem in the

dairy division a method for thinning or preventing fat from being deposited was devised. By this method or pasteurized cream of the same fat content might be made thicker or thin, but the method is not practical for milk plants. However, in more recent years a practical method of increasing the thickness of pasteurized cream compare favorably with that of raw cream has been developed.

## CONGRESS MUST GIVE PRESIDENT ASSURANCE OF CROP LEGISLATION BEFORE FEDERAL LOANS APPROVED

President Roosevelt has announced that congress must give him assurance of new crop control legislation before he would approve federal loans to bolster sagging cotton prices.

Despite a threat of congressional action to compel the granting of loans and "parity payments" to cotton farmers, the president said at his press conference that he guessed there would be no cotton loans if there is no new production control law by January.

He reiterated his contention that the country will have to come to control of crop surpluses.

The senate during the session offered him a form of assurance concerning "general farm legislation," directing that its agriculture committee have such a measure ready within a week after congress reconvenes, either in a proposed special session this fall or in regular session in January.

Chairman Johnson (D-Okla.) of the house Democratic steering committee reported, meantime, that it had been informed the president would approve commodity loans on cotton and other major farm products if the house and senate pass resolutions agreeing to give farm stabilization legislation right-of-way.

The market situation growing out of the government forecast of a 15,500,000-bale cotton crop, far larger than last year's, was discussed with the president during the day by Secretary Wallace, Chairman Jones (D-Texas) of the house agriculture committee, Senator Black (D-Ala.) and Chairman Steagall (D-Ala.) of the house banking committee.

"We hope to have some plan by which we will prevent the sacrifice of our crop this fall," Steagall declared afterward.

The senate agriculture committee voted to recommend that congress order the administration to lend 10 cents a pound on 1937 cotton and to guarantee the cotton growers "parity" prices.

Parity, as explained to the senate committee, would be a price for cotton that would be on a par with prices prevailing for other farm products. Advocates of the government guarantee placed cotton parity at 17 cents a pound on the basis of the current general price level. Chairman Smith (D-SC) of the

agriculture committee said the committee proposal would make loans mandatory whereas the Credit Corporation's plan would be discretionary.

It is hoped, he said, that a 10-cent loan program would put cotton under the cotton market cause a price rise perhaps sufficient to make parity payments necessary.

J. E. McDonald, Texas natural commissioner, expressed belief that if congress enacts the program prices will advance most to parity.

"It would mean we could pay our labor a decent wage again, store the moral of the cotton country and wipe out staggering rolls," he said.

At his press conference, Roosevelt was asked if he would production control contact with members like that which existed in the outlawed Agriculture Adjustment act.

In reply the president warned reporters not to get into the same court question.

He said that, under an interpretation of the court's AAA decision by Chairman Jones of the agriculture committee, the government could not make a deal with the farmers but could offer a conditional grant.

Mr. Roosevelt declared he did not see much difference between the two, but it would be all right with him if the conditional grants were constitutional.

Illustrating his position concerning cotton loans, he said that a man making \$10,000 a year would not make a \$100,000 loan because the borrower was good for it, he would not make the loan, he added.

## MOODY'S CAFE

A GOOD PLACE TO EAT

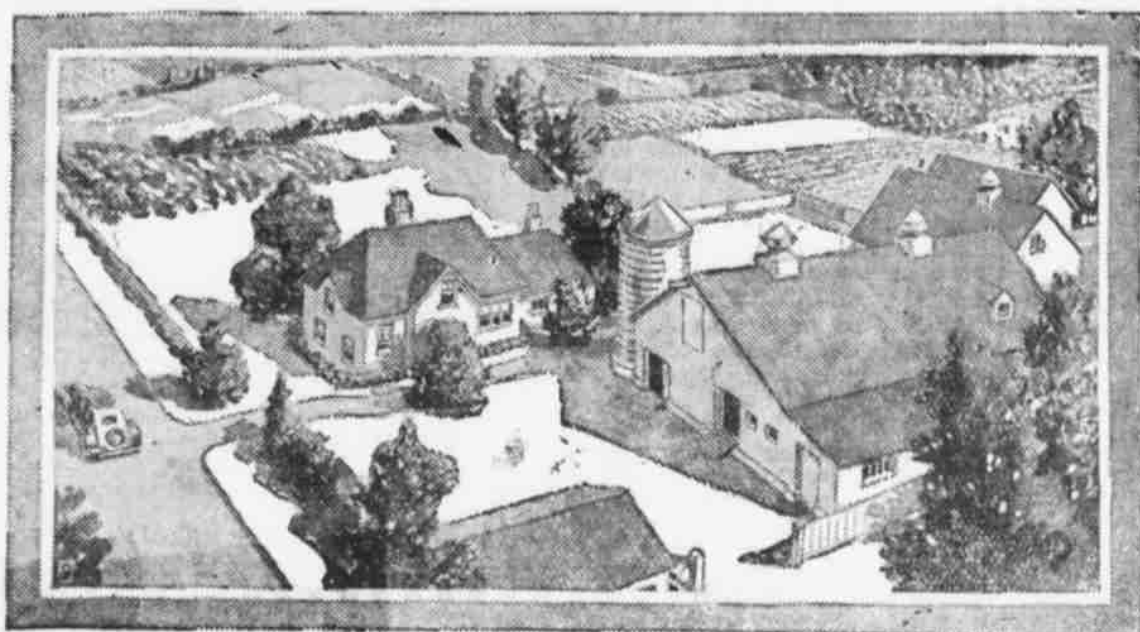
## Don't Scratch

Use BROWN'S LOTION for ITCH, ACHILLES' FOOT, BAD FOOT, ODDER'S ECZEMA, FETTER, RING, WORM CHIGGER AND MOSQUITO BITES. Price 25c. 50c and \$1.00 at WALTERS DRUG COMPANY

## Hay Fever

Get BROWN'S NOSOPHEN, the TWO-WAY TREATMENT against Hay Fever. It will bring you FREE BREATHING in 20 MINUTES or money back. \$1.00 at STOKES DRUG STORE

# THE LINWOOD CREAMERY



... is proud to purchase all the excellent cream the progressive farmers of Lamb county sell to the ...

# PORCHER Coal & Produce Co.

LITTLEFIELD, TEXAS

DEALING WITH US PERMITS THE PORCHER COAL & PRODUCE CO. TO PAY THE—

## HIGHEST PRICES TO YOU FARMERS!

WE ENJOY DEALING WITH THE PORCHER ORGANIZATION ... AND WE KNOW YOU FARMERS IN LAMB COUNTY FEEL THE SAME WAY ... WE CONGRATULATE THEM ON THEIR NEW MODERN HOME WHICH WILL PERMIT EVEN BETTER SERVICE!

# LINWOOD CREAMERY

WICHITA, KANSAS

MANUFACTURERS OF

FANCY CREAMERY BUTTER

BLUE RIBBON CONDENSED BUTTERMILK

## CASH BUYERS OF CREAM

## Progress

OUR CONGRATULATIONS TO THE PORCHER COAL & PRODUCE CO. WHO ARE NOW IN A FINE NEW BUILDING

## West Texas Gas Co.

GOOD GAS WITH DEPENDABLE SERVICE



# The Fact We Have Moved Into A NEW BUILDING

WHERE WE WILL BE ABLE TO OFFER BETTER SERVICE  
THAN EVER BEFORE.

## COME VISIT US

The Same Company == Just The Same Location On High-  
way No. 7 == South East Santa Fe Station

# Use **EVERLAY** Double Duty FEEDS

The PROPER FEED For  
EVERY PURPOSE

Modern-Sanitary  
**Electric  
Hatchery**

**SIX YEARS**  
of  
**Dependable  
SERVICE**

Plenty of Free  
**Parking Space**



The Finest of Nut & Lump Coal  
**SUNSHINE - - MAITLAND  
RAVENWOOD-NIGGER HEAD**

We are NEVER out of Coal  
**Buy Now-SAVE**

Save Money on Better Feeds!

The best and most convenient place to sell poultry!

Highest Prices Paid for Cream!

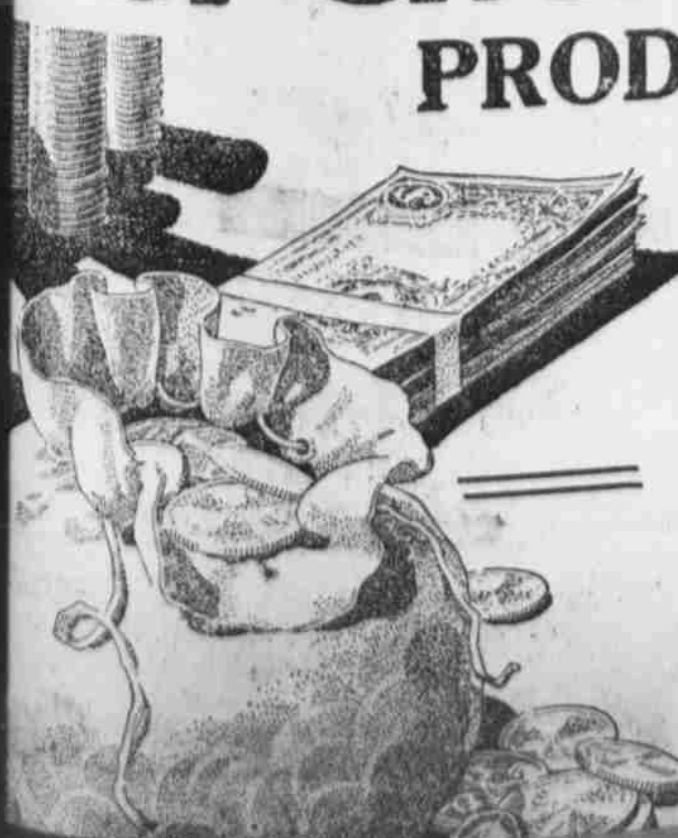
# Porcher Coal & Produce Co.

**PRODUCE PRICES UP!**

**WE PAY EVERYONE THE  
HIGHEST POSSIBLE PRICE  
EVERY DAY.**

**QUICK SERVICE**

We Purchase  
**HIDES**



Clubs - - Women's Interest - - Social Events

MISS BETTY ANN HILLIARD
HOSTESS TO HOUSE GUESTS
AT LAWN PARTY FRIDAY

One of the most enjoyable parties of the season was given Friday evening, when Miss Betty Ann Hilliard was hostess at a lawn party, complimenting her house guests...

A delicious buffet supper was served on the lawn, where decorations including colored lights, provided a perfect setting, after which dancing was enjoyed on the front porch.

Besides the honor guests, Misses Fenton, and Mr. Norman, there were present: Misses Nettie Belle Patton, Ernestine Cundiff, Dan Hemphill, J. E. Chisholm, Tom Hilburn, and Wayne Madden.

Miss Helen Rumback To Receive B. A. Degree August 30

Austin, Tex., Aug. 17. — One hundred and seventy-six students in the College of Arts and Sciences at the University of Texas have applied for degrees to be conferred

at the summer commencement exercises August 30. Of this number, one hundred and fifty-four are seeking the degree of bachelor of arts, five the degree of bachelor of journalism, seven the degree of bachelor of science in geology, and ten the degree of bachelor of science in home economics. The list of candidates includes Miss Helen Rumback of Littlefield who will receive the bachelor of arts.

Cadet Wright Leaves Friday For West Point

Cadet Tilden Wright of West Point, who has been on a 70 day furlough, which he spent with his mother, Mrs. Vernie Wright, will leave Littlefield Friday for Brownfield, where he will spend the night with Cadet Brownfield, enroute to West Point.

Cadets Wright and Brownfield will be joined at that city by Cadet Bob Wray of Norton, Kansas and Cadet Woody Wilson of El Paso, and the party will drive to San Antonio, where they will pick up Cadet Matt Bristol of San Antonio.

They plan to arrive in New York August 27, and reach West Point August 28.

Mrs. H. W. Wiseman Hostess Thursday Bridge Club

Mrs. H. W. Wiseman was hostess to members of the Thursday Bridge club Thursday afternoon at the home of Mr. and Mrs. E. S. Rowe, when three tables of bridge were enjoyed.

Golden Glow in profusion decorated the entertaining rooms.

Following the games, in which Mrs. E. S. Rowe scored high, ice cream and cake were served to the following: Mesdames W. H. Gardner, M. M. Brittain, W. D. T. Storey, B. L. Cogdill, Alph Wright, W. H. Gardner, J. H. Barnett, Wayne Carlisle, E. S. Rowe, S. J. Farquhar, J. D. Dodgen, and C. E. Cooper.

Mrs. Vernie Wright Entertains In Honor Of Cadet Wright

As a courtesy to her son, Cadet Tilden Wright, who is here on a seventy day furlough from West Point, Mrs. Vernie Wright entertained with a lawn party Sunday evening.

A picnic supper, consisting of fried chicken and all the trimmings were served to the following: Mr. and Mrs. G. M. Shaw, Miss Myrtle Marion Shaw, Miss Nell Wayne Carlisle, Guy Aldridge, Cadet Tilden Wright and Mrs. Wright.

MRS. CHESHER HONORS HOUSE GUEST AT DANCING PARTY

As a courtesy to her house guest, John Robertson, Jr., of Plains, Texas, Mrs. W. J. Chesher entertained a group of young people at a dancing party Saturday evening at the beautiful new Chesher residence in the Duggan Addition.

Baskets and bowls of cut flowers in profusion decorated the home for the occasion.

Dancing was the main diversion

for the evening. An ice course was served about eleven o'clock to the following: Miss Marion Mollberg of Austin; and Misses Dorothy Newgent, Louise Thornton, Ernestine Cundiff, Virginia Walker and the honor guest, John Robertson, Jr., Emory Glass, Jimmie Taylor, Dan Hemphill and Billy Bishop of El Reno, Okla.

MISS PENNINGTON IS BRIDE OF ROBERT C. HARRAL IN MORNING CEREMONY SUNDAY

A marriage of interest in circles here took place at Amherst Sunday, when Miss Delilah Pennington of Amherst became the bride of Robert C. Harral of Littlefield.

The ring ceremony was performed by Rev. R. R. Gilbreath, Methodist pastor, at 10 a. m. at the residence of Mr. and Mrs. M. L. Payne, where the bride makes her home.

The ceremony was performed in the presence of Mr. and Mrs. M. L. Payne, Mr. and Mrs. Harry Bennett, Miss Eula Lee Gilbreath and Mrs. S. T. Jordan.

The bride, who was charming in a pink frock with white accessories, is the daughter of Mrs. T. H. Pennington. She is a graduate of the 1932 class of Amherst high school, and operates the Art Style Beauty shop in the Amherst hotel.

Mr. Harral is the son of Mr. and Mrs. W. A. Harral of Abernathy. He is a graduate of the Abernathy high school and attended T. C. U. at Fort Worth.

He has been connected with the bookkeeping department of the local branch of the Higginbotham-Bartlett Lumber company for the past eighteen months, previous to which he was employed in a like capacity by the Ralls yards.

Mr. and Mrs. Harral have a host of friends in Littlefield and section, who wish them much happiness.

Methodist Ladies Meet At Church

The Ladies' Missionary Society met Monday afternoon at the Methodist church. Mrs. Van Clark, president, presided over the business meeting. The opening song, "I Love the Kingdom," Mrs. O. Dennis led the devotional. The subject, "Missionary Church," from the World Outlook.

Mrs. R. E. Williams led in a word of prayer. Mrs. O. K. Howe gave personal life of "Adoniram Judson." Mrs. I. D. Coley discussed life of "Mary Slessar"; Mrs. R. E. Williams "Laura Haygood"; Mrs. D. G. Hobbs dismissed the meeting.

The Missionary Society will meet in the home of Mrs. D. G. Hobbs Monday, August 22 at 4 o'clock. Those present were: Mesdames J. T. Elms, D. G. Hobbs, I. D. Coley, N. T. House, R. E. Williams, Van Clark, O. K. Howe, O. Dennis, J. W. Keithley and Paul Pharris.

MRS. R. E. McCASKILL HONORS FATHER ON 80TH BIRTHDAY IS HOSTESS AT LAWN PARTY

As a courtesy to her father, W. C. Cress, on his eightieth birthday, Mrs. R. E. McCaskill entertained at a lawn party Friday evening, which served as a happy family reunion on the beautiful grounds at the McCaskill home, a number of the Cress family being present.

Mrs. McCaskill drove to Sweetwater the week end previous accompanying her father to Littlefield the first of last week.

A number of friends greeted during the day extending greetings to Mr. Cress on his birthday.

Barbecued chicken and everything necessary to make a delicious supper were served picnic style on the lawn, following which a large array of useful and beautiful gifts were showered on the honoree.

In addition to the honor guest, Mr. Cress, there were present: Mr. and Mrs. N. L. Cress and children of Hereford; J. A. Cress of Hereford; Mr. and Mrs. W. C. Cress of Hot Springs, N. M.; and H. L. Cress of Sweetwater.

Even though it was a "Friday the Thirteenth" party, nothing

marred the pleasure of the and Saturday Mr. Cress himself as feeling fine, and younger for having a birthday.

Mrs. Hoover And Miss Fern Move Into New Residence

Mrs. Eula Hoover and Miss Fern Hoover, moved to new home at 720 East Street last week.

This residence was moved West Seventh Street, and tely remodelled through rooms added, making it a and bath home.

It is of oriental stucco on the exterior, and of finish inside. Hardwood floor laid, and all other improvements make it a modern new residence every respect.

WANT ADS GET RESULTS

LITTLEFIELD DEPENDS ON THE Farmers And We Are Glad to Congratulate... Mr. & Mrs. R. B. McQuatters and Family on Winning the MASTER FARMER AWARD

WALTERS DRUG STORE PHONE 12

Hail Insurance ON GROWING CROPS J. H. LUCAS I. C. Enochs Office Building Littlefield

If Your Car Pumps Oil Use... STEEL-VENT The "Extra Dry" OIL RING "Made by Hastings" Littlefield Auto Parts

Our Sincere Best Wishes To— Mr. and Mrs. R. B. McQuatters and Family on winning the 1937 Master Farmer Award! BRITAIN PHARMACY

CONGRATULATIONS— Mr. & Mrs. R. B. McQuatters AND FAMILY MASTER FARMERS FOR 1937 IONES HARDWARE

CUT THE COST of Operating Your Car... Texas Motor & Fuel —WHOLESALE AND RETAIL— East End of Pavement on Highway No. 7

McCORMICK-DEERING FARM IMPLEMENTS FULL LINE OF REPAIR PARTS ROW BINDERS TREMAIN IMPLEMENT CO.

YES SIR! We Shout it From Housetops REALLY A GOOD BUY BEN PORCHER DRIVES A FORD V-8 CONGRATULATIONS TO THE PORCHER COAL & PRODUCE CO. ON THEIR NEW HOME! Hall Motor Co Sales—FORD—Service

August 19...  
ts  
RS  
HDAY  
VN PA  
ure of th  
r. Cross  
g fine, an  
le a birt  
And  
ve  
vidence  
er and  
moved  
20 East  
was mov  
ect, and  
through  
ing it a  
etucoo  
t. and of  
wood flo  
improve  
new re  
ET R  
ST  
r Car  
refine  
its, the  
very  
ene  
el  
CA  
Will be paid by the manufacturer,  
any Corn GREAT CHRISTOPHER  
Corn Cure cannot remove. Also  
removes Warts and Callouses. 35c  
WALTERS DRUG COMPANY.

# AMBULANCE

## Phone 77

"OUR SERVICE A SACRED TRUST"

# BURLESON

FUNERAL HOME

"SINCE 1925"

# CHURCH NEWS

## WATSON ARMY TO HOLD REVIVAL; BEGINNING SUNDAY

Local unit of the Salvation Army will hold a revival, beginning Sunday, and continue for several weeks.

As recreational features, a hike up the canyons is planned, horse shoes, swimming, volleyball, etc. will be played.

### LUTHERAN CHURCH

Services will be held at the local Lutheran church next Sunday, August 22. This day the Peoples' Society will travel to Ceta Glen canyon, close to Olton, Texas, for the annual rally of the Panhandle Lutheran Peoples' Zone. Young people of our church from Shamrock to Big Spring will gather for day.

### Rev. Willis J. Ray Conducts Meeting At Colorado, Texas

Rev. Willis J. Ray, who has been conducting an open air revival at the First Baptist church here, concluded the meeting here Sunday night, and left Monday for Colorado, Texas, where he will preach at a series of meetings throughout this week.

### Friendship Church To Hold Meetings

Members of the Church of Christ in the Friendship community have announced there will be a series of meetings, starting August 23rd and extending through September 5th.

Wallace of Austin has been secured to do the preaching. Brother Murice McFarland, regular pastor will also be in attendance part of the time.

### Special Meeting For Farmers Tonight

There will be a special meeting for the farmers of this section on the lawn of the Methodist church tonight (Thursday) in connection with the revival that is in progress there this week and next.

is doing the preaching for the meeting, all those who live on a farm, or who have ever lived on a farm, will be the special guests of the church on this night. It will include all those who raise flower or vegetable gardens. The message will be on "Sowing and Reaping."

Other special services during the revival will be as follows: Friday night—"10 cent night" or "Bargain Night." Saturday night — "Fisherman's Night." Sunday night—"Family Night." Monday night—"Ladies Night." Tuesday night — "Men's Night."

Wednesday night — "Young People's Night."

Thursday night — "Visitor's Night."

Friday night — "Methodist Night." Rev. Norwood will bring an appropriate message for each special service. Other services will be held at 10 a. m. each morning, with the evening services at 8:15. Special group prayer services are held each evening thirty minutes before the regular service.

The revival is reported to be growing in interest and attendance with each service, and everyone is invited.

### Abernathy Couple Wed At Durant, Okla.

The marriage of Miss Evaughn Clark and Jack Hackler, both of Abernathy, were married on August 6, in Durant, Okla., at the home of the bride's father, R. G. Clark.

The bride was graduated from Texas Tech in 1935, and has been teaching home economics in the Abernathy High school.

The groom is the son of Mrs. W. P. Hackler of Olton, Mr. and Mrs. Hackler will reside in Abernathy.

# THE CLASSIFIED SECTION

## BUY AND SELL HERE

### RATES

Want ads, Rentals, Lost and Found, Exchanges, Lands and Stock. Miscellaneous, etc.

### FOR SALE

FOR SALE—Store building 25x40. Located back Littlefield Tailor Shop. See Clyde Willis. 19-1tc

FOR SALE—Carbolinum, nicotine, worm capsules, lice powder, sprays, etc. Porcher Produce Company. 17-1tp

FOR SALE—Concord, Carmen and Niagara grapes. \$1.00 per bu. Ready for jelly now. Grape juice later. G. D. Lair, 5 miles northwest of Littlefield. 19-2tp

FOR SALE—We have stored near Littlefield baby grand piano, small upright and a good piano, will sell for amount against them. For information write at once to G. H. Jackson, Credit Manager, 1101 Elm St. Dallas, Texas. 173tc

FOR INVESTMENT OR HOME—Buy my lots and acre tracts in SOUTHWIND ADDITION, small down payment, balance monthly, just like rent. C. J. Duggan, c/o Rumback hotel. 52-1tc

FOR SALE — Avon cosmetics, guaranteed by Good Housekeeping Inst. See Mildred Reid, Littlefield. 14-1tc

FOR SALE—1936 Model Ford Pickup—1935 Pontiac Coach.—Oscar Wilemon, Sinclair Refining Co. 19-2tc

### FOR RENT

FOR RENT—Light housekeeping rooms. Todd Apartments, 707 East 7th Street. 20-2tp

### WANTED

WANTED—Four room furnished house or apartment near school. Mrs. Ven Lanken at Highway Hotel. 19-2tp

WANTED—Four or five room house unfurnished. Must be modern. Also three room apartment or house unfurnished. Phone 67. 20-1tc

WANTED—Good clean cotton rags at Leader Office. Must be absolutely clean and soft cotton rags only. No hard materials or silks. Please take all buttons off. Rags are used for cleaning rubber rollers and must be large enough to handle properly. Leader Office.

MALE HELP WANTED  
HUSTLER WANTED!—To introduce, supply demand for Rawleigh Necessities. Good routes open nearby. Rawleigh Methods get business. No selling experience needed. We supply Sales, Advertising literature—all you need. Profits should increase every month. Low prices; good values, complete service. Rawleigh's, Dept. TXH-447-63—Memphis, Tenn. 20-1tp

WANT ADS GET RESULTS  
WANT ADS GET RESULTS

WANT ADS GET RESULTS  
WANT ADS GET RESULTS



### STOP IT WITH Alka-Seltzer

Does Headache "slow you down?" You are a rare exception if it does not. One or two tablets of ALKA-SELTZER in a glass of water makes a pleasant alkalinizing solution that usually brings relief in just a few minutes. ALKA-SELTZER is also recommended for Gas on Stomach, "Morning After", Acid Indigestion, Colds, and Muscular Pains. You will like the tangy flavor and the results when you take Alka-Seltzer. Alka-Seltzer, when dissolved in water, contains an analgesic (Sodium Acetyl-Salicylate). In addition, the alkalinizing agents in Alka-Seltzer help to relieve those everyday disorders associated with hyperacidity.

Small package 50c  
Large package 60c

### Alka-Seltzer

DEPENDABLE  
SHOE REPAIRS  
PRICES RIGHT  
George's Shoe Shop

WANT ADS GET RESULTS  
WANT ADS GET RESULTS

WANT ADS GET RESULTS  
WANT ADS GET RESULTS

WANT ADS GET RESULTS  
WANT ADS GET RESULTS

WANT ADS GET RESULTS  
WANT ADS GET RESULTS

WANT ADS GET RESULTS  
WANT ADS GET RESULTS

WANT ADS GET RESULTS  
WANT ADS GET RESULTS

WANT ADS GET RESULTS  
WANT ADS GET RESULTS

WANT ADS GET RESULTS  
WANT ADS GET RESULTS

WANT ADS GET RESULTS  
WANT ADS GET RESULTS

WANT ADS GET RESULTS  
WANT ADS GET RESULTS

WANT ADS GET RESULTS  
WANT ADS GET RESULTS

WANT ADS GET RESULTS  
WANT ADS GET RESULTS

WANT ADS GET RESULTS  
WANT ADS GET RESULTS

WANT ADS GET RESULTS  
WANT ADS GET RESULTS

WANT ADS GET RESULTS  
WANT ADS GET RESULTS

WANT ADS GET RESULTS  
WANT ADS GET RESULTS

WANT ADS GET RESULTS  
WANT ADS GET RESULTS

### 25.00 Reward

Will be paid by the manufacturer, any Corn GREAT CHRISTOPHER Corn Cure cannot remove. Also removes Warts and Callouses. 35c WALTERS DRUG COMPANY.



### OUR SINCERE CONGRATULATIONS TO THE

PORCHER

Coal & Produce Co.

Your New Home is Certainly Nice!

HUNDREDS TELL US OUR SERVICE IS GOOD

### WALTERS DRUG STORE

"The Store on the Corner" PHONE 12

### PAYNE-SHOTWELL HOSPITAL & CLINIC

Equipped for all Types of Diagnostic and Surgical Procedure



STAFF  
C. E. PAYNE, B. S., M. D.  
J. T. SHOTWELL, B. S., M. D.  
W. H. WOOD, D. D., S.

### Dr. F. W. ZACHARY

## Venereal Clinic

LUBBOCK, TEXAS  
503-4 Myrick Building

### DE LUXE

BARBER SHOP

We Do First Class Work!

GERTIN FOWLER, Prop.  
ALLEN McDONOUGH

### TIRE and TUBE VULCANIZING GASOLINE—OIL BATTERY SERVICE

—AT THE—  
**NATIONAL TIRE STORE**  
City Garage — Highway 7 Littlefield  
CURTIS WILLS, Prop.  
You'll want service, you'll get service! Try us once, you'll come back!

### T. WADE POTTER

ATTORNEY AT LAW  
Office in First National Bank Building  
LITTLEFIELD, TEXAS

### Look At Your Hat, Everyone Else Does!

## LYNCH HAT WORKS

1106 Ave. "J"—Between Broadway and Main  
LUBBOCK, TEXAS  
Men's Hats Cleaned, Blocked, Trimmed—Ladies' Hats Cleaned and Re-Blocked

## Watson Produce

We meet all Prices in Littlefield and Appreciate your Business!

### B. A. Prestridge, M. D.

Office—D. Irvin Bldg., Across Street in Front of C. E. Bley's Store  
Res. Phone 13—Office Phone 60  
OLTON, TEXAS

### DR. R. P. REEDS

Physician - Surgeon - Osteopath  
Fourth Floor, Myrick Bldg.  
Lubbock, Texas  
HEMORRHOIDS (PILES)  
Treated Without Surgery  
No Loss of Time from Work

### MOST PARTICULAR PEOPLE CHOOSE—

## LON'S CAFE

FOR BETTER FOOD  
LON CAMPBELL, Prop.

### MONEY TO LOAN ON FARMS AT 4 & 5% Why Pay More?

—See—  
**J. S. HILLIARD**  
Secretary-Treasurer  
Littlefield National Farm Loan Association for Lamb, Hockley and Cocharan Counties  
Offices—Corner Location Yellow House Land Co. Building  
Littlefield, Texas

### Livestock and Farm—

## AUCTION SALES

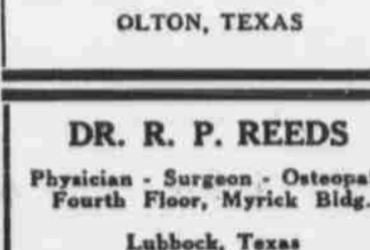
For Best Results Employ  
**Jack Rowan**  
Sudan  
—An auctioneer with a long record of successful sales  
Clerk—Charlie Clark  
Littlefield  
—Book your sales with auctioneer or clerk

### Lubbock Sanitarium & Clinic

Medical, Surgical, and Diagnostic  
Dr. J. T. Krueger  
Dr. J. H. Stiles  
Dr. Henrie E. Mast  
General Surgery  
Dr. J. T. Hutchinson  
Eyes, Ear, Nose and Throat  
Dr. M. C. Overton  
Dr. Arthur Jenkins  
Infants and Children  
Dr. J. P. Latimore  
Dr. H. C. Maxwell  
General Medicine  
Dr. O. R. Hand  
Obstetrics  
Dr. James D. Wilson  
X-Ray and Laboratory  
C. E. Hunt  
J. H. Felton  
Superintendent Business Mgr.  
X-RAY AND RADIUM  
Pathological Laboratory  
SCHOOL OF NURSING

### LITTLEFIELD HOSPITAL

EQUIPPED FOR ALL SURGICAL AND MEDICAL CASES.  
COMPLETE X-RAY AND DIAGNOSTIC LABORATORY  
—TELEPHONE 225—



STAFF  
T. B. DUKE, M. D.  
Diagnosis, Internal Medicine and Obstetrics  
J. H. COEN, M. D.  
Medicine and Surgery  
VIOLET BRATCHER  
Supt. of Nurses  
R. E. HUNT, M. D.  
Surgery, Urology & Diseases of Women  
FLOYD COFFMAN  
Supt. and Director of Laboratory and X-Ray

# AGRICULTURAL PAGE

## Cities-Towns Fast Taking Texas Farm Populatio

### AREA WEST AND SLIGHTLY NORTH OF LUBBOCK IS SHOWN TO BE INCREASING

Babies Born to Farm Families 716,000 While Deaths on Farms is 349,000; 447,000 Moved to Cities; 1,166,000 to Villages

By C. HORACE HAMILTON, Texas Agricultural Experiment Station

During 1936, the number of people living on Texas farm decreased 26,000 or a little more than one per cent of the farm population. According to the estimates of the Division of Farm and Ranch Economics.

The Texas farm population on January 1, 1937 was 2,290,700 as compared with 2,316,700 a year earlier.

The United States Census found 2,332,693 people living on Texas farms in 1935 and 2,352,370 in 1930.

Since 1930, therefore, the Texas farm population has decreased approximately 62,300 or 2.6 per cent, and since 1935 the decrease has been about 42,700 or 1.8 per cent. In 1920, the Texas farm population was 2,277,773. Other important population changes for the

State of Texas during 1936 are given in the table on this page.

**Farm Population Trends**  
The Bureau of Agricultural Economics found that the total farm population of the United States also decreased during 1936. On January 1, 1937, the farm population of the United States was 31,729,000 as compared with 31,809,000 one year earlier and 31,801,000 in 1935. The

### Farm Population Changes in Texas During 1936

Population living on farms January 1, 1936	2,316,700
Number of babies born on Texas farms during 1936	53,000
Number of persons moving to farms from towns and cities	49,000
Number of persons (net) moving from Texas farms to farms in other states	12,000
Number of persons moving from farms to towns and cities	96,000
Number of deaths on Texas farms during 1936	20,000
Excess of births over deaths	33,000
Net migration from farms to towns and cities	47,000
Net migration from Texas farms to farms in other states	12,000
Decrease in the Texas farm population	26,000
Population living on farms January 1, 1937	2,290,700

net loss of 80,000 persons was the first net loss reported since 1929.

The Bureau further estimated that during the year 1936, 716,000 babies were born to farm women and 349,000 farm residents died. The net migration from farms to towns and cities was 447,000 persons; 1,166,000 persons moved from farms to villages, towns, and cities, and 719,000 moved to farms. The most important single factor affecting the farm population during 1936 was the drought. Decreases in the drought area were larger than elsewhere. The Pacific Coast States reported increases due to migration, much of which came from the drought states.

As the table shows, the net decrease in the Texas farm population was due mainly to the heavy migration to towns and cities. There was also a small migration of farm people to other states. The natural increase (excess of births over deaths) on Texas farms was only 33,000. That is to say, had there been no net loss in population due to cityward migration, the Texas farm population would have increased by 33,000. Since Texas farms lost 59,000 by migration to cities and to farms in other states, however, the

total farm population decreased by 26,000. (59,000 minus 33,000 equals 26,000.)

#### Changes And Type

In general, farm population was found to be decreasing in west Texas and central Texas and increasing in south Texas and east Texas. The drought caused a slight decrease in the farm population of the north plains. In the major cotton growing areas of Texas, the increase of large-scale farming, due to the use of tractors and power equipment, has apparently caused some decrease in farm population. In some counties, the crop adjustment program has influenced population movements. In some of the drought counties, farm people were enabled to stay with their farms with the help of government benefits, but in many cases, it is felt, the government benefits have increased large-scale farming and hence population displacement.

Farm population was found to be increasing in the Rio Grande Plains Area, the Lower Rio Grande Valley Area, the Piney Woods Lumbering Area, the east and west ends of the Coastal Prairie Area, the North-Central Grazing Area, the newer sections of the High Plains Area, and in small areas surrounding large urban centers. Areas of population decrease

are: the Panhandle Wheat Area, the Low Rolling Plains, Edwards Plateau Grazing Area, Corpus Christi Cotton Area, Black Prairie Area, the pine covered Northeast Sandy Lands Area, the Post Oak Area, and the Central Coastal Prairie Area.

Estimates of population changes by counties are not available because of limited data. It is entirely possible that the farm population of a given county actually increased even though the population of the surrounding area may have decreased—or vice versa. The data on which this report is based were secured from questionnaires and letters received from 1600 farmers in 45 representative Texas counties. These questionnaires supplied information on several thousand farms adjoining those of the correspondents.

#### The Outlook

The farm population of Texas is expected to remain more or less constant during the next few years. It is entirely possible, of course, that the Texas farm population might increase or decrease one or two per cent in any given year. Texas cities are still growing at a

high rate. Were it not for the increased use of machinery on the increasing consuming Texas cities might call for people. However, the very of cities attracts many people from Texas farms. They do not maintain their own tions by births. They must on a high rural birth rate, a constant stream of from farms. One additional must be considered here: the birth rate, as well as the rate, is falling about one per year. This means that the ply of young people from the will not be as great in the as in the past.

All of the above facts along with the decrease of the population during 1936, indicate tainly that no increase in the as farm population is likely ing the next few years. It is likely that the farm population decrease or possibly remain ximately stationary.

FORWARD WITH LITTLEFIELD  
**PORCHER**  
**COAL-&-PRODUCE CO.**  
Who are in a new building . . . Receive our best wishes!  
HARD WORK ALWAYS BRINGS SUCCESS!  
**First National Bank**  
LITTLEFIELD, TEXAS



WE ARE ALWAYS GLAD —to— CONGRATULATE  
OUR FRIENDS WHO ARE MAKING PROGRESS LIKE THE . . .  
**PORCHER COAL & PRODUCE CO.**  
**McCormick Bros.**  
Auto Parts Petroleum Products

### Congratulations Ben Porcher ON YOUR FINE NEW QUARTERS!

We believe you have built your success in rendering a real service to the Farmers in this county. That also has been our aim. We are constantly striving to offer better values and service and we wish the . . .

**PORCHER COAL & PRODUCE CO.**  
CONTINUED SUCCESS



### Rules For Producing Quality Cream

1. Eliminate objectionable feed flavors by removing the cows from pastures causing same at least four or five hours before milking. Onion, garlic, French weed, pepper grass, rye and other strong and objectionable flavors cause your cream to be graded as second.
2. Clean the cow's flank and udder with a damp cloth before milking. This reduces the chance of contamination.
3. Use a cover top milk bucket. Seventy per cent of the dirt is thus kept out.
4. Strain the milk before separating, preferably using a cotton pad strainer. Wire strainers do not remove fine sediment.
5. Separate your cream to test 35 per cent to 40 per cent for most satisfactory results.
6. Use a brush and mineral washing powder in cleaning the separator and other dairy utensils. Cloths and soap are not satisfactory.
7. Wash the separator after each usage. Rinsing with a chloring solution or cold water immediately before using it reduces the bacterial contamination. You will avoid much yeasty, off-flavored cream by following this practice.
8. Cool the new cream before mixing with the held cream.
9. Keep the cream cold but do not allow it to freeze. Frozen cream results in an unsatisfactory, mealy-bodied, low scoring butter.
10. Deliver to the station as of ten as possible. Not less than twice a week. Cream loses its finest flavor when kept over four days. Cleanliness, proper cooling and frequent delivery insures first-grade cream.

### At The— Payne-Shotwell Hospital & Clinic

Mr. Rim Thedford of Littlefield was dismissed on August 10 after about 3 week's stay in the hospital, for medical treatment.

Mr. Charles Thompson of Amherst was admitted on August 10. Mr. Thompson will undergo a major operation shortly.

Little Freddie Joe Hall, son of Mr. and Mrs. Homer Hall of Sudan had his tonsils removed on August 10. He was dismissed on the following day.

Jeanette Hall, oldest daughter of Mr. and Mrs. Homer Hall underwent a tonsillectomy on August 10. Jeanette returned to her home in Sudan on the following day.

Mallory Etter of Littlefield was admitted late on August 10 for observation. Mr. Etter at last report was resting much better.

Eva May Crawford, 6 year old daughter of Mr. and Mrs. C. C. Crawford was admitted on August 9 for medical treatment. She felt well enough to be dismissed on the following day.

WANT ADS GET RESULTS

## Congratulations

To The

## Porcher Coal & Produce Co.

ON YOUR NEW BUILDING ON HIGHWAY NO. 7

It is always a pleasure to see local business organizations make forward strides.

Although your organization is not so old in years it has made steady progress built on service.

We, too, endeavor to build on service.

With business moving forward many problems confront business men of today. When it comes to providing inexpensive lighting service and electric power we invite your questions.

We feel certain that in the majority of instances we can render you a service that will aid your business!

**Texas-New Mexico Utilities Company**

We Dive in With the Whole City to Extend—

*Best Wishes*  
TO THE

**PORCHER COAL & PRODUCE CO.**

Who Are Now in Their New Home.

FORWARD WITH LITTLEFIELD!

**PAYNE-SHOTWELL**

HOSPITAL and CLINIC  
Littlefield, Texas



# Fallacies About Milk Exposed By Authority

**DIGESTIBLE BY 98 PERCENT  
ALL PEOPLE; PASTEURIZED  
MILK IS EVEN MORE DIGESTIBLE**

By **JAMES A. TOBEY, Dr. P. H.**  
author of "Milk—The Indispensable Food"  
Those rare individuals who can not, or think they  
cannot, digest milk may be surprised to learn that actual-  
ly one of the most easily and completely digested  
foods. No normal person should ever have any trou-  
ble with it.  
This fact has been confirmed by a recent investi-  
gation of the foods that disagree with  
the healthy persons. Milk  
is digested by all but 1.7  
per cent of 600 young college wo-  
men, and by all but 5.6 per cent  
of 400 older men and women, equ-

ally divided as to sex, and ranging  
in age from 30 to 65 years.

The ease of digestion of any  
food depends upon a number of  
factors including the composition  
of the food, the way it is cooked,  
the influence of other foods in the  
diet, and, most important of all,  
the physical and mental condition  
of the consumer. A person who is  
overtired, mentally upset, or suffer-  
ing from an organic ailment will  
usually have difficulty with his di-  
gestion, although he may take bland  
foods with less trouble.

Milk is a bland food. It is 98  
per cent digestible by the average  
person, being exceeded in ease of  
digestion and completeness of ab-  
sorption by very few other foods.  
Buttermilk is even more readily  
digested than whole milk, ranking  
at the head of practically all foods  
in this respect. Pasteurized milk  
is slightly more digestible than raw

milk.  
The composition of milk favors  
its digestion by the average person,  
since it is a well-balanced blend of  
fat, protein, carbohydrate, minerals  
and water, plentifully supplied with  
the vitamins that promote growth  
and good health.

The vitamins are so small that  
they present no digestive problems,  
but in spite of their smallness they  
are of tremendous significance to  
our health and physical welfare.

The digestibility of milk is im-  
proved somewhat when it is part of  
a mixed diet. Thus, crackers or  
bread and milk are both more read-  
ily digested when eaten together  
and the same may be said of vari-  
ous other foods.

There is no incompatibility be-  
tween milk and any other food.  
Milk may be eaten with fruits, fish,  
and all other dietary articles. The  
idea that milk and acid fruits, or

milk and fish do not go together  
is a fallacy that has no scientific  
basis.

Pure milk offers so many nutri-  
tional virtues and is such an indis-  
pensable food for young and old  
alike that it should always form a

conspicuous part of every diet. The  
average person will find that it is  
as digestible as it is palatable.

**WANT ADS GET RESULTS  
WANT ADS GET RESULTS**

**BEST WISHES** —To— **BEN PORCHER**

ON HIS FINE NEW BUILDING. SERVICE WILL MAKE ANY  
BUSINESS ADVANCE . . . !

**MADDOX**

**TAILOR SHOP**

PHONE 201 — — — — — FREE DELIVERY

## Everybody's Talking About . . . Porcher Coal & Produce's NEW HOME - - BETTER SERVICE AND Everlay Feeds

So the makers of Everlay congratulate Ben Por-  
cher on his new home and his confidence in  
Lamb county.

We are proud to number Mr. Porcher as one of  
the 147 distributors of Everlay Poultry Feeds  
and are glad to assist him and the poultrymen  
of Lamb county in making poultry more profi-  
table through better feeding methods.

Why not start saving today with the only Sum-  
mer Formula Feeds? . . . Summer-lay, Summer-  
gro and Summer-Seven . . . Containing the extra  
ingredients that produce **EXTRA PROFIT!**

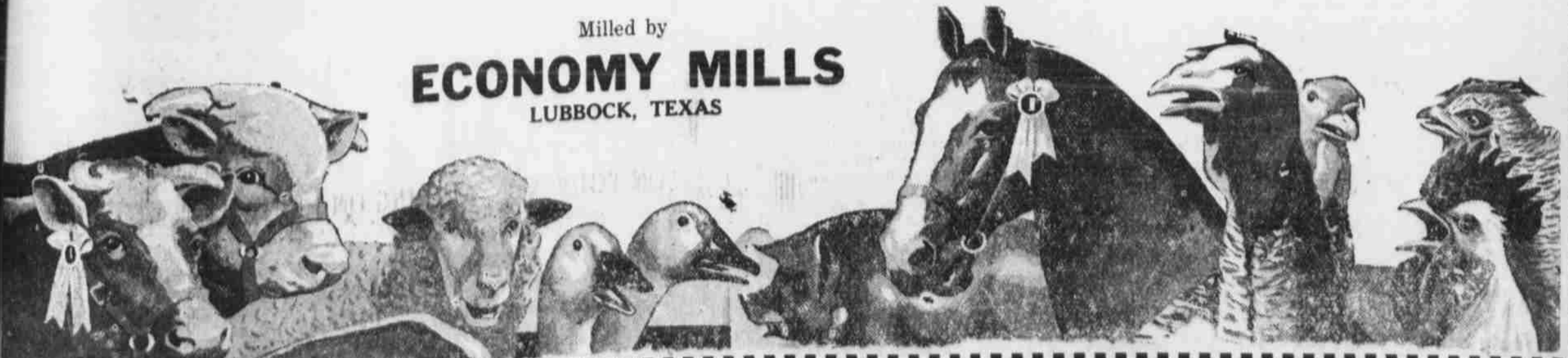


**EVERLAY CHICK STARTER  
EVERLAY GRO MASH  
32 PCT. GROWING CONCENTRATE**

**LOTTA MILK DAIRY FEED  
SWEET MILK SWEET FEED  
ECONOMY SWEET FEED**

**EVERLAY EGG MASH  
BIG 7 EGG MASH  
32 PCT. EGG CONCENTRATE**

Milled by  
**ECONOMY MILLS**  
LUBBOCK, TEXAS



and made notes on the conditions  
of several things that need to be  
taken up with the school board.  
Yes Sir! Supt. Hemphill has re-  
sponded on the job.

county line to Littlefield.  
The Highway committee of the  
Littlefield Chamber of Commerce  
have been working on the improve-  
ment of Highway 51, but believe

county Judge and two commissioners  
now running over the same line  
just north of Littlefield.  
It is thought that if the improve-  
ment is made toward the north it  
will be just that much toward get-

known as a "fair-to-medium" way  
with the state and government  
each dividing the cost. The state

(Continued on back page)

**DR. IRA E. WOODS**  
Ophthalmologist—Littlefield

## Porcher Coal &—

(Continued from page 1, Sec. 2)

he was forced to secure larger quarters, so he moved his place of business to his present location on Highway No. 7 and besides handling produce, he branched out to handle coal and feeds.

### Growth Shown

His first place of business was only 20 by 40 feet and today, not only having a large modern building from which to render his good service to the farmers, the property from which he operates has a frontage on the main traveled highway through Littlefield of over 300 feet, consists of a large coal shed, extending 300 feet along the Santa Fe Railroad, has facilities for housing 14 carloads of coal, a modern and complete hatchery, a building for hides and poultry, and facilities for taking care of over three carloads of eggs in cold storage. All this besides the new building.

Porcher is very modest about the growth of his services to the farmer and credits it entirely to the good will the farmers have for him.

### Cream Handled

Although many cans of cream are handled each week by the Porcher firm, it does not stay in Littlefield very long after the farmers bring it to their cream station.

Each afternoon when the whistle of the Santa Fe train sounds its warning signal at 3:10 p. m. you can depend on it that some of Forcher's cream is aboard for the benefit of others in the country

who are not as favored as Lamb county, with plenty of good whole-some cream.

With the new building space has been provided for a modern cream room completely equipped. A separate cooling room has also been provided and plenty of free parking space is available for Porcher's farmer friends.

### Electric Hatchery

Although the large electric hatchery maintained by Porcher in a separate building is somewhat "out of season" at this writing, it is something of vital need to the community and cost several thousand dollars. The incubator is rated at 17,000 eggs.

About January 1st, this hatchery starts "rolling" and during the winter and spring season when baby chicks are supposed to see the light of day they produce about 2,000 chicks each week. The major portion of these chicks are sold right here in Lamb county but a few are shipped to other cities.

All of the equipment in this hatchery is operated by electricity and during a season over 40,000 baby chicks can credit the Porcher Hatchery with being both "Papa and Mama."

### Has Feed Volume

Since taking on a complete line of feeds in 1934 this part of the Porcher business has grown by leaps and bounds. "I'm just like every other business man," says Ben Porcher, I have to move thousands of pounds of feed before we even pay the light bill, but our Everlay line of Double Duty feeds to please the farmers in this section due to the fact that they are milled especially to supplement mito and kaffir." Another good point about the

Porcher service on Economy's line of feeds is the fact that they are delivered weekly as to assure fresh feeds at all times.

Mr. Porcher will tell you that due to the quality of these feeds and the large volume sold to farmers here, it makes possible his rendering them better service and the lowest possible prices for a quality product that will get the job done.

Wheat, barley, maize, oats, corn, bran, shorts, cotton seed meal, and all types of grains and feeds are carried in stock all the year round. Feeds for chickens, hogs, and cattle are also a great factor in the growth of the Porcher business.

### Coal

The slogan, "Never out of Coal" is a fact and not just an advertising slogan. This can be determined by visiting this up-to-date produce, coal and feed business. It may be over a hundred in the shade in Littlefield during the summer at times but nevertheless you will find good coal available all the time.

Mr. Porcher said yesterday he had customers who travelled many miles for his coal, and said he hoped his customers spent Money with other firms in the city as Porcher said he wanted to continue to bring people to the city to help business.

Colorado coal is used exclusively in both nut and lump grades, Ravenwood-Nigger Head and Sunshine-Maitland are the two brands of coal featured by Porcher.

"I advise people to purchase coal now, said Porcher yesterday, as I feel it will be slightly higher later on in the fall." The coal sold by Porcher comes from the Victor American Fuel company, Denver.

### Hides Purchased

Many animal hides are purchased during the year by this firm. A special house is used to store these hides and in a year over two carloads of hides will be shipped from Littlefield by Porcher, which is a lot of hides, no matter how you figure it, and in any language.

### Large Scales Available

The Porcher concern maintains large scales at their plant for weighing large loads. They can handle a load up to 22,000 pounds. With the winter season rapidly approaching these scales will get a good work out as Porcher sells a large volume of coal in this section.

With 1937 this far to date showing increased scales volume for almost every line of business it is expected the Porcher Coal & Produce company will have the opportunity to render its good service to thousands of farmers in this section of the great South Plains.

The cotton crop looks good and ginnings in this county are expected to exceed the 1936 total by several bales. All this points to more and better business in Littlefield this fall.

## J. R. Newman—

(Continued from page 1, Sec. 2)

This plan may be put into use either of two ways, by feeding to each 100 pullets (light breeds) 6 to 7 quarts of mash per day (7 to 8 quarts for heavy breeds) while the grain feed is kept before them continually. Or if desired pullets may be fed only what mash they will consume in from 3 to 4 hours each day. In using the latter method make sure that plenty of hopper space is available so that all pullets may eat at will. While this plan is a radical departure from old methods, you need have no fears about pullets going hungry. Remember, it is not necessary to stuff pullets with "Good Mash" to make them grow.

During the hot summer months, the heavy feeding of grains should be in the forenoon and the mash given in the middle of the after-

### Stomach Gas

One dose of ADLERIKA quickly relieves gas bloating, cleans out BOTH upper and lower bowels, allows you to eat and sleep good. Quick, thorough action, yet entirely gentle and safe.

**ADLERIKA**  
STOKES DRUG STORE

Always Glad to Stop and Congratulate the Progressive Firm . . .

**PORCHER  
COAL &  
PRODUCE CO.**  
WHO NOW HAVE A  
NEW HOME!

**PHILLIPS  
"66"  
SERVICE  
STATION**  
Corner Phelps and 5th St.

## PERSONALS

Mrs. Arthur Mueller and young daughter, arrived home from the Littlefield hospital Saturday, and are doing nicely.

Bob Sikes, radio operator at the Police Station at Amarillo, spent from Saturday until Monday afternoon the guest of Rev. Donald Harris.

Mrs. Quindy Self of Fort Worth arrived Sunday to spend two weeks with Mr. and Mrs. Wayne Carlisle.

Mrs. J. G. Curry of Colorado, who is making her home with her son, Jeff Curry, is spending two weeks visiting friends here and looking after business matters, following which she will spend some time in Plainview with Mrs. W. L. McCarty, where she will also be joined by her daughter, Mrs. W. J. McCarty of Harlingen, with whom she will visit before returning to her home in Colorado.

Mr. and Mrs. J. W. Keithley spent the week end with her daughter and son-in-law, Mr. and Mrs. Harold Roberts, at Sunray, Texas. They were accompanied by Mrs. W. H. Gardner as far as Amarillo, where she visited Dr. and Mrs. J. H. Vaughn. They all returned to Littlefield Sunday.

Mr. and Mrs. S. H. Gray of First Coleman National Bank, Coleman, Texas, visited Mr. and Mrs. Lon Smith, enroute through on a vacation trip Monday.

Mrs. C. H. Landron is spending a month in Birmingham, Ala. with her parents, Mr. and Mrs. C. M. Smith. She is expected home the end of next week.

C. J. Duggan and J. R. Melton left Tuesday to spend several days out of town on business.

noon. The mash being much more cooling than the grains help to keep pullets comfortable while trying to rest in their hot roosting quarters at night. View this feeding method in the light of your family meals for the summer. As pullets near maturity the mash may be reduced to 25 percent of the total feed and the grains increased to 75 percent.

### Ends Aching Sore Muscles

For longer lasting, quicker relief, use Ballard's Snow Liniment which contains active ingredients to give a more than local action, thus bringing a surge of warmed blood to scatter congestion and more quickly soothe away the pain from aching muscles, strains, sprains, backache and lumbago. Ballard's Snow Liniment, 30c and 60c.

**WESTERN DRUG CO., Olton  
STOKES DRUG STORE, Littlefield  
LLOYD DRUG CO., Amherst**

### At Your Best!

**Free From Constipation**  
Nothing beats a clean system for health!

At the first sign of constipation, take purely vegetable Black-Draught for prompt relief.

Many men and women say that Black-Draught brings such refreshing relief. By its cleansing action, poisonous effects of constipation are driven out; you soon feel better, more efficient.

Black-Draught costs less than most other laxatives.

**BLACK-DRAUGHT**  
A GOOD LAXATIVE

LIKE THE WAVES OF THE SEA —  
COUNTY FIRMS ARE MAKING PROGR

CONGRATULATIONS

TO THE

**PORCHER COAL & PRODUCE CO.**  
IT'S A GRAND NEW BUILDING!

**BRITAIN PHARMAC**

Night Phone 37

RELIABLE PRESCRIPTIONS Day Phone

CONGRATULATIONS—

**W. H. Heinen**

ON THE FINE NEW BUILDING YOU HA  
CONSTRUCTED FOR THE—

**Porcher  
Coal & Produce**

We believe your faith shown in Littlefield is deserving of  
This is a wonderful city, has made great strides these past  
years and will even enjoy continued growth. Investors in  
perty here will find their investment safe.

**FOXWORTH-GALBRAITH LUMBER C**

ED SEELY, Manager

PHONE 162

Good Luck

TO THE

**Porcher Coal & Produce Co.**

ON YOUR MODERN BUILDING

**WE ARE PROUD  
TO SERVE YOU**

We do our utmost to serve the citizens of the South Plains with fast, dependable and inexpensive motor freight service.

**JOHNNIE GRAHAM'S**

**Truck Express Loop**

AMHERST PHO. 33—LITTLEFIELD PHO. 33

# YES SIR!

We Furnished  
Materials For  
The New Heinen  
Building, Now  
Occupied By The

**PORCHER**  
Coal & Produce Co.

OUR COMPLETE

building service will save you  
money and at the same time  
assure you of . . .

QUALITY  
MATERIALS

**Wm. Cameron  
Lumber Co., Inc.**

PHONE 85 | Littlefield, Texas | PHONE 85

22 LITER TO 27 TO WHAT V-8 MILES OWNERS PER GALLON SAY!

Built in Texas by Texas Labor

**THE THRIFTY "60"**

**FORD V-8**

60 HORSEPOWER TUDOR SEDAN

**\$684.56**  
DELIVERED IN  
LITTLEFIELD

Price includes transportation charges, front and rear bumpers and spare tire. (Taxes and License Plates extra.)

**HALL MOTOR CO**

Littlefield SALES— SERVICE

**Piggly Wiggly**

For medical treatment. She felt well enough to be dismissed on the following day.

Texas-New Mexico