

Two Varieties of Air Defense



America relies on airplanes for national defense and soil defense. Heavily armed planes such as the giant four-motored "flying fortress" at top help provide national defense. Planes armed only with cameras help provide soil defense. The two farmers in lower picture are inspecting a typical aerial photo map, taken from an elevation of nearly three miles and used in administering the AAA Farm Program's conservation work. Similar aerial pictures are available showing more than two million square miles of U. S. land area.

Symbols of American Defense



Tractors and tanks symbolize modern American defense. Farmers operating the machinery at top are carving out terraces which defend their soil from erosion. Soldiers operating the U. S. army tank in lower picture are practicing maneuvers which strengthen the nation's armed defense. American farmers, carrying on soil protection work under the AAA Farm Program, last year built more than 67,000 miles of terraces, enough to reach more than two and a half times around the world.

Field Day To Be Staged By Lon Campbell; Oliver "60" Tractor To Be Demonstrated

An Oliver Day and Field Demonstration, will be staged by Lon Campbell, as local dealer in Oliver tractors and farm equipment, Friday, February 7, when the new Oliver "60", the big little tractor of the Oliver family, will be demonstrated for the first time in the Littlefield section.

This small tractor has just recently been put on the market. Other tractors manufactured by the Oliver Farm Equipment Co., are the "70" and the "80," larger tractors than the "60," and will be demonstrated along with the "60."

The demonstration will be staged in a field close to the city. Program For Day Mr. Campbell announced that the program will start at 11 a. m., when farmers and others interested are invited to gather at the Campbell Feed Mill, just off Highway 7 and opposite Porcher Produce.

The program for the day will be as follows: 11 a. m.—Registration and other special attractions at the Campbell Feed Store. 12 noon—Free lunch at the Campbell Feed Store. 12:30 p. m.—Free motion pictures at the Palace Theatre.

1:30 p. m.—A special surprise. 1:45 p. m.—Field Demonstration: Row Crop "60" and mounded tools; Row Crop "70" with the latest modern equipment; Row Crop "80" with four row lister, planter and cultivator; Plowmaster, a new two bottom mould board plow; Numbers 65 and 67 Stover-Oliver hammermills.

3 p. m.—An extra special surprise. A number of Oliver executives will be here for the Field Day. They will include R. P. Lehr of Dallas, branch manager for the Oliver Farm Equipment Sales Co.; O. G. Satterlee of Dallas, credit manager, and George Umland, block man, with headquarters at Plainview.

Will Introduce New Tractor The Field Day will be held, stated Mr. Campbell, for the purpose of introducing the new Oliver "60" tractor to the farmers of this section.

Referring to the Oliver "60," Mr. Campbell said: "It's a big little tractor; a big tractor in its fundamental design—big tractor features throughout—comfortable seat, simple, positive controls, easily turned steering wheel, handsome tapered hood, sturdy, rugged frame and big, high compression, four cylinder valve in head engine.

"It gives you a good-looking tractor—a sturdy tractor—a comfortable tractor—an easily operated tractor—a tractor with field tested mounted tools—and a modern powerful tractor at a very low price. Mr. Campbell carries a complete stock of parts in connection with the operation of his tractor and implement business.

Salvation Army To Get Pennant

As announced this week by Capt. Lula Trummell of the local unit of the Salvation Army, Maj. and Mrs. Ernest Pickering of Dallas, secretaries for the Young People's division for this district, will visit Littlefield Friday.

In the late afternoon, a Soldier's Supper will be given in their honor at the Army Hall, at which Major and Mrs. Pickering will make talks. Another meeting will be held in the evening at the hall, at which the Standard of Excellence pennant will be awarded by Major Pickering to the local unit, which is one of the few to reach the goal set by headquarters.

At this meeting, Major Pickering will address the meeting, and Mrs. Pickering will sing. The public is cordially invited.

The SNOOPER SAYS ...

Bird lovers — not to mention the birds themselves — will be happy to know that Uncle Sam is going to do something about the illegal feathers that are appearing on hats in the millinery stores, both male and female.

R. T. Hildebrand, U. S. Game management agent, has discovered that many of the plumes adorning ladies' and gentlemen's hats are illegal. In a Texas city he recently visited, in the stores he found feathers from the egret, eagle, albatross, Bird of Paradise and others that figuratively are under Uncle Sam's protective wing.

Only 15 of the 540 species of wild birds in Texas may be killed legally for sales, and Hildebrand said that certain feather merchants in Texas have been bootlegging plumes on the protected list. The men that sell the hats, are liable to prosecution.

How about that feather in your cap, Mister?

County officials down Fort Worth way reported that more automobile licenses and more marriage licenses were issued in 1940 than in the preceding year.

Marriage licenses during leap year were 2,764, the most since 1937. The 1939 total was 2,524.

(Please note: The girls didn't have such a big majority during leap year!)

Are you wondering how, since Mr. and Mrs. Frank Lehman didn't start setting eggs at the Littlefield Hatchery until last Monday, how they will have chicks for sale this next Monday?

They made two settings of eggs at the hatchery in Sudan so they could accommodate their first customers.

Miss Elizabeth Voren, who has assisted Mr. and Mrs. Lehman several years in the Littlefield Hatchery, arrived last Thursday from Phoenix, Ariz., where she spent the summer. She said she enjoyed her stay there, all but the last three weeks, when it rained every day. We are still hoping that rain will follow her to Littlefield.

Some of the highlights of my life for the next few months will be those annual visits to the Lehman home, five miles north of town. I adore their daughter, Dolores, and every time I have been to their farm home, I have learned something new, besides enjoying the friendship of these good people.

Miss Luzelle Bryan, daughter of Mr. and Mrs. D. Bryan of Littlefield, will not come home during the few days between semesters at West Texas State College, Canyon. She will accompany a group of debaters as assistant coach from the college to Goodwell, Okla., for a tournament.

She is a speech major at the college, and usually takes part in the radio programs each Thursday night over station KGNC, Amarillo, which are sponsored by the speech department. She will write a play that is to be presented by the students next Thursday night, Feb. 6, over the station.

The large crowd which attended the program rendered by the McMurry Chanters Monday night at the local Methodist church, received much inspiration from the beautiful singing by the young people who are students at McMurry college, Abilene. Directed by Mrs. Gypsy Lee

Sullivan Wiley, who has been music director at the college since it was founded, the group was composed of first year, second, third and fourth year students, whose talents for singing will take them far, as they journey through life. These 24 chanters were only a small group of the 75 students who are enrolled in music classes this year at the college, Mrs. Wiley said, and they all possess the magnetic voices that truly make their singing together an inspiration to those who hear them.

Among those who came to Littlefield was Joe Boyd of Rotan, Tex., son of Rev. and Mrs. Joe Boyd. Rev. Boyd was formerly pastor of the Methodist church here. Joe played the piano for several special numbers sung by Rupert Phillips of Abilene.

People of Littlefield evinced their enjoyment of the program, when many journeyed to Amherst Tuesday morning where the Chanters gave a similar program. The group went to Sudan and Tucumcari, N. M., before returning to Abilene via Heretford and Floydada this week end.

Mrs. Wiley accompanies a group of "her" singers on tours twice during the school year. Another is being planned for the last of May. The students enjoy making these tours, seeing much of Texas and meeting many people.

Seems the order of the day for athletic coaches in colleges and high schools to be changing about a bit this year. However, since Jas. Yeager landed the coaching job at the University of Colorado, and Henry Frnka signed a four-year contract at the University of Tulsa, Tulsa, Okla., and the Texas Tech athletic council is still in a huddle and will say the word in February — we should be concentrating on the preliminary Golden Gloves tourney, scheduled for tonight and tomorrow night and the Presidential Ball, which will take place tonight at the Roller Rink.

All of which leads to the same thing—we need that new municipal auditorium in Littlefield, and need it bad!

Oh, well! MARGIE.

Sunnydale Club Entertain Husbands And Families

Members of the Sunnydale Home Demonstration Club entertained their husbands and families at a gathering in the community church at Sunnydale Thursday evening. V. F. Jones, county agent, was a guest of the occasion and made an interesting talk on "Feeding and Breeding of Hogs and Beef."

Miss Beatrice McCurdy, new

False Teeth



CHICAGO, Ill. — Buster, the pet bull dog of Max Finkel, ran out of teeth, so Max, a dental mechanic, fixed him up a set of uppers and lowers. Looks like Buster's ready to eat again, at last.

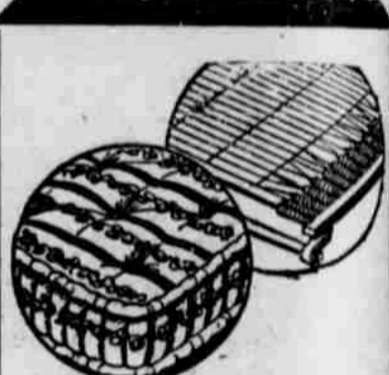
home demonstration agent, talked on "Our Part in the Defense Program."

A short business session was held with Mrs. Gus Clark, president, presiding, following which games were enjoyed.

Following the program refreshments, consisting of apples and popballs were passed to those present.

The Sunnydale Home Demonstration Club meets on second and fourth Thursdays. The next meeting will be held at the home of Mr. Gus Clark.

Phone 27 for office supplies.



We can make a wonderful change in that old mattress of yours. Our workers and equipment are up to date. Let us make your old mattress into an Innerspring. We guarantee all jobs on mattress rebuilding.

PHONE 261 COLBERT'S Mattress Factory Located across street from the Assembly of God Church West of Littlefield Tourist Camp

Too Late To Classify

FARM FOR SALE — 44 acres; improved; gas line; electricity; immediate possession. Abe Schmidt. See me at J. K. Eau home, located Route 1, one and one-half miles west of cemetery. 441tp.

FOR RENT — Modern garage apartment. Close to school. See H. A. Collins. 441tp.

FOR SALE — Five room modern house and acre of land. A. C. Harrison at Phillips Service Station. 441tc.

WANTED — All kinds of sewing. Mrs. A. C. Harrison, 10th Street & Cundiff Ave. 441tc.

FOR SALE — 1936 V-8 Coupe; 1936 F12 Farmall; Allis-Chalmers tractor; 1938 Fordson; Also a dandy Boston screw tail Bull pup. Laco & Rogers. 441tc.

USED ELECTRIC REFRIGERATORS FOR SALE

FOUR EXTRA GOOD REFRIGERATORS Your Choice \$50

SEE THEM AT — GARLAND-WHITE AUTO SUPPLY

Bro. McFarland Reports Progress At Nashville Church

Bro. Maurice McFarland, former pastor of the Local Church of Christ, LFD Drive, but for the past two months, minister of the Church of Christ, Nashville, Ark., arrived in Littlefield Thursday, accompanied by Mrs. McFarland, and her sister, Miss Margaret Garner, of Jacksboro, Texas.

Bro. and Mrs. McFarland visited relatives and friends here until Saturday, when they left for their home in Nashville. Among those visited were Mr. McFarland's parents who live near Littlefield.

Mr. McFarland reports a large increase in membership in the two months he has been minister of the Nashville church. He states that attendance at Wednesday night meetings increasing from 30 and 40 to 135; that they have about 300 membership now; that the church offering has doubled; and that there is an average attendance at bible classes of over 200, representing about 15 percent increase in the two months he has been in Nashville.

The many friends of Bro. and Mrs. McFarland extended them a hearty welcome back to Littlefield.

A news poster at Hyde Park, London read "Nazi planes made in Germany, finished in England".

Rural Electrification

Has brought outstanding improvements for the farms of Lamb County — new comforts and conveniences for farm families.

We heartily congratulate the Lamb County Electric Co-Operative on their notable achievements in the interests of this county.

FRED GERLACH Battery & Electric

Littlefield Phone 50



More Comforts More Conveniences

For Farm Homes Through Rural Electrification

Hundreds of Lamb County families are enjoying the benefits of electric service through the efforts of the Lamb County Electric Cooperative, and we heartily congratulate the organization on their outstanding accomplishments.

Houk's Grocery and Market

# TODAY and TOMORROW

DON ROBINSON

UNEMPLOYED . . . . 5,110,270

For the last ten years it has been anybody's guess just how many people there were out of work at any particular time.

No actual count was made until last March, when the Census takers presumably counted every nose in the United States—and found out just how many noses were being kept to the grindstone and how many people were looking for work.

The government adding machines haven't yet finished the huge job of getting exact totals, but when the final figures are available here is what they are expected to show:

Seeking work -- 5,110,270

On public emergency work -- 2,380,062

Those are the figures for last March, however. Since then many of those seeking work have found jobs in defense industries. So, by the time the final figures are released, they will already be outdated and the extent of the unemployment situation will still be anybody's guess.

### STATISTICS . . . . impersonal

While I was analyzing the cold, statistical record of unemployment, a man came in to see me about a job. When the Census takers checked him they marked him down as "unemployed." Thereafter he became just one little digit, under that head, in the Census Bureau's statistical department. If it hadn't been for him the figure on those "seeking work" would be 5,110,269 instead of 5,110,270.

But he wasn't interested in figures on employment. He said that during his year of being unemployed he hadn't felt that he had gained any solace from the fact that there were a lot of others in the same boat.

Now, however, he is getting panicky over reports that the nation's huge defense program has the employment problem pretty well licked.

"I didn't get any comfort out of the fact that a lot of others were out of work when I was," he said. "but I'm plain scared now when I hear that everybody's getting a job and I'm still adrift."

There are plenty of others who must feel the same way as this man. The answer for most of them is that skilled workers are the ones who are in greatest demand, that factory workers in general have gone back to work in droves, but white collar jobs haven't opened up at the same pace. They probably will, since greater production means more supervision and clerical work—but that will be a secondary phase. Right now all attention is centered on getting all of America's machines humming.

### WOMEN . . . . jobs

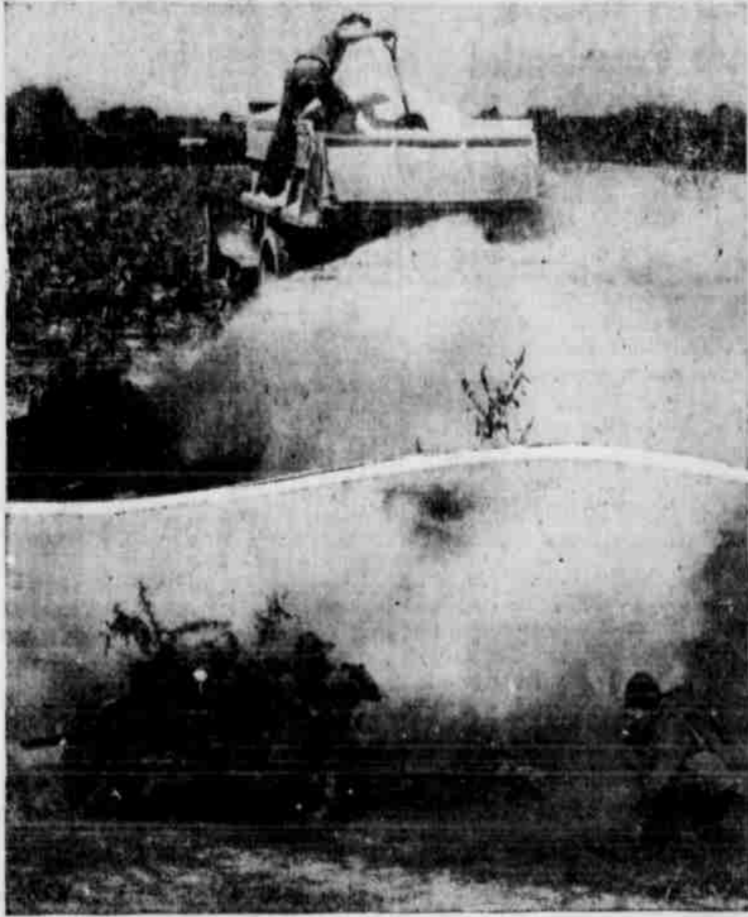
Did you know that in this country, there are three times as many men working as there are women?

That census figure surprised me, because in so many businesses the women seem to far outnumber the men. But in our biggest factories most of the work is man's work—and that's where the bulk of employment is these days.

There are over 37 million women in the country who don't try to get jobs. The great majority of them, of course, do housework, but the government doesn't count them as part of the "Labor Force." Taking care of a house, cooking the meals, raising a few children and doing the washing puts them under the statistical classification of non-workers—wive's opinions notwithstanding.

And speaking of wives—the Census shows that there aren't enough to go around. If every girl in America had a husband, there would still be 25,412 men left over.

## These Clouds Mean Defense



Clouds arise as American farmers increase the fertility of their fields by sprinkling them with lime. Clouds arise as American soldiers increase their skill through artillery practice. Both fertile soil and skilled gunners are vital to the nation's defense. American farmers last year, cooperating with the AAA Farm Program, applied nearly six million tons of lime to their soil, enough to have powdered the face, at the rate of a ton per acre, of every acre of cropland in Maine, Vermont, New Hampshire, Massachusetts, Rhode Island, and Connecticut.

Husbands, it would seem, are becoming a drug on the market.

### AUTOMOBILES . . . . treasures

Lift the hood of your automobile and you'll uncover a veritable treasure chest of hidden precious metals! Only, unless you're an expert at metallurgy, you'll never be able to find them.

That they are there, although in minute quantities, is testified to by a metallurgist of the Ford Motor Company. He says that there are several metals used in every Ford which are more valuable than gold or silver, such as iridium, palladium, platinum and rhodium. In addition, gold and silver are used, along with dozens of other precious metals.

It may give you new respect for the old bus if you keep thinking about this. Even if you can't ever actually see these precious metals, it's a comforting feeling to know as you ride along that although you may not have money in the bank or diamonds on your fingers, you at least have platinum on your car's contact points.

### TOWNS . . . . namesakes

There are towns all over the United States which are named after towns in England—Londons and Dovers and Bradfords and Cambridges, and Oxfords and Hamptons and dozens of others.

This fact gave Mrs. Barbara Spencer an idea. Mrs. Spencer came over here from England last summer, and ever since she's wanted to do something to really help that stricken nation.

Now she's doing a grand job of it, through the organization she started called, the Namesakes Town Committee, Inc.

The idea is to persuade the people who live in a town here, which is named after a town in England, to help the people in that English town.

Mrs. Spencer finds out what things are needed most by the various towns in England and reports to the namesake towns here. They, in turn, work out a plan to fill those needs, for clothes, food, blankets and other necessities.

By helping the people in namesake towns a closer bond is being built up between the English and American communities.

Human pride is human weakness. Self-knowledge, humility and love are divine strength.

## Barbecue To Be Staged Monday

Members of the R.E.A. will be guests of the Littlefield Chamber of Commerce Monday next at a barbecue to be staged here at noon, following the annual REA meeting, according to Sam Patterson, Secretary.

The committee in charge of the barbecue is composed of Pat Boone, Chairman, and Ellis Foust, Jim Elter, H. T. Bartley, J. W. Keithley and Viggo Peterson.

The barbecue will be served at 12 o'clock.

It is the plan, according to Mr. Patterson, to stage the barbecue on Phelps Avenue in front of the Palace Theatre if the weather permits, but if bad weather prevails, the barbecue will be served at the First Baptist, Presbyterian and Methodist churches.

## Tax Payments Coming In Good

"Taxes are coming in pretty good," stated I. B. (Doc) Holt Tuesday, who was here Tuesday and Wednesday for the purpose of collecting state and county taxes.

When asked about how much had been received for taxes in the county, Mr. Holt stated that he did not know, but that about Saturday they would start checking up.

He said although payment of taxes had been good, poll tax payments were slim over the county. He said it looked as though collections would be equally as good, if not better than last year with the exception of poll taxes. Up to Tuesday night only 1,950 poll taxes had been paid. Last year a total of 4,759 poll tax receipts were issued.

### ON BUSINESS TRIP

Otto Jones, Mayor Homer Tull, Ellis Foust and Beaman Phillips made a trip to Fort Sill, Okla., Saturday night, returning to Littlefield Sunday afternoon. They reported that they were on business for the city.

The number of hairs on an adult's head usually ranges from 129,000 to 150,000.

## Reports Must Be Filed Promptly

Form Cotton 422, the producer's record of the cotton produced and seed cotton marketed, is due in the county A.A.A. office within two weeks after he has finished ginning.

All producers who have finished ginning should submit this report at once.

These reports are required by law, and it is imperative that they be submitted promptly, since cotton yields for 1941 cannot be established until the reports are received in the county office.



## For Your Valentine— KING'S CHOCOLATES

PEOPLE WHO KNOW TRADE AT—

# WALTERS

"The Drug Store on the Corner"

A Cordial Greeting To Farmer Friends— We invite you to visit "The Drug Store on the Corner" when you are in Littlefield for the annual meeting of the R. E. A.

## Dick Carl Escapes Serious Injury When He Falls From Pole

Dick Carl, line foreman for the Rural Electrification project here, was painfully but not seriously injured Monday morning when he fell from a light pole south of the Beck stove.

He was brought to the Littlefield Hospital by Herman Herring, who was assisting Carl in hanging a transformer on the pole.

Carl started down the pole after the job was completed and it is reported that he slipped and fell 25 feet to the ground. Eight of his teeth were knocked out, and he suffered bruises and cuts. He was dismissed from the hospital Tuesday morning.

## Mrs. L. H. Bates Suffers Broken Arm In Fall

Mrs. L. H. Bates of Enoch, confined to her bed suffering from a fractured left arm and cuts and bruises sustained when she fell in the yard at her home Saturday night.

Mrs. Bates had occasion to go in the yard, and in the darkness fell over some truck ingates, causing the injury.

According to her son, Crawford, who is employed by the Palace Theatre, Mrs. Bates will be confined to her bed several days.

A hedgehog has adopted a litter of orphan guinea pigs, Home Spalding Moor, England.

## Here's News! Good News!

The New

# Oliver "60" Tractor

The "Big" Little Tractor Of The Oliver Family

## IS HERE!



# Oliver Day and Field Demonstration

FRIDAY, FEBRUARY 7—STARTING AT 11 A. M.

FREE LUNCH AT NOON—MANY SPECIAL ATTRACTIONS

## Demonstration of Oliver Tractors "60," "70," "80"

### PROGRAM FOR DAY

11 A. M.—Registration; other special attractions at Campbell's Feed Store.  
12 Noon—Free lunch at Campbell's Feed Store.  
12:30—Free motion picture at Palace Theatre.

The Oliver Day and Field Demonstration Will Be Held Chiefly For The Purpose Of Introducing The New Oliver "60"—On Display For The First Time In Littlefield.

A big, small tractor in every way — a big tractor in its fundamental design — big tractor features throughout, comfortable seat — simple, positive controls — easy turned steering wheel — good looking tapered hood — sturdy, rugged frame — big, high compression four cylinder valve in head engine — and with this fine tractor a modern set of — FIELD TESTED MOUNTED TOOLS.

### PROGRAM FOR DAY

1:30 P. M.—A special surprise.  
1:45 P. M.—Field Demonstration.  
3 P. M.—An extra special surprise.

POWERED RIGHT-PRICED RIGHT-STYLED RIGHT

# Lon C. Campbell

Oliver Tractors and Implements At Campbell's Feed Store, Littlefield—Phone 120M Just off Highway 7 — Rear Continental Oil Co. Purina Feeds — Feed Grinding

Tip Toe Wheels Rubber Tires LOW COST SPECIAL EQUIPMENT



## It's Baby Chick Time CHICK STARTER BROODER STOVES

When you buy chicks raised at our hatchery, you know you are getting the best poultry money can buy — and not very much money at that.

For 14 years we have catered to the needs of poultrymen in this vicinity, and we invite you to let us set your eggs again this year.

# LITTLEFIELD HATCHERY

Near the Palace Theatre

How is This for a Large Family?



Mr. and Mrs. Motojiro Shiroda, of Nagasaki Prefecture in Japan (front row) are shown with 13 of their 17 sons and daughters. About 10,300 large families such as the Shiroda group above, will receive letters of commendation from the Japanese Government for their prolific contribution to the Empire.

River Traffic Active in Shanghai



Under the peaceful reign of the New National Government of China at Nanking, the waterfront of Shanghai hums with daily transportation of commodities. Here along the Whangpoo River, log booms, loaded bateaux, and junks traffic along the modernized business district of Shanghai.

LUBBOCK DISTRICT GOLDEN GLOVES JOURNEY TO GET UNDERWAY FEB 5

LUBBOCK, Jan. 26 — Special to the Leader — The fifth annual Lubbock district Golden Gloves tournament will get underway Wednesday at 7 p. m., February 5, at the Cotton Club, four miles from Lubbock on the Slaton highway.

Included in the more than 70 entries received are many from Littlefield. In addition, the winners of the Littlefield Invitation tournament this week end will compete as a group.

Outstanding in the Littlefield division is W. D. McCarty, Jr., 1940 district heavyweight champion of the district, who will be back to defend his title. Others are Alvin McCarty, middleweight; Buford Bradshaw, featherweight champion of the recent district view invitation tournament and strong bidder for the district title in this division; Preacher Yenez, middleweight from Littlefield CCC, and a little Mexican who made a strong impression in the Tahoka tournament last week; Jessie Ramsey, Littlefield CCC, runnerup in the middleweight class of the Tahoka tournament; Woody Culppepper, Littlefield CCC, runnerup in the heavy division at Tahoka; Bill Holder, another CCC lad, who competes as a lightweight; Bud Man, CCC lightweight; Bulldog Man, CCC welterweight; J. Taylor, middleweight; Jimmie Robinson, Littlefield, Route 1, flyweight; Man Dyer, Littlefield, middleweight; League Clay, Littlefield,

light heavyweight; and Lloyd Richardson, Littlefield, middleweight.

Tickets for the three-day meet, which begins Wednesday and winds up Friday, are on sale in Lubbock at the Avalanche-Journal A. & L. Drug and Hotel Lubbock Drug. Reservations may be made by phone wire or mail at the Avalanche-Journal.

Boys who plan to enter the tournament should send in their entries to Golden Gloves Editor, Avalanche-Journal, Lubbock, at once if they have not already done so. All fighters are to meet at the Downtown Gymnasium in Lubbock 1014 Broadway in the location formerly occupied by Sherrard Hardware the afternoon of Feb. 5.

VALLEY VIEW

Mr. and Mrs. C. D. Gilley, Mrs. George Gilley and Mrs. Johnnie Miller were in Lubbock on business Thursday.

Mrs. R. E. Townsend, who has been visiting relatives in the Valley View community for the past few weeks, left Saturday for Sweetwater where she will make her home.

Mr. and Mrs. D. G. Boyce from Borger, were week end visitors in the Johnnie Miller home.

Mr. and Mrs. Johnnie Thomas have moved from Valley View to Shallowater.

Word has been received that Mrs. Wales is improving and that she

may be back home soon.

C. D. Gilley received word Friday that his daughter, Mrs. George Vaughtman was in the Decatur hospital. He left immediately, accompanied by his children, George, Noah, Mrs. George Collins, Mrs. Harris Stevens and Mrs. Bertha Mullenix. They returned home Sunday night.

Mrs. Blanche Wales is home from Texas Tech.

Mrs. Stinson of Shamrock visited her sister, Mrs. Bill Eudy the past week.

The next club meeting will meet at Mrs. F. C. Bishop's. All are urged to attend, and we are always happy to have visitors or new members.

Valley View Club Meets

The Valley View club met at the home of Mrs. G. E. Lytle at one o'clock Friday afternoon, Jan. 24. After the business meeting, a social hour was spent. Mrs. F. E. Wigginton, Mrs. Ed Allen, Mrs. J. P. Attaway were admitted as new members. Mrs. Cunningham was a visitor.

Dainty refreshments were served to the following: Mesdames: Cunningham, R. Dyer, Fay Attaway, J. P. Attaway, B. Roten, Bill Eudy, R. Roberts, Hollis Townsend, F. C. Bishop, N. C. Gilley, George Gilley, Opal Gilley, Ed Allen, F. E. Wigginton.

"Balkan," an old Turkish word, means "mountain".

Farm Electricity Was Prediction Of Thomas A. Edison

The Rural Electrification Administration, young nephew of Uncle Sam, is instrumental in fulfilling the prophecy of one of the world's greatest electrical geniuses.

Thomas A. Edison, before his death, predicted a "breathing spell" in electrical invention that would give the world a chance to develop the marvels that it had acquired. In the preface of a book written by his friend, Ernest Greenwood, Edison wrote:

"... I am an old man now. I have lived to see the street car, the elevator, the electrified railroad, the automobile, the phonograph, the motion picture, the radio, the airplane, and the beginning of television. It seems today to many as it seemed to most men and women of 1882, that no great forward steps remain to be taken.

"It may be that the next 40 years will not produce inventions of such revolutionary character. Progress has been made so rapid that we may require a breathing spell in which to consolidate our gains, and develop present inventions to their full capacity. But of one thing I am more positive than I was 40 years ago—the electrical development of America has only well begun."

The lull, the breathing spell in which to consolidate our gains, to develop these inventions and to expand the use of electricity is here—through the rural electrification program.

Thomas Underwood Seriously Injured

Thomas Underwood of this city was admitted to the Payne-Shotwell Hospital Wednesday night suffering injuries received when the car in which he was driving alone, enroute home from Lubbock, skidded on the wet pavement, about four miles east of Littlefield, turning over several times.

He was thrown from the car to the pavement. The accident happened about 9 o'clock.

It was reported that he had passed a truck shortly before the accident, and that the driver of the truck brought him to Littlefield.

He was reported to be suffering from a broken neck. Confirmation of this, however, was not available at a late hour last night. Mrs. Underwood, wife of the injured man stated that X-rays were taken at the hospital, and that the extent of his injuries could not be learned until this morning.

Mr. Underwood is married and has a young daughter, Patsy. He is a son of Mrs. S. G. Underwood, and a brother of John Underwood, all of this city.

Methodist Ladies Meet In Pledge Service Monday

The Woman's Christian Service met in a pledge service program Monday afternoon at the Methodist church, with Mrs. B. L. Cogdill as leader.

Assisting in the program were: Mesdames Jim Sharp, A. G. Hemphill and Bilderback.

Besides the above, other members present were Mesdames: Y. Onstott, Van Clark, J. W. Keithley, M. P. Reed, W. H. Gardner, W. P. Kirk, and L. L. Lippard.

Miss Lillian Cameron visited her parents at Lamesa last week end. She is junior clerk typist in the Farm Security office.

Deputy Sheriff Sid Hopping left Tuesday for Gallup, N. M., on an investigation growing out of the burglary of the Earth and Muleshoe establishments recently.

CHURCHES

METHODIST CHURCH

Jim H. Sharp, Pastor  
The McMurray College Chanters really gave a very fine program last Monday night. We wish that every person in our community could have heard them. We hope that they will come our way again some time.

Our attendance last Sunday was good. We surely was glad to have a number of young men from the CCC Camp at our evening service. Oand we welcome them and others to come as often as they can.

A lot of people don't want the churches closed. They want them to have service every Sunday, but they don't want to help to keep the churches open if it interferes with their pleasure or business.

The story is told of two men golfing at 11 o'clock Sunday morning. One said to the other: "It's bad about them closing all the churches in Russia." The man that is going along after pleasure and things of the world and never helps the church by attending is doing his part to close every church in the country. The saddest march today is not the march of the boys in the Regular Army, but the march of the churches unconcerned about the greatest of all our institutions. Attend church somewhere next Sunday. We will be glad to have you at the Methodist church.

FIRST BAPTIST CHURCH

Roy Shaban, Pastor  
We were glad to welcome eight new members into our Church fellowship during the services last Sunday. ur Bible school attendance is staying above the 300 mark. May each of us work to see this attendance go on to the 400 mark.

The pastor will speak on the following subjects this coming Lord's Day. At the morning hour, "Being A Andrew," Jno. 1:35-42. At the evening hour, "A Lad With the Loaves and Fishes," Jno. 6:1-11.

During these uncertain times, we need to be firmly established. Find your way to God's House. Seek to know God's Will for your life, and then have the courage to do God's Will.

The Workers' Conference of West Plains Baptist Association met with the Fieldton Baptist church and pastor, Rev. Aubrey McAuley, on Tuesday, Jan. 28.

The attendance at this meeting was the best that we have had for some time. The messages from the speakers were very inspiring.

The general theme of the meeting was "The Enlarged Program of Texas Baptists." Rev. F. B. Hamilton of Muleshoe brought the morning sermon on the subject, "Onward Christian Soldier."

Lunch was served at the noon hour to about 150 representatives from the churches by the ladies of the Fieldton church.

Those attending from the local Baptist church were: Mrs. L. W. Jordan, Mrs. Viggo Peterson, Mrs. George Vaught, Mrs. Alfred McGee, Mother Mueller, Rev. W. J. Jackson, Roy Shaban.

The next meeting will be held with the Rocky Ford Baptist church on Tuesday, February 25.

Personals

Mr. and Mrs. W. E. Bass returned Sunday from a week's business and pleasure trip to Houston and Galveston. They visited Mr. Bass' daughters, Mrs. W. W. Turner and Mrs. Joe Whitus and Mrs. Bass' uncle and aunt, Dr. and Mrs. J. G. Ligon.

Mr. and Mrs. W. J. Aldridge will return home some time this week from Newsome, Texas, where they are visiting Mrs. Aldridge's father, J. H. Burgin, who is in ill health.

J. E. Chisholm, who has been ill for several weeks with colitis, and confined in the Payne-Shotwell hospital, was reported much improved Wednesday. Mr. Chisholm

had a bad day Sunday, but since at Spade.

Mr. and Mrs. A. W. Ray, accompanied by Mr. and Mrs. N. D. Ray of Olton, attended the hardware convention in Amarillo Tuesday.

Ross Mayhew, who had been at the Sanatorium for treatment, returned home about two weeks before Christmas, and is getting along nicely. He has gained 51 pounds, and although he is obliged to still take the "rest cure," he is looking well and feeling good. Mr. Mayhew weighed only 121 pounds when he left Littlefield for the sanatorium and now weighs 153 lbs.

FOR A SHORT TIME FORT WORTH STAR-TELEGRAM

Daily and Sunday and LAMB COUNTY LEADER

Both for 10 Months

\$6.20

FORT WORTH STAR-TELEGRAM

Daily Without Sunday and

LAMB COUNTY LEADER

Both for 10 Months

\$5.20

These rates good only in Littlefield and trade territory.

Bring or mail your subscription to ...

LAMB COUNTY LEADER

BIG, NEW

10,000 Gallon

Water Softener

Just Installed At The—

R. C. Laundry

Helpy-Selfy customers now will have convenience of plenty of soft water at no extra cost—only 30c per hour.

Laundry Services Offered Wet Wash, Rough Dry

Flat Finish, Complete Finish

PHONE 197

We Call For and Deliver

R. C. Laundry

Mrs. E. S. Rowe, Operator

We Welcome You! R. E. A. Members

We greet you on your splendid Electrification Program . . . It has increased the comforts of rural living, and is a most commendable step forward in the progress of this entire section.

TONEY'S TEXACO STATION

Highway 7 Texaco Products

Littlefield Firestone Tires

NOTICE

I Am Buying Some 1940-41 Government Loan Cotton Equities

J. L. MURDOCK

Office over Thaxton Hardware

Be Sure To See---

"LITTLE PHIL"

On Display At The R. E. A. Office

"Little Phil" is the mascot for the Phillips "66" Petroleum Company, and he will be on display at the local R. E. A. office all day Monday.

You will enjoy using Phillips "66" Gas and Oils.

WINGO "66" SERVICE STATION

Highway 7 Littlefield

# MAN - A - MAR POULTRY and LIVESTOCK FEEDS

## Greetings To R. E. A. Members

We are exceedingly proud of the Rural Electrification Program; it is one of the greatest achievements in the development of Lamb County. WE EXTEND A CORDIAL INVITATION TO R. E. A. MEMBERS TO VISIT US WHILE IN LITTLEFIELD MONDAY FOR THE ANNUAL RURAL ELECTRIFICATION MEETING.

## FEED R. L. BYERS SEED

Highway 7, Littlefield

Phone 187

## FEED GRINDING and FEED MIXING

### THIS WEEK IN WASHINGTON

Washington, Jan., 27 (Autocaster) — Congress took time out for a deep breath while the President and Vice-President were being inaugurated and plunged right back into the

fight for and against HR 1776, the controversial lend-lease bill which would give the President the right to "sell, transfer, exchange, lease, or otherwise dispose of" any defense article which the President may deem advisable to transfer to another nation. And to permit British ships to be repaired in our ports. Former ambassador, Joseph Kennedy, gave the opposition a wedge to offset Wendell Willkie's startling endorsement of the bill by making a nation-wide radio speech in which

he urged that a less drastic measure be written on the ground that the danger was not immediate enough to justify what he called "this surrender of the authority and responsibility of the Congress."

#### Kennedy Created Stir

Even before he testified before the House Committee holding hearings on the bill, his speech had been denounced on both sides of the issue. Representative Hamilton Fish of New York, Republican member of the committee, at whose request Kennedy appeared, had already endorsed the speech, while Chairman Sol Bloom, Democrat, commented: "Just another ostrich speech with his head deep in the sands of unreality. And I still prefer to take the advice of Secretaries Hull, Morgenthau, Stimson and Knox, and above all, that of Franklin Delano Roosevelt."

Over the strenuous opposition and constant denouncement of those favoring the President's bill, Mr. Fish and his supporters on the committee called an imposing array of witnesses which included Norman Thomas, Socialist candidate for President; Hamrod MacNider, former Ambassador to Canada; Col. Charles A. Lindbergh and General Hugh H. Johnson. Mr. Fish intended to summon Wendell L. Willkie, also, but his trip to Europe forestalled his appearance.

With so much excitement about the hearings of the House of Foreign Relations Committee, the opening of Senate hearings on Friday were almost forgotten, but starting with the same parade of witnesses as appeared before the House, the Senate hearings promise plenty of fireworks before they are over. It is here that the voice of Senator Wheeler may make itself felt most. He, at least, is in no mood for compromise, and demands outright rejection of the bill.

#### Administration May Give In

A distinct impression has been given out by the Administration forces that they would not fight a two-year time limit on the bill and might yield on other points which they did not feel affected the main purpose. But they are determined to resist any major curtailment in the powers proposed for the President, insisting that he must be given a free hand to act swiftly during a crisis which may change in "twenty-four hours."

The Administration may have to give in a great deal before it is over. It may have to strike out the "Naval-repair" part of the bill, and conceivably might be forced to accept a statutory limitation on the amount of money that could be devoted to the purpose of aiding Britain, but the feeling here is that the bill will pass with its major provisions intact.

In the meantime official efforts are being made to hamper the dictator powers in every way possible. A treasury drafted executive order which will freeze all foreign assets in the United States has gone to the White House. Such an order will halt the present free flow of German, Italian and Japanese funds in and out of the United States in the same way that a previous order has prevented the use of funds of occupied countries.

Although it will tie up British funds also, a provision of the order enables a country to withdraw its funds as long as it is within the interest of the United States for it to do so. Fear of this step has caused recent heavy withdrawal of Swiss

and German currency from the country.

Our own rearmament program was speeded up as House leaders arranged to give speedy consideration to President Roosevelt's request for \$350,000,000 to construct 200 cargo vessels. The House appropriations subcommittee approved the measure almost immediately and Chairman Clifton A. Woodrum plans to ask immediate Congressional consideration as soon as the Navy's new \$1,209,000,000 appropriation is disposed of.

#### Moving at Rapid Rate

The whole armament program is moving along at an ever more rapid rate. John D. Biggers, director of the production division of the defense agency announced that 799 military airplanes were built in December, surpassing the most optimistic of estimates by 100 percent. He also announced that January production would exceed December's considerably, and that production of light tanks is now almost five months ahead of schedule.

Yet with all these public and private efforts to meet the threat of a Dictator controlled world, there is still an effort to maintain normal relations with the Axis powers. A large German flag flying from the office of the German Consulate in San Francisco, was ripped from its mast by two American sailors. An authorized German spokesman in Berlin declared that this incident has "created a very bad impression in Berlin" and that "there should be an apology."

Immediately the United States government formally expressed its regrets and promised a thorough investigation of the incident would be made.

### Ex-Emperor Of Ethiopia Returns

Ex-Emperor Haile Selassie of Ethiopia proudly raised the red, yellow and green flag of his former kingdom in a hidden mountain clearing somewhere in Ethiopia recently, then set off to the interior to head British-aided Ethiopian tribesmen fighting their Italian conquerors.

The bearded former conquering lion of Judah, driven from his throne in 1936 by Premier Mussolini's troops, came back to Ethiopia in a British army plane.

He flew from Khartoum, British headquarters in the Anglo-Egyptian Sudan where he had conferred in recent weeks with tribal chieftains who slipped across the frontier to plan with him the rearming of Ethiopian natives with British guns.

Accompanying him were a British liaison officer; Ras Kassa, his former war minister; and a high dignitary of the Ethiopian church.

The Negus, exultant and determined, gazed down searchingly as the plane circled over the wooded hills of his former kingdom, seeking the cunningly concealed landing field prepared by his soldiers. Then the pilot swung the craft down through a narrow clearing, its wings clearing trees on either side by a bare ten feet as it came to rest.

A British staff major greeted the ex emperor and party and accompanied them on a short automobile journey to an Ethiopian encampment where dignitaries taking part in the welcoming ceremony included the former crown prince of Ethiopia.

A unit of tribal fighters, with British officers at their head, pa-

### All Officers Of Farm Credit Admn. Are Re-Elected

HOUSTON, Jan. 27 — All officers of the units of the Farm Credit Administration of Houston were re-elected by the Farm Credit Board of

rated and presented arms smartly as their old leader appeared.

Houston at their annual meeting held here Tuesday and Wednesday. During the session, the directors reviewed reports covering the 1940 operations of the Federal Land Bank of Houston, the Federal Intermediate Credit Bank of Houston, the Production Credit Corporation of Houston and the Houston Bank for Cooperatives, all of which reflected continued progress in the development of this cooperative credit system for agriculture.

### We Salute You---

## LAMB COUNTY ELECTRIC CO-OP.

—For bringing the blessing of electricity to hundreds of farmers in this territory.

We congratulate the members of the R. E. A. on such a fine program as the Rural Electrification development.

## VAUGHT'S DAIRY

Phone 277-J

## GREETINGS— FARMER FRIENDS! and REA MEMBERS

It is fine to know that the pioneer spirit of West Texas still exists today—

To these "Pioneers of Progress," the REA members, we congratulate you on such a fine program as the Rural Electrification Development.

## HIGGINBOTHAM-BARTLETT COMPANY



## MONEY--

If you have it, you want to protect it or invest it—  
If you haven't enough of it, you want to borrow—  
If you want to make it, capital, counsel and service are of prime importance.

Education, health and happiness are subsidized through electricity, and it is only through an educated people that America can continue its forward march.

Members of the R. E. A. we salute you and your progressive work

## FIRST NATIONAL BANK

Littlefield, Texas

### HAND IN HAND WITH PROGRESS!



The Rural Electrification Program is a great step forward in the development of this section, and in the comforts and facilities for the farm home.

The Continental Oil Company continues to take progressive steps for better service.



## G. R. SANDIDGE

Wholesale Distributor  
Continental Oil Company

## A CREDIT TO OUR SECTION

No longer are the rural districts isolated from the modern conveniences of cities. Rural Electrification is another step upward in the progressive ladder of the ever advancing rural communities.

## HAMMONS



### You Don't Have To Feel Like This

When You Come In Off A Trip

### GOOD TIRES ARE CHEAPER

Than Delays — Worry — Road Hazards — Backache — Exposure to Weather — and a Seriously Ruffled Disposition.

Why take chances on having these things happen to you? Come in and let us check your tires and if you should need new ones, we have the best there are at prices that suit your pocketbook.

Choose Your Needs From  
SEIBERLING and GATES TIRES

Car Washing and Lubrication That Gives You A New Driving Thrill!

WELCOME R. E. A. MEMBERS!  
We're proud of the outstanding achievements of your organization.

## SEWELL'S CONOCO STATION

L. R. Sowell, Owner and Manager  
Highway 7, Opposite Santa Fe Depot Phone 209

## Retail Stores Join Campaign



General R. E. Wood (left), Chairman of the Board of Sears Roebuck Company of Chicago, tells Keith Morgan (right), National Chairman of the Committee for the Celebration of the President's Birthday at New York Headquarters of the 1941 "Fight Infantile Paralysis" Campaign, that thousands of retail merchants and store executives are enlisting for the appeal for funds. General Wood has accepted chairmanship of the National Retail Committee of the campaign. General Wood's Committee will supervise the distribution, installation and collection of coin boxes in retail stores from January 13 to January 30. Coins deposited in these tiny boxes will comprise one of the big features of the campaign's "March of Dimes."

## LOCAL BOXERS COMPETE IN TOURNAMENTS AT TAHOKA AND PLAINVIEW

Several leather-slinging boys from Littlefield carried away honors at preliminary tournaments at Plainview and Tahoka last week. Wednesday night, January 22, the winners in the tournament were:

**BANTAMWEIGHT** — Curtis Leeburn, the 1940 district champion, won a close decision from W. D. McCarthy. Littlefield was the 1940 bantamweight king, but he had the edge in the best bout of the evening. McCarthy seemed to have the edge in the first two rounds, but Leeburn was strong in the third to win.

**MIDDLEWEIGHT** — Laverne Roach, new registerer, the only knock-out of the night, stopping Troy Tullia, in the second.

**HEAVYWEIGHT** — Buford Law, Littlefield, decided on a technical knockout over Heath, Hale Center, the 1939 district champion in this division.

**FLYWEIGHT** — Alvin McCarthy, Littlefield, evened the score for the McCarthy family by deciding Bud Thurman, also of Littlefield. McCarthy won from Roy Kress, in a semi-final bout in the evening.

**WELTERWEIGHT** — Steve Self, shaded Roy Belk, Running in the semi-finals. Belk decided Raymond Reed, Hale Center, and Self won from Chester Alexander, Plainview.

**MIDDLEWEIGHT** — Bernie Bogan, Quitaque, decided Wick Mason, one of Plainview's football players and boxing twins.

**LIGHT HEAVYWEIGHT** — Amos Parsons, Quitaque, won by default.

Tahoka's Golden Gloves preliminary tournament was concluded in what may properly be termed a blaze of glory Friday night when 18 pleasing bouts determined champions in eight divisions.

The champions won their titles like this:

Mitchell won a technical knock-out from Jesse Ramsey of Littlefield. Ramsey carried the fight in the first two rounds, registering two knockdowns in the second, one for a nine-count. Mitchell came back like a champion should, had Ramsey on the floor for a count of five just before Referee Leo Jackson stopped it.

Florence won a decision from Woody Culpepper of Littlefield. Like the college boy who doesn't let studying interfere with getting an education, these two didn't let boxing interfere with fighting. They stood toe to toe and just whaled away with out any attempt at defensive work. It was even in the first two rounds, but Florence pulled away in the third.

Lovin, after turning in a technical knockout over Red Lytle of Morton in a semi-final, won the final bout by default from John Taylor of Littlefield CCC.

McLaurin and Dale Odum of Lubbock, a couple of handsome high school football players, tangled in the finals in the welter division. McLaurin was the victor, but the decision was very thin.

**Proctor Shows Class**  
Bell won the lightweight title by forfeit from his fellow townsman, Roy Adams, who had registered a technical knockout over Sidney Keeton of Lubbock early in the night.

Hightower won the night's final bout from another classy red headed scrapper, Melvin Proctor of O'Donnell, with a technical knockout in the first. Before this fight, Proctor had entered the ring three times in his life and had won all three fights by knockouts. Earlier in the evening he had fought Buster Driver of Tahoka. In this fight, Proctor

## Sewing Circle



FORT DIX, N. J. . . . Private Harold Pickard has only been at Fort Dix four weeks but he is finding that there's more to army life than drill. Here he is sewing on a button for his bunkmate, Private Joseph Kagan.

pranced out of his corner, tossed a tentative left, then connected with a hard right that ended proceedings then and there.

Proctor had plenty of class in dishing out punishment, but showed lack of experience when Hightower began to toss the leather. With a few more fights under his belt Proctor will be troubling the best of the featherweights.

**McCarthy Beaten in Semi-Finals**  
Hightower had won a decision from Albert Mills of Littlefield in a semi-final match.

G. W. White, the home town favorite, won the bantamweight title, but he had plenty of trouble in doing it. In the final round, he gained a decision from P. Yenez, a rowdy Mexican lad from the Littlefield CCC. The decision was close, and White won it by superior boxing skill as opposed to the slugging power of Yenez.

Earlier in the night, White had eliminated W. D. McCarthy of Littlefield, the 1940 district bantamweight king. It was the same story in the finals, White's boxing ability gained the nod over the aggressiveness of the Littlefield lad.

In the flyweight finals, Wayne Townsend of Slaton won a very close verdict over Robert Warren of Tahoka after three rounds of straight leather slinging, the unscientific and interesting variety. Townsend had decided Sport Pendleton of T. Bar and Warren had eliminated Sonny Kyser of O'Donnell in the semi-finals.

Many of these winners and the losers, too, will enter the tournament her tonight and tomorrow night. They will also compete in the district gloves at Lubbock February 5, 6, and 7.

## South Sudan News

Mr. and Mrs. A. B. Wilkinson, and daughter, Rita, of Farwell, spent the day Sunday in the home of Mr. D. B. Matthews.

Mr. and Mrs. Ed Gaston left Tuesday morning for Hot Springs, N. M., where Mrs. Gaston will be under treatment of a doctor. They were accompanied by her sister, Mrs. Allie.

Miss Christine Bewley, who is employed by Swift & Co., has had the flu the past week.

Paul Matthews went to Amarillo the first of the week.

Mr. and Mrs. Ernest Gaston and family went to Ballinger Thursday and returned Sunday. They were accompanied by Miss Stella Ingle. They also visited in San Angelo.

Mr. and Mrs. A. B. McClure and Mrs. Frank Bagwell from Claude, Texas, spent the week end in the home of their father, D. B. Matthews.

Mr. and Mrs. Henry Meyers and son spent Sunday evening at the home of Mr. and Mrs. V. H. Bewley.

Bro Standler and family visited in the home of Mr. and Mrs. W. T. Fowler Sunday.

Miss Ernestine Gaston spent the week end at the home of Mr. and Mrs. J. A. Ingle.

Mr. and Mrs. Otto Workman and children spent Sunday in the home of her parents, Mr. and Mrs. W. T. Fowler.

Mrs. Dale K. Pepper and children spent the week end at her father's D. B. Matthews.

Miss Ernestine Gaston and Miss Stella Ingle visited school at Sudan Tuesday.

## Mrs. Harkey Reports Feature Style Show, Coast To Coast Hits

Mrs. Hattie Harkey, manager of Hattie's Shop, attended the Advance Spring Showing of the American Fashion Association and the National Fashion Exhibitors of America, which was held last week in Fort Worth and Dallas.

Mrs. Harkey said that the highlight of the week's entertainment for the merchants and buyers was the Breakfast Merchandising Clinic

## Betty Ann Hilliard Attends Presidential Inauguration Jan. 20

Miss Betty Ann Hilliard, daughter of Mr. and Mrs. J. S. Hilliard, received an official invitation from Matthew M. Neely, chairman of the committee of arrangements, to attend the ceremonies for the inauguration of President Franklin D. Roosevelt and Vice President Henry A. Wallace, which took place at the nation's capitol building in Washington, D. C., January 20.

She also received the honor of

and Fashion Show, held in the beautiful mural room of the Baker Hotel, Dallas.

V. R. Alley, general merchandise manager for Sanger Bros., spoke on "Vitals As Vitamins in Clothing."

The entire week offered an outstanding program and style show, an irresistible array of handsomely created fashions featuring style innovation with universal appeal, a true display of the season's outstanding Coast to Coast hits.

sitting on the platform during the inauguration, only four feet away from the president.

In the invitation were pictures of the president and vice president.

Betty Ann is a second year student at George Washington University, Washington, D. C., and she was the only student from the college to receive an invitation to the inauguration ceremonies.

In a letter she sent to her parents last week, she reported that it was very cold the morning of the ceremonies, and that an unusually large crowd witnessed the inauguration.

## "It Pays To Advertise" Says Automobile Dealer

"It pays to advertise," said I. T. Batson Tuesday in commenting on the splendid results he obtained from a recent advertisement in the Lamb County Leader.

Mr. Batson added: "After running one ad, I sold five cars right off."

The Batson Motor Co. are dealers for the Plymouth and Chrysler cars. Deliveries were made by this firm

to G. C. Pass, Plymouth four-door; J. F. Woody of northeast of town, a Plymouth coupe; E. E. Stagner of Amherst, a Chrysler coupe; Manrey Brantley Amherst, Plymouth two-door, and W. Bogart of Cotton Center, Chrysler Hollandier coupe.

The Lamb County Leader appreciates the kind remarks of Mr. Batson relative to the pulling power of Leader advertising, but modestly refrains from taking the entire credit for the five sales.

However, the management and personnel of the Leader always appreciate words of commendation—flowers for the living.

## Births Reported By Payne-Shotwell

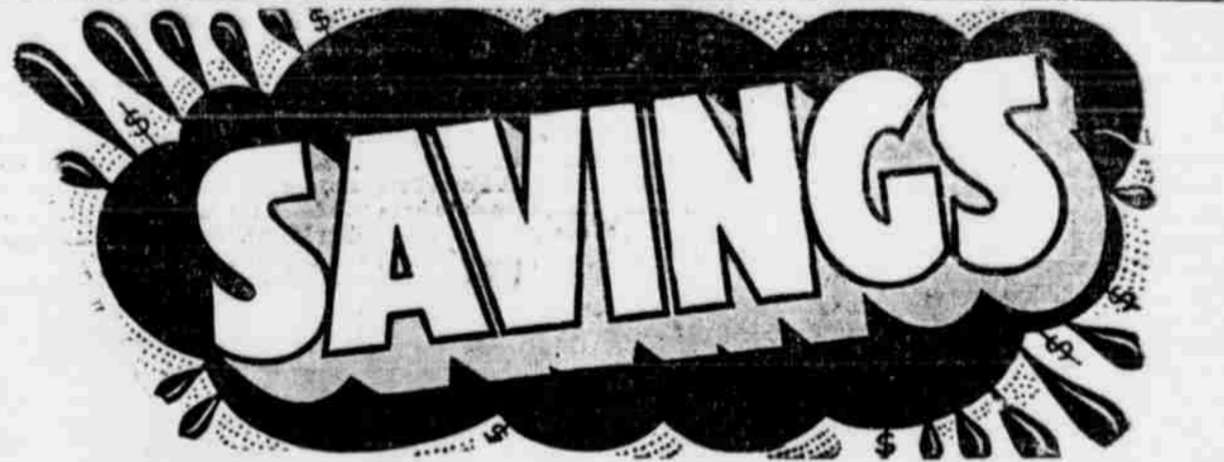
The following births are reported by the Payne-Shotwell Hospital.

To Mr. and Mrs. R. W. Wright, Amherst, a son, Tuesday, Jan. 23.

To Mr. and Mrs. Floyd Adams, Amherst, a son, Monday, Jan. 27.

To Mr. and Mrs. H. E. Cape, Littlefield, a daughter, Wednesday, Jan. 29.

Phone 27 for office supplies.



# WHEN YOU BUY AT ALEXANDER FOOD STORE

Next Door to Palace Theatre Littlefield

PHONE 202 WE DELIVER

Specials For Fri., Sat. and Mon.

SALAD DRESSING, Big Value, Qt. . . . . 12c  
PANCAKE FLOUR, Worth Brand, 20 oz. Pkg. . . . . 10c

No. 1 Reds 10 Lbs. SPUDS . . . . . 17c  
10 LB. BOX PRUNES . . . . . 55c  
2 CANS Potted Meat . . . 5c  
4 CANS Vienna Sausage, 19c

A SPECIAL INVITATION TO R.E.A. MEMBERS  
We are located next door to the Palace Theatre, where the R. E. A. annual meeting will be held Monday, and we extend a cordial invitation to R. E. A. Members and their families to visit our store. Come in! Make yourselves at home!

10 LB. BOX PEACHES . . \$1.05  
3 LB. CAN Snowdrift . . . 47c  
NO. 2 1/2 CAN HOMINY . . . . 7c  
THRIFT, GALLON SYRUP . . . . . 35c

COFFEE, Folgers, Pound . . . . . 23c  
BAKING POWDER, Clabber Girl, 25 oz. can . . . 17c

WE WANT YOUR EGGS  
And Always Pay Highest Market Prices

MEATS YOU CAN EAT  
BABY BEEF STEAK, Lb. . . 17 1/2c  
Salt Jowls, Lb. . . 10c  
PORK and BEEF, PURE MEAT Sausage, Lb. . . 10c  
FULL CREAM CHEESE, Lb. . . 19c

SELL YOUR CREAM HERE  
Best Possible Tests—Fair Dealing  
Our Cream Department is in charge of Ernest Russell, who buys for the Plains Co-operative.

FRUITS and VEGETABLES  
BUNCH VEGETABLES, Bunch . . . . . 3c  
CARROTS, FRESH ONIONS, TURNIPS and TOPS, BEETS, Etc.  
CELERY, . . . . . Stalk . . . . . 10c  
APPLES, Delicious, Nice Size, Dozen . . . . . 19c  
BANANAS, . . . . . Dozen . . . . . 8c

WELCOME  
R.E.A. MEMBERS  
will be looking for you at the  
PALACE  
CONFECTIONERY  
the Palace Theatre Lobby

B. W. LINDLEY HAS PURCHASED  
CANDIFF'S CAFE and is NOW IN CHARGE

DELICIOUS FOOD  
Is Served At All Times

We specialize in Plate Lunches and Steaks — and serve everything good to eat, including sandwiches, short orders.

Try one of our special T-Bones

LINDLEY'S COFFEE SHOP  
Formerly Candiff's Cafe  
B. W. Lindley, Owner

# GREAT INCREASE IN INSURANCE REPORTED BY SOUTHWESTERN LIFE

A gain of \$20,364,403 in insurance in force for the year 1940, giving the company a total of \$381,132,934 insurance in force, is reported in the 38th annual report of Southwestern Life policy owners, C. F. O'Donnell, president, announced today. This is the largest gain in insurance in force the company has had since the beginning of the depression ten years ago.

The figures are contained in a statement just received here by Arthur Mueller, local representative.

Reflecting an unusual growth during the past ten years, the company's insurance in force has increased more than 36 percent during that time while assets were increasing more than 105 per cent.

The company's 38th annual financial statement reflects continued progress of this Texas institution. The company continued its enviable record of never having had a default of interest or principal on any bond owned by it. Its assets increased more than \$6,000,000 during 1940, total assets of Southwestern Life being reported at \$73,415,129.77.

The 38th annual report shows that the company carries no real estate in excess of current market value, and that it continued to earn a rate of interest during 1940 in excess of 4 per cent.

The company confines its business to the state of Texas and aside from its investments in United States government securities, practically all of its investments are in Texas.

The 38th annual report shows that since 1903 Southwestern Life has paid out to policyowners and beneficiaries a total of \$71,056,985.87.

An intensive agency training program begun by the company the first of last year kept pace with the company's growth Mr. O'Donnell said. This program, he said, has as its objective the development of agents, thoroughly equipped to give the highest possible degree of public service.

## Morton Indians Win In Sudan Tourney

SUDAN, Jan. 23. (Special)—Sudan's invitation high school basketball tournament opened tonight with four games played. In the feature contest, the Morton Indians, champions of the recent Idalou tournament, edged out Muleshoe, 27 to 26.

In the only girls game played tonight, Anton required an overtime period to defeat Bula 35 to 33.

Oklahoma Lane, coached by Robert Percival, former Texas Tech star, downed the Bula boys, 37-21. In the other game, Anton swamped Littlefield 30-12. Morton girls forfeited to Muleshoe.

Patented during 1940 was a luminous glass building brick which lights up when a high frequency electric current passes through it.

Phone 27 for office supplies.

## COUGHS

Caused By Colds or Bronchial Irritations

Pour yourself a teaspoon of Buckley's CANADIOL Mixture — let it lie on your tongue a moment then swallow slowly. Feel its quick powerful effective action spread through throat, head and bronchial tubes. Acts like a flash. Right away it starts to loosen thick, choking phlegm and open up clogged bronchial tubes. Over 10 million bottles sold in cold wintry Canada. A single sip will tell you why. Spend 45 cents today at any drug store for a bottle of Buckley's CANADIOL Mixture.

MADDEN DRUG STORE

Worthwhile FEBRUARY SAVINGS

THAT ARE REAL BARGAINS

- USED PIANOS
- CHIFFIROBES
- DRESSERS
- SEWING MACHINES
- BEDROOM SUITES
- MATTRESSES
- GUITARS
- DISHS

Also Magazines Exchanged, and Sewing Machines For Rent

ROBISON'S SECOND HAND STORE & TRADING POST Next door to Hart-Thaxton Littlefield



ARTHUR MUELLER Local representative of Southwestern Life.

## Creomulsion Praises Results Of Advertising Campaign In Leader

In a letter received Saturday from the Creomulsion Company, makers of Creomulsion a cough remedy, the following, which may be of interest to readers of this newspaper appeared:

"Consistent advertising in the Lamb County Leader has greatly increased the sale of our product, Creomulsion in your trading area.

"Creomulsion, a superior prescription for stubborn coughs, chest colds and bronchitis is especially beneficial in the relief of coughs that fol-

## Plans Underway To Form Co-operative Assn. At Anton

Efforts are being made at Anton to form a cooperative association to be known as the Cooperative Marketing Association of Anton.

A large number of farmers and business men attended a mass meeting at the Anton theatre Tuesday night of last week, at which plans for the organization were set out by Mr. Merriman of Lubbock who is an expert in that field. Some \$2,000 of the necessary stock was subscribed then, and a committee is out soliciting other members now.

This is perhaps the most far reaching matter ever sponsored in Anton. A canning plant potato curing plants and an organization to finance vegetable marketing are among the aims of the organization.

Palm groves in French Equatorial Africa now contains over 100,000,000 trees.

low influenza.

"Recommended by thousands of doctors and druggists from coast to coast Creomulsion is sold and guaranteed by all drug stores."

## Beware Coughs from common colds That Hang On

Creomulsion relieves promptly because it goes right to the seat of the trouble to help loosen and expel germ laden phlegm, and aid nature to soothe and heal raw, tender inflamed bronchial mucous membranes. Tell your druggist to sell you a bottle of Creomulsion with the understanding you must like the way it quickly allays the cough or you are to have your money back.

**CREOMULSION** For Coughs, Chest Colds, Bronchitis

## Want a Work-Saving Kitchen?

You can have an IDEAL Kitchen (materials and labor) for as little as \$3.52 PER MO.

Installed to Cameron Value-Giving Specifications FHA Credit Requirements

**CAMERON STORE**

See Your Nearest Don't Deny Yourself the Efficiency of an IDEAL Kitchen

NOW it's easy to own the Kitchen of your dreams! Cameron's IDEAL step-saving Kitchen cabinets now are reduced in price. These Kitchen units can be tailor-fitted to your kitchen space, reduce kitchen work to a minimum—make cooking a pleasure. Finished in smart, spirit-lifting colors. Makes your kitchen a show place. Remember, your kitchen is your workshop—make it efficient and a work-saver.

## SHAMROCK GAS and OILS

Offer You

THE BEST OF SERVICE!  
THE BEST OF PRODUCTS!

We Sell---

WHOLESALE and RETAIL

## MORRIS and SON

### DEPENDABILITY



WITH a mysterious sense far beyond the powers of the white man, the Indian tracker reads the true message in every bent twig and blade of grass. He can be depended on to find that which is wanted.

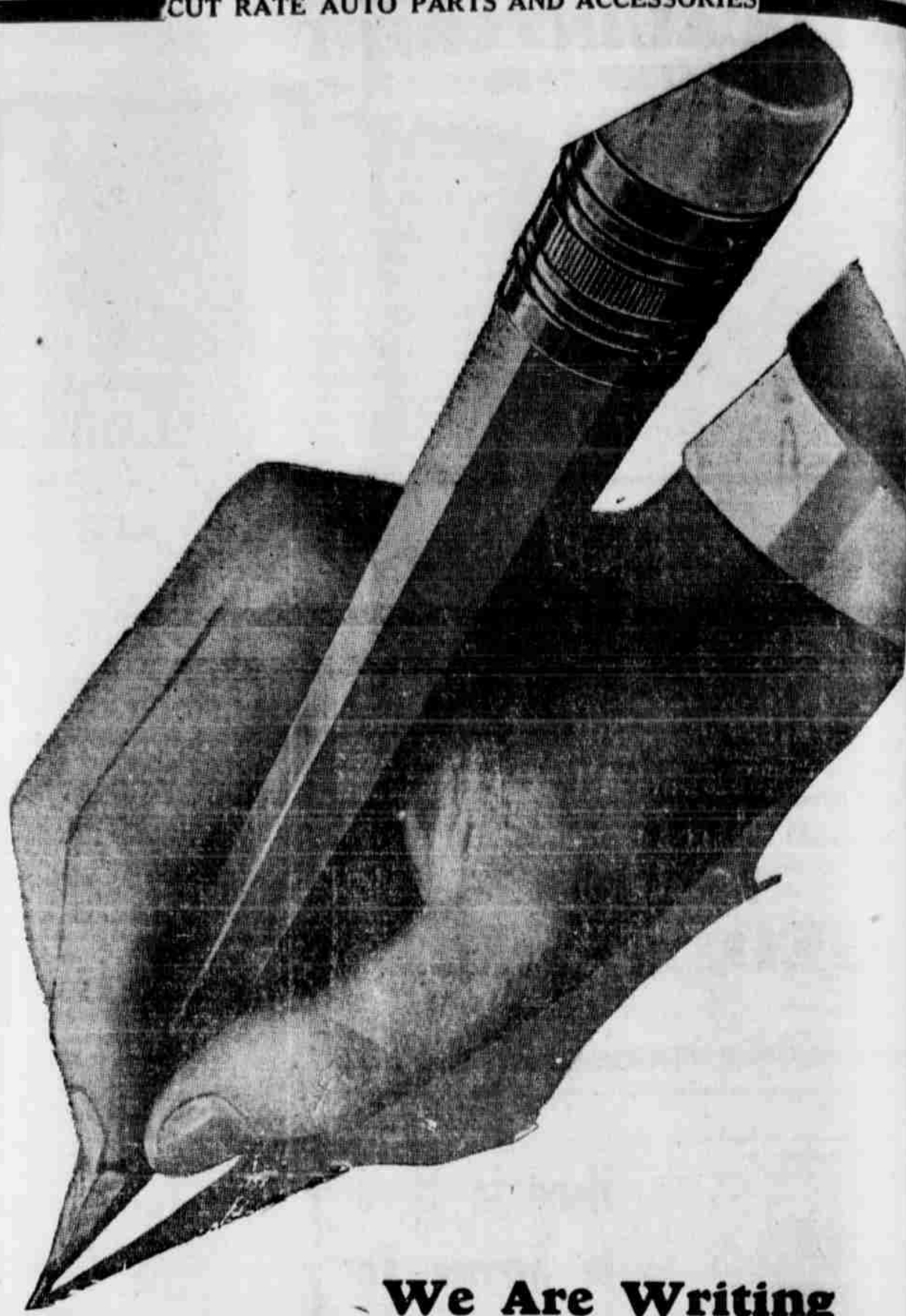
We observe the spirit, as well as the letter of professional ethics. Sincerity of purpose and the desire to be of practical dependability motivates our staff at all times.

**Hart - Thaxton**  
Ambulance Service  
FUNERAL DIRECTORS - EMBALMERS  
PHONES 77 and 259 - LITTLEFIELD, TEXAS

CONSERVATION IN TIME OF NEED

CUT RATE AUTO PARTS AND ACCESSORIES

CUT RATE AUTO PARTS AND ACCESSORIES



## We Are Writing A NEW PAGE

### In Our Progress of Service

With the purpose in mind of rendering an enlarged and improved service to our constantly increasing number of customers, we have completely remodeled and modernized the interior of our store.

These improvements have greatly increased our facilities, giving better display, increased space, and more storage for merchandise.

In carrying out the improvement program, we gave particular attention to our wholesale business, and we are now better equipped than ever before to meet the increased demands on this branch of our trade.

## SEAT COVERS

For 1941 Cars and Other Models

## MOHAWK BATTERIES

BARREL PUMPS  
GREASE GUNS  
FUNNELS

## Wrenches

A Good Assortment

INSERTS  
FAN BELTS  
BRAKE LINING

## BURD RINGS

For Cars and Tractors

# McCormick Bros.

Cut Rate Auto Parts

Main St. Littlefield

WHOLESALE and RETAIL  
Phone 157

CUT RATE AUTO PARTS AND ACCESSORIES

## Under THE DOME At Austin

By GORDON K. SHEARER  
United Press Staff Correspondent

AUSTIN, Tex., Jan 27. —(UP)—Several trends, in addition to the controversial one of including social purity allotments in the Board of Control budget, were noted in Gov. Lee O'Daniel's recommendations to the legislature for 1941-43. These indications included:

- (1) More consideration for the state's large negro population.
- (2) Rapid expansion of state colleges (although the budget did not cover building needs of the state university and its affiliates of Texas A. & M. College).
- (3) Improved hospital, recreational and fireproofing facilities at the Eleemosynary Institutions.

Several new state buildings for exclusive use of negroes were recommended. One is a \$150,000 classroom-library building at Prairie View Normal College. A separate negro hospital unit at Rusk State Hospital was recommended, as were 3 buildings costing \$110,000 at the State Negro Orphanage, Gilmer.

### 'Build-Up' Good News For Suffering Women

Much of women's periodic distress may be unnecessary! Many who suffer from headaches, nervousness, cramp-like pain, other symptoms of functional dysmenorrhea due to malnutrition are helped by CARDUI. Main way it helps relieve periodic distress is by increasing appetite and flow of gastric juice. Thus it often aids digestion; helps build strength, energy, resistance to periodic disturbances. Others find help for periodic discomfort this way: Start a few days before and take CARDUI until "the time" has passed. Women have used CARDUI more than 50 years.

gram which O'Daniel recommended calls for an outlay of \$3,577,618 in two years. Vocational and fine arts facilities predominate, and O'Daniel pointed out that appropriations for buildings were eliminated two years ago "because we did not have the money to pay for them".

The state has no money, except by further draining an already deficient general fund, with which to erect new buildings in the future. But O'Daniel expects the 47th legislature to relieve this condition by levying new taxes.

The Governor noted "tremendous growth in attendance" at state colleges and said additional buildings are imperative. He also recommended salary raises for the teachers, "which I think are necessary if we are to maintain in this state institutions of higher learning comparable with those of other states."

Buildings and improvements at Eleemosynary institutions, which the governor approved, would cost \$4,664,350, of which the Terrell and Big Spring State Hospitals would get the major shares.

Fireproofing was included for many of the older buildings at Austin State School, Abilene State Hospital, Austin State Hospital, San Antonio State Hospital, the Terrell Hospital, Austin Confederate Women's Home, and the colored youths Deaf, Dumb and Blind Institute at Austin.

Special outlays for recreational facilities were recommended for Big Spring Hospital and Gatesville Training School for boys.

Selections of a Poet-Laureate for Texas is one of the functions that the Texas Legislature carries on bi-annually. This session of the legislature will follow the rule. One of the earliest resolutions adopted by the House and Senate calls for making such a choice.

Gov. W. Lee O'Daniel, author of "Beautiful, Beautiful Texas," and many other verses and songs, is ex officio chairman of the committee.

### Epidemic of Cold Symptoms

666 Liquid or 666 Tablets with 666 Salve or 666 Nose Drops generally relieves cold symptoms the first day.

tee to name the Poet-Laureate. Three House members and three Senators will assist in the choice.

Present Poet-Laureate is Mrs. Lexie Dean Roberts of Rising Star. Mrs. Roberts has made a tour of many states reading her verses, and only last month gave a recital in New York.

Mrs. Coke R. Stevenson, attractive wife of the Lieutenant Governor, chuckles about one of her husband's favorite expressions: "We'll throw a stick of wood on the fire".

The Stevenson fireplace, at their ranch home near Junction, is nine feet wide and it is a two-man job to put a "stick" of that length into the fireplace.

The Stevensons usually go home for weekends, for the Lieutenant governor actively directs the affairs of his ranch, even making frequent range-riding trips on horseback.

"We live like common folks", said Mrs. Stevenson. "Coke nearly always goes to bed about nine o'clock. We often have friends as dinner guests at the ranch, but they all know his bedtime and excuse themselves about nine."

Resolutions to name young children of legislators as "Mascots", "Sweethearts" or "Queens" and to place their pictures in the permanent gallery of the House of Representatives are not uncommon. There were 57 children included in the official portrait of the 46th legislature.

But Rep. John L. Crosthwait of Dallas put a unique twist to the resolution according that honor to Alicia Ann Reed, pretty young daughter of Rep. W. O. Reed of Dallas. Crosthwait put his words into poetry.

The rhyme said in part: "It's therefore resolved by all present here That Alicia Ann Reed, who is a dear, Be named our sweetheart number one And then we'll feel our work is done."

We'd like to have her picture, too, Upon the block as others do Giving her the number one place Next to the Queens, if there is space".

### Jim Foust Granted Letter In Football

CANYON, Jan. 28 (Special to the Leader). Jim Foust of Littlefield, a senior, has been granted a letter in football at West Texas State College, contingent upon maintaining a satisfactory scholastic standing during the first semester.

This honor was announced at the annual banquet last week. The Buffalo squad received a big silver trophy emblematic of the Alamo conference football championship in 1940.

Foust traveled and played with the Buffaloes last season in games as far away as Fresno, California. Losing only eight of 27 lettermen next season, the West Texas State eleven will be a powerful outfit next season, with a schedule covering thousands of miles.

## Two Hundred Members Buick Organization Meet At Flint For Sales Meeting January 16

FLINT, Mich., Jan 27—More than 200 members of the Buick regional and zone sales organization from throughout the country assembled in Flint Thursday Jan 16 for a meeting called by W. F. Hufstader, General Sales Manager, to launch spring sales activity of this division of General Motors Corporation.

Hewitt Buick Company are local dealers for the Buick automobile.

With first quarter operations scheduled at high levels and market trends indicating sustained new car buying in 1941, Mr. Hufstader announced plans for an aggressive sales program during the next four months.

Housewives of Venezuela are demanding American electric refrigerators.

## 65 Percent Texas Wheat Under Loan

Texas wheat producers placed 65 percent of the wheat they produced in 1940 under the government loan, receiving an average of slightly more than 64 cents a bushel with protein premiums taken into account. Of the 29,355,000 bushels of wheat produced in the state last year, 19,29,000 were placed under the Commodity Credit Corporation loan, Charlie L. Thomas, state AAA committeemn and Pampa wheat grower, announced. The total amount loaned in the state was \$13,955,523.

## THAT GOOD GOLDEN KRUST LOAF!

White — Whole Wheat — Rye — Potato

We Also Specialize In

Cakes, Cookies, Doughnuts and Pastries

and have at all times a nice selection fresh from the oven. Try our delicious cream puffs . . . They sure are good.

## GRAHAM'S BAKERY

West Fourth St., Opposite Hewitt Chevrolet Co., Littlefield.

## Old Fashioned

# Big Values

At McCormick Bros. On Highway 7



## COSDEN MOTOR OIL

100% Paraffin Base Gallon

50c In Case Lots

## Tractor Fuel Transmission Grease

We Guarantee This Fuel to Burn Satisfactorily in Your Oil Heaters In Barrel Lots Gallon

# 5c

IN YOUR OWN CONTAINER GALLON

50c

## Pressure Gun Grease

25 Ld. PAIL \$1 69

## KEROSENE

Sold On A Money Back Guarantee In Barrel Lots Gallon

# 5 1c 5 2

## PLENTY OF GOOD USED TIRES and TUBES

# McCORMICK BROS.

Petroleum Products Highway 7, Littlefield

Wholesale and Retail

Phone 153

OPEN 24 HOURS DAILY --- WE NEVER CLOSE

### FOR A SHORT TIME

#### FORT WORTH STAR-TELEGRAM

Daily and Sunday and LAMB COUNTY LEADER

Both for 10 Months

\$6.20

#### FORT WORTH STAR-TELEGRAM

Daily Without Sunday and LAMB COUNTY LEADER

Both for 10 Months

\$5.20

These rates good only in Littlefield and trade territory.

Bring or mail your subscription to . . .

LAMB COUNTY LEADER

## Tractor Parts and Supplies

A Complete Line Of Ignition Parts

MAGNETOS --- SLEEVES  
VALVES and GUIDES  
BEARINGS --- BRAKE LINING

Genuine A. C. Spark Plugs Each **38c**

## GARLAND-WHITE

MOTOR SUPPLY and SERVICE  
Littlefield Phone 138

# Clubs - Women's Interest - Social Events

## Parents Of Mrs. Rowe And Mrs. Carlisle To Celebrate Golden Wedding Feb. 8

Mr. and Mrs. J. H. Carpenter, parents of Mrs. E. S. Rowe and Mrs. Wayne Carlisle of Littlefield, will celebrate their Golden Wedding anniversary Saturday, February 8, at their home 12 miles south of Clyde, with open house, and friends and relatives are being invited to attend.

The couple, who are both 73 years young, have lived in Callahan county the past 28 years. Mr. Carpenter was precinct commissioner six years, and county judge 12 years. During that time, they have continued to operate a modern farm, which is located 17 miles southeast of Abilene.

They were married Feb. 8, 1891 at Cuthbert, in Mitchell county, by Rev. J. C. Burkett, Baptist minister, who read a double wedding ceremony. Mrs. Carpenter's brother, John Eiland, was also married at this time.

Open house will be held at the beautiful home of Mr. and Mrs. Carpenter from two o'clock to five o'clock Saturday afternoon. An informal program has been planned and their son and daughter, Frank Carpenter of Clyde, and Mrs. L. E. Floyd of Odessa will furnish music for the occasion.

Besides the two daughters residing here, Mr. and Mrs. Carpenter have four other children, Mrs. John Leving of Clyde; Ed Carpenter of Big Spring, Frank Carpenter of Clyde and Mrs. L. E. Floyd of Odessa. They also have 18 grandchildren.

All of their children plan to attend the celebration.

## Miss Pauline Tucker And Emmett Grant Wed At Clovis, N. M.

Announcement was made this week of the marriage of Miss Pauline Tucker, daughter of Mr. and Mrs. J. R. Tucker, and Emmett Grant, of Anton which took place at Clovis, N. M. July 7, 1940. Rev. H. C. Hoy, pastor of the First Methodist church at Clovis, performed the ceremony.

Mrs. Grant graduated from Anton high school in 1935 and was a member of the basketball team.

Mr. Grant was a senior of the class of '37 and was one of Anton's star football and basketball players.

## Mrs. Roy Wade Is Honoree At Coffee-Shower Friday

Mrs. Alph Wright, Mrs. C. C. Weigle and Mrs. Henry Banks were joint hostesses at a delightful coffee and shower at the home of Mr. and Mrs. Wright on Phelps Avenue Friday morning complimenting Mrs. Roy Wade.

A lace cloth covered the coffee table. A reflector bearing a large bowl of beautiful pink sweet peas formed the centerpiece. Mrs. Henry Banks presided over the coffee service, and was assisted in the serving by Mrs. Wright and Mrs. Weigle.

Bowls of sweet peas made the entertaining rooms more inviting and carried out the color scheme of blue and pink chosen for the party.

The program included a tap number by Jackie Farr; reading "Whistles" by Madelyn Wade; and a reading by Charlene Weigle, who presented a portion of the gifts in an unique way to the honoree. A contest on advertising, directed by Mrs. Wright was also enjoyed in which the prize was won by Mrs. Wm. N. Orr who in turn presented it to the honoree.

The balance of the gifts were presented by other members of the house party.

Those attending were: Mesdames Wm. N. Orr, Bill Aldridge, Newell Kirk, C. R. Heard, H. C. Martin, A. C. Harrison, Carl Arnold, Paul Pharris, Van Clark, Dan Bryan, Alton Hauk, O. L. Hollingsworth, E. G. Alexander, L. R. Rogers, Thomas Lowe, Arbie Joplin, Arthur Mueller, W. D. T. Storey, Warren Rutledge, Herbert Dunn, John Blair, Ellis Whitaker, L. K. Whitaker, Oren Kirk, H. N. Banks, Mrs. Jack Farr and daughter, Jackie, and Charlene Weigle.

Sending gifts, but unable to be present were: Mesdames Lester Walters, Fred Gerlach, Ewing Thaxton, Jess Elms, Maude Street, L. B. Stone, W. J. Aldridge, Vernie V. Wright, H. C. Pumphrey, M. D. Welborn, Norman Renfro, J. E.

He is now employed at Amarillo where they expect to make their home.

## Number Of Births Reported For Week

Births reported by the Littlefield Hospital during the past week are: A daughter, Mildred Ellen, was born to Mr. and Mrs. B. B. Teague of Rt. 2, Littlefield, at the hospital Tuesday, Jan. 21, weighing nine pounds, twelve ounces.

A son born to Mr. and Mrs. B. Butler of Littlefield at the hospital Friday, Jan. 24, weighing six pounds ten ounces.

A daughter, Monia LaWann, weighing eight pounds, one ounce, born to Mr. and Mrs. T. M. Thurman Tuesday, Jan. 21.

Mr. and Mrs. L. L. (Fly) Thornton are the proud parents of a daughter, weighing six pounds, 8 ounces, born Saturday morning, Jan. 25 at the Littlefield Hospital.

Brannen, E. L. Winston, D. W. Holliday, and Mrs. K. W. Wells of Anton, and Misses Naomi and Louise Whitaker. A gift was also sent by the Rebekah Lodge.

## FASHION for today BY PATRICIA DOW



Blouse-Pinafore

Pattern 8815—In a season of pinafore and blouse styles this smart little pattern stands right at the head of its class, and your own school-girl daughter will adore it!

The pinafore part of No. 8815 flares so beautifully, is so flatteringly small at the waist (older girls, especially, very much admire that!) and has such a satisfyingly huge patch pocket.

It buttons down the back, flaunting the added attraction of a big sash bow! It's particularly smart in wool jersey, flannel, wool crepe or velveteen.

And to go with it, make several tailored blouses like this, of linen, challis, flat crepe or batiste. Thus your daughter will have sufficient variety to make her happy and keep her smart for the rest of the coming school season.

Pattern No. 8815 is designed for sizes 6, 8, 10 and 12 years. Size 8 requires 1 5/8 yards of 54 inch material for pinafore jumper and 1 3/8 yards of 36 inch material for blouse.

Form for ordering patterns: Paper \_\_\_\_\_, Town \_\_\_\_\_, State \_\_\_\_\_, Send 16 cents in coin (for each pattern desired) together with your NAME, ADDRESS, PATTERN NUMBER and SIZE, Patricia Dow Patterns, 806 W. 17th St., New York, N. Y.

MEMORANDUM—Be sure to fill in the full name of your newspaper, Town and State in the box above when ordering patterns.

## Miss Fashion Future



NEW YORK, N. Y. . . . The title of "Miss Fashion Future" was won by Miss Caldwell at a recent fashion show in New York. American modistes have taken the lead in fashioning garments for the world since the fall of Paris.

## O. E. S. Meet At Barnett Home In All Day Sewing

Members of the local chapter of the Order of Eastern Star met at the home of Mr. and Mrs. J. H. Barnett Tuesday, in an all day sewing, when curtains for the lodge hall were made.

Mrs. W. G. Street was chairman of the committee on buying the material, and was assisted by several other members.

A covered dish luncheon was also enjoyed at the Barnett home.

## Mr. and Mrs. Hopping Entertain Members Eidelweiss Club

Complimenting members of the Eidelweiss Dinner Club, Mr. and Mrs. Sid Hopping entertained the group at a dinner party Friday evening.

Beautiful red sweet peas were featured in the decorations of the home.

A two course dinner was served on the bridge tables, following which bridge provided the diversion for the balance of the evening.

Enjoying the hospitality of Mr. and Mrs. Hopping were: Mr. and Mrs. Pat Boone, Mr. and Mrs. Bob Lewis, Mr. and Mrs. T. Wade Patter, Mr. and Mrs. J. H. Barnett, and Mr. and Mrs. Bill Pass.

Scoring high in the games were Mr and Mrs. Lewis.

## Friendship Class Enjoy Luncheon At Coffman Home

Mrs. Floyd Coffman and Mrs. O. K. Woodall were hostesses to members of the Friendship Class of the First Baptist Sunday School, of which Mrs. Pat Boone is teacher, Thursday, at a luncheon meeting in the Coffman home in the Duggan addition.

The theme of the program was "Prayer" and was led by Mrs. Boone.

Luncheon was served at foursome tables, and the home was made more inviting by bowls of beautiful snapdragons, attractively arranged about the home.

Those present were: Mesdames Roy Shahan, Pat Boone, Bill Weachke, Alfred Dennagin, Emma Cornett, Roy Byers, V. S. Cassel, C. O. Griffin, Pryor Hammons, J. M. Stokes, Jones and the hostesses Mrs. Coffman and Mrs. Woodall.

Phone 27 for office supplies.

## WELCOME R. E. A. Members

We congratulate you on your progressiveness.



## BEAUTY.

—At Your Finger Tips Reach out your beautifully manicured nails and get your share of success, romance and happiness.

## MARY EDITH'S BEAUTY SHOP

Across from Crystal Ice Co. Littlefield

## "Housewarming Is Delightful Surprise At Orr Home

Dr. and Mrs. Wm. N. Orr were delightfully surprised Friday evening when a group of friends gathered at the Orr home to celebrate with them their removal into their new and beautiful home in the Duggan addition.

Sponsors of the affair were Mrs. Jack Farr, Mrs. Thos. B. Duke and Mrs. Hugo Kinkler, who were responsible for the tasty refreshments served at the Orr home during the evening.

A number of friends met at the Kinkler home, where they were joined by others enroute, and who all in a body called at the Orr residence about 8 o'clock Friday evening.

Beautiful and useful gifts presented to Dr. and Mrs. Orr by their group of friends were two ornamental tables, and a set of three table lamps with crystal bases.

"Forty-two" was enjoyed during the evening, which was interspersed with piano numbers, rendered by Mrs. Ira E. Woods and A. B. Hunt. Present for this happy occasion were:

Dr. and Mrs. Orr and children; Dr. and Mrs. Ira Wood, Mr. and Mrs. A. B. Hunt, Dr and Mrs. R. E. Hunt, Mr. and Mrs. Alph Wright,

Mr. and Mrs. Floyd Coffman, Mrs. Carroll Blacklock, Mrs. Hugo Kinkler, Mr. and Mrs. O. K. Woodall, Mr. and Mrs. Jack Farr, and Mr. and Mrs. D. Ratliff.

Others, whose names appeared on the gifts presented, but who were unable to be present were: Dr. and Mrs. Thos. B. Duke, Dr. and Mrs. J. R. Coen, Mr. and Mrs. R. Phillips, Mrs. Leon Stansell, Miss Ruby Carrel Neely.

## Mrs. Jack Henry Hostess Thursday Luncheon Club

As a courtesy to members of the Thursday Luncheon Club, Mrs. Jack Henry entertained the group this past week end.

A delicious luncheon was served the club members at the Littlefield Hotel following which bridge was enjoyed at the Henry residence.

Scoring high in the games were Mrs. Sid Hopping and Mrs. Wm. Rumback.

The guest list included: Mesdames Earl Hopping, Sid Hopping, Roy E. Hunt, A. B. Hunt, Bill Pass, Stanley Doss, Wm. Rumback and Dr. woody.

In A Hurry?  
Call 14  
For Free Delivery

R.E.A. Members  
We extend a cordial invitation to our many friends and customers who are members of the Lamb County Electric Co-operative to visit our store while you are in town Monday at the annual membership meeting.

It is convenient to be able to call for sandwiches and fountain drinks, and have them delivered to you. It is a pleasure to render this service.

## STOKES DRUG

The *Renall* Store  
PHONE 14 "In Business for Your Health."

We Appreciate Our Farmer Friends And---  
We Extend You A Cordial Invitation To Littlefield For

The Annual R. E. A. Meeting  
BUY PHILLIPS "66" GAS and OILS For Your Tractor, Car, Irrigation Well

## W. E. HEATHMAN

Wholesale Agent for Phillips "66" Oil Company

THERE'S NO DELAY!

A Vote of Thanks To The Lamb County Electric Co operative

You have brought hundreds of Lamb County farm families the conveniences and comforts of electricity.

WE JOIN IN CONGRATULATIONS BEING EXTENDED TO THE LAMB COUNTY ELECTRIC COOPERATIVE ON THE SPLENDID PROGRAM OF FARM ELECTRIFICATION BEING CARRIED OUT.

## KEITHLEY & CO.

INSURANCE

I'll be right back  
Just learned I can modernize my lighting with easy-on-the-eyes, glareless fixtures for only 45c down and \$1.00 per month - up to eight months to pay for a complete lighting change!

Close-up of a smart lady's door

THE LIGHTIER: Gives both direct and indirect light. Regular price \$2.45. Special at \$1.75.

THE ELECTROLER: Indirect light with plastic diffusion bowl. Regular price \$2.95. NOW ONLY \$1.95.

THE VISIONAID: Metal indirect fixture, complete with Mazda Silver-Bowl globe. Regularly \$2.50. NOW \$2.95.

THE ADAPTLER: This adapter a bargain at regular \$4.45 price. NOW on sale at \$3.45.

Texas-New Mexico Utilities Company



# OF LOCAL INTEREST

Mrs. L. E. Floyd and Mrs. Nix of Odessa visited Friday night at the home of Mrs. Floyd's sisters, Mrs. E. S. Rowe and Mrs. Wayne Carlisle.

Mr. and Mrs. Dick Johnson of Hobart, Okla., visited Mr. and Mrs. R. Hendricks, Mr. and Mrs. P. Walker, John Porcher and other friends here last week end. Mr. Johnson was formerly manager of the local Higginbotham-Bartlett Co. and Mrs. Murice McFarland of Nashville, Ark., and Mrs. McFarland's sister, Miss Margaret Garner of Jackboro, visited his parents Mr. and Mrs. W. H. McFarland last week end. Bro. McFarland is the

former pastor of the Church of Christ on LFD Drive here.

Mr. and Mrs. Cecil Courtney and son of Brownfield visited last week end in the home of Mr. and Mrs. A. W. Ray.

Mrs. W. E. Walkup and daughter, Caroline, of Lubbock, visited in the home of Mr. and Mrs. A. D. Seth Friday.

Clyde Hilbun had his tonsils removed, and underwent an operation on his sinus at the West Texas Hospital, Lubbock, Friday. Mrs. Hilbun accompanied her husband to Lubbock, where they both remained until Monday. Mr. Hilbun is getting along nicely.

### Newfoundland Bound



NEW YORK, N. Y. . . . United States Army men, specially equipped for cold weather conditions, have their equipment inspected on board the S. S. Edmund B. Alexander upon sailing for new army bases in Newfoundland. The Alexander is the old S. S. America which was used as a troop transport in the days of 1917.

### "Parents Night" Is Observed By Cubs

"Parents Night" was observed by the local Cub organization at the monthly meeting of the four dens Friday evening at the Methodist church.

Dr. M. V. Cobb, Cubmaster, presided over a brief business session, following which the four dens put on a stunt in the form of a negro minstrel.

The program also included Southern songs by the assembly, accompanied at the piano by Mrs. Jones. The attendance banner was awarded to Den No. 3.

A large number of Cubs and their parents were present.

### New Officers Elected For Hart Camp Home Demonstration Club

Mrs. C. P. Montgomery was elected president of the Hart Camp Home Demonstration Club at the regular meeting Tuesday afternoon January 21. The meeting was held at the club room.

Other officers elected were: Mrs. Bill Lynch, vice president; Mrs. M. T. Hukill, council delegate; Mrs. C. Parkey, secretary, and Mrs. Charles King, reporter.

The next meeting will be held at

the home of Mrs. Charles King at 2:30 Tuesday afternoon, February 2. At that time, Miss Beatrice McCurdy, Lamb county home demonstration agent, will give a demonstration on "Less Tender Cuts and Their Preparation."

Members present at the last meeting were: Mesdames C. P. Montgomery, Bill Lynch, L. R. Buck, U. P. Neimast, Eb Dreadin, H. V. Lynch, and Charles King, and Miss Ethel Warren.

### Mrs. L. A. Daniel Hostess Amherst Wednesday Club

Mrs. L. A. Daniel of Amherst entertained the Wednesday afternoon Bridge Club at her home Wednesday afternoon, January 22.

In the contract games Mrs. C. A. Duffy received the slam prize while Mrs. O. G. Wagner received high score award and Mrs. E. B. Luce second high. Mrs. L. Y. Nix was lucky at bingo.

Mrs. Daniel was assisted in entertaining by her daughter, Mrs. Roy McCrory.

Delicious refreshments were served to Mesdames E. H. Acker, Don Boyles, C. A. Duffy, Lester LaGrange, L. Y. Nix, E. E. Stagner, O. G. Wagner, Rogers Willett, Bill Bingham, Aubrey Loyd of Amherst and Mrs. E. B. Luce, of Littlefield.

Phone 27 for office supplies.

## We Have Faith

Faith in Littlefield, Lamb county and the surrounding territory, and we realize that the great project of rural electrification has brought pleasure and comfort to many of our rural homes.

We are glad to have "done our bit" by doing the wiring on many of the farms and homes. We appreciate our farmer friends.



## GEO. H. HILL

Phone 219-W ELECTRICIAN Littlefield

## Hand In Hand In Service To The Farmers



As a group working for the welfare and improvement of our community, it gives us much pleasure to know that the many farmers are enjoying the comforts from the Rural Electrification Program. It has, indeed, made our community a better place to live in.

## We, Too, Are Doing Our Part

Farmers and others have worked hard to bring about this great advancement and modernization of the rural homes of this community. This project stimulates a new order of things in the minds of the people; it makes for a higher conception of advancement, and sets a goal for other rural areas. We take pride, as a farmers co-operative, in the fact that we have helped to build, and pledge our support to every upward effort of the future era.

## Littlefield Farmers Coop Gin And Frozen Food Plant

Earl Hobbs, Manager

## TIME MARCHES ON —and Lamb County and the Great South Plains continue to Progress

### ELECTRIC SERVICE FOR FARM HOMES

Is Proving A Big Factor In The Development Of Lamb County . . .

—And we are proud to have the R. E. A. members gather in Littlefield for their annual meeting.

## OSCAR P. WILEMON

Wholesale Agent, Sinclair Refining Co.

Billie Carroll Mitchell, daughter of Mrs. Alma Mitchell, had her tonsils removed at the Payne-Shotwell Hospital Friday and is getting along nicely.

Mrs. Wm. N. Orr and Mrs. Hugo Kinkler were Lubbock visitors Saturday.

Mr. and Mrs. Butler Adams of Ralls arrived Sunday for a visit in the home of Mr. and Mrs. Floyd Coffman.

Mrs. Pryor Hammons, suffering from a strept throat, was admitted to the Littlefield Hospital Saturday.

Mr. and Mrs. E. W. Norris of Goree, parents of Mrs. Floyd Coffman, arrived Sunday to spend a month with Mr and Mrs. Coffman.

Patricia K., little daughter of Mr. and Mrs. Bob Smith, was released Saturday from the Littlefield Hospital after being confined with pneumonia.

Mrs. J. M. Robertson of five miles west of Littlefield, was admitted Friday to the Littlefield Hospital suffering from pneumonia.

Edwin Coffman, student of Tech College, and son of Mr. and Mrs. Floyd Coffman, spent the week end here.

Born to Mr. and Mrs. C. W. Billington of Maple, on January 20 at 2:05 p. m., a daughter weighing 6 pounds, 6 ounces. She was named Clara Jean.

Born to Mr. and Mrs. Haskell Clark of Morton on January 23 at 8:05 a. m., a daughter weighing 7 pounds, 10 ounces. She was named Doris Marie.

Nellouise Day, little daughter of Mr. and Mrs. Earl Day of Morton, was taken to Lubbock several times last week for mastoid trouble. She is now improved.

Marshall Davis of Morton purchased two lots from W. K. Whitman and has started construction of a two room residence.

Cecil Andrews, 12, son of Mr. and Mrs. C. H. Andrews of Anton, had the misfortune of getting a leg broken while practicing football with some other boys at school last week. He is doing well at the Littlefield Hospital.

Stacy Hart left Saturday for San Angelo and Del Rio to visit his mother, Mrs. F. M. Hart and other relatives. He returned home Monday.

Rev. Donald Harris of Jacksonville, Texas, was a week end visitor in Littlefield.

Leland S. Stone, and his brother, Max Stone, manager of Stone's Store in Portales, N. M., flew to Big Spring Friday in response to a message, saying their mother was seriously ill. Max Stone owns and pilots his own plane.

Miss Hazel Grisham, daughter of E. E. Grisham, and student of Texas Tech, spent several days between semesters at home. She plans to resume her studies Friday, Jan 31.

Mrs. S. J. Farquhar was on the

sick list all last week with cold. Mr. and Mrs. Claude Carpenter of Silerton visited Mr. Carpenter's parents, Mr. and Mrs. R. N. Carpenter in Sunnydale last week.

Mrs. Gus Clark, Mrs. Jordan and Mrs. I. N. Carpenter attended Home Demonstration Council at Amherst in an all day meeting Wednesday of last week.

Mr. and Mrs. T. E. Dobbys of Lubbock spent Saturday in Littlefield. Mr. Dobbys was attending to business, while she visited friends.

### Dinner Party Is Enjoyed At Floyd Coffman Residence

As a courtesy to her parents, Mr. and Mrs. Norris, Mr. and Mrs. in the Coffman home, Mrs. Floyd Coffman entertained at a dinner party Wednesday evening of last week.

Present for the occasion were: Mr. and Mrs. Norris, Mr. and Mrs. A. E. Coffman of Lubbock, Mr. and Mrs. O. K. Woodall, and Mr. and Mrs. Floyd Coffman, and daughter, Margaret.

Following the dinner, "42" was enjoyed by the group.

## Mr. and Mrs. Farmer:--

We extend a most cordial invitation to you to visit Littlefield Monday, February 3, and attend the annual R. E. A. membership meeting.

We appreciate the progress the REA has made in this territory, in helping to make life more pleasant and add comfort to rural families.

GOOD GULF PRODUCTS GOODRICH TIRES

## PHARRIS SERVICE STATION

Highway 7 Phone 246



## WE URGE YOU TO ATTEND THE Annual Membership Meeting

Monday, February 3  
Palace Theatre

Beginning At 9:30 And Closing At 4:00  
Free Barbecue At Noon — Served By  
Local Chamber of Commerce

This Is Your Meeting—Be Sure To Attend

## LAMB COUNTY ELECTRIC CO-OPERATIVE INC.

Littlefield

Phone 230

# BREAD Fresh From Our Ovens 2 Full Size LOAVES 15c

This Price Good Only Over the Counter at Our Bakery

Cakes and Pastries Fresh Daily

## NEW'S BAKERY

Cakes and Pastries Fresh Daily

This Price Good Only Over the Counter at Our Bakery

Highway 7 — Opposite Continental Oil Co. Wholesale

### DEFENSE TRAINING COURSES IN WELDING, MACHINE TOOL OPERATION OPENS FEB. 3 AT TECH COLLEGE

LUBBOCK, Texas, Jan. 27. Defense training courses in welding and machine tool operation begin Feb 3 at Texas Tech. Financed by Federal funds and planned in cooperation with the State Department of Vocational Education, the courses are of a type usually taught in technical institutes, trade and opportunity schools, or vocational high schools, according to Dean O. V. Adams of the division of engineering. Because of emergency shortage of skilled men in navy yards, aircraft factories, machine tool industries, and companies manufacturing national defense equipment, four-year colleges are cooperating in the training of additional men. Boys between the ages of 17 and

24 years, who have graduated from high school, may register for either of the courses without charge, Dean Adams said. Eighteen weeks of 30 hours each will be required to complete either course, and those satisfactorily meeting requirements will be given certificates by the State Department of Vocational Education. Maximum enrollment in each class is 15 persons; over 50 applications have already been received.

### Care And Planting Of Trees And Shrubs

LUBBOCK, Texas, Jan., 27. Prof O. B. Howell, of the Tech Plant Industry department, remembering that thousands of amateur landscape artists get the old urge to dig out their tools every year about this time makes the following suggestions as to the selections, care and planting of trees and plants.

Soil where the plants are to be placed should be worked thoroughly to a depth of at least twelve inches, and plenty of good organic material such as barnyard manure or cottonseed hulls should be added. If soil is poor, certain commercial fertilizers can be obtained that will make up these deficiencies, and any county agent or vocational agriculture teacher in the community can give valuable advice as to the need for and the selection of these fertilizers. For the first two years, or until the root system is well developed, plenty of supplementary water should be used, for the rainfall in this section is not sufficient, usually to start plants.

Plants should be obtained from reputable nurseries in similar climatic areas. These nurseries are always glad to help their customers place and care for their plants. Many of the larger nurseries maintain landscaping departments and experts on the control of insects and many of them issue bulletins giving the fundamentals of these services.

Planting should be done usually in the fall in order to get the best root growth, but planting may be done successfully any time in winter or spring up to March 31, or when the leaves are fully out.

Deciduous trees, or forest trees as they are sometimes called, that are adaptable to this section include all varieties of oaks, some varieties of the ash, some catalpas, the locust, maples, mulberries, poplars, willows, hackberries, and pecans.

Evergreens which grow well here include pines and arborvita, junipers, Arizona cypress, some spruce and others.

Shrubs that are popular here include the wax ligustrums, amur river privet, California privet, Japanese ligustrum, and the Iodense privet.

Few diseases and insects bother trees and shrubs of this section, but every grower should be constantly on the lookout for Aphids, San Jose scale and the Red Spider. Any appearance of these should be reported at once to the county agent, vocational agriculture teacher or your nurseryman, any one of whom can give you the names of sprays and remedies for the situation.

Fruit trees and grapes, especially those which bloom late and are wind resisting, do well in this section also, when given proper care and protection by windbreaks, but any prospective fruit grower should consult a soil expert as to the type of fruit he can produce, as some plants are tolerant to alkaline soil, others to acid soils, and the type of soil in the area determines the growth of the trees. In all cases the

### J. C. Arnett, 72 Dies At Austin

Death Thursday night in Austin of J. C. Arnett, 72, former resident of Lubbock, was learned by friends and relatives there Friday.

A brother of Mr. Arnett, Albert H. Arnett, lives at 2101 Sixteenth street, Lubbock. The aged man had been ill since Christmas, friends said.

Burial was conducted Saturday in Austin.

The wife, two sons, three daughters, six brothers and a sister survive. One son, Stanford, and a brother, Tom, live on the Spade ranch in Hockley county. Other brothers are J. R. of Stanton, W. T. of Meadow, Bass of New Mexico and R. H. of Gail. The sister is Mrs. Annie Simms of Amarillo.

### Total Of 100,000 Italian Prisoners Are Reported Taken

The British Middle East command reported the capture of Tobruk had brought the total of Italian prisoners taken in the sweep of the Imperial army of the Nile across the western desert to almost 100,000 officers and men.

Fall of Tobruk, the high command said, has brought more than 14,000 prisoners thus far, including four generals and an admiral. This brought the British bag of Italian generals to 16.

Italian casualties included at least 2,000 wounded while British losses were placed at less than 500.

Mopping up of Tobruk, the high command said, was completed last night, leaving the British free to move up their siege forces against Derna where armoured units already are feeling out the Italian defenses.

### ON FURLOUGH

Bill Howard, now of the U. S. Army medical corps and stationed at El Paso, is at home at Amherst visiting his parents, Mr. and Mrs. M. T. Howard.

Bill is making his first visit at home since enlisting in the army last summer. He is on leave with a 15-day furlough and plans to return to his post about the first of the month.

Telephones No. 27 for office supplies, office forms.

grower should be sure that he has a water supply sufficient to supply his young trees.

To Relieve Misery of **COLDS** take **666** LIQUID TABLETS, SALVE, NOSE DROPS

**SINCLAIR PETROLEUM PRODUCTS** The motor fuels and lubricants you know are the best because they have been proved and are nationally accepted as best— ARE HANDLED AT **DENNIS JONES SERVICE STATION** Across From New Postoffice PHONE 111

### RURAL ELECTRIFICATION ADMINISTRATION ALLOTS \$2,884,000 IN 18 POWER SYSTEMS

Harry Slattery, Administrator of Rural Electrification, recently announced allotments totaling \$2,884,000 for rural electrification in 11 States. These allotments provide for the establishment of five new power systems, the enlargement of 10 cooperative, a new public power district and the enlargement of another, and a loan to a private utility. This brings allotments made by REA since it was established in 1935 to \$355,255,621.22, of which \$85,881,500 represents operations of the current fiscal year.

Many of the older buildings in Chihuahua, Mexico, have enough silver in their walls to make demolition highly profitable.

Nothing expresses your sentiments so well as flowers. We carry all kinds, and can fill your every need quickly and adequately. **Chisholm's Floral** PHONE 122

### Review Enjoyed At Amherst Study Club Meeting

Members of the Anton, Littlefield and Sudan Study clubs were guests of the Amherst club at a tea and book review on Tuesday night, Jan. 21. Mrs. Simon D. Hay of Sudan reviewed "Sapphira and the Slave Girl" by Willa Cather.

Advertise—The more you sell the more you sell 'em.

The Best **HAMBURGERS** In Town For a bite to eat... for a refreshing drink... for good coffee... for short orders cooked the way you like them. Stop at— **CLINT'S CAFE** Formerly Graham's Lunch Room

**DRY CLEANING** LOW PRICES WE'RE CAREFUL OF COLORS no fading, no running of color FABRICS life & pattern is preserved SHAPE careful pressing gives new life PRESSING all hand-work... expert TRY the Luster-Sheen Way - Start the New Year Right With your clothes cleaned by experts. We clean men's and women's clothes, hats, gloves, etc. Prices are reasonable. WORK CALLED FOR AND DELIVERED PHONE 250 **EVINS** CLEANERS LITTLEFIELD

This Winter... Don't Force Your Motor to Pull An Extra Load! **VEEDOL MOTOR OIL** Worn-out summer oil can't give your motor the lubrication protection it needs to combat the damaging friction of cold-weather starting.... Let Us "Safety-check" Your Car for Winter Driving

...CHANGE TODAY TO... Winter Grade, Cold-Proof **VEEDOL** McCormick Bros. Petroleum Products WHOLESALE AND RETAIL HIGHWAY 7 PHONE 153 EAST SIDE OF CITY

**NOTICE FARMERS** We are buying Government Loan Equities, 1940-1941 See Us Before You Sell **PASS COTTON CO.** Main Street Littlefield, Texas

**Attention Farmers—** We specialize in the repairing of tractors and other farm machinery. SEE US FOR **BLACKSMITHING, WELDING, CAR and TRACTOR REPAIRING, OILFIELD WELDING, and the REPAIRING OF ALL FARM MACHINERY** **Oliver & Son Blacksmith Shop & Garage** (formerly Duncan Garage) E. G. Oliver — Cecil Oliver — Wm. Duncan — Elmer Johns

SEE **Onstead Furniture** For **BUTANE** PLANTS and APPLIANCES The Home Of Magic Chef Ranges

Every Member of the Family says "I'm Glad I Tried **Alka-Seltzer**" And They Say It With a Smile! Do the members of YOUR family say this? If not, perhaps it is because you have never given Alka-Seltzer a thorough trial. All over the world people who have used Alka-Seltzer are enthusiastic in its praise. If Alka-Seltzer is as good as we say it is, you want it in your medicine cabinet; if it is not, it won't cost you a penny. We will refund the purchase price to any new user who is not entirely satisfied. Your family may need Alka-Seltzer sooner and more often than you think. Our guarantee of satisfaction or money refunded covers its use in all conditions listed below. Gas on Stomach, Acid Indigestion, Heartburn, "Morning After", Muscular Pains, Rheumatism, Neuralgia, Headache, Distress of Cold, as a Gargle in Minor Throat Irritations. **Alka-Seltzer**

# Marrying Mark

## Violette Kimball Dunn

CHAPTER VII  
Synopsis

After Mark Alexander's beautiful wife Ellen died, her whole family came interested in Valerie, Ellen's daughter by a former marriage. All Shirley seemed to have their eyes on the trust fund left Valerie Ellen. Dorothy, Elise, and their hands, want Valerie to live with them, but Mark and Valerie go on two-months' automobile trip and, they near home, meet Lucy Tredway, owner of a broken-down traveling library. Mark asks Valerie to tutor Valerie, and she ac-

too closely at their faces. The light that smoldered behind Elise's large rather full brown eyes was anything but peaceful. And Valerie and Mark reminded Lucy curiously of wild things held against their wills. Elise turned suddenly, and caught her first glimpse of Lucy. She stared and froze. Her hand dropped from Valerie, but her hold on Mark tightened.

"Oh—" she said.  
"Oh—" echoed Mark easily. "You haven't met Miss Tredway, have you? She's heaven's gift to the unlearned. Valerie's new tutor, in other words. Between whiles, she's going to keep us all in order. Isn't it luck?"

"It's quite charming," said Elise. "How do you do?" She sat down suddenly.

She ignored Lucy completely after that. She chattered endlessly about her own affairs, and asked questions about the trip when she remembered, seldom waiting for an

She turned the velvet of her eyes on the girl, and spoke with gentle enthusiasm.

"My dear—we've all forgotten you—" she said. "But I'm sure you'll understand. We three had so much time to make up—"

"I haven't forgotten Lucy," said Valerie suddenly. It was the first time she had spoken since Elise came in. She got up now and tucked her slim young body into the vacant space in Lucy's big chair.

"Oh, but darling—" cried Elise maternally, "aren't you crowding Miss Tredway terribly?"

Lucy smiled with equal amiability on Elise and Valerie. "She isn't crowding me at all, thanks! The name is Tredway," she said.

"I'm so wretched at names," said Elise plaintively. "I shall probably call you all sorts of queer things. It may take me months to get you straight. I expect you'll be tired of us long before that, and have flown away."



Valerie clasped Lucy's hand in panic.

answer. Almost as if she were afraid to pause, while she made the new adjustment to Lucy's arrival.

Chiltern came in, and poured coffee for her, and went away.

"There's a clever one!" he told Mrs. Banwood later. "Too clever, if you ask me. Had a bit of a shock, and put on the brakes before anybody could tell the difference. I was watching her eyes. Doesn't relish another woman coming in and upsetting her plans. Not that she'll get much change out of Miss Lucy."

"I don't relish it myself," said Mrs. Banwood.

"Perhaps you'd rather have Mrs. Waterford under foot," suggested Chiltern.

Mrs. Banwood ignored this. She sat down to her own coffee, and looked at him over the brim of her cup.

"I'm sure it's nothing to me who he brings into the house to teach Miss Valerie," she offered.

Chiltern passed his cup a second time. "No more it should be, with situations what they are at present," he reminded her. He never found it very hard to keep Mrs. Banwood in her place.

Elise was almost ready to leave before she apparently realized Lucy.

Valerie clasped Lucy's hand in panic. "Lucy's going to stay forever!" she cried.

"Oh" said Elise.

Mark looked across at Lucy, sitting with Valerie beside her. There was a suggestion of tenseness in the way they both looked back at him. As if in some mysterious way they sought him for protection. He felt a sudden rush of tenderness for them, sitting so young and so defenseless under his roof.

"Our contact with Miss Tredway came through old friends of her father's," he explained. "Judge Brown, of Allington, and others—" He suggested somehow that she could take the information or leave it.

Elise at once became all feminine. "Oh, how marvelous! I mean to have a real background. It looks like wonderful luck for you all. I suppose you've done a lot of teaching, Miss Tredway?" She clasped her hands delightedly. "Oh, how clever of me! I really got it that time—or did I?"

"You did," said Mark. He didn't wait for Lucy to answer. As well to establish her once and for all. Telling to Elise would be telling it to the world. Their world, at least. "You see, Miss Tredway only graduated from college herself last spring, so her teaching experience hasn't been exactly vast. But she's won medals and taken degrees and done all the highbrow stunts you'd expect from a spinster of forty, instead of—what you see." He sounded as if he couldn't put into words what he thought of Lucy. Of her brains or beauty or charm.

"But how terrifying!" cried Elise pathetically. "What will she think of the rest of us when she finds us out? But maybe she never will." Having found out all she could, which was practically nothing but the bare fact of Lucy's presence at Wide Acres, Elise got slowly out of her chair.

"Selfish me," she said reproachfully, "when you're all probably tired out. Mark darling, will you ring Chiltern and ask about my car? I told Harmon not to be later than eleven, and here it is almost twelve! How does one get decent servants? But what can you expect? Nobody pays the least attention to a woman alone. Nobody cares—"

She looked appealingly at Mark,

### CHEVROLET'S CONCEALED SAFETY-STEPS

are safer, more modern than old-fashioned running boards

You'll find "Concealed Safety-Steps" (instead of running boards) at each door of Chevrolet's famous Fisher Body. . . They look better . . . they stay cleaner . . . they provide safer, easier, more comfortable entrance and exit!

| GIVE US PRICED CARS THIS             | QUALITY QUIZ |    |    |
|--------------------------------------|--------------|----|----|
|                                      | YES          | NO | NO |
| 90-H.P. ENGINE                       | YES          | NO | NO |
| CONCEALED SAFETY-STEPS               | YES          | NO | NO |
| VACUUM-POWER SHIFT                   | YES          | NO | NO |
| BODY BY FISHER                       | YES          | NO | NO |
| UNITIZED KNEE-ACTION                 | YES          | NO | NO |
| BOX-GIRDER FRAME                     | YES          | NO | NO |
| ORIGINAL FISHER NO DRAFT VENTILATION | YES          | NO | NO |
| TIP-TOE-MATIC CLUTCH                 | YES          | NO | NO |

ONLY CHEVROLET HAS ALL THESE QUALITY FEATURES

NO DANGEROUS SNOW AND ICE

NO DIRTY RUNNING BOARDS

NO "JUMPING ON" CAR

NO "SITTING OR LOITERING"

SAFER, EASIER ENTRANCE AND EXIT

SMARTER, MORE MODERN STYLING

Again CHEVROLET'S the LEADER ★ YOU'LL "FIRST BECAUSE FINEST!" SAY IT'S

# Hewitt Chevrolet Co.

Littlefield Texas

## The Lane Land Co.

Of Portales, N. M.

offers for quick sale the following Eastern N. M. land:

- A good 160 acre tract, in Irrigation belt, 8 miles of Portales at a very attractive price and terms.
- 420 acres of raw farm land 7 miles of Portales, located on hard-surfaced highway, school bus and mail route, at a very low price and good terms.
- 320 acres improved, with 640 acre grass lease at a real bargain.
- 160 acres, improved, 4-room house, good well and mill, 80 acres cultivation, all good red sandy loam land,, can be had worth the money with \$750 cash, one to four years on balance.

We also have an extra good 7-section ranch, about one-half deeded land and balance cheap lease, all this is good land, has plenty water and good improvements, can offer this for a few days only, at a very low figure.

We have a nice list of good buys in Eastern N. M. farms and ranches. If interested in a real buy, get in touch with us.

### LANE LAND CO.

Main Street Portales, N. M.

## Plains Liquefied

### "Gas Co."

## Phillips Butane and Propane

Phone 71 Littlefield

## A HOME IN THE COUNTRY

THE SIMPLE LIFE IS THE IDEAL LIFE

Whether you are interested in a home or an investment . . . A great ranch or a small farm . . . We can please you

ATTRACTIVE PRICES—LIBERAL TERMS

Write or Call on Us For Full Information

### YELLOW HOUSE LAND CO.

—LITTLEFIELD—

Owners and Developers of the Famous Yellow House Lands in the Littlefield-Levelland Section

## Plains Liquefied

### "Gas Co."

## Phillips Butane and Propane

Phone 71 Littlefield

### Five Injured In Auto Collision Saturday Night

#### Accident Happens Saturday Night Five Miles North Of Town

Five persons were injured and treated in local hospitals this week for injuries suffered in a collision of two cars five miles north of Littlefield on Highway 7 about 9:30 o'clock Saturday night.

Mrs. Howard Crosby, 27, of Amherst suffered a broken knee cap, a broken ankle and bad lacerations;

Miss Violet Franklin, 30, of Amherst, sustained bad laceration of the scalp, cuts about the face, and an injured ankle.

Lloyd G. Franklin, Jr. 2 years old, was the most seriously injured. He suffered a severe head injury, and was rendered unconscious for about 48 hours. However, he was reported becoming conscious by the Littlefield Hospital Tuesday.

Mrs. Lloyd Franklin suffered a back injury, and numerous cuts about the face.

All of the above were admitted to the Littlefield Hospital Saturday night. Mrs. Lloyd Franklin and son, Lloyd G. Jr. were dismissed from the hospital Wednesday, but Miss Violet Franklin and Mrs. Crosby are still there.

Jimmie Alsop, 26, Littlefield Druggist, driver of one of the cars, suffered minor cuts and bruises. He was confined in the Payne-Shotwell Hospital until Tuesday, when he was released.

Mr. Alsop was driving toward Littlefield, while the occupants of the other car had been shopping in Littlefield, and were returning home to Amherst when the cars collided at a curve in the highway.

### District Governor Lions International To Be Here Friday

#### F. V. Wallace Of Dumas To Fly Here For Weekly Meeting

F. V. Wallace of Dumas, district governor for the Lions International, will be guest speaker at the regular weekly meeting of Littlefield Lions Friday at noon.

Mr. Wallace has been visiting various clubs on the South Plains, and will go from Littlefield to Amherst Friday night. If the weather permits, he will fly from Lubbock to Littlefield.

Rev. J. T. Sharp, Gene Yeager and Dr. I. T. Shotwell are in charge of the program after the luncheon, which will be held at the First Methodist Church. Selections by a colored quartet will be one of the features of the program.

The local Lions Club was organized June 24, 1940, with 28 charter members. During the past few months several members have been added to that number.

The club is sponsor of the Cub Scout Packs.

At the meeting last week the members voted to pay ten dollars a month to the school lunch room project that has been planned.

They received their charter to the Lions International August 12, and Mr. Wallace presented the charter at that time.

Officers for the coming year were recently elected. They are: A. B. Chapman, president; Dr. I. T. Shotwell, vice president; Earl Wilson, secretary-treasurer; T. A. Hilbun, tall twister; and Leo Hewitt, Lion tamer. Directors are: Gene Yeager, J. R. Eagan, O. K. Woodall, and Dennis Jones

### Lamb Gins 55,450 Bales To Jan. 16

According to Warren H. Rutledge, Cotton Statistician for this district, there were 55,450 bales of cotton ginned in Lamb County up to Jan. 16, 1941, as compared with 44,663 bales up to the same period last year.

Castro County ginned 2373 bales up to January 16 of this year, as against 2819 ginned up to the same period of 1940.

#### Golden Gloves—

(Continued from page one)

ing scrappers—each of them a potential champion—will enter the ring at least once during the tournament:

Flyweight (up to 112 pounds): Preacher Yenez, Littlefield CCC; Jimmie Robinson, Littlefield; Curtis Lebow, Abernathy, 1940 district champion.

Bantamweight (112 to 118 pounds): Jack Lytle, Morton; W. D. McCarty, Littlefield, 1940 district champion.

Featherweight (118 to 126 pounds): Buford Bradshaw, Littlefield, 1940 T. A. A. F. champion; Delvis Hallmark, Abernathy; Eugene Heath, Hale Center, 1940 district champion.

Lightweight (126 to 135 pounds): Bud Thurman, Littlefield; Herman Neuschwander, Littlefield; John Mason, Plainview; Alvin McCarty, Littlefield; Elmer Hurley, Abernathy; Bob Hampton, Spade; Charlie Vandeventer, Enochs; Alva Spain, Olton; T. C. Wade, Route 2, Littlefield.

Welterweight (135 to 147 pounds): Billy Holder, Littlefield; Billy Buck, Morton; Edwin Hall, Littlefield; Junior McLaurin, O'Donnell, 1940 state champion; Raymond Reed, Hale Center; Harold Harvey, Littlefield.

Middleweight (147 to 160 pounds): Wilford Mason, Plainview; Red Lytle, Morton; Taylor, Littlefield CCC camp; Harold Hood, Littlefield; Goldman Dyer, Route 2, Littlefield.

Light Heavyweight (160 to 175 pounds): Woody Culpepper, Littlefield CCC; Willard Hedges, Olton.

Heavyweight (over 175 pounds): J. D. Ramsey, Littlefield CCC.

Competition will undoubtedly be keen in each weight division, and the "favorites" probably will encounter stern opposition from the opening gong Thursday night to the final one Friday night. Repeating that many outstanding contestants not listed above will be here from Plainview, Slaton, Tahoka and Brownfield, this observer picks 'em as follows:

Flyweight: Curtis Lebow.  
Bantamweight: W. D. McCarty.  
Featherweight: Buford Bradshaw.  
Lightweight: Alvin McCarty.  
Welterweight: Junior McLaurin.  
Middleweight: Taylor of Littlefield.

Light Heavyweight: Culpepper.  
Heavyweight: J. D. Ramsey.

No bout, preliminary or final, will be for more than three two-minute rounds. Many of them, particularly in the heavier weights, will be much shorter.

Suitable trophies, which have

been on display here the past several days, will be awarded champions and runners-up in each weight division.

Winners in the district mee. at Lubbock next week end will go to Fort Worth the following week for the state tournament. Winners there will have all expenses paid to Chicago, where they will represent Texas in the "Tournament of Champions."

Simon-pure athletes from the Canadian border to the Gulf, and from Maine to California compete each year in the Golden Gloves tournaments. From the ranks of the Glovers have risen such "kingspins of Fisticiana" as Joe Louis, world's heavyweight champion; Texas' own Lew Jenkins, world's lightweight ruler, and Barney Ross, former welterweight title holder.

Officials for the tournament here will be J. D. Spann, Plainview referee; Fly Thornton and Sid Hopping, judges.

There will be no extra charge for ringside seats at the fights, according to Murphy.

#### Brown Farm—

(Continued from page one)

trench silos insure the winter food supply for the stock.

He has been a member of the State Certified Seed Growers association since 1932, and much of the seed grown on this farm in Lamb county has been purchased by local farmers. However, some of it is shipped to other parts of Texas.

#### Here Since 1927

Mr. and Mrs. O. D. Brown moved to this farm in 1927. They were originally from Georgia, where Mr. Brown enjoyed fox hunts with his hounds. He was fatally injured in an automobile accident near Littlefield in 1938. Besides the two sons, they have a daughter, Helen, who is a student in Texas State College for Women, Denton.

Mrs. Brown raises enough vegetables from her garden for the family's winter food supply. She is planning an extensive landscaping program for the near future when fruit trees will be planted east of the house. An electric pressure pump is used on the windmill when the water supply runs low.

Rural Electrification has indeed brought happiness and prosperity to the many similar farm homes in this section.

### Bula School Head Is Re-elected

At a meeting of the Bula School Board on January 24, Supt. O. G. Dickenson was re-elected for the school year of 1941-42.

The school has operated very successfully this year and the plant has undergone some changes. An extra teacher was added this year.

The District owns its own transportation system, including a service station for buses.

The school has 21 credits and is adding four new credits this year.

Triplets, a son and two daughters, were born to Mr. and Mrs. M. D. Benson, of Lubbock, Thursday night, January 23.

# PIGGLY WIGGLY

## Specials For Fri., Sat. and Mon.

WELCOME R. E. A. MEMBERS—We extend you a cordial invitation to visit our store.

- ORANGES, Texas, Full of Juice, Med. Size, Doz. 10c
- CARROTS, Large, fresh bunches 2 1/2c
- LEMONS, California Choice, Doz. 10c
- LETTUCE, California, Lge. Heads, 3 for 10c

## Marshmallows 10c

Brown's, 1 Lb. Bag

- CATSUP, Royal Gem, 14 oz. bottle 9c
- BABY FOOD, Libby's, 2 for 15c
- FRUIT COCKTAIL, Santa Valley, No. 1 Can 10c
- CORN FLAKES, Sunset Gold, 3 for 25c

## Coffee 21c

Admiration, 1 Lb. Vacuum Tin

- PEAS, Starbeam, No. 2 Can 10c
- HOMINY, Marshall Seal, No. 2 1-2 Can, 3 for 25c
- LUX TOILET SOAP, Bar 5 1/2c

|                            |                  |                         |                 |
|----------------------------|------------------|-------------------------|-----------------|
| Salted, Dixie Dream; 2 Lb. | Crackers 12 1/2c | Wm. Penn, 6 Box Carton  | Matches 12 1/2c |
| All Flavors, 3 Pkgs.       | Jello 13c        | Concentrated, Large Box | Super Suds 19c  |

- P. & G. SOAP, 5 Giant Bars 15c
- BROOMS, Good Value, Each 25c
- SUNBRITE CLEANSER, 3 Boxes 13c
- CLOROX, Pint Bottle 10c
- TOILET TISSUE, Waldorf, 3 for 13c



## HI-HO 19c

Cheese Crackers Large 1 Lb. Box

## MEATS

- AMERICAN CHEESE, 2 Lb. Box 43c
- OLEO, Maybelle, Pound 9 1/2c
- WHITE TROUT FISH, 3 Pounds 25c
- DRY SALT SQUARES, For Boiling, Lb. 6 1/2c

None Sold to Merchants—We Reserve the Right to Limit Quantities.



**Man oh Man!**  
**WHAT USED CAR VALUES!**

|                                    |                               |
|------------------------------------|-------------------------------|
| 1940 Chevrolet DeLuxe Town Sedan   | 1936 Chevrolet Standard Coach |
| 1940 Chevrolet Standard Town Sedan | 1937 Ford Tudor               |
| 1940 Ford Coupe                    | 1936 Chevrolet Standard Sedan |
| 1936 Plymouth Sedan                | 1940 Ford Tudor               |

**HEWITT CHEVROLET CO.**  
Littlefield, Texas

### DOLLAR DAY SPECIAL

Friday, Saturday and Monday Only

\$7.50 Double Oil Permanent For Only \$2.50

**DE LUXE BEAUTY SHOP**  
Mrs. Edna Sibley  
Mrs. Oma Gilder  
Littlefield Phone 167

# 1941 Emergency Crop, Feed Loans Available

### Applications Now Being Taken L. B. Wright Farmers May Also Apply W. G. Street, Committee Clerk, At City Hall

Emergency crop and feed loans for 1941 are now available to farmers in Lamb County, and applications for these loans are now being received at the City Hall by L. B. Wright, Field Supervisor of the Emergency Crop and Feed Loan Section of the Farm Credit Administration. W. G. Street, Committee Clerk, will be in the office each day to receive applications.

These loans will be made, as in the past, only to farmers whose requirements are small and who cannot obtain a loan from any other source, including production credit associations, banks, or other private organizations or individuals.

In former years, the money available will be limited to the application of necessary cash needs in preparing and cultivating his 1941 crop or in purchasing or producing for his livestock.

Producers who obtain loans for production of cash crops are required to give as security a first mortgage on the crop financed or, in the case of loans for the purchase or production of feed for livestock, a mortgage on the livestock to be fed.

### Formby Appointed Member Important Finance Committee

In committee appointments for the session of the 47th Legislature have been assigned to Senator Formby of this district. Assignments were made by Lt. Governor Coke Stevenson.

Senator Formby of McAdoo was named as a member of the highly important Finance Committee, one of the two most important committees of the Senate. The Finance Committee, known as the Appropriations Committee, passes on appropriations for schools, colleges and other appropriations for the state.

Senator Formby was also appointed chairman of the important committee on Stock and Stock Raising and as a member of the important committee on Agriculture.

Other committees Formby was named to besides Finance, Stock and Agriculture are: Contingent Expense, County Boundaries, Criminals; vice chairman of Relations Committee; Publishing and Grounds; Public Buildings and Accounts; State Printing and Departments, and

### LONDON IS STILL TAKING IT



LONDON, Eng. . . . Battered by ceaseless Nazi air raids, but unbowed, the city of London, heart of the British Empire, presents this scene of devastation. Rearing up out of the flames and smoke of surrounding blazing buildings is St. Paul's Cathedral. This photo was made during a great fire raid on the British capital.

### Penitentiaries.

Senator Formby recently was honored by being appointed on the Inauguration Committee and by being appointed by the Dean of the Senate on the Patronage committee in the Senate.

Germany has gained more than a million and a half acres of new arable land since 1933 by dam building, river regulation and sea bottom reclamation.

### Harvesting, Ginning Good During 1940

COLLEGE STATION, Jan. 28 — Seventy-two percent of the 1940 Texas cotton crop was picked and 91 percent taken to the gin dry and in good ginnable condition, says F. E. Lichte, Extension cotton gin specialist for Texas A. & M.

College in a survey of the ginning situation.

This resulted in more than 98 percent of the crop being ginned normal and better, he adds. The figure for normal preparation in 1939 was 94 1-2 percent, but the improvement in 1940 of 3 1-2 percent translated into folding money meant that farmers and ginners increased the value of the crop more than a half million dollars.

"The ginner is the first processor of cotton," the specialist points out, "and the lint cotton he turns

out has a value which cannot be improved afterward, although the value of the bale often is lowered by additional sampling and careless handling."

In 1940, there were 3,056 active and 270 idle gins in Texas, representing a loss of 81 from the preceding year. The loss was chargeable to abandonment, fires, and declining need due to adjusted production. Active gins included 430 cooperatives.

The quality and efficiency of gins were increased through improvement of equipment by manufacturers. Installation of conditioning machinery has been steadily upward. Census figures for conditioners in 1935 showed 50, Lichte says, "while our surveys show additions

from year to year and the 1940 figures are 500." He suggests that a conservative estimate of the added value of this equipment gives farmers and ginners more than one million yearly."

### Attend Dinner Party At Lubbock Tuesday

A number from Littlefield attended a dinner party at Lubbock Tuesday at the home of Mr. and Mrs. A. E. Coffman, West 22nd. Ave., Lubbock.

Attending from here were: Mr. and Mrs. Floyd Coffman and daughter, Margaret; Mr. and Mrs. E. W. Norris, parents of Mrs. Coffman and house guests in the Coffman home here; and Mr. and Mrs. O. K. Woodall.

### PRESCRIPTIONS

Exactly  
As Your Doctor Ordered

They will be filled by a skilled pharmacist who uses only the most potent drugs and double checks all prescriptions before they are delivered to you.

WE NEVER Sacrifice  
Accuracy For Speed!

MADDEN DRUG STORE



We are proud of the Rural Electrification program . . . it is one of the greatest achievements in the history of this section.

## Orchids from a Holly Grower



Buick SUPER Sedan, \$1185.\*

ORDINARILY we don't go in for owner-testimonials.

But every now and then, along comes a letter that so perfectly portrays the way Buick owners feel about their cars that we haven't the heart to keep it from you.

Here, for example, we quote from Mr. Ambrose Brownell, English holly grower of Mitwaukie, Ore.

"... When I drove that '41 SUPER out of Flint . . . and started a circle trip home . . . I jotted down each gas purchase and mileage to sort of figure my expenses . . .

"It wasn't long before I got suspicious of something wrong . . . The gas gauge needle just didn't go down fast enough . . .

"But, Roy, all the way home it

was the same story. The Buick wormed through miles of city traffic . . . made numberless stops to inquire directions, purred along in sizzling heat that made my feet feel like two fried eggs, breezed over the Rockies at 9,000 elevation . . . and finally fairly stole home through the sinuous Columbia Gorge.

"Statistics? Of course: 3,200 miles; 165 gallons . . . Ethyl gas; 19.51 miles per gallon; gas expense—1<sup>9</sup>/<sub>100</sub>¢ per mile; total out-of-pocket expense—1<sup>22</sup>/<sub>100</sub>¢ per mile.

"... Roy, I'm glad I bought a Buick."

Mr. Brownell has other nice things to say about his Compound Carburetion-equipped 1941 SUPER.

But the point is that everywhere Buick is running up such astonishing records for thrift that letters like this are commonplace.

Why not drop in on your local dealer and try out the thrifty traveler that brings us orchids from a holly grower?

BUICK PRICES BEGIN AT \$935

for the BUSINESS COUPE delivered at Flint, Mich. State tax, optional equipment and accessories—extra. Prices subject to change without notice.

# "Best Buick Yet"

EXEMPLAR OF GENERAL MOTORS VALUE

LEO R. HEWITT

418 Phelps Ave.

Littlefield, Texas

WHEN BETTER AUTOMOBILES ARE BUILT BUICK WILL BUILD THEM

### WELCOME FARMERS!

To Littlefield  
On Monday  
February 3  
the REA Meeting

here visit our Dining—  
Fine People Meet—  
FAMILY STYLE MEALS  
Hot Rolls, Delicious Trimmings  
Mondays and Sundays

Littlefield Hotel  
Dining Room  
PAUL VAUSE  
Man Who Feeds the People."

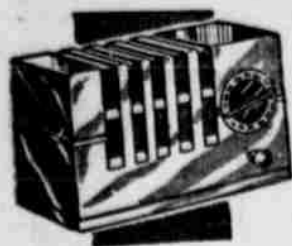
# THE CLASSIFIED SECTION

PHONE 27

BUY AND SELL HERE

ADS TAKEN UP TILL NOON WEDNESDAY

### FOR SALE



## USED RADIOS

All Makes and Types Going At

# \$100

up

See Them

## WE TRADE

Radio Batteries Parts and Service All Makes

### Garland-White Auto Supply

FOR SALE — 188.6 acres of choice land, all in cultivation, with no improvements, located 5 miles north of Bula. W. E. Walkup, 1947 19th St., Lubbock, Tex. 354fc.

FOR SALE — North 1/4 Section 17 Block 'U' Cochran County 2 1/2 miles North of Bledsoe, Texas, for sale \$13.50 per acre; \$6.00 per acre cash; balance 3 equal annual vendor notes 6%. Sole Agent, J. E. Alexander, 1922 7th St., Lubbock, Tex. Phone 524-J. 43-44fc.

FOR SALE — Twenty sows; will farrow in thirty days. P. W. Walker. 444fc.

### FOR RENT

FOR RENT — Two furnished bedrooms. Bath with hot and cold water. Private entrance. Jones Hardware. 41-1tc.

FURNISHED APARTMENT for rent. Apply Gene's Food Store. 42-1tp

FOR RENT — South apartment, unfurnished; four rooms and bath. Mrs. Ulyss Dalmont. Phone 152. 44-4tc

### WANTED

### SEED WANTED

African Millett, German Millett, Honeydrip Cane and other Field Seed.

**DOGGETT GRAIN CO.**  
Littlefield Phone 175

GLASS JARS WANTED. Robison's Second Hand Store. 444fc.

WANTED — 100 tons of scrap iron, \$4 per ton. Western Motor Supply, Littlefield. 43-2tc.

### MISCELLANEOUS

VISIT our magazine exchange. We buy and trade used magazines. Must be 1941's and in good condition. Robison's Second Hand Store & Trading Post, Opposite Ware's Dept. Store, Littlefield. 40-4fc.

Phone 27 for office supplies.

HAVE CLIENT WHO WANTS to buy 160 to 240 acres unimproved land in vicinity of Littlefield. I have good cheap land in Castro and Farmer counties; from \$15.00 per acre up. Write or come to see me. Howard Scoggin, Box 96. Dimmitt, Texas. 44-2tp.

### For More Efficient Service

We continue to add new equipment to our Laundry.

Our Services Include

- Helpy Selfy Service
- Finished Work
- Wet Wash and Rough Dry

### EASY-WAY LAUNDRY

F. N. Miller

Phone 253—We Call for and Deliver

### ROCKY FORD NEWS

Sunday school at the Baptist church was well attended Sunday, despite the fact that there is still lots of flu.

Mr. and Mrs. J. C. Dutton are the proud parents of a baby boy born January 19. They are staying at Mr. J. D. Dixon's. All are doing fine. Mrs. Dutton is the former Miss Melba Nixon.

Mr. and Mrs. R. O. Edwards and several others visited in the Nixon home Sunday.

Mr. and Mrs. John Reed, and children visited in the Floyd Chafin home Sunday.

Mr. and Mrs. Floyd Rogers visited his sister, Mrs. Davis, at Spring Lake Sunday.

Mrs. E. J. Bussanmas visited Mr. Bussanmas at the Veterans Hospital at Amarillo over the week end.

Lester Burl Dunn and Alene Gilliland surprised their many friends by getting married Friday evening. Rev. Moore read the ceremony.

Aubrey Parmer and wife, Lionel Dunn and wife and the newly-weds, Mr. and Mrs. Lester Burl Dunn, motored to Portales Saturday, where Lester and Alene will make their home.

Mr. and Mrs. C. E. Williams have moved back into Rocky Ford community. They occupy the place Mr. Prentice worked last year. Mr. Prentice having moved to Yellow House.

Mr. and Mrs. Dillard Bryant

were called to Oklahoma recently. Mrs. Bryant's parents having been killed in a car accident. We offer our sympathy.

Mr. and Mrs. L. L. Dunn attended Castro coun'l singing Sunday afternoon.

Mrs. Eugene Ivey and girls visited homefolks a few days last week. Mrs. Herbert Roberson under went a major operation Thursday of last week at the Payne-Shotwell Hospital in Littlefield.

Mr. and Mrs. J. A. Roberson and Miss Ola Roberson visited in Erath county last week end.

Mr. I. Cummins is having trouble with his ears, having them treated at Lubbock. We wish for him a speedy recovery.

### Revival To Be Held At Assembly of God

A revival began at the Assembly of God church on Wednesday evening of this week and will continue for an indefinite period of time. Rev. J. M. Medlie of Dallas, Texas, is the evangelist conducting the revival.

Reverend Medlie is a forceful and interesting speaker, having been in the ministry for 28 years, and having had some interesting experiences, which will be of interest to all. Reverend Medlie is a Bible scholar and will preach sermons on various Bible subjects. The public is invited to attend his revival.

### First Baptist W. M. U. Meets In Bible Study

Members of the W. M. U. of the First Baptist church met in regular Bible study Monday afternoon with Mrs. Pat Boone leading.

A short business session was held with Mrs. L. W. Jordan in charge.

Present for the meeting were: Mesdames L. W. Jordan, Roy Shahan, Ruth Jones, V. S. Cassel, Allen Crowley, E. M. Davis, Alfred Dunningan, Carl Smith, M. Mueller, C. O. Griffin, M. B. Welborn, W. C. Redell, Herbert Dunn, Viggo Peterson, R. T. Badger, Frank Roan, W. Hampton and Pat Boone.

### Installed Officers For Levelland Lodge

Mrs. Alph Wright, district deputy president of the Rebekah Lodge, accompanied by Mrs. John Blair and Mrs. Thomas Lowe, attended the Levelland lodge meeting Tuesday night of last week, and installed officers for the Levelland group for the ensuing year.

### Miss Potter Resigns, Goes To Paris, Tex.

Miss Geraldine Potter, teacher in the elementary grade school has resigned to take a similar position in the Paris, Tex. grade school and left Tuesday night for Paris.

Mrs. Chas. Flesher will substitute until Miss Potter's place has been filled.

### Personals

Mr. and Mrs. Milton McCleskey of Vega visited in the home of her parents, Mr. and Mrs. J. M. Gordon, last week end.

Miss Kate Gordon visited friends at Abernathy and Hale Center last week end.

Mrs. A. J. Fuchs and son of Lovington, N. M., visited in the home of Mr. and Mrs. J. M. Gordon Friday.

Mr. and Mrs. William Johnson of Morton visited friends here Sunday. Mr. Johnson, who was formerly employed at the local Cobb's Department Store, is manager of Cobb's Store at Morton.

Mr. and Mrs. Millard Cox of Morton are the proud parents of a daughter weighing 6 pounds 14 ounces, born Sunday morning at a Lubbock hospital.

Ben Porcher purchased a new

long wheelbase truck from the local Chevrolet dealers, Hewitt Chevrolet Company, taking delivery Monday.

Ben Lyman, Jr., student at Tech, is home this week with his parents, Mr. and Mrs. Ben Lyman, assisting in the Jeffries Grocery and Market.

L. K. Whitaker visited Clyde Hillbun at the West Texas Hospital in Lubbock Sunday.

Mr. and Mrs. Ray Nix visited Mr. and Mrs. Everett Nix at Spade Sunday.

Mrs. Bob Smith, and daughter, Tina, were in Lubbock Monday of last week, when Miss Tina Smith made application to enter training at the Lubbock Sanitarium. She will not be able to enter until Jan. 1, 1942, as they reported filled up until then.

Osee Holland of Seymour arrived Tuesday for a few days visit in

Littlefield. Mr. Holland owns a dence property here, and is attending to business and visiting friends including Mr. and Mrs. Otto Jones, then has been improving.

Louis Eubank of Carlsbad arrived Monday for a few days visit in home of Mr. and Mrs. Charles C.

### Motor Rebuilding

On Any Make or Model of Automobile

## Williams Bros.

GARAGE

Rear Southern Auto

## RURAL ELECTRIFICATION

Leads To

## BETTER HOMES

and

## MODERN EQUIPMENT

That's why we salute those who have pointed the way to a more prosperous and comfortable farm life.

As a co-operative association, it gives us pleasure to extend best wishes to the Lamb County Electric Co-operative and the R. E. A. members for the extensive electrification program.

## LAMB COUNTY FARMERS

## CO-OP ASSOCIATION

V. S. Cassel, Mgr.

## NOTICE

Anyone having merchandise or jewelry left in Dean's Jewelry Store for repair may obtain same between 1 and 2 o'clock in the afternoon of Tuesday, February 4 by calling at Dean's Jewelry Store.

George W. McCleskey, Receiver in Bankruptcy

## THE NEW AND MODERN LITTLEFIELD HOSPITAL & CLINIC

PRIVATE PHONE EXCHANGE 301-302

### —THE STAFF—

|  |   |
|--|---|
| T. B. DUKE, M. D.<br>Diagnosis, Internal Medicine and Obstetrics | J. R. COEN, M. D.<br>Medicine and Surgery |
| R. E. HUNT, M. D.<br>Surgery, Urology, and Diseases of Women     | WM. N. ORR, D. D. S.<br>Dentistry         |

|  |  |   |
|--|--|---|
| FLOYD COFFMAN<br>Superintendent and Director<br>X-Ray and Laboratory | MISS HAZEL EDGERTON<br>R. N.<br>Superintendent of Nurses | MISS MILA M. MIDDLETON<br>R. N.<br>Night Supervisor |
|--|--|---|

DEDICATED TO THE HEALTH OF MANKIND

## PAYNE-SHOTWELL HOSPITAL and CLINIC

Littlefield, Texas

Medical, Surgical and Diagnostic

An Open Staff Hospital

C. E. PAYNE, B. S., M. D.  
Diagnosis, Internal Medicine, Obstetrics, Surgery

I. T. SHOTWELL, JR., B. S., M. D.  
Obstetrics, Internal Medicine, Urology, Gynecology, Surgery

### MONEY TO LOAN ON FARMS AT

4 & 5 %  
Why Pay More?

—See—

**J. S. HILLIARD**

Secretary-Treasurer  
Littlefield National Farm Loan Association for Lamb, Hockley and Cochran Counties  
Office—Corner Location Yellow House Land Co. Building  
Littlefield, Texas

### AUCTION SALES

Book Your Sales With **JACK ROWAN**

AUCTIONEER — SUDAN

—Or—

**CHARLIE CLARK**

CLERK — LITTLEFIELD

We Specialize in Livestock Sales

### Dr. M. G. WOOD Dentist

Office Across From the Rumback Hotel

Littlefield, Texas

Office Phone 59

Residence Phone 58

### LUBBOCK Sanitarium & Clinic

Medical, Surgical, and Diagnostic

General Surgery

Dr. T. J. Krueger  
Dr. J. H. Stiles  
Dr. Henrie E. Mast

Eye, Ear, Nose & Throat

Dr. J. T. Hutchinson  
Dr. Ben B. Hutchinson  
Dr. E. M. Blake

Infants & Children

Dr. M. C. Overton  
Dr. Arthur Jenkins

General Medicine

Dr. J. P. Lattimore  
Dr. H. C. Maxwell  
Dr. G. S. Smith

Obstetrics

Dr. O. R. Hand

Internal Medicine

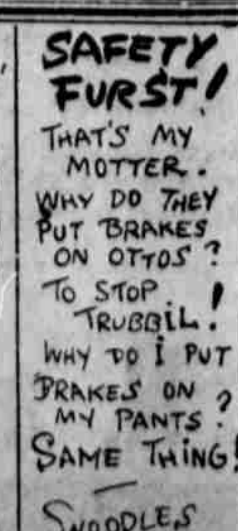
Dr. R. H. McCarty  
X-Ray & Laboratory  
Dr. James D. Wilson

Resident

Dr. Wayne Reeser

C. E. HUNT J. H. FELTON  
Superintendent Business, Mgr.

X-RAY AND RADIUM  
PATHOLOGICAL LABORATORY  
SCHOOL OF NURSING





Baby Chicks  
Pullets  
Cockerels

### SELL YOUR CULLS

If they don't lay now they should be culled. We have catching coops to do it easily and quickly, and guarantee satisfaction.

You Can't Beat Our Prices On FEEDS!

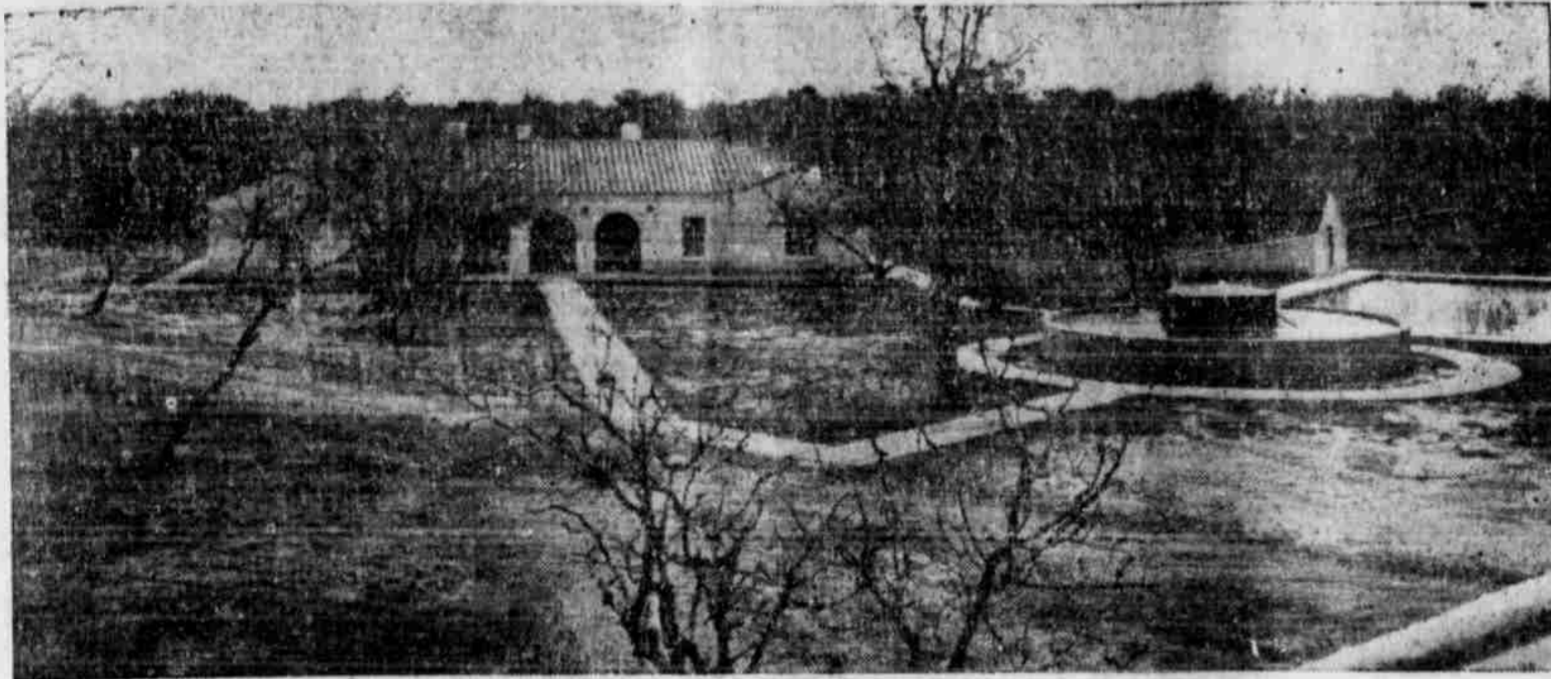
# SELL US YOUR CREAM AND EGGS

## Porcher Produce Co.

### TOP PRICES-QUICK SERVICE

Plenty Parking Space      Your Best Market For Produce      Never Out of Coal

### First Unit Texas Warm Springs Foundation



The time spring's first blossoms splashing color on the beautiful woodland location of the Texas Warm Springs Center, will be at least sixteen crippled children bathing in warm pools regaining the use of their bodies in the recently completed pools. Pictured above is the completed first unit of the master plan of the Gonzales Warm Springs Foundation. Construction was through a \$28,000 NYA project and was made possible through public contributions. The

first unit includes the large red-tile roofed brick building housing dormitories for sixteen, reception room, two indoor tiled pools, kitchen, dining room, nurses rooms, large outdoor pool, shown at extreme right, from which flows more than 200,

000 gallons of 106 degree, health-giving water daily. Equipment is now being purchased and the first phrase of the new Texas Warm Springs Center will be put into operation within a short time, Foundation officials state.

most a quarter of a century, voted last night to recommend the appointment to President Roosevelt.

Feodor Vassileff of Moscow, when pensioned by the Czar of Russia in 1782, told the sovereign he had 83 children.

Telephone No. 27 for office supplies, office forms.

Phone 27 for office supplies.



## The Family Cow-Or the Dairy Herd

Will thrive on a mixture of rich-in-protein COTTONSEED MEAL AND CLEAN COTTONSEED HULLS, and you will save money on your feed bill.

To insure growth and milk production in dairy cattle, rations containing proper proportions of proteins, carbohydrate minerals should be used. Let us help you with your feeding problems.

West Texas Cottonoil Co.  
LITTLEFIELD

### Method Of Arriving At Cash Lease Is Outlined

The following is an example showing the method of arriving at a customary cash lease for a tenant to pay or for the landlord to ask for a section with 160 acres in cultivation:

|        | COTTON |       | GENERAL |       | LANDLORD'S SHARE |            |
|--------|--------|-------|---------|-------|------------------|------------|
|        | Allot. | Yield | Allot.  | Index | Parity           | Cons.      |
| 88     | 43.0   | : 202 | 73.0    | : 105 | \$ 0             | : \$ 78.51 |
| 89     | 56.0   | : 204 | 60.0    | : 105 | \$45.64          | : \$ 71.58 |
| 90     | 51.0   | : 216 | 68.1    | : 105 | \$42.71          | : \$ 57.70 |
| TOTALS |        |       |         |       | \$88.35          | : \$207.79 |

Landlord's total benefit payments for past three years \$296.14  
Landlord's average number of bales of cotton for the past three years—  
at the average price of 80 cents, totaling \$200.00.  
Landlord's average number of tons of grain for the past three years—  
at the average price of \$8.00 per ton totaling 120.00.  
Landlord's average payments including both crop and benefit payments  
\$418.71. Thus \$418.71 is the approximate cash lease any landlord  
be justified in charging on the above figures.  
The purpose of the program  
of the practices for defeating the purpose of the program  
in which cash tenants agree to pay an amount in cash to the  
of the land which is in excess of the amount of rent the landlord  
normally received from the farm plus his proportionate share of the  
payments. If this practice is carried out, the whole of any pay-  
with respect to the farm will be withheld from or refunded by the  
There shall be withheld from or required to be refunded by the  
rd the whole of the payment with respect to all of his farms under  
program involved.  
The protection of landlords and tenants, the County Committee, as  
anced by Chairman William E. Bentley, advises all landlords and  
to figure cash leases using the above example and call by the  
County A. C. A. Office for information from the Lamb County  
Committee on Tuesdays and Thursdays of each week. These are the reg-  
meeting days of the Committee

When New Amsterdam, now New City, was incorporated in 1653 its population was 800. Some of the caravan routes on the Gobi Desert are thousands of years old.

### Petain Selects Super-Council

France's Chief of State Philippe Petain personally selected a super-council of 188 members Friday to help him govern France but left the body without legislative powers.

The council, which includes 69 senators and deputies, will meet solely at his call to discuss only those matters he determines, but he is not obligated to follow its decisions.

### Is Recommended To Place On Supreme Court

AMARILLO, Jan. 25 — Panhandle friends of Marvin Jones, former congressman, now on the United States court of claims, boosted him today for a place on the Supreme court, succeeding Justice McReynolds, resigned.

More than 1,000 persons, attending a banquet honoring Jones, who served this district in Congress al-

### Betty Alice Thaxton Honored At College Inn Thursday NiNight

Miss Gayle Etter entertained with a "get together" at College Inn in Lubbock Thursday night, honoring Miss Betty Alice Thaxton. The girls, who were leaving Texas Tech for the vacation between semesters, enjoyed a social hour before Miss Etter served refreshments.

Those attending were: Mrs. W. C. Thaxton and Mrs. Jim Etter from Littlefield, Mrs. Temple, house mother at College Inn, Mrs. Vause, social director at Texas Tech, and Misses Wilma Ruth Turner, Sally Temple, Doris Damron, Jane Weekly, Maxine Ellis, Marie Yarbrough, Mary Palmer, Patty Crawford, Louise Lewis, Mozelle Williamson, Charlotte Ranson, and Betty Alice Thaxton and Gayle Etter.

The girls stay at the College Inn and attend Texas Tech.



## New Piece Goods

Just Arrived . . .

You Must See—

These Lovely New Materials

---All Fast Colors

- . . . Wash Silks
  - . . . Spun Gaberdine
  - . . . Spun Rayon
  - . . . Nub Linen
  - . . . Alpaca
  - . . . Pique
  - . . . Seventh Heaven Crepe
- 39c per yard, up

### WELCOME REA MEMBERS---

We extend to R. E. A. members and their families a special invitation to visit our store when in Littlefield for the annual meeting of the R. E. A. Come in! Make yourselves at home!

### NEW . . .

In the Ready-to-Wear Department

### COATS . . .

- In Tweeds
- In Solids

Princess and Box Styles

### DRESSES . . .

- Pastels . . . Prints
- All Sizes



SPRING HATS

# COBB'S DEPT. STORE

SPRING SHOES



## When In Littlefield Monday February 3

—SEE AND DRIVE—



### Oldsmobile

## New Two-Tone Combinations

Just compare the de luxe models of lowest priced cars with the beautiful big Olds Special . . . Bigger, roomier Fisher body, new interior luxury . . . it's motoring's newest thrill.

# SMITH MOTOR CO.

Your Oldsmobile Dealer

Littlefield, Texas

### BUTANE Plants Make Comfortable HOMES

Gas Cook Stove, Heater and Hot Water Heater installed for as little as—

**\$179.50**

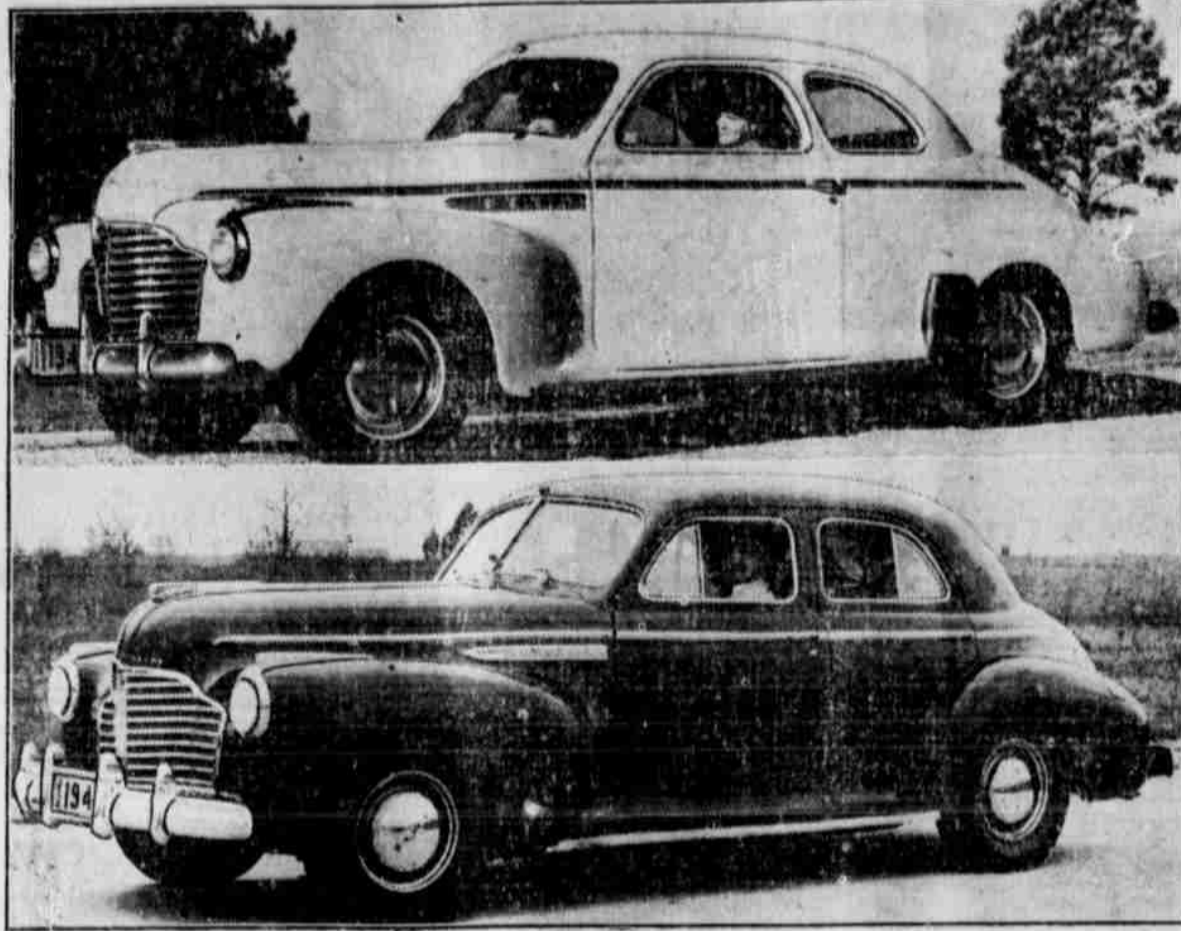
Extra Special Prices on BUTANE IRRIGATION PLANTS

**LITTLEFIELD APPLIANCE CO.**

A. W. RAY, Manager



### Shorter Wheelbase Buicks Make Bow



A SHORTER wheelbase, more compact Buick model makes its bow today with the announcement of four new cars as additions to the 1941 Buick Series 40 Special Line. Shown above are the new sport coupe and four door sedan. Others being added to the line are a business coupe and convertible coupe with automatic top. The new cars are built on a 118-inch wheelbase chassis and have six inches less over-all length and new torpedo styled bodies with concealed running boards. Except for the shorter dimension, chassis are otherwise identical with the 121-inch wheelbase Buicks, having 115-horsepower valve-in-head straight eight engine, with optional compound carburetion, torque tube drive, coil springs on all four wheels and other identical chassis units. Lower prices feature the new models.

### Correction

In last week's issue of the Leader in a news item about E. G. Oliver buying the interest of S. P. Blackbrook in the Duncan Garage and Blacksmith Shop, it was inadvertently stated that Mr. Oliver had 30 years experience, whereas it should have read "30 years experience to his credit in blacksmithing, welding and general car and tractor repairing. The Leader is pleased to make this correction.

The United States Army is to increase to 1,400,000 in 1942.



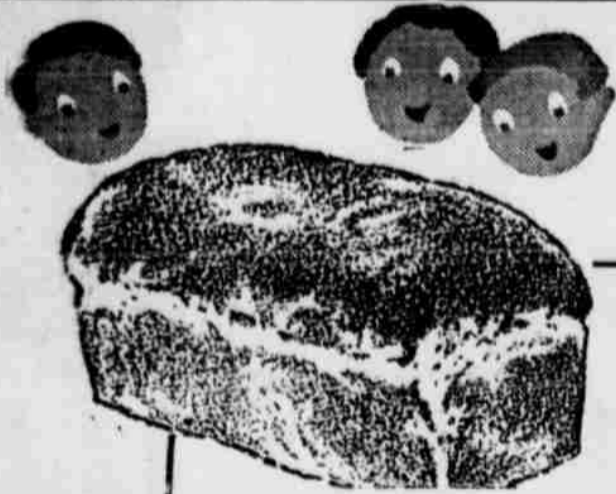
### SERVICE---

Fill Up Your Car TODAY With Phillips "66" Gas and Oil

And enjoy the pleasure of safe and economical driving.

We Welcome R. E. A. Members to Littlefield Monday.

**PHILLIPS "66" SERVICE STATION**  
Elton Hauk, Prop.



**GOOD BREAD**

Good bread makes good sandwiches — most of a sandwich is bread, so if you want a good sandwich you'll have to use good bread. Our bread is slow-baked, its ingredients are of a high standard and its flavor is just right.

**WELCOME REA MEMBERS**

Visit our Bakery when here for your bread and pastry needs.

**HOME BAKERY**

sub-station, west of Littlefield, include 440 miles, which are extended through Lamb county and parts of Hale, Hockley, Cochran and Bailey counties. The lines also reach Spade, Fieldton, Hart Camp, Pep, Frenship, Beck, Whiteface and Pettit.

Farmers in these communities are asking extensions daily through the local office, and new subscribers are added to the large list every week.

approximately 500 emblem buttons have been sold, as a part of the March of Dimes program. Boxes have been placed in stores of towns in the county, and people are contributing to the good of the cause.

The Hetrick Rhythm Clowns of Amarillo, a seven-piece all girl orchestra, will furnish the music. This orchestra is recognized as one of the best in the country and has several good singers, who will favor the attendants with songs during the dancing.

on the block west of the Dr. Payne home. The house will be of frame structure. Wm. Cameron & Co. is furnishing the materials and Ab Taylor is general contractor.

### Many Will Attend Presidential Ball

Plans are completed for the annual Presidential Ball for the benefit of infantile paralysis victims, which will be held at the Littlefield Roller Rink on Highway 7, tonight Thursday, at 8:45 p. m.

Jim Fitter, chairman of the committee for the celebration, reported that many advance sales had been made for tickets to the ball, and tickets will be on sale at the door. Also, in aid to the fund to help sufferers of infantile paralysis, ap-

### NEW HME BEING BUILT

A six-room modern house is under construction for Mr. and Mrs. W. D. Watkins in the Duggan Addition

### WELCOME FARMERS—

To Littlefield Monday for the R. E. A. Meeting. After your meeting if you are tired and need recreation, come and have a good time with us.

**WATSON'S BOWLING ALLEY**

### Lamb County Electric Serving 881 Members

During the month of January, 39,962 kilowatt hours were sold through the Lamb County Electric

Co-Operative, which amounts to \$2,991.79 in revenue, it was reported this week from the local office. The average kilowatt hour used per member totals 45.36, and the average bill per member totals \$3.40.

The local project is an investment of approximately \$300,000.

The first line in this section was energized through the R. E. A. May 19, 1939, when 340 members were serviced, and the number of members serviced to date totals 881.

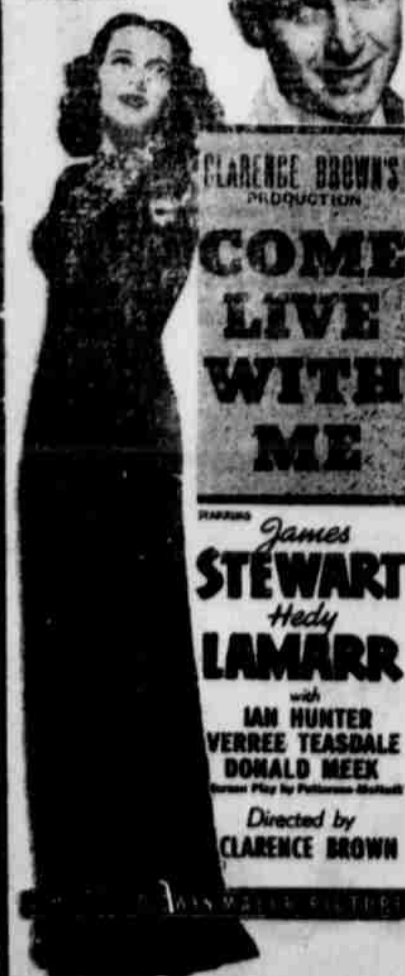
The R. E. A. lines in this section, which are serviced from the

### YOUR—Palace

**THEATRE PRESENTS:— Saturday Midnite Sunday & Monday**

### HOW TO WOO AN UNKISSSED BRIDE!

Heavenly Hedy! Romantic Jimmy! Together... in a romantic escapade!



Added—2 Snappy Shorts and News of the Day.

### RITZ

**THEATRE Saturday Midnite Sunday & Monday**

Triumph after triumph! And now another superb performance from—

**BETTE DAVIS**

in the top screen attraction of 1941—

**"The Letter"**

By W. Somerset Maugham

with

Herbert Marshall James Stephenson Gale Sondergaard

Added — Comedy and Fox Movietone News

Don't Forget These Dates!

February 12, 13, 14

**"Gone With The Wind"**

Palace - Littlefield Matinee & Night

### (NOTICE OF PUBLICATION IN PROBATE)

No. 328 THE STATE OF TEXAS TO THE SHERIFF OR ANY CONSTABLE OF LAMB COUNTY, TEXAS, GREETING:

YOU ARE HEREBY COMMANDED TO CAUSE TO BE PUBLISHED (in a newspaper of general publication, which has been published continuously and regularly for a period of not less than one year in your county), once not less than ten (10) days previously to the return day hereof, copies of the following notice:

THE STATE OF TEXAS TO ALL PERSONS INTERESTED in the Estate of V. MILLER, deceased:

T. Wade Potter has filed in the County Court of Lamb County, Texas, an application for the probate of the last Will and Testament of said V. MILLER, Deceased, and for Letters of Administration with the Will Annexed; that said Will was duly probated in Adams County, in the State of Iowa, the place of residence of said V. MILLER, Deceased, and Letters Testamentary issued to William A. Miller on the 21st day of November, 1938; that a certified copy of said Will and the probate thereof, duly attested by the Clerk of the District Court of the State of Iowa, Third Judicial District of said State, in and for the county of Adams, State of Iowa, with the seal of said court annexed and affixed, together with a certificate from the Judge of said court, which said attestation is in due form, is attached to and filed with said application of T. Wade Potter, filed herein; and that said application will be heard by the Court on the 10th day of February, 1941, at the Court House of Lamb County, in Olton, Texas, at which time all persons interested in said Estate are required to appear and contest said application, should they desire to do so.

HEREIN FAIL NOT, but have you before said court on said day this writ together with your return thereon showing how you have executed the same.

Given under my hand and seal of said court at my office in Olton, Texas, this 24th day of January, A. D. 1941.

(SEAL) O. F. DENT Clerk, County Court Lamb County, Texas.



GROVER C. DENNIS

and

JACK STRAW

of Earth of Olton

### Have Purchased the BRYAN DRUG STORE

Littlefield

And Will Take Possession Saturday, February 1

Your Business Solicited And Appreciated

Both of us have been residents of Lamb County for many years, and we are personally acquainted with large numbers of the residents of Littlefield and territory. It will be a great pleasure to us to serve the residents of Littlefield and section . . . to meet and mingle with old friends . . . and to make new friends. Visit ourstore! We'll be looking for you.

Jack Straw Grover C. Dennis

### S. & D. Drug Co.

Buy Here and Save!



Visit  
Our Store  
When In  
Littlefield

# SUPER SAVINGS

Big  
Trade-In  
Allow-  
ances



A Store Full Of

Beautiful Modern Furniture

Low Prices, Convenient Terms, Liberal Trade-in Allowances

We Have Just Unloaded A New Shipment Of---

Living Room Suites — Bedroom Suites  
Dinette Sets — Platform Rockers —  
Rugs — Heaters.

## Onstead Furniture

Phone 283

Littlefield

We extend the R. E. A. members and their families a special invitation to visit our store when in Littlefield Monday for the annual membership meeting of the Lamb County Electric Co-Operative.

You will enjoy the comforts of rural electrification more if you place in your home a new 1941 Kelvinator. See these new models at our store.

### New 1941 DeLaval Electric SEPARATORS

First In Performance — First In Sales  
All Electric Models—Prices Range From  
\$69.50 to \$129.00

### MAGIC CHEF RANGES BUTANE PLANTS



### KELVINATOR

"The most beautiful refrigerator in the world." This sparkling beauty is just one of the amazing 1941 Kelvinator values—values that save you as much as \$30 compared with last year when Kelvinator's prices were reduced from—

\$30 to \$60

Let us show you these refrigerators of tomorrow—today! Prices start at—

\$114.75

## O. N. AND EARL ROBISON APPOINTED REPRESENTATIVES FOR MONTGOMERY WARD CO.

Robison announced Wednesday that he and his son, Earl, have been appointed local representatives for Montgomery Ward Co. to introduce their merchandise, Mr. Robison will exhibit of the Montgomery merchandise, including electric refrigerators, radios, washing machines, butane gas appliances, Monday, February 3 in the building across from the theatre, where he and his son, Earl, will demonstrate during the various pieces of merchandise of this company.

Robison has been in business since 1937, operating his son's Second Hand Store. This son, Earl, invite their visit this exhibit Monday.

Warmer of the earth is said to be as hot today as it was in 1937.

### Highlights Of 1941 A. C. A. Program Outlined For 1941

Producers Should Give Thought To Article, Says Bentley

As announced by the chairman of the Lamb County A. C. A. Committee, William E. Bentley, the following are some highlights of the 1941 Agricultural Conservation Program that producers should give some thought and study:

**PRACTICE**  
A landlord or operator, including the landlord of a standing or fixed rent or cash tenant, whether by oral

or written leases or by oral or written agreement supplementary to such lease, requires by coercion or induces by subterfuge his tenant or sharecropper to agree or pay to such landlord or operator all or a portion of any government payment which the tenant or sharecropper has received or is to receive for participating in the 1941 program.

**AMOUNT OF MONEY TO BE WITHHELD OR REFUNDED**  
The entire payment which has been or otherwise would be made to such landlord or operator with respect to the farm.

Some devices used by landlords operators in charging bonus rents are as follows:

- (1) Cash Payment in addition to regular share rent.
- (2) Cash Payment for each acre not planted to cotton, including idle land.
- (3) Additional cash payment for

all land in the farm which is not rented on a regular crop share basis.

(4) Rental is sometimes charged for the house in which the tenant must live.

(5) The tenant is sometimes required to pay the taxes on the farm.

(6) Some landlords charge a cash lease higher than is customary for farms in the community, which may be a bonus.

The County Committee of Lamb County meets on Tuesdays and Thursdays of each week.

### Quota For Feb. 7 Will Be 6 Men; 8 To Go From Here

More Than Sufficient Have Volunteered To Fill Said Quota

According to Otto Jones, Chairman of the local draft board, two of the 23 volunteers who left Littlefield last week for Lubbock, Concentration Point, failed to pass examination, and were returned to Lamb County. They were; Norman Henry Small, Earth; and William Aldridge Higgins of Anton.

In an interview with Mr. Jones Tuesday he said: "Since we have been advised that six men will be our quota for February 7, we will have to send 8 during February on account of two not passing examinations. However, we have sufficient volunteers to fill this quota, and some to spare."

The men who are scheduled to fill the quota requirements February 7, and leave here on that date are; Esqual D. Parker, Littlefield; Alzono T. Newman, Earth; George J. Warner, Littlefield; Holland A. Duke, Sudan; Robert L. Ramage, Spade; and Robert P. Wilson, Littlefield.

The men who will replace the two rejected from the January quota are Curtis H. Sharp and Oscar C. Grunke of Littlefield, who will leave here February 13.

Other men volunteered for military service at the local board, who are waiting to be called are; Edward C. Fulcher, Sudan; Sneed Johnson, Sudan; Leonard C. Foster, Littlefield, Roy Oscar May, Sudan;

and Ray B. Sneed of Sudan, were sent out from the local office Questionnaires up to Number 960 up to and including Wednesday.

## YOU'LL SAVE MORE Shopping Here!

### SPECIALS FOR FRIDAY, SATURDAY AND MONDAY

- PALMOLIVE SOAP, 4 Bars ..... 21c
- CONCENTRATED SUPERSUDS, Large Size ..... 19½c
- BEANS, Ranch Style, 3 cans ..... 23c
- GLEN VALLEY CATSUP, 14 ounce bottle ..... 10c

### MILK, Small Size, 3 Cans, 10c

- CRACKERS, 2 Lb. Box ..... 12½c
- UNCLE WILLIAM MINCE MEAT, 3 pkgs. .... 25c
- VIENNA SAUSAGE, Can ..... 5c
- WHITE SWAN RED KIDNEY BEANS, No. 300 can ... 7c
- FOLGER'S

### COFFEE, 1 Lb. Can ..... 25c

### MARKET SPECIALS

The Biggest Little Market In Littlefield

- CHICKEN LEGS, Mock, 3 for ..... 10c
- DRY SALT, No. 1 Jowls, Lb. .... 8½c
- NICE AND TENDER STEAK, Lb. .... 18c
- GRAIN FED BABY BEEF BEEF ROAST, . . . Lb. .... 18c
- PORK CHOPS, Nice and Lean, Lb. . . 19c
- STEAK PORK, Nice and Lean, Lb. . . 18c
- ALL VEGETABLE OLEO, Nu Maid, Lb. .... 11c

Top Prices Paid For Eggs

## Gene's Food Store

## Visit The Montgomery Ward Display

of

W. Electric Refrigerators, Airline Radios, Washing Machines, Butane Gas Appliances

In Enochs Building

Across From Palace Theatre, Littlefield

## Monday, February 3

This Will Be An All-Day Exhibit

ANNOUNCEMENT — O. N. and Earl Robison have been appointed local representatives for Montgomery Ward, and are in a position to sell you Montgomery Ward's Refrigerators, Radios, Washing Machines, Butane Appliances, Ranges, Sewing Machines, Furniture, etc.

Liberal Trade-in Allowance

## O. N. and Earl Robison

ROBISON'S SECOND HAND STORE

located Across From Ware's Dept. Store

Littlefield

### Valve Service

Bring Us Your Tractor Heads

Williams Bros.

GARAGE

Rear Southern Auto

Published Every Thursday Afternoon at Littlefield, Texas

LAMB COUNTY LEADER

Entered as second class matter May 24, 1923, at the Post Office of Littlefield, Texas, under act of Mar. 3, 1879

MORLEY B. DRAKE Editor and Publisher

E. M. DRAKE Business Manager

SUBSCRIPTIONS: \$1 Per Year in Lamb and Adjoining Counties. \$1.50 Per Year Outside Lamb and Adjoining Counties.



Advertising Rates Given Upon Application

Subscribers who change their addresses, or fail to get their paper, should immediately notify this office, giving both new and old addresses.

Communications of local interest are solicited. They should be briefly written, on only one side of the paper, and must reach this office not later than Wednesday noon of each week. The right of revision or rejection is reserved by the publisher.

Any erroneous reflection upon the character, standing or reputation of any person, firm or corporation which may appear in the columns of the Lamb County Leader will be gladly corrected upon its being brought to the attention of the publisher.

In case of errors or omissions in local or other advertisements, the publisher does not hold himself liable for damage further than the amount received by him for such advertisement.

Farm Inventory Pays

Does it pay to make a farm inventory each year?

Well, here's a partial answer. Some years ago a banker friend was telling of an experience he had. At the beginning of the year he had made a loan to a young farmer who was starting out just about from scratch. At the end of the year the young man came in showing very plainly that he was badly discouraged. Because of drouth he had not made the crops he expected to make, and he could make only a partial payment on the note. It would soon be time to make arrangements for next year and he felt he was worse off now than when he started. Frankly, the young man was ready to give up.

"Wait just a minute," said the banker as he reached for the record that was made out and filed when the loan was made. "How many cows do you have now? How many calves?" On completing the check-up they found the young man had more livestock than he had when the loan was made, more corn in the crib, more hay in the loft, and he still had the mule and implements he had bought with part of the money obtained through the loan. He had been building up his capital!

"Why, young man, you are a better credit risk now than you were a year ago," announced the banker. "Your net worth is greater. The increase in value of livestock, feed, and equipment far exceeds the unpaid balance on your note."

A very much relieved young man

left the office of the banker, all because of a few minutes' work with a lead pencil. Why not try this plan around New Year's? Nothing will pay better the next rainy day.

Electricity On The Farm

C. V. Phagan and G. H. Stewart, Clemson extension agricultural engineers, list five ways to use electric juice to reduce farm costs or increase farm income as follows:

- 1. A water pump at reasonable cost will give the housewife running water where and when she wants it and will lessen her biggest drudgeries and give her time for other tasks that will mean much more to the family.
2. A water hose and sprinkler will irrigate the garden during dry months and insure more fresh vegetables for the family and for sale.
3. A homemade electric brooder costing \$6 or less, with a capacity of 100 day-old chicks, will help raise chicks more economically for family use and market.
4. A small bur mill pulled by a one quarter horsepower motor will permit wheat grinding at home, thereby getting 50 pounds of flour and 10 pounds of bran from a bushel of wheat which, if sold on the market, would buy only 17 pounds of flour.
5. Refrigeration of any type will aid in the preservation of farm products with surplus to sell for cash.

-The Progressive Farmer

WANT ADS GET RESULTS Police of London who do not get regulation footwear now receive a shoe allowance of 20 cents a week.

Last Rites Held For Victim Car Mishap Friday

Twelve year old Leroy Hall died early Friday night in an automobile enroute to a hospital at Levelland after he had been struck by a car near his home, a half mile south of Pettit.

Highway patrolmen said a Levelland man was driver of the car that struck the boy.

A son of Mr. and Mrs. Bud Hall, Leroy had started to an entertainment at Pettit schoolhouse when the accident happened. He had walked little more than 100 yards away from the house.

The man was driving south toward Levelland on the unpaved road and was quoted as saying the boy apparently stepped from the side of the road and in the path of his car. He said he did not see the child.

The driver stopped and placed the injured boy in his car, returning to Pettit. The limp body was placed in another machine and rushed to the Levelland hospital, but physicians said Leroy was dead on arrival.

Funeral services were conducted Saturday afternoon in the First Side church at Pettit, with P. V. Mont Robinson, pastor, officiating, and burial took place in the Levelland cemetery.

The Texas Highway Patrol was investigating the tragedy.

The RAF is careful about its cooks. Chefs in its camps line up daily for "fingernail inspection" before going to work.

LOOK!

"Maddox is right next door to the Lamb County Electric Co-op! Sure is convenient to take our clothes when we pay each month's bill."



"And Maddox is urging us to attend the annual Membership Meeting of the R. E. A. next Monday, February 3."

Be Sure To See Our New Spring Samples

MADDOX TAILOR SHOP

Phone 201 We Call For and Deliver

All Kinds WELDING Expert Service Best Equipment Williams Bros. GARAGE Former Beisel Machine Shop

Between Two Fires



Frenship Five Winner Ropes Tourney Saturday

Coach Bauman Roper's Frenship five won the Ropes invitation basketball tournament at Ropes Saturday night with a 27 to 17 victory over Tahoka. Idalou won the girls championship, defeating Union, 23 to 19.

Union won the boys consolation title by defeating New Deal 37 to 32, while Wilson won the girls consolation from New Home, 28 to 13.

Frenship defeated Ropes in the semi-finals of the boys bracket, 36 to 20, while Tahoka was eliminating Meadow, 28 to 26.

J. W. Gamble was high for Frenship in the final game, with 10 points, while McWhorter scored 8. Miss Dacus led Idalou to victory in the final girls game with 12 points.

Morton Makes Effort To Secure Railroad

Four officials of the Panhandle and Santa Fe Railway system, namely, H. H. Nye, assistant general freight and passenger agent of Amarillo, E. Kancher, also of Amarillo, I. M. Robinson and R. H. Forbes of Lubbock, were guests Wednesday of last week at the Morton Lions Club luncheon and at 1:30 p. m., a meeting was held in the district court room with the Morton business men endeavoring to show these railway officials how Morton and vicinity was badly in need of a railroad.

Information as to incoming and outgoing freight was also submitted to the railway officials, who did not give any promise as to what the decision of the company would be.

Miss Whitman And Wesley Fox Wed Here Saturday

Miss Mildred Whitman of Artesia, N. M., and Wesley Fox of Amarillo were married here Saturday afternoon, Rev. Roy Shahan, pastor of the First Baptist church, officiating with the ring ceremony.

The ceremony took place at the parsonage at 3 o'clock in the afternoon, in the presence of Mr. and Mrs. R. R. Reynolds of Lubbock, who accompanied the couple to Littlefield.

The bride was attired in a teal blue dress and hat, and wore antique tan accessories.

Mrs. Fox is a daughter of A. B. Whitman of Artesia, N. M., and the groom is a son of Mr. and Mrs. J. W. Fox of Lockney, Texas. The couple will make their home at 910 Tyler St., Amarillo, where the groom is employed.

Get Your Exemption Certificates Now

All persons becoming 21 years of age between January 1, 1940 and January 31, 1941, should get exemption certificates during the month. It is not necessary for persons over 60 years of age to get exemption certificates.

We Welcome You - Farmer Friends

To Littlefield for the R. E. A. Meeting Monday, February 3. When here we invite you to make our establishment your headquarters, and if you need anything in the hardware or implement line, let us serve you.

When in need of Butane Gas Appliances, let us figure with you.

JONES HARDWARE

Dealer for Allis Chalmers Tractors and Farm Implements Littlefield, Texas

Phone 190

Littlefield, Texas

ELECTRICITY

Servant To A Hundred Daily Needs

WE ARE PROUD OF THE Rural Electrification Program

We Are Enthusiastic At The New Comforts And Increased Facilities It Has Brought To Farm Homes

Texas-New Mexico Utilities Company



### West Texas Areas Should Have More Legislators Redistricting Plains According To New Census Would Benefit

With the 47th state legislature of Texas now in session, and with proposals in certain quarters for a re-districting of the state for both the legislative and senatorial posts, importance of 194 census figures seems high.

Recent census announcements, said the final, show conclusively that South Plains legislative district among others should be changed so as to give a more equitable distribution of representatives.

With only two out of the nine counties comprising state legislative district 119 reporting decrease in population in the last decade, the district in the past ten years has had 29,195 or 28.8 percent in population.

Based on an estimated average of approximately 45,000 residents of a legislative district, Lubbock county with 51,872 population, is tied to one representative.

Totals show that the 1940 census reported 130,474 persons lived in the nine counties, compared with 101,279 ten years ago. Crosby and Lynn counties alone show decrease in population.

Three counties of the district showed high in percentage of increase; Yoakum with 323.9 percent led the state Gaines with 190.9 percent was fourth and Cochran 90.3 percent was seventh.

Comparative figures for the two years were:

| County  | 1940    | 1930    |
|---------|---------|---------|
| Yoakum  | 10,046  | 11,023  |
| Crosby  | 3,735   | 1,963   |
| Lynn    | 15,367  | 13,573  |
| Garza   | 8,136   | 2,800   |
| Wichita | 12,693  | 9,233   |
| Lubbock | 51,872  | 39,104  |
| Yoakum  | 11,931  | 12,372  |
| Cochran | 11,160  | 9,883   |
| Yoakum  | 5,564   | 1,263   |
| Total   | 130,474 | 101,279 |

Population of three other West Texas state legislative districts that in the 119th on the north, east and southeast, all show decreases in population, according to the official figures.

Population of the three districts, the 120th and 121st, shows in

1940 there were 146,686 residents compared to 166,186 ten years ago, a decrease of 19,500.

Eighteen counties are in the three districts and in only four of them did the county population show an increase in the decade. Garza county alone increased in the 118th district and Bailey, Lamb and Parmer in the 120th, with the four counties comprising the 121st district showing losses.

In two of the districts, the total population is below the state average.

Comparative figures for the three districts are:

118th district:

| County    | 1940   | 1930   |
|-----------|--------|--------|
| Borden    | 1,386  | 1,505  |
| Dickens   | 7,847  | 8,601  |
| Garza     | 5,678  | 5,586  |
| Kent      | 3,413  | 3,851  |
| Seurry    | 11,545 | 12,188 |
| Stonewall | 5,589  | 5,667  |
| Total     | 35,468 | 37,398 |

120th district:

| County  | 1940   | 1930   |
|---------|--------|--------|
| Bailey  | 6,318  | 5,186  |
| Briscoe | 4,056  | 6,583  |
| Castro  | 4,631  | 4,720  |
| Floyd   | 10,659 | 12,409 |
| Hale    | 18,813 | 20,189 |
| LAMB    | 17,606 | 17,452 |
| Parmer  | 5,890  | 5,789  |
| Swisher | 6,528  | 7,343  |
| Total   | 74,501 | 79,671 |

County

| County    | 1940   | 1930   |
|-----------|--------|--------|
| Cottle    | 7,079  | 9,295  |
| Childress | 12,527 | 16,044 |
| Hall      | 12,117 | 16,966 |
| Motley    | 4,994  | 6,812  |
| Total     | 36,717 | 49,117 |

20th district:

| County    | 1940   | 1930   |
|-----------|--------|--------|
| Wichita   | 7,079  | 9,295  |
| Childress | 12,527 | 16,044 |
| Hall      | 12,117 | 16,966 |
| Motley    | 4,994  | 6,812  |
| Total     | 36,717 | 49,117 |

Twenty-one of the 40 cities and towns of Lubbock's trade territory over the South Plains, made gains in population.

Thirteen towns did not gain—in fact they lost in population, while six towns which were in existence this year were not incorporated in 1930.

Unincorporated towns ten years ago included Andrews, Anton, Dickens, Morton, Seminole and Southland.

No report was made for Denfer City, south Yoakum county oil field town, which is less than two years old. An unofficial report gave the population as slightly in excess of 3,300.

Nineteen of the 40 counties listed are county seat towns. Only unincorporated county seat towns are Plains in Yoakum county and Gall in Borden county, either of which shows a population report. Dickens, Morton, Andrews and Seminole have been incorporated during the past decade.

Dimmitt and Plainview are the only county seat towns that do not show a population gain.

Nine towns have more than 3,000 population. There were but six a decade ago. They are, in order, Lubbock, Plainview, Lamesa, Brownfield, Snyder, Littlefield, Slaton, Seagraves, Levelland. In 1930 these ranked, Lubbock, Plainview, Slaton, Lamesa, Littlefield, Snyder.

In West Texas, there are 31 towns with 2,700 or more inhabitants, north of the Texas and Pacific and west of the 100th meridian. Amarillo is first; Wichita Falls, second; Lubbock, third; Abilene fourth; San Angelo, fifth; Pampa, sixth; Big Spring, seventh; Sweetwater, eighth; and Borger, ninth, all with over 10,000 population. Plainview ranks 13th; Lamesa 15th; Colorado City, 17th; Brownfield, 20th; Littlefield, 21st; Snyder, 22nd; Slaton, 24th; Seagraves, 28th; Levelland, 29th, and Floydada 31st.

The state population in 1940 was 6,414,824, an increase of 10.1 percent over the previous decade. The state remained preponderantly rural, however, gaining both in total and in percentage, 45.4 percent in 1940 to 41 percent in 1930.

Houston leads the state cities in population, with Dallas San Antonio, Fort Worth, El Paso, Austin, Galveston, Beaumont, Corpus Christi, Waco, Amarillo, Port Arthur, Wichita Falls, Laredo and Lubbock, the latter ranking 15th.

### United States Civil Service Exams

The United States Civil Service Commission announces open competitive examinations for the positions of Senior Stenographer, \$1620 a year, Junior Stenographer, \$1440 a year, Senior Typist, \$1440 a year, and Junior Typist, \$1260 a year, for employment in the Tenth United States Civil Service District, comprising Louisiana and Texas. These examinations are open to men only as there are adequate registrars of female eligibles. Applications may be filed continuously with the Manager Tenth U. S. Civil Service District, Customhouse, New Orleans, La., until further notice.

Persons whose applications are accepted will be notified when to

appear for the assembled written examination, which will be given at intervals.

Additional information and entry blanks may be obtained from the Secretary, Board of U. S. Civil Service Examiners, Littlefield, or from the Manager, Tenth U. S. Civil Service District, Customhouse, New Orleans, La.

port from the committee as to a new or a different organ. It is important that all voters be present at this meeting.

Next Sunday night the Young People's Society meets for an educational study and business meeting at 7:30.

**EMMANUEL LUTHERAN CHURCH**  
(E. H. Riese, Pastor)

Services next Sunday with Holy Communion at 11:00 a. m. Announcements may be made Saturday afternoon between one and seven o'clock, if possible.

Sunday School and Bible classes will meet at 10:30 a. m.

The voters' assembly of the congregation will meet at 10:30 a. m. in the church in order to hear a re-

**BLACKSMITHING**  
All Work Guaranteed

**Williams Bros.**  
GARAGE

Former Beisel Machine Shop

**We Join With  
Our Farmer Friends**

In Viewing With Satisfaction  
the outstanding Progress Of  
**RURAL ELECTRIFICATION**

The furnishing of electricity to the rural sections of our nation has been an outstanding step forward... we view with great satisfaction the electrification of farm homes... and offer our hearty congratulations to the Lamb County Electric Cooperative.

**I. C. ENOCHS**  
Enochs, Texas  
Bailey and Cochran County Lands



### Morton Wins Over Sudan Saturday

Morton high school took top honors in the Sudan invitation basketball tournament by defeating Spring Lake, 29 to 25 in the championship round at Sudan Saturday.

Girls division honors went to Anton with a final 36-33 victory over Lazbuddy.

In the consolation bracket, Lazbuddy's boys defeated Muleshoe 28 to 24 in the final game, while in the girls division, Friona won from Spring Lake, 30-25.

Phone 27 for office supplies.

Follow the SUN  
the land of FUN



**SOUTHERN CALIFORNIA**  
All-Winter  
**SUN FESTIVAL**

The Sun Festival, now in full swing, presents an array of colorful events for the enjoyment of California winter visitors. Come—follow the sun to the land of fun via a comfortable air-conditioned Santa Fe train! Join in the Southern California All-Winter Festival for the happiest, healthiest vacation you've ever known!

**ALONG THE WAY**

Plan your winter trip to include Carlsbad Caverns, Grand Canyon and an Indian-detour through the Spanish-Indian Country of the great Southwest. Ask your local Santa Fe Agent for picture folders and other details.

Ship via Santa Fe for freight service that provides unfailing dependability of speed and handling. Precise attention to every detail is a Santa Fe tradition.



Look... here's an important announcement... now we can buy a—

**Sanitized  
Used Car**  
**100% CLEAN**  
**INSIDE and OUTSIDE**

**FOR YOUR COMPLETE ENJOYMENT  
and PERSONAL SATISFACTION**  
—SELECT A SANITIZED USED CAR

We have installed special equipment and facilities for the thorough cleaning of all automobiles taken in trade. Every part of the car is gone over — under the seats, under the floor mats, the trunk, the glove compartment, when you step into one of our used cars you are entering an automobile that is 100% CLEAN, INSIDE AND OUTSIDE.

WHEN YOU BUY A USED CAR FROM US YOU ARE PURCHASING A RECONDITIONED and GUARANTEED AUTOMOBILE THAT IS 100% CLEAN — the kind of a car that you want your family to ride in.

**Here Are Big Values In Used Cars**      Every One Sanitized

|   |  |  |
|---|--|--|
| <b>1940 FORD</b><br>Tudor, Practically New Tires<br><b>\$625</b>                          | <b>1938 FORD</b><br>DeLuxe Tudor, Radio and Heater<br><b>\$425</b>     | <b>1939 BUICK</b><br>Coach, A real bargain—very low mileage for the model<br><b>\$595</b>  |
| <b>1937 FORD</b><br>DeLuxe Tudor, Radio and Heater<br>Motor Reconditioned<br><b>\$325</b> | <b>1939 FORD</b><br>Coupe, Local Merchant's Car, Clean<br><b>\$495</b> | <b>1939 CHEVROLET</b><br>Master DeLuxe Coupe, radio and heater — new tires<br><b>\$535</b> |

**HALL MOTOR CO.**  
SALES  SERVICE

# LITTLEFIELD WILL BE HOST TO R. E. A.

## Lamb Farmers Receive Nearly Million Dollars

Parity And A. C. A. Payments For 1940 Total \$948, 835.38

Checks totaling 50,000 arrive this week at Amherst according to Aubrey W. Bung, Secretary of Lamb County. A. the farmers of this county received in 1940 Cotton Parity payments and Agricultural Conservation payments the sum of \$948, 835.38. Of this amount, Parity is total \$448,000.00, issued in checks. Agricultural Conservation payments received to date total \$500,000.00, issued in 3,320 checks. Approximately 85 percent of the Agricultural Conservation payments have been received. Total of \$60,000 in about 300 checks was received this week as follows: \$16,000. Monday; Tuesday \$10,000. and Wednesday \$18,000.

### Jewelry Store At Littlefield Is Robbed; \$500 Is Taken

Robbers were busy in this store during Thursday night and Friday morning the Ray Mercantile Co., at Earth was being prying open a rear door. Approximately \$135 was taken from the safe, which was unlocked. Cartons of cigarettes are

Kelley discovered the burthen when he went to his place of business on Friday morning.

### Muleshoe Store Robbed

At the same time, Hart's store at Muleshoe was robbed. Entrance was gained through front door, which apparently had been pried open with a crowbar. A knob was knocked off the door and approximately \$199 in cash was missing.

Sam Hutson, Deputy Sheriff and other Lamb county officers at once began investigation and were advised that similar robberies had taken place at Roswell Saturday night, and several hundred dollars was missing.

### Man Is Held

Information has reached the Lamb County officers that a man was arrested at Gallup Saturday night, an alleged attempted burglar. A man, believed to be a companion of the arrested man, escaped.

The arrested man, held in jail at Roswell, is said to have escaped from the penitentiary at Huntsville on November 17. When arrested he had \$400 in his possession. A representative of the Lamb County Sheriff's department went to Roswell Tuesday in connection with the investigation into the Lamb County burglary.

### Destroys House

#### Killed By H. C. on Friday Morning

A two-room house occupied by Mrs. W. C. Hutson, located on the hog farm in the Coleridge addition, was completely destroyed by fire about 10 o'clock Friday morning. The building was almost destroyed by the Littlefield Fire Department. The fire reached the scene of the

Hutson and the six months old pig escaped from the house but all their furniture and personal belongings were destroyed. Hutson was in town when the fire occurred.

Complete Stock Of JEWELRY & SILVERWARE  
WATCH REPAIRING  
JACK FARR  
Member In Stokes Drug

LITTLEFIELD—THE PULSE OF THE PLAINS

# LAMB COUNTY LEADER

20 PAGES

20 PAGES

Official Newspaper of Lamb County, Texas

THE SOUTH PLAINS GREATEST WEEKLY NEWSPAPER  
Serving the Fastest Developing Agricultural Section of the Entire Southwest

VOLUME XVIII LITTLEFIELD, LAMB COUNTY, TEXAS, JANUARY 30, 1941 NUMBER 44

## Viralyn Patrick To Be Crowned High School Personality Queen

Miss Viralyn Patrick will be crowned "Personality Queen" of the Littlefield high school next Tuesday night in an elaborate ceremony which will take place at the high school auditorium. The program will start promptly at 7:30 o'clock and admission will be ten cents.

The queen's escort will be B. D. Garland. Her attendants and their escorts will be Noreen McGee and Floyd Holberg; Janith Hewitt and J. B. Sharp; Jean McGee and Babe Hammons; Lucille Minton and Reed Tomlinson; Lois Lee and Ferrell Compton; and Hazel Holladay and Alph Wright.

Sponsored by the Yearbook staff,

a contest was held early in January, when students voted in assembly, casting their ballots as first, second, third, fourth and fifth choice, for Personality Queen. Miss Patrick won by a wide margin and her attendants were next in the contest.

Mrs. Dee Stephens, director of publicity for the Yearbook, announced the following program:

Tap dance, Linda Beth Stokes; piano solo, Lynell Barnett; reading, Alma Faye Taylor; song, Ozelle Pounds and Havern Luman; ballet dance, Jackie Farr; dance, Georgia Lou Smith, Jackie Farr, Jeanine Sanders and Linda Beth Stokes; tap dance, Dee Stephens.

Bobbie Taylor will be master of ceremonies, and he will crown the queen. The crown bearer will be Freddie Pinkerton and train bearers will be Ann Q. Bellomy and Jerry Sanders.

Jimmie Zed Robinson will be court fool. Heralds will be Mozelle Nance and Dorothy Marie Gainous.

Viralyn, attractive daughter of Mr. and Mrs. W. S. Patrick, is a senior in high school, and her pleasant, friendly smile for everyone helped her to be voted Personality Queen. She has a beautiful voice, and she has made many public appearances, entertaining groups with her singing.

## GLOVES BATTLES START TONIGHT

By CHARLES DIDWAY

Their only plan of attack a two-fisted one, and their only thoughts of defense a guard against rights and lefts, more than forty ambitious youths of the Littlefield area will clamber through the ropes two at a time at the Littlefield high school gymnasium tonight and tomorrow night to vie for honors in the annual Golden Gloves invitation tournament. The opening bouts on each night's card are scheduled to begin at 7:30 o'clock.

Champions and runners-up in each weight division here will represent this area as a team at the Golden Gloves district tournament at the Cotton Club near Lubbock next week end. A fighter's elimination in the tournament here, however, does not bar him from entering the district tournament, explains Abe Murphy, athletic mentor at Littlefield high school and sponsor of the local fistic meet.

The "cream of the crop" from recent "warm up" tournaments at Plainview, Tahoka and Brownfield will be on hand to swap punches and sportsmanship with such local favorites as W. D. McCarty, Jr., Buford Bradshaw, Preacher Yenez, J. D. Ramsey, and others.

In addition to winners of the tournaments at Plainview, Tahoka Brownfield and Slaton, the following (Continued on back page)

## Judge James Ellis Guest Speaker For Annual Meeting

Miss Katherine Harris R.E.A. Home Economist Will Be On Program

Plans are almost completed for the second annual membership meeting of the Lamb County Electric Co-Operative, which will be held Monday, February 3, in an all-day session at the Palace Theatre.

Free barbecue will be served at noon to R. E. A. members and guests by the local Chamber of Commerce.

Judge James A. Ellis of Level-land, county judge of Hockley county, has been invited to be guest speaker during the program.

Miss Katherine Harris, home economist for R. E. A. in Texas, will attend and will discuss electrical problems with the women members who are present at the meeting.

Ben Gann, of Olton, president, will preside.

Officers and directors will be elected at this meeting.

The following officers and directors have served the past year:

Ben Gann, president; J. W. James of near Lums Chapel, vice president; J. R. Kuykendall, Spade, secretary-treasurer, and C. W. Smiley, Littlefield, C. A. Thomas, Amherst, C. M. Sanders, Pettit and J. T. McGowan, Anton, directors.

O. K. Woodall is general manager of the local project; Mrs. Edna Sisson and Miss Doris Reed, stenographers and bookkeepers in the local office; Dick Carl and Herman Herring, maintenance men; and E. A. Bills, attorney.

There are 881 members of the local project and most of these members and their families will attend this annual meeting.

Local merchants are extending the members a cordial invitation to come to Littlefield next Monday, and attractive displays are being arranged to help solve electrical problems of these farmers.

There will be no general display of electrical appliances, Mr. Woodall reported, but members are urged to visit the local stores.

## Rural Route 2 To Be Extended 8 Miles

As announced by Postmaster W. D. T. Storey, Rural Route Two will be extended February 1.

The extension will take care of territory south and west of Valley Gin and also College Heights addition. Some eight miles is added to this route and accommodates approximately 40 families.

Patrons are advised by Mr. Storey to properly erect approved boxes on the right hand side of the road as traveled by the carriers. The name of the patron should be printed on the box and a list of names who receive mail placed in the box.

The patron's prompt attention to this will aid in securing good service on these extensions, according to Mr. Storey.

## Buys 257 Calves For Feeding Out

Ellis Foust made a trip to Midland last week, and purchased 257 calves for feeding out. He will have these calves shipped here by truck Friday, and will feed them out at his pens, 12 miles southwest of town.

According to Mr. Foust, this will make about 500 cattle in all feeding out at his pens, all of which are whitefaces, and owned jointly by him and Bob Smith.

Mr. Foust stated Monday that they would keep the calves bought at Midland over for another year.

They sold 175 head a short time ago.

Mr. Foust reports that meat prices are going up.

## RURAL ELECTRIFICATION MODERNIZES HOME

By MARGARET BANDY

A typical farm home!

Sounds like a dream come true, and among the many typical farm homes in Lamb county, the farm owned and operated by Mrs. O. D. Brown and her son, Archie Brown, has truly been "electrified."

Located 12 miles east of Littlefield, and four miles north of Spade, their home is very "typical" and the machinery, trucks, trailers and many improvements are evidence of prosperity.

Besides having the many conveniences offered through rural electrification in their home, Mr. Brown

has recently completed wiring the barns, chicken house and tool sheds.

is Model Farm

This place might be called a model farm, for everything is found on the premises that make farm life interesting, from the ducks on the pond to the greyhound that chases rabbits all day!

Mrs. Brown says "no" when Archie starts talking about selling the 40 registered Hampshire hogs, the horses (although they farm with five tractors) or the guinea.

Mr. Brown not only is a state certified seed grower, but he believes in diversification. Much of

the feed grown on the farm this year will be fed to about 30 head of Hereford cattle, including a registered bull.

If the hog market does not sink too low, he will make money in the spring from corn-fed pigs. The hogs are getting used to the bright lights over their pens at night.

Have 11 Jersey Cows

Eleven fullblood Jerseys furnish milk and lots of cream is sold each year.

The 15 big work horses are used to pull trailers at feed-heading time, and the two horses used for riding are the pride and joy of 11 year

old O. D. Brown, Jr.

The large chicken house that has been lighted with electric lights, easily accommodates 300 white Leghorn hens, that are being "educated" to wake up early, eat a good breakfast and "get busy." Mrs. Brown has two large brooders for baby chicks.

Of the 400 acres of cotton from the 1,500 acres that are being cultivated by Mr. Brown each year, approximately one-half bale to the acre was made this year. He does not have an irrigation well.

The huge stacks of feed and two (Continued on back page)



An outstanding example of the possibilities for farm home modernization through the facilities of the rural electrification program is presented in the farm of Mrs. O. D.

Brown and her son, A. B. Brown, located four miles north of Spade.

In addition to electric facilities in the home, Mrs. Brown and her son have made extensive use of

electricity in the operation of their farm, examples of which are the use of an electric pump in the pumping of water; electric motor

on a seed cleaner; motors for the farm repair shop, and electric lights in the poultry houses, the barn, hog pen and sheds.



CAREFUL EYE EXAMINATION  
DR. IRA E. WOODS  
and  
DR. E. W. ARMISTEAD  
—Optometrists—  
Littlefield, Texas