

You'll find it in the

WANTED

16 Pages
10c Per Copy

NUMBER 20

For Rent

2 bedrooms, 801 near school. \$40.00 monthly. Lee Holthamp 721 across street on corner.

Four rooms and bath. 2 houses 3 rooms unfurnished. Roberts 233. Call 232.

Mr. Alvin C. Webb 333 Ltd. Drive. Phone TF-W

For rent to lady, air, central heating, without kitchen privilege. 10th.

Clean, comfortable 303 S. Phelps. Mrs. Duke Phone 198. TF-D

4 ROOMS. Nice, comfortable for men, new electric refrigerator. 234 E. 1st. TF-A

Five rooms and only. Phone 152. TF-H

House for rent, 940 contact Earl Johnson, Littlefield. TF-J

Furnished house with air conditioner. Couple with child. 917 W. 6th. TF-R

Modern apartments. 415 10th. TF-N

Unfurnished and monthly. Inquire at 10-6-3.

Bill paid. House price. Acres Barton, 2nd St. Phone 97. TF-B

Two room house on 3rd. See Jesse Bolton at 31-W. TF-B

House. Furnished. Phone 340. Elvis TF-W

For Rent

NEWLY redecorated three room duplex apartment. Furnished. Adults only. Mrs. J. E. Chisholm. 402 Phelps Ave. TF-C

FURNISHED newly decorated bedroom apartment. Adults only. Phone 152. TF-H

3-ROOM unfurnished house. Contact Mrs. J. E. Chisholm, 402 Phelps Ave. TF-C

FIVE room home with bath, \$45. On East Meacham St. Call 4891, Olton, from 8 to 6 p.m. TF-W

THREE ROOM modern furnished apartment. Clean. Close-in. 410 E. 8th St. TF-N

FOUR ROOM house furnished. Located at 504 West 6th. Mrs. V. A. Valles. TF-V

TWO bedroom house, garage. Near school. Call 361-RX. TF-P

2 BEDROOM house, close in on 4th St. Call 384 for information. TF-G

2-BEDROOM furnished apartment. Completely redecorated, near school. Bills paid if desired. Call 238 - 715 W. 2nd St. TF-F

THREE large rooms. Duplex furnished with bath. 810 East 6th. 771-M. TF-S

APARTMENTS furnished and unfurnished. Couples only. No cats or dogs. L. B. Stone. Phone 603. TF-S

NEW building with plenty of parking space. Suitable for any type business at Spade. See E. C. Hariman, Spade Hardware. TF-H

For Sale

192 ACRE irrigated farm. Close in to Littlefield. Well improved, wells connected with 1800 foot of underground pipe. Lays well to water. Good land. Call 452-J or contact 414 Hall Avenue. TF-A

1948 CHEVROLET - 1 1/2 ton truck. 132" wheel base. 8.25 front, 9.00 Rear. Can be seen at Fieldton Co-op Gin. Sold by sealed bids to be opened Sept. 14. TF-C

3 BEDROOM home, carpeting and drapes, central air-conditioning. Call Dr. Glenn Burk. 808 N. Cundiff. (N. Sunset) Phone 638M. TF-B

640 ACRES grass, on pavement, close in to good town - will take trade. Peyton Reese Co Reese Drug. TF-R

120'-6" LAYNE and Bower pump less gear head. 170'-8" Winthrop Pump less gear head. McCoy Machine and Pump. Phone 672. TF-M

GUARANTEED 1955 Olds. Holiday. Good tires. Radio, heater, Exc. cond. Will trade. Priced at \$1850. Phone 64. TF-O

3 BEDROOM, stucco house with attached garage. 909 W. 3rd. Melvin Ross. TF-R

WILL TRADE 1957 - 28 ft. house trailer for pickup or lot. Call Armes Chevrolet or 1052M. TF-S

REGISTERED toy screw tail bull dog puppies. 2 miles east of 1/2 south of Hart Camp. L. A. Smith TF-S

WEST 127.1 acres of Labor No. 18, League No. 643 for sale. \$250 an acre. Contact Dwight or Danny Moore, Lamesa. Ph. 4844 or 4943. TF-M

193 ACRES, well improved, shallow water well, watered with two wells and sprinkler system. 90 acres alfalfa. Fifteen miles east of Texline, Texas. A. P. Pope, Route 3, Dalhart, Texas. 10-6

Magness Real Estate, Box 56, Farewell, Texas, Ph. 8-6298. 10-6-M

ROTARY sewing machine. Good condition. Slightly used flute with case. 225 Hall Ave. or call 188R. TF-R

WILL take house for equity in irrigated farm north of Dimmitt. Peyton Reese, Reese Drug. TF-R

GOOD used refrigerator, reasonable. Hill Rogers Furniture. TF-T

SNOW-CONE Machine. Phone 4577 Springlake. Edna McClure. 10-6-M

LONG wheel base 1947 Chevrolet truck. 14 ft. Lovell burr spreader with heavy duty conveyor chain. Farmhand hydraulic loader mounted on 4-wheel drive truck. All ready to go. See it at Spade Co-op Gin, Spade or Phone 738. TF-F

For Sale

320 ACRES grass land on pavement \$48.00, \$6,000 down, 11 years on balance. This land is all tillable. Peyton Reese, Reese Drug. TF-R

NICE five room house for sale. Corner lot, attached garage. Hardwood floors, blinds and panel heating. Priced to sell. West 4th and Bell Ave. 10-3-W

BUTANE and gas ranges. Reconditioned. \$20 up. W. W. Electric. TF-W

USED Servel gas refrigerator. Butane or natural gas. Excellent condition. \$50. Hawk and Ho-facket. TF-H

COMBINE 12-A John Deere with motor. Good shape \$300.00. Charles Hukill 3 1/2 miles north and 1 mile west of Progress. Route 2, Box 31, Muleshoe. 10-6-H

IRRIGATED land in Littlefield territory. We have cash buyers for your farm. Call or write or come by Turner Bros. Land Co. P.O. Box 224, Box 121 Hale Center, Texas. 10-1-C

CITY FRUIT STAND. Across street from Nelson Hardware, back of Furr's Food has a complete line of your fall needs. Cotton sacks, scales, knee pads, butane or oil stoves, Buane bottles, binder twine, gloves, tarps, buckets, tubs, dishes, cooking wares. New and used clothing and shoes blankets, quilts, coats, large mattresses, cotton duck, two-wheel trailers, sewing machines, washing machines, electric refrigerators, lamps, candles, lanterns, cigarettes, canoes, cold drinks, hundred of other items. Bar-B-Que on weekends. We have equipment to feed 3000 people. 100 cot pads left at \$1.50 each. New crop Colorado Pinto beans, \$8.95, 100 lb. Pure hog lard, \$2.10. can \$4.95. TF-H

A. C. COMBINE, International broadcast binder. Both machines ready to go! 1 heavy duty grain trailer, 8x20" steel floor, grain and cotton sideboards. 2 cotton trailers. One 14' extension. Disc harrow, 1 grain drill. W. H. Cunningham, 1 mile west and 1 south of Littlefield. 10-3-C

1951 A. C. Combine, excellent condition, always housed. See at Sullins Farm Supply. 10-10-S

1949 FORD - 6 cylinder, runs good. 5 good tires. Will make a good second car. Price \$175. Ph. 25. G. M. Shaw. 10-3-S

320 ACRE farm located real close to Bovina, on pavement, has some medium good improvements, all the land in cultivation, all tops in quality, smooth, level and all waters from one 8" irrigation well connected to the natural gas line. This is one of the outstanding farms in Farmer County, and is being sold to settle an estate. Price is \$250.00 per acre. Terms 29 per cent down. O. W. RHINEHART, REAL ESTATE PHONE 2081 BOVINA, TEXAS

LOW DOWN-PAYMENTS Choice two bedroom home on 16th. Wall-to-wall carpets. Attached garage. \$9000 for more than 1100 sq. feet living area. Neglected two bedroom home on East 13th. F.H.A. built. \$6900. Lovely two bedroom stucco East 7th. \$4500. Call Phillips, 424.

For Sale

ONE practically new 5 hp. single phase electric motor will work on REA lines. P. W. Walker. 10-18-W

THREE Briggs Stratton 5 hp air cooled gasoline engines good condition \$50.00 each. P. W. Walker. 10-18-W

Wanted To Buy

Wanted to buy used furniture at the 50¢ store on the main highway in Littlefield. TF-O

Wanted to buy equipment to run farm. Can furnish good references. Clyde Gains, Route 2 Littlefield. 10-1-C

CHILDREN'S coats and clothing. Large size ladies clothing. Would trade some clothes for stamps. Mrs. Petree 1011 E. 5th St. TF-P

Help

ARE you ready to cause your success to go to work? Buy an insurance policy today!

NATIONAL FIRE INSURANCE CO. OF NEW YORK

WANTED: Mrs. Helen Jean Washington and Helen Jean Washington against the A & A Lumber Co. and the City of Lubbock rendered the plaintiffs the no award in the suit.

WANTED: Mrs. Helen Jean Washington and Helen Jean Washington against the A & A Lumber Co. and the City of Lubbock rendered the plaintiffs the no award in the suit.

WANTED: Mrs. Helen Jean Washington and Helen Jean Washington against the A & A Lumber Co. and the City of Lubbock rendered the plaintiffs the no award in the suit.

Co. Wednesday

PORT SELLS

CAA Official Approves Site West of Littlefield

Another step toward the future development of Littlefield was assured Tuesday night with the sale of the present site of the municipal airport. A verbal agreement for the payment of \$85,000 for the site was made between the Littlefield Development Corporation and the City Commissioners, Clint Griffin and Bob Cox and Mayor Ellis Foust at Tuesday's meeting.

Petit Jury To Convene At 9 a.m. Today

The following people have been notified to appear this morning at 9 a.m. for petit jury duty:

C. W. Grant, Olton; Hugh Preston, Sudan; Kenneth Berg, Ltd.; W. O. Watson, Jr., Spluglake; Mackey Greer, Ltd.; Mrs. Gerald Allcorn, Olton; Otis Smith, Ltd.; O. D. Martin, Sudan; Forbes Tatum, Ltd.; Mrs. J. B. Davis, Amherst; F. C. Caldwell, Ltd.; Charles Lowery, Sudan; Gene Reynolds, Olton; B. G. Kelley, Olton; J. W. Miller, Sudan; Mrs. B. D. Garland, Jr., Ltd.; W. H. Braden, Earth; Mrs. M. O. Dunigan, Ltd.; Richard W. Grace, Anton; Dennis Zahn, Ltd.; W. R. Stockard, Jr., Earth; Elroy Wisian, Sudan; Daniel R. Banner, Ltd.; Jim Glasscock, Earth; Mrs. L. B. Stone, Ltd.; Orville Bassett, Ltd.; Ray Keeling, Ltd.

Larry Pollard Wins Week's Football Contest

Larry Pollard of Bula came the nearest to guessing all of the winners in the Leader's Gigantic football contest.

Close behind Larry in guessing were Gary Pirkey and Richard Maurer both of Littlefield.

Each week the new contest appears in the Lamb County Leader. Any person may enter the contest by filling out the blank in the Football page and turning it into one of the sponsoring merchants on that page.

Mrs. T. C. Gardner MiConduct TU Revival

Mrs. T. C. Gardner of Littlefield will be at the First Baptist church in Littlefield for four weeks beginning October 20-23 for a Training Union Revival. The Gardner's attended a Training Union Revival at the church here six years ago.

Gardner served for forty years as a Training Union director in the Texas Baptists.

Insurance Loans Real Estate

Protecting You Is My Business

INSURANCE LOANS REAL ESTATE

You'll Profit More by Calling 424

J. R. (BILLY) H

ATTORNEY-AT-LAW

PHONE 383 LITTLEFIELD

WE BUY EGGS

We are equipped to buy fresh country standards of the new Texas Egg in each grade.

PORCHER P

EVERLAY FEED

Attending the meeting of the Board of Directors of the United Fund for Lamb County, Tuesday Night at the County Court House were Albert Lockwood, Spade, J. E. Chisholm, Littlefield, President, Joe Salem, Sudan, who will be drive chairman for the county, and Truitt Sides of Olton. Plans were made for the 15 board members present for the county-wide drive, to be held November 15.

For Sale

MR FARMER: We have a large shipment of new heavy 14 to 18 lbs. mattress pads \$3.95 each and slip covers at \$1.70 each at Big Red Barn. 10-13-O

SEWING MACHINES and supplies. A. L. Legg, 1007 S. Westside Ave. Littlefield, Texas. TF-L

WE NEED listings on Farm Property, City Homes, and business property. L. Peyton Reese, c/o Reese Drug. TF-R

RANCH in South Dakota, approximately 3750 acres. Modern 2-story house. Plenty of water. 300 acres in cultivation. Well fenced. Contact Giles Mtr. Co., 212 Clovis Rd. TF-G

DEARBORN 1-way plow, for Ford Tractor. Call 927-M2.

ONE 45-MODEL VTV Tractor on late W-4 row equipment. 4 miles south and 1 1/2 west of Anton. TF-L

WILL take nice home in Littlefield in on land in Yoakum County. Peyton Reese, Reese Drug. TF-R

For Sale

193 ACRES, well improved, shallow water well, watered with two wells and sprinkler system. 90 acres alfalfa. Fifteen miles east of Texline, Texas. A. P. Pope, Route 3, Dalhart, Texas. 10-6

Magness Real Estate, Box 56, Farewell, Texas, Ph. 8-6298. 10-6-M

ROTARY sewing machine. Good condition. Slightly used flute with case. 225 Hall Ave. or call 188R. TF-R

WILL take house for equity in irrigated farm north of Dimmitt. Peyton Reese, Reese Drug. TF-R

GOOD used refrigerator, reasonable. Hill Rogers Furniture. TF-T

SNOW-CONE Machine. Phone 4577 Springlake. Edna McClure. 10-6-M

LONG wheel base 1947 Chevrolet truck. 14 ft. Lovell burr spreader with heavy duty conveyor chain. Farmhand hydraulic loader mounted on 4-wheel drive truck. All ready to go. See it at Spade Co-op Gin, Spade or Phone 738. TF-F

For Sale

193 ACRES, well improved, shallow water well, watered with two wells and sprinkler system. 90 acres alfalfa. Fifteen miles east of Texline, Texas. A. P. Pope, Route 3, Dalhart, Texas. 10-6

Magness Real Estate, Box 56, Farewell, Texas, Ph. 8-6298. 10-6-M

ROTARY sewing machine. Good condition. Slightly used flute with case. 225 Hall Ave. or call 188R. TF-R

WILL take house for equity in irrigated farm north of Dimmitt. Peyton Reese, Reese Drug. TF-R

GOOD used refrigerator, reasonable. Hill Rogers Furniture. TF-T

SNOW-CONE Machine. Phone 4577 Springlake. Edna McClure. 10-6-M

LONG wheel base 1947 Chevrolet truck. 14 ft. Lovell burr spreader with heavy duty conveyor chain. Farmhand hydraulic loader mounted on 4-wheel drive truck. All ready to go. See it at Spade Co-op Gin, Spade or Phone 738. TF-F

For Sale

193 ACRES, well improved, shallow water well, watered with two wells and sprinkler system. 90 acres alfalfa. Fifteen miles east of Texline, Texas. A. P. Pope, Route 3, Dalhart, Texas. 10-6

Magness Real Estate, Box 56, Farewell, Texas, Ph. 8-6298. 10-6-M

ROTARY sewing machine. Good condition. Slightly used flute with case. 225 Hall Ave. or call 188R. TF-R

WILL take house for equity in irrigated farm north of Dimmitt. Peyton Reese, Reese Drug. TF-R

GOOD used refrigerator, reasonable. Hill Rogers Furniture. TF-T

SNOW-CONE Machine. Phone 4577 Springlake. Edna McClure. 10-6-M

LONG wheel base 1947 Chevrolet truck. 14 ft. Lovell burr spreader with heavy duty conveyor chain. Farmhand hydraulic loader mounted on 4-wheel drive truck. All ready to go. See it at Spade Co-op Gin, Spade or Phone 738. TF-F

Wanted

DEEP-BREAKING 2 way mold board. Herbert Walker 701 W. 7th. Phone 481-M. TF-W

A LADY with car to do special work for Stanley home products. Earnings excellent. Call Nova Melton, Ph. 926-J1 or write P.O. Box 663 Littlefield. TF-M

LOST - gold watch chain made like a rope. \$1.00 reward. Lost in downtown Littlefield. J. P. Turner, 720 E. 13th. Phone 374M. T-10-3

Wanted

you think that Washington is to keep a proper look-out on his own safety? Yes.

you think that his failure to make a proper look-out was the cause of the accident? Yes.

the statement further said, "It is an unavoidable accident."

BRICK court ruled "unavoidable accident" in this case means an accident which was not the result of negligence on the part of the defendant or Grant.

Further questions regarding the building of barricades, flares, and cautionary measures around the ditch had been previously asked by witnesses by the attorneys.

Smoking

Children's Clothes

Filtered and Mended

Washable Rates

EUGENE HANSON

Littlefield, Texas

Phone 963

WAREHOUSE STORAGE SPACE

L. B. STONE

PHONE 603

SEE O. S. SULLIVAN for the finest in MONUMENTS Office At CITY SHOE SHOP LITTLEFIELD

Going Fishing?

Get ACCIDENT INSURANCE TO COVER WHILE YOU'RE AWAY FROM HOME for one day or longer, up to 6 months. Continuous protection anywhere on land, sea or in the air. Rates are low—\$1.00 and up.

Mangum-Hilburn Agency

430 X17 Drive—Phone 84 Littlefield, Texas

RENTAL PROPERTY

L. B. STONE

PHONE 603

RENTAL PROPERTY

L. B. STONE

PHONE 603

INSURANCE LOANS REAL ESTATE

Protecting You Is My Business

INSURANCE LOANS REAL ESTATE

You'll Profit More by Calling 424

BLACKKEY MUNG BE and of CUSTOM

BLACKKEY MUNG BE and of CUSTOM

We Have A Complete Line Of Supplies For Cotton Pickers

- Bunk Beds
 - Hot Plates
 - Mattresses
 - Cooking Utensils
 - Stoves
 - Tarps & Tents
 - Heaters
- S. & S. SALES
- 203 X17 Drive Phone 615

J. R. (BILLY) H

ATTORNEY-AT-LAW

PHONE 383 LITTLEFIELD

WE BUY EGGS

We are equipped to buy fresh country standards of the new Texas Egg in each grade.

PORCHER P

EVERLAY FEED

Special Distress Loan On Milo to Aid Farmers

Rep. George Mahon of the 19th District this week commended officials of the Department of Agriculture for announcing a special distress loan on milo. The loan had been urged by farmers on farm groups, and Mahon had presented the request to the grain branch of the Department of Agriculture early in September.

The distress loan will provide milo producers with a special loan equal to 80 per cent of the regular loan. It is designed to aid producers who are unable to take advantage of the regular loan by reason of the lack of storage facilities. The producer would have 90 days or not later than March 31 of next year to locate storage and convert his distress loan into a regular loan. Details of the program are available through County ASC offices.

The distress loan is necessary by reason of the very heavy milo production, limitation of elevator capacity and the critical shortage of boxcars to transport the milo to available storage.

Mahon said that it was his hope that the distress loan would tend to stabilize the marketing of the milo crop. He said that he hoped the new program would not have to be used in a very big way as it had certain disadvantages and was primarily meant as an aid to a more orderly disposition of the crop.

At the same time the distress loan was announced, a 3 cents per hundred weight increase in the loan rate was announced. The previous rate was an interim rate. The new rate is the final rate for the 1957 milo crop.

Lamar D. Aten, Jr., of the local ASC office said Tuesday that the increase now makes the loan \$1.76. The local market on milo is around \$1.45 per hundred. Aten said the ASC office has been deluged since late last week with loan seekers. The office had handled over 100 Monday morning.

Aten also wished to advise farmers that the law in Texas makes landlords lien holders. Producers must either have a power-of-attorney (available at the ASC office) or bring the lien holder along when the grain loan is obtained.

Dot Haynes Chosen FFA Sweetheart

The Littlefield Chapter of the Future Farmers of America held their monthly meeting at 7 p.m. Tuesday in the Ag department of the high school.

Dot Haynes was chosen FFA Sweetheart, and Sandra Martin was chosen Flower Girl.

Plans were made for the annual FFA trip. The FFA will go to the Fat Stock Show in Ft. Worth again this year.

LOCAL AUTHORITIES NOT ADVISED ON SHOPLIFTERS
A detective employed by a local grocery store reported that he picked up shoplifters in the store, but neither the city or county officials had any report on any such occurrence.



See it Live!
"MY FAIR LADY" ICE CAPADES
AUT SWENSON THRILLCADE
COTTON BOWL FOOTBALL
PAT BOONE, OCT. 13
GORDON MAC RAE, OCT. 15
FLYING INDIANS
NOW playing
STATE PATROL TEXAS
dallas

Anton News

The Anton F.H.A. chapter came home with many awards at Lake Cook South Plains Fair. There were winners of four 1st places, seven 2nd places, and eight 3rd places. Those winning first place were Doris Grace, broccoli; Claudine Campbell, cake and candy; Jackie Suddeth, candy.

Winners of second were Glenda Jones, cake; June Stephenson, cherries and candy; Rita Hanson, preserves and jellies; Carolyn Ganser, canned fruits; Wanda Bullard, canned soup.

Third place winners were Estel McCraw, bread; Amelia Truisto, candy; Martha Braker, cake and a planter box; Patricia Vaughan, bread; Ruth Ganser, canned fruit; Wanda Bullard, clothing; Mary Sol Gann, can ned chowchow. The girls won \$18.50 prize money which will be used for F.H.A. expenses and their annual Sweetheart Banquet.

PTA Meets

"Operation with Co-operation," was the theme of the October Anton P.T.A. which met in the cafeteria at 3:00 p.m. Tuesday. The speakers for the meeting were W. T. Taylor, school superintendent, James Cathey, high school principal and W. D. Weisauer, elementary school principal.

The president, Mrs. M. H. Mayes, presided at the meeting and plans were made for the last five meetings to be held at night. Yearbooks were given out by Mrs. Brad Gilbert. A committee of Mrs. Saunders, Mrs. Bass and Mrs. Campbell was appointed to make plans for the float for the home coming. Motion was made and carried to buy a page in the school annual. A committee was appointed to decide what to use on the page composed of Mrs. J. G. Greer, Mrs. Cecil Motl, and Mrs. E. Kerr. The next meeting will be Tuesday November 5, at 3 o'clock. Refreshments were served to fifty persons after which the meeting adjourned.

Miss Judy Moll spent Sunday night in the home of her grandparents, Mr. and Mrs. Reno Rochelle of Amarillo.

Mr. and Mrs. C. R. Kirk and family of Anton attended the funeral of Mrs. Kirk's brother, M. C. Altman of Amarillo, Saturday at 2 o'clock.

Mr. and Mrs. Charles Beyer and son, Bobby, of Buffalo, N.Y., and Mr. and Mrs. Reno Rochelle of Amarillo spent Wednesday in the home of Mr. and Mrs. Cecil Motl of Anton.

Sharon Couch of Anton, has been named to the A.C.C. A Capelin Choir. Sharon is a freshman at Abilene Christian College and is the daughter of Claud Couch and is a 1957 graduate of Anton. She is a music major. The chorus sings under the direction of Dr. Leonard Burford who is head of the Music Department of A.C.C.

Mr. and Mrs. W. G. McGree announced the engagement and approaching marriage of their daughter, Della to Robbie Joe Oakley, son of Mr. and Mrs. Jack Oakley of Anton. The wedding will be sometime in November.

Miss Kathy Billings of Anton will represent Mary Hardin-Baylor at San Marcos "Day of Plays" Oct. 17, and a camp craft workshop in Kerrville Oct. 19. Miss Billings is a senior physical education major at Mary Hardin-Baylor.

Johnny Waters of Levelland, formerly of Anton, was visiting old friends at Anton this past week.

The grade school of Anton shows a marked increase from 365 to 405.

You're Sure with Southwestern
SOUTHWESTERN PLASTIC PIPE
FOR IRRIGATION GAS LINES
Manufactured by...
Southwestern Plastic Pipe Co.
P. O. BOX 117 - MURKIN, TEXAS

The record show that 102 have received small pox vaccine, 171 polio, 171 and only 28 have received diphtheria, whooping cough and tetanus. Attendance has been fairly regular. Mrs. Oldham's 6th grade room reported perfect attendance last week. The 8th grade had a very successful magazine selling campaign clearing over \$300 from the program.

A great deal of interest is being shown in the band program which is being offered this year to grades 5, 6, 7, and 8. Mr. Reiges is the band and chorus instructor. The beginners band has approximately 60 members. They are needing second hand instruments for the use of these beginners.

The Anton F.H.A. chapter held their regular meeting Tuesday night. Glenda Jones president, presided. J. L. Smith was named P.H.A. Sweetheart. J. L. is a junior and a member of the football team.

A program of "What to Wear" was given by Jackie Suddeth, Martha Braker, and Darlene Davis. During the business hour the year books were presented to members. Refreshments were served to the present and after a social hour the meeting adjourned.

Mr. A. J. House, Yokum president of Texas Federation of Women's Clubs was a guest of honor at a coffee in the home of Mrs. Nell Herrin Saturday morning. Mrs. House is a former teacher of music and an orchestra director. She has served the Texas Federation for several years. Mrs. Robert Landsey, Berger, president of the Seventh District, and Mrs. A. T. Coxanagher, Lubbock, first vice president of Seventh District were also guests of the joint meetings of the 1956 Study Club and the Anton Study Club. Mrs. Landsey introduced Mrs. House who spoke on the theme of "Service Through Federation."

The Anton Bulldogs were victors over Cooper last Friday night, and they will be idle this week end.

The quarterly meeting of the Hockley County Business Women's Circle of the Woman's Missionary Union was held at Anton at the First Baptist Church at which time new officers of the organization were installed. Mrs. Lawrence Anderson, outgoing president of Anton W.M.U. gave the invocation. Sapper was served by Anton B.W.C.

Mrs. Alma Tate was in charge of the program and installed the new officers for the coming year. These officers were: President, Mrs. J. B. Richardson, Levelland; 1st V. Pres., Mrs. J. B. Marshall, Morton; 2nd V. Pres., Mrs. Elmer Houston, Anton; Sec., Miss Rose Lunlap, Anton; Treasurer, Mrs. Roy Hill, Morton; Chorister, Mrs. Elina Soney, Morton; Pianist, Mrs. Susie Shockley, Anton.

"Hands" was the installation theme using Psalms 24 as scripture. Joy the devotional, while Miss Sarah Joe Wallace sang, "His Hands" as a solo. Present for this meeting were 12 from Anton, eight from Levelland and seven from Morton. The December meeting will be on the 30th at First Baptist Church Levelland, March 31 meeting at Sundown, June 30 will be at Morton, and September meeting in 1958 will be at Anton First Baptist church. Benediction was given by H.A. Roy Hill of Anton.

Grand Jury --

(Continued from Page 1)
County Court scheduled to convene October 21
County Judge Pat Boone, Jr. has set Monday, October 21st as the beginning of a week of County Court. A jury will be called in commencing Tuesday the 22nd. Some 60 cases charging liquor law violations, driving while intoxicated, and various miscellaneous offenses will be disposed of during this week.
Vernon Hockett is foreman of the Grand Jury.

BAPTIST DEACONS WILL MEET SUNDAY
The Deacons of the First Baptist Church will meet Sunday at 3 p.m.

DAY and NIGHT TELEVISION SERVICE
COTTON HARLIN
PHONE 386 420 W. 1ST ST.

New Mexico Man Charged On DWI In 3-Car Wreck

The city police investigated two automobile accidents within a hour Sunday. At 12:30 p.m. J. D. Lot of Elida, New Mexico, who was driving a 1949 Ford pickup failed to stop at a red light on First Street and West side avenue and hit a 1950 Chevrolet driven by Sandra Kay Lackey broad side.

Loft was charged with running a red light and Failure to Grant Right-of-way. He paid a \$75 fine, according to Chief of Police F. A. Fitzgerald.

The second accident occurred at 1:30 p.m. on Phelps Ave. and Third Street when Nathan Don Wheeler driving a Chevrolet failed to stop and struck a 1953 Pontiac driven by Wiley Roberts, ramming it into a 1953 Chevrolet driven by John Wesley Cassie.

The Roberts car was a total loss. Damages to the Chevrolet were \$250, and the Cassie Chevrolet was damaged to the extent of \$450.

Fitzgerald said Cassie was charged with Driving While Intoxicated. He entered a plea of not guilty and was released on a \$1000 bond.

Tellyer Pipe --

(Continued from Page 1)

Pueblo, Farmington and El Paso. Tellyer announced Wednesday that G. A. White, owner of the White Pipe Company, will be general manager of the Littlefield and Muleshoe plants. Travis Winters will be assistant manager.

White, a veteran of 37 years in the concrete pipe business, founded the Littlefield plant in 1951. He first became associated with a concrete pipe concern in 1921 in California. In 1950 he moved to Lubbock from Arizona and joined the Gifford-Hill-Western firm. In 1953 he opened the Muleshoe plant.

During the past seven years, White Pipe Company has seen tremendous growth and is recognized as one of the leading concrete pipe manufacturing firms in the southwest.

"I'm very happy of the change," White told a Leader reporter Wednesday.

"I have known the Tellyers for 18 to 20 years and feel confident they will be a great asset to Littlefield and the South Plains," he continued.

Harry B. Tellyer, Sr., who is now a general consultant for American Marietta, first became associated with the concrete pipe business 35 years ago in California. In 1928 he assisted in founding the Gifford-Hill Pipe Co., in Dallas. He transferred his stock in the Dallas plant for the Gifford Hill plant in Albuquerque in 1938. This was the beginning of the Tellyer Pipe Co.

In 1945 "Partner" Tellyer joined his father in the business. When American Marietta purchased the firm in January, 1956, it had grown to a five-plant operation in California, Texas and New Mexico. The younger Tellyer is district manager of Colorado, New Mexico and Texas.

New Weapon

The County Attorney's Office has been checking laws and drafting pleadings, and in the near future will file several suits in the 154th Judicial District Court attempting to secure injunctions against habitual "bootleggers." If the terms thereof violated the District Court will have the power to punish for contempt which can carry jail sentences and fines. In addition, the County Attorney's office and the Sheriff's office have indicated that in the future there will be suits filed to confiscate automobiles of "liquor runners."

County Court Scheduled To Convene October 21

County Judge Pat Boone, Jr. has set Monday, October 21st as the beginning of a week of County Court. A jury will be called in commencing Tuesday the 22nd. Some 60 cases charging liquor law violations, driving while intoxicated, and various miscellaneous offenses will be disposed of during this week.
Vernon Hockett is foreman of the Grand Jury.

BAPTIST DEACONS WILL MEET SUNDAY

The Deacons of the First Baptist Church will meet Sunday at 3 p.m.

First Committee Completes Part Of BC Survey

The Community Service Committee of the Business Climate Survey was the first committee to complete its portion of the survey.

The committee met Tuesday and Wednesday morning at 7 a.m. at Thornton's Cafeteria.

Findings of the committee, headed by Paul Carmickle and Vernon Hockett, will be reported with the findings of the other committees that will comprise the overall picture. Nine men participated in this part of the survey.

The Business Climate survey is being sponsored by the Littlefield Chamber of Commerce.

Twenty Persons Arrested During The Past Week

Twenty persons have been charged on law violations the past week in the county, according to Sheriff Dick Dyer. The increase in law violations usually occurs with the beginning of the fall harvest season.

Violations were as follows: vagrancy and gambling, 3; drunks, 2; check law violation, 1; fighting, 1; DWI, 2; liquor law, 4; no drivers license, 1; transporting liquor, 1; robbery by assault, 1; drunk and disturbance, 2.

C of C Drive--

(Continued from Page 1)

The Chamber of Commerce has a working budget of \$12,000. The investment therein is \$1846. There must be \$1016.35 raised now to meet the necessary expenses.

The Chamber of Commerce has been riding a \$100 note for the past five years at a local bank. The interest has been paid on the note, but the principal must be paid.

"The financial plight of the chamber is no reflection on past management. The fact is, enough money has not been invested in it to pay the necessary expenses," Duval said.

Chamber of Commerce officials hope to raise the necessary money by new investments and gifts over and above those already in.

Fire Prevention

By LINDA STEFFEY
How can we help prevent fires? First of all, by a study of our own habits. We must realize and correct the careless things we do that might cause a fire.

Careless smoking is the great est fire hazard known. Ash tray

should be kept handy in the kitchen and used. A person should never lay a burning cigarette on a table or throw it out of a window. Smoking in bed should be avoided. There should be no smoking while filling a gas tank in the garage.

Spade Scoops

Mr. and Mrs. Joe Prater visited relatives at Cleburne, Plano, Aubrey and Farmers Branch last week. They attended the State Fair Saturday and attended the Stae 4-H Dress Revue.

Mrs. Norman Frey visited her mother at Goree, Texas during the weekend.

Mr. and Mrs. Jess Emmons visited relatives at Clarendon during the weekend.

Mrs. J. R. Matthews was still hospitalized in the Medical Arts Monday.

Mary Lou Wadley was taken to the Medical Arts in Littlefield Monday with an attack of appendicitis. She was awaiting possible surgery late Monday.

Jolene Duifer was sick during the weekend.

The W.M.U. met in the Baptist Church Monday at 2:30 p.m. for a study in the "Practical Primer of Prayer." Those present were Mesdames Doc Vann, Ted Hutchins, Jess Emmons, Sam Tindal, Arthur Turner, Joe Blankenship, Ernest Savage, Doyle Black, Arwin Turner and Joe Prater.

Mr. and Mrs. H. Harvey and Mr. and Mrs. Garland Patterson are fishing on the Gulf.

The laundry at Spade was reopened recently.

Mesdames Bill Wadley, Doyle Black and Ted Hutchins attended the W.M.U. conference of the Hockley-Cochran and West Plains Associations Oct. 2 in the Littlefield First Baptist Church.

Boyd A. Michael, who was bur-

There is a potential of 315 members in Littlefield with only 180 now investing.

LET'S START ALL OVER AGAIN. INVEST IN THE ONLY BUSINESS THAT SELLS LITTLEFIELD.

Spade Scoops

Three-fourths of an inch of rain fell in parts of the community Sunday.

Sam Tindal ginned the first bale of cotton at the Spade Co-op. It was ginned the later part of September.

Mr. and Mrs. Leon Leonard went to Dallas last Thursday to be at the bedside of her father who underwent surgery last Friday at Baylor Hospital.

Mr. and Mrs. W. E. Mitchell went to Dallas last Thursday to visit relatives in Dallas, Irving and Arlington and to attend the 4-H Dress Revue at the State Fair Saturday morning. Their daughter, Patricia, left for Dallas Thursday with the County H. D. Agent, Drucilla King of Hale Center and her mother, Patricia and Drucilla modeled in the 4-H Dress Revue.

The W.M.U. officers were installed Sept. 30 at 7 p.m. in the Baptist Church. Mrs. Bill Anderson of near Fieldton, niece of Mrs. Doc Vann, was in charge of the service. Rev. Bill Wadley led the singing accompanied by Joyce Hodges, Virginia and Ada Anderson played an accordion duet. Refreshments of coffee, tea, cake and sandwiches were served to members and their husbands. Mrs. Sam Tindal was in charge of serving.

DAN BLANCHARD IS NEW DEPUTY

A former city policeman, Dan Blanchard, has been employed as an additional deputy in the Lamb County Sheriff's department. Blanchard assumed duties October 1.

As if anything were so common as ignorance. The multitude of fools is a protection to the wise.

God tempers the wind of the shoddy lamb.—Sterne.

We should be fire marshals in our own homes. This could be done by inspecting homes, looking up rubbish; look out for gas leaks; and kerosene and oil lamps should be placed in air tight containers. We should look out for the cellar, which is apt to become a catch-all for rubbish.

Electrical appliances should be kept in order. Be sure to disconnect the electrical appliances when not in use. Also all electrical wiring should be done by expert.

Other safety rules are: if you burn gas, see that the flame is away from the woodwork; all pipes and flues in good repair; in using gasoline or naphtha cleaning, keep away from open windows, open doors, or outdoors. Do not try to burn a gas leak with a lighted match. Never start an open fire on a dry day, or leave it unattended. Sure bonfires are absolutely before you leave them. Matches should be kept in a metal container, out of reach of children and away from heat. It pays to be careful during the days with fireworks and Christmas decorations.

You have probably heard statement that the best way to put out a fire is before it starts. This is a very true fact; but should also know what to do in case of fire. First of all, you should keep your mind on what you are doing and not become excited. This is very important. You safely put out a fire. A blaze is small it can be smothered or put out by a fire extinguisher. The first procedure in a fire is to close all windows and doors to prevent drafts which will fan the fire to spread. Never use a grease fire; use sand or flowerpots. Also tie a wet towel over mouth and nose so they will not be exposed to smoke flames. If you cannot get out you should call the Fire Department.

Fire kills and injures fourteen thousand people and destroys valuable property and homes. A complete fire and life insurance policy could be

Attention Farmers...

GET YOUR **Farm Service Tires** READY FOR HARVEST!

And You'll SAVE MONEY with **Phillips 66 FARM TIRES**

With the Famous **50 Months Road Hazard Guarantee Plus Lifetime Guarantee**

- * OPEN CENTER, FLEX-ACTION TREAD speeds work — tread cleans itself!
- * DUAL-ACTION SABS share wear — give bigger, deeper, stronger bite and steady pulling power!
- * REINFORCED SABS, EXTRA-BUGGED SHOULDERS for extra strength — extra-long life!
- * GUM LINING guards against chemical action from liquid weighting!
- * 50 MONTHS' ROAD HAZARD GUARANTEE plus Lifetime Guarantee on workmanship and material!

For The Finest in Oil Products and Accessories
Depend on Phillips "66"
—DISTRIBUTED BY—
Reast Oil Company
PHONE 66 LITTLEFIELD

Trophy To Be Given In Children's Division Of Fall Flower Show

Incentive has been added for the children who will show plants at the annual Fall flower show of the Littlefield Club.



MRS. HAROLD ROBEBSON

Mr. and Mrs. Roberson To Reside In Littlefield

Large sprays of pink gladioli and pink candles decorated the First Baptist Church of Hart for the wedding of Miss Lavora Joyce Kittrell of Lubbock and Mr. Harold Herbert Roberson of Amherst.

Whitharral HD Club Meets In Dempsey Home

Whitharral (Spl.) - Mrs. Hub Spraberry, president pro-tem presided at the regular meeting of the Whitharral Home Demonstration Club Wednesday afternoon at the Home Economics Cottage.

Movie Stars

For many years have been among the leading idols of American people. Some of them are good and some are just as ordinary citizens as you or had.

To Be

That your prescription is good you have only to try Stiggs Drug. Double Brothers Stamps are on all prescriptions. Strive in every way possible to render the best service.

Littlefield

Singing To Be Held Sunday At Rocky Ford

The Lamb County singing convention will be held at the Rocky Ford Baptist Church Sunday, starting at 2:00 P.M.

Don't Tell Anyone, But

Everyday that we live we are convinced that we were born thirty years too soon. We are honestly envious of some of the present customs. When we go over to Tech and see the girls running around in shorts, pedal pushers, and leisure clothes, we recall the instance when Dean Doak called us on the mat for having our black gym bloomer just above our knees.

Lately In Littlefield



Mr. and Mrs. M. S. Robertson and daughters Lida and DeAnn of Floydada, visited Sunday with her brothers, W. O. and Earl Hampton and families.



Miss Mary Lou Crump shows the three home making classes from the Bula school the advantages of gas ranges at the Pioneer Natural Gas Co., in Littlefield.

Toast Mistress Club Meets At Noon On Tuesday

The Toastmistress Club met Tuesday at noon in the Wheel Inn. Mrs. Doyle Tapley served as toastmistress.

Homemaking Classes Make Practical Learning Tour

Twenty-two girls, who are members of the Homemaking classes of the Bula School, visited Littlefield stores on a practical learning tour in studying housing and home management.

PENNEY'S IT'S "KICK-OFF" TIME FOR A BRAND NEW PENNEY EVENT!

Penney buyers ate and slept sport shirts for months... looked at every style, every fabric offered by every important manufacturer... finally came up with this top opening line-up:



Penney's Towncraft SHIRT RALLY



GET FULL BODY WITHOUT WEIGHT IN TOWNCRAFT AIR JET ACETATES. Get style-setting natural lustre and brilliant "color-locked" woven patterns, too. It's Penney's "find" of the season... rich Chromspun acetate, processed in a revolutionary new way for new beauty, new comfort. Neither age nor the washing machine* can dim those plaids 'n stripes, either. The price is a "find", too. \$2.98

WANTED careful drivers. REWARD low cost auto insurance. State Farm Mutual Automobile Insurance Company. See or Call E. L. NEWTON

JOHN NAIL Portrait Photography. Weddings - Cameras

One of God's side is a majority. -Wendell Phillips.



New Arrivals

Mr. and Mrs. T. L. Ham of Delia on the birth of a daughter, Charlotte Ann Ham. She arrived on October 8th, weighing six pounds and eight ounces.

Mr. and Mrs. Forrest A. Bisher of Lattinwood, on the birth of a son, Jerry Keith Bisher. He arrived October 8th, weighing eight pounds and three ounces.

Mr. and Mrs. R. E. Birkelbach of Lattinwood, on the birth of a daughter, Kathy Louise Birkelbach. She arrived October 8th, weighing seven pounds and nine ounces.

Mr. and Mrs. E. Brock of Lattinwood on the birth of a daughter, Betty Kay Brock. She arrived October 8th, weighing five pounds and fourteen ounces. Mrs. Brock is the former Lee Jean McCarty.

Mr. and Mrs. F. R. Watson of Littlefield, on the birth of a son, Frank Bob Watson. He arrived October 7th, weighing seven pounds and fourteen ounces.

Mr. and Mrs. J. W. Trammell of Levelland, on the birth of a daughter, Karen Janice Trammell. She arrived on October 7th, weighing six pounds and twelve ounces.

Valleyview HD Club Meets In Dempsey Home

Whitharral (Sp.)—The Valley View Club met Thursday afternoon at the home of Mrs. Ray Denney southwest of Oklahoma Platt.

Minutes of the last meeting were read and approved.

In the social hour that followed Mrs. Norman Hodges was presented a high chair by the club.

The next meeting on Oct. 17, will be in the home of Mrs. Johnny Miller.

Punch, cookies and fruit jello were served to Mesdames Norman Hodges, V. D. Hodges, Elva T. Crank, Dorothy Ferguson of Littlefield, Charlene Vaughn, A. B. Roberts, Hayes Denney, Jimmy Starnes, Warren Tipton, Johnny Miller, Wade Strother, Ted Gray, Buddy Miller and Robert Strickland.

FHA To Install Officers Tonight At High School

The formal installation of officers of the Patsy Lively Chapter of Future Homemakers of America will be held tonight at 8 p.m. in the auditorium of Littlefield High School. Parents and friends of FHA members are invited to attend.

Following the installation, refreshments will be served in the homemaking laboratory.

Amherst Study Club Meets At Knight Home

The Amherst Study Club met Monday evening in the Knight Convalescent Home in Amherst.

The program was opened with prayer and Mrs. David Harmon gave a reading. Mrs. Buster Mohler led in group singing.

The club then went in a group to the home of Mrs. C. A. Duffley, Jr. for the business meeting.

Refreshments were served by Mrs. Norman Snyder and Mrs. Duffley to fourteen regular members and two new members.

Manley Serves As Toastmaster At Regular Meet

Bob Manley served as Toastmaster at the regular meeting of the Toastmasters Monday night at Thorner's Cafeteria.

Verna Peterson introduced the guests after Ronnie Gustad gave the invocation.

Marshall Howard was topic master and Dr. Glen Burk was general evaluator.

Prepared speeches were made by Ronnie Gustad, Edward Smith, Dick Carl. An extemporaneous speech was made by Verna Hofack.

No man is so great as mankind. Theodore Parker.



Piggly Wiggly's

"HOG WILL

A NEW

\$13,500.00

CASH GIVEAWAY

GRAND PRIZE



\$5,000.00

17 CASH AWARDS

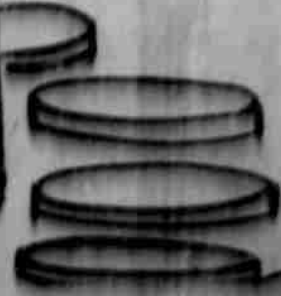
\$500.00 EACH

DRAWINGS FOR \$500 IN EACH STORE TO BE HELD NOV. 6, 6 PM

Register Now

SOUTH PLAINS GIVEAWAY

No purchase is necessary.
 Register often at any or all Piggly Wiggly Supermarkets.
 You need not be present to win. Winners will be notified if not present. Winners must claim prize money within 30 days after drawing.
 Personnel of Davis & Humphries, Inc. and their advertising agency or their immediate families are not eligible to win.



ACHES TREMPE, YELLOW CLING IN HEAVY SYRUP, NO. 2 1/2 CAN **25c**
MEAT BATHS 12 OZ. CAN **39c**
ES FROZEN, BEEF CHICKEN OR TURKEY, SPARETIME 8 OZ. PKG. **19c**
ZEN-RITE ROLLS 24 COUNT, FROZEN BAG **39c**
SE CASSEROLE MORTON'S FROZEN 2 For **39c**
LIFFLOWER POLAR FROZEN 10 OZ. PACKAGE **15c**
ZEN TACOS MORENO 13 1/2 OZ. PKG. **53c**
RAWBERRIES MAID, 10 OZ. PKG. FROZEN **15c**

MIRACLE WHIP SALAD DRESSING KRAFTS PINT **33c**
TUNA STARKIST CHUNK STYLE NO. 1/2 CAN **27c**
COCA-COLA 12 BOTTLE CARTON EACH **39c**

SAUSAGE CUDAHY'S PORK SAUSAGE 1 LB. ROLL **39c**
CHEESE VELVEETA KRAFTS 2 LB. BOX **83c**

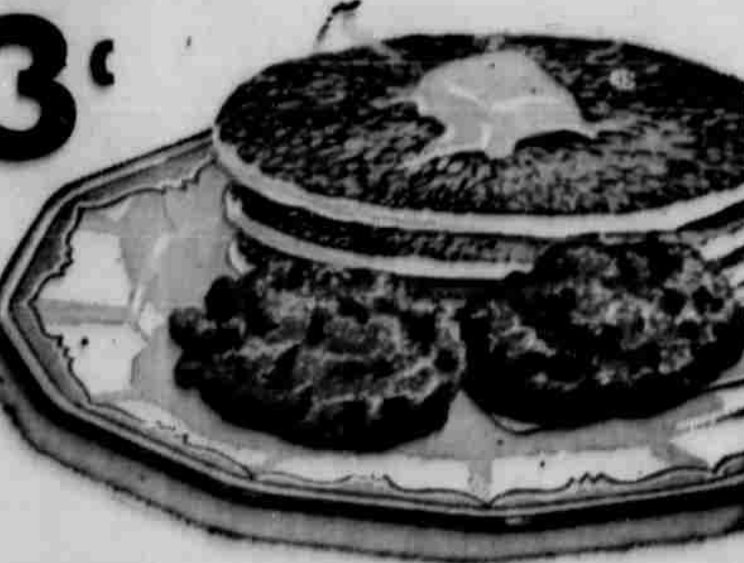


WINNERS OF FREE FORDS:
 Shown above is one of the three little girls who drew the names of the winners of the three Fairlane 500 Fords from the large ticket cage containing over 1700 pounds of tickets. The drawing was held at Piggly Wiggly number 16, 3003 Avenue H in Lubbock, Tuesday, October eighth. Winners were: H. L. Scoggin of Loveland, Mrs. J. E. McMeekan of Slaton and Wesley W. Barnes, Jr. of Seminole.
Winner of the \$250 Cash Prize in this store--Willie Williams, Box 633, Sudan, Texas

ALL MEAT
FRANKS 3 LB. BAG **99c**
HERFORD EAT MORE 12 OZ. PKG. **69c**
STEAKS U. S. GOOD BEEF, 1 LB. **29c**
PILLSBURY CANNED BISCUITS 2 FOR **25c**
FIRST CUT, 1 LB. U. S. GOOD BEEF, 1 LB. **47c**
PORK CHOPS 59c **RIB STEAK** 79c

SLICED BACON SWIFT'S SWEET KASHER, 1 LB. **59c**
HAMBURGER FRESH GROUND LB. **35c**

LEAN TENDER, 1 LB. U. S. GOOD BEEF, 1 LB. **98c**
VEAL CUTLETS 98c
RIBS U. S. GOOD BEEF, 1 LB. **29c**
ROAST CENTER CUT CHUCK, U. S. GOOD BEEF, 1 LB. **47c**
LEAN TENDER, 1 LB. U. S. GOOD BEEF, 1 LB. **98c**
VEAL CUTLETS 98c
RIBS U. S. GOOD BEEF, 1 LB. **29c**
ROAST CENTER CUT CHUCK, U. S. GOOD BEEF, 1 LB. **47c**
RIB STEAK 79c



SYRUP Blue Brer Rabbit 24 oz. Bottle **45c**
SYRUP Waffle, Brer Rabbit 10c Off, Net Price **29c**
PANCAKE MIX Pillsbury Large Box **36c**

ABBAGE... 3c
TATOES 10 LB. BAG **49c**
APPLES 1 LB. **19c**
CELERY CALIF. LARGE GREEN STALK, EACH **12 1/2c**
BEETS 1 LB. FILLIP PKG. **12 1/2c**
BRUSSELS NEEDLESS, 2 LB. BAG **49c**
BRUSSELS WITH TOP, HOME GROWN, 1 LB. **10c**
BRUSSELS FRESH LARGE BUNCH, EACH **7 1/2c**

LEMONS CALIF. SUN-KIST 1 LB. **12 1/2c**

CRACKERS RITZ, NABISCO 16 OZ. BOX **39c**
BEANS RANCH STYLE NO. 300 CAN **2 FOR 25c**
TISSUE DELSEY 4 coils **57c**
NAPKINS PAPER, NORTHERN 80 COUNT 2 Boxes **25c**
SOAP TOILET, WOODBURY'S, 1/2 SALE 4 BATH SIZE BARS **48c**
PUREX QUART BOTTLE **19c**
TREND GIANT BOX **49c**
STARCH ETA FLO LIQUID, QTS. **27c**
RAZOR BLADES GEM 10 FOR **59c**

AUSTEX, PLAIN, NO. 300 CAN
CHILI. 39c

DUSORB... the wonderful way to dust ANYTHING!
 Make your own chemically treated dust cloth from any clean cloth for just a few pennies. Picks up and holds dust like a magnet. Makes each dusting job easier—and you don't need to dust so often.

BUFFERIN HAND LOTION
 100 COUNT BOX
ROOM DEODORANT FLORIBENT AEROSOL, 79c

KLEENEX... 25c

DUSORB PT. 49c
Piggly Wiggly

Texas O-U Game To Start Second Week Of Fair

The second big week of the 1957 State Fair of Texas gets underway Saturday, Oct. 12, with the hula-hoos of the big Texas-Oklahoma football game in the Cotton Bowl.
 And Sunday evening, Oct. 13, at 7 p.m. in the Cotton Bowl, another big Fair event will take place. It will be the Pat Boone show, starring the youthful singer who has become America's top singing sensation.
 Livestock judging over the weekend will include quarter horses and the Open Cutting Horse Contest.

The Junior Livestock Show will get under way Tuesday, Oct. 15, and will be emceed by the Junior Auction Sales Friday and Saturday, Oct. 18 and 19.

Judging of Palomino horses and Shetland ponies will be Thursday, Oct. 17.

Special days at the Fair during the second week will include Achievement Day Monday, Oct. 14, featuring a top Negro college football game between Prairie View and Texas Southern; East Texas Day Tuesday, Oct. 15, with a big free Cotton show starring Gordon MacTae; High School Day Friday, Oct. 18, and Saturday, Oct. 19, when Southern Methodist will play Rice in an important Southwest Conference football game in the evening.

Daily performances of the Broadway musical, "My Fair Lady," Ice Capades and the Art Owenson Thrucaise will be presented through the week, along with free performances of the Aztec-Mayan Spectacular and numerous other free attractions.
 The Fair runs through Sunday night, Oct. 20.

Texas Fine Art Exhibit Set November 10

Announcements are out this week for the Annual Membership Exhibition of the Texas Fine Arts Association. The exhibition will be held from November 10 to December 5 at Laguna Gloria Art Gallery in Austin and entries are due on or before October 21.
 This exhibition has been an annual feature of the Association since 1933 and has become one of the major shows of the state each season.

Almost \$2000 are offered in prizes which include the following:
PURCHASE PRIZES:
 \$300. D. D. Feldman Purchase Prize for the Feldman Collection,
 \$300. Republic National Bank, Dallas, Memorial Purchase Prize to the late Mr. Leslie Waggoner,
 \$300. Mr. and Mrs. Paul Dowald, Howie, Purchase Prize,
 \$100. Mr. and Mrs. Charles E. Mardgen, Jr., Lubbock, Purchase Prize for Realistic Painting,
 \$100. Austin Life Insurance Company Purchase Prize for Realistic Painting,
 \$100. The American National Bank, Austin, Purchase Prize,
 \$75. Goodfriends of Austin Purchase Prize for Print or Drawing,
 \$50. E. M. Scarbrough and Sons Purchase Prize for Craft.

AWARDS:
 \$200. Humble Oil and Refining Company, Houston, Award,
 \$100. Mr. and Mrs. Herman Heep, Austin, Award,
 \$50. Capital National Bank, Austin, Award,
 \$50. Austin National Bank, Award,
 \$35. Mutual Saving Institution, Austin, Craft Award,
 \$25. Anonymous Award for Water Color,
 \$25. City National Bank, Austin, Print or Drawing Award,
 \$15. Austin Savings and Loan, Craft Award,
 \$10. Austin Savings and Loan, Craft Award,
 \$5. First Federal Savings and Loan Association, Austin, Award.

The judges are Dr. Jermayne MacAgy, Director, Contemporary Arts Museum, Houston, and Paul Askew, Art Critic, Dallas Morning News.
 The exhibition is open to all members of the Association. Each painter, sculptor, graphic artist, or craftsman may send one entry, and all entries will be exhibited. Judges will award prizes in all categories.

A feature this year are two \$100. Purchase Prizes offered for Realistic Painting. All other prizes may be awarded without limitation of medium or style.
 The membership extends throughout Texas and entries into this annual exhibition bring a cross section of the best Texas work in the arts. Artists who are not members of the Association are invited to write for entry blanks and membership applications.

Most men remember obligations, but not often to be grateful; the proof are made sour by the remembrance and the vain silent.—Simms.

FIND YOURSELF THROUGH FAITH IN GOD

FIRST BAPTIST CHURCH
400 East Sixth Street
Rev. Lee Hemphill

Sunday School 9:45 am
Morning Worship 11:00 am
Youth Choir 5:30 pm
Training Union 6:30 pm
Evening Services 8:00 pm

Wednesday:
Pre-School Sunbeams 4 to 5 pm
Junior G.A. 4 to 5 pm
Junior R. A. 4 to 5 pm
Teachers and Officers Meeting 7:00 pm
Prayer Meeting 8:00 pm
Intermediate G.A. and R.A. 8:15
YWA & Junior Brotherhood 8:15
Thursday:
Church Choir 7:30 pm

FIRST PRESBYTERIAN
Rev. Raymond Burns
Levelland Highway

Sunday School 9:45 am
Services 11:00 am
Choir Rehearsal 5:00 pm
Westminster Fellowship 6:00 pm

FIRST METHODIST CHURCH
Sixth and Littlefield Drive
Harry Vanderpool, Pastor
Phomes 209 and st

Sunday School 9:45 am
Morning Worship 10:55 am
Youth and children's Fellowship 6:30 pm
Evening Worship 7:30 pm

SEVENTH-DAY ADVENTIST CHURCH
Rev. A. C. Carson
Corner Ninth and Duggan

Sabbath School 9:45 am
Preaching Services 11:00 am

JEHOVAH'S WITNESSES

Wednesday 8:00 pm
Thursday 8:00 pm
Sunday 4:00 pm

CHURCH OF THE NAZARENE
Rev. William H. Anderson
916 Phelps - Phone 433-R

Sunday School 9:45 am
Worship Service 11:00 am
N.Y.P.S. 7:00 pm
Evening Service 7:45 pm
Midweek Prayer Service 8:00 pm

FOUR SQUARE CHURCH
115 Phelps Avenue
Rev. J. G. Ford, Pastor

Sunday School 10:00 am
Morning Worship 11:00 am
Evangelistic Service 7:30 pm
Mid-week Service (Wed.) 8:00 pm

CHURCH OF CHRIST
Highway 21

Sunday Morning Service 10:30 am
Sunday Night Service 7:30 pm
Wednesday Night Service 8:00 pm

CHURCH OF CHRIST
8th and LFD Drive
W. P. Dennis, Minister

KVOW—Sunday 9:00 am
Daily 6:45 am
Bible School 10:00 am
Communion 10:45 am
Preaching 11:00 am
Training Service 6 and 7 pm
Midweek (Wed.) 7:30 pm

CHURCH OF CHRIST
West Ninth Street

Sunday Morning Service 10:30 am
Sunday Night Service 6:30 pm
Wed. Evening 8:00 pm

SACRED HEART CATHOLIC CHURCH
Cundiff and 8th Sts.
Rt. Rev. W. F. Bosen, Pastor
Rev. Vincent Daughn's, Assistant
Box 1047, Telephone 1468

Mass for Eng. Speaking 9:00 am
Mass for Span. Speaking 10:30 am
Confessions Saturday, 4 to 5 and 7:30 to 8:50.

UNITED PENTACOSTAL CHURCH
Dewie Hash, Pastor
1200 Duncan Ave.
Mrs. Thelma Bankhead, Pastor

Sunday School 10:00 am
Evening Services 7:30 pm
Thursday 7:30 p. m.

Fieldton Churches

FIELDTON BAPTIST CHURCH
J. L. Loyd, Pastor

Sunday School 10:00 am
Preaching Service 11:00 am
B.T.U. 7:00 pm
Prayer Meeting (Wed.) 7:30 pm

CHURCH OF CHRIST

Sunday School 10:00 am
Preaching Service 11:50 am
Evening Preaching 7:30 pm

PARKVIEW BAPTIST CHURCH
West 5th and Wicker Streets

Sunday Services:
Sunday School 10:00 am
Worship Service 11:00 am
Training Union 7:00 pm
Preaching Service 8:00 pm

Wednesday:
Teachers Meeting 7:30 pm
Prayer Meeting 8:00 pm

SUNSET AVE. BAPTIST CHURCH
North Cundiff Avenue
Littlefield, Texas
Rev. John H. Burleson

Sunday School 10:00 am
Preaching 10:45 am
B. T. S. 7:00 pm
Preaching 8:00 pm
Midweek Prayer Meeting 8:00 pm
Ladies WMA Thursday 2:30 pm

LITTLEFIELD MISSIONARY BAPTIST CHURCH
XIT Drive and 8th Street
Rev. James F. Cox, Pastor

Sunday School 10:00 am
Morning Worship 11:00 am
Evening Worship 8:00 pm
Monday Evening Workers Conference
Wednesday Evening Prayer Service 7:30 pm

EMANUEL LUTHERAN
Pastor
Rev. R. L. Young
400 W. Third Street

Sunday School 9:30 am
Worship Services 10:30 am

ST. MARTIN LUTHERAN CHURCH
(American Lutheran Church)
Donald W. Luckemeyer, Pastor

Sunday School 9:30 am
Worship Service 10:30 am

FIRST CHURCH OF GOD
Rev. Carl Ware, Pastor
The Church of the Brotherhood Hour

East 5th Street
Sunday School 10:00 am
Preaching Service 10:00 am
Night Service 7:30 pm
Wednesday Service 8:00 pm

ASSEMBLY OF GOD
209 North Morse Avenue
Rev. J. W. Newton

Sunday School 9:45 am
Preaching Service 11:00 am
Wed. Night Service 7:30 pm
Young People's Service, Friday Night 7:30 pm

SALVATION ARMY
321 East 5th Street
Lt. Rolan Chambliss

Sunday School 10:00 am
Morning Worship 11:00 am
Street Service 7:00 pm
Salvation Meeting 7:30 pm
Mid-Week Worship Meeting, Wednesday night 7:30 pm

FIRST CHRISTIAN CHURCH
14th and So. Phelps
Arthur Huot, Pastor

Sunday School 10:00 am
Services 11:00 am
Evening Services 7:30 pm
Young People
Sunday Night 5:30 pm
Choir Practice, Wed. 7:30 pm



Playing at Life

EVERYONE IN THE CHURCH
THE CHURCH IN EVERYONE

Is something wrong with your life—
an inner restless dissatisfaction? The
answer to every human problem comes
only from God our Maker. He alone
can forgive and reassure.
Through the church God has com-
mited the provision and proclama-
tion of His forgiveness and redem-
ning love. Without a church relation
no one is securely related to God.
Everyone should be in the Church and
the Church in everyone!

© 1957, Coleman Adv. Serv. P. O. Box 4887, Dallas, Texas

Playing at life is fun; it makes little difference what the outcome. Real life is different; it is for keeps and we have it only once. Yet how tragically many of us only play at real life instead of living as free men. The Church has the message which will free us so that we can truly live life in all of its depth and richness. It has the message which will free one from fear, sin and death. Do you want to stop playing and start living? Then go to Church and learn how to trust in the God who gives the freedom to live.

Hart Camp Church
FIRST BAPTIST CHURCH
Charles Vanlandingham, Pastor

Sunday School 10:00 am
Morning Worship 11:00 am
Training Union 7:30 pm
Evening Worship 8:00 pm

Wednesday:
Prayer Meetings 8:00 pm
Auxiliary Meetings 8:30 pm
Choir Practice 8:30 pm
Ladies' W.M.S. Mon. 2:30 pm

Rocky Ford Baptist
Rev. A. S. Mayfield Jr.

Sunday School 10:00 am
Worship Service 11:00 am
Training Union 6:30 pm
Worship Services 7:30 pm
Prayer Meeting, Wed. 6:30 pm

SPADE CHURCHES
SPADE BAPTIST CHURCH

Sunday School 10:00 am
Preaching 11:00 am
B.T.U. 7:30 pm
Preaching 8:30 pm
Prayer Service, Wed. 7:30 pm

CHURCH OF CHRIST
Dayton Reese, Minister

Sunday:
Bible Study 10:00 am
Preaching 11:00 am
Bible Study 7:30 pm
Preaching 7:45 pm

Wednesday:
Ladies Bible Class 7:30 pm
Bible Study 7:30 pm

THE METHODIST CHURCH
Rev. Ural S. Sherrill

Sunday School 10:00 am
Worship Service 11 & 7:30 pm
Intermed. & Sen. MYF 6:30 pm
Prayer Meet. Wed. 7:30 pm

BULA CHURCHES
CHURCH OF CHRIST
Hollis Prime, Evangelist

Sunday Morning Classes 10:00 am
Communion 10:45 am
Preaching 11:00 am
Sunday Meeting Classes 7:00 pm
Preaching 7:30 pm
Ladies Bible Class, Tues. 9:30 am
Bible Study, Wed. 7:30 pm

AMHERST CHURCH
Rev. S. Baikin, Pastor

Sunday School 10:00 am
Morning Worship 11:00 am
Training Union 7:30 pm
Evening Worship 8:00 pm

FIRST METHODIST CHURCH
LEE ROY BAKER, Pastor

Sunday School 9:45 am
Morning Worship 11:00 am
Evening Fellowship 7:00 pm
Evening Worship 7:30 pm
Mid Week Service, Wed. 7:30 pm

CHURCH OF CHRIST
DOYLE CHAPIN, Minister

Bible School 10:00 am
Morning Worship 10:45 am
Evening Services 7:45 pm
Ladies Bible Class, Tuesday 1:30 pm
Mid Week Service, Wed. 8:00 pm

ENOCHS CHURCHES
ENOCHS METHODIST CHURCH
James E. Merrell, Pastor

Sunday School 10:00 am
Worship Service 11 am-8 pm
W.S.C., Wednesday 8:00 pm
Men's Club 2nd Tuesday

MONUMENT LAKE METHODIST CHURCH
James E. Merrell, Pastor

Sunday School 10:00 am
Worship Service 11 am-8 pm
W.S.C., Monday 2:30 pm
Men's Club 2nd Tuesday

FIRST BAPTIST CHURCH
LAMB CHAPEL
Rev. E. J. Price - Pastor

Sunday School 10:00 am
Worship Service 11:00 am
Training Union 7:30 pm
Worship Service 8:30 pm
WMU—Wed. 7:30 pm
Prayer Meeting—Wed. 7:30 pm
Brotherhood First Mon. 7:30 pm

This Church Feature is made possible by the following individuals and Business Firms with the hopes of getting more people to church and for a more church minded community

- Campbell Plumbing Co.**
J. B. Campbell
- Bell Ice Cream And Milk**
Nature's Most Healthful Food
- E. C. Rodgers Furniture Co.**
Your Price Appliance Dealer in Littlefield
- Hampton Gin**
W. O. Hampton
- First National Bank**
J. H. Lee, President
- Hill Rogers Furniture And Appliances**
The Place To Buy Your Furniture & Appliances
- Furr's Super Market**
Save With Frontier Savings Stamps
- Armes Chevrolet Co.**
Economical Transportation

- Cox Tin And Plumbing Shop**
Plumbing - Heating - Air Conditioning
- Hammons Funeral Home**
Ambulance Service - Phone 64
- Howard's**
Feed - Seed - Fertilizer
- Littlefield Truck & Tractor Company**
Your International Harvester Dealer
- Clint's Cafe**
Typical Home Cooked Meals
- Bolton Bear & Brake**
Front Wheel Alignment
Wheel Balancing - Brake Repair
- Draw Gin Company**
Paul Green
- Ware's**
The Dept. Store With Better Values

- Farbes Tatum Trucking**
Texas, New Mexico, Oklahoma, Colorado
Insured Transportation
- Batson Motor Co.**
DeSoto - Plymouth
- Chisholm Floral Co.**
J. E. Chisholm
- Dairy Queen**
Tasty Food - Quick Service
- Birkelbach Machine Shop**
Irrigation Pump and Machine Repairs
- G & C Auto Supply**
Motor Parts and Accessories
Everything Automotive
- Piggly Wiggly**
Winfred Stout, Mgr.
- Western Building & Plumb.**
R. D. Eller - L. E. Wilson

- A. M. Dunagin And Son**
House Moving and General Hauling
- Foley's Auto Salvage**
Auto Salvage & Used Cars
- Maples Groc. & Mkt.**
Trade Where Your Friends Trade
Bee Maples & Son - Spade, Tex.
- Luce, Rogers & Nelson Implement Co.**
Your John Deere Dealer
- Davison Motor Co.**
Littlefield Mercury Dealer
- S & S Army Store**
We Buy - We Sell - We Trade
- Stansell Gulf Service Station**
Bumper To Bumper Service

- Tracy Perkins Roofing & Siding**
Free Estimates - Phone 270
- Fenton's Shoe Store**
Footwear For The Whole Family
- Frank Cummings Agency**
Littlefield, Texas
- Vista Drive In**
Where Friends Meet To Eat
- Little's of Littlefield**
- McCoy Machine Shop & Pump Repair**
- Cal Harvey Refrigeration Service**
Services Is Our Business

ell McCarty
es Naval
ng

McCarty, apprentice
 third class, USN,
 and Mrs. H. B. Mc-
 Littlefield, Tex., was
 Sept. 27 from Recruit
 of the Naval Training
 Dept. Calif.

party officers are
 in the ranks of the sea-
 to assist Company
 The selection is
 individual aptitude and
 qualities.

ews From
sant Valley

meeting of the IAB
 Allison was elected as
 council representa-

Wahrow attended
 Bi-pano Annual W.M.U.
 and in 1957 recently.

Harper was a patient
 in the hospital last

Taylor and Mrs. L.B.
 recently attended
 the W.M.S. Confer-
 in Littlefield.

Hicks and Billy Free
 on Friday morning to
 evening fishing at Lake
 Saturday. They visited in
 the home of Lee's
 family.

Club Meets
 Pleasant Valley Social
 at the Community Cen-
 ter last night, September 28.
 Leah Jones and Mrs.
 Hodges as co-hostess.
 Meeting was presided over
 by president, and roll call was

gain of the club contest
 on the rules submitted,
 meeting was adjourned,
 prizes were served to
 Mrs. Clinton Wells,
 Mrs. Oscar Allison,
 Mrs. Green, Mrs. Kirk Pitts,
 Mrs. Tracy, and the host-
 esses, Mrs. Jones and Mrs. H.B.

meeting will be on Octo-
 ber 11.

is urged to attend as
 many of the officers will
 be at this meeting.

Club took a load of
 bank: Tuesday and re-
 turns Wednesday night
 and of sleep.

of the Pleasant Valley
 Club members and their
 met at the Community
 Saturday night September
 a social. Games were
 and music was furnished
 local string band.
 Monies of cake, coffee
 and drinks were served to
 attending.

Business was on the sick
 week.

by Bickell who is in the
 F.F.A. will attend the
 fair in Dallas on Oct. 14-19.
 plans to show 3 Poland
 pigs.

and Mrs. Billy Free attend-
 funeral of Mrs. C. U. Shel-
 last Thursday after-

and Mrs. Forrest Green-
 their son, Richard, at
 Tech recently.

During had the misfor-
 being hit by a dog recent-
 dog was not rabid.

and Mrs. Roland Matthe-
 Muleshoe were last
 evening callers in the
 of Mrs. Vera Engelking
 Mrs. Celia Mattheison.

Pleasant Valley Farm Bu-
 will meet Tuesday night,
 at the Community Center.
 will be new officers elected.
 coming year. Everyone
 to attend.

and Mrs. Jim Shoemaker
 and Mrs. West all from
 Texas, visited in the home
 Shoemakers son and fam-
 Roy Shoemaker's two days
 week.

and Doyce Turner were
 in this week.
 Free has reported that
 grandmother, Mrs. D. L. Free,
 improving some on Tuesday.
 Grandmother Free is in
 Methodist Hospital in Lub-

and Mrs. Leroy Hicks and
 K. E. Lamunyon were in
 Tuesday on business.

STOREWIDE HARVEST of FOOD BUYS

COFFEE	FOOD KING REG. OR DRIP VACUUM PACK	69¢
CRACKERS	SUNSHINE KRISPY 1 LB.	30¢
CORN	SHURFINE 303 CAN	15¢
JUICE	TOMATO HUNT'S 48 OZ.	25¢
HONEY	ONE HALF GALLON	98¢

FRUITS VEGETABLES	
CABBAGE LB.	4½¢
GRAPEFRUIT RUBY RED LB.	12¢
SPUDS WHITE 10 LBS.	49¢
CELERY GREEN PASCAL BUNCH	15¢
PEPPERS BELL LB.	9¢
ONIONS YELLOW LB.	3½¢

We carry a big stock of pistols, .22, .32, .38. All kinds of ammo for your pistols. Also for bird and duck hunters we have Super X and Peters Ammunition.

We have a complete line of supplies for your cotton pickers. Quilts, mattresses, cotton sacks, butane hot plates, all kinds of cooking utensils.

BUDGET PRICES QUALITY MEAT

PORK STEAK	NICE LEAN LB.	49¢
HAMBURGER	GROUND FRESH LB.	39¢
SAUSAGE	PINKNEY'S PURE PORK LB.	35¢
PORK RIBS	NICE MEATY SMALL LB.	59¢
TORTILLAS	12 COUNT PKG.	12¢
BACON	SWEET BASHER SWIFT'S LB.	69¢

APPLE BUTTER	28 oz.—SHURFINE	29c
PRESERVES	PEACH—Western Maid—5 lb.	89c
SHURFINE FLOUR	PRINT BAG	
25 lb.		\$1.89
10 lb.		89c
5 lb.		39c
PINEAPPLE	DEL MONTE—Flat Can Crushed	15c
PINTO BEANS	NO. 300—CAMPFIRE	10c
SPINACH	303 CAN	15c
Salad Dressing	MORTON—QUART	37c
TUNA FISH	ALBACORE	29c

CHILI	CAMPFIRE—NO. 300 CAN	35c
CATSUP	SUNNY HILLS	15c
TOMATOES	NO. 300 CAN, HUNT'S—SOLID PACK	15c
GREEN BEANS	CAMPFIRE—WHOLE	2 for 35c
HOMINY	SHURFINE—NO. 300	3 for 25c
PEACHES	SHURFINE—Sliced or Halves	29c
PEAS	TRELLIS—NO. 303	2 for 25c
WRIGLEY GUM		3 for 10c
Pure HOG LARD	PINKNEY—8 LB. CARTON	69c
Vienna SAUSAGE	NO. 1½ CAN—LIBBY'S	2 for 35c

DOUBLE GUNN BROS. STAMPS On Tuesday

Renfro Bros. FOOD MARKET
 ESTABLISHED IN 1929
 RIGHT ON THE CORNER RIGHT ON THE PRICE
 Raymond PHONE 74 Norman



Plenty Of FREE PARKING



Mr. and Mrs. W. A. Kelly observed their fiftieth wedding anniversary Saturday with an anniversary dinner at a local cafe. They were married Oct. 5, 1907 in Mundy, Texas. The Kelly's have three daughters, Mrs. A. D. Sharp, Mrs. Thomas Sharp, Mrs. Bill Lee, and one son, Jack D. Kelly, eighteen grandchildren and five great grandchildren.

Sudan Sidelights

Homecoming Sudan Troop 228 met Wednesday afternoon when the members walked from the school to the home of leader Mrs. Bill Link, for a cookout. The group sang songs on the way to the meeting then enjoyed marshmallows and making S'Mores.

Other visitors present were Mrs. Bill Nix and Mrs. Frank Lane.

Troop members present included Ed Stella, Hubert Dymore, Clark Sanders Lane, Joyce Williams, Benner McKay, Barbara Young, Joe Harper, Susan Jones, Linda Dutton, Brenda Drake, Lydia Marshall, Sandy Mae, Gayle Thomas, and Karen Miller.

Mrs. H. E. Rogers was in Lubbock Friday to see a doctor there. She is accompanied by her daughter to Lubbock.

On the 10th 1st over the moon and stars, James Jr. and Lyle Leach, children of Mr. and Mrs. M. G. Leach.

Visiting Friday night in the Joe Bryant home in Lubbock were the Doyle Watkins.

Among substitutes attending the

Scotts.

Mr. and Mrs. Kenneth Serratt of Amarillo were weekend guests in the home of his parents, the Johnny Serratts. Kenneth is attending WTSC in Canyon.

Mr. and Mrs. Doyle Watkins and Mr. and Mrs. Bill Brown were in Lubbock Saturday evening to attend the Texas Tech and LSU game there.

Mrs. Tom King, Jr. was hostess last week to a meeting of the Wednesday bridge club. Meeting for games were Mesdames F. M. Smith, Adrian Martin, Glenn Gatewood, Johnny Thomason, W. V. Terry, W. C. Edkins, Doyle Watkins, Rodney Nichols.

John Dean is confined to a Lubbock hospital where he underwent surgery Tuesday.

The Thursday dinner Bridge club met Thursday evening in the home of Mr. and Mrs. C. E. Nichols. Present for the evening were Messrs. and Mesdames Ray Wood, Wayne Brown, F. M. Smith, Olan Roark.

Mrs. Rodney Nichols and Mrs. Sara Baucus were entertained with a joint birthday dinner Thursday at the El Monterey in Clovis. Those honoring them for Elgan Baucus were entertained the occasion were Mesdames E. C. Minyard, Glenn Gatewood, F. M. Smith, and Olan Roark.

In Littlefield Thursday to attend a Girl Scout Leaders Training Study were Mesdames Burnie May, Bob Drake, and Johnny Thomason.

Mrs. Luell Turnbow of Lubbock was present to conduct the course. In charge of the meeting was Mrs. Rosemary McNeese of Littlefield.

Bobby Drake received four stitches for a cut on one hand Thursday afternoon at a Littlefield hospital. He received the cut when he fell on a fence while attending the birthday party of Van Wallace.

The Bob Drakes were in Amarillo Sunday to visit in the home of Mr. and Mrs. J. D. Balows, and

Mr. and Mrs. John Evan.

Van Wallace was honored on his sixth birthday with a party, Thursday afternoon by his mother, Mrs. James Wallace.

Party favors were toy grasshoppers. Games were played and refreshments of cake and ice cream served to the following attending: Shawn Potter, Johnny King, Bobby Drake, Bonner Markham.

The Sudan Garden Club will meet Thursday, Oct. 17, in the home of Mrs. Gilbert Masten.

Mrs. Harry Williams of Leveland will be present to speak on "Dahlias and Flower Arrangements." The leader will be Mrs. Cleo Whitnair.

Visiting Sunday in the LeeRoy Cole home were the Clarence Jacksons of Olton.

The Dawson Mullers visited Saturday in the home of Dr. and Mrs. J. W. Chatwell in Amherst.

A number from the local Church of Christ were in Lubbock Sunday evening to attend the

opening session of the Lubbock Christian College Lecture week being held in the Coliseum there.

Going were Messrs. and Mesdames Walter Bostek, Edgar Chance, Weaver Barnett, J. T. Baird, Mrs. Joe Foster, and Mrs. O. Jones.

FIRST BAPTIST EVENING SERVICES CHANGE TIME

The evening services of the First Baptist Church will begin at a new time. Training Union will begin at 6:30 p.m. and evening worship service at 7:30 p.m.

To Late To Classify

words of comfort in the loss and sorrow. May God bless you. Mr. and Mrs. M. M. ... Mr. and Mrs. E. A. ... Mr. and Mrs. Ray ... Mr. and Mrs. Viola ... Grandchildren.

FOR SALE
1931 Chevrolet truck. Good garin bed, Butane, 900-20 tires. 1127 West 10th Street. Phone 962.

HELP WANTED (General)
HOUSEWIFE to work 3 hours, 5 days a week. Sat. work optional. High school education preferred. Write John Burger, 1334 60th, Lubbock.

CARD OF THANKS
We wish to express our sincere thanks and deepest gratitude for the many acts of kindness and

JOIN the MARINE

WHAT A SALE!

Come in

WEEK END SPECIALS AT

Dunlap's
Littlefield

SALE OF COTTON

PIECE GOODS

VALUES TO 98c

IDEAL FOR BACK-TO-SCHOOL SEWING

3 yds. \$1.00

2,000 YARDS OF BETTER

COTTON REDUCED

JUST COME IN—
NEVER SOLD AT THIS PRICE BEFORE

SELLS FOR **2 yds. 1.00**
59 TO 79c

LADIES FINE QUALITY

NYLON HOSE

Clean Up Of Our Better Hose

VALUES TO \$1.29

2 pr. \$1.00

—CLOSEOUT—

BOY'S AND MEN'S PANTS AND SHIRTS

2.00

KHAKI PANTS
KHAKI SHIRTS
BOY'S JEANS

VALUES TO \$5.95

LADIES' BRASSIERE

Sell everywhere for \$1.00 to \$1.29

SPECIAL

2 for \$1.00

WORTHWHILE

CORDUROY

FIRST QUALITY

MANY COLORS TO CHOOSE FROM

68c YARD

BOY'S FLANNEL SHIRTS

NOT ALL SIZES BUT A GOOD SELECTION. WEAR NOW

SIZE 8 TO 16
SELL ELSEWHERE FOR \$1.98 ONLY

\$1.00

CLEAN UP OF MEN AND BOYS PANTS

NOT ALL SIZES BUT A GOOD SELECTION. WEAR NOW

1/2 Price

BOY'S WOOL FLANNEL JACKETS

REG. \$9.99

\$7.00

BOYS EXTRA HEAVY BLUE JEANS

Sizes 8 to 12 — Reinforced For Extra Wear

2 Pair 63c

75 Gauge, Regular \$1.95

Ladies Hose . . . \$1.00

Closeout on Ladies

SHOES . . . 1/2 price
Picked from Regular stock. Flats and Wedges—Val. \$2.98 to \$4.98—**THIS IS A GOOD DEAL!**

MENS—Regular 79c

HOSE . . . 2 pair 61c

JUST A LITTLE REMAINING

MATERIAL Now-Fall Drapery, YD. 59c

MEN'S SHORT SPORT JACKETS REG. \$7.95

\$4.99

1st QUALITY

Wash Rags 10 for \$1.00

Men's First Quality Broadcloth Short Undershirts

VAL. TO 98c **2 FOR \$1.00**

Cannon Towels Reg. \$1.49

LADIES ALL WOOL—Reg. \$39.00

COATS . . . 69c

Ladies 2-pc. Sport Skirt and—Reg. \$5.95

SHORTS . . .

FREE

Hubcap Identification

Realizing the great need for positive identification of lost or stolen hub caps, we have, in full cooperation with the City and County Law Enforcement officials, made available as a public service a Hub Cap Identification Service—AT NO CHARGE.

Come by, let us engrave your license number or other mark on your hub caps. We will record and file the ownership and identification of your hubcap with the City Police and County Sheriff's office.

This Will Not Deface Your Hubcaps

DICK SALMAN SERVICE STATION

Dealer in Humble Products

Phone 719 Box 706 Littlefield, Texas

Dedicated
A Greater
Lamb County

Lamb County Leader

Section
Two

VOLUME 24

LITTLEFIELD, LAMB CO., TEXAS, THURSDAY, OCTOBER 10, 1957

NUMBER 20

Lamb County Estimate Is 165,000 Bales

Cotton Growers Set High Plains Production At 1,700,000 Bales

Lamb County will produce 165,000 bales of cotton according to the latest estimate of the Cotton Growers. This is a 10 percent increase over their September estimate.

The estimate coincides with the report of the Western Cotton Producers Association.

The 10 percent increase in the estimate is due to the fact that the Cotton Crop estimate for September has pushed the estimate past 1,700,000 bales.

The September estimate totaled 1,600,000 bales for the 23 member counties of the Plains Cotton Growers Association, whereas for October the estimate is 1,713,000 bales.

The crop estimate is a bit higher than the agricultural official estimate that dryland cotton production for moisture in some areas and the estimated yield has been reduced. Experts do not see the case of the dryland cotton in Lamb County.

The estimate is underway in most of the county with the bulk thus far in the dryland fields. A dearth of irrigation water is needed to speed up maturing and an early frost still is feared by most producers. It could either see the crop realized or it could see a smaller crop harvested, depending on how late or early it comes.

Statistics for September and October by the county of the 23 member counties of the Plains Cotton Growers, Inc., are listed below.

September 70,000, 75,000,
80,000, 8,000,
17,000, 17,000,
53,000, 53,000,
60,000, 60,000,
105,000, 105,000.

Dawson, 125,000, 125,000.
Deaf Smith, 11,000, 11,000.
Dicken, 11,000, 25,000.
Floyd, 73,000, 74,000.
Gaines, 56,000, 56,000.
Garza, 18,000, 20,000.
Hale, 151,000, 153,000.
Hockley, 170,000, 170,000.
Howard, 32,500, 32,500.
Lamb, 163,000, 165,000.
Lubbock, 216,000, 216,000.
Lynn, 118,000, 118,000.
Motley, 8,500, 8,500.
Parmer, 46,000, 46,000.
Swisher, 48,000, 48,000.
Terry, 107,000, 107,000.
Yoakum, 21,000, 20,000.
Totals 1,688,000, 1,713,000.

Oil Progress Week To Be Observed October 13-19

"Fill 'er up, please."

In Texas, as well as in 47 other states, these four words are repeated more often, every day of the year, than any phrase in modern life.

Standing behind the men to whom this request is directed is a fascinating industry made up of 1,650,000 people representing more than 2,000 different trades, crafts, skills and professions.

All phases of oil industry operations are carried on in Texas—exploration, production, refining, transportation and marketing. They supplied Texans with more than seven billion gallons of petroleum products last year, or equal to 806 gallons for every man, woman and child in the state.

How do they do it? Well, let's look at some of the people and the jobs they do to accomplish this modern miracle.

Currently more than 122,000 persons work in various phases of petroleum production here. In 1956, the 166,000 wells in the state produced 1,111,172,600 barrels of

crude oil and ranked first among other states in producing oil.

One person that has a lot to do with finding it in the first place is a geologist. He knows rocks and subterranean structures. He can identify those that have the potential of possessing oil.

Before drilling begins, however, other geologists, seismographic crews, paleontologists and assorted professionals look over the country side to determine the likelihood of oil.

Seismograph crews set off miniature earth quakes and record sound waves that bounce through the earth and ricochet back. The recorded vibrations enable them to draw maps of the formations



New members of the Future Teachers of America club in Sudan high school were inducted into the club Wednesday afternoon. Pictured above are Sophomore, Junior and Senior class students inducted into the club. Left to right is Mary Lee Backett, Pat Stone, Wanda Hill, Madeline Turner, Shirley Beller, Joy Beth Vinson, Frank Foster, Edward Pruitt, and Mrs. Marvin Tollett, sponsor of the club. Others becoming new members of the club were Freshman class students, including Hallie Cardwell, Loretta Burnett, Elaine Otwell, Arlene Humphreys, Georgie Stephens, Rosetta Williams, Linda Davison, Jeannie Seymore, Sheryl Maxwell, Alma Muller, Radney Fisher, Beth Price and Wanda Powell.

below that may contain oil. But that's only the beginning. "Drilling is a difficult operation," Texas Oil Information Committee Chairman James L. Sewell of Dallas said, "and financially a hazardous one. The only sure way to tell if there is oil in the ground is to drill for it. The odds are long."

Only one in nine wildcat wells finds oil or gas and only one in 44 produces enough for the oilman to get his money back. Many wells run 10,000 feet or more, some go four miles down and can cost more than two million dollars.

Most wells are drilled with "rotary" rigs that bore a hole as you might with a brace and bit in a plank. Some shallow wells use the "cable tool" method that literally hammers a hole into the ground.

A drilling job goes 24 hours a day. In addition to the driller, the crew consists of roughnecks or roustabouts, the laborers in the oil fields; floormen, the helpers; engineers and equipment operators who keep pipe and bit rotating in the hole and derrickmen who work high in the still rig.

Sewell said the U. S. oil industry will drill approximately 60,000 wells in 1957. Despite great odds, oilmen find more each year than is consumed. Of this country's 30.4 billion-barrel reserve, Texas has an estimated 14,783,133,000—or nearly half.

"The future is bright," Sewell said, "much exploration and development lies ahead. Oil companies have leased more than 500 million acres of land in Texas. As long as they keep looking and know-how keeps improving, there is always hope that the future may outrank the past."

Frank Foster Is Student of The Month at Sudan



FRANK FOSTER

Frank Foster, son of Mr. and Mrs. Joe Foster, was named Student of the Month for Sudan High School at the Pep Rally held Friday afternoon.

A member of the Senior class, Frank is drum major of the school band. Students are selected by members of the faculty on the basis of reliability, leadership, cooperation, citizenship, studies and extra-curricular activities.

Lives of great men all remind us, we can make our lives sublime.—Longfellow.

A TRUE STORY... How I Escaped From Behind The Iron Kitchen!

The day I chose to make my break for freedom was a dismal, rainy one. Heavy clouds hung everywhere. But I didn't care. This was the day. My day.

At exactly 10:07 a.m., the doorbell rang. I was at once suspicious. Because I didn't expect the agent until 11:00. But I was safe. It was him, all right. Properly identified by faultless credentials.

Then... I signed the papers. Yes—at last I was free. Free... do you hear me!

I had become a member of the Amens Plan for Better Living! You can free yourself, too, of the every day chains that restrict your freedom to do the things you prefer. Start the Amens Plan in YOUR home. Get all the facts right now. Simply call 1381. Or write to Amens Food Center, 811 Farwell Avenue.

Local Committees To Boost High Plains Station Visits

County chairman Jack Yarbrough and Co-chairman Paul Lewis are organizing groups in the southern portion of Lamb County to encourage them to visit the High Plains Station of the Texas Research Foundation in Halfway.

This agricultural research station is financed by contributions from farmers, businessmen, and firms in the area. All the monies contributed in this area will be spent in carrying out the research program at this location. The objectives of the High Plains Station as set forth by the executive council are (1) to increase economic returns from existing crops, (2) to find new crops which will add to the economy of the area, and (3) to find ways and means of conserving soil and water. This kind of research to be done at this station is determined by the people in this area.

Community chairmen in the Littlefield area are A. C. Chesher, W. O. Hampton, Spade, and H. V. Lynch and Blanton Martin, Hart Camp. A. C. Chesher announced that the team chairmen of the Littlefield area will meet for breakfast at Thornton's Cafeteria, 7 a.m., October 10. W. O. Hampton announced a meeting of the team chairmen of Spade, Hart Camp, and Fieldton at the Spade school cafeteria at 7:30 p.m., October 10.

Much interest was displayed in

the experimental recharge well at the High Plains Station's Field Day on September 18. A great number of people have returned to the Station for a more detailed study of the research in progress.

The signs identifying the varieties and fertilizer tests have been left in place for the benefit of visitors to the Station. Although a large number of people who observed the Station on Field Day have returned, many new visitors are arriving each week.

Grade Record To Determine Tech Registration

LUBBOCK, Oct. 5—Texas Tech will take students' scholastic attainment into account in determining the order of registration, beginning with the fall semester of 1958.

At that time, students will be ranked according to their entire grade record on date and allowed to register on that basis.

Tech officials emphasized that Tech has no desire to deny any student the opportunity to demonstrate his ability to do satisfactory college work. It is assumed, they said, that those students who may be unable to get all the courses they want, nevertheless will be able to enroll for normal study loads.

Bennett Chiropractic Clinic

C. W. Bennett, D.C. Crystelle Bennett, Office Mgr.

X-RAY

Hours 9 to 12 — 1 to 5
Saturday 9 to 12

106 East 10th

Phone 588

(Our 11th Year in Littlefield)

FIGHT FIRE



With DOUBLE PROTECTION!

It never pays to take chances with fire. Play safe. Check your home to eliminate fire hazards. Then check your insurance to make sure you're adequately covered.

Winston Insurance Agency

517 PHILIPS

PHONE 588



Yes, it's time to rediscover America — the land of freedom, opportunity and progress. Time, too, to discover that freedom, opportunity and progress have many enemies — right here in our own country. Enemies who say the government should be in business, should provide our medical care, should control the education of our children. Redeem America — and the American Way of Life — before socialism traps you and your children.

Roddy Kibworth

HUBBELL SERVICE

6 WEEK!

School of Stars

ALL STAR CAST!



The Stars Star with the Academy Award Nominations!

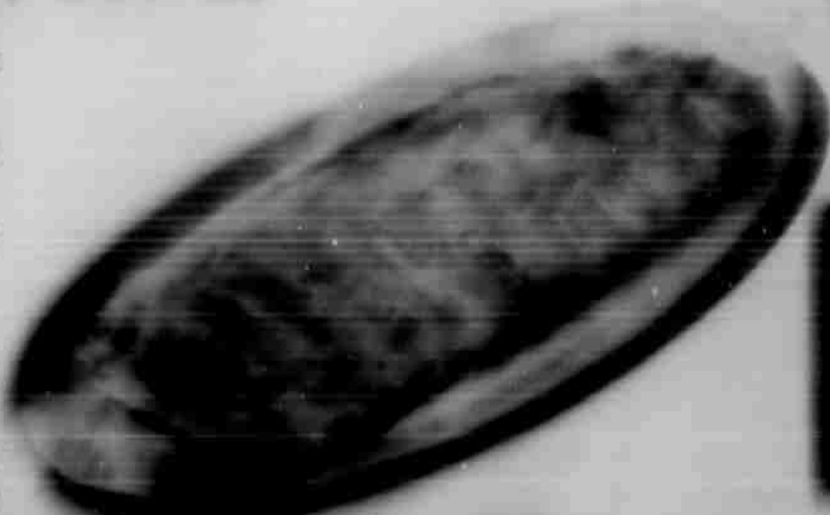
Plus many more!

ONLY TWO WEEKS LEFT TO GET FREE TICKETS!

REDEEM YOUR COLORED CASH REGISTER TAPES BY OCT. 23

- FRANKFURTERS 49c
- BOLOGNA 39c
- CHEESE SPREAD 79c

FRYERS
89c



SPARERIBS

LEAN MEAT BUNNET OF 12 45c

- ROUND STEAK 98c
- SIRLOIN STEAK 98c
- RIB STEAK 89c
- Chuck Roast 49c

SWEET POTATOES
2 for 29c

CHILI
39c

COMING
Oct. 31, Nov 1, 2

WIN ONE OF TEN 1957 PLYMOUTH PLAZAS! REGISTER AT FURR'S

- COFFEE 82c
- FLOOR WAX \$1.39
- SYRUP 39c
- PINE TREE OIL 39c
- BROOMS \$1.79

T.V. Popcorn 2 for 29c
BLACK PEPPER 19c

OLEO 29c

Get Your Pet Insurance Now!

Dog Food 3 for 25c
ENCHILIDAS 59c

FRESH FROZEN FOODS

- Orange Juice 10c
- LEMONADE 2 for 19c
- BROCCOLI 17c
- BRUSSEL SPROUTS 19c

SHAMPOO 69c
TOOTH PASTE 33c

- YELLOW ONIONS 3 1/2
- APPLES 19c
- GRAPEFRUIT 49c
- ROMAINS 15c
- RADISHES 7 1/2c
- COCONUTS 15c

FURR'S

EDITORIALS

Weighting Is Dangerous

Men and young girls—and even some men, we hear—of the nation often lose their sense of balance when the subject of their weight. Favorite of them is that she is a few pounds beyond a weight-like girl to cut down on food intake in order to take weight.

It is a risky process and you don't have to take it to either. Consult your own physician.

Women in Lamb County are sometimes so self-conscious to know how to properly diet themselves. They eat of the "diets" made in state but are not instructed but are accompanied. It is forced by authorities with nervous diseases and a generally healthy body.

It is the best ways to reduce is to take more exercise. That before you cut down too severely on food, you know that most people eat too much and consume some poisons by eating improperly, but to reduce the diet while carrying on the usual comparatively dangerous and should be avoided by anyone.

Advertising Makes Business

Other city realties if not advertising is perhaps the most wonderful development of the modern century. It is the maker or breaker of business, but it is the one factor of successful sales that is most appreciated by the merchants and business men of this and other cities.

Advertising is not the exclusive weapon of big business. It is the power that will make little concerns grow larger concerns. It is a matter that requires study and character. It cannot succeed if it is based upon untruthful build upon faith and integrity.

Lamb County Leader is prepared to assist local business with their advertising problems. It may be to the modestly, that its staff knows something about it and that their experience is available to help to use it.

What Are You Reading?

In recent speech, FBI Director J. Edgar Hoover stated that an aroused public opinion is needed to combat "saboteurs" who peddle obscenity to children, at school.

Director of the closed session of the recent Atlantic City, N. J. Hoover announced an attack on all color photographs and publications, which for more united family life to each other. He stated that the "trick" magazine is reading on the newsstands today is dangerous for the future of our nation.

Hoover stated that the peddler of obscene pictures and magazines have no freedom of speech without it is the free expression. He is the moral backbone of the type of reading merely serves to what he is for moral excitement all the time.

After legal penalties, particularly in local and state, are needed to replace the "obscure" and "low" type of this vice trade. Hoover said, "The legal sentences and heavier fines reduce the circulation of this traffic and the probability distribution of it will be driven out of the country."

Hoover pointed out that "a single good picture can be a small child and obscure photographs in public which can then be copied by the thousands. Little girls, who are victims, are reduced to mere playthings of the unfortunate victim, the obscure photo. This can be transmitted in an almost instant world of destruction."

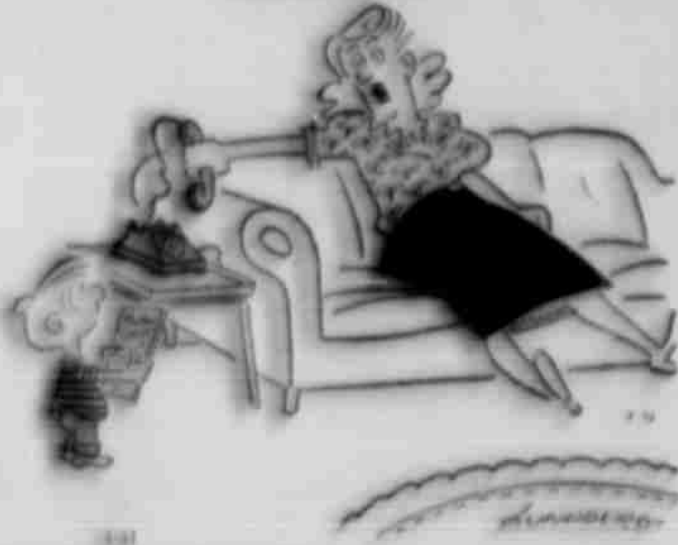
Hoover, he said, "The activities of the 'trick' magazines, which are sold and are always republished, are dangerous to the lives of our children. They are a menace to our children. You don't want your children to be victims of the 'trick' magazines. You don't want your children to be victims of the 'trick' magazines. You don't want your children to be victims of the 'trick' magazines."

Working with all that the F. B. I. Director has said, we ask the reader, what are you reading? And we ask the merchant, what are you selling? Reading?

Lamb County Leader

Published Thursday of each week at Littlefield, Texas. Entered as second-class matter, October 10, 1937, under Post Office No. 100, Littlefield, Texas. Post Office at Littlefield, Texas, is authorized to mail this publication at special rate of postage provided for in Section 1103, Act of October 3, 1917, authorized to mail at special rate of postage provided for in Section 1103, Act of October 3, 1917, authorized to mail at special rate of postage provided for in Section 1103, Act of October 3, 1917.

LAFF-A-DAY



"Not now, dear. Mother is completely talked out!"

Highlights and Sidelights From Your State Capitol

By VERN SANFORD
Texas Press Association

ADULTS, Texas Gov. Price has apparently in going all out to get the balance of his 1938 program adopted this day.

Special legislative session set for Oct. 21.

In recent speeches, Gov. Price has stated his program for 1938. It is a matter that requires study and character. It cannot succeed if it is based upon untruthful build upon faith and integrity.

In addition, the governor has made some important statements in his recent statements. He says that he has many plans for the future.

He said that he has many plans for the future. He said that he has many plans for the future. He said that he has many plans for the future.

He said that he has many plans for the future. He said that he has many plans for the future. He said that he has many plans for the future.

He said that he has many plans for the future. He said that he has many plans for the future. He said that he has many plans for the future.

He said that he has many plans for the future. He said that he has many plans for the future. He said that he has many plans for the future.

He said that he has many plans for the future. He said that he has many plans for the future. He said that he has many plans for the future.

He said that he has many plans for the future. He said that he has many plans for the future. He said that he has many plans for the future.

He said that he has many plans for the future. He said that he has many plans for the future. He said that he has many plans for the future.

He said that he has many plans for the future. He said that he has many plans for the future. He said that he has many plans for the future.

He said that he has many plans for the future. He said that he has many plans for the future. He said that he has many plans for the future.

He said that he has many plans for the future. He said that he has many plans for the future. He said that he has many plans for the future.

He said that he has many plans for the future. He said that he has many plans for the future. He said that he has many plans for the future.

He said that he has many plans for the future. He said that he has many plans for the future. He said that he has many plans for the future.

He said that he has many plans for the future. He said that he has many plans for the future. He said that he has many plans for the future.

He said that he has many plans for the future. He said that he has many plans for the future. He said that he has many plans for the future.

He said that he has many plans for the future. He said that he has many plans for the future. He said that he has many plans for the future.

He said that he has many plans for the future. He said that he has many plans for the future. He said that he has many plans for the future.

He said that he has many plans for the future. He said that he has many plans for the future. He said that he has many plans for the future.

He said that he has many plans for the future. He said that he has many plans for the future. He said that he has many plans for the future.

He said that he has many plans for the future. He said that he has many plans for the future. He said that he has many plans for the future.

DOWN MEMORY LANE

From the files of The Lamb County Leader October 10th, 1937.

Mrs. Robert Bigham is now connected with the Higham-Roy gin.

J. W. Kettiday is elected director of West Texas Chamber Of Commerce.

Ed Anderson bags 900 pound elk while on hunt in Colorado.

Mrs. Sam Hutson is now employed by the Littlefield Beauty Salon.

Jack Garlington teaches english classes at Texas Tech.

Executive News, Mrs. L. E. Dallas, Alton, N. J. Johnson, Ontario, N. J. Johnson, Houston.

Its appointments such were made earlier by the Speaker of the House, the Lieutenant Governor and the department of education.

BUSINESS YEAR UNCERTAIN - Despite its present high level, Texas business faces uncertainties in coming the year.

There is little evidence pointing to any substantial rise, observers in John R. Brackton, director of the University of Texas Bureau of Business Research.

Causes for concern, softening of the building outlook, decreased opportunities by the federal government and business concerns.

Right hopes, expanding expenditures by state and local governments, high level consumer spending, continuing population increases.

RIGHT SHORTS - House Speaker

Wagoner Carr is visiting in his capital quarters in office now. Atty. Gen. Will Wilson has held in an opinion requested by the State Comptroller Galley for a secretary and expenses for stationary supplies, telephone and telegraph also were approved.

John H. Hargrove has been appointed chief of the state services division of the State Insurance Department by Commissioner William A. Harrison. Hargrove was formerly with the Texas Research League.

Though the scale of God grind slowly, yet they grind exceedingly small.

Thought with patience He stands waiting, with swiftness He will punish. - Frederick Von Geisler.

The mightiest power by deep-sea routes are fed - W. W. Fisher.

Sandhills Philosopher Says--

President Should List Items Of Reckless Spending

Editor's note: The Sandhills Philosopher on his Johnson grass farm wants to compile a list for him. It's better this week or next, but we're pretty busy right now.

Dear editor: A friend of mine from town was out here at my farm yesterday afternoon telling me about his troubles.

According to him, he has been trying to convince his family President Eisenhower is right when he says reckless spending is making our nation and he called a family conference to go over the situation.

He claims everybody in his family agrees with him, reckless spending ought to be cut out. This inflationary spiral can't keep going on forever, President Eisenhower is absolutely right, and every family ought to pitch in and help.

But if you get down to individual cases he runs into trouble. For example, his teenage daughter says reckless spending ought to stop, but not until after she's gotten a formal evening dress, and besides, Mrs. Eisenhower wears evening dresses frequently and she knows Mr. Eisenhower doesn't include that on his list of reckless spending items.

His 10 year old son says he's opposed to reckless spending, too, but buying a football suit, with a helmet and shoulder pads, is not reckless, on the contrary, it's reckless to play without one.

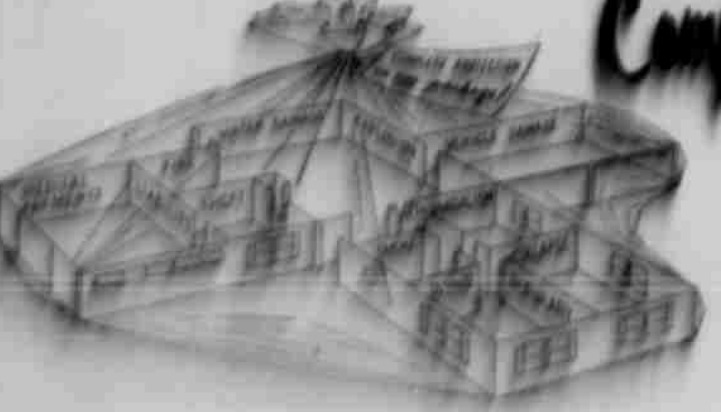
Personally, I can't help him out myself. I've got more problems out here now than I can handle, but I've got an idea why don't you sit down and figure out a list of all the items that constitute reckless spending and publish it in your paper?

Yours faithfully,
J. A.

South Plains Creamery Inc.
Manufacturers of Ice Cream
and Ice Cream Novelties
Littlefield, Texas
Phone 55



Complete, Packaged Protection



Now you can cover, in a single policy, most of the risks you face in your home—and you may save money, too.

The consistent way — and the safe way — to handle your property insurance is to have it placed in one policy written by your local agent. He is an expert on all types of coverage and ready to serve you at all times.

BE SURE WHEN YOU INSURE. Your local agent is an independent businessman and a neighbor of yours. He represents Capital Stock Insurance Companies, the standard bearers of reliable protection for more than a century.



JOIN THIS COMMUNITY EFFORT

National Fire Prevention Week

BILL KELLY

INSURANCE AGENCY

Advertisement for Melba featuring a woman's face and the text 'HAVE YOU TRIED NEW Melba'.

DAVIS "66" SERVICE

500 PHELPS AVE. PHONE 128 — NIGHT 533R
LITTLEFIELD, TEXAS

HAUK & HOFACKET

PHONE 68 CORDUROY TIRES
LITTLEFIELD, TEXAS

CITY SHOE SHOP

COMPLETE LEATHER GOODS
Across Street From First National Bank Littlefield

H. T. BARTLEY & SON

SINCE 1938
318 PHELPS AVE. LITTLEFIELD

HAYDON-WINKELS SHOES

"SHOES FOR THE ENTIRE FAMILY"
PHONE 970 301 PHELPS

THORNTON'S CAFETERIA

"THE BEST OF HOME COOKED MEALS"
PHONE 362 LITTLEFIELD

MADDEN and WRIGHT

PRESCRIPTION PHARMACY
"WE FILL ALL DOCTOR'S PRESCRIPTION"

DAVISON MOTOR CO.

"MERCURY DEALER"
PHONE 312 LITTLEFIELD

W-W ELECTRIC

"ANYTHING ELECTRIC"
PHONE 192 LITTLEFIELD

G. & C. AUTO SUPPLY

"EVERYTHING AUTOMOTIVE"
LITTLEFIELD — ANTON — SUDAN

PIERCE COSDEN SERVICE

"WHEEL BALANCING"
PHONE 412 430 LFD DRIVE

GULF PRODUCTS

GAS — GREASE — OIL
LONDON GRISSOM PHONE 82

Molder Pump & Machine Co.

WINTROATH PUMPS
PHONE 86 816 W. DELANO

DAIRY QUEEN

Hamburgers — Sandwiches — Drinks of All Kinds
LEVELLAND HIGHWAY PHONE 452-M



THE TEXAS CO.

JACK CHRISTIAN, CONSIGNEE
PHONE 116 LITTLEFIELD

ONSTEAD'S FURNITURE

"FOR BEST BUYS"
418 PHELPS LITTLEFIELD

E. C. Rodgers Furn. & Appl.

"COMPLETE HOME FURNISHINGS"
215 PHELPS LITTLEFIELD

STAGGS JEWELRY

"WE GIVE GUNN BROS. STAMPS"
501 PHELPS PHONE 12

Foxworth-Galbraith Lbr. Co.

LUMBER AND BUILDING MATERIAL
SEIDLITZ PAINTS FLOOR COVERING

YARBROUGH FOOD

"WE GIVE GUNN BROS. STAMPS"
9th and Levelland Highway Littlefield

Bryan's South Side Laundry

SELF SERVICE
813 E. 9th Phone 307-J Littlefield

Willson & Crump Lumb. Co.

Everything for the Builder—Paint, Wall Paper, Floor Covering
Phone 458 East Lubbock Highway

FOUST FOOD MARKET

"WE GIVE GUNN BROS. STAMPS"
601 EAST 10th PHONE 710

RAY KEELING BUICK

"SMART BUY'S BUICK"
800 E. 4th St. PHONE 777

51 AUTO SALVAGE

"HIGHEST PRICES PAID FOR USED CARS"
FLOYE MORRIS PHONE 680-J

FARR'S JEWELRY

"GIFTS FOR ALL OCCASIONS"
PHONE 383 LITTLEFIELD

ROBERTS LUMBER CO.

Intersection Of Lubbock and Spade Highway
PHONE 332 LITTLEFIELD

FIELD'S CLEANERS

AND MEN'S STORE
LITTLEFIELD PHONE 400

FOOTBALL WIN CASE

It's Easy . . . Anyone Can



CONTEST RULES

- Anyone can enter except employees of The News and Leader.
- Three Cash Prizes are given each week; duplicate prizes awarded in the case of ties.
- It is not necessary to indicate scores on all the games but score must be indicated on the "Tie-Breaker" Game each week.
- Members of the editorial department are sole judges of the contest and their decision is final.
- Deadline for submitting entries is 5 p. m. Friday. Winners will be announced the following week. Enter as often as you wish. Completed entries must be deposited at any of the participating firms. Do not send to this paper.

ENTER NOTHING . . . just CATE

ENTER NO NO PURC

This Week's Schedule

BULA vs. COTTON CENTER
AT BULA

SPADE vs. SMYER
AT SPADE

LITTLEFIELD vs. CANYON
AT CANYON

AMHERST vs. SPRINGLAKE
AT SPRINGLAKE

Deposit Entry Blank
Do Not

TEST ZES

Win . . .



First Prize

\$5

Second Prize

\$3

Third Prize

\$2

Test today; you may win one of the big prizes. No obligation! Match your guesses with the experts for the winners, NOT ALL THE SCORES! "Indicating Game" only!

ABSOLUTELY
NECESSARY!

Games

ATHARRAL

ANDREWS

LAINVIEW

SYMOUR

-Official- Entry Blank

Contest Ends Friday Evening, October 11, 9 pm.

- | | | | |
|-------------------------------|--------------------------|-------------------------------|--------------------------|
| 1. Arkansas Baylor | <input type="checkbox"/> | 11. Monterey (Lubbock) Borger | <input type="checkbox"/> |
| 2. Rice Duke | <input type="checkbox"/> | 12. Bala Cotton Center | <input type="checkbox"/> |
| 3. S.M.U. Missouri | <input type="checkbox"/> | 13. Spade Binyay | <input type="checkbox"/> |
| 4. Texas A & M Houston | <input type="checkbox"/> | 14. Ashford Springdale | <input type="checkbox"/> |
| 5. T.C.U. Alabama | <input type="checkbox"/> | 15. Anton Whiteoak | <input type="checkbox"/> |
| 6. Texas Oklahoma | <input type="checkbox"/> | 16. Loveland Andrew | <input type="checkbox"/> |
| 7. Texas Tech Texas Western | <input type="checkbox"/> | 17. Harford Piquette | <input type="checkbox"/> |
| 8. West Texas State Trinity | <input type="checkbox"/> | 18. Dumas Reynolds | <input type="checkbox"/> |
| 9. Palo Duro High Pampa | <input type="checkbox"/> | 19. Porryton Dalhart | <input type="checkbox"/> |
| 10. Lubbock (Team #1) Abilene | <input type="checkbox"/> | 20. Childress Memphis | <input type="checkbox"/> |

Be Sure To Check The Winners — And Indicate The Score On The Scoring Form Pick Score on this "The-Scoring Form" Below

LITTLEFIELD TO CANYON

NAME

ADDRESS

CITY

re on this page.....
field Press

HILL ROGERS FURNITURE

FRIGIDARE — MAYTAG — FURNITURE
LUBBOCK HIGHWAY PHONE 77-M

MUTT HOUK GROCERY

"OPEN EARLY — OPEN LATE"
5th and Loveland Highway Phone 512-J

LITTLEFIELD BUTANE CO.

PHONE 554 LITTLEFIELD

HOWARD'S

FEED, SEED and FERTILIZER
PHONE 517 LITTLEFIELD

HEFLIN'S MACHINERY CO.

ALLIS-CHALMERS DEALER
PHONE 456 LITTLEFIELD

COX TIN SHOP

PLUMBING AND SHEET METAL
LITTLEFIELD, TEXAS

BATSON MOTOR CO.

DESOUD — PLYMOUTH
"THE SMARTEST OF THE SMART CARS"

Massengale Radiator Shop

716 HALL AVE. LITTLEFIELD

TRACY PERKINS

ROOFING AND SIDING
PHONE 570 LITTLEFIELD

Brown's Auto Serv. & Repair

114 HALL AVE. PHONE 407-4

CECIL HALL CO.

PAINT — FLORIN COATING — EXTERIOR DECORATION
CARPET CLEANING

B. & C. Pump and Machine

LITTLEFIELD AND FORTH
Phone 1007 - 1011, Littlefield Phone 4001-Forth

Walker Battery & Electric

We Specialize In Motors, Starters, Generators, Motor Tune-up
PHONE 410 LITTLEFIELD

REPLIN'S

Residual Sell Conforming Hots and Other Home Brand Merch.
LITTLEFIELD PHONE 300

FISHER'S RESTAURANT

"WHERE EVERYBODY EATS"
LITTLEFIELD, TEXAS

Dick Salmon Humble Station

Get Your Entry Blank Here For Humble's Football Contest
72 Valuable Prizes Every Week
Highway 51 and 54 Phone 710

S & S ARMY STORE

"WHATEVER IT IS — WE HAVE IT"
PHONE 615 LITTLEFIELD

McCoy Mach. & Pump Repair

"EQUIPPED TO DO GENERAL MACHINE WORK"
1102 E. 5th St. PHONE 672

Curtis Chisholm Gulf Station

"ALL GULF PRODUCTS"
5th and Hall Ave. PHONE 624-M

LUCE, ROGERS & NELSON

JOHN DEERE DEALER
PHONE 507 502 DELANO

KEITHLEY & CO.

INSURANCE
PHONE 62 LITTLEFIELD

Littlefield Glass Works

PHONE 514 507 W. CLARK ROAD

TASTY CREAM DRIVE-IN

Hamburgers - Sandwiches - Frosting Desserts
ON CLAYTON HIGHWAY

BOLTON BEAR & BRAKE

AUTHORIZED BEAR SERVICE
1111 E. 5th St. Day and Night Phone 500-4

BILL KELLY INSURANCE

LITTLEFIELD, TEXAS
101 E. 5th St. PHONE 577-4

CAMPBELL PLUMBING

"Everything For Your Plumbing Needs"
101 E. 5th PHONE 100

MAC'S CABINET SHOP

CABINET WORK — ALL TYPES MILL WORK
PHONE 100-M 1112 E. 5th St.



