

COMMUNITY CHEST DRIVE SET FOR NOVEMBER 4; ONE-DAY CAMPAIGN

SCHOOL BOND ELECTION DATE IS SET

\$5,000 Issue To Be Before Voters Before November 3

Securities Will Not Affect Present Taxes

After hearing the petition, the school board is to call an election on the \$75,000 school improvement bond issue was presented to school board at a meeting Tuesday.

Qualified voters of the Littlefield independent school district are to cast their ballots in the election.

Will Not Affect Taxes
The bond issue will not affect taxes, neither rate nor evaluation in any way, according to school officials. Cost of servicing the bonds will be borne by the school.

Long Term Improvements
They realized from the sale of bonds will be used toward improving the school facilities, both old and new. This long-term program of remodeling and repairing the school buildings in general also provides for laboratory equipment and facilities.

Club To Appear At Rotary Program
The Future Farmers of America will hold its regular luncheon program for the Rotary Club at the Littlefield High School.

BUY'S FARM
Langford is reported to have deal this week whereby he purchased from Mr. Nunley a farm east of Lubbock High School.

Wildcats, Springlake to Meet in District Tilt Friday
The Wildcats will have that

off the record—a news-stealer's way of saying you dare tell anybody we can work smoothly and even in the face of such as injuries to his first

deadly starting line with Johnny Srygley in for the injured Travis Price. Srygley has shown himself to be a menace in the ozone with his passing ability.

We'd like to call fans' attention to the error in the Muleshoe program last Friday.

We nearly went mad trying to figure out who was this "J. Ford Shelby," and where he came from. Frankly we were a little dubious about a Wildcat back with such a high-falutin' handle. It turned out that this "Shelly" was none other than Jack Shelby, who must have been confused, being out there racking up points like crazy and some guy named Shelly getting all the credit.

The band and Pep Squad will be on hand to keep the team on its toes at Springlake.

The play-by-play report of the game will be broadcast by station KVOW.

LAMB COUNTY LEADER

Official Newspaper Of Lamb County, Texas

THE SOUTH PLAINS GREATEST WEEKLY NEWSPAPER
Serving the Fastest Developing Agricultural Section of the Entire Southwest

VOL. XXV. LITTLEFIELD, LAMB COUNTY, TEXAS, THURSDAY, OCTOBER 23, 1947 NO. 31

HEALTHY BANKS REFLECT OUTSTANDING GROWTH OF LITTLEFIELD AND SECTION

Financial statements of the two Littlefield banks, according to the official call, as of October 6, are published in this week's issue of the Lamb County Leader.

These statements reflect the active progress of Littlefield and Lamb county, and the stability of the Littlefield banking institutions and their ability to care for the needs of this section.

The Security State Bank was opened Saturday, October 4, and the first call came after two business days. One of the special features of the statement of the Security State Bank is the fact that deposits as of October 6, totaled \$238,071.93.

The new Littlefield bank has a capital stock of \$50,000, a certified surplus of \$50,000, and a reserve of \$25,241.79.

The statement of the First National bank, which has been in operation many years, shows deposits totaling \$5,193,686.43. This figure is close to an all time high for the First National Bank, or any other bank, which has ever operated in Littlefield. Such a high total for deposits reflected a long and creditable record of service to this city and community.

The First National Bank has a capital stock of \$100,000, a surplus of \$100,000, and undivided profits of \$52,457.81.

Fieldton PTA Sponsor Carnival

The Fieldton P. T. A. organization is sponsoring the Womanless Wedding, and a carnival Friday night, October 24.

The entertainment will be held in the Fieldton school building. Admission will be 10 and 25 cents.

There will be the usual carnival booths and amusements, and a good time is assured all who attend.

Prizes will be awarded in the various contests.

PTA Carnival October 30



Presented above is Jim Roberts, Secretary of the Littlefield Chamber of Commerce, who congratulates Mrs. E. E. Joiner, President of the Central P. T. A. and Mrs. F. E. Yohner, President of the Primary P. T. A. on their extensive plans for an outstanding carnival to be staged on the school grounds Thursday night, October 30, and presents these women with some typical carnival prizes.

Oscar Garcia Is Killed Instantly

The South Plains highway death toll for the week ending Sunday had reached eight Sunday night when a Mexican cotton-picker, Oscar Garcia, 29, of Rio Grande City, was killed outright in an overturning automobile just south of Littlefield near Lum's Chapel about 8 p. m.

Garcia's wife, only other occupant of the automobile, was treated for minor cuts and bruises at a local hospital here and released.

Investigating officers said the Garcia automobile was traveling south when it was struck in the rear by a second automobile.

The driver of the other car apparently had attempted to pass the car driven by Garcia when the right front of the machine was in collision with the Garcia car, Garcia's machine then overturning into a deep ditch. It was understood that no occupants of the second car were injured.

The body of Garcia was taken to the Hammons Funeral Home, who prepared it for burial. The remains were shipped Monday morning to Rio Grande City, Texas. Burial was expected to be taken place Tuesday.

Garcia's death was the third traffic fatality in the Littlefield area.

Charges Filed In Earth Car Accident

Funeral services were conducted at the First Baptist Church, Dimmitt, at 2 p. m. Friday, for Mrs. Jack Shrum, 21, of Earth, who was killed in an automobile accident about 9 p. m. the Wednesday previous when the car occupied by Mr. and Mrs. Shrum and their four year old daughter, Sherry was in collision with another automobile, occupied by Mr. and Mrs. E. C. Northrup. The accident occurred on the new highway, four miles north of Earth. Mr. Shrum and their daughter were treated at the South Plains Cooperative Hospital for minor injuries and released.

Rev. U. S. Sherrill, Baptist Pastor (Continued on Back Page)

this past week, and brought the death toll for the South Plains since the Sunday previous to eight in traffic accidents. Three more persons were claimed in a fire at Lamesa, which brought the violent death toll in the immediate area to eleven for the week, one of the worst in the history of the South Plains.

Accompanying the remains to South Texas were Mrs. Garcia and a brother of her husband.

Civic Groups Cooperate In Raising 1948 Budget

At a meeting held Tuesday night in the District court room of the county court house, officials of the Community Chest set the date of their drive for Tuesday, November 4.

Purpose of the meeting was to receive reports from representative of various civic organizations who are seeking funds.

Last Rites Held Sunday For L. A. (Pap) Ratliff

Passes Iway Early Saturday Morning At Local Hospital

Louis Aaron Ratliff, 74, better known as L. A., or "Pap" Ratliff passed away at the Littlefield Hospital about 1 a. m. Saturday, as the result of injuries received in an auto accident more than a month previously.

Mr. Ratliff was a patient in the hospital 32 days.

Last Rites Sunday
Funeral services were conducted at 4 p. m. Sunday at the Littlefield Drive Church of Christ, with Bro. Ned Fairbairn, minister, officiating. Interment, in charge of Hammons Funeral Home, took place in the Littlefield cemetery.

Active pallbearers were: Len Irvin, Pat Boone, Bill Yeary, J. T. Elms, C. O. Stone, and Sam Hutson.
Honorary Pallbearers were: Jack Farr, John Kling, Troy Howton, J. P. Freeman, J. M. Stokes, W. D. Chapman, Joe Wells, E. Wallace, Vernon Eagan, Lon Campbell, A. A. Anderson, E. C. Cudiff, and Billy Hall.

Flower bearers were Misses Dorothy Faust, Wanda Strange, Lucy Robinson, and Dorothy Apperson, and Mesdames Lucille Robinson, Willie Steffey, G. W. Steffey, R. D. McNeely, Mutt Houk, Faye Smith, O. K. Yanitis, Jr., B. W. Armistead, F. E. Yohner, Wm. N. Orr, F. W. James, Jess Elms, Buck Ross, Hugo Kinkler, Jack Farr, Claude Thaxton of Littlefield; Mrs. Sannie Osborn of Pampa, Mrs. Vayne Harless of Dumas, Mrs. Troy Noel of Plainview; Mrs. Chrence Fox of Lubbock; and Mrs. Iva Dell Phelps of Odessa.

Was Pioneer of This Area
Mr. Ratliff, a pioneer of this section was a retired farmer and police officer, and at the time of his death was superintendent of the Littlefield cemetery, a position he had held for many years.

Mr. Ratliff was well known for his work as an officer. He served as Constable of this precinct, and as a deputy sheriff under Len Irvin.

Born in Williamson County
He was born September 4, 1873, in Williamson County. He had lived in Lamb County 22 years, coming here from near Temple, in Bell County.

Wife Dead 18 Years
His wife passed away on March 25, 1929, at the age of 53 years. (Continued on Back Page)

One-Day Drive

A breakfast heralding the kickoff of the Community Chest Drive will be held for officers and members of the collecting teams on Tuesday morning.

There will be a minimum of six members of each club to help canvass the town.

The purpose of this drive is to consolidate the solicitation of funds into one drive.

Radio programs over station KVOW will feature interviews with a representative of each organization seeking funds.

Contributors to the Community Chest will receive a red feather and a card certifying that they have made their contribution.

Budget For 1948

A total of \$14,000 will be distributed to the treasuries of the following organizations:

Youth Recreational program, \$3000; Girl Scouts, \$1750; Boy Scouts, \$1750; Local Library \$2500; and \$5,000 to the Salvation Army.

The officers of the Community Chest, Mrs. A. I. Fowler, president; Paul Hyatt, vice-president; and Mrs. Arthur P. Duggan, Jr., secretary-treasurer, heard reports from the following organizations which will cooperate in the drive:

Rhenard McCary, Lions Club; Mrs. A. I. Fowler, Woman's Club; Mrs. E. J. Packwood, Central PTA; Mrs. Arthur Duggan, Primary PTA; Wade Potter, American Legion; A. C. Chesher, City of Littlefield; Paul Hyatt, Veterans of Foreign Wars; Floyd Ferrell, Chamber of Commerce; Johnnie Waters, Jaycees; Alben Hodges, Rotary; Mrs. T. A. Hillbun, Junior Study Club.

James Roberts Returns From C of C Convention

James G. Roberts, secretary-manager of the Littlefield Chamber of Commerce, returned last Wednesday October 16, from a three-day trip to Colorado Springs where he attended the annual convention of Chambers of Commerce secretaries.

Main subject of the convention was "The Community In These Changing Times."

The purpose of the annual meeting is to enable secretaries from all parts of the United States to discuss mutual problems with experts in the field of civic organization.

Roberts was accompanied by his wife.

BUY'S TWO HOUSES

Two deals were consummated Saturday whereby Dr. Glenn Simmons purchased two houses on West Third Street. A residence property of five rooms and bath, 318 West Third St., was sold to Dr. Simmons by F. R. Jones, and a residence property of three rooms, 320 W. Third, was sold by L. F. Rucktashel. Mrs. D. E. Reese handled both transactions as agent.

C. of C. Ends Finance Membership Drive

The Chamber of Commerce Membership and Finance Drive ended with a budget of \$8,112 and a total membership of 180.

This represents a gain of \$112 over the \$8,000 which had been set as the proposed budget. Eighty new members were secured during the drive.

Appoint Library Committee
The Chamber of Commerce is definitely interested in the work toward securing a library which has been started by the Woman's Club.

To this end, they have appointed a Committee to investigate the possibilities of a County Library.

It has been announced that there is a fund of \$9,000 for the purpose of a county library. If the fund is not used for this purpose, it reverts to the state.

The Chamber of Commerce Library committee, working in conjunction with the Woman's Club is com-

REMEMBER

- BIRTHDAYS
- ANNIVERSARIES
- WEDDINGS
- SPECIAL EVENTS

— with —

Photographs

— by —

CHISHOLM and NAIL

Watch Repairing
W. C. FARR
JEWELER

**Establishes Garage
On Highway 54**

Bob Wilson has established a general automobile repair garage on Highway 54 (Bula Highway) just east of the Lamb County Frozen Food Locker Plant, and opened for

business last week. He solicits work on cars, trucks and tractors.

LEAVES FOR JAPAN

Dr. Melvin Thornton, who has the rank of Lieutenant in the Army, is leaving soon from California for Japan.

"Window Shopping"

Howdy, Yo all: Incidentally have you been out my favorite highway just one mile east of the Amherst school? Well from what I can find out those girls are really doing some hard work on that Decorator's Knack!

I've never seen the girls so busy, they are always on the beam taking orders to make some one some beautiful new draw drapes or loosing a little shut-eye to finish up an order on time with a perfect inspection.

They declare there has been more demand for good decorating than there has ever been. The knack is well equipped with a complete line of drapery materials and those exclusive and decorative wall papers and all you need to create that colorful atmosphere you enjoy living in.

Incidentally, Audry reports a most wonderful line of gifts will soon be on display. I guess I will then be put to work unpacking those barrels of what-nots and that gorgeous turquoise pottery Velma is so excited about.

I know a secret—but I might be persuaded to give you a hint. A popular young lady visited the knack for information on crystal, China and pottery. I know you are curious—but she has lovely blond hair, dancing blue eyes and a happy disposition. See ye next week
PEEPIN—Tom

**Drilling Progresses
On Lamb Co. Tests**

Forest Oil corporation, Jergins Oil Company and H. R. Smith, No. 1 Ida Mae Harris, southwest Lamb county prospector, two miles southwest of Amherst and 440 feet from north and east lines of labor 15, league 661, State Capital Lands, which is slated to explore to 7,500 feet, head reached 4,240 feet in lime and anhydrite, and was continuing.

Seaboard No. 11 Jackson, another southwest Lamb wildcat, two miles north and west of Pep, and 660 feet from south and west lines of labor 15, league 680, State Capital Lands, had progressed past 8,047 feet in an unidentified lime and was making more hole.

Honolulu No. 1 Hassell Land and Cattle company, in the Sudan region of West-Central Lamb county, and 660 feet from south and west lines of labor 19, league 219, Castro County School land, was drilling ahead below 6,173 feet in lime and anhydrite. It is contracted to 9,000 feet—unless it gets commercial production before that point is reached.

**NEW HOME UNDER
CONSTRUCTION FOR
W. J. (BILL) CHESHER**

A beautiful large home is under construction at East Thirteenth Street and Farewell, in the Duggan Addition, for Mr. and Mrs. W. J. (Bill) Chesher. Construction will be of limestone construction, with an antique shake roof.

Walter Nashert & Company of Oklahoma City, Okla., are the contractors. Mr. Nashert is a brother-in-law of Mrs. Chesher.

ON FURLOUGH

P. F. C. Charles H. Chapman, son of Mr. and Mrs. W. D. Chapman arrived home Saturday night for a fifteen day furlough. Charles flew from Quonset Point Rhodes Island, to El Paso. He is stationed on board the U. S. S. Kearsarge, an Essex class Air Craft Carrier. He will return to Quonset Point Rhode Island Sunday night.

TO GO TO CHINA

Mrs. D. W. Chapman received a telephone call Monday from her son, Gy. Sgt. Lloyd Chapman, who is a member of the First Marine Division at Camp Pendleton, Calif., to the effect that he was leaving the

United States November 8 for Tsin-azo, China.

Total farm real estate in the United States on January 1, 1947, had an estimated value of \$8.6 billion dollars.

**A GENERAL REPAIR SHOP
NOW OPEN
AND READY FOR BUSINESS**

Electric Work
Brake Service
For All Cars
Trucks And
Tractors



• ALL WORK GUARANTEED •
YOUR BUSINESS APPRECIATED

Bob's Garage

EAST 9TH ST. HIGHWAY 54
Next Door East of Lamb County Frozen Food Locker

BETTER -----
**CLEANING and
PRESSING**
HIGH QUALITY LOW COST
CLEANING



Confucius Says: "He who looks well does well."

C & O Says: "You will look well when you have your cleaning done in our modern plant."

You will like our prompt service and the fresh, new look your clothes will have when they are cleaned here.

C & O Cleaners

PHONE 65 LITTLEFIELD

WALLPAPER - - WALLPAPER

IF YOU ARE NEEDING WALL PAPER—WE
HAVE IT! 150 PATTERNS
FROM 15c ROLL UP.



GOOD SUPPLY OF ACME QUALITY
PAINT AND WALLPAPER
THERE IS NONE BETTER

Call us and let us measure your windows for
VENETIAN BLINDS. High in Quality. Low
Price.

ROOF OIL \$2.00 GAL. IN 5 GALLON CANS

Alexander & Wyatt Co.

314 Phelps Ave. LITTLEFIELD, TEXAS Phone 352-M



RED LETTER DAY FOR Bargain SEEKERS

YOU'LL ALWAYS FIND VALUES
GALORE—AT WINNINGHAM'S

FREE 1 Lb. ADMIRATION COFFEE With \$5.00
Purchase of Groceries

SUGAR 5 Lb. 49¢
SHORTENING 3 Lb. 89¢
VEL-WASHO Large 30¢
LARGE WITH PLATE
MOTHERS OATS 45¢
BROOM 3 Strand 85¢
HERSHEY COCOA 1/2 Lb. 15¢

ADMIRATION
COFFEE



WESTEX SYRUP Gal. 89¢ 1/2 Gal. 45¢

BAKERS CHOCOLATE 1/2 Lb. 23¢ MILK Large Can 11¢
NICE FRESH GRAPES Lb. 15¢ PURE Apple Jelly 2 Lb. 39¢
NO. 1 DRY SALT Lb. 47¢ BEEF ROAST Lb. 38¢

LUNCH MEAT 39¢ OLEO—NU-MAID Lb. 31¢

CHOICE MEATS AT REASONABLE PRICES

**WINNINGHAM'S
FOOD STORE**

HIGHWAY 54 (BULA HIGHWAY) WEST OF CASSEL'S NEW BRICK GIN
LITTLEFIELD TEXAS

**YOUR CAR IS KING
At Garland Motor Co.**



We like cars. Our idea of music is an engine running smoothly and easily—no knocks or sputters. Every car that rolls through our doors is a challenge to us to do our best to make it run like new. That's why we'd like to serve your car, and why, when it's here, we'll treat it like a KING.

SKILLED MECHANICS
WELL-EQUIPPED
SHOP

• PARTS FOR ALL MAKES OF CARS •

DODGE • PLYMOUTH
DODGE Job-Rated TRUCKS

Garland Motor Co.

YOUR DODGE AND PLYMOUTH DEALER
PHONE 138 LITTLEFIELD

IT CAFE

BUS DEPOT IN CONNECTION

PHONE 73

IT'S "IT" FOR FINE FOOD AND COURTEOUS SERVICE

Open 5 A. M. To Midnight
Till 2 A. M. Sunday Mornings
Highway 84

SOCIAL EVENTS

Miss Mary Jean Hammer Is Bride of Capt. Lee Johnson Sunday Evening

The First Methodist Church of Littlefield was the scene of the marriage of Miss Mary Jean Hammer, daughter of P. D. Hammer of Olton and Robert Lee Johnson, son of Mr. Mrs. Dowell A. Johnson of Petersburg, which took place Sunday evening at 7 o'clock. Rev. Cecil Tood officiated. The ceremony was held before an arch entwined with chrysanthemums and greenery. The bride and groom were flanked by white mums and candles. A medley of wedding music was

played by Mrs. Allen Ferrell, organist who accompanied Mrs. Eddie Wilcox as she sang, "Because" and "The Lord's Prayer." J. B. Sell of Petersburg sang, "Ah, Sweet Mystery of Life," accompanied by Mrs. Ferrell. Candles were lighted by Paul Don Hammer and Powell Johnson, Jr., brothers of the bride and bridegroom.

Given in marriage by her father, the bride wore a white duchess satin gown, styled with a sweetheart neckline, leg o'mutton sleeves, fitted bodice and a peplum tapering into a train. Her veil fell from a satin and

lace halo and she carried a white bible topped with a shower orchid bouquet.

Mrs. A. G. Givens of Hale Center, matron of honor, was dressed in white marquisette and taffeta. She wore white net mitts and hat, and carried white mums. Bridesmaids, Miss Jolene Machen of Plainview, Mrs. Winston Barclay of Lubbock, and Misses Jean Poteet, Wanda Chitwood, Rosalyn Schreier, and Doris Thurman of Olton wore matching dresses of pink, blue and yellow marquisette made with fitted bodices, ruffled necklines and full skirts. They wore mitts and shoulder length veils of satin and marquisette, and their bouquets were of mums of contrasting colors tied with satin and marquisette streamers.

Judy and G. L. Scarbrough, Jr. of Petersburg, cousin of the bridegroom were flower girl and ring bearer, and wore white satin.

Ushers were Bill Rogers, Gene Austin Fullingim, Winston Barclay,

Jimmy Crowley, Van Dale White and Charles Scarbrough of Lubbock and A. J. Givens of Hale Center and Robert Foote of Petersburg.

Assisting at the reception which was given at the Plainview Hilton hotel following the ceremony were parents of the bride and bridegroom, members of the wedding party and Dorothy Nell Dobbs of Lubbock, Glenna Dean Breland of Olton and Nelda Willis of Littlefield. The bride's table was laid with a lace cloth and decorated with a three tiered wedding cake, white chrysanthemums and candles. Wedding music was played in the background.

For a wedding trip, the bride wore a gray pin-stripe suit with black accessories and an orchid corsage. The couple is to be at home in Petersburg.

The bride is a graduate of Olton High School and attended Texas Technological College. She is a member of Las Vistas Club. Mr. Johnson is a graduate of Petersburg

Dancing Party Enjoyed At Lewis Home Saturday Night

Miss Katherine Lewis entertained at a party Saturday evening at the home of her parents, Mr. and Mrs. R. W. Lewis.

Games were played and music and High School and attended Tech where he was a member of the Textile Engineering society. He served overseas for 19 months during the war.

Out-of-town wedding guests were from Lubbock, Petersburg, Olton, Amarillo, Sudan, Abernathy, Halfway, Hale Center and Vernon.

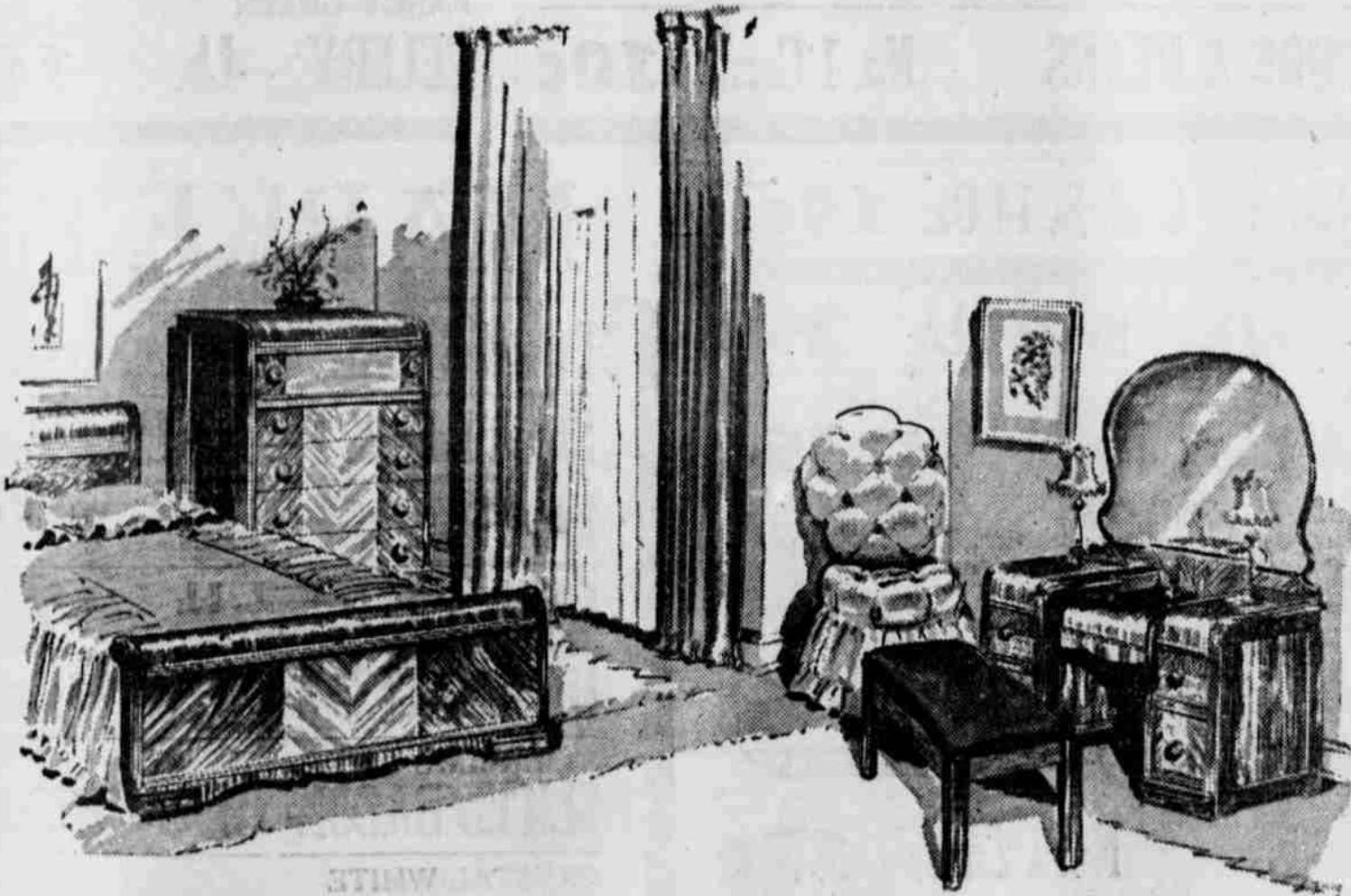
dancing enjoyed.

During the evening punch and divinity and chocolate fudge were served.

Those attending the party were: Misses Connie Wray Hopping, Joan Thornton, Barbara Jo Bryan, Joan Schovajsa, Margaret Ann Brotherton, Iris Pace, DeAun Kinkler, and Billie June Chesher, and Jack Rothwell, John Pearson, Coy Dean Orr, Clifford Hopping, Bennie Ross, and Darrell LeBeuf, and the hostess, Miss Lewis.

Miss Alice Lynn Street of Borger, Texas, spent a recent week end in the home of her parents, Mr. and Mrs. W. G. Street.

Our Thanks To All Who Attended The Opening Of Pierce Furniture And Appliance-And Made It A Success



TEMPLE
RADIO-PHONOGRAPH
AUTOMATIC RECORD
PLAYERS

BEAUTIFUL 4-PIECE
BED ROOM SUITES

Sleep in beauty - - - exquisite joining and lustrous finish crafted for years of sturdy service.



\$149.50 UP

"Happy Family Credit Terms"

COME ONE, COME ALL, COME QUICKLY TO THE BIGGEST FURNITURE VALUE PARADE IN TOWN. SEE BEAUTIFULLY UPHOLSTERED SOFAS, EASY CHAIRS, STUDIO COUCHES - - - COMPLETE LIVING ROOM, DINING ROOM, BED ROOM SUITES - - - GRACEFUL COFFEE TABLES, MAGAZINE RACKS, BOOK CASES - - - LUXURIOUS HOME FURNISHINGS OF EVERY DESCRIPTION. A HUGE STOREFUL OF VALUES DEDICATED TO THE IMPROVEMENT OF HOME LIFE, TO BOUNTIFUL LIVING ON A MODEST BUDGET.

PIERCE FURNITURE AND APPLIANCE

MR. AND MRS. HERBERT PIERCE, Owners

HIGHWAY 51 ADJOINING HOUK BROS. GROCERY—SOUTH OF HIGHWAY 84

AT PENNEY'S

YOUR CONFIDENCE IS WHAT WE LIVE BY—



FOR A LIMITED TIME
We Are Offering The Famous Line of GENTRY
Made To Measure SUITS PRICED \$49.75 to \$72.75

Some of the finest materials and patterns that are available today. Come in Today for correct measurement for one of these fine suits

AT PENNEY'S

Your Dollars Go a LONG Way!



All-Wool Gabardine! Men's Topcoats 39.75
Rugged-weave gabardines in substantial coat weight! Tailored for easy wear. Natural. Longs, shorts, regulars.
Cunapac Topcoats Alpaca-wool long wearing, sturdy! Well-tailored! Camel brown, teal. 29.75

SANFORIZED! TOWNCRAFT SHIRTS Real woven-in patterns (no prints!) in your favorite collar style! Clean-cut stripings—solid colors, too! Full-cut and Sanforized! 3.49
Rich Silk and Rayon Ties! New Winter Patterns! 1.49
MEN'S ALL-WOOL SLACKS. Real worsted suitings, new Baratheas weaves, Bedford cords, sport serges. Well-tailored! 8.90 to 11.75
MEN'S SHOES. Sturdy double-soles (leather or rubber) in new Golden Harvest and Boulevard Brown tones! Goodyear welt. 6.90

**STATEMENT OF CONDITION OF
THE FIRST NATIONAL BANK**

Littlefield, Texas

At the Close of Business October 6, 1947

RESOURCES

Loans and Discounts	\$1,582,899.27
C. C. C. Loans	58,954.01
Bills of Exchange	427,785.10
U. S. and Other Bonds	1,045,050.94
Warrants	74,679.31
Federal Reserve Bank Stock	6,000.00
Banking House, Furniture & Fixtures	14,500.00
Cash and Sight Exchange	2,152,322.56
Other Assets	114,734.18

TOTAL \$5,476,425.37

Capital Stock (Common)	\$100,000.00
Surplus	100,000.00
Undivided Profits	82,457.81
Deposits	5,193,686.43
Other Liabilities	281.13

TOTAL \$5,476,425.37

**Cats Maul Muleshoe
In District Tilt**

In their first District 5-A game this season, the Littlefield Wildcats racked up a score of 39 to the Yellowjackets' 13. The Wildcat victory, fourth this season, was highlighted by long runs and some spectacular passes.

The Cats hit their scoring stride on the third play when James Lee made a 13 yard dash for the evening's first touchdown. Jack Shelby sprinted 64 yards for the second six-pointer.

Some beautiful blocking by Jack Davis enabled the Wildcat fullback to go all the way, standing up.

James Lee followed this with a 75 yard end run to put another notch on the score for the Cats.

Johnny Srygley, subbing for quarterback Travis Price who is out with a leg injury, tossed a pass to Gene McCannies which was good for a touch down on a play that covered 40 yards.

Billy Don Barbour, Yellowjacket quarterback, barely averted a shut-out for his team late in the second quarter when he passed to Barnett. The try for the point was good, but Littlefield was way out in front at the half.

Last tally of the game was chalked up by Muleshoe's Weldon McCarty on

a three yard line plunge. This feat climaxed a 70 yard Yellowjacket drive.

The final score; Wildcats 39, Muleshoe 13.

RETURN FROM CONVENTION

Postmaster and Mrs. W. D. Storey returned Monday night from Los Angeles, Calif., where they attended the National Postmasters Convention, which convened October 11-16th.

They also visited the Grand Canyon, Boulder Dam, Los Vegas, Nev. San Diego, Cal., and came by the southern route home. They report a pleasant trip.

Too Late To Classify

FOR SALE—6 Ft. Electric Refrigerator and a 75 lb. Ice Box. 806 East 7th St. 31-1t-P

BARGAIN 22 ft. House Trailer, 2 beds, built ins. Ice box wired for gas, electric, also 2 wheel stock trailer, 8 ft. Extra good tires, see at 806 East 7th St. 31-1t-P

FOR SALE—Drop Leaf Mahogany Table and six chairs, singer sweeper, phone 409-W 417 Curdoff, Mrs. John Roberts. 31-1t-P

FOR SALE—Practically new axminster rug 12x15 ft. 8 piece dining room suite. Mrs. Otha Key, Phone 290. 31-1t-C

FOR NEW TIRE PERFORMANCE NOW



Get **USCAP**
TREAD MARKED RECAPPING
INSTEAD OF A RECAP!

BROWN TIRE CO.
"The Complete Tire Store"
LITTLEFIELD, TEXAS

WHY NOT DO IT NOW?

CHECK UP
ON
YOUR
INSURANCE



Competent insurance counsel now may be the means of saving you hundreds of dollars later. We will be happy to help you correlate your present insurance with present day values. The few minutes of your time will well spent. And you will enjoy a greater sense of security.

HILBUN

INSURANCE AGENCY

**A Lesson in
FOOD SAVINGS**

**Smart Housewives Shop Renfro's Right on the Corner...
Right on the Price!**

MORTON HOUSE
CHICKEN SOUP No. 1 Can **10c**

SNACK TIME—ARCHER HOUSE
VIENNA SAUSAGE 2-for **25c**

PORK & BEANS No. 1 Can **10c**

Catsup C. H. B. 14 Oz. 19c

CRACKERS Krispy 1 Lb. 25c

REMARKABLE
PEACHES No. 2 1-2 Can **25c**

BARTLETT—HUNT'S
PEARS No. 1 Can **27c**

DEL MONTE
COFFEE Lb. **39c**

MEXICAN STYLE
BEANS No. 1 Can **12c**

WOLF BRAND
TAMALES **25c**

TOMATOES No. 1 Can **10c**

Peaches Hunt's Small Size **12c**

HUNT'S NO. 1 TALL
FRUIT COCKTAIL **25c**

C. H. B.—NO. 2 CAN
TOMATO JUICE **10c**

EAGLE PASS—NO. 2 CAN
CRUSHED PINEAPPLE **33c**

SMALL SIZE
TOMATO PUREE **5c**

PURE SORGHUM 1-2 Gal **\$1.10** Pure Jelly, Gold Star Brand Assorted Flavors 1-2 Gal. **75c**

VEGETABLES

MARYLAND SWEET
YAMS Lb. **7½c**

FRESH GROWN
TOMATOES Lb. **19c**

DELICIOUS RED FANCY
APPLES Lb. **17c**

FANCY GREEN
CELERY Lb. **14c**

MARKET

PORK STEAK Lb. **65c**

Steak Loin & T-Bone Lb. **69c**

LAMB ROAST Lb. **35c**

OLEO All Brands Lb. **37c**

HAM BUTTS 3 to 5 Lbs **55c**

MORRELL'S PRIDE
SLICED BACON Lb. **87c**

CRYSTAL WHITE
SOAP 3 for **29c**

VEL Large Size **35c**

Cashmere Bouquet
SOAP 2 for **25c**

SPORTING GOODS

JUST RECEIVED A SHIPMENT OF

DAZEY AIR RIFLES

12—16—20 Gauge Shot Guns

22 Cal. Rifles — 30—30 Rifles

Renfro Bros
FOOD MARKET
ESTABLISHED IN 1929
Raymond PHONE 74 Norman



PINEAPPLE Libbys No. 2 Can 29c	PINEAPPLE Libbys Juice No. 2 Can 19c	SORGHUM Pure 1-2 Gal. 89c
LIBBY'S CORNED BEEF No. 1 Can 49c	RED SOCKEYE SALMON No. 1-2 Can 49c	LARGE BOX MARVENE 29c
WHITSON'S CHILI With Beans No. 2 Can 35c		WESTEX MAPLE SYRUP Gal. \$1.13

BLUE BONNETT Margarine POUND **34c**

KYDOL or DUZ Box 35c	SPREAD SHEFFORDS GLASS CHEESE 19c
JUICE - Hunt's Tomato 46 Oz. Can 25c	GRAPEFRUIT JUICE 46 Oz. Can 19c
POTATOES No. 2 Can 13c	

LARD ARMOURS STAR **3 lb. CARTON 89c**

DIAMOND MATCHES Carton 33c	DELCO LIMA BEANS No. 2 Can 15c
CRYSTAL WHITE SOAP 3 Bars 27c	JELLO BOX 8c
REDHEART DOG FOOD Can 14c	PARKAY Lb. 39c

WHITE HOUSE APPLE BUTTER 2 Lb. **29c**

Peaches ROSEDALE NO. 2 1-2 CAN **25c**

PORK & BEANS VANCAMPS NO. 303 TALL **2 for 25c**

TEXAS—FULL JUICE ORANGES Lb. 10c
FRESH FIRM LETTUCE Lb. 12c
CANCY'S ALL KINDS APPLES 15c
MARYLAND SWEETS CANS No. 1 7½c
COFFEE ADMIRATION ANY GRIND—LB. 49c

Market SPECIALS

BEEF RIBS	Lb.	35c
BOLOGNA	Lb.	35c
FRANKS	Lb.	39c
VELVEETA	2 Lb. Box	97c



Reserve District No. 11
State No. 1788

REPORT OF CONDITION OF
SECURITY STATE BANK
OF LITTLEFIELD, TEXAS, AT THE CLOSE OF BUSINESS OCTOBER 6, 1947, A STATE BANKING INSTITUTION ORGANIZED AND OPERATING UNDER THE BANKING LAWS OF THIS STATE AND A MEMBER OF THE FEDERAL RESERVE SYSTEM. PUBLISHED IN ACCORDANCE WITH A CALL MADE BY THE STATE BANKING AUTHORITIES AND BY THE FEDERAL RESERVE BANK OF THIS DISTRICT.

ASSETS	
Cash, balances with other banks, including reserve balance, and cash items in process of collection	\$340,290.24
Corporate stocks (including \$3,000.00 stock of Federal Reserve bank)	3,000.00
Loans and discounts	19,987.25
Other assets	51.23
TOTAL ASSETS	\$363,328.72
LIABILITIES	
Demand deposits of individuals, partnerships and Corporations	238,071.93
Other deposits (certified and officers' checks, etc.)	15.00
TOTAL DEPOSITS	\$238,086.93
TOTAL LIABILITIES (not including subordinated obligations shown below)	\$238,086.93
CAPITAL ACCOUNTS	
Capital	50,000.00
Surplus	50,000.00
Undivided profits	25,241.79
TOTAL CAPITAL ACCOUNTS	\$125,241.79
TOTAL LIABILITIES AND CAPITAL ACCOUNTS	\$363,328.72
Common stock with total par value of \$50,000.00	

I, PAUL HYATT, Cashier of the above-named bank, hereby certify that the above statement is true to the best of my knowledge and belief.

PAUL HYATT, Cashier

CORRECT—Attest:
L. C. HEWITT
A. P. DUGGAN
A. C. CHESHER
Directors

STATE OF TEXAS, COUNTY OF LAMB—ss.
Sworn to and subscribed before me this 13th day of October, 1947.
(SEAL) A. B. HILBUN, Notary Public

AMHERST NEWS

Roscoe Brown and wife are visiting relatives in Amherst.

Mr. and Mrs. Homer Hall and daughter from Nebraska, are visiting his sister Mrs. Catherine Lynch.

Mr. and Mrs. Scott Smithee and daughter from Silverton were visiting Mr. and Mrs. Caraway last week.

Mr. and Mrs. W. L. of Lubbock were visiting her mother Mrs. B. J. Vaughn last Sunday.

Mr. and Mrs. Mutz Hufstедler and children were Levelland visitors last week.

Mrs. R. E. Rochelle had a family reunion this week when her four sons were at home.

The four sons were Reno of Fort Worth, Winton of New York, Leo of Chillicothe, and Balford of Rocky Ford Community.

Mr. and Mrs. Ray Beason of Calif have been visiting relatives in Amherst.

Last week end visiting their daughter Mrs. Newt. Riggs in Pampa, were Mr. and Mrs. Roger Willett, Sr.

The Amherst Lions Club is sponsoring a Hallowe'en Carnival, Oct 31. The entire proceeds will be used for installing lights on the Amherst high school athletic field. A harvest queen will be crowned that night following a contest for the right to be queen.

S. I. Irwin and wife and daughter from Calif, are visiting his mother Mrs. H. K. Irwin this week. He has been in the Navy for a number of years.

Mr. and Mrs. C. A. Duffy, Jr., have been in Hillsboro to see her brother who was injured in a car wreck.

Mr. and Mrs. Earl McDaniel will soon move to Lubbock.

Mr. and Mrs. Ray Blessing had Mr. and Mrs. Bob Banner of El Paso as visitors last week.

James Baker son of Mr. and Mrs. Bob Baker is recovering from a fractured skull which was caused from falling from a bicycle last week.

Walter Berry who is in the U. S. Navy is visiting in Sudan and Amherst.

Mr. and Mrs. Raymond Cantrell spent last week visiting in Winton, Texas.

Rev. and Mrs. J. B. Baker are on a short vacation trip.

Mrs. L. D. Daniel visited her sister in Levelland Wednesday.

Mrs. Barney Sherrill is at Vernon Texas where her mother is sick.

Sunday visitors to Lubbock were Mr. and Mrs. A. D. Lynch.

Mr. and Mrs. John Quattlebaums and son, Bill went to Matador last Sunday.

Mr. and Mrs. Dock Shaver were Lubbock visitors Tuesday.

Amherst Baptist Church Plans Improvements

The Baptist Church of Amherst is planning an extensive building and improvement program on the church facilities.

Members of the church have agreed to donate their services, but they have been so busy that nothing definite has as yet been accomplished.

First scheduled on the program is an educational building. A new parsonage will also be built.

ANNOUNCEMENT---

To Our Friends and Customers
THIS STORE WILL BE CLOSED FOR INVENTORY
Monday, Oct. 27 Through Friday Oct. 31

To Transfer Store To Home Ownership

BEN FRANKLIN
A BUTLER BROS. DISTRIBUTOR

LYMAN'S

LYMAN'S

EVERY DAY

Low Prices

GOOD FRIDAY
THRU THURSDAY



Fall Housecleaning Time is here AGAIN!

TAKE YOUR HOUSE FOR A CLEANING WITH THESE VALUES!

NU-MAID OLEO
Margerine
33^c lb.

FRESH BABY BEEF
HAMBURGER
39^c lb.

VEL PKG. **29c**

PURE ALL MEAT
BOLOGNA
29^c lb.

AA BABY BEEF
ROAST
42^c lb.

FULVALUE FURNITURE POLISH	Qt. Bottle	19c
NO. 16 LIGHT MOPS	Each	69c
LUSTR WAX RUBLESS FLOOR WAX	Qt. Can	59c
HOOVER OR RABBIT LYE	Can	11c
BABO	Can	12½c
GULF GLEAM	8 Oz. Bottle	23c

CRYSTAL WHITE SOAP	3 bars	27c
RINSO	LARGE PKG.	35c

COFFEE
FOLGERS 49c lb.

SNOWDRIFT 3 Lb. \$1.12
Can

MORTON HOUSE CHICKEN NOODLE
Soup Can 10c



ICEBERG
LETTUCE Lb. 12c

FRESH—BUNCH
TURNIPS 12½c

CALIFORNIA
LEMONS Lb. 15c

MARYLAND SWEET
YAMS Lb. 7½c



Mary Lee Taylor's Royal Custards
Broadcast: October 18, 1947.
2 eggs, separated
6 tablespoons brown sugar
¼ teaspoon salt
1 teaspoon vanilla
1 cup Pet Milk
¼ cup water
3 tablespoons chopped nuts
2 teaspoons jelly or marmalade
Turn on oven; set at slow (325° F.). Mix together slightly beaten egg yolks, 3 tablesp. brown sugar, salt and vanilla. Stir in milk and water. Beat egg whites until stiff, but not dry. Beat in remaining 3 tablesp. brown sugar. Fold in milk mixture slowly. Pour into 4 custard cups. Top with nuts. Set in pan holding ½ in. hot water. Bake 45 min., or until knife inserted near center comes out clean. Cool; garnish with jelly. Makes 4 servings.

You Will Need:
PET MILK Can 12c
EGGS doz. 59c
Brown Sugar lb. 12c
JELLY glass 25c

CRISP—2 BUNCHES
RADISHES 15c

Mrs. Housewife... Please help us serve you better by buying your groceries during the week and avoiding the "Fall Rush".
You get the same prices during the week as you do on weekends for LYMAN'S have every day low prices.

MIXED—NO. 2 CAN
VEGETABLES 12c

BRIGHT & EARLY
COFFEE Lb. 43c

CHAMPION—CAN
VEGETABLE SOUP 10c

POPULAR BRAND
Cigarettes Carton \$1.63

McGRATH'S
Pork & Beans 1 Lb. Can 10c

SNACK TIME
Vienna Sausage 12½c

Pet Milk Tall Cans 12c

LYMAN'S FOOD STORE

205 West Third Street

EVERYDAY LOW PRICES

205 West Third Street

LOCAL FARMER KILLED IN AUTOMOBILE COLLISION

Accident Occurs 6 1-2 Miles North Of Littlefield

Last Rites For J. C. Jones, 62, Held Sunday

James Charlie Jones, 62, prominent pioneer farmer of five miles east of Littlefield, was killed instantly in a head-on automobile collision about 7:40 o'clock Friday morning six and one-half miles north of Littlefield on Highway 51.

The car driven by Jones and an automobile driven by Mrs. Peggy Towery, nurse in South Plains Cooperative Hospital at Amherst, were in collision, stated Sheriff Hugh Rice, who went to the scene after the accident.

Enroute To Amherst

Mrs. Towery who lives about three miles west of Littlefield, was driving a Ford Sedan, and was enroute to her work at Amherst.

She is a daughter of Mr. and Mrs. Lee Nichols.

Mr. Jones had taken some cotton the day before to the Speers Gin, seven miles north of town on highway 51. Friday morning he had gone after his trailer and was bringing the cotton seed on the trailer attached to his car home when the accident happened. He was driving a 1936 Oldsmobile southward toward Littlefield and Mrs. Nichols was going the opposite direction.

The body of Mr. Jones was brought by Hammons to the funeral home here.

Mrs. Towery was taken by Millard Phillips, who was passing by the scene of the accident, to the South Plains Cooperative Hospital, Amherst. She is suffering from cuts and bruises about the face and legs, and is reported to be doing nicely.

Mr. Jones was born July 26, 1885, in Alabama. He came to Texas when a young man, settling in Brown county, where he married Miss Pearl Leatherwood, and where they made their home for a number of years.

To the above union were born nine children, five sons and four daughters, all of whom survive their father, with the exception of two sons. Ervin, 10, passing away in 1936, as a result of a heart ailment; and Thomas Adron, about 34, who died at the Baylor Hospital Dallas, June 8, 1944, as a result of a brain tumor.

The Jones family moved to Lamb from Brown county in 1924, locating seven miles east of Amherst, where they made their home for 15 years. They moved to their present home, five miles east of Littlefield, between Oklahoma Avenue and Lubbock Highway in 1941.

Funeral services for Mr. Jones were conducted at the First Baptist Church, Littlefield, Sunday afternoon at 2 o'clock, with Rev. V. F. Lawrence, pastor of Friendship Primitive Baptist Church, officiating, assisted by Rev. Lee Hemphill, pastor of the First Baptist Church, Littlefield. Interment, in charge of Hammons Funeral Home, took place in the Littlefield cemetery.

Palbearers were: Joe Wilburn, Walter Gray, J. M. Griffin, Alvin Webb, George Speers, and Lee Bolinger.

Flower bearers were Misses Melba Griffin Betty Gray, Eloise Gray, Betty Anderson, Corrine Spencer, Avilene Spencer, Oma Dee McCormick, Dorothy Patterson, Barbara Gofforth and Virgean Fields.

Mr. Jones was a member of the Primitive Baptist Church for many years.

Surviving deceased are: his widow Mrs. Pearl Jones and three sons and four daughters. The sons are: A. E. Jones of El Paso; W. H. Jones of Albuquerque, N. M., and W. T. Jones of Hart Camp. The daughters are: Mrs. E. K. Broadus of Amarillo; Mrs. Audrey Jones of Amherst; and Billy Jean and Ottilie Marie Jones at home.

Mrs. Irvin St. Clair of Lubbock visited her mother, Mrs. Ruth Perry, in Littlefield Monday.

LAST RITES—

(Continued From Page 1)
Previously to their marriage she was Miss Katy Casey.

Eight Children Survive

Surviving deceased are: eight children, two sons and six daughters. The sons are: L. M. (Mickey) Ratliff of Littlefield; and Dick Ratliff of Ruidosa, N. M. The daughters are: Mrs. W. A. James, Mrs. Carl Harrison, Mrs. M. A. Bales, Mrs. Cephas Glover, and Mrs. Jesse Steffey, all of Littlefield, and Mrs. Paul L. Gregory of San Angelo.

He is also survived by three brothers, Tom and Dick Ratliff of Killeen, Texas, and Arthur Ratliff of Whitharral; and six sisters, Mrs. Florence Phillip of Winters, Texas; Mrs. John Powers of Ballinger, Texas; Mrs. Zeke Shppard of Florence, Texas; Mrs. W. A. Slawson of Holland, Texas; Mrs. Oliver Johnson of Corpus Christi, Texas; and Mrs. Lopa Slawson of Killeen, Texas; and by 28 grandchildren and 13 great grandchildren.

Out of town relatives and friends attending the funeral services were Mr. and Mrs. Beaman Phillips of Fort Worth; Mrs. Velma Boies of Fort Worth, Texas; Clifton Davis and son Willis and daughter, Venieta, of Winters, Texas; Mrs. Lullie Davis of Winters; Mr. and Mrs. George Aiken and son of Tahoka; Mr. and Mrs. Malcolm Bales of Lubbock; Mr. and Mrs. Nat Alexander of Winters; Mrs. Florence Phillips and son of Winters; Mrs. Mark Hudgens of Fort Worth; Mrs. Troy Noel of Plainview; Mr. and Mrs. Zelta Osborn of Pampa; Mr. and Mrs. Douglas Bales of Levelland; Mr. and Mrs. Vayne Harless of Dumas; Mrs. Clarence Fox of Lubbock; Mr. and Mrs. Ed Viden of Lubbock; Mrs. Iva Dell Phelps of Odessa; Mr. and Mrs. Bud Bailey of Brownfield; Mr. and Mrs. Pick Thomas of Carlsbad, N. M., and Mr. and Mrs. Frank Panell of Carlsbad, N. M.

CHARGES FILED—

(Continued From Page 1)

of Sudan, officiated at the services, assisted by Rev. C. T. Jordan, Baptist Pastor of Earth.

Burial at Dimmitt
Burial in charge of Payne Funeral home, Amherst, took place in the Dimmitt cemetery.

Northrups Injured
Mr. and Mrs. Northrup, also injured were taken to the Payne-Shotwell Hospital, Littlefield. Mr. Northrup, 43 suffered lacerations of the hand and head injuries. Mrs. Northrup, 20, suffered bruises.

The Northrups are said to live on a farm operated by Fred Schaefer, northeast of Earth.

The Shrums were said to have been driving north in a late model Packard, going from Earth, when they were in collision with the Chevrolet car driving onto the highway and both machines left the highway. It was believed that Northrups was driving west.

Both Machines Damaged
Both machines were heavily damaged as the impact threw both cars off the highway.

L. R. Yapley of Earth was one of the first to pass the scene and loaded Mr. and Mrs. Shrum into his car to take them to the Amherst Hospital. Mrs. Shrum died on the way. Hospital attendants stated she suffered head and chest injuries.

The Shrums were operators of Jack's Cafe at Earth.

Charges Filed
Two charges were filed Thursday against Northrup by the Highway Patrol. In Justice Court he was charged with driving without a license, and in County Court he faces a charge of Negligent Homicide.

Artis Sue Wesley, 3 1-2 months old daughter of Mr. and Mrs. E. E. Wesley, who has been ill and a patient at the Payne-Shotwell Hospital for the past week, is much better, and was released and taken home Tuesday.

SACRED HEART CHURCH SERVICE

Rev. F. M. Higgins
Every 1st, 3rd and 5th Sunday.
Mass at 11 o'clock.
Second and fourth Sundays at 9 o'clock.

Truck Hits Hog And Overtakes

An unusual accident happened late Thursday night on the Spade road, six miles east of Littlefield, when a pickup truck, on which a number of highway workers were riding into Littlefield, after working on the roads hit a hog, which caused the truck to turn over.

Six men were in the pickup at the time. No one was injured with the exception of a man by the name of Johnson, who was treated for bruises at the Payne-Shotwell Hospital and released.

The pickup was owned by Arnold Purtell, who has the contract for black topping the new roads in the county.

Drunken Driving Charge Is Filed

A produce truck driven by William Bryant Carroll, employed by a wholesale produce concern of Fort Worth, overturned on highway 84, between Sudan and Littlefield, early Friday afternoon, scattering fruit and vegetables over the highway.

Carroll was taken into custody by Highway patrolman, who filed a charge against him of drunken driving.

Appearing before Judge O. H. Dent, Carroll entered a plea of not guilty and his bond was set at \$500.

Mrs. Ben Wiggins Hostess To Members Of Altar Society

Mrs. Ben Wiggins was hostess to members of the Altar Society at her home Tuesday afternoon.

The meeting was opened with a prayer by Rev. F. M. Higgins.

After the business discussion over which Mrs. Earl Dreup presided, Mrs. Joe Foltyn gave an excellent report on the D. C. C. W. Convention which was held in Amarillo October 5.

The members will hold a rummage sale October 25. All contributions may be left at the rectory or bring them to the place of the sale.

During the social hour the hostess served refreshments to Mrs. H. J. Miller, N. Fisher, A. C. Mann, Earl Dreup, Joe Foltyn, Roger Willett, Sr. O. L. Schlotman, H. Dolle, Joe Rietman, Ray McKinney, W. Servatius and Rev. F. M. Higgins.

The next meeting will be at the home of Mrs. Roger Willett, Sr. November 3rd in Amherst.

Mr. and Mrs. Morrow Mayo Vacationing In Kentucky

Mr. and Mrs. Morrow Mayo left the latter part of last week on a leisurely vacation jaunt which will take them eventually to Bowling Green, Kentucky.

Enroute they visited Mr. Mayo's brother, John Mayo and family, in Amarillo, going from there to Oklahoma City where they also stopped for a visit. Included in their itinerary was a stop in Red Boiling Springs, Tennessee, and thence to Morrow's old home town of Bowling Green. This is Mr. Mayo's first visit back home in fifteen years. Mrs. Mayo, a former Brooklyn girl whom Mr. Mayo met and married after leaving Kentucky, has never visited the Bluegrass state. They plan on spending ten days or more on the trip.

Mrs. Wolfe Shaw left Monday morning by plane for Dallas and Fort Worth to attend ladies ready-to-wear market, returning to Littlefield Wednesday night.

CUSTOM COMBING and COTTON PULLING. Brantley Welborn at Renfro Bros. 31-tfc

Florsheim Shoes

SO FINE . . . SO FAMED . . . SO FAIRLY PRICED



A few cents a day is the long

run cost of wearing America's finest

and most popular shoes . . . for Florsheim

Quality spreads the cost over many

extra months and miles of wear.



Dunlap's

LITTLEFIELD

G. M. SHAW, Mgr.

Dance Every Saturday Night To The Music of **BIG ED HARDAGE**, and his

Texas Joy Boys

Every Friday Night To The Music of **DELMER SHIRLEY**, and HIS NIGHT OWLS
Every Wednesday Night To The Music Of **BOB TUCKER** and His SKY RIDERS

8:00 'till 12:00 O'clock

COUPLES \$1.50, Tax Included

Priboth Roller Rink
MULESHOE, TEXAS



LITTLEFIELD ELECTRIC CO., A BUSINESS THAT IS FAST BECOMING THE LEADING COMMERCIAL ELECTRIC COMPANY IN LITTLEFIELD!

'REA HOUSE WIRING

Domestic and Commercial Refrigeration

COMPLETE ELECTRIC SERVICE ON MOTORS, CONTROLS, AND OTHER ELECTRIC DEVICES, SUCH AS IRONS, MIXERS AND SWITCHES.

We are general electrical contractors. If you want an electric job done right, always call **LITTLEFIELD ELECTRIC CO.**, where your money goes farther and satisfaction is guaranteed.

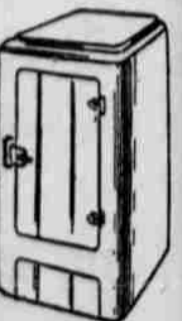
2 Refrigerator Specialists At Your Service

LITTLEFIELD ELECTRIC CO.

DAY PHONE 53-J

LITTLEFIELD DRIVE

NIGHT PHONE 329-R



Arrangements for Carnival Now Nearing Completion

The Primary and Central Parent-Teachers Association report arrangements are nearing completion for the biggest third annual Halloween carnival ever held on the school grounds of Littlefield.

This entertainment is scheduled to take place Thursday evening, October 24. Activities will begin at 6:00 o'clock with a big parade, when everyone interested in the parade are to meet between the Court and the Postoffice.

This carnival is for everybody, including post-school children.

The purpose of the third annual carnival will be to continue the carnival community spirit and to further the interest of the school children. Some of the improvement made from past carnivals have

been as follows: Primary Schools: Slide, victrola records, library books, electric victrola, film projector, manila tag board, modeling clay; and for Central School: First aid equipment, basket ball pump, speaker system, library books, donation from both P. T. A. groups to the home economic department of high school, and to the school band.

Just before the coronation of the Queen, there will be a number of gifts given away. These were donated by the following Littlefield firms, Lyman's Food Store, Shaw Dry Goods, Walters Drug, Littlefield Truck & Tractor Company, Sinclair Refining Company and Rodgers Furniture.

These gifts will be on display at the school Cafeteria from October 27

until the evening of the carnival. Food booths will open early for the convenience of those who wish to eat at the school.

Plan to attend this big community carnival for an evening of entertainment and fellowship for young and old. Community, City and County leaders will participate.

Sustains Compound Fracture of Leg

Alton L. Hollingsworth of three miles east and three-quarters of a mile north of Spring Lake was admitted to the Payne-Shotwell Hospital early Friday morning suffering from a compound fracture of his left leg, sustained when a bale of cotton fell on it, when he was helping to load cotton at the Circle Gin about 1 a. m.

In an interview with Mr. Hollingsworth at the hospital Saturday he said he was loading a bale of cotton on a truck when the hooks failed to hold, and the bale fell on his leg.

Bill Smith, also employed at the Circle Gin, brought Mr. Hollingsworth to the hospital.

Strawn Daniels is now owner of the Circle Gin.

Enochs Gin Changes Ownership Last Week

The Enoch Gin, owned by I. C. Enochs at Enochs, Texas, was purchased last week by C. E. Alexander, Carl Alexander and E. G. Gardner. E. N. McCall has been serving as manager of the gin.

J. H. Lucas, formerly of this city, is manager of the Enochs Land Company.

Mr. Enochs built the Enochs Gin in 1938.

Campaign Underway For Donations To Buy Library Books

With Mrs. Bill Morris as chairman, a campaign is underway by the Library Committee, to secure donations for the purchase of new books for the library.

The Littlefield Library is sponsored by the Woman's Club.

With members of the library committee in charge, a booth is maintained each Saturday in front of Bartley & Harvey, on Phelps Ave., and donations towards this worthy cause will be much appreciated.

According to Miss Lula Hubbard, Librarian, many of the books are old and dilapidated, and there is a great need for new books at the library.

The library, located in the Red Cross building, is open to the public each day from 1 to 5:30, excepting Sundays and Mondays.

Army Sets Mailing Date For Christmas Parcels

The Adjutant General, U. S. Army recently announced that Christmas packages for personal stationed overseas should be mailed between October 15 and Nov. 15, according to a statement made today by Capt. Leonard Staffieri of the Lubbock U. S. Army and Air Force recruiting station at room 203 Post-office building.

This is the same mailing period for Christmas packages as last year, which proved so successful that it will be used again this year. If the suggested mailing period is used, there is more definite assurance that packages will actually arrive just before or opening the holiday season.

Postal authorities urge the use of judgment in mailing dates, dependent on the geographical location of the individual. Packages to more distant bases should be sent during the early part of the mailing period.

FOURTH CAR WRECK IN 36 HOURS FOR AREA

What was reported by Lamb County Police as the fourth accident in 36 hours in this area occurred at the intersection of a country road 10 miles north and 1-2 miles east of Littlefield Saturday morning, when a 1941 Plymouth occupied by Mr. and Mrs. Eli Young, was in collision with an automobile driven by V. L. Gill, traveling west towards Highway 51.

In the Gill car, also were Mrs. Gill and two children.

Mr. Young is a farmer living about one mile north of where the collision took place.

Mr. Young was knocked unconscious and remained in that condition for about 30 minutes, it is reported.

Both Mr. and Mrs. Young were admitted to the South Plains Cooperative Hospital suffering minor injury, but were released Saturday afternoon.

The Gill family, who live a mile east of the wreck on the Bub Stewart place escaped injury.

Prentiss Graham, Deputy Sheriff, who investigated the accident, stated that the Young car, which turned over twice, was badly damaged, but that the Gill automobile was not damaged by the collision.

A migratory labor force of 80,000 cotton pickers comes through Texas every year.

BATHROOM HEATERS NATURAL OR BUTANE

—AT—

Bartley & Harvey

"The Place to go for the Brands you Know" Phone 107 Littlefield

REESE DRUG

PHONE 167-J

Just South of Palace Theater

new! sensational!
lipstick four-cast
color-keyed for you!
by helena rubinstein
inspired artist in color

For the very first time!

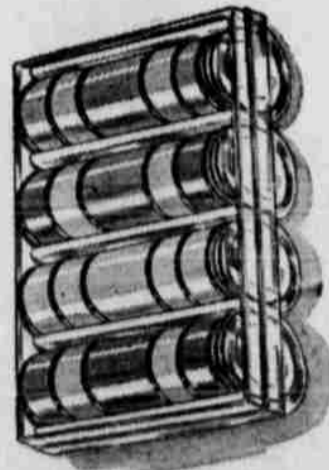
The 4 right lipsticks for your 4 best costume shades... in lipstick cases costume-colored to tell you which lipstick to wear!

Choose the LIPSTICK FOUR-CAST created for you!

Blonde? Brunette? Red-head? Medium-brown? Silver-gray? There's a LIPSTICK FOUR-CAST color-keyed to your own complexion type and your costume colors.

Use your colors to dramatize you!

Look classic, romantic, daring, discreet. Your key is the Helena Rubinstein LIPSTICK FOUR-CAST for your complexion type.



YOUR LIPSTICK FOUR-CAST is your color-key! Your four most flattering lipstick shades are in costume-colored lipstick cases... to tell you at a glance which lipstick to wear with each costume! 4 glowing, lasting, creamy lipsticks in a sparkling lucite carry-all. 3.50. Individual lipsticks... each 1.00.



BLONDE? Pick your colors from your blonde LIPSTICK FOUR-CAST to achieve classic, romantic, daring or discreet effects.



BRUNETTE? Red is your classic color. The right lipstick is the red-cased lipstick from your brunette LIPSTICK FOUR-CAST.



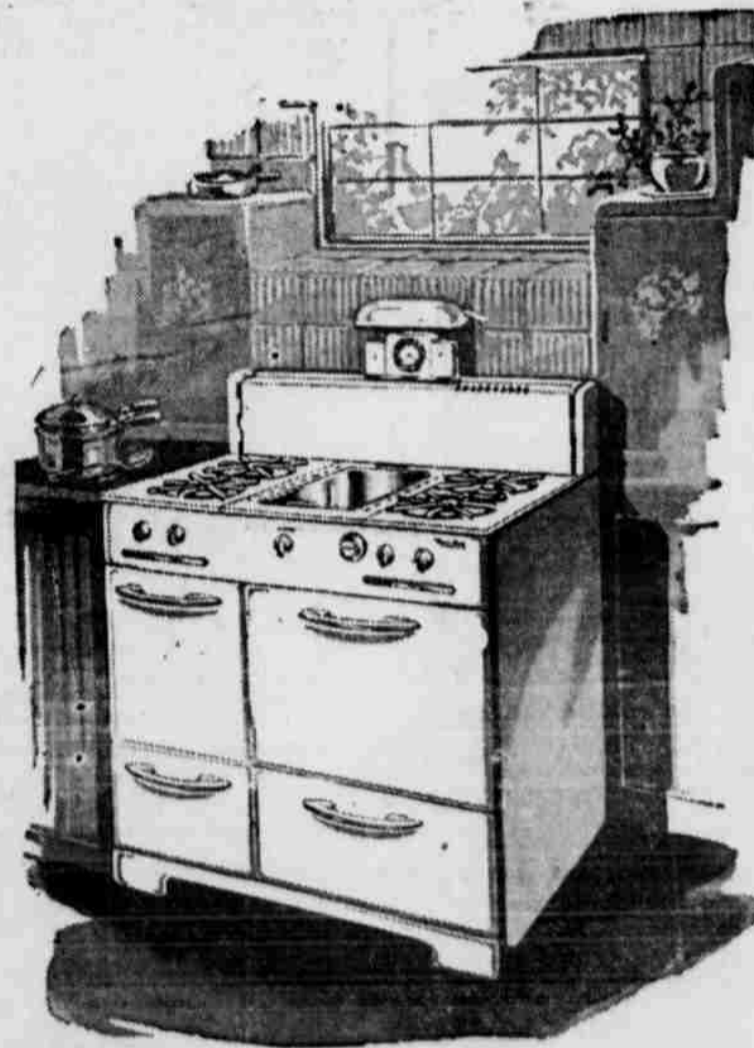
RED-HEAD? Blue is your discreet color. With blue, wear the blue-cased lipstick from your red-head LIPSTICK FOUR-CAST.



MEDIUM-BROWN? Yellow is your romantic color. The right lipstick is in the yellow case in your medium-brown LIPSTICK FOUR-CAST.



SILVER-GRAY? Green is your daring color. The right lipstick is in the green case in your silver-gray LIPSTICK FOUR-CAST.



With or without the griddle, and with or without the clock and lamp assembly.

RANGING FROM

\$169.⁵⁰ to \$199.⁵⁹

Jones Hardware

PHONE 190

LITTLEFIELD

Published Every
Thursday Afternoon
Littlefield,
Texas

LAMB COUNTY LEADER

Entered as second class
matter May 24, 1923,
at the Post Office of
Littlefield, Texas, under
Act of March 3, 1879.

SUBSCRIPTIONS: \$2.00 Per Year
in Lamb and Adjoining Counties;
\$2.50 Per Year Ouside Lamb and
Adjoining Counties.



Advertising Rates
Given Upon Application

MORLEY B. DRAKE
EDITOR AND PUBLISHER

E. M. DRAKE
BUSINESS MANAGER

Subscribers who change their address, or fail to get their paper, should immediately notify this office, giving both new and old addresses.

Communications of local interest are solicited. They should be briefly written, on only one side of the paper, and must reach this office not later than Wednesday noon of each week. The right of revision or rejection is reserved by publisher.

Any erroneous reflection upon the character, standing or reputation of any person, firm or corporation which may appear in the columns of the Lamb County Leader will be gladly corrected upon being brought to the attention of publisher. In case of errors or omissions in local or other advertisements, the publisher does not hold himself liable for damage further than amount received by him for such advertisement.

Does He Have The Solution?

A farmer in the Bell community of Gray county believes he has the Panhandle bindweed problem solved.

And Gray County Agent Ralph R. Thomas, after seeing the evidence, thinks it's worth a try, at that.

The farmer is Hubert Keahey, and his method of eradicating the bindweed, which causes many thousands of dollars worth of crop losses in the Panhandle each year, is simple. He plants Western Wheat grass.

Keahey took County Agent Thomas to his farm and showed him how the wheat grass was crowding out the bindweed. "Bindweed was growing

right up to the edge of the Western Wheat grass, but there was none thriving in the grass," says Thomas. On the strength of that showing, Keahey has sowed all the bindweed patches on his farm with the grass, and many of his neighbors are following suit.

"There are possibilities, all right," says the County Agent, "because Western Wheat grass starts its growth in late winter and is generally from six inches to a foot high before bindweed starts growing in the spring. And the grass produces great masses of roots that offer some real competition to bindweed. At any rate, the grass will provide a lot of pasture and even a good hay crop - - - so it's worth a try."

BULL LAKE PHILOSOPHER SAYS CONGRESS IS OFF WHEN IT TRIES TO LOCATE THE TYPICAL FARMER

EDITOR'S NOTE: The Philosopher on his Johnson grass farm on Bull Lake comes to the defense of farmers this week, denying that most of them are like him.

Dear Editor:

I read in a copy of Fort Worth Star Telegram which I picked up out here on Bull Lake Monday while I was checkin my pasture while my wife was puttin out the washin which is the best pasture-checkin time I know where Congress has been in a uproar over what the average farm-

er is like.

Accordin to the Department of Agriculture, the typical farmer has mice in the kitchen and rats around the barn, and this threw Congress into a big argument, with each member tryin to tell what a typical farmer is like, as though they was specimens, like boll weevils.

Our Congressman said it was a insult to American farmers, and another one said it was true and only proved the farmer needed more help.

Now I ain't pretendin to correct no Congressman as life is too short and any way I ain't corrected my own self yet and don't intend to, the same as you, but it seems to me that tryin to put your thumb on the typical farmer is like trying to put your thumb on the typical banker or school teacher or business man.

I don't suppose it has ever occurred to them Congressmen that there is well-to-do farmers and busted farmers, and tryin to pick out one farmer who has mice in his kitchen and rats around his barn and callin him the typical farmer is about like pickin out a banker who happens to be in the penitentiary at the time and sayin he's a typical banker, or like pickin out a school teacher who butchers the English language worse'n I do and sayin he's a typical teacher or a business man who has to blow the dust off his hats before he sells em and sayin he's typical.

It may be true there is lots of farmers with no more modern standards than I got out here, but they

ain't average. I got more confidence in the American farmer to say he ain't got no more ambition than I have, and I consider it a insult for Congress to be sayin so, although understand I ain't apologizin for my farm as it suits me and if it does it ain't nothin for Congress to sweat about. I got enough to do answerin to my wife without takin on Congress to boot.

Yours faithfully,
J. A.

P. S. Wouldn't want to say what the typical editor is like, would you?

Star Telegram now announce bargain rates in force, for renewals only. Bring your renewal to Leader Office.



They'll Do It Every Time

Engelhard & Pomeroy

By Jimmy Hatlo



TWIDDLING THE THUMBS AT EVERY TURN OF THE ROAD WHILE THE CAMERA-FIEND TAKES ANOTHER SHOT...
Thank to ERNIE MINNER, EAST OMAHA, I.

Proper Stock Vaccination Is Most Important

With the arrival of the fall season for vaccination of livestock and poultry, American farmers have been warned that a loaded vaccination syringe is a deadly weapon and should be respected as such.

"In the hands of a skilled veterinarian," the American Foundation for Animal Health declared, "vaccines can save the lives of valuable livestock by preventing outbreaks of disease."

"In the hands of an unskilled person, however, they may actually cause losses of animals—losses that would be especially costly under today's meat price and supply conditions."

As an example, the American Foundation declared a fractional drop of virus from a syringe might be enough to start a disastrous outbreak of disease.

Moreover, the statement added, failure to sterilize syringes properly after each use might transmit such serious livestock plagues as hog cholera, anaplasmosis, anthrax, gas gangrene, swamp fever, or others.

"Proper vaccination," the livestock health organization said, "requires a thorough knowledge of dis-

eases and vaccines; careful determination of when and whether to vaccinate, and what kind of vaccine to use; sterilization of syringes with the proper agents; and thorough experience in handling the necessary materials and instruments."

An artificial dairy breeding association must be well financed the start if it is to be successful. Much time and energy is required by the association leaders to maintain interest and support, especially the first year of operation.

Krueger, Hutchinson and Overton Clinic

Lubbock, Texas

GENERAL SURGERY
J. T. Krueger, M.D., F.A.C.S.
J. H. Stiles, M.D., F.A.C.S.
(Ortho)
H. E. Mast, M.D., F.A.C.S.
(Urology)
EYE, EAR, NOSE & THROAT
J. T. Hutchinson, M.D.
Ben B. Hutchinson, M.D.
E. M. Blake, M.D.
OBSTETRICS
O. R. Hand, M.D.
Frank W. Hudgins, M.D.
(Gynecology)

INFANTS AND CHILDREN
M. C. Overton, M.D.
Arthur Jenkins, M.D.
J. B. Rountree, Jr., M.D.
INTERNAL MEDICINE
W. H. Gordon, M.D., F.A.C.P.
R. H. McCarty, M.D.
GENERAL MEDICINE
G. S. Smith, M.D. (Allergy)
R. K. O'Loughlin, M.D.
X-RAY AND LABORATORY
A. G. Barsh, M.D.

J. H. Felton, Business Manager

● WHITE

Everlite

—A PERFECT FLOUR

Is Here Again

Milled from the best of the wheat

WHERE THE GOOD WHEAT GROWS

— by —

HARVEST QUEEN MILL & ELEV. CO.
PLAINVIEW, TEXAS

SAFEWAY TRANSFER CO.

Freight Baggage Furniture Moving

Merchants Delivery Service

18 YEARS EXPERIENCE

PHONE 168-M .. 700 DELANO

MUTT AND JEFF

By Bud Fisher



Farmers!

Get Your Trailers Ready for the Cotton Crop

We Have Trailer Wheels, Tires and Tubes

PLENTY OF CAR, TRUCK and TRACTOR BATTERIES

REASONABLE PRICES

PLENTY OF OIL IN QUART CANS SATISFACTION GUARANTEED

McCormick Bros.

PETROLEUM PRODUCTS

Highway 84

Phone 153

LITTLEFIELD

— OPEN ALL NIGHT —

WHOLESALE and RETAIL

SOCIAL EVENTS

Mrs. Junior Graham Honoree at Bridal Shower Recently

Mrs. Junior Graham was the honoree at a bridal shower at the home of Mr. and Mrs. R. V. Armstrong, 518 West Third St., Tuesday afternoon, October 7.

The house was beautifully decorated with vases and baskets of Dahlias.

Pastel shades were carried out in the color scheme.

As the guests arrived they registered in a lovely bridal book.

Following an enjoyable program, a lovely array of bridal gifts were displayed.

Refreshments of sandwiches, potato chips, cookies and punch were served to the following:

Misses Billie White, LaRill Johnson, Jean Johnson, Yvonne Smith, Elsyne Manthey, Jo Smith, and Sara Armstrong, Mesdames Joe Wells, John Stockinger, L. E. White, Sam

Lee Hemphill.
12:20 LUNCH.
1:30 Board and W. M. U. Meeting.
2:30 Inspirational Message, Franklin E. Swanner.
3:15 Adjourn.

Ballard, Buck Ross, Gerald Green, Bob Smith, Tunney Moore, Joe Edwards, Lon Cappbell, SSammie Parker, M. A. Gambell, Paul Manthey, J. E. Johnson, S. A. Foust, J. L. Drake, and O. D. Bigham, of Littlefield, and Mrs. Norvell Smidley of Levelland, and the hostess, Mrs. R. V. Armstrong and Miss Wanda Mae Armstrong.

Sending gifts, but unable to be present were: Mesdames S. M. Wright, Montie Labouef, Lillian Treeco, Robert Graham, Don Massey, Joe Kloiber, R. D. McNeely, Nath Griffin, Bill Smith, Jimmie Starnes, Ruth Zoth, Fred Wright, Marvin Qualls, O. B. Graham, Winnie Zoth, John Cary, Afton Graham, Emma Akin, A. L. Hood, Orval Seefey, Vara Buck, C. O. Stone, Cassie Duke, J. C. Smith, Sr., J. C. Smith, Jr., J. C. Hilbun, George Staggers, Riley Cox, Art Miller, A. L. Legg, Starr Haile, A. Neuschwander, E. Wallace, Perry Pierce, Hugh Rice, Hallas Smith, Jimmie Bryan, Dee Chapman, Barbara Bryan, Lois Humphreys, Bonnie Gray, Ted Standifer, Bernita Ross, Patsy Steffey, Nell Sublett, Fannie Bell Graham, Lavern Qualls, Betty Jean Cary, Patsy McNeely, Elsie Kloiber, Dana McNeely, Lillian and Annie Neuschwander, Nelda Willis, Marilyn Willis and Romona Eagan.

Amherst Perry H. D. Club Guests In Verner Wood's Home

The Amherst Home Demonstration Club spent a most enjoyable afternoon Thursday in the home of Mrs. Verner Woods with the President, Mrs. Maurice Brantley, Presiding.

The Home Demonstration agent, Miss Dudley Hambright, gave a very interesting demonstration on making home-made corsages.

Each lady was presented materials to make a corsage and every one left the meeting, wearing a beautiful corsage.

After a short business meeting and the announcement that the next meeting would be in the home of Mrs. Jack Brock with the new Earth Home Demonstration Club as guests the club enjoyed an auction sale which netted the club several dollars.

Delicious refreshments were served to Mesdames, Joe Porter, Jim Bradley, Gordon Thurman, R. H. Briley, Walter Brantley, V. R. Stagner, J. P. Brantley, E. L. Yarbrough, Maurice Brantley, W. E. Benne't, Jack Brock, Harris Brantley, E. L. Ross, Geo. Harmon, Miss Dudley Hambright.

A visitor, Mrs. J. B. Davis and the hostess Mrs. Woods.

OFFICE SUPPLIES AT THE LEADER OFFICE

Hosiery Bargains

ANKLETS—11 pairs for \$1.00, regular 25c value. For infants, girls or ladies. Cuff tops, assorted colors.

LADIES' HOSE—4 pairs for \$1.00. 39c value. Choice of semi-sheer seamless rayon, or full-seam service weight cotton. Fall shades.

MEN'S COTTON SOX—8 pairs for \$1.00. 25c value. Medium wt., long style or shortelastic top. Assorted colors.

BIRDSEYE DIAPERS—\$2.95 per dozen. First Quality, 27x27 hemmed, in sanitary sealed package.

MEN'S DRESS SOX—5 pairs for \$1.00. 35c value. Fine rayon, long style or short elastic top. Assorted colors.

Hosiery are slight imperfects. Please state sizes wanted.

Satisfaction Guaranteed!

No. C. O. D's. We Pay Parcel Post.

Southern Sales Co.

P. O. Box 2029 Dept. 20-R KNOXVILLE, TENNESSEE

Okla. Ave. H. D. Club Meets In C. E. Jones Home

The Oklahoma Avenue Home Demonstration Club met Friday, October 10, in the home of Mrs. C. E. Jones.

Miss Hambright, H. D. Agent, gave a very interesting demonstration on "Frozen Foods."

Those present were: Mesdames Leonard McNeese, W. E. Kelly, Jim Gibson, Torbett, C. C. Soleshee, Banks Davis, Virgil Bitner, Nina Messer, Dubose Clem Dubose, W. F. Martin, Jim Gibson, J. M. Griffin, C. E. Higgins, Miss Hambright, Joe Bitner and the hostess Mrs. C. E. Jones.

The next meeting will be held Friday, October 24, in the home of Mrs. Virgil Bitner. All members are urged to attend, as this is the time for electing new officers.

DECORATION KNACK

One Mile East of Amherst School We specialize in making drapery, and carry a complete line of drapery materials.

Audry & Velma Harmon

"Watch For Formal Opening of Gift Shoppe"

INITIATED INTO STATE U. FRATERNITY

Beta Mu Chapter of Pi Kappa Alpha Fraternity at the University of Texas announces the initiation of Sidney Johnson Buell of Littlefield. Sidney Buell graduated from Littlefield high school in the spring of 1946 and the University of Texas in the fall of that year. He later was elected best pledge of his pledge class and will receive a distinctive pen from the chapter for this honor.

Destroying cotton stalks immediately after harvest will cut down insect infestations next year.

DR. C. W. FINLEY

DENTIST

Office Hours

8:30 to 5:30

Phone No. 8



Security is Vital to A Family's Happiness

One of the cornerstones of security is adequate insurance protection. How long has it been since you had your insurance program checked? Chances are you don't remember. Why not stop in today and let us see if your present insurance is doing what you want it to do.

KEITHLEY & CO.

—INSURANCE—

PHONE 62

LITTLEFIELD, TEXAS

'You Mean All Helpy-Selfy Laundries Are Not the Same'

She: Of course not! At Morris Laundryette you get quick, courteous service - - - the advantage of the most modern equipment and Helpy-Selfy as well as wet-wash service. Not to mention the fact that they will call for the clothes and deliver them—ALL FREE!



FREE PICK-UP AND DELIVERY

Helpy-Selfy Laundry

New, Maytag Washers. Tubs, Soap and ice!

Wet Wash Service

We will pick up your laundry, wash it, and deliver it back to your home, wet-wash, in three hours—CHEAPER than you can wash it yourself.

6c

Pound

Morris Laundryette

C-A-L-L 134-M

ADJACENT TO MORRIS & SON SERVICE STATION

EAST FOURTH ST.

LITTLEFIELD, TEXAS

Relief At Last For Your Cough

Emulsion relieves promptly because it goes right to the seat of the trouble to help loosen and expel germ organisms, and aid nature to soothe all raw, tender inflamed bronchial membranes. Tell your druggist you want a bottle of Creomulsion with understanding you must like the results quickly always the cough or you have your money back.

CREOMULSION

Coughs, Chest Colds, Bronchitis



PAYNE-SHOTWELL HOSPITAL & CLINIC

Littlefield, Texas • Phones 155-156

E. PAYNE, M. D. Medicine and Surgery
ALPH E. MAURER, M. D. Pediatrics and Surgery
T. SHOTWELL, Sr. Superintendent
I T. SHOTWELL, Jr., M. D. Medicine and Radiology
O. W. STILL, M. D. Obstetrics and Gynecology
MRS. D. C. LINDLEY, R. N., Superintendent of Nurses



THE WORK OF SKILLED HANDS

Prescription compounding is a painstaking task which calls for the fullest measure of concentration, care, and precision. It is work for skilled hands because the specified weights and measures are carefully determined by your doctor and express the perfect proportions that are essential to your health and well-being. Because our skilled hands assure you of letter-perfect translations of your doctor's written orders, you are well-advised to bring all your prescriptions to us for compounding.

MADDEN & WRIGHT DRUG FRED E. WRIGHT
LITTLEFIELD, TEXAS PHONE 91

PARTS FOR ALL MAKES OF CARS

WE SELL WHOLESALE AND RETAIL

GARLAND MOTOR CO.

YOUR DODGE AND PLYMOUTH DEALER

Phone 138

Littlefield, Texas

*You can't beat
Mother Nature!*



Nature's Finest!

The Alaskan "Brownie" has been known to weigh up to 1500 pounds. Largest of the grizzly bear family (*Ursus horribilis*) it is mainly carnivorous . . . the strongest and fiercest of all American mammals.

**The Crude Is The Answer
To Phillips 66 Fine Motor Oils**

Nature outdid herself when she produced the great Alaskan Brown Bear, and she was doing a mighty fine job when she made the crudes that go into Phillips 66 Motor Oils!

Ask any oil man what that means in terms of protection for your engine. Yes, a fine crude . . . plus Phillips expert refining and practical experience . . . all these factors together turn out a smooth, tough, sturdy lubricant that's able to do a real lubricating job in your motor.

Phillips 66 Premium Oil is a brand new Phillips product. Detergent type and corrosion-resistant, Phillips 66 Premium Oil cleans, as it protects your engine.

And remember, too . . . Phillips 66 Motor Oil has given motorists years of satisfactory lubrication!

Look for the orange-and-black Phillips 66 shield!



FOR—

SATISFACTORY MOTOR OPERATION

YOU, TOO, CHANGE TO—

PHILLIPS "66" MOTOR OILS

W. E. HEATHAM

Wholesale Agent, Phillips Petroleum Company
LITTLEFIELD



SEE US FOR
GENERAL REPAIR

ON

CARS, TRUCKS and TRACTORS

BRAKE, GENERATOR and STARTER Service

ALL OUR WORK GUARANTEED

**IF YOU DON'T KNOW YOUR JOB
KNOW YOUR MECHANIC**

Hilmar Braune's

Highway 84 SERVICE Phone 229



GAS AND LIGHT FOR BRITONS . . . The tall stacks of Battersea power plant, near London, loom over huge coal stockpiles which, it is said, will assure domestic British consumers of sufficient gas and electricity during the winter months without rationing.

\$100,000 Cake



"Something out of fairyland," says 3-year-old Rue Howell, of Dallas, at sight of the jeweled birthday cake, valued at \$100,000, prepared for Arthur Everts, pioneer Dallas business man, on his Golden Anniversary celebration. Rue is 3½ feet tall, while the cake measures over four feet, iced with gold and blue sugar frosting, festooned with pearls and garlanded with diamonds, sapphires and other precious gems, the rare confection is the sort little girls dream of but seldom see except in fairy tales.



STOUT FELLOW . . . It took this giant tortoise, "Amelia," at the London zoo most of her 150 years to learn how to drink a pint of stout through a straw. So now she's trying to teach the little turtle how to do it.

led her parents to the home of Mrs. Willie L. Johnson.

It is the first time Mrs. Gie Oldom had the privilege of visiting her cousin, Pinkney Johnson, since he returned from overseas.

Local Junior High Lose To Junior Hi Pupils

A 33-13 victory was turned in Thursday morning by the Central Junior High school Purples over the Littlefield Junior High school eleven on Chapman field, Lubbock.

Wayne Stroud, 157-pound Purple left halfback, scored four of his team's touchdowns, two of them on 50-yard broken field runs. A Purple penalty wiped another Stroud 50-yard dash to pay territory.

LOCAL BOYS IN BAND

Included in the 140 members of the University of Texas Longhorn band, one of the most colorful collegiate musical organizations in the nation, are Bobby Gene Perkins and George Amos Wheeler of Littlefield. The picturesque band wear bright orange and white Western type uniforms.

College Heights News

Observe Birthdays

Mr. and Mrs. Floyd Nixon celebrated their birthdays and their wedding anniversary recently. Their children all gathered at their home, excepting their sons, J. R. and Alton, who could not be present.

The table was centered with a large birthday cake, on which was lettered, "Happy Birthday Dad and Mother."

Ice cream was served during the afternoon.

The honored couple were presented with a nice quilt and living room suite, besides other gifts.

Those attending the happy family gathering were: Mr. and Mrs. Wilburn Hunt and son, Glen Dale of Lubbock; Miss Opal and Floy Nixon, all of Lubbock; Mr. and Mrs. Elmer Dodd and daughters, Kay, Glenda J. and Phillip of Meadlow, and Miss Catherine Nixon at home.

Have Weekend Guests

Mr. and Mrs. R. C. Turman had as their weekend guests their daughter-in-law, Mrs. Floyd Turman and daughter, Miss Betty Jean, of Hubbard City, Texas; her married daughter and son-in-law, Mr. and Mrs. P. Teakle and daughters, Patsy and Beverly Joe, of Pendelope, Texas, a son, and daughter-in-law, Mr. and Mrs. Orville Turman of Waco, Texas, also Mrs. Wm. Hall and daughter, Miss Lara Beth, and son, Jerry of Lubbock.

Moves To W. 6th St.

Mr. and Mrs. Ray Thompson, who lived on east 11th St. have moved to West Sixth Street.

Mrs. Johnson Has Guests

Mrs. R. M. Craig and granddaughter of Memphis, Texas, visited in the home of their sister and aunt, Mrs. Willie L. Johnson, also Mr. and Mrs. Shortie Brown and family of Levelland accompanied Mrs. Craig, her mother, and niece, to her aunt's Mrs. Johnson's.

Mrs. B. H. Stephens of Ropesville, Texas, and daughter, Mrs. Gie Oldom of North Dakota visited Mr. Stephens' sister, and Mrs. Oldom's aunt, Mrs. Willie L. Johnson. Mrs. Billie Diggs, a daughter of Mr. and Mrs. B. H. Stephens, and son, accompani-

**Washable
KINGSTON JACQUARD
Rayon Shirts by**

New Era



The news in shirts! These luxurious Kingston Jacquard shirts that are sanforized* shrunk. Beautiful fabric designs . . . originally seen only in the finest imported fabrics . . . now available in this washable rayon!

*Residual shrinkage not more than 1%.

As seen in LIFE

\$5.95

REPLIN'S
"REAL VALUES"

**COMPLETE FENDER,
BODY, AND PAINT SHOP**

We can now not only make your car run like new, but we can make your car look like new, and at a reasonable cost too.

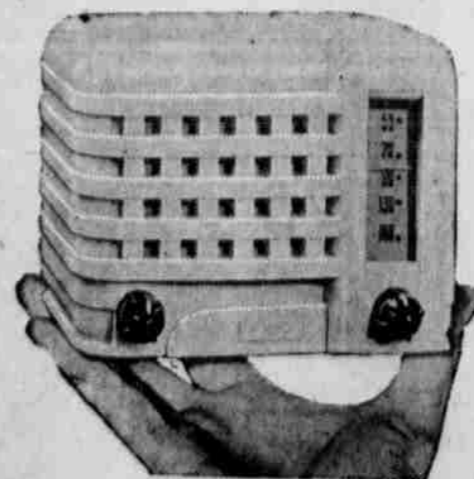
No matter how bad your car is crushed or dented, we can REPAIR it like NEW.

Let us show you how reasonable you can drive a GOOD LOOKING CAR.

HENRY'S

NEW LOCATION: 4TH ST. AND HARRALL AVE.,
ACROSS THE STREET FROM THE TELEPHONE OFFICE

EMERSON RADIO



**AC—DC Superheterodyne
In New Plastic Styling—In Ivory**
Gives perfect performance, exceptional power and full bodied tone. This is the ideal radio for home or office, in ivory finish.

In Stock A Lovely 5-Tube Set For—
ONLY

\$19.95

AT

JONES HARDWARE

PHONE 190

LITTLEFIELD

"MICKY" AND HIS GANG

By Sam Iger



and Mrs. L. H. Powell of Littlefield are the proud parents of a son born at the Payne-Shotwell Hospital Wednesday, October 15, weighing 8 lbs. 9 oz. He has been named Lawrence Harold Powell, Jr. Mrs. Powell is the former Miss Maxwells. Mother and daughter were released from the hospital Saturday.

Daughter, Donna Gale, was born to Mr. and Mrs. Jack Poer of Littlefield, Tuesday, October 14, at Payne-Shotwell Hospital. She weighed at birth 8 lbs. 5 oz. Mrs. Poer and daughter were released from the hospital Friday.

son was born to Mr. and Mrs. Beach of Littlefield at the Payne-Shotwell Hospital Sunday, October 19.

at the Littlefield Hospital

John Tidwell was admitted to the Payne-Shotwell Hospital Sunday, October 19, suffering from head and back pain sustained in handling some heavy boxes. In some way a piece of the box fell on him. He was improved and released October 14.

Little Gilley, aged 5, had her tonsils removed October 14, and was released and went home the following day.

Ascension Ochoa was admitted to the hospital October 11 with a fever. She was released October 14.

J. M. Cox of Amherst was admitted to the hospital Thursday for medical treatment. She was released after several days.

Schlotzman, aged 5, was admitted Thursday suffering from a fever. She was a patient several days.

Matthews, aged 2, was admitted Friday for a tonsilectomy. He was released the next day.

Graham, colored, was admitted Friday for medical treatment of a chest ailment.

A. A. BRIAN OPPIES PULPIT MULESHOE SUNDAY

A. A. Brian, pastor of the First Baptist Church of Brownfield, former pastor of Littlefield, spoke at the Baptist Church at Muleshoe in a regular morning worship Sunday.

Brian is an outstanding speaker.

Special Sale!



Tussy RICH CREAM
1.75 size now only \$1.95
all prices plus tax

roughness—even fatigue tend to fade away when you use this luxurious emollient. Buy today and give your skin all these beauty benefits. Don't wait. Sale lasts limited time.

WOKES DRUG

Littlefield
For Your Health

Personals

Mr. and Mrs. Billy Squires spent the past week end with relatives in Littlefield. Mr. Squires is attending Tech College, and majoring in journalism.

Mrs. J. R. Coen and daughter, Mary Jane left Friday for Dallas to attend the Dallas Fair, returning here Sunday.

Otto Jones and son, Jarold, made a trip to Oklahoma City by plane Friday, returning to Littlefield Saturday night.

Mr. and Mrs. John Price returned to Littlefield Tuesday of last week from Central Texas, where Mrs. Price underwent examination at the Temple Scott-White Hospital. Mrs. Price left again Friday to return to the hospital at Temple, where she planned to undergo a minor operation, returning to Littlefield Tuesday.

The condition of Mrs. J. W. McCormick who has been ill at the home of her daughter and son-in-law, Mr. and Mrs. Chandler at Amarillo, was not so good the past week. Her daughter, Miss Catherine McCormick, of Littlefield, has been remaining with her mother. Mrs. McCormick is also the mother of Bill, Jack, Paul and Leonard McCormick.

Mrs. J. E. Chisholm left Sunday to attend Dallas market and buy merchandise for Louise Dress Shop. She was accompanied by her son, J. E., Jr. They were due to return home Wednesday.

Archie Dale, manager of Perry's Variety Store, was ill and confined to his home Friday.

OFFICE SUPPLIES AT LEADER OFFICE

NEW 6-TUBE Automatic Radio-Phonograph

Admiral

Record Playing Sensation!

WITH **MIRACLE TONE ARM**

WARTIME SECRET FORMULA MAKES RECORD MAGIC

It brings a new thrill to your record listening pleasure. The greatest advance in high fidelity reproduction. Banishes needle scratch, "talk-back" or other disturbing noises. Reveals hidden tone beauty even in your most frequently played records.

- Plays up to 12 records automatically
- 6-tube Superhet radio
- Variable tone control
- Bass compensation
- Gleaming French Gold grille

Ask for Admiral Model "41"

\$69.95

FOR IMMEDIATE DELIVERY SEE YOUR *Admiral* DEALER NOW

HILL ROGERS

FURNITURE AND APPLIANCES

LITTLEFIELD, TEXAS

223 PHELPS AVE.

PHONE 77-M

ATTEND THE CHURCH OF YOUR CHOICE

You Are Cordially Invited To All Services

CHURCH SERVICES

FIRST BAPTIST CHURCH OF EARTH
 Rev. C. T. Jordan, Pastor.
 Sunday School—10 a.m.
 Morning Service—11 a.m.
 Training Union—7:30 p.m.
 Evening Service—8:30 o'clock.
 Wednesday Evening—8 o'clock.
 W. M. S., Thursday—3 p.m.

St. MARTIN'S LUTHERAN CHURCH
 Rev. C. Schulte, Pastor.
 First and second Sundays: Sunday School, 2:30 p.m.; Divine worship, 3:30 p.m.
 Third Sunday: No service.
 Fourth Sunday: Sunday School, 10 a.m.; Divine worship, 11 a.m.
 Everyone is welcome to worship with us.

CHURCH OF CHRIST, SPADE
 Bro. Richard Duncan, of Abilene, Minister.
 Sunday School, 10 a.m.
 Morning services, 11 o'clock.
 Evening service, 8 o'clock.

FIRST BAPTIST CHURCH
 Whitharral, Texas
 Rev. Howell Verner, Pastor
 Sunday School, 10 a.m.
 Morning worship, 11 o'clock.
 Training Union, 7:30 p.m.
 Evening worship, 8:30 o'clock.

FOUR SQUARE GOSPEL CHURCH
 Mrs. Ruth Zimmerman, Pastor.
 Sunday School, 10 a.m.
 Sunday worship, 11 a.m.
 Crusaders' service, 7 o'clock.

FIRST METHODIST CHURCH
 S. M. Dunnam, Pastor.
 Sunday School, 10 a.m.
 Worship service, 11 a.m.
 Methodist Youth Fellowship, 6 p.m.
 Evening worship, 7 o'clock.
 A welcome to all.

FIRST BAPTIST CHURCH
 Enochs, Texas
 Rev. Lee Furrh, Pastor.
 Sunday School, 10 a.m.
 Preaching service, 11 a.m.
 B.T.U., 8 p.m.
 Preaching service, 9 p.m.
 Midweek service, Wednesday, 8 p.m.

EMMANUEL LUTHERAN CHURCH
 E. H. Riess, Pastor
 Sunday School and Bible Classes at 10 a.m.
 Divine Worship at 11:00 a.m.
 A Cordial Invitation Is Extended to All to Attend Our Services.

CHURCH OF GOD
 900 Block, East Eighth Street
 C. H. Johnson, Pastor.
 Sunday school, 10 a.m.
 Preaching, 11 a.m.
 Evening service, 8:15 o'clock
 Mid-week services, Thursday, 7:30 p.m.

SALVATION ARMY
 Envoy and Mrs. H. C. Seage.
 Sunday School, 10 a.m.
 Holiness meeting, 11 a.m.
 Open air meeting, 6:30 p.m.
 Young People's meeting, 7 p.m.
 Evangelistic service, 8 p.m.
 Preparation class Tuesday evening 7:30 o'clock.
 Soldiers' meeting Tuesday evening, 8 o'clock.
 Home League, Wednesday afternoon, 2 o'clock.
 Meeting, Thursday night, 7:30 o'clock.
 Open air meeting, Saturday night, 7 o'clock.

ASSEMBLY OF GOD CHURCH
 Sunday School, 10 a.m.
 Morning worship, 11 o'clock.
 Sunday evening, 8:30 o'clock.
 Christian Ambassador service, 8:30 p.m. Wednesday.
 Prayer meeting, 8:30 p.m. Saturday.
 Everybody invited to attend.

FIRST PRESBYTERIAN CHURCH
 Littlefield, Texas
 Rev. Carter McKenny, Pastor
 Dr. Bill Armistead, Sunday School Superintendent.
 Sunday School — 10 A. M.
 Morning Worship — 11 A. M.
 Westminster Fellowship—6:30 P. M.

FIRST BAPTIST CHURCH
 LITTLEFIELD, TEXAS
 Lee Hemphill, Pastor
 Sunday School 10:00 A. M.
 Morning Worship 11:00 A. M.
 Training Union 7:00 P. M.
 Evening Worship 8:00 P. M.
 W. M. U., Monday 2:30 P. M.
 Prayer Service, Wednesday 8:00 P. M.
 Teachers Meeting, G. A.'s, etc. Wednesday 8:30.

FIRST BAPTIST CHURCH
 John C. Cory, Pastor.
 Amherst
 Sunday School, 9:45 a.m.
 Morning services, 11 o'clock.
 Training Union, 6:30 p.m.
 W. M. S. (Monday), 2 p.m.
 Wednesday evening services, 7:30 o'clock.

CHURCH OF CHRIST
 Fieldton, Texas.
 First and third Lord's Day services:
 10 a.m., Bible classes.
 11 a.m., Sermon.
 11:45 a.m., Lord's Supper.
 8 p.m., Sermon.
 A warm welcome awaits you.

CHURCH OF CHRIST
 Amherst, Texas
 Second and fourth Lord's Day services:
 10 a.m., Bible classes.
 11 a.m., Sermon.
 11:45 a.m., Lord's Supper.
 8 p.m., Sermon.
 A warm welcome awaits you.

ST. MARTIN'S LUTHERAN CHURCH
 Rev. C. Schulte, Pastor.
 First and second Sundays: Sunday School, 2:30 p.m.; Divine worship, 3:15 p.m.
 Third Sunday: No service.
 10 a.m.; Divine worship, 10:45 a.m.
 Everyone is welcome to worship with us

CHURCH OF THE NAZARENNE
 909 Phelps Avenue
 Rev. Geo. Eppler, Pastor.
 Sunday School, 10 a.m.
 Preaching, 11 a.m.
 N.Y.P.S., 8 p.m.
 Evangelistic service, 7:15 p.m.
 Prayer meeting, Wednesday, 8 p.m.
 W.F.M.S., Tuesday, 2:30 p.m.

SACRED HEART CATHOLIC CHURCH
 Rev. F. M. Higgins, Pastor.
 Mass every first, third and fifth Sunday, at 10 a.m.
 Mass every second and fourth Sunday at 8 a.m.

LITTLEFIELD MISSIONARY BAPTIST CHURCH
 XIT Drive and Eighth Street.
 Rev. Weldon B. Meers, Th.M., Pastor.
 Sunday School, 10 a.m.
 Morning service, 11 o'clock.
 Evening service, 8:30 o'clock.
 Wednesday prayer service, 8:30 p.m.
 A church with a message and a welcome.

MAIN ST. CHURCH OF CHRIST
 Amherst
 Sunday morning service, 10:30.
 Evening service 7:30 o'clock.
 Communion at both services.

SACRED HEART CATHOLIC CHURCH
 Rev. F. M. Higgins
 First, Third, Fifth Sundays.
 Mass at 11 o'clock.
 Second and Fourth Sundays.
 Mass at 9 o'clock.

OFFICE SUPPLIES AT THE LEADER OFFICE

Factory Rebuilt Singer Sewing Machines SAME AS NEW

Will Take Your Old Machine In On Trade

Sewing Machine Repair Work

Work Guaranteed

PARTS FOR SINGER MACHINES AND OTHER MAKES

Robison's Upholstery
 308 W. 4th St. LITTLEFIELD

READ THE CLASSIFIED ADS — GET RESULTS

DRS. WOODS & ARMISTEAD
 OPTOMETRISTS
 406 LFD DRIVE LITTLEFIELD

Announcement

To the Tax Payers Of Lamb County

For YOUR convenience, I will be at Olton for the purpose of collecting State and County Taxes.

ON OCTOBER 28 AND 29

Clarence Davis
 TAX ASSESSOR-COLLECTOR
 LAMB COUNTY, TEXAS



Littlefield Hospital and Clinic
 Littlefield, Texas
 Private Branch Phone 301-302
 X-Ray and Laboratory

F. W. Janes, M. D.
 Res. Ph. 150
 Surgery, Diseases of Women, and Obstetrics

J. R. Coen, B. S., M. D.
 Res. Ph. 52
 Medicine and Surgery

Wm. N. Orr, D. D. S.
 Dentistry

FARM and RANCH LOANS

We loan on your homestead where financing is needed as a part of the purchase price or to make improvements such as irrigation wells, residences, etc.

On non-homestead property, we make cash loans without any requirements as to how the money shall be spent. No stock to buy. Interest as low as 4 Percent.

The WINSTON INSURANCE AGENCY
 PHONE 233 LITTLEFIELD, TEXAS

We Do General Welding, Oil Field and Heavy Welding



Don't let Breakdown troubles worry you! We are "Johnny-on-the-spot" whenever a breakdown occurs.

2 Portable Rigs To Answer Any Call
 We Go Anywhere—Anytime

South Plains Welding Service
 HIGHWAY 84 E. S. ROWE, JR. PHONE 354

Now At Your Service

An Experienced Refrigerator Repair Man

PAUL EGBERT

Formerly of Shreveport, La., who has had 20 years experience in repairing refrigerators, is now associated with our company. He is a state licensed electrician and licensed refrigerator man. His experience includes repairing all makes of refrigerators, air-conditioning equipment, soda fountains and frozen food lockers.

CALL US WHEN YOU NEED ELECTRIC SERVICE OF ANY KIND

W-W Electric Co.

PHONE 192 LITTLEFIELD, TEXAS

From where I sit... by Joe Marsh

"Take Pen in Hand"
that make for tolerance and better understanding—whether it's ideas on planting alfalfa or choosing between beer and cider.

Veterans Need To Get Jobs Back

many Texas veterans are en-
law to get their old jobs
can not? No one knows.

HOGS CATTLE

are in the market to buy all classes of
hogs and slaughter class cattle
ayton Packing Co.
Phone 173 or 231 Littlefield

SATISFACTORY MOTOR OPERATION
YOU, TOO, CHANGE TO—
PHILLIPS "66" MOTOR OILS
W. E. HEATHAM
Wholesale Agent, Phillips Petroleum Company
LITTLEFIELD

Advertisement for HAMONS FUNERAL HOME featuring a Superior-Cadillac Funeral Coach. Includes phone numbers for day and night.

as and Louisiana for the Veterans
Reemployment Rights Division of
the U. S. Department of Labor.

Since August 1, Speer has been
working to set up a volunteer organ-
ization to take up where the draft
board reemployment committeemen
left off.

At present the VRRD field repre-
sentative has 24 contested reemploy-
ment rights cases, and there are 30
more now in the hands of the U. S.

Social Security Official To Be Here October 29

Elliott W. Adams, Social Security
Administration Representative, will
be in Littlefield at the U. S. Post
Office at 10:30 a. m., on Wednes-
day, October 29, 1947, for the pur-
pose of answering any questions you
may have on Social Security;

Mr. and Mrs. Starr Haile and Mr.
and Mrs. W. D. Gilder left Friday
for Dallas, where they witnessed the
S. M. U. and Rice University foot-
ball game.

Mrs. Ruth Perry and Mrs. Bob
Nickels visited in the home of Mr.
and Mrs. T. H. Anderson at Brown-
field Thursday and Friday.

Advertisement for 'Better' laxative, featuring a woman illustration and text: 'WELCOME news in every home where men, women or youngsters suffer from constipation.'

More Credit Due U. S. Foreign Aid, Says Mahon

Returning to Washington Friday
from a trip abroad, Rep. Mahon
(D., Tex.) expressed the belief that
more propaganda should be spread
by the United States with the relief
goods it sends to Europe.

"We can't give Europe all they
want," he stated. "We do know,
however, that it is to our own in-
terest to help stabilize those gov-
ernments and maintain the good will
and friendship we already have over
there."

"I will say that I was disappoint-
ed in finding how little credit we
are given for the amount of relief
already extended. I think we should
see that the American flag and the
letters U. S. are displayed prominently
wherever our foodstuffs are dis-
tributed."

Suppression of head-hunting leads
to a "decline in enterprise and zest
for life and hastens a deterioration
of the population" in the more primi-
tive Melanesian tribes, according to
some evidence found by anthropolo-
gists.

Advertisement for BLACK-DRAUGHT laxative, showing a box and text: 'Need a LAXATIVE? Black-Draught is. 1-Usually prompt 2-Usually thorough 3-Always economical'

THE Family Group HOSPITALIZATION

THIS PLAN IS MADE FOR YOU
if you want to save money. You and
your family don't expect to have to
go to the hospital because of sick-
ness or an accident. But you can't
be sure that you won't, and maybe
soon. You can be sure, though, that
your bills are paid if you are a member
of the Great American Reserve Hospi-
talization and Medical Care Plan—the
Plan which has been approved by
physicians, hospitals and leading busi-
nessmen. Talk it over with

Advertisement for Bob Walker, representing Great American Reserve Insurance Company. Includes address and phone number.

Rev. Cory West Plains Baptist Hour Speaker

According to Rev. A. W. Blaine,
Director, Muleshoe, Rev. John C.
Cory, Pastor of the First Baptist
Church of Amherst, Texas, will be
featured in a series of Gospel Mes-
sages on the West Plains Baptist
Hour, over Radio Station KICA,
Clovis, New Mexico, at 3:15 P. M.
(CSR) each Tuesday.

This program was formerly broad-
cast each Tuesday at 2:45 P. M.
Comments from those who hear
the programs will be appreciated.
Just send a card or letter to West
Plains Baptist Hour, in care of Ra-
dio Station KICA, Clovis, New
Mexico.

Milk cows are creatures of habit.
Proper handling of cows on a regu-
lar schedule is the essence of dairy
management.

Rye grass, planted in October,
will make a green lawn that lasts all
winter and dies down when summer
grass revives in the spring.

Advertisement for Acme Mattress Company, Box 327, Lubbock, Texas. Telephone 7347.

Advertisement for R. L. BYERS, 'WE WANT TO BUY YOUR GRAIN and WILL PAY YOU— HIGHEST PRICES YOUR BUSINESS APPRECIATED'.

Advertisement for GMC Trucks, 'OUT AHEAD IN New Cab Comfort'. Includes image of a truck and text: 'Better Looking... Better Riding Better Built and A Better Buy'.

Advertisement for HENRY'S PONTIAC SERVICE, LITTLEFIELD TEXAS.

Advertisement for heaters and linoleum: 'HEATERS FOR YOUR CAR LINOLEUM 9 X 12 FT. RUGS and LINOLEUM by the yard'.

Advertisement for MARTIN NATURAL GAS AND BUTANE HEATERS, McCORMICK BROS. Auto Parts & Hardware. MAIN STREET PHONE 157 LITTLEFIELD.

Advertisement for BICYCLES TRICYCLES RED WAGONS.

OFFICIAL RECORDS

Transfers Filed:

J. T. Smith and wife to Nina B. Wyatt, tract of land 50 feet wide

and 60 feet long out of Southeast corner of lot 1, block 5, high school addition to city of Littlefield.

W. W. Carpenter and wife to Sam E. Fox of Bailey County, lots 16, 17 and 18, block 6, within corporate

limits of City of Sudan, Lamb County.

M. C. Tull and wife to P. A. Nafziger, all of North half of lots 1, 2, 3, 4 and 5, and all of lots 6 and 7, all in block 79, original town of Olton, Lamb County.

Buster Owens and wife to A. J. Henry, E. 1-2 of lot 5, block 9, Dugan Annex, an addition to the City of Littlefield.

R. C. Childress and wife to N. T. Renfro, lots 7, 8 and 9, in block No. 1 of Southmoor Addition to town of Littlefield.

R. T. Badger to Fred Harrell, lots 7 and 8, block 6, of Highway Addition to the City of Littlefield.

Harold Halsell and Dana Belle Halsell of Oklahoma County, Okla., to Louise D. Halsell and Rilla Halsell of County of Denver, State of Colorado, N. 132 acres of Labor 18. League 647, Lamb County.

M. E. Northam and wife to B. F. Campbell, lot No. 8, block 18, Highway Addition to the City of Littlefield, Lamb County.

R. C. Childress and wife to A. L. Weaver and C. L. Rogers, parcel of land out of what is known and described as Lot 17, block No. 15, of original Townsite of Littlefield, Lamb County.

C. L. Rogers and wife to Harvey Bishop an undivided one-half right, title and interest to part of lot 17, Block 15, in Lamb County.

O. B. Digby and wife to Esther Bomar, a widow, Lot 11, Block 102, Town of Spring Lake.

N. T. Renfro and wife to Faye E. Kendall, being E. 1-2 of Lot No. 8, and all of Lot No. 9, all in Block One of Southmoor Addition to Town of Littlefield.

Dennis Kellogg and wife to T. A. Kellogg and Maude Kellogg, Lot 1, Block 44, in City of Amherst.

J. H. Bowen and wife to Robert Mack Yarbrough and wife, Mae Yarbrough, and Robert Merlin Yarbrough and wife, lots 10, 11 and 12, Block No. 21, Highway Addition to the City of Littlefield, Lamb County, Texas.

Ira T. Shotwell, Jr., and Lena Shotwell, husband and wife, to Frank L. Anzeline and wife, Margie L. Anzeline, Lots 3, 4 and 5 in block 67, of original town of Littlefield, Lamb County, Texas.

W. F. Farington and wife to Mrs. Callie Middlebrook, a widow, Lots 1 and 2, block 2, College Heights Addition to the City of Littlefield.

G. V. Dirickson, a single man, to John Blair, Lot 8, Block 4, High School Addition to the City of Littlefield.

Mary A. Martin to R. L. Masten, Labor 24, in League 233, King County School Land, and containing 177.1 acres located in same County.

Marriage Licenses Issued:

Roy Donald Garrett and Barbara Louise Bingham, Oct. 11.

Morris R. Rayne and Vera Rue Faulkner, Oct. 11.

Fred Matthews and Miss Wanda Marie Sisson, Oct. 13.

James Everett Cowart and Clair Ruth Light, Oct. 15.

William Carlton Cowan and Mrs. Mary Lois Havins, Oct. 18.

Ralph Dangerfield and Mamie Johns, Oct. 18.

The temperature of the planet Neptune is probably colder than 330 Fahrenheit degrees below zero. Neptune is 30 times farther from the sun than is the earth.

OFFICE SUPPLIES AT LEADER OFFICE

Special Services At Local Church Next Sunday

Special services Sunday at First Presbyterian Church.

The Rev. J. L. Aldrich, pastor of the First Presbyterian Church of Tullia, will be the guest and minister at the morning worship service at the First Presbyterian Church. Rev. Aldrich is the chairman of the Christian Education Committee of Amarillo Presbytery and a careful worker in the Westminster Fellowship for young people.

The evening worship hour at 7:30 will be in charge of the Rev. William F. Rogan, Director of Westminster Foundation at Texas Tech, Lubbock. Rev. Rogan will be accompanied by a group of students of Texas Tech who are members of the Westminster Foundation Organization there.

Rev. Carter McKemy will be in Tullia assisting in a series of meetings there under the direction of Rev. J. L. Aldrich, October 26-31.

First Presbyterian Church

Corner XII Drive and Fifth St. Rev. Carter McKemy, Pastor Dr. B. W. Armistead, Sunday School Supt.

Sunday School 10. Morning Worship 11. Westminster Fellowship 6:30. Evening Worship 7:30. Choir Practice, Wednesday 7:30 p. m.

You are cordially invited to the services of this church.

TechaofA11 q fif-ser eta hr r

The average American drank 34 times as much coffee as tea in 1946.

The per capita coffee consumption for the year was 17 pounds, while tea consumption was slightly more than one-half pound per person.

QUICK RELIEF FROM Symptoms of Distress Arising from STOMACH ULCERS DUE TO EXCESS ACID

Free Book Tells of Home Treatment that Must Help or it Will Cost You Nothing

Over three million bottles of the WILLARD TREATMENT have been sold for relief of symptoms of distress arising from Stomach and Duodenal Ulcers due to Excess Acid - Poor Digestion, Sour or Upset Stomach, Gasiness, Heartburn, Sleeplessness, etc., due to Excess Acid. Sold on 15 days' trial! Ask for "Willard's Message" which fully explains this treatment—free—at

STOKES DRUG STORE WALTERS DRUG CO.

DR. CLYDE W. BENNETT
CHIROPRACTOR
COLON THERAPY-PHYSIOTHERAPY
FOOT CORRECTION
Office Hours: 9 A. M. to 6 P. M.
106 East 10th Phone 410
Three Blocks South of Post Office
LITTLEFIELD, TEXAS

NOW OPEN
EAST END CAFE
MRS. EDITH LaFAYER, Owner
On Highway 54, Second Door West of WINNINGHAM'S GROCERY
In A New Building Just Completed
SERVING---
● Full Course Dinners ● Plate Lunches
● Hot and Cold Drinks ● Short Orders
COME - - - EAT WHERE IT IS COOL AND PLENTY OF PARKING SPACE
East End Cafe
Highway 54, 2nd Door West of Winningham Grocery, and Near Lamb County Farmers Co Gin and Evans Washateria. Littlefield

WE ALLOW YOU UP TO
\$5
BRING THEM IN TODAY!
EACH on
Used Tires
THAT YOU DRIVE UP TO OUR SHOP ON—AS TRADE-INS ON—
NEW TIRES
O. K. RUBBER WELDERS
COMPLETE TIRE SERVICE
Two Complete Shops To Serve You
Muleshoe H. L. ATWOOD Littlefield

Painting A SPECIALTY
PHONE 373-J HIGHWAY 84

Littlefield Fender & Body Co.
NO JOB TOO LARGE OR TOO SMALL
As Good As The Best, Better Than The Rest
J. C. STOVALL, Owner LITTLEFIELD
BILLY DON AND J. C. STOVALL, JR.
ON THE HIGHWAY

An ALL-ELECTRIC Kitchen In My 20 Year Old Home?

Sure Lady
Here's how you can do it!
Install Adequate Wiring now.
When your present home was built, perhaps the builder never thought you'd want to cook, refrigerate, and heat your water electrically. So he installed just enough wiring to supply service to a few electric lights and possibly an outlet or two.
To find out how to have an all-electric kitchen just call a wiring specialist from your Public Service Company, or an electrical contractor. They will be glad to tell you more about the wiring you will need.
We have nothing to sell but good electric service.
SOUTHWESTERN PUBLIC SERVICE COMPANY
23 YEARS OF GOOD CITIZENSHIP AND PUBLIC SERVICE

Get On The Winning Team!
With
TUFFIES
OUT OF THE WEST
Genuine Blue Denims For Boys
Tuffies Out Of The West are just the thing for boys in school or at play. They're real cowboy pants made in junior sizes. Tough 8-oz. Sanforized LANE Blue Denim, Copper Riveted and Double-Stitched with heavy orange thread.
IN ALL SIZES 20" to 32" WAIST

\$2.09 Pair
REPLIN'S
REAL VALUES
COWBOY PANTS