

# GOVERNMENT APPROVES \$10,000 FOR LITTLEFIELD AIRPORT IMPROVEMENTS

## Federal Crop Insurance To Be Explained Friday Night

### Session to Be Held At Spade School Building

#### Final Meeting Is Scheduled For Jan. 24 At Olton

Another of the series of meetings to explain the 1947 cotton crop insurance program will be held at the Spade school, Spade, Texas, Friday night, January 17, 1947, at 7:30 o'clock. All farmers in the county are invited to attend this meeting. A representative of the Federal Crop Insurance Corporation will be present to explain the program.

All producers interested in an insurance program to protect their interests are urged to attend this meeting.

If the weather permits, the final meeting of this series will be held Friday night, January 24, 1947, at Olton, Texas. Those who cannot attend the meeting at Spade are urged to attend this meeting.

### Red Cross Annual Meeting Tonight

The Lamb County Chapter of the American Red Cross will have their annual meeting for the election of officers Thursday night, Jan. 16, at the courthouse. The meeting will be at 8 o'clock, in the district courtroom. The officers to be elected will be chairman, vice-chairman, secretary and treasurer, and will take the office immediately for the ensuing year. Those filling these offices the past year were: Dr. Ira E. Woods, county chairman; Drew Watkins, Sudan, vice-chairman; D. M. Granbery, Olton, secretary; and C. A. Duffy, Amherst, treasurer.

Appointive officers of the executive board are: Joe Salem, Sudan; Mrs. Lester LaGrange, Amherst; Norman Clevenger, Springlake; Rev. T. M. McBrayer, Earth; and C. E. Bley, Olton.

Service county chairmen are: Miss Bernice Sanderson, Littlefield, Junior Red Cross; Mrs. Pat Boone, Littlefield, production chairman; G. M. Shaw, Littlefield, publicity chairman; and J. W. Keithley, home service chairman. All of these people are also members of the executive board.

Mrs. Lyle Brandon is the executive secretary, and the only paid worker in the county.

There are approximately 2400 cases on file in the Red Cross office and services offered are service to the armed forces such as emergency roughs and leaves and extensions, reporting, all kinds of communications, and financial assistance to families of servicemen; service to veterans, which covers help with hospitalization and domiciliary care, disability pensions, insurance, vocational training, and information, as well as various other services. Also help in preparing affidavits and documents for bringing over war brides and alien fiancées of servicemen, and for dependency discharges. Other services offered also are help in case of disaster, first aid and home nursing.

Every person who has contributed as much as one dollar to the Lamb County Chapter of the American Red Cross is entitled to vote and is urged to be present.

Mayor A. C. Chesher made a business trip to Seagraves Thursday.

### Drs. Woods and Armistead Formal Opening January 25

Drs. Ira Woods and B. W. Armistead will stage their formal opening of their new building at the corner of LED Drive and South Twichell Street Saturday, January 25, with open house from 9 a.m. until 5 p.m.

**REMEMBER**

- BIRTHDAYS
- ANNIVERSARIES
- WEDDINGS
- SPECIAL EVENTS

— with —

**Photographs**

— by —

**CHISHOLM and NAIL**

## LAMB COUNTY LEADER

12 PAGES

12 PAGES

Official Newspaper Of Lamb County, Texas

THE SOUTH PLAINS GREATEST WEEKLY NEWSPAPER

Serving the Fastest Developing Agricultural Section of the Entire Southwest

VOL. XXIV LITTLEFIELD, LAMB COUNTY, TEXAS, THURSDAY, JANUARY 16, 1947 NO. 43

## March Of Dimes To Get Underway In Lamb County

G. M. Shaw, manager for Dunlap's Littlefield, was notified Tuesday by the state chairman of the National Foundation for Infantile Paralysis of his appointment as campaign director for the 1947 March of Dimes in Lamb County, which opened in the state January 15 and will continue through January 30, the birthday of the late President Franklin D. Roosevelt.

Other officers for the Lamb County chapter who were appointed are: Jack Yarbrough, vice-chairman; Floyd Coffman, treasurer; W. G. Street, secretary. Executive committee: W. D. T. Story, Mrs. R. A. Brotherton; Allan White, Amherst; L. B. Holt, Olton; J. E. Wiles, Olton; Marshall Kelley, Springlake; Nebs Warren, Sudan. Medical advisory committee: Drs. Clifford Payne, I. T. Shotwell, J. R. Coen, F. N. Jones, of Littlefield; and Drs. W. M. Birdsong and B. O. McDaniels, both of Amherst.

**Lamb County's Goal \$3,000**

Three thousand dollars is the goal for Lamb County and, while plans are not complete at this time, Mr. Shaw states the drive will be handled through the Lions clubs, Rotary clubs and other civic organizations of the county.

A meeting of the board will be held about the middle of next week, at which time the method of raising the funds will be decided.

**One-Half Remains Here**

One-half of the money collected through this campaign will remain in Lamb County for treatment of Lamb County polio cases, and the other half sent to the national foundation for research, training nurses and for distribution to areas needing more money than was raised.

Mr. Shaw asserts that the March of Dimes of the National Foundation for Infantile Paralysis is a living memorial to Franklin D. Roosevelt, and that the late president would have preferred the American people to commemorate him in a living institution like the March of Dimes, dedicated to alleviation of human suffering, rather than in monuments of stone or bronze.

### Primary P. T. A. to Meet Wednesday

The Primary Parent-Teacher Association will meet in the auditorium of the high school at 1 p.m. Wednesday, January 22.

The program will be given by the third grade children of Mrs. Joe Hutchinson and Mrs. H. W. Strother.

Rev. Lee Hemphill will be guest speaker, and Mrs. Cecil Bartlett will preside at the business session.

### Legion Auxiliary to Meet January 20

The American Legion Auxiliary will meet Monday night, January 20.

All members are urged to be present.

### Paving Project To Get Underway Early In Spring

W. G. Street, city secretary, announced this week that Harrison & Williams, engineers, are bringing to completion the survey of the town for the paving project, and the contracts will be ready for the signatures of property owners by the latter part of next week.

The cost of the paving to the property owners will amount to approximately \$4 per foot, or \$200 for the 50-foot lot with curb and gutter. And the signers of the contracts will be given four years to pay off their assessments.

In answer to the question, where the pavement would start, Mr. Street said, "The first street to sign up for the pavement will determine that." He urges all property owners who expect to pave their streets to call at the city offices at an early date.

If the work continues to progress at the present rate, the pavement will begin early in the spring.

### Sudan Post of American Legion to Stage Dance

Sudan Post of the American Legion has set Friday night, January 17, for their first dance, with Frank Miller and his five-piece band from Clovis furnishing the music, according to Commander Claude Wiseman. Wiseman said he had completed arrangements for the well known orchestra to come to Sudan for the newly-organized post's first venture. He stated that the Legion hall, located one block behind the bank, is being decorated for the occasion and one of the biggest dances in West Texas is planned.

Dancing will begin at 9 p.m. and last until 1 a.m. Admission has been set at \$1.10 per person, tax included, Wiseman said.

### School Heads Attend Annual Conference At Austin

County Supt. J. Ernest Jones, Supt. Joe Hutchinson, Perry Moring, superintendent of the Sudan Schools and Roy C. Stevens, superintendent of the Amherst Schools, returned Saturday from Austin where they attended the School Administrators Annual Conference, which convened there January 9th through the 11th.

They report a very successful meeting despite the very disagreeable weather. Mr. Jones said they didn't see the sun throughout their stay in Austin.

The trip gave the school administrators an opportunity to present and work out many of their problems with the State Department personally.

Many contacts with State Senators, and State Representatives, and other high officials were made; and some good work was done regarding legislation that is to come up during this session of the State Legislature.

The main subjects of the official program were as follows: Thursday morning: Our Health Needs and Education's Role in Their Achievement. Thursday afternoon: The Need of Improvement Of The Program Of

Guidance in The Public Schools.

Thursday night: Current Administrative Problems.

Friday morning: Our Curriculum Needs and Plans For Meeting Them.

Friday afternoon: The Need of Extension Of The Program Of Education In Time And Scope.

Friday night: Radio And Visual Aids In Education.

Saturday morning: Our Financial Needs and Plans for Achieving Them.

In addition to the above program all of the Lamb County men attended a meeting of The Rural School Administrators on Friday afternoon, in which many of the special problems of Rural Aid Schools of Texas were discussed.

Then Mr. Jones attended the Annual Banquet and meeting of The Texas County School Superintendents Association on Friday at 6:30. In this meeting several Senators and Representatives, and others discussed Special School Problems and School Legislation.

The one predominant subject in the minds and on the lips of the School Administrators during this conference was:

**HOW TO GET TEACHERS SALARIES RAISED.**

### JACK FARR BUYS WOODS JEWELRY

A deal was consummated last week whereby Jack Farr purchased the stock and fixtures of Woods Jewelry from Mrs. Ira Woods, taking possession the first of last week.

Mr. Farr has been operating a jewelry department, and carrying on a general watch and jewelry repair business in Littlefield for over 15 years. He has been located in Stokes Drug for the past 13 years, and previous to that time operated his business in the Isbell & Doss Drug, which is now the Little Drug.

The Farr family moved to Littlefield in 1931.

As announced by Mr. Farr, he has taken a lease of the portion of the building now occupied by Oma's Beauty Shop from L. C. Hewitt, and about March 1 will move his entire stock of jewelry to the new location,

### I. D. ONSTEAD RETURNS FROM CHICAGO MARKET

I. D. Onstead returned Friday from market at Chicago, where he viewed the latest in furniture and household appliances. Mr. Onstead reports lots of snow and cold weather in the North. He reports 17 degrees below zero there. Mr. Onstead had been gone since January 1. He left Chicago Wednesday and arrived here Friday morning, coming as far as Clovis by train.

where he will operate an exclusive jewelry store, and carry a large stock of most everything pertaining to jewelry.

According to Mr. Farr the building will be completely remodeled and no use that bed and breakfast will all new fixtures will be installed.

### Study of Water Availability Urged

Declaring they favor a study of the underground water situation, before passage of any control of protective legislation, the Lubbock City Commission and Directors of the Lubbock Chamber of Commerce made their position clear, in a meeting with the High Plains Water Use and Conservation Association held in the Hilton Hotel, Lubbock Friday night.

Attending the meeting were more than 150 people including the Board

Continued On Back Page

### Last Rites Held Monday For Mrs. C. W. Woodworth

#### Passes Away Early Sunday Morning After Long Illness

The passing of Mrs. C. W. Woodworth, known to her many friends as "Agatha," a beautiful character loved by everyone, is deeply mourned by the people of this city.

Her pleasing personality and ready smile will always remain in the memory of those whom she came in contact with while going about the business of her work as secretary and book-keeper for the Hewitt Chevrolet Company, and the Hewitt Buick Company, for whom she was employed for the past ten years.

Mrs. Woodworth, 47, passed away at 4:20 a. m. Sunday at the Payne-Shotwell Hospital, where she had been a patient for the past two months. About two years ago she underwent major surgery, and had since been in bad health.

**Last Rites Monday**

Funeral services were conducted at 3 o'clock Monday afternoon at the First Methodist Church, Littlefield, with Rev. S. M. Dunnam, Pastor, officiating.

As a special number during the service, Mrs. E. J. Packwood and Mrs. Jack Pope sang "The Lord is my Shepherd," accompanied at the organ by Mrs. S. M. Dunnam.

**Large Funeral Attendance**

The large attendance at the funeral service, and the most elaborate floral offering also bespoke the very great regard felt for the deceased.

Interment, in charge of Hammons Funeral Home, took place in the Littlefield Cemetery.

Active pallbearers were: Durwood Howell, Thos. J. McFarland, Joe Clark, James Nixon, E. L. Price, and Jack Fore.

Honorary pallbearers were: Claude Thaxton, J. T. Elms, Sam Hutson, Kenneth Houk, Leo Hewitt, Lester Hewitt, Buster Owens, Marvin Keifer, of Littlefield; Mr. McKelvey of Lubbock; Earl Wilson of Slaton; Elmer Lewis of Lubbock; and W. D. Watkins of Abilene.

**Born in Ellis County**

Mrs. Woodworth, as Agatha Gore, was born March 5, 1899, at Ennis, Ellis County.

She had been a resident of Littlefield for the past ten years. About eight years ago she and C. W. Woodworth, Superintendent of the West Texas Cotton Mill, were married.

**Member of Methodist Church**

Mrs. Woodworth was a member and an active worker in the First Methodist Church of this city.

Besides her husband, she is survived by three step-children, Cecil

Continued on Back Page

### Paving, Building, Road Projects Will Be Included

### Sudan OKED For \$15,700, Including Rebate For Site

In an airport construction and improvement program for towns of the South Plains and nearby area, which was announced Friday in Washington, the Civil Aeronautics Administration, Washington, has approved application for improvements on the Littlefield airport property in the amount of \$10,000.

Application was made about three months ago by the County Commissioners to the Civil Aeronautics Administration.

Notification of the above allocation was received by the Lamb County Leader this week from Congressman George Mahon, who said: "The Administrator of the Civil Aeronautics Administration has advised me today that tentative allocation of funds has been made for the improvement of your airport and that specific information will be provided the city at an early date."

**Include Administration Building**

Improvements to be carried out at the Littlefield Airport will include parking apron pavement, administration building, and road improvement.

According to Mayor A. C. Chesher, it is expected that these improvements will be made this spring.

**Sudan Included in Program**

Airport improvements are also scheduled for Sudan, and the amount of \$15,700 has been approved by the Civil Aeronautics Administration, including \$4500 allowed as a 25 percent rebate on the purchase of an airport site, which the City of Sudan has purchased and paid for. Some preliminary work has been done on this site.

This money will be spent mostly in the building of runways, according to those in authority.

Andrews, Slaton, Matador, Plains and Monahans are other West Texas towns included in the airport construction and improvement program.

### Lamb Co. Schools Are Represented

Lamb County school administrators who attended the Texas State Teachers Association meeting recently held in Fort Worth were: Supt. Joe Hutchinson and County Supt. J. Ernest Jones of Littlefield; Supt. Roy Stevens of Amherst, and Supt. Perry Moring of Sudan.

At this meeting the association opened a publicity campaign to obtain public support for the requests it will make to the 50th Texas Legislature.

There are three phases of the association's financial program, embracing the following:

1. Enactment of an emergency measure early in the session of the legislature to permit the equalization schools to use the supplemental apportionment of \$6 given last summer to raise salaries of teachers in this present school session.

2. Enactment of the new equalization bill, setting a minimum salary in equalization schools of at least \$2,000, with annual increases for additional training and experience; providing transportation aid at \$3 per pupil transported both elementary

Continued on Back Page

### Maverick Club To Stage Shows Here Friday, Saturday

The Maverick Club Boys Show, which was scheduled to be presented in the Littlefield High School Auditorium January 3 and 4, but was postponed due to inclement weather, will be held in Littlefield at the High School Auditorium Friday and Saturday of this week.

Twenty boys will take part in this entertainment, which will be staged in the High School Auditorium.

All proceeds of the shows will go towards the expenses of organizing a Boys Club in Littlefield.

E. E. Wesley, Chairman for the Jaycees, asked the Leader to arrange will be completely remodeled and no use that bed and breakfast will all new fixtures will be installed. be needed for the Maverick Club

boys on both the nights, January 17 and 18, and asks all those who can take care of one or more of these boys to contact Mr. Wesley at the W-W Electric.



**Watch Repairing**

**JACK FARR**

**JEWELER IN STOKES DRUG**

**The Fourth Army Weekly News Digest**

WASHINGTON, D. C.—Practically all facilities of the Army were opened to the training of the Organized Reserve in a sweeping directive issued here by General Jacob L. Devers, commanding Army Ground Forces.

Transmitter to the commanders of the six armies in the United States through the directive all agencies of the ground forces are thrown open to selected officers of the Organized Reserve who volunteer for the training.

Highlights of the plan which will be set in motion at once include the attendance of reserve officers at regular courses and at associate basic advance courses at all Army ground forces and technical and administrative service schools, including fifteen day refresher courses during the summer months.

As worked out during the summer months selected officers can have not less than sixty nor more than ninety days with higher headquarters, including the War Department and headquarters of the chiefs of various technical and administrative services.

Other features of the training plan include the attachment of Company Grade officers for thirty days, including travel time to combat teams and larger units of the ground forces, Regular Army and National Guard Units during training periods. Other officers, especially qualified, may secure duty as instructors for specialized reserve officers at ROTC institutions and summer camps.

Provisions for attendance of especially qualified reserve officers for attendance at schools after January 1, 1949 include the Infantry School at Fort Benning, Ga., the artillery school at Fort Sill, Oklahoma, the seacoast branch of the artillery school at Fort Scott, Cal., and the AAF and guided missiles at Fort Riley, Kansas.

Other schools that will be open to reserve officers include the engineer school at Fort Belvoir, the Signal Corps School at Fort Monmouth, the Ordnance School at Aberdeen, Maryland; the Q. M. School at Camp Lee, Va., the Transportation Corps Schools at Fort Eustis, Va., the Chemical Warfare School at Edgewood Arsenal, the Army Finance School at St. Louis Mo., the Provost Marshal General's and Adjutant General's School at Carlisle Barracks, Pa.

Courses at the schools will be between eleven and eighteen and a half weeks. Officers will be paid the pay and allowances of their grades but no provisions have been made for travel pay for dependents.

WASHINGTON—The Universal Military Training experiment unit

to be activated in January at Fort Knox, Kentucky, will try out an experiment court martial system, according to announcement made by General Jacob L. Devers, Commanding the Army Ground Forces.

In the UMT experimental unit over 600 newly enlisted 18 and 19 year old Regular Army Recruits will receive UMT-type training which would couple military training with civilian advice and counsel on non-military aspects of the program, including recreation and moral welfare.

The disciplinary system features a demerit system for minor transgressions, a merit system for exceptional performance of military duties and a certain amount of self government for the trainees.

In the event that Congress provides for universal military training, under the plan by the War Department, young men will be given military training without being inducted into the armed services.

Consequently the experimental plan used at Fort Knox will be used to chart a master plan for the control of the young civilian trainees of the proposed universal military service organization, if this is authorized by Congress.

While the trainees in the experimental unit will be soldiers who have enlisted in the Regular Army, and therefore subject to the Articles of War in the final analysis, the experimental training will employ the same system by Officer Candidate Schools during the world war in which 10 demerits in any one case meant one additional hour of extra fatigue.

For more serious offenses such as AWOL for twenty four hours or less, shirking off duty and disorderly conduct, the experimental trainees will be tried by a Trainee Court, with seven trainees from the same organization as the accused, and three of them senior.

Members of the Trainee Courts will be appointed by the Senior Trainee member of the Company,

who will also appoint a trainee as Trail Judge Advocate of prosecutor and a trainee defense counsel. An officer will serve as advisor, on military law but will not have a vote in the proceedings.

Sentences will not include confinement and every justifiable case will be mitigated or suspended by the reviewing authority. Trainees twice convicted by the Trainee Court, however, will receive a military court martial for a third offense.

The Staff Judge Advocate of the experimental unit will maintain detailed records of this experiment in self government for comprehensive study and comparison with results in other training centers under current systems.

The Universal Military Training experimental unit will be commanded by Brigadier General John M. Devine, war time commander of the

8th Armored Division who holds degrees from both West Point and Yale University.

WASHINGTON—Nearly \$150,000, 000 worth of Quartermaster Corps equipment has been salvaged, repaired and returned to Army stocks for re-issue during one year's post war operations, the War Department announced.

At repair shops throughout the United States thousands of different kinds of worn or damaged military items ranging from mess kits to mobile bakeries, from shirts to typewriters have been restored to usable condition in one of the biggest peace time repair jobs ever known.

"The country is in need for heavier production in 1947 of crops from which edible oils are produced; and foremost among these, of course, is cotton," Greenville, S. C., "News."

**PLANS UNDERWAY TO ORGANIZE SOFTBALL LEAGUE IN AREA**

Preparations are underway to form a South Plains Softball League this year.

A questionnaire was mailed out recently by Ralph J. Bumpass of Lubbock to a number of people of the South Plains, asking their opinion concerning the establishment of such a League. Replies to this questionnaire have been very favorable, according to a letter received by Morley B. Drake, Publisher of the Lamb County Leader.

or that the first meeting looking toward a formation of the League will be held at the Hilton Hotel at 8 p. m. January 28. All persons interested in the establishing of a South Plains League are invited to attend the meeting.

Mr. Bumpass invites interested persons to telephone him collect at 5534 Lubbock, or they may call on Mr. Bumpass at the Blue Bonnet Laundry, Lubbock.

Calling Cards, Wedding Announcements, or Thank You Cards, at the Mr. Bumpass informed the Lead-Leader office.

Announcing that---

**DR. CLYDE BENNETT**

Formerly of Lubbock

HAS OPENED AN OFFICE

For the General Practice of

**Chiropractic**

—at—

106 East Tenth Street

In Duggan Annex

Littlefield

FREE CONSULTATION

**LITTLEFIELD BODY AND FENDER CO.**

Highway 81 • East Side of City

**PAINTING A SPECIALTY**

**NO JOB TOO LARGE OR TOO SMALL**

**As Good as the Best . . . Better Than the Rest**

J. C. STOVALL - J. C. STOVALL, JR. - BILLY DON STOVALL

Owners • Operators

• WHITE

**Everlite**

—A PERFECT FLOUR

**Is Here Again**

Milled from the best of the wheat

WHERE THE GOOD WHEAT GROWS

— by —

**HARVEST QUEEN MILL & ELEV. CO.**  
PLAINVIEW, TEXAS

**Need a LAXATIVE?**  
Black-Draught is:  
1-Usually prompt  
2-Usually thorough  
3-Always economical

25 to 40 doses only 25¢

Get **BLACK-DRAUGHT**  
CAUTION: USE ONLY AS DIRECTED

**COUNT THESE SAVINGS**



You can easily count on saving when you use 150-Hour Veedol Tractor Oil — especially refined for tractors from the world's toughest crude — 100% Pennsylvania. Let this tough, wear-fighting tractor oil cut down friction and guard vital parts. You'll profit by these five savings:

- 150-Hour Veedol SAVES OIL by serving a full 150 hours between refills in gasoline tractors — hours longer between changes in any tractors . . .
- SAVES FUEL by reducing power blow-by . . .
- SAVES TIME by avoiding breakdown delays . . .
- SAVES REPAIRS through greater heat and wear resistance . . . SAVES TRACTORS and assures long, economical service.

**150-HOUR VEEDOL**

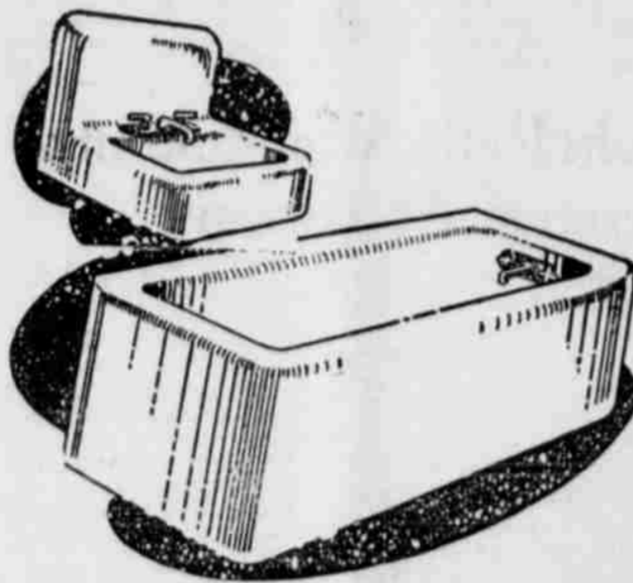


**Dennis Jones**

COSDEN JOBBER

On the Curve at Levelland and Lubbock Highways

Phone 111 • Littlefield, Texas



For **RELIABLE PLUMBING** and **HEATING SERVICE**

—plus satisfaction . . .

**Phone 349-J**

FOR PROMPT SERVICE

- A Complete Plumbing Service
- Plumbing Supplies
- Pipe and Pipe Fitting

WE HAVE ON HAND—

**BUTANE HOT WATER HEATERS**  
(20 Gal.)

**BUTANE FLOOR FURNACES**

**G. and A. Plumbing Co.**

L. E. GROSS • L. H. ADAMS

308 West Second Street

Littlefield

**We Have Most All Sizes In New Tires**

**McCORMICK BROS.**

PETROLEUM PRODUCTS

Highway 84

Phone 153

LITTLEFIELD

— OPEN ALL NIGHT —

WHOLESALE and RETAIL

# CLUBS - WOMENS' INTEREST - SOCIAL EVENTS

## Memorial Service Is Held Friday By Eastern Star

A beautiful Eastern Star Memorial service was held at the Masonic Hall Friday evening, with Mrs. Wm. Rumback, Worthy Matron, presiding and about 42 members present. Members taking part in the Memorial service for Eastern Star members who passed away during 1946 in Texas, were dressed in choir robes

and carried tall white lighted tapers. Mrs. Louise King and Mrs. Ralph Nelson were soloists, while Mrs. E. B. Lue played the piano.

Other members taking part in the service were: Mesdames Wm. Rumback, J. R. Coen, V. S. Cassel, G. M. Shaw, Quinton Bellomy, T. S. Sales, Arbie Joplin, Pat Boone, Eugene Johnson, Catherine Rumback, and Pryor Hammons, and Miss Lula Hubbard. Jack Farr

## Approaching Marriage of Miss Priddy, R. J. Dowell Announced

Mr. and Mrs. W. H. Priddy of Amherst are announcing the engagement and approaching marriage of their daughter, Billie-Sue, to Russell J. Dowell, son of Mr. and Mrs. Ray Dowell of Minneapolis, Minn.

The wedding will take place at the First Baptist Church of Amherst at two o'clock Sunday, January 19th., with Reverend John C. Corey performing the ceremony.

Attending Miss Priddy as matron of honor will be Mrs. W. E. Priddy, sister-in-law of the bride, while her husband will serve the groom as best man.

The bride-elect attended the Amherst schools until her graduation with the 1945-46 class, after which she enrolled in the University of Houston, where she has been a student until recently.

Mr. Russell is an ex-service man and is a junior at this time in the

University of Minnesota and following the wedding trip to points in Old Mexico, the couple will go to Minnesota where he will resume his studies in the University.

## Valleyview Couple Honored on Wedding Anniversary

Mr. and Mrs. J. W. Howell of the Valley View Community were honored on their fiftieth wedding anniversary when their sons and daughters entertained their relatives and a host of friends at a reception at the family home Friday evening, December twenty-seventh.

Miss Odesia Howell received the guests and presented them to her mother and father. After the guest registered in a book made attractive with gold embossed lettering bearing the dates 1896-1946 and the names of the honorees, and presided over by Miss Alice Carolyn Jones, grand-daughter of the honorees. They were served refreshments of golden colored punch and wedges from a three-tiered wedding cake. Mrs. J. Q. Stewart served the punch and Mrs. Claude Fargason served the cake after the couple had cut the first piece.

The table was covered with a white hand-embroidered linen cloth. The center piece was a bouquet of gold chrysanthemums on a reflector. Gold candles in crystal candlebras burned on each side of the center piece and on the buffet.

Grand - daughters of the couple, dressed in formals, furnished the entertainment of the evening. Little Misses Elaine Jones and Clara Frances Howell sang a welcome song. Then Miss Clara Frances accompanied her by her sister, Miss Winetta Jane Howell sang "Just a Song at Twilight". Miss Jeanne Stewart gave a humorous account of the courtship and wedding of the couple and read a brief history of the family.

Mr. B. J. Howell and Mrs. Carroll Jones had charge in the gift room where a beautiful array of gifts were received and put on display.

## Number From Local Chapter Attend Canyon Open House

A number from the local chapter of the Order of Eastern Star attended open house at Cousins Hall, Canyon, Sunday afternoon from 3 to 5, when the Canyon chapter entertained in honor of Frank Phillips of Canyon, worthy grand patron of Texas, and Mrs. Phillips, deputy grand matron.

Among those attending from Littlefield were: Mr. and Mrs. Pat Boone, Mr. and Mrs. G. M. Shaw, Mrs. Wm. Rumback, Mrs. John Price, Mrs. Sid Hopping, Miss Lula Hubbard, and Meses. T. S. Sales, T. A. Henson and Pryor Hammons.

## Willie L. Garrett Enrolled In Abilene College

Abilene Christian College, opening the spring semester of its forty first session Feb. 7, will be able to care for additional students because of buildings procured from Camp Barkley, and newly-constructed permanent buildings on the campus.

Abilene Christian College, maintained and directed by members of the Church of Christ, has for its motto "Emphasizing Christian living."

Enrolled in Abilene Christian College from Anton are Willie Lewis Garnett and J. O. Wimberly.

## Four Candidates to Be Initiated Into O. E. S. Chapter

Four candidates will be initiated into the local Chapter, Order of Eastern Star, Friday night, February 14, when the regular session of the group will be held.

The candidates are: Mrs. E. E. Wesley, Mrs. D. L. Whitson, Mrs. Nell Furrh, and Mrs. Lonnie Taylor.

## Return From Trip To Florida

Mr. and Mrs. L. T. Green returned recently from a trip to St. Petersburg, Fla., and, en route home, spent a day sightseeing at New Orleans, La. They were accompanied by Mr. and Mrs. W. L. Currier of Delta, Colo., who had been visiting the Greens.

They visited Mrs. Green's sister and brother-in-law, Mr. and Mrs. Bill Corley, at St. Petersburg. Leaving here Dec. 12 and traveling by car, they returned here Jan. 2.

Mr. and Mrs. Currier are visiting relatives in Comanche County, after which they will return to Littlefield and leave for their home.

## MOVE TO VERNON

Mr. and Mrs. R. E. Walsler and children, Wanell and Joe, left Thursday to make their home at Vernon. For the past four years Mrs. Walsler has been associated with her father, M. H. Wingham, in the grocery business. Mrs. A. D. Caldwell assumed her duties last week, filling the vacancy made by Mrs. Walsler.

## I. D. Onstead Returns From Chicago Market

I. D. Onstead returned Friday from Chicago, where he purchased merchandise for his furniture store.

Mr. Onstead reports the furniture

market very unstable at this time. Some items of furniture are higher in price, while others are purchased at a reduction. He predicts it will be six months before there is a lessening-off of furniture prices.



**Regardless of Cost  
a Prescription is Priceless**

When you are ill, your doctor's prescription is the precise formula that will restore your well-being, activity, and pleasure in living. Because such benefits cannot be evaluated in dollars and cents, a prescription is truly a priceless thing. And yet, nothing else so valuable to you costs so little. When you have a prescription filled here, the cost is based solely upon the ingredients and the time required to compound them in the exact proportions specified by your physician, plus a small and legitimate profit. Why pay more?

**MADDEN & WRIGHT**  
W. H. MADDEN DRUG FRED E. WRIGHT  
LITTLEFIELD PHONE 91 TEXAS



**NEW  
SMO-O-OTH  
POWER**

because it's

**POWER-PACKED  
WITH 100-OCTANE COMPONENTS**

The first time you "step on the gas" with the new Sinclair H-C note the smooth power of this power-packed gasoline. That's because new H-C contains 100-octane gasoline components—the same components that were developed for war-time aviation fuel.

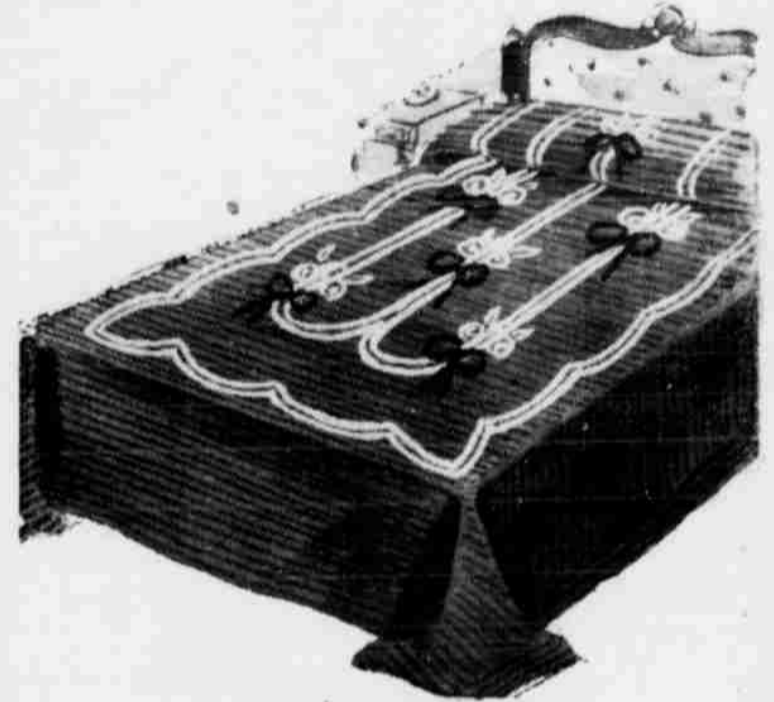
In addition to smooth power, H-C also gives you speedy getaways and longer mileage. Try a tankful of new Sinclair H-C or new Sinclair Ethyl today—power-packed with 100-octane gasoline components.

**SINCLAIR H-C GASOLINE**

**Oscar P. Wilemon**

Wholesale Agent Sinclair Refining Co.  
Littlefield Phone 32

**PENNEY'S**



**Chenille Spreads**

**THICK-AS-MOSS!**

Thickly tufted, washable cotton chenille spreads in all white, two-tone solid colors, and white touched with gay multicolored flowers, bows, etc.! Double bed size.

**9.90 and 12.90**

**PENNEY'S**

*A thrifty way to  
foot health*  
**GIVE YOUR CHILD**



BOYS' dress scuffless tip Oxfords. Chrome split leather tips, Neolite soles, rubber heels. Sizes 12 - 3 A-D. 8 1-2 - 11 1-2.

**3.49 3.69**



BOYS' dress scuffless tip high shoes. Neolite soles, rubber heels. Hooks for easy lacing at top. 12-3.

**3.98**



GIRLS' service sport oxfords. Rubber heels, Neolite soles, glove leather. 12 - 3, 8 1-2 - 11 1-2.

**3.49 3.69**



GIRLS' ghillie oxfords. Rubber heels, Neolite soles. Favorite school style. 12-3, 8 1-2-11 1-2

**3.49 3.69**

# Leader WANT ADS Get Quick Results

### FOR SALE

FOR SALE—3 Singer Sewing Machines, recently overhauled. Price \$75.00 each. Enquire Littlefield High School. 3tc

FOR SALE—Good used Electric Refrigerator. Good 2 wheel trailer. Car radio. See Wade Polk at rear of Jones Hardware. 41-4tc

FOR SALE—1942 A. C. Tractor and equipment, newly overhauled, new rubber, 7 1-2 miles east, 1 1-4 miles south of Littlefield, W. B. Jones. 41-3t-p

FOR SALE—Custom made, highest quality Fleveble steel, aluminum or Wood Venetian Blinds. Cicero Smith Lumber Company. 35-tfc

REAR TRACTOR TIRES FOR SALE—Birdwell Bros. Firestone Store, Littlefield. 45-1t-c

FOR SALE—Canaries, in pairs with cages, or single. Nice for gifts. Mrs. Fairrie Billings, on XIT Drive. 42-4t-C

FOR SALE—1946 Pontiac, 1946 Oldsmobile, 1939 Chevrolet. H. C. Armstrong, 1 mile north of Hart Camp. 42-2t-P

FOR SALE OR TRADE—for late model car 1942 Cabover Chevrolet Truck, new 9:20 and 8:25 tires. T. A. Yeager at Renfro's Grocery. 42-2t-P

FOR SALE—5 room modern house with basement and garage, 915 E. 28th St. Call 59-R. 41-3t-P

FOR SALE—Macha Storm Proof cotton seed, \$2.50 per bu. as ginned. \$3.00 recleaned. These seed are well prepared and ginned in large quantities. Have been well cared for. SPADE SEED FARMS, A. B. Brown, Mgr. 43-tfc

FOR SALE—Half section of land, modern improvements, also 1 labor and one-quarter. See or write G. G. Young, Star Rt. 2, Littlefield, 1 1-2 miles north of Hart Camp. 43-3tp

FOR SALE OR TRADE—New typewriters. Zoth Office Machine Company, XIT Drive at W. 10th St., Phone 279. 43-4tp

FOR SALE—1 No 47 Clipper seed cleaner in good condition with bagging elevator, shute and feeding elevator, roll feed hopper, travelling brushes, two horse electric motor, single phase 220 volt, on mill trucks, can be moved around in building. Has large assortment of screens for grains and cotton seed. Also has cotton seed hopper. All ready to use. SPADE SEED FARMS, A. B. Brown, Mgr. 43-tfc

FOR SALE—1941 Chevrolet five passenger coupe, first class condition. Henry's Pontiac Service, Littlefield. 43-1tc

FOR SALE—1946 Chrysler Convertible Coupe. See Merl Pickrell at Fieldston. 43-2tp

### MISCELLANEOUS

WEED CONTROL—Kills the roots. No piece roots left; No Harm to Soil; Kill for yourself and others. Jobs for experienced men. Send stamp for particulars. J. M. Baxley, 711 13th St., Modesto, Calif. 41-3t-P

ATTENTION FARMERS and STOCKMEN  
Enjoy the very finest cured and fresh pork of your own raising. We kill, cure make sausage and render lard.  
LUBBOCK PACKING CO.  
602 E. 19th St. Lubbock, Tex. 40-4tc

SEE US—We will take your used rear tractor tires in as part payment on a new tire. Birdwell Bros. Firestone Store, Littlefield. 45-1t-c

WE HAVE—A few sizes in good rear used tractor tires for sale. Birdwell Bros. Firestone Store, Littlefield. 45-1t-c

JUST RECEIVED—A shipment of 14/2 Romex Wire. Birdwell Bros. Firestone Store, Littlefield. 32-1tc

KEYS MADE at Perry Brothers. 25c. Bring your old keys or pieces. 7-4t-c

PLENTY OF AJAX ANTI-FREEZE for your radiator. Dennis Jones Tire Store and Service Station, Littlefield. 34-tfc

Special combination rate on Star-Telegram and Leader renewals at the Leader office.

GUIBERSON ALL-METAL BUILT-IN CABINETS at RODGERS. 43-tfc

See RODGERS for VENETIAN BLINDS. We have custom built Venetian Blinds in stock. 43-tfc

GET YOUR COKES at RAMSEY'S FRUIT STAND. 43-tfc

### WANTED

WANTED—Used typewriters and adding machines. Zoth Office Machine Co., Phone 279. XIT Dr. and West Tenth St. 39-6tc

JUNK BATTERIES WANTED. Highest prices paid. Brown Tire Company. 32-4tp

WANTED—Portable or standard typewriter, new or used. Leader Office. 43-tfc

FOR SALE—2 registered Duroc Jersey male Hogs, 9 months old. SPADE SEED FARMS, A. B. Brown, Mgr. 43-tfc

VETEENANS!—We will train one young veteran as a parts man. Littlefield Motor Co. 43-1tc

PLENTY OF APPLES, ORANGES and SPUDS at RAMSEY'S FRUIT STAND. 43-tfc

REWARD  
Lost two weeks ago keys on a leather zipper key holder, including some small keys and two keys on outer ring. Reward for return to Garland Motor Co. 43-1tc

## COLBERT FURNITURE and BEDDING

Highway 51—Just South Of Lubbock Highway

FOR... White Staple

COTTON MATTRESSES With Good Striped Ticking **22.50**

Let Us Make That Old Mattress Over Like New

2 PIECE LIVINGROOM SUITES (Bed type) in Rayon Mohair, colors, blue and cherry **\$149.50**

We are receiving a limited number of INNERSPRING UNITS

## A LOT FULL OF— BUTANE and PROPANE Tanks

If You Don't See Us, We Will Both Lose Money

Special Price on 500 Gal. BUTANE TANKS and CARBURETORS for Irrigation Wells PLAINS LIQUEFIED GAS COMPANY

Highway 84—West Side of Town Phone 71 • Littlefield

### FOR RENT

FOR RENT—Bedroom adjoining bath, kitchen privileges. Mrs. W. P. Willis, 505 West Third St. 41-2tp

LOST—Small black and white rat terrier dog, short tail, named Trixie. Return to 510 West Fifth St. for reward. 43-1tp

### UNCLE HANK SEZ



You're sure to count the ZACHARY RADIO SERVICE as your friend... We give complete radio repair service. We also install auto radios and repair them... we're sure to please. If you need a new radio or repair service on your old one... see us, today.

ZACHARY RADIO SERVICE Sales Parts Service LITTLEFIELD PHONE 175-J 201 W. 4th

### PAINTING and DECORATING...

A COMPLETE SERVICE SPRAY or BRUSH We Specialize In ROOFS FARM EQUIPMENT and BUSINESS BUILDINGS — SEE — BOB TAYLOR 417 W. Fifth St. Littlefield Phone 343-M

### Krueger, Hutchinson and Overton Clinic

GENERAL SURGESY J. T. Krueger, M.D., F.A.C.S. J. H. Stiles, M.D., F.A.C.S. (Ortho) H. E. Mast, M.D. (Urology) EYE, EAR, NOSE & THROAT J. T. Hutchinson, M.D. Ben B. Hutchinson, M.D. E. M. Blake, M.D. INFANTS AND CHILDREN M. C. Overton, M.D. Arthur Jenkins, M.D. J. B. Rountree, M.D. OBSTETRICS O. R. Hand, M.D. INTERNAL MEDICINE W. H. Gordon, M.D.\* R. H. McCarty, M.D. (Cardiology) GENERAL MEDICINE G. S. Smith, M.D. Allergy R. K. O'Loughlin, M.D. (X-RAY AND LABORATORY A. G. Barsh, M.D. RESIDENT PHYSICIAN D. C. Lindsey, M.D. L. M. Altaras, M.D. \*In U. S. Armed Forces

LUBBOCK MEMORIAL HOSPITAL PATHOLOGICAL LABORATORY, X-RAY and RADIUM School of Nursing fully recognized for credit by University of Texas J. H. Felton, Business Manager Clifford E. Hunt, Superintendent

John Henry Chapman Post No. 4854 V. F. W. Meets Each 2nd and 4th Monday Nights 8 P. M. Durwood Howell, Com.

### FURNITURE Upholstery

### ROBISON'S Upholstery

308 West Fourth St. Just West of Robison's

Our Service Includes— A COMPLETE REBUILDING RESTORING RENEWING and UPHOLSTERY



### ALIGNMENT Saves You Car Wear! Gas! Rubber!

Misaligned wheels cause unnecessary friction and wear on tires. They can interfere with proper car control.

Stop in Today! Let Us Align and Balance Your Wheels with Our Complete BEAR Equipment.

SAVE TIRES SAVE MONEY SAVE LIVES

### HENRY'S PONTIAC SERVICE LITTLEFIELD

### CHISHOLM'S FLORAL & NURSERY

Flowers and Pot Plants Large Variety of Funeral Designs  
**Wanted**  
Your Auction Sales by an experienced, efficient Auctioneer and Clerk—  
**JACK ROWAN** AUCTIONEER Phone 201-W  
**CHARLIE CLARK** CLERK Phone 223-J LITTLEFIELD

### THERE'S A



### STATION

Convenient to Your Home and Business THESE STATIONS IN LITTLEFIELD AND TERRITORY WILL APPRECIATE YOUR BUSINESS:  
PRENTICE BROS. Highway 51, Near Highway 84  
MOBLEY STATION Highways 84 and 51  
LIGON'S TRIANGLE STATION Highway 84, Just West of Main St.  
HODGE GROCERY & MARKET West on Highway 84  
COMMUNITY GROCERY & STATION West on Highway 84, Near Football Stadium  
MAIN STREET SERVICE STA. Main Street, Opposite Walter Drug  
NICHOLS STORE Bula  
R. J. RHOTEN STORE 6 Miles North on Highway 51  
W. O. HAMPTON STORE 4 Miles West on Bula Highway  
OKLAHOMA FLAT STATION

### W. E. Heathman

Wholesale Agent, Phillips Petroleum Co. Littlefield Phone 66

### FOR A TIRE GUARANTEE

That Sticks — see —

### BROWN TIRE COMPANY

"The Complete Tire Store"

### SEWING MACHINE REPAIR WORK

See me for repairs on any make Sewing Machine

Fully Experienced—All Work Guaranteed

CLEAN and ADJUST We Buy, Sell, Trade Rent Machines

### EARL ROBISON at ROBISON'S FURNITURE Littlefield

## GOODYEAR TIRES

for Passenger, Trucks, Implements or Tractors  
**EUBANK TIRE & SUPPLY** Littlefield



ALVIN MUELLER Authorized MAYTAG Dealer Phones 354 or 316-R Littlefield

## Dead Animals Removed

Large or Small, We Will Remove Them FREE OF CHARGE

Telephone 153

## McCormick Bros. Service Station

## Welding Service

with first-class portable rig ARC and ACETYLENE — see — ROY CARTER, or AL MUELLER — at the — **MAYTAG SHOP** On Highway 84 Phone 354 or Night, 380-M

### MUTT AND JEFF



By Bud Fisher

**Marion Claiborne Enroute to Antarctic**

Marion M. Claiborne, 17, seaman, second class, USN, son of Walter E. Claiborne of Littlefield, Texas, is serving aboard the USS Mount Olympus, a flagship of Task Force 68, which is enroute to the Antarctic. This expedition, called "Operation Highjump", will explore the vast icy regions of the Antarctic for approximately four months, training personnel, testing equipment, and developing Navy technique for establishing and maintaining bases in frigid areas. Two ice breakers are among the

13 ships included in Task Force 68. All these ships are equipped with great quantities of the newest cold weather clothing and many invaluable scientific instruments. Christmas was not overlooked, for the crew of every ship participated in divine services and enjoyed the traditional turkey dinner on that day.

"The largest increase over 1946 of any commodity is suggested for cotton in 1947. The goal predicated upon the need for approximately 12 million bales of cotton". U. S. Department of Agriculture.

**Information For Veterans**

Q. Does the name "United States Government Life Insurance" include "National Service Life Insurance?"

A. No, "United States Government Life Insurance" is one type of Government insurance and "National Service Life Insurance" is another. However, both are administered by the Veterans Administration under authority granted by acts of Congress.

Q. Do the premiums increase as the insured grows older?

A. No. The premiums to be paid on any form of the insurance are established according to the age of the person insured at the effective date of the insurance; that is, a person 30 years old will pay a higher premium than a person 25 for the same plan of insurance.

Q. Are there any restrictions in Government insurance on the type of work I do?

A. No. The insured may engage in any occupation, no matter how hazardous, live where he likes, and travel any way he chooses, without effecting the value or cost of his insurance policy.

Q. For how long can I carry the World War II National Service Life Insurance that I bought while in service?

A. National Service Life Insurance is issued originally upon the 5-year premium term plan, which was extended three years for all policies issued before January 1, 1946. However, veterans have the privilege of conversion after one year from date of issue to permanent plans. The law provides that all level premium term policies shall terminate at the expiration of the term period unless exchanged for permanent policies on or before the expiration date. If Term insurance has been converted, it remains in effect as long as the premiums are paid.

Q. Do I lose the subsistence allowance that has not been paid to me because of my failure to report my earnings promptly?

A. No. You do not lose any of the balance due to you. If your report shows that you are entitled to subsistence allowance, you will receive everything due you since the date of suspension.

Q. I am a foreign-born American citizen, a veteran of World War II and would like to know if I will continue to receive my disability compensation if I visit the land of my birth?

A. Yes; but you may have to report in due course for a physical examination to determine whether it should be continued.

Q. Will Veterans Administration provide me with quinine or atabrine tablets because of my service in malaria infested countries, even though I have never made application for compensation?

A. Yes. For the time being, if you will present your discharge at a Veterans Administration office and it indicates that you saw service in a malaria infested country, VA will provide you with quinine or atabrine tablets. However, it would be well to establish your rights as of record.

Q. While I was in a Veterans Administration Hospital, my clothing was damaged so that I could use it no longer. Is there any way that I can collect for the damage done?

A. You should make application to the manager of the hospital who will appoint a qualified disinterested employee to inquire into the matter informally and make recommendations. The manager is authorized to dispose of the matter locally or to make formal investigation when the hize or circumstance of the loss warrant such action.

Q. Can a disabled veteran taking a course under Public Law 16 con-

tinue his training for more than four years?

A. Training in excess of four years may be approved when the veteran's disability is such that no course of training which does not exceed four years will restore him to employability, or circumstances beyond the control of the veteran necessitate the extension beyond the prescribed four years period.

Q. Can an amputee veteran select the type of artificial limb he wants and the firm he wants to buy it from?

A. Yes, the veteran will be permitted to select the artificial limb he wants but it must be purchased from an approved prosthetic appliance manufacturer under contract with VA.

Q. Am I entitled to field trip expenses in gathering material for a thesis while I am in school under the Servicemen's Readjustment Act?

A. Veterans Administration will not pay for occasional field trips, whether to summer camp or for data for research or thesis, where the charge to the student is a separate charge not included in the tuition or laboratory fee customarily paid by all students enrolled in the course.

Q. How may application be made for domiciliary or hospital care of a veteran?

A. Veterans Administration Form P-10, "Application for Hospital treatment or Domiciliary Care," should be executed by the veteran or nearest relative, guardian, or representative and forwarded to the nearest VA hospital, regional office, or contact office. If found to be eligible, for admission, the veteran will promptly be notified and if admission cannot be authorized, the veteran will be informed and the reason stated.

"Don't worry too much about synthetics for the next year or two. Plan to plant every possible acre of cotton you can in the spring of 1947. In our opinion, there will be a need, a demand, and a good price for every pound of cotton that can be produced in the Southeast." "Carolina Cooperator."

"B. F. Morrow has grown 220 acres of cotton this year, producing and harvesting it without any hand labor. The mechanical picker is just one step in his mechanized program, although he estimates that he saved \$3,480 last season by using this machine." "Oklahoma Extension News."

"Many farms will find that a well-planned crop and livestock program that includes larger production of cotton on land that is best suited for this chop offers a real opportunity to cash in on cotton in 1947." Educational Service, National Cottonseed Products Assn.

**EVINS CLEANERS**

LITTLEFIELD

Efficient Service.....Always!



**PAYNE-SHOTWELL HOSPITAL & CLINIC**  
Littlefield, Texas — Phones 155-156

C. E. PAYNE, M.D.  
Medicine and Surgery

I. T. SHOTWELL, Jr., M.D.  
Medicine and Radiology

O. W. STILL, M.D.  
Obstetrics and Gynecology

RALPH E. MAURER, M.D.  
Resident Physician

I. T. SHOTWELL, Sr.  
Superintendent

MRS. D. C. LINDLEY, R.N.  
Superintendent of Nurses

**Of Course— I Always Buy Red Chain Feeds**

- R. C. 18% Dairy Feed
- Chick Starter
- Egg Mash
- Grow Mash
- Wa-Mo-Hog Supplement

Alcomo Horse and Mule Feed, Etc.

**HAVE PLENTY OF YELLOW CORN, BRAN and SHORTS**

Complete Line of Retail Feeds  
**WE WANT TO BUY YOUR GRAIN**  
**DOGGETT GRAIN CO.**  
LITTLEFIELD



**BAKERY GOODS**

With That "HOME" Flavor

Always Select Our Delicious  
**CAKES and PASTRIES**  
Fresh Daily at Your Grocer  
**LITTLEFIELD PASTRY SHOP**

JACK WEAVER

Owner and Mgr.

**BETTER SELECTIONS! LOWER PRICES! IT WILL PAY TO STOP FIRST AT**

**ROBINSON'S**



**New Furniture Arriving Weekly . . .**

We can supply almost your every need in furniture, new or used, and have many of the harder to get items.

SEE US FOR—

- Bedroom Suites —Livingroom Suites —Dinette Suites
  - Platform Rockers —Studio Couches —Cedar Chests
  - Bugs —Desks —Stoves —Dishes —Enamelware
  - Clothes Hangers —Mattresses —Blankets —Comforts
- And Other Articles For Your Home.

**ROBINSON'S FURNITURE STORE**

One Block West of Bank

**DAVIS UPHOLSTERY**

833 Highway 84  
Phone 33-M

**No Rag Tacker**  
**FIRSTCLASS UPHOLSTERY**

**FARM LOANS**

LONG TERM LOW RATE  
PROMPT CLOSING

**FIRST NAT'L. BANK**  
LOCKNEY, TEXAS

In Association with  
**THE PRUDENTIAL**



Insurance Company of America  
Home Office, Newark, N. J.

**BABY CHICKS FOR SALE**

All chicks from 100 Per Cent Blood Tested Flocks, that have been rigidly culled.

Hatchings Off Each Monday and Thursday

**MILEUR & ROSS HATCHERY**

Littlefield

Phone 257-J

**ABOUT THE WATER CONSERVATION QUESTION:**

Because of erroneous information being spread throughout the High Plains area that the Lubbock Chamber of Commerce and the Lubbock City Commission are in favor of legislation to regulate the drilling of wells and pumping of water in the region, the two groups held a joint meeting Friday, January 3, in the City Commission room to discuss the problem.

It was unanimously stated that neither the Chamber of Commerce nor the City Commission had ever agreed to back any such legislation and the following joint statement was issued by C. A. Bestwick, Mayor of Lubbock, and Roy Furr, President of the Lubbock Chamber of Commerce.

"The Lubbock City Commission and the Lubbock Chamber of Commerce have not advocated, proposed, approved or endorsed any legislation, rules or regulations in regard to protecting, controlling or allocating underground water.

"The two organizations are opposed to any legislative proposals until the people of this area have the opportunity to thoroughly study them.

"Both groups do advocate and propose a thorough study of the underground water resources of the area and ask the cooperation of all the citizens of this section in helping to put into effect protective measures if the study indicates they are needed."

The two groups voted to meet at the request of the High Plains Water Use and Conservation Association with directors of that organization, January 10. A number of similar meetings are planned with other interested groups to thoroughly inform them of the position of the Lubbock Chamber of Commerce and the Lubbock City Commission.

C. A. Bestwick, Mayor  
CITY OF LUBBOCK

Roy Furr, President  
LUBBOCK CHAMBER OF COMMERCE

### Miss Martha Eliz. Willett Is Bride Of John P. McCrory

The marriage of Miss Martha Elizabeth Willett of Seattle, Wash., daughter of Mr. and Mrs. Rogers Willett of Amherst, and John Paul McCrory of Levelland, was read at St. Elizabeth's church Wednesday morning January 8 at 10:00 o'clock by Rev. William F. Blakeslee as "Ave Maria" was offered on the organ.

White baskets of gladioli and white tapers in candelabra flanked the fireplace before which the vows were exchanged.

The bride, given in marriage by her father, wore a period dress of white gros de landre taffeta, styled with a train and a fingertip veil bordered with Chantilly lace. On a white prayer book, the bride carried a showered bouquet of gardenias.

Mrs. J. N. Riggs, jr., of Pampa, matron of honor, wore a pale rose satin gown with net overskirt and carried a bouquet of aqua carnations. The maid of honor, Miss Mary Ellen Duffy of Amherst, wore aqua satin with a net overskirt and carried pale rose carnations.

Dr. James Lynn McCrory of St. Louis, Mo., was best man and Rogers Willett, Jr., was groomsmen.

Following the ceremony, a reception was held in the Navajo room of Hilton hotel with Mrs. C. A. Duffy, Jr., Mrs. J. E. Waller, Mrs. C. A. Duffy, Sr., Miss Veta Payne, parents of the bride, and members of the wedding party assisting with hospitalities.

The bride's table was laid with a lace cloth and decorated with white tapers in silver holders and a three tiered wedding cake and punch bowl wreathed in fern and peach gladioli.

When the couple returns from a wedding trip to San Antonio, their home will be in Levelland where the bridegroom owns a furniture company. For travel, the bride wore an aqua gabardine suit with black accessories.

Mrs. McCrory attended Miss Hinkles school in St. Louis and Louisiana State university where she was a member of Kappa Gamma sorority. Mr. McCrory attended Texas Technological college and served as a Lt. Col. with the Army Air forces.

### Woodman Circle State Manager Visits Local Group

Members of Loyalty Grove No. 2178 of the Supreme Forest Woodmen Circle met in regular session Tuesday night, January 14, at the American Legion Hut.

One new member, Mrs. Frank Cummings, was initiated into the Grove.

Mrs. Laura E. Krebs, Austin, State Manager, Mrs. Marjorie Beisel, Lubbock, District Manager and Mrs. Ophia Theford, Mineral Wells, were present for the meeting.

A Doctor of Ritualistic Proficiency diploma was presented Mrs. Lola L. Adkins. Mrs. Krebs made the presentation. Mrs. Adkins is one of eight in the United States that holds the record of the Ritualistic work in the Woodmen Grove.

Following the business meeting the team members of the W. O. W. Lodge met with Circle team members for drill practice of a mixed drill.

The next meeting of the Grove will be January 28. All members are urged to attend.

### AMHERST NEWS

**MRS. L. D. DANIELS IS HONOREE AT SHOWER**

Mrs. E. L. Blackwell honored Mrs. L. D. Daniels, formerly Miss Maxine McClarney, who was recently married, with a shower Saturday from 3 to 5 p.m., at her home on Main Street in Amherst.

### RECENT BRIDES HONORED

Mrs. Kenneth Webb, formerly Miss Betty Jo Brake, and Mrs. Earl McKeehan, formerly Miss Billie Joyce Webb, were honored at a bridal shower jointly at the Amherst Hotel Wednesday, from 2:30 till 5 p.m.

Hostesses were: Mrs. L. B. Gainer, Mrs. R. L. Brown, Mrs. Alfred Schroeder, Mrs. Claud Stine, Mrs. Guy Hufstetler, Mrs. Lois Humphries, Mrs. John Moreland, Mmes. Bill and Misses Peggy Jo McKay, Frances Jim Templeton, Mrs. W. O. Morgan; and Misses Peggy Jo McKay, Frances Lide, and Ferrell Jean Northcutt.

Refreshments of punch and cookies were served.

### RELEASED FROM HOSPITAL

Kenneth Webb was released from the Amherst Hospital Wednesday morning, where he had received treatment for injuries received when the '36 V-8 Ford car in which he was riding with his wife was overturned five miles north of Amherst, Jan. 6. He received lacerations on the face and bruises on one of his shoulders and leg. The car was badly damaged, but Mrs. Webb was not hurt.

### P-TA TO MEET TODAY

Mrs. Joe Porter will lead the program for the Parent-Teacher Association today (Thursday) at 3:30 p.m. at the meeting in the high school auditorium. The topic for discussion is "Training for Economic Efficiency."

Mrs. Balford Rochello, president, will be in the chair for the business session. Hostesses are: Mmes. Ernest Black, Harold Clement, Sterle Harma, Dood Drake, A. D. Lynch, Raymond Cantrell, Josie Proctor, J. B. Davis, and Mr. J. O. Luinsden.

### CHURCHES

**FIRST BAPTIST CHURCH**  
Whitharral, Texas.  
Rev. Hal Vermer, Pastor.  
Sunday School, 10 a.m.  
Morning worship, 11 a.m.  
Training Union, 7:30 p.m.  
Evening worship, 8:30 p.m.  
Wednesday, prayer service, 8:30 p.m.

**FIRST METHODIST CHURCH**  
S. M. DUNNAM, Pastor.  
Sunday School, 10 a.m.  
Worship service, 11 a.m.  
Methodist Youth Fellowship, 6 p.m.  
Evening worship, 7 o'clock.  
A welcome to all.

### Nazarene Revival Opens January 21



REV. CHARLIE HARRISON

Rev. Charlie Harrison of Kansas City, Missouri, is to preach for the revival meeting at the Church of the Nazarene which begins January 21 and closes February 2. Rev. Harrison, who is a brother of the local Nazarene pastor, was for years a very outstanding pastor and in recent years has been in the evangelistic work, having held many successful campaigns.

Captain and Mrs. James Harrison of Abilene will be present the first night of the revival, playing their saxophone and cornet. Other special music and singing will be rendered each night of the revival.

Everyone is cordially invited to attend these services which begin each night at 7:15.

**COFFEE**  
**FOLGER'S**  
LB.  
**44c**

---

**HEART'S DELIGHT**  
**PEACHES**  
IN HEAVY SYRUP  
**29c**  
CAN



For—  
**Bigger Values**  
Shop—  
**LYMAN'S**

**10c FOR YOU in every 50 lb. sack!**  
SAVE VALUABLE COUPONS PACKED IN ENRICHED FLOUR

**24 Lbs. \$1.77**

SHREDED WHEAT	BOX	14c	DEL MONTE CATSUP	14 oz. Bottle	26c
DELGADO TAMALES	CAN	17c	MRS. TUCKER SHORTENING	3 LB.	\$1.29
IMPERIAL SUGAR	5 LB. BAG	45c	VAL VITA TUNA	CAN	45c

**FIRST QUALITY MEATS FOR BETTER MEALS**

**BORDEN'S COTTAGE CHEESE** 1 LB. **29c**

TORTILLAS	PKG.	22c	PICNIC HAMS	LB.	45c
PECOS GOLD BUTTER	LB.	73c	1st CUTS PORK CHOPS	LB.	49c
PURE MEAT BOLOGNA	LB.	35c	PURE PORK SAUSAGE	LB.	47c
FRESH VEAL HAMBURGER	LB.	32c			

**NICE VEGETABLES MAKE the PERFECT MEAL**

**NO. 1 RUSSET POTATOES** 10 LB. BAG **45c**

<b>TENDER CELERY</b> Stalk <b>19c</b>	<b>LARGE CARROTS</b> Bunch <b>7 1/2 c</b>	<b>TEXAS ORANGES</b> 8 Lb. Bag <b>49c</b>
<b>Fresh CAULIFLOWER</b> 17c Lb.	<b>Delicious APPLES</b> 15c Lb.	<b>Pink GRAPEFRUIT</b> 9c Lb.

# LYMAN'S FOOD STORE

**Come to San Antonio - Merchants -- Buyers -- Operators of:**

- APPLIANCE STORES
- HARDWARE STORES
- FURNITURE STORES
- VARIETY STORES
- DEPARTMENT STORES
- JEWELRY STORES
- MERCANTILE STORES
- LUMBER YARDS
- AUTO SUPPLY STORES
- DRUG SUNDRIES

SEE THIS PREVUE of FACTORY LINES For 1947 Retailing — on display at —

**SAN ANTONIO'S MUNICIPAL AUDITORIUM**  
SUNDAY THRU WEDNESDAY  
**FEBRUARY 9-12**  
TICKETS WILL BE SENT YOU FREE...  
Just Write:

**San Antonio's INTER-NATIONAL HOUSEWARES and APPLIANCE SHOW**

2200 Alamo National Building  
SAN ANTONIO (5), TEXAS

Charter No. 12824 Reserve District No. 11

REPORT OF CONDITION OF

### The FIRST NATIONAL BANK

OF LITTLEFIELD, IN THE STATE OF TEXAS, AT THE CLOSE OF BUSINESS ON DECEMBER 31, 1946, PUBLISHED IN RESPONSE TO CALL MADE BY COMPTROLLER OF THE CURRENCY, UNDER SECTION 5211, U. S. REVISED STATUTES.

ASSETS	
Cash, balances with other banks, including reserve balance, and cash items in process of collection	\$2,276,477.26
United States Government obligations, direct and guaranteed	1,498,696.97
Obligations of States and political subdivisions	8,950.94
Corporate stocks (including \$6,000.00 stock of Federal Reserve bank)	6,000.00
Loans and discounts (including \$5,057.85 overdrafts)	1,364,511.00
Bank premises owned \$10,000.00, furniture and fixtures \$4,500.00	14,500.00
Other assets	19,694.60
<b>TOTAL ASSETS</b>	<b>\$5,188,830.77</b>
LIABILITIES	
Demand deposits of individuals, partnerships, and corporations	\$4,618,285.51
Time deposits of individuals, partnerships, and corporations	27,398.77
Deposits of United States Government	40,018.01
Deposits of States and political subdivisions	158,300.47
Other deposits (cashier's checks)	77,296.06
<b>TOTAL DEPOSITS</b>	<b>\$4,921,298.82</b>
Other liabilities	15,187.24
<b>TOTAL LIABILITIES</b>	<b>\$4,936,486.06</b>
CAPITAL ACCOUNTS	
Capital Stock:	
Common stock, total par \$100,000.00	\$ 100,000.00
Surplus	100,000.00
Undivided profits	52,344.71
<b>TOTAL CAPITAL ACCOUNTS</b>	<b>\$ 252,344.71</b>
<b>TOTAL LIABILITIES AND CAPITAL ACCOUNTS</b>	<b>\$5,188,830.77</b>

MEMORANDUM

Assets pledged or assigned to secure liabilities and for other purposes \$ 260,000.00

STATE OF TEXAS, COUNTY OF LAMB—ss:

I, DON BELL, Cashier of the above-named bank, do solemnly swear that the above statement is true to the best of my knowledge and belief.

DON BELL, Cashier.

CORRECT—Attest:  
J. H. LEE,  
PAUL HYATT,  
J. T. ELMS,  
Directors.

Sworn to and subscribed before me this 8th day of January, 1947.  
(Seal) BEE DAVIS BIGHAM, Notary Public.  
My Commission Expires June 1, 1947.

**J. W. Dennis Family Meet in Reunion**

Mr. and Mrs. J. W. Dennis spent Christmas at Texico, New Mexico, with their daughter, Mrs. Fred Cornelius.

Six of their eight children met with them there, celebrating the birth of the World's Redeemer. The occasion was Mr. Dennis' 71st birthday which came on Friday December 20th, then Mr. and Mrs. Dennis' 52nd anniversary came on Dec. 28th, they report a wonderful time. A daughter, Mrs. Floyd DeArman, and family went to Los Angeles, Calif., to spend Christmas with their two children, Muriel and Margaret, and were not present at Texico. Also a daughter, Pauline Haydon of Plainview was absent on account of sickness.

**Starts Relief in 6 Seconds from All 6 usual Cold Misereries**

**COLD PREPARATION 666**

TABLETS OR LIQUID

Caution: Take only as directed

Those present for this occasion were Rev. and Mrs. A. L. Dennis of Belton, Floyd Dennis and family of Plainview; Buddy of Levelland; Mr. and Mrs. H. A. Jones of Colorado; Mr. and Mrs. Louis Hair and girls of Olton and the hostess, Mrs. Fred Cornelius and family of Texico.

**POSSUM FLATS . . . "SNAPPY COLD SNAP CHATTER"**

By GRAHAM HUNTER



**LUTHER BRAWLEY**

Now Specializing

in **FEEDS** And **SEEDS**

At the Same Location on LFD Drive



We have sold our stock of groceries, but are retaining our FEED and SEED business, and will have in stock at all times . . .

A FULL LINE OF FIELD AND GARDEN SEEDS  
Including Certified Seeds  
A COMPLETE LINE OF FEED  
Including Plenty Of Bran And Shorts

We thank you for the nice volume of business you have extended us in the grocery line, and will appreciate your SEED AND FEED business.

Mr. And Mrs.

**L.L. BRAWLEY**

LFD Drive — Between Third And Fourth Streets

**Too Late To Classify**

**NOTICE TO BANKS Selection of County Depository February 10, 1947**

Pursuant to Article 2544 of the Civil Statutes of the State of Texas, notice is hereby given to banking corporation, association or individual bankers of Lamb County, Texas. That the Commissioner's Court of Lamb County, will receive bids and/or proposal from any banking corporation, association or individual bankers, of Lamb County, that may desire to be selected as the depository for the public funds of said County.

Any banking corporation, association or individual banker, desiring to bid, shall deliver their bids and/or proposals to the County Judge on or before the first day of the February Term of the Commissioners' Court, same being the 10th. day of February 1947, at which time a selection of a depository is to be made.

Within five (5) days after the selection of such depository or depositories it shall be the duty of the banking corporation, association or individual banker so selected, to qualify as County depository as required by law.

The Commissioners' Court may reject any and all bids or proposals.

**O. F. Dent**

County Judge  
Lamb County, Texas 43-3t-C

**FOR SALE**

- 160 a. under irrigation, new pump, some alfalfa.
- 100 a. wheat, fair improvements, a good buy at \$16,000.00.
- 390, 320 a. good land, 150 a. wheat, good improvement, at \$55.00 per acre.
- 200 a. good red land, nicely improved at \$65.00 per a.
- 40 a. Irrigated. 12 Alfalfa. 6 room house well located, pump and motor. \$6000.00.
- 160 a. Good land, 20 a. alfalfa, good improvements priced right.
- 120 a. All in wheat, small improvements, good terms, priced to sell.
- 3400 a. ranch and farm. 700 a. wheat, 2240 a. deeded, 1160 a. leased, all modern with plenty of grain storage. A good buy.
- 354 a. improved. 4 mi. west of Maple. 150 a. wheat. Worth the money.
- 320 a. eastern N. M. improved, 120 a. wheat, balance grass. A good buy at \$35.00.
- 20 a. Real close in, 4 room house, good irrigation setup, level land, price reduced.
- 1411 a. stock farm. 12 mi. out, 2 houses, 500 a. cultivated. Priced too cheap.

**CAN GIVE POSSESSION OF ALL THE ABOVE**

We are in need of 80 a. tracts or smaller tracts. Have buyers every day for good 80 acres. Give us your listings if you want to sell.

**HENRY HANOVER AND C. E. BRISCOE BURKHEAD'S Real Estate MULESHOE, TEXAS**

FOR SALE—Livingroom Suite, Bedroom Suite, Breakfast Set, Kitchen Range, Baby Bed and other household items. John Hanks, 701 E. 6th. 43-1t-C

FOR SALE — 1942 Ford Tractor with or without equipment. 1 mile south to 1-2 mile east Spears Gln. Marcus Mesecke. 43-2t-P

NO MORE MOTH DAMAGE to your clothing, rugs, furniture, etc. if you use Y-A-D-E 5-Year Guaranteed Mothproof. One spraying with Y-A-D-E mothproofs for years. If moth damage occurs within 5-years Y-A-D-E will make good your loss. Y-A-D-E is inexpensive, colorless, odorless, stainless. Buy Y-A-D-E at Hill Rogers. 43-1t-C

**DYEING**  
All Kinds Service Clothes a Specialty  
**TECH DYERS**  
1617 College Ave. • Lubbock, Tex.

FOR SALE—Nice dining room suite. Mrs. W. I. Banks, one mile west on Pop Highway, two miles south and one fourth mile west.

WANTED — room and bath, by employee of the Lamb County Leader. Call Nolan Joyce at Office during day.

G. I. City, Farm and Ranch Loans, Low Interest rate, Hamp McCary. 43-1-tc

**Sidelights From Washington**

By GEORGE MAHON

This is being written on the opening day of the new Congress. Joe Martin, Republican from Massachusetts, this afternoon took the oath of office as Speaker of the 80th Congress, carrying this position of power and responsibility to the Republican party for the first time in 16 years and to New England for the first time in 21 years.

Joe Martin is 62 years of age, a newspaper publisher and a bachelor. He is not a brilliant man, but he is an agreeable, friendly sort of person who is well liked and respected by the House membership.

While the Democrats realized they lacked the votes to re-elect a Democrat as Speaker, Sam Rayburn of Texas was nominated. The vote was 244 to 182 in favor of Mr. Martin. However, Mr. Rayburn was elected by the Democratic caucus as the Democratic leader in the House.

Mr. Rayburn had said that he would not accept the leadership and had promised his support to John McCormack, of Boston, Mass. Texas members felt that it would be a severe loss to Texas and to the South if Mr. Rayburn should refuse the leadership, particularly if the job should go to someone who had no first-hand knowledge of Southern problems of agriculture and industry. Democratic members from other states were unanimously for Mr. Rayburn, but sharply divided as to anybody else. Mr. Rayburn finally consented to take the job and was elected without a dissenting vote.

It is generally agreed in Washington by both Republicans and Democrats that President Truman has taken on additional stature and prestige in recent weeks by reason of his refusal to accept dictation from John L. Lewis and by the issuance of di-

rectives designed to place the country on a peace-time basis.

**Band Mothers to Meet Tuesday**

The Band Mother's Club will meet in the band hall Tuesday night the 21st at 7:30 at the band hall. All members are urged to attend.

G. I. City, Farm and Ranch Loans, Low Interest rate, Hamp McCary. 43-1-tc

**REFRIGERATOR REPAIRS AND INSTALLATION Of**

**COMMERCIAL And DOMESTIC REFRIGERATION**

We have in our employ **CARL OWENS**

who has many years experience and is a specialist in the work

**W-W ELECTRIC**

Phone 192 • Littlefield

**AUCTION SALE**

I WILL SELL AT PUBLIC AUCTION AT MY PLACE 1 1/2 MILES WEST OF SUDAN, AND 3 1/2 MILES SOUTH, OR 1 MILE EAST AND 1 1/2 NORTH OF FRIENDSHIP CHURCH,

**Wednesday, Jan. 22**

STARTING PROMPTLY AT 10:30 A. M.

the Following Described Property:

**CATTLE . . .**

- 1 Roan heifer with calf.
- 1 Brown cow giving milk.
- 1 Jersey heifer 1 year old.
- 1 Guernsey heifer 6 months old.

**CHICKENS . . .**

125 Hens.

**HOUSEHOLD GOODS . . .**

- 1 Bedroom Suite, good as new.
- 1 Platform Rocker.
- 1 Dinette Set.
- 1 Oil Heater.
- 1 Four-burner cook stove.
- 1 Five-burner cook stove.
- 2 Oil Heaters.
- 1 9 X 12 Rug.
- 1 Maytag Washing Machine.
- 1 Kitchen Cabinet
- Other things Too Numerous to Mention.

**IMPLEMENTS . . .**

- 1 Regular Farmall with split type cultivator.
- 1 John Deere Combine with de-header.
- 1 Two-Row Farmall cultivator.
- 1 Two-Row slide go-devil.
- 2 Four-Wheel two-bale trailers with good rubber.
- 1 Planter Furrow Guide.
- 1 Two-section harrow.
- 1 Iron Wheel wagon chassis.
- 1 Wooden Wheel wagon chassis.
- 1 Hog Scalding vat.
- 1 Hog Trough, 10 ft.
- 1 Hog Trough, 8 ft.
- Several rolls of hog wire.
- Several rolls barbed wire.
- 1 Working Barrel for windmill.
- 1 Pair of post diggers.
- Sledge Hammer.
- Several Chicken Feeders and Coups

LUNCH WILL BE SERVED ON THE GROUNDS — FREE COFFEE AT NOON — BRING YOUR CUPS  
Terms of sale cash. Nothing to be moved until settled for with the clerk.

**C. B. Alexander,**

OWNER

COL. JACK ROWAN, Auctioneer

CHARLES CLARK, Clerk

**SHOP SIMMONS GROCERY**

For QUALITY GROCERIES At LOWER PRICES



We have purchased the grocery stock of BRAWLEY GROCERY from Mr. and Mrs. L. L. Brawley, and took possession Monday. We will have in stock at all times . . .

FULL LINE OF STAPLE AND FANCY GROCERIES — FRUITS AND VEGETABLES CANDY — CIGARETTES — COLD DRINKS

We invite all our friends in Littlefield and area to visit us for their grocery needs, which we assure you will be appreciated; we solicit and will appreciate the continued business of those who patronized Mr. and Mrs. Brawley.

Mr. and Mrs. J. M. SIMMONS  
Operating As

**SIMMONS GROCERY**

LFD Drive — Between 3rd and 4th Streets  
Littlefield

**BATTERIES  
IN STOCK  
NOW**

**WE HAVE IN STOCK NOW THE FOLLOWING  
SIZES IN TIRES**

6.00 x 16 — 4 and 6 ply  
5.50 x 17 — 4 ply  
6.00 x 16 — Mud and Snow  
6.50 x 16 — 4 and 6 ply  
6.50 x 16 — Truck and Bus

7.00 x 16 — 4 and 6 ply  
7.00 x 15 — 6 ply  
7.50 x 16 — 4 and 6 ply  
7.50 x 16 — Truck and Bus

**TIRES**  
600 x 16  
**\$15.95**

**SEAT COVERS**  
Protect your car and  
have comfort and  
beauty

**McCORMICK BROS.**  
**AUTO PARTS**

**YOUR CROSLY DEALER**

MAIN STREET PHONE 157 LITTLEFIELD

**EASY WASHERS  
CROSLY RADIOS  
and  
REFRIGERATORS**

**E. J. PEPPER BUYS  
KING'S ENTERPRISES**

E. J. Pepper of Hereford has purchased King's Enterprises, a coin-operated business and route, and took possession last week. Mr. and Mrs. Pepper are moving into a house here owned by "Slim" Spikes. At present he has his busi-

ness in the rear of the O. K. Yantis News Stand, but is looking for a front street location.

Mrs. Billie Zachary is employed by Mr. Pepper.

Mrs. Duane Orr left Friday for her home at Corpus Christi, Texas, after spending two weeks with her parents, Mr. and Mrs. George Stagers.

**Health Officer Warns  
Against Insufficient  
Cooking of Pork**

Now that the winter season is here and pork and pork products are more freely used, warning against insufficient cooking of pork is given by Dr. Geo. W. Cox, State Health officer. Trichinosis is caused by a parasite in the muscles of pigs. This parasite may occur in large numbers in infested meat. Dr. Cox explained that a disease

condition known as trichinosis is caused by a microscopic organism called the trichina or muscle worm. The young worms, or larvae, are found in the muscles of infested pigs. When this meat is eaten raw or is undercooked, the unharmed larvae grow in the human intestines into adult worms which are carried by the lymphatic tissue and blood stream to the muscles where they become encysted. This period of invasion gives rise to the symptoms of the disease. The severity of the illness is dependent upon the number of trichinae originally consumed.

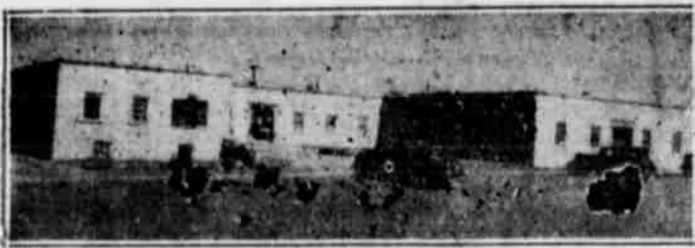
While the adult parasites are in the human intestines they may cause acute diarrhea," Dr. Cox said, "which at first can be mistaken for typhoid fever or dysentery. This may start anywhere from the first to the fourth day after eating the infested pork and may last several days. Later a puffiness of the eyes may appear together with various degrees of pain in the muscles, particularly those of the upper arm, the shoulders and the jaws."

Dr. Cox declared that since no adequate treatment is known, prevention is very important. The worms cannot be seen by the unaided eye, so inspection of pork cannot

be depended upon to protect from this type of infection. The only sure safeguard is to be certain that all pork products are thoroughly cooked, whether processed at home or purchased. Many of the more serious and fatal cases have been traced to eating raw smoked or raw pork pudding.

Since it has been estimated that approximately five per cent of all swine are infested with trichinae, it is being emphasized that the invariable rule before consuming any pork or pork product is to see that it is cooked until all natural color is gone and no evidence of blood can be detected. This is the only safe rule to follow, according to the State Health Officer.

Mr. and Mrs. Charles Logan of Denver, Colo. left Tuesday of last week after spending two weeks in the home of Mr. and Mrs. Edwin Logan here.



**Littlefield Hospital and Clinic**

Littlefield, Texas

Private Branch Phone 301-302  
X-Ray and Laboratory

**F. W. Janes, M. D.**  
Res. Ph. 150  
Surgery, Diseases of Women,  
and Obstetrics

**J. R. Coen, B. S., M. D.**  
Res. Ph. 52  
Medicine and  
Surgery

**Wm. N. Orr, D. D. S.**  
Dentistry

**VETERANS NEWS**

Home town dental care for veterans with service-connected disabilities is not available in Texas, Louisiana and Mississippi, the Veterans Administration has announced.

Under the program, all veterans entitled to out-patient dental care at VA's expense have free choice of dentists participating in the project where VA dentists clinic service is not available.

Veterans must obtain authorization for this local treatment from the VA regional office having jurisdiction. Regional offices in the Dallas Area are located at Jackson, Miss., New Orleans, Waco, Houston, San Antonio and Lubbock, Texas.

Approximately 131,000 veterans in Texas, Louisiana and Mississippi were receiving monthly payments at the beginning of December as a result of disabilities incurred during World War II.

Veterans Administration hospital managers have been authorized to furlough patients, whose treatment can be completed out of hospitals, to make more beds available for other veterans awaiting hospitalization.

Those furloughed will be treated on an out-patient basis. Service-connected cases will be treated at VA clinics or on a fee basis by private doctors at government expense. Non-service-connected cases will be treated only at VA clinics and must pay their own transportation or other expenses.

As of November 30, approximately 3,000 veterans were awaiting hospitalization in Texas, Louisiana and Mississippi. Of these, only one was service-connected.

The Veterans Administration has a total of 11,569 wards in Texas, Louisiana and Mississippi. These include 8,651 minors, according to a VA report of November 31, 1945.

**FARM and RANCH  
LOANS**

4% interest. Terms 5 to 25 years with annual payment. May be repaid in full after two years. No stock to buy and no loan expense except bringing abstract up. We also buy land notes.

**The WINSTON INSURANCE AGENCY**  
LITTLEFIELD, TEXAS PHONE 233

**Accounting and  
Income Tax Service**

WE HAVE OPENED AN OFFICE

in the Keithley Insurance Building, and will be

pleased to serve you

...BOOKKEEPING SYSTEMS INSTALLED

...INCOME TAX SERVICE

...AUDITING...

**Alvin C. Webb**

PUBLIC ACCOUNTANT

Phone 394-M

LITTLEFIELD

Keithley Ins. Bldg.



At one time or another most of us become upset and jittery due to overwrought nerves. This makes us irritable, restless and wakeful. You can't do your work well the next day, if you toss and tumble through the night and don't get the rest you need. At such times why not do as so many thousands have done for over sixty years—try

**Miles NERVINE**

Miles Nervine is a mild but effective sedative that helps soothe overwrought nerves and permits refreshing sleep. It has brought restful nights and peaceful days to thousands. Ask your druggist for genuine Miles Nervine. Have it on hand and be prepared next time tense nerves threaten to keep you awake or make you nervous. CAUTION, use only as directed! All drug stores have Miles Nervine.

Effervescent Tablets, 25¢-75¢  
Liquid Nervine 25¢-51.00



**MILES NERVINE**

**NOTICE**

For the convenience of the Taxpayers, I will be at the following places on the dates set out below for the purpose of collecting State and County Taxes:

AMHERST Thursday, January 16, 1947

EARTH Saturday, January 18, 1947

OLTON Mon. and Tuesday, Jan 20 and 21, 1947

This is the last month in which taxes may be paid without paying a penalty.

**CLARENCE DAVIS**

TAX ASSESSOR-COLLECTOR, LAMB COUNTY



### Mrs. E. M. Glass Passes Away At Age of 90 Years

The passing of one of the most colorful figures in Texas was in the death Monday, January 6th, of Mrs. E. M. Glass, 90, grandmother of Carson Glass, an attorney in the Department of Justice, Washington, D. C., and Emery Glass, druggist of Odessa, sons of Mrs. Thomas B. Duke.

Mrs. Glass passed away quietly at the home of a son, Claude Glass, at DeKalb, Texas. Funeral services were held in the Church of Christ the following Wednesday at Farmersville, Texas, and interment took place in the Farmersville cemetery.

She had been an active woman through her years and, until the time of her illness, her mind was clear, and she was an interesting conversationalist. She was a small child at the time of the Civil War, but had a vivid memory, and could relate the happenings of the time as vividly as though they had happened in recent years. For the past three years she had not worn glasses.

During the late war, she had twenty-three grandsons and great-grandsons in the service, to whom she wrote frequent letters, informing them as to the welfare of the kinship. In a letter she had written to Carson Glass recently she spoke of her approaching birthday.

She took great pride in these grandsons, among whom is Wick Fowler, of Austin, Texas, who was one of the country's prominent war correspondents. One of these boys so dear to her was lost in the Pacific theater of war.

A sister of the deceased, Mrs.

#### AWARDED \$300

Miss Maxine Harp of Abernathy and Barton Willingham of Talia, senior students at Texas Technological College, have each been awarded \$300 by the Borden Company Foundation for outstanding undergraduate work in home economics and agriculture, respectively.

Come to the Leader office for your office supplies.

Harve Ellison, who resides in Hereford, is 82 years of age and, upon hearing of the death of her sister, went to Farmersville to be present for the last rites.

Mrs. Glass was the mother of 13 children. Five of whom survive her are: Claude Glass of DeKalb, Texas; L. A. Glass, Farmersville, Texas; Bert Glass, San Angelo, Texas; Earl Glass, Wassom, Texas; and Mrs. J. R. Wright, of Weatherford, Texas. She is also survived by a number of grandchildren and great-grandchildren.

### Relatives of Mrs. Packwood Are in Auto Accident

Relatives of Mr. and Mrs. E. J. Packwood were involved in a traffic accident Thursday about 8 p.m., when the car, a 1946 Chrysler sedan and a 1946 Dodge sedan, in which they were riding, piled up behind a truck on the Lubbock-Brownfield highway, five miles out of Lubbock.

Both cars were going into Lubbock, en route to Wayne, Mo., from California, when the Chrysler driven by LeRoy McGruder was in collision with a parked truck on the highway, and the other car, driven by Charles McGruder, crashed into the rear of the leading car. All twelve occupants of the cars were badly shaken up and suffered severe head injuries and cuts from broken glass. They were treated at the West Texas Hospital.

Mr. Packwood states that the Chrysler car is so badly damaged it is almost beyond repair, but the Dodge was repaired sufficiently to continue the journey to Missouri.

The McGruder brothers, with their families, and Mrs. Chandler Catron, all of Wayne, spent Christmas in the Packwood home and were returning home via the Carlsbad Taverns.

Mrs. LeRoy McGruder and Mrs. Catron are sisters of Mrs. Packwood and Mrs. Charles McGruder is a cousin.

Mrs. Packwood took part of the group to Texico Saturday morning, where they boarded a train for Wayne, while the brothers will go by car.

Said two mules named Beulah and Joe,  
 "When it comes to starting we know,  
 "Once somebody backed us,  
 "Right into a cactus,  
 "That's the way '66' makes you go!"

## For Startling Starts.. Get Phillips 66 Gasoline

What makes Phillips 66 start so quickly . . . warm up so easily these cold mornings? That extra measure of high-volatility elements!

Yes, Phillips draws on its vast reserves of high-test natural gasoline to boost the volatility of Phillips 66 as the temperature goes down.

You'll find that this "controlled volatility" will help you to better driving, quicker starting, faster warm-up, as the weather gets colder. Stop at the next orange-and-black '66' sign and be shown!



AS THE SEASONAL TEMPERATURE GOES DOWN... PHILLIPS 66 VOLATILITY GOES UP!



For good service... Phillips 66!

FOR STARTLING STARTS... BOTH ON THE FARM AND THE ROAD... CHANGE NOW TO

## PHILLIPS 66 GASOLINE

# W.C. Heathman

WHOLESALE AGENT Littlefield PHILLIPS PETROLEUM COMPANY

### C. B. McCoy Writes This Newspaper

The Leader was pleased to receive a postal card this week from C. B. McCoy, formerly of this area, but now vacationing in Portland, Oregon. Believing the contents will be of interest to their many friends here, this newspaper is publishing Mr. McCoy's message on card as follows:  
 "Hello there—"Youall" out Texas way. Just received a copy of the

Leader, which really brought back fond memories. We EVEN read the ADDS. The "Oregonian paper" is super collusal in size and volume, but the Lamb County Leader still looks good to us. This country is a tourist paradise. You never tire of this wonderful scenery of snow-capped mountains and evergreen hills. (sgd.) C. B. McCoy

Special combination rate on Star-Telegram and Leader renewals at the Leader office.

### SEASONS GREETINGS!

Baby chick season — that is. Hatching good chicks each week from culled and blood-tested flocks. All culling and testing done by an authorized flock selecting agent, and chicks hatched under sanitary conditions.

You will like our chicks, and we believe this is the year it will pay you to place your order in advance.

## Littlefield Hatchery

On Highway 51 Phone 909F22

DeSoto Plymouth

## WHAT IS GOOD AUTOMOBILE SERVICE?

GOOD SERVICE on YOUR CAR comes from:

Trained and experienced mechanics.  
 Up-to-date tools and equipment.

- 1 Our mechanics are trained and know their business.
- 2 They have the equipment with which to find exactly what, if anything, is wrong with your car.
- 3 They have the tools to do the job best and quickest.

THAT'S WHY YOU'LL FIND OUR SERVICE GOOD

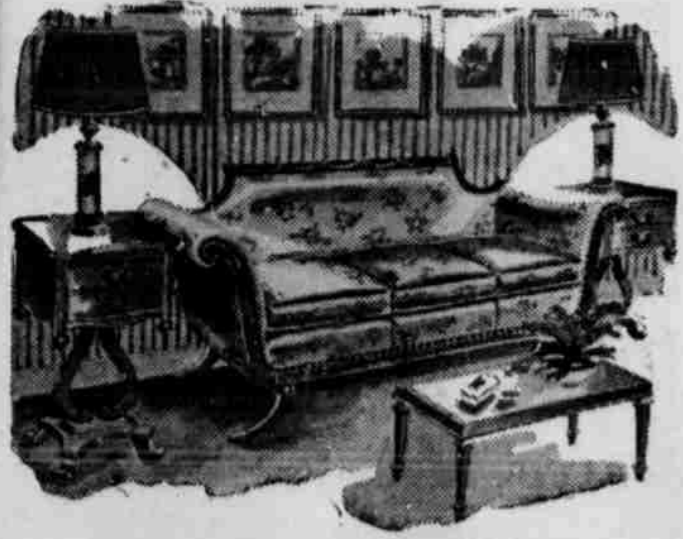
We Have Received A Few Car Motors

## LITTLEFIELD MOTOR CO.

Your DeSOTO-PLYMOUTH Dealer  
 LITTLEFIELD TRUCK and TRACTOR CO. BUILDING

# Inventory Sale

We have to make room for new merchandise, and are making drastic price reductions on home furnishings . . . Now's your chance to get the furniture you've wanted at greatly reduced prices.



### LIVINGROOM SUITES

In Velour and Tapestry coverings . . . Colors blue and wine in Velour and Egg shell in Tapestry . . .

A Big Bargain At . . . \$169<sup>50</sup>

### BEAUTIFUL BEDROOM SUITES

In Blonde and Walnut finish, and Solid Oak, panel beds—

\$139<sup>50</sup>

### ELECTRIC APPLIANCES . . .

Including AUTOMATIC PROCTOR ELECTRIC IRONS POP-UP TOASTERS

ADMIRAL And BENDIX RADIOS And COMBINATIONS

Be sure to see the Bendix if in the market—it is the real voice of the Air . . .

## HILL ROGERS FURNITURE

and APPLIANCE CO.

233 North Phelps

Phone 77-M

**West Plains Baptist Hour Is Changed To 3:15 P. M. Wednesdays**

As announced by Rev. A. W. Blaine, chairman, radio committee, the time for the West Plains Baptist hour, KICA, Clovis, N. M., has been changed to 3:15 p.m., Wednesdays (2:15 p.m., Clovis time).

Rev. Blaine urges on all those interested to hear this broadcast each Wednesday.

Dr. Broughton Mattox, pastor of the First Baptist Church of Clovis, was guest speaker on this program Wednesday, Jan. 15. Cards or letters will be appreciated from those who heard the message of Dr. Mattox.

Those responding to the message

should address West Plains Baptist Hour, care Station KICA, Clovis, N. M.

Dr. Blaine asks that this announcement be made in all of the churches of the West Plains Baptist Association.

**Mr. and Mrs. Chester Have Baby Daughter**

Mr. and Mrs. J. A. Chester are the parents of a new daughter, born January 2 at the Payne-Shotwell hospital. Mrs. Chester is the former Miss Pauline Jarnagin.

The child when born weighed 8 pounds and 4 ounces, and has been named "Margie Marie." Mother and daughter were released from the hospital Saturday.

**Mother of Mrs. Nath Griffin Passes Away**

Mr. and Mrs. Nath Griffin returned Tuesday from Roosevelt, Okla., where they attended the last rites January 5th for Mrs. Griffin's mother, Mrs. A. G. Trotter, who passed away there Jan. 2. Funeral services, held in the First Baptist Church, were in charge of the Rev. George Evans, pastor of the local Methodist Church, and interment was made in the Roosevelt cemetery.

The deceased, 73, had left her home to visit a neighbor and, after about two hours had elapsed, her husband became alarmed that she had not returned and went to the neighbor's to learn that she had not arrived there. In further search, he found her in the yard of their home, where she had passed away with a heart attack.

Besides her husband, deceased is survived by two daughters, Mrs. Nath Griffin of Littlefield, and Mrs. Marvin Johnson of Roosevelt, Okla.; and three sons, Angelo and Lloyd Trotter of Roosevelt, and Marvin Trotter of San Dumas, Calif.

**LOCAL STUDENTS ENROLL IN ABILENE CHRISTIAN COLLEGE**

Abilene Christian College, opening the spring semester of its forty-first session Feb. 7, will be able to care buildings procured from Camp Barber for additional students because of new, and newly-constructed permanent buildings on the campus.

Abilene Christian College, maintained and directed by members of the Church of Christ, has for its motto: "Emphasizing Christian Living."

Enrolled in Abilene Christian College from Littlefield and vicinity are the following students: Dayton Kee-see of Anton, John McCormick and Leta Mae McCormick.

**Jaycees Discuss Organization of Softball League**

Members of the Junior Chamber of Commerce met Thursday night at per meeting.

The session was presided over by Wayne Brown, President, and a large attendance was present.

Among matters discussed were the holding of this year's rodeo, and the organization of a softball league in Littlefield.

**E. J. PEPPER BUYS KING'S ENTERPRISES**

E. J. Pepper of Hereford has purchased King's Enterprises, a coin-operated business and route, and took possession last week.

Mrs. Billie Zachary is employed by Mr. Pepper.

**this is no FAIRY TALE...**



FOR RELIABLE

REMEDIES

For COUGHS And COLDS

You'll do better . . . EVERYTIME . . .

At

**Stokes Drug**

Littlefield



Phone 14

"In Business For Your Health"

**Adequate Wiring FOR PROFITABLE FARMING**



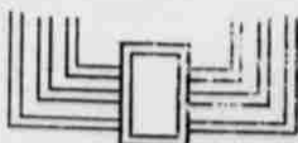
What does "Adequate Wiring" mean on your farm? It simply means ENOUGH electric outlets and switches for convenient working; enough electrical circuits for serving efficiently and safely all the electrical aids to better farming you have now, and will want in the future; and electric wires large enough for serving your present and future needs without unnecessary loss to you.

For profitable farming, the economical, efficient electric way—make sure you have adequate wiring.

- Electric BROODERS
- Electric FEED GRINDERS
- Electric HOME FREEZERS
- Electric INCUBATORS
- Electric PRESSURE COOKERS
- Electric MILKERS
- Electric WATER HEATERS
- Electric WATER PUMPS
- Electric SEPARATORS

**Adequate Wiring**

SIMPLY MEANS



✓ LARGE ENOUGH WIRE



✓ ENOUGH CIRCUITS



✓ ENOUGH OUTLETS AND SWITCHES

**SOUTHWESTERN PUBLIC SERVICE COMPANY**

22 YEARS OF GOOD CITIZENSHIP AND PUBLIC SERVICE

**LAST DAYS Firestone January Clearance**

THE BIG EVENT THAT SAVES YOU MONEY



On All The Following Merchandise

- Reg. 59c RADIATOR HOSE ... ft. 47c
- Reg. 85c Exhaust Deflectors ... 63c
- Reg. \$1.69 TIRE PUMPS ... 1.35
- Reg. \$2.19 TIRE PUMPS ... 1.75
- Reg. \$2.79 TIRE PUMPS ... 2.23
- Reg. \$2.79 Wall Tone Paint ... 2.10
- Reg. 65c SPARK PLUGS ... 49c
- Reg. \$4.00 35-36 Ford Brake Lining 3.00
- Reg. \$1.69 2 inch PAINT BRUSH ... 1.29
- Reg. \$2.39 SERVING TRAYS ... 1.85
- Reg. \$3.69 SERVING TRAYS ... 2.69
- Reg. \$6.95 COMBINATION BOILER and CANNER ... 4.95
- Reg. 85c Steering WHEEL SPINNERS ... 59c
- Reg. 75c VISOR MIRRORS ... 60c
- Reg. \$1.49 AUTO BABY SEATS ... 1.19
- Reg. \$1.98 BABY SWINGS ... 1.58
- Reg. \$2.19 FOG LIGHTS ... 1.79
- Reg. \$2.19 STEP STOOL, 3 foot ... 1.75
- Reg. \$5.95 STEP STOOLS, all metal 4.98
- Reg. \$3.98 KITCHEN STOOL ... 2.98
- Reg. \$8.95 1937 FORD Sealed Beam Kit ... 6.95
- Reg. \$4.45 ALUMINUM PAINT ... 3.70
- Reg. \$3.25 SEAL BROWN HOUSE PAINT ... 2.95



- REG. \$1.19 GARDEN SPADES ... 83c
- REG. \$1.19 SHOVELS ... 83c
- REG. \$1.39 WEED CULTIVATOR ... 98c
- REG. \$2.49 SQUEEZE EASY MOP ... 1.75
- REG. \$1.98 WAREHOUSE BROOM ... 1.49
- REG. \$1.69 HOUSE BROOMS ... 1.29

- REG. \$1.19 DUST MOPS ... 82c
- REG. \$2.39 SHINGLE STAIN ... 1.65



- REG. \$1.19 DAIRY SPRAY ... 70c
- REG. \$8.95 Ladies Trench Coats ... 4.95
- REG. \$8.95 Men's Trench Coats ... 4.95
- REG. \$13.15 LADIES LUGGAGE ... 7.98

- REG. \$4.98 RUBBISH BURNER ... 2.98
- REG. \$5.95 ELECTRIC LANTERN ... 3.95
- REG. \$5.98 BOYS COWBOY SUITS ... 2.98

NEW TIRE SAFETY AT LESS THAN 1/2 THE COST OF NEW TIRES

**Firestone FACTORY METHOD RETREADING**



You get the same famous tread found only in the new Firestone De Luxe Champion and at less than half the cost of a new tire. Firestone recaps are guaranteed. Get new tire safety today.

**700**  
4.00-14  
Other Sizes Proportionately Low

**Firestone**

HOME and AUTO SUPPLY STORE

BIRWELL BROS., Owners

Phone 68, Littlefield

VERNON HOFACKET, Manager

**Internal Revenue Income Tax Information**

The Collector of Internal Revenue reminded federal income tax payers today that January 15 is the deadline for filing, amending and paying 1946 Declarations of Estimated Tax.

In issuing this reminder, the Collector cautioned taxpayers not to confuse the January 15 date with the usual March 15 deadline for filing final 1946 income tax returns. However, he pointed out that if a taxpayer files his final 1946 tax return (on Form 1040) by January 15, it will serve both as his return and as any declaration or amended declaration which would otherwise be due from him on that date.

The Collector estimated that only about one out of every five taxpayers in his district are required to file anything January 15, since his date concerns only those taxpayers whose tax is not substantially paid up withholding from wages. In

the average wage-earner, his entire income from wages is withheld, and he need not file a declaration and pay his final return before 15.

Principal groups concerned with 15 filing are:

**CHRISTMAS AROIT, MICH.**

Mrs. A. Melton and Don of the breakfast above the close of December 23rd as they flew to Michigan to spend Christmas with the rest of the family, Mr. and Mrs. Perry. The trip by air was approximately nine and one-half hours.

On day for the Meltons was a day with a big snow, a light turkey and all the trimmings.

Returned home with her family until January 8th. Lucille is able to visit home at this time of her home economics position at the Pershing school in Detroit. She and Don will spend a month in Texas in the summer.



**STUDENT MOTHER . . .** Carolyn Larid, freshman home economics student at University of New Mexico's home management house, is learning the duties of motherhood. With a look that is both beatific and challenging, the cherub in the bath puts it up to Miss Larid to name the next step in the bathing process. The baby is Patsy, 10 months old, who has not been spoiled despite the fact that the entire class takes turns at being her mother.

**Completes Week's Study Course in Life Insurance**

According to an announcement of the Great American Reserve Insurance Company, J. R. (Bob) Walker, their Littlefield representative, has just completed a week's intensive study course in life insurance at the Baker Hotel, Mineral Wells, Texas. The company announces that more than forty of their leading salesmen took this course.

For the most part, the course concerned itself with the study of how life insurance may best meet the needs and financial problems of the insuring public. R. M. Baker, instructor from Indianapolis, represent-

ing The Research and Review, conducted the classes. He emphasized that life insurance not only protects and preserves the family as a unit in the event of death, but provides the finest method of saving money. He also stressed the fact that life insurance as an investment is the safest ever known.

During the school, an intensive study was made of social security so that the salesmen would be in a position to explain thoroughly to company policyholders and others in their community the benefits that they might expect from social security in the event of death or retirement.

Calling Cards, Wedding Announcements, or Thank You Cards, at the Leader office.

**64 Day or Night 64**



**HAMMONS FUNERAL HOME**

**PROPANE FOR YOUR BOTTLES**

**NO FREEZING ON COLD**

**MORNINGS!**

**Bottles Filled By Weight**

**PLAINS LIQUEFIED GAS CO.**

Clovis Highway

Phone 71

LITTLEFIELD

**HOME TOWNEWS**



"I'll trade this champion, any, for a new DODGE from the GARLAND TOR CO."

**OFFICIAL RECORDS**

**Transfers Filed**

Eva Wells and husband, E. E. Wells, to Montgomery, tract out of East part of Lot No. 5, Block 3, High School Addition to City of Littlefield, Lamb County, Texas;

W. H. Bond and wife, Alpha A. Bond, to C. D. Jarman, Lot 8, Block 1, Griffin Addition to City of Littlefield;

Lynn Anderson and wife, Geneva Anderson to R. L. Brewer, E. 1/2 of SW 1/4 of Section 42, Block 1, R. M. Thompson, original Grantee in Lamb County, Texas;

Jim Bell and Dorcus Bell, husband and wife, to H. N. Ellis, Lot, tract or parcel of land lying and situated in Lamb County, Texas, and being described as East 100 acres of the N. 100 acres of the N. 320 acres, of Section 54, Block 2, of W. E. Halls' Subdivision, containing 100 acres of land in Lamb County, Texas;

F. R. Jones and wife, Emma F. Jones to Rev. J. A. Street, Tract "C" F. R. Jones Addition to City of Littlefield.

D. E. Parrish and wife, Leona Parrish, to Ben H. Johnson, Lots, 2, 3, in Block No. 6, of Doughty Addition to the Town of Earth, Lamb County, also known as R. I. Doughty's Addition;

A. D. Melton and wife, Minnie, to V. Y. Jeffries, E. 150 acres of NW 1/4 of Section 5, Block "B", R. M. Thompson, original Grantee;

Pink Lawson and wife Jettie Lawson, to N. H. Nicholas, Lots 5, 6, 7, 9 and 10, Block 84, of original town of Olton, Lamb County;

W. T. Clayton and wife, Myrtle, F. Clayton to L. W. Jaquess, Lots 15 and 16, Block 22, Duggan Annex, an addition to the City of Littlefield;

City of Amherst to Alva Chalmers, Lot 4, 5, 6, Block 61, Town of Amherst;

H. L. Atwood and wife to G. W. Ellis, Lot 3, Block 2, Rowe Subdivision of Blocks 7 and 8, Westside Addition, City of Littlefield;

A. F. Jones to Cecil B. Price, being lot 60 ft. by 50 ft. out of SE corner of Lot 1, Block 5, High School Addition, to City of Littlefield, Lamb County;

R. O. Jenkins and wife to J. R. Dean, part of Labor 19, of League 223, Collingsworth County School Land;

Robert M. Holton and wife to Bert L. Wingo, Lot 6, Block 61, original town of Littlefield, Lamb County, Texas;

Othell Jones and Lucille Jones to H. C. Richardson, all of labor 7, State Capitol League 658, Abner Taylor, original Grantee, containing 177.1 acres of land, more or less;

Emmett Brown and wife to M. D. Lambert, lot 16, Block 7, College Heights Addition to City of Littlefield;

Bernard Nelson and wife, Ruby Eva Nelson, to L. F. Meeks, all of Lots 2, 3, 4, and 5, Block 10, original townsite of Sudan;

Wm. D. Elliott and wife, Maribeth B. Elliott, to L. W. Jaquess, lot 12, Block 22, Duggan Annex;

J. H. Yeager and wife to Johnnie W. Estep, W 1/2 of Lot 10, Block 3, High School Addition to City of Littlefield;

Mrs. Stella Zimmerman, that lot, tract or parcel of land, lying and being situated in Lamb County, Texas, described as being all of lot 19, Block 64, original town of Littlefield;

**Relief At Last For Your Cough**

Creomulsion relieves promptly because it goes right to the seat of the trouble to help loosen and expel germ laden phlegm, and aid nature to soothe and heal raw, tender inflamed bronchial mucous membranes. Tell your druggist to sell you a bottle of Creomulsion with the understanding you must use the way it quickly allays the cough or you are to have your money back.  
**CREOMULSION**  
For Coughs, Chest Colds, Bronchitis

P. A. Nafzger and wife, Mildred L. Nafzger, to J. O. Norris and wife, all of SE 1/4, of Section 33, Block 0-2, containing 160 acres of land, Lamb County;

Myrtle M. Hendricks and husband, A. C. Hendricks, to C. H. Singer, Lot 3, Block 50, Town of Littlefield;

Carl Kahlick and wife to Antone Demel, all of Labor 1, Capitol League No. 680, abstract 345, original Grantee Abner Taylor;

J. R. Flowers and wife, Lennie Flowers, to E. E. Dixon, lots 5, 6, 7, 8, and 9 in Block 49, City of Amherst;

T. L. Buchanan and wife to J. N. Walker, Lot 2, Block 22, Highway Addition to City of Littlefield;

Theodore W. Houlette and wife, Meretta Houlette, to T. L. Buchanan and wife, Lot 2, Block 22, Highway Addition to City of Littlefield;

R. L. Renfro, joined by wife, Nola Renfro, to R. T. Fredericksen, all of lot 10, Block 27, Dugan Annex, an addition to City of Littlefield;

W. E. Hobson and Tempie B. Hobson to Emmitt E. Hobson and wife; all lot 4, Block 1, High school Addition to City of Littlefield, Lamb County;

Mrs. Mary A. Martin to R. L. Masten, all of Labor 4, League 232, King County School Land situated in Lamb County;

Mary A. Martin to R. L. Masten all that certain tract or parcel of land being all of Labor 6, League 232, King County School Land in Lamb County;

Mrs. Mary A. Martin, a feme sole, to R. L. Masten, all of Labor 5, League 232, King County School Land situated in Lamb County, Texas, and containing 177.2 acres of land;

Again in 1946

**CHEVROLET IS FIRST**

First IN CAR PRODUCTION . . . First IN TRUCK PRODUCTION  
First IN COMBINED CAR AND TRUCK PRODUCTION!

AGAIN at the close of 1946—when America's need for new motor cars and trucks is most urgent—the Chevrolet Motor Division of General Motors leads all other manufacturers in automotive production. This means that Chevrolet is first in passenger car production—first in truck production—first in combined passenger car and truck production . . . despite the fact that all Chevrolet plants were closed completely during the first three months of 1946! Naturally, Chevrolet hopes

to be able to build more and more of these fine products which America is buying so eagerly—the only motor car giving BIG-CAR QUALITY AT LOWEST COST—the only truck giving BIG-TRUCK QUALITY AT LOWEST COST—the complete Chevrolet line which stands out as the lowest-priced line in its field! Meanwhile, it stands to reason you'll get bigger value and quicker delivery by purchasing the product of America's largest builder of cars and trucks—Chevrolet!

Remember . . . LARGEST PRODUCTION means QUICKEST DELIVERY of your new car. Place and keep your order with us for a new Chevrolet and get biggest value as well as earliest possible delivery!

**CHEVROLET—LOWEST-PRICED LINE IN ITS FIELD!**

**Hewitt Chevrolet Company**  
Littlefield, Texas

**Huskies**  
THE ALL-PURPOSE MOCCASIN  
WOMEN'S SIZES 3.95  
THAT'S START TO WEAR FOR COMFORT

Appeals to the Outdoor Girl—and all who love that fascinating "outdoor look".

Every inch LEATHER except the non-marking rubber sole—and that's husky rubber. Adjustable ankle-fit. Raw-hide laces. Quality in every stitch.

**REPLIN'S**  
"REAL VALUES"



From where I sit ... by Joe Marsh

**Willie Goes to School at 23**

Everybody's joshing Willie Wells about going back to school. They remember when Willie would hide out in the woodshed—scared to bring his report card home to Pa. But under the G.I. Bill of Rights, Willie (who has a wife and baby) is getting a free education at the Agricultural College. And Uncle Sam is giving him a fine report: "Department, excellent; Progress, above average."

That goes for all those undergraduate veterans. Like Willie, they appreciate an education more than

ever now. They're industrious and well-behaved—their favorite beverage is milk, or a temperate glass of beer. For them the "three R's" seem to mean: Responsibility, Resourcefulness, Restraint.

From where I sit, cynical folks who thought veterans wouldn't want to return to school—wouldn't stick to steady habits of work and moderation—have their answer in "undergraduates" like Willie.

*Joe Marsh*

Copyright, 1947, United States Brewers Foundation

**Mrs. Quinton Bellomy Organizes Nursery Class; 25 Enrolled**

Mrs. Quinton Bellomy, assisted by Mrs. A. E. Hayes, Jr., is getting her nursery class organized at her home on West Second Street, with 25 children enrolled and a few on the waiting list.

An outlined program is followed each day, dividing the time into the following periods, thereby giving the necessary diversion for their age groups:

Conversation, Presentation of the Flag, Music, Work, Supervised Play, Fruit, Counting, Spanish Conversation, Story Hour, and Dramatization. The following children are enrolled: Maybelle Ayers, Carol Bellomy, Judy Johnson, Teena Brown, Chip Payne, Ralph Gerald Maurer, Edwin

**Study of Water**

(Continued from page one)

of Directors of the High Plains Water Use and Conservation Association and officers and directors of every county water conservation group.

Mayor C. A. Bestwick of Lubbock, opened the meeting with a short welcoming address followed by a clear statement of the stand of the Lubbock City Commission and the Lubbock Chamber of Commerce on the question. Reading from the advertisement which appeared in many Plains newspapers last week, Bestwick said, "The Lubbock City Commission and the Lubbock Chamber of Commerce have not advocated, proposed, approved or endorsed any legislation, rules or regulations in regard to protecting, controlling or allocating underground water."

"The two organizations are opposed to any legislative proposals until the people of this area have the opportunity to thoroughly study them."

**Propose Thorough Study**

"Both groups do advocate a thorough study of the underground water resources of the area and ask the cooperation of all the citizens of this section in helping to put into effect protective measures if the study indicates they are needed."

**J. H. Lee Addresses Meeting**

The Mayor then introduced W. L. Edelman, Friona committeeman of the High Plains Water Use and Conservation Association. Edelman, along with H. S. Hilburn, Plainview editor, and J. H. Lee, Littlefield banker, was there as official spokesman for the High Plains Water Use and Conservation Association. All three made talks to the effect that they were in favor of a thorough study to determine what should be done about underground water on the High Plains.

Besides Mr. Lee, other representatives from Lamb county were: A. P. Duggan, Ivan Fowler, Gus Parrish, of Earth and C. E. Bloy of Olton.

**Miss Elaine Gatlin and Jack P. Grant Marry January 3**

Announcement is being made of the marriage of Miss Elaine Gatlin, the daughter of Mr. and Mrs. V. W. Gatlin, of Lubbock, and Jack P. Grant, son of E. Grant, of Anton, which took place Jan. 3 in the home of Rev. C. J. McCarty, who officiated.

The bride wore a gray gabardine suit with black accessories.

Those attending were: Mr. and Mrs. Olen Grant of Long Beach, Calif.; Miss Judy Gatlin, Miss Carla Mae Jones, both of Lubbock, and Billy Joe Gafford of Shallowater.

A reception followed the ceremony.

Fowler, Bill Fowler, Bill Wade, Bill Jefferies, Paula Sue Jensen, Alexander Duggan, Ray Smith, Gary Rodgers, Kenny Wilemon, Frances Rodgers, Jane Rumbach, David Holmes, Gay Hale, Gayla Jane Smith and Charlotte Robinson.

**Last Rites**

Continued from Page 1

Woodworth, student of Tech College, Lubbock; C. W. Woodworth, Jr., of Kingsburg, N. J., and Mrs. Louise Brown of San Francisco, Cal.; her parents, Mr. and Mrs. W. N. Gore of Littlefield; and two sisters and three brothers. The sisters are: Mrs. Van Clark of Littlefield; and Mrs. W. K. Matthiesen of Boulder, Colo. The brothers are: W. N. Gore, Jr. of Littlefield; Harold Gore of San Antonio, Texas; and Horace Gore of Lubbock.

Out of town relatives here for the funeral services were: Mr. and Mrs. A. I. Thomas and Mr. and Mrs. Claude Woodworth, all of Tahoka, Texas; Mrs. Georgia Mecham of Tarkenton, Texas; Mr. and Mrs. Cecil Woodworth of Lubbock; and Mr. and Mrs. Horace Gore of Lubbock.

**Lamb County Schools**

Continued from Page 1

and high school, with adjustments upwards for sparsely settled areas; providing high school tuition at \$12 per month and elementary at \$6 per month; and providing that the "free time" shall be four months, without the necessity of having school districts submit the complicated information now required for setting free time and rate.

3. Enactment of such laws and appropriations of such funds as will provide a per capita of \$55, to be used by schools not receiving equalization aid to enable them to increase salaries to be in line at least with the salary provisions of the new equalization bills.

Special combination rate on Star-Telegram and Leader renewals at the Leader office.



**YES.....IT'S TRUE**

You Can Subscribe To Any CURRENT MAGAZINE At The

**YANTIS NEWS STAND**

Ask Us About LIFE, TIME, HOUSEBEAUTIFUL, READER'S DIGEST, ETC.

Renew or subscribe to your favorite daily newspaper here

SHINES — POPCORN — CANDY CIGARETTES And SOFT DRINKS

**YANTIS NEWS STAND**

North Phelps Ave. Phone 257-R

**FOOD Values**

At **Piggly Wiggly**

BESTYETT SALAD DRESSING	Full Pint Jar	39c	BAUMER BRAND PURE PINEAPPLE PRESERVES	2-Lb. Jar	77c
LARGE GRAIN — TNT Brand P OPCORN	Can	16c	CAMPBELL'S VEGETABLE SOUP	No. 1 Can	14c
HARVEST INN SWEET PEAS	No. 2 Can	14c	LUX OR LIFEBOUY TOILET SOAP	Bar	12c

**APPLE BUTTER** WHITE HOUSE 28 Oz. JAR **29c**

**MODART FLUFF SHAMPOO** Regular 75c Jar for **37c**

**BRER RABBIT SYRUP** Half Gal. Size **49c** FOR SATURDAY ONLY

Delta No. 2 1/2 Can **TURNIP GREENS 11c**

Bisquick 40-oz. Box **GOLD MEDAL 47c**

Softasilk Large Box **CAKE FLOUR 37c**

Marshall No. 2 Can **HOMINY 12c**

Franco-American No. 1 Can **SPAGHETTI 15c**

**SCHILLING'S BLACK PEPPER** 2-oz. Can **23c**

FOR SATURDAY ONLY

Schrock No. 2 Can **PINTO BEANS 15c**

Red Sock-Eye No. 1 Can **SALMON 59c**

Everlite 10-Lb. Bag **MEAL 75c**

**COFFEE** BRIGHT AND EARLY ANY GRIND Lb. **35c**

**Garden Fresh Fruits and Vegetables**

10-Lb. Mesh Bag Marsh Seedless **GRAPEFRUIT 59c**

10-Lb. Mesh Bag Texas Full o' Juice **ORANGES 59c**

**EXTRA FANCY Lb. Delicious Apples 15c**

**NO. 1 YELLOW Lb. ONIONS 5c**

Wolf Brand No. 2 Can **CHILI 45c**

Heinz 14-oz. Bottle **KETCHUP 27c**



**BIRDS EYE FROZEN YELLOW WHOLE KERNEL CORN 25c**

**BIRD'S EYE FANCY FROZEN STRAWBERRIES 72c**

Extra Choice Dried Lb. **APRICOTS 45c**

Extra Choice Dried Lb. **PEACHES 32c**

Extra Choice Dried Lb. **PRUNES 27c**

Extra Choice Dried Lb. **RAISINS 27c**

Skinner's **RAISIN BRAN 14c**

**DIAMOND CARTON MATCHES 33c**

**PEACHES** ALL GOLD IN HEAVY SYRUP No. 2 1/2 FANCY HALVES OR SLICED CAN **29c**

No. 1 Store, Sliced Lb. **BACON 65c**

Fresh Lb. **PORK CHOPS 54c**

All-Beef Lb. **HAMBURGER 35c**

**AMERICAN CHEESE** ... 2 Lb. **96c** ...

Borden's **COTTAGE Lb. CHEESE 29c**

Baby Beef Lb. **SHORT RIBS 33c**

**NO. 1 Lb. DRY SALT 49c**

**Piggly Wiggly**