

**Troup, Formerly of Scotland
Fort Worth Bible Seminary,
Coming to Littlefield for Visit**

Troup, formerly of Ed-Scotland, and now the Bible Baptist Seminary, Fort Worth, will visit the near future. He is coming to Lubbock for a special meeting, and an opportunity to visit for one night. He remembered that Dr. Weldon B. Meers of the Littlefield Missionary Baptist church will be the guest of the Bible Baptist church in Edinborough, Texas, for many years ago. Troup is in Edinborough, Texas, in connection with his work as a member of the Bible Baptist church. Dr. Troup is the founder of the Bible Baptist church in Edinborough, Texas. Dr. Troup is the founder of the Bible Baptist church in Edinborough, Texas. Dr. Troup is the founder of the Bible Baptist church in Edinborough, Texas.

several young people, the Littlefield Missionary Baptist church, attending the group included Wallace, daughter of Mr. E. Wallace, Littlefield, and Mrs. V. Richardson, son of H. C. Richardson of Littlefield, and Vyndal of Mr. and Mrs. V. Richardson.

**Growers
Revenue Loss**

The cotton farmers are facing the dismal prospect of a complete loss of their 1950 crop and a decline of 20 percent in the revenue of their 1950 crop as a result of the Department of Agriculture restricting exports to 2 million bales. The order was announced, and cotton has already fallen to \$15 a bale and more are expected.

Man Hits Action

W. Cochran, president of the department, has made the efforts of many growers to eliminate our losses has also destroyed the South Plains farmers' right to expect for his

of the Lubbock Cotton exchange said.

"Geographically the South Plains area, which produces more than 15 per cent of the Texas crop, is situated so that its products, cotton and grain, can move to export channels with little or no trouble and confusion," Cochran pointed out. "Our economy is geared to this situation and anything that interrupts the flow of our products to the port, also disturbs the price the producer may expect to receive for his crops."

Cochran urged farmers, business men, cotton men and every person in every industry and walk of life to write or wire Texas representatives in Congress and the Secretary of Agriculture to protest bitterly against the restrictions of exports for cotton.

"There ought to be protest meetings convened in the South Plains and word sent to Washington immediately so that our sentiment can be heard," Cochran said.

"It is inconceivable — this ill-timed and ambiguous announcement restricting exports to a possible meager 2,000,000 bales," Cochran continued, "coming right after the government has disposed of practically its entire stock of cotton which could have been held for any national defense emergency."

"The government sold its stocks at high prices from 40 to 41 cents. Why should they now want us to take less and at the same time urge us to produce a big crop next year?" he added.

"The resulting effect will seriously undermine the farmers market and credit facilities and will mean the loss in income of millions of dollars right here on the South Plains as well as elsewhere in Texas."

"The action clearly indicates that selfish interest—the mills—have supported the order," the cotton man continued. "We feel that the department should take immediate corrective steps to remedy the injury and the loss it has already caused the farmers of Texas and this area. Our exchange is joining with other Texas exchanges and those of the South in requesting that this action be taken and we believe farmers should make themselves heard."

Cochran pointed out that in past years American mills have been sellers of raw cotton late in the crop years proceeding heavy discounts such as we have at the present time, and it is the opinion of cotton experts that the 2,000,000 bale export limit for eight months, probably 3,000,000 bales for the year, sets up another ideal situation for this operation. Some American mills are already asking

OFFICIAL NEWSPAPER OF LAMB COUNTY
LAMB COUNTY LEADER

VOLUME XXVII LITTLEFIELD, LAMB COUNTY, TEXAS, THURSDAY, OCTOBER 19, 1950 NO. 68

that September and October shipments be postponed until 1951, he said.

Mexican Cotton Advances

"The immediate result of the announcement was a 200-point advance in the basis of Mexican cotton," Cochran said, "and doubtless this is true of all cotton non-United States grown. This means higher prices for all of our competitors resulting in larger acreage and more competition in future years. We have the demand and we have the cotton to spare with a comfortable margin of safety and to us it seems preposterous to use this indirect subsidy for our competitors."

Cochran said members of the Lubbock exchange planned to circulate petitions on the situation to be forwarded to Washington within the next few days.

He pointed out that insofar as the cotton man is concerned, he will be the least affected by the order, as he buys and sells, on a margin of profit in the process regardless of the price.

To Hit Area Farmers

"But the order will be felt se-

verely in the pockets of South Plains farmers and they should set up a wholesale howl," Cochran said.

He said fully one-third of last year's cotton crop, more than 1,000,000 bales, went directly to export to Japan and the ECA countries of Europe.

"Such a drastic reduction in exports will permanently alienate many of our foreign buyers, who have been in the past and will be in the future sorely needed," Cochran declared.

Since in some cases more cot-

ton has already been contracted than the total allowable, the proposed cutback in exports will not only reduce the farmers income, but will also create a chaotic condition in the cotton trade, the Lubbock cotton merchant continued.

"We urged everyone on the South Plains to raise their voices in protest against the harmful and unnecessary drastic limitations imposed," he concluded.

Use the Leader Classified Ads for quick results.

ATTEND ALL-DAY FELLOWSHIP MEET AT DUMAS RECENTLY

Rev. Weldon B. Meers, pastor of the Littlefield Missionary Baptist church, XIT Drive and 8th Sts., attended an all-day fellowship meeting at Dumas, Texas last week.

Rev. Meers also attended a Bible conference at Amarillo on Tuesday, and was one of the speakers of the day.

Try the Classified Ads for quick results.

FORD MOTOR COMPANY'S
New Automatic Drive
Makes its Bow in
the new 1951 MERCURY

"Smoother, simpler, more efficient!"
—that's how engineers hail this amazing new automatic drive that's coming soon in the new 1951 MERCURY.

MAYBE you've read about it. Surely you've heard about it. It's the amazing new automatic transmission developed by Ford Motor Company. Now you're going to see it, thrill to it, for the first time in any car, in the new 1951 Mercury.

Called Merc-O-Matic

Merc-O-Matic is the name. And of this you can be sure: there'll be nothing like it on the road! The thrilling new 1951 Mercury will be making a debut in our showrooms in a very few days. And once you see it, we think you'll agree:

For "the drive of your life," it's the new 1951 Mercury with Merc-O-Matic Drive!

What is Merc-O-Matic Drive? It's a completely new, completely automatic drive developed under the direction of Ford Motor Company and Borg-Warner transmission engineers, and made to order for Mercury's great, V-type, 8-cylinder engine. It's s-m-o-o-t-h-e-r, simpler, more efficient!

Makes every driver an expert

Naturally, there's no clutch or gearshift. But there the resemblance to other drives ends. For this new Merc-O-Matic Drive is different. Even the easier-to-read indicator panel is different. The drive selector is so arranged that a person accustomed to a standard shift will feel perfectly at home. And if you're familiar with other drives, you'll notice immediately the big

difference in the way this new 1951 Mercury with Merc-O-Matic performs.

There's no "mushiness." With Merc-O-Matic Drive you get instant, certain response. You start in one smooth sweep of power. No tugging as gears change. There's a "down-shift" for extra hill-climbing and passing power; just press the accelerator smartly to the floor. And Merc-O-Matic is cool operating — no uncomfortable heat in the passenger compartment.

There's no "runaway" downhill. You are in control all the time with the engine's compression at work to save your brakes.

There's no stalling in traffic. Park on a hill if you like. You're safe. Merc-O-Matic Drive locks when in Parking position.

Yes, Merc-O-Matic is going to make you forget all you ever knew about automatic transmissions. This is it—the easy, sure, safe, s-m-o-o-t-h "drive of your life." And—it's extremely thrifty.

Dozens of New Features in 1951 Mercury

But Merc-O-Matic is only part of the great new Mercury for 1951. There's a new look from end to end... beautiful new styling... rich, new fabrics and colors to make Mercury for 1951 one of the smartest cars on the road.

New safety, too—the new rear window alone gives you more than 1,000 square inches of safe viewing area. Greater comfort in a new, improved ventilating system which brings you just the amount of fresh air you want, when you want it, and where you want it.

It's the plus car of the year—plus on beauty, plus on comfort, plus on safety, plus on economy—plus on everything but price!

All that and the great new Merc-O-Matic Drive, too. Yes, you'll want to see these new Mercurys. So watch Mercury showrooms for the new 1951 Mercury with Merc-O-Matic for "the drive of your life"—for "the buy of your life."



COMING SOON—AT YOUR MERCURY DEALER—1951 MERCURY WITH MERC-O-MATIC DRIVE!

Ed Packwood Motors
610 East Fourth Street Littlefield Texas

ANSEL AND GRETEL

ON STAGE **IN PERSON**

COLORFUL COSTUMES **FAIRYLAND SCENERY**

Illustrious All-Adult New York Singing and Dancing Cast
"A Supreme Achievement in Perfect Family Entertainment"

DON'T MISS IT!
Every Child Deserves To See This
ONE AND ONLY ORIGINAL MUSICAL STAGE PRESENTATION

Sponsored By The
LITTLEFIELD SCHOOLS
One Performance Only
Friday, October 20
Opening at 10 A. M.
at the
LITTLEFIELD HIGH SCHOOL AUDITORIUM
Tickets on Sale at the School Only
Children and Students Admission 60c
(Including Tax)
Adults \$1.20
(Including Tax)



A SHORT STORY

Reunion

BY RICHARD HILL WILKINSON

I MEANT to warn Oliver about Carolyn, but somehow I hadn't got around to it. After all, you can't go up to a man you've only known three days and tell him to lay off a beautiful woman like Carolyn because she was poison. Especially when you know the man is in love with her. Men in love aren't rational.

What griped me most was the fact that she was well aware that I knew all about her past and it didn't make any difference. This proved more than anything that she was an unscrupulous woman.

Of course she hadn't known I was coming. Palmer Khor invited me down at the last minute. He was going to Europe, and this was a sort of farewell party—one of Palmer's famous parties that began on Friday and ended on Monday.

I hadn't been there 10 minutes before I saw Carolyn. She had a man in tow. I might have expected a man, but even so it was a shock. It hadn't been a month since she'd had her quarrel with Toby. I knew all about that quarrel. Every one else did, I guess. Every one but this Oliver Legge. He was a stranger. He should have been warned, and I had every intention of warning him.

If you stopped to think about the thing sanely, which was hard when you knew Carolyn, you wouldn't wonder at Legge's infatuation. She was a wheat-colored blonde with deep blue eyes and a scarlet mouth. If ever a more beautiful woman lived I haven't met her.

The worst of it was that Palmer and the others were amused at the way Legge was being taken in.

"Somebody," I said, "ought to warn that fool."

"Why?" said Palmer, grinning.

"Why?" I repeated. "You know very well why. Look what kind of a woman she is. The boy seems decent."

"He is decent. I've known him for years. Carolyn's all right, too."

"Yes? Look what she did to one man."

"Toby? Maybe that was Toby's fault."

I looked at him in surprise. "You know damn well it wasn't. Every body knows it."

"They did before they heard Carolyn's side of the story. There's two sides, you know, to every story."

I shot him a quick, suspicious look. "So that's it? Carolyn came down here and cried on your shoulder and you believed her?"

"She explained that she didn't know Toby was near financial ruin. He was one of those dotting fools who never let his wife in on his private business. He gave her everything she asked. When the end came he blamed his ruin on

her extravagance. That's what made her mad."

"And you believed it?"

"Sure I believed it. Any one who knew the pair would. Toby was nuts about her. So nuts that he didn't play fair."

"Do you call giving her everything she wants not playing fair?"

"It's the worst kind of cheating. If Toby had given the girl a break she'd have come through. She loved him."

"You're crazy!"

Palmer shrugged. It struck me as grimly humorous the way he had been taken in. Carolyn was clever all right. She'd made Toby look like a punk. She had them all rooting for her. And now she had Oliver Legge chasing after her.

The next day I took the trouble to find out something about Legge. Among other things I learned that he had a million dollars in his own right. That explained a lot. This time Carolyn was knocking off some real money. She wasn't going to run the risk of having a second husband go broke. I felt sorry for Legge. He was a good, clean chap. Something ought to be done at once.

I went looking for Carolyn. She wasn't in the living room and she wasn't anywhere else in the house. Nathan, the butler, said he'd seen her going over the north slope alone on skis. I got my skis and climbed to the top of the slope. Below there was a moving yellow dot. That was Carolyn's trick ski suit. She was alone.

The thing that killed me is I couldn't say it. I started to twice and stopped. My throat felt dry. I swallowed. Then I said: "Palmer told me—I mean, he said the smash-up wasn't your fault."

"Yes?" she said, and waited, waiting.

"Well," I said, "I told Palmer he was crazy. I told him you were the type who would let your husband down when he needed you. I—oh, hang it, Carolyn, I didn't mean it, honest!"

She caught her breath, but she didn't speak. I came up close to her. "Listen," I said, "I never thought of it that way. Palmer got me to thinking. Maybe—maybe I didn't give you a break. But that's because I loved you so darned much I couldn't make myself believe you would be happy without material things I mean, I've kidded myself it was me you loved and not what I could give."

"Toby," she breathed. "Darling! Then thank heaven it happened—so you can know always that it is you and nothing else in the world that I love. Toby, you do believe me?"

"This proves—everything," I cried happily. And then I had my wife in my arms and, figuratively speaking, of course, she's been there ever since.

YOUR brain budget

1. Cleopatra of Egypt came to power at the age of (a) 30, (b) 18, (c) 41, (d) 6.
2. Grapple means (a) to seize, (b) to anchor, (c) to grind, (d) to tie.
3. The "Great White Way" should make one think of (a) Montreal, (b) New York City, (c) Mexico City, (d) Tokyo.
4. The part of the U.S.A. noted for turpentine production is (a) New England, (b) Midwest, (c) South, (d) West.
5. Emulate means (a) to try to equal, (b) to revive, (c) to cure, (d) to hide.

ANSWERS
 1.—(b) 18.
 2.—(a) To seize.
 3.—(b) New York City.
 4.—(c) South.
 5.—(a) To try to equal.

MAYOR MCGUP

By John Jarvis



BINGO CARNIVAL WEEKLY AT EARTH

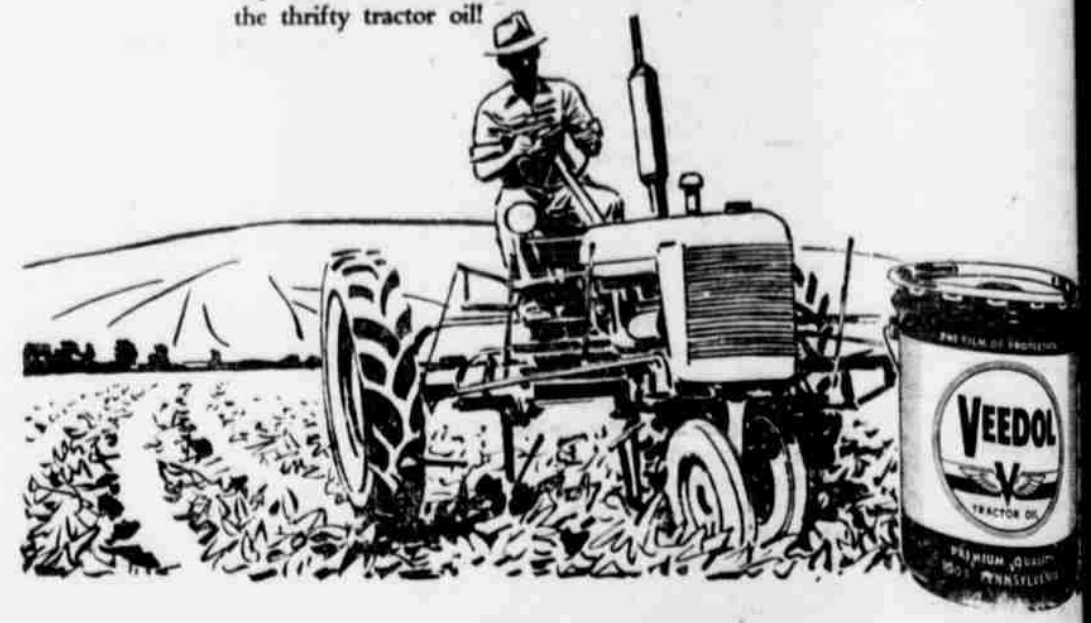
The Earth Lions club voted to hold a Bingo carnival each Saturday at the community house to give the townspeople a form of relaxation and provide a means of replenishing the treasury.

Mrs. C. H. Bottoms of the Shotwell hospital Friday and is getting along nicely.

The World Famous "Film of Protection" Helps YOU SAVE 5 WAYS

- ### VEEDOL
1. SAVES FUEL—by reducing power blow-by.
 2. SAVES TIME—by avoiding breakdown delays.
 3. SAVES REPAIRS—through greater resistance to heat and wear.
 4. SAVES OIL—good for 150 hours between changes in gasoline-powered tractors; cuts oil consumption in all tractors.
 5. SAVES TRACTORS—with oil protection that assures long, consistent service.

150-HOUR VEEDOL TRACTOR OIL is refined 100% from BRADFORD PENNSYLVANIA crude oil—the world's finest Pennsylvania crude. Veedol's rich, extra oiliness, super-tough body, amazing resistance to extreme heat and pressure assures dependable, effective lubrication. Ask for 150-Hour Veedol—the thrifty tractor oil!



Oscar P. Wilemon
 DISTRIBUTOR FOR VEEDOL
 Highway 84—Littlefield

HART CAMP CHURCH TO BE HOST TO W. P. ASSOCIATION

The monthly workers conference of the West Plains Baptist association will meet with the Hart Camp Baptist church on Friday, October 20. Rev. Charles Vanlandingham is pastor.

The program follows:
 10:00 Song Service—Glen Wilson
 10:15—Our Best in Use of Our

Time ----- Rev. Bruce Giles
 10:40—Our eBst in Use of Our Talents -- Rev. Wayne Perry
 11:05—Our Best in Use of Our Possessions ----- Rev. Lee Hemphill
 11:30 ----- Announcements
 11:35 Sermon Rev. A. W. Blaine
 12:05—Lunch served by Host Church
 1:15 Executive and W.M.U. Board meetings
 2:30 Sermon Rev. F. E. Swanner

1890 1950



Will You Enjoy "Tomorrow"?

Every man's future is fraught with uncertainties . . . of health . . . ability to meet emergencies . . . his family's protection in event of his disability or death . . . his own independence and happiness in old age.

Let the local Woodmen representative show you how you can enjoy Woodcraft's fraternal activities today while you build "tomorrow's" security and happiness with safe, sound Woodmen life insurance protection the Society furnishes its members at cost.

W. D. CHAPMAN

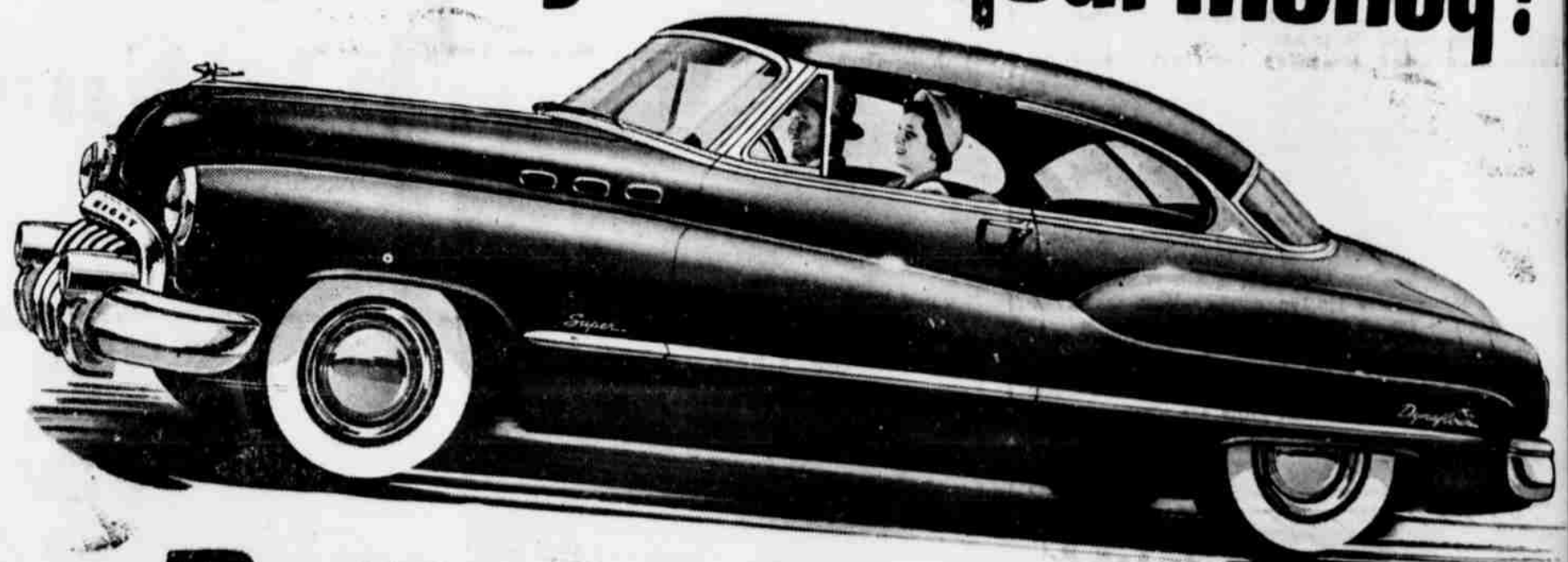
District Manager,

Box 168

Littlefield

WOODMEN of the WORLD
 Life Insurance Society
 OMAHA, NEBRASKA

Want a long run for your money?



Better Buy Buick!

YOU want a new car to be tops in things like style and room and comfort and power—and a thrill-packed fifteen minutes with the nimble number pictured here will show you it has all these things in abundant measure.

So you ask us—how about money? What does it cost to buy a Buick—and to own one? All right—let us ask you some questions.

Take first cost. Do you know that Buick prices start down at a level below what you'd pay for some sixes—and that every Buick, on a cents-per-pound basis, is a standout buy?

Take operating cost. Do you know that the bang you'll get from Buick's Fireball power comes from a valve-in-head engine—recognized by engineers as a thrifty saver of fuel?

Do you know that owners of 1950 Buicks are writing us rave letters, saying that this year's version is the most economical Buick ever built?

Do you know that such comfort features as coil springs on all four wheels protect the car as well as the passengers—and throw in an extra saving because they need no servicing, and are practically breakproof to boot?

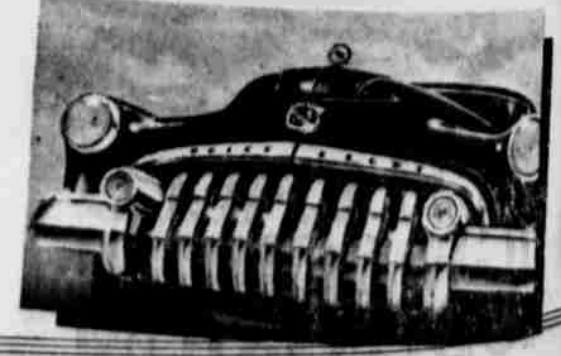
Do you know that Dynaflo*—in addition to keeping you fresh as a daisy on a day-long drive—caps its convenience with savings on tires, cuts down the strain on

transmissions and engines—and eliminates all friction clutch repairs, because it hasn't any?

Take final cost. Do you know that when the owner of a Buick gets a yen for a later model, the prices that Buicks command on a used-car lot are the ultimate proof of their long-run value?

So if you want a real run for your money, better buy Buick. And the first step is very simple: Go see your Buick dealer—soon—and get an order signed.

FOUR-WAY FOREFRONT—This rugged front end (1) sets the style note, (2) saves on repair costs—vertical bars are individually replaceable, (3) avoids "locking horns," (4) makes parking and garaging easier.



Tune in HENRY J. TAYLOR, ABC Network, every Monday evening.



Leo R. Hewitt Motor Co.

507 PHELPS AVENUE

LITTLEFIELD, TEXAS

WHEN BETTER AUTOMOBILES ARE BUILT BUICK WILL BUILD THEM

son's New Elevator Gets First Load of Grain from Gene Mitchell

60,000 Kee Grain elevator, under construction in south Olton, received its first load of grain Wednesday afternoon.

Gene Mitchell, who resides at Olton, delivered the first load of grain to the new structure.

emonstrate ing of Mission y Books

Monday, October 19th, a team of the First Baptist church and state W.M.U. workers will be at the First Baptist church to demonstrate the teaching mission study books for all members of the W.M.U. of the West Plains district.

The meeting will begin at 10 a.m. and continue until mid-afternoon. All members of the W.M.U. are invited to attend. Mrs. T. H. Thorn, district young people's secretary and Miss Ruth Thorn-

ton, state young people's secretary will be among the guests for the day.

Rex Kee, elevator owner, has announced that the elevator will receive grain, to be unloaded by hand, pending completion of the structure. Roofing is being placed on the north storage warehouse to protect the grain from the elements as the rest of the structure is being rushed to completion.

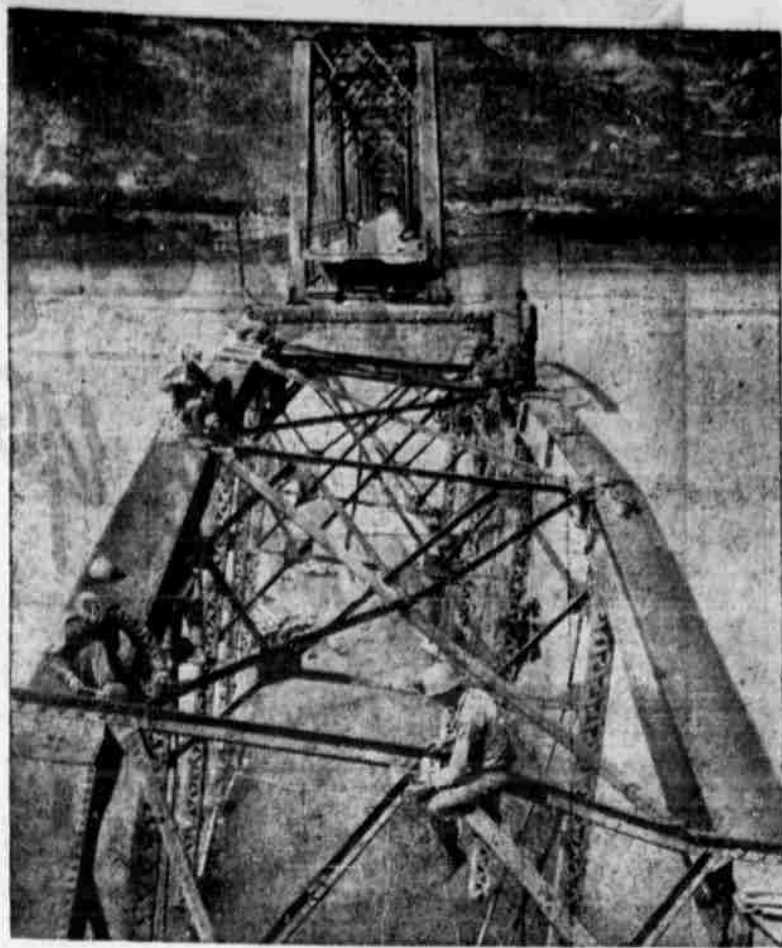
Starting work two weeks ago, the structure was scheduled to be completed within 30 days.

Women's Society Meets

The Women's Missionary society of the First Baptist church held a Royal Service program Monday afternoon in the church parlor, with the Ella Ruth Soleabee circle in charge.

The Business Women's Circle meets Tuesday, October 17 at 7:30 p.m. in the home of Mr. and Mrs. W. E. Bass, with Mrs. Bass as hostess.

Leader Want Ads never sleep.



PREPARE BRIDGE FOR DEMOLITION . . . At the Waegwan front area of battle-ravaged Korea, members of the 84th combat engineers of the eighth army swarm over a wrecked bridge span, putting in place demolition charges, as they plan to blow the bridge. The destruction of the wrecked span is in preparation to erect a new structure.

FIRE IN ENGINE ROOM CAUSES DAMAGE TO GIN

A fire in the engine house of the J. H. Plemons gin at Snyder about 2:30 Wednesday of last

week caused damage estimated be-

ment sent out one truck and the blaze was extinguished before the gin proper or any cotton was set fire.



LIGHT · MEDIUM · HEAVY MODELS
Made in widest variety of engine-body-chassis combinations to fit every trucking need

**Think twice today
when you buy a truck!**

THAT new truck you're considering may have to last a long time. So you'll be wise to look at a GMC for these important reasons:

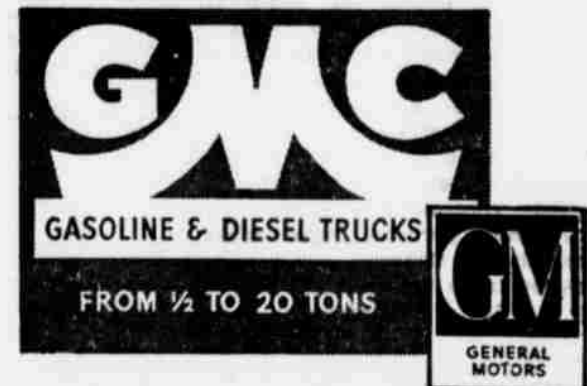
GMC's are built by the world's largest exclusive manufacturer of commercial vehicles—with the broadest truck engineering experience.

GMC's are real trucks. Engine, transmission and frame, as well as cab and axles, are all specially truck-built to give you longer service.

GMC truck-built engines have high horsepower with higher sustained torque—great pulling power. They are built to give you years of service with less maintenance.

GMC extra-value features include Synchro-Mesh transmission, Tocco-hardened crankshaft, full-pressure lubrication, recirculating ball-bearing steering gear, air-plane-type bearings and Lifetime Weather-sealed cabs as standard equipment on practically all models from 1/2 ton up.

That's why more truckers are buying GMC's today than ever before—experience proves them best in the long haul!



Get a real truck!

Sumrall Pontiac

902-10 E. Delano

Littlefield, Texas

You'll do better on a used truck with your GMC dealer

Bula Chapter of F. H. A. Entertains Ladies of Bula and Enochs Community

The Bula chapter of the F. H. A. club entertained the ladies of the Bula and Enochs community tea October 6, to show appreciation for buying the inlaid linoleum for the floor and cabinet tops.

The homemaking department was adorned in fall colors consisting of fall leaves and dahlias.

The invitations were extended to over 60 ladies of the Bula and the Enoch community. Miss Patsy Blackman greeted the guests and Miss Patsy York presided at the registration table.

The refreshment table was covered with a white linen cloth. The center piece was an arrangement of orange coral and pink dahlias, accented by coral candles. A cut glass punch bowl added beauty to the table. Miss Faye Clevenger presided. Mrs. Wayne Alkey the homemaking teacher was hostess to the occasion.

The menu consisted of an assortment of tea sandwiches, cookies, fruit punch and mints.

The following were present: — Henry Young, Mrs. McGee, Mrs. Jarlon Green, Mrs. Wesson, Mrs. J. H. Clevenger, Mrs. Arthur Foley, Mrs. Guy Sanders, Mrs. J. S. Loydston, Mrs. John Blackman, Mrs. Carl Tidwell, Mrs. C. L. Cannon, Mrs. Eugene Bryan, Mrs. Tom Bogard, Mrs. Ray D. Carter, Mrs. R. H. Bruce, Mrs. John Gunter, Mrs. T. A. Thomas, Mrs. J. B.

Van, Mrs. L. E. Nichols, Mrs. M. H. Skinner, Mrs. Roy George, Mrs. Cecil Jones, Mrs. John Hubbard, Mrs. H. A. Reynolds, Mrs. Dutch Cash, Mrs. Troy Calvert and Mrs. Hall.



G.I. FASHION NOTE . . . There's a time for battle and time for merriment in Korea, and one G.I. appoints himself to break battle tension for men of the 25th division.

NOTICE

For the convenience of the taxpayers of Lamb County .. I will be at the following places on the dates set out below for the purpose of collecting State and County taxes . . .

AMHERST October 19
EARTH October 24
OLTON October 26-27

**CLARENCE
DAVIS**
Tax Assessor-Collector
Lamb County, Texas

**HERE'S HOW OLDSMOBILE'S "ROCKET" ENGINE
GIVES YOU BOTH FLASHING POWER
AND REAL GAS ECONOMY!**

"OO"

OLDSMOBILE
A GENERAL MOTORS VALUE
SEE YOUR NEAREST OLDSMOBILE DEALER

Jones Motor & Tractor Co.
LITTLEFIELD, TEXAS

HIGH COMPRESSION!
Oldsmobile's "Rocket" Engine squeezes more power from every drop of fuel! Designed for higher pressures than ordinary engines, it gives you more "go" on less gas!

TEAMWORK WITH HYDRA-MATIC!
The most thrilling power team on the road! Smooth new Oldsmobile Hydra-Matic Drive* converts the "Rocket's" flashing high-compression power into instantaneous action!

TRY IT YOURSELF!
Get set for a new sensation when you try your first "Rocket" ride! Just one exciting trip behind the wheel will convince you: Your best deal is the "Rocket 88" Oldsmobile!

*Oldsmobile Hydra-Matic Drive optional at extra cost on all models.

More Curbs Placed On Credit Buying

On Sept. 18 the government issued an order making it a little tougher for you to buy things on the installment plan.

Friday it issued another order, making it still tougher. So twice within a month the government—through the Federal Reserve Board—has slapped controls on consumer credit buying.

1. By saying how much down payment you must have on things like automobiles, furniture and household appliances.

2. By saying how much time you can have to pay up in full on these things.

Pressure Continues

Why this second crackdown within a month? Didn't the Sept. 18 order put a crimp in some of the heavy consumer credit buying?

Apparently not. The Federal Reserve board says that it has received reports from all parts of the country about continued pressures on prices. But as yet no detailed analysis has been made, the board said.

These crackdowns are part of the government's program, approved by Congress, to put a brake on inflation.

The inflation began after the shooting in Korea started in June. Prices began to climb.

Early this week the government took another inflation-checking step by putting controls on the buying of one and two-family homes.

On Thursday spokesmen for a number of National Retail Dealers associations told government officials the Sept. 18 restrictions on consumer credit should be relaxed, not tightened.

It was reported, though, that top government defense officials asked the board to do more tightening. So the board did so with its order Friday.

And just about the time this order was issued the board reported that department store sales during the week ended Oct. 7—or three weeks after its Sept. 18 order—were 10 percent above the same week last year.

Other controls which haven't been used yet to brake inflation include controls on prices and wages and, perhaps, higher taxes, even though Congress has just increased taxes this month.

Controls Explained

Briefly here are the controls

ordered Friday:

Automobiles, used or second hand: one-third down payment (including trade-in allowance on your old car) and 15 months to pay in full. The Sept. 18 order said one-third down and 21 months to pay.

Television and radio sets and major household appliances: A 25 per cent down payment and 15 months to pay. The Sept. 18 order said 15 per cent down and 18 months to pay.

(Household appliances affected under this order are refrigerators, food freezers, phonographs, cook-in stoves, ranges, dish washers, ironers, washing machines, clothes dryers, sewing machines, vacuum cleaners, air conditioners, dehumidifiers.)

All Over \$50

Furniture: 15 per cent down 15 months to pay. The Sept. 18 order said 10 per cent down, 18 months to pay.

Friday's order applies to all articles covered by the order if they cost \$50 or more. The Sept. 18 order didn't cover them unless they cost \$100 or more.

The order like that of Sept. 18, set no terms on charge accounts or single-payment loans—meaning loans repayable in a lump sum.

And the order left one part of the Sept. 18 order unchanged: This set the down payment on home improvement credits at 10 per cent and 30 months to pay up.

2,331 Graduate Students

Graduate school enrollment continues to increase at the University of Texas, with 2,331 graduate students registered this fall. Graduate enrollment of 553 in 1945 increased to 1,254 in 1946, 1,464 in 1947, 1,824 in 1948 and 2,088 in 1949.

Confers 52,082 Degrees

Since it opened in 1883, the University of Texas has conferred 52,082 degrees, including 767 Doctor of Philosophy and 64 Doctor of Education degrees. Masters' degrees total 7,209 and bachelor's degrees, 44,042.

Next time for results try a Classified adv in The Lamb County Leader.

To Relieve Misery of

COLDS take 666

LIQUID OR TABLETS—SAME FAST RELIEF

SPADE NEWS

NEW DEAL DEFEATS SPADE 46-0

Last Friday night Spade football boys played New Deal here. New Deal came out as winner 46-0.

This Friday, October 20, Spade will journey to Hale Center for a game of football.

Sunday Visitor

Roy Charles Dodson spent Sunday visiting with Jimmy Mouser.

Visitors in Worley Home

Aurelia Teal, Kay Teal, Sue Sullivan and Shirley Whitfield all of Hart Camp spent Sunday visiting with Barnara and Phyllis Worley in the home of Mr. and Mrs. R. H. Worley.

Week End Visitor

Jerome Head, who is attending ePaeock Military academy in San Antonio, Texas, spent the week end visiting in the home of Mr. and Mrs. C. O. Head.

Visit McWhorters

Wilma Lee Barnhill spent Friday night visiting in the home of Mr. and Mrs. Jake McWhorters.

Visit in Amarillo

Mr. and Mrs. L. E. Arnold and daughter spent the week end visiting with his sister and family, Mr. and Mrs. S. J. Goldwater in Amarillo, Texas.

Sunday Guests

Mr. and Mrs. R. A. Leonard had as Sunday guests Mr. and Mrs. D. R. Leonard of Hart Camp, and Mr. and Mrs. Shorty Leonard of Littlefield.

Breaks Leg

Last Wednesday night Bennett Maples met with an accident when he broke his leg while the outsiders were playing football with the football team of Spade.

Asthma Hay Fever...

So easy to use. Just inhale mist-like vapor. For results use only as directed.

Why suffer when something will help you? After your symptoms have been diagnosed as Asthma or Hay Fever you owe it to yourself to investigate.

ASTHMA NEFRIN

If you are a user of AsthmaNefrin, please bring in your nebulizer for free inspection and servicing.

REESE DRUG

LITTLEFIELD
Phone 167-J

Today

make your plans to

LARD

Armour's
3 Lb. Carton

49c

MAKE THAT FRUIT CAKE NOW
NEW SHIPMENT OF FRESH FRUIT CAKE
INGREDIENTS JUST RECEIVED

SALMON CHUM

Tall Can

36c

- NEW POTATOES, Del Monte Whole, No. 2 Can 15¢
- CORN, Del Monte, Country Gentleman, No. 303 Can 17¢
- CREAM PEAS, Dorman No. 300 Can 15¢
- TOMATO JUICE Magic Garden, 46 Oz. Can 23¢
- PRUNE JUICE, Food Club Quart 29¢
- PEANUT BUTTER, Food Club 12 Oz. Mug 39¢
- PICKLES, Food Club, Fancy Sweet Midgets, 12 Oz. Jar 35¢
- CLEANSING TISSUE, Bo Peep Soft, 300 Count, Box 25¢

- HOMINY, Stilwell No. 2 Can 25¢
- TISSUE, Bo Peep Soft, 2 Rolls 15¢
- NAPKINS, Bo Peep Soft, 80 Count Box 10¢
- SARDINES, American Oil, Can 17¢
- DOG FOOD Dog Club Tall Can 10¢

ANNOUNCING THAT...

Brown & Miller

Studebaker Sales and Service

LFD Drive and 10th Street

have been appointed dealers of

Firestone

TIRES · TUBES · BATTERIES
AND AUTOMOBILE
ACCESSORIES

WE CONGRATULATE

Brown & Miller

on the erection of their beautiful new building,
and also on their wise selection of

Firestone Products

The pioneer line in the Auto Accessory Field

Hauk & Hofacket

Firestone

STORE

Littlefield

Phone 68

Littlefield

Apples

Golden Delicious POUND

- Washington Red Delicious—**APPLES**
- Maryland Sweet—**SWEET POTATOES**
- Golden Fruit—**BANANAS**
- Russets, U. S. No. 1—**POTATOES**
- Iceberg, Heads—**LETTUCE**
- Garden Fresh—**RADISHES**
- ORANGES**

- Shampoo—**DRENE** \$1.00 Size 59c
- Deodorant—**VETO** 50c Size 39c
- Baby Powder—**MENNEN** 50c Size 39c
- Hair Tonic—**JERIS** 75c Size 59c
- CASTORIA** 75c Size 59c

- CREOMULSION**
- Phillips—**MILK of MAGNESIA**
- After Shave Lotion—**WOODBURY**
- Salve—**VICKS**

WEEK OF OCT. 15-21 IS DESIGNATED 'OIL PROGRESS WEEK'

From October 15 through 21, the men and women of America's oil industry are reporting to the public on the part they play in making life fuller and better for the nation's 150 million people. The occasion is the annual observance of Oil Progress Week by the 1,800,000 men and women engaged in the domestic petroleum industry.

Our daily uses for petroleum and its products should be obvious to everyone, for this is a nation on wheels. Oil powers our cars, buses, trucks, airplanes and virtually all other modes of transportation. More than that, it heats millions of our homes and offices. Every machine that runs, every wheel that turns, is lubricated by oil. Many factories and power plants are run on oil. The men and women of oil provide raw materials for hundreds of additional products—cosmetics, plastics, synthetic rubber, insecticides and even the ink with which this paper is printed.

All in all, Americans each day order and receive more than 250 million gallons of petroleum products. To meet this tremendous demand, oil men lift petroleum from the earth—sometimes from wells two to three miles deep—in 26 of our 48 states. They are searching constantly to locate new deposits to maintain our high level of proved oil reserves. The nation's reserves of crude oil and other liquid hydrocarbons now stand at an all-time high, exceeding 28 billion barrels.

Supplying the nation's oil needs are thousands of independent and competing companies, large and small. To most of us the most familiar unit probably is our neighborhood service station. There are 200,000 of these in the country, the majority independently owned or operated. The corporate units of the industry are owned by more than 1,500,000 stockholders.

An indication of the value of the oil men's efforts is the fact that a pound of gasoline costs about four cents, on the average. This amount of gasoline will run an average car 2.5 miles—with all the family aboard! Multiply this by some 44 million motor vehicles, and the significance is apparent. There's no doubt to it. The oil men have a big job to do, and they do it well.

The progress of Texas has been in direct proportion to the development of this state's petroleum resources by private enterprise according to rules laid down by the State's elected government.

Texas produces nearly one-half of the nation's oil supply.

The petroleum industry is the largest contributor to the economy of Texas and to the support of its public institutions and government.

The oil industry in Texas, as well as in the entire United States, is better prepared today than ever before to meet any national emergency because of consistent increase in the oil industry's capacity in all phases of production, refining and proved oil reserves.

At the half-way mark of this century, it is possible to survey the progress of America in the last fifty years and to assay the advances which may be expected in the future. It is plain that our state's progress, and our nation's progress, go hand in hand with oil progress.

October 15 to 21 inclusive has been designated as "Oil Progress Week" when members of the oil industry will cooperate in informing the public about the ways in which their industry will cooperate in informing the public about the ways in which their industry has contributed to our high standards of living and the preservation of our free democratic American way of life.

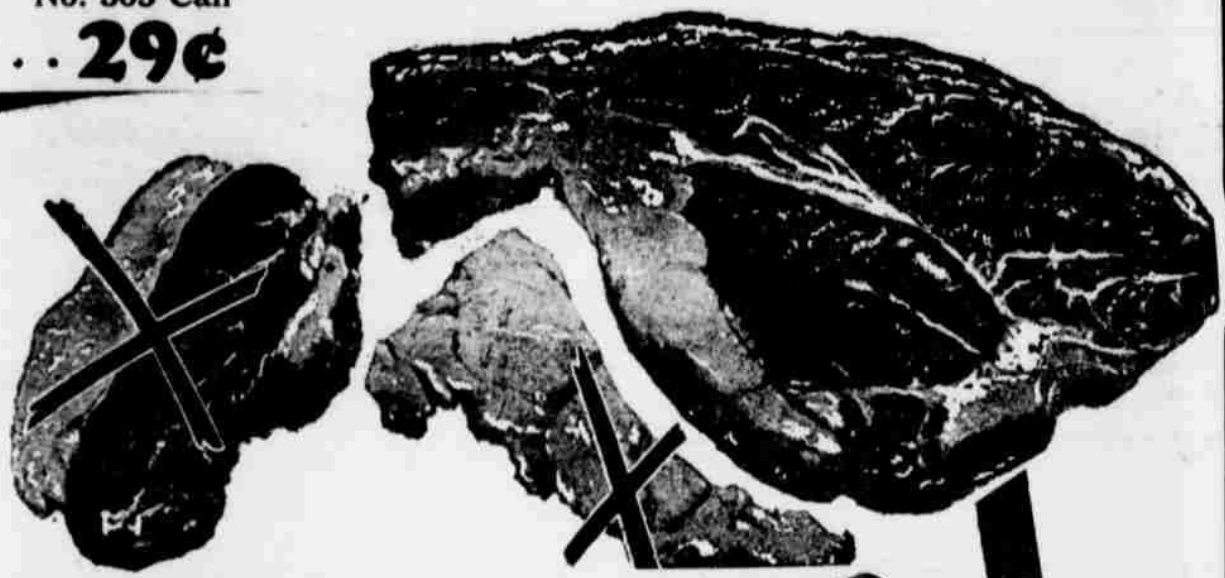
FURR'S MONTE ROUND-UP

Apple Del Monte Crushed, in Heavy Syrup, No. 2 Can **23c**

No. 303 Can **23c** Sierra Mission, in Heavy Syrup—**PEACHES** No. 2 1/2 Can **25c**

Orange Juice Lady Royal 46 Oz. Can **27c**

3 For **25c** Tuxedo Grated—**TUNA** CAN **25c**
No. 303 Can **29c**



STEAKS BACON

Loin or T-Bone **79c**
POUND

Wilson's Lakeview Sliced—POUND **39c**

POUND **39c** PORK STEAK
Boston Butt Cuts
Lb. **49c**

POUND **39c** FRYERS
Bighams Fresh Dressed
Lb. **51c**

Mr's Tenderized, Half or Whole—**KNICKS** **39c**
Mr's, Rolls—**SAUSAGE** **39c**
Small Meaty Sides—**SPARE RIBS** **49c**
Furr's Skinless—**FRANKFURTERS** **39c**

FROZEN FOODS

GRAPEFRUIT JUICE, Hampshire, 6 Oz. Can	15c	BROC COLI	
ORANGE AND GRAPEFRUIT, Hampshire, 6 Oz. Can	15c	Top Frost	29c
STRAWBERRIES, Top Frost	39c	Pkg.	
In Heavy Syrup, 12 Oz. Pkg.		SPINACH	
CORN ON COB	15c	Top Frost	25c
Top Frost, Pkg.		Pkg.	
BRUSSEL SPROUTS	35c	Box—	
Top Frost, Pkg.		AJAX	12c
ASPARAGUS, Top Frost	49c	Bar—	
All Green, Pkg.		DIAL	19c
Soap—	Reg. Bar	Can—	
PALMOLIVE	9c	BABO	12c
Soap—Bath—			
PALMOLIVE	13c		
Crystal White—	Giant Bar		
SOAP	8 1/2c		

FIELDTON FACTS

25 Bales Ginned
Twenty-five bales of cotton have been ginned at the Fieldton gin at this date.

Bull Pulling Soon
Several farmers expect to begin bull pulling soon. The early feed is being combined at a rapid rate the past week or ten days. We are hoping for more time to mature the late feed.

Take Up Collection
The Fieldton Baptist church took up a collection last week for the new orphan home at Round Rock. Ten cases of eggs, over 300 containers were donated and the ladies of the church quilted three quilts.

Return Home
Mr. and Mrs. Jim Ryan spent Sunday with Mr. and Mrs. A. H. Scivaly. Mrs. Ellis Sullivan, who has spent the past two weeks at Clovis, with her daughter, Mrs. Ryan, returned home with them.

Go To State Fair
Mrs. Vernon Qualls and Henrietta accompanied the F.F.A. boys

of Amherst to the Dallas state fair the past week. Henrietta is the F.F.A. sweetheart.

Sunday Visitors
Mr. and Mrs. W. H. Blackwell and Mr. and Mrs. George Hooper of Whitharral, Mr. and Mrs. Bernard Gaston of Bula, Mr. and Mrs. Jackie Riddings of Deming, N. M., Mrs. Arthur Doshier, Mrs. J. D. Richards and Mr. and Mrs. W. H. Blackwell, jr. of Littlefield were Sunday visitors with Mr. and Mrs. Paul Blackwell and sons.

Spend Sunday at Lamesa
Mr. and Mrs. Ted Royal and children and Mrs. Beulah Robison spent Sunday at Lamesa with Mr. and Mrs. R. T. Bedwel, jr. and children.

Billy Ray Birch and Jimmie Testerman attended the Dallas state fair with the F.F.A. boys from Amherst high school.

Goes to Fort Worth
Ruddy Testerman visited in Ft. Worth last week.

Try the Classified Ads for quick results.

Wayland President To Speak at Baptist Meeting at Ft. Worth

President J. W. Bill Marshall of Wayland college will speak at 9:15 a. m. on Wednesday, Nov. 8 at the Baptist General convention of Texas in Ft. Worth.

He is a vice-president of the convention. President of the convention is William Fleming of Ft. Worth.

The Wayland International choir will also sing at that hour for the convention. This choir is directed by Shelby Collier, former music director of the First Baptist church of Austin.

Increases 45%

University of Texas army, air force and naval ROTC enrollment this year has increased 45 percent over last year. There are 1,325 enrolled in ROTC units, including 400 in the army, 615 in the air force and 310 in the naval ROTC programs.

Use Leader Classifieds for quick results! Buy! Sell! Rent! Trade!



READY TO SERVE

WE ARE GLAD TO ANNOUNCE THE APPOINTMENT OF **RAYMOND L. ERWIN**

As Our Representative in Littlefield and surrounding territory. Mr. Erwin is well qualified to advise you in all matters relating to your future needs for the most modern forms of personal protection.

Life insurance for men, women, and children of any age from birth — Hospital & surgical—Health & accident — Mortgage redemption — Retirement income — Group — Polio — Educational Funds.

Policyholders of the company and the general public are assured of a friendly reception and competent service from Mr. Erwin. Feel free to call on him for any information or service you may desire to increase usefulness of your insurance program.

Republic National Life Insurance Company

THEO. P. BEASLEY, President

DALLAS, TEXAS

FURR'S

ARE YOU ONE OF THESE?



Daffodils For Lasting Beauty

Daffodils are a permanent investment in springtime loveliness. You plant them as early as they can be obtained this fall and they will bloom without question next April or May and for many springs thereafter, usually increasing their numbers with each new blooming season. You can lift and store the bulbs after they have flowered and the foliage has ripened, but most gardeners set out annual flowering plants between and over them and allow them to remain in the ground undisturbed until they need to be separated. Then, replant them at once or store the bulbs for a short period and replant in early September.

No other hardy bulbs are easier to grow than daffodils. They require a soil of only average fertility and they may be planted in sun or semi-shade. They flower best in a moist but well drained site in groups in the flower borders, in natural colonies under trees and shrubs and in drifts on the lawn, along the woodland path or in other gardens of native plants. Legend places them by the pool-side, the garden brook and pond where reflections double their beauty.

Their bright white, yellow, orange, vivid orange scarlet and delicate pink colors are a cheerful fulfillment of spring wherever they are seen. They are well displayed amid their own foliage and against the dark green of yew, hemlock, juniper and other evergreen trees. Mountain laurel, the andromedas, rhododendrons, azaleas and leucothoe are broadleaved evergreens that are congenial daffodil companions. Flowering crabapple, peach and plum trees, star magnolia, flowering quince and Thunberg spirea are among the deciduous shrubs and trees that are in flower with them.

Lower-growing materials that can be combined with daffodils include the moss pink (phlox subulata), the blue-pink Virginia bluebell (mertensia), white rock cress (arabis alpina) and, of course,

blue grape hyacinths (muscaria). These pert, minute hyacinth spikes come in colors that combine readily with all daffodil flowers while their low stature assures a grouping of finished form. Late flowering daffodils can be naturalized with bleeding hearts and blue phlox divaricata in the regular garden border.

There are numerous flowering types among the daffodils and all of them are worthy of the gardener's attention. There are the large trumpet daffodils, which along with the medium trumpet and large-cupped Incomparabilis and the short-cupped Barril and Leeds types are particularly showy in groups of six to twelve or more in the regular flower borders. The bunch-flowered Poetaz, the Jonquils and the fragrant double daffodils also are right at home in border groupings and in spot plantings beside the garden terrace, bench or gate.

The short, scarlet-cupped poets, the jonquils and other short cup and medium trumpet types are especially suited to planting in drifts and groups to obtain natural effects. Most of the trumpets and Incomparabilis types can be used in this manner also. And remember that practically all daffodils furnish excellent cut flowers. They usually are the first excellent flowers to be cut and brought in after a long winter and as such they bring a beauty and fragrance to the home that is unsurpassed by the flowers to follow.

Bulbs are spaced six to eight inches apart in planting pockets dug at least 6 1/2 inches deep. A handful of bone meal, dried manure or other plant food is worked into each square foot of soil beneath the bulbs, and they are seated on a thin layer of sand or soil free of plant food. Then the top soil is replaced carefully around and over the bulbs. A mulch of leaves, hay or straw can be placed over the bulbs, after the surface of the soil has frozen. Take this mulch off gradually starting in March or when the growing tips appear.

White Fox--The Little Indian Boy

By FAITH HELEN FAUST

Once there was a big white dog that lived in the woods. He wanted to live with humans. One day he started out to find a home. Every dog he met he asked what they did. Most of them were watchdogs and some were pets. The white dog decided to be both a watchdog and a pet. First he would try to get by with being a pet.



The white dog traveled very far before he found the home he wanted. There were two people and a boy. The people kept him and named him Butch.

Butch stayed a long time with the people. Finally the man said, "I think we'll take Butch away. He

isn't a good watchdog." Butch heard him and was very sad.

That night a burglar came to Butch's home. At first Butch didn't bark. But when the man began sneaking through a window, Butch raised an awful racket!

Lights were turned on and the burglar was caught.

Butch wasn't taken away and he is very happy.

Mrs. Lee Taylor of Morton was admitted to the Payne-Shotwell hospital Friday night and underwent surgery Monday morning.

LAMB COUNTY

LEADER



Published Every Tuesday and Thursday At 412 Phelps Ave. Littlefield, Texas

Entered As Second Class Matter at the Post Office At Littlefield, Texas, January 26, 1950 Under Act of March 3, 1879

SUBSCRIPTION RATES: In Littlefield and Trade Territory \$3.50 per year. Elsewhere \$5.00 per year.

MORLEY B. DRAKE EDITOR AND PUBLISHER

E. M. DRAKE BUSINESS MANAGER

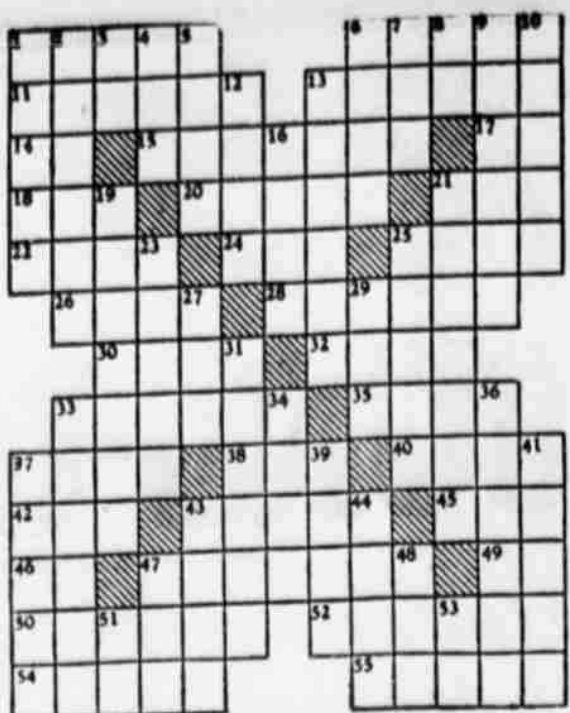
Subscribers who change their address, or fail to get their paper, should immediately notify this office, giving both new and old addresses. Communications of local interest are solicited, they should be briefly written, on only one side of the paper, and must reach this office not later than noon of the day previous to publication. The right of revision or rejection is reserved by publisher.

Any erroneous reflection upon the character, standing or reputation of any person, firm or corporation which may appear in the columns of the Lamb County Leader will be gladly corrected upon being brought to the attention of publisher. In case of errors or omissions in local or other advertisements, the publisher does not hold himself liable for damage further than amount received by him for such advertisement.

Crossword Puzzle

- HORIZONTAL**
 1 Duck's cry
 6 To shape into a mass, as dough
 11 Destroyed
 13 14th U. S. President
 14 Four
 15 Violent windstorm
 17 Note of scale
 18 Lower limb
 20 To manipulate
 21 Islet
 22 Prevaricator
 24 Sodium chloride
 25 To covet
 26 King of beasts
 28 Card combination in whist
 30 Christmas carol
 32 Plate
 33 Great respect
 35 Former Nicaraguan capital
 37 Cry of sorrow
 38 Tibetan gazelle
 40 To let fall
 42 Supporting wire
 43 Large silvery fish
 45 To petition
 46 Fundamental mass of life tendencies
 47 To present at
 49 To depart
 50 Confederation
 52 Sea between Greece and Italy
 54 Site of the Krupp works
 55 Raves

- VERTICAL**
 1 Porcupine spine
 2 To disclose
 3 Poster
 4 Feeding bed
 5 To be aware of
 6 Famous pirate
 7 Prefix: new
 8 Teutonic deity
 9 Sprightly
 10 Divinity
 12 Goddess of discord
 13 Became tiresome
 15 Tidy
 19 To contradict
 21 Fixes securely
 23 Sources
 25 Soothed
 27 Born
 29 Nothing
 31 Envy
 33 Escapes
 34 Additional
 36 Sweetmeat
 37 Spry
 38 Hindu deity
 41 Spanish American laborers
 43 To stupefy
 44 Aroma
 47 To mature
 48 Nahoor sheep
 51 While
 53 Nook



PUZZLE NO. 104

ANSWER TO PUZZLE NO. 103

WISER SPIRE
 PAVAN HONORS
 AZAR SHINE
 TON SPURZ MAJ
 IR CLIM JAFE
 OS ROTE MILES
 WOTS TAME
 TRACH CORNER
 RAK CURRY RA
 USE TARRY RCB
 SI FORTE AIDA
 PERETE NUOON
 RIDES WRAD

BULL LAKE PHILOSOPHER SAYS COTTON RESTRICTIONS COMES TOO LATE TO HELP HIM

Editor's note: The Philosopher on his Johnson grass farm on Bull Lake seems to be disagreeing with the secretary of agriculture in his letter this week, but we don't look for any shake-up in the agriculture department as a result of it. Dear editor:

I picked up a copy of a news paper out here yesterday which one of my cows had been chewing on, you can say what you please but the best newspaper on earth is a mighty poor substitute for salt for a cow and I aim to get my cows some the next time I am in town and can think of it, and I took the balance of the paper home and got on the sunny side of the barn and read where cotton restrictions will be removed next year and the cotton farmer turned loose. Now, I don't like to disagree with the Secretary of Agriculture, I like to get along with everybody, especially the man with the checks but Secretary of Agriculture Brannan's announcement that cotton controls will be removed next year and farmers can plant all their land in cotton if they want to and haven't got better sense comes too late out here.

My new farmin' program is already underway, that is I have it mapped out in my mind, and I haven't got time to change it. That is, reducin' your cotton ac-



AT YOUR SERVICE & GAS

GAS OIL GREASE

Washing and Lubrication Fritz Diersing

200 Phelps Ave. and Highway 84—Phone 200-J

More cups per pound

"takes less tastes best"

WHITE SWAN finer

"More truck for your money"

DODGE

"Job-Rated 1/2-ton PICK-UP"

You get more load space. Dodge offers you the biggest load of the three leading 1/2-ton pick-ups get 44.16 cu. ft. capacity at 100 lbs. in solid, all-steel construction—sounded hardwood floor and steel sides.

Widest seat and biggest windshield! More seat width and greater windshield area than in any popular 1/2-ton truck! Plenty of shoulder-room, legroom and headroom for three big men. Better visibility for safer, easier driving. Safety-steel cab has adjustable "Air-O-Ride" seat cushions. Vent wings and rear quarter windows available.

The ONLY Pick-up to offer you FLUID DRIVE

Another big plus, available only on Dodge "Job-Rated" 1/2-, 3/4- and 1-ton trucks! gyrol Fluid Drive engine power, reduces wear and tear on over 80 vital parts. Takes the jerk, jolt and skid out of starting. Smooth operation makes handling easier, cuts upkeep, increases life. Ask us for interesting Fluid Drive booklet.

Come in today... for a good

With all their extra value **DODGE** *Job-Rated* **TRUCKS** are priced with

Garland Motor Co.

229 Phelps Avenue Littlefield

Official Records

TRANSFERS FILED

Lura Mae Kelley, individually and as administratrix of Community Estate, to Springlake Independent school district, part of section 57, block , of W. E. Halsell survey, containing 4 acres of land \$5000.

A. L. Legg to R. H. Kyzer, lot 7, block 2, Southmoor addition to the town of Littlefield, \$2350.

Barney Green and Faye Green to Harold Smotherman, lot 7, blk. 20, College heights to the city of Littlefield \$175.

Roy McCary and wife to Mrs. Eva Wells, lot 2, subdivision of block 20, West Side addition to city of Littlefield \$5500.

Bobbye J. Putnam, joined by husband to Cornelia Williamson, all of lot 16, block 42, Duggan annex \$6000.

L. B. Stone and wife to Cam Ottis Renfro, lot 13, block 36, Duggan Annex, \$600.

WEDDING LICENSES ISSUED

Lewis Edwin Harper and Helen LaVerne Sager, Oct. 1, 1950;

Junior James Holocker and Billie Louise Beisel, Oct. 14, 1950; Vernel Kemp and Miss Betty Jo Brown, Oct. 7.

First Baptist Install Germicidal Lamps in Nursery

The church has purchased germicidal lamps for nursery department of the First Baptist church.

These lamps have been installed to make the air in the nursery as healthy as possible. With the lamps it is thought the nursery children will be in as healthy a place at church as they would be at home. Even so, children with colds, and cold indications, should not be brought to church to expose other children.

Parents, come, bring your children to church and leave those of nursery age in the nursery.



VISHINSKY A DUTCH UNCLE?
... Andrei Vishinsky arrives in New York and grants an audience to Richard Frank of Great Neck, L.I., who asked him for his autograph. Vishinsky cheerfully complied as the Frank's popped.

Next time for results try a Classified adv in The Lamb County Leader.

New Building Plan-

See us . . . Inquire about our new building plan.
Let us furnish your building materials of all kinds . . .
Make estimates on new houses or repair jobs.

WILL ASSIST IN SECURING FHA LOANS

We will help in securing F.H.A. loans on new houses or remodeling loans (10% cash down)—

UP TO 36 MONTHS TO PAY

CICERO-SMITH Lumber Company

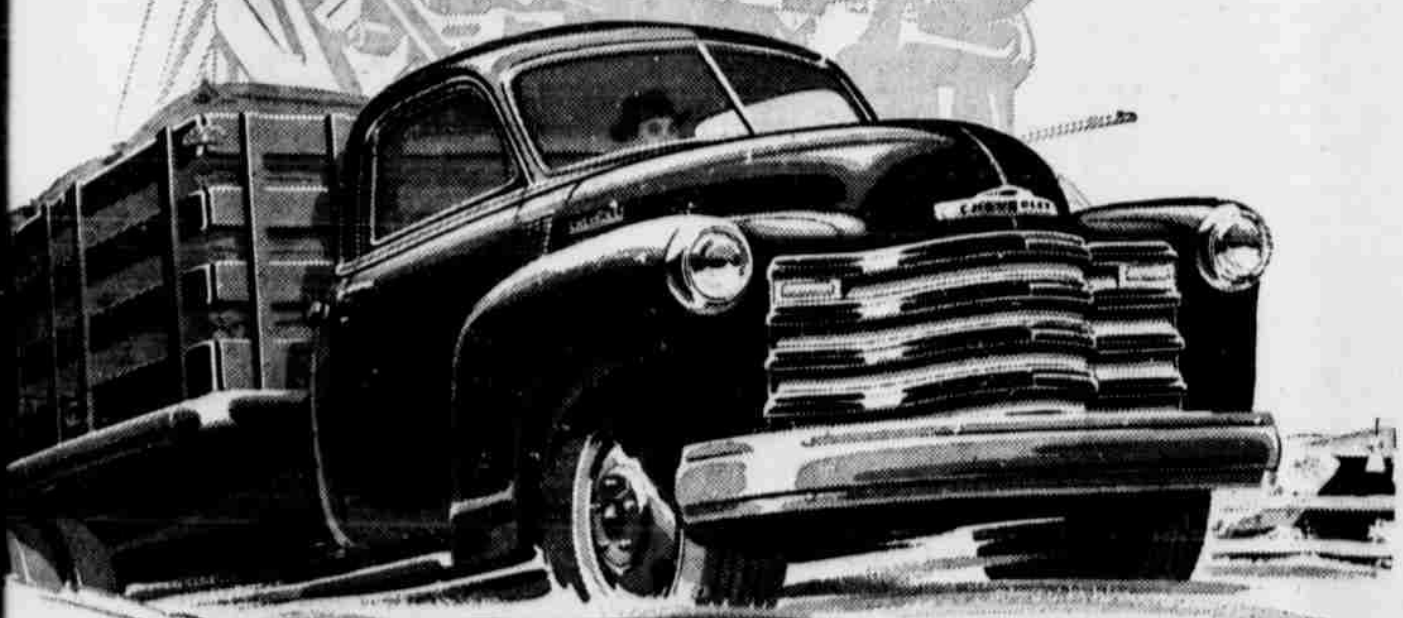
LITTLEFIELD

TEXAS

301 XIT DRIVE

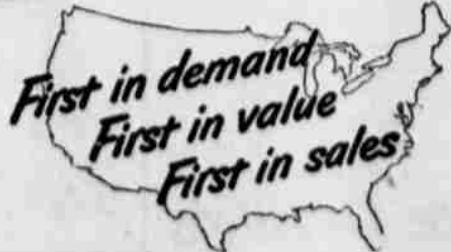
Over 2,000,000 truck users can't be wrong with

CHEVROLET and VALVE-IN-HEAD!



Registrations Show More Than 2,000,000 Chevrolet Trucks Now on the Road . . . More Than Any Other Make!

Today over 2,000,000 truck operators are getting the benefits of the world's most popular engine in the world's most popular truck. For the last eight consecutive truck production years, Chevrolet trucks have led in demand and sales . . . are far ahead this year. Come in—let us give you the facts.



Hewitt Chevrolet Company

TEXAS

Admiration's FLAVOR

Admiration's AROMA

Admiration's FRESHNESS

And most of all Admiration's TASTE

makes the
finest cup
of coffee
in the
southwest



Admiration Coffee

BECAUSE NOTHING SATISFIES
NOR TASTES LIKE ADMIRATION



Copyright, 1950, Duncas Coffee Company

FOR ALL YOUR HARDWARE
AND FURNITURE NEEDS...

ECONOMY Hardware & Furniture

"BRANDS YOU KNOW—AT PRICES YOU CAN AFFORD"

3 DOORS SOUTH
ONSTEAD FURNITURE

SPORTS

Anton to Sponsor Invitational Basketball Tourney Jan. 18-19-20

Plans are being completed for the Anton Invitational basketball tournament which will be held in the new \$110,000 Anton high school gymnasium January 18, 19 and 20.

Twenty-five invitations have been mailed to the class A and B schools on the South Plains. The tournament is for both boys and girls teams.

The new gym is one of the finest in the state for a class B school. Recently completed, its estimated value is now \$140,000, although the actual construction was \$110,000.

It has a 50 x 90 foot maple floor, rectangular-type backboards, four dressing rooms with showers, laboratories and basket-type lockers. It is constructed entirely of steel, with no beams being used. Forty-two drop lights extend over the playing court.

2000 Seat Capacity
Seating capacity is 2,000, with permanent bleachers seating 1,000 and roll-away bleachers seating another 1,000.

The gym will have its official opening Dec. 5, with a college game between Wayland college of Plainview and Midwestern University of Wichita Falls in a Gulf Coast Conference contest.

In addition, both the boys and girls team of Anton will swing into action. Their opponents have

not been chosen.

Anton's boys team shapes up as one of the best in district 4-B, with six lettermen returning from last year's team, which finished second to Spade. Spade and Anton have finished one-two in the district for the last two years. Anton was surprisingly strong in 1949, finishing the season by defeating Levelland, 44-33, before the Lobos went to the state meet.

Byerly Returns
Horace Byerly will be coaching both girls and boys. Byerly is an oldtimer at Anton, although he has been absent the last two years. He was at the helm of the Anton teams two years before returning to school at New Mexico State Teachers college at Silver City. While there, he lettered in four sports and was an all-conference quarterback on the football team last year.

The old high school gymnasium is being used for the grammar school, which has a complete physical training program set up identical to that of the high school. W. D. Wetlauffer is grammar school coach.

BULA FOOTBALL SCHEDULE

Oct. 29 Pettit at Bula
Oct. 27 Open
Nov. 3 Bula at Lazbuddie
Nov. 10 Three-way at Bula
Nov. 17 Bovina at Bula

Sudan Hornets Defeat Stubborn Friona in 13-0 Victory Friday

The Sudan Hornets ground out a methodical 13 to 0 victory over the Friona Chiefs in a listless football game at Sudan Friday night before approximately 1,000 fans.

It was the Hornets third conference win of the year. The game, which was marred by fumbles and penalties, saw the heavily favored Hornets score once in the second and once in the third periods to wrap up the win.

The Hornets' victory kept them in a virtual tie for the conference lead, while dropping Friona farther into the cellar. Sudan now has won twice without defeat in the conference and has a total of six victories without defeat for the season.

Fifth Loss for Friona
Friona, yet to win a conference game in three attempts, suffered its fifth loss of the season without victory.

After a series of first downs in which the home eleven of Coach F. M. Smith carried the ball to the Friona 15 yard line, Halback Arliss Hogue slanted off his own right tackle to score the first Hornet TD. An end run by Don Whitmire added the extra point and the Hornets led 7 to 0 at half-time.

The other score came midway in the third period when quarterback Bobby Lynch of Sudan kept the ball on a fake hand off and raced 20 yards through the middle of the line. A running try for extra point failed.

Sudan drew 75 yards in penalties while the visitors lost only 10 yards through misquest. The Hornets fumbled three times and recovered all of them while Friona

covered the only two fumbles made during the game.

Friona made nine first downs to the winners 12 during the contest, and the Hornets racked up 226 yards on the ground to 160 for the Chiefs.

Spade Trampled By New Deal 46-0

New Deal's powerful Lions trampled the hapless Spade Longhorns 46-0 in a district 4-B conference game at Spade Friday night, which saw members of the winning team dedicate the victory to Tom Brogdon, out with an injury.

The victory was the second consecutive conference win for the Lions and put them in a tie with Hale Center, each with two victories and no defeats. The victory left both teams trailing Anton, which has played—and won—two more conference games.

It was the fifth victory in six games for New Deal and was Spade's fourth loss in five games, two of which have come in conference play.

New Deal Uses Power
New Deal showed a powerful ground game in scoring in every quarter to rack up its second conference win without a defeat. The Lions were paced by Lloyd Jeffcoat, an end, who took over Brogdon's position. L. M. Hobgood, Wayne Worley, R. W. Webb and Donald Evans.

Jeffcoat, the end turned tackle, turned in one of the most spectacular plays of the night when he intercepted a backfield pass from Spade and ran it 75 yards for the score midway in the third period.

Hale Center Defeats Idalou 21-6 in 4-B

Hale Center's Owls knocked the Idalou Wildcats out of the district 4-B conference lead at Hale Center Friday night with a 21 to 6 victory.

It was Hale Center's second district win without defeat and its fourth of the year against only one loss.

Idalou, tumbled from the lead for the first time after being deadlocked with Anton, which assumed undisputed possession of first place by beating Cooper Thursday night, now has lost twice in the regular season. The Wildcats, however, still are in the conference fight.

The heavier Wildcats held the Owls to a scant 7-6 lead at the half, but after the intermission Coach Ralph Huntington's club dominated play. The contest was won up front with Owl linemen Jack Dyer and Jimmy Lamb repeatedly opening holes for Johnson and Dennis Oliver and nailing Wildcat carriers on defense.

More than 600 fans watched the Owls grab the lead when Johnson capped a 67-yard drive by bursting through center for 14 yards. He ran the point over. Idalou's Tom Russell scored from five yards out after a Hale Center fumble on a punt set the stage.

Most sparkling play of the game came when Jerry Johnson, Bobby's cousin, bulleted 55 yards for a fourth period score, shedding the tacklers enroute. Before his dash Bobby had inched over from the Idalou 1-yard line to climax another long Owl surge. When the game ended Hale Center was at the Idalou 12. The win left the Owls undefeated in conference play.

Bula Bulldogs Defeated by Bovina To Play Pettit Friday at Bula

Olton Defeats Farwell 69-12

Olton won its first conference game of the 1950 season in a home game Friday night, the Mustangs turning in an impressive victory over Farwell in a district 3-B conference battle witnessed by over 1,500 fans, 69-12.

The Mustangs rolled to a 42-6 lead at the half and were never threatened in the second two stanzas. For Olton it was the fifth victory of the season without loss, while Farwell absorbed its third loss in conference competition and fourth of the regular season.

It was a touchdown parade for Coach T. M. Cox's team, the Mustangs driving for four touchdowns in the first quarter and rolling unhindered from that point on. Olton scored twice in the second, third and fourth quarters.

Pool Scores Twice
For the losers, Quarterback Jerry Pool scored twice on runs of 74 and 76 yards respectively. Pool was the only threat that Farwell could muster.

Strangely enough, the Mustangs converted after every touchdown and they converted by standard placekick, by rushing, and of all things, by the outmoded dropkick. Olton rolled up 504 yards rushing to 194 for the visitors. The Mustangs also completed five of nine passes for 57 yards while Farwell could complete only seven of 17 pass attempts for 53 yards. The Mustangs rolled to 27 first downs to Farwell's eight in domination play entirely.

The Bula Bulldogs were defeated by Bovina Friday night in their first time in conference, dropping them out of first place in district 2-B.

Bovina scored first on a Thompson to White touchdown and White also teamed for an extra point.

Bovina came back and scored 20 extra points in the quarter.

Bula came back when Robert White took the left end and went to Bula's next encounter.

Bula held Bovina to the last quarter while them back for two additional score was Bovina's Bula. Bula will play Pettit Friday.

Olton Run

Jerry Maynard scored yard run; Gerald Alcorn on an eight-yard run; center; J. Frank Dasher on a 10-yard run; sprint and a seven-yard Don Dodd raced 27 yards to pay dirt; and Bula scored twice on Jimmy Millay, the first 11 yards and the second 11 yards and the second 11 yards.

Alcorn scored one yard by rushing; Maynard on a plunge; Millay and rushed one over; kicked an extra point over another; Dodd's dividend point and Bula used the dropkick to others.

OIL PROGRESS

Is Important to the Growth and Development of This Section

THE FIRST NATIONAL BANK

Believes in the Oil Industry and the Future of Littlefield and Lamb County

We are proud of the part we have had in the development of this great WEST TEXAS EMPIRE.

We invite you to discuss your financing with one of our officers. Serving Our Customers has always been a privilege and a pleasure.

THE FIRST NATIONAL BANK

Littlefield

Member of Federal Reserve System
Member of Federal Deposit Insurance Corporation

Plainview Tramples Brownfield 59-7

Coach Doc Harris' injury-ridden Bulldogs managed a modest lead during three quarters, then unleashed a furious touchdown spree in the fourth to whip the Brownfield Cubs, 59-7 at Plainview Friday night before a crowd of 2,000.

The Bulldogs of district 1-AA led 13-7 at half time, then 25-7 at the end of the third quarter. Second and third string players passed and ran with apparently newly found skill to complete the massacre of the class 4-A Cubs.

Although four starters were on sidelines with previous injuries, the Bulldogs piled up the largest Plainview score made here in the last six years. Harris, after the game, said excitedly, "We won, but I nearly lost count myself."

Cubs Gain Lead
Otis Ratliff ran 10 yards after a 60-yard march early in the first to open the Plainview scoring. Later in the period, Howard Swain climaxed a Brownfield drive to make their first tally on a run from the three. Doyle Bradley's successful run for the extra point gave the Cubs a 7-6 lead at the end of that period.

Wilbur Ratliff put the Bulldogs out front again in the second on a 40-yard run from scrimmage for the third touchdown. The extra point try failing, the Plainview lead was 19-7. Tom Caskey ran over for another touchdown to make the score 25-7 before the fatal fourth began.

The fumbles and penalties that retained the Bulldogs earlier in the game disappeared. Weldon Hays scored twice, then Ratliff scored. Hays came back to score his third touchdown and in the final minute of the game Dale Conroy intercepted a pass to round out the score at 59-7. Bryce Bell kicked three extra points during the period.

The sidelined Plainview starters were Gat Pinney, tackle; Dale Scott, quarterback; Don Keeler, fullback, and Bokey Robertson, right end.

Plainview will host next Friday to class AA Bowie of El Paso.

Plainview	Brownfield
18 First Downs	12
275 Yards Rushing	158
178 Yards Passing	64
6 of 6 Passes completed	5 of 21
3 Passes intercepted by	0
3 for 75 Punts	6 for 128
6 for 60 Penalties	8 for 70

Use the Classifieds

PETROLEUM PROMOTES PROGRESS...

The Oil Industry Is Fast Moving... it is fast because it wants you to have the best as soon as possible

THIS IS —

OIL PROGRESS WEEK in the U. S. A.

But it's worth remembering that 1950 is Oil's Ninety-first Year of Progress

Many thousands of individual companies are engaged in the race to supply the world's greatest market for oil — America. Their competition in oil production, refining, transportation, research and marketing pays off for you... means better living for all Americans.

And rely on it, competition in the oil industry will mean even greater progress in the days and years to come. A

free competitive oil industry is your guarantee that you and your neighbors will keep right on getting more and more, better and better oil products at reasonable competitive prices.

OIL BUILDS FOR YOUR FUTURE. COUNT ON PETROLEUM TO ADD TO YOUR COMFORT, YOUR HEALTH AND YOUR CONVENIENCE.



L. C. GRISSOM

Consignee GULF REFINING CO. Littlefield Phone 82

Your Progress and Oil Progress Go Hand in Hand

DELICIOUS FOOD - GOOD SERVICE - FAIR PRICES

STARR DRIVE-IN

East On Highway 84
LITTLEFIELD
WE SERVE CLUBS
and PARTIES
PHONE 204-J