

LAMB COUNTY LEADER-NEWS

VOLUME 51 NUMBER 60 LITTLEFIELD, LAMB COUNTY, TEXAS, SUNDAY, NOV. 18, 1973 14 PAGES

15 CENTS
TAX INCLUDED

Weather Balloon Equipment Lands In Fieldton

Eldon Hill was the first to arrive at a downed parachute on the Ruben Brock farm Tuesday afternoon.

A strange silver object ejected the parachute from a high altitude research balloon released from Holloman Air Force Base at Alamogordo, N.M.

When first spotted, the weather balloon was about 70,000 feet high and floating between Morton and Littlefield.

The balloon carried a 900-pound payload of special high altitude atmospheric research testing instruments. The instruments gather information from 102,000 feet altitude and make meteorological observations determining temperature and atmospheric pressure. Readings are sent back to the base by a radio transmitter on the balloon, according to Major Bernard Burnett at Holloman AFB.

When the balloon test ended in the Fieldton area Tuesday, the balloon automatically ripped apart with a discharging device. The radio and recording instruments were then released from the balloon by the parachute which lowered them to the ground.

The plastic balloon which was carrying the parachute and equipment landed about four miles northeast of Morton, according to AFB officers.

A four-man recovery team was directed to the downed location of the parachute by a spotter plane which also recovered the plastic balloon.

Officers said large numbers of balloons are launched each day by government and private agencies. Some do not carry instruments, but are tracked from the ground to determine wind velocity and direction at different levels.

Others such as the one in this area Tuesday carry instruments. These balloons may remain aloft for several days and can be maintained at the desired height by automatic ballast-discharging devices. Their flight can be terminated after the desired length of time ripping the balloon.

Holloman AFB officials said many of the balloons released at Holloman during the winter will drift over this area.

City Appoints Judge, Discuss Lake Hunting



THE CHRISTMAS SEAL campaign for Lamb County was officially begun Friday, when three officials of the West Texas Area American Lung Association flew into Littlefield for a dinner meeting with the Lamb County Board. Shown, left to right, are Dr. Jim Granberry of Lubbock, campaign chairman; Mrs. Clifford Sharp, area executive; Doug Boren, WTA president; and Ken Day, Lamb County board member. (Staff Photo)

In a brief meeting Thursday night during their regular session, Littlefield's City Councilmen appointed Florence Dunn to the post of Municipal Judge, and discussed opening Bull Lake during the remainder of the duck hunting season.

Due to the retirement of Ben Noble, the position of municipal judge has become vacant, and Mrs. Dunn was appointed to fill the post for a period beginning Nov. 16 and ending Nov. 15, 1974.

Mrs. Dunn has worked in the police department a total of 12 years, and has been chief dispatcher the past 2 1/2 years. The new job will be a part-time position.

Appearing before the council to discuss the request for permission to hunt on Bull Lake was Johnny Yohner. Yohner had presented a petition bearing

44 signatures, requesting that Bull Lake be opened for the remainder of the season. The duck hunting season is split this year. The first began Oct. 25 and continues until Nov. 25 and the second half is to begin Dec. 8 and continue through Jan. 20.

Councilmen suggested to Yohner that if enough permits could be sold to gain enough funds to pay the lake manager's salary while the lake is open, they would be willing to open the lake to hunters.

Hunters who wish to buy a permit are asked to contact the city manager's office, 385-4411, and indicate your wishes. If enough funds are guaranteed, then the lake will be opened.

Councilmen reminded Yohner that guns are restricted to shotguns, as the city's contract with the owner of the lake specifies. Because of livestock in the pastures around the lake, the restriction will be enforced.

Pep Residents Planning Thanksgiving Festival

Pep residents have finalized plans for their 28th Annual Thanksgiving Festival, slated for St. Philips Parish Hall and Educational Building Thanksgiving Day, Nov. 22.

The famous Pep sausage will be served with turkey, dressing and all the trimmings from 11 a.m. to 2 p.m. and again from 5 to 7 p.m.

Tickets for adults are \$3, and for children under 10, \$2.

Carnival attractions will be set up all day for people of all ages, and a general auction will be conducted at 6:30 p.m.

Winding up the day's activities will be a dance, starting at 9 p.m., and music will be provided by a live western band.

A. G. Jungman, chairman of the event stated, "Make your plans now to come to Pep Thanksgiving Day to enjoy the good food, fellowship and fun. Everyone is invited."

DWI, Liquor Law Charges Filed

The latter part of the week several persons were booked in the county jail.

Liquor law violation charges were filed against Thomas Ramirez, 33, of 1320 West 5th. He was fined \$100 plus \$47 court cost.

Dillard Odell Mills, 38, of Levelland, was arrested Thursday on a charge of driving while intoxicated, and his bond is set at \$1,000.

Ronnie Jenkins of Littlefield was fined on a check law violation charge.

In misdemeanor cases, a Littlefield man was charged with drunk and disturbance, and two men and a woman from Lubbock were arrested on charges of drunk in public.

City officers arrested one for disorderly conduct, one for disorderly conduct and disturbance, and three for drunk in public.

City police checked two minor accidents, one vandalism report and one theft.

A pickup driven by William D. Pittman of Amherst was traveling west on W. Delano north of U.S. 84 and went into the 20 mph curve at a speed that overturned the vehicle two and one-half times.

A child put a car in gear on the Multi-Service Center private parking lot, and the vehicle driven by Mae Baker of 433 W. 5th hit the building doing minor damage to the car and building.

Terry Myers of Amherst reported the theft of an eight-track stereo valued at \$150 and two speakers valued at \$15 each.

Hazel Ward of 101 Crescent Drive reported that someone pulled over her yard light and broke a screen and storm window.

Christmas Seal Campaign Launched In Littlefield

The Christmas Seal Campaign of the West Texas Area of the American Lung Association was kicked Friday by a "fly-in" by the WTA president, Douglas Boren, and campaign chairman, James H. Granberry, D.D.S., according to Ken Day, Lamb County Board member.

This way of meeting area volunteers personally, and sharing his enthusiasm with them face to face, was worked out by Dr. Granberry through the happy circumstances that the area president is also a pilot who flies his own plane.

"This year more than ever before the theme of the campaign emphasizes keeping young lungs healthy," stated Dr. Granberry. He continued by saying that over a period of years his interest in the area Lung Association (formerly Tuberculosis and Respiratory Disease

Association) had been caught by a mutual interest as a dentist in teaching young people the dangers of cigarette smoking.

"The idea," said Dr. Granberry, "is to reach youngsters before they're hooked. The risk of emphysema or other crippling lung disease increases with each cigarette."

We must help them to quit as well as to reduce the number of new smokers. This is why I am asking you to join me in this campaign and give more to the Christmas Seal fight against smoking and other causes of lung disease."

One way Christmas Seal contributions are put to work in this area is to provide young people with factual information regarding cigarette smoking and their health. Recently, a program of breathing exercises and physical fitness classes for children with asthma has been started. Nineteen children from the West Texas area are presently enrolled in this pilot project in Lubbock.

Chronic respiratory problems such as emphysema and bronchitis are the fastest growing health problems in the nation today. Respiratory disease ranks second only to heart trouble as the major cause of disability payments from the Social Security Administration.

Acute respiratory infections caused the loss of 446 million days from classroom and office during 1972.

Pep Senior Class' Turkey Shoot Today

The Pep senior class is sponsoring a turkey shoot at Pep today, beginning at 1 p.m.

Site for the shoot is located east of the school building. Turkeys will be given as prizes, and the public is invited to participate.

Public Meeting Set On New Constitution

many citizen advisors who helped the Commission, will hear an explanation of the proposed new Constitution and may ask questions about the Commission's work.

The series of public meetings is being held in accordance with the Commission's legal mandate to insure maximum public participation in its work and to fully inform the public of its recommendations.

Another area meeting is slated in Amarillo at 9:45 a.m. Monday, Dec. 3, in the Sunburst Room of the I-40E Quality Inn.

Water, Inc. Begins Membership Campaign

about our capabilities," he said, "but our voice can only be as strong as our underlying membership."

Water, Inc., activities center around obtaining supplemental water for the area.

"We are producing food, fiber and fuel now that are easing world shortages," Kendrick said. "With adequate supplemental water, not only will a decrease in production be prevented as our present water supplies dwindle, but we can, in fact, increase our production rates," he added.

Water, Inc., is a non-profit, membership-based organization and membership dues are income tax deductible as a business expense.

Gasoline Pump Stickers Must List Ceiling Price

"Because of recent changes in the Phase IV petroleum regulations, all gasoline and diesel fuel retailers must obtain new ceiling price stickers for each pump or grade of petroleum sold," according to Walter I. Perry, administrative officer of the Internal Revenue Service (IRS) office in Plainview.

New pump stickers and instruction-computation forms may be picked up at the IRS office at: 1403 West 5th Street, Plainview, Texas 79072, and must be posted on pumps by 11:59 p.m. Nov. 21.

Written requests for stickers and instructions may be made at the IRS office listed above. Retailers should specify the number of stickers they will need.

"The new stickers should be posted on each pump in a prominent position to be easily seen by the customer. The old sticker should then be removed," Perry said. If more than one grade of gas is sold from a pump, a separate sticker

must be posted for each grade. Stickers must contain the new ceiling price and the minimum octane of the gasoline.

Anticipating additional changes, The Cost of Living Council (CLC) designed the stickers with four numbered blanks for inserting the ceiling prices for Nov. 1973 through Feb. 1974.

Under revised CLC Rules gasoline and diesel fuel retailers are permitted to increase their May 15, 1973 selling price to reflect, on a dollar for dollar pass-through basis, their increased petroleum costs.

This can be done more than once a month. Whenever an adjustment is made to the maximum permissible price, each retailer must adjust his posted price.

"On the reverse side of the posting instructions is a form which dealers must use to compute their ceiling price," Perry said. This sheet must be retained at the service station for IRS inspection to determine compliance with the new regulations.



A NEW GAS PUMP STICKER is to be posted by dealers by Wednesday, Nov. 21, 1973. Box number one is for listing the November ceiling price, and numbers 2, 3 and 4 are for December, January and February ceiling prices. Paul McCormick of McCormick's Service Station affixes one of the stamps to his pump. (Staff Photo)

Commissioners Set Estimates Fiscal Budget

County commissioners set an 1974 budget of \$1,649,808 in a meeting of the commissioners Monday. This is based on an assessed county valuation of \$1.6 billion based on 25 percent of the market value with an 85-cent tax

court entered into mutual agreement with Bailey County to share juvenile and adult probation for Lamb and Bailey Counties. Appointed Bailey County Judge Glen to act as financial officer.

Assessor Herbert Dunn requested a part time deputy, and the court granted the request effective

to use a used 23.5 cubic food freezer and a 10-foot by 10-foot walk-in with compressor were rejected. The court passed an order for additional bids to be taken at the next meeting.

Other items considered, the court raised the pay of election judges to \$2 per hour.

McCanlies Wins Contest

McCanlies is the winner of this Leader-News Contest. McCanlies wins the \$5 first prize by predicting all but one of the 16

Patterson emerged from a group of 14 predictions to win the \$3 prize by her guesses on the tie between A. D. Perrin picked up the prize of \$2.

Generally, the scores were above average as only four contestants missed more than six games. The Littlefield and Minnesota-Detroit clashes were picked correctly by nearly every contestant, and the Arkansas-Rice and Arkansas-SMU games were the hardest to predict.

McCanlies added to his seasonal total with 14 right for the week and a total of 123 for the year. Larry Price is back at 119, followed Kim Hill and McNeese at 118.

-111-

Jackson Efton Graham

Price Arthur McLelland

Hill Roy Jackson

McNeese Steve Pollard

Turner Lloyd Pollard

Burch Maurice Sexton

Hutson Jill Yarbrough

Mills -110-

Hutson Warren Dayton

Blume Richard Rogers

Clayton Harold Pollard

Dayton -109-

McNeese Bub Clayton

Pickrell Sharrise Cowen

Hopping Roy Hutson

Newman Ed McCanlies

Hood Lee Roy Nuttall

McNeese Tommy Patterson

Stephens Dean Walden

Yarbrough Scot Yarbrough

-108-

Hopping W. W. Fry

Newman -107-

Hood Tommy Cloninger

McNeese Kenny Carter

Stephens Terry Rodgers

Yarbrough Rickye Parker

A. D. Perrin

Kennedy Veach

-106-

Hopping

Newman

Hood

McNeese

Stephens

Yarbrough

-105-

Hopping

Newman

Hood

McNeese

Stephens

Yarbrough



MR. AND MRS. DILLARD BRYANT

Bryants To Celebrate 50th Wedding Anniversary

Mr. and Mrs. Dillard Bryant of Littlefield will be honored on their 50th Wedding Anniversary with a reception Sunday afternoon, Nov. 25, from 2 to 4 p.m. in the First Baptist Church Parlor.

Hosting the event will be their three sons and their wives.

Jewel Mixon and Dillard Bryant were married Nov. 20, 1923 in Frederick, Okla. and came to the Rocky Ford community to begin farming in 1925. They moved into Littlefield in 1943. Bryant still has the farm at Rocky Ford, and is active in its operation.

Their three sons are Laverne Bryant of Amherst, Duane Bryant of Littlefield and Harley Bryant of Guymon, Okla.

They have seven grandchildren. They are Mrs. Bill Hunter of Gainesville, Stephanie Bryant and Latayne Bryant of Guymon, Okla.; Anita Bryant, Darral Bryant, Donna Sue Bryant and Michael Bryant, all of Littlefield.

They also have two great-grandchildren.

All friends of the couple are invited to attend the reception.

County TSTA Meets Monday

Monday night, Nov. 12, Lamb County Texas State Teachers Association met in the Springlake-Earth Cafeteria.

The cafeteria was decorated with various autumn floral arrangements, and streamers centered the tables in orange.

The featured speaker, Bruce Evans from L.C.C., challenged the teachers to observe each child as an individual and give him a chance to achieve his potential.

Lee Hicks, from the state TSTA office in Austin, gave some pros and cons on TSTA uniting with NEA.

The group was entertained with several selections by the Springlake-Earth choir under the direction of Wayne Anderson.

The president, Mrs. Joe W. Bailey, presented a president's pin to the past president, Mrs. Lois White.

Bob Payne introduced Miss Jana West, who received the Lamb County TSTA scholarship for 1972-1973. Miss West expressed her appreciation to the group.

The teachers enjoyed a

meal prepared by the Springlake-Earth cafeteria personnel which included: turkey, dressing, cranberry sauce, beans, candied yams, rolls, strawberry shortcake, tea and coffee.

Mrs. Bailey encouraged members to attend a meeting in Lubbock Monday night, Nov. 19 in Lubbock where another representative from the state office will speak on unification. She closed the meeting by reminding them that "teachers teach by what they say, by what they do, by what they are."



MONDAY: Hamburgers, pickle and onions, French fries, pudding, salad and milk.

TUESDAY: Dressing with turkey, gravy, green beans, cranberry sauce, fruit salad, hot rolls and milk.

WEDNESDAY: Irish stew, salad, crackers, brownies



THOMAS IVEY JR. AND DEBRA STILL

Still-Ivey Wedding Set

Mrs. Mildred D. Still of Dallas and Dr. O. W. Still of Littlefield announce the engagement and approaching marriage of their daughter, Debra Still of Lubbock, to Thomas E. Ivey Jr. of Lubbock.

He is the son of Mr. and Mrs. Thomas E. Ivey Sr. of Littlefield.

The couple plans a Jan. 19 wedding in the chapel of First Baptist Church in Littlefield.

The bride-elect is a graduate of Bryan Adams High School in Dallas and attended Texas Tech three years. She is cashier at Globe in Lubbock.

The prospective bridegroom is a graduate of Littlefield High School, attended West Texas State, and received his BA degree in journalism from Texas Tech. He is presently employed at Skaggs-Albertson's in Lubbock.

Boys' Piano Recital Today

The Lamb County Piano Teachers Association will conduct their annual Boys' Recital today, Nov. 18, at 2:30 p.m. in the First United Methodist Church of Littlefield.

Piano teachers who are members of this group are Mrs. Norma Phillips, Mrs. Al Chambers, Mrs. Jack York, Mrs. Larry Sanderson, Mrs. Buster Owens, all of Littlefield, and Mrs. A. B. Carter of Amherst.

Students who will play in the recital are Ronnie Hopping, Jerry Jones, Brent Jones, Brent Nelson, Derek Ratliff, Monty Pullig, Chris Thrash, Michael Davis, Bill Davidson, Steve Ford, Will Burkes, Jim Davidson, Ben Davidson, Todd Stafford, Mark Roden, Michael Williams, Mark

Prentice, Jeff Lust, Harvey, Randy Schaefer, Mark Bryant and Pat Barton, a student at Tech, and former student Mrs. Buster Owens.

He and Mrs. Owens present an organ and arrangement of "How Thou Art."

The public is invited to attend the recital.

WEE ONES

FLORES
Born to Mr. and Mrs. Flores a baby girl weighing 7 lbs. 2 ozs. at 7:41 p.m. on 11.

DUESTERHAUS
Born to Mr. and Mrs. Duesterhaus a baby weighing 7 lbs. 7 ozs. at p.m. Nov. 15.

Thinking Of A Color TV?
Choose The Reliable - RCA!
PORTABLE?



RCA The PROVIDENCE Model ES774
25" diagonal picture
Also available with remote control (optional, extra)

EARLY AMERICAN?

Or...



RCA The ALMADA Model ES778
25" diagonal picture
Also available with remote control (optional, extra)

SPANISH STYLING?

- Super AccuColor black matrix picture tube—RCA's finest big screen color picture tube ever!
- RCA's most powerful XL-100, 100% solid state chassis, combined with RCA's Super AccuColor black matrix picture tube, for the most brilliant and crisply detailed big screen color TV in RCA history.
- AccuMatic IV brings color, tint, brightness and contrast within a normal pre-set range at the touch of a button.
- Automatic Fine Tuning electronically pinpoints and accurately holds the correct picture signal on each channel.

Take your pick in a 25" XL-100 RCA 100% Solid State



RCA The PROJECTA Model ES354
15" diagonal picture

NEED A SMALL PORTABLE? Choose RCA 15"



ROGER KENDALL

Service a problem? Choose RCA and have guaranteed service!



A Community of Interests

A COMMUNITY OF INTERESTS IS WHAT WE SHARE WITH EACH AND EVERY SECURITY STATE BANK CUSTOMER. AND THAT'S THE WAY IT SHOULD BE BECAUSE THAT'S WHAT WE'RE HERE FOR.....TO TAKE CARE OF THE FINANCIAL NEEDS OF THE PEOPLE IN OUR COMMUNITY WITH WHOM WE SHARE INTERESTS AND CONCERNS IN COMMON. COME IN AND SEE US WHEN YOU HAVE BANKING NEEDS.....REMEMBER, YOU'RE AN IMPORTANT PART OF US.



MEMBER FDIC

Security Is Our Name, Helping Is Our Business



FURNITURE & APPLIANCE

1006 MAIN AVE. PH. 385-5883 LITTLEFIELD

SPS Employees Honored At Awards Dinner Tuesday

Eleven Littlefield residents were among 86 employees of Southwestern Public Service Company's Southern Division honored Tuesday night at an awards dinner in Lubbock. The group was recognized for periods of service ranging from 5 to 40 years.

Roy Bussey, a line department foreman, and Willie Florence, assistant manager at Plant X, received ruby-studded awards for 25 years' service. Roy Tolk, chairman

and president of the electric company, made the presentations.

Juan Perez, Edward Mercer and Charles M. Smith were honored for 20 years' service, while 15-year recognition went to Joy Elizabeth Campbell, O. B. Graham and Lee Roy Robertson.

Silbiano Rangel received his 10-year emblem, while Ben E. Green and Margaret Timmons received their first awards, for five years' ser-

vice.

Agnes Braly of Plainview, one of three honored throughout the company's service area for 40 years' service, was the top honoree at Tuesday's dinner.

Tuesday's dinner was the third of four being held this year throughout the company's territory. 261 employees with a combined service of 4,805 years are being honored at the dinners.

KIRBY VACUUM CLEANERS
Sales and Service
PAT'S 385-4664



ALPHA LAMBDA ZETA Chapter members mailed 1,300 letters Thursday to families throughout Lamb County informing the public of services offered by the Lamb County Community Action Center. The sorority has joined the Center in an attempt to educate residents of the help available. (Staff Photo)

News about our Lamb County Neighbors in

AMHERST
MRS. LESTER LA GRANGE
246-3336

HAVE YOU seen the beautiful sunrises and sunsets in this area recently? If you haven't, you've missed seeing beauties of nature.

AMONG THOSE attending funeral services for Mrs. Calvin Pigg in Littlefield Tuesday afternoon were Mr. and Mrs. Strau Coffer, Mrs. Bennie Shipley, Brenda Davis, Mrs. Bill Weaver, Mr. and Mrs. Verdell Burton, Mr. and Mrs. Charles Smith, Mrs. E. E. Smith and Paul D. Bennett. She was the mother of Wesley Pigg of Lubbock a former Amherst resident.

MRS. E. E. SMITH is expecting her daughter and husband, Mr. and Mrs. David Paskausky of Groton, Conn. for Thanksgiving. He teaches in the University of Connecticut and she in the public school at Groton. They plan to visit Mrs. Smith's other daughter, Mr. and Mrs. Charles Hensley and Paula in Big Spring while they are here.

MRS. FRED WILSON and Mrs. R. R. Royal were in Plainview last Thursday. Mrs. Wilson visited her sister, Mrs. Fay Goree and Mrs. Royal her son Lawrence and family.

MRS. HAZEL DAVIS brought her mother, Mrs. Ivy Patton of Carlsbad, N.M. home from Methodist Hospital Lubbock Thursday where she successfully underwent major surgery last week. Mrs. Patton will convalesce at the home of her daughter.

FLOYD ROWELL has sympathy from friends in the loss of his mother Mrs. H. L. Rowell (Elsie) in Lubbock. She died Nov. 8 after a prolonged illness. Funeral service was Nov. 10 in the Calvary Baptist Church in Lubbock. Burial was in Memorial Park, Littlefield. She and her husband resided in Amherst a number of years ago. Survivors are her husband, four sons, Vernon and Lloyd, Lubbock, Lee Roy of Clovis and Floyd of Amherst. Three daughters Mrs. Lucille Cole, Dallas, Mrs. Mary Donaldson and Mrs. Pearl Mitchell of Colorado Spring, Colo. two sisters, Mrs. S. L. Crow, Long Beach, Calif. and Mrs. Edna Smith of Estes Park, Colo. 14 grandchildren and 24 great-grandchildren.

MR. AND MRS. Allan White Jr., Steve and Andy of Lub-

bock visited his parents last Sunday. His mother was a patient in the local hospital and has been home since Wednesday.

MR. AND MRS. Bobby Hayworth and DeAnna and her friend, Lauri Meyers of Lubbock were weekend guests of her parents, Mr. and Mrs. E. L. Schovajsa. Their son Larry who attends Tech was here, also.

MRS. MUREL TROUT, Mrs. Don Quarles and children were weekend guests of their daughter and sister, Mrs. Charles Mixon.

MR. AND MRS. Charles Mixon attended the banquet at the Lubbock Country Club given for employees of the Southwest Public Service in this area Tuesday night. Charles received a 25 year pin for that length of service with the company.

MRS. OBY BLANCHARD went to Shallowater Wednesday to visit her sister, Mrs. Edna Arnold.

MRS. SUSIE Lynch spent the weekend with her daughter and husband, Mr. and Mrs. Don Hevern.

MR. AND MRS. Robert Wheeler, Ronda and Robbie of Plainview visited her parents, Rev. and Mrs. Glenn Willson Saturday.

MRS. GLENN WILLSON and Sheryl visited their sister and aunt, Mrs. Dick Madison in Amarillo early this week.

"M NIGHT" will be observed in Llanos Altos Workers Conference at the Oklahoma Lane Baptist Church Monday Nov. 19 at 7:30 p.m. The "M" means "mobilization".

MR. AND MRS. E. L. Schovajsa are expecting their daughter, Mr. and Mrs. Jack Cummings and Frank of Lexington, Ky. for Thanksgiving. Their daughter Cheryl of the University of Nebraska and Linda who attends school in Nebraska will accompany them. They will visit Littlefield relatives also.

AMHERST SCHOOLS will dismiss Wednesday Nov. 21 at 2:30 p.m. for Thanksgiving holidays. Classes will resume Monday Nov. 26.

er Explains
ily Planning
Alpha Lambda Zeta
of Beta Sigma Phi has
efforts with the Lamb
Community Action
forming the public of
er's work, including
planning, infant
senior citizen aids
head start program
ren.

community service
members of Alpha
Zeta Chapter have
1,300 letters to county
advising them of
information and
available to anyone
to acquire them.

also advise their
that medical services,
a physical exam, a
year, and dispensing of
control method are
women who cannot
to pay for such ser-

included in the letter is
that illustrates
happens when persons
family planning. The
may be contacted for
information by calling
or dropping by the
on Highway 385, a few
north of the railroad
in Littlefield.

rs. Pelfrey
sts Club

THARRAL—The Whit-
Home Demonstration
met Tuesday afternoon
at Joe Pelfrey home in
ad.

mail was answered with
Plan to Do After Age

McLain of a Levelland
home met with the
She suggested helpful
club members might
members of the nursing

group discussed plans
pre-Christmas baazar
ate sale

freshments of pumpkin
tea and coffee were
of to Mmes S. J.
nger, James Blakley, B.
es, Joe Pelfrey, E. E.
James Mixon, Bud
Carrie Eller, Eula
Alma Kilgore, Vera
Mrs. Eunice Wade, Lilly
ard and three visitors.
next meeting will be
with Violet Blakley.

PRATT'S
has just become
the only sensible place
to buy diamonds.

We've always offered you something we take great pride in: personal service and reliability. Now, we've taken a giant step... We've converted our store into a complete Diamond Center. So we can offer you even more: Fantastic values on the widest and most exciting selection of diamond and wedding rings ever assembled under one roof. The Goldmaster Collection.

Goldmaster's styling and craftsmanship have made it one of the fastest-growing diamond companies in America. With each and every ring reflecting what has come to be known as the matchless "Master's Touch."

And because we're a direct manufacturer's center (Goldmaster imports its own diamonds from Antwerp and Israel), we can make these beautiful rings available to you at extremely attractive prices.

So when you're ready to make that big move, stop off here. Where you'll find the most fashionable rings with the most dependable backing: our reputation.

Pratt's Jewelry
5th & XIT
GOLDMASTER DIAMOND CENTER

Reg. \$225.
Now \$180.00

Reg. \$250.
Now \$200.00

2-tone set
Reg. \$264.50
Now \$211.60

We Sell
Service
Install
Finance
And
Guarantee
ELECTRIC
WATER
HEATERS

Phone 385-5144

monique
ACRYLIC
100%
knitting worsted weight

Special 77¢ skein

Acrylic worsted knitting yarn. Machine washable and dryable. Shrink resistant. Many popular colors. When the fall comes be ready with sweaters your friends will envy.

Special 2 for \$1 Bath towel

Solid color cotton terry bath towel ensembles. Face towels, 3 for \$1. Wash cloths, 4 for \$1.

Special
2.99 - 3.99

100% Acrylic Sweaters make wonderful gifts.
All 3-6X Now 2.99
All 7-14 Now 3.99
White and Pastels.

Special
4.99

Polyester/cotton shirt and tank top makes a great layered look for boys. Prints, solids and jacquards. 8-18

Shop Penneys
Right Now
And Save

JCPenney
We know what you're looking for.

Bring Your
Penney Charge
Card



BOARD MEMBERS of the Salvation Army Service Unit's Advisory Board are (left) Settle, chairman; Pat Behnke, secretary; and Rad Richardson, vice chairman. Shown is Charles Duval, treasurer. They were elected during a special meeting Monday noon at the Tasty Taco. (Staff Photo)

Anton Community Thanksgiving Service Slated

ANTON—The Anton Ministerial Alliance is sponsoring a Community Thanksgiving service this evening, Nov. 18, at 6 p.m. at First Baptist Church. Rev. F. J. Foster, vice-president of Ministerial Alliance and pastor of the First United Methodist Church, will be the officiating minister.

Bill Glenn, pastor of Beibel Baptist Church will give the message. Rev. Ray Rice, pastor of the Assembly of God, will lead in prayer reading and prayer.

Baptist Men Hold Fellowship

ANTON—Some of the men and their sons met Saturday morning for a time of fellowship and breakfast. The new officers for this year are: Dwayne White, president; Darold Hardin, vice-president; Floyd Morton, secretary-treasurer; Erschel Bird, R. A. Director; and Don Oden, program chairman.

The men discussed putting up church signs on the highway as well as other items of work. A layman from out-of-town brought the message. There were 13 members and one visitor present.

WHERE YOU ALWAYS BUY THE BEST FOR LESS

GIBSON'S

DISCOUNT CENTER

STORE HOURS
MON.-SAT.
8:00-8:00
SUNDAY
1:00-6:00

FLAT OR FITTED
SHEETS
COLORED-YELLOW, BLUE, PINK, PURPLE
BY MOHAWK
\$3.59
REG. \$4.79

Close-up
Super Whitening Toothpaste and Mouthwash in One

CLOSE-UP
TOOTH PASTE
REG. & MINT FLAVOR
FAMILY SIZE
REG. 79¢
59¢

5-DAY ROLL-ON
DEODORANT
ANTI-PERSPIRANT FOR MEN
1.5 OZ.
REG. 76¢
57¢

AQUA NET
HAIR SPRAY
NEW MOISTURE SHIELD
HOLDS EVEN IN DAMP OR WET WEATHER
13 OZ.
REG. 49¢
35¢

BYE-BYE TANGLES
BYE-BYE TEARS
CREME RINSE
SPRAY ON
12 OZ.
REG. 97¢
72¢

YUCCA-DEW
SHAMPOO
7.5 OZ.
WITH THE NATURAL CLEANSING DISCOVERY FROM THE DESERT YUCCA PLANT.
NORMAL, DRY, OILY
REG. \$1.27
95¢

Relieves sinus headache and congestion
SINE-OFF
SINUS MEDICINE TABLETS
SINE-OFF
SINUS MEDICINE
RELIEVES SINUS HEADACHE AND CONGESTION
48 TABLETS
REG. \$1.39
\$1.04

Be A Success
AT LOWERING YOUR FOOD BILL! - SHOP HERE!

WE HAVE TURKEYS & HAMS

GRADE A FRYERS	POUND	43¢
FIRST CUTS PORK CHOPS	POUND	89¢
CHOICE SIRLOIN STEAK	POUND	\$1.29
CHOICE ROUND STEAK	POUND	\$1.39
CLOVERLAKE BUTTERMILK	1/2 GAL.	59¢
BELL OR CLOVERLAKE DIP & CHIP	8 OZ.	39¢
SHURFINE MANDARIN ORANGES	11 OZ.	29¢
BORDEN WHIPPING CREAM	1/2 PT.	39¢
BORDEN SOUR CREAM	8 OZ.	39¢
GARDEN CLUB JELLY	18 OZ.	3 FOR \$1
SHURFINE SWEET PEAS	EARLY HARVEST 303 CAN	2 FOR 49¢
SOFLIN NAPKINS	200 COUNT	29¢
CENTRAL AMERICAN BANANAS	POUND	10¢
EMPIRE RED GRAPES	POUND	39¢
CALIFORNIA CELERY	GREEN PASCAL LARGE STALK	20¢

DOUBLE STAMPS TUESDAY AND WEDNESDAY WITH PURCHASE OF \$2.50 OR MORE (EXCLUDING CIGARETTES) WE RESERVE THE RIGHT TO LIMIT QUANTITIES.

PEPSI COLA 32 OZ. PLUS DEPOSIT **20¢**

PIONEER SUPERMARKET

MENNEN SOF-STROKE
SHAVE CREME
REG., LIME AND MENTHOL ICE
10 OZ.
REG. 94¢
69¢

NEW DAWN 2
HAIR COLOR
SHAMPOO-IN WITH MIX-IN COLOR CONTROLLER
REG. \$1.99
\$1.49

PEPTO-BISMOL
16 OZ.
WITH PROTECTIVE COATING ACTION FOR UPSET STOMACH, INDIGESTION AND NAUSEA
REG. \$1.59
\$1.19

SAFEGUARD
DEODORANT SOAP
COMPLEXION SIZE
PINK, WHITE, BEIGE
ANTI-BACTERIAL ACTION WITH RICH LATHER
REG. 19¢
14¢

ALBERTO BALSAM
CREME RINSE OR CONDITIONER
8 OZ.
WORKS LIKE MAGIC
REG. \$1.19
89¢

COOLING SYSTEM
FLUSH & FILL KIT
BY PRESTONE II
3/4 IN., 1/2 IN., & 3/8 IN.
REG. \$1.83
\$1.46

BRYLCREEM SOFT HAIR
MEN'S HAIR SPRAY
GIVES HAIR A DRY LOOK WITHOUT STIFFNESS
7 OZ.
REG. \$1.09
81¢

SSP
SMASH UP DERBY
ALL THE THRILLS OF A REAL SMASH-UP DERBY CARS SNAP TOGETHER - FLY APART
BY KENNER
REG. \$7.99
\$5.99

BIG JIM
BOAT & BUGGY SET
RIDE THE WAVES, LAND THE BIG FISH AND CONQUER THE DUNES
BY MATTEL
REG. \$11.88
\$9.49



LORRAINE DUDLEY of Abilene, past state president and General Federation Board member of the Federation of Women's Clubs, presented a colored slide during the annual Woman's Club Scholarship Dinner. (Staff Photo)

Woman's Club, Guests Attend Annual Dinner

Approximately 100 persons attended the annual Woman's Club Dinner Tuesday night in the Lamb County Community Center.

Highlight of the evening was a slide presentation of "These United States" by Mrs. Lorraine Dudley of Abilene, past state Federation of Women's Clubs president, and General Federation Board Member.

She showed 200 colored slides of beautiful scenery, historical spots, interesting people and their crafts, and national monuments. Included in the pictorial presentation were scenes from New England, Smoky Mountains, Ozarks, Aspen trail in New Mexico, Santa Fe Trail, Gallup, Oklahoma Indians, the desert, Tennessee, Lincoln Memorial, Colonial America, Grand Tetons and the Grand Canyon; along with several other scenes.

Theme for the night's program was "Americanism Day", and tables were decorated with "States on Parade" centerpieces made by the club members.

Greeting the guests and members was the president, Mrs. A. B. Brown.

Invocation was led by Rev. Clem Sorley, and the salute to the flag was led by Herschel Randall.

Presiding as master of ceremonies was Judge G. T. Sides, and presenting special musical numbers were Buddy Wells and Mrs. Norma Phillips, who were accompanied at the piano by

Mrs. Dewey Hulse. For the benediction, members and guests sang "God Bless American."

Mrs. Driskill Entertains Club

Mrs. John Driskill entertained members of the Forum Study Club Thursday evening in her home.

Mrs. Hubert Henry, president, presided at the short business meeting. Correspondence was read from Mrs. Norma Russell, a former member, now living in Grapevine.

Plans for a Christmas party were discussed and names drawn for a gift exchange.

Mrs. Frank Cummings introduced Harry Ford who brought the program. He discussed the history and culture of Mexico, showing slides of the University of Mexico, Cathedrals and other points of interest.

Refreshments were served by the hostess to members and guests, Mr. and Mrs. Ford.



ERNEST CONNELL, district committeeman and immediate past president of the Littlefield Rotary Club presents B. D. Garland Jr. with a 20-year perfect attendance award and Jimmy Brittain with a 20-year perfect attendance award.

Brittain, Garland Get Rotary Awards

Jimmy Brittain and B. D. Garland received 20-year and 20-year perfect attendance awards at a recent meeting of the Littlefield Rotary Club.

Recognition is made in 5-year intervals of club members with perfect weekly attendance records.

Absentees are allowed one week to "make up" meetings and may do so by visiting any Rotary Club in a neighboring town or while on vacation.

Allowances are made for illness, and absentees "senior active" members do not penalize local clubs.

The Littlefield Rotary ranked ninth among 67 clubs in District 573 during the month of September as secretary Phelps Blinn reports that the attendance percentage topped 97 percent in October.

Garden Club Meets Tuesday

Littlefield Garden Club met Tuesday afternoon, Nov. 13, in the Reddy Room of Southwestern Public Service Co.

Mrs. Herbert Dolle presided for the business session.

Mrs. Dolle reported on her trip to the central zone meeting in Tahoka Nov. 1, and Mrs. Nicholas reported on EIP requirements.

The program "Indoor Gardens," was presented by Mrs. A. H. Scivally.

Anton Students Attend Meeting

ANTON—Over 70 juniors and seniors high-ers attended the last fifth quarter meeting of the year following the Seagraves game last Friday night.

They were entertained by the "Three-Way Glas" (Minus one) a group from the Texas Tech BSU.

Shower Honors Oden Infant

ANTON—Mrs. Don Oden and Heather Dawn, were honored with a layette shower Saturday morning in the home of Mrs. Raymond Stephenson.

Co-hostesses were Mmes. Floyd Morton, L.L. Anderson, Chas Edgemon, Darold Hardin, Bob Trussell, Vernon Stone, Harold Green, Homer Lawrance, Jim Copeland and Weldon Swan.

Approximately 20 guests registered Mrs. Vernon served coffee, tea, nuts and nut bread from a table covered with a pink cloth overlaid with a white cloth.

Hostess' gift was an assortment of baby clothes.

Hospitality House News

By MRS. JONNIE CHAPMAN

SUNDAY			
Channel	KCBD 11	KBLK 13	KSEL 28
7	00:00	00:00	00:00
8	00:00	00:00	00:00
9	00:00	00:00	00:00
10	00:00	00:00	00:00
11	00:00	00:00	00:00
12	00:00	00:00	00:00

THURSDAY			
Channel	KCBD 11	KBLK 13	KSEL 28
6	00:00	00:00	00:00
7	00:00	00:00	00:00
8	00:00	00:00	00:00
9	00:00	00:00	00:00
10	00:00	00:00	00:00
11	00:00	00:00	00:00
12	00:00	00:00	00:00

SATURDAY			
Channel	KCBD 11	KBLK 13	KSEL 28
7	00:00	00:00	00:00
8	00:00	00:00	00:00
9	00:00	00:00	00:00
10	00:00	00:00	00:00
11	00:00	00:00	00:00
12	00:00	00:00	00:00

MOVIE LISTINGS ARE INCORRECT FOR THIS WEEK

FRIDAY			
Channel	KCBD 11	KBLK 13	KSEL 28
6	00:00	00:00	00:00
7	00:00	00:00	00:00
8	00:00	00:00	00:00
9	00:00	00:00	00:00
10	00:00	00:00	00:00
11	00:00	00:00	00:00
12	00:00	00:00	00:00

MONDAY			
Channel	KCBD 11	KBLK 13	KSEL 28
6	00:00	00:00	00:00
7	00:00	00:00	00:00
8	00:00	00:00	00:00
9	00:00	00:00	00:00
10	00:00	00:00	00:00
11	00:00	00:00	00:00
12	00:00	00:00	00:00

TUESDAY			
Channel	KCBD 11	KBLK 13	KSEL 28
6	00:00	00:00	00:00
7	00:00	00:00	00:00
8	00:00	00:00	00:00
9	00:00	00:00	00:00
10	00:00	00:00	00:00
11	00:00	00:00	00:00
12	00:00	00:00	00:00

WEDNESDAY			
Channel	KCBD 11	KBLK 13	KSEL 28
6	00:00	00:00	00:00
7	00:00	00:00	00:00
8	00:00	00:00	00:00
9	00:00	00:00	00:00
10	00:00	00:00	00:00
11	00:00	00:00	00:00
12	00:00	00:00	00:00

MOTOROLA

Quasar WORKS IN A DRAWER

100% SOLID STATE CHASSIS 25" CRDENZA COLOR TV

\$848⁸⁸

Color Tuning, 100% Solid State Chassis, Insta-Matic Color Tuning, Matrix Bright Picture Tube, Removable Picture and Sound, 300 Lines, 100% Solid State Chassis, Insta-Matic Color Tuning, Matrix Bright Picture Tube, Removable Picture and Sound.

Brightness

Adjustable for better picture.

CONTRAST

Adjustable for better picture.

SATELLITE REMOTE CONTROL

Turn set on or off change channels on still and off.

MATRIX BRIGHT PICTURE TUBE

Sharp, clean picture with vivid color. Add brightness for extra contrast.

INCLUDES ONE YEAR IN-HOME SERVICE

Basic Terms of Guarantee: Motorola guarantees to pay labor charges for correction of product defects for one year from purchase date. Motorola guarantees to exchange a defective picture tube for two years from purchase date and to exchange all other defective parts for one year from purchase date. Any exchange will be made with new or reconditioned parts of Motorola's discretion. Guarantee is effective only when serviced by a Motorola authorized service center during normal working hours. Guarantee does not cover installation, setup, travel time or mileage, antenna system, adjustment of customer controls, foreign use or damage due to water misuse.

DAYTIME			
Channel	KCBD 11	KBLK 13	KSEL 28
7	00:00	00:00	00:00
8	00:00	00:00	00:00
9	00:00	00:00	00:00
10	00:00	00:00	00:00
11	00:00	00:00	00:00
12	00:00	00:00	00:00

Mrs. Bill Weaver of Amherst visited her mother-in-law, Mrs. Maggie Weaver, Sunday.

Mrs. Ernest Hill and Mrs. Lillie Birkelback visited Miss Emma Sell Monday.

SEVERAL of our patients have been bothered with colds and flu the past week.

Mrs. Fay Steffy and Mrs. Viola Steffy were visiting Fay's mother, Mrs. Jewel Foust Tuesday.

Mrs. Cooper and daughter and Mrs. Howard McClure of Olton visited

Vivian Crume in Alpha Chi

Vivian Crume, a West Texas State University junior student, was initiated into Alpha Chi a national honor society in Canyon recently.

Miss Crume is an elementary education major and is the daughter of Mr. and Mrs. Edward Crume of Sudan.



VIVIAN CRUME

LITTLEFIELD SEED & DELINTING

has moved to the old Paymaster Oil Mill

Our expanded facilities enable us to serve you with faster and better service.

Contact: Conal Norried, Joel Thompson, Darwin Green, Tommy Thrash, Ronald Morris.

LITTLEFIELD SEED & DELINTING CO.

1423 HOUSTON STREET ■ PH. 385-3588



TURKEY DAY SALE

FOR YOUR THANKSGIVING DAY FEAST

DOUBLE STAMPS GOLD BOND
 MONDAY, TUESDAY & WEDNESDAY

IN ORDER TO DO OUR PART, TO CONSERVE ENERGY ALL FURR'S SUPER MARKETS WILL:

- *SET STORE THERMOSTATS AT 68
- *OUTDOOR SIGN TOWERS WILL BE TURNED OFF WHERE POSSIBLE
- *REGULATE THE ROAD SPEED OF ALL COMPANY VEHICLES

PLEASE.....WON'T YOU JOIN IN EFFORT TO CONSERVE ENERGY!

CLOSED THANKSGIVING DAY

- BANANAS**
- APPLES**
- ONIONS**
- NUTS**

CENTRAL AMERICAN GOLDEN RIPE, LB **10¢**
 RED ROME, RED OR GOLDEN DELICIOUS, LB **4 FOR \$1**
 IDAHO SPANISH SWEET YELLOW, LB **12¢**
 PECANS, WALNUTS, FILABERTS, BRAZIL, ALMONDS, MIX OR MATCH, LB **79¢**

OCEAN SPRAY CRANBERRIES

1 LB CELLO BAG **29¢**

SWEET POTATOES

EAST TEXAS MARYLAND SWEET, LB **23¢**

CANNED HAMS
 FOOD CLUB BONELESS
 3 LB CAN **\$4.79**
 5 LB CAN **\$7.89**

CREAM CHEESE
 FOOD CLUB
 8 Oz Pkg **39¢**

RUMP ROAST
 FURR'S PROTEN LB **\$1.09**

PURE PORK SAUSAGE
 FARM PAC
 1 LB PKG **\$1.18** 2 LB PKG **\$2.36**

PRICES EFFECTIVE THRU NOVEMBER 21. WE RESERVE THE RIGHT TO LIMIT QUANTITIES.

- TURKEYS**
- TURKEYS**
- PORK ROAST**
- PORK ROAST**
- RIB ROAST**
- ROUND**
- SIRLOIN**
- RIB STEAK**

TOP FROST HENS, LB **69¢**
 TOP FROST, TOM'S, 16-20 LB AVG., LB **65¢**
 PORK LOIN, LB **\$1.19**
 FRESH HAM, WHOLE OR HALF, LB **\$1.19**
 LARGE END, FURR'S PROTEN, LB **\$1.09**
 FURR'S PROTEN, STEAK, LB **\$1.09**
 STEAK, FURR'S PROTEN, LB **\$1.09**
 FURR'S PROTEN, LB **\$1.09**

- COCONUT TOPPING SAUCE**
- BUTTER**
- BEARS**
- DRINKS**
- PIES**
- TOWELS**
- JUICE**

FOOD CLUB FLAKE, 14 OZ PACKAGE **45¢**
 FOOD CLUB WHIPPED, 8 OZ PKG **59¢**
 FOOD CLUB CRANBERRY, NO. 300 CAN **22¢**
 FOOD CLUB, SWEET CREAM, LB **89¢**
 FOOD CLUB, IN HEAVY SYRUP, NO. 2 1/2 CAN **53¢**
 DEL MONTE, PINEAPPLE, ORANGE, OR PINEAPPLE GRAPEFRUIT, 46 OZ CAN **3 FOR \$1**
 TOP FROST, PUMPKIN OR MINCE, FRESH FROZEN, 24 OZ PACKAGE **49¢**
 NORTHERN ASSORTED, LARGE ROLL **29¢**
 DEL MONTE, PINEAPPLE, 46 OZ CAN **39¢**



WHIPPING CREAM
 BORDEN'S
 1/2 PINT **29¢**

GREEN BEANS
 FOOD CLUB WHOLE, NO. 303 CAN **4 FOR \$1**

PAPER PLATES
 TOPCREST
 100 CT PKG **69¢**

ANGEL FOOD CAKE MIX
 FOOD CLUB
 16 OZ PKG **49¢**

Frozen Food Favorites

- TOPPING STRAWBERRIES** TOP FROST, FRESH FROZEN, 10 1/2 OZ PKG **49¢**
- CREAM PIES** TOP FROST, FRESH FROZEN, ASS'T. FLAVORS, PKG **3 FOR \$1**
- BREAD DOUGH** GAYLORD, FROZEN, 2-16 OZ LOAVES, PKG **37¢**
- BROCCOLI** SPEARS, TOP FROST, FRESH FROZEN, 10 OZ PKG **29¢**
- PIE SHELLS** Pet Ritz, 2-Pc Pkg **43¢**
- CARROTS** Top Frost, Cut, 24 Oz Pkg **39¢**

VALUABLE COUPON
 THIS COUPON ENTITLES YOU TO **SAVE 35¢**
 MARYLAND CLUB COFFEE
 2 Lb Can
 With Coupon.....\$1.96
 Without Coupon....\$2.31
 Expires 11-21-73
 LIMIT ONE COUPON PER FAMILY

SNACK CRACKERS

Nabisco Ass't, Pkg **59¢** **VANILLA WAFERS** Sunshine 11 Oz Pkg

ONION SOUP MIX

Lipton's 2 Pc Pkg **39¢** **POULTRY** Seasoning Schillings, 3/4 Oz Pkg **29¢**

- JUMBO LOG ROLL PAPER** 30" wide, 40% heavier than last year. **\$1.59**
- JUMBO LOG ROLL FOIL WRAP** 30 Sq.Ft. Beautiful design. **\$1.59**
- MINI JUMBO PAPER & FOIL** 30 Sq.Ft. solid foil, decorated paper **\$1.59**
- JUMBO LOG ROLL PAPER** 30" wide, 80 Sq.Ft. **78¢**

- PAPER & FOIL COMBINATION** 6 roll combo, 4 paper and 2 foil. **\$1.19**
- HOLIDAY PAPER & FOIL** 10 roll package, 8 paper 89 Sq.Ft. 2 foil, 11 Sq.Ft. **\$1.79**
- HOLIDAY PAPER & FOIL** 7 roll pack, 65 Sq.Ft. **\$1.79**

CHOOSE YOUR STYLE AND SIZE

AMERICAN CHRISTMAS TREES
 Scotch Pine Or Fir Styles

- 2 Ft Scotch Pine... **\$2.49**
- 4 Ft Scotch Pine... **\$7.99**
- 7 Ft Scotch Pine... **\$18.99**
- Bush 64-Tip Scotch Pine, Deluxe Stand **\$11.99**

REPLACEMENT BULBS

- 5 PK. C71/2 **29¢**
- 5 PK. C91/4 **39¢**

From Germany
 Flame Proof Tarnish Proof
 Luxury Quality

- 3"x18' 2 Ply, Box..... **59¢**
- 4"x25' 2 Ply, Hank.... **79¢**
- 4"x12' 6 Ply, Hank... **\$1.19**
- 3"x50' 1 Ply, Hank.... **89¢**

BRITE STAR ICICLES

- 200 STRAND PACKAGE **2 FOR 25¢**
- 300 STRAND PACKAGE **2 FOR 35¢**

TREE ORNAMENTS

- 1 3/4 INCH BOX **79¢**
- 2 1/4 INCH BOX **\$1.09**
- 2 5/8 INCH BOX **\$1.19**

Shop Our Complete Selection Of Christmas Tree Decorations. We Have Many Styles To Choose From All Priced At Low, Discount Prices.

SHOP Furr's MIRACLE PRICES

FOOTBALL CONTEST

Enter Our Contest Each Week
Nothing To Buy - Just Pick Winners

It's so easy. . .
Anyone can enter!
Read the rules. . .
Start Winning
RULES
OF THE CONTEST:

All you have to do to be eligible for the weekly cash prizes is to complete the form below and place (or mail) it in the designated box at the Leader-News office. It is the contestants responsibility to see that the form has been placed in the entry box and the Leader-News assumes no responsibility for blanks lost, or delayed in the mails.

One game is listed in each advertisement. Pick the winner and insert the name of that team in the OFFICIAL ENTRY BLANK below. Then in the "Tie Breaker" section, put the scores you believe each of the teams will make. Weekly judging will be based on the total number guessed correctly. In case of a tie, the tie-breaker will be used to determine the top winners. Decision of the Leader-News scoring judges will be final.

To be eligible for the 2 free tickets to the New Year's Game at the COTTON BOWL, the total number of correct guesses will be totaled through the season.

LIMIT—One entry per contestant per week.

BE SURE to complete the forms by PRINTING plainly your name and complete address and turning in the entry blank only. Contest winners will be announced in each Thursday's issue of the Leader-News.

Win Cash Prizes Each Week

FIRST PLACE PRIZE

\$5

SECOND PLACE PRIZE

\$3

THIRD PLACE PRIZE

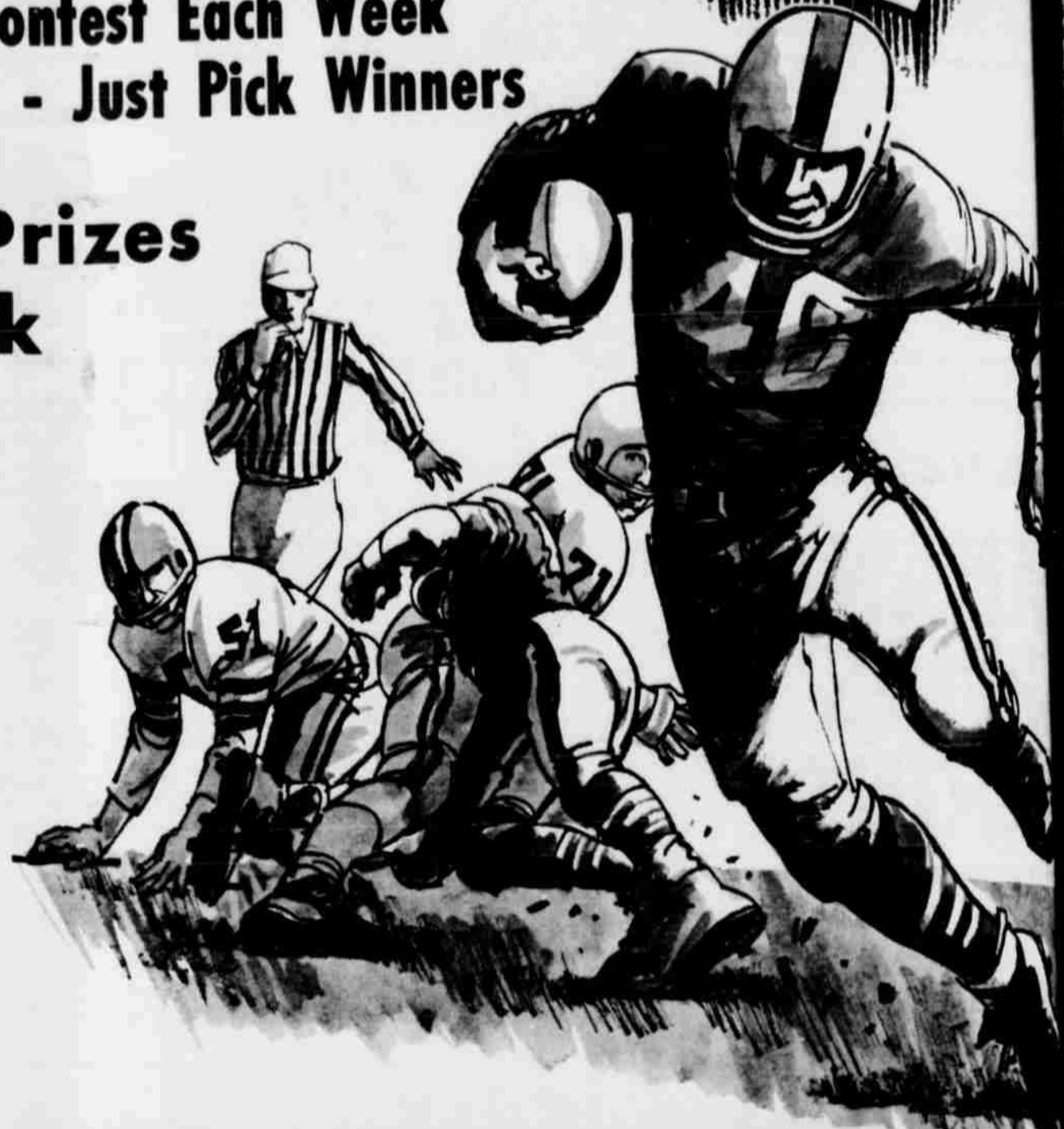
\$2

GRAND PRIZE

2 TICKETS TO THE
Cotton Bowl

NEW YEAR'S GAME

Plus \$25.00 Expense Money



LITTLEFIELD DELINTING CO.

We Sell Cotton Seeds

Game No. 1

LITTLEFIELD vs. FLOYDADA

Arthur Summers

Phone 385-4533

Spade Highway

Findley's Jewelry

"Known By The Quality We Keep"

Game No. 2

VEGA vs. HALE CENTER

* BULOVA * LONGINES * WITTMANER WATCHES
* GORHAM STERLING * FOSTORIA CRYSTAL * PICKARD CHINA

MARCUM Olds, Cadillac, Pontiac

Game No. 3

TEXAS TECH vs. ARKANSAS

801 Hall Ave.

Phone 385-517

OFFICIAL ENTRY BLANK

Lamb County Leader-News Football Contest

Game No. Winner

1	
2	
3	
4	
5	
6	
7	
8	
9	
10	
11	
12	
13	
14	
15	
16	

TIE BREAKER

HOUSTON vs. NEW ENGLAND
GREEN BAY vs. SAN FRANCISCO

Name _____
Address _____

Ernest Mills Cotton Co.

RARE COINS & COIN SUPPLIES

Game No. 4

RICE vs. TCU



823-B Lfd. Dr. 806-385-5178



Shook Tire Co.

14 STORES IN 13 WEST TEXAS CITIES

Game No. 5

USC vs. UCLA

1028 East 9th

Phone 385-4405

LITTLEFIELD SEED & DELINTING

"Home Of Fine Cotton Seeds"

Game No. 6

NEBRASKA vs. OKLAHOMA

Phone 385-3588

PRESCRIPTION SHOP

PHONE 385-4491

Game No. 7

SMU vs. BAYLOR

401 WEST 6TH

FINANCING TEXAS AGRICULTURE

FOR OVER



35 YEARS

Game No. 8

MICHIGAN vs. OHIO STATE

ARMES EQUIPMENT CO.

Your John Deere Dealer

Formerly Luce-Nelson



BUFFALO vs. BALTIMORE

Game No. 9

East Loop 84

385-4121

Lamb County Farmers Co-op Gin

Game No. 10

THE BRICK GIN

CHICAGO vs. MINNESOTA

1230 E 9th 385-4552

Armes Chevrolet Co.

Game No. 11

LOS ANGELES vs. NEW ORLEANS

New And Used Cars,
Trucks, Pickups



610 East 4th

Phone 385-4437

PRATT'S JEWELRY & GIFTS

Game No. 12 GIFT GALLERY HEADQUARTERS

KANSAS CITY vs. DENVER

DIAMONDS LOOSE AND MOUNTED WATCHES BY SEIKO, VANTAGE, HAMILTON, MIDO, ELGIN, BULOVA

CONOCO JIM JONES

AGENT

Game No. 13

NEW YORK GIANTS vs. PHILADELPHIA

LITTLEFIELD Stan's Conoco Jim's Conoco S&J Service
AMHERST Joe Miller Bob Clayton HART CAMP V.L. Foster
BULA Dale Middlebrooks PEP Pop Gro. & Service

GIBSON'S DISCOUNT CENTER

Game No. 14

OAKLAND vs. SAN DIEGO

311 East 8th 385-5932

Littlefield Farmers Coop Gins & Elevators

Game No. 15

PITTSBURGH vs. CLEVELAND

"OWNED BY THOSE WE SERVE"

Wallace Home Furnishings

Game No. 16

ST. LOUIS vs. CINCINNATI

229 Phelps Ave. 385-3888

News about our Lamb County Neighbors in

OLTON

MRS. W. B. SMITH, JR. 285-2385



PARKER, son of Mrs. Jess Parker, had an appendectomy at Plains General Hospital in Plainview Thursday. Brother Jimmy was in the football game last night and is now in treatment at Central Hospital.

CITIZEN Group had their Thanksgiving at Woman's on Wednesday, Nov. 15.

LEON MAY visited in Childress with her Mrs. F. M.

AND MRS. Barry Paige and Bryan Schreier visited in the homes of their Mr. and Mrs. Barton and Mrs. Ray.

QUY BALLARD will with a pink and blue on Saturday, Nov. 24, at in the Church of in Spade. Friends and are invited.

AND MRS. Herman of Plainview, Mr. and Ray Roberts, Mr. and Ray Copeland and Mr. Derwood Copeland stayed several days in Kingdom Lake.

PHILLIPS, son of Mrs. Glenn Phillips, was chosen for listing in edition of "Who's Who Students in American Cities and Colleges," among 38 Texas A&M seniors chosen for list.

AND MRS. Paul Spain visited Sunday in the of their parents, Mr. E. R. Spain and Mrs. Slatten.

ENTY-SIX youth of United Methodist and several sponsors Sudan Sunday evening

and presented "The Happy Side" at the Methodist Church.

SUNDAY AFTERNOON, visitors in the home of Mr. and Mrs. W. E. Andrews were Mr. and Mrs. M. J. Reed of Dimmitt.

MR. AND MRS. Ancil Miller of Grand Prairie have moved back to Olton to make their home.

MR. AND MRS. Elmer Lewis have purchased a five-room modern home in Olton. They plan to add on a den and double garage before moving to town.

MRS. LINNIE CAMPBELL, Mrs. Ethel Schreier, Mrs. Helen Bohner and Mrs. Pearl Schreier all visited in Plainview Monday.

MR. AND MRS. Lonnie Smith and daughters and Mrs. Love Smith visited Sunday in Floydada in the home of Mr. and Mrs. L. D. Smith and Mr. and Mrs. Mike Smith and new son, Tanner Ray.

MR. AND MRS. H. R. Curtis visited Saturday and Sunday in Dumas in the home of their daughter, Mr. and Mrs. Harvey Garrison.

MRS. FRANK CORNELIUS and Mrs. Jess Parker visited Miss Marsha Parker at Texas Tech University Monday.

MRS. MARGARET BURRUS entered Central Plains General Hospital in Plainview Monday for surgery.

MR. AND MRS. Jack Fuller of Austin visited his mother, Mrs. Jim Fuller recently.

OLTON STUDY CLUB met Monday night in the home of Mrs. J. L. Carson Jr. for a Thanksgiving program. Mrs. Bertie Lee Brown, president, presided at the short business meeting. Each member present gave a short discussion on "Thanksgiving." Mrs. Carson served a salad plate to the

Fellowship Hall to pack candy for their servicemen. They need the addresses of all servicemen in our community.

MR. AND MRS. Leo Smith and his mother, Mrs. Love Smith, made a business trip to Wichita Falls Tuesday.

MR. AND MRS. E. R. Spain are expecting their son, Jim Spain of Cali, Colombia to visit MR. AND MRS. Don Spain are vacationing in the Bahamas. They plan to return home Friday.

J. R. WALTON of Portales, N.M. arrived Sunday for a visit in the home of his son-in-law and daughter, Mr. and Mrs. Alton Cure.

"GIFT WRAPPING" was the program topic presented Tuesday afternoon to members of the Olton Home Demonstration Club by Mrs. O. T. Crosby. Meeting in the home of Mrs. Bill Pittillo, members were shown wrapping techniques as Mrs. Crosby gift wrapped three parcels and demonstrated how making with a "Mini-bow" maker. Mrs. Melvin Souter presided. Roll call was answered with "What I notice first about a package." Refreshments were served two visitors, Mrs. Julia Hoskins, mother of the hostess, and Mrs. Norman Smith and members Mmes. Crosby, Souter, V. O. Harrod, Lester Kennedy and Lee Simmons. Mrs. Harrod will host the Nov. 20 meeting. Mrs. Lynn Bowerman, Lamb County Extension Agent, will present a program on diabetes.

MR. AND MRS. Darryl Dennis and Cody are moving to Lockney, where they will be engaged in farming.

MR. AND MRS. E. S. Huckabee visited recently in the home of their daughter and family, Mr. and Mrs. George Bickly in Seymour.

OLTON CHAPTER No. 847 Order of Eastern Star met Thursday night in Masonic Hall for a salad supper. Mrs.

Sally Teague, deputy of Plainview was present.

MEN LEAVING Saturday for Old Mexico for a fishing trip were Judge G. T. Sides, Dr. Basil Johns and son Ebin, Stephen Smith, Kenneth Ray, Eldon Franks, Major James, J. B. James. They plan to fish about a week.

Help Wanted

Want year around family man for irrigated farm. References required. No drinkers need apply. Good housing and good pay. Charles King, eleven miles west of Dimmitt on Hwy 85, at the

Miller Farms
806-647-4242

Miss Wade Chosen FA Sweetheart

WHITHARRAL—Cynthia Wade, a junior student at Whitharral High School, was chosen Monday, during assembly, that she has been chosen Whitharral Future Teachers Chapter Sweetheart. She was presented a white jacket with her name status encribed upon it, by Chapter President, J. Dukatnik. She presented the Chapter last as Flow Girl.

Cynthia will represent the Chapter at the District meeting Monday night in Olton. She will compete against Sweethearts throughout the area for the District Sweetheart title.

Cynthia Ann is an honor student, head cheerleader and was recently chosen Whitharral Homecoming Queen. She plays the flute in the Panther Band; is a member of the Annual Staff and Student Council. She has gone to State in Future Homemakers the past two years. This summer she was a Farm Bureau Queen Candidate and attend the Citizenship Seminar on the Baylor College Campus.



CYNTHIA ANN WADE

ANTON NEWS
MRS. C. D. NELSON 997-4261

AND MRS. Hoyt and Alan, had guest the weekend, his Mrs. and Mrs. Cranfill Sweetwater.

AND MRS. S. M. visited their son, Rick, in the Veterans Hospital in Amarillo Sunday.

AND MRS. Weldon and family visited in Snyder over the week.

MEMBERS of Central Plains Church assembled in Fellowship Hall after their Wednesday night for and to honor their Rev. Harmon Bishop on his birthday. He was presented a gift of money.

WITTING in the home of Mrs. F. S. Stephenson



WE WILL BE CLOSED THANKSGIVING DAY

USDA GRADE A SELF BASTING

TURKEYS TOMS 16-22 LB SIZE **65¢** HENS 10-14 LB SIZE **69¢**

HAMS **\$4.29**

BEEF LIVER FRESH LB **59¢**

CELERY FRESH STALK **19¢**

CRANBERRIES FRESH OCEAN SPRAY 1 LB CELLO PACKAGE **19¢**
LIMIT 2- THEREAFTER REGULAR PRICE

YAMS JUMBO LB **19¢**

CARROTS 1 LB CELLO BAG **19¢**

APPLES RED DELICIOUS, LB **19¢**

DOVERSTONE THIS WEEK

Build your set the piece-each-week way.

WEEK	ITEM	PRICE
1	Dinner Plate	49¢
2	Cereal/Dessert Dish	
3	Cup	
4	Saucer	
5	Salad/Cake Plate	

WITH \$5.00 PURCHASE

THIS CYCLE WILL BE REPEATED THROUGHOUT THE PROMOTION

MILK EAGLE BRAND BORDEN'S 16 OZ CAN **39¢**

FLOUR GOLD MEDAL 5 LB BAG **79¢**

SUGAR SHURFINE PURE CANE 5 LB BAG **59¢**

ASPARAGUS SHURFINE NO. 300 CAN **45¢**

COCA COLA 6 BOTTLE CARTON 32 OZ PLUS TAX & DEPOSIT **\$1**

PIES JOHNSTON FROZEN PUMPKIN OR MINCE 32 OZ **89¢**

PIE SHELLS MORTON 2 IN PACKAGE **39¢**

ROLLS TENDER CRUST PACKAGE 2 FOR **79¢**

HOUSE SHOES LADIES REGULAR 2.69 ONLY **\$1.99**

CONVENIENT LOCATIONS 322 E. DELANO AND 601 E. 10th

BUTTERMILK BORDEN OR CLOVERLAKE 1/2 GALLON **59¢**

HALF'N HALF BORDEN OR BELL **39¢**

WHIPPING CREAM EACH

SOUR CREAM EACH

CHIP & DIP EACH **\$7.99**

CORN POPPER MIRRO ELECTRIC EACH **\$7.99**

THE LIVING BIBLES

HARD BACK-ADULT	PAPER BACK-TEENAGE	CHILDREN'S
\$6.99	\$4.88	\$3.88

Pay-n-Save AFFILIATED QUALITY AND SERVICE

PLUS S & H GREEN STAMPS!
DOUBLE STAMPS TUESDAYS & WEDNESDAYS WITH \$2.50 OR MORE PURCHASE (EXCLUDING CIGARETTES)

WE RESERVE THE RIGHT TO LIMIT QUANTITIES
WE SELL TRAVELERS EXPRESS MONEY ORDERS, PAYROLL CHECKS CASHED

CLASSIFIED ADS

Rates on **CLASSIFIED ADVERTISING** are 10 cents per word 1st insertion (\$1.50 minimum charge) and 6 cents per word 2nd insertion (\$1.00 minimum charge). **Blind box ads** are \$1.00 additional. **DISPLAY CLASSIFIED RATES:** \$1.40 per column inch first insertion and additional insertions, \$1.15 per column inch. **Card of Thanks**—1 time—maximum of 20 words, \$1.50. All cards of Thanks over 20 words are to be charged at regular classified rates.

Wanted

CUSTOM Farm work—breaking, listing, discing, refflaring, fertilizing, Phone Leroy Davis 385-3253 or Littlefield Butane 385-3010. TF-D

WILL BUY good clean furniture, stoves, refrigerators, one piece or household. Call 385-3714 or 385-5979. TF-Y

EXPERIENCED credit manager. Good benefits, with excellent potential. Salary depends on qualifications. Call 385-4421. TF-L

WANTED registered nurse for charge nurse position. Apply in person, King's Manor Methodist Home Hereford, 430 Ranger Drive. 806-364-0663. 11-26-K

WANTED licensed vocational nurse for charge nurse position. Apply in person, King's Manor Methodist Home, Hereford, 430 Ranger Drive. 806-364-0663. 11-26-K

WHEAT, rye and stalk fields for fall and winter pasture. Bill Roper, 385-6058. TF-R

HOUSEKEEPER and baby sitter 1:00 to 6:30 week days. Two children 8 years and 6 years old. 385-3888 and 385-5667 after 6:30. 11-15-W

EXPERIENCED GM mechanic. Guaranteed salary and commission. Incentive bonus and vacation. Call Danny Stuart, Marcum-Olds, Cadillac, Pontiac. 385-5171. TF-M

Help Wanted

SECRET lose water weight, body bloat, puffiness, etc. X-Pel water pills, only \$3.00 or money back refund. Brittain Pharmacy, 430 Phelps, 385-5114. 12-23-P

WANTED year around farm hand. Good house, top wages for top man. phone 806-262-4341. 12-13-N

Misc.

OLD photographs copied and restored. Bring your photographs in for an estimate. Roberts Studio, Fine Photography, 203 W 3rd St., Littlefield, Tex.

TREES cut and hauled. Call 385-4621. 11-18-P

Give Away

3 kittens to give away. 385-3991. 11-18-G

Real Estate

FOR SALE 30 acres good land. \$8,000. Contact L. Peyton Reese. TF-R

366 acre farm for sale. \$175.00 per acre. Four miles north of Pep, Tex. R.F. Kuehler, Rt. 3, Seymour, Tex. 76380, telephone 817-888-3725. 11-25-K

FOR SALE labor of land 8 1/2 mi S.W. of Sudan, with 100 acres permanent grass, some side oaks grammar. \$38,000. See Wayne Swart, Sudan, 806-933-2541 or Jack Crain, Waco, Tex. 817-772-1904. 12-2-C

177 acres, irrigated, strong 8" well, underground tile, 2 1/2 miles northwest of Amherst. 806-492-3805. 11-25-D

Real Estate

FOR SALE to settle estate 177 acres, irrigated land in Beck Gin community. 2 wells tied together with high pressure line. 3 bedroom brick home on pavement. Almost new pressure pump system. Extra good cotton farm. Contact Lloyd Pryor, independent executor. 246-3460, Amherst, Tex. TF-P

177 acres northeast of town. Good combination stock farm. Two small wells.

10 acres, close in. 6 room house. Dry land.

180 acres, dryland. Lays perfect. South Bailey County.

2 bedroom house, 14th St. Priced right.

3 bedroom, 2 bath, carpeted. Double garage. Close in. Wingo Real Estate 143 N. Westside 385-4684 Equal Housing Opportunity

3 bedroom brick, 2 bath, 2 car garage. Good storage. Refrigerated air, corner lot. Fenced yard. Cres. Dr.

3 bedroom, 2 bath, 2 car garage. Fenced yard. North Sunset.

4 bedroom, 2 bath, utility room. FHA loan. \$450 down plus closing. W. 10th.

3 bedroom FHA, 2 bath, 2 car garage. \$450 down plus closing. W. 12th.

2 bedroom FHA, garage, completely refinished. New carpet. \$250 down plus closing. W. 6th.

2 bedroom, den, carport, storm cellar. FHA loan, \$250 down plus closing. W. 5th.

354 acres dryland.

112 acres irrigated.

Otis Bennett Real Estate 385-3575 385-4215 Equal Housing Opportunity

Houses For Sale

2 BEDROOM, fenced back yard, house for sale. 721 E. 15th. \$150 down and take up payments. Call 385-4712. 11-22-B

HOUSE FOR sale by owner. Nearly new. 3 bedroom, brick, carpeted and paneled. Will show at your convenience. 600 Duggan, Anton. TF-A

LARGE 3 bedroom brick house, refrigerated air, 3 baths, 2-car garage, central heat, 100-foot lot. Call Curtis Chisholm 385-6017 or 385-3425. 11-18-C

LARGE brick home, formal living room, den, fireplace, 3 bedrooms, 2 baths, utility, double garage, storage house, refrigerated air and fully landscaped. Call after 12:00 noon 385-5795. 11-22-L

NICE house with cellar, patio, single car garage with storage and carport. Located one block from school in Anton. Call 997-3621. TF-H

3 BEDROOM, 1 bath, dining room, & living room. See at 102 N. Sunset. Call Ken Day, 385-4421 TF-D

3 bedroom, 1 bath, fenced yard & carport. Almost new carpet. Call 385-4975. TF-M

2 bedroom, furnished or unfurnished, storm cellar. Home Mrs. B.O. Shavor. Call 246-3232, Amherst. 11-25-5

3 bedrooms, one bedroom has outside entrance, fenced with nice trees and

ran out sifter on three lots, on Main Street one block from school in Amherst. \$8,000. 246-3230. 11-15-L

177 acres, irrigated, strong 8" well, underground tile, 2 1/2 miles northwest of Amherst. 806-492-3805. 11-25-D

Houses For Sale

3 bedroom brick, 2 baths, walk-in closets, completely carpeted, double garage, central heat & air. 506 N. Sunset. Call 385-5184 8 to 5 or 385-3952 after 5 p.m. TF-W

3 bedroom, 2 bath, garage, fenced back yard, carpet throughout. For sale by owner. 385-5639. TF-V

4 bedroom, 2 1/2 bath. Brick, den, fireplace, storm windows, glassed in sun room. Built in Bar-b-qe deck. Lots of storage. 6 1/2% loan E. 18th.

OTIS BENNETT REAL ESTATE Equal Housing Opportunity 385-4215 385-3575

Rent Or Sale

LARGE building, at Delano and Hy. 385. Former Pontiac building. See or call Jack Farr, 385-5968. TF-F

Apt. For Rent

FURNISHED 1 and 2 bedroom apartments, adults only. 385-3880. TF-H

APARTMENT for rent. Bills paid. Call 385-3365. TF-W

Garage Sale

100 E. 20th. Starts at 1 p.m. Furniture, clothes, dishes, odds & ends. Everybody welcome. 11-8-D

SEVERAL family garage sale. Sat. 10-6. Sunday 1-6. Antiques, lots of furniture and lots of junk. 1 block off Hwy. 84 in Anton. 11-18-T

MON., Tues., Wed. 9-6. 1315 W. 5th. 11-18-V

Autos For Sale

1963 Chev. pickup, 4-speed transmission. Wayne Parson, 403 E. 19th, 385-5784. TF-P

CLEANEST USED CARS in town. Marcum-Olds-Cadillac, 8th and Hiway 385, Littlefield. 385-5171. TF-M

1968 Chevrolet 1/2 ton pickup, long wide bed, new motor, exhaust system, brakes perfect condition. \$1450.00. Call 385-4119 after 6:00. TF-C

1968 Dodge Charger, 440 Magnum, 4 speed, 1970 engine, good tires with magnum wheels. \$500. Phone Whitharral, 299-4763. TF-N

Misc. For Sale

1 Lane cedar chest, fruitwood, like new. Antique china lamp. Call 385-3754 after 5 p.m. 11-15-R

FRESH dressed turkeys for sale. Mrs. P.E. Jones, Rt. 1, Littlefield, 385-5648. 11-18-J

FIVE TOUCH & Sews, all zig-zag, buttonholes, fancy designs, fills bobbin automatically, deluxe models, desk cabinets or portables. Your choice. \$50 cash each. Usually home, 4313 A 53rd. Please call first. 797-1867. If no answer, 747-9272.

SUPER SOUND electronic Quad Audio system. 400 watts. 4D Discrete. SQ Matrix. 8 track tape player. Fully transistorized Am-Fm-FMMPX stereo radio. 4 big speakers. Fantastic buy for only \$15.98 monthly. We will trade. Super Sound U.S.A. 1305 Ave. H, Lubbock. 762-1453, call collect. Call today. Call now.

SEVERAL scratched and dented GE refrigerators at special reduced prices. Goodyear Service Store, 304 W. 4th, Littlefield, Tex. Phone 385-5162. TF-G

FOR SALE at half price 5 burial plots in Littlefield Cemetery. 227-4441. 12-2-W

Misc. For Sale

GREAT BUY, electronic 8 track tape player with 2 speakers for only \$79.95 cash or 8 pmts. of \$10.00 with \$11.45 down. Super Sound USA, 1305 Ave. H, Lubbock. Call 762-1453 collect. Hurry while they last.

SPANISH style console stereo-psychedelic lights, 100 watt speakers, Tape deck, turntable and Am-Fm stereo radio mounted on a sliding drawer. Super buy for only \$15.95 monthly. Super Sound USA, 1305 Ave. H, Lubbock, Tex. Call 762-1453 collect today.

1/2 cab/camper for sale, 8 ft. Self-contained. 385-5375. 11-22-S

Bus. Service

WILL BUILD re-enforced concrete cellars. Redi-built houses. H.G. Ferguson. 385-5508. 2-28-P

LITTLEFIELD Roofing specialist, built up asphalt roofs. All work guaranteed. 1115 W. 9th. Call 385-3507 or 385-5680. TF-L

MONUMENTS-Memorials high quality granite. Also cemetery curbing. Toby Walker, 1407 Nichols, Littlefield, Tex. 385-3539

WHITE'S metal detectors for sale or for rent at Clara's Beauty Shop, 1216 Monticello Ave. Call 385-4264. TF-C

WE repair small appliances, furniture, venetian blinds, vacuum cleaners. We specialize in Hoover & Electrolux. Bigham's Fix-It-Shop, 310 W. 4th St., Littlefield. Phone 385-4010. TF-B

TAKE soil away the Blue Lustre way from carpets and upholstery. Rent electric shampooer \$1. (Nelson's Hardware).

HARRELL Building Supply

MAIN ST. ANTON, TEXAS PHONE 997-3621 OR 997-2751

STOCK REDUCTION SALE

Floor Covering

12 ft. selections sq. yd. 1.10 Cushion-type 2.39

12 ft. Candy-Stripe sq. yd. plus installation Tough-One Kitchen Carpet sq. yd. plus installation 4.00

Doors

Damaged Doors—All sizes Good prices Only 3-Exterior Damaged Steel Doors 20.00 each

Paneling

Damaged 4'x8' 2.00 Masonite 4'x8' 6.50

Good stock prefinished moulding & trim.

One table Miscellaneous Merchandise 50% off

Interior Latex Paint 6 colors 3.10 gal.

1x12 Resawn .18 bd. ft.

Decking 2x4-8' .99 ea.

Lawn mowers Priced to sell

Free estimates on do-it-yourself jobs.

For Classifieds Dial 385-4481

Bus. Services

ALL KINDS ALTERATIONS, covered buttons, buttonholes, belts. Mr. and Mrs. G.E. Scifres, 905 E. 6th St. Phone 385-3971. Former Drive In Cleaners. TF-S

RENT CONVALESCENT equipment at Brittain Pharmacy. Wheel chairs crutches, hospital beds, other items. Complete line convalescent needs TF-B

MATTRESSES complete renovating. New mattresses & box springs, any size. Call Mrs. Claude Steffey, 385-3386, agent for A&B Mattress Co., Lubbock, Tex. TF-S

KIRBY SALES & SERVICE Call 385-3357 For a free demonstration on the Kirby Classic 1013 W. 9th

Industrial BEARINGS & BELTS Forney Welders & Supplies

*Farm Equip.

*Industrial Equip.

G & C AUTO SUPPLY

700 E. 14th 385-4431

Na-Churs liquid fertilizer available for immediate delivery. Guaranteed future deliveries booked now.

W. G. or L. L. Webb

Abernathy, Texas. Phone 298-2586.

DUKE ELECTRIC

Custom Wiring Ditch Digging Underground Service Insured and Bonded

385-5064 1318 W. 14th

TRUCK SEATS EXCHANGED

15 MINUTE SERVICE McCORMICKS

UPHOLSTERY CHARLES POWELL, OWNER

227 PHELPS AVE. PH. 385-4555

Littlefield, Texas, 79339

Rena's Poodle Parlor

Professional Poodle Grooming

By appointment only 997-4731 Corner of 4th & Edwards Anton, Texas

Notice

NOTICE TO BIDDERS Notice is hereby given that the Commissioner's Court of Lamb County, Texas, will receive sealed bids at the County Courthouse at Littlefield, Texas, to sell the following described equipment until 10:00 o'clock a.m., Friday, November 30, 1973, at which time all bids will be opened and read aloud in the Regular Commissioner's Court meeting: Item No. 1: 1 Used 1970 Whirlpool Chest Type Freezer with 23.5 Cubic Feet Model EVH 235, Serial No. 65189. Item No. 2: 1 Used 10ft. x 10 ft. walk-in cooler with Compressor. For more information concerning the items for sell contact County Judge. G. T. Sides or County Commissioner Precinct No. 3, Jack Peel. Each of the above items will be sold as separate items. All bids shall be sealed when presented or filed and will be opened at the above time and date. The Commissioners' Court of Lamb County reserves the right to accept or reject any and all bids and waive all formalities. Dated this 12th day of November, A.D., 1973.

s/Mary Beth Willey Mary Beth Willey, County Clerk and Ex-Officio Clerk of the Lamb County Commissioners' Court

For Classifieds Dial 385-4481



GRAIN HARVEST is nearing completion in Lamb County, and mountains of the grain are stacked near elevators. Here, grain is being loaded onto trucks for transport to loading augers where the grain will be placed onto trains. (Staff Photo)

Salvation Army Board Elects Officers

The Littlefield Service Unit of the Salvation Army met Friday noon, Nov. 16, to elect new officers and to discuss the upcoming Christmas Basket Drive.

New officers are: Chairman, James Settle; vice-chairman, Rad Richardson; treasurer, C. A. Duval; and secretary, Pat Behnke.

Appreciation was expressed to past chairman Warren Dayton who has given so much time to this organization.

Salvation Army, though no longer working out of its own building, is active in Littlefield. In the past year, 229 people have been helped.

Fifty Christmas baskets were distributed last Christmas to needy families and individuals. Local help, which included the Christmas food and toys, amounted to \$903.33, while help to transients totaled \$191.07.

Littlefield also extended help to the Regional Salvation Army in the amount of \$1,079.32. "Some may be unfamiliar with the work of the Army," stated Mrs. Behnke. "This is a non-denominational Christian organization that, simply, helps those in need, whether they be local people, disaster victims of some sort, or transients needing food, clothing or lodging. Last summer five boys from Littlefield were sent without charge to Camp Hobbittelle, a camp for boys near Fort Worth. The people helped by the Salvation Army would perhaps not be eligible for any other kind of aid and most are in immediate need."

"Your help is asked in this year's Christmas Drive. Do you know of a needy family or individual who may not have a Christmas this year? If you know of someone, please call 385-6043 or mail their names and addresses to Box 1047, Littlefield. Your help is needed to make sure that no one in Littlefield goes without

especially through tribulations from many Christians in Littlefield who generously give of their money and help the fortunate," she concludes.

1963-64 Class Slates Reunion

The class of 1963-64 of Littlefield High School will conduct a class reunion on Thanksgiving weekend.

Activities are to begin with a coffee for all women, including class members and wives of the class members, Friday morning, Nov. 23 from 9:30 to 11:30 a.m. in the home of Mr. and Mrs. Buster Hodge, 126 E. 23rd in Littlefield.

Registration and a reception for all members of the class will be held Saturday evening, from 7 to 10 in the Willie Room of the Lamb County Electric

Spade School Board Meets

The Spade School Board held its regular meeting Monday morning, Nov. 12, in the school cafeteria, where breakfast was served.

The president, Bill Thompson, conducted the business meeting.

Bride Elect Given Show

WHITHARRAL—Miss Debbie Drackenberg of Smyer, bride elect of Rex Avery, was honored with a household shower Monday night in the Whitharral Lions Club building.

Guests were registered in the Bride's Book which was placed upon a white covered table centered with a red candle encircled with white flowers, the bride elect's chosen colors.

Fifty guests called or sent gifts. Spiced tea, coffee and cookies were served from a table covered with a red cloth and centered with an arrangement of red and white

headed flowers. A coffee service and white were used.

Hostesses for the occasion were Misses Don Redman, C. Wade, Joe Hoelscher, E. Sadler, J. E. Wadsworth, Johnson, Ralph Wade, Hayes, H. G. Walden, Grant, E. C. Timmons, C. Fagen, Louis McCormick, Lowell Herring and S. Burrus.

The hostess gift was pieces of stainless steel bride-elect's chosen plan. The couple plan to be married Dec. 30 in the Smyer Baptist Church.

Others present were Mr. Long, Mugs Glazener, McCoy, Bob Myers, Cowan, Dwayne Gray, Superintendent Joe W. Barron, and Jim Haynes. Aaron Hensley.

8 KING Size Wallets UNIQUE COLOR PORTRAITS 99c Plus 50¢ Handling
GET THE WHOLE FAMILY TAKEN AT THESE LOW PRICES.
9 A.M. UNTIL 7 P.M.

2 each of 4 Poses ONE DAY ONLY GROUPS ACCEPTED
99¢ PER PERSON ONE SPECIAL PER PERSON

ORDER NOW FOR CHRISTMAS DATE: WED. NOVEMBER 21, 1973

FURR'S

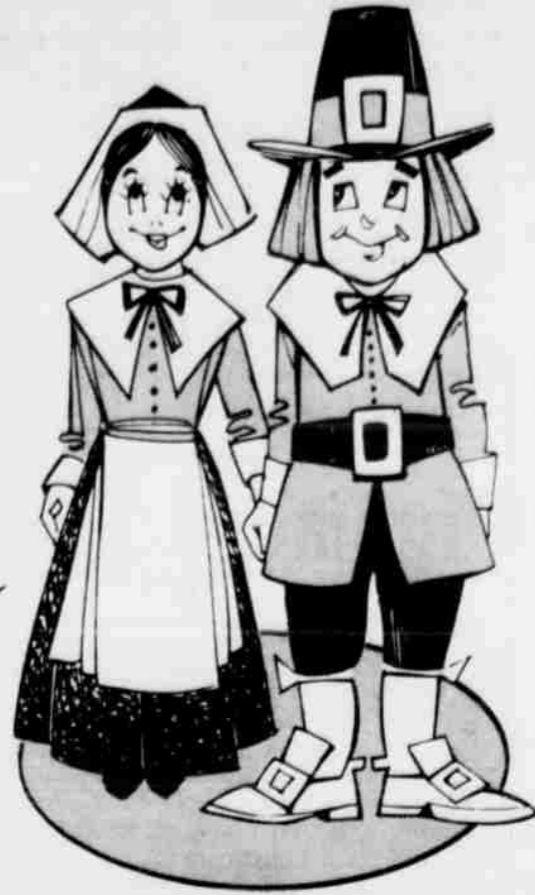
SUPER MARKETS 705 East 4th

SPECIALS GOOD
NOV. 19-24

CLOSED ALL DAY THANKSGIVING

Everything for a Bountiful

THANKSGIVING



TURKEY TOMS
TURKEY HENS

WILSON'S
20 LBS. AND UP **69¢**
LB.

8-16 LBS.
3% SELF BASTING ADDED
WILSON'S CERTIFIED **89¢**
LB.

BACON
GLOVER'S THICK SLICED

\$1.19 STEAK
USDA CHOICE, LB.

SIRLOINS
USDA CHOICE STEAK, LB.

\$1.19 BEEF
GROUND FRESH DAILY **69¢**
LB.

HAMS

WHOLE, WILSON'S
16 LBS. UP **98¢**
LB.

98¢

SHANK PORTION, LB.

\$1.09

BUTT PORTION LB.

PRODUCE

CELERY LARGE STALK, EACH **19¢**
SWEET POTATOES TEXAS FANCY LB. **19¢**
CRANBERRIES FRESH 1# PKG. **35¢**
BANANAS GOLDEN RIPE, LB. **10¢**
APPLES COLORADO RED, DEL., ROME BEAUTY LB. **23¢**
ONIONS YELLOW, LB. **12 1/2¢**

DRUGS

ARRID EXTRA DRY 9 OZ. **\$1.27**
\$1.79 VAL.
CONTAC CAPSULE 10 CT. **77¢**
MOUTHWASH CHLORSEPTIC AND GARGLE 6 OZ. **99¢**
JERGENS LOTION LEMON FRESH 13 OZ. **99¢**
ANACIN 50 TABLET BOTTLE **69¢**

DAIRY SPECIALS

WHIPPING CREAM 1/2 PT. BELL **39¢**
SOUR CREAM 1/2 PT., BELL **39¢**
MARGARINE BLUEBONNET 1# STICKS **39¢**
CRANBERRY SAUCE OCEAN SPRAY, 16 OZ. **33¢**
CHICKEN BROTH 13 3/4 OZ. SWANSON **19¢**
PUMPKIN DEL MONTE 15 OZ. CAN **19¢**
MARSHMALLOWS MINIATURE, 10 1/2 OZ. PKG. **19¢**
OLIVES SALAD 10 OZ. WHITFIELD **49¢**

FROZEN FOOD

BROCCOLI CHOPPED, BIRDSEYE **27¢**
COOL WHIP 9 OZ. BIRDSEYE **49¢**
CHERRIES SALAD 10 OZ. JAR, WHITFIELD **33¢**
CHOCOLATE CHIPS BAKERS, 12 OZ. PKG. **49¢**
SWEET POTATOES 29 OZ. JACK-O-LANTER **33¢**
SALAD DRESSING QUART, WHITE SWAN **49¢**
SUGAR POWDERED OR BROWN, 2# BAG **48¢**
STUFF & SUCH STUFFING MIX **39¢**
SYRUP CRYSTAL WHITE QUART BLACKBURN **59¢**
COCOANUT BAKERS, ANGEL FLAKE, 7 OZ. **39¢**
FRUIT & PEEL 1# OLD ENGLISH **49¢**
PINEAPPLE CRUSHED OR SLICED 15 OZ. WHITE SWAN **3/\$1**

ROLLS BROWN & SERVE STOF-N-LITE **3/\$1**
FLOUR 5 LB. SOFT-N-LITE **77¢**
PIE FILLING CHERRY 21 OZ. WIN YOU **59¢**
GREEN BEANS FRENCH SLICED, 15 OZ. CAN **4/\$1**

FURNITURE POLISH
WOOD CRAFTER, 7 OZ. **88¢**

WIN FREE CASH

\$100 IN CASH
\$100 IN GROCERIES

BIG JACKPOT DAY

Your Bonus For Shopping Littlefield Super Market

Register just once...
Get your card punched EACH week and YOU can WIN WONDERFUL CASH DOLLARS
Nothing to buy... You don't have to be present to win.

GET YOUR CARD PUNCHED EVERY WEEK.

GET YOUR JACKPOT DAY CARD PUNCHED FREE... THIS WEEK...

OUR PLEDGE TO YOU

We Invite You To Shop And Compare Our Store With Any Other Store In Town. We Welcome Your Criticism Or Comments On Price!, Variety!, Freshness!, Quality!, Courtesy!, And Cleanliness! Our Goal Is To Be Number One In All Categories. We Appreciate Your Patronage! Shop With Confidence!

HOME OWNED - HOME OPERATED

LITTLEFIELD SUPER MARKET

LITTLEFIELD SUPER MARKET

WITH THIS COUPON 2-POUND CAN OF Maryland Club Coffee **\$1.63**

Without Coupon \$2.08

Limit one per customer

Coupon Expires 11-30-73



Census Bureau To Conduct Survey Here

Local representatives of the Bureau of the Census will interview a number of households in this area the week of Nov. 19-23 to obtain information on employment here.

The Bureau is part of the U.S. Department of Commerce's Social and Economic Statistics Administration.


Interviewer who will visit households in this area is Mrs. Rosemary McNeese of Amherst.

Percy R. Millard, director of the Bureau's Data Collection Center in Dallas, in making the announcement, said the households are among 50,000 across the country that have been scientifically selected to represent a cross section of the American people.

The survey, which the Bureau conducts each month for the U.S. Department of Labor, provides a continuing measure of employment and unemployment for the Nation.



BARBARA K. WALKER of Turkey was at the Lamb County Library Thursday to tell stories for children during story hours. She is shown wearing a typical Turkey costume, and is surrounded by Kindergarten children who visited the library for the story hour. (Staff Photo)



LITTLEFIELD NEWS

By GAYLE MILLS 385-4554

MRS. ART FOLEY, Ola Potts, Rinso Streety and W. R. Montgomery attended a products party Monday at Plainvivi in the home of Mrs. Montgomery's daughter, Mrs. Clyde Stann, Jr.

GUESTS WEDNESDAY in the home of Mrs. Ina Merle Barlow were Mrs. W. R. Montgomery and Mrs. Vicki Hardwick.

MRS. OTTO JONES received a message this week of the death of her sister, Mrs. Viola Hobbs of Costa Mesa, Calif. Her sister had visited here on numerous occasions.

MRS. DON BULLOCK of Odessa has been visiting with her mother, Mrs. Minnie Matthews.

MR. AND MRS. D. W. Falls of Albuquerque, N.M. visited his mother and step-father, Mr. and Mrs. H. N. Bennett in Littlefield this past weekend. The weekend before that, Mrs. Bennett's grandson, Jerry Falls and family of Albuquerque, were guests in her home.


THE POST CLASS of the Littlefield Satellite School visited three prospective

students in Amherst this morning, and were to lunch at the Dairy noon, courtesy of Mr. L. V. Pierce.

MRS. ROY THURMOND continues to follow surgery at the White.

MRS. RUBY NIXON of Mrs. Lillian Burman last week and her services were held in Brownwood.

REV. ERNEST STEWART and family of Crosby weekend guests in Littlefield Sunday.



Texas Farm Bureau Insurance Companies

WHEN YOU NEED INSURANCE SERVICE FOR YOUR HOME RANCH FARM AUTO CROPS LIFE

Think of Low Net. Cost With Service.

Ed Jennings Home Ph. 385-5012

Elroy Wisian Home Ph. 986-2731

DIAL 385-3444 Joe Gilbert Home Ph. 385-3062

Wheel Alignment Special

- * INSPECT TIRES
- * CHECK TIRE AND WHEEL RUN-OUT
- * INSPECT SUSPENSION, STEERING AND SHOCK ABSORBERS
- * CHECK AND ADJUST CASTER, CAMBER AND TOE-IN

950

NOW TILL CHRISTMAS PLUS PARTS

Marcum Olds, Cadillac, Pontiac

801 Hall Ave Littlefield

Littlefield YH Conducts Meet

The Littlefield Young Homemakers met Monday night, Nov. 12 in the Flame Room.

The new chapter begun the evening with the installation of officers. Neil Ingle, president of the Sudan chapter was present to install the officers. They are Shirley Bean, president; Janey Raney, first vice president; Janice McElroy, second vice president; Linda Elms, secretary; Olivia Galindo, treasurer; Pat Stubbs, reporter; Brenda Coffey, historian; Bobby Magruder, parliamentarian; Bernice Johnson and Vestella Williams, special projects chairmen.

After the installation of officers, a program was given by Ellen Massengill on gift wrapping. Ellen showed the group several ways to make bows to decorate packages for the holiday season.

There was a business meeting after the program. Plans were discussed for a Christmas party in December. It was decided to change the meeting time from the second Monday of each month to the first Thursday each month providing there was a meeting place available.

Anyone interested in joining the Young Homemakers club may contact any of the officers.



HOMER LOWRANCE of Anton, left, chairman of the board of deacons of Anton's Central Baptist Church hands the keys to a new car to the Rev. Harmon Bishop, in a church presentation recently.

Anton Jun HD Club M

ANTON—Mrs. Robinson, Hockley Extension Agent, presented a program on "Holiday" to 11 members of the Junior Home Demonstration Club, Tuesday, Nov. 13. The meeting was held in the home of Mrs. Jerry Dutton.

Plans were made for Club's Annual Golden Luncheon that will be held Nov. 20 in the Lawrence Church of Christ, Folsom Hall, Bert Sinclair, Department of Public Health, Lubbock, will be program on "Self Defense Women". In other business final plans were made for Christmas luncheon, held Dec. 4 in the Gold at Hemphill-Wells, to complete the club year.

Garland Ele To Conferen

B. D. Garland Jr. of Garland Motor Co. in Littlefield among dealers elected to serve as representative of the 1974 Dodge Dealer Advisory Conference by dealers in the Dallas area recently.

The region covers the state of Texas, as well as the LaFayette, Littlefield, Miller and Sevier Counties, Arkansas.

Members of the conference meet twice yearly with county officials to discuss mutual interests in automobile business.

FHA Members Hear Program

The Junior High FHA members met Tuesday, Nov. 13, for a program on birth defects.

Mrs. Robertson from the Lubbock March of Dimes presented and discussed a film on birth defects.

Also the FHA members received their Junior High FHA yearbooks and discussed business. The refreshments were served by Ida Castillo, Novelice Robertson, Vickie Bryant, Vicki Brockington, Nora Trejo, and Lourie Echevarria.

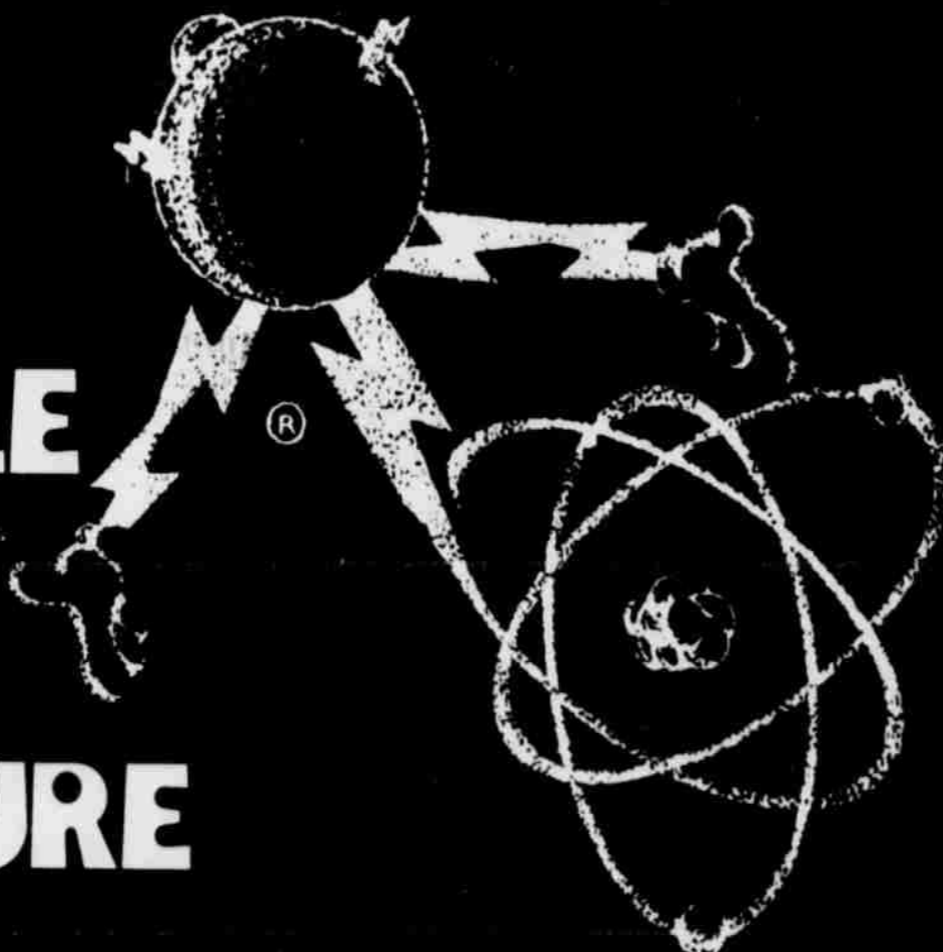
Saturday, Nov. 17, the FHA members will be collecting money for the March of Dimes in downtown, Littlefield.

In the future FHA members will display a "Silly Style Show" and meet their secret grandparent at the Hospitality House Tuesday, Nov. 20.

Bowling Results

IVY LEAGUE	TOWN AND COUNTRY LEAGUE
Ware's 26 14	Pay & Save #6
Marcum Olds 25 15	Perry's Variety
Robison's Upholstery 24 16	Lfd. Seed & Delinting
Carl Davis Co. 23 17	Shook Tire Co.
Connell's Office Supply 18 22	Lamb Bowl
9th St Auto 17 23	Campbell's Insurance
Tasty Creme 15 1/2 24 1/2	Coca Cola
Dairy Queen 11 1/2 28 1/2	Lfd Butane
Hi Team Series Carl Davis Co. 2422	Hi Team Series Lfd. Seed
Hi Team Game Carl Davis Co. 835	Delinting 3016
Hi Individual Series Women	Hi Team Game Shook
Jewel Durham 456	Perry's Variety 1032
Hi Individual Game Women	Hi Individual Series
Rutg Stueart 183	Earnest Mills 575
	Hi Individual Game
	Maurice Exton 209
	HIT AND MISS LEAGUE
	Kirby Sales
	Sanitary Linen
	Anton Drive-In
	Western Auto
	Clark's Shell
	Duke Electric
	Birkelbach
	Nat'l Farm
	Hi Team Series San
	Linen 2760
	Hi Team Game Nat'l F
	838
	Hi Individual Series
	Glenn Davis 579
	Hi Individual Game
	Glenn Davis 219
	Hi Individual Series W
	Robbie Sexton 553
	Hi Individual Game W
	Robbie Sexton 202
	HI POINT LEAGUE
	Deep Rock Station
	Pay & Save #6
	Lamb Bowl
	Cox Furniture
	Duke Electric
	Grimes Auto
	Hi Team Series Pay &
	#6 1808
	Hi Team Game Lamb
	662
	Hi Individual Series
	Bill Dunlap 514
	Hi Individual Game
	Bill Dunlap 206

LIFE STYLE OF THE FUTURE




That's why our industry and we, as a Company, continuously plan for the future . . . contribute toward research and development of better, more efficient ways to get electricity to you.

What will be the life style of the future? One thing we can be sure of . . . it will revolve around electricity. Without electric energy there is no hope of getting the pollution eliminators that only electricity can operate.

We'll need our factories, our refineries, our water treatment plants . . . all the things necessary for survival in a modern civilization.

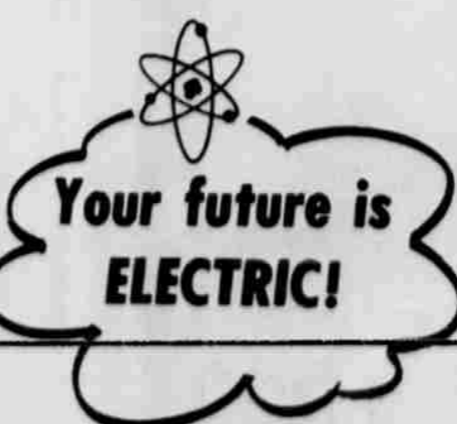
But, without electricity none of these can function.

We know we'll be needed in the future even as we are now . . . and we'll be there when the time comes . . . even as we are now . . . making sure that every kilowatt you buy is 100% usable.



Total ELECTRIC Heating

FOR SO MANY PEOPLE



Your future is ELECTRIC!

Pam Stafford Accepts Job

Pam Stafford, daughter of Dr. and Mrs. D. J. Stafford, has recently completed studies at Southwest Business College in Plainview. She is now trained in general office and secretarial work. She will begin her career at Silverthorne Insurance Agency in Plainview as Craig

Silverthorne's secretary and receptionist beginning the first of December. Pam moved to Plainview last January and is presently employed at Laird's House of Carpet. It took her nine months to complete her training in the secretarial field.



PAM STAFFORD



SCOUT TROOP 18 presented a program for members of the Hospitality House Thursday afternoon. They sang songs, danced two of the Scout dances, and served every patient fruit to eat. (Staff Photo)

Royalty, Talent Winners Are Named

WHARRAL—The Whitharral seniors sponsored a show Monday night in the school cafeteria. The Harvest Festival was held in conjunction with the talent show. Reding was master of ceremonies. Cheerleaders

Shallowater Wins Anton

Mustangs of Shallowater battled back from behind and defeated the Bulldogs 26-12 here night. The team who finished their season with a 2-8 record scored early in the game on an 85-yard pass and ran Tommy Gilliam to the ground. Scoring in the game for the Dogs was Wills on a four-yard

Shallowater started late surge. Fullback James rumbled 18 and three-yards for two period sixes for the game. The score 12-12 in the period. James scored and six of the evening on a yard dive. Bobby scored an insurance in the game on a four-run for the Mustangs, finished their season with mark.

for the best insurance anywhere CALL 385-3055

F.L. NEWTON, Agent
 a good neighbor, State Farm is there.
 State Farm Mutual Automobile Insurance Company
 Home Office: Bloomington, Illinois

Helps pay hospital/surgical bills
 Write to person health insurance, call: F.L. Newton Littlefield Agent

BEAUTY that uplifts

surrounds the visitor to our home. This atmosphere of serenity in our environment is a source of inspiration to the bereaved.

HAMMONS FUNERAL HOME

Farm Real Estate Loans
Farm Equipment Loans

Best Rates And Terms

SECURITY STATE BANK
 Your Full Service Bank

5703 DEC 73 M.P. 61

WHETHER YOU NEED A COMPLETE OUTFIT OR JUST SOME WESTERN ACCESSORIES, SHOP BILL'S BOOT SHOP FIRST FOR LAMB COUNTY'S MOST COMPLETE SELECTION OF WESTERN GOODS.

BILL'S BOOT SHOP

GOODYEAR SERVICE STORES

304 W 4th Littlefield, Texas 385-5162

FREE HAM OR TURKEY FOR THE HOLIDAY

GE 23.5 CU. FT. REFRIGERATOR-FREEZER CUSTOM DISPENSER

TFF-24RM

- Dispenses crushed ice or cubes and cold water too
- Giant freezer holds 297 lbs.
- No defrosting ever in freezer or refrigerator

\$829⁰⁰

Floats on your car antenna

Anniversary Antenna Blimp

Free with any purchase

Fits on car antenna to "fly" up and down as car moves...

FREE with any major appliance, Tv or Stereo
 Ham or Turkey Offer Good This Week Only... Ends Saturday Night! Nov. 24

10" DIAGONAL MEASURE COLOR TV

MES208TK

- Private earphone and jack included
- Special "In Line" color system brings great color accuracy
- Attractive luggage type strap handle
- Solid state UHF tuner
- High impact polystyrene cabinet with teakwood finish

\$229⁰⁰

GE HEAVY DUTY AUTOMATIC WASHER WITH MINI-WASH®

WWA8350N

- 2 wash/spin speeds, 3 cycle selections and 5 water temperature combinations
- Mini-Basket™ for small loads and colored items
- 4 water level selections
- Hydropower wash action
- Filter-Flo traps lint

\$239⁰⁰

GE 23" Color Console TV

M935LMD

- 23" diag. measure screen
- AFC... automatic fine tuning
- Spectra-brite™ picture tube
- GE reliacolor chassis
- Mediterranean styling
- UHF solid state, VHF pre-set fine tuning

\$239.00

Christmas Special

Portable Radio

Earphone included **\$19⁸⁸**

Operates on batteries or house-current. 3 1/2" speaker. FM/AM antennas. Slide-rule dial. Comes with batteries.

AM Clock Radio

Handsome styling. low price!

\$16⁹⁸

Automatic volume control 3 1/2" speaker, drift compensation circuit, lighted dial, compact Polystyrene cabinet.

Garland Farm Sale

Selling all farm equipment, 4020 John Deere Tractors, six new planters, John Deere shredder, 1973 John Deere Tandem Disc, 1964 Ford Diesel Tractor, 60 Series John Deere Tractor and Model 77 Cotton Stripper, Eight cotton trailers, and miscellaneous crust busters, knifing rigs, listers, tandem discs, two row farm equipment include planters, cultivators and various two row equipment. Many other things—watch for a more detailed listing later.

Sale Date Thurs. Nov. 29
 Fieldton Farm On Blackwater Draw

Jack Dulin Auctioneer
 "Appreciate Working For You"
 Rt. 1 Plainview, Tex. 806-895-3401

7th, 8th Grade Teams Finish Grid Campaigns

Littlefield's seventh and eighth grade footballers

Calling All Homemakers

Brought To You
By
Bert & Carol Wallace

HERE'S A PIECE OF FURNITURE MANY HOMES COULD USE

Oddly enough, there's one kind of furniture that many people overlook when they are furnishing their home. Yet, this particular kind of furniture can be one of the most useful—and one of the most attractive—pieces in a room.

Can you guess what we are talking about?

It's a desk. Actually, many homes should have several desks.

Desks can be well-placed and well-used in the living room, the den or family room and in the adults' bedroom in addition to the usual desk for the children's room.

Let your imagination go and think of all the uses a desk can give you—both the top or surface part of the desk as well as the drawer and storage space.

And one of the best features of desks is the wonderful decorating pick-up they can give a room. There's such a wide variety of beautiful and practical desks that can add a real "decorator" touch to your home.

We are here to help you decorate your home with the kind of furniture you want—whether it be desks, sofas, chairs, tables—an individual piece or a whole household of furniture. Stop in and browse to your heart's content.

Wallace HOME FURNISHINGS

Open Daily 9:00 to 6:00
229 Phelps Box 365
Phone 285-3888
Littlefield, Texas 79339

wound up their seasons Tuesday against Friona with the seventh graders winning 30-0 and the eighth gaining an 8-8 tie.

Rudolph Smith piled up 179 yards rushing, scored three touchdowns and added two conversions to lead the seventh team. Richard Morgan picked up the other touchdown. Offense standouts named by Coach Kenny Carter were Smith, Ben Davidson and Keith McCain.

Frosh, JV End Year With Wins

The Littlefield Frosh and JV teams finished their seasons on a successful note Thursday with twin victories over the visiting Friona Chieftains.

The Frosh sped to 34-6 win, while the JV dropped the Chieftains 18-0 behind Sammy Schlottman's 200 yards rushing.

The Frosh finished out their season at 5-4-1. The JV was 7-3.

KRESS 21, SUDAN 18

Kress finished their season on a winning note here Friday with a 21-18 win over Sudan in a District 3-A battle.

The win boosted the Kangaroos to a 3-7 year mark and 2-4 in loop play while Sudan dropped to 6-4 and 3-3.

Kress controlled the tempo of the game until the final quarter. The Kangaroos capitalized on a blocked punt in the second period and Trent Street scampered 11 yards for the initial score minutes later. Stan Weathered booted the first of three extra points.

Another Sudan error, this time a third-quarter fumble, set up the second Kress score. Barry Street waltzed in from the five for the TD.

Sudan began its comeback in the final period. Mark Hanna sprinted 35 yards for the first Hornet score and minutes later went over again from the three. Each PAT attempt failed, however, and

Richard Soria, Van Jaquess and Wayne Lucas were singled out defensively.

The win put the seventh graders' season mark at 3-5.

The Littlefield eighth graders' touchdown was set up by a 23-yard run by Brett Middlebrooks. Quarterback Stan Jackson went across for the touchdown and then added the two-point conversion. Littlefield led Friona in penetrations 3-1, which would constitute a win in district

play. The eighth finished their year at 6-2.

Middlebrooks, Greg Moreland, Dewayne Hayes and David Jones were the outstanding offensive players, and Jeff Ratliff, Raymond Baiza and Eugene Hernandez gained the coach's praise defensively.

The seventh and eighth graders will now begin basketball workouts. Their first game will be Nov. 26 against Dimmitt, there.

the Mustangs to squeeze past Dimmitt's Bobcats 16-15 in District 3-AA.

Olton quarterback Vic Alcorn burst 50 yards up the center of the field on the third play of the game to push the Mustangs out to an early lead. He also ran for the extra points.

Two minutes later Bobcat halfback Robert Mayberry barged 14 yards for a TD and Gene Veals ran the extra point to even the count.

Fullback Florence Acevedo put Dimmitt out in front with 11:21 left in the second period when he carried over from the one to cap a 49-yard drive. Ricky Wright kicked the extra point, but the decision to go for one rather than two was costly for the Bobcats.

AMHERST 35, WHITEFACE 0

The Amherst Bulldogs put the bite on the Whiteface Antelopes 35-0 in a District 2-B clash here Friday night.

In shutting out the visitors, the Bulldogs ran their final season tally to 7-3.

Scoring in every period, the Bulldogs got on the board in the first stanza on a 7-yard pass from Sandy Moore to Stanley Miller. In the second period, Butch Sutton capped a 95-yard drive with a 2-yard plunge to give the hosts a 14-0 halftime advantage.

Moore romped 65 yards in the third period, and runs of three yards by Miller and 31

yards by Frankie Williams, rounded out the scoring in the final quarter.

Spade Chosen To Win District

The Spade Longhorn basketball squad, fresh from a trip to the state playoffs in Austin last year, has been picked to repeat as District 5-B champs by a poll of district coaches.

Spade was a unanimous pick to take the title, with Cotton Center chosen second.

Spade, which has lost only one game this year, is led by three returning starters: Marvin Matthews (6'2), Gaylon Reed (6'1) and Randy Gray (5'10). All averaged over 10 points last year.

yards by Frankie Williams, rounded out the scoring in the final quarter.

Construction On Dams Begins

Construction is beginning in six dam sites planned along the Running Water Draw. U. S. representative George Mahon will speak at the dedication of the Bovina site Tuesday. The Bovina site is the first of six lake sites along the draw in Lamb, Curry, Parmer and Hale Counties. Local sponsors of site number two, or

Catfish Draw, in the upper Running Water Draw Watershed, are the Lamb County Soil and Water Conservation District and the Lamb County Commissioners Court.

The bid was about \$152,000 and will be paid by the SCS using Public Law 566 funds.

Frank Struve of Olton, chair of the Lamb County SWCD, said the draw runs through the northeast part of the county and has a drainage area of 7,000 acres in this district.

This drainage comes off 28 feet of Running Water Draw starts at Clovis and runs through Plainville.

Tune Up Special

- * CLEAN OR REPLACE SPARK PLUGS
- * CHECK DIST. CAP AND ROTOR
- * SET TIMING AND ADJ. DWELL
- * SET CARB. IDLE MIXTURE & IDLE SPEED
- * SERVICE CARB. AIR CLEANER
- * REPLACE POINTS AND CONDENSOR

ONLY **13.95** PLUS PARTS

MARCUM
Olds, Cadillac, Pontiac

801 Hall Ave

Littlefield

PRE-HOLIDAY CLEARANCE

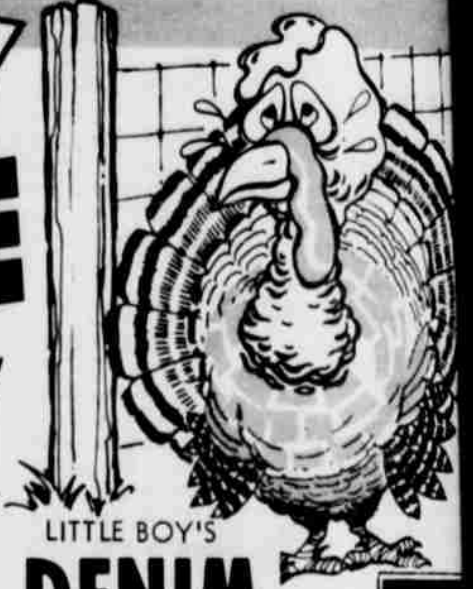
MONDAY, TUESDAY, WEDNESDAY

OPEN 8:30 A.M.
CLOSE 6:00 P.M.

ENTIRE STOCK

BODY SHIRTS

1/3 OFF



LITTLE BOY'S

DENIM JEANS

FAMOUS BRAND NAME
SLIGHT IRREGULARS

\$4.99

2 RACKS OF GIRL'S
**SLEEPWEAR, PANTS,
DRESSES, SMOCKS**

25% OFF

THERMAL UNDERWEAR

SHIRTS AND DRAWERS

REG. \$2.99 **2 FOR \$4.50**
REG. \$3.99 **2 FOR \$6.50**

MEN'S
DOUBLE KNIT PANTS

Famous Brand Names
VALUES TO \$20.00

\$10

DOUBLE KNIT

SHORT LENGTHS
1 - 5 YARD PIECES
NO LIMIT

\$1.77

FAMOUS BRAND NAME
DENIM JEANS

BELLS & FLARES
SLIGHT IRREGULARS
SIZES 26-30
REG. \$8.98 and \$9.50 NOW

New Shipment
\$5

LADIES KNEE HI
FASHION BOOT

REG. \$9.99 **\$5**
REG. \$7.99 **\$4**

All the Fixin's for Thanksgiving

FRYERS	GRADE "A" LB	39¢
WHIP CREAM	CLOVERLAKE 1/2 PINT	39¢
BUTTERMILK	CLOVERLAKE 1/2 GALLON	59¢
COCA COLA	28 OZ NO RETURN BOTTLE	25¢
EGGS	GRADE "A" MEDIUM DOZEN	69¢
MILK	SHURFRESH GAL. CTN. \$1.43 1/2 GAL 73¢ 1/2 GAL LOW FAT 69¢	

GOOD SELECTION OF:

GLOVER'S CURED HAMS - WILSONS-BAR-S- CURE 81- BONELESS
HAMS - ARMOUR'S STAR TURKEYS, HENS & TOMS

FRESH BAR-B-Q MADE DAILY

QUALITY MEATS COST NO MORE AT

MERLIN'S FOOD

Double Gunn Bros. Stamps, Tuesday & Wednesday

OPEN 7 DAYS A WEEK

9th & Levelland Highway

WE REDEEM FOOD STAMPS

DOUBLE GUNN BROS., STAMPS TUES. & WED.

Anthony's
C. R. ANTHONY CO.

ON THE BLOCK TO SHOP IN LITTLEFIELD