

# LAMB COUNTY LEADER-NEWS

AGES 47 46 Years Old - - - And New Twice Every Week LITTLEFIELD, LAMB COUNTY, TEXAS, THURSDAY, FEBRUARY 19, 1970 10 CENTS NUMBER 85

## BE A FELLOW

### Old Molly The Cook' Legend At Sudan

RODGERS Staff Writer

Cook was a legend in time and he left memories for the around Sudan who recount tales of Old Molly.

Hay said, "He was as a hedgerow fence, first came to Sudan by the Cook or Molly Wadde, then with of the ranch era, Molly."

many years ago, ry goes, Molly was in a cow camp nts who were on their omnia. Each of the camp gave the sandy-haired young- name, thus he be- Lee Preston Ham- up knowing only cowboys.

ter he passed through enroute to New d Arizona, and dis-

### Evils Take Meat Sudan Cafe Haul

Evils shoved in the of the Sands Cafe Sunday night and 20 c-bone steaks, hamburger patties, and packages of thick m, 10 pounds of m, five two-pound hamburger meat, crust cut in strips, authorities are inves-

### Escape In Mishap

an teenagers return- banquet narrowly rious injury Saturday the car they were as struck by a truck, ayne Doty, accom- his date, had stopped Ford sedan he was a stop sign at the as FR 303 and U.S. as proceeding onto 4 when the car was a White freightliner ad failed to see ap-

Howard Morrison was driving the truck riving Whitfield Truck El Paso, front of the truck left rear fender of according to Highway Bill Angel who esti- mages of \$300 to the truck.

### To Honor Doc' Holt

Doc' Holt, former representative, district mb County Judge, r-collector, and Ol- ter, will be honored appreciation banquet at Saturday in the Olton cafeterium.

ear-old man has been Olton 47 years and Friday from 20 years as postmaster, named Olton's "Cit- Year" in 1966, Baseball Associa- soring the banquet, ed the first Pee Wee program in Olton and y in the early 1940s, Olton Quarterback served as coach of the egion Baseball team years.

civic affairs, he is a member of the Olton Legion, is a World an, is past president mb County Pioneers ons Club, is a form- District deputy, and e terms as Worship- of the Masonic Lodge,

to Olton in 1923 from he was employed otton Gin at Olton worker.

WEATHER		
	H	L
FEB. 11	59	24
FEB. 12	69	26
FEB. 13	56	33
FEB. 14	75	28
FEB. 15	57	31
FEB. 16	69	35
FEB. 17	83	35

## Littlefield Teens Set Youth Center Opening

### Students In Grades 7-12 Eligible For Membership

Littlefield teenagers will have their big night Friday, when a long dream for them has come true--with the aid of lots of planning, discussing, and hard work.

Teen Town will be open to junior and senior high school student members for the first time at 6:30 Friday night in downtown Littlefield, 318 Phelps.

Seventh, eighth, ninth graders and high school students in Littlefield schools are invited to become members, and membership cards for a period of three months may be purchased at the door for \$1.50, or from any of the Teen Town officers.

Folding chairs and tables are still needed, and anyone wishing to make donations are asked to call 385-5069 and someone will arrange to pick up the items at the donor's convenience.

Members would also like to start a fund for a television set--or if anyone has a television set they would like to donate, they may call the above number, and someone will pick it up.

Each of the weekend meetings will be chaperoned by adults, and the teenagers have set up their own rules and regulations --which will be strictly enforced for successful operation of the recreation and "fun-time" organization.



BILL GUNTER, left, District Agent of the Texas Agricultural Extension Service at Lubbock, presents Lamb County Agricultural Agent Buddy Logsdon a plaque in behalf of the Texas Plant Food Education Society for "Outstanding Soil Fertility Educational Program." Logsdon was presented the plaque during the Soil Fertility Day program Monday, and is one of three agricultural agents in Texas who won the award. He also received a \$200 cash award.

### FROM COTTON TO CATTLE

## Farmers Hear Tips At Soil Fertility Day

Topics on cattle feeding and handling, minimum soil tillage, planting of broadcast cotton, and hog production were heard by area farmers and ranchers Monday afternoon during the Annual Soil Fertility Day program, when outstanding men in those fields presented studies on the subjects.

Dr. V. E. Brimhall, veterinarian of the Olton Feedyards, presented hints on "Buying, Handling and Veterinary Practices of Livestock", to begin the afternoon's session in the Willie Room of Lamb County Electric Coop.

Charles Koontz, manager of the Olton Feedlots, told of the

increased demands in this part of the country for beef products and spoke on the topic, "Grazing Cattle on Diverted Acres, Small Grain and Stalks."

L. D. Aten, Lamb County ASCS Office Manager, presented "Planning Livestock Operation for Diverted Acres and Grazing Crops."

Present and prospective cattlemen were reminded of several "do's and don'ts" in the cattle raising business, and the speakers suggested that the best type of cattle for the meat market these days is the Angus--which produces the best marbling in the finished product.

Dennis Mooney, agronomist with the High Plains Research Foundation at Halfway, presented colored slides showing how cotton and grain sorghum crops were planted over old stalks in the field, with very little soil tillage or turnover.

Broadcast cotton, something new in this area, was of interest to area cotton farmers. Carl Carter, associate agronomist with Hale County Extension Service at Plainview, showed slides and moving film, showing how cotton was planted with a standard 10-inch grain drill, using 4 to 5 seed per foot.

A special harvester has been developed to gather the broadcast crop. The agronomist said he felt that the relatively new method of planting and harvesting cotton in broadcast fashion, would become more popular with high plains farmers.

Jim Shearer, swine producer from Dimmitt, showed slides on his commercial hog producing operation and presented facts he has discovered to be advantages over raising cattle--comparing the amount of grain fed to the animals to the finished product.

Dr. W. E. 'Bill' Black, economist with Texas A&M University at College Station, encouraged the farmer to market his agricultural products.

In opening remarks, Dr. Black stated, "Marketing is agriculture's prodigal son." He went on to explain, "Marketing is putting the right product, of the right quality, in the right

quantity, in the right form, at the right place, at the right time, for the right price.

"Marketing is no longer guesswork...it's a practical science."

"There are so many synthetics and substitutes that are waiting to displace the true goods."

He encouraged farmers to

See FERTILITY, Page 6

### Help Is Sought For Satellite School

Various organizations and clubs in and around Littlefield are being asked to help with the satellite program here for mentally retarded children.

Mrs. J. R. Coen, Mrs. Kenneth Largent, Mrs. Albert Perkins, Mrs. Claude Oliver, Rev. Phillip Berry and Jim Kelly.

Two classes, branches of the Lubbock State School for the Mentally Retarded, are held in Littlefield each week-day morning the year around.

### Aid Offered Businessmen

Classroom facilities are provided by two local churches. Teachers working with these handicapped youngsters are hired, supervised and paid by the state.

To give relief to Lamb County businessmen who have suffered economic injury as a result of the adverse weather and to aid those businesses to continue in operation, the Small Business Administration is permitted to make economic injury disaster loans in 15 counties:

Classroom supplies are furnished as the state school budget allows. Everything else is donated by local persons, clubs, organizations and churches.

The advisory board here has suggested that donations of \$30 a month be made to the two churches donating their buildings to offset the utilities bills.

Organizations or individuals who would like to volunteer cash or their time may contact either of the teachers at the schools located in the fellowship and parish halls of St. Martin Lutheran and Sacred Heart Catholic Churches or see one of the advisory board members.

Rev. Clem Sorley is chairman of the board. Other members are Paul I. Jones, Sid Hopping, Mrs. Frank Jordan,

Bailey, Briscoe, Castro, Cochran, Crosby, Deaf Smith, Hale, Hall, Hockley, Lamb, Lubbock, Farmer, Swisher, Terry, and Yoakum.

This action was taken because of substantial damage to 1969 crops as a result of various adverse weather conditions during the entire crop year, including hailstorms, prolonged drought, and unseasonal freezes.

The Small Business Administration has authority to make either direct loans or loans in participation with banks or other lending institutions.



SPRINGLAKE-EARTH and Petersburg girls look to the referees to see who won the wrestling match when the two teams' offense and defense mixed it up over a loose ball at the center line during the bi-district game at Plainview Tuesday night. For details on more area basketball action, turn to more sports on pages 8 and 9.



NEW FOOTBALL JACKETS are being worn by Littlefield High School gridders. Admiring their maroon and black letter jackets are Mark Jordan and L. D. Holt, LHS seniors.



## County HD Agent Advises Balance Food, Bargains

If you count each grocery penny, balance your food budget and your family's diet by cutting costs within each of the four food groups, then these ideas from Lady Clare Phillips, Co. Home Demonstration Agent, may help you balance nutrition and bargains.

**Meat:** We need two or more servings from this food group each day. Count as a serving: two-three ounces lean cooked meat, poultry or fish without bone; two eggs; one cup cooked dry beans or peas; four tablespoons peanut butter.

To save on meat money buy weekend meat specials; buy dressed chicken whole rather than cut-up; and select variety meats.

**Milk:** Use two to four servings a day. A serving would be one eight-ounce glass fluid milk; two cups ice cream; one and a half cups cottage cheese or two one inch cubes Cheddar type cheese.

Save in this department by using nonfat dry milk and save up to one-half of your milk bill, serve milk shakes and fewer soft drinks, grate hardened ends of cheese and use to top casseroles.

**Bread-Cereal:** Eat four or more servings a day. One serving equals one slice of bread, an ounce ready-to-eat cereal or a half cup cooked cereal, pasta or rice.

Save here by preparing bread

and cereal products at home. They usually cost less than ready-baked breads and ready-prepared cereals.

**Vegetable-Fruits:** We need four or more servings daily. Count as a serving a half cup vegetable or fruit; or a portion as ordinarily served such as a medium apple, a half cantaloupe or juice of one lemon. Save on this food group by taking advantage of fresh seasonal items; and by buying frozen vegetables and fruits if they cost less a serving than fresh or canned.

This is the study home demonstration club women are making this month.

## Spade Baptists Slate Revival

Spade Baptist Church will begin their revival Sunday, Feb. 22 with Rev. J. L. Honeycutt as the evangelist.

Walker Boren will lead the singing accompanied by pianist, Marketta Leonard.

Weekday services will begin at 10:30 a.m. and 7:30 p.m. Prayer services will be held nightly at 7 p.m. Sunday services will begin at 11 a.m. and 7 p.m.

Pastor J. J. Berry invites the public to attend the services.

## SPADE

Mrs. Ernest Mills

Phone 385-4556

ATTENDING a Fabric School in Irving the past week have been Mmes. Budd Vann and Travis Hopper.

**DINNER GUESTS** in the John T. Ramage home Sunday were Mr. and Mrs. H. W. Bradley, daughter Gayle, Mr. and Mrs. Jimmy Nix, Roan and Jody.

**MR. AND MRS. T. O. Mote** visited in Amherst Sunday night with his brother and family, Mr. and Mrs. A. J. Mote, Mrs. Mote visited her mother in Plainview Hospital last week.

**MRS. ROBERT Ramage** is home after a two week visit in Odessa with her son and family, Mr. and Mrs. Marcos Ramage and new baby, James Marcos.

**AMONG THOSE** attending the Texas Tech and Texas basketball games Saturday were Messers. and Mmes. Dwight Faver, Kerwin Oliver, Jack Stubbs and Kathy.

**ALVIN AND CLIFTON Mills** visited this past Sunday in Odessa with their mother, Irene Mills, and sister, Mrs. Odell Molder and family.

**A PINK AND BLUE** shower will be held in the First Methodist Church annex at Spade Saturday, Feb. 21 at 2 p.m., honoring Nancy and Gary Bizzell and newly adopted son Skylar Kirk. All friends are invited to attend.

**LITTLEFIELD COIN Club** meets Tuesday night, Feb. 24 in the Reddy Room of Southwestern Public Service at 7:30 p.m. Auction will be held and refreshments will be served. All interested persons are invited to attend.

## Eastern Star Conducts Supper

**ANTON--**The Anton Chapter 936 OES met Thursday night for their regular monthly meeting, with Margaret Reed, worthy matron and Paul Reed, worthy patron, presiding.

A salad supper was served to 19 members and six guests, in honor of the special guest, Grand Officer Helen McCullough, who is Deputy Grand Matron of District 2, Section 4, State of Texas. Order of the Eastern Star and her two guests from Lubbock Chapter No. 76.

The Deputy Grand Matron gave instructions on the rules and regulations of the chapter and on the new change in the order.

The meeting was closed in regular form by the Deputy Grand Matron with the retiring drill.

Coffee, cake and pie were served in the dining hall.



REV. DON O'REILLY

## Sudan Catholics Have Pastor

Forty-eight Catholic families at Sudan now have a pastor-- Rev. Don O'Reilly, who resides in Littlefield in the Sacred Heart Parish as an associate to Rev. Joseph W. James, pastor of the Littlefield church.

Rev. O'Reilly has been at the church since October.

The Sudan church is presently renting a building on Main Street where they are conducting services until their building is ready to move into next month.

Sunday afternoon, March 1, from 1:30 to 5:30 p.m., members will have the Apostolatus (an afternoon of talks on spiritual renewal) in the Community Center in Sudan.

Rev. O'Reilly, a native of Ireland, was ordained into the ministry in Ireland, went to the state of Louisiana in 1966 and came to Texas in 1968.

Rev. O'Reilly conducts regular mass every Sunday in Sudan at 9 a.m. The congregation sings mass in Spanish, to the accompaniment of a guitar, played by Felipe Baca of Lubbock. Rev. O'Reilly drives Baca from and to Lubbock each Sunday.

Baca also teaches high school doctrine classes each Thursday night.

# OBITUARIES

## OLETA HOMEYRE YOUNG

Funeral services for Mrs. Oleta Homeyre Young, 56, of Littlefield and formerly of Bula, who died Sunday in Littlefield Hospital following a lengthy illness, were conducted Tuesday afternoon in Littlefield's First United Methodist Church.

Rev. Wallace Kirby, pastor and Rev. Harold Sager, a Lutheran minister from Seguin, officiated for the services.

Burial was in Littlefield Memorial Park with Hammons Funeral Home in charge of arrangements.

Born Jan. 2, 1914 in Williamson County, Mrs. Young moved to Littlefield from Bula two years ago.

The family requested that all memorials be made in donations to the American Cancer Society.

Surviving are her husband, Roy B. Young; her mother, Mrs. Alex Homeyre of Georgetown; two sisters, Mrs. Alice Doerfler and Mrs. Dora Davis, both of Georgetown; a daughter, Mrs. Carolyn Hook of Levelland; and two grandchildren.

## C. H. (JEFF) JEFFERS

Funeral services for C. H. Jeffers, 66, of Lubbock, former Littlefield resident who died late Sunday in Highland in Lubbock, were conducted Tuesday in W. W. Rix Funeral Chapel.

Rev. Sam Laine, pastor of Westminster Presbyterian Church in Lubbock, officiated. Burial was in Lubbock Memorial Park that afternoon.

Rix Funeral Directors was in charge of arrangements.

Jeffers was in the dental supply business in Toledo, Ohio, for many years before moving to Littlefield. He had lived in Lubbock and was a member of the Masons.

Surviving are his wife, Vera; two sisters, Miss Oma Jeffers, Mrs. E. J. Mrs. Essie Best and Mrs. Evelyn Best of Grand Junction, Colo.

## FRED HARRELL USSERY

Funeral services for Fred Harrell USSERY of Earth, who died Sunday in Littlefield, were conducted Tuesday at Earth's First Baptist Church.

Rev. David Hartman, pastor and Rev. Baldwin of Grand Prairie, officiated.

Burial was in Earth Cemetery with Ellis-Singleton Funeral Home of Earth in charge of arrangements.

USSERY was born in Mt. Vernon, Mo., went to Earth 17 years ago from Ft. Smith, Ark. He was a carpenter, member of Earth's First Baptist Church, and Masonic Lodge.

Surviving are his wife, Gurtha; three sons, Max Neal of Lubbock; a sister, Mrs. Hatfield of Houston; five brothers, Ed USSERY of Earth, Ed USSERY and Joe USSERY of Mt. Vernon, Ark., Cullen USSERY of the Army in Korea, and Bill USSERY of Kansas; and three grandchildren.

## OWEN L. HARP

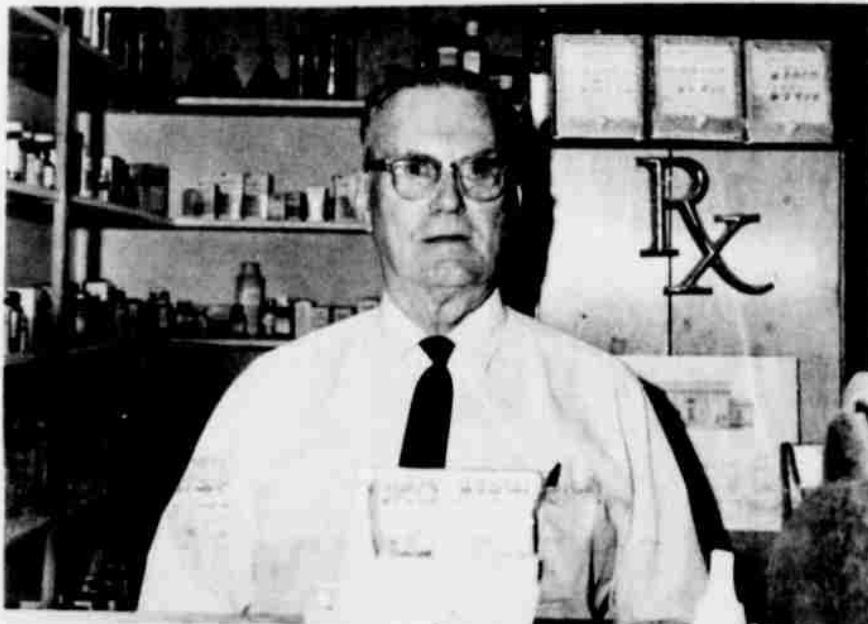
Services for Owen Looney HARP father of Mrs. C. W. Stafford of Lubbock, who died Monday in Methodist Hospital, were Wednesday in the First Church of Lamesa with Dr. George J. pastor, officiating.

Burial was in Lamesa Memorial by Branon Funeral Home.

Harp, a pioneer Daws on County resident in the Lamesa area since 1911.

Other survivors include his wife, four other daughters, Mrs. Amos Harp London, Ark., Mrs. W. C. Coulter of Frank St. Clair, both of Lamesa; Mrs. Corine O'Brien of Palmdale, Calif.; Mrs. O. L. and Bill, both of Welch; Mrs. Mrs. Maude Palmer of Clarendon and E. Prantz of Post; a brother, J. E. Jackson; 19 grandchildren and 15 great-grandchildren.

## IT PAYS TO TRADE IN LITTLEFIELD



## Wright Drug Fills All Prescriptions

Wright Drug is headquarters for this area's prescriptions and miscellaneous needs.

Fred E. Wright, owner and operator of Wright Prescription Drug, has been dispensing prescriptions in the 300 block of Phelps Avenue for 31 years.

Emphasis at Wright Drug is on the prescription department where any and all doctors' prescriptions can be filled exactly as ordered.

A large supply of patent medicines and first aid supplies are also carried at Wright Prescription Drug.

Mr. Wright came to Texas in 1938 from Oklahoma where he earned his B. S. degree from the University of Oklahoma at Norman.

For the first few years Wright lived in Littlefield, he was pharmacist for W. H. Madden.

Early in 1944, Wright bought in with Mr. Madden as a partner, and the

drugstore was called Madden-Wright Drug until 1960 when Mr. Wright bought out Mrs. Madden's interest.

Four complete lines of cosmetics are carried at this conveniently located store: (1) Allecream cosmetics, for those with sensitive skin and allergies; (2) Coty creams and cosmetics are staples at Wright's; (3) Wright Drug has a franchise on Dorothy Perkins products; (4) Clairol cosmetics and a complete line of Clairol hair care products are also carried at Wright's.

Other staple sundries at Wright Prescription Drug includes a large selection of birthday and greeting cards, both modern and contemporary. A good selection of magazines and paperback books can be found here, too.

Cigars, cigarettes, and candy are offered in a good selection, too. Wright has a franchise in Littlefield on King's Candies.

If you find your name in small print on this page, you may go to that advertiser and collect \$2 with no obligation.

## WRIGHT Prescription Drug Coty's Cosmetics

We Fill All  
Doctors' Prescriptions

Phone 385-4500 331 Phelps  
Littlefield, Texas

## COX TIN SHOP

BOB COX OWNER

PLUMBING-HEATING  
AIR CONDITIONING  
SHEET METAL WORK

DISTRIBUTOR **LENNOX**  
AIR CONDITIONERS

PHONE 385-4020 706 E. 3rd.

## Littlefield Coin Center

321 Phelps

(Old Fair Store Bldg.)

Coins Bought And Sold

Complete Line Of Coin Supplies

Bid Board Closes Monday 7 P.M.

WANTED-  
SILVER COINS BEFORE 1965

## H & M FABRICS

AUTHORIZED SINGER

DEALER

NEW AND USED MACHINES

REPAIR

427 Phelps 385-5205

Chiles Rellenos  
Tacos  
Steaks  
Beans  
Tamales  
Sea Food

## TASTY TACO RESTAURANT

"Mexican Food At It's Best"

Why cook tonight? Dine with us, your host Chico and Ralph Mendez.

For Orders ready on arrival Call 385-6124 That's Tasty Taco's

Take Out Dept.

7th & Hall Ave Littlefield

## YOHNER'S Feed-Seed-Fertilizer

- \*Wayne Feeds
- \*Dekalb Seeds
- \*Fertilome Products
- \*All Types of Garden Seeds
- \*Ortho Products
- \*Bedding Plants

Phone 385-5605 \*Littlefield  
409 W. Delano

## LAMB COUNTY HOG and CATTLE CO.

Paying Highest Market Prices

On Top Hogs And Cattle

Located 1 Mile East Of Crossroads

Service Station On Highway 84

Between Amherst And Littlefield

Ph 246-3693 Bonded

We Accept All Oil Co. Credit Cards

Pfash puts the  
Pfun back in  
driving

FINA with pfash!  
available at

**McCormick Oil Co.**  
917 Delano-385-4320

**M and M Laundry**

Coin Operated Laundry  
& Dry Cleaners  
Hair Dryers and Steam Presses  
Clean Efficient Service

Open 24 hrs. a day-7 days a week.

Attendant on Duty 8-6 P.M.  
6 days a week

CORNER 8th AND FARWELL  
Always Plenty Of Soft Water

**BYERS  
GRAIN & FEED**

- \*Bonded Storage
- \*Purina Chows
- \*Field Seed
- \*Garden Seed

Custom Mixing  
of Your Hog & Cattle Rations

200 W. Delano 385-3511



## Take a quiet break. Get a price break!

The facts favor Ford! Special value edition of our quiet Ford Galaxie 500 now sale-priced below all full-sized V-8 hardtops. (Our 4-Door Sedans are also sale-priced.)

SIXTH ANNUAL  
**FORD DEALER  
WHITE SALE**  
BUY NOW! ENDS FEBRUARY 28

Our special White Sale Galaxie 500 with 302 V-8 and special interior trim is priced below anything else in its class. And Galaxie outclasses them all, too, with 100% nylon carpeting, a longer wheelbase, a rear bumper attached to the frame instead of the body... and a whole lot more. See for yourself!

## Mitchell-Ford Inc.

625-529 PHELPS AVENUE LITTLEFIELD, TEXAS  
Dallas District Ford Dealers Advertising Fund



LITTLEFIELD

J. B. McSHAN 385-4337

School group of the Methodist Church is selling candy to help defray the cost of the Arrowhead Assembly...

Mrs. Ken Griffin of Odessa was here for the weekend visit...

Mrs. George L. ... in Roswell, ... the first part of the...

Littlefield Showmen Compete In Houston

Members of Littlefield will exhibit their livestock at the Houston Livestock Show...

and 4-H Club exhibitors are Danny ... Gary Lichte ... will exhibit bar-

performers for the 1970 ... Elvis Presley, ... only appearance in this year, in matinee performances Feb.

MODERN AMBER There is no modern amber since all true amber is the fossil resin of extinct trees.

SPROUSE REITZ Washington's Birthday SALE

VALUES 22¢

JACK SNELL-Manager 424 Phelps Avenue Store Hours: 9 a.m. - 6 p.m. Daily

Susan Britton Is Runner-Up For Queen

Susan Britton of Springlake was first runner-up for homecoming queen at Wayland College Friday night in Plainview...

Second runner-up was Emily Winters of Albuquerque, N. M. The three girls were chosen from a field of 14 coeds at the Plainview college.

Sudan OES Has Meeting

Sudan Chapter 806 Order of Eastern Star observed its annual friendship night Monday, Feb. 16.

A regular business meeting of the Sudan chapter was held following the salad supper.

Attending from Littlefield were Mr. and Mrs. Weldon Findley, Mmes. Lena Logan, Mary Davis, Doris Frey, Francis Ricks, Minnie Matthews, Edith Bridges, Betty Melton and Bettye Smith.

Joella Lovvorn To Speak On Photo Panel Saturday

Miss Joella Lovvorn, news editor for the Leader-News, will participate on a photographic panel Saturday morning in Midland...

Amherst Girls Attend Meeting

AMHERST--Darlene Weaver and Barbara Muncy, seniors at Amherst High School, are in Washington this week attending the first session of a Presidential Classroom for Young Americans.

Club Hears Book Review

AMHERST -- The Amherst Study Club met Monday night in the home of Mrs. T. J. Williams, with Mrs. V. C. Commons as co-hostess.

Service Guild Concludes Study

The Wesleyan Service Guild of the First United Methodist Church of Littlefield met in the church parlor Monday night...

FFA WEEK

It is Future Farmer Week in Texas and the nation. The 450,000 FFA members in America--10 percent of them in Texas--are to be congratulated for the leadership programs and the scientific agriculture they practice.



PROGRAM PERSONNEL at the Annual Soil Fertility Day here Monday included these men. At left is Program Chairman Douglas Walden...

County Students On Dean's List

Two Lamb County students are named among 416 students at Eastern New Mexico University who have been included in the Dean's Honor Roll...

SUNDAY, MARCH 1 SACRED HEART PARISH Council of Catholic Women will honor the Senior Citizens of the Sacred Heart Parish...

SATURDAY, FEB. 21 A PINK AND BLUE shower honoring Nancy and Gary Bizzell and newly adopted son, Skylar Kirk...

OPEN HOUSE for Mr. and Mrs. Paul Lewis of Floydada, formerly of Littlefield and Earth, soon to celebrate their 50th wedding anniversary...

HORSE CHESTNUTS The horse chestnut tree gets its name from the fact that the shape of the scar left on the twin where a leaf stem has fallen off resembles a horse's hoof.

PALACE THEATRE Wed. Thru Sat. Sun. Thru Tues. A True Adventure ALASKAN SAFARI Filmed in Color

Activities

THURSDAY, FEB. 19 LITTLEFIELD CHAPTER 742 Order of Eastern Star will have a salad supper beginning at 6 p.m. Worth Matron, Norma Phillips, will preside at the business meeting...

SUNDAY, MARCH 1 SACRED HEART PARISH Council of Catholic Women will honor the Senior Citizens of the Sacred Heart Parish with a tea from 2 to 4 p.m. in the Parish Hall.

SATURDAY, FEB. 21 A PINK AND BLUE shower honoring Nancy and Gary Bizzell and newly adopted son, Skylar Kirk, will be held in the Spade First Methodist Church...

OPEN HOUSE for Mr. and Mrs. Paul Lewis of Floydada, formerly of Littlefield and Earth, soon to celebrate their 50th wedding anniversary...

Pennys ALWAYS FIRST QUALITY February Values THIS WEEK ONLY! SALE! QUILTED BEDSPREADS 15% OFF BEAUTIFUL PRINTS AND SOLIDS SOME PENN-PREST NEVER-IRON!



# DEAR EDITOR

## What Our Readers Think

### Captain Dan Hudson Writes Open Letter

Dear Editor:

At the present time, the future of the Salvation Army in Littlefield doesn't look very good. We have raised only \$2,070.96 in which to operate the welfare department of the Salvation Army for the year of 1970.

I don't know whether the people of Littlefield have been misled or what, for I hear comments every day as to how people "don't want to support another church." This just isn't so. The people of Littlefield have been asked to help support the welfare program for the Salvation Army, but to no avail. Evidently, not very many people of this city want the services of the Salvation Army.

Just in the transient welfare program alone, over \$536.00 was spent in 1969 in assisting nearly 190 persons through our fair city. People who were referred to the Salvation Army by business managers; ministers; the police department, and private individuals. People who have called me in the middle of the night--to get out of bed--to be their agent in assisting these people. People who could rob a store, or even hit someone over the head in the middle of the night.

Ninety-one lodgings were provided; 151 meals were given; 16 tanks of gas were given. If the Salvation Army is not able to give this assistance, then who will take care of these people?--You?--The Church? Just who will do this job?

In the family welfare program, 49

families received clothing orders; 9 utilities were paid; 9 lodgings were provided; 18 meals were given; 43 grocery orders were issued; a referral to the Salvation Army Home and Hospital for unwedded mothers was made; and inquiries and assistance was given in locating a missing person. In all, 306 persons of the city of Littlefield felt the services of the Salvation Army. These people are our own. Will you turn them down?

In 1969, the people of Littlefield generously gave \$2,700.00 in which to operate the Salvation Army. But, the city of Dallas gave over \$12,000 to the city of Littlefield, just to keep the Salvation Army in operation. Money that was spent in your businesses through the means of grocery orders; utilities paid; gasoline for transient and local needs; helping with medical bills etc. How much longer can we expect someone else to carry the burden that is ours?

Right now, not tomorrow, but today your help and support is urgently needed. Will you help the City of Littlefield to help itself? Please send your donation to: The Salvation Army, P. O. Box 526, Littlefield, For further information, or to give a helpful suggestion as to how this problem might be solved, please call 385-3403.

Yours truly,  
Captain Daniel Hudson  
Commander of the Littlefield Salvation Army



"Ella and I have a good arrangement. She handles the purse strings . . . I handle the money!"

## HOMINY GRITS

By CORNBALL BLEVINS



I'VE HEARD, via the grapevine that I've picked up a few readers of the younger group.--Surely, if they read the grits, they must be starved for something to read!

Could be that they are amused at the sight of a guy with his foot in his mouth.--But, you cats, if I do have your attention for a few minutes, let me offer you a little daddy-like advice.

THESE, DEAR HEARTS, are the "Good Ol' Days, about which you'll be tellin' YOUR kids, in about 20 to 30 years!

Make 'em happy ones.--Lots of our youngsters don't really enjoy their "Golden Years" simply because of their impatience to grow up!--(Just can't wait 'til I'm grown!)

Take it easy!--Time enough to face the serious responsibilities of life when the time is ripe.

works.--Liquor and "pot" is their strength!

THEY HAVE NO respect for marriage, the home, church, or authority.--They will divorce, at the drop of a hat, if they think they've found someone they think they'll "enjoy more," for awhile.

Their children that are orphaned by this process are of little concern to them!--(Still with me?)

The Church, (to these people), is only a "Society, or Club." Religion is just a superstition, or a game, IF they think of it at all!--Little they care that YOU'RE watching them to learn about life!

SO, PLAY IT COOL, take your time about growing up!--Latch on to what you think is solid, and you can live with from now on.

But, look the thing over carefully, before you buy.--It may be counterfeit!--AND, don't take for granted that it's right just because the grown-ups do it.--They may have been misled, themselves!

No, I didn't say "Rebell"--Rebellion is for those that don't respect the law, authority, or the rights of others.

I'm challenging you to search for truth, and follow it!--There's nothing that will compare with an intelligent conscience that's clean--And, (contrary to the well-know tv ad) IT'S THE CLEAN, THAT HAVE MORE FUN!

GO AHEAD, live it up, laugh it up, and clown it up!--But, DON'T MESS IT UP!

And if it's of any importance to you, KNOW THIS: Cornball's pulling for you!

Pretty soon we, of this older generation, are going to hand you a pretty "hot potato".--It's gonna take some mighty solid citizens to cool it off!

## THE PHILOSOPHER

### Let's Make War!



(Editor's note: The Sandhills Philosopher on his Johnson grass farm takes a close look in a sidelong fashion at the pollution problem this week.)

Dear editor:

Generally speaking, I'm always in favor of whoever's President of our country or my bank, figuring both do the best they can with what they've got to work with, so I sat up and cheered--I figure you can cheer just as well sitting as standing--when President Nixon announced he's declaring war on pollution.

Consequently I wasn't prepared when a neighbor came by and asked me if I'd read everything he'd said about pollution.

"Mostly the headlines," I said. I didn't figure a man had to memorize all the streams and lakes and cities now polluted in order to endorse the idea of cleaning them up. A war on pollution is a war on pollution and you leave the details to the generals.

"You should have to read it all," he said, straightening up a fence post he'd been leaning against. "He said pollution is not only a national problem, it's a local problem. Said everybody ought to start with his own premises, make everything tidy and ship-shape. When you gonna re-build this fence? Is that a 1918 or 1920

car chassis grown up in weeds over there? If that barn of yours sags a few more feet to the north without falling over it's gonna become a tourist attraction."

He went on like this for several minutes when I got up and walked off, saying some people read too much.

The trouble is, he had a point, and I got no peace of mind until I ran across an article in a newspaper which I picked up in my driveway as a first step in the anti-pollution war.

According to it, the government is furnishing the money in some cases to plant shubbery around unsightly junk yards along the main highways. If you can't get rid of the old cars, hide them.

I have reviewed the situation on this Johnson grass farm from one end to the other and have decided it would be easier and cheaper to comply with the anti-pollution drive by just planting shubbery around it.

This way me and the government could both go about our way in peace. Please advise where you apply for funds for this. We've got to get this country in shape.

Yours faithfully,  
J. A.

GO AHEAD and do your "Thing" --BUT KEEP IT CLEAN! Filthy and lustful living will only bring shame and regret to mature age.--You see, I didn't say: "Just let yourself go!"

There's a difference. Live each day as tho you were going to give a report about it, before the whole school!--(Are you still reading?)

HERE'S A "no-no"--Don't look too closely, at the grown-ups of these days, for your examples.--SOME set good patterns to follow, --BUT, many do NOT!

The "do-nots", are the ones that have no respect for you, themselves, or anyone else.--They use vile and filthy language, tell dirty jokes, revel in lust, and use sex as a plaything!

What's worse, they want to make you to be just like they are!--Their kind have control of Hollywood now, and, are moving in on the tv net-

## A WOMAN'S VIEW

### Made In Color

By PEARL BRANDON



WHILE LIVING in Los Angeles, I was privileged to visit one of the greatest art museums of our time.

I had visited other museums, including the Smithsonian but never before one such as this.

I enjoyed it very much since my daughter-in-law took me. She has a degree in art and studied one year in France.

I WANDERED from painting to painting gazing at valued pieces dating far into the past...of old masters depicting religion, motherhood, war, death...great beauty as seen through the eyes of the painter.

It was awe-inspiring trying to imagine the soul of the artists and their feelings as they painted these works from long ago.

THEN WE CAME to the showings of modern art, of abstract and pop art and even some they called Op art.

There were confused looking tangled lines of color, with no way to tell what they were meant to be, or even tell whether they were hanging right side up or not.

There were painting of poor mangled looking human beings with part of their faces looking one way and part another. Some had twisted, painful looking forms.

Then we finally came to some that were nothing but shadows, or they were supposed to be.

They were so dim you could hardly see them, just bleak monotone.. showing nothing. I asked my young artist what they meant. She said, "Nothing. That is what the artist feels."

AS I WALKED AWAY from that canvas I thought of the soul of the artist.

An artist of skills evidently, or his work wouldn't have hung there in the museum, but one who had nothing to offer.

Just a gray, bleak looking board. Surely this does not depict our times.

Our times! The age in which we are living, when men with young faces and straight eyes look far beyond the blue into space so remote there is no stretching of the imagination.

If the earth and all it's challenge looks dull and monotonous what of the ocean with its mysteries and great depths?

What of the vast solar system away out there? What of the face of a child or the wrinkled face of a lovely old woman.

MY YOUNG ARTIST said, "Anyone can paint scenery", or "Anyone can paint people."

Well, maybe, but no one who lived long ago can paint the "today". They are gone and we need people to depict this age.

How can anyone living in this age attest that it has nothing to offer... with men on the wing and plowing through the great deep...how can they say there is no future?

There is still love, hate, beauty, pain...there is still light against dark, hope against despair and love against hate.

ARTIST, I SAY to you quit looking into your own soul if you see nothing but bleakness....look out like the child I heard say, "I'm glad God made the world in color."

## THE ABUNDANT LIFE

### Zestful Living

By BOB

LIFE IS A CRUEL JOKE someone has played on us is the feeling of many, many people; in varying degrees.

This is one of the reasons, perhaps the most prevalent one, why there is so much misuse and abuse of life. These people find living tasteless, and they approach the living experience with hostility; some more than others.

This is a perverted view of life.

OUR CREATOR intended we should be happy with that our attitudes and reactions be characterized by joy, joyment. Zestful living is the order for life.

ZEST FOR LIFE is the order for life, or any of the many orders of loose living.

There is abundant evidence many people keep trying to convince themselves, and that lust for life is the order for life.

They try to make it appear the "good life" is a grim experience. Many are deceiving themselves, and are deceiving others.

A MERE DANCE OF DEATH is what living becomes for some people. The life-energy expended is wasted energy.

It is misdirected because of unwise choices, inadequate conclusions and unworthy aims.

The sense of futility is predominant, and there is no honest joy or satisfaction in living.

PRODIGAL LIVING is the way to destroy the human body for wholesome enjoyment.

If we honestly study the concerning the available knowledge of human nature, behavior and human needs, the inevitable conclusion.

Self-indulgence is a sure way to lose our taste for living.

ZESTFUL LIVING is accomplished by the continued stimulation of the senses, and the unrestrained activity of human behavior.

This is not the way to the fulfillment of life's purpose, but one sure way to deteriorate and disappointment.

MUCH ADO ABOUT NOTHING is the modern "life style" for large segments of mankind.

It is seen in the various recreational forms, in the theater, in much of the art, music, literature, and in the general conduct of life.

It is more like the practice of just doing something to pass the time away, or, as some say it, "to kill time". Such frustration dulls the taste for life.

DISSIPATION is the quickest most certain way to completely destroy our capacity for relating.

All well-informed people, in fields of study related to human nature, know that strength, stability, and, all else necessary to a full living, are closely associated to pureness of thought and action.

ZESTFUL LIVING is accomplished by the devotion of our vitalities to the high purposes of life and someness.

LEVITY IS BEING substituted for living.

It is symptomatic of the tragic loss of a proper zest for life.

Levity is derived from a word meaning "light in weight". It is defined as lack of constancy. It is fickleness and unseemly frivolity.

"Between levity and cheerfulness there is a wide distinction; the mind that is most open to the former is frequently a stranger to the latter. Levity may be the offspring of folly or vice; cheerfulness is the natural offspring of wisdom and virtue." --Blair.

THE DINOSAURS ate themselves out of house and home. Many millions of years ago they outgrew all enemies, were thus able to breed millions and millions of little dinosaurs--unmolested.

Until the dominant dinosaurs had eaten everything edible and there was nothing left to dominate--or eat.

And so they perished from the earth.

## PAUL HARVEY

### Precarious Balance

THE DINOSAURS ate themselves out of house and home. Many millions of years ago they outgrew all enemies, were thus able to breed millions and millions of little dinosaurs--unmolested.

Until the dominant dinosaurs had eaten everything edible and there was nothing left to dominate--or eat.

And so they perished from the earth.

THIS LESSON is repeated throughout history: The struggle for existence is necessary to survival.

For any animal to win that struggle too completely is self-defeating.

For man, too? For man, also.

Throughout the "Best Nature Writing" of Dr. Joseph Wood Krutch is apparent over and over again this lesson: Wild creatures need their enemies as well as their friends.

At the beginning of this century there were, on the Kaibab Plateau in the region of our Grand Canyon about 4,000 deer occupying 127,000 acres.

AS MOUNTAIN LIONS, coyotes and weasels exterminated ranchers or hunters, the deer population expanded. By 1924 the herd had become 100,000. The deer struck. In that one year, 100,000 deer died from starvation disease and since, year by year, population has dwindled.

In the absence of predators, life managers advocate allowing man hunters annually to "harvest" a specific number of wild animals. The big trouble with this is that the beasts of prey destroy first the weak, the sick and the senile, as a predator, is more likely to slaughter the big, the strongest and most magnificent.

WHEN TENDER-MINDED, well-intentioned humans seek to create a "wildlife preserve" for a particular species, where it will be safe from predators--a refuge where the "innocent creatures" may be allowed to prosper and propagate beyond the reach of "evil creatures" such as the fox and the hawk--it doesn't work.

A deer herd or a partridge covey, if not thinned out by predators, grows weaker, not stronger.

AND NOW WE ARE coming to the point of all this. Those those who are convinced that human population is eating into extinction.

With modern medicine we have all the imperfect: with modern war we sentence our best people and mental specimens to die. A civilized society tends to guarantee the survival of the fittest.

WITH GOVERNMENT payments predicated on numbers, babies, we encourage further population increase.

Symptoms are already appearing of the eventual sickness of our earth's human population: epidemic mental illness, crime, revolution.

IN THE NORMAL BALANCE of nature the strongest and most fleet of foot or wing survive. In a sanctuary, the weak also survive, propagate and thus weaken the herd or the flock.

Further, the herd or the flock, if not thinned out by predators, grows to such numbers that, like the dinosaurs, it eats itself into starvation.

WE ARE EXHAUSTING our supply of water and air, and will be next.

I'm not mentioning all this to sound gloomy. And I don't know all the answers to proper regulation of our human population. It seems to me that human civilization which got us overpopulated should inspire us to correct imbalance.

Can we not learn from the dinosaurs, or must we imitate them?

# LAMB COUNTY LEADER-NEWS

MEMBER ESTABLISHED 1923

Lamb County Leader and County Wide News combined Feb. 13, 1969.

BILL TURNER Editor & Publisher  
JOELLA LOVVORN News Editor  
NILAH RODGERS Staff Writer  
WANDA STRANGE Society Editor  
EMIL MACHA Advertising-Sports

PUBLISHED SEMI-WEEKLY, each Thursday and Sunday morning by the Leader-News, 313 W. 4th, Littlefield, Texas, 79339. Entered as second class matter in the U.S. Post Office, Littlefield, Texas, 79339, under the acts of March 3, 1879. Subscription rates by mail in Lamb and adjoining counties, \$6 per year, elsewhere, \$8 per year. Carrier Boy delivery, 70 cents per month. Single copy rates, 10 cents on Thursday and 15 cents on Sunday. Classified advertising rates: 6 cents per word first insertion, minimum \$1, 3 cents per word thereafter.

Telephone: 385-4481.

Dial 385-4481 For Classified



# YOU GET IT ALL AT FURR'S!

**LOW MIRACLE PRICES**

**FREE GOLD BOND STAMPS AT FURR'S**

Redeem your Coupon received in the mail for 100 Free Gold Bond Stamps this week at Furr's, with \$5.00 purchase or more. Save and Redeem valuable Gold Bond Stamps for beautiful items for yourself or others!

**GOLD BOND STAMPS-DOUBLE ON WEDNESDAYS**



**OUR GAYLORD 29¢**  
5 LB BAG

**EAS DEL MONTE SWEET 19¢**  
NO.303 CAN

**ORN STOKLEY'S CREAM 5 \$1**  
STYLE OR WHOLE KERNEL NO. 303 CAN FOR

**APKINS ZEE ASS'T 25¢**  
COLORS 150 CT

**RANGES JUICE 29¢**  
GOLD INN 46 OZ. CAN

**DMATO SOUP CAMPBELL'S 10¢**  
NO 1 CAN

**RACKERS FOOD CLUB 19¢**  
1 LB PKG.

**HERRIES FOOD CLUB RED SOUR 22¢**  
PITTED NO. 303 CAN

<b>CHUCK STEAK</b> FURR'S PROTEN LB.....	<b>63¢</b>	<b>RIB STEAK</b> FURR'S PROTEN LB.....	<b>87¢</b>
---	------------	---	------------

**SIRLOIN STEAK FURR'S PROTEN, LB..... 87¢**

**ROUND STEAK**  
FURR'S  
PROTEN  
LB.....

**87¢**

**SWISS STEAK ROUND BONE ARM, FURR'S PROTEN, LB..... 89¢**

**CUTLETS BONELESS STEAK, LB..... \$1.19**

**SAVOY STEAK BONELESS FURR'S PROTEN, LB..... \$1.19**

**STEAK TEXAS BROIL FURR'S PROTEN, LB..... 98¢**

**SHOULDER ROAST FURR'S PROTEN, LB..... 79¢**

**BONELESS ROAST SHOULDER LB..... 88¢**

**TEXAS POT ROAST FURR'S PROTEN, LB..... 89¢**

**STEW MEAT LEAN, BONELESS LB..... 79¢**

**LUNCH MEAT FARM PAC MIX OR MATCH, 6 OZ..... 33¢**

**PORK STEAK BOSTON BUTT LB..... 79¢**

**PERCH TOP FROST LB..... 48¢**

**GROUND BEEF**  
FRESH  
GROUND  
DAILY LB..... **48¢**

**RUMP ROAST FURR'S PROTEN, LB..... 89¢**

**SHORT RIBS LEAN, FURR'S PROTEN, LB..... 38¢**

**FRANKS FARM PAC 12 OZ..... 59¢**

**BOLOGNA FRONTIER 12 OZ..... 49¢**

**COCKTAIL SHRIMP SINGLETON 4 OZ. GLASS..... 3 FOR 98¢**

**CHEESE LONGHORN STYLE BLOCK, LB..... 79¢**

**STEAK FINGERS BREADED, HEAT-N-EAT 16 STICKS..... \$1**

**FISH STICKS 18 STICKS HEAT-N-EAT..... \$1**

**FISH CAKES HEAT N EAT 16 CAKES..... \$1**

**CORN DOGS EIGHT..... \$1**

**BEEF CHOPPIES 5 STEAKS PKG..... \$1**

**FISH CRISP TOP FROST 8 OZ. PKG..... 3 FOR \$1**

**FISH STICKS TOP FROST LB. PKG..... 59¢**

Everyday Low Prices Plus Gold Bond Stamps Proten Beef And Super Service.

<b>BAR HOLLY BEET 5 LB. BAG..... 49¢</b>	<b>CIGARETTES ALL BRANDS CARTON..... \$3.69</b>
<b>PROX 1/2 GALLON BLEACH..... 36¢</b>	<b>TOMATO SAUCE MOUNTAIN PASS 8 OZ. CAN..... 9¢</b>
<b>OUR GOLD MEDAL 5 LB. BAG..... 49¢</b>	<b>FRUIT COCKTAIL FOOD CLUB NO. 303 CAN..... 22¢</b>
<b>BY FOOD GERBERS STRAINED JAR..... 11¢</b>	<b>GREEN BEANS FOOD CLUB CUT NO. 303 CAN 6 \$1</b>
<b>LO ASSORTED FLAVORS GELATIN BOX..... 10¢</b>	<b>TISSUE PERT 4 ROLL PKG..... 29¢</b>
<b>NCHON MEAT SPAM 12 OZ. CAN..... 56¢</b>	<b>POTATO CHIP FARM PAC GIANT BAG..... 48¢</b>
<b>DRINKS ASSORTED FLAVORS 46 OZ..... 29¢</b>	<b>MELLORINE FARM PAC 1/2 GALLON..... 3 FOR \$1</b>
<b>FFEE FOOD CLUB ALL GRINDS, 1 LB. CAN..... 59¢</b>	

WE RESERVE THE RIGHT TO LIMIT QUANTITIES

**FRESH FRYER PARTS**  
**FRYERS USDA INSPECTED LB. 29¢**  
BREAST LB...69¢ LEGS LB..... 58¢  
THIGHS LB.. 58¢ BACKS LB..... 19¢

**WASTEBASKET ONE TABLE ALUMINUM YOUR CHOICE, EACH..... 99¢**

<b>PLASTIC PITCHER 3 QUART..... 99¢</b>	<b>30 OZ. TUMBLERS REG. 39¢ EACH ASST. 4 FOR \$1 COLORS.....</b>	<b>TUCKER PLASTIC DECANTER WITH STRAINER FOR BEVERAGES, EACH..... 23¢</b>
---	--	---

**Fresh Frozen Foods**

**CREAM PIES MORTON'S FRESH FROZEN ASS'T FLAVORS EACH..... 25¢**

**POT PIES TOP FROST FRESH FROZEN CHICKEN, BEEF, OR TURKEY 8 OZ. PKG..... 6 FOR \$1**

**HACH TOP FROST CHOPPED OR LEAF FRESH FROZEN, 10 OZ. PKG. 15¢ POTATOES TOP FROST HASH BROWN, 2 LB. PKG. 3 FOR \$1**

**FRUITS & VEGETABLES**

**PEARS SHINGTON 19¢**  
NJOU LB.....

**GRAPEFRUIT 12**

**POTATOES RUSSETS COLORADO, LB..... 7¢**

**LEMONS CALIF. LB..... 29¢**

**PEAT MOSS MICHIGAN BAG..... \$1.09**

**Health & Beauty Aids**

**MOUTHWASH COLGATE 100 6 OZ..... 63¢**

**HAND CREAM JERGEN'S JAR REG. \$1.00..... 53¢**

**VITAMINS WITH IRON ONE-A-DAY, 100'S..... \$2.19**

**BABY MAGIC LOTION MENNEN 9 OZ..... 79¢**

**EVERYDAY LOW PRICES!**

**MAALOX SUSPENSION LIQUID..... \$1.19**

**PETROLEUM JELLY 8 OZ..... 28¢**

**COUGH SYRUP FORMULA 44 6 OZ..... \$1.62**

**O.J.'S LOTION..... 79¢**

**MASCARA ULTRA LASH BY MAYBELLINE..... 89¢**

**FDS DEODORANT SPRAY 3 OZ..... \$1.35**





# CLASSIFIED ADS

**Wanted**

L.V.N. NEEDED. Equal opportunities employer. 894-4902, Levelland, Texas. TF-F

ROOM FOR ONE more elderly lady or couple in my home. Good meals, care and reasonable rates. 417 E. 9th. 385-3438. TF-MCB

DRIVERS NEEDED: Semi Drivers, local and over the road. Experience helpful but not necessary, we will train you. You can earn over \$4.00 per hour, after short training period. For application write: Nationwide Safety Director, 4747 Gretna, Dallas, Texas, or call: 214-742-2924. 2-26-N

ATTENTION: Part or full time sales work with World Book Encyclopedia, in this area. Write or call Juanita Bratcher, 3414 58th, St., Lubbock, Texas. 799-5576. 2-2

**Houses For Rent**

THREE BEDROOM, den, living room, two baths, kitchen and cellar. Otis Bennett Real Estate. 385-4215 or 385-3575. TF-H

TWO BEDROOM, 504 E. 13th. Carpeted, garage. \$50.00 month. Call 385-3466. TF-P

CLEAN TWO BEDROOM, nice neighborhood. 710 E. 16. 385-3112 day-385-5060 night. 3-15-G

THREE BEDROOM modern, fenced backyard, 1027 W. 7th. Contact Lonnie Horn, 257-3441. TF-H

FOR RENT: two bedroom house, \$35.00 a month. See Mrs. L. L. Brawley, 421 E. 15th. or phone 385-4661. TF-R

THREE OR FOUR bedroom house for rent. One block from Junior High School. Inquire at 600 W. 1st. 385-3365. TF-W

ONE BEDROOM furnished. 915-A E. 6th. 385-8964. Pete Shipley. TF-S

FOR RENT: Furnished apartments. Phone 385-5364. T

FOR RENT furnished one and two bedroom apartments. Adults. 385-3880. TF-H

TWO BEDROOM furnished apartment. Newly decorated in Early American, fully carpeted, refrigerated air conditioning, vented heat. Bills paid. Suitable for adults. Call 385-5147 or 385-4860. TF-A

COMFORTABLE bedrooms for men. New Home. Heated rooms. Phone 385-3604. 204 E. 9th St. TF-A

Furnished apartment for rent. Bills paid. 385-3365. 600 W. 1st. TF-W

FURNISHED ONE bedroom apartment, bills paid, fully carpeted, vented heat, refrigerated air conditioning, downtown location, unusually nice, suitable for adults. Call 385-5147 or 385-4860. TF-A

**Sale or Rent**

FOR SALE or rent: One, two, three bedroom houses and apartments. Some furnished. Small down payment on houses sold. Balance paid out like rent. Located all over Littlefield. Call K. Houk, 385-4830 or Office 385-3492.

FOR RENT OR SALE: Two and three bedroom. 385-4674. Ophelia Stone. TF-S

**Misc for Sale**

SALE ON TRACTOR cabs. All models. Farm Equipment Company, Littlefield, Texas. TF

THE MISCELLANEOUS Shop open Thursday, Friday and Saturday. Adding more and different merchandise each week. Come see at garage sale prices. We buy, sell or trade. 1310 E. Delano. 385-5979. TF-F

GRASS HAY for sale. Phone 385-4680 or 385-5620. TF-M

CAMPER TRAILER house, 14 ft., ice box, stove, sleeps four. See at 1301 W. 12th. TF-B

BRANTLEY DRIVE in. Can be moved. Mrs. M. B. Welborn. 385-4502. TF-W

FOR SALE: Special prices on all sizes of good used aluminum pipe, hydrants, valves, tees, etc. We also have new Alcoa aluminum pipe and will-move sprinkler system. Before you buy-see STATE LINE IRRIGATION in LITTLEFIELD and MULESHOE. TF-S

FOR SALE: 1955 edition of Compton's Encyclopedia. Excellent condition. Includes two dictionaries printed in five languages. Yearbooks complete through 1969. For information write Wanda Strange, Box 126, Littlefield.

SHEEP FOR SALE. Ramboulet ewes. Contact 385-3413 or 385-4658. TF-M

Reposessed Singer sewing machine, buttonholes, zigzag, overcast, etc. Balance \$26.95. Terms with good credit. Discount Sewing Machine Co., 1906 Main St., Lubbock, Texas. TF-D

TRACTOR FOR SALE: 1964 International Farmall 560-butane, 4 row lister planter, cultivator, 4 row crusbuster, 3 bottom moldboard breaking plow. Good condition. Ed Blackwell. 385-3334. TF-B

GOOD ROPING HORSE. Contact Garland Koontz. One mile north of radio station or Dave Koontz at Earth. TF-K

BUY YOUR fertilizer from Tide Products. Treffan-\$110. for 5 gallons. Tide. 385-4456. TF-T

1-1965 Pontiac irrigation motor. Complete carburetor with B regulator. Natural gas filter. \$325.00. Call 385-4617. 2-26-P

TAKE OVER payment, model 1968 singer sewing machine in walnut console, will zig zag, blind hem, fancy patterns, etc. Assume three payments at \$7.96. Write Credit Manager, 1114 19th St., Lubbock, Texas. TF-L

**BUS. OPP.**

**BE YOUR OWN BOSS**

Run a Gulf Station of your own. Healthy, interesting outdoors work. Choice location. Earn first-rate income-excellent future. No service station experience necessary. Gulf will pay you while training you. Financial assistance to qualified man. Sell the famous, nationally-advertised line of Gulf products-the finest in the world. Get complete details right away! Write or phone: Landon Grissom 220 West Delano Littlefield, Texas 385-3900

**Bus. Services**

ALL KINDS ALTERATIONS, covered buttons, button-holes, belts. Mr. and Mrs. G. E. Scifres, 905 E. 6th St., Phone 385-3971. Former Drive In Cleaners. TF-S

RENT CONVALESCENT equipment at Britain Pharmacy. Wheel chair, crutches, hospital beds, other items. Complete line Convalescent needs. TF-B

MATTRESSES RENOVATED-all mattress rebuilt, new mattress and box springs. Your present bed springs converted into box springs. Call Mrs. Claude Steffey at 385-3386 or Mrs. Dan Cotham at 385-4572, agents for A & B Mattress Co., Lubbock. TF-A&B

CLEANINGEST carpet cleaner you ever used, so easy too. Get Blue Lustre. Rent electric shampooer \$1. Nelson's Hardware.

ONE SHOT house spraying yard and tree care. United Pest Control, 385-5637, Littlefield, Texas. TF-U

HAVE A SICK WATCH? Bring it to Pratt's Jewelry, for fast, dependable service. TF-P

**Autos for Sale**

1963 Ford 9 passenger station wagon, power and air. Cheap 9th and Sunset, 2nd trailer house. Phone 385-5029. TF-B

1965 Ford Mustang, 2 door hardtop, dark blue, 289 V8 engine, console three speed in the floor. Radio, heater and extras. 1970 inspection-Feb-ruary. \$850.00 3 1/2 miles north Littlefield on 385. First house north of Country Club on west side of the road. TF-P

1954 FORD. Extra nice. Phone 385-3293. 2-15-R

**PCA Stockholders Meet Saturday**

The 36th Annual Stockholders' Meeting of the Plainview Production Credit Association will convene in Plainview Saturday morning, according to Tommy Ballard, Littlefield PCA manager.

The program is to begin at 11 a.m. in Plainview High School Auditorium.

Two directors will be elected during the season--from four nominees for the positions. For Place Number One, Leon Grissom of Bovina and Ray Robertson of Dimmitt have been nominated, and for Place Number Two, Don Garrison, incumbent from Silvertown and Luke M. Miller of Plainview, have been nominated.

Reports from the board, management and the Houston bank will be presented.

W. H. Calkins of Houston will be the guest speaker.

According to Ballard, a total of \$6,133,966 was loaned to 155 persons in Lamb County the past 12 months--investor money from the east which has gone into aiding Lamb County's economy.

A barbecue lunch will be served to those attending.

**Trucks For Sale**

**GMC**

Long Wide Box

**2295<sup>00</sup>**

Delivered in Littlefield

**MARCUM OLDS, CADILLAC**

8th and Highway 385 Littlefield 385-5171

**REAL ESTATE**

**FHA-VA**

We Have Keys And Contracts, Will Show Anytime, Enthusiastic Service

**PLAINS REAL ESTATE**

Phone 385-3211

Roy Wade 385-3790  
I.D. Onstead 385-4888

New land near Lamesa, subdivided. 14,000 acres Mesquite-cattail land. Proven farming area. Six miles south of Patricia. \$50-\$90.00 per acre. 25% down. Contact John or Marvin McLarty, 1611 Ave. M., Lubbock. 765-8816. Evenings, 744-6188, 744-6221. TF-C

## CLASSIFIED ADS

### LEADER-NEWS

BOX 72, LITTLEFIELD

\*You can mail your ad to the address above. \*Or you can phone it to 385-4481

\*Or you can take it to the Leader-News, 313 W. 4th, Littlefield.

PUT 1 WORD IN EACH SPACE. PRICE IS GIVEN WITH THE LAST WORD. DON'T FORGET TO INCLUDE YOUR ROAD ADDRESS, TOWN AND PHONE NUMBER. YOU'LL GET BETTER RESULTS WITH COMPLETE DETAILS.

CLASSIFICATION: (Circle one) Help wanted - Wanted - Business Opportunities - Business Services - Houses to Rent - Houses for Sale - Lost & Found - Special Notices - Personal Services - Card of Thanks - Apts. for Rent - Miscellaneous for Rent - Miscellaneous for Sale - Miscellaneous - Real Estate - Notices - Legals - Pets - Autos, Trucks for Sale.

Rates on classified advertising are: 5 cents per word first insertion; 4 cents per word each additional consecutive insertion.

The Leader-News is not responsible for mistakes after first insertion. Please read your ad. All classified accounts are due and payable 10th of month following insertion. A flat rebilling fee of \$1.00 will be charged for all accounts 30 days past due for all successive rebillings.

**FREE OFFER**

If you'll give it away, The Leader-News will give you the ad free for one time. It will appear in "Free Offer" column.

**DEADLINES**

LAMB COUNTY LEADER-NEWS

5 P.M. TUESDAY				5 P.M. FRIDAY			
1.00 1 Time	1.00 1 Time	1.00 1 Time	1.00 1 Time	1.00 1 Time	1.00 1 Time	1.00 1 Time	1.00 1 Time
Add 44c E.A.T.	Add 48c E.A.T.	Add 52c E.A.T.	Add 56c E.A.T.	Add 56c E.A.T.	Add 60c E.A.T.	Add 60c E.A.T.	1.00 1 Time
1.00 1 Time	1.02 1 Time	1.08 1 Time	1.14 1 Time	1.20 1 Time	1.26 1 Time	1.32 1 Time	1.38 1 Time
Add 64c E.A.T.	Add 68c E.A.T.	Add 72c E.A.T.	Add 76c E.A.T.	Add 80c E.A.T.	Add 84c E.A.T.	Add 88c E.A.T.	Add 92c E.A.T.
1.26 1 Time	1.32 1 Time	1.38 1 Time	1.44 1 Time	1.50 1 Time	1.56 1 Time	1.62 1 Time	1.68 1 Time
Add 94c E.A.T.	Add 98c E.A.T.	Add 92c E.A.T.	Add 96c E.A.T.	Add 1.00 E.A.T.	Add 1.04 E.A.T.	Add 1.08 E.A.T.	Add 1.12 E.A.T.
1.56 1 Time	1.62 1 Time	1.68 1 Time	1.74 1 Time	1.80 1 Time	1.86 1 Time	1.92 1 Time	1.98 1 Time
Add 1.04 E.A.T.	Add 1.08 E.A.T.	Add 1.12 E.A.T.	Add 1.16 E.A.T.	Add 1.20 E.A.T.	Add 1.24 E.A.T.	Add 1.28 E.A.T.	Add 1.32 E.A.T.
1.86 1 Time	1.92 1 Time	1.98 1 Time	2.04 1 Time	2.10 1 Time	2.16 1 Time	2.22 1 Time	2.28 1 Time
Add 1.24 E.A.T.	Add 1.28 E.A.T.	Add 1.32 E.A.T.	Add 1.36 E.A.T.	Add 1.40 E.A.T.	Add 1.44 E.A.T.	Add 1.48 E.A.T.	Add 1.52 E.A.T.

Enclosed is \$ For 1 Time 2 Times Times

Send the bill To \_\_\_\_\_ Address \_\_\_\_\_ City \_\_\_\_\_

\*Each Additional Time

**PCA Stockholders . . . FERTILE**

Continued from Page 1

market their goods "before produce them...to suit the of the customer...then through the customer's satisfaction."

In closing out his topic, Black said, "It takes time to market successfully. Organization, and 2. Marketing tools.

A free barbecue sponsored by seven of Lamb County's financial institutions closed out the day's activities. Barbecued beef, potato, cabbage slaw, pinto beans, coffee and tea were catered served by Holder's Restaurant.

Continued from Page 1

without Molly during the flu epidemic," Mrs. said. "He would go into where everyone was with the flu and just over-cooking, doctoring everything. Under different conditions, Molly would have been a very fine doctor."

Molly's early life was not as prosperous, and he never told age. Sudan residents believe Molly was on the list for 60, long before he left for Mexico to find his fortune. Molly plied his veterinary skill around Portales, with sick cattle for many years in New Mexico the last years of his life.

Just as mystery surrounded Molly in life, there is a mystery about his death. Molly never mentioned a family following his death in two well-dressed women a luxury car came to see about their "dad's" grave.

A modest marker is at head of Molly's grave at Portales, but the cemetery record of who put the stone there. If Molly had a family he carried the secret to his grave.

**DIAL 385-4481 FOR CLASSIFIEDS**

Because We Understand

FEEL FREE TO CALL ON US AT ANY HOUR

**Hammons Funeral Home**

**LEGAL**

NOTICE TO Creditors of the Estate of O. C. McBRIDE, JR.

NOTICE IS HEREBY GIVEN that the original Letters Testamentary of the Estate of O. C. McBride, Jr., Deceased, were issued to ETHEL McBRIDE, a resident of Lamb County, Texas, on the 13th day of February, A. D., 1970.

All persons having claims against the Estate of O. C. McBride, Jr., are hereby required to present the same to ETHEL McBRIDE, at 1408 Cherry Blossom Drive, Littlefield, Texas, 79339.

KIRBY, RATLIFF & SANSON Attorneys for Ethel McBride P. O. Box 888 Littlefield, Texas 79339 /s/ Jerome W. Kirby Jerome W. Kirby

**Robert Richards Real Estate**

512 N. Sunset 385-3293.

**Political Calendar**

(announcements)

FOR COUNTY CLERK MARY BETH WILLEY

COUNTY TREASURER LUCY MORELAND

COMMISSIONER PRECINCT 2 O. J. FARRISH

COMMISSIONER, PRECINCT 4 HUBERT DYKES

DISTRICT CLERK RAY LYNN BRITT

COUNTY JUDGE G. T. SIDES

STATE SENATOR JACK HIGHTOWER

**Wholesale Route Salesman**

Cloverlake Dairy Foods has opening for a Route Salesman in Littlefield. Milk and Ice Cream Route. Guaranteed salary and commission. Insurance, profit-sharing and other company benefits. No experience needed. We will train you. Must be married and equivalent of high school education. Contact Joe Jacobs in Littlefield, at Pierce Oil between 3:30-6:00 p. m.

**Sales & Rentals**

Pickup Campers And Trailers

**Askew Texaco**

401 E. 9th Littlefield Phone 385-5276

**ELECTROLUX VACUUMS**

New & Used - \$15. & Up

Supplies & Repairs All Brands

Late Model Rebuilds Fully Guaranteed

Electroluxes \$35. To \$65.  
Kirby's..... \$69. To \$79.  
1 Rainbow..... \$50.  
Filter Queens \$39. To \$69.

Free Pick Up & Delivery

Write, Call, or Come By after 7 p.m. Call Collect

**BENTON'S ELECTROLUX**

505 Portland St. Plainview, Texas Phone 296-7655

**DIAL 385-4481 FOR CLASSIFIEDS**

**KIRBY SALES & SERVICE**

Lloyd White 385-3357

**AFTER HOURS PRESCRIPTION SERVICE**

Please Phone Us

Bob Roden 385-3698  
James Walker 385-4504

**RODEN DRUG**

**GRADY MURRY AUCTION SERVICE**

Experienced and licensed Olton Route, Plainview 806-296-7139

**INCOME TAX SERVICE**

Reasonable Rates

J. CALVIN YOUNG Phone 385-5638

MOTEL L-F Littlefield, Texas

**Auto's For Sale**

1962 CLEAN PONTIAC. One owner car. Call 385-4137. TF-P

CLEANEST USED CARS in town. Marcum Olds-Cadillac, 8th. and Hiway 385, Littlefield. 385-5171. TF-M

1965 Buick Electra 225, 4 door hardtop. Don Avery. 299-4395. TF-A

1946 Willis Jeep. Call 933-2232. TF-N.

**Political Calendar**

(announcements)

FOR COUNTY CLERK MARY BETH WILLEY

COUNTY TREASURER LUCY MORELAND

COMMISSIONER PRECINCT 2 O. J. FARRISH

COMMISSIONER, PRECINCT 4 HUBERT DYKES

DISTRICT CLERK RAY LYNN BRITT

COUNTY JUDGE G. T. SIDES

STATE SENATOR JACK HIGHTOWER

**Dial 385-4481 For Classified**

**LEGAL**

NOTICE TO Creditors of the Estate of O. C. McBRIDE, JR.

NOTICE IS HEREBY GIVEN that the original Letters Testamentary of the Estate of O. C. McBride, Jr., Deceased, were issued to ETHEL McBRIDE, a resident of Lamb County, Texas, on the 13th day of February, A. D., 1970.

All persons having claims against the Estate of O. C. McBride, Jr., are hereby required to present the same to ETHEL McBRIDE, at 1408 Cherry Blossom Drive, Littlefield, Texas, 79339.

KIRBY, RATLIFF & SANSON Attorneys for Ethel McBride P. O. Box 888 Littlefield, Texas 79339 /s/ Jerome W. Kirby Jerome W. Kirby

**Robert Richards Real Estate**

512 N. Sunset 385-3293.

**Political Calendar**

(announcements)

FOR COUNTY CLERK MARY BETH WILLEY

COUNTY TREASURER LUCY MORELAND

COMMISSIONER PRECINCT 2 O. J. FARRISH

COMMISSIONER, PRECINCT 4 HUBERT DYKES

DISTRICT CLERK RAY LYNN BRITT

COUNTY JUDGE G. T. SIDES

STATE SENATOR JACK HIGHTOWER

**Wholesale Route Salesman**

Cloverlake Dairy Foods has opening for a Route Salesman in Littlefield. Milk and Ice Cream Route. Guaranteed salary and commission. Insurance, profit-sharing and other company benefits. No experience needed. We will train you. Must be married and equivalent of high school education. Contact Joe Jacobs in Littlefield, at Pierce Oil between 3:30-6:00 p. m.



# SAV-U

## EVERYDAY... MORE DISCOUNT PRICES!

DISCOUNT FOOD CENTER  
307 EAST 8th STREET

SHOP AND SAVE AT YOUR  
SAV-U DISCOUNT FOOD CENTER!



**PINTO BEANS** CHEF'S PRIDE  
**10¢**  
1 POUND PACKAGE  
SPECIAL DISCOUNT PRICE!  
Save Up to 20%! Why Pay More?  
Compare Our Everyday Low Prices!

**PEPSI COLA** NO DEPOSIT, NO RETURN  
**\$1**  
5 28 OZ BOTTLES  
SPECIAL DISCOUNT PRICE!  
Open 7 Days Each Week!  
Lowest Everyday Discount Prices!

**OLEO** ELGIN SOLIDS  
**10¢**  
1 POUND PACKAGE  
SPECIAL DISCOUNT PRICE!

**PORK CHOPS**  
Family Package, 1/4 Pork Loin  
**58¢**  
SPECIAL DISCOUNT

**ACON** Hickory Smoked, Sliced Lb **58¢**  
**TEAK** Family, USDA Center Cut Chuck the best for less Lb **58¢**  
**OT LINKS** Hickory Smoked Lb **64¢**  
**TEAK** Pork, Semi-Boneless, Extra Lean Lb **74¢**  
**IVER** Sliced Pork High In Protein Lb **28¢**  
**ICNICS** Hickory Smoked Lb **48¢**  
**ORK CHOPS** Center Cut Rib Lb **68¢**  
**TEAK** Chicken Fried, Fully Cooked Lb **88¢**

**GROUND BEEF**  
Ground, 80% Lean  
**48¢**  
SPECIAL DISCOUNT

COMPARE THESE PRICES & SAVE!		Sav-U Price	You Save
MIRACLE WHIP	Salad Dressing Quart Jar	47¢	12¢
BABY FOOD	Gerber's Strained 1/2 Oz jar	11¢	3¢
MILK	Evaporated, Carnation Tall Can	17¢	4¢
FLOUR	Gold Medal, Enriched 5 Pound Bag	49¢	20¢
CLOROX	Liquid Bleach 1/2 Gallon	36¢	7¢
SALMON	Honey Boy Chum Tall Can	75¢	6¢
HI-C FRUIT DRINKS	Asst. 46 Oz Cans	29¢	4¢
TOMATO SOUP	Campbell's No 1 Can	10¢	3¢
SUGAR	Holly, Granulated 5 Pound Bag	49¢	20¢
SALT	Table, Morton's 26 Oz Box	12¢	3¢
FACIAL TISSUE	Soft Ply 200 Ct Box	5/\$1	25¢
BATHROOM TISSUE	Soft Ply 4 Roll Pkg	31¢	8¢

YOU WILL SAVE MORE at **SAV-U** EVERY-DAY DISCOUNT

MORE SAVINGS EVERYDAY!		Sav-U Price	You Save
JELLO	Asst. Flavors 3 Oz Box	10¢	3¢
VELVEETA	Kraft's Cheese Food 2 Lb Box	\$1.05	14¢
FOIL	Aluminum, Arrow 25 Ft Roll	25¢	4¢
CRISCO	Pure Vegetable Shortening 3 Lb Can	69¢	20¢
BISCUITS	Farmer Jones, B.Milk, or S.Milk 10 Ct Can	3/27¢	4¢
CORN	Golden, Carol Ann No 303 Can	5/\$1	10¢
GREEN BEANS	Carol Ann, Cut No 303 Can	6/\$1	39¢
TIDE	Laundry Detergent Giant Box	69¢	20¢
BUFFERIN	Headache Tablets 36 Ct Btl	65¢	14¢
MOUTHWASH	Scope 12 Oz Btl	98¢	20¢
DEODORANT	Ban Spray 4 Oz Can	98¢	19¢
HAIR SPRAY	Aqua Net 13 Oz Can	59¢	31¢

YOU WILL SAVE MORE at **SAV-U** EVERY-DAY DISCOUNT

**TOMATOES**  
Red, Ripe Bubble Pack  
**25¢**  
SPECIAL DISCOUNT

**CARROTS** Texas 1 Lb Cello Bag Each **15¢**  
**GRAPEFRUIT** Texas Ruby Red Lb **14¢**  
**CELERY** Calif. Fresh Lb **24¢**  
**LEMONS** Calif. Full-O-Juice Lb **34¢**  
**RADISHES** Calif. Lg Bunches **14¢**  
**AVOCADOS** Creamy Ripe Each **28¢**  
**TURNIPS** Calif. Clip Top Lb **22¢**  
**COCONUTS** Kids Love'Em Each **38¢**

**YELLOW ONIONS**  
US No. 1 Mild  
**12¢**  
SPECIAL DISCOUNT

**FRYERS** INSPECTED USDA  
**28¢**  
POUND  
SPECIAL DISCOUNT PRICE!  
No Stamps! No Games! No Gimmicks!

**PAPER TOWELS** ZEE SPICE TONE  
**29¢**  
JUMBO ROLL  
SPECIAL DISCOUNT PRICE!  
Sav-U Saves You More Every Day!

**APPLES** RED ROME, COOKING OR EATING  
**\$1**  
6 POUNDS  
SPECIAL DISCOUNT PRICE!  
We Reserve The Right to Limit Quantities!



- PORK & BEANS** CAMPFIRE NO. 300 CANS **11¢**
- TOMATO SAUCE** LIBBY'S BUFFET CAN **9¢**
- SALAD OIL** CRISCO PINT BOTTLE **32¢**
- BLACK PEPPER** ARROW GROUND 4 OUNCE CAN **25¢**
- MELLORINE** PLAIN'S ASSORTED 3 1/2 GALLONS **\$1**
- CRACKERS** SALTINE, PRIDE 1 POUND BOX **22¢**

# SAV-U

DISCOUNT FOOD CENTER

THESE DISCOUNT SPECIALS ARE GOOD FEBRUARY 19, 20 & 21 AT SAV-U!



# Spade Girls Oust Bula From Playoffs, 63-59



CHRISTY ADAMS (50) shoots for Spade while Bula guards Freda Layton, Judy Snitker (45) and Ina Clawson get ready for a rebound. Debbie Myers (42) helps the ball with a little body English.

The highlight of activity in the Texan Dome at the South Plains College Monday night was the Bi-District playoff between the girls of Spade and Bula. Spade won 63-59.

Spade entered the play-off with a 24-7 season record and 9-1 in loop play.

Bula had lost only one game this year, and entered with a 20-1 record for season and 14-0 in district.

Spade took control and an early lead, but the ferns from Bula never let down. The pressure was on during the entire game.

Bula's Sharon Turney began hitting in the second quarter and never stopped until the final minutes in the fourth quarter when she finally fouled out, but only after she netted 42 points for the losers—six from the free-throw line.

Bula came within one point in tying Spade in the last part of the third quarter. The score was 41-40. Bula missed a free shot and the race was on.

About a 10-point spread was

enjoyed by Spade in the fourth quarter, until the final minutes when Bula put the pressure on and narrowed the gap to only three points at the final whistle.

Belinda Thompson took advantage of fouls and sank 16 shots for Spade as well as scoring 12 points from the field, to lead Spade with 28 points.

Christy Adams netted 20 points, 10 in the first quarter from the field and two from the foul line, with the other eight scored in the second and third quarters.

Debbie Myers poured in six in the second quarter, three in the third, and six in the last for a total of 15.

Bula was led by Sharon Turney with 34 points from the field and the other eight from the foul line.

Sheila Medlin netted 10 points for Bula, all from the field.

Diane Crume scored seven, five from the foul line and two from the field.

Last year Spade and Bula fought it out in the Dome with Spade grabbing the 1969 bi-district crown with a 67-54 win. Spade took fourth in regional play, losing to Quitaque for third place in the regional tournament.

After the game, one could hear the Spade girls singing, "Happy Birthday" to their coach, Jimmy Kirkland. Kirkland commented that this was one of the greatest birthday presents he had ever received.



SPADE LONGHORN Linda Hopper and Bula's Sheila Medlin (43) fight for possession of the ball in the bi-district battle Monday night at the SPC Texan Dome. Bonnie Thompson (5), another Spade guard awaits the outcome.

## S-E, Spade Fem Cap Advance To Region

Two Lamb County girls basketball teams advanced to regional play this weekend, with Springlake and Spade traveling to Lubbock for Class A action and Spade going to Levelland for the Class B meet.

Springlake-Earth, 26-4 after topping Peterburg bi-district, will play at 8:30 a.m. Saturday at Levelland Coliseum. The Wolverettes meet Iran, 23-1, beating Eldorado 36-30 Tuesday night.

The other two teams in the tourney, Claude and Wylie of Abilene (26-2), meet at 10:15 a.m. Winners of the first round games play for the championship Saturday night at 7 p.m.

The Spade girls, sporting a 25-7 record following a bi-district victory over Bula, will meet Friday at 7 p.m. Friday as the Class B tourney gets underway at Levelland's Texan Dome.

## LHS Volleyballers Outpoint Levelland

In volleyball action Tuesday night, Littlefield girls wrapped up another win against the Levelland Lobos.

The varsity hit the floor to take the lead against the Lobos 15-6 in the first game. They immediately won another 15-7 to wrap it up for the night.

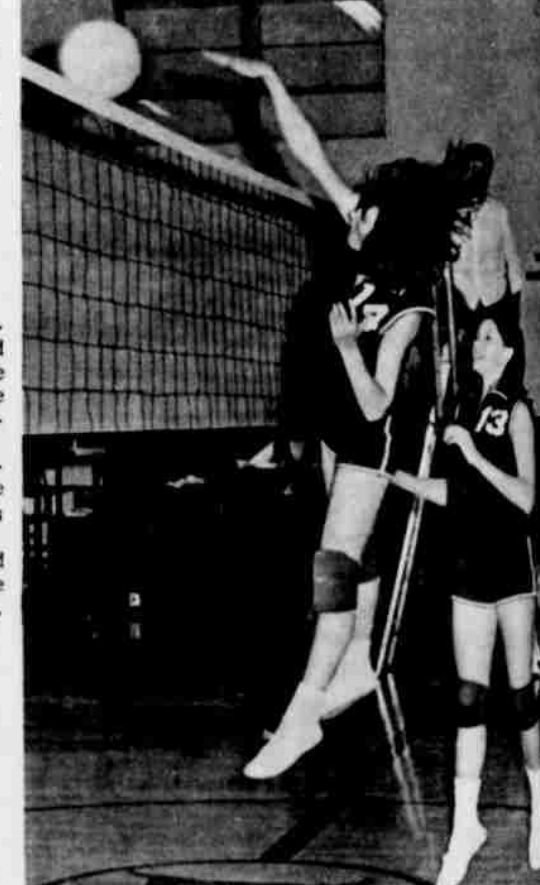
Vollena Francis handled the net with her numerous spikes and blocks while the Gray sisters, Sharon and Junie, aided the score with serves. Sharon made nine points followed by Junie and Miss Francis with eight each.

The season record stands at 4-2. In the junior varsity game, Brenda Feagley scored nine points leading them to a 15-9, 15-7 win over the Lobo JV.

Reagan County could not make the count, losing to the 15-10, 15-8. Miss Francis scored again in the scoring against the Lobos.

Snyder won the best-of-three match by defeating Colorado College in the finals.

In a constant battle, the freshmen team came out on top in



VOLLENA FRANCIS spikes another ball to help LHS volleyball "A" team come up with another win Tuesday night, by defeating the Levelland Lobos to a tune of 15-6 and 15-7. Sharon Gray, number 13, is ready for an assist in case it's needed.



BRENDA FEAGLEY, Number 5, scored nine points for the junior varsity volleyball team Tuesday night against the Levelland Lobos, racking up two wins with 3 and 16-14. Becky Broaddus and Linda Hill are team members caught in the action.

**For COLDS take 666** WILDCAT TRACKSTERS TREK TO BROWNFIELD

Littlefield's track team will be participating in the Brownfield Invitational Track Meet at Brownfield Saturday.

**NEW CLOSING HOURS**  
Effective March 7th  
We will start closing at 1:00 P.M. on Saturdays

**Lamb Co. Locker & Littlefield Frozen Food Center**

**AFTER HOURS PRESCRIPTION SERVICE**  
Please Phone Us  
Bob Roden—385-3698  
James Walker 385-4504  
**RODEN DRUG**

### SHOP IN LITTLEFIELD



Washington's Birthday

George Washington believed in making a dollar go as far as possible.

We do, too.

That's why we feel you'll want to shop with our Littlefield merchants this coming Monday, Feb. 23.

**SECURITY STATE BANK**  
MEMBER F.D.I.C.  
The Bank That Gets Things Done For You

#### OLTON LOSES PAIR

In District AA action Tuesday night, Olton finished its basketball season by bowing to Floydada, 56-42.

Mike Parsons collected 10 points for Olton. Floydada was sparked by Richard Hale with 21.

Olton ended up 2-4 and Floydada 3-3 in the second half of league play.

Floydada won the B-team boys' game, 52-35.

#### LITTLE LEAGUE MEETING SLATED

A Little League organizational meeting has been called for Tuesday night at 7:30 at the NIT Room of Security State Bank by President Bob Bromlow.

Bromlow asked that all coaches and persons desiring to be coaches and interested parents attend the meeting.

Officers will be elected and plans for fund-raising will be made, according to Bromlow.

#### BOWLING

IVY LEAGUE	W	L
Lfd. Steam		
Aaundry	62	18
Lfd. Frozen		
Food	48	32
Lfd. Seed & Delinting	40	40
Travel Center		
Restaurant	35	35
Coston '66'		
Service	29	51
Gene Mixon		
Trucking	26	54

High team series, Lfd. Steam Laundry 2272, high team game, Lfd. Frozen Food 791, high individual series women, Afena Matthews 494, high individual game women, Afena Matthews 181.

#### HIT & MISS

C & O Cleaners	16	8
Conal's Fina	14	10
Consumer		
Butane	13%	10%
Birkelbach		
Machine	12	12
Reliable Life		
Ins.	12	12
Western Auto & Grimes Auto	10%	13%
Crescent House		
of Beauty	10	14
Team No. 1	8	16
High team series, Birkelbach Machine 2256, high team game, C & O Cleaners 802, high individual series men James Timian 555, high individual game men Pody Welch 215, high individual series women, Doris Ayer 464, high individual game women, Doris Ayer 188.		

#### MAJORETTES

Oilton Cleaners	68	20
Byers Grain & Feed	53	35
Dimmitt Real Estate	50	38
Earth XYZ	47	41
Lubbock White Truck	28	60
High team series, Oilton Cleaners 1614, high team game, Dimmitt Real Estate 570, high individual series women M. Savage 450, high individual game women M. Savage 189.		

#### SP TRAVEL ASSN.

Oakwood Lanes	35	21
Imperial Lanes	34	22
Lfd. Seed & Delinting	33	23
Lobo Lanes	32	24
Wheat Bowl	30	26
Fiesta Bowl	28	28
Deals Machine		
Shop	25	31
Lamb Bowl	23	33
Lubbock Bowling Supply	22	34
A-1 Glass Company	18	38

High team series, Oakwood Lanes 3124, high team game, Imperial Lanes 1068, high individual series men, Jimmie Snook 653, high individual game men, Ken Gilmore 245.





BRITTON scored nine points for Springlake. Two of her field goals were key baskets. One of the third quarter brought S-E from a tie to put them ahead, and another goal at the end of the game iced the win.



VICKY GREGORY makes one of her patented jump shots for Springlake-Earth in the bi-district clash against Petersburg. Miss Gregory made 41 points—most of them this jump-shot variety.

## Posse Names Winners In Sunday Play Day

There was activity in the local Sheriff's Posse arena, as they sponsored another "Play Day" Sunday afternoon.

Contestants from all over the county as well as Levelland and the Hockley County area were present to accumulate more points to their credit in competing for trophies that will be awarded at the end of the season.

Sheriff's Posse member James Blackwell said it is not too late for other interested contestants to enter. Since the point system is being used, there will be times that a rider will not qualify, thus a late comer will have a chance to catch up and be in contention for a trophy.

Play Day will be held once a month and is open to all riders, young and old, beginners and experts. You do not have to be a member of the Sheriff's Posse to compete.

Results from last Sunday's Play Day were:

**Pee Wee Boys:**  
Keyhole, 1. Corey Hopping, and 2. Gary Fields.

**Poles, 1. Corey Hopping, 2. Gary Fields,**  
Potato, 1. Corey Hopping, Flags, 1. Corey Hopping, Barrels, 1. Corey Hopping

**Junior Girls:**  
Poles, 1. Lesa Berry, 2. Monica Phillips, Rings, 1. Monica Phillips,

**Ribbons, 1. Lesa Berry and Monica Phillips,**  
Junior Boys:  
Keyhole, 1. Cokie Hopping, 2. Scottie Hopping, 3. Joe Ruthardt.

**Poles, 1. Rodney Geissler, 2. Randy Posey, 3. Joe Ruthardt,**  
Relay, 1. Scottie Hopping, Cokie Hopping, and Jim Fields.

**Flags, 1. Rodney Geissler, 4-H Flags, 1. Joe Ruthardt, 2. Randy Posey, 3. Kim Ruthardt,**  
Rings, Rodney Geissler, 2. Cokie Hopping, 3. Scottie Hopping.

**Barrels, 1. Jim Fields, 2. Kim Ruthardt, 3. Rodney Geissler,**  
Ribbon, 1. Kim and Joe Ruthardt, 2. Scottie and Cokie Hopping.

**Senior Girls:**  
Keyhole, 1. Eva Hopping, Poles, 1. Eva Hopping, 2. Nelda Blackwell, 3. Pat Blackwell.

**Flags, 1. Eva Hopping, Rings, 1. Nelda Blackwell, Eva Hopping, 2. Pat Blackwell, Barrels, 1. Betty Boone, 2. Nelda Blackwell, 3. Eva Hopping,**  
Ribbon, 1. Pat Blackwell and Eva Hopping.

**Relay, 1. Pat Blackwell, Nelda Blackwell, and Eva Hopping.**

**Senior Boys:**  
Keyhole, 1. Robert Geissler, 2. Edwin Culp, Poles, 1. Robert Geissler, 2.



JAMES BLACKWELL and Dub Berry race against the clock in the ribbon race event during the Sheriff's Posse Play Day Sunday.

James Blackwell, 3. David Orr, and Kerry Nicholas. Ribbon, 1. Kerry Nicholas and Edwin Culp, 2. James Blackwell and Dub Berry.

There were more entries in each event but several were unable to qualify because of breaking the pattern or other infraction on the rule.

Each rider ran against the clock, and this governed the amount of points or time each contestant was awarded.

# E Wolverettes Win Bi-District, 58-50

Springlake-Earth's Wolverettes finally won out in a battle that was tied 12 times at Plainview Tuesday night.

High scoring Vicky Gregory tossed in 41 points, the same as the number on her uniform, and the Wolverettes needed every one of them in the neck-and-neck game.

Her counterpart for Petersburg, Cathy Wilson, pitched in 32 points, and that, incidentally, was the same as her number.

After Springlake-Earth took a 6-3 lead and upped it to 8-5, Petersburg came back for a 9-8 margin. But the Wolverettes managed a 16-15 edge when the end of the first quarter sounded.

The second period saw the teams tied at 17, 19, 21, 23, 25 and 27 before a basket by Miss Gregory gave Springlake-Earth the halftime lead at 29-27.

Petersburg tied it up at 31-31 early in the third quarter, and after ties at 34 and 36, finally managed a 40-37 lead late in the period.

But baskets by Gregory and Janet Britton put Springlake-

Earth back on top after three quarters, 41-40.

The final tie was at 42-42 before the Wolverettes were able to gain the upper hand. They raced out to 47-42, then to 52-46, before Martin led a rally that closed the gap to 52-50 with 1:30 left in the game.

Springlake-Earth then iced things when Jan Hedges hit a pair of clinching free throws and Britton and Gregory added two more field goals.

Britton tallied 9 for the night, Hedges 6 and Jenna Banks got the other two points for the Wolverettes with a second quarter basket.

Cindy Barton and Debbie Martin led the Springlake-Earth defense, with able assistance from Sandra Henderson, Jennifer Myers and Jan Blackburn.



A QUICK HAND, steady eye, and a dependable mount helps trim seconds in the potato race.

**CONGRATULATIONS**

to the area

**CHAMPS**

WE'RE PROUD OF THESE CHAMPIONSHIP BASKETBALL TEAMS AND THEIR COACHES.

**SPADE GIRLS** DISTRICT 5-B CHAMPIONS

**BULA GIRLS** DISTRICT 6-B CHAMPIONS

**SPRINGLAKE-EARTH GIRLS** DISTRICT 3-A CHAMPIONS

**Penneys**  
ALWAYS FIRST QUALITY

SUN., MON., TUES. FEB. 15, 16, & 17

## ALASKAN SAFARI

HIGH ADVENTURE IN THE FAR NORTH COUNTRY

SEE Bush pilots defying death to color shoot wild game!

SEE Hunting and fishing amidst most magnificent scenery ever filmed!

SEE Fishing your dream about... and high adventures never before photographed!

**STARTS NEXT SUNDAY THREE DAYS ONLY**

SUN. 2:15-4:30-7:00-9:15  
WEEK DAYS 4:30-7:00-9:15

**PALACE**

## All Whitharral Girls Returning Next Year

Whitharral girls completed their 1969-70 schedule with a 13-13 season record and a 10-4 district record for third place in 6B.

Whitharral girls rebounded 620 times for a 23.8 average against their opponents' 546 for a 21.0 average. In field goal attempts, Whitharral made 1,068 attempts for 363 and a 34.0 percentage to their opponents' 1,044 FGA, with 379 FGM for a 36.3 average. Whitharral made 654 free throw attempts making 306 for 46.8. Their opponents made 678 FTA, making 337 for 49.7 percentage. Whitharral players fouled 499 times or 19.2 per game and made 1032 points in 26 games for a 39.7 average. Opposing teams fouled 493 times, averaging 18.9 and scored 1095 points for a 42.1 average.

Kathy Lynn Williams led the scoring and rebounds for the forwards with 538 total points for an average of 20.7 per game for 26 games. She had 90 rebounds for a rebound average of 3.5. Kathy attempted 459 field goals, making 181 for a 39.4 percentage. She attempted 318 free throws, completed 176 for 55.3 and fouled 70 times for a 2.7 game average.

Rita Avery made 230 points, an 8.8 average. She rebounded 85 times for 3.3, shot 326 field goals, completing 36 for 27.3 and averaged four fouls per game with a total of 105 for 26 games this season.

Christy Clevenger hit 126 points for a 4.8 average, rebounded 67 (2.6 per cent), hit 44 of 140 FGA for 31.4 went to the free throw line for 77 shots, completing 38 for a 49.4 average and fouled 67 times for a 2.6 average.

Darlene Burns played 16 games this year, averaging 1.6 per game on rebounds. She attempted 60 field goals making 16 for a 26.7 average, made 27 of 63 free throw attempts for a 42.9 average and fouled 22 times for 1.4 per game.

Marla Sadler alternated between guard and forward. In her forward position she scored 60 points for a 2.3 average. She rebounded 61 times for 2.3, made 19 of 65 field goal attempts for 29.2 and averaged 44 per cent on her free throws

with 22 of 50. She fouled 63 times for a 2.4 average.

Linda Strickland played 12 games, averaging 1.2 per game with 14 points. She had six rebounds, a .5 average, attempted 12 field goals making five for 41.7 and hit four of eight free throws for 50 per cent, and had only one foul for the year.

Beth Pelfrey played in 11 games, with her best percentage coming at the free throw line with two of four for 50 per cent. She rebounded twice for .2, made one of six FGA for 16.7, fouled once and made four points for a .4 average.

Linda Andrade rebounded two for one per cent for two games, hit one of two free throws, fouled six times for a three per cent average and averaged .5 points per game.

Linda Wade led the rebounding for the Whitharral guards. She rebounded 143 times for a 4.0 average. She fouled 70 times in 26 games for a 2.7 season average.

Cynthia Dukatnik was second highest rebounder with 104 for 4.0. She fouled 61 times in 26 games for a 2.3 average.

Pauline Perez played 21 games, made 34 rebounds, an average of 1.6, and fouled 22 times for 1.0.

Lupe Andrade played 10 games, rebounded seven for a .7 average, and fouled eight times for .8.

All of the Whitharral girls will be returning for the next season.

### Deane Wright To Leave S-E

Deane Wright, who was named South Plains Class A Coach of the Year, has resigned his coaching position at Springlake-Earth to accept the athletic directorship and head coaching job at Hamlin.

If Wright is released from his contract at Springlake-Earth Schools, he hopes to begin work at Hamlin by March 1. Wright will replace Joe Youngblood who resigned to enter private business.

**CHILDREN UNDER 5 ADMITTED FREE!**

## WRESTLING

**SATURDAY NIGHT MAIN EVENT**

### TEXAS DEATH MATCH

Rufus R. Jones

**Dusty Rhodes**

vs

**Rufus R. Jones**

**Roberto SOTO**

**VS**

**The BEAST**

Doors Open 7 p.m. - Matches Start 8:30

The Beast

**Bobby Duncan**

vs

**Billy Spears**

---

**LADIES**

Admitted Free

Every

Wednesday

Night!

**SKATING**

Every Monday Night, Tuesday

Night, Wednesday Night, Friday

Night, Saturday Afternoon & Sunday

Week Nights Open 7-9:30 P.M. Saturday & Sunday 1-3:30 P.M.

For Private

Parties

Phone

385-4112

---

We

Accept

Items For

Sale

Monday

Through

Thursday

**AUCTION**

Starting Tonight

And Every Thursday

Night. . 7:30 P.M.

Consignment On Commission Basis

Bring Your

Items To

Sports Arena

Between

10 A.M.

And

6 P.M.

## LITTLEFIELD SPORTS ARENA

PHONE 385-4112 \* Highway 385 South





# THE SKAT

OFFICIAL LHS NEWSPAPER



## Sophomore Linda Horn Reigns As Basketball Queen



QUEEN NOMINEES Lisa Volpe and Carolyn Lumsden get ready to jump for the ball that Basketball Queen Linda Horn holds.

Friday night before the Littlefield-Brownfield varsity basketball clash, Linda Horn was crowned 1969-70 Basketball Queen. Linda, a sophomore at LHS, was one of three candidates for the honor. The other two nominees were Lisa Volpe, a junior, and Carolyn Lumsden, a senior.

Lynn Barton, student council vice-president, introduced the candidates and stated the activities in which they are involved. As they were introduced, the candidates were escorted to the center of the basketball court. Carolyn Lumsden was escorted by Charlie Holt, a senior; Lisa Volpe was escorted by Kim Hill, a junior and Linda Horn, was escorted by Ralph Funk, a sophomore.

Matt Giles, sophomore junior varsity basketball player, presented the flowers to the queen.

Linda Horn participates in band, choir, Kat Klub and Future Teachers of America club activities. She is brown-haired, hazel-eyed, and stands five foot five. Basketball and track are her favorite sports only because she can understand them better than football. She enjoys listening to "Simon and Garfunkel" and their hit song "Bridge Over Troubled Water." Her favorite food is chicken and strawberry shortcake. Linda particularly likes friendly and talkative people.

Lisa Volpe stands at five foot three with brown hair and brown eyes. She is a member of the Girls' Athletic Association, Kat Klub, volleyball team, and the choir. "Credence Clearwater Revival" is her favorite singing group and their song "Who'll Stop the Rain?" is her favorite. Pizza is her favorite food. Football ranks high with her, but she also enjoys basketball and track. Lisa serves as VICA Sweetheart.

Carolyn Lumsden is involved in many school activities. She serves as secretary of the Future Teachers of America, fifth vice-president of the Future Homemakers of America, parliamentarian of Student Council, member of the band council, head majorette and is a member of the annual staff. Carolyn also reigned as Band Sweetheart. Carolyn stands at five foot two and has brown hair and green eyes. Her favorite singing group is "The Lettermen." "Here Comes the Sun" and barbecue chicken are her favorites. Tennis is Carolyn's favorite sport.

### NHS Elects Officers

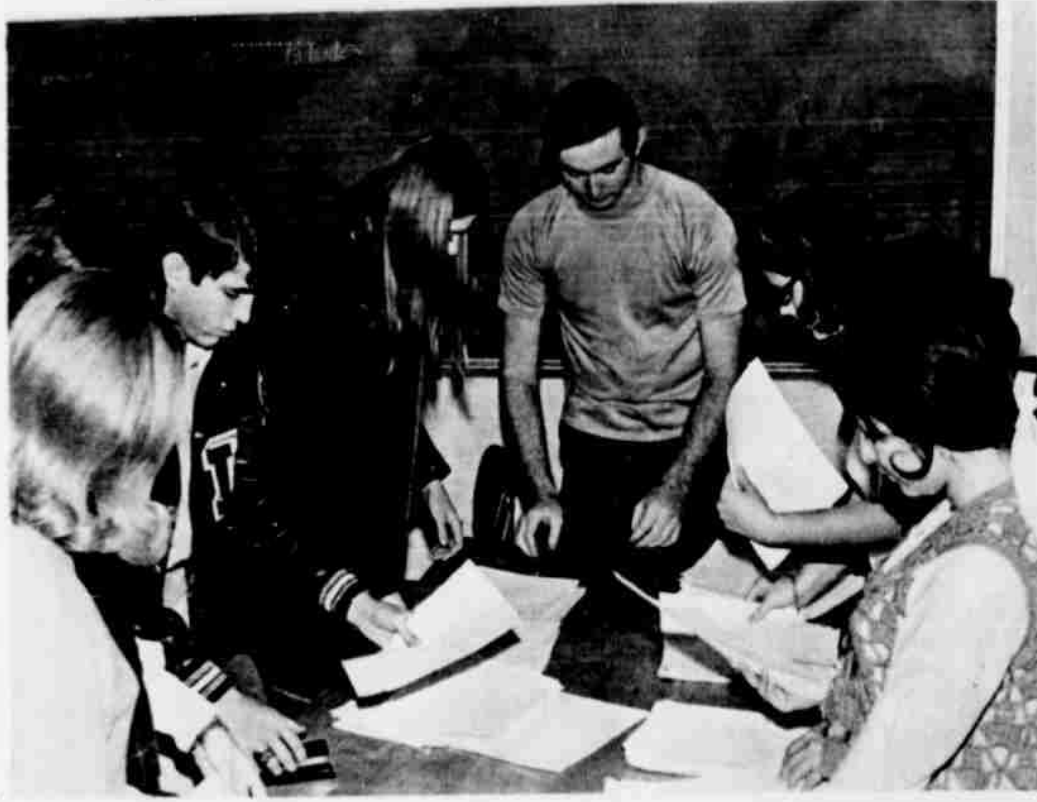
The National Honor Society met Monday, 7:45 a.m. in Mrs. Irene Lynn's room. The major business of the meeting was to elect second semester officers.

Steve Owens, first semester president, began the nominations for the office of president. Wayland Hutto was elected. He then took over his new duties as NHS president and carried on with nominations for other offices. Lynn Barton was elected vice-president; Peggy Richey, secretary; Jan Christian, treasurer, and Donarex Bowen, reporter.

Outgoing officers were then asked to bring their records up to date for the oncoming officers. Nancy Henson, first semester treasurer, reminded NHS members to pay their dues for the second semester.

Wayland Hutto adjourned the first meeting of this semester.

### Study Of Journalism Takes Individual



SECOND PERIOD Journalism students work putting the "Kat Kater" together for sale each Friday.

The Journalism staff at Littlefield consists of about 15 members and two teachers. The members are Mrs. Lillian Betts, Mrs. Marti Toulmin, Mrs. Betty... Mrs. Betts is the LHS annual staff for the last 23 years for year teaching. Mrs. Betts states that the annual work, now that something about it she feels that the problems in putting the annual are manageable each year, especially production time and opportunity times and the finished product. She feels that the much of a work each Spring month.

The other members of the Journalism staff are Toulmin, who has been journalism for many years that she would like an interest in among her students same time put out a Mrs. Toulmin has decided to teach journalism she has journalism all her life that most students like how much work a paper.

### Annual Works Toward Deadline

Since winding up ad sales, annual staff members have been working on write-ups and layouts in order to meet their first deadline March 25. The first 100 pages of copy must be completed by this date. Dianne Perkins recently finished the cover design and it was packed and shipped to the publishing company.

Jo Reid and Nina Manley have been working on ad information and layouts. Other members of the staff are: Donarex Bowen, editor; Jan Christian, assistant editor; Gene Williams, sports editor; Carolyn Lumsden, Debra McAnally and Juanita Samaniego. Mrs. Lucille Betts sponsors the annual staff.

### All-School Play Cast Named

Tryouts were recently held for this year's All-School Play. The play is "The Mouse That Roared", a comedy in which a small European country tries to take advantage of the liberal give-away programs of the United States. The main characters of the play are Gloriana, the Grand Duchess of the small country of Grand Fenwick, played by Geoffrey Grizzle and Tully Bascomb, a backwoodsman and Chief Forest Ranger of the National Forest of Grand Fenwick, played by Gary Garrison.

Other characters are Ann, played by Ann Hopper; the Page, played by Jan Christian; the Secretary to the Secretary of State, played by Evah Tucker; Secretary to President, Juanita Samaniego; Housekeeper, Betty Boone; Mrs. Bascomb, Elaine Graves; Ladies in waiting, Sally Davidson and Tonya Bingham; General's daughters, Margaret and Kelly Fain; tourists, Marilyn Price, Nina Manley, Jane Nowlin and Sharon Parrott. Boys' parts are Mountjoy, played by Monte Trotter; Ben-

ter, played by Lynn Barton; Secretary of State, Emery Waters; Professor Kokintz, Steve Owens; the President, Wayland Hutto; General Snipper, Jerrel Haber; Will Tatum, Danny Short; Tom Mulligan, Eddie Hickman, and the announcer will be Phil Chambers.

All-School Play Stated March 13, 14

### Time Out For Sports

Slaton held on to an early lead and beat the Wildcats 91-53 in Tuesday's meet.

Max Hutchins was the high scorer for the Cats with 18 points. Charles Carter made 14.

The Littlefield JV won their first game of the season over Slaton 63-38.

The high scorer for the Littlefield JV was Ralph Funk with 26 points. Jerry McCarty made 14 and Matt Giles had 13.

The Littlefield Wildcats ended their 1969-70 basketball season falling to the Brownfield Cubs 90-52.

The leading scorer for the Cats was Charles Carter with 22 points.

The game put Littlefield's record for district at 1-9.

The Brownfield JV slipped past the Littlefield JV to win 64-48.

Ralph Funk led the Littlefield JV with 11 points. Jay Trammell and Matt Giles had 10 each.

In volleyball action, the Littlefield Varsity won over Hereford 15-10 and 15-4. Luanne Lucas was the high scorer with eight points. Junnie Gray was second in scoring with seven points.

The Littlefield JV fell to the Hereford JV in the first and third games 9-15 and 13-15. The B team won the second game 15-6.

Iris Oberlechner was the leading scorer with 12 points.

Over the weekend the girls traveled to Colorado City to enter the Lone Wolf Tournament.

The Cats lost to Snyder 15-5 and 15-11. Saturday morning they played Biz Lake and lost 15-10 and 15-8.

The season record for the varsity volleyball team stands at 3-2.

The tennis team got into action over the weekend losing to Snyder 13-0.

## Sweater Award Tests Taken By Students

Sweater Award tests for solid subjects were taken Wednesday, Feb. 11, in the auditorium. Each student was required to have an overall "B" average and a "B" average in the subject of the test that he was taking.

Subjects in which tests were given are geometry, Algebra II and analysis, which were taken the first period; English II, English III and English IV, which were taken second period; biology and chemistry, which were taken fourth period, and world history, American history, and government, which were taken fifth period.

Students who took the biology test were: Cynthia Adair, Larry Birkelbach, Chuck Blevins, Martha Brown, Timmie Campbell, Mary Davidson, Ralph Funk, Cathy Giles, Allen Grisham, Bob Grissom, Annette Harris, Dave Jordan, Kerry Nicholas, Mark Rogers, Ruan Richardson, Patricia Sanders, Kathy Turner, DeLon Walker and Gail Williams.

Students who took tests in chemistry were: Kay Armistead, Lynn Barton, Betty Boone, Marsha French, Rosanne Funk, Nancy Henson, Charlotte Hinds, Wayland Hutto, Kathie McBride, Jane Nowlin, Dena Reast, Ken Richardson, Robert Rodriguez, Joanna Rogers and Vicki Wimberley.

Students who took tests in world history were: Cynthia Adair, Larry Birkelbach, Chuck Blevins, Martha Brown, Timmie Campbell, Mary Davidson, Ralph Funk, Cathy Giles, Allen Grisham, Bob Grissom, Annette Harris, Dave Jordan, Kerry Nicholas, Mark Rogers, Kathy Turner and Gail Williams.

Students who took tests in American history were: Kay Armistead, Lynn Barton, Sandra Carter, Kelly Fain, Margaret Fain, Marsha French, Charlotte Hinds, Wayland Hutto, Kathie McBride, Cyd McKinnon, Nina Manley, Dena Reast, Jo Reid, Ken Richardson, Billie Ruth Richey, Robert Rodriguez, Joanna Rogers, Patricia Sanders, Mike Talburt and Vicki Wimberley.

Students who took tests in government were: Tonya Bingham, Betty Boone, Gary Britt, Kay Burk, Sally Davidson, Terry Doshier, Rosanne Funk, Geoffrey Grizzle, Nancy Henson,

Mark Jordan, Jean Keeling, Gary Nace, Jane Nowlin, Steve Owens, Shannon Palmer, Diane Perkins, Ruan Richardson, Peggy Richey, Juanita Samaniego and Terry Walker.

Students who took tests in English II were: Cynthia Adair, Chuck Blevins, Martha Brown, Timmie Campbell, Mary Davidson, Ralph Funk, Cathy Giles, Allen Grisham, Bob Grissom, Annette Harris, Dave Jordan, Kerry Nicholas, Mark Rogers, Kathy Turner, DeLon Walker, and Gail Williams.

Students who took tests in English III were: Kay Armistead, Lynn Barton, Meloni Brantley, Becky Broadbush, Sandra Carter, Kelly Fain, Margaret Fain, Marsha French, Charlotte Hinds, Wayland Hutto, Kathie McBride, Cyd McKinnon, Nina Manley, Dena Reast, Ken Richardson, Robert Rodriguez, Joanna Rogers, Patricia Sanders and Vicki Wimberley.

Students who took tests in English IV were: Tonya Bingham, Betty Boone, Gary Britt, Kay Burk, Rosanne Funk, Geoffrey Grizzle, Nancy Henson, Jane Nowlin, Steve Owens,

Shannon Palmer, Diane Perkins and Ruan Richardson.

Students who took tests in analysis were: Gary Britt, Geoffrey Grizzle, Gary Nace and Steve Owens.

Students who took tests in Geometry were: Cynthia Adair, Larry Birkelbach, Chuck Blevins, Martha Brown, Timmie Campbell, Mary Davidson, Ralph Funk, Cathy Giles, Allen Grisham, Bob Grissom, Annette Harris, Dave Jordan, Kerry Nicholas, Mark Rogers, Kathy Turner, DeLon Walker and Gail Williams.

Students who took tests in Algebra II were: Kay Armistead, Lynn Barton, Becky Broadbush, Sandra Carter, Marsha French, Charlotte Hinds, Wayland Hutto, Kathie McBride, Dena Reast, Ken Richardson, Robert Rodriguez, Patricia Sanders and Vicki Wimberley.

Students who took tests in Spanish were: Martha Brown, Timmie Campbell, Mary Davidson, Cathy Giles, Kerry Nicholas, Mark Rogers and Gail Williams.

Students who took tests in Latin were: Gary Britt, Sally Davidson and Ken Richardson.



THE GOODTIME Singers from Lubbock Christian College showed LHS a good time at the Valentine Assembly last Thursday.

Teen Town Opens Tomorrow

### FHA Entertained By Cosmetic Specialist

The Future Homemakers of America met in the home-making lab, Monday, Feb. 9, at 8:00 p.m. in the chemistry lab. Due to Vicki Cook's absence, Tonya Bingham, first vice-president, opened the meeting. The girls set Monday, March 16 as the deadline for naming the state convention delegates. This year the convention is in Austin on April 24-25.

Also the group voted to pay Mrs. Frances Jones, sponsor, the money owed to her.

Tonya closed the business meeting by introducing Mrs. Freddie Duke, a Mary Kay cosmetic distributor. She gave a demonstration of cosmetics based on skin care. She explained the five basic steps of the application and gave the general background of cosmetics.

Mrs. Duke has agreed to return in a month to give each FHA member a facial application and a general talk on glamour.

### Science Club Plans Trip

The Science club held its monthly meeting Feb. 9, at 8:00 p.m. in the chemistry lab.

Guest speaker for the meeting was Mr. Kenneth Largent, physics teacher. He spoke about physics and showed demonstrations in physics.

Other business discussed in the meeting was taking a trip to Carlsbad Caverns. A definite date has not been decided yet for the trip. The trip is for

the members of the club to study rock formations, atmosphere conditions and other scientific experiments.

The last bit of business discussed during the meeting was that concerning science projects. Mr. Smith urged all members to start working on their projects. In order to belong to the club one must have a science project.

Attend Faculty Basketball Game Friday at 7:30 p.m.

FTA GIRLS WAVE a cheery "good bye" before their early-morning departure for Fort Worth and the state convention, where Margaret Fain won the office of recording secretary. Left to right are Carol White, Margaret Fain, Kelly Fain, Dena Reast, Jan Christian and (sponsor) Mrs. Daphne Smith.

February At A Glance

THURSDAY: Brownfield VB

SATURDAY: ACT Test-Her Sweetwater-Tad Brownfield-Tad

MONDAY: Science Club, 7:30

### Goodtime Singers Entertained

The Goodtime Singers from Lubbock Christian College showed LHS a good time at the Valentine Assembly last Thursday.

The group, which posed of four boys and girls, played popular songs of today. They sang "Scarborough" followed with "Gentle On My Mind", "Cherish", "You Were On My Mind", "Don't Let Me Be This Close", "You Crying" and "Keep Falling On Me". The Goodtime Singers greatly applauded and was requested. There was "Peace On Earth".

### SKAT STAFF

The SKAT is published the first period of each month by the students of Littlefield High School without expense to school or taxpayers.

The SKAT is published in the media to use the articles therein.

Editor: Jan Christian

News Editor: Donarex Bowen and Jo Reid

Feature Editor: Manley, Coby, Cathy Smith, Editor-John Toulmin

Reporters: Phil Christian, Pernicia Savage, Chris, Jim McCarty, Garrison

Advisor: Mrs. Toulmin.



SUGGESTED FOR IMMATURE AUDIENCES

# Happiness Is...

ND DIRECTORS" are few and far between and what a thrill it was to have our own, Miss Judy Penn, come back and take over for Mr. Anderson, SoRelle while they were at Dallas.

(or Judy, as she is known to be the daughter of Mr. and Mrs. She has lived in Littlefield all attended school here and was in Littlefield High School in 1965, recently enrolled in Graduate School working on her Master's in education.

er in hand began at Littlefield Beginner's Band under the Mr. Beryle Harris. From the Mr. Harris and Judy really had fun High School Band last week!! Judy attained her share of honors here. During her junior and senior years she was Section Leader, (Flute) she received the John Phillip and Outstanding Bandsman Award with being Assistant Drum Major.

She has accomplished many of the same of us who have the same love striving toward. She has been Mr. Killion's great band for five membership to Tau Beta Sigma, music sorority, and Mu Phi Epsilon, music sorority. She plays with the Municipal Band Tech Chamber, and the Lubbock Symphonic has been a flute instructor for at the Tech Youth Music Camp. She has a 3.2 average. Her goal is to be a band director in schools and play professionally in an orchestra. For those of us who are closely associated with Judy, it was a privilege to have her visit us, and honor for Littlefield to claim her.

ECONOMICS classes certainly pay last Tuesday entertaining next grade girls with an Open House, where served as hostesses.

BEEN quite a bit of conversation about both the Junior High and High Schools about changing the beginning dates of our two-semester school year, particularly since some of the other colleges have changed theirs, so that

the first semester ends before the Christmas holidays, I thought it might be interesting to interview some L.J.H.'ers and Mr. Paul I. Jones, Superintendent of Schools here:

BEN FARMER: "I think we should finish our first semester before Christmas, as we could enjoy the Christmas holidays a lot more because the load would be off of our minds. You would very likely make better grades too, because you have not had two weeks to dull your mind. We might also get out of school early because of it's starting early."

CAROL FRENCH: "I think mid-term tests should be given before the Christmas holidays. When you come back after the New Year, you could start over with a new semester instead of mid-term tests."

TERRI BIRKELBACH: "I feel it would be better to go back to school earlier in the summer, so we could have our semester exams before the holidays, I think this would allow us to make better grades; also, we could start brand new again after the holidays."

MR. JONES feels that it is far better as it is presently. His reasons are:

1. You wouldn't have to start so early.
  2. You wouldn't be thinking about Christmas festivities and gifts during the examining period.
  3. 180 hours are required, --90 each semester.
  4. You would have a week to study and review after coming from the Christmas holidays before the mid-term examinations.
  5. Teachers begin the first semester earlier than students now, and in consideration to them they could enjoy more of summer by not starting earlier than at present.
- So, maybe in the future something satisfactory can be worked out to please everyone.--There are advantages and disadvantages to everything.

THE GIRLS VOLLEYBALL team is well on its way to a victorious season. Tuesday they play Levelland at 6 p.m. in the Wildcat Gym. Members of the teams are: Sharon White, Rebecca Matthews, Pat Glazener, Lynn Harry, Sheila Jackson, Pam McNeese, Billie Pierce, Debbie Tinker, Shelley Grant and Cheryl Carter. Tonya Pickrell and Celia Andrews are manager and score keeper.

THOUGHT FOR THE WEEK: It is admirable to work toward a worthy goal, gratifying to reach your goal, and wise to set a new goal. An unattained goal is better than having no goal at all.

HAVE A GOOD WEEK!!! GOOD LUCK ON SIX WEEKS TESTS!!!

## Adults Attend Church Banquet

OLTON--Approximately 80 attended the banquet for adults at First Baptist Church Wednesday night. Theme of the banquet was "Round-Up Time in Texas."

Ranch Foreman was Duward Price, Adult Sunday School Superintendent. Roving Cowboys, Barry Cowart, Steve Andrew, James Cross and Kent Gunter, accompanied by Harold Carson, entertained the group with a number of musical selections. Place cards were in the shape of a Western Hat decorated with two red hearts and a red band. Names on the hats were in red ink.

The Chuck Wagon menu consisted of Cow Poke's Appetizer, rough-cut salad, triple H steak, old settlers' potatoes, comanche carrots, concoction, sour dough bread, cute-so pie, Six shooter coffee and Texas T. Kerosene lamps lighted Fellowship Hall and all decorations carried out the Valentine theme.

## SERVICEMEN

GARY GATEWOOD  
Army Private First Class Gary G. Gatewood, 20, son of Mr. and Mrs. Glenn W. Gatewood of Sudan, was assigned as a cannoneer with the 4th Infantry Division in Vietnam, Dec. 12.

MATTHEW HODGE  
Army Private First Class Matthew Hodge, 20, son of Mr. and Mrs. Bera Hodge of Littlefield, was assigned Dec. 24 to the 25th Infantry Division in Vietnam.

GLENN EAGLE  
Army Private First Class Glenn E. Eagle, 19, son of Mr. and Mrs. Claude E. Eagle of Earth, was assigned as a cannoneer with the 4th Infantry Division in Vietnam, Dec. 12. His wife, Barbara, lives in Amherst.

PEDRO AGUIRRE  
Army Private Pedro F. Aguirre, 19, son of Mr. and Mrs. Ruperto Aguirre, of Littlefield, was assigned with the 1st Aviation Brigade in Vietnam, Dec. 24.

LAWRENCE WILLIAMS  
Staff Sergeant Lawrence W. Williams, 29, son of Mrs. Ruth M. Williams, 2121 Parker Road, Houston, received the Army Commendation Medal while serving with the 1st Infantry Division in Vietnam.

S. Sgt. Williams received the award for meritorious service as a personnel staff non-commissioned officer with Headquarters of the division's 121st Signal Battalion. His wife, Frances, lives in Amherst. The award was presented Dec. 26.

## PEP

Mrs. Conrad Demel Phone 933-2222

ERVIN JOSEPH (Tex) Meyer, 64, died at Mount Vernon State Hospital in Missouri Feb. 6 after a lengthy illness. Born March 19, 1905 at Gillett, Meyer was a former resident of Pep community before moving to Buffalo, Mo., 17 years ago. Services were held at St. Williams Catholic Church at 10 a.m. Tuesday, Feb. 10 with Father John A. Brath officiating the funeral Mass. Philip Long was commentator. Burial was at Memorial Gardens Cemetery in Buffalo, Mo., by Greenlawn Funeral Home of Springfield, Mo. He is survived by his wife; two daughters, Mrs. Richard Lupton of Nazareth, and Conrad Demel of Pep; three sons, Darrell of Warner Robins, Ga., Donald of Springfield, Mo., and James of Joplin, Mo.; five sisters, Adele Thames of Decatur, Sister Mary Alberta of Fort Worth, Elisa Thames of Arlington, Bertha Miller of Corpus Christi, and Albert of Wichita Falls, and Alma Zissel of Austin; three brothers, Alfred of Big Spring, Albert of Wichita Falls, and Edward of Pep; 27 grandchildren, one great-grandchild and 92 nephews and nieces.

THOSE ATTENDING the funeral Mass were Mr. and Mrs. Richard Lupton and children, and Mrs. Larry Alleye, Pam, Franis and Shelly of Hereford; Mr. and Mrs. Conrad Demel of Pep; Mr. and Mrs. Jim Meyer and son of Joplin, Mo.; Darrell Meyer of Warner Robins, Ga.; Donald Meyer and family of Springfield, Mo.; Mr. and Mrs. F. W. Krottinger of Wichita Falls; Mr. and Mrs. E. V. Meyer of Pep; Albert Meyer of Wichita Falls; Elisa Thames of Arlington; Father McKinner of St. Angus Catholic Church of Springfield; and Father Norbert Wagner, a former pastor of Pep now retired at Springfield, Mo.

MR. AND MRS. Ray Hardin and daughter Donna of Munday visited in the home of Mr. and Mrs. Norman Demel and sons over the weekend of Feb. 13, 14, 15.

MR. AND MRS. Billy Witt Jungman and boys of Post visited in the home of their parents, Mr. and Mrs. Emil Marik and Mr. and Mrs. A. H. Jungman, over the weekend of Feb. 13, 14, 15.

PAUL ALBUS Scout Master and assistant Scout Masters James and Sam Albus and Charles Shannon along with 21 other boy scouts of Troop 615 of Pep

went on a camp-out at White's Ranch Feb. 13.

MR. AND MRS. James Glumpler and children, Karen Green and Bill Albus all of Pep and Helen Lynch of Morton saw the Globe Trotters at the Municipal Coliseum at Lubbock Feb. 13.

THE PEP PTA held its monthly meeting Feb. 9 at the Pep High School Auditorium. The president, Mrs. Marie Gerik, called the meeting to order. The opening prayer was led by Marcy Demel. The PTA will sponsor a high school volleyball tournament March 6 and 7. A tennis net will be purchased by the PTA. A cancer film was shown by Dr. Barney Klein of Littlefield. The PTA banner went to the Seventh grade. The next meeting will be March 9 at 7:30 p.m.

COFFEE AND DOUGHNUTS were served after the 8 a.m. Mass in the Pep Parish Hall Feb. 15. The refreshment committee was in charge.

THE PEP FHA Chapter held their "BO Party" in the Pep school cafeteria, Feb. 15 for the FFA. The banquet was at 7 p.m. with a dance following. Johnny Demel was chosen as FHA "BO" for the year, Johnny is the son of Mr. and Mrs. Norman Demel. Sponsors for the party were Mrs. Pearl Peterson, Jack Tharp, and John Shaller.

## Water Symposium Set For March

Water resources development and management in the western United States will be emphasized at a two-day Water Resources and Irrigation Symposium March 31-April 1 in Lubbock. The meeting at the Red Raider Inn is expected to attract several hundred from Texas, New Mexico and Oklahoma.

Both current and long range water supply projects will be discussed by water authorities including: Col. Carl Bronn, executive director, National Water Resources Association, Washington; Lewis G. Smith, international water resources consultant, Denver; Bill Clayton, executive director, Water, Inc., Lubbock; and Harry Burleigh, Bureau of Reclamation engineer, Austin.

## CLASS OF 1990!

Imagine what a college education will cost in 1990? Wise parents plan ahead with our College Assurance Plan. Full details just a phone call away. Special fraternal and social benefits are yours, too. Don't delay, tomorrow will soon be today.

Ed McCantles  
F.I.C. Special Representative  
112 E. 14th  
Phone 385-4304  
Littlefield, Texas



WOODMEN OF THE WORLD  
LIFE INSURANCE SOCIETY

HOME OFFICE OMAHA, NEBRASKA  
"The FAMILY Fraternity"



Let's TALK TURKEY about your

## INCOME TAX

Taxes gobbling up your income? Maybe you're not claiming all the legal deductions you're allowed. BLOCK will see to it you get all you're entitled to. Saves you time, worry, and money, too! Come in today!

Complete Federal Returns \$5 UP

GUARANTEE We guarantee accurate preparation of every tax return. If we make any errors that cost you any penalty or interest, we will pay the penalty or interest.

**BLOCK Co.**  
America's Largest Tax Service with Over 4000 Offices

519 Phelps 385-3116

Weekdays: 9 A.M.-6 P.M.-Sat. 9 A.M.-5 P.M.

No Appointment Necessary

Dial 385-4481 For Classifieds

# NOW IS THE TIME

FOR YOUR 1970

## AUTO SAFETY INSPECTION

SURE THERE'S PLENTY OF TIME UNTIL THE DEADLINE--- BUT THERE ARE OTHERS WHO ARE ALSO WAITING. THAT MEANS TROUBLE THE LAST MINUTE.

INSPECTIONS TAKE TIME . . .

SO HAVE YOUR VEHICLE INSPECTED NOW!

1. HORN
2. WINDSHIELD WIPERS
3. SEAT BELTS (required on all cars made since 1962)
4. STEERING
5. BRAKES
6. WHEELS & RIMS
7. BEAM INDICATOR
8. TAIL LAMP
9. STOPLIGHT
10. POWER STEERING UNITS

11. LEAKY EXHAUST SYSTEM
12. LICENSE PLATE LIGHT
13. REFLECTORS
14. HEADLAMPS
15. RECORD MOTOR, SERIAL, IDENTIFICATION NUMBER
16. DIRECTIONAL SIGNALS
17. MIRROR
18. CAB LIGHTS
19. CLEARANCE & SIDE MARKER LAMPS

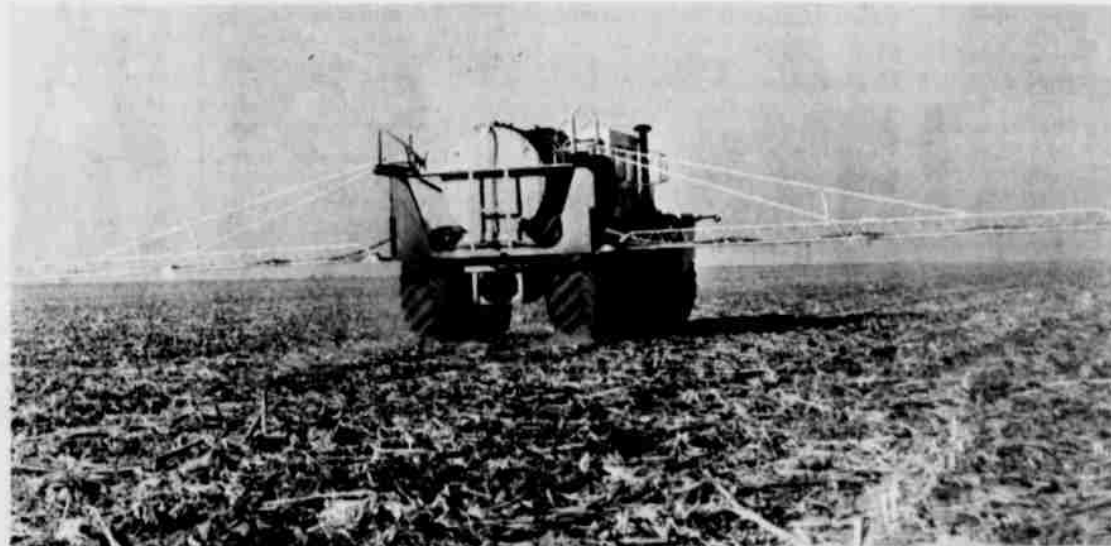
Deadline For Inspection Stickers Is April 15

YOUR LOCAL INSPECTION STATIONS

**MITCHELL-FORD INC.** 525 Phelps Ave.  
**ARMES CHEVROLET CO.** 1028 East 9th.  
**SHOOK TIRE** 610 East 4th.  
**GRIMES AUTO SALES & SERVICE** 315 West Delano

# FERTILIZE EARLY

Call Us Now At 385-4511



**Goodpasture INC.**

SPADE HIGHWAY  
PHONE 385-4511

Come By And Let's Talk About Your FERTILIZER, ANHYDROUS AMMONIA, TRACE ELEMENTS & HERBICIDES NEEDS,

We Can Apply Liquid Or Dry Fertilizer With The NEW 'BIG A' APPLICATOR

Covers More Acres Per Day With Minimum Compaction. We Can supply you with the fertilizer and the rig that is suited to your job.



**Used and New Tractors and Equipment**  
 Sales and Service  
 In Littlefield It's  
**Brownd and Jordan Equipment**  
 Phone 385-5415 Wayne Brownd, Mgr. Bus. Route 84

CALL 385-4481 FOR CLASSIFIEDS

**NOW OPEN**  
**Anton T.V. Service**  
 Color is our speciality  
 Call us for T.V. Service  
 Antennas  
 U.H.F. Conversions  
 Radio Repair  
 We can save you plenty on RCA Color. Get our price before you buy. 15 years experience. Authorized RCA sales and service.  
**ANTON T.V.**  
 309 North Main 385-3522 or 997-5421

**AMHERST**  
 Mrs. Lester LaGrange 246-3336

RETURNING THURSDAY from a Gulf Coast fishing trip with Jim Gage were Tom and Bill McKinnon, Jim Humphreys, C. W. Rossion, Kit Carson, Bruce Newman, Martin Hardwick, R. L. White and Martin White, Sr. They went to Rockport the Saturday before and caught 210 pounds of fish. A "fish fry" for members of their families and friends is being planned for the near future.

MR. AND MRS. Roscoe Brown of Grand Junction, Colo., were here Tuesday of last week. They visited his brother, Mr. and Mrs. Henry Brown, and their mother, Mrs. Jettie Brown.

MR. AND MRS. Grady Phillips of Munday and Mr. and Mrs. Glen Phillips and two sons of Friona were guests in the Henry Brown home Sunday. Other guests were Mr. and Mrs. Orvis Dickson of Earth.

EDDIE ROPER, Tech student from Odessa, accompanied Paul Holland home for the weekend. GARY WOOTEN was a soloist at the "Parade of American Music Festival" held at the Garden and Arts Center in Lubbock Thursday night. It was held in connection with the annual meeting of the South Plains Genealogical Society.

RECENT GUESTS of their great-grandparents, Mr. and Mrs. E. E. Beason, were Mr. and Mrs. Jackie Heffington and her brothers, Mark and Scott Brantley of Littlefield. The Heffingtons returned earlier this year from a year tour of duty in Italy.

RAYMOND DUVAL, Mr. and

Mrs. Don Carter, Stephanie and Dannie, Mickey Johnson, Kim Harmon and Mark Nicholson attended the El Paso Fat Stock Show last week.

MR. AND MRS. Sam Harmon joined her sister and husband, Mr. and Mrs. Wayne Spradlin of Clovis, for a fishing trip to Lake Falcon this week.

MISS CAROLYN DUNN of Springlake has accepted a position in the South Plains Hospital-Clinic Office.

MR. AND MRS. Jerry Ward and Susanne were here for the weekend with her parents, Mr. and Mrs. Leonard Tittle. They recently moved to Dumas from Dimmitt.

MR. AND MRS. E. E. Gee joined the Earl Taylors of Spearman for a week's fishing at Possum Kingdom. They plan to spend the weekend in Dallas with their son, Billie Gene, and family before returning home.

THE DAVID HARMONS and George Williams are fishing at Falcon Lake this week.

MRS. BILL REYNOLDS, Mr. and Mrs. Jack Chronister and Mrs. Odessa Cary of Littlefield attended funeral services in Quahar Thursday afternoon for Mrs. Reynolds' brother-in-law, Martin Owens.

GUESTS IN THE U. E. Thompson home are his sisters, Mrs. A. E. Ford of Sacramento, Calif., and Mrs. Bill Connell of Battle Mountain, Nev., and his daughter and husband, Mr. and Mrs. Carl Stewart of Tribune, Kans. Mrs. Buford Thompson joined them for the day Sunday.



A FREE BARBECUE SUPPER, courtesy of seven Lamb County financial institutions, was served by the Restaurant Monday evening to farmers, agriculturists and ranchers who attended the Soil Fertility Day at the Willie Room of Lamb County Electric Co-op.

**Whitharral Lions Set Chili Supper**

Whitharral Lions are sponsoring a chili supper tomorrow night, Friday, Feb. 20, from 5 until 7:30 p.m. in the Whitharral High School Cafeteria.

Whitharral Lions invite everyone to attend.

Tickets are on sale by Lions Club members or can be purchased at the door. Price is 75 cents per person.

**OLTON**  
 MRS. W.B. SMITH JR. 285-2385

VISITING RECENTLY in the home of Mr. and Mrs. H. B. Maxey Jr. were their daughter and grandchildren, Mrs. Bobby Brown, Ty and Shane of Irving.

MR. AND MRS. Russell Rucker visited last weekend in Gruber in the home of their daughter and family, Mr. and Mrs. Billy Winn and son, Paul.

MR. AND MRS. Edd L. Burrus of Paris announce the birth of a daughter, born Feb. 6, weighing seven lbs., five ozs. She has been named Holly Brooke. Maternal grandmother is Mrs. O. D. Robinson of Lubbock. Paternal grandmother is Mrs. Paul Burrus, Mr. and Mrs. C. M. Owen are paternal great-grandparents.

A BRIDAL courtesy will honor Mrs. Ronald Quentin Redinger Saturday, Feb. 21, in the Kenneth Ray home. Calling hours are 9:30 to 11:30 a.m. Friends and relatives are invited to attend.

THE ANNUAL lectureship at Abilene Christian College in Abilene will be held Feb. 22-26. RUSSELL RUCKER made a business trip to Levelland Friday.

MR. AND MRS. J. L. Small and Mr. and Mrs. J. L. McCord returned Sunday from Arlington where they were guests in the home of Mr. and Mrs. Bill Rematore and Kurt. Mrs. Rematore is the daughter of Mr. and Mrs. Small and the niece of Mr. and Mrs. McCord.

GAS MEET every Monday at

4 p.m. in the First Baptist Church. All girls in the fourth and fifth grades are welcome. Mrs. Johnny Thompson is leader of this group.

SUNDAY DINNER guests in the home of Mr. and Mrs. Owen Jones were Richard Hunt, a student at Wayland Baptist College in Plainview and his mother and brother, Mrs. Walter Hunt and Tim of Clovis, N. M.

MR. AND MRS. W. B. Smith Jr. and grandson, Sean Bonner of Albuquerque, N. M., visited Saturday and Sunday in the homes of Mr. and Mrs. L. L. Bonner and Mr. and Mrs. Billy Ray Smith in Amarillo. Mr. and Mrs. Robert Bonner of Albuquerque, N. M., visited in Amarillo last weekend. Their son, Sean, returned home with them after spending a week in Olton.

MR. AND MRS. Eddie Carson, Jill and Kirk of Dalhart visited last weekend in the homes of their parents, Mr. and Mrs. H. B. Carson and Mr. and Mrs. Owen Jones.

MR. AND MRS. Don Powell, Becky, Stan and Brad of Friona visited Sunday afternoon in the homes of Mr. and Mrs. Archie Sorley and Mr. and Mrs. Owen Jones.

JOHNNY LEWIS, son of Rev. and Mrs. John E. Lewis, who is attending Howard Payne College in Brownwood, visited here last weekend.

REV. AND MRS. Gene Sorley of Lubbock visited Thursday afternoon in the home of his par-

ents, Mr. and Mrs. GARY MRS. Nancy Catherine of Mrs. Ralph Gaskins land are guests in their parents, Mr. and Mrs. John Lewis.

JOHN CARSON of West Texas Hospital last week where he is treatment for a heart. His parents, Mr. and Mrs. Carson spent last week with him.

MISS VALDA BOND, student at Texas Tech, was in Lubbock Thursday in the home of Mr. and Mrs. MRS. MARGARET visited recently in her son and daughter, Mr. and Mrs. Ed and Mrs. Edna Lewis.

THIRTY-SIX year made reservations Sweetheart Banquet in the Fellowship Hall of First Baptist Church Thursday night.

APPROXIMATELY 100 people from Main Street of Christ had a study in Plainview Friday night. Their Douglas Layton, several adults accompanied.

RICHARD HUNT, son of Mr. and Mrs. H. B. Carson, was the guest speaker at First Baptist Church day.

**Field**  
 Mrs. Ray 262-4203

**Tech To Dedicate New Law Building**

The chief judge of the U. S. Court of Appeals for the Fifth Circuit, John R. Brown of Houston, will make the dedicatory address for Texas Tech University's new School of Law Building Monday, Feb. 23.

The dedication will highlight a three-day symposium which will bring to the campus as speakers several of the nation's leading legal educators, lawyers and Raymond Burr, noted for his television portrayal of the lawyer, "Perry Mason," and the police detective, "Ironside."

The symposium was scheduled to coincide with the birth date of George Washington, and it will take place Feb. 21-23. Seminar topics will cover the American Bar Association's new Code of Professional Responsibility, water use, federal taxation and torts.

In addition, E. G. Hamilton of Harrel and Hamilton of Dallas, project architects for the building, will discuss "Development of the Design Concept" for the unusual building designed for the special use of 585 students and a law faculty of 30.

About 50 students are expected to be graduated from the Texas Tech School of Law from the first class which enrolled in 1967. There are 186 enrolled now.

Luncheon and banquet tickets for the dedication symposium are available at the Law School.

Luncheons (at \$2.50 each) will take place in Tech Union. Afternoon seminars, for which there is no charge, will be held in the Law School classrooms.

A Sunday night (Feb. 22) dedication reception and banquet, for which a limited number of tickets still are available at \$7.50 each, will take place at the Lubbock Country Club.

opment of the Design Concept" for the unusual building designed for the special use of 585 students and a law faculty of 30.

About 50 students are expected to be graduated from the Texas Tech School of Law from the first class which enrolled in 1967. There are 186 enrolled now.

Luncheon and banquet tickets for the dedication symposium are available at the Law School.

Luncheons (at \$2.50 each) will take place in Tech Union. Afternoon seminars, for which there is no charge, will be held in the Law School classrooms.

A Sunday night (Feb. 22) dedication reception and banquet, for which a limited number of tickets still are available at \$7.50 each, will take place at the Lubbock Country Club.

VAST WATER AREA The Pacific Ocean covers an area larger than that of all the continents combined.

REV. DAVID BURR of Lubbock Friday night to the Young People of Avenue Baptist Church.

DANA YOAKUM and Malone were among attending the wedding of Simpson last Sunday at the byterian Church at Lubbock.

Miss Simpson was the grade teacher in Littlefield until mid-term when she returned to get married.

MR. AND MRS. Doree ler and Jean of Saco Friday night with Mr. and Mrs. Ray Maloney, Roger and Michael, returned home with them until Sunday.

RAY MULLER was Ford Sunday morning to the people at the First Baptist Church in Olton.

MR. AND MRS. Malone went to Amarillo to visit their son, Mr. Gerald Ray Malone and Karla returned home grandparents for a

**WASHINGTON'S BIRTHDAY CELEBRATION SALE**  
 A GREAT 5-DAY EVENT  
**perry's**  
 305 Phelps Bill Mott, Manager STORE HOURS 8:30 A.M. - 6 P.M. WEEKDAYS 8:30 A.M. - 7 P.M. SATURDAYS  
 ★ **SENSATIONAL VALUES** ALL OVER THE STORE ★

**FAN-FARE Interior Latex Wall Paint**  
 COLORS WHITE & BIRCH WHITE, PETAL PINK, BEIGE-YELLOW, BLUE-AQUA, SOFT GREY COMPARE AT \$2.99 GALLON  
**1.57** GALLON

**REGULAR \$1.99 LADIES and MISSES SNEAKERS**  
 White, or bright shades of yellow, melon or green. Sturdily constructed for long wear. You'll want several pairs at this low price.  
**99¢** PAIR

**REGULAR 29¢ WASH CLOTHS**  
 • SOLIDS • PRINTS • JACQUARDS • STRIPES  
**14¢**

**REGULAR \$1.00 14 x 27 INCH CARPET REMNANTS**  
 CUTS FROM FINE QUALITY CARPETING FOR JUST **37¢**

**FABRIC SALE SPRING FABRIC**  
 36" - 45" WIDTH'S VALUES TO 89¢ YD. THIS SALE ONLY  
**22¢** YARD

**REGULAR \$1.00 14 x 27 INCH CARPET REMNANTS**  
 CUTS FROM FINE QUALITY CARPETING FOR JUST **37¢**

**VALUES TO 39¢ ASSORTED ITEMS IN GLASSWARE**  
 Mixing Bowls, 8" Serving Bowls, Milk Pitchers, Prescut Celery Dishes, Prescut Relish Dishes, Various types of ash Trays and a number of other attractive glass items.  
**ANY ITEM 22¢**

**REGULAR 39¢ 12 x 18 INCH FLORAL PLASTIC LACE PLACE MATS 22¢**

**NEW COUTURIER LACE ASSORTMENT**  
 VALUES TO \$1.75 YD. SEQUINS, GLITTER, METALLICS, LACE-CLONY TRIM, IMPORTS, COTTON-VENISE EMBROIDERIES.  
**22¢** YARD

**USE-OUR-LAY-A-WAY Mustang Riding Mower**  
 7 Horsepower, Briggs & Stratton Engine W/Recoil Starter, With Transmission. COMPARE AT \$219.95  
**178.88** CASH \$10.00 MORE FOR LAY-A-WAY

**BOXED CHOCOLATE COVERED CHERRIES**  
 REG. 99¢ BOX 1 WEEK ONLY  
**52¢** BOX

**"DARLING DEB" FOAM DOLL PILLOW KIT**  
 REG \$1.99  
**1.47** 5 DAYS ONLY

**America's manpower begins with BOYPOWER**  
**ADULT EAGLE SCOUT SURVEY**

Name \_\_\_\_\_ Zip \_\_\_\_\_  
 Address \_\_\_\_\_  
 Occupation \_\_\_\_\_ Phone \_\_\_\_\_  
 Title \_\_\_\_\_  
 Year of Eagle Award \_\_\_\_\_ Now Registered—Yes  or No   
 Where Eagle was received: \_\_\_\_\_  
 City and State \_\_\_\_\_  
 Mail to: Eagle Survey, P.O. Box 3055, Lubbock, Texas 79410

ARE YOU AN EAGLE SCOUT? Or do you know someone who is one? A survey is being conducted and all adult Eagle Scouts are asked to clip the form out and mail it to the above address.