

# Interception Again Preserves Victory

Perfect fall football weather Friday night, Littlefield Wildcats recorded a straight victory of the young season with a 10-2 win over the Tigers.

Players, who were heavily favored in the quarters, had their hands full to depend upon two goal-line players to preserve the victory.

Friday night, Littlefield's premier back, Bill Turner, had his third 100-yard-plus rushing night as he picked up 105 net yards on 18 attempts. Payton rushed for 22, Twitty had 10, Steve Cruz had 6 and Hopping had 4. In addition to the goal-line stands, the Cat defense stood in the second half of the ground game as they limited the Tigers to only 35 yards on the ground for the second half.

**FIRST QUARTER**

Turner kicked off to the Tigers and they were in operation at their own 30. By McClesky and a five-yard penalty moved it up to the 44. On the second play, McClesky carried the ball into the end zone. On the second play near mid-field, ball-hawk Hopping came up with a Tiger fumble. The Cats had their first possession on the 30-yard line in the first quarter.

Turner's first play by the 'Cats, Ronald Twitty, the 'Cats' quarterback, moved the ball to the Tigers' 36-yard line on a 15-yard play.

Turner picked up 9 yards on the next

play and then on a handoff from Palmer, Turner scooted to the 6.

Payton picked up one yard and then as Turner carried next time, the 'Cats were penalized 15 yards for clipping and the ball was moved back to the 25.

Turner picked up three yards on the next carry and then a Palmer pass to Greg Moreland was incomplete and a field goal was attempted by the 'Cats on the fourth down play.

Danny Martinez attempted to run the ball, but he was swarmed at the 30-yard line.

Slaton was unable to move on their series and the Tigers were forced to punt.

Littlefield took over on their own 23-yard line with 5:42 left in the first quarter.

Cruz gained one yard on the first play and then Palmer unloaded a touchdown pass to Turner to put the 'Cats ahead 6-0, with 4:59 left in the first quarter.

Turner's point after kick was good and Littlefield took a 7-0 lead.

Slaton was unable to move and they were again forced to punt.

The 'Cats took over following the punt on their own 45.

Payton carried for one yard to the 46 on the first carry and carried for two more yards on the second play.

Palmer, who continues to execute well each week, pitched out to Twitty for the first down and moved into Tiger territory.

Slaton's defense toughened however and the 'Cats had to punt from Slaton's 38.

Turner's punt set the Tigers up on their own 15-yard line and runs by the Tigers' tailback moved the ball to their own 31 before the first quarter ended.

**SECOND QUARTER**

Once again the 'Cat defense toughened and Slaton was forced to punt.

The 'Cats took over following the punt on their own 23.

Cruz carried to the 25 and then the 'Cats fine running back broke through to the Tiger 35 but Littlefield was caught for clipping downfield and the ball was brought back to the mid-field stripe.

Two plays saw the 'Cats on their own 48 as a result of a bobbled pitchout and one more play netted one yard and the 'Cats punted to the Tiger 9-yard line with 8:22 remaining in the first half.

Slaton was unable to move and were forced to punt. However the kick was touched downfield by the 'Cats and Slaton got a big break and the Tigers maintained possession.

Runs by McClesky and Tumlinson moved the ball to the 'Cat 25 and on a fourth and 12 situation, a Tiger pass was incomplete and Littlefield took over with less than two minutes left in the first half still maintaining their 7-0 lead.

Three running plays found the 'Cats back on their own 25 and Turner was forced to punt from the 'Cat 20.

With 13 seconds left, the Tigers advanced the ball to the Littlefield 30-yard line aided by a 15-yard penalty against Littlefield. On Slaton's first play, the 'Cats were penalized again on a pass interference call and Slaton had the ball on Littlefield 20.

A fine defensive play by Cruz knocked down a long pass and the half ended with the 'Cats still holding their 7-0 lead.

**SECOND HALF**

The 'Cats took the opening kickoff on their own 21 yardline.

Turner picked up four yards on the first carry and then a half yard on the next attempt.

A pitchout to Turner moved the ball to the 30, but short of a first down.

McClesky took the punt on his own 25 and moved the ball up to the 45 before being brought down by Ronnie Milligan.

It was the Tigers' penalty time now, and a clipping call moved the ball back to the 30. On the Tigers' first play, the 'Cats' opportunistic defense recovered a Tumlinson fumble and the Wildcats set up housekeeping on Slaton's 30 with 9:42 left.

Three plays moved the 'Cats to within a yard of a first down and then Palmer

See WILDCATS, Page 8



LITTLEFIELD WILDCAT defense led here by #88, Ricky Hopping, hampered the Slaton running game throughout the Friday night game which Littlefield won 10-2. Other 'Cats are #22 Steve Cruz, #55 Randy Hall and #72 Layne McKinnon. It was the Wildcats' third straight win and the 'Cats will be busy this week preparing for the Homecoming tilt Friday night as they host the Muleshoe Mules. (Photo by Connie Black)

## Council Authorizes Fire Agreement, Okays Water-Sewer Negotiations

By JOELLA LOVVORN

In their regular meeting Thursday night, Littlefield's City Council authorized Mayor J. E. Chisholm to sign the rural fire protection agreement with the county commissioners, decided to have Mayor Chisholm approach

Congressman George Mahon about the disagreement with the Federal Aviation Agency over airport funds, decided to further study and negotiate with prospective builders of a new business area for Littlefield over water and sewer extensions, and decided to let City Attorney Ted Sansom study the proposed agreement on street lighting with Southwestern Public Service Co. before agreeing to accept the document.

All councilmen were present for the meeting, along with the mayor, city manager, and City Attorney.

The fire protection agreement as signed by County Judge Bill Angel and Mayor Chisholm will begin Oct. 1 and end Sept. 30, 1976. The city will provide the fire fighting equipment in response to fire calls from points beyond the city limits as determined by the fire chief or other officers that he directs, and that the county agrees to pay to the city \$100 for each call responded to by the city outside the city limits.

After discussing the situation regarding what the Federal Aviation Agency claims is an overpayment of \$23,565.14 in funds for a federal grant for airport construction and what the city claims is \$13,000 short of the FAA's promised amount fund payments, councilmen agreed that Mayor

Chisholm should approach Congressman George Mahon with the facts and see if the congressman can get it cleared up in Washington.

A prospective business concern that will house approximately five businesses in 60,000 square feet of floor space has plans for construction at the corner of Phelps Avenue and Highway 84 By-Pass, and has requested that the City of Littlefield provide water and sewer facilities in a dedicated easement at no cost to the business, except the cost for tapping fees.

City Manager Jim Blagg reminded the councilmen that the basic policy for extension of water and sewer facilities is that the city extend those facilities a distance of 150 feet per customer at the expense of the city. The prospective business has indicated that they will have three revenue producing services in the initial stage, and has requested an extension of 450 feet of both the utilities.

He also reminded "At the present time, we do have funds available for sewer extensions which are part of a 1968 bond issue. The only funds available for a water extension of this nature would come from current budget appropriations, and there are not sufficient funds in the new 1975-'76 budget to cover

See COUNCIL, Page 4

**LAMB COUNTY**

# LEADER-NEWS

VOLUME 51 NUMBER 19 LITTLEFIELD, LAMB COUNTY, TEXAS, SUNDAY, SEPT. 21, 1975 4 SECTIONS

**15 CENTS**  
TAX INCLUDED

## County Clerk Is A Food Processing Dynamo

LAH RODGERS

"You can't see the reaction many have when you mention how much canning she does," says Mary Beth Willey.

She can and freeze foods she does, and in unbelievable quantities. This year she has canned over 600 jars, and filled two 400-gallon freezers with frozen goods. Four hundred ears of corn-on-the-cob are among the frozen goodies. "It will all be eaten by the time the garden is ready next year," this food processing dynamo added. "This year I had an early garden, and when I started canning and freezing July 1, all I had left from last year were two dozen ears of corn, two dozen jars of beans and a few odd jars of peas."

Not only her husband, Jeff, and one of her sons, Lewis, it is surprising that one can consume such astronomical amounts of food. But it seems they have a lot of help.

In her outspoken manner, the Lamb County Clerk declares that the Willey family is a free boarding hotel for all the relatives from east to west.

"I have 10 brothers and sisters," she said. "Half of them live in East Texas, the other half lives in Arizona, and we live in Littlefield. If I didn't do all this canning and freezing, there would be times when I wouldn't be able to feed them."

"I have one sister who is like 5' 11", and her husband is 6'7" and weighs 350 pounds. They have five kids, one boy is 10 and weighs 325 pounds."

For the year from Memorial Day through Labor Day weekend, the company every single weekend except one. You can imagine how much like that can eat."

"Mary Beth Willey has been canning since she was in her teens, not since the jar lid was invented."

"I started canning by myself when I was about 13," she said. "My sister was about 14 and the peaches got ready to pick. My mother and Daddy were called out on a death message. My sister had the bright idea that we would can peaches and can peaches while our parents were gone. Until then, about all that was done was wash jars and watch the pressure on the cooker. Well, we know that you put peaches up by the bath method. We pressured four jars of peaches. Besides ruining those peaches, we wasted all that

sugar. All four dozen jars had to be thrown away."

That was just the first of a comedy of errors, which must account for such a vast knowledge of preserving all types of foods. In her own words, she admits that her methods for the most part have been self taught. It never occurred to her in those early years that there were books that told how to can, freeze and jell.

The year that she and Jeff married, she did all her canning by herself for the first time. "That was the year all the tomatoes ruined," she said. "They didn't seal. I had them in a back bedroom closet. There was this funny smell. And it kept smelling and smelling and smelling. Oh Lord, it was awful!"

That was the year that she learned to put jelly up in small amounts, too, and not to double or triple a recipe.

"I was making grape jelly and I wanted to get it done in a hurry. So I increased the recipe like six times. I had every pot in the house on that stove. I cooked and cooked and couldn't get it to jell. I didn't have any jars, so I poured it up in every bowl and glass in the house. Then I put paraffin on them and took them around to all my neighbors, saying 'how about a little jelly?'"

Some of her earlier experiences shows a shocking lack of botanical knowledge. For all that she knew about canning, she didn't know much about the growing process. "Mother had always picked the beans, and I picked the black-eyed

peas," she said. "The second year I was married, I decided to pick some beans and can them. Jeff said they were ready, but I went to the garden and looked and I couldn't see any beans. I thought the things grew on top of the bushes like peas. I didn't know you had to look under them to find the beans. I didn't know potatoes grew underground, either. I thought they grew like squash."

Some of her exploits make interesting conversation, but that is all behind her now. A seasoned preserver, she now puts up unusual items like pickled okra, pickled zucchini squash and quartered dill tomato pickles.

It was needing jars for some pickled okra this summer that almost caused her to have a hair pulling.

"I always buy my jar lids back in the winter," she said. "And I buy a case at a time, or 60 dozen. That way, I know I'll have plenty when it is time to start canning. But I'd used all the lids I had and still needed some lids for my pickled okra. I was in Furr's and I asked the checker if she knew anyone who would like to exchange three dozen lids for a dozen jars."

"A woman behind me looked down her nose and said, 'Oh, do you have lids?' I said, yes, I bought 60 dozen last winter. She looked down her nose again and said, 'no wonder there aren't any lids. It's people like you who hoard all the lids that keeps the rest of us from canning.'"

"From the way she looked, I'd guess that she never spent a day canning. And there I was with my hands all swelled up and red from scraping potatoes and slicing okra and squash. She just doesn't know how close she came to getting her hair pulled."

"I told her I'd have her know that I didn't hoard lids. That everyone of mine were used," she added with a toss of her red hair and her brown eyes lit with angered remembrance.

"I hadn't missed a single weekend for six weeks working all hours putting up fruits and vegetables. And I'd taken a week of my vacation to can. One morning that week I'd been up til 2 o'clock, another until 3 in the morning, and once I didn't get to bed until 5 a.m. when I had to cook off some zucchini pickles."

Mary Beth admits she gets help from her husband when it's time to pick the vegetables. "Jeff helps," she said. "He does a lot of picking and he helps shell the beans and peas. But all the time he is picking or shelling, he gripes."

Now that all that hard work is behind them, though, there's just a lot of good eating ahead.



MARY BETH WILLEY displays just a few of some 600 jars of canned fruits and vegetables she processed this year. Besides the canned food, she has two freezers for frozen fruits and vegetables. Although there are only three in the Willey family, an abundance of company depletes the hoard of food each year. (Staff Photo)

## Johnny Guthrie Injured In Fall

A Lamb County Electric Cooperative employee, Johnny Guthrie, was seriously injured Thursday afternoon when he fell approximately 20 feet while trimming trees surrounding an electric line west of Whitharral.

Guthrie was brought to Littlefield by ambulance, then transferred to Lubbock Methodist for treatment of a compressed vertebra in his back, several broken ribs and an injured ankle.

## Scabies Epidemic Now In Schools

Lamb County and the surrounding area are in the midst of an epidemic of scabies—better known as the seven-year itch—according to County Health Officer, Dr. J. H. Oyer, MD.

According to Dr. Oyer, there have been several cases referred to physicians from the schools here by the school nurse, Mrs. Joyce Oliver.

Dr. Oyer says the symptoms are small red spots that itch, particularly at night and when the victim gets warm.

Culprit for the itch is a small mite that burrows under the skin, and Dr. Oyer advises persons to contact their physicians if they feel they have the scabies.



LAMB COUNTY'S FIRST BALE of cotton was ginned at 9:15 p.m. Wednesday, Sept. 17, at Gage Gin of Amherst. Shown with the 440-lb. bale in front of the bank at Amherst are Jim and Jeanne Gage, left, and the growers Myrtle and Bill Elms. The Paymaster 202 cotton was hand pulled by Arnaldo Barrerra's family from a field 1 1/2 miles northwest of the Gage Gin. The 1,800 lbs. of seed cotton yielded 700 lbs. of seed. Gage Gin paid Elms a premium of \$150 per ton for the seed, free ginning, and a guarantee of 75 cents per pound for the cotton. (Staff Photo)



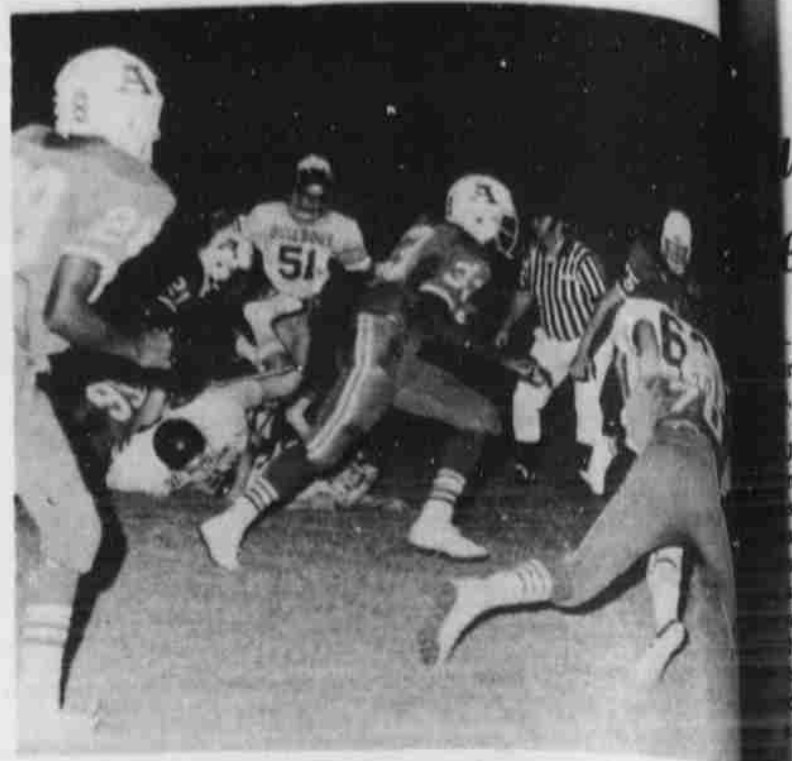


BILL TURNER, in white uniform, knocks the ball out of the grasp of this Slaton receiver in Littlefield's 10-2 win Friday night. Turner picked up 105 yards offensively for his third 100-plus-yard game of the season. (Photo by Connie Black)



# CLIPS & TIPS

By JOELLA LOVVORN



WEBSTER JOHNSON, center, Amherst fullback, scampers for a point touchdown Friday night to help his Bulldogs approach the Anton Bulldogs scoring. Anton defeated Amherst in Amherst Stadium by only two points, 30. Shown clearing the way for Johnson are Larry Pinkston (70) and Pierce (75). Also scoring for Amherst were Donald Johnson, two TD's, Richard Holley. (Staff Photo by Joella Lovvorn)



REX JONES, Anton Bulldog quarterback, moves the ball down field Friday night for a touchdown to help his team win the bulldog fight with Amherst 32-30. His teammates Trinidad Rendon (63) and Lon Timms (32) come to aid as Amherst's Larry Pinkston (70) is tripped up. Others scoring for Amherst were Zane Butler, Greg Couch and Lon Timms. (Staff Photo by Joella Lovvorn)

## AREA FOOTBALL SCORES

**ANTON 32 AMHERST 30**  
In a battle of the Bulldogs, Anton squeezed by Amherst 32-30 in Amherst Friday night.  
Despite 392 yards of total offense, the Anton Bulldogs had to withstand a second half Amherst rally to win. Anton opened the scoring with 4:38 remaining in the first period on a 6-yard run by Zane Butler. Lon Timms kicked the extra point.  
Anton struck for 13 points in the second quarter and Amherst answered with its first TD of the night on a 1-yard plunge by fullback Donald Johnson. Johnson also ran for two points to end first half scoring with Anton on top 20-8.  
Amherst came back in the third quarter with a 1-yard run by Johnson with 10:25 left in the quarter.  
Both teams exploded to score 28 points in the final quarter with Amherst's Johnson completing a brilliant offensive effort with a 2-yard run. Anton held off the 16-point fourth quarter surge by Amherst to finally win the game 32-30.  
The Anton Bulldogs rolled up 13 first downs with 248 yards on the ground and 144 through the air. Amherst tallied 15 first downs on 208 yards of total offense. Both teams records now stand at 1-2.

**DIMMITT 29 SPRINGLAKE-EARTH 0**  
Dimmitt scored in the first and fourth quarters Friday night and captured its first victory of the season, a 20-0 win over previously-undefeated Springlake-Earth, which fell to 2-1.

## COUNCIL

Continued From Page 1  
the estimated expense of a water extension of this magnitude."  
Required for the complete job would be an 8-inch sewer line laid from the alley between 20th and 23rd streets to the buildings and 8-inch water lines to be tied into lines on Phelps Avenue—all at a total estimated cost of \$10,000.  
Councilmen decided to have City Manager Blagg contact the developers, advise them of the city's policy and of funds available, and negotiate some kind of agreement.  
Southwestern Public Service Com-

## House Speaker Plans Tour To Explain Constitution

The proposed state constitution will be the topic under discussion at local meetings with Speaker of the House Bill Clayton, beginning Monday, Sept. 22-25. Everyone is invited to attend.  
Speaker Clayton will hold a meeting in the Sudan School from 5 to 5:45 p.m. Monday, the 22nd.  
He will then be at the Springlake-Earth School Cafeteria from 7:30 to 8:15 the same evening.  
From 8:30 to 9:30 p.m. Monday, the Speaker will meet at the Olton School

## Homecoming Dance Slated After Game

Littlefield Ex-Student's Association is sponsoring a homecoming dance following the homecoming game with the Muleshoe Mules Friday night, Sept. 26, at the Country Club.  
The dance is scheduled from 10 p.m. to 1 a.m.  
Country and western music of the 50's and the blues will be played by Firecreek of Lubbock.

**LAMB COUNTY LEADER-NEWS**  
ESTABLISHED IN 1903  
Lamb County Leader  
202 County Road, Littlefield, Texas 79401  
Phone 381-1111

MADE A HARBOR  
JOELLA LOVVORN  
WILLIAM BODDERS  
BETTYE MCNEEL  
CHARLOTTE MULLIGAN  
DAN MARRIOTT

Published weekly except Sundays  
Subscription rates: Local \$1.00 per year, Outside \$2.00 per year. Single copies 10¢.  
Copyright © 1975 by Joella Lovvorn  
All rights reserved.

**ONIONS OFFER** outstanding nutritive value. They're low in calories and have only a trace of fat. They're a good source of calcium and Vitamins A and C. They contain iron, riboflavin, thiamine and niacin.  
I found these recipes and hints about onions and thought you'd like them.

- ONION TIPS**
1. Small onions can be peeled in a jiffy. Simply cut off the tops and roots, cover onions with boiling water, and let stand a minute or two. Then the skins will slip off easily.
  2. If peeling onions makes you cry, try doing this job under cold, running water.
  3. To chop an onion without letting it "get away", cut it lengthwise in half from root to stem; peel. Place flat cut surface down and slice lengthwise several times. Then cut crosswise. One medium onion will make about 1/2 cup chopped.
  4. Onion juice is no problem if you use your lemon squeezer. You'll find "squeezing" an onion twice as fast as grating it. For 1/4 cup or more, hold juicer over glass measuring cup for exact amount.
  5. To remove the odor of onions from your hands, rub them with a little lemon juice or vinegar, then wash in soap and water.
  6. Onions can be placed in a shallow pan and frozen. After freezing, put loosely into a jar or other container, from which the chopped onions can be scooped as needed.

**BAKED ONIONS**  
Allow 1 or 2 medium sized onions per person. Do not peel them. Just set them on the rack in a 300-325 degree oven, and bake until they are tender when poked with a toothpick. Allow to stand out of the heat for a moment, then easily slip off the skins. Serve hot with butter, salt, and freshly ground pepper.

**SELF-PICKLING DILLED ONIONS**  
Cut onions in 1/4 inch slices. Cover with leftover dill pickle juice, plain or Kosher style. Refrigerate 2 or 3 days, covered, to absorb dill pickle flavor. Serve as slices in sandwiches or separate into rings and use as relish or as a salad or cold meat or fish garnish. Juice may be used over and over.

**A SAUCE FOR FISH**  
Equal parts of chopped Sweet Spanish Onions, Kosher-style dill pickles, a few pitted ripe olives and a little mayonnaise to hold them together. Serve cold. This sauce is also good on hamburgers.

**FRENCH-FRIED ONIONS**  
6 medium Bermuda or mild white onions, sliced 1/4 inch thick  
2 cups milk  
3 eggs  
All-purpose flour  
Salt

Separate onion slices into rings. Combine the milk and eggs; beat thoroughly and pour into shallow pan. Drop onion rings into pan. With your fingers, swish rings around till well coated. Lift onions out; shake over pan to drain. Then drop in pan of flour, a few rings at a time, coating each well. Place in wire French-frying basket (don't fill more than one-fourth full). Shake off excess flour by giving basket a sharp slap.  
Fry in deep hot fat (375 degrees), stirring once with fork to separate rings. When onions are golden, drain on paper towels. Just before serving, sprinkle

## OBITUARIES

**COLEMAN**; two sisters, Mrs. S. E. Steadman and Mrs. Jewel Gessert of Spring; a brother, August Garlit of Cross Plains; eight grandchildren and three great-grandchildren.  
Funeral services for Roy Scott Bennett, 70, of Dallas, who died Friday night at 11:55 at Littlefield following an apparent heart attack, were conducted Friday afternoon at Dallas.  
Burial was in Restland Cemetery, Dallas with Restland Funeral Home of Dallas in charge of arrangements.  
He was visiting his sister and brother here at the time of death.  
Bennett was born June 28, 1905, in Paradise in Wise County, and came to Littlefield when 13 years old. He moved to Dallas in the 1930's after attending schools here. He was on the first football team at LHS.  
He was a retired plant security guard for Ford Motor Co. in Dallas, and wife preceded him in death to Mrs. Bennett of Garland; two sisters, Mrs. Docia Phillips of Littlefield and Mrs. Burleson of Rochester; a brother, Roy Bennett of Littlefield; six grandchildren and two great-grandchildren.

**ROY SCOTT BENNETT**  
Funeral services for Roy Scott Bennett, 70, of Dallas, who died Friday night at 11:55 at Littlefield following an apparent heart attack, were conducted Friday afternoon at Dallas.  
Burial was in Restland Cemetery, Dallas with Restland Funeral Home of Dallas in charge of arrangements.  
He was visiting his sister and brother here at the time of death.  
Bennett was born June 28, 1905, in Paradise in Wise County, and came to Littlefield when 13 years old. He moved to Dallas in the 1930's after attending schools here. He was on the first football team at LHS.  
He was a retired plant security guard for Ford Motor Co. in Dallas, and wife preceded him in death to Mrs. Bennett of Garland; two sisters, Mrs. Docia Phillips of Littlefield and Mrs. Burleson of Rochester; a brother, Roy Bennett of Littlefield; six grandchildren and two great-grandchildren.

**AMOS M. GARLITZ**  
Funeral services for Amos M. Garlitz, 76, of Coleman were conducted Thursday afternoon, Sept. 11, in Stevens Memorial Chapel in Coleman.  
Robert Bostick officiated.  
Graveside services were conducted later that afternoon at Lawn Haven Cemetery in San Angelo, beside his first wife, Fannie Ruth.  
Garlitz died at 2:50 a.m. Tuesday, Sept. 9, in Overall-Morris Memorial Hospital of an apparent heart attack.  
He had been a resident of Coleman since 1973. He was a retired farmer and a Methodist. He was born Aug. 9, 1899 in Kaufman.  
He married Dora Malanax Martin in Coleman June 10, 1973.  
Surviving are his wife, Mrs. Dora Garlitz of Coleman; two daughters, Mrs. Frankie Dusek of Littlefield and Mrs. Marie Legg of Sterling City; a son, Elmer Garlitz of Eldorado; a step-daughter, Mrs. Ike (Mae) Jones of

**STORMY MCCLAIN**  
Graveside services for Stormy McClain, the 17-month-old daughter of Mrs. Bedeborah McClain Fester of Bella Vista, Ark., were conducted Thursday morning in Olton Cemetery with Rev. Sherman Lawson, pastor of the Hopewell Baptist Church near Olton, officiating.  
The child died Sunday in Arkansas. Survivors include her mother, Mrs. Bedeborah McClain Fester of Bella Vista, Ark.; and her grandparents, Mr. and Mrs. C. Jackson of Littlefield.

## Local Highway Office Slates Open House

In observance of National Highway and Transportation Week, Sept. 21-27, the local Texas Highway Department office, located on West Delano, will conduct an open house from 12 noon to 6 p.m. Thursday, Sept. 25.  
Mayor J. E. Chisholm has signed a proclamation designating the special week for Littlefield, and urged "all citizens to lend their support to the State Department of Highways and Public Transportation."  
According to Rhea Bradley, area supervisor, the public is invited to view and tour the local facilities.

## Hunter Safety Class Scheduled

Pat Donnelly, game warden with the Texas Parks and Wildlife Department, advises that anyone who was born after 1949 who plans to hunt elk, deer and other wildlife in New Mexico and Colorado and certain other states must attend a hunter safety class and become certified.

A certified hunter safety class has been scheduled for Sept. 22-24 at the Lubbock Adult Learning Center, 13th and Ave. U in Lubbock.  
The school, sponsored jointly by the TPWD and the National Rifle Association, will be taught by civilian instructors from Lubbock.  
The classes will be from 7-9:30 each night and the instruction will include gun safety, firearms handling, cleaning of firearms, first aid, survival, hunting ethics and conservation.  
Cost of the course will be \$1 per person, with money going for books and registration.  
More information is available by phoning the Lubbock TP&WD office at 744-0213.

Double  
Aug.  
Chur  
Joan M  
and Ter  
of the  
Lo  
nd  
St  
for th  
the  
an a  
deco  
Lil  
the  
F  
Fo



# Kuehler-Sowder Vows Edged At Morton

Double-ring wedding ceremony was held Saturday, Aug. 16, in St. Ann's Church at Morton. Joan Marie Kuehler of Littlefield and Terry Glenn Sowder of Littlefield were the couple.

The organist, Gail Lassater, accompanied Marilyn Greener as she sang "The Wedding Song" and "Ave Maria".

Louis Kuehler presented his daughter for marriage. She wore a formal gown of fashion organza in an empire design, with a full-length chapel train and sheer sleeves. Her veil of bridal illusion was edged with chantilly lace.

She carried a bouquet of white carnations and apricot roses.

baskets of white gladiolas and apricot carnations, and can delabras holding apricot candies.

The bride graduated from South Plains College and attended Texas Tech.

The groom also is a graduate of South Plains College, and attended West Texas State University and Texas Tech. He is presently engaged in farming.



MRS. TERRY GLENN SOWDER

## Frances Denney Recipe For Instant Refreshment



The Interlude Gourmet Recipe Box value 28.00 only 7.50

Frances Denney's fragrance "recipes" to make you feel and smell delicious. All the ingredients are inside this custom-designed recipe box.

1. Cream on Interlude Body Lotion all over. value 5.00
  2. Camellia with Interlude Natural Spray Cologne. 2 oz. value 8.00
  3. For refreshment on the go, spray on Interlude Cologne in a Natural Spray purse. 3.3 oz. value 5.00
  4. Add the crowning touch: pure Interlude perfume in a French crystal flacon. 1.8 oz. value 10.00
- Total value 28.00

You also get 4 recipes and 10 index cards. All presented in an herb-blooming recipe box you'll keep for years. Bon appetit!

**Brillain Pharmacy**  
P. O. BOX 1227

Littlefield, Texas 79339

## Bula-Enochs Lions Meet

BULA—The Bula-Enochs Lions met Thursday evening in the Bula community center, with wives and friends.

During the business session, further plans were made for the purchase of the community fire truck. 12 hours of training on how to drive and operate the

truck will be given free. Two women of the community have volunteered to take the training along with several men.

Mrs. Quinton Nichols made a report from the Enochs Home Demonstration Club, that they will sponsor, with the assistance of the women from the Bula community, a rummage sale Friday and Saturday Oct. 3 and 4th. This will be held at the community center, and proceeds will go toward the fire truck fund.

Following the meeting, refreshments of ice cream and cake were served.

Mrs. James Sinclair, Mrs. George Tyson and J. D. Rowland provided the music for the evening.

## 'Bulldog' Staff Attends J-Day

ANTON—"Bulldog" annual staff members attended J-Day at Texas Tech University Saturday.

J-Day included lectures on news gathering, yearbook organization and lay-out, photography, radio-tv, business

management, and newswriting. Those attending the J-Day activities and the football game between Texas Tech and Florida State were Nancy Webb, Kendra Bishop, David Morales, Kathy Bailey, Lon Timms, Janette Bishop, and Mrs. Beth Martin, Advisor.

# Norman Appointed Postmaster

ANTON—Sammie S. Norman has been appointed postmaster for the U.S. Postal Service in Anton.

Norman is a career postal employee, having been employed 10 years as a clerk and postmaster at Hurlwood.

He is a 1954 graduate of Frenship High School, Wolf-orth, and has been a Hurlwood resident 33 years. He attended school in Anton in 1941-42 for the first and second grades.

He was married in 1955 to Betty Wright of Hurlwood. They have two children, Kimberley, age 13, in the eighth grade; and Scottie, age 9, in the third grade.

He has served on the operations and staffing survey team for the Lubbock Sectional Center where he visited first and second class offices in the Sectional Center.

The past year he served on the

operations and staffing team where he visited third class offices in the Sectional Center.

He presently serves as Trainer Postmaster for new postmasters of third and fourth class offices in the Lubbock 792, 793 Sectional Center.

His wife is presently employed at Methodist Hospital, Lubbock as eighth floor medicine nurse where she will continue to work. She has been employed at Methodist Hospital eight years. She is a graduate of Lubbock Vocational School of Nursing in 1956.

Mr. and Mrs. Norman are Baptists. His hobbies are attending basketball games (Little Dribblers to college). He served the past summer as assistant coach of a Little League baseball team.

Postmaster Norman said,

"The people of Anton have been very, very nice and friendly and we are looking forward to moving to Anton and becoming a part of the community. Anton has great possibilities for growth if the housing situation can be remedied with the fine school and other nice facilities the city offers. Anton is an excellent city in which to raise a family."

He continued, "Anton has a strong post office with very efficient clerks and rural carrier. All residents of the Anton trade territory are invited to visit the office for their mailing needs. Good, friendly service is our No. 1 goal!"

**LIGHT SEASONING**  
Season lightly when preparing casseroles for freezing. Pepper and cloves, in particular, become strong and better when used in frozen foods.



BOARD MEMBERS of the American Heart Association for Lamb County met for a noon luncheon Thursday. Seated are Billy Moore of earth and Dorothy Powell of Littlefield. Standing are Carole Faver, LaJuana O'Hair, Janice Sebring, and Evonne Oliver. Joyce White, far right, is regional director. Board members not in the picture are Carol Black and Nilah Rodgers. A regional meeting is planned Oct. 28-29 in Lubbock. (Staff Photo)

## Spade 4-H

### Slates Meeting

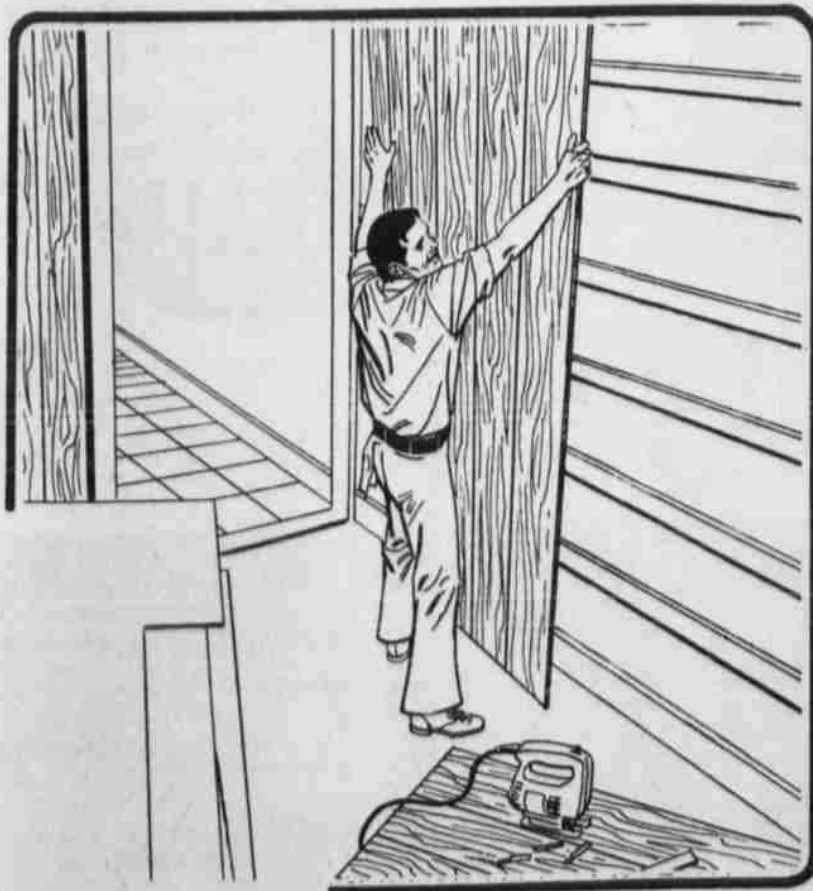
The Spade 4-H Club will conduct a meeting Thursday, Sept. 25, at 4 p.m. in the lunchroom of the Spade school.

Persons interested in helping the youth are invited to attend. Boys and girls between 9 and 19 are sought for the club, as well as adult leaders.

**KIRBY**  
**VACUUM CLEANERS**  
Sales & Service  
**PAT'S RECORD CENTER**  
APPLIANCE DEPARTMENT

# Home Improvement Made Easy

WITH A LOW COST HOME IMPROVEMENT LOAN



Rebuild. Remodel. Winterize. Now! We'll help you get started. How? By offering you home improvement loans at the lowest interest rates permissible. And we'll tailor an extended payment plan to suit your needs.

**SECURITY STATE BANK**

YOUR COMMUNITY EVERYTHING BANK

## LITTLEFIELD SCHOOL MENU

MONDAY: Hot dogs with chili, mustard, French fries, banana pudding and milk.

TUESDAY: Hot turkey sandwich, salad, green beans, strawberry puff and milk.

WEDNESDAY: Spaghetti and meat, salad, blackeyed peas, hot rolls, Jello and milk.

THURSDAY: Burritos with chili, salad, corn, sugar cookies and milk.

FRIDAY: Pinto beans, spinach, cornbread, apple cobbler, milk and orange juice.

## Homemakers Plan Sale, Installation

Littlefield Young Homemakers of Texas will install new officers at their regular meeting at 7 Thursday night, Sept. 25, in the Flame Room of Pioneer Natural Gas Co.

The organization is also conducting a current card sale Saturday, Sept. 27, in front of Anthony's.

The cards will be available then, or persons may place an order for any item they wish.

The booth will be open from 9 a.m. to 5 p.m.



surrounds the visitor to our home. This atmosphere of serenity in our environment is a source of inspiration to the bereaved.

**HAMMONS FUNERAL HOME**

USE YOUR PENNEY CHARGE

**JCPenney**

100% POLYESTER DOUBLE KNIT COORDINATING  
**SUBLASTATIC PRINTS AND SOLID MATCHING CREPE**

**\$1.99** YARD

BEAUTIFUL SUBLASTATIC 100% POLYESTER DOUBLE KNIT PRINTS AND MATCHING 100% POLYESTER DOUBLE KNIT CREPE. IDEAL FOR LONG DRESSES, PANT SUITS, SKIRT SETS, PAJAMA PANT SUITS AND MANY OTHER THINGS. 60" WIDE.

100% POLYESTER  
**BED PILLOWS**  
2 FOR **\$3.88**

STOCK UP NOW ON THE STANDARD SIZE PILLOWS.

300 YARDS  
**DOUBLE KNIT**  
**\$1.44**

LEFTOVER 100% POLYESTER DOUBLE KNIT SHORT LENGTHS.





# FALL BARGAIN BONANZA

YOUR CHOICE!  
**MOTOR OILS**  
 PENNZOIL, AMALIE,  
 OR QUAKER STATE  
 REG. 64¢ **48¢**  
 SAE 20 or 30  
 46-302, 4 46-308, 9 46-316, 17

KLEEN-PAK  
**OIL FILTER**  
 LIMIT 3 **99¢**  
 REG. \$1.79  
 44-718, 745  
 FITS MOST FORDS 57-73;  
 CHRYSLERS 57-72; CHEV. V-8 68-73

STP  
**OIL TREATMENT**  
 REG. \$1.29  
 LIMIT 6 **88¢**  
 Retards Oil Consumption  
 And Wear By Increasing Piston Action.

PRICE CUT 12%  
 FOR DOLLAR DAYS SALE  
**SHOCK ABSORBER**  
 REG. \$4.99  
 \*Magic Airtex Shock Absorbers  
 \*Sizes To Fit Most American Cars  
 \*Guaranteed 18,000 Miles!

5-FUNCTION  
**CALCULATOR**  
**\$13<sup>88</sup>**

**TENNIS SHOES**  
**\$5<sup>44</sup>**

**WINDBREAKERS**  
 IN SCHOOL COLORS  
 MEN'S **\$4<sup>77</sup>**  
 BOYS' **\$3<sup>99</sup>**

**22 RIFLE**  
 MARLIN GLENFIELD  
 W/SCOPE **\$39<sup>99</sup>**

**C. B. RADIOS**  
 REG. \$159.95  
**\$139<sup>95</sup>**  
 REG. \$129.95  
**\$114<sup>95</sup>**

**MAGIC 50 ANTI-BOIL ANTI-FREEZE**  
 FOR WINTER AND SUMMER USE TO KEEP YOUR CAR'S ENGINE RUNNING COOLER LONGER! 1 GALLON  
**\$3<sup>77</sup>**

**25% Off Each During Bargain**  
 Whisper Jet STEEL BELT  
 40,000 MILE LIMITED WARRANTY  
 Against All Road Hazards

TIRE SIZE	F.E. TAX
BR78-13	2.18
DR78-14	2.45
ER78-14	2.55
FR78-14	2.67
GR78-14	2.89
HR78-14	3.09
GR78-15	2.96
HR78-15	3.17
JR78-15	3.31
LR78-15	3.48

\*Plus F.E. Tax

**AIR FILTER**  
 WHITE 'MAGIC 50'  
 FOR MOST AMERICAN CARS  
 EACH **\$1<sup>97</sup>**

**AIR FILTERS**  
 EACH **44¢**

SAVE 41%  
**BICYCLE TUBE**  
 HEAVY DUTY CONSTRUCTION! 20", 26", OR 27" SIZE!  
 REG. \$1.69 **99¢**

**BIKE HELMET**  
 SIZE IS ADJUSTABLE  
**\$14<sup>99</sup>**

**SPORTS SHOES**  
**\$4<sup>47</sup>**  
 SIZES 7 THROUGH 10 1/2

MEN'S AND BOYS'  
**WHITE GYM SHORTS**  
**\$1<sup>33</sup>**

MEN'S AND BOYS'  
**ATHLETIC SUPPORTERS**  
**99¢**

**FREE BICENTENNIAL THROW RUG WITH EVERY PURCHASE OVER \$30**



# FALL BARGAIN BONANZA



**8 TRACK TAPES**

**\$1.00**

OFF REGULAR PRICE

**GAS TREATMENT**

8 OZ. CAN

**57c**

BUTANE

**DISPOSABLE LIGHTER**

GOOD FOR THOUSANDS OF LIGHTS

ASSORTED COLORS

**87c**

**20% OFF REMINGTON SHOTGUN SHELLS**

**MASTER TAKE DES**

**\$4.44**

A PAIR W/EXCHANGE

**LAUNDRY BASKET**

**\$1.17**

SAVE 35%

**SPARK PLUGS**

REG. AC OR CHAMPION REGULAR 98¢ EACH

30-200,226  
30-229,237  
30-300,331  
30-333,337

**64c**

Resistor Plugs.....78¢ Each

**BLANK TAPES**

REGULAR \$5.49

PACKAGE OF 4 **\$3.99**

LIMIT 2

**Whisper Vell**

**Triple Written Guarantee**

1. FREE 30 DAY REPLACEMENT GUARANTEE if the hat due to read failure in faulty workmanship and material.

2. MILLAGE SERVICE GUARANTEE against all types of road wear with. Advantages are rated on monthly or mileage and are based on White's regular selling price at the time of purchase plus Federal Excise Tax.

3. LIFETIME GUARANTEE against defects in workmanship and materials are rated on tread wear.

**MR. COFFEE II™**

**AUTOMATIC COFFEE MACHINE**

BREWS FROM 1 TO 10 CUPS OF COFFEE IN ONLY MINUTES! HAS SINGLE ACTION BREWER/WARMER SWITCH.

**\$26.88**

**BICYCLE**

IN CARTON **\$59.88**

**BACK RAYS**

**99c**

EACH

SCHOOL

**LUNCH KIT**

**\$2.88**

WITH THERMOS

**CARPET SHAMPOOER**

**\$13.88**

**STEREO**

8 TRACK MUSIC SYSTEM

**\$88.00**

**RUGS**

HARD SURFACE

PLASTIC FORTIFIED RESISTS STAIN

**\$6.88**

**TOOL BOX**

FOR PICKUPS

**\$88.00**

Save 35%

**CENTURY 30**

**8-TRACK TAPE PLAYER**

REG. \$39.95 SALE PRICE **\$29.88**

**VANITY SINK**

Faucet Extra

**\$39.00**



# Woman's Club Dignitary Speaks To Local Group

On Wednesday, Sept. 17 in the home of Mrs. Otto Jones, 46 members of the Woman's Club and five guests were present to



PROGRAM PERSONNEL for the annual Woman's Club Luncheon Wednesday included Lena Jones, chairman of the hostess committee who offered her home for the luncheon; Mrs. J. W. Walker of Plainview who is Caprock District Parliamentarian; Lorene Hulse, president of the Littlefield Woman's Club; and Esther Martin, executive director of South Plains Texas Chapter of the National Multiple Sclerosis Society. (Staff Photo)

enjoy a luncheon and afterwards to hear an entertaining and challenging lecture by Mrs. J. W. Walker of Plainview, a well-known officer, past and present, in Texas Federation of Women's Clubs.

Mrs. Walker did not confine her lecture to the Federation's objectives only but went on to include some worthwhile food for thought concerning the coming Bi-Centennial celebration. To the group she said, "In this land of plenty, enjoying the many blessings and privileges that America offers its people, be not proud and boastful, for it was given to us by those who came to a wilderness and endured hardships beyond our imagination. Be humble, remembering our many errors: the unfair treatment of the Indians, which even surpasses that of the Negroes, the wanton killing of the native animals, the misuse of the land and wastefulness of our natural resources. Our celebration should be one of humility."

The second part of Mrs. Walker's lecture dealt with woman's place in American History. "One hundred years ago, a woman's place was in the home, over the cook stove, wash-board, or whatever. She was little more than chattel, the property of her husband or her father," Mrs. Walker said. "Most were not educated, but a few women like Susan E. Anthony, a great reformer; Jane Addams, who founded the famous Hull House; Emily Dickinson, who expressed in poetry her bitterness; Willa Cather, and a few others dared to strike out for the rights of women; and it is our duty to

carry on where they left off. We have the means."

She reminded the club women that the Federation of Women's Clubs is a great tool for American women to use to gain equal rights. It should be supported, be real and meaningful. "Too many women today are afraid to speak out for their rights because of their past role in life, but, they have been accepting their privileges and shunning responsibility, which they fear. Those women want to have their pie and eat it, too. We mature women should be tired of that attitude, should shoulder our share, and stand with our men not behind them. The future is unknown, but we should take the risk; there is a terrible waste of Women Power. Women's clubs can do their share in bringing about this revolutionary change in the status of the American Woman."

Mrs. Walker closed her lecture with this poem followed by a final word on America's greatness:

"What is a woman's club?" you ask.

A meeting ground, a place where kindly words are said, And kindlier deeds abound and hearts are fed. Where wealth of fellowship for poverty atones, Where hand clasps hand, and soul finds touch with soul.

"We are great today. We are the richest, most prosperous nation on earth, or that has ever been on this earth. We have the highest standard of living ever achieved by any civilization. We have all the trappings of greatness, the opportunity, the possibility. Never has so much beckoned to such a chosen few. Can we fail so great an opportunity? Can we avoid such a great responsibility?" she asked.

Hostesses for the meeting were: Mmes. Otto Jones, chairman, Pat Donnelly, John Bellar, O. I. Bennett, Sr., W. R. Kimbrough, C. A. Duval, Kenneth Houk, T. L. Dunlap, J. G. Johnson, and Jack Wicker.



HOSTESSES for the annual Woman's Club Luncheon, held Wednesday in the home of Mrs. Otto Jones, were, left to right, Tena Wicker, Lucille Johnson, Ernestine Bellar, John Bellar, Lena Jones, Louise Bennett, Thelma Duval, Gladys Houk, Hazel Kimbrough, Beulah Dunlap. The luncheon opened the 1975-'76 club year, and was well attended. (Photo)

## Hospital Auxiliary Plans District Meeting

Approximately 15 members of the Hospital Auxiliary of Littlefield are planning to attend the meeting of Texas Association of Hospital Auxiliaries in District I, Area II Wednesday, Sept. 24. Registration and coffee at 9:30 will start the meeting, which is scheduled for Lubbock at the Methodist Hospital in the George M. Brewer Assembly Room.

Hostesses for the event will be Methodist Hospital, St. Mary's Hospital and the University Hospital, with Mrs. John Bohm-

falk of San Antonio, president of TAHA, presiding.

Mrs. Bohmfalk will show a film, "Your Life Depends On It", and a skit, "How To Get Your Man" will be presented by Dewitt Thompson, vice president of development at Methodist Hospital.

A buffet luncheon will be served at noon.

After the luncheon, Jim Boon, representative of Boon and Chapman Insurance Co., will discuss an insurance plan for auxiliary members. Speaker will be Weldon

Chamberlain, administrator of University Hospital.

## Aptitude Exam Set For November

An aptitude exam for prospective vocational students will be given Oct. 15 at South Plains College, Levelland.

Anyone planning to attend South Plains School of Vocational Nursing is urged to take the exam.

FUR TRIMMED  
**COATS**  
BY GEROLD  
**20% OFF**

**SPORTSWEAR**  
LABEL 4 JRS.  
CORDUROY By JANTZEN  
**20% OFF**

**Moss**  
SHOES AND SPORTSWEAR

## Sheriff's Posse Slates Playday

Lamb County Sheriff's Posse will conduct their regular playday events Sunday afternoon in the Posse Playday arena, located on south Hall Avenue, near the showbarns.

Registration for events gets underway at 1 p.m., and the action starts at 1:30. Spectators may watch the events free of charge.



DEBBIE GREGSON AND CHARLES BENTLEY

## Gregson-Bentley Wedding Plans, Date Are Revealed

SPADE—Mr. and Mrs. Joe S.

Gregson of Spade announce the engagement and approaching marriage of their daughter, Debbie, to Charles Bentley, son of Mr. and Mrs. Charles L. Bentley of Duncan, Okla.

The bride-elect is a graduate of Spade High School and attended Abilene Christian College.

Bentley is a graduate of Duncan High School, and a graduate of East Texas State University with a Bachelor of Science degree in business management.

Both are employed by Texas Instruments, Inc. The couple plans a November wedding in Lubbock.

## Oklahoma Ave. HD Club Meets

The Oklahoma Avenue Home Demonstration Club met Thursday, Sept. 18, in the home of Mrs. Minnie Davis.

Doris Waters gave the devotional and roll call was answered with "My Pet Peeve About Television."

Mrs. Davis, club delegate, will attend the state THDA convention in Abilene Sept. 23, 24 and 25.

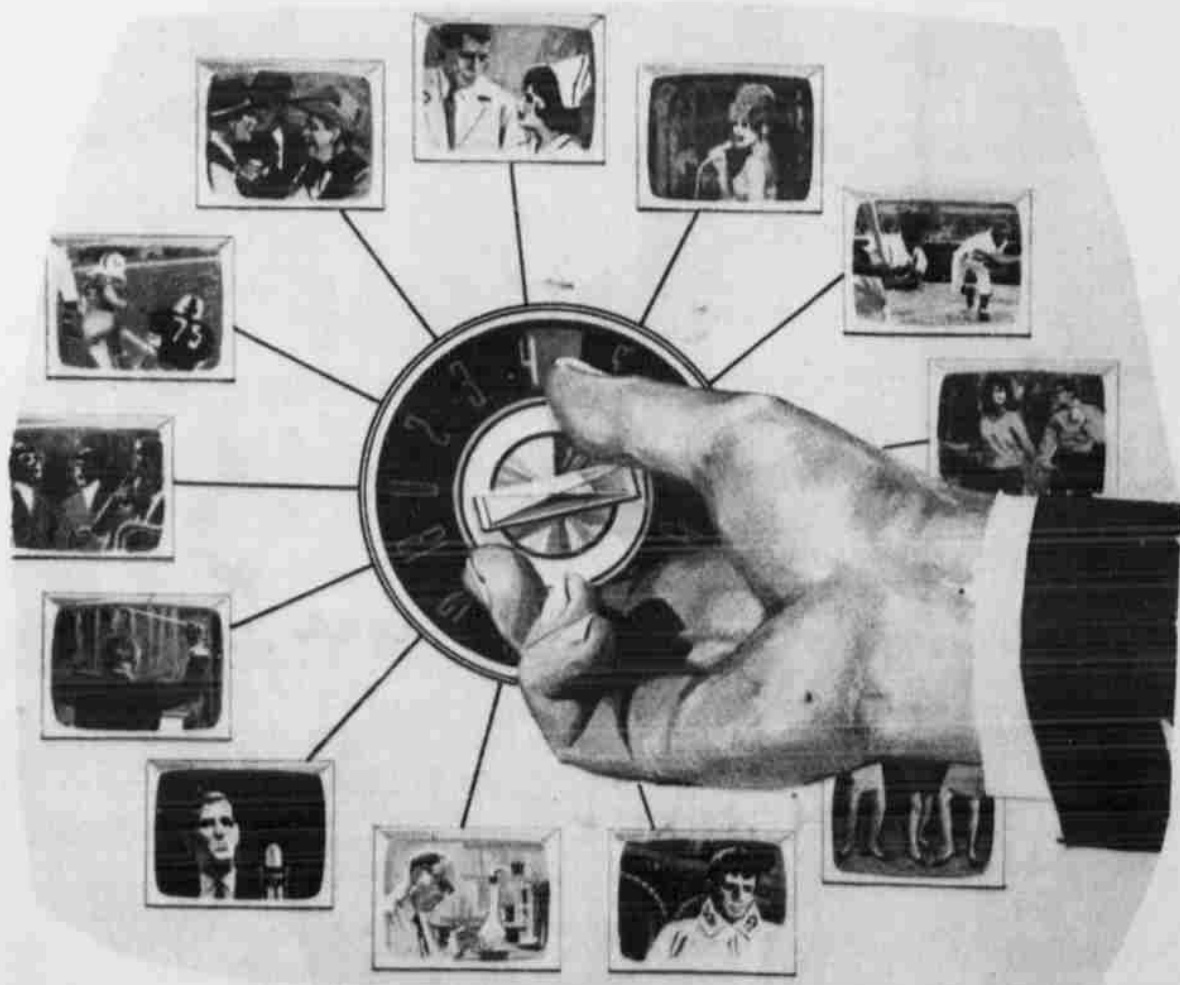
The program leader, Ruth Miller, assisted by County Extension Agent Dorothy Powell, presented a program on "Metrics Are Coming". Members participated in a short skit on basic units to be used. It consisted of sewing with metric measures, metric cooking, conversion chart and ten basic units of metrics.

Refreshments were served to Vena Maner, Ruth Miller, Lorene Hulse, Fern Bitner, Ila Helms, Clem Dubose, Mary Feagley, Dorothy Powell, Shirley Hardin and sons, Doris Waters and sons, and Letitia Trimmer.

## BOOKMOBILE SCHEDULE

Wednesday, Sept. 24:  
Whiteface #1, 9:30-10:30;  
Whiteface #2, 10:30-11:00; Lehman, 11:05-11:30; Bledsoe, 12-1; and Maple, 2:15-3:15.  
Thursday, Sept. 25: West Camp, 9:15-10:15; Lariat, 10:30-11:30; and Bovina, 12-3:30.  
Friday, Sept. 26: Lums Chapel 10-10:45; Spade, 12-1:30; Hart Camp, 1:45-2:30; and Fieldton, 2:45-3:30.  
Saturday, Sept. 27: Olton, 9:30-11:45 and Amherst, 1:15-3:30.

# CABLE TV



From: Littlefield Community Cable TV Service  
To: Non Subscribers Of Cable Service

We At Cable TV Believe There Are Quite A Number Of Littlefield Citizens Who Having Never Tried Our Eight (8) Channels Of Cable TV Service Are Not Aware Of The Variety And Choice Of Programs To Choose From By Being Able To Select From Eight (8) Channels On Cable TV.

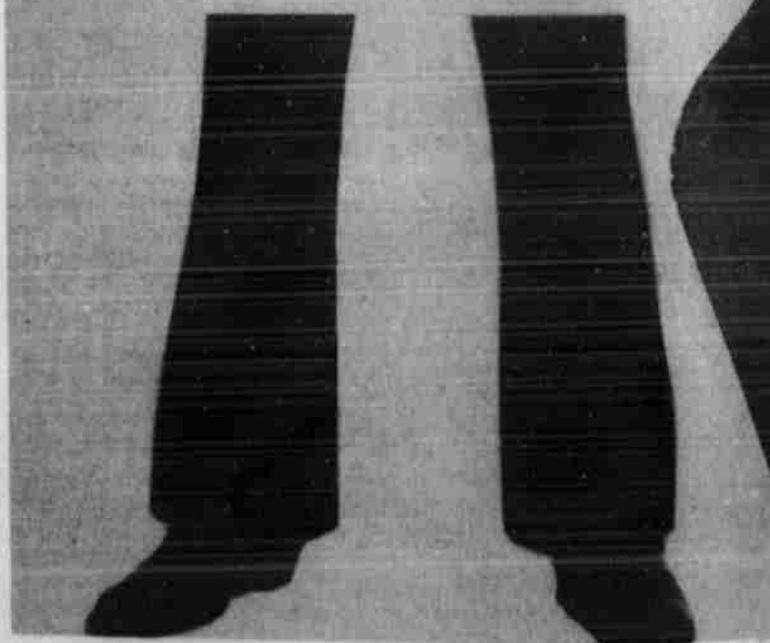
In The Very Near Future Our Sales Representative Will Be Calling On You To Tell About A Special "Get Acquainted" Offer.

## Littlefield Cablevision Inc.

326-A PHELPS AVE.

385-4522

# Sedgefield took the fat out of jeans.



Boys' Flair Jeans.....6-14.....\$9. Boys' Big Bell Jeans..8-14.....\$12.50  
Boys' Jackets.....8-12.....\$12.50.....14-20.....\$13.

Student Big Bell.....\$12. Mens' Big Bell.....\$14.  
Mens' Flair.....\$13.50 Mens' Jacket.....\$25.

# Ware's



# SAVINGS STOREWIDE



RESERVE THE RIGHT TO LIMIT QUANTITIES.

**CELERY**  
CALIFORNIA PASCAL STALK ..... **29¢**

**RED GRAPES**  
LB ..... **39¢**

**BANANAS**  
CENTRAL AMERICAN FRESH LB ..... **19¢**

**APPLES**  
RED DELICIOUS 3 LB CELLO BAG ..... **49¢**

**TOMATOES**  
VINE RIPENED LB ..... **29¢**

**LETTUCE**  
CALIFORNIA ICEBERG LB ..... **34¢**

**PEACHES**  
CALIFORNIA RIPE, LB ..... **39¢**

**RUBBER PLANTS**  
**\$6.99**

**CHUCK STEAK** FURR'S PROTEN LB ..... **98¢**

**RANCH STEAK** FURR'S PROTEN LB ..... **\$1.19**

**BEEF ROAST** FURR'S PROTEN LB ..... **\$1.09**

**GROUND BEEF** GROUND FRESH DAILY, LB ..... **79¢**

**CHUCK ROAST** FURR'S PROTEN LB ..... **79¢**

**BEEF STEW** FURR'S PROTEN LB ..... **\$1.29**

**ROUND STEAK** Furr's Protén, Lb ..... **\$1.39** **CLUB STEAK** Furr's Protén, Lb ..... **\$1.79**

**SIRLOIN STEAK** Furr's Protén, Lb .. **\$1.39** **CUBE STEAK** Furr's Protén, Lb .... **\$1.69**

**RIB STEAK** Furr's Protén, Lb ..... **\$1.39** **FRANKS** Farm Pac 12 Oz Pkg ..... **79¢**

**T-BONE STEAK** Furr's Protén, Lb ... **\$1.89** **TURBOT** Halibut Lb ..... **98¢**

**PINNERS** MACARONI & CHEESE FOOD CLUB 7 1/4 OZ PACKAGE ..... **4 FOR \$1**

**PEACHES** GAYLORD, HALVES OR SLICES NO. 2 1/2 CAN ..... **49¢**

**CORN** FOOD CLUB, WHOLE KERNEL OR CREAM STYLE GOLDEN NO. 303 CAN ..... **3 FOR \$1**

**RISICO** 3 LB CAN ..... **\$1.59**

**CHIPS** FARM PAC POTATO, REG. OR DIP 9OZ 9 OZ. PKG. .... **59¢**

**UNA** FOOD CLUB LIGHT CHUNK NO. 1/2 CAN ..... **49¢**

**BEANS** RANCH STYLE NO. 300 CAN ..... **3 FOR \$1**

**BEANS** GALA ASSORTED COLORS LARGE ROLL ..... **49¢**

**WOOL WASH** TOPCO LIQUID 16 OZ SIZE ..... **75¢**

**AX** Detergent, 25¢ Off Label, 84 Oz ..... **\$1.99** **AXION** 20¢ Off Label 25 Oz ..... **86¢**

**SNACKIN CAKE**  
BETTY CROCKER ASSORTED 14 1/2 OZ PKG  
**69¢**

**DOUBLE GOLD BOND STAMPS**  
TUESDAY AND WEDNESDAY

**WEXFORD CRYSTAL**  
BY ANCHOR HOCKING  
THIS WEEK'S FEATURE  
**TABLE TUMBLER**  
GOOD THRU SEPT 27  
**55¢**  
EACH  
NO PURCHASE REQUIREMENT  
COMPLETER PIECE  
**FOOTED CENTERPIECE** \$1.49

PRICES EFFECTIVE THRU 9-24-75

★ YOU PAY THE LOWER PRICE AT FURR'S  
★ WE WILL NOT CHANGE A PRICE ON A MARKED CAN OR PACKAGE EXCEPT TO LOWER THE PRICE.  
★ ONCE PRICED . . . ALWAYS PRICED.

**GREEN BEANS**  
DEL MONTE  
WHOLE NO. 303 CAN ..... **3 FOR \$1**

**TRASH CAN LINERS**  
TOPCO 20 CT PKG ..... **\$1.79**

**PUNCH** Detergent 49 Oz Box ..... **\$1.05**

**POTATOES** Top Frost, Fresh Frozen, Hash Brown, 2 Lb Package ..... **3 FOR \$1**

**LIMA BEANS** Top Frost, Ford Hook, Or Baby, 10 Oz Pkg ..... **3 FOR \$1**

**ORANGE JUICE** Gaylord 6 Oz Can ..... **5 FOR \$1**

**ORIENTAL VEGETABLES** Birdseye, Ass't Frozen, 10 Oz ..... **59¢**

**MORTON DONUTS** Glazed, Mini Chocolate, Cake Jelly, Bavarian ..... **79¢**

**TOPCREST CHARCOAL**  
LB, BAG ..... **\$1.09**

**SMOKE-N-EMBERS WOOD CHIPS**  
2 LBS ..... **59¢**

**LIGHTER FLUID**  
TOPCREST FOR CHARCOAL QT. CAN ..... **59¢**

**RAZOR BLADES**  
GILLETTE TRAC 11 ADJUSTABLE 4'S ..... **\$1.04**

**SUAVE SHAMPOO**  
28 OZ ..... **\$1.06**  
STRAWBERRY  
APRICOT  
GREEN APPLE

**MAALOX TABLETS**  
COUNT ..... **\$2.49**

**KOTEX** SANITARY NAPKINS BOX OF 30'S ..... **\$1.59**

**KIMBIES** BABY SHAPED DIAPERS DAYTIME 30'S ..... **\$2.19**

**MOUTH WASH** LISTERINE 14 OZ ..... **79¢**

**TOOTH PASTE**  
CREST Reg. or Mint 5 Oz ..... **67¢**

**SHOP Furr's MIRACLE PRICES**



# WILDCATS

Continued From Page 1

kept the ball for two yards and a first down on the Tiger 19.

A Palmer pass was incomplete to Jimmy Durham and then the 'Cat quarterback kept to the Tiger 9-yard line for a third and one situation. Payton bulled his way for the first down and Littlefield threatened for the first time since earlier in the game.

Payton then carried to the four. A pitchout to Turner lost three yards as the Tiger defense tightened.

On the third down play, Palmer's pass was barely deflected out of the grasp of Turner and the 'Cats again lined up in field goal position and this time it was good and the 'Cats added an important three points to go ahead 10-0 with 5:59 left in the third quarter.

Slaton was unable to move and they were forced to punt from their own 38-yard line. Littlefield took over on their own 21 following the punt.

The 'Cats netted one first down on the drive, but were forced to punt from their own 41.

After Turner's 48-yard punt, Slaton was in business at their own 17 with a minute and a half left in the third quarter.

The two teams exchanged punts again and Littlefield started their final possession of the third quarter on their own 25.

On the first play, the pigskin eluded the grasp of Hopping and Slaton had possession on the 'Cat 25.

The 'Cats didn't take to that action though as Larry McDonald recovered a Tiger fumble on the 'Cat 21.

The 'Cats moved the ball to their own 31 and then it was fruitcake turnover again as Slaton recovered a Wildcat fumble.

A Tiger pass promptly moved the ball to the 'Cat 9-yard line. Fine defensive play led by Hopping dropped the Tigers

back to the 14.

A run by McClesky and a procedure penalty moved the ball to the Littlefield 4 before the tough 'Cat defense held under the shadows of the goal post on the Tigers' fourth down play.

The 'Cats took over deep in their own territory with 8:10 left to play.

The Wildcat offense was unable to move and with 5 minutes left, Littlefield punted to their own 40-yard line where Slaton took over.

A Slaton pass moved the ball to the 'Cat 24-yard line with 4:10 left. McClesky then rambled to the 7-yard line before being stopped by Payton.

Three plays netted the Tigers only three yards and once again the 'Cat defense was called upon to stop a touch-down drive by Slaton, with 1:50 left.

And once again the 'Cat defense answered the call as they stopped the second Slaton threat of the half.

On the first play from scrimmage following the goal-line stand, Payton was dropped in the end zone for a safety to give Slaton their only two points of the night.

With 1:39 left, Littlefield had a 10-2 lead.

Turner's free kick went to the Tiger 10 and McClesky returned it to his own 37.

Three plays moved the ball to midfield with less than a minute left. With the ball near the 50, the Tigers faced a fourth down and two situation with 43 seconds left.

Tumlinson's pass was complete for an apparent first down but a personal foul moved the Tigers way back in their own end of the field with 36 seconds left on the clock.

Tumlinson's final desperation pass of the night was intercepted by Rudy Ayala and Wildcat fans breathed easy for the first time in the second half in recording their third straight victory.

## Lobo JV Drops

### Littlefield JV

Levelland's JV capitalized on the Littlefield JV's mistakes Thursday evening to grab a 28-6 win.

Levelland made their first score on a bad fumble when Littlefield tried to field a punt. A second TD was made on a long pass to put the JV at the short end of a 14-0 score at halftime. They scored again on another fumble and a blocked punt.

Jeff Ratiiff scored for the Littlefield JV in the last quarter.

Coach Hooper named Stan Jackson and Kevin Wallace for a good offensive game, and Wayne Lucas, David Goen and Jeff Birkelbach on defense.

## 7th, 8th Boys

### Lose To Slaton

The Littlefield 7th graders took a 42-0 defeat from Slaton Tuesday, and the eighth graders lost 32-8. Tracy Birkelbach scored a TD for Littlefield, and the defense made a safety.

Levelland frosh rolled over the Littlefield freshmen 42-6 Thursday evening. Donny Green made the lone score on an 80-yard kickoff return in the last play of the half. Coach Comer cited Donny Green, Roy Mendez and Johnny Ortiz for their defensive efforts.

## PLAINS 16 SUDAN 7

Danny Bell passed for one touchdown and ran for another as the Plains Cowboys whipped the Sudan Hornets 16-7 Friday night in a close defensive ball game in Sudan.

Sudan led 7-6 at the half, but Plains mounted two scoring drives in the third quarter. Sudan's record fell to 1-2. Plains is now 1-1-1.

Bell began the scoring in the second quarter after the Cowboys muffed the only first quarter threat by missing a field goal. The Cowboy quarterback threw three yards to Chris Blundell. The conversion kick missed.

Sudan countered before the half with a one-yard run by Kyle Martin, who also kicked the extra point. The TD was set up by a 60-yard pass, Craig Pickett to Joel Williams.

Plains scored in the third period on a Chris Winn field goal and Bell's 24-yard keeper. Winn added a conversion on the last score.

Both teams garnered 13 first downs and Plains outgained the Hornets 246 yards to 235.

Cowboy runners were led by Martin Duran's 86 steps on 16 carries and Sudan's best rusher was Danny Williams, with 67 yards on 18 tries.

Littlefield		Slaton
52	Plays	58
11	First	10
169	Yards Rushing	124
77	Yards Passing	61
246	Total Yards	185
7	Passes Attempted	17
1	Passes Completed	4
0	Passes Intercepted	1
5	Punts	5
196	Punting Yards	189
5	Penalties	3
55	Yards Penalties	45
3	Fumbles Lost	3



**Anthony's**

## DAVID HAMSON

The leisure shirt is rapidly taking over the men's fashion world!

**\$6.88**

**3 for \$18.00**

- Vividly hued in a galaxy of colors.
- Dozens of artistic prints and patterns
- Made of cool... comfortable... easy to care for fabrics.

New Shipment & Styles Just Arrived

**Anthony's**

YOUR FURR'S IN LITTLEFIELD IS

# NOW



# OPEN SUNDAY

9: AM 'TIL 7: PM

FOR YOUR SHOPPING CONVENIENCE

## TUNA

FOOD CLUB  
LIGHT CHUNK  
NO. 1/2 CAN

# 49¢

## POTATO CHIPS

FARM PAC 9 OZ PKG  
REG. OR DIP

# 59¢

## BEANS

RANCH STYLE  
NO. 300 CAN

# 3 \$1

FOR

## FRANKS

Meat Or Beef, 1 Lb **\$1.44**

## BOLOGNA

All 8 Oz Pkgs **85¢**      All 12 Oz Pkgs **\$1.26**

PLUS... YOU GET THE BONUS OF

# GOLD BOND STAMPS

AT FURR'S...

VALUABLE COUPON

THIS COUPON ENTITLES YOU TO

# 100 FREE GOLD BOND STAMPS

WITH ANY PURCHASE AT FURR'S IN LITTLEFIELD THIS SUNDAY ONLY

LIMIT ONE COUPON PER FAMILY

LETTUCE CALIFORNIA ICEBERG LB. **3**

APPLES RED DELICIOUS 3 LB CELLO **4**

BANANAS CENTRAL AMERICAN LB. **19**

Prices Effective Sunday Sept. 21, 1975 In Littlefield Only Quantity Rights Reserved, No Sales To Dealers Please.

**Furr's SUPER MARKETS**

**WE REDEEM USDA FOOD STAMPS**



**AROUND LITTLEFIELD**

**BEN ALTMAN** family until 5 at the Community Center. All relatives are invited to attend, Sunday, Sept. 21, from 9

WEEKEND guests in the home of Mr. and Mrs. Arlen Simpson, Todd and Tiffany were Mr. and Mrs. Don Lowe, Mark, Renie and Lisa and Mr. and Mrs. Weyland Altman, Mitzi and Ronnie of Maple and Mr. and

Mrs. Sonny Dewbre of Morton. MRS. FRANK BAGLEY of Odessa visited this weekend in the home of Mr. and Mrs. Wade Warren, Leslie Ann, Shannon and Jason.

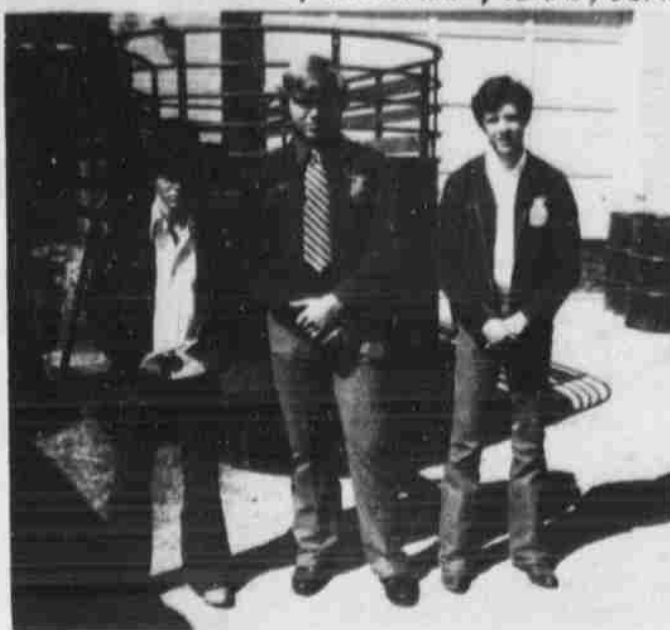
MR. AND MRS. Jay Bridwell, Shala, Chance and Ace visited in Amarillo last weekend with Mr. and Mrs. Jerry Hermesmeier and family in Amarillo.

VISITING in the home of Mr. and Mrs. Richard Newman, Sherity, Creed and Shandi this week were Judy's mother, Mrs. Virginia Scott from Anson and her sister and children, Mrs. Brenda Podsednik, Trent and Grant of Ft. Worth.

FREDDIE DUKE, Mary Kay Cosmetic Representative, is in St. Mary's Hospital in Lubbock.

**NATURAL ACCESSORIES**

To update home accessories, let "nature" be the guide. Shells, houseplants, wicker, straw and bamboo baskets will evoke happy thoughts of the outdoors.



DENNIS McCain (standing in center) was elected Sentinel for Littlefield District FFA in a meeting Sept. 16 at Sudan. Others going were Brad Walden (right) voting delegate, and Kevin Bell (left) as a member. (FFA Photo)

**TOP PRICES FOR SUNFLOWERS**

Littlefield Delinting Co. Is Now Buying And Receiving sunflower seed.

We have been authorized to buy a limited amount of sunflower seed for a major exporter.

Contact Arthur Summers today at **LITTLEFIELD DELINTING CO.**

1/2 Mile East On Spade Highway 385-4533



NEWS FROM **AMHERST**

MRS. LESTER LaGRANGE 246-3336

CINDY CROSBY is taking a course in nursing in her college work at West Texas University, Canyon. A "capping" ceremony was held in the activities center at the college Sept. 6. One hundred and twenty five were capped in the impressive candle-lit ceremony. Mr. and Mrs. W. H. (Bo) Crosby and Mr. and Mrs. Joe Chambers were there for the occasion. Cindy is a member of the Chi Omega sorority, one of the most active on the campus.

MRS. JOHN MORTON, Levelland, Mrs. Onetta Bell Allen, Mrs. Pauline Snelson, Fort Worth and Mrs. Mary Ruth Woodson of Lubbock, visited their uncle Guy Hufstader Sr. and Mrs. Hufstader. Wednesday. Guy is a patient in the

local hospital and has had pneumonia and is improving. Guy's sister, Mrs. Audrie Warren of Lubbock accompanied the nieces.

JOHN BUTLER, a resident at Amherst Manor has been in the local hospital several days with pneumonia. He is improving, it is reported.

MR. AND MRS. R. T. Watts of Pampa were recent guests of his sister and husband, Mr. and Mrs. Floyd Rowell.

COURTNEY EWING of Winchester, Tex. will be here with her grandparents, the Don Ewings and the Rowan Youngs until the last of next week when the Ewings take her home.

MR. AND MRS. Jim Templeton and their daughter and husband, Mr. and Mrs. John Norwood, attended Mrs. Templeton's family reunion, the Brannons, at Quartz Mountain Lodge, near Altus, Okla. last week. Mrs. Templeton saw cousins they had not seen in 25 years. The week before the Brannon reunion the Templeton family reunion was held at Possum Kingdom. Johnny Norwood of San Antonio was there for the reunion.

THE GOSPEL meeting at the Amherst Church of Christ will be held Sept. 21-26. Sunday the Bible classes will be 10 a.m., worship 10:50 a.m., and 6:30 p.m. Monday through Thursday 10 a.m. and 6:30 p.m. Evangelist will be Jack L. Mackey and song leader B. W. Briggs.

**Olton Hosting Dance, Lessons**

The Swinging O's Square Dance Club in Olton is beginning square dance lessons starting Tuesday, Sept. 30.

Maurice Stevenson of Lubbock will be teaching every other Tuesday through the first of the year, then every week. There will be 20 lessons for a very nominal charge.

Everyone who is interested is invited to attend.

Hap Pope, who is the regular club caller for Circle Eight in Littlefield, will be calling for the Olton group Thursday night, Sept. 25, in the new Agriculture Building at 2nd and Ave. E.

**Senior Citizens Meet At Amherst**

AMHERST—Senior Citizens enjoyed an ice cream and cake party Tuesday evening, Sept. 16th.

Members of the Senior Citizen group provided the homemade ice cream and cakes.

Members having birthdays in September were recognized and "happy birthday" was sung to them.

Fifty-seven were present for the social.

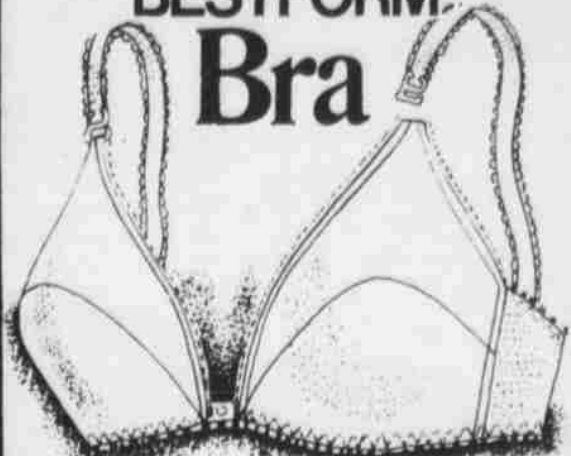
The next meeting will be a covered-dish supper, Tuesday, Sept. 30 at 7 p.m.

All senior citizens are invited and requested to bring a covered dish.

**A FIRST SIGN**

An unexplained change in your ability to hear clearly could be the first sign of a developing hearing loss problem. If the condition persists you should seek proper hearing care assistance.

**Silver Saver BESTFORM Bra**



\$2.59 each... 2 for \$5

FRONT HOOK CONVERTIBLE BRA  
Soft seamless cups of 100% Polyester lightly padded with Kodel® fiberfill for natural shaping. Straps convert to halter. Nylon, Lycra® Spandex sides and back. Elegant deep plunge. 32-36A, 32-38B, 38-38C white.



**SUPER SALE OF EVERYDAY FOODS**

DUNCAN HINE LAYER CAKE MIX	BOX	69¢	SHURFRESH BUTTERMILK	1/2 GAL	69¢
GOLD MEDAL FLOUR	5 LB.	79¢	PRINGLE POTATO CHIPS	9 OZ	88¢
WOLF CHILI	19 OZ	89¢	SUNSHINE KRISPY CRACKERS	LB.	49¢
FOOD KING BARTLETT PEARS	NO. 303 CAN	33¢	MORTON SALAD DRESSING	QT.	89¢
MORTON FROZEN DINNERS	CHICKEN, STEAK, MEAT LOAF, TURKEY 11 OZ	2/89¢	MARYLAND CLUB COFFEE	LB	\$1.09
CASCADE CASCAD	GIANT SIZE	89¢	SHURFINE WHOLE WHITE POTATOES	NO. 303 CAN	2/45¢
SHURFINE WAFFLE SYRUP	QT	89¢	YELLOW ONIONS	LB	15¢
CASSEMAN PLUMS	LB	29¢	GRADE A FRYERS	LB	59¢
CHOICE CLUB STEAK	LB	\$1.49	BABY BEEF LIVER	LB	49¢
CHOICE BACON	12 OZ	\$1.39	CHOICE CHUCK STEAK	LB	\$1.19

We Reserve The Right To Limit Quantities. We Redeem USDA Food Stamps. We Give Gunn Bros. Stamps. Double Stamps On Tuesday & Wednesday With \$2.50 Purchase Or More Excluding Cigarettes.

**PIONEER SUPERMARKET**

**I SEE A FUTURE OF FREEDOM FROM HEATING WORRIES**



Even the gypsy fortune-teller is impressed by the performance of the heat pump. She, of course, thinks the heat pump is magic. But it's not at all...it just acts that way.

**BE SWITCHED**

...to electric heat, now and for the future. Electric heat is 100% efficient at the point of use. Call Southwestern for a FREE personalized heating cost survey and we'll give you all the details about the heat pump without gazing into a crystal ball. Call us this week.

**ENERGY EFFICIENCY ALLOWANCE**

We, at Southwestern, are interested in your getting the most for your energy dollar. That's why we're offering an Energy Efficiency insulation allowance to our customers in existing homes who install electric comfort heating. Ask us about it.

ELECTRICITY-IT DOES SO MUCH GOOD

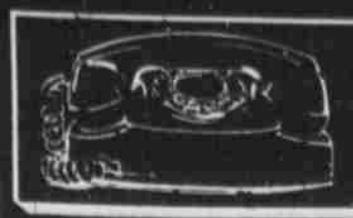


The **ELECTRIC** Company

FOR SO MANY PEOPLE

CALL US FOR A FREE ELECTRIC HEATING COST ESTIMATE





TO PLACE YOUR AD IN THE WANTED ADS GET RESULTS IN LAMB COUNTY NEWS

**3 8 5 - 4 4 8 1**

Rates on CLASSIFIED ADVERTISING are 10 cents per word 1st insertion (\$1.50 minimum charge) and 6 cents per word 2nd insertion (\$1.00 minimum charge). Blind box ads are \$1.00 additional. DISPLAY CLASSIFIED RATES: \$1.40 per column inch first insertion and additional insertions, \$1.15 per column inch.

Card of Thanks—1 time—maximum of 20 words, \$1.50. All cards of Thanks over 20 words are to be charged at regular classified rates.

**House For Sale**

CRESCENT Park addition. Brick, 3 bedroom, 2 bath, living room, den kitchen dining combination, recreation with fireplace, utility room, covered patio, 2 car garage, storage room, big fenced back yard, central heat and air, over 2,200 sq. ft. living area. Priced to sell in low 30's. Shown by appointment. Call 385-3515. TF-H

**Real Estate**

30 acres dry land stock farm. Close to pavement. No improvements. Contact L. Peyton Reese. TF-R

CHOICE irrigated quarter for sale near Anton. For appointment write Box 534, Anton, Tex. 79313. 9-25-P

Real Estate: Small lot on 19th St. Cres. Park addition. Call Merlin Yarbrough, 385-4755. TF-Y

**Misc. For Sale**

BALED alfalfa hay. Phone 385-3636 or 299-4763. TF-N

GRAPES for sale. 1/2 mile S.E. of Amherst. B.L. Greener, 246-3525. TF-G

**Bus Service**

SELL AND INSTALL Aluminum windows and do painting. L. M. Synatzske, 997-4911.

**Misc.**

NOTICE: Senior citizens mini bus, Littlefield area every Fri. Call 385-5425. TF-S

2 BEDROOM house for sale on 17th St. Contact owner at 401 E. 19th St. 385-5318. 9-21-P

1027 W. 5th, Littlefield. 2 bedroom, large kitchen and family room combination. Lots of garden space. 2 corner lots. Phone 385-4774 after 5. 9-25-D

WHITE BRICK veneer, 2 bedroom, large bath, wood yard fence, garage with double drive. 114 E. 18th. \$15,000. 385-4696. 9-25-H

2 BEDROOM house, carpet, partly furnished. \$12,900. 1014 W. 9th. 385-6179.

loop 84, brick, 3 bedroom, 3 bath, walk-in closets, basement, one acre, fireplace. 385-4204 385-4919.

Brick veneer at 700 Cres. Dr., facing park; 3 bedroom, 3 baths, 2 fireplaces, living room, large carpeted office, 2 car garage with shop, covered screened-in patio, fenced backyard, built-in stove, dishwasher and garbage disposal, with Nutone service center, central refrigerated air and heat, carpeted, with built-ins and large closets; immediate possession. Call Bob or Mary Rogers at 385-3895 for additional information. 9-21-A

HEX MOM! 9:30 a.m.-3 p.m. daily, Saturdays optional. If you meet our requirements the position offers unlimited income opportunity. Experience in church, PTA, scouting or community work desirable. Write Rayford or Martha Thomas, Division Sales Managers, P. O. Box 5216, Lubbock, Texas 79417. 9-25-P

MALE OR female route driver for Rainbow Baking Co. Contact Ed Isbell at 201 Main, Amherst, after 7 p.m. or apply at Rainbow Baking Co. in Lubbock. 9-25-R

"L-O-O-K" EXTRA INCOME Dependable person to service and collect from NEW TYPE HIGH QUALITY DISPENSORS dispensing only nationally advertised products. We establish accounts and place dispensers for you. References, \$1,750.00 to \$4,750.00 cash capital necessary for excellent income. Investment secured by inventory. We will match qualified persons investment and put you on the road to success. For local interview write: Big State Distributing Co. 3655 LaJoya Drive Dallas, Texas 75220 Include Telephone number

**Beauty By Mary Kay**  
Call: Freddie Duke  
385-5064  
1318 W. 14th

**FOR RENT** 164 acres land in southeast Lamb County. Call 799-1892 or 799-1285 collect in Lubbock, Tex. 9-28-O

CORNER LOT 12 and 1/2 of 11, 17th St. across from First Christian Church. Call 246-3250, Amherst, TF-D

24x104' Brick and Tile building, formerly Robert's Studio.  
3 bedroom, 2 bath, 2 car garage. Extra large home with storm cellar.  
Drive-in located in Anton, Texas. This business will make a good return on investment.

2 bedroom, 1 car garage on West Second. \$5,000.  
4 bedroom, 2 bath and 3-car garage.  
Robert Richards  
Real Estate  
385-3293

EARLY American sofa and chair, newly upholstered. Can be seen at 400 Bell or call 385-4934.

PIANO for sale. \$200. Phone 385-4774.

Miscellaneous Shop has a nice selection of new and used furniture and appliances, antique furniture, glassware, and lots of miscellaneous items. We buy, sell or trade. Come see us. 385-3714. TF-Y

THREE choice cemetery lots in Masonic Memorial Garden. \$250 each. Call after 6 p.m. 214-632-5328. Financing can be arranged. 10-2-S

FOR SALE: wheat seed, clean and packed. 385-4276.

FOR SALE! African Millet hay with grain. \$1.60 per bale or \$60. per ton. Garland Kooztz, one mile north of Littlefield Radio Station. TF-K

REGISTERED poodle puppies for sale. Call 385-4611. TF

**Concrete Work**  
Now is the time  
Call 385-6144  
Rosales Concrete

**Industrial BEARING & BELTS**  
Forney Welders & Supplies  
\*Farm Equip.  
G & C AUTO SUPPLY  
700 E. 14th  
385-4431

**Campbell's Plumbing Co.**  
Heating Air Conditioning Sheet Metal Work  
Complete stock of repair parts for all major lines of plumbing, heating, air conditioning products. Service on all major lines heating and air-conditioning equipment. Sales Service Installation. Bus. phone 385-5020 1022 E. 9th

**Will Build re-enforced concrete cellars.** Redbuilt houses. H.G. Ferguson, 385-5508. 11-30-F

**RENT CONVALESCENT** equipment at Britain Pharmacy. Wheel chairs, crutches, hospital beds, other items. Complete line convalescent needs. TF-B

**SEWER stopped up?** Let us unclog your sewer line with our Roto Rooter Service. Harrell Building Supply, Anton. 997-3621. TF-H

**TREWAX rug shampooer** for \$2. per day. Harrell Building Supply, Anton. TF-H

**MATTRESSES complete** renovating. New mattresses & box springs, any size. Call Mrs. Claude Steffey, 385-3386, agent for A & B Mattress Co., Lubbock, Tex. TF-S

**JIMMIE GRAY roofing, painting, general carpentry.** All work guaranteed. Call 385-5068. TF-G

**RAY REED Sales & Service.** Cleaning & lubricating supplies. Top quality from Conklin. 835-4964 or 385-5122. Paying more is your business—paying less is mine. TF-R

**BISHOP PEST CONTROL**  
Trees, Homes, Yards.  
385-5492 or 997-5011

**SuJe's Canine Grooming** open Tuesday-Friday 9 a.m. to 6 p.m. Call 385-4234, 385-3247, 385-5871 for appointments.

**LITTLEFIELD ROOFING ROOFING**  
All types built-up asphalt roofs. Composition shingles. All work guaranteed. Call Ron Foshee, 385-5680, Littlefield, Texas.

**Trif-County SAVINGS AND LOAN**  
\*Conventional Loans  
\*Home Impr. Loans  
\*Installment Loans  
Littlefield Office  
410 LFD Drive  
Ph. 385-5149

**Hereford Slates Art, Craft Show**  
An arts and crafts show will be sponsored by Hereford merchants at Sugarland Mall in Hereford Oct. 25-26 at the mall. All exhibits must be hand-crafted or original art, but there is no limit on the type of works displayed. Both fee will be \$10, and the fee must accompany applications for a space. Applications may be made to Texas Gallery and Frame Shop in the mall. The show will be open Oct. 25 from 10 a.m. to 6 p.m. and Oct. 26 1 p.m. to 6 p.m. Deadline for entries is Oct. 15.

**SPC Enrollment Up 26 Percent**  
Fall semester enrollment at South Plains College totalled 2,376 students, an increase of more than 26 per cent over the same registration period last year, according to Jerry Barton, registration and dean of admissions. Of the total, 2,082 are enrolled in classes on the main campus here and at extension divisions at Reese Air Force Base and in Lubbock. Some 294 students also are signed up at the Regional Occupational Center in Plainview. The enrollment total for the same period last fall was 1,876, Barton added.

**GET RIGHT TOY**  
Before buying children's toys, know for what age child the toy is designed and how it can be used.

**LET OUR EXPERIENCE AND TRAINING WORK FOR YOU**  
SECURING HOME LOAN FINANCING DISCLOSURE/SETTLEMENT STATEMENT ADVANCE DISCLOSURE ESCROW ACCOUNTS PREVIOUS SELLING PRICE DISCLOSURE TRUTH IN LENDING DISCLOSURE.  
OTIS BENNETT REAL ESTATE  
385-4215 or 385-3575

Ch. 11 KCBT	Ch. 13 KLBK	Ch. 28 KMCC
6:30 * News Weather Sports 6:45 * Sacred Heart 7:00 * Jerry Farrell 8:00 * Day of Discovery 8:30 * James Robison 9:00 * Rex Hubbard 10:00 * Oral Roberts 10:30 * Kathryn Kuhlman 11:00 * Living Your Religion 11:30 * A Better Life 12:00 * NFL Pro Football Houston/N. England 3:00 * Hogan's Heroes 3:30 * Department 5 4:30 * Foramy Furniture Care 5:00 * Meet The Press 5:30 * Evening Report 6:00 * World of Disney 7:00 * The Family Halvok 8:00 * "McCloud" 10:00 * Weekend Wrap-Up 10:30 * Steve Sloan Show 11:00 * "Night of the Following Day" 12:45 * News Weather Sports	7:00 * This is the Life 7:30 * Around The World In 80 Days 8:00 * U.S. of Archie 8:30 * Harlem Globetrotters 9:00 * Bullwinkle 9:30 * A Place To Talk 10:00 * Underdog 10:30 * Face The Nation 11:00 * Kaleidoscope 11:30 * Pro-Game 12:00 * NFL Football N. Orleans/Wash. 2:30 * NFL Football L.A./Dallas 6:00 * Three for the Road 7:00 * Cher 8:00 * Kojak 9:00 * Bronk 10:00 * Channel 13 News 10:30 * CBS Sunday News 10:45 * "Young Mr. Lincoln" 12:30 * Channel 13 News	8:00 * Jimmy Swaggart 8:30 * Exciting Life 9:00 * Encounter 9:30 * Wrestling 10:30 * Human Dimension 11:00 * First Baptist Church 12:00 * Let The Bible Speak 12:30 * Friends of Man 1:00 * College Football 2:00 * Size Fuedel 2:30 * International Ryder Cup Matches 5:00 * Pop Goes the Country 5:30 * Ways of Hope 6:00 * Friends of Man 6:30 * Swiss Family Robinson 7:00 * Six Million Dollar Man 8:00 * "Serpico" 10:00 * "Hurry Sundown"
Ch. 11 KCBT	Ch. 13 KLBK	Ch. 28 KMCC
6:30 * Sanford & Son 7:00 * The Invisible Man 8:00 * "There's A Girl In My Soup" 10:00 * Weekday Wrap-Up 10:30 * Tonight Show 12:00 * Tomorrow 1:00 * News Weather Sports	6:30 * To Tell The Truth 7:00 * Rhoads 7:30 * Phyllis 8:00 * All in the Family 8:30 * Mousie 9:00 * Medical Center 10:00 * Channel 13 News 10:30 * CBS Late Movie 12:30 * Channel 13 News	7:00 * Barbary Coast 8:00 * NFL Monday Football 10:45 * KMCC News 28 11:15 * Grant Taff Show
Ch. 11 KCBT	Ch. 13 KLBK	Ch. 28 KMCC
6:30 * Adam 12 7:00 * Movin' On 8:00 * Police Story 9:00 * Joe Forrester 10:00 * Weekend Wrap-Up 10:30 * Tonight Show 12:00 * Tomorrow 1:00 * News Weather Sports	6:30 * SWC Highlights 7:00 * Good Times 7:30 * Joe & Sons 8:00 * Switch 9:00 * Bacon Hill 10:00 * Channel 13 News 10:30 * CBS Late Movie 12:30 * Channel 13 News	7:00 * Happy Days 7:30 * Welcome Back Kotter 8:00 * The Rookies 9:00 * Marcus Welby 10:00 * KMCC News 28 10:30 * Wide World Mystery
Ch. 11 KCBT	Ch. 13 KLBK	Ch. 28 KMCC
6:30 * Adam 12 7:00 * Little House on the Prairie 8:00 * Doctor's Hospital 9:00 * Petrocelli 10:00 * Weekend Wrap-Up 10:30 * Tonight Show 12:00 * Tomorrow 1:00 * News Weather Sports	6:30 * To Tell The Truth 7:00 * Tony Orlando & Dawn 8:00 * Cannon 9:00 * Kate McShane 10:00 * Channel 13 News 10:30 * CBS Late Movie 12:30 * Channel 13 News	7:00 * When Things Were Rotten 7:30 * That's My Mom 8:00 * Baretto 9:00 * Starsky & Hutch 10:00 * KMCC News 28 10:30 * Wednesday Movie
Ch. 11 KCBT	Ch. 13 KLBK	Ch. 28 KMCC
6:30 * Adam 12 7:00 * The Montefuscos 7:30 * Fry 8:00 * Eileen Queen 9:00 * Medical Story 10:00 * Weekend Wrap-Up 10:30 * Tonight Show 12:00 * Tomorrow 12:30 * Barbara Walters Special	6:30 * To Tell The Truth 7:00 * The Waltons 8:00 * CBS Thursday Movie 10:00 * Channel 13 News 10:30 * CBS Late Movie 12:30 * Channel 13 News	7:00 * America 8:00 * Streets of San Francisco 9:00 * Harry O 10:00 * KMCC News 28 10:30 * Wide World Mystery

# Quasar

SOLID STATE COLOR TV ENSEMBLE

19" diagonal with "SATELLITE" REMOTE CONTROL

The convenience of "Satellite" Control—in the most technically featured 19" Color TV offered by Quasar

- High Performance QS3000 100% Solid State Modular Chassis delivers outstanding picture
- "In-Line" Matrix-Stripe Picture Tube with color stripes replacing conventional dots
- All Electronic VHF and UHF Tuners, with no moving parts to wear out and a Program Center for up to 18 channels on one dial
- "Super Insta-Matic" Color Tuning with Electronic Light Sensor Picture Control
- Instant Picture and Sound
- Energy Saver Switch
- Rich Rosewood finish high impact plastic cabinet

Model TT5545MT

**\$598.88**

- "SATELLITE" REMOTE CONTROL TUNING
- Changes channels
- Turns set on or off
- Adjusts volume
- Slumber Sentry circuit automatically shuts off set when station stops transmitting

**PAT'S RECORD CENTER**  
385-4664  
515 Phelps Ave.

Ch. 11 KCBT	FRIDAY EVENING Ch. 13 KLBK	Ch. 28 KMCC
6:30 * Emergency 7:30 * Chco & The Man 8:00 * Rockford Files 9:00 * Police Woman 10:00 * Weekend Wrap-Up 10:30 * Tonight Show 12:00 * Midnight Special 1:30 * News Weather Sports	6:30 * To Tell The Truth 7:00 * M*A*S*H 7:30 * Big Eddie 8:00 * Hawaii 5-0 9:00 * Barnaby Jones 10:00 * Channel 13 News 10:30 * CBS Late Movie 12:00 * "Dabow Incident"	7:00 * Mobile One 8:00 * ABC Friday Movie 10:00 * KMCC News 28 10:30 * Wide World-Special

Ch. 11 KCBT	SATURDAY Ch. 13 KLBK	Ch. 28 KMCC
6:45 * News Weather Sports 7:00 * Emergency Plus Four 7:30 * Sigmond 8:00 * Secret Life Of Walter Kitty 8:30 * Pink Panther 9:00 * Lord of the Last 9:30 * Run, Joe, Run 10:00 * Beyond The Planet of the Apes 10:30 * West Wind 11:00 * Josie & Pussycats 11:30 * Gel 12:30 * World of Survival 1:00 * What's Going On 1:30 * Baseball Game of Week 4:00 * Porter Wagoner 4:30 * That Good Ole Nashville Music 5:00 * Wild Kingdom 5:30 * NBC News 6:00 * Lawrence Walk 7:00 * Laredo 8:00 * "The Man Who Loved Cat Dancing" 10:20 * Weekend Wrap-Up 10:50 * Tomorrow Special 12:20 * News Weather Sports	7:00 * Pabbies & Bam Bam 7:30 * Bugs Bunny! Road Runner Hour 8:30 * Scooby Doo 9:00 * Shazam 10:00 * For Out Space Huts 10:30 * Ghost Busters 11:00 * Valley of the Dinosaurs 11:30 * For Albert! Festival 12:00 * CBS Film Festival 1:00 * Soul Train 2:00 * NFL Action 2:30 * The Fisherman 3:00 * World of Racing 3:30 * Sports Spectacular 5:00 * CBS Film Festival 5:30 * CBS News 6:00 * Hee Haw 7:00 * The Jeffersons 7:30 * Doc 8:00 * Mary Tyler Moore 8:30 * Bob Neuharth 9:00 * Carol Burnett Show 10:00 * Channel 13 News 10:30 * Sammy & Co. 12:00 * "Yellow Sky"	7:00 * Hong Kong Phooey 7:30 * Tom & Jerry! Grape Ape Show 8:30 * The Last Soster 9:00 * Adventures of Gulligan 9:30 * Uncle Croc's Block 10:00 * Odd Ball Couple 11:00 * Speed Buggy 11:30 * American Bandstand 12:30 * NCAA Football Illinois/Tex. A&M 4:00 * Wide World of Sports 5:30 * RAP 6:00 * Space: 1999 7:00 * Howard Knell 8:00 * S.W.A.T. 9:00 * Matt Helm 10:00 * Bob Strapton Show 10:30 * "Branded"





FOOTBALL atmosphere in the air and talk about it everywhere, children at Williams Kindergarten are excited about their own football field. Each child's scholastic achievement is rewarded by the moving of miniature footballs down field for a touchdown. Shown around the football field drawn by Mrs. Lewis Boomer are the Jack and Jill boys. (Staff Photo)

FINGER PAINTING is a special means of expression being taught each Thursday morning at Williams Kindergarten by Mrs. Stacey Armes. Shown at work at the tables are the Jack and Jill girls. (Staff Photo)

## ENOCHS

MR. AND MRS. Kenneth Millsap of Tulsa and daughter, Valerie, attended the Tulsa and Morton Football game and then spent the night with their mother, Mrs. Alma Altman. Tulsa won the game.

MR. AND MRS. Kenneth Coats went to Hobbs last Saturday to help their son, Keith, prepare their trailer home to move to Levelland.

MR. AND MRS. Jack Spence of Glenn, Calif. surprised their cousin, Mrs. Alma Altman Sunday afternoon. Jack was a former resident of Littlefield in the 1920's, so Monday they were taken on a tour of Littlefield area and they were surprised at the vast changes. They admired the Main streets of the town itself and the beautiful crops. The windmill near the Depot, and the pumping oil wells, right in town. They made the remark California does not have all the beauties, Texas has a few.

MRS. WINNIE BYARS visited her children, Mr. and Mrs. Tom Byars and their two babies, Scott and Alice Ann at Friona.

RAYMOND WILKINS was the speaker for Sunday morning's services in Enochs Baptist Church. He spoke in behalf of TANE. His home is at Slaton.

REV. CHARLIE SHAW was able to be in both church services, Sunday and during the night he became ill and was taken to Littlefield Hospital.

AMY LYN LYTAL, daughter of Mr. and Mrs. Jimmy Lytal of Morton, was honored with a baby shower at the Enochs-Bula Community Center last Wednesday afternoon. The serving tablecloth was covered with a pink lace cloth. Cookies, peanuts, and punk punch were served to the guests. Many useful gifts were unwrapped and enjoyed by the mother, Mrs. Sharon Lytal and grandmother, Mrs. Myrna Turney. Hostesses were Mrs. Betty Medlin, Betty Tiller, Peggy Sowder, Joyce Risinger, Rhea Lynn Newton, and Linda Fred.

The hostess gift was a diaper bag, car seat, a jumper, and a large blanket.

## AMHERST NEWS

MRS. MARTIN WHITE and her daughter, Mrs. Lavelle Hardwick, were in Tahoka Saturday, Sept. 13 and attended the wedding of Mrs. Billie White and Warren Embry. It was held in the chapel. A dinner was served later for relatives and friends attending.

MR. AND MRS. James Burks of Wichita Falls are guests of his cousin, Mrs. Guy Hufstetler Jr. and family this week.

MR. AND MRS. Richard Lemer, Joe and Jeff were at Lake Brownwood last weekend with her sister, Mr. and Mrs. Laverne Long who have a cabin there.

## ENOCHS

MRS. ALMA ALTMAN

MR. AND MRS. Quinton Nichols spent the weekend at Raton, N.M.

MR. AND MRS. Harrold Layton and their house guest, Tomoyo Kunisawa from Japan, attended the District State Line Butane meeting at the Koko Inn at Lubbock. This was a director and managers meeting.

MRS. J. D. Bayless gave a birthday dinner for her twin brothers, Clyde Coffman of Morton and Claude of Muleshoe. Their wives attended also. This was their 77th birthday.

MRS. G. R. NEWMAN returned home after a week's visit with her daughter, Mr. and Mrs. Al Reasoner. In the afternoon her nephew and his wife from Hobbs came to see her.

MR. AND MRS. J. W. Layton visited his brother, Mr. and Mrs. Frank Layton at Midland. Friday they had dinner with their sister, Mandy Terrell and then they returned home Saturday.

LITTLE Becky Petree, daughter of Mr. and Mrs. Kenny Petree of Clovis, N.M. spent several days with her grandparents, Mr. and Mrs. Chester Petree of Enochs.

CROPS got a refreshing rain last weekend. We also had some damaging hail in spotted areas. The first load of grain has come into the Coop Elevator. Cotton is maturing and since the good rain, wheat land is being prepared and sown in wheat. The country is beautiful with its crops.

MR. AND MRS. Gene Autry and boys from Dimmitt spent the weekend with their parents and other relatives, Mr. and Mrs. Ed Autry.

MR. AND MRS. L. T. Lytle of Conroe visited their sisters, Mr. and Mrs. Fred Locker and family of Bula and Mr. and Mrs. Shorty McCall of Enochs.

was yellow flowers and yellow tapers. The theme carried out Beginning Day in Beta Sigma Phi.

Members present were Bonnie Stephens, Kyra Cox, Pat Mott, Pat Stubbs, Judy Vaughn and Kris Bean. Guests included, Freddie Duke, Janice Graves, Dorothy Powell, Sharon Brown and Shiela Hanlin.

## Wedding Solemnized In Seminole

BULA—Mrs. Ester Blevins of Grants, N.M. and J. W. Judeman of Bartlesville, Okla., were united in marriage Monday night, Sept. 15, in the home of Mrs. Blevins' daughter, Mr. and Mrs. Sam Spikes of Seminole.

Mrs. Blevins' son, Ollie Blevins, a Baptist missionary to the Indians in Ramah, N.M. performed the wedding ceremony. She was given in marriage by another son, Roy Blevins from Grants, N.M.

Mrs. Ken Gray, daughter of Mrs. Blevins, from Lawton, Okla. was matron of honor for her mother.

Rudy Judeman, brother of the groom from Odessa, was best man.

Following the wedding, a reception was held in the Spikes home, where wedding cake and punch were served by Mrs. Ruth McCormack, daughter of Mrs. Blevins and Cindy Spikes, granddaughter, to the 25 relatives and close friends who attended.

The bride was attired in a pink silk blend two-piece suit with matching floral scarf and white accessories.

The new Mr. and Mrs. Judeman flew to Montana for a few days' honeymoon. They will be making their home in Bartlesville, Okla.

Attending the wedding from here were Mr. and Mrs. John McCormack and children, Danny, Heather and Cornell.

**AVOID SLIPPAGE**  
To keep soft fabrics from slipping off the surface while sewing, place a towel on the sewing machine surface to the left of the needle.

**SCRUB REFRIGERATORS**  
Refrigerator interiors should be scrubbed periodically with suds to reduce odors and bacteria.

## Beta Chi Chapter Holds First Meeting

The regular meeting of the Beta Chi Chapter of Beta Phi was held Monday at the Reddy Room.

The meeting was called to order by president Bonnie. The roll was called and there were five members present. A visit by Pat was at Plainview. There were five guests present.

Old business was read and the treasurer's report was given. Then each member was asked to relate for the duties her office there was also a com- view.

The program was given from the new program book entitled "Heritage and the Woman." The title of the program for the evening was "Woman, her heritage and her hope." The members and guests were asked to have some fun by compiling on construction paper from pictures from magazines their ideas of what a modern total woman consisted of. Everyone enjoyed their composites of "Modern Women."

The meeting was dismissed and members and guests were invited to browse through Beta Sigma Phi items on display at

the "Let Heritage Ring" table. The table was set in Heritage red, white and blue with a bell centerpiece. The bell had the letters Beta Sigma Phi and "Let Heritage Ring" inscribed upon it. Items on display were the Torch magazines, Beta Sigma Phi Jewelry, cookbooks and partybooks.

Refreshments were served and guests and members enjoyed "Our Special Banana Punch, and a cake in the shape and colors of the Beta Sigma Phi crest. The table was set in white with crystal and gold appointments. The centerpiece

royal park  
DALLAS

Encron® Golden Touch polyester by ENKA

First Soft As Polyester Western Jacket

Encron® polyester have western style jacket. In colors of Navy, Mocha, Loden, Must.

\$19.

100% Encron® pull-on pant in Navy, Ivory, Mocha, Loden, Must.

\$11.

Print Shirt... \$11.

Satisfaction Guaranteed

**Anthony's**  
C. R. ANTHONY CO.

## NOTICE

### TEXAS HUNTING & FISHING LICENSE AVAILABLE AT

# Western Auto

See Our Complete Line Of Hunting And Fishing Equipment

## WHEAT SEED FOR SALE

### Cleaned, Sacked, Treated

# LITTLEFIELD DELINTING CO.

Spade Highway Littlefield 385-4533

Taste the Difference... Pocket the Savings!

## QUALITY FOOD SALE

<p>PURECANE SUGAR 5 LB BAG \$1.43</p> <p>KOUNTRY FRESH MILK 4 TALL CANS \$1.00</p> <p>CRISCO 3 LB CAN \$1.79</p> <p>KIM DOG FOOD 6 NO. 300 CANS \$1.00</p> <p>PRIME RIB STEAKS LB \$1.29</p>	<p>BIG K FLOUR 25 LB BAG \$3.49</p> <p>NEW CROP TOKAY GRAPES LB 29¢</p> <p>GOLDEN RIPE BANANAS LB 17¢</p> <p>COLORADO CABBAGE LB 10¢</p> <p>SIRLOIN STEAK LB \$1.29</p> <p>RATH'S BULK BACON 2 LB PKG \$3.29</p>
--	--

NEW STORE HOURS:  
MON THRU SAT 8 A.M. - 8 P.M. SUN. 8 A.M. - 1 P.M.  
QUALITY MEATS COST NO MORE AT

## MERLIN'S FOOD

Double Gunn Bros. Stamps, Tuesday & Wednesday  
9th & Levelland Highway

OPEN 7 DAYS A WEEK PRICES GOOD MON. THRU SUN. WE REDEEM FOOD STAMPS





THE NAME THUNDERBIRD, taken from the god of many American Indian tribes—a namesake the Air Force Thunderbirds are proud of. Here the camera lens, the sun and the Thunderbird aircraft capture the feeling of grace and power attributed by many American Indian tribes to their god, Thunderbird. They will be featured in open house ceremonies at Reese AFB Wednesday, Sept. 24, and at Cannon AFB at Clovis, N.M. Saturday, Sept. 27. (Air Force Photo by SSgt Henry Dutcher)

### Army Parachute Team To Perform At Cannon

The world champion U.S. Army Parachute Team, the "Golden Knights", will demonstrate their free-fall jumping skill on Saturday, Sept. 27th at the Cannon AFB annual Open House. The open house will run from noon until 5 p.m. and will also feature a variety of other events including a performance by the Air Force's aerial demonstration team, the "Thunderbirds".

While maneuvering in free-fall from altitudes of up to 13,000 feet, the "Knights" will plunge earthward at speeds nearing 200 mph before opening their parachutes to glide to a stand-up landing in the demonstration area.

While free-falling, the jumpers will perform various intricate maneuvers visible to

spectators by a trail of smoke emitting from smoke grenades clamped to the jumpers' boots. After the jumping is completed, the "Knights" will remain in the area to give interested spectators a chance to see how a parachute is packed and to answer questions about both parachuting and the Army.

Having performed more than 145 thousand jumps, this championship team has delighted more than 85 million spectators in twenty-four foreign nations and throughout all fifty states.

The Cannon AFB open house is an excellent opportunity for the whole family to see the most breathtaking parachute performance in the United States. The first jumper will exit the aircraft at 2:10 p.m.

### Alpha Lambda Zeta Chapter Holds Meeting

The Alpha Lambda Zeta Chapter of Beta Sigma Phi, met Sept. 15, in the Southwestern Public Service Reddy Room, with President, Brenda Denton presiding.

Janice Sebring, service chairman, reported that the Eye Screening, to detect the lazy eye in children, will begin Monday, Oct. 6. The Chapter will test kindergarten, first and second grades in Public School.

Members attended a workshop in February to qualify with the Texas Prevention of Blindness in order to do the testing. This will be one of the main service projects for the year.

The members decided to order "Save and Win" books to sell as a Ways-and-Means project. The books feature do-it-yourself crafts made from several different materials as well as a section of favorite recipes.

Items to be sold at the Christmas Bazaar, Dec. 6, were discussed, and all members were urged to complete their crafts for the Bazaar.

The main topic for discussion was Rush. Final plans were made for the Rush parties.

An all-girl party will be held Monday, Sept. 22, in the XIT Room of Security State Bank. Theme will be "Back to School" with members and guests wearing their favorite style from their school days.

A "Night in Las Vegas" will be held Saturday, Sept. 27, in the

Lamb County Electric Willey Room. A salad supper will be served to the couples attending.

The final activity of Rush, The Model Meeting, will be held Monday, Oct. 6, in the XIT Room of Security State Bank.

The cultural program for the evening was entitled "What Women are Heir To," and was presented by Ruan Richardson and Janice Appleton. Ruan presented the cons to Womens Lib and Janice presented the pros.

Each of the girls were dressed to represent their respective parts on the subject. During the enlightening debate, matron Richardson touched on such ideas as women should not smoke, wear trousers or be educated. Ms. Appleton countered by saying that women could do anything a man could do, only better.

Turning to a more serious side, Janice read of several historic accomplishments women had made through the years.

The door prize was won by Darlene Maxfield.

Hostesses Cathy Hufstelder and Charla Rountree served refreshments of individual pizzas, tossed salad, frozen fruit dessert, sock-it-to-me cake, Coke and Dr. Pepper to: Brenda Denton, Linda Charlton, Ruan Richardson, Linda Jones, Darlene Maxfield, Deanna Friday, Janice Appleton and Janice Sebring.

# SINK YOUR TEETH INTO OUR OWN BRANDS

FOR ADDITIONAL SAVINGS!

- COCA COLA 32 OZ, 6 BOTTLE CARTON \$1.38
- DR PEPPER 32 OZ, 6 BOTTLE CARTON \$1.38
- ANTI-FREEZE PRESTONE, GALLON \$3.98
- PUMPKIN PIE MIX LIBBY'S, 2 1/2 SIZE 59¢
- TEA BAGS SHURFINE, 48 COUNT 79¢
- TUNA SHURFINE, FLAT CAN 48¢
- TIDE KING SIZE \$2.19
- COOKING OIL JEWEL, 38 OZ 99¢
- SHORTENING BAKERITE, 3 LB CAN \$1.39
- PEANUT BUTTER SHURFINE, 12 OZ 59¢
- GREEN BEANS & POTATOES SHURFINE, CUT, 15 1/2 OZ 3/\$1
- SUGAR WAFFERS FIRESIDE, ASS'T FLAVORS 3/\$1
- HI-C DRINK 46 OZ, ASSORTED FLAVORS 49¢
- RANCH STYLE BEANS 32 OZ 2/98¢
- TRASH CAN LINERS SHURFINE, 10 COUNT 89¢
- SCOURING CLEANSER PINESOL, 14 OZ 2/29¢
- BLACKEYE PEAS SHURFINE, 15 OZ 4/\$1
- MIXED VEGETABLES SHURFINE, 16 OZ 3/\$1
- PORK & BEANS JOAN OF ARC, 15 OZ 3/89¢

- GRAPEFRUIT RUBY RED, LB 15¢
- APPLES JONATHAN, NEW CROP, LB 33¢
- YELLOW ONIONS MEDIUM SIZE, LB 15¢
- POTATOES RUSSETS, 10 LB BAG 79¢
- LETTUCE FRESH FIRM HEADS, LB 29¢
- BUTTERMILK BORDEN'S, 1/2 GALLON 73¢
- WHIPPING CREAM BORDEN'S, CARTON 43¢
- COTTAGE CHEESE BORDEN'S, 12 OZ 49¢
- SOUR CREAM BORDEN'S, 8 OZ 39¢
- ICE CREAM SHURFRESH, 1/2 GAL. 98¢
- PIZZA JENO'S 79¢
- FROZEN DINNERS MORTON, CHICKEN, MEAT LOAF, TURKEY, SALISBURY STEAK, TURKEY TETRAZZNE, EA 49¢
- OLE SOUTH COBBLERS 2 LB PKG \$1.19
- HONEY BUNS MORTON, 9 OZ PKG 59¢
- EGG BEATERS FLEISCHMANN'S 79¢

**RIB STEAK**  
CHOICE  
POUND \$1.19

**FAMILY STEAK**  
POUND \$1.19

**BEEF RIBS**  
POUND 59¢

**BEEF STEAKS**  
T.M.  
POUND 99¢

**CHEESE**  
SHURFINE INDIVIDUAL SLICES, 8 OZ PKG  
99¢

**FLOUR** GOLD MEDAL  
5 LB 83¢ 25 LB \$3.98

**BREAD DAWN** TENDERCRUST, FAMILY SIZE 2/79¢

**DOWNY** LIQUID DETERGENT, 32 OZ \$1.19

**SPINACH** 64 OZ SIZE \$1.79

**DOG FOOD** SHURFINE, 15 OZ 4/79¢

ROXEY, TALL CAN 7/79¢

CONVENIENT LOCATIONS 332 E. DELANO AND 601 E. 10th

AFFILIATED

## Pay-n-Save

QUALITY AND SERVICE

WE GIVE GUNN BROS STAMPS!

DOUBLE STAMPS TUESDAY & WEDNESDAY WITH \$2.50 OR MORE PURCHASE (EXCLUDING CIGARETTES)

WE RESERVE THE RIGHT TO LIMIT QUANTITIES

WE REDEEM AND GIVE STAMPS ON FOOD STAMPS

WE SELL TRAVELERS EXPRESS MONEY ORDERS, PAYROLL CHECKS CASH

**INSUR-MATION**

Ed Jennings 385-4489

Southern Farm Bureau Life Ins. Co.

How does the cost of life insurance compare now to what it was twenty years ago?

It is probably the only service-oriented product that serves a long-established need and continues to go down in price per thousand at any given age. There are many good reasons... competition being one of the biggest. Contrary to popular belief, life insurance rates are not set by any government regulatory body. As the insurance industry has become more sophisticated with the use of automation and modern business methods, so have the field representatives... a smaller, more professional sales force... helping people simplify their problems. People live longer and insurance companies invest their money more wisely. Therefore, you have a better product at a cheaper price with reduced administration costs.



WHERE YOU ALWAYS BUY THE BEST FOR LESS

**GIBSON'S**  
**GIBSON'S**  
**DISCOUNT CENTER**

**311 E. 8th St.**  
**Littlefield, Texas**

*Opens Daily at 9 a.m.*

**Sale Starts Today--Lasts One Week**

**HAMMERING DOWN  
HIGH PRICES**



**Admiral  
Stereo Tape  
Player  
Combination**

**Reg. 229.99**

*now*

**166<sup>66</sup>**

**STP OIL TREATMENT**

**Our 1.27**

*now*

**88<sup>c</sup>**







DISCOUNT CENTER



# SHOOTING DOWN HIGH PRICES



SSS 2595

Automatic

## Tape Player

Our 46.99

now

# 33<sup>33</sup>

**Closeout on 8 Track Tapes**  
 Values to 2.99  
 now  
**\$1<sup>88</sup>**  
 Values to 3.99--Now  
 now  
**2 \$5**



**Brookfield Athletic Football Shoe**  
 Blk-White  
 Our 10<sup>97</sup>

now **8<sup>88</sup>**

+ 761 Blk  
 #762 White

**TURTLE WAX HOT WAX**

WIPE & SHINE

ADD "HOT WAX" TO A HALF BUCKET OF WATER, MAKING THE WATER A WAX SOLUTION. APPLY AND WIPE OFF TO A BRILLIANT DURABLE SHINE.

Our 1.79

now **1<sup>29</sup>**

T411



**Acrylic Outside WHITE PAINT**

values to 6.99  
 now only  
**3<sup>99</sup>**



**SATHER'S Fresh Cookies** 39<sup>97</sup> EACH PKG.  
 Save 17<sup>97</sup> WHEN YOU BUY 3 PKG. **3 \$1<sup>00</sup>**

Soundsign 1222  
**Portable Radio**  
 Reg. 8.77  
 now **\$5<sup>88</sup>**

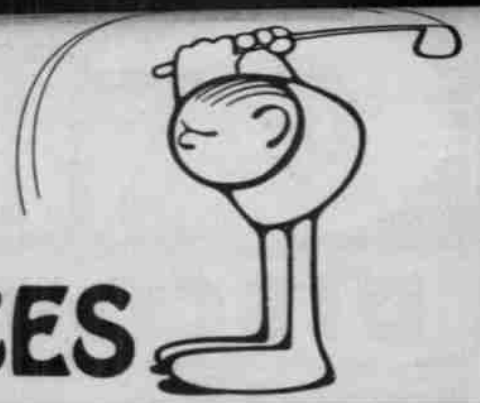




**GIBSON'S**  
DISCOUNT CENTER

Capri Bath Oil **99¢**

**TEEING OFF FOR LOW PRICES**



**HAIR CARE**  
FOR MEN AND WOMEN

*Baker's Best*

Baker's® Best Lotion  
(red) (blue) 8 oz.

Our 1.39

**99¢**

Northern Electric  
**Hot Lather Dispenser**

**9<sup>99</sup>**

Retail 12.99-now

**DUSTING POWDER**  
MAVIS • DJER • KISS  
LOV' ME •

- made of finest powder
- absorbs moisture
- an after-bath delight
- charming new plastic box with fluffy puff

8 Oz.  
Retail \$1.11

**79¢**



**ARRID EXTRA DRY**

6 Oz. Unscented  
20¢ Off Label

Retail 1.09  
now

Our 87c/72c

**Gleem II**  
5 Oz.

With 15¢ Off Label

now

**59¢**

**49¢**

Now You Save 30¢

**Depend-O**

AUTOMATIC IN-TANK  
TOILET CLEANER  
and  
DEODORIZER

- † Lower priced than the nationally advertised brands
- † Compare and Save!

Reg. Retail 69¢

now **39¢**

**New Marina Toilet Tissue**

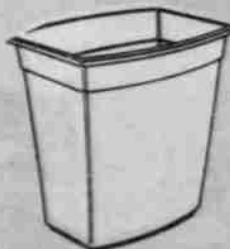
4 roll pkg.

Reg. Retail 83¢

now

**67¢**



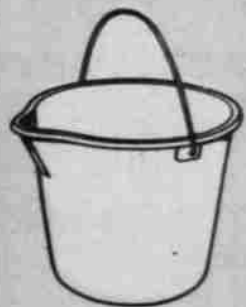


No. 254/48  
ROUND BUZHEL SIZE LAUNDRY BASKET  
4 doz. pack—42 1/2 lbs., cube 6.54  
Colors—Gold, Avocado, Yellow  
Sold per case

No. 149  
ROUND SIZE IMPACT STYRENE DUST PAN  
2 doz. pack—5 1/2 lbs., cube 1.90  
Colors—Gold, Avocado, Yellow  
Assorted per case

No. 237  
COLANDER  
Linear Polyethylene  
2 doz. pack—7 1/4 lbs., cube 1.62  
Colors—Gold, Avocado, White, Yellow  
Assorted per case

No. 1056  
10 QT. RECTANGULAR WASTE BASKET  
2 doz. pack—17 lbs., cube 1.45  
Colors—Gold, Avocado, Yellow  
Assorted per case

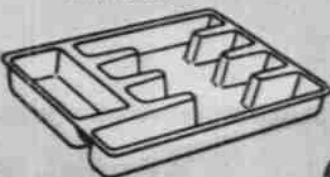


# Tucker Plastics

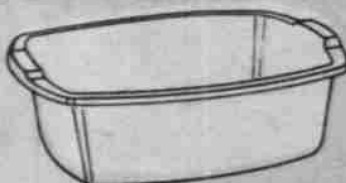
now

# 2 for 88¢

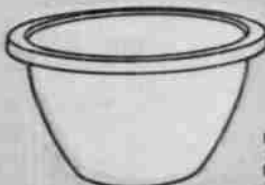
No. 260  
11 QT. SPOUT PAN  
2 doz. pack—15 1/2 lbs., cube 1.91  
Colors—Gold, Avocado, Yellow  
Sold per case



No. 225  
3 COMPARTMENT CUTLERY & UTILITY TRAY  
2 doz. pack—12 lbs., cube 1.09  
Colors—Gold, Avocado, Yellow  
Assorted per case

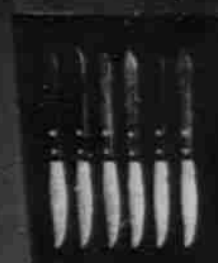


No. 1056  
10 QT. RECTANGULAR WASTE BASKET  
2 doz. pack—17 lbs., cube 1.45  
Colors—Gold, Avocado, Yellow  
Assorted per case



No. 256  
3 QT. LETTUCE CRISPER WITH COVER—NESTED  
Linear Polyethylene  
2 doz. pack—10 lbs., cube 1.52  
Color—Green with Natural Cover

# GIBSON'S DISCOUNT CENTER



6 Pc.  
**Ekco Stainless Steel  
Steak Knife  
Set**

Reg. 5.29 now

# 3.99



## Ekco Stainless Steel COOKWARE

8-Pc. Cookware Set  
Includes:  
7601 1 qt. cov. saucepan  
7611 1 1/2-qt. cov. saucepan  
7624 4-qt. cov. saucepot  
7629 9 1/2" cov. skillet

\$58.80 OPEN STOCK VALUE

now

# \$24.99



## National Presto Pressed Aluminum PRESSURE COOKER

4 Qt. Harvest Gold

Reg. 17.59

now

# \$13.99

## Miracle Candles

Spiral and Plain  
Tapers

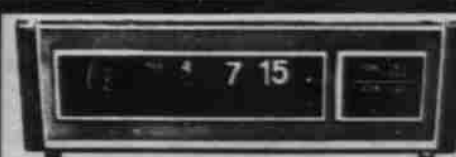
10" Reg. 33¢

12" Reg. 37¢

now

# 4 \$ 1

Packages



## Westelox Digital Clock

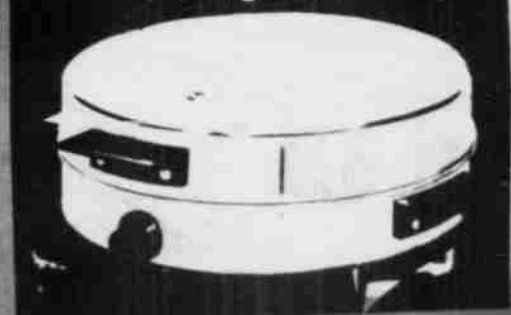
White/Woodgrain White/Denim  
Brown/Woodgrain

Reg. 17.59 Your Choice

now

# \$12.99

## Automatic WAFFLE BAKER "THE ROUND ONE"



## Superior Electric Round Waffle-Grill Comb.

Reg. 19.99

now

# \$14.99

## Ladies Purse Organizer

Reg. 1.99

# \$1.49





Men's Chambray  
Western & Regular

# SHIRTS

Our 5.99

now

# \$3.99

Dickie

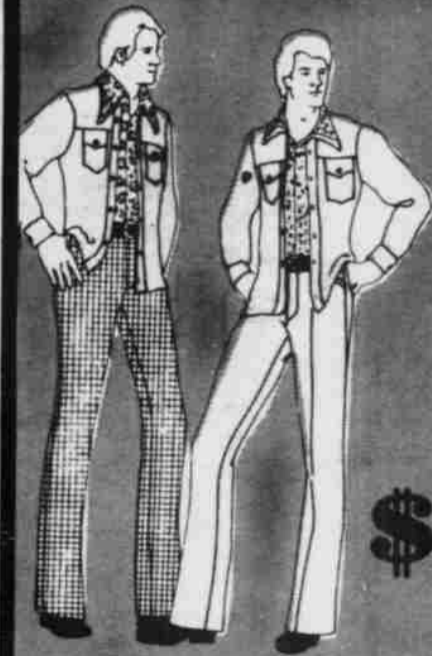
# BLUE JEANS

Our 8.99

now

# \$5.99

47932



Dickie Men's

# LEISURE SUITS

now only

# \$19.99

## Kodacolor II Film

For color snapshots in daylight or with blue flash-bulbs. This film offers reduced grain for greater sharpness in the prints which also have higher color saturation.

Our 1.29

CX 126-12

now

# 99¢



WHERE YOU ALWAYS BUY THE BEST FOR LESS  
**GIBSON'S**  
DISCOUNT CENTER

# TEARING DOWN HIGH PRICES



## 2 pc. Suits

100% Polyester - Long  
Sleeves - Button Prints.  
Pull-on Pants - Flare  
Bottoms. Sizes 10-18

Reg. 13.99

now

# 9.99



## Long Sleeve Shell

Reg. 3.99

now

# \$2.88

BLACK

#150



# TRACK SHOES

Tracksters for men - boys - youths

Our 5.99

now

# \$3.99





DISCOUNT CENTER

# STAMPING OUT HIGH PRICES



SUSPENSION  
**Maalox**



The  
Number One  
Antacid

Reg. Retail 1.65

now

**1.25**



**Vitalis**  
LIQUID  
WITH V7

Grooms Hair Without Grease

12 OZ.  
FOR 7 OZ.  
PRICE

Retail 1.39

now

**99¢**

**KIMBIES DIAPERS**  
NEWBORN 30's  
Our 1.93 now  
**\$1.49**

DAYTIME 30's  
Our 2.39 now  
**\$1.89**

EXTRA ABSORBENT 24's  
**\$1.89**

New O'cedar  
**Country Kitchen Broom**  
Our \$2.95  
now  
**\$1.99**

**FREE!** **Earth Born** CREME RINSE & CONDITIONER



With this purchase of  
EARTH BORN SHAMPOO

Our 79¢

**49¢**

APRICOT  
AVOCADO  
GREEN APPLE  
STRAWBERRY

4 Oz. Twin Pack

**CRICKET LIGHTERS**  
Reg. Retail 99¢  
now  
**69¢**

**Daisy by Gillette**  
The First Twin Bladed Disposable Shaver  
Designed Especially For Women.

**SPECIAL OFFER**  
**95¢** worth of Gillette in-store coupons in this special package

- 2 Recessed blades for safety
- Curved handle for better visibility
- Non-slip grip
- Protective safety cap
- Each shaver gives weeks and weeks of safe, close shaves

Our Regular 99¢

**69¢**

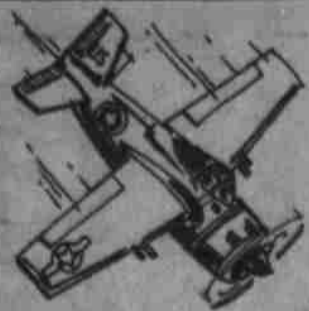


**Windex**  
**20 Oz. Refill**  
With 7¢ Off Label  
Reg. Retail 65¢  
now  
**45¢**





**JACK OR JILL DOLLS**  
11" lovable, dressed rag dolls. Select Jack or Jill.



**W.W. II FIGHTER PLANES**  
Wide variety of scale and model fighter planes.



**DENIM PURSES**  
Fashionable denim. Carrying strap and zipper.



**8-PC. POLY TOOL SET**  
For every little would-be fixer. 8 soft plastic tools.



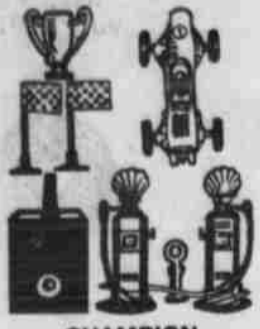
**CHARM BEAUTY SET**  
Assorted beauty sets to please little charmers.



**FRICITION BATTLE TANK**  
Friction powered with manual turning turret.



**NURSERY FOAM ANIMALS**  
Terrycloth covered. Washable, non-toxic, foam filled.



**CHAMPION RACING TEAM**  
Ejector powered racer with racing accessories.



**JR. NURSE SET**  
7-piece set lets every little girl be a nurse!



**FRICITION CYCLE WITH RIDER**  
Realistic and ready for action. Roaring sound.



**10" JUDY DOLL**  
Vinyl head with rooted hair. Movable arms, legs and head.



**PINBALL GAMES**  
Test your skill. Assorted actions for hours of fun.



**PLAYTIME BAKING SET**  
Home baking set like Mom's. Utensils of sturdy colored plastic.



**SWORD AND SCABBARD**  
Gold vinyl safe sword and scabbard for young swashbucklers.



**11 1/2" FASHION DOLL**  
Twist & turn waist. Long rooted hair. Stand included.



**FASHION DOLL CLOTHES**  
Fits all 11 1/2" dolls, including Barbie. Assorted styles. Great values.



**CHEMTOY RAPID FIRE DART PISTOL**  
Rubber-tipped darts. Shoot roll barrel—and shoot again.



**8-INCH CUTIE DOLL**  
Washable 8" doll with movable arms, legs and head.



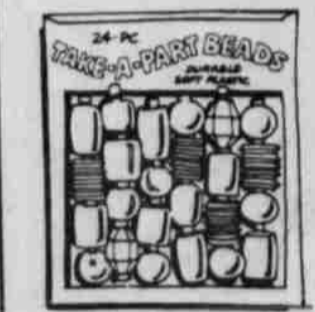
**VANITY SET**  
3-piece comb, brush and shatter proof mirror vanity set.



**UNION OR CONFEDERATE SOLDIERS**  
Interchangeable parts of unbreakable plastic. Authentic figures.



**PULL ALONG COPTER OR TANK**  
Fun for pre-schoolers. Gaily colored, non-toxic, plastic.



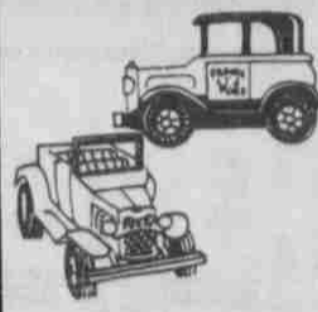
**24 TAKE-A-PART BEADS**  
Big 24-pc. set. Educational, safe, non-toxic. Durable soft plastic.



**VINYL PIGGY BANKS**  
Encourage thrift with these flower decorated piggy banks.



**MINI PLAYFOOD**  
Non-toxic plastic. Select fruit, bakery, dairy or meat and fish items.



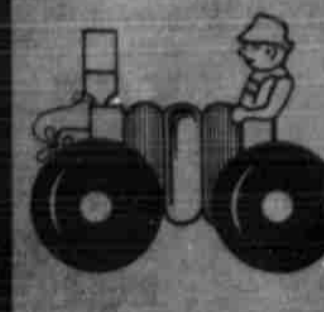
**ANTIQUE CAR**  
Die cast old time car assortment. Just the right size to collect.



**ROCKER RINGS**  
Helps coordination. Non-toxic, brightly colored vinyl rings.



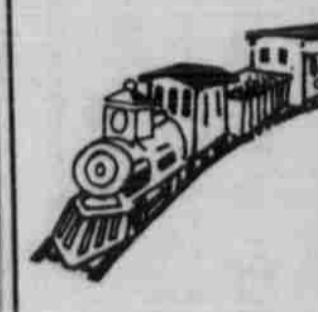
**GUNSLINGER GUN & HOLSTER**  
Perfect for little cowboys. Realistic hammer action trigger.



**TAKE-A-PART PULL TOY**  
Educational, safe and non-toxic. Pre-school fun!



**BEADED PURSE**  
Beaded bags in beautiful colors with gold-colored chain handle.



**CHEM TRAIN SET**  
Cannon Ball Express includes Red engine—2 cars and track. Durable plastic.



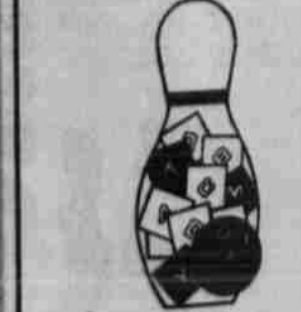
**CHEMTOY PING PONG SET**  
Score like the real game. Fast hitting game for two. Travel fun.



**WIND-UP RACERS**  
Wind up and take off straight or in circles. Choice of 4 styles.



**PLAYTIME BABY SET**  
Contains 5 infants, 3 cribs, stroller, highchair and bath.



**BOWLING PIN WITH BLOCKS**  
11-pc. pre-school bowling pin filled with blocks. Ball included.



**POLY BOTTLE & HAMMER**  
Durable all poly bottle with big soft poly hammer.



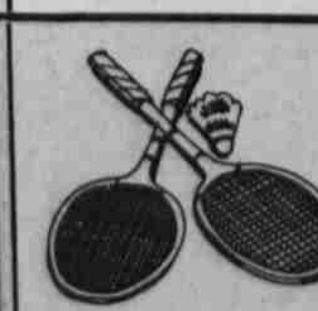
**HELICOPTERS**  
Friction powered. Revolving propeller. Durable plastic.



**ACTION BUDDY SOLDIER**  
11 1/2" G.I. Joe-type doll. Movable arms, legs, head and body.



**DOLL HOUSE FURNITURE**  
Fits miniature doll houses. Assorted room settings.



**JR. BADMINTON SET**  
2 durable rackets and birdie in carrying case.



**8-PC. BATH TOY SET**  
Non-toxic floating friends for tub, pool or playpen.



**15-PC. BLOCK SET**  
Bright vinyl squeezable blocks of numbers and letters.

# GIBSON'S

# 99 TOY RIOT

VALUES FROM \$1.19 TO \$1.69



**ACTION BUDDY MILITARY CLOTHES**  
Perfect fit for G.I. Joe. 12 piece styles. Select several.



**FRICITION CAR & TRAILER**  
Colorful, large assortment of styles.



**18-PC. FARM SET**  
Realistic barnyard animals with farmer.



**MARCUM OLDS-CADILLAC-PONTIAC-GMC**  
801 Hall Ave. • Littlefield • 385-5171

Which new Olds is right for you?



# THE 1976 *Oldsmobile* PERSONALITY QUIZ

There are 1976 Oldsmobiles for fun-lovers, hard workers, families, career women, people on a budget, introverts, extroverts, skin divers, sky divers, just about everybody. Take the Oldsmobile Personality Quiz, and find out which one is for you. Then see the new Oldsmobiles at your Olds dealer.



For those who need the room of a station wagon but appreciate all the advantages of an Oldsmobile—the durability, the luxury, the style—Olds has two of the classiest wagons you can buy anywhere. With the room and the comfort that only Olds can give you.

1. I need a station wagon in the summer...
  - a. So I can put our water skis inside and head for the beach.
  - b. So I can put the sails to our sailboat inside and head for the Club.
2. I need a station wagon in the winter...
  - a. So I can carry the kids and their hockey equipment.
  - b. So I can carry the kids and their skis.
3. I'd like my station wagon to be...
  - a. The mid-size car of my dreams turned into a wagon.
  - b. The full-size car of my dreams turned into a wagon.



**a. The Vista Cruiser:**

Surprisingly economical, this is one mid-size wagon that will stand up to families, to heavy loads, to just about anything. With standard equipment like a Rocket 350 V-8, automatic transmission, power steering and power brakes, it still carries a lower price tag than many other wagons. The Vista Cruiser is no ordinary wagon.



**b. The Custom Cruiser:**

A station wagon in the tradition of the Olds 98—the one wagon with many of the 98's quality touches—wall-to-wall cut-pile carpeting, electronic message center, deep foam seats with a center armrest on the front seat, and much more. Exceptional luxury in an exceptionally hard-working wagon.

**Vista-Cruiser and Cutless Supreme Cruiser standard features include:** Rocket 350 CID V-8 engine • Turbo Hydra-matic transmission • Catalytic converter emission control system • 116-inch wheelbase • Vari-ratio power steering • Steel-belted radial tires • Power brakes (front/disc and rear/drum) • Front seat center armrest • Deluxe vinyl upholstery • Plush pile carpeting • Rocker panel and wheel-opening moldings • Simulated wood grain body side panel (Vista-Cruiser). **Available equipment includes:** Rocket 455 CID V-8 engine • Tempmatic air conditioning • Sport wheels • Fuel economy meter • Rear-facing third seat (includes rear vent windows).

**Custom Cruiser standard features include:** Rocket 455 V-8 engine • Turbo Hydra-matic transmission • Power steering • Power brakes (disc/front, drum/rear) • Power ventilation • Wall-to-wall cut-pile carpeting • Bench front seat with center armrest • Electronic message center • High-energy ignition system • Catalytic converter emission control system • Steel-belted radial tires • 127-inch wheelbase • Dual rectangular headlamps • Rear wheel-opening covers • Divided second and forward-facing third seat (3-seat models) • Roof drip, side-window and wheel-opening moldings • Spare tire extractor. **Available equipment includes:** Tempmatic air conditioning • Night light door lock illumination • "Invisible" theft alarm system • Fuel economy gauge • AM/FM stereo radio • Anti-spin axle.

**1976**  
*Oldsmobile*

**CAN WE BUILD ONE FOR YOU?**

Oldsmobile reserves the right to make changes at any time, without notice, in prices, colors, materials, equipment, specifications and models, and also to discontinue models.



**TAKE AN OLDS FOR A SPIN.**  
We're celebrating the arrival of the newest Oldsmobiles in years. The best way to see them is from the driver's seat. Take a test drive!

**MARCUM OLDS-CADILLAC-PONTIAC-GMC**  
**801 Hall Ave. • Littlefield • 385-5171**

Photo) truck was not injured. the honors. REV serv Pres eight past Gate Chau the the mor will

The spo rough high S onnee All L com id ea The ve ex the tend



# WHICH IS SMALL

Compact Omegas and sub-compact Starfires for the practical, the playboy, the adventurous, the homebody ... for who

1. On my vacation, I'd like to take my car ...
  - a. Camping in Colorado.
  - b. To a resort in Florida.
  - c. Surfing in California.
  - d. To my folk's cabin up at the lake.
  - e. To an amusement park.
  - f. Skiing in Aspen.
  - g. To a dude ranch in Arizona.
2. In high school, I was ...
  - a. First-string halfback my Senior year.
  - b. Voted most likely to succeed.
  - c. A good basketball player.
  - d. A whiz at math.
  - e. A student council delegate three out of four years.
  - f. Lead singer in a rock band.
  - g. Class President.
3. My favorite kind of music is ...
  - a. Country rock.
  - b. Folk and jazz.
  - c. Hard rock.
  - d. Top 40's.
  - e. Broadway show tunes.
  - f. Jazz-rock.
  - g. Classical.



**a. Starfire:**  
Our basic Supercoupe. For drivers who like to feel the road. High-back bucket seats, short-throw 4-speed shifter, torque-arm suspension. Economical, but never boring.



Starfire SX, inside. Deluxe contoured bucket seats in pleated vinyl or corduroy. The padded-rim 4-spoke sports wheel is standard.



### c. Starfire GT:

For drivers who like a sports car look and feel. Fat, raised-letter tires, special "Star-spoke"-styled steel wheels, GT hood and body stripes, instrumentation, 4-speed transmission are standard; 5-speed available. GT looks to match the GT feeling.



Starfire gives you sporty performance to start with. But order the available 5-speed overdrive transmission if you're looking for performance with overdrive efficiency.

Pop the hatchback and load it for your idea of a great weekend. Go ahead, take those extra things along. You've got over 5 feet of carpeted space inside. They'll fit.



### b. Starfire SX:

A little more plush. For drivers who like to feel pampered as they feel the road. Slip into rich, padded, individual buckets upholstered in vinyl or cloth. 4-speed standard; automatic transmission available. Steel-belted radials and sport steering wheel are standard.



**Starfire and Starfire SX standard features include:** 97-inch wheelbase • V-6 engine with 2-bbl. carburetor • High-energy ignition system • Catalytic converter emission control system • Fully-synchronized 4-speed manual transmission • High-rise front bucket seats • Plush pile carpeting • Torque-arm rear suspension design • Brakes: disc/front, drum/rear • Pliable nose and tail surfaces • Hatchback rear door • Folding rear seat • Carpeted deck over 5 feet long • Stow-away spare tire to save space, carpeted cover.

**Starfire only:** B78 x 13" blackwall bias-ply tires • 13" x 5" wheels • Curb wt. 2983 lbs.

**Starfire SX only:** Luxury-trim bucket seats and door panels • Custom sport steering wheel • Wheel-opening moldings • Wide BF 78 x 13" blackwall steel-belted radial tires • 13" x 6" wheels

**Starfire GT Package available includes:** GT body and hood stripe decals, special "Star-spoke" steel wheels • BR 70 x 13" wide oval steel bolted radial tires with raised white letters • Tachometer, voltage and engine temperature gauges • Electric clock • Rear stabilizer bar • Wheel opening moldings.

**Other available equipment includes:** 5-speed overdrive manual transmission • Turbo Hydra-matic transmission • Power steering • Tilt steering wheel • Anti-spin axle • Air conditioning • AM/FM stereo radio • Dual sport mirrors • Sport wheel discs • Body color-coordinated styled steel wheels • And more.



L DOLL  
rag dolls



ON  
TEAM  
with

1 1/2

N DOLL  
LONG IT

RE



D FIL



# OLDS IS FOR YOU?

the full-size Olds—comfort, quiet ride, and economy. As for the amount of luxury and the styling, some cars will fit you better than others. But whether you're after value, comfort or excitement, there's a full-size Olds for you.

4. My favorite way of relaxing is . . .
- Watching TV.
  - Watching sports on TV.
  - My work relaxes me.
  - Going to dinner and a play.
  - Getting together with friends.
5. I always wanted a job where I could be . . .
- Somebody's boss.
  - My brother-in-law's boss.
  - A few people's boss.
  - Everybody's boss.
  - My own boss.
6. If I had it all to do over again, I would . . .
- Do it the same way.
  - Do it the same way but do more of it.
  - Do it the same way but enjoy myself more while I do it.
  - Do it the same way but do it better.
  - Do it the same way but start sooner.

## e. Toronado:

For the person who appreciates the finest in luxury and engineering quality. America's first contemporary car with front wheel drive, and the impressive stability, traction and maneuverability it affords. When you enter the inner world of Toronado, prepare for a unique experience in personal luxury cars.

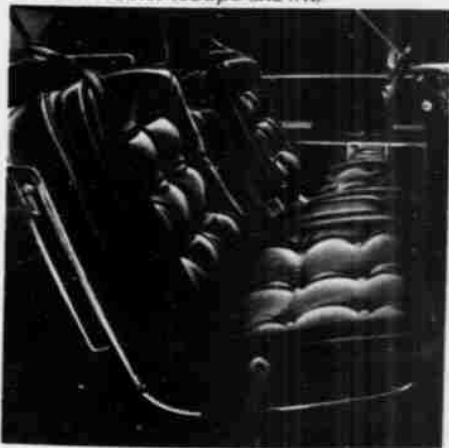


Front wheel drive. It made Toronado famous and it is one of the reasons for Toronado's impressive performance. It's the kind of innovative engineering built into every Toronado.



The Toronado Brougham interior: The loose-cushion look gets a new look with Toronado's geometric-weave velour. Center armrests, too, front and rear. Very plush. Very comfortable.

The 98 Regency interior—now available in black leather (coupe shown)



## d. 98 Regency Sedan:

For the person who simply wants the most comfortable and thoroughly luxurious car ever built by Oldsmobile.

98 available equipment includes: Tempmatic air conditioning • Night-light door lock and interior illumination • "Invisible" theft alarm system • Fuel economy gauge • Whitewall tires • AM/FM stereo radio • Anti-spin axle • Air cushion restraint system • Full padded rooftop covering (Sedans) • Padded Landau roof (Coupe) • Pulse wiper system • Cruise Control • Low washer fluid and low fuel level, low coolant and headlight-on reminder.

Toronado Brougham standard features include: Rocket 455 V8 with cold-air induction • Turbo Hydra-matic transmission • High-energy electronic ignition system • Catalytic converter emission control system • Vari-ratio power steering • Power brakes (disc/front, drum/rear) • Power windows • Power ventilation • High level rear stop/turn signals • Digital clock with quartz-crystal movement • Electronic message center • Divided 60/40 front seat • Velour interior selection • T-crest hood ornament • Dual rectangular headlamps • 122 inch wheelbase • Steel-belted radial tires.

Toronado available equipment includes: Tempmatic air conditioning • Landau vinyl top • Fuel economy meter • "Invisible" theft alarm system • Whitewall tires • AM/FM stereo radio • Stereo tape player • Paint striping • Air cushion restraint system • Pulse wiper system • Cruise Control • Low washer fluid and low fuel level, low coolant and headlamp-on reminder.



# OLDSMOBILE FOR YOU?

you are or who you want to be. Here's how to find out which car is for you. If most of your answers are A's, for instance, car A, the Starfire, is for you.

#### 4. My favorite athletic activity is . . .

- Softball on the weekends.
- Tennis.
- Water-skiing.
- Bowling.
- Golf.
- Handball.
- Sailing.

#### The Ms. Quiz. For women only.

##### 1. A woman's place is . . .

- In the center of attention.
- In the home and in a good job.
- In the office of the Chairperson of the Board.
- Making her family happy.
- In the home.
- At a party.
- In a high fashion shop.

##### 2. The kind of woman I admire most is . . .

- A woman who gets ahead in business.
- A smart, but beautiful woman.
- A woman tennis champion.
- A woman who makes the most of her budget.
- My Mom.
- A woman who knows how to enjoy life.
- A woman who's always well dressed.



Omega is no ordinary compact — it offers two hatchback models. As convenient as it is stylish, the hatchback helps make loading and unloading an easy chore.



##### d. Omega F-85:

The lowest-priced way to own a new Oldsmobile. Practical, no-nonsense compact transportation. For drivers who expect basic comfort and economy.



##### f. Omega SX:

The economical Olds that feels as exciting as it looks. It's an option available for drivers who know that a compact doesn't have to be boring. Dual sports-style rearview mirrors, rallye suspension, and special exterior trim. A five-speed shift is available, too.



##### g. Omega Brougham:

Brings a new Olds standard of luxury to the compact car class. For drivers who want compact maneuverability and economy, but demand a measure of full comfort, too.



Omega Brougham — the luxury, the comfort and the room you'd expect only in a bigger car.



##### e. Omega:

More luxury, more class. For drivers who feel that compact doesn't have to mean small and uncomfortable. Sensibly priced. And it's an Olds.

**Omega F-85:** Coupe model • 111-inch wheelbase • 250 CID 6-cylinder engine • Single-barrel carburetor • Cut-pile carpeting • Full front bench seat • Choose from black check fabric or buckskin vinyl interior • Fully-synchronized 3-speed manual transmission\* • 14" x 5" wheels • Bias-belted tires • High-energy ignition • Flo-thru ventilation • Catalytic converter emission control system.

**Omega:** Choose from coupe, hatchback or sedan model • 111-inch wheelbase • 250 CID 6-cylinder engine • Single-barrel carburetor • Cut-pile carpeting • Choose from 5 deluxe woven vinyl or brushed nylon interiors • Stow-away spare tire (hatchback) • Fully-synchronized 3-speed manual transmission\* • 14" x 5" wheels • Bias-belted tires • High-energy ignition. Day/night inside rearview mirror • Flo-thru ventilation • Catalytic converter emission control system • Landau top available on coupe

**Omega SX:** Available SX Sports Package (coupe models) includes: Special wheel-opening and body-side decals with "SX" identification in 9 body-stripe colors • Rocket panel moldings • Wheel-opening moldings

• Dual sports-styled rearview mirrors • Rallye suspension package • Custom sport steering wheel.

**Omega Brougham:** Standard features include deluxe interior seat and door panels • Deluxe steering wheel • Stand-up hood ornament • Wheel-opening moldings.

**Available equipment includes:** 260 and 350 CID Rocket V-8 engines • Turbo Hydra-matic transmission • Power steering • Power brakes • Super-stock sport wheels • Raised-letter or whitewall tires • Air conditioning • Power windows • Fuel economy meter • 5-speed overdrive manual transmission (with 260 V-8 only).  
\*Not available in California.



# WHICH FULL-SIZE

As always, we're taking care of the full-size car buyer, too. Providing the kind of quality and dependability you'd expect from Olds, at a price lower than what you might expect. There are some things common to all

## 1. I think a full-size car should . . .

- Show people I know a good deal when I see one.
- Show people I've got good taste.
- Show people I know how to combine the very practical and the very elegant.
- Show people I've got good taste and don't mind flaunting it a little.
- Show people I know how to enjoy myself.

## 2. The stock market is . . .

- Too much of a gamble for me.
- Something I'd try if I had more money.
- Worth trying if you find a stock that's not too risky.
- Worth taking a chance on.
- An exciting challenge.

## 3. When my daughter started college, I warned her about . . .

- Asking me for more spending money.
- Co-ed dorms.
- Not spending enough time studying.
- Calculus.
- Joining the wrong sorority.

### a. Delta 88:

For the person who knows how to get a lot for his money. A lot of dependability, a lot of room inside, a lot of comfort and good economy.



The 88 Royale's crushed velour seats, as comfortable as they are stylish. Symbolic of the kind of luxury the Royale provides inside.



Delta 88 and Delta 88 Royale standard features include: Rocket 350 CID V-8 engine • Turbo Hydra-matic transmission • Custom sport bench front seat (Royale HTS and HTC) • Conventional bench front seat (all Delta 88s and Royale Town Sedan) • Wall-to-wall cut-pile carpeting • French walnut-grained vinyl instrument panel trim • Catalytic converter emission control system • High-energy ignition system • Rocker panel and wheel-opening moldings • Vari-ratio power steering • Power brakes (disc/front, drum/rear) • 124-inch wheelbase • Electronic message center • HR 78 x 15" GM spec steel-belted radial ply tires • Chrome wheel discs • Flo-thru ventilation.



### c. Delta 88 Royale Crown Landau:

A new and special Royale coupe option available with an elegant padded landau roof accented by a stainless steel roof-bar, plus stand-up hood ornament and color-matched wheel discs. For the person who likes to express individuality and lifestyle.

The 88's electronic message center can monitor up to 10 driving functions for you—it minds the car while you mind the road.



### b. Delta 88 Royale:

Family-car practicality with Olds luxury-car touches. For the thinking person who knows how to get even more comfort for his money.



Delta 88 available equipment includes: Rocket 455 V-8 • Vinyl top • Tempmatic air conditioning • Fuel economy meter • AM/FM stereo radio and tape player • Power side windows • 6-way power seats • Divided front seat with dual controls (Royale only) • Power door locks • Theft deterrent system • Electric lamp monitor • Low washer fluid, fuel level, and low coolant and headlight-on indicators • Electric digital clock • Pulse wiper system • Front door lock and interior illumination package • Cruise Control • Crown Landau option: padded vinyl top with stainless steel band across the roof, wheel discs with special color-coordinated center, stand-up hood ornament (Royale coupe only).

98 Regency and Luxury Sedan and Coupe standard features include: Rocket 455 V-8 • Turbo Hydra-matic transmission • Vari-ratio power steering • Power brakes (disc/front, drum/rear) • Power ventilation • Power windows • Special Regency seat design has divided front seat with center armrest • Driver's power seat controls • Zippered pouches on front seatbacks (Regency) • Digital clock with quartz-crystal movement (Regency) • Electronic message center • High-energy electronic ignition system • Catalytic converter emission control system • JR 78 x 15" steel-belted radial tires • 127-inch wheelbase • Dual rectangular headlamps • Stand-up hood ornament • Rear wheel-opening covers.



**WHICH MID-SIZE**  
 Cutlass, our most popular car. There's a wide variety of practical, roomy yet maneuverable, mid-size Cutlasses to satisfy all kinds of people. From the sporty, sturdy Cutlass S, which you may want to make even more exciting by adding

1. The kind of mid-size car I like is . . .

- Sporty and lively.
- Elegant and exciting, like a European GT car
- The car that set the standard for practical, stylish mid-size cars.
- A luxurious, personal mid-size car with a classic look.

2. Children should be . . .

- Seen and not heard.
- In the back seat.
- The center of the family.
- Well cared for, but left at home with the sitter.

3. When I go out, I like to go . . .

- To a party.
- To a foreign movie.
- To a family movie.
- To a gourmet restaurant.



b. Cutlass Salon:



A Cutlass in the Grand Touring tradition. Reclining front bucket seats and special suspension are standard. A five-speed overdrive manual transmission is even available as a no-extra-cost option.

d. Cutlass Supreme Brougham:

Simply the most luxurious Cutlass ever made. Special Brougham interior features seats made with the same loose-cushion look as our famous 98 Regency.



A stand-up hood ornament, one of the many little signs of luxury you'll find on the Brougham.



a. Cutlass S:

Lively, responsive, stylish. And our lowest-priced Cutlass. For the driver who won't settle for the ordinary and thinks driving should be fun.



For the first time anywhere, a mid-size car with a luxurious interior inspired by the 98 Regency—that's Cutlass Brougham.

**Cutlass S standard features include:** Bench front seat • Steel-belted blackwall radial-ply tires, FR 78 x 15" • Fully synchronized 3-speed manual transmission\* • 250 CID 6-cylinder engine • Catalytic converter emission control system • Cut-pile carpeting • 116-inch wheelbase (sedan) • 112-inch wheelbase (coupe) • High-energy ignition system.

**Cutlass Supreme standard features include:** Custom Sport front seat with center armrest, or choose bucket seats at no added cost (coupe only) • Variable ratio power steering • Power front disc brakes (sedan) • 250 CID 6-cylinder engine • Walnut-grain vinyl instrument panel trim • Fully synchronized 3-speed manual transmission\* • Catalytic converter emission control system • Cut-pile carpeting • Rocker panel and wheel-opening moldings • 116-inch wheelbase (sedan) • 112-inch wheelbase (coupe) • High-energy ignition system.

**Cutlass Supreme Brougham standard features include:** Divided front seat with dual controls • Power brakes (disc front, drum/rear) and Variable ratio power steering standard • 250 CID 6-cylinder engine • Walnut-grain vinyl instrument panel trim • Fully synchronized 3-speed manual transmission\* • Catalytic converter emission control system • Cut-pile carpeting • Rocker panel and wheel-opening moldings • 112-inch wheelbase • High-energy ignition system.



# CUTLASS IS FOR YOU?

the 4-4-2 package, to the top-of-the-line Cutlass Supreme Brougham, which this year creates a whole new level of luxury for mid-size cars. Cutlass—something for everyone, including you.

4. How I spend my summer vacation . . .

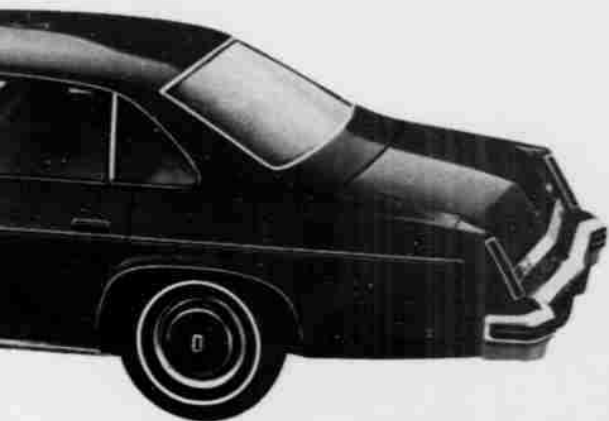
- Backpacking in Europe.
- Driving in Europe.
- Visiting Grandma with the kids.
- Riding at the club.

5. The ideal pet is . . .

- Someone's else's.
- A standard Schnauzer.
- A dog the kids like.
- A pedigreed Siamese.

6. I like to stay home . . .

- A few evenings a week.
- Not very often.
- Most of the time.
- When there's nowhere else to go.



The Cutlass control center. Quite possibly, you'll feel like you're in a cockpit.



Hatch roof—it can open up a whole new world for you. Available on Cutlass Supreme Brougham, Supreme and Salon Coupes.



Choose bucket seats in your Cutlass Supreme coupe at no extra cost.



c. Cutlass Supreme:

An American Classic. One of America's most popular mid-size cars, it offers a combination of style, luxury and economy that's hard to match at the price.

Cutlass Salon standard features include: 260 V8 engine • Turbo Hydra-matic transmission or 5-speed overdrive manual transmission • Contour reclining front bucket seats • Walnut grain vinyl instrument panel trim • Power front disc brakes • Vari-ratio power steering • GR 78 x 15" white-stripe steel-belted radial tires • Rocker panel and wheel-opening moldings • Flo-thru ventilation • Body-color-coordinated wheel discs • Special suspension including stabilizer bars front and rear • Salon steering wheel • Catalytic converter emission control system • Cut-pile carpeting • 116-inch wheelbase (sedan) • 112-inch wheelbase (coupe) • High-energy ignition system.

Available equipment on Cutlass includes: 260 CID, 350 CID and 455 CID Rocket V8 engines • Turbo Hydra-matic transmission, or 5-speed overdrive transmission with 260 V8 only (standard on Salon) • Temperature air conditioning • Super-stock sport wheels • Fuel economy meter • Bumper guards • Cruise control • AM/FM stereo radios • Hatch roof (Brougham, Supreme and Salon coupes) • Dual sports-styled mirrors • Tilt steering wheel • And more.

\*Not available in California.