



© 1990

Vol. 32, No. 47

Published Every Sunday At Muleshoe, Bailey County, Texas 79347

Member TEXAS PRESS ASSOCIATION 25¢ Sunday, November 21, 1993



WORKING TOWARD A HEALTHY HEART--The Muleshoe Heart Association's goal is to work toward a healthy heart. In doing so they are joining the American Cancer Society in encouraging all smokers to quit and all non smokers to never start. (Back Row From Left) Elizabeth Watson and Tonya Pool; (Front Row From Left) Dick Pylot, Anne Floyd, Glenda Powell and Susan Wedel. (Journal Photo)

Hospital Board Okay's Purchase Of Equipment

During Thursday night's Hospital District Board meeting, the board voted to purchase or lease several pieces of equipment to upgrade the quality of care given to patients.

Richard Murphy, administrator, reported that he had checked on upgrading activities at Muleshoe HealthCare Center. Building them a computer system which can meet

the 1994 required MDS sent through the state. It will also be a help in keeping track of the residents medications. The board voted to purchase the system.

A hospital Fire Alarm System was another item discussed. The board voted to purchase a new system.

They also voted to purchase a hospital Security System.

The next item on the agenda was the purchase of an EKG-Monitor System. Murphy explained that they could get a TX60 high quality image machine that leases for \$7,500 per month with a 40 scan minimum. This would be for a five year lease.

When asked who would operate the machine, Murphy replied, "We have qualified personnel already employed." The board voted to get more estimates with the final decision being made in December.

The last item on the agenda was a Helicopter Pad to be built behind the hospital. "Methodist Hospital has placed us in the position to build the helicopter pad, complete with chain link fence, west of the hospital," Murphy said. "They will pay for the pad, they just want us to agree to it."

Buck Campbell called the board meeting to order. Minutes of the

Cont. Page 6, Col. 1

We Stand For A Healthy Heart

The Muleshoe Branch of the American Heart Association met at noon Friday for their regular monthly meeting. Elizabeth Watson was in charge of the meeting. Following routine business, Glenda Powell, treasurer, reported on a recent Walk-A-Thon

During the president's reports, Ms. Watson stated that she had talked to the schools about smoking. She also said that a man from Lubbock would come and talk to the students.

Dick Pylant has been appointed a Legislative Network Volunteer.

Pylant told of a recent experience he had at the airport in Austin. Although Pylant was not one of those smoking, he saw 18 people who had just gotten off a plane arrested for smoking in the airport. He stated that the police officer was very nice when he approached the smokers when he told them it was a \$500 fine to smoke at the airport, and they either payed it or he would have to arrest them and take them in.

A discussion was also held on the law against selling cigarettes to a minor (anyone under 18 years of age).

The Heart Association's Goal for this year is "More In 94".

The group decided not to have a meeting in December.

Ms. Watson said, "We stand for a healthy heart."

The American Heart Association joins the American Cancer Society in urging all smokers to quit even if for only one day, The Great American Smoke Out.

One of the primary focus points in students education should be the importance of health and physical education at all levels of the curriculum, according to the American Heart Association.

Students need to have the knowledge and skills to help them make decisions about forming

Progress Church Schedules Area Wide Youth Rally

The Progress First Baptist Church, approximately six miles northwest of Muleshoe on Highway 84 and three blocks north in Progress, has scheduled an Area Wide Youth Rally for Saturday, November 27 at 7:30 p.m.

"Do It-Renew It-Pursue It" will be the theme and all teenagers and young adults are encouraged to stay "on track" with commitment during the holiday season.

Special music will be by Rick Petersen.

Steve Cook from Lubbock will be the speaker. He is presently teaching at the Lubbock jail. Cook will be giving his testimony of victory over a life of drug abuse, crime, and imprisonment.

Refreshments will be served.

MISD Classes To Dismiss For Thanksgiving

Muleshoe School District will dismiss classes for the Thanksgiving Holidays on the following schedule Wednesday, November 24, 1993.

Dismissal schedule is as follows:
DILLMAN.....1:40 P.M.
DeSHAZO.....1:50 P.M.
WATSON JR. HIGH...2 P.M.
HIGH SCHOOL...2 P.M.
Classes will resume on Monday, November 29.

lifetime habits necessary to maintain a healthy lifestyle.

According to the American Heart Association, "heart disease often begins in early childhood. If bad habits are acquired and carried over into adulthood, the risk of developing heart disease is increased.

"In many cases, heart disease can be prevented if steps are taken early. Habits-good and bad-are difficult to change once they are established. Many of the risk factors associated with heart disease are influenced by lifestyle patterns, such as diet, physical inactivity,

Cont. Page 6, Col. 1

4-H Exchange Group To Sell Fruit Baskets

The Bailey County 4-H Exchange Group, including 4-Hers from Cochran and Lamb Counties, are now taking orders for Holiday Fruit Baskets. These baskets will be delivered in time for your holiday gift giving...Around December 15.

A small basket with approximately 15 pieces of fruit will sell for \$12.50, while a large basket with approximately 25 pieces of fruit will sell for \$17.50. Each basket will contain oranges, grapefruit, pears, apples and the large baskets will also contain some tangerines.

You are asked to place your order for the gift baskets by December 6. You may all the Bailey County Extension Office at (806) 272-4583, the Lamb County Extension Office at (806) 385-4004, or the Cochran County Extension Office at (806) 266-5215. You may also contact a 4-H Exchange Group member directly to order the baskets: Audra and Justin Lee; Marianne Toombs; Shane, Carolyn and Melinda Schuster; Kimberly Griswold; Kourtnee Magby; Brittany Kirby; Misty Angeley; Christy Holt; Brooks Brunson; Keith Newton; Erin Kloiber; Trissi Walden; Jim Ed Field and Jayme Gladden.

If you have any questions, you are asked to call the Bailey County Extension Office.

SPS Honors Employees With Service Awards

Six employees of Southwestern Public Service Company from Muleshoe were honored for their years of service to electric customers at SPS's annual Southern Division awards dinner November 11 in Lubbock.

They are among 72 SPS employees in the division and at area power plants who are being recognized for thousands of years of collective work.

Those honored from Muleshoe are: Kathy Strickland, ten years; Mario DeHoyos, and Bo Long, 15 years; Troy McKee and Larry Rasco, 20 years; and Ben Green, 25 years.

SPS serves 96 communities and provides wholesale power in 16 rural electric cooperatives in the Panhandle and South Plains of Texas, eastern and southeastern New Mexico, the Oklahoma Panhandle and southwestern Kansas.

Volunteer Plus Will Sponsor Christmas Card Project

Volunteer Plus is once again sponsoring the Christmas Card Project.

Donations may be made at either bank, the nursing home or to one of the members.

This year's funds will go toward the purchase of a Handicap rail into the living room of the nursing home, a non-clear coating on patio window and door and vertical blinds and drapes for the living room, as well as wall decorations

Where We Have Been- At Now-Where Going

"I would like to tell you where we have been, where we are at now, and where we are going," Richard Murphy, administrator of the local

around muleshoe

Navy Seaman Recruit Leslie B. Park, son of Donald W. and Sheila B. Park of Earth, recently completed basic training at Recruit Training Command, Great Lakes Ill.

During the cycle, recruits are taught general military subjects designed to prepare them for further academic and on-the-job training in one of the Navy's 85 occupational fields.

Studies include seamanship, close-order drill, naval history and first aid.

He is a 1993 graduate of Springlake-Earth High School of Earth.

Last week Mike Richardson, who teaches Computer Literature, was named Educator of the Week.

Principal's Awards went to Dusty Kidd, sixth grade; Josh Kitchens, seventh grade; and Scotty Mills, last week.

This week's Educator of the Week went to Dianna Harrison, who teaches sixth grade Reading.

Principal's Awards went to Lucio Soto, sixth grade; Marcos Soto, seventh grade; and Rhonda Warren, eighth grade; this week.

If you need information about Social Security, Medicare, or Supplemental Security Income,

Cont. Page 6, Col. 1

hospital, told the Rotarians Tuesday. "In 1989, the voters voted in a hospital district and we started out with no capitol. We borrowed \$300,000 to get (the hospital) started."

Murphy showed the hospital's liabilities and assets for the years of 1990, 1991, and 1992. "We now have an estimated budget of \$6.4 million for 1993-94. The budget was put together by department heads. Fifteen point eight percent of the budget goes to the staff and benefits. I'll guarantee you, we are far ahead of any hospital in rural Texas.

"We have applied for Clinical 4 Trauma Care. We keep on hand and stock blood plasma. We also have Home Health Care Services and provided services for over 500 patients last month.

Old Fashion Christmas To Be Held This Year

Muleshoe will definitely be the place to be the weekend of December 3 and 4 to welcome the Christmas Spirit. In conjunction with the other planned activities, the Muleshoe Heritage Foundation members urge everyone to go to the Heritage Complex immediately after the big Christmas Parade, planned to begin at 6:30 p.m. December 4.

Heritage Foundation members along with the Student Community Action Club will host the "second annual 'Old Fashioned Christmas'" centered at the historic Janes Ranch House. The unusual old buildings at the complex will sparkle with Christmas lights and the Janes Ranch House will have a

"We are going to upgrade our Chaplain Service, coordinating all of the ministers in the area. Another service we offer is Physical Therapy in the HealthCare Center and hospital."

Randy Field called the Rotary Club to order at noon Tuesday. James Turnbow led the pledge to the flag and Happy Birthday was sung to Field. "Home On The Range" was led by Terry Hutto, accompanied by Curtis Shelburne at the piano.

Bill Liles reported on the float the Rotarians are building for the Christmas Parade.

Todd Ellis was the Polio Plus winner.

Visitors recognized included Denis Carr, Hugh Mosley, Grady Jenkins and the press.

Christmas tree decorated by SCAC members in the old fashioned manner.

Refreshments will be served at the Janes Ranch House and tours will be conducted at the center by Heritage board members and members of SCAC from Muleshoe High School.

Christmas musical entertainment will be furnished by the Muleshoe High School band and different church choir groups.

Make plans now to welcome the

Cont. Page 6, Col. 1

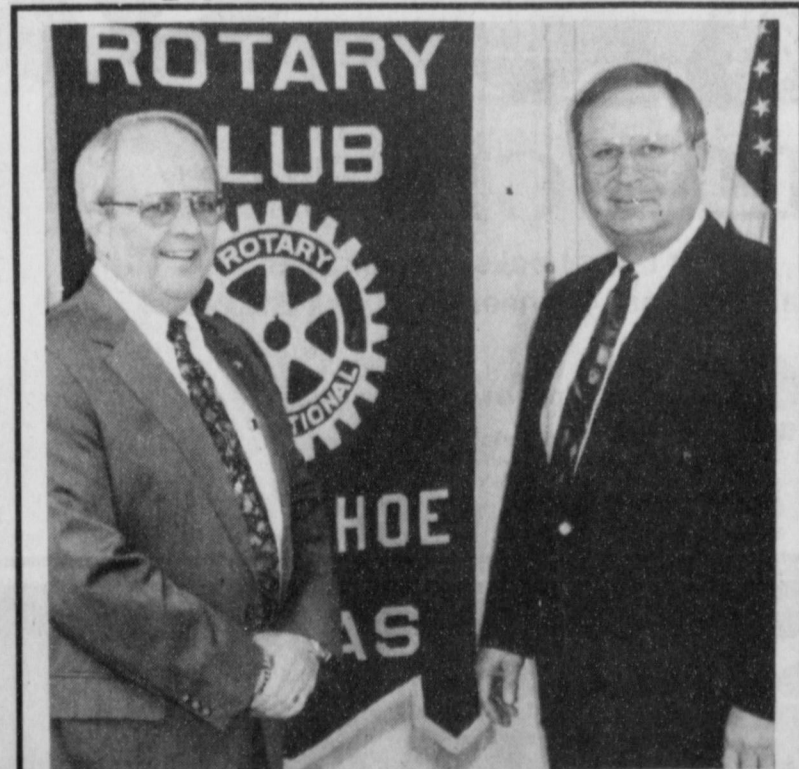
Local VFW Member Appointed Aide-De-Camp

George R. Clark, a member of VFW Post 8570 in Muleshoe, has been appointed by VFW National Commander-in-Chief George R. Creamer, to serve as a National Aide-de-Camp for 1993-94. Clark is a resident of Muleshoe.

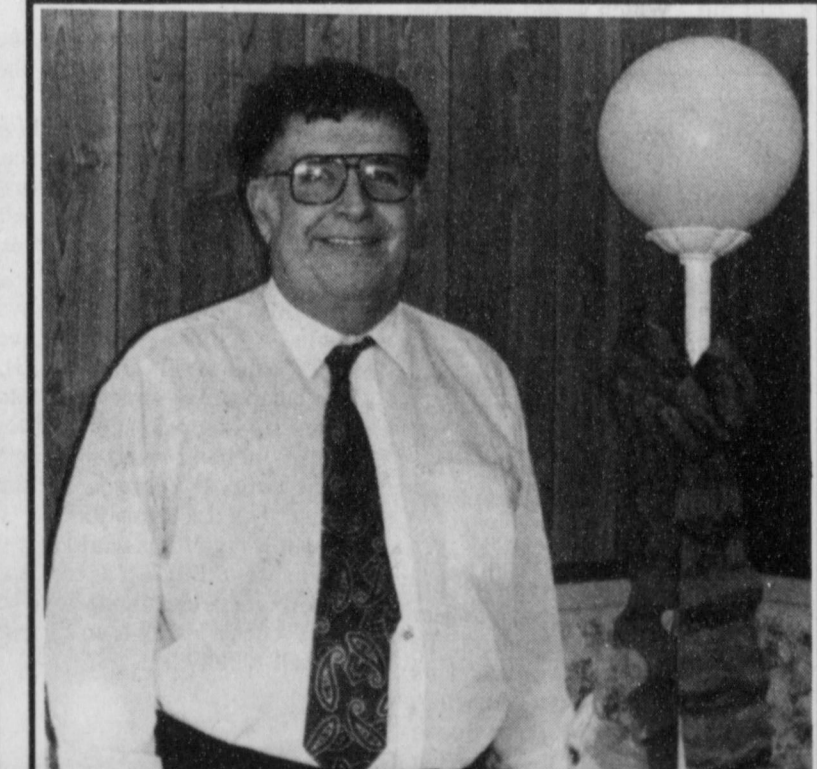
In making the appointment, Creamer said, "Through the efforts of veterans like Comrade Clark the VFW has become one of the largest and most active community service organizations in America. From veterans benefits to scholarships for high school students, the VFW meets the needs of America's active and productive communities."

"I am pleased to make this appointment because Comrade Clark has done an outstanding job and will continue to do an outstanding job for the VFW, the veterans and his community."

Appointment as a National Aide-de-Camp recognizes outstanding service to the VFW. During the year-long appointment, the National Aide-de-Camp assists the department (state) commander in promoting VFW programs, especially membership.



MURPHY PRESENTS ROTARY PROGRAM-- Richard Murphy, left, presented the program at Rotary Tuesday at noon. He spoke on the hospital. Bob Finney, right, was in charge of the program. (Journal Photo)



LEGISLATIVE NETWORK VOLUNTEER-- Dick Pylant has been named Legislative Network Volunteer. Ms. Elizabeth Watson made the announcement during the recent Heart Association meeting. (Journal Photo)

Three Way School Menu

Nov. 22-26, 1993

MONDAY BREAKFAST
Pancakes, Sausage, Juice, Milk
LUNCH
Taco's, Salad, Corn, Milk, Peaches

Muleshoe School Menus

Nov. 22-26, 1993
Dillman - DeShazo

Elementary MONDAY BREAKFAST
Scrambled Eggs, Mixed Fruit, Milk
LUNCH
Fish Nuggets, Green Peas, Fresh Orange, Combread, Milk

TUESDAY BREAKFAST
Cinnamon Toast, Chilled Juice, Milk
LUNCH
DeShazo Thanksgiving Feast, Roast Turkey & Dressing, Mashed Potatoes & Gravy, Green Beans, Hot Dinner Roll, Fall Fruit Salad, Milk

WEDNESDAY BREAKFAST
Waffles, Mixed Fruit, Milk
LUNCH
Soft Tacos, Mexican Beans, Pineapple Tidbits, Spanish Rice, Chocolate Pudding, Milk

THURSDAY & FRIDAY NO SCHOOL THANKSGIVING HOLIDAYS

Jr. High & High School MONDAY BREAKFAST

Breakfast Pizza, Mixed Fruit, Milk
LUNCH
Ham & Cheese or Footlong Hotdog, Coleslaw, Mixed Fruit, Milk

TUESDAY BREAKFAST
Pancakes, Chilled Juice, Milk
LUNCH
Steak Fingers or Chicken Nuggets, Mashed Potatoes & Gravy, Black Eyed Peas, Dinner Roll, Milk

WEDNESDAY BREAKFAST
Peanut Butter Toast, Chilled Fruit, Milk
LUNCH
Thanksgiving Feast
Roast Turkey & Dressing, Mashed Potatoes & Gravy, Green Beans, Hot Dinner Roll, Fall Fruit Salad, Milk

THURSDAY & FRIDAY NO SCHOOL THANKSGIVING HOLIDAYS

TUESDAY BREAKFAST
Cereal, Juice, Graham Crackers, Milk
LUNCH
Turkey, Dressing, Gravy, Green Beans, Cranberry Sauce, Candy Sweet Potatoes, Hot Rolls, Milk, Italian Cream Cake

WEDNESDAY BREAKFAST
Biscuit, Gravy, Juice, Milk
LUNCH
Bologna and Cheese, Lettuce, Tomato, Pickles, Chips, Milk, Orange

THURSDAY & FRIDAY NO SCHOOL THANKSGIVING HOLIDAYS

Law Enforcement Instructors School Slated At South Plains College

A 40-hour instructor course for prospective law enforcement instructors is scheduled Dec. 6-10 at South Plains College.

Registration deadline is Dec. 5. "The purpose of the course is to acquaint students with the basic skills necessary for successful instruction," said Larry Nichols, an SPC associate professor of law enforcement. Major topics will include preparation, principles, techniques, demonstration and evaluation. Active participation is mandatory, said Nichols.

The course meets the minimum training standards for the instructor license as required by the Texas Commission on Law Enforcement Officer Standards and Education (TCLEOSE). Officers successfully completing the course will receive TCLEOSE credit for 40 hours of training.

Classes will meet in the SPC Petroleum Technology-Law Enforcement Building, room 115. Cost is \$40 a person.

Formal registration will be completed at the first class meeting. Either payment in full or a company purchase order number is required on the first day of class.

A minimum of 10 students must enroll for the class to make. To reserve a place, contact the SPC law enforcement office at 894-9611, ext. 291.

Audiology Doctoral Program Nation's First

The nation's first four-year educational program for a Doctor of Audiology (Au.D.) degree has been developed at Baylor College of Medicine in Houston.

Students will rotate through audiology clinics in various hospitals following two years of course work and a year of clinical clerkships.

Dr. James Jerger, the program's director, said students will learn about a variety of hearing-related disorders, including hearing disorders in newborns, dizziness, and other equilibrium problems, speech and language difficulties, the fitting and dispensing of hearing aids and mild hearing loss in the elderly.

Lazbuddie Schools Honor Roll

Second Six Weeks Principal's "A" Honor Roll

First Grade
Chris DeLeon, Tanner Gartin, Mandy Haney, Ana Hernandez, Marli Johnson, Brett Mimms, Melanie Winders

Second Grade
Shonnah Black, Cobey Branscum, Robby Martin, Shawndee Nichols, Bethenie Sanchez, Kolby Wilkerson

Third Grade
Andy Martin, Brady Mimms, Tobin Redwine, Tyrel Templar

Fourth Grade
Savannah Black, Kayla Copp, Colt Richardson

Fifth Grade
Kati Mimms

Sixth Grade
Amy Angeley, Scotti Brown, Staci Foster, Garrett Magby, Bobby Martha, Leah Turner

Seventh Grade
Seth Black, Michael Jones, Josh Morris, Kia Morris, Cade Morris, Shena Seaton

Eighth Grade
Brice Foster, Cameron Turner, Dustin Weir

Ninth Grade
Shana Foster

Tenth Grade
Regina Jones, Dawn Weir

Eleventh Grade
Jeremy Jones, Ivette Reyes, Rachelle Rice, Timmie Smith

Twelfth Grade
Lori Bradshaw, Jessica Burch, Jody Copp, Gina Jarman, Dawnda Magby, Jodi Morris, Jarah Redwine

"A & B" Honor Roll

First Grade
Chance Barrett, Arturo Benavidez, Danny Bonilla, April Godinez, Susie Juarez, Cory Puckett, Garrett Scisson, Durtis Smith, Laura Solis

Second Grade
Violet Aguilar, Kelli Harris, Josh Hill, Amanda Martinez, Raul Mata, Timothy Noble, Shelia Noble, Shelby Templar, Sterling Via

Third Grade
Lucas DeLeon, Michelle Puckett

Fourth Grade
Jodi Coker, Kelsey Jones, Kayla Kimbrough, Damon Mouser, Trey Nickels, Candice Randolph, Shannon Redwine, Triston Thorn

Fifth Grade
Kendra Gallman, Maria Godinez, Cole St. Clair

Sixth Grade
Michael Collins, Jason Jesko, Zulema Marquez, Billy Martinez,

Veronica Mata, Kristen Mitchell, Gabriel Reyes

Seventh Grade
Brandon Foster, Andy Johnson, Christina Martha, Joshua McDonald, Rosa Mendoza, Adam St. Clair

Eighth Grade
Don Burch, Deon Gallman, Jr. Godinez, Dawn Mouser, Juan Salazar, Chris Smith, Roxann Warren

Ninth Grade
Rocio Aguilar, Heath Brown, Janis Hernandez, Jennifer Hill, Mandy Magby, Blake Mimms, Sulema Moran, Justin St. Clair, Edward

Terry
Tenth Grade
Travis Barber, Keith Burch, Heather Engelking, Marisol Godinez, Clay Hurst, Katy Jones, Julie McDonald, Guy Nickels, Socorro Reyes, Kimberly Smith, Josh Warren

Eleventh Grade
Eva Jo Alcala, Orlando Benevides, Matt Elliott, Joanna Gallman, Jon Colby Miller, Trina Orozco, Dink Pitcock, Belynda Waddell, Brandon Walker, Bobby Weaver

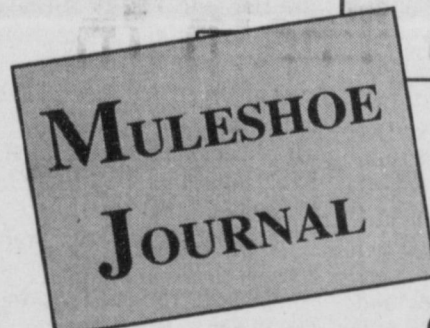
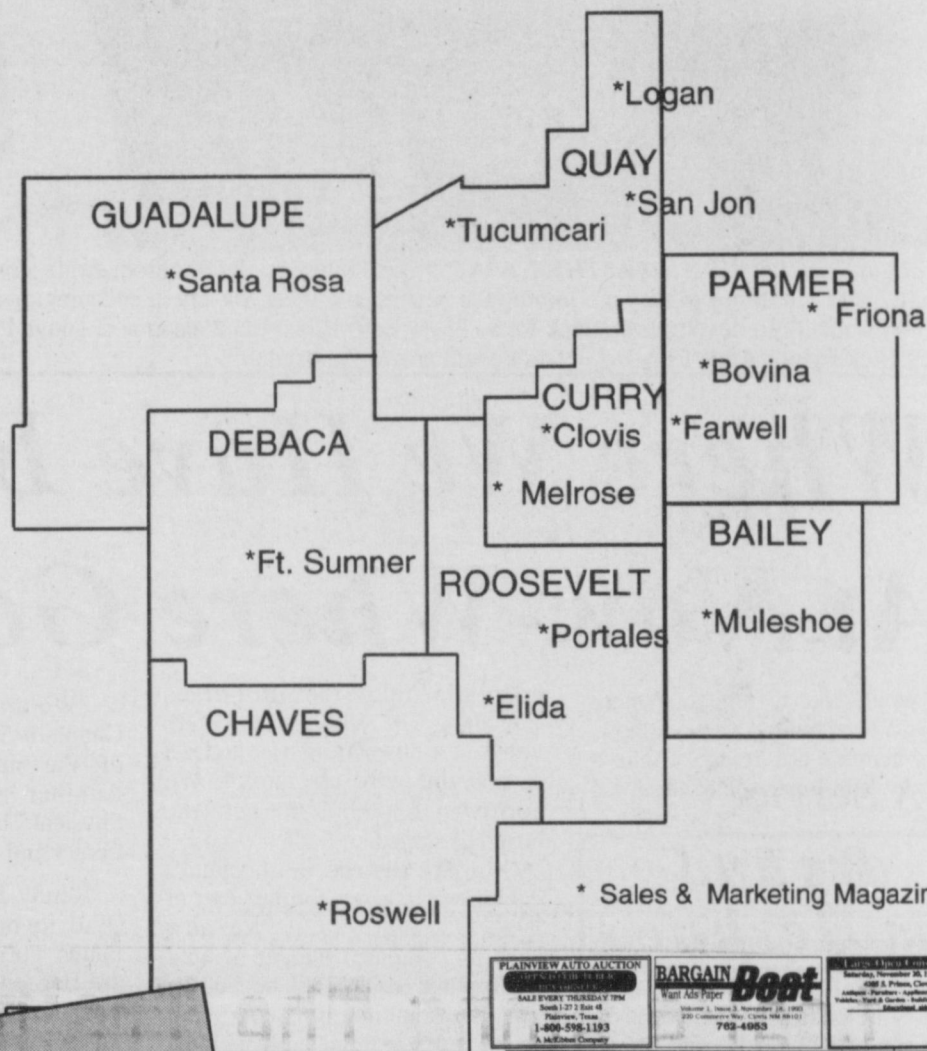
Twelfth Grade
Shannon Bomer, Jonas Hernandez, Troy McBroom, Chad Nickels,

Roger Pacheco, Brett Thomas, Chad Weaver



Microwave Tips
Tomato halves are easy to microwave in minutes. Place four in casserole dish and sprinkle with seasoning or crumb topping. Microwave on High 3-4 minutes for average size tomatoes. Rotate dish once, half a turn.

Now You Can Reach
40,600 Readers
In 8 Counties
With Over \$787,500,000* To Spend



PLAINVIEW AUTO AUCTION
BARGAIN Boat
FORD TAURUS
America's #1 Selling Car!

Call today to see how inexpensive and easy it is!

MULESHOE JOURNAL
304 W. 2nd
272-4536

A Balanced View

All of us, I suppose, have heard how to tell the difference between a pessimist and an optimist. The pessimist, I'm told, sees a partially-filled cup of coffee and says, "It's half empty." The optimist, on the other hand, sees the very same cup and says, "It's half full." Which would you rather be?



Focus On Faith
Curtis Shelburne

I'd say, "Neither." The incurable optimist and the hard-core pessimist have one thing in common--both are half-blind. Give me a realist, a Christian realist, any day.

If the Bible is anything, it is realistic. It walks perfectly the right-ropes between blind optimism and equally blind pessimism. To the notion that the world and its people are getting better and better, it says (and this is a loose paraphrase), "Bosh!" And yet it steadfastly affirms the unquenchable hope that mankind may lay hold of abundant life through Jesus' blood.

The Bible's realism is nowhere more apparent than in its treatment of suffering. It never, in sandy-headed ostrich pose, denies the reality of pain, but neither does it deny the reality of God's love by giving in to despair. What could possibly point to a more balanced view of reality than these verses?

"Weeping may tarry for the night, but joy comes with the morning" (Psalm 30:5).

"And after you have suffered for a little while, the God of all grace, who has called you to his eternal glory in Christ, will himself restore, establish, and strengthen you" (1 Peter 5:10).

"In this world you will have trouble. But take heart! I have overcome the world" (John 16:33).

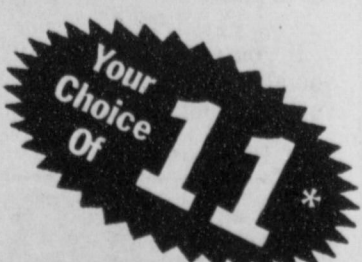
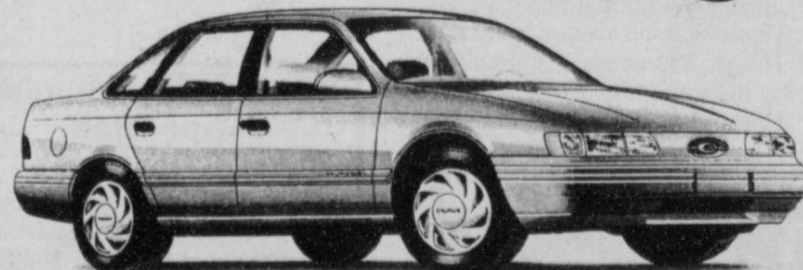
The balanced view. It takes into account sin--and salvation. It sees hearts aching--and hearts overflowing. It focuses on the cross--and on the empty tomb.

The suffering of this world is real and persistent. But just as real and far more persistent is the love of God. To deny either is to choose to be half-blind.

* Curtis Shelburne is the minister of the 16th and Ave. D. Church of Christ in Muleshoe.

FORD TAURUS

America's #1 Selling Car!



1993 TAURUS GLs Used Factory Program Cars

Am/Fm Cassette, Power Windows, Power Door Locks, Power Seat Tilt Steering Wheel, Cruise Control, Dual Air Bags, 4 Wheel Anti-Lock Brakes

Only **\$13,995** Delivered in Portales

HURRY IN WHILE THE SELECTION IS BEST!



Teague-Strebeck



FORD - MERCURY - CHRYSLER - PLYMOUTH - DODGE

356-8581

1115 N. Chicago • Portales, NM

762-3845

(On the first curve into Portales)

Perry: "More Time Needed To Implement Worker Protection Standards"

The enforcement phase of the new federal Worker Protection Standards should be delayed until states have had adequate time to educate farmers and the federal government has addressed agriculture's questions about the pending regulations, Texas Agriculture Commissioner Rick Perry said today during testimony to a Congressional subcommittee.

"American agriculture certainly wants to protect farm workers and those who handle pesticides from an unreasonable risk of pesticide exposure," Perry told the U.S. House Agriculture Subcommittee on Department Operations and

Nutrition. "This is a legitimate concern of everyone involved in agricultural production. But this policy should be implemented in a way that is reasonable to all."

"That means regulations that can be easily interpreted by regulators and the regulated community; regulations that are not excessively costly; and regulations that will not unnecessarily hinder a business' ability to operate and prosper. Unfortunately, the WPS regulations fail these standards on all counts."

Many in the agricultural community are not aware of these pending regulations and reaching all

of Texas' 180,000 certified pesticide applicators will take time and money, the commissioner said.

EPA itself had been tardy in informing states about what the regulations require.

"EPA was late in developing and disseminating its 'How To Comply' manual to the states," Perry said. "Texas received this just a few weeks ago. Also, EPA has not provided a training manual that employers must use to educate their worker on the regulations. If EPA's current implementation schedule is not altered, I can assure you our inspectors will end up knocking on the doors of farmers who have not heard of these regulations, let alone started complying with them."

Another concern of many state regulatory agencies is the lack of adequate federal funding to enforce WPS laws at the state level.

"EPA is gravely underfunding the lead state agencies that have been given the responsibility to educate agriculture on these regulations and then implement enforcement measures," the commissioner said. He noted that when Texas finally received EPA's outreach material, the Texas Department of Agriculture was given 120 copies of the "How to Comply" manual to reach 180,000 people.

"Instead of being immediately in the education business, the agency has had to spend its limited time on printing, stuffing and mailing outreach material," Perry said.

In addition, numerous questions about how the regulations are to be interpreted remain unanswered.

"States are being put into a position of enforcing WPS provisions before answers are provided to many significant questions," the commissioner said.

For the standards to be effective and to protect farm workers, these problems must be addressed, Perry said.

"We know that bureaucrats in dozens of federal agencies around Washington will continue to churn out new regulations. But that doesn't mean those new regulations have to be cumbersome, confusing and financially prohibitive. This is an opportunity to make the system work a little bit better."

"We simply request that EPA delay enforcing WPS regulations until there is sufficient time for educational and outreach activities

in the agricultural community and for EPA and NASDA (National Association of State Departments of Agriculture) to work together to resolve issues of concern to the states," Perry said.

Unless a delay is granted, the rules are scheduled to go into effect in April 1994.

Nicolasa Bara Services Being Held Tuesday

Services for Nicolasa Bara, 73, of Vernon will be held at 2:00 p.m. Tuesday, November 23, 1993 at the Immaculate Conception Catholic Church in Muleshoe with Father Joseph Augustine officiating. Rosary will be said at 7:00 p.m. Monday, November 22, 1993.

Burial will be in Muleshoe Memorial Park Cemetery under the direction of Ellis Funeral Home, Muleshoe.

Mrs. Bara died November 19, 1993 at Wilbarger General Hospital in Vernon, TX.

She was born July 30, 1920 in Menard, TX. She married Jacinto Bara on July 30, 1949 in Menard, TX.

Bara had lived in Vernon since 1991, moving from Muleshoe where she had lived for 30 years. She was a homemaker and a member of Immaculate Conception Catholic Church in Muleshoe. She was preceded in death by a son, Ernest Bara in 1983.

Survivors include her husband, Jacinto Bara of Vernon; five sons, Gerald Bara, Hector Bara, and Fred Bara all of Vernon, Roy Bara of Amarillo, and Ray Bara of Muleshoe; two brothers, Fernando Rosas of Plainview and Fermin Rosas of Muleshoe; five sisters, Oralie Mendoza of WA, Luisa Gonzales, Antonia Cassanova, Margarita Rosas all of Muleshoe, and Carolina Bara of Altus, OK; and fourteen grandchildren.

Courthouse News

Mattie Smith, Bobby Junior Smith and Vaughneda Shough to Antonio P. Lira and wife, Kathy M. Lira, a 5.77 acre tract out of the N.20 acres of the NW/4 of the NW/4 of Section Number 53, Block Y, W.D. & F.W. Johnson Subdivision No. 2, Bailey County, TX.

David Dominguez to Reynaldo Ortiz and wife, Dalia Ortiz, all of Lots Numbers 7 & 8, Block Number 2, Crawford Addition to Muleshoe, Bailey County, TX.

Katherine H. Rogers to themselves as trustees and to their successor as trustee all of Labors Numbers 6, 7, and 8 League Number 176, Moyley

County School Land in Bailey County, TX.

Bertie L. Thompson to Sims' Properties assumed name for S.E. Sims, Jr., all of Lot Number 7, Block 3, Lenau Subdivision to Muleshoe, Bailey County, TX.

Louis J. Shultz to Louis J. Shultz Lot 43, Parkridge Addition, Second Installment, Bailey County, TX.

Loetta Elaine Coburn to Harold Gene Coburn and Walter William Coburn, all of the S/2 of the SE/4 of Section Number 37, Block Z, W.D. & F.W. Johnson Subdivision, Bailey County, TX.

Joe King, barber, Asheville, N.C.

"We've been non-smoking for about two years and I really love it. I thought it would hurt business but it hasn't."

Bailey County Journal

USPS 040-200
Established March 31, 1963. Published by Muleshoe Publishing Co., Inc. Every Sunday at 304 W. Second. Box 449, Muleshoe, Tx. 79347. Second Class Postage paid at Muleshoe, Tx. POSTMASTER: Send address changes to the Bailey County Journal, P.O. Box 449, Muleshoe, Tx. 79347.

We are qualified members of:
Panhandle Press Association, National Newspaper Association, West Texas Press Association and Texas Press Association

NNA
National Newspaper Association

MEMBER 1993
TEXAS PRESS ASSOCIATION

L.B. Hall, Publisher
Sammye Hall, Vice-President/Comptroller
Evelene Harris, News
Annette Bottelmann, Society
Holly Millsap, Advertising
Gina McElree, Classified
SUBSCRIPTIONS
Muleshoe Journal and Bailey County Journal
By Carrier Yearly - \$15.00
Bailey and surrounding counties
By Mail - \$16.75
Elsewhere - \$18.50
Advertising Rate Cards on Application
Advertisers should check their ad the first day of insertion. The Journals will not be liable for failure to publish an ad or for a typographical error or errors in publications except to the extent of the cost of the ad for the first day of insertion. Adjustment for errors will be limited to the cost of that portion of the ad where the error occurred.

The Bailey County Ministerial Alliance Invite You To A Community Thanksgiving Service

Sunday, Nov. 21, 1993
First United Methodist Church
7:30 p.m.
A Service Of Community Praise For The Goodness Of God.

Leal's Stops The Train In Muleshoe



You've heard it been said that only Superman can stop a speeding locomotive, well how about this. These guys travel the Lubbock to Clovis route on the Santa Fe railroad. According to them the best part of the trip is stopping to load up in Muleshoe. No we don't mean filling up boxcars, they like loading up on Bryant Specials, Chicken Guesadillas, our famous mouthwatering enchiladas and plenty of chips and hot sauce. Funny thing is they bring 50 to 95 cars with them and never have trouble finding a place to park. So, next time your sitting at a railroad crossing, smile and wave at these guys then follow them over to Leal's and join them loading up.

THANKSGIVING SPECIALS ALLSUP'S

PRICES EFFECTIVE NOV. 21-27, 1993

318 W. Amer. Blvd. 272-4862

<p>ALL TYPES PEPSI-COLA 6 Pk. 12 oz. Cans 1.69</p>	<p>SAUSAGE & BISCUIT FOR ONLY 69¢</p>	<p>BEEF, CHEESE & GREEN CHILI ALLSUP'S CHIMICHANGA FOR ONLY 89¢</p>
<p>Allsup's 1 1/2 lb. loaf Bread 2 for \$1.00 or 69¢ each</p>	<p>Lay's POTATO CHIPS REG. \$1.49 SIZE 99¢</p>	<p>HORMEL LITTLE SIZZLERS 12 OZ. PKG. 99¢ Folgers 13oz. Can Coffee 1.99</p>
<p>VALLEY FARE BATHROOM TISSUE 4 ROLL PKG. 79¢ BRAWNY PAPER TOWELS JUMBO ROLL 99¢ SHURFINE NAPKINS 60 CT. PKG. 39¢ SHURFINE CHICKEN BROTH 14.5 OZ. CAN 49¢</p>	<p>SHURFINE YOUNG HEN TURKEYS 10 TO 14 LBS. 59¢ LB.</p>	<p>COMBO OF THE MONTH CHICKEN BREAST SANDWICH & A TALLSUP FOR ONLY \$1.99</p>
<p>SHURFINE GRADE A LARGE EGGS ONE DOZEN 79¢</p>	<p>12 oz. Spam 1.99</p>	<p>Mellow Crisp 16 oz. Bacon 99¢</p>
<p>Fitti Med or Lg Diapers 5.99</p>	<p>Libby 5 oz. can Vienna Sausage 2 / \$1</p>	<p>SHURFINE CUT GREEN BEANS OR WHOLE KERNEL GOLDEN CORN 16 OZ. CAN 39¢</p>

Hoskins-Dale Wed In Double Ring Ceremony

At a double ring ceremony LaVita Sue (Susie) Hoskins, formerly of Hobbs, New Mexico, and Randell Dwayne Dale of Muleshoe were united in Holy Matrimony on August 21, 1993 at the First United Methodist Church of Hobbs, New Mexico, with Rev. Bill Ivans officiating the ceremonies.

Susie is the daughter of Mr. and Mrs. Woodrow Hoskins of Melrose, New Mexico, and Randell is the son of Mr. and Mrs. C.W. Dale of Muleshoe.

Two seven candelabras, decorated with ivy and dusty rose bows enhanced the front of the church and pew bows of dusty rose marked the pews.

Given in marriage by her father, Susie wore a white satin traditional wedding gown by Lisa Marie. The long sleeve off the shoulder gown had a sweetheart neckline. The bodice front and back were heavily appliqued with alencon lace which was beaded with pearls and clear sequins. The lovely basque waistline was adorned with multiple pearl dangles. A wide row of alencon lace adorned the edge of the hem of the bouffant skirt and the cathedral train.

She carried a cascade bouquet of mixed dusty rose silk flowers with baby's breath and trimmed with dusty rose ribbons.

Matron of honor was Mrs. Windell Warden, niece of the bride, of Sonora, TX. She wore a dusty rose tea length dress, bows at the waist on the side in the front, and carried a bouquet of mixed silk flowers in dusty rose with baby's

breath.

Bridesmaid was Christy Hepp of Hobbs, N.M. She wore a dress of the same type as the matron of honor and carried a bouquet to match.

Flower girl was Candice Randolph, niece of the groom, of Lazbuddie, TX. She wore a dress to match the matron of honor and bridesmaid, and carried a basket of mixed silk flowers in dusty rose, decorated with dusty rose ribbons.

Rickie Dale, brother of the groom, of Muleshoe acted as best man, and groomsmen was LynEldon Randolph, brother-in-law of the groom of Lazbuddie.

Ring bearer was Brandon Randolph, nephew of the groom, of Lazbuddie.

During the ceremony, the featured music selections were "The Mystery of Love", "The Lord's Prayer", and "The Wedding Song (There is Love)". Soloist was Peggy Drake of Hobbs, N.M.

A reception followed the wedding ceremony at the Susanna Wesley Parlor of the First United Methodist Church in Hobbs.

Members of the House Party were Kellie Campbell of Arlington, TX; Karen Aguilar of Ft. Worth, TX; Gail Simmons of Hobbs, N.M.; and Ann Williams of Muleshoe; Suzanne Wilhelm of Muleshoe, TX.

Following a wedding trip to Durango, CO, the couple now resides in Muleshoe, TX.

Susie is a graduate of Hobbs High School, New Mexico Junior College, and College of the Southwest (all in Hobbs, N.M.).

She resides as past president of College of the Southwest Alumni Association and is a former Board member of Hobbs Beautiful. She is currently employed by Muleshoe State Bank in Muleshoe.

Randell is a graduate of Lazbuddie High School and attended Clovis Community College. He is a graduate of Texas Tech School of Banking and is currently employed by Muleshoe State Bank as Assistant Cashier.



Mamie Askew

Nursing Home Birthday Party

The monthly birthday party at the Muleshoe Healthcare Center was held on Thursday, November 18, 1993 in the Day Room. Those honored on their special day were Birdie Warren, 11-21-1903; Mamie Askew, 11-20-1900; and Lawrence Blalack, 11-30-1912.

Entertainment was provided by Mr. and Mrs. J.C. Shanks and Retha Tighe.

Flowers were provided by Helen Hunter at Lasting Impressions of Muleshoe.

Party hosts for the activities were the Activity Department and Volunteers Plus.

Journal Society Notice

A processing charge of \$4.00 is made when a photo accompanies any wedding, engagement or anniversary with the exception of Anniversaries of 50 years or more.

\$5.00 will be charged for any shower picture taken by the Journal staff and \$4.00 charged for any shower picture accompanying a story. Pictures may be picked up after the article appears in the paper.

Wedding, engagement and anniversary stories must be in the Journal office by Monday noon for the Thursday paper and by Thursday noon for the Sunday paper.

After that time, stories will be run on a space available basis. Any wedding more than two weeks old, when received, will be edited and only the basic information will be included.

Shower pictures will not be taken without a 24 hour notice and copy must be in the office by 5:00 p.m. Monday for the Thursday paper and 5:00 p.m. Thursday for the Sunday paper.

A charge of \$4.00 will be assessed when a picture accompanies a baby announcement, and \$5.00 when taken by the Journal staff.



Frederick Kyle Marchman

"Doak" and Amy Marchman of Muleshoe are proud to announce the birth of their son, Frederick Kyle, born on November 15, 1993 at 11:32 a.m. at Muleshoe Area Medical Center. He weighed 5 pounds and 12 1/2 ounces.

Frederick has two sisters, Lindsay and Ashley.

Grandparents are Janice and B.S. Jordan of Dimmitt, Jim Marchman of Hereford, and Wesley Bennight of Plainview.

Great-grandmother is Ramona Anne of Dimmitt.

Annual Telethon Helps Provide Funds For Texas Boys Ranch

Sharon and Kenny Maines hosted the 19th Annual Texas Boys Ranch telethon held on October 23 on KAMC-TV 28.

The Maines have been longtime supporters of the Ranch and are members of the monthly donor program. A special word of thanks goes to Kenny and Sharon for helping the telethon reach its goal of \$75,000 for the support of Texas Boys Ranch.

The telethon would not be possible without the corporate sponsors. United Supermarket representative, Teresa Paul, presented a \$1,000 check for sponsorship; Brent Brady, with Brady's Dairy Queen presented a check for \$315 and Tony Whitehead, incoming president for

the Boys Ranch board of directors presented a \$1,000 check from American State Bank. Special thanks also goes to these businesses for their support.

Don Caldwell of Don Caldwell Studios has lined up the entertainment for the telethon for the past five years. Every year the listening audience brags on the variety of great entertainers Don selects. This year the telethon featured: Blue Prairie, La Tronda Maines, Kenny Maines, Cami Caldwell, Natalie Maines, Tina Caldwell, The Cloggers, Travis Ware, Holly Robertson, Shana Van Winkle, Ryan Toomire, and Jerry Johnson. Thanks to each of these entertainers and Don Caldwell for donating their time.

National Kidney Foundation Of West Texas Thanks For Giving Campaign

The National Kidney Foundation held its annual Donor Appreciation Party on Tuesday, November 16, 1993.

The "Thanks For Giving" message is one of gratitude to our many volunteers and supporters for giving their time and financial contributions to our foundation, to our donor families who have helped give the "gift of life" to another, and to the institutions in our city, for providing the resources and medical expertise to care for the hundreds of kidney patients in West Texas.

Campaign Events: This is our annual educational and promotional campaign that includes media coverage, public service announcements, speakers to civic organizations, community education programs and health

1) More than 20 million Americans have kidney and urinary disease. Millions of others are at risk.

2) Most kidney diseases are preventable or treatable. We need to get this message out with your help.

3) More than 10,000 Texans including over 2,000 West Texans, suffer from chronic renal disease and need an artificial kidney machine to stay alive.

4) More than 1,000 Texas patients are waiting for a kidney transplant-but not all will receive one this year because of a shortage of suitable organ donors.

5) Contributions are used to help others who really need your support. Last year, we served 350 West Texas kidney patients who desperately needed our assistance.

6) Our Patient Assistance Fund provides needy patients with much needed monies for prescriptions, lodging, transportation, diet supplements, and medical alert jewelry.

7) We provide ongoing important professional education, patient education and community education about kidney disease and organ donation.

8) Did you know that diabetes and high blood pressure are the leading causes of kidney disease? And that proper, early intervention might prevent the complications of kidney disease?

9) The National Kidney Foundation of West Texas, an Affiliate of the National Kidney Foundation is the only voluntary health agency in West Texas which is dedicated to finding the answers to kidney diseases while at the same time insuring that people who have kidney disease receive the finest possible care.

10) November 15-November 30 is our Thanks for Giving Campaign. Please consider a small gift! The National Kidney Foundation of West Texas is making a difference.

screenings. We want to keep spreading the word about the prevalence of kidney and urological diseases, promote prevention and early detection, the importance of signing an organ donor card, and the programs and services of the NKF of West Texas.

10 Reasons to Learn About The National Kidney Foundation of West Texas 1993 Thanks for Giving Campaign



Mr. and Mrs. Randell Dwayne Dale (nee La Vita Sue Hoskins)

COUPON

Williams Bros Office Supply

322 Main Muleshoe 272-3113

Ambassador

Christmas Party Ware

Boxed Christmas Cards
VHS Gift Boxes CD Gift Boxes

20% off

Ambassador With This Coupon

COUPON

WE'VE GOT THE

HOMETOWN Spirit

Save on gasoline...

With the cost of gasoline, you can't afford to waste it.

So why ever shop outside your Hometown when local merchants can supply you with everything you need conveniently close to where you live.

From clothes to groceries to vacation supplies, smart shoppers know that shopping locally is the best way to go.

When you shop in our Hometown, everyone benefits. It's more convenient. You get friendly service while helping the local economy.

We've got the Hometown Spirit
... nothing else comes near it!

202 S. 1st
Member F.D.I.C.
272-4515

The Bailey County Ministerial Alliance

Invite You To A Community Thanksgiving Service

Sunday, Nov. 21, 1993

First United Methodist Church

7:30 p.m.

A Service Of Community Praise For The Goodness Of God.

Muleshoe Native Turns Author



From the innermost imagination of a Muleshoe native comes the supernatural of the dark side, or so it seems.

Kim Fried, owner of General Tile and Home Improvement in Clovis, NM, will, hopefully, hold the world in captivity with her creative imagination soon, as she has recently signed a contract with Northwest Publishing of Salt Lake City to sell her first novel, a gothic horror story entitled "Darkside Exile". Four years of labor and long hours of writing have landed Kim the opportunity to have her first novel published.

She says she has always been interested in the supernatural, ghosts and the like. Her book was inspired by her curiosity about "where these spirits hang out."

The spellbinding book tells the tale of a 10th century Irish assassin who steps over into a dimension of witchery. The book's other main character, Juliene Hunter-Belmadade, who is a former fashion model and the widow of a wealthy playboy (also a cocaine addict), finds herself wrapped up in a situation which curtails her previous life with the assassin. It seems he is hunting a physical doorway in which he can enter the mortal world.

Fried intertwines the supernatural with the elements of modern-day reality in her novels, and adds a new twist to the typical Gothic hero.

After a year of work on her first novel, Fried became so disgusted and the characters got so muddled and confusing, that she threw the whole manuscript in the barbecue and tentatively gave up writing. But she returned to her writing, after clearing her vision, and three years and several rewrites later, her story is revealed.

She says she has a series of novels planned. The second book already having been written, she is currently working on the third in the series.

Having sent her manuscript to several publishers, with empowering rejections, Fried finally sent her work to Northwest and they sent her a contract instead of another rejection. Finally last week, she signed with the publisher for the publication of her first novel, which is to be released sometime in March.

Fried is the daughter of Johnny Fried of Muleshoe and the granddaughter of Velma Fried of the Needmore area, and the late John Fried.



Kimberly Terrill Fried

BEAUTICONTROL CONSULTANT-After completing a comprehensive training program on October 16, 1993, Darla Stovall of Muleshoe, Texas has been certified as an independent Skin Care and Image Consultant for BeautiControl Cosmetics, headquartered in Dallas, Texas. Ms. Stovall has been trained to offer her clients complimentary services like Skin Condition Analysis with patented Skin Sensors and customized skin care, plus color analysis, color-coded cosmetics, computer-assisted image analysis and more! BeautiControl has been recognized by BusinessWeek, Forbes and Inc. Magazines as one of the best and fastest growing companies in North America. Chairman of the Board, Jinger Heath, was recently named one of "America's Top 50 Women Business Owners," by Working Woman magazine. BeautiControl has over 32,000 Skin Care and Image Consultants in the United States and Canada and reported sales in excess of \$60 million at the end of fiscal 1992. For more information on BeautiControl's products, services or earning opportunities, please call Ms. Darla Stovall at (806) 272-5857. (guest photo)

Career Professional Leads The Way For Many Students

Cindy Walker, a career education specialist at New Mexico Junior College, keeps the roads hot. A Hobbs resident, she puts more than 500 miles a month to the road, usually three days a week away from her office at the school.

Her goal? To educate students on making choices about careers. Using modern technology, Cindy helps ease the many fears the students might have about their future.

The Guidance Information System that Cindy uses is an electronic retrieval system for locating colleges, professional schools, occupations, military careers and scholarships. The programs she uses coordinate with the many school counseling offices. In addition, she works one-on-one with students on a walk in basis.

Cindy says her job is to help the students learn about different types of jobs and the education requirements for those jobs.

Her unit is just one of 44 GIS units in New Mexico, which provides such a variety of information that she can tailor programs for any age group.

Her job in part entails teaching ninth grade students to create resumes using personal skills instead of job history, discussing specific jobs and salaries with sixth graders, while still younger students learn about different types of jobs by using worksheets and games designed for their age groups. She says most of the students have specific goals, and although she

gets some unusual requests, there seems to be a lot of students interested in environmental careers.

Cindy is the daughter of Joe and Joyce Walker of Hobbs, NM and the granddaughter of Mrs. Byron Gwyn of Muleshoe.

Necessity is the last and strongest weapon. -Livy.

Necessity is the mother of courage, as of invention. -Walter Scott.

Whatever necessity lays upon thee, endure; whatever she commands, do. -J.W. Goethe.

Senior Citizens Meet

The Senior Citizens met in the Old Depot for their Thanksgiving dinner on November 15, 1993 with turkey, dressing, and all the trimmings. Everyone enjoyed the very good meal and fellowship.

Odessa Shanks called the meeting to order. Margaret Collins introduced Jack Henderson from the Carousel Restaurant. He played and sang for us. "I Love You Because", "Back Home Again", "Mocking Bird Hill", "Great Speckled Bird", and Bob Wills' song, "Faded Love" and more. All enjoyed having Jack sing.

Lou read the minutes and gave the treasurer's report.

We didn't have any birthdays, didn't get any older.

Get well cards were sent to Maud Souder and D.B. Bellar. Mattie Grimsley, will have eye surgery Wed. Nov. 18.

Elected officers:
President: Buster Kittrell
Vice-President: Margaret Collins
Sec. & Treasurer: Odessa Shanks

Dorothy Browning will take care of the get well cards. Zida Mae Black and Mae Wilterding reminding everyone when meeting will be.

There were 27 present.
The meeting was dismissed by Buster Kittrell.

The Muleshoe Area Calendar Of Events

SUNDAY, NOVEMBER 21, 1993

Attend the church of your choice

MONDAY, NOVEMBER 22, 1993

M.I.S.D. School Board Meeting
Cub Scouts, pack 620, boy scout ground
Girl Scouts, girl scout hut, 3:30
Muleshoe Heritage Foundation, Old Depot
Muleshoe Senior Citizens, Old Depot, noon

TUESDAY, NOVEMBER 23, 1993

AA, Muleshoe Counseling Center, 8:00 p.m.
Muleshoe Athletic Boosters, H.S. Cafeteria, 7:30 p.m.
Rebekah Lodge, Lodge Hall, 7:30 p.m.
Rotary Club, Civic Center, noon
M.I.S.D. School Board, 7:00 p.m.
Muleshoe Square Dance, Legion Hall
Young Homemakers, Muleshoe Church of Christ

WEDNESDAY, NOVEMBER 24, 1993

Lion's Club, noon, Civic Center
Muleshoe Volunteer Fire Dept., City Fire Station

THURSDAY, NOVEMBER 25, 1993

Thanksgiving Day!

FRIDAY, NOVEMBER 26, 1993

Muleshoe Road Riders
Daisy Girl Scouts, Girl Scout Hut, 3:30 p.m.
AARP, Civic Center, 11:30 p.m.

SATURDAY, NOVEMBER 27, 1993

IF YOU WISH TO ADD TO OR CHANGE ANYTHING ON THE MULESHOE CALENDAR, PLEASE CONTACT, ANNETTE AT THE JOURNAL-272-4536

Tops News

Tops chapter no. 34 met at the Muleshoe Church of Christ Thursday, Nov. 18, 1993 at 6:00 p.m. Leader Laverne James called the meeting to order. The Tops pledge was recited and the fellowship song was sung. Mrs. James led the group in a prayer. Betty Jo Davis, weight recorder,

called the roll with 14 members answering with the amount they had lost or gained. Minutes of the previous meeting were read by Aurora White, co-secretary, and they were approved as read.

Best loser for the week is Naomi Schanez. Runners up are Mollie Henis, first runner up, and Alma Robertson, second runner up.

Tops will not meet next Thursday night.

AN O-K DEAL

from



Complete this card and save \$5.00 on Oil & Filter Change or "The Works" (full-featured car wash) at Liveoak Fuel -- must be validated by Liveoak personnel.

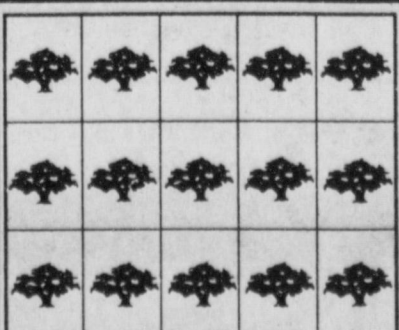
Earn one point with each fill-up (8 gals. or more) at Liveoak Fuel.



FULL SERVICE/ DISCOUNT PRICES.

LIVEOAK FUEL
1914 W. Amer. Blvd.
272-4875

(Formerly Richland Hills Texaco)



* Can not be used in combination with other coupon offers.

THANKS! We're out to earn your Business!

Robert & Melanie Railiff

(Get Your OK Deal Punch Card at Liveoak Fuel, 1914 W. Amer. Blvd. in Muleshoe, Tx.)

You can go a long way if you are interested in other human beings.

We are inclined to think love at first sight is infatuation at first sight.

Good Ole Days
The old days were those times when the human race survived without benefit of miracle drugs or get-well cards. No wonder those who came through were rugged individualists.

-Leader, Fairfield.

ADD A SPECIAL TOUCH!

For Thanksgiving: November 25



Your Professional Florist



Send the FTD® Autumn Harvest™ Bouquet

This bounty of seasonal color adds to the celebration — for your family table, or for loved ones!

Decorators Floral & Gifts

616 S. 1st Muleshoe 272-4340

*A Registered Trademark of Florists' Transworld Delivery Assn. **A Trademark of Florists' Transworld Delivery Assn. ©1993 F.T.D.A.



1943-1993
IN TEXICO
314 WHEELER
482-3363 or
800-748-2459
Open 9:00 am to 6:30 pm CDT



Layaways Welcome
Free Gift Wrapping - Free Alterations

Christmas On Parade

OPEN HOUSE

Sunday, Nov. 21 2-6 P.M. CST

Register For Door Prizes
To Be Given Away With Purchase

-Refreshments Will Be Served-

Hanes Hosier.....	20% off
Jewelry (one group).....	30% off
Denim Skirts (one group).....	50% off
David Brown Robes.....	20% off
Cambridge Dry Goods (one group).....	50% off
Pendleton Southwest Design Jackets.....	25% off

-OTHER IN-STORE SPECIALS-

Prices good Nov. 13 thru Nov. 21



Migrant Council Workers Attend Seminar

On November 13, Donna Bradshaw, Margie Lopez, Aurora Mata, Eustolia Rank and Gloria Recio, staff members of the Muleshoe office of the Texas Migrant Council attended a seminar "Understanding and Improving Child Behavior in the 90's, in Lubbock.

The seminar was presented by Dr. Ann Wildemann, a highly recognized professional counselor that has been featured on such programs as P.M. Magazine, Hour Magazine and KDFW-TV Channel 4 News and a featured columnist on the Fort Worth Telegram.

Dr. Wildemann's topics included understanding the three primary **Heart...**

Cont. From Page 1
and smoking. With the right information, students can make the kinds of decisions that will establish habits that will help keep their hearts healthy, and in all probability, reduce their risk of heart disease through their adult years.

"The right kind of information includes avoiding all tobacco use. "Smoking is a risk factor for heart disease and stroke.

"Tobacco is the only product that when used as directed results in death and disability. Smoking causes blood pressure and heart rate to increase, and narrows the blood vessels to the heart.

"More than one million children start to smoke in the United States every day. Ten percent of the students start smoking by the fourth grade, and nearly two thirds by the tenth grade. Tobacco is a gateway drug and more often than not leads to experiments with "harder" drugs such as cocaine, crack, heroin and marijuana.

"The whole purpose of the nursery is to make it economical for landowners to plant a lot of trees," Fewin said. "We want it to be relatively inexpensive to purchase good, quality trees."

Christmas...

Cont. From Page 1
Christmas spirit by attending the Old Fashioned Christmas at the Heritage Complex immediately after the lighted Christmas Parade December 4.

Hospital...

Cont. From Page 1
previous meeting were approved as distributed. Hospital Financial and Statistical reports were given by Murphy. A lengthy discussion was held on the collection of bad debts. Murphy also gave the HealthCare Center Financial and Statistical reports.

Around Muleshoe

Cont. From Page 1

you may contact a representative of the Lubbock Social Security office at the Bailey County Courthouse the second Tuesday of each month between the hours of 9:15 and 10:45 a.m. In addition, the Lubbock office is open Monday through Friday, except national holidays, 9 a.m. to 4 p.m.

The Slaton Monthly Oprey Musical will be November 27, at the Texas Avenue Oprey House located at 161 Texas Avenue in Slaton. The Oprey's are from 7 to 10 p.m. Admission is free, although donations to further the renovation of the Texas Avenue Oprey House will be appreciated. There will also be a full concession stand.

The Board of trustees of the Muleshoe Independent School District will meet in regular session Monday, November 22 at 7 p.m. in the School Administration Building.

The meeting will be held in compliance with Gov. Code, Ch. 551. The meeting is also being conducted in accordance with the American Disabilities act. (42 U.S.C. 12101 (1991)). The facility where the meeting is to be held is wheelchair-accessible, and handicapped parking is available at the rear. Requests for sign interpretive services are available upon request received at least 48 hours prior to the meeting. To make arrangements for those or other handicapped services, please call 806-272-3389.

The following agenda sets forth the subjects of the meeting. The order in which the agenda is followed is subject to change by the board.

If a topic on the agenda is permitted by law to be discussed in

manipulative behaviors, insecure, immature, and aggressive, specific techniques for setting, teasing, whining and hitting. Also the competent child-how teachers can foster competence.

Those attending received six credit hours for attending this seminar.

Texas Forest Service Delivers To Landowners

Reaching from the Panhandle to the Gulf Coast of Texas, the Texas Forest Service delivers windbreak trees to almost two-thirds of the state.

Bob Fewin, area forester at the agency's West Texas nursery in Lubbock, said they sell trees to nearly every county west of Interstate 35. Fewin has been involved with windbreak sales for the Forest Service, an agency of the Texas A&M University System, since 1971.

With so much territory to cover, the Forest Service lets the local Soil and Water Conservation Districts handle sales in each county. Each district sends landowners a purchase list and the landowners pay the individual districts for the trees. In turn, the districts then place orders with the Forest Service.

"We let each individual Soil and Water Conservation District handle the sales and they buy the trees from us," said Fewin.

He said the selling season usually begins in the middle of September and runs through the last week in March. Ideally, delivery of the trees begins in the middle of February and takes approximately six weeks.

"It works really smoothly if we don't get any ice storms or snow, but invariably we'll encounter bad weather," said Fewin.

"We rent trucks and drop off trees in nearly every county in Texas," said Fewin.

Windbreak tree planting is a year-round job for the Forest Service's West Texas nursery. Fewin said they begin sowing seed in May, fertilize all summer and begin digging the trees out of the ground normally the first week in December and put them in cold storage until delivery.

"We take orders for around 2,500 landowners and sell trees directly to about 115 Soil and Water Conservation Districts," said Fewin. "We sell everything; there's a demand for more trees than can be produced."

While the individual districts are free to increase the prices they sell

executive session, the board may or may not, at that time, close the meeting as to such topic.

AGENDA FOR THE MEETING

1. Call to order
2. Invocation
3. Recognition of support staff member of the month and recognition of district champion boys and girls cross country teams.
4. Approval of minutes of the regular meeting held on November 8, 1993
5. Open Forum/Audience Participation
6. Business Items
 - 6.1 Appoint the District Textbook Committee
 - 6.2 Discuss the Recommended High School program as approved by the Board of Education at its November 8 meeting.
 - 6.3 Discuss the implementation schedule for new testing administered statewide.
7. Informational Reports
 - 7.1 Board President
 - 7.2 Superintendent
 - 7.3 Assistant Superintendent of Instruction
 - 7.4 Assistant Superintendent of Operations
 - 7.5 Business Manager
 - 7.5a Tax Report
 - 7.5b Bank Balances
 - 7.5c Fund Balances
 - 7.5d Payment of Current Bills
 - 7.5e Other business items
8. Personnel Considerations
 - 8.1 Executive Session (Article 6252-17, Section 2)
 - 8.1a Receive Resignations
 - 8.1b Consider hiring new personnel
 - 8.1c Discuss the purchase of real property
 - 8.2 Take appropriate action following Executive Session
 9. Announcements
 10. Adjournment

Keeping Cars In Tune With The Environment

Every 10 days, motorists who drive with poorly maintained engines and under-inflated tires waste 70 million gallons of gasoline, almost 2.6 billion gallons a year.

Car and truck owners can help save their vehicles and help the

environment by getting an "environmental tune-up."

Basic care and maintenance can help a vehicle run more efficiently and last up to 50 percent longer, while careless and improper care can severely damage the vehicle as well as the environment. Each year do-it-yourselfers improperly dump 20 times the amount of oil spilled by the Exxon Valdez into the American environment.

To deter such waste, the Texas Automobile Dealers Association suggests that car and truck owners follow basic maintenance guidelines developed by the National Institute for Automotive Service Excellence:

*Keep tires properly inflated. Under-inflation wastes fuel because the engine has to work harder to push the vehicle.

*Keep the air conditioner in good condition. One third of ozone-depleting chlorofluorocarbons released into the atmosphere come from car air conditioners, either through leaks or escape during servicing. Well-equipped service operations, such as those at franchised dealerships, have equipment that captures and recycles these coolants.

*Observe the speed limit. Gas mileage decreases significantly when driving above 55 miles per hour.

*To save gas usage and engine wear, drive gently without sudden accelerations and jerky stops and

go's, and avoid excess idling. *Remove excess items from your vehicle. Less weight equals better gas mileage.

* Keep your engine tuned up. A well-maintained engine lasts longer and operates more efficiently. For example, a restricted fuel injector can reduce fuel efficiency as much as 30 percent. Follow the service schedule in your owner's manual, and get your car serviced by a trained professional technician who is backed by state-of-the-art equipment, such as those at dealerships. A tune-up is strongly recommended at every 30,000 miles or 2 to 3 years.

A comprehensive performance check can also serve as an environmental check up. It should include an emissions test and the examination of the ignition, battery, filters, fluids, belts and hoses, safety devices, spark plugs and basic engine parts.

These simple steps can help extend the life of your car while keeping it environmentally in tune.

Teleconference On Tech Prep Scheduled

A teleconference to help parents get better acquainted with tech prep, an educational and career path now sweeping the nation, is scheduled Nov. 16 at South Plains College.

The teleconference, sponsored by STARLINK and Texas A&M University, begins at 7 p.m. in the SPC Communications Building, room 105.

The teleconference can also be viewed at O'Donnell, Ralls and Seagraves High Schools and the Education Service Center--Region XVII in Lubbock.

"Tech prep is a key component of a national educational reform movement to better prepare students for the transition from school to work," said Allan Meriwether, director of tech prep for the South Plains Regional Tech Prep Consortium.

"It's an education process designed for all students with on-grade level math, science, and English integrated into high technology." "The program begins in high school and continues at community and technical colleges and universities. It is designed to maximize skills learned in high school and college to better prepare our students for future employment," said Meriwether.

Meriwether suggested that any parents concerned about their child's future education and career should attend the teleconference in one of the five locations offered.

Smiles

Who's Making It
"So your son is in college? How is he making it?"

"He isn't making it. I'm making it and he's spending it."

Not Long Enough
Poet--Are you the man who cut my hair last time?"

Barber--I don't think so, sir, I've only been here six months.

News Views

James Fitzpatrick, lawyer:

"It (the subpoena) exceeds the fourth amendment rights of the ethics committee," commenting on his defense of Senator Bob Packwood's right of privacy and concerning self-incrimination.

Bill Clinton, U.S. president:

"We did nothing improper," commenting on revelation he and his wife were connected through ownership to an Arkansas savings and loan under investigation.

Jeffrey Bliss, of Malibu California:

"It's like nighttime over here in Malibu," commenting during the height of the forest fires destroying residential homes in California.

Basketball Tickets Go On Sale

Basketball season tickets for adults and students are now on sale in the Business Office of Muleshoe I.S.D., 514 W. Ave. G. Tickets are \$7.50 for students and \$15.00 for adults. These tickets will enable the holder entrance to ALL home basketball games for Jr. High and High School. This is a tremendous savings for those planning to attend several games.

The Liveoak Guarantee: "If We Don't Clean Your Windshield, You Don't Pay!"

(With Fill Up, 8 Gal. Min.)

LIVEOAK FUEL
MULESHOE, TEXAS



1914 W. Amer. Blvd. Muleshoe, Tx. 272-4875
(Formerly Richland Hills Texaco)



Make It a Motorola Christmas Package From Liberty Cellularphone



Motorola 2600
Bag or Mobile
\$49
On the Advantage Plan

• Price varies according to rate plan



Motorola Flip Phone
\$159
On the Advantage Plan

• Price varies according to rate plan



Motorola 8000
Portable
\$99
On the Advantage Plan

• Price varies according to rate plan

We Feature State-of-the-Art Cellular Phones by Motorola

• Requires new activation with annual contract on specified rate plan
• Phone pricing does not include antenna or installation of mobile phone



LIBERTY CELLULARPHONE
NETWORK

303 Avenue H • Levelland • 894-8004 ■ 2215 West Fifth Street • Plainview • 293-7366

Antonio Torres Services Scheduled

Services for Antonio Torres, 68, of Muleshoe are scheduled for 2:00 p.m. Monday, November 22, 1993 at Immaculate Conception Catholic Church with Father Joseph Augustine officiating.

Rosary were said at Ellis Funeral Home Chapel Friday and Saturday at 7:00 p.m.

Burial will be in Muleshoe Cemetery, under direction of Ellis Funeral Home, Muleshoe.

Torres died November 18, 1993 at his home.

He was born June 13, 1925 in Ojinga, Mexico. He married Cecilia Venegas on April 25, 1948 in Ojinga, Mexico.

Mr. Torres had lived in Bailey County since 1969, moving here from Ojinga, Mexico. He was employed by King Elevator of Muleshoe for 21 years. He was a member of the Immaculate Conception Catholic Church of Muleshoe.

Survivors include his wife, Cecilia Torres of Muleshoe; one daughter, Carolta Ramirez of Muleshoe; one brother, Manuel Torres of Ojinga, MX; two sisters, Venancia Medrano of Ojinga, MX and Inocencia Guteriz of Ojinga, MX; seven grandchildren and three great-grandchildren.

Troy H. Clem Services Scheduled

Services for Troy H. Clem, 86, of Muleshoe are scheduled for 10:30 a.m. Monday, November 22, 1993 at Progress Baptist Church with Reverend Jim Green officiating.

Burial will be in Muleshoe Memorial Park Cemetery, under the direction of Ellis Funeral Home, Muleshoe.

Clem died November 19, 1993 at the Muleshoe Area Healthcare Center.

He was born September 21, 1907 in Killeen, Tx. He married Mary Noema Bates on May 20, 1928 in Brownwood, Tx. She preceded him in death in September of 1990.

Clem had lived in Muleshoe since 1991, moving here from Brownwood, Tx. He was a retired farmer and a Baptist.

Survivors include one son, Troy H. Clem, Jr. of Laguna Beach, CA; two daughters, Nona Griffin of Muleshoe and Jeanne Morgan of Austin; eight grandchildren and 8 great-grandchildren.

The family suggests memorials to American Heart Association.

Patients In Muleshoe Area Medical Center

NOVEMBER 12, 1993

Ramon Salazar, William Hankins, Arnold Archer, Ellis Sterling, Robert Hayes, Berlinda Cavazos

NOVEMBER 13, 1993

Elizabeth Autrey, Oleta Hamblin, Lela Wieland, William Hankins, Arnold Archer, Ellis Sterling, Berlinda Cavazos

NOVEMBER 14, 1993

Elizabeth Autrey, Oleta Hamblin, Amy Marchman, Lela Wieland, William Hankins, Stella Morgan, Arnold Archer, Ellis Sterling, Berlinda Cavazos

NOVEMBER 15, 1993

Elizabeth Autrey, Oleta Hamblin, Amy Marchman, Lela Wieland, William Hankins, Stella Morgan, Arnold Archer, Ellis Sterling, Berlinda Cavazos

NOVEMBER 16, 1993

Felicitas Leja, Oleta Hamblin, Amy Marchman, Cordelia Eddins, William Hankins, Ruby McCamish, Stella Morgan, Arnold Archer, Ellis Sterling, Janette Burden, Berlinda Cavazos, Baby Boy Marchman

NOVEMBER 17, 1993

Felicitas Leyja, Oleta Hamblin, Cordelia Eddins, Ruby McCamish, Stella Morgan, Fern Gilbreath, Janette Burden

NOVEMBER 18, 1993

Felicitas Leyja, Oleta Hamblin, Cordelia Eddins, Ruby McCamish, Stella Morgan, Fern Gilbreath, Janette Burden

Nursing Home News

by Joy Stancell

Thursday morning Rev. David McIntire brought a missionary from the Philippines to talk and make a slide presentation of his work in that part of the world.

Thursday afternoon, Jennie McVickers, Sammie Allison and Sally Ellis from the Ladies' Circle of the United Methodist church conducted a special Veteran's program in the Day room. Edd Edmiston and Clifton Finley spoke to the group on their experiences as they served their Country in World War II.

Friday morning Gary Montgomery from the Muleshoe Church of

Christ directed a singing and "I Remember When" program for the residents.

Tuesday afternoon Laverne James, Mary Scoggins, Beth Watson, Charlene Cargile, Lynda Low and

Claudine Embry came to shampoo and set the ladies' hair. Mandy Edwards gave manicures.

Tuesday evening residents, families, volunteers and staff gathered together for our annual Thanksgiving pot luck supper. This was a special time of sharing and caring. We really wish to express our thanks and appreciation to everyone who contributed to the success of the gathering: our residents, their families, volunteers, dietary, employees, and staff. Thank you Buster and Wanda Kittrell, Melvin and Wanda Griffin, Lona Embry, Mr. Awbrey, Five

Area Telephone, Nancy Kidd, The Gospel notes quartet, Mr. and Mrs. Gary Montgomery, and many other dear people.

Wednesday morning Melvin Griffin hosted coffee, spudnut, and table talk time.

Thursie Reid assisted with our Turkey and Such Show and Tell Party on Wednesday morning.

Wednesday afternoon Mr. and Mrs. J.C. Shanks led singing and played the piano for our sing-a-long. Special guest attending were Holly Millsap, Irene Splawn, Jean and Bennie O'Brian, Mr. Hukill.

HEALTH INSURANCE
CALL Mark Morton 109 S. 1st Muleshoe 272-7519
MULLEN AUTOMOBILE INSURANCE COMPANY
NATIONAL OFFICE BOONVILLE, MISSOURI

Clara Weaver was visited over the weekend by her daughter Pat and son-in-law, Bill.

We wish to express our thanks and appreciation to Cari Kidd for the fine job she does in keeping our

residents in fresh water. Cari, we salute you!

At this writing, Stella Morgan, F. Leyja, and Ruby McCamish are in the local hospital. Hurry and get well, ladies, we miss you.

Come In And Register For Holiday Smoked Turkeys

No Purchase Necessary

LIVEOAK FUEL

MULESHOE, TEXAS

1914 W. Amer. Blvd. Muleshoe, Tx.

272-4875

(Formerly Richland Hills Texaco)

Immaculate Conception Catholic Church

805 E. Hickory

Father Joseph Augustine

First Baptist Church

220 West Ave. E.

Pastor, Stacey Conner

Emmanuel Baptist Church

Iglesia Bautista Emmanuel

107 East Third

Isaias Cardenas, Pastor

Trinity Baptist Church

314 E. Ave. B

Rev. Dale Berry

Circle Back Baptist Church

Intersection FM 3397 & Fm 298

Rev. Jessie Shaver

946-3676

Calvary Baptist Church

1733 W. Ave. C.

Pastor B.G. Hill

Progress Baptist Church

Progress, Texas

Richland Hills Baptist Church

17th and West Ave. D

Rev. Terry Taylor

St. Matthews Baptist Church

Corner of West Boston & West Birch

Pastor,

Progress Second Baptist Church

1st and 3rd Sundays

Rev. Arthur Hayes

Primitive Baptist Church

621 South First

Elder Cleveland Bass, Pastor

1st Baptist Church

Lazbuddie, Tx.

Bobby Alexander, Pastor

965-2126

The Christian Center

Morton Hwy

Reydcn Stanford

272-5163 or 227-2136

St. John Luthern

Sunday School and Bible

Classes 9:30 a.m.

Church Services 10:30 a.m.

Rev. Richard Greenhaner

Jehovah Witness

Friona Hwy

Jack Tiffin, Minister

Warren Meeks, Minister

Lazbuddie Methodist Church

965-2121

G. Scott Richards, Pastor

New Covenant Church

Plainview Hwy

Sunday 10:00 a.m.

Wednesday 7:00 p.m.

Jimmy Lowe, Pastor

Templo Calvario

507 South Main

Sunday 10:00 a.m.

Sunday Evening 7:00 p.m.

Evangelistic Services

New Vision Church of the Nazarene

814 W. Ave. C

272-3622

Pastor David R. McIntire

SCIENCE and GOD

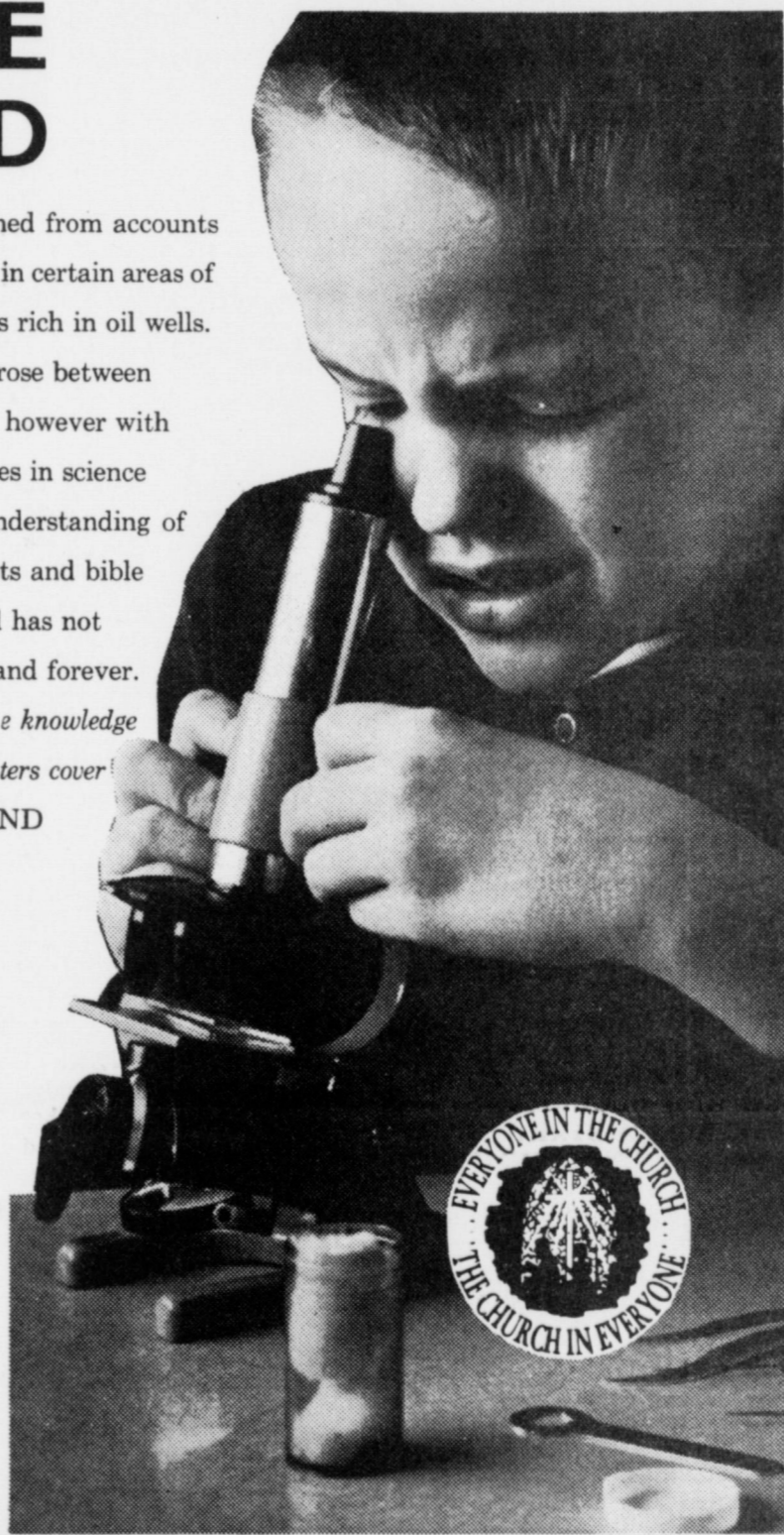
Not too long ago, a man determined from accounts in the bible that oil could be found in certain areas of bible lands . . . now this country is rich in oil wells.

In the past, vigorous arguments arose between some scientists and bible scholars, however with the passing of time, new discoveries in science have helped us to have a better understanding of God's word and now most scientists and bible scholars are in accord. God's word has not needed to be proved, for it will stand forever.

"For the earth shall be filled with the knowledge of the glory of the LORD, as the waters cover the sea." ATTEND CHURCH AND STUDY GOD'S WORD.

The Church is God's appointed agency in this world for spreading the knowledge of His love for man and of His demand for man to respond to that love by loving his neighbor. Without this grounding in the love of God, no government or society or way of life will long persevere and the freedoms which we hold so dear will inevitably perish. Therefore, even from a selfish point of view, one should support the Church for the sake of the welfare of himself and his family. Beyond that, however, every person should uphold and participate in the Church because it tells the truth about man's life, death and destiny; the truth which alone will set him free to live as a child of God.

Coleman Adv. Serv.



Attend The Church Of Your Choice!

Bob Stovall Printing 221 E. Ave. 272-3373	Bailey Gin Co. 946-3397	Muleshoe Trade Center Tex-Pack 130 Main 272-4906	Attend The Church Of Your Choice!
American Valley Inc. W. Hwy 84 272-4266	First Bank Member F.D.I.C. 202 South First 272-4515	Bratcher Motor Supply 107 E. Ave. B. 272-4288	Western Drug 114 Main 272-3106
Decorator's Floral & Gifts 616 S. 1st 272-4340	Bailey County Farm Bureau 1612 W. Amer. Blvd. 272-4567	Nacho's Southside Chevron 502 S. 1st 272-3251	Wes-Tex Feed Yards, Inc. 272-7555
Irrigation Pumps & Power W. Hwy 84 272-4483	James Crane Tire Co. 322 N. 1st 272-4594	Viola's Restaurant 2002 W. Amer. Blvd. 272-3838	5-Area Telephone Cooperative, Inc. 302 Uvalde 272-5533

Complete Line Monuments - Markers Memorials Granites - Bronze

Muleshoe Memorial Park Cemetery, Inc
232 Main P.O. Box 373
Muleshoe, Texas
272-5727 or 272-4670

CLASSIFIEDS 272-4536

CLASSIFIED RATES

15 Words & Under
Minimum Charge
\$2.30
Thereafter
\$.00
16 Words & over
1st Insertion
15 cents per word
2nd Insertion
13 cents per word

CLASSIFIED DISPLAY RATES

\$1.75
Per Column Inch
DEADLINES
12 noon Tues.
For Thursday Paper
12 noon Friday
For Sunday Paper

To receive the reduced rate after the first insertion, ad must run continuously.

We reserve the right to classify, revise, or reject any ad. We are not responsible for any error after ad has run once.

CONCERNED
About Someone's Drinking?
HELP IS AVAILABLE
through Al-Anon
Call 272-2350 or 965-2870 or come to visit Tuesday and Thursday nights, 8:00 p.m. & through AA call 965-2870 or come visit Tuesday nights, 8:00 at 620 W. 2nd, Muleshoe

1. Personals

CONCERNED
About Someone's Drinking?
HELP IS AVAILABLE
through Al-Anon
Call 272-5857; 927-5110 or 965-2870 or come to visit Tuesday and Thursday nights, 8:00 p.m. & through AA call 965-2870 or come visit Tuesday nights, 8:00 at 723 W. Ave. E, Muleshoe

WANTED:
A circle of alfalfa pasture. Call (505) 359-0990. 1-46t-4tp

Storage for 4 row cotton harvester. 227-2350 - Matt Nix, Sudan, TX. 1-47s-6tp

5. Apts. For Rent

Apartment for Rent!
272-4622.
K5-44s-tfc

11. For Sale or Trade

BAHAMA CRUISE!
5 days/4 nights, Underbooked!
Must Sell!
\$299/Couple.
Limited Tickets.
(407) 767-0208 ext 6310
Mon. - Sat.
9 a.m. - 10 p.m.
11-45s-8tp

Business For Sale!
Across from High School. Call 272-5283 after 5:00 p.m.
S11-45t-6tc

Classifieds!
Bigger and Better Than Ever
272-4536

3. Help Wanted

3. Help Wanted

HELP WANTED

SPARTAN Public Transportation, is taking applications for the position of Driver/Neighborhood Center Worker. People interested may apply at the Bailey County Multi-Service Center located at 804 W. American Blvd., Muleshoe, Texas. The person to contact is Janie Mejia.

Criteria for Selection and Qualifications:

- *Valid Texas Drivers License which is upgradeable to Commercial Drivers License.
- *Must be a minimum of twenty-five years of age. One year may be waived provided that the individual being considered has a clean record.
- *Ability to independently follow oral and written instructions.
- *Ability to work and communicate effectively with people from diverse socio-economic and cultural backgrounds.
- *Ability to learn first aid, and passenger handling techniques and procedures.
- *Basic knowledge of operations of a motor vehicle and ability to perform minor and routine maintenance on transportation vehicles.
- *Ability to read and write in the English language.
- *Ability to perform simple mathematical computation to include the four basic skills plus simple fractions and percentage.
- *Ability to communicate orally and in written form.
- *Ability to gather and record simple facts accurately.

SOUTH PLAINS COMMUNITY ACTION ASSOCIATION, INC. is an EQUAL OPPORTUNITY EMPLOYER.

S3-47t-2tc(TS)

TOP SALESPERSON #1 WANTED

NO EXPERIENCE REQUIRED
EXTENSIVE TRAINING PROGRAM
HEALTH INSURANCE -
PRESTIGE AND SECURITY
30,000 A YEAR TO START
PROFESSIONAL ENVIRONMENT

THIS GROUND FLOOR OPPORTUNITY IS THE CHANCE OF A LIFE TIME FOR AN AGGRESSIVE PERSON WILLING TO TAKE DIRECTION AND HAS A STRONG DESIRE TO SUCCEED. ONLY PEOPLE INTERESTED IN MAKING BIG MONEY NEED TO APPLY.

Apply in Person

MULESHOE MOTOR CO.
Muleshoe, Tx

TEXAS MIGRANT COUNCIL

Is Now Taking Applications For Bus Drivers.
Qualifications needed:
CDL license
For Applications Come By
101 E. Ave. B, Muleshoe Texas
3-37s-tfc

"The Texas Department of Health is recruiting for a Nurse II for the Muleshoe office. This position is responsible for the delivery of public health nursing services to the population of Bailey County, including child health, maternity, case management, immunizations, and adult health. Hours are basically 8-5, Monday-Friday. Excellent benefits. Must have at least two (2) years of full-time paid R.N. experience or B.S.N. Current Texas licensure as RN required. Resumes not accepted. Salary \$2,389 per month. Approximately 25% daytime travel. Please use PRN# 94-R01-0018 when applying. For other qualifying options and application contact Pat Jones or Phyllis McLemore, 1109 Kemper Street, Lubbock, Texas 79403-2599, 806/744-3577. Applications accepted in Austin through 5:00 pm November 29, 1993. "Equal Opportunity Employer."
T3-47s-1tc(TS)

Welders and Fitters Needed. We will train. Apply at A&M Building Systems at 2610 E. Mabry Drive, Clovis or call Teddy at (505) 769-2611.
A3-47s-2tc
Beauticians Needed: Main Street Beauty Shop. Call: 272-3448.
M3-31t-tfc

MUST SELL! 1992 Ford Ranger Truck, 5 Speed, Air Conditioning, AM/FM Radio, Fuel Miser. No old contract to assume, no back payments to make. Just need responsible person to make reasonable monthly payments. Ask for Mr. Gibson in the Credit Dept, 272-4251 or 1-800-432-7617, Muleshoe Motor Co.

No man does anything from a single motive.
—Samuel Taylor Coleridge

MUST SELL! 1993 Ford Aerostar Passenger Van, Automatic Transmission, Air Cond., AM/FM Cassette, Loaded With Options - Two To Choose From. No old contract to assume, no back payments to make. Just need responsible person to make reasonable monthly payments. Ask for Mr. Gibson in the Credit Dept, 272-4251 or 1-800-432-7617, Muleshoe Motor Co.

There is nothing so nice as having a great deal one ought to do and then firmly taking a holiday.
—E.F. Benson

MUST SELL! 1988 Mercury Grand Marquis, 4 Door, Automatic Transmission, Air Cond., Power Windows, Locks, Tilt, Cruise, Extra Clean. No old contract to assume, no back payments to make. Just need responsible person to make reasonable monthly payments. Ask for Mr. Gibson in the Credit Dept, 272-4251 or 1-800-432-7617, Muleshoe Motor Co.

MUST SELL! 1988 Ford F250 XLT Lariat, Power Windows, Locks, Tilt, Cruise, AM/FM Stereo, Automatic Transmission, A/C, Large V8, Low Mile. No old contract to assume, no back payments to make. Just need responsible person to make reasonable monthly payments. Ask for Mr. Gibson in the Credit Dept, (806) 272-4251 or 1-800-432-7617, Muleshoe Motor Co.

8. Real Estate

House for Sale:
Beautiful, 3 Bedroom, 2 Bath, Large Kitchen and Utility, Newly Remodeled Bathroom, New Paint, and Carpet throughout, Refrigerated Air and Central Heat. Call 272-3453, after 5 or 272-4495, in day time.
D8-46s-tfc

LAND FOR SALE
320 acres, 2 miles South of Lariat, 160 acres each side of FM1731. NW/4 of Sec. 19 and the NE/4 of Sec. 30. 4 wells, 2 pivots, \$192,000. Will split. 7.85% interest fixed for 10 years.
Contact
The Federal Land Bank Association of Muleshoe.
806/272-3010.

MUST SELL! 1992 Ford Escort Station Wagon, Automatic Transmission, Air Cond., AM/FM Stereo, Clean, Low Miles. No old contract to assume, no back payments to make. Just need responsible person to make reasonable monthly payments. Ask for Mr. Gibson in the Credit Dept, 272-4251 or 1-800-432-7617, Muleshoe Motor Co.

BUILDING LOT BY OWNER.
Beautiful Parkridge Addition, Muleshoe. 103' x 125', paved streets, utilities. Great View! Consider trade-in or owner financing.
(806) 792-5409.
W8-38s-tfc(TS)

HOUSE FOR SALE!
MUST SELL!
Large 2 Bedroom, 1 Bath, Central Heat, Utility, Garage, Fenced Back Yard. FmHA Financing Available. Phone 272-5922, leave message.

15. Misc.

FLORAL DESIGN CLASS
Christmas Decoration for the Home!
Saturday, December 4 and Saturday, December 11 From 10 a.m. to 3 p.m.
Rheata White Studio
213 E. Fir Ave. Muleshoe.
For information call 272-3889 or 272-4696.
15-47s-4tc

8. Real Estate

For Sale: 100 Acres!
Three wells with motors, house, barn, four side rolls, and various farm equipment. Next to a farm market road. Make offer to Tommy at: 806-272-4515.
G8-47t-tfc

CLASSIFY! MULESHOE JOURNAL 272-4536

James F. Hayes & Co.

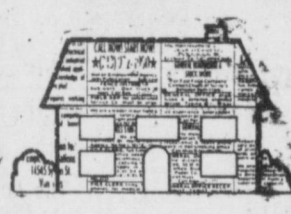
AGRICULTURAL REAL ESTATE SERVICES
1200 Acres in Castro County. 5 wells, 3 sprinklers, 2000 Head Feedyard. Ideal Cattle Operation for Wheat Pasture and Finishing Operation.

6400 Acres in Western Deaf Smith County. 4600 Acres of grass. Balance in Cultivation. Nice home, Good Pens and Fences, Good Stock Water. Call for more details.

240 Acres in Bailey County West of Muleshoe. Irrigated. Lays Good. Call for further details.

Bailey County Dryland Farm. 696 Acres on State Line, South of Arch Highway. Fully allotted. All in cultivation.

Vic Coker, Agent
310 Main Street, Suite 103
Office Muleshoe Home 965-2468
272-3100



SMALLWOOD REAL ESTATE

232 Main 272-4838
3 Bedroom, 1 3/4 Bath, 1 Car Garage, Fenced Back Yard.

11 Acres (Joins city limits), 76' x 14' Mobile Home, 672 sq. Feet built on, Carpet, 3 Bedrooms, Central heat and air, Barns and Sheds. 3 Horse power pump.

3 Bedroom Brick, 2 Bath, 1 Car Garage, Fenced Back Yard. Priced to sell.

Commercial, with large house. Storage or Apartments. Make repairs & make money. This is for someone who can repair and paint. Owner financed.

Joe L. Smallwood, Broker

Nieman Realty

116 E. Ave. C George Nieman, Broker 272-5286 or 272-5285

RICHLAND HILLS
NICE RESIDENTIAL LOTS...\$5,000 UP

JUST LISTED-Nice 3-1 3/4-2 Brick, Cent. A&H, built-ins, fenced yard. \$40's!!!!RH-1

HIGH SCHOOL
3-1-1 Brick, Cent. heat, evap. air. FmHA financing. \$20's!!!!HS-1

NICE 3-2-2 Brick, Heat Pump, built-ins, FP, cov. patio, fenced yd. \$50's!!!! HS-2

PRICE REDUCED 3-2 Remodeled, heat pump, built-ins, fenced yd., storage bldg. \$23,000!!! HS-3

3-1-1 carport Home, heat pump, storm windows & doors. MUCH MORE. \$20's!! HS-4

3-1 3/4 Home, wall furnace/feat, window evap. air, built-in stove, storage bldg.!! \$13,000 Cash "AS IS"!!!! HS-5

PRICE REDUCED-BUYER INCENTIVES-3-2 Home, fl. furnace, evap. air, st. bldg., fenced yard!!!!HS-6

IMMACULATE 3-2-2 Brick, Cent. A&H, built-ins, fenced yard, storage bldg., & MORE!!!! \$50's HS-8

HIGHLAND AREA
3-2-1 Brick, Cent. A&H, FP, built-ins. MAKE OFFER!!!! HL-1

JUST LISTED- 3-2 Home, Heat Pump, FP, cov. patio, st. bldg., & More. \$30's!!!! HL-2

FmHA Financing To Qualified Buyer- -NICE 3-1-1 Brick Home, Cent. A&H, ceiling fans, storage bldg., fenced yd. \$30's!!!!HL-3

3-2-1 Brick, Cent. heat, evap. air, built-ins fenced yd., storage bldg. \$40K. HL-4

8. Real Estate

1280 Irrigated Farm. 8 wells, underground lines, good grain bases, lays good, metal shop, pipe and cable corrals, home near Hereford. Owner Finance part. (409) 543-5636.

3 Real Estate

HOME FOR SALE
3-1-1 Brick, Heat Pump, Fence, and Much More. Very Reasonably Priced. FmHA Financing Available. 808 W. 9th. 272-5687.
WR-30t-tfc

HENRY REALTY

111 W. AVE. B 272-4581
Muleshoe, Tx.

Near High School-3 Bedroom, 3 Bath, BV Central Heat, Ducted in Evaporative Air Cond., Carpet throughout, Large Den with rock fireplace, Top grade wood paneling throughout. Storm Windows and Doors. Insulation in ceiling. Large utility room and spacious storage area. Kitchen built-ins.

4 Bedroom, 2 Bath, 2 Car Garage, 2 Carport. Refrig. Air, Central Heat. All carpet, beautiful Dining Area with built in china cabinet and paneled walls and other extras. Storm Doors, Storm Windows & Awnings. Concrete fence, front yard has automatic sprinkler. Kitchen built-ins, 1,000 sq. ft. storage. Large home with extra storage.

Country Club Addition, 2 bedroom, 1 bath, enclosed carport, new protective siding. Carpet throughout, wood fence, storm doors and some storm windows. Ceiling fans, new front porch and new back patio. Ample storage, storm cellar. Excellent condition.

Lenau Addition-4 bedroom, 2 bath, carport, central heat and air, carpet, dining area, built-in dishwasher and stove. Covered patio, wood fence, storm doors and windows, drapes and curtains. One ceiling fan. Ample storage and shed for travel trailer.

RURAL-3 bedroom, 1 bath, 2 car garage, masonite siding, carpet throughout, central heat, evap. air cond. on roof ducted to all rooms. Built-in dishwasher. New roof. Additional acres available, owner financing to qualified buyer.

Reduced Price - Owner ready to sell. 2 bedroom, 1 bath, 1 car garage, carpet, wood fence, storm cellar.

Lenau Addition - 2 bedroom, 1 bath, large den, carport, carpet, storm doors and windows, patio. Spacious, clean and ready to move into. Local financing could be arranged. \$27,500.00.

Near High School - 2 bedroom, 1 bath, wood fence, carpet, storm doors & windows. Local financing could be arranged. Immediate occupancy.

COMMERCIAL PROPERTY
Ideal location on West American Blvd. 150' highway frontage. A great business opportunity.

West American Boulevard 150' frontage. Priced to sell.

LAND
160 acres irrigated farm land with pivot sprinkler SW of Muleshoe. 60 acres of wheat. Ideal for livestock operation. Good water.

Nieman Realty

116 E. Ave. C George Nieman, Broker 272-5286 or 272-5285

LENAU ADDITION
PRICE REDUCED-3-1 1/2-1 Home, Cent. heat, evap. air, new roof, cov. patio, st. bldg., fenced yd. \$30's!!! L-1

VERY NICE-3-2-1 Home, Heat Pump, storm windows & doors, extra insulation, nice carpet, spktr. sys., & MORE!!!! \$30's!!!! L-2

JUST LISTED 2-1 1/2-1 Home, Heat Pump, built-ins, encl. patio, plant room, workshop-stor., fenced yd. \$30's!!!! L-3

RURAL HOMES
NICE 3-2-2 carport Home, one acre tract, Cent. A&H, built-ins, fenced, on pavement close to town. \$40's!!!! HR-2

3-2-2 Brick, blt-ins, Ht. pump, FP, 2.5 acres on pavement. \$60's!!! HR-3

VERY NICE 4-2-2 Brick home on 6 ac., Cent. A&H, 2300'+lv. area, Much More!! \$60's/HR-4

3-2-1 on 1 acre, Cent. Heat, Evap. Air, Remodeled, \$30's!!! HR-6

3-1-2 Home on 1 1/2 acres storm cellar & storage bldg...\$20's!!!! HR-8

ESTABLISHED BUISNESS, 40+ yrs., lot, bldg., furniture, fixtures, & inventory. Books open to qualified Buyer!!!!

LAZBUDDIE-VERY NICE 3-2-2 Brick Home on 1 acre, Cent. A&H, built-ins, FP, nice carpets, large cov. patio. \$60's!!!! HR-7

ASK ABOUT OUR COMMERCIAL LISTINGS!!!
Circle Back Area-177 acres of good dryland... Fully Allotted!!!!

PLEASANT VALLEY- 160 acres, 8" well. Lindsey circle!!!!

Traditional Thanksgiving

6 Pack
Coca Cola
or Other Flavored Drinks
\$1.39
12 oz. Cans
Asst.
See stores for favors included.

Savings At

Lowe's
Pay-n-Save
MARKETPLACE

Ocean Spray Cranberries \$1.99 1/2 lb.	New Crop Pecans \$2.59 1/2 lb.	New Crop Jumbo Walnuts \$1.59 1/2 lb.	Borden Valencia Peanuts Salted or Roasted \$1.39 1/2 lb.	Borden Valencia Raw Peanuts \$1.19 1/2 lb.
--	--	--	---	---

QUALITY MEAT

Shurfine Turkeys
49¢ lb.
16-22 lb. Average
Limit 2 at 49¢ lb.
Additional Purchases 69¢ lb.

Shurfine Turkeys **59¢** lb.
15 lbs. & Under

with POP UP timer

Corn King Boneless
Half Ham
\$1.69 lb.
Limit 2 at \$1.69 lb.
Additional Purchases \$1.89 lb.

We Have A Full Line of Poultry Such As Cornish Hens, Ducks, Geese, Baking Hens & Freezer Packs

Corn King Boneless
Whole Ham
\$1.49 lb.
Limit 2 at \$1.49 lb.
Additional Purchases \$1.69 lb.

Guaranteed Freshness!
Fresh - N - Tender

Broccoli.....69¢ lb.

Red Delicious
Apples.....49¢ lb.

Fresh Crisp Small Size
Celery.....19¢ ea.

California New Crop
Navel Oranges.....55¢ lb.

Medium Size
Yellow Onion.....3 lbs. For \$1

Cello Pack
Carrots.....3-1lbs. Cello Pkg. For \$1

Golden Ripe
Bananas.....4 lbs. For \$1

Portales
Sweet Potatoes.....3 lbs. For \$1

Sunday House Whole
Smoked Turkeys
\$1.29 lb.

Frozen
Baking Hens
89¢ lb.
1-7 Average

Grade "A" Bone in
Turkey Breast
\$1.29 lb.

Shurfine
Turkey Ham
\$1.69 lb.

Chicken
Livers & Gizzards
79¢ lb.

Butterball
Turkeys
16-22 lb. Average
89¢ lb.

Wilson
Spiral Cut Ham
for the Holidays

Minute Rice **\$2.99**
42 oz.

Foil Roaster **79¢**
Large Oval or Rectangle

Sugary Yam
Yams
89¢
29 oz.

Morrison
Cornbread
Mix
White or Yellow
4 \$1
6 oz. For

Morrison
Corn Kits
3 \$1
6 oz. For

SAVE 60¢
on ONE 10oz. MIRACLE WHIP®
SALAD Dressing or MIRACLE WHIP®
LIGHT Reduced Calorie Dressing
10 oz. Jar. 100% Fat Free. No Cholesterol.
Good Only At Lowe's Pay-N-Save Marketplace
Expires 11-24-93

JELLO gelatin
4.51
Regular and Sugar Free
4 Serving Size

Shurfine
Grade "A"
Large Eggs
59¢
Dozen

Kraft
Marshmallow
Creme
79¢
7 oz.

Shurfine
Corn
Syrup
99¢
32 oz.

Baker's Semi-Sweet
Chocolate
Chips
77¢
12 oz.

Check Our
Insert In
Today's
Muleshoe
Journal
For More
Specials!

Betty Crocker
Cake Mix
69¢
Asst.

Shurfine
Marshmallows
Regular or Mini
2 \$1
10.5 oz For

Del Monte
Pineapple
2 \$1
15.25 oz. For

Lester Mini Sweet
Peas
79¢
15 oz.

Campbell's
Cream of
Mushroom
or Cream of Chicken
89¢
10.75 oz.

Shurfine
Powdered or Brown
Sugar
88¢
2 lb.

Shurfine Granulated
Sugar
89¢
4 lb.

Del Monte Whole
Spiced
Peaches
\$1.99
29 oz.

Del Monte
Seedless
Raisins
\$1.39
15 oz.

Del Monte
Mandarin
Oranges
89¢
11 oz.

Del Monte
Green
Beans
Italian Cut or Whole
69¢
16 oz.

Del Monte
Italian Beans
or Whole Green Beans

Del Monte
Vegetables
Regular or No Salt Added Cut Green Beans, French Style Green Beans, Cream Style Corn or Whole Kernel Corn, Sliced Corn, Whole New Potatoes, Mixed Vegetables, or 11 oz. Summer Crisp Corn.
5 \$2
16-17 oz. For

Del Monte
Fruit
17 oz. Fruit Cocktail/Chunky Mix Fruit, 16 oz. Yellow Cling Peach Halves/Slices, 16 oz. Pear Halves/Lite Fruit Cocktail, 16 oz. Lite Chunky Mix Fruit/Lite Sliced Yellow Cling Peaches, 16 oz. Lite Pear Sliced Halves, and Regular Pear Halves
79¢
16-17 oz.

Heinz Homestyle
Gravy
Brown, Country, Chicken, Mushroom, or Turkey
\$1.19
12 oz.

Shurfine
Cranberry Sauce
Jellied or Whole
3 \$1
16 oz. For

Stove Top
Stuffing
\$1.09
6 oz. Asst.

Aunt Jemima
Corn Meal
Yellow, White, or White Self-Rising
99¢
5 lb.

55¢ OFF
ANY 5 LB. BAG
Aunt Jemima
Corn Meal

Colgate
Shave
Cream
99¢
11 oz. Asst.

Tylenol
Cough
or Cough & Decongestant
\$2.99
4 oz.

Pepto
Bismol
\$3.79
12 oz.
Regular or 8 oz. Max

Minute Maid
Orange Juice
\$2.99
96 oz.

Country Crock
Spread
\$1.59
3 lb. Tub

Pet Ritz Deep Dish
Pie Shells
99¢
2 pack

Mrs. Smith's
Pumpkin Custard
Bake & Serve Pie
2 \$5
26 oz. For

Parkay
Margarine
2 \$89¢
1 lb. For

Kraft
Margarine
Quarters
Regular or Lite

Eggo Homestyle or Buttermilk
Waffles
\$1.59
11 oz.

Minute Maid
Orange Juice
Reduced Acid, Country Style, Reg. or Calcium Fortified
99¢
10-12 oz.

Pillsbury
All Ready Pie Crusts
\$1.79
15 oz.

Pillsbury
Grands Biscuits
Buttermilk 8 ct. Butter
Tartar, Cheddar Biscuits,
Flaky or Southern Style
\$1.19
16 oz.

Inland Valley
Fries
Curly Q, Tater, Babbers,
or Fridge Fries
2 \$3
32 oz. For

Green Giant
Vegetables
Mixed Vegetables, Broccoli Cut,
Sweet Peas or Niblets Corn
\$1.19
10 oz.

Pillsbury
Cookies
Chocolate Chip, Sugar,
or Peanutbutter
2 \$3
20 oz.

Gandy's or Quality Ched
Sour Cream
8 oz. For
2 \$89¢

Rhodes
Rolls
18 oz. Cinnamon Whirls
18 oz. White Dinner Rolls
Wheat or Texas White
\$2.19
Pkg.

Land O Lakes
Butter
Light or Regular
\$1.19
1 lb.

Shurfine
Pie Filling
Cherry or Apple
89¢
20-21 oz.

Libby's
Pumpkin
49¢
15 oz. Can
Limit 2 with coupon. Limit 1 coupon per customer. Good Only At Lowe's Pay-N-Save Marketplace. Expires 11-24-93.

Libby's
Pumpkin
49¢
15 oz. Can
Limit 2 with coupon. Limit 1 coupon per customer. Good Only At Lowe's Pay-N-Save Marketplace. Expires 11-24-93.

INSTORE VALUABLE
COUPON
Libby's
Pumpkin
49¢
15 oz. Can
Limit 2 with coupon. Limit 1 coupon per customer. Good Only At Lowe's Pay-N-Save Marketplace. Expires 11-24-93.

Philadelphia
Cream Cheese
Original or Lite
79¢
8 oz.

Cool Whip
69¢
8 oz.
Good Only At Lowe's Pay-N-Save Marketplace. Expires 11-24-93. Additional Purchases Req. Limit 1 Per Coupon. Limit 1 Coupon Per Customer.

Carnation
Hot Cocoa
Mix
99¢
10 ct. Asst.

INSTORE VALUABLE
COUPON
Carnation
Hot Cocoa
Mix
99¢
10 ct. Asst.
With This Coupon And The Purchase of Three Other Nestle Items in This Ad. Limit 1-10 ct. Pkg. Per Coupon. Expires 11-24-93.

Shurfine
Whipping Cream
19¢
Half Pint

Shurfine
Brown 'N Serve
Rolls
3 \$1
14 ct. For

Shurfine
Whipping Cream
19¢
Half Pint

Shurfine
Whipping Cream
19¢
Half Pint

Solo
Party Cups
89¢
16 oz. 20 ct.

Solo
Party Plates
\$1.19
9 inch 15 ct.

INSTORE VALUABLE
COUPON
Solo
Party Plates
\$1.19
9 inch 15 ct.
With This Coupon And The Purchase of Three Other Nestle Items in This Ad. Limit 1-10 ct. Pkg. Per Coupon. Expires 11-24-93.

INSTORE VALUABLE
COUPON
Solo
Party Plates
\$1.19
9 inch 15 ct.
With This Coupon And The Purchase of Three Other Nestle Items in This Ad. Limit 1-10 ct. Pkg. Per Coupon. Expires 11-24-93.

Lowe's
Pay-n-Save
MARKETPLACE
515 W. Amer. Blvd. Muleshoe 272-4406
401 W. American Blvd. Muleshoe, TX 79347 (806) 272-4585
Prices effective November 18 - November 24, 1993
WE RESERVE THE RIGHT TO LIMIT QUANTITIES IN TEXAS.
Our Best to You!