



Harvey and Cal Harvey get a pan of deep sea fillets ready to fry for fish dinner in the courthouse basement. Those who go fishing and the other employees to a fry for the last four years.

GOOD EATIN'

Nothing Fishy Here

Harvey, B.T. Kisner and other residents whose occupations are related at the Lamb County Courthouse for their annual Mexico County officials left behind

Approves Increase

City Manager Pat Bradley brought up to date on the completion of improvements project. He said, "The city has finished with the paving of the 56 cities."

City Manager Pat Bradley brought up to date on the completion of improvements project. He said, "The city has finished with the paving of the 56 cities."

City Manager Pat Bradley brought up to date on the completion of improvements project. He said, "The city has finished with the paving of the 56 cities."

City Manager Pat Bradley brought up to date on the completion of improvements project. He said, "The city has finished with the paving of the 56 cities."

Services Pend B.E. Ivey, Truck Victim

Services are pending for Bervel Ivey, 50, of Littlefield and area who died Friday night in Lubbock's Methodist Hospital of injuries he sustained in a pickup-semi trailer collision on Sunday morning on Sunset

Services are pending for Bervel Ivey, 50, of Littlefield and area who died Friday night in Lubbock's Methodist Hospital of injuries he sustained in a pickup-semi trailer collision on Sunday morning on Sunset

County Cotton Harvest Rolls, 27,000 Bales In

Olton Area Ahead In Early Count

Almost 27,000 bales of cotton had crossed gin scales in Lamb County by noon Friday when a bale count was made by telephone. The Olton area led the list with 7,212 bales weighed in at the three Olton gins. Five thousand, nine hundred and eighty-seven bales had been tagged out at the Olton Co-Op where one gin was running 24

ECONOMY STEADY

Deposits Up \$1 Million

A bank call on Oct. 28 showed deposits up more than \$1 million dollars over the call date in 1969 and a further steady economy was reflected with loans down slightly.

One factor cited in increased deposits was the good grain crop and better milo prices than those paid a year ago. Milo crops also were cited as a reason for deposits being down in some instances, because some producers were still holding their grain crops hoping for a further price raise.

Early ASC payment, better grain crops and a steady grain market were attributed as factors in the drop of loans, since money from these two sources was repaid after the checks went out in the mail July 1.

DEPOSITS are up a total of \$1,276,404 over the Oct. 21 call last year in the six Lamb County banks, the Citizens State Bank at Anton, and Littlefield Federal Savings and Loans.

Deposits and loans both were up at the First National Bank at Sudan, Olton State Bank and Littlefield Federal Savings and Loan.

Security State Bank in Littlefield and Citizens State Bank at Anton both showed deposits up and loans down.

Loans and deposits were down at the First National Bank in Littlefield, the Citizens State Bank at Earth, and Amherst's First National Bank.

LITTLEFIELD Federal Savings and Loan had deposits of \$12,224,627 this quarter compared to \$11,793,397 for the same period last year, for an increase of \$431,230. Loans were up \$63,522 from \$10,411,609 last year to \$10,475,131 on the call date for 1970.

Deposits were up at the Olton State Bank from \$7,669,061 a year ago to \$8,242,145 on the official federal and state call date this quarter. This is an increase of \$573,084. Loans at the Olton bank were up \$147,981 from a total of \$5,138,585 in Oct. 1969 to \$5,286,566 as of Oct. 28.

The First National Bank at Sudan increased deposits \$2,112, up to \$3,807,230 from last year's \$3,805,118. Loans and discounts at the Sudan bank were \$1,064,317 at the end of the third reporting period for 1969

See DEPOSITS, Page 4

hours and the other two were on 14-hour shifts.

The Circle Gin and Jack Straw Gin had not put on night crews because of a shortage of gin labor.

GINNS ALL OVER the county reported a shortage of help to keep gins humming. Ginners, suction feeders and men on the presses were needed at the crowded gin yards.

Early cotton returns showed good grades, staple lengths and mic readings on the few grade cards returned, but most gins showed government classing behind several hundred bales.

Strict low middling and middling light spot seemed to be the predominant grade, with staple lengths running 31/32 with a micronaire in the premium range of 3.5 to 4.9. Price per pound was between 20.40 and 22.25 cents per pounds.

SIX GINS in the Earth area had tagged out 5,657 bales through Friday noon and another 1,000 bales were expected to be brought in before the day ended. The Earth area reported the best turnout of cotton produced in several years. The Nichols Gins at Pleasant Valley and Earth were not ginning around the clock because of a lack of crew. The Earth Gin Co. put on a full crew Tuesday and the Earth Co-Op was to have a night crew for the first time Friday.

Six gins in and around Littlefield had issued 4,820 green tags through Friday noon. A night crew was hired Monday at the Littlefield Farmers Co-Op, and other gins were trying to hire enough hands to run without shutting down one shift.

Four gins in the Amherst area had weighed in 3,921 bales, and a capacity was expected to be reached early this week with weather conditions remaining fair.

SPADE had tagged out 3,117 bales at the Friday noon call. The Spade Co-Op started 24-hour operations Monday and the Hampton gin had one and one-half crews.

Three gins at Sudan had a total of 2,950 and ginning was just getting started good there, due to some later crops than in other parts of the county.

Hart Camp and Fieldton had a combined total of 2,300 bales to cross the scales. The gin at Hart Camp and both Fieldton gins were needing labor to put on night ginning crews.

Springlake gins had weighed in 1,686 bales. Crops are late in this area, too, and ginning is just now getting up steam.

Farmers were complaining of not getting any grade cards back. Billy Braden, owner of the Springlake Gin Co., had not received a single return and termed the slowness "typical federal operations."

Third Annual Lamb Coin Show Set Here Today

Hundreds of persons are expected at the Third Annual Lamb County Coin Show during the day-long affair in the Littlefield Community Center today.

The show opens at 9 this morning and closes at 5 p.m. Throughout the day un-circulated silver dollars will be given away hourly and at the close of the show a drawing will be conducted for \$20, \$10 and \$5 gold pieces.

Eighteen dealers will be on hand for appraising, trading and buying in addition to the large number of exhibits of foreign currency and coins, U.S. exhibits, medals and tokens, special exhibits of currency and a junior class.

Larry Sanderson, general chairman of the show, said the show, parking and appraisals are free and the public is invited to attend.

Breakfast Planned For Veteran's Day

Veterans of WWI, WWII, Korean and Vietnam wars will be honored by the Littlefield Veterans of Foreign Wars, Post 4854, on Veterans Day, Wednesday Nov. 11.

Veterans from all over the Littlefield area will be honored with a free breakfast of whole-hog sausage, eggs and hot biscuits from 6 to 8 Wednesday morning. VFW membership is not required for veterans attending.



STEVE PUCKETT of Floydada is stopped after returning a Littlefield punt 35 yards to the Winds' 45. Chuck Blevins, 65, and Lee Roy Danford, 45, are the Cats in on the tackle. Dennis Cowan, 83, is coming up in the rear.

Cats Make Floydada Earn Victory, 21-3

The Floydada Whirlwinds are still unbeaten and the Littlefield Wildcats still haven't won a game, but a glance at the two teams as they left the field Friday night might have given a reverse impression.

Floydada's Mean Green won the District 3-AA tilt, 21-3, but the state-ranked Whirlwinds, now 9-0 for the year, had to fight every inch of the way.

The Wildcats, although 0-9 and going nowhere except to the "Cellar Bowl" with Morton here next Friday night, gave the Whirlwinds their stiffest test of the year.

AND IT WAS a proud Wildcat team that left Floydada's Wester Field Friday night, for they put on a tremendous defensive effort in a game that was actually closer than the score indicated.

Floydada, ranked as high as second in the state this season, got only one offensive drive under way during the night.

It was a 13-play, 68-yard march in the first quarter, on which officials measured for first downs four times during the drive.

FB Van Mitchell finally capped it with a one-yard drive with 2:49 left in the first quarter. Greg Campbell kicked the first of three extras to give Floydada a 7-0 lead.

THAT ALMOST could have been the ball game, because Littlefield seemed to be

going nowhere offensively. The Cats' best penetration was to the Floydada 37 until the Wildcats drove to the Green's 16 in the

See WILDCATS, Page 4

Membership Drive Slated

Members of the Littlefield Chamber of Commerce kick off their annual membership drive Monday with a buffet breakfast at 7 a. m. at the Crescent House Restaurant.

Tommy Ballard is chairman of the drive this year, and team captains are Don Avery, Doyle Patton, Kip Cutshall, Flannery Newton and Jimmy Jones.

One point will be awarded for each dollar collected in the drive that will continue through Wednesday, Nov. 9. Plaques will be awarded to the winning teams at the conclusion of the drive.

There are 224 Littlefield C-C members at the present time, and a goal of at least 50 new members is hoped for this year in addition to bringing the delinquent dues list up to date.



CHAMBER OF COMMERCE drive leader Tommy Ballard, standing center, passes out kits and instructions to team leaders who begin their annual drive for new C-C members Monday. Team captains are Kip Cutshall and Flannery Newton, standing, and Jim Jones and Doyle Patton, seated. The fifth captain is Don Avery who could not be present for the photo.



BERVEL EDWARD IVEY died Friday night in Lubbock's Methodist Hospital of injuries he suffered in this pickup-trailer collision early Thursday morning on Sunset Avenue.

4-H Club Has Meeting

The Littlefield 4-H Club met Monday night in the Community Center with Pat Boone president, presiding. Ricky Stamps called the roll and read the minutes. Jerry Ogerly gave the inspiration and Kenan Lichte led the motto and pledge. Jerry Ogerly, county council representative, gave a report on

the County 4-H Council meetings. Mrs. Lady Clare Phillips and Bobby Brunson gave the program on "Method Demonstrations."

The meeting was closed with the 4-H prayer led by Rodney Logsdon. Bobby Brunson led the recreation and refreshments were served to those attending.

LITTLEFIELD

MRS. J. B. McSHAN

385-4337

Margaret Fain, State Recording Secretary of Future

Teachers of America and Mrs. Lenton Smith, her state advisor will fly to Houston, Nov. 7, to attend a State Executive Board meeting. They will assist in planning the State Convention, which will be held in Houston in late Feb. Margaret is the first State Officer Littlefield has every had.

Mr. and Mrs. Bill Lyman and Bode of Hereford are spending the weekend with his parents, Mr. and Mrs. Bill Lyman. They attended the Tech-T.C.U. football game on Saturday.

Bonnie Pressley left Friday for Lubbock to spend the weekend with her sister-in-law, Mrs. Hallye Christian.

Mike Grissom, Charlie Craw, Shannon Traugott and Sandy, all students at T.C.U. are spending the weekend in the home of Mr. and Mrs. Slo Grissom.

Mrs. Houston Hoover, Mrs. Al Chambers, Miss Jan Hoover and Carla Chambers, students at West Texas State University, spent Saturday in Amarillo.

Opal McCarty was guest soloist at the First Christian Church last Sunday. She sang "How Great Thou Art".

Betty English and two boys of Lubbock spent last Sunday with her parents, Mr. and Mrs. O.E. Williams.

Mrs. Howard Keener left Wednesday for Childress to be with her mother, Mrs. A.O. Sweat, who underwent surgery on Thursday.

Mrs. Willard F. Devenau of Albuquerque, N.M. left last Sunday after spending a week in the home of her cousin, Mrs. Hobson Grant.

Mrs. Elton Hauk is visiting in Burnet with her daughter and family, Mr. and Mrs. Joe Paul Owens.

Rev. and Mrs. H. Henderson, Mrs. John D. McCarty and Frances Ricks were in Sudan Sunday night to hear Pro. Jo Mays and the Supremes Angels in a concert.

Recent guests in the home of



Julie Goes Shopping...

Julie, daughter of Mr. and Mrs. Billy G. Smith, who will be two in February, goes on a shopping spree

at the



"Better Check Prices!"



"I Need this book!"

Like Julie, a discriminating buyer, you'll find just the right gift at the A&B.



"But I'm happy with this Baby Tender Love."

A&B Office Supply
COMMERCIAL PRINTING
in Littlefield



MRS. DANNY COOK

Miss Lynn McGill Wed To Danny Cook In Olton

OLTON—Miss Lynn McGill became the bride of Danny L. Cook Friday, Oct. 30 in a home ceremony, with Douglas Burrer of the Olton Street Church of Christ, officiating. Parents of the couple are Mr. and Mrs. Lowell McGill of Olton and Mr. and Mrs. James Cook of Slidell, La.

The home was decorated in an archway covered with greenery, adorned with red bows, flanked by candelabras on each side of the archway and tied with a large red bow.

The bride, given in marriage by her father, wore a white floor length bridal gown of delustered satin, trimmed in alencon lace, accented with pearls and sequins. The empire bodice of the bride's gown was set-off by lace petals and the neckline was enhanced by alencon lace, that was embroidered with seed pearls and sequins. Her detachable chapel length train of satin was designed with lace and pearls, veiled in a flowing mantilla, attached to a queens crown of pearls. She carried a bridal bouquet of Bristol Fairy and tiny red rose buds, adorned with ribbon streamers.

The bride attended Abilene Christian College and West Texas State University and the groom attended Texas Tech University.



CAROLYN JONES

Wedding Plans Are Announced

Dr. and Mrs. Walter Breckenridge Mantooth Jr. of Lubbock announce the engagement of her daughter, Carolyn Kaye Jones to Donald Bounds Mask, son of Mr. and Mrs. William Bounds Mask of Lake Ransom Canyon in Lubbock.

Miss Jones is the granddaughter of Mr. and Mrs. Otto Jones of Littlefield, Mrs. Lucille Hutchins of Canyon and J. R. Hutchins of Spade.

The bride-elect is a graduate of Coronado High School in Lubbock and is presently attending Texas Tech.

The prospective groom graduated from Coronado High School in 1968 and is a junior at Texas Tech. He is a member of the Sigma Chi social fraternity and represents his fraternity on the inter-fraternity council. As a Cadet/2nd Lt. in the Air Force ROTC, Mask plans to enter law school after graduation. Upon completion of law school he will enter the Air Force as a captain.

The wedding date has been set for March 20th in the First Christian Church with Rev. Dudley Strain, officiating.



BETTY BALDWIN

Engagement Announced

Mr. and Mrs. F. D. Baldwin of Littlefield announce the engagement and approaching marriage of their daughter, Betty Ann Baldwin to Edward Lee Jordan, son of Mr. and Mrs. Arlie Jordan of Anson. The couple plan a January wedding at the Crescent Park Church of Christ in Littlefield.

Miss Baldwin is a 1968 graduate of Littlefield High School. She attended Amarillo Junior College in Amarillo.

Jordan attended school in Anson. He is presently serving with the United States Navy in South America.

All friends of the couple are invited to attend the wedding.

Mrs. Massengale Presides At VFW Aux. Meet

The VFW Ladies Auxiliary met Wednesday evening, Nov. 4, for a regular meeting with 15 members present. Bonnie Massengale, president, presided.

A report on the Voice of Democracy was given by Billie Ramage. The Christmas party project for the patients in the Veterans Hospital in Amarillo was discussed, with the date of the patients party being set for Dec. 21, at which time, the Littlefield Auxiliary will attend and distribute gifts.

Those going to the Veterans Hospital in Amarillo recently for the regular work day were Mmes. Freida Rice, Mildred Ivey and Rosie Vasek.

The Gold Star Parent's Tea was discussed and re-scheduled for Dec. 6.

The next regular meeting will be held Nov. 18 at 7:30 p. m. This will be a salad supper for members and their husbands. All members are urged to attend.

DON'T MISS THIS **True Value BARGAIN OF THE MONTH**

AM CLOCK-RADIO
Wake up to music instead of a nerve-shattering alarm! Just flip "on-off" switch to "wake-to-music". Separate volume control. 4", up-front dynamic speaker. Solid state. Dark brown case.

988 Reg. 14.98

Nelson's
P.O. Box 871 Phone 385-4331 Littlefield, Texas

INSTANT RELIEF from HIGH PRICES

Specials Good Sun., Mon., Tues., & Wed.



CAMERA
POLAROID

COLOR PAK 11 **\$24.99**

SHAMPOO HAIR COLOR

NEW DAWN

99¢

METAMUCIL

14 OZ

\$1.98

AFTER SHAVE LOTION

OLD SPICE

REG. \$1.50

99¢

CANDY DROPS

HONEY & HOREHOUND

7 OZ BAG

44¢

LUBRIDERM

16 OZ

\$1.69

RODEN Rexall DRUG

WE GIVE DOUBLE GOLD BOND STAMPS EVERY DAY ON PRESCRIPTIONS

Activities

THURSDAY, Nov. 5
XIT Girl Scouts neighborhood meeting, in the Girl Scout room.

FRIDAY, Nov. 6
The XYZ Club noon in the Pioneer Natural covered dish lunch. Flora Best Boon will be elected.

Olton Club Has Meeting

OLTON—The Olton Club met Monday night in the Women's Club for a friendship night. Members and guests present.

The Devotional was given by Mrs. Frank Cook. Ralford Daniel was guest speaker. Witten, who presented a review on "Everybody Loves a Body" by the serving table with an ecru cloth and a fall candle. Mrs. Dunes variety of sandwiches, mints, hot spices coffee.

Members attended Mmes. J. C. Burrus, H. B. Cornelius, Daniel Granbery, Bailey Prestridge, C. S. Slatten, Jack Yates. Guests attended Mmes. Al Jensen, Shelton, Frank Trotter, W. A. Schreier, Clyde Witten, Jack Allcorn, Gay Owen Jones, Verne Pearl Moore, Bob and W. B. Smith Jr.

The next meeting group will be Monday for a program on "The News." Mrs. H. will be hostess. At the group will bring gifts to the State Hospital.

Flower Talk

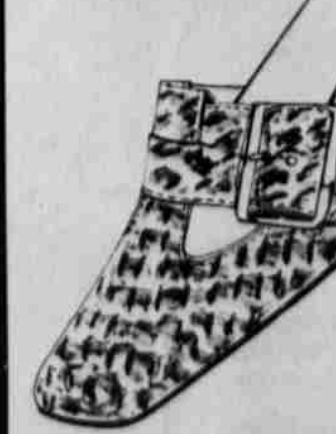
There is no way of knowing how things have been in social event in life. As far back recorded, the wedding has been very special.

We love to prepare for wedding, call on display the proper for this beautiful. The bouquets carried by the wedding, flowers for the wedding these get our attention.

If you are planning wedding, call on handle the details of decorations and realize how important day is, and we try it just a little longer.

CHISHOLM FLORA
420 E. 10th

California Cobblers

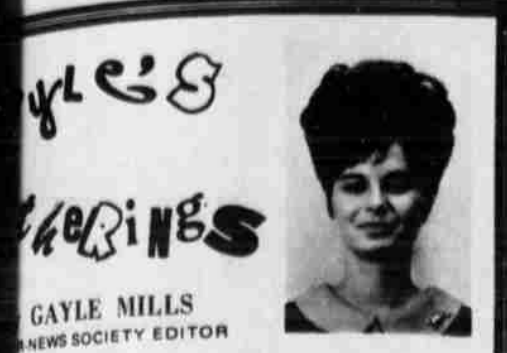


Black, Colors, Red, Bone, etc.

\$16.95

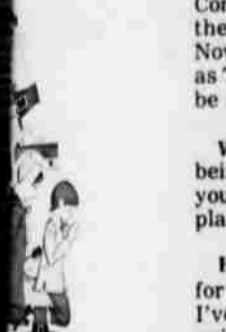
Moss Shoes

SHOES FOR THE ENTIRE FAMILY



GAYLE MILLS
NEWS SOCIETY EDITOR

EVER wondered first American was celebrated once knew back part of your but have since read on some in-out the history of and would like to you.



Thanksgiving Days best festivals, or set aside for giving God for plentiful is the reason the takes place late in the year, after the been gathered. Pilgrims, called Pilgrims their wanderings in religious freedom, of English settlers at what is now mouth, Mass. on Dec. They established a colony on the western Cape Cod Bay in Massachusetts. In a year after they in the new land, the rican Thanksgiving ated. half of the people of were killed the first Massachusetts due to weather. In't give up hope and an to look up in the 1821, when their corn ough much rejoicing second Governor of William Bradford, at a three-day feast

180, 1823 Governor decreed the first ing Day be set aside ical purpose of giving to God, and for as well. of the colony spent in preparing for the Meat and fish, with ke, corn meal bread and succotash were and everyone ate at large tables.

stom of Thanksgiving and from Plymouth to w England colonies. George Washington general announcement of thanks to be on Nov. The first Thursday of er, the same year, the at Episcopal Church this would be a regular ay for giving thanks another day be ap- by the civil

as no regular national ing Day in the United r several years. Some observed a yearly iving holiday, and not. By 1830, northern n followed that of New attern, of having an ate Thanksgiving Day. ia was the first state to choose the this was in 1855. In er of 1863 President declared the last as a day set aside for



Put more giving into Thanksgiving!

Give a party that's as easy to clean-up—after as it is fun and colorful to give! Use the Festive new Thanksgiving party sets from the Ambassador collection. Whether it's a small dinner, or a giant feast...clean-up's easier and the party's more enjoyable.

A complete selection of Thanksgiving Cards and Decorations.
CONNELL'S OFFICE SUPPLIES
13 Phelps Phone 385-5440



DEBYE MARKHAM

Engagement Announced

Mrs. T. L. Marham of Lubbock announces the engagement of her daughter, Debye to Jerry Cox of Littlefield. Jerry is the son of Mr. and Mrs. J. D. Cox of Littlefield. Debye is a sophomore accounting major at Texas Tech. Jerry is a sophomore finance major at South Plains. The couple plans a Dec. 19 wedding.

Inez Lichte Host HDC Meet

The Oklahoma Home Demonstration Club met Nov. 5 in the home of Inez Lichte. Members attending were Ruth Miller, Pebble Roberts, Dorothy Crawford, Laura Acord, Valma Cooker, Vada Manner, Thelma Griffin, Fern Bittner, Zella Helms, Ila Helms and one visitor, Francis Turner. Agent Lady Claire Phillips presented a program on "How To Rate TV Programs." Refreshments of finger sandwiches, chips and dips, cake, ice cream, coffee and tea were served by the hostess, Mrs. Lichte. Plans were made for their Thanksgiving supper on Nov. 19, at 7 p.m. in the Willy Room.

Shower Honors Chad Phares

SPRINGLAKE—Chad Phares, one month old son of Mr. and Mrs. Wayne Phares, was feted with a lullaby coffee and shower Tuesday morning in the Dan Quigley home. Assisting Mrs. Quigley with hostess duties was Mrs. Oliver Rose. Special guests were Chad, his mother, and his grandmother, Mrs. H. L. Phares of Lubbock. The table was laid with blue net and centered by a miniature porcelain baby carriage surrounded by cherubs. Tea, coffee and cakes were served to the guests. Individual gifts and a gift certificate were presented.

Concert Slated In Lubbock

The Lubbock Symphony Orchestra presents the second concert of the season Monday, Nov. 23 at the Municipal Auditorium adjacent to the Tech Campus. Conducted by William A. Harrod, the program will feature the magnificent voices of Don Jones, Bill Lucas and Marta Pender. These artists will perform excerpts from Operas. The Opera Night was well received last season and the Symphony had many requests for a similar program to be given again. The ticket prices are \$4.50, \$3.50, \$2 and \$1. Order your tickets by writing the Symphony Office, 1416 Avenue Q or by calling 762-4707.

LITTLEFIELD SCHOOL LUNCH MENU

Monday: Hamburgers, tossed salad, French fries, milk and fruit cake.
Tuesday: Roast and gravy, creamed potatoes, English peas, milk, apple sauce and cookies and rolls.
Wednesday: Pizza, peas, beans, combination salad, milk and brownies.
Thursday: Beef-vegetable soup, sandwiches, salad, crackers, milk and cinnamon rolls.
Friday: Steak and gravy, creamed rice, green beans, rolls and butter, milk and raisin pie.



GARY MOTL

Gary Motl Honor Student For November

ANTON—Gary Motl has been selected as National Honor Society Student for the month of November. He was nominated by the A. H. S. and selected by the teachers. Gary was in the band for three years; represented Anton in tennis for four years; a member of the bulldog basketball team; he had served in the National Honor Society for three years; he had the lead part in the junior play and was junior class vice president. He is presently senior class president and NHS president. Gary plans to attend West Texas State University next fall. He is the son of Mr. and Mrs. Frank Motl, Jr.

Family Health Center
Brittain Pharmacy
P. O. BOX 1227
Littlefield, Texas 79339

Dial
385-4481
For Classifieds

Amherst Art Show Is Unveiled Today

Amherst and area artists will unveil their paintings today during their Second Annual Art Show, slated for the Amherst School Cafeteria between 2 p. m. and 5 p. m. Local and area artists will be exhibiting paintings in various media, and artists will not be limited on the number of paintings entered. The exhibition will be open to the public, and door prizes will be given away to exhibitors and guests at a drawing at 5 p. m. Prizes for the event are being donated by the Littlefield Glass Works, Hart-Thaxton Hardware of Littlefield, and Amherst Variety Store.

No admission will be charged and refreshments will be served to all who attend the display.



Save 20% and more!
Towel ensembles and tub mats
in discontinued colors.

144
Bath towel, org. 2.25
Hand towel, org. 1.25
Wash cloth, org. .65
Finger tip towels, org. .55
Tub mat, org. 2.25

144
Bath towel, org. 2.25
Hand towel, org. 1.25
Wash cloth, org. .65
Finger tip towels, org. .55
Tub mat, org. 2.25

Penneys
OPEN A PENNEY CHARGE ACCOUNT TODAY!

New Playtex 18 HOUR BRA

The first support bra that's comfortable for hours

Made with Spanette, the exclusive Playtex stretch fabric with the exact combination of strength and softness for truly comfortable support.

Attractive nylon lace self-adjustable cups suspended in a unique frame of sheer lightweight elastic for freedom of movement and customized fit. Adjustable stretch straps... that can't twist, curl or lose their stretch.

Smooth profile seams for a rounded, natural contour. With no see through feature.

Bandeau
white
sizes: 34-36A, 32-40B, 32-42C \$6.00
32-42D \$7.00

Long Line
For firm midriff control that's comfortable for hours
white
sizes: 34-40B, 34-44C \$9.00
34-44D \$10.00

Ware's

Cup facing: 100% Nylon. Cup and band lining: 100% Cotton. Center and side back elastic: Nylon Spandex. Band facing and back: Rubber, Nylon, Elastic; Rayon, Cotton, Nylon, Spandex. Exclusive of other elastic.

WHO'S WHO?

Arm Chair Quarterback

The first five people who guess our Who's Who for this series will get a free RPM record.

Use our Lay-A-Way plan for your Christmas buying.

Western Auto
306 Phelps Ave. Littlefield, Texas

Noted Speaker Sets Scholarship Dinner



CURTIS E. RAMEY

Plans are complete for the Annual Scholarship Dinner of the Littlefield Woman's Club scheduled for Thursday night, Nov. 12, in the Community Center, and a special speaker has been secured.

He is Curtis Edward Ramey of Fort Worth, well known speaker on patriotism and American Democracy in 11 states.

Topic for his address will be "The American Way," and the public has been invited to hear him speak at the 7:30 p.m. dinner.

Tickets are now on sale and may be secured from Mrs. D.C. Lindley, Mrs. Otto Jones or Mrs. Allen Purday.

Members of the Woman's Club will bring the home cooked food, and proceeds from the ticket sales will go into a scholarship fund that will be presented to a graduating senior.

Ramey is a real estate salesman with Margaret Needham Co. in Fort Worth, and has been listed in "Who's Who in Texas", among school administrators, is listed in the "Dictionary of International Biography" and was awarded the George Washington Honor Medal from Freedoms Foun-

ation at Valley Forge, Pa., in 1969.

He presently serves as youth director of Polytechnic Church of Christ in Fort Worth, and was president of Fort Worth Christian College from 1965 until 1969.

Rocky Ford

Mrs. V.M. Peterman
262-4532

MR. AND MRS. J.T. Gibson were at University Hospital in Lubbock last Monday with her brother-in-law, Jim Fuller of Olton. He died Tuesday morning.

BARBARA MUNCY of South Plains College in Levelland was home with her parents, Mr. and Mrs. Clarence Muncy and Charles for the weekend.

GUESTS in the Eli Young home Sunday were her sister, Mrs. Bess Davis and Mrs. s.g. Perkins of Littlefield.

JERRY FEAGLEY of Littlefield spent the weekend with his cousin, Monte Feagley.

MR. AND MRS. V.M. Peterman, accompanied by Mrs. Claud Cook of Amherst attended funeral services for Jim Fuller in Olton Wednesday afternoon.

MR. AND MRS. Alvin Mills and children visited The C.G. Snodgrass family in Lubbock last Sunday.

VISITORS in the J.T. Gibson home this week were their daughter and family, Mr. and Mrs. Hollis Cain, Kathie and Connie of Fort Worth; her

SPRINGLAKE - CIRCLE

MRS. TOM STANSELL

285-2572

MRS. PEARL HAIR and her sons, Otis and Wayne Hair, attended funeral services Monday morning for John L. Pullium, 65. He was a brother to Mrs. Hair. Services were at Pryor, Okla.

MR. AND MRS. Hollis Cain of Fort Worth attended funeral services in Olton Wednesday afternoon for her uncle, J. E. Fuller, 79. Mr. and Mrs. Cain are former residents of the Springlake area.

SUNDAY Mr. and Mrs. J. T. Gibson were in Lubbock with Mrs. Gibson's sister, Mrs. J. E. Fuller, whose husband underwent surgery that day in the University Hospital.

BILL WALDEN of Hereford recently visited his mother, Mrs. E. W. Walden and his grandmother, Mrs. Church Edgin.

MR. AND MRS. J. A. Matlock of Springlake and her sister-in-law, Mrs. W. W. Bearden visited relatives in Paducah during the weekend.

MR. AND MRS. Ed Childress of Fresno, Calif. came Monday to see her aunt, Mrs. Mellie V. Gabehart.

DALE GABEHART and Miss Mary Lee Stone, both of Canyon visited Friday night with his parents, Mr. and Mrs. Albert Gabehart.

MR. AND MRS. Francis Scott of Plainview were overnight Saturday guests of Mr. and Mrs. W. K. Britton.

MRS. E. S. HUCKABEE, her daughter, Mrs. Harold Autry of Clarendon, and her daughter-in-law, Mrs. Bob Huckabee of Olton met Mrs. E. S. Huckabee Jr. of Roswell, N. M. in Lubbock Thursday. The women had lunch together.

MR. AND MRS. W. M. Smith and her father, S. F. Bennett, have as visitors Bennett's son, S. L. Bennett of Austin, and the elder Bennett's daughters, Mrs.

sister, Mrs. Fay Granberry and her brother, Mr. and Mrs. Bartlett all of Austin; and his brother, Mr. and Mrs. Joe Gibson of Canyon.

DIVERSIFICATION
Inland marine insurance, which today covers personal effects, jewelry, furs, fine arts and many other movable properties, was originally developed to cover goods in transit other than by ocean vessels.

Velva Hardison of Dallas and Mrs. H. K. Patrick of San Antonio.

VISITING during the weekend with Mr. and Mrs. L. L. Laduke were their son and family, Mr. and Mrs. Max Laduke, Mike and Marci of Fort Worth. Also the L. L. Laduke's son-in-law and daughter, Mr. and Mrs. Elmo Hall of Petersburg, and another daughter and family, Mrs. Billy Jean Wilkinson, Lynn, Judy and Patti of Olton. From Lubbock were the Hall's son, Jimmy, and their daughter and grandson, Mrs. Dustel Sallis and Lance. Also Miss Linda Yantis of Lubbock.

MRS. N. W. LIVESAY and her daughter-in-law and granddaughter, Mrs. L. J. Livesay and Mary of Hereford, were in Lubbock Thursday with the elder Mrs. Livesay's daughter, Mrs. Milton Horst.

MR. AND MRS. Robert Struve and Shelli attended a birthday party Monday evening for Mrs. Struve's niece, Kristi Covington, daughter of Mr. and Mrs. Layton Covington of Littlefield.

KELLI SMITH of Stratford stayed several days last week with her grandparents, Mr. and Mrs. Bill Smith.

MR. AND MRS. L. B. Kennedy had as recent guests their daughter and family, Mr. and Mrs. Bill Ayers, and Melody of Anderson, Mo.

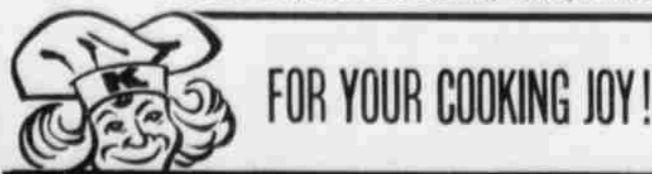
MR. AND MRS. Preston Liggitt of Lubbock attended the ball game Friday night and visited his parents, Mr. and Mrs. Ray Gabehart.

MR. AND MRS. Harold Fields, Troy, Bonita, Janet and Delena of Springlake attended the dinner party Saturday evening in the Fellowship Hall of the Olton Assembly of God Church.

MRS. ESTHER BOMAR and Mrs. I. D. Grimsby were in Friona Sunday with Mr. and Mrs. David Grimsby and Jason. Grimsby is the son of Mrs. I. D. Grimsby and Mrs. David Grimsby is Mrs. Bomars daughter. ER.

MR. AND MRS. Jack Edwards had in their home Sunday their daughter and family, Mr. and Mrs. Bob Carley and Lynn of Lamesa and Mrs. Edward's brother and his wife, Mr. and Mrs. Andrew Murphy of Clovis, N. M.

MR. AND MRS. Frank Palmatier of Somerville, N. M.



Kelvinator ELECTRIC RANGE

In 30" or 40" Width



30" Model

Includes:

- *Infinite heat switches
- *Disposable foil oven linings
- *Fast oven pre-heat
- *Timer
- *Automatic self cleaning oven

Only \$209⁹⁵ WT

Littlefield TV Service

Kennedy Veach CET 83 311 W. 4th 385-3522 Ed Hauk CET 53

Dial 385-4481

FOR CLASSIFIEDS

Why Clean? Frigidaire Electri-Clean



FURNITURE & APPLIANCE

1804 Hall Ave. 385-5883

...buy your NEW ELECTRIC RANGE and Select a Gift

Clean, electric cooking helps keep walls clean, gives you no guess-work, exact cooking temperatures everytime, has self-cleaning surface units and offers experience-proven self-cleaning ovens.

Now is the time to buy your clean cooking electric range... and receive a free gift of your selection... over 40 choices. You need only be our residential customer and buy your new range from a participating dealer on or before December 24, 1970.



Clean ELECTRIC Cooking

27-2

Foust Food Market "HARVEST SPECIALS"

DOUBLE GUNN BROS. STAMPS WED. AND SAT.

- CHOCOLATE CHIPS** NESTLES 12 OZ PKG 59¢
- COCA COLA OR DR PEPPER** 6 BOTTLE CARTON KING SIZE 39¢
- HAMS** BUY'EM NOW THE PRICE IS RIGHT, BONE IN OR BONELESS WE PROCESS FREEZER BEEF -- ASK ABOUT IT
- CLOROX** 1/2 GAL BLEACH 39¢
- COTTAGE CHEESE** BORDEN 2 LB. CTN. 59¢
- BUTTERMILK** BORDEN 1/2 GAL 49¢
- PEANUT BUTTER** PETER PAN 18 OZ JAR 59¢
- NAPKINS** SOFLIN 200 Count 29¢
- GRAPEFRUIT** 2 LB 29¢
- BONUS** GIANT SIZE 69¢
- EGGS** GRADE A MED DOZ 39¢
- DOG FOOD** Skippy Tall Cans 9¢
- CONTACT** COLD CAPSULES \$1.19
- STEAK** ROUND GLOVERS QUALITY LB 89¢
- BREAD** RAINBO LARGE LOAF 29¢
- PECANS** DEL CERRO 12 OZ PKG \$1.29
- SAUSAGE** Jimmy Dean 2-Lb. Pkg. \$1.39
- MIRACLE WHIP** KRAFTS QUART 59¢
- FRUIT PIES** MORTONS 29¢

FOUST FOOD MARKET THIS COUPON IS WORTH 15¢

When you buy a 00 pound Can of Maryland Club Coffee

69¢ with coupon

Cash value 1/20¢ Limit one per customer

COUPON EXPIRES 12/4/70

TURKEYS

BUY'EM NOW NORBEST-ROAST RITE HONEY SUCKLES BUTTERBALLS

WE WILL KEEP THEM FOR YOU TILL YOU NEED THEM

FOUST FOOD MARKET

WORSHIP IN CHURCH

and get a spiritual lift for the whole week

SYMBOLS



...the world is full of them. National symbols, political symbols, religious symbols for most every type, race, creed, organization or business. It's getting so that we automatically judge a person by the symbol he wears. "See that man with the Star of David? He's a Jew. The one with the Cross is a Christian. Look at that guy wearing flowers. ...he's a hippie. Those with clinched fists are black power advocates. Donkeys are for Democrats, elephants for Republicans. Everyone knows that. Yes, but what if the symbols were to disappear? Ah, there's the rub. Then, just how could we know what a person really is? Even more important, would we know?

Check your life today...right now. Are you depending on symbols to identify you, to get you through? Do your actions read well? For sake of the record, just what manner of man are you? In the final analysis, only your actions, your life will tell. Attend church this week. It'll make a big difference.



The BEST CROWD to FOLLOW is the CROWD GOING to CHURCH

- | | | |
|--|---|--|
| LITTLEFIELD FROZEN FOOD CENTER
R.B. Kirby | B & C PUMP & MACHINE WORKS
304 Lake Ave. | FIRST NATIONAL BANK
Don Bell |
| SPADE GRAIN COMPANY
Spade, Texas | PIONEER SUPER MARKET
205 West Third | DAIRY MART
L.V. Pierce |
| DAIRY QUEEN
Frank Robinson | BRITAIN PHARMACY
M.M. & J.T. Brittain | HAMMONS FUNERAL HOME
Pryor Hammons |
| E.C. RODGERS FURNITURE
And Employees | SHOOK TIRE COMPANY
Orville Bassett & Employees | ARMES CHEVROLET CO.
Troy Armes |
| RENEE'S BEAUTY BAR
Renee Williams & Staff | TASTY CREAM DRIVE IN
229 W. Delano Ave. | LUCE & NELSON IMPLEMENT
939 East Delano |
| | LEADER-NEWS
and Employees | |

Sponsors Of This Service Persuade Its Readers To Worship In The Church Of Their Choosing Every Week. Let Your Life Count For God.

Littlefield Churches

- CHURCH OF CHRIST
8th and Hall
- UNITED PENTECOSTAL CHURCH
Rev. E.E. Houlette
1030 East 11th
- BIBLE MISSIONARY CHURCH
Rev. Hugh Cantrell
1321 West 6th
- FIRST CHRISTIAN CHURCH
Doug Morton
1305 Phelps Ave.
- SALVATION ARMY
Captain Daniel Hudson
621 East 6th
- FIRST BAPTIST CHURCH
Rev. R.B. Hall Jr.
400 East 6th
- PARKVIEW BAPTIST CHURCH
Rev. R.N. Tucker
W. 5th & Wicker
- SUNSET AVE. BAPTIST CHURCH
Rev. Benny Goss
North Sunset Ave.
- CHURCH OF JESUS CHRIST
OF LATTER DAY SAINTS
Raddy Room, 511 W. 7th
- FOURSQUARE GOSPEL CHURCH
Rev. James Gillentine
715 Phelps Ave.
- LITTLEFIELD MISSIONARY BAPTIST
Rev. David Jackson
XIT Drive and 8th St.
- SEVENTH DAY ADVENTIST
Ninth and Duggan
- FIRST METHODIST CHURCH
Rev. David Hamblin
14th and Phelps Ave.
- EMMANUEL LUTHERAN CHURCH
Rev. Louis Wetzel
409 West 3rd St.
- ST. MARTIN LUTHERAN CHURCH
Rev. Thomas Lange
W. 10th and Sunset Ave.
- FIRST PRESBYTERIAN CHURCH
Rev. Clem G. Sorley
Levelland Highway
- SACRED HEART CATHOLIC CHURCH
Rev. Joe James
Sunset and 8th St.

- CHURCH OF CHRIST
Park & 9th St.
Odell Setliff
- MISSION BAPTISTA EL CALVARIO
Rev. Celestino Rangel
1100 East 14th
- CHURCH OF GOD IN CHRIST
F.S. Diggs
Basin and Hilburn
- IRVIN STREET FIRST BAPTIST
Dr. W.A. Terry
- CHURCH OF THE NAZARENE
8th and L.F.D. Drive
Rev. Curtis Steen
- ASSEMBLY OF GOD
Rev. H.L. Hallmark
Hall at College Ave.
- CHURCH OF CHRIST
Bob Wear, Minister
17th and Crescent Drive
- CHURCH OF CHRIST
Highway 385

Area Churches

- LUMS CHAPEL BAPTIST
Rev. W.H. Hill
- AMHERST
First Methodist
Douglas W. Gosssett
- Church Of Christ
Leonard H. Tittle
First Baptist
T. Glenn Willson
- BULA
Church Of Christ
Methodist
First Baptist
- SUDAN
Church Of God Of Prophecy
1st and Wilson
Rev. Steve Couch
- SPADE
First Method.
Rev. Jim Smith
First Baptist
J.J. Terry
Church Of Christ
Mack Greenway
HART CAMP
First Baptist
Rev. John Walker
FIELDTON
First Baptist
David Burum, Pastor
Church Of Christ
ROCKY FORD BAPTIST
Rev. Ray Harrison



REV. J.C. THOMAS

New Pastor Named At Anton Church

ANTON-Rev. and Mrs. J. C. Thomas and family moved to Anton last weekend from Jacksonville. He has accepted the pastorate of the Bethel Baptist Church.

Rev. Thomas, who is 35 years old is a graduate of Jacksonville Baptist College. Before moving to Anton he had pastored Churches at Kennard and Jacksonville the past nine and one-half years. He and his wife, Lannette, are the parents of three sons, Glen, 13, Troy, 9, and Darell eight months old.

Mrs. Thomas who was employed by Sears Roebuck and Co. at Jacksonville was transferred to Levelland. They will make their home at 514 Igoe St. Anton.

Two-Car Accident At Amherst School

Two Amherst High students were involved in a two-car accident during the noon hour Wednesday.

The accident occurred near the school at the intersection of West First and Adams when Kathy Alene Weaver entered the traffic lane in the 1965 El Camino she was driving and collided with the car in front of her.

The left front of the Weaver vehicle hit the right side of a 1965 Ford sedan driven by James Albert Moore.

Highway Patrolman Bill Angle investigated and estimated property damage at \$300 to the Ford and \$100 to the El Camino.

Arbor Day Kits Are Available

Free Arbor Day Program Kits are being offered again to school teachers and conservation-minded organizations by the Texas Forest Service.

The Texas Pecan Growers Association is cooperating in the program by providing high quality pecan seeds which are a part of each Arbor Day Kit.

In addition to the seeds, the Kit contains a suggested Arbor Day program, suitable program aids including poems, songs and a history of Arbor Day, and instructions for planting the seeds as a classroom project.

The third Friday in January of each year has been designated as Arbor Day by the Texas Legislature. The next observance of Arbor Day in Texas will be Jan. 15, 1971.

Send all requests for Arbor Day Kits to Texas Forest Service, College Station, Texas 77843.

BULA

MRS. JOHN BLACKMAN
933-2328

HONOR ROLL for the first nine weeks for Bula School are: first grade, Joe Rosales; second grade, Keith Layton, Tresa Autry; third grade, Mike Nichols, Robert Layton; fourth grade, Elnora Peacock, Jarrol Layton, Richard Nichols; fifth grade, Cary Austin, Sherri Claunch; and sixth grade, Carolyn Stroud; eighth grade, Lisa Risinger, Jackie Tharp, Suzanne Layton; freshmen, Craig McDaniel, Jerry Sowder, Edward Clawson; sophomore, Jimmy Risinger; and senior, Diane Crume.

THE FALL FESTIVAL at the school Saturday night sponsored by pupils and teachers of each room was well attended. Climaxing the festival, sixth graders Linda Pena and Sammy Delerosa were crowned king and queen.

BULA BASKETBALL girls played Bovina a scrimmage game Tuesday night. Bula girls were victorious.

RAS OF THE Baptist Church bowled Friday night at Littlefield. They were Keith, Dennis and Doug McCain, Billy Tiller, Donald Black, Marty Austin and Blake Allman. Also Rev. Paul Gordon, wife and son, Chris, Johnny and Elaine Hall. Patsy McCain.

DONNA CRUME, freshman student at Wayland, spent from Friday until Sunday afternoon with her parents, Mr. and Mrs. Edd Crume. A friend Miss Brenda King from Artesia, N. M. accompanied her home.

WOMEN'S BIBLE class met Monday morning at the Church of Christ with Mrs. Jones in charge of the study. Attending were Mrs. J. D. Rowland, Mrs. J. C. Withrow, Mrs. Gene Bryan, Mrs. John Hubbard, Mrs. John Blackman, and Mrs. Cecil Jones.

SHERRI WITHROW, senior student at Abilene Christian College, spent from Friday until Sunday afternoon with her parents, Mr. and Mrs. J. C. Withrow.

DOROTHY SPENCE of Ruidoso is spending this week visiting in the home of her sister, Mr. and Mrs. Douglas Betts and girls.

ATTENDING THE wedding of Miss Vera Vanbeber and Jerry Flowers Saturday afternoon in the home of the bride's parents at Morton, were Mr. and Mrs. J. L. Latham and Mr. and Mrs. Warner De Sautell and boys Chris and Cliff of Lubbock. The groom was a nephew of Mrs. Latham's.

MR. AND MRS. Douglas Betts attended the funeral Thursday morning at the Lutheran Church in Slaton of an uncle of Mr. Betts, Mr. Walter Steinhouser.

MR. AND MRS. W. T. Thomas spent Thursday night with friends Mr. and Mrs. H. G. Brown at Denver City. The men attended a Shell Oil Company Safety and awards banquet. Both men are retired employees of Shell Oil Company.

MRS. NOLAN HARLAN and son David left by plane from Lubbock Wednesday for Farmington, plans to spend several days at her home recovering from recent surgery.

MRS. B. S. G... patient in the Hospital.

MRS. V. C. WEAT... misfortune of falling and breaking her leg.

TUESDAY BE... as Women's... Prayer, the local... met for the day... sack lunch for the... the morning the... study was con... Battles. In the... Richardson had... World Day of Pr... Attending were... Battles, Mrs. Fred... Paul Gordon... Richardson, Mrs. P... Mrs. Raymond... W. Black and... Tugman.

VISITING IN T... Mr. and Mrs. P... Sunday were the... Mrs. Jean Jack... Mike, Mrs. Nell... four children and... Lou Pierce of Lubbo... and Mrs. Jim... boys of Muleshoe.

MRS. BERTIE... Littlefield spent... with her daughter... the Bill Brewers.

THE ACTEEN... auxiliary for girls... Church, enjoyed... supper Friday eve... home of Mr. and... Hall. The food was... the girls, with... preparing the de... Chinese theme was... in the decorations... room. The menu... pepper steak, sweet... prok, fried shrimp... chinese chews, fru... grapes and orange... supper was in com... their foreign miss... short devotional... before the meal. A... Helen Black, Ber... Diane Crume, Ter... and sponsors Patsy... Elaine Hall.

MR. AND MRS... Thomas left Wedne... a few days with... Ettie Woolley of Ab... MR. AND MRS. W... are visiting with... Fort Worth this we... MR. AND MRS. J... man visited Sunday... in Portales with... Mr. and Mrs. D... Dennis, Darryl and...

WHEN IT'S TO INSURE BE SURE CALL ON F.L. NEWTON 128 East 10th St. Littlefield, Tex.

F.L. NEWTON
128 East 10th St.
Littlefield, Tex.

Men and Brethern,
What Shall We Do?
Repent and be Baptized
everyone of you in Christ
name for the remission of
sins.
Acts 2:30

The 6th and Hall Ave.
CHURCH OF CHRIST
Invites all to hear the
Gospel, preached by
Arnold Hardin.
November 9th thru 15th
7:30 p.m.

6th And Hall Ave Church Of Christ

55TH ANNIVERSARY SALE

LITTLEFIELD, LEVELLAND AND BROWNFIELD

STACY MASON'S IS IN ITS SECOND HALF OF A CENTURY OF SERVICE TO WEST TEXANS. YOU CAN DEPEND ON US TO BE HERE WHEN YOU NEED US. OUR REPUTATION WAS BUILT ON SERVICE! HOW OFTEN WE SEE THOSE WHO HAVE PURCHASED 'BARGAINS' THAT LATER DEVELOP PROBLEMS AND THEN FIND THE SELLER HAS GONE OUT OF BUSINESS. WE OFFER QUALITY FURNITURE AND APPLIANCES THAT ARE GUARANTEED TO SATISFY OR YOUR MONEY BACK. AND WE'LL BE HERE TO BACK UP OUR PROMISES.

SPECIAL PRICE REDUCTIONS STOREWIDE THIS IS A STOREWIDE SALE

CALIFORNIA STYLED VELVET SOFAS
CHOICE OF COLORS,
REG. \$299.95 **\$188⁵⁵**

BROYHILL TRADITIONAL OUTLINE
QUILTED SOFAS, CHOICE OF COLORS
REG. \$299.95 **\$188⁵⁵**

EARLY AMERICAN SOFAS FROM
CALIFORNIA, BEAUTIFUL VINYL
FABRIC, REG. \$299.95 **\$188⁵⁵**

TRADITIONAL HIDE-A-BED 100%
NYLON GOLD TWEED FABRIC **\$169⁵⁵** 

SHAG CARPET, GOLD TWEED COLORS-
100% NYLON, REG. \$9.95 **\$5⁵⁵**

EXTRA HEAVY 100% NYLON,
DESIGNED FOR HEAVY WEAR
AREAS, CHOICE OF GOLD OR
GREEN, REG. \$9.95 **\$5⁵⁵**

TWEED CARPET 100% NYLON,
CHOICE OF GOLD, GREEN
TWEEDS, REG. \$9.95 **\$5⁵⁵** 

BLACK VINYL SPANISH SOFA & MATCHING
LOVE SEAT,
REG. \$499.95 **\$299⁵⁵**

KING SIZE RECLINER, COMPLETE WITH
VIBRATOR & HEATER,
REG. \$169.95 **\$129⁵⁵**

BEDROOM BEAUTIES

LARGE SPANISH BEDROOM SUITE, KING TRIPLE
DRESSER WITH DOORS, LANDSCAPE MIRROR,
CHEST ON CHEST WITH DOORS, CARVED BED,
REG. PRICE \$439.95 **\$299⁵⁵**

SPANISH BEDROOM SUITE, DOUBLE DRESSER,
LANDSCAPE MIRROR, REG. OR QUEEN SIZE
BED, NITE STAND, REG. \$299.95 **\$255⁵⁵**

5 PIECE EARLY AMERICAN LIVING ROOM SUITE,
MAPLE ARMS ON SOFA AND ROCKER, COFFEE
TABLE, 2 END TABLES, CHOICE OF COLORS,
REG. \$289.95 **\$199⁵⁵**

5 PIECE VINYL LIVING ROOM SUITS, SOFA, CLUB
CHAIR, 1 COFFE TABLE, 2 END TABLES, CHOICE
OF COLORS, REG. \$199.95 **\$119⁵⁵**

MODERN BEDROOM SUITE, TRIPLE DRESSER
LANDSCAPE MIRROR, CHEST, NITE STAND,
REG. \$495.95 **\$299⁵⁵**

CURTIS MATHIS PERSONAL PORTABLE TELEVISION
HANDLES, DIAPOLE ANTENNA, REG. \$99.95 **\$79⁵⁵**

BEDDING EVENT

SEALY EXTRA FIRM REGULAR OR TWIN SIZE
MATTRESS OR BOX SPRINGS,
REG. \$69.95 **49⁵⁵**

SEALY EXTRA FIRM QUEEN SIZE MATTRESS
& BOX SPRING SET,
REG. \$199.95 **149⁵⁵**

SEALY EXTRA FIRM KING SIZE MATTRESS
& BOX SPRING SET,
REG. \$299.95 **199⁵⁵**

SAVE UP TO
\$100 ON WHIRLPOOL
WASHERS,
DRYERS, FREEZERS
& REFRIGERATORS

MAGNAVOX
PRIOR MODE
TELEVISION
& STEREOS
AT BIG SAVINGS

LA-Z-BOY
ROCKER RECLINER
PRICES
START AT **\$159⁵⁵**

CURTIS MATHIS 48" SPANISH CONSOLE
STEREO SOLID OAK, RED GRILL CLOTH,
\$199⁵⁵

CURTIS MATHIS 23"
MODERN, COLOR TV
CONSOLE
REG. \$539.95 **\$399⁵⁵**

BATHROOM SCALES -
WATCH YOUR WEIGHT
FUZZY WHITE COVER **\$5⁵⁵**



**STACY-
MASON**

Home Furnishings

TRIC
SORS
55
NYL
ERED
ADDED
BY
EST
9⁵⁵

AT
ACY
SON
OU
GET
ORE!



AMHERST

MRS. LESTER LA GRANGE 246-3336



MRS. MARY E. BRITT is remaining with her daughter, Mrs. Adele Cole in Farmington, N. M. who underwent surgery in October. She is reported to be improving.

MRS. A. F. COPELAND and Mrs. Don Turner were guests of the Jimmy Copeland's near Anton Tuesday. Jimmy's

mother, Mrs. Archie Copeland of Lubbock is spending some time with them.

MR. AND MRS. W. T. Weaver Sr. returned home from Corpus Christi Wednesday. They had spent a month there and fished.

MR. AND MRS. Gene Campbell, Mr. and Mrs. Leroy Maxfield were among those

attending the Shrine Bowl game in Lubbock Thursday night between the Tech freshmen and A & M freshmen teams. The proceeds went to the Orthopedic Clinic and Burns Center in Galveston.

SHERYL WILLSON was guest of Vicki Cook at Wayland College in Plainview last weekend.

MRS. DALE PUTMAN was injured in a wreck on Highway 84 at the intersection in Shallowater where the overpass is being built. She received head injuries. An ear was almost severed and she received other injuries. She was on the operating table at Methodist Hospital almost two hours, her husband reported. She is at home now and continues to improve.

MRS. OBY BLANCHARD visited her sister, Mrs. Edna Arnold in Shallowater Thursday.

MRS. A. L. MIXON spent Wednesday with relatives in Clovis, N. M.

MRS. G. C. NICHOLSON, Mrs. Lloyd Edwards and Mrs. Rayno Crain attended funeral services for Mrs. A. C. Ferrell in Muleshoe Wednesday.



THIS SAD EYED, popped-bellied little clown and a colorful little red devil appeared in downtown Littlefield for the Halloween Parade Saturday afternoon that was sponsored by the Littlefield Girl Scouts. The clown is portrayed by Alisha Graham, daughter of Mr. and Mrs. Jerry Graham of Littlefield, and the Red Devil is Rhonda Vann, daughter of Mr. and Mrs. Mack Vann of Spade.

ENOCHS

MRS. ALMA ALTMAN

Donnie Clark, son of Mr. and Mrs. Joe Clark of Morton and grandson of Mr. and Mrs. Jo Dane of this community received second degree burns last Friday, when his clothing caught fire from an open heater in the bathroom of his home. He is reported doing fine and will soon be able to go back to school.

MR. AND MRS. Curtis Snitker and family from Amarillo were here over the weekend visiting their parents, Mr. and Mrs. C.A. Snitker, Mrs. Snitker is in the West Plains Hospital in Muleshoe with an infected knee following a fall she got at their home at Enochs. She will undergo surgery soon as possible.

MYRLENE NICHOLS was a weekend visitor in her mothers home, Mrs. L.E. Nichols. She also attended church at Enochs Baptist Church with her mother.

RONNIE MOORE, son of Mr. and Mrs. Merle Moore was a guest in the R.H. Layton home this last Sunday. Also attending church with them in both services.

MR. AND MRS. Rev. Tony McKinney arrived home on Thursday after attending Baptist General Convention at Austin for three days.

MR. AND MRS. Harold Abney were weekend visitors with their parents, Mr. and Mrs. W.B. Peterson. Harold has just been discharged from the U.S. Navy and has been stationed in the Vietnam area for a year. Kay is a senior at Wayland College in Plainview.

MR. AND MRS. Lee Pearson, Randy and Bethany of Bovina were weekend guests at parents home, Mr. and Mrs. Pearson.

TERESA AUTRY of Mr. and Mrs. Geo. Keith Layton were queen and queen of the women of Bula School. Attending the carnival Schools were Geo. Keith Layton, Alma Altman, and Thompson, granddaughters Teresa Autry and Lowe of Maple.

MRS. ELLEN CLOVIS, N.M., and her friends here, Mr. and Mrs. Johnson.

MRS. J.D. BAYLOR Mrs. J.W. Layton Muleshoe on Wednesday. Mrs. Dicie Snitker who is to have surgery on her knee soon as the date gone. After leaving Mrs. Layton visited Mrs. H.H. Snow and Bayless visited her law, Mrs. Mary Bayless.

MRS. TONY MCKINNEY little son Tom, both reported improved last week-end.

THE GRADE SCHOOL Bula school played and were defeated by high school boys and defeated the Seagraves 65-5.

MURRAY AND WEST, children of Mr. Billy West of Littlefield staying with their parents, Mrs. and Mr. Autry for a few days parents have gone to

Get A 10¢ Drink FREE
This Saturday, Sunday And Monday
When You Order:

- CHICKEN FRIED STEAK
- HOT STEAK SANDWICH
- HOT BEEF SANDWICH
- STEW
- MEXICAN PLATE at the regular price

OUR NEW HOURS: Sunday, 11:30 A.M.-9 P.M. Weekdays, 9 A.M.-10 P.M.
CLOSED THURSDAYS AT 2 P.M.

HUMDINGER DRIVE IN

502 W DELANO UNDER NEW MANAGEMENT 385-5356

Hear The Word Of God
Preached By
Rev. Tony Dyess
At 7:30 P.M.
Nov. 12 Through 15

Singing Will Be Under
The Direction Of Don Bell

UNITED METHODIST CHURCH
Rev. Ben R. Day, Pastor Spade, Texas

Historical Committee Has Meeting

The Lamb County Historical Survey Committee met in the fellowship hall of the First United Methodist Church Thursday for a luncheon, with Mr. and Mrs. Roy B. McQuatters, Ray Smith and Mrs. Marie Hamilton as the hosts. The Rev. Ben R. Ray, pastor of the church gave the dedication.

In the absence of the president the secretary of the organization, V. M. Peterman presided at the business session.

Mrs. McQuatters, who had recently returned with her husband from Fredricksburg, where the State Historical Committee and State Historical Association were in joint session. She gave a report on what the organizations have accomplished to date in restoring historical subjects; what can be accomplished through further excavation toward establishing the important place the American Indian holds for study in our state and nation was also emphasized.

TOMATO CORN SOUP
Small fry usually like whole kernel corn added to tomato soup. If there's a cob or two of cooked fresh corn leftover, cut off the kernels and add to the soup; or use canned whole kernel corn.

Happiness is making one dollar work like four!

Your cash-value life insurance dollar really works like four dollars.

- 1: a protection dollar.
- 2: an emergency dollar.
- 3: an opportunity dollar.
- 4: a retirement dollar.

One dollar, working four ways. That's happiness.

Southwestern Life Hubert D. Henry

PHONE NO. 385-4160

TELEVISION SCHEDULE

SUNDAY	MONDAY	TUESDAY	WEDNESDAY	THURSDAY	FRIDAY	SATURDAY
<p>CHANNEL 11</p> <p>8:00 Faith for Today* 8:30 Glory Road* 9:00 Insight 9:30 Herald of Truth* 10:00 Ask Your Minister* 10:45 First Christian Church 11:45 Sacred Heart 12:00 Pro Football-New York at Pittsburgh 3:00 Pro Football-Cleveland at Oakland 6:00 Evening Report* 6:30 Walt Disney* 7:30 Bill Cosby* 8:00 Bonanza* 9:00 The Bold Ones* 10:00 Final Report* 10:30 Tonight Show* 12:00 New Mexico Report* 12:15 Sign Off</p> <p>CHANNEL 13</p> <p>7:58 Sign On 8:00 Tom & Jerry* 8:30 Perils of Penelope Pitstop* 9:00 Oral Roberts* 9:30 Look Up and Live 10:00 Camera Three 10:30 Notre Dame Football Pittsburgh/S. Bend 11:30 Tom Landry 12:00 NFL Football Dallas/New York 3:00 "Wake Up and Dream" John Wayne 4:30 The Jetsons 5:00 To Rome With Love 6:00 Lassie 6:30 Hogan's Heroes 7:00 Ed Sullivan 8:00 Glen Campbell 8:30 Tim Conway 10:00 Channel 13 News 10:15 Harry Reasoner News 10:30 "Horror Hotel" 12:00 Sign Off</p> <p>CHANNEL 28</p> <p>8:30 Smokey the Bear* 9:00 Johnny Quest* 9:30 Catanooga Cats* 10:00 Bullwinkle* 10:30 Discoveries* 11:00 De Toole Un Poco* 12:00 Directions 12:30 Issues and Answers Football Highlights 2:00 Expose 3:00 The Rogues 4:00 R.A.F. 4:30 Encounter 5:00 Roller Derby 5:30 The Young Rebels* 7:00 The FBI 8:00 "The Sons of Katie Elder" 10:30 Jim Carlen Show* 11:00 News Scope* 11:30 Sign Off</p>	<p>CHANNEL 11</p> <p>7:00 Early Report* 7:05 Farm Report* 7:25 Today's Weather* 7:30 Today 8:25 Morning Report* 8:30 Today 9:00 Dinah's Place* 9:30 Concentration 10:00 Sale Of The Century 10:30 Hollywood Squares* 11:00 Jeopardy 11:30 Who, What or Where* 11:55 News 12:00 Mid-Day Report* 12:15 Community Closeup* 12:30 Words and Music* 1:00 The Doctors 2:00 Another World Bay City 2:30 Bright Promise* 3:00 Another World Somerset* 3:30 Peyton Place 4:00 Movie 5:30 NBC Nightly News 6:00 Evening Report 6:30 Red Skelton* 7:00 Laugh-In 8:00 Movie-"Sergeants Three" Frank Sinatra* 10:15 Final Report* 10:45 Tonight Show* 12:15 New Mexico Report* 12:30 Sign Off</p> <p>CHANNEL 13</p> <p>6:29 Sign On 6:30 Farm & Ranch News 7:00 CBS Morning News 8:00 Captain Kangaroo 9:00 The Lucy Show 9:30 Beverly Hillbillies* 10:00 Family Affair* 10:30 Love Of Life* 11:00 Where The Heart Is* 11:25 CBS Midday News* 11:30 Search For Tomorrow* 12:00 News* 12:25 Paul Harvey* 12:30 As The World Turns* 1:00 Love Is A Many Splendored Thing* 1:30 Guiding Light* 2:00 Secret Storm* 2:30 Edge Of Night* 3:00 Matinee Theatre 4:30 The Three Stooges 5:00 Gomer Pyle 5:30 CBS Evening News* 6:00 Channel 13 News 6:10 Paul Harvey* 6:15 Channel 13 Weather 6:20 Channel 13 Sports* 6:30 Gunsmoke* 7:30 Here's Lucy* 8:00 Mayberry R.F.D.* 8:30 Doris Day Show* 9:00 Carol Burnett* 10:00 Channel 13 News* 10:20 Channel 13 Weather* 10:30 "Romeo and Juliet" 12:25 News / Weather 12:30 Sign Off</p> <p>CHANNEL 28</p> <p>9:30 Eddy Nicholson 10:00 Jack LaLanne 10:30 That Girl 11:00 Bewitched 11:30 A World Apart 12:30 Kommert 1:00 Let's Make a Deal 1:30 The Dating Game 2:00 General Hospital 2:30 One Life To Live 3:00 Dark Shadows 3:30 All My Children 4:00 Comedy Night 4:30 Dennis the Menace 5:00 ABC Evening News 5:30 Gilligan's Island 6:00 News Scope 7:30 The Young Lawyers 8:00 The Sleepy Fox 8:00 NFL Football Colts/Seaway Packer 11:00 News Scope 11:30 Suspense Theater</p>	<p>CHANNEL 11</p> <p>6:30 Don Knotts Show* 7:30 Julia 8:00 Movie-"The Truth About Spring" John Mills 10:00 Final Report* 10:30 Tonight Show* 12:00 New Mexico Report* 12:15 Sign Off</p> <p>CHANNEL 13</p> <p>6:30 Beverly Hillbillies 7:00 Green Acres 7:30 Hee Haw 8:00 Movie-"Pied Piper of Hamelin" 10:00 Channel 13 News 10:20 Channel 13 Weather 10:30 "Operation Moonlight" 12:10 News / Weather 12:15 Sign Off</p> <p>CHANNEL 28</p> <p>6:30 Mod Squad 7:30 Movie-"The Tribes" 9:00 Marcus Welby, M. D. 10:00 News Scope 10:25 Dick Cavett 12:00 Sign Off</p>	<p>CHANNEL 11</p> <p>6:30 Men from Shiloh* 8:00 Kraft Music Hall 9:00 Four In One* 10:00 Final Report* 10:30 Tonight Show* 12:00 New Mexico Report* 12:15 Sign Off</p> <p>CHANNEL 13</p> <p>6:30 Store Front Lawyers* 7:30 Governor And J.J.* 8:00 Medical Center* 9:00 Hawaii Five O* 10:00 Channel 13 News* 10:20 Channel 13 Weather* 10:30 "Knives of the Avenger" Cameron Mitchell 12:00 News / Weather 12:05 Sign Off</p> <p>CHANNEL 28</p> <p>6:30 Courtship of Eddie's Father 7:00 Danny Thomas* 7:30 Room 222 8:00 Johnny Cash* 9:00 Dan August* 10:00 News Scope* 10:45 Dick Cavett* 12:00 Sign Off</p>	<p>CHANNEL 11</p> <p>6:30 The Black Rhinoceros* 7:30 Ironside* 8:30 Nancy* 9:00 Dean Martin* 10:00 Final Report* 10:30 Tonight Show* 12:00 New Mexico Report* 12:15 Sign Off</p> <p>CHANNEL 13</p> <p>6:30 Family Affair 7:00 Jmi Nabors 8:00 Movie-"This Property is Condemned" Natalie Wood 10:00 Channel 13 News 10:20 Channel 13 Weather 10:30 "Golden Bread" 12:10 News / Weather 12:15 Sign Off</p> <p>CHANNEL 28</p> <p>6:30 Matt Lincoln* 7:30 Bewitched* 8:00 Barefoot in the Park* 8:30 The Odd Couple* 9:00 The Immortals 10:00 News Scope* 10:45 Dick Cavett* 12:00 Sign Off</p>	<p>CHANNEL 11</p> <p>6:30 High Chaparral* 7:30 Name of the Game* 8:00 Brackens World* 10:00 Final Report* 10:30 Tonight Show* 12:00 New Mexico Report* 12:15 Sign Off</p> <p>CHANNEL 13</p> <p>6:30 TBA 7:00 Movie-"Guns of Navarone" Gregory Peck 10:10 Channel 13 News 10:30 Channel 13 Weather 10:40 "Amphibian Man" 12:20 News / Weather 12:25 Sign Off</p> <p>CHANNEL 28</p> <p>6:30 The Brady Bunch* 7:00 Nanny and the Professor* 7:30 The Partridge Family* 8:00 That Girl* 8:30 Love American Style* 9:00 Tom Jones* 10:00 News Scope* 10:30 Dick Cavett* 12:00 Sign Off</p>	<p>CHANNEL 11</p> <p>7:00 Heckle and Jeer* 7:30 Woody Woodpecker* 8:00 Tom Foolery Show* 8:30 The Bugaloos* 9:00 Dr. Goodwin* 9:30 Pink Panther* 10:30 Here Comes The Groom 11:00 Hot Cow 11:30 Jambo* 12:00 Charlie Chan 1:10 Voice in the Mirror 3:00 Up Front 4:30 New Mexico Outdoors 6:00 Wild Kingdom* 6:30 Saturday Night Live 6:00 Evening Report* 6:30 Andy Williams* 7:30 Movie-"Tom Corbett" Paul Newman 10:00 Final Report* 10:30 Movie-"No Man Is An Island" Jeffrey Hunter 12:30 New Mexico Report 12:45 Sign Off</p> <p>CHANNEL 13</p> <p>6:58 Sign On 7:00 Bugs Bunny/Road to Nowhere 8:00 Sabrina & the Gap 9:00 Josie And The Pussycats 9:30 Harlem Globetrotters 10:00 The Archie Fox 11:00 This Week In Pro Football 12:00 Daillyly And Pro Football 12:30 The Jetsons* 1:00 Sports Review* 1:30 Death Valley Days 2:00 Wrestling Junction* 3:00 Country Junction* 4:00 Bill Anderson Show* 4:30 Pro-Football NFL at Pittsburgh 5:30 "Foolish Club to Hell" 6:00 News/Roger Moore 6:30 Mission Impossible* 6:30 My Three Sons* 8:00 Annie* 8:30 Mary Tyler Moore 9:00 Manik* 10:00 News/Weather 10:30 "Thief of Bagdad" 12:15 Sign Off</p> <p>CHANNEL 28</p> <p>7:00 Reluctant Dragon 7:30 Motor Men 8:00 Laverne & Shirley 8:30 Double Decoder 9:00 Hot Wheels* 10:00 Sky Hawks* 10:30 The Hardy Boys* 11:30 America's Funniest Home Videos 12:30 TBA 1:30 Wide World of Sports 2:00 The Westward 3:00 Let's Make a Deal 4:00 Lawrence Welton 4:30 Most Wanted 5:30 The Pink Panther* 10:00</p>

BE GREEDY!
INSIST ON

Quasar™ COLOR
by **MOTOROLA®**

2 YEARS (24 MONTHS) FREE PARTS & SERVICE

PATS RECORD CENTER

23" Console, Works In A Drawer.
Super Bright Tube.
AS LOW AS **\$498.88** WT

PHONE 385-4664

NO MORE WITH YOUR FOOD DOLLAR



FARM PAC
POTATO CHIPS
REG. OR DIP
59c VALUES **39c**

DOUBLE STAMPS AT 1:00 P.M. TUESDAY AND ALL DAY WEDNESDAY.

MARSHMALLOWS

- 6 1/2 Oz. Pkg. 15c
- 10 1/2 Oz. Pkg. 19c
- 16 Oz. Pkg. 29c

SHOULDER ROAST

FURR'S PROTEN, LB. **79c**



RIB STEAK FURR'S PROTEN, LB. **87c**
ROUND STEAK FURR'S PROTEN, LB. **87c**
HAMBURGER FRESH GROUND LB. **49c**

SIRLOIN STEAK FURR'S PROTEN, LB. **87c**
CLUB STEAK FURR'S PROTEN, LB. **98c**
STEAK FAMILY STYLE FURR'S PROTEN, LB. **98c**
STEAK CUTLETS BONELESS, LB. **\$1.39**
SAVOY STEAK BONELESS, BROIL OR GRILL, FURR'S PROTEN, LB. **\$1.19**
ESSEX STEAK FURR'S PROTEN, LB. **\$1.19**
RUMP ROAST FURR'S PROTEN, LB. **89c**
ROAST DELUXE POT FURR'S PROTEN, LB. **89c**
SHORT RIBS FURR'S PROTEN, LB. **39c**
STEW MEAT BONELESS LEAN LB. **79c**
FRANKS FRONTIER 12 OZ. PKG. **49c**
LUNCH MEAT FARM PAC MIX OR MATCH, 6 OZ. PKG. **33c**
BOLOGNA FRONTIER 12 OZ. **49c**
CHEESE LONGHORN STYLE BLOCK, LB. **79c**
FISH CAKES HEAT-EAT 16 CAKES. **\$1**

FRYERS **29c**
FRYER PARTS
BREASTS, LB. 69c BACKS, LB. 19c
THIGHS, LB. 59c LEGS, LB. 59c

GREEN BEANS FOOD CLUB CUT NO. 303 CAN. **19c**

RESERVES GAYLORD APRICOT, PEACH OR STRAWBERRY, 2 LB. JAR. **59c**

ETERGENT TOPCO WHITE OR BLUE GIANT. **59c**

EGGS FARM PAC, USAD GRADED A MEDIUM, DOZ. **39c**

ES MORTON FRESH FROZEN APPLEPEACH, CHERRY, COCONUT custard, EA. **29c**

RACKERS GRAHAM, FOOD CLUB, 16 OZ. BOX. **3 \$1**

LEDGE JOHNSON'S WAX REG. OR LEMON 7 OZ. CAN. **69c**

ENNA SAUSAGE LIBBYS NO. 1/2 CAN. **4 FOR 89c**

DOUBLE GOLD BOND STAMPS
on Wednesdays

HENS ROCK CORNISH GAME HENS 18 OZ. **89c**

DINNERS MORTON FRESH FROZEN CHICKEN, BEEF OR TURKEY, 11 OZ. **39c**

DONUTS MORTON PLAIN OR POWDERED PKG. **3 FOR \$1**
POTATOES FRENCH FRIES, GAYLORD 2-LB. PKG. **39c**
HONEY BUNS MORTON FRESH FROZEN, 9 OZ. **29c**
SPINACH TOP FROST CHOPPED 10 OZ. PKG. **15c**

Health & Beauty Aids

HAND LOTION SUE FREE 16 OZ. **26c**

ALKA - SELTZER 20's **69c**
PRELL LIQUID SHAMPOO 7 OZ. **63c**
HAIR CONDITIONER BALMS 16 OZ. **\$1.19**
DENTURE ADHESIVE CUSHION GRIP 1/2 OZ. **79c**
DEODORANT GILLETTE SOFT & DRY 5 OZ. **87c**
COTTON PUFFS VALIANT 300's. **39c**

GLOVES BLUE TOP CANVAS 3 PAIR 3 FOR **\$1**
PANTY HOSE AMPLON 2 SIZE FIT ALL PAIR. **67c**
TV TRAYS VALUES TO \$1.98 FOLDING LEGS, EA. **99c**
LUNCH KIT WORKMAN'S WITH PINT VACUUM BOTTLE **\$2.99**
FLAG KIT AMERICAN FLAG 3'X5' POLE BRACKETS. **\$2.99**

PAMPERS DISPOSABLE DIAPERS
DAYTIME, 30's. \$1.69
DAYTIME 15's. 89c
NEWBORN, 30's. \$1.49
OVERNIGHT, 12's. 89c

CAKE PAN TEFLON COATED Heavy Construction \$6.49 Retail **4.99**

NUT BUTTER FOOD CLUB SMOOTH OR KRUNKY, 18 OZ. **59c**
UP VERMONT MAID 24 OZ. BOTTLE. **69c**
AIAN PUNCH ASST 48 OZ. **3 FOR \$1**

MARGARINE FOOD CLUB CORN OIL QUARTERS, LB. **29c**
DOG FOOD HI-VI 50 28 OZ. OAN. **19c**
DISINFECTANT SPRAY TOPCO 14 OZ. **58c**
WINDOW CLEANER TOPCO AEROSOL 15 OZ. **33c**
SWEET POTATOES GAYLORD NO. 2 1/2 CAN. **3 FOR \$1**
PINEAPPLE SLICED GAYLORD NO. 2 CAN. **25c**

VALUABLE COUPON
150-3278
8c OFF LABEL
GOLD MEDAL FLOUR 10-LB. BAG **87c**
Without Coupon **99c**
EXPIRES 11-11-70
GOOD ONLY AT FURR'S

WE RESERVE THE RIGHT TO LIMIT QUANTITIES

FRUITS & VEGETABLES

ORANGES TEXAS FULL OR JUICE, LB. **13c**
ELERY CALIFORNIA GREEN PASCAL STALK. **15c**

POTATOES RUSSETT, ALL PURPOSE, 10-LB. BAG. **58c**

ROOTS 1-LB. CELLO PKG. **11c**
EN ONIONS CALIF. BUNCH. **3 FOR 29c**
PEFRUIT TEXAS RUBY RED 1 LB. **15c**
POTATOES FINE FOR SALAD, LB. **35c**
ILFLOWER SNOWHITE HEAD EACH. **43c**
LOW ONIONS COLORADA LB. **7c**
APPLES GOLDEN DELICIOUS WASH. STATE, LB. **25c**
RADISHES FLORIDA, 6 OZ CELLO PKG. **14c**
CUCUMBERS CALIF. LB. **19c**
TURNIPS CALIF. PURPLE TOP, LB. **17c**
CABBAGE CALIFORNIA LB. **10c**
GARLIC TOP FRESH EACH. **19c**

VALUABLE COUPON 3543278
Betty Crocker LAYER CAKE MIX
WITH COUPON **3 FOR 85c** WITHOUT COUPON **3 FOR \$1**
Good week of. 11-11-70
Good at... Furr's supermarket

SHOP Furr's MIRACLE PRICES

WHITHARRAL

The Whitharral Home Demonstration Club met in the home of J. M. Nixon, Tuesday, Oct. 20.

Mrs. Mary Landers called the meeting to order. After a short business meeting, Mrs. Elsie Avery gave a reading, "A Christmas Meditation." Mrs. Iva Pair gave the roll call and the reading of the minutes.

Mrs. Nedra Hodnett and Bonnie Kennedy gave a demonstration on different ways of arranging neck scarves. Mrs. Iva Pair and Mrs. Marcy Cleverger gave a demonstration on hooked rugs.

The 18 members present were Mes. Mary Nichols, Evla Fike, Vera Rodgers, Neil Smith, Bessie Pelfrey, Lena Maxy,

Mary Landers, Nedra Hodnett and Rena, Bonnie Kennedy, Alma Kilgore, Lula Hicks, Edna Waters, Iva Pair, Lillie Thetford, Elsie Avery, Marcy Cleverger and Opal Mixon, the hostess. The next meeting will be Dec. 3rd with Mrs. Carrie Eller in Whitharral.

THERE WILL be a Scout-O-Rama Saturday Nov. 14, at the Texan Dome in Levelland, from 2 p.m. - 6 p.m. One dollar admits the entire family.

Tickets may be secured from any Boy Scout in Whitharral. The Young Homemakers and Young Farmers had a Halloween Costume Party Sat. Oct. 31st.

THE FHA and FFA held a hayride Sat., Oct. 31st.

WHITHARRAL Homecoming started out with a big boom Fri., Oct. 30th with a Chili Supper sponsored by the Whitharral Lions Club.

WHITHARRAL LOST their Homecoming game to the Cotton Center Elks. The score was 52-12. It was a good game.

At halftime the A and B Panther Bands marched. The candidates for football hero were Carl Hoelcher, Johnny Graham and Randy Wade. The candidates for Homecoming Queen were Linda Strickland, Linda Wade and Joli Grant. The football hero was Johnny Graham and the Homecoming Queen was Linda Wade. The crowning ceremony was held at halftime. After the game a

reception was held for the Whitharral Exes.

THE A TEAM girls basketball team and Jr. High girls played a game at Smyer Tuesday Oct. 27. The High School girls won. High Schools next game is Nov. 3rd, at Whitharral. They will be playing Shallowater.

THE JR. HIGH football team forfeited their game Thurs. night at Three-Way.

CHARLIE PRYOR, captain of Whitharrals' 1st football team year of 1967 was honored at halftime of Whitharrals' Homecoming. Charlie's wife is also a Whitharral ex-student, Jimmy (Hooper) Pryor, the daughter of George Hopper. Charlie is a retired ex-marine and was a prisoner of war in World War II of the Japanese.

A BIG BONFIRE was held in honor for the team and fans of Whitharral. It was held to arouse the spirits of the team and fans.

A FINE MEMBER of the Whitharral community past away Sat. Oct. 31st. A funeral was held for John Williams Nov. 2nd. School turned out in order for the school kids to be able to be present at the funeral.

TUE. NOV. 3rd the Panther band met for a practice. The band will be going to marching contest Nov. 17th and 18th.

JOHN DUKATNIK a resident of Whitharral was in a one car turn over between Lubbock and Levelland in the University



LESA NELSON, daughter of Mr. and Mrs. J. D. Nelson of Amherst was named Girl of the Month for Amherst FHA. She is president of FHA, vice president of pep squad, secretary of National Honor Society, secretary of Student Council, editor of the Kennel Staff, and FFA Sweetheart.

Hospital in Lubbock. He is reported doing fine.

RECENTLY the FHA installed their officers at a Mother-daughter Luncheon in the Lions club building. The officers are: Joli Grant, Sec.; Linda Wade, Pres.; Christy Cleverger, first vice president; and Marla Sadler, Treasurer.

THE WHITHARRAL Lions Club is stripping cotton for anyone who'll hire them.

OLTON

MRS. W. B. SMITH JR. 285-2385

SUSAN NICHOLAS, a student at Parks School of Business in Denver, Colo. attended Homecoming and visited her parents, Mr. and Mrs. Buster Nicholas last weekend.

MRS. SARAH MORTON, mother of Mrs. I. B. Holt, who has been ill is reported to be improving in Tulia Nursing Home.

CAROL HICKS and Letha Estes, both students at West Texas State University in Canyon attended homecoming and visited with their parents last weekend.

BARBARA AND BARRY Cowart, daughter and son of Mr. and Mrs. James Cowart, who attend college at Howard Payne in Brownwood visited last weekend.

OTHER STUDENTS home from Howard Payne were Cecil Oursbourn, son of Mr. and Mrs. Aurey Oursbourn and Bobby Turner, son of Mr. and Mrs. Joe Turner.

MR. AND MRS. Mike Hipp of Lubbock attended Homecoming and visited in the home of his parents, Mr. and Mrs. Bob Hipp

Friday night and Saturday, Mike teaches science at Anton High School.

MR. AND MRS. L. R. Cruce have purchased the former home of Mrs. Stella Cowart at 814 West 4th Street.

MR. AND MRS. Roy Barnes have returned to their home at Azusa, Calif. after visiting two weeks with their sister-in-law, Mrs. George Bohner, and with Mrs. Barnes' sister, Mrs. Florence Spears, and a brother-in-law and sister, Mr. and Mrs. H. B. Maxey Sr. and other relatives and friends. Mr. and Mrs. Barnes are former Olton residents.

REX CHITWOOD of Canyon, formerly of Olton, is scheduled for open heart surgery Nov. 11 at a hospital in Dallas. He is the son of Mrs. R. L. Chitwood.

MR. AND MRS. Wiginton of Plainview attended services at the Main Street Church of Christ Monday night. Their son, Curly Wiginton of Gainesville, was the visiting minister.

NELL SMITH'S mother broke her hip about a month ago and is recuperating in bed at the Amherst Nursing Home.

MR. AND MRS. Vance Estes are visiting relatives in Shamrock this week.

TOM SMITH made a trip to Espanola, N. M. last week and brought back a load of apples.

THE ADMINISTRATIVE Board of First United Methodist Church voted to have the Annual Harvest Festival on Wednesday, Nov. 18. Turkey and dressing with all the trimmings will be served at this meeting. Highlights of the Harvest Festival will be music by children's groups and a guest speaker.

REV. PAT GLORIA attended District meeting Tuesday at Silverton Baptist Church. Rev. Gloria is pastor of Baptist Spanish Mission.

MRS. CLARENCE TODD is receiving treatment at a hospital in Big Spring. She is the daughter of Mr. and Mrs. Albert Briggance.

ATTENDING PARENTS Day Saturday at Levelland South Plains College were Mr. and Mrs. Earl Robertson and Ronda, also Mr. and Mrs. Kenneth Ray and Tammy Redinger. Both couples have students attending college there.

MRS. C. E. BLEY returned home last week from Central Plains General Hospital in Plainview, where she received treatment about a week.

JANIE JONES, daughter of Mr. and Mrs. Owen Jones was recently named FFA Sweetheart by members of the Olton Futre Farmers of America. Her assistant is Marsha Moss, daughter of Mr. and Mrs. C. M. Moss.

CHARLES MCCLAIN, son of Mrs. Norma McClain, has pledged Phi Delta Theta, national social fraternity, on the campus of West Texas State University at Canyon. McClain is a sophomore at the University, majoring in physical education.

MR. AND MRS. Bill Bohner of Edmonson entertained Sunday with a birthday dinner in honor of their son, Bill Jr., who is a junior student at Texas Tech in Lubbock. Attending from Olton was his grandmother, Mrs. George Bohner. BARRY THOMPSON, son of Mr. and Mrs. Juanita Thompson, who is a student at Lubbock Christian College attended Homecoming and visited here last weekend.

SISSY SMITH, daughter of Mr. and Mrs. Fred Smith, who attends Texas Tech University in Lubbock visited here last weekend.

MR. AND MRS. Earl Hysinger visited this week in Crowell with her mother who is ill.

MRS. R. L. CHITWOOD has gone to Canyon to visit in the

home of her son and Mrs. Rex Chitwood. MRS. FRANCES Garland returned Friday after weeks here visiting her son and Mrs. Douglas Lutz. MEMBERS OF Church of Christ had 189 present for their goal. That goal they met. Douglas Lutz pastor. MRS. BILL Wednesdays she will be a guest of her son and Mrs. Jo Dan Yarn and Lynn. DON SPAIN left plane for Oklahoma where he will go to an allergy clinic. MRS. LLOYD Measles of Plains relatives in Lubbock. SUE CHURCH, a Texas Tech, visited attended Homecoming weekend. MR. AND Mrs. Burlison of Alpine home of her parents. Mrs. Erabel Jones. MRS. JIM children, also Diana and Jo Ann Finner attended Homecoming. Mrs. Gayland visited in the home of Mrs. Gayland. MR. AND Mrs. Cooper have moved ranch in New Mexico. Olton. Gordon, a graduate of Olton. MRS. C. E. BLEY home Monday from Plains General Hospital in Plainview, after treatment there about a week. MRS. JUNE Duncan, Okla. returned Sunday after visiting week in the home of Mrs. Lois Hollingsworth. MR. AND Mrs. B. left Wednesday for where they will be home of Mr. and Mrs. Clendenen. GUESTS LAST week of Mr. and Mrs. Cooner were her brother, wife, Mr. and Mrs. Cowden of Amherst. MARCELLA AND Breland, students at Christian College. Homecoming and visited here last weekend. MR. AND Mrs. Breland last weekend. JOE DALE CHITWOOD of Mr. and Mrs. Dale who attends college at & M visited here last weekend.

REPORT OF CONDITION, CONSOLIDATING DOMESTIC SUBSIDIARIES, OF THE		
THE FIRST NATIONAL BANK of LITTLEFIELD		
IN THE STATE OF TEXAS AT THE CLOSE OF BUSINESS ON October 28, 1970		
PUBLISHED IN RESPONSE TO CALL MADE BY COMPTROLLER OF THE CURRENCY, UNDER TITLE 12, UNITED STATES CODE, SECTION 161.		
ASSETS		
Cash and due from banks (including \$ none unposted debits)	Dollars	Cts.
U.S. Treasury securities	2 176 837	17
Securities of other U. S. Government agencies and corporations	198 157	50
Obligations of States and political subdivisions	155 921	88
Other securities (including \$ none corporate stock)	9 000	00
Trading account securities	None	
Federal funds sold and securities purchased under agreements to resell	1 250 000	00
Loans	2 103 964	53
Bank premises, furniture and fixtures, and other assets representing bank premises	85 501	42
Real estate owned other than bank premises	None	
Investments in subsidiaries not consolidated	None	
Customers' liability to this bank on acceptances outstanding	None	
Other assets (including \$ none direct lease financing)	5 284	13
TOTAL ASSETS	5 112 662	60
LIABILITIES		
Demand deposits of individuals, partnerships, and corporations	4 035 356	89
Time and savings deposits of individuals, partnerships, and corporations	559 738	94
Deposits of United States Government	43 802	76
Deposits of States and political subdivisions	200	38
Deposits of foreign governments and official institutions	None	
Deposits of commercial banks	None	
Certified and officers' checks, etc.	67 699	63
TOTAL DEPOSITS	\$ 4,706,894	60
(a) Total demand deposits	\$ 4,035,356	89
(b) Total time and savings deposits	\$ 671,538	71
Federal funds purchased and securities sold under agreements to repurchase	None	
Liabilities for borrowed money	None	
Mortgage indebtedness	None	
Acceptances executed by or for account of this bank and outstanding	None	
Other liabilities	None	
TOTAL LIABILITIES	\$ 4,706,894	60
RESERVES ON LOANS AND SECURITIES		
Reserve for bad debt losses on loans (set up pursuant to IRS rulings)	None	
Other reserves on loans	38 756	09
Reserves on securities	None	
TOTAL RESERVES ON LOANS AND SECURITIES	38 756	09
CAPITAL ACCOUNTS		
Capital notes and debentures	None	
Equity capital-total	657 398	49
Preferred stock-total par value	None	
No. shares outstanding	100 000	00
Common Stock-total par value	None	
No. shares authorized	1,000	
No. shares outstanding	1,000	
Surplus	357 398	49
Undivided profits	None	
Reserve for contingencies and other capital reserves	None	
TOTAL CAPITAL ACCOUNTS	657 398	49
TOTAL LIABILITIES, RESERVES, AND CAPITAL ACCOUNTS	5 112 662	60
MEMORANDA		
Average of total deposits for the 15 calendar days ending with call date	5 354 263	52
Average of total loans for the 15 calendar days ending with call date	2 102 964	53
Interest collected not earned on installment loans included in total capital accounts	38 12	

CONSOLIDATED REPORT OF CONDITION OF Security State Bank of Littlefield in the State of Texas and Domestic Subsidiaries at the close of business on October 28, 1970.		
ASSETS		
1. Cash and due from banks (including \$ none unposted debits)	DOLLARS	Cts.
2. U.S. Treasury securities	1 287 797	80
3. Securities of other U.S. Government agencies and corporations	2 575 194	70
4. Obligations of States and political subdivisions	1 201 446	23
5. Other securities (including \$ none corporate stock)	300 000	00
6. Trading account securities	400 000	00
7. Federal funds sold and securities purchased under agreements to resell	5 665 098	35
8. Other loans	236 939	92
9. Bank premises, furniture and fixtures, and other assets representing bank premises	None	
10. Real estate owned other than bank premises	None	
11. Investments in subsidiaries not consolidated	None	
12. Customer's liability to this bank on acceptances outstanding	None	
13. Other assets	33 221	36
14. TOTAL ASSETS	13 257 301	43
LIABILITIES		
15. Demand deposits of individuals, partnerships, and corporations	3 872 097	88
16. Time and savings deposits of individuals, partnerships, and corporations	6 697 982	11
17. Deposits of United States Government	1 53 367	46
18. Deposits of States and political subdivisions	1 153 474	68
19. Deposits of foreign governments and official institutions	None	
20. Deposits of commercial banks	10 000	00
21. Certified and officers' checks, etc.	50 135	61
22. TOTAL DEPOSITS	\$ 11,837,277.74	
(a) Total demand deposits	\$ 3,872,097.88	
(b) Total time and savings deposits	\$ 7,965,179.86	
23. Federal funds purchased and securities sold under agreements to repurchase	None	
24. Other liabilities for borrowed money	None	
25. Mortgage indebtedness	None	
26. Acceptances executed by or for account of this bank and outstanding	None	
27. Other liabilities	46 692	97
28. TOTAL LIABILITIES	11 883 970	71
RESERVES ON LOANS AND SECURITIES		
29. Reserve for bad debt losses on loans (set up pursuant to Internal Revenue Service rulings)	261 695	66
30. Other reserves on loans	None	
31. Reserves on securities	None	
32. TOTAL RESERVES ON LOANS AND SECURITIES	261 695	66
CAPITAL ACCOUNTS		
33. Capital notes and debentures	None	
34. Equity capital, total	None	
35. Preferred stock-total par value	None	
No. shares outstanding	10,000	
36. Common stock-total par value	None	
No. shares authorized	30,000	
No. shares outstanding	30,000	
37. Surplus	300 000	00
38. Undivided profits	300 000	00
39. Reserve for contingencies and other capital reserves	311 637	06
40. TOTAL CAPITAL ACCOUNTS	1 111 637	06
42. TOTAL LIABILITIES, RESERVES, AND CAPITAL ACCOUNTS	13 257 301	43
MEMORANDA		
1. Average of total deposits for the 15 calendar days ending with call date	11 924 861	17
2. Average of total loans for the 15 calendar days ending with call date	5 781 102	10
3. Overhead amount on installment loans included in total capital accounts	None	

FINANCIAL STATEMENT

LITTLEFIELD FEDERAL SAVINGS & LOAN ASSN.

AS OF

October 30, 1970

<h3>ASSETS</h3> <p>First Mortgage Loans.....\$10,068,976.</p> <p>Other Loans..... 242,048.</p> <p>Real Estate Owned..... 81,278.</p> <p>FHLB Stock..... 80,600.</p> <p>U.S. Govt. Bonds & Cash..... 2,254,932.</p> <p>Real Estate Sold On Contract..... 160,698.</p> <p>Office Bldg. & Equipment..... 77,610.</p> <p>Other Assets..... 484,446.</p> <p>TOTAL..... \$13,450,588.</p>	<h3>LIABILITIES</h3> <p>Savings Capital..... \$12,224,022.</p> <p>General & Other Reserve..... 659,314.</p> <p>Other Liabilities..... 314,181.</p> <p>Surplus..... 253,071.</p> <p>TOTAL..... \$13,450,588.</p>
---	---

DIRECTORS:
Floyd Coffman
Frank Rogers
Don Bell
Jerome Kirby
J.M. Farmer
Kenneth Ware
Roger L. Jones

LITTLEFIELD FEDERAL

SAVINGS AND LOAN ASSOCIATION

EACH ACCOUNT INSURED UP TO \$20,000

OFFICERS:
Floyd Coffman, President
Roger L. Jones, Executive Vice-President
Frank Rogers, Vice-President
Mary Lois Thaxton, Secretary
Betty Melton, Treasurer
Jerome Kirby, Attorney

Any jeweler who can charm you

is in the Yellow Pages



MURTI W. STEEN, pastor of Littlefield's Church of Nazarene, is pictured with his family, Geron, 11-years-old and a sixth grader; Brat, 6; and his wife, Joann.

Nazarene Minister In First Pastorate

Rev. and Mrs. Curtis W. Steen and their two sons have lived in Littlefield since June 1, although Rev. Steen has been pastoring the First Church of The Nazarene here since February.

Rev. Steen accepted his first pastorate at the church in February, and drove 383 miles one way from Bethany, Okla. every other weekend to minister to the congregation here.

A native of Hemphill County, Texas, Rev. Steen attended Bethany Nazarene College in Oklahoma and received an Associate Degree in Bible, prior to accepting the ministry here.

He has been a licensed minister six years and has preached for several services and assemblies. He was a certified welder and had taught welding for Black, Sival and Bryson employes in Oklahoma City before he felt the call to enter the ministry as a full time occupation.

He worked for General Electric while attending Bethany Nazarene College.

Rev. Steen met his future bride in Shamrock and married her there in February, 1962.

Their two sons, Geron and Bart, are active in church work too, and often sing duets together in the services.



CRADDOCK
Mr. and Mrs. Benny Craddock are the proud parents of a baby son born Oct. 31, at 10:21 a.m., weighing 7 lbs. and 10 ozs.

COTTON
A new son was born Nov. 2, at 6:35 p.m. to Mr. and Mrs. Ernest Cotton. He weighed 7 lbs. and 8 ozs.

HAGERTY
Nov. 3, at 12:18 p.m. a baby boy was born to Mr. and Mrs. Ellis Hagerty. He weighed 7lbs. and 11ozs.

ANTON

MRS. C. D. NELSON

997-4261



THE ANTON LIONS Club met Monday night, Oct. 2, at 7 p.m. in the school cafeteria, with 18 members present, and one new member, Rev. C. M. Tune. The drive for Community Chest was discussed. The campaign quota for Anton is \$1100.00 and the Lions would like for all the Civic Organizations in Anton to help reach their goal.

has been named Rodney Mark. Maternal grandmother is Mrs. Halima Hussain of Los Angeles, Calif. Paternal grandmother is Mrs. Vernon Taylor of Anton. The Carl Taylors is a former Anton resident and a graduate of Anton High School and Texas Tech.

MRS. RUBY POWERS, Irvin,

and Mrs. Vada Dixon from Cleburne visited several days last week with Mrs. Powers' sisters, Mrs. W. O. Wilson and Mrs. Rose Denson.

MR. AND MRS. W. J. Bullington, from Seagraves visited in the home of his brother, Mr. and Mrs. Alton Bullington Monday.

ANTON SCHOOL MENU
Monday 9: Macaroni and cheese with bacon strip, green beans, cole slaw, corn bread, milk, butter and rolled wheat cookies.

Tuesday, 10: Fried chicken, cream potatoes, tossed salad, hot rolls, butter, milk and peaches.

Wednesday 11: Roast beef, English peas, candied yams, hot rolls, butter, milk and fudge cake.

Thursday 12: Country fried steak, buttered corn, spinach, rolls, milk, butter and vanilla pudding.

Friday 13: Hamburgers, ranch style beans, potato chips, milk and fruit cobbler.

MISS ESTHER ALVARADO, daughter of Mr. and Mrs. Johnny Alvarado, has been chosen Miss FHA for the month of Oct. Esther is a member of the FHA and provisional member of the National Honor Society. She had a sum of 205 points.

MRS. HATTIE POOL of Anton, attended funeral services Monday, Nov. 2 for her brother, F. N. Adams, 69, of Wichita Falls. Burial was in Archer City under the direction of Hampton-Vaughan Funeral Home. Rev. Joe Cunningham of South Side Baptist Church Wichita Falls officiated.

LITTLEFIELD DISTRICT Future Farmers of America contests will be held Saturday at Muleshoe. Contests include: Greenhand Chapter Conducting, Jr. and Sr. Farm Skills, and radio broadcasting. Anton FFA is entering radio broadcasting team of Tommy Clevenger, Randy McLarty and James Synatschik in Greenhand Chapter Conducting will compete. Senior farm skill team is Roger Webb, Bill Walthall, Donald Davis, and Alan James.

SEVEN MEMBERS of the WMS at Central Baptist Church met at the Church Monday afternoon for the "Day of Prayer for Baptist Women's Program." Mrs. T. C. Talkington was in charge of the program. Others attending and on the program were Mmes. L. L. Anderson, John Tubbs, Jim Hobgood, Homer Lowrance, Alton Bullington, and Eva Dee Wright.

MRS. GEORGE GOEN and her sister Mrs. G. H. Poteet from Spade are visiting relatives in Abilene and Greenville this week. Mrs. C. D. NELSON visited her sister, Mrs. W. M. Draper in Plainville last week. **DOYLE SANDERS** attended funeral services for his cousin, T. H. Hammonds that was held in First Methodist Church in Tahoka Monday afternoon. **TWENTY-THREE** teenagers from Lawrence Ave. Church of Christ met in the home of Mr. and Mrs. Hoyt Cranfill Saturday night for a "Hippie Stew" After the meal they went trick or treating for groceries for the pantry at the Church to be distributed to the orphanages. The group then went to the movie in the school auditorium sponsored by the senior class. **THOSE GATHERING** at the home of Mr. and Mrs. Glen Parish for a social after services at Central Baptist Church Sunday night were: Rev. and Mrs. John Tubbs, Troy, Terry, Tawny, Mr. and Mrs. Vernon Stone, Randy, Ray and Risa, Mr. and Mrs. Homer Lowrance, Michelle and Malissa, Mr. and Mrs. Tommy SoRelle, Mr. and Mrs. Ted Rendleman, Mr. and Mrs. Alton Bullington, Mr. and Mrs. Floyd Morton and Virgie, Mrs. Weldon Swan and sons, Mrs. Jim Hobgood, Mrs. Baulah Houston and Mrs. Eva Dee Wright.

MR. AND MRS. Carl Taylor of Hollywood, Calif. are the parents of a new son born, Oct. 21st. He weighed 9 lbs. 1 oz. and

Book Review Today
Rev. Harvey Halmark is president of the re-activated Friends of the Library that begins a new year Sunday afternoon with a book review that is open to the public. Mrs. F. M. Smith of Sudan will present FRED GIPSON'S RECOLLECTION CREEK in the county courtroom at 2:30 p.m. Refreshments will be served in the library after the review.

ANNUAL Sausage and Turkey Dinner

Sunday Nov. 15
Served Till 3 P.M. At The Community Center
\$1.50 For Adults 75c For Children

Sponsored By Sacred Heart Catholic Church

Dial 385-4481

For Classifieds

BUDGET BEATERS FOR HEAVY EATERS

<p>MORTON DINNERS 39¢ Chicken, Meat Loaf, Turkey, Macaroni and Beef.</p> <p>SCOPE Mouthwash Family Size \$1.09</p> <p>IMPERIAL OR HOLLY SUGAR 5-Lb. Bag 19¢ With Purchase of 3 Oz. Jar Nestea</p> <p>Betty Crocker CAKE MIX Box 39¢</p> <p>KLEENEX FACIAL TISSUE 200 Count 33¢</p> <p>GAIN DETERGENT Giant Size 65¢</p> <p>FRYERS U.S.D.A. INSPECTED LB. 29¢</p> <p>SWIFT'S PREMIUM HENS 4 TO 6 LB. LB. 47¢</p> <p>CHOICE SIRLOIN STEAK Lb. 98¢</p> <p>PORK STEAK Lb. 69¢</p>	<p>SHURFINE TUNA CHUNK STYLE 45¢</p> <p>SKINNERS MACARONI 10 Oz. 25¢</p> <p>ELLIS TAMALES JUMBO SIZE 39¢</p> <p>SHURFINE EXTRA RICH SHAMPOO 16 Oz. 59¢</p> <p>PEPSI COLA 28 Oz. Bottle 25¢</p> <p>ROXEY DOG FOOD DRY 5 LB. 69¢</p> <p>JOHNSTON PIES Apple, Mince, Or Pumpkin Family Size 69¢</p> <p>BANANAS LB. 10¢</p> <p>YELLOW ONIONS LB. 6¢</p> <p>MARS CANDY Fun Size 69¢</p> <p>Wagners DRINK Quart 29¢</p>
---	--

LIFT THE SHADOW OF HIGH EATING PRICES WITH THESE DRIVE IN SPECIALS!

MONDAY

Steak Fingers 89¢

TUESDAY

3-Hamburgers 99¢

WEDNESDAY

Malts & Shakes 19¢

TASTY CREAM DRIVE IN

229 W DELANO

385-3332

A COTTON STAND THE FIRST TIME AND KEEP WHEN YOU USE OUR DEMOSAN TREATMENT



"Demosan" protected the cotton on the left from seedling disease. No disease protection was used in the two rows at the right-note the better stand and more vigorous and healthy cotton where "Demosan" was used.

Reduce costly replanting by letting us delint your cottonseed and treat your seed with Demosan by DUPONT.

Have your ginner call us collect and we will pick up your seed at the gin.

We offer Modern Delinting in our Modern Delinting Plant.

LITTLEFIELD DELINTING COMPANY

Spade Highway

Day Or Night 385-4533

PIONEER SUPERMARKET

LEE HAYNES

205 WEST 3rd.

ALVIS TUBBS



FOOTBALL CONTEST

**Enter Our Contest Each Week
...Nothing to buy - Just Pick Winners
HERE'S YOUR CHANCE TO
WIN CASH PRIZES**

FIRST PRIZE

\$5

SECOND PRIZE

\$3

THIRD PRIZE

\$2

It's so easy...
Anyone can enter!
Read the rules...
Start Winning
**RULES
OF THE CONTEST:**

All you have to do to be eligible for the weekly cash prizes is complete the form below and turn it in to the Leader-News office. In each merchant's block is a game. Mark out the team in all blocks you believe will lose. Then in the "Tie Breaker" box, put the scores you believe each of the teams will make. Weekly judging will be based on the total number guessed correctly. In case of a tie, the tie-breaker will be used to determine the top winners. Decision of the Leader-News scoring judges will be final.

To be eligible for the 2 free tickets to the New Year's Game at the COTTON BOWL, the total number of correct guesses will be totaled through the 12-week season.

Entry forms must be in the Leader-News office, 313 West 4th Street, no later than 5 p.m. Friday. Forms mailed to the Leader-News, P. O. Box 72, must be postmarked Friday. All late entries will be voided by the judges.

LIMIT—One entry per contestant per week.

BE SURE to complete the forms by PRINTING plainly your name and complete address. Contest winners will be announced in each Thursday's issue of the Leader-News.

GRAND PRIZE
TICKETS TO THE
Cotton Bowl
NEW YEAR'S GAME
\$25.00 Expense Money

GO WILDCATS - BEAT MORTON

LITTLEFIELD DELINTING CO.
We Also Sell Cotton & Sorghum Seeds
ESTACADO VS SNYDER
Arthur Summers Spade Highway

AAA TRUCK AND AUTO PARTS
New-Used-Rebuilt Parts, Transmission Exchange
TULIA VS LEVELLAND
Located On Springlake Hiway, Littlefield
Wayne & Doyle Winfield Phone 385-4720

Shook Tire Co.
14 STORES IN 13 WEST TEXAS CITIES
MORTON VS LITTLEFIELD
1028 East 9th Phone 385-4405

LITTLEFIELD SEED & DELINTING
"Home Of Fine Cotton Seeds"
FLOYDADA VS ABERNATHY
Tommy Thrash Ray Austin Larry Lance
Clovis Highway Phone 385-3588

Findley's Jewelry
"Known By The Quality We Keep"
OLTON VS DIMMITT
LOVA * LONGINES * WITTAUER * GORHAM
LING * FOSTORIA CRYSTAL * SYRACUSE CHINA

MARCUM Olds, Cadillac, Pontiac
LOCKNEY VS FRIONA
801 Hall Ave. Phone 385-5171

TASTY TACO
Phone In Orders Are Welcome!
COLORADO VS OKLAHOMA STATE
621 Hall Ave. Phone 385-3660

Take Me Out To The Ball Game
On New Tires By
Astro Star
On Sale Now At 1/2 Price
Plus F.E.T. of \$1.65 To \$3.05
OKLAHOMA VS KANSAS
MCCORMICK OIL CO.
917 Delano Phone 385-4320

TASTY CREAM
For Your Drive-Inn Dining Pleasure
S.M.U. VS ARKANSAS
WHERE FRIENDS MEET BEFORE
AND AFTER THE GAME!

BYERS GRAIN & FEED
TEXAS TECH VS BAYLOR
200 W. Delano Phone 385-3511

DAIRY MART
YOUR HOST FOR MEALS AND SNACKS
RICE VS TEXAS A&M
1020 West 10th Phone 385-5022

Littlefield Butane Co
A Complete Farm Service
Motor Fuel—Fertilizers—Oil—Tires—Accessories
TEXAS VS T.C.U.
1120 East 9th Phone 385-3010

PRESCRIPTION SHOP
PHONE 385-4491
OHIO STATE VS PURDUE
401 WEST 6TH

FINANCING TEXAS AGRICULTURE
FOR OVER 35 YEARS
Tommy Ballard Manager
STANFORD VS AIR FORCE

JIM JONES
AGENT
SUDAN VS KRESS
LITTLEFIELD: Jim's Conoco, Jones Conoco, S&J Service Parts
AMHERST: Joe Miller, Bill Lightsey, HART CAMP, V.L. Foster
BULA: Dale Middlebrooks, PEP, Pep Gro. & Service

Littlefield Farmers Coop Gins & Elevators
BULA VS COTTON CENTER
AMHERST LITTLEFIELD
"OWNED BY THOSE WE SERVE"

PRATT'S JEWELRY & GIFTS
GIFT GALLERY HEADQUARTERS
HAPPY VS SPRINGLAKE-EARTH
MONDS LOOSE AND MOUNTED WATCHES BY
VANTAGE, HAMILTON, MIDO, ELGIN, ZODIAC.

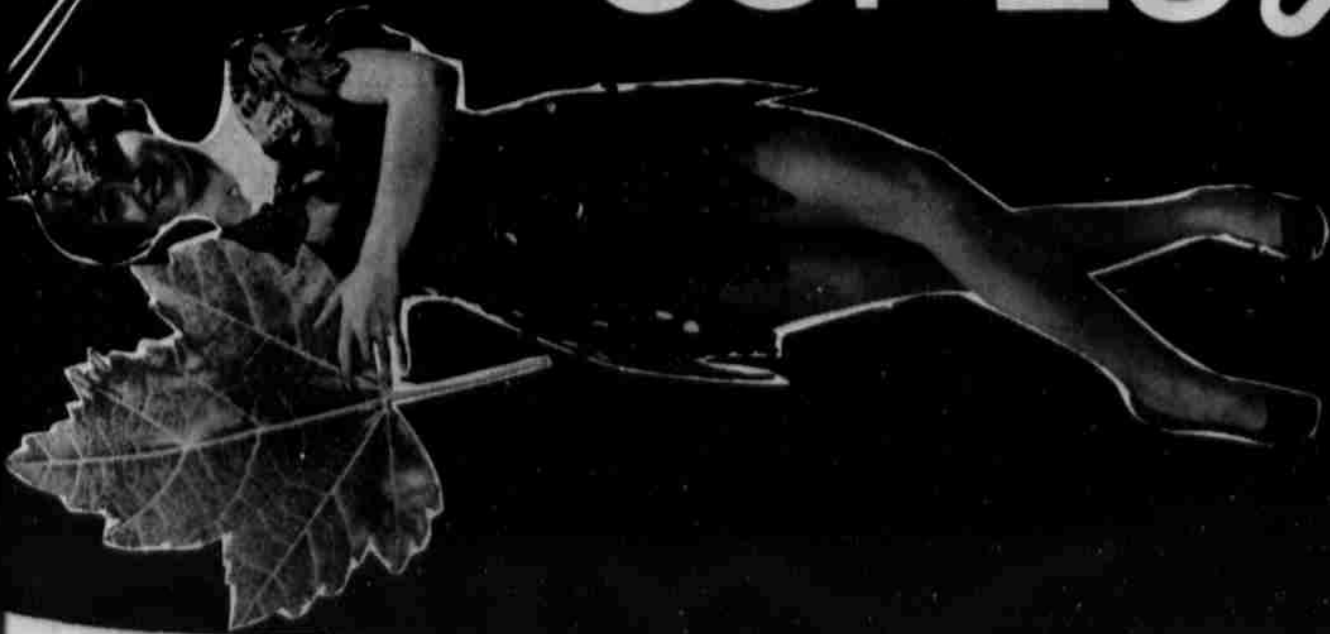
Armes Chevrolet Co.
ANTON VS NAZARETH
New And Used Cars,
Trucks, Pickups
610 East 4th Phone 385-4437

PLEASE PRINT NAME AND ADDRESS
YOUR NAME _____
ADDRESS _____
TOWN _____

TIE BREAKERS
GEORGIA TECH VS NOTRE DAME

LAZBUDDIE VS AMHERST

WALLS



TOILET TISSUE
SINGLE ROLL NORTHERN
2 FOR \$1

GREEN BEANS
L133Y 303 CAN
6 FOR \$1

APPLES
DELICIOUS WASHINGTON STATE EXTRA FANCY, LB.
MELLORINE
CLOVERLAKE 1/2 GALLON
HAIR SPRAY
CINDERELLA

GRAPEFRUIT 17¢
POTATOES RUSSETS 10 LB 49¢
ICE CREAM CLOVERLAKE 1/2 GAL 79¢
WHIPPING CREAM CLOVERLAKE 8 OZ 33¢
BUTTERMILK 1/2 GAL 49¢

CRISCO
3 LB. CAN **67¢**
WITH THE PURCHASE OF \$7.00 EXCLUDING CIGARETTES

CASCADE CREAM PIES 77¢
DISHWASHING SOAP 2 LB. 3 OZ.
TANG 29¢
MORTON

PREAM 69¢
ORANGE DRINK
CORN 6 FOR \$1
CREAM STYLE OR WHOLE KERNEL 303 CAN

SALMON SOUP 69¢
HONEY BOY TALL CAN 16 OZ.
ONION SOUP 3 FOR \$1
LIPTON DRY MIX
POTATOES 39¢
INSTANT IDAHOAN 16 OZ.
DR PEPPER

BAMA JAMBOREE
PINEAPPLE PRESERVES 18 OZ. JAR 2/98¢
PEACH PRESERVES 18 OZ. JAR 2/98¢
RED PLUM JAM 18 OZ. JAR 2/89¢
PEANUT BUTTER REF. JAR 18 OZ. 67¢
PEANUT BUTTER 8 OZ. 39¢
12 OZ. 49¢

SHAMPOO HEAD & SHOULDERS IN TUBE 99¢
POWDERED SUGAR 2 LB. 39¢
PINE SOL 15 OZ. 59¢
SUPER SUDS GIANT SIZE 53¢
TOMATOES CHARLES GREEN HOUSE LB. 39¢
WAX PAPER 6 BOTTLE CARTON 10¢
PINTO BEANS CUTRITE 125 FT 38¢
BARBECUE SAUCE DURKEES 77¢
FLOUR SHURFINE 10-LB.BAG 55¢
SUGAR IMPERIAL OR C&H 5-LB.BAG 79¢
LISTERINE 20 OZ. 89¢

Renfro Bros
RIGHT on the CORNER
SUPER MARKET
ESTABLISHED IN 1929
Raymond PHONE 385 3400
Norman

2 FOR \$1

21¢
39¢
39¢

SOUR CREAM CLOVERLAKE 8 OZ. 33¢
LIQUID DETERGENT NY LEMON 32 OZ. 69¢
AJAX CLEANSER 22 OZ. 2/49¢
LAREDO REFILLS TABACO REFILLS 99¢
COTTAGE CHEESE CLOVERLAKE 2 LB. 69¢

MARKET SPECIALS

BACON SWIFT PREMIUM LB. 69¢
CHUCK ROAST BLADE CUT LB. 69¢
SIRLOIN STEAK LB. 98¢
LOIN STEAK PIN BONE LB. 85¢
RIB STEAK LB. 85¢
CHEESE VELVEETA 2 LB. BOX \$1.19



GIBSON'S DISCOUNT CENTER

WHERE YOU ALWAYS BUY THE BEST FOR LESS

311 EAST 8th ST. LITTLEFIELD, TEXAS
 STORE HOURS: DAILY 9-6 P.M.—1-6 P.M. ON SUNDAYS
 PRICES GOOD MONDAY 9TH THROUGH SUNDAY 15TH

now **Crest** IN TWO FLAVORS
 REGULAR & NEW MINT



GIBSON SPECIAL
 FAMILY SIZE **67¢**

Windex with **DOUBLE AMMONIA**
 cuts grease and film fast
 15 OZ CAN **39¢**

new! improved! **Hidden Magic**
 Gibson Special **39¢**

CAN POP
 COKE DR. PEPPER SPRITE
9¢ CAN

SAVE ON Head & Shoulders
 the best possible dandruff shampoo you can buy

FAMILY TUBE.....99¢
 FAMILY LOTION.....99¢
 FAMILY JAR.....\$1.17

Visine eye drops
 1/2 OZ **83¢**

Zest BATH SIZE
 Gibson Special **2 FOR 39¢**

DEP hair spray
79¢

DELUXE Lilt the home permanent with the soft wave look
 STYLE KIT **\$1.19**

HOUSE-I-TOSIS FAST!
NEW Wizard air freshener
 9 OZ **39¢**

14 1/2 OZ
Gibson Special **97¢**

Lilt SPECIAL the home permanent with the soft wave look
 STYLE KIT **89¢**

CAREFREE
argus **\$4.99**

Butternut Hot Cocoa 3 PKGS **19¢**

STADIUM SEAT
 Padded in assorted colors. Great for ball games.
 LIMITED QUANTITY **\$2.39**

Westinghouse AGI Bulbs
 LIMIT 2 PKGS **59¢** PKG OF 12



MIKE WILLIAMS is apprehensive as Myrtle Sumrall administers a Heaf test. More than 600 Littlefield students lined up Friday for the annual tests to detect tuberculosis. Conducting the clinic were Mrs. Joyce Oliver, R. N., school nurse; Donna Sue McCarty, R. N.; Christelle McCarty, LVN; Mrs. Charles Nace, and a number of volunteers. Results will be read Monday. Those showing positive signs will be tested again, and if positive a second time will be given chest x-rays.

Farm Bureau Membership Reaches All-Time High

The Texas Farm Bureau has ended its fiscal year with an all-time high membership of 121,158 families, according to Wayne L. Little, director of field services.

The new mark represents a gain of 4,536 over last year's previous high of 116,622. It was the 18th straight year for the state's largest general farm organization to show an increase in members.

A total of 158 of the 203 organized counties in Texas showed a gain over 1969, Little said.

TFB's fiscal year ended Oct. 31, and the membership figure was announced Nov. 5 following calculation of all members transmitted to the Waco headquarters by the end of October.

Little said the TFB has gained more members in the past four years than all other general farm organizations in Texas have on their rolls.

The Texas organization ranks third in membership size among all state Farm Bureaus, behind Illinois and Indiana.

The field services director said Farm Bureaus' continuing growth, in the face of a dwindling farm population, reflects the desire of Texas farmers and ranchers to promote and preserve the agricultural industry through their own organization.

PUBLIC RECORDS

JUDGES DOCKET

Calvin Joe Hood, charged with carrying a pistol, entered a plea of guilty Nov. 2 and was sentenced to \$100 plus court cost.

Nathaniel Williams, charged with carrying a pistol, entered a plea of guilty Nov. 2 and was sentenced to \$100 fine plus court cost.

Willie Lee Williams, charged with driving while intoxicated, entered a plea of guilty Nov. 2 and was sentenced to fine of \$100 plus court cost.

Mrs. Don Reynolds, charged with check law violation, entered plea of not guilty and bond was set at \$500.

NEW CAR REGISTRATION

O. D. Oakley, Anton, 1971 Ford 4-door sedan, Mitchell Ford, Inc.

Mary Wright, Amherst, 1970 Dodge 2-door Garland Motor Co.

Hollis Smith, Littlefield, 1971 Chrysler, 4-door, Garland Motor Co.

Ben Earl Green, 510 E. 14th, Littlefield, 1971 Ford 2 door, Mitchell Ford, Inc.

Syd Coffman, Morton, 1971 Chrysler 4-door, Garland Motor Co.

Thomas E. Alair, Dimmitt, 1971 Dodge pickup, Garland Motor, Co.

J. Randel Fain, 104 E. 21st, Littlefield, 1971 Mercury, Mitchell Ford, Inc.

Jeanne Bundick, 402 E. 19th, Littlefield, 1970 Dodge 2-door, Garland Motor Co.

L. A. Jones, Shallowater, 1971 Dodge 4-door, Garland Motor Co.

W. R. Tunnell, Lubbock, 1971 Ford 4-door, Mitchell Ford, Inc.

Billy J. Cox, Littlefield, 1970 Dodge 4-door, Garland Motor Co.

John W. Humphreys, Sudan, 1971 Plymouth 2-door, Garland Motor Co.

Max D. Bagwell, Lubbock, 1971 Olds 2-door, Marcum Olds-Cadillac.

E. C. Purvis, Stephenville, 1971 Chrysler 4-door, Garland Motor Co.

Hart Camp Co-Op Gin, 1971 International truck-trailer, I-H Lubbock.

Joe Collins, Dimmitt, 1970 Dodge pickup, Garland Motor Co.

E. B. Luce, 400 E. 13th Littlefield, 1970 Oaklander motorhome, Armes Chevrolet.

SHERIFF'S OFFICE

Mrs. Don Reynolds, 32, Anton, was arrested Friday, Nov. 6, and charged with check law violation. Bod was set at \$500.

HOSPITAL NEWS

MEDICAL ARTS HOSPITAL

NOVEMBER 1
 ADMITTED: Mrs. Leonard Rhodes, Mrs. Pat Cromer, Mr. Ed Ross.
 DISMISSED: Mrs. Elsie Lamberson.

NOVEMBER 2
 ADMITTED: Mrs. Minna Stubblefield, Mrs. Angelina Hernandez, Ramiro Gonzales, Louis Peacock.
 DISMISSED: Mrs. Elisa Rice, Mrs. Domingo Garcia, Mrs. Monroe Ray, Mrs. Leonard Rhodes, Mrs. Norene Moore, Travis Jaquess.

NOVEMBER 3
 ADMITTED: Mrs. Marie Minfa Montill, T.A. Moose, M.D. Hall.
 DISMISSED: Mrs. Cordelia Ferguson, Mrs. Leo Fullingim, Mrs. Nellie Smith.

NOVEMBER 4
 ADMITTED: Andelia Salazar, Mrs. Pauline Cooper, Cynthia Espinoza, Raymond Marek, J.B. Haire.
 DISMISSED: Mrs. Veada Crawford, Mrs. Pat Cromer, A.A. McMahan, Pryor Hammons.

LITTLEFIELD HOSPITAL

NOVEMBER

OCTOBER 30
 ADMITTED: Ann Minyard, Larita Hodge.
 DISMISSED: Jerry Kemp, Carlos Davilla, Mrs. Janice Justin, Robert Ball.

NOVEMBER 1
 ADMITTED: Mrs. Rosa Craddock, Dillard H. Bryant.
 DISMISSED: Mrs. Lee Curry, Mrs. Ruthie Jenkins.

NOVEMBER 2
 ADMITTED: Andy Walker, Mrs. Norma Cotton, Mrs. Connie Martinez, Mrs. Mozelle Tapley, Joe Scarborough, Mrs. Alice Hood, Mrs. Charlotte Day.
 DISMISSED: Mrs. Margie Jenkins, Dillard Bryant.

NOVEMBER 3
 ADMITTED: Mrs. Ruby Weaver, Manuel Salas, Mrs. Bessie Brunson, Mrs. Sherley Hagerty, Mrs. Bertha Dutton.
 DISMISSED: Mrs. Delia Whitson, Miss Ann Minyard, Mrs. Rosa Craddock and baby, John Terry, Charles Young, Mrs. Dorothy Vinson.

NOVEMBER 4
 ADMITTED: Mrs. Priscilla Cook, Mrs. Ruby Garcia, Mrs. Lake Hutto, Mrs. Mildred Barnes.
 DISMISSED: Larnita Jodge, Mrs. Norma Cotton and baby, Mrs. Edna McReynolds, Mrs. Connie Martinez, Wayne Williams.

NOVEMBER 5
 ADMITTED: Mrs. Isabelle



NEW FROM ELGIN

Smallest size ever... with big set power and tone!

10 TRANSISTOR AM CLOCK RADIO

- IT'S TUBELESS! No parts to burn out.
 - IT'S COMPACT! Only 4"x4"x4" nestles neatly on nite stand, in bookcase, kitchen counter, office, anywhere!
 - IT'S FULLY AUTOMATIC! Turns itself ON and OFF... sings you to sleep and wakes you in the morning!
- OUTSTANDING BUY! **\$29.95** DOWN

Also available in solid walnut \$42.99

Never before a clock radio like this! Ultra compact with a powerful 10 transistor, 2 diode and thermistor circuit that pulls in stations from near and far. Precision vernier tuning, easy to read dial, glows softly at night, oversize speaker for clear, rich sound, privacy earphone. U.L. approved. Elegant style... a smart accent for any room. Come, see and hear it today!

Mother's Ring Headquarters



Up To 3 Stones - 14K Gold
 One Yr. Guarantee On Loss
 Of Stone **17.95**

Additional Stones Up To 7... Only \$3. Each

Pratt's Jewelry
 5TH & KIT

-if you WANTA SAVE

PLAN NOW ... To Be At Your Nearby Anthony Store

THURSDAY-FRIDAY-SATURDAY

For one of the biggest money saving events in our history... so much value collected under one roof, you'll scarcely believe your eyes

STOREWIDE FOUNDER'S DAY SALE

SEE OUR ADVERTISEMENT IN THURSDAY'S PAPER



RIGHT NOW!

COME DEAL YOURSELF INTO THE BIGGEST TRADES AND THE BEST PRICES IN TOWN TOO!
 You'll find them both at our showroom

Garland Motor Company, Chrysler-Plymouth

710 EAST 3RD LITTLEFIELD, TEXAS