

Could You Believe.....? See Wildcats Page 9



THE 'BAD GUYS'

C-C Membership Drive Currently Underway

Thursday was a full day of activities for the Littlefield Chamber of Commerce.

Two teams, headed by David Jones and Kip Cutshall, were organized and given proper work materials for the new membership campaign, during an early-morning meeting in the XIT Room of Security State Bank. Overall campaign chairmen are Rad Richardson and J. L. Marcum.

During a joint meeting of Chamber of Commerce members, Lions Clubs, Rotary Club and "We, The Women" Thursday at noon in the Community Center, reports several phases of area work were presented.

Presiding for the meeting was Chamber of Commerce President J. L. Marcum, who introduced each as they made their reports.

Carol Black introduced Mrs. Wanda Legion of Bula, president of the District Women's Cotton Promotion Association, who made a report on recent cotton research as provided by Cotton Incorporated through the dollar-per-bale donations from farmers.

She then introduced Faye Jones, president of the Bailey-Lamb County Women's Cotton Promotion Association.

Paul Bennett, business member of the board of Cotton Incorporated, presented a report on prospects of acquiring an open-end spinning and textile plant for Littlefield. He reported that the open-end spinning method can produce more yarn from cotton fiber than conventional spinning, and the new plant will utilize 60,000 bales of cotton per year.

Warren Dayton presented a report on the proposed new agriculture center. He displayed an architectural drawing of the 120x100-foot building, and credited the high school architectural students in working up the plans. The county commissioners will pay for the construction of the building and the Chamber of Commerce, civic organizations, and other interested citizens have pledged to pay for the furnishings (approximately \$10,000).

Tom Tollett made a report on Festivities Days. He stated, "We just broke even this year". He said considerations are being made to discontinue Festivities Days for next year, and that citizens will make a concerted effort to promoting the huge Bicentennial celebration in the spring of 1976.

Rev. David Hamblin of Abilene, immediate past president of the Chamber of Commerce, presented plaques of appreciation to seven members of the board of directors for 1973, during his tenure as president. Only one of the directors was present to accept the plaque—Benny Zahn. Others recognized were Roger Lowe, Elouise



THE 'GOOD GUYS'

Cox, Bob Roden, Joe Carlisle, Doyle Patton and Carol Black.

Rev. Hamblin also paid tribute to Bill Payne for his "outstanding service to the Chamber of Commerce and to his overall efforts for making the Littlefield area a better place to live." Payne has resigned his post as executive vice president to accept a similar post at Cleveland, Tex.

J. L. Marcum presented a \$100 set of the George W. Littlefield Commemorative Medals to Payne in behalf of the C-C.

Kip Cutshall and David Jones, opposing team captains for the current membership campaign, kicked off the membership drive and encouraged each of their teams to get out and work.

At the close of the drive, the two teams will meet at the Country Club for a steak

and beans dinner Tuesday, Oct. 29. Winners of the contest will eat the steaks and the others will eat beans.

David Jones' "Bad Guys" team is composed of Steve Cox, Ken Day, Carlton Tanner, Charlie Duval, Orville Bassett, Billy Tom Grant, Leon Burch, Ronnie Smith, Johnny Hall, Sedell Black, Clinton Byers, Rad Richardson, Jeni Brunson, Susan Head, Delbert Smith and Tom Hilburn.

Team members led by Kip Cutshall are the "Good Guys", J. L. Marcum, Wade Warren, Jim Jones, John Clayton, Carol Black, Janice Sebring, Warren Dayton, Ernest Connell, Tom Tollett, Benny Zahn, Doyle Patton, Jim Settle, Mary Beth Willy, Jim Lacky, Bobby Brunson, Susan Wilemon, Bert Wallace, Jim Upton, Buddy Wells and Phelps Blume.

Directors Election Ballots Due Nov. 4

Electing five new directors for the Chamber of Commerce are due in the C-C office no later than 5 p.m. Monday, Nov. 4.

The persons which have been nominated on the ballot by the Directors are Paul Bennett of Seed and Delinting, Carol Security State Bank, B. D. Garland Motor Company, and Mangum-Hilburn In-

urance, and Dale Walthall of R&W Supply.

The ballots also have spaces for write-in votes.

Retiring directors are Charles Ary, Ernest Connell and Kip Cutshall.

Other directors with two years left to serve are Joe Carlisle, David Jones, Carlton Tanner, Tom Tollett and Bert Wallace.

Those with one year remaining to serve are Benny Zahn, Ken Day, Rad Richardson, Wade Warren and Doyle Winfield.

Reservations For Cowboy Game Due Soon

Three days remain to make reservations for the Chamber of Commerce and culture's chartered bus trip to see the Cowboys play the Texas Cardinals in Texas.

The cost of the trip is \$47.50 per person, which includes the bus, a night's stay at a new motel near the Dallas-Ft. Airport, and tickets to the game.

The bus will depart Littlefield on Monday, Nov. 2 and return to Littlefield on Wednesday, Nov. 4, immediately after the game.

Reservations must be in the Chamber office on the second floor of City Hall by 5 p.m. Oct. 30, or by calling 383-4451 before then.

Members Buying Citrus

Local FFA members have begun buying citrus fruit and will take orders until Nov. 20. All box weights 40 pounds and up. Each for either grapefruit or oranges. If a person wants half oranges and half grapefruit, the box costs \$6.50. If a person wants half a box of either, the box costs \$3.25.

Any FFA member or call the FFA office at 383-4437 or contact instructor.

Little School Seeking Pipe Fence Project

Little School's Board of Directors is working on plans to conference around the school and according to Gene Spies, principal, help is needed in cutting the fence project.

Anyone who has some two-inch pipe that could be used, contact him at 383-4437 or contact Rev. Joe Spies at Sacred Heart Church, 383-6043.

Man Sausage, Turkey Dinner Set Here Nov. 10

Undeniable signs that fall to the Plains of West Texas. The signs is the scheduling of great dinners in the area. The Parish Council of St. Catholic Church in Littlefield plans for their 38th Anniversary and Sausage Dinner.

The dinner has a long history of good service in the community. The parish offering will keep that tradition. The people of the parish are invited to all to come and share their contribution to the dinner and the harvest.

The dinner will take place on Sunday, Nov. 10, from 11 a.m. to 2 p.m. As always, turkey and sausage will be served. The Community Center at West 10th and 11th Streets in Littlefield's Main Street. The Dinner features an "all-you-can-eat" buffet-style service



MAYOR J. E. CHISHOLM gets his blood pressure checked by Evone Oliver Thursday during a community-wide hypertension evaluation clinic, sponsored by the Texas affiliate of the American Heart Association. He was among more than 100 persons who were tested and received literature on high blood pressure. (Staff Photo)

and is a real treat for all who come.

Last year more than 1,000 patrons ate more than 450 pounds of turkey and 700 pounds of sausage. Even though the dinner is served in such quantities, care in preparation keeps the quality of food high, and the work of the servers and table attendants keeps the flow of diners moving. The council promises a delicious meal in a fall setting, and extend an invitation to come and share with them.

To prepare for and carry out this ambitious project the members of the parish work together to provide always popular German sausage (home-made by the men of the parish from the pig to the pan...), home-baked bread and cherry cobbler, turkey, dressing and all the trimmings to set a festive Thanksgiving table. The Parish Council of Catholic Women, along with the

tireless youth of the Parish, take an active part in preparing and serving.

Tickets are now on sale by members of the Parish Council, or by mail until Nov. 6 (Box 1047, Littlefield, Tex. 79339).

Tickets will also be sold at the door the day of the dinner. Prices are \$3 for adults and \$1.75 for children under 10. Sausage will be sold by itself to take home for \$2 a pound, if there is any left after diners have had their fill.

Have You Joined The Chamber?

LAMB COUNTY
LEADER-NEWS
VOLUME 52 NUMBER 53 LITTLEFIELD, LAMB COUNTY, TEXAS, SUNDAY, OCT. 27, 1974 2 SECTIONS 16 PAGES
15 CENTS
TAX INCLUDED

County To Receive New Radio Equipment

In ceremonies held Wednesday, Oct. 23, in Lubbock's City Hall, South Plains Association of Governments' president Carolyn S. Jordan signed a \$1,078,770.00 contract with General Electric, Inc. to provide new radio equipment for all law enforcement agencies in the 15-county SPAG region, including Lamb County.

The new radio communications system will be funded in part through a grant from the Governor's Office, Criminal Justice Division.

Participating agencies will pay 25 percent of the total cost for the new equipment.

The project will replace present obsolete equipment with a modern, four-channel system for radio communications. The Overload on the 37.180 frequency currently used by most agencies in the area will be relieved with each agency being assigned a separate frequency. The multi-channel system will allow agencies to monitor other departments within the county, while maintaining clear transmission and reception on other channels.

Implementation of the system is expected to begin within thirty days, and will be completed within one year.

District Sewing Contest Scheduled Here Nov. 2

Littlefield will host eight counties in the District "Sew It With Cotton Contest and Style Show," slated for Saturday, Nov. 2.

The contest will be held in the Littlefield High School Auditorium at 4 p.m., followed by the show at 7:30.

Contestants from eight area counties will be modeling several categories of all-cotton clothing.

Prizes of \$50, \$35 and \$25 will be awarded to the first, second and third places respectively in the various categories.

Narrator for the show will be Mrs. Joy Breedlove, and Mrs. Wanda Legan, bookkeeper at a Bula Gin, who is District President of the Women's Cotton Promotion Association, will serve as master of ceremonies.

Anthony's will be in charge of

decorating the state, and the Chamber of Commerce from Muleshoe and Littlefield are aiding with the program.

Door prizes donated by area merchants, will be given during the show.

Bad Check Losses, Shoplifting To Be Studied In Workshop

A two-hour workshop on the control of shoplifting and bad check losses will be held Monday, Nov. 11, at 7:30 p.m. at the XIT Room at Security State Bank, according to Philip J. O'Jibway, District Director Lubbock SBA.

As a service to businessmen of the area, the workshop is presented by the

Earth Deputy Files 3 Burglary Charges

A wholesale burglary was averted at Earth Friday, and three Mexican-American men are in the Lamb County jail charged with burglary with bonds set at \$2,500 each.

The three from Muleshoe are charged with breaking into Gary's TV at Earth. They had gained entry through the air conditioner on the roof. One stereo unit had been pulled out of the building at the time the breaking and entering was discovered by the Earth deputy.

In other bookings at the county jail, a Levelland man and an Amherst man have been jailed on charges of check law violation. A Littlefield man was picked up on district judge's orders for failure to pay child support.

Two Plainview men were jailed. One was charged with DWI and fined \$147 plus 20 days in jail, probated. The other was fined on a drunk charge. Similar charges were filed on two Amherst men. One was fined \$200 plus court cost and given 20 days in jail on a guilty pleas of driving while intoxicated. The other was charged with being drunk.

Littlefield Chamber of Commerce, other civic organizations, local law enforcement officers, and the Small Business Administration.

A panel consisting of representative of the District Attorney's office, the Chief of Police and other public officials will be present to answer questions and explain what the individual businessman can do to protect himself against these losses.

J. L. Marcum, president of the Littlefield Chamber of Commerce said, "Every year our local shopkeepers lose many thousands of dollars through the activity of shoplifters and check artists. No one knows how much these losses add up to in a year's time, but any retail businessman can tell you that they can be a very heavy drag on a small business enterprise.

"But the small businessman cannot afford to hire special policemen and he cannot afford the expensive and more elaborate electronic devices large firms use to thwart the efforts of both the professional and amateur 'light finger artists' who risk off with merchandise or cash without getting caught," he concluded.

School Board Action An Apparent Violation

The final action taken by the Littlefield School Board of Trustees at their last meeting, the extension of Superintendent Jack York's contract for a one-year term, was apparently a violation of the "Governmental Bodies-Open Meetings" law of the state of Texas.

Article 6252-17, Section 3A of Vernon's Civil Statutes states that "written notice of the date, hour, place and subject of each meeting held by a governmental body shall be given before the meeting

as prescribed by this section."

The agenda did not list "personnel" or a similar topic as one of the items to be considered and therefore apparently does not meet the qualifications as stated in the above paragraph.

All board members voted on the motion to extend York's contract.

Trustees Werner Birkelbach, David Hampton, Mickey Ratliff, Doug Walden and Benny Zahn voted for extending the contract while Dick Hopping and Doyle Winfield voted against the extension.



Myers-Willingham Wedding Solemnized

Debra Ann Myers and Donald Wayne Willingham exchanged double-ring wedding vows Saturday night in the Spade United Methodist Church, as they stood before an altar centered with flared candelabra decorated with blue, lilac and pink daisies and babies breath. Flanking the candelabra were two candle trees, decorated with huckleberry foliage and babies breath.

Officiating for the reading of the vows was Rev. Elroy Wisian Jr., pastor of the Spade United Methodist Church.

Parents of the couple are Mr. and Mrs. Bobby J. Myers of Rt. 1, Littlefield; and Mr. and Mrs. Joe M. Willingham of Garland.

Bobby J. Myers presented his daughter for marriage. She wore a floor-length gown of white satin organza with Venice lace in the daisy pattern around the empire waistline. The bodice featured a jeweled neckline and lantern sleeves of satin organza over taffeta with bouffant organza extension cuffed by a narrow band of lace. The straight skirt was softly gathered in the back and flowed into a sweep train. Her formal full-length veil of illusion was attached to a Juliet headpiece of Venice lace with matching lace edging the veil.

She carried a tapered bouquet of blue, lilac and pink daisies and stephanotis, babies breath and English Ivy, with a removable corsage atop a white Bible.

Mrs. Wayne Matthews of Rt.

1. Anton, was her sister's matron of honor. Bridesmaids were Mrs. Gary Hairston of Spade and Miss Regina Awbrey of Levelland.

The matron of honor wore a floor-length gown of baby blue with cap sleeves, fashioned with an empire waistline and matching lace-covered bodice. Bridesmaids wore gowns identical to the matron of honor, except they were in lilac and pink.

The matron of honor carried a colonial bouquet of blue and white daisies and babies breath and English Ivy. One bridesmaid carried a colonial bouquet with lilac and white daisies and babies breath, and the other carried a colonial bouquet with pink and white daisies and babies breath.

Bobby Willingham of Dallas was his cousin's best man. Groomsmen were Frank Bush and Mike Halford, both of Levelland.

Flower girl was Angela Matthews of Anton, niece of the bride, who carried a pom pomegranate of blue daisies with blue and white ribbon.

Her brother, Mark Matthews, was ring bearer. Chris Myers, brother of the bride, of Spade, served as candlelighter.

Ushering the guests to their seats were Scott Beasley and Mike Seaton, both of Levelland.

For her daughter's wedding, Mrs. Myers wore a formal-length gown of light avocado green Alaskine polyester with beige accessories and a pink cymbidium orchid corsage.

Mrs. Willingham wore a formal-length gown of Nile green polyester with matching accessories and a pink cymbidium orchid corsage.

Steve Maines of Lubbock sang "Colour My World", "The Wedding Song", and "The Lord's Prayer" as he was accompanied at the piano by Mrs. Raymond Sewell of Spade.

Mrs. Steve Maines registered the guest in the church foyer, from a table laid with a white tablecloth, bearing the bride's book and a blue feather pin in a blue velvet stand, flanked by a long stemmed blue carnation in a crystal vase.

As the bride entered, she presented a long stemmed rose to her mother, and following the ceremony, she presented one to her new mother-in-law.

Following their pledges, the bride and groom lit a memory candle in the sanctuary, signifying their becoming one.

For "something old" the bride wore her grandmother's wedding band; she wore the traditional "blue" garter; "something borrowed" was a white Bible; "something new" was her bridal veil; and in her shoes she wore two pennies minted in the year of their birth—1954.

Following the ceremony, a reception was served in the church fellowship hall. A three-tiered wedding cake decorated in blue, lilac and pink roses was served with yellow fruit punch, mints and nuts from crystal appointments. The serving table was laid with a white cloth overlaid with white, and centered with a gold candelabra entwined with baby's breath. The bridesmaids' bouquets along with the bride's bouquets, completed the decorations.

Members of the houseparty were Mmes. Duane Gray, Leon Leonard, N. E. Hall, Clint Ward, Nevada Gray and Ralph Matthews.

Rice bags of white net with blue, lilac, and pink rice, were tied with rainbow ribbons and distributed by the bride's brother, Chris Myers.

For their short wedding trip, the bride chose to wear a green polyester knit dress with long sleeved jacket and black patent accessories, and the corsage lifted from her bouquet.

They will reside at 1334 Rigsbee, Apt. 265A in Plano, 75074.

The new bride is a graduate of South Plains College where she earned her social science degree and was on the Student Senate.

The groom graduated from South Plains College, where he was a member of the golf team two years. He is now assistant pro at the Plano Municipal Golf Club.

Guests were registered from Dallas, Abilene, Cisco, Crowell, Fort Worth, Amarillo, Lubbock, Levelland, Hereford and Shallowater.

A rehearsal dinner was served Friday night in the Fellowship Hall of the Spade Methodist Church.

FINDLEY'S JEWELRY

IS PLEASED TO PRESENT OUR **Bride-Elect** of the **Week**

SEE HER SELECTION ON DISPLAY IN OUR STORE



MARSHA STARNES BRIDE ELECT OF JIMMY DAVID CAMBRON

SALE ON POLAROID CAMERAS & FILM



POLAROID'S LATEST MODEL ZIP! ONLY **\$13.95**

SQUARE SHOOTER GIFT PACK CAMERA, CASE, FILM & FLASH **\$39.95**

POLAROID'S MODEL SX-70 LAND CAMERA NO. 2 **\$139.99**

POLAROID'S COLOR PACK LAND CAMERA KIT INCLUDES CAMERA, CARRYING CASE, FILM, FLASH CUBES, GIFT BOXED COMPLETE. **\$49.95**

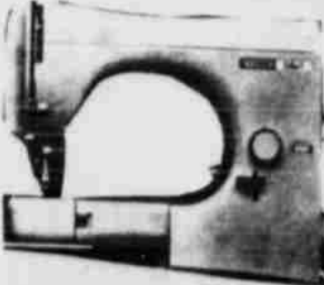


POLAROID 420 AUTOMATIC LAND CAMERA REGULAR \$64.99 SALE PRICED **\$54.99**



POLAROID FILM

SALE PRICES ZIP FILM SIZE NO. 87.....\$2.87 SQUARE SHOOTER SIZE 88.....\$3.85 COLOR LAND CAMERA SIZE 108.....\$4.85 BLACK & WHITE CAMERA SIZE 107.....\$2.85



WESTERN AUTO IS NOW THE EXCLUSIVE DEALER IN LITTLEFIELD FOR NECCHI'S AND ALCO SEWING MACHINES.

INTRODUCTORY OFFER 10% OFF ON ANY NECCHI SEWING MACHINE, CABINET & CARRYING CASE.



ALSO THE PACKARD BELL DEALER.

10% OFF ON ANY PACKARD BELL T.V.

MODEL 14C844 ED - SPANISH REGULAR PRICE \$649.00 SALE PRICE **\$539.00**

Western Auto 306 Phelps Ave. Littlefield, Texas

Xi Nu Nu Chapter Plans Spook House

The Xi Nu Nu Chapter of Beta Sigma Phi met in the Reddy Room of the Southwestern Public Service Building Monday night, Oct. 21.

Kay Pace presented the cultural program "What We Want", from "Written In Our Hearts".

New magazines are being distributed and donated to the hospitals by chapter members.

Preparations are being made for the "Spook House" to be held on Halloween Night, which will be located in the H&R Block Building on main street. The "Spook House" will open at 6:30 p.m. and close at 8:30 p.m. after all the Halloween Spooks and Goblins and Ghosts are gone away, into the eerie darkness of the night, on Thursday, Oct. 31.

Thursday morning, Oct. 31st, chapter members will go to the Satellite School to help the class make Halloween favors and

serve refreshments to them.

On Thursday afternoon, Oct. 31st, a Halloween Party has been planned for a Special Education class at the Public School in the Elementary I Building.

Doris Simpson, Peggy Johnson, Loretta Winfield, Marilyn Parker, and Carolyn Spies recently met with the Executive Board for the Satellite School to discuss with them the assistance chapter members could give to help with the Satellite School.

Refreshments were served to Ann Pullig, Loretta Winfield, Doris Simpson, Paula Schroeder, Sarah Tollett, Carolyn Warren, Ann Manning, Carolyn West, Judy Newman, Jane Ann Byers, Mary Knox, Marilyn Parker, Twila Goheen, Carolyn Spies, Kay Pace and Myrlene Bridwell.

Conducts Costume Party

Members of the Xi Nu Nu Exemplar Chapter of Beta Sigma Phi were guests at a Halloween social recently in the Reddy Room of the Southwestern Public Service Building.

All guests were dressed in costume attire. The winner in the costume division was Twila Goheen, who received prize for first place.

The entertainment for the evening was the show of costumes on parade, and several games of "Crazy Bridge" were played.

The serving table was adorned

with an array of Halloween decorations, chips and dips, a selection of sandwiches, relishes filled plates, chocolate cups cakes with Jack-O-Lantern faces, orange colored popcorn balls, and pumpkin pie with whipped cream topping.

Present for the social were Doris Simpson, Paula Schroeder, Ann Pullig, Loretta Winfield, Sarah Tollett, Carolyn Warren, Carolyn West, Judy Newman, Jane Ann Byers, Kay Pace and Myrlene Bridwell.

Hostesses serving at the social were Carolyn Spies, Ann Manning, Twila Goheen, Mary Knox and Marilyn Parker.

Plant X Employees Feted

SUDAN—Approximately 175 employees and families of Southwestern Public Service Company's Plant X were served a Mexican supper recently in the Sudan School Cafeterium.

In charge of the preparation and the evening were Mr. and Mrs. Jimmy Newman, and school employees cooked the meal of enchiladas, tacos, beans, tossed salad, tea, coffee and peach cobbler.

Tutu's School of Dancing provided the program with several girls from Littlefield, Muleshoe and Sudan participating.

Dancers from Sudan included Lisa Bishop, Ann Marie King.

Turkey Dinner Served Before Game

The Women's Clubs of Olton are sponsoring a Community Turkey Dinner in the Olton School Cafeteria Friday, Nov. 8, prior to the Littlefield-Olton football game.

Serving is to begin at 5 p.m. and continue through 8 p.m. "An annual affair, we like to have out-of-town friends and fans join us for this Thanksgiving style meal," says Lily May Silcott, president of the Olton Study Club.

Littlefield fans are especially invited to "come for supper." Tickets are \$2.50 for adults and \$1.50 for children.



MRS. D. W. WILLINGHAM

Alpha Lambda Zeta Is Planning Bazaar

Alpha Lambda Zeta Chapter of Beta Sigma Phi held its meeting Monday, Oct. 21, at the XIT Room of Security State Bank.

With Deanna Friday, president, presiding, the chapter voted to have its Bazaar, consisting of baked goods and handmade crafts, Monday, Dec. 22, from 9:30 a.m. to 5:30 p.m. at Janice's Buttons and Bolts in Littlefield.

Brenda Denton presented the program on "About Style". Brenda gave the history of clothing and pointed out how different styles affect one's own beauty, moods, and personality. A discussion was then held on

the proper style of dress for each individual and the fashion and place for it. Charla Rountree was prize.

Members present Deanna Friday, Brenda Gail Kloiber, Penny Mary Giles, Cindy Janice Appletan, Charlotte Gilley, Richardson, Charles Cathy Hufstetter, Maxfield, Linda Jones Sebring, and Linda Ch Linda Jones and Penny served Halloween refreshments of colored popcorn, individual pumpkin pies, Cokes and coffee.

Three Littlefield Scouts To Receive Eagle Award

Three Littlefield Boys Scouts from Troop 637 will be among the many Scouts who will

receive the Eagle Award after a ceremony at the Baptist Church of Littlefield.

They are Bradley E. Jeffrey B. Freeless Wood. Their Scoutmaster David Roden, and the three of the four in George White District receive the awards.

Senior Citizens Served Supper

AMHERST—The Amherst Senior Citizens enjoyed a "Pot Luck Supper" Tuesday, Oct. 15th, at the Amherst Community Center. Sponsor for the night was Farmers Co-Op Gin, with James Holland, the gin

manager, and Verbel serving as hosts.

Entertainment of the evening consisted of fiddling music, piano selections was enjoyed by who attended.



CHRISTIE sure liked the Sweater Sets that came in this week.

Lots a' Styles in Seventeen and at



329 PHELPS 385-4090

MON., TUES., WED. ONLY BAR-B-QUE SANDWICH REGULAR 70¢ 59¢

EVERY FRIDAY ALL DAY

FRESH CATFISH REG. \$1.85 \$1.25

PHONE ORDERS WELCOME! DAIRY MART 1020 W. 10TH 385-5000



MR. AND MRS. JOE PELFREY

Mrs. Joe Pelfrey Celebrate Anniversary

house and reception. Mr. and Mrs. Joe Pelfrey were married Nov. 8, 1924 in Altus, Okla. They have resided in the Whitharral community 29 years, where Pelfrey was engaged in farming until his retirement two years ago. They now reside at 107 Cypress in Levelland. The couple has 15 grandchildren and five great-grandchildren. All friends and relatives of the couple are invited to attend.

FOR THOSE WHO SEW-THE PLACE TO SHOP.

GURETTE REPRESENTATIVE WILL BE IN THE STORE MONDAY ONLY, OCT. 28, FOR THE PURPOSE OF FITTING FOUNDATION GARMENTS.

JANICE'S BUTTONS & BOLTS
Phelps Hours: 9:30 to 5:30 385-6151

WE SPECIALIZE IN



REHABILITATION EQUIPMENT



Rentals and Sales
BRITTAIN PHARMACY
PHELPS P.O. BOX 1227 385-5114

THE GREATEST SALE ON EARTH! CARNIVAL

Effective October 28 STOCK UP NOW...SAVE ALL WINTER!
November 9, 1974

| | |
|---|---|
| <input type="checkbox"/> Shurline Apple Butter 28 oz. 2/1.00 | <input type="checkbox"/> Shurline Macaroni & Cheese Dinner 7 1/2 oz. 4/1.00 |
| <input type="checkbox"/> Shurline Apple Sauce 16 oz. 3/1.00 | <input type="checkbox"/> Shurline Mandarin Oranges 11 oz. 3/1.00 |
| <input type="checkbox"/> Shurline Asparagus Spears Cut-Grn. 14 1/2 oz. 1.53 | <input type="checkbox"/> Shurline Margarine Reg. Quarters 16 oz. 2/1.00 |
| <input type="checkbox"/> Seltin Bathroom Tissue Ass'd. 2 Ply 8 Roll Pak. 1.90 | <input type="checkbox"/> Shurline Mushrooms Pieces & Stems 4 oz. 3/1.00 |
| <input type="checkbox"/> Shurline Beets Sliced 16 oz. 3/1.79 | <input type="checkbox"/> Shurline Orange Juice Fres. 6 oz. 6/1.00 |
| <input type="checkbox"/> Shurline Blackeyes Fresh-Shell'd 15 oz. 10/1.00 | <input type="checkbox"/> Shurline Pancake Mix 32 oz. 1.59 |
| <input type="checkbox"/> Shurline Broc. Sprs./Cauliflower/Mix. Veg. Fres. 10 oz. 3/1.00 | <input type="checkbox"/> Shurline Peaches Hrs. or Sliced YC 29 oz. 2/1.88 |
| <input type="checkbox"/> Shurline Cheese Hifen. Colby Longhorn 10 oz. 1.79 | <input type="checkbox"/> Shurline Pasa Sweet Early Harvest 17 oz. 3/1.00 |
| <input type="checkbox"/> Shurline Coffee Vac-Pak All Grinds 16 oz. 1.49 | <input type="checkbox"/> Shurline Pineapple in Juice Cdn./Cbk./Sl. 15 1/2 oz. 3/1.00 |
| <input type="checkbox"/> Shurline Coffee Creamer 11 oz. 1.49 | <input type="checkbox"/> Shurline Pork & Beans 16 oz. 4/1.00 |
| <input type="checkbox"/> Shurline Crackers 16 oz. 3/1.39 | <input type="checkbox"/> Shurline Potatoes Whole Irish 16 oz. 3/1.89 |
| <input type="checkbox"/> Shurline Cranberry Sauce Strained or Whole 16 oz. 3/1.89 | <input type="checkbox"/> Shurline Preserves Strawberry 18 oz. 1.79 |
| <input type="checkbox"/> Shurline Cucumber Chips Fresh Pak 16 oz. 1.39 | <input type="checkbox"/> Shurline Rice Medium Grain 2 lb. Bag 1.49 |
| <input type="checkbox"/> MC-2 Detergent All Purpose 49 oz. 1.79 | <input type="checkbox"/> Shurline Rice Spinach 15 oz. 4/1.89 |
| <input type="checkbox"/> Shurline Dinners Chili Tam./Beef Hdt./Chisburger/Hash Ben. 1.49 | <input type="checkbox"/> Shurline Tomato Juice Fancy 46 oz. 1.59 |
| <input type="checkbox"/> Shurline Drinks Orange/Fruit Punch/Grape 46 oz. 3/1.00 | <input type="checkbox"/> Shurline Tomato Sauce 15 oz. 3/1.79 |
| <input type="checkbox"/> Shurline Evaporated Milk 14 1/2 oz. 4/1.00 | <input type="checkbox"/> Shurline Tuna Chunk Style 6 1/2 oz. 2/1.89 |
| <input type="checkbox"/> Shurline Flour Enrich'd 5 lb. Paper Bag 1.88 | <input type="checkbox"/> Shurline Vanilla Wafers 10 oz. 3/1.00 |
| <input type="checkbox"/> Shurline Fruit Cocktail 16 oz. 3/1.00 | <input type="checkbox"/> Shurline Vegetables Mixed 16 oz. 3/1.79 |
| <input type="checkbox"/> Shurline Grapefruit Juice Nat.-Pbk Texas Pak 46 oz. 3/1.89 | <input type="checkbox"/> Shurline Waffle Syrup 32 oz. 1.79 |
| <input type="checkbox"/> Shurline Green Beans 3 Sv. Cut 16 oz. 4/1.00 | |

CRACKERS, Nabisco Saltine, 1 Lb. Box.....53¢
FRESH BAR-B-Q MADE DAILY
QUALITY MEATS COST NO MORE AT
MERLIN'S FOOD
Double Gunn Bros. Stamps, Tuesday & Wednesday
OPEN 7 DAYS A WEEK 9th & Levelland Highway WE REDEEM FOOD STAMPS
DOUBLE GUNN BROS. STAMPS TUES. & WED.

McAnally-Moore Vows Exchanged

Miss Debra Kay McAnally and Gary Russell Moore exchanged double-ring vows in the home of the bride's parents, Oct. 15.

Rev. Clem Sorley, pastor of the First Presbyterian Church, solemnized the vows.

Parents of the bride are Mr. and Mrs. John McAnally of Littlefield.

The bridegroom is the son of Mr. and Mrs. Russell Moore of Wilson.

The bride, escorted and given in marriage by her father, wore a natural formal-length gown of embroidered eyelet linen, featuring a V neckline, long richly embroidered lace sleeves and an empire gathered skirt. Rows of embroidered lace adorned the skirt.

She wore an ice blue wide brim hat accented with ice blue satin ribbon, and she carried a bouquet of ice blue miniature daisies and mums.

Mrs. Brent Whiteaker of Sudan, sister of the bride, was matron of honor. She wore a formal-length pinafore of natural polyester and cotton accented with heavy natural lace, and an old-fashioned blue printed long sleeve blouse. She carried a basket of miniature ice blue mums. She wore an ice blue wide brimmed hat.

Serving as best man was Delton Moore from Levelland, brother of the groom.

Providing the music was Mrs. Clem Sorley as she sang "O Perfect Love."

A reception followed the ceremony. The bride's table was covered with a white cloth edged with

wide embroidered lace. The centerpiece was a silver candleabra flanked with babies breath and English ivy. The white tiered wedding cake featured white miniature swans and ice blue roses and trim. It was topped with white satin bells edged in pearls. Silver appointments were used and ice blue punch was served from a crystal pedestal punch bowl. Presiding at bride's table were Mrs. Brent Whiteaker and Carla Moore, sisters of the bride and groom.

The groom's table featured an ice blue candle centerpiece and gold appointments.

The bride is a 1972 graduate of Littlefield High School and graduated from SPC in 1974.

The bridegroom is a 1968 graduate of Wilson High School, 1974 graduate of SPC and is a junior Agri-business major at Texas Tech.

The couple is at home at Route 1, Wilson.



MRS. GARY RUSSELL MOORE

Wesley Class Feted With Fish Fry

Fifty members and guests of the Wesley Fellowship Class of First United Methodist Church met Wednesday night, Oct. 23, for a fish fry, courtesy of Bryson Kisner, Buck Oldham, Robert Gronewald, George Ligon and Joe Oden.

Special guests for the event included Mr. and Mrs. Wesley Daniels, Mr. and Mrs. Millard Srygley, Mr. and Mrs. Robert Powers, Mr. and Mrs. Charlie Smiley and Miss Charlene Smiley.

TEXAS TOPS NO. 102

Texas TOPS No. 102 met Tuesday night in Medical Arts Hospital with 13 members present.

Members were weighed and weights recorded as they arrived.

The meeting was called to order by Juanita White. Roll was called by Juanita White in the absence of Trudy Bryant and minutes read and approved.

A note was read from the Brownfield club inviting the Littlefield club to a Halloween party and salad supper Oct. 31.

A letter from Plainview was also read inviting the group to their open house Oct. 27, from 3:30 to 5 p.m.

Queens for the week lost 2 1/2 lbs. each and runner-up lost 2 1/4 lbs.

Secret pal cards and gifts were distributed. The pledge was said in unison and the meeting was dismissed.

LITTLEFIELD SCHOOL MENU

MONDAY: Steak and gravy, English pea salad, mashed potatoes, hot rolls, cranberry sauce and milk.

TUESDAY: Pigs in blankets, salad, buttered corn, peanut butter cookies and milk.

WEDNESDAY: Turkey cakes, catsup, black eyed peas, light bread, chocolate pudding, milk and orange juice.

THURSDAY: Trick Treats, ghost potatoes, broomstick beans, goblin bread, Jack'O Lantern surprise, and Witcher's brew.

FRIDAY: Fish, cucumber salad, June peas, hot rolls, fruit Jello and milk.

KIRBY VACUUM CLEANERS SALES AND SERVICE Pat's Record Center

HAPPY IS THE BRIDE CAUGHT IN A SHOWER
When Her Selections are from
McAnally's Jewelry
DEANA STERLING
Bride Elect Of
LINDEN LUNDBERG

5th ANNIVERSARY
For this special occasion we are offering Artist Oils & Acrylics in Grumbacher & Permanent Pigments, and Art Prints 1/2 price
For Limited Time Or As Long As Supply Last.
We Thank All Our Customers For Their Continued Business And Support To Make This 5th Anniversary Possible.
THE GALLERY
306 Phelps Hours: 9:30 - 5:30 Mon-Sat 385-4162

HALLOWEEN

CANDY
MILKY WAY - SNICKERS - 3 MUSKETEERS - MARS BAR
6 BAR PACKAGE 90¢ VALUE SALE **59¢**

FINAL NET BY CLAIROL INVISIBLE HAIR NET 8 OZ PLASTIC BOTTLE REGULAR \$1.57 SALE **99¢**

FURNACE FILTERS MOST POPULAR SIZES REGULAR 59¢ SALE **44¢** EACH

GIBSON'S NOW CARRIES A COMPLETE LINE OF PARTY FAVORS AND ASS'T. ALL AT GIBSON'S LOW DISCOUNT PRICE.

LIFESAVERS 28 ROLLS OF 5 FLAVORS REGULAR \$1.27 VALUE SALE **65¢**

WHERE YOU ALWAYS BUY THE BEST FOR LESS

GIBSON'S DISCOUNT CENTER

311 EAST 8th STREET, LITTLEFIELD DAILY 9:00-8:00, SUNDAYS 1:00-7:00 PHONE 385-5932



GOBBLIN GOOD

RESERVE
RIGHT
LIMIT
QUANTITIES

**WE REDEEM
USDA FOOD
STAMPS**

| | | |
|------------------|---|------------|
| BANANAS | CENTRAL AMERICAN LB | 13¢ |
| APPLES | FANCY WASHINGTON STATE DELICIOUS NEW CROP, 4 LB BAG | 99¢ |
| AVOCADOS | FLORIDA, FANCY FINE FOR SALAD, EACH | 44¢ |
| CUCUMBERS | LB | 16¢ |
| GREENS | FANCY, MUSTARD, COLLARD, TURNIP, CHOICE, EACH | 20¢ |
| ONIONS | SPANISH SWEET YELLOW LB | 10¢ |

| | | | |
|------------------------|---|--------------|---------------|
| RANCH STEAK | FURR'S PROTEN LB | ADV. SPECIAL | 89¢ |
| SIRLOIN STEAK | FURR'S PROTEN LB | ADV. SPECIAL | 98¢ |
| CHUCK STEAK | FURR'S PROTEN LB | ADV. SPECIAL | 79¢ |
| GROUND BEEF | FRESH GROUND LB | ADV. SPECIAL | 69¢ |
| BEEF ROAST | FURR'S PROTEN SEVEN BONE SHOULDER CUT, LB | ADV. SPECIAL | 79¢ |
| ROUND STEAK | FURR'S PROTEN LB | ADV. SPECIAL | 98¢ |
| FISH STICKS | 2 LB PACKAGE | | \$1.19 |
| CLUB STEAK | Furr's Proten, Lb | | \$1.39 |
| BOLOGNA | Ascar Mayer All 8 Oz Pkg | | 74¢ |
| CATFISH FILLETS | Lb | | \$1.19 |
| BOLOGNA | Ascar Mayer All 12 Oz Pkg | | \$1.09 |

| | | |
|-------------------------|--|------------------|
| ORANGE 'N READY | ORANGE DRINK 1 GALLON | 95¢ |
| FRUIT POPS | FOOD CLUB 50 COUNT PACKAGE | 47¢ |
| APPLE CIDER | TREE TOP 1/2 GAL. CAN | 89¢ |
| CANDY | MILKY WAY, SNICKERS, 3 MUSKETEERS AMRS ALMOND, SNIK SNAK, M&M PLAIN OR PEANUT, 6 BAR PACKAGE | 69¢ |
| CARAMELS | KRAFT VANILLA 14 OZ PACKAGE | 69¢ |
| PINACH | FOOD CLUB NO. 303 CAN | 4 FOR \$1 |
| PIZZA | APPIAN WAY CHEESE MIX 13 1/2 OZ | 59¢ |
| CORN | FOOD CLUB, WHOLE KERNEL OR CREAM STYLE NO. 303 CAN | 3 FOR 89¢ |
| DOUR | PILLSBURY PLAIN OR UNBLEACHED 5 LB BAG | 69¢ |
| VEGETABLE BAGS | Hefty 10 Count Pkg | \$1.95 |
| MIXED VEGETABLES | Veg-All No. 303 Can | 32¢ |

VALUABLE COUPON
THIS COUPON ENTITLES YOU TO
SAVE 15¢
HEINZ PICKLES
Polish Dill, 0t
With Coupon.....64¢
Without Coupon.....79¢
Expires 10-30-74
LIMIT ONE COUPON PER FAMILY

VALUABLE COUPON
THIS COUPON ENTITLES YOU TO
SAVE 20¢
FOLGER'S COFFEE
All Grinds, 1 Lb
Can, With Coupon...\$1.15
Without Coupon.....\$1.35
Expires 10-30-74
LIMIT ONE COUPON PER FAMILY

FEATURE OF THE WEEK
**ALVARADO
DINNER KNIFE** 37¢
Each.....
COMPLETER PIECES AVAILABLE
AT ANY TIME

- 4 Iced Tea Spoons\$1.99
- 2 Tablespoons\$1.99
- 2 pc. Salad Set\$1.99
- 3 pc. Serving Set\$1.99
- Cold Meat Fork.....\$1.99
- Pierced Pastry Server.....\$1.99
- Gravy Ladle\$1.99

**DOUBLE
GOLD
BOND
STAMPS**
TUESDAYS AND
WEDNESDAYS

| | | |
|-------------------------|---------------------------------|------------------|
| HAMBURGER HELPER | BETTY CROCKER ASS'T FLAVORS PKG | 59¢ |
| CAT FOOD | FRISKIES NO. 303 CAN | 5 FOR \$1 |

Frozen Food Favorites

| | | |
|---------------------|--|------------------|
| ORANGE JUICE | Gaylord 6 Oz Can | 5 FOR \$1 |
| PIZZA | Totino's Classic 21 1/2 Oz Package | \$1.69 |
| EGG BEATERS | Fleischmann's 16 Oz | 89¢ |
| VEGETABLES | Green Giant, Niblet Corn, Spinach, Sweet Peas, Cream Style | 46¢ |
| COFFEE RICH | Fresh Frozen 16 Oz Pkg | 38¢ |
| PIE SHELLS | Pet Ritz Fresh Frozen 5 Pc Pkg | \$1.23 |

PIE PLATE SPECIAL
2 FOR **\$1.39**

new double deodorant
Modess
BOX OF 12
49¢

PLAYTEX HAND SAVER
REGULAR \$1.09 VALUE, EACH
77¢

DEODORANT
HOUR AFTER HOUR 8 OZ SIZE
59¢

Colgate MFP CREME RINSE Clairol 8 Oz **99¢**
COUGH SUPPRESSANT Hold 4 Hours **43¢**

Playtex
30 COUNT
\$1.39

NAIL POLISH REMOVER
CUTEX 6 OZ **63¢**
KITCHEN WASTE BASKET
FESCO FESTIVAL 28 QT **\$1.57**

VACUUM BOTTLE
ALADDIN PINT SIZE NO. 23 C
EACH **\$1.49**

SHAVE CREAM
COLGATE INSTANT
REG. MENTHOL OR LIME
39¢

White Rain
HAIR SPRAY
REG OR HARD TO HOLD
53¢

SHOP Furr's MIRACLE PRICES

Sudan HS Homecoming Scheduled Next Weekend

SUDAN— The 22nd Annual Homecoming of ex-students and teachers of Sudan High School will be held Friday and Saturday, Nov. 1 and 2.

Getting things underway will be a bon fire Thursday night and the football game between the Amherst Bulldogs and Sudan Hornets at Hornet Stadium at 7:30 p.m. Friday night.

Members of the junior class of Sudan High School will sponsor a pre-game supper of enchiladas and all the trimmings, with

servicing time from 5:30 to 7 p.m. The homecoming banquet will be served and prepared by the Band Parents Organization Saturday night at 7 in the school

cafeterium. During the registration period prior to the meal, the Sudan Teachers of America plan to honor the exes with a reception

beginning at 6. Classes to be honored this year are from 1933, 1943, 1953, 1963, and 1973.

Council Appoints Committees

The Lamb County Home Demonstration Council met Oct. 16 with all clubs represented. Eight council members, one visitor and the agent, Dorothy Powell, attended. All officers were present. The standing rules were read

and adopted as amended. Committees were appointed, including: Education: Velma Curry, Juanel Boone, Thelma Kirsh and Minnie Davis. Finance: Inez Lichte, Elizabeth Packard and Winonna

Trusty. 4-H: Rudy Biles, Rachel Pitillo and Fern Bitner. Year Book: Oma Pearl Murrell, Zelda Helms, Jaunelle Boone and Winona Trusty. Reporter: Ruth Miller. The Council Christmas party will be held Dec. 3 at the Flame Room. Homemade gifts will be exchanged.

The group made plans for their Friendship Day which will be held Jan. 27, 1975.



NEW PLEDGES for the Alpha Lambda Zeta Chapter of Beta Sigma Phi were honored with a preferential tea Sunday afternoon. Pledges are, left to right Gail Kloiber, Charlotte Gilley, Mary Giles, Cindy Kelton, Ruan Richardson, Sharla Rountree and Cathy Hufstelder. Now shown is Janice Appleton. (Personal Polaroid Photo)

Preferential Tea Honors New Pledges

A preferential tea was given Sunday afternoon, Oct. 20, in the home of Deanna Friday in Fieldton, by the Alpha Lambda Zeta chapter of Beta Sigma Phi honoring their new pledges.

The new pledges and members were served the yellow rose decorated cake, nuts, mints, and golden punch.

Each of the new pledges was presented a yellow rose from the vase centering the table.

New pledges attending were: Charla Rountree, Ruan Richardson, Charlotte Gilley, Mary Giles, Cindy Kelton, Gail Kloiber, and Cathy Hufstelder.

Members present were: Janice Sebring, Penny Kelton, Deanna Friday, Linda Charlton,

Brenda Denton, Darlene Maxfield, and Carol Haile. New pledge, Janice Appleton, was unable to attend.

MULLIGAN STEW

The 4-H Foods and Nutrition Series, "Mulligan Stew" will be shown in this broadcast area by KCBD-TV, Channel 11, and is being provided by the Agricultural Extension Service of Texas A&M University and the United States Department of Agriculture. "Mulligan Stew" will be shown at 1 p.m. each Saturday beginning last Saturday and will continue for six Saturdays through Nov. 30 according to Mrs. Dorothy Powell, County Extension Agent.

Boys and girls who enroll in the tv series will be considered a member of the Mulligan Stew 4-H Club. 1,078 boys and girls in the fourth, fifth, and sixth grades in Lamb County schools will participate in the series. Each child who enrolls will receive a member guide. The guide provides numerous activities to reinforce and extend the educational value of the series.

| | | | |
|--|---|--|---|
| <p>301 St. 439-2006 Inc. 24 Noun Dr. KL 5-8416 IASS CO INC —See Our Display Ad Page 439— way YO 8-8520 Ar Imports Ltd. 14 10 Av 439-8242 Ar 13 Leonard 578-8123 p. 37 E 60 AR 8-8288 ic Hrdwr 25 Sylvan Av. 278-4944</p> <p>15 HARDWARE CORP WHOLESALE IRS: HARDWARE & TOOLS KL 5-1234</p> | <p>Fogelman F Wing Nut Co 335 E 33 Forker Jim & Co 20 E 36 532-2212 355-8128</p> <p>GARBETT T HARDWARE MANAGEMENT CO HARDWARE & SPECIALTIES FANCY & DECORATIVE ● Hinges ● Door Closers ● Power Tools ● Locks ● Hand Tools ● Clamps ● Costers ● Drives ● Sliding Door Hardware</p> <p>111 Broadway</p> | <p>51 Model I Quinn Ben Deco Rice Chas Hrdwr Rike Geo Hrdwr Ryan Barney Eri Schmidt Dennis Sillen Larry Lock Silverman Hal H Steckler Roger A Stem Robt & As Stone Floyd Hrd</p> <p>McPartland Joe R OBASZ VIC FAY</p> | <p>Guarino W Assocs 16 W 35 Hampton Walt Prod Co 15 W 7 HUTELMYER JAMES & BROS</p> <p>Levenson L & R Creative Tools 36 E 1 Mangano Mike Paint & Hrdwr Co 19 W 3 Meadow Leon Noiseless Hrdwr 48 E 55x McCarthy Mary & Sons 82 Davis</p> <p>359-1234 618-4231 553-3288 665-8675</p> <p>Volker H J Co 9 Walsh Ed Hrdwr Waterston Nat P</p> |
|--|---|--|---|

Energy savers' shopping guide.

GOODYEAR SERVICE STORES

304 W 4th 385-5162 LITTLEFIELD, TEXAS

TBF-16D

- 15.6 cu. ft. no-frost refrigerator
- 4.30 cu. ft. freezer
- Two ice 'n easy trays. Automatic ice maker optional
- 30 1/2" wide, 64" high
- Power saver switch to help reduce operating costs
- Tinted, see-thru adjustable meat keeper
- Tinted, see-thru Permalon crispers
- GE colors or white

\$469.00

**TFF24 RR
GE NO-FROST
REFRIGERATOR-FREEZER**

\$999.00

Big 23.7 cu. ft. capacity. Giant freezer holds up to 302 lbs. Separate controls.

TBF-21D

- 20.8 cu. ft. no-frost refrigerator-freezer
- 6.90 cu. ft. freezer
- 2 ice 'n easy trays. Automatic icemaker optional
- 30 1/2" wide, 66" high
- Power saver switch to help reduce operating costs
- Tinted, see-thru adjustable meat keeper
- Tinted, see-thru Permalon crispers
- GE colors or white

\$529.00

FREE **30 LB MEAT** **FREE**

WITH THE PURCHASE OF ANY MAJOR APPLIANCE OR T.V.

12" & SMALLER TELEVISIONS NOT INCLUDED

**GE WWA9400P
HEAVY DUTY 18
AUTOMATIC
WASHER
WITH MINI-WASH**

- Variable wash/spin speeds and water temperatures
- 4 wash cycles with a 10-minute Mini-Wash cycle for small delicate loads
- Hydropower wash action
- Filter-Flo system eliminates lint and fuzz

\$299.00

**DDE8200P
GE
BIG CAPACITY
AUTOMATIC
ELECTRIC
DRYER**

- 3 heat range selections
- 5 cycle selections including permanent press "Extra Care"
- End-of-cycle signal
- Axial air flow for quick natural drying
- Big capacity lint trap
- Separate start button

\$269.00

25" Diagonal Measure 100% Solid State Color TV

MC9234PN

- Spectra-Brite picture tube delivers extra bright, sharp picture
- One touch of a button adjusts tint, re-sets fine tuning and brightness
- Automatic color control maintains intensity from channel to channel

\$869.00

25" Diagonal Measure Mediterranean Color Console TV

MC9224PN

- 100% solid state circuitry delivers brilliant, sharp picture
- One touch of a button adjusts tint, re-sets fine tuning and brightness
- Automatic color control maintains intensity from channel to channel

\$789.00

BUY NOW AT PRICES YOU WON'T WANT TO MISS!

5 WAYS TO PAY

OUR OWN EASY PAY PLAN

Master Charge

LIBERAL BUDGET TERMS-LOW MONTHLY PAYMENTS

GE Convertible Dishwasher

GSC661

- Portable today, built-in tomorrow
- 3 wash cycles for any type load
- Automatic rinse glo dispenser
- Soft food disposer
- Faucet flo unscumpler

\$309.00

GE Convertible Now, Built-in Later Dishwasher

SC461

- 3 Wash Cycles: daily loads, pots and pans, china and crystal
- Double Detergent Dispenser to get those extra dirty dishes clean
- Textolite® Top

\$389.00

RECRUITING
The American...
needs more...
many services...
patient. Won't you...

Calling Home
BROUGHT TO YOU

BERT AND G...
WALLACE
DO YOU...
THE BRIG...
OCCASIO...
FURNITURE...
Here's an idea...
give a...
decorating...
rooms, and...
added conveni...
Why not consi...
an occasional...
piece, such as...
separate pull...
This separate...
provide you...
something disti...
something that...
as an "accent"...
of your room...
can make a...
difference in...
decoratively...
nothing of gr...
another seati...
can always com...
Incidentally, you...
have to restrict...
just one occasi...
your living...
might consider...
perhaps twin...
entirely differ...
add even more...
And there is o...
furniture that...
in addition to...
might think ab...
things as a dif...
instead of a...
beside a chair...
console, love...
or cabinet or...
number of spec...
punctuate your...
This occasio...
niture—altho...
small in the...
ture—can play...
in picking up...
scheme or in...
standing. We...
come in and...
around here.

Waller Home Furnishings
Open Daily 9:00 a.m. to 6:00 p.m.
229 Phelps
Phone 385-2888
Littlefield, Texas 77561

HAMMONS FUNERAL HOME

INTRODUCING

WAYNE BUTLER

LAMB COUNTY FARM BUREAU ANNOUNCING THE ADDITION OF WAYNE BUTLER TO THE LOCAL INSURANCE AGENCY. WAYNE AN EXPERIENCED AGENT IN FIRE, AUTO AND COMMERCIAL LINES OF INSURANCE WILL WORK OVER THE ENTIRE COUNTY. LAMB COUNTY FARM BUREAU LITTLEFIELD, TEXAS

SPECIAL AGENTS
JOE GILBERT
ELROY WISIAN
EDDIE WILSON

OFFICE SECRETARIES
PHYLLIS CUTSHAW
JAN FORD

CLAIMS ADJUSTERS
ALBERT ERSLAND

AGENCY MANAGER
ED JENNINGS

IT *all* ADDS UP!

SAVINGS! QUALITY! SERVICE!

MARKET SPECIALS

| | | |
|----------------------|-----------------------------|---------------|
| CALF LIVER | SKINNED & PORTIONED LB. | 69¢ |
| GROUND BEEF | 100% FRESH GROUND DAILY LB. | 67¢ |
| RANCH STEAK | USDA CHOICE LB. | 69¢ |
| RIB STEAK | USDA CHOICE LB. | 79¢ |
| CHILI MEAT | USDA CHOICE LB. | 99¢ |
| SIRLOIN STEAK | USDA CHOICE LB. | 89¢ |
| BACON | HICKORY SMOKED SLAB LB. | \$1.09 |

DAIRY

| | | |
|-----------------------|---------------------------|--------------|
| BISCUITS | WHITE SWAN HOMESTYLE | 7/89¢ |
| MARGARINE | WHITE SWAN 1 LB. TUB | 69¢ |
| WHIPPING CREAM | BELL 1/2 PINT | 2/89¢ |
| ICE CREAM | BELL 1/2 GAL. SQUARE CRTN | 99¢ |
| BUTTER MILK | BELL 1/2 GAL. | 69¢ |

FROZEN FOOD

| | | |
|-----------------------|-------------------|---------------|
| FISH STICKS | BOOTH 16 OZ. | 99¢ |
| ENCHILADAS | BEEF PATIO 22 OZ. | 99¢ |
| POUND CAKE | SARA LEE | 99¢ |
| CATFISH STICKS | FRESH WATER LB. | \$1.29 |
| ORANGE JUICE | FLAV-R-PAK 6 OZ. | 5/\$1 |

DRUGS

| | | |
|----------------------|---|---------------|
| COUGH FORMULA | SILENCE IS GOLDEN REG. \$1.49 | 99¢ |
| TAMPONS | KOTEX 40 COUNT REG. OR SUPER BOX | \$1.19 |
| HAIR GROOM | SCORE 3 OZ. TUBE REG. 97¢ | 67¢ |
| VITAMINS | MONSTER BRAND 60 TABLETS REG. \$2.20 | \$1.69 |
| BUFFERIN | ARTHRITIS STRENGTH 40 TABLETS REG. \$1.09 | 69¢ |
| DEODORANT | BAN ROLL ON ANTI-PRESPIRANT REG. 90¢ | 59¢ |

SPECIALS GOOD 10-28-74 TO 11-3-74

HOME OWNED - HOME OPERATED

LITTLEFIELD SUPER MARKET

FRESH PRODUCE

All purpose Russets
POTATOES 10 lb. bag **79¢**

Dole
BANANAS golden ripe lb **12¢**

CARROTS 1 lb. poly bag **19¢**

Hass variety
AVOCADOS extra large **39¢**

GROCERY ITEMS

| | | |
|-----------------------|-------------------------------|---------------|
| COFFEE | FOLGERS 3 LB. CAN | \$2.99 |
| FLOUR | GOLD MEDAL 5 LB. BAG | 69¢ |
| FLOUR | EVERLITE 25 LB. BAG | \$3.99 |
| LUNCHEON MEAT | TREET 12 OZ. | 79¢ |
| POTATO CHIPS | PRINGLES 9 OZ. TWIN PAK | 77¢ |
| SALAD DRESSING | BEST MAID QUART | 89¢ |
| TUNA | CARNATION 6 OZ. | 49¢ |
| OREO COOKIES | NABISCO 15 OZ. | 65¢ |
| GRAPE DRINK | BODEN 1/2 GAL. | 2/\$1 |
| DETERGENT | DOVE LIQUID 32 OZ. | 77¢ |
| DUZ | PREMIUM PACK KING SIZE 74 OZ. | \$1.69 |
| FABRIC SOFTNER | WHITE SWAN 1/2 GAL. | 59¢ |
| DOG FOOD | FULL DRESS | 8/\$1 |
| APPLE JUICE | TREE TOP 32 OZ. | 2/\$1 |
| RED PLUM JAM | BAMA 18 OZ. | 59¢ |
| PEANUT BUTTER | PETER PAN 18 OZ. | 79¢ |
| COLA | WHITE SWAN 12 OZ. | 9/\$1 |

WE GIVE GUNN BROS. STAMPS
DOUBLE TUES & WED
WE RESERVE THE RIGHT TO LIMIT QUANTITIES



MRS. Allen Rhodes of Littlefield will celebrate her 45th wedding anniversary Sunday with an open house from 2 to 4 p.m. in the Flame Room of the Pioneer Gas Company. Friends of the couple will host the celebration. Mrs. Rhodes and the former Lena Mitchell were married Oct. 7, 1924 in Frederick, Okla. They have lived in Littlefield County 45 years. Friends and acquaintances are invited to attend the reception, and the couple requests no gifts, please.

as Tech Curator
Books For Study Club

Alfred Bjelland, coordinator for education and Associate Director of Ornithology at the Museum in Lubbock was selected for the Anton Study Club meeting Monday night at the home of Mrs. C. E. Sliger. The program was "A Conservation Must". Bjelland reviewed the history of the bird watching society founded in 1871 at Belfast, Maine. J. J. Audobon painted the first Audobon Society book. David Thoreau and others were early birders in Massachusetts. The Audobon Society named the Audobon Society in 1896. It now has 250 branches. The advantages of birding are to provide pleasure and which are universal.

County Animals
Win Places In
State Fair Show

Three Lamb County youths placed animals in the State Fair of Texas Junior Livestock Show recently. Jim Fields, a 4-H'er, placed third in the medium weight Hereford steer division, while Terry Lively of the Springlake-Earth FFA placed a Crossbred lightweight steer in 10th place. There were 16 medium weights shown and 75 lightweights. In the lamb show, Kevin Riley of the Lamb County 4-H, placed ninth with a purebred Suffolk lamb. There were 100 shown in that class.

WESTERN WEAR

FOR THE ENTIRE FAMILY

LARGE SELECTION OF BOOTS

- *WESTERN SUITS
- *COATS
- *VESTS
- *HATS

FOR GIFT GIVING


WE HAVE A LARGE SELECTION NOW.

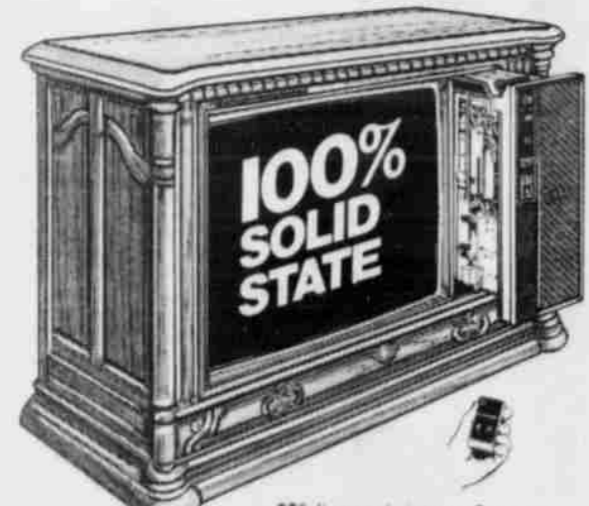


BILL'S BOOT SHOP

FREE GIFT WRAPPING
MAKE YOUR SELECTIONS TODAY & LAY-A-WAY

| SUNDAY | | | SATURDAY | | |
|---|--|---|---|--|--|
| Ch. 11 KCB | Ch. 13 KLBK | Ch. 28 KSEL | Ch. 11 KCB | Ch. 13 KLBK | Ch. 28 KSEL |
| 6:15 * News Weather Sports 6:30 * Sacred Heart 6:45 * Ask the Ministers 7:00 * Old Time Gospel Hour 8:00 * Day of Discovery 8:30 * Get Together 9:00 * Rex Humbard 10:00 * Oral Roberts 10:30 * Kathryn Kuhlman 11:00 * Living Tour Religion 11:30 * A Better Life 12:00 * NFL Football 3:00 * NFL Football 6:00 * Evening Report 6:30 * World of Disney 7:30 * "Columbo" 9:30 * Dragon 10:00 * Weekend Wrap Up 10:30 * George Segal 12:00 * News Weather Sports | 7:00 * This is the Life 7:30 * Around the World in 80 Days 8:00 * My Favorite Martian 8:30 * Bailey's Coners 9:00 * Bullwinkle 9:30 * A Place To Talk 10:00 * Underdog 10:30 * Face the Nation 11:00 * Koinetic 11:30 * NFL Football Dallas/New York 3:00 * Inquiry 3:30 * NBA 6:00 * Channel 13 News 6:30 * World of Disney 7:30 * "Columbo" 9:30 * Dragon 10:00 * Weekend Wrap Up 10:30 * George Segal 12:00 * News Weather Sports | 8:00 * Encounter 8:30 * Exciting Life 9:00 * Boyce Evans 9:30 * Day of Miracles 10:00 * Goober & Ghost Chasers 10:30 * Christopher Closeup 10:45 * First Baptist Church 11:45 * Film Feature 12:00 * Let The Bible Speak 12:30 * Texas Tech Football College Football Highlights 2:00 * The Carlos Show 3:00 * Fantasia Falcon 4:00 * Championship Wrestling 5:00 * Unnamed World 5:30 * Lay Witness 6:00 * Texas Tech Football 6:30 * The Jimmy Dean Show 7:00 * The Sammy Comedy Revue 8:00 * "Possession Adventure" 10:30 * "The Pleasure of His Company" | 6:45 * News Weather Sports 7:00 * Adams Family 7:30 * Chopper Bunch 8:00 * Emergency Plus Four 8:30 * Run, Joe, Run 9:00 * Lead of the Last 9:30 * Signed 10:00 * Pink Panther 10:30 * Star Trek 11:00 * The Jetsons 11:30 * Go! 12:00 * Garner Ted Armstrong 12:30 * Questions 1:00 * Mulligan's Stew 1:30 * I Dream of Jeannie 2:00 * "I Love a Mystery" 4:00 * This Week in NFL 5:00 * Other Places 5:30 * NBC News 6:00 * Porter Waggoner 6:30 * Lawrence Walk 7:30 * That Good Ole Nashville Music 8:00 * "The New Centurions" 10:00 * Weekend Wrap Up 10:30 * "The War Wagon" 12:30 * News Weather Sports | 7:00 * Speed Buggy 7:30 * Scooby-Doo 8:00 * Jeannie 8:30 * Partridge Family 9:00 * Valley of the Dinosaurs 9:30 * Sheena 10:00 * Harlem Globetrotters Popcorn Machine 10:30 * Hudson Brothers 11:00 * U.S. of Archie 11:30 * Fat Albert 12:00 * CBS Children's Film Festival 1:00 * Sports Spectacular 2:00 * Soul Train 3:00 * The Scene 4:00 * Have Gun Will Travel 4:30 * You Can Do It 5:00 * Bobby Goldsboro 5:30 * CBS Evening News 6:00 * New Hope 7:00 * All in the Family 7:30 * Paul Sand Show 8:00 * Mary Tyler Moore 8:30 * Bob Newhart Show 9:00 * Carol Burnett Show 10:00 * Channel 13 News 10:30 * WFL-TV 11:00 * NFL-TV 11:30 * Sports | 8:00 * Admiral Faghorn 9:00 * AM Lubbock 9:30 * Country Music 10:00 * All My Children 10:30 * The Brady Bunch 11:00 * Password 12:00 * KSEL Agri-News 12:30 * Bernie Howell Show 1:00 * "I Make a Deal" 1:30 * The Newlywed Game 2:00 * General Hospital 2:30 * One Life To Live 3:00 * "10,000 Pyramid" 3:30 * 3-30 Money Movie 4:00 * KSEL 28 News 6:30 * The Lucy Show |
| Morning & Afternoon - Monday through Friday | | | | | |
| Ch. 11 KCB | Ch. 13 KLBK | Ch. 28 KSEL | Ch. 11 KCB | Ch. 13 KLBK | Ch. 28 KSEL |
| 6:45 * New Mexico Report 7:00 * News & Weather 7:10 * Today in Texas 7:25 * Weather 7:30 * Today Show 7:55 * Weather 8:00 * Today Show 8:25 * News & Weather 8:30 * Today Show 9:00 * People Place 9:30 * Winning Streak 10:00 * High Rollers 10:30 * Hollywood Squares 11:00 * Jackal 11:30 * Celebrity Sweepstakes 11:55 * NBC News 12:00 * Nige: That Tune 12:30 * Jeopardy 1:00 * Days of our Lives 1:30 * The Doctors 2:00 * Another World 2:30 * How To Survive 3:00 * Somerset 3:30 * Beverly Hillsbillies 4:00 * Gomer Pyle 4:30 * Raymond Burr Show 5:30 * NBC News 6:00 * Evening Report | 6:30 * Farm & Ranch News 7:00 * Morning News 8:00 * Captain Kangaroo 9:00 * Not For Women Only 10:00 * New You See It 10:30 * Love of Life 10:55 * Midday News 11:00 * Young & Restless 11:30 * Search for Tomorrow 12:00 * Channel 13 News 12:30 * As the World Turns 1:00 * Guiding Light 1:30 * The Edge of Night 2:00 * Price is Right 2:30 * Match Game 3:00 * Terrafines 3:30 * Joker's Wild 4:00 * Gombit 4:30 * Bonanza 5:30 * CBS Evening News 6:00 * Channel 13 News | 8:00 * Admiral Faghorn 9:00 * AM Lubbock 9:30 * Country Music 10:00 * All My Children 10:30 * The Brady Bunch 11:00 * Password 12:00 * KSEL Agri-News 12:30 * Bernie Howell Show 1:00 * "I Make a Deal" 1:30 * The Newlywed Game 2:00 * General Hospital 2:30 * One Life To Live 3:00 * "10,000 Pyramid" 3:30 * 3-30 Money Movie 4:00 * KSEL 28 News 6:30 * The Lucy Show | 6:45 * News Mexico Report 7:00 * News & Weather 7:10 * Today in Texas 7:25 * Weather 7:30 * Today Show 7:55 * Weather 8:00 * Today Show 8:25 * News & Weather 8:30 * Today Show 9:00 * People Place 9:30 * Winning Streak 10:00 * High Rollers 10:30 * Hollywood Squares 11:00 * Jackal 11:30 * Celebrity Sweepstakes 11:55 * NBC News 12:00 * Nige: That Tune 12:30 * Jeopardy 1:00 * Days of our Lives 1:30 * The Doctors 2:00 * Another World 2:30 * How To Survive 3:00 * Somerset 3:30 * Beverly Hillsbillies 4:00 * Gomer Pyle 4:30 * Raymond Burr Show 5:30 * NBC News 6:00 * Evening Report | 6:30 * Farm & Ranch News 7:00 * Morning News 8:00 * Captain Kangaroo 9:00 * Not For Women Only 10:00 * New You See It 10:30 * Love of Life 10:55 * Midday News 11:00 * Young & Restless 11:30 * Search for Tomorrow 12:00 * Channel 13 News 12:30 * As the World Turns 1:00 * Guiding Light 1:30 * The Edge of Night 2:00 * Price is Right 2:30 * Match Game 3:00 * Terrafines 3:30 * Joker's Wild 4:00 * Gombit 4:30 * Bonanza 5:30 * CBS Evening News 6:00 * Channel 13 News | 8:00 * Admiral Faghorn 9:00 * AM Lubbock 9:30 * Country Music 10:00 * All My Children 10:30 * The Brady Bunch 11:00 * Password 12:00 * KSEL Agri-News 12:30 * Bernie Howell Show 1:00 * "I Make a Deal" 1:30 * The Newlywed Game 2:00 * General Hospital 2:30 * One Life To Live 3:00 * "10,000 Pyramid" 3:30 * 3-30 Money Movie 4:00 * KSEL 28 News 6:30 * The Lucy Show |
| WEDNESDAY EVENING | | | | | |
| Ch. 11 KCB | Ch. 13 KLBK | Ch. 28 KSEL | Ch. 11 KCB | Ch. 13 KLBK | Ch. 28 KSEL |
| 6:30 * Wild Kingdom 7:00 * Little House on the Prairie 8:00 * Lucas Tanner 9:00 * Petroselli 10:00 * Weekend Wrap-Up 10:30 * Tonight Show 12:00 * Tomorrow 1:00 * News Weather Sports | 6:30 * To Tell the Truth 7:00 * Sons & Daughters 8:00 * Cannon 9:00 * Manhunter 10:00 * Channel 13 News 10:30 * "The Dirty Dozen" | 7:00 * That's My Man 7:30 * "Death Cruise" 9:00 * Get Christie Love 10:00 * KSEL 28 News 10:30 * Wide World Special | 6:30 * "Department 51" 7:00 * "Strange Homecoming" 8:00 * Police Story 10:00 * Weekend Wrap-Up 10:30 * Tonight Show 12:00 * Tomorrow 1:00 * News Weather Sports | 6:30 * To Tell the Truth 7:00 * Good Times 8:30 * M*A*S*H 9:00 * Hawaii Five-O 9:30 * Bonanza 10:00 * Channel 13 News 10:30 * "The Dirty Dozen" | 7:00 * "The Mark of Zorro" 7:30 * "Marcus Welby, M.D." 10:00 * KSEL 28 News 10:30 * Wide World Mystery |
| THURSDAY EVENING | | | | | |
| Ch. 11 KCB | Ch. 13 KLBK | Ch. 28 KSEL | Ch. 11 KCB | Ch. 13 KLBK | Ch. 28 KSEL |
| 6:30 * Adam 12 7:00 * Siro 8:00 * Pylis Diller is a Circus 9:00 * Dean Martin's Roost 10:00 * Weekend Wrap-Up 10:30 * Tonight Show 12:00 * Tomorrow 1:00 * News Weather Sports | 6:30 * To Tell the Truth 7:00 * "Walton" 8:00 * "Cold Turkey" 10:00 * Channel 13 News 10:30 * "See No Evil" | 7:00 * The Odd Couple 7:30 * Paper Moon 8:00 * Streets of San Francisco 9:00 * Harry O 10:00 * KSEL 28 News 10:30 * Wide World Special | 6:30 * "Department 51" 7:00 * "Strange Homecoming" 8:00 * Police Story 10:00 * Weekend Wrap-Up 10:30 * Tonight Show 12:00 * Tomorrow 1:00 * News Weather Sports | 6:30 * To Tell the Truth 7:00 * Good Times 8:30 * M*A*S*H 9:00 * Hawaii Five-O 9:30 * Bonanza 10:00 * Channel 13 News 10:30 * "The Dirty Dozen" | 7:00 * "The Mark of Zorro" 7:30 * "Marcus Welby, M.D." 10:00 * KSEL 28 News 10:30 * Wide World Mystery |
| FRIDAY EVENING | | | | | |
| Ch. 11 KCB | Ch. 13 KLBK | Ch. 28 KSEL | Ch. 11 KCB | Ch. 13 KLBK | Ch. 28 KSEL |
| 6:30 * Porter Waggoner 7:00 * That Good Ole Nashville Music 7:30 * Chico & the Man 8:00 * The Rockford Files 9:00 * Police Woman 10:00 * Weekend Wrap-Up 10:30 * Tonight Show 12:00 * Midnight Special 1:30 * News Weather Sports | 6:30 * To Tell the Truth 7:00 * "Planet of the Apes" 8:00 * "The Graduate" 10:00 * Channel 13 News 10:30 * "Coffee, Tea or Me" 12:30 * "Lady & the Monster" | 7:00 * Kung Fu 8:00 * Six Million Dollar Man 9:00 * The Night Striker 10:00 * KSEL 28 News 10:30 * Wide World of Mystery | 6:30 * "Department 51" 7:00 * "Strange Homecoming" 8:00 * Police Story 10:00 * Weekend Wrap-Up 10:30 * Tonight Show 12:00 * Tomorrow 1:00 * News Weather Sports | 6:30 * To Tell the Truth 7:00 * Good Times 8:30 * M*A*S*H 9:00 * Hawaii Five-O 9:30 * Bonanza 10:00 * Channel 13 News 10:30 * "The Dirty Dozen" | 7:00 * "The Mark of Zorro" 7:30 * "Marcus Welby, M.D." 10:00 * KSEL 28 News 10:30 * Wide World Mystery |

FOOTBALL VALUES

Quasar
 COLOR TV
 see all the action in beautiful color



Quasar
 Works in a Drawer Color TV

- VHF/UHF Satellite Remote Control Tuning with Slumber Sentry
- Super Insta-Matic Color Tuning with Electronic Light Sensor
- Works in a Drawer a TV QS 3000 Chassis
- Matrix Plus Picture Tube

\$848.88

PAT'S
 385-4664
 515 Phelps Ave.

Library Boasts 13,500 Books, Offers Additional Research Help

The Lamb County Library has much to offer. There are 13,500 books and at least 600 periodicals. These volumes offer boundless enjoyment and facts. And patrons are not limited to this library alone.

The Texas State Library Communications Network (T.S.L.C.N.) is at the public's disposal five days a week. If the county library is unable to supply you with the book or information needed, the first step is to give all information to the librarian. Then the librarian will call collect to her Major Resource Center (M.R.C.) which is the Lubbock City County Library.

The M.R.C. will search their shelves and if unable to fill the request, they will teletype the information to T.S.L.C.N. which is in the Texas State Library at Austin, here the request is found or forwarded to other libraries.

Through the Interlibrary Loan Service, the patron has access to many libraries. What does it cost? Only the postage to return the request when finished with it. Sometimes the request can be filled in two or three days, others may take longer. This is your Lamb County Library. Take advantage of your tax dollar.

The following new books are recent additions to the Lamb County Library.

A change of Heart by Helen McCloy
 The Diddakol by Rumer Godden
 The Doctor Who Made House Calls by Milton R. Bass
 The Wind Shifting West and Other Stories by Ashirley Ann Grau
 Passerman's Hollow by Jane Stuart
 How To Be Your Own Best Friend by Mildred Newman
 A Bag Of Marbles by Joseph Joffo
 Deck With Flowers by Elizabeth Cadell
 Call In The Night by Susan Howatch
 Dr. Moore's Legacy by Agatha Young
 Muscle and Blood by Rachel Scott
 Jimmy the Kid by Donald E. Westlake
 The Lonely Strangers by Charity Blackstock
 The Cowboy and the Crossack by Clair Huffaker
 The Camerons by Robert Crichton
 A Bird in the Hand by Donald Wetzel
 The Fatal Gift by Alec Waugh
 The Reason For Roses by Babs H. Deal
 The Senator from Slaughter County by Harry M. Caudill
 Marianne and the Privateer by Juliette Benzoni
 Marianne and the Rebels by Juliette Benzoni
 The Heart of the Dog by Thomas A. Roberts
 "I Am Not A Crook" by Art Buchwald
 The Crystal Mouse by Babs H. Deal
 Dutch Uncle by Marilyn Durham
 The Man In The Middle by Hugh Atkinson
 Lizzie and Caroline by Ruth Moore
 The Littlefield Girl Who Lives Down The Lane by Laird Koinig
 The Doctor's Daughter by Elizabeth Seifert
 The Doctor's Reputation by Elizabeth Seifert
 Close The Door On Murder by John Creasey
 Dangerous Quest by John Creasey
 Daughter of Sad Plaidy
 The Shining Year
 Loring
 A GOOD SUBSTITUTION
 Should a gas occur again?
 Today's magazine
 this advice in automobile insurance
 "If your engine is run out of gas, you always get home on alcohol, or even Skoal!"

SINGER SEWING MACHINE SALE

FROM \$20.00 TO \$100.00 OFF ON SOME DISCONTINUED MODELS-ALSO SOME NEW MODELS ON SALE-WE HAVE BUTTON HOLE ATTACHMENTS TO FIT ANY MAKE OR MODEL SEWING MACHINES.

ALSO NEEDLES-BELTS-BULBS REPAIR SERVICE ON ANY KIND

ROBISON
SEWING MACHINE CENTER
 308 W 4th Littlefield 385-4621

OCTOBER 28, 1974
VETERANS DAY

A Day To Honor Those Men And Women Who Serve Our Country.

Today's Soldiers Are Proud Professionals
 . . . True Volunteers In Service To America

JOIN THE PEOPLE WHO'VE JOINED THE

SSG. MIKE PRIMEAUX
 PHONE 296-9228
 PLAINVIEW, TEXAS

PRICE REVOLUTION

ONE OF OUR MOST IMPORTANT BEDDING SALES OF THE YEAR!

Save \$30⁰⁰ to \$75⁰⁰ a set

MORE THAN 300 SEALY MATTRESSES AND BOX SPRINGS AT SPECIAL SALE SAVINGS



| Sealy Posture Form | Sealy Posture Lok Supreme | Sealy Posture Form |
|---|---|---|
| Medium Firm Quilted Mattress Dura Guard Foundation | Extra Firm Support Luxury Quilted Top Mattress Over 300 double tempered steel coils. Dura Guard Foundation for firmer support. | Medium Firm Support Channel Quilted Dura Guard Foundation |
| Reduced To \$45⁰⁰ ea pc Twin Size Save \$30⁰⁰ Per Set | Reduced To \$55⁰⁰ ea pc Twin Size Full Size Save \$30 per set \$75⁰⁰ Queen Set Save \$55 per set \$195⁰⁰ King Set Save \$75 per set \$265⁰⁰ | Reduced To \$65⁰⁰ ea pc Full Size Save \$30⁰⁰ Per set |

We still have some Posturepedic's left at the old prices.

Save \$20 to \$60 per set

Posturepedic headquarters in West Texas

STACY-MASON Inc.
 HOME FURNISHINGS

. . . 2-0 Wildcat Victory In Last 2 Seconds

DE WARREN left a minute early Friday night, missed it! If you left ten early, well, you missed it too! playing 47 minutes and 58 of scoreless football, the Littlefield Wildcats forced the Morton Indians to give the 'Cats a 2-0 victory in a District 3-AA contest that had an Indian fan in town wanting to see the "Bury My Heart in Buried Knees" chapter to "Bury My Heart in Buried Knees."

Members of the Indian uprising that the referee's signal that

awarded the safety to the 'Cats hadn't been seen since 'ol John Wayne told Geronimo that the "fire-water" he had been drinking was just that—water!

If you returned to the scene of the battle today, you might still find some folks a-pointin' and a-poundin' about that official's call and whether it was a fumble or an incomplete pass. But what it was folks, was a fumble. The man in the striped shirt said so!

To set up the winning score, let's go back to where there's 5:56 left in the game and the 'Cats have the ball on their

own 16-yard line following a Morton punt.

On the first play in this series, Ronald Parmer, under a strong pass rush, threw an incomplete pass to end Gary Lichte. Bill Turner, who gained 174 yards on 32 carries, loses a step on the next play and with an even five minutes left, it was looking as if the 'Cats would have to be satisfied with an edge in penetrations and 0-0 on the scoreboard.

However, Parmer, who threw 16 times and completed 5 for 52 yards, threw a bullet to halfback Stanley Patterson who

looked it just off the grass to give the Wildcats a first down by inches.

Two plays net the 'Cats only one yard and again the hustlin' 'Cats were faced with a third and long yardage situation. In comes Patterson with the call from Coach Jerry Blakely and again, Parmer hit Patterson on basically the same play as he did on the previous third and long situation and the Wildcats set up housekeeping again on their own 40-yard line.

Turner carried again for five yards and then an incomplete pass put the 'Cats into another crucial third down situation.

No pass this time, as Turner broke through the Indian line to pick up 12 yards and a first down.

own end zone, and as he was being pursued by a whole host of Wildcats, the cry of "throw it! throw it!" could be heard from his team mates.

But he didn't. He fumbled the ball, recovered it in his own end zone and as the clock ran out, the Wildcats had a 2-0 victory via a safety.

There were certainly no peace pipes in sight as the Morton coaches and players vigorously protested the final play of the game.

The Wildcats showed some offensive punch that had been missing in previous games as they amassed 230 yards of total offense as compared to the Indians' 116 yards. The 'Cats controlled the ball

throughout the entire game as they ran 63 plays as compared to the opponent's 46 and Littlefield had 16 first downs as compared to 9 for Morton.

Littlefield threatened on the first series of downs as they marched from their own 37 to the Indians two-yard line before the drive failed. Penalties aided in stopping drives by both teams as Littlefield had three flags tossed against them and Morton had four. An apparent 60 yard TD pass to Gary Lichte was called back for holding and Morton had one called back for the same infraction.

The Wildcats host Friona this Friday night in the third district game of the year.

MOORE COUNTY 22 ... cooperation 2-point conversion ... by the Amherst Bulldogs late in ... quarter failed here Friday ... and that two points was the ... of victory for the Motley County ... 22-20, in a crucial District 2-B ... encounter.

BRINES 30 BOVINA 6 ... lake-Earth contributed scores ... quarter here Friday night in a ... over Bovina in a District 3-A ...

Andrew Monreal, whose toe ... a predominant role in the ... win last week, booted a 16- ... goal in the opening quarter to ... lake-Earth a shortlived lead. ... roared back with a 58-yard ... from quarterback Dennis Willard ... Clint Cox. The extra-point kick ... after a bad snap.

lake's Lee Brown powered his ... from the 1 on a quarterback ... for one touchdown, then con- ... with end Junior Saucedo ... later on a 10-yard toss for the ... TD of the quarter and a 17-6 ...

NAZARETH 0 ... opportunistic Sudan Hornets, ... lling on several Nazareth ... es, turned fullback Danny ... loose here Friday night ... to a 35-0 whitewashing of the ...

ans scored twice in the opening ... both set up on Nazareth fumbles, ... of 27 and 15 yards. The fullback ... on another score in the third ... 4-yard burst, then was on the ... end of a 35-yard strike from ... back Mitch Chester in the final ...



SCOTT HARMON, Pep Squad King, escorts Gina Young, Homecoming Queen, off the field following coronation ceremonies in the Amherst Bulldog Stadium Friday night. Other candidates for queen were Daria Hedges, Tonya Bearden, and Gay Weaver. Other candidates for King were John Booth, Stanley Miller and Eddie Duvall. (Staff Photo)



JOHNNY ROSEMOND (45) gained several yards for the Amherst Bulldogs early in the game Friday night against the Motley County High Matadors, but was taken out permanently with a broken leg early in the game. Here he gained five yards with the help of his teammates Stanley Miller (20), Red Hudgins (70), David Booth (50), Gary McDaniel (66), Eddie Duvall (52), and on the ground to the right Dwain Tucker (42) and Scott Harmon (31). (Staff Photo by Joella Lovvorn)



JUNIOR TAILBACK Bill Turner picks up yardage enroute to his game total of 174 yards on 32 carries for a 5.4 yard average per carry. For the year, Turner has amassed 967 yards rushing on 224 attempts for a season average of 4.3 yards per carry. Adding 164 yards gained on pass receiving gives Turner a net yardage total of 1131 yards for the season. Littlefield defeated the Morton Indians Friday night 2-0 to even their district mark to 1-1. (Staff Photo by Bill Mott)

THE Phyllis Diller ISA

CIRCUS SHOW

WITH Emmett Kelly JR. TINO WALLEDA

Daring aristocrat of the high wire

ONE HOUR TELEVISION SPECIAL!

Presented by... **Shur-fine**

THE GREATEST SALE... ON EARTH

CARNIVAL

WE RESERVE THE RIGHT TO LIMIT QUANTITIES

LUBBOCK THURSDAY, OCTOBER 31
KCBT TV CHANNEL 11 8:00 - 9:00 P.M.

DOUBLE GUNN BROS STAMPS TUES. & WED. WITH PURCHASE OF \$2.50 OR MORE EXCLUDING CIGARETTES

SHURFRESH **CANNED HAM 3 LB., EACH \$3.39**

| | | | |
|---|---------|---|--------|
| Shurfine Apple Butter 28 oz. | 2/1.00 | Shurfine Macaroni & Cheese Dinner 7 1/2 oz. | 4/1.00 |
| Shurfine Apple Sauce 16 oz. | 3/1.00 | Shurfresh Margarine Reg. Quarters 16 oz. | 2/1.00 |
| Shurfine Asparagus Spears Cut-Grn. 14 1/2 oz. | 1 .55 | Shurfine Mushrooms Pieces & Stems 4 oz. | 3/1.00 |
| Sollin Bathroom Tissue Ass'd. 2 Ply 8 Roll Pak | 1 .98 | Shurfine Orange Juice Froz. 6 oz. | 6/1.00 |
| Shurfine Beets Sliced 16 oz. | 3/1.79 | Shurfine Pancake Mix 32 oz. | 1 .59 |
| Shurfresh Biscuits Butmlk./Swmlk. 8 oz. | 10/1.00 | Shurfine Peaches Hlvs. or Sliced YC 29 oz. | 2/1.88 |
| Shurfine Blackeyes Fresh-Shelled 15 oz. | 4/1.00 | Shurfine Peas Sweet Early Harvest 17 oz. | 3/1.00 |
| Shurfine Broc. Sprs./Cauliflower/Mix. Veg. Froz. 10 oz. | 3/1.00 | Shurfine Pineapple in Juice Csh./Cnk./Sli. 15 1/4 oz. | 3/1.00 |
| Shurfresh Cheese Hlfm. Colby Longhorn 10 oz. | 1 .79 | Shurfine Pork & Beans 16 oz. | 4/1.00 |
| Shurfine Coffee Vac-Pak All Grinds 16 oz. | 1 .98 | Shurfine Potatoes Whole Irish 16 oz. | 3/1.89 |
| Shurfine Coffee Creamer 11 oz. | 1 .69 | Shurfine Preserves Strawberry 18 oz. | 1 .79 |
| Shurfresh Crackers 16 oz. | 1 .39 | Shurfine Rice Medium Grain 2 lb. Bag | 1 .69 |
| Shurfine Cranberry Sauce Strained or Whole 16 oz. | 3/1.89 | Shurfine Spinach 15 oz. | 4/1.89 |
| Shurfine Cucumber Chips Fresh Pak 16 oz. | 1 .39 | Shurfine Tomato Juice Fancy 46 oz. | 1 .59 |
| MC*2 Detergent All Purpose 49 oz. | 1 .79 | Shurfine Green Beans 3 Sv. Cut 16 oz. | 4/1.00 |
| Shurfine Dinners Chili Tom./Beef Ndl./Chsburger./Hash Box | 1 .49 | Shurfine Tomato Soup 10 3/4 oz. | 6/1.00 |
| Shurfine Drinks Orange/Fruit Punch/Grape 46 oz. | 3/1.00 | Shurfine Tuna Chunk Style 6 1/2 oz. | 2/1.89 |
| Shurfine Evaporated Milk 14 1/2 oz. | 4/1.00 | Shurfresh Vanilla Wafers 10 oz. | 3/1.00 |
| Shurfine Flour Enriched 5 lb. Paper Bag | 1 .68 | Shurfine Vegetables Mixed 16 oz. | 3/1.79 |
| Shurfine Fruit Cocktail 16 oz. | 3/1.00 | Shurfine Waffle Syrup 32 oz. | 1 .79 |
| Shurfine Grapefruit Juice Nat.-Pink Texas Pak 46 oz. | 2/1.89 | | |

SHURFRESH **SLICED BACON**

REG. OR THICK 99¢

1 LB., PKG.

SHURFRESH BOLOGNA, PICKLE PEPPER LOAF, OLIVE LOAF, SALAMI, LUNCHEON LOAF

LUNCH MEAT 36 OZ., PKG. 3 FOR \$1

SHURFRESH **FRANKS 12 OZ., PKG. 59¢**

SHURFRESH **BOLOGNA SLICED 12 OZ., PKG. 59¢**

WE REDEEM USDA FOOD STAMPS

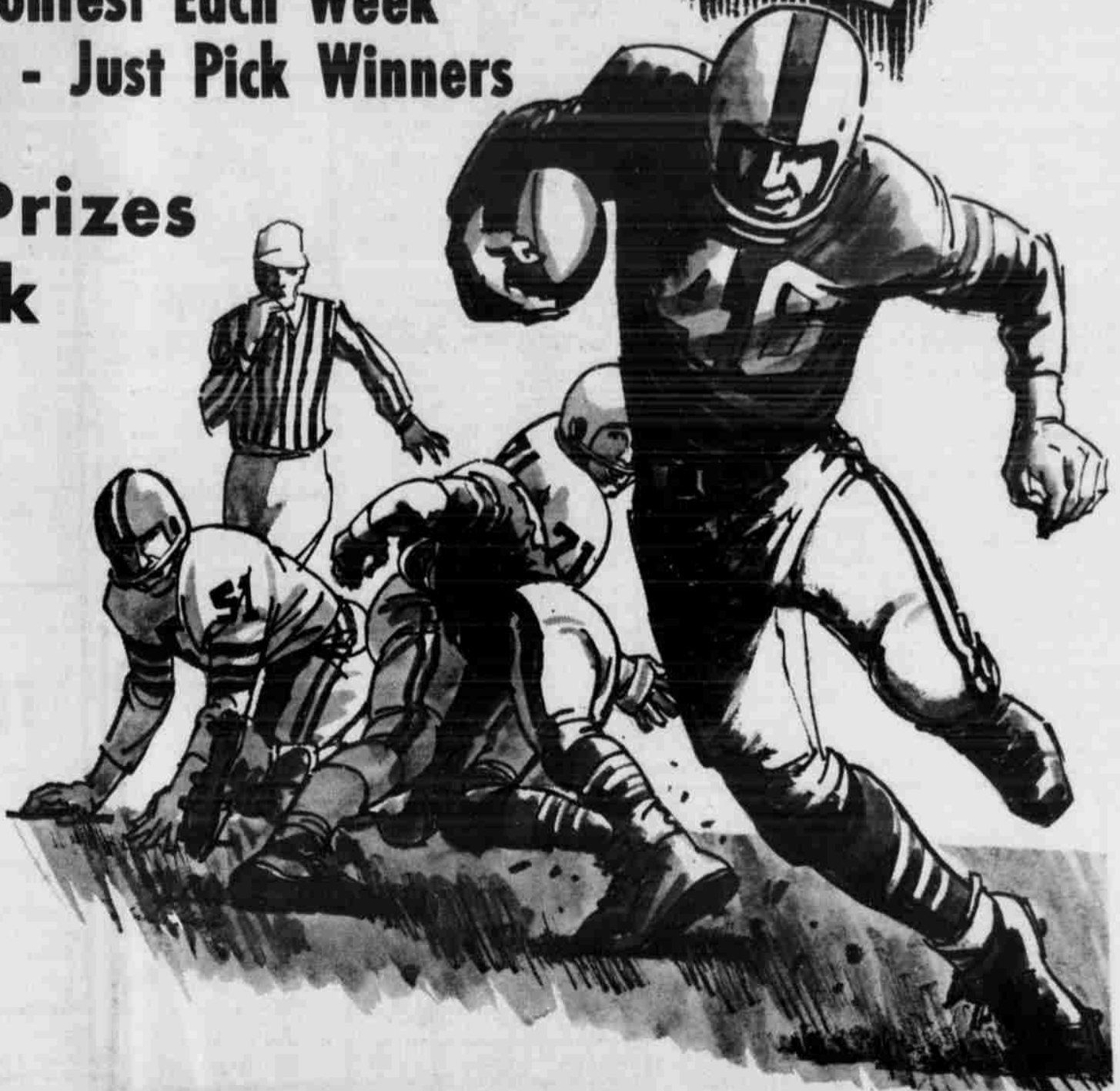
AL AMERICAN BANANAS 2 LB. 25¢

RUSSETS ALL PURPOSE POTATOES 10 LB. POLY BAG 79¢

SUPERMARKET

FOOTBALL CONTEST

Enter Our Contest Each Week
Nothing To Buy - Just Pick Winners



Win Cash Prizes Each Week

FIRST PLACE PRIZE

\$5

SECOND PLACE PRIZE

\$3

THIRD PLACE PRIZE

\$2

GRAND PRIZE

2 TICKETS TO THE
Cotton Bowl

NEW YEAR'S GAME

Plus \$25.00 Expense Money

It's so easy...
Anyone can enter!
Read the rules...
Start Winning

RULES

OF THE CONTEST:

All you have to do to be eligible for the weekly cash prizes is to complete the form below and place (or mail) it in the designated box at the Leader-News office. It is the contestants responsibility to see that the form has been placed in the entry box and the Leader-News assumes no responsibility for blanks lost, or delayed in the mails.

One game is listed in each advertisement. Pick the winner and insert the name of that team in the OFFICIAL ENTRY BLANK below. Then in the "Tie Breaker" section, put the scores you believe each of the teams will make. Weekly judging will be based on the total number guessed correctly. In case of a tie, the tie-breaker will be used to determine the top winners. Decision of the Leader-News scoring judges will be final.

To be eligible for the 2 free tickets to the New Year's Game at the COTTON BOWL, the total number of correct guesses will be totaled through the season.

LIMIT—One entry per contestant per week.

BE SURE to complete the forms by PRINTING plainly your name and complete address and turning in the entry blank only. Contest winners will be announced in each Thursday's issue of the Leader-News.

TIED GAMES ARE CONSIDERED DRAWING UNLESS CALLED AS A TIE.

LITTLEFIELD DELINTING CO.

We Sell Cotton Seeds

Game No. 1

Friona At Littlefield

Phone 385-4533

Arthur Summers

Spade Highway

Findley's Jewelry

"Known By The Quality We Keep"

Game No. 2

Arkansas At Texas A&M.

*Bulova*Longines*Watches

*Gorham Sterling*Fostoria Crystal*Pickard China

MARCUM Olds, Cadillac, Pontiac

Game No. 3

Texas Tech At Rice

801 Hall Ave. Phone 385-5171

Ernest Mills Cotton Co.

RARE COINS & COIN SUPPLIES

Game No. 4

S.M.U. At Texas

823-B Lfd. Dr. 806 385-5178

Shook Tire Co.

14 Stores In 13 West Texas Cities

Game No. 5

Baylor At T.C.U.

1028 East 9th Phone 385-4405

LITTLEFIELD SEED & DELINTING

"Home Of Fine Cotton Seeds"

Game No. 6

St. Louis At Dallas

In The Old Oil Mill Location Phone 385-3588

GIBSON'S DISCOUNT CENTER

Game No. 7

Buffalo At New England

311 East 8th 385-5932

Littlefield Farmers Coop Gins & Elevators

Oakland At Denver

Game No. 8

"OWNED BY THOSE WE SERVE"

ARMES EQUIPMENT CO.

Your John Deere Dealer

Formerly Luce-Nelson

Kansas City At New York Giants

Game No. 9

East Loop 84 Phone 385-4121

Lamb County Farmers Co-op Gin

THE BRICK GIN

Game No. 10

Philadelphia At Pittsburgh

1230 E 9th 385-4552

Armes Chevrolet Co.

Washington At Green Bay

Game No. 11

New & Used Cars,
Trucks, Pickups

610 East 4th Phone 385-4437

Pratt's Jewelry

& TROPHIES

5th AND XIT DRIVE

CUSTOM MADE
PLAQUES AND
TROPHIES OUR
SPECIALTY

Lockney At Tulia

Game No. 12

ORIGINAL TASTY TACO

Game No. 14

Mulshoe At Levelland

WE SPECIALIZE IN MEXICAN
AND AMERICAN FOOD

621 HALL AVE.

PHONE 385-3764

PERRY'S LAUNDRY, CAR AND TRUCK WASH

Game No. 15

Cincinnati At Baltimore

TENTH AND XIT



CLIFF'S GROCERY AND DELICATESSEN

Game No. 16

Houston At New York Jets

CUSTOM COOKING WILD & DOMESTIC
1200 HALL AVENUE 385-3441

JIM JONES AGENT

Springlake - Earth At Hart

AMHERST
Joe Miller
Bob Clayton
HART CAMP
V.L. Foster

EULA
Dale Middlebrooks
PEP
Pop Gro. & Service

OFFICIAL ENTRY BLANK

County Leader-News Football Contest

Deadline 5:30 Friday

Winner

TIE BREAKER

Louis vs. Dallas
Springlake-Earth vs. Hart

BOWLING RESULTS

| HIT AND MISS LEAGUE | TOWN AND COUNTRY LEAGUE | HI POINT LEAGUE |
|---|--|---|
| Huber & Sexton 20 8 | Lamb Bowl 131 1/2 | Cox Furniture 168 |
| Sanitary Linen 19 9 | Lfd Seed & Delinting 132 1/2 | Witcher Electric 147 |
| Amoco 16 12 | Campbell's Insurance 122 | B&C Pump 132 |
| Francis-Hodge-Macha 14 14 | Shook Tire Co. 114 | Lamb Bowl 126 |
| Puente-Coston 13 15 | Gibson's 103 1/2 | Pay & Save 113 |
| Howarton-Wimberly 12 16 | Coca Cola 97 | Lfd Frozen Food 112 |
| Western Auto 9 1/2 18 1/2 | Furr's 75 1/2 | Deep Rock Station 110 |
| Birkelbach Machine 8 1/2 19 1/2 | Pay & Save 75 | Grimes Kawasaki 100 |
| Hi Team Series Amoco 25 13 | Hi Team Series Littlefield Seed & Delinting 3006 | Hi Team Series Pay & Save 1857 |
| Hi Individual Series Men Maurice Sexton 606 | Hi Team Game Pay & Save 1074 | Hi Team Game Pay & Save 651 |
| Hi Individual Game Men Maurice Sexton 254 | Hi Individual Series Men Jr. Graham 392 | Hi Individual Series Men Bob Simmons 543 |
| Hi Individual Series Women Denise Francis 489 | Hi Individual Game Men Lester Orr 222 | Hi Individual Game Men Pete Contreras 211 |
| Hi Individual Game Women Lynda Donnell 187 | | |

JV's Win Fourth Game

The Littlefield Junior Varsity ran their record to four wins and three losses Thursday night as they defeated the Muleshoe JV's 22-16.

In what was described as Littlefield's best offensive night of the year, coach Eddie Hooper's team amassed 175 yards rushing on 55 attempts for their come from behind victory.

Muleshoe scored first, but their lead didn't last long as the Wildcats scored on their first possession on a one-yard run by Terry Foley. The two extra points were scored by Blake Wood and the score was tied 8-8.

Muleshoe came right back to go ahead 16-8, but later in the quarter, the combo of Foley and Wood added eight more points to tie the game up in the second quarter.

The winning score for Littlefield came on a pass play from Rudy Ayala to Danny Martinez to put the 'Cats ahead 22-16 for good.

All of the scoring was in the first half of the game.

Hooper described the game as "our greatest effort so far. The Mules had a good team but we just outplayed them. Our offensive line did a great job all night. Hooper singled out the play of Wood and Brent Garland for their play in the game.

FRESHMEN

The Freshman team lost to Muleshoe 8-0.

Coach Buddy Comer said the Frosh had a good defensive effort, but the offense never could jell. Bradley Allen (who intercepted a pass), Louise Willey and Greg Moreland all had good defensive games.

Eugene Hernandez is the "Hustler of the Week."

EIGHTH GRADE

The eighth grade Wildcats tied the Mules, 6-6.

Coach Mark Hulin had praise for his entire team as he stated "all the players were ready to play and they all gave a tremendous effort."

Jeff Lust scored the Cats' only touchdown and the 'Cat defense shut out the opposition until the last 30 seconds of the game when

they took advantage of a blocked punt to score.

The hustler of the week is Ronnie Martin.

SEVENTH GRADE

The seventh grade was defeated by a score of 46-6.

In a game which saw the Littlefield seventh grade playing against a combined

team of seventh and eighth graders, Hulin described his team by saying "since we had not practiced since Monday due to the weather, we were just not ready to play."

Rickey Huey scored the 'Cats' only score on a kickoff return, and Craig Hammock is the "Hustler of the Week."

Basketball Schedule Set For Bula

BULA—The schedule for both boys' and girls' basketball teams in high school will be, Oct. 25, Bula at Spade; Oct. 29, Christ The King at Bula; Nov. 1, Cotton Center, at Bula; Nov. 5, Bula at Lazbuddie; Nov. 7, Lazbuddie at Bula; Nov. 12, Bula at Cotton Center; and Nov. 26, Bula at Canyon.

name: Dec. 17, Whitarral at Bula; Amherst at Bula; Bula at Three W; Anton at Bula; Jan. 17, Bula at Jan. 21, Bula at Jan. 24, Three W; Bula at Anton; at Bledsoe; Feb. 4,

END OF MONTH SPECIALS

OPEN 8:30-6:00



ON THE BLOCK TO SHOP

DAMAGED DOORS
\$2.50 & UP

HEATING SALES & SERVICE
FLOOR FURNACE, WALL HEATER OR CENTRAL HEATING

TRAILER MATERIAL
4"x6" - 20 Ft. Length
4"x4" - 8 Ft. Length
1"x4" - 20 Ft. Length
1"x6" - Rough 20 Ft.

LUMBER
2"x4" - 8 Ft. .69¢
1"x4" - 8 Ft. .49¢
1"x12" - #3 Re-Saw .16 1/2¢ Ft.

SHEET ROCK
1/4" - \$1.39
3/8" - \$1.59
1/2" - \$1.69

PARTIAL BOARD
3/8" - \$2.99
1/2" - \$3.29
5/8" - \$3.99

HARRELL'S BUILDING SUPPLY
ANTON, TEXAS
997-3621 - 997-2951

JUST RECEIVED LEVI'S
NEWEST SUPER BELL
GREAT LOOK & GREAT FIT FOR JUST **\$14.50**

MEN'S & BOYS TRACK SHOES
SEVERAL COLORS
REGULAR \$6.49 **\$3.74**

DRESSES
Fantastic Fall colors in lovely soft solids & gay prints. 100% polyester in 13 different styles; several long lengths. 2 pc. jacket dresses and 1 pc. dresses in regular lengths.
Junior Sizes 5 to 13
REGULAR \$25.00 **\$19.90**

MEN'S DOUBLE KNIT DRESS PANTS
NEW ASSORTMENT
REGULAR \$14-\$20 **\$10**

SUPER BIG BATH TOWELS
REGULAR \$3.99 EACH
2 FOR \$5.00

DRESSES
Excellent selection of beautiful Ladies' fashions; Pant Suits, 3 pc. Suits, 2 pc. Suits with co-ordinating tops, vests & jackets. Many different & exciting styles to choose from, all 100% polyester.
Ladies Sizes 8-18
REGULAR \$45.00 **\$29.90**

Basketball Clinic Set

The 17th annual Flying Queens Basketball Clinic for girls will begin at 8:15 a.m. Saturday, Nov. 2, at Hutcherson Center on the Wayland Baptist College campus.

The Wayland Flying Queens are the 1974 AAU and NWIT National Champions.

PULL-ON PECOS COMFORT
NO LACES!
LARGE SELECTION OF SIZES AND WIDTHS
RED WING
Anthony's

UP TO TWICE THE HEAT PER DOLLAR
from a Carrier Heat Pump

and summer cooling, too

Carrier heat pumps take heat from outdoor air even in winter and put it to work heating your home or business. They can give up to twice as much heat per dollar of electric energy as ordinary electric heating. No fuel worries. No flue. No flame.

Carrier No. 1 Air Conditioning Maker
will install expertly. For a free estimate, call

CAMPBELL PLUMBING CO.
HEATING and COOLING
1022 E. 9th Phone 385-5020

Enjoy All-Season Comfort.

THE ELECTRIC HEAT PUMP

in the winter... in the summer.

Seasonal changes won't bother your family... not when you can enjoy the clean comfort in your home provided by an electric heat pump. The heat pump does it all... heats... cools... dehumidifies... with one convenient, dependable unit! The heat pump is economical and energy efficient because it uses otherwise wasted heat and electricity to maintain a constant comfortable climate in your home.

For more information on the heat pump... call us for a free electric home heating survey for your own home... week!

The Future Is Electric!

EQUAL OPPORTUNITY EMPLOYER

The Electric Company
ELECTRICITY IT DOES SO MUCH FOR YOU
FOR SO MANY PEOPLE

ADVERTISERS FOR THE FOLLOWING NEWSPAPERS -
 WEEK OF OCTOBER 27, 1974:
 COLORADO CITY RECORD
 COLORADO CITY, TEXAS
 MOORE COUNTY NEWS PRESS
 DURAS, TEXAS
 LITTLEFIELD DAILY SUN NEWS
 LITTLEFIELD, TEXAS
 LAMB COUNTY LEADER NEWS
 LITTLEFIELD, TEXAS
 ODessa AMERICAN
 ODessa, TEXAS
 THE PERRYTON HERALD
 PERRYTON, TEXAS
 HAINES COUNTY NEWS
 SEAGRAVES, TEXAS
 SNYDER DAILY NEWS
 SNYDER, TEXAS



Shur
fine

CARNIVAL

SPECIALS GOOD OCTOBER 28-NOVEMBER 9, 1974
6 FULL WEEKS TO SAVE!!

Today's food budget isn't something to clown around with, so take advantage of a "Circus of Savings" during the Shur-fine Carnival Sale. You'll find all kinds of canned goods to choose from, there are no shortages and the prices are unbelievably low. So stock up now and save, it's the "Greatest Food Sale on Earth"!

Pay-n-Save
 QUALITY AND SERVICE

PAYROLL CHECKS
 CASHED
 WE SELL TRAVELERS
 EXPRESS MONEY ORDERS
 WE RESERVE THE RIGHT
 TO LIMIT QUANTITIES

LITTLEFIELD, TEXAS

CONVENIENT LOCATIONS:
 322 E. DELANO & 601 E. 10th



DOUBLE
 GUNN BROS. STAMPS
 TUESDAY AND
 WEDNESDAY
 WITH *2* PURCHASE
 OR MORE
 "EXCLUDING CIGARETTES"

**SHURFINE 100% PURE FLORIDA
 ORANGE JUICE**

6 \$1.00
 6-oz.
 Cans



**ADMIT ONE
 FRONT ROW-CENTER**

**ONE HOUR
 TELEVISION
 SPECIAL!**

Presented
 by...

Shur
fine

THE PHYLLIS DILLER

CIRCUS SHOW

WITH EMMETT KELLY JR.



Thrills and suspense with TINO WALLEDA on the high wire, GENTLE BEN the
 BEAR, TONY the WONDER HORSE, PLUS Circus Stars from all over the World!

Check this guide for Local Time and Date.

| | | | | | |
|----------------------|---------|---------|-------|-------|-------|
| Marillo | KFDA-10 | CBS | Sun. | 10/27 | 5-6pm |
| Hubbuck | KCBD-11 | NBC | Thur. | 10/31 | 8-9pm |
| Bilene/Sweetwater | KTXS-12 | ABC/CBS | Sun. | 10/27 | 7-8pm |
| Odessa/Midland | KOSA-7 | CBS | Tues. | 10/29 | 7-8pm |
| Richita Falls/Lawton | KSWO-7 | ABC | Mon. | 10/28 | 7-8pm |
| Paso | KTSM-9 | NBC | Tues. | 10/29 | 8-9pm |



SHURFINE
 ENRICHED

**FLOUR
 68¢**

5-Lb.
 Bag



SHURFINE GREEN
 3 SIEVE CUT

**BEANS
 4 \$1**

16-oz.
 Cans



IT'S
 Great
 IT'S SHURFINE



THE
 GREATEST
 SALE
 ON
 EARTH!



SHURFINE
 MEDIUM GRAIN

**RICE
 69¢**

2-Lb.
 Bag

SHURFINE
 ORANGE-GRAPE-FRUIT PUNCH

**DRINKS
 3 MIX & MATCH \$1**

46-oz.
 Cans

SHURFINE REG.-DRIP-ELEC. PERK

**COFFEE
 98¢**

16-oz.
 Vac Pac
 Can

SHURFINE

**SPINACH
 4 89¢**

15-oz.
 Cans

SHURFINE CHUNK STYLE

**TUNA
 2 89¢**

6 1/2-oz.
 Cans

WE RESERVE THE RIGHT TO LIMIT.



STOCK UP NOW...
**SAVE
 ALL WINTER!**



**SHURFRESH
 CANNED
 FULLY COOKED
 BONELESS**



HAM

\$3.39

3 LB.
 CAN
 EACH



**Shur
Fine**

CARNIVAL

STOCK UP NOW... SAVE ALL WINTER!

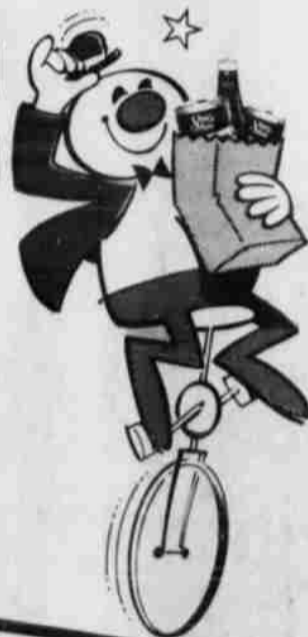


**YELLOW CLING-SLICED OR HALVES
SHURFINE
PEACHES**

2 88¢
29-Oz. Cans

**SOFLIN 2 PLY / WHITE-YELLOW-PINK-A
BATHROOM
TISSUE**

8 98¢
Roll Pack



| | | |
|--|---------------------------|------------|
| MC*2 ALL PURPOSE OR SHURFINE DETERGENT SHURFINE | 49-Oz. Box | 79¢ |
| COFFEE CREAMER SHURFINE | 11-Oz. Jar | 69¢ |
| PANCAKE MIX 8-OZ. CHILI TOMATO-7-OZ. BEEF NOODLE-8-OZ. CHEESEBURGER-6-OZ. HASH | 32-Oz. Box | 59¢ |
| SHURFINE DINNERS SHURFINE QUALITY | Ea. Pkg. | 49¢ |
| MAC-CHEESE DINNER SHURFINE | 4 7½-Oz. Pkgs. | \$1 |
| APPLE SAUCE SHURFINE | 3 16-Oz. Cans | \$1 |
| MANDARIN ORANGES SHURFINE-STRAINED OR WHOLE | 3 11-Oz. Cans | \$1 |
| CRANBERRY SAUCE CRUSHED-CHUNK-SLICED/IN IT'S OWN JUICE | MIX & MATCH 3 16-Oz. Cans | 89¢ |
| SHURFINE PINEAPPLE MIX & MATCH | 3 15¼-Oz. Cans | \$1 |

| | | |
|--|----------------------------|---------------|
| SHURFINE FROZEN BROCCOLI SPEARS-CAULIFLOWER OR MIXED VEGETABLE | 3 MIX & MATCH 10-Oz. Pkgs. | \$1.00 |
| PORK & BEANS SHURFINE | 4 16-Oz. Cans | \$1.00 |
| SLICED BEETS SHURFINE MIXED | 3 16-Oz. Cans | 79¢ |
| VEGETABLES SHURFINE FRESH SHELL | 3 16-Oz. Cans | 79¢ |
| BLACKEYES SHURFINE EARLY HARVEST | 4 15-Oz. Cans | \$1.00 |
| SWEET PEAS SHURFINE WHOLE | 3 17-Oz. Cans | \$1.00 |
| IRISH POTATOES | 3 16-Oz. Cans | 89¢ |

THE GREATEST FOOD SALE ON EARTH!

Emmett Kelly, Jr.
Star of television and
his own colossal circus

AT YOUR NEARBY AFFILIATED FOOD STORES!



SHURFINE QUALITY
EVAPORATED MILK
4 14½-Oz. Cans **\$1.00**

SHURFINE QUALITY
FRUIT COCKTAIL
3 16-Oz. Cans **\$1.00**



- TOMATO SAUCE** 3 15-Oz. Cans **79¢**
- TOMATO SOUP** 6 10¼-Oz. Cans **\$1**
- MUSHROOMS** 3 4-Oz. Cans **\$1**
- APPLE BUTTER** 2 28-Oz. Cans **\$1**
- RESERVES** 18-Oz. Jar **79¢**
- GAFFLE SYRUP** 32-Oz. Jar **79¢**
- CUMBER CHIPS** 16-Oz. Jar **39¢**
- SHURFRESH CRACKERS** 16-Oz. Box **39¢**
- VANILLA WAFERS** 3 10-Oz. Pkgs. **\$1**

- SHURFRESH SWEETMILK OR BUTTERMILK
- BISCUITS**
10 8-Oz. Cans **\$1.00**
- SHURFRESH QUALITY-REGULAR QUARTERS
- MARGARINE** 2 16-Oz. Pkgs. **\$1**
 - COLBY CHEESE** 10-Oz. Pkg. **79¢**
 - GRAPEFRUIT JUICE** Texas Pak 2 46-Oz. Cans **89¢**
 - TOMATO JUICE** 46-Oz. Can **59¢**
 - ASPARAGUS SPEARS** 14½-Oz. Can **55¢**

*Shur
Fine*



**THE GREATEST SALE
ON EARTH!**

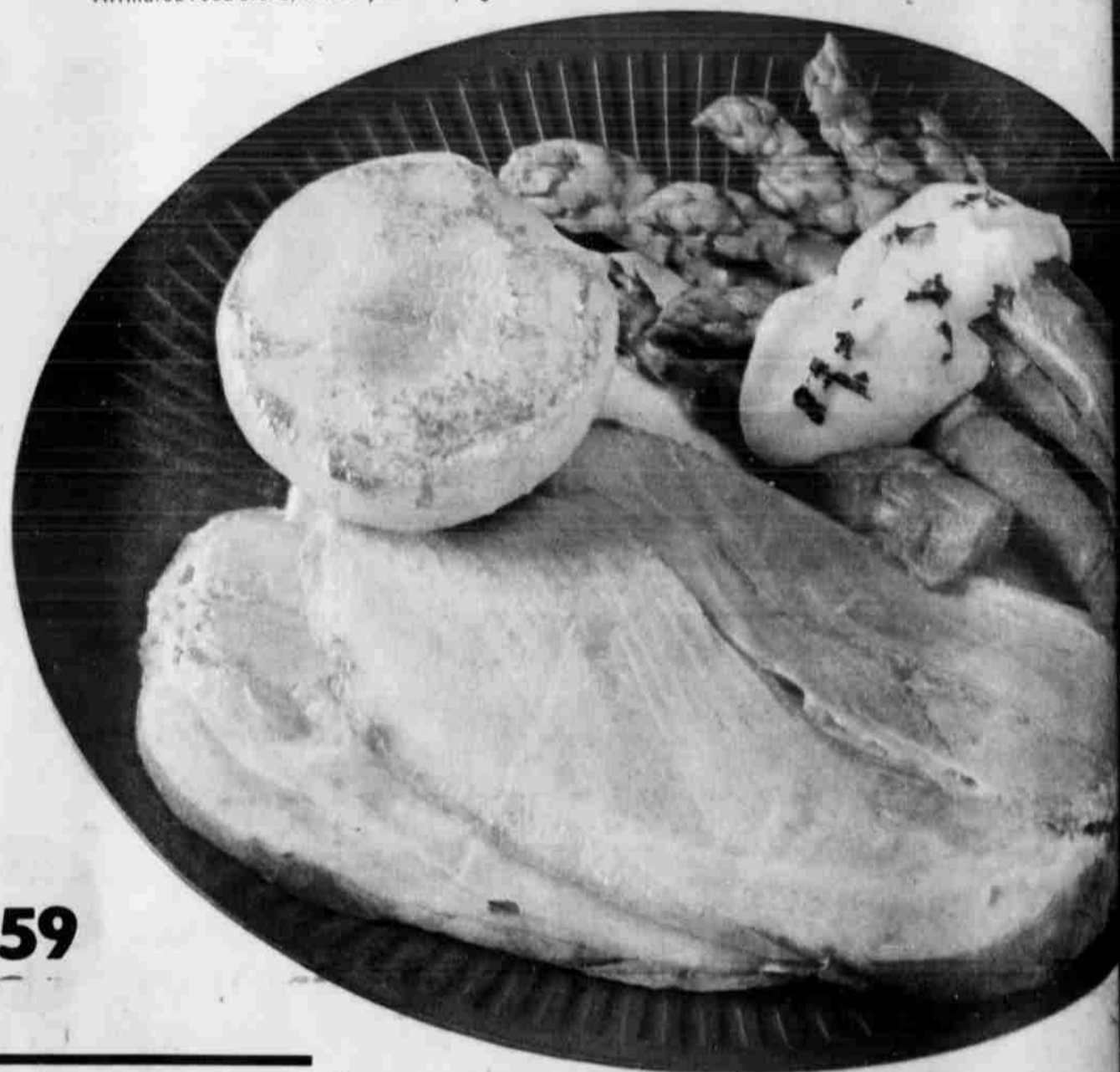
CARNIVAL

Step right up, ladies and gentlemen, to the "Greatest Food Sale on Earth"...The Shurfine Carnival Sale! We have delicious, mouth-watering Shurfine hams, plump and juicy franks, sizzlin' good bacon and lots more, all at tremendous savings! The time to buy is now. The place? Your Affiliated Food Store, where you always get the best, for less.

**SHURFRESH
FULLY COOKED BONELESS CANNED**

HAM

3 \$3.39
LB.
CAN



SHURFRESH FULLY COOKED BONELESS

CANNED HAM 5-Lb. Can **\$5.59**



SHURFRESH BOLOGNA, PICKLE-PEPPER LOAF, OLIVE LOAF, SALAMI, LUNCHEON LOAF MIX & MATCH

LUNCH MEAT 3 6-Oz. Pkgs. **\$1**

SHURFRESH PIMENTO OR JALAPENO

CHEESE SPREAD 7 1/2-Oz. Cup **69¢**

SHURFRESH QUALITY

SLICED BOLOGNA 12 Oz. Pkg. **59¢**

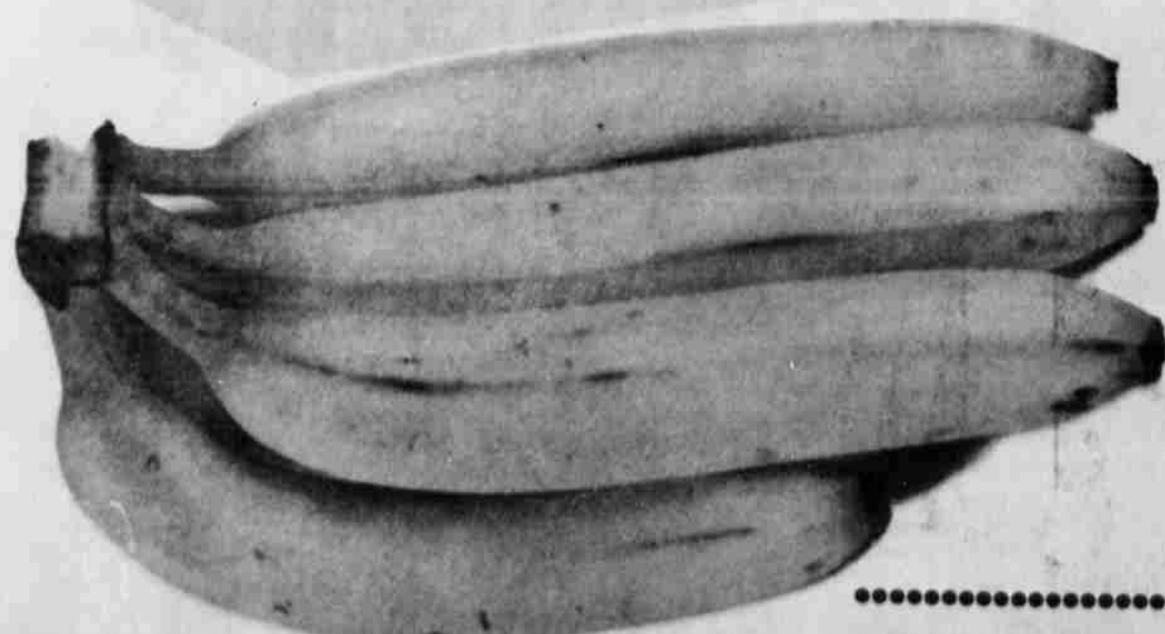
SHURFRESH

FRANKS 12-Oz. Pkg. **59¢**

SHURFRESH REG. OR THICK

SLICED BACON

1-LB. PKG. **99¢**



GOLDEN RIPE

BANANAS

2 LBS. 25¢

ALL PURPOSE RUSSET

POTATOES

10 LB. POLY BAG

79