

CHRISTMAS DECORATIONS are nearly all in place, and lights will be turned on for the first time Thanksgiving night. Pickett Ray, supervisor of public utilities, top left, Willie Young, top right, and Chester Kerby fought the winds Thursday morning to erect this lighted Christmas tree on the corner of Phelps Avenue and Fourth Street.

Contest Prizes Set For Home Lighting

Prizes are being awarded on artistic originality, lighting techniques, and display during this year's Christmas lighting contest, again being sponsored by Littlefield's Chamber of Commerce.

Prizes, totaling \$100, will be awarded by Southwestern Public Service. First place winner in the contest will take \$50; second place winner will take \$25; third place, a \$15 prize and fourth place, a \$10 prize.

Entries will be done at 7 p.m., Friday, Dec. 18, by anonymous judges "The Women."

Persons living within the city limits of Littlefield are eligible to enter the contest, and entrants wishing to enter are to clip the entry blank from inside this issue, fill it out and mail it to the Chamber of Commerce, Box 507, Littlefield, Texas.

Children, as well as adults, are eligible to enter.

A high score of 30 is attainable in the "merit" category, in which design, originality and arrangement of lights, colors, and color scheme will be considered in the judging.

Twenty points are possible in the "creativity" portion of the judging sheet. Entrants are new ideas or effects, new uses of standard devices such as Christmas plaques, candles, cutouts, and shapes formed with Christmas tree lamps.

"Lighting techniques" could bring a score of 30 to the ingenious Christmas

lighting artist, if he figures a good use for regular Christmas tree lamps, spot and flood lamps (with or without filters), or other lamps such as fluorescent, circling and reflector color lamps.

Twenty points will be awarded to the entrant who best uses his "ingenuity" in using the structure of house, in using surroundings to an advantage, in assembling the display, and in construction and installation.

In encouraging participation in this year's contest, C-C Manager Jim Kelly advises, "Remember, it is what you do with what you have; the artistry, originality, ingenuity, and lighting techniques you show, that our judges will take into account."

AT ORIENTATION SESSIONS

School Counsels Parents

By NILAH RODGERS
Leader-News Staff Writer

Something new has been added to counseling in Littlefield schools.

Mrs. JoAnn Jordan, school counselor, now confers with five groups of parents. Through these sessions, school personnel and administrators hope to establish a better relationship with parents.

Forty seventh grade parents met with Mrs. Jordan and Junior High Principal Tommy Brawley for junior high orientation recently for the first of these new night meetings. "Ordinarily, this will be held the first week of school," Mrs. Jordan said, "but we were very pleased that that many parents came."

The handbook was explained to parents, and rules on being absent and tardy were discussed, followed by a general discussion.

More than 20 parents attended the senior parents' meeting. "Here again we were pleased with the response," Mrs. Jordan said. "The senior class is about half as big as the seventh grade. And again we were late, because this program is new."

Senior parents were given information on college entrance examinations, room reservations, scholarships and loans. Parents of senior students will also be

City Council Battles Poor Street Conditions

Big Costs Involved

By JOELLA LOVVORN
News Editor, Leader-News

City Councilmen discussed at length the condition of Littlefield's paved streets and heard Ronald Purtell of Lubbock present methods for collecting paving certificates pertaining to the 1967-68 paving projects, during their regular session Thursday night.

"There is little doubt that one of the major problems facing the City of Littlefield today is the condition of our paved streets. The recent wet weather experienced during September and October this year saturated the base of our streets which were already in extremely poor condition," City Manager Jim Shearer informed the councilmen.

He continued, "As has been mentioned on many previous occasions, all of our paved streets, with the exception of those seal-coated this past summer, are in need of seal coating, overlay and or reconstruction as quickly as possible."

"The major problem facing the City government is the financing of these needed improvements," he continued.

"According to a report made in May of 1968 by McMorries and Associates of Amarillo, the city's consulting engineers, the total estimated cost for accomplishing needed improvements to our paved streets was estimated to be \$180,853, plus \$6,000 or \$8,000 per year for replacement of asphalt valleys and curbing for better drainage," Shearer said.

"Of course, this report is nearly two years old, and probably some inflation would increase that cost if bids were taken for the total project today," he said.

"There are two alternatives the citizens of Littlefield could take—(1) continue to repair and improve the streets and operate out of existing funds, or (2) promote a bond issue," Shearer said.

Mayor J. E. Chisholm said he "would like to proceed with an updated study of the cost involved—whether citizens could face a tax increase, or whether the project could be taken care of in the budget, or if a bond issue is involved, how much the payments would be per year and for how many years—then inform the citizens of the cost to be involved before they authorize repairs to be made next summer."

Councilmen agreed this would be the best route to take.

Ronald Purtell, who represented Municipal Investment Corp. of Lubbock, presented plans for collecting paving certificates, and City Attorney Ted Sansom took the cases in hand for collection.

The paving involved in 1967-68 was

See COUNCIL, Page 5

30 GINS REPORT Bale Count 20,000

Gin yards are crowded in parts of Lamb County with nearly 20,000 bales weighed in Friday afternoon when the Leader-News made a bale count at the 30 gins.

Grade returns are low with average

grades showing low middling spots or tinge and many barksies and below grades. Staple lengths and micronaire readings were surprisingly high, however. Staples averaged better than 15/16 in most cases with farmers who planted longer staple

varieties getting 1 1/16 lengths. Micronaire on most of the cotton showed 3.0 to 4.9 with an average of about 3.4 to 3.5.

Gins in the Earth area lead in the number of bales ginned with 6,979 crossing the scales at five cotton gins.

Five gins in the Olton area are close behind with 6,488 bales counted Friday afternoon.

Hart Camp-Fieldton gins accounted for 2,052 of the total.

The two gins in Littlefield and the gins at Lums Chapel, Bainer Switch and Lumsden had weighed 1,335 bales across their scales.

Amherst gins showed 1,119 bales, Sudan had ginned 830, Spade, 439, and Springlake 360 to bring the county total to 19,788 when the bale count was made.

Irrigation Survey Shows 5,650 Wells

Facts and figures that describe irrigation in Lamb and 41 other High Plains counties are now available from Buddy Logsdon, County Agricultural Agent.

Logsdon says these irrigation facts are

published each year by the Texas Agricultural Extension Service in the High Plains Irrigation Survey.

Although special emphasis is placed on 1969 irrigation, long term trends for major crops, number of wells, pumping capacities, and irrigated acreage are also included in the survey. This information is combined to show changes that have taken place in High Plains irrigation over the years, adds the agent.

Yields Down For '70 Crop

Lamb County cotton yields for the 1970 crop are down approximately 13 per cent from 1969, according to ASCS manager J. A. Aten.

This 1970 crop yield is based on a three-year average which will worsen over the county when the 1969 crop is figured in next year on the 1971 yield.

In Lamb County, approximately 5,650 wells pumped water to 285,320 acres of cropland in 1969. In addition to the wellwater pit and playa lake water sources offer economical irrigation and contribute significantly to crop production and water conservation. More playa lake water should be used for irrigation, says Logsdon.

Of the major crops in Lamb County, Logsdon points out that 107,000 acres of grain sorghum, 80,000 acres of cotton, and 30,000 acres of soybeans were irrigated during 1969. These acreages alone show the importance of Lamb County irrigation.

Additional income from irrigating See IRRIGATION, Page 5

Even with this 13 per cent cut in yields, payment made to cooperators in the government program will increase approximately \$500,000 for the county because of an increase in price-support payments to 16.80 cents and an allotment increase of six per cent.

"This increase in allotment and price per pound more than makes up the decrease," Aten said.

Payment limitations are off for this year following a struggle waged by Congressman George Mahon.

The payment again will be made on acreage planted within the domestic allotment, which is 65 per cent of the total farm allotment.

Price-support loans will be available to cooperators in the cotton program at a national average loan rate of 20.25 cents a pound based on middling 1 inch cotton at average locations.

Early Paper, Stock-In Set

With Thanksgiving Day and two big days for Littlefield's Christmas Stock-In Festival ahead, plans are being made to publish the Leader-News next Wednesday instead of Thursday.

Accordingly, deadlines for news and advertising have been moved up.

All news and ads for the day-early paper must be in by 5 p.m. Monday.

The Leader-News will feature the annual Christmas Stock-In Festival section, in which merchants advertise gift ideas and bargains for two big days of Christmas shopping in Littlefield Friday and Saturday.

Also, the Stock-In Festival also marks the first days for Santa to visit Littlefield. He'll be in Littlefield both days again this year.

Football Contest Deadline Moved Up

Because several of the games listed in this week's Leader-News football contest are being played Thanksgiving Day, the deadline for entries has been moved up to Wednesday at 5 p.m.

Contestants should mail or bring entry blanks to the Leader-News no later than that hour.

The final contest of the year appears in section B today.



LITTLEFIELD SCHOOL COUNSELOR, Mrs. Jo Ann Jordan, goes over tests scores with an LHS student. In addition to regular duties, Mrs. Jordan is conducting parent meetings in junior high and high school to explain students' scores, for general orientation and information.

See SCHOOL, Page 5

1969
LITTLEFIELD HOME LIGHTING CONTEST

ENTRY BLANK

Name

Address

Phone

Complete the blank and mail to bring to the Chamber of Commerce office, 2nd Floor City Hall, P.O. Box 507, Littlefield, Texas. Deadline for entries December 15th.

For Classifieds

Dial 385-4481

Anton SS Class Had Dinner

ANTON—The Progressive Sunday School class at First Baptist Church met in the dining room of the church Wednesday for a Thanksgiving dinner.

B. Forman, M. M. Tidwell, Jim Parker and D. D. Dickinson.

Guests were Rev. and Mrs. D. J. Peters, Rev. H. W. Hill, Dutch Chesser, D. D. Dickinson, B. Forman, Mmes. Edna McReynolds, Lew Jones, Davis, W. O. Wilson, Miss Frances Collins and Mr. and Mrs. Johnie Harper, Sr.



MRS. GEORGE ALAN JONES

Norfleet-Jones Vows Repeated

Miss Susan Dayle Norfleet and George Alan Jones pledged wedding vows in a double ring service Nov. 15, in United Methodist Church in Olton, with the pastor, Rev. Tommy E. Nelson, performing the ceremony.

The bride is daughter of Mr. and Mrs. J. Owen Norfleet and parents of the bridegroom are Mr. and Mrs. Owen E. Jones, all of Olton.

Given in marriage by her father, the bride wore a classic gown of white English net and ivory re-embroidered Alencon lace over white peau de soie. The floor length gown was fashioned with a fitted bodice, scalloped circle neckline, long lace sleeves, and a modified full skirt. A sleeveless cape of the lace, held on each shoulder by a silk bow, cascaded to a chapel length train. Her bouffant veil was held by a bandeau of matching lace flowers. She carried a cascade of orchids and stephanotis.

Attending as maid of honor was Miss Leslie Norfleet, sister of the bride. Bridesmaid and matron were Miss Petty Woodridge of Claude and Mrs. Dwight Carter of Tulla.

Their Empire style gowns were of cut velvet in muted tones of gold, brown and moss green with bodices of pale gold silk organza designed with full sleeves and cummerbunds of golden brown velvet. Headpieces were fashioned of small gold chrysanthemums. Their flowers were cascades of gold chrysanthemums with brown velvet streamers.

Barry B. Prestridge of Galveston was best man. Groomsmen were Eddy Carson of Dalhart and Ronnie Parsons of Lubbock. Seating guests were Jimmy Swanson of Fort Worth, Benny Akin, David Norfleet, and Jackie Burkhalter.

Altar decorations included an arch of candles in crystal votive cups flanked on each side with spiral candelabra, baskets of greenery and a candle tree. The kneeling bench was covered with white satin, and the chancel rail was graced with garlands of greenery. Lighting the center aisle were votive cups entwined with greenery.

Mrs. Delmer Givens provided organ music for the wedding. Lighting candles was Ben Akin.

Guests were greeted at a reception in the home of the bride's parents. Presiding at the bride's table was Miss Tanya Bryant and Kathi Norfleet, and Mrs. Barry Prestridge. At the bridegroom's table were Mrs. Eddy Carson and Misses Valda Jones and Janie Jones.

Gold candelabra with gold candles and the attendants bouquets cascading from candelabra enhanced the bride's table where a tiered wedding cake and punch were served. Silver appointments and chrysanthemums decorated the bridegroom's table from chocolate cake and coffee served.

Arrangements of bronze chrysanthemums placed at vantage points home.

For a wedding in Colorado, the bride wore a yellow and black gown with coordinating accessories.

After Nov. 30 the bride will be at home at Crestview, Corpus Christi and her husband a graduate of Olton High and Texas Tech. Miss Jones is an ensign in the Navy at Corpus Christi.

At Tech, the bride member of Angel Phi Kappa Education and the Education Association. The bridegroom was a member of the Finance Association, Gamma Sigma, and Phi Phi at Tech.

Limited Time Only - Special Offer



Jacqueline Cochran's Flowing Velvet Skin Beautifiers And Cosmetics

TWO-FOR-ONE SALE

Buy One - Get One Free During This Sale

- * Eye Cream
- * Radiant Masque
- * Joy Of Bathing
- * Pick Your Tan
- * Hydroph Cream Soap
- * Hand & Arm Cream
- * Cosmetic Glove
- * Sheer Body Beauty
- * Hair Spray
- * Anti-Perspirant Spray
- * Radiant Glo-Makeup
- * Liquid Make Up
- * Opaline Make Up
- * Face Powder
- * Pressed Powder Compacts
- * Cream Rouge
- * Rosy Outlook Blushers
- * Cake Eye Color
- * Cake Eyeliner
- * Mascara
- * Brow Make Up
- * Model Mouth
- * Lipsticks
- * Image Of Youth

Come In Now And Save On Jacqueline Cochran!

(THIS SPECIAL OFFER EXCLUDES FLOWING VELVET LOTION AND SUPER-RICH NIGHT CREAM)

BRITTAIN PHARMACY
430 PHELPS AVENUE PHONE 385-5114

Amherst Study Club Plans Yule Tide Activities

AMHERST—The Amherst study club met in Mrs. Ray Blessing's home Tuesday night with Mrs. Lee Payne and Mrs. Debra Harmon as co-hostesses.

The club collect was repeated in unison.

The subject of the program was "A Better Impulse—to Communicate With Youth". Mrs. Clyde Brownlow, program chairman, led the program and introduced three high school girls who appeared on a panel. "The Impulses of Today's Youth," Linda Gossett's subject was "Religion Impulses," "Social Impulses," Debbie Mills and Vicki Cook's was "Educational Impulses". A question and answer period followed. Mrs. A. J. Mote, president, presided in business following the roll call that was answered with "My ambition as a Youth".

An annual club project is to send gifts to the State Hospital at Wichita Falls for Christmas. Club members will leave gifts at the Blossom Shop to be mailed by Dec. 10. Shut-ins and elderly are to be remembered. Names were drawn for the Christmas gift to be exchanged at the meeting Dec. 15 in Mrs. W. P. Holland's home. Her co-hostesses will be Mrs. Jim Humphreys, Mrs. Ed Elms and Mrs. Homer Peel.

Refreshments of fruit turnovers, coffee and spiced tea were served to 14 members and guests, Mrs. Alvin Mills, Mrs. Hurlburt Slate of Oklahoma City and the three high school girls who were on the program.

SS Classes Have Supper

OLTON—The Dorcas and Sarah Sunday School classes of the First Baptist Church met Monday night at PCA Hospitality Room for their annual Thanksgiving social and salad supper.

Husbands were invited guests.

The invocation was given by Duward Price, adult Sunday School Superintendent.

Mrs. L. G. Elkins, teacher of Dorcas Sunday School class, gave the welcome.

Mrs. H. B. Carson, who teaches the Sarah Sunday School class, read a comedy entitled, "Confusion."

The serving tables were decorated in the Thanksgiving theme by Mrs. Tom Smith, member of Sarah Sunday School class.

Following the meal, the group played "42".

Attending were Mmes. and Messrs. Duard Price, Doyle Zinson, Jim Hyatt, R. G. DeBerry, L. G. Elkins, Homer Curry, Max Malone, Tom Smith, Cass Kirkpatrick, also Mmes. Jewell Campbell, H. B. Carson, Austa Fisher and Mary Smith.

LWML Has Regular Meeting

A meeting was held Lutheran Women's League Friday, Nov. 14. Florence Syms presented the program.

Projects the past were shipping used clothing to local children school, welfare, collecting eye for needy.

Future projects discussed.

A bake sale was planned a Christmas party was Dec. 12 in the home of Curtis Wilkerson.

Newly elected officers: Mrs. Gene Bartley, chairman; Mrs. W. W. Birke, secretary; Mrs. E. H. Hobrathsch, Christian chairman and Mrs. Ernie historian.

Mrs. Jezisek Named Queen

ANTON—The Anton Club met Saturday, Nov. 9:30 a.m. with six members present.

Queen of the week was Paul Jezisek.

Total pounds lost for club for the week was and one-half.

PRE-CHRISTMAS END-OF- SEASON COLOR TV SALE

You Asked For It! ... HERE IT IS! SAVE \$100 Or More At Pat's Expense! LOW TO NO DOWN PAYMENT NO PAYMENTS 'TIL NEXT YEAR

Motorola 23" "Fast-Back" Chassis Color TV



Now Motorola offers an easy-to-service "Fast-Back" Chassis Color TV, plus solid-state reliability at 17 vital points

MOTOROLA the Creators of Quasar Color TV



PAT'S RECORD CENTER

LITTLEFIELD

MRS. J. B. McSHAN 385-4337



Kay Herring Named Queen

AMHERST—The Be-Little TOPS Club met Tuesday night in a regular meeting.

Each lady was weighed as she came in.

The chairman Joyce Streety presided.

Roll call was answered with the number of pounds lost or gained the past week.

The club pledge was given in unison.

The runners-up for weekly queen was Rose Zyruba and Virginia Nichols.

The queen was Kay Herring. Mildred Smiley had eight weeks perfect attendance.

A letter was read concerning the IRD. (International Recognition Day) to be held in Houston May 14, 15, and 16, 1970.

Seventeen members were present.



ELAINE SIMMACHER

Couple Plans Dec. 29 Vows

Mr. and Mrs. Frank Simmacher of Pep announce the engagement of their daughter, Elaine, to Jim Bragg of Madison, Wisconsin.

Miss Simmacher is a graduate of South Plains Junior College in Levelland and Texas Technological College in Lubbock. She has taught in Texas schools and served two years with the Peace Corps in Bolivia.

Mr. Bragg, a former 4-H Peace Corps Volunteer to Brazil, is a University of Wisconsin graduate and a Delta Theta Sigma. He is presently doing graduate work at the University of Wisconsin.

The wedding will be held Dec. 29 in Saint Philip Neri's Catholic Church in Pep. They will reside in Beaver Dam, Wisconsin, where Miss Simmacher is teaching.

Captain Speaks To Anton Lions

ANTON—Captain Allen R. Earls, Pilot Instructor at Reese Air Force Base, was the featured speaker at Anton's Lions Club meeting Monday evening.

He told of his experiences as a trainee, his ferrying a fighter plane to the Far East and of the actual combat flying he did while in Viet Nam.

Birthday Calendars were given to the members present for distribution.

Forum Club Plans Events

A business meeting of the Forum Club was held Thursday evening, Nov. 13, in the home of Mrs. Frank Cummings.

Presiding over the meeting was Mrs. Kenneth Lynn, president.

Plans were formulated for the Forum to serve refreshments for an open house following the annual meeting of the Friends of the Lamb County Library Sunday, Nov. 16.

Attention was called to a communication from the General Federation of Women's Clubs Headquarters relating that Mrs. Richard M.

Nixon suggests that club women make an effort to help the lonely elderly of their communities.

In further business, members voted to make a monetary contribution to Girlstown to be used for purchasing shoes.

The next meeting of the Forum will be its Christmas party Dec. 12 in the Flame Room at which time members will bring Christmas gifts to be sent to the State Hospital at Wichita Falls.

FOR CLASSIFIEDS
DIAL 385-4481

and Mrs. R. T. Brewer returned to Harrison, after spending eight days at the home of Mr. and Mrs. Lichte after coming for funeral of E. D. Brewer Nov. 10, at the Sanders Funeral Chapel. The Brewers brothers and cousins of Lichte. Other recent guests in the Lichte home were Mrs. Vernon Brewer of Lubbock, Mr. and Mrs. L. Witcher, Mr. and Mrs. E. Witcher and Mrs. Mrs. D. W. Witcher, Robin, Kevin of Dallas, and the children and families, Mrs. Cheryl and Scott, and Mrs. Les Lichte, Gayle, and Gary, all of Lubbock.

Mr. and Mrs. W. S. McCracken of Brownfield were guests of their daughter and family, the Gerald Kehoe's last Tuesday. Mrs. McCracken attended the luncheon of "We, The Women" with her daughter, who is president.

The First Christian Church will have their annual Thanksgiving dinner at the church today following the morning services.

Nancy Keeling, a student at Texas University, will be coming home this week to spend the Thanksgiving holidays with her parents, Mr. and Mrs. Ray Keeling and sister Jean.

Mr. and Mrs. James Renfro and family of Virginia, arrived this week to spend the holidays with his parents, Mr. and Mrs. Raymond Renfro.

Mr. and Mrs. Monte Hulse and family of Dallas have been visiting his parents, Mr. and Mrs. Ray Hulse this week.

Troy Arms has been a patient in Littlefield Hospital this week.

Mr. and Mrs. Gus Gallini and family of Lubbock, spent last Sunday with his parents, Mr. and Mrs. Johnnie Gallini.

Mrs. A. D. Ward, a teacher in the Littlefield schools, had surgery Thursday in the Methodist Hospital in Lubbock.

Guests Sunday in the M. V. Kelsey's home were their son and family, Mr. and Mrs. Troy Kelsey of Petersburg, and Miss Elsie Grace of Lubbock.

Mrs. Cecil Martin was in Quanah this week to visit her parents, Mr. and Mrs. M. Fryer. Her father was to have surgery.

Mrs. I. T. Shotwell Sr. is a patient in Medical Arts Hospital.

The Youth Choir of the First United Methodist Church

will be in the choir loft today and lead in singing, singing the responses and special music. Phil Anthony, Chancel Choir director, directs the youth choir.

Aaron Stanley and James Renfro are deer hunting in East Texas this week.

Mrs. A. H. Schivally, president of the Littlefield Garden Club, Mrs. Herbert Dolle, vice-president and Mrs. C. H. Messer, secretary, attended a zone meeting in Ralls, Nov. 13. There were nine state affiliated judges present. The meeting was held in the First Baptist Church and 100 Garden Club members attended. The Littlefield Garden Club will be entertaining the zone meeting in 1970.

The Littlefield Garden Club will entertain the County Council of Garden Clubs, Monday, Nov. 24 at 2 p.m. in the Flame Room. Mrs. Charlene Williams of Levelland, will give a demonstration on making Christmas decorations.

Mrs. Dora Davis of Georgetown returned home Tuesday after a visit with her sister and brother-in-law, Mr. and Mrs. Roy Young.

Mrs. Elmo Jones of Dickerson is visiting her parents, Mr. and Mrs. C. H. Calvert. Elmo will be coming for Thanksgiving. Mrs. Ty Jones and baby girl of Slaton, were guests in the Calvert home last Wednesday.

Mr. and Mrs. Dan Holladay of Teague, are visiting in the home of his parents, Mr. and Mrs. D. W. Hoaday and will remain here thru Thanksgiving.

Mable Alexander was honored on her birthday at the home of Mr. and Mrs. Weldon Gage and Son, Tracy, recently. Mrs. Freda Dyer, mother of Mrs. Gage, assisted with hospitalities. A few close friends were invited to attend.

Shower Honors Jana Sharp

A bridal shower for Jana Sharp, bride-elect of Steven Drane from Kerrville, was given Tuesday, Nov. 18 in the Flame Room.

Corsages of mum petals were presented to Jana and her mother, Mrs. Hazel Sharp.

Mrs. Gwen Zahn and Mrs. Doniece Jones served punch and cake to 40 guests from a serving table with a white satin skirt ruffle and overlay of white hand-crochet cloth over green with a centerpiece of white mums, green candles and a bride and groom.

Mrs. Frances Allison registered guests in the bride's book.

Out-of-town guests attending were an aunt of the bride, Mrs. Bertha Goodman from Klammoth Falls, Oreg., Mrs. Marie Payne from Amherst; Mrs. Doris Vandaviera and Mrs. R. O. Gregory from Muleshoe.

The hostesses were Mmes. Berniece Armistead, Carolyn Sullivan, Tiny Elder, Rosa Hood, Melba Reast, Marie Payne, Lucille Butler, Juanita Howard, Louise Perkins, Julia Randall, Frances Allison, Charlene Reast, Willie B. Cook, and Nell Jensen. Their gift to the bride was an avocado electric mixer.

Family Health Center
Billain Pharmacy
P. O. BOX 1227
Littlefield, Texas 79230

PRATT'S DIAMOND, WATCH AND GIFT
Pre-Holiday SALE
OVER 60 WATCHES ON SALE - UP TO 60% OFF REG. PRICE

ONE CARAT LADIES SET -OR- ONE CARAT LADIES WEDDING BAND YOUR CHOICE \$199.95
LADIES DIAMOND WEDDING SETS WHITE OR YELLOW GOLD \$39.95
MEN'S Diamond Ring Reg. 59.95 Value \$42.88
Diamond Princess Or Dinner Ring Regular 14.95 \$9.88

INGRAM
LADIES Reg. 12.95 Now Only \$8.88
MAN'S Reg. 11.95 Now Only \$8.88
VANTAGE
17 JEWEL Autowind Water Proof \$19.88
CALENDAR Autowind Water Proof \$19.88
ELGIN
23 JEWEL Man's Autowind Waterproof Reg. 69.95 Now \$32.88
DAY & DATE Sold Wind \$36.88
HAMILTON
17 JEWEL Man's Dress Watch Reg. 55.00 Now \$34.88
AUTOWIND Man's Stainless Steel Reg. 69.50 Now \$47.88
TIMEX WATCHES In Stock We Also Service Timex Outside Warranty
SPEIDEL CALENDAR WATCHBAND REPLACEMENT CARTRIDGES \$1.50
CROTON
17 JEWEL Ladies Reg. 59.95 Now \$37.88
12 DIAMOND Ladies 14 K gold Reg. 175.00 Now \$99.95
DAY & DATE Man's Autowind Reg. 49.95 Now \$38.88
Reg. \$495 LADIES ONE CARAT DIAMOND WATCH \$299 By Croton - 14 K Gold
GRUEN
17 JEWEL Sold Wind Now \$39.88
DAY & DATE Autowind Reg. 69.95 Now \$48.88
17 JEWEL Ladies Reg. 29.95 Now \$22.88
17 JEWEL Ladies Reg. 34.75 Now \$26.88
6 DIAMOND Ladies Reg. 89.95 Now \$66.88

Crystal Stem Ware \$1.99 Per Stem
Pratt's Jewelry 5TH & 4TH
6-Transistor Radio Now Only \$3.99 LAYAWAY NOW FOR CHRISTMAS!

LITTLEFIELD SCHOOL LUNCH MENU
MONDAY: Hamburgers, lettuce and tomatoes, pickles and onions, French fries, milk and banana pudding.
TUESDAY: Turkey, dressing and gravy, buttered peas, cranberry sauce, rolls, milk, and pumpkin pie.
WEDNESDAY: Chicken salad sandwiches, pimento cheese sandwiches, tossed salad, Tater Tots, and fruit cobbler.
HAPPY THANKSGIVING!

THIS WEEK ONLY!
Pencale® white cotton percale sheets at Special Low Prices

186 count combed cotton
Twin 72" x 108" flat or Elasta-fit Sanforized® bottom... 3 for \$5
Full 81" x 108" flat or Elasta-fit Sanforized® bottom... 2 for \$5
Pillow cases... 4 for 2.50

SAVE NOW... USE YOUR PENNEYS CHARGE ACCOUNT

Jr HD Club Has Meeting

ANTON—The Anton Junior Home Demonstration Club met Friday, Nov. 14 in the home of Mrs. Buddy Spears with 11 members present.



Christmas Comes So Colorfully This Year

A snow scene comes alive in a rainbow of pastels, the nativity is glorified in warm, rich hues. Santa and his reindeer dash through the sky in a blaze of color. Color is the keynote in Hallmark Christmas art this year, and there's a wide array of cards to fit every taste, whether traditional, religious or contemporary. Any card can be imprinted with your name to make it elegantly yours. This year, say Merry Christmas colorfully with a Hallmark personalized card.



MR. AND MRS. GORDON LYNN BRYANT

Andrews-Bryant Vows Pledged

The Elms Chapel of the First Methodist Church of Littlefield was the setting for the wedding uniting Miss Marion Sue Andrews and Pfc. Gordon Lynn Bryant of Tahoka, Wednesday, November 12 at 7:30 p.m. George S. DeVoll, Church of Christ minister in Lancaster, officiated.

The bride is the daughter of Mr. and Mrs. Cecil R. Andrews of Littlefield. Parents of the groom are Mr. and Mrs. Bert Bryant of Tahoka.

Presented in marriage by her father, the bride wore a formal gown of satin and chiffon. Her veil was of silk illusion attached to a crown of lace and seed pearls. Her bridal bouquet was of white frenched mums and an orchid.

Miss Karen Bridges was maid of honor. She wore a formal gown of hot pink. Her veil was of pink silk illusion attached to a pink velvet bow. She carried a Dutch bouquet of frenched mums with pink streamers.

Chuck Lay of Levelland served as best man. Billy Birdwell and Chan Thomas, both of Tahoka, seated the guests.

Wedding music was furnished by Miss Charlotte Hinds. Miss Pam Stafford, soloist, sang "Walk Hand in Hand," and "The Wedding Prayer."

The mother of the bride wore a cranberry suit with gray

accessories. The groom's mother wore a blue dress with black accessories. Both wore corsages of white frenched mums tinged in pink.

A reception followed the ceremony at the home of the bride's parents.

For traveling, Mrs. Bryant wore a coat dress of red wool with red and blue accessories and the corsage taken from her bridal bouquet. The bride is a graduate of Littlefield High School and attends South Plains College in Levelland.

The groom is a graduate of Tahoka High School. He is stationed with the Army in California.



NEWLY ELECTED OFFICERS OF THE South Photography Association are president, Wiley R. of Littlefield, first vice-president, Darrell Th. second vice-president, Joyce Williams, secretary-treasurer, Tessie Dickerson, all of Lubbock.

Mrs. Grimes Shower Honoree

ANTON—Mrs. Tom Grimes of Lubbock was honored with a pink and blue shower Saturday, Nov. 15 in the home of Mrs. Ted Rendleman in Anton.

Calling hours were from 9:30 to 11 a.m. Twenty-five guests registered. Out-of-town guests were the honoree's aunt, Mrs. F. N. Tidwell and her cousins, Janice Tidwell and Mrs. Nancy Biffle, all from Lubbock.

The guests were served coffee, tea and nut breads from a table laid with a white lace cloth that featured an arrangement of blue and pink flowers. China and silver appointments were used. Hostesses alternated at the serving table.

Among the many gifts received was a high chair from the hostesses, who were Mmes. Carl Rushing, Chester Jones, Leon Wooten, Sid Landers,

Larry Campbell, Overstreet, Bob McGee, Gilliam, Don Brad Rendleman.

Girl Scouts

Demonstration

ANTON—The Anton Scouts met Monday, at 4 p.m. in the scout room. Shirley Oakley demonstrated on Tri-Chem paint and shading on liquid embroidery. Mrs. Hoyt Cranfill refreshments to Anita Edna Rendon, Amy Rosa Rendon, Terri Butler, Sherrill Betty Mathis, Cynthia one visitor, Truby Jones, Scout leaders present Mrs. Richard Burt and Doyle Butler.

Study Club To Sponsor Bazaar

ANTON—The Anton Study Club met Monday evening in the home of Mrs. Edgel Sliger. Mrs. Jim Copeland was co-hostess.

Mrs. Orval Williams presided. Mrs. Jack Grace led the Pledge of Allegiance to the flag. Mrs. Edith Whitfield was leader of the program on Americanism.

Gene Ann Herrin and John Cantu related their experiences as delegates to the Texas American Auxiliary and Legion held in Austin last June. Gene Ann was the delegate sponsored by the club.

The club is sponsoring a Bazaar in the Community

Center Building on Dec. 6 beginning at 9 a.m.

Eighteen members, one associate member, Mrs. Al Herrin, Gene Ann Herrin and John Cantu attended the meeting.

The next meeting will be Dec. 8 in the home of Mrs. H. G. Timms.

MORE SERVING

The larger the turkey the more people each pound serves. A four-pound turkey has four servings, an 8 pound bird equals 10 servings, a 12-pound one provides 20 servings and a 20-pound turkey has 40 servings.

PRINTED & PLAID KETTLECLOTH
45 Inches Wide
Reg. 2.49 \$1.69
Reg. 1.98 \$1.39

One Table
100% Cotton
COTTON & BLENDS
45 Inches Wide
Reg. 1.19 79c
Reg. 1.29 89c
Reg. 1.49 98c
Reg. 1.98 \$1.39
Reg. 2.49 \$1.69
Reg. 2.98 \$1.98

FALL WOOLENS
56 Inches Wide
Reg. 3.98 \$2.69
Reg. 4.49 \$2.98
Reg. 4.98 \$3.49
Reg. 5.49 \$3.69
Reg. 6.49 \$4.49
Reg. 7.98 \$5.98
Reg. 12.98 \$7.98
Reg. 13.98 8.98

WOOL DOUBLE KNIT
60 Inches Wide
Reg. 7.98 \$5.98
Reg. 9.98 \$6.98
Reg. 10.98 \$6.98

BONDED COTTON WITH MATCHING TRIM
Reg. 1.98 \$1.39
Reg. 1.49 98c

Plain and Embroidered
Corduroy & Velour
45 Inches Wide
Reg. 2.79 \$1.89
Reg. 2.98 \$2.19
Reg. 4.49 \$2.98
Reg. 4.98 \$3.49
Reg. 5.49 \$3.69
Reg. 9.98 \$6.98

CLEARANCE

FALL PIECE GOODS

ONE GROUP OF

DACRON KNIT

58 To 60 Inches Wide
Reg. \$5.98 and \$6.98

\$3⁹⁸

One Table Of
COTTON PLAIDS
45 Inches Wide
Reg. 3.49 **1⁹⁸**

100% Cotton
SAILOR CLOTH
45 Inches Wide
Reg. 1.79 **1¹⁹**

ONE TABLE OF
Cottons & Blends
1/2 PRICE
Values \$1.98 To 2.98 Yd



Sale Starts Monday, 9 A.M.

PAUL HARVEY

Wait'll Next Year!

NIXON VOTERS, impatient with the President's ambitious promises, are waiting for the next election campaign, but they are already campaigning in the next election. Here's how that works.

EVERY MEMBER of Congress has an important stake in next year's election whether he, himself, is a candidate or not. Being a member of the majority party in Congress involves powerful committee chairmanships, prestige, often even improved accommodations. Presently Republicans need 30 seats to gain control of the House, and to dominate the Senate.

PRESIDENT NIXON will be concentrating his coming 12 months on "looking good," encouraging election of a GOP Congress. Democrats in Congress will also try to "look good," however that involves restraining, resisting or, where convenient, embarrassing the White House.

WHAT MAY HELP you better to understand the protracted operation over the Haynsworth nomination which, in any less active political climate, would have been approved routinely. President Nixon, on Oct. 13, urged Congress to stop playing partisan politics and start passing proposed legislation relating to health, draft reform, tax reform,

revenue reform, postal reform, Social Security reform, electoral reform, law enforcement and so on.

WITH THE EXCEPTIONS of extending the surtax and voting for the ABM, his Congress has been long on talk and short on action.

However the President pleads his cause, he knows Congress will not declare a moratorium on partisan politics; at least it never has.

MORE LIKELY, for enactment of any meaningful reforms he and we will have to wait until next year.

Next year, needed or politically popular White House legislation will have been sufficiently rephrased so that it will have a Democratic flavor.

And everybody is going to try to win for himself credit for ending U. S. involvement in Vietnam.

THE MOST POTENT political issues in 1970 will be Vietnam and any threat of recession.

There is time between this November and the next one for the war to be phased out and any economic decline to be reversed. If the election timetable which governs partisan politics sometimes requires frustrating delays, it works for your best interests, too.

FOR THE WHOLE SYSTEM which we sometimes pretend to deplore involves the parties of two parts trying to outdo one another in a least a periodic effort to woo you.



CHARACTER DAY at Elementary II brought many classic literary characters to the language art classes taught by Nina McBride and Mrs. Harry Ford. Sleeping Beauty, Doolittle, Jim Thorpe, Lou Gehrig, Lord Nelson, Huckberry Finn and Uncle Sam are represented here along with various witches, pirates and other familiar and not so familiar story book people.

Language Art Classes Report 'In Character'

Tom Sawyer, Huckberry Finn and Lord Nelson were all at Elementary II Thursday.

So were Uncle Sam, Doolittle and Abraham and Nancy Lincoln.

These famous people were portrayed by fifth grade language art students taught by Mrs. Harry Ford and Miss Nina McBride.

Once every six weeks the group has a "Character Day" and students come dressed as their favorite character in a book read during this period.

"They're really giving book reports, but just don't realize it," Mrs. Ford said. "The students dress up like their favorite character and tell what this character did in the book and the other students have to guess who the student represents."

The two team teachers find this a way to motivate students to participate. Students also read more, trying to find unusual characters.

Students are required to fix some sort of costume once a year, but most find it so much fun they want to participate in costume each time. Whether dressed to represent a character or not, each student must give his report.

Costumes on Character Day usually

tell a story on the type books a student likes to read.

Sports stories aren't for boys only. Thursday one fifth grade girl wore a football uniform and helmet to portray Jim Thorpe. Another femme fatale was Lou Gehrig.

Gulliver was there, the director of the FBI, Henry Ford and the pirate in Swiss Family Robinson.

Biographical characters outnumbered fictional imposters, but Mary Poppins, Heidi and Sleeping Beauty were represented.

"They get so excited trying to guess who each one represents," Mrs. Ford said.



Thanksgiving Service Set

A community-wide Thanksgiving service is scheduled Tuesday night at 7:30 in the sanctuary of First Baptist Church.

Rev. Philip Berry, pastor of St. Martin's Lutheran Church, will deliver the Thanksgiving message for the service and combined choirs from the host church will sing.

The Church Choir, Chapel Choir, Cambiata Choir and Crusader Choirs will join efforts in singing Thanksgiving numbers, including "Praise To The Lord."

All people of the community are invited to attend the event, which is being sponsored by Littlefield Ministerial Alliance.

IRRIGATION

Continued from Page 1

these and other crops contribute heavily to the county economy. Irrigation water, continues Logsdon, contributes heavily to the wealth of many people in the county, whether received directly by farmers or indirectly through other businesses and employment.

A point of major concern to all of us, cautions Logsdon, is that an average of 136 acres were irrigated by each well in 1950, 72 in 1960, and only 51 in 1969.

The number of wells pumping irrigation water increases every year. Growers continue to adjust irrigation practices in order to make more efficient use of available water. For many farmers this means watering fewer acres.

Whether your interest in irrigation stems from a farming enterprise, commercial business, or some other, Logsdon emphasizes that the 1969 High Plains Irrigation Survey has up-to-date irrigation information for you. Call or come by for it.

DIAL 385-4481

FOR CLASSIFIEDS



THE FARMER'S WIFE

Never Shall Meet

By LIBBY MUDGETT

I'VE ALWAYS HEARD that East is East and West is West and never the twain shall meet.

After reading how today's Emily Post, Amy Vanderbilt, suggest to give a dinner party, I'm convinced that country is country and city is city and never those twain shall come within a hair's breadth of one another.

IN HER "Private Secrets of Entertaining" that she wrote lies again ammunition to end all friendships forever in rural America.

Right off the bat she fires the first shot that would get her in trouble out here on the wide open prairie.

"For me the right size dinner party is seven...the extra is, if possible, a man, but I never worry about an uneven number or about 'mating' everybody."

SINCE HER CROWD is married and she is too, well, see what I mean? Ask one of your friend's husbands to dinner sometime without asking her and see what happens.

"Because I am very busy and I assume that many of my friends are, I prefer to put my invitations in writing."

SHE CONTRADICTED herself right there. If she's all that busy, how does she have time to write instead of telephone?

"If it is to be black tie, I write Black tie in the lower left."

That would really do it! If a farmer gets off the tractor in time to take a shower before going to a dinner party, the hostess should feel herself complimented, because he went to lots of trouble in a hustle.

"FOR BIG PARTIES, I hire for the evening two neighborhood boys to stand duty in the hall. They open the door, take the men's coats, tag them (you can get these supplies in any stationery store), hang the coats in the hall closet...."

Out in the country, you're downright lucky if the host or hostess that is preparing a dinner has time to call the dogs off when you drive up and as for assuming men can't find a place to put their windbreakers all by themselves....

"The ladies are directed to my bedroom where there is a rack with plenty of hangars. I prefer not to

have coats on my bed and most guests realize this."

NO COUNTRY LADY would dare take more than a sec to throw her wrap on the bed because she knows jolly well she'd better get into that kitchen and help finish getting that dinner on the table or else.

"I NEVER introduce guests all around the room...I introduce them to one or two people and know they have sophistication enough to go on from there."

I told you she'd lost every friend she had before she even got started.

"Once or twice a year I employ the services of Rudy Stanish, 'The Omelet King'...For my favorite party, I.....work with my housekeeper and a Finnish waitress. My dining room is informal and I am not very fond myself of highly stylized meals and service."

SOMEDAY I JUST gotta have Amy to one of my "dinner parties" and see how in tarnation she would classify this type of entertaining. But on second thought, I'd probably be better off not knowing.

"We limit our service of cocktails nearly always to not more than two before dinner. With any dinner party we have, wine is served. Our friends are not drinkers."

WELL NOW, gollllllllleeeee!

"I never, by the way, act as a waitress myself. In clearing the table, I MAY accept the help of one person who knows my kitchen well and I trust with glasses and dishes."

WONDER WHAT she'd think about the farm woman's casual "Lissen, yall clear the table while I cut the cake and we'll all serve it, o k a y?"

"People usually ask for recipes and I am very flattered and make a note to have the recipe typed up and sent to the guest."

I CAN JUST SEE the expression on any of my friend's face after asking for a recipe and being told I'd make a note of it.

As for Amy's menus (she had four different rabbit food suggestions), if that were all I served at a dinner party, my guests would still be sitting at the table at midnight waiting on the rest of the meal.

And I wouldn't blame them.

THE ABUNDANT LIFE

Held Accountable

By BOB WEAR



ONE OF THE GREAT observable facts in human behavior is in the difference between being responsible and not being responsible for the outcome.

When we are being held accountable, we will usually be very careful about what we say and do. When not being held accountable, we are less likely to act responsibly.

IF PEOPLE ARE NOT responsible for the outcome, they are inclined to be very bold to express views of what should be done.

It is much too easy to freely express ideas about what should be done, when we are not to be held accountable.

THIS COMMON WEAKNESS causes much of the difficulty in the person to person relationship. The results are often disastrous. It is also prominent in the words and actions of the people toward public officials.

The public official will be held responsible for the outcome of his actions. He may act under the illegitimate force of some noisy minority. If he does, he, and not they, will be accountable.

If the results are wrong, these same people will say, "He should not have listened to us." They will say, "He should have known better."

WHEN WE DO NOT have to give an accounting for our views, or our actions, we are very likely to be irresponsible. On this basis, much of what is being said and done today is irresponsible.

We are surely able to see that none of us can afford such careless behavior regarding our personal or our national welfare.

WHEN WE TALK or act without being informed, we are being irresponsible. We know when we are not informed, and must keep our opinions to ourselves. Under such circumstances, we can encourage the persons who are

informed and will be held accountable for their actions.

Cooperation with those who know, and must answer for their actions, is the great need today.

Of course, we may have justified suggestions to make to the persons responsible for the outcome, but let us make sure that they are just suggestions.

WE CAN EASILY become part of an irresponsibility which we cannot afford. We do this when we, by force, cause unenlightened or hasty action by the persons in authority.

It is one of the worst forms of presumption, when we assume that we know what to do in areas of action which are completely out of our range of knowledge and experience.

This kind of foolishness, which has become so much part of the present-day human scene, has always been wrong. Its ultimate results vary from disappointment to disaster.

WE DO NOT ALWAYS know what is best. Assuming that everybody is conscientious and honestly concerned, we must admit that we will not always know what is best. Therefore, we must depend upon others for so many things which touch our lives one way or another.

We can help by giving them a fair chance to make decisions, and to act on the basis of what they know.

IF WE ARE GOING to interfere with the work of duly elected and appointed persons, there are guide lines we must follow.

We must be informed, our conclusions right, our reasons sound, and our aims worthy.

WE MUST NOT be ruled by prejudice, selfish interests, conceits or any other degrading feeling or motivation. This is not all. We must be doubly sure that we are not being duped by those who wish to cause disorder and confusion.

THE PHILOSOPHER

Humor Needed



Editor's note: The Sandhills philosopher on his Johnson grass joins the television comedy this week.)

After reading about it in the papers and listening to it on the radio—I'm talking about the big comedy stirred up by Vice President Agnew over the way the nation handles the news—I've decided what this country needs is a Department of Humor with full cabinet status.

Now you take Mr. Agnew's complaints about the way a lot of commentators handled President Nixon's speech a while ago. As he reported, as soon as Mr. Agnew got through speaking, these commentators came on and sat there tearing his remarks apart explaining what he said and saying and generally going on. Agnew objected to it, said they shouldn't let the public digest the news on its own.

I hadn't thought of it that way. I know these commentators are there to contribute anything of influence anybody, I thought there were because television has an inflexible schedule, and ends a program at say 10:00 p.m. till 9, but always exactly one hour or half-hour, and it was my job to fill out the 10 minutes over from the President's speech. I didn't hear what they said and I left to get a drink of beer, but I didn't suppose anybody paid any attention to what they were saying. I thought I was just killing time till the show reached 9 and the regular medicine commercial could

come on, although of course it could have been the one about false teeth.

A Department of Humor could be used to explain that the only people who take the commentators seriously are the commentators and that if say Gunsmoke ever ended 10 minutes short of the hour they'd be used to round out the clock with a discussion of the sociological-economic impact of Festus Hagen.

As for Mr. Agnew's complaint that television concentrates on the sensational, like focusing on a window smashing by a few marchers when 100,000 others are walking peacefully, or on 50 students throwing a dean out when 20,000 others are in their rooms studying or reading comic books, he's right, of course, but that's human nature for you.

There never was a football game so exciting that the fans' attention couldn't be drawn away, even during a tie-breaking touchdown run, by a fist fight in the stands between two drunks.

Of course, one fist fight right after another would finally become boring, and Mr. Agnew is right in sensing that the mob scenes are becoming tiresome.

By the way, I asked a man who watches the television news without fail every night what happened a few minutes after the show was over last night since I'd missed it and for the life of him he couldn't tell me.

A lot of things on television shouldn't be taken too seriously. Make that 95 per cent.

Yours faithfully, J. A.

LAMB COUNTY LEADER-NEWS

MEMBER NATIONAL NEWSPAPER Association - Founded 1885

ESTABLISHED 1923
Lamb County Leader and County Wide News combined Feb. 13, 1969.

Editor & Publisher: BILL TURNER
News Editor: JOELLA LOVVORN
Staff Writer: WILAH RODGERS
Society Editor: WANDA STRANGE
Advertising-Sports: EMIL MACHA

PUBLISHED SEMI-WEEKLY, each Sunday and Sunday morning by The Leader-News, 313 W. 4th, Littlefield, Texas, 79339. Entered as second class mail in the U. S. Post Office, Littlefield, Texas, 79339, under the act of March 3, 1879. Subscription rates: by mail in Lamb and adjoining counties, \$6 per year; elsewhere, \$8 per year. Carrier Boy delivery, 70 cents per month. Single copy rates, 10 cents on Thursday and 15 cents on Sunday. Classified advertising rates: 6 cents per word first insertion, minimum \$1. 3 cents per word thereafter. Telephone: 385-4481.

OUT OF SIGHT SAVINGS

are found at
E C Rodgers
 26th Anniversary Sale
 Store Wide Specials
 "Like Buying Wholesale,"
 featuring Name Brands at
 Prices you can afford
 some items are priced
 as low as 1/2 price
 and below
 Come in and take
 advantage of the bargains

E. C. RODGERS
 229 PHELPS Furniture LITTLEFIELD

FOR CLASSIFIEDS DIAL 385-4481

HART CAMP

MRS. EDWIN OLIVER 262-4242

MR AND MRS. Lonnie Adrian Of Canyon, students of West Texas State, spent the weekend with her parents, Mr. and Mrs. L.A. Smith. Also visiting in the Smith home was their other daughter, Mary Bess Smith of West Texas State.
 MR. AND MRS. L.A. Smith visit regularly at Amherst with Mr. Smith's mother, Mrs. Minnie Smith. Her condition continues to weaken.
 MRS. J.C. PENDLETON was released last week from Methodist Hospital in Lubbock after a stay of 12 weeks following an automobile accident. She will be having to return for further treatment.



MR. AND MRS. V.L. Foster and Kimmie were in Lubbock Sunday afternoon to attend the opening of Del-Tex.
 VISITING in the Blanton Martin home Sunday afternoon were Mrs. Martin's brother-in-law and sister, Mr. and Mrs. Grady King.
 MR. AND MRS. W.D. Hukill and children of West Camp visited Sunday afternoon with his parents, Mr. and Mrs. Paul Hukill, and with Mrs. Hukill's parents, Mr. and Mrs. L.W. Sullivan.
 MR. AND MRS. H.J. Harrell and children were Sunday dinner guests of Mr. Harrell's mother, Mrs. Evalyn Harrell, in Lubbock.
 MRS. PAUL HUKILL and her brother, Wayne Barnett of Littlefield, were in Loop Thursday to attend funeral services for an aunt, Mrs. Elizabeth Blair, 93, who died at 6:10 a.m. Wednesday in Brownfield Hospital after a lengthy illness. Funeral services were held in the Church of Christ in Loop.
 MR. AND MRS. Aubrey Neinast honored their daughter, Cindy, with a slumber party Friday night on her 13th birthday. Classmates coming home with her on the school bus were Doretta Couch, D'Lynn Hall, Kay Givens, Cindy Jones, Ronda Martin and Jan Burkhalter.
 GEORGE STEWART and Dewey Parkey are directors of the Lamb County Farm Bureau. Parkey is also serving as Secretary-Treasurer of the organization. They attended an organizational meeting on Tuesday night in the Farm Bureau office in Littlefield.

Two Famous Brand Names
LA-Z-BOY and
DU PONT NYLON
 offer you Exceptional Savings
 during this "Mark of Quality"

SEMI-ANNUAL
 FACTORY
 AUTHORIZED **SALE**



New dimensions in comfort are yours for years to come with either of these specially priced La-Z-Boy Recliner-Rockers! This is a once-a-year opportunity to put comfort and beauty into your home at substantial savings. Wake up your room decor with the chair that responds to your every wish...rocking, TV viewing, lounging, even full bed reclining. During this factory authorized sale, the famous La-Z-Boy Recliner-Rockers pictured here available in the Dupont Mark of Quality nylon fabric of your choice, with new Scotchgard Fabric Protector containing ESQ-Extra Soil Defense. Now, you can own the world's most imitated reclining chair...a genuine La-Z-Boy that is backed by a lifetime warranty. These chairs are especially priced till Christmas. USE OUR CONVENIENT LAY-AWAY PLAN.

E. C. RODGERS
 229 PHELPS Furniture LITTLEFIELD



FIRE CHIEF, LOUIS BOOTH displays the ambulance the Anton Fire Department has purchased from the Wolforth Fire Department with proceeds from the two fish fries sponsored by the department recently. The ambulance came fully equipped.

HOSPITAL NEWS

MEDICAL ARTS HOSPITAL

NOV. 17
 ADMITTED: J. C. Hall, Mrs. I. T. Showell, Sr., Mrs. Floy Young, John Wayne Carrol, Amos Pate.
 DISMISSED: Sharon Smith, Mrs. Marcella Patterson, Mrs. Trinidad Sierra, Mrs. Juanita McGowan, C. C. Serratt.
 NOV. 18
 ADMITTED: Mrs. Drucilla Pugh, Mrs. Maude Grace.
 DISMISSED: Mrs. Betty Ann Hall.
 NOV. 19
 ADMITTED: W. F. Williamson, Larry Hodge, Mrs. Minnie Carrell.

DISMISSED: Mrs. Simona Esquivel, Mrs. Addie Curry.
 NOV. 20
 ADMITTED: Mrs. Verna Munger.
 DISMISSED: Mrs. Alex Kranshar, Mrs. Floy Young.

LITTLEFIELD HOSPITAL

NOV. 14
 ADMITTED: Ansel Doolittle, William Evins, Mrs. Edith Brockette, Victor Diarsing.
 DISMISSED: Mrs. Amelia Davilla and Infant, Rebecca Morehead, Joe Bob Hunter, Ray Baiza, Mrs. Alice Sowers, Carey Gene Gilley, Mrs. Irtie Banks.
 NOV. 15
 ADMITTED: Jeffrey Carr.
 DISMISSED: Mrs. Carolyn Parish and baby girl, Miss Shannon Neinast.
 NOV. 16
 ADMITTED: Mrs. Ella Mae Lott, Bob Wear, Johnny Garcia, Mrs. Hazel Ward.
 DISMISSED: Michell Campbell.
 NOV. 17
 ADMITTED: Bill Pointer, Leonard Graham, Tim Howard, James Brooks, Mrs. Vanessa Martinez, Mrs. Sarah Latimer, Troy Armes, Dee Myers.
 DISMISSED: Mr. Catherine Moore, Ansel Doolittle, Mrs. Edith Brockette.

NOV. 18
 ADMITTED: Jimmy U. Holly, Mrs. Pa. Bruce Schmitt, Mrs. Sherrill.
 DISMISSED: Mrs. Edith Brockette, Mrs. Irtie Banks, Mrs. Minnie Carrell, Mrs. Verna Munger, Mrs. Alex Kranshar, Mrs. Floy Young, Mrs. Amelia Davilla and Infant, Rebecca Morehead, Joe Bob Hunter, Ray Baiza, Mrs. Alice Sowers, Carey Gene Gilley, Mrs. Irtie Banks, Mrs. Carolyn Parish and baby girl, Miss Shannon Neinast, Mrs. Ella Mae Lott, Bob Wear, Johnny Garcia, Mrs. Hazel Ward, Michell Campbell, Bill Pointer, Leonard Graham, Tim Howard, James Brooks, Mrs. Vanessa Martinez, Mrs. Sarah Latimer, Troy Armes, Dee Myers, Mr. Catherine Moore, Ansel Doolittle, Mrs. Edith Brockette.

Vandals Damage Irrigation Wells

Approximately \$200 damage was done to two irrigation wells on the Johnny Harper Jr. farm northwest of Anton Tuesday night. Vandals broke the oil drippers off the pump heads and bashed in the spark plugs and three oil baths into the field.
 Last Friday Leslie B. Hulse reported the theft of an LDS gold coronet in a brown case from the junior high band hall.

ENOCHS

Mrs. Alma Altman

MRS. BLANCH CASH, who has been employed in Lubbock, is staying with her daughter and family, The Dean Waltrips, at Maple. Waltrip has been in the Methodist Hospital having knee surgery. Mrs. Cash has been staying with the children while they were gone.
 MRS. C.H. BYARS went to Ralls to help move her daughter, Mrs. Henry Hardaway, and family to Littlefield. Mrs. Hardaway is to

be employed as assistant supervisor in the telephone exchange in Littlefield.
 MR. AND MRS. Don Hall and Donita were visitors in the home of their parents, Mr. and Mrs. J.C. Pearson. The Hall's are from Amarillo.
 MR. AND MRS. G.R. Newman of Enochs had a family get-together for the 82nd birthday of Mr. Newman, "Uncle Tosh", as most people call him. His birthday was Nov. 11. Those that came to help celebrate were his brother-in-law, Guy Nunn from Junction, his niece, Ruby Williams from Snyder; and a dear friend, Mrs. Inez Howard from Lake Buchanan; a son, Mr. and Mrs. Donnie Newman and family Matt, Mark and Cindy from Dallas; Mrs. Donnie Newman's mother, Mrs. Irene Cordon of Dallas; Mr. and Mrs. Bobby Jo Newman and children Judy, Debbie, Lanette and Bobby Jr. of Muleshoe; and Mrs. Mildred Reasoner of Needmore.
 MR. AND MRS. Jo Dane of Enochs visited their daughter and family, Mr. and Mrs. Lyndell Bates of Tuscon, Ariz.
 MR. AND MRS. Gene Autry, Ronnie and Kevin from Rocharin, are visiting their parents, Mr. and Mrs. Edd Autry.
 MR. AND MRS. Kenneth Millsap and Kena Louise from Clovis, N. M., visited their mother, Mrs. Alma Altman Sunday. They all attended church at Morton.
 MRS. GEO. AUTRY has been released from Morton Memorial Hospital after spending four days there.
 MR. AND MRS. W. B. Peterson and Mrs. L. E. Nichols went to Plainview Tuesday night to attend a meeting at Wayland Baptist College. Mrs. L. E. Nichols visited her son, Mr. and Mrs. Sammie Nichols, SHONNYE, TERESA, and Wesley Autry visited their grandparents, Mr. and Mrs. Glenn Thompson of Morton over the weekend.

A Plea From Your Letter Carrier

SAVE OUR SERVICE



Your letter carrier is struggling against overwhelming odds.
 Wages of postal workers average thousands of dollars a year less than the amount determined by the United States Bureau of Labor Statistics as necessary for a "modest but adequate" standard of living.
 To reach the top step in our postal pay scale takes up to 25 years of service... a goal most postal workers never reach. Over 90% of the letter carriers never rise above level 5 of the 21 level scale.
 The rate of turnover among postal workers is nearly 10 times the turnover rate among factory workers—23 per hundred compared to 28 per thousand. That costs the postal service... and the taxpayers... over \$100 million a year in locating, hiring and training new employees.
 To remedy these conditions and to achieve the kind of postal service Americans want and deserve, Congress has passed a bill. That bill is HR 13000 and is about to be considered by President Nixon.
 Here's what HR 13000 would do:
 • Provide step increases equivalent to a 5.4% pay increase.
 • Establish a Federal Wage Commission to determine future postal and federal pay scales.
 • As of July 1970, provide for reaching top pay after eight years of service instead of 25, thus increasing the incentive for postal workers to stay in the postal service.
 The simple fact is that postal reform begins with good postal pay.
 President Nixon can take that first large step toward postal reform by signing HR 13000.
 You can help by sending him the coupon at left indicating your approval.
 Postal wages are not inflationary.
 Postal workers are the victims of inflation.

NATIONAL ASSOCIATION OF LETTER CARRIERS
 Branch 4190
 Littlefield

NO CORPORATION NEEDED

Postal reform is badly needed. The surest path to postal reform is through good postal pay. It cannot be achieved by turning the postal service over to a corporation that will simply put a new name on old practices. Postal reform is up to Congress. The Postal Service, however, should remain in the hands of the people through their elected representatives and not in the hands of a profit-motivated Board of Directors.

President Richard M. Nixon
 The White House
 Washington, D.C. 20500

Dear Mr. President:
 Please sign HR 13000 and help save our postal service.

Name _____
 Address _____
 City _____ State _____ ZIP _____

PRE-THANKSGIVING FABRIC SALE



FOR ONE WEEK ONLY
Driz ELECTRIC SCISSORS
 Reg 8.00 **\$6.98**

45" Cotton And Dacron
BLENDS
 Values To 2.29 **\$1** Yd

45" 100%
COTTON
 Values To 1.29 **79c** Yd

BONDED COTTON
 54"
\$3.98 Yd

WOOL COATING
 60"
 Reg 5.98 **\$3.98** Yd

ORLON KNITS
 60"
 Machine Washable
 Reg 4.98 **\$2.49** Yd

60"-62"
DOUBLE KNIT
 Dacron
 Values To 7.98 **\$3.98**

60"
PERMANENT PLEAT
 Orlon And Wool
 Reg 30c An Inch **15c**

DOUBLE KNITS
 60"
 Nylon
 Reg 5.98 **\$3.49**

DECORATOR BURLAP
 Six Colors **\$1.19**

TUNIC TOPS
 Printed
 Reg 9.98 **\$7.98**

New Shipment Of Buttons And Trims Just Arrived
 Make Us Your Christmas Gift Headquarters

Many Small Gift Items

Free Gift Wrapping

H & M FABRICS

427 Phelps Ave

385-5205

EXTRA TURKEY
 Plan on extra turkey for Thanksgiving. It's great for quick meat and in casseroles. Tuck away "plan-overs" in the freezer but be sure to remove all stuffing or dressing from the turkey before freezing. Divide the meat into the size portions you can use at one meal.



TOM TURKEYS

Sunco
Fresh Frozen
18 to 22 Lbs.
Average
Pound **35¢**

COOKED HAM

Glover's
Shank
Portion
Pound **59¢**

**DOUBLE
S&W GREEN
STAMPS**
MON. TUES. + WED.
WITH \$2.50 PURCHASE OR MORE!

CREAM CHEESE

Farmer Jones, Full Cream Flavor
8-Ounce Package **29¢**

BONELESS PORK ROAST

Boston Butt Cut, Lean Northern Pork
Pound **59¢**

FRYER LIVER

Blue Star, Fresh Frozen
8-Ounce Package **39¢**

BAKING HENS

Swift Premium, 5 to 7 Pound Average
Pound **53¢**

RIB ROAST

Larded and Tied, U.S.D.A. Choice Beef
Pound **98¢**

FULLY COOKED HAM

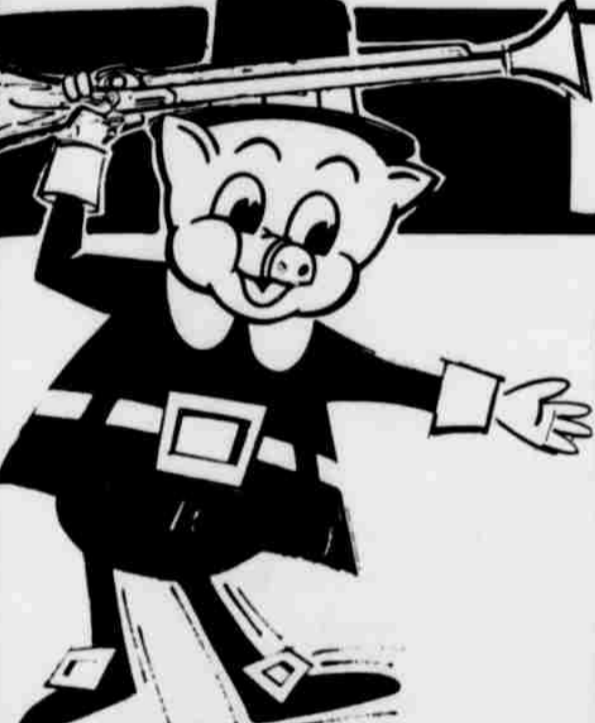
Glover Quality, Butt Portion
Pound **67¢**

HEN TURKEYS

Sunco
Fresh Frozen
10 to 16 Lbs.
Average
Pound **39¢**

Valu-Trimmed, U.S.D.A. Choice Beef
SIRLOIN STEAK Pound **95¢**
Singleton's, Fresh Frozen
SHRIMP COCKTAIL 3 4-Ounce Packages **98¢**
Sour Cream, Five Varieties
FAIRMONT DIPS 4 8-Ounce Packages **\$1.00**
Kraft Cracker Barrel
SHARP CHEESE 10-Ounce Stick **89¢**

Blue Star, Fresh Frozen
FRYER GIZZARDS Pound **49¢**
Beauty
FROZEN OYSTERS 10-Ounce Can **98¢**
Swift Premium, 4 to 7 Pound Average
SWIFT DUCKLING Pound **69¢**
Turkey Hen, 3 to 7 Pound Average
TURKEY BREAST Pound **79¢**



DINNER OF THE YEAR DISCOUNT PRICE!

CRANBERRY SAUCE

Carol Ann
No. 300 Can **17¢**

Ocean Spray
CRANBERRY SAUCE No. 300 Can **25¢**

Discount Prices!

Stokely's Finest
FRUIT COCKTAIL No. 303 Can **19¢**
Del Monte, Fancy Whole
GREEN BEANS No. 303 Can **25¢**
Del Monte, Fancy
SWEET PEAS No. 303 Can **19¢**
Libby's Cream Style or Whole Kernel
GOLDEN CORN No. 303 Can **17¢**
Kraft Miniature
MARSHMALLOWS 10 1/2-Ounce Package **19¢**
C&H, Holly or Imperial
SUGAR 5-Pound Bag **47¢**

Mrs. Cubbison, Plain or Cornbread
STUFFING 13-Ounce Box **39¢**
College Inn
CHICKEN BROTH No. 300 Can **12 1/2¢**

WHIPPING CREAM **22¢**
Bell's
1/2 Pint
DREAMWHIP 8-Ounce Box **73¢**

SHELLED PECANS **69¢**
Azar Pieces
8-Ounce Package
Karo, Red Label
SYRUP Pint Bottle **35¢**

BONNEBELLE BUTTER **79¢**
Sweet Cream
1-Pound Package
MARGARINE 1-Pound Package **25¢**

CUT YAMS **23¢**
Jack O Lantern
No. 2 1/2 Can
MARSHMALLOWS 10-Ounce Bag **19¢**

GOLDEN ROLLS **19¢**
Brown & Serve Golden Crust
12-Count Package
Dolly Madison
ANGEL FOOD CAKE Regular **69¢**

Low, Low Prices on Frozen Foods!
PUMPKIN PIES **59¢**
or MINCE
Johnston
32-Ounce Each

PUMPKIN

Stokely's Finest
No. 303 Can **2 FOR 29¢**

Betty Crocker, 8c Off Label
PIE CRUST STIX 22-Ounce Package **45¢**

You Can Depend on Quality at Piggly Wiggly!
ALKA SELTZER **49¢**
Regular 73c Retail
25-Count Bottle
Vicks, Regular \$1.29 Retail
NASAL SPRAY 15cc Bottle **99¢**

Dutch Ann, 2-Pack
PIE SHELLS Each **19¢**
Libby's
BROCCOLI SPEARS 8-Ounce Package **22¢**
Holsum
Parkerhouse ROLLS 3 24-Count Packages **\$1.00**

THESE PRICES GOOD
NOV. 24, 25, 26, 1969
IN LITTLEFIELD, TEXAS

Garden-Fresh Produce from Piggly Wiggly!

BANANAS Golden Ripe Pound **10¢**

CELERY California Crisp Fresh Large Stalks Each **7 1/2¢**

Ocean Spray, Poly Bag
CRANBERRIES 1-Pound Bag **39¢**

Large Green Bunches
ROMAINE LETTUCE Each **29¢**

California, Red or Green Tip
LEAF LETTUCE Each **19¢**

California, Green Bunches
BROCCOLI Pound **49¢**

We Reserve the Right to Limit Quantities

PIGGLY WIGGLY

1st in Savings!

Dogs Bite Whiteface
By 57-6

Bobby Clayton scored on TD romps from the 65, 40, 10, 4 and 2 yard lines to put Amherst out front in a 57-6 final district win over the Whiteface Antelopes.

Clayton dived over from the two early in the first quarter to get the Bulldogs on the scoreboard. In addition to the five Clayton TDs, Ricky Miller blasted over the goal line from the 2 and 13.

Eddie Moates plunged into TD territory from the two, then added the extra points.

Tony Jimenez made the longest Bulldog scoring play of the night on an intercepted pass, scrambling 50 yards for another six-pointer. Jimenez was outstanding defensively, too, with 17 unassisted tackles.

L. C. Clewis ran 58 yards up the middle of the Antelopes' lone touchdown in the final minutes of play, but the Bulldogs stopped his bid for points after.

Amherst got off to a slow season start, losing 7 before starting a winning district spree of three in a row for a 3-2 district record.

SPORTS

Eagles Claw Panthers 64-42

Johnny Graham led the Whitharral Panthers' attack against Three Way Friday night, but the Eagles out-manuevered the Panthers for a 64-42 district win.

Graham opened Panther scoring with a 53-yard run from the Panther 23 yard-line for six points in the first quarter.

The Panthers and Eagles both counted for 14 points in the second period of play with Graham scoring again from the 5 yard line and Monty Rodgers plowing in from the 15 for a TD. Larry Gage ran over for two points to end the first half 30-20, with Whitharral trailing.

Three Way added two more TDs before Monty Rodgers broke loose for a 52-yard gallop to the goal line.

Graham scored again in the fourth quarter from the 20, and Gage ran over for points after. Pedro Perez took the ball and ran over three Eagles on a long sprint to pay dirt only to have the ball

brought back on a clipping penalty. Perez plunged before from the one, then added two points after to his TD.

Mike Roberts made five FDs for Three Way and added 4 extra points. Johnny Ferguson ran for two extras, scored a TD on a 12-yard run and passed to Gene Abbe for two extras. James Partlow made a 10-yard TD run; Paul Nino and Allen Joyce went over from the two, and Abbe added two extras running and two on a pass.

Graham led in ground gaining with 112 yards, added 83 yards in kick-off returns and completed two passes for 19 yards.

Panther work horse Rodgers fractured a disc in the Union game and was only in on five carries but gained 94 yards and booted three out of four kick-offs into the end zone.

Gage returned kick-offs for 79 yards, gained 35 yards on the ground and assisted in 33 tackles.

Lloyd Hoelscher added 10 yards in kick-off returns and 19 yards rushing before breaking a bone in his hand in the final game of the season.

Finis Tipton and Bobby Cardenas gained praise for blocking.

Bula's Wood Leads Bulldogs

Cotton Center sewed up their district title with a 66-24 win over Bula on the Bulldog field Friday night.

Sophomore halfback Wayne Woods crossed the goal line three times for Bula, scoring from the 40, 15 and 5 yard lines.

Carlos Costillo took a handoff from the 20-yard line for another TD romp.

Cotton Center closed their season without a single loss, standing 10-0 for the season and 6-0 in district play.



Wildcats Prep For Opener With Abernathy

Coach Jim Jefferies and his Littlefield Wildcats scrimmaged the Crosbyton Chiefs here Saturday morning in preparation for their season opening battle with the Abernathy Antelopes here Tuesday night. From left: Steve Owens, Coach Jerry Trees, Charlie Holt, Wendell Horn (foreground), Coach Jefferies, Charles Carter, Boone and Gary Nace. The Tuesday night season opener pits the Littlefield Junior Varsity vs. Abernathy 6:15 p.m. with the varsity battle to follow.

3 Teams Split Pair 2 Win Cage Opener

OLTON-SLATON

Olton's Mustangs lost their first outing of the season when they dropped a pair to Slaton Friday night.

Tony Miller led the Mustang scoring with 18 points in the 66-53 loss.

Olton girls dropped their game in a 60-36 decision.

SPADE-SHALLOWATER

Spade Longhorns split a pair when they traveled to Shallowater Friday night. Shallowater boys raced past Spade 74-30. Danny Sewell led Spade scoring with eight points.

Debra Myers paced the feds with 19 points and a 41-38 Spade win.

SPRINGLAKE

Quitaque crushed Springlake Wolverines 59-47 in an opener Friday night.

Willie Wilborn led Wolverines with 19 points.

PEP-NAZARETH

Pep Buffaloes lost a game when they challenged Nazareth Friday. Don Shannon led with 18 to the 54-40 defeat.

Nazareth girls tossed to Pep girls' 24.

BULA-SUDAN

Bula girls stepped on Sudan 80-35 in their season opener Thursday night. Sharon To hit the net for 28 points. Dianne Croom added 23. Pep. Sharon Wilson lead Sudan with 27.

TUESDAY GAME

Spade plays at Crosbyton Monday and New Home at Spade Tuesday night.

Sudan hosts At Tuesday; Shallowater goes to Olton; Amherst meets Bullhome game; Springlake travels to Friona; Whitharral opens the season at Meadow.

Anton Rally Too Late

MEADOW—In a District 5-B finale between Anton and Meadow here Friday night, the Meadow Broncos edged Anton 20-19.

Meadow took an early lead and maintained the lead during the first half as they went to the dressing room with a 12-0 lead.

Anton's Quinton Williams ground out two Bulldog TDs, and John Cantu crashed over to put the Bulldogs within one point of the Broncos.

In the first half Terry Don Wilks scored a 1-yard TD for Meadow, and David Watson scored on a 35 yard pass play from Billy Wright for a 12-point lead at the half.

Anton came back with Williams charging over from the one yard line but the extra was blocked.

Meadow charged back with Kyle King going 17 yards for another 6-pointer, and Wilks carried over for the extra 2 points.

Williams got Anton back in the game with another 1-yard charge. Williams also booted the extra.

In the final minutes of the game, the Bulldogs invaded Meadow territory, then John Cantu bulled over for a two-yard TD on a fourth down to tighten the score 20-19. A two point passing try for the conversion was incomplete.

Hunting Supplement Is Available

The supplement to the Texas Hunting Guide is available from the Texas and Wildlife Department.

The supplement covers the quail seasons and bag limits for the entire State as well as deer, turkey, javelina, squirrel seasons, which have been set when the first Texas Hunting Guide was printed.

It also has the special archery provisions for counties placed under regulatory responsibility of Parks and Wildlife Commission by the 61st Legislature.

Copies of the supplement will be mailed to the deputies and Department officials.

They may also be obtained by writing the Texas Parks and Wildlife Department, John Reagan Building, Austin, Texas, 78701.

Whooping Crane Population

There is a very good chance that the world's only population of wild whooping cranes has increased its numbers in 1969, according to a regional director of the Bureau of Sport Fisheries and Wildlife.

Forty-three adult and six young of the year have already arrived safely at the Department of the Interior's Arkansas National Wildlife Refuge on the Texas Coast, W. T. Krummes said.

Another whooper has been sighted along the flyway during the past week, and the total still early, according to Krummes.

Their numbers fell as low as 15 birds in 1941, but they have shown a slow but encouraging increase in numbers over the past 10 years, according to Krummes.

DINING ROOM SUITES

by

- Stanley
- Garrison
- Virtue
- Falcon
- Davis



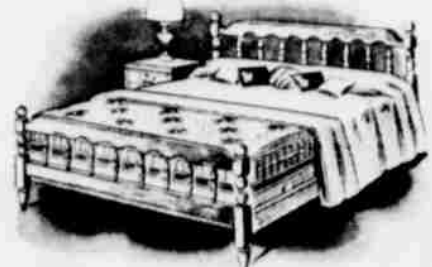
Come In And Browse!

OUR FAMILY TREE OF FAMOUS BRANDS

BEDROOM FURNITURE

by

- Sealy
- Thomasville
- Palaski
- Ward
- Ayers
- Memphis
- Stanley
- Bienville
- Sprague Carleton

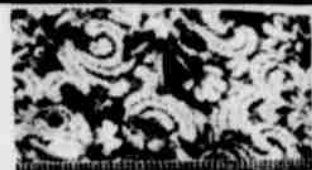


NOW OPEN

CARPETING

by

- Calloway
- Bigelow
- World
- Viking
- Lees
- Royalweave
- Trend
- Beatie
- Alexander-Smith
- Evans and Black



LIVING ROOM FURNITURE

by

- La-z-boy
- Southland
- Coffey
- Smith
- Pullman
- Mayo
- Barkel
- Magnacraft
- A. Brandt
- Fort Smith Chair
- Massound
- DeVille
- Stickley
- Reverside



APPLIANCES

by

- Whirlpool
- Magnavox
- Morse
- Hoover
- Magic Chef



Watch For Our

GRAND OPENING COMING SOON!

Stacy-Mason Inc.

Houston Barker, Manager Phelps Ave. 385-4120

to our many friends

THANK YOU

You have helped to make this truly a day of Thanksgiving for all of us.

WE WILL BE CLOSED WED. & THURS.

NOV. 26th and 27th

LAMB BOWLING LANES

Huge and Margaret

VA Hospital Care May Be Extended

Care in Veterans Administration hospitals may be extended to veterans of all wars and to peacetime veterans under certain conditions, according to Mrs. Ruth Wade, VA Service Officer, located in the basement of Lamb County Courthouse.

Priority on admission to hospitals goes first to veterans who require treatment for conditions that are not service connected.

A veteran without a service-connected disability may be admitted provided he served in any war or after June 27, 1950, or received the Medal of Honor during peacetime service.

The Veterans Administration pointed out that admission of these patients in contingent upon these considerations: (1) hospitalization must be necessary, (2) the patient must state in writing that he is unable to defray the cost of the necessary hospitalization elsewhere, and (3) an appropriate hospital bed must be available.

Outpatient care for non-service-connected conditions is not permitted by law, but certain prehospital and posthospital medical services can be performed for patients who are scheduled for admission to a VA hospital or for those who require followup care after hospitalization. The intent of this law is to shorten periods of actual hospitalization while providing

the same medical care. Patients who have received maximum hospital benefit yet require nursing care may be furnished this care in either a VA facility or a private nursing home.

Veterans disabled by age or disease who do not need hospitalization or skilled nursing care may be admitted to VA domiciliaries on an ambulatory, self-care basis

under approximately the same rules for hospitalization.

Application may be made by the veteran or in behalf of the veteran at the VA office in the courthouse.

The office in Lubbock is located at 1612-20 Nineteenth Street. Information may also be obtained by writing the VA Regional Office, 1400 North Valley Mills Drive, Waco, Texas 76710.

Keep The Checks Coming

You've been receiving a social security benefit check for some time and you depend on getting it on time. What can you do to insure that your check will continue to arrive on time?

The most sensible course of action is to keep the Social Security Administration informed of any change in your address or any change in your working arrangements that may affect the payment of your checks.

As soon as you know when you're moving, you should notify social security right away. If your notice is given early enough in the month, your next check should arrive at your new address on time.

It also makes good sense to advise the post office of your move in case social security doesn't have time to catch your check before it's sent to your former address.

A second way to keep the benefit checks coming on time

is to let us know when you're working, even if it's only part-time. Your total earnings for the year, and the number of months you work determine the amount of benefits that can be paid you.

You may earn up to \$1,680 per year and still receive all of your social security benefits.

Even if your annual earnings are more than \$1,680, you may still be eligible for some benefits.

At the end of each year you earn over \$1,680, don't forget to file the necessary annual report.

BOWLING

W	L
28	8
25	11
17	19
14	22
12	24
12	24

TOWN & COUNTRY

TEAM	W	L
Pill Rollers	32	12
No. 5 Morton	26	18
Knights Rest Home	24	20

L&L TRAVEL LEAGUE

TEAM	W	L
Harris Plumbing	11	5
Ltd. Steam Laundry	10	6
Lamb Bowling	9	7
Laveland Wig Salon	8	8
Connally Electric	7	9
Scoggins & Ewing	7	9
Harvey's Enco	7	9
Treeman Motor Exchange	4	12

HIT & MISS

TEAM	W	L
C&O Cleaners	31	17
Conal's Fina	27	21
Team No. 1	27	21
Birkelbach Mach.	24	24
Reliable Ins.	24	24
Consumers	23	25
Crescent House of Beauty	21	27
Western & Grimes Auto	16	32

1969 YEARBOOK

"Food for Us All" is the title of the 1969 Yearbook of Agriculture recently released by the U. S. Department of Agriculture. It contains basic, solid nutrition information needed by every consumer. The 400-page book joins the popular editions of past years which have and are serving as valuable reference and information sources relating to the great advances made by the agriculture industry.

HD Has Annual Supper

The Oklahoma Avenue Home Demonstration Club met Thursday night in the Willie Room for its annual Thanksgiving supper. Turkey and all the trimmings were served.

Those present were Mr. and Mrs. Joe Bitner; Mr. and Mrs. Jimmy Starnes and Jeanie; Mr. and Mrs. Dwight Starnes and Scott; Marsha Starnes; Steve Parker; Brenda Stafford; Garen Landrum; Mr. and Mrs. A. B. Roberts; Dorothy Crawford; Mr. and Mrs. Clyde Davis; Mr. and Mrs. Shine Miller; Mr. and Mrs. Fred Cook, Vicki and Randy; Mr. and Mrs. J. M. Griffin, Kevin and Kurt; Mr. and Mrs. H. W. Odom; Mr. and Mrs. Dewey Hulise; Mr. and Mrs. Brady Helms; Mr. and Mrs. Pless Helms; Mrs. Dee Myers; Mr. and Mrs. Fred Lichte; Mr. and Mrs. C. C. Solesbee; Clemmie Duboise; Mrs. Guy Ivy; Mrs. Lora Accord; W. E. Kelly and Vena Manor.

The next meeting will be the Christmas party Dec. 11 with Mrs. Jimmy Starnes.

THANKSGIVING SAVINGS

DOUBLE STAMPS MONDAY THRU WEDNESDAY
SPECIALS GOOD 24th THRU 29th.

SAVE VALUABLE COUPON SAVE

5-1/2oz KING SIZE GAIN ONLY WITH THIS COUPON

1.09

PRICE WITHOUT COUPON \$1.29

GOOD ONLY AT RENFRO BROS

OFFER EXPIRES NOV. 29

LIMIT 1 COUPON PER PURCHASE

COFFEE ALL BRANDS 1 LB. CAN	67¢
TEA 4/98¢	4/98¢
POTATOES 29¢	29¢
CORN 5/\$1	5/\$1
PORK CHOPS 49¢	49¢
ROAST MEAT 25¢	25¢
MARSHMALLOWS 2/49¢	2/49¢
STRAWBERRY SAUCE 2/25¢	2/25¢
IMPKIN 2/33¢	2/33¢
VEGETARIAN WHIP 39¢	39¢

Market Specials

We will meet any and all competition in Littlefield on USDA Grade A Turkeys Norbest or Honeysuckle all sizes

TURKEYS (Whole) 69¢	ROAST (7 Bone) 79¢
PORK CHOPS (Center Cut) 89¢	ROAST (Arms) 79¢
ROAST (Hams) 69¢	

HAMS SUNRAY 12 TO 16 LB. 69¢

CHEESE VELVEETA 2 LB. BOX 1.29

COKES 6 BOTTLE CARTON	39¢
HERSHEY, MILK CHOCOLATE OR PLAIN	
Chocolate Chips 12	49¢
HIP-O-LITE CREAM	
Marshmallow 7 OZ.	19¢
SALT 10¢	FLOUR 75¢
TEA 39¢	CAKES 69¢
CORN MEAL 59¢	JELLO 2/29¢

CRISCO 3 LB CAN 59¢

WITH A \$7.50 PURCHASE

Frozen Foods

PIES (Johnston Pumpkin Mince or Apple) Each	55¢
PECAN PIES (Johnston or Morton) Each	69¢
COOL WHIP (Dairy) 4 OZ	49¢
ORANGE JUICE (Shurtz) 6 OZ	5 For \$1
STRAWBERRIES (Eagle Brand) 2 For	49¢
PIE SHELLS (2 Pkg Morton)	29¢

Produce

RANBERRIES 1 LB BAG	29¢
CELERY (Fresh) 19¢	19¢
ORANGES (5 LB Bag) 39¢	39¢
GREEN ONIONS (Daisy) 9¢	9¢
SWEET POTATOES (New) 12 1/2¢	12 1/2¢
BANANAS (Cavendish) 10¢	10¢

PIONEER YELLOW OR WHITE

Corn Bread Mix 33¢

FOIL ANACONDA EXTRA WIDE 18X25 37¢

LIBERTY CANDIED FRUITS

CHERRIES 4 OZ	39¢
PINEAPPLE 4 OZ	39¢
PINEAPPLE 8 OZ	69¢
RAISINS (Sun Seed) 1 1/2 OZ	39¢
BLACK PEPPER (Shurtz) 4 OZ	39¢

COCONUT (Eagle Brand) 43¢	
MILK 2/69¢	NAPKINS (Northern Ass't Colors) 2/29¢
ORANGES 29¢	TOILET TISSUE (Family Scott & Pack) 39¢
LYSOL 89¢	
CHOCOLATE 49¢	

Dairy Specials

MELLORINE (Clove Flake) 1 1/2 GAL	37¢
ICE CREAM 69¢	69¢
EGG NOG 49¢	49¢
BUTTERMILK 39¢	39¢
YOGART 27¢	27¢
WHIPPING CREAM 29¢	29¢

Register For The \$100.00 Worth Of Free Grocery To Be Given Away

RIGHT on the CORNER **Renfro Bros** RIGHT on the PRICE

SUPER MARKET

ESTABLISHED IN 1929

Raymond PHONE 385-3400 Norman

CLASSIFIED ADS

Wanted	Houses for Sale	Sale or Rent	Misc. For Sale
Homeworkers (envelope addresses) wanted. Send self addressed stamped envelope to Homeworkers Enterprises, P. O. B. 6685, Lubbock, Texas 79413. TF-H	FOUR BEDROOM, three bath home, central heat and air. One acre of land includes barn. Shown by appointment. Contact Dr. Hinkle, 223-8733, DeSoto, Texas. Very reasonable. TF-H	BLACKSMITH SHOP \$25.00 per month or would sell shop and two bedroom house on three blocks. Would sell all property for \$4,000.00. Call 233-2562. 12-14-M	BEAUTIFUL Komorner and Helmet pigeons for sale. Very reasonable. Phone 385-4075. 11
L.V.N. NEEDED. Equal opportunities employer. 894-4902, Levelland, Texas. TF	THREE BEDROOM HOME, two baths, den, utility room, 14 x 20 shelter. See at 209 E. 17th. St. Call 385-4393. 11-27-	Misc	BAILED HEGARI in the field. Three miles north of Pep. 933-2168. 11-30-D
WANTED TO BUY hog self feeder and feeder pigs. Ed Blackwell. 385-3334. TF-B	NICE LARGE THREE bedroom, 1 1/2 baths, garage, fenced back yard. Located 311 E. 9th. Littlefield. \$8500. Call Oilton 285-2387. TF-B	SHREDDING, TANDEM and breaking. B. L. Greener, 246-3525, Box 175, Amherst. 1	TRACTOR FOR sale: 1967 M-M Jet-Star 3, LPG, PS, WF, live PTO, very low hours. Excellent condition. Six miles north of Embury Gin and Farm Supply. Joe Embury-385-4132. 1
WANTED: ROUTE Salesman, guarantee salary plus commission. Call after 6 p.m. between 6 and 7. 385-5997. 11	MODERN three bedroom home in Amherst. Carpeted, central heated. Call after 6:00 p.m. 246-3253. 12-11-F	WE DO CUSTOM farm work. Shredding, disc breaking, chiseling with big ox chisel plow, and listing. Call Bill Davis, 246-3483 Amherst. TF-D	CANEL "boy" beautiful bay registered three-year-old quarter horse. The best stock in Arizona. Gentle, broke to ride. Call 385-3878. 11-30-W
ROOM FOR one more elderly lady in my home. Good meals, care and reasonable rates. 417 E. 9th. 385-3438. TF-MCB	HOUSE-171 N. Wicker Ave., 385-3061. TF-J	The Pain Room *Over 28-Tuesday-Roy Roberts *Friday-Tech Stage Band *Saturday-Roy Roberts Main Highway P.O. 3-3700 Lubbock	FOR SALE registered quarter horse, son of Silver Cash. Three years old, broke to ride, would be nice Christmas gift for some girl or woman. Howard Kelso, Box 12, Bovina, Texas 238-2091. 11-27-K
HELP WANTED in the kitchen at the Dairy Mart. Lady. 11-23-			SHEEP FOR SALE. Rambouillet ewes. Contact 385-3413 or 385-4658. TF-M
			RAINBOW CHILD CARE Center open daily, Monday through Saturday and every Friday night. 385-3719. 720 E. 14th. 10-23-B
			Repossessed-16 Ft. Fiberglass boat, 75 hp motor and tilt trailer; two hp outboard motors; Fiberglass camper; electric welder. Oak Spanish bedroom suite. Call 385-4492. TF-S
			FOR SALE CARLOAD STEEL HOG PANELS 34"x16" Galvanized, McCourt Construction Co., across from Gibbons', Plainview, Texas.
			FOR SALE: Brantley Drive In. Mrs. M. B. Welborn. 385-4502. TF-W
			REWARD for return of eye glasses belonging to Dianne McMahan. Lost last week near 304 E. 18th. Call 385-5466. TF
			BEAGLE PUPPIES-Fat, cuddly babies. Registered. Money can't buy more love. Phone Whitharral 299-4185.
			ALL KINDS ALTERATIONS, covered buttons, button-holes, belts. Mr. and Mrs. G. E. Scifers, 905 E. 6th St., Phone 385-3971. Former Drive In Cleaners. TF-S
			RENT CONVALESCENT equipment at Brittain Pharmacy. Wheel chairs, crutches, hospital beds, other items. Complete line Convalescent needs. TF-B
			MATTRESS RENOVATED-Mattress rebuilt, new mattresses and box springs. You present bed springs converted to box springs. Mrs. Claude Steffey, dial 385-3386, or Stitch-In-Time, 385-3140, Agents for A & B Mattress Co., Lubbock. TF-A
			We pick up old cars. Whitharral, 299-4741. TF-W
			GENERAL JANITORIAL work. Floor reconditioning, window cleaning. Littlefield Cleaning Service, Agustín Perez, owner, 613 E. 6th. 385-5513. 11-23-P
			SORRY SAL is now a merry gal. She used Blue Lustre rug and upholstery cleaner. Rent electric shampooer \$1. Nelson's Hardware. 11-23-N

Bus Services	Autos for Sale
ADAIR BISHOP DRILLING IRRIGATION OR DOMESTIC Phone 385-6113 1224 W. 14th Littlefield	1967 Ford Fairlane 500 4 Dr. Sedan. V8 engine. Cruise-o-matic, Power Steering and Air-conditioner, with other extras. Beautiful Aquamarine color. Clean as a pin. Still under warranty. Only— \$1795.
KIRBY COMPANY OF LITTLEFIELD Authorized Distributor Phone 385-3357	1967 Chev. Pick-up, 6 Cyl., with Air-conditioner. Yellow and White. Clean— \$1395.
GENERAL REPAIR AND PAINTING Call James Siems At 385-3787.	1968 Chev. Pick-up, 292 6 Cyl. Engine. Automatic, Power Brakes and Steering. Deluxe Cab with Carpet. Floor mats, Long wide box. Just right for a camper. White Color \$1795.
COMPLETE AUCTION SERVICE L.D. Henderson Box 125 Earth, Texas Phone 966-2446	1964 Ford Gal. 500, 4 Dr. Sedan, V8, Automatic, Power Steering and Air. Beige with Beige Vinyl Trim. Local one owner car and extra nice for the model. \$995.
Thinking of Auction? Think of L.D. Henderson WORKING AUCTIONEER	1964 Fairlane 2 Dr. V8, Std. Light Blue. Extra Nice. One owner. Trade in on 1970 Ford. \$845.
AFTER HOURS PRESCRIPTION SERVICE Please Phone Us. Bob Roden-385-3698 James Walker 385-4504	1962 Ford Pick-up, V8, Automatic. White with Black Top. \$395.
RODEN DRUG	1964 Ford Cty. Sedan Sta. Wagon, V-8, Cruise-o-matic, Power Steering, Hail Damaged on the outside, lots of room in the inside. White with Blue Interior. As is Bargain. Reduced to \$495.
NOW IS THE TIME TO CHECK FOR TERMITES UNITED PEST CONTROL 1301 W. 12th 385-5637	1958 Olds 4 Dr. Sedan, Transportation for only \$195.
TRUCK SEATS EXCHANGED 15 MINUTE SERVICE McCORMICK'S AUTO SUPPLY AND TRIM SHOP PHONE 385-4555 227 MAIN	1962 Chev. Fordor, V8, Overdrive. Lite Green Color \$495.

CLASSIFIED ADS LEADER-NEWS

BOX 72, LITTLEFIELD

*You can mail your ad to the address above. *Or you can phone it to 385-4481

*Or you can take it to the Leader-News, 313 W. 4th, Littlefield.

PUT 1 WORD IN EACH SPACE. PRICE IS GIVEN WITH THE LAST WORD. DON'T FORGET TO INCLUDE YOUR ROAD ADDRESS, TOWN AND PHONE NUMBER. YOU'LL GET BETTER RESULTS WITH COMPLETE DETAILS.

CLASSIFICATION: (Circle one) Help wanted - Wanted - Business Opportunities - Business Services - Houses to Rent - Houses for Sale - Lost & Found - Special Notices - Personal Services - Card of Thanks - Apts. for Rent - Miscellaneous for Rent - Miscellaneous for Sale - Miscellaneous - Real Estate - Notices - Legals - Pets - Autos, Trucks for Sale.

Rates on classified advertising are: 6 cents per word first insertion; 3 cents per word each additional consecutive insertion.

The Leader-News is not responsible for mistakes after first insertion. Please read your ad. All classified accounts are due and payable 10th of month following insertion. A flat rebilling fee of \$1.00 will be charged for all accounts 30 days past due for all successive rebillings.

DEADLINES

LAMB COUNTY LEADER-NEWS

5 P.M. TUESDAY					5 P.M. FRIDAY				
				1.00 1 Time					
1.00 1 Time	1.00 1 Time	1.00 1 Time	1.00 1 Time	1.00 1 Time					
1.00 1 Time	1.02 1 Time	1.08 1 Time	1.14 1 Time	1.20 1 Time					
1.26 1 Time	1.32 1 Time	1.38 1 Time	1.44 1 Time	1.50 1 Time					
1.56 1 Time	1.62 1 Time	1.68 1 Time	1.74 1 Time	1.80 1 Time					
1.86 1 Time	1.92 1 Time	1.98 1 Time	2.04 1 Time	2.10 1 Time					

Enclosed is \$ For 1 Time 2 Times Times
Send The Bill To Address City

REWARD

REWARD for return of eye glasses belonging to Dianne McMahan. Lost last week near 304 E. 18th. Call 385-5466. TF

Pets

BEAGLE PUPPIES-Fat, cuddly babies. Registered. Money can't buy more love. Phone Whitharral 299-4185.

Bus Services

WHEN YOU BORROW MONEY, be sure you've considered the many advantages of a low-cost Federal Land Bank loan. Payments spread over a greater number of years and full prepayment privileges. Get the facts from W. H. McCown, Manager of Federal Land Bank Association of Littlefield, 504 Phelps Ave. Phone 385-4425. 11

ALL KINDS ALTERATIONS, covered buttons, button-holes, belts. Mr. and Mrs. G. E. Scifers, 905 E. 6th St., Phone 385-3971. Former Drive In Cleaners. TF-S

RENT CONVALESCENT equipment at Brittain Pharmacy. Wheel chairs, crutches, hospital beds, other items. Complete line Convalescent needs. TF-B

MATTRESS RENOVATED-Mattress rebuilt, new mattresses and box springs. You present bed springs converted to box springs. Mrs. Claude Steffey, dial 385-3386, or Stitch-In-Time, 385-3140, Agents for A & B Mattress Co., Lubbock. TF-A

We pick up old cars. Whitharral, 299-4741. TF-W

GENERAL JANITORIAL work. Floor reconditioning, window cleaning. Littlefield Cleaning Service, Agustín Perez, owner, 613 E. 6th. 385-5513. 11-23-P

SORRY SAL is now a merry gal. She used Blue Lustre rug and upholstery cleaner. Rent electric shampooer \$1. Nelson's Hardware. 11-23-N

DIAL 385-4481 FOR CLASSIFIEDS

Mitchell-Ford Inc. AND MERCURY

"A Good Place To Do Business"

1955 2 door Chevrolet sedan with 385 h.p., 327 cubic-inch, three speed, and two four barrel carbs. Excellent condition and clean. Call Terry at Whitharral, 299-4185.

1957, 4-door Chevrolet, V-8 engine, just like new. 50,000 actual miles. 385-5972. TF-H

WANT TO TRADE, sell or exchange Ford Mustang Fenton mags with flippers. Phone Terry at 299-4185, Whitharral.

1965 Buick Electra 225, 4-door hardtop. Don Avery. 299-4395. TF-A

1961 Pontiac, good upholstery, radio, heater, air conditioner and good tires. \$175.00. 385-4065. 11-23-P

1961 Fury III Plymouth, clean and loaded. See at 1114 W. 3rd., or call 385-3474. 11-27-C

1966 Landau Thunderbird, clean, low miles. See to appreciate. 385-6083. 409 West 2nd. 11-30-P

LEGALS

The Lee C. Nichols land must sell before January 1st, 1970. Anyone interested in this land at any price should call at my office and submit a bid.

James A. Gowdy
100 West 4th
Littlefield, Texas

Real Estate

182 acres with shallow 8 inch irrigation well, has never broken suction. 55 acres cotton allotment. Concrete block grade A dairy barn. Sheet iron sheds, barn, corral, etc. For 100 head cattle. Barn holds 2,000 bales hay, ideal place for large feed lot. 40 acres good native grass, 30 acres green sprangle top. Priced low and down payment low. Phone owner 262-4732 Fieldton. TF-B

APARTMENTS AND trailer park for sale near Reese Air Base. Good business. Would trade for farm land or anything of value. Call 385-5364 or 233-2581, Spade. 11-23-1

Needs listing on residential and small acreage near town.

Robert Richards Real Estate

512 N. Sunset
385-3293

FHA-VA

We Have Keys And Contracts, Will Show Anytime, Enthusiastic Service.

PLAINS REAL ESTATE

Phone 385-3211
Roy Wade 385-3790
I.D. Onstead 385-4888

New land near Lamesa, sub-divided, 14,000 acres Mesquite-catclaw land. Proven farming area. Six miles south of Patricia, \$50-\$90.00 per acre. 25% down. Contact John or Marvin McLarty, 1611 Ave. M., Lubbock, 765-8816. Evenings, 744-6188, 744-6221. TF-L

Would take car, pick-up, trailer house or what-have-you for my equity on nice five bedroom, three bath house, well located near school, good low interest loan established. Or would take smaller house in trade. See I. D. Onstead.

PLAINS REAL ESTATE

CALL 385-4481 FOR CLASSIFIEDS

OLTON



MRS. W. B. SMITH JR 285-2385

AND MRS. Dave Pace visited recently in the home of Mr. and Mrs. Ike at Galveston. Mr. and Mrs. Walker are former Olton residents.

ANYA CARRUTH, 10-month-old daughter of Mr. and Mrs. Travis Carruth of V. M., is here visiting her parents, Mr. and Mrs. Carruth.

AND MRS. Witt have gone to Hico to be the bedside of his father, who is seriously ill.

AND MRS. R. R. Clark and Mrs. R. R. Clark are vacationing in Truth or Love, N. M.

AND MRS. Jay and Mrs. Jay visited at Payne College in Lubbock last weekend.

DON FRANKS, Dr. Basil Johns, Major James and Bill Kelley, flew to El Novillo, Mexico, for a fishing trip Monday. They planned to return Thursday.

MR. AND MRS. E. L. Wood of Longview were guests Monday and Tuesday in the home of Mr. and Mrs. Bill Collins.

MR. AND MRS. Don Loveless of Lubbock announce the arrival of a 9 pound 7 ounce daughter, Terry Lynn, who was born Nov. 10 at Porter Hospital. Grandparents are Mr. and Mrs. Ralph Loveless and Mrs. Dottie McCall, all of Lubbock. Great-grandparents are Mr. and Mrs. Dewey Ball. The new baby has a half sister, Audra Kay, who is two years old.

MR. AND MRS. Dewey Ball visited Sunday in Lubbock in

the homes of Mr. and Mrs. Don Loveless and in the home of Mr. and Mrs. Ralph Loveless and their son.

V. H. GILES, who underwent surgery last week in Methodist Hospital in Lubbock recently, was able to return home last week.

MRS. R. D. Bryant entered Methodist Hospital in Lubbock Tuesday for treatment for a lung condition.

MR. AND MRS. Billy Malone of Fort Stockton and their daughter, Shirley Malone, a student at West Texas State University in Canyon, were guests last weekend in the home of Mr. and Mrs. Ray Copeland, A. J. Malone and Mrs. Nora Hash.

BILLY MALONE and son, Donnie, left Sunday for Anchorage, Alaska, where they

plan to work two months.

ATTENDING THE TEXAS Cattle Feeders Association in Abilene this week were Mr. and Mrs. Owen Norfleet and Mr. and Mrs. Charles Koontz. Mr. Koontz participated on a panel discussion, "So You Are Going To Build a New Feed Lot."

MR. AND MRS. John Speck Jr. are parents of a baby girl born Nov. 17, at Methodist Hospital in Lubbock. The new arrival weighed 7 lbs., 6 1/2 ozs. and both mother and baby are reported to be doing fine.

JIM SPAIN OF Cali, Colombia, South America spent last weekend here visiting in the home of his parents, Mr. and Mrs. Ernest Spain, and in the homes of two of his brothers, Mr. and Mrs. Alva J. Spain and Mr. and Mrs. Don Spain. Jim was back in the States to attend an agriculture meeting at Tucson, Ariz., this week.

SUNDAY EVENING, NOV. 23, at the First Baptist Church, a Union Thanksgiving Service will be held at 7 p.m. The Rev. John E. Lewis, pastor of the host church, will preside at the service. Rev. Tommy Nelson, pastor of First United Methodist Church, will bring the Thanksgiving message. A choir composed of various

church choirs throughout the community will present special music. Bobby Strait, minister of music and Youth at First Baptist Church, will direct the choir. Persons of all denominations are invited to attend this Thanksgiving service.

TWENTY-TWO YOUTHS presented a musical at First Baptist Church Sunday evening at 7 p.m. The title, "Tell It Like It Is," was directed by Bobby Strait, minister of Music and Youth.

MR. AND MRS. John Laurence, of Wilcox, Ariz., visited recently with her brother and sister and families, Mr. and Mrs. Ray Culwell and family and Mr. and Mrs. Ira J. Foster.

MR. AND MRS. Marvin Cryer and family of St. Joseph, Mo., visited recently in the home of Mr. and Mrs. Winston Bley. Mrs. Cryer and Mrs. Bley are sisters.

DALE GABEHART, son of Mr. and Mrs. Albert Gabehart, is presently working in the library at West Texas State University. He had attended the University but withdrew because of illness. He plans to enroll for the Spring semester.

MRS. B. B. HUGHES is receiving treatment at Olton

Community Hospital.

MR. AND MRS. Barry Prestridge of Galveston visited in the homes of their parents, Mr. and Mrs. Barton Prestridge and Mr. and Mrs. Kenneth Ray last weekend and attended the wedding of George Jones and Miss Susan Norfleet. Barry is attending Medical College in Galveston.

MR. AND MRS. Jerry Maynard and children of Stratford and Mr. and Mrs. Eddie Carson, Kirk and Jill of Dalhart were guests last weekend in the homes of Mr. and Mrs. Owen Jones, Mr. and Mrs. H. B. Carson and Mr. and Mrs. Emil Sorley.

MR. AND MRS. Bill Schreier of Abernathy spent Tuesday night visiting in the home of his sister, Mrs. Stella Cowart. Mr. and Mrs. Schreier had lunch Wednesday noon in the home of Mrs. Pearl Schreier.

MR. AND MRS. Ronnie Parsons and baby of Lubbock visited last weekend in the home of her parents, Mr. and Mrs. Sonny Miller.

IN THE COMMUNITY Hospital in Olton this week is E. E. Whitson.

MRS. J. C. REED, mother of J. C. Hamby, is a patient in

Rocky Ford
Mrs. V. M. Peterman
262-4532

MR. AND MRS. N.B. Embry attended a fertilizer Sales Meeting at the Green Oaks Inn of Fort Worth last Tuesday evening. They also visited with Mr. and Mrs. R.J. Leonard while in Fort Worth.

LEON HOLLEY was brought home Friday from a Lubbock hospital where he had been in traction.

MRS. ALVIN MILLS and Debbie were guests of the Amherst Study Club in the home of Mrs. Ray Blessing last Tuesday evening. Debbie was on the program. She gave a talk on, "Social Impulses of Youth."

MR. AND MRS. Lilburn Bales were in Lubbock Sunday afternoon to visit his mother, the Plainview Hospital.

WILLMON WHITE, son of Rev. Aubrey White, who is a former pastor of Methodist Church, is one of the editors of "Together Magazine", a Methodist publication.

who is in the hospital.

MR. AND MRS. Johnnie Lee Feagley and Monte visited with Mr. and Mrs. Burl Wilks in Olton Wednesday evening.

LED FORD ENLOE has been fishing at Buchannan Lake for a week and has had good luck. Charles Hines of Littlefield and Charles Schroeder of Amherst are with him.

CHARLA CARPENTER, Darrell Bryant, Brad Enloe, Monte Feagley and Alvin Ray Mills were on the Amherst PTA program Thursday.

MRS. ALVIN MILLS took her mother-in-law, Mrs. B.A. Mills of Littlefield, to Lubbock to see a doctor last Tuesday. She is expected to go to surgery next Tuesday.

THERE WILL be a Thanksgiving dinner at the Rocky Ford Baptist Church today after the morning services. Everyone is welcome to come and bring your baskets of goodies.

SUNDAY AFTERNOON Mr. and Mrs. V.M. Peterman attended the Pony Express Tournament at the Lamb County Sheriffs Posse's new arena in Littlefield. There were riding clubs and Sheriff's Posse from over District I participating.

Turkey 'n' Trimmings Sale

CREAM SERVED ALL DAY WEDNESDAY FEATURING PECAN CRUNCH
Courtsey Cloverlake Dairy

ICE CREAM CLOVERLAKE 1/2 GAL 69¢

ICE CREAM CLOVERLAKE 1/2 GAL. 37¢

WHIPPING CREAM CLOVERLAKE 1/2 PINT 17¢
WITH PURCHASE 10 OZ. KERN'S STRAWBERRIES

COTTAGE CHEESE 2 LB. CARTON 46¢

BUTTERMILK 1/2 GAL CLOVERLAKE 39¢

WHIP and DIP 8 OZ. 29¢

HOLIDAY NOG CLOVERLAKE QT. SIZE 53¢

OUR CREAM 8 OZ. CLOVERLAKE 29¢

ROLLS Brown - N - Serve Tendercrust 12 Count Pkg. 29¢

CORN Libby's Cream Style or Whole Kernel 303 Can 4 For 88¢

BEANS Libby's English 303 Can Early Garden 4 for 88¢

PAPER TOWELS Scott Big Roll 33¢

FRUIT COCKTAIL Shurfine 303 Can 2 For 45¢

CRANBERRY SAUCE Shurfine 300 Size 2 For 49¢

CRISCO 3 Lb. Can 55¢
With Purchase Of 1 Pkg. 10 Oz. Pecans At 99¢

SUGAR c & H Or Imperial 5 Lb. Bag 19¢
With Purchase Of 3 Oz. Jar NESTEA Reg. Price

DECKBOARD FARMS SLICED TURKEY \$1.23
WITH GIBLET GRAVY 28 OZ. PKG.

5 Lb. 4 oz. KING SIZE GAIN ONLY \$1.11
PRICE WITHOUT COUPON \$1.21
GOOD ONLY AT PIONEER SUPERMARKET
OFFER EXPIRES 11 - 30 - 1969
LIMIT 1 COUPON PER PURCHASE

FREE
Kern's Strawberries
10 Oz. Pkg.
With Purchase 8 Oz. Box DREAM WHIP

TURKEYS
YOUNG and TENDER
12-14 Lb. Avg. 16-18 Lb. Avg.
35¢ Lb. 33¢ Lb.
With Purchase of 2 Boxes Croutetts Stuffing Mix

SUNRAY HAMS
12-14 Lb. Avg.
67¢ Lb.

HENS ANY SIZE 49¢
YOUNGBLOOD CHICKEN LIVERS 8 OZ. PKG. 33¢

MORTON FROZEN JUBILEE
PUMPKIN PIE }
MINCE PIE }
APPLE PIE }
CHERRY PIE }
PEACH PIE }
PIE SHELLS }
29¢ EACH

CELERY
Fresh Crisp Stalks
9¢ Lb.

LEE'S SAUSAGE
2 LB. SACK
1.39 Lb.

PAPER PLATES
15 Ct. Compartment
49¢ Each

REYNOLDS FOIL
Heavy Duty-25 X 18
53¢

GALA NAPKINS
60 COUNT
2 For 27¢

FREE 10 BOX IMPERIAL POWDERED SUGAR WITH PURCHASE 1 PKG. MERSHLY'S 10 OZ. PKG. CHOCOLATE CHIPS **FREE**

VEGETABLE OIL Shurfine 24 Oz. 53¢	DOG FOOD Roxey Tall Can 3/31¢
ALUMINUM FOIL Viking 25 Ft. 29¢	MACARONI Skinner's Ready Cut 10 Oz. Pkg. 25¢
FLOUR Shurfine 5 Lb. Bag 49¢	ASPARAGUS Shurfine All Green Cut 300 Can 39¢
CARROTS Shurfine Sliced 303 Can 19¢	TOMATOES Shurfine Stewed 303 Can 27¢
PICKLES Alabama Sour 22 Oz. 45¢	VITAMINS Shurfine Daily Multiple 100 Count 99¢
HAIR SPRAY Shurfine Deluxe 13 Oz. 79¢	REGISTER For \$100 Worth of FREE GROCERIES Courtesy Gunn Bros.

OYSTERS - Myco - Buff Size Fine For Dressing 39¢

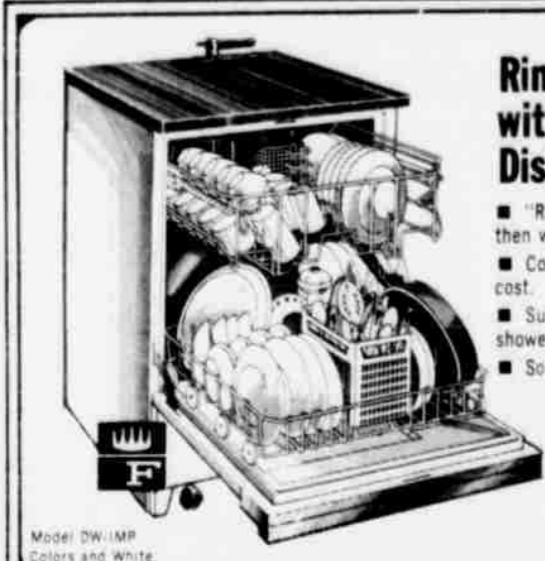
FOLGERS COFFEE
1 LB. CAN Lb. 45¢
With Purchase 20 Oz. Jar Pream Coffee Creamer

6-BTL. KING SIZE COCA COLA
23¢
With Purchase 1 Pkg. Lay's 69c Ruffles

PIONEER SUPERMARKET

LEE HAYNES 205 WEST 3RD. ALVIS TUBBS

We have compared appliance prices in the area
and
WE CAN SAVE YOU UP TO \$30!
We do not charge extra for freight, delivery
or installation



Rinse now, wash later
with this Frigidaire
Dishmobile.

- "Rinse and Hold" setting lets you rinse now, then wash later.
- Converts to built-in with optional kit at extra cost.
- Super-Surge washing action gets dishes shower-clean. Little or no pre-rinsing.
- Solid Cherry Wood chopping block top.

5-year
Nationwide Warranty

backed by General Motors.

1-year Warranty for repair of any defect without charge, plus 4-year Protection Plan (parts only) for furnishing replacement for any defective part in the motor, pump and water circulating system, except the spray impeller on models so equipped.

Wondering If A Dishwasher
Will Really Clean Your Dishes?
FRIGIDAIRE WILL!

Let Us Wash Your Dishes For 2 Days . . . FREE!
You May Choose The Days And There's No
Obligation To Buy.

Call 385-5883 For Free Demonstration

Cox

FURNITURE & APPLIANCE

ASK ABOUT OUR CHRISTMAS FINANCING PLAN!

1804 HALL AVE.
LITTLEFIELD, TEX.
722-385-5883



THE WORLD'S TALLEST windmill replica at LFD Drive and Delano stands guard over downtown Littlefield like a sentinel at attention in this aerial photo made by Emil Macha courtesy of Flying Service.

AMHERST

MRS. LESTER LA GRANGE 246-3336



OUT-OF-TOWNERS here for the golden wedding anniversary celebration of Mr. and Mrs. S. J. Tharp in Fellowship Hall of the Methodist Church Sunday afternoon were Mr. and Mrs. Floyd Tharp of Morton; Mr.

and Mrs. John Taylor of Hobbs, N. M.; Mr. and Mrs. J. M. Taylor and family of Seagraves; Mr. and Mrs. Doyce Cook of Muleshoe; Mr. and Mrs. Walter Choate of Littlefield and Mrs. Irene Louthback of Bellflower, Calif. The honoree's sons, Clay Tharp and family of Sweetwater and Jarrell Tharp and family of O'Donnell were hosts for the occasion.

MR. AND MRS. Bill Workman and her sister and husband, Mr. and Mrs. Otis Jones of Idalou, returned Sunday from a trip to Houston and Galveston. In Houston they visited the Jones' daughter.

MRS. JERRY WARD of Muleshoe is a patient in the local hospital this week. Her daughter, Susanne, is staying with her grandparents, Mr. and Mrs. Leonard Tittle.

VISITING HER SON, Lewis Sessums, and family this week is Mrs. J. D. Cooper of Levelland.

MR. AND MRS. Lee Payne visited their granddaughter, Mrs. Steve Day and son, Colby, at Lubbock Wednesday.

MRS. JOETTA Tadlock of Borger was guest of her parents, Mr. and Mrs. Hubert Taylor last week.

AMY BROWNLOW was five years old Friday and her parents, the Clyde Brownlows, entertained with a supper to celebrate the occasion. Both grandparents, Judge and Mrs. M. C. Ledbetter and Mr. and Mrs. Earl Brownlow and her aunt, Mr. and Mrs. Loy Kern and children, all of Morton, were here.

MRS. CHARLIE WEBB was in Dallas last week. Her grandson, Mark McKeehan, was involved in an accident.

WEEKEND GUESTS in the Don Ewing home were his sister and family, Lt. Col. and Mrs. W. E. McBride, daughter and granddaughter of El Paso.

LAMAR KELLY and T. J. Williams attended a school administrators' meeting in Plainview Wednesday.

THANKSGIVING holidays will begin when school is dismissed at 2:30 p.m. Wednesday, Nov. 26. School will resume Monday, Dec. 1.

MR. AND MRS. Hurlburt (Dube) Slate of Oklahoma City were guests of his brother and wife, Mr. and Mrs. L. E. Slate, of Sudan and Mrs. Lester LaGrange and others in Amherst this week.

MR. AND MRS. James Corder of Abary, Ore., with Mrs. Nolan Harlan and James of Bula visited Mrs. Mary E. Britt, Mrs. Harlan's mother, this week. The Corders are spending some time in Bula with Mrs. Lula Harlan.

MR. AND MRS. Henry Brown were in Lubbock with their son, Mr. and Mrs. Guy Brown, last weekend.

MISS V. O. and Willie White stayed in Lubbock last week with Blane Simmons while his parents, Mr. and Mrs. Hartley Simmons were in Wheeler and Mobeetie with Mr. and Mrs. Ross Morgan, Jr. Ross is ill in a Wheeler hospital. Mrs. J. L. Simmons of Littlefield was there with them.

GUEST OF HER sister, Mrs. Lewis Sessums and family last week was Mrs. Jack Parkinson of Phoenix, Ariz.

MRS. GRACIE HUFF underwent major surgery at John Sealey Hospital in Galveston Wednesday. She is Mrs. B. M. Ferguson's daughter and Winston Ferguson's sister.

MR. AND MRS. Clyde Brownlow, Mr. and Mrs. Joe Miller and Mr. and Mrs. Bert Grimes of Shallowater visited in Lubbock Wednesday. Later they visited in the Grimes home.

VISITING IN THE Hubert Taylor home last weekend were Mr. and Mrs. Rodney Taylor of Portales, N. M.

BIGGER CHECKS
Approximately 180,000 widows will receive larger checks from the VA in January 1970 under a law signed in October 1969.

**Anton School Observes
National Book Week**

ANTON—Anton High School is observing National Book Week Nov. 17-24. Theme for this year's emphasis on book reading is "Book Power". Posters are on display, book markers and reading lists are being distributed throughout the junior-senior high school area.

The library of Anton High School is well stocked with selected modern and classic novels and books of science, history, biography. The library

is organized on the Decimal system with a catalog.

Students are given instructions in the use of the library. A guide to the magazines is provided with years of back copies of magazines available to students to use for research materials. Five area and national newspapers are available and more periodicals are currently received.

Activities

MONDAY, NOV. 24
PERSONS INTERESTED in forming a youth center in Littlefield are asked to meet in the Lamb County Court Room at 8 p.m.

MONDAY, NOV. 24
CUB SCOUT PACK 666 will have a meeting beginning at 7 p.m. All parents are invited to attend.

SATURDAY, DEC. 6
MISS KAREN LEWIS, bride-elect of Roland Livesay of Olton, will be feted with a bridal shower in the Clovis Poteet home from 3 to 5 p.m. Friends and relatives are invited to attend.

BULA
MRS. JOHN BLACKMAN
933-2328

MONDAY, NOV. 24
THE LITTLEFIELD Garden Club will be host to Lamb County Council meeting in the Flame Room beginning at 2 p.m. Mrs. Harry W. of Levelland will give program on Christmas decorations. All members urged to attend.



BRYAN LOVE bites into apple that got a little red up and came out in distinct varieties. The little strip is Golden Delicious dark wedge is Extra Fancy and the remaining apple just plain Delicious. Bryan is the six-year-old son of Mr. and Mrs. Wayne Love, 113th.

**Two Students
Are Enrolled
In OSU Class**

Olen Neal Walker and E. Duncan of Littlefield among 17,492 students enrolled on the Oklahoma State University campus Stillwater, Okla., this semester. Total OSU enrollment 20,992 and includes 2,200 Oklahoma State University students at the Oklahoma City campus of OSU Technical Institute.

Olen Walker is a graduate student at the University of Oklahoma. Billie Duncan is a senior economics major.

On the Stillwater campus are 11,278 men and 6,714 women.

By colleges, arts and sciences has 4,624, business 2,754, graduate 2,098, engineering 1,936, agriculture 1,568, economics 1,305, technical institute 589, veterinary medicine 188.

By classes, there are 4,624 freshmen, 3,518 sophomores, 3,510 juniors, 3,665 seniors, 2,430 graduate students, 126 special and unclassified students.

Reap these Buys

STARTS
MONDAY
9 A.M.

DURING



SPECIAL
PURCHASE
EVENT!

60-INCH
DACRON DOUBLE KNITS

Beautiful Prints
and Jacquard.

\$ 5.00
Yd.

Compare at 8.99 Now

CANNON "CROCHET LACE"
100% COTTON

**Thermal
Blankets**

* SIZE 72 X 90
* REG. \$5.99

\$4.
NOW



FAMOUS CANNON 22X 46
WHITE

Bath Towels

REG. 69c

EACH NOW

44c

LADIES NYLON QUILTED

ROBES

ASSORTED STYLES
VALUES TO \$8.99

\$7.00
NOW

SWAN SOFT 20 x 40
Gauze Diapers

Reg. \$2.99 Value

\$2
Now

LADIES 100% AGILON

Panty Hose

Reg. \$2.

Now **2 PAIR For \$3**

MEN'S PERM-PRESS

Sport Shirts

* Long Sleeve

* Sizes S-M-L-XL

* Reg. \$3.99

Now **2 FOR \$5**



**Hey Kids
Dial
385-5212**

FOR A
MESSAGE
FROM

Santa Claus

COURTESY FORREST PRICE'S

Western Auto

The Story

Of

Thanksgiving



Late in March of 1621 concluded a peace treaty with the Indians which was to last for fifty years.

FIRST THANKSGIVING AT PLIMOTH PLANTATION

THE FIRST THANKSGIVING celebrated at Plymouth in 1621 was a great festival, a gathering of family, friends and neighbors, and a time of games and feasting.

Almost half of the original 102 Pilgrims had survived the first winter. They labored long and hard to build a village and plant crops. When their harvest gathered, they celebrated.

In writing to a friend in England describing the First Thanksgiving, one of the Pilgrims said: "Our harvest being gotten in, our Governor William Bradford set forth four men on fowling; so that we might after a more special manner, rejoice together, after we had gathered the fruit of our labours. They four, on one day, killed as much fowl as, with a little help besides served the company almost a week."

"And among the rest, their (the Indians) greatest king, Massasoit, with some fifty men, whom for three days, we entertained and feasted, and they went out and killed five deer; which they brought to the Plantation and bestowed on our governor, and upon the Captain (Myles Standish) and others."

In describing this Thanksgiving, which set the pattern for the traditional American celebration, other writers tell of foot racing, wrestling, exercising arms (military drill) and pitching the bar.

These scenes were acted out by citizens of Plymouth, Massachusetts, many of whom are descendants of those who celebrated the First Thanksgiving. Appropriately enough, the setting was at Plimoth Plantation, an outdoor museum where the Pilgrim settlement is being re-created.



The Indians were invited to join the Pilgrims in celebrating a bountiful harvest.



When the multi-colored flint corn, which the Indians had taught the Pilgrims to plant, was harvested it had to be shelled and ground into a meal.



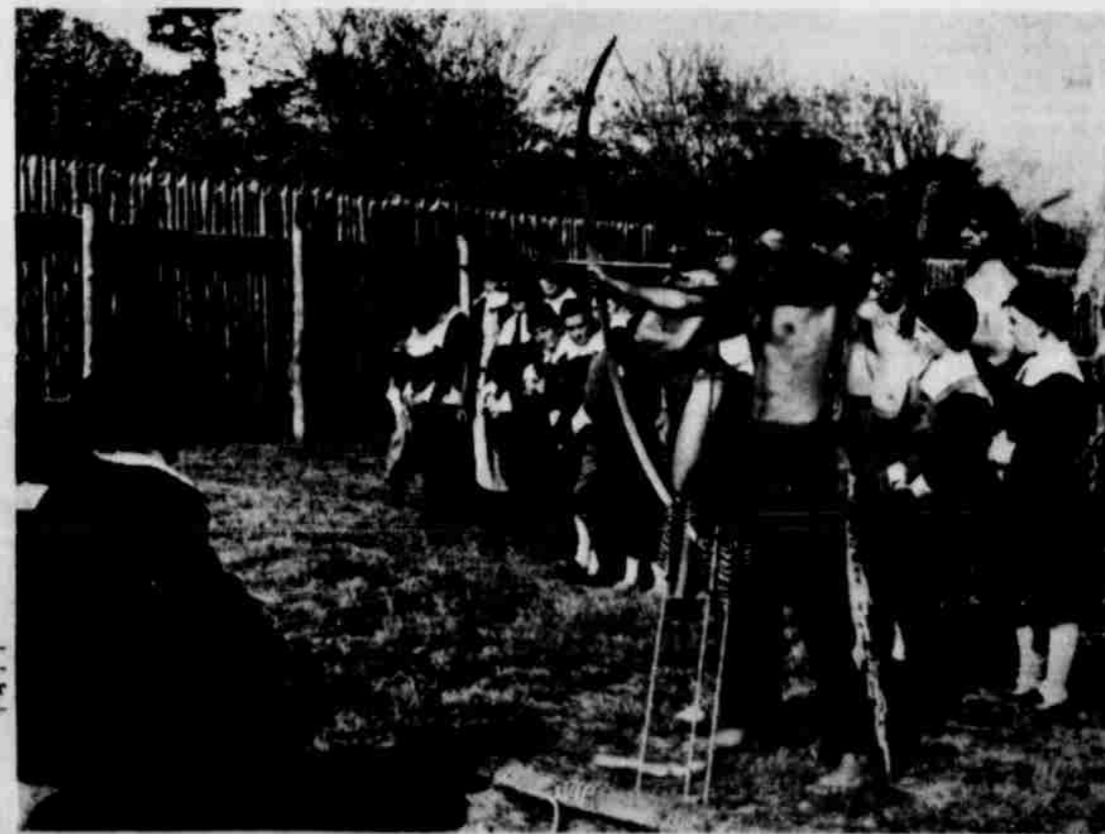
Although the First Thanksgiving was a harvest festival, the Pilgrims blessed their food and thanked God for a bountiful harvest.



When it was time to carve the bird, there were plenty of spectators.



Athletic events and contests of skill between Pilgrims and Indians made for another part of our Thanksgiving tradition.



TV SCHEDULE

CHANNEL 13

SUNDAY

7:58 Sign On
8:00 Tom & Jerry*
8:30 Batman*
9:00 Oral Roberts*
9:30 Movie Theatre
10:30 Face the Nation*
11:00 Favorite Hums*
11:15 Tom Laundry Show*
11:45 NFL Football*
6:00 Lassie*
6:30 To Rome With Love*
7:00 F.B.I.*
8:00 Leslie Uggams*
9:00 Mission Impossible*
10:00 News & Weather*
10:15 Red Raider Highlights*
10:30 Curtain Call*
1:50 Sign Off

MONDAY

6:28 Sign On
6:30 Farm & Ranch News*
7:00 CBS Morn. News*
8:00 Captain Kangaroo*
9:00 The Lucy Show*
9:30 Beverly Hillsbillies*
10:00 Andy Griffith*
10:30 Love of Life*
11:00 Where Heart Is*
11:24 Mid Day News*
11:30 Search for Tomorrow*
12:00 Channel 13 News*
12:12 Farm & Ranch News*
12:22 Paul Harvey*
12:30 As the World Turns*
1:00 Love is a Many Splendored Thing*
1:30 Guiding Light*
2:00 Secret Storm*
2:30 Edge of Night*
3:00 Matinee Theatre
4:30 Three Stooges*
5:00 Gomer Pyle*
5:30 Evening News*

TUESDAY

6:30 Lancer*
7:30 Red Skelton Hour*
8:30 Governor & JJ*
9:00 My Three Sons*
9:30 Green Acres*
10:00 News & Weather*
10:30 Merv Griffin*
12:00 Little Bit of News & Weather*
12:05 Sign Off

WEDNESDAY

6:30 Glen Campbell*
7:30 Beverly Hillsbillies*
8:00 Medical Center*
9:00 Hawaii Five O*
10:00 News & Weather*
10:30 Merv Griffin*
12:00 Little Bit of News & Weather*
12:05 Sign Off

THURSDAY

5:00 NFL Football*
8:00 Thursday Night Movie*
10:00 News & Weather

10:30 Merv Griffin Show*
12:00 Little Bit of News and Weather*
12:05 Sign Off

FRIDAY

6:30 Get Smart*
7:00 Good Guys*
7:30 Hogans Heroes*
8:00 Friday Night Movie*
10:00 News & Weather*
10:30 Merv Griffin*
12:00 Midnight Theatre
1:15 Sign Off

SATURDAY

6:58 Sign On
7:00 The Jetsons*
7:30 Bugs Bunny/Road Runner*
8:30 Flying Machine*

9:00 Parits of Penelope Pitstop*
9:30 Scooby Doo*
10:00 Archie Show*

11:00 Wrestling*
12:00 NCAA Football*
6:00 Kodaks All American Football Team
6:30 Jackie Gleason*
7:30 Lawrence Welk*
8:30 Petticoat Junction*
9:00 Mannix*
10:00 Double Feature
2:00 Sign Off



ELIZABETH TANKERSLEY, instructor for short charm course, sponsored by Norma's, pictured top left, presented her students in a graduation fashion show Saturday in the Reddy Room. Young ladies participating in the course were Connie Cannon, Rita McKinney, Mary Kay Matthews, Tina Russell, Pam Huber, Charly Russell, Cindy Huber, seated, Debbie Crosby, Christi Stone, Patti Stone, and Teresa Crosby.

OLTON

MRS. W.B. SMITH JR.

285-2385

MRS. BOB WORLEY was a guest of an old friend, Mrs. Edra Taylor at Crosbyton, last weekend.

MR. AND MRS. Haydon Hankins and baby of Azle visited last weekend in the homes of their parents, Mr. and Mrs. Louis Clark and Mr. and Mrs. W. T. Hankins.

MR. AND MRS. Jack Coleman, Bentley, Lisa and M'Lee of Hereford visited Sunday in the homes of their parents, Mrs. Era Maye Walthall and Mr. and Mrs. Floyd Coleman.

MRS. IRA FOSTER, who is receiving therapy treatments at Methodist Hospital in Lubbock, spent last weekend at home.

MR. AND MRS. Willie Gene Green entertained with a birthday dinner party

Thursday night in honor of his mother, Mrs. Lillian Green. Mrs. Willie Gene Green served a four course dinner to guests, Mmes. Era Maye Walthall, Ruby Smith, Lenora Martin, Freddie Mae Hysinger, Inez Yates, Margerie Slatton, Merle Sharp, Callie Walker, Bonnie Brown, Lola Mills, Miss Theo Hackler and the honoree, Lillian Green.

MRS. GREER HAMILL and Mrs. S. E. Whittington left Thursday morning to be at the bedside of Mrs. Laura Tisdale, mother of Mrs. Hamill, who was seriously ill at Fairfield Hospital. Mrs. Tisdale made her home at Streetman near Corsicana.

MR. AND MRS. George Smith of Sanger visited one day last week in the home of her brother and sister-in-law, Mr. and Mrs. Jess Parker.

Springlake-Circle

MRS. TOM STANSELL

285-2572

RIGHT WORSHIPFUL Brother J. B. Noland of Hereford and members of the Texas Grand Lodge Committee on work, directed 10 tests Saturday at the Olton Masonic Lodge for renewing certificates to teach Masonic Work. From Olton were Robert Dennis and James Martin. Earlier C. D. Kirkpatrick took the examination at Friona. Assisting was Casey Walling of Slaton, formerly of Olton. Activities were hosted by Leonard Sanders Jr., Worshipful Master of the Olton Lodge, assisted by the fellow members.

G. H. WOOD, 81, of Olton, was honored with a birthday dinner Sunday by his son and daughter-in-law, Mr. and Mrs. Raymond Wood, in their home near Cotton Center. Attending were the guest of honor, Mr. and Mrs. Jack Morris of Temple, Mr. and Mrs. Arthur Wood of Cotton Center, Mrs. T. C. Kennedy of Olton, Mrs. Larry Adrian of Petersburg and Gary Wood of Cotton Center. Karin, Chuck and Connie Kennedy of Olton, Lorhonda and Larry Jr. Wood of Anton and Clay Adrian of Petersburg, Kennedy and Adrian, and Mrs. Bonnie Brown. Mr. and Mrs. C. T. Wood of Littlefield joined the group during the afternoon, and Clyde Wood of Greenwood, Ark., called.

THURSDAY evening, 19 members of the Olton Masonic Lodge received awards for Master Masons in good standing for 25 years or longer. Casey Walling of Slaton, formerly of Olton, made presentations to Joe L. Carson, Galen Finney, Eldon Franks, Wallace Hackler, C. E. Hysinger, Oliver Harvey Jones, W. M. Keating, Winford H. Leathers, Leland H. McAdams, Jack Petty, Basil Woodrow Sherman, W. B. Smith Jr. and Marshall Stone, all of Olton, and Howard Dale Walthall of Littlefield and others.

MR. AND MRS. James Couch gave two-year-old Kayleen a birthday dinner Thursday. Attending were Mrs. Lucille Couch, Mrs. Ruby Bumpus of Plainview, Mr. and

MR. AND MRS. J. M. Crawford had as recent guests from Austin their daughter and her family, Mr. and Mrs. Bill Boverie and sons, Brian and Barry.

MR. AND MRS. Bill Boverie and sons of Austin, visited in the home of his mother, Mrs. J. A. Boverie. Mr. and Mrs. Bill Boverie and sons plan to move to Albuquerque, N. M., next month.

MRS. W. B. SMITH Jr. attended the funeral in Lubbock Friday for Grover Mitchell in the chapel of the First United Methodist Church. He was the brother of Mrs. Forrest Kyle of Bangs.

MR. AND MRS. Bill Collins celebrated their anniversary Saturday night by dining out at El Chico Cafe in Lubbock. Their guests were their daughter and husband, Mr. and Mrs. Billy Roy Smith of Amarillo.

CHARLEY GILES is receiving treatment at Methodist Hospital in Lubbock for pneumonia.

MRS. R. V. (Gayle) Allcorn is one of 27 students named to the Dean's Honor Roll for the fall Mid-term semester according to Dr. W. Wayne Alford, Dean of Wayland Baptist College.

Coffee Honors Winnie Campbell

Mrs. Winnie Campbell was honored at a get-acquainted coffee Saturday morning in the home of Mrs. Ora Martin. Coffee, hot tea, cookies, cake, mints and nuts were served. Decorations carried out a Thanksgiving theme. Those attending were Mmes.

Alice Willis, Lillie Lorene Hulse, Vena Katy Higgin, Ruth Ne Loriane Hoppings, Bryan, Lena Jones, Mrs. Shotwell, Sr., B. Gollehon, Alta Smith, Ross, Louise Armstrong, Barnett, Gladys Joplin, Cummings and Ann Lo

School Council Plans Projects

ANTON—The Inter-Club Council met Thursday before school with Gene Ann Herrin, chairman, presiding.

An all-school Christmas project was selected. Canned goods will be collected for Girlstoun. Again, halls will be decorated by class competition with the winning decorations receiving the Christmas decoration plaque provided by the Student Council.

The club is exploring the possibility of entering into the foreign student exchange program.

Parkview WMS Begins Study

Parkview WMS met at the church Monday night for the mission study book, "Sons of Ishmael, How Shall They Hear?"

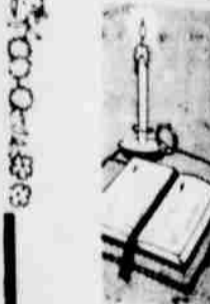
The first half was taught by Mrs. Ila Sewell and Mrs. Raymond Burchfield.

Those attending were Mmes. Dan Cotham, Ralph Tillery, W. W. Fry, A. F. Wilson, Goby Vargas, Phorious Howell and Lois McBride.



Because Understand

Hammons Funeral Home



FELL FREE TO CALL US AT ANY HOUR

Hammons Funeral Home

Quasar Color TV with the "works in a drawer" with the magnificent look of Mediterranean!

WL834F Mediterranean credenza style cabinet of genuine elm veneers and select hardwood solids with Andorra pecan finish. Decorative accents of polystyrene. Easy roll coasters.

PAT'S RECORD CENTER

516 Photos AUTHORIZED MOTOROLA DEALER 385-6664

CHANNEL 11

SUNDAY

8:00 Faith For Today*
8:30 Glory Road*
9:00 Insight
9:30 Herald of Truth*
10:00 Ask Your Minister*
10:45 First Baptist Church
12:00 Meet the Press*
12:30 AFL*
3:00 AFL*
6:00 Evening Report*
6:30 Walt Disney*
7:30 Bill Cosby*
8:00 Bonanza*
9:00 The Bold Ones*
10:00 Final Report*
10:30 Tonight Show*
12:00 New Mexico Report*

TUESDAY

6:30 Jeannie*
7:00 Debbie Reynolds*
7:30 Julia*
8:00 Tuesday Night Movie
10:00 Final Report*
10:30 Tonight Show*
12:00 New Mexico Report*
12:15 Sign Off

WEDNESDAY

6:30 The Virginian*
8:00 Kraft Music Hall*
9:00 Then Came Bronson*
10:00 Final Report*
10:30 Tonight Show*
11:00 New Mexico
12:00 New Mexico Report*
12:15 Sign Off

THURSDAY

6:30 Daniel Boone*
7:30 Ironside*
8:30 Dragnet*
9:00 Dean Martin*

FRIDAY

6:30 High Chaparral*
7:30 Name of Game*
9:00 Brackens World*
10:00 Final Report*
10:30 Tonight Show*
12:00 New Mexico Report*
12:15 Sign Off

SATURDAY

7:00 Heckle & Jackie*
8:00 Here Comes the Grump*
8:30 The Pink Panther*
9:00 H. R. Pufnstuf*
9:30 Banana Splits*
10:30 Jumbo*
11:00 The Flintstones*
11:30 The Underdog*
12:00 Roy Rogers
1:00 Sherlock Holmes
2:15 The Hanging Tree
4:00 New Mexico Outdoors
4:30 GE College Bowl*
5:00 Wild Kingdom*
5:30 Huntley-Brinkley*
6:00 Evening Report*
6:30 Andy Williams*
7:30 Adam 12*
8:00 Saturday Movie*
10:30 Final Report*
11:00 Movie of Week
1:00 New Mexico Report*
1:15 Sign Off

SUNDAY

8:30 Dudley Do Right*
9:00 George of Jungle*
9:30 Fantastic Four*
10:00 Bullwinkle*
10:30 Discovery*
11:00 De Todo Un Poco*
12:00 Directions*
1:00 Film Fair
2:00 Burkes Law
4:30 KSEL Spotlight*
5:30 Gilligan's Island*
6:00 Land of Giants*
7:00 College Football*
8:00 ABC Sunday Night Movie*
10:00 News Scope*
10:30 Let Me Speak to the Manager*
10:40 Classic Theater

MONDAY

9:30 Jack LaLanne*
10:00 Romper Room*
11:00 Switched*
11:30 That Girl*
12:00 Frankly Speaking*
12:30 Let's Make Deal*
1:00 Newlywed Game*
1:30 The Dating Game*
2:00 General Hospital*
2:30 One Life to Live*
3:00 Dark Shadows*
3:30 Dream House*
4:00 Comedy Kapers*
5:00 The Flintstones*
5:30 ABC News*
6:00 News Scope*
6:30 Music Scene*
7:15 The New People*

CHANNEL 28

SUNDAY

8:00 The Survivors*
9:00 Love American Style*
10:00 News Scope*
10:30 Joey Bishop Show*
12:00 Sign Off

TUESDAY

6:30 Mod Squad*
7:30 Movie of Week*
9:00 Marcus Welby, M. D.*
10:00 News Scope*
10:30 Joey Bishop*
12:00 Sign Off

WEDNESDAY

6:30 Tech Football*
7:00 Courtship of Eddie's Father*
7:30 Room 222*
8:00 ABC Wednesday Night Movie
10:00 News Scope*
10:30 Joey Bishop*
12:00 Sign Off

THURSDAY

6:30 The Ghost & Mrs. Muir*
7:00 That Girl*
7:30 Switched*
8:00 Tom Jones*
9:00 It Takes a Thief*
10:00 News Scope*
10:30 Joey Bishop*
12:00 Sign Off

FRIDAY

6:30 How Life Begins*
7:30 Mr. Deeds Goes to Town*

SUNDAY

8:00 Here Come Brides*
9:00 Jimmy Durante Presents the Lennon Sisters*
10:00 News Scope*
10:30 Joey Bishop*
12:00 Sports Scoreboard*
12:05 Midnight Movie

SATURDAY

7:00 Casper Cartoons*
7:30 Smokey the Bear*
8:00 The Cattanooga Cats*
9:00 Hot Wheels*
9:30 The Hardy Boys*
10:00 Sky Hawks*
10:30 Adventures of Gulliver*
11:00 Fantastic Voyage*
11:30 American Bandstand*
12:00 Follow the Fun*
12:30 This is Your School*
1:00 Film Fair
2:10 "Blackwell's Island"
3:20 Woman of Mystery*
4:30 The Westerners
5:00 The Willis Family*
5:30 West Texas Outdoorsman*
6:00 Flying Nun*
6:30 Dating Game
7:00 Newlywed Game*
7:30 Country & Western Spectacular
"Buck Owens"
"Marty Robbins"
8:30 Hollywood Palace*
9:30 Race is On*
10:00 Lew Dee Theatre
11:30 Sports Scoreboard*
11:35 Science Fiction Theater
12:05 Sign Off

AFTER HOURS

PRESCRIPTION SERVICE
Please Phone Us

285-3698
285-4504

RODEN DRUG

"THE MAN WHO SAVES HIS OWN COTTONSEED"

Let's call him Grower A. He knows what seed production is all about . . . how seed quality insures greater production of higher quality cotton. He produces his seedstock with these elite methods: one variety farm, one variety gin for handling seed cotton, one variety trucking, one variety storage, handles big volume for processing one variety with absolute cleanup at every stage of handling. He knows that seed can be mixed at many points such as the gin or delinting plant and that "varietal mixture", so common with farmer-saved seed, hurts his overall production. Further, he's aware of the genetics and agronomics of seed production.

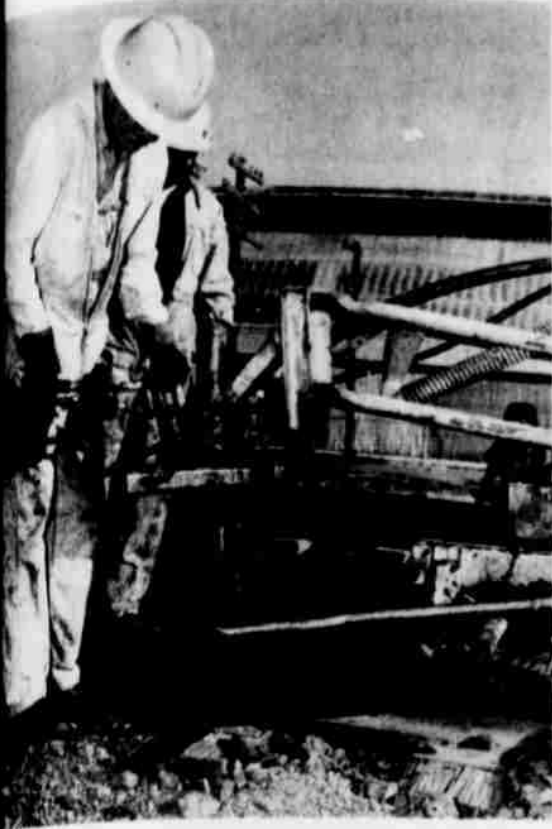
We salute Grower A. He produces planting seed exactly the way it should be done . . . exactly the way every bag of Johnny Cottonseed is produced. If your seedstock is anything less, you should be concerned. But maybe we can help. If you don't have the time, facilities or desire to go into the seed production business, check into our unique SEED BANK program at your local coop gin or elevator. You can get your choice of varieties in both guaranteed quality and supply. It's a service offered by your own cooperative, Growers Seed Association.

Sign up now at your local coop gin or elevators.



- Littlefield Farmers Coop Gin
- Lamb County Farmers Coop Gin
- Fieldon Coop Gin
- Hart Camp Coop Gin
- Spade Coop Gin

- Whitharral Farmers Coop Assn.
- Amherst Producers Coop Gin
- Amherst Farmers Coop Gin
- Sudan Farmers Coop



Building A Railroad Ain't Like It Used To Be

TA FE WORKMEN are busy replacing rail ties along the entire route from Farwell to Rock. They were in Littlefield last week and are heading toward Bainer Switch. The machine at left is a spike puller, and is first in a string of machinery

to do the replacement task. After the spikes are pulled from marked ties, the machine, second from left, saws the ties in two near the rails, lifts the mid-section of the tie out of the ground and kicks the ends outward. A third machine digs out and loosens

the dirt where the new tie goes, then, as shown in the fourth photo, pulls the new tie into place beneath the rails with a cable. The crew behind comes along with another machine, replaces the foundations for the rails, and start the spikes by hand for the machine to

finish up. Another machine later comes along and smoothes the earth and gravel for a neat appearance and better foundation.

Journey To The Past

BY EVALYN PARROTT SCOTT



THE NOTE: This is a story regarding the life of Charles Edgar Strawn and Lillie Williams Strawn, as related by their daughter.

By VESSIE LEE HICKS
Charles Edgar Strawn, his wife and six children, moved to Lamb County, near Littlefield, in March of 1924. The six children were Pearl, Vessie Lee, L. C., Horace, Pauline Norvell, Charles (Charlie) was born in Littlefield, Ala., May 22, 1882 to Perry and Lillie Strawn.

PREFERS TEXAS
Charlie attended school there until he was 10 years old, then decided he was through with formal education and preferred to stay on the farm, and make canoes and hunt instead of attending classes. He started missing classes (being a bookie). His parents did not agree to, and he had to return to school for further study. He decided to run away instead and came to Texas, with his older brother, Willie, and worked on a farm for three years.

There he and his brother went to Lamb County and bought land near Center, Texas. It was here he met Lillie Eugenia Williams at the Silas Baptist Church.

Being unusually good-looking and also having a new buggy and a most spirited horse, Lillie decided he was good material for a husband. The couple was married Jan. 1,

1923. The land the Strawn brothers bought in Lamb County had been owned by Negroes and a white man was located on the premises. However, this did not daunt Lillie one bit and she moved with her husband to their new home near Center, close to the Negro Cemetery. It was in this house that all six of their children were born.

When came another move when the lure of cheap and good land became available in Texas. Strawn bought two labors of land in 1923,

one mile north of the once famous Yellowhouse Switch; which was the largest cattle shipping switch west of Lubbock. Yellowhouse Switch now goes by the name of Bainer.

In June of 1924 Strawn shipped a freight car full of lumber and built a six room house.

BOMBARDED WITH PELLETS
The house was located one-fourth of a mile east of the late Pat Boone's cattle and sheep ranch.

During the first sand storm that the family experienced, they heard a noise on the roof and thought it was surely hailing.

Strawn rushed out to find that it was pellets from the Boone sheep pen.

Strawn was a County Commissioner for 12 years. He was an Oddfellow and served on the Littlefield school board, and was active in both civic and political affairs.

Lillie Williams Strawn was the daughter of General Irving Williams and wife, Cynthia Spivy Williams. She was born April 11, 1882, and was graduated from Willowgrove High School near Tempson.

One of her more interesting experiences was watching her mother "witch" for water when the family built a new home. She then helped dig the well and there is a picture in existence of her oldest son, L. C., drawing water from the well. The well is still in use.

Lillie's grandmother was the wife of a Baptist preacher but was prone to smoking a corn-cob pipe. Mrs. Strawn remembered seeing her light the pipe from coals of fire from the wood burning fire place.

Lillie Strawn was a member of the first Home Demonstration Club organized at Yellowhouse; was an active member of the Baptist Church and WMU until three months prior to her death.

Descendants of the Strawns today number 11 grandchildren including 4 grandsons to carry on the Strawn name; 8 great-grandchildren, one of them named Charles Strawn for his great-grandad, Charles Edgar Strawn.

FREE!

SATURDAY NOON IS YOUR LAST CHANCE TO REGISTER FOR GUNN BROS.

GRAND PRIZES!



DRAWING AT 4:00 P.M. SAT., NOV. 29 AT GUNN BROS. CENTER, 412 PHELPS

Here Are The Prizes

\$100.00 In Groceries At Abbott's Grocery Amherst	\$100.00 In Groceries At Merlin Food Littlefield
\$50.00 In Merchandise At Amherst Variety Amherst	\$100.00 In Groceries At Pioneer Super Market Littlefield
100 Gallons Gasoline At Clark's Shell Service Littlefield	\$100.00 In Groceries At Renfro Super Market Littlefield
100 Gallons Gasoline At Crescent Shamrock Ser. Littlefield	100 Gallons Gasoline At Richey's Shamrock Littlefield
100 Gallons Gasoline At Daily's Texaco Service Littlefield	\$100.00 In Groceries At Wagner's Amherst
\$100.00 In Groceries At Foust Food Littlefield	\$100.00 In Merchandise At Wares Dept. Store Littlefield
\$50.00 In Merchandise At Wrights Prescription Drug Littlefield	

Registration for grand prizes is open to heads of families and all persons over 18 years old, except Gunn Bros. employees and their immediate families and Gunn Bros. dealers, their employees and their families. Entry blanks are available only at the Gunn Bros. dealers listed in this ad. They are free-no purchase required. Drawing for the grand prizes will be at the GUNN BROS. REDEMPTION CENTER, in Littlefield at 4:00 P.M. Saturday Nov. 29. You do not have to be present at the drawing to win-winners will be notified. A person is eligible to win only one grand prize! Prizes will be awarded in the alphabetical order of dealers listed in this ad.

Register At These Gunn Bros. Dealers:

- | | |
|---------------------------------------|--|
| Abbott's Grocery Amherst | Merlin Food Littlefield |
| Amherst Variety Amherst | Pioneer Super Market Littlefield |
| City Cleaners Amherst | Renfro Super Mkt Littlefield |
| Clark's Shell Service Littlefield | Richey's Shamrock Service Littlefield |
| Crescent Shamrock Service Littlefield | Wagner's Amherst |
| Daily's Texaco Service Littlefield | Wares Dept. Store Littlefield |
| Foust Food Littlefield | Wright's Prescription Drug Littlefield |

Public Records

NEW CAR REGISTRATIONS
1969 GMC Truck, J. D. Hufstader Truck Co.
Bill Bradley, Amherst, 1970 Ford Pickup, Keith Glover Ford.
Diane Darling, Rt. 1, Muleshoe, 1970 Ford 4 dr., Keith Glover Ford.
J. W. Gosdin, Amherst, 1970 Chevrolet Pickup, Baccus Chevrolet.
Jack Cowart, Shallowater, 1970 Ford 4 dr., Keith Glover Ford.
Joe Mac Bush, Rt. 1, Anton, 1969 Ford pickup, Keith Glover Ford.
J. H. Busby, Springlake, 1970 Ford Pickup, Mitchell Ford Co.
Thelma Long, Olton, 1970 Ford 4 dr., Brown Jordan Ford.
Yellowhouse Machinery Co., Olton, 1970 Chevrolet pickup, Thompson Chevrolet.
B. N. Kidd, Plainview, 1970 Chevrolet 4 door, Thompson Chevrolet.
High Plains Seed & Delinting, Olton, 1970 Chevrolet pickup, Thompson Chevrolet Co., Olton.
Olton Feedyards, Inc., Olton, 1970 Chevrolet Pickup, Thompson Chevrolet Co., Olton.
Roger C. Davis, Dimmitt, 1970 Chevrolet pickup, Thompson Chevrolet Co., Olton.
Charles Stroope, Hale Center, 1970 Chevrolet 2 door, Thompson Chevrolet Co., Olton.
Dalwin Walden, Rt. 2, Hart, 1970 Chevrolet 2 door, Thompson Chevrolet Co., Olton.
D. L. Givens, Rt. 1, Olton, 1970 Chevrolet four door, Thompson Chevrolet, Olton.
L. C. Crosby, 1114 W. 3rd., Littlefield, 1969 Plymouth 4 door, Garland Motor Co.

FOR CLASSIFIEDS DIAL 385-4481

SEED BANKING with Johnny Cottonseed
see advertisement, this issue

HELP WANTED
Excellent Opportunity For Part-Time Sales of Fire and Casualty Insurance.
The SIC Insurance group is looking for someone to sell fire and casualty insurance on a part-time basis in the Littlefield area. May be developed into a full-time position. Insurance for automobiles, boats, houses, household goods, personal property, and life insurance.
Contact will be made from a system of leads on present customers. A program is also available for developing direct sales outside of present customer sources.
The right party can work in the evening after 5 P.M.
If interested call George Davis at 385-4492 for an appointment.

"WANTED TO BUY"

- *All Silver Coins Minted Before 1965
 - *All Types Silver Dollars
 - *Wartime Silver Nickels (1942-1945)
 - *All Old U.S. Coins
- Check With Me Before Selling For My Generous Buying Price

WORSHIP IN CHURCH

and get a spiritual lift for the whole week



reasons

To Be

Thankful

Read the 150th Psalm for a clue.

It begins and ends with a call for all men to praise God. Let everything that hath breath praise the Lord. Perhaps we would do well to follow David in this matter of being Thankful. Our Pilgrim Fathers did. They put God right in the center of every Thanksgiving day. It was the Lord's Day . . . not just another day void of work. Then just what is there about Thanksgiving, about God, that makes me glad? What is it that lifts my face to Heaven when I am sad and when I am glad? Too many times we find the weak, the hungry, the sick and the sad way out in front with their Thanksgiving to God for His fairness, His kindness and His goodwill. Certainly the Great God goes beyond justice to establish love as the central virtue. He gave up His Son to prove it to us beyond a doubt. He calls on us to be very Thankful for health, if we have it — for wealth, if we own it — and for that friend who can turn us on when our way is dark. He invites all of us to live like women and men who know very well about God, . . . to be grateful for the few days He gave us which have been full of the trouble He promised. Don't ever let us say a final farewell to dear ones, but let us be Thankful for His promise that we may find them again. Thank you, Lord, for these reasons and many more. Amen.

© Williams Newspaper Features Syndicate Box 231 - Fort Worth, Texas

Ministers of all faiths and the community-minded firms below persuade you to read this Spiritual Values page

- | | | | |
|---|--|--|---|
| Grimes Auto Sales
James Grimes | Piggly Wiggly
311 East 8th | Lamb Bowling Lanes
Hugh Savage | Luce & Nelson Implement
939 East Delano |
| First National Bank
Don Bell | E. C. Rodgers Furniture
and Employees | Armes Chevrolet Co.
Troy Armes | Curley Top Drive Inn
Ed Bivins-Owner, Janie Jones-Mgr. |
| Dairy Queen
Frank Robinson | Hammons Funeral Home
Pryor Hammons | Dairy Mart
L. V. Pierce | B & C Machine Works
304 Lake Ave. |
| Lumsden Gin Co.
Ross Lumsden | G & C Auto Supply
Mr. Odell Chandler | McCarty Funeral Home
J. D. McCarty & Staff | Fisher's Restaurant |
| Brittain Pharmacy
M. M. & J. T. Brittain | Chisholm Floral
J. E. Chisholm | Crescent House Restaurant
Bill Holder & Employees | Sawyer Pump & Machine
H. L. Sawyer & Employees |
| Spade Grain Company
Spade, Texas | Pioneer Super Market
205 West 3rd | Perkins Roofing & Siding
Tracy Perkins | |

Find yourself through FAITH in GOD...man's ONLY HOPE
Both your FAITH and your CHURCH GROW through REGULAR CHURCH ATTENDANCE

Littlefield Churches

- | | |
|--|---|
| UNITED PENTECOSTAL CHURCH
Rev. E. E. Houlette
1030 East 11th | MISSION BAUTISTA EL CALVARIO
Rev. Celestino Rangel
1100 East 14th |
| BIBLE MISSIONARY CHURCH
Rev. John Conaway
1321 West 6th | EMMANUEL LUTHERAN CHURCH
Rev. William Remmert
409 West 3rd St. |
| FIRST CHRISTIAN CHURCH
Doug Morton
1305 Phelps Ave. | ST. MARTIN AMERICAN LUTHERAN CHURCH
Rev. Phillip J. Berry
W. 10th and Sunset Ave. |
| SALVATION ARMY
Captain David Hudson
621 East 6th | LITTLEFIELD MISSIONARY BAPTIST CHURCH
Rev. Ken Johnson
XIT Drive and 8th St. |
| FIRST BAPTIST CHURCH
Rev. R. B. Hall, Jr.
400 East Sixth | CHURCH OF THE NAZARENE
Rev. Robert Whybrew
8th and LFD Drive |
| SEVENTH DAY ADVENTIST
Ninth and Duggan | SACRED HEART CATHOLIC CHURCH
Rev. Lawrence C. Bobsien
Sunset and 8th St. |
| PARKVIEW BAPTIST CHURCH
Rev. R. N. Tucker
W. 5th and Wicker | FIRST PRESBYTERIAN CHURCH
Rev. Clem G. Sorley
Laveland Highway |

- | | |
|---|--|
| CHURCH OF CHRIST
Park & 9th Street | FOURSQUARE GOSPEL CHURCH
Rev. James Gillettine
715 Phelps Ave. |
| CHURCH OF CHRIST
Highway 385 | FIRST METHODIST CHURCH
Rev. Wallace Kirby
14th and Phelps |
| CHURCH OF CHRIST
9th & Duggan
Bible Class 10 A.M. | ASSEMBLY OF GOD
Rev. H. L. Hallmark
Hall at College Ave. |
| IRVING STREET FIRST BAPTIST CHURCH
Dr. W. A. Terry | CHURCH OF CHRIST
Bob Wear, Minister
17th and Crescent Drive |

Area Churches

- | | |
|--|--|
| BULA
Church of Christ
Methodist
First Baptist | SPADE
First Methodist
Rev. Jim Smith |
| ROCKY FORD BAPTIST
Rev. Ray Harrison | First Baptist
J. J. Terry |
| LUMS CHAPEL BAPTIST
Rev. Don Hudgins | Church of Christ
Mack Greenway |
| AMHERST
First Methodist
Douglas W. Gossett | HART CAMP
First Baptist
Rev. John Nelson |
| Church of Christ
Leonard H. Tittle | FIELDTON
First Baptist
David Burum, Pastor
Church of Christ |
| First Baptist
T. Glenn Wilson | |

'I Believe Jesus Christ'

CLEM G. SORLEY
First Presbyterian Church

IN THE EARLY Christian Church as described in the New Testament, Jesus Christ was the central figure. Peter, Paul, John and other leaders in the early church were primarily concerned about what people thought about Jesus Christ and how they responded to him. All were witnesses to Jesus Christ and tried to reflect him as their way and truth and life. In this they were his servants and followers.

THE EARLY CHURCH related itself to Jesus Christ not only through its leadership but in all that it did. The work of the church was the same work Jesus Christ sought to fulfill. We can likely find several quotations from Scripture which bear out this premise, but Acts 5:42 is a good text. "And every day in the temple and at home they did not cease teaching and preaching Jesus as the Christ."

THE CHURCH OF TODAY has no other cause nor person which can supplant this cause and person of Jesus Christ. The task of the church is to continue to teach and preach Jesus as the Christ in order that there may be an increasing knowledge about him, a more effective experience with him, and a closer adherence to his mission and work in our own time. When will we ever be able to cease teaching and preaching Jesus Christ as a prime theme in our current life and work?

OBVIOUSLY the time will never come when we can cease though we probe and search and reflect we are never able to learn everything, much less teach everything, there is to learn and teach about Jesus Christ.

Much less will the day come soon when we can put into practice that which Jesus Christ taught as what men should do and think and be. However, we can and must continue to make

him the central figure around which we witness and servants.

WE CAN BEAR witness that Jesus is the son of God and serve him only. Emil Bruner was convinced that Christians believe Jesus to be the Son because in him they learned who God is. We have doubts, questions, confusions. In Jesus Christ we may come to know God in the flesh.

WE CAN BEAR WITNESS that Jesus is the Son of Man and thus enter into his mission. And when we thus know we are able to know ourselves better. We are then able to know more of the nature and purpose of man. When "What is man?" we need to say, "Be the man!", for in Jesus Christ we discover man really is and can be.

WE CAN BEAR WITNESS that Jesus Christ is the same today as he was yesterday, in the early church as in the church, his is the "kingdom and the power the glory, forever."

We seek to build a world out of blood and sweat and tears, but in Jesus Christ we seek a kingdom that shall never end. We seek power in the name of the community or nation, but in Jesus Christ power beyond all of these which come from God and is for all time. We seek glory in war or sports or in what we can grasp, but in Jesus Christ we seek the glory of God in which he passes before its reality and goodness.

EARLY CHRISTIANS made Jesus the center of their lives. Modern Christians find no greater motive for their loving and dying in today's world than witnesses to Jesus Christ and his service how they live in this day.

All men give themselves to some work for some end. Christians are called to give themselves to Jesus Christ and work for his kingdom ceasing.

ANTON

MRS. C. D. NELSON 997-4261



REV. JOHN TUBBS

MR. AND MRS. Frank Jackson of Irving, former Anton residents, were here this weekend visiting friends and moving their furniture to their new home in Fort Worth.

A NUMBER OF Anton residents attended funeral services for Mrs. Lillie Cate, 74, which were held in First Baptist Church in Lorenzo at 2:30 p.m. Thursday, Nov. 13. She was Warren Cate's mother and a sister to Mrs. Robert Butler.

MRS. EVA DEE WRIGHT is visiting her brother, Cecil Houston, in Fort Worth. Mr. Houston has been in the hospital sometime and was able to return to his home last week.

MRS. H. F. BISHOP and Mrs. Lynn Anderson attended the golden wedding reception for Mr. and Mrs. L. H. Williams in the Hospitality Room at Portales, N. M., Sunday afternoon.

MR. AND MRS. F. E. Spradley from Dallas visited their children, Mr. and Mrs. Paul Jezisek, and Mr. and Mrs. Kenneth Spradley and families this week.

VISITING MRS. Laura Anderson this weekend were her daughters, Mr. and Mrs. Gene Huddleston and children and Mrs. Garland Cooper and children, all from Dallas; her son, Billy Anderson and his fiancée, Ann Phillips, both students at South Plains College in Levelland.

MRS. ALTON Bullington attended a get-acquainted coffee for the WMU Directors of the South Plains Association at the Chat and Chew Restaurant in Levelland Friday.

MR. AND MRS. Delmar Wooten and children of Hale Center, visited his parents, Mr. and Mrs. Leon Wooten, Sunday.

MR. AND MRS. Less Ellis, Pam and Larry of Abilene were weekend guests in the S. M. Monroe home.

MRS. GEORGE GOEN returned home Friday from a two weeks' visit with relatives in Abilene and Greenville.

VISITING WITH Mrs. Joe McGowan this week were her sisters, Mrs. Oleta East from Oklahoma City, and Mrs. Irene Elliott from Dayton, Ohio, and her son, Fred McGowan of Dallas. Mrs. McGowan returned with Mrs. East for a visit before going to Dallas to make her home.

JAY STANTON of Shallowater delivered the first load of castor beans to the Boothe elevator Monday. Stanton has 45 acres of beans which averaged 1600 pounds per acre.

MR. AND MRS. R. M. (Chief) Molder of Kilgore visited Mrs. Willa Molder and children this week.

THE ANTON Bulldog Band Sweetheart, Trina McLarty, daughter of Mr. and Mrs. Wayne McLarty, was crowned Nov. 14 in the pre-game ceremonies. Her attendants were Judy Motl and Patrice Byrum. Their escorts were James Turnbow, Virgil Morton and James Synatzske.

SCHOOL MENU MONDAY - Barbecue weiners, baked beans, cabbage and raisin salad, rolls, butter, milk, pineapple pudding.

TUESDAY: Meat balls and spaghetti, blackeyed peas, buttered corn, rolls, milk, butter, fudge cake.

WEDNESDAY: Turkey and dressing, cranberry sauce, green beans, candied yams, rolls, butter, milk, fruit salad.

THURSDAY AND FRIDAY: Thanksgiving holidays.

Central Baptist Has New Pastor

ANTON - Rev. John Tubbs and family moved to Monday, where he is pastor of Central Baptist Church.

Rev. Tubbs is 28 years old and a graduate of Denver, Colo., High School. He attended South Plains College and is a junior student at Wayland College in Plainfield. He and his wife, Jane, have three children, Troy, 8, and Tawny, 4.

Central Baptist Has Dinner

ANTON - Members of Central Baptist Church Fellowship Hall were evening for a Christmas Thanksgiving dinner. Approximately 60 people had a traditional Thanksgiving meal.

Following the meal program was presented by Stanford from Plainfield speaker. Special guests District Superintendent Mrs. Jordan Grooms Brownfield.

Tops Club Has Picnic

Tuesday night of last week, Nov. 11, the club met in the Willie Room of the REA Building for its fifth anniversary.

It was the annual family night affair. A picnic supper was served for entertainment. Rev. Joseph James played the electric guitar and sang folk songs. Lucille Robinson had eight weeks perfect attendance. Kay Herring was weekly queen and Virginia Nichols was mistress of ceremonies. Forty-three attended.

CLEANING FLUID TIP If cleaning fluid is used on plastic and leather, it may stiffen the plastic and take the color from leather.

OPTOMETRY - The Art & Science Of Visual Care
B. W. ARMISTEAD, O. D.
GLENN S. BURK, O. D.
406 LFD Drive - Littlefield - Phone 385-5147

LITTLEFIELD BUSINESSES GIVING AWAY 14 THANKSGIVING TURKEYS

Gift idea as bright as the stars, this new HOROSCOPE WEEK-AT-A-GLANCE® ENGAGEMENTS FOR 1970



ONLY \$3.50

EATON'S ZODIAC LETTER PAPERS

List solver: letter papers enlivened and personalized by individual zodiac signs. A gift that shows foresight. All 12 uniquely styled signs available, each in its own bold paper color. Gift-boxed at just \$2.00.

CONNELL'S OFFICE SUPPLIES
MACHINES & FURNITURE
PHONE 385-5440 513 PHELPS AVE.

A TRUE VALUE IN COMFORT



California Cobblers

ALIVE In * Oak * Cream * Grey

Moss Shoes

SHOES FOR THE ENTIRE FAMILY

SPECIAL PURCHASE SALE!


SAMSONITE LUGGAGE

1/3 OFF Regular Price

Ladies Beauty Case, Reg. 28.50 Now . . . \$19.00
Ladies Over-Nite, Reg. 32.50 Now . . . \$21.67
24" Pullman, Reg. 37.50 Now . . . \$25.00
26" Pullman, Reg. 45.50 Now . . . \$30.34
Men's 2-Suiter, Reg. 45.50 Now . . . \$30.34
Men's 3-Suiter, Reg. 47.50 Now . . . \$31.67

OTHER SIZES AVAILABLE AT SAME PRICE

Assorted Colors - All First Quality





Penneys
ALWAYS FIRST QUALITY

CLOSEOUT! Men's dress shirts in all your favorite collar stylings. Long and short sleeve models in easy-care blends of polyester/cotton. White and fashion colors. 3 for \$5

CLOSEOUT!

Gifted sweaters that'll solve all your 'what to give' problems. Novelty cardigans of bulky mohair/wool/nylon knit. White, light blue, pink or coral. S, M, L. 4.99



SAVINGS

Buy now and pick up later

HAMS SUNRAY 12-14 LB AVG **67¢**

WHIPPING CREAM 1/2 PT. **17¢**

TURKEYS 12-14 Lb. Avg. **35¢** 16-18 Lb. Avg. **33¢**

PIONEER SUPERMARKET

REGISTER FOR 14 FREE TURKEYS



NOTHING TO BUY
NEED NOT BE PRESENT
TO WIN.

All you do is register at any of the businesses on this page or the Leader-News. If you win, you will be notified to pick up your turkey.

FOR ADULTS ONLY

TO BE GIVEN AWAY MONDAY, NOVEMBER 24



KINDNESS 20 HAIR CURLERS

\$16.99

REG. \$23.99

Come By and Pickup Your 1970 CARDUI Calendars

RODEN DRUG

NOW Compact Quasar Color TV




• Same solid-state dependability.
• Same plug-in tubeless mini-circuit for fast, easy service.

as this Quasar Color TV...

PAT'S RECORD CENTER
AUTHORIZED MOTOROLA DEALER
5 Phelps Ave. 385-4664

OUR QUALITY IS TRADITIONAL



CINDERELLA HAIR SPRAY **49¢**

IDAHO DELICIOUS APPLES LB. **12 1/2¢**

SHURFINE MILK **6 CANS FOR \$1**

We Have Plenty Of Norbest Turkey Hens

FOUST FOOD
601 EAST 10TH

Continuing Our PRE-THANKSGIVING SALE

Jr. Petite **DRESSES**
VALUES TO \$24.00
\$9 AND \$13

Come in and see many other specially priced items in this sale!

Newton's Ladies' Apparel

PLACE YOUR ORDER FOR TURKEYS NOW

TURKEY HENS ANY SIZE POUND **39¢**

TURKEY TOMS ANY SIZE POUND **37¢**

6 TO 8 LB. SMOKED **PICNICS** POUND **49¢**

SWEET **POTATOES** POUND **10¢**


OLE SOUTH **COBBLERS** 2 POUND **79¢**

DURKEE **COCONUT** 14 OZ **49¢**

PHILADELPHIA CREAM **CHEESE** 3 OZ **2 FOR 29¢**

PHILADELPHIA CREAM **CHEESE** 8 OZ. PKG **37¢**

FREE Bread Or Head Scarf With \$5.00 Purchase



REALLY BIG SAVINGS

RANBERRIES 1 LB BAG **29¢**

Winston Or Morton **PECAN PIES** Each **69¢**

Winston **HAM** 12 to 16 Lb. **69¢**

TURKEYS

We Will Meet Any and All Competition in Littlefield on USDA Grade A Turkeys, Turkey Legs or Honey-Suckle All Sizes

RENFRO BROS.

Mother's Ring Headquarters
UP TO 3 STONES—14 K GOLD



ONE YEAR GUARANTEE ON LOSS OF STONE
ADDITIONAL STONES UP TO 7... ONLY \$3 EACH
15 Different Styles Of Mother's Rings To Choose From

17.95

Pratt's Jewelry
5th & XIT

Chloraseptic

ANTISEPTIC MOUTHWASH & GARGLE
6 OZ. BOTTLE WITH SPRAYER

\$1.09

Reg. \$1.50 Value

WEST drug and pharmacy
5TH AND XIT. PHONE 385-3030



FOOTBALL CONTEST

**Enter Our Contest Each Week
...Nothing to buy - Just Pick Winners
HERE'S YOUR CHANCE TO
WIN CASH PRIZES**

FIRST PRIZE SECOND PRIZE THIRD PRIZE
\$5 \$3 \$2

Entry Deadline: 5 P.M. Wed.

It's so easy...
Anyone can enter
Read the rules...
Start Winning
**RULES
OF THE CONTEST**

All you have to do to be eligible for weekly cash prizes is complete the form below and turn it in to the Leader-News office. In each merchant's block is a game. Mark out the team in all blocks you believe will lose. Then in the "Breaker" box, put the scores you believe each of the teams will make. We judge each week based on the total number guessed correctly. In case of a tie, a tie-breaker will be used to determine top winners. Decision of the Leader-News scoring judges will be final.

To be eligible for the 2 free tickets to New Year's Game at the COTTON BOWL, the total number of correct guesses will be totaled through the 12-week season.

Entry forms must be in the Leader-News office, 313 West 4th Street, no later than 5 p.m. Wednesday. Forms mailed to Leader-News, P. O. Box 72, must be postmarked Wednesday. All late entries will be voided by the judges.

LIMIT—One entry per contestant per week.

BE SURE to complete the forms. PRINTING plainly your name and complete address. Contest winners will be announced in each Thursday's issue of Leader-News.

**GRAND PRIZE
2 TICKETS
TO THE
Cotton Bowl
NEW YEAR'S GAME**

Final Contest

Since several of these games will be played Thanksgiving Day, the deadline for entry has been moved up to 5 p.m. Wednesday.

51 SALVAGE
NEW-USED-REBUILT PARTS
TRANSMISSION EXCHANGE
and We Specialize in Pickup Parts
ESTACADO VS BROWNWOOD
LOCATED ON SPRINGLAKE ROAD- LITTLEFIELD, TEXAS
WAYNE & DOYLE WINFIELD Owners Phone 385-4720

State Line Irrigation Co.
Irrigation Systems
FLOYDADA VS IOWA PARK
CLOVIS - LITTLEFIELD - MULESHOE
Phone 385-4487

LITTLEFIELD DELINTING CO.
We Also Sell Cotton & Sorghum Seeds
AUBURN VS ALABAMA
Arthur Summers Spade Highway

Shook Tire Co.
14 STORES IN 13 WEST TEXAS CITIES
ARIZONA VS ARIZONA STATE
1028 East 9th Phone 385-4405

BIRKELBACH MACHINE & PUMP
1012 E. 9th PHONE 385-5123
GEORGIA VS GEORGIA TECH
YOUR BERKELEY PUMP DEALER
All Sizes Of Submersible Pumps

LITTLEFIELD SEED & DELINTING
"Home Of Fine Cotton Seeds"
FLORIDA STATE VS HOUSTON
Clovis Highway Phone 385-3535

Findley's Jewelry
"Known By The Quality We Keep"
FLORIDA VS MIAMI
*BULOVA * LONGINES * WITTNAUER *GORHAM
STERLING * FOSTORIA CRYSTAL *SYRACUSE CHINA

DAIRY MART
YOUR HOST FOR MEALS AND SNACKS
COLORADO STATE VS NEW MEXICO STATE
1020 West 10th Phone 385-5022

Mangum-Hilbun INSURANCE
PENN STATE VS NORTH CAROLINA STATE
430 X.I.T. Drive Phone 385-5131

GENE RATLIFF
TEXACO CONSIGNEE 385-3220
OKLAHOMA VS OKLAHOMA STATE
GENE RATLIFF No. 1 401 E. 9th
102 W. Delano GENE RATLIFF
JOY PARKER Hiway 385 South
532 Phelps REYNOLDS TEX
DAVE DAILEY Amherst
521 Hall

PRESCRIPTION SHOP
PHONE 385-4491
BAYLOR VS RICE
401 WEST 6TH

FINANCING TEXAS AGRICULTURE
FOR OVER 35 YEARS
Tommy Ballard
Manager
WEST TEXAS STATE VS SOUTHERN MISSISSIPPI

JIM JONES
AGENT
TEXAS TECH VS ARKANSAS
LITTLEFIELD Jim's Conoco 200 Phelps
AMHERST Joe Miller Bill Lightsey HART CAMP V.L. Foster
BULA Dale Middlebrooks PEP Pep Gro. & Service

Littlefield Farmers Coop Gin & Elevator
VANDERBILT VS TENNESSEE
"OWNED BY THOSE WE SERVE"

PRATT'S JEWELRY & GIFTS
GIFT GALLERY HEADQUARTERS
MISSISSIPPI VS MISSISSIPPI STATE
DIAMONDS LOOSE AND MOUNTED WATCHES BY SEIKO, VANTAGE, HAMILTON, MIDO, ELGIN, ZODIAC.

Armes Chevrolet Co.
VMI VS VIRGINIA TECH
New And Used Cars, Trucks, Pickups
610 East 4th Phone 385-4437

PLEASE PRINT NAME AND ADDRESS
YOUR NAME _____
ADDRESS _____
TOWN _____

TIE BREAKERS
NAVY _____ ARMY _____
TEXAS _____ TEXAS A&M _____

AMHERST



MRS. LESTER LA GRANGE 246-3336

AND MRS. Gerald returned last weekend with Mike, who attends Institute at Kerrville. There they were guests of Mr. and F. Ray, former residents.

DOUGLAS Gossett a district pastor in Brownfield

AND MRS. Charlie attended the wedding of her granddaughter, Janie in the Victory Baptist Church, Lubbock Friday last week. She is the mother of Mrs. Bob Dorman.

is Horace Edwin of Lubbock. The father, Lee gave her in marriage.

is employed by the Texas Tech. Mr. and Mrs. were overnight of their son, Herschel Friday.

AND MRS. Monte and Kristan Lea of Dallas this weekend for a visit to their parents, the Bill and Ray Hulbes of

AND MRS. J. H. returned from Stovall Wednesday. They had for the health baths.

AND MRS. Travis were weekend guests of Mrs. Allan White at Tres Ritos, N. M.

AND MRS. Jim visited their son, and family at Dimmitt Friday. They were guests of her brother, Mr. Roy Brannon in N. M.

CHARLIE Thomas G. D. Lair were in recently with Charlie Veterans Hospital and visited her daughter husband, Mr. and Mrs. Seely.

AND MRS. Leroy and family visited here last Sunday.

M. V. COWAN and Cantrell went to Ariz. Saturday of last Mrs. Cowan stopped for a visit with her sister and Mr. and Mrs. Paul in California. They to visit Disneyland and places of interest.

visited his daughter, Darrell Elliott and family Angles.

MYRTLE Cranes' wife, Mr. and Mrs. Moore of Kansas City for several days. They to Kansas City after a tour of the States. Mrs. Crane them as far as Okla. for a visit with Mr. and Mrs. Craine and

HOLLAND was from Texas Tech for the with his parents, the Hilliards.

MYRTLE CRANE for three brothers and for a family reunion Mr. and Mrs. Hylton of Bovina, Mr. and Mrs. Moore of Kansas City

and Mr. and Mrs. Otis Moore attended.

MRS. JOE MILLER returned from Arkansas early last week where she had spent a week. Her mother, Mrs. H. R. Carlock of Des Arc, has been confined to a nursing home at Stuttgart a number of weeks. While in Arkansas, she visited relatives in Brinkley and Little Rock.

WHILE IN HOUSTON recently, Dorothy Weaver and Mr. and Mrs. Charles Pollock attended a joint convention of American and Texas Nursing Homes. About 3,000 attended at the Shamrock-Hilton Hotel. Miss Weaver and the Pollocks visited relatives while there.

NEXT MONDAY, Nov. 17, a luncheon and meeting of the WMU Circles will be held at the Baptist Church. The program for the World Day of Prayer before the 12:30 luncheon will be led by Mrs. J. P. Brantley. Following the luncheon, Mrs. Glenn Willson will give the program. Mrs. Eugene Young is chairman of the three circles.

THE NOVEMBER meeting of the Amherst Parent-Teacher Association will be Thursday Nov. 20 at 2:30 p.m. The first and second grade pupils will present the program.

MRS. JOHN FAUST was a dinner guest Sunday with her son Eddie Mac and family in Muleshoe.

MR. AND MRS. Clay Tharp of Sweetwater and Rev. and Mrs. Jarrell Tharp, Lisa and Stephen of O'Donnell were here for the weekend. They were hosts for the 50th wedding anniversary of their parents, Mr. and Mrs. S. J. Tharp, in Fellowship Hall of the United Methodist Church Sunday afternoon.

MR. AND MRS. Bill Lane of Anaheim, Calif., arrived Tuesday for a short visit with his mother, Mrs. O. P. Lane, and sister, Mrs. Opal Collins. Other guests Tuesday to Thursday were Mrs. Lane's brother and wife, Mr. and Mrs. R. W. Caldwell of Joshua and their sister, Mrs. O. J. Moore of Rule. The Bill Lanes went on to Mena, Ark., Thursday to visit her relatives. They plan to stay there through Thanksgiving and will return here for a longer visit.

MR. AND MRS. John Farris of Lovington, N. M., visited Mr. and Mrs. Lee Payne Saturday. They were enroute to Sudan to visit her sisters and brothers.

REV. LEONARD TITTLE, minister for the Amherst Church of Christ and Rev. Willard Cox of the Sudan Church of Christ, exchanged as speakers for the Sunday evening services.

MR. AND MRS. R. H. Sasser of Borger visited their daughter, Mrs. Cleon Johnson and family Thursday. Mrs. Sasser attended the bridal shower for her granddaughter, Linda Johnson.

VISITING HER mother, Mrs. Lester LaGrange, Monday were Rev. and Mrs. Gene B. Louder and Monte of New Home.

MRS. M. V. COWAN and Raymond Cantrell returned from Phoenix Sunday. Mrs. Cowan visited her sister, Mr. and Mrs. Paul Stough and son, Dan, there. They accompanied her to San Diego for Bobby's graduation from basic Marine training Nov. 13. His platoon was graduated with honors. He has been sent to Camp Pendleton, Calif., for advanced infantry training for four or six weeks. While Mrs. Cowan and her sister and family were in California, they visited Disneyland, the zoo and other places of interest. Raymond visited his daughter, Mrs. Darrell Elliott and family in Los Angeles. He flew back to Phoenix for their return home Sunday.

MISS CHRISTINE Sims and Miss Ruby Mince of Sudan were guests of Mrs. J. E. Smith during the weekend.



1969 SANTA FE Railway Achievement Award for outstanding 4-H Club work was presented to John Pitts, right, by Herman Hill, during the annual 4-H Achievement Banquet Saturday night. Hill is special assistant of the public relations department for the Santa Fe Railway of Amarillo. Pitts, 18, is son of the Kirk Pitts of Pleasant Valley, and is the 1970 chairman of the Texas State 4-H Council, and represented 4-H'ers at Cape Kennedy Friday morning for the Apollo 12 moon shot launch.

BULA



MRS. JOHN BLACKMAN 933-2328

SEVERAL FRIENDS of the community were in attendance at the golden wedding anniversary observance of Mr. and Mrs. J. H. Withrow at their home in Sudan Sunday afternoon. Those attending were Mr. and Mrs. Nolan Harlan, Mr. and Mrs. John Hubbard, Mr. and Mrs. Cecil Testerman, Mr. and Mrs. John Blackman and Mr. and Mrs. Gene Bryan.

SUNDAY AFTERNOON guests in the W. T. Thomas home were Mr. and Mrs. Leonard McCormack of Muleshoe and their friends, Mr. and Mrs. Settiff of Plainview.

MR. AND MRS. James Corder of Springfield, Oreg., are here for a visit of several days with her mother, Mrs. Lula Harlan, and a brother, Nolan Harlan and family. They plan to be here until after Thanksgiving.

MRS. ART FOLEY of Littlefield spent the day Wednesday with her parents, Mr. and Mrs. Gene Bryan.

GUEST FRIDAY night with Jerry Cox was his mother, Mrs. Harvey Whittenburg of Welch. Friends, Mr. and Mrs. Howard Hale and boys of Maple, were supper guests with them.

KAY NEEL of Friona was a guest Sunday night at the Church of Christ. She was on her way home from spending the weekend with friends at Midland. After services she visited with friends, Kay lived for several years here before moving to Friona. She is a graduate of Friona High School and WTSU in Canyon, and is now teaching the third grade in the Friona school system.

MR. AND MRS. J. O. Dane left Friday for a visit with their daughter and family, Mr. and Mrs. Lindsey Bates and two sons at Bisby, Ariz. After arriving there, they were told that their daughter was to have surgery the 24th. Mrs. Bates has had surgery on her back several times. Her doctors fear this surgery might leave her paralyzed from her waist down.

MR. AND MRS. Marion McDaniel received letters from two of their sons recently. Gordon, a senior student at Texas A&M and is an engineering major student. He is doing extensive research on dynamic fluids. Recently, he was recognized for having written the best research paper. This is the second recognition of this kind Gordon has received. He is studying under Dr. Randal Darby, professor of engineering. David, who is

Brownfield every weekend but after the first of the year he will be moving here. Their son, Edward, has just returned from a tour of duty in Vietnam.

MRS. V. C. WEAVER and her daughter, Mrs. Juanita Brannon of San Antonio, left by plane Thursday for several days of sightseeing in Hawaii. Mr. Weaver has received a letter from them saying they had arrived safely.

CINDY AND SHERRY Withrow, students of Abilene Christian College, spent the weekend with their parents, Mr. and Mrs. J. C. Withrow, and attended the golden wedding celebration for their grandparents in Sudan Sunday.

MRS. TOM BOGARD, Mrs. F. L. Simmons and Mrs. Paul Young attended the last chapter on the study of "China", presented by Mrs. Bickley of Threeaway. This

study was given at the Enochs Methodist Church Sunday evening preceding their regular worship services.

MR. AND MRS. John Blackman drove to Portales, N. M., Monday afternoon for a birthday party for their granddaughter, Patti Cash. Patti was six years old and is a first grader at school.

JUNIOR HIGH boys' and girls' teams played Lazbuddie Monday evening on Bula's court. Both Bula teams won their game.

WORD HAS BEEN received here of the sudden death of Don Petty of Lubbock. Mrs. Petty will be remembered here at Sandra Skinner. He died Tuesday with a heart attack. His home was formerly in Friona. He was 32 years of age.

HARVEY BOLEYN, son of Doc Boleyn of Bula, was met at the Lubbock Airport early Friday morning by relatives. Harvey is returning from a second tour of duty in Vietnam. His wife, Cecu, and small daughter, Cathy, have been here several days. After a short furlough, Harvey and his family will be going to Virginia, where he will be for the completion of his Army duty.

CARLOS CASTILLO, freshman student, was elected by the high school faculty as the citizen of the week. Carlos is the son of Mr. and Mrs. Guadalupe Castillo. His father works for the Farmers Co-op Gin at Enochs.

MRS. J. L. LATHAM drove to Lubbock Friday afternoon to pick up her grandsons, Cliff and Chris DeSautell, for the weekend. Their mother flew to New Orleans, La. to spend the weekend with her husband, Warner DeSautell. Warner is doing deep sea diving off the coast of New Orleans.

MR. AND MRS. Bruce Garner of Lexington, Okla., visited Saturday afternoon in the J. C. Withrow home. They are his aunt and uncle.

BRO. AND MRS. Day had their son, Edward Day, spend the weekend here with them. Rev. Day spends the weekends at the Bula Methodist parsonage and preaches for the Enochs and Bula Methodist Churches. He drives here from

Cub Scout Pack 641 To Meet

Cubmaster Roland Bell has announced that Cub Scout Pack 641 will hold their monthly Pack meeting Tuesday, Nov. 25, at 7 p.m. at the Community Center. He invites all boys age 8 to 11 who are interested in joining Cub Scouting to bring their parents to this meeting. At present there are two dens meeting in this Pack, but he has enough boys interested now to compose more dens if he can find some mothers who can be Den Mothers. Boys, come and bring your parents to the meeting this Tuesday night. DIAL 385-4481 FOR CLASSIFIEDS

Bennett Chiropractic Clinic
106 EAST 10th
Phone 385-3450 for Appointment

CAR • HOME • LIFE • HEALTH

State Farm is all you need to know about insurance.

STATE FARM INSURANCE

F. L. NEWTON
128 East 10th
Littlefield

State Farm is the world's largest car insurer, providing economical protection and fast, efficient claim service from the world's largest network of full-time agents and salaried claim representatives. See me for your good deal on car insurance.
State Farm Insurance Companies/Home Office: Bloomington, Ill.

On The Farm Tire Service

We'll come right out to your farm and service your tires on the job!

GOODYEAR

Flats fixed on any size tire
Cuts-Brakes
Tubes Repaired
Valves Replaced
Liquid Drained-Refilled

RICHEY'S
1401 E. 9th 385-3747

INTRODUCING

BY (Carter) MILES

NOW ON THE STAFF AT THE Holiday Beauty Salon

Beauty Salon

Beauty will take both early and late appointments

W. Delano 385-5311

This Christmas give **PHOTO-PORTRAITS**

Color Or Black And White

ROBERTS STUDIO
203 W 3rd 385-3428

Sherrri Cook

300 FREE

BE OUR GUEST... 300 LOADS FREE (A \$15.00 VALUE)

Buy your new electric clothes dryer now and, as our customer, you will receive a \$15.00 certificate. At 5¢ a load, total operating cost, it's just like getting 300 loads dried free. Don't delay - buy now and take advantage of this valuable 300 offer

CONVENIENT ELECTRIC DRYING

Southwestern Public Service Company

NOW AT YOUR PARTICIPATING DEALER

BIG SAVINGS for BIG EATERS.

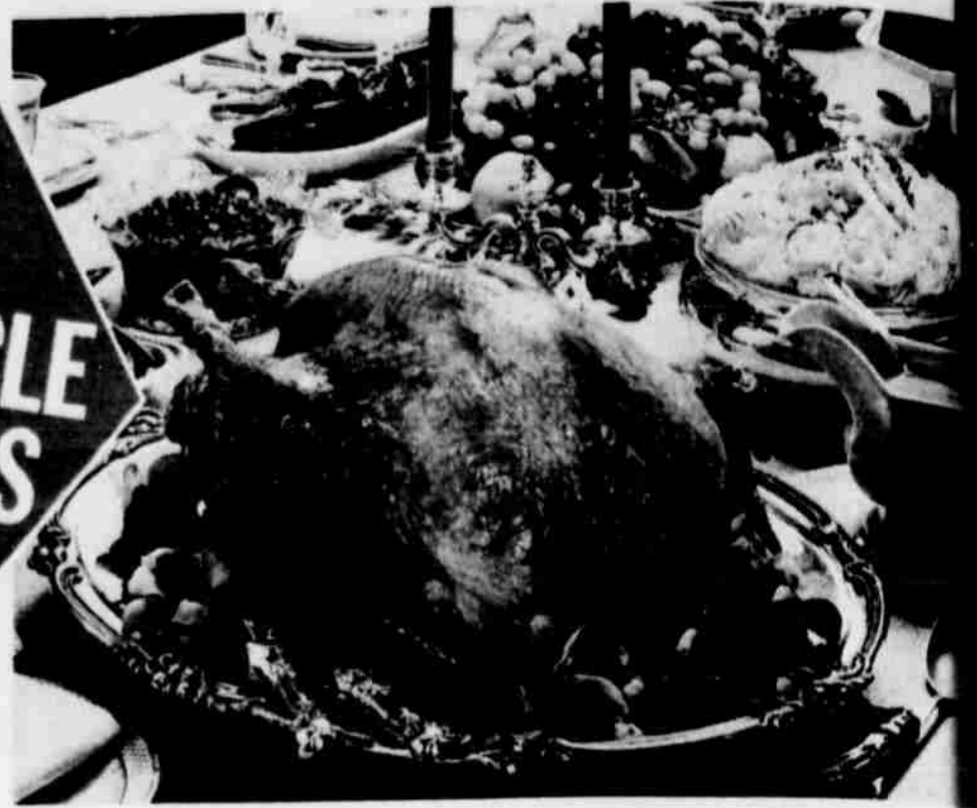
SHOP FURR'S MIRACLE PRICES



DOUBLE GOLD BOND STAMPS

MONDAY, TUESDAY and WEDNESDAY

Closed Thanksgiving Day



NEW LOW EVERYDAY PRICES ON FURR'S PROTEN BEEF!

ROUND STEAK	Furr's Protén, Lb.	.87c
SIRLOIN STEAK	Furr's Protén, Lb.	.89c
T-BONE STEAK	Furr's Protén, Lb.	.98c
RIB STEAK	Furr's Protén, Lb.	.83c
CLUB STEAK	Furr's Protén, Lb.	.98c
SWISS STEAK	Round Arm Furr's Protén, Lb.	.88c
SHOULDER ROAST	Boneless Furr's Protén, Lb.	.88c
STEW MEAT	Lb.	.79c
SHORT RIBS		.39c

HAMS

FOOD CLUB BONELESS

798

8-LB. CAN

SHOULDER ROAST

FURR'S PROTEN, LB.	79¢
FRESH GROUND LB.	39¢

HAMBURGER

USDA INSPECTED FANCY GRADE A

TURKEYS

SHRIMP COCKTAIL	Singleton 4 Oz. Glass	3 For 98c
HENS	Rock Cornish Game 22 Oz. Each	79c
LUNCH MEAT	Farm Pac Mix Or Match, 6 Oz.	33c
BOLOGNA	Farm Pac 12 Oz. Pkg.	55c

HENS, FRESH FROZEN, 10 LBS. AND UP, LB.

39¢ TOMS, FRESH FROZEN, 18 LBS. AND UP, LB.

FRYER PARTS

BREASTS	All White Meat, Lb.	69c	THIGHS	Juicy Dark Meat, Lb.	59c
LEGS	Children's Choice, Lb.	59c	BACKS	Dumplings, Lb.	12c

BUTTER

FARM PAC SWEET CREAM QTRS, LB.	79¢
EAGLE BRAND MILK	15 Oz. Can .33c
RAISINS	Food Club 2-Lb. Cello Pack .69c

CREAM CHEESE

Food Club 8 Oz. Pkg.

FRANKS Farm Pac 12 Oz. Pkg.

PORK CHOPS Family Pac Lb.

CHECK OUR DISPLAY OF DUCKS, OYSTERS, COCKTAIL SHRIMP, HAMS, ETC. FOR YOUR HOLIDAY NEEDS

Fresh Frozen Foods

BREAKFAST DRINK

ORANGE, TOP FROST FRESH FROZEN, 12 OZ. CAN 29¢

WHIPPED TOPPING

TOPCO FRESH FROZEN, 10 1/2 OZ. 39¢

PIES

MORTON'S APPLE MINCE PUMPKIN Lb. 29¢

BROCCOLI Spears Top Frost 10 Oz. Pkg.

BREAD DOUGH Morton's 32 Oz. .39c

ROLLS Mead's Parkerhouse 20 Oz. Bottle.

POULTRY SEASONING

VANILLA Food Club 2 Oz. Bottle .39c

LIPTONS SOUPS

Onion Or Chicken Noodle With Meat 2 Pc. Pkg. 39¢

Noodle With Chicken Broth 2 Pc. Pkg. 39¢

WHIPPING CREAM CRANBERRY SAUCE

BORDEN'S 1/2 PINT 25¢

WHOLE OR JELLIED FOOD CLUB, NO. 300 CAN 17¢

PUMPKIN FOOD CLUB NO. 303 CAN 10¢

MINCE MEAT NON SUCH 9 OZ. PKG. 23¢

PINEAPPLE FOOD CLUB SLICED FLAT CAN 15¢

FOIL TOPCO, HEAVY DUTY, 25 FT. ROLL 39¢

JELL-O ASS'T FLAVORS 3 OZ. PKG. 10¢

TOWELS NORTHERN BIG ROLL 25¢

CHICKEN BROTH College Inn 13 1/2 Oz. Can 15¢

NOODLES & CHICKEN College Inn 16 Oz. 39¢

ROLLS

BROWN AND SERVE

12 CT. PKG. FARM PAC 19¢

WE RESERVE THE RIGHT TO LIMIT QUANTITIES.

SWEET PICKLES Food Club 22 Oz. Jar .58c

GREEN BEANS Food Club Whole No. 303 Can .24c

TOMATOES Food Club Pack, No. 303 Can 5 For \$1

BEETS Food Club Pickled 16 Oz. Jar 29c

MIXED VEGETABLES Food Club No. 303 Can 5 For \$1

SPAGHETTI-O Franco American No. 300 Can .19c

CROUTETTES Kellogg's Stuffing Croutons, 7 Oz. .3 For \$1

LOW PRICES ON HEALTH AND BEAUTY AIDS.

TOOTH PASTE ALKA-SELTZER

PEPSODENT KING SIZE 59¢

25's 43¢

TOOTH BRUSH Pepsodent, Reg 69c .29c

HAND CREAM Chapans 3 Oz. .78c

STYLING GEL Dippity Do .8 Oz. .99c

COLD TABLETS Contac 10's .99c

DUSTING POWDER Ponds

POLISH REMOVER For Nails Cutex, 3 Oz.

SUCRET

PEPTO BISMOL 8 Oz.

ARTIFICIAL CHRISTMAS TREES

CHOOSE NOW BIG SELECTION

6 1/2 Ft. Tall, 101 Branches, Compare At \$29.95	\$12.19
7 Ft. Tall, 113 Branches, Compare At \$39.95	\$14.09

FLOCKED TREES

6 Ft. 57 Heavy Branches Compare At \$24.95	\$11.99
4 Ft. Tall, 41 Branches Compare At \$19.95	\$8.99
2 Ft. Tall, 13 Branches Stand, Compare At \$4.95	\$2.39

TREE LITES

Assorted Colors or Solid Green, Red & Blue

25 Lite, Outdoor	\$4.99
15 Lite, Outdoor	\$3.69
7 Lite, Indoor	\$1.39
15 Lite, Indoor	\$2.49
20 Lite Miniature Set, UL Approved	.69c

ENAMEL ROAST

7 Lb. Size	77c
12 Lb. Size	\$1.49
18 Lb. Size	\$1.79
Rectangle, Without Cover	69c
12" X 18"	79c
16" X 9"	79c
16" X 12"	99c

FRUITS & VEGETABLES

SWEET POTATOES ARIZONA LB. 10¢

YELLOW ONIONS COLO. LB. 7¢

ORANGES Sunkist Navel, Lb.

APPLES Wash. Fancy Delicious, Lb. 17c

GRAPES Red Cardinal Lb. 26c

CRANBERRIES Ocean Spray Pkg. Each .39c

NUTS Walnuts, Almonds, Brazil or Filbert, Lb. 65c

PEARS Wash D'Anjou Lb. 22c

CELERY Calif. Green Pascal Stalk 12 1/2¢

SAVE TEN CENTS

SAVE 10¢

ON THE PURCHASE OF HOLLY SUGAR

5-Lb. 39¢ WITH THIS COUPON

With out Coupon 49c

SAVE TEN CENTS

