

Celebration Promises To Be Best Yet

A committee for Littlefield's Bicentennial Celebration met Tuesday night to further formulate plans for Littlefield to celebrate the nation's 200th birthday.

This year instead of calling special activities "Festivities Days" as it has been called the past several years, all activities will be combined into a Bicentennial Celebration and what hopefully will be the biggest and best celebration yet.

All of the activities usually associated with Festivities Days, plus the annual big Band Barbecue and many more events will all be combined and moved up to April 30 and May 1.

As usual, one of the main attractions will be a drawing for some spectacular prizes.

This year's first place prize will be a trip to Boston for three nights and four days. This site was chosen because of its historical significance centering around our nation's history.

In addition to the drawing for the trip, there will be two additional drawings for citizen band radios.

Marty Mangum is ticket sales chairman. The tickets will be \$1 each, and various clubs and organizations will start selling tickets by March 1.

All of the Littlefield bands along with members of the Band Boosters will have their big barbecue, concerts

and parade on Saturday, May 1.

The bands will lead a parade down Phelps. Herschel Randall is parade chairman, and he said according to the response he has received, this Bicentennial Celebration parade looks like it will be the largest and best parade Littlefield has ever hosted.

The newly selected "Miss Lamb County" for 1976 will ride at the head of the parade.

The annual Beta Sigma Phi sponsored Miss Lamb County Beauty Pageant will be held on Friday night, April 30, and Miss Lamb County will be selected from the pageant entrants.

The Tau Chi Chapter is sponsoring the pageant. Entries in the contest will be accepted starting Feb. 1. Contestants must be 17 by July 1 to enter, and may not be over 22 years by that date. Talent as well as personality and figure will be judged.

Marge Anzeline and Sarah Tollett head up the committee that will host the annual Art Show and Sale. Artists from all over the area may participate. All of the art work will be displayed in the Lamb County Ag and Community Center.

Square dancers from all over the area are expected to start the activities rolling when the Littlefield Circle Eight Square Dance Club sponsors a special square dance on the fifth

Thursday night of April 29th.

Jana Stehlik is heading a committee which will provide a museum for the Bicentennial Celebration. Anyone who has antiques they wish to display may contact Mrs. Stehlik for further details.

Tentative plans call for an Old Fiddlers Contest in conjunction with the celebration. Details will be announced at a later date.

Jim Jones is chairman for the booths and kiddie rides. Various carnival attractions will be provided for the children. In addition, there will be booths for selling ice cream, baked goods, and hand crafts. Bingo and other activities will be sponsored by various organizations.

Various clubs and organizations wishing to have booths during the celebration should contact Bill Adams at the Chamber of Commerce office.

One of the highlights of the Bicentennial Celebration will be a noted patriotic speaker in Laguna Park Saturday afternoon. Some 4-H awards will be made after the speech.

Further details will be announced as final plans are made by various sponsoring organizations.

Steering committee members for the Bicentennial Celebration are Hubert Henry, Tom Tollett, Tom Hilbun, Benny Zahn, Paul Carmickle, Carol Black, Sarah Tollett, Marty Mangum, Bill Adams, and Herschel Randall.

Movie Premiere Set Here Feb. 6

The premiere of Roy Rogers' first movie role in 20 years will be held at the Palace Theatre in Littlefield on the same day it will premier in Lubbock.

"Mackintosh and T. J." will have its premier showing here Feb. 6.

The star of 87 movies returns in a contemporary western filmed on two large Texas ranches east of Lubbock—the 6666 and the Pitchfork.

The movie is a story about a weathered, rugged old cowpoke and a fatherless boy.

LAMB COUNTY LEADER-NEWS

15 CENTS

VOLUME 53 NUMBER 77

LITTLEFIELD, LAMB COUNTY, TEXAS, SUNDAY, JAN. 25, 1976

14 PAGES

Bicentennial Liberty Tree Planted Thursday Ceremony Here

Lamb County and Littlefield city officials planted Littlefield's Bicentennial Liberty Tree in a ceremony at the new Lamb County Ag Community Center Thursday afternoon.

The tree is a gift from the Texas Forest Service and Texas Forestry Association. It symbolizes the American idea of liberty and freedom from oppression. [Staff Photo]

Participating in the planting and ceremony are Rad Richardson, Tom Hilbun, Tom Tollett, Jack Peel, Paul Carmickle, Bill Adams, and County Judge Ruth Kirby.

The tree is a gift from the Texas Forest Service and Texas Forestry Association. It symbolizes the American idea of liberty and freedom from oppression.

The tree is a gift from the Texas Forest Service and Texas Forestry Association. It symbolizes the American idea of liberty and freedom from oppression.

The tree is a gift from the Texas Forest Service and Texas Forestry Association. It symbolizes the American idea of liberty and freedom from oppression.

The tree is a gift from the Texas Forest Service and Texas Forestry Association. It symbolizes the American idea of liberty and freedom from oppression.

The tree is a gift from the Texas Forest Service and Texas Forestry Association. It symbolizes the American idea of liberty and freedom from oppression.

The tree is a gift from the Texas Forest Service and Texas Forestry Association. It symbolizes the American idea of liberty and freedom from oppression.

The tree is a gift from the Texas Forest Service and Texas Forestry Association. It symbolizes the American idea of liberty and freedom from oppression.

The tree is a gift from the Texas Forest Service and Texas Forestry Association. It symbolizes the American idea of liberty and freedom from oppression.

The tree is a gift from the Texas Forest Service and Texas Forestry Association. It symbolizes the American idea of liberty and freedom from oppression.

The tree is a gift from the Texas Forest Service and Texas Forestry Association. It symbolizes the American idea of liberty and freedom from oppression.

The tree is a gift from the Texas Forest Service and Texas Forestry Association. It symbolizes the American idea of liberty and freedom from oppression.

when a British tax official was hanged in effigy from the limb of a 120 year old elm tree, located in the heart of Boston. The Sons of Liberty, a kind of underground group opposed to English rule, gave the tree its name and planted symbolic Liberty Trees in many other colonial towns to symbolize opposition to unbearable taxation and oppressive English rule.

The tree began appearing in political cartoons as resistance to England increased, and, finally, in 1773, a big new flag was raised on the pole atop

the Boston Tree to signal the Sons of Liberty to gather in preparation for the biggest Tea Party in history. This took place on December 16 of that year.

Many kinds of Liberty Trees have been planted all over America since colonial times. The logical choice for Texas is, of course, the pecan—the official state tree.

Planting of the Liberty Tree is only one of many projects in which Lamb County will participate during the coming months of this nation's Bicentennial Celebration.

Levi Jeans Merchandiser To Be C-CA Banquet Speaker

Gil Melbardis will be the speaker for the Annual Banquet of the Chamber-BCD Saturday at the Lamb County Ag and Community Center. Melbardis is Manager of Basic Jeans Merchandising in the San Francisco office of Levi Strauss & Co. He is a graduate of Yale and resides in Mill Valley, Calif.

Melbardis will be looking over progress on the ACG Textile Mill while he's in Littlefield. Levi's, with sales of about a billion dollars in 1975, will be the primary buyer of denim

from the Littlefield mill.

Tickets to the banquet are available from the Chamber-BCD office in City Hall or from Carol Black at Security State Bank, according to ticket chairman Ken Larrabee. Marty Mangum and Carol Black are co-chairman with Larrabee for banquet tickets.

The tickets are \$7.50 each and the banquet will feature an 8 oz. filet mignon for the meal. The banquet is being locally catered.

County HD Clubs Hosting Their Annual Friendship Day

Lamb County Home Demonstration Clubs are hosting their Annual Friendship Day here Monday in the Willie Room of the Lamb County Electric Coop Building.

Everyone is to bring a salad for lunch and spend the day.

Registration is from 9:30 to 10 a.m. At 10, Miss Lynn Bourland who is an extension home management specialist will present a program, "Con-

sumer Path of Progress."

Recreation will follow from 10:45 until 12:15. After lunch there will be a THDA pin presentation.

Suzi Holder, home service representative from the South Plains Electric Coop in Lubbock will give a program on "Historic Houses" beginning at 1:15.



THE LAMB COUNTY chapter of the American Heart Association board of directors got together Tuesday night to kick off the 1976 Heart Fund Drive. Among those attending

were Brenda Denton, Carole Faver, and Janice Sebring, seated, and standing are Evone Oliver, Linda Jones, Doris Simpson, Dorothy Powell and Marilyn Parker. [Staff Photo]



GLENN BATSON filed for Lamb County Judge this week on the Democratic ticket. The term is for two years, effective Jan. 1, 1977 through Dec. 31, 1978.



A. J. SPAIN, Lamb County commissioner of precinct 1 at Otton, has filed for re-election. He filed on the Democratic ticket this week for the May primary. [Staff Photo]



PRESTON POINTER of Spade has filed as a candidate for Commissioner of Precinct 3. He filed on the Democratic ticket Wednesday, making three seeking this office.

KIRBY
SALES & SERVICE
 No Labor Charge On First 30 Repair Jobs
 On Kirbys Brought In. *Parts Extra*
 CALL FOR A FREE DEMONSTRATION
 OF 1976 KIRBYS
 \$100 Rebate
 Rebuilt Kirbys As Low As \$44.95
 385-3357 817 E. 9th
 "Get Right—Call White-Day Or Night"

'Why Everyone's Weary' Woman's Club Topic

Littlefield Woman's Club met on Wednesday, Jan. 21, with a full membership present, plus a large number of guests for Friendship and Guest Day. To relax the nerves of all present prior to a mental health program, Mrs. D. C. Lindley, R.N. passed out "tranquilizers" (mints).
 The program was presented by Dr. C. L. Kay, President Emeritus of Lubbock Christian College and, at present, Director of the Center for Business and Economic Education. His topic was "Why Everyone is

Weary." It is Dr. Kay's opinion that the main reason for weariness and mental health problems among Americans is the frustrations, unrest, fear, and insecurity that is prevalent, stemming from many conditions, existing, not only in large cities, as was formerly the case, but also touching small towns and even invading the rural areas. "The causes of these conditions are many," he said. "Among them leniencies of our courts in handling criminal cases. The criminal is on our streets one

day, apprehended, perhaps sentenced to a short term, paroled, and back on the streets to repeat his criminal acts soon afterwards."
 "What, perhaps, is the basic cause of many of these and other acts begins with permissiveness, indulgences, and leniency in the home. In many homes, the parents no longer tell the children what to do or not do, the children tell the parents. Children have lost respect for authority, not only in the homes but also in the church, the school, and in society in general.

"Along with this lack of respect is also lack of responsibility and refusal to accept a place at the bottom and earn their way to the top. They want to start at the top."
 "Another frustrating and fearful condition is the deplorable path along which our nation seems to be taking us economically. Our government is billions of dollars in debt, but continues to borrow more money year after year. As far as balancing the budget goes is only talk and promises of what can and will be done "next year." Prices continue

to rise and our money loses in value. Today our dollar is worth about 25 cents. Millions are jobless, and welfare has become a way of life."
 Dr. Kay's analysis of life in the United States today is that these combined conditions are the primary reasons for restlessness, discontent, uneasiness and general mental disturbances. But his last thought was, "America is a great country—the greatest in the world—and it is up to you and me to help it rise above the influences that, if left to hold sway, will eventually lead to its downfall."
 Hostesses for the meeting were: Mmes. Bob Kirk, Jeff Perkins, W. P. Elliott, Hal Ferguson, and Winnie Fredrickson.

Like a good neighbor,
State Farm is there.
 with help for your car, home, life and health insurance.
 See me.
 F. L. New
 385-3055
 128 E. 10th
 Littlefield

STATE FARM
 Insurance Company
 Home Office: Bloomington, Ill.

Outstanding Bonus Offer! Get this \$19⁹⁵ value roll-about cart for only \$9⁹⁵ when you buy this

1976 **ZENITH** 100% SOLID-STATE **CHROMACOLOR II** 19" compact table TV

\$445 WT

The SOMERSBY • G4025
 Distinctive, compact-size simulated wood-grain American Walnut cabinet. Solid-State Super Video Range Tuning system with Synchromatic 70-Position UHF Channel Selector. Chromatic One-button Tuning. Automatic Fine-Tuning Control. VHF and UHF Antennas.

100% solid-state chassis!
 Patented power sentry voltage regulating system
 Brilliant Chromacolor picture

Enjoy room-to-room mobility!

Cox FURNITURE & APPLIANCE
 On The Levelland Hwy.
 1804 Hall Ave. 385-5883 Littlefield

Anton Study Club Hears Talk

ANTON—Senior Citizens of Anton were guests of the Anton Study Club for a luncheon and program in the Fellowship Hall of First United Methodist Church Monday.
 The guests were welcomed by Mrs. S. M. Monroe, president, Anton Study Club. Speaking for the senior citizens was Mrs. Bob Meier, president, Senior Citizens Club.
 George Brock, Fire Mar-

shall, explained the new city ordinance: "The City of Anton has passed an ordinance stating that all trash barrels must be equipped with a screen when burning trash and that no trash shall be burned after sundown."
 This ordinance has been published January 15, and after two additional publications will become law. The city has purchased some heavy metal wire which can be

purchased at City Hall to use for covers for burning trash.
 Mrs. Mary Emma Grace and Mrs. Virginia Hart presented a slide discussion program on their tour of Colonial New England in October.
 The tour group left Lubbock by plane enroute to New York City. There they visited points of interest such as Chinatown, Empire State Building, and the Plaza. They had a bus tour to West Point.
 The tour group went into Upstate New York, and took a boat trip across Lake Champlain to Montpelier, Vt. They visited Mt. Cranmore and took a ski mobile trip through the mountainous area.
 Mt. Washington Inn, Bretton Woods, New Hampshire was a place of interest because the World Monetary Conference was held there in 1934.
 In Boston, the group followed the route of Paul Revere's Ride. They visited Lexington and Concord, and Louisa May Alcott's Home.
 Mrs. Grace said that they were particularly impressed by the lovely fall colors in the trees and shrubs.
 Senior Citizen guests were Mr. and Mrs. Bob Meier, Hattie Poole, Bertha Emanuel, George Brock, Katie Braley, Felipa G. Cantu, Juan N. Cantu, Alejanda Flores, Frances Collins, Mrs. Frank Motl, Sr., Mrs. L. F. Turnbow, Mrs. O. T. Barnes, Mr. and Mrs. Paul Tibbets, Mrs. George Goen, Viola Jackson, Mr. and Mrs. V. E. Young, Mrs. Ruby Roberts, Mrs. Lula Kirk, Mrs. Eva Waters, Emma Douglas, Julia Aldaco, Mamie Stewart, and Meddie Holmes.
 The next meeting of the Anton Study Club will be February 2, at the home of Mrs. Emmett Kerr, south of Round Up with Mrs. Pat Byrum and Mrs. Sid Landers co-hostesses.
 The program will be presented by Mrs. Charles Edgemon on her trip to Australia, Hong Kong and Japan.



CLASS III OF THE radiologic technology program at South Plains College is receiving clinical training this spring at St. Mary's of the Plains, Highland and University hospital in Lubbock. Left is Debbie Birkelbach of Littlefield and Frances Bly, instructor of radiologic technology at SPC. The students attend morning classes at SPC and fan out to the various hospitals in the afternoon. The class will graduate in the fall of 1977.

Heart Club Meeting Sunday
 The Lamb County Chapter of the Open Heart Club will have an "Old Time Meeting" here Sunday, Feb. 1, in the Willie Room of the Lamb County Electric Coop Building.
 All members of the Open Heart Club and all interested persons are invited to attend.

WATER WASTING
 A faucet dripping in a continuous stream wastes 100 gallons of water per day.

9.88 special
 Fresh and lively prints in pale or bright tones. Assorted patterns in polyester knit with full button panel, self-sash. 8-18

JCPenney

If You Want Safety And Security
 For Your Money
 And
 Personal Service For Yourself
 See
 The Banking People
 At
SECURITY STATE BANK
 MEMBER FDIC
 That's The Bank For Your Money

M. M. BRITAIN
 J. T. BRITAIN
 430 PHELPS AVE.
 DIAL 385-5114
 P. O. BOX 1227

Brittain Pharmacy
 Littlefield, Texas 79339

A REMINDER To The People Of This Area

We would like to remind you of a service which we believe is tailored to the needs of the people we serve. Our prescription record system of your original Prescriptions and Prescription refills makes it possible for you to have an itemized record of these items upon request.

Under this system your individual record of prescriptions and convalescent rentals will be maintained on an itemized basis. This will qualify for income Tax deduction, Medicare, Insurance Requirements or any other purpose for which you may need or desire a permanent record.

For instance, if you were to lose or misplace your Prescription and had no record of its original number with which to obtain a refill—it would be available to you instantly under your individual record at Brittain Pharmacy. This service is available whether you charge, pay by check, or cash.

You may call for a copy of your complete record at any time, and your record for each succeeding year will become a permanent part of your personal file.

BRITAIN PHARMACY

M. M. Brittain J. T. Brittain

Newman Honored Valentine Sweetheart

No Nu Chapter of Phi honored Mrs. (Judy) Newman Jan. 22, in the presence of Mr. and Mrs. Arlen

Garvin Knox, Neville Manning, Carlton Parker, Wade Warren, Neil West, Doyle Winfield, Randy Birkelbach, Kim Hanlin, Ronnie Vaughn and Arlen Simpson.

Guests enjoyed games of cards and dominoes.

COPE WITH LIFE

Most people cope with life. Coping is like a "C" on an exam— you squeak by, you don't cop out, you don't fail, but you don't excel. Dorothy Taylor, family life education specialist with the Texas Agricultural Extension Service, The Texas A&M University System, says.



CONSERVATION BOOKLETS have been distributed by the Lamb County Soil & Water Conservation District Board of Directors. Over 4,500 conservation education booklets are going to all elementary schools in Lamb County. Students in grades two through six receive these booklets. There are 10 different subjects covered, ranging from wildlife, water to plants. These materials are used by teachers as teaching aids to supplement regular textbooks. Since 1970, over 25,000 booklets have been given to help educate our next generation of conservation minded citizens. [SCS Photo]

Ann Mackey Given Shower

A miscellaneous bridal shower was given for Ann Mackey in the parlor of the First Baptist Church Tuesday evening.

Miss Mackey is the bride-elect of Steve Taylor. She is the daughter of Mr. and Mrs. T. W. Mackey of Littlefield, and the prospective bridegroom is the grandson of Mrs. Hubert Taylor of Amherst.

A daisy flower arrangement on a white runner centered the serving table. Silver appointments were used, and cookies, punch and hot spiced apple

cider were served.

Special guests were grandmothers of the bride, Mrs. Carl Lewellyn of Lubbock, Mrs. J. D. Mackey of Lubbock, and Mrs. Hubert Taylor of Amherst.

The hostess gift was cookware.

The couple will be married on Jan. 24 in the chapel of the First Baptist Church.

Winterizing Houses Funded

Governor Dolph Briscoe announced approval of \$308,807 in Community Services Administration grants for Emergency Energy Conservation programs.

The ten grants are effective retroactively from Dec. 1, 1976, through February 29, 1976. They are funded under Title II of the Head Start, Economic Opportunity and Community Partnership Act of 1974.

Grantees include: South Plains Community Action Association, Inc., in Levelland for \$11,450.

Activities of the Emergency Energy Conservation program include repair and winterization of housing of low-income persons through replacement of broken windows, patching roofs, caulking cracks and joints, weatherstripping and insulation. In addition, emergency assistance is provided for fuel and utility payments and transportation.

1st Division Winners Named In Singing Contest

Members of the Littlefield Junior High and High School Choirs participated in Solo and Ensemble contests in Lubbock last Saturday. The students worked many extra hours in voice lessons and rehearsals to prepare their songs to be judged. They each received comment and rating sheets on their performance.

Those participating in the solo event from the Junior High Choir were: Angie Duke, Carrol Kirby, Eddie Knox,

Nancy Marquez, Lona Mills, Kim Pace, Kammy Rainbolt, Roy Ramirez, Robert Wallace, and Debra Williams.

Those receiving 1st division ratings were Eddie Knox, Lona Mills and Roy Ramirez.

Students entered in the solo event from the High School Choir were Janice Cowan, Kevin Gardner, Kimberley Hutto, Donna Knox, Darla Nichols, Pam Parrott, Mark Roden, Jan Sisson and Karla

tennial committee. The group voted to comply with their request.

Dorothy Powell won the door prize.

Freddie Duke invited the members to a party at her house on January 20.

Janice Graves and Kyra Cox served refreshments of sandwiches, soft drinks, chips and cake to Bonnie Stephens, Kris Bean, Barbara Sarnes, Sharon Brown, Freddie Duke and Dorothy Powell.

A lively discussion of current events was led by Kris and Kyra.

Sorority Sponsors "MissLambCounty"

The Tau Chi Chapter of Beta Sigma Phi sponsored the Littlefield Mother's March of Dimes, Monday, Jan. 19. Kris Bean was chairman of the project. She expressed her appreciation to members of other organizations who assisted with the march.

Members of Tau Chi attended a called meeting following the march. Bonnie Stephens presided over the meeting. Barbara Sarnes gave the treasurer's report.

Plans were made for the Miss Lamb County contest. Entries for the contest will be accepted February 1-April 30. Contestants must be 17 by July 1 and not over 22.

Plans for the float for the Littlefield Bicentennial were discussed.

Hubert Henry requested that the Miss Lamb County contest be held in conjunction with the Littlefield Bicentennial activities. Henry was representing the Littlefield Bicentennial committee.

Homemakers In Meeting

The Littlefield Young Homemakers of Texas met Thursday in the Flame Room of the Pioneer Natural Gas Building for their regular business meeting.

Bobbye Magruder, president of the club, presided over the meeting. The financial report was given by Alice Potts, treasurer. A Thank-you note from the FHA Club was read. The YHT had donated Corning ware sets and glasses to the FHA. A donation from the Gonzales children in the Panhandle Home was collected.

The Knight's Rest Home party will be Saturday, Feb. 7, at 2:30. All members are reminded to attend.

Janey Raney and Bobbye served refreshments to Alice, Ellen Massengill, Janice McElroy, Pat Stubbs, Linda Elms and guest, Gerry Thomas.

The next meeting will be February 12 at 7 p.m. in the Flame Room for a program on Mexican Food Preparation. All area women are invited to attend.

December Shows Few Accidents

The Texas Highway Patrol investigated five accidents on rural highways in Lamb County during the month of December, 1975, according to Sergeant Thurman Keffer, Highway Patrol supervisor of this area.

These crashes resulted in no one killed and only one person injured.

The rural traffic accident summary for this county during the first 12 months of 1975 shows a total of 109 accidents resulting in five persons killed and 71 persons injured.

The rural traffic accident summary for the 60 counties of the Lubbock Department of Public Safety Region for December, 1975, shows a total of 534 accidents resulting in 22 persons killed and 325 persons injured, as compared to December, 1974, with 598 accidents resulting in 11 persons killed and 340 persons injured.

The traffic deaths for the month of December, 1975, occurred in the following counties: Four in Parker; three in Hardeman; two in Lubbock; and one each in Bailey, Dickens, Hockley, Jack, Montague, Palo Pinto, Wise, Young, Gray, Ochiltree, Farmer, Potter, and Wheeler.

STEAM CLEAN your own carpets (At do-it-yourself prices)

RENT OUR RINSEVAC—the new compact carpet cleaning machine that lifts dirt, grime and residues out of carpets and does the job professional cleaners charge up to a hundred dollars for.



Rent for only \$12.00 a day
WHITE'S AUTO
424 Phelps 385-5959

**KIRBY
VACUUM CLEANERS**
—Sales & Service—
**PAT'S
RECORD CENTER**
APPLIANCE DEPARTMENT

JCPenney

Prize buys
in pantsuit
3-piecers.

Your choice **14.88**

All easy care polyester double knit in spring colorations.

Great looking 3-pc. sets. Sizes 10-20.

Styles similar to illustrations.

CLOSEOUT! Women's Panty Hose

Short, Average, Tall, Reg. \$1.29 To \$2.29.

Queen Sizes, Reg. \$1.69
240 Pairs, Your Choice.

77¢

SOUTH PLAINS HOSPITAL-CLINIC, INC.

YOUR NON-PROFIT INSTITUTION
SERVING YOU AND YOUR COMMUNITY

ANNOUNCES THE ANNUAL MEETING

SATURDAY 3 P.M. JANUARY 31

In The Hospital Library

Two Directors Will Be Elected

one 18 years of age or older who has used the hospital or clinic during the year is eligible to vote in the election of directors.

You Are Responsible For Our Progress

WE WANT TO EXTEND OUR APPRECIATION

Refreshments Will Be Served

SOUTH PLAINS HOSPITAL-CLINIC

AMHERST

SAVINGS ON FOOD IN STORE FOR YOU...DAILY

COCA COLA 6 BOTTLE CRTN 32 OZ \$1.39	DR PEPPER 6 BOTTLE CRTN 32 OZ \$1.39	KOUNTRY FRESH BISCUITS 10 OZ CANS 8/\$1
HUCK ROAST LB 89¢	RIB STEAKS LB 98¢	SEA PAK FISH STICKS 8 OZ PKGS 3/\$1
PATIO BEEF ENCHILADAS 89¢ 22 OZ PKG	PATIO CHEESE ENCHILADAS 79¢ 22 OZ PKG	BIG-K FLOUR 25 LB BAG \$3.19
RUSSET POTATOES 10 LB BAG 89¢	KIMBELL'S PRIZE HAND LOTION 16 OZ 89¢	PURE CANE SUGAR 5 LB BAG \$1.15

NEW STORE HOURS:
MON THRU SAT 8 A.M. - 7:30 P.M., SUN. 8 A.M. - 1 P.M.
QUALITY MEATS COST NO MORE AT

MERLIN'S FOOD

Double Gunn Bros. Stamps, Tuesday & Wednesday

9th & Levelland Highway

OPEN 7 DAYS A WEEK PRICES GOOD MON., THRU SUN. WE REDEEM FOOD STAMPS

... FRIENDSHIP DAY

Continued from Page 1

Members of the South Plains Genealogical Society in Lubbock will bring a program, "Tracing Your Family Tree" from 2 to 3 p.m. These include Mrs. Chris Gelin, executive secretary, Mrs.

Dorothy Rylander, librarian, Mrs. Elsie Wilbanks, charter member, and Mrs. Eugenia Toland, principle speaker.

Jan Sisson Picked All-State Choir

Jan Sisson, daughter of Mr. and Mrs. Mitchell Sisson, recently participated in All State Choir Contest in Lubbock for Texas Music Educators Association. She was selected to perform in the All State Choir in San Antonio in February. This is her third year to make All State Choir. She sings first soprano. There will be 240 high school students from the State of Texas performing in this choir. 32 who sing first soprano.



JAN SISSON

Jan also recently competed in U.I.L. Solo Contest in Lubbock. She sang an Italian Aria. She received a first division rating on a Class I Solo. This entitles her to go to Austin in June to compete at the State Solo Contest. This will be her fourth year to go to Austin to sing at the State level.

"FIRST LET ME SAY I DISAGREE THAT I AM INACCESSIBLE, RE-CLUSIVE AND SPEND TOO MUCH TIME AT THE RANCH!"



THE ABUNDANT LIFE

OUR PLACE



By BOB W.

MUCH DISSATISFACTION and strife would never develop, if all of us would maintain a wholesome attitude about "our place". This does not mean that legitimate and approved efforts to make improvements, or a desired change are out of order. Improvement, or betterment of our life situation is our privilege; but, for many of us, the real satisfaction in living will be found in the full appreciation of "our place", the place we now fill.

WE MAY HAVE REACHED our level of competency, and, if we are wise, we will be happy to recognize this fact and will accept it graciously. If we are foolish enough to try to move out of "our place", we are asking for unnecessary troubles. If, in our efforts to get out of what is appropriately "our place", we make ourselves pushy in our relationships with others; we are going to lose far more than we gain. In addition to this trouble, there will be more difficulties caused by trying to function in a role we are not capable to handle.

WE ARE DIFFERENT, and these individual differences can be a source of much distress and personal difficulty. They can be, but we must not let them. Relatively speaking, some of us will be rich and some will be poor; and some in between. Some of us may be unusually well-endowed, and some less; and many at all levels between.

Some of us are well-known, and unknown; and many somewhere between; but all of us are of some value.

WE HAVE A PLACE, and it is "our place". It is honorable, and each one of us must fill it the way we can, with joy, diligence and appreciation.

This is to be accomplished by accepting our limitations, with understanding attitude; and doing our best with our potentials and opportunities. It is foolish to yearn for other situations, in which we are very likely to be unhappy; and in which we might even be a misfit.

THERE IS A PLACE for all, regardless of age, physical condition, education, economic status, or background. There is a place for that, in many ways, uniquely "our place". It is a good place, enough, a place that we can fill with dignity and pride. When we find it and we can find it, let us be glad and happy in it; because it is our place.

LIFE HAS A PLACE FOR us, and it may not be exactly what we think we want, or what we think we deserve; but it will be the place in which we can function effectively. When we find it, we must accept it graciously; and to the limit of our capabilities.

HAPPY ARE WE, when we find "our place"; and accept it cheerfully.

OBITUARIES

MOLLY McKINNON

Services for Molly McKinnon, 81, of Littlefield were held at 2 p.m. Thursday in the chapel of First Baptist Church with the Rev. A. J. Kennemer, pastor, officiating and assisted by Wilburn Dennis, minister of Crescent Park Church of Christ.

Burial followed in Littlefield memorial Park under the direction of Hammon Funeral Home.

Mrs. McKinnon died at 8:20 p.m. Tuesday in Littlefield Hospital.

A Littlefield area resident since 1929, she was a native of Center. She was married to M. T. McKinnon on Sept. 3, 1911 in Poolville and was a

member of First Baptist Church.

Survivors include two sons, Tommy and Bill, both of Littlefield; three daughters, Mrs. Mildred Gallaway of Plainview, Mrs. Irene Brantley of Amherst; and Mrs. Betty Ryan of Lubbock; six sisters, Mrs. R. L. Hobbs of Muleshoe, Mrs. Lillian Swinney, Mrs. Bell Lankard and Mrs. Grace Bedford, all of Fort Worth, Mrs. Clare Browder of Bowie, and Mrs. Nolan Fant of Seal Beach, Calif.; a brother, Bill McWilliams of Mesa, Ariz.; 14 grandchildren; and 14 great-grandchildren.

Grandsons served as pallbearers.

A Woman's View

PEARL BRANDON

I GUESS SOME OF US get to thinking pretty low of ourselves at times. We know our weaknesses so well and don't give ourselves credit for being very strong.

Many times we feel so inadequate for the task before us. We are weak without that inner power, which is the spirit of God in our lives. We really underestimate ourselves. In times of emergency we act very quickly with great strength, without even taking time to think. We are much stronger

than we realize.

It takes testing and hardship to bring out the best in us and we learn more about ourselves and our strengths from having suffered.

Billy Graham has an article in the "Decision" this month entitled, "All it Takes is One."

One person with faith in God and himself can change the history of a nation. Jesus changed the history of the world. He walked on this earth a very short time and died a cruel death on the cross. But, you say, "He was divine. He was more than human." So are we.

We have access to the same power that He had. His faith was great and He took advantage of it, while our faith is weak.

None of us can understand the mystery of Christ, neither can we understand ourselves. God said, "Let us make man in our own image." For us, this is so hard to understand, "man in the image of God."

Christ was human. He was born of woman, lived a few short years on this earth and died the death of a human being—but He was the son of God, also. So are we His children.

Jesus died and rose again from the dead. He walked this earth in human form for a while after He arose from the dead. He ate and drank with His disciples and was seen by many people before He ascended into the Heavens.

We don't know what we will be like in the life to come but He said that where He was we would be. The Bible also says He was the first born among many. So if we were made in His image doesn't it sound reasonable that we will be like Him in the life to come? To me this means we will never lose our humanness.

God created many creatures besides human beings—"The fish of the seas, the fowls of the air and the beasts of the fields." He also created many celestial beings such as angels and cherubim. But he only created man in His own image.

No mortal human being knows what is in store for us in God's plan but we know our destiny is great, both here and the eternity to come. John on the isle of Patmos through the revelation of Jesus was allowed to see things shortly to come to pass. It concerned the human race.

After seeing the vision so great it was beyond his comprehension he wrote in the 7th chapter of Revelations these words, "After this I beheld, and, lo, a great multitude, which no man could number, of all nations, and kindreds, and people, and tongues stood before the throne, and before the Lamb, clothed with white robes, and palms in their hands; and cried with a loud voice saying, 'Salvation to our God which sitteth upon the throne, and unto the Lamb.'"

We know the Lamb, spoken of here, was Jesus Christ, who sacrificed himself for all the peoples of the world. People of every race and color were there clothed in white robes of purity, with Palms of peace in their hands, praising the most High God and His Son who died for us.

Does that sound like we are insignificant?

It seems to me like we will keep our own identity and continue to live on through eternity with perfect incorruptible bodies. Isn't that worth this short, testing time on this earth?

John ended his writing with, "He which testifieth these things saith, 'Surely I come quickly'. Amen. Even so, come, Lord Jesus. The grace of our Lord Jesus Christ be with you all. Amen." We echo the words of John. Even so come quickly, our Lord. Amen.

YOU DON'T HAVE TO WISH ANYMORE



...for an efficient heating system. Today, you can meet both your heating and cooling needs with one unit, one thermostat setting. The heat pump does both jobs. You don't have to find a magic lamp with a genie inside to tell you how the heat pump works...one call is all it takes and we'll give you a FREE personalized heating cost survey and tell you all about the heat pump...it's not magic, it just acts that way.

BE SWITCHED

...to electric heat. There's a heating system that's just right for your home...an electric heating system that will be just as modern tomorrow as it is today...and environmentally sound, because electric heating is 100% efficient at the point of use. Call us this week.

ENERGY EFFICIENCY ALLOWANCE

We, at Southwestern, are interested in your getting the most for your energy dollar. That's why we're offering an Energy Efficiency Insulation allowance to our customers in existing homes who install electric comfort heating. Ask us about it.



The Electric Company

FOR SO MANY PEOPLE

EQUAL OPPORTUNITY EMPLOYER

LETTERS TO THE EDITOR

Dear Editor:
We would like to say "Thank You" for the pictures taken and the excellent coverage you have given us this past year.
Please accept our sincere appreciation.

Sincerely,
Xi Nu Nu Exemplar Chapter

Olton Chamber Banquet Feb. 2

The Olton Chamber of Commerce and Agriculture banquet will be held at 7:30 p.m. Feb. 2 in the Olton School cafeteria with Bob Murphy of Naudoches as guest speaker.

Murphy is an East Texas humorist and philosopher.

Tickets are \$6.50 each and can be purchased from any chamber member or at the offices of the Olton Enterprise or the chamber.

LAMB COUNTY LEADER-NEWS

ESTABLISHED IN 1923

Lamb County Leader and County Wide News. Combined Feb. 13, 1969



WADE A. WARREN	Publisher
JOELLA LOVVORN	News Editor
NILAH RODGERS	Staff Writer
ESTELLE MYERS	Bookkeeper
GINGER RAINBOLT	Circulation, Classified
CHARLOTTE MILLIGAN	Advertising Composition
TINA MARTINEZ	Type Setter

Second Class Postage Paid at Littlefield, Texas 79339

PUBLISHED semi-weekly each Thursday and Sunday morning by the Leader-News, 313 W. 4th, Littlefield, Texas 79339. Subscription rates: Lamb County only, \$9.50 a year and

\$5.75 for 6 months. Outside Lamb County in Texas, \$11.75 a year and \$7.95 6 months. Outside Texas, \$13.50 a year; \$8.95 6 months. Single copy rates, 15 cents for each of both issues.

Telephone 385-4481

NEWS FROM
AMHERST

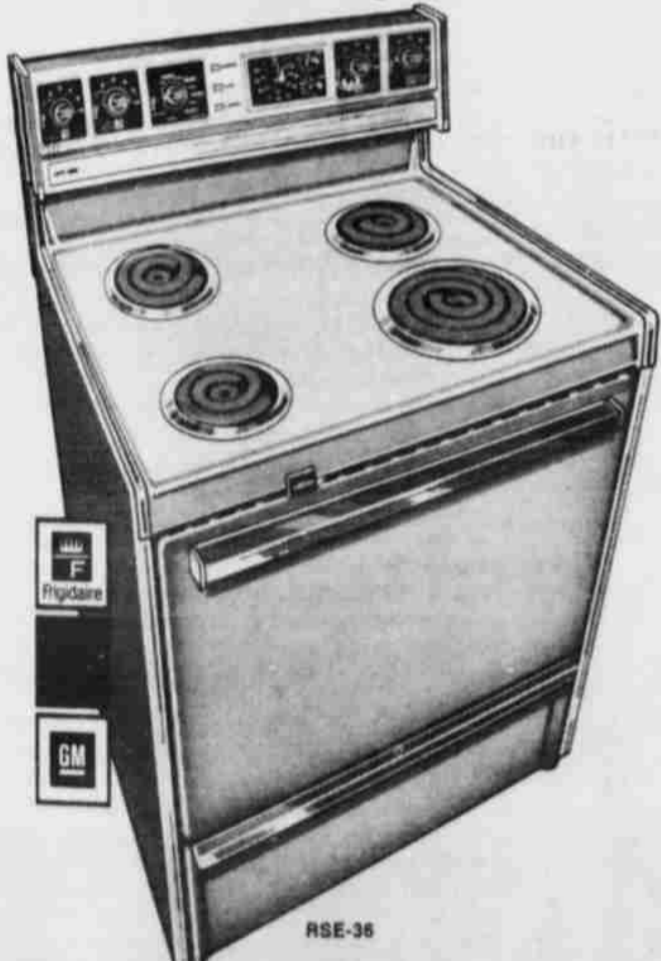
MRS. LESTER LaGRANGE 246-3336

W.D. Nix visited her mother, Bob Torrance in the first of this week. MRS. Hartley and MRS. Hartley are spending some time in the Ridgecrest area. The Ridgecrest church of Christ there had their stay in Austin where they were mis- AND MRS. Homer celebrated the 40th wedding anniversary of his sister, Mrs. Phillip Cook in

LEAP YEAR SPECIAL
—25% OFF—
Any Upholstery Cleaning with Any Carpet Cleaned Now You Can Charge It!!
—Use Your Wards Card—
Call Collect 806-799-2755
Carpet Cleaning Discount
CARPET CLEANING DISCOUNT
5406 SLIDE RD. LUBBOCK 79414

Frigidaire
Clearance Sale

Your chance to get the convenience and dependability of Frigidaire and get special clearance savings, too!
Frigidaire 30" Electri-clean Range



Forget the drudgery of oven cleaning forever thanks to the Frigidaire 30" Electri-clean oven of this Frigidaire 30" Range. Just lock the oven doors, set the controls, and the oven cleans itself automatically, electrically, leaving just a trace of ash to wipe away. This model also offers the convenience of an automatic Cook-Master control and Easy-View surface unit controls.

Now only
\$409 WT



Frigidaire Microwave Oven offers the flexibility of a special Slow Cook cycle for slow roasting quality meats and for cooking delicate sauces and cheese on egg dishes.
Now only
\$475



Space at a premium? This Frigidaire Upright Freezer is a mere 28 inches wide, but it offers 12.8 cubic feet of refrigerated volume inside.
Now only
\$325

Cox
FURNITURE & APPLIANCE
1804 HALL AVENUE PHONE 285-5883
LITTLEFIELD, TEXAS 79339



KATHY KELLY admires the belt buckle presented to her from the Sheriff's Posse by past president Dub Berry. Berry made the presentation Monday night in appreciation for Kathy's participation as club queen during 1975. The Sheriff's Posse is sponsoring a Play Day at the club arena today. [Staff Photo]

Short Courses Offered At SPC

South Plains College again will offer a variety of community service short courses this spring designed for your own personal enrichment. The community service short courses are being offered through SPC's Division of Continuing Education. Class schedule is as follows:
Ms Auto Mechanics, 7:30 to 9:30 p.m. Mondays, starting Jan. 26, six weeks, \$12, Diesel Shop.
Guitar I, 6 to 6:50 p.m. Tuesdays, starting Jan. 27, eight weeks, \$15, FA-10.
Guitar II, 7 to 7:50 p.m. Tuesdays, starting Jan. 27, eight weeks, \$15, FA-10.
Guitar III, 8 to 8:50 p.m. Tuesdays, starting Jan. 27, eight weeks, \$15, FA-10.
Woodworking, 7 to 10 p.m. Thursdays, starting Feb. 5, 10 weeks, \$25, Ag-1.
Fencing, 7 to 9 p.m. Mondays, starting Feb. 7, six weeks, \$12, Women's Gym.
Women's Recreational Swimming, 12:30 to 1:30 p.m. Tuesdays and Thursdays, starting Feb. 20, 14 weeks, \$20, SPC Natatorium.
Advanced Needlepoint, 7:30 to 9:30 p.m. Mondays, starting March 1, five weeks, \$15, T-109.
Small Gasoline Engine Repair, 7 to 10 p.m. Tuesdays, starting March 2, eight weeks, \$20, Ag-2.
Advanced Ms. Auto Mechanics, 7:30 to 9:30 p.m. Mondays, starting March 8, six weeks, \$12, Diesel Shop.
Registration will be at the first class meeting for each short course. For more information, contact the office of Don Yarbrough, dean of continuing education at SPC, 894-4921, ext. 253.

Square Dance Lessons Set

Lessons for beginning square dancers have been extended one more week. Hap Pope of Lubbock is teaching students how to square dance. Lessons are each Tuesday at 7:45 in the Community Center in the park.
This Tuesday will be the last night open for new students. There will be 20 lessons at \$1 each, with payment made in two installments. The first half is due Tuesday.
Members of Circle Eight Square Dance Club and area square dancers are reminded that Joe Greer will be calling a special fifth Thursday night dance at 8 p.m. on the 29th.

BEAUTY THAT UPLIFTS
surrounds the visitor to our home. This atmosphere of serenity in our environment is a source of inspiration to the bereaved.
HAMMONS FUNERAL HOME

Doris Waters Chairman

Lamb County Home Demonstration Council met in the Courthouse Thursday, Jan. 22, for a called meeting. An election of a new THDA Chairman was the order of business. The new THDA Chairman is Mrs. Doris Waters.
Plans for the District Home Demonstration Meeting to be held in Littlefield April 8th were discussed.
Present for the meeting were: Mrs. Ed Biles, Mrs. Keith Boone, and Mrs. Hilbert Wisian of Springlake; Mrs. C. P. Davis, Mrs. J. W. Bitner, and Mrs. Ruth Miller of Littlefield; Mrs. Alva Kersh and Mrs. Elmer Houston of Olton, and Mrs. Dorothy Powell, County agent.

JC Penney will close at 5:00 PM Tuesday for inventory. We will re-open 2:00 PM Wednesday with fabulous bargains all reduced to clear. Penneys after inventory Clearance, Wednesday, Thursday, Friday & Saturday.

1 & 2 Bedroom Apartments For Rent
* All Electric
Range, Refrigerator, Central Heat-Air, Free Cable T.V., Garbage Disposal
* Laundry Facilities Available.
* Furnished & Unfurnished
OAK TERRACE APTS.
11th & Wicker 385-3382

Menu Planners! Start Here!

HORMEL, ALL MEAT, MARKET SLICED		
BOLOGNA	LB	99¢
CHOICE		
CHUCK STEAK	LB	69¢
CHOICE		
CHUCK ROAST	LB	85¢
BUTTER BALL, ALL SIZES		
TURKEY	LB	69¢
CHOICE		
ARM ROAST	LB	\$1.09
MORTON, FROZEN APPLE, PEACH, CHERRY		
FRUIT PIES	24 OZ	69¢
DEL MONTE		
CATSUP	32 OZ JUG	79¢
LISTERINE	14 OZ	\$1.19
DEL MONTE		
FRUIT COCKTAIL	303 CAN	39¢
DEL MONTE, CUT		
GREEN BEANS	303 CAN	2/49¢
DR PEPPER	6 BOTTLE CRTN 32 OZ	\$1.39
GRANDMA OR FIRESIDE		
COOKIES	PKG REG. 39¢	3/\$1
MORTON, FROZEN EXCLUDING SHRIMP, HAM		
DINNERS		49¢
ORCHID		
BATHROOM TISSUE	8 ROLLS	\$1.09

STAINLESS FLATWARE
Do we have a bargain for you! Quality—value—choice it's all here... at an unbelievable price! You can collect a complete set of luxurious stainless flatware now for just pennies a piece! Each week we'll feature a different piece setting piece that can be yours at great savings just for buying the groceries you need. You can even have your choice of pattern!

Just follow the simple schedule:

WEEK ONE	DINNER FORK
WEEK TWO	DINNER KNIFE
WEEK THREE	TEASPOON
WEEK FOUR	SOUP SPOON
WEEK FIVE	FRUIT/SALAD FORK

GET STARTED NOW!

There's never been a smarter way to get a set of beautiful stainless flatware. We even give you your choice of pattern! Pick up the featured piece setting piece of the week each time you shop—and before you know it, you'll have collected a complete service at great savings just for buying the groceries you need!

Each piece starting at **22¢** ONLY

GOLD MEDAL		
FLOUR	5 LB BAG	89¢
DEL MONTE		
TOMATO JUICE	46 OZ	59¢
MAXWELL HOUSE		
COFFEE	LB	\$1.19
GOLDEN		
BANANAS	LB	19¢
YELLOW		
ONIONS	LB	13¢

We Reserve The Right To Limit Quantities. We Redeem USDA Food Stamps. We Give Gunn Bros. Stamps. Double Stamps On Tuesday & Wednesday With \$2.50 Purchase Or More Excluding Cigarettes.

PIONEER SUPERMARKET

COCA COLA
6 BOTTLE CRTN 32 OZ **\$1.59**

LET A WOODMEN I.R.A.



DRIVE YOUR DARK CLOUDS AWAY

Are rainy days the forecast for you in your retirement years? If you are a working person and are not participating in a qualified pension or retirement plan, you may set up your own I.R.A. (Individual Retirement Account). Income tax free until your retirement years begin. You can do this by setting aside 15% of your earned annual income of \$1,500, whichever is less. Clear up those clouds of darkness by contacting the Woodmen representative in your area today for additional information.

Edgar McCantles
112 E. 14th
Phone 385-4304
Littlefield, Texas

WOODMEN OF THE WORLD LIFE INSURANCE SOCIETY
HOME OFFICE • OMAHA, NEBRASKA
"The FAMILY Fraternity"

Scouts Hold Pinewood Derby

Cub Scout Pack 641 held its Pinewood Derby at its January pack meeting. Twenty-six cars built by the Cubs and their dads raced for top honors. A first, second and third place trophy was presented to the top three cars and recognition was given to the fourth and fifth place winners.

These five Cub Scouts will represent the Pack at the District Pinewood Derby held at the Scout-O-Rama in November and also at the Council Pinewood Derby which will be held in Lubbock in February of 1977.

Wayne Davis and Leonard

Albus kept the records of the winning cars. Claude Burnett was the official starter and John Lee and Danny Steuart were the finish line judges. John McAnally of McAnally Jewelry engraved the trophies.

Jimmy Steuart would like to recognize these men for their help in making Pack 641's Pinewood Derby such a great success.

The winners of the race were John Lee, son of Mr. and Mrs. James Lee, first place; Shane Albus, son of Mr. and Mrs. Leonard Albus, second place; Terry Martindale, son of Mr. and Mrs. Darel LeBeouf, third place; Douglas Gilbert, son of Mr. and Mrs. Jim Gilbert, fourth place; and David Tunnell, son of Mr. and Mrs. Jerry Tunnell, fifth place.

Pack 641's next pack meeting will be in February and will consist of a Blue and Gold Banquet for the parents and Cub Scouts.



BULA NEWS

THE BULA-ENOCHS Lions met Thursday morning for their breakfast, with Lions Lester Bounds and J. L. Cox preparing a breakfast of bacon, scrambled eggs, butter flake biscuits, butter and jelly and coffee. John Despres, city policeman from Littlefield, was guest at their meeting. He spoke to the group about drug misuse and abuse, including aspirin on to hard drugs. He also showed them paraphernalia used by drug abusers and related some experiences he had encountered with persons on drugs.

WMU MET Tuesday afternoon with seven in attendance. The lesson was taken from their Mission study book, "Sick and You Visited Me."

Mrs. Black is chairman of the mission study. Mrs. Richardson read the call to prayer, with Mrs. Battles giving the opening prayer and prayer for the missionaries. Mrs. Black offered the benediction. Following the meeting a short business meeting was held. Attending were Mrs. E. W. Black, Mrs. Rowena Richardson, Miss Vina Tugman, Mrs. E. O. Battles, Mrs. Fred Locker, Mrs. C. A. Williams and Mrs. P. R. Pierce.

THE SCOUTS met Wednesday evening at the community center with their scout master, Jerry Cox. Following giving their scout pledge and opening rituals, the boys had a short business meeting, and decided to have a weekly fee of 25 cents to help increase their club income. Their work for the evening included doing some needed work in the old school lunchroom kitchen.

MRS. NOLAN Harlan, accompanied by her mother, Mrs. Mary Britt of Amherst, attended the funeral Friday for Mrs. Harlan's cousin, Miss Ruby Goldwater, held at the Sanders Funeral Home in Lubbock.

SUNDAY company in the J. R. Teaffs home were his brother and wife, Mr. and Mrs. Archie B. Teaff of Abernathy and his sister and husband, Mr. and Mrs. Charlie Parkman of Littlefield.

MRS. P. R. Pierce visited Wednesday with her sister, Mrs. Erwin Nieman of near Muleshoe. Mrs. Nieman was recovering from recent gall bladder surgery at the West Plains Hospital in Muleshoe.

MR. AND MRS. J. D. Rowland recently returned from a 10-day visit with relatives in Visita, Calif.

CHRIS AND Cliff DeSautell of Slaton came up for the day Sunday with their grandparents, Mr. and Mrs. John Latham. Cliff had won the grand champion prize on his Duroc pig he had shown in the Slaton stock show over the weekend.

MR. AND MRS. W. R. Adams drove to Lubbock Saturday and spent the weekend with her sister-in-law, Mr. and Mrs. Herb Harris.

MRS. L. E. Pollard is still a patient in the Lubbock Methodist Hospital. Her children report that she is doing real good since her hip surgery, and is now able to take a few steps by herself. Mr. Pollard is at present staying with his son and wife, Mr. and Mrs. Loyd Pollard.

MR. AND MRS. Raymond Austin enjoyed having their children and grandchildren home Sunday, the occasion was to help father and grandfather celebrate his birthday. They were Mr. and Mrs. Orphas Tate and boys, Jimmy and Kevin of Cotton Center, and Mr. and Mrs. Junior Austin and boys Carey, Greg and Jeff of Lubbock. Jeff is staying over for a longer visit with his grandparents.

MRS. PEARL Wald home with her son and Mr. and Mrs. Lowell Friday, and spent the end.

REV. AND MRS. Riley and Mr. and Mrs. Pierce attended the Conference, held Monday evening at the Ambler Baptist Church. A report given by some church conference on a cruise Sano Salvador, Brazil.

MR. AND MRS. Latham enjoyed supper day evening with his Mrs. Bertie Clawson in field. Also to be with Mr. and Mrs. Travis Hobbs and Mr. and Mrs. Dillard of Littlefield.

MISS KATHRINE and Miss Geniva Lubbock visited Saturday. Kathrine's mother, Mrs. Pierce and son, Jack

JACKIE WITHROW Muleshoe spent Sunday her parents, the J. C. rows.

AROUND LITTLEFIELD

JONGE (Ko Ko) student at the University San Marcos in Lima, Peru been a guest in the home of Mr. and Mrs. Tom Cari and Kim. Ko was the exchange student sponsored by the Lions Club.

MR. AND MRS. Birklebach recently spent weekend in Shawnee, visiting with friends, Ann and Gordon Manning.

NEWCOMERS in Littlefield are Mary and Richard Mark and Michael, who recently moved here from Odessa. Richard is employed with Calvin Price.

MR. AND MRS. Simpson, Todd and Tess spent Sunday before last in Morton visiting with Mr. and Mrs. Sonny Dewbre, Mr. and Mrs. Donny Dewbre, and D'Nae, Mr. and Mrs. Weyland Altman, Miss Ronnie and Mr. and Mrs. Simpson, Gloria, Dale and Micah.

GEORGE WHITE moved last week from a patient in Methodist Hospital in Lubbock.

MRS. A. T. Hedgpeth patient in Methodist Hospital in Lubbock.

STACI AND SHELLI Birklebach went to Borger with grandparents, Mr. and Mrs. Billy Lynch of Lubbock visit Mr. and Mrs. E. Gilliam.

MR. AND MRS. Newman, former resident now living in Bryan, were in Thursday.

ERNEST SELL is recovering at home after 10 days in Methodist Hospital, where he underwent major surgery.

RECENT GUEST in John Clayton III home were former residents of Littlefield Coach and Mrs. Jim and family of Snyder.

GEBO'S

LITTLEFIELD
508 Hall Avenue



WESTERN WEAR Prices Good Thru Saturday

Clearance SALE

Bank Americard and Master Charge As Good As Cash At **GEBO'S**

Thermal Socks 2 Pr. \$139

Thermal Shirts and Drawers Your Choice \$339

White Socks 3 for \$229

Orlon Acrylic Dress Socks 89¢

Health Knit Underwear 3 for \$339

Hooded Sweatshirts Reg. \$5.99 \$399

LARGE SELECTION WRANGLER DRESS WESTERN SHIRTS LONG SLEEVE Values to \$12.49 SPECIAL \$688

LARGE GROUP JEANS Values to \$10.00 SPECIAL \$749

ALL COATS JACKETS VESTS 25% off

Boys - Student Denim Jeans
Boys Reg. \$8.00 Student Reg. \$10.00
Sizes 6-14 Reg. and Slim \$849
\$649

Boys Boots
Boy's Ranch Wellington
Natural full grain Leather, water repellent treated. MODEL 17332T Reg. 19.95 \$1795

Boy's Wrangler "Perma Welt" Ranch Wellingtons
MODEL 2993 \$1195 Thick wear resistant sole is permanently bonded to the high quality upper.

Wallo's INSULATED COVERALLS
BLACK, OLIVE OR HUNTER RED
SPECIAL MEN BOYS \$1995 \$1749

GEBO'S



Treflan 5 GAL. \$119.25

Eradicane GAL. \$18.00

Attrex LB. \$2.50

Milogard LB. \$2.53

Heptachlor LB. \$2.35

CASH
(While It Lasts)

EARTH AG SUPPLY, INC.
Earth, Texas 806-257-3762

OLTON NEWS

HOLT returned Saturday from Central General Hospital in Olton, where he received surgery for a heart condition.

GLENN Singletary returned home Sunday from Plains General Hospital in Plainview where she underwent major surgery.

OP-TOWN guests Saturday at the home of Mr. and Mrs. Limbocker were Mr. Richard Garrett, Mrs. Allen of Amarillo; Mrs. Tommy and Mrs. Sheila of Lubbock.

THOMAS WAYNE Clayton, of Texas House District 10, was listed in serious condition Sunday at Methodist Hospital in Lubbock from injuries suffered in a traffic accident.

JANET RODEN, formerly of Olton, is ward processing secretary at Wayland Baptist College in Plainview. It is pointed out that a use of this new word processing system can produce between 700 and 800 mailable lines in a full day as compared to 95 mailable typed lines in a half day of typing. Mrs. Roden is the daughter of Mr. and Mrs. Joe Chester.

MR. AND MRS. Ira Limbocker entertained Sunday with a birthday dinner. Attending were Mr. and Mrs. Kenneth Limbocker and Heather of Canyon; Mr. and Mrs. Tommie Tidwell of Nonata, Okla.; and Mrs. Clinton Limbocker and Leslie Raeann of Plainview. Those having birthdays recently were Kenneth Limbocker, Mrs. Ira Limbocker and her twin brother, Tommie Tidwell.

MEMBERS of Victory Missionary Baptist Church are seeking a minister.

ALAN CONNELL is now employed as the city's night watchman. Mr. and Mrs. Connell moved here recently from Clovis, N.M.

MR. AND MRS. Joel Nelson of Bovina honored their son, Craig with a birthday dinner Sunday. Guests were the honoree's grandparents, Mr. and Mrs. K. Y. Givens and their daughter, Kay.

ROLL BLACKWELL, Olton resident and graduate of Olton High School, died Sunday.

ERRY BLOCK has 7 reasons why you should come to us for income tax help.

ERRY BLOCK has 7 reasons why you should come to us for income tax help.

ERRY BLOCK has 7 reasons why you should come to us for income tax help.

ERRY BLOCK has 7 reasons why you should come to us for income tax help.

ERRY BLOCK has 7 reasons why you should come to us for income tax help.

ERRY BLOCK has 7 reasons why you should come to us for income tax help.

ERRY BLOCK has 7 reasons why you should come to us for income tax help.

ERRY BLOCK has 7 reasons why you should come to us for income tax help.

ERRY BLOCK has 7 reasons why you should come to us for income tax help.

ERRY BLOCK has 7 reasons why you should come to us for income tax help.

ERRY BLOCK has 7 reasons why you should come to us for income tax help.

ERRY BLOCK has 7 reasons why you should come to us for income tax help.

ERRY BLOCK has 7 reasons why you should come to us for income tax help.

ERRY BLOCK has 7 reasons why you should come to us for income tax help.

ERRY BLOCK has 7 reasons why you should come to us for income tax help.

ERRY BLOCK has 7 reasons why you should come to us for income tax help.

ERRY BLOCK has 7 reasons why you should come to us for income tax help.

MEAT MARKET

CRISCO

3 LB CAN PURE VEGETABLE

\$1.59



TAB DR PEPPER COCA COLA

6 BOTTLE CARTON, 32 OZ

\$1.38



SUGAR

SHURFINE, 5 LB BAG

\$1.14

TURKEYS	8 TO 12 LB AVG., LB	55¢
SIRLOIN STEAK	CHOICE, LB	\$1.69
CHUCK ROAST	CHOICE, LB	89¢
RIB STEAK	CHOICE, LB	\$1.19
BEEF RIBS	LB	69¢
FACIAL TISSUE	NORTHERN, 200 COUNT	2/89¢
COFFEE	SHURFINE, ALL GRINDS, 1 LB	\$1.09
ORANGE DRINK	GOLDEN HARVEST, 46 OZ	39¢
FRUIT COCKTAIL	SHURFINE, NO. 303 CAN	2/89¢
CRYSTAL WHITE SYRUP	KARO, QUART	98¢
BLACKEYE PEAS	RANCH STYLE, NO. 300 CAN	3/89¢
PORK AND BEANS	VAN CAMP, 16 OZ	3/\$1
DOG FOOD	STRONGHEART, TALL CAN	6/98¢
INSTANT COFFEE	MARYLAND CLUB, 10 OZ	\$1.98
TAMALES	GEBHARDT, JUMBO CAN	69¢
PINESOL DISINFECTANT	16 OZ	59¢

FLOUR

GOLD-MEDAL 5 LB BAG **89¢**

DUZ KING SIZE **\$2.29**

ERA

32 OZ SIZE

\$1.19

CORN TUNA SPINACH PEAS

JOAN OF ARC, NO. 303 CAN	3 FOR \$1
CARNATION, 1/2 SIZE CAN	49¢
SHURFINE, NO. 303 CAN	4 FOR \$1
JOAN OF ARC, NO. 303 CAN	3 FOR \$1

DAIRY

DIP	BORDEN, 1/2 PINT	45¢
WHIPPING CREAM	BORDEN, 1/2 PINT	45¢
SOUR CREAM	BORDEN, 1/2 PINT	45¢
BUTTERMILK	BORDEN, 1/2 GAL	69¢
COTTAGE CHEESE	BORDEN, 12 OZ	49¢
ICE CREAM	BORDEN, ROUND CARTON	\$1.09

PRODUCE

POTATOES	10 LB BAG, RUSSETS	79¢
GRAPEFRUIT	5 LB BAG RUBY RED	63¢
BANANAS	GOLDEN RIPE, LB	19¢
RADISHES	CELLO BAGS	10¢
ONIONS	MILD YELLOW, LB	12 1/2¢

FROZEN FOODS

PUMPKIN PIES	MORTON, EACH	59¢
GRAPE JUICE	WELCH, 12 OZ	59¢
BROWNIES	SARA LEE, 13 OZ	99¢
POT PIES	MORTON, 8 OZ	4/\$1
FISH STICKS	GORTON, 15 OZ	98¢



Pay-n-Save
QUALITY AND SERVICE

DOUBLE STAMPS TUESDAY & WEDNESDAY WITH \$2.50 OR MORE PURCHASE (EXCLUDING CIGARETTES) * WE RESERVE THE RIGHT TO LIMIT QUANTITIES * WE REDEEM AND GIVE STAMPS ON FOOD STAMPS * WE SELL TRAVELERS EXPRESS MONEY ORDERS * PAYROLL CHECKS CASHED

Friday, Jan. 30th

99¢

RING SIZE WALLET CREATIVE COLOR PORTRAITS FOR ONLY



Extra Charge for GROUPS

GET PICTURES MADE OF GRANDMA, GRANDPA, DAD, MOM AND ALL THE LITTLE ONES AT THESE SAME LOW PRICES!

SHUGART COLOR PHOTOS

PAY & SAVE

322 DELANO AVE.

SACK 'EM UP



WE REDEEM MAILED COUPONS at FURR'S FOR 100 EXTRA STAMPS

WE REDEEM USDA FOOD STAMPS

YOU PAY THE LOWER PRICE AT FURR'S WE WILL NOT CHANGE A PRICE ON A MARKED DOWN OR PACKAGE EXCEPT TO LOWER THE PRICE. ALWAYS PRICED.

- GREEN ONIONS LARGE FRESH BUNCH **2 FOR 29¢**
- GARDENIAS 3 INCH POT **\$1.50**
- RAPEFRUIT RUBY RED LB **12¢**
- ANANAS FANCY GOLDEN FRUIT LB **19¢**
- APPLES WASHINGTON FANCY RED LB **4 FOR \$1**
- ORANGES SWEET 5 LB BAG **79¢**
- TANGERINES Arizona Mineola Lb **5 FOR \$1**

- SIRLOIN STEAK FURR'S PROTEN LB ADV. SPECIAL **\$1.09**
- ROUND STEAK FURR'S PROTEN LB ADV. SPECIAL **\$1.09**
- RIB STEAK FURR'S PROTEN LB ADV. SPECIAL **\$1.09**
- CHUCK STEAK FURR'S PROTEN LB ADV. SPECIAL **89¢**
- RANCH STEAK FURR'S PROTEN LB ADV. SPECIAL **98¢**
- GROUND BEEF FRESH GROUND LB ADV. SPECIAL **79¢**
- CLUB STEAK Furr's Proten, Lb **\$1.49**
- DELUXE RIBS Furr's Proten For Barbeque, Lb... **79¢**
- T-BONE STEAK Furr's Proten, Lb... **\$1.59**
- RIB ROAST Furr's Proten, Lb..... **\$1.09**
- FAMILY STEAK Furr's Proten Boneless, Lb... **\$1.19**
- TURBOT Fillet Lb **\$1.09**
- RUMP ROAST Furr's Proten, Lb **\$1.09**
- BOLOGNA Farm Pac 1 Lb Pkg..... **99¢**

- ORANGE DRINK Boden's 64 Oz Btl. **69¢**
- CRISCO 3 LB CAN **\$1.49**
- SAUCE FOOD CLUB APPLE NO. 303 CAN **3 FOR 89¢**
- CORN JOAN OF ARC GOLDEN CREAM STYLE NO. 303 CAN **4 FOR \$1**

DOUBLE GOLD BOND STAMPS
TUESDAYS AND WEDNESDAYS

Frozen Food Favorites

- GRAPE JUICE Welch's, Fresh Frozen, 12 Oz Can..... **59¢**
- CUT CORN Libby's, Fresh Frozen, 24 Oz Pkg..... **49¢**
- BROCCOLI Top Frost Spears Fresh Frozen 10 Oz Package **39¢**
- WAFFLES Top Frost 5 Oz Size **5 For \$1** 10 Oz Size **39¢**

- PAGHETTI SAUCE Ass't Flavors, 1/2 Oz **64¢**
- DRESSING Craft Thousand Island, 6 Oz Size **79¢**
- HAMBURGER HELPER BETTY CROCKER PACKAGE **59¢**
- TOMATO SAUCE FOOD CLUB 8 OZ CAN **6 FOR \$1**
- GREEN BEANS FOOD CLUB CUT, NO. 303 CAN **4 FOR \$1**
- PEACHES ELNA NO. 2 1/2 CAN **45¢**
- POTATO CHIPS FARM PAC DIP OR REGULAR STYLE 9 OZ PACKAGE **59¢**
- LIQUID GOLD SCOTT'S 14 OZ AEROSOL **\$1.39**
- CAKE MIX Food Club Ass't Flavors **49¢**
- COOKIES Keebler Deluxe Grahams 13 1/2 Oz Package..... **89¢**

START YOUR GARDEN CENTER TODAY!

\$6.99 Basic Starter Unit
optional dome accessory **\$4.99**

Available in DOVE WHITE or WROUGHT IRON BLACK
PLANTS ETC SHOWN ARE NOT INCLUDED

GLASSWARE

VERY CUTE SETS

Daisy NEW FROM BROCKWAY GLASS

CHOOSE FROM "FRIENDSHIP WILL GROW" "LOVES ME" "OPEN YOUR HEART" "SHARE WITH YOUR FRIENDS" "TUMBLERS IN 4-PIECE SETS"

BUY SEVERAL AT THIS PRICE **\$1.99** SET OF 4

FOIL BROIL PANS Topcrest Ez-Pkg Of 3 **2 For \$1**

TOPCO BABY SHAMPOO **63¢**

PLASTIC STRIPS Topco 50 Ct **64¢**

RHINAL NOSE DROPS 1 Oz **\$1.04**

NESTLES BLOW DRY CONDITIONER 16 OZ **99¢**

CORICIDIN "D" TABLETS 25 CT **\$1.24**

PEPTO BISMOL Liquid 12 Oz **\$1.53**

SHOP Furr's MIRACLE PRICES





ANSCUM of the Springlake-Earth 4-H Club, left, showing award for the steer division Saturday. Making the presentation was Susan Ogerly of the FFA. (Staff Photo)



BEARDEN of the Amherst FFA was presented the trophy award for the lamb division Friday night by Lana. (Staff Photo)



HAIR of the Springlake-Earth FFA received the trophy award for the swine division following the judging Saturday afternoon. (Staff Photo)

C Group Plans Land Trip

Day trip to the Holy Land will be conducted by the Christian College Bible Studies Program March. Dr. Shackelford will be the tour leader. He is chair of the LCC Biblical Studies and teaches both Bible and archeology. Dr. Shackelford has previously led Land tours and is an archeologist in the land of the Holy Land. Those interested can write for further information and brochures to Dr. Shackelford, Bible Studies Division, Lubbock Christian College, 5601 W. 19th, Lubbock, Tex. 79407.



SAVE AT LITTLEFIELD SUPER MARKET

- CRISCO** 3 LB CAN **\$1.39**
- FLOUR** GOLD MEDAL, ALL PURPOSE, 5 LB BAG **79¢**
- COFFEE** MARYLAND CLUB, ALL GRINDS, 1 LB **\$1.19**
- BISCUITS** WHITE SWAN, SWEETMILK OR BUTTERMILK, 8 OZ CAN **10¢**
- CRACKERS** WHITE SWAN, 1 LB BOX **39¢**
- CHILI** GEBHARDT'S, 19 OZ CAN **77¢**
- KETCHUP** HEINZ, 32 OZ BOTTLE **79¢**
- TOWELS** BRAUNY, LARGE ROLL **2 FOR \$1**
- GREEN BEANS** KOUNTY KIST, WHOLE, CAN **4 FOR \$1**
- CORN** JOAN OF ARC CREAM STYLE, 17 OZ **5 FOR \$1**
- SUGAR** IMPERIAL, C&H, HOLLY, WHITE SWAN, 5 LB BAG **\$1.19**
- QUICK** NESTLE, LARGE SIZE, 32 OZ **\$1.77**
- APPLE JUICE** TREE TOP, 32 OZ **2 FOR \$1**

FROZEN FOODS

PIES JOHNSTON APPLE, MINCE, PUMPKIN **\$1.29**

COBBLERS STILLWELL, ALL FLAVORS, 32 OZ **88¢**

POT PIES BANQUET, 8 OZ **4 FOR \$1**

PIZZA JENO'S, ALL FLAVORS, 13 1/2 OZ **79¢**

DAIRY

BUTTERMILK PLAINS, 1/2 GALLON **69¢**

WHIPPING CREAM PLAINS, 1/2 PINT **3 FOR \$1**

COTTAGE CHEESE PLAINS, DIET, 16 OZ **59¢**

HALF & HALF PLAINS, PINT **39¢**

DR PEPPER COCA COLA TAB

6 BOTTLE CARTON, 32 OZ (With Purchase Of \$10 Or More)

\$1.29

PRODUCE	
BANANAS DOLE GOLDEN RIPE, LB	19¢
ORANGES CALIFORNIA SUNKIST NAVELS LARGE SIZE, LB	19¢
POTATOES RUSSETT, NO. 1, ALL PURPOSE, 5 LB BAG	59¢
LETTUCE CALIFORNIA ICEBERG, LB	25¢
CABBAGE GREEN CRISP LB	12¢

- BACON** DOLD, SMOKED SLICED SLAB, LB **89¢**
- FRYERS** USDA INSPECTED, LB **49¢**
- GROUND BEEF** FRESH GROUND DAILY, LB **67¢**
- RIB STEAK** USDA CHOICE, LB **99¢**
- CLUB STEAK** USDA CHOICE, LB **\$1.39**
- ARM ROAST** USDA CHOICE, LB **\$1.09**
- CHUCK ROAST** USDA CHOICE, CENTER CUT, LB **99¢**
- CHUCK ROAST** USDA CHOICE, END CUT, LB **79¢**
- BOLOGNA OR FRANKS** GLOVER, ALL MEAT OR BEEF, 12 OZ PKG **69¢**
- CHEESE** SALAD MAKER, LB **69¢**

HOME OWNED - HOME OPERATED

LITTLEFIELD SUPER MARKET

FREEZER BEEF, USDA CHOICE ONLY

- 1/2 BEEF..... Lb, 83¢
- FORE QUARTER..... Lb, 73¢
- HIND QUARTER..... Lb, 93¢

Cut, Wrapped, And Frozen To Your Specifications.

Specials Good Sunday, Jan. 25 thru Saturday, Jan. 31. We Give Gunn Brothers Stamps Double Tuesday & Wednesday. Excluding Cigarettes. We Sell Travelers Express Money Orders & Redeem USDA Food Stamps. We Reserve the Right To Limit Quantities. Open 7 Days A Week.

Flu Warning System Works

An early warning system against influenza has been put into operation in Texas through the Texas Department of Health Resources. Disease Services, says outbreaks of influenza can have traumatic effects on a community, cutting sharply into school attendance and the ranks of the working public.

"The severe and disruptive effects of epidemic influenza on a community can be mitigated, however, by the early detection and early diagnosis of an outbreak," said Dr. Dickerson. "This is accomplished by a thorough surveillance system that is presently operational throughout the state of Texas."

In the past, the Department of Health Resources has received weekly reports of notifiable communicable disease in the state from reports of private physicians. These "flu-like" illness reports, which are still continuing, are published by the Department in its "Texas Morbidity This Week". But in addition to these physician reports, influenza surveillance is placing another finger on the pulse of the disease.

"Although influenza affects all age groups," said Dr. Dickerson, "age-specific prevalence rates are highest among primary and secondary school children at the onset of an epidemic."

BOWLING

HIT AND MISS LEAGUE	TOWN AND COUNTRY LEAGUE
Clark Shell 4 0	Lfd Seed & Del. 265 1/2 194 1/2
Pay & Save 3 1	Mills Cotton 242 208
Birkelbach 3 1	Lamb Bowl 235 1/2 214 1/2
AmocoProz 2 2	Campbell Ins. 235 215
Mills Cotton 2 2	Shook Tire 234 216
A&B Office Supply 1 3	Lupes Fina 210 1/2 239 1/2
Lamb Bowl 1 3	Lfd Frozen Food 206 1/2 243 1/2
Marcum Olds 0 4	Pay & Save 181 266
Hi Team Series Clark Shell 2335	
Hi Team Game Clark Shell 835	Hi Team Series Shook Tire 2914
Hi Individual Series Men Glenn Davis 234	Hi Team Game Shook Tire 1012
Hi Individual Game Men Glenn Davis 591	Hi Individual Series Men Hugh Cape 627
Hi Individual Series Women Robbie Sexton 485	Hi Individual Game Men Sharon Robison 183
Hi Individual Game Women Sharon Robison 183	Hugh Cape 225

Delbert Hall Heads Red Cross Chapter

Delbert Hall was named Chairman of the Lamb County Chapter of the American National Red Cross at a reorganizational meeting of the county chapter Friday. Other new board members include



DELBERT HALL

Mark Twain Portrayal SPC

A one-man portrayal of Mark Twain is scheduled Feb. 2 at South Plains College.

A Rice University professor of English, J. D. Thomas, will give a performance of the famed American author and humorist at 10:30 a.m. on the second floor of the SPC Library. The program is open to the public without charge.

Thomas will dramatize his portrayal of Twain through jokes, anecdotes and humorous stories found in the sayings of Huck Finn, Tom Sawyer and other colorful Twain characters. Thomas, Missouri-born himself, is widely acclaimed for his realistic portrayal of the renowned American author. Clad all in white, like his famed counterpart, he uses no makeup, few props and speaks with a native-born Missouri accent.

This is Thomas' second visit to the SPC campus. He performed here in October, 1972. Thomas' one-man show here is being sponsored by the SPC English department and the Office of Student Activities.

Rev. Benny Goss, chairman of the Membership and Fund Drive for 1976; Jean Streety, treasurer; recording secretary is Dorothy Francis, publicity chairman, Joella Lovvorn, and Louise Ray is executive secretary.

A report given showed a total of 1,097 Lamb County residents were served through this office in 1975. The financial status is a dangerously low to maintain service to all county residents.

New projects by the Red Cross Chapter include, the theme "Meeting Basic Humanitarian Needs in 1976." A referral service, by Dorothy Francis will benefit any one in Lamb County needing to know exactly what services a club or organization has to offer. A county wide poster contest for grades 1-4 will begin Feb. 17-Feb. 27. The winner in each school will be awarded, and the first place in the county will have their poster sent into the Youth Services of the American Red Cross for nation wide publication.

Project people Hunt is now under way. The Lamb County Chapter of the Red Cross is asking all residents with military family members to register with the local office to assist in better service to military families.

Kick off date for the 1976 drive is March 1. Before this time the board is asking for a town chairman from each town to volunteer to represent their town and are to meet the needs of the citizens in their home area. This will ensure equal service to all county residents. Please call 385-3663 to serve in this capacity for one year.

REMOVE CARPET SPOTS

Remove carpet grease spots caused by holiday traffic by pouring a generous amount of baking soda or corn meal on the spot. Work it into the pile with your fingers. Leave it overnight and vacuum off the next day, suggests Lynn Bourland, family resource management specialist with the Texas Agricultural Extension Service, The Texas A&M University System.

CPR.
A method anyone can learn to save someone whose heart and breathing have stopped.
It's simple. It's effective. And it's free.

And it's available to any interested neighborhood, organization or business. To arrange for CPR training, simply call your local American Heart Association. We'll be happy to help you.



American Heart Association
This space has been donated as a public service.



An Open Letter To The Good People of Lamb County and Precinct III from: David Thompson, Candidate for Commissioner Precinct III.

Dear Friends and neighbors of Lamb County,

I would like to take this opportunity to say it has been a long time dream of mine to, in some way, better serve my community, and the people in it. As commissioner of Precinct 3, I would be in a position to do so.

My wife, Donna, and I have been residents of Lamb County for more than 20 years. We have two daughters, Davida, 13, and Dawnita, 10.

Most of my life business has been in work, therefore I feel I fully qualified in the maintenance of the roads in precinct. But I would give equal time to the other aspects of the office well.

In our growing community, which I am proud to be a part of, I ask your support in the coming election. I will, the best of my ability, the kind of Commissioner you the people want that position. Thank you and again I ask for much needed support.

David Thompson
Pd. Political Advertisement by David Thompson
816 W. Delano Ave.



For Sale

1302 West 14th

385-4232

THREE BEDROOMS.....SHAG CARPETED THROUGHOUT (SCULPTURED SHAG INSTALLED IN SEPT.).....TWO BATHS.....DEN.....LIVING ROOM.....DINING AREA.....DISHWASHER.....CENTRAL HEAT.....TWO CAR GARAGE.....YARD INCLUDES SYCAMORE, MAPLE AND MULBERRY TREES.....GREAT NEIGHBORHOOD.

NOW OPEN IN

LITTLEFIELD

316 PHELPS

CORNER CUTTERS

STRETCH YOUR DOLLAR
RENOVATE and SAVE!

CROWN:
TWIN OR DOUBLE **34⁹⁰** 1-Year guarantee

ONLY YOUR OLD COTTON IS USED.
YOU GET A NEW SPRING, NEW COVER AND NEW MATTRESS GUARANTEE.

SUPREME—15 YEAR GUARANTEE
LUXURIOUS QUILTED TOP-BUTTON TUFTED INNERBED

TWIN 64.90 DOUBLE 64.90 QUEEN 94.90 KING 129.90

MATTRESS ONLY
MATCHING BOX SPRINGS AVAILABLE AT ABOVE PRICES

BUY FROM THE FACTORY & SAVE

"POSTURE QUILT"

MATTRESS OR BOX SPRING

10 YR. GUARANTEE

(KING SOLD AS 3 PC. SET ONLY)



FACTORY SELECT COVERS

BEDSPREADS

UP TO 50% OFF
Fieldcrest Special Purchase—

SPECIAL GROUP OF KIRSCH QUILTED SPREADS—**\$29⁵⁰**

Choice of Double, Queen or King

1976

20 YEAR GUARANTEE
FIRMFLEX

TWIN OR DOUBLE QUEEN OR KING **\$76⁰⁰** each piece (KING SOLD AS 3 PC. SET ONLY)

BUILT WITH A HOLLAND MAID KNOTTED OFFSET SPRING UNIT, LUXURIOUS QUILTED TOP.



TOWEL SETS

FACE BATH WASHCLOTH MATCHING BEDSPREAD (GREATEST SHOW ON EARTH) 9.95 VALUE **\$4⁹⁶**

SOLID COLORS PATTERNS "PATENCE ROSE" REMINISCENT OF OUR AMERICAN HERITAGE **\$7⁹⁵**

WITH MATCHING SHEETS FOR A "ONE" LOOK

Save \$222⁸⁵ SOLID OAK FURNITURE GROUP

Oak Venners 9 coats of finish! Real quality. QUEEN SIZE AVAILABLE

Group includes king size headboard, twin mirrors and dresser, night stand. Built to last a lifetime, it features the ultimate in workmanship, and is all wood. Full open stock individual pieces available

RETAIL VALUE \$1140.75 NOW **\$855**

VISIT OUR SLEEP SHOPS

Our complete bedroom stores are located in Abilene • Big Spring • Brownwood • Dal Rio • Midland • Odessa as well as in San Angelo.

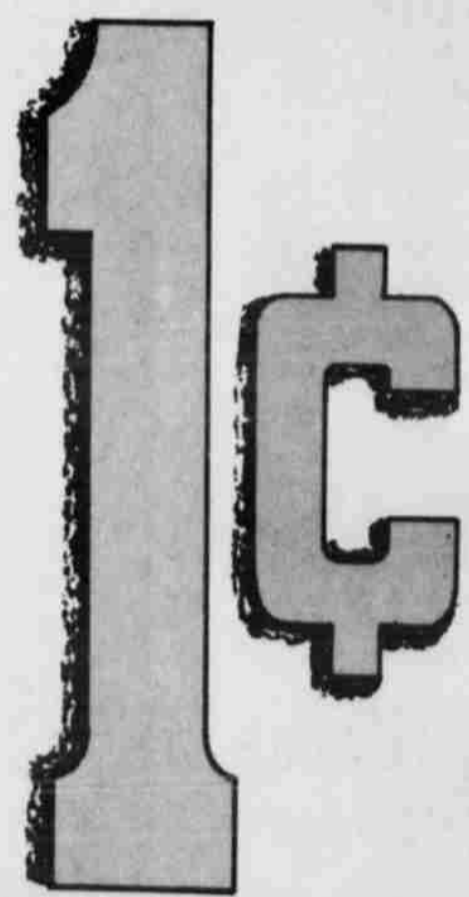
New Shops in Stephenville Lamern Littlefield

PHONE 653 4507

600 BLOCK N. CHADBOURNE

SAN ANGELO, TEXAS

WE MAKE THEM WE SELL THEM WE GUARANTEE THEM
Western mattress



CLEARANCE SALE

Buy 1 Item At Regular Price, Buy A Different Item Of The Same Price For Only **1¢**

DENIM JACKETS One Group Reg. \$16 Now **\$7**

DENIM JEANS Reg. \$15 Now **2/\$10**

"Since you can't go around saying you're terrific, let our clothes do it for you!"



329 PHELPS

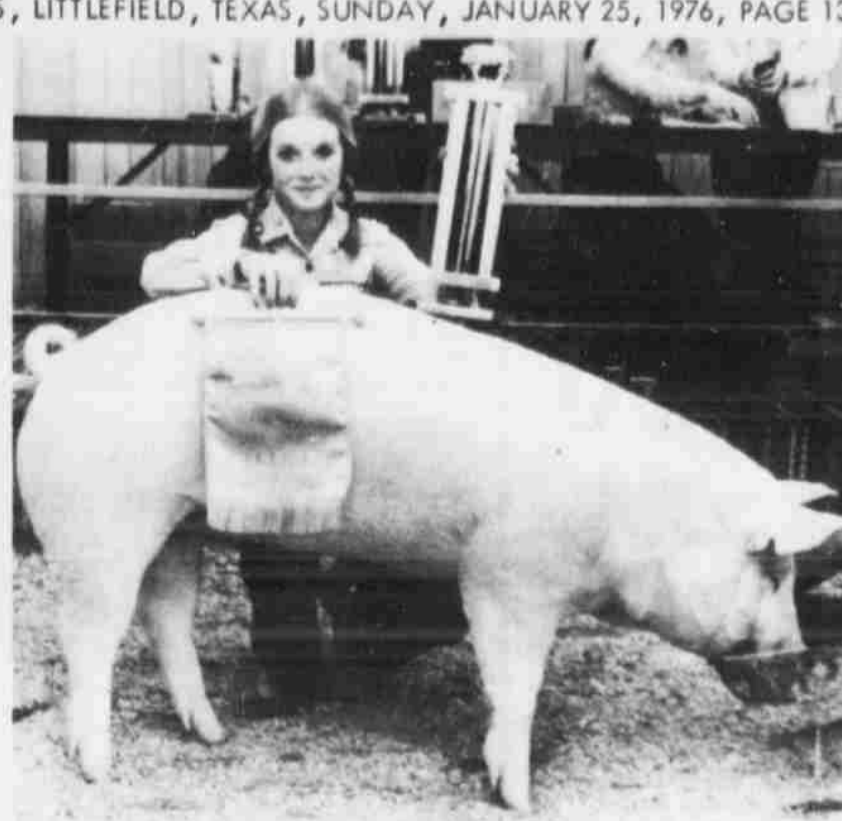
385-4090



RY SAWYER'S 101-pound Hampshire light heavy weight lamb won the reserve grand championship trophy and banner Friday night during the annual Lamb County Junior Livestock Show in Littlefield. Sawyer is a Springlake-Earth member. [Staff Photo]



DEAN WALDEN of the Littlefield 4-H Club showed the reserve grand champion steer Saturday afternoon during the annual Lamb County Junior Livestock Show in Littlefield. His steer is this 1,200-pound heavyweight English Cross. With him are the steer judge, John McNeill of WTSU, and County Extension Agent Buddy Logsdon. [Staff Photo]



SHARISSA HAMBY'S 240-pound Chester White pig won the reserve grand championship trophy and banner Saturday morning during the annual Lamb County Junior Livestock Show in Littlefield. Miss Hamby is a member of the Olton FFA. [Staff Photo]

Starts In New Home

HERST— Mr. and Mrs. Swart were given a "warming" in their new home in Littlefield (964 West Tuesday night. "money tree" and other gifts were received by the new couple. Mrs. Eli Griffin, V. O. and White served refresh-

McNabb Honoree

HERST— Mrs. Gregory was honored with a blue shower in Mrs. Williamson's home Saturday afternoon. Callers included the baby's book. Heim and Cynthia presided at the reception table laid with a white cloth. The decorations featured a stork surrounded with an arrangement of handmade ornaments in shades. Lime sherbet white cake squares and dainty confectionery, nuts and mints were the hostess gift was a high Many other useful and

ments of cookies, punch and coffee. Others attending from Amberst were Mrs. Henry Brown, Mrs. Thelma Hufstедler, Mr. and Mrs. W. P. Holland, Mr. and Mrs. J. C. Franks and Mr. and Mrs. Johnnie Williamson. Their son Mr. and Mrs. Wayne Swart and family of Sudan attended.

pretty gifts were received. The hostesses were Mmes. A. Schroeder, R. Schroeder, W. P. Stone, Kay Tooley, Thelma Hufstедler, Katherine Lynch, S. E. Lightner, Marie Coffey, Jan Heim, Dean Campbell, Charlie Young. Also Debbie Maxfield, Ray Lynn Moates, Dale Weaver, Marvin Wagner, Mandy Briggs, Alice Mills, Reba Williamson, Peggy Bales and J. C. Franks.

SEWING SKIWEAR
Due to increased availability of suitable fabrics, patterns, notions and prepackaged kits, more people will be sewing skiwear and outer sportswear during 1976.

Agri-Culture? HOW'S YOUR?

SOUTHERN HOSPITALITY BROUGHT RICE CROP TO COLONIAL AMERICA

WHEN COLONISTS IN CHARLESTON, S. C., HELPED REPAIR A STORM-DAMAGED VESSEL FROM MADAGASCAR IN 1685, THE SHIP CAPTAIN SHOWED HIS GRATITUDE WITH A GIFT OF RICE SEED...

SOUTH CAROLINA RICE

PLANTINGS FROM THESE SEED LAUNCHED A NEW CROP FOR AMERICA, AND SOUTH CAROLINA WAS THE LEADING RICE PRODUCER FOR THE NEXT 200 YEARS...

NOW GROWN CHIEFLY IN TEX., LA., ARK. & CALIF. RICE IS ONE OF OUR MOST POPULAR FOODS TODAY!

TOPS Forms New Teams

Texas Tops 102 met in Medical Arts Hospital meeting room Tuesday night, Jan. 20.

Roll call was answered with gains or loss. For the next three months roll call will be answered with the amount of weight gained or lost.

It was decided to start a new contest. Teams were chosen. Team 1 captain is Patty Zahn; captain of Team 2 is Margie Dickerson. Points will be given for pounds of weight lost and subtracted for pounds gained. Scores will be posted each week in this column.

Members who felt like they weren't doing their best were asked to sing a song. Everyone stood up and sang the fellowship song.

Secret pal gifts were exchanged and the meeting was dismissed with all members saying the pledge in unison.

Queen was Ada Lee Barnett with a 7 1/2 pound loss.

Patty Zahn was runner up with 5 1/2 pound loss. Nineteen members were present and 7 members were absent.

A new member for the month is Ruby Tiller.

LITTLEFIELD SCHOOL MENU

MONDAY: Bar-b-que on bun, salad, pork and beans, banana pudding and milk.

TUESDAY: Fish, slaw, June peas, hot rolls, brownies and milk.

WEDNESDAY: Tamales, crackers, carrot sticks, corn on cob, fruit Jello and milk.

THURSDAY: Stuffed weiners, lettuce-tomato salad, black eyed peas, peaches and milk.

FRIDAY: Turkey pot pie, tossed salad, cake and milk.

I, Jack A. Peel, would like at this time to thank you, the people of Lamb County, Precinct #3, for your past and present support. Due to the fact there has been a change in my personal business which will enable me to give to this office the time it demands, I ask for your continued support, as I now place myself as a candidate for another term in the office of Commissioner of Precinct 3.

Thank You
Jack Peel

PAID POLITICAL ADVERTISING



WE PAY MORE!

Take a tip from a real money expert. First Federal is the right place for your savings. We pay rates up to 7 3/4 percent compounded daily. That's higher than some other financial institutions can pay.

So be sure you're getting your money's worth! At First Federal, you can choose a savings plan to fit your individual needs.

Make a Bicentennial resolution to visit First Federal of Littlefield, and find out why we're the best one for your money.

FIRST FEDERAL
of Littlefield
"the best one for your money"

MEMBER
FSLIC
Federal Savings & Loan Insurance Corp.
Your Savings Protected to \$40,000

Ware's

1/2 PRICE SALE CONTINUES

LADIES DRESSES LADIES SPORTSWEAR
LADIES COATS
JUNIOR DRESSES JUNIOR COATS
JUNIOR SPORTSWEAR
CHILDREN'S DRESSES
CHILDREN'S SPORTSWEAR
INFANT & TODDLER WEAR
MEN'S SUITS MEN'S SPORTCOATS
MEN'S SLACKS MEN'S TOPCOATS
MEN'S JACKETS MEN'S SPORT SHIRTS
BOYS' JACKETS PANTS SHIRTS

ENTIRE STOCK
LADIES FALL SHOES
ONE GROUP
MEN'S SHOES

3 Littlefield Men On National Team

The South Plains College livestock judging team has won reserve champion judging

honors at the recent Denver National Western Livestock Show.

The SPC team won high point team honors in sheep judging, second high point team honors in beef cattle judging and fourth high point team honors in quarter horse judging, announced Jim Jenkins, assistant professor of agriculture at SPC and team coach. SPC was one of 15 college teams representing a

10-state area in the competition, he noted.

In a field of 75 contestants, individual honors for SPC went to Joe Foley of Littlefield, third high point man in overall judging and second high point man in sheep judging; Cory Logsdon, also from Littlefield, fourth in overall judging; and Rodney Logsdon of Littlefield, fifth in beef judging. Dean Smithson of Dimmitt took 11th place and Roy Hendley of Ft.

Sumner, N.M., took 15th place, both in overall judging.

The SPC livestock judging team also will compete Feb. 7 at the Southwestern Exposition and Fat Stock Show in Fort Worth, March 5 at the Houston Livestock Show, and March 26-27 at the National Agriculture Colleges Teachers Association livestock contest, slated this year at West Texas State University in Canyon, Texas.

The U.S. Civil Service Commission announced today that from January 19 through February 2, 1976, applications will be accepted for a limited number of mid-level administrative career positions.

Oklahoma, Arkansas, Louisiana, and New Mexico. Also

available is a bulletin which lists the kinds of jobs and duty locations for which applications are needed. Additional information can be obtained by contacting the nearest Federal Job Information Center.

You may call or write to the address as listed below: Dallas, Texas, Federal Job Information Center, local tel: (214) 749-3156 U.S. Civil Service Commission, 1100 Commerce, Rm. 1C42, Dallas, Texas 75202, (toll-free (800) 492-4400).



Little Drib Try Out

Tryouts will be held at 7:30 in the Gym. If you ran out of cigarettes, would your nicotine addiction force you to smoke? The PLAN TO SMOKING can make the boss for only register call 385-2222 between 1:00 and 6:00 Sunday.

Treflan
\$120
Bucket
Littlefield Butane
385-3010



SPC JUDGING TEAM WON Reserve Championship at Denver. Competing with 14 other colleges from a 10-state area, the South Plains College livestock judging team has won reserve championship at the Denver National Western Livestock Show. From left are team members Roy Don Hendley of Ft. Sumner, N.M., sophomore, 15th in overall judging; Cory Logsdon of Littlefield, freshman, fourth in

overall judging; Joe Foley, also from Littlefield, freshman, third high point man in overall judging and second high point man in sheep judging; Dean Smithson of Dimmitt, sophomore, who took 11th place in overall judging; and Rodney Logsdon of Littlefield, freshman and fifth place winner in beef judging.

Political Announcements

The Lamb County Leader-News, Littlefield, Texas, has been authorized to announce the following persons as candidates for the offices listed, subject to the action of Democratic voters in the May primary.

Lamb County Tax Assessor-Collector
Herbert Dunn

Commissioner Precinct 3
Jack Peel
David Thompson
Preston Pointer

Sheriff
E. D. McNeese

County Judge
Glen Batson

Political Advertising paid by individual candidates.

Employers Offered AFDC Tax Credit

Employers can gain a 20 per cent tax credit on the wages paid employees hired from the rolls of the Aid to Families with Dependent Children (AFDC) welfare program, according to Emil Schattel, Regional Director for Financial Services of the State Department of Public Welfare.

The tax credit applies both to employers of domestics engaged as household workers, and to employers in a trade or a business. There also may be compensation to the employer for training the worker, for erecting training facilities, or for providing day care for the worker's child or children.

"When a person on welfare moves into job, it's a step up for a lot of people," Schattel said. "The worker's job is more profitable to him than receiving welfare alone. The nation gains in two-fold measure. Welfare payments are

reduced and the newly-employed worker starts paying taxes. Now employers can realize personal gain by recovering a sizable share of the employment costs by hiring workers from the welfare rolls."

Further information may be obtained from the State Department of Public Welfare office in the employer's community.

We Couldn't Spell SUCCESS Without U

GIBSON'S DISCOUNT CENTER

Construction Equipment Auction

Tuesday, JANUARY 27, 1976 10:00 A.M. CST

SALE SITE: HIGHWAY 84 (on Loop) LITTLEFIELD, TEXAS (Toby Smith Construction Quitting Business)

LOADERS—BACKHOES—
 • Caterpillar 930H Tractor Loader, Backhoe & Excavator, Serial 148 42821
 • 1973 Case 580B Backhoe/Loader, Roll-Over Protection, Serial 314 22 48793
 • 1972 Case 280 Backhoe/Loader, Roll-Over Protection, Serial 11W 220293
 • 1971 Ford 930 Backhoe/Loader, Serial 80966, S/N 220922
 • 1972 Ford 3000 Backhoe/Loader, 18-inch Backhoe, Serial 80966, S/N 810422
TRACTORS
 • 1966 IWC 370DCLM 4x4
 • 1967 IWC 370DCLM 4x4
AC 1011 Bulldozer, Factory Rigged, S/N 81955
Excavator 38 Trencher
TRENCHING MACHINES—
 • Dams 3800 Trenching Machine, Set Up For 11" Groove
 • 488 Ditch Witch Trencher, 48" Head, S/N 402868
 • Challenger Wheel Ditcher, 36" Cut, 48" Head, Serial 0204
 • 2 Argo Ditching Machines For Small Trenches
TRUCKS—PICKUPS—
 • 1969 Chevy Cab, 1 1/2 Ton, Wash, Handing Bed
 • 1968 Chevy 3/4 Ton, Green Bed, Lift
 • 1960 Dodge 1/2 Ton, Steel Bed
 • 800 800 2 1/2 Ton Truck, Trencher, Steel Bed, Four Wheel Drive, Serial 11W 220493 126
 • 1969 GMC 290, 3 Ton, Utility Bed, Duesenberg
 • 1968 White Freightliner, 270 Cummings, Four Doors, 18 1/2 Bins, Air, 8407
 • 1968 Chevy 3 Ton, Wash
 • 1973 Dodge 1 1/2 Ton Club Cab Pickup
 • 1971 Ford V8 1 1/2 Ton Pickup
 • 1970 Ford V8 1 1/2 Ton Pickup, 4 Speed
 • 1971 GMC 1 1/2 Ton Pickup, Club Cab
 • 1964 1/2 Ton Pickup
MOTOR GRADERS—
 • Adams Motor Grader, 2 1/2 TON 19
 • Case 1247 Motor Grader, 12' Blade, 2 1/2 TON
REAL ESTATE
 2 1/4 Acres, 210 Highway Frontage, Nice Offices And Shop Building, Fenced, Will Be Offered at 2:00 P.M. Subject To Owner's Acceptance.
 Complete Payment Sale Day. Cash Or Cashier's Checks. A Bank Letter Of Credit Must Accompany All Personal And Company Checks.
EVERYTHING, EXCLUDING REAL ESTATE, SELLS WITHOUT MINIMUM OR RESERVATION!

Licensed & Bonded **For Full Information and Cooperation, Contact:** Texas Auctioneer License No. TAC 76-0088

DICK WATSON AUCTION SERVICE
STAR ROUTE 2 OLTON, TEXAS A.C. 806 285-2282

Anthony's C. R. ANTHONY CO.

SWEEPSTAKES SALE

PRIZE WINNING VALUES BE A WINNER—SHOP NOW AND SAVE

Ladies' Polyester DOUBLE KNIT PANTS
Reg. 2.99
2.76
3 for \$6.76

Beautiful Colors

Jacquards Patterns Solids

Size 10-20

BOYS' KNIT TOPS
Reg. 2.99
2.76
3 for \$6.76

Newest in prints and fashion knit tops for he or she. Polyester and cotton blends. Sizes 8-18.

SAVE, SAVE ON MEN'S SHIRTS
Reg. \$6.99
\$5.97 3 for \$15

A large selection of long sleeve sport and dress shirts to choose from. Solids and fancies. Sizes S-M-L-XL.

MEN'S COVERALLS
Reg. 24.99
19.76

- Insulated
- Polyester blend
- Permanent press
- Light weight
- Rain and stain repellent
- 2-way zipper
- Adjustable cuffs
- S-M-L-XL shirt, Reg. Tails
- Color: Olivewood

MEN'S & BOYS' TRACK SHOES
Reg. \$4.99
2.76

1 for \$8

Comfort and durability built in. Men's sizes 6 1/2-11, Boys' sizes 2 1/2-6.

LADIES' FLANNEL SLEEPWEAR
Reg. 3.99 & 4.50
2.76
3 for \$8

PRIZE WINNING LOW PRICES

Long, flowing and feminine. 100% soft cotton flannel with dainty print design. Pastel colors. Sizes S-M-L and 42-48. Pajamas sizes 34-40.

MEN'S HANDSOME SLACKS
Reg. \$12
8.76
3 for \$24

100% polyester double knit. Gentle flare leg. Many popular men's colors. Sizes 32-40 waist.

Anthony's C. R. ANTHONY CO.