

# Jack York Named School Superintendent

Present High School Principal Jack York was unanimously elected to the post of superintendent of schools for the Littlefield School District Friday night in a special called meeting.

The selection of York, who is in his second year as high school principal, culminated a search for a replacement for present superintendent Paul I. Jones who announced his retirement plans officially in the January board meeting.

The new superintendent will receive a one-year contract which calls for an annual salary of \$18,300. The change in superintendents will be effective Aug. 1.

The Friday called meeting came on the heels of a seven-hour marathon meeting Wednesday night and in to the early morning hours of Thursday which saw the board interview 11 applicants for the position. Narrowing down the

field of candidates to five was the result of this meeting, and board president Doug Walden was instructed to contact three of the candidates concerning their salary requirements, since they had expressed a desire for a salary higher than the \$18,300 the board had voted to pay during the regular board meeting Monday.

Walden contacted these applicants and all three stated they would not come for what the board had voted to pay. The two other applicants had previously agreed on the \$18,300. This narrowed the field of applicants to two, and then to the selection of York.

The Friday night meeting marked a rare appearance of a group of townspeople at a school board meeting, as approximately 20 interested citizens were present.

## LAMB COUNTY LEADER-NEWS

VOLUME 51 NUMBER 85 LITTLEFIELD, LAMB COUNTY, TEXAS, SUNDAY, FEB. 17, 1974 12 PAGES

15 CENTS  
TAX INCLUDED

### Cancer Society Slates Annual Campaign



MEMBERS of the Lamb County Chapter of the American Cancer Society met Thursday night in Olton to plan the upcoming Cancer Crusade for the county. From left to right are Mozelle Trotter, Olton; Peggy DeWitt, Olton; Melvin Rape of Olton, president; Pat

Lewis of Earth; Lucy Moreland, Joella Lovvorn, Lady Clare Phillips and Hubert Henry, all of Littlefield; Lillian Rape of Olton; and Ida Simmacher, Valeria Shannon and Evelyn Albus, all of Pep. (Photo by Bill McDavitt for the Leader-News)

In a special meeting Thursday night in the home of Mr. and Mrs. Melvin Rape in Olton, members of the Lamb County Chapter of the American Cancer Society set community goals to reach an overall \$8,000 goal for the county, and slated beginning dates for the campaign.

Mrs. Lady Clare Phillips is serving as crusade chairman for the county-wide effort this year, and chairmen have been named for the various communities.

Three dates were set for community campaigns.

Pep will start their campaign March 4 and Olton will begin March 25. Littlefield's business drive will begin Monday, March 18 and the residential drive is to begin the following Thursday, March 21.

Campaigns at Earth, Amherst and Sudan will be announced later.

Heading the business drive in Littlefield will be Clara Sawyer. Mrs. Bobby Brunson will be chairman of the Littlefield residential drive. The business goal is \$2,000 and the Littlefield residential goal is \$1,200.

Mrs. Frank Simmacher will lead the group at Pep, which has a goal of \$180 to reach this year.

At Sudan, Mrs. Gene Bartlett will serve as chairman of the drive which will attempt to reach a goal of \$550.

At Amherst, citizens will reach for a goal of \$850, under the chairmanship of Mrs. Clyde Brownlow.

Olton citizens will be led by Peggy DePrang in attempting to reach their goal of \$1,650.

Mrs. Jodie Ellis will lead Earth residents in reaching for their goal of \$1,650.

Mrs. Jim Parks will serve as chairman of the Spade campaign.

Littlefield High School DE students will again assemble the work packets for the entire county's campaign this year. They, under the guidance of their instructor, Mrs. Hubert Henry, have donated their time in past years to assemble the packets.

Bill McDavitt of Lubbock, District representative of the American Cancer Society, was present to answer questions and discuss the campaign.

Members learned that \$1,044 had been placed in the Memorial Fund last year through November. Jackie Freeman of Earth is the county memorial chairman, and Gloria Jackson of Littlefield serves as treasurer. Both are employed in banks in their respective cities.

The county unit will meet again Tuesday night, March 12, in the XIT Room of Security State Bank in Littlefield.

### Area Livestock Show This Weekend

Littlefield Area Junior Livestock Sale is scheduled to get underway this weekend, when 4-H and members from Amherst, Littlefield and Sudan will exhibit and sell their animals.

The sale will show Friday, Feb. 22, at 10 a.m. in their places by Feb. 21, at 7 p.m. Barns will be open from 11 to 10 p.m. that day for fitting. Superintendents of each category will assign the spaces and exhibitors will be in charge of the sale or stall throughout the weekend.

The sale will begin with the sheep at 10 a.m., and all exhibitors will be expected to have their animals in the ring at the proper time. Swine will follow immediately, with showing after that.

For this year's show are Ed Amarillo, sheep; Paul Gross, County Agent, swine; and Jim of South Plains College at the steers.

For the sale Saturday, at 1:30 p.m. will be Kenneth Gregg and his sheep, swine and cattle.

The board of this year's show are Don Carter, president; Jeff, vice president; Lewis

Fields, secretary; George Tooley, treasurer; Linda Lamb, assistant treasurer; and Luther Hill, reporter.

Other directors are Les Lichte, Doug Walden, Tommy Moss, Art Foley, Wayne Swart, R. J. Cook and Barry Bearden. S. A. Parmer of Littlefield is

### Harrassment Acts Still Under Study

Hamilton County Sheriff L. H. Young said this week that Texas Rangers and the Hamilton sheriff's office are continuing their investigation in the wanton destruction of a mile of three strand wire fencing and metal posts which were destroyed on the Central Texas ranch owned by an Anton resident.

Mrs. Sol (Gertrude) Gann of Anton said the destruction of the fence is just one of several incidents of vandalism and violence occurring on her ranch near Hamilton the past few months. Earlier, the ranch house, barns and a corn crib were burned.

She has received two harrassing letters during this time, with words and letters cut from newspapers and magazines. Since the mails were used, this is a federal matter.

### Littlefield Schools Closed Due To Flu-Like Illnesses

Dr. Oyer added that persons aren't nearly as apt to take the flu if they didn't over exert themselves and become rundown. And when flu symptoms appear, victims are advised to go to bed. Dr. Oyer said hospitalization isn't needed. "There is still such a thing as bed rest and home care," he said. Aspirin, cough syrup and other medications help make a person feel better while he gets better.

Schools at Springlake-Earth and Anton dismissed classes earlier because of unusually high percentages of student and teacher illnesses.

Whether halting classes reduces the number of flu victims is debatable. Influenza appears to be airborne. During flu epidemics, persons who have not been out in crowds often come down with the illness.

honorary director.

Department superintendents include Richard Newman and Les Lichte in the steer division; S. A. Parmer, Ronnie Smith and Wayne Swart in the sheep division; and Don Carr, R. J. Cook, Art Foley, David Jones and James Blackwell in the swine division.

Vocational Agriculture teachers who have aided the youngsters with their project animals are Art Sommerfeld, Littlefield; Aaron Hinsley, Spade; Donald Booth, Amherst; and Don Ham, Sudan.

4-H'ers have been guided by County Extension Agents, Buddy Logsdon and Jim Kuykendall.

Winners of last year's show were Gary Fields of Sudan in the steer division, Cindy Moss of Sudan in the Lamb division, and Moose Baber of Littlefield, barrow division. They will not be eligible to exhibit in the same division this year.

### Latest Farming Information Available At Farm Facts Day

Farmers are reminded of the Lamb County Farm Facts Day tomorrow, Monday, Feb. 18, in the Willie Room of the Lamb County REA Building.

Coffee and registration is from 10 to 10:20 Monday morning, followed by introductions. Marvin Sartin, Area Economist with the Texas Agriculture Extension Service, heads the list of speakers with a talk on "To Contract or Not to Contract—Why?" at 10:30 a.m. Area Irrigation Specialist with the TAES speaks on "Conservation or Irrigation Water and Center Pivot Systems" at 11 a.m.

"Living with Limited Fertilizer Supplies" and "Burning Stubble" are topics to be presented by Jim Valentine, area soil chemist for TAES, at 11:30.

Lamb County financial institutions are sponsoring the noon barbecue. At 1 p.m. Dr. James R. Supak, area agronomist with TAES will speak on "Agricultural Utilization of Feedlot Waste."

TAES entomologist Dr. Robert C. McIntyre will talk on "Insect Pest Management" at 1:25 p.m.

All the news on cotton varieties and seed control concepts is the top for Dr. Bob Metzger's cotton program at 1:50.

The meeting will conclude with a talk by Roy E. Childers, Jr. on the energy crisis and its effects on farming at 2:20 p.m.

### Littlefield FFA Selling Citrus, Preparing For Show

The Littlefield FFA, in conjunction with National FFA Week this week, will again be selling citrus fruit from now until Monday, Feb. 25.

Fruit bought now will be delivered the first week in March.

"If you would like to buy some of this fruit, and have not been contacted, see one of the FFA members or me," stated Art Sommerfeld, vo ag instructor at Littlefield High School.

Sommerfeld may be contacted at 385-5612 or 385-5719.

According to the chapter's president, Steve Carr, the Littlefield Chapter will be busy selling fruit and "showing off" their project animals at the Littlefield Area Junior Livestock Show and Sale this weekend.

### Area Farmers Looking Into Grape Growing

A few farmers in the Littlefield area are considering turning cotton land into land of the vine. And some California wineries are looking at the South Plains as an ideal place for not only growing grapes but for making wine, too.

At the rate interest is growing, several wineries may locate in the West Texas area within the next few years. Forty acres of grapes are needed for a commercial wine making operation. Presently, Morton farmers have already organized and pledged more than 50 acres toward grape production.

At least three Littlefield farmers plan to set out two to five acres of grapes each.

Whiteface farmers have organized a grape growing association, and several Hockley County farmers have stated intentions to try a few acres each of grapes as soon as settings are available.

Three Texas Tech professors have been conducting grape growing experiments for the past six years. Their research shows grapes can be a very practical and profitable crop for this area.

Prices for wine grapes range as high as \$700 per ton for some varieties, with averages of around \$400 per ton. With yields from five to six tons on many varieties, the gross per acre ranges from \$2,000 to \$2,400. Special varieties could be much higher.

The West Texas climate and soils seem to be ideal for grapes—even better than California. Dr. William Lipe, horticulturist with the Texas Agricultural Experiment Station at Lubbock said West Texas has an

abundance of cheap, well-drained sandy soils which are ideal for growing grapes.

He noted that the long, sunny days and cool nights of July and August, together with dry weather, are highly desirable climatic conditions for grape production.

An experimental vineyard was started by the Experiment Station at Abernathy in 1968. Even with severe hail, the Abernathy vineyard has produced as much as six to eight tons per acre the past two years.

A hail last May uncovered a startling fact that some varieties of grapes possess the ability to regenerate from tertiary buds after the primary buds are destroyed.

"What this means," Lipe said, "is that hails in May and June probably would not cause a complete crop failure, one of the greatest potential hazards of grape growing."

Good grape crops can be grown on a minimum amount of water, too, even less than is required for cotton under most conditions. Trickle irrigation applications of seven to nine inches is the average amount of water needed in this area. No irrigation was required on the Abernathy vineyard in 1973.

A grape vineyard is a long-term crop, with the initial plants producing from 25 to 50 years. Vines that are well tended have produced for over 100 years.

Farmers interested in further information on growing grapes may contact the Littlefield Chamber of Commerce or Swain Rodgers at 711 Ave. J in Lubbock.

### Heart Sunday Today

Volunteers for the American Heart Association will be calling on homes between 2:30 and 4:30 p.m. today for donations to the Heart Fund.

According to Carol Wallace, Heart Sunday chairman, "three-fourths of all the money given in Lamb County will remain in this county for various phases of the Association's program."

Mrs. Wallace emphasized that the Heart Fund dollar is broken down into figures such as this: 24 cents for research, 23 cents for public education, 18 cents for professional education, 16 cents for community service, 11 cents for fund raising, and 8 cents for management and supporting services. As each volunteer calls, he will

distribute helpful information to the public concerning risk factors and hints on how to care for the heart. "You may ask the volunteer calling on you where you can get other valuable booklets, such as low-fat recipe books, etc."

All volunteers will meet in the XIT Room of the Security State Bank this afternoon at 2 p.m. for assignments and work packets.

After areas have been covered, workers will again meet in the XIT Room to turn in their collections. Refreshments will be served at that time.

### Nurse Home Auxiliary To Be Formed

Persons interested in forming a Nursing Home Auxiliary are urged to attend an organizational meeting Tuesday afternoon Feb. 19, at 1:30 in the Flame Room of Pioneer Natural Gas Co.

Speakers for the meeting will be Randy Barnett of Lubbock, medical assistant for the State Welfare Medical Concern Association; Norma Visage of Lubbock, president of the Panhandle Social Concern Association; Donna Davidson of Hereford, social coordinator of King's Manor and West Gate Nursing Home at Hereford; and Mrs. J.J. Durham of Hereford, president of the Panhandle Nursing Home Association.

Anyone wishing more information may call Mrs. Mary Cowan at 385-4815, Mrs. Edith Turner at 385-3048 or Mrs. Freda Rice at 385-6175.



HARRY KEYES is the new Texas highway patrolman stationed in Littlefield for Lamb County. He fills the position of Vincent Ponder who transferred to Archer City. Keyes has just completed training at the DPS academy in Austin. He and his wife Karen have an 18-month-old daughter. (Staff Photo)

# Beta Sigma Phi Valentine Dance, Sweethearts Presented Saturday

"Love, Love, Love" was the theme of the Beta Sigma Phi Valentine Dance and presentation of sweethearts Saturday night at the Littlefield Country Club.

Presentation of Chapter Sweethearts was the highlight of the evening. Jerry Don Denton, Master of Ceremonies introduced each girl and her escort.

Tau Chi Sweetheart, Dot Simmons, escorted by Larry Bruce was presented a plaque by last year's sweetheart, Bonnie Stephens.

Xi Nu Nu Sweetheart, Carolyn Warren, escorted by her husband, Wade, was presented with the traditional crown pin by Sarah Tollett, 1973 Sweetheart.

Deanna Friday, sweetheart of the Alpha Lambda Zeta Chapter, escorted by her husband, David, was presented with red roses and a plaque by Chapter President Janice Sebring.

Paula Schroeder, City Council President, presented each girl with a long stemmed red rose.

Members and guests were entertained by the "Badlanders" from Whitharral.

Photographs of the three queens were sent to the Beta Sigma Phi International office in Kansas City, Mo. and will be entered in the Valentine Contest. Each year the contest is judged by a different Hollywood celebrity.

Judges in the past have been Hugh O'Brian, Bob Hope and Jack Benny.

A queen will be chosen from

the Ritual of Jewels Degree; a sweetheart from the Exemplar and Preceptor Degrees; and a princess from the Nu Phi Mu Degree.



**DOT SIMMONS**  
Tau Chi

Dot Simmons is a Littlefield native. After graduation from Littlefield High School she gained a degree from West Texas State University in Canyon. She is also a licensed Medical Technologist and a member of ASCP. She now teaches in the Littlefield Public School System.

Dot serves her chapter as Recording Secretary and Scrapbook Chairman.

Carolyn Warren has been a member of the Xi Nu Nu Chapter two years and holds the Ritual of Jewels Degree.

She currently is the Recording Secretary and Publicity Chairman of the Chapter.

She serves on the yearbook

committee and was voted 1972 Pledge of the Year.



**CAROLYN WARREN**  
Xi Nu Nu

She and her husband, Wade, have been residents of Littlefield approximately two years. He is publisher of the Lamb County Leader-News. They are the parents of two daughters, Leslie Ann, age 5 and Shannon, 3.

Carolyn attended Texas Tech University and taught the first grade three years.

Carolyn and her family are members of the United Methodist Church. She is a member of "We, the Women" and the Hospital Auxiliary.



**DEANNA FRIDAY**  
Alpha Lambda Zeta

Deanna Friday has been a member of the Alpha Lambda Zeta since May 1973.

She holds a Ritual of Jewels Degree.

Deanna is now serving as corresponding secretary, and also serves as chairman of ways and means, chairman of yardstick and the telephone

committees. Deanna attended Littlefield High School, and she and her husband, David live in Fieldton where he is engaged in farming. They have one daughter, Kristy.

They are active members of the Emmanuel Lutheran Church. They also belong to the Circle Eight Square Dance Club.

Beta Sigma Phi is an international organization for women, offering opportunities for friendship, development of cultural appreciation and service to others. Members believe the only right they have is the right to be useful.

Through Beta Sigma Phi cultural programs, members develop appreciation for the finer things in life. Programs are presented by and for the members in an atmosphere of sincere fellowship which contributes to the learning experience.

The organization's circle of friendship began with seven members in 1931, and today it is the world's largest Greek letter organization for women.

There are 228,000 members of Beta Sigma Phi, more than 10,000 chapters in 24 countries and territories meet twice each month for a brief business meeting and cultural program.

Walter W Ross II organized the first chapter in Abilene, Kans. April 30, 1931. The Founder died in 1969. His sons, Walter W Ross III and John J. Ross, and a staff of 90 serve the organization from the International Offices in Kansas City, Mo.

New Horizons and new friends are found as chapters plan and implement local, area, and international projects.



**MR. AND MRS. H. O. SEWELL**

## Spade Couple Honored On 50th Anniversary

In observance of their 50th Anniversary, Mr. and Mrs. Howard Sewell of Spade, were honored at a luncheon buffet and reception in the home of their son, Mr. and Mrs. Sam Sewell, of Spade.

Hosting the event were the couple's children: Mr. and Mrs. Bob Sewell of Farwell and Mr. and Mrs. Sam Sewell of Spade.

The former Ella Lee Williams and Sewell were married Feb. 10, 1924 in Cordell, Okla. They lived in Oklahoma until 1944 and they moved to Spade. Sewell is

engaged in farming.

The serving table was laid with an ecru lace cloth over a gold cover and decorations featured a gold and orange floral arrangement. The cake, consisting of two tiers was decorated with gold rose buds and green leaves. The top layer was a heart topped with 50th emblem and a gold bride and groom.

Gold wedding punch was also served. Appointments were of crystal and gold.

Presiding at the serving table were Mrs. J. R. Sewell and Mrs. Danny Sewell, granddaughters of the couple.

Guests were registered by Mrs. Raymond Sewell.

Those attending were: grandsons, Mr. and Mrs. J. R. Sewell; Mr. and Mrs. Danny Sewell; Mr. and Mrs. Raymond Sewell and Dale; Jimmy Sewell, Clifford Williams of Cordell, Okla.; Mr. and Mrs. Steven Fritz, Misty and Dusty of Mt. View, Okla.; Mike Fritz of Hobart, Okla.; Mr. and Mrs. Chuck Botchlett of Clinton, Okla.; Mrs. Hawley Williams, Clinton, Okla.

Brothers of Sewell were Mr. and Mrs. Bill Sewell of Cordell, Okla., Mr. and Mrs. Joe Sewell of Thomas, Okla.

Friends attending were Mr. and Mrs. Steve Orbison and Stephanie, Mr. and Mrs. Bill Cook, Mr. and Mrs. Bud Vann, Mr. and Mrs. J. W. Johnson Jr., Mr. and Mrs. Frank Barnes and Mamie Greenwood.

They are grandparents of four grandsons and a great-grandson.

## Rocky Ford Community To Celebrate Birthdays

Lloyd Sturgis.

The first of these dinners was served in 1936 to celebrate the birthdays of the late J. A. Roberson and L. L. Dunn.

Through the years, many other persons celebrating February birthdays have been added to the list of honorees. A special invitation is extended to all present and former residents of the Rocky Ford Community.

## David Bartley Earns Master's Degree At UT

David Glen Bartley of Littlefield is among 267 students at the University of Texas who were awarded master's degrees at the close of the fall semester.

David earned his Master of Library Science degree.

The list of graduates included 183 Texas residents, 57 students from other states and 27 from foreign countries.

Dr. Gardner Lindzey, vice president and dean of graduate studies at the University, revealed the recipients of the degrees.

### WEE ONES

**METCALF**

Born to Mr. and Mrs. Larry Metcalf a baby boy at 9:05 a.m. on Feb. 13, weighing 7 lbs. 14 ozs.

## Valentine Party Fetes Sorority

A Valentine party was the highlight of the regular meeting of Tau Chi Chapter of Beta Sigma Phi, Monday night.

Tables were decorated with Valentine trees and red and pink floral arrangements, as well as Valentine cut-outs.

A game of "Costume design" was played by dividing the girls into two groups. Each group was given newspapers and pins in order to design a costume for one group members within an allotted time period. The models then displayed the costume.

Edna Crews and Jeanne Gage served heart-shaped sandwiches, sandwich loaf, chips, dips, relishes, deviled eggs, Jello salad, Cokes, hot cinnamon drink and cake.

The program for the evening, "Self Expression" was given by Judy Vaughn. Judy conducted the group in "The Match Game" and three winners Debby Collins,

Brenda Coffey, and Edna Crews were presented the most points expression.

A brief business session concluded the evening. The Beta Sigma Phi Chapter gave a City Councilman the Beta Sigma Phi Dance. The chapter discussed plans for the decorations for the Valentine party.

A Valentine party was given by the Special Education Chapter of Tau Chi sponsors sponsored.

Members were from the Heart Drive Members of Tau Chi Chapter, the Cannon Terrace, along with the Homemakers Club.

The "love gift" was Glenda Young.

Members and present were: Glenda Young, Judy Vaughn, Karen Edna Crews, Pat Brenda Coffey, Kaye Starnes, Sally Dugan, Collins, Pat Metcalf, Gage, Bonnie Stephens, Kaye Kendall.

## African Missionary To Speak For Lions

Walter D. Cardwell, executive secretary of the office of interpretation for the division of overseas ministries of the Christian Church, will speak for the Lions Club Wednesday at noon in the Community Center.

Cardwell has served as a missionary in Africa for the Disciples of Christ, and is a friend of Rev. and Mrs. Robert Glenn, pastor of the Littlefield First Christian Church.

Persons wishing to hear the missionary speak may come to the Community Center at 12:25. Lions will eat at 12 noon and the meal price is \$1.75 for

those who do not eat.

Cardwell also served field of area and helping the administration where there is special present he is serving capacity for Africa. He has had many years experience.

He was in Christian in the Republic of years, and served in which was formerly and interpretation department of evangelism the United States Missionary Society.

He is a native of Littlefield, Ky.

## Jerria Peacock Chosen AHS Student Of Month



**JERRIA PEACOCK**

ANTON— Jerria Peacock, senior, was selected by the Anton Chapter, National Honor Society, as Student of the Month for January.

She is a member of the Varsity Dorettes basketball team, National Honor Society and Future Homemakers of America.

The Student Council requires a great deal of her time, as she is vice president. She is chairman of the Safety Committee and is in charge of plans for a Safety Week to be held March 4-8.

Jerria is a cheerleader and

assistant editor of "The Bulldog." She is part in speech activities will be entered in reading in the spring of the one-act play cast.

Texas Tech University her choice for college in the School of Education where she plans to be elementary education.

He went West... arms of two



**PALACE**  
Open 7:00 P.M.  
Show Time 7:30  
Sun., Mon., Tu.  
He went West... arms of two

**VIRGIN COWBOY**  
A Calista International Release - Color By Pathé

"Funny Car Summer"

surrounds the visitor to our home. This atmosphere of serenity in our environments is a source of inspiration to the traveler.

**HAMMONS FUNERAL HOME**

Thurs., Fri., Sat.

**PALACE**

Littlefield

## YOUR OLD CLOTHES HANGERS CAN MAKE MONEY FOR YOU!!

If you bring in your clothes hangers in good reusable condition with your cleaning, you will receive 1/2 cents credit for each on your cleaning order.

### C & O CLEANERS

628 FARWELL AVE.

385-5211

# MAYTAG

## Introductory Sale



### SPECIAL PERMANENT PRESS CYCLE

- Hot-Warm-Cold water wash controls
- Warm-Cold water rinse controls
- Big Family size capacity
- 3 water level control
- Safety lid • Whisper quiet

### plus MAYTAG DEPENDABILITY



### MAYTAG'S PERMANENT PRESS - HEAVY DUTY AUTOMATIC WASHER

EASY TERMS

**259<sup>95</sup>**

### MATCHING DRYER

- Halo of Heat Dryer
- Cost one third less to operate
- Automatic
- Dries full load in 26 to 32 mins.
- No hot spot
- Multi-cycle

**199<sup>95</sup>**



We Service Everything We Sell!

**FURNITURE & APPLIANCE**

1804 Hall Ave.  
PH. 385-5883  
LITTLEFIELD

## Moss SHOES AND SPORTSWEAR

### TRADE-IN SALE

ON SPECIAL SELECTION OF SHOES

TRADE IN YOUR OLD SHOES

|         |          |
|---------|----------|
| \$10.00 | \$3 OFF  |
| \$15.00 | \$7 OFF  |
| \$20.00 | \$9 OFF  |
| \$25.00 | \$11 OFF |
| \$30.00 | \$15 OFF |

MEN'S, WOMEN'S AND CHILDREN'S SHOES THAT ARE TRADED IN WILL BE GIVEN TO NEEDY FAMILIES IN LITTLEFIELD.

## Young Homemakers Elect President

Littlefield Young Homemakers of Texas met Feb. 7, in the home of the South Plains Service Co. for their meeting.

Officer, Barbara Bernice Johnson, about their trip to the State Young Women's Convention in San Antonio on Jan. 11 and 12.

She is the new club president.

Bea, former president, is moving to Lubbock and was presented from the club.

Trimmer was vice president in the programs. Jerrie

Smith and Ginger Rainbolt were elected to serve on a committee to help Beverly with the programs.

The Young Homemakers are going to help with the door-to-door drive for the Heart Fund Sunday, Feb. 16.

Refreshments were served by Brenda Coffee and Barbara Starnes to Linda Elms, Bobby Magruder, Pat Stubbs, Janice McElroy, Shirley Bean, Janey Raney, Bernice Johnson, Vestella Williams, Ginger Rainbolt and Ellen Massengill, club advisor, and to a guest, Vicki Oden and Alice Potts who decided to join the club.

Anyone interested in young homemakers may contact any of the club members.

## Troops Win District Swim Meeting

Littlefield took first place in the first District Winter of the South Plains swimming pool.

Troops and one also attended the meet. They were Levelland, Troop Springlake, Troop and Explorer Post field, Troop 640 - Troop 645 - Morton, 643 - Whiteface.

from Sundown came with a total of 48 points and from Levelland took with a total of 27

William Carlisle came in first and Wayne Carlisle third in the back stroke event.

Quinn LeBeouf won second place in the breast stroke event.

Lynn Duffy came in first, Wayne Carlisle, third, Quinn LeBeouf second and Chuck Robinson third in the side stroke event.

Troop 600 took second place in the medley relay and came up with two firsts and one second place in the free style relay.

The Scouts could enter two individual events and two relays.

There were three age groups, 11-12, 13-14, and 15-17.

Ribbons for the swim meet were provided by the Levelland State Bank and Frank Watts, vice president of the bank, presented the awards to the Scouts upon completion of the swim meet.

Ernest Dykes, Scoutmaster of Troop 640 Sundown was in charge of the swim meet.

## To Host Student

"Ticket" is

Durongkaveroj, "Ticket", a Thai is a guest in Anton

family will be Mr. Domingo Ramirez will have a brother,

is 18, a native of Thailand, and his parents are of Chinese ancestry. He is of the Buddhist faith.

five sisters and two and his parents are in a family business mattresses.

American family is Mr. Bill Welton of

educational plans in preparing for a job in economics when he to Thailand next

volleyball, and a star playing are his

ments for the visit student were made Student Council and

WEE ONES

Mr. and Mrs. Jessie a baby boy at 2:28 Feb. 10, weighing 7



REP. E. L. SHORT AND QUINN MARTIN

## Anton Senior In Austin Working With Rep. Short

Quinn Martin, a senior at Anton High School, was in Austin last week working in conjunction with the Constitutional Convention on the staff of Representative E. L. Short. His duties included the research and investigation of areas on Constitutional law, familiarizing himself with some of the issues under study, attending and reporting directly to Representative Short the proceedings of important committee hearings, and general staff duties.

Representative Short has invited the 27 schools of his district to send interested high school seniors to Austin during

the Convention. This is the first Constitutional Convention in Texas since 1875 and the document, if adopted by the delegates and accepted by the voters, will provide a new, revamped basis for Texas State Government.

Quinn commented, "Mr. Short's senior work program is a real chance for educational advancement. There is no substitute for experience, and the experience of being with, and working for the legislature, is a once in a lifetime chance for education. Simply watching the remaking of a Constitution is an education in itself."

## Annie Armstrong Circle Meets For Bible Study

AMHERST— The Annie Armstrong Circle of the Baptist W.M.W. met Monday night for mission study with Mrs. James Holland as hostess.

She brought the lesson, the first part of the book "Fishers of Men". The book on soul winning and personal witnessing which was written by Anita Bryant and her husband, Bob Green.

He wrote the first part of the book given Monday and she wrote the second part, to be given at a later date. The Scripture was Matthew 4:18 through 20 verses.

## Party Fetes Pep FHA Girls

A Valentine party, sponsored by the Pep F.H.A. was held Thursday, Feb. 14 in the Home Economics Department.

The welcome was given by FHA president, Brenda Kuhler and the story of Saint Valentine was read by Anne Hatla.

At the party, each girl revealed her secret grandmother, and gifts were exchanged.

Grandmothers in attendance were: Mrs. Clara

Mrs. Crawford, vice chairman, presided in the absence of the chairman. Plans were completed for the banquet for the young people Valentine evening.

The mission action for February is to remember the elderly and shut-ins on Valentine's Day.

Refreshments of open-face heart sandwiches, angel food cake, coffee and tea were served to Mrs. J. P. Brandy, Charles Mixon, Randall Crawford, Hazel Davis, Glenn Willson, Bill Bradley and Holland.

Albus, Mrs. Marcia Bowen, Mrs. Bonnie Brakebill, Mrs. Ethel Burt, Mrs. Agnes Decker, Mrs. Loma Glumpler, Mrs. A. G. Jungman, Mrs. Ellen Moore, Mrs. Mary Munselle, Mrs. Agnes Schlottman, Mrs. Valeria Shannon, Mrs. Ida Simnacher, and Mrs. Celia Sokora.

Refreshments of cake and punch were served. Sponsor for the party was Mrs. Alice Kester.

## Garden Club Views Program

Littlefield Garden Club met Tuesday afternoon, Feb. 12, in the Reddy Room.

Kip Cutshall gave the program on various methods used to design closed or open-air terrariums and types of plants and soil to be used in the two types of terrariums.

Following the program, refreshments were served from a Valentine-decorated

table by the hostesses, Mrs. Comer Hall and Mrs. R. L. Tisdale to Mrs. Bruce Porcher, Ellen Wills, Mary Davis, C. H. Messer, Herbert Dollee, E. H. Gardner, Martin Parmer Jr., R. N. Nicholas, Bell Dow, Lumir Dusek and guests, Mrs. Perkins and Kip Cutshall.

Kip gave his demonstration to the club and Mrs. Gardner was the lucky lady.

## Littlefield Girl Competes For Title of 'Miss FTA'

Barbara McBride, a senior at Littlefield High School, will compete for the title of "Miss FTA" of Texas at the 25th annual state convention of Texas Future Teachers of America, Feb. 22-23 in Dallas.

Miss McBride is a two-year member of FTA, serving as reporter last year and parliamentarian this year. She was selected Littlefield High Miss FTA and has been chairman of several committees in the local FTA chapter.

She has been president of National Honor Society and secretary of the Student Council, Distributive Education Club, and the Wildcat Band.

She was Homecoming Queen, a member of the All-Region Band and the UIL typing team, and was treasurer of her sophomore class.

State Rep. Dan Kubiak of Rockdale, chairman of the education committee of the Texas House of Representatives, will be the keynote speaker for the opening session of the TFTA convention the afternoon of Feb. 22 in Dallas Memorial Auditorium.

Theme of the convention is "Caring: Our Commitment to the Future." Some 4,500 delegates from TFTA chapters throughout Texas are expected to attend.

Texas FTA is an organization of high school boys and girls interested in pursuing careers in teaching. It is sponsored by the Texas State Teachers Association and the National Education Association.

Vatra Solomon of Austin, TSTA staff member, is the new state advisor. Dora Rose, advisor since 1969, recently was named director-regional consultant of the new TSTA Region 8 office in Arlington.

State TFTA officers who will be in charge of the program are McKinley Alford of Longview, president; Laura Hughes of Deer Park, vice president; Beth Gips of Cuero, recording secretary; Heather Miller of Taylor, Parliamentarian; Chalene Burroughs of El Paso, financial secretary; Dalia Garcia of Edinburg, Hisotrian; and Beth Bryant of

Longview, corresponding secretary.

As a convention highlight, 40 finalists will compete for the titles of "Miss FTA" and "Mr. FTA," each of which carries with it a \$1,000 college scholarship sponsored by TSTA.



MISS JANET SALE, fashion representative for Vogue and Butterick Patterns of New York City, will speak on Friday, Feb. 22, at the Levelland High School Auditorium. She will talk about careers in the fashion industry at 9 a.m. and present tips on stretching the sewing dollar at 10 a.m. Area residents are invited to attend and there is no charge for admission.

WEE ONES

ANDERSON

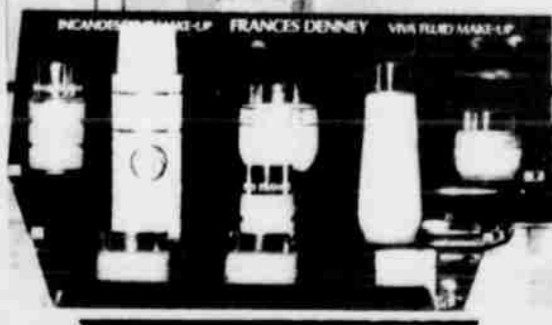
Born to Mr. and Mrs. Marion Anderson a baby girl at 1:50 p.m. on Feb. 10, weighing 6 lbs. 12 ozs.

Introducing A New Line with

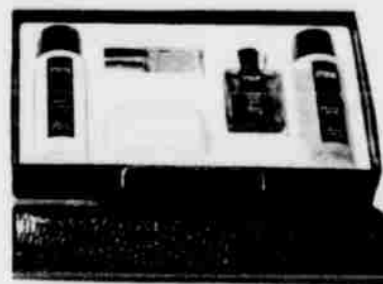
BRITAIN PHARMACY

Frances Denney

We are very proud to be able to bring you this famous brand of cosmetics. Francis Denney has a complete makeup and treatment line.



As an introductory offer, we offer you the \$15 value Interlude Set shown here, for only \$5.



BRITAIN PHARMACY

430 PHELPS

LITTLEFIELD, TEXAS

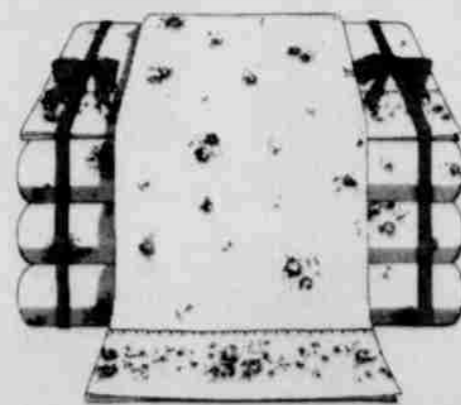
## Celebrate and save during our great holiday sales.

"For Washington's Birthday We're Chopping 15% Off Fine Fabrics."

Sale 83¢ to 3<sup>39</sup>

All our sport, dresswear, knits and woven fabrics are 15% off. Beautiful solids, prints and gingham checks. All woven with the finest fibers, like cotton, rayon and polyester. Most are machine wash, tumble dry and no-iron for easy care.

Thru Wednesday Only



Sale 2 for \$6 twin, flat or fitted

Parisienne is our charming polyester/cotton muslin sheets bordered with roses. Choose from four lovely pastels on a white background.

Full Bed Size..... 2 for \$8.00  
Queen Size..... 2 for \$12.50  
King Size..... 2 for \$16.00



Sale 2 for 7<sup>99</sup>

Reg. \$5 ea. Standard size pillow with Dacron® polyester fiberfill.

JCPenney

We know what you're looking for.

ROBERTS STUDIO  
LITTLEFIELD, TEXAS  
CORDIALLY INVITES YOU  
TO ATTEND THE  
SOUTH PLAINS  
PROFESSIONAL PHOTO  
ASSOCIATION SHOW  
FEBRUARY 18-23  
SOUTH PLAINS MALL  
LUBBOCK, TEXAS

QUITTING BUSINESS SALE

up to

50%

off reg. price

H & M FABRICS

423 PHELPS AVE. 385-5205

Wallace HOME FURNISHINGS

Open Daily 9:00 to 6:00  
229 Phelps Box 365  
Phone 385-3088  
Littlefield, Texas 79239

# EDITORIAL

## National FFA Week

THE PROMISE of the future lies in the youth of today.

This fact is brought sharply to mind during National FFA Week, which occurs this year during the period of Feb. 16-23.

Through its program of instruction in modern farming techniques and preparation for challenging careers in agribusiness and related fields, the Future Farmers of America ensures that tomorrow's agriculture will be able to meet the needs of tomorrow's consumer.

THE NATIONAL FFA organization embraces some 8,000 high schools

throughout the nation, helping its members develop their individual skills and interests in agriculture. As the world leans evermore heavily upon American farmers to supply the food and fiber vital to human life and well-being, the importance of FFA becomes more evident.

We must see to it that the Future Farmers of America continues to thrive and produce the agricultural leaders capable of maintaining the excellence of U.S. agriculture—the most productive agricultural system ever created in all the recorded history of man's earthly tenure.

## Freedom Of The Press--Moscow Style

WHATEVER ILLUSIONS may abound concerning the nature of the "hew" between the U.S.S.R. and the free world, those illusions are quickly dispelled whenever anyone dares to step outside of the narrowly proscribed bounds of "freedom" behind the iron curtain. And in few areas of Soviet life is there a greater restriction upon freedom than in the press.

One recent example: in January a United Press correspondent, Gordon Joseloff, interviewed some Jewish people who had been denied permission by the Communist government to emigrate to Israel. As a normal part of his job, Joseloff had written notes of the interview.

BUT WE WILL never know what the Jews said. Upon leaving the home of the people Joseloff had spoken with, he was stopped on the Moscow street by two KGB agents and a uniformed policeman. They demanded that the notes be turned over to them, and he was warned that he was not to write anything about the incident.

Did Joseloff give them his material? He did. Will he write anything about the incident? He will not.

FOR ANY NEWSMAN to bow to such government suppression here in the United States is, of course, unthinkable. Why, then, is it allowed to happen in Moscow? Because Joseloff—and all other correspondents in Moscow—know that to disobey orders of the dictatorship would result in their immediate expulsion from the country or, possibly, the closing down of the entire office of the wire service or newspaper involved. Rather than have that happen, a "voluntary" censorship is rigorously observed.

The response to such government pressure, of course, varies. There are some who exert great care to report and write only that which the Communists want them to write. Others do their best (at no small risk to themselves) to report the truth. But every correspondent in Moscow knows that the KGB is always watching over his shoulder, with chilling effect.

HOPEFULLY, the day may come when freedom of the press exists behind the iron curtain. But, right now, that day is too far in the future to be seen, if it is there at all.

—U.S. Press Association

## Propane Prices Reduced

Texas Attorney General John L. Hill was notified Monday that the Federal Energy Office has "rolled back" propane prices in response to the urgings of attorneys general of Texas and six other states—Arkansas, Missouri, Oklahoma, North Carolina, Alabama and Illinois.

The roll back resulted from a revised F. E. O. interpretation of existing regulations regarding propane, and the Federal Energy Office also announced the beginning of an official investigation into the charges of a propane price manipulation.

The roll back of prices for propane produced after Jan. 31, 1974, to a May 15, 1973, base price should result in a substantial reduction of price, Hill said—perhaps, more than 30 percent of the current wholesale price, and should mean a saving of more than \$210 million for Texas users.

Attorney General Hill noted that an estimated 1,500,000 Texans residing in some 600,000 homes use the propane gas as a primary fuel source. In addition, Texas Liquefied Petroleum Gas

Association figures indicate that 75 percent of all Texas farmers use this fuel for all agricultural production.

Hill recalled that when the Cost of Living Council ordered a ceiling in the spring of 1973 for 23 major oil companies, it did not set a ceiling for independents and brokers, causing an "artificial shortage." With the lifting of the ceiling in Phase II, the cost jumped in one year from 5.5 cents per gallon wholesale to 25 cents per gallon, upping the average consumer's cost from about 14 percent to 40 cents and more.

Assistant Texas Attorney General Frank Cooksey, who appeared with Arkansas Attorney General Jim Guy Tucker at the F. E. O.'s Feb. 6 hearing in Washington, D. C., noted that spiraling costs not only worked a hardship on persons of fixed incomes, but would force the price of farm produce to be increased.

Hill said the announced roll back "is a good example of results which can be attained when state attorneys general work together."

## Olton Show Winners

OLTON—Brent Hamby showed the grand champion barrow of the 29th annual Livestock Show at Olton last weekend. The grand champion gilt was shown by Brent Hamby.

Showing the grand champion steer was Shannon Thomas, and the grand champion lamb was shown by Sharon O'Neal.

Showmanship awards were given to Steve Kennedy, swine; Sharron Thomas, steer and sheep; to Villanueva brothers for the clean calf pen; to Bryan Muller for the clean pig pen; and to Kelli Smith for the clean sheep pen.

Winners in various categories are listed here.

- BARROWS:**  
 Grand champion, Brent Hamby  
 Reserve grand champion, Jana Mandrell  
 Hampshire, breed champion, Brent Phares  
 Reserve breed champion, Ricky Smith  
 Poland China breed champion, Steve Graham  
 Reserve breed champion, Steve Kennedy  
 Spotted breed champion, Van Parkey  
 Reserve breed champion, Brent Hamby  
 Yorkshire breed champion, Sharissa Hamby  
 Crossbreed breed reserve champion, Sammy Coleman

- CHESTERS:**  
 Chesters, champion, Jan Mandrell  
 Reserve champion, Gregg Smith  
 Heavy weight Chesters, reserve champion, Monty McFadden  
 Duroc, reserve champion, Kent Pittlo  
 Duroc Grand Champion, Brent Hamby  
 Cross Breed Champion, Chuck Kennedy

**STEEPS:**  
 Grand Champion Steer, Shannon

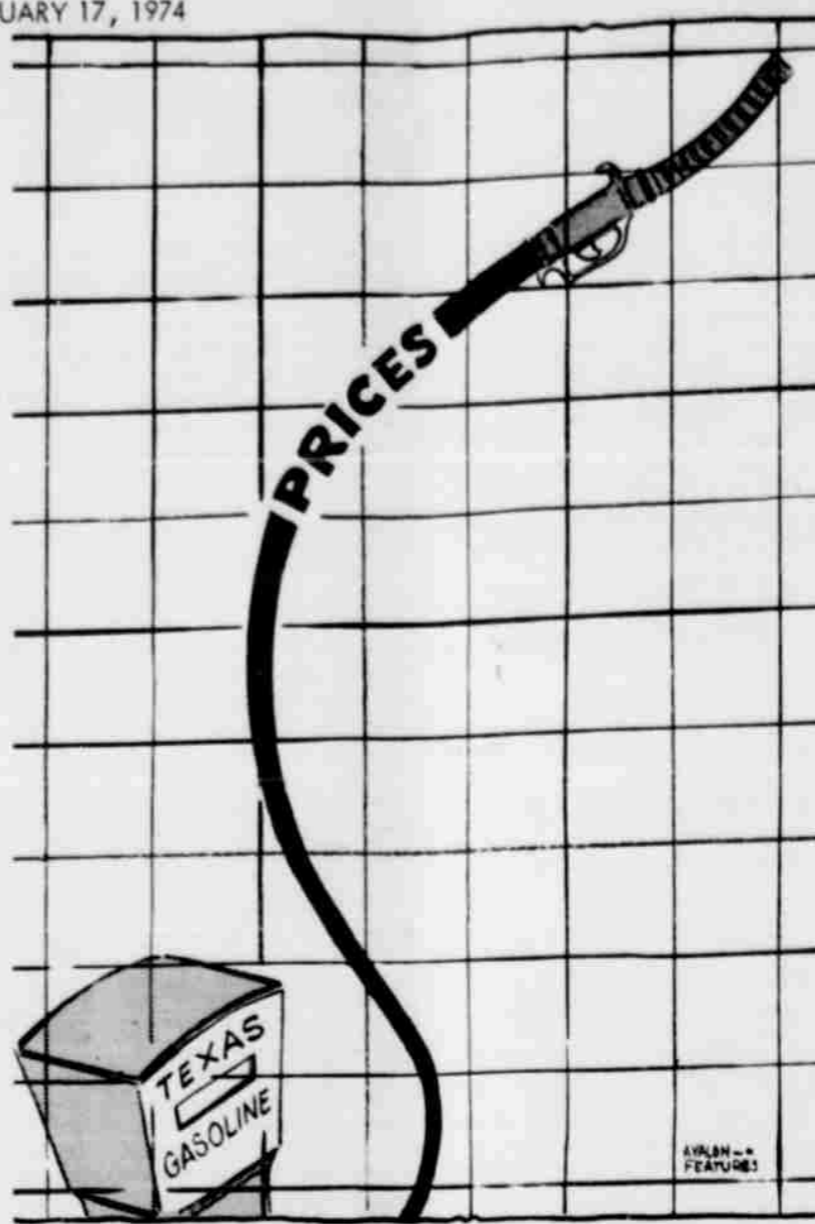
- Thomas  
**HEREFORD**  
 Grand Champion, John Ted Daugherty  
 Reserve Champion Hereford, Nancy Norfleet  
**ANGUS AND BLACK BALDY**  
 Champion, Sandy Koontz  
 Reserve Champion, Steve Kennedy  
**SHORTHORNS**  
 Champion, Marvin Tillman  
 Reserve Champion, Duane Tillman  
**CHAROLAIS**  
 Champion, Shannon Thomas  
 Reserve Champion, Jimmy Mandrell

**LAMBS:**  
 Grand Champion, Sharon O'Neal

- GILTS:**  
 Grand Champion, Brent Hamby  
 Reserve Grand Champion, Sharissa Hamby  
 Chester White Champion, Allen Jones  
 Reserve Champion, Mark Roberson  
 Hampshire Champion, Larry Kirk  
 Reserve Champion, Mark Roberson  
 Spotted Champion, Chuck Kennedy  
 Reserve Champion, Allen Jones

- SHOWMANSHIP:**  
 Pig, Steve Kennedy  
 Sheep, Sharron Thomas  
 Steer, Sharron Thomas  
 Calf, Clean Pen, Villanueva Bros.  
 Pig, Bryan Muller  
 Sheep, Kelli Smith

- Judging Contest**  
**H Division**  
 1. Jimmy Mandrell  
 2. Lisa Brimhall  
 3. Rodney Smith  
 4. Steve Graham  
 5. Matt Floyd  
**FFA Division**  
 1. Chuck Kennedy  
 2. Shane Hasha  
 3. Steve Kennedy  
 4. Glen Johnson  
 5. Marion Tillman



## A Woman's View

By PEARL BRANDON

OUR CHURCH is preparing for a New Life Mission program scheduled for March 7-10.

Some of us have been asked to pray for a certain group of members every day until that time, so that every member of our church is being prayed for by someone every day.

IT IS STRANGE what this does for you. The list I took is made up of several families, some of them I hardly know.

Now I find myself wondering about them as I hold them up in prayer to God.

What are their hopes and dreams—and what are their problems? I would like to know them better, then I'll know better how to pray for them.

I HAVE A FEELING when this program is over the members of our church will be much closer together.

Once I heard an old colored woman say, "The old Devil sure is at work these days."

THAT PUT ME to thinking. He sure

seems to be stirring up things all over the world, but it seems to me he is working harder among our young people.

It seems that at no time in history has so many young people come out for Jesus Christ. What agony that must be causing Satan—so he sets snares for them through drugs, drink, sex and acts of violence.

He keeps trying to influence them against the tried and true established ways of the older generation. Thank God, he won't be able to win that battle.

OUR YOUNG people are fearless and eager, when they believe in something they go all out for it.

The powers of evil might fool them for a little while, but not for long.

ALL OF US make errors along the way but I have a feeling the world of tomorrow is going to be safe in the hands of our youth, and will be better because of their honest leadership.

I'm willing to turn my part of it over to them.

## Voting Registrations, Tag Deadlines Nearing

Lamb County residents are reminded of two upcoming deadlines by Herbert Dunn, tax assessor-collector.

Persons who have not registered to vote must do so through the tax office at least 30 days before the election they plan to vote in.

However, all who registered to vote or voted in the 1972 presidential election year are still classified as registered voters. These registrations are good for three years and those already registered do not need to re-register until 1975.

Dunn reminds voters that registration is needed for all persons who have recently moved into the county or have moved into different voting precincts. Because of the 30-day residency

requirement and the 30-day registration law, the deadline for registering for the April 6 school board and city elections is March 6. Registration for the May primary must be done by April 4.

This applies only to persons who have not voted in the county since 1972 and for all new residents of the county.

The second deadline facing local residents concerns license plate tags for vehicles. The tax office is issuing 1974 license tags now and the new plates must be on vehicles before the April 1 deadline. Take the three-part renewal form received in the mail with you when you go to the courthouse or sub station to purchase new tags.

## OBITUARIES

**A. H. BONTKE**  
 Services were pending Saturday at Wood Dunning Funeral Home in Plainview for Joe A. H. Bontke, 58, who died at 9:20 a.m. Friday, Feb. 15, in a Houston hospital after a three-week illness.

He was a nephew of Mrs. Art (Bertha) Lichte of Littlefield.  
 Bontke, who farmed 10 miles north-east of Plainview, moved to Swisher County in 1922 from Hill County. He was a member of St. Paul's Lutheran Church in Plainview.

Surviving are his wife, Elfriede of the home; two sons, Richard Bontke of Arlington and Nolan Bontke of the home; two daughters, Mrs. Jerry Jarnagin of Lovington, N.M. and Mrs. Stewart Norrell of Plainview; his mother, Mrs. Minnie Bontke of Plainview; three sisters, Mrs. Minnie Self of Plainview, Augusta Bontke of Amarillo and Mrs. Ruth Young of Kress; four brothers, A. G. Bontke of Kress, Max Bontke and Ernest Bontke, both of Morse and L. C. Bontke of Hiwassee, Ark.; and nine grandchildren.

**INEZ BROWN**  
 Funeral services for Mrs. Inez Brown, 91, of Littlefield who died at 8 a.m. Friday, Feb. 15, in Littlefield Hospital are scheduled for 2 p.m. today in the Crescent Park Church of Christ.

Wilburn Dennis, minister, will officiate.  
 Burial will be in Littlefield Memorial Park with Hammons Funeral Home in charge of arrangements.

Mrs. Brown was born in Georgetown and had lived in Littlefield 26 years.

Surviving are three sons, Emmett Brown and Charley Brown, both of Littlefield, and Cecil Brown of Mexia; four grandchildren; five great-grandchildren and one great-great-grandchild.

**ROSS E. MORGAN**

Graveside services were conducted Saturday afternoon in Littlefield Memorial Park for Ross Emanuel Morgan, 74, who died at 8:20 p.m. Thursday, Feb. 14, in West Texas Medical Center in Abilene.

Officiating was Ned Fairbairn.

Morgan was a native of Oklahoma and was a water well driller in Littlefield.

Surviving are his wife, Elva of the home; three daughters, Mrs. Tommie Lowrance of Abilene, Mrs. Betty Stracener of Littlefield and Mrs. Pat Pinner of Levelland; two sons, Billy Morgan of Oklahoma City, Okla., and Bill Morgan of Brownfield; three sisters, Mrs. Carl Thorp of Sweetwater, Mrs. Kate McDonald of McLean and Mrs. Zora Blessing of Tulsa; three brothers, Ray Morgan of Hobbs, N.M., Bill Morgan of Panhandle and Joe Morgan of Alaska; 28 grandchildren and five great-grandchildren.

## THE ABUNDANT LIFE

### Good Service

LIFE HOLDS AN OPEN DOOR for us, for all of us; and there is no barrier, unless we have thrown up one in our own faulty thinking about and understanding of life.

This open door is called "good service", the service each person can give; according to his own abilities and opportunities. If the door is closed to us, it is because of our own self-imposed blindness. It is not really closed. The trouble is that we can't see it.

USEFULNESS IS a good companion word for "service", a word which expresses one of the finest of human traits. Basically, we, by nature, have a need to feel that we are useful.

Giving the "service" we can give, when we can give it, in the best way we know how, fills this need. This is good for us; in addition to whatever we may have accomplished for some other person, or some worthwhile cause.

"NOTHING IN THIS WORLD is so good as usefulness. It binds your fellow creatures to you, and you to them; it tends to the improvement of your own character and gives you a real importance in society, much beyond what any artificial station can bestow." —B. C. Brodie

TOO MANY PEOPLE are waiting for something big, or spectacular that they can do. They are convinced that they are ready to serve, that they actually want "to serve", and that they "will serve"; when the opportunity is worthy of their consideration.

So, they wait; but for many perhaps all of them, the opportunity never comes. In our time, days which are filled with opportunities are passing by.

SERVICE IS "SERVICE" is what we classify as "little" or "big" service. This classification is a mistake.

Most of us must be pleased with what is usually called "little" service; there is nothing wrong with that.

The classification of "service" is a mistake, because it is a discouragement and is a distorted life structure. "Service" as we can make it "good" service.

ALL OF US ARE LOOKING for "service". We consider this need purchase an automobile, or a plane; or go into a department store, or into a service station; or doctor, lawyer or other person.

"Service" is the one thing we can make the difference in our automobile, or appliance, or store, or filling station, or lawyer. More and more, we are talking about "poor" service.

"GOOD SERVICE", when broad, general life pattern, more specifically structured and professional areas of life, do much to restore and preserve the most needful and helpful personal and social expression.



## HONNY GRITS

By CORNBALL BLED

GUESS YOU HEARD that Nixon had his physical check-up and found he was in good enough shape to stand a trip to Florida?

Difference is, that when I decide to go somewhere, I have to go to the BANK for my check-up—Shux, that's when I decide I'm healthy enough to stay home!

NONETHELESS, I don't envy him any part of it. Even Florida should be some relief, compared to Washington. Next thing, I'm guessing, is that he wouldn't care much if Air-Force One got stranded down there for lack of fuel!

I suppose it doesn't make much difference whether he's in Florida or Washington. Watergate can go along without him, as well as the impeachment proceedings. Too, he can be sure that it doesn't make any difference which end of the country he's in. He'll get the blame forever unsavory happening anyway.

THE PRESIDENT'S enemies should begin to wake up to one fact of human nature while they're giving him the acid-tongue treatment. They may be doing him and his party more good than they're doing for themselves.

Too many (perhaps) of us are prone to give our sympathies to the underdog—Backlash at the polls may wipe out the aspirations of a good bunch of those pseudo-patriots that think they're making so much hay, by their

persecution of our highest government official.

A GOOD MANY of the great places of influence, as well as part of the news-media, are in a chance to bedevil and belittle Nixon.

They remind one of a band of flies pestering an elephant. Yet, however, hearing much of the masses. And won't it need to be?

The president is doing all possible to hold his office in a dignity and respect. He has his authority to no one. If I could coach, I'd try to make sure he "Fighting-Hart" award, and tie the "Sportsmanship" and "Valuable-Player" Awards, right with it!

ONLY SINCE WATERGATE game of politics became a game, possibly played by a group of Sunday-School teachers! (Actual administrative enemies, that I think that this incident was an island in a lake of pure, clear water.)

When I can see the halos of heads of the Ervins, Kennedys, Jacksons, I may begin to be sympathizing with the president's cohorts.

IN THE MEANTIME, if Nixon should get hi-jacked to Havana couple or three weeks, doubt if I'd eyebrow!

## Turn Row

### COMMENTS

By EMIL MA...

GUESS I'LL START off today with a weather prediction. Of course we will not receive a measurable amount of moisture until the middle of April, but from all indications we may receive a little moisture the first part of the week.

Some folks received a little sprinkling of rain on a line from Lubbock to Olton, Thursday, although it was not experienced by us in the western part of the county.

A NEW LOOK in ladies' fashions will be attempted again this summer. The look noticed mostly is the lowering of the hemlines to the middle of the knee. Nuff said.

THOUGHT I'D let you readers in on a portion of an article that was printed in a Wisconsin paper.

"We wonder if the young drivers will know what to do with themselves this winter?"

"There are too many youths who have never had a shortage of anything, except maybe trips to the woodshed...and we figure if they can take a cold floor in the morning, and will drink hot water in the

milk for breakfast to get warm, watch tv to save on electricity, get fighting mad if the government will take away or register their guns will get into politics and business get rid of our shortages, the should be fairly secure.

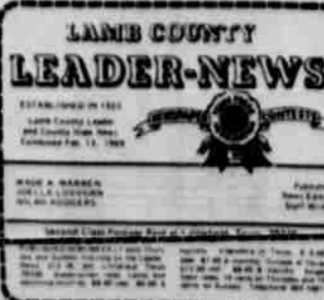
"They demonstrated in war to get out, so we wonder if they will demonstrate because of the shortage? Will they blame the government and parents? Or will they from all this and use their education to put it to work? It should be interesting winter!"

FOR A BIT OF HUMOR: In a highway clean-up crews couldn't pace with litterers until roadside were changed a few years ago, them anti-litter posters read "Litter ahead one fourth mile" motorists took the signs, litter scattered garbage over the quarter-mile.

The roads are much cleaner, say, since the signs were removed. "Litter container one fourth mile."

GAS RATIONING DURING War II got down to two gallons for 'A' class sticker holders, and four times more cars. The gas can be met if drivers will just get their gasoline from 14.5 gallons per week to 11 gallons per week. We do another bureaucracy in Washington out of Washington.

"A MAN SHOULD never be admitted he has been in the wrong, but saying, in other words, 'wiser today than he was yesterday'."



## Amarillo College Offers Classes

Classes will be offered by Amarillo College in a series of Commerce programs, beginning the week of

for the non-classes is now in those interested from 8:30 a.m. to 4 p.m. through Friday 9:30 to 9:30 p.m. through Thursday at the office in the building on Washington Street campus.

may enroll by coupon, which is available elsewhere in the Amarillo area.

Of interest to area fishermen is a fly fishing seminar to begin Feb. 19 taught by Maurice Mitchell. Mitchell will cover the proper techniques of using a fly rod. The class will meet on Tuesdays from 7:30 to 9:30 p.m. in Room 119 and 124 of Badger Gym. Fee for the 10-hour course is \$8.

Originally a demonstration class, a pencil and pastel workshop to begin Feb. 21 will include audience participation this spring. Taught by George Oberg, the 16-hour class will meet Thursdays from 7:30 to 9:30 p.m. in Room 212 of Durrett Hall. Students will work from live models and photographs in different media. Fee is \$14.

Planning your wedding, which was offered for the first time last fall, will again be offered this spring. Mrs. Ann George will conduct the 10-hour course on how to plan and enjoy your wedding along with explaining all the details of every phase of a wedding. Fee is \$13. Classes will meet from 7:30 to 9:30 p.m. on Thursdays in Room 109 of Warren Hall beginning Feb. 19.

A trap shooting practice course will be offered for \$31. Price includes targets. Jerry Wingate of the Amarillo Gun Club will instruct students in the 20-hour session which begins Feb. 20. Students will meet from 7-9 p.m. at 46th and Osage.

What to wear, when and where will be offered. Class discussion will include wardrobe analysis, buying plan, grooming, accessories, how to camouflage figure flaws and the new looks for 1974. The 16-hour class will meet from 7:30 to 9:30 p.m. on Wednesdays in Room 202 of the Music Building. Fee is \$13.

Also of interest to women is the womanly art of self-defense. The class will cover non-physical ways of self-defense as well as karate and kung fu. Bill Beach will instruct the 16-hour course for \$13. Classes will meet in Room 122 of Badger Gym from 7-9 p.m. on Tuesdays beginning Feb. 19.

Woodworking will be instructed by Gary Minor for both beginners and experienced craftsmen. Proper techniques and use of workshop tools and machinery will be highlighted. The 20-hour class will meet from 7:30 to 9:30 p.m. Tuesdays at the woodshop of Caprock High School, 3001 SE 34th. Fee is \$25. Class begins Feb. 19.

Other new offerings include a clarinet master class, taught by Paul Keithley; parliamentary procedure by Mrs. Hazel Crawley, and a gymnastics course for women who teach in the public schools, taught by Miss Winnie Montgomery.

Specific information concerning classes may be obtained from Gaither or from a listing of classes available in the registrar's office.

Planning your wedding, which was offered for the first time last fall, will again be offered this spring. Mrs. Ann George will conduct the 10-hour course on how to plan and enjoy your wedding along with explaining all the details of every phase of a wedding. Fee is \$13. Classes will meet from 7:30 to 9:30 p.m. on Thursdays in Room 109 of Warren Hall beginning Feb. 19.

A trap shooting practice course will be offered for \$31. Price includes targets. Jerry Wingate of the Amarillo Gun Club will instruct students in the 20-hour session which begins Feb. 20. Students will meet from 7-9 p.m. at 46th and Osage.

What to wear, when and where will be offered. Class discussion will include wardrobe analysis, buying plan, grooming, accessories, how to camouflage figure flaws and the new looks for 1974. The 16-hour class will meet from 7:30 to 9:30 p.m. on Wednesdays in Room 202 of the Music Building. Fee is \$13.

Also of interest to women is the womanly art of self-defense. The class will cover non-physical ways of self-defense as well as karate and kung fu. Bill Beach will instruct the 16-hour course for \$13. Classes will meet in Room 122 of Badger Gym from 7-9 p.m. on Tuesdays beginning Feb. 19.

Woodworking will be instructed by Gary Minor for both beginners and experienced craftsmen. Proper techniques and use of workshop tools and machinery will be highlighted. The 20-hour class will meet from 7:30 to 9:30 p.m. Tuesdays at the woodshop of Caprock High School, 3001 SE 34th. Fee is \$25. Class begins Feb. 19.

## Kent Lewis Makes Tour With Livestock Team

The Livestock Judging Team from South Plains College headed for Lubbock Saturday, Feb. 16, for the Texas Junior College Livestock Judging Contest, an event the team has won every year since 1970.

Included on the team is Kent Lewis of Earth. Coach Jim Jenkins and his five team members will be competing against junior colleges from throughout the state at Lubbock Christian College, host for the first JC contest this year. Another state contest will be conducted in Tarleton later in the semester.

The judging team just last weekend won reserve champion honors at the Southwestern Livestock Exposition at Fort Worth. That contest and one at Denver earlier attracted judging teams from

across the country, Jenkins said. SPC placed sixth at the Denver National Western Stock Show. Jenkins has coached his teams to first place honors at every JC contest since 1970. The 1970 team won at Tarleton, followed by victories in 1971 and 1972 at Abilene and last year in Lubbock.

Competing on the team this year are sophomores Gary Moore of Wilson, Bill Drennan of Guthrie, L. D. Hamm of Plains and Eddy Woods of Dimmitt and freshman Kent Lewis of Earth.

At the Fort Worth show, Lewis was the high individual contestant from among 51 other entrants. He placed first in sheep judging, second in swine, and tied for first in quarter horse. At the Denver show, Moore placed sixth in the individual competition to lead the SPC team.

## Senior Citizens Feted At Party

AMHERST—The Amherst Senior Citizens meeting was sponsored by the Ruth Solesbee WMU Circle, Tuesday Feb. 12, at the Amherst Community Center.

A Valentine motif was used. Refreshments of heart-shaped cookies and red fruit punch was served by the hostesses: Mmes. Janice Burton, Joy Cantrell, Martha Ferguson, Barbara McDaniel, Gayla Cowan and Virginia Young.

A salad supper for the Senior Citizens will be served Tuesday, Feb. 19, at 6:30 p.m. at the Amherst Community Center. Senior citizens are invited to attend and bring a salad or covered dish.

Music, games of dominoes, forty-two and bridge, and "just visiting" were enjoyed by Messers and Mmes. Bill Roberson, Sam Cowan, Johnny Smith, Jim Brodley, W. S. Sharley, A. A. Royal,

Hubert Dykes, Bill Owen, Forrest Moore, Delbert Moore, Otis Witcher, Forrest Martin, Jimmy Cowan, Eugene Young and Verdell Burton.

Mmes. Frances Enloe, Myrtle Love, N. H. Humphries, G. C. Nicholson, C. N. Stine, Bertha Thompson, Delva Harmon, C. F. Thompson, Bud Emery, John Foust, Lester La Grange, Lola Gonzales, W. N. Humphreys, Kathryn Day, Barbara McDaniel, Joy Cantrell and Christal Cantrell, Martha Ferguson, Denese Ferguson.

Alfred Useiton, Lee Carves, Homer Harper, W. L. Key, Floyd Ivey, A. D. Lynch, Weldon Findley and J. D. Rowland.

## Nichols Circle Holds Study

The Mary Francis Nichols Circle of the First Baptist Church met Monday night in the Church Parlor for the monthly Bible study.

Mrs. Ella Lindley, circle chairman, presided. Mrs. Gladys Houk read the prayer calendar and offered prayer for missionaries who had birthdays Monday.

Mrs. Bessie Brunson led the group in a study from Matthew, chapters five and six on the Sermon on the Mount.

Members present were Mmes. Ella Lindley, Frieda Cunningham, Gladys Houk,

Bee Park, Rose Bass, Willie Benton, Loraine Welborn, Maude Street, Faye Barker, Flora Boone, Illa Sewell, Bessie Brunson, Kathrine Rumback, Jessie Jordan, Winnie Hogan, Lucille Walden, Minnie Matthews, Mattie Barnard, Ora Martin, Ruth Ford and Miss Frankie Stevens.

**LARGE HERDS**  
According to Agriculture Commissioner John C. White, 83 per cent of U.S. beef cattle are produced from herds of less than 500 head.

## PEP NEWS

**CORRECTION** on Pep Homecoming story, Beverly Albus Homecoming Queen, is daughter of Mr. and Mrs. Paul Albus.

**DUE** to the flu and other illness there was no school at Pep during the week of Feb. 4-8 with so many of the school children ill. School resumed Monday, Feb. 11.

**ROXANNA** and Elizabeth Demel daughters of Mr. and Mrs. Conrad Demel, visited Friday night and Saturday night with Mr. and Mrs. Billy Demel of Littlefield. They returned home Sunday.

**MR. AND MRS. Leo Ruzicka** and girls of Friona visited in the home of Mr. and Mrs. Conrad Demel Sunday, Feb. 10.

**SUNDAY DINNER** guests in the home of Mr. and Mrs. Conrad Demel on Feb. 10 were Mr. and Mrs. Eugene Demel and Mr. and Mrs. Billy Demel of Littlefield.

**THERE WERE 32** farmers from Pep and Bula communities to go fishing on the coast at Rock Port near Corpus Christi the week of Feb. 8 to Feb. 16.

**MRS. EVELYN ALBUS** and son, Terry, of Pep, Michael Albus of Hobbs, N.M., Gail Albus of Levelland and Ann Albus of Lubbock attended the wedding of Lynda Langhamer of San Marcos and Art Koening of Austin Saturday, Feb. 9, in St. John's Catholic Church at San Marcos. Bobby Boss of Levelland also attended the wedding. Lynda is the daughter of Mr. and Mrs. Alvin Langhamer of San Marcos and niece of Mrs. Evelyn Albus.

**L. V. HOGUE** of Pep is in Methodist Hospital at Lubbock. Hogue suffered a heart attack Feb. 2 and was at Littlefield Hospital, then transferred to Methodist Sunday afternoon. He is reported to be doing better.

## Powder Puff Mechanics Short Course Offered

South Plains College will offer a short course in Powder Puff Mechanics beginning Tuesday, Feb. 19, in the SPC diesel shop.

Bobby Capps, assistant instructor at the college, will serve as course instructor. Classes will meet from 7:30 to 9:30 p.m. each Tuesday for six weeks. Fee is \$10.

"Due to the increase in travel, women need to know how the automobile works," Capps said. "The prices that garages charge for certain jobs, and a basic knowledge of what the job consists of—plus the skill and training to do

minor repairs for themselves—will be covered in the course," he said.

"On completion of this course, students will be able to detect minor problems and maintain their own vehicle," he noted.

The course will outline the basic principles of the engine, how to tune an engine, such as changing the points and spark plugs; maintenance of the car, including changing oil and gas filters, engine oil and transmission fluid; and accessories needed in the car, such as flares, flash light, first aid kit, and a jack and a lug wrench for changing a tire.

## Sorority Members Attend Production

Members of the Xi Nu Nu Chapter of Beta Sigma Phi and their guests attended the Hayloft Dinner Theater production of "The Owl and The Pussycat" Feb. 6.

Attending were: Mr. and Mrs. Tom Tollett, Mr. and Mrs. Wade Warren, Mr. and Mrs. Neil West, Jan Mar-

lindale, Mr. and Mrs. Arlen Simpson, Mr. and Mrs. Steve Butler, Mr. and Mrs. Ronnie

Vaughn, Mr. and Mrs. Jay Bridwell, Mr. and Mrs. Kenneth Johnson, Ann Pullig, Mrs. Harry Ford, Mr. and Mrs. Steve Rountree, Mr. and Mrs. Clinton Byers, and Mr. and Mrs. Doyle Winfield.

**LITTLEFIELD CHAMBER OF COMMERCE AND AGRICULTURE**

Listed in this space from week to week will be things in which the Chamber is involved.

**WELCOME NEW MEMBERS**  
Cliff's Grocery  
Pow Wow Shop  
Buster Gilliam  
T. A. Henson

**Aggressive Commodity Trading Buy-sell ideas. A.C.T. now!**

(Aggressive Commodity Trading) is a new venture created by A. G. Edwards to help well-financed speculators dynamic commodity markets in the fast-moving commodity markets. If you have the risk capital and steady nerves... we have the fundamental and technical research and the experience and judgment. For more information on the A.C.T. concept... write or call today for a free brochure.

**A. G. Edwards & Sons, Inc.**  
Established 1887. Members all principal commodity exchanges and New York Stock Exchange, Inc.

Send me your free brochure on "Aggressive Commodity Trading"

Name \_\_\_\_\_

Address \_\_\_\_\_

City \_\_\_\_\_ State \_\_\_\_\_ Zip \_\_\_\_\_

1220 Ave. K, P.O. Box 10315, Lubbock, Texas 79408

## Shopping Cart Specials

HELP TO KEEP THE COST OF EATING DOWN!  
COMPARE THE QUALITY AND PRICE OF OUR MEAT ANYWHERE

|  |  |
|--|--|
| FINE CANE<br><b>SUGAR</b><br>5 LB. BAG<br><b>79¢</b>   | ARMOUR'S STAR GRADE "A"<br><b>TURKEY'S</b> LB.<br>(SELF BASTING)<br><b>69¢</b> |
| GRADE "A" MEDIUM<br><b>EGGS</b><br>DOZEN<br><b>69¢</b>   | CENTER SLICES<br><b>ROUND STEAK</b> LB.<br><b>\$1.39</b>                       |
| SUNSHINE KRISPY<br><b>CRACKERS</b> LB.<br><b>39¢</b>   | <b>SIRLOIN STEAK</b> LB.<br><b>\$1.39</b>                                      |
| GOOD SELECTION OF ROSE BUSHES<br>FRESH BAR-B-Q MADE DAILY<br>QUALITY MEATS COST NO MORE AT<br><b>MERLIN'S FOOD</b> | <b>T-BONE STEAK</b> LB.<br><b>\$1.69</b>                                       |
| WE REDEEM FOOD STAMPS<br>Double Gunn Bros. Stamps, Tuesday & Wednesday<br>9th & Levelland Highway<br>7 DAYS A WEEK | <b>RIB STEAK</b> LB.<br><b>\$1.39</b>  |
| WE REDEEM FOOD STAMPS  | <b>BONELESS STEW MEAT</b> LB.<br><b>\$1.19</b>                                 |
| WE REDEEM FOOD STAMPS  | <b>CHUCK ROAST</b> LB.<br><b>98¢</b>   |
| WE REDEEM FOOD STAMPS  | GRADE "A"<br><b>FRYERS</b> LB.<br><b>49¢</b>                                   |

# BE WISE...

# GET A FREE NO OBLIGATION ELECTRIC HEATING COST ESTIMATE FOR YOUR NEST THIS WEEK

ELECTRICITY - IT DOES SO MUCH GOOD

**Total ELECTRIC Heating**

FOR SO MANY PEOPLE

# CLASSIFIED ADS

Rates on CLASSIFIED ADVERTISING are 10 cents per word 1st insertion (\$1.50 minimum charge) and 6 cents per word 2nd insertion (\$1.00 minimum charge). Blind box ads are \$1.00 additional. DISPLAY CLASSIFIED RATES: \$1.40 per column inch first insertion and additional insertions, \$1.15 per column inch.

Card Of Thanks — 1 time — maximum of 20 words, \$1.50. All cards of Thanks over 20 words are to be charged at regular classified rates.

## Help Wanted

25,000 miles between oil changes. Synthetic motor oil, non-petroleum. Full or part time distributors needed. 385-4746. 3-6-P

**WANTED:** Dealers calling on farmers and ranchers, for the new 20,000 mile no change motor oil. Bill Bailey, Racer Oil Co., Suite 600, Bank of the Southwest, 352-9211, Amarillo, Tex. 79109. 2-17-P

**EXPERIENCED** front help and experienced fry cook wanted. Apply in person. Curly Top Drive Inn. 2-17-C

**CARPENTERS** needed. Finish carpenters, framing, carpenter's helpers. 385-3346 or see Jimmy Starnes. 3-8-S

**FARM HAND.** Experienced in tractor and irrigation farming. House and utilities furnished. Near school. Springlake-Earth area. 806-799-2060 after 9:00 p.m. Write Box 424, Earth, Tex. 79031. TF-J

**EXPERIENCED** night cook. Apply in person. Curly Top Drive Inn. 2-24-C

## Misc

**OLD** photographs copied and restored. Bring your photographs in for an estimate. Roberts Studio, Fine Photography, 203 W. 3rd St., Littlefield, Tex.

**LEARN TO FLY**  
For flight instructions call Allen Purdy. 385-4811. Private pilot ground school in progress. No charge for ground school.

## Personal

**SECRET.** Lose water weight; body bloat, puffiness, etc. X-Pel Water Pills, only \$3.00 or money back refund. Brittain Pharmacy, 430 Phelps Ave. 385-5114. 4-25-P

## Wanted

**CUSTOM** Farm work—breaking, listing, discing, trellising, fertilizing. Phone Leroy Davis 385-3253 or Littlefield Butane 385-3010. TF-D

**WILL BUY** estate sales complete or we buy good furniture, one piece or houseful. 385-3714 or 385-5979. TF-Y

## Houses For Sale

**3 bedroom** home for sale. 1308 W. 13th. Call 933-2112. TF-S

**HOUSE FOR** sale, to be moved. Can be remodeled to a two bedroom. Call 385-4203. TF-H

**LIVING ROOM.** 3 bedroom, all new carpet, central heat, tile bath, large kitchen with adequate built-ins, dining area, new floor covering on kitchen, bath and dining area. Wired for electric range, plumbed for washer and dryer. Also 3 old houses, all to be moved. 385-3198, 2 miles south, 1 mile west of Littlefield. TF-G

**FOR SALE:** Nice little 2 bedroom house, wall heater, new panelling, new roof, nice stucco, located West 5th Street. Will sell real cheap. Call Onstead's Real Estate, ph. 385-4888.

## Houses For Sale

**2 bedroom,** den, dining area, carpet throughout. Large garage and patio. 411 E. 16th. 385-4362. 4-21-T

**EQUITY FOR** sale: Assume low 5 1/4% loan on three bedroom, 2 bath home. 1305 W. 14th. 385-4993. TF-P

## Don't Put Off Seeing

This family home, big enough to accommodate the most active family. Three (3) bedroom brick, 3000 sq. ft. floor space, carpeted, 3 tile baths, large den with beam ceiling and fire place, utility room, central heat, refrigerated air-conditioner, abundance of storage space, fenced yard, double garage and good location.

Wingo Real Estate  
143 N. Westside Ave.  
Phone 385-4684  
(Equal housing opportunity)

## Rent Or Sale

**5 room** and bath, partly furnished. See at 1119 W. 9th or phone 385-4367. 2-17-M

## Real Estate

**135 acres** of good land, good 8' well, 1/2 mile of underground pipe. 385-5881. TF-F

**SIX** lots including north end of Badger Ave. 385-5441. TF-H

**MY HOME** with small acreage 12 miles north of Littlefield. Doyle Tapley, 262-4225. TF-T

**FOR RENT,** business building and storage. Call Chester Harvey, 385-4297. TF-H

## Autos For Sale

**1970 Bonneville** Pontiac. Steel belted radial tires, front disc brake, tilt steering, cruise control. Vinyl top. Excellent condition. Call 385-4224 or 385-3363. TF-S

**1968 English** Ford, economical and clean. Also 2 mag wheels and tires for Chevrolet. See at 1207 W. 14th. 1-17-B

**1968 Chevrolet** Impala, automatic, power, air, good tires, good condition. 385-3910. 2-17-M

**CLEANEST USED CARS** in town. Marcum-Olds, Cadillac, 8th and Hiway 385, Littlefield, 385-5171. TF-M

## Misc For Sale

**FOR SALE:** citizens band 2-way radio, complete with antennas. Base set with 23 channels and mobil all transistor set with 12 channels. \$500 value, will sell for \$295.00 cash. 385-5147 or 385-4521. TF-A

**1973-17'** Shasta Starflyte trailer, completely self-contained, sleeps 6, like new. Olton-phone 285-2968. TF-G

**FRESH** pecans for sale, 65c lb. Eggs 70c dozen. B.L. Greener, 1/2 mi. S.E. Amherst. 246-3525. TF-G

**HAY GRAZER** hay, 5,000 bales in stack. Priced to sell. Bennie Harmon, 246-3218, Amherst. TF-H

**FOR SALE** sucker rod type pump with 150 ft. 2" pipe good. E.C. Hill. 2-17-H

**REGISTERED** Durac boards, 220 lbs. \$60.00, 385-4596. 2-21-P

Singer Touch and Sew Deluxe models, these machines zig-zag, blind hem, make button holes, fill bobbin in machine, etc. Desk cabinets with drawer space. Used only three months. Six left out of public school systems. Your choice, \$75.00 each. Fully guaranteed. Usually home, 4313-A 53rd. Call first, 797-1867, if no answer, 747-9722

## Misc For Sale

**LARGE** beautifully framed original oil painting by Jean Richard. A landscape. Call Lubbock 795-8948. 2-17-P

**HAMMOND** organ, 2 key board, \$600.00. Same organ used in Hospitality House. Call 246-3583, Mrs. Dodd. 2-17-D

## Bus Services

**RENT CONVALESCENT** equipment at Brittain Pharmacy, Wheel chairs, crutches, hospital beds, other items. Complete line convalescent needs. TF-B

**MONUMENTS.** Memorials high quality granite. Also cemetery curbing. Toby Walker, 1407 Nichols, Littlefield, Tex. 385-3539

**ALL KINDS ALTER-** ations, covered button, buttonholes, belts. Mr. and Mrs. G.E. Scifres, 905 E. 6th St. Phone 385-3971. Former Drive In Cleaners. TF-S

**LITTLEFIELD** Roofing specialist, built up asphalt roofs. All work guaranteed. 1115 W. 9th. Call 385-3507 or 385-5680. TF-L

**CLEAN** expensive carpets with the best. Blue Lustre is America's favorite. Rent shampooer, \$1. (Nelson's Hardware.)

**WILL BUILD** re-enforced concrete cellars. Redi-built houses. H.G. Ferguson. 385-5508. 2-28-P

**MATTRESSES** complete renovating. New mattresses & box springs, any size. Call Mrs. Claude Steffey, 385-3386, agent for A & B Mattress Co., Lubbock, Tex. TF-S

**CARPET CLEANING** \$57.95. Steam clean any three rooms. Call collect 806-799-2755. Carpet Cleaning Discount. TF-C

**WILSON'S DECORATIVE SERVICE**  
(Colors A Specialty)  
Panelling, painting, papering  
General Home Repair  
Anywhere T.J. Wilson  
Lfd. 385-6133  
Anton 997-3501

**TRUCK SEATS EXCHANGED**  
15 MINUTE SERVICE  
**MCCORMICKS**  
UPHOLSTERY  
CHARLES POWELL  
227 PHELPS AVE  
PH. 385-4555  
Littlefield, Texas, 79339

**ALLEN ELECTRIC**  
812 E. 9th 385-4811  
We rewind and repair all makes and sizes of electric motors.  
Electric pump motors.  
Industrial and domestic motors thru 150 H.P. Fast dependable service.

**KIRBY.** Sales & Service  
Call 385-3357  
For a free demonstration on the Kirby Classic 1013 W 9th

**Industrial BEARINGS & BELTS**  
Forney Welders & Supplies  
\*Farm Equip.  
Industrial Equip.  
**G & C AUTO SUPPLY**  
700 E. 14th 385-4431

**FLORES UPHOLSTERY**  
Large Selection Of Quality Fabrics...  
Free Estimate In Your Home  
Free Pick-Up and Delivery  
All Work Guaranteed  
4th and Bell Avenue  
Littlefield, Texas  
Phone 385-4034

## Political Calendar

The Lamb County Leader-News is authorized to announce the following candidates for election to the office under which their names appear below, subject to the action of the Democratic Primary in Lamb County, Texas, May 4, 1974.

- County Judge: Bill Angel
- G. T. (Truitt) Sides
- County Commissioner Precinct 4: Hubert Dykes, Eugene Young
- Democratic Chairman: Glenn Batson
- JP Precinct 4: Stanley Doss, Jerry Collins
- County Clerk: Mary Beth Willey, Kathryn Day, Betty Hall
- District Clerk: Ray Lynn Britt
- County Treasurer: Lucy Moreland, Fannie B. Rogers

## KNIGHT'S REST HOME

**By MRS. HULDA HENSON**  
MRS. HOMER Worley and family brought flowers for all the residents to enjoy. The flowers were in memory of Mr. Worley.

**LAWRENCE STREET** Church of Christ of Anton came for singing and presented a devotional. It was enjoyed by all.

MRS. ALLEN RHODES visited Mr. and Mrs. John Horton and Mrs. Evitt.

**VISITING** Mrs. Thompson and Mrs. Williams was Mrs. F. L. Simmons.

MRS. R. L. Tisdale visited Felix Legate in the home.

**VISITING** Mrs. Saleana Evitt during the week were Lois Hooper of Anton, Mrs. Mary E. Pierce, Mrs. Chester Kerby, Mrs. Leslie Kerby, Tommy Kerby, Mr. and Mrs. Laney Reagan and Tammy Owens all of Littlefield, Cheryl Jones, Mr. and Mrs. M. A. Evitt of Anton, Mr. and Mrs. J. O. Wimberly, Mr. and Mrs. L. S. Evitt of Idalou and Mr. and Mrs. Arthur Evitt of Portales, N.M., and Mrs. Ralph Lewis of Anton.

**THE HOSPITAL** Auxiliary Ladies came Friday and had the monthly birthday party. Since the party in January had been postponed, the honorees were for January and February. Those honored were: Inez Brown, Sarah Clark, Mittie Fowkes, Charlie Hooper, Hulda Henson, Ida Mae Johnson and Paula Oliveraz. Birthday cake and punch were served to all the residents. The ladies from the Hospital Auxiliary coming out were Lucille Johnson, Frieda Rice, Dell Phelps, and Florence Porcher.

**MRS. HULDA HENSON** is back in the home after her stay in the hospital. Visiting her was Mrs. Bill Jeffers, Mrs. Hort and Mrs. Parker.

**MR. AND MRS. Cecil** Brown of Mexia visited their mother, Mrs. Inez Brown on her birthday. Also visiting was Mr. and Mrs. Emmett Brown, and Mr. and Mrs. Charley Brown all of Littlefield.

**MRS. VIOLA** Wassell of Lubbock is a new resident in the home. Visiting her was her son, Bob Taylor from Iowa. Also Dorothy Currie of Littlefield.

**ERNEST BUNDICK** of Brady visited in the home of Mr. and Mrs. J. E. Knight and Mr. and Mrs. Tommy Cheshier, Richard, Linda and Melanie. Also visited Kenneth Knight, administrator.

## Bula News

**MR. AND MRS. Tom** Bogard ate supper Tuesday evening with their daughter and family, the Ray Kennisons of Olton, and attended the basketball game between the Nazareth and Bula girls.

**MR. AND MRS. Tom** Fipps of Morton visited Sunday afternoon with her parents, Mr. and Mrs. Jack Eakles.

**MR. AND MRS. John** Blackman were dinner guests Sunday in the home of her brother and wife, Mr. and Mrs. P. E. Dever at Plainview. Mr. and Mrs. Weldon Harkness of Lubbock were also with them.

**MRS. E. A. Eakes** flew Wednesday to Denver to take care of her two grandchildren while her daughter, Mrs. Jim Green, recovered from surgery in a Denver hospital.

**BULA BASKETBALL** girls won Bi-district over Nazareth Tuesday evening in the Olton Gym by a score of 66 to 63. They were to have played Anthony on Friday night in the Texan Dome in the District Tournament. Leading Bula for scoring were Leisa Risinger, Gwyn Pollard and Oralia Davila.

**BULA** FHA chapter will be sponsoring a chicken dinner Sunday, Feb. 17, in the Bula school lunchroom from 12 to 3. Adults' plates are \$2 and children \$1.50. The girls are working toward covering their expenses to the Area I. FHA meeting in Amarillo in March.

**MR. AND MRS. J. D.** Rowland spent the past weekend in Abilene, visiting with his father, Mr. and Mrs. J. F. Rowland and son Mike.

**ROBERT OPELLA**, migrant teacher in the Bula School was in Muleshoe Feb. 4 to attend the sub-regional Migrant In-Service Workshop.

**SEVERAL** from Bula attended funeral services held Wednesday morning at the Crescent Park Church of Christ at Littlefield, for Dee Sims. Sims, with his wife, Mabel and daughter, Jackie, lived in our community several years before moving to Littlefield. Our sympathy is extended to the wife and daughter.

**MR. AND MRS. L. C.** Childers of Wolfroth spent Sunday with her mother, Mrs. A. M. McBee.

**MR. AND MRS. Tom** Bogard visited with their son, Jake Bogard and family in Addington, Okla. from Friday until Sunday.

**MR. AND MRS. Jerry** Smith of Lubbock were supper guests of her parents, the Jack Withrows, Saturday evening.

**MR. AND MRS. Nolan** Harlan and John David visited Friday afternoon with their daughter, Ann Harlan, freshman student at South Plains College.

## ENOCHS NEWS

**JOHN VANLANDINGHAM** (Uncle John), who was involved in a traffic accident last Wednesday at the intersection in Enochs has been reported as improved. He is in Methodist Hospital in Lubbock. Their children, Thee Van, Mr. and Mrs. Lawrence Hall, all from California, Arthur from Albuquerque, and Woodrow from Colorado, are all at his bedside with their mother.

**JAYE LINN GREER** daughter of Mr. and Mrs. Keith Price was injured last Friday night when she fell off of the bleachers during a basketball game in the Morton gym. She was taken to the Littlefield Hospital for X-ray's and observation.

**MRS. GUY SANDERS** was able to attend Church Sunday morning. She had eye surgery several weeks ago and is able to do some of her housework.

**MRS. MARIE ELLIOTT** was able to leave the hospital at Cochran Memorial after having pneumonia and an attack of asthma.

**G. R. NEWMAN** is doing well after his release from Veteran's Hospital in Big Spring.

**MRS. GEORGE AUTRY** brought her mother home from Denver City. Mrs. Thompson has been at Denver City for a week to sell and dispose of her sister's possessions. Her sister, Miss Ozella Hunt, was killed in a car accident Feb. 2, near that city.

**MR. AND MRS. Mark** Derrington of Lubbock visited her parents, Mr. and Mrs. Harrold Layton.

**BULA SCHOOL** resumed classes on Thursday after turning out school for eight

**MR. AND MRS. C. A.** Williams spent Sunday afternoon with his mother, Mrs. S. A. Williams, resident of the Knight's Rest home.

**SEVERAL FROM** the community attended the funeral Saturday morning for James Cash, at the Avenue Baptist Church in Hereford. Friends and relatives attending were Mr. and Mrs. Ed Crume, Mrs. J. W. Layton, Mr. and Mrs. Harold Layton and Mr. and Mrs. John Blackman. Mrs. Cash is a sister of Mrs. Crume, Mrs. Layton and Mrs. H. H. Snow of Muleshoe.

**MR. AND MRS. Marvin** Skinner of Dodge City, Kans., visited with friends here Friday. They were lunch guests with the Raymond Austins and also visited with the Clarence Cannons. Mr. and Mrs. Skinner lived here for several years before moving to Kansas.

**WMU MET** Tuesday afternoon for their weekly meeting, with Miss Vina Tugman in charge. Study was taken from the current study book with topic "Mission Work in West Virginia". Mrs. Richardson, prayer chairman, read the call to prayer calendar and Mrs. Williams opened the study with prayer. All present took part in the discussion. Mrs. Pierce gave the closing prayer. Attending were Mmes. C. A. Williams, P. R. Pierce, E. O. Battles, Rowena Richardson and Miss Vina Tugman.

**MR. AND MRS. Bennie** Claunch and children Keith and Sherri, and Jack Birdwell, school Agriculture teacher, returned Monday night from attend the Stock Show and rodeo at San Antonio, the past weekend. Both Keith and Sherri showed calves at the stock show.

**MR. AND MRS. Nolan** Harlan and son, John David, spent Sunday afternoon visiting with their mothers, Mrs. Mary Britt at Amherst and Mrs. Lula Harlan, resident of the Amherst Manor Nursing home.

**MR. AND MRS. J. L.** Latham returned home Sunday afternoon from a visit of several days at Lake Thomas in the home of her sister and husband, Mr. and Mrs. Jack Eaker and her mother, Mrs. Lily Flowers. Also visiting with them were brothers, Mr. and Mrs. Ted Flowers of Houston and Mr. Eugene Flowers of Odessa. Her mother, Mrs. Lilly Flowers came home with them for a visit of several days. On their return home they stopped for a visit Sunday afternoon with their daughter and family, the Warner De Sautells at Slaton.

**MR. AND MRS. Nolan** Harlan and son, John David, spent Sunday afternoon visiting with their mothers, Mrs. Mary Britt at Amherst and Mrs. Lula Harlan, resident of the Amherst Manor Nursing home.

**MR. AND MRS. J. L.** Latham returned home Sunday afternoon from a visit of several days at Lake Thomas in the home of her sister and husband, Mr. and Mrs. Jack Eaker and her mother, Mrs. Lily Flowers. Also visiting with them were brothers, Mr. and Mrs. Ted Flowers of Houston and Mr. Eugene Flowers of Odessa. Her mother, Mrs. Lilly Flowers came home with them for a visit of several days. On their return home they stopped for a visit Sunday afternoon with their daughter and family, the Warner De Sautells at Slaton.

**MR. AND MRS. Nolan** Harlan and son, John David, spent Sunday afternoon visiting with their mothers, Mrs. Mary Britt at Amherst and Mrs. Lula Harlan, resident of the Amherst Manor Nursing home.

**MR. AND MRS. J. L.** Latham returned home Sunday afternoon from a visit of several days at Lake Thomas in the home of her sister and husband, Mr. and Mrs. Jack Eaker and her mother, Mrs. Lily Flowers. Also visiting with them were brothers, Mr. and Mrs. Ted Flowers of Houston and Mr. Eugene Flowers of Odessa. Her mother, Mrs. Lilly Flowers came home with them for a visit of several days. On their return home they stopped for a visit Sunday afternoon with their daughter and family, the Warner De Sautells at Slaton.

**MR. AND MRS. Nolan** Harlan and son, John David, spent Sunday afternoon visiting with their mothers, Mrs. Mary Britt at Amherst and Mrs. Lula Harlan, resident of the Amherst Manor Nursing home.

**MR. AND MRS. J. L.** Latham returned home Sunday afternoon from a visit of several days at Lake Thomas in the home of her sister and husband, Mr. and Mrs. Jack Eaker and her mother, Mrs. Lily Flowers. Also visiting with them were brothers, Mr. and Mrs. Ted Flowers of Houston and Mr. Eugene Flowers of Odessa. Her mother, Mrs. Lilly Flowers came home with them for a visit of several days. On their return home they stopped for a visit Sunday afternoon with their daughter and family, the Warner De Sautells at Slaton.

**MR. AND MRS. Nolan** Harlan and son, John David, spent Sunday afternoon visiting with their mothers, Mrs. Mary Britt at Amherst and Mrs. Lula Harlan, resident of the Amherst Manor Nursing home.

**MR. AND MRS. J. L.** Latham returned home Sunday afternoon from a visit of several days at Lake Thomas in the home of her sister and husband, Mr. and Mrs. Jack Eaker and her mother, Mrs. Lily Flowers. Also visiting with them were brothers, Mr. and Mrs. Ted Flowers of Houston and Mr. Eugene Flowers of Odessa. Her mother, Mrs. Lilly Flowers came home with them for a visit of several days. On their return home they stopped for a visit Sunday afternoon with their daughter and family, the Warner De Sautells at Slaton.

**MR. AND MRS. Nolan** Harlan and son, John David, spent Sunday afternoon visiting with their mothers, Mrs. Mary Britt at Amherst and Mrs. Lula Harlan, resident of the Amherst Manor Nursing home.

**MR. AND MRS. J. L.** Latham returned home Sunday afternoon from a visit of several days at Lake Thomas in the home of her sister and husband, Mr. and Mrs. Jack Eaker and her mother, Mrs. Lily Flowers. Also visiting with them were brothers, Mr. and Mrs. Ted Flowers of Houston and Mr. Eugene Flowers of Odessa. Her mother, Mrs. Lilly Flowers came home with them for a visit of several days. On their return home they stopped for a visit Sunday afternoon with their daughter and family, the Warner De Sautells at Slaton.

**MR. AND MRS. Nolan** Harlan and son, John David, spent Sunday afternoon visiting with their mothers, Mrs. Mary Britt at Amherst and Mrs. Lula Harlan, resident of the Amherst Manor Nursing home.

**MR. AND MRS. J. L.** Latham returned home Sunday afternoon from a visit of several days at Lake Thomas in the home of her sister and husband, Mr. and Mrs. Jack Eaker and her mother, Mrs. Lily Flowers. Also visiting with them were brothers, Mr. and Mrs. Ted Flowers of Houston and Mr. Eugene Flowers of Odessa. Her mother, Mrs. Lilly Flowers came home with them for a visit of several days. On their return home they stopped for a visit Sunday afternoon with their daughter and family, the Warner De Sautells at Slaton.

**MR. AND MRS. Nolan** Harlan and son, John David, spent Sunday afternoon visiting with their mothers, Mrs. Mary Britt at Amherst and Mrs. Lula Harlan, resident of the Amherst Manor Nursing home.

**MR. AND MRS. J. L.** Latham returned home Sunday afternoon from a visit of several days at Lake Thomas in the home of her sister and husband, Mr. and Mrs. Jack Eaker and her mother, Mrs. Lily Flowers. Also visiting with them were brothers, Mr. and Mrs. Ted Flowers of Houston and Mr. Eugene Flowers of Odessa. Her mother, Mrs. Lilly Flowers came home with them for a visit of several days. On their return home they stopped for a visit Sunday afternoon with their daughter and family, the Warner De Sautells at Slaton.

**MR. AND MRS. Nolan** Harlan and son, John David, spent Sunday afternoon visiting with their mothers, Mrs. Mary Britt at Amherst and Mrs. Lula Harlan, resident of the Amherst Manor Nursing home.

**MR. AND MRS. J. L.** Latham returned home Sunday afternoon from a visit of several days at Lake Thomas in the home of her sister and husband, Mr. and Mrs. Jack Eaker and her mother, Mrs. Lily Flowers. Also visiting with them were brothers, Mr. and Mrs. Ted Flowers of Houston and Mr. Eugene Flowers of Odessa. Her mother, Mrs. Lilly Flowers came home with them for a visit of several days. On their return home they stopped for a visit Sunday afternoon with their daughter and family, the Warner De Sautells at Slaton.

**MR. AND MRS. Nolan** Harlan and son, John David, spent Sunday afternoon visiting with their mothers, Mrs. Mary Britt at Amherst and Mrs. Lula Harlan, resident of the Amherst Manor Nursing home.

**MR. AND MRS. J. L.** Latham returned home Sunday afternoon from a visit of several days at Lake Thomas in the home of her sister and husband, Mr. and Mrs. Jack Eaker and her mother, Mrs. Lily Flowers. Also visiting with them were brothers, Mr. and Mrs. Ted Flowers of Houston and Mr. Eugene Flowers of Odessa. Her mother, Mrs. Lilly Flowers came home with them for a visit of several days. On their return home they stopped for a visit Sunday afternoon with their daughter and family, the Warner De Sautells at Slaton.

**MR. AND MRS. Nolan** Harlan and son, John David, spent Sunday afternoon visiting with their mothers, Mrs. Mary Britt at Amherst and Mrs. Lula Harlan, resident of the Amherst Manor Nursing home.

**MR. AND MRS. J. L.** Latham returned home Sunday afternoon from a visit of several days at Lake Thomas in the home of her sister and husband, Mr. and Mrs. Jack Eaker and her mother, Mrs. Lily Flowers. Also visiting with them were brothers, Mr. and Mrs. Ted Flowers of Houston and Mr. Eugene Flowers of Odessa. Her mother, Mrs. Lilly Flowers came home with them for a visit of several days. On their return home they stopped for a visit Sunday afternoon with their daughter and family, the Warner De Sautells at Slaton.

**MR. AND MRS. Nolan** Harlan and son, John David, spent Sunday afternoon visiting with their mothers, Mrs. Mary Britt at Amherst and Mrs. Lula Harlan, resident of the Amherst Manor Nursing home.

## ANTON NEWS

**MR. AND MRS. Lynn** Williams are visiting in Crowell this week with their son and family, Mr. and Mrs. Cecil Williams. Mrs. Bryan Johnson accompanied them and is also visiting relatives.

**THE ANTON** ambulance took Mrs. B. H. Handley to the Littlefield Hospital Thursday after she suffered a heart attack at her home.

**MR. AND MRS. Joe** Bramlett had as their guest last week, her brother, Charles Flaherty from Beaumont.

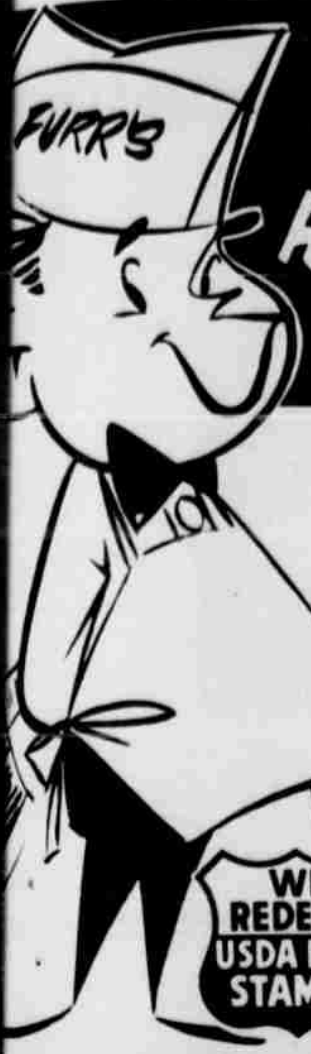
**MR. AND MRS. Duane** Curtis from Big Fort, Mont. and Pen Curtis, Farwell, visited their cousin, Mrs. Gus Maynard, Monday.

**MR. AND MRS. Ronny** Damae and daughter, Acuff, visited their grandmother and her father, Mrs. Ella Jackson and George Jackson over the weekend.

**MONDAY NIGHT,** 18 Lions and Lionesses enjoyed Valentine Banquet at Anton School Cafeteria with steak dinner, under direction Lion Boss Don Stone. Summer Snow Singing group from LCC College, Lubbock furnished the program. Miss Patrice Byrum, local girl was part of the group. Special guest was Domingo Ramirez, student in AHS and his guest Phicket Durongkaveroj from Bangkok, Thailand, exchange student in this country. Other guests were Mr. and Mrs. B. J. Foster, Mrs. Ruth Gary, Mrs. Mary Emma Grace, and Mr. and Mrs. Swan Pettit from Hale Center.

**MISS FRANCES** Collins, Mr. and Mrs. John Waters, Eva Waters and Miss Johnna Dean Waters attended the installation of the order of the Rainbow for girls, in Littlefield, Saturday evening Feb. 9. Johnna Dean Waters was installed as Worthy Advisor. All girls wore long formal dresses.

**ANTON CHAPTER 936** OES



CUT DOWN  
HIGH PRICES  
BY....

# SAVING at FURR'S

PRICES IN THIS AD EFFECTIVE THRU FEB. 20, 1974

## APPLES

WASHINGTON STATE RED **28¢**  
OR GOLDEN DELICIOUS, LB

## LEMONS

ARIZONA **29¢**  
FANCY, LB

**23¢**  
PURPLE TOP, LB

**5 FOR \$1**  
FANCY CALIF. NAVEL, LB

**4 FOR \$1**  
LB

**12 1/2¢**  
CENTRAL AMERICAN, GOLDEN RIPE, LB



**BONELESS CUTLETS**  
Furr's Protén Steak, Lb **\$1.69**  
Adv. Special

**RANCH STYLE STEAK**  
Broil Or Grill Furr's Protén Lb **\$1.29**  
Adv. Special

**FARM PAC FRANKS**  
12 Oz Pkg **79¢**

**SMOKED SAUSAGE**  
Echrich Lb **\$1.79**

## ROUND SIRLOIN

FURR'S PROTÉN STEAK, LB Advertiser Special **\$1.29**

## T-BONE CLUB STEAK

FURR'S PROTÉN STEAK, LB Advertiser Special **\$1.29**

## RIB STEAK

FURR'S PROTÉN STEAK, LB Advertiser Special **\$1.59**

## CHUCK STEAK

FURR'S PROTÉN, LB Advertiser Special **\$1.49**

## STEW MEAT

FURR'S PROTÉN, LB Advertiser Special **\$1.29**

## RUMP ROAST

FURR'S PROTÉN, LB Advertiser Special **\$1.09**

## STEW MEAT

EXTRA LEAN, LB Advertiser Special **\$1.29**

## RUMP ROAST

FURR'S PROTÉN, LB Advertiser Special **\$1.19**

WE RESERVE THE RIGHT TO LIMIT QUANTITIES.

## LAUNDRY DETERGENT

TOPCO WHITE OR BLUE, GIANT PKG **69¢**

## LAUNDRY BAGS

GLAD CLEAN-UP, 10 COUNT PACKAGE **59¢**

## DOG FOOD

DOG CLUB, ASSORTED FLAVORS, CAN **15¢**

## ORANGE DRINK

BODEN'S 64 OZ **49¢**

## WAX POLISH

FURNITURE POLISH, 12 OZ **\$1.09**

## WAX POLISH

KRAFT, 1000 ISLAND, 16 OZ BOTTLE **59¢**

## WAX POLISH

WOLF, NO. 2 CAN **89¢**

## WAX POLISH

46 OZ CANS **39¢**

## WAX POLISH

FOOD CLUB IN HEAVY SYRUP, NO. 2 1/2 CAN **55¢**

DUE TO THE CRITICAL PAPER SHORTAGE..... Furr's is unable to acquire enough shopping bags to meet our customer's needs. You can help us solve this problem by bringing your bags back so that we may reuse these bags for your purchase. Your help will be appreciated by Furr's Super Markets.

**DOUBLE GOLD BOND**  
TUESDAYS AND WEDNESDAYS

ART LINKLETTER'S MONEY-SAVING SUGGESTION!  
**TOPAZ STONWARE**  
Regular Price 79¢  
**49¢** each  
THIS WEEK SOUP/CEREAL BOWL  
Safe in oven and dishwasher...and so smart!  
NO PURCHASE NECESSARY

### Frozen Food Favorites

**CHERRY PIES** Johnston 38 Oz **\$1.29**

**CORN BEANS** Gaylord Whole Kernel, 24 Oz Package **49¢**

**SARA LEE CAKES** Top Frost Cut Green, 20 Oz Pkg **59¢**

**JOHNSTON PIE SHELLS** Regular 9 In, 2 Pc Pkg **49¢**

**TUNA** Chicken Of The Sea, Solid White, 1/2 Can **75¢**

**COOKIES** Sunshine Hydrox, 15 Oz Pkg **56¢**

**GARLIC SALT** Schilling **37¢**

VALUABLE COUPON  
THIS COUPON ENTITLES YOU TO  
**MAXWELL HOUSE COFFEE**  
2 LB CAN WITH COUPON..... **\$1.96**  
WITHOUT COUPON. **\$2.31**  
EXPIRES 2-20-74  
LIMIT ONE COUPON PER FAMILY

**GLORY SPRAY** 24 Oz **\$1.66**  
**DYNAMO** Laundry Detergent 28 Oz **97¢** 48 Oz **\$1.61**  
**CLOROX BLEACH** 1/2 Gallon Size **43¢**

**VACUUM BOTTLE**  
ALLADIN SIZE **\$1.59**

**COOKIE SHEET**  
TOPCREST, HEAVY ALUMINUM, BIG 15"x12" SIZE NATURAL FINISH EACH **69¢**

**PYREX PIE PLATES**  
9 1/2", REG. 89¢ EACH..... **79¢**  
EXTRA DEEP, LARGE 10 1/2" PIE PLATES REG. \$1.09..... **89¢**

**TOOTH PASTE**  
5 OZ TUBE **67¢**

**HAIR DRESSING**  
HAIR TONIC **64¢**

**AFTER SHAVE SHAVE CREAM**  
Hai Karate, 4 Oz **\$1.31**  
Colgate Instant Shave, 11 Oz **39¢**  
**TOPCO SWABS** 90's **37¢**

**KITCHEN TOWELS**  
EXCELLO, EXTRA LARGE VELVETY SOFT ALL COTTON ASS'T PATTERNS GINGHAM, EA. **69¢**

**LIBBY STACK-N-STORE CANISTER JARS**  
17 3/4 OZ SIZE REG. \$1.09..... **69¢**  
34 1/2 OZ SIZE REG. \$1.29..... **79¢**  
42 1/2 OZ SIZE REG. \$1.49..... **89¢**

**TapeTab DISPOSABLE DIAPERS CURITY**  
DAYTIME 30 COUNT **\$1.69**

**Sue Free' HAND LOTION**  
HONEY & ALMOND **27¢**

**ANACIN**  
FAST PAIN RELIEF  
100 COUNT SIZE **\$1.09**

SHOP Furr's DISCOUNT PRICES!

February 17-23, 1974

| Ch. 11 KCBD             | Ch. 13 KLBK             | Ch. 28 KSEL         |
|-------------------------|-------------------------|---------------------|
| 6:50 Sacred Heart       | 7:00 * This is the Life | 8:00 * Encounter    |
| 7:00 * Asa the Molester | 7:30 * * * * *          | 8:30 * Revival Fire |
| 7:30 * * * * *          | 8:00 * * * * *          | 9:00 * * * * *      |
| 8:00 * * * * *          | 8:30 * * * * *          | 9:30 * * * * *      |
| 8:30 * * * * *          | 9:00 * * * * *          | 10:00 * * * * *     |
| 9:00 * * * * *          | 9:30 * * * * *          | 10:30 * * * * *     |
| 9:30 * * * * *          | 10:00 * * * * *         | 11:00 * * * * *     |
| 10:00 * * * * *         | 10:30 * * * * *         | 11:30 * * * * *     |
| 10:30 * * * * *         | 11:00 * * * * *         | 12:00 * * * * *     |
| 11:00 * * * * *         | 11:30 * * * * *         | 12:30 * * * * *     |
| 11:30 * * * * *         | 12:00 * * * * *         | 1:00 * * * * *      |
| 12:00 * * * * *         | 12:30 * * * * *         | 1:30 * * * * *      |
| 12:30 * * * * *         | 1:00 * * * * *          | 2:00 * * * * *      |
| 1:00 * * * * *          | 1:30 * * * * *          | 2:30 * * * * *      |
| 1:30 * * * * *          | 2:00 * * * * *          | 3:00 * * * * *      |
| 1:45 * * * * *          | 2:30 * * * * *          | 3:30 * * * * *      |
| 2:00 * * * * *          | 3:00 * * * * *          | 4:00 * * * * *      |
| 2:15 * * * * *          | 3:30 * * * * *          | 4:30 * * * * *      |
| 2:30 * * * * *          | 4:00 * * * * *          | 5:00 * * * * *      |
| 2:45 * * * * *          | 4:30 * * * * *          | 5:30 * * * * *      |
| 3:00 * * * * *          | 5:00 * * * * *          | 6:00 * * * * *      |
| 3:15 * * * * *          | 5:30 * * * * *          | 6:30 * * * * *      |
| 3:30 * * * * *          | 6:00 * * * * *          | 7:00 * * * * *      |
| 3:45 * * * * *          | 6:30 * * * * *          | 7:30 * * * * *      |
| 4:00 * * * * *          | 7:00 * * * * *          | 8:00 * * * * *      |
| 4:15 * * * * *          | 7:30 * * * * *          | 8:30 * * * * *      |
| 4:30 * * * * *          | 8:00 * * * * *          | 9:00 * * * * *      |
| 4:45 * * * * *          | 8:30 * * * * *          | 9:30 * * * * *      |
| 5:00 * * * * *          | 9:00 * * * * *          | 10:00 * * * * *     |
| 5:15 * * * * *          | 9:30 * * * * *          | 10:30 * * * * *     |
| 5:30 * * * * *          | 10:00 * * * * *         | 11:00 * * * * *     |
| 5:45 * * * * *          | 10:30 * * * * *         | 11:30 * * * * *     |
| 6:00 * * * * *          | 11:00 * * * * *         | 12:00 * * * * *     |
| 6:15 * * * * *          | 11:30 * * * * *         | 12:30 * * * * *     |
| 6:30 * * * * *          | 12:00 * * * * *         | 1:00 * * * * *      |
| 6:45 * * * * *          | 12:30 * * * * *         | 1:30 * * * * *      |
| 7:00 * * * * *          | 1:00 * * * * *          | 2:00 * * * * *      |
| 7:15 * * * * *          | 1:30 * * * * *          | 2:30 * * * * *      |
| 7:30 * * * * *          | 2:00 * * * * *          | 3:00 * * * * *      |
| 7:45 * * * * *          | 2:30 * * * * *          | 3:30 * * * * *      |
| 8:00 * * * * *          | 3:00 * * * * *          | 4:00 * * * * *      |
| 8:15 * * * * *          | 3:30 * * * * *          | 4:30 * * * * *      |
| 8:30 * * * * *          | 4:00 * * * * *          | 5:00 * * * * *      |
| 8:45 * * * * *          | 4:30 * * * * *          | 5:30 * * * * *      |
| 9:00 * * * * *          | 5:00 * * * * *          | 6:00 * * * * *      |
| 9:15 * * * * *          | 5:30 * * * * *          | 6:30 * * * * *      |
| 9:30 * * * * *          | 6:00 * * * * *          | 7:00 * * * * *      |
| 9:45 * * * * *          | 6:30 * * * * *          | 7:30 * * * * *      |
| 10:00 * * * * *         | 7:00 * * * * *          | 8:00 * * * * *      |
| 10:15 * * * * *         | 7:30 * * * * *          | 8:30 * * * * *      |
| 10:30 * * * * *         | 8:00 * * * * *          | 9:00 * * * * *      |
| 10:45 * * * * *         | 8:30 * * * * *          | 9:30 * * * * *      |
| 11:00 * * * * *         | 9:00 * * * * *          | 10:00 * * * * *     |
| 11:15 * * * * *         | 9:30 * * * * *          | 10:30 * * * * *     |
| 11:30 * * * * *         | 10:00 * * * * *         | 11:00 * * * * *     |
| 11:45 * * * * *         | 10:30 * * * * *         | 11:30 * * * * *     |
| 12:00 * * * * *         | 11:00 * * * * *         | 12:00 * * * * *     |
| 12:15 * * * * *         | 11:30 * * * * *         | 12:30 * * * * *     |
| 12:30 * * * * *         | 12:00 * * * * *         | 1:00 * * * * *      |
| 12:45 * * * * *         | 12:30 * * * * *         | 1:30 * * * * *      |

| SATURDAY<br>Ch. 11 KCBD       | Ch. 13 KLBK     | Ch. 28 KSEL     |
|-------------------------------|-----------------|-----------------|
| 6:30 * News, Weather & Sports | 6:30 * * * * *  | 6:30 * * * * *  |
| 7:00 * * * * *                | 7:00 * * * * *  | 7:00 * * * * *  |
| 7:30 * * * * *                | 7:30 * * * * *  | 7:30 * * * * *  |
| 8:00 * * * * *                | 8:00 * * * * *  | 8:00 * * * * *  |
| 8:30 * * * * *                | 8:30 * * * * *  | 8:30 * * * * *  |
| 9:00 * * * * *                | 9:00 * * * * *  | 9:00 * * * * *  |
| 9:30 * * * * *                | 9:30 * * * * *  | 9:30 * * * * *  |
| 10:00 * * * * *               | 10:00 * * * * * | 10:00 * * * * * |
| 10:30 * * * * *               | 10:30 * * * * * | 10:30 * * * * * |
| 11:00 * * * * *               | 11:00 * * * * * | 11:00 * * * * * |
| 11:30 * * * * *               | 11:30 * * * * * | 11:30 * * * * * |
| 12:00 * * * * *               | 12:00 * * * * * | 12:00 * * * * * |
| 12:30 * * * * *               | 12:30 * * * * * | 12:30 * * * * * |
| 1:00 * * * * *                | 1:00 * * * * *  | 1:00 * * * * *  |
| 1:30 * * * * *                | 1:30 * * * * *  | 1:30 * * * * *  |
| 2:00 * * * * *                | 2:00 * * * * *  | 2:00 * * * * *  |
| 2:30 * * * * *                | 2:30 * * * * *  | 2:30 * * * * *  |
| 3:00 * * * * *                | 3:00 * * * * *  | 3:00 * * * * *  |
| 3:30 * * * * *                | 3:30 * * * * *  | 3:30 * * * * *  |
| 4:00 * * * * *                | 4:00 * * * * *  | 4:00 * * * * *  |
| 4:30 * * * * *                | 4:30 * * * * *  | 4:30 * * * * *  |
| 5:00 * * * * *                | 5:00 * * * * *  | 5:00 * * * * *  |
| 5:30 * * * * *                | 5:30 * * * * *  | 5:30 * * * * *  |
| 6:00 * * * * *                | 6:00 * * * * *  | 6:00 * * * * *  |
| 6:30 * * * * *                | 6:30 * * * * *  | 6:30 * * * * *  |
| 7:00 * * * * *                | 7:00 * * * * *  | 7:00 * * * * *  |
| 7:30 * * * * *                | 7:30 * * * * *  | 7:30 * * * * *  |
| 8:00 * * * * *                | 8:00 * * * * *  | 8:00 * * * * *  |
| 8:30 * * * * *                | 8:30 * * * * *  | 8:30 * * * * *  |
| 9:00 * * * * *                | 9:00 * * * * *  | 9:00 * * * * *  |
| 9:30 * * * * *                | 9:30 * * * * *  | 9:30 * * * * *  |
| 10:00 * * * * *               | 10:00 * * * * * | 10:00 * * * * * |
| 10:30 * * * * *               | 10:30 * * * * * | 10:30 * * * * * |
| 11:00 * * * * *               | 11:00 * * * * * | 11:00 * * * * * |
| 11:30 * * * * *               | 11:30 * * * * * | 11:30 * * * * * |
| 12:00 * * * * *               | 12:00 * * * * * | 12:00 * * * * * |
| 12:30 * * * * *               | 12:30 * * * * * | 12:30 * * * * * |

# Hospitality House News

By MRS. JONNIE CHAPMAN

MRS. JANE TAPLEY and little daughter were visiting with their grandmother, Mrs. Effie Tapley Friday.

LUCILE HARGROVE visited with Mrs. Mary Wright Friday.

MR. AND MRS. George Bagwell of Dimmitt were visiting their aunt, Mrs. Madge Roberts.

MR. AND MRS. Bill Street visited with Mrs. Effie Massey last Saturday.

FRED SMITH from Olton was visiting his mother, Mrs. Millie Smith, Saturday.

MRS. D. C. Lindly and Mrs. J. R. Coen were visiting Mrs. L. L. Massengill Saturday.

MR. AND MRS. Neal Conkin of Anton came Monday and brought Valentine boxes of candy for the home employees.

MRS. JEWEL FOUST went with her daughter, Mrs. Dorothy McKinnon, and daughter-in-law Mrs. Jimmy Foust of Salter, S. C. to Lubbock last Tuesday.

BILL WHITTEN of Breckenridge visited his aunt, Mrs. Maggie Chandler Tuesday.

THE LADIES from Spade Church of Christ came Monday for their regular monthly visit to sing and serve refreshments.

MR. AND MRS. Paul Albus and Mrs. Leonard Albus of Pep were visiting their mother, Mrs. Victoria Albus Monday.

MR. AND MRS. Glen Young visited her mother Tuesday. They also brought another big box of turnips. Many thanks.

CHURCH SERVICES were conducted Sunday afternoon by Ron Williams, minister at the Missionary Baptist Church. Miss Belinda Bailey sang a solo with Jan Martindale at the piano. These services are enjoyed

## Mrs. Rogers Make Political Statement



I have long been a resident of Lamb County, Texas, here with my parents, Mrs. O. B. Graham, in the restaurant business in the restaurant in Littlefield and many years.

I worked as office and bookkeeper for the Union Commission in Littlefield.

Following the death of my husband, Hill Rogers, I operated the Hill Furniture Store and close out last June.

I will appreciate your confidence and me as County Treasurer of the office to the very my ability.

**FANNIE B. ROGERS**  
Candidate  
for County Treasurer

| Ch. 11 KCBD             | Ch. 13 KLBK     | Ch. 28 KSEL     |
|-------------------------|-----------------|-----------------|
| 6:50 * News and Weather | 6:50 * * * * *  | 6:50 * * * * *  |
| 7:00 * * * * *          | 7:00 * * * * *  | 7:00 * * * * *  |
| 7:30 * * * * *          | 7:30 * * * * *  | 7:30 * * * * *  |
| 8:00 * * * * *          | 8:00 * * * * *  | 8:00 * * * * *  |
| 8:30 * * * * *          | 8:30 * * * * *  | 8:30 * * * * *  |
| 9:00 * * * * *          | 9:00 * * * * *  | 9:00 * * * * *  |
| 9:30 * * * * *          | 9:30 * * * * *  | 9:30 * * * * *  |
| 10:00 * * * * *         | 10:00 * * * * * | 10:00 * * * * * |
| 10:30 * * * * *         | 10:30 * * * * * | 10:30 * * * * * |
| 11:00 * * * * *         | 11:00 * * * * * | 11:00 * * * * * |
| 11:30 * * * * *         | 11:30 * * * * * | 11:30 * * * * * |
| 12:00 * * * * *         | 12:00 * * * * * | 12:00 * * * * * |
| 12:30 * * * * *         | 12:30 * * * * * | 12:30 * * * * * |
| 1:00 * * * * *          | 1:00 * * * * *  | 1:00 * * * * *  |
| 1:30 * * * * *          | 1:30 * * * * *  | 1:30 * * * * *  |
| 2:00 * * * * *          | 2:00 * * * * *  | 2:00 * * * * *  |
| 2:30 * * * * *          | 2:30 * * * * *  | 2:30 * * * * *  |
| 3:00 * * * * *          | 3:00 * * * * *  | 3:00 * * * * *  |
| 3:30 * * * * *          | 3:30 * * * * *  | 3:30 * * * * *  |
| 4:00 * * * * *          | 4:00 * * * * *  | 4:00 * * * * *  |
| 4:30 * * * * *          | 4:30 * * * * *  | 4:30 * * * * *  |
| 5:00 * * * * *          | 5:00 * * * * *  | 5:00 * * * * *  |
| 5:30 * * * * *          | 5:30 * * * * *  | 5:30 * * * * *  |
| 6:00 * * * * *          | 6:00 * * * * *  | 6:00 * * * * *  |

| Ch. 11 KCBD             | Ch. 13 KLBK     | Ch. 28 KSEL     |
|-------------------------|-----------------|-----------------|
| 6:50 * News and Weather | 6:50 * * * * *  | 6:50 * * * * *  |
| 7:00 * * * * *          | 7:00 * * * * *  | 7:00 * * * * *  |
| 7:30 * * * * *          | 7:30 * * * * *  | 7:30 * * * * *  |
| 8:00 * * * * *          | 8:00 * * * * *  | 8:00 * * * * *  |
| 8:30 * * * * *          | 8:30 * * * * *  | 8:30 * * * * *  |
| 9:00 * * * * *          | 9:00 * * * * *  | 9:00 * * * * *  |
| 9:30 * * * * *          | 9:30 * * * * *  | 9:30 * * * * *  |
| 10:00 * * * * *         | 10:00 * * * * * | 10:00 * * * * * |
| 10:30 * * * * *         | 10:30 * * * * * | 10:30 * * * * * |
| 11:00 * * * * *         | 11:00 * * * * * | 11:00 * * * * * |
| 11:30 * * * * *         | 11:30 * * * * * | 11:30 * * * * * |
| 12:00 * * * * *         | 12:00 * * * * * | 12:00 * * * * * |
| 12:30 * * * * *         | 12:30 * * * * * | 12:30 * * * * * |
| 1:00 * * * * *          | 1:00 * * * * *  | 1:00 * * * * *  |
| 1:30 * * * * *          | 1:30 * * * * *  | 1:30 * * * * *  |
| 2:00 * * * * *          | 2:00 * * * * *  | 2:00 * * * * *  |
| 2:30 * * * * *          | 2:30 * * * * *  | 2:30 * * * * *  |
| 3:00 * * * * *          | 3:00 * * * * *  | 3:00 * * * * *  |
| 3:30 * * * * *          | 3:30 * * * * *  | 3:30 * * * * *  |
| 4:00 * * * * *          | 4:00 * * * * *  | 4:00 * * * * *  |
| 4:30 * * * * *          | 4:30 * * * * *  | 4:30 * * * * *  |
| 5:00 * * * * *          | 5:00 * * * * *  | 5:00 * * * * *  |
| 5:30 * * * * *          | 5:30 * * * * *  | 5:30 * * * * *  |
| 6:00 * * * * *          | 6:00 * * * * *  | 6:00 * * * * *  |

## MOTOROLA Value Time '74

USA

THE TV VALUE EVENT YOU'VE WAITED FOR!

See our superb selection of Motorola Color and Black & White TV—at VALUE TIME prices!

**23" Quasar II**  
WORKS IN A DRAWER®

**CREDENZA COLOR TV**

• Insta-Matic Color Tuning • Plug-in Circuit Modules • Matrix Bright Picture Tube • Solid state chassis (except 4 tubes)

**\$529.95**



Model WUB008PK Mediterranean style Credenza TV Reception Simulated

**PAT'S** 385-4664  
515 Phelps Ave.

## Amherst

MRS. HAZEL DAVIS has purchased the Bill Floyd place on Wood Street and moved this week.

LaVERNE Lance is moving into the Crosby apartment this week, vacated by Mrs. Hazel Davis.

MRS. A. F. Copeland and Mrs. Virginia Turner spent three days this week in Anton. The Jim Copelands were on a trip abroad and they were there with Kurt who is in school part of the time.

MR. AND MRS. J. E. Berry and son Dale of Canyon spent Sunday with his parents, Mr. and Mrs. Alex Berry and other relatives.

MR. AND MRS. Roy Hicks of Smartsville, Calif. visited his sister, Mrs. Annie Nuttall last week.

MRS. BOB ARMSTEAD is spending the week with her parents, Mr. and Mrs. Dean Carpenter.

MR. AND MRS. Sedell Black and son Connie, and Mr. and Mrs. Roy Black of Spade are in Tyler on business.

FORMER FFA MEMBERS It is estimated that there are more than 4 million former FFA members.

## Patt's Jewelry CLEARANCE

More watches added to these groups

|   |   |
|---|---|
| 50 Ladies and Mens WATCHES<br>Elgin calendars, all major brands day and date<br>VALUES \$50. TO \$69.98<br><b>\$27.88</b> | MEN'S DIAMOND CARAT CLUSTER RING<br><b>\$388.</b>   |
| 25 Ladies and Mens WATCHES<br>\$15.95 TO \$22.95<br><b>\$11.88</b>  | LADIES 1 1/2 CARAT DIAMOND DINNER RING<br>\$950.00 <b>\$788.</b>  |
| 25 Ladies and Mens WATCHES<br>\$70.00 TO \$125.00<br><b>\$39.88</b>   | ALL TURQUOISE RINGS<br><b>25% OFF</b>   |
| 25 Ladies and Mens WATCHES<br>\$23.00 TO \$32.00<br><b>\$16.88</b>  | DIAMOND PENDANTS<br>GOLDPENDANTS<br>STONE SET 14K PENDANTS<br>MEN'S WEDDING BANDS<br><b>25% OFF</b><br>MARKED PRICE |
| 25 Ladies and Mens WATCHES<br>\$33.00 TO \$50.00<br><b>\$24.88</b>  |   |

ASSORTED GIFT ITEMS New Items Added Values to \$5.95 **99¢**

ASSORTED GIFT ITEMS New Items Added Values to \$6.95 **1.99**

ASSORTED GIFT ITEMS New Items Added Values to \$9.95 **2.99**

| Ch. 11 KCBD     | Ch. 13 KLBK     | Ch. 28 KSEL     |
|-----------------|-----------------|-----------------|
| 6:50 * * * * *  | 6:50 * * * * *  | 6:50 * * * * *  |
| 7:00 * * * * *  | 7:00 * * * * *  | 7:00 * * * * *  |
| 7:30 * * * * *  | 7:30 * * * * *  | 7:30 * * * * *  |
| 8:00 * * * * *  | 8:00 * * * * *  | 8:00 * * * * *  |
| 8:30 * * * * *  | 8:30 * * * * *  | 8:30 * * * * *  |
| 9:00 * * * * *  | 9:00 * * * * *  | 9:00 * * * * *  |
| 9:30 * * * * *  | 9:30 * * * * *  | 9:30 * * * * *  |
| 10:00 * * * * * | 10:00 * * * * * | 10:00 * * * * * |
| 10:30 * * * * * | 10:30 * * * * * | 10:30 * * * * * |
| 11:00 * * * * * | 11:00 * * * * * | 11:00 * * * * * |
| 11:30 * * * * * | 11:30 * * * * * | 11:30 * * * * * |
| 12:00 * * * * * | 12:00 * * * * * | 12:00 * * * * * |
| 12:30 * * * * * | 12:30 * * * * * | 12:30 * * * * * |
| 1:00 * * * * *  | 1:00 * * * * *  | 1:00 * * * * *  |
| 1:30 * * * * *  | 1:30 * * * * *  | 1:30 * * * * *  |
| 2:00 * * * * *  | 2:00 * * * * *  | 2:00 * * * * *  |
| 2:30 * * * * *  | 2:30 * * * * *  | 2:30 * * * * *  |
| 3:00 * * * * *  | 3:00 * * * * *  | 3:00 * * * * *  |
| 3:30 * * * * *  | 3:30 * * * * *  | 3:30 * * * * *  |
| 4:00 * * * * *  | 4:00 * * * * *  | 4:00 * * * * *  |
| 4:30 * * * * *  | 4:30 * * * * *  | 4:30 * * * * *  |
| 5:00 * * * * *  | 5:00 * * * * *  | 5:00 * * * * *  |
| 5:30 * * * * *  | 5:30 * * * * *  | 5:30 * * * * *  |
| 6:00 * * * * *  | 6:00 * * * * *  | 6:00 * * * * *  |

## Henry Block has 17 reasons why you should come to us for income tax help.

Reason 1. We are income tax specialists. We ask the right questions. We dig for every honest deduction. We want to leave no stone unturned to make sure you pay the smallest legitimate tax.

**HENRY BLOCK**  
THE INCOME TAX PEOPLE  
519 Phelps 385-5520  
Weekdays 9-6 Sat. 9-5  
Come In Soon

**We Sell Service Install Finance And Guarantee ELECTRIC WATER HEATERS**

Modern Electric Water Heating  
Phone 385-5144

## Steam and Dry Iron

Delivered within 25 miles free.

**Floor Clocks**  
Grandmother **\$339.88**  
Clock reg. \$449.00  
Grandmother **\$379.88**  
Clock reg. \$559.00  
Grandfather **\$749.88**  
Clock reg. \$995.00  
ALL MANTEL CLOCKS  
20% Off

**ELECTRIC CLOCKS**  
Regularly \$29.95 **19.88**

**Lighted Make-up Mirror**

**Sunbeam Iron** Spray Steam and Dry  
**BRILLIANT**  
Small, Foldable, Reg. \$2.50 with rollers

**WALL CLOCKS**  
UP TO 60% OFF  
Wall Strike Clock

**Stainless Steel**  
50 piece set REGULAR \$100. SALES **42.88**  
50 piece set \$69.95 SALES **29.88**  
36 piece set \$45.00 SALES **18.88**  
55 piece set \$22.95 SALES **15.88**

**Sunbeam Mixers**  
Regular \$24.95 **24.88**  
Regular \$60.99 **69.88**  
Regular \$63.99 **49.88**

**Toasters** Decorator colors, Faberware & Hitachi **\$9.88**  
These styles to choose from, values to \$2.95

**Musical Carousel** **\$3.88**  
Men's and ladies Regular \$4.00

**Billfolds** Five cup, decorator colors **\$2.49**

**Electric Percolator** 1.99  
Travel Alarm by Westcott

**Travel Clocks** **\$3.88**

**Crystal Cups** Fused, \$3.00 value **49¢**  
Olds n' Ends

**Pottery Pieces** 60% OFF

**Pearls** Delish Simulated values to 9.95 **\$2.88**

**Stainless Steel Set** 78 Piece Flatware and Serving Pieces **\$29.88**



# LITTLEFIELD NEWS

RHODA PRICE 385-4957



Singer has returned home from a visit with her mother and Mrs. Louis and family at Amarillo. While there she practiced her left hand returning to her apartment in Levelland. Mr. and Mrs. Glass. Mrs. Avery Hunt visited Mrs. E. Carter Tuesday. They visited Amarillo. Carter plans to play basketball Monday. College basketball manager at Amarillo. Mr. and Mrs. Ben Lyman are having as their weekend guests, their son, Dr. Ben Lyman Jr., and wife of Lubbock. MRS. FRANK ANZELINE and Mrs. Allen Hodges are in Dallas this weekend attending the Spring Gift Show. Mrs. Anzeline and her husband are owners and managers of Littlefield Glass Works and Mrs. Hodges owns A&B Office Supply. MR. AND MRS. C.B. Jaquess are in Wichita Falls where they were called last week due to the serious illness of her mother, Mrs. Orville Hanks, who suffered a stroke and is in Wichita General Hospital there. MRS. GENE WILLIAMS and Mrs. Gaston Shaw are expected to return home Monday. Mrs. Williams is visiting her daughter, Miss Beth Williams, student at Bauder Fashion School at Arlington, and Mrs. Shaw is a guest in the home of her son, Mr. and Mrs. James Shaw at Plano. MRS. A.J. Kennemer returned home Wednesday from Redondo Beach, Calif., where she was called several days ago, due to the serious illness of her mother, Mrs. P. Boyd Smith. MRS. WILLIE Florence is expected to be released this weekend from Methodist Hospital at Lubbock, where she underwent minor surgery last week. MRS. HILDA TRIMMIER and son David of Hale Center spent Friday night and Saturday with her parents, Mr. and Mrs. Delton Jones. MR. AND MRS. Ellis Foreman of Lubbock spent last weekend with her mother, Mrs. E.J. Newgent. MR. AND MRS. Roy Thurman have been removed from Methodist Hospital, Lubbock to Littlefield Hospital. Mrs. Thurman's condition remains critical.

"DON'T GROW OLD, Grow Up", by Mrs. Dale Carnegie was reviewed by Bob Wear, retired Crescent Park Church of Christ minister, at the regular monthly book review and business meeting held at the local Library Tuesday afternoon. Mrs. Archie Brown, member of the Library Board introduced the speaker. Approximately 30 were in attendance. Coffee and doughnuts were served by the hostesses. MR. AND MRS. Jerry Lowe and children, Lisa, Tom, Tim and Todd of Edmond, Okla., are spending the weekend with his mother, Mrs. E.M. Lowe and brothers, Roger Lowe and family and Steve Lowe and wife. MR. AND MRS. Ben Lyman are having as their weekend guests, their son, Dr. Ben Lyman Jr., and wife of Lubbock. MRS. FRANK ANZELINE and Mrs. Allen Hodges are in Dallas this weekend attending the Spring Gift Show. Mrs. Anzeline and her husband are owners and managers of Littlefield Glass Works and Mrs. Hodges owns A&B Office Supply. MR. AND MRS. C.B. Jaquess are in Wichita Falls where they were called last week due to the serious illness of her mother, Mrs. Orville Hanks, who suffered a stroke and is in Wichita General Hospital there. MRS. GENE WILLIAMS and Mrs. Gaston Shaw are expected to return home Monday. Mrs. Williams is visiting her daughter, Miss Beth Williams, student at Bauder Fashion School at Arlington, and Mrs. Shaw is a guest in the home of her son, Mr. and Mrs. James Shaw at Plano. MRS. A.J. Kennemer returned home Wednesday from Redondo Beach, Calif., where she was called several days ago, due to the serious illness of her mother, Mrs. P. Boyd Smith. MRS. WILLIE Florence is expected to be released this weekend from Methodist Hospital at Lubbock, where she underwent minor surgery last week. MRS. HILDA TRIMMIER and son David of Hale Center spent Friday night and Saturday with her parents, Mr. and Mrs. Delton Jones. MR. AND MRS. Ellis Foreman of Lubbock spent last weekend with her mother, Mrs. E.J. Newgent. MR. AND MRS. Roy Thurman have been removed from Methodist Hospital, Lubbock to Littlefield Hospital. Mrs. Thurman's condition remains critical.

while Thurman is improving. Their three daughters, Mrs. E.R. Gray, Bartlesville, Okla., Mrs. John Abdalla, Albuquerque, N.M., and Mrs. Ves Brock of Pasco, Calif. are all here. GUESTS in the home of Mr.

and Mrs. L.A. Pressley last Saturday included Mr. and Mrs. David E. Dailey and Mrs. Kay Yeager of Clovis, N.M. and Mrs. Willie Rossen of Sudan. FUNERAL SERVICES for Howell Tatum, 50, of Tulsa, Okla., brother of Forbes Tatum, was held Feb. 9th at Flora, Ill. He died Feb. 6 in a Tulsa hospital following a brief illness. He had been a resident of Tulsa three years and was formerly of Flora. He was associated in business with Dowell Well Inc. Besides his brother he is survived by his wife and five children.

## 'Sound Water Plan' Needed To Expand State's Economy

"All programs involving the expansion of the state's economy depend entirely on a sound water plan," Texas Agriculture Commissioner John C. White said in Lubbock Saturday, Feb. 16, at the annual meeting of Water, Inc. "Without a firm plan to expand water resources for Texas, there simply will be no expansion of our economy. We talk at length about the

critical energy shortage we face in the state and the nation, but the real crisis in Texas as far as the expansion of our economy is in water. Until answers are found to getting more water for Texas, we can expect no action whatever in all other areas of development programs for this state," Commissioner White said. He said that water is needed

not only to expand agriculture production, but also industry must be assured of getting the water it will need in future development. Water is extremely important on the High Plains. Since most of the sections in the region are relatively dry, irrigation wells are essential in crop production. "Agriculture producers are required to go all-out in

production of food and fiber this year. Judging from recent planting indications, producers are responding to this plea by planning to increase crop acres. "Getting the fuel to the farmers for irrigation pumps is going to be at best a trying experience. Farmers must have the fuel they will need when they will need it. This is one of my major concerns right now regarding the outlook for expanded production," he said. Although agriculture does have a fuel priority this year, White said, "We must see to it that this priority is more than just a word.

# WASHINGTON'S BIRTHDAY SALE



- SPARE RIBS FRESH PORK LB. **89¢**
- LITTLE SIZZLER SAUSAGE HORMEL 12 OZ. **79¢**
- DRY SALT JOWELS THE NATIONS FINEST LB. **59¢**
- FISH STICKS BOOTH'S COOKED LB. **69¢**
- PIG FEET FRESH LB. **49¢**

**PRODUCE**

- BANANAS LB. **99¢**
- CARROTS CELLO PKG. **99¢**
- CABBAGE LB. **99¢**
- RADISHES FRESH BUNCH **99¢**

**FROZEN FOOD**

- T.V. DINNERS MORTON 11 OZ. (FISH CHIPS, MEAT LOAF, SALISBURY STEAK, TURKEY) EACH **49¢**
- SHRIMP SHURFINE BREADED FANTAIL 10 OZ. **89¢**

**Grocery Items**

- DINNER NAPKINS SOFLIN 200 COUNT **39¢**
- TOMATO JUICE SNAPY-E-TOM QT. **59¢**
- BROWN-N-SERVE ROLLS TENDER CRUST PACKAGE **29¢**



**BLEACH**

CLOROX 1/2 GAL. **39¢**

CONVENIENT LOCATIONS 322 E. DELANO AND 601 E. 10th

**Dairy Products**

- EGGS GRADE "A" MED. **69¢**
- BUTTERMILK CLOVERLAKE 1/2 GAL. **69¢**
- ICE CREAM 1/2 GAL. SHURFINE (LIMIT ONE) (THEREAFTER 79¢ ALL FLAVORS) **69¢**



**PEPSI COLA**

32 OZ. **19¢**

(PLUS DEPOSIT AND TAX)



**Pay-n-Save**

QUALITY AND SERVICE

PLUS S & H GREEN STAMPS!

DOUBLE STAMPS TUESDAYS & WEDNESDAYS WITH \$2.50 OR MORE PURCHASE (EXCLUDING CIGARETTES)

WE RESERVE THE RIGHT TO LIMIT QUANTITIES

WE SELL TRAVELERS EXPRESS MONEY ORDERS, PAYROLL CHECKS CASHED

**Pep Students To Visit Austin**

Miss Anne Hatla, granddaughter of Mr. and Mrs. V. E. Glumpler and Miss Brenda Kuhler, daughter of Mrs. Frances Kuhler are among several Hockley County high school students who will spend a week in Austin this spring. They will be working on Rep. E. L. Short's staff in conjunction with the Constitutional Convention. They will serve as regular employees on Short's staff for the week of Feb. 25-29. Their duties will include research and investigation of areas on constitutional law.

**8,000 CHAPTERS**  
The Littlefield chapter is one of 8,000 local FFA chapters in the United States.

**Income tax**

turns prepared as little as \$5

accurate, complete, confidential... by trained consultants. Call, come by now the year round tax service!

social house

**TAX MASTERS** INTERSTATE SECURITIES COMPANY

425 N. Pripps Littlefield 385-5188  
3703 Ave. Q Lubbock 765-6311

SPECIALS GOOD FEB. 18 THRU FEB. 23

# Hospital Report

## MEDICAL ARTS CLINIC-HOSPITAL

FEBRUARY 9  
ADMITTED: Gladys Espinosa, Daniel Hinckley, Donald Bailey

DISMISSED: Minnie Anderson and infant, Sue Crowder, Edward Williams, Consuelo Rendon, Andrea Montalvo, Vangie Rangel, Sammy Rangel, Randy Rangel, Shirley Serratt, Lola Jones, Mary Hagler

FEBRUARY 10  
ADMITTED: Dionicia Rosales, Jack McLeod, Lela Exum

DISMISSED: Dionicia Rosales, Donna Jacobs

FEBRUARY 11  
ADMITTED: Herbert Hinckley, Charlene James, James Smith, Christi Penn, Debbie Driggs

DISMISSED: Juan Ybarra, Betty Ann Dancer, Gayla Jody Daniel, Marie McCool, Debbie Driggs

FEBRUARY 12  
ADMITTED: Ralph Bidgood, Vangie Rangel, Catarino Vela

DISMISSED: Docia Phillips, Mable Jordan, Jill Hinckley, Leona Walker, J. L. Broashear, Donald Bailey

FEBRUARY 13  
ADMITTED: Alex Krausher, R. L. Heard, Helidoro Espinosa, Iva Canada

DISMISSED: Dr. Herbert Hinckley, Becky Dunn, Debbie Daniel, John Gordon, Charlene James, Nora Renfro

FEBRUARY 14  
ADMITTED: Mable Jordan, Patricia Medrano, Cari Tollett, Robert Chronister

DISMISSED: Alex Krausher, Linda Joe Arter, Betty Jo Arter, Jimmy Smith, Rosa Aguirre

## LITTLEFIELD HOSPITAL AND CLINIC

FEBRUARY 8  
ADMITTED: Kyle Swanson, Jaye Linn Price, Kenny Pratt

DISMISSED: Mrs. Lillie

Harris, Kevin Moore, Mrs. Anna Bryce, Mrs. Willie Young, Mrs. Mattie Dunn, Mrs. Jewel Durham

FEBRUARY 9  
ADMITTED: Robert Gover, Mrs. Beatrice Conn, Mrs. Ella Short, Mrs. Edity Thurman, Roy Thurman

DISMISSED: Kyle Swanson, Jaye Linn Price, Alice Fields, Jimmie Armstrong

FEBRUARY 10  
ADMITTED: Juan Ortiz Jr., Mrs. Azlette Roberts, Mrs. Petra Enriquez, Mrs. Kay Anderson, Mrs. Janice Aaron, Manuel Montalvo

FEBRUARY 11  
ADMITTED: Mrs. Olive Cox, Mrs. Francis Watson, Rudy De La Fuente, Mrs. Ella R. Jackson, Leonard Black, Leandro Pesqueda, Bob Ed Grissom, Traci Dawn Kelton, Mrs. Mary Houchin, Mrs. Lorraine Jones, D'Ann Greer

DISMISSED: Mrs. Hulda Henson, Renee Stephens

FEBRUARY 12  
ADMITTED: Cruz Sierra

DISMISSED: Mrs. Francis Watson, Miss Barbara Colbert, Robert Gover, Mrs. Shirley Murrell, Mrs. Mattie Handley

FEBRUARY 13  
ADMITTED: Richard Houk, Daniel Lara, Mrs. Judy Downs, Mrs. Nannie Ray, Mrs. Vollena Metcalf, Miss Rene Jones, Mrs. Bertha Walden, Mrs. Dottie Lichte, Risa Stone, Debbie Paxton, Pat Minyard

DISMISSED: Tracy Kelton, Mrs. Kay Anderson and infant, D'Ann Greer, Mrs. Ella Short, Mrs. Edith Denny, Earl Chester, Mrs. Cathy Reed, Pat Minyard

FEBRUARY 14  
ADMITTED: Mrs. Rhonda Kelton, Mrs. Bonnie Williams, Cheryl Holmes, Mrs. Lola Sloan, Mrs. Inez Brown, Armando Carranza

DISMISSED: Juan Ortiz Jr., Cruz Sierra, Bob Ed Grissom, Mrs. Petra Enriquez, Manuel Montalvo, Mrs. Janice Aaron, Debbie Paxton



FEATURING DEL MONTE FOODS

PINEAPPLE-GRAPEFRUIT JUICE

DEL MONTE, 46 OZ

PRUNE JUICE

DEL MONTE, 40 OZ

PUMPKIN CORN PICKLES

DEL MONTE, 16 OZ

DEL MONTE, CS OR WK, 12 OZ CAN

DEL MONTE, DILL, 22 OZ

59¢ PINEAPPLE JUICE

DEL MONTE, 46 OZ

4/\$1 CUT GREEN BEANS

DEL MONTE, 16 OZ CAN

4/\$1 CATSUP

DEL MONTE, 14 OZ

39¢ TUNA

**BACON CHILI HAMS**

SAVORY, 1 LB PACKAGE

BRICK, LONGHORN, 1 LB

SAVORY, BONELESS, LB

**89¢ PIZZA**

PEPPERONI...\$1.19 VALUE.....

CHEESE.....99¢ VALUE.....

**89¢ SAUSAGE**

HORMEL, LB

**\$1.39 Steak Fingers**

Breaded, Lb

WE GIVE GUNN BROS. STAMPS-DOUBLE ON TUESDAY & WEDNESDAY  
IT TAKES ONLY 1200 GUNN BROS. STAMPS TO FILL A BOOK.

WE RESERVE THE RIGHT TO LIMIT QUANTITIES

**BROWN & SERVE ROLLS** SUPER VALUE 3/99¢

**DONUTS**

GLAZED, DOZEN

95¢

**BLACK PEPPER EGGS**

SCHILLING, 4 OZ

49¢

**TAMALES**

GRADE A MEDIUM, DOZEN

69¢

**BROWNIE MIX**

GEBHARDTS, REG. 37¢, 30 OZ

59¢

**SHORTENING AXION**

JEWEL PRE-CREAMED

68¢

**CASCADE COCA COLA**

LAUNDRY PRE-SOAK, 25 OZ

\$1.19

**ICE TEA MIX**

DISHWASHING DETERGENT, 50 OZ

59¢

**INSTANT TEA**

32 OZ, 6 BOTTLE CARTON

88¢

**DREAM WHIP**

LEMON FLAVOR, LIPTON'S, 24 OZ

\$1.39

**YO-YO**

WHITE SWAN, 3 OZ

99¢

**KOTEX**

4 OZ BOX

88¢

**PANTY HOSE**

Gold Award By Duncan, Each

49¢

**YARN**

Red Hearts "Wintuk" 12 Colors, Ea

39¢

**KOTEX**

Sanitary Napkins, Super, 40 Count

\$1

**PANTY HOSE**

Lady Star Knee Hi's

99¢

**Super Stretch**

Micro Mesh

\$1.59

**Micro Mesh**

59¢

39¢

**PORK & BEANS**

WHITE SWAN, 15 OZ

**TOMATO SOUP**

CAMPBELL'S, 10 3/4 OZ

**HI-C DRINK**

ORANGE OR GRAPE, 46 OZ

**NESTLES QUICK**

2 LB BOX

**PEANUT BUTTER**

PETER PAN, 12 OZ

**SPAGHETTI DINNER**

KRAFT, ITALIAN, 8 OZ

**SYRUP**

MRS. BUTTERWORTH, 24 OZ

**JUICE**

GERBER'S, ORANGE OR APPLE

**BUTTERMILK**

SAMMY'S PRIDE, 1/2 GALLON

**BUTTER**

WESTERN GOLD, 1 LB

**OLEO**

SAMMY'S PRIDE, 1 LB SOLIDS

**ICE CREAM**

BORDEN'S ROUND TOP, 1/2 GAL.

**MELLORINE**

BORDEN'S, 1/2 GALLON

**STRAWBERRIES**

TROPHY, 10 OZ PKG

**SHRIMP**

BOOTH BREADED, 10 OZ PKG

**PERCH FILLETS**

BOOTH, 1 LB PKG

**HONEY BUNS**

MORTON, REG. PRICE 55¢, 9 OZ

**CREAM PIES**

BANQUET, ASS'T. FLAVORS, 14 OZ

## SUDAN NEWS

Local revivals scheduled include: First Baptist Church beginning Sunday, Feb. 17, through Feb. 20, with Evangelistic Jack Norwood and Rich Hudson, song leader, directing services 11 a.m. and 7 p.m. Sunday and 7:30 other nights.

Assembly of God from Monday, Feb. 18 through Friday, Feb. 22 at 7:30 each evening led by Bob Goodwin, evangelist.

Circle Back Baptist Church beginning Feb. 18 through Saturday, Feb. 22 at 8 p.m. nightly and morning services Tuesday through Friday at 10 a.m. led by Wayne Mahoney of Lovington and W. B. Kittrell leading music. Booster Band at 7:30 each night.

MR. AND MRS. D. W. Williamson were in Lubbock Saturday to visit their son, Mr. and Mrs. Harry Williamson and infant daughter, Karen Kristina.

LAURIE ANN DAMRON, daughter of Mr. and Mrs. Julian Damron has returned home after being hospitalized.

THE TEL class of FBC held their Valentine social recently in the home of Elsie Cate. Present were Ruth Baker, Louise Gatewood, Letha Gordon, Ruby Ingle, Alice McCarty, Ouida Parrish, Louise Parrish, Alma Burnet, Alva Sturdivant, Warena Roark, Hazel Savage, Thelma Vinson, Ruth Williams, Marie Beckett, and Dorothy Drake.

WEEKEND VISITORS in the T. C. Mooney home were their sons, Mr. and Mrs. Ronnie Mooney of Canyon, Mr. and Mrs. Clifton Mooney and children of Littlefield; and their daughter, Mr. and Mrs. Roger Hollingsworth and infant daughter, Lee Anne who are staying a few days with her parents.

REV. AND MRS. HENRY Clarke visited Saturday with their daughter, Mr. and Mrs. Robert Bybee of Lubbock.

MR. AND MRS. Kenneth Serratt and family of Amarillo visited Sunday with his mother, Louzelle Serratt.

MR. AND MRS. Glyn Quisenberry and Jeff of Quanah visited during the weekend in the home of her brother, Mr. and Mrs. Gaylon Beavers and girls.

GAVIN HAYES of Hale Center and a former Sudan resident recently suffered a heart attack. He has returned

to work for two hours per day. MR. AND MRS. Sterling Reese were in Visalia, Calif. last week to attend funeral services for his mother, Mrs. E. B. Reese.

MARVIN BOWLING, Glenn Chester and Frank Lane have returned home after a 10-day fishing trip to Guamas, Mexico.

VISITING Sunday afternoon in Littlefield with Mr. and Mrs. E. B. Dick were Mr. and Mrs. Wayne Doty.

MR. AND MRS. Glen Cardwell and family were in Plains over the weekend to visit her brother, Mr. and Mrs. D. Hobbs, and with her father.

MRS. BOB NELSON and children visited relatives in Plains during the weekend. ROSABEL COLDIRON was "queen of the week" in TOPS this week. Nine members were present and a loss of 9 3/4 lbs. recorded.

GEORGEANN RASCO hosted the Baptist Truthseekers Sunday School social last week. Charis Ann Williams and Bobbie Carpenter were co-hostesses. Others present were Floy Arnold, LaDelta Vernon, Norma Burnet, Betty Beavers, Mary Powell, Beverly Thurmon, Carol Freeman, Lynette Hill.

MRS. DANNY RHOADES was honored with a lullaby shower last week in the home of Mrs. D. W. Williamson. Other hostesses were Mesdames Wayne Rogers, R. C. Williams, B. A. Beauchamp, Charles Logan, Bud Graves, G. C. Ritchie and M. C. Engram.

JOE SALEM underwent surgery in Methodist Hospital, Lubbock, recently.

JAY ELLEN WILSON hosted a brunch for E.S.A. members Feb. 9th during rush period. Present were Kathy Gatewood, Angela Eicke, Debbie Baker, Nancy Baker and the hostess.

MR. AND MRS. O. C. Kirk of Muleshoe and Mr. and Mrs. Waller of Brownwood visited Saturday with Mr. and Mrs. J. C. Wells.

MRS. MARY STANLEY underwent major surgery this week at St. Mary's Hospital, Lubbock.

FUNERAL SERVICES for three former Sudan residents were held this week. Those of W. C. "Nibs" Warren of Lubbock, W. N. Peacock of East Texas, Jumbo, Lubbock, and Roy Gentry of Mortons.

**STRAWBERRIES**

Fresh Carton

49¢

**BANANAS**

Dole, Golden Ripe, Lb

12¢

**ORANGES**

Texas, Lb

5/99¢

**LEMONS**

Sunkist, Lb

29¢

**WHITE ONIONS**

No. 1, Lb

19¢

**SWEET POTATOES**

East Texas, Jumbo, Lb

19¢

HOME OWNED - HOME OPERATED

# LITTLEFIELD SUPER MARKET

WHERE YOU ALWAYS BUY THE BEST FOR LESS  
**GIBSON'S**  
**SCOUT CENTER**

STORE HOURS:

MON. THRU SAT. 9 TO 9

SUN. 1 TO 7

**GIANT SIZE**  
**BUYS**

NIKO BAN  
**SMOKING DETERRENT**

MINT OR REG. 36 LOZENGES

**\$1.57**

**JUST ARRIVED**  
**COMPLETE**  
**ASSORTMENT OF**  
**NORTHRUP KINGS'**  
**GARDEN & FLOWER**  
**SEEDS**



ILLUSTRATION SIMILAR

HUFFY  
**BICYCLE**

26 IN. 3 SPEED

REGULAR \$60.97

SALE

**\$48.77**

HUFFY  
**BICYCLE**

20 IN. BOYS & GIRLS

REGULAR \$43.47

SALE

**\$34.77**

BLACK LIGHT  
**LIGHT BULBS**

75 WATT

REGULAR 69¢

SALE

**55¢**

GIBSON BRAND  
**LATEX**  
**WALL FINISH**

1 GALLON

REGULAR \$3.88

SALE

**\$3.09**

BICYCLE  
**SAFETY FLAGS**

REGULAR \$2.19

SALE

**\$1.67**

**GARDEN HOSE**

BY MONSANTO  
 5/8 IN. DIA. 50 FT.

REGULAR \$3.44

SALE

**\$2.77**

POLAROID NO. 107  
**FILM**

BLACK & WHITE

REGULAR \$2.89

SALE

**\$1.77**

MEN'S  
**WESTERN BOOTS**

BLACK LEATHER, WHITE STITCHING

REGULAR \$31.97

SALE

**\$23.97**

MEN'S STEEL TOE  
**WORK BOOTS**

REGULAR \$18.97

SALE

**\$14.22**

MEN'S WELLINGTON  
**BOOTS**

REGULAR \$12.97

SALE

**\$9.77**

MEN & BOYS  
**TRACK SHOES**

REGULAR \$4.47

SALE

**\$3.57**

LADIES D-RING  
**CANVAS SHOES**

BLUE, BEIGE, WHITE

REGULAR \$4.99

SALE

**\$3.77**

COLEMAN LOW-BOY  
**COOLER**

44 QT.

REGULAR \$19.95

SALE

**\$15.99**

STP  
**OIL TREATMENT**

REGULAR 99¢

SALE

**69¢**

CLOSE-UP  
**TOOTH PASTE**

MINT OR REG.

FAMILY SIZE  
 REGULAR 89¢



SALE

**59¢**

BOUTIQUE PRINT  
**KLEENEX TISSUES**

REGULAR 38¢

SALE

**4 FOR 99¢**

JOY DISHWASHING  
**DETERGENT**

22 OZ SIZE REGULAR 59¢

SALE

**37¢**

ULTRA-BAN 5000  
**ANTI-PERSPIRANT**

12 OZ SIZE  
 REGULAR \$1.39



SALE

**99¢**

SPOTLESS  
 AUTOMATIC DISHWASHING  
**DETERGENT**

REGULAR 39¢

SALE

**29¢**

KIWI  
**SHOE POLISH**

3 OZ PASTE

REGULAR 39¢

SALE

**29¢**

**Sudan Slates Outsiders' Tourney**

SUDAN— An outsiders basketball tournament has been scheduled for Feb. 28 through March 2 in the Sudan school gymnasium. Teams are needed and those wishing to enter may contact

Pete Lance or Adrian Martin, 227-6451 for further information. An entry fee will be charged and proceeds will go to the Sudan Booster Club and the Little League organization.

—★ ★— **Spade Longhorns: Playoff Bound Again** —★ ★—

The Spade Longhorns, defending Class B state semi-finalists, are playoff bound again this year.

The Longhorns own a healthy 30-4 record this fall, and ran away with the 5-B district title by winning all of 10 of their district games. They play Bledsoe Feb. 26 at the Texan Dome in Levelland for the Bi-district title.

"We've played Bledsoe twice this year, and we beat them both times," said Spade coach Jim Haynes. "The first one was our Homecoming game, and we beat them 93-78. The second time we won by about 23 points."

Haynes is in his third year of coaching, and has compiled a 75-30 record at Spade. Last year his squad went 31-7. They were edged by Brock 80-74 in the first round of the state tournament.

"Each team is a little different than the one before," Haynes said. "This year's team is a lot different, but the differences are hard to point out. We've got a lot of the same kids, but they're more mature than they were a year ago. And then we've got some new ones that are maturing as we go along. Our attitude last year was very good, and it's also good this year. We've got good hustle, too, like last year."

The Longhorns lost only two players from last year's squad. All-stater David Gray (914 points) and Kenny Ramage. This year, with only one senior on the team, the Longhorns look like they'll be tough again next season.

Spade is a fast-breaking team, using a full-court press then dropping back into a

pressure defense in the back-courts. "We're a run and gun type team," Haynes said. "We like to pressure the other team into making the mistakes and giving us the easy basket."

"I guess if you were going to pinpoint our weakness it would be our defense. This year we're just not concentrating like we need to. It's funny, because last year our defense was our strong point. If we get into a situation where we have to play defense, then usually the boys will think about it a little, and usually they play real well. But there's room for improvement, and we'll be working on that between now and Feb. 26."

Haynes' style of coaching is simple: emphasize the fundamentals and stress a good attitude. "We work hard on the fundamentals, because without a sound background in those you can't go on to the more complicated things," explained Haynes. "I also teach attitude. We haven't had a technical foul all year, and you won't ever see a boy, or me, get one. I try to teach more than basketball. I want to give them something they can use later in life, because they won't be playing basketball forever. I'd like to think that after they graduate, they'll have something to draw back on that they learned here."

"I guess you could say I teach philosophy more than I

do basketball," Haynes continued. "Sportsmanship is very important to me. I don't put a lot of stress on winning, because as long as you play as hard as you can and put out a total effort, you never really lose."

"I love to coach. It's my life. If a person didn't love it, it'd be better for him to get out. You'd just be wasting your time and hurting the kids. I got some offers last year, and I could've gone on to a bigger school. But I hate to see kids go. You can't help but get attached to them. And if

someone was in coaching to make a lot of money, he might as well give it up. Loyalty's a big thing, too. I expect the boys to be as loyal to me as I am to them. The whole trick to coaching is getting the kids to think like you do. Once a coach gets his message across to his boys, he's got the battle won."

"When I first started coaching, I thought I would probably go to state someday, but I didn't know how soon. Whether we go again this year, I can't say. Your guess is as good as mine."

Haynes cited two common problems in the four games the Longhorns have lost: poor shooting and too many turnovers. "In every game we've lost we've had over 20 turnovers and shot less than 30 per cent from the field," he pointed out. "Against Lockney Thursday, we just couldn't get anything going (Spade lost 81-76). We had one boy out with the flu (Mark Cowan), we hadn't played in a week and a half, and we were sort of in awe of playing a AA team, but still we should've won." Spade's other losses were to Lubbock Christian, Channing and Meadow.

The Longhorns have four players averaging in double figures, and their team average is 78 points a game to their opponent's 55.

Randy Gray, the only senior on the squad, is averaging 20 points to lead the Longhorns in scoring. The 5'11" guard is also converting on 72 percent of his free throws.

Marvin Matthews, a 6'3" junior, plays post and is Spade's leading rebounder with 366. He's averaging 16 points.

Joining Gray at guard is Gaylon Reed, who leads the team in assists (191) and steals (164). The 6'2" junior is right behind Matthews in rebounding with 350, is averaging 15 points, and is connecting on 57 percent of his field goal tries. Gray, Matthews and Reed were All-district performers last year.

At the other end of the averaging is point guard, rounds and Longhorn starts averages eight points and Haynes calls most improved player.

Mark Cowan, sophomore, plays position for a while start, he's real good off the bench and team going when he's a good match. The bench is where strength lies, and being sick has hurt Cowan is average points, but has games with the 5'11" junior Tompkins sophomore Teddy and freshmen, John and Mickey Burchfield.

Led by Marvin Matthews, the District champion Spade closed past the Feb. 16-54 Friday in Fayetteville. The win boosted record to 31-4 for the Longhorns. Gaylon Reed with Burchfield with Chuck Mills with

Plant



**9173**

★

**HYBRID GRAIN SORGHUM**

for

**HIGHER YIELDS**

and

**CLEANER FIELDS**

Macha 9173 is a versital sorghum adapted to this area and proven for extra profits.

Book your Macha seeds now with your seed dealer or Macha seed salesman.

**BUY QUALITY**


IT'S CHEAPER IN THE LONG RUN

WE RESERVE THE RIGHT TO LIMIT QUANTITIES

|              |                    |                         |               |
|--------------|--------------------|-------------------------|---------------|
| HORMEL       | <b>BACON</b>       | LB.                     | <b>\$1.19</b> |
| RANCH STYLE  | <b>STEAK</b>       | LB                      | <b>99¢</b>    |
| BAR-S        | <b>WEINERS</b>     | 12 OZ.                  | <b>79¢</b>    |
| CALIF.       | <b>ORANGES</b>     | LB.                     | <b>19¢</b>    |
| BELL         | <b>CARROTS</b>     | CELLO BAG               | <b>2 25¢</b>  |
|              | <b>ICE CREAM</b>   | ROUND CARTON 1/2 GALLON | <b>99¢</b>    |
|              | <b>CHEER</b>       | GIANT SIZE              | <b>85¢</b>    |
|              | <b>COCA COLA</b>   | 32 OZ., PLUS DEPOSIT    | <b>23¢</b>    |
| GARDEN, CLUB | <b>JELLY</b>       | 18 OZ.                  | <b>39¢</b>    |
| GOLD MEDAL   | <b>FLOUR</b>       | 5 LB.                   | <b>95¢</b>    |
| FOOD KING    | <b>FISH STICKS</b> | 8 OZ.                   | <b>2 49¢</b>  |
|              | <b>SWEET PEAS</b>  | 303 CAN                 | <b>19¢</b>    |
|              | <b>HOMINY</b>      | 300 CAN                 | <b>13¢</b>    |

DOUBLE GUNN BROS STAMPS TUES. & WED., EXCLUDING CIGARETTES WE REDEEM FOOD STAMPS

**PIONEER SUPERMARKET**



**Anthony's**

C. R. ANTHONY CO.

OPEN 9:00 CLOSE 6:00

ON THE BLOCK TO SHOP IN LITTLEFIELD

**WASHINGTON'S BIRTHDAY SALE**

**LADIES 100% POLYESTER DRESSES**

NEW SPRING STYLES VALUES TO \$24 **\$11**

**LADIES KNEE-HI BOOTS**

BROKEN SIZES VALUES TO \$18.99 **\$2.97**

**LADIES 100% POLYESTER BLOUSES & PANTS**

VALUES TO \$16. **\$5.88**

SLIGHT IRREGULARS OF A VERY FAMOUS NAME BRAND ONLY

**MEN'S LONG SLEEVE WESTERN SHIRTS**

SOLIDS, PLAIDS & STRIPES BUTTONS OR SNAPS 32-35 SLEEVE LENGTHS

SIZES 14 TO 17 REG. \$9.99 **2 \$18 FOR**

**MUNSINGWEAR GRANDSLAM SHIRTS**

BROKEN SIZES VALUES TO \$18.99 **\$9**

REG. \$12.

**ONE LARGE GROUP OF MEN'S SPORT AND DRESS SHIRTS**

LONG SLEEVE VALUES TO \$6.99 **\$3**

**MEN'S FASHION PANTS**

CHECKS & PLAIDS CUFFED **\$6.88**

**Just Received NEW SHIPMENT OF ELECTRIC BLANKETS**

**OVER 3,000 YARDS DOUBLE KNIT \$2.99 YARD**

REG. \$10.00

**THE ENTIRE STOCK OF MEN'S FASHION JEANS**

|              |                |              |                |
|--------------|----------------|--------------|----------------|
| REG. \$13.50 | <b>\$10.88</b> | REG. \$14.00 | <b>\$11.88</b> |
| REG. \$13.00 | <b>\$10.48</b> |              | <b>\$7.88</b>  |