

# Services Conducted For Plane Crash Victims



W. CRITTENDEN LARRY WIGINTON  
LOIS JOYNER CHIPPER LEE JOYNER

Two joint services were conducted for four Littlefield residents who were killed shortly after noon Sunday in an airplane crash in a muddy field near the Shallowater Airport.

Joint services for Bobby Wayne Crittenden, 22, pilot of the single-engine craft; and his brother-in-law, Larry Wiginton, 23, were held Wednesday afternoon in Littlefield's First Baptist Church with Rev. A. J. Kennemer, pastor, officiating.

Joint services for Chipper Lee Joyner, 24, and his wife, Amy Lois, 19, were conducted Tuesday afternoon in the Fieldton Baptist Church, with Rev. A. L. Swagerty of Fletcher, Okla., Rev. Jeff Messer, pastor, and Rev. Kenneth Harlan of Whitbarral officiating.

Burial for all of the victims was in Littlefield Memorial Park with Hammons Funeral Home in charge of arrangements.

An eyewitness to the crash, Norman S. Sturn Jr. of Lubbock, said he was driving along U.S. 84 when he noticed the Piper Tri-pacer miss its first attempt at landing at the airport because it was too high. He said the plane banked into a steep turn about 200 to 300 feet above the ground, then nosed down into the muddy field.

Investigators theorized that Crittenden was attempting a second landing when the plane stalled and crashed, due to the steep turn.

Both fuel tanks on the wings of the

plane were ruptured, and gasoline was still dripping onto the ground late in the day. A minimum amount of debris was scattered in the immediate crash area.

Wiginton was seated next to the pilot and Joyner and his wife were seated in the rear of the craft, occupying the left and right seats respectively. All were strapped into the craft with safety belts.

Skip Trivett, who operates a repair shop at the Shallowater Airport, said the pilot may have been bringing the plane in for repairs. He reported he had received a call from a man Saturday who wanted repairs done to the motor cover on a plane fitting the description of the plane that crashed.

Crittenden, a barber at the City Barber Shop, had received his pilot's license two weeks ago.

He was born in Amherst and had lived in Littlefield 13 years. He was a member of Littlefield's Masonic Lodge No. 1161. Masonic graveside rites were conducted at the cemetery.

Surviving are his widow, Patricia; his daughter, Bobbi Jo Crittenden of the home; his mother, Mrs. Betty Barker of Plainview; his father, James Crittenden of Grapevine; a sister, Mrs. David Ridley of Richardson; and his grandmother, Mrs. Aline Wisdom of Littlefield.

Wiginton was born at Odessa but grew

up in Littlefield. He was a veteran of the Vietnam conflict and was attending a Lubbock barber school at the time of death.

Surviving are his parents, Mr. and Mrs. Claude Wiginton of Littlefield; his sister, Mrs. Patricia Crittenden of Littlefield; his brother David Wiginton of Littlefield; his grandmother, Mrs. Dora Davenport of Sulphur, Okla.; and several aunts and uncles.

Joyner was born in Littlefield and was farming in the Fieldton Community. He was a member of the Fieldton Baptist Church.

Surviving are his parents, Mr. and Mrs. Don Joyner of Fieldton; his sister, Mrs. Larry Lindsey of Corpus Christi; his paternal grandmother, Mrs. Ruth Joyner of Chickasha, Okla.; and his maternal grandmother, Mrs. Mary Saxon of Cache, Okla.

Amy Lois Joyner was born in Alice. She was also a member of the Fieldton Baptist Church.

Surviving are her parents, Mr. and Mrs. Van Vaughan of Corpus Christi; two sisters, Mrs. Dennis Raulie and Mrs. Cynthia Moran, both of Corpus Christi; her paternal grandmother, Mrs. Lula Vaughan of Alice; and her maternal grandmother, Mrs. Gover Stapleton of Jacksonville, N.C.

LITTLEFIELD RESIDENTS were killed shortly after Sunday when this single-engine plane stalled and crashed into a muddy field near the Shallowater Airport after making an attempt to land. Dead are

Bobby Wayne Crittenden, 23, the pilot; his brother-in-law, Larry Wiginton, 24; and a couple, Chipper Lee Joyner, 24, and Amy Joyner, 19. (Staff Photo by Joella Lovvorn)

## First County Freeze Falls On General Election Day

The Littlefield area as well as most of the Plains area recorded the first freeze of the season here early Tuesday morning, Nov. 5.

The freeze which opted to come on general election day dropped temperatures to 31 over most of the area. Icy windshields and crusty, ice covered lawns left no doubt that winter had arrived.

In a year of the unexpected, the freeze is about the only weather incident which falls within the range of the expected.

The average date of temperatures 32 degrees or below is Nov. 3.

Oct. 7, in 1952 and again in 1970 is the earliest freeze on record with the NWS,

and Nov. 22 is about the latest first freeze date. A record late freeze is recorded for Lamb County when temperatures failed to reach the freezing mark until Nov. 27 in 1965.

As usual the first freeze got mixed reactions. For most cotton growers, the recent frost and many weeks of cold, wet weather had stopped maturing of cotton. Much grain sorghum remains unharvested, and lodging or falling may result if wet conditions continue, especially if there are high winds.

Many who are feeding cattle welcome the freeze so they can put cattle on rye, wheat, alfalfa and haygrazer and reduce feeding costs.

**LAMB COUNTY**

# LEADER-NEWS

VOLUME 52 NUMBER 56 LITTLEFIELD, LAMB COUNTY, TEXAS, THURSDAY, NOV. 7, 1974 10 PAGES

**15 CENTS**  
TAX INCLUDED

## Living With Children' Seminar Scheduled Today

J. E. Chisholm has officially designated today as "Living With Children Day" in Littlefield, and urges citizens to participate in the first of two seminars to be held in the county this year.

The seminar will be held at the Presbyterian Church, located on

**Key Dinner In Olton**  
**or To Game**

citizens have received a invitation to the annual community Turkey Dinner in Olton tonight prior to the Mustang game. Dinner will be served from 5 to 8 at the school cafeteria, by members of the Women's Clubs of Olton. Tickets are \$2.50, and tickets for under 10 are \$1.50.

**Commissioners Pass**  
**ada Items**

end-of-the-month community court meeting Thursday. Commissioners acted on three items. Madiera of Levelland appealed the court asking that the Plains Community Action Center, Inc. be designated as the services Delivery System Agent for the County.

regarding, the South Plains Community Action Association will service to operate manpower under the Comprehensive Training Act, create economic development district, regional housing authority, and other programs of a human nature as appropriate.

to be subject to the advice and direction of the Lamb County Community Action Committee and the Lamb County Commission as deemed appropriate.

discussion, the court resolution which will be sent to Governor George Mahon, Senator and other government officials asking that Revenue Sharing be authorized.

been brought up was the purchase of a small desk and chair for the commissioners meeting room.

Highway 385 (Hall Avenue), beginning at 9:30 a.m. with registration.

A registration fee of \$3 covers a lunch and a packet of materials, and the seminar is to conclude at 2:30 p.m.

According to Mrs. Dorothy Powell, Lamb County Extension Agent, child care will be provided for a fee of 75 cents for the first child, and 25 cents for each additional child. Parents are asked to bring a sack lunch for each child.

The seminar will be repeated in Olton Nov. 14 at the First United Methodist Church.

Seminar topics and speakers are: "What Children Wish Adults Knew" by William Barley, third-year graduate student majoring in clinical psychology at Texas Tech University.

"Dare to Discipline" by Dr. Stanley Fowler, professor of Home and Family Life, Texas Tech University.

"Understanding Children's Fears" by Dr. Laura Vincent, director of children's services, Central Plains Mental Health/Mental Retardation Center, Plainview.

"Anger is OK" by Mrs. Dorothy Powell, Lamb County Extension Agent, Littlefield.

The seminars are being sponsored by the Lamb County Family Living Committee and the Texas Agricultural Extension Service.

Educational programs sponsored by the Texas Agricultural Extension Service are open to everyone regardless of race, religion or national origin.

## City Councilmen To Meet Tonight

Littlefield's City Council will meet tonight at 7 p.m. to discuss seven items on an agenda.

In matters of old business, councilmen will discuss the placing of waste receptacles in the downtown area; and will discuss water taps on the 24-inch transmission line from the sandhills.

New business matters will include the appointment of a member to the South Plains Association of Governments' Alcohol-Drug Abuse Committee; discuss concession rights at Bull Lake; discuss the city's participation in the Texas Utility Advisory Council; consider a resolution concerning the sale of 80 acres owned by the city; and discuss a proposal by the Environmental Research Associates, Inc., for the joint treatment of waste water for the cities of Littlefield, Brownfield and Levelland.



LITTLEFIELD MAYOR J. E. Chisholm signs a proclamation designating today as "Living With Children Day" in Littlefield. Looking on are Dorothy Powell, left, county extension agent; and Janice Sebring, member of the Family Living Committee, which is sponsoring the program. (Staff Photo)

## McLelland, Nuttall, Moore Win Weekly Contest Money

Arthur McLelland of Littlefield, Lee Roy Nuttall of Friona, and Robert E. Moore of Littlefield win the prize money in the ninth week of the football contest.

McLelland missed only one contest to win the \$5, and Nuttall and Moore tied with two misses each and Nuttall won second place by coming closest in the tie breaker scores.

Tony Aguirre and Max McLelland barely missed the weekly prize money

with three misses each. Fourteen contestants missed four a piece this week.

With the contest tapering toward the end, Lamar Pollard remains in first place for the season with a 102-38 score. Floyce Pierce and Lloyd Pollard are in second place overall with scores of 101, and Arthur Duggan is third with 100 to his credit.

In fourth place are T. W. Bryson and Jimmy Randolph. Walter Liles, Robert Moore, and John L. Smith hold fifth place. Four persons, Jeff Birkelbach, Raymond Duvall, Tommy Hood, and Kevin Hutson are tied for sixth.

Next in line are W. W. Fry, Roy Jackson Jr., Ernest Mills, Maurice Sexton and W. P. Holland Jr. with 96, and N. C. Horn, Mozelle Hutson, Max McLelland, Virginia McLelland, Bill R. Smith and Jill Yarbrough with 95 each.

## Voter Turnout Light

A grand total of 2,697 votes were cast Tuesday in the Lamb County General Election.

According to Mary Beth Willey, this represents about a fourth of the registered voters in the county.

Returns from the 16 boxes may be found on page 8 of this issue.

## Burglary, Marijuana Possession Charges Filed By County Officers

A Sudan man was jailed by county authorities this week on a charge of burglary of Baccus Chevrolet and taking five cases of anti-freeze. Bond has been set at \$2,500.

Eight others were booked in the county jail this week. A 14-year-old delinquent was picked up Wednesday for failure to attend school. He was released Thursday and picked up again on the same charge Friday.

A Littlefield man was arrested on a warrant from the county judge, a Mount

Pleasant man was jailed on a check law violation charge. Highway patrolmen arrested two from Olton. One was charged with driving while intoxicated and the other was jailed as a drunk pedestrian.

County officers arrested an Olton man on a charge of possession of marijuana, and bond is set at \$1,000. A Littlefield man was charged with theft, and an Amherst man was charged with simple assault.

## Wright Injured In Lubbock Wreck

Fred Wright remains in critical condition in a Lubbock Hospital following a two-car collision in Lubbock about 8 Sunday night.

Tuesday he was reported still unconscious most of the time, but gaining consciousness at intervals.

Ruby Clark was a passenger in the

car. She was injured, but was treated and had returned to her Littlefield home at press time.

Wright is the owner and operator of Wright Drug. Local pharmacists are taking turns filling prescriptions for the injured man, and employees and friends are keeping his store open.

## Achievement Awards Banquet Scheduled Saturday Night

The 1974 Lamb County Achievement Banquet will be held Saturday, Nov. 9, at the Littlefield Junior High Cafeteria, 105 Lake Ave., in Littlefield at 7:30 p.m.

Joe Brown, KDAV Farm and Ranch Director, will be the guest speaker.

Brown is a native West Texan, who was reared on a Hartley County farm and ranch. He attended Channing public schools and is a graduate of West Texas State University at Canyon.

As a youth, he was an active 4-H member, receiving many awards for his 4-H activities, including several beef steer champions. Brown has continued his interest in agricultural organizations for the young men and women, boys and girls, of the West Texas and Eastern New Mexico area. His 13 years of broadcasting experience includes five years as Assistant Farm Director for KGNC Radio and TV at Amarillo.

He has covered all of the major agricultural news events across the United States and Canada, and has been an active member of the National Association of Farm Broadcasters seven years.

"Hope to see you at the 1974 Lamb County Achievement Banquet and with your continued support, We Can Make It Happen," stated Jim Kuykendall, assistant County Extension Agent.



JOE BROWN



# EDITORIAL

## Tips For Energy Savers

YOU CAN HELP fight inflation and the high cost of energy by taking steps now to conserve heating fuels, electricity and gasoline. Saving energy means a saving in dollars—more important than ever in the face of higher prices.

Many useful energy and money-saving ideas for consumers are listed in the new Federal Energy Administration booklet, "Tips for Energy Savers". Single copies are available free from Consumer Information, Pueblo, Colo. 81009.

ACCORDING to the booklet, you can conserve energy not only in household heating, cooling, and appliance use, but also in the workshop, yard and garden, in home planning, and of course in driving the family car.

In addition to the popular fuel-saving tips of lowering the thermostat in winter to 65-68 degrees during the day and to 60 degrees at night, and driving at 55 miles per hour, some not so familiar ways to save energy and money are listed in "Tips for Energy Savers." They include:

\*Consider the advantages of a clock thermostat which will automatically

turn the heat down at a regular hour before you retire and turn it up just before you awake.

\*Repair all leaky faucets, especially hot water faucets, as quickly as possible. Heating water is second only to heating and cooling residences in energy consumption.

\*Separate clothes drying loads into heavy and lightweight items. Since the lighter ones take less drying time, the dryer doesn't have to be on as long for these loads.

\*Dry your clothes in consecutive loads. Once the dryer is warm, it cuts down on initial energy consumption.

\*Use higher lumen-per-watt lights. A fluorescent lamp, for instance, is more than three or four times as efficient as an incandescent bulb. Use fluorescent lights in the kitchen and bathroom. A single long tube is more energy-efficient and economical than two shorter tubes. One 40-watt fluorescent light provides more light than three 60-watt incandescent bulbs and save you money. Similarly, use one large incandescent bulb instead of several small ones.

\*Keep lamps and lighting fixtures clean. Dirt absorbs light.

\*Keep cutting edges sharp on electrical tools. A sharp saw or bit cuts more quickly and therefore uses less power.

\*Use natural compost from your own yard cuttings for fertilizer. Petroleum and natural gas generally are used as raw materials and for fuel in manufacturing artificial fertilizers.

\*Whenever possible, buy products made of recycled materials or those which offer opportunities for recycling, such as steel, aluminum, paper and glass. More energy is used in production of products from virgin materials than from recycled or reclaimed materials.

## Littlefield Bands In UIL Contests

The Littlefield High School Band received a II rating in the University Interscholastic League Marching Contest held in Jones Stadium, Lubbock Wednesday morning.

The Littlefield Junior High Band received a II in marching Tuesday morning while the Junior High twirlers received a I in ensemble and a II in solo competition. High School twirlers received a I in ensemble and a II in solo competition.

## Springlake-Earth Homecoming Friday

Homecoming festivities at Springlake-Earth Schools will be Friday, Nov. 8.

The Ex Students Association is sponsoring an enchilada supper in the school cafeteria beginning at 5:30. Tickets, \$2 for adults and \$1 for children, may be purchased before the game from Ex Students Association Officers and will also be available at the door.

Those registering at the supper will be eligible for a door prize to be presented

at the program following the game.

Other activities after the game will include special recognition to the oldest Ex-student present and also to the Ex-student traveling the farthest for the game. A brief tribute to the honor years of 34, 44, 54, 64, and 74 will also be presented.

Kickoff is at 7:30 for the clash between Springlake-Earth and Kress.



MEMBERS of Emmanuel Lutheran Church participated in a mortgage burning service Sunday morning following the worship service. Officiating was the pastor, Rev. James Ristvedt, and Eldon Gohlke, president of the congregation, lit the flame to the facsimile mortgage papers. (Staff Photo)



MARCELINO DURAN at the Lamb County Locker, and Sidney Melton, state meat inspector, look over pork to be cut up and made into sausage for the Sacred Heart Catholic Church's annual turkey and sausage dinner. The dinner will be in the Community Center Sunday, Nov. 10th, from 11 a.m. to 2 p.m.



EXHIBIT WINNERS of the Lamb County Coin Club's Annual Coin Show Sunday were John and Lorraine Spradley of Tucumcari, N.M., first in U. S. coins; Evelyn Galliant of Plainview, first in medals and tokens; and Jonathan Wilson of Clovis, N.M., first in the junior division. Larry Sanderson, club president, won first place in foreign coins exhibit. Pat Downs won a coin clock in the drawing. Below, Ernest Mills, bourse chairman of the show, discusses some coins with a customer, while Larry Sanderson, club president, discusses a price list with Dr. J. H. Oyer, show chairman and vice president of the club. (Photos by Joella Lovvorn and Gayle Mills)

## Lamb County Ranks High In Farm Cash Receipts

The final figures have been compiled, and last year Lamb County ranked in the top ten counties in total cash receipts from farm marketings.

Lamb County farmers received more than \$96 million from the sale of crops and livestock. Agriculture Commissioner John C. White reports that government payments added almost \$11 million, bringing the total amount received from agricultural marketings to \$109 million.

Approximately \$73 million was added to the county's agricultural income from the sale of crops.

Deaf Smith County led the state with total agricultural cash receipts of \$181 million.

With state-wide cash receipts for farm marketings totaling nearly \$7 billion, it would appear that Texas agriculture hit it big last year. However, a closer look at the net farm income reveals another story.

According to White, average net income per farm was \$12,200—which places Texas farmers squarely in the middle income bracket. Out of a \$7.2 gross farm income, \$5.2 billion went to pay farm production expenses.

Cattle and calves accounted for 43.5 per cent of the total cash receipts with sorghum and cotton lint being the highest income factors in Texas' crop figures. Each added 11.7 per cent of the total farm marketings.

Texas ranked third in the nation in total cash receipts from crops and livestock. Iowa and California ranked first and second.

Sales of cattle and calves brought in more than \$2.8 billion to the state's total agricultural income. Texas ranked second in the U.S. in sales of livestock and livestock products with total receipts of almost \$3.7 billion.

Cash receipts from crop marketings totaled almost \$2.8 billion—with food grains and feed crops accounting for 21 per cent of the amount. Over \$758 million was paid to sorghum farmers, and a record yield brought total cash receipts for wheat up to \$240,918,000—a 244 per cent increase over the 1972 crop value. Cotton is still an important cash crop

to Texas farmers and last year's crop was worth more than \$737 million. Cottonseed added another \$157 million.

Government payments in 1973 were \$386,554,000—5.6 per cent of the total cash receipts paid to farmers. White reported that this was the lowest amount of government payments received by Texas farmers and ranchers since 1965. Payments in 1973 were for wheat, cotton, feed grain, sugarbeets, wool, mohair, cropland adjustment, rural environmental assistance and conservation programs.

Nationally, total cash receipts from farm marketings, including government payments, amounted to more than \$91 billion.

## OBITUARY

VIDA CRISWELL Services for Mrs. Vida B. Criswell, 84, of Muleshoe, will be at 2 p.m. Thursday in the First Assembly of God in Plainview. Officiating will be Rev. Jerry Roberts, pastor, and Rev. H. B. Hunter, pastor of the First Assembly of God Church in Muleshoe.

Burial will be in Olton Cemetery at Olton, under direction of Singleton-Ellis Funeral Home of Muleshoe. Mrs. Criswell's body will lie in state at Lemons Funeral Home in Plainview until service time Thursday.

Mrs. Criswell died at 4:45 p.m. Tuesday at West Plains Memorial Hospital in Muleshoe after a brief illness.

Born at Lingleville, Mrs. Criswell had been a Muleshoe resident the past two months. She had been a Plainview resident since 1957, moving there from Olton, where she lived from 1915 to 1957.

She was a member of the First Assembly of God Church at Plainview. She was a dietician at Medical Center Hospital in Plainview until her retirement in 1970.

Survivors include her two daughters, Mrs. Vaneta Thompson of Muleshoe and Mrs. Thelma Raber of Spanaway, Wash.; her son, W. T. Criswell of Plainview; two sisters, Gertrude McElyea of Stephenville and Grace Fruin of Midland; two brothers, Rev. E. O. McElyea of Spur and C. H. McElyea of Fort Worth; seven grandchildren and 15 great-grandchildren.

J. L. HARRIS Services for J. L. Harris, 77, of Portales, N.M. were conducted Tuesday afternoon at Wheeler-Starlight Chapel in Portales with Rev. Alfred Richard,

**LAMB COUNTY LEADER-NEWS**

ESTABLISHED IN 1922

Lamb County Leader and County Wide Times  
Commenced Feb. 11, 1928

MADE A HARRIS  
JOELLA CRISWELL  
NILLAN ROGERS  
BILL MOFF

Publisher  
News Editor  
Staff Writer  
Advertising Sales

Second Class Postage Paid at Littlefield, Texas 75235

Pub. No. 283-280-281-282-283-284-285-286-287-288-289-290-291-292-293-294-295-296-297-298-299-300-301-302-303-304-305-306-307-308-309-310-311-312-313-314-315-316-317-318-319-320-321-322-323-324-325-326-327-328-329-330-331-332-333-334-335-336-337-338-339-340-341-342-343-344-345-346-347-348-349-350-351-352-353-354-355-356-357-358-359-360-361-362-363-364-365-366-367-368-369-370-371-372-373-374-375-376-377-378-379-380-381-382-383-384-385-386-387-388-389-390-391-392-393-394-395-396-397-398-399-400-401-402-403-404-405-406-407-408-409-410-411-412-413-414-415-416-417-418-419-420-421-422-423-424-425-426-427-428-429-430-431-432-433-434-435-436-437-438-439-440-441-442-443-444-445-446-447-448-449-450-451-452-453-454-455-456-457-458-459-460-461-462-463-464-465-466-467-468-469-470-471-472-473-474-475-476-477-478-479-480-481-482-483-484-485-486-487-488-489-490-491-492-493-494-495-496-497-498-499-500-501-502-503-504-505-506-507-508-509-510-511-512-513-514-515-516-517-518-519-520-521-522-523-524-525-526-527-528-529-530-531-532-533-534-535-536-537-538-539-540-541-542-543-544-545-546-547-548-549-550-551-552-553-554-555-556-557-558-559-560-561-562-563-564-565-566-567-568-569-570-571-572-573-574-575-576-577-578-579-580-581-582-583-584-585-586-587-588-589-590-591-592-593-594-595-596-597-598-599-600-601-602-603-604-605-606-607-608-609-610-611-612-613-614-615-616-617-618-619-620-621-622-623-624-625-626-627-628-629-630-631-632-633-634-635-636-637-638-639-640-641-642-643-644-645-646-647-648-649-650-651-652-653-654-655-656-657-658-659-660-661-662-663-664-665-666-667-668-669-670-671-672-673-674-675-676-677-678-679-680-681-682-683-684-685-686-687-688-689-690-691-692-693-694-695-696-697-698-699-700-701-702-703-704-705-706-707-708-709-710-711-712-713-714-715-716-717-718-719-720-721-722-723-724-725-726-727-728-729-730-731-732-733-734-735-736-737-738-739-740-741-742-743-744-745-746-747-748-749-750-751-752-753-754-755-756-757-758-759-760-761-762-763-764-765-766-767-768-769-770-771-772-773-774-775-776-777-778-779-780-781-782-783-784-785-786-787-788-789-790-791-792-793-794-795-796-797-798-799-800-801-802-803-804-805-806-807-808-809-810-811-812-813-814-815-816-817-818-819-820-821-822-823-824-825-826-827-828-829-830-831-832-833-834-835-836-837-838-839-840-841-842-843-844-845-846-847-848-849-850-851-852-853-854-855-856-857-858-859-860-861-862-863-864-865-866-867-868-869-870-871-872-873-874-875-876-877-878-879-880-881-882-883-884-885-886-887-888-889-890-891-892-893-894-895-896-897-898-899-900-901-902-903-904-905-906-907-908-909-910-911-912-913-914-915-916-917-918-919-920-921-922-923-924-925-926-927-928-929-930-931-932-933-934-935-936-937-938-939-940-941-942-943-944-945-946-947-948-949-950-951-952-953-954-955-956-957-958-959-960-961-962-963-964-965-966-967-968-969-970-971-972-973-974-975-976-977-978-979-980-981-982-983-984-985-986-987-988-989-990-991-992-993-994-995-996-997-998-999-1000

## Turkey, Sausage Dinner Set Here By Local Church

The Parish Council of the Sacred Heart Catholic Church will be serving its 38th annual Turkey and Sausage Dinner in Littlefield this Sunday from 11 a.m. to 2 p.m. in the Community Center, located at Third and Ripley Streets.

Some sausage will be sold for take-home orders, if there is enough left after the dinners are served.

Tickets are now on sale by members of the Parish Council, and may be purchased at the door at \$3 for adults and \$1.75 for children under 10.

Last year more than 1,000 persons ate more than 450 pounds of turkey and 700 pounds of homemade sausage.

## THE ABUNDANT LIFE

# Politeness Pays

POLITENESS, genuine politeness, is one of the finest personal characteristics; both from the standpoint of life quality and practical help in human relationships.

From both standpoints, "politeness pays". The necessary efforts to learn and maintain politeness are certainly justified.

OUR BEHAVIOR SHOULD always be "marked by consideration, tact, deference, and courtesy". When it is, we are being polite; we are expressing "the characteristics of advanced culture". This involves the most refined development of our intellectual and moral faculties. We are being very foolish if we do anything less with ourselves.

WE WILL BE PERFORMING at our best, when we are being polite; because we will be "putting our best foot forward", and will be showing the utmost regard for others.

We will be building ourselves up, because our "politeness" dispels the destructive feelings of regret, self-reproach and general displeasure. We are contributing to the well-being of others, because our "politeness" indicates our respect for them, and our recognition of their personal worth.

"POLITENESS" MUST BE a constancy in our attitudes and behavior. There is never a proper time or place for impoliteness (rudeness).

Regardless of how we may feel about somebody else, we must always think well enough of ourselves to be polite.

There seems to be a propensity toward neglecting politeness in some of the more intimate relationships; such as friendships, family relationships, and with our fellow workers. We must always be on guard against letting this happen. The loss caused by such neglect is too great.

"DON'T FLATTER YOUR friendship authorizes you disagreeable things to you. The nearer you come into relationship, the more necessary courtesy (politeness) becomes." —Holmes.

PRETENDED POLITENESS appreciated, but even this is rudeness.

Most of us prefer the politeness to the furious rudeness; however, for the benefit to us and others, politeness is the "polite pays" the greatest and most dividends.

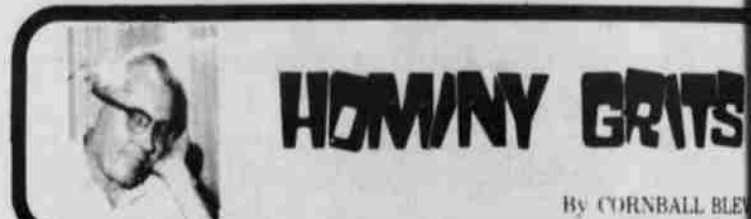
MUCH OF THE TENSION other dissipating emotion eliminated by "politeness", these are made less hurtful, ever extent this is accomplished by better off. This is another which "politeness pays".

"TRUE POLITENESS is peace and freedom. It simply consists of treating others just as you would be treated yourself." —Chesterton

POLITENESS IS STRENGTH and unfortunate that anyone ever with weakness. Because it is its use contributes to the well-being of persons involved.

PERSONS WHO ARE impolite people who, in one way or another, position which makes it necessary advantageous to endure this are expressing one of the most despicable of human traits.

"POLITENESS PAYS" about it.



NOW THAT THE election's over, do you suppose we'll get anything done towards getting a vice president? We've heard the poo-pooing of the idea of the dangers of a "Veto-Proof Congress", this should be a case in point as to what can be done when one party controls all the marbles in this worthy organization.

OF COURSE, I'M not especially sold on the idea of Mr. Rocky being the one "Just a heart-beat from the presidency", but I do hate to see strength used to push people around.— That especially, when the opposition has nothing better to offer!

SPEAKING OF BEIN' pushed around, wonder if you've had the misfortune to run amuck of this distinguished organization of, OSHA? (Office of Safety and Health Administration) These are the guys who have been given the questionable authority to come around to your place of business and dictate conditions of safety and conveniences you must have for the benefit of your employees.— Seems you're a member, automatically, without being consulted.

## Turn Row COMMENTS

50% PLUS 50% EQUALS 100% AMONG THE THINGS we wish the newly elected Congress will drop is the well-worn practice of appropriating funds for various and sundry public works and worthy causes, with the stipulation (on the part of our National-Legislators) that the "U.S. government" pick up 50 percent of the costs, while the States" will pay the other 50 percent.

This gimmick works very well for our Representatives in Washington, because it makes it appear that the money they are appropriating is much less than it really is. By shunting half of the costs to "the States," it does not show up on the

pastor of Calvary Baptist Church of Littlefield.

Born at Limestone City, Harris had been a resident of Portales since 1929. A retired carpenter, he owned and operated a Portales cabinet-making shop. He was a member of the Calvary Baptist Church and an Odd Fellow lodge member.

Survivors include his daughter, Clara Stokes of Amherst; three sons, Irby of Tatum, N.M., Edwin of Portales and Lowell of Bossier City, La.; his sister, Elizabeth Harris of Muskogee, Okla.; 16 grandchildren and 13 great-grandchildren.

books of the 300-billion dollar Federal budget, and thus is not (in full) through the Federal Tax.

Of course, the rub is that the States" is also the taxpayer; it's just that you're different tax collector. One another, it comes out of your pocket the same.

Thus, an appropriation of \$100 million in Washington may represent two hundred million other \$100 million will be collected through your State and administrators.

Of course, local bureaucrats same argument, but in reverse go for that public project. "After all, the Federal Government going to pick up 50 percent of this. This is usually said with enthusiasm, in a tone otherwise for small children when you "Santa Claus is coming down the chimney tonight!"

Well, it's time to tell the good and bad) that after a century the Santa Claus story takes on realistic nature. Fifty percent percent equals one hundred why try to kid us as to who is struck with the bill? \*\*\*\*\*

A GOOD test of your power concentration is your ability to child's homework while he is television.



### OES Meets At Sudan

SUDAN— Order of Eastern Star met Monday, Oct. 21, in a stated meeting with Mrs. Willie Terrell presiding in the absence of Worthy Matron, Edith Humphreys.

Mrs. Annie Chester was honored for having been a member for over 50 years. She was presented a pin and a fifty year certificate from the Grand Chapter.

Two of the members who were officers when she was Worthy Matron were present. They were Mrs. Beth Salem and Mrs. Birdie Shuttlesworth. Mrs.

Jeannie Gage read a tribute to Mrs. Chester of the history of her fifty years service.

Others present were her daughter-in-law, Stella Chester, Noble Dudgeon, Coleman Terrell, Mr. and Mrs. Mike Carter, Jim Gage, and the Msdmes, Julia Camp, Ima Olds, Gwen Jones, Sara Wood, Oleta Reece, Mildred Lance, Mary Pearl Bellar, Thetta Mae Walker, Ann Walker, Nell Gentry, Romona Engram, Ruth Newman, Karen Rich, Virginia Rone, Edna Bellamy and Rosabel Coldiron.

### Ladies VFW Auxiliary Planning Annual Projects

The Ladies Auxiliary of the John Henry Chapman Post 4854 of the Veterans of Foreign Wars in Littlefield is conducting its annual membership dues campaign, and is seeking to enlist the members to participate in local projects.

Auxiliary dues are being collected for 1975, and according to a spokesman for the group, "Due to the rise in cost of paper, printing and postage rates, the dues for 1975 are \$9.50. We want 1975 to be a good year for the reporting of 100 percent membership by Dec. 15."

Members are asked to send dues to the VFW Auxiliary, Box 243, Littlefield.

One project in the planning stages is the purchase of a set of 200 pieces of stainless steel flatware with Betty Crocker coupons. Anyone who wishes to donate coupons to this project, even if they are out of date, is asked to contact the numbers listed below and they will be picked up.

Another project is the collection of cancelled postage

stamps, meter stamps and pre-stamped envelopes. All stamps must be cancelled and be complete, with part of the envelope still attached to the stamps.

Persons wishing to donate either the coupons or cancelled stamps are asked to call Vivian Barrett at 385-3367, or Janna Stehlik at 385-5977.

The VFW Post is also making preparations for the annual Thanksgiving salad supper, when turkey and dressing will be served with the salads on Friday, Nov. 22. Members are invited to bring their immediate families and a salad for the event.

**WELCOME BACK**  
Total rehabilitation or the return to normal life is the goal of the American Cancer Society's Service to the Cancer Patient Program.

When people think of the American Cancer Society they automatically think of research, but the ACS does important work as well in providing service to the cancer patient.



MR. AND MRS. George B. (Wart) Williams will be honored with a reception on their 35th Anniversary, Sunday, Nov. 17th from 2 to 4 p.m. in the fellowship hall of the United Methodist Church in Amherst. All friends and relatives are invited to attend. (Personal Photo)

### September Bond Sales At \$23,025

In releasing Treasury figures, \$130,000.

County Bond Chairman James T. Lee, announced that sales of Series E and H United States Savings Bonds in Lamb County during September totaled \$23,025.

Sales for the nine-month period were \$77,797 for 60 percent of the yearly sales goal of

September sales in Texas amounted to \$19,110,753 compared to \$17,149,206 during the same period of 1973—an increase of 11 percent. Year-to-date sales totaled \$173,861,964 for 73 percent of the \$236.8 Million goal achieved.

**KIRBY VACUUM CLEANERS**  
SALES AND SERVICE  
Pat's Record Center

USE YOUR PENNEY CHARGE TODAY

OPEN A PENNEY CHARGE TODAY

USE YOUR PENNEY CHARGE TODAY

# JCPenney



\$9<sup>99</sup>

## LADIES BOOTS

RAIN BOOT,

SNOW BOOT,

OR

FASHION BOOT

Warm vinyl with full side zipper. Black. Sizes 5-11.

## Your HOTLINE to Savings

# SATURDAY SIZZLERS

JCPenney



55¢ SKEIN

ACRYLIC WORSTED KNITTING YARN. MACHINE WASHABLE AND DRYABLE. SHRINK RESISTANT. LIMITED COLOR SELECTION.

**FIREPLACE FRESH CUT WOOD**  
LONG BURNING EAST TEXAS OAK  
SATURDAY ONLY

\$85 A CORD  
\$45 A RICK

CLIFF'S DELICATESSEN

1200 HALL AVE. 385-3441

CLIP & SAVE COUPON

TONY'S HAPPY HOUR PIZZA

11 INCH

8 DIFFERENT DELICIOUS FLAVORS

25¢ OFF

CLIFF'S GROCERY & DELICATESSEN

1200 HALL AVE. 385-3441

SATURDAY SIZZLER

ANTIQUE CLASSICS GLASSWARE

CANDY JARS

FENTER FOOTED NAPPIE

COVERED CANDY BOWL (GREEN, RED)

REG. \$1.59

\$1<sup>39</sup>

perry's

CLIP COUPON AND SAVE

32 OZ BOTTLES

6 BOTTLE CARTON

COCA COLA

\$1<sup>39</sup>

WITH COUPON

WITHOUT COUPON.....\$1.59 PRICES GOOD THURS., FRI., SAT.

AMMUNITION AND HUNTING

LICENSE SOLD HERE

PAY-N-SAVE

322 W. DELANO 385-6173  
601 E. 10th 385-4711

UNIQUE ZIPPERS

50¢

SPECIAL COORDINATED

KNIT

REG. \$5.98 & \$4.98

FRIDAY & SATURDAY ONLY \$2<sup>98</sup>

COTTON PRINTS

89¢

JANICE'S BUTTONS & BOLTS

316 Phelps 385-6151

SATURDAY ONLY

REG. \$88.00

\$77<sup>00</sup>



26 INCH, 10 SPEED

BIKE

Twin Level Shiftels, Caliper

Hand Breaks, Taped Racing

Handelbars

WHITE STORES, INC.

424 Phelps

385-5959

SATURDAY SIZZLERS

GIBSON'S LABEL

BALDRIDGE

HOT DOG BUNS  
BROWN 'N SERVE BUNS  
LOAVES OF BREAD  
HAMBURGER BUNS  
MIX OR MATCH

2 FOR 69¢

GIBSON'S DISCOUNT CENTER




ARTIFICIAL GREEN  
**CHRISTMAS TREES**  
FLAME RETARTANT

4 FT. \$6.97      6 FT. \$15.97      7 FT. \$25.97

DELUXE  
**RIBBON REEL**

13 REELS OF RIBBON  
5 3/4" WIDE 85/8 WIDE  
210 TOTAL FT.  
REG. GIBSON PRICE 79¢      SALE **59¢**


SHARI MINIATURE  
**CANDY CANES**

 REG. 49¢ RETAIL      SALE **39¢**

SIM-A-WARE  
**COOK POT**

BIG 4 1/2 QT. SIZE  
REG. GIBSON PRICE \$15.97      SALE **\$11.99**

FOSTORIA  
**STEAM & DRY IRON**

 PUSH BUTTON CONTROL  
FULL RANGE FABRIC CONTROL IN  
POPPY, HARVEST GOLD, & AVACADO  
REG. GIBSON PRICE \$11.99      SALE **\$8.99**

THERMAL  
**BOOT SOCKS**

INSULATED FOR WARMTH  
REG. .99¢      SALE **2 FOR \$1.49**

WILSON  
**BASKETBALL**

\*OFFICIAL SIZE & WEIGHT      \*DEEP TREAD PEBBLING  
\*NYLON WOUND CARCASS      \*SCUFF RESISTANT  
\*5 COLOR COMBINATIONS      \*COMPOSITION COVER  
REG. GIBSON PRICE \$7.97      SALE **\$5.99**

MEN'S  
**COVERALLS**

BY DICKIES  
HERRINGBONE PATTERN  
100% COTTON  
REG. \$12.97      SALE **\$9.99**

WINCHESTER MODEL 870  
**RIFLE**

IN .243 & 30-60  
WITH 4X MARKSMAN WEAVER  
SCOPE & MOUNTING  
REG. GIBSON PRICE \$127.56      SALE **\$99.99**

KODAK  
**INSTAMATIC X-15**

COLOR OUTFIT  
INCLUDES X-15 CAMERA,  
1 ROLL COLOR FILM, 1 MAGIC CUBE  
REG. \$16.97      SALE **\$12.99**



REMINGTON RADIAL WORLD WIDE RECHARGEABLE  
**ELECTRIC SHAVER**

EXTRA SET OF BLADES -  
MOLDED CARRYING CASE  
REG. GIBSON PRICE \$38.99      SALE **\$29.99**

STEREO 8-TRACK  
**RECORDING DECK**

RECORDS AND PLAYS STANDARD  
8-TRACK TAPES BY SOUND DESIGN  
GIBSON PRICE **\$89.97**

**CHRISTMAS TREE  
STAND**

MADE OF DURABLE METAL      **99¢**

**USE  
OUR  
LAY AWAY**

"WHERE YOU ALWAYS BUY THE BEST FOR LESS"

**GIBSON'S**

**GIBSON'S**

**DISCOUNT CENTER**

**STORE HOURS**  
9 TO 8 WEEKDAYS  
1 TO 7 SUNDAYS



PACKAGE OF 36

## STICK ON BOWS



REG. GIBSON PRICE 89¢

SALE **69¢**

SEALED BEAM

## SPOTLIGHT

BY STARFIRE

PLUGS INTO YOUR  
CIGARETTE LIGHTER

SALE **\$4.99**

REG. GIBSON PRICE \$6.68

SALE

MEN'S

## TERRY ROBES

MACHINE WASHABLE  
100% COTTON

SALE **\$9.99**

REG. GIBSON PRICE \$12.97

TOP HAND

## BOOT JEANS

BY DICKIES

50% POLYESTER  
50% COTTON

SALE **\$5.99**

REG. GIBSON PRICE \$7.97

SALE

## COWBOY BOOTS

ROUND TOE

DEEP SCOLLOP PEGGED ARCH

LEATHER LINED

SALE **\$29.99**

REG. GIBSON PRICE \$37.97

SALE

## OFFICIAL ELECTRIC FOOTBALL

BY TUDOR WITH TOTAL TEAM CONTROL

RUN REAL PRO FOOTBALL PLAYS,  
SLANTS, TRAPS AND SWEEPS

SALE **\$6.77**

REG. GIBSON PRICE \$8.99

SALE

## BABY TENDER LOVE

SWEET SOUNDS BY MATTEL

SHE MAKES SOFT BABY SOUNDS  
WHEN YOU SQUEEZE HER

SALE **\$8.99**

REG. GIBSON PRICE \$11.88

SALE

SELECTION OF WOMEN'S  
DOUBLE KNIT

## BLOUSES

REG. GIBSON PRICE \$7.97

SALE **\$5.99**

SALE

BOTTLE 'N JUG

## CUTTING KIT

BY AVALON

RECYCLE WASTE BOTTLES  
TURN TRASH INTO TREASURES

SALE **\$4.49**

REG. GIBSON PRICE \$5.99

SALE

## BED PILLOWS

WASHABLE PURE FOAM

HOSPITAL AND INSTITUTIONAL  
PILLOW IDEAL FOR FAMILY USE

SALE **\$2.27**

REG. GIBSON PRICE \$2.97

SALE

## TROJAN MOLDED LUGGAGE

REG. GIBSON PRICE \$34.97

ALUMINUM CLOSURE  
TOUGH FIBER BODY  
VINYL COVERED OUTSIDE  
PATENTED RECESSED LOCKS  
BIG COMFORTABLE HANDLE  
3 PIECE SET

SALE **\$27.99**

SALE

## LITTLE PRO POOL TABLE

BY COLECO

POLISHED COLORED BALLS WITH TRIANGLE  
SIMILATED FELT PLAYING SURFACE  
SPRING-LEADED CUES

SALE **\$3.77**

REG. GIBSON PRICE \$4.99

SALE

## BUSY BOX

BY KOHNER

10 ACTIVITIES FOR CHILDREN AGE  
6 MONTHS TO 3 YEARS  
TO PLAY WITH

SALE **\$5.24**

REG. GIBSON PRICE \$6.99

SALE

"WHERE YOU ALWAYS BUY THE BEST FOR LESS"

# GIBSON'S

## DISCOUNT CENTER

STORE HOURS

9 TO 8 WEEKDAYS

1 TO 7 SUNDAYS

USE  
OUR  
LAY AWAY



### ThriessBingham Named To Band

Thriess Bingham, daughter of Mr. and Mrs. E. D. Bingham of Littlefield, is among

a total of 220 students who have been named to the 1974-75 Big Purple marching band at Abilene Christian College.

The Big Purple marching band is one of the largest marching bands among Texas colleges and universities. Of the 220 total, 152 are Texas students and 68 are out-of-state students.

Dr. Charles Traylor, associate professor of music, is the band director. The band performs at halftime during the football season for home games and some away games. They also present concerts at various ACC sponsored activities throughout the year.



MR. AND MRS. LARRY ELDER

### Sears-Elder Vows Read

Donna Sears and Larry Elder, both of Littlefield, exchanged double-ring wedding vows Tuesday night, Oct. 29, in a ceremony in the home of the bride.

Officiating was Harris T. Ray of Littlefield.

Parents of the couple are Dan and Laura Heard of Littlefield and Mrs. C. D. Elder of Littlefield.

The bride's step-father presented her for marriage.

Following the wedding, a reception was served in the bride's home by Mrs. Lonnie

Wood. They are residing in Littlefield while the bride is attending South Plains College and the groom is employed by Zero of Clovis, N.M.

### Gaye Weaver Named To HS 'Who's Who'

Gaye Weaver, a senior at Amherst High School, was recently notified that she is to be featured in the Eighth Annual Edition of "Who's Who Among American High School Students, 1973-74" the largest student award publication in the nation.

Students from more than 20,000 public, private and parochial high schools throughout the country are recognized for their leadership in academic, athletics, activities or community service in the books.

Gaye is the daughter of Mr. and Mrs. Dale Weaver of Amherst.

Gaye is active in National Honor Society, and is secretary this year; and played basketball and track and is a member of FHA, Pep Squad, Kennel Staff Editor, and Rodeo Club.

### Grahn-Bolton Wedding Solemnized In Wisconsin

Marlene Ann Grahn and Roy Dan Bolton were united in marriage Saturday, Oct. 12th, at St. Joseph's Catholic Church, Waupun, Wisc.

Officiating for the ceremony was Rev. Wilfred Logsdon.

Parents of the bride are Mr. and Mrs. Wilbert Grahn of Route 2, Randolph, Wisc. The bridegroom is son of Mrs. Jesse Bolton of Littlefield, and the late Mr. Bolton.

The bride was given in marriage by her father.

Serving as maid of honor was Gail Grahn, sister of the bride. Best Man was Lynn Bolton, brother of the bridegroom.

Music was provided by guitarists Bill and Pepper, students at the University of Madison, Wisc. Selections in-

cluded "Sunshine on my Shoulder", "The Wedding Song", and "Follow Me". Immediately after the ceremony, a reception and dinner was held at the home of the bride.

Following their honeymoon to various points of interest in Indiana and Kentucky, the couple now resides in Amarillo.

The bride is a 1974 graduate of the University of Wisconsin at Madison, where she majored in physical therapy. She is presently employed at St. Anthony's Hospital in Amarillo, as a physical therapist.

The bridegroom is a senior at West Texas State University in Canyon, majoring in physical education with a minor in English. He is an active member of Phi Epsilon Kappa, the men's national professional honorary physical education fraternity.



MR. AND MRS. ROY DAN BOLTON

See SANTA in person  
6 p.m. to 9 p.m. NOVEMBER 13, 14  
WEDNESDAY • THURSDAY  
406 385  
Phelps SCATS 4444

We Sell Service Install Finance And Guarantee ELECTRIC WATER HEATERS  
Modern ELECTRIC Water Heating  
Phone 385-5144

INDUSTRY MUST HELP  
The American Cancer Society says that business and labor must unite to keep the cancer patient on the job. It's the clue to total rehabilitation.

BEAUTY THAT UPLIFTS  
HAMMONS FUNERAL HOME

NOTICE  
Earl Elliott and Davis have purchased the Fina Station at 420 West Delano, formerly owned by J. E. Emmons.  
Save on Major Brand Oil, 59c quart.  
We want and will appreciate your business.  
Thank You

She is a member of the Church of Christ in Amherst.

A cheerleader two years, she is head cheerleader this year, has been FFA Plowgirl and is FFA Sweetheart this year, among other honors. Gaye plans to attend South Plains College upon graduation.



GAYE WEAVER

The right answers to your life insurance needs depend on the right questions. Who asks them?  
A professional.  
Southwestern Life  
Happiness is what we sell  
514 E. 12th 385-4160



# GEBO'S

LITTLEFIELD  
508 Hall Avenue

DURA-LIFT HYDRAULIC JACKS  
American made. Top quality. Large diameter extension screw.  
1 1/2 Ton Reg. \$11.90 SPECIAL \$10.49  
3 Ton Reg. \$16.95 SPECIAL \$14.95

PRICES GOOD THRU' SATURDAY  
NORTH VERNON FORGE LUG WRENCH 16" 4-WAY  
Don't let a tire leave you flat! Change it fast and easy!  
\$159  
No. T-4650

HANDY MAN HI-LIFT FARM JACK  
A giant of power! 7000 lb. capacity. 48" continuous lift.  
\$2695

GREEN LINE HIGH PRESSURE WASHER  
Portable / Fast / Economical  
Only water goes through pump. Extends pump life. Quick change 4 way turret nozzle.  
No. GLW2B  
REG. \$262.00  
SPECIFICATIONS GLW-2B  
pressure 500 psi  
gpm 2  
motor, 115V-60CY 1/4 hp  
pump 2 piston  
solution injection after pump  
control at washer  
nozzles (4) turret head  
wheels 8"  
gun hose 3/8" 30'

MYSTIK JT-6 MULTI-PURPOSE GREASE  
A long-life multi-purpose grease product. Reduces down-time on expensive equipment. Offers an impervious film of lubrication between bearing surfaces; maximum stability; exceptional resistance to chemicals and water.  
10 TUBES \$599  
CASE \$2975

MYSTIK JT-8 SUPER HEAVY DUTY MOTOR OIL  
For all API services. Exceeds all performance requirements for auto, truck, tractor and stationary engine manufacturers. Low ash formula. Excels in heavy duty service.  
10W40 or 20W50  
QT. 59c CASE \$1325

MOTOROLA TRACTOR RADIO ALL WEATHER SOLID STATE  
Engineered specifically for rugged, dependable outdoor performance to cope with weather conditions and tractor noise. Solid State circuitry for reliability. 5 1/2" x 7 1/2" speaker. Works on 6 or 12 volt operations, positive or negative ground.  
MODEL TM 107M  
\$5995

UNION ALUMINUM GRAIN SCOOP No. 531324 \$649  
COTTON FORK D or straight handle No. 731455 or No. 731420 \$749  
ROUND POST STA-TITE FENCE INSULATORS Holds wire securely. Easy to install. Plastic nut. Locks insulator on post. No metal parts to rust or short out.  
RP-13 1/2" Post REG. \$2.78 \$199

HUBBARD TRACTOR MUFFLERS 20% OFF OUR REGULAR LOW PRICE  
KNIGHT SUPER CHARGER ELECTRIC FENCER Most Powerful on the Market  
The Super Charger works when others don't because it starts out with more power than the others. It's a solid state breakthrough to a high level of dependability and performance. That means holding better under all conditions.  
No. 909 \$4195

CRACKER BARREL SPECIAL

CRACKER BARREL SPECIAL

TERRAMYCIN INJECTABLE SOLUTION  
Assures potent action against many common respiratory, scours and bacterial infections, plus many secondary infections.  
500cc. \$795



THIS WEEK, HAVE A

# LOWER TAPE TOTAL



WE REDEEM USDA FOOD STAMPS

PRICES EFFECTIVE THRU 11-9-74

<b>AVOCADOS</b>	CALIFORNIA FANCY EACH	44¢
<b>SQUASH</b>	YELLOW LB	19¢
<b>GRAPEFRUIT</b>	INDIAN RIVER RUBY REDS LB	19¢
<b>BANANAS</b>	CENTRAL AMERICAN GOLDEN RIPE, LB	13¢
<b>APPLES</b>	RED ROME LB	4 FOR \$1
<b>POTATOES</b>	ALL PURPOSE RUSSET 10 LB BAG	92¢

<b>CLUB STEAK</b>	FURR'S PROTEN LB	ADV. SPECIAL	\$1.39
<b>RANCH STEAK</b>	FURR'S PROTEN LB	ADV. SPECIAL	89¢
<b>GROUND BEEF</b>	FRESH GROUND LB	ADV. SPECIAL	69¢
<b>BEEF ROAST</b>	FURR'S PROTEN SEVEN BONE SHOULDER CUT, LB	ADV. SPECIAL	79¢
<b>ROUND STEAK</b>	FURR'S PROTEN LB	ADV. SPECIAL	98¢
<b>SIRLOIN STEAK</b>	FURR'S PROTEN LB	ADV. SPECIAL	98¢
<b>RIB STEAK</b>	Furr's Protén, Lb		98¢
<b>RIB ROAST</b>	Furr's Protén, Lb		98¢
<b>T-BONE STEAK</b>	Furr's Protén, Lb		\$1.39
<b>RUMP ROAST</b>	Furr's Protén, Lb		98¢
<b>TURKEYS</b>	Top Frost Lb		59¢
<b>TURKEYS</b>	Butterball Lb		69¢
<b>SAUSAGE</b>	Farm Pac, Skinless Link, 12 Oz Pkg		73¢
<b>CATFISH FILLETS</b>	Lb		\$1.19

<b>TOMATOES</b>	CALA-RIPE NO. 303 CAN	3 FOR 89¢
<b>KETCHUP</b>	HEINZ 20 OZ BOTTLE	49¢
<b>BEEF STEW</b>	ELLIS 24 OZ CAN	79¢
<b>DOG FOOD</b>	PARD 15 OZ CAN	6 FOR \$1
<b>FLOUR</b>	GOLD MEDAL REG 5 LB BAG	69¢
<b>FRENCH DRESSING</b>	KRAFT 16 OZ SIZE	79¢
<b>RITZ CRACKERS</b>	11 OZ PACKAGE	79¢
<b>PHILIP HILI</b>	WILSON S PLAIN 24 OZ CAN	79¢
<b>MACARONI AND CHEESE</b>	KRAFT MACARONI AND CHEESE 7 1/4 OZ	4 FOR \$1
<b>COFFEE</b>	FOLGER'S ALL GRINDS	
<b>PICKLES</b>	HEINZ SWEET CUCUMBER SLICES, QT	79¢
<b>3 LB CAN</b>		\$2.99
<b>CHICKEN SPREAD</b>	Swanson's 5 Oz	4 FOR \$1
<b>KITCHEN BOUQUET</b>	Sauce 2 Oz	36¢

**WE GIVE GOLD BOND STAMPS**

**GREEN BEANS**  
FOOD CLUB CUT NO. 303 CAN  
**3 FOR \$1**

**FEATURE OF THE WEEK**  
**ALVARADO SOUP SPOON**  
Each . . . . . **37¢**

**COMPLETER PIECES AVAILABLE AT ANY TIME**

- 4 Iced Tea Spoons . . . . . \$1.89
- 2 Tablespoons . . . . . \$1.89
- 2 pc. Salad Set . . . . . \$1.89
- 3 pc. Serving Set . . . . . \$1.89
- Cold Meat Fork . . . . . \$1.59
- Pierced Pastry Server . . . . . \$1.59
- Gravy Ladle . . . . . \$1.59

**CHICKEN BROTH**  
SWANSON'S 12 3/4 OZ CAN  
**39¢**

**Frozen Food Favorites**

<b>COOL WHIP</b>	BIRDSEYE FRESH FROZEN, 9 OZ	59¢
<b>DINNERS</b>	PATIO, FRESH FROZEN, 12 OZ MEXICAN, 11 OZ COMBINATION, 12 OZ CHEESE OR 13 OZ BEEF ENCHILADA, EACH	49¢
<b>POTATOES</b>	ORE IDA, HASH BROWN 12 OZ PACKAGE	4 FOR \$1
<b>PIE SHELLS</b>	PET RITZ FRESH FROZEN DEEP DISH PKG OF 2, EACH	63¢
<b>WAFFLES</b>	AUNT JEMIMA ORIGINAL 10 OZ PKG	58¢
<b>APPLE PIE</b>	MRS SMITH GREEN, 46 OZ PKG	\$1.55

**NEW HOSIERY BOUTIQUE**  
QUALITY\*STYLE\*COLOR\*FIT...AT FURR'S LOW BUDGET PRICES

**holeproof® PANTY HOSE**

<b>SHEER STRETCH PANTY HOSE</b>	<b>ALL NUDE PANTY HOSE</b>	<b>EXTRA WIDTH PANTY HOSE</b>
Pair <b>69¢</b>	Pair <b>79¢</b>	Pair <b>89¢</b>
<b>ALL NUDE AMPLON PANTY HOSE</b>	<b>SHEER SUPPORT PANTY HOSE</b>	
Pair <b>89¢</b>	Pair <b>\$1.29</b>	Pair <b>\$1.69</b>

**HAIR SPRAY**  
MISS BRECK 13 OZ SIZE  
**69¢**

**TALCUM**  
CASHMERE 6.5 OZ  
**69¢**

**CREME RINSE** Miss Breck 12 Oz. **\$1.33**  
**BUBBLE BATH** Jergen's 16 Oz Size **\$1.12**

**SKIN CREAM**  
NOXZEMA 10 OZ  
**\$1.63**

**NEW**  
IT KEEPS YOU VERY DRY  
**dial VERY DRY**  
**\$1.09**

**SHOP Furr's MIRACLE PRICES**



TO	PLACE	YOUR	LOW	COST	WANT	AD	DIAL
3	8	5	-	4	4	8	1
WANT	ADS	GET	RESULTS	IN	LAMB	COUNTY	NEWS

Rates on CLASSIFIED ADVERTISING are 10 cents per word 1st insertion (\$1.50 minimum charge) and 6 cents per word 2nd insertion (\$1.00 minimum charge). Blind box ads are \$1.00 additional. DISPLAY CLASSIFIED RATES: \$1.40 per column inch first insertion and additional insertions, \$1.15 per column inch. Card Of Thanks — 1 time — maximum of 20 words, \$1.50. All cards of Thanks over 20 words are to be charged at regular classified rates.

**Apts. For Rent**

2 & 3 bedrooms, furnished and unfurnished apartments. 385-3647 after 5 p.m. 400 E. 22nd. 11-10-H

For rent furnished one and two bedroom apartments. Adults only. No pets. 385-1880 TF-H

**Houses For Rent**

Country home for rent. \$60 month. Call 262-4452, Fieldton. TF-D

2 bedroom country home for rent, with all city conveniences. Wall to wall carpet, garden spot, all out buildings. \$50 month. 2 1/2 miles west of Anton. Contact James C. Jez at above location. 11-10-J

**Houses For Sale**

Large two bedroom house, priced reasonable. Call 385-4790

2 bedroom, bath, near downtown Littlefield. Call Mrs. S. B. Deavours, 832-4429, Shallowater. 11-14-D

16' trailer house. Sleeps six. Real nice. \$795.00. 385-5047 TF-F

EXTRA nice 3 bedroom, 2 bath home in Crescent Park. Paul Carmickle Real Estate, 385-5131, Littlefield, Tex.

**Autos For Sale**

CLEANEST USED CARS in town. Marcum-Olds Cadillac. 8th and Hiway 385. Littlefield. 385-5171. TF-M

1967 Ford Galaxie 500, power & air, automatic, clean. Excellent condition. \$525.00. Call 385-5548. TF-N

1970 Galaxie 500-nice. 1966 LTD 4 door, air, radio. See at 701 E. 15th or call 385-4155.

Extra clean '65 Impala, loaded. \$450. 385-4514 or 385-3873 after 3 p.m. 11-7-F

1972 Ford pickup. 360 engine, half-ton, power and air. 55,000 miles. 262-4172.

1974 Nova Hatchback, low mileage, power steering, air and radio. \$2900. Call 227-5431 after 4. Sudan. 11-3-P

1968 CHEVROLET Carryall 4 wheel drive. Good condition. Call T. L. Timmons. 385-4487. TF-SL

1968 Volkswagon. \$895. 227-1321, Sudan. 11-10-P

1969 Pontiac. 1 owner, loaded. \$750. 1207 W. 14th. TF-B

1968 Plymouth Spts. Suburban. 9 passenger wagon. Low mileage, clean, all power and air. 8 to 6. 385-5108, ask for Gary. After 6. 385-4665.

1971 Suzuki 250 motorcycle. \$400.00

1972 Ford Galaxie 500. 9200 miles. 385-5108

2-1969 LTD and station wagons. PURDY Motor Machine Shop 812 E. 9th 385-4811

**Bus Services**

Campbell's Plumbing Co. Heating Air Conditioning Sheet Metal Work

Carrier Complete stock of repair parts for all major lines of plumbing, heating, air conditioning products.

Service on all major lines heating and air conditioning equipment. Sales Service Installation. Phone 385-5020 1022 E. 9th

**Bus Services**

ALL KINDS ALTERATIONS, covered buttons, hufftonholes, belts. Mr. and Mrs. G. E. Scifres, 905 E. 4th St. Phone 385-3971. Former Drive In Cleaners. TF-S

RENT CONVALESCENT equipment at Brittain Pharmacy. Wheel chairs, crutches, hospital beds, other items. Complete line ironvaldescent needs. TF-B

Will build re-enforced concrete cellars. Redibuilt houses. H. G. Ferguson, 385-5508. 4-6-F

C&O Cleaners guaranteed carpet & upholstery cleaning. 385-5211, 628 Farwell. 5-5-C

KEEP carpet cleaning problems small—use Blue Lustre wall to wall. Rent electric shampooer \$1. (Nelson's Hardware)

Yard and house painting. 385-4893. Leonard Simington Jr. Your business will be appreciated.

**CARPET**

Shop at home and save. Hi lo plush shags, multicolor shags, hi lo shags, level loop tweeds, pattern and tweeds in bath and kitchen carpet and commercials. Installation guaranteed to satisfy. Call for samples and free estimates. 385-4953 or 385-6194. J. C. & Bill Duncan.

**Industrial BEARINGS & BELTS**

Forney Welders & Supplies \*Farm Equip. \*Industrial Equip.

**G & C AUTO SUPPLY**

700 E. 14th 385-4431

**KIRBY Sales & Service**

Call 385-3357 For a free demonstration on the Kirby Classic 1013 W. 9th

**MARTIN ROOFING**

Roofing Specialists Roofing of all kinds Asphalts of All Kinds Asphalt Built-up Roofs All Work Guaranteed

1115 W. 9th 385-3507

**Misc. For Sale**

3 nice used black and white T.V.s. Your choice \$69.95. In excellent condition. A few used appliances. Call 385-5959. 11-17-W

MARDEL Ceramics and gifts. 401 W. 3rd. Green ware and a few finished pieces for sale. Will also do firing and have paints for sale. 385-4704. 11-17-C

PINTO beans and turnips for sale. 385-5481. 11-1-V

KUSTOM 100 deluxe base amplifier. For appointment to see, call 385-6021 or 385-3222. TF-H

TWO 18 x 48 truck tarps. Never been used. Call 385-3919. 11-10-P

Full blood, Chinese Pug, registered with papers. 1 1/2 years old. Peach color. Call 385-3682 or 385-5790. 11-7-P

Independent Beverage Distributor for Muleshoe Area Dr. Pepper, Seven-Up, and complete line of National Brand Flavors. Contact: Dr. Pepper-Seven-Up Bottling Company 505 E. 50th Street Lubbock, Texas Phone 806-763-4311

**Misc. For Sale**

THOROUGHbred German Shepherd puppies, solid white or black and silver. Call 385-4713 after 5. TF-H

Valley self-propelled sprinkler systems available for delivery now. A.V.I. Inc. 806-272-3565 Clovis Hwy W. Muleshoe, Texas.

**PANELING**  
LARGE SELECTIONS  
**\$3.00 & UP**

ACAUSTICAL  
**TILE**  
**15¢ & UP**

DO-IT YOURSELF  
NU-TOP  
**CABINET TOP**  
**20% OFF**

**DAMAGED DOORS**  
**\$2.50 & UP**

**HEATING SALES & SERVICE**  
FLOOR FURNACE,  
WALL HEATER OR  
CENTRAL HEATING

**TRAILER MATERIAL**  
4"x6" - 20 Ft. Length  
4"x4" - 8 Ft. Length  
1"x4" - 20 Ft. Length  
1"x6" - Rough 20 Ft.

**LUMBER**  
2"x4" - 8 Ft., .69¢  
1"x4" - 8 Ft., .49¢  
1"x12" - #3 Re-Saw  
.16 1/2¢ Ft.

**SHEET ROCK**  
1/4" - \$1.39  
3/8" - \$1.59  
1/2" - \$1.69

**PARTIAL BOARD**  
3/8" - \$2.99  
1/2" - \$3.29  
5/8" - \$3.99

**HARRELL'S BUILDING-SUPPLY**  
ANTON, TEXAS  
997-3621 - 997-2951

**FIGHT CANCER**  
American Cancer Society

VOTING BOX NAME	TYPE	GOVERNOR		LIEUT. GOV.		ATTORNEY-GEN.		COMPT.		TREAS.		LAND COMM.		AGRI. COMM.		RAILROAD COMM.												
		1	2	1	2	1	2	1	2	1	2	1	2	1	2	1	2											
OLTON	214	1	282	156	4	0	3	269	118	0	297	86	5	284	88	1	269	134	209	77	0	302	95	206	84	4	0	247
BARTH	231	2	184	98	11	0	0	206	56	0	209	36	5	213	41	0	193	77	230	39	0	208	55	209	39	4	0	214
SPADE	101	3	78	20	1	0	0	89	12	0	89	3	0	82	10	0	80	18	97	4	0	93	6	83	7	0	0	87
W. LITTLEFIELD	ED	4	25	13	0	1	0	26	7	0	39	3	0	44	2	0	34	9	40	4	0	39	8	41	3	0	0	43
SUDAN	187	5	129	58	0	0	1	129	43	0	137	34	0	137	36	0	131	48	149	38	0	146	38	136	38	0	0	146
PLEASANT VALLEY	VA	6	20	22	0	0	0	23	12	0	22	13	0	20	12	0	17	16	23	11	0	26	12	22	13	0	0	25
N. SUDAN	NS	7	20	4	0	0	0	18	5	0	21	2	0	22	1	0	20	3	24	0	0	20	4	20	2	0	0	21
AMHERST	288	8	155	46	0	0	0	146	32	0	156	20	0	157	21	0	137	70	168	19	0	169	21	159	18	0	0	168
FIELDTON	289	9	28	4	1	0	0	24	3	0	25	1	1	25	1	0	32	1	28	1	0	27	3	25	1	1	0	28
LITTLEFIELD	290	10	408	214	2	0	0	397	157	2	445	107	1	439	110	0	420	168	476	100	0	461	123	433	102	2	0	468
BECK GIN	31	11	54	6	0	0	0	57	3	0	57	3	0	58	2	0	57	5	56	4	0	57	3	53	2	0	0	58
HART CAMP	32	12	16	7	0	0	0	14	7	0	17	2	0	16	4	0	18	4	18	4	0	18	4	16	3	0	0	18
E. SPRINGLAKE	33	13	35	20	0	0	0	33	15	0	38	10	0	34	13	0	38	16	39	11	0	39	13	38	11	0	0	39
N. LITTLEFIELD	34	14	243	144	19	1	1	278	95	2	304	62	7	301	65	3	292	124	310	63	0	317	66	285	61	20	0	316
W. SPRINGLAKE	35	15	33	19	3	0	1	35	15	0	38	11	0	43	10	0	35	16	44	12	0	44	13	37	15	1	0	44
N. FIELDTON	36	16	18	10	0	0	0	15	9	0	15	6	0	13	7	0	15	10	18	4	0	21	5	14	4	0	0	19
ABSENTEE	37	17	78	23	1	0	0	78	14	0	80	12	0	80	14	0	75	20	81	13	0	83	12	78	12	1	0	77
TOTALS	SUBT		4736	2594	42	2	6	1848	605	4	1952	411	19	1708	437	4	1853	719	2407	408	0	2070	431	1732	415	33	0	2080

**AMHERST NEWS**

THE UNITED Methodist Youth of Amherst sponsored their annual "trick or treat" for CROP Monday night of last week. They raised more than \$200. Youth from other churches joined them. Their counselors, Mr. and Mrs. Leroy Maxfield served refreshments to them as they returned to the church with their collections.

MR. AND MRS. Dewayne Gable and Shelly of Muleshoe visited her mother, Mrs. Erlye Abbott last weekend.

MRS. ORVILLE BLAIR and family and Estelle Jones of Lubbock spent the weekend with their mother, Mrs. S. E. Lance and sister, Mrs. Eugene Young and family.

MR. AND MRS. Randy Plank and baby daughter, Amber De Ann of Lubbock, were recent guests of her parents, Mr. and Mrs. Eugene Young and girls and her grandmother, Mrs. S. E. Lance.

JUDY LONG joined the group from Littlefield for the bus trip to Irving to see the Cowboys and Cardinals game Sunday afternoon.

JOE AND JEFF Lemer, sons of Mr. and Mrs. Richard Lemer, are recovering from recent illnesses. Jeff had an emergency appendectomy and Joe, the very next day, broke his ankle. Both boys are back in school now.

WEEKEND guests of Mr. and Mrs. E. L. Schovajsa were their daughters and family, Dr. and Mrs. Farrar Patterson Paige and Shea of Fort Worth. Dr. Patterson went to Hobbs, N.M. Sunday delivering the sermon at a Baptist Church. Others here were their daughter, Mrs. Bobby Hayworth, De Anna and Alan of Lubbock and son Larry and a friend Susan Gilmer, also of Lubbock and son, Mr. and Mrs. Gary Schovajsa, Charles and Carl of Amherst. Birthdays were celebrated, Shea was three Saturday, and Page's was Monday and Tuesday was Jo Ann's (Mrs. Hayworth's). The dinner Saturday honored those for their special day.

GEORGE HARMON and Joe Branstatt are at Falcon Lake, on the Mexico border for several days fishing.

MR. AND MRS. Ray Blessing returned from a visit in east and central Texas. They visited Jedd and family in Fort Worth, Pat and family in San Marcos, her sister in Lufkin and other relatives in Austin, and Houston.

VISITING their parents, Mr. and Mrs. L. E. Landers and sister, Tanoa, for the weekend were Mr. and Mrs. Steve Martin of Amarillo and Mr. and Mrs. Roger Mac Boyles of Lubbock.

TANO A LANDERS celebrated her 13th birthday Sunday. Joining her for a spaghetti supper, in her home were Terri Cowan, Charla Carpenter, Kelly Tomes and Cassie Mote.

MRS. RAY BLESSING and Mrs. R. H. Campbell attended the meeting of the Delta Kappa Gamma sorority meeting held in the party room of the Security State Bank in Littlefield Saturday morning.

MRS. KEITH DICKSON, Steffy and Jennifer of Montgomery, near Houston visited the Willie Steffys in Littlefield and the A. O. Dicksons and other relatives last week. Others here with the Dicksons Sunday were their daughter Mrs. Kenneth Hanna and daughter Mrs. Bob Hogan of Amarillo.

MR. AND MRS. W. H. Smith of Lubbock visited his sister, Mrs. Effie Veach at Amherst Manor last week.

BILL BRADLEY and his nephew, Bob Bradley of Hereford, Eldon Nichols of Sudan and his nephew were deer hunting near Nucla, Colo. last week. They were in heavy snow most of the time, but reported fair luck.

**Cotton Press Installed In Olton Gin**

As part of a major expansion program, a large cotton press built in Brazil has been installed at the Olton Co-Op Gin.

Density Press, is the second such machine made in Brazil for Murrey Gin Company of Dallas for American installation. Although the first was installed last year in a cotton Mississippi, the producers have made moves in Israel.

Lloyd Graham, manager of the firm, said Olton Co received preferential treatment because the company is the new machine to a big Murrey Gin.

**PEP NEWS**

GAIL ALBUS and Miki Demel were among those of South Plains College to attend the A.E.O. Convention held at Austin the past weekend. Gail is the daughter of Mrs. Evelyn Albus and Miki is the daughter of Mr. and Mrs. Conrad Demel.

PEP FFA Chapter held their Sweetheart banquet in Pep School Cafeteria Thursday, Oct. 10, at 7:30 p.m. Sweetheart was Renee Wright and Plowgirl was Doris Woosley. The meal was prepared by the FFA boys' mothers and was Mexican dishes served to the F.F.A. and F.H.A. Chapters with sponsors Lester Bowens and Alice Kester.

All machinery has been removed from the oldest ginning plant, and a large addition to the side of the building has more than doubled its original capacity. The building, now 70x110 is being fitted with three gin stands and Signode automatic strapping. Its panel of controls and devices per trailer is expected to be at the rate of 100 per hour.

DAVID SHANNON, a student at Steven F. Austin College at Nacogdoches, was home visiting his mother, Mrs. Valeria Shannon over the weekend of Oct. 11 to 14th. Other guests were Mr. and Mrs. Don Shannon and daughter of Plainview and Mr. and Mrs. Charle Shannon of Lubbock were dinner guests Sunday, Oct. 13th.

KAREN GREEN, a student at Sul Ross College was home visiting her parents over the weekend of Oct. 4th to 6th.

The new press will be used in its underground vault concrete covering, which serve as the gin floor turntable and all other on the press is contained in the floor.

A COME and go bridal shower was held in honor of Mrs. Jerry McCurry, nee Debbie Glumpler, in the home of Mrs. Walter Gerik Sunday afternoon, Oct. 13. The serving table was laid with a white table cloth. The centerpiece was blue candles in silver appointments. Refreshments of white cake with assorted floral-decor punch, nuts and mints were served to the guest. Hostesses' gift was an avocado green electric teflon coated skillet. Hostesses were: Lea Gerik, Brenda Kuhler, Beverly Albus, Ann Gerik, Betty Merrick, Dorothy Ford, Jo Ann Miller, Jean Demel, Jeanette Homer, Joyce Simmacher, Lydia Green and Doris Hatla and Clara Albus.

THE UD press will be used in its underground vault concrete covering, which serve as the gin floor turntable and all other on the press is contained in the floor.

The UD press will be used in its underground vault concrete covering, which serve as the gin floor turntable and all other on the press is contained in the floor.

ST. PHILIP'S ALTAR Society held their monthly meeting Oct. 16th with 18 members and one guest present, and Rev. Kevin Clark, President, Lydia Green called the meeting to order by dedicating it to the "Most Holy Rosary." Rev. Clark led the opening prayer. Roll was called and minutes of the previous meeting were read by Zita



**LITTLEFIELD TEXAS**  
**RED HEART CATHOLIC CHURCH**  
**38TH ANNUAL**  
**TURKEY AND SAUSAGE DINNER**  
**FRIDAY NOVEMBER 10, 1974**  
**10:00 A.M. TO 3:20 P.M.**  
**at the COMMUNITY CENTER**  
**in Laguna Park**  
**TICKETS: \$3.00 CHILDREN: \$1.75**  
**"ALL YOU CAN EAT"**

were in Hollis to visit in his home and also visited her aunts, Mr. and Mrs. Raymond Self and Mrs. George Austin in Blair, Okla.

MR. AND MRS. B. A. Beauchamp, Jr. and Derwin visited Sunday in the home of

her mother, Mrs. Bessie Myers of Muleshoe.

MIKE HUNTER, a student at Wayland Baptist College, was guest singer and choir director at the First Baptist Church Sunday, and visited in the home of Rev. and Mrs. Eddie Freeman. His mother, sister and brothers of Morton also attended the morning worship services.

MRS. ROSE PINKERTON returned home Saturday from the Littlefield Hospital.

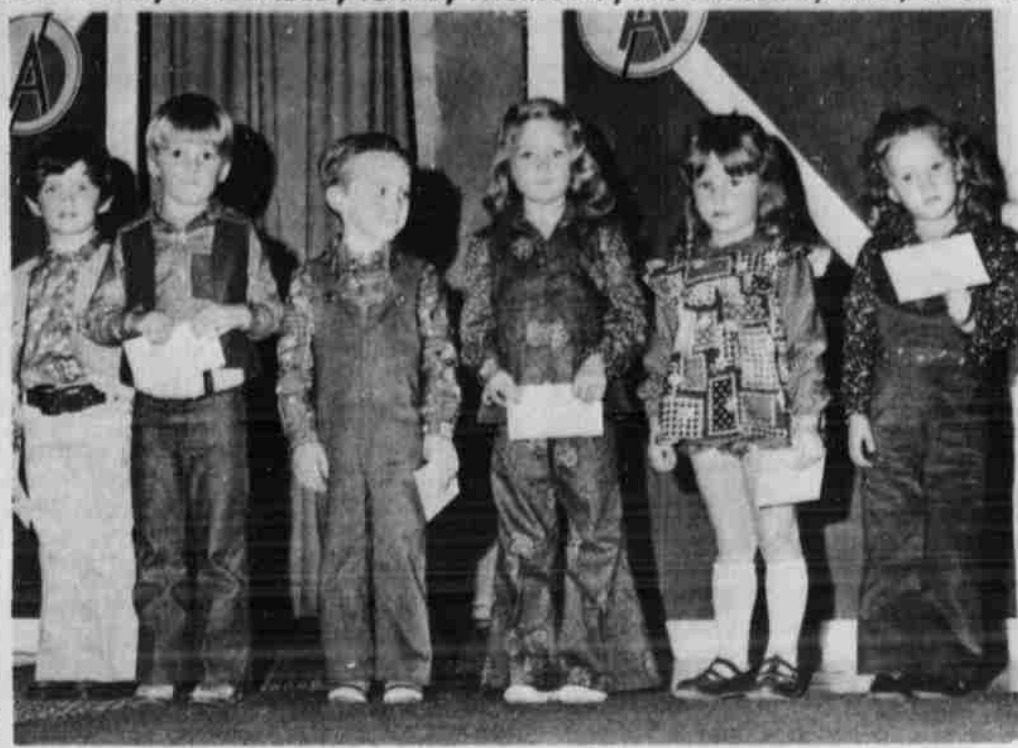
WEEKEND VISITORS in the home of Mr. and Mrs. G. C. Ritchie were their daughters, Mr. and Mrs. Robbie Rudd and April, and Mr. and Mrs. Dewayne Phillips, all of Lubbock. Other visitors were Mrs. Ritchie's sisters, Mrs. Nona Watson and Cricket of Farmington, N.M. and Mrs. Doris Matthews of Albuquerque.

MR. AND MRS. Sterling Reece returned home Sunday from visiting with their daughter, Mr. and Mrs. Albert Thomas of Diana; their granddaughters, Mr. and Mrs. Billy Ewins and son of Lone Star and Mr. and Mrs. Jack Bingham of Arlington met them there.

KAY LYN ETHRIDGE of Dimmitt visited Sunday with her grandparents, Mr. and Mrs. G.



SCHOOL TIME WINNERS were Danene Cox of Sudan, third place; Raynee Davis of Plains, second place; and Pam Spears, first place. (Staff Photo)



PLAY TIME WINNERS were Jesse Saltzman of Levelland, first place boys; Scott Buchanan of Morton, second place boys; Darrell Taylor, third place boys; Cherry Ann Graves of Guthrie, third place girls; Tara Sue Abbe of Morton, second place girls; and Jami Chambers of Terry County, first place girls. (Staff Photo)

C. Churchman, Scott and Gwen.

WEEKEND VISITORS in the home of Vesta Richards were Mrs. Daisy Raney of Alvin and Mrs. Ruby Dunn of Texarkana.

MRS. MARTHA MASTEN returned home Monday after being hospitalized in the Amherst Hospital for several days.

WEEKEND VISITORS in the home of Rev. and Mrs. Roy Lee Baker were their daughter, Mr. and Mrs. W. W. Mansell and children of Littlefield. MR. AND MRS. John Milam and her brother, Dr. Plaes Harper of Canyon, visited recently with their daughter and niece, Dr. Evelyn Milam in Nevada, Mo. They returned home Thursday evening.

# LITTLEFIELD AT OLTON

GAME TIME 7:30 AT MUSTANG STADIUM

GAME TIME 7:30 AT MUSTANG STADIUM

Offense	Defense
<p>Bill Turner Tailback</p> <p>Rick Hopping Fullback</p> <p>Ronald Parmer Quarterback</p> <p>Brad Banner Tackle</p> <p>Doug McCain Guard</p> <p>Jack Speck Center</p> <p>Jerry Soria Guard</p> <p>David Blevins Tackle</p> <p>Kip Elms or Lonnie Twitty End</p>	<p>Larry McDonald Defensive End</p> <p>Doug McCain Defensive Tackle</p> <p>Rick Hopping Defensive Tackle</p> <p>Ben Farmer Defensive End</p> <p>Stanley Patterson or Sammy Schlottman Halfback</p> <p>Reginald Payton Inside Linebacker</p> <p>Steve Cruz Inside Linebacker</p> <p>Kip Elms Outside Linebacker</p> <p>Secondary Stanley Patterson Bill Turner Gary Lichte or Sammy Schlottman</p> <p>Richard Barton Outside Linebacker</p>

## WILDCATS OF THE WEEK



GARY LICHTER



STEVE CRUZ

**Fair Dept. Store**

333 Phelps  
Littlefield  
385-4064

**McCormick's Upholstery**

"Charles Powell,  
Owner"  
227 Phelps  
Littlefield 385-4555

**Littlefield Butane Co.**

1120 East 9th  
Littlefield  
385-3010

**CLIFF'S GROCERY AND DELICATESSEN**

HALL AVENUE  
385-3441

**Littlefield Frozen Food Center**

Littlefield  
385-3818

**case**

**Case Power & Equipment**

236 W. 2nd 385-4427

**Lamb County Locker**

1101 E. 9th 385-5506

**Chisholm Floral**

620 W. 5th 385-4461

**AAA Truck & Auto Parts**

3 Blocks North  
Of Old Location  
SPRINGLAKE HWY.  
385-4720

**B. W. Armistead Optometrist**

406 LFD. DR. 385-5147

**J.C. Penney**

408 Phelps Ave.  
385-5166

**Campbell's Plumbing**

Heating &  
Air Conditioning  
1022 E. 9th  
385-5020

**Keithley & Co.**

303 XIT DR. 385-4911

**Pioneer Super Market**

205 W. 3rd 385-4848

**Joy Parker Gulf Serv.**

814 Hall Avenue  
385-3200

**New Tasty Taco**

5th and XIT Drive  
385-6124

**Littlefield Federal Savings & Loan**

301 XIT DR. 385-5197

**Goodyear Service Store**

304 W. 4th 385-5162

**Littlefield Seed & Delinting**

385-3588

**Dairy Queen**

1001 E 9th  
385-3666

**Lamb Co. Farmers Co-Op Gin**

1230 E. 9th 385-4552

**Gibson's Discount Center**

311 E. 8th 385-5932

**Roden Drug**

431 PHELPS AVE.  
385-4250

**Marcum Olds, Cadillac & Pontiac**

801 HALL 385-5171

**Armes Chevrolet**

610 E. 4th  
385-4437

**Shook Tire Co.**

1028 E 9th 385-4405



# Annual Littlefield-Olton Game Set For Friday

While Friday night's Littlefield-Olton clash will not decide the District 3-AA league winner, it will provide the unofficial "champion" of Lamb County and will go a long way in determining the district champ, because Olton will go into the game undefeated in district play.

And for the first time in four years, Littlefield will not be going into this game with the district championship in its grasp if the 'Cats win.

Littlefield's season record to date is three wins, five losses and one tie. Olton's record is seven wins and one loss. The Mustangs' only loss was to Floydada, 28-16.

Olton was idle last week, but defeated Friona the week before, 6-0. Littlefield was defeated by Friona 21-14.

Head Coach Jerry Blakely describes the Mustangs as "being in the same class as Dimmitt and Floydada."

Olton returned eight offensive and nine defensive starters at the beginning of the season off a team that was five and five one year ago. Part of Olton's success this year has to be contributed to the fact that the Mustangs returned their entire starting backfield.

Blakely describes two of Olton's backs as "two of the best we will have faced this year."

The two men he is referring to is Glen Johnson and Joe Alcorta. In the Friona game, Johnson rushed for 119 yards and scored Olton's only score from his tailback slot. For the season, Johnson has rushed 170 times for 1,056 yards for a 6.2 average per carry. His totals are surpassed only by Littlefield's Bill Turner's lead-leading yardage gained of 1,078 yards on 248 carries for a 4.3 average.

Alcorta, Olton's junior fullback, was

an all-district performer last year and has rushed for 374 yards on 85 carries so far this season.

Olton will operate out of an "I" formation which is very similar to the Wildcats. Statistics show that Olton has depended upon their ground attack more and more as the season has progressed. Against Friona, the Mustangs threw the ball only one time.

Olton's defense is led by Johnson who Blakely describes as "the best linebacker we've played against since I've been at Littlefield." Other defensive standouts include Clarence Johnson and Alcorta.

Littlefield's starting lineup will have on offense, Jack Speck at center, Larry McDonald and Randy Hall or Jerry Soria at guards, Brad Banner and Dean Walden at tackles, Gary Lichte and Kip Elms at ends, quarterback will be Ronald Parmer, halfback will be Stanley Patterson or Sammy Schlottman, fullback will be Rick Hopping and the tailback will be Bill Turner.

Defensively Turner will be at safety, Patterson and Schlottman at cornerback, Jimmy Durham and Richard Durham at outside linebackers, Steve Cruz and Reginald Payton at inside linebackers, David Blevins and Ben Farmer at defensive ends and Doug McCain and Rick Hopping at defensive tackles.

Kickoff is set for 7:30 p.m. in Olton's Stadium.

"The Friona game was one of the best we've played all year. We were extremely disappointed that we didn't win,

but we were all pleased with the team's effort," Blakely stated in talking about the 21-14 defeat the 'Cats suffered against Friona.

"I thought Bill Turner had another fine night running with the ball and punting the ball. He ran with a great deal of determination and his kicking certainly kept Friona in the hole much of the time.

We were all well pleased with Ronald Parmer's passing and even the last pass that was intercepted should have been a completion. The receiver was open and if it had been a "normal" size defender, it would have been a TD. But as it was the 6' 4 1/2" end just got way off the ground and that was it! Friona had a fine football team and their quarterback

Clay Bandy had an exceptional night. Their receivers made two fine catches when I thought we had them pretty well defended. It's pretty hard to cover someone 6'2" when you're only 5'8"."

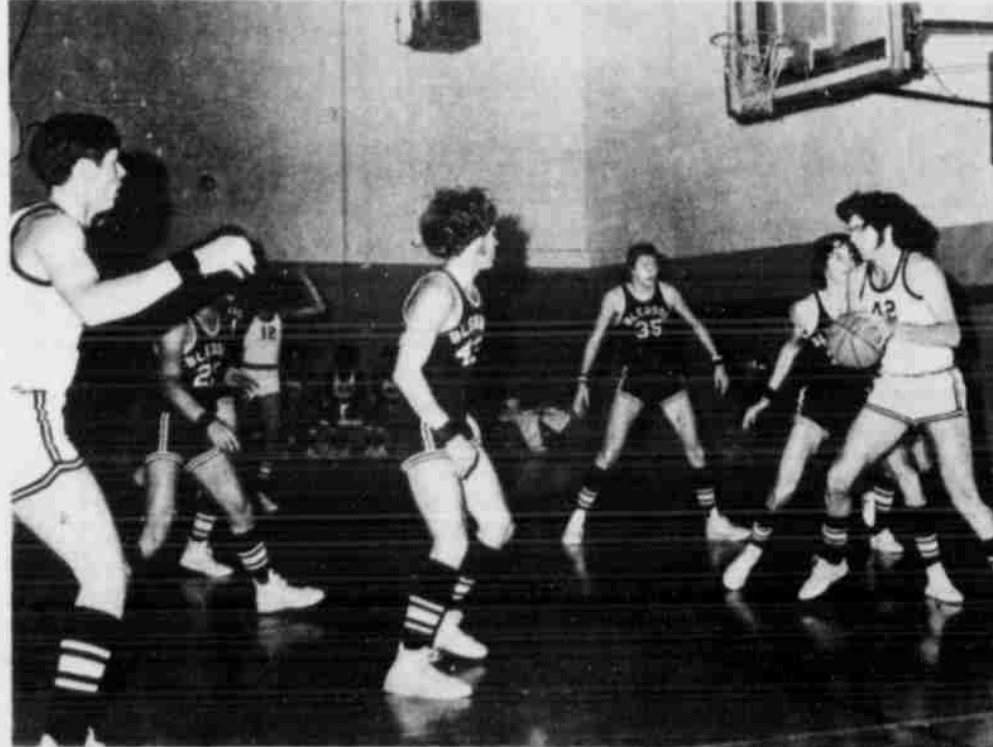
"It was certainly our most complete ball game of the year-speaking offensively, defensively and with the kicking game."

"We were well pleased by the fact that the team played right down to the final seconds as they did last week against Morton."

"Our defense looked good and the play of Rick Hopping, Steve Cruz, Richard Barton, Reginald Payton, Bill Turner and Sammy Schlottman was outstanding. The Wildcats of the Week are Gary Lichte for his offensive blocking at tight end and Steve Cruz for his defensive work."



LINDA IVINS, center, was crowned queen of Spade High School during homecoming activities Saturday night. Other candidates were Jaton Long, left, and Cheryl Holmes, right. (Staff Photo by Lisa Roberts)



SPADE LONGHORNS won their homecoming game Saturday night with Bledsoe by 70 to 49. Shown to the left is Gaylon Reed, and to the right with the ball is Marvin Matthews (42) who soon goes up for a basket. In the far background is Chuck Mills (12). (Staff Photo by Lisa Roberts)

### SUDAN NEWS

JACKIE WITHROW, daughter of Mr. and Mrs. J. C. Withrow of Sudan, was named Monday night, Nov. 4, as one of the five finalists for Homecoming Queen candidates at South Plains College in Levelland. The top five were chosen from 25 candidates. The queen will be crowned at Pep Rally Friday morning. Miss Withrow is sponsored by South Sue Spencer dorm and is a 1973 graduate of Sudan High School.

RECENT VISITORS in the home of Mr. and Mrs. Norman Humphreys were her brother, Chief Petty Officer and Mrs. Jesse Meeks of Athens, Greece. They are on their way to Fallon, Nev. where he will be stationed with the Navy the next three years. While here they all visited in Farwell with her mother, Mrs. G. C. Meeks and her brother, Mr. and Mrs. Leon Meeks when some 50 members of the family were present.

MR. AND MRS. Cary Anderson of Littlefield visited during the weekend in the home of her parents, Mr. and Mrs. Bob Edwards, Debra and Pete, and attended worship services Sunday morning at First Baptist Church.

SENIOR CITIZENS will meet Friday, Nov. 8 at 12:30 in the community center for a covered dish luncheon sponsored by the Honor Society, F.T.A. and ESA. Everyone is invited to attend and bring a covered dish.

RECENT VISITORS in the home of Mrs. J. S. Smith were her sons, Mr. and Mrs. H. M. Nichols of Winters and on Sunday Dr. E. N. Nichols, Mr. and Mrs. Eldon Nichols and Mr. and Mrs. Rodney Nichols all joined them for Sunday dinner.

WEEKEND VISITORS in the home of Mr. and Mrs. Tommy Cates were their granddaughters, Brandi and Shani Cates, daughters of Mr. and Mrs. Rodney Cates of Lubbock.

MR. AND MRS. Lee Roy Fisher, Missy, Randy and Kathy visited during the weekend in Waco with Mr. and Mrs. Gaylon Beavers and girls. MRS. KAY BURGE and Mrs. Lori Florez of Lubbock visited in the home of Mrs. Burges parents, Mr. and Mrs. Leon Warren on Monday.

AMONG COLLEGE students home for the weekend were Vicki Gardner, Deanna Phillips, Terry Graves, Craig West, Jackie Withrow, Curtis Chester, Roby Lynn, Bo Lance.

MR. AND MRS. Arthur Galloway of Los Angeles, Calif. visited last week in the home of his sister, Mrs. Annie Chester.



6 p.m. to 9 p.m. NOVEMBER 13, 14  
WEDNESDAY - THURSDAY  
406 385  
4444  
SCARS  
Helps

OPEN  
8:30  
6:00

# Anthony's

C. R. ANTHONY CO.

ON THE BLOCK TO SHOP IN LITTLEFIELD

## MEN'S COAT CARAVAN for Gold Days Ahead

HUNDREDS FROM WHICH TO MAKE YOUR SELECTION

**15% OFF REGULAR CARAVAN PRICE**

LAY-A-WAY NOW FOR CHRISTMAS

### MID-FALL CLEARANCE SPECIALS

<p>MEN'S &amp; BOY'S <b>TRACK SHOES</b></p> <p>121/2-6 &amp; 61/2-12 REG. \$6.49 <b>\$3.74</b></p>	<p>MEN'S DOUBLE KNIT <b>DRESS PANTS</b></p> <p>FAMOUS NAME BRANDS VALUES TO \$20 <b>\$10</b></p>
<p>LARGE GROUP OF MEN'S DRESS &amp; SPORT <b>SHOES</b></p> <p>BROKEN SIZES VALUES TO \$22.00 <b>\$7.88</b></p>	<p>SPECIAL PURCHASE I FAMOUS TEXSHEEN <b>LINGERIE</b></p> <p>GOWNS, ROBES, PAJAMAS &amp; BABY DOLLS REG. \$7-\$11 YOUR CHOICE <b>\$4.</b></p>
<p>BOY'S &amp; MEN'S LITTLEFIELD <b>WILDCAT JACKETS</b></p> <p>REG. \$19.99 <b>\$14.97</b></p>	<p>GIRL'S DEMIM <b>SCREWDRIIVER JEANS</b></p> <p>REG. \$5.99 <b>\$4.</b></p>
<p>BOY'S <b>BRIEFS &amp; T-SHIRTS</b></p> <p>HANES &amp; ANTHONY BROKEN SIZES <b>50¢ EACH</b></p>	<p>SELECT GROUP OF <b>GIRL'S DRESSES</b></p> <p><b>1/3 OFF</b></p>
<p>MEN'S CASUAL <b>JEANS</b></p> <p>ALL FAMOUS NAMES INCLUDES HOPSACKS, KNITS, WOVENS VALUES TO \$15 <b>\$8.88</b></p>	<p>SPECIAL GROUP OF LADIES <b>PANT SUITS</b></p> <p>SEVERAL STYLES REG. \$21 <b>\$</b></p>
<p>LEVI DENIM <b>DURANGO BELLS</b></p> <p>PERM-PRESS REG. \$14 <b>\$7.98 OR 2/\$15</b></p>	<p>LADIES <b>DOUBLE KNIT PANTS</b></p> <p>SLIGHT IRREGULARS OF FAMOUS BRAND ELASTIC PULL ON WAIST <b>\$5 OR 2</b></p>
<p>WILDCAT <b>TOBOGGANS</b></p> <p>MAROON &amp; WHITE <b>\$1.69 AND \$2.49</b></p>	<p>SPECIAL GROUP OF SOFT <b>PRINTED JERSEY</b></p> <p>REG. \$1.99 <b>79¢</b></p>

### BOOKMOBILE SCHEDULE

The High Plains Bookmobile will be in this area on the following dates.

Wednesday, Nov. 13:  
Whiteface #1, 9:30-10:30;  
Whiteface #2, 10:30-10:40; Lehman, 11:05-11:30; Bledsoe, 12:1-3:0; and Maple, 2:15-3:15.

Thursday, Nov. 14: West Camp, 9:15-10:15; Lariat, 10:30-11:30; and Bovina, 12-3:30.

Friday, Nov. 15: Lums Chapel, 10-10:45; Spade, 12-1:30; Hart Camp, 1:45-2:30; and Fieldton, 2:45-3:30.

Saturday, November 16:  
Olton, 9:30-11:45 and Amherst, 1:15-3:30.

SPADE GIRLS lost their homecoming bout with the Bledsoe girls Saturday night, 37 to 42. Fran Gray (22) watches a shot as Elaine Guthrie (40) comes in for a possible assist. (Staff Photo by Lisa Roberts)