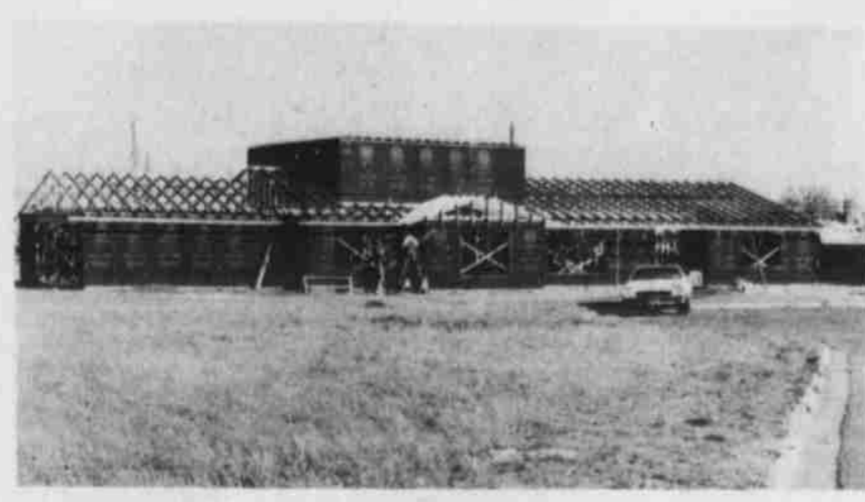
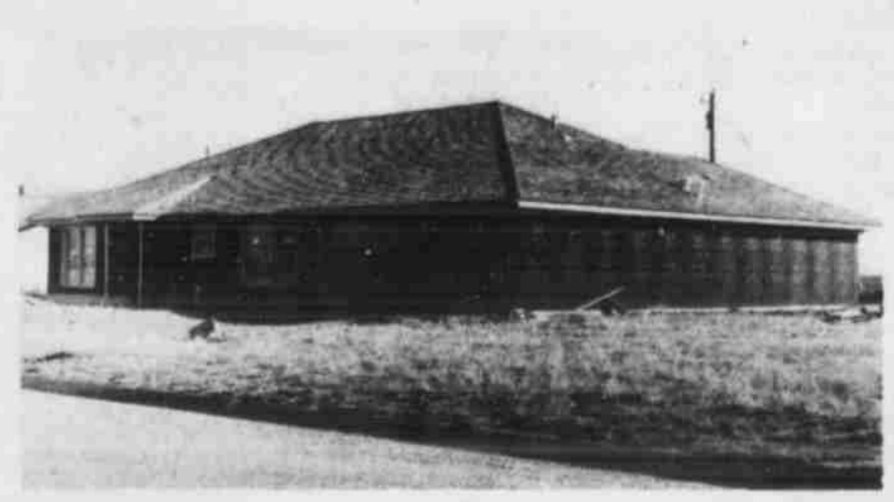


CONSTRUCTION IS MOVING throughout the city, and the building boom is the photo on the left, a concrete floor and foundation has been a residence on 1201 W. 13th. In the far background, the new Oak



Terrace Apartments may be seen as they take shape. In the second photo, the framework of a two-story home begins getting a cover on the corner of 25th Street and E. 26th. In the last photo, another home nearby on 26th Street



is nearing completion and is ready to be brick veneered. (Staff Photos)

## Commissioners Court Acts End-Of-Month Business

Regular end-of-the-month business of the Commissioners' Court was held on Nov. 10. The court accepted applications for competitive bids at the next court session. The court approved the purchase of a pickup for \$1,750 from Marion Ford in Sudan. A salvage car was sold. The pickup is for the 4th precinct. D. McNeese met with the sheriff and requested that the sheriff be allowed to trade in two new models. He is to present

competitive bids at the next court session. The court approved travel expenses for commissioners attending the State Convention for Judges and Commissioners. Commissioners agreed on portable livestock pens to be built for stock shows in the County Community and Ag Building. A committee is working with extension personnel. Court members agreed to furnish enough seven and one-half-foot shelving across the north end of the library to fill the present facilities to capacity. In other action the court agreed to temporarily assist with travel expenditures for a patient to go to Lubbock three times a week for dialysis treatments. The next regularly scheduled meeting of the Commissioners' Court is Monday, Nov. 10.

## Littlefield's Symbolic Emblem Be Chosen Through Contest

Prizes in the contest are being offered to select a symbolic emblem to promote the Littlefield area. Entries, an emblem will be drawn in all ways practical to draw attention to Littlefield, according to Howard Head, committee chairman. The contest is being sponsored by the Littlefield Chamber of Commerce and Board of City Development. The prizes are being donated by members of the Chamber-BCD. Head said the emblem should not only include some kind of reference to our ACG Plant, which is to be one of the largest in the U.S., but should also make some kind of reference to West Texas cotton and to Littlefield. He noted that the emphasis is on symbolic with as few words as possible, and added "Naturally, we want 'Littlefield, Texas' somewhere on it." The rules of the contest are: 1. All entries must be made to the Chamber-BCD office by Thanksgiving. 2. Any person may submit as many entries as he wishes, but only one prize per person will be awarded (except for the grand prize). 3. All entries become the exclusive property of the Littlefield Chamber-BCD. 4. Decision of the judges will be final. Head said anyone wishing additional details may call the Chamber-BCD office.

office. Judging will be based upon originality, content, and concept rather than solely upon artistic merit. Prizes will be awarded to elementary, junior high, high school, and adult divisions. Each division winner will receive \$50 and the grand prize winner will receive \$100 for a grand prize total of \$150. Runner-up prizes will also be awarded in each division. Prizes are being donated by Carlisle-Oldham Ford, \$100; ACG Textile Mill, three \$50 prizes; Littlefield Farmer Co-op Gin, \$50; Littlefield Seed & Delinting, \$10; Ware's, \$10 gift certificate; Littlefield Pay & Save stores, 1000 Gunn Bros. stamps; and Lamb County Leader-News, one year's subscription. Members of the Chamber-BCD Denim Promotional Committee are: Chairman Dr. Howard Head DVM, Jerry Roberts, Mickey Brewer, Phelps Blume, Tina Wicker, Carlton Tanner, and Joe Carlisle, board liaison from the Chamber-BCD Executive Industrial Committee.

are underway for Pep's 30th Thanksgiving Festival to be held on Thanksgiving Day, Thursday, Nov. 11, at Philip's Parish Hall in Pep. Dressing and all the trimmings will be served from 11 a.m. to 2 p.m. and from 5 p.m. to 7 p.m. Adult tickets are \$3 and children under 12 are \$2 per plate. Special attractions will be set up all day for family entertainment, and an entertainment band will play for a dance to begin at 9 p.m. to conclude the activities. Everyone is welcome and invited. Plans now to come to Pep, Nov. 27th, 1975," stated Mrs. Schumacher, publicity chairman.

are underway for Pep's 30th Thanksgiving Festival to be held on Thanksgiving Day, Thursday, Nov. 11, at Philip's Parish Hall in Pep. Dressing and all the trimmings will be served from 11 a.m. to 2 p.m. and from 5 p.m. to 7 p.m. Adult tickets are \$3 and children under 12 are \$2 per plate. Special attractions will be set up all day for family entertainment, and an entertainment band will play for a dance to begin at 9 p.m. to conclude the activities. Everyone is welcome and invited. Plans now to come to Pep, Nov. 27th, 1975," stated Mrs. Schumacher, publicity chairman.

## Commissioners Say To Revision

Texas Judges and Commissioners went on record as opposed to the revision of the state's constitution. They met for their annual meeting recently. Commissioners Jack Peel, Hubert and Clarence Kelley attended. Peel said it was the association's opinion that it wasn't all bad, but that there were enough provisions in each article that the association felt they were strong in voicing an opinion on the revisions. Main objections were removing the welfare spending in the article, special meetings—since there was more legislation could be handled in regular sessions—and the fact that they felt the proposals would cost the tax-

are underway for Pep's 30th Thanksgiving Festival to be held on Thanksgiving Day, Thursday, Nov. 11, at Philip's Parish Hall in Pep. Dressing and all the trimmings will be served from 11 a.m. to 2 p.m. and from 5 p.m. to 7 p.m. Adult tickets are \$3 and children under 12 are \$2 per plate. Special attractions will be set up all day for family entertainment, and an entertainment band will play for a dance to begin at 9 p.m. to conclude the activities. Everyone is welcome and invited. Plans now to come to Pep, Nov. 27th, 1975," stated Mrs. Schumacher, publicity chairman.

The Lamb County Coin Club will open their annual coin and all-hobby show today at 9 a.m. in the Lamb County Agriculture and Community Building, located on South Hall Avenue. Besides coin displays, several exhibits of arts and crafts will be displayed according to the publicity chairman, Dr. J. H. Oyer. The Wildcat show will continue through the day until 5 p.m. when a drawing will be conducted for a \$5 gold piece. Persons registering throughout the day will be eligible for the drawing, and persons need not be present to win. The 50-cent admission price will provide a ticket for the drawing. Children under 12 years old will be

# LAMB COUNTY LEADER-NEWS

VOLUME 53 NUMBER 54 LITTLEFIELD, LAMB COUNTY, TEXAS, SUNDAY, NOV. 2, 1975 22 PAGES

15 CENTS TAX INCLUDED

## City Sued For \$2,650,000

Gene Spies filed a \$2,650,000 suit against the City of Littlefield this week. The more than two and one-half million dollar suit is in behalf of the Spies son,

Danny, for injuries he sustained in the very first annual Festivities Days sponsored by the Littlefield Chamber of Commerce.

154th court alleges that the Chamber of Commerce sponsored event resulted in irreversible brain and head injuries to Danny.

dangerous rate of speed and struck Danny Spies. In the suit, the parents say that because of the head and brain injuries, Danny will never be able to fully function in society and must be watched and cared for for the rest of his life. They seek to recover some \$18,000 for medical expenses, \$165,000 for loss of earnings and a million dollars for pain and suffering.

The boy was critically injured six years ago when a stunt motorcycle struck the boy during special events at LaGuna Park. The suit filed in Judge Pat Boone's

The suit claims that a motorcycle rider performed a stunt before an audience when the audience was allowed to congregate without barricades or safeguards, and that the motorcycle hurdled into the crowd at a

## LITTLEFIELD WINS EIGHTH GAME 'Cats, Mustangs On Collision Course

The Littlefield Wildcats, in defeating the Friona Chieftains Friday night for their eighth win of the year and third straight district victory, are in a direct collision course with Lamb County neighbor and pre-season district pick, Olton.

The 'Cats, in defeating Friona 24-11, played in spring-time like weather and a large contingent of Olton coaches as the Mustangs enjoyed an open date Friday night. Littlefield and Friona were almost equal in all departments of the stat sheet

except in the number of plays run and the 'Cats managed to get off 70 plays as compared to the Chieftains' 48 and that was the difference as the 'Cats controlled the pigskin throughout the game. Littlefield picked up 18 first downs as compared to Friona's 15 and the 'Cats had 239 yards total offense as compared to the Chieftains' 236. Steve Cruz led all Littlefield rushers with 119 yards on 29 carries and Bill Turner carried 16 times for 65 yards. Ronald Parmer rushed 7 times for 48 yards and had 10 yards passing to Turner. The toe of Turner got the tilt underway as the 'Cats kicked off to the hometown Chieftains. Friona started their first drive on their own 40 yard line but three plays netted only five yards and the first punt of the night, was in order for Friona. Parmer continued to run well in this game as he did last week as on the first play for Littlefield, he scooted for a 20 yard gain up to his own 40 yard line. Two running plays and a penalty against Friona set up a third and four situation and then Parmer called his own signal again to gain a first down on Friona's 49. Littlefield got the first break of the game as after Turner gained four yards, the 'Cats fumbled the ball over to Friona but a penalty gave the ball back to the 'Cats and another first down. A clipping penalty against Littlefield forced Littlefield back into their own territory and on a third and long situation, Parmer evaded a strong Friona rush against the pass only to see his second attempt of the game intercepted on the Chieftains 20 yard line. Friona moved steadily upfield and aided by the second penalty of the night against Littlefield, the hometown Indians moved into 'Cat territory. Runs by the Chieftains in the third quarter set the Chiefs up on the Wildcat nine yard line with 2:34 left in the initial period. Friona moved closer to the goal on a run by Glen London but Friona's third penalty of the night moved them back to the Cat 14. Friona then gained back the necessary yardage for the first down and they had a first and goal to go situation on the Littlefield 8 yard line. Three running plays against the 'Cats goal line defense netted only five yards but on the fourth down play, Friona opted to go for a field goal and the kick by Davy Carthel was good to set the Chieftains ahead 3-0 with 7 seconds left in the first period.



BILL TURNER leaves a trail of Chieftains behind him Friday night as Littlefield defeated Friona 24-11. For the night, Turner gained 65 yards on 16 carries to give him 813 yards rushing for the season on 144 carries for a 5.6 per carry average. Steve Cruz led all Littlefield runners Friday as he scampered for 119 yards on 29 carries. Olton will be in Wildcat Stadium Friday night for the last regularly scheduled home game for Littlefield. (Photo by Connie Black)

## Woman's Club Preparing Annual Scholarship Dinner

Members of the Woman's Club are preparing for their annual Scholarship Dinner Tuesday, Nov. 11 at 7:30 p.m. in the Lamb County Agricultural Building. "It bids fair to be an evening worthwhile, what with a home-cooked meal

including chicken breasts with dressing, vegetables, salads, and to top it off, everybody's favorite, pecan pies donated by Furr's Cafeterias," says the club's president, Mrs. Lorene Hulse. Robert Hale, manager of Littlefield's new industry, the 30 million dollar denim textile plant, will be the speaker of the evening. He is a native of Commerce, a graduate of Texas Tech, and a former manager of a textile plant. He has chosen the subject, "Looking Forward," for his talk and with the aid of slides, photographs and models, he will introduce the new plant. Hale has already earned an "A" rating in Littlefield as a public speaker, according to people who have heard him. Littlefield citizens will soon be approached by club members with tickets for sale. If anyone wishing to buy a ticket is overlooked, he or she may obtain one by calling Mrs. Lena Jones, 385-4460 or Mrs. Hazel Kimbrough, 385-3979. Also any club member, if called, will make tickets available to anyone wanting them.

## Election Tuesday Polls Open 7 A.M.

Polls will be open from 7 a.m. until 7 p.m. Tuesday, Nov. 4, for those voting in the constitutional revision election. Previously, commissioners set the voting hours for smaller towns and counties. Under the new election code, polls now remain open from 7 to 7 across the state. Through 4 p.m. Friday, a total of 57 persons had cast absentee ballots in the constitutional revision election. All persons with legal business are reminded that the courthouse will be closed all day Tuesday, Nov. 4, for the election.

SEE SPECIAL BAND SALUTE in This Issue SECTION 1-B

# Miller-Cook Vows Recited In Home

Miss Rebecca Jo Cook became the bride of Ricky Miller in a single-ring ceremony Friday night, Oct. 17 in the home of the bride's parents, Mr. and Mrs. R. J. Cook of Amherst.

Officiating was Rev. George Butler, Methodist Minister of Levelland.

The groom is the son of Mr. and Mrs. Joe Miller also of Amherst.

Vows were exchanged before a bouquet of fall flowers. Miss Claudia Cook, sister of the bride was maid of honor. Joe Miller served as best man.

For her wedding the bride was attired in an empire-style dress of Champagne double knit and embroidered cotton. The dress

featured a stand up collar and long sleeves buttoned above the wrists. The dress was fashioned by the brides mother.

A reception was held following the wedding. The table was covered by an ecru cloth with a lace border. A candelabra of yellow candles and the brides bouquet of fall flowers decorated the table along with the three tiered cake and crystal and silver appointments.

The bride is a graduate of Amherst High School class of 1973 and attended WTSU 2 1/2 years.

The groom is a 1971 graduate of Amherst High School.

The couple will be at home in Lubbock, where both are employed.



MRS. RICKY MILLER

## Former Minister To Preach

OLTON— S. A. Freeman, former minister of the Main Street Church of Christ, will bring a series of messages during the Gospel meeting which is slated Nov. 2 through Nov. 6.

Morning services will begin at 7:30 each weekday, and will be dismissed by 8 so that working people can reach their jobs on time.

Sunday morning worship will begin at 10:40 p.m. and week days at 7:30 p.m.

Topics for the services are "The Alabaster Box" Sunday morning; "Under New Management" Sunday evening; "Ambassadors of Heaven," Monday night; "Faith, Opinion

and Expediency," Tuesday night; "Worthless When Detached," Wednesday night; and "The Great Invitation" Thursday night.

Freeman, now engaged in mission work at Bismark, N.M. and Lexington, Neb., makes his home in Lexington. He has been involved in this work for the past 12 years, and has been preaching full time for more than 40 years.

He recently produced a tract dealing with drug abuse and strong drink, entitled, "At the Last."

Milton Caraway, minister of the Main Street Church of Christ, offers a special invitation to everyone in Olton and the surrounding areas to attend.

## Mother-Daughter Tea Presented

AMHERST— The annual mother-daughter tea for the members of the United Methodist Women was held in fellowship hall of the church on Wednesday night, Oct. 29.

Mrs. W. P. Holland and Mrs. Harvie Messamore were hostesses.

The president, Mrs. Clyde Brownlow, welcomed members, their daughters and friends. Mrs. R. H. Campbell was speaker, with the subject "Challenges to be met Today".

Special songs were presented by Mrs. Norman Patton and daughters Melissa and Michelle; Mrs. Brownlow and daughters Lee Ann and Amy, accompanied by Amy; Mrs. Harvie Messamore, Mrs. Jomeryl Harmon, Kyla Howell, Jacqueline and Holly Harmon, grandmother, Mother and daughters, Mrs. Tess Gilliland, Mrs. Gene Campbell, Sherley Edwards, Kathy Mills and Kammie Campbell and a musical comedy number.

The refreshment table was laid with a lace-edged cloth, and autumn decoration in shades of yellow and brown for decoration. Mrs. Brownlow served coffee and spiced tea and assorted cookies and fruit bread.

About 50 attended the annual entertainment of U.M.W.

Mrs. W. P. Holland is a former member and Pam of Earth attended.



MRS. STACIE ARMES

**Jewell's Hospitality House Nursing Home**

of Littlefield is now having drawings made for new additions to the building. Applicants should start now to reserve rooms for the future. Nursing homes must now show sufficient need to the State of Texas before being allowed to build on. Your Assistance Will Be Appreciated.



**THANK YOU**  
Kenneth Jewell

## A Banker's Viewpoint....

There are signs that this country, after four decades of tampering with socialistic schemes, may be swinging back to the solid free-enterprise Americanism that made it a great nation in the first place.

There are straws in the wind. Only straws, we admit, but they are significant nevertheless.

We have been in a severe recession, coupled with inflation that has crippled all pocketbooks and brought real deprivation to many people. Yet, except for empty tub-thumping by some of the country's super-liberals, there has been no real pressure for great federal spending programs.

Some of our congressmen have orated for big spending schemes, and a few such measures have been passed. But when spending measures have been sent back, vetoed, from the White House, Congress, despite its overwhelming Democratic majority, has not overridden the vetoes.

It seems clear that a groundswell of public sentiment - for fiscal soundness and against federal deficit spending - has gotten through to most members of Congress. Old time liberals, in some cases, are beginning to talk like conservatives.

A major swing in philosophy may be taking place. Young people, aware that they will spend their lifetimes paying off federal debts, are asking for approaches to national problems that make sense.

And wise politicians, regardless of their past viewpoints, seem to be paying attention.

We hope so.

We believe in this country and its people. Like the writers of our Constitution, we believe that the strength and the real intelligence of government originates with the people. So we urge all our citizens, here and elsewhere, to do our part - keep up with public issues and send our opinions about them to our elected representatives.

**SECURITY STATE BANK**



MEMBER FDIC  
YOUR COMMUNITY SERVICE BANK

## Solesbee Circle Conducts Meet

AMHERST— The Ruth Solesbee Circle of the Baptist WMU met Monday night, Oct. 27, in Barbara McDaniel's home.

Chairman, Betty Duvall, president for the business. The apportionment of members paying to the association was made.

Gayla Cowan led the opening prayer. Janice Burton presented the Bible Study from 1st Peter. It was "It only Hurts when I Laugh" by Ethel Bennett.

Refreshments served were sandwiches, pumpkin ice box pie, Cokes and coffee to Mmes. Hudson Cantrell, Jimmy Cowan, V. Burton, Raymond Duvall, Bobby Brantley, Dwaine Gray, hostess and two visitors, Mrs. Barry Bearden and Mrs. Gary Schovajsa.

Nell Tomes will be hostess at the next meeting for mission study.

## Four Honored With Dinner

OLTON— Mrs. Mae Silcott entertained Sunday in her home with a birthday dinner in honor of two sons and two daughters-in-law, Mr. and Mrs. Roy Granberry of Truth or Consequences, N.M. and Mr. and Mrs. Dubbs Granberry of Olton.

Others attending were a daughter and family, Mr. and Mrs. Earl Smith of Lubbock; two grandsons and two granddaughters, Mr. and Mrs. Paul Paine of Portales, N.M. and Mr. and Mrs. Roy Bartlett Granberry of Lubbock.

Also attending was Mrs. Delia Fuller.



KELTON Mr. and Mrs. Dale Wayne Kelton are proud parents of a new daughter, Angela DeAnn, who was born Thursday morning, Oct. 30 at 12:44 a.m. in the Littlefield Hospital.

She weighed 5 lbs., 12 ozs. and measured 19 inches long. She has a 6-year-old sister, Melissa Gayle.

Paternal grandparents are Mr. and Mrs. Odie Kelton of Littlefield, maternal grandmother is Mrs. Wilma Sutton of Littlefield, and paternal great-grandparents are Mr. and Mrs. Barney Green of Littlefield.



TOPS Club No. 102 met Tuesday night in the dining room of the Medical Arts Hospital.

The meeting opened with the reading of the minutes. Each member answered roll call with either a loss or gain.

There were 15 members present. Weekly queen was Earlene Dickerson with a 6 1/2 lb. loss and runner-up was Mildred Smiley with a 4 1/2-lb. loss.

Several members are going to Brownfield, Thursday night to be guests of their club, for a Halloween party.

The club dismissed with the singing of the TOPS song and saying the pledge in unison.



NEW PLEDGES of the Tau Chi Chapter of Beta Sigma Phi were installed Monday at chapter's regular meeting. They are, left to right, Sharon Brown, Freddie Duke, Powell and Janice Graves. (Staff Photo)

## Four Pledges Installed Into Tau Chi

The regular meeting of Tau Chi Chapter of Beta Sigma Phi was held Monday, Oct. 27, in the Reddy Room.

Freddie Duke, Janice Graves, Dorothy Powell and Sharon Brown were installed as new pledges of Tau Chi.

These four new members joined President Bonnie Stephens and members around

the candlelit table as together they reviewed the purposes and aims of Beta Sigma Phi. Each pledge was presented her pledge pin and a yellow rose from the chapter.

A business meeting was held following the pledge ritual.

Members discussed old and new business. Xi Nu Nu requested help in giving

students at the Saturday their Halloween party morning, Oct. 30.

Barbara Starvo council report to the

Plans were finalized Halloween get-together Saturday night at the Steven and Kyra Cox

A program entitled "My Country" was given by Stubbs. Open discussion held on a woman's man's society today.

After the meeting dismissed, members had a salad supper, orange and chocolate cake.

Members attending were Stubbs, Kyra Cox, Stephens, Judy Vaughn, Mott, Sharon Brown, Duke, Dorothy Powell, Janice Graves, Barbara and Kris Bean.

## Local Artist Awarded Prizes In Colorado Show

Local artist, Stacie Armes, received numerous awards in the Longmont, Colo. Art Guild Fall Show which was held Oct. 3, 4 and 5 in the First National Bank building.

Kenneth Mitchell of Colby Community College, Colby Kans., judged the show.

Acrylic and oil landscape winners were Stacie Armes, first; Helen Flanders, second; and Marilyn Palmer, third. Still life winners were Stacie Armes, first; Mary Foote, second; and Joanne Yager, third.

Helen Flanders won best of show honors with a watercolor painting and Stacie placed second best of show with her still life in oils.

Mrs. Armes has studied with artists Lonnie Mason, Mutt Still, William Henry Earl, Ben Konis, Harold Reney, Elver Barker, and Earl Gebhardt.

She has paintings hanging in the Tipple Art Gallery in Pine Junction, Colo., in Fort Collins, Colo., the Longmont, Colo. Art Mart, various offices in Lubbock, and locally at the Littlefield Hospital and the Pazaz.

She holds memberships in the Littlefield Art Club, the Colorado Art Shows, Inc., Word Art Shows, Inc., and the Longmont, Colorado Art Guild, and an associate member of the Art and Artists Club.

## LAMB COUNTY COIN CLUB

COIN & ALL HOBBY SHOW

WILDCAT

Nov. 2, 1975 9 a.m. - 5 p.m.

Lamb County Agriculture & Community Building

Levelland Hi-way (385)

5 blocks N. of By-Pass #1

50¢ Admission Gives Ticket For Drawing for \$5.00 GOLD PIECE

(Children Under 12 FREE With Paid Admission)

8 Bourse Tables - 800 - Ernest Mills, Box 788, L.L. Ph. 828-5578

**Early-in-the-Week Money-Saver**

KIMBELL'S CUT GREEN BEANS BLUE LAKE 303 CAN	4 FOR \$1	KIMBELL'S CORN WK OR CREAM STYLE 303 CAN	3 FOR \$1
KIMBELL'S CRANBERRY SAUCE 300 SIZE CAN	39¢	FRESH GROUND BEEF	79¢ LB
6 BOTTLE CRT DR PEPPER 10 OZ.	69¢	FACIAL TISSUE SOFT PLY 200 COUNT	39¢
KIMBELL'S PICKLES DILL OR SOUR QT	59¢	KOUNTRY FRESH BISCUITS 10 CT CAN	8 FOR \$1
KIMBELL'S BEST FLOUR 5 LB BAG	69¢	GOLDEN RIPE BANANAS	17¢ LB
DIAMOND SHORTENING 3 LB CAN	\$1.29	6 BOTTLE CRT COCA COLA 10 OZ.	69¢

NEW STORE HOURS:  
MON THRU SAT 8 A.M. - 7:30 P.M.; SUN. 8 A.M. - 1 P.M.

QUALITY MEATS COST NO MORE AT

**MERLIN'S FOOD**

Double Gunn Bros. Stamps, Tuesday & Wednesday  
9th & Levelland Highway

OPEN 7 DAYS A WEEK PRICES GOOD MON. THRU SUN. WE REDEEM FOOD STAMPS

## Per-Reed Wedding Set

Travis Hopper and Brenda Hopper announced their engagement and wedding plans. The bride-elect is a graduate of Spade High School and is presently attending South Plains College. The prospective bridegroom is also a graduate of Spade High School, is presently attending South Plains College and is employed as a truck driver for Olton Feed Barn.

## Leisa Collins, Lewis Slate Wedding

Mr. and Mrs. Royce announced a coffee Friday luncheon for the wedding of their daughter, Leisa Collins, to Stephen Dale Lewis, son of Mr. and Mrs. Lewis. The wedding will be exchanged Dec. 20 at 7 p.m. in the Baptist Church. Friends and relatives are invited. Leisa, a 1973 Olton High graduate, received a business certificate from



GAYLON REED AND BRENDA HOPPER

## Teachers To Conduct CTA Membership Drive

Littlefield teachers will be conducting a campaign to enroll all teachers in the local and state classroom teachers associations. The membership drive will coincide with American Education Week, Nov. 16-22. Most teachers already are members of the Littlefield Classroom Teachers Association and the Texas Classroom Teachers Association. Littlefield CTA president Steven Cox says that the organization plans to enroll several other new members. The TCTA membership goal this year is 60,400 members statewide.

"I feel that American Education Week is a good time for each teacher to think about his professional stature," states TCTA state President Henrietta Blend of Houston. "All teachers need to be involved in their professional associations. This is the only way that true progress will be made in the profession."

Cox says that the Texas Classroom Teachers

Association offers every member professional improvement. Members are eligible to use the association's Curriculum Library and attend TCTA sponsored conferences and workshops to improve their teaching skills. TCTA also offers members personal services such as insurance programs for income protection, dental expenses, and professional liability.

## Jerry Kirby Reappointed To Regional Committee

Chief Justice Joe R. Green has revealed the Supreme Court's reappointment of Jerome W. Kirby of Littlefield as member of a regional committee to screen applicants for admission to the Bar.

Kirby was nominated for another term on the Standards of Admission Committee by State Bar of Texas President John M. Lawrence III of Bryan.

"This program is a new one created by the Supreme Court to make our screening of new lawyers a more professional and thorough system," Lawrence said. "With 2200 persons applying each year for law licenses, we feel we need to insure strong procedures to assure that the quality of the legal profession remains high."

The committee will screen the applications of all persons from the geographical area included in the local State Bar district.

"This is a time-consuming job, but an essential one if our program is to succeed," Lawrence said. "We need lawyers from the local areas to look at these applications from members of their own community and advise the State Board of Law Examiners as to

## LITTLEFIELD SCHOOL MENU

**MONDAY:** Sloppy Joes, lettuce and tomatoes, pork 'n beans, milk chocolate pudding and milk.

**TUESDAY:** Croquettes, salad, black-eyed peas, hot rolls, peaches and milk.

**WEDNESDAY:** Beanie wieners, creamed potatoes, corn, light bread, apricot cobbler and milk.

**THURSDAY:** Corn chip pie, salad, crackers, peanut butter pie and milk.

**FRIDAY:** Vegetable-beef soup, toasted cheese sandwiches, salad, cake and milk.

## Nichols Circle Meets For Prayer

The Mary Frances Nichols Circle met Monday night in the parlor of First Baptist Church in Littlefield.

Mrs. Frieda Cunningham led the group in a program on our mission work in Zambia, Africa assisted by Mrs. Rose Bass, Mrs. Peterson, and Mrs. Walden.

Mrs. Lucille Walden closed the program by reading the prayer calendar and offering prayer for the missionaries and local request.

Members present were: Mmes. Frieda Cunningham, Viggo Peterson, Faye Barker, Winnie Hogan, Lucille Walden, Ila Sewell, Rose Bass, Minnie Matthews, K. Houk, Ora Martin, Bea Park, Mattie Barnard, Harry Ford, Lorene Welborn, Willie Benson and Sammy Hogue.



BETA SIGMA PHI Chapters of Tau Chi and Xi Nu Nu sponsored a Halloween party for students at the Littlefield Satellite School Thursday morning. They provided refreshments and entertainment for the students. (Staff Photo)

## Alpha Lambda Zeta Celebrates Halloween

Members of Alpha Lambda Zeta Chapter of Beta Sigma Phi celebrated Halloween with their children, Oct. 27 in the Flame Room of Pioneer Natural Gas.

Dressed in their favorite Halloween costumes, the children played bewitching party games such as "Fish for Goblins and Ghost," "Pin the tail on the Black Cat" and "The Wicked Witch."

Refreshments consisting of Halloween cookies, cake, trick or treat bags full of candy, punch and Cokes were served to the families of: Cheryl Perkins, Linda and John Charlton, Brenda Denton, Judie and Jerry Huddleston, Janice

Sebring, David and Linda Jones, Doris Water, Penny Kelton, Alton and Janice Appleton, Stella Randerman, Kay Powers, Darlene Maxfield, Deanna Friday, Ruan Richardson and Charla Rountree.

## BOOKMOBILE SCHEDULE

The High Plains Bookmobile will be in this area this week.

Wednesday, Nov. 5: Whiteface #1, 9:30-10:30; Whiteface #2, 10:30-11:30; Lehman, 11:05-11:30; Bledsoe, 12-1; and Maple, 2:15-3:15.

Thursday, Nov. 6: West Camp, 9:15-10:15; Lariat, 10:30-11:30; and Bovina, 12-3:30.

Friday, Nov. 7: Lums Chapel, 10-10:45; Spade, 12-1:30; Hart Camp, 1:45-2:30; and Fieldtan, 2:45-3:30.

Saturday, Nov. 8: Olton, 9:30-11:45 and Amherst 1:15-3:30.

Like a good neighbor, State Farm is there.

with help for your car, home, life and health insurance.

See me. F. L. Newton 385-3055 128 E. 10th Littlefield



STATE FARM Insurance Companies Home Offices: Bloomington, Illinois



STEVE LEWIS AND LEISA COLLINS

## ANNOUNCING

OPEN 6:30 A.M. FOR BREAKFAST MONDAY THRU FRIDAY (CLOSED WEDNESDAY)

Serving Fresh Country Sausage with a Complete Breakfast Menu Beginning Monday, Nov. 3.

## DAIRY MART

1020 West 10th 385-5022

## EASY WAY TO KEEP YOUR YEARS FROM SHOWING



2nd Debut

### LIQUID MAKEUP

Highly opaque to do an unusually complete job of blamish hiding. In fact, gives a complexion so perfect that it's still suspect of being makeup. Matte finish adds to flawless look. 6 shades, each a natural skin color which makes finding your right shade easy the first and every time. 1 oz. \$3.00

### LIQUID CLEANSER

This cleanser is very different. It's a rich liquid you spread on your face and neck. Allow it to remain there one minute. Then, wash your skin with cool water. The 2nd Debut Liquid Cleanser dissolves into the water and flows away, taking with it unsightly embedded dirt and cosmetic residue. See your skin glow with new cleanliness. Feel it softer, too. 4 oz. is \$5.00

2nd Debut with CEF 1200

The double potency 2nd Debut is for the important lady who wants visible results without delay. In only a few days you see a marked change. 2nd Debut with CEF 1200 is also greaseless and is used under makeup as well as night for uninterrupted deep moisturizing. 4 oz. bottle is \$6.50



## BRITAIN PHARMACY

430 Phelps LITTLEFIELD, TEXAS 385-5114

## Art And Artist Club Meets

The Art and Artist Club held their regular meeting, Thursday, Oct. 30, in the Reddy Room of Southwestern Public Service.

Member, Myrtle Haire, gave a demonstration on three dimensional painting on glass, using oil and acrylic paints.

A luncheon consisting of, chili, cornbread, relishes, cookies and coffee was served to members Pearl Rountree, Gwen Tucker, Gladys Yohner, Carolyn Mauldin, Naomi Rountree, Jane Owens, Myrtle Hair, Dorothy Ferguson, Hattie Street, Eva McDonald, Leatha Calvert, and special guests, Geneva Hanna, Louise Bennett and Christine Gallini.

Next club meeting will be Thursday, Nov. 6.

## Witnesses To Convene In Carlsbad

Jehovah's Witnesses of the local Spanish congregation will attend their semi-annual circuit assembly in Carlsbad, N.M. Nov. 8 and 9. All sessions will be held at the Civic Center.

Theme of the assembly is, "As For Us, We Shall Serve Jehovah", based on Josh. 24:15. Referring to the theme, Mr. Augustin Perez presiding overseer, commented, "Not life in itself, but life as an approved servant of Jehovah God is our most precious possession. When considering what He has done, especially in giving His son Jesus Christ as a ransom sacrifice and what He has promised to do for us in the near future, we certainly want to keep on serving Him regardless of what problems or hardships we might have to face."

## Donna Muller To Be Feted

OLTON— Miss Donna Muller, bride-elect of Danny West, will be honoree at a bridal courtesy Saturday, Nov. 8, in the Joe Harrell home on FM 168 road South.

Friends and relatives are invited to call between the hours of 2 and 4 p.m.

YOU DON'T HAVE TO WISH ANYMORE

...for an efficient heating system. Today, you can meet both your heating and cooling needs with one unit, one thermostat setting. The heat pump does both jobs. You don't have to find a magic lamp with a genie inside to tell you how the heat pump works...one call is all it takes and we'll give you a FREE personalized heating cost survey and tell you all about the heat pump...it's not magic, it just acts that way.

## BE SWITCHED

...to electric heat. There's a heating system that's just right for your home...an electric heating system that will be just as modern tomorrow as it is today...and environmentally sound, because electric heating is 100% efficient at the point of use. Call us this week.

### ENERGY EFFICIENCY ALLOWANCE

We, at Southwestern, are interested in your getting the most for your energy dollar. That's why we're offering an Energy Efficiency insulation allowance to our customers in existing homes who install electric comfort heating. Ask us about it.



EQUAL OPPORTUNITY EMPLOYER





**SHURFRESH**  
**TURKEY**  
**HENS**

SPECIALY BRED BROAD BREASTED  
 SELF-BASTING WITH  
 POP UP COOKING TIMER

USDA  
**A**  
 GRADE

10 To  
 16 Lb.  
 Average  
 USDA  
 Grade  
 A, Lb. ....

**69¢**

**COKE** 32 OZ., 6 BOTTLE  
 CARTON, (NO LIMIT) **\$1.38**

**DR PEPPER** 32 OZ., 6 BOTTLE  
 CARTON, (NO LIMIT) **\$1.38**

**SUGAR** SHURFINE  
 5 LB BAG **\$1.19**

**BREAD** TENDER CRUST  
 FAMILY SIZE **2 89¢**

**ICE CREAM** SHURFRESH  
 1/2 GALLON **98¢**

REFRESH  
**ACON**  
 VAC-PAC  
**1.69**

EVAPORATED  
**Shurfine Milk** **4 \$1**  
 14 1/2 OZ. CANS

FREE RUNNING OR IODIZED  
**SHURFINE SALT** 26 OZ. **10¢**  
 BOX

**SHURFINE COFFEE CREAMER** 11 OZ. **69¢**  
 JAR

**SHURFINE TOMATO SOUP** 6 10 1/2 OZ. **\$1**  
 CANS

**SHURFRESH FULLY COOKED**  
**CANNED HAMS** 5 LB. **\$8.79**  
 CAN

SHURFRESH Pickle Pepper-Olive-Bologna-Salami & Spiced  
**LUNCH MEATS** 6 OZ. **49¢**  
 PKG.

SHURFRESH  
**TASTY FRANKS** 12 OZ. **79¢**  
 PKG.

**BOLOGNA** 12 OZ. **79¢**  
 PKG.

ECONOMICAL SHURFRESH

RED DELICIOUS EXTRA  
**ANCY APPLES** **5 \$1.00**  
 LBS.

Shurfine  
**CATSUP** 3 14 OZ. **\$1**  
 PICKLES Shurfine 22 69¢  
 Whole Sweet, Oz

CENTRAL AMERICAN  
**ANANAS** 1 LB. **19¢**

ORADO SWEET  
**YELLOW ONIONS** 2 LBS. **29¢**

**ALL PURPOSE RUSSET POTATOES**  
**10 LB. BAG 89¢**

<p>ALL GRINDS  <b>Shurfine Coffee</b> <b>\$1.09</b>                  REGULAR DRIP OR ELEC. PERK 1 LB. CAN</p>	<p>SHURFINE WHOLE PEELLED  <b>Tomatoes</b> <b>\$1.00</b>                  16 OZ. CANS</p>	<p>SHURFINE  <b>ENRICHED FLOUR</b> <b>5 69¢</b>                  LB. BAG</p>	<p>DAIRY                  SWEETENED OR BUTTERMILK  <b>Shurfine Biscuits</b> <b>9 \$1.00</b>                  MIX 'N MATCH 8 OZ. CANS</p>
<p>MANDARIN ORANGES 3 1/2 CAN \$1</p> <p>SHURFINE APPLESAUCE 3 1/2 CAN 76¢</p> <p>SHURFINE APRICOTS 2 1/2 CAN 89¢</p> <p>SHURFINE CHERRIES 2 1/2 CAN 89¢</p> <p>CHERRY PIE FILLING 7 1/2 CAN 59¢</p> <p>ASPARAGUS SPEARS 2 1/2 CAN 79¢</p> <p>SWEET POTATOES 2 1/2 CAN 89¢</p> <p>MIXED VEGETABLES 3 1/2 CAN 76¢</p> <p>CHUNK STYLE TUNA 2 1/2 CAN 89¢</p> <p>CANNED DOG FOOD 7 1/2 CAN \$1</p>	<p>SHURFINE WHOLE OR STRAWBERRY CRANBERRY SAUCE 2 1/2 CAN 76¢</p> <p>BARTLETT PEARS 2 1/2 CAN 79¢</p> <p>ORANGE DRINK 2 1/2 CAN 89¢</p> <p>SHURFINE GRAPE JUICE 2 1/2 CAN 98¢</p> <p>TOMATO JUICE 2 1/2 CAN 59¢</p> <p>EARLY JUNE PEAS 3 1/2 CAN \$1</p> <p>SHURFINE SPINACH 4 1/2 CAN \$1</p> <p>SHURFINE PORK &amp; BEANS 4 1/2 CAN \$1</p> <p>CUT GREEN BEANS 4 1/2 CAN \$1</p> <p>SHELLED BLACKEYES 4 1/2 CAN \$1</p>	<p>SHURFINE PANCAKE MIX 2 1/2 CAN 59¢</p> <p>WAFLE SYRUP 2 1/2 CAN 89¢</p> <p>MEDIUM GRAIN RICE 2 1/2 CAN 59¢</p> <p>SHURFINE APPLE BUTTER 2 1/2 CAN 59¢</p> <p>SALTY CRACKERS 2 1/2 CAN 89¢</p> <p>PEANUT BUTTER 2 1/2 CAN \$1</p> <p>SHURFINE DINNERS 4 1/2 CAN \$1</p>	<p>SHURFINE CINNAMON ROLLS 2 1/2 CAN 89¢</p> <p>CHEESE FOOD 2 1/2 CAN 89¢</p> <p>COLBY CHEESE 2 1/2 CAN 79¢</p> <p>FROZEN FOODS                  SHURFINE PRECOOKED FISH STICKS 3 \$1                  8 OZ. PKGS.</p> <p>ORANGE JUICE 5 1/2 CAN \$1</p> <p>MIX 'N MATCH                  SHURFINE BROCCOLI SPEARS 3 1/2 CAN \$1</p>

OR PINK  
**FLIN FACIAL ISSUE** **3 \$1**  
 200 CT. BOXES

**SHURFINE DETERGENT** 49 OZ. **89¢**  
 BOX

**WASH CAN LINERS** 18 CT. **79¢**  
 BOX

**HEAVY DUTY - 18" X 25"**  
**ALUMINUM FOIL** **59¢**  
 ROLL

**SHURFINE BLEACH** 1 GAL. **59¢**  
 GALLON

DAIRY PRODUCTS

**Buttermilk** BORDEN 1/2 GALLON **75¢**

**Cottage Cheese** BORDEN 12 OZ **53¢**

**Sour Cream** BORDEN 8 OZ **47¢**

**Whipping Cream** BORDEN CARTON **47¢**



WE GIVE GUNN BROS STAMPS

DOUBLE STAMPS TUESDAY & WEDNESDAY WITH \$2.50 OR MORE PURCHASE (EXCLUDING CIGARETTES). WE RESERVE THE RIGHT TO LIMIT QUANTITIES. WE REDEEM AND GIVE STAMPS ON FOOD STAMPS. WE SELL TRAVELERS EXPRESS MONEY ORDERS. PAYROLL CHECKS CASHED.



The School of Vocational Nursing at South Plains College in Levelland again will offer an aptitude examination in November for all students who

plan to enroll in the College VN program. The aptitude test will be administered at 12:45 p.m. on both Nov. 3 and 17 by the College guidance and counseling staff. There is a \$1 fee for the test, which will cover mental ability, spelling, science, judgement and personnel adjustment.

In addition to the aptitude exam, other requirements to enter the School of Nursing include either a high school diploma or a General Educational Development (GED) certificate, a complete physical examination within six months prior to admission, personal interview, moral integrity, references and a definite interest in nursing. The interview will be conducted by Mrs. Helen Brown, coordinator, and Mrs. Barbara Bennett, assistant coordinator of the vocational nursing program. Both women are registered nurses.

The vocational nursing program at SPC will include 27 weeks of classroom and laboratory study and 23 weeks of on-the-job experience in an affiliating hospital. Area hospitals where students will be working include Cochran Memorial Hospital at Morton, Littlefield Hospital, Medical Arts Hospital at Littlefield, University and Highland hospitals in Lubbock, West Plains Hospital in Muleshoe and Cook Memorial Hospital in Levelland.

The SPC School of Vocational Nursing pilot program is approved and accredited by the Texas Educational Agency and the Texas State Board of Vocational Nurse Examiners. Graduates will be eligible to take the state board licensure test qualifying them to practice as licensed vocational nurses (LVNs).

For more information on the vocational nursing program, contact either Mrs. Brown or Mrs. Bennett at 894-4921, ext. 281.

**T-Bone Club Slates Meet**

Rex McAnelly, president of the Southwestern T-Bone Club has announced that a meeting for that organization has been set for Thursday, Nov. 6th, at the Big Texan Steak House in Amarillo.

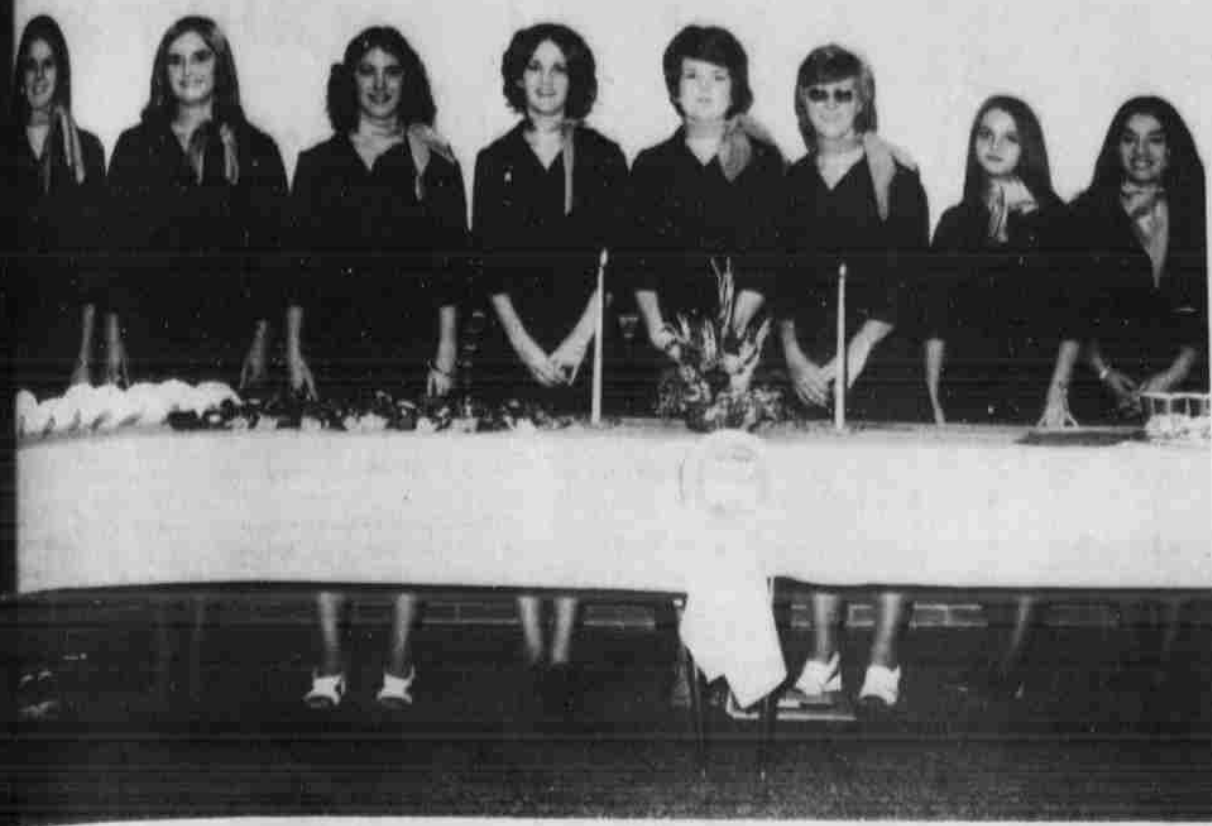
The "Attitude Adjustment House" will begin at 6:30 p.m. and dinner will be served at 7:30 p.m.

Guest speaker for the meeting will be Dr. Ted Montgomery, associate professor of animal science in charge of meat at

West Texas State University. He has been employed by Swift and Company in Ft. Worth and he is a graduate of Texas Tech University. Included in his talk will be the results of the Beef Carcass contest, to be held prior to the meeting.

Tickets for the meeting are \$7 each and may be purchased at the door.

Reservations should be made with Dick Cummins at the Amarillo Chamber of Commerce.



OFFICERS of the South Plains College Chapter of Office Education Association (OEA) were recently installed in ceremonies at SPC. From left are Terri Whitharral, state OEA secretary; Barbara Sundown, historian; Jan Payne of Lubbock, secretary; Gayla Seif of Friona, parliamentarian; Karen

Abrey of Sundown, president; Ronda Hall of Littlefield, vice president; Karla Smart of Farwell, secretary; and Christina Sanchez of Lubbock, treasurer. Installing officers were Gail Albus of Pep, past president of OEA, and Teresa Caswell of Levelland, past state OEA parliamentarian. (SPC Photo)

**Rodeo Club Has Meeting**

The Rodeo Club president presided for a business meeting Monday night in Amherst following an ice cream supper.

Mrs. Cox spoke about projects the club will be raising money to sponsor, and members discussed their jackets.

Parents who were present were Karen and Joe Lane, Tom and Joyce Smith, Mr. and Mrs. Joe Peterson, Mr. and Mrs. Charles Carpenter and Glen Taylor.

Officers for the rodeo were named: Director, Breezy Cox; secretary, Mrs. Cox; announcer, Paul Booth; time keepers, Joyce Smith and Karen Lane; judges, Tom Smith and Joe Lane; clowns, Dewayne Tucker and Donald Johnson; and alternate clown, Larry Pinkston.

Members made \$27.60 from the ice cream supper Monday, and "We thank all of those who came," stated Cassie Mote, reporter.



BRINGING FOR APPLES is fun, and every child in Williams' kindergarten had his turn Thursday morning during their annual Halloween party, sponsored by the children's parents. (Staff Photo)



A GIANT PUMPKIN and a 'Wicked Witch' were present to entertain all the little spooks and goblins at Williams' Kindergarten Thursday morning during their annual Halloween party. (Staff Photo)

**BULA NEWS**

OLIVER SIMMONS of Lubbock spent from Friday until Tuesday visiting with his parents, the F. L. Simmons.

MR. AND MRS. Cecil Jones visited Sunday afternoon in Levelland with her relatives the Cecil Scribners.

MRS. NOLAN HARLAN has been spending much of her time recently with her mother, Mrs. Mary Britt of Amherst, who had cataracts removed from both of her eyes the past week. She is a patient in the Lubbock Methodist Hospital.

WMU MET Tuesday afternoon for their weekly study, with Mrs. C. A. Williams in charge of the study. This was day for prayer study. Several different Scriptures were used and all present took part in the discussion.

**Plant 'X' Employees At Dinner**

SUDAN— The school cafeteria of Sudan was the scene for a Mexican dinner for the Plant "X" employees Tuesday evening, Oct. 28.

The Plant "X" Service Club chairman, Maurice Tow, was in charge of arrangements. After George Ritchie of Sudan gave the invocation, the group of approximately 100 was served the Mexican food by the Sudan School Cafeteria personnel.

During and after the meal, a local musical group, of whom Dario Rodriguez, a Plant "X" employee, is a member, gave a musical program, with singing being done in both Spanish and English. The music was enjoyed by the young as well as the older members of the party.

**PEP NEWS**

MR. AND MRS. Eugene Demel and daughter, Christy, and Charles Murray Jr. of Littlefield were Sunday dinner guests in the home of Mr. and Mrs. Conrad Demel and family Oct. 26.

MIKE ALBUS and B. J. Bood of Hobbs, N.M. visited in the home of Mrs. Evelyn Albus recently.

ANNE HATLA and Debbie McCurry and son Jason of Lubbock visited in the home of Mr. and Mrs. James Glumpler and family and Mr. and Mrs. V. E. Glumpler over the weekend of Oct. 25-27.

MIKI DEMEL of Lubbock visited in the home of her parents, Mr. and Mrs. Conrad Demel and family Oct. 26-27.



LITTLEFIELD YOUNG HOMEMAKERS of Texas presented five six-piece sets of Corning glassware for the kitchens of the Littlefield High School Home Economics Department Thursday evening. Presenting the sets to the two teachers, Mrs. Linda Harbin and Mrs. Dorothy Magruder, are Bobby Magruder, Alice Potts and Pat Stubbs. Stationery sales made the presentation possible. (Staff Photo)

**Higginbotham Names Anton Manager**

ANTON—James L. Byers has been named by Higginbotham-Bartlett Lumber Co. as manager of the Anton branch. Byers moved to Anton from

Byers is a 1968 graduate of

Abernathy where he had been employed by Higginbotham-Bartlett Lumber Co. two years.

Abernathy High School. He was born in Big Spring. He served in the United States Navy four years, with three and one-half years at sea. He was an electronics technician and was stationed aboard the cruiser, St. Paul and an AOE supply ship. He made three trips to Vietnam during the United States' involvement in the war.

He and his wife, Terry, reside at 501 Main Street. They are Baptists.

Generation Gap  
 American farmers today produce over 40% more crops on 6% fewer acres than their fathers did.

**ATTENTION**

PLEASE RETURN TRAILERS

TO

LITTLEFIELD DELINTING CO.

1/2 MILE EAST ON SPADE HIWAY LITTLEFIELD, TEXAS.

**INSUR-MATION**

Ed Jennings 385-4489

Southern Farm Bureau Life Ins. Co.

At what age am I able to start receiving benefits from the individual Retirement Act? Are the earnings taxable? Will I be able to borrow on this account?

Under IRA you may begin to receive benefits at age 59½. If you become disabled, these funds are available at time of disability. The funds are available to beneficiaries at time of death. As with most savings instruments, there are penalties if the funds are withdrawn prior to these three circumstances. The interest earnings are not taxable... you are earning interest which is tax free, as opposed to money in regular savings accounts. You cannot borrow on the account or use the money as security in obtaining a loan. IRA's purpose is to assure you retirement security with money that is well protected and available only in the appropriate circumstances.

**Do people scatter when you start to talk?**



Then maybe it's the way you talk to them. If you're sincere and genuine, more

people might stay around and listen. It's called honest, plain talk. Not bull. Ever tried it?

**ALTERNATIVES**

Helping you build a life you can live with.

CENTRAL PLAINS FAMILY SERVICE CENTER

1288 E. 10th Littlefield, Texas 79339 385-4013

Ch. 11 KCBD	SUNDAY Ch. 13 KLBK	Ch. 28 KMCC	Monday through Friday Morning & Afternoon
6:30 * News Weather Sports 8:45 * Sacred Heart 7:00 * Jerry Falls 8:00 * Day of Discovery 9:00 * James Robinson 9:00 * Rex Hubbard 10:00 * Oral Roberts 10:30 * Kathryn Kullman 11:00 * Living Your Religion 11:30 * A Better Life 12:00 * That Good Ole Nashville Music 12:30 * Grandstand 1:00 * NFL Pro Football Houston/Kansas City 4:00 * Rolex Champions 4:30 * Formby Furniture Care 5:00 * Wild Kingdom 5:30 * Weekend Report 6:00 * "Napoleon & Sonnettes" 8:00 * "McKay" 10:00 * Weekend Wrap-Up 10:30 * Steve Sloan Show 11:00 * "Heat of Anger" 12:30 * News Weather Sports	6:30 * This is the Life 7:00 * A Place To Talk 7:30 * Around the World in 80 Days 8:00 * U.S. of Archie 8:30 * Harlem Globetrotters 9:00 * "Enchanted Forest" 9:30 * Face The Nation 11:00 * U.S. Farm Report 11:30 * NFL Pre-Game 12:00 * NFL Football Minnesota/Green Bay 3:00 * Dallas/Washington 5:00 * NFL Football 6:00 * Three for the Road 7:00 * Cher 8:00 * Eupak 9:00 * Brink 10:00 * Channel 13 News 10:30 * CBS Sunday News 10:45 * "Rogue River" 12:30 * Channel 13 News	8:00 * Jimmy Swaggart 8:30 * Exciting Life 9:00 * Encounter 9:30 * Wrestling 10:30 * Human Demotion 11:00 * First Baptist Church 12:00 * Let The Bible Speak 12:30 * Issues & Answers 1:00 * College Football '75 2:00 * Si Se Fuede! 3:00 * Fantaria Falcon 3:30 * Jim Thomas 4:00 * Friends of Man 4:30 * Ebony Affair 5:00 * Pop Goes The Country 5:30 * Rays of Hope 6:00 * Swiss Family Robinson 7:00 * Six Million Dollar Man 8:00 * "You Only Live Twice" 10:00 * "From Here to Eternity"	Ch. 11 KCBD 6:45 * New Mexico Report 7:00 * News & Weather 7:10 * Today In Texas & New Mexico 7:25 * Weather 7:50 * Today Show 7:55 * Weather 8:00 * Today Show 8:25 * News & Weather 8:30 * Today Show 9:00 * People Place 9:30 * Wheel of Fortune 10:00 * High Rollers 10:30 * Hollywood Squares 11:00 * Magnificent Marble Machine 11:30 * Three for the Money 11:55 * NBC News 12:00 * Celebrity Sweepstakes 12:30 * Days of our Lives 1:30 * The Doctors 2:00 * Another World 3:00 * Somerset 3:30 * Robert Young 4:30 * Ironside 5:30 * NBC News 6:00 * Evening Report



LANA WEAVER, second from left, was named Homecoming Queen for Amherst High School Friday night in Bulldog Stadium. Escorting her off the field before the Amherst-Sudan game was the new Homecoming King, Richard Holley. Other contestants were, left to right, Sandra Duval, Beth Duffy and Dana Young. (Staff Photo)

Ch. 11 KCBD	MONDAY EVENING Ch. 13 KLBK	Ch. 28 KMCC
6:30 * Sanford & Son 7:00 * Invisible Man 8:00 * "The Owl and The Pussycat" 10:00 * Weekend Wrap-Up 10:30 * Tonight Show 12:00 * Tomorrow 1:00 * News Weather Sports	6:30 * To Tell The Truth 7:00 * Rhoda 7:30 * Phyllis 8:00 * All in the Family 8:30 * Maude 9:00 * Medical Center 10:00 * Channel 13 News 10:30 * CBS Late Movie 12:30 * Channel 13 News	7:00 * Mobile One 8:00 * NFL Monday Football 8:30 * Friends of Man 11:10 * Mort Crim 11:15 * Grant Tinker



JOHNNY ROSEMOND moves the ball for the Amherst Bulldogs against the Sudan Hornets Friday night and gets some help from Donald Johnson (21). Richard Holley made the first touchdown of the night for Amherst in the first quarter. (Photo by Joella Lovvorn)

## IT'S EASY ON THE EYES!

# Quasar

25" diagonal 100% SOLID STATE  
WORKS IN A DRAWER COLOR TV

The American Optometric Association recommends adjusting the TV to changing room light and this set does it automatically.

Model WU9242LP

Simulated TV reception

- Mediterranean credenza styling captures a Spanish motif • High performance solid state modular chassis • Instant Picture and Sound • Energy Saver Switch • Pushbutton UHF Tuning

\$798<sup>88</sup>

Ch. 11 KCBD	FRIDAY EVENING Ch. 13 KLBK	Ch. 28 KMCC
6:30 * Laredo 7:30 * Chico & The Man 8:00 * Rockford Files 9:00 * Police Story 10:00 * Weekend Wrap-Up 10:30 * Tonight Show 12:00 * Midnight Special 1:30 * News Weather Sports	6:30 * To Tell The Truth 7:00 * Big Eddie 7:30 * Mr. A-154 8:00 * Hawaii-5-0 9:00 * Barnaby Jones 10:00 * Channel 13 News 10:30 * CBS Late Movie 12:00 * "The Moon is Down"	7:00 * The New Original Wonder Woman 8:30 * "Hey, Tom! Alive!" 10:00 * KMCC News 28 10:25 * Mort Crim 10:30 * Wide World-Special

## WHITHARRAL

By CHARLA CHRONISTER

MR. AND MRS. Glenn Howe of Seymour visited in the home of Mr. and Mrs. Danny Grant. The Howes are former residents.

MR. AND MRS. Henry White of Corsicana visited his mother, Mrs. Pearl White over the weekend. They also visited with Roger White at Methodist Hospital in Lubbock.

W. R. ENGLAND and Jenny Milburn were Sunday morning visitors at Whitharral Baptist Church.

MRS. FRED SMITH spent the weekend in the home of Mr. and Mrs. Driscoll Bryant and family. She attended the Whitharral ballgame Friday night.

MR. AND MRS. Don Stafford attended a wedding over the weekend in Abilene.

THE HIGH SCHOOL basketball and B girls teams met Ropes at Ropes Tuesday night. The B team was beaten 25 to 23. The A girls were beaten 37 to 34. They will meet again next Tuesday at 6:30 on the home court.

MR. AND MRS. Ray Benton are the proud parents of a 7 lb. 12 oz. baby girl born Saturday night in the Littlefield Hospital. They named her Laura Denise. The Bentons have a daughter, Carolyn and a son, Darwin.

LESLIE DOCKERY was uninjured Sunday night when his car hit a cow about 3 miles south of Littlefield. His car was torn up but Leslie only received a bumped head and a cut knee.

ROGER WHITE remains a patient in the Intensive Care Unit at Methodist Hospital in Lubbock. Roger has had some bad days, but at this writing his doctor thinks there is some improvement beginning to take place.

MR. AND MRS. Danny Chronister gave their son Jamie a birthday party on his second birthday. Those attending were Mr. and Mrs. Harlen Gilley and Robin of Littlefield and Mr. and Mrs. Jimmy Hisaw and Cheri. Cake and punch were served.

THE YOUNG PEOPLE of the Whitharral Baptist Church had a get together Wednesday night. Those attending were Trudie, Rhonda and Mark Bryant, Esta Mae and Cheri Hisaw, Lana Dukatnik, Leslie Dockery, David Dunson, and Rev. and Mrs. Ken Harlan, and Bart. They had pizza, lasagna, spaghetti, salad and garlic toast.

CHERI HISAW was named Homecoming Queen for 1975 and Eddie Chavez football hero Friday night. Whitharral won their homecoming game 57 to 14 over the Southland Eagles. There was a large crowd that turned out for the parade with several floats and the High School band taking part. A giant pep rally was held with cash prizes being given to those who had drawn the best 'Beat the Eagles' posters. Each high school class gave a skit depicting victory over the Eagles with the Young Homemakers also taking part. A trophy was given to the Lions Club, Senior Citizens, Cub Scouts and Young Homemakers for their floats.

About 225 were served at the Lions Club Chili Supper before the game. After the game, coffee and doughnuts were served to the exes in the cafeteria. Some of those who attended the game were Mr. and Mrs. Roger Wade and family of Odessa, Mr. and Mrs. Norman Thetford and family of Seminole, Mr. and Mrs. Glenn Howe of Seymour, Mr. and Mrs. Elyvn Lee of Tulsa, Mr. and

charge of a business meeting. Linda Pittman gave the program on "Clothing the Family and Effects on Family Relations."

## AMHERST

MR. AND MRS. C. A. Duffy Jr. returned from a two weeks' trip spent at Port Aransas. They report an enjoyable stay that included swimming each day and deep-sea fishing. As they were going, they stopped to call on Mr. and Mrs. Frank Ray at Kerrville. They are former Amherst residents and sent greetings to friends here.

MRS. IDA RUTH HOLT of Muleshoe visited her sister last week.

MRS. DICK McDaniel, Jamie and Cindy visited in the home of her parents, Mr. and Mrs. J. A. Chester in Littlefield Sunday night.

GUESTS IN the Henry Brown home last Saturday were Mr. and Mrs. Danny Dickson of Seattle, Wash., Mr. and Mrs. Earl Moberman and Tommy of Brownfield, Mr. and Mrs. Guy Brown and Shayna of Littlefield, Mrs. C. A. Thomas, Mr. and Mrs. R. O. Dickson of Earth, Jack and John Dickson of Olton. Funeral services for Bennie Dickson of Olton were held earlier in the week.

MR. AND MRS. Ben Williams, Tammy and Todd of Amarillo and Jay were here with Mr. and Mrs. Homer Peel for the weekend. Homer continues to improve at his home from his accident while visiting south Texas.

MRS. A. F. Copeland and Mrs. Virginia Turner visited their grandson and nephew, Jimmy Copeland and family at Anton Sunday.

MRS. JOE BURT Markham (Jackie) visited her brother, Everett Nix at Amherst Manor Wednesday afternoon. Jackie returned last week from a trip to see her daughter and family at Flint, Mich.

MR. AND MRS. V. R. Stagner returned home this week from a fishing trip to several places in south central Texas.

MRS. DOCIA PHILLIPS underwent major surgery at Methodist Hospital Monday. All four sons and their wives were there at that time.

MR. AND MRS. Guy Phillips of Dayton, Ohio visited her mother, Mrs. Harvey Grigsby this week and spent time in Lubbock with his mother, Mrs. Docia Phillips.

MRS. LULA HARDIN and her great-grandson, Jeffrey Black, returned to Amarillo last weekend after a visit here. Her daughter, Mr. and Mrs. W. P. Stone took them home.

MRS. MARY E. BRITT successfully underwent major eye surgery last week in Methodist Hospital. She will be taken to her daughter's, Mrs. Nolan Harlan, home in Bula for further recuperation.

MRS. CECIL ROBE visited her daughters, Mrs. Griffin and Mrs. Thea Brown in Amarillo last week.

GUESTS on the B. Duvall home Sunday were parents, Mr. and Mrs. Williams of Earth and brother, Mr. and Mrs. Mitchell of Burkburnett.

MR. AND MRS. Sam returned from Redding early this week. Her husband is improving from major surgery. They made the trip here. Her sister and husband, Mr. Wayne Spradling of Redding remained for a longer time.

THE CHURCH of minister, B. L. Briggs, Mrs. Mary E. Britt in Methodist Hospital Wednesday. She underwent eye surgery Tuesday.

## MEDICAL ARTS CLINIC-HOSPITAL

announces the association of

# WILLIAM A. DILLEN, M.D.

General Practice

Phone 385-5151  
Littlefield, Texas

Watch your savings grow  
at highest rates allowed by law

## SECURITY STATE BANK

Each account insured by F.D.I.C.





# DOLLAR DAYS

**STOCK YOUR PANTRY**

**GREEN ONIONS**  
**AVOCADOS**  
**POTATOES**

**YAMS**  
 EAST TEXAS FINEST LB **29¢**  
**APPLES**  
 WASHINGTON RED DELICIOUS OR JONATHAN, LB **5 FOR \$1**  
**PEARS**  
 WASHINGTON BARTLETT LB **3 FOR \$1**  
**FRESH BUNCHES EACH** **2 FOR 27¢**  
 FLORIDA FINEST EACH **3 FOR \$1**  
 10 LB. BAG **99¢**



**ROUND STEAK** FURR'S ADV \$1 19  
 PROTEN SPECIAL LB  
**SIRLOIN STEAK** FURR'S ADV \$1 19  
 PROTEN SPECIAL LB  
**RIB STEAK** FURR'S ADV \$1 19  
 PROTEN SPECIAL LB  
**CHUCK STEAK** FURR'S ADV 98¢  
 PROTEN SPECIAL LB  
**RANCH STEAK** FURR'S PROTEN ADV \$1 09  
 7-BONE CUT SPECIAL LB  
**STEW MEAT** EXTRA LEAN Lb \$1 19  
**T-BONE STEAK** Furr's \$1.69  
 Proten, lb  
**CHUCK ROAST** Furr's 89¢  
 Proten, lb  
**CLUB STEAK** Furr's \$1.59  
 Proten, lb  
**SHOULDER ROAST** Furr's \$1.09  
 Proten, lb  
**STEWING HENS** LB. 39¢  
**CUBE STEAK** Furr's Proten Tender, \$1.69  
 No Waste, lb  
**GROUND BEEF** Ground Fresh 79¢  
 Daily, lb  
**TURKEYS** Butterball Or 79¢  
 Honeysuckle, 10-16 lb.

**PEACHES**  
**APPLE SAUCE**  
**TOMATOES**  
**BEANS**  
**FRUIT COCKTAIL**  
**SHORTENING**  
**CRACKERS**  
**COFFEEMATE**

GAYLORD, SLICES OR HALVES NO. 2 1/2 CAN **49¢**  
 FOOD CLUB NO. 303 CAN **3 FOR 89¢**  
 HUNT'S WHOLE PEELED, 14 1/2 OZ CAN **3 FOR \$1**  
 TERI ASSORTED COLORS **57¢**  
 DEL MONTE NO. 303 CAN **3 FOR \$1**  
 FOOD CLUB NO. 303 CAN **43¢**  
 SHORTENING 3 LB CAN **\$1 69**  
 NORTHERN 4 ROLL PKG. **79¢**  
**\$1 24**  
 10¢ OFF LABEL, 49 OZ PKG. **\$1 49**  
 SPEAS APPLE GALLON SIZE **\$1 49**  
 GAYLORD LB. SALTINES **29¢**  
 CARNATION, 11 OZ. **99¢**

**BAR-B-Q SAUCE**  
 KRAFT 18 OZ **69¢**



With \$2.50 Purchase or More

★ YOU PAY THE LOWER PRICE AT FURR'S  
 ★ WE WILL NOT CHANGE A PRICE ON A MARKED CAN OR PACKAGE EXCEPT TO LOWER THE PRICE.  
 ★ ONCE PRICED . . . ALWAYS PRICED.

**WEXFORD CRYSTAL**  
 BY ANCHOR HOCKING  
 THIS WEEK'S FEATURE  
**FOOTED WINE-JUICE**  
 GOOD THRU NOV. 8 **55¢**  
 EACH  
 NO PURCHASE REQUIREMENT  
 COMPLETER PIECE  
**2 QT. PITCHER \$1 49**

**CREAM PIES** Pet Ritz, Assorted Flavors, 14 Oz Pkg. **2 FOR \$1**  
**AVOCADO DIP** Calavo, Fresh Frozen, 7 3/4 oz. **76¢**  
**PIE SHELLS** Top Frost, Fresh Frozen 2 Piece Pkg. **49¢**  
**MEXICAN FOOD** Combination or Mexican Dinner, Beef or Cheese Enchilada or Fiesta, Patio, Ea **49¢**

**TAMPONS**  
 Playtex-New Giant Economy Box of 55's  
**\$1 99**

**KLEENEX TISSUE**  
 Facial 200 Ct White or Asst' Colors **49¢**

**INSTANT SHAVE**  
 Colgate 11 Oz **56¢**

**HAND LOTION**  
 Jergens' 15 Oz Extra-Dry or 15 Oz Reg. Bottle **\$1 71**

**SECRET**  
 Deoderant Super Reg. 7 Oz **\$1 38**  
 Anti-Perspirant 9 Oz **\$1 46**

**LIQUID PRELL**  
 Shampoo 11 Oz with 20 cents off label **\$1 37**

**DIAPERS**  
 Extra-Absorbent Daytime 30's or Toddlers 24's  
**\$2.19**

**PERCOLATOR**  
 Topcrest or Comet-Range Aluminum-Heavy Gauge-With Bake Lite Handle 7-Cup Size Each **\$2 00**

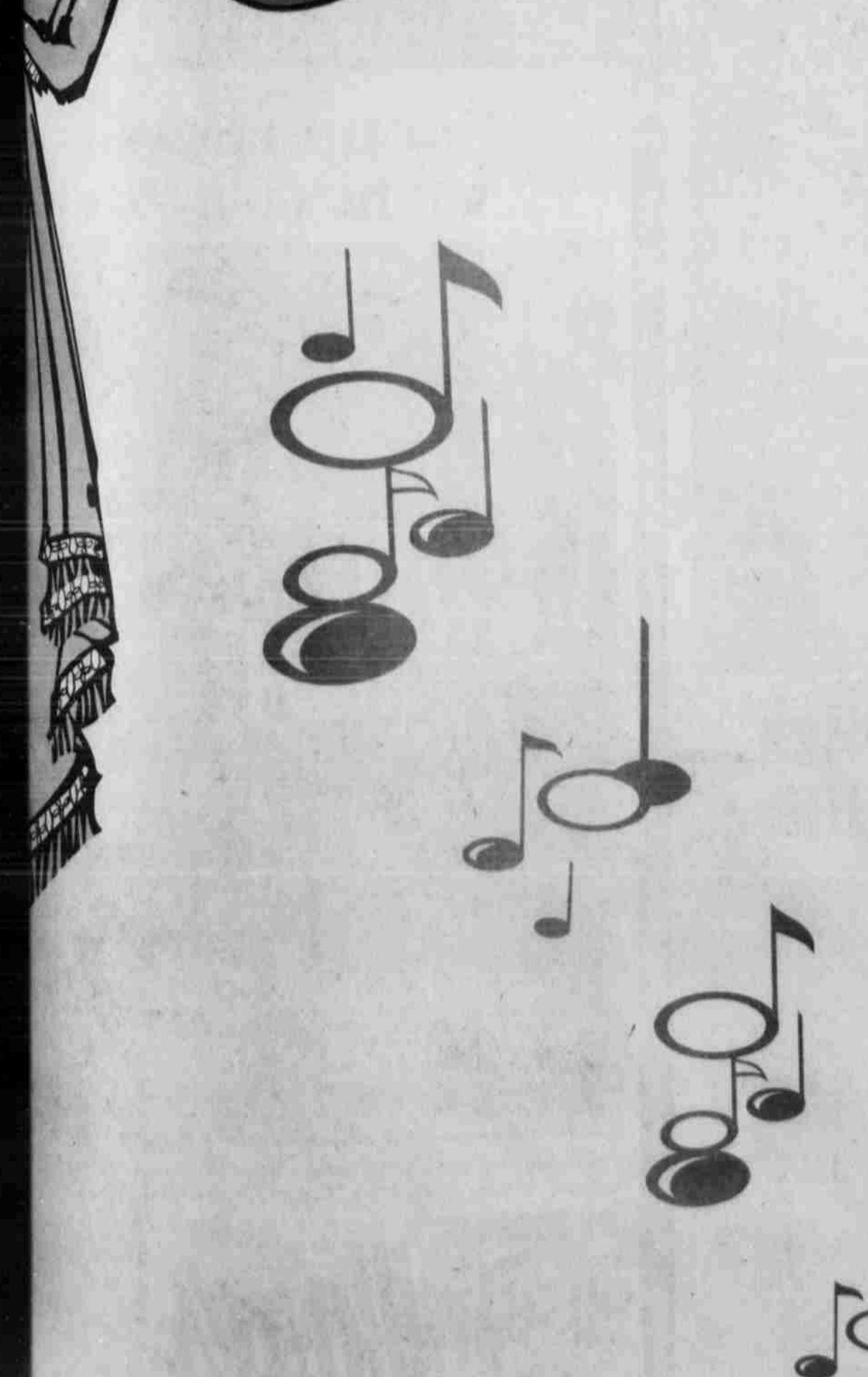
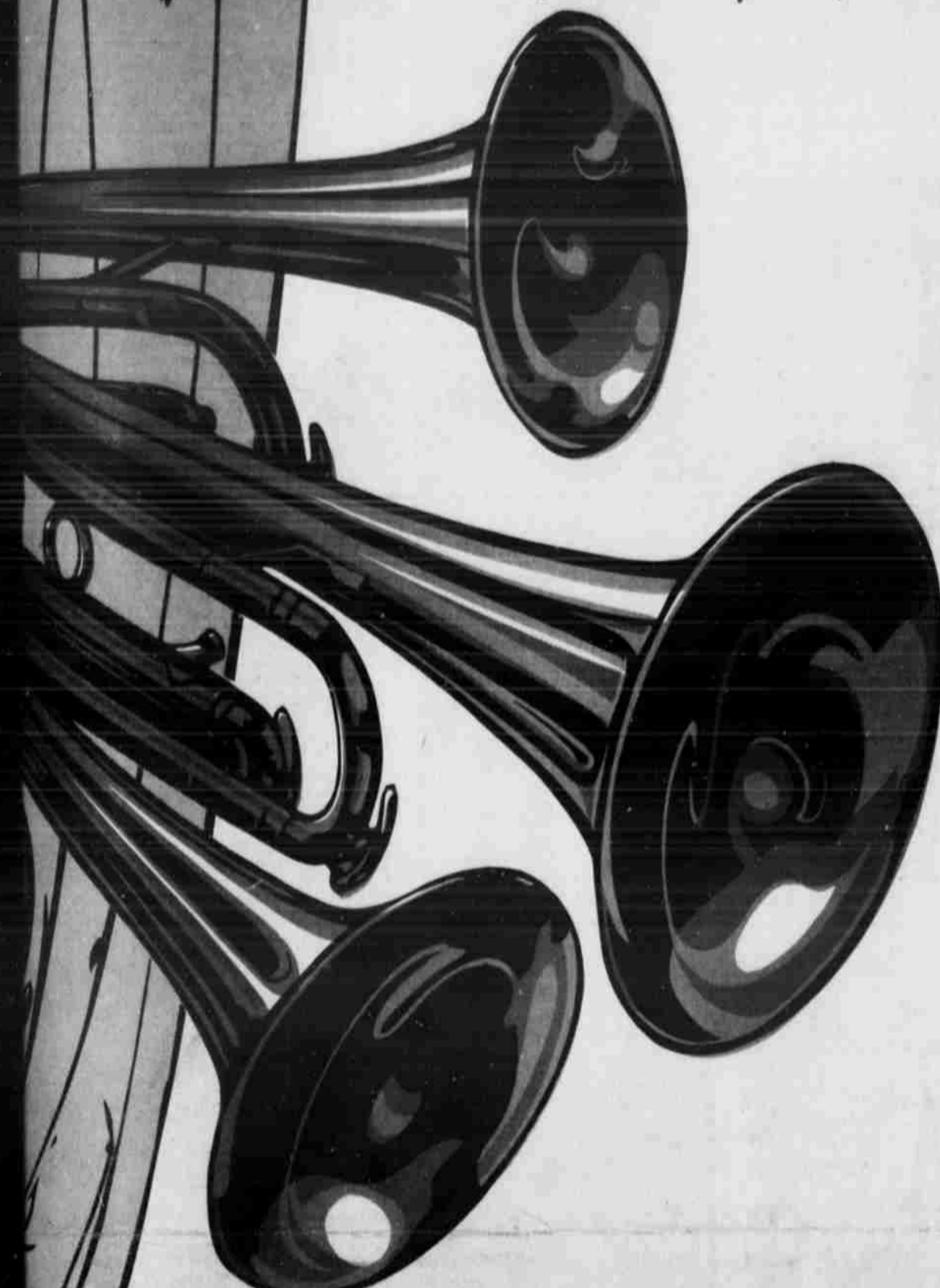
**PIZZA PAN**  
 Topcrest Aluminum 12" Round Size Heavy Gauge **2 1**

**MOUTH-WASH**  
 Listerine 24 Oz Bottle **\$1 29**

**VASELINE HAIR TONIC**  
 Hair Dressing 5 1/2 Oz Bottle **\$1 19**

**SHOP Furr's MIRACLE PRICES**





# Littlefield Bands To Participate In U.I.L. Contests

## High School Band To March Wednesday, 11:30 A. M.

### Junior High Band To March Tuesday

The Littlefield Wildcat Marching Band will participate in the U.I.L. Marching Contest Wednesday, Nov. 5, at Jones Stadium on the Texas Tech Campus.

The Wildcat Band will march at 11:30 a.m. Judges for the contest are Bill Bradley- Big Spring, Harris Brinson- San Angelo and Dub Crain-Dumas.

According to high school band director, Tom SoRelle, the Wildcat band will enter from the north end zone and play a fanfare adapted from the Claude Smith concert piece "Emperata." Then marching downfield in a six steps to five yards stride, the band plays march "Monterey" by Karl King.

As a change of pace, they then will change their stride to eight to five and lower volume as they play "Daughters of Texas," by John Phillip Sousa. The drill is called a step two drill and forms a series of moving diamonds.

Next, the formation changes to a block, then a circle. To the music "Maria," the band executes one revolving circle, then 3 circles moving in different directions.

For the exit, the Wildcat band will go from a block to a chevron and march to the south end playing "March On America."

Judges will rate each band I, II, III, IV or V.

All bands from this area are participating.

The Wildcat marching band is composed of 93 marchers, 80 players, eight flags, three twirlers, and two drum majors.

The Littlefield Junior High Band will be competing Nov. 4 in the UIL Marching Contest at Jones Stadium on the Texas Tech Campus according to director, Richard Hayden.

They will be performing a six minute routine before a panel of three judges. They will be entering from the south end zone in a pyramid formation. Their first pass down the field will be to the march "Snappy Snares." While marching they will execute a series of turns resulting in a large diamond stretching 30 yards across the field. Then they will return to their original pyramid formation.

Next, they will play "It's a Small World." During this march they will execute a series of counter marches, followed by a step-two drill.

The third drill, consisting of two block buster drills, will be performed to the Karl King march, "Rifle Rangers."

Finally the band will exit to the south end zone to the tune of "Rifle Rangers."

The band will be marching 80 bandsmen, two twirlers, and one drum major. Twirlers are Sandy Richards, and Beth Driskell; David Smith is the drum major.

The third and youngest band is the beginner band. It is composed of all sixth grade students from elementary two. These bandsmen are an important part of our program, because some day they will be traveling and competing, representing the Littlefield schools.

The 85 members of this band have been playing since mid-September, and have made excellent progress. They are aggressive and anxious to learn and become the best players they can possibly be.

The beginner band will present their first performance at the regular November 10 band booster meeting. It will be held at 7:30 p.m. in the Junior High School auditorium. There is no admission charge and all are invited to come and hear these Littlefield bandsmen play this first concert.

## GOOD LUCK! WILDCAT BAND



Sousaphone Section: Top, Connie Black, Stacy Black. Bottom: Ben Davidson, Eric Gilliam.

### SEDELL'S KUT HUT

1205 HALL AVE. 385-3750

## BEST OF LUCK! WILDCAT BAND



Head Drum Major, Lisa Garland (left) and Assistant Karla McCantles

### GARLAND

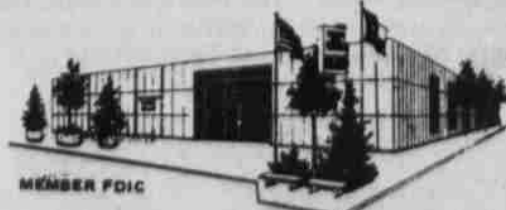
CHRYSLER\*PLYMOUTH\*DODGE  
720 E. 3rd 385-4454



## Best Wishes To The Littlefield High School Band During U.I.L. Competition Wednesday, Nov. 5th.

Trombone Section: Top, Kendon Zahn, Greg Bruton, Brent Jones, Harlan Gilliam, Chris Ogerly, Gary Pace. Bottom Row: Melvin Hall, Gina Streety, Sue Pointer And Danny Hinckley.

## SECURITY



MEMBER FDIC

## STATE BANK

YOUR COMMUNITY SERVICE BANK

## GOOD LUCK! WILDCAT BAND



Drum Corp: Top Row, Kenny Jones, Jody Schlottman, Mickey Ogelski. Bottom: Pat Orr, Carrie Ware, Carmelita Patterson. Not Shown: Jerry Lee, Richard Rogers.

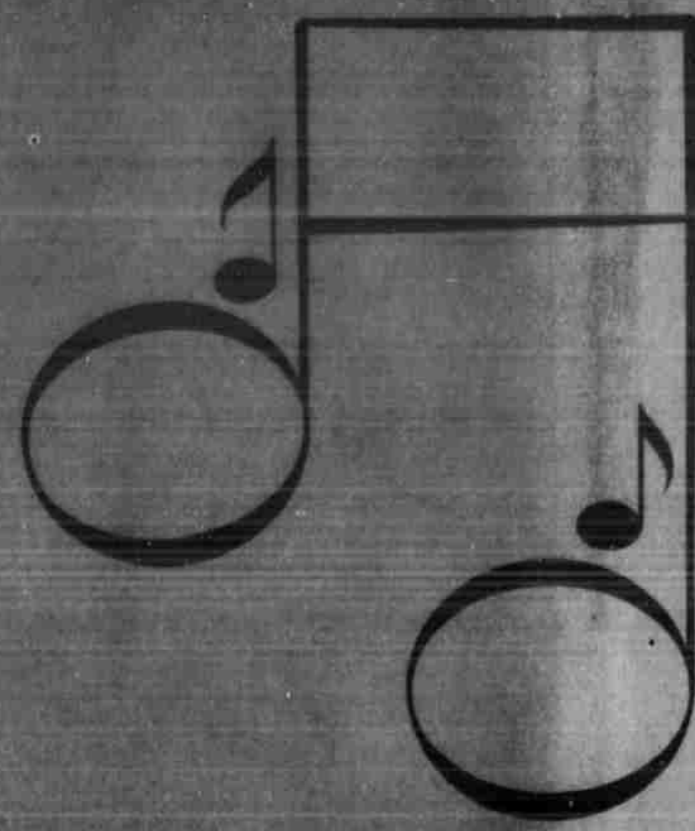
Ware's

# We Salute All Littlefield Band Members!



Saxophone: Judy Thompson, Stephanie Bell, Janie Brazell, Kerry Favor, Timmy Black, Johnny Vargas, Terrie Nielson.

## LAMB COUNTY LEADER-NEWS



### BRING HOME A NUMBER ONE!!



French Horns: Jamie Aaron, Kellie Hampton

OUR NEW ADDRESS

### MACHA SEED FARMS

P.O. Box 248 Littlefield, Texas  
806-385-6094

# We Salute The Wildcat Band!



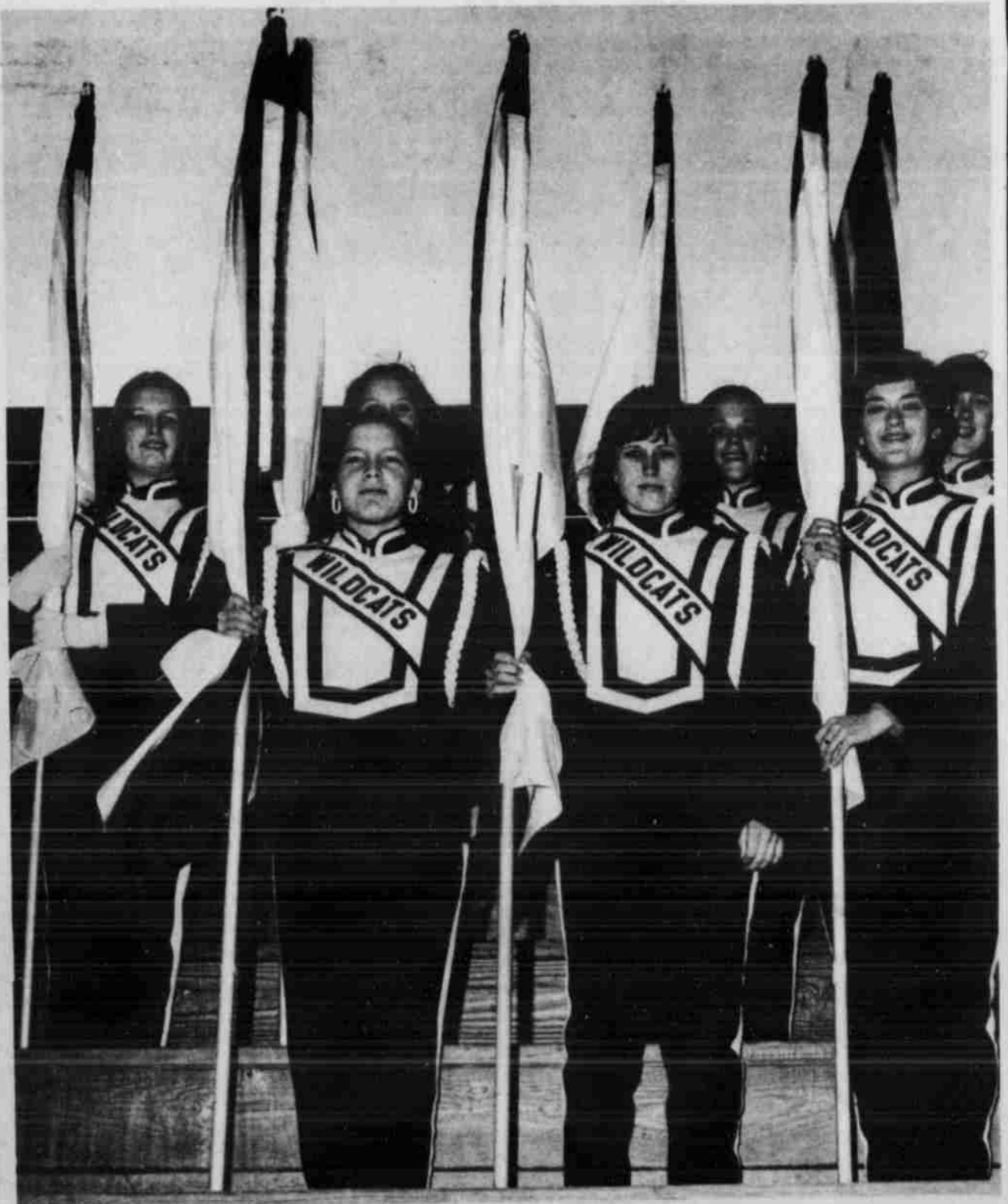
### BRING HOME A NUMBER ONE!

Baritone Section: Bruce Harlan, Chris Pace, Mark Roden, Joe Alvarado

## RODEN **REXALL** DRUG

STORE HOURS: 8 A.M. TO 7:00 P.M. MON. TO SAT. 9 A.M. TO 5:00 P.M. SUNDAY

# We Salute All Littlefield Band Members! Best Wishes For The U. I. L. Contests!



Flag Corp: Top, Sharla Seales, Dana Bassett, Cindy Jones, Cathy Champion. Bottom, DeEnna Blakely, Shayln Grant, Kim Wallace. Not Shown, Kimberly Fisher.

# FIRST FEDERAL

SAVINGS & LOAN ASSOCIATION

301 XIT Drive Littlefield, Texas 385-5197



Junior High Band Director Richard Hayden and High School Director Tom SoRelle

## BEST OF LUCK TO ALL LITTLEFIELD BAND MEMBERS



Flute Section: Top, Jackie Chronister, Sharla Birkelbach, Carol Hobratchk, Chris Bradley, Shauna Clayton. Bottom, Kristi Altman, Susan Ogerly, Kathy Howell, Mary Sierra, Christine Cristan. Not Shown, Pam Parrott.

## Tri-County Savings & Loan

410 Lfd. Drive Littlefield 385-5149

## GOOD LUCK WILDCAT BAND... BRING HOME A NUMBER ONE RATING!!



Cornet Section: Top Row, Quinn Lebeauf, Delinda Sebring, Leisha Pierce, Wanda Williams, Dana West, Todd Stafford, Greg Lavo. Bottom Row, Ronnie Hopping, Ricky Castillo, Jack Hall, Daisy Abeyta, Kerry Drake. Not Shown, Kyle Jones.



Clarinet Section: Top Row, Dee Ann Elliott, Christine Jones, Cindy Ristvedt, Penny Jones, Debbie Spencer, Middle Row, Esmeralda Aguirre, Gwen Duffey, Julie Klein, Cynthia Embry, Kimberly Hutto, Jan Sisson, Tanya Tunnell, Stella Moreno. Bottom Row, Denise Graham, Shauna Barker, Candy Chaney, Cari Tollett, Amy Patton. Not Shown, Susie Giles, Kathy Elliott.

## We Support The L. H. S. Wildcat Band!

# FIRST NATIONAL BANK

LITTLEFIELD, TEXAS

MEMBER FDIC



## BEST OF LUCK IN THE CONTESTS!



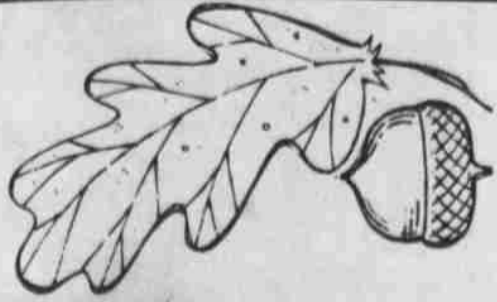
Twirlers: Cindy Drake, Karen Carter, Debbie Burks

"Since you can't go around saying you're terrific, let our clothes do it for you."



A BUCK GOES A LONG WAY DURING

# Dollar Days



## LADIES DRESSES

\$20.99	44.00....	\$32.99
\$21.99	46.00....	\$33.99
\$23.99	48.00....	\$35.99
\$24.99	50.00....	\$36.99
\$26.99	52.00....	\$38.99
\$27.99	54.00....	\$39.99
\$29.99	56.00....	\$41.99
\$30.99	58.00....	\$42.99
	60.00....	\$44.99

## MR & JR PETITE DRESSES

\$16.99	30.00.....	\$21.99
\$17.99	32.00.....	\$23.99
\$18.99	34.00.....	\$24.99
\$20.99	36.00.....	\$26.99
	38.00.....	\$27.99

## LADIES SPORTSWEAR

\$9.99	24.00....	\$18.99
\$11.99	28.00....	\$20.99
\$13.99	32.00....	\$23.99
\$14.99	40.00....	\$29.99
\$16.99	42.00....	\$30.99
	44.00....	\$32.99

## MAY QUEEN PANTY HOSE

REG. \$1.39 **99c**

## ONE GROUP GIRDLES

\$5.99	15.00....	\$10.99
\$6.99	16.00....	\$11.99
	17.00....	\$11.99

# Ware's Dollar Days

## POLYESTER KNITS

60" WIDE

REG. 3.98.....	\$1.98	6.98.....	\$3.49
5.49.....	\$2.98	7.98.....	\$3.98
5.98.....	\$2.98	9.98.....	\$4.98
6.49.....	\$3.49	10.98.....	\$5.98

## FIELDCREST SHEETS

PATIENCE ROSE  
50% COTTON-50% POLYESTER  
NO IRON-PERMANENT PRESS PERCALE

A DESIGN ADAPTATION OF A SLUMBER THROW PRINT ON A CHAMPAGNE PERCALE GROUND WITH A SELF-HEM.

PILLOW CASE, 42x36, Reg. \$6.50.....	\$4.49
PILLOW CASE, 42x46, Reg. \$7.50.....	\$4.98
66x104, Reg. \$7.50.....	\$4.98
TWIN FITTED BOTTOM, Reg. \$7.50.....	\$4.98
81x104, Reg. \$9.50.....	\$6.49
FULL FITTED BOTTOM, Reg. \$9.50.....	\$6.49
90x110, Reg. \$12.50.....	\$8.49
QUEEN FITTED, Reg. \$12.50.....	\$8.49
108x110, Reg. \$17.50.....	\$9.98
KING FITTED, Reg. \$17.50.....	\$9.98

## FIELDCREST BOUTIQUE LID COVER

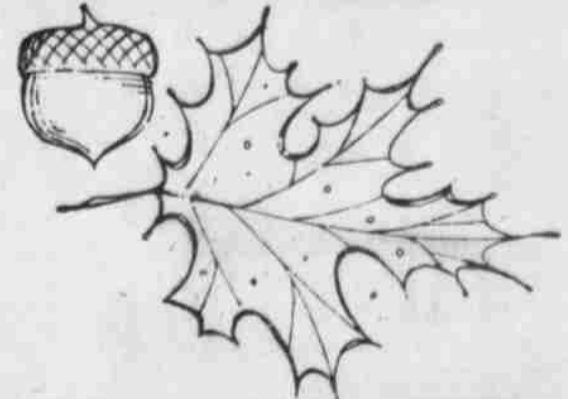
## BATH RUG-CONTOUR

LID COVER, REG. \$3.00.....	\$1.79
CONTOUR, 21x27, REG. \$7.00.....	\$4.49
RUG, 22x36, REG. \$7.00.....	\$4.49

SONATA

## BATH RUG & LID COVER

LID COVER, REG. \$3.00	RUG, 21x36, REG. \$6.00
\$1.79	\$3.98



## ONE GROUP DRESS SLACKS

MENS & YOUNG MEN

VALUE TO \$30.00 **30% OFF**

## MEN'S INSULATED COVERALLS

REG. \$28.00

**\$17.99**

## MEN'S COVERALLS

REG. \$16.00

**\$12.00**

## ONE GROUP SHRINK TO FIT JEANS

SIZES: 26-30 WAIST

REG. \$11.25 **\$6.00**

## ONE GROUP WRANGLERS

REG. \$11.00 **\$6.00**

## ONE GROUP COLORED JEANS

YOUNG MEN

VALUE TO \$14.00 **\$6.00**

## LADIES SHOES

BERNARDO, JOYCE  
FLORSHEIM  
VALUES TO \$28.00

**\$12.99 to \$19.99**

## MEN'S SHOES

RAND-PEDWIN VALUES TO \$28.00

**\$14.99 to \$19.99**

FLORSHEIM **\$24.99**

# DOLLAR DAY

**DOLLAR DAY**

**Hair Spray**  
NON AEROSOL  
VO-5  
8 OZ **49¢**



**Vitamins**  
Fittosones  
60's + 30  
ALSO PLUS IRON.....\$1.29 **\$1.19**



**Alka-Seltzer**  
**39¢**




**50¢ off**  
ON 100 TABLET SIZE  
**ONE A DAY PLUS IRON**  
100 COUNT **\$1.49**



**Metamucil**  
14 OZ SIZE **\$2.49**

**Balm Barr**  
7 OZ **\$1.59**

**Antacid**  
10 COUNT ROLL **12¢**




**Mouthwash**  
SCOPE  
24 OZ **98¢**



**Toothpaste**  
CREST  
7 OZ **69¢**



**Toothpaste**  
GLEEM  
7 OZ **69¢**




PRICES GOOD SUNDAY, MONDAY, TUESDAY, & WEDNESDAY. STOCK LIMITED TO SUPPLY ON HAND.

**white rain HAIR SPRAY**  
11 OZ. **69¢**

**CAMERA OUTFIT**  
REG. \$29.95  
**\$18.95**



KODAK TRIMLITE INSTAMATIC®

**CAMERA**  
REG. \$39.95  
**\$26.95**



KODAK TELE-INSTAMATIC™  
608 Camera Outfit


**Maalox Liquid**  
OR PLUS  
12 OZ **98¢**

**SAVE**  
60 TABLET SIZE  
**98¢**




Chock's Biscuits  
ALSO IRON

**Bath Oil**  
ALPHA KERI  
8 OZ **\$1.99**



**Film**  
POLAROID  
TYPE 108 **\$4.29**



**Film**  
20 EXP. KODAK  
126 & 110 **\$12.99**



**Nose Drops**  
PRIVINE  
1 OZ **79¢**


**Vaporub**  
VICKS  
1.5 OZ **49¢**

**Shampoo**  
11 OZ **\$1.75**




ALSO 7 OZ TUBE

**Creme Rinse**  
BRECK  
7 OZ **59¢**



**Cold Tablets**  
36 COUNT **89¢**



**Vitamin c**  
NEO VADRIN 500 MG.  
100 COUNT **98¢**

**RODEN REXALL DRUG**  
STORE HOURS: 8 A.M. TO 7:00 P.M. MON. TO SAT. 9 A.M. TO 5:00 P.M. SUNDAY  
WE RESERVE THE RIGHT TO LIMIT QUANTITIES



# STRETCH-A-BUCK AT

PLENTY OF PARKING!  
USE OUR XIT ENTRANCE!

PLENTY OF PARKING!  
USE OUR XIT ENTRANCE!

## Anthony's

C. R. ANTHONY CO.

# DOLLAR DAYS



### Men's LEISURE SUITS

\*JACKET AND MATCHING PANT

\*100% POLYESTER

## \$19.

### LADIES GOLDEN TOUCH BLAZERS

\*OUR MOST FAMOUS MAKER....REG. \$19.

## \$14.

\*MATCHING GOLDEN TOUCH PANT...  
Reg. \$11. **\$6.00**

### Leisure Shirts

VALUES TO \$12.

## \$6.

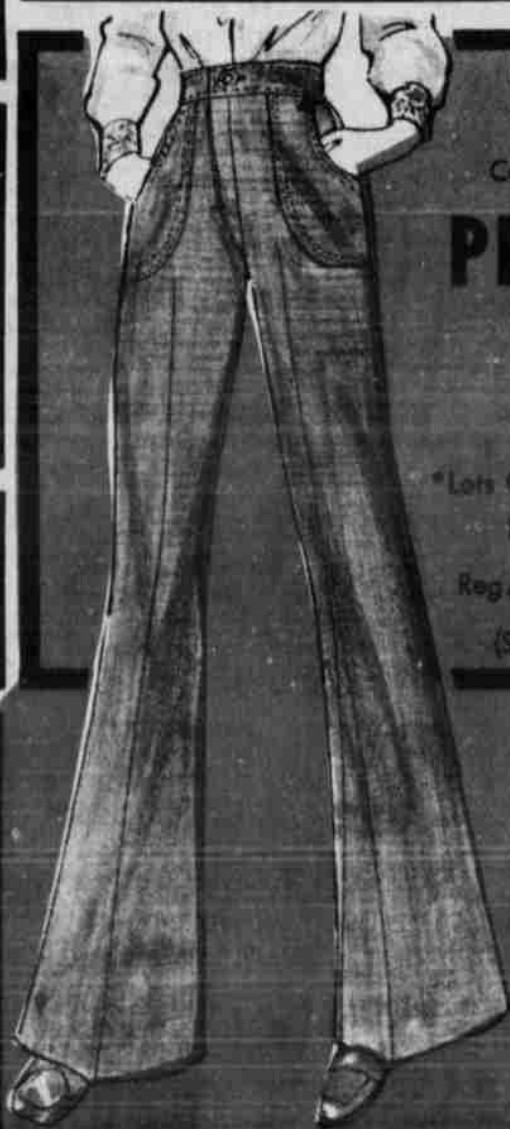
3 FOR \$15.



### MEN'S DRESS SOCKS

ONE SIZE FITS SIZES 10-13 ALL COLORS

## 2 FOR \$1.25



California Market

### PRE-WASHED JEANS

\*Lots Of Zippers For That Poured In Look\*

Reg. \$14.

(Similar Styles)

## \$9.



### Men's & Boys' TRACK SHOES

Reg. 4.99

## \$3.88

3 For \$10.00

"The Brand That Won The West"

### California BIG BELL

\*20 to 30 Waist \*Reg. \$14.

## \$8.

Three Days Only

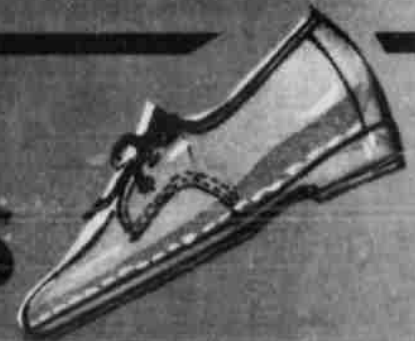
### 100% POLYESTER DOUBLE KNIT

Solids, Fancies, Coordinates

## \$1.77

Anthony Quality Means More Value

### LADIES CRINKLE PATENT OXFORDS



## \$3.99

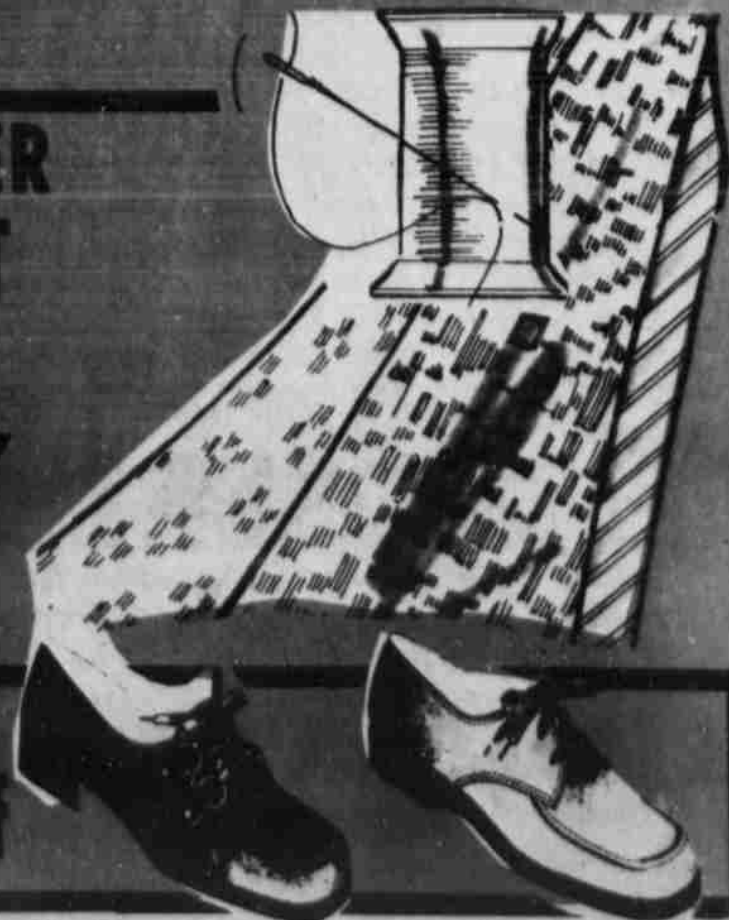
3 For \$11.00

ENTIRE STOCK

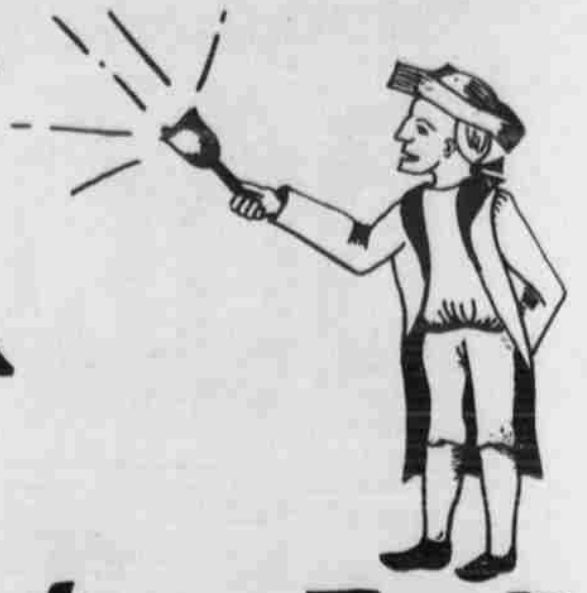


Hush Puppies

## Ladies Hush Puppies 20% off



# Stacy-Mason's 60<sup>th</sup> ANNIVERSARY SALE



## Living Room

Every Sofa-Love Seat-Chair-Ottoman And Sleeper in Stacy-Mason's Fall Collection is on SALE - Choose from New La France Velvet Patterns-Real Leathers-Bold Flame Stitches-Durable tweeds & Comfortable Plains The Contemporary - The Spanish The Early American - The Traditional Stacy-Mason has the Style at Money Saving Sale Prices- Quilted Velvet Sofas are reduced to \$299. Swivel Rockers in Velvet-just \$88. Queen Size Sleepers Only \$299. If you need one Piece or a room full You will SAVE at Stacy-Mason during the 60<sup>th</sup> Anniversary Sale.

## Dining Room

TELL-CITY Hard Rock Maple dining room furniture is one of the better values today. If you want Lasting Quality in EARLY AMERICAN you want TELL-CITY. Table top covered with real FORMICA so you can use your Dining Room daily. Chairs built to take rough useage and still remain comfortable. The 48" Round Table & 4 Chairs \$449 & The Oval Table Group \$469 during the 60<sup>th</sup> Anniversary Sale. For the more Traditional Look choose Sutton Towers by PULASKI. A rich elegant look in a durable Pecan finish save \$80. Oval Table Group reduced to \$399. Elegant KESSLER-designed cast Aluminum Bases with full 1/2" thick glass top, your choice of Round or Oval Shape. Lemon Ice finish. Simulated Cane Chairbacks, keep the Elegant look going. Save \$80 60<sup>th</sup> Anniversary Sale. Price \$369. Shop all the Dining Room Groups at SALE prices now.

## Sealy Bedding

### Sealy Bedding

Stacy-Mason is proud to be the No. 1 SEALY Dealer in West Texas. We firmly believe that the SEALY POSTURPEDIC is the best bedding and at Stacy-Mason we sell Posturepedics with confidence. During the 60<sup>th</sup> Anniversary Sale You can save \$30 when you buy the Posture Firm twin Size Set at \$90. The Regular Size set is \$120. This Good Quality Sealy bedding is excellent for that extra bedroom. The Posture Firm Super by Sealy Features-Better Firmness & a Multineedle Quilt Ticking. Save \$50 on the King Size, sale priced at \$289. The Queen Size reduced to \$219. The Posture Pillow Premier line is the best of the Nonposturepedic bedding line. Beautiful luxury Quilt fabric on Sealy firmness. Save \$80 on King Size at \$319. Queen Size set only \$249. Regular size & Twin Size save up to \$40. If you want a goodnight's sleep- Choose a Sealy at Stacy-Mason. Home of the Sealy Posturepedic 30 NITE home trial.

## Carpet

Stacy-Mason has the best Carpet values in West Texas- Now You can SAVE EVEN MORE during the 60<sup>th</sup> Anniversary Sale. Choose brand names like EVANS & Black-CABIN CRAFT-BARWICK-VIKING & Others. Our largest selling 100% Nylon Hi-Lo Shag in tweed Colors by EVANS & BLACK will be installed for \$8.95 per yard. BARWICK'S True Fashion Kitchen Carpets gives you a wide selection of print patterns with SCOTHGARD protection. Now on SALE \$7.95 Installed. Stacy-Mason deals expressly in QUALITY Carpets. Our newest line is from WESTPOINT PEPPERELL and is called, CABIN CRAFT. These people have taken DU-PONTS new 6 denier nylon and made "CHAMINADE." The Saxony plush that gives mink like softness with the durability of Rawhide. SALE Priced at \$15.95 installed. For your CARPET come to Stacy-Mason & SAVE during the 60<sup>th</sup> ANNIVERSARY SALE!

## Patio Furniture

Because of a very Special Early Season Buy Stacy-Mason has PATIO FURNITURE in stock. Early season buys and the 60<sup>th</sup> Anniversary Sale means the lowest prices of the year. Carolina Forge by WOODARD is beautiful wrought Iron Styling finished in Lemon Ice outdoor enamel. Obscure Glass tops & Metal Mesh tops are featured. Save \$50 when you buy now on the 42" glass top Table and four side chairs at \$149. The "On The Terrace" group includes the sitter, 2 spring base Barrell chairs and the Round Coffee Table, SALE Price \$149.



BROWNFIELD LEVELLAND LITTLEFIELD ODESSA  
**STACY-MASON Inc.**  
HOME FURNISHINGS

## La-Z-Boys

Stacy-Mason has the largest selection of LA-Z-BOYS in West Texas-Over 500 in stock. The new Wail Recliner from LA-Z-BOY is in stock and on SALE. Prices start at \$229. The big pillow back LA-Z-BOY made for big is available in Vinyls & Herculons-It's reduced to \$159. The smaller LA-Z-BOY for the Ladies in elegant velvets-Now \$169. The Joe Namath LA-Z-BOY made especially for Broadway Joe comes in Blonde, Brunette & Redhead. A limited edition model-On SALE too, \$269. Dad can now take his LA-Z-BOY to the office. The Office LA-Z-BOY looks all bussiness but is extremely comfortable. SALE \$299. If you want the best Quality Price & Selection- See a LA-Z-BOY at Stacy-Mason.

## Bedroom

Stacy-Mason features a wide selection of Quality made Allwood Bedroom Groupings from RIVERSIDE, HARRISON, & TELL CITY. You get Solid Oaks, Pecans, & Maple in Real Authentic Styling. The Hutch Mirror is one of the newest looks in the BEDROOM. Stacy-Mason has it in OAK. Sale Priced at \$899. In Pine the Hutch Mirror Bedroom Suit is only \$429. If EARLY AMERICAN is your thing. A Tell City Triple Dresser Bedroom Group is SALE Priced at \$599. For the Kids Room you can choose from Oak, Pine, Maple, White Provincial, or White Spanish Styling. The Kids will really be proud of a new Bedroom from Stacy-Mason. You will be proud of the SALE Prices. Desks-Bookcases-Bunk Beds-Trundle Beds-Captains Bed-Chests-Dressers-Design your own look for the Kids and get the extra pieces Stocked by Stacy-Mason. From the Kids Room to the Guest Bedroom or Master Bedroom. Stacy-Mason has what you want and you will save money during the 60<sup>th</sup> Anniversary Sale.

## Accessories

### Accessories

Stacy-Mason has the largest assortment of Accessories in its 60 year history. With this huge selection & SALE PRICES you can't go wrong. The Brass Lamp Look presented by WESTWOOD is the "in" thing today. Save 20% on all Westwood Lamps. Others at a 50% savings during the 60<sup>th</sup> Anniversary Sale. Gold Leaf CURIO CABINETS go in any room to show your treasures. Save \$70 now only \$149. RIDGEWAY Floor Clocks, Grandmother & Grandfather, a very good selection. Why not choose now for Christmas Delivery-Weighted movement, some with Moon Dials. SAVE \$100. with sale price at \$299. Fern Stand by KESSLER. The popular Plant Life needs a place to sit too. Choose Your Plant Stand in the shape of a winding stair case, bread rack, or glass shelf Etage. Beautiful colors like Pewter, Lemon, Mid-nite & white. The 3-step Plant Stand in your choice of colors \$25.

### ENOCHS

By MRS. ALMA ALTMAN

MARY ATRY had the ankle in several places when she stepped off the back porch steps and turned her foot. She called for help and her grandson came to her rescue. She stayed with her daughter, Mrs. Jack Jackson of Amarillo, several days, but is at home in Enochs and is doing fine.

MRS. BLANCHE CASH visited her daughter, Mr. and Mrs. Dean Waltrip several days at Maple and several homes in the Enochs area. She visited Mrs. Alma Altman and ate lunch with her, and she also visited Mrs. Winnie Byars. She was a resident of this community for many years and it was good to see again.

THE BAPTIST ladies had their regular meeting Tuesday morning for business day. Mrs. Rose Nichols gave a reading on "Time," The Scriptural version of it, and the hectic way persons waste it. Minutes of the former meeting were read and treasure's report were given by Mrs. Flo Nichols. Some of the plans for the approaching holidays were discussed, and a thanksgiving dinner is being planned.

**DOLLAR DAYS**  
 ONE GROUP  
**SPORTSWEAR**  
 1/3 OFF  
**SHOES**  
 FOR MEN  
 ANN BUSH &  
 JARMAN  
 100 Off Any Pair  
**SPORTSWEAR**  
 JANTZEN  
 \$21 **\$13.99**  
 \$23 **\$14.99**  
 \$28 **\$15.99**

LADIES  
**SHOES**  
 L. TO \$22.00  
 Pair **\$9.99**  
 Pair **\$14.99**  
 Pair **\$13.99**  
 Barefoot. Orig  
**SHOES**  
 VAL. **\$19.99**  
 ONE RACK  
**SHOES**  
 Val. **\$4.99**  
 ONE GROUP  
**COBBLER**  
 Val. **\$14.99**  
 CHILDREN  
**SHOES**  
**\$5.99**  
**Moss**  
**SHOES AND**  
**SPORTSWEAR**



USE OUR NO COST  
**LAYAWAY**  
 timed for Christmas

So easy to use for lovely, exciting gifts—and your own Holiday fashions. Shop now while our selections and sizes are complete.

**MODE O' DAY**  
 400 PHELPS AVENUE



FITS MOST AMERICAN CARS

HY-GAIN  
 23 CHANNEL

**CB RADIO**  
**\$134.95**  
**\$109.95**

**MOTOR OIL**  
 State, Amalie,  
 20 Wt, Or  
 30 Wt  
**48¢** Qt.  
**58¢**

WINCHESTER  
 MODEL 94  
**RIFLE**  
**\$87.00**

**WHITE STORES, INC.**

400 PHELPS AVE. PHONE 385-5959

# CIRCUS OF FOOD VALUES



**COFFEE** ADMIRATION 1 LB CAN **\$1.19**

**COOKING OIL** CRISCO 48 OZ JAR **\$1.69**

**SHORTENING** CRISCO 3 LB. CAN **\$1.59**

**COCA COLA** 6 BOTTLE CRTN WITH \$10 PURCHASE OR MORE 32 OZ **\$1.29**

**DR PEPPER** 6 BOTTLE CRTN WITH \$10 PURCHASE OR MORE 32 OZ **\$1.29**

**POTATO CHIPS** PRINGLES TWIN PAK 9 OZ **79¢**

**DETERGENT** LAUNDRY SUPER SUDS GIANT SIZE 84 OZ **49¢**

**CRACKERS** WHITE SWAN SALTINE 1 LB. BOX **49¢**

**SALAD DRESSING** HIGH LIFE QUART **59¢**

**TEA** WHITE SWAN 3 OZ JAR **\$1.19**

**TREET** ARMOUR 12 OZ CAN **89¢**

**TOWELS** BROWN 2-PLY LARGE ROLL **2 for \$1**

**SUGAR** HOLLY 5 LB. BAG **\$1.19**

**CASCADE DISHWASHER DETERGENT** GIANT SIZE 35 OZ **79¢**

**FROZEN FOOD SPECIALS**

POTATOES Shoestring Flav-R-Pac 20 Oz **4/\$1**

FISH FILLETS Booth 12 Oz Pkg **99¢**

PERCH FILLETS Gorton 16 Oz Pkg **\$1.09**

FANTAIL SHRIMP Booth Breaded 10 Oz **\$1.69**

HUSH PUPPIES Gold King 16 Oz **49¢**

CUT CORN Birdseye 10 Oz **3/\$1**

**DRUG SPECIALS**

NYQUIL Large Size 10 Oz **\$2.59**

ASPIRIN Bayer 100 Ct **99¢**

COLD TABLETS Contac 10 Ct Pkg **\$1.49**

ALCOHOL Clear Pint **25¢**

**LIQUID DETERGENT** JOY 32 OZ **97¢**

**LAUNDRY DETERGENT** CHEER 84 OZ KING SIZE **\$1.79**

**FUDGE BROWNIE MIX** SWANS DOWN 22 OZ **69¢**

**ANGEL FOOD CAKE MIX** SWANS DOWN 15 OZ **69¢**

**PORK & BEANS** WHITE SWAN 15 1/2 OZ **4/\$1**

**BLACK EYE PEAS** WHITE SWAN 16 OZ **4/\$1**

**FRUIT COCKTAIL** WHITE SWAN 16 OZ **3/\$1**

**CUT GREEN BEANS** RENOWN 16 OZ **4/\$1**

**CORN** JOAN OF ARC 17 OZ **3/\$1**

**JELLO** GELATIN DESERT 3 OZ **4/89¢**

**BATHROOM TISSUE** MARINA 4 ROLL PKG **77¢**

**SYRUP** BAMA PANCAKE & WAFFLE 24 OZ **89¢**

**MARKET SPECIALS**

**BACON** HORMEL BLACK LABEL 1 LB PKG **\$1.69**

**SAUSAGE** Armour Star, Smokers Breakfast 12 Oz Pkg. **99¢**

**PRODUCE SPECIALS**

**SWEET POTATOES** East Texas No. 1 Lb **28¢**

**ONIONS** Yellow Spanish Sweet 2 Lbs. **28¢**

**APPLES** Washington Extra Fancy Red Delicious Lb. **28¢**

**ORANGES** Texas New Crop 5 Lb. Bag **68¢**

**POTATOES** Russett No. 1 All Purpose 5 Lb Bag **58¢**

**GROUND BEEF** USDA Choice Fresh Daily Lb. **77¢**

**FAMILY STEAK** USDA Lb. **\$1.09**

**CHUCK ROAST** USDA Blade Cut Lb. **89¢**

**ARM ROAST** USDA Lb. **\$1.09**

**SAUSAGE** German Brand 12 Oz Pkg. **\$1.19**

**BOLOGNA** Armour Star All Meat or All Beef 6 Oz Pkg **59¢**

HOME OWNED - HOME OPERATED

# LITTLEFIELD SUPER MARKET

# FOOTBALL CONTEST

Enter Our Contest Each Week  
Nothing To Buy - Just Pick Winners

It's so easy. . .  
Anyone can enter!  
Read the rules. . .  
Start Winning

## RULES OF THE CONTEST:

All you have to do to be eligible for the weekly cash prizes is to complete the form below and place (or mail) it in the designated box at the Leader-News office. It is the contestants responsibility to see that the form has been placed in the entry box and the Leader-News assumes no responsibility for blanks lost, or delayed in the mails.

One game is listed in each advertisement. Pick the winner and insert the name of that team in the OFFICIAL ENTRY BLANK below. Then in the "Tie Breaker" section, put the scores you believe each of the teams will make. Weekly judging will be based on the total number guessed correctly. In case of a tie, the tie-breaker will be used to determine the top winners. Decision of the Leader-News scoring judges will be final.

To be eligible for the 2 free tickets to the New Year's Game at the COTTON BOWL, the total number of correct guesses will be totaled through the season.

LIMIT—One entry per contestant per week.

BE SURE to complete the forms by PRINTING plainly your name and complete address and turning in the entry blank only. Contest winners will be announced in each Thursday's issue of the Leader-News.

All tied games are considered wrong unless called as a tie.

Win  
Cash Prizes  
Each Week

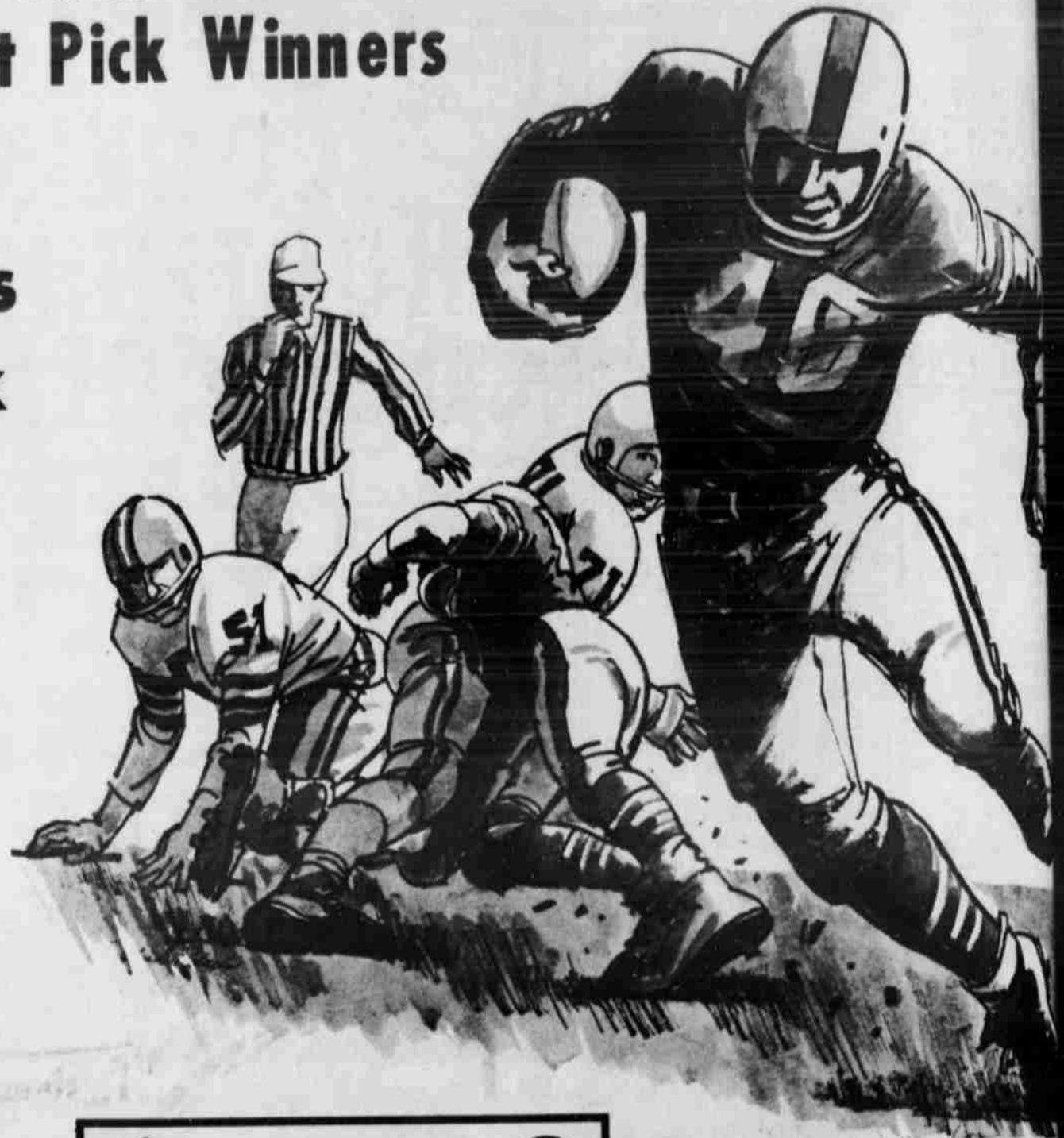
FIRST PLACE PRIZE  
**\$10**

SECOND PLACE PRIZE  
**\$3**

THIRD PLACE PRIZE  
**\$2**

### GRAND PRIZE

2 TICKETS TO THE  
**Cotton Bowl**  
NEW YEAR'S GAME  
Plus \$25.00 Expense Money



Win Cash Prizes  
Each Week

FIRST PLACE PRIZE  
**\$10**

### OFFICIAL ENTRY BLANK

Lamb County Leader-News Football Contest  
Deadline 5:30 Friday

Game No. \_\_\_\_\_ Winner \_\_\_\_\_

1. \_\_\_\_\_
2. \_\_\_\_\_
3. \_\_\_\_\_
4. \_\_\_\_\_
5. \_\_\_\_\_
6. \_\_\_\_\_
7. \_\_\_\_\_
8. \_\_\_\_\_
9. \_\_\_\_\_
10. \_\_\_\_\_

### TIE BREAKER

Olton vs. Littlefield  
N.Y. Jets vs. Miami  
Name \_\_\_\_\_  
Address \_\_\_\_\_

**Ernest Mills Cotton Co.**  
RARE COINS & COIN SUPPLIES  
"Always A Fair Price"  
Game No. 2  
TCU vs Texas Tech  
1517 E. 9th 806 385-5178

**Shook Tire Co.**  
Game No. 3  
Houston Oilers at Pittsburgh  
1028 East 9th Phone 385-5126

**LITTLEFIELD SEED & DELINTING**  
"Home Of Fine Cotton Seeds"  
Game No. 4  
Auburn vs Miss. State  
In The Old Oil Mill Location Phone 385-3

**ORIGINAL TASTY TACO**  
Game No. 5  
N.Y. Jets at Miami  
WE SPECIALIZE IN MEXICAN AND AMERICAN FOOD  
621 HALL AVE. PHONE 385-3764

**Littlefield Farmers Coop Gins & Elevators**  
Olton at Littlefield  
Game No. 6  
"OWNED BY THOSE WE SERVE"

**ARMES EQUIPMENT CO.**  
Your John Deere Dealer  
Baltimore at Buffalo  
Game No. 7  
East Loop 84 Phone 385-4121

**CONOCO JIM JONES AGENT**  
Kansas City at Dallas  
Game No. 8  
AMHERST Joe Miller BULA Dale Middlebrooks  
HART CAMP HART CAMP PEP Gro. & Service  
V.L. Foster

**Armes Chevrolet Co.**  
Washington at N.Y. Giants  
Game No. 9  
New & Used Cars, Trucks, Pickups  
610 East 4th Phone 385-4437

**Pratt's Jewelry & TROPHIES**  
CUSTOM MADE PLAQUES AND TROPHIES ON SPECIALTY  
5th AND 11th DRIVE  
St. Louis at Philadelphia  
Game No. 10

# Football Contest

WHERE YOU ALWAYS BUY THE BEST FOR LESS!  
**GIBSON'S**  
**DISCOUNT CENTER**

**LOOK WHAT A DOLLAR BUYS**

**DELSEY BATHROOM TISSUE**  
 2 ROLL PKG  
 REG. 53¢  
**SALE 44¢**

ALL  
**LAUNDRY DETERGENT**  
 REG. \$3.77 WITH 30¢ OFF LABEL  
 9 LB. 13 OZ  
**SALE \$3.11**

**DISHWASHING DETERGENT**  
 JOY OR IVORY  
 32 OZ SIZE  
 REG. \$1.23 WITH 20¢ OFF LABEL  
**SALE 88¢**

**COLEMAN CAMP FUEL**  
 1 GAL. SIZE  
 REG. \$2.29  
**SALE \$1.99**

**KLEENEX FACIAL TISSUE**  
 200 CT. REG. 55¢  
**SALE 2 FOR 88¢**

**air BLEACH BORAX & BRIGHTENERS**  
 BONUS GIFTS BRAND

**SURE DEODORANT & ANTI-PERSPIRANT**  
 14 OZ SIZE  
 REG. \$2.27  
**SALE \$1.88**



A SMALL DEPOSIT WILL HOLD YOUR SELECTION ON GIBSON'S LAY AWAY PLAN.

**PRESTONE ANTI-FREEZE**  
 1 GAL. REG. \$4.99  
**SALE \$3.99**

**MEN'S COVERALLS**  
 DICKIE FISHER STRIPE  
 REG. \$13.97  
**SALE \$9.99**

**BLANKETS**  
 BY BEACON  
 100% ACRYLIC-72 X 90"  
 REG. \$6.99  
**SALE \$5.44**

**CIGARETTES**  
 CARTON REGULAR OR SHORT-REG. \$4.63  
**SALE 4.39**  
 CARTON 100'S REG. \$4.73  
**SALE 4.49**

**MEN'S LIGHT WEIGHT THERMAL SOCKS**  
 REG. 99¢  
**SALE 77¢**

**GIRL'S COTTON PUFF PANTIES**  
 REG. 63¢  
**SALE 2 FOR \$1**

**LADIES' STEVENS BRAND BIKINI PANTIES**  
 REG. 89¢  
**SALE 2 FOR \$1**

20% Off All Kodak Film Processing

**MEN'S DRESS SHIRTS**  
 WHITE AND COLORS  
 REG. \$5.97  
**SALE \$4.88**

**MEN'S WESTERN SHIRTS**  
 BY 'FRONTIER'  
 REG. \$8.99  
**SALE \$6.99**

HUNTING & FISHING LICENSE AVAILABLE

WHERE YOU ALWAYS BUY THE BEST FOR LESS!  
**GIBSON'S**  
**DISCOUNT CENTER**

# Cotton--You Can Never Guess Where It Might Turn Up Next

You never know where cotton might turn up next. Cotton's major use continues to be to clothe man and to furnish his home. But the more that researchers study the fiber, the more they find it uniquely suited for the most varying purposes. The latest cotton application has popped up in Canada, and it could help conserve energy and protect the environment. It's a role to detect petroleum leaks—and thus prevent fire hazards and protect the environment. Canadians and Americans are using cotton to warm of dangers in critical areas of airports, where highly inflammable fuel is stored, and on cross-country

oil pipelines, where there is danger of leakage. The warning system is called Leak "X" Detection. It is made by Leak "X" Detection Devices, Ltd., of Ottawa. The company chose cotton braiding to cover the heart of its detection system because of cotton's absorbency, cushioning ability and abrasion resistance. Cotton won out over several synthetics and paper, company officials say, because of its superior performance in those key categories. "Cotton's ability to absorb oil allows a quick reaction to petroleum leaks," says L. J. Armstrong, manager of Lead

"X" Detection Devices. The primary element in the warning system is a dielectric wire covered with a cotton braid. The cable is laid under pipelines or around storage facilities. Whenever a leak occurs, the cotton absorbs petroleum instantaneously. Through the cotton, the petroleum comes into contact with the wire. The wire transmits an electric signal to a warning station. "The cotton acts as a wicker, or a blotter," explains Armstrong. "This is quite important to us. Cotton gives us the message faster than other fibers. It transmits its alert after no more than a quart of petroleum has leaked out."

Armstrong says the Lead "X" warning system fills a critical need at airports as a warning system on lines carrying airplane fuel to the service areas. "With the system, if there is a leak in a line carrying highly volatile jet fuel to a service area, the service men can shut that line down right away, before getting into a potential fire situation," he explains. LaGuardia Airport in New York City recently adopted the Lead "X" system for its fuel lines. The STOL (Short Take-Off and Landing) Airport in Montreal was the first to use the system to protect itself from dangerous leaks. Cotton's cushioning ability is

especially important when it comes to installing the system, Armstrong explains. "Cotton gives us additional strength of 300 pounds per square inch over cable with other coverings. A 300 pound advantage can mean a lot in pipeline work, where the cable is being laid in jagged, blasted

rock. It can mean the difference between having an undamaged cable—or replacing it," he says. The increase in strength is from 1,650 pounds per square inch without cotton to 1,950 pounds per square inch with cotton, according to Armstrong. Cotton's abrasion resistance

also helps prevent nicks and scratches, Armstrong adds. And cotton also provides an advantage in extremes of temperatures. "We get greater flexibility with the cotton because we have no stiffening up," says Armstrong. "We have laid cotton in temperatures as low as 25 below zero, and the cotton causes no problems at all. Cotton is as flexible at 25 below as it is at 90

or 100 above." For the future, Armstrong expects big things for his enclosed warning system. He has a contract to install Leak "X" devices on Tokyo's main Narita International Airport. Armstrong has other ships lined up in Manila, Aviv, Madrid, Stockholm, Rio de Janeiro, and other foreign cities.

**\$100 REBATE**  
OFF THE PRICE OF A NEW KIRBY

SAVE ON KIRBY CLASSIC DEMONSTRATORS,  
REPOSSESSED KIRBY VACUUMS  
AND  
REBUILT KIRBY CLASSICS

**KIRBY SALES AND SERVICE**  
385-3357 817 E. 9th  
Lloyd White, Area Distributor  
"Call White, Day or Night"



**BIRKELBACH COTTON TROMPER**  
CONVENIENT SPREADING DISTRIBUTION OF COTTON

One of the harder jobs involved in field loading—the side mounted feature makes this an easy task.

**HYDRAULIC OPERATION**  
Provides for high density packing. Accommodates most 4" x 8" double acting cylinders. Only one cylinder required. Trompers are supplied less cylinder and hose.

**HEAVY DUTY CONSTRUCTION**  
Heavy wall-four inch square tubing provides the "back bone" necessary to perform the hard work demanded of the tromper.

**SIDE MOUNTING**  
A real convenience feature for the operator. Facilities working parallel to trailer with simple back and forth movement of the tractor. Permits working within confines of turn row.

**UNIQUE TROMPER HEAD DESIGN**  
"A" shape head provides for squeezing action to better force air from the cotton. Slotted underside permits air to escape. Cotton will not puff back up as pressure is removed. Sloping sides prevent cotton from clinging and being lifted and blown from trailer as tromper head is raised.

**BOOM CLEARANCE-12" WITH TROMPER DOWN TROMPER**  
HEAD BASE AREA-22" x 24"

\*Some variations will be noted with different tractors and tire sizes.  
Basic unit is complete except for hydraulic cylinder and hoses. Recommended cylinder size is 3 1/2 or 4" x 8", double acting.  
Mounts to: I. H. C. 06, 56, and 66 Series, J. D. 3010 to 4620, Case 1030 to 1175, Massey Ferguson 1100 to 1130, Ford 8000, 8600, 9000 and 9600, other models—\$50.00-net additional.  
Price \$450.

MAKE INQUIRES AT:  
**BIRKELBACH MACHINE AND PUMP, INC.**  
1012 East 9th Street  
LITTLEFIELD, TEXAS (806-385-5123)

## Wheat Forage Irrigation Key Factor In Production

With prevailing dry weather these days, irrigation is likely to be a key factor in producing good wheat forage this fall and winter, says Lamb County Extension Agent Buddy C. Logsdon. "If dry weather continues and feed costs remain high, there will be an extra bonus for the lower-cost forage," says Logsdon.

"Two fall irrigations, especially in dry years, in addition to either a watering-up or preplant application will usually produce maximum forage," he adds. Logsdon says that good, early fall grazing can normally be obtained from late August-planted wheat with an irrigation from mid to late October or early November while temperatures are still up. Water use is low prior to this time, he explains, but adequate soil moisture is still needed in growing well-tillered crowns and extensive root systems. By Nov. 1, however, the water use rate is likely to be one to one-and-one-half inches every ten days or more.

"Dry matter forage production is normally increased about 1800 pounds per acre from similarly timed irrigations," the Extension agent says. "It is best and often more convenient to make the first application before cattle are placed on wheat pasture. This prevents trampling of valuable forage and compacting wet soil. Compacted soil can severely limit water penetration into especially heavier soils such as Pullman clay loam."

A second irrigation in December or January will usually produce an additional 1500 to 1800 pounds of dry matter forage per acre. Moisture stored by this application also encourages early spring growth and can be especially important during dry years to maintain forage quality and even stand survival. Vegetative growth is usually slow since temperatures are usually under 45 degrees during late January and February, and water use is low. Logsdon says fall irrigation has very little influence on grain yield. Therefore, ungrazed wheat should be irrigated only to sustain stands. High soil moisture during usually warm periods can promote water uptake and cause freeze damage later, especially to less winter-hardy wheat varieties and to oats and barley, he adds. Over-grazed plants may also be susceptible to freeze damage under similar weather and moisture conditions. Research has shown no response to a third fall irrigation, even when the seeding rate was 90 pounds per acre.

NOV. DOLLAR DAYS  
PRICES GOOD MON.-TUES., -WED., AS LONG AS QUANTITIES LAST!

# JCPenney

## DOUBLE KNIT CREPE

### \$1.99

100% POLYESTER DOUBLE KNIT  
SOLID COLORS IN GREY, EGG-SHELL, BLACK, MINT, DUSTY GREEN, DUSTY BLUE, FOREST GREEN, DEEP PINK, LT. BLUE, LT. PINK, BROWN, MAROON, RUST, RED & WHITE.

100% POLYESTER DOUBLE KNIT

## SUBLASTATIC & ROTARY PRINTS

BEAUTIFUL SUBLASTATIC DOUBLE KNIT PRINTS  
100% POLYESTER ROTARY PRINTS  
IDEAL FOR LONG DRESSES

### \$1.67

YD SHORT LENGTH

MANUFACTURERS CLOSEOUT

## WOMEN'S KNIT & ACRYLIC SCUFFS

### \$1.66

ASSORTED COLORS AND SIZES  
ONLY 100 PAIRS

JR DENIM PANT SUITS Pre-Washed.....	\$14.99	MEN'S ATHLETIC SHOES Reg. \$15.99.....	Now \$11.99
POLYESTER PANT SUITS Long Sleeve Solids.....	\$12.99	MEN'S SOLID SPORT COATS Polyester Double Knit.....	\$8.99
WOMEN'S CARDIGAN SWEATER V-Neck, Ribbed, Colors.....	\$5.99	MEN'S DRESS KNIT GLOVES Leather Palm.....	\$3.99
GIRLS' ACRYLIC TOE SOX Knee-Hi, Warm.....	\$1.99	MEN'S CORDUROY HOUSESHOES Red, Brown, Navy.....	\$2.99
WOMEN'S KNIT GLOVES Leather Palm.....	\$4.00	BOYS' KNIT SHIRTS Special.....	\$1.49-\$1.99
VALIANT KNITTING YARN 100% Orlon Acrylic.....	77¢	BOYS' ATHLETIC SHOES Reg. \$11.99-\$12.99.....	Now \$8.99
6-Digit Electronic Calculator Adds, Subtracts, Multiplies.....	\$9.99	BOYS' KNIT DRESS GLOVES Leather Palm.....	\$1.99
SOLID COLOR BATH TOWELS White Or Yellow.....	\$1.44	BOYS' SHIRT AND SWEATER Print Shirt, Solid V-Neck.....	\$7.99
POLYESTER THERMAL BLANKETS Several Colors.....	\$4.99	MEN'S SWEAT PANTS & SHIRTS Pants.....	\$3.79 Zip Hood... \$6.99
WHITE TIER CURTAINS Val. ....	\$1.44	Tier .....	\$2.44
		HOT LATHER DISPENSER Hot In Seconds.....	\$9.99

# SPECIAL SPECIALS

ALL  
**COATS, JACKETS,  
SWEATERS,  
WINDBREAKERS**  
**20% off**  
MONDAY ONLY

ONE RACK  
**WEARING APPAREL**  
0-6X  
**1/2 Price**

COME IN AND SEE OUR NEW HOLIDAY MERCHANDISE FOR YOUR CHRISTMAS SHOPPING. WE NOW HAVE AN EXCELLENT SELECTION FOR THAT PERFECT GIFT.  
FREE GIFT WRAPPING... AND USE YOUR BANKAMERICARD, MASTER CHARGE OR OUR LAYAWAY PLAN.

**Pierces' Specialty Shop**  
331 PHELPS