

Commissioners OK '71 Budget

Lamb County Commissioners' Court had a lengthy session this week and set the 1971 county budget and salaries of officials.

Rule Package Needs A Home

Does anyone here know Mrs. Ruth Brown of Harlingen? She was supposed to have received a package before Christmas—but the package was returned to the Littlefield post office and stamped "addressee unknown", according to Ronald Bell, postal clerk. Not only is the addressee unknown, but the person who mailed the package did not include a return address, and the sender is also unknown. If you mailed the package, you would like to claim its contents, go by the post office, describe the package, and pick it up.

Postal Receipts Again In '70

Postal receipts in the Littlefield Post Office took on an "all-time-high" look in 1970, according to an eight-year record released by Acting Postmaster James Thompson. The \$127,120.93 in receipts for 1970 were a continuation of an upward trend since when only \$102,927.45 was recorded on office books. The lowest receipts taken in during the year period was the \$100,824.27 in 1963. During the past eight years, postal receipts have gone up and down, and then

UNDERSTANDING AND FINANCIAL AID

Satellite School Needs Help

The child's sob in the silence curses deeper. Than the strong man in his wrath. The mentally retarded children attending the satellite school in Littlefield need understanding, financial and dietary help, and in just about that order. They have feelings, moods and needs like everyone else. Because the mentally retarded are very outgoing, some people have a hard time understanding them. Mrs. Mae Blevins, who is the older group. "I have a 17-year-old boy who has to have his hand on or around my shoulder to talk to me. He seems to need me to be constantly with him. His neighbors say he is so well behaved since he has attended school and been associated with me two years. Some people shrink at the touch of a child who is less fortunate than they. 'I've never seen a child who couldn't stand to

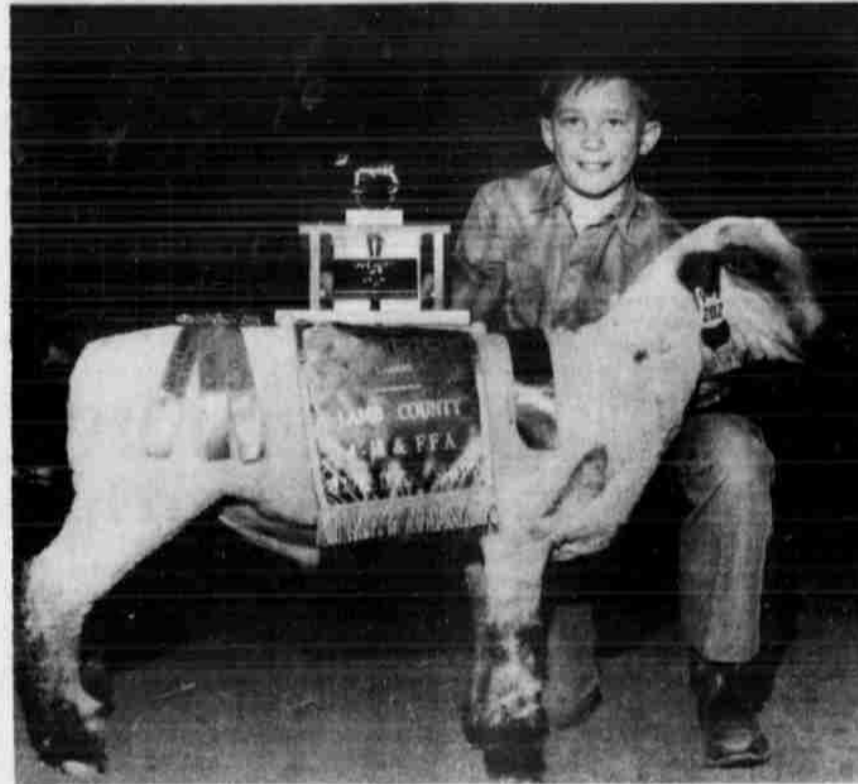


APPROXIMATELY 700 band students from B, A and AA high schools from 42 high schools over the Plains of Texas were in Littlefield Saturday for the Regional 16 UIL band tryouts. Students trying out used music that will be played by the All-Region Band in a concert in Lubbock on Jan. 30. Area students named for the honor will be published Sunday. Shown here are three Littlefield girls who participated, Stelma Rodriguez, Thriess Bingham and Karol Terry, and Springlake-Earth band members, LaDonna Sigman and Marian Dawson.

approved as proposed by the commissioners' court in November. Amendments were made on budgets submitted by several offices. County Clerk Mary Beth Willey requested the employment of four full-time deputies at \$400 per month and a part-time deputy clerk during the summer at \$250 per month, plus \$300 for conference expenses, \$3,000 for Xerox machine and supplies, \$2,200 for books and binders and \$600 for telephone expenses. Commissioners amended this to two full-time deputies at \$400 per month and two at \$375 per month. Tax Assessor-Collector Herbert Dunn submitted a proposal for salaries of \$4,800 for two deputies and three others at \$4,200 and extra help at \$300 per month, also 30 cents each to sub stations selling tags and \$1.50 per hour plus 10 cents per mile when assessing in various communities for a total estimated fee for this office for 1971 of \$45,000. This budget was amended to provide two deputies at \$4,500, three at \$3,900 and extras at \$250 per month, with car expenses omitted for assessing, collecting and servicing tag sub stations. Budget for District Clerk Ray Lynn Britt's office totaled \$5,400 for 1971 including the salary of \$3,900 salary for one deputy clerk. The budget approved for the Lamb County sheriff's office totaled \$52,118. This includes \$7,072.50, sheriff's salary, and five deputies at \$5,610 each annually and one deputy at \$3,960, plus \$12,000 expenses and a new 100-watt base station radio at \$1,343.

A proposed increase of 10 per cent was made for the county agent, assistant county agent, county home demonstration agent and office secretary. Commissioners amended this, with the county's share of \$3,000 plus \$1,000 traveling expenses for the county agent, \$1,980 plus \$800 traveling expenses for the assistant county agent, \$2,280 plus \$800 traveling expenses for the county home demonstration agent, and \$3,300 for the office secretary. The budget submitted from County Attorney Curtis Wilkinson's office was approved as submitted for estimated expenses of \$4,850 which includes \$3,300 for a secretary. Salary for Justice of Peace Stanley Doss was set the same as the salary paid last year, \$4,980. A proposed library book fund was cut

See BUDGET, Page 6



GRAND CHAMPION LAMB of the Annual Lamb County Junior Livestock Show here this weekend is this Hampshire lamb, shown by Gary Ham of the Sudan 4-H Chapter. The lamb was classed in the middle-weight division. Grand champion swine was shown by Kent Lewis of the Springlake-Earth FFA Chapter. The animal is a 192-pound Duroc, classed in the heavyweight division.



SUDAN, OLTON YOUTHS TAKE TOP PRIZES

Show Winners Named

FFA, FHA and 4-H boys and girls throughout Lamb County displayed their championship talents, and the competition was keen throughout all divisions of the Annual Lamb County Junior Livestock Show here in the show barns Friday and Saturday.

Taking the top spot in the Lamb Division was Gary Ham's Hampshire which won Grand Champion Lamb of the show. Gary is a Sudan 4-H'er.

Nancy Britton's Cross heavyweight lamb walked away with the reserve grand championship honors. Nancy is a member of the Olton 4-H Club.

Grand champion barrow of this year's show was shown by Kent Lewis of the Springlake-Earth FFA. His 192-pound Duroc took top honors in his class, then

went on to take grand championship of all classes. The 182-pound FFA barrow, Robert Abrams of the Olton FFA, took the second-high honors when he was chosen as reserve grand champion barrow of the show.

A showmanship award—something new with this year's show—was presented to the best showman in each of the three animal divisions.

Two Olton FFA members copped these honors in the sheep and swine divisions. They are Marlos May and Gary Kelley, respectively.

Judging in the sheep division continued until about 9:30 Friday night, when a total of 115 lambs were shifted, shuffled and re-shuffled by Joe Wise, associate county agent of Dawson County, who served as judge.

The judge considered how the animals would look hanging on the racks at the slaughter house, and gave the boys and girls a critique on how to improve their animals for later showing.

Jim Allison, assistant county agent of Howard County, judged the swine division Saturday morning. He viewed 108 pigs in 10 classes and came up with the winners by 11:30 a.m.

Allison analyzed each animal for the

Register To Vote In Next 2 Weeks

Less than two weeks remain for Lamb County and all eligible Texas voters to register for the 1971 fiscal year.

Persons may apply in person at the tax-assessor-collector's office in the courthouse, or may make application by mail. Applications for voter certificates can be mailed to the office of Lamb County Tax Assessor-Collector Herbert Dunn as long as the postmark date is before midnight Jan. 31.

For those who appear personally to make application, the last day to register will be Friday, Jan. 29, since the Jan. deadline falls on Sunday when offices are closed. Courthouse hours are from 8 a.m. through 5 p.m.

Dunn notes this week that voter registration is running about the same as previous years when no general elections were scheduled. He said the majority of voters are either mailing applications in or making application when they come in to pay their taxes.

This is the first time 18, 19 and 20-year-olds are eligible to acquire certificates to vote. For these under 21 years, certificates are being issued but are marked "Federal Elections Only Until 21 Years of Age" and the birthdate of the applicant is written on the voter registration slip.

Although no preliminary count of applications and certificates issued has been made on the younger applications, deputies in the tax office said about 55 under 21 had been issued voters' certificates.

A full count of certificates issued for 1971 will not be made until all applications for this fiscal year are in. The 1971 fiscal year spans a period from Mar. 1, 1971 through Feb. 28, 1972.

onlookers, and gave his reasons for choosing the winners.

The judging began at 1 p.m. Saturday and was still underway at presstime. Results will be published with pictures in next Thursday's edition of the Leader-News.

The first five places in the sheep and swine divisions are listed here:

SHEEP:
Fine Wool, lightweight-1. Sheila Lewis, Springlake-Earth 4-H; 2. Len Ivey, Amherst FFA; 3. Mark Nicholson, Amherst FFA; 4. Tutti Dysart, Amherst

FHA; 5. Mark Nicholson, Amherst FFA. Fine Wool, heavyweight-1. Christi Thomas, Olton 4-H; 2. Marlos May, Olton 4-H; 3. Sandra Duvall, Amherst 4-H; 4. Eddie Duvall, Amherst 4-H; 5. Shannon Thomas, Olton 4-H.

Fine Wool champion was shown by Christi Thomas and the Fine Wool reserve champion was shown by Marlos May.

Cross, lightweight-1. Gary Kelley, Olton FFA; 2. Petra Lewis, Springlake-Earth 4-H; 3. Len Ivey, Amherst FFA; 4. Tutti

See STOCK SHOW, Page 13

Set-Aside Details Told For Cotton, Grain, Wheat

Most details of the 1971 farm program are now available, according to Lamar Aten, county ASCS executive director.

The feed grain, wheat and cotton set-aside program will be in effect for the 1971, 1972 and 1973 crop years.

This program is a completely different concept from the Agricultural Act of 1965 in that it enables farmers to use their land and capital resources to plant the crops they can best produce. At the same time, the program continues the protection of farm income through payments and loans.

Some of the major changes and important details for 1971 are:

- Cotton Set-Aside Program:**
1. Set-aside requirements-20 percent or less.
 2. Price support payment available (15 cents per pound x payment yield x planted within base allotment), the base allotment being the domestic allotment. Producer must plant to receive payment.
 3. No offsetting or cross-compliance requirement.
 4. Planting not limited to a permitted acreage.
 5. Loss of allotment in some cases for failure to plant.
 6. Payment limitation-\$55,000 per commodity, per person.
 7. Loans available at the rate of 9.50 cents per pound net weight.
 8. Transfer by sale, lease or by owner.
 9. Sign-up date March 1 through April 9.

10. Marketing quotas suspended for 1971-73.

Feed Grain Set-Aside Program:

1. Barley is excluded for 1971.
2. Set-aside requirements not greater than 20 percent of farm base.
3. Substitution for wheat authorized.
4. Loans-corn \$1.06 per bushel and grain sorghum \$1.73 per cwt.
5. Price support on 50 percent of base-preliminary payment based on farm yield x 32 cents (corn) and 29 cents (grain sorghum). This payment reduced proportionately if set-aside less than 20 percent.
6. Final payment soon after first five months of marketing year which begins Oct. 1.
7. No offsetting or cross-compliance.
8. No additional set-aside for payment in

See FARM PLANS, Page 6

Youths Arrested After Area Chase

Lamb County's sheriff's officers and highway patrol participated in a dragnet Wednesday in the northern part of Lamb County in connection with a series of car thefts in three counties.

An 18-year-old, and three juveniles, a 16-year-old boy, and two girls aged 13 and 15 were arrested in Lubbock Wednesday night following a chase that involved more than 25 highway patrolmen and sheriff's officers from five counties, a helicopter from Lubbock and a plane from Bovina.

The quartet was the subject of a wide search that started about 9:30 Tuesday morning when a late model car was reportedly stolen in Clovis, N. M. Another late model car was reported stolen at Hereford, and two cars were taken from Hale Center.

Lamb County officers set up a road block north of Earth and near Springlake. The four youths were arrested by Lubbock police Wednesday night when one of the stolen automobiles was recovered on the Texas Tech campus. An 18-year-old, Leo Wilkes Miller of Lubbock, was jailed for the counts made in three counties, with action pending from Hale County.

Consideration on the juveniles started with a session in Hale County Friday afternoon.

School Opens After Semester Break

Students in Littlefield schools will receive their report cards Wednesday, Jan. 20.

This report is for the third six weeks and the end of the first semester.

It will be back to school Monday for the students, who had a one-day holiday Friday while teachers finished up the semester.

Thomas-Weatherly Vows Read In Wichita Falls

Wedding nuptials were read for Miss Linda Jo Thomas and Jimmie Vaughn Weatherly, formerly of Spade, Saturday evening, Jan. 9, in Lamar Baptist Church of Wichita Falls before an altar decorated with greenery, flanked by baskets of white chrysanthemums and candelabras.

Officiating for the reading of the vows was Rev. Robert F. Norsworthy, pastor.

Parents of the couple are Mr. and Mrs. Lester E. Thomas of Wichita Falls and Mr. and Mrs. J. T. Weatherly of Wichita Falls, formerly of Spade.

The bride, given in marriage by her father, wore a white satin formal gown featuring an Empire bodice overlaid with lace. The lace also accented the A-line skirt and train. Her veil of illusion was attached to a cap of lace flowers and trimmed in seed pearls. She carried a white orchid and feathered carnations.

Miss Debra Jo Anderson of Big Spring was maid of honor. She was fashioned in a royal blue velvet gown trimmed in lace at the neckline. Her bouquet consisted of white mums.

Bridesmaids were Miss Kaye Ann Jordan, and Mmes. Clay Wages and Paul Ware. They were fashioned identically.

Flower girl was Melissa Boyett.

Joe Kelly served the groom as best man. Groomsmen were Joe Golden, Kemble McCurry and

Robert Cates. Guests were seated by Kenneth Rea, Billy Arey, Manuel Griego, Danny Wiseman, Don Kimbler, all of Wichita Falls and Jimmy Holder of Irving, brother of the groom.

A reception followed in the Fellowship Hall of the Church, given by the bride's parents, Misses Pat Allison, Rhonda Parry, and Mmes. J. V. Anderson, B. K. Edens, Kenneth Hill, Ray Bearden, Harry Menasco, Elaine Holder, sister-in-law of the groom, and Mrs. Charlie Williamson, sister of the groom, assisted.

A rehearsal dinner was hosted by the groom's parents at Luby's in Wichita Falls. Among those attending from out-of-town were H. W. Bradley of Spade and Judy Nix of Earth.

The new Mrs. Weatherly is a graduate of Rider High School in Wichita Falls. She was a member of the A Cappella Choir while in high school. Mrs. Weatherly is employed at Allison's Pharmacy in Wichita Falls.

The bridegroom is a student at Midwestern University. He played on the Coyote football team; a gym leader; and a member of the Senior Council, while at Wichita Falls High School. Weatherly is employed by the Texas Highway Department.

Following a wedding trip to Dallas the couple will reside in Wichita Falls.



MRS. KEITH OVERLAND

Maner-Overland Wed In Church Ceremony

Miss Diane Maner became the bride of Keith Overland in a double ring ceremony Thursday evening, Jan. 14 in the First Baptist Church Chapel of Littlefield.

Rev. R. B. Hall of Littlefield officiated at the wedding service.

Parents of the couple are Mr. and Mrs. Ocie DeVoll, formerly of Littlefield, and now of Amarillo, and Mr. and Mrs. G. L. Overland of Lubbock, and former Littlefield residents.

The bride, given in marriage by her step-father, Ocie DeVoll, wore a formal floor-length wedding gown of angel skin peau de soie and Alencon lace designed with scoop neckline, empire waist, A-line silhouette and long bell sleeves. Inserts of Alencon lace enhanced with seed pearls complimented the bodice, sleeves and front of the gown. The full back of the gown ended in a sweeping chapel train. Her veil of imported illusion fell from a bead- and coil, and she carried a bouquet of white roses centered with an orchid. Her bouquet was arranged atop a white Bible.

Miss Diane Perkins presented musical selections of "Whither Thou Goest," "Wedding

Prayer," and "Twelfth of Never."

Matron of honor was Mrs. Tim Tapley of Lubbock, sister of the bride. Sally Davidson served as maid of honor. Both wore formal length gowns of royal blue velvet accented at the empire waist with white lace. The gowns had full length sleeves trimmed with white lace at the bottom.

L. D. Holt of Littlefield served as best man, and Steve Maner of Amarillo, brother of the bride, served as groomsman.

The guests were seated by Tim Tapley of Lubbock, Michael Overland and Kenneth Overland, both brothers of the groom, and both of Lubbock, and Mark Jordan of Austin.

After a reception in the church parlor, the couple departed for Cloudfcroft, N. M. for a wedding trip.

The couple will make their home at 7214 W. 34th. in Amarillo.

MANSION

The official residence for the Governor of Texas in Austin was built in 1865 and still serves as the mansion for the first family of the Lone Star state.

Mrs. Smith Presents Program On Australia

The Forum met Thursday, Jan. 14, in the home of Mrs. Frank Cummings, with Mrs. Lenton Smith presenting a program on Australia.

Australia is the largest island and the smallest continent in the world.

Mrs. Smith stated "if the people "down under" could bottle and sell congeniality, they would be rich overnight. Australians have the big heart attributed to Texans, the informality attributed to Californians, and the happy outlook toward life attributed to all Latin Americans generally, and people of Mexico specifically."

Another fact Mrs. Smith pointed out was that "whatever the time in the United States, it is always tomorrow in Australia. The International Dateline ensures this."

"This seems prophetic," Mrs. Smith said. "Australia's tomorrow is bright with promise. The blooming, healthy, strong youth are symbolic of the very spirit of Australia."

During the Forum's business session, plans were completed for the erection of a flag pole in the Free Camp Grounds on Highway 385.

Next meeting of the will be in the home of Robert Richey. Mrs. Driskill will present a program at that time.

Bible Study Presented

"A Man Lives In Builds" was the Bible taught by Mrs. E. G. when the Mary Nicholas Circle of First Church met Monday, Jan. 11.

Scriptures studied were Matt. 7:24-28, and Luke 13:9-17. Those present for the were Mmes. D. C. Lind, Walden, Frankie Stebbins, Boyd, E. G. Bruns, Barker, E. S. Lowe, P. Sr., W. E. Bass, Kay, Dorothy Crawford, Street, Bess Coen, Matthews, and Jesse

Solesbee City Views Miss By Way Of

AMHERST--The Solesbee Circle of the WMU met in Fellowship the church Monday night. A film was shown in connection with the current study.

Mrs. Dick McDaniel the first part of the film was shown, "The Task"--Christian Ministry. In the business conducted by Mrs. Cowan, a mission action was discussed.

Mrs. Eugene Young hosted and served refreshments of sandwiches, pastries and coffee to Mmes. Cantrell, Jimmy Cowan, Tomes, Winston Felt, Verdell Burton, Duval, Dick McDaniel, Young.

Flower Talk

By Kip Cutshall

TULIPS OFFER BEAUTY AND MYSTERY

One of the kingdom's most beautiful blossoms is the tulip. It is one of the few plants whose remains whose remains a mystery. Holland, believe it or not, however, it is believed to be a native of Persia.

The word "Dulhan" Persian is the cloth which the Fez is made. English translation of the word is "Turban," tulip closely resemble inverted Fez or Turban.

There is no mystery about the flowers we see all are the finest freshest that are available. Whenever you need flowers we are just as close as a telephone. Call 385-4444.

CHISHOLM FLORAL

820 E. 51st

**WE
• SELL
• SERVICE
• INSTALL
• FINANCE
• AND
GUARANTEE**

**Hot Water Heaters
CALL US
385-5144**

GOLDEN ANNIVERSARY



2-2

Family Health Center

SCS Electrostatic Air Purifier
Carry It From Room To Room

**Brillain
Pharmacy**
P. O. BOX 1227
Littlefield, Texas 79339

Rebecas Meet, Set Committees

Sunset Rebecca Lodge 333 appointed committees in a regular meeting at the First National Bank Tuesday night. Coffee and cake were served to Katherine Rumbach, noble grand; Gladys Stafford, vice grand; Daisy Steward, secretary; and Rachel Byrd, treasurer. Others present were Charles Steward, Richard Woodring, Twyla Woodring, H. L. Byrd and C. D. Stafford.

O. HENRY MUSEUM

Famous author O. Henry began writing short stories as a sideline while working in Austin as a bank clerk. His one-time Austin home is now a museum featuring many of his personal effects.

RODEN REXALL DRUG

Specials Good Sun., Mon., Tues., Wed., And Thurs.

We Give Gold Bond Stamps - Double On All Prescriptions.

We Reserve The Right To Limit Quantities!

VICKS. NyQuil 6 Oz.

NIGHTTIME COLDS MEDICINE

79¢

Relieves major cold symptoms for hours to help you get the rest your body needs.

VO'S
HAIR SPRAY 89¢

REG. \$2.35 17 OZ.

JERGEN'S Hand Lotion 99¢

REG. \$2.19 20 OZ.

DU BARRY Cleansing Cream 2.00

REG. \$3.25

TAME Creme Rinse 79¢

TONI PINT SIZE REG. \$1.79

MISS BRECK
HAIR SPRAY 39¢

13 OZ.

VO 5
SHAMPOO 59¢

BUY A 7 OZ. BOTTLE AND GET 3.5 BOTTLE BOTH FOR \$1.84 VALUE

JANUARY CLEARANCE

CONTINUES THRU WEDNESDAY

Cedarcrest Boots \$7.99
Black & Brown Leather

Rough-Out Boots \$8.99

ONE GROUP
California Cobblers \$8.99
Values To 16.95

Moss Shoes
FOR THE ENTIRE FAMILY

Party Honors Father And Daughter

Barlene Williams hosted a birthday party in honor of her husband and daughter, Ben Williams and Tammie Williams Saturday evening, Jan. 16, at their home in Amherst.

Ben and Tammie's birthdays are Jan. 15.

The hostess served refreshments of cake and ice cream to the following guests: Mr. and Mrs. Home Peel, Jay and Tammie, all of Amherst; Mr. and Mrs. Bill Williams, Mr. and Mrs. Sherman Williams, Mr. and Mrs. Wayne Williams and daughter, all of Cotton Center; and Mr. and Mrs. Mike Peel of Lubbock.

Sherman Williams of Cotton Center, an uncle to Ben Williams, observed his birthday on Jan. 15 also.

FAST, HOT AND SALTY

The seawater moving at high velocities presents one of the most severe corrosion tests for shipboard materials. However, copper-nickel piping systems for shipboard cooling last the 20-year life of a ship.

GOLDS take 666



MR. AND MRS. L. F. DOWELL

Anniversary Reception To Honor The Dowells

Mr. and Mrs. L. F. Dowell will be honored on their Golden Wedding Anniversary, with an open house reception Sunday afternoon, Jan. 24, from 2:30 to 5:30 p.m., in their home at 615 N. Ash in Littlefield.

The event will be hosted by their three daughters, Mrs. Glenn Davis of Dallas, Mrs. Elwin Gilley and Mrs. Weldon Gilley, both of Littlefield.

Mr. and Mrs. Dowell were married Jan. 26, 1921 in Roby.

She is the former Miss Agnes Dowden.

All friends of the family are invited to attend.

STAINLESS-LOCAL AND EXPRESS

New York City's Transit Authority has ordered 250 new cars of nickel stainless steel for the metropolis' subway system.

The majority of the cars are scheduled to be delivered in 1971.

Miss Gloria DiJulio Wed To Ronnie Glenn Hedges

Miss Gloria DiJulio of Ft. Worth became the bride of Ronnie Glenn Hedges of Amherst in a single ring ceremony, Dec. 19, at the Cavalry Baptist Church in Stephenville. Rev. Harry Bush officiated for the reading of the vows.

Parents of the couple are Mrs. Charlotte DiJulio of Ft. Worth and Mr. and Mrs. Arthur Hedges of Amherst.

The bride was attired in a white street length dress featuring an Empire waistline and long full sleeves. She carried a bouquet of white carnations.

Miss Carol DiJulio, twin sister of the bride, was maid of honor and Arthur Hedges, father of the groom, was best man.

The bride graduated from high school in Ft. Worth and is a student at Tarleton State College in Stephenville. Hedges

is a graduate of Amherst High School and is attending Tarleton State College.

The couple will reside in Stephenville.

Couple Wed In Lubbock

SPRINGLAKE-CIRCLE--Miss Deborah Carruth, former resident of Olton, and B. Gillit exchanged wedding nuptials Saturday evening, Jan. 9, at the Broadway Church of Christ in Lubbock.

Pastor Boyd, officiated for the double ring ceremony.

The bride is the daughter of Mr. and Mrs. Travis Carruth of Clovis, N. M. Grandparents are Mr. and Mrs. J. A. Carruth, and Mr. and Mrs. C. E. Carruth, all of Olton.

Given in marriage by her brother, Travis Carruth Jr. of Clovis, N. M. the bride wore a white street length dress featuring the traditional wedding veil.

A reception was held following the ceremony. Mrs. Travis Carruth Jr. presided at the serving table.

After a wedding trip to Ruidoso, N. M. the couple will be at home in Lubbock.



NINA BETH MANLEY

Wedding Plans Are Revealed

Mr. and Mrs. R. W. Manley of Edinburg, formerly of Littlefield, announce the engagement of their daughter, Nina Beth, to Carl Allen Staffel, son of Mr. and Mrs. R. B. Staffel of McAllen.

The date of the wedding has been set for May 8 in the Harvey Drive Church of Christ at McAllen.

Party Honors Mrs. Schreier

SPRINGLAKE-CIRCLE--Mrs. Ethel Schreier was honored with a birthday party Monday afternoon in the home of Mrs. V. H. Giles.

Assisting with hostess duties were Mrs. J. A. Boverie and Mrs. C. B. Hines. Guests were registered by Mrs. J. A. Boverie.

Mrs. Schreier was presented a pink carnation corsage, a money tree and various other gifts. Sixty three people brought or sent gifts to the honoree.

The serving table was laid with a white linen cutwork cloth. Fruit cake, spice cake, mints and nuts was served from silver and china appointments by Mrs. A. B. Jeffries and Mrs. V. H. Giles.

Special guests were Mrs. Schreier's granddaughter, Mrs. Ronnie Digby and children, Ronnie Jr. and Sharla; her sister-in-law, Mrs. Pearl Schreier; and a niece, Mrs. Archie Sorley. Out-of-town guest was Mrs. C. C. Graef of Lazbuddie.

Wedding Shower Honors Couple

BULA--Mr. and Mrs. Joe Price of Olton, the former Cynthia Withrow from Bula, were honored with a miscellaneous wedding shower, Friday evening at the Community Center building in Sudan.

The serving table carried out the bride's colors, and was laid in white centered with an arrangement of blue flowers.

Punch, coffee, and cookies were served by Ann Harlan, Jackie Withrow and Connie Hamm.

The couple were assisted by their mothers, Mrs. D. S. Price and Mrs. J. C. Withrow.

Miss Sherry Withrow registered the gifts in the bride's book. Jodie Withrow registered approximately 55 guests who attended.

The hostess gift was a rug. Hostesses for the occasion were Mmes. M. C. Bellar, W. A. Beale, Marvin Bolin, Jerry Ray, H. M. Black, Raymond Maxwell, Ashel Richardson, P. R. Pierce, Cecil Jones, J. D. Rowland, Nolan Harlan, Gene Bryan, John Hubbard, C. C. Testerman and John Blackman.



LYNN
Mr. and Mrs. Velton Lynn of Amarillo are the proud parents of a baby girl born Jan. 2, weighing 5 lbs. and 5 oz. She has been named Lisa Gayle. Paternal grandparents are Mr. and Mrs. Kenneth Lynn of Littlefield, and maternal grandparents are Mr. and Mrs. Arlie Gilmore of Hale Center.

LARGE UNIVERSITY
The University of Texas at Austin has an enrollment above 40,000 students, making it the largest in the South.

FIBERGLASS REPAIRS TANKS and BOATS

**PUMP IT ALL OUT
BY INSTALLING A BUBBLE**

ALSO SEE US ABOUT
ALUMINUM PIPE WELDING

Fulton Radiator Shop

412 HALL AVE. Littlefield Phone 385-4545

Registration Remains Open At South Plains

Registration will remain open at South Plains College through Jan. 22 for day classes and Jan. 21 for the Evening College, according to Registrar Dr. Charles Sylvester.

Students registering from now through Jan. 22 will receive full credit for the semester's work. This is for the benefit of those attending college where the fall semester does not end until late.

Activity is underway with a new semester dance held Jan. 14.

All clubs and organizations have had at least one meeting and the Texan's basketball

conference series got underway Jan. 16 when they played Frank Phillips Junior College in Texan Dome.

The next scheduled game is Jan. 19 with New Mexico Military Institute in Roswell, N.M.

The next home game is Friday, Jan. 22 against Howard County Junior College.

Dial 385-4481 For Classifieds

THE FAIR'S January Clearance Continues

333 Phelps Ave. Next To First National Bank

Men's SUITS

Regular Values Up To \$85.00

Now Only

\$49.95

All Ladies COATS and DRESSES

1/2 Off Reg. Price

Girls JACKETS and COATS

1/2 Off Reg. Price

Men's SHOES and WESTERN BOOTS

20%

ALL OTHER MEN'S AND LADIES ACCESSORIES GREATLY REDUCE

Fair Dept. Store

JANUARY CLEARANCE

SALE CONTINUES THIS WEEK!

BIG SAVINGS THROUGHOUT THE STORE-TOO MANY TO LIST, BUT HERE ARE A FEW.

MEN'S HAND-MADE BOOTS

Some NACONA, Reg. 36.98	Now \$29.98
Some JUSTIN, Reg. 38.98	Now \$29.98
Some TONY LAMA'S, Reg. 40.98	Now \$29.98
Some COWTOWN, Reg. 34.50	Now \$29.98
Some LARAMIE Reg. 37.98	Now \$29.98

LADIES BOOTS

Some 19.95	Now \$15.00
Some 18.98	Now \$15.00
Some 34.50	Now \$26.00
Some 36.98	Now \$27.00

LADIES COATS

Nylon Quilted	Reg. 30.98	Now \$25.00
Fringed Leather,	Reg. 58.98	Now \$45.00

MEN'S COATS

Some 23.98	Now \$18.00
Some 24.98	Now \$19.00
Some 59.98	Now \$45.00

MEN'S

TAILORED SUITS	Reg. 39.98	Now \$29.98
	Reg. 64.98	Now \$54.95

MEN'S JEANS

FLARES	Reg. 9.98	Now \$8.50
	Reg. 7.98	Now \$6.50

MEN'S TEXAS AND ACME BOOTS

Some 19.95-22.95	Now \$15.00
Some 24.98-27.98	Now \$20.00

MENS DRESS

WESTERN PANTS	Some 7.50	Now \$4.50
	Some 8.50	Now \$5.10
	Some 10.95	Now \$7.50
	Some 19.95	Now \$10.00

LADIES SHIRTS

Some Up to 8.98	Now \$3.00-\$4.00-\$5.00
Some 6.25	Now \$3.00

MEN'S SHIRTS

Some 5.98	Now \$3.00
Some 8.98	Now \$5.00
Some 6.25	Now \$5.00
Some 5.98	Now \$5.00
Some 7.98	Now \$6.50

LADIES PANTS

Some 8.98	Now \$6.00
Some 7.98	Now \$5.50
Some 4.25	Now \$3.00
Some 5.98	Now \$4.50

BOY'S BOOTS

4 To 8	Some 6.98	Now \$4.75
	Some 5.98	Now \$4.00
8 1/2 To 3	Some 7.98	Now \$6.00
	Some 9.98	Now \$6.50
	Some 10.98	Now \$7.50

VESTS

FRINGED LEATHER	Reg. 17.98	Now \$12.00
MEN'S FLEECE LINED LEATHER	Reg. 19.98	Now \$15.00
BOY'S FLEECE LINED LEATHER	Reg. 15.98	Now \$11.00
NYLON QUILTED	Reg. 12.50	Now \$9.00

LITTLE BOY'S PANTS

Reg. 3.68 - 3.98	Now \$2.98
------------------	------------

LITTLE BOY'S SHIRTS

Some 4.25	Now \$3.25
Some 5.98	Now \$4.50
Some 3.98	Now \$2.98

BILL'S BOOT SHOP

LITTLEFIELD

Special Buy.

WOMEN'S NYLON PANT SUITS are completely machine washable. Tunic tops in V-neck or crew neck styling. Pull-on pants in coordinating solids. Sizes 8-16.

\$8

Penneys

Value. It still means something at Penneys.

WHO'S WHO?

The first five people who guess our Who's who for this series will get a free RPM record.



Teacher

Western Auto
306 PHELPS AVE. LITTLEFIELD

Former Littlefield Man Is Named Branch Manager

Interstate Securities Company, consumer installment finance firm, has opened a new branch office at 210 North Main in Denver City.

Interstate will service over 500 accounts of the Modern Finance Company and occupy their facilities.

C. A. Parker Jr., of Denver City, has been named branch manager.

Parker joined Interstate in 1968, and served as adjutant in the Littlefield branch office and as assistant branch manager in Hereford.

He and his wife, Donna, have a five month-old daughter, Lori. Interstate Securities Company with headquarters in

Kansas City, Mo., now operates 205 branch offices in 19 states and two foreign countries.

Its "financial house" concept includes personal and family loans, financing of automobiles, household appliances and furniture, personal and property insurance, and personal income tax service under one roof.



C. A. PARKER, JR.

South Plains Students Listed On Honor Roll

Twenty area students at South Plains College in Levelland are among 206 students who were named to the Dean's Honor List for the fall semester at the college, according to Academic Dean Nathan Tubb.

Thirty-seven of the 206 students made the perfect grade point average of 4.0, and four of the area students were included.

They are Robert Armistead of Littlefield, Katherine Decker of Pep, William Gover of Earth and Quenette Redinger of Olton.

Area students who made a grade of 3.25 or better included: Georganne Conway, Martha Haynes, Hazel Mackey, Joe Parrott and Janet Setliff, all of Littlefield; Betty Castro, Zita Hooper, Rosa Luna and Judy Pearson, all of Anton; Ann Albus and William Albus of Pep; Lauren Earnest of Springlake; Barbara Muncy of Amherst; Margaret Richardson of Bula; Evelyn Verden of Earth and Harvey Willeby of Sudan.

OLTON

MRS. W. B. SMITH JR 285-2385



V.M. Peterman Appointed To Committee

The Lamb County Survey Committee Thursday, Jan. 14 in the County Court Room, with G. T. Sides presiding.

Judge Sides appointed Peterman as chairman of committee for 1971-72.

The following members elected as his assistants: the appointed committee present: Mrs. C. A. secretary-treasurer; Mrs. Peterman, reporter; Mrs. Kelly, preservation committee; Mrs. Simon historical marker committee and G. T. Sides, chairman.

Judge Sides presented group with two books, by Evelyn Parrott Sudan, to be donated to County Library. Titles books are "Link That Brought History of Lamb County

The next meeting of committee will be hosted by A. Joplin and W. H. Ruzick Littlefield, to be held soon in March. The exact time place to be announced later.

The federal copyright law was enacted in 1790, but not until 1870 that another made the Library of Congress the central agency for registration and copyright deposits in the States.

MISS BENNY LONG, daughter of Mr. and Mrs. Fred Long completed requirements for her B. S. degree at West Texas State University, Canyon at the end of the semester. Miss Long left this week for Zuni, N. M. where she will be teaching 4th grade in the public school system of Gallop McKinley County School District. She was an elementary education major. Graduation exercises will be held May 9.

BURNEY DAN HOOPER, son of Mr. and Mrs. Carl Hooper, was among 500 graduates receiving degrees in commencement exercises Dec. 19 at Stephen F. Austin State University in Nacogdoches. A 1966 graduate of Olton High School, Hooper received a bachelor of science degree from the school of sciences and mathematics. Conferring of bachelors' degrees was by R. W. Steen, president of the university. The commencement exercises were held in the Griffith Fine Arts Auditorium. Hooper attended West Texas State University two years before transferring to Stephen F. Austin. He is married to the former Dayna Kite and the couple have an infant daughter, Carolyn Celeste.

ANOTHER OLTON graduate, Curtis Schaefer completed work for his Bachelor of Science degree from Texas Tech University, Lubbock, at the end of the fall semester. His major is in the field of entomology. His semester average of 3.5 places him on the dean's honor list. Schaefer is the son of Mr. and Mrs. R. W. Schaefer and a 1965 graduate of Olton High School. He plans to take additional courses at Tech during the spring semester.

MRS. JACKIE Burkhalter, daughter of Mr. and Mrs. Owen Jones, received her Bachelor of

Science degree from Texas Tech University at Lubbock, at the end of the fall semester. Her major was elementary education. She is a 1967 graduate of Olton High School.

MIKE BODKIN, son of Mr. and Mrs. Wilton Bodkin, received his Bachelor of Business Administration from Texas A&M University Dec. 12. He is a 1966 graduate of Olton High School. He plans to continue his education at Texas A&M and work toward a computer science degree. Attending the exercises from Olton were Mr. and Mrs. Wilton Bodkin. His grandfather, G. A. Bodkin, was ill in a Hereford hospital and unable to attend.

NOT PRESENT for the exercises, but having completed his requirements for a Doctor's Degree from Texas A&M University was James Mason (Sonny) Bryant, son of Mrs. Leamon Bryant and the late Leamon Bryant. He received his degree with a major in food technology. Bryant is a 1959 graduate of Olton High School. He received his BS from Texas A&M in 1964 and his MS from A&M in 1967. He is grandson of Mr. and Mrs. Don Bryant and Mrs. M. T. Bagley of Olton.

ROCKY FORD

MRS. V. M. PETERMAN 262-4532

MR. AND MRS. Leonard McNeese spent Wednesday night with their son and family, Mr. and Mrs. David McNeese, Kyle and Keith in Lubbock.

MR. AND MRS. Leon Holley attended a business meeting in Lubbock Tuesday night.

MR. AND MRS. Dean Carpenter and Tanya entertained with a dinner Sunday. Honored guest was their son, Rocky Carpenter, who flew in Saturday night on a thirty day leave from Vietnam. Other dinner guests were Mr. and Mrs. Floyd Houston of Littlefield; Mr. and Mrs. Choc Carpenter, Charla, Todd and Lance; Mr. Joe Dillon of Littlefield; Mr. and Mrs. Gary Newton and children of Littlefield; and Mr. and Mrs. Dale Edwards and family.

MISSES DIANNE and Cheryl Stewart of Hart Camp spent the weekend with their grandparents, Mr. and Mrs. Bub Stewart.

MRS. TIM TAPLEY, Todd and Tasha of Lubbock spent last week with her husbands parents, Mr. and Mrs. Doyle Tapley. Saturday evening Mr. and Mrs. Doyle Tapley hosted the rehearsal supper for the Diane Maner-Keith Overton wedding. Sixteen attended the supper.

MR. AND MRS. De Juan

Strickland, Michael, Caron and Deedi of Plainview were callers in the Peterman home Sunday.

ANTON NEWS

MRS. H. G. BRADLEY has returned home from a holiday visit with her sister and brother, Mrs. Carrie Giles and Oscar Swancy at Frankston. She also visited at Waxahachie.

MR. AND MRS. Weldon Swan, Charlie, Steve, and Rusty spent the Christmas holidays with Swan's sister and family, Mr. and Mrs. B. J. Smith in Bloomington, Ind. They spent the New Year's holidays with relatives at Snyder.

Any bowling alley with room to spare

is in the Yellow Pages

FOR CLASSIFIED ADS DIAL 385-4481

Introducing EVA COX

Our Wigs and Hair Piece Stylist

Introductory Offer

All Wigs and Hair Pieces Cleaned and Styled 1/2 PRICE

Call EVA at 385-3520

Leveta's Beauty Shop

135 Westside Littlefield

Ware's

FINAL REDUCTIONS

IN OUR JANUARY CLEARANCE!

Casual Slacks & Jeans

ONE GROUP

VALUES TO 12.00

\$3

ONE GROUP MEN'S TRADITIONAL SPORT SHIRTS LONG & SHORT SLEEVES 1/2 PRICE

ONE GROUP MEN'S HATS 1/2 PRICE

ONE GROUP MEN'S DRESS SHIRTS LONG & SHORT SLEEVE 1/2 PRICE

ONE GROUP MEN'S SUITS SPORT COATS 1/2 PRICE

MEN'S SWEATERS 1/2 PRICE

MEN'S JACKETS COATS 1/2 PRICE

BOY'S SWEATERS 1/2 PRICE

ONE GROUP BOY'S SLACKS & JEANS VALUES TO 9.00 **\$3**

- Ladies & Junior Dresses
- Ladies & Junior Coats
- Ladies & Junior Sportswear
- Children's Dresses 3 to 6X and 7 to 14
- Children's Coats 3 to 6X and 7 to 14
- Children's Sportswear 3 to 6X and 7 to 14
- Infant's & Toddler Wear

1/2 PRICE

ENTIRE STOCK LADIES FALL SHOES

13.00 Values.....	\$6	17.00 Values.....	\$7	20.00 Values.....	\$8
14.00 Values.....		18.00 Values.....		21.00 Values.....	
15.00 Values.....		19.00 Values.....		22.00 Values.....	

ONE GROUP BOY'S SHIRTS 1/2 PRICE

BOY'S SUITS & SPORT COATS 1/2 PRICE

Men's Shoes

Boy's Shoes

Children's Shoes

1/2 PRICE

HOSPITAL NEWS

MEDICAL ARTS HOSPITAL
 JANUARY 9
 ADMITTED: Mrs. Bill Ford
 DISMISSED: Mille Nichols, Vera Bray, Paul Van Dyke
 JANUARY 10
 ADMITTED: Mrs. Nellie Mrs. Bertha Warner, Mrs. Jewel Heard, Mrs. Jewel Roberts, Otto Fair.
 DISMISSED: None.
 JANUARY 11
 ADMITTED: Jimmy Hart, Mrs. Alma Holder, Mrs. Gertrude Kacheln, Mrs. Gertrude Kacheln.
 DISMISSED: C. O. Greer, Jewel Roberts.
 JANUARY 12
 ADMITTED: Mrs. Maggie Peacock, Robert Peacock, Miss Froney Mills.
 DISMISSED: Mrs. Bill Ford, Mrs. Pearl Morris, Clara Kervas, Mrs. Allene Kervas.
 JANUARY 13
 ADMITTED: Mrs. Geanne Wright.
 DISMISSED: Mrs. Kathleen Leeroy Ellis, Mrs. Annie Holder, Mrs. Annie Maenshie.
 JANUARY 14
 ADMITTED: Emil Marek, Ella Marek, Mrs. Annie Marek.
 DISMISSED: Mrs. Mary Otto Fair.
LITTLEFIELD HOSPITAL
 JANUARY 8
 ADMITTED: Daniel Hernandez, Miss Paula Thomas, Ysleta Ball, Mrs. Gladys Guss, Mrs. Lucille Friday, Mrs. Gabina Solis.
 DISMISSED: Robert W. Steward, Mrs. Estefana Martinez, John Burnett.
 JANUARY 9
 ADMITTED: L. D. Roberson, Mrs. Dorothy Vinson.
 DISMISSED: Miss Deana Sterling, Mrs. Olivia Rangel, Mrs. Daisy Henderson, Mrs. Eula Douglas, Mrs. Fay Holladay, Mrs. Mary Lockwood.
 JANUARY 10
 ADMITTED: Ralph Duran, Eunice Wade, Mrs. Ruth Duran, Mrs. Lena Rhodes.
 DISMISSED: Dewey Ball, Lela Chester, Mrs. Helen and baby.
 JANUARY 11
 ADMITTED: Mrs. Elaine Mrs. Audrey Tidwell.

DISMISSED: Mrs. Hettie Cole.
 JANUARY 12
 ADMITTED: Mrs. Linda Lightfoot.
 DISMISSED: Miss Paula Thomas, Mrs. Frances McDonald, Rlpha Duran, Mrs. Lucille Friday.
 JANUARY 13
 ADMITTED: Horace Byrd, Henry Manley, Mrs. Cecilia Goodwin, Archie Mitchell, Mrs. Doris Simpson, Miss Hellen King.
 DISMISSED: Mrs. Linda Lightfoot, L. D. Robertson, Mrs. Eunice Wade, Raymond Maxwell.
 JANUARY 14
 ADMITTED: Mrs. Ruby Griffin.
 DISMISSED: Mrs. Dorothy Chance, Mrs. Elaine Hall and baby, Mrs. Audrey Tidwell, Mrs. Gabriela Solis, Mrs. Charlotte Day, Mrs. Lena Rhodes.

AREA SERVICEMEN

RUFUS RAMIREZ
 Army specialist Four Rufus Ramirez, 21, son of Mrs. Lorenza Ramirez of Littlefield, driver in the Battalion's Battery A. Spec. Ramirez entered the Army in June 1969, completed basic training at Ft. Leonard Wood, Mo., and was last stationed at Ft. Bliss, Tex.
 The specialist, whose wife, Eva, lives at Lubbock, is a 1969 graduate of Littlefield High School.
 His father, Nestor Ramirez, lives at Houston.
 Specialist Ramirez is a member of the 59th Artillery's Second Battalion that officially became a part of the 4th Armored Division in Germany, Nov. 2.
 The 2nd Battalion, formerly stationed at Ft. Bliss, is armed with the 20MM multi-barreled Vulcan Weapons System and the Chaparral Missile.
 The addition of the unit gives the 4th Armored Division defense against low-flying aircraft in its forward operations area that previously was not available with conventional weapons.

ANTON

MRS. C. D. NELSON 997-4261



SATURDAY, JAN. 9, Patti Stone, and Mrs. Mary Jane Johnson attended the Area I, FHA Executive Council meeting, held at Frenship High School. Patti is the Area I FHA Secretary and Mrs. Johnson is an Area I Advisor. Final plans for the Area I Meeting, to be held February 26-27 in Lubbock, were made.
 THE INTERCLUB Council of AHS sponsored a canned food drive for Girlstown, U. S. A. There was competition between the six high school and junior high classes for the largest number of cans. One hundred cans were collected in the contest. Winner was the seventh grade class, who brought one-third of the total amount contributed. The class will be given a Coke Party for their efforts by the Innerclub Council.
 THE STUDENT COUNCIL held their first meeting of the year on Jan. 7. Bill Walthall read the correspondence from Abilene Cooper High School and from the Texas Association of Student Councils, TASC. Mrs. Landers read the requirements for membership in Student Council. A member must have no grade lower than a 74 and have no less than four solid subjects. Plans for next semester was made by the completion of mid-year evaluation sheets.
 MR. AND MRS. Mitchell Grice and Mr. and Mrs. Foy Mills accompanied the Junior High Sunday School Class from Lawrence Ave. Church of Christ on a skating party Sunday afternoon.
 Those going were: Terry and Scott Goen, James Melton, Lisa Booth, Greg Couch, Sherrell and Mickey Molder, Peggy Kiser, Donna Morrow and Foy Mills, Jr.
 MR. AND MRS. Frank McGowan, Mrs. Joe McGowan and James McGowan, returned home Thursday from a three weeks visit with relatives at San Diego, Calif.
 MR. AND MRS. Alton Bullington returned home last week from a three weeks visit with relatives in California. They visited their daughter, Mr. and Mrs. Lee Ketay and children at Sacramento, Calif.; in Richmond, Calif. they visited Mrs. Bullington's brother and family, Mr. and Mrs. O. L. Chapman; they visited Bullington's brother, Mr. and Mrs. Grady Bullington at Long Beach; his sister, Mr. and Mrs. L. D. Summons at Riverside, Calif.; and a cousin, Mr. and Mrs. Leonard Fisher at Stockton, Calif. They also visited friends at Albuquerque, N. M.
 MRS. J. R. CHAPMAN is visiting her daughter, Mr. and Mrs. Pete Orcut at Uvalde.
 MR. AND MRS. Renay Rice had as their guests over the weekend his parents, Mr. and Mrs. Cecil Rice from Tulia.
 JOHN GOEN is a patient in the hospital at Amherst.
 A NUMBER of Anton residents attended funeral services for Mrs. Lora Long that was held in Hammonds Funeral Home Chapel Tuesday morning. She was the mother of Mrs. Dewey Stephens.
 MEMBERS OF the BROTHERHOOD at Central Baptist Church met Tuesday Jan. 12 for their monthly breakfast and business meeting. Members present were: Rev. John Tubbs, Homer Lowrance, Floyd Morton, Ted Zant, Gordon Timms, Alton Bullington, Ted Rendleman, Vernon Stone, Bud Stone, and Weldon Swan. Boys present were Terry and Troy Tubbs, Steve Swan, Charles Swan, Clark and Ray Stone.
 MEMBERS OF the Anton High School "A" honor roll include:
 Seniors: Patti Stone, Judy

ANTON NEWS

MRS. BEAULAH HOUSTON returned home Tuesday from a weeks visit with relatives at Bryan and Austin.
 MR. AND MRS. Carl Clements and Billie Jean have returned home from a visit with Mrs. Clements' sisters and their families, Mr. and Mrs. N. W. Rogers and Mr. and Mrs. S. A. Sheek in Abilene. Enroute home they visited relatives in Munday.

Final Clearance SALE

THIS IS IT . . . TREMENDOUS MARK DOWNS FOR QUICK CLEARANCE.

DRESSES

Fall & Winter 1/2 Price

PANT SUITS

Fall & Winter 1/2 Price

SLEEPWEAR

Fall & Winter 1/2 Price

COATS

Fall & Winter 1/2 Price

PLUS STORE WIDE SAVINGS IN MANY OTHER DEPARTMENTS

Newton's Ladies' Apparel
 508 Phelps 385-5533

Dial 385-4481 For Classifieds

SAVE NOW during our

ZENITH

ANNUAL 1ST OF YEAR

VALUE SPECTACULAR '71

CHROMACOLOR

SAVE UP TO \$1000.00 ON SOME MODELS

The SCOFIELD B4514M Early American styled compact console solids, exclusive of decorative genuine Maple veneers and select hardwood front and trim.

Featuring a color picture so much brighter, so much sharper... you really have to see it... to see it!

The BERING • B4707W Vinyl clad metal cabinet in grained Kashmir Walnut color. VHF/UHF Deluxe Spotlite Panels. 5" Round Twin-Cone Speaker.

SUPER-SCREEN
 COLOR TV'S BIGGEST PICTURE

—A full rectangular 25" viewable diagonal TV picture!

The ADDIN • B4030W Beautiful Grained Walnut cabinet fits in any room. Inside is Zenith's Chromacolor TV system with exclusive Chromatic Brain, AFG, and Color Commander Control, plus Zenith's World Famous Titan handcrafted Chassis.

The EDDINGTON • B4030W—Beautiful Grained Walnut cabinet fits in any room. Inside is Zenith's Chromacolor TV system with exclusive Chromatic Brain, AFG, and Color Commander Control, plus Zenith's World Famous Titan handcrafted Chassis.

LITTLEFIELD TV SERVICE

"We Service What We Sell"

311 W.4th 385-3522
 Ed Hauk CET 53 Kennedy Veach CET 83

BUY Kelvinator

AND GET THE TOTAL CONVENIENCE APPLIANCE

SAVE AS MUCH AS \$100.00 ON SOME MODELS

28" FOODARAMA
 With Icemaker

Freezer Section Features:

- Automatic Icemaker
- No Frost Cold Shielded Light
- Four Freezer Door Shelves
- Slide Basket
- Three Freezer Shelves.

Refrigerator Section Features:

- Automatic Defrosting
- Three Cast Silver Shelves
- Large Crisper
- Egg Chest
- Full Width Dairy Chests

Model 99CN

30" ELECTRIC RANGE

Quality cooking benefits:

- Infinite Heat Switches
- Automatic Oven Timer
- Even HEAT Flow Oven
- Adjustable Broiling
- Convenient Recessed Top
- Fast Oven Pre-Heat

Quality Cleaning Benefit:

- Self-cleaning Oven
- Plug-out Surface Units
- Removable Switch Knobs

Model RF33CP

GAS MODELS AVAILABLE

NO-FROST TRIMWALL REFRIGERATOR-FREEZER

- 16.7 Cu. Ft.
- 151.6 Lb. Freezer
- Left Or Right Opening Doors
- Three Sliding Shelves
- Covered Meat Pan
- Dairy Chest
- Twin Crispers.

Model 167DW

AUTOMATIC DISHWASHER
 Portable-Convertible

- Laminated Top
- Front Loading
- Pan Rack
- Large Silverware Basket
- Rinse Additive Dispenser
- Detergent Dispenser
- Drying Cycle
- Easy-to-use Controls

Model U970C

THREE TEMPERATURE AUTOMATIC WASHER

- 18 Pound Capacity
- Three Cycle Soil Selection
- Three Wash AND Rinse Water Combinations
- Three Step Rinsing Action
- All Pressure Filling
- Automatic Spin Cutoff

Model W420C

TWO CYCLE, TWO TEMPERATURE AUTOMATIC DRYER

- Permanent Press Tumble
- Two Temperatures
- Flexible Timer
- Automatic Timer
- Convenient Lint Trap
- Dual-Action Thermostat
- Large Blowers
- Color Styling

Model DE421C

LITTLEFIELD TV SERVICE

"WE SERVICE WHAT WE SELL"

311 West 4th Phone 385-3522
 Ed Hauk CET 53 Kennedy Veach CET 83

EDITORIALS

Why Parents Stress Education To 'Junior'

A lifetime income of \$200,000 is the average needed for "Junior" if he was born in 1968.

According to detailed estimates released by the Census Bureau and reported to the National Consumer Finance Association December newsletter, FINANCE FACTS, a positive correlation between education and income is established. This holds true what Mom and Dad have been told to tell their sons for years.

The report estimates that completion of high school for an eighteen year old in 1968 would produce a lifetime income of \$227,000.

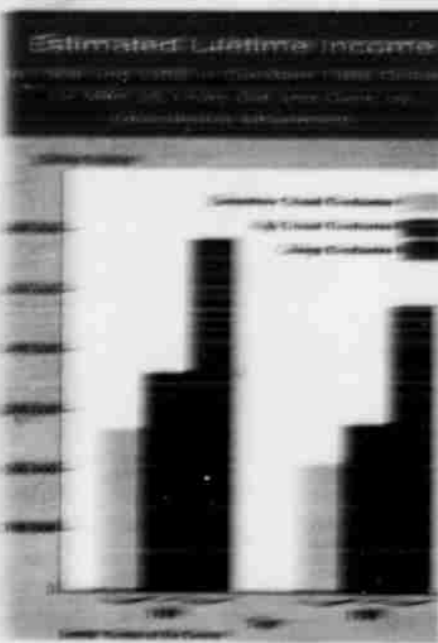
Four years of high school would add \$4,000 to that figure for \$271,000. Four years of college adds \$113,000 for a total of \$384,000 and graduate study of one or more years would add another \$53,000 for a lifetime income of \$437,000.

For all men, estimated income in 1968 follows: from age 25 to death increased from \$245,000 in 1958 to \$348,000 in 1968. Estimated lifetime income of those men with four or more years of college was \$380,000 in 1968.

An interesting point observed by the statistics are the percentage increases. For all males 25 years old to death, the increase was 43 per cent based on data from 1958 to 1968. For those with four or more years of college, 67 per cent.

In 1958, the college group's lifetime income was estimated to be 10 per cent above the average for those in the high school graduate group. It was 12 per cent above average in 1968 but only 4 per cent above average in 1958.

Those males with an eight year school education were 24 per cent below the average in 1958 and 18 per cent below the average in 1968.



school graduate group, it was 12 per cent above average in 1958 but only 4 per cent above average in 1968.

Those males with an eight year school education were 24 per cent below the average in 1958 and 18 per cent below the average in 1968.

THE PHILOSOPHER

No Problem



Editor's note: The Sandhills Philosopher on his Johnson grain farm immediately lays claim to the solution of a problem this week.

Dear editor:

Try it. It doesn't make any difference what subject you're talking about, somewhere in the world it's a problem, something ought to be done about it.

For example, I was reading in a newspaper last night I salvaged from a Christmas package it was used to keep some cans and saucers from breaking. Two of them came out all right except for a few chipped places — that dogs are becoming an unmanageable problem in cities.

That's right. The dog population, the article said, is increasing faster than the human population, which most people claim is increasing too fast itself, and as a result city officials don't know what to do. You take a city with a million people and a million dogs, counting those roaming the streets, dogs that although some people

come under that category too, and you have got a problem.

But of course dogs and people are just part of the problem. There are too many cars, too many airplanes, too many wars, too many countries, too many diseases. In fact, if you'll survey the entire world you'll find that there's just one group that has had the sense to understand the problem and keep its head: it's farmers.

You don't find there's too many of the farmers.

Farmers saw the problem of endless multiplication and over-crowding years ago and began cutting back. Where cities tried to put two dogs where there was room for just one and three cars where there was barely room for one, farmers put one farmer where there used to be four.

From 50 per cent of the population we dropped to 8 per cent.

I don't know why cities haven't caught on to this solution.

Yours faithfully,
P.H.A.

PAUL HARVEY

'Sixth Sense'



HYPNOSIS was a stunt for hundreds of years before the British in 1857 and the American Medical Assn. in 1938 voted to make hypnosis a respectable field of science.

New hypnosis, so long ignored and so longly unmet constructively, is much in use as a medical tool.

SIMILARLY, for years parapsychologists sought recognition and respectability, but "mind reading," "fortune telling" and such were considered dubious venturing into the occult and were professionally unacceptable.

A few brave researchers persisted. And last December in Chicago the respected American Assn. for the Advancement of Science officially recognized and adopted the Parapsychology Assn.

NEW SCIENTIFIC, medical and engineering societies affiliated with the AAS conspicuously interest themselves in a subject which has secretly fascinated many of science for generations.

What next for extrasensory perception?

WHEN THE ESP people own their long-sought status as a bona fide science, they do not want to press their luck. Spokesmen from the field of parapsychology might have mounted the podium in Chicago to relate some of the dramatic results of recent research.

Rather than resist the skeptics and chance alarming the convention, spokesmen from the field of extrasensory perception contented themselves with a largely statistical report on possible relevance of ESP to the decisions of corporation executives.

YOU READ WHERE they said that

executives, with a high degree of ESP apparent to anticipate business trends and cash in on them.

Douglas Dean of Newark's College of Engineering told the assembly that we do not need to understand ESP in order to use it. He related the experience of these business executives whose "sixth sense" enabled them to make wise decisions, even over available information indicated a contrary decision.

A STUDY of 67 company presidents showed those with the best scores in a "guessing test" had the best track record as executives.

Those presidents in office more than five years whose profit average had doubled scored 123 on the "guess test."

THOSE WHOSE companies had made lesser profits or had lost money averaged 83.

So the speaker concluded, your chances of picking a good profit maker or president of your company on the basis of ESP are better than two-out-of-three.

Like electricity, therefore, these brain waves of whatever may be used before they are understood.

THIS WAS A SCHOLARLY, conservative, appropriate introduction of the new science to the old scientists.

Wait! If they and we see results of such controlled experiments as the one in which an unprepared subject can have the contents of his pockets revealed by a total stranger over a long-distance telephone from 3,000 miles away. And that's not all...

...but that's all for now.



Girl Scouts Plan Fund Drive

Planning for the Annual Girl Scout Drive begins here today, with Joe Montgomery as chairman of the drive.

The Mothers' March is scheduled for Sunday afternoon, Jan. 17, from 1:30 to 5:30 p.m., when homes in Littlefield will be contacted.

"There are 200 Girl Scouts in Littlefield depending on you for help," Montgomery said.

"The Girl Scouts don't have sponsors

like other organizations. They need their parents and the people of their town to support them," he continued.

The Littlefield Girl Scouts are the few in the Caprock District to have their own Scout house, and they need to have such a nice place to meet.

"They have fun there, planning, they can be of help to others. At times they remember the sick and the people of our community who are running out, and others are not long throughout the year.

"Girls who need a friend, find me from a volunteer leader in the Girl Scout program.

"Girls—just like boys—need to know that they too can grow up to be citizens of tomorrow.

"Won't you help?"

"When these mothers knock at your door last Sunday in this month, you give to the Girl Scout program," Montgomery concluded.

Money is needed for payment of Scout building, upkeep of the building, payment of utilities to the building, and purchase of camping equipment.

FARM PLANS

Continued from Page 1

1. Planting not limited to a permitted acreage.
2. Loss of base in certain cases for failure to plant.
3. Payment limitations—\$55,000 per commodity, per person.
4. Sign-up date: March 1 through April 1.

Wheat Set-aside Program:

1. Marketing quotas suspended for 1971-1972.
2. Set-aside requirements between 60 and 75 percent of farm allotment (domestic allotment).
3. Wheat certificates and loans available to participants.
4. No offsetting or cross-compliance.
5. No additional voluntary set-aside for payment.
6. Loss of allotment in certain cases for failure to plant.
7. Substitution for feed grain authorized.
8. Planting not limited to a permitted acreage.
9. Payment limitation—\$55,000 per commodity, per person.

BUDGET

Continued from Page 1

From \$1,800 to \$1,500 and salaries of \$265 and \$240 per month were approved for the county librarian and assistant librarian.

County Treasurer Lucy Moreland requested a travel check of \$75 per month, and commissioners denied this request.

The court approved a maintenance contract of \$13,150 per year for Calvin Harvey.

Salaries for other county employees were set as follows: veterans' service officer, \$137.50 per month; Ambert night watchman, \$300 per month; health officer, \$50 per month; secretary to district attorney, \$124.83 per month; county welfare agent, \$475 per month; county welfare secretary, \$12 per day; and \$90 per month for extra help in the welfare office. A salary of \$500 per month was set for county precinct equipment operators, and \$275 per month for the county judge's secretary.

In other action, the commissioners court approved the withdrawal of \$10,000 in bonds from the Federal Reserve Bank, approved the payment of \$2,400 into the Lamb County Soil Conservation District for 1971, approved the installation of buried cable in premises 2 and 3 from General Telephone Co. County bills were considered and were ordered paid, the quarterly reports of the county treasurer were approved, and reports of the county agriculture agent, the county treasurer, county clerk and county trapper were considered and passed.

Salaries for other county employees were set as follows: veterans' service officer, \$137.50 per month; Ambert night watchman, \$300 per month; health officer, \$50 per month; secretary to district attorney, \$124.83 per month; county welfare agent, \$475 per month; county welfare secretary, \$12 per day; and \$90 per month for extra help in the welfare office. A salary of \$500 per month was set for county precinct equipment operators, and \$275 per month for the county judge's secretary.

In other action, the commissioners court approved the withdrawal of \$10,000 in bonds from the Federal Reserve Bank, approved the payment of \$2,400 into the Lamb County Soil Conservation District for 1971, approved the installation of buried cable in premises 2 and 3 from General Telephone Co. County bills were considered and were ordered paid, the quarterly reports of the county treasurer were approved, and reports of the county agriculture agent, the county treasurer, county clerk and county trapper were considered and passed.

Salaries for other county employees were set as follows: veterans' service officer, \$137.50 per month; Ambert night watchman, \$300 per month; health officer, \$50 per month; secretary to district attorney, \$124.83 per month; county welfare agent, \$475 per month; county welfare secretary, \$12 per day; and \$90 per month for extra help in the welfare office. A salary of \$500 per month was set for county precinct equipment operators, and \$275 per month for the county judge's secretary.

In other action, the commissioners court approved the withdrawal of \$10,000 in bonds from the Federal Reserve Bank, approved the payment of \$2,400 into the Lamb County Soil Conservation District for 1971, approved the installation of buried cable in premises 2 and 3 from General Telephone Co. County bills were considered and were ordered paid, the quarterly reports of the county treasurer were approved, and reports of the county agriculture agent, the county treasurer, county clerk and county trapper were considered and passed.

Salaries for other county employees were set as follows: veterans' service officer, \$137.50 per month; Ambert night watchman, \$300 per month; health officer, \$50 per month; secretary to district attorney, \$124.83 per month; county welfare agent, \$475 per month; county welfare secretary, \$12 per day; and \$90 per month for extra help in the welfare office. A salary of \$500 per month was set for county precinct equipment operators, and \$275 per month for the county judge's secretary.

In other action, the commissioners court approved the withdrawal of \$10,000 in bonds from the Federal Reserve Bank, approved the payment of \$2,400 into the Lamb County Soil Conservation District for 1971, approved the installation of buried cable in premises 2 and 3 from General Telephone Co. County bills were considered and were ordered paid, the quarterly reports of the county treasurer were approved, and reports of the county agriculture agent, the county treasurer, county clerk and county trapper were considered and passed.

Salaries for other county employees were set as follows: veterans' service officer, \$137.50 per month; Ambert night watchman, \$300 per month; health officer, \$50 per month; secretary to district attorney, \$124.83 per month; county welfare agent, \$475 per month; county welfare secretary, \$12 per day; and \$90 per month for extra help in the welfare office. A salary of \$500 per month was set for county precinct equipment operators, and \$275 per month for the county judge's secretary.

In other action, the commissioners court approved the withdrawal of \$10,000 in bonds from the Federal Reserve Bank, approved the payment of \$2,400 into the Lamb County Soil Conservation District for 1971, approved the installation of buried cable in premises 2 and 3 from General Telephone Co. County bills were considered and were ordered paid, the quarterly reports of the county treasurer were approved, and reports of the county agriculture agent, the county treasurer, county clerk and county trapper were considered and passed.

Salaries for other county employees were set as follows: veterans' service officer, \$137.50 per month; Ambert night watchman, \$300 per month; health officer, \$50 per month; secretary to district attorney, \$124.83 per month; county welfare agent, \$475 per month; county welfare secretary, \$12 per day; and \$90 per month for extra help in the welfare office. A salary of \$500 per month was set for county precinct equipment operators, and \$275 per month for the county judge's secretary.

In other action, the commissioners court approved the withdrawal of \$10,000 in bonds from the Federal Reserve Bank, approved the payment of \$2,400 into the Lamb County Soil Conservation District for 1971, approved the installation of buried cable in premises 2 and 3 from General Telephone Co. County bills were considered and were ordered paid, the quarterly reports of the county treasurer were approved, and reports of the county agriculture agent, the county treasurer, county clerk and county trapper were considered and passed.

like other organizations. They need their parents and the people of their town to support them," he continued.

The Littlefield Girl Scouts are the few in the Caprock District to have their own Scout house, and they need to have such a nice place to meet.

"They have fun there, planning, they can be of help to others. At times they remember the sick and the people of our community who are running out, and others are not long throughout the year.

"Girls who need a friend, find me from a volunteer leader in the Girl Scout program.

"Girls—just like boys—need to know that they too can grow up to be citizens of tomorrow.

"Won't you help?"

"When these mothers knock at your door last Sunday in this month, you give to the Girl Scout program," Montgomery concluded.

Money is needed for payment of Scout building, upkeep of the building, payment of utilities to the building, and purchase of camping equipment.

SCHOOL

Continued from Page 1

in the building now in use that more students could be enrolled.

Meanwhile, there is work needed at new location. "We need some car," Mrs. Brown said, "there is nothing at these old floors to stop the cold wind coming through. And we need electrical outlets. I have no way to get a record player or anything in here."

Several local preachers who are board members worked many hours getting the building ready, but all plumbing, etc. wasn't completed. The kitchen that can be used to teach the boys to cook, but the refrigerator is in a room because of lack of a plug, and water runs from the sink faucets, but is no plumbing to drain the water. A kitchen supplies is needed also, like sheets and cooking utensils.

Some of the boys in the older groups want to work with carpenters and there was help with the teaching. Mrs. Brown and some of the students have limited putting in some baseboard quarter-round where some partitions were put in. Mrs. Brown said she would help with this work. "The girls are so stuff when I work with things like this," she said, "the boys and vice-versa, when the boys could make minor repairs, paint work, and the girls could do housekeeping and to work under supervision in some retail stores.

"They are making some nice rag things now," Rev. Glen Sorley, chairman of the advisory board, said, "these creative and keeps them occupied, but isn't something that they can make living at. We hope to expand, and eventually some of these can take a place in society and exist as people."



HENNY ERIS

By CORNBALL BEAVINS

ARE YOU SPENDING sleepless nights? Do your arms hurt? Do you suffer from hypersensitivity?

Is the weather too cold? Does the dry weather bother you? Are you over-sleeping? Is your picture fuzzy? Are you absent all aspects of football?

WE HAVE A NEW and interesting game going. It's one participated in by over 40 million of our fair land. Especially adept at life games, it's our new confidence and optimism.

It's called "Blame the Government" and since the president is the head of the government, it's natural that he should carry the biggest part of the blame!

THAT'S THE BEAUTY of having someone over you. If you don't want to be over, you can always blame it on your superior. It's called "Throwing the Book."

The little game has been in progress ever since Eden. You remember of Adam said, "Now, Lord, that woman you gave me, caused me to eat that forbidden fruit!"

WHEN KID take a wrong turn, they're not to blame it on to the one they were brought up. Seems some of us want to take the blame for our own misdeeds.

Now in Washington, the Congress blames the President, and Nixon blames Congress. Sometimes they both blame the Supreme Court. In the state level the

game is between the governor and the legislature.

EVERYTHING from unemployment to high prices is caused by the government. Anything, from racial strife to student unrest.

Back in 1952 we elected a man to the presidency who promised us instant prosperity. He inaugurated the date system. We liked it!

SINCE THAT TIME, we have gone overboard for every political candidate that can promise to GIVE us them! We have made ourselves the charges of the government.

We cannot wholly blame the elected officials for our dilemma. They have tried to give us what we want, even to the point of our planning and thinking for us!

OF COURSE, we should realize that we, the people, are the government! We have elected by our vote the kind of rule we desire. We will not elect officials who oppose the date!

So, gentlemen, and take it, we have the ability programs, welfare, and Medicare, Social Security, public housing, and federal school systems, inflation, integration, and taxation.

NOW, WE'RE TRYIN' for details to go along with our constitution!

So—?—When things don't go to your liking, go ahead, blame the government! You can't rightly do so. But remember one thing: WE ARE THE GOVERNMENT!

A WOMAN'S VIEW

The Lord's Table

By PEARL BRANTON

ONE DAY when Jesus was teaching by the seaside, people didn't seem to be paying much attention to him.

They must have had their mind on other things and what Jesus was saying didn't register.

AS THE DAYING goes, "I just went in one ear and out the other."

"He who has ears to hear let him hear," Jesus cried.

Then he started talking to them in parables. Some now people remember a story long after other things are forgotten.

HE TOLD of the man who gave a great supper and prepared an enormous amount of food.

When he sent word to his friends that the meal was ready, they began regretting one after another.

"It is sorry, I have just bought a piece of land and I need to go see it. I have just bought five yoke of oxen. I have married a wife." Pretty good excuses, they thought. They were not hungry, anyway.

THEN THE master of the house became very angry and told his servant to go out into the lanes and streets of the city quickly and bring in the poor and the maimed and the blind, and when they still didn't have enough to fill the great tables he sent the servant into the highways and hedges to bring in the way-faring poor, until at last his table was full.

Can't you just see this motley crowd? The poor, the sick, the blind, the

wide, the deafest. There must have been old people and young mothers with children. I am sure there were lots of children, and young men too, without jobs.

All of them ragged and dirty. Very poor people are usually dirty.

How hungry they must have devoured that enormous meal!

Jesus said, "He is like the Kingdom of God. Those special people in whom the kingdom was offered rejected it. They were too interested in their own affairs and the busyness of their own lives to listen to what this unknown country preacher had to say about the kingdom of God. So the master had to call the meek and the lowly in carry on his work.

And how gladly they received this good news!

I am glad they didn't receive food only to fill their hungry bodies but spiritual food as well. Spiritual food with power to heal broken lives and give them hope for the future.

In God's Kingdom the lame are made to walk, the blind to see and sick bodies are made well. Young men find purpose in their lives and little children are cared for.

Through the Christian movement great hospitals, schools and churches have been built. Civilizations have grown with better living conditions for the human race wherever the love of Christ has spread.

All of this is true and still the undeveloped is important. Each of us belongs to God and He cares for His own.

May the time soon come when all people everywhere will be included among those feasting sumptuously at the Lord's table.

THE ABUNDANT LIFE

Neo-Revolution



By BOB WEAR

REVOLUTION, meaning rebellion, is not new. According to history, it began in the garden of Eden.

It has been going on, in one way or another, ever since. The revolution which concerns all of us, however, is a neo-revolution because it is new and abnormal.

It is destructive; it is man-anthropie; it is pessimistic; and it is self-defeating.

IT IS NOT A REVOLUTION for cause, but is more of a cover-up for the majority of the participants. They are not trying to improve anything, not even themselves.

Many of them, by their own action, reveal their emotional instability, and some are obviously psychotic. It is also a well-known fact that degeneracy of one kind or another is common among these people.

THEY CURSE AND BLASPHEME, and try to destroy the very structure upon which they must depend for their own well-being. It is indeed an abnormal rebellion.

In fact, revolution is a manner as applied to what is being done by these trouble-makers. Their actions are best described by words like "betrayal," "treason," "anti-social," "inhuman," "lawless," and "debauchery."

NO GOOD PURPOSE is being served by the present lawlessness and disorder. Of course, the American people may eventually be aroused to the extent that action will be taken to protect the good things which have been taken for granted so long.

If these misguided and evil persons could destroy all they threaten to destroy, it would be necessary for them or for somebody to build all of it.

SOME DON'T KNOW what they are doing, and many of them do not care what they do. Of course, some are deceived. All

put together it is indeed a pitiable life style these self-styled revolutionists have chosen for themselves.

Many of them seem more like people who are deranged than like people with a just cause.

Nevertheless, they constitute a threat against everything that is decent and sound, and essential to human welfare.

THEY CLAIM LOVE as their principal motivation, but their violence reveals their hate and hostility.

Thus, they are the leading supporters of the hypocrisy which they claim is one of the worst evils in the established social order.

Their actions show none of the essential qualities of love. In this, and in other ways, they profess to be what they are not.

THE METHODS of the neo-revolutionists are not compatible with anything that has proven to be for the good of humankind.

They say that they are fighting oppression, but they are among the most oppressive persons in our society.

They say that they are trying to build up, but everything they do is destructive. They say that they seek justice, but they are the biggest users of the tools of injustice.

THEY CRY FOR PEACE, but are constantly causing strife.

They claim to be advocates of freedom and truth, but impose the slavery of terror and use the vocabulary of distortion.

THE NEO-REVOLUTIONISTS have no solutions, but have made themselves very much part of the problem.

UNTIL ALL OF US decide to work together for the common good, our way of life must hang in the balance.

LAMB COUNTY LEADER-NEWS

MEMBER NATIONAL NEWSPAPER Association - Founded 1888

BILL TURNER, Editor & Publisher
JOELLA LOVVORN, News Editor
NLAH ROGERS, Staff Editor
GAYLE MILLS, Society Editor
EMIL MACHA, Advertising Editor

PUBLISHED SEMI-WEEKLY, each Thursday and Sunday morning by the Leader-News, 213 W. 4th, Littlefield, Texas 79329. Second class postage approved at Littlefield, Texas 79329. Subscription rates by mail in Lamb and adjoining counties, \$6.25 per year, elsewhere, \$8.00 per year. Carriage (by delivery) 25 cents per month or \$2.40 per year. Single copies, 10 cents. Classified advertising rates: 6 cents per word per insertion, minimum \$1.40 cents per week thereafter.

Telephone 389

Bula

Mrs. John Blackman
933-2328

MR. BILL BREWER and mother, Mrs. Bertie, from Littlefield until Saturday afternoon at Hobbs. Mr. and Mrs. Travis Webb with Mrs. Tina Wardlaw. AND MRS. Douglas and daughter, Nona, accompanied by his mother, C. D. Betts and Mr. and Mrs. Ralph Ware of Morton to Slaton Friday evening for a triple 25th wedding anniversary for friends at the Slaton Hall in Slaton. The guests were Mr. and Mrs. and Wilke, and Mrs. E. Tabino and Mr. and Mrs. Voight of Slaton.

MU MET Tuesday afternoon with five in attendance. Battles was in charge of the lesson with the study on "American Indians" taken from the Royal Service Magazine. The Scripture was read from Matt. 9:35-38. Mrs. Hardson read the prayer and Mrs. Williams the opening prayer and for the missionaries.

Black offered the benediction. Attending were E. W. Black, Mrs. E. O. Les, Mrs. Rowena Hardson, Mrs. C. A. Jams and Miss Vina man.

MR. AND MRS. Ray Spence daughter, Dorothy, from Slaton spent the weekend with Doug Betts. Dorothy planned over to register and enrolled at South Plains College.

DAVID McDANIEL entered at Tech as a senior Wednesday. David entered for the service at the close of his junior year and spent more than three years in service with more than a year's duty in Vietnam. He is ready to complete his education.

MR. AND MRS. P. R. Pierce celebrated Tuesday with their daughter, Mrs. Jonnie Jackson, patient in the Methodist Hospital. We are happy that Mrs. Jackson is showing some improvement.

STUDENTS ON the second week honor roll for Bula include: first grade-Joe Rosales second grade-Keith Layton third grade-Robert Layton, Nicholas

fourth grade-Jarrol Layton, Sara Peacock fifth grade-Sherry Claunch, Austin sixth grade-Lisa Risinger, Layton seventh grade-Craig McDaniel, Edward Clawson eighth grade-Jim Risinger, Rene Pollard, Kenny

ninth grade-Diane Crume. BOYS lost their district game with Three-Way Friday on Bula courts. The girls' game, Tuesday night, boys and girls won their game with Whiteface.

MR. AND MRS. T. A. Thomas held services Wednesday at Memphis Avenue Church of Christ in Lubbock and her nephew, Ivan Woodard, acted as a gospel preacher. He is a graduate of the Sunset School of Preaching in Lubbock. He has been doing some work at a Church of Christ in Slaton.

PUBLIC RECORDS

CARS
Chester, Sudan, 1971 4-door, Garland
Covington, 1223 W. 1971 Oldsmobile, 2-door, Olds-Cadillac-Pontiac
pump & Machine, Olton, Dodge pickup, Garland
Parks, St. Rt. 2 Littlefield, 1971 Ford pickup, Ford, Inc.
D. Feagley, 502 Crescent, Littlefield, 1971 Olds 4-door, Marcum Olds-Cadillac
field Butane Inc., 1971 Chevrolet pickup, Armes
Gollabon, 719 E. 6th, field, 1971 Chevrolet 4-door, Armes Chevrolet
Boyles, Rt. 1 Sudan, 1971 pickup, Garland Motor
K. Jones, Enochs, 1971 2-door, Mitchell Ford, Inc.
Vaughn, Muleshoe, Cadillac 4-door, Marcum Cadillac-Pontiac
Towns, Lubbock, 1971 4-door, Mitchell Ford

TRIGES
Lynn Tidwell, 19, Anton, Judy Kim Bridwell, 18, field, married Jan. 8.
Louis Witherspoon, 17, field Diane Albert, 19, both Littlefield, married Jan. 8.

Shop Here!

**LOWEST PRICES
QUALITY FOODS**

DOUBLE STAMPS ALL DAY TUESDAY AND WEDNESDAY
PRICES GOOD JANUARY 18th THRU JANUARY 23rd.

CHOCOLATE CHIPS NESTLES 12 OZ. PKG. --- **45¢**

NESTLES QUICK 2 LB. BOX --- **77¢**

LIPTON TEA 1/4 LB. --- **37¢**

TOMATO SOUP SHURFINE 10 OZ. CAN --- **9¢**

GREEN ONIONS BUNCH --- **9¢**

SALMON HONEY BOY 300 CAN --- **79¢**

CRACKERS SHURFINE 1 LB. BOX --- **18¢**

EGGS XIT GRADE A LARGE --- **45¢**

ICE CREAM SHURFINE 1/2 GALLON --- **47¢**

MELLORINE SHURFINE 1/2 GALLON --- **29¢**

AVOCADOS LARGE EACH --- **19¢**

BANANAS GOLDEN RIPE LB. --- **9¢**

BUTTERMILK BORDEN 1/2 GALLON --- **45¢**

CABBAGE FIRM HEADS LB. --- **7¢**

JELLO ASSORTED FLAVORS --- **10¢**

DEODORANT RIGHT GUARD 3 OZ. --- **69¢**

CRISCO
WITH \$7.00 PURCHASE OR MORE
59¢
3 LB. CAN

C & H
SUGAR
5 LB. **55¢**
10 LB. **\$1.12**

FLOUR GOLD MEDAL 5 LB. --- **59¢**

MILK SHURFINE TALL CAN --- **6** FOR **\$1**

COFFEE FOLGER'S 1 LB. CAN --- **89¢**

SPAM LUNCHEON MEAT 12 OZ. CAN --- **57¢**

ELLIS CHILI 24 OZ. CAN NO BEANS **59¢**

LETTUCE FIRM HEADS, LB. **19¢**

WHIPPING CREAM BORDENS 8 OZ. ... **33¢**

CHIP & DIP BORDENS 8 OZ. **33¢**

YOGURT BORDENS 8 OZ. **33¢**

COTTAGE CHEESE BORDENS 1 LB. **69¢**

ORANGE JUICE MINUTE MAID 6 OZ. **27¢**

HONEY BUNS MORTONS 9 OZ. **2/59¢**

PINE-SOL 15 OZ. BOTTLE **59¢**

FIDDLE FADDLE 8 OZ. BOX **3/\$1**

CORN CHIPS MORTONS 45¢ SIZE **39¢**

HAIR SPRAY AQUA NET 13 OZ. **49¢**

SHAVE CREAM SHURFINE 10 OZ. **59¢**

TV DINNERS MORTON ASSORTED **39¢**

TOILET TISSUE CHARMIN 4 PACK PACKAGE **33¢**

FAB DETERGENT GIANT SIZE **79¢**

SLICED BEETS SHURFINE **2 33¢**

BLACKEYE PEAS SHURFINE 300 CAN **2 33¢**

BELL PEPPERS CALIFORNIA LB. **27¢**

SOFT DRINKS 28 OZ. BOTTLE **25¢**

BEANS RANCH STYLE **2 35¢**

ANACIN PAIN TABLETS 50 COUNT **79¢**

PAPER TOWELS BOUNTY BIG ROLL ... **39¢**

COCONUT BAKERS 14 OZ. **59¢**

TOMATO PUREE 4 1/2 OZ. BUFFALO **2/15¢**

ORANGE DRINK DEL FOOD 1 1/2 GALLON **39¢**

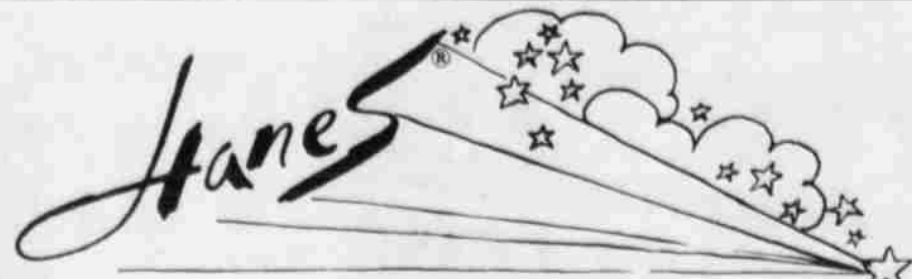
PINTO BEANS ARROW 2 LB. **29¢**

150 Gunn Bros. Stamps
With \$5.00 Purchase Or
More From Fresh Meat
Counter Featuring The
Original Swift Premium
Proten Beef

Coupon Not Required



Renfro Bros
RIGHT ON THE CORNER SUPER MARKET RIGHT ON THE PRICE
ESTABLISHED IN 1929
Raymond PHONE 385-3400 Norman



PLAY A BEAUTIFUL HEIRESS DURING HANES MILLION DOLLAR LEGACY SALE THE WEEK OF JANUARY 16 TO JANUARY 23



	Regular Price per pair*	Sale Price 3 Pairs*	6 Pairs*
STOCKINGS			
Evening Report*	\$1.50	\$ 3.75	\$ 7.50
Wait Dining*	1.75	4.50	9.00
Bill Cosby*	2.00	4.95	9.90
PANTYHOSE			
Replacement Stockings	3.00	7.50	15.00
Replacement Pantyhose	3.50	9.00	18.00
ALIVE® SUPPORT SHEERS			
Stockings	3.95	9.75	19.50
Pantyhose	5.95	14.85	29.70
Panty Pair® Replacement Stockings	3.95	9.75	19.50
PANTY PAIR®			
Replacement Stockings	2.00	4.95	9.90
Panty Pair® Girdle	3.00	7.50	15.00

Ware's

*Fair trade price where permitted by law.

Recognition Banquet Honors Scout Leaders

More than 625 Scout leaders and their wives filled the Fair Park Coliseum in Lubbock Saturday night for the 45th Annual Recognition Banquet of the South Plains Council, Boy Scouts of America.

They heard Jack L. Rhea, New Brunswick, New Jersey, Director of Field Operations of the Boy Scouts of America, challenge them to meet the goals of the BOYPOWER 76 program. Rhea outlined the challenge as deeply involving a representative one-third of all boys in the Scouting program by 1976. 1971 is the third year of the national long-range plan.

Judge Halbert O. Woodard, United States District Judge for the Northern District of Texas, was presented the Distinguished Eagle Scout Award.

The honor, created in 1969, is

presented by the National Court of Honor to men who earned the Eagle Rank in Scouting as boys, and who have distinguished themselves in their profession, business, or service to their country.

Judge Woodward earned the Eagle Rank in 1932 as a Scout in Big Spring. It was the first ever presented in the South Plains Council.

The Silver Beaver Award for "distinguished service to boyhood" was presented to seven area Scouters.

They are Rev. Walter Barthol, Sr. of Muleshoe; Col. Haynes M. Baumgardner of Lubbock; Dr. Charles C. Craig of Floydada; Fred Garrison of Plainview; Bobby J. Moody of Lubbock; Sgt. Carlos C. Rodriguez, of Reese Air Force Base; and Rudolph R. Struve of Abernathy.

Installed as president of the council for 1971 was Col. Clyde J. Morganti (USAF, Ret.) of Lubbock. He succeeds Judge Woodward who served as president of the 20 county area council the past year.

Other officers installed were Vice President: W. A. Leigon of Brownfield; J. Fike Godfrey of Spur; and Lloyd C. Woods of Plainview. Col. Haynes M. Baumgardner of Lubbock, was re-elected Council Commissioner, and Murlin Derebery of Lubbock, was elected treasurer.

J. C. Chambers of Lubbock, served as master of ceremonies for the event.

Special guests included Mayor and Mrs. Jim Granberry of Lubbock; Col. and Mrs. James Breedlove, Wing Commander of Reese Air Force Base; Mr. and Mrs. Troy Myers, campaign chairman of Lubbock United Fund; and Dean and Mrs. Lewis Jones, sponsor of Alpha Phi Omega.

LITTLEFIELD NEWS

Carolyn Kay Jones of Lubbock spent a few days with her grandparents, Mr. and Mrs. Otto Jones. She is a student at Texas Tech.

Mr. and Mrs. Roy Rhoten, formerly of Littlefield, have moved to Kerrville.

FOR CLASSIFIEDS
DIAL 385-4481



By GAYLE MILLS
LEADER-NEWS SOCIETY EDITOR

KNOW YOU'VE

heard the old saying that "Charity begins at home", and why not include "Safety begins at home, and first in the kitchen", because that's where so many dreadful mishaps occur, since most housewives devote more of their time in the kitchen, than anywhere else in the home.

I would like to pass along to all of you a few kitchen safety tips by Jan Slabaugh, Extension specialist in housing and home furnishings at Texas A&M University.

Mrs. Slabaugh has asked the question, "What room can be the most dangerous in the house? Research shows that it's the kitchen, but it does not have to be so."

The kitchen is a combination factory, bakery, cannery, butcher shop, restaurant, household workshop and children's playground. "Each family member should put into practice all he knows about safety in this busy place," Mrs. Slabaugh says.

Safety is an attitude of sincere concern for the well-being of oneself and others. Mrs. Slabaugh adds, "It is a willingness to accept rules and regulations and to apply them in all activities."

A safe kitchen starts with the development and practice of good habits in the selection, preparation, serving and storage of food. Safety continues its march to actuality as long as the family members observe strict rules designed to prevent fires and mishaps.

Keep matches in metal containers. Light gas burners by holding a lighted match to the burner before turning on the gas. Be careful not to place trays, pot holders, and plastic or wooden utensils on electric range units which could be hot without showing red.

Mrs. Slabaugh also suggests that range burners should not be turned on until they are needed. And, they should be turned off as quickly as they are not needed.

Such flammable items as waxed paper, towels, cleaning agents and other combustibles should be stored away from the range.

REMOVING STAINS

To remove combinations of greasy and nongreasy stains such as salad dressing, ice cream, gravy, or meat juices from washable material, first sponge the stain with cool water. If the spot remains, soak in cool water for 30 minutes. If the spot still doesn't come out, rub liquid soap or detergent into it. Rinse well and let the material dry. If a greasy stain remains, sponge with a spot remover.

MOISTURE IS ENEMY

Chocolate will not melt properly if the slightest amount of moisture is introduced. Any moisture will make the chocolate bits tighten into a solid mass. The solid mass may also result when melting chocolate at too high a temperature. If chocolate does tighten, however, you may make it smooth again by heating it in a double boiler over hot but not boiling water, and then blending in up to 1 tablespoon of vegetable shortening.

MOVING TIPS

Moving into a new home? To make the job easier, label each carton, stating contents and the room in which you want the box placed. Pack together those

Tex-Anns, B Schedule Pa

The South Plains College Tex-Anns and the Texan band will participate in the Inauguration Parade in Austin, Jan. 18.

The two groups will make a trip by chartered bus and spend the night at the Gondolier Hotel in Austin.

The Tex-Anns will be marching routine and the band will be among other bands providing music for the parade.

The Tex-Anns and the band participated in the festivities during the Smith's first inauguration.

About 40 band members from 34 Tex-Anns and sponsored by Nowlin and Mrs. Mary Smith will make the trip. They will be the inauguration and places of interest during Austin visit.

items you will need immediately upon arrival at your new home. Have them in the van last so they are unloaded first.

REMOVING WALLPAPER

One of the easier ways to remove old wallpaper is the will paper with warm water and scrape from the top.

A warning about "BLUES"

from your pharmacist

Amytal is a white powder in blue capsule or white tablet form. Amytal is a barbiturate, legally obtainable with a doctor's prescription only. The reason for this is that barbiturates are classified as dangerous drugs. Don't let anyone talk you into taking them!

WRIGHT PRESCRIPTION DRUG

331 Phelps Littlefield

SUNDAY MONDAY TELEVISION SCHEDULE TUESDAY WEDNESDAY THURSDAY FRIDAY SATURDAY

CHANNEL 11

8:00 Faith For Today*

8:30 Gory Road*

9:00 Insight

9:30 Herald of Truth*

10:00 Ask Your Minister*

10:45 First Baptist Church*

12:00 Meet the Press*

12:30 New Senators*

1:30 Universal Startime*

2:30 Beethoven Special*

4:00 Experiment in TV

5:00 Comment

5:30 Sunday Evening News*

6:00 Evening Report*

6:30 Wait Dining*

7:30 Bill Cosby*

8:00 Peggy Fleming*

9:00 The Bold Ones*

10:00 Final Report*

10:30 "The Thrill of it All"

12:30 New Mexico Report*

12:45 Sign Off

CHANNEL 13

7:58 Sign On

8:00 Tom & Jerry*

8:30 Perils of Penelope*

9:00 Oral Roberts*

9:30 Look Up and Live*

10:00 Camera Three*

10:30 Face The Nation*

11:00 This Is The Life*

11:30 Bible Story*

12:00 NFL Hockey New York at Chicago

2:30 Sunday Matinee

4:00 All in The Family*

4:30 Animal World*

5:00 Meet The New Senators*

6:00 Lassie*

6:00 Hogan's Heroes*

7:00 Ed Sullivan*

9:00 Glen Campbell*

9:00 The Honeymooners*

10:00 Channel 13 News*

10:15 News/Harry Reasoner*

10:30 "Moss Rose"

CHANNEL 11

7:00 Early Report*

7:05 Farm Report*

7:25 Today's Weather*

7:30 Today*

8:25 Morning Report*

8:30 Today*

9:00 Dinah's Place*

9:30 Concentration*

10:00 Sale of the Century*

10:30 Hollywood Squares*

11:00 Jeopardy*

11:30 Who, What or Where*

11:55 Mid-Day Report*

12:15 Community Closeup*

12:30 Words and Music*

1:00 Days of Our Lives*

1:30 The Doctors*

2:00 Another World-Bay City*

2:30 Bright Promise*

3:00 Another World-Somerset*

3:30 Peyton Place

4:00 Matinee

5:30 NBC Nightly News*

6:00 Evening Report*

6:30 Red Skelton

7:00 Laugh-In*

8:00 Movie: City Beneath the Sea*

10:00 Final Report*

10:30 Tonight Show*

12:00 New Mexico Report*

12:15 Sign Off

CHANNEL 13

6:30 Beverly Hillbillies*

7:00 Green Acres*

7:30 See How*

8:30 "Sue" Tyrone Power Loretta Young

10:00 Channel 13 News*

10:20 Channel 13 Weather*

10:30 "Swamp Water"

11:55 Sign Off

CHANNEL 28

6:30 Mod Squad*

7:30 "Dr. Cool's Garden"

9:00 Mod Squad*

9:30 "Dr. Cool's Garden"

11:25 CBS Middy News*

11:30 Search For Tomorrow*

12:00 Channel 13 News*

12:30 As The World Turns*

1:00 Love Is A Many Splendored Thing*

1:30 Guiding Light*

2:00 Secret Storm*

2:30 Edge of Night*

3:00 Matinee Theatre

4:30 The Three Stooges

5:00 Gomer Pyle*

5:30 CBS Evening News*

6:00 Channel 13 News*

6:15 Channel 13 Weather*

6:20 Channel 13 Sports*

6:30 Gunsmoke*

7:30 Here's Lucy*

8:00 Mayberry R. F. D.*

8:30 Doris Day Show*

9:00 Carol Burnett*

10:00 Channel 13 News*

10:20 Channel 13 Weather*

10:30 "Road House"

12:15 Sign Off

CHANNEL 28

9:30 Eddy Nicholson*

10:00 Jack LaLanne*

10:30 That Girl*

11:00 Bewitched*

11:30 A World Apart*

12:00 Comment*

12:30 Lets Make a Deal*

1:00 The Newlywed Game*

1:30 Dating Game*

2:00 General Hospital

2:30 One Life to Live*

3:00 Dark Shadows*

3:30 All My Children*

4:00 Komeady Kapens*

4:30 Dennis the Menace

5:00 ABC Evening News*

5:30 Gilligan's Island*

6:00 News Scope*

6:30 Lets Make a Deal*

7:00 Newlywed Game*

7:30 The Real Game*

8:00 Movie-"Cal Ballou"

10:00 News Scope*

10:35 The Dick Cavett Show*

12:00 Sign Off

CHANNEL 11

6:30 Julia*

7:00 Don Knotts*

8:00 Movie-"House of the Sun"

9:00 Final Report*

10:30 Tonight Show*

12:00 New Mexico Report*

12:15 Sign Off

CHANNEL 13

6:30 Men From Shiloh*

8:00 Kraft Music Hall*

9:00 Wildlife Management*

10:00 Final Report*

10:30 Tonight Show*

12:00 New Mexico Report*

12:15 Sign Off

CHANNEL 13

6:30 Flip Wilson*

7:30 Circle*

8:10 Nancy*

9:00 Dean Martin*

9:00 Strange Report*

10:00 Final Report*

10:30 Tonight Show*

12:00 New Mexico Report*

12:15 Sign Off

CHANNEL 13

6:30 Family Affair*

7:00 Jim Nabors*

8:00 "Battle of the Bulge" Part I Henry Fonda

10:00 Channel 13 News*

10:20 Channel 13 Weather*

10:30 "Claudia & David"

12:00 Sign Off

CHANNEL 13

6:30 Interns*

7:30 New Andy Griffith Show*

8:00 "Battle of the Bulge" Part II

10:00 Channel 13 News*

10:20 Channel 13 Weather*

10:30 "Lodger"

12:05 Sign Off

CHANNEL 28

6:30 The Brady Bunch*

7:00 Nanny & The Professor*

7:30 The Partridge Family*

8:00 Nixon's Address

9:00 Love, American Style*

10:00 News Scope*

10:35 Dick Cavett*

12:00 Sign Off

CHANNEL 13

6:58 Sign On

7:00 Bugs Bunny*

8:00 Sabrina*

8:00 Josie

9:30 Harlem Globetrotters

10:00 Archie Funhouse*

11:00 Scooby Doo*

11:30 The Monkees*

12:00 Dastardly and Mutt in the 21st Century*

1:00 All Star Game

3:00 8th Annual Golf Classic

5:30 News w/Roger Mudd

6:30 News, Weather, Sports

6:30 Mission Impossible*

7:30 My Three Sons*

8:05 Arnie*

8:30 Mary Tyler Moore*

9:00 Mannix*

10:00 Channel 13 News & Weather*

10:15 "In Old Chicago"

12:00 Sign Off

CHANNEL 28

8:00 Lancelot Link*

9:00 Jerry Lewis*

9:30 Double Decker*

10:00 Hot Wheels*

10:30 Sky Hawks*

11:00 The Hardy Boys*

12:00 American Bandstand

1:00 RAP

1:30 The Regies

2:30 Pro Bowlers Tour*

4:00 Wide World of Sports

5:30 Westerns*

6:00 Buck Owens*

6:30 Lawrence Welk*

7:30 Pearl Bailey*

8:30 "Rio Grande" J. J. Vanavan

10:00 "The Young Doctors"

Quasar™ by MOTOROLA®

DOES IT AGAIN.

"INSTA-MATIC" Color Tuning.
One Button Does It All.
Biggest Brightest Picture.
Transistor Chassis.
Best Of Everything For You.

PATS RECORD CENTER PHONE 385-4664

DOUBLE GOLD BOND STAMPS ON WEDNESDAY



ONLY! FURR'S

FRESH DATED MEATS

GOLD BOND STAMPS

MIRACLE PRICES!



FRYERS FRESH DRESSED USDA INSP. LB. **29¢**

TO 160
RA STAMPS!
your mailed coupons at
Receive 50 free Gold Bond
with coupon plus 100 free
with \$5. purchase or more
coupon. Coupon good thru
y 20.
Give Double Stamps
ating 1 P.M. Tuesday
All Day Wednesday.
PARKAY
MARGARINE
32¢
42¢

SALAD DRESSING	FOOD CLUB QUART	49¢
MUSTARD	FRENCH'S 24 OZ. BOTTLE	39¢
TOMATO SAUCE	MOUNTAIN PASS 8 OZ.	10¢
PINEAPPLE	LIBBY'S CRUSHED 20 OZ. CAN	35¢
COFFEE MATE	CARNATION 16 OZ.	83¢
SYRUP	FOOD CLUB 36 BOTTLE	79¢
MUSTARD	FOOD CLUB 24 OZ. JAR	25¢

FRESH Spare Ribs **49¢** LB.

FRYER PARTS

BREASTS	69¢
THIGHS	59¢
LEGS	59¢
BACKS	15¢

TOMATO JUICE KERN'S 46 OZ. CAN **25¢**

ICE CREAM FARM PAC ASSORTED FLAVORS 1/2 GALLON **59¢**

PINACH DEL MONTE NO. 303 CAN **19¢**

CAKE MIX GAYLORD ASSORTED FLAVORS 8 OZ. PKG. **10¢**

CORN OIL FOOD CLUB QUART **69¢**

LOUR FOOD CLUB 5 LB. BAG **39¢**

CORN KOUNTY KIST WHOLE KERNEL 12 OZ. CAN **29¢**

EGGS FARM PAC USDA GRADED A LARGE DOZ. **49¢**

CLOROX BLEACH 1/2 GALLON **32¢**

PEAS FOOD CLUB SWEET NO. 303 CAN **5 FOR \$1**

CAKE MIX ANGEL FOOD, DUNCAN HINES, 15 OZ. PKG. **59¢**

SHORTENING FOOD CLUB 3 LB. CAN **79¢**

PRESERVES PEACH, FOOD CLUB 18 OZ. **43¢**

APPLE SAUCE FOOD CLUB 25 OZ. **34¢**

DETERGENT FOR DISHES TOPCO, 32 OZ. **47¢**

DOUBLE GOLD BOND STAMPS WEDNESDAY!

BLACK PEPPER FOOD CLUB 4 OZ. CAN **29¢**

ASPARAGUS FOOD CLUB ALL GREEN CUT, No. 300 CAN **35¢**

HONEY FOOD CLUB, EXTRACTED 16 OZ. JAR **39¢**

RICE A RONI CHICKEN, BEEF, TURKEY HAM, SPANISH FLAVORED **39¢**

INSTANT POTATOES FOOD CLUB 13 OZ. PKG. **39¢**

PICKLES HAMBURGER DILL CHIPS FOOD CLUB, QUART **49¢**

CORN FLORIDA FANCY 6 EARS. **49¢**

APPLES WASH. STATE, RED, DELICIOUS, LB. **22¢**

CARROTS TOP FRESH 1 CELLO PKG. **14¢**

ORANGES CALIF. NAVAL, LB. **19¢**

GREEN BEANS FANCY LB. **39¢**

ACORN SQUASH CALIF. LB. **29¢**

YELLOW SQUASH FANCY LB. **39¢**

FOOD CLUB 3 LB **CANNED HAM** **297**



RIB STEAK FURR'S PROTEN LB. **79¢**

CLUB STEAK 98¢ **BONELESS STEAK** FAMILY STYLE FURR'S PROTEN, LB. **88¢**

SWISS STEAK ROUND BONE ARM FURR'S PROTEN, LB. **89¢** **STEAK CUTLETS** BONELESS, LB. **\$1.29**

STEAK RANCH STYLE, FURR PROTEN, LB. **69¢** **ROAST** ROUND BONE ARM FURR'S PROTEN, LB. **79¢**

SHOULDER ROAST FURR'S PROTEN, LB. **73¢** **BONELESS ROAST** FURR'S PROTEN, LB. **85¢**

ROAST DELUXE POT ROAST FURR'S PROTEN, LB. **89¢** **SHORT RIBS** FURR'S PROTEN, LB. **33¢**

SHORT RIBS DELUXE BAR-BE-CU FURR'S PROTEN, LB. **49¢** **LUNCH MEAT** FARM PAC MIX OR MATCH 6 OZ. **69¢**

FRANKS FARM PAC 12 OZ. PKG. **49¢** **STEW MEAT** BONELESS LEAN LB. **33¢**

BOLOGNA FARM PAC 12 OZ. PKG. **59¢** **LONGHORN CHEESE** STYLE BLOCK LB. **79¢**

FISH STICKS 16 COUNT **\$1** **STEAK** SHURTENDA 5 PIECS **\$1**

BEEF CHOPPIS 5 STEAKS **\$1** **SAUSAGE** OWEN'S WHOLE HOG 2 LB. SACK **\$1.49**

General Merchandise

NEW! Close-up WHITEST TEETH! FRESHEST BREATH! **63**

FACIAL TISSUE KLEENEX, 200 CT. BOX WHITE OR ASST. COLORS **4 FOR \$1**

PIZZA PAN ALUMINUM CHILTON GIANT SIZE EACH **59¢**

SHAMPOO SUE FREE **29¢** **THEME BOOKS** HONOR ROLL 2 HOLE **19¢**

DEODORANT | **EFFERDENT** | **MAALOX** Right Guard Anti-Prep. 5 Oz. **59¢** Denture Cleanser **\$1.36** Liquid 12 Oz. **99¢**

HAND LOTION TUSSY \$2.00 SIZE **\$1** **BATTERIES** TOPCO D SIZE EACH **10¢** **TOSS PILLOWS** 2 FOR **\$5**

MOUTHWASH LISTERINE 32 OZ. **1 09**

LADIES AMPLON NYLON PANTY HOSE

THE FIT THAT WON'T QUIT 2 SIZES FITS ALL 4 BEAUTIFUL COLORS **67¢**



SHOP Furr's MIRACLE PRICES



READ and USE

CLASSIFIED ADS

Wanted

BABY SITTER wanted, prefer to come to home. Mature lady. Call 385-4564 after 6 p.m. 1-17-S

WANTED LVN. Knight's Rest Home. Must be able to get along with elderly people. Phone 385-3921. 1-17-K

Houses for Sale

FOR SALE in Crescent Park, 3 bedroom, 2 baths, brick with wood burning fireplace, formal living & dining, large den, refrigerated air, fenced, double garage, 116 E. 23rd. Call 385-3369 after 5 p.m. or weekends. Medium equity and assume 5 3/4% loan. TF-G

FIREPLACE, electric kitchen and dishwasher, basement playroom, double garage, fenced yard. 108 E. 18th. 385-5468. 10-25-N

Apt. For Rent

FOR RENT furnished one and two bedroom apartments. Adults. 385-3880. TF-H

FOR RENT one bedroom furnished apartment. New carpeting, Early American decor, vented heat, refrigerated air. Bills paid. Extra nice. Suitable for adults. Call 385-5147 or 385-4860. TF-A

Misc. For Sales

17 foot boat tri-hull, 8 ft. camper, 1954 Chevrolet, 3500 miles. 708 E. 15th. 385-5375. TF-S

FOR SALE: Good used aluminum pipe in sizes from 4" thru 8". Also a good assortment of all kinds of used fittings. New systems of all types. We will buy or trade for your used aluminum pipe. State Line Irrigation-Littlefield and Muleshoe. TF-S

Bus. Services

ALL KINDS ALTERATIONS covered buttons, button-holes, belts, Mr. and Mrs. G. E. Scifres, 905 E. 6th. St. Phone 385-3971. Former Drive In Cleaners. TF-S

RENT CONVALESCENT equipment at Brittain Pharmacy. Wheel chairs, crutches, hospital beds, other items. Complete line Convalescent needs. TF-B

ENOCHS

MRS. ALMA ALTMAN

MR. AND MRS. Robert George, Brent, and Marthann and Mr. and Mrs. Rusty Rowden and son Chris, all of Lubbock visited their parents, Mr. and Mrs. E. N. McCall on Sunday. They all attended Enoch's Baptist Church services.

MR. AND MRS. Lloyd Pollard visited their children last Sunday. Mr. and Mrs. Lamarr Pollard and son Wade of Levelland and then they went on to Lamesa to visit Mr. and Mrs. Larry Pollard, Tonya, and Lance at Lamesa.

MRS. AND MRS. Kenneth Millsap and daughter, Kena of Clovis, N. M. visited their mother, Mrs. Alma Altman over the weekend and attended church with her on Sunday.

MRS. EDDAUTRY is visiting her daughter and family, Mrs. Billy West of Littlefield. Some women from this community are enrolling in school at Morton High School. The class is being given at night, consisting of typing and bookkeeping, taught by Orville Tilger and Mrs. Freeland of Morton. Some of the ones enrolling are Mrs. John Blackman, Mrs. Sybil Hubbard, Mrs. Olive Angel, Alta Salyer, Pauline McCall, Alma Altman, Melba McKinney, in all there were 50 people enrolled.

TREVA JO AUTRY and Mrs. Cecil Jones are attending night school on Wednesday night, at South Plains. This class is taught on income tax.

MRS. W. M. BRYANT, Rose Nichols and Dorothy Nichols attended the quarterly associational library conference at Olton on Tuesday, Jan. 12. The Enoch's library staff presented the program.

NICK ISAAC of Corpus Christi was an overnight visitor on Wednesday night, at the home of his aunt, Mrs. Alma Altman. He had been in Newton, Kan. visiting his family. He also visited the Kenneth Coats family.

THE INFANT daughter of Mr. and Mrs. Sammie Nichols has been hospitalized in a Plainview hospital after falling from a couch and breaking one of her legs. She is in traction and is reported doing real well. The baby is the granddaughter of Mrs. L. E. Nichols of Enoch and of Mr. and Mrs. Donald Grusendorf. Mrs. Nichols has been helping care for her in the hospital.

Autos For Sale

SALE PRICES SLASHED ON THESE AND OTHER USED CARS

382A 1969 Buick Wildcat, 4 dr. Green. \$3200

337A 1969 Chrysler 300 dr. HT, Green. \$2875

362A 1969 Plymouth Fury III, 4 dr. Gold. \$2200

290 1968 Chrysler New Yorker, 4 dr. sedan, Dark. \$1995

315A 1968 Chrysler Newport Cust. 4 dr. sedan. \$2195

254 1968 Plymouth Fury 4 dr. sedan, White. \$1795

301A 1968 Oldsmobile Delta 88, 4 dr. sedan, Grey/White. \$2295

340A 1968 Dodge Dart Sweetline, Green. \$1695

35681 1968 Chevrolet Pickup, 1/2 ton, Blue/White. \$1795

35682 1968 Ford Galaxie dr. sedan, Yellow/Black. \$1800

346B 1967 Plymouth Fury II, 4 dr. sedan, Turq./White. \$1295

368A 1967 Plymouth Fury III, 4 dr. sedan, Met. \$1700

297A 1967 Mercury Parklane, 4 dr. Brn/Parklane/Black. \$1695

338A 1967 Buick Wildcat dr. sedan, White/Tan. \$1995

347A 1966 Chevrolet New Yorker, 4 dr. sedan. \$1100

243B 1966 Chevrolet HT, White. \$1175

294A 1966 Chrysler Newport, 2 dr. HT, Grey/Black. \$1400

328A 1966 Chrysler Newport, 4 dr. HT, Grey. \$1295

344A 1966 Chrysler Newport, 4 dr. HT, White. \$1395

BDG 1966 Chevrolet Chevelle, 4 dr. lt. grey. \$1295

329A 1965 Chrysler Newport, 4 dr. sedan, Brown. \$995

302A 1965 Dodge Coronet dr. HT, Maroon/white. \$895

214A 1965 Dodge Dart, 4 sedan, Beige. \$650

291B 1965 Buick Electra 4 dr. sedan, Beige. \$995

281A 1964 Chevrolet Biscayne, 4 dr. sedan, Beige. \$400

326B 1964 Chevrolet Bel Air 4 dr. Red. \$795

123A 1964 Chevrolet Camino Pickup, White. \$795

152A 1964 Mercury Parklane, 2 dr. sedan, Turq. \$795

233A 1963 Dodge Dart Pickup, Green. \$450

353B 1962 Ford Fairlane 500, Turq./White. \$400

226A 1962 Ford D100 ton, White. \$580

258A 1962 Mercury Montclair 4 dr. sedan, Beige. \$500

382B 1967 Chrysler New Yorker, 4 dr. HT, Gold. \$1895

379A 1970 Chrysler Newport, 4 dr. HT, Brn. factory warranty. \$3300

Room For One

ROOM FOR ONE more elderly lady or couple in my home. Good meals, care and reasonable rates. 417 E. 9th. 385-3438. TF-McB

NEW HOMES FHA

If you qualify, move in for \$250. total, with payments \$70-\$90. month. The more kids and less money you have, the lower the payments.

Card Of Thanks

The recent bereavement which has visited our home has brought to us a greater appreciation of our friends. Such kindness and neighborly thoughtfulness can never be forgotten. **THE FAMILY OF MABEL WALKER.**

SALE ON TRACTOR cabs.

All models. Farm Equipment Company, Littlefield, Texas. TF

Houses For Rent

FOUR ROOM furnished house. Phone 385-4028 after 6 p.m. or 385-3226 days. TF-B

LEVELLAND REAL ESTATE

611 Austin St. Sammy Hightower 894-5769 nights 894-5734 or 385-4835

Miscellaneous

ALL OCCASION cakes. Call Gayle Simpson, Maple 806-927-3535. TF-S

CASH FOR used guns of any kind. See S. A. Davis at Littlefield Bell Station. 385-3800. 1-31-D

FLAT BREAKING.

5020 John Deere, Hart Camp-Fieldton area. Guy Brandvik. 285-3303 if no answer 285-2074. TF-B

Sale Or Rent

FOR SALE or rent: One, two three bedroom houses and apartments. Some furnished. Small down payment on houses sold. Balance paid out like rent. Located all over Littlefield. Call K. Houk, 385-4830 or office 385-3492.

FOR RENT OR SALE: Two or three bedrooms. 385-4674. Ophelia Stone. TF-S

TAX SERVICE

Mrs. Elzie Bennett Announces her new location at 311 W. 4th. (Lfd. TV Service). Phone 385-3522. She is acquainted with your tax problems and is experienced.

PUBLIC NOTICE

United Freight Sales now has brand new 1971 zig-zag sewing machines, \$35. Nationally advertised stereo component sets with Garrard changer, AM-FM stereo radio, \$89.95. And walnut stereo consoles with AM-FM radio, \$69.95. Electrolux vacuum cleaners, \$49.95. Also refrigerators and freezers from \$79. up. All merchandise guaranteed and monthly payments are available UNITED FREIGHT SALES, 2120 Ave Q, Lubbock. Open 9 a. m. to 9 p. m. Monday thru Friday. Saturday till 1 p. m. TF-U

FOUR ROOM furnished house.

Phone 385-4028 after 6 p.m. or 385-3226 days. TF-B

FOR RENT-Three bedroom house.

Call 385-3365. TF-W

FOUR CHOICE spaces in Littlefield Memorial Park.

Call 806-298-2190. TF-B

PERSONAL

Dear A. L., Good-bye twenties! Hello thirties! 1-21-P

DIAL 385-4481

FOR CLASSIFIEDS

FURNISHED APARTMENT

for rent. Bills paid. 385-3365. 600 W. 1st. TF-W

MISCELLANEOUS SHOP.

1310 E. Delano. Open Monday through Saturday. Will buy furniture and miscellaneous items. Come and see us as we have a nice selection of furniture, refrigerators, stoves, and glasswares. Call 385-5979 after 6 p.m. TF-Y

REDUCE SAFE & fast with GoBese Tablets & E-Vap

"water pills" West Drug & Pharmacy. 1-24-G

CLASSIFIED ADS

LEADER-NEWS
BOX 72, LITTLEFIELD

*You can mail your ad to the address above. *Or you can phone it to 385-4481

*Or you can take it to the Leader-News, 313 W. 4th, Littlefield.

PUT 1 WORD IN EACH SPACE, PRICE IS GIVEN WITH THE LAST WORD. DON'T FORGET TO INCLUDE YOUR ROAD ADDRESS, TOWN AND PHONE NUMBER. YOU'LL GET BETTER RESULTS WITH COMPLETE DETAILS.

CLASSIFICATION: (Circle one) Help wanted - Wanted - Business Opportunities - Business Services - Houses to Rent - Houses for Sale - Lost & Found - Special Notices - Personal Services - Card of Thanks - Apts. for Rent - Miscellaneous for Rent - Miscellaneous for Sale - Miscellaneous - Real Estate - Notices - Legals - Pets - Autos, Trucks for Sale.

Rates on classified advertising are: 6 cents per word first insertion; 4 cents per word each additional consecutive insertion.

The Leader-News is not responsible for mistakes after first insertion. Please read your ad. All classified accounts are due and payable 10th of month following insertion. A flat rebilling fee of \$1.00 will be charged for all accounts 30 days past due for all successive rebillings.

DEADLINES
LAMB COUNTY LEADER-NEWS
5 P.M. TUESDAY 5 P.M. FRIDAY

				1.00 1 Time Add 40c E.A.T.
1.00 1 Time Add 44c E.A.T.	1.00 1 Time Add 48c E.A.T.	1.00 1 Time Add 52c E.A.T.	1.00 1 Time Add 56c E.A.T.	1.00 1 Time Add 60c E.A.T.
1.00 1 Time Add 64c E.A.T.	1.02 1 Time Add 68c E.A.T.	1.08 1 Time Add 72c E.A.T.	1.14 1 Time Add 76c E.A.T.	1.20 1 Time Add 80c E.A.T.
1.26 1 Time Add 84c E.A.T.	1.32 1 Time Add 88c E.A.T.	1.38 1 Time Add 92c E.A.T.	1.44 1 Time Add 96c E.A.T.	1.50 1 Time Add 1.00 E.A.T.
1.56 1 Time Add 1.04 E.A.T.	1.62 1 Time Add 1.08 E.A.T.	1.68 1 Time Add 1.12 E.A.T.	1.74 1 Time Add 1.16 E.A.T.	1.80 1 Time Add 1.20 E.A.T.
1.86 1 Time Add 1.24 E.A.T.	1.92 1 Time Add 1.28 E.A.T.	1.98 1 Time Add 1.32 E.A.T.	2.04 1 Time Add 1.36 E.A.T.	2.10 1 Time Add 1.40 E.A.T.

Enclosed is \$ For 1 Time 2 Times Times
Send The Bill To Address City

FREE OFFER
If you'll give it away,
The Leader-News will
give you tie ad free for
one time. It will appear
in 'Free Offer' column.

TAKE OVER payment, model 1968 Singer sewing machine

in walnut console, will zig zag, blind hem, fancy patterns, etc. Assume three payments at \$7.96. Wirtz Credit Manager, 1114 19th. St., Lubbock, Texas. TF-L

SHEEP FOR SALE.

Rambiolett ewes. Contact 385-3413 or 385-4658. TF-M

BALE Milo stalks for sale.

Call 385-3024 or 233-2801. TF-G

FOR SALE: American Registered Quarterhorses.

One age mare bred to my Bee Play Stud; 1 yearling mare; 2 weaned filly colts \$200.00 each, your choice. 1 long yearling stud prospect out of running son of Vandy; all horses halter broke and located at Jake Armstrong farm, Fieldton, Texas. James A. Gowdy, Littlefield, Texas.

SAVE MONEY ON TAPES

Custom 8-track Stereo recording

RCA color tv, VHF, UHF, new Zenith trade in, maple console, looks like new.

New Micro wave oven one year warranty.

Nearly new black & white table model 16" VHF-VHF, \$69.95.

Used tv's, \$34.95 up.

Littlefield TV Service

311 W. 4th 385-3522

Pets

FOR SALE Bassett hound puppies. 385-5750. 1-14-J

Bus Services

WE DO CUSTOM farm work. Shredding, discing and breaking, chiseling with big ox chisel, plow, and listing. Call Bill Davis, 246-3483, Amherst. TF

Service with a capital "S"

is what you get when you let Jerry repair your appliances.

JERRY'S Appliance Service

385-5464 521 W. 2nd

TRUCK SEATS EXCHANGED

15 MINUTE SERVICE

McCORMICKS AUTO SUPPLY AND TRIM SHOP

PHONE 385-4555 227 MAIN

ADAIR BISHOP DRILLING

IRRIGATION OR DOMESTIC

Phone 385-6113 1224 W 4th Littlefield

Autos for Sale

CLEANEST USED CARS: in town. Marcum Olds-Cadillac, 8th and Hiway 385, Littlefield. 385-5171. TF-M

FOR SALE--Cadillac sedan DeVille cruise control, new tires, new shocks, all power, A-1 condition. Call 385-3198. TF-G

1968 El Camino Super Sport 390, Palomino ivory. 933-2293. TF-M

1969 red Volkswagen, black interior, automatic stick shift, AM-FM radio. Call 385-4369. 1-21-S

FOR SALE-1960 Ford Falcon-clean. One mile west of overpass on Bula hiway. Jack Holloway. 1-17-H

Autos For Sale

Used Cars from a New Car Dealer

Mitchell-Ford, Inc. AND MERCURY

Main Office 525-529 Phelps Used Units And Body Shop Hall Ave. And Delano Phone All Offices 385-5164

A Good Place To Do Business

1969 Ford LTD Country Squire 429 2V V8 engine, cruise-o-matic, power brakes, power steering, power rear window. Selectaire conditioner, deluxe luggage rack and other extras. Beautiful dark green with squire paneling on the side and green vinyl trim. New tires. Don't miss this one. \$2995.

1963 Ford Gal. 500 4 door sedan, V-8 automatic, green color. \$595.

1970 Ford Gal., 500, 4 door sedan, power and air. Local one owner. Yellow with white top and beige interior. Priced to sell at only \$2995.

1968 Ford Pickup, long wide box, V-8 automatic, radio and other extras including custom cab. Local one owner. Green and white color. Don't let this one get away. \$1895.

1969 Torino GT 2 door hardtop Fastback, V8 engine, Cruise-O-Matic, air conditioner, radio. Light blue color...Drive it. \$2295.

1967 Ford Custom 500, 4 door sedan, V8 automatic, power steering and air. Gold color. Clean \$1295.

1963 Chev V8, standard with air conditioner. Red and white color. \$595.

1969 Ford Gal. 500, 4 door hardtop, V8 automatic power and air. White with black vinyl roof. It will compel a second look. \$2295.

1959 Ford pickup. Red and white. Would you believe one owner? \$395.

One 1970 model Kinetic Voyager Electric, battery powered, includes battery charger. Nearly new, still in warranty, bargain priced, original owner, Bud Autry of Amherst. Call or see 806-385-4130 or 385-5871. TF-H

SETTLE ESTATE. 177.1 acres, dry land. \$150. per acre. Two miles east, one north of Bula. Call 806-879-2233. TF-S

FARM FOR SALE or trade, 144 acres located seven miles west, 1 1/2 south of Earth. One 10' well, one 8' well, good water. One-half mile high pressure line. 35 acres cotton, 86 acres milo. Government check 71 approximately \$3,000. For quick sale \$250 acre, terms can be arranged. Gene Brown, day 257-3484, night 257-3701. 1-24-B

s/G.T. Sides
G. T. Sides, County Judge, Lamb County, Texas

Real Estate

INSURANCE * REAL ESTATE

JUDD WALKER AGENCY

NEED YOUR LISTINGS-WILL BUY EQUITY Phone 385-5323

Bring your Income Tax work to a highly trained and experienced personnel

FRANK CUMMINGS TAX SERVICE

We are familiar and well acquainted with all kinds, types and phases of INCOME TAX. Our aim is to help you--our work is completely guaranteed--our customer must be thoroughly satisfied with our work, our price and our treatment.

Bring your tax problem & work to us now--we are open 6 days a week from 8 a.m. until 6 p.m. or much later if you need us.
600 East 4th. St. Phone 385-4135

Legal Notice

In compliance with Article 2544 thur Article 2558a of the Revised Civil Statutes of the State of Texas, notice is hereby given to any Banking Corporation, Association or Individual Banker of Lamb County, Texas, that the Commissioner's Court of Lamb County, Texas, will be on the 8th day of February, 1971, receive bids for the Depository for County Funds.

Any banking Corporation, Association or Individual Banker of Lamb County, designated as County Depository or Depositories shall make and deliver to the County Judge an application applying for such funds. There shall be furnished with said applications a statement showing the financial conditions of said bank and a certified check for not less than one half (1/2) of one percent (1%) of the County's revenue for the preceding year at the date of said application which shall be delivered to the County Judge of Lamb County on or before 10:00 a.m., February 8, 1971, at which time a selection of Depository or Depositories for County Funds will be made.

Dated this 15th day of January, 1971.

GARLAND MOTOR

720 E. Third Street Littlefield, Texas

Loop Play

Winds Blast Cats

Littlefield Wildcats traveled to Friday night and dropped the A tilt, 85-47. Giles and Kim Hill were the scoring stars of the game with Giles scoring on 10 field goals and one free throw for 15 points. Hill connected on only two goals but foul shots for 10 points. Hill also Littlefield rebounding with 11 backboards. Wildcats hit on 13 of 22 free throws Floydada to make 59 per cent of attempts. The Littlefield squad hit on field goals for 40 per cent accuracy

from the field. Littlefield committed 22 turnovers to the Whirlwinds. Littlefield now holds a 0-5 loop record while Floydada holds a 3-2 mark to stay in contention for the district crown.

	FG	FT	TP
M. Giles	7	2	15
K. Hill	2	3	10
J. E. Johnson	3	3	9
J. Trammell	1	1	3
M. Carter	1	0	2
R. Funk	1	0	2
A. Sanchez	0	0	0
Littlefield	7	23	31
Floydada	15	31	47

Plays For Third

The JV bracket of the Littlefield district, the Littlefield JV won its first game against New Deal, 56-42. The JV against the Lockney JV second round game which they won 70-34. Alan Mackey who had 22 goals and four free throws for 22 points against the New Deal team. Randy and Don Britt also hit in the double with 12 and 11 points respectively. Mackey was the Littlefield top rebounder with 11. Charles Smith, Randy and Britt each had six rebounds for the free throw line the Cats hit 12 shots for 67 per cent accuracy. The JV hit 24 of 43 shots for 56 per cent accuracy by 45 per cent. Littlefield squad had 20 turnovers. The Wildcats were led by seven points, Ken Albert with Randy Posey with two points. Charles Smith and Alan Mackey led the game with Lockney. Smith and

Mackey both scored 10 points against the Lockney squad. Bill Hamblin was the top rebounder for the Littlefield squad with five. Littlefield's JV scored on 13 field goals out of 43 shots, for 30 per cent accuracy. From the free throw line the JV hit eight of 16 for 50 per cent of their shots. Littlefield committed 31 turnovers to Lockney. Other Littlefield scorers were Randy Dayton with eight, Randy Trotter with two, Donald Britt with three and Hamblin had one point. Littlefield next played Slaton, Saturday afternoon for the third place in the tourney. Results of this game will be in the Thursday Leader News. In other games: Slaton topped Floydada, 44-37; Abernathy tipped Roosevelt, 51-34; Lockney beat Friona, 67-39; and Littlefield raked New Deal, 56-42. In second round games toward the finals; Abernathy out-raced Slaton, 57-40. In the second round toward the consolation finals, Floydada romped Roosevelt, 62-45.



DON BRITT fights for the ball in the first round game against New Deal in the JV Tournament bracket. Britt fouled Kenny Mathes here for New Deal. Looking on is Larry Carroll for New Deal and Randy Trotter of the JV. Britt hit for 11 points and four rebounds as the JV won 56-42.

Bula Drops Game

The Bula Bulldogs were dropped in a district game Friday night by the boys from Bledsoe. The Bledsoe team took the win, 56-37. Ron Risinger was the high scorer for Bula with 11 points. Sheila Medlin tossed in 33 points as the Bula girls romped over the Bledsoe girls by 70-25.

Gerald Chisholm Named All-State

Gerald Chisholm of Sudan is the only area player named by the Texas Sports Writers Association in the writers' selection of Class A All-State teams that were recently announced by the Associated Press. Chisholm, the son of Mr. and Mrs. Gerald Chisholm, was named to the offensive tackle position on the second team. He is a senior at Sudan and lettered all four years with the Sudan Hornets. He was named to the All-District 3-A teams this year. His coaches said his absence will be felt by the team next year.

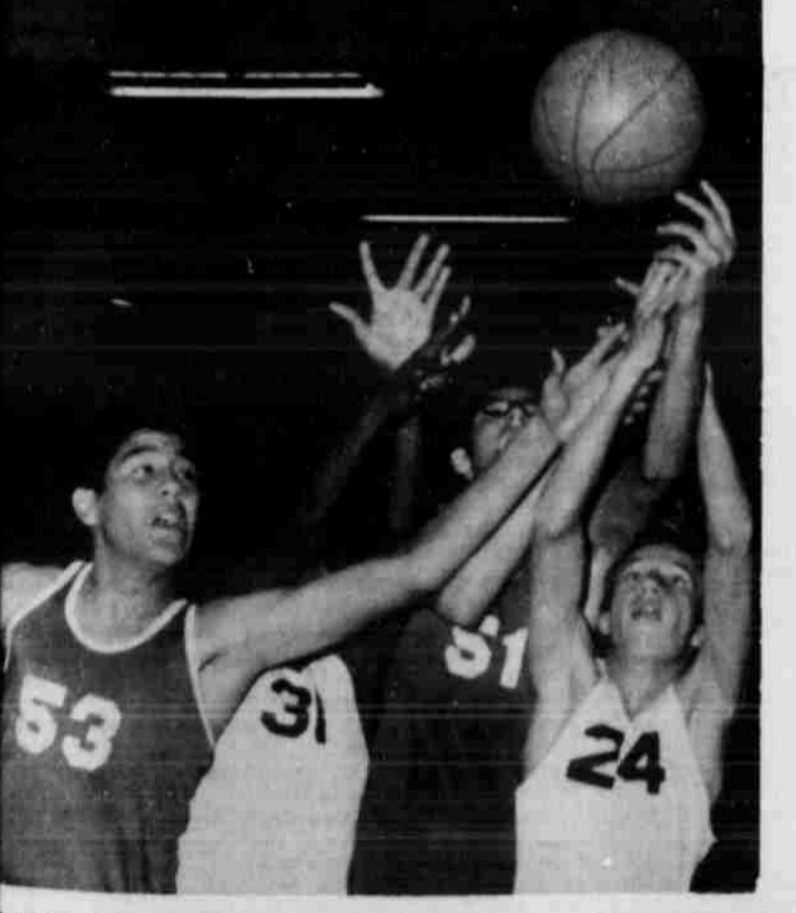
Home Tourney

Littlefield 9th Splits Pair

Littlefield Freshmen dropped their first game to the Abernathy 9th in the series of play in the Littlefield JV Tournament. The loss, 51-50, was the Littlefield 9th against Slaton in consolation bracket. Littlefield 9th topped Slaton in a game, 55-37, and went into the consolation finals.

In the first game, Pat Henderson was the top scorer for the 9th with four goals and six free throws for 14 points. Gary Brown was the only other Littlefield player in the double digits with four field goals and three free shots for 11 points. Brown led the rebounding with nine and Henderson and Terry Bryson followed with four each.

Other scorers for the Littlefield squad were Bryson with eight, Dan Jefferies with six, Kenny Owens with five, Chris Pope with four and Randy Cook with two. The Cats hit on 14 of 27 free throw attempts for 51 per cent accuracy. From the field they hit 18 of 61 goal attempts for 30 per cent accuracy. The 9th committed 20 turnovers to Abernathy.



PEEL, number 24, and Danny Cushion, number 31, fight for the Littlefield 9th Grade in the 9th Tournament. Littlefield won the game, 55-37.

ZENITH CHROMACOLOR PRESENTS THE BASKETBALL SCHEDULE

Jan. 19 Littlefield at Morton
Floydada at Olton
Sudan at Springlake-Earth
Spade at Cotton Center
Anton at Amherst
Pep at Bula
Three Way at Whitharral

AMERICA'S NO. 1 SELLER
ZENITH CHROMACOLOR
LITTLEFIELD TV SERVICE

FOR CLASSIFIEDS DIAL 385-4481

Area Basketball Roundup

OLTON TAKES WIN

The Olton Mustangs, behind Luis Rey, Mike Parsons and Marlos May, raced past the Abernathy squad with an easy 63-46 victory. The win evens out the Olton loop record with 2-2. Rey ripped the nets for 18 points. Parsons followed with 17 and May hit for 13. Connie Hall hit for 21 points to lead the win over the Abernathy girls team. Olton girls won the game 43-37.

SUDAN DROPS THIRD

The Sudan Hornets dropped their third straight District 3-A game to the Kress Kangaroos Friday night, 54-50. David Weaver led the Hornets scoring with 17 points. Pam Nix hit the basket for 20 points to lead the Sudan girls past the Kress girls, 51-48.

WOLVES TIP HAPPY

The Springlake-Earth Wolverines tipped the Happy boys in loop 3-A action Friday night, 67-61. Brian Cole of Springlake was second high game scorer with 17 points. Springlake took the girls game, 41-33.

DOGS TAKE LOOP WIN

The Anton Bulldogs romped over the Nazareth Swifts in loop action Friday night. Anton won the game by a 69-36 score. James Turnbow led the Anton attack with a sparkling performance. Turnbow hit the nets for 33 points. Mark Grace scored 10 points as the only other Anton player in double digits. In the girls action, Anton again won over the Nazareth girls, 33-22. Pam Bell was the high Anton scorer with 19 points. Carolyn Hodges had nine. The Anton boys are now 12-4 for the season and held a 2-1 loop mark. The Dogettes are 8-8 for the season and sport a 2-1 loop record.

MOATES SPARKS WIN

Eddie Moates hit the basket for 27 points as the Amherst High Bulldogs raced past the Cotton Center Elks in a loop game by 65-45. In the girls game, Amherst again was the winner with a 50-44 victory led by Alane Weaver's 22 points.

SPADE SPLITS WINS

The Spade boys fell behind a strong Lazbuddie scoring attack by 71-63, as the Lazbuddie Longhorns ran their district mark to 3-0. Roy Thompson led the Spade scoring with 18 points. David Gray had 15 for Spade. The loss drops the Spade record to 1-2 in the district race. The Spade girls toppled the Lazbuddie girls by a score of 59-36. Linda Hopper led the Spade scoring with 20 points. Christie Adams and Debbie Myers followed with 17 and 15 points respectively.

GRAHAM HITS FOR 27

Johnny Graham of Whitharral, hit the baskets for 27 points against the Whiteface boys but it just wasn't enough to win as the Steers took a loop victory, 63-50. Kathy Lynn Williams led the Whitharral scoring with 14 points but again it wasn't enough to stop the Whiteface team from a 46-31 win.

EAGLES DROP PEP

The Three-Way Eagles dropped Pep in loop action, 65-55, Friday night. Dave Shannon was the Pep high scorer with 19 points.

BOWLING

TOWN & COUNTRY	
Harris Plumbing	24
Coca Cola	40
Lfd. Seed & Delinting	39
Grimes Auto	28
Temp Bow	27
Pill Rollers	25
Knights Rest	30
Home	34
Lfd. Butane	24
	13
	47

High team series, Harris Plumbing 2874; high team game, Grimes Auto, 993; high individual series men, Don Lamar, 579; high individual game men, Bill Duncan 223.

IVY LEAGUE	
Crescent House of Beauty	7
Dairy Queen	6
Joy Parker Texaco	5
Tasty Cream	4
Maurines Beauty Shop	4
Carots Curl & Swirl	3
Perry's Laundry	2
Renees Beauty Shop	1

High team series, Crescent House of Beauty, 2256; high team game, Maurines Beauty Shop, 820; high individual series women, Margaret Savage, 542; high individual game women, Margaret Savage 199.

HIT & MISS	
Conal's Fina	12
Birkbech Ma.	11
Tom's Peanuts	11
Hodges & Largent	10 1/2
Largent	9 1/2
Grimes Auto	9 1/2
Clark's Shell	4
Chapman & Heffington	2

High team series Conal's Fina, 2323; high team game, Tom's Peanuts 878; high individual series men, Maurice Sexton 820; high individual game men, Hugh Savage 255; high individual series women, Margaret Savage 516; high individual game women, Brenda Diering 184.

There Is A Star In Littlefield

AUTHORIZED BRAKE SERVICE CENTER

1 WE DISMOUNT YOUR BRAKE SHOES

When your brake shoes look like the photo above, you're driving with your life in the balance. Even when the linings are not worn out, there may be serious weaknesses that can cause your shoes to fail. Linings can become glazed by excessive heat, reducing friction potential to dangerous levels. Or, if linings are of the glued-on (bonded) type, repeated stops at high speeds may cause them to become detached from the shoe. Star Brake Service inspects with a thorough inspection to reveal possible causes of brake failure.

2 WE THOROUGHLY RECONDITION YOUR BRAKE SHOES

When we overhaul your brakes, we like to start with a good foundation. We use the brake shoes that are already on your car because we know that they have been "mated" to work properly with the rest of the brake mechanism. We do not substitute an entirely different set of brake shoes. In reconditioning your shoes, we completely remove the old lining and clean the table of the shoe. When we are satisfied that the shoes are as good as new, we're ready to reline them.

These 6 Steps Can Make Your Brakes As Good Or Better Than The Brakes On A New Car.

3 WE RIVET ON PREMIUM LININGS

Two things to remember about our Star Brake Service: (1) We use only premium-grade Star linings, secured to the shoe by the only positive method known—precision power-riveting. No adhesives or bonding agents are used because we know that even the best of these can be affected by extreme heat. (2) Ventilating grooves in the lining and hollow-center vented rivets allow free air circulation through and around the shoe to ventilate friction surfaces. Result: reduced brake heat-up and faster cooling—safer, smoother braking.

4 WE TURN WORN DRUMS TO RESTORE 100% BRAKING SURFACE

To get relaxed brake shoes in a glazed, scored or out-of-round drum is like getting a new tube in a worn-out tire casing: sooner or later, you're bound to have trouble. Reconditioning drums is a Star drum lab. We restore drums to "like new" condition, with a fresh, perfectly round friction surface machined to precision tolerances.

5 WE GRIND SHOES TO ENSURE PRECISION SHOE-TO-DRUM CONTACT

Turning drums is not enough. For full braking power, shoe linings must be arc-ground to the precise contour of the drum. This gives you complete, 100% contact with the drum, with equalized stopping power on all four wheels. You get safer brakes and smoother stops, eliminate pulling, squealing and steering. With our Star shoe grinder we are the new shoe to full contact with the reconditioned drum. No "wear-in" and "take-up" adjustment needed because we compensate for initial wear.

6 WE CHECK ALL HYDRAULIC AND MECHANICAL LINKAGES

What goes on between your brake pedal and your brakes? We make it our business to find out. As part of our complete Brake Service, we thoroughly check all hydraulic and mechanical linkages. If any part is too badly worn to give reliable service, we'll tell you so. That's why, when we deliver a complete brake job, you'll know that your brakes are as good or better than the brakes on a brand new car. And that's an mighty good feeling.

RICHEY'S

1401 EAST 9th ST.
BOX 709
PHONE 385-3747

WORSHIP IN CHURCH

and get a spiritual lift for the whole week

Even the sparrow

...found a nesting place in the church of the early believers. That temple was a reverent place where devoted souls could find God. It had an outer court where all men might come, followed by the Court of Israel, which was open only to the Hebrews. In the center was the Court of the High Priests. It was dominated by the Altar of Sacrifice where worshipers brought God their best goods.

Every step they took in this approach was more sacred. Yet a warm welcome within the Altar awaited the little sparrow. Here she could build her nest and raise her young.

But oh, how much more important are the children of God, than the life of a sparrow. How wonderful that we too, can enter the church and stand in this holy place, sheltered by the protecting love of a great God. Welcome to church this week. He welcomed the sparrow ... He welcomes you.



The BEST CROWD to FOLLOW is the CROWD GOING to CHURCH

LUCE & NELSON IMPLEMENT
939 East Delano

SPADE GRAIN COMPANY
Spade, Texas

DAIRY QUEEN
Frank Robinson

E.C. RODGERS FURNITURE
And Employees

RENEE'S BEAUTY BAR
Renee Williams & Staff

B & C PUMP & MACHINE WORKS
304 Lake Ave.

PIONEER SUPER MARKET
205 West Third

BRITAIN PHARMACY
M.M. & J.T. Britain

SHOOK TIRE COMPANY
Orville Bassett & Employees

TASTY CREAM DRIVE IN
229 W. Delano Ave.

LEADER-NEWS
and Employees

FIRST NATIONAL BANK
Don Bell

DAIRY MART
L.V. Pierce

HAMMONS FUNERAL HOME
Pryor Hammons

ARMES CHEVROLET CO.
Troy Armes

Sponsors Of This Service Persuade Its Readers To Worship In The Church Of Their Choosing Every Week. Let Your Life Count For God.

Littlefield Churches

- CHURCH OF CHRIST
6th and Hall
- UNITED PENTECOSTAL CHURCH
Rev. E. E. Houlette
1030 East 11th
- BIBLE MISSIONARY CHURCH
Rev. Hugh Cantrell
1321 West 6th
- FIRST CHRISTIAN CHURCH
Doug Morton
1306 Phelps Ave.
- SALVATION ARMY
Captain Daniel Hudson
621 East 6th
- FIRST BAPTIST CHURCH
Rev. R. B. Hall Jr.
400 East 6th
- PARKVIEW BAPTIST CHURCH
Rev. R. N. Tucker
W. 5th & Wicker
- SUNSET AVE. BAPTIST CHURCH
Rev. Benny Goss
North Sunset Ave.
- CHURCH OF JESUS CHRIST
OF LATTER DAY SAINTS
Reddy Room, 511 W. 7th

- FOUR SQUARE GOSPEL CHURCH
Rev. James Gillentine
715 Phelps Ave.
- LITTLEFIELD MISSIONARY BAPTIST
Rev. David Jackson
XIT Drive and 8th St.
- SEVENTH-DAY ADVENTIST
Ninth and Duggan
- FIFTY METHODIST CHURCH
Rev. David Hamblin
14th and Phelps Ave.
- EMMANUEL LUTHERAN CHURCH
Rev. Louis Wetzel
409 West 3rd St.
- ST. MARTIN LUTHERAN CHURCH
Rev. Thomas Lange
W. 10th and Sunset Ave.
- FIRST PRESBYTERIAN CHURCH
Rev. Clem G. Sorley
Levelland Highway
- SACRED HEART CATHOLIC CHURCH
Rev. Joe James
Sunset and 8th St.

- CHURCH OF CHRIST
Park & 9th St.
Odell Settiff
- MISSION BAPTISTA EL CALVARIO
Rev. Celestino Rangel
1100 East 14th
- CHURCH OF GOD IN CHRIST
F. S. Digger
Basin and Hillbun
- IRVIN STREET FIRST BAPTIST
Dr. W. A. Terry

- CHURCH OF THE NAZARENE
8th and LFD, Drive
Rev. Curtis Steen
- ASSEMBLY OF GOD
Rev. H. L. Hallmark
Hall at College Ave.
- CHURCH OF CHRIST
Bob Wear, Minister
17th and Crescent Drive
- CHURCH OF CHRIST
Highway 385

Area Churches

- LUMS CHAPEL BAPTIST
Rev. W. H. Hill
AMHERST
First Methodist
Douglas W. Gossett
Church Of Christ
Leonard H. Tittle
First Baptist
T. Glenn Willison
BULA
Church Of Christ
Methodist
First Baptist
SUDAN
Church Of God Of Prophecy
1st and Wilson
Rev. Steve Couch

- SPADE Methodist
Rev. Ben Day
First Baptist
J. J. Terry
Church Of Christ
Mack Greenway
HART CAMP
First Baptist
Rev. John Walker
FIELDTON
First Baptist
David Burum, Pastor
Church Of Christ
ROCKY FORD BAPTIST
Rev. Ray Harrison

OBITUARIES

WILLIAM E. JORDAN

William Earnest Jordan, 74, longtime Lamb County resident, died Wednesday night in Knight's Rest Home.

Funeral services were conducted Friday afternoon in Parkview Baptist Church with Rev. R. N. Tucker, pastor, officiating. Burial was in Littlefield Cemetery with Hammons Funeral Home in charge.

Jordan was born June 30, 1896 in Ellis County and had lived in Lamb County since 1928. He was a retired ginner and had resided in Littlefield 20 years.

His son, Finis Jordan, was killed in a car-pedestrian accident near Shallowater Jan. 4.

Survivors include his wife, Mable; two sons, Calvin Jordan of Sudan and Johnny Jordan of Littlefield; two daughters, Mrs. J. D. Tinker of Slaton and Mrs. Hubert Carpenter of Brownfield; two brothers, Clarence Jordan of Abernathy and Frank Jordan of Van Alstyne; three sisters, Mrs. Clara Ireland and Mrs. Bertha Bruce, both of Van Alstyne, and Mrs. Gertrude Howie of Fort Worth; 10 grandchildren; and eight great-grandchildren.

MRS. NORA BARNETT

A longtime Olton resident, Mrs. Nora Barnett, 75, died Wednesday in the Hospital in Lubbock, where she had been a patient nearly three weeks.

Funeral services were conducted Friday afternoon in the First Baptist Church in Olton, with Rev. John E. Lewis, pastor, officiating.

Burial was in the Olton Cemetery with Parsons Funeral Home in charge of arrangements.

Mrs. Barnett was born in Lamb County and had been an Olton resident for many years.

She was a Baptist.

Surviving are her husband, D. L. Barnett; two daughters, Mrs. Merdell Barnett of LaVerne, Calif., and Mrs. Edna Gilbreath of Sunnyside; two sons, Mr. Barnett of Olton and James Barnett of Lubbock; four sisters, Mrs. Joda Gustine, Mrs. Belle Rasmussen, Mrs. Breckenridge, Mrs. Flora Rosebud and Mrs. Addie Smith of Olton; and 11 grandchildren.

CELESTINO GUERRERO

Services for Celestino Guerrero, 80, of Snyder, who was father of Julio Guerrero of Littlefield, and who was dead on arrival Tuesday at Cogdell Memorial Hospital following an extended illness, were conducted Thursday afternoon in Our Lady of Guadalupe Catholic Church in Snyder.

Rev. Francisco Lopez, minister, officiated and burial was in the Colorado City Cemetery with Bell-Seale Funeral Home in charge of arrangements.

Surviving are his wife; three daughters, Mrs. Tiodora Barrera and Maria Terrasas, both of Snyder, and Mrs. Mercedes Martinez of Colorado City; two other sons, Raul Guerrero of Loraine and Thomas Guerrero of Michigan; 43 grandchildren and 27 great-grandchildren.

MRS. IRIS LOUVA WILSON

Funeral services for Mrs. Iris Wilson, 86, a resident of Olton for many years, were conducted Wednesday afternoon in the First United Methodist Church in Olton.

Rev. Al Jennings, pastor; Doug L. minister of the Main Street Church; and the Rev. Clifford Hereford officiated.

Burial was in Olton Cemetery under the direction of Parsons Funeral Home.

Mrs. Wilson died Thursday in the Hospital in McKinney. She was a member of the Order of Eastern Star.

Survivors include four daughters, D. L. Givens, Mrs. Louva Nichols and Jean Sachse, all of Olton, and Mrs. Steinachle of Gunter; a son, Don Wilson of Los Angeles, Calif.; a sister, Mrs. Mason of California; six grandchildren and seven great-grandchildren.

AMHERST

MRS. LESTER LA GRANGE

246-3336

A SURPRISE "house warming" was given Mr. and Mrs. Clyde Brown Tuesday night in their new home on Wood Street. The Fidelis Sunday school class members of the United Methodist Church of which the honorees are members, were hosts for the occasion. The 12 couples, members of the class provided the refreshments of punch, coffee and cookies. Their gift was a "money tree" and many other gifts were received by the honorees. Harve Messamore is teacher for the class. Both their parents from Morton were present.

A GIFT COFFEE honored Mrs. Jimmy Hufstader in Fellowship Hall of the Church of Christ Thursday afternoon of last week. The refreshment table was laid with a white linen cloth. A honeymoon cottage was the center decoration with pink roses "growing" in the "yard". Teresa Templeton, and Reba Franks served hot punch and coffee with apricot and banana nut bread, nuts and mints from a crystal and silver service. Mmes. Alfred Schroeder, Leonard Tittle, C. D. Moates, Marvin Wagner, Homer Campbell, Eli Young, Leon Hardwick, Sam Cowan, Bo Crosby, Raymond Humphreys, W. P. Stone, Dean Chisholm, J. C. Franks, A. Mills, Connie Franks, Libun Bales and Jim Humphreys were hostesses.

THE MONTHLY social meeting of the Gleaners class of the Baptist Sunday school was held Tuesday afternoon with Mrs. T. J. Batson as hostess in her home on South Main Street. Mrs. Ted Long read the ninth chapter of Matthew for the devotional. The topic was "Nature of the Kingdom." A short business session followed. Refreshments of open-faced sandwiches, German chocolate cake, spiced tea and coffee were served to Mmes. Johnny Smith, Henry Myer, Caruse Thomas, John Enloe, Gene Enloe, C. A. Thomas, Ted Long, Paul Gonzales, Vanessa Hill and the hostess.

MRS. LULA HARDIN is returning home to Amarillo after a visit with her daughter and husband, Mr. and Mrs. W. P. Stone, and other relatives. ROBERT L. MAY of Kress, a former resident of Amherst, visited here Tuesday.

WEDNESDAY morning

guests of Mrs. Audrey Long were Mrs. Veida Gage, Mrs. Joyce Streety and Mrs. Nadine Foley, all of Littlefield.

SUPT. of schools Lamar Kelly and Supt. Kenneth Noles of Sudan attended a school administrator's mid-winter advisory conference on education in Austin last week.

MR. AND MRS. Homer Harper spent sometime recently in their mobile home at Hubbard Lake, near Breckenridge.

MRS. ARNOLD Carter returned from Wichita, Kan. Wednesday. She had welcomed her granddaughter, Stephanie Dawn, born Dec. 3, weighing seven pounds 10 ozs. Her parents are Sgt. and Mrs. Larry Waite who will be moved in April to Grand Falls, Mont. where he will be stationed.

MRS. PETE TEMPLETON was burned Wednesday of last week and is still a patient in the local hospital. She received the burns as she emptied scalding water into a coffee maker. The burns, are on the upper parts of her body and arm. She is showing gradual improvement.

SPENDING Tuesday with Mrs. W. J. Carper were Mrs. Mary Roberts of Bovina, Mrs. Rosa Mae Guthrie, Mrs. Kate Moore of Littlefield, Mrs. Nannie Long and Mrs. Eva Artaway of Amherst.

MR. AND MRS. James Holland and Paul were among those attending the Tech-Arkansas basketball game in the coliseum at Lubbock Tuesday night.

MISSES V. O. and Willie White and Mr. and Mrs. Larkin White were in Portales, N. M. Thursday. Their sister, Mrs. Charlie Webb, was scheduled for surgery there.

MR. AND MRS. Dean Chisholm and little daughter, Christi, moved to Houston the first of this week. He has been employed in Houston since their return from Puerto Rico several months ago. Leona and little daughter have spent that time with her mother, Mrs. Leon Hardwick, and family.

MRS. W. N. Humphreys and Mr. and Mrs. Arlis Humphreys attended funeral services Saturday of last week in Lubbudie for Earl Miller, 73, a former Amherst area resident. He died in a Friona hospital. Others attending were Mr. and Mrs. Blackie Seymore, and

Doyle Accus of Sudan. LARRY SCHOFER, younger son of Mr. and Mrs. Schovajsa was drafted Army Wednesday, and stationed at Ft. Polk. STUDY CLUB met at the home of Mr. and Mrs. Williams. Mrs. Williams, Mrs. W. P. Stone, hostesses.

Spanish Course To Be Taught At Morton

A course in conversational Spanish will be taught beginning Thursday night.

This is an eight-week course with classes held each day night from 7 to 9 p.m. at the Morton High School. The course will be of particular interest to business teachers, farmers and travelers.

Instructing the course are Frank Gonzales, Mesa South Plains College, and Language Department. Anyone wishing to be in the class may register for first class session.

For any additional information, contact Doug L. Hereford, director of education at South Plains College.

LARGE LIBRARY The University of Texas Library, containing more than two million volumes, largest library within 100-mile radius of Austin.



Bennett Chiropractic Clinic

106 EAST 10th

Phone 385-3450 For Appointment

HAMMONS FUNERAL HOME

Stock Show Results Told

Continued from Page 1

Amherst FFA; 5. Don Noles, FFA.

heavyweight-1. Nancy Britton, Olton 4-H; 2. Grady Durham, Olton FFA; 3. Duval, Amherst 4-H; 4. Ricky Littlefield 4-H; 5. Rodney Littlefield 4-H.

Champion Cross was shown by Nancy and reserve champion Cross was shown by Grady Durham.

ts, lightweight-1. Sharissa Olton 4-H; 2. Steve Carr, Littlefield 4-H; 3. Alan Wheeler, Olton 4-H; 4. Smith, Olton FFA; 5. Rodney Smith, Littlefield 4-H.

ts, heavyweight-1. Donice Olton 4-H; 2. Marlos May, Olton 4-H; 3. Aaron Quigley, Olton 4-H; 4. Kevin Reynolds, Sudan FFA; 5. Judy Quigley, Littlefield 4-H.

Champion Dorset was shown by Donice and reserve champion Dorset was shown by Marlos May.

shires, lightweight-1. Petra Lewis Springlake-Earth 4-H; 2. Freddie Littlefield 4-H; 3. Sheila Lewis, Springlake-Earth 4-H; 4. Sheila Lewis, Springlake-Earth 4-H; 5. Freddie Max-dan FFA.

shires, middleweight-1. Gary Sudan 4-H; 2. Sheila Lewis, Springlake-Earth 4-H; 3. Jimmy Mandrell, Littlefield 4-H; 4. Connie Ham, Sudan 4-H; 5. Lewis, Springlake-Earth 4-H.

shires, heavyweight-1. Donice Olton 4-H; 2. Kent Pittillo, Olton 4-H; 3. Karla Nicholson, Littlefield 4-H; 4. Tooley, Amherst 4-H; 5. Karla Olton, Littlefield 4-H.

Champion Hampshire was shown by Alan and the reserve champion Hampshire was shown by Sheila Lewis.

Southdowns, lightweight-1. Connie Kennedy, Olton 4-H; 2. Jimmy Mandrell, Olton 4-H; 3. Gary Kelley, Olton FFA; 4. Freddie Maxwell, Sudan FFA; 5. Gary Kelley, Olton FFA.

Southdowns, heavyweight-1. Chuck Kennedy, Olton 4-H; 2. Gary Lichte, Littlefield 4-H; 3. Guy Cannon, Olton FFA; 4. Billy Gary, Olton FFA; 5. Kelley Tooley, Amherst 4-H.

Champion Southdown was shown by Chuck Kennedy and reserve champion Southdown was shown by Gary Lichte.

SWINE:

Chester Whites, lightweight-1. Chuck Kennedy, Olton 4-H; 2. Brad Grisham, Littlefield 4-H; 3. Terry Phipps, Sudan FFA; 4. Kent Lewis Springlake-Earth FFA; 5. Pat Britton, Olton 4-H.

Champion Chester White was shown by Chuck Kennedy of the Olton 4-H and reserve champion Chester White was shown by Brad Grisham of Littlefield 4-H.

Crosses, lightweight-1. Robert Ahrens, Olton FFA; 2. Gary Cooper, Olton FFA; 3. Brian Muller, Olton 4-H; 4. Joe Foley, Littlefield 4-H; 5. Roger Muller, Littlefield 4-H.

Crosses, heavyweight-1. Jack Richards, Olton FFA; 2. Dan Foley, Littlefield 4-H; 3. Larry Baker, Sudan FFA; 4. Dan Foley, Littlefield 4-H; 5. Steve Foley, Littlefield FFA.

Champion Cross was shown by Robert Ahrens of the Olton FFA and reserve champion Cross was shown by Jack Richards of the Olton FFA.

Durocs, lightweight-1. Kenan Lichte, Littlefield FFA; 2. Robert Ahrens, Olton FFA; 3. Nancy Britton, Olton 4-H; 4. Jerry Stamps, Littlefield 4-H; 5. Jimi Bruton, Littlefield FFA.

Durocs, middleweight-1. Barry Pittman, Springlake-Earth FFA; 2. Cory Logsdon, Littlefield 4-H; 3. Cory Logsdon, Littlefield 4-H; 4. Brian Muller, Olton 4-H; 5. Robert Ahrens, Olton FFA.

Durocs, heavyweight-1. Kent Lewis, Springlake-Earth FFA; 2. Tommy Lewis, Olton FFA; 3. Weldon Eagle, Springlake-Earth FFA; 4. Gary Durham, Olton FFA; 5. Rodney Logsdon, Littlefield 4-H.

Champion Duroc was shown by Kent Lewis and reserve champion Duroc was shown by Barry Pittman.

Hampshires, lightweight-1. Pat Britton, Olton 4-H; 2. Grady Durham, Olton FFA; 3. Chuck Kennedy, Olton 4-H; 4. Gary Durham, Olton FFA; 5. Michael Muller, Littlefield 4-H.

Hampshires, heavyweight-1. Grady Durham, Olton FFA; 2. Dean Walden, Littlefield 4-H; 3. Steve Randolph, Springlake-Earth FFA; 4. Gary Kelley, Olton FFA; 5. Kevin Anderson, Springlake-Earth FFA.

Champion Hampshire was shown by Grady Durham of the Olton FFA and reserve champion Hampshire was shown by Dean Walden of the Littlefield 4-H.

Polands, lightweight-1. Alan Been of Springlake-Earth 4-H; 2. Chuck Kennedy, Olton 4-H; 3. Gary Cooper, Olton FFA; 4. Robert Cooper, Olton FFA; 5. Don Templeton, Springlake-Earth FFA.

As there was only one class in the Poland division, Alan Been showed the champion Poland and Chuck Kennedy showed the reserve champion Poland.

Spotted Poland China, lightweight-1. Steve Randolph, Springlake-Earth FFA; 2. Jerry Ogerly, Littlefield FFA; 3. Howard Tooley, Amherst 4-H; 4. Jerry Ogerly, Littlefield FFA.

There was only one class in the Spotted Poland China division, so Steve Randolph's pig won the championship and Jerry Ogerly's pig took reserve champion honors.

Logsdon, Littlefield 4-H; 3. Cory Logsdon, Littlefield 4-H; 4. Brian Muller, Olton 4-H; 5. Robert Ahrens, Olton FFA.

Durocs, heavyweight-1. Kent Lewis, Springlake-Earth FFA; 2. Tommy Lewis, Olton FFA; 3. Weldon Eagle, Springlake-Earth FFA; 4. Gary Durham, Olton FFA; 5. Rodney Logsdon, Littlefield 4-H.

Champion Duroc was shown by Kent Lewis and reserve champion Duroc was shown by Barry Pittman.

Hampshires, lightweight-1. Pat Britton, Olton 4-H; 2. Grady Durham, Olton FFA; 3. Chuck Kennedy, Olton 4-H; 4. Gary Durham, Olton FFA; 5. Michael Muller, Littlefield 4-H.

Hampshires, heavyweight-1. Grady Durham, Olton FFA; 2. Dean Walden, Littlefield 4-H; 3. Steve Randolph, Springlake-Earth FFA; 4. Gary Kelley, Olton FFA; 5. Kevin Anderson, Springlake-Earth FFA.

Champion Hampshire was shown by Grady Durham of the Olton FFA and reserve champion Hampshire was shown by Dean Walden of the Littlefield 4-H.

Polands, lightweight-1. Alan Been of Springlake-Earth 4-H; 2. Chuck Kennedy, Olton 4-H; 3. Gary Cooper, Olton FFA; 4. Robert Cooper, Olton FFA; 5. Don Templeton, Springlake-Earth FFA.

As there was only one class in the Poland division, Alan Been showed the champion Poland and Chuck Kennedy showed the reserve champion Poland.

Spotted Poland China, lightweight-1. Steve Randolph, Springlake-Earth FFA; 2. Jerry Ogerly, Littlefield FFA; 3. Howard Tooley, Amherst 4-H; 4. Jerry Ogerly, Littlefield FFA.

There was only one class in the Spotted Poland China division, so Steve Randolph's pig won the championship and Jerry Ogerly's pig took reserve champion honors.

BULA NEWS

MR. AND MRS. Tom Bogard visited over the weekend with relatives, Mr. and Mrs. Cleo Peabody and Mrs. Lena Pettit at McLean and with Mrs. Blanche Smith at the Clarendon Nursing Home and with Mr. and Mrs. Roy Blackman in Clarendon. Mrs. Roy Blackman returned home with them for a visit with Mrs. Nettie Blackman at the West Plains Nursing Home in Muleshoe.

MR. AND MRS. Lawrence Mitchell of Clute visited the past week with her father, Mr. and Mrs. Doc Boleyn.

MR. AND MRS. Lowell Walden of Earth spent Sunday afternoon and night with his mother, Mrs. Pearl Walden.

JOHN EDWARD HALL arrived Tuesday night at 11:45 weighing seven pounds at the Littlefield Hospital, to make his home with his parents, Mr. and Mrs. Jonnie Hall. This is the first child for the Halls. The maternal grandparents are Mr. and Mrs. Dewitt Tiller and the paternal grandparents are Mr. and Mrs. John Hall of Hale Center.

KitchenAid

FOOD WASTE DISPOSERS

Built to grind finer, faster, quieter and last longer.

Grind all kinds of food waste. Heavy duty. Powerful 1/2 H.P. motor. Sound insulation. No more wrapping messy garbage!



Ken's T.V. Appliance

SALES and SERVICE

711 HALL AVENUE

PHONE 385-3777



Buy EVERYTHING on YOUR list at PIONEERS

DEL MONTE CORN 303 CAN 2 FOR 49¢

DASH JUMBO SIZE 1.99

NORTHERN BATHROOM TISSUE 4 ROLLS 39¢

GERBER STRAINED BABY FOOD 4 CANS FOR 49¢

SHURFINE SHORTENING 3 POUND CAN 79¢

MARKET SPECIALS

PORK STEAK EXTRA LEAN LB.	49¢
SHURFINE, CANNED HAM 3 LB. CAN	269
SWIFT'S PREMIUM ARM ROAST LB.	79¢
KORNLAND BACON LB.	39¢
FRESH GROUND HAMBURGER LB.	49¢
AMERICAN BEAUTY MACARONI 10 OZ.	25¢
SHURFINE SACCHARIN TABLETS 500 COUNT	49¢
SHURFINE ASPIRIN 200 COUNT	49¢
SHURFRESH CRACKERS LB. BOX	19¢
SHURFRESH, SOFT MARGARINE LB.	43¢

PRODUCE

RADISHES CELLO BAG	10¢
YELLOW ONIONS LB.	7¢
RUBY RED GRAPEFRUIT LB.	10¢

COCONUT 7 OZ. 2 FOR 49¢

SHURFINE SLICED OR CRUSHED PINEAPPLE NO. 2 CAN 39¢

VAN CAMP 300 CAN PORK & BEANS 2 FOR 29¢

CINDERELLA HAIR SPRAY 13 OZ. 49¢

LADY BREVONI DELUXE PANTY HOSE

PIONEER SUPERMARKET

LEE HAYNES 205 WEST 3rd. ALVIS TUBBS

NORGE by FEDDERS

18-lb. CAPACITY

2 SPEED

6 CYCLE

Reg. \$289.95

On Sale This Week For \$215.50

BEST FOR PERMANENT PRESS

Automatic Washer

with all-new revolutionary turbosweep 202

Exclusive all-new agitator creates its sweeping 202" turbulence which sweeps lint from wash clothes really clean and is gentle enough for the most delicate fabrics.

★ Porcelain Top & Lid

★ Water Saver Control

YOUR NEW NORGE DEALER

Ken's T.V. Appliance

SALES and SERVICE

HALL AVENUE PHONE 385-3777



ROBERT AHRENS, Olton FFA member, took Reserve Grand Championship Swine honors in the Annual Lamb County Junior Livestock Show.



NANCY BRITTON, Olton 4-H'er, showed the Reserve Grand Champion lamb in the Annual Lamb County Junior Livestock Show here Friday night.

Cotton Problems Are Presented

In a paper presented to the 1971 Beltwide Cotton Production Research Conference Jan. 12-13 in Atlanta, Ga., Jim Valliant, director of research at High Plains Research Foundation, points out that one of the major problems of cotton production on the High Plains is the relatively short growing season.

In his discussion, "Cotton Production as Influenced by Cultural Design in the Texas High Plains," Valliant outlined six of the cultural practices currently under study for improved cotton production at the Foundation.

Included were production data on the interplant system, skip-row designs, solid planted cotton with every other row irrigated, solid planting and solid irrigation, solid planting with irrigation by heated water and solid planting with no summer irrigation.

Valliant concluded that cultural designs had little or no effect on grade or strength of lint cotton but staple length and micronaire were influenced by the different designs.

"Fun to Spare" **GO BOWLING**

JOIN A JUNIOR LEAGUE

Ages 8 - 18

Balls and Shoes Furnished

Free Instruction By Bowling Instructor Bob Jones.

Lessons Begin At 1: P.M. Sat.

Inquire About Adult Leagues.

Lamb Bowling Lanes

OPEN 6:00 P.M. WEEKDAYS 2:00 P.M. Sat. And Sun.

Form No. 200—Revised January, 1969 State Bank No. 1788

PUBLISHER'S COPY

Consolidated Report of Condition of Security State Bank of Littlefield in the State of Texas and Domestic Subsidiaries at the close of business on December 31, 1970.

	DOLLARS	Cts.
ASSETS		
1. Cash and due from banks (including \$ NONE unreported debits)	275,215	27
2. U.S. Treasury securities	574,386	87
3. Securities of other U.S. Government agencies and corporations	201,484	83
4. Obligations of State and political subdivisions	532,031	92
5. Other securities (including \$ NONE corporate stocks)	None	00
6. Trading account securities	1,100	00
7. Federal funds sold and securities purchased under agreements to resell	6,007	45
8. Other loans	232	00
9. Bank premises, furniture and fixtures, and other assets representing bank premises	None	00
10. Real estate owned other than bank premises	None	00
11. Investments in subsidiaries not consolidated	None	00
12. Customer's liability to this bank on acceptances outstanding	22	14
13. Other assets	15,453	11
14. TOTAL ASSETS	1,805,111	25
LIABILITIES		
15. Demand deposits of individuals, partnerships, and corporations	5,783	68
16. Time and savings deposits of individuals, partnerships, and corporations	6,827	30
17. Deposits of United States Government	14	00
18. Deposits of State and political subdivisions	1,086	86
19. Deposits of foreign governments and official institutions	None	00
20. Deposits of commercial banks	None	00
21. Certified and officers' checks, etc.	30	00
22. TOTAL DEPOSITS	14,650,979	56
(a) Total demand deposits	5,783	68
(b) Total time and savings deposits	8,867	88
23. Federal funds purchased and securities sold under agreements to repurchase	None	00
24. Other liabilities for borrowed money	None	00
25. Mortgage indebtedness	None	00
26. Acceptances executed by or for account of this bank and outstanding	None	00
27. Other liabilities	15	14
28. TOTAL LIABILITIES	14,650,979	56
29. MINORITY INTEREST IN CONSOLIDATED SUBSIDIARIES	None	00
RESERVES ON LOANS AND SECURITIES		
30. Reserve for bad debt losses on loans (set up pursuant to Internal Revenue Service rulings)	261	69
31. Other reserves on loans	None	00
32. Reserve on securities	None	00
33. TOTAL RESERVES ON LOANS AND SECURITIES	261	69
CAPITAL ACCOUNTS		
34. Capital notes and debentures (specify interest rate and maturity of each issue outstanding)	None	00
35. Equity capital, total	None	00
36. Preferred stock-total par value	None	00
(No. shares outstanding)	None	00
37. Common stock-total par value 10.00	300	00
(No. shares authorized 30,000; No. shares outstanding 30,000)	None	00
38. Surplus	300	00
39. Undivided profits	449	01
40. Reserve for contingencies and other capital reserves	None	00
41. TOTAL CAPITAL ACCOUNTS	1,049	01
42. TOTAL LIABILITIES, RESERVES, AND CAPITAL ACCOUNTS	15,699,980	57
MEMORANDA		
1. Average of total deposits for the 13 calendar days ending with call date	13,396	94
2. Average of total loans for the 13 calendar days ending with call date	5,997	37
3. Unearned discount on installment loans included in total capital accounts	None	00

I, Doyle L. Patton, Vice President & Cashier, of the above-named bank, do solemnly swear that this report of condition is true and correct, to the best of my knowledge and belief.

State of Texas, County of Lamb, My commission expires 6-1, 1971. Carol Black, Notary Public.

Former Littlefield Businessman Named College Vice President

Ed Packwood, former West Texan who moved to Arizona in 1952, has been appointed vice president of development at California Baptist College, Riverside.

Packwood, who held oil and automobile dealerships in New Mexico and at Littlefield, has for the last 12 years been a real estate broker and land developer in the Phoenix, Ariz. area.

Prior to that he served as business manager of Grand Canyon College, another Southern Baptist institution. Long active in Baptist work, Packwood has served as Arizona Baptist Foundation secretary, State Brotherhood secretary and associate executive secretary, among other positions.

Honorary positions in the Southern Baptist Convention include six years on the Executive Committee and five

years on the Capital Needs Five-Year Projection Committee, and for the last five



ED PACKWOOD

years on the Baptist Public Affairs Committee.

Though a layman, Packwood has participated in evangelistic campaigns in Scotland and in Japan. He has visited Baptist mission fields in the Orient, Central and South America, Europe and the Near East, including the Holy Land. He represented the Brotherhood Commission in conferences in Hawaii and served as a delegate to the Baptist World Alliance.

California Baptist College is celebrating its "Coming of Age" this session as the college was founded in 1950. Inauguration of Dr. James R. Staples as the fourth president will take place on Feb. 12, at which time Mrs. Ronny D. Cox, the former Ann James, Plainview, will represent Wayland Baptist College in the professional of distinguished educators and other representatives.

HART CAMP

MRS. EDWIN OLIVER

262-4242

REV. CHARLES Vanlandingham, pastor of First Baptist Church of Raton, N. M. and a former pastor of the Hart Camp Baptist Church was elected to serve as president for this year of the New Mexico Wayland Baptist College Club, when they met for a breakfast during the New Mexico Baptist State Convention. Rev. Vanlandingham received his BS degree from Wayland Baptist College in 1949, while he was pastor here.

SUNDAY DINNER guests in the John Walker home were Mr. and Mrs. L. B. Snyder of Plainview, Joel Ige and Funcho Akinglala, all students of Wayland Baptist College in Plainview. Joel and Funcho are here in the states from their homes in Nigeria, Africa. They all attended the Sunday morning church services at the Baptist Church.

RECENT GUESTS of Mr. and Mrs. K. Sorrenson were their grandchildren, Fredda and Ronnie McElfish of Lubbock, Debbe Oliver and Rev. and Mrs. John Walker, Robbie and Lori.

DURING THE HOLIDAYS Urby Bristow spent a few days in the Littlefield Hospital for further treatment on his back that he injured while working at the gin a few weeks ago. He is back at home now.

MR. AND MRS. Aubrey Neinaast and children were Sunday dinner guests of Mr. and Mrs. Edgar Schulz in Littlefield.

MRS. DAN PUCKETT and Mrs. Paul Hukill were in Plainview Thursday to visit Mrs. Homer Hukill, who is hospitalized recuperating from hip surgery. They also visited at Methodist Hospital in Lubbock with Mrs. R. W. Stanfield who had surgery on Monday.

MRS. L. E. BALL spent a few days last week in Lubbock with her daughter and family, Mr. and Mrs. Fred Bordon and children. Mrs. Bordon was ill with the flu. Mrs. Ball brought the Bordon children home with her and they will be here a few days while their mother is recuperating.

MR. AND MRS. Kerwin Oliver visited Sunday night with his parents and sister, Mr. and Mrs. Edwin Oliver and Debbe. MELINDA AND MARK Blessing spent Friday and Saturday night in Littlefield in the Barry Armes home.

A WMS MEETING was held Monday morning at the Baptist Church. The program was a study on "Search for Continuing Culture of the Indian-American". Present for the study were Mmes. L. W. Sullivan, Dewey Parkey, Blanton Martin and Edwin Oliver.

REV. JOHN WALKER, pastor of the Hart Camp Baptist Church, is attending the Micro

term at Wayland. He is taking a course in Sociology.

ROY HENDRICK has quit farming, but will continue to live here. He is employed by Delapp Industries of Mesa, Ariz.

ROY HENDRICK spent a few days last week in Yazoo City, Miss. where he made a tour of the Amco Implement factory.

SUNDAY DINNER guest of the Blanton Martin was Mr. J. E. Mayfield of Knights Rest Home. Mayfield was a guest at the Sunday morning church services at the Baptist Church. Martin carried him back to Littlefield in the afternoon.

MR. AND MRS. Blanton Martin were in Slaton Friday and spent the night with Martin's mother, Mrs. S. D. Martin. Thursday night Mrs. Martin's house in Southland burned. She had moved from the house about a month ago after having lived there forty years. Origin of the fire is not known. A young farm couple had moved their furniture into the house a day earlier but they were not in the house when it burned. All of their furniture burned however.

VISITING in the Blanton Martin home Sunday afternoon were Mrs. Martin's sister and nephew, Mrs. Jo Spikes and Jimmy Spikes of Lubbock.

MR. AND MRS. Ronnie Jones and children of Hereford spent the weekend with Mrs. Jones parents and sister, Mr. and Mrs. O. J. Neeley and Teresa.

MR. AND MRS. L. A. Smith received word Saturday night that their daughter and son-in-law, Lt. and Mrs. Mike Allison, who live in Virginia were in a car wreck Saturday which demolished their car and hospitalized Mrs. Allison with a serious and painful back injury. She will be hospitalized for some time. Lt. Allison received some cuts and glass in his hands but was not seriously injured. For anyone wishing to send cards or letters, send them to Mary Bess Allison, Room 316, National Naval Hospital, Bethesda, Md.

MRS. CHARLES Vanlandingham's brother, Ernest Nicholson of Denver City died recently following a heart attack. He also was ill with Emphysema. The Vanlandingham family attended the funeral services and visited relatives in this area.

CHUCK Vanlandingham who is a senior in Raton High School, son of Rev. and Mrs. C. H. Vanlandingham of Raton, N. M. made State Chorus for the second year in succession and will sing in the State Chorus groups in Albuquerque. Another son of the Vanlandinghams, Gene Vanlandingham, is in the Army stationed in De Nang, Vietnam. He has around three more months to serve there before returning to the states.

PAM FOSTER, daughter of Mr. and Mrs. V. L. Foster, fell and injured her leg in a basketball game between Wayland and Temple Junior College Saturday night in Ft. Worth. She was carried to the hospital and x-rays were made of her leg. The doctor reported bruises and stretched ligaments. The Wayland team won the game by eleven points. Pam returned from Mississippi with the basketball team Friday night. While in Mississippi they were iced in for a time. They won both games in Mississippi.

HART CAMP students in Olton Junior High who were on

the semester honor roll were

Cindy Neinaast, eighth grade, daughter of Mr. and Mrs. Aubrey Neinaast and Brian Muller, sixth grade, son of Mr. and Mrs. Don Muller. Kimmie Foster, daughter of Mr. and Mrs. V. L. Foster was given the P.E. Award in Junior High.

ELECTRIC WELL MOTOR SERVICE PANELS & CONTROL SERVICE

GIN MOTOR SERVICE INDUSTRIAL WINDING ELECTRIC HOIST REPAIR

SERVICE CALLS \$7.00

A & T ELECTRIC CO.

Motor Rewind and Repair

Free Pick Up and Delivery

SHOP 765-9818 TROY ANDREWS 2215 CLOVIS ROAD

NIGHTS 795-8372, 792-2828 JOE CROUCH LUBBOCK, TEXAS 79413

On The Farm Tire Service

We'll come right to your farm and vice your tires on job!

Flats fixed on any size tire

Cuts-Brakes

Valves Replaced

Liquid Drained-Refilled

GOODYEAR

RICHEY'S

1401 E. 9th 385-3747

FOR CLASSIFIEDS

DIAL 385-4481

You'll be Dollars ahead...

PATIO MEXICAN DINNERS

COMBINATION DINNER BEEF ENCHILADA DINNER CHEESE ENCHILADA DINNER

EACH 53¢

WE ARE HAPPY TO HAVE J.L. DALTON AS OUR NEW MARKET MANAGER. HE HAS MANY YEARS OF EXPERIENCE.

Chuck Roast Lb 49¢

Shurfresh Biscuits 7 For 69¢

Golden Crust Bread Family Loaf 2 For 47¢

Borden's Ice Cream 1/2 Gal. 69¢

Parkay Margarine Lb 29¢

Dinty Moore BEEF STEW 24 Oz Can 69¢

Nestle's CANDY 30 Pak 69¢

Foust Food

STORE HOURS 8 A.M.-7 P.M.

Dial 385-4481 For Classified

Call No. 476 Charter No. 12824 National Bank Region No. 11

REPORT OF CONDITION, CONSOLIDATING DOMESTIC SUBSIDIARIES, OF THE

THE FIRST NATIONAL BANK of LITTLEFIELD, TEXAS

IN THE STATE OF TEXAS AT THE CLOSE OF BUSINESS ON December 31, 1970 PUBLISHED IN RESPONSE TO CALL MADE BY COMPTROLLER OF THE CURRENCY, UNDER TITLE 12, UNITED STATES CODE, SECTION 161.

	Dollars	Cts.
ASSETS		
Cash and due from banks (including \$ None unreported debits)	2,878	60
U.S. Treasury securities	395	18
Securities of other U.S. Government agencies and corporations	None	00
Obligations of State and political subdivisions	180	23
Other securities (including \$ None corporate stocks)	9	00
Trading account securities	None	00
Federal funds sold and securities purchased under agreements to resell	1,250	00
Loans	1,892	02
Bank premises, furniture and fixtures, and other assets representing bank premises	17	47
Real estate owned other than bank premises	None	00
Investments in subsidiaries not consolidated	None	00
Customer's liability to this bank on acceptances outstanding	12	97
Other assets (including \$ None direct lease financing)	6	19
TOTAL ASSETS	6,639	119
LIABILITIES		
Demand deposits of individuals, partnerships, and corporations	5,071	87
Time and savings deposits of individuals, partnerships, and corporations	728	31
Deposits of United States Government	14	00
Deposits of State and political subdivisions	14	75
Deposits of foreign governments and official institutions	None	00
Deposits of commercial banks	None	00
Certified and officers' checks, etc.	68	05
TOTAL DEPOSITS	5,914	113
(a) Total demand deposits	5,157	76
(b) Total time and savings deposits	756	37
Federal funds purchased and securities sold under agreements to repurchase	None	00
Liabilities for borrowed money	None	00
Mortgage indebtedness	None	00
Acceptances executed by or for account of this bank and outstanding	None	00
Other liabilities	15	10
TOTAL LIABILITIES	5,929	21
MINORITY INTEREST IN CONSOLIDATED SUBSIDIARIES	None	00
RESERVES ON LOANS AND SECURITIES		
Reserve for bad debt losses on loans (set up pursuant to IRS rulings)	65	30
Other reserves on loans	None	00
Reserve on securities	None	00
TOTAL RESERVES ON LOANS AND SECURITIES	65	30
CAPITAL ACCOUNTS		
Capital notes and debentures	None	00
% Due \$	None	00
Equity capital-total	639	59
Preferred stock-total par value	None	00
(No. shares outstanding)	None	00
Common Stock-total par value	100	00
(No. shares authorized 1,000; No. shares outstanding 1,000)	None	00
Surplus	200	00
Undivided profits	339	59
Reserve for contingencies and other capital reserves	None	00
TOTAL CAPITAL ACCOUNTS	639	59
TOTAL LIABILITIES, RESERVES, AND CAPITAL ACCOUNTS	6,639	119
MEMORANDA		
Average of total deposits for the 13 calendar days ending with call date	5,709	15
Average of total loans for the 13 calendar days ending with call date	1,785	03
Interest collected not earned on installment loans included in total capital accounts	None	00

I, James T. Lee, Cashier, of the above-named bank do hereby declare that this report of condition is true and correct to the best of my knowledge and belief.

Witness my hand and the seal of this bank this 17th day of January, 1971.

J. Don Bell, J. Verlin Farr, J. C. O. Stone, Directors

Depository Bids Being Taken

Lamb County commissioners and the county judge met in a called session of the commissioners' court Friday to authorize a publication that the county is taking bids for the county depository.

Notice was given that any banking corporation, association or individual banker in Lamb County may turn in a bid as the depository for county funds on Feb. 8, 1971.

The legal notice of this action is in today's paper.