

Band Boosters Meet Monday

Band Boosters of Littlefield will meet Monday night, Sept. 8, in the senior pool band hall, when pictures of the band to San Antonio will be shown. Officers for this year are Patty Zahn, president; Harvey Gilliam, vice president; Jerry Smith, secretary; Bill Black, treasurer; and Wayne Johnson, assistant treasurer.

A membership drive is being conducted and the price per year is \$2.50. Donations, which entitles the bearer to all concerts free with membership.

Rotarians Slate Chili Supper

Littlefield Rotary Club is sponsoring a chili supper before the game between the Littlefield and Lubbock football teams Friday, Sept. 12, from 6:30 to 9:30 p.m. in the agriculture and community center on South Hall Avenue (near Hwy. 385).

Rotarians Club Room Sale

Sept. 12-13

Littlefield Lions Club will have its room sale Friday and Saturday, Sept. 12 and 13, when members will be selling quality blind-made products to the public and local merchants.

Cancer Society Meets At Earth

Lamb County unit of the American Cancer Society met Tuesday night in the Community Building in Littlefield.

Pool Board Meet Monday

Littlefield School Board of Trustees will meet Monday night at 8 p.m. in the High School lunchroom for a regular school business session.

GED Class Registration Set

Registration for basic and GED classes for adults will be conducted Monday night at the Junior High School building at 7:30 p.m.

City Adopts \$1,007,842 Budget, Sets \$1.29 Tax Levy

By JOELLA LOVORN
Five new ordinances were passed by Littlefield's City Council in their regular meeting Thursday night. Following a public hearing on the budget for fiscal year 1975-76— at which no one was present to discuss the new budget— councilmen unanimously passed an ordinance to adopt the \$1,007,842 budget as presented, and set the tax levy at \$1.29 per \$100 assessed valuation.

the mayor and councilmen with his budget message, which stated: "Gentlemen: The 1975-76 proposed budget is submitted to you for your consideration and approval. Excellent cooperation is acknowledged for the participation of the Department Heads and other City employees in the preparation of the 1975-76 Budget. Without the careful analysis of the needs of the City for the coming year, staying within our present taxing structure would have been difficult.

"The increases in revenue reflected in the 1975-76 budget are based on an upward tax adjustment and anticipated service charges from increased usage. During 1974-75 the City and School tax offices were consolidated with the City accepting the property values and percentage of assessment of the School. This will result in a slight upward adjustment in our overall tax base, although some individuals will not experience this adjustment. We are already experiencing some growth from

the new textile mill and we are anticipating that this growth will be reflected in increases in such revenue items as water sales, sewer charges, sales taxes, and sanitation charges. "Qualified employees are a requirement of any business and we are proud of our efficient employees. The City must continue to pay competitive salaries in order to retain the employees we hire and train. A major increase in expenditures is due to salary and wage increases and increases in our

retirement program. Both of these items we feel are necessary to our continued efforts to be a good employer. Capital improvements were held to a minimum. Other expenditures reflect our attempt to continue to provide efficient and effective municipal services and reflect little, if any, expansion of those basic services.

LAMB COUNTY

LEADER-NEWS

VOLUME 53 NUMBER 38 LITTLEFIELD, LAMB COUNTY, TEXAS, SUNDAY, SEPT. 7, 1975 2 SECTIONS 16 PAGES

15 CENTS
TAX INCLUDED



MRS. FIDELA GUITERREZ, 62, died of injuries she received in an accident at 9:26 a.m. Friday morning at Hall and E. 14th. Her husband, 70, is in Medical Arts Hospital suffering with chest injuries. The Guiterrez vehicle was traveling south on Hall and attempted to make a left turn onto E. 14th, in front of a northbound vehicle driven by Coy Ansel Howard of Whitharral. The Howard vehicle skidded 70 feet before the impact. (Staff Photo)

Three County 4-H'ers Win District Record Contest

Twelve Lamb County 4-H'ers submitted record books for judging in the District 2 4-H Record Book Contest, and three of them won the contest and the right to have their record books submitted for judging on the state level.

District winners are Glenn Branscum, Dina Jo Hampton, and Cory Logsdon. "These youth are to be commended for the contributions they have made to Lamb County 4-H. They have worked hard to win this honor," said Mrs. Dorothy Powell and Jim Kuykendall, County Extension Agents.

Extension Classes Offered At LHS

Persons interested in extension courses from South Plains College, to be offered in Littlefield, will begin enrollment Tuesday night at 7:30 in room 9 of the Littlefield High School building.

Wildcats Sink Pirate's Ship In Season Opener

"The Cats Are Back" was the cry of one Wildcat football player as he entered the dressing room immediately after Littlefield defeated Lubbock Cooper in the fall lid-lifter, 37-7. And if Friday night's game is an indication of things to come, he is right! Littlefield completely dominated the game which saw the 'Cats amass 407 yards offensively as compared to the visitors 186 and Littlefield totaled 16 first downs and the Pirates managed 13.

The Wildcats wasted little time in showing the home folks their '75 version of a scoring machine as the first marks were put on the board with 9:19 remaining in the first quarter as tailback Steve Cruz scooted 46 yards through the middle of the Cooper defense for the score. Bill Turner's kick was good for the point after and the 'Cats took a 7-0 lead.

The score came after both teams had turned over the ball, Littlefield via the pass interception route and Cooper by way of the fumble. Another mistake by the visitors led to Littlefield's next score.

The Wildcats had failed to score on their third possession and Turner was forced to punt. Kelly Choban, Cooper's workhorse for the night, caught the ball on the 6 yard line and returned it to the 9. A clipping penalty moved it back to the four and a half. Cooper was unable to move from deep in their own end of the field as the perennially-tough 'Cat defense led by Reginald Payton, Steve Cruz, Rudy Ayala, Jimmy Durham and Rick Hopping forced the Cooper team into a safety and the 'Cats took a 9-0 lead with 2:48 left in the first quarter.

Neither team was able to move on their next possession and it wasn't until a Wildcat fumble on their own 22 yard-line did Cooper have a scoring opportunity.

Choban recovered the 'Cat fumble and on the third play of the series, he hit Tommy Berry with a 15-yard scoring pass and the PAT kick was good and the

game stood at 9-7 with 5:07 left in the first half.

Payton returned Cooper's kickoff to the 'Cat 34 yard line in a determined bit of running and carried on the first play of the series to the 40. Again Payton carried on the next play, this time to the 44 for the first down.

Quarterback Ronald Parmer, displaying good ball-handling, faked through the middle and then passed incomplete to Danny Martinez. Two plays later however, Parmer found the target in the form of Durham and hit him with a 46 yard pass that brought the ball to Cooper's 15 yard line.

Turner carried the ball over two plays later from the 1/2 foot line to pad the lead at 15-7 and the senior tailback then carried over for the two extra points to put the 'Cats in front, 17-7.

The only other scoring opportunity of the first half went awry as a 38 yard field goal attempted by Turner was off to the right.

HALFTIME
The Wildcat band, under the direction of Tom SoRelle, did an excellent job in their season debut as they performed at See WILDCATS, Page 7, Sec. 2

Short Joyride Lands Pair In Jail

Two were jailed by county authorities here Friday after a new 1975 Chrysler was stolen from the showroom floor of Garland Motor Company sometime after midnight Thursday.

George Henry Morgan, 26, of Littlefield, is charged with the theft of the car, and John McClendon, 22, is being held as a material witness in the theft of the \$8,000 vehicle.

The pair apparently gained entry into the car dealership by breaking a window. After moving a pickup, the car was backed off the showroom floor and removed through garage doors.

About 2 a.m. Friday, James Cox, Littlefield chief of police, received a call to check on a car one mile east of Amherst on U.S. 84. The pair apparently got that far and ran out of gas.

With an estimated total of \$897,304 in funds available, and an estimated \$892,842 in expenditures, the anticipated contingency would be \$4,462.

The second ordinance that was passed by the council was the ordinance levying taxes and providing for the interest and sinking fund for the fiscal year of 1975-76, and providing for the time and manner of paying the ad valorem taxes levied.

The tax rate to be applied to the value of property situated within the city limits of Littlefield as of Jan. 1, 1975 is to be \$1.29 per \$100 assessed valuation, unless that property is exempted by the Constitution of the State of Texas or other laws applicable to the City of Littlefield.

Taxes will become due Oct. 1, 1975 and may be paid up to and including Jan. 31, 1976 without penalty. If not paid by then, taxes will become delinquent on Feb. 1, 1976. If paid during February, one percent will be added; if paid during March, two percent will be added; during April, three percent; during May, four percent; during June, five percent; and on or after July 1, eight percent. Those unpaid taxes will bear interest at the rate of 1/2 of one percent after Feb. 1, with rates increasing 1/2 of one percent each month until the rate of six percent is reached. After that, such unpaid taxes will bear interest at the rate of six percent per annum.

This tax rate and penalty and interest scale is the same as the school's, and that tax office will be collecting both taxes through the same computerized system. Councilmen passed the ordinance See COUNCIL, Page 4

Dinner Style Show Set Tuesday Evening

The Dinner Style Show sponsored by "We, The Women" will be held Tuesday, Sept. 9, at 7 p.m. in the Lamb County Agriculture and Community Center.

The theme for the show is "Fall Into Fashions of '76" featuring cotton fashions of 1976 as well as the modern fashions of today.

Tickets for the meal and show are \$3.50 and may still be purchased from the members of "We, The Women" and Carol Black at Security State Bank. The meal will be catered by Vann's Catering of Lubbock.

Kip Curshall and Joy Breedlove will narrate the show and the Red Coats of the Chamber of Commerce will usher.

Liz Lawson, "Miss Lubbock," will provide special entertainment as well as model, and "Miss Lamb County," Pam Parrot, will also be on hand to provide entertainment.

Local merchants will provide door prizes which will be given away.

The merchants participating and their models are:
ANTHONY'S— Jody Davis, Sharon Collins, Carolyn Milligan, Gaye Weaver, Mikel Spies, J. W. Bitner, Roger McKissack;
PIERCE'S— Melanie Byers, Rodney Byers, Shannon Warren, Leslie Ann Warren, David Spies, Cherie Lara, Misty Maxfield and Bobbie Jo Crittenden;
WARE'S— Hilda Cummings, Kay Nelson, Carrie Ware, Cindy Jones, Donna Knox, Shea Lynn Knox, Tiffany Simpson, Jason Butler, Kristy Friday, Hillary Harlan, Elise Gilliam, Kelly Kloiber, Leslie Lowe, Gena Wells, Roger Lowe and Brad Bussey;
NEWTON'S— Peggy Johnson, Twila Sawyer, Viola Gosdin, LaPearl Embry, Mary Zoe Owens;
FRONTIER— Thelma Connell, Judy Butler and Paula Bell;
FASHION HOUSE— Yvonne Maxfield, Debbie Maxfield, Kaye Tunnell, Becky Camel, Gladys Robinson;
MOSS'S— Cindy Moss, Shelly Hargrove, Lehman Jones, Pat Marcum;
PAZAZ— Debbie Burks, Lanelta Harlan, Angela Arms, Carol Hooper and Brenda Boomer.



LITTLEFIELD'S first load of milo arrived at Goodpasture, Inc. Wednesday afternoon. Producers were David Goen and Norman Emfinger, and Emfinger accepts the \$50 bonus check from Leon Willis, right, manager of Goodpasture. The Northrup King 180 grain yielded about 6,000 pounds per acre and tested 15.41 moisture. It was grown on irrigated land six miles east of Littlefield, and was planted April 24 and 25. Their load was only a couple of hours ahead of the second load. (Staff Photo)

"FALL INTO FASHIONS OF '76" We, The Women Dinner Style Show Tuesday Night Sept. 9 at 7 p.m.



THELMA CONNELL models a wrap around skirt and jacket for the Frontier Store.



PEGGY JOHNSON is one of the models who will be showing fashions for Newton's.



PAT MARCUM is shown in the new look which is bringing back the look of the 50's.



JODY DAVIS and Gaye Weaver discuss the Dinner Show as they prepare to model for Anthony's.



DARLA HEDGES models for Penny's wearing fashion bandana print blouse and shoes and faded blue denim bibbed overall effect in the new length.

A Banker's Viewpoint....

Sometimes, in these days, it seems people have to choose between things to get upset about.

Such is the case of American wheat sales overseas. The thumb-in-the-dike stand of longshoremen against sales of wheat to Russia is dramatic, but it seems to us the dock workers chose the wrong thing to vent their anger against. After all, the wheat sales to Russia are commercial sales, for cash. That's free enterprise—the principle we're supposed to believe in. While the sales may push up slightly the prices of meat and other foods, they also will force Russia to release some of its hoard of gold and will help this country's balance of payments.

The sales also will help this country's wheat farmers who, to say the least, haven't always gotten a fair break at the market place.

The longshoremen would have been better advised to protest another sale of wheat, one that has almost completely escaped the attention of the American people.

This is a sale by the United States government to Pakistan.

In a deal signed under our Food for Peace program, this country has agreed to deliver to Pakistan by June 30, 1976, eleven million bushels of wheat, on the following terms:

This country lends the money to Pakistan to "pay" for the wheat.

Payments on the loan will be deferred for ten years, during which time Pakistan will pay 2 per cent interest.

After the ten year grace period, the interest rate will move up to 3 per cent, but Pakistan will have another 40 years to repay the loan.

That loan, incidentally, is piled on top of another made last fiscal year covering 17 million bushels of wheat shipped to Pakistan.

Somehow, we can't visualize Pakistanis in the year 2025 eagerly paying for wheat eaten by their grandfathers in 1975.

Also, we can't exactly comprehend the economics of a loan by the government at 2 per cent interest when it is paying over 8 per cent to borrow long term money for its own needs.

In other words, the so-called sale of wheat to Pakistan is nothing more nor less than a gift. Perhaps the gift is justified, for the Pakistanis are a suffering people.

But we think this gift, like many others of its kind that are made across the globe, would set better with the American people if labeled as such rather than being shrouded by a phoney loan at a phoney rate of interest.

We believe in this country and its people. Like the writers of our Constitution, we believe that the strength and the real intelligence of government originates with the people. So we urge all our citizens, here and elsewhere, to do our part—keep up with public issues and send our opinions about them to our elected representatives.



MEMBER FDIC

YOUR COMMUNITY SERVICE BANK



KAYE TUNNELL is ready for cold weather in this outfit she will be modeling for the Fashion House.



LANELTA HARLAN is ready for back to school socials in this skirt and blouse from Pazaz.

SEE STORY ON PAGE ONE

PLAYTEX FALL SALE

SAVE UP TO \$2.00

Sale ends Oct. 6, 1975

ON SALE FOR THE FIRST TIME

SAVE \$1.00 ON INSTEAD*

the bras that give fullness without falseness

- #108—Tricot Cups Reg. \$7.50 NOW ONLY \$6.50
- #109—Lace Cups Reg. \$7.50 NOW ONLY \$6.50
- #136—Tricot Cups—Plunge Style Reg. \$7.50 NOW ONLY \$6.50

SAVE \$1.00 on CROSS YOUR HEART

Undercup Support Panel Regular and Longline Bras

- #813 LONGLINE LACE CUPS Reg. \$9.95 NOW ONLY \$8.95
- #120—Lace Cups, Stretch Straps Reg. \$6.50 NOW ONLY \$5.50*
- #122—Lace Cups, Fiberfill Lined Reg. \$6.95 NOW ONLY \$5.95
- #627—Tricot Cups, Stretch Straps Reg. \$6.50 NOW ONLY \$5.50*
- #629—Tricot Cups, Fiberfill Lined Reg. \$6.95 NOW ONLY \$5.95*

SAVE \$2.00 on i can't believe it's a girdle* girdles... unbelievable control, yet lightweight

STYLE	SIZE	REG.	NOW ONLY
#2500 Open	M-XXXL*	\$13.95	\$11.95
#2502 Brief	S-XL*	\$11.95	\$ 9.95
#2504 Shortie	S-XXL*	\$13.95	\$11.95
#2506 Average Leg	S-XXL*	\$14.95	\$12.95
#2508 Long Leg	S-XXXL*	\$15.95	\$13.95
#2510 High-Waist Open	M-XXL*	\$16.00	\$14.00
#2512 High-Waist Long Leg	M-XXXL*	\$18.95	\$16.95
#2514 High-Waist Average Leg	M-XXXL*	\$17.95	\$15.95

*All XL, XXL prices—\$1.00 more. **All XXXL, XXXXL prices—\$2.00 more.

Ware's

Nu Nu Chapter Conducts Meeting

Nu Nu Exemplar of Beta Sigma Phi met in the Flame Room Monday, Sept. 1, with Doris Simpson as the first regular for the 1975-76 year. Simpson, a former member, is now living in Oklahoma, was a guest at the meeting.

Carolyn Clopton, teacher of special education class, thanked you for the parties sponsored by the chapter.

Goheen was the winner of the charm.

Plans are to be made in the future to help the MH/MR chapter will have a

rummage sale from 8 a.m. till 6 p.m. at 101 East 13th Street.

Those present for the meeting were Doris Simpson, Judy Newman, Twila Goheen, Marilyn Parker, Paula Schroeder, Loretta Winfield, Mary Knox, Jane Ann Byers, Carolyn Warren, Ann Manning, Kay Pace, Janet Houk, Pat Conway, Myrlene Bridwell and Carolyn West.

The cultural program "Women, Her Heritage And Her Hope" from "Heritage and The Woman," was presented by Marilyn Parker, Judy Newman, Jane Ann Byers and Mary Knox.

The hostesses, Jane Ann Byers and Loretta Winfield, served dinner to those present at the meeting.



THE MINIBUS for senior citizens stops enroute to town sometimes for nutrition classes, which explain the basic four food groups, the importance of good nutrition and ideas for saving money. Driver of the bus, Valeria Henderson, and County Extension Agent Dorothy Powell stand outside the bus during one of the classes. (Staff Photo)

NEWS FROM AMHERST

MRS. LESTER LaGRANGE 246-3336

MR. AND MRS. Mut Hufstetter were in Fredrick, Okla. last weekend and attended the fiftieth wedding anniversary of her sister, Mrs. A. R. Holley and Mr. Holley. They accompanied their son Ronnie and wife of Lubbock.

TODD ELMS of Midland, Mich. returned home early this week after being here several weeks with his grandparents, the Don Heverns and Bill Elms. Todd's mother flew down for her grandfather, Lynn E. Slate's funeral services Friday in Sudan. Todd was interested in gardening while here.

MR. AND MRS. Jack Durham returned recently from a tour of the Western states.

MR. AND MRS. Aubrey Jones are at their cabin on Lake Brownwood for a stay. They are expected home soon.

PAT DUFFY spent the Labor Day weekend with his parents, Mr. and Mrs. C. A. Duffy Jr., Neil and Beth.

Shower Honors Baber Infant

An infant shower was given Tuesday, Aug. 26, in honor of Lana Brett Baber, daughter of Mr. and Mrs. Wayne Baber.

The shower was given in the home of Sue Bowman, who served cookies, nuts and punch to those attending.

Georgia Cowen, Nita Short, Willie Elliott, Mandell Elliott, Jo Nita Elliott, Norma Elliott, Beverly Stewart, Jeannie Yoakum, Norma Cotton, Sandy Koonz, Drucie Gowdy, Adell Rushing, Jonnie Brestrup and Sherra Hopping.

The hostesses and great-grandparents presented a gift of a four-drawer chest to the infant.

Hostesses were Sue Bowman, Donna Moreland, Mary Zoe Owens, Mary Alice Cowen,

Out-of-town guests included the infant's grandmother, Mrs. H. C. Armstrong of Fieldton; aunt, Mrs. Bob Armstrong of Earth; and Sandy and Kimbee Koonz of Earth.

P-TA Holds Meeting

SPADE— The Spade P-TA meeting was held Sept. 4 in the auditorium.

Kay Spohn. Officers and chairmen for the new year were introduced.

Mrs. Jeanette Offield, president, presided, and the meditation was given by Ray Biggerstaff, a Baptist minister.

Members decided to give the lunchroom a kitchen shower and to pay for the assembly programs as projects for this year.

New teachers introduced were Mr. and Mrs. Jim Judah, Coach and Mrs. Teddy Bedwell, Mrs. Danny Sewell, Mrs. Linda Thoms, Bob Lacey and Mrs.

After a business discussion, the meeting was adjourned to the lunchroom where a reception for the new teachers was served.

Refreshments were served by the senior class mothers.

Alpha Lambda Zeta Reports Year's Budget

Alpha Lambda Zeta of Beta Sigma Phi met Sept. 1, in the South Public Service Reddy with president, Brenda Chariton, presiding.

The executive board voted to accept the committee's recommendations for the 1975-76 year. The executive board also discussed and accepted the members. The committees gave a report of the plans for the coming year.

Chariton, membership chairman gave a report of the rush parties, to the end of September. Members participated in the rush concerning the program, entitled

"Woman, Her Heritage and Her Hope", was presented by Linda Jones and Janice Sebring. Linda began the program by reading Milton's description of Eve from "Paradise Lost." Janice then told of the various stages women have progressed through the centuries from Eve to present day women. The program was concluded with an open discussion by all the members.

Refreshments of finger sandwiches, chips and dips, relishes, cake, Cokes, and coffee were served by Deanna Friday and Linda Chariton.



KEY NUTRIENTS in diets of older folks are explained to senior citizens by County Extension Agent Dorothy Powell, third from left, as they travel aboard the minibus. The bus provides transportation for elderly citizens who wish to go to town to get errands done, and Mrs. Powell takes an opportunity to get in some teaching. Shown second from the left is the bus driver, Valeria Henderson. (Staff Photo)

Those attending were Brenda Denton, Janice Appleton, Linda Jones, Deanna Friday, Linda Chariton, Cathy Hufstetter, Penny Kelton, Janice Sebring, Darlene Maxfield, and Ruan Richardson.

Nutrition, Good Health Explained

Do you want to learn about nutrition and good health? Take a ride on the senior citizens' minibus when Mrs. Dorothy Powell, county extension agent, is giving a program!

Lamb County Family Living Committee. Mrs. Powell expressed appreciation to Mrs. Henderson for her cooperation. The bus is provided by Green Thumb and the Farm Bureau,

and there is no charge for senior citizens to ride the bus. Mrs. Powell reports, "a ride on the minibus is an enjoyable experience. Won't you come along for a ride?"

Eighteen senior citizens have learned about the basic four food groups, ideas for saving money and the importance of good nutrition. The senior citizens also receive free booklets on food preparation, special diets and nutrition.

The Littlefield Hospital Auxiliary will have a membership luncheon Thursday, Sept. 11, at 12 noon in the Flame Room of the Pioneer Natural Gas building.

Anyone, interested in joining the Auxiliary is invited to attend the luncheon or call Doris Simpson, 385-5890, or Mary Alma Lockwood, 385-5366.

The senior citizens seem to enjoy the lessons, according to Mrs. Powell. A group from Springlake had the bus driver stop under some trees so Mrs. Powell could complete the lesson before the bus got into Springlake.

The Oklahoma Avenue Home Demonstration Club met in the home of Mrs. Fern Bitner Thursday, Sept. 4, with seven members present.

Mrs. Minnie Davis, president, opened the business meeting with members' saying the Association Prayer, creed and pledge to the Texas flag.

The bus driver is Mrs. Valeria Henderson, a member of the

Education committee is composed of Lorene Hulise, Mary Feagley and Callista Myers; the finance committee is composed of Doris Waters, Ruth Miller and Ila Helms; the 4-H committee members are Barbara Starnes and Jerry Cook; yearbook, Mary Feagley, Zella Helms and Fern Bitner; recreation, Ruth Trimmer and Jo Jones; reporters, Mary Feagley and Ruth Miller; gift committee, Minnie Davis and Mary Feagley; and telephone committee, Ila Helms and Ruth Trimmer.

Refreshments were served to Callista Myers, Ruth Trimmer, Ila Helms, Minnie Davis, Mary Feagley, Zella Helms and Fern Bitner.

Oklahoma Ave. HD Club Meets

Anyone, interested in joining the Auxiliary is invited to attend the luncheon or call Doris Simpson, 385-5890, or Mary Alma Lockwood, 385-5366.

Mrs. Minnie Davis, president, opened the business meeting with members' saying the Association Prayer, creed and pledge to the Texas flag.

KIRBY
VACUUM CLEANERS

—Sales & Service—

PAT'S RECORD CENTER
APPLIANCE DEPARTMENT

Helena Rubinstein has introduced a new category of products for protection from environmental: Skin Dew Face Protector 2 oz., \$4.50; Skin Dew Hair Protector, 6 oz., \$4.00

Brittain Pharmacy
30 Phelps Ave. Dial 385-5114

Harvest these Fall Food Bargains

CHUCK BAST LB. 89¢	FRESH GROUND BEEF LB. 79¢	ROUND STEAK LB. \$1.29
COIN BAK LB. \$1.29	ARM ROAST LB. \$1.09	GOLDEN RIPE BANANAS LB. 17¢
DE A SMALL GS 3 FOR \$1	KIM ALL PURPOSE DETERGENT GIANT SIZE 89¢	NABISCO GRAHAM CRACKERS 1 LB BOX 69¢
RED HEART BEEF ROAST 15 OZ CAN 15¢	COCA COLA 12 OZ CANS 6 PAK 99¢	DR PEPPER 12 OZ CANS 6 PAK 99¢

NEW STORE HOURS:
MON-THRU SAT 8 A.M. - 8 P.M. SUN. 8 A.M. - 1 P.M.
QUALITY MEATS COST NO MORE AT

MERLIN'S FOOD

Double Gunn Bros. Stamps, Tuesday & Wednesday
9th & Levelland Highway

OPEN 7 DAYS A WEEK WE REDEEM FOOD STAMPS
PRICES GOOD MON. THRU SUN.

OPEN A PENNEY CHARGE

JCPenney

100% POLYESTER
**FANCY & SOLID
DOUBLE KNIT**

100% POLYESTER DOUBLE KNIT PIECE GOODS. FANCIES, SOLIDS, WHITE TOO. STOCK UP NOW FOR ALL YOUR FALL SEWING. USE YOUR PENNEY CHARGE

\$1.44

SHORT LENGTHS YARD

Our go-everywhere soft stepper.

FOR A LIMITED TIME

\$11.19

The softest thing afoot... our monk-strapped lightweight with tricot lined urethane uppers welt stitched to leather outsoles. Unique, flexible and packable cushioned comfort in several colors including maroon, grey, green & tan.

Lightweight flexibility

Bruce Lee's All New Adventures as the Super Hero from "Enter The Dragon"!

BRUCE LEE
Return of The Dragon

...his last performance is his best!

TECHNICOLOR
A BRANSTON PICTURES PRESENTATION
Sunday, Monday, Tuesday

PALACE

AROUND LITTLEFIELD

MRS. Neal Walker and her sons, Jay and Jon, will be in Littlefield Tuesday Sept. 9, for the first time where they have been their home the past two years. They have been here six years as guests of their parents, Mr. and Mrs. Walker and the David Neal. Neal is engaged in research in Agricultural Economics at the University of New England in Australia. He is in the states in connection with his work. They will be in Australia another year.

MRS. CHARLEY BROWN has returned home from St. Mary's Hospital in Lubbock following



BOB ROBERTS, local sign painter, donated his time and materials to replace the word "Retarded" to "Special" on the sign for the Littlefield School for Special Children. (Photo by Mae Blevins)



MARY WRIGHT, left, points to the new word 'Special' on the sign in front of the Littlefield School For Special Children, located on north Highway 385 at Greenfield. Noting the change, from left to right, Iredell Boren, Rosendo Molina, Lou Trevino, Johnny Trevino, Junior Vargas, Howard Hayden, Mark Paskey and Mark Davis. Standing to the right are Mrs. Vargas and Pauline Dempsey, teacher. (Photo by Mae Blevins)

Family Communications Important To Happiness

MOROTHY POWELL, Extension Agent, says that good communication is one of the most important elements in a family life.

Sharing ideas and feelings with family members learn to give and take with others in the family.

Good communication is difficult for some families to achieve. However, it is possible to establish good family communication.

There are ways to improve family communication:

1. Listen with the "Third Ear". The first two ears hear what is being said; the third ear hears what is not said. Try to put yourself in the other person's shoes and feel what he is feeling. Don't play "judge and jury".
2. Make it easier for family members to express their feelings.
3. Lay down your weapons. "Weapons" which most often interfere in family relationships are: personal attacks (you are no good, stupid, etc.);
4. Send positive messages. We strengthen our communication abilities by transmitting ideas that are gladly received, such as:
 - *congratulations
 - *appreciation
 - *praise
 - *happiness
5. Allow for expression of unpleasant feelings. For a family to get along, the unpleasant things have to be expressed, too. Putting bad feelings is probably the healthiest way of handling them.

There is no "instant" program for good family communication according to Mrs. Powell. But it is something available to families willing to work at it. Don't try to accomplish everything at once, and don't give up because of a few failures.

Senior Citizens Feted At Supper

Amherst Senior Citizens enjoyed a covered dish supper Tuesday, Sept. 2, at the community center.

The next meeting will be an ice cream and cake supper, Sept. 16th at 7 p.m.

All senior citizens are invited to attend.

SHUGART COUPON
FRIDAY, SEPT. 12
PAY-N-SAVE
 222 PHELPS AVE., LITTLEFIELD, TEXAS

9
 WALLET SIZE
 COLOR PORTRAITS
99¢

ASK ABOUT
FREE
 8 x 10
 OFFER

Extra charge for GROUPS

surgery.

MRS. R. L. TISDALE Sr. is back at home after being a patient in the Littlefield Hospital.

MRS. LYLE BRANDON has been hospitalized in Medical Arts Hospital.

MRS. LUCILLE WALDEN is back at home after spending the summer in the First Baptist Church cabin at Glorieta Baptist Encampment. She served as

hostess for the church.

VISITING Tuesday evening with Joella Lovvorn were her brother and sister-in-law, M. D. and Velma Lee Lovvorn of Farwell. They were enroute to Lubbock after a business trip to Lubbock.

MRS. RON HOWERTON and daughter, Chris, of Albuquerque, N.M. have been visiting with her grandmother, Mrs. Buck Teague, and with

Mrs. Bob Smith. Mrs. Howerton is a longtime friend of Mrs. Smith's, and is the daughter of Mr. and Mrs. Delbert Garner of Aspen, Colo., former Littlefield residents.

VISITING with Roy Thurman last week were his daughter and her husband, Mr. and Mrs. Rex Gray from Bartlesville, Okla.

MR. AND MRS. Jerry Hester of Brownfield were guests in

Mrs. Hester's parents' home, the John Driskills.

JAY NEAL WALKER of Armidaie, Australia, grandson of the Jack Walkers, has been visiting in Littlefield.

MRS. CONNIE DALE underwent surgery in Lubbock Tuesday morning.

MRS. TOMMIE CARPENTER, her granddaughter and husband, Mr. and Mrs. Bobby Brantley of Amherst,

have just returned from spending the Labor day holidays with her twin granddaughters and Leslie Brantley's sisters, Mr. and Mrs. Bill Rodgers, Misty and Robin and Mrs. Nita Shelton at Willis near Houston. They flew down so as to have longer to stay. Forrest Nuttall, father of the three girls met them there. He is from Texline. Mrs. Carpenter has recently returned from a three-week tour with

"The Dallas Yellowston Glacier other inter west Canada ladies of Littlefield. They were Mrs. Mrs. Tiny Elder Myrtle Haire. They had a wonderful time.

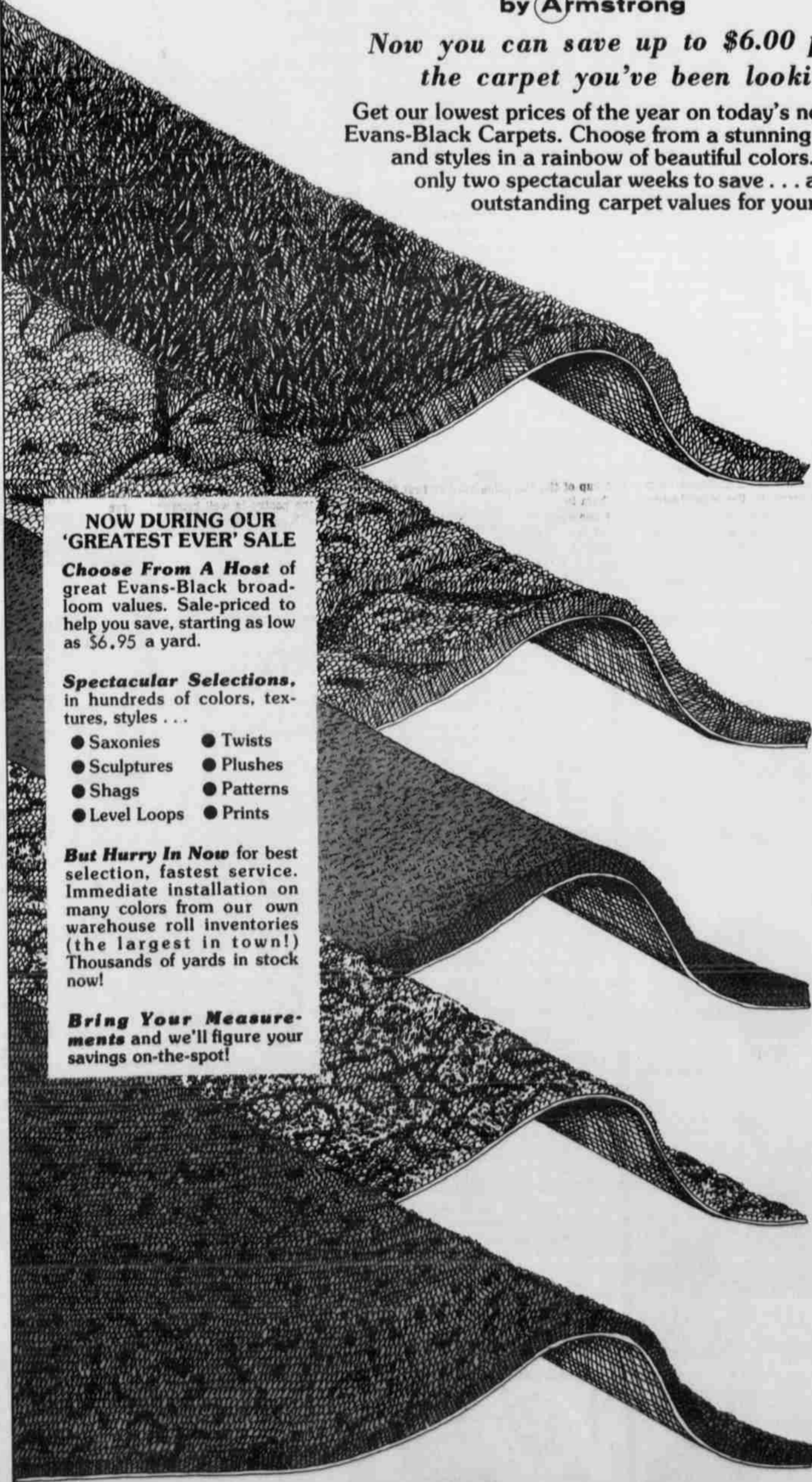
STACY-MASON Inc. Announces Spectacular Savings on Beautiful Broadloom!

Our Greatest Fall Carpet Sale Ever Of Beautiful Evans-Black Carpets

by Armstrong

Now you can save up to \$6.00 per yard on the carpet you've been looking for!

Get our lowest prices of the year on today's newest, finest-quality Evans-Black Carpets. Choose from a stunning selection of textures and styles in a rainbow of beautiful colors. But hurry . . . only two spectacular weeks to save . . . and get these outstanding carpet values for your home.



NOW DURING OUR 'GREATEST EVER' SALE

Choose From A Host of great Evans-Black broadloom values. Sale-priced to help you save, starting as low as \$6.95 a yard.

Spectacular Selections. in hundreds of colors, textures, styles . . .

- Saxonies
- Twists
- Sculptures
- Plushes
- Shags
- Patterns
- Level Loops
- Prints

But Hurry In Now for best selection, fastest service. Immediate installation on many colors from our own warehouse roll inventories (the largest in town!) Thousands of yards in stock now!

Bring Your Measurements and we'll figure your savings on-the-spot!

Save On Our Rugged Easy-Care Nylon Shags
 Easy-care, low-pile constructions — twisted and heat-set for rugged durability, extra-long wear — like Evans-Black's INFORMALITY. Was \$10.95 per sq. yd.

On Sale Now At Only **\$8.88**

Save On Our Luxuriously-Thick Sculptured Shags
 A popular cut and loop style in nylon that blends the casual look of shag with deeply-sculptured beauty. Color choices ranging from subtle tone-on-tone effects to beautifully-bold multi-hues . . . like Evans-Black's RANDOL MILLS (Name). Was \$14.95 per sq. yd.

On Sale Now At Only **\$12.88**

Save On Our Sumptuous Saxony-Texture Plushes
 It's today's most popular carpet construction. The plushy twist-texture look in richly-thick low-pile carpeting, for a super-smart effect in any decor. Choose from vivid brights to muted earth tone colors. As in Evans-Black's 1905 Was \$16.95 per sq. yd.

On Sale Now At Only **\$10.88**

Save On Our Classic Tri-Level Random Shear Patterns
 High-Low loop pile patterns, softly-sheared for extra beauty. A long-time favorite in classic sculptured patterning, now at extra-enjoyable prices — like Evans-Black's CHECKMATE. Was \$9.95 per sq. yd.

On Sale Now At Only **\$8.88**

Save On Our Rich, Silky-Soft Multicolor Shag-Plushes
 A creative blending of the formal elegance of plush with the casual look of shag . . . bringing a kaleidoscope of color and thick, silky-soft texture to any room — like Evans-Black's JAKARTA Was \$16.95 per sq. yd.

On Sale Now At Only **\$14.88**

If You've Been Waiting To Make The Most Of Your Carpet Dollar . . . This Is It! Buy Now And Save At

BROWNFIELD LEVELLAND LITTLEFIELD ODESSA

STACY-MASON Inc.
 HOME FURNISHINGS



JOHN ANDREW ROGERS receives a \$500 check from Dr. Ralph Harrel, Southwest Texas State University's associate vice-president for Academic Systems. Rogers is one of an elite group of 20 "University Scholars." The Scholars program provides scholarships of \$1,000 a year for up to four years. Rogers, a journalism major, graduated from Littlefield High School, and is the son of Mr. and Mrs. Bobby G. Rogers. (STSU Photo)

Homemakers To Elect New Officers

The Littlefield Young Homemakers of Texas will meet Thursday night, Sept. 11, at 7 p.m. in the Flame Room of Pioneer Natural Gas Co.

Officers will be elected and all members are urged to attend the business session.

LITTLEFIELD SCHOOL Cafeteria

The school lunchroom ladies were surprised this week when H. A. Carter gave them a load of canteloupe.

"We enjoyed them very much and wish to thank him for his generosity," stated Bertice Walker, supervisor.

This is the menu for this week: MONDAY: Corn chip pie, lettuce, tomatoes, corn, crackers, peanut butter cookies and milk.

TUESDAY: Stuffed wieners, slaw, pork 'n beans, hot rolls, fruit Jello and milk.

WEDNESDAY: Macaroni and cheese, salad, black-eyed peas, hot rolls, strawberry cake and milk.

THURSDAY: vegetable-beef soup, crackers, apple sauce, cookies and milk.

FRIDAY: Sandwiches, salad, French fries, milk-chocolate pudding, milk and orange juice.

Registration Is Continuing At South Plains

There is still time to sign up this fall for classes at South Plains College in Levelland.

Late registration for evening classes will continue through Thursday (Sept. 11), while late registration for regular classes will end Friday (Sept. 12).

Interested persons may register in the office of Jerry Barton, SPC registrar and admissions officer. His office is located in the SPC administration Building. For more information, contact the registrar's office at 894-4921.

Save A Life
Calling all women over 20 to have a Pap test! The life you save could be your own, reminds the American Cancer Society.

PEP

By MRS. CONRAD DEMEL
PHONE 933-2222

KAREN GREEN a student at Alpine College was home visiting her parents, Mr. and Mrs. Franklin Green and family on Aug. 23-26. Glenda, her sister went with Karen to college there at Alpine, this semester.

DAVID DEMEL of Crane, returned home on the 27th of Aug. David is going back to South Plains Junior College at Levelland this semester. David is the son of Mr. and Mrs. Conrad Demel.

MRS. E. J. MEYER of Buffalo, Mo. visited in the home of her daughter and family, Mr. and Mrs. Conrad Demel from Aug. 29 till Sept. 1. Mrs. Meyer also attended the 25th wedding anniversary of Mr. and Mrs. Conrad Demel on Aug. 30 in Pep Parish Hall.

SONYI BUSTEMANTE returned home to Bolivia, South America Friday, Aug. 29. Sonyi spent the summer in the home of Mr. and Mrs. Frank Simmacher and she also visited some friends in the Pep Community during their stay.

THOSE FROM Pep who are attending South Plains College are: Gary Albus, David Albus, Steve Albus, Fayette Demel, David Demel, Roger Vick, and Pam Demel.

THOSE out-of-town guests attending the 25th wedding anniversary of Mr. and Mrs. Conrad Demel Aug. 30th in Pep Parish Hall were: Mr. and Mrs. Maynard Miller and daughter, Cindi, and Mr. and Mrs. Robert Vaughn and son of Levelland, Mr. and Mrs. Mark Followill and son, Miki Demel, Gail Albus of Lubbock, Mrs. E. J. Meyer of Buffalo, Mo., Mr. and Mrs. Richard Lupton and Tony and Mr. and Mrs. Larry Alley and family of Hereford, Mr. and Mrs. Erhart Demel and daughter of Houston, Mr. and Mrs. Leo Ruzicka and girls of Friona, Mr. and Mrs. Bill Street, Mr. and Mrs. Billy Demel and Mr. and Mrs. Gene Demel and daughter of Littlefield. The celebration was given by the children of Mr. and Mrs. Conrad Demel; Eugene Demel, Billy Demel, David Demel, Miki Demel, Dorothea Demel, Roxanna, Timothy and Elizabeth and another daughter who could not attend Juanita Herring. Also attending was Mr. and Mrs. Joe D. Heinrich and

family of Slaton.

MRS. MAGGIE DEMEL visited with her sisters at San Antonio and Schulenburg and other relatives with her daughter, Mrs. James Alberdine and son of Lubbock recently.

MR. AND MRS. Erhart Demel and daughter of Houston visited in the homes of Mr. and Mrs. Gaubert Demel and family, Mr. and Mrs. Conrad Demel and family and Mrs. Evelyn Albus and family.

MRS. EVELYN ALBUS visited with her daughters, Ann and Gail and Miki Demel and Miti Albus Aug. 23 at Lubbock.

GAIL ALBUS and Miki Demel and Miti Albus of Lubbock, visited in the home of their parents, Mrs. Evelyn Albus, Mr. and Mrs. Conrad Demel, and Mr. and Mrs. Leonard Albus over the Labor Day weekend.

MR. AND MRS. Eugene Demel and daughter of Littlefield were dinner guests in the home of his parents, Mr. and Mrs. Conrad Demel on Aug. 31. Mr. and Mrs. Billy Demel of Littlefield were supper guests.

MR. AND MRS. Conrad Demel were supper guests in the home of Mr. and Mrs. Richard Lupton at Hereford on Sept. 1. Mrs. E. J. Meyer will spend a couple of days there before returning home to Buffalo, Mo. this weekend.

MR. AND MRS. Billy Witt Jungman and boys of Shallowater visited in the home of Mr. and Mrs. Emil Marek of Morton and Mr. and Mrs. A. G. Jungman over the weekend of Aug. 31-Sept. 1.

OLTON

MR. AND MRS. William Rematore and Kurt of Grand Prairie arrived Saturday for a few days' visit in the home of her parents, Mr. and Mrs. J. L. Small, also in the home of her uncle and aunt, Mr. and Mrs. E. J. McCord.

TOM C. SMITH returned home Saturday from Hi-Plains Hospital in Hale Center where he received treatment six days.

AMONG out-of-town visitors at First United Methodist Church Sunday were Mrs. Paul Daveir of Long Beach, Calif., Hiroleo Nagashima of Japan and Linda Karurek of Ontario, Canada.

WE EXPRESS sympathy to Mr. and Mrs. Barton Prestridge, in the recent death of their nephew.

JON AND MARY Ruth Ramsour of Dallas, formerly of Olton, are the proud parents of a baby son, Marcus Roy, born in Dallas July 28th.

CONGRATULATIONS to Ruth Gloria for receiving one of the 15 Latin American scholarships from the Baptist General Convention of Texas. She is the daughter of Rev. and Mrs. Pat Gloria.

SUNDAY NIGHT, Sept. 14, the film "Time To Run" will be shown at the evening service of First Baptist Church. It is shown through the courtesy of the Billy Graham Film Ministry.

MR. AND MRS. W. B. Smith Jr. returned home Friday after spending 11 days in Albuquerque, N.M. visiting in the home of their daughter and family, Mr. and Mrs. Robert Bonner and Sean. While in New Mexico both families vacationed at Lake Heron and Stone Lake for a few days.

GLENN GEE underwent major surgery recently at West Texas Hospital in Lubbock.

DELORES BURCH is receiving treatment at Methodist Hospital in Lubbock.

W. B. TUBB entered a Littlefield Hospital Wednesday for tests and treatment.

A SHOWER for the infant son of Dale and Ann Haynes was given Sept. 4 in the home of Mrs. L. H. Carson.



POWELL
Mr. and Mrs. Lynn Powell of Littlefield are parents of a new son, Rusty Allen Powell, who was born Monday, Sept. 1, at 3:15 a.m. in the Littlefield Hospital. He weighed 7 lbs., 15 ozs. and measured 20 inches long. Maternal grandparents are Mr. and Mrs. Junior Graham of Littlefield, and paternal grandmother is Mrs. Connie Powell of Littlefield.

Now at **Furr's SUPER MARKETS**

WEXFORD CRYSTAL

BY ANCHOR HOCKING
AT TREMENDOUS SAVINGS

This magnificent crystal glassware is a machine reproduction of very expensive hand made lead crystal imported from Europe. WEXFORD is styled in every way for today's living—sturdy enough for children while providing traditional elegance for gracious entertaining. Its classic "Old World" styling will add a touch of warmth and charm to your home and pride in serving your family and friends.

Now WEXFORD is made available at extraordinary savings! Each week we will be featuring a different WEXFORD item at 55¢. Start your set today!

55¢

SCHEDULE OF WEEKLY FEATURES OF WEXFORD CRYSTAL

FIRST WEEK AND SIXTH WEEK	STEMMED GOBLET	55¢
SECOND WEEK AND SEVENTH WEEK	STEMMED SHERBET	55¢
THIRD WEEK AND EIGHTH WEEK	TABLE TUMBLER	55¢
FOURTH WEEK AND NINTH WEEK	STEMMED WINE	55¢
FIFTH WEEK AND TENTH WEEK	ON-THE-ROCKS	55¢



Add these handsome Completer Pieces to your sets at substantial savings during this special ten week offer!

- SPECIAL PRICE**
- 14 INCH SERVING PLATE 1.49
 - 7 1/2 INCH CANDY DISH/COVER 1.49
 - 2 QUART PITCHER 1.49
 - 8 INCH FOOTED CENTERPIECE 1.49
 - 11 INCH RELISH TRAY 1.49
 - 1 QUART WINE DECANTER 1.49
 - 4 POUND JAR AND COVER 1.49

Furr's SUPER MARKETS

BESTFORM Silver Savers

Figure-saving, money-saving bras and girdles at prices you never thought you'd see again.

A. SEAMLESS FIBERFIL BRA. Ultra-soft, seamless, cup, light fiberfil padding, Lycra stretch band bottom, sides and back. Adjustable stretch straps. Sizes: A 32-36, B 32-38, C 34-38. White \$2.99, 2 for \$5.00.

B. FIBERFIL CROSS-OVER DOUBLE-KIT BRA. Popular cross-over design with adjustable stretch straps. Entire bra of luxurious double-knit. Thin. Flat top show cup seams. A 32-36, B 32-38, C 34-38. White \$2.99, 2 FOR \$5.00.

C. PANTY GIRDLE. Lightweight figure-tensing Nylon Lycra garment with reinforced tummy and stretch control panels, detachable garters, nylon front stretch and stretch lace leg trim. Sizes: M-L, XL, 2X. White \$4.99.

D. EXTRA SIZE PANTY GIRDLE. Lightweight figure-tensing Nylon Lycra garment with reinforced control panels of tummy, hip, rear, complete back. Nylon front stretch, detachable garters. Sizes: 32-42. White \$5.99.

Anthony's C.B. ANTHONY CO.

2 FOR \$5 (2 FOR \$2.99 EACH)

ANTHONY'S SILVER SAVER PRICE \$5.99

ANTHONY'S SILVER SAVER PRICE \$4.99

SHOPPER SAVERS



PRICES EFFECTIVE
THRU 9-10-75

BANANAS

CENTRAL AMERICAN
LB _____

17¢

APPLES

316 BAG _____

79¢

SWEET POTATOES

EAST TEXAS SWEET, LB _____

38¢

ALL PEPPERS

LARGE PODS FOR STUFFING, LB _____

19¢

REDLESS GRAPES

CALIFORNIA FINEST, LB _____

49¢

YELLOW ONIONS

SPANISH SWEET, LB _____

22¢

ROUND STEAK

FURR'S PROTEN LB _____

ADV SPECIAL

\$1.39

SIRLOIN STEAK

FURR'S PROTEN LB _____

ADV SPECIAL

\$1.39

RIB STEAK

FURR'S PROTEN LB _____

ADV SPECIAL

\$1.39

CHUCK STEAK

FURR'S PROTEN LB _____

ADV SPECIAL

98¢

RANCH STEAK

FURR'S PROTEN SEVEN BONE CUT LB _____

ADV. SPECIAL

\$1.19

GROUND BEEF

FRESH GROUND LB _____

ADV SPECIAL

79¢

T-BONE STEAK

Furr's Proten, Lb _____

\$1.89

SHORT RIBS

Furr's Proten, Lb _____

59¢

CLUB STEAK

Furr's Proten, Lb _____

\$1.79

SHOULDER ROAST

Furr's Proten, Lb _____

\$1.09

ARM ROAST

Furr's Proten, Lb _____

\$1.29

CUBE STEAK

Furr's Proten, Lb _____

\$1.69

RUMP ROAST

Furr's Proten, Lb _____

\$1.19

TURBOT FILLET

Frozen Lb _____

98¢

POTATO CHIPS

FARM PAC REG. OR DIP 9 OZ PKG.

59¢

PINACH

FOOD CLUB NO. 303 CAN _____

4 FOR \$1

LEMON JUICE

REALEMON 24 OZ SIZE _____

59¢

TUNA

FOOD CLUB LIGHT CHUNK NO. 1/2 CAN _____

49¢

OIL

TOPCO STANDARD 25 FT ROLL _____

29¢

KATSUP

DEL MONTE 26 OZ SIZE _____

69¢

CASCADE

DISHWASHER DETERGENT 35 OZ SIZE _____

99¢

SWEET PEAS

FOOD CLUB NO. 303 CAN _____

35¢

LEANER

TOPCO BATHROOM AEROSOL 20 OZ _____

69¢

RUG CLEANER

Heartland, Plain Or Regular, 18 Oz _____

83¢

Woolite Spray Foam, 22 Oz. **\$1.57**

DOUBLE GOLD BOND STAMPS
TUESDAYS AND WEDNESDAYS

Sun. 9 to 7 Thur. 8 to 7
Mon. 8 to 7 Fri. 8 to 7
Tues. 8 to 8 Sat. 8 to 8
Wed. 8 to 8

☆ YOU PAY THE LOWER PRICE AT FURR'S
☆ WE WILL NOT CHANGE A PRICE ON A MARKED CAN OR PACKAGE EXCEPT TO LOWER THE PRICE.
☆ ONCE PRICED ... ALWAYS PRICED.

ERA
Liquid Detergent
16 Oz..... **65¢**
32 Oz.... **\$1.21**
64 Oz... **\$2.37**

FABRIC SOFTNER Topco 94 Oz **99¢**
SAUCE Worcestershire Heinz, 10 Oz **63¢**
CRACKER JACKS Triple Pack, Pkg **39¢**
MORSELS Nestle Semi-Sweet, 12 Oz. **\$1.17**
FABRIC SOFTNER Topco Wash Cycle, 48 Oz. **69¢**

GREEN BEANS

FOOD CLUB CUT, NO. 303 CAN **3 FOR 89¢**

DONUTS

MORTON GLAZED, JELLY OR MINI PACKAGE _____

69¢

TAMALES

PATIO FRESH FROZEN 8 COUNT _____

39¢

ORANGE JUICE

MINUTE MAID 6 OZ _____

3 FOR 89¢

16 OZ CAN **82¢**

CAKES
Pepperidge Farm Layer Lemon, Chocolate Coconut Boston Cream **89¢**

VEGETABLE PEELER
TOPCREST POTATO/VEGETABLE
EACH **39¢**

Sue Free'
HAND LOTION HONEY & ALMOND ALOE VERA, LEMON
43¢

CONTACT
COLD CAPSULES
10 CT. **\$1.19**

TONI HOME PERMANENT REG OR GENTLE PKG **\$1.83**

FACIAL MOISTURE OIL
OIL OF OLAY BTL. **\$2.77**

MR. BUBBLE BATH OIL
Beads 12 Oz **59¢**

HAIR CREAM
TOPCO **56¢**

NAIL POLISH REMOVER
BEACON 4 OZ **27¢**

SECRET
ANTI-PERSPIRANT DEODORANT
14 OZ SIZE **\$1.99**

STRIDEX
FACIAL CLEANSER 75'S
JAR **\$1.29**

TAME
CREME-RINSE
16 OZ BTL. **\$1.57**

Furr's MIRACLE PRICES

\$50,000 In Federal Funds Back To Criminal Justice

Speaker Bill Clayton and two key committee chairmen have jointly returned more than \$50,000 in federal funds to the Criminal Justice Division (CJD) of the Governor's office to help aid the State's over-loaded court system.

Clayton, Representative Ben Grant, chairman of the House Judiciary Committee; and Representative Tim Von Dohlen, chairman of the House Committee on Judicial Affairs, returned the money after it had

been allocated by the CJD to the committees to perform legislative studies.

The three legislators were united in their reasoning for refusing to accept the money, stating that although the money was badly needed by the House Committees to conduct interim study assignments, its major importance is to the local communities to help bring about a stronger and more efficient judicial system.

Earmarked by Congress to be

applied by the states to areas of court administration and judicial reform, the funds represent the largest sum ever refused by the state legislature on the grounds that the local governments face greater needs than does the legislature.

"The funds will now be used locally to help to solve the court system's inability to deal with their increased workloads," Clayton said. "Hopefully, the application of these funds in this manner will speed up the entire

judicial system so that a more swift, efficient and sure form of justice will become a fact rather than a goal in Texas."

Clayton praised Von Dohlen and Grant for their leadership and fiscal awareness of the needs of the local communities in directing the return of the monies. "It is only when the bureaucracy ceases to grow and begins to respond to individual and local needs that government truly becomes representative," Clayton concluded.



Anthony's
C. R. ANTHONY CO.



Put the Family in P.V.C. Jackets

Men's, juniors' and children's PVC jackets for fall. Lightweight, but warm with the look of leather. In earth tones. Men's sizes S, M, L, XL; juniors' sizes S, M, L; girls' sizes 7 to 14; boys' sizes 8 to 18.

Men's, reg. 15.99
Juniors', reg. 14.00
Children's, reg. 13.00

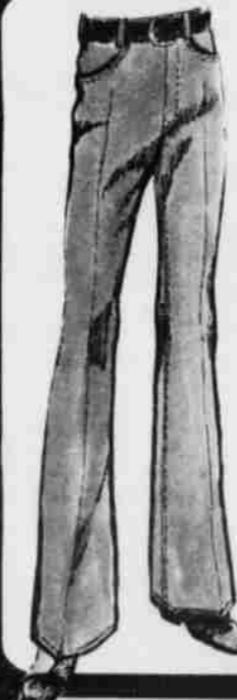
Men's **\$12.**
Juniors' & Children's **\$10.**



The Look of Leisure

100% polyester crepe stitch double knit leisure suit. Inverted pleat pockets. Contrast stitching to accent. Western style slacks. In fall colors. Jacket size 38 to 44. Pant size 32 to 38.

\$20.



Men's Super Bell Perma Press Jeans

The way the West was won.

28-32 Waist
Reg. \$14.50

\$10



Women's Crinkle Patent Softee

Women's one eyelet tie crinkle patent oxford, crepe sole. Sizes 5 to 10. Black, Red, Navy, White
1 & 2 Eyelet

Reg. \$13.99
\$5.88

Values on Bath Towels



Your choice of solids, stripes, jacquards and prints. If first quality, 2.99 values.

3 for \$5.

Flannel Prints



46" printed flannelette of 100% cotton. Variety of florals and sleepwear patterns. First quality on full bolts and flat fold.

Reg. 89c yd.

3 yds. for \$2.

Anthony's
C. R. ANTHONY CO.

YOUR FURR'S IN LITTLEFIELD IS

NOW



OPEN SUNDAY

9: AM 'TIL 7: PM

FOR YOUR SHOPPING CONVENIENCE

POTATO CHIPS

FARM PAC
9 OZ PACKAGE

59¢

PLUS...
YOU GET THE
BONUS OF
**GOLD BOND
STAMPS**
AT FURR'S...



TUNA

FOOD CLUB

1/2 CAN

49¢

VALUABLE COUPON
THIS COUPON ENTITLES YOU TO
**100 FREE
GOLD BOND STAMPS**
WITH ANY PURCHASE AT
FURR'S IN LITTLEFIELD THIS
SUNDAY ONLY
LIMIT ONE COUPON PER FAMILY

BELL PEPPERS

FINE FOR
STUFFING, LB

YELLOW ONIONS

SPANISH SWEET
LB

BANANAS

CENTRAL
AMERICAN, LB

GREEN BEANS

FOOD CLUB, CUT
NO. 303 CAN

3 FOR 89¢

Prices
Effective
Sunday
Sept. 7, 1975
In Littlefield
Only

Quantity
Rights
Reserved,
No Sales
To Dealers
Please.

T-BONE STEAK

FURR'S PROTEIN
LB

\$1.89

WE
REDEEM
USDA FOOD
STAMPS

Furr's
SUPER
MARKETS

GIBSON'S DISCOUNT CENTER

"WHERE YOU ALWAYS BUY THE BEST FOR LESS"

Shop Gibson's Easy
Lay-A-Way Plan, A Small
Deposit Will Hold Your
Selections.

**NOBODY
SELLS
FOR
LESS**

DASH LAUNDRY DETERGENT

HOME LAUNDRY, 20 LBS.

REGULAR \$7.29
WITH 60% OFF LABEL
SALE **\$5.99**



MAALOX ANTACID

12 OZ SIZE

REGULAR \$1.65

SALE **\$1.27**

ALL AUTOMATIC DISHWASHER DETERGENT

REGULAR \$1.35 WITH 20% OFF LABEL

SALE **99c**

ANACIN TABLETS

50 COUNT

REGULAR \$1.03

SALE **88c**



CAPRI FOAMING BATH OIL

64 OZ SIZE

REGULAR \$1.67

SALE **\$1.37**

MEN'S SHORT SLEEVE KNIT SHIRTS

REGULAR \$5.97



SALE **\$3.99**

GUN CLEANING KITS

RIFLE & SHOTGUN

REGULAR \$5.27

SALE **\$3.99**

WEST BEND FLAVO-DRIP COFFEEMAKER

MAKES COFFEE IN 60 SECONDS

2-8 CUPS

REGULAR \$31.99

SALE **\$24.99**

CHARCOAL BRIQUETS

10 LB BAG

REGULAR 93¢

SALE **77c**

CHARCOAL LIGHTER

1 QUART

REGULAR 69¢

SALE **2 \$1** FOR

MEN'S DICKIE CHAMBRAY

SHIRTS

LONG SLEEVE

REGULAR \$6.97

SALE **\$4.88**

TENNIS BALLS

3 IN CAN

REGULAR \$2.99

SALE **\$2.57**



MEN'S STRAW HATS

\$2.00

OFF ANY HAT

LOAN PLAN

for **BIG MONEY**

Our Preferred Loan Plan is designed specifically for those times when you need up to \$10,000... for bill consolidation, automobiles, big school money and home repairs. An SIC representative will help you determine the size of your loan. Borrow big money at SIC.

HERE ARE SOME EXAMPLES OF OUR PAYMENT SCHEDULES

Amount Financed	Finance Charges	Monthly Payment	Months To Pay	Total of Payments	Annual Percentage Rate
\$2500.00	\$ 800	\$ 68.75	48	\$3300	14.34%
\$4000.00	\$1280	\$110.00	48	\$5280	14.34%
\$5000.00	\$1600	\$137.50	48	\$6600	14.34%

The amount financed will not be the net proceeds paid to you. If insurance is desired and included in the loan.

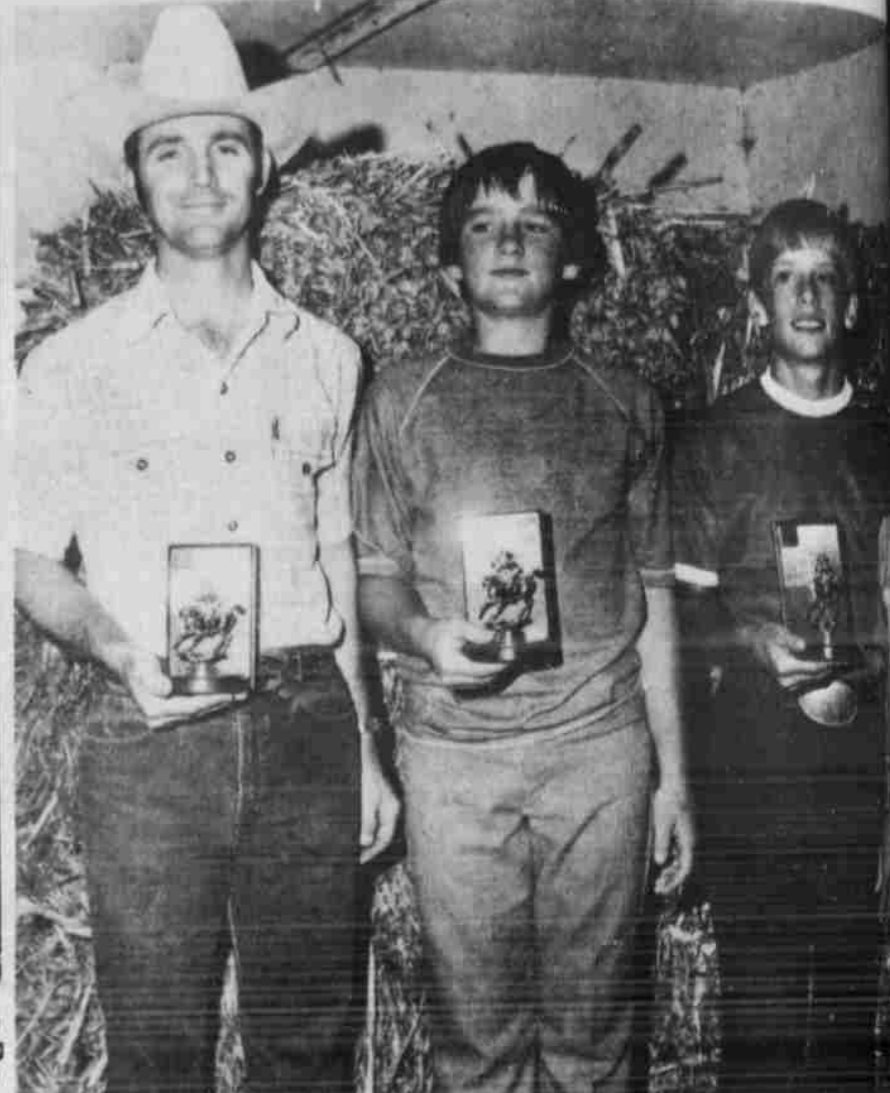
Where's the money coming from? that's where

SIC CREDIT COMPANY

420 PHELPS AVE. 385-4492



TWO MEMBERS of the Lamb County Sheriff's Posse won high point senior honors in District Playdays. Receiving trophies were Mark Suitt, high point senior man, and Sandra Suitt, high point senior woman. (Staff Photo)



NATIONAL PLAYDAY FINALS winners from the Lamb County Sheriff's Posse and Suitt, fourth in pylon alley in the senior men's division; Hoby Phillips, Mark Kelly and Lackey (not shown), who had second place in baton relay in the junior boys' division. The national event was conducted in Dallas Aug. 13-16. (Staff Photo)

RESERVE

TO ELECTRIC HEAT

BESWITCHED

Two hundred years ago, the witch hunters would have burned us at the stake for even daring to dream of a clean, practical means of heating our homes like electric heat. Fortunately, things have changed since then and today you can choose a heating system that is not only clean and efficient, but also economical and environmentally-sound. You don't even have to look for a witch to give you a great deal like this one. Call the electric company... we'll show you how easy it is to BESWITCHED to real comfort home heating that's as modern tomorrow as it is today.

ASK ABOUT THE HEAT PUMP
IT'S NOT MAGIC...IT JUST ACTS THAT WAY

You'll think it's magic when you see what the heat pump does, but it's not at all. It probably will seem quite impossible that one unit can provide clean, efficient electric heating and cooling with only one unit, one thermostat setting. The important thing to remember is the heat pump is today's answer to improving your lifestyle—economically and efficiently. Sound like magic? Not at all.

ELECTRICITY-IT DOES SO MUCH GOOD

The

ELECTRIC Company

FOR SO MANY PEOPLE

CALL US FOR A FREE PERSONALIZED HOME HEATING COST SURVEY

EQUAL OPPORTUNITY EMPLOYER

News about our Lamb County Neighbors

WHITHARRAL

By CHARLA CHRONISTER

RODNEY AND ANN Marshall had a party for the youth of the Southside Church of Christ. Games were played and chips and dips were served to Karen, Kristin, and Susan Corkery, Kerry McCormack, Kim White, Greg and Chris Whitley, Timmie Durrett and Alan and Brian Kay.

YVONNE PULSEN from Copenhagen, Denmark is here visiting with Mr. and Mrs. Dale Hewitt and family. Yvonne is Mrs. Hewitt's niece. She is enrolled as a junior in Whitharral High School.

MR. AND MRS. Omar Tripp and Bonnie visited in Richland Springs over the holidays.

THE CHEERLEADERS and twirlers sponsored a watermelon bust for the football boys Thursday afternoon after school.

THE FHA GIRLS had their first meeting of the year Tuesday afternoon. They discussed some money-making projects for the coming year.

MR. AND MRS. Jimmy Hisaw and Cheri and Mr. and Mrs. Driscal Bryant, Jackie, Mark and Rhonda spent Labor Day weekend in Pecos, N.M. Saturday they went to the Festivity Days in Santa Fe.

MR. AND MRS. B. E. Hayes have been spending some time at Lake Kemp. Joining them there for the holidays were Mr. and Mrs. Ken Polk and daughters of Carrolton, Mr. and Mrs. Randy Waller of Denver City, Mr. and Mrs. Gary Hayes and Keith Sullivan.

TOM BURRUS spent the weekend in Alpine with Mr. and Mrs. Bob Ward. He spent some time dove hunting.

MR. AND MRS. Louis McCormack and Kerry spent Labor day in Dora and Portales, N.M.

SUNFLOWER harvesting is beginning in the community.

SEVERAL from the community attended the Billy Graham Crusade in Lubbock this week.

REV. AND MRS. Kenneth Harlan and Bart were called to Fort Worth to attend funeral services for Jane's grandmother.

MR. AND MRS. Marion Polk, Susie and Billy Mike and Roxanne Polk visited with Mr. and Mrs. Glenn Howe in Seymour over the weekend.

LUDELL STAFFORD AND Mr. and Mrs. Don Stafford and boys, and Mr. and Mrs. Freddy Woody and family were at Lake Kemp Labor Day weekend.

DANNY GRANT, Bobby Grant, T. C. Wade, Roger White and Lloyd Strickland were in Seymour for the opening of dove season.

MR. AND MRS. Harry Harrison of Penryn, Calif. former residents visited with Lou Emma Edwards.

MARGARET JONES and Betty Burrus have been in Tipton, Okla. at the bedside of

Mrs. Ed Jones, their mother-in-law and grandmother.

THE ANNUAL meeting of the members of the Lamb County Electric Cooperative was held in the new Lamb County Agriculture and Community Center at Littlefield Tuesday, Sept. 2. Driscal Bryant ran as a nominee for director of District No. 6. Whitt Stephenson won the half beef which was given as a door prize. Others winning gifts

were V. D. Hodges, Valentin and George Whitharral attending were Emma Edwards, Opal Mrs. Whitt Stephenson, Mrs. C. E. Timmons, Mrs. Robert Avery, Mrs. Anderson, Mrs. V. O. Mrs. Driscal Bryant, Jimmy Hisaw, Mrs. Valentine, and Mr. Gene Munselle.

ENOCHS

MRS. ALMA ALTMAN

TOMOYA KUNISWA, an exchange student from Japan, is going to live with Rev. and Mrs. Charlie Shaw for the next nine months. She will be attending Three Way High School as a senior. She was asked how she liked this country and she said it was so big and flat. She likes school and says everyone is so nice to her and she is in her first year in college at home and is majoring in English and wants to learn more English here. She is 19 years old and very attractive.

THE LADIES of Enochs Baptist Church met in their weekly program on Tuesday morning. They had their Royal Service program. The topic was "Southern and National Baptists, Partners in Education." Those attending were: Olive Cox, Etta Layton, Flo Nichols, Loretta Layton, Rose Nichols, Wanda Layton, Dicie Smitker, Ellen Bayless, Elnita Kay, Essie Seagler, Zelma King, Wilma Petree, Josie Vanlandingham, Louise McCall and Alma Altman.

THE CHURCH BUS has taken a load of people to the Billy Graham Crusade each night since the beginning of the Crusade. Church attendance from this area is good. This is the fall revival for our church, so this is wonderful.

MR. AND MRS. E. N. McCall went to Ruidoso this last weekend with their children, Mr. and Mrs. Robert George and Marthann and Brent from Lubbock.

MRS. ALMA ALTMAN spent several days with her children, Mr. and Mrs. Kenneth Millsap and their daughters, Kena and Valerie last week. She also visited with Mr. and Mrs. Dan Altman.

MR. AND MRS. Robert Jones of Clovis visited her parents, Mr. and Mrs. Kenneth Coats over the weekend.

KIM COATS moved to Canyon to start School at WTSU. This will be his senior year. He is a major in industrial arts, and is deeply involved in BSU work. FILLING the pulpit last week

in the absence of Rev. Shaw was Thomas Gage. pastor is ill in Littlefield Methodist Hospital with a condition. His wife rushed to Littlefield last Sunday and was transferred to Littlefield immediately.

MR. AND MRS. Oscar went to White Deer to visit daughter, Mr. and Mrs. Hodge and family and Mrs. Herman Carruth Amarillo.

WE RECEIVED word that M. Bryant, who now lives in Littlefield is in Medical Hospital. They were long residents of this area.

WOMEN of this community gathered at the Dale home and gathered and 82 pints of blackeyed peas. Mr. and Mrs. Charlie they are at Lubbock hospital.

THE ENOCHS Demonstration Club met at home of Mrs. Rose Nichols. call was answered with "we have accomplished summer." There were present and one visitor. books and planning of next year's programs discussed. Refreshments served.



Broccoli Is Tops for Fall Gardens

Broccoli is complete planting of broccoli. Kuykendall, county extension agent, Texas Agricultural Service, broccoli is by all-round member of the family for fall home. It is hardy, relatively slow, and can be harvested a considerably long time. It can be planted either seed or transplants. Use of transplants for earlier harvesting, 8 to 10 plants are to keep plenty of tasty on the family dinner.

Broccoli plants should be in the garden 8 to 12 before the anticipated frost, which generally about Nov. 4, in Lamb recommended varieties in-altham 29, Topper 43, reliable De Cicco. Some seeds are also available. It is a rather heavy fertilizer, points out. It suggests ap- three to four pounds of a fertilizer such as 10-10-100 square feet before and working it into the soil. Plants 14 to 24 in- rows 24 to 36 in-

Artists Have Entered Planning Water Festival

There have been 78 who have requested to display their crafts at the Planning Water Arts & Crafts Festival to be held in Plainview. The festival, sponsored by the Plainview Rotary and the Llano Estacado, is an approved Bicentennial Revolution Bicentennial event. Profits from the festival will support community projects.

There will be a variety of arts and crafts on exhibit at the festival which will be held in the County Agricultural Center. Those attending the festival will have the opportunity to see and buy the art of artists from Texas, Oklahoma, and New Mexico. Among those exhibiting at the festival will be Ronnie Waide of Littlefield, specializing in western nature scenes on jewelry boxes handpainted with a pen and ink technique on por-

CORN BREAD COFFEE CHEER TUNA CAN POP TOMATOES COCA COLA DR PEPPER HI-C DRINKS RANCH STYLE BEANS BROWNIE MIX

- SHURFINE CREAM STYLE OR WHOLE KERNEL **3 FOR \$1**
- TENDERCRUST, FAMILY SIZE **2 FOR 79¢**
- SHURFINE, 1# CAN **99¢**
- GIANT SIZE **\$1.19**
- SHURFINE, FLAT CAN **48¢**
- SHURFINE ASSORTED FLAVORS **7 FOR \$1**
- SHURFINE, WHOLE, 16 OZ **3 FOR 89¢**
- 6 BOTTLE, 32 OZ **\$1.38**
- 6 BOTTLE, 32 OZ **\$1.38**
- ASSORTED FLAVORS, 46 OZ **49¢**

QUALITY FOODS AT... BIG SAVINGS

GREEN BEANS AND POTATOES
SHURFINE
303 CAN **3 FOR 89¢**

SHELL NO PEST STRIPS
\$1.89
EACH



PRODUCE MARKET

- POTATOES RUSSET'S, 10 LB. BAG **59¢**
- CARROTS CELLO BAGS **2/25¢**
- CABBAGE FIRM HEADS, LB. **10¢**
- GRAPEFRUIT RUBY RED, LB. **17¢**
- GRAPES LB. **39¢**
- FRYERS GRADE A, LB **59¢**
- FRYERS GRADE A, CUT UP, LB **65¢**
- RIB STEAK CHOICE, LB **\$1.19**
- BEEF LIVER LB **59¢**
- SHORT RIBS BEEF, LB **59¢**

DAIRY FROZEN FOODS

- BUTTERMILK BORDEN'S, 1/2 GAL. **73¢**
- COTTAGE CHEESE BORDEN'S, 12 OZ **49¢**
- WHIPPING CREAM BORDEN'S, 8 OZ **43¢**
- BISCUITS TALL CANS **7/\$1**
- PORK AND BEANS JOAN OF ARC, 300 SIZE **3/89¢**
- PEANUT BUTTER SHURFINE, 12 OZ **59¢**
- FLOUR SHURFINE, 5# BAG **69¢**
- DAWN 32 OZ **\$1.09**
- ERA 32 OZ **\$1.19**
- EGGS GRADE-A-MEDIUM **59¢**
- SHORTENING BAKE RITE, 3# CAN **\$1.39**
- SPAGHETTI SAUCE RAGU, 32 OZ **98¢**
- ICE CREAM SHURFRESH, 1/2 GAL. **88¢**
- PINESOL POWDER 14 OZ **2/29¢**
- DONUTS MORTON'S **89¢**
- OCEAN PERCH GORTON'S, 16 OZ **99¢**
- PEAS SHURFINE, MIX OR MATCH **3/\$1**
- MIXED VEGETABLES SHURFINE, 10 OZ **43¢**
- STRAWBERRIES FLEISCHMAN'S **79¢**
- EGG BEATERS

CONVENIENT LOCATIONS 332 E. DELANO AND 601 E. 10th



WE GIVE GUNN BROS STAMPS
DOUBLE STAMPS TUESDAY & WEDNESDAY WITH \$2.50 OR MORE PURCHASE (EXCLUDING CIGARETTES)
WE RESERVE THE RIGHT TO LIMIT QUANTITIES
WE REDEEM AND GIVE STAMPS ON FOOD STAMPS
WE SELL TRAVELERS EXPRESS MONEY ORDERS, PAYROLL CHECKS CASHED

FRIDAY, SEPT. 12

99¢

KING SIZE WALLET CREATIVE COLOR PORTRAITS FOR ONLY

NO LIMIT

Extra Charge for GROUPS

GET PICTURES MADE OF GRANDPA, GRANDMA, DAD, MOM AND ALL THE LITTLE ONES AT THESE SAME LOW PRICES!

ASK About Our FREE 8 x 10 OFFER

SHUGART COLOR PHOTOS

PAY-N-SAVE
322 PHELPS AVE.
LITTLEFIELD, TEXAS

FOOTBALL CONTEST

Enter Our Contest Each Week
Nothing To Buy - Just Pick Winners

It's so easy...
Anyone can enter!
Read the rules...
Start Winning

RULES OF THE CONTEST:

All you have to do to be eligible for the weekly cash prizes is to complete the form below and place (or mail) it in the designated box at the Leader-News office. It is the contestants responsibility to see that the form has been placed in the entry box and the Leader-News assumes no responsibility for blanks lost, or delayed in the mails.

One game is listed in each advertisement. Pick the winner and insert the name of that team in the OFFICIAL ENTRY BLANK below. Then in the "Tie Breaker" section, put the scores you believe each of the teams will make. Weekly judging will be based on the total number guessed correctly. In case of a tie, the tie-breaker will be used to determine the top winners. Decision of the Leader-News scoring judges will be final.

To be eligible for the 2 free tickets to the New Year's Game at the COTTON BOWL, the total number of correct guesses will be totaled through the season.

LIMIT—One entry per contestant per week.

BE SURE to complete the forms by PRINTING plainly your name and complete address and turning in the entry blank only. Contest winners will be announced in each Thursday's issue of the Leader-News.

ALL TIED GAMES ARE CONSIDERED WRONG UNLESS CALLED AS A TIE.

Win Cash Prizes Each Week

FIRST PLACE PRIZE

\$10.

SECOND PLACE PRIZE

\$3

THIRD PLACE PRIZE

\$2

GRAND PRIZE

2 TICKETS TO THE

Cotton Bowl

NEW YEAR'S GAME

Plus \$25.00 Expense Money



Win Cash Prizes Each Week
FIRST PLACE PRIZE
\$10.

OFFICIAL ENTRY BLANK

Lamb County Leader-News Football Contest
Deadline 5:30 Friday

Game No.	Winner
1	
2	
3	
4	
5	
6	
7	
8	
9	
10	

TIE BREAKER

Littlefield vs. Cooper
Brownfield vs. Levelland

Name _____
Address _____

GOODYEAR Tires ZENITH TVs AND STEREOs **GE**
GOODYEAR SERVICE STORE
A DIVISION OF THE GOODYEAR TIRE & RUBBER CO.
304 N. 4TH
Game No. 1 LITTLEFIELD, TEXAS 78338
Arlington at TCU
DALE MAULDIN
Store Mgr.
Phone 385-5162

Ernest Mills Cotton Co.
RARE COINS & COIN SUPPLIES
"Always A Fair Price"
Game No. 2
Florida State at Texas Tech
1517 E. 9th 806 385-5178

Shook Tire Co.
Game No. 3
Georgia Tech at South Carolina
1028 East 9th Phone 385-4405

LITTLEFIELD SEED & DELINT
"Home Of Fine Cotton Seeds"
Game No. 4
Mississippi at Texas A&M
In The Old Oil Mill Location Phone 385-

ORIGINAL TASTY TACO
Game No. 5
Plains at Springlake-Earth
WE SPECIALIZE IN MEXICAN AND AMERICAN FOOD
621 HALL AVE. PHONE 385-3764

Littlefield Farmers Coop Gins & Elevators
Olton at Muleshoe
Game No. 6
"OWNED BY THOSE WE SERVE"

ARMES EQUIPMENT CO.
Your John Deere Dealer
Sudan at Anton
Game No. 7
East Loop 84 Phone 385-4121

CONOCO JIM JONES AGENT
Ohio State at Michigan State
Game No. 8
AMHERST Joe Miller BULA Dale Middlebrooks
HART CAMP PEP
V.L. Foster Pep Gro. & Service

Armes Chevrolet Co.
Levelland at Littlefield
Game No. 9
New & Used Cars, Trucks, Pickups
610 East 4th Phone 385-4437

Pratt's Jewelry & TROPHIES
5th AND XIT DRIVE
Wichita Falls Rider at Lubbock Monterey
Game No. 10

Football Contest



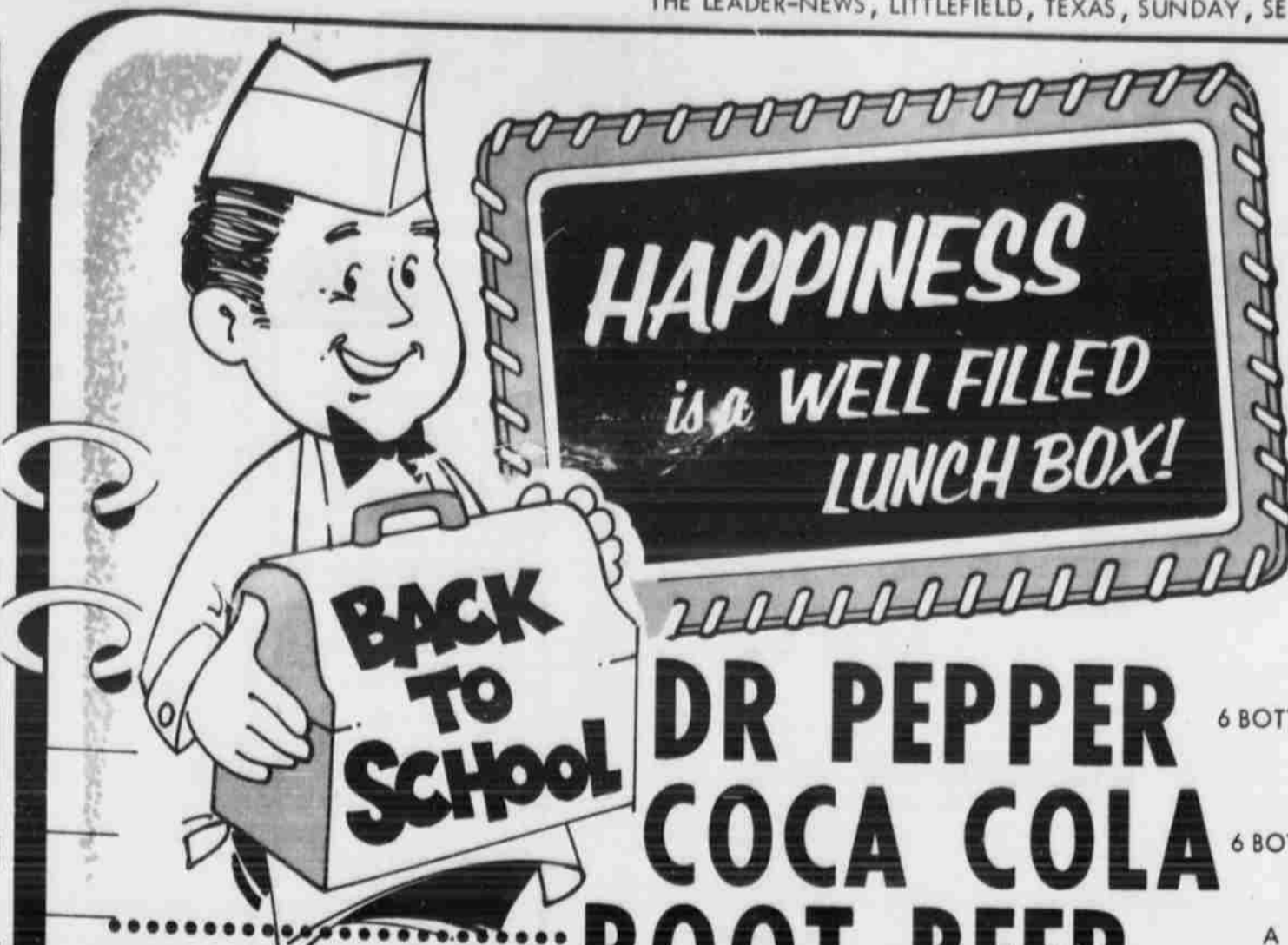
SEVEN STUDENTS certified as medication aides during graduation ceremonies at South Plains College were (from left, bottom row) Maria Duenes and Dora Duenes, both of Littlefield, and (from left, top row) Jephtha Bryant of Littlefield and Geneva Brothers of Levelland. Mrs. Glenda Jones, R.N., of Levelland (top right), served as instructor for the 60-clock hour course, Medication Administration for Nursing Homes. The course was offered by the Regional Occupational Center at Lubbock, an extension center of SPC. (SPC Photo)



SEVEN AREA WOMEN receiving certification as medication aides were (from left, top row) ElWanda Rogers of Littlefield, Mary Wilson of Amherst and Helen Ratcliff of Littlefield; and (from left, bottom row) Mildred Scott of Littlefield and Ruth Gonzales of Littlefield. The women recently completed a medication aid administration course offered by the Regional Occupational Center. Instructor was Mrs. Glenda Jones, R.N., of Levelland. The students were presented certificates during graduation ceremonies at South Plains College. (SPC Photo)



SEVEN STUDENTS were certified as medication aides after successfully completing a 60-clock hour course, Medication Administration for Nursing Homes. Students were presented certificates during brief graduation ceremonies at South Plains College were (from left, top row) Foy Bilbrey of Littlefield, Alta Marie Elliott of Morton and Teresa Melton of Littlefield; and (from left, bottom row) Gabriele Fleming of Littlefield, Shirley Chancey of Morton and Jane Leatherwood of Littlefield. Mrs. Glenda Jones of Levelland, R. N., served as instructor for the course, which was offered through the Regional Occupational Center. (SPC Photo)



SUGAR
IMPERIAL OR HOLLY,
5 LB BAG **\$1.43**

FLOUR
GOLD MEDAL,
5 LB BAG **89¢**

DR PEPPER 6 BOTTLE CARTON, 32 OZ **\$1.29**

COCA COLA 6 BOTTLE CARTON, 32 OZ **\$1.33**

ROOT BEER A & W, 6 BOTTLE CARTON, 96 OZ **\$1.29**

COFFEE WHITE SWAN, 1 LB CAN **\$1.09**

TAMALES DERBY, BEEF, PORK, OR BEAN & CHEESE, 13 1/2 OZ CAN **59¢**

MARGARINE MAZOLA, QTRS., LB. **69¢**

PEACHES HUNT, HALVES OR SLICES, 29 OZ **2 FOR \$1**

CAKE MIX BETTY CROCKER, LAYER, 18 1/2 OZ **59¢**

MIRACLE WHIP KRAFT, QUART **\$1.17**

BONED CHICKEN SWEET SUE, 5 OZ CAN **49¢**

SLICED BEEF MORTONHOUSE, 12 1/2 OZ CAN **59¢**

SALISBURY STEAK MORTONHOUSE, 12 1/2 OZ CAN **59¢**

PEANUT BUTTER BAMA, SMOOTH, 18 OZ **79¢**

WHOLE NEW POTATOES DEL MONTE, 16 OZ **4 FOR \$1**

T-BONE STEAK USDA Choice, Lb **\$1.79**

CHUCK ROAST USDA Choice, Blade Cut, Lb **98¢**

CHUCK STEAK USDA Choice, Lb **\$1.09**

ARM ROAST USDA Choice, Lb **\$1.19**

RIB STEAK USDA Choice, Lb **\$1.19**

GROUND BEEF USDA Choice Fresh Daily, Lb **77¢**

BEEF SHORT RIBS USDA Choice, Lb **69¢**

BEEF TRIPE Lb **39¢**

FRANKS Glover, 12 Oz Pkg **65¢**

CHORIZO Glover, Lb **99¢**

POT PIES Banquet, 8 Oz **4/\$1**

PEAS & CARROTS Birdseye, Mix Or Match **3/89¢**

CORN Birdseye, Mix Or Match **3/89¢**

CHOPPED BROCCOLI Birdseye, 10 Oz **3/89¢**

LEMONADE Minute Maid, Pink Or Reg., 6 Oz **6/\$1**

CORN Joan Of Arc, Cream Style, 17 Oz **3/\$1**

SWEET PEAS Green Giant, 17 Oz **3/\$1**

FACIAL TISSUE Kleenex Casuals, 100 Count Box **3/\$1**

PAMPERS New Born, 30 Count Box **\$1.79**

LAUNDRY DETERGENT Punch, Giant Size, 49 Oz **89¢**

BLEACH Purex, 1/2 Gallon **47¢**

DOG FOOD Husky, 15 3/4 Oz Can **3/39¢**

MELLORINE Plains, 1/2 Gallon **79¢**

HOME OWNED-HOME OPERATED

LITTLEFIELD SUPER MARKET

WILDCATS WIN SEASON OPENER

Continued From Page 1
 The Wildcat band came onto the field from the north end zone under the direction of drum majors Lisa and Carla McCannies to the tune of "Monterey". After a precision drill, the halftime

featured the Wildcat twirlers, Karen Carter, Cindy Drake and Debbie Burks to the tune of "Proud Mary".
SECOND HALF
 The Cats wasted little time getting onto the scoreboard in the second half as

they received the kickoff and three plays later, the 'Cats had another six points to lead 23-7.
 In this series, Parmer had a nifty 27 yard run that ended in a fumble but teammate Martinez recovered the ball

on the 28 of Cooper. A 15 yard penalty on the next play set the 'Cats back to the 40 but once again Turner was the man of the hour as he cleared the right side of the line to go 40 yards for the touchdown.
 The next series of downs for Cooper

saw the Pirates reach to the 'Cat 5 yard line but once again defensive plays by Hopping, David Jones and Durham prevented the score.
 It wasn't until 7:01 was left in the game until Littlefield scored again and this time it was another spectacular run by Turner.
 With the ball on Littlefield's own 30 yard line, Turner took the handoff from Parmer, broke four tackles and then outran the field for his third touchdown of the night to give the 'Cats a commanding 30-7 lead.

A fumble recovery by Hopping, his second of the night, led to Littlefield's final score.
 Three plays after Cooper lost the ball, Lonnie Twitty skirted left end for his first TD, Turner's kick was again good and the final score ended 37-7.
 Turner ended the game with 154 rushing yards on 12 carries and Parmer had 110 yards on 9 carries and passed for 50 yards.
 This Friday night, Littlefield will host the Levelland Lobos in the annual battle for "The Trap."



TURNER evades the grasp of a Cooper tackler in the first half of the Wildcat-Pirate Friday night which Littlefield won, 37-7. Turner was the leading ground-gainer for the night with 154 yards on 12 carries and scored touchdowns from the one foot line, 40 yards and 40 yards. Wildcat Danny Martinez is also shown. (Photo by Connie Black)



STEVE CRUZ, No. 22, zeros in on Pirate fullback Scott Armstrong as he picks up short yardage. Cruz scored the Wildcats' first touchdown on a 47-yard scamper in the first quarter of action. Littlefield won the game 37-7. (Photo by Connie Black)

CATS	COOPER	
45	Plays	50
16	First Downs	13
357	Yards Rushing	105
50	Yards Passing	81
407	Total Yards	186
8	Passes Attempted	16
3	Passes Completed	8
1	Passes Intercepted	1
4	Punts	4
112	Punting Yards	151
6	Penalties	4
50	Yards Penalties	25
1	Fumbles Lost	3

KIRBY SALES & SERVICE THINGS YOU SHOULD KNOW ABOUT YOUR KIRBY...

- ...When Should You Change The Belt?
- ...When Should You Clean Out The Bag?
- ...If Your Light Comes On But The Motor Won't?

For The Answers, Call
385-3357

Lloyd White Area Distributor
 "Phone Day or Night, Call White"

INSUR-MATION

Ed Jennings 385-4489
 Southern Farm Bureau Life Ins. Co.

I have recently changed my employment situation and am now self-employed. Is there any way to have tax-saving deductions and set up a pension plan for myself?

Under the Pension Reform Act of 1974, you may now receive the tax benefits enjoyed by employees of corporations. For pension plan purposes... you are both an employer: being treated to set aside up to 15% of earned annual income or \$7,500, never smaller toward a pension plan... and an employee: not taxed on such contributions or on the income earned by the plan during the accumulation period. To receive these benefits, you must be under a qualified Keogh plan. Life insurance plans can pay death income as long as you live and pure insurance proceeds in full are received by your beneficiary free of income taxes.



LITTLEFIELD'S Brad Banner clears the blocking path for Bill Turner, No. 10, as he has taken a pitch-out from Ronald Parmer, No. 12. The 'Cats won the first game of the season, 37-7 and will face Levelland at Wildcat Stadium Friday. (Photo by Connie Black)

SUDAN

WEEKEND VISITORS in the home of Mr. and Mrs. Jay House in Andrews and attending church services at the Wesley Methodist Church there were their sons and family, Mr. and Mrs. Dalton Wood, Vendell and Juanell, and Capt. and Mrs. John Wood of Lewisville, Mr. and Mrs. Roy Mahan of Monahan. Others visiting include Mr. and Mrs. Jim Claunch and Mr. and Mrs. Marvin Drake of Bula.

MR. AND MRS. John Burnett were in Brownwood recently to attend their family reunion.

MR. AND MRS. Jeff Lynskey of Lubbock visited during the weekend in the home of her parents, Mr. and Mrs. Kenna Sue Richards, daughter of Mr. and Mrs. Kenneth Richards, has been visiting her grandparents, Mr. and Mrs. John Underwood in Amarillo while her parents attended the General Assembly of Church of God of Prophecy in Cleveland, Tenn. Others attending from Sudan were Mr. and Mrs. Wesley Brannan, Vesta Richards, Melba Richards, Alvin Richards, Jr.

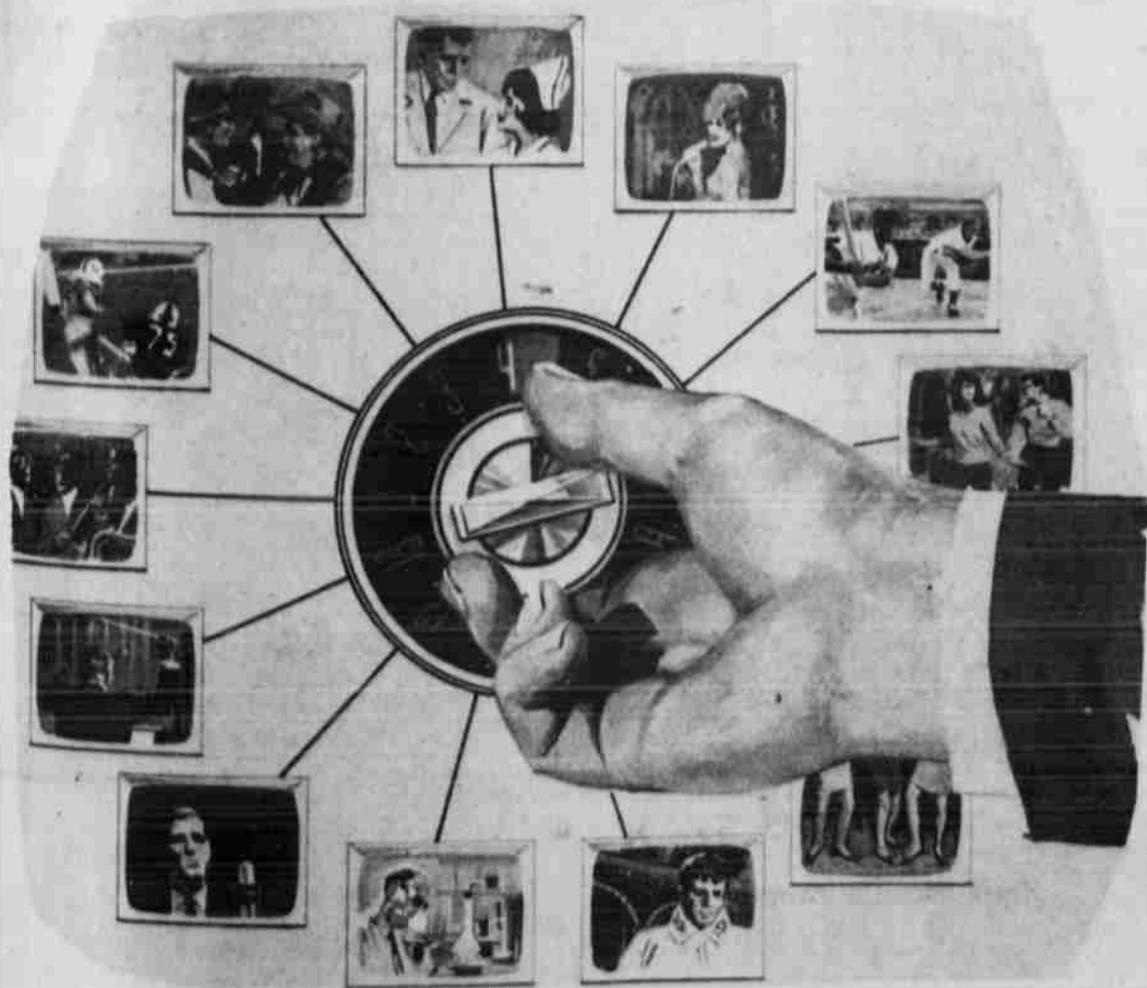
MR. AND MRS. Green Underwood visited recently in Amarillo with his parents, Mr. and Mrs. John Underwood.

GREEN UNDERWOOD returned recently from guard summer camp in El Paso.

MR. AND MRS. Terry Evins are parents of a boy, Spencer Todd, born at 12:30 p.m. Sunday, Aug. 24, in Littlefield Hospital in Littlefield. The infant weighed seven pounds. Grandparents are Mr. and Mrs. U. J. King, Sudan; Mr. and Mrs. Frances Evins of Fieldton, great-grandmother, Mrs. Ora King of San Antonio; Mrs. Evins of Littlefield; Mr. and Mrs. F. O. Warren of Needmore and great-grandparents are Mr. and Mrs. L. P. Irwin of Lawton, Okla.

THOSE ATTENDING the Walser family reunion held Aug. 23 and 24 at Ceta Glenn Canyon were Mr. and Mrs. O. O. Baker, Mr. and Mrs. Calvin Baker, Mr. and Mrs. Dexter Baker, Mr. and Mrs. Deck Baker and children, Mr. and Mrs. Larry Baker, Mr. and Mrs. Pete Lance, Mr. Steve Edwards and Monty, Mrs. Robin Davis and Mandy, Bo Lance, Donna Gillett, Blake Laceywell, Mark Baker, Shane and Fawn.

CABLE TV



From: Littlefield Community Cable TV Service
 To: Non Subscribers Of Cable Service

We At Cable TV Believe There Are Quite A Number Of Littlefield Citizens Who Having Never Tried Our Eight (8) Channels Of Cable TV Service Are Not Aware Of The Variety And Choice Of Programs To Choose From By Being Able To Select From Eight (8) Channels On Cable TV.

In The Very Near Future Our Sales Representative Will Be Calling On You To Tell About A Special "Get Acquainted" Offer.

Littlefield Cablevision Inc.

326-A PHELPS AVE.

385-4522

Save cash WITH THESE SPECIALS

FOOD KING, PEACH, PRESERVES	32 OZ	\$1.09
MORTON, FROZEN, POT PIES	8 OZ	2/49¢
DR PEPPER	12 OZ CAN	6/98¢
BETTY CROCKER, LAYER, CAKE MIX	BOX	59¢
STILLWELL CUT, GREEN BEANS	303 CAN	19¢
'SOFLIN, PAPER TOWELS	BIG ROLL	2/89¢
MAMA, ASSORTED FLAVORS, COOKIES	PACKAGE	3/\$1
MORTON, FROZEN, DONUTS	PACKAGE	79¢
SHURFINE, SLICED DILL, PICKLES	32 OZ	59¢
SHURFINE, MIXED VEGETABLES	303 CAN	29¢
SHURFINE, ASSORTED FLAVORS, FRUIT DRINKS	46 OZ	39¢
SHURFINE, TUNA	CHUNK STYLE	49¢
TIDE	FAMILY SIZE	\$3.98
BAR-S, BACON	12 OZ. PACKAGE	\$1.39
GRADE A, FRYERS	LB.	59¢
CHOICE, CLUB STEAK	LB.	\$1.49
BABY BEEF, LIVER	LB.	49¢
CALIFORNIA THOMPSON SEEDLESS, GRAPES	LB.	39¢
TEXAS, CABBAGE	LB.	9¢

We Reserve The Right To Limit Quantities. We Redeem USDA Food Stamps. We Give Gunn Bros. Stamps. Double Stamps On Tuesday & Wednesday With \$2.50 Purchase Or More Excluding Cigarettes.

PIONEER SUPERMARKET



AREA FOOTBALL SCORES

KLONDIKE 30 WHITHARRAL 16

Klondike put 24 points on the board in the middle two quarters, which was more than enough as the Cougars took a 30-16 decision over the Whitharral Panthers.

It was a game of big plays as the first Klondike tally came on a 36-yard jaunt around end by halfback Jimmy Bradford, who added touchdown runs of 65 and 12 yards in the second period. Sandwiched in between Bradford's two second-period scampers was a 70-yard kickoff return by Whitharral's Leslie Dockery.

In the third period, the Cougar's Bryan Harris bulldozed over for a 2-yard TD. The Panthers added a final touchdown in the last period on a 40-yard scoring strike to Dockery.

S-EARTH 30 AMHERST 22

Springlake-Earth held off a fourth quarter rally by Amherst to post a 30-22 win Friday night in the season opener.

Springlake-Earth scored twice in the first quarter, first on a run by Rodney Geissler and another by John Cleavenger. The winners ran for the two extra points after the first TD.

In the same period, Amherst scored on a run by halfback Donald Johnson.

A run by Brad Barden in the second quarter gave Springlake-Earth a 22-7 lead at the half. The winners scored once more in the final quarter, and

Amherst then rallied for two touchdowns to account for the final margin.

The losers first scored when they recovered a blocked punt in the end zone, Donald Johnson later ran for another score with one second remaining in the contest.

SUNDOWN 36 SUDAN 26

The Sundown Roughnecks scored twice in the last two minutes here Friday night to down Sudan 36-26.

Quarterback Smith fired a 17-yard touchdown pass, his second of the game, to end Davis Holdman and halfback Randy Wood stepped 25 yards for a score to bring the Roughnecks back from a 26-20 third quarter deficit.

Sudan built that lead on touchdown jaunts by Danny Williams, the game's leading ground-gainer with 140 yards on 30 carries, and by Kyle Martin.

Sundown had led 14-12 at the half as Smith passed for a first-quarter touchdown and ran for another in the second period. End Mike Menges caught the TD strike.

Sudan had scored twice in the first stanza on a seven-yard run and a 65-yard touchdown pass, both by quarterback Craig Pickett. Halfback Joel Williams was on the receiving end of the TD pass.

The Roughnecks outgained the Hornets 382 to 352, but Sudan led in first downs 20-19.



RICHARD HOLLEY, No. 12 on the Amherst Bulldog team and senior quarterback, runs five yards for a PAT to raise the score to 15 for Amherst with 1:44 minutes left in the match with the Springlake-Earth Wolverines. Final score was 30 to 22 in favor of the Wolverines. (Staff Photo)



LEE BROWN, No. 10 for the Springlake-Earth Wolverines, makes yardage gain Friday night in Bulldog Stadium to aid his team to their 30 to 22 victory over the Amherst Bulldogs. Brown is a senior quarterback. (Staff Photo by Joella Lovvorn)



BRAD BARDEN, No. 7 Wolverine from Springlake-Earth, is ready to put a slow-down tackle on Amherst Bulldog Donald Johnson, No. 21. Both made touchdown runs for teams during the game Friday night in Bulldog Stadium. (Staff Photo)

Thompson Returns

AMHERST—U. E. Thompson has returned from a visit to California and Nevada. He accompanied his daughter and husband, Mr. and Mrs. Carl Stewart of Logan, N.M.

The feature of his trip was a Thompson reunion held at Battle Mountain, Nev.

His sister, Mrs. Zela Connell was hostess.

She and her late husband, Bill Connell homesteaded the place several years ago. She has several hundred cattle, alfalfa and other crops growing.

Thompson's granddaughter, Mrs. La Quita Franks of Modesto, Calif. had assisted Mrs. Connell in the publicity of the get-together. A barbecue dinner was served during the reunion.

Mrs. Connell's daughter and three children of Bakersfield, Calif. attended.

Mr. and Mrs. Arlis Humphreys and her mother, Mrs. Buford Thompson of Amherst were among 54 there for the occasion held during the Labor Day weekend.

11 Civil Disputes Slated For Trial

A total of 120 prospective jurors' names have been drawn and the petit jurors notified to report for jury duty Monday and Wednesday when District Judge Pat Boone Jr. has set 11 civil cases for trial.

Slated for this session of district court are the following cases: Continental Grain Company versus Ted Haber, breach of contract; Western Surety Company versus Grace Haberer Williams, Ralph Gage and Betty Anne Hall, indemnity for surety bond funds paid.

H. V. Elkins versus M. P. Thedford, collision, property damage; Ray Brooks versus Byron Magruder and Security State Bank, breach of contract for purchase of realty; Valaria G. Henderson versus Jackie Dwaine Fox and J. D. Fox, collision, personal injuries.

Ernest Wright versus Central States Health and Life Company of Omaha, hospitalization insurance claim; Harvey Leo Holt versus General Motors Corporation and Armes Chevrolet, products liability; Cook Oil Company versus Robert DeLoach, foreclosure of judgement lien.

L. H. Pickrell versus Farmers Chemical and Grain Company, herbicide spray damage, G. and W. Construction versus H. M. Black, account for building terraces; Homer Peel versus Amherst Independent School District, suit for wrongful death.

The following petit jurors have been notified for court duty:

R. C. Willard, Littlefield; Rodney Maxfield, Amherst; Mrs. Roy Gilbert, Amherst; Ernest Mills, Littlefield; Jewell Parker, Littlefield; Mrs. Flossie

M. Edwards, Sudan; Mrs. C. V. Ray, Littlefield; Catherine D. Reese, Sudan; Josefina Herrera, Littlefield; J. O. Barrett, Littlefield;

Mrs. Waymon T. Bellar, Sudan; Lee Holtkamp, Littlefield; Tom Ivey, Sr., Littlefield; John M. Norwood, Amherst; Bennette Wilson, Littlefield; Mrs. Addie Abernathy, Littlefield; E. O. Chandler, Littlefield; Linda Faye Starkey, Earth; Willie K. Zahn, Littlefield; T. E. Wheat, Earth;

Marvin A. Bowling, Sudan; Inell Koontz, Littlefield; Melinda Smith, Olton; K. B. Parish, Springlake; Ferris Foley, Sudan; Albert C. Cabla, Anton; W. P. Dennis, Littlefield; Mrs. Bill Ivins, Spade; Mrs. Willie B. Cook, Anton; Mrs. J. E. Williams, Earth; Mrs. Glenn Batson, Littlefield; Mrs. H. V. Elkins, Littlefield; Mrs. Julia Ann Ray, Olton; Roscoe Thomas, Olton;

Mrs. J. P. Hukill, Littlefield; Jerry Berry, Amherst; Cindy Marie McNeese, Littlefield; Dale Edwards, Sudan; Mrs. S. J. Farquhar, Littlefield; Janna Gilbert, Littlefield; Floyd H. Armistead, Littlefield; Frances Pickett, Sudan; Mrs. Dexter Baker, Sudan; Clarence Deaver, Littlefield;

Mrs. George Stewart, Littlefield; Donnie Lee Howell, Littlefield; Mrs. Edward Fisher, Sudan; Claude Woods, Littlefield; Lloyd Edwards, Sudan; Mrs. Shirley Sigman, Earth; Jerrell Haberer, Littlefield; Helen Templeton, Earth; Shirley Vaughn, Earth; Carrie Brooke, Littlefield;

Rex S. Gilstrap, Littlefield; R. T. Price, Sudan; Mark Rogers, Littlefield; Mrs. J. A. Graves, Sudan; Mrs. Sarah Dunaway, Sudan; F. W. Bearden, Springlake; Feliberta DeLeon, Route 4,

Muleshoe; Deborah Gray, Route 1, Anton; James D. Black, Route 1, Anton; Mrs. James R. Wages, Earth; Ray Austin, Littlefield; Mrs. J. A. Welch, Olton; Russell Strain, Olton; Mrs. J. E. Wuthrich, Littlefield;

Sharon White, Littlefield; Dan Heard, Littlefield; Delia Trull, Spade; Truda L. White, Amherst; Mrs. A. F. Wilson, Littlefield; Corrine Marie Giles, Littlefield; J. M. Griffin, Littlefield; Lesa Ann Nelson, Littlefield; Juan Ortiz, Littlefield; Mrs. Era M. Walthall, Olton; Añe Daniell, Sudan; Ben A. Beauchamp, Sudan; Mrs. R. A. Leonard, Spade; Mrs. Lucille Loyd Bley, Olton; V. M. Peterman, Amherst;

Felix Longoria, Earth; Mrs. Jessie L. Inman, Littlefield; Ed Altman, Littlefield; Essie Lee Wozencraft, Olton; Mrs. W. A. Goldston, Littlefield; Mrs. J. G. Johnson, Spade; Mrs. R. A. Axtell, Earth; Ruth O. Davis, Littlefield; Roy Dolle, Littlefield; Alpha Walden, Olton; Mike Carter, Sudan; Mrs. Edward H. Wesley, Littlefield; Mrs. A. T. Hedgepeth, Littlefield; Mrs. A. B. Jeffrey, Olton; J. R. Inglebarger, Route 1, Anton.

Mrs. W. P. Stone, Amherst; Byron S. Douglass, Littlefield; E. C. Kelley, Earth; Roland Bell, Littlefield; Marguerite Sevier, Littlefield; D. C. Ward, Littlefield; Harold E. Clement, Littlefield; Mrs. A. J. Kennemer, Littlefield;

John Kelley, Earth; Alfredo Hernandez, Littlefield; Davy Cristan, Littlefield; D. W. Bawcom, Littlefield; Alene Huber, Littlefield; Robert Dysart, Amherst; Mrs. K. E. Trotter, Olton; Martin Parmer, Littlefield; Mrs. Toby Walker, Littlefield; Mrs. C. A. Workman, Olton; and Jack W. Yessel, Littlefield.

Portrait
Specials

OUR PROFESSIONAL PHOTOGRAPHER
WILL MAKE 6 TO 8 DIFFERENT POSES
FOR YOU TO CHOOSE FROM

CHILDREN
ADULTS
GROUPS

**FREE 11x14 Silvertone Portrait
to EVERYONE OVER 60!**

This Very Special Offer is presented as an expression of our thanks for your patronage.

WHITE'S AUTO STORE

10 A.M. - 5 P.M.
THURSDAY, SEPTEMBER 11, 1975
LOWE'S STUDIO
WATER VALLEY, MISS.

LARGE WALL SIZE 11x14

Only **95¢** Plus 50' Handling
Compare With \$14.95 VALUE

LIFE SIZE 16x20

Only **\$1.95** Plus 75' Handling
Compare With \$24.95 VALUE

★ Silvertone Bust Vignette
★ One Per Subject ★ No Age Limit
★ Groups \$1.00 per person extra, either size

Leisure Jacket
Smartly tailored plaid jacket shows off a button front; it's belted for extra dash! Sizes 8 to 18. **\$19.**

Plaid Pull-On Pant
Put the finishing touch to a flattering suit by combining the jacket with these wide leg plaid pants, elastic waist. Sizes 8 to 16. **\$12.**

Plaid Skirt
The front-pleated skirt for flair this fall. Elastic waist. Sizes 10 to 16. **\$11.**

Solid Color Pant
Contrast these solid color pants with plaid co-ordinates to make an exciting combination. Sizes 10 to 18. **\$11.**

Sleeveless Knit Shell
Ribbed turtleneck shell of 100% polyester. Sleeveless for cool comfort under the jacket. Sizes 8 to 18. **\$9.**

Heather
Plaid
Coordinates

Create a sensation in good looks that can take you anywhere in style... beautiful fall go-togethers with the fine look of wool yet the easy-care, durability of synthetics. Polyester and acrylic blend fabric in aqua and heather shades.

Mix-N-Match for a wonderful addition to your wardrobe