

Littlefield Plaza opens for business

LA LOVVORN
Special ribbon-cutting ceremony
morning officially opened the
Littlefield Plaza shopping center,
on South Phelps Avenue and
84 Bypass (Marshall Howard
rd).

grocery, on the east.

K-BOB'S
K-Bob's Steak House was officially
opened for business Friday morning,
but gave the facilities and personnel a
trial run Thursday night when several
Littlefield citizens were served steaks.

According to Bruce and Joyce
Deavoures, managers of K-Bob's, this
is the 17th K-Bob's Steak House, and
two more are opening this weekend—
at Perryton and Sweetwater.

K-Bob's houses 4,060 square feet of
floor space, and they can seat 174
people. A special dining room will seat
52.

K-Bob's will also cater parties,
according to the Deavoures.

Included on the menu will be all
types of steaks—merchant's, charloin,
T-bone club, filet, rib eye, New York,
sirloin for two, K-Bobs, Special K-
Bob—a salad wagon and jumbo
shrimp.

KOUNTRY BOY

Clarence Sisemore is managing the
new Kountry Boy grocery store, which
will be handling all national brands, as
well as Kimbell's private labels.

The Kountry Boy will be officially
opening Monday with a fully-stocked
store. According to Sisemore, "We're
going to have the best in Littlefield!
We want the store set up so people
can't say they have to go to Lubbock to
get what they want."

This is the first Kountry Boy store,
and is owned by M. K. Gentry
Shopping Centers, Inc. It houses
19,000 square feet of space.

Steve Bankston of Sudan will be
assistant manager, Steve Gage is
second assistant manager, Freddie
Cook is market manager and C. T.
Heard is produce manager.

T.G.&Y

Bill Minyard is manager of the new
T.G.&Y. Family Center, which was
opened for business Friday afternoon.

T.G.&Y operates a chain of 925
general merchandise stores in a
29-state area. These stores are ser-
viced from 12 warehouses throughout
the U.S.A.

T.G.&Y began operations in 1936,
with headquarters, general office,
and warehouses in Oklahoma City.

The firm had grown to 128 stores at
the end of 1957 when purchased by
Butler Brothers of Chicago, remaining
an autonomous division and contin-
uing under the management of
T.G.&Y officers.

The division had climbed to 219
stores by 1960, the year Butler
Brothers was purchased by City

Products Corporation, with head-
quarters in Chicago and operating
throughout the United States, includ-
ing Hawaii and Alaska. City Products
Corporation and its subsidiaries con-
duct a diversified business consisting
principally of the sales of general
merchandise through company-owned
and franchised stores and home
furnishings. T.G.&Y. continued to
operate as an autonomous division
under the management of the same
group of officers.

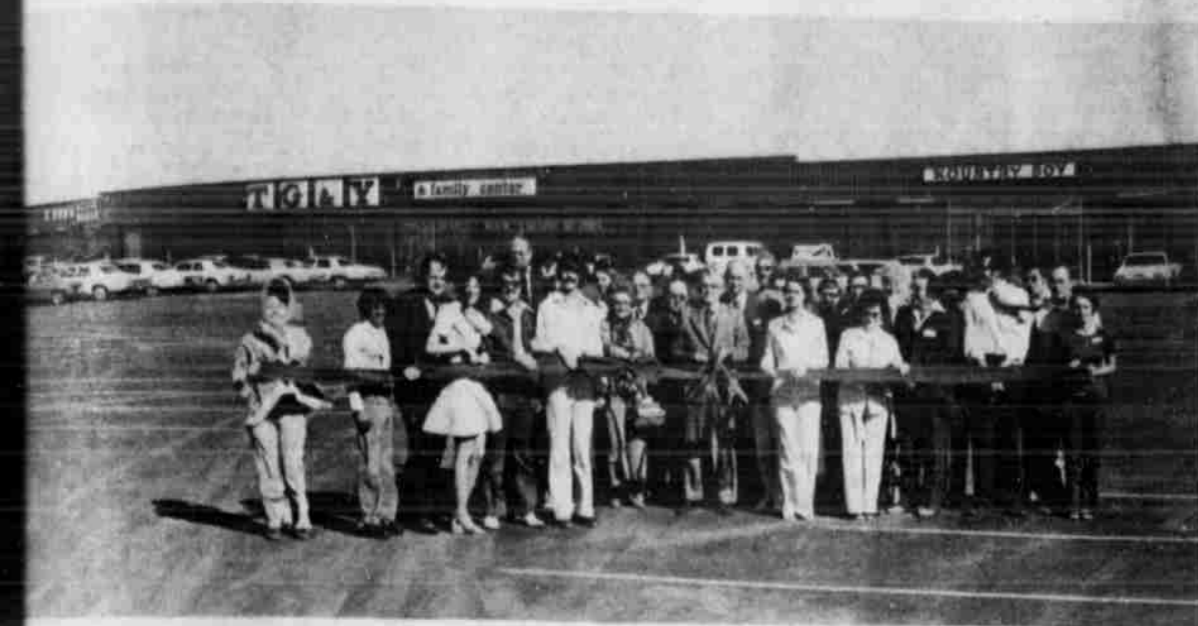
Scott Stores, a subsidiary of City
Products, merged with T.G.&Y. in
1969. Scott operated 110 stores in 18
states, with most of its outlets being
clustered in the Great Lakes and
Middle Western states. This merger
brought all of City Products' company-
owned stores into the T.G.&Y. Divi-
sion.

1975 sales were \$791,000,000. 1976
sales are projected to be \$900,000,000,
and the billion dollar mark will be

reached in 1977. In 1975 there were 56
new stores opened, 50 are scheduled
for 1976 and this aggressive expansion
program will continue into the future.

T.G.&Y. considers their stores to be
of three classes: one is the expanded
variety store, primarily convenience
merchandise ranging to about 15,000
square feet and carrying limited junior
department store lines; secondly, the
family center unit ranging from 20,000
to 30,000 square feet; thirdly, the
larger family center unit ranging from
40,000 to 80,000 square feet. Depend-
ing upon the size of these family
center units, they go heavily into
sporting goods, hardware, wearables,
fabrics, automotive lines, and several
other departments, considering the
needs of the community. Some of
these may include an auto center or
outdoor garden and lawn sales.

E. J. Braun is president and chief
executive officer of the firm. R. A.
Young is Chairman of the Board.



J.E. CHISHOLM cuts the
ribbon Friday morning for grand

opening ceremonies at Littlefield Plaza
shopping center. K-Bob's Steak House.

TG&Y Family Center, and Kountry
Boy market are now open for business.

Council tables items, supports Amtrak

In their regular meeting Thursday
night, Littlefield's city council decided
to table action on the water and sewer
extension policy ordinance, pending
further study on the document; re-
appointed Byron Douglas and Bobby
Short to two-year terms on the Airport
Zoning Board; re-appointed Hershel
Randall to the Planning Commission;
tabled action on the letter regarding
natural gas "banking deals" until an
understanding of what "banking
deals" are, could be reached; agreed
to have Mayor J. E. Chisholm contact
the Amtrak Board supporting the

southern route for Amtrak; and
passed a resolution supporting the
study to be done by the South Plains
Association of Governments concern-
ing joint landfill operations with the
county.

In Friday noon's specially-called
meeting, the council awarded the low
bid of \$18,550 for the street seal
coating project to Jake Diel. High
Plains Pavers was the only other
bidder, who submitted a bid of
\$21,050.

Regarding the water and sewer
See CITY, Page 2

Home gardening clinic to aid area greenthumbs

'Grow Your Own Groceries' is
theme of a home gardening clinic to be
held in Littlefield in the Willey Room
of the Lamb County Coop Building on
South Hwy. 84 Loop Tuesday, April
20, beginning at 1:30 p.m.

The afternoon event, says Buddy
Logsdon, Lamb County Extension
agent, is for home gardening en-
thusiasts and others interested in
growing their own vegetables.

Topics will include discussion
on popular vegetables suitable to the
South Plains area, cultivation and care
of the garden, variety selection and
key cultural practices.

Speaker will be Dr. Roland Roberts,
area vegetable specialist for the Texas
Agricultural Extension Service, Lub-
bock.

'Home gardening has gained popu-
larity at an extremely accelerated pace
in the last few years, says Logsdon.
Backyard gardeners are looking for
ways to save money on grocery bills,
while at the same time recapturing the
enjoyment of growing plants they
experienced 'in the old days.'

Logsdon says the meeting will last
about two hours and that there will be
time for questions and answers re-
garding problems of home gardeners.



"CHRIST THE LORD is risen today!
Hallelujah!" will be sung today in
many Easter worship services
throughout the city. The Bobby Nelson

family, composed of Bobby, Kay,
Brent, 12, and Natalie, 8, are wor-
shipping today at First United Metho-
dist Church. [Staff Photo]

Lamb County Leader-News

LITTLEFIELD, LAMB COUNTY, TEXAS, SUNDAY, APRIL 18, 1976

15¢

VOLUME 53 NUMBER 100

24 PAGES, TWO SECTIONS

TAX INCLUDED

Burglaries, thefts, vandalism being investigated by officers

Lamb County Sheriff's officers are
investigating five burglaries, two
cases of theft and a case of vandalism
which occurred this past week.

Today, Sheriff's officers checked a
store of Pay and Save in Sudan.

Property valued at \$30 was taken after
the front glass doors were pried open
and entered. Besides the cash from the
register, also taken were a vacuum
cleaner and scrubber.

Another burglary was reported
Tuesday at Givens Texaco in Olton.
Three cash boxes were pried open,
and three cash boxes on the car wash
and vacuum cleaner were pried. A
small amount was taken.

That same day, another burglary
was reported from Hall Lumber Com-
pany of Olton. Entry was gained
through the south door. Glass was
broken out of the end door, and about
\$18 in money was taken from the cash
register, along with a gate key and
Coke box key. A large hammer was
found next door at a station.

Wednesday, Bill Smith reported the
burglary of his barn on a farm 13 miles
southwest of Littlefield. A Victor torch
and cutting tip, hoses, blue bottles and
gauges were taken.

Another burglary was reported by
Carol Smith, who resides east of
Earth. Her house had been entered
and taken was a clock from off a table
in front of the living room window, a
blue towel and a 25-caliber chrome-
plated Browning automatic pistol.

Officers recovered a Remington 270
pump gun Tuesday for Freddy Max-
well, who reported Saturday that it
had been taken from his pickup after a
window had been knocked out.

Monday, Green Machinery of Plain-
view reported \$300 in damages was
done to two of their trucks. Battery
posts were broken, and one battery

was thrown in a pit, air lines, gas lines
and mirrors were broken, dirt was put
in gas tanks, radiators and in the oil,
and water was drained from both
trucks.

Sometime over the weekend, a Pace
2300 CB radio and a S&W 38 caliber
blue 4-inch barrel gun were taken from
a pickup belonging to Jerlie James of
Earth. The pickup was parked in front
of his home west of Earth.

Sheriff's officers arrested two earth
men Sunday, and charged one with
DUI and the other with public
intoxication. A Sudan man was ar-
rested Sunday and charged with check
law violation.

A Littlefield man was arrested
Tuesday and charged with DUI.

Wednesday, an Olton man was
arrested and charged with DUI and

transporting in a dry county. He has
been tried, fined and released.

Littlefield city police officers are
investigating the report of a possible
theft at Security State Bank, after the
outside teller booth window was pried
open Sunday.

Police officers jailed seven Tues-
day—three were charged with violat-
ing the liquor ordinance, three were
charged with disorderly conduct, and
one for larceny theft.

Thursday, city policemen arrested
six. One was charged with disorderly
conduct, one charged with violation of
road and driving laws, one charged
with theft, one charged with larceny
theft from an automobile, one charged
with miscellaneous public, and one
with simple assault.

'We, Women' to meet

"We, The Women," women's division
of the Chamber of Commerce, will
meet for a salad luncheon Wednesday,
April 21, in Tri-County Savings and
Loans' Community Room at 12 noon.

A representative from the Women's
Division of the Hereford Chamber of
Commerce will be the guest speaker.
This meeting will kick-off the

membership drive, therefore each
member is to bring a guest.

"Anyone interested in 'We, The
Women' is invited to come and be
with us for this meeting," said a
spokesman for the group.

"A variety of salads to be provided
by the members is expected to be
enjoyed by all."

Pioneer dances to be presented

Students at Elementary II are busy
practicing for their Bicentennial pro-
grams they will be presenting this
month for several organizations and
the public.

Every student will be participating
in 10 pioneer dances and singing
routines.

Some will present a program for the
Rotary Club Thursday, April 22.

All-day singing set by churches

On May 2nd the Ministerial Fellow-
ship of Littlefield is planning to
participate in the Bicentennial Cele-
bration. Members are planning to
have a dinner on the ground, and
singing all day in the Lamb County Ag
and Community Building.

The event will start with a catered
dinner at noon, and the price will be
\$2.25 a plate. Tickets will be available

Another program will be presented
to the student body April 29, and the
general public will be treated to a
program at 1 p.m. Friday, April 30, in
the Junior High School gym.

According to Principal Jack Chris-
tian, "I'm very proud of these
students, and they've been working
real hard to get their programs just
right."

at the Chamber of Commerce office
and various churches.

Singing groups who will begin
singing at 12:45 p.m. are "The
Crusaders" from Muleshoe; "The
Ballards" from Lubbock, "Johnny Ray
Watson", Lorenzo; "Eddy Nichol-
son", Lubbock; and "The Disciples"
from Lubbock.

Soil Temperatures For Littlefield

Date	Temperature	10-Day Average
Sat., April 10	59°	57.3°
Sun., April 11	62°	58.2°
Mon., April 12	60°	58.7°
Tues., April 13	59°	58.8°
Wed., April 14	62°	59.3°
Thurs., April 15	60°	59.6°
Fri., April 16	49°	58.6°

Courtesy of your local Soil Conser-
vation Service.

10-Day average for April 16, 1975,
50.4°

Continued From Page 1

-shootin'-

"You can enter Texas in the morning, travel all that day, go to sleep and when you wake up in your train berth the next morning you will still be in Texas," he proudly told the other passengers.

But the listeners seemed unimpressed so instinctively he decided to stretch the point some: "...then you can travel all that day too and you will still be in Texas."

It was then that one of his audience leaned over and said: "yeah, we got trains like that in Arkansas too."

The one Texan tells is that a man should never ask another man what state he is from; because if he is from Texas he will let you know. And if he is not, then there is no use embarrassing him.

Then there's another one about the Texan who was visiting relatives in New York state and spent all day touring the state and bragging that Texas had "one better" than everything he saw on the tour. Tired of his bragging, the New Yorkers carried him to Niagara Falls.

"Bet you don't have anything like this in Texas," the New Yorker said, finally pleased with himself.

"Nope," the Lone Star State man said, "but we have a plumber who can fix it."

And the list goes on...

-SS-

The United States Postal Service continues to get its share of publicity on the national scene.

Recent disclosures that high-priced (into the billions) bulk mail centers are harboring package-sorting machinery that tends to take its job title literally—by sorting packages into little bitty pieces—certainly hasn't helped the image of the Postal Service.

Television footage last week showed mounds of broken packages that the machines had destroyed beyond recognition. It was reported that one of the huge bulk mail centers up north was going to have an auction to try to rid their storage areas of these packages.

It's going to be a "you pay your money and you take your chances" type event though and that is exactly what the bidders will be doing. Because it was disclosed last week that the Postal Service has lost a package containing the earthly remains of a man whose body had been cremated and the ashes were being shipped to a final resting place.

Granted, the Postal Service, just like any other business, is going to make mistakes. We all do.

We've always contended though, that the small local Post Offices do good jobs in distributing the mail but they continue to be hampered by their superiors in the postal hierarchy.

And machinery that eats packages doesn't help them much either!

LHS Rodeo Club to be organized

Several students at Littlefield High School are interested in forming a Rodeo Club at LHS, and a special organizational meeting has been scheduled Tuesday night.

All interested boys and girls are asked to meet at 7 p.m. in the Vocational Agriculture building on the LHS campus.

Sponsors are needed too, and adults interested are asked to meet with the group at that time.

Brent Gartland will be presiding, and rodeo rules and plans will be discussed.

Olton bank becomes member of Federal Reserve system

Olton State Bank of Olton has been admitted to the Federal Reserve System, according to an announcement by the Federal Reserve Bank of Dallas.

Olton State reports a capital structure of more than \$1.5 million, including capital stock of \$350,000, surplus of \$650,000, and undivided profits and reserves of \$562,200.

The bank's officers include: Kenneth L. Burgess, president and trust officer; Laus Hair, executive vice president; Alan D. Brown, vice president and cashier; Dale L. Cary, vice president; Rachel Ruthart, assistant vice president and assistant trust officer; Betty Jo Hall, assistant cashier; and Jim S. Ferguson, assistant cashier.

In addition to Burgess, Hair, Brown and Cary, other directors include James H. Busby, Vero Busby, Leon Griffin, Louis M. Ratliff Jr., Stephen B. Smith, Robert L. Straw and Calvin R. Wood. The admission of Olton State Bank

-city-

extension policy ordinance, some of the councilmen felt the document "takes away incentive for developers," and felt that the ordinance needs a little more study before it is passed.

The ordinance was designed to establish a policy, terms, rates, fees, conditions and methods to be followed in extending water and sanitary sewer lines in the city.

City Manager Jim Blagg presented a report on administrative activities for March.

"March seemed to be the month of the meetings," he began. "We held two separate meetings with General Telephone Company during the month. Both of these meetings were in conjunction with rate increase negotiations, and these meetings were also held with the Cities of Anton and Amherst in attendance.

"The Mayor and I met with George Wall, District Engineer for the Texas Department of Highways and Transportation, to discuss present and future traffic problems on the two state highways that go through our city. The meeting resulted in the Highway Department's agreeing to perform traffic studies at several intersections to determine the need of traffic control devices.

"The City sponsored a housing seminar during the month to attempt to inform more people of the programs available through the Farmer's Home Administration, the Federal Housing Administration, and the Regional Housing Authority. Representatives from the agencies were present to outline their programs. The seminar was attended by approximately 40 interested people.

Bicentennial at Amherst being planned

Citizens of the Amherst community who are interested in making plans for the Amherst Bicentennial Celebration are asked to attend a special meeting in the Amherst High School Library Tuesday, April 20, at 7 p.m.

Ideas on events to be scheduled are being sought, and persons may express them at this meeting.

Spade board sets meeting

The Spade School Board will meet for a called session Monday night, April 19, at 7:30 at the Spade School.

Included on the agenda are:

1. Consideration of employment of personnel.
2. Comments from Joe Caddell on personnel.

Junior Babe Ruth sign-up underway

Junior Babe Ruth Baseball League sign-up will be conducted at Junior High School all this week, according to Don Avery, president.

Persons or businesses interested in sponsoring two teams are asked to contact Avery at 299-4395.

League play will get underway as soon as team assignments are made.

Pee Wee final sign-up set

The final Pee Wee League Baseball sign-up has been moved up to April 22nd. To sign up call Ronnie Vaughn, 385-5941; Floyce Pierce, 385-4491 or Charles Heffington, 262-4374.

Boys who will be six by August 1 and not nine by that date are eligible to play.

Everyone interested in coaching is urged to attend a meeting set for 7 p.m. Thursday at First Federal Savings and Loan.

STAR-SPANGLED HISTORY

HISTORICAL DRAWINGS BY JOSEPH BOGGS BEALE (1841-1928)



"CAPTURE OF STONY POINT"

The British General Sir Henry Clinton began a series of raids throughout the northern states during the summer of 1779. On one of these raids he captured the American fort at Stony Point, located on the Hudson River in northern New York. On July 15, 1779, American General "Mad Anthony" Wayne and his men sailed down the river, scaled the treacherous, almost perpendicular wall of rock, and recaptured the fort. The Battle of Stony Point has been called one of the most daring midnight attacks of the Revolutionary War. From the collection of American National Insurance Company, Galveston, Texas.

©1975 American National Insurance Co., Galveston, Texas

A Woman's View

PEARL BRANDON

GRANNY'S LETTER

THIS LETTER is to my grandchildren and other loved ones and young people.

Dear Ones:

The time will come, (maybe after I have been gone a long time), when you will wonder if the teachings of the Christian religion have any real meaning for you.

There comes a time in all our lives when we are filled with doubt. That is why I am writing you this letter.

Things will change a great deal by the time you are young men and women. We are living now in the age of space and nuclear energy, but I remember when there were no airplanes, no radios, no television and very few cars.

By the time you read this, many miraculous things will have come to pass, but we will be worshipping the same God. He will mean as much to your generation as He has to generations past.

You will just know more about Him than we do. He will always be where there are human beings.

Not long ago people were saying that they didn't believe God ever intended for man to go to the moon, on the planets, or sail through space beyond the gravity of the earth. Remember they were saying the same

thing when Columbus started out to find a new way to India and found a new continent. Think what has happened since then.

You will probably have occasion to travel under the sea and out there in space.

Remember, regardless of where we are, we are never alone. The presence of God is on the earth, in the depths of the sea and out there in space.

In Isaiah 42 we have this quotation, "Thus saith the Lord God, He that created the heavens and stretched them out; He that spread forth the earth, and that which cometh out of it; He that giveth breath unto the people upon it, and spirit to them that walk therein; I the Lord have called thee in righteousness, and will hold thee hand and will help thee..."

God is eternal. He lives in every age.

In the 93rd Psalm we have this: "Thy throne is established of old, Thou art from everlasting."

So when you grow discouraged and are inclined to doubt, slip off to yourselves and pray to the same God your ancestors prayed to, and He will hear you. He is from everlasting to everlasting.

We may not be around when you need us, but God will be. Lean on Him.

Daylight Time returns April 25

Texas will return to the six-month observance of Daylight Saving Time at 2 a.m. Sunday, April 25.

Because Congress was unable to agree on a new bill this year, the 1966 Uniform Time Act controls and dic-

tates DST from the last Sunday in April through the last Sunday in October.

The provisions of the 1966 law were suspended in January, 1974 at the height of the oil embargo when government officials were looking for every possible way of saving energy.

Basing its actions on preliminary studies, Congress concluded that some energy could be saved through year-around observance of DST, so it was begun in January of that year.

But before the onset of cold weather in the fall, Washington had heard the protests of farmers and rural parents, and standard time was returned in October, 1974. It remained in effect through the last Sunday in February, 1975.

That left the nation with six months of DST in 1973, 10 months in 1974 and eight months in 1975.

The Senate Commerce Committee approved a bill aimed at standardizing the time schedule by decreasing eight months of DST every year.

OBITUARIES

MYRTLE STAFFORD

Services for Mrs. E. M. (Myrtle) Stafford, 88, of Amarillo and formerly of Littlefield, were conducted Saturday afternoon in the George C. Price Funeral Chapel of Levelland.

Officiating was Rev. Bill Ford, pastor of the United Pentecostal Church of Levelland.

Burial was in the City of Levelland Cemetery.

Mrs. Stafford died at 10 a.m. Thursday, April 15, in Olson Manor Nursing Home in Amarillo after a short illness.

A native of Covington, she had lived in Levelland since 1939 when she left in early 1975. She resided in Fort Worth a short time and then in Denver, Colo., before moving to Amarillo. She was married to Stafford on April 14, 1912, in Blum; he died Dec. 17, 1974.

They farmed at Whitharal, Levelland, Littlefield and Cleburne. Mrs. Stafford was a member of United Pentecostal Church.

Survivors include four sons, Ennis Oliver of Fort Worth, Curtis Wilson of Lubbock, Weldon Otis of Carlsbad, N.M., and L. T. of Denver, Colo.; a daughter, Mrs. James H. Eubanks of Amarillo; 13 grandchildren and 16 great-grandchildren.

LAMB COUNTY LEADER-NEWS

ESTABLISHED IN 1911

Lamb County Leader and County Official
Published Feb. 11, 1976

JERRY THOMAS
Editor

WILLIAM LUTYER
Business Manager

EDDIE WILSON
Advertising Manager

LEWIS BARNETT
Circulation Manager

TRINA BARNETT
Telephone Editor

Subscription Rates: \$1.00 per copy; \$2.00 per month; \$5.00 per 3 months; \$10.00 per 6 months; \$18.00 per year in advance.

Single copies, 10c.

Copyright ©1976

THE ABUNDANT LIFE

Rules of order

"RULES OR ORDER" are essential to the order and the effectiveness of the work done in public assemblies. If there be no rules to guide the work of such assemblies, it isn't likely that anything of value will be done.

In fact, there is a possibility that much harm will be done.

AN EFFECTIVE personal life must have "rules of order", too. This is a must for all who desire to live effectively, and with the satisfaction which is so very essential to worthwhile living.

The disorder, and misspent time and effort can be eliminated; or, at least, kept to a minimum. There can be nothing worthwhile in the individual experience, or in the social order made up of individuals; if there be no rules to guide us; or if we reject the rules.

ORDER IN ONE'S LIFE, and order in the social structure are desired by most people. We, at least, want others to abide by the rules that are designed to maintain order; and we must realize that the rules are for us, too.

The worst manner of life is that fashioned by rebellion, the way of life in which an individual deliberately refuses to respect and submit to time-tested and proven "rules of order". It may seem strange that we are somewhat inclined to refuse what is best for us, and what we need most. We must be on guard constantly to make sure that we do not make this mistake.

WE MAY NOT LIKE some rules.

but most of them must be followed anyway. We must not be too busy trying changing the rules we like. Some of them may be essential to well-being, and most of them are tolerated.

We may even learn to appreciate some of them. The reason for most rules, and for wise, we will try to understand and behave accordingly.

"RULES ARE MADE TO BE BROKEN" is a statement heard frequently. Of course, it is false. Some of the rules there are too many rules, and they may be right.

Nevertheless, none of them are permitted to minimize the value of "rules of order" and value of "rules of order" rules are made for our benefit and protection for sustaining an ordered life.

WE LIVE BY SOME KINDS OF RULES. Even the rebellious abide by rules. They reject the "good" rules, but they automatically submit to inferior rules. It is very foolish to minimize the value of justified rules, because they are essential to a well-ordered life.

"ORDER IS THE SANCTUARY OF PEACE." The health of the state. As the beams to the body, so are the bones to the body, so is order to things. —Southey.

THE GREATEST personal goodness is realized, when one is careful to abide by the best of rules.

HOWDY GRITS

By CORNBALL BLEVINS

GUESS I'VE BEEN subscribin' to our Suburban Journal for about the last 25 years. Just couldn't see how I could start my day without it. I really enjoyed "The Plainsman", written by Chas. A. Guy—but he's long since quit.

This newer set of staff writers, however, are something else. I can't make up my mind whether they get paid by the column inch or just get carried away by their own rhetoric. Their excessive use of adjectives, somehow, remind me of federal spendin'.

FOR THE MOST part, by the time I've worked my way through all the descriptive phrases and excessive verbiage of the news stories (just tryin' to get the facts, ma'am) I'm plumb tuckered out! I guess it's some kind of proof of education and a degree or so in journalism. (And if you've got it, flaunt it!) But it's kind of hard on the intellect of a hayseed tenth-grader to keep up with the gist of the story.

By the time I've finished the story, I've forgotten who was the party of the first part and whether he was mugged, robbed, or run over by a bicycle by the party of the second part, and whether the whole scene was worth relatin', in the third part! Really, there oughta' be an easier way to say: "John went to town!"

FOR INSTANCE, THIS past week, we read of threatening, skulkin',

potentially deadly, dancin', mornin' around, dartin', bobbin', an' pin' around the poor little, terrified, cringin', threatened, shakin', shakin', shakin' news sightings, verifications, reports, and reportings, of these stalkin', sneakin', overmornin' devils.

I had to go to work, before I finish the story, without learnin' damage was done, whether or not we were injured, and/or who they

AND HECTOR-LOUSE

I've got friends and kinship in the community! They could be bruised, beaten, battered, lacerated, skinned, broken, and to death, before I could have a through decipherin' that journalistic excellence!

I'm about ready to limit our local publication, and our national news via tv. There's enough readin' in our paper to make drowsy, then I'll be able to get right through the news casts.

SEEMS THAT OUGHTA' wear and tear on my eyesight, both. That, besides, I'd lot less to worry about.

Then if I want to get a good sleep, I can eat a bowl of cornmeal Turn Row's column, turn in, and right off to sleep. Nothing in my stomach or mind, either.

Turn Row COMMENTS

By EMIL MACH

SEEMS TO BE a few more smiles than usual. A person can't help but be in a better frame of mind since the rains. Some areas did not receive as much rain as others, but now there is hope and I'm sure that soon all will have received an adequate amount of rain. Of course we can expect a little more wind this month and we will probably receive a bit more sand than usual. That is, until all the farmers will have a chance to get over the land another time with some type of sand fighting equipment.

NOTICE THAT THE SOIL temperature took quite a drop Friday morning. It is now probably average with previous years. Up until Friday, this area had been enjoying about an eight-degree-above average soil temperature.

OLE CORNBALL seemed to step over his boundaries in his last effort with a little meddlin' with the weather or at least trying to take credit for the rain.

If putting up the rain gauge had anything to do with the rain, I sure wish he

would have put it up sooner. It cranked up those irrigation wheels that guy is hooked up with the companies. Hay, "ball are you follow they call "Fuel Cost Comment" ? If you are, there is no way you will be eligible to get on the line."

AN OLD WEATHER saying of this country is that if it rains on the Sunday, it rains for seven days. Here's hoping.

THERE'S A BIGGER FELLOW the fellow who knows it all. I'll be the fellow who will argue with him.

FELLOW DOWN the black Detroit to recall his new car. The fight with his wife and when she was going home to her mother wouldn't start.

WIFE OF the fellow down the says, "If a man says it's a childish game, chances are he can beat him at it."

Clifton-Hodge wedding solemnized in Dumas

Barlene Clifton and Hodge were united Saturday night in St. John's Lutheran in Dumas. The wedding ceremony was officiated by Rev. Ronald Dumas, at an altar decorated with Easter lilies and a white cloth. The bride's parents, Mr. Marvin Clifton and Mrs. Buster Littlefield, and the groom's parents, Mr. and Mrs. Buster Littlefield, were seated to the left of the bride. The bride wore a white gown with a deep ruffle and a cascade of white bridal roses.

The bride's gown was a chapel-length train. The sweetheart neckline, outlined in white cotton lace interlaced with blue satin ribbon, was further enhanced by a sheer yoke bodice of mira-mist applied with imported Alencon lace medallions and seed pearls rising to a stand-up collar. The full bishop sleeves of mira-mist were appliqued with imported Alencon lace and embroidered with seed pearls. The three-tiered chapel veil fell from a matching lace capulet, high-lighted with seed pearls. The bride carried a cascade bouquet of white bridal roses with blue gypsophila. The bouquet was centered over a small white Bible from the bride's childhood. A handkerchief given to her for her confirmation was placed inside the Bible. The bride carried out the tradition of "something old, something new, something borrowed, and something blue." She wore in her shoe a penny with the date of her birth and one with the groom's birthdate. The matron of honor was Mrs. Rayna DeShazo of Dumas. Bridesmaids were Misses Cynthia Murry of Dumas and Phyllis O'Donnell of Lubbock. Their gowns were designed with an empire waistline and a square neckline. The ice blue floor-length gowns were accented by white cotton lace interlaced with white satin ribbon and butterfly sleeves. Each carried a colonial nosegay of white daisies and blue gypsophila with blue ribbons.

The best man was Donnie Heard of Littlefield. The groomsmen were Billy Paul Bennett of Littlefield and Chuck Clifton of Lubbock, brother of the bride. Ushers were Terry Sheldon, cousin of the bride, and Delbert Harlin, cousin of the groom. They wore black western tuxedos with blue shirts. The groom wore a matching tuxedo with a white shirt.

Mrs. Cliff Miller of Dumas accompanied Jim Bob Herndon of Borger as he sang "How Great Thou Art" and "Whither Thou Goest" before the ceremony. Mrs. Miller also played the traditional "Wedding March" as the bride walked down the aisle on the arm of her father. The mother of the bride chose for her daughter's wedding a floor-length gown of blue flowered polyester accented by a corsage with blue trim.

The groom's mother wore an apricot floor-length gown of melo-mist with sheer sleeves and a corsage with apricot trim. Guests were registered by Miss Janis Sheldon of Dumas, cousin of the bride. Veronica Jo Wilkins of Amarillo, the bride's niece, distributed rice rosebuds at the reception. The reception followed the ceremony in the Parish Hall of the church.


The bride's serving table was decorated with the Easter lilies from the altar and the bridesmaids bouquets. The three-tiered wedding cake was topped with a miniature bride and groom from her parents' wedding cake. The white cake was accented with blue ribbons and roses. The groom's table featured a chocolate cake made to resemble an 18-wheel semi-trailer rig. Serving at the reception was Mrs. Charles Seldon Jr., Mrs. Harold Lambert, Mrs. John Admire, sister of the bride, and Miss Linda Kay Hodge, sister of the groom. For going away, the bride chose a bright green pant suit accented with a green floral blouse and white accessories. She wore a corsage of white roses lifted from the bridal bouquet.

The bride is a graduate of Dumas High School. The groom is a graduate of Littlefield High School and is employed at Waples-Platter Company of Lubbock. After the wedding trip, the couple will be at home in Littlefield. The wedding party was honored with a rehearsal dinner by Mr. and Mrs. Buster Hodge at the Kona-Kai Restaurant in Dumas Friday night.



MRS. ROBERT LEE HODGE

EXPERIENCED **QUALIFIED**



DAVID THOMPSON
Candidate Commissioner Precinct 3

EXPERIENCED **HONEST**

Make Me Your
Commissioner
I'll Work For "U"!
Pd. Pol. Adv. by David Thompson

Doris Williams attends sing

Doris Williams was in Lubbock Saturday night to attend the 1976 Texas Tech University Sing. Her daughter, Beth, a Tech junior, sang with the Chi Omega Sorority and Sigma Chi Fraternity in a "Hello Dolly" theme. Her son, Gene, freshman law student, directed the Phi Kappa Ksi Fraternity to its second sweepstakes win in two years. The Kappa Alpha Theta Sorority teamed with the Phi Psi in a "Pippin" theme. "Enthusiasm by the participants, unusual costuming and backdrops, plus excellent choreography made the 1976 Sing very impressive and enjoyable for the large audience at the Municipal Auditorium," Mrs. Williams said.

Sharon Timmons honored

Sharon Timmons, Littlefield sophomore, was among 32 Texas Tech University students who were honored Wednesday night, April 14 by the department of German and Slavic languages at an awards dinner sponsored by the National Slavic Honor Society, Dobro Slovo, Alpha Zeta Chapter; and Delta Phi Alpha, National German Honor Society. Sharon received a Certificate of Merit. Master of ceremonies was Jan Hogan, president of Delta Phi Alpha; invocation was given by Terry Wilkinson, secretary of Alpha Zeta; and Gary Rouse, vice president of Delta Phi Alpha, introduced honor guests. Secretary of Delta Phi Alpha, Jamie Lee, presided over recognition of officers and initiation of new members for the two organizations.

GOSPEL MEETING

CRESCENT PARK CHURCH OF CHRIST

Littlefield, Texas

APRIL 18-22

SERVICES 10 A.M. & 7:30 P.M.

SERMON TOPICS

Sunday morning—JESUS IS LORD
Sunday Night—THE ENCOURAGING BOOK OF REVELATION
Monday Night—BLOOD THAT TALKS
Tuesday Night—GOD WANTS TO SAVE YOU
Wednesday Night—CHRIST AND THE CHURCH
Thursday Night—WHEN THE TRUMPET SOUNDS



ALVIS JONES
Song Director

STORIES FOR THE CHILDREN:

Sunday Night—THE KING'S BIRTHDAY
Monday Night—TWO BAD BOYS
Tuesday Night—PAUL AND THE SNAKE
Wednesday Night—THE BOY WHO WENT TO SLEEP IN CHURCH
Thursday Night—THE FIERY FURNACE



NORMAN GIPSON
Speaker

COME VISIT

PAZAZ



DURING OUR FIRST BICENTENNIAL SALE



*** 2 FREE TOPS TO BE GIVEN AWAY**

*** You Must Register Before 4:30 P.M. Wednesday, April 21**

*** Prices Good Mon., April 17 Thru Wed., April 21**

LONG DRESSES			
Reg.	Sale Price	Reg.	Sale Price
46.00	\$32.25	38.00	\$26.25
26.00	\$18.20	40.00	\$28.00
34.00	\$23.80	38.75	\$27.25
42.00	\$30.45	50.00	\$35.00

LONG & SHORT DRESSES			
Reg. \$18-\$100			
\$12.60 to \$69.95			
JUMP SUITS, PANTSUITS & SLACKS			
Reg. \$18-\$60			
\$12.60 to \$42.00			
Red & Blue WINDBREAKERS			
Were \$19		Now Only \$13.45	

TOPS & BLOUSES			
Reg. Price \$6.75-\$23.00			
Now Only			
\$4.75		\$16.50	

JUMP SUITS, PANTSUITS & SLACKS			
Reg.	Sale Price	Reg.	Sale Price
18.00	\$12.60	50.00	\$35.00
22.00	\$15.40	25.50	\$17.85
41.50	\$29.25	21.50	\$15.29
46.00	\$32.25	19.50	\$13.65
42.00	\$29.45	16.50	\$11.59
60.00	\$42.00	13.75	\$9.65

DRESSES			
Reg.	Sale Price	Reg.	Sale Price
18.00	\$12.60	35.00	\$23.80
17.50	\$12.25	39.20	\$26.45
29.50	\$20.65	14.00	\$10.00
33.50	\$23.45	32.00	\$23.00
50.00	\$35.00	25.00	\$17.50
30.00	\$21.00	45.50	\$31.85
46.00	\$32.00	42.00	\$29.95
34.000	\$23.80	100.00	\$69.95
56.00	\$39.20	49.50	\$34.65
20.00	\$14.00		

All Bicentennial **SCARVES \$1.50**

Marked **HANDBAGS \$5.95**

"You Can't Go Around Saying You're Terrific, So Let Our Clothes Say It For You"

PAZAZ

329 PHELPS 385-4090

ARMOUR STAR,
MIRA CURE,
BACON
VACUUM PACKED,
12 OZ PKG **\$1.19**

RANCH BRAND,
BACON
VACUUM PACKED,
1 LB PKG **\$1.39**

USDA INSPECTED
FRYERS
WHOLE, LB **49¢**

HAMS
LONGHORN DRY CURED,
NO WATER ADDED
SHANK PORTION **99¢**
BUTT PORTION **\$1.09**
WHOLE **\$1.09**

CATFISH
FRESH WATER,
PAN READY, LB **99¢**

CHEESE
KRAFT,
AMERICAN-SINGLES,
1 LB PKG **\$1.39**

FRANKS BOLOGNA
RANCH BRAND,
12 OZ PKG **59¢**

WHITE
Value
SALE

ROUND STEAK
USDA CHOICE, LB **98¢** BONELESS, LB

CHUCK ROAST

POLISH SAUSAGE LONGHORN, LB **\$1.58**

GROUND BEEF USDA CHOICE, FRESH GROUND DAILY, LB **68¢**

T-BONE STEAK USDA CHOICE, LB **\$1.48**

CLUB STEAK USDA CHOICE, CENTER CUT, LB **68¢**

We invite your order for special cuts. We sell only USDA Choice beef. No chemicals added to our beef. In stock daily, Rib Eyes, Boneless Clubs, Thick Cut T-Bones, Cut-up Fryers & Chicken Parts

FRUIT COCKTAIL
WHITE SWAN,
17 OZ CAN
3/\$1



TOMATO JUICE
WHITE SWAN,
46 OZ CAN
2/99¢



GRAPEFRUIT JUICE
WHITE SWAN,
46 OZ CAN
2/99¢



CAN MILK
WHITE SWAN,
TALL CANS,
13 OZ CAN
3/\$1



SPINACH
WHITE SWAN,
15 OZ CAN
4/\$1

YOU ALWAYS SAVE AT LITTLEFIELD SUPER MARKET

MARGARINE
WHITE SWAN,
1 LB TUB **2/89¢**



SHORTENING VELVET, 42 OZ CAN **89¢**

COFFEE WHITE SWAN ALL GRINDS, 1 LB CAN **\$1.29**

SALAD DRESSING
WHITE SWAN,
NO. 1 QUALITY,
QUART **69¢**



PEPSI COLA
COCA COLA
DR PEPPER

6 BOTTLE CARTON, 32 OZ **\$1.39**

STRAWBERRIES TROPHY,
ORANGE JUICE TEXSUN, 6 OZ
POT PIES SPARETIME, BEEF, CHICKEN OR TURKEY, 7 6 OZ
SHOESTRING POTATOES FALV-R-PAC, 20 OZ

TOMATOES VINE RIPE, LARGE SIZE
CARROTS CALIFORNIA, 1 LB CELL
POTATOES RUSSET ALL PURPOSE
CABBAGE GREEN CRISP
ORANGES

ASPIRIN BAYER, 100 COUNT BOTTLE
LISTERINE LARGE 14 OZ BOTTLE
TOOTH PASTE PEPDENT, 7 OZ
HAIR SPRAY BRECK, 7 OZ

MOTOR OIL
MCBIL,
30 WT. H.D.
49¢

SUP

ays

CUT GREEN BEANS

WHITE SWAN,
15 1/2 OZ CAN

4 / \$1

WHOLE NEW POTATOES

WHITE SWAN,
16 OZ CAN

4 / \$1

WHOLE PEELED TOMATOES

WHITE SWAN,
16 OZ CAN

3 / \$1

HOMINY

WHITE SWAN, WHITE OR GOLDEN,
15 OZ CAN

5 / \$1

PEACHES

WHITE SWAN,
HALVES OR SLICED, 29 OZ

2 / 99¢

CORN

WHITE SWAN, WHOLE KERNEL OR
CANNED STYLE, NO. 17 OZ CAN

4 / \$1

CANNED PEAS

WHITE SWAN,
17 OZ CAN

3 / \$1

PORK & BEANS

WHITE SWAN,
15 OZ CAN

4 / \$1



FLOUR

GLADIOLA, 5 LB BAG

69¢

CRACKERS

WHITE SWAN,
1 LB BOX

2 / 89¢

CATSUP

WHITE SWAN,
20 OZ BOTTLE

2 / 99¢

BISCUITS

WHITE SWAN, HOMESTYLE
BUTTERMILK OR SWEETMILK
8 OZ

10 / \$1

VANILLA WAFERS

WHITE SWAN, 12 OZ PKG

39¢

TISSUE

ZEE, NICE-N-SOFT, 4 ROLL

69¢

TOMATO SAUCE

WHITE SWAN,

8 OZ CAN

7 / \$1



NO. 10 THIS COUPON IS GOOD FOR
100 FREE GUNN BROS. STAMPS
AT Littlefield Super Mkt
No Purchase Required

Please fill in your name and city
Only One Coupon Per Customer-Coupon Expires

100 Extra Gunn Bros. Stamps With Each Purchase
3 LB CAN CRISCO

TRASH BAGS, BAGGIES, 10 COUNT

PAPER PLATES, CHINET,
COMPARTMENT, 36 COUNT

POTATO CHIPS, PLANTERS,
9 OZ TWIN PACKAGE

TOWELS

HI-DRY,
LARGE ROLL

2 / 89¢

ICE CREAM

PLAINS ROUND CARTON,
1/2 GALLON

\$1.09

BUTTERMILK

PLAINS, 1/2 GALLON

67¢

SAVINGS ADD UP AT LITTLEFIELD SUPER MARKET

CASSEROLE

PINTO BEANS

4 LB BAG

99¢

BLEACH

WHITE SWAN, 1/2 GALLON

39¢

HUSKEY

DOG FOOD

15 OZ CAN

8 / 99¢

TIDE

GIANT SIZE

\$1.19

WHITE SWAN,

SUGAR

PURE CANE GRANULATED

5 LB BAG

99¢

WHITE SWAN

TEA

3 OZ JAR

99¢



Specials Good Monday,
April 19 Thru Saturday,
April 24. We Give Gunn
Brothers Stamps- Double
Tuesday & Wednesday.
Excluding Cigarettes. We Sell Travelers
Express Money Orders &
Redeem USDA Food Stamps.
We Reserve The Right To Limit
Quantities. Open 7 Days
A Week. 8: A.M. Till 9
P.M.

Monday, April 18.

Littlefield Super Market

Home Operated

LITTLEFIELD
MARKET

Avery-Wheeler engagement announced

WHITHARRAL—Mr. and Mrs. Donald R. Avery of Whitharral announce the engagement and approaching marriage of their daughter, Donna Faye, to Vernon David Wheeler, son of Mr. and Mrs. J. H. Wheeler of Levelland.

The couple plans a June 18 wedding in the Cactus Drive Church of Christ in Levelland.

Friends of the couple are invited to attend.

Nichols Circle studies Bible

The Mary Francis Nichols Circle of First Baptist Church met Monday night in the church parlor.

The prayer chairman Mrs. Lucille Walden, read the birthday calendar and offered prayer for the missionaries.

The Bible teacher, Mrs. Bessie Brunson, led the group in a study, of second Corinthians.

Thirteen members were present: Mmes. Ella Lindley, Minnie Matthews, Ora Martin, Lucille Walden, Irene Peterson, Frieda Cunningham, Loraine Welborn, Bee Park, Winnie Hogan, Faye Barker, Bessie Brunson, Mattie Barnard, Sanny Hogue, and one visitor, Mrs. Gladys Lynn.



DONNA AVERY AND DAVID WHEELER

Easter program observed by Methodist UMW

The United Methodist women met Monday night in the home of Mrs. C. Ray Stevens for an Easter program.

Mrs. Jim Harlan, acting chairperson, presided over the meeting.

The opening prayer was presented by Mrs. Ina Mae McQuatters.

After a short business session, Mrs. Mildred Smiley presented an Easter program.

Mrs. Stevens served refreshments to guests and members: Mrs. Louise Lust, Gretchen Brown, Janice Muller, Rachel Byrd, Eras Caldwell, Lola Dyess, Doris Frey, Jewell Grant, Jess Harlin, Ruth Hinds, Ina Mae McQuatters, Lois Pharris, La Vern Seay, Mildred Smiley, and Miss Charlene Smiley.

Epsilon Delta chapter meets

Epsilon Delta Chapter of Delta Kappa Gamma Society met in the Sudan homemaking cottage Saturday morning, April 3.

The Sudan members of the chapter were hostesses for a brunch, and decorations emphasizing spring were used.

After the business meeting, Dorene Harbin, homemaking teacher in Muleshoe, presented the program. Assisted by her daughter and granddaughter, who sang a variety of songs, Mrs. Harbin read a "letter" in which the life of a school teacher was reviewed. Everything from growing up on a farm, teaching in a one-teacher school, being the janitor as well as teacher, and driving a bus over all dirt roads to the more enjoyable duties of a modern teacher was included. As each activity was mentioned in the "letter", the teachers who had experienced that activity stood.



DEANNA PITTMAN MISS DIXIE DEB

Following the program, Ruth Ford led the group in singing several songs including "Delta Kappa Gamma".

Those attending from Littlefield were Addie Abernathy, Elizabeth Ayres, Audie Collins, Harriett Cummings, Iona Donnelly, Ruth Ford, Nan Ellen Largent, Charlene Reast, Ruby Reid, Edith Settle, Daphne Smith, and Hazel Ward.

The next meeting, which will be a dinner meeting May 1

in Olton, will be a tribute to the founders of Delta Kappa Gamma.

Pep News

MR. AND MRS. Jerald Simnacher and family of Big Spring and Mrs. Harriet Phillip's and son of Dallas visited in the home of their parents, Mr. and Mrs. Frank Simnacher over the weekend of April 10 and 11.

Deanna Pittman wins Miss Dixie Deb event

Deanna Pittman, 8-year-old daughter of Mr. and Mrs. C. W. Pittman, former residents of Littlefield, won the title of Miss Dixie Deb, Longview, in a southern states preliminary pageant held there Feb. 14.

She competed in interview, sportswear, short party dress, talent, and Southern Bell gown.

She will attend state final competition in Fort Worth in July.

She is sponsored by David Thompson, oil field contractor, here in Littlefield.

The Thompsons are Deanna's aunt and uncle. Other relatives residing in Littlefield are both grandmothers, Devela Henshaw and Jewel Pittman.

Mr. and Mrs. Don Huckabey and family, Drucilla Pugh and family, Vonnie Gregory

and family; all are aunts of Miss Pittman. Her father, Deanna Henshaw of Ardmore,

Littlefield News

MRS. KATIE SED was dismissed from the cal Arts Hospital Wednesday. She is the mother of Archie Tiller who works hospital.

MRS. BUD WHITE Medical Arts Hospital for tests.

MRS. LYLE BRANSON taken to Medical Arts Saturday night with a heart attack and was missed Thursday.

MRS. SARAH MITCHELL and her daughter, Laura, from Phoenix last week to celebrate the 50th birthday of Mr. and Mrs. E. Y. strong today.

Boothe is chosen April student

ANTON—Student of the month for April at Anton High School is Lisa Boothe, junior, secretary of the National Honor Society.

She was chosen to the All-Star Cast for the District 5-B one-act play contest. She has had a lead part in one-act plays two years.

She has been a twirler in the Bulldog Band three years and was designated head twirler this year. She has been a member of the marching and

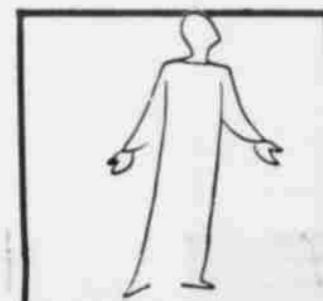
concert bands three years and was nominated for band sweetheart last fall.

She is second vice president of the F.H.A., and was recognized for Encounter her sophomore year.

Lisa was nominated for "Most Friendly," "Best Looking," "Most Likely to Succeed," and "Most Spirited" for the 1976 "Bulldog" annual. She was chosen "Who's Who for Home Economics for 1976."

She is a member of the annual staff with three years' experience.

She is the daughter of Mr. and Mrs. Louis Boothe.



Being A Single Adult.
Jesus Often Found
Himself Alone.
Do You?
You Don't Always
Have To Be Alone.
Surround Yourself With
Friends In The Single
Adult Department At
The First Baptist Church
Littlefield, Texas
Every Sunday Morning
Fellowship Time 9:20
Bible Study Time 9:45



LISA BOOTHE, daughter of Mr. and Mrs. Louis Boothe, sweetheart of the Anton Lions Club, will be a contestant in the 21-2 Lions Clubs Queen Contest to be held April 23 at Snyder.

You Are Invited
To A FRANCES DENNEY
"EXPERIENCE IN
LUXURY"

The Frances Denney
Consultant will
be in our store

(WED., APRIL 21ST, 9 A.M. - 5 P.M.)

to answer your questions
and discuss the
Fine Arts of
Cosmetics and
Fragrances.

Please join us on
the above date
and discover that

Frances Denney

is truly your most rewarding
source of beauty.



BRITAIN PHARMACY

Close 6 p.m. Daily Close 5 p.m. Sunday

Announcing the Grand Opening of a Pontiac dealership that does a lot more than make deals.



David Bell

OLDS - CADILLAC - PONTIAC - GMC, INC

801 Hall Ave., Littlefield, Texas

Sure, we'll give you a good deal on a new Pontiac. But that's only one of the things we'll do. Because we figure that long after the deal is settled, you'll still want to know that you can depend on us.

That's why we've just opened a great new full-service dealership. That's why we've got experienced salesmen to help you select the car you need. That's why we stock so many of the accessories that will help make it exactly the car you want. And that's why, when your car needs that occasional service, you can

turn it over to our reliable mechanics. Just because we want you to enjoy your car. So much that you tell your friends about the great place where you bought it.

PONTIAC



The Mark of Great Cars

So stop by and have a look at our terrific lineup of new 1976 Pontiacs. See our selection of clean, quality used cars. Tour our showroom and service department. See how our new place is set up to serve you. Because we're going to give you a good deal. But we're prepared to give you a lot more.



Rotarian delegation to attend conference

MELVA DEAN Mote writing a book on Amherst. It is to contain family histories with it possible, with other data. Phone Mote at her home, 46-3430.

TANGY ARMSTEAD is spending Easter with parents Mr. and Mrs. Carpenter.

A delegation of Littlefield Rotarians, led by president Jim Vandenberg, will attend the District 573 Annual Conference in Amarillo April 23, 24 and 25.

District Governor Ralph McLaughlin and a 28-member committee have assembled a diverse program ranging from club workshops, international

fellowship programs and official legislative functions to art and shopping tours, a planetarium visit and a full day of "Rotary Olympics."

All three Amarillo Rotary clubs are co-hosting the conference which will headquarter at the Hilton Inn in Amarillo.

"To Dignify the Human Being" is the theme of the conference; Rotarian L. S. "Skip" Kreidler of Tulsa will deliver the keynote address.

Other speakers include incoming district governor John Tyler, Midland; the RI President's Special Representative William Murphy, Paris; and Ernest D. Upham, RI World Fellowship Activities Chairman, Columbia.

Amarillo Rotarian Dr. Jim Cook, responsible for the opening "fun day" events has organized the first "Rotary Olympics" competition. Golf, bowling, handball, bridge, tennis and a marathon run are included; winners will be decorated with bronze medallions in three-tiered awards ceremony Friday evening, April 23. An Amarillo advertising executive, Rotarian Ken Parker, designed the special medallions.

Wives of the Rotarians from the 45 cities in the northwest Texas district will tour the new Discovery Center in Amarillo, which boasts the largest domed screen of any planetarium in a 400-mile radius. They will also attend a fashion show, and will view a special art show featuring work by West Texas Station University and Amarillo College students.

AMHERST NEWS

MR. AND MRS. Denny Pinter, and daughter have moved to Amherst.

SATURDAY Mrs. S. E. Lance, Mrs. Virginia Young and Dana and Mrs. Raymond Young visited the Blairs and Planks in Lubbock.



MRS. MARGARET PARKER of Arlington, right, was commissioned to paint the portrait of O. L. Kizer, who for 22 years played the role of Christ in the Laurel Land Easter Pageant. Kizer, left, is retiring. Mrs. Parker is daughter of Mr. and Mrs. C. E. Cowan of Littlefield. The portrait was presented to Kizer March 21 at reception given at Laurel Land in his honor. (Personal Photo)

Junior-Senior Banquet served

ANTON—"The Spirit of Youth" was theme of the Anton Junior-Senior banquet held in the East Patio of South Park Inn, Lubbock Saturday night.

The junior class members were hosts to the faculty, administration, trustees and guests honoring the graduating seniors.

Janette Bishop, junior class president, presided at the banquet. The response for the seniors was given by James Melton, senior class president. Preceding the meal, the invocation was given by Foy Mills Jr.

Cindy Spears introduced the entertainment which was provided by Donnetta Williams, Miss Wayland College 1976, vocalist and her back-up band.

The senior class will be read by Greg Couch. Pictures depicting the senior will be provided for each junior. The junior class prophecy was given by Lisa Boothe.

The other members of the honored senior class include Ronnie Peacock, vice-president; Willie Griggs, secretary; Trinidad Rendon, treasurer; and Danny Benton, reporter, and Tami Brazil, Teri Butler, Toni Green, Kevin Hunt, Louis Martinez, Ishmael McDonald,

Jeri Deanna Parrish, Marty Sea, and Anita Wright.

"Together they climb the mountain of life, waterfalls of laughter fill their hearts, streams of hope flow through their souls, learning floods their minds, raindrops of tears often fill their eyes, but

showers of courage fall bringing sunshine after the storm, waves of time leave traces of memories on the shores of their souls, into the ocean of experience they grope for answers, this is the Spirit of Youth...forever to shine," quoted by the program theme.

Spring fashion fair slated at Muleshoe

"Want to learn more about fashions?" says County Extension Agent Dorothy Powell. "You are invited to attend the Spring Fashion Fair in Muleshoe Thursday, April 22," she continued.

The fair will be held at the First United Methodist Church, 507 West Second Street.

The program for the day includes:

10-11—"Creative Sewing" by Vivian Trimpl, educational consultant, Viking Sewing Machine Company. Ms. Trimpl will show machine embroidery, monograms, appliques and give tips for sewing on different fabrics.

11-12—"Quick and Easy Recycling" by Mrs. Becky Culp, Extension Service clothing specialist. Ideas and techniques for updating your current wardrobe for spring and summer '76.

12-1—Lunch (on your own)

1-2—"Accent With Accessories" by Mrs. Dickie Perkins, buyer for Gabriel's in Plainview. Ideas for new accessories for spring and summer. Demonstration on how to tie scarfs for different outfits and face shapes.

2-3—"Simplicity Style Show" Ms. Jeri More, Education Representative, New York City. Models from Lamb, Bailey, Cochran and Farmer Counties will present fashions made from Simplicity Patterns.

The Spring Fashion Fair is being sponsored by the Family Living Sub-Committees in Lamb, Bailey, Cochran and Farmer Counties. There is no charge for admission.

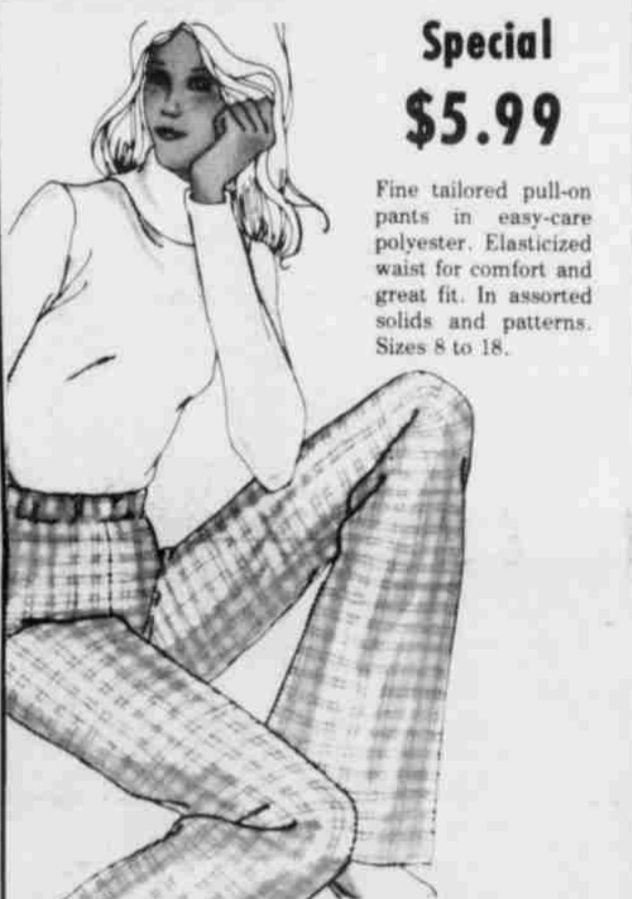
Educational programs sponsored by the Texas Agricultural Extension Service serve people of all ages regardless of socio-economic levels, race, color, sex or national origin.

JCPenney



Special \$14.88

Crinkly polyester/cotton big dress with wing collar, matching wide belt. In blue, beige or green. Misses 8-16.



Special \$5.99

Fine tailored pull-on pants in easy-care polyester. Elasticized waist for comfort and great fit. In assorted solids and patterns. Sizes 8 to 18.



Special 2/\$9.00

Women's sporting casual shoes. Step-in styling with buckles, top stitching. Soft tricot lined urethane uppers. Choose from many fashion colors. Sizes 6/10, M



Special \$4.88

Girls Super Denim jean of polyester/cotton with flare legs. In assorted pastel colors. Sizes 7-14.



Special \$2.22

Girls crewneck photo prints, 40% acrylic fiber, 40% cotton, 20% polyester. Sizes SML.

SHOP BY PHONE SHOP CATALOG 385-5166

OPEN SAT. 9-6 OTHER DAYS TIL 5:30

Easter

The message of Easter is a source of inspiration and courage for the world! There's something very special . . . very precious . . . about Easter that lifts it far above all the other days of the year . . . a never-failing source of inspiration and courage. You see it in the happy faces of whole families as they join the Easter parade to Church. You hear it in their voices, joyously lifted in triumphant Easter hymns. Most of all, you feel it in your own heart, as surrounded by your loved ones, you take your place in Church on Easter Sunday. There you experience anew, that deeply inspiring sense of re-awakening that is the age-old wonder and shining glory of Easter. May we rejoice once more in the supreme blessing of the Resurrection . . . and give us a renewal of hope, a fulfillment of faith to fortify our courage and sustain our spirits through all the days ahead.

ATTEND THE CHURCH OF YOUR CHOICE THIS EASTER SUNDAY



Ware's

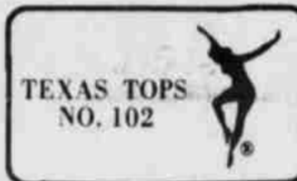
NHS officers are elected at Anton HS

ANTON—Anton Chapter of the National Honor Society elected officers for 1976-77 school year.

Re-elected for president was Lon Timms, son of Mr. and Mrs. Gordon Timms, and re-elected for secretary was Lisa Boothe, daughter of Mr. and Mrs. Louis Boothe.

Elected vice president was Ray Stone, son of Mr. and Mrs. Vernon Stone. Treasurer is Janette Bishop, daughter of Mr. and Mrs. Eddie Bishop, and reporter is Dena Goen, daughter of Mr. and Mrs. Bill Goen.

Advisors for the chapter are Mrs. Marilyn McLarty and Miss Janiece Robertson.



Texas TOPS 102 met in Medical Arts dining room for a regular meeting Tuesday night.

Juanita White, leader, asked that all members bring a washrag and a bar of soap to the next meeting. This will be for a project to make souvenirs for the A.R.D. at Amarillo. These washrag dogs will help TOPS pay the finances.

Mildred Smiley was recognized as queen for the month. Queen for this week was Shirley Cox.

Runner-up was Lola Wason. Secret pal gifts were exchanged.

Call TODAY for an appointment to have your free portrait taken!

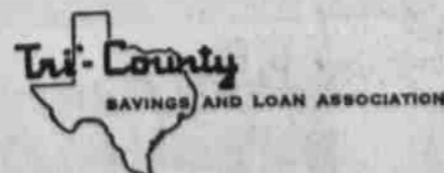
LITTLEFIELD PHONE: 385-5149

PHOTOGRAPHY DATES: April 19 through April 21

PHOTOGRAPHY HOURS:

3 p.m. - 8 p.m.

Monday, Tuesday, and Wednesday



7th & XIT 385-5149

Annual Children's Clinic set by Shriners in Hereford

Hereford's Oasis Shrine Club will conduct its 20th annual children's clinic Saturday, April 24, at the Hereford Medical and Surgical Clinic, 343 N. Miles.

Shrine Nobles and their wives will get the day underway at 6:30 a.m. with registration at the Civic Club Center.

Registration of children will begin at 8 a.m. at the Southwestern Public Service building at the corner of 4th and Lee Streets.

Prior to being registered for the day-long clinic, all children must pre-register with their own doctors.

Dr. A. T. Mims of the Hereford Medical Clinic is directing the day-long project, and forms needed for pre-registration may be obtained from him at his clinic, from private physicians, or from any Shriner.

Physicians who will be present for the clinic include: Dr.

Kenneth King earns award from U.S.A.F.

Airman First Class Kenneth N. King, son of Mrs. Fred Clements of Muleshoe, is a member of a unit which has earned the U.S. Air Force Communications Service Commander's Achievement Award for the Southern Communications Area.

Airman King, an electronic-mechanical communications and cryptographic equipment systems repairman, is assigned at Kelly AFB, Tex., with the 1923rd Communications Group which received the annual award for exceptional performance and professionalism throughout 1975.

The airman is a 1971 graduate of Muleshoe High School. His wife, Sonya, is the daughter of Mr. and Mrs. Dale Newsom of Sudan.

EXCESSIVE NOISE

Excessive industrial noise can not only pose a threat to employees' hearing ability, but can also be costly in increasing worker fatigue and reducing efficiency.

James E. Loveless of Lubbock and Dr. William McKay of Amarillo, orthopedics; Dr. Don Ryan, Denton, speech and hearing; Dr. Jerry Miller, Dallas, radiology; Dr. Robert Leachman, Houston, cardiology; Dr. Maurice Dyer, Amarillo, pediatrics; Dr. J. Franklin Howell, Amarillo, ophthalmology; Dr. Willard Sellman, Dallas, plastic surgery; Dr. Norman Wright, Amarillo, otolaryngology; Dr.

Jerold Gormley, Amarillo, oral surgery; and Dr. Louis A. Finney, Amarillo, neurology. Participants in the clinic will be welcomed at a noon meal which will be catered by the Noon Lions Club of Hereford. The meal will be held on the Hereford High School cafeteria.

The clinic is held each year to determine any medical deficiencies in children who might not ordinarily be able to pay

for complete examinations.

Last year, a total of 106 children registered for the clinic and 103 were examined.

Following the close of the clinic, doctors and the Shrine Nobles will meet at the Hereford County Club to receive reports on the children examined.

Dinner and dancing will follow the report session for the Shriners, doctors, clinic personnel and their spouses.



LAN BENTSEN, son of State Senator Lloyd Bentsen, was in Littlefield Wednesday to contact Glenn Batson, right, campaign coordinator for Lamb County. Bentsen places a "Bentsen" pin on Batson's lapel, while George Tagg, a member of Senator Bentsen's finance committee, displays a bumper sticker. (Staff Photo)



BUSINESS CLUB members at LHS presented an Easter egg hunt Wednesday for students at the Satellite School. Members include: Mickey Austin, Ricky Bennett, Sharla Birkelbach, Ida Castillo, Jackie Chronister, George Davis, Cindy Drake, Mary Ellen Echevarria, Hope Flores, Betty Head, Carol Hohratsch, Pipop Laocum, Terri Nielsen, Chris Ogerly, Pat Orr, Julian Saenz, Debbie Spencer, Brenda Sterling, Amado Montalvo, Rachel Montalvo and Miss Kraushar, sponsor. (Staff Photo)



LITTLEFIELD NEWS

JIM BEADLES, 27, has been appointed District Executive for the George White Boy Scout District, and he assumed duties Monday, March 29. A special reception and welcome to the District was presented at the District Annual Banquet April 10 in Littlefield at the Lamb County Ag and Community Center.

Census survey set this month

A sample of households in this area will be visited by a Bureau of the Census interviewer during the work week of April 19-24 to conduct the Bureau's monthly survey of employment and unemployment.

Interviewer who will visit households in this area is Rosemary McNeese of Rt. 1, Amherst.

In addition to the usual questions on current employment, the April survey will have additional questions about the use of food stamps in 1975 and the first quarter of 1976.

Households in this area are part of the sample of 70,000 across the country scientifically selected to represent a cross section of all U.S. households.

The monthly survey is conducted for the U. S. Department of Labor and provides a continuous record of activity in the labor force. The February survey indicated that of the 93.5 million men and women in the civilian labor force, 86.3 million were employed. The Nation's unemployment rate was 7.6 percent, down from 7.8 percent in January, and substantially below the recession peak of 8.9 percent reached in the second quarter of 1975.

Information supplied by individuals participating in the survey is kept strictly confidential by law and the results are used only to compile statistical totals.

AMHERST NEWS

MRS. CHARLENE BLUME, Mrs. Agnes Phelps and Mrs. Roane Weaver visited Manitou, Okla. relatives last weekend.

VISITING THEIR grandparents, Mr. and Mrs. N. H. Humphries last weekend were Betty, Dick and Chris Turner of El Paso.

CAPROCK DISTRICT president, Mrs. Harold Green of Tahoka will be guest at the meeting of the Amherst Study Club tomorrow April 19 at 7:30 p.m. in Mrs. Bill Elms' home.

APRIL 4, Mrs. Allen Purdy honored her mother, Mrs. Essie Bales on her birthday. Those visiting were Mr. and Mrs. Kenneth Bales of Andrews, Mr. and Mrs. Malcolm Bales of Breckenridge, Mr. and Mrs. L. A. Bales of Amherst, Mr. and Mrs. Douglas Bales of Muleshoe, Mr. and Mrs. Gary Purdy, Sheri and Kelly of Littlefield and Mr. and Mrs. Craig Ratliff of Littlefield.

H. P. DAVIS was in Clovis Sunday to attend a birthday dinner for his sister. The day was spent recalling days when they were in school, and they listened to western music that night.

GINGER RAINBOLT is hospitalized in Littlefield Hospital following gall bladder surgery Wednesday morning.

VAN CLARK has been hospitalized in Veterans Hospital in Big Spring.

HOSPITALIZED in the University Hospital in Lubbock has been Mrs. G. K. Lemmons.

GUESTS at First United Methodist Church last weekend were Mrs. Ralph Thomas of Mentasano, Wash., and Mr. and Mrs. Gary Donathan of Littlefield.

MR. AND MRS. Virgil Bitner have returned home after visiting in the home of their son and daughter, Mr. and Mrs. Jimmy Bitner and Mr. and Mrs. Charles Lewis.

MR. AND MRS. Loyal Sharp returned last weekend from a two-week visit with their son, Major Larry Sharp USAF and family at Weisbaden, West Germany. While there Major Sharp, his wife and three children took them on an eight-day tour by auto to Austria, Italy, Switzerland and France. In Italy they were in Venice, Piza and in Rome they visited the Vatican, Catacombs, Caesum, Saint Peters Basilica and the treasury of the Vatican Peata and Statue of Moses. Their return was made by the Mediterranean coast to Genoa. It was a wonderful visit with their son and family and historical places and scenery to behold.

MRS. TRAVIS ALTMAN and children, Christy and Renea, also Christy's friend, Sharla Seal, are spending the Easter holidays with her parents at Seven Points, which is near Cedar Creek Lake.

MR. AND MRS. Elmer Elliott of Albuquerque, N.M. visited in the home of his twin brother, Mr. and Mrs. W. P. Elliott last week. They spent several days here.

THE UNITED Methodist women met in the home of Mrs. C. Ray Stevens Monday evening. They had a good attendance with some visitors. They pastored the meeting of next Monday because it was so near Easter.

Take stock in America. Buy U.S. Savings Bonds.

WESTERN AUTO APPLIANCE SPECIAL OF THE MONTH. Whirlpool Model No. Eat 17 LM 17.2 Cub. Feet. *Automatic Ice Maker *Adjustable Shelves *Big 4.79 Cub. Ft Freezer *Reversible Door Swings *Charcoal Air-Filter Reg. \$599.95 \$529 White w/t Color Colors Only \$6.00 Extra During This Sale USE YOUR CREDIT Factory Trained Service

MEN'S FORMAL WEAR TUXEDO RENTAL by Meter Dages. Vogue Cleaners 102 E. 10th 385-3074

The Biggest "Little Store" in West Texas!! We Make Our Mattresses & Box Springs For Free Delivery A Factory-To-You Price... OPEN 10:00 A.M. CLOSE 5:00 P.M. BUT - do you realize our other savings as a Bedroom store? LANE LOVE CHEST REG 119.00 79.50 UP 35 Styles to Choose From. GRAND OPENING DOOR PRIZES: 1st Joella Lovvorn-Littlefield, 2nd Mike Richardson-Littlefield, 3rd Wesley Hargenskeimer-Sudan. BRASS Lovely Headboards to Beautify Your Home: Double # 5097 39.95, Queen # 5097 44.95, King # 8630 49.95. SLUMBER MATTRESS & BOX SPRING SETS: TWIN 119.00 exchp., DLB 129.00 exchp., QUEEN 179.00 exchp., KING 229.00 exchp. VISIT OUR SLEEP SHOPS: Our complete bedroom stores are located in Abilene, Big Spring, Brownwood, Del Rio, Midland, Odessa as well as in San Angelo. Western Mattress Littlefield, Texas

GIBSON'S DISCOUNT CENTER. Open Monday-Sat. 9 A.M.-7 P.M. Sunday 1 P.M.-6 P.M. OPEN EASTER SUNDAY. These Specials Easter Sunday 1 P.M.-6 P.M. Store Full of Savings And Unadvertised Many Below Cost. Our Photographers Here Easter Sunday & Monday 10 to 12 to Take Pictures Single Family Groups. GLEEM II TOOTH PASTE Fluoride and Brightner Net Wt. 7 Oz Reg. \$1.15 87. New Earth Born BABY SHAMPOO Non-Tear, Non Alkaline 8 Oz Reg. \$1.39 97. Mennen Sof Stroke SHAVE CREAM Reg. Shave With Lanamen 11 Oz Size, Reg. 97¢ 67. Noxzema SKIN CARE New Light Plastic Jar 6 Oz Jar Reg. \$1.39 97. 30 HP Briggs & Stratton MOWER Vulcano Lacon Model No. 90-4 Reg. \$79.97 \$63.99. Ladies White BAL-OXFORD Reg. \$3.99 \$2.99. Men's White DECK SHOES Reg. \$4.99 \$3.99. PAPER TOWELS Kleenex, Bounty, Teri, Orchid, Hi-Dri, Your Choice While Supply Last. Each 49. Polaroid Land One only This is original \$189.99 POLAROID SX-70 This camera is in plain sight but no help will be offered in finding it. \$152.00. We Couldn't Spell SUCCESS Without U. GIBSON'S DISCOUNT CENTER

Hall wins office of state OEA secretary

Rhonda Hall of Littlefield won the office of state secretary and a first-place trophy in secretary level I competition during the recent state Post-Secondary Office Education Association convention in Corpus Christi.

Ronda, current president of the South Plains College OEA chapter, is the daughter of Mr. and Mrs. Benny Hall of Star Route 2, Littlefield.

SPC representative Hope Cervantez took home a second-place trophy in medical secretary competition, and Karla Smart, SPC chapter secretary, copped a third-place trophy in prepared verbal communications. Hope is the daughter of Mrs. Guadalupe Rosales of Ropesville and Karla is the

daughter of Mr. and Mrs. Jim Bob Smart of Farwell.

Lunette Dickson is OEA sponsor and chairman of the SPC business administration department.

Del Mar College at Corpus Christi last weekend hosted the annual state OEA convention among a dozen colleges—SPC, Tarrant County Junior College (northeast, northwest and south campuses), El Paso Junior College, Hill County, Lee, St. Philips, Howard and

Vernon college, and the College of the Mainland.

Ann Tims of Muleshoe and Miss Smart, SPC representatives, won fourth and fifth place certificates, respectively, in the records management clerk category. Ann's parents are Mr. and Mrs. Weldon Tims of Route 2, Muleshoe.

A plaque was presented to Terri Howard of Whitharral, outgoing state OEA secretary.

The SPC OEA chapter also took third place in chapter of

the year competition, fourth place in display board and the fifth spot in chapter activities manual.

In addition to Miss Hall, state OEA officers for 1976-77 are Donna Ray of TCJC, northeast campus, president; David Ragsdale, TCJC, northwest campus, historian; and Carolyn Honza, Hill County JC, parliamentarian.

Misses Cervantez, Tims and Maria Vasquez of Brownfield served as voting delegates for the SPC chapter.



LITTLEFIELD JUNIOR ALL-STARS, composed of front row, left to right: Steve Coston, John Lee, Vernon Williams, Chris Ayala, [unclear] Davis; back row: Coach Jerry Tunnell, Charles Jackson, Bryan Pace, Ace Bridwell, Trey Martindale, David Tunnell and [unclear] Coach Ronnie Vaughn, placed second in the Regional Little Dribblers Tournament at Dimmitt. They lost to Dalhart in the [unclear] and last Thursday, then came back to defeat Kress, Bovina and Dimmitt before losing to Dalhart again in the championship Saturday night, 32-28. (Photo by Therman Oldham, Dimmitt)

Area students honored at reception

Reception honoring students at South Plains College have maintained a 4.0 point average (all A's) in 1975 spring or fall

semester is scheduled at 10:30 a.m. April 21 in the El Dorado Room at SPC.

Included are seven students from this area.

Nathan Tubb, SPC academic dean, will present certificates of achievement to each student. Students who have maintained a perfect grade point average for both semesters are Susan H. Dubberly of Morton, Gerald R. Martin of Lubbock, Larry L. Ratliff of Lubbock, and LaFayla Self of Friona, and Larry P. Shannon of Ropesville.

Among students listed in the 4.0 category for the 1975 spring semester is Jerria S. Peacock of Anton.

Students receiving a 4.0 GPA during the 1975 fall semester include Susan D. Dulwell of Olton, James Harrell of Anton and Terri Howard of Whitharral.

Also maintaining a 4.0 GPA

during the fall semester were Rita McKinney of Littlefield; Harvey McLarty of Anton,

Alice Moates of Littlefield, and Jerry Sowder of Star Route, Enochs.

May 1 deadline set to apply for SPC aid

May 1 is the deadline to apply for financial aid for the 1976 fall semester at South Plains College.

Primary student financial aid programs available at SPC include Basic Educational Opportunity Grant, Supplemental Educational Opportunity Grant, Law Enforcement Education Program and Texas Public Education Grant.

Also offered are a national direct student loan and off-and-on campus employment through the college work-study program.

Interested persons should complete financial aid appli-

cation forms and return them to the SPC Financial Aid Office by May 1, said Glenn Pounds, financial aid officer.

A variety of scholarships also are available, such as athletic, text book, music, publications, academic, external and internal scholarships, and scholarships for valedictorians and salutatorians of their high school graduating classes.

Brochures explaining the details of the financial aid program are on hand through the Financial Aid office. For more information, contact Pounds' office at 894-4921.

OLTON NEWS

MR. AND MRS. Lee Roy Robison of Littlefield visited recently in the home of Mrs. Nell Woods.

MELVIN RAPE, manager of Southwestern Public Service Co. returned home Thursday from Central Plains General Hospital in Plainview.

MR. AND MRS. Tom Cook Smith visited in Amarillo Tuesday. She went for an eye check-up following eye surgery in Baptist Hospital in Amarillo. She received a good report.

MRS. THETIS HADDAD, re-entered M. D. Anderson Hospital in Houston Monday for a check-up.

MR. AND MRS. Robert Bonner and son, Sean spent Friday night visiting in the home of her parents, Mr. and Mrs. W. B. Smith Jr. Saturday they left for San Antonio to visit with his parents, Mr. and Mrs. L. L. Bonner.

MR. AND MRS. Roger Owen of Hereford announce the arrival of a son, Dagon Gleaves. Born March 19 he weighed 8 lbs., 8 ozs. He has an older brother, Dax Q. who is almost three. Grandparents are Mr. and Mrs. Gwen Owen, and Mr. and Mrs. Bill Walden, all of Hereford. Great-grandmothers are Mrs. Alpha Walden and Mrs. Euna Sides.

PEP NEWS

CONRAD DEMEL 933-2222

AND MRS. Conrad and family visited in the home of Mr. and Mrs. Leo and family of Friona

HILDA Frances Kuhn had a pink and blue luncheon Tuesday, honoring Mrs. Dwayne in the home of Mrs. Rice of Morton. Hostess St. Ann's Altar of Morton.

LITTLEFIELD GARDEN CENTER

South 385 At 84 Bypass
Just East Of Texaco Station

It's Planting Time And Our Stock Is Growing Daily. Come On Out And Save!

Hanging Pots With Hangers
From \$2.95 to \$11.89

Grape Myrtle \$3.79 One Gallon
Assorted Cactus 84 cents each

Geraniums 68 cents each
Impatiens 32 cents each

Grape Ivy On Poles \$3.45, One Gallon

Halls Honeysuckle \$3.49 One Gallon
Purple Honeysuckle \$3.59 One Gallon

Snow Ball \$3.39 Mums 44 cents each

Petunias \$1.95 Doz.

Rose Bushes \$1.19

—Clay Pots—Potting Soil— Straw Baskets

—Plus—

Strawberries \$3.35 Doz.

Tomatoes And Pepper Plants \$1.75 Doz.

IT'S GREEN-UP TIME—SEE US FOR HAPPY RESULTS!

OPEN
DAILY 9-6
SUNDAYS 2-6

OWNERS:
RICHARD EDDINGS
ARLEN SIMPSON

OPEN FOR BUSINESS

K-BOB'S STEAK HOUSE

LOCATED IN LITTLEFIELD PLAZA 385-3640

OPEN 6 DAYS A WEEK
CLOSED SUNDAYS

11 A.M. - 10 P.M.

Featuring Our

* Salad Wagon

* Finest Steaks

* Jumbo Shrimp

* We Will Cater Your Parties



FURR'S FROZEN FOODS

PRICES EFFECTIVE 4-21-76

WE RESERVE THE RIGHT TO LIMIT QUANTITIES.

WE REDEEM USDA FOOD STAMPS



ORANGE JUICE

GAYLORD, FRESH FROZEN **5 FOR \$1**

BROCCOLI SPEARS TOP FROST FRESH FROZEN 10 OZ PKG. **39¢**

OKRA TOP FROST FRESH FROZEN CUT, NO. 10 OZ PKG. **39¢**

WAFFLES TOP FROST FRESH FROZEN 10 OZ PKG. **39¢**

PIZZA TOP FROST, FRESH FROZEN ASSORTED, PACKAGE **79¢**

DO-NUTS MORTON, FRESH FROZEN ASSORTED, PKG. **67¢**

MARGERINE CORN OIL FOOD CLUB, LB. **49¢**

COOL WHIP Birdseye, 7¢ Off Label, 9 Oz Pkg **59¢**

PIES Johnston, Dutch Apple, Peach, Strawberry, Rhubarb, 38 Oz **\$1.39**

ROUND STEAK FURR'S PROTEN LB. **\$1.19**

RIB STEAK FURR'S PROTEN LB. **\$1.69**

CLUB STEAK FURR'S PROTEN LB. **\$1.19** ADV SPECIAL

CHUCK STEAK FURR'S PROTEN LB. **\$1.19** ADV SPECIAL

RUMP ROAST FURR'S PROTEN LB. **\$1.19** ADV SPECIAL

SIRLOIN STEAK Furr's Protén, Lb. **1.19** **GROUND BEEF** Fresh Ground, Lb. **1.19**

T-BONE STEAK Furr's Protén, Lb. **\$1.69** **LUNCH MEAT** Farm Pac, Choice Varieties, 6 Oz. **1.19**

SWISS STEAK Furr's Protén Round Bone Arm, Lb. **\$1.19**

STEW MEAT Furr's Protén Boneless Lean, Lb. **\$1.19**

BOLOGNA Farm Pac Sliced 12 Oz Pkg. **83¢**

FISH STICKS Gaylord 8 Oz Pkg. **44¢**

SAUSAGE

FARM PAC PURE PORK-EXTRA LEAN

1 LB PKG **\$1.19** 2 LB PKG **\$2.19**

☆ YOU PAY THE LOWER PRICE AT FURR'S ☆ WE WILL NOT CHANGE A PRICE ON A MARKED CAN OR PACKAGE EXCEPT TO LOWER THE PRICE. ☆ ONCE PRICED . . . ALWAYS PRICED.

HISTORICAL FLAG COLLECTION OF OUR AMERICAN HERITAGE



48 DIFFERENT FLAGS IN ALL. 3 OFFERED EACH WEEK. 33¢ EACH OR **3.99** EACH \$3.49

CLOSED EASTER SUNDAY

STORE HOURS
Mon. 8-7 Thurs. 8-7
Tues. 8-8 Fri. 8-7
Wed. 8-8 Sat. 8-8

COCA COLA 6 PAK 32 OZ **\$1.29**

PEARS HILLSDALE NO. 2 1/2 CAN **49¢**

TEA FOOD CLUB INSTANT 3 OZ SIZE **\$1.39**

CORN FOOD CLUB, WHOLE KERNEL OR CREAM STYLE GOLDEN NO. 303 CAN **3 FOR 89¢**

DOUBLE GOLD BOND STAMPS
TUESDAYS AND WEDNESDAYS

WESSON OIL 38 OZ SIZE **\$1.19**

FABRIC SOFTENER TOPCO 1/2 GAL. **89¢**

FOOD CLUB TOMATOES NO. 303 CAN **3 FOR \$1**

ICE CREAM BORDEN'S 1/2 GAL ROUND. **\$1.09**

SPRAY N'WASH TEXISE 16 OZ **99¢**

Frozen Food Favorites

WATERMELONS WHOLE OR SLICED LB. **19¢**

APPLES WASHINGTON RED DELICIOUS, LB. **39¢**

BANANAS GOLDEN FRUIT NO. 1 U.S. LB. **59¢**

RADISHES 6 OZ CELLO BAG **2 FOR 29¢**

POTATOES Florida NewRed, New Crop, Lb. **22¢**

TOMATOES Vine Ripe Slicers, Lb. **39¢**

FACIAL TISSUE Victorian, White 200 Ct. Box **3 FOR \$1**

DOG COLLAR Hartz Mountain 2 in 1 Reg. \$2.98 **\$1.99** Each

POTTING SOIL Bunyon's Enriched 8 Qt Bag **69¢**

BABY POWDER BABY MAGIC 9 OZ SIZE **81¢**

Sinutab For relief of sinus headache and congestion. Convenient fast-acting tablets. **SINUS TABLETS \$1** 30's

ELECTRIC PRE-SHAVE WILLIAMS 3 OZ SIZE **96¢**

GREEN EARTH Cut Flower PRESERVATIVE Green Earth Keeps Easter Lilies And Flowers Weeks Longer Each **99¢**

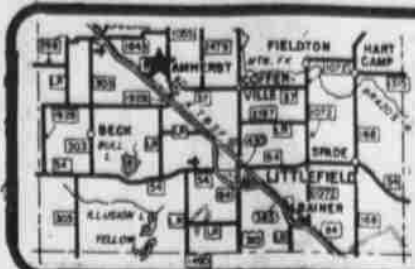
DISH PAN FESCO-FESTIVAL 15 QT GOLD OR GREEN EACH **\$1.39**

SLENDER POWDER 4 ENVELOPES PER BOX ROUND **79¢**

EYE DROPS VISINE 1/2 OZ SIZE **\$1.36**

Cepacol Mouthwash 20 OZ SIZE **\$1.50**

SHOP Furr's MIRACLE PRICES



NEWS FROM
AMHERST
MRS. LESTER LaGRANGE 246-3336



BAPTIST CHURCH Mission Friends were treated to an Easter egg hunt on the front lawn of church Wednesday afternoon. [Staff Photo]

Forum meets for program

part of The Forum's for the year, "Saluting 1776-1976". Grace presented a program of "Architectural Elements of the Past".

Member, Lou Driskill, presented slides of the modern house in American Thomas Jefferson's Mon-

narration brought out that Jefferson's diary made restoration of the house and grounds. Interior scenes of Jefferson's inventions including a with weights, folding and tables, and a bed could disappear into the

COND SERVICE SPECIAL

\$788

INCLUDES -

- Cleaning Tub
- Oil All Bearings
- Hooking Up Water Lines
- Adjusting Float
- Replacing Pads

All Pads And Parts Are Extra
Our Work Is Guaranteed

WHITE STORES, INC.

Phelps Ave., Littlefield 385-5959

NEW — MODERN

SUNSET SLOPE

MOBILE HOME PARK

OFFERS

- PAVED STREETS, STREET LIGHTS,
- INDIVIDUAL WALKS, STORAGE AREA,
- CABLE TV, STORM CELLAR, LAUNDRY,
- AND GROCERY STORE.

STORAGE HOUSES, WATER, AND GARBAGE INCLUDED IN MONTHLY RENT

Come By And Take A Look

100 NORTH SUNSET

Call: 385-3683 Days 385-3983 Nights **FHA Approved**

FREE

Anchor & Tie Down—
The Month Of April

Regular meeting of The Forum was held April 8 in the home of Reva Florence, with president Harriett Cummings in charge.

Benevolence committee member, Joycelyn Henry reported that a sales tax exemption was granted on musical toy donations to the Lubbock State School.

Plans were finalized for The

Art contest open to area

The Art Competition subject for the opening of the musical drama "Texas" for the Bicentennial year will be "Memories". The Gala Opening will feature the first permanent settlers, the cattlemen, and the paintings and photographs

of "Memories" will be a fitting background for the ceremonies.

Preliminary judging will be based on slides and photographs. These are to be in the "Texas" office, 2010 Fourth Avenue, Canyon, Texas 79015 by 5 p.m., Wednesday, June 2.

The judges will make their first selection and notify those who have placed so that they may have their originals sent to the same address in time for the final judging on June 16.

Pictures in the final judging will be awarded Honorable Mention and will be hung at the opening of "Texas" if the weather permits and also in the Panhandle Plains Historical Museum for a month thereafter.

In addition to the exhibitions, the ten winning artists in each class will receive two tickets to "Texas" on opening night. On that evening, plaques will be awarded from the stage for First Place in each class and for Best-of-Show.

For further information about the Competition, and for the drama "Texas", write Box 268, Canyon, Texas 79015 or call 806-655-2182. (After 6:00 p.m. call 806-488-3100)

SUDAN NEWS

THE SUDAN Young Homemakers started their cancer drive Tuesday, April 6 and will continue through the month of April. Persons not contacted by one of these members and who are interested in donating may leave donations at the bank.

MR. AND MRS. Lib Bales, Mr. and Mrs. Jomeryl Harmon and Holly attended the little dribblers regional tournament of baseball held in Dimmitt Saturday night. They were winners and will play in Leveland this weekend. Jackie Harrall of Littlefield assisted.

THE AMHERST Study Club is to have a bake sale at the Amherst Drug Store (today, Thursday) beginning at 9 a.m. Your patronage will be appreciated.

MR. AND MRS. Lloyd Franklin (Dorothy) had members of their family for a reunion at their home in Clovis Saturday. Attending were Mr. and Mrs. Kory Franklin and three daughters of Albuquerque, George Franklin of Florida, Paula Churchman and daughter and Dorothy's mother, Mrs. Lena Humphreys of Amherst.

THE FIRST BAPTIST church has a new mini-bus to accommodate 12 passengers. It will be used for any purpose needed in church work. A committee is in charge and a licensed driver will always be a necessity. It contains a double-duty air conditioner—back and front—and an adequate heater, when needed. April 23 several will attend the Bible School Clinic for workers at Sudan and the bus will be used at that time. Youth used it early last week.

REV. AND MRS. Glenn Willson have served the First Baptist Church nine years today. Hence, their 10th year of service has begun.

MICKEY, Sharla and Stephen Brantley of Albuquerque are to visit their grandparents, the Prentice Hollands and Harry Brantleys this week.

MR. AND MRS. Don Carter were at the Methodist Hospital, Lubbock several days last week with his mother, Mrs. Mike Carter of Sudan who is ill there. She is showing improvement, it was reported.

MRS. C. A. Thomas was in Brownfield several days last week with her niece, Mrs. Earl Moherman and family.

MR. AND MRS. Hartley Simmons were here Friday with relatives as they were moving to Estes Park, Colo. He will be in work for the Church of Christ. They recently returned from Australia where they had done mission work for the church at Toowoomba several years.

MR. AND MRS. Bill Workman have returned home from Toledo Bend where they had spent several months.

MRS. J. E. Smith underwent major surgery at Methodist Hospital last week. She is in intensive care unit and is reported to be improving satisfactorily. Her son, John Everett Smith was with her last week. He is connected with the Louisiana State University at Baton Rouge.

MR. AND MRS. George Thompson and sons, Mr. and Mrs. Bobby Walbrick, Mr. and Mrs. Bill Kelly, Mr. and Mrs. Starnes of Littlefield spent the weekend at Lake Kemp.

JOE THOMPSON was transferred from the local hospital to Methodist Hospital, Lubbock, Sunday afternoon. He became ill while on a fishing trip to Corpus Christi earlier this month.

THE GENE CAMPBELLS are vacationing at their place on Lake Brownwood.

MR. AND MRS. Clyde Brownlow, Amy, Brian and Lee Ann visited their relatives in Morton Sunday.

U. E. THOMPSON has returned home after a visit with relatives in Bakersfield and Downey, Calif. and other places in that state and Nevada.

THE CHEERLEADERS of Amherst High School next year have been named. Head cheerleader is Dana Young, senior; Sandra Duvall, senior;

Tammy Tones, junior; Terri Cowan, sophomore; and Cassie Mote, freshman.

MR. AND MRS. Bennie Harmon and Kit spent several days at Kingsland on LBJ Lake.

VISITING THEIR grandmother, Mrs. Marie Payne, this week were Mrs. Susie Day and Kori and Gina Marie Tadlock of Ruidoso.

ED NICHOLSON and daughter, Morine, have returned home from Corpus Christi.

MRS. EMMA PATTERSON was home from Hale Center for a short visit. She is employed there.


MR. AND MRS. Don Priddy and Melinda of Big Spring

spent last weekend with her mother, Mrs. Pauline Downing and his parents, Mr. and Mrs. Eugene Priddy. Also here during the weekend were Mr. and Mrs. Glenn Vaughn, David and Terry, Shirley and Amy Spies of Lubbock. In the afternoon the Gene Priddys came for a visit.

CODY AND AMY Allensworth spent last week with their grandparents, Mr. and Mrs. Monroe Shulz in Floydada.

MRS. NAOMI TEDDAR of Corpus Christi was the guest of Mr. and Mrs. W. F. Taylor recently. She was enroute Yuma, Colo., her summer home for the summer. She and Mrs. Taylor have been friends for many years.

For Continued Courteous, Efficient And Economical Operation Of Your Tax Office



RE-ELECT HERBERT DUNN

TAX ASSESSOR-COLLECTOR, LAMB COUNTY

Asking For Re-Election On My Record Of Service In The Operation Of Your Tax Office.

(Political Advertisement Paid For By Herbert Dunn)

Anthony's
C. R. ANTHONY CO.

royal park DALLAS



NATURAL MATCH-MATES
by ROYAL PARK®

Gently flared skirt	\$14.
Chanel jacket	\$16.
Cargo pocket pant	\$14.
Flap pocket pant	\$14.

They're natural in color, texture and comfort. You'll live in these cool coordinates of Concord's 50% polyester and 50% cotton permanent wrinkle Calcutta cloth. In Navy, Rust, Natural or Mint. Sizes 8 to 18.



LITTLEFIELD 4-H Club is selling tickets for a red, white and blue afghan, hand crocheted by Vera Farrington. The size is 40" x 66", and will be given away May 1, during the Bicentennial Celebration. Tickets can be purchased from 4-H members or by calling 385-3263. Tickets will also be sold at the 4-H booth downtown during the celebration for \$1 each. The afghan is now on display at the Security State Bank.

Pioneer Days

By PETE PETERMAN
SUDAN

Sudan depot stood boarded up on a lonely-looking spot until 1917, when its first settlers, Mr. and Mrs. P. E. Bosen, arrived.

Bosen was a land agent for the Wilson Furneaux Land Company.

Sudan was located on the land, which was donated or assigned to Collinsworth County as School Land.

In 1893, Collinsworth County sold this land, some 17,000 acres, to Wilson Furneaux, who established the 77 Ranch and later sold most of it at auction for \$1.30.

G. T. Oliver was the highest bidder.

Furneaux had reserved a few sections and later decided to sell this as farming land, and sent P. E. Bosen there to establish a community and settlement.

Soon a rather large and spacious hotel was completed. A general merchandise store and several homes were also built.

A large windmill and concrete water trough was put up just south of the depot, and was first used as water for the travelers and town.

Many a passing cowboy and wagon team stopped at this old water trough for water.

A medallion, placed there by the Lamb County Historical Society and the State of Texas, will mark its history for many years.

The Sudan Hotel still stands with its medallion on the front door.

There is a movement today to restore the Hotel and make a museum out of it.

In the year of 1919, Mr. and Mrs. L. E. Slate purchased the mercantile store, and he served as postmaster until 1923, with Mrs. Slate as his Assistant Postmaster.

From that date on, the Slates were active and honorable citizens, and did more than their share for the promotion of Sudan.

They soon built a nice home, and the Slates soon became the owner and operator of the International Harvester Store. He was on the ground floor when the move from horse-drawn implements to tractors—and what a mule trader he was. He was always assisted by Tohe Vereen, a local boy who grew up with the business, and remained with the Slates until they retired.

L. E. Slate died in 1975. Mrs. Slate is still there, and is loved and honored by all who know her.

Tohe Vereen is now Justice of Peace at Sudan.

When the horse and buggy days were over, this writer remembers how the old water trough was used to cool the watermelons he brought to town to sell. Fond memories of Sudan in the early days will linger long with a lot of us.

The Promises of God

By CARL F. KASTEN

"But now is Christ risen from the dead, and become the first fruits of them that slept. For since by man came death, by men came also the resurrection of the dead. For as in Adam all die, even so in Christ shall all be made alive." 1 Cor. 15: 20-22.

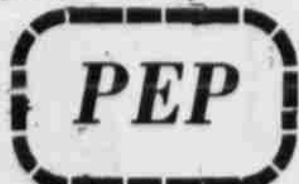
Someone has said there are over 10,000 promises in the Word of God for the Christian. The greatest of these is the assurance of Eternal life through the resurrection of Jesus Christ from the dead. There are many religions in the world but only the Christian faith offers hope beyond the grave.

In 1 Cor. 15:19 we read "If in this life only we have hope in Christ, we are of all men most miserable." But the hope of the Christian faith is in the message of the empty tomb, it cries out "He is not here but is risen." Luke 24:6. With the greatest assurance we can say "O death, where is thy sting? O grave, where is thy victory?" 1 Cor. 15:55.

Jesus Christ said in John 14:1-2 "Let not your heart be troubled: ye believe in God, believe also in me. In my Father's house are many mansions; if it were not so, I would have told you. I go to prepare a place for you." We also read in Heb. 12:2 "Looking unto Jesus the author and finisher of our faith; who for the joy that was set before him endured the cross, despising the shame, and is set down at the right hand of the throne of God."

The Navajo Indian Christians have two favorite hymns which they invariably sing at their church services and they are: "There will be no dark Valley when Jesus comes." and "What a beautiful Place Heaven must be." In these two hymns they express their Faith made possible by the resurrection of Jesus Christ.

Thought: May the message of the resurrection speak assurance to your heart on this glorious Easter Day!



MR. AND MRS. Eugene Demel and daughter of Littlefield visited and were dinner and supper guests in the home of his parents, Mr. and Mrs. Conrad Demel and family April 11.

PEP COMMUNITY received from .20 to .80 inches of rain this past week and from .4 to .8 again April 11. The rain was welcomed by all the farmers.

MR. AND MRS. Conrad Demel visited in the homes of Mr. and Mrs. Maynard Miller and Mr. and Mrs. Billy Demel of Levelland on March 28.

BRENDA KUHNER, a student at South Plains College in Levelland attended a Senate meeting in Dallas April 11, 12, 13 and 14. Some of the members, teachers and sponsors also attended.

SHOWERS of SAVINGS

HOT DOG SAUCE

GEBHARDT'S, 10 OZ

3/89¢

BLACK EYE PEAS

SHURFINE, FRESH SHELL

4/\$1

SHORTENING

SHURFINE, PURE VEGETABLE

\$1.09

DOG FOOD

ROXEY, TALL CANS

2/25¢

FRUIT DRINKS

WAGNER'S, 32 OZ

39¢

CHERRIES

SHURFINE, PITTED, 16 OZ

2/89¢

TAMALES

GEBHARDT'S, JUMBO CAN

59¢

CHILI

GEBHARDT'S, 19 OZ CAN

79¢

COFFEE

SHURFINE, 1 LB CAN

98¢ **COCA COLA**
DR PEPPER

\$1.29

6 BOTTLE CRTN, 32 OZ

MEAT MKT

ARM ROAST

Choice, Round Bone, Lb

99¢

CHUCK ROAST

Choice, Lb

69¢

BACON

Shurfresh, v/p, 1 Lb Pkg, Lb

\$1.39

FRANKS

Shurfresh, v/p, Lb

63¢

SLICED CHEESE

Shurfresh, Ind., 8 Oz Pkg

69¢

GREEN BEANS & POTATOES

SHURFINE 3/89¢

SUGAR

Shurfine, 5 Lb Bag

\$1.09

FLOUR

Gold Medal, 5 Lb Bag

79¢

CORN MEAL

Gladiola, 5 Lb Bag

79¢

PINESOL

28 Oz

98¢

MIXED NUTS

Tom Scott, 12 Oz

79¢

TOMATO PASTE

Hunt's, 12 Oz

45¢

RANCH STYLE BEANS

15 Oz

4/\$1

BREAD

Tendercrust, Family Size

2/69¢

SALAD DRESSING

Best Maid, Qt. Size

69¢

DAIRY PRODUCTS

BUTTERMILK

1/2 Gal

57¢

COTTAGE CHEESE

Borden's, 24 Oz

89¢

SOUR CREAM

Borden's, 8 Oz

33¢

CHIP-N-DIP

Borden's, 8 Oz

43¢

ICE CREAM

Borden's, 1/2 Gal

\$1.19

WHIPPING CREAM

Borden's, 1/2 Pint

33¢

FROZEN FOOD

TATER TOTS

Ore-Ida, 2 Lb

63¢

ORANGE JUICE

Minute Maid, 6 Oz

4/\$1

PIES

Morton's, Apple, Cherry, Peach, 24 Oz

59¢

EGG BEATERS

Fleischman's

79¢

HONEY BUNS

Morton's, 4 Count

59¢

FRESH FRUITS & VEGETABLES

POTATOES

Russetts, All Purpose, 10 Lb

79¢

TOMATOES

Cello Crtn

39¢

ORANGES

Texas, 5 Lb Bag

69¢

GREEN ONIONS

Farm Fresh

9¢

CUCUMBERS

Long Slicers, Lb

17¢

No. 1 THIS COUPON IS GOOD FOR
100 FREE GUNN BROS. STAMPS

AT PAY & SAVE #6 & #8

No Purchase Required

Please fill in your name and city
Only One Coupon Per Customer—Coupon Expires

No. 1 THIS COUPON IS GOOD FOR
100 EXTRA GUNN BROS. STAMPS

AT PAY & SAVE #6 & #8

With the Purchase of Best Maid
Dill Pickles, 32 Oz

Please fill in your name and city
Only One Coupon Per Customer—Coupon Expires



WE GIVE GUNN BROS STAMPS

"A lot of homeowners are pleased at what they can save with State Farm insurance."

Come see me. You may be pleased, too.

F. L. Newton
385-3055
128 E. 10th
Littlefield

Like a good neighbor, State Farm is there.

STATE FARM FIRE AND CASUALTY COMPANY
Home Office: Bloomington, Illinois



SUDAN NEWS April 13
SUDAN NEWS
 BILLYE DOTY 933-2467

CLASSES for tole and oil painting will be held on Monday, April 19, from 10:00 a.m. to 12:00 p.m. and Wednesday, April 21, from 1-3 at Dood's. A list of names and information received at Dood's or the Markham, 227-1000. Markham has two classes now in progress. She feels she is having the desire to learn to tole.

END VISITORS In the home of Mr. and Mrs. G. W. Chapman were their daughters, Mrs. Jerry Ethridge and Kay Lynn of Dimmitt. KATHY FISHER of Hart visited during the weekend in the home of her parents, Mr. and Mrs. Lee Roy Fisher and Missy.

LEN KUYKENDALL was honored Saturday with a birthday party on his third birthday at the home of his parents, Mr. and Mrs. Bill Kuykendall. Snoopy cake and ice cream were served to Mr. and Mrs. Chester Knox and Curtis, the honorees great-grandmother, Mrs. Daisey Ford, his grandmother, Mrs. R. B. Knox, and his new baby sister, Melissa, Molly Nelson and Cindy Feagley.

SCOUT PACK meeting was held March 26 when the members participated in "Almost Anything Goes." Present were Joe and Gordon Martin, Jamie Ingle, Jeff Kinnee, Lynn and Lee Bartley, Donnie Johnson, Blake Laceywell, Mike May, Clyde Conley and a guest, Sambo Conley. Parents attending were Mr. and Mrs. Macom Martin, and his parents from Seminole. Mr. and Mrs. Gene Bartley, Mr. and Mrs. Tommy Laceywell, Mr. and Mrs. John Kinnee, Mr. and Mrs. Jim Ingle, Mr. and Mrs. Ralph May and Mrs. Johnson. Pack mother are Mrs. Nell Ingle, Shirley Martin and Jeannie Bartley.

MR. AND MRS. Wiley Mudgett just returned from Pueblo, Colo. where they visited their daughter and family.

Mr. and Mrs. Quigg and sons. Mrs. Quigg is the former Candy Mudgett.

MR. AND MRS. Jack Walker of Littlefield visited Tuesday night with their daughter and family, Mr. and Mrs. El Ray Rasco and attended the annual "Spring Sting". Two of their grandchildren, Becky and Bert are members of the Hornet Band.

MR. AND MRS. Arnold Becket were in Midland during the weekend to visit their son and family, Mr. and Mrs. James Beckett. They also visited Sunday afternoon in Andrews with Rev. and Mrs. Eddie Freeman and children, who recently moved to Andrews to accept the pastorate at the Calvary Baptist Church.

WEEKEND VISITORS in the home of Mr. and Mrs. Jack Engram were their daughter, Karen and Travis of Amherst, his nephew and family, Mr. and Mrs. Harvey Baker and girls from Michigan, and Mr. and Mrs. Raymond Magness, Irene Baker and Frank and Hester Early all of Clovis. The group was also in Roswell, N.M. during the weekend.

MR. AND MRS. B. A. Beauchamp were in Muleshoe recently to attend the funeral services for a friend, Mrs. Mable Raymond who died Thursday at Methodist Hospital.

UMW MET MONDAY, April 5, with Nell Lane presiding. Thelma May gave the invocation with Mrs. T. B. Adair bringing the devotion on John 1:1-14. Mrs. Bill Nix gave the program "Celebration of Easter" in context of Christ's birth, death and resurrection. Gina Nichols was the hostess. Benediction was given by Mrs. Ralph May. Others present were Willie Terrell, Leroy Baker, Doyle Terrell, Virginia Rone, Matt Nix, Willie Rosson, Edwin Harper, Jim Newman, Wix Gaston, Frances Furneaux, Jo Markham, Bruce Newman and F. M. Smith.

YOGURT, SUGAR FREE CANDY & CAROB PEANUT CLUSTERS VITAMIN & PROTEIN FOR REDUCING AND WEIGHT CONTROL UNPROCESSED MILLERS BRAN & TABLETS COSMETICS & SKIN CARE PRODUCTS

HEALTH FOOD CENTER
 CLOSED MONDAY
 10 to 5 P.M. 114 E. 10TH TUE. thru SAT.

THE WILDCAT track team enters the district meet in Friona Friday. On the front are manager Pipop Laocum, Raymond Baiza, Sammy Schlottman, Jett West, Louis Soria, Danny Martinez, Joel Rangel, Terry Grand, Robert Hall, Jack Speck, Willie Don Mason and manager Kevin Bell. On the back row are Coach Lewis Boomer, Lewis Willey, Terry Foley, Jasper Colbert, Bill Turner, David Jones, Jimmy Durham, Rick Hopping, Randy Taylor, Steve Cruz and Toney Cowan. [Leader-News Photo]

Mr. and Mrs. Gene Bartley, Mr. and Mrs. Tommy Laceywell, Mr. and Mrs. John Kinnee, Mr. and Mrs. Jim Ingle, Mr. and Mrs. Ralph May and Mrs. Johnson. Pack mother are Mrs. Nell Ingle, Shirley Martin and Jeannie Bartley.



THE WILDCAT track team enters the district meet in Friona Friday. On the front are manager Pipop Laocum, Raymond Baiza, Sammy Schlottman, Jett West, Louis Soria, Danny Martinez, Joel Rangel, Terry Grand, Robert Hall, Jack Speck, Willie Don Mason and manager Kevin Bell. On the back row are Coach Lewis Boomer, Lewis Willey, Terry Foley, Jasper Colbert, Bill Turner, David Jones, Jimmy Durham, Rick Hopping, Randy Taylor, Steve Cruz and Toney Cowan. [Leader-News Photo]

16-20—Teacher In Service
 23—Students first day of school
 24—End of six weeks
 29—TSTA in Lubbock
 35—End of second six weeks
 40—Teacher In Service
 45-26—Thanksgiving Holidays
 52-31—Christmas Holidays
 53—End of third six weeks
 55—Teacher In Service
 61—End of fourth six weeks
 65—Teacher In Service
 70—End of fifth six weeks
 77-81—Easter Holidays
 89—Baccalaureate
 90—Graduation
 91—End of final six weeks
 91—Teacher In Service
 School will dismiss at 2:00 p.m. on the last school day before the Thanksgiving, Christmas and Easter Holidays.



THESE ARE THE eighth graders who ran on the mile relay season. On the front row, from left to right, are: Sandra Lisha Short. On the back row are Jana Jones, LaVonna and Tisha Martinez. [Leader-News Photo]



VOTERS AND CITIZENS OF LAMB COUNTY, TEXAS:
 I am asking the office of County Judge of Lamb County, Texas, for the vote and support of all Lamb County Citizens. I am married in Lamb County and married Zeta Lynn Blume. Zeta and I have three children: two daughters, Mrs. Jimmy Farmer of Littlefield, Texas and Mrs. Walter (Joey) Plainview, Texas, and a son, Tommy, who is now attending Texas Tech.
 I have been actively involved in the work of the Democratic Party for over twenty years and have held several county and state offices. I have served the people of Lamb County as the County Judge, County Chairman for the past fourteen years, and I am asking for your support on my qualifications and ability to handle the duties of County Judge of Lamb County, Texas.
 I have been in Lamb County for 35 years old and now engaged in farming and ranching in Lamb County, Texas.
 I served in the U.S. Navy in 1942 to 1946 and served in both the Pacific and Pacific Military operations. I have served on various committees and appointed offices, including a member of Littlefield Chamber of Commerce, Director of Littlefield Chamber of Commerce, Director of Texas Tech Dad's Association, Director of Texas Tech Dad's Association and several other positions, both on local and state level and I am presently serving as a Deacon of the First Church of Spade.
 I would like to serve the voters of the County as their Judge, and I would like to serve all to the best of my ability.

Sincerely yours,
 a/Glenn Batson
 GLENN BATSON

Sky High Savings on Appliances





General Electric Automatic Washer
\$264 WWA5500
 • Permanent press cycle
 • 3 wash-rinse temperature combinations • 3 water level selections • Delicate cycle for fine garments



General Electric Upright Food Freezer
\$266 CA10D
 • 10.1 cu. ft. storage capacity • Adjustable temperature controls • Lift-out bulk storage rack • Convenient door storage shelves



General Electric Fast Cooking Microwave Oven
\$328 JET84
 • Great for counter-top cooking • Convenient defrost cycle - handy for frozen foods • The modern way to cook tv dinners or convenience foods • Slashes cooking time



General Electric Automatic Electric Dryer
\$199 DDE3300
 • 3 temperature selections
 • Permanent press cycle
 • Up front lint filter - easy to see, easy to clean • Large loading port



General Electric Portable Dishwasher
\$222 GSC376
 • Use as a portable now - as a built-in later • 3-level wash action • Soft food disposer



General Electric Black & White TV
\$94 XB2450
 • 12" diagonal picture • 100% solid state circuitry • Great looking high impact plastic cabinet • Pre-set VHF fine tuning



General Electric Frost-Free Refrigerator-Freezer
\$399 TBF14D
 • Frost free in refrigerator and freezer sections • Rolls out on wheels • Door shelf storage in refrigerator and freezer • Adjustable cantilever shelves



General Electric Portable Dishwasher
\$222 GSC376
 • Use as a portable now - as a built-in later • 3-level wash action • Soft food disposer



General Electric Room Air Conditioner
\$179 TE 605-FA
 • 5,000 BTUs • 10-position thermostat • Easy mount installation • Weighs only 50 pounds



General Electric Portable Color TV
\$229 WT15215WD
 • 10" diagonal picture • Efficient circuit has many solid state components • Built-in antennas • VHF pre-set fine tuning

SALE STARTS MONDAY!
COME EARLY & TAKE ADVANTAGE OF THESE SKY HIGH SAVINGS!

8 Ways to Buy
 • Cash • Goodyear Revolving Charge • Our Own Customer Credit Plan • Master Charge • BankAmericard • American Express Money Card • Carte Blanche • Diners Club



GRAND

**You're Invited
To Attend The
Grand Opening Sale Of
KOUNTRY BOY**

-Littlefield Plaza-

Our Prices Are The Lowest To Be Found Anywhere!

**We Also Invite You To Shop The TG&Y Family Center
& Eat At K-Bobs. Littlefield Plaza Is A Shopping
Center To Serve Your Every Need!**

**Meet
Clarence Sisemore**



**Kountry Boy's
Manager**

At

KOUNTRY BOY

You Will Find

- *The Best Service**
- *The Lowest Prices**
- *The Friendliest Staff**
- *The Finest Quality**
- *And All Your Neighbors**

**Meet
Freddie Cook**



**Kountry Boy's
Market Manager**

OPENING

BULA NEWS



... Tuesday after- church, with Vina ... of the study ... the Royal Service ... topic for study was ... in Ethiopia ... son read the ... and Mrs. ... the opening ... for mission- ... were Miss ... Rowena Rich- ... P. R. Pierce, ... Black and Mrs. E.

... political ... nouncements ... Lamb County ... Littlefield, ... been autho- ... announce the ... persons as ... for the offices ... to the acem- ... omatic voters ... May primary.

... COUNTY ... ASSESSOR- ... LECTOR ... bert Dunn ... Rodgers

... MISSIONER ... CINCT 3 ... ck Peel ... Thompson ... on Pointer

... HERIFF ... McNeese ... L. Despres

... CITY JUDGE ... an Batson ... orbis Kirby

... ATTORNEY ... CIAL DISTRICT ... oyle Elliott ... k Young

... OF PEACE ... CINCT 4 ... Yarbrough

... Advertising ... aid by ... candidates.

CONGRATULATIONS TO LITTLEFIELD
For Your New, Modern Shopping Center
HAMILTON ACOUSTICAL CO.
 10th Lubbock
 806-763-3830
Glad To Have Done the Acoustical Work at Littlefield Plaza.
Strong Acoustical Materials Were Used
 Call **HAMILTON ACOUSTICAL** For **Your Acoustical Needs.**

were their grandson, James Lancaster, and friend, Debbie Hensley, from Fort Worth.
MRS. E. W. BLACK returned home Saturday from Dallas, where she has been with her daughter, Mrs. Margaret Zedletz, the past several months.
SUNDAY GUESTS for the J. R. Teaffs, were her brother and wife, Mr. and Mrs. Raymond Hargrove of Lubbock.
MR. AND MRS. Tom Bogard visited first of this week in Clarendon with his sisters, Mrs. Blanche Smith, resident of the Clarendon Medical Center Nursing Home, and with Mr. and Mrs. Roy Blackman.
GRANDMA (Mrs. S. A.) Williams, resident of the Knight's Rest Home, Littlefield, was admitted to the Medical Arts Hospital, Wednesday, April 7, suffering with pneumonia. Last report she was feeling some better. Her son, Mr. and Mrs. C. A. Williams of Bula, were visiting in California, at the time she took ill, and they rushed home. His sisters, who they were visiting, came with them. They are Mrs. Ruth Hendrick of Carmichael and Mrs. Christine Kulhanek of Los Angeles. Another daughter, Mrs. Velma Smith and sons Ray, Wayne and H. L., came up from Burleson, and are here to help take care of their mother. Grandma Williams is 93 years old, and was a resident of the Bula Community many years before moving to Knight's Rest Home.
MR. AND MRS. W. R. Adams spent the weekend in Lubbock, visiting in the home of his nephew, Mr. and Mrs. Alan Thelford.
MR. AND MRS. Earl Shields and children Rosslyn, Kennon and Patrice, came up over the weekend to visit in the home of her mother, Mrs. Lorina Jones, and to be with her sister and children, Mrs. Carl Jones and Britt and Leslie, who are visiting her from Swainsboro, Ga. Shields and Kennon went home Sunday afternoon, with Mrs. Shield and girls staying over until Wednesday.

MR. AND MRS. Joe Haithcock of Carlsbad, N.M. visited in the home of the Nolan Harlans Wednesday. They went on to Amherst for a visit with her mother, Mrs. Mary Britt.

MR. AND MRS. John Latham drove to Elida, N.M. Sunday afternoon for a visit with friends, Mr. and Mrs. Tom Best.

MRS. V. C. WEAVER met her niece, Mrs. Bill Maxwell Black of Ventura, Calif., at the Lubbock Air Terminal, Sunday afternoon. Monday they drove to Portales, N.M., where she will visit with other relatives, before coming back here for a longer visit.

MR. AND MRS. Nolan Harlan visited with his mother, Mrs. Lula Harlan, at Knight's Rest Home Saturday, and took her out for lunch. They try to do this for her each week.

JEFF AUSTIN of Lubbock went home Wednesday, after spending a week here with his grandparents, the Raymond Austins.

THREE WAY SCHOOL turned out for their Easter vacation Thursday afternoon and classes will resume at 8:30 a.m. Tuesday morning. Thursday morning, an Easter program was put on by students of the grade school in the school cafeteria.

REV. AND MRS. Eddie Riley, took two RA boys, Lewis Peacock and Bernie Davila to San Antonio Wednesday, where the boys competed in the RA state track meet. The boys will be competing in archery and riflery. They plan to do some sightseeing Thursday.

OLTON
 Mrs. W. B. Smith, Jr.
 285-2385

MR. AND MRS. H. L. May of Lubbock announce the arrival of a son born April 1 in St. Mary's Hospital. He weighed 9 lbs., 7 ozs. and has been named Lance Robert. Paternal grandparents are Mr. and Mrs. Leon May. Maternal grandparents are Mrs. Winona Onstead of Austin and Kenneth Boone of Hereford. Mrs. F. M. Williams of Childress and Mr. and Mrs. Bob Boone of Springlake are his great-grandparents. Mrs. Nettie Boone of Muleshoe is his great-great-grandmother.

MR. AND MRS. Alton Cure have returned from a week's vacation when they visited in the home of their daughter and family, Mr. and Mrs. Clifford Curry, Kyle, Billie Ellen and Torrie in Clifton.

MRS. HELEN GOHNER visited last weekend in Edmonson in the home of her son and family, Mr. and Mrs. Bill Bohner.

BARRY FERIEND is one of the 60 students from Wayland College who toured Europe recently with the school's performing group, "Spirit of America's Singers." Mrs. Feriend was invited to accompany the group. She is an instructor in Wayland. Barry is youth and music director of First Baptist Church. Their first stop was New York City, where the singers caught a joining flight to London before going on the several other European Countries.

MRS. CHESTER PEARCE of Abernathy visited Thursday in the home of two of her brothers, Mr. and Mrs. Tom Cook Smith and Mr. and Mrs. W. B. Smith Jr.

MR. AND MRS. Wesley Davis returned recently from a week's vacation in Hawaii. The pineapples, which they brought back were delicious and the orchids, gorgeous.

MR. AND MRS. Jay Small visited last weekend in Dimmitt in the home of their son and family, Mr. and Mrs. Randall Small, Jerri, Kelli and Toni. While there he received a checkup.



MEMBERS OF THE 880 yard team won first in the district meet. Kneeling in front is Bridgett Twitty and in the back are Darlene Williams, Jana Jones and Gloria Brockington. These four girls also took second in district in the 440 yard relay. [Leader-News Photo]

ACS nurses' committee formed in session

A nurses' committee for the American Cancer Society was organized Monday night at the South Plains Hospital in Amherst.

Mrs. Fred Grisham presided and was elected chairman of the group.

Doris Lemer served as secretary for the meeting, when members voted to organize and plan of action was approved. A list of LVNs and RNs in Lamb County is being constructed.

Curtis Courtney, field representative for the American Cancer Society was present to present a film "The People Side of Cancer", and to present an in-service training program format.

Attending the meeting besides Mmes. Grisham and Lemer were Alpha Peterson, public health nurse for the area, Betty McInnis, and Mary

Snow, administrator of the Amherst Manor.

The program committee will be formed of Mmes. Peterson, McInnis and Snow.

The organization will meet again May 3 at 2 p.m. in the medical library of South Plains Hospital. All county nurses are invited to attend.

AMHERST NEWS

REV. AND MRS. Mike Stafford and Kent of Austin returned home Friday after spending a week with their parents, Mr. and Mrs. J. P. Brantley and Dr. and Mrs. D. J. Stafford of Littlefield.

MR. AND MRS. George Harmon are spending a few days in Arizona as guests of Mr. and Mrs. Noel Hayward of Alva, Okla., who are wintering in the Phoenix area, and Mr. and Mrs. Gil Rapp at Fountain Hill.

A&M Centennial film to be featured

A 30-minute documentary film for Texas A&M University's Centennial will be shown on KLBK at 6:30 p.m., April 21.

Titled "That Certain Spirit," the film is part of the year-long observance of the 100th anniversary of Texas' first public institution of higher learning, points out Mrs. Dorothy Powell, county agent for the Texas Agricultural Extension Service, a part of the Texas A&M University System.

The film offers a glimpse at the university's colorful history, beginning when only six students showed up for the first classes in October, 1876, and contrasting that dubious start with today's Texas A&M, which ranks as the fastest-growing university in the nation and serves as headquarters for research and public service programs with far-reaching impact.

According to Mrs. Powell, the film offers a look at Texas A&M as seen through the eyes of Richard Quine, one of the leading characters in the mid-forties movie filmed at Aggie-land called "We've Never Been Licked." The film is both entertaining as well as informing.

"That Certain Spirit" was prepared by Cinema Inde-

pendent Artists, a Hollywood-based film which has produced material for NFL Sports and other nationally known organizations. The script was written by Don Widener, who has three Emmy Awards to his credit.

For anyone interested in a look at Texas A&M from its humble beginning to an institution of national prominence today, Mrs. Powell suggests viewing "That Certain Spirit."

B & W MECHANICAL CO.
 1827 N. UNIVERSITY LUBBOCK
 806-763-9793
Is Proud To Have Been The Contractor For The Plumbing, Heating & Air Conditioning At Littlefield Plaza.
Best Wishes To K-Bob's Steak House, TG&Y Family Center, Kountry Boy

HALLMARK BUILDERS CONGRATULATES THE CITY OF LITTLEFIELD ON THE COMPLETION OF THEIR NEW SHOPPING CENTER

LITTLEFIELD PLAZA
Hallmark Builders Is Proud To Have Built This Fine New Plaza
HALLMARK BUILDERS OF LUBBOCK, INC.
"Construction Value"

P.O. BOX 16209
 5520 BROWNFIELD HWY., LUBBOCK 806-795-9571

TG & Y



family centers

Grand Op

JUST OFF U.S. 84

STORE HOURS: 9 A.M. TO 9 P.M.
MONDAY-SATURDAY

705 MARSHALL HOWARD BLVD. LITTLEFIELD, TEXAS

Men's FOOTBALL SHIRT
Short sleeve. 100% Nylon mesh. Assorted sizes and colors.

\$3.88 EA.

Men's Short Sleeve

DRESS SHIRTS

A great addition to any man's wardrobe! Easy-care 65% Polyester/35% Cotton in assorted pastel colors. Sizes 14 1/2 - 18 1/2.

2/\$5.00

FAMOUS ARTISTS
8-TRACK

TAPES

\$2.99

100% POLYESTER

DOUBLEKNIT

58/60" Wide

A versatile, all purpose fabric that's both easy and fun to sew... great for just about anything including pants, dresses and shorts. Choose from the latest patterns and fashion colors. Machine wash, tumble dry and never iron!

97¢

SHAMPOO PRELL 11 OZ \$1.99

TOOTHPASTE COLGATE 7 OZ \$1.49

HAIR SPRAY MISS BRECK 11 OZ \$1.99

HAIR SPRAY AQUA NET 13 OZ \$2.99

TOILETRIES LISA MARNEY 1/2 GAL \$1.99

LATEX GLOVES GOLDEN T PAIR \$1.49

WA

T.G. & Y's ADVERTISED MERCHANDISE POLICY

Our company's policy is to always have advertised merchandise in adequate supply in our stores. In the event the advertised merchandise is not available due to unforeseen reasons, T.G. & Y. will provide a Rain Check upon request, in order that the merchandise may be purchased at the same price when it becomes available. If you may purchase similar quality merchandise at a similar price reduction, it is the policy of T.G. & Y. to see that you are happy with your purchases.

master charge BANKAMERICARD

Riegel®

BIRDSEYE DIAPERS

Birdseye diapers with pinked edges. 27"x27". 12 in a package.

\$4.97 pkg.

We Will Be Happy To Refund Your Money If You Are Not Satisfied With Your Purchase

LADIES HANDBAGS

FROM **\$2.88** TO **\$7.88**

1,000 WATTS

TG & Y

PRO DRYER

2-speed, 6-setting dryer with directional attachment.

\$12.99

JUNIOR KNIT TOP

100% Polyester in a pleasing and comfortable style. Easy-care polyester fabric is great for the young girl on the go. Assorted colors and Junior sizes. So soft and feminine!

\$1.88

Ladies'

"POPSICLE" SHOES

Polyurethane upper and sock. Jute covered heel and platform. Assorted sizes.

\$3.76 PR.

We Will Be Happy To Refund Your Money If You Are Not Satisfied With Your Purchase

JUST SAY "CHARGE IT!"

master charge BANKAMERICARD

ing
D PLAZA

Model 625
EM

\$29.95 PR.

- LOTION O.J. 6 OZ 66¢
- WASH LISTERINE 20 OZ \$1.17
- WANT RIGHT GUARD 7 OZ \$1.07
- VASELINE INTENSIVE CARE 10 OZ 97¢
- GILLETTE FOAMY 11 OZ 87¢

BLACK & WHITE TELEVISION

All solid state UHF & VHF tuning. Lightweight black & gray cabinet. Swivel antenna. Printed circuitry. 75 Sq. inches of viewable picture area.



#Z0474

LIMIT 1

\$79.88

CELLO TAPE



1/2" x 1500" dispenser.

37¢ EACH

TG&Y
family centers



Hirsch BRIGHT-LINE SHELVING



Attractive, practical, economical shelving for all your storage needs. 4 shelves, 10" x 30" x 60", all-steel construction with silver finish. Bright and right for any room. Unassembled.

\$6.99

TB-400

T.G.&Y.'s ADVERTISED MERCHANDISE POLICY
Our company's policy is to always have advertised merchandise in adequate supply in our stores. In the event the advertised merchandise is not available due to unforeseen reasons, T.G.&Y. will provide a Rain Check upon request, in order that the merchandise may be purchased at the sale price when it becomes available. Or you may purchase similar quality merchandise at a similar price reduction. It is the policy of T.G.&Y. to see that you are happy with your purchases.

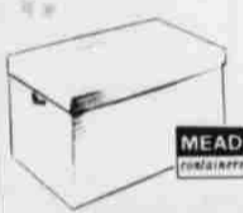
ies'
SALE
BRANDS
ments in a
men and
NOW PRICE!
advised
ELGIN
HAM and
selection!

CHOICE ...

\$24.88 EACH

We Will Be
Happy To
Refund Your Money
If You Are Not
Satisfied With
Your Purchase

STORAGE CHEST



MEAD

- MULTI-PURPOSE
- WOODGRAIN PATTERN

\$1.88 EA.

PAINT ROLLER & TRAY SET



- 9" Roller
- Metal Tray

\$1.99 EA.

Coleman FUEL



For gasoline stoves, lanterns, & heaters.

Gallon Size

LIMIT 2

\$1.59 Gal.

TOILET SEAT



Regular size enameled wood. Colors are white, blue, pink and avocado.

\$4.77 EACH

Tempest FUEL CYLINDER



Replacement propane fuel cylinder fits all standard torches. Can also be used for many camping items; stoves, lanterns and heaters.

\$1.66 EACH

Schick HOT LATHER MACHINE



Comfortable hot lather instantly. Includes 1 refill.

\$13.99 ea.

BANKAMERICARD
master charge

ENSION CORD

50', yellow, grounding extension cord for outdoor utility use.

\$4.97 EACH

IGLOO Playmate ICE CHEST



Assorted colors. Holds 18 cans. Swing-open lid.

#1371
LIMIT 1

\$8.88 EA.

RADIO WHEELBARROW or GARDEN CART



Choice of 3-cu. ft. Garden Cart or 4-cu. ft. wheelbarrow. Bearing wheels.

YOUR CHOICE **\$14.88** EACH

MORNING & AFTERNOON-MONDAY through FRIDAY		
CH. 11 KCBD 6:45 * Today in Texas & New Mexico 7:30 * Today Show 7:55 * Weather 8:00 * Today Show 8:25 * News & Weather 8:30 * Today Show 9:00 * People Place 9:30 * High Rollers 10:00 * Wheel of Fortune 10:30 * Hollywood Squares 11:00 * Fun Factory 11:30 * Take My Advice 11:55 * NBC News 12:00 * Celebrity Sweepstakes 12:30 * Days of Our Lives 1:30 * The Doctors 2:00 * Another World 3:00 * Sonoma 3:30 * Robert Young 4:30 * Inside 5:30 * NBC News 6:00 * Evening Report	CH. 13 KLBK 6:30 * Farm & Ranch News 7:00 * CBS Morning News 8:00 * Captain Kangaroo 9:00 * Women Point of View 9:30 * Not For Women Only 10:00 * Gombi 10:30 * Love Of Life 10:55 * CBS Midday News 11:00 * The Young & the Restless 11:30 * Search For Tomorrow 12:00 * Channel 13 News 12:30 * As The World Turns 1:30 * The Guiding Light 2:00 * All in the Family 2:30 * Match Game 3:00 * Ispitales 3:30 * The Price is Right 4:30 * Banana 5:30 * Water Croaker News 6:00 * News, Weather, Sports	CH. 28 KMCC 7:00 * Good Morning America 8:30 * The PTI Club 10:30 * Happy Days 11:00 * Let's Make A Deal 11:30 * All My Children 12:00 * TTD Show 12:30 * Rhyme & Reason 1:00 * \$20,000 Pyramid 1:30 * The Neighbors 2:00 * General Hospital 2:30 * One Life to Live 3:30 * The Edge of Night 4:00 * Drown and Stuff 4:00 * Lucy Show 4:30 * The Partridge Family 5:00 * ABC Evening News 5:30 * Andy Griffith 6:00 * KMCC News 28 6:25 * Paul Harvey 6:30 * Bewitched
CH. 11 KCBD 4:30 * Sanford & Son 7:00 * People Live Us 8:00 * Jeopardy 9:30 * Jeopardy 10:00 * Jeopardy 11:00 * Jeopardy 11:00 * News, Weather, Sports	MONDAY EVENING CH. 13 KLBK 8:30 * To Tell The Truth 9:00 * Rhoda 9:30 * Phyllis 10:00 * All in the Family 10:30 * M*A*S*H 9:00 * Medical Center 10:00 * Channel 13 News 10:30 * Spinout	CH. 28 KMCC 7:00 * On The Rocks 7:30 * Monday Night Baseball 10:00 * KMCC News 28 10:30 * Monday Night Special
CH. 11 KCBD 5:30 * Adam 12 7:00 * Movie On 8:00 * Police Woman 9:00 * City of Angels 10:00 * Jeopardy 10:30 * Jeopardy 11:00 * Jeopardy 11:00 * News, Weather, Sports	TUESDAY EVENING CH. 13 KLBK 8:30 * To Tell The Truth 9:00 * Good Times 9:30 * Papi 9:00 * M*A*S*H 8:30 * One Day At A Time 9:00 * Switch 10:00 * Channel 13 News 10:30 * Goody Mr. Chips	CH. 28 KMCC 7:00 * Happy Days 7:30 * Laverne & Shirley 8:00 * The Rockies 9:00 * ABC News Closeup 9:00 * Gun Control, Pro & Con 10:00 * KMCC News 28 10:30 * Mystery of the Week
CH. 11 KCBD 5:30 * Adam 12 7:00 * Texas Resident's Eye Hope 8:30 * Choice & Ho-Me 9:00 * Hawk 10:00 * Jeopardy 10:30 * Jeopardy 11:00 * Jeopardy 11:00 * News, Weather, Sports	WEDNESDAY EVENING CH. 13 KLBK 8:30 * To Tell The Truth 9:00 * Tiny Orlando & Down 9:00 * Cannon 9:00 * The Blue Knight 10:00 * Channel 13 News 10:30 * Baron Blood	CH. 28 KMCC 7:00 * The Bonis Women 8:00 * Bonatti 9:00 * Star Trek 10:00 * KMCC News 28 10:30 * Movie of the Week
CH. 11 KCBD 6:30 * Adam 12 7:00 * Mac Davis Show 8:00 * Judge Horton & the Scoundrel's Bury 10:00 * Jeopardy 10:30 * Jeopardy 11:00 * Jeopardy 11:00 * News, Weather, Sports	THURSDAY EVENING CH. 13 KLBK 8:30 * To Tell The Truth 9:00 * The Waltons 9:00 * Hawaii 5-0 10:00 * American Parade 10:30 * Channel 13 News 10:30 * Faces of Dr. Loo	CH. 28 KMCC 7:00 * America 8:00 * Streets of San Francisco 9:00 * Harry O 10:00 * KMCC News 28 10:30 * Mork & the Minkidion
CH. 11 KCBD 5:30 * Emergency 6:30 * The Price Is Right 8:00 * Rockford Files 9:00 * Police Story 10:00 * Jeopardy 10:30 * Jeopardy 11:00 * Midnight Special 11:00 * News, Weather, Sports	FRIDAY EVENING CH. 13 KLBK 8:30 * To Tell The Truth 9:00 * Sarah 9:00 * Friday Night Movie 9:00 * CBS News Special 10:00 * Channel 13 News 10:30 * Savanora 11:30 * Sell a Crooked Ship	CH. 28 KMCC 7:00 * Danny K. Abrie 8:00 * Friday Night Movie 10:00 * KMCC News 28 10:30 * The Rockies 11:30 * The PTI Club



SHOWN ON THE front row, from left to right, are: Jeanette Johnson, and Arlene Williams. On the back row are Ponni Walter, Ruthie Davis and Sally Wilkinson. These five girls were members of the 440 and 880 yard relays. Jeanette, Arlene and Ponni ran on both relays while Sally was a member of the 440 relay and Ruthie ran on the 880 relay. [Leader-News Photo]



SALLY WILKINSON, Michelle Phillips, Pamela Fisher and Cindy Klein were members of the seventh grade mile relay that finished second in district. [Leader-News Photo]



BILL MINYARD, manager of TG&Y Family Center, opened the new store Friday afternoon following grand opening ceremonies in Littlefield Plaza that morning. [Staff Photo]



K-BOB'S COOKS slave over the new grill at K-Bob's Sub House Thursday night. [Staff Photo]

IT'S EASY ON THE EYES!
Quasar
25" diagonal 100% SOLID STATE
WORKS IN A DRAWER® COLOR TV



\$798⁸⁸

25" diagonal picture. Quasar Works in a Drawer® Color TV. "Super Insta-Matic" Color Tuning. Our greatest picture performance. Mediterranean Credenza cabinet styling. Model WU9242LP.

PAT'S RECORD CENTER
385-4664
515 Phelps Ave.

CH. 11 KCBD 7:45 * News, Weather, Sports 8:00 * Emergency Plus Four 8:30 * Jesse & the Pussycats 9:00 * The Sonny Liston 9:30 * Wilda Kitty 10:00 * The Risk Panther 10:00 * Land of the Lost 9:30 * Run, Joe, Run 10:00 * Beyond the Planet 10:30 * West Wind 11:00 * The Jacksons 11:30 * Gal 12:00 * World of Survival 12:30 * What's Going On? 1:00 * Baseball Game of the Week Kansas City Athletics vs. N.Y. Yankees 4:00 * New Orleans Open 5:30 * NBC News 6:00 * Lawrence Welk 7:30 * Robert Young 8:00 * Family Doctor 8:00 * Sonoma 10:00 * Jeopardy 10:30 * Jeopardy 11:00 * News, Weather, Sports	SATURDAY CH. 13 KLBK 6:00 * Billwinkle 6:30 * Underdog 7:00 * Pebbles & Bam Bam 7:30 * The Bugs Bunny 8:00 * Road Runner Hour 8:30 * Scooby Doo 9:00 * The Simpsons 10:00 * For Our Space Nuts 10:30 * Ghost Busters 11:00 * Valley of the Dinosaurs 11:30 * Jim Albert Show 12:00 * CBS Film Festival 1:00 * Texas Ranger Baseball vs. Detroit 3:45 * Sports Spectacular 5:00 * Nashville on the Road 5:30 * CBS News 6:00 * News Hour 7:00 * The Jeffersons 7:30 * Doc 8:00 * Moby Taylor Moore Show 8:30 * Bob Newhart Show 9:00 * Carol Burnett Show 10:00 * Channel 13 News 10:30 * The Victrola 12:00 * Sonoma & Co.	CH. 28 KMCC 7:00 * Hong Kimo Phivry 7:30 * Tom & Jerry 8:00 * Grape Ape Show 8:30 * The New Adventures of Gilligan 9:00 * Super Friends 10:00 * Speed Buggy 10:30 * The Oddball Couple 11:00 * The Last House on the Left 11:30 * American Bandstand 12:00 * Eason, Afton 1:00 * S. S. Power 2:00 * Fantasy Island 2:30 * Pro Bowlers Tour 4:00 * Wide World of Sports 5:30 * Top Gun 6:00 * American Graffiti 7:00 * The Love Boat 8:00 * S.W.A.T. 9:00 * Jeopardy 10:00 * Bob Sherman's Show 11:30 * The Rat Patrol
CH. 11 KCBD 6:30 * News, Weather, Sports 6:45 * Sacred Heart 7:00 * Vegetable Soup 7:30 * Rev. Jimmy Swaggart 8:00 * Day of Discovery 8:30 * James Robison Presents 9:00 * Rex Humbard 10:00 * Oral Roberts 10:30 * Living Your Religion 11:00 * A Better Life 11:30 * Meet the Press 12:00 * Garner Ted Armstrong 12:30 * World Cup Tennis Challenge Cup 2:30 * Grandstand 3:00 * Family Furniture 3:30 * World of Survival 4:00 * Porter Waggoner 4:30 * The Good Die Nashville Music 5:00 * Wild Kingdom 5:30 * Weekend Report 6:00 * World of Disney 7:00 * Elery Queen 8:00 * Sunday Mystery Movie 10:00 * Weekend Wrap-Up 10:30 * Three into Two War 'n Go 12:00 * News, Weather, Sports	SUNDAY CH. 13 KLBK 7:00 * This Is The Life 7:30 * Around The World In 80 Days 8:00 * U.S. of Archie 8:30 * Harlem Globetrotters 9:00 * Old Time Gospel Hour 10:00 * A Place To Talk 10:30 * Face The Nation 11:00 * Kalediscops 11:30 * Inquiry 12:00 * NBA Playoff Double Header 5:00 * Easter Is 5:30 * CBS Sunday News 6:00 * 60 Minutes 7:00 * Sonoma & Char 8:00 * Kagle 10:00 * Channel 13 News 10:30 * CBS Sunday News 10:45 * A Visit With J.R. Church 11:00 * The Avengers	CH. 28 KMCC 8:00 * Jimmy Swaggart 8:30 * Exciting Life 9:00 * Encounter 9:30 * Human Dimension 10:00 * Championship Wrestling 11:00 * First Baptist Church 12:00 * Let the Bible Speak 12:30 * Friends of Man 1:00 * Pop Goes the Country 1:30 * TBA 2:30 * American Sportsman 3:30 * Tournament of Champions Golf 5:30 * Rays of Hope 6:00 * Swiss Family Robinson 7:00 * Six Million Dollar Man 8:00 * 1976 Tony Awards 10:00 * The Nutty Professor

WHEN YOU BUY OR BUILD A NEW HOME
LOOK FOR THIS SIGN

It has been known for some time that methods existed to insure the building of ENERGY EFFICIENT HOMES. But inexpensive energy in the past made it logical to ignore the extra investment such a home would require. Now with energy costs rising, it becomes more and more important to use effectively every bit of energy we consume. The TOTAL ELECTRIC ENERGY EFFICIENT HOME has construction features which result in savings of 40% or more on heating and cooling costs when compared to previously accepted standards for total electric construction.

You'll be hearing more about the ENERGY EFFICIENT HOME. If you're considering a newly constructed home, let us work with you and your builder to assure that your new home is designed for maximum comfort and energy savings — the TOTAL ELECTRIC ENERGY EFFICIENT HOME.

And Save Over 40% On Heating & Cooling Costs



CALL US!

Equal Opportunity Employer

Half of the people who suffer from high blood pressure don't know it.

Here's a simple way to make sure you aren't one of them.

American Heart Association

This space has been donated as a public service.

Lisa Risinger selected all-conference team

Texanette basketball have been named to Western Junior College since first and second conference teams for 1975-76.

led to the WJCC first conference freshmen Lisa Risinger, Bula and Jane Goheen. Freshman Shatoh of Farwell was named as a WJCC second-conference team member by conference players named to the team were Marilyn Pay-Theresa Beal of Western College and Micky Clarendon of Clarendon College members of the second team also in Carol Vincent and Clarendon of Clarendon, Tillman of Western and Sherry Griffin of College.

er and Booth earlier named to the Region team. They also as an all-tournament at the women's re-playoffs in Snyder this year, a 5-10 forward-



LISA RISINGER of Bula has been named to the Western Junior College All-Conference first team, according to voting by conference coaches. The 5-10 freshman forward-post player for South Plains College also was selected earlier for the Region V All-Regional team. Risinger, daughter of Mr. and Mrs. W. C. Risinger of Bula, established five school records this season and is co-holder of another. She was the Texanette's leading scorer with 17.6 points a game and tied with Capri Kimbrow of Midland for top rebounding honors with 8.7 a contest. Also named to the All-Conference teams were SPC's other all-regional player, Jane Goheen of Abernathy, and Sharon Booth of Farwell. [SPC Photo]

Sunflower acreage to be down this year

Although much acreage was planted to sunflowers in Texas last year, producers are shying away from this relatively new crop for the 1976 season.

While lucrative prices buoyed the crop in 1975, the outlook is rather bleak now, says an agronomist for the Texas Agricultural Extension Service.

"Texas sunflower acreage shot from 5,000 acres in 1974 to 375,000 last year, and now mills and markets are over supplied," notes Dr. John Bremer. "Some crushers have enough sunflower seeds on hand to last about three years."

So the 1976 crop may be down to about 100,000 acres, especially if the current market price of 8 cents a pound doesn't take a turn upward. Sunflowers hit the 15-cent per pound mark in 1975.


"The 1975 sunflower crop in Texas has been valued at almost \$55 million, with the big portion of the crop grown in the High Plains. Although the crop has potential over much of the state, it does best under irrigation and therefore the High Plains will continue to be prime sunflower country," points out the Texas A&M University System specialist.

Sunflowers fit in well in a double cropping program in certain areas, and they also work well in a rotation system with corn and sorghum. Since the crop is tolerant to many of the vagaries of weather, such as high winds and hail, it again makes it attractive to the High Plains.


"The simple fact that sunflowers are new to Texas brings on a number of production problems that have to be ironed out," says Bremer. "Yields last year ranged from 150 to 3,000 pounds per acre, so this shows that there definitely are problems. Many questions hinge around varieties, planting rates, fertility levels, insect, disease and weed control, and harvesting techniques."

PRESTON POINTER

A GOOD NAME TO REMEMBER WHEN VOTING FOR COMMISSIONER OF PRECINCT 3



Pd. Pol. Adv. By Preston Pointer



TOBE VEREEN

Candidate For JP Precinct 4 Would Appreciate Your Votes.


The Easter Seal Society provided treatment and services for 10,768 physically handicapped children and adults in Texas last year, and this program needs to be expanded. Many people are going without services that would increase the productivity of their lives and make them happier. Increased public support of the Easter Seal Society will enable more and more of these people to be reached.

The Society is carrying out a continuing program to seek out the disabled who are doing without services and see that they receive the help they need. The Easter Seal Representative is the person to contact for services from the Easter Seal Society at Security State Bank.

A further request for support of the Easter Seal Society for Crippled Children and Adults and its program of services to the handicapped has been issued by Doyle L. Patton Jr. of Littlefield, who is the County Easter Seal Representative for Lamb County.

NAME OF BANK THE FIRST NATIONAL BANK OF LITTLEFIELD		CHARTER NUMBER	12624
BALANCE SHEET at the close of business on		March 31, 1976	
INFORMATION ABOVE LINE NOT TO BE PUBLISHED			
Statement of Resources and Liabilities			
		Thousands of dollars	
ASSETS			
Cash and due from banks		3,771	
U.S. Treasury securities		554	
Obligations of other U.S. Gov't agencies and corps		None	
Obligations of States and political subdivisions		152	
Other bonds, notes, and debentures		None	
Federal Reserve stock and corporate stock		9	
Trading account securities		None	
Federal funds sold and securities purchased under agreements to resell		2,500	
Loans, Total (excluding unearned income)	2,193		
Less: Reserve for possible loan losses	56		
Loans, Net		2,137	
Direct lease financing		None	
Bank premises, furniture and fixtures, and other assets representing bank premises		79	
Real estate owned other than bank premises		None	
Investments in unconsolidated subsidiaries and associated companies		None	
Customers' liability to this bank on acceptances outstanding		None	
Other assets		60	
TOTAL ASSETS		9,562	
Demand deposits of individuals, partners, and corps		6,620	
Time and savings deposits of individuals, partners, and corps		1,116	
Deposits of United States Government		52	
Deposits of States and political subdivisions		631	
Deposits of foreign govts. and official institutions		None	
Certified and officers' checks		None	
TOTAL DEPOSITS		8,532	
Total demand deposits	6,944		
Total time and savings deposits	1,588		
Federal funds purchased and securities sold under agreements to repurchase		None	
Liabilities for borrowed money		None	
Mortgage indebtedness		None	
Acceptances executed by or for account of this bank and outstanding		None	
Other liabilities		None	
TOTAL LIABILITIES (excluding subordinated notes and debentures)		8,532	
Subordinated notes and debentures		None	
Preferred stock a. No. shares outstanding	None	(par value)	
Common stock a. No. shares authorized	1,000	(par value)	
b. No. shares outstanding	1,000	(par value)	
Surplus		100	
Undivided profits		390	
Reserve for contingencies and other capital reserves		741	
TOTAL EQUITY CAPITAL		(10)	
TOTAL LIABILITIES AND EQUITY CAPITAL		9,562	
Average for 15 or 30 calendar days ending with call date:			
Cash and due from banks		3,421	
Fed. funds sold and securities purchased under agreements to resell		2,500	
Total loans		2,238	
Time deposits of \$100,000 or more in domestic offices		None	
Total deposits		8,234	
Fed. funds purchased and securities sold under agreements to repurchase		None	
Liabilities for borrowed money		None	
Standby letters of credit outstanding		None	
Time deposits of \$100,000 or more in domestic offices		None	
Time certificates of deposit in denominations of \$100,000 or more		None	
Other time deposits in amounts of \$100,000 or more		None	

VOTE FOR DOYLE ELLIOTT



ON MAY 1, 1976

Candidate For DISTRICT ATTORNEY

Lamb, Bailey And Parmer Counties

Subject To Action Of Democratic Primary

★ Candidate's History And Qualifications

- *Born In Wellington, Texas, October 24, 1926
- *Grew Up On A Farm And Attended Public Schools In Lamb County, 1928-1944
- *U.S. Navy, World War II, 1944-1946
- *Married Maribeth Bilderback, June 23, 1945, Has Two Children
- *Farmed In Lamb County, 1946-1947
- *BBA Degree - January 1950, Texas Technological College
- *Employed By General Motors, 1950
- *Farmed In Parmer County, 1951 - 1961
- *Lived In Muleshoe, Texas 1952
- *MBA - Accounting, 1962 - Texas Tech University
- *Dr. Of Jurisprudence, 1965 - University Of Texas
- *General Practice Of Law In Friona, Texas Since 1965

Political Advertisement Paid For by Doyle Elliott

25% OFF SALE

Save On Goodyear White Stripe Or White Letter Tires

'POLYGLAS'

70 SERIES-White Stripe

Custom Wide Tread Polyglas

\$39

D70-14 with trade

E70-14	F70-14	G70-14
\$39	\$42	\$45
H70-14	G70-15	H70-15
\$48	\$45	\$48

Plus \$1.95 to \$3.07 F.E.T., depending on size.

- For performance cars
- Tread-firming belts
- Wide tread, low profile

Also white letter tires at comparable savings.

60 SERIES-White Letter

Polyglas GT

\$44

E60-14 with trade

F60-14	G60-14	F60-15
\$48	\$50	\$50
G60-15	H60-15	L60-15
\$52	\$56	\$59

Plus \$2.65 to \$3.72 F.E.T., depending on size.

- Wide nine-rib tread
- Bias-belted construction
- Style and performance

Lube, Oil & Filter

\$888

Up to 5 qts. of major brand 10/30 grade oil.

- Complete chassis lubrication, oil change and filter
- Helps ensure long wearing parts & smooth, quiet performance
- Please phone for appointment
- Includes light trucks

Front-End Alignment

\$1188

Any U.S. made car - parts extra if needed. Excludes front-wheel drive cars.

- Complete analysis and alignment correction - to increase tire mileage and improve steering safety
- Precision equipment, used by experienced mechanics, helps ensure a precision alignment

Engine Tune-Up

\$3688

Any U.S. made car - parts extra if needed. \$4 Less for cars with electronic ignition.

- Our mechanics electronically fine-tune your engine
- New points, plugs & condenser
- Fuel charging, starting systems, adjust carburetor
- Helps maintain a smooth running engine
- Includes Datsun, Toyota, VW & light trucks

Everyday Low Prices on Polyester Cord Tires

\$17

ALL-WEATHER 78 B78-13 blackwall with trade

E78-14	F78-14	G78-14	G78-15
\$2245	\$2470	\$2580	\$2695

blackwall with trade. Plus \$1.82 to \$2.65 F.E.T., depending on size. WHITEWALLS available at slightly higher prices. Listed sizes fit models of Dart, Mustang, Camaro, Charger, Century, Cutlass, Buick, American Motors, Dodge and others.

- Polyester cord body
- Bias-ply construction
- Low budget-saving price

Tire Sale Prices Remain In Effect Thursday, Friday & Saturday Only

GOODYEAR

See Your Independent Dealer For His Price. Prices As Shown At Goodyear Service Stores.

8 Ways to Buy

- Cash
- Goodyear Revolving Charge
- Our Own Customer Credit Plan
- Master Charge
- BankAmericard
- American Express Money Card
- Carte Blanche
- Diners Club



CLARENCE SISEMORE, manager and Freddie Cook, market manager of the new Kountry Boy market, located in Littlefield Plaza, will open their store for business Monday morning. [Staff Photo]

Renters need insurance

Renters, as well as homeowners, need property insurance, a local home economist advised this week.

Many renters suffer the illusion that they "don't have anything worth insuring," so they should know that in an average apartment theft, more than \$400 worth is taken, Mrs. Dorothy Powell, County Extension Agent, said.

Even in furnished apartments, "loot" can include televisions, stereos, small appliances, clothes and much more, she added.

Turning to costs of insurance, she speculated that premiums for basic coverages are probably close from company to company within town.

Big differences can come in for "extras" or "disclaimers" — so remember to ask what is included as well as the base price for the premium, she added.



LITTLEFIELD MAJOR division Little Dribblers All-Stars won championship in Regional Little Dribblers Tournament at Dumas going undefeated in a four-game sweep. They defeated Bovina, Hart and Dimmitt in first three rounds, then defeated Dimmitt in championship game Saturday night. Team members are front row, left to right: Mark McCanlies, Ronnie Smith, Eric George Brockington, Michael Williams and Rocky Bowman. Back row, left to right: James Randall, Clark Pylant, Jim Yarbrough, Greg Harris and Jerry Jones. Coaches are Jackie Powell and Marty Mangum. [Photo by Therman Oldham]

Tire Sale!

GEBO'S

LITTLEFIELD
508 Hall Avenue

Prices Good Thru Saturday

Bank Americard
and
Master Charge
As Good As Cash
At **GEBO'S**



DURALON DS PREMIUM
4 PLY POLYESTER CORD **13" TREAD**
32" DEPTH

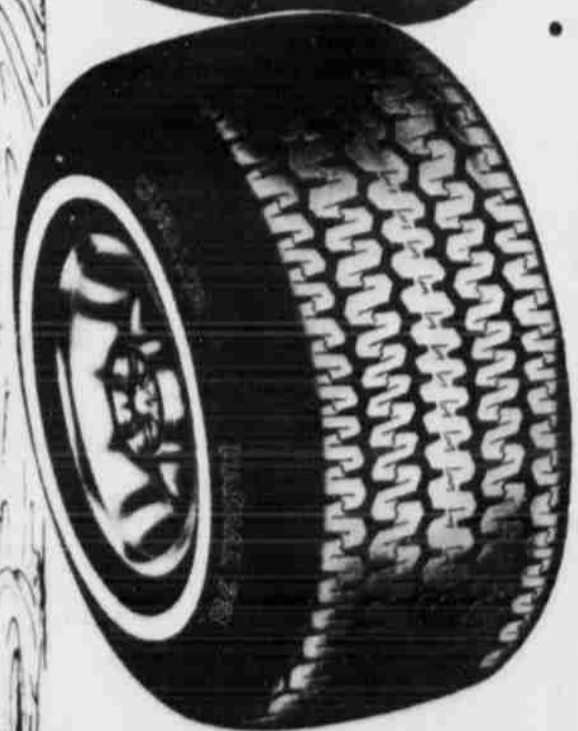
As Low As \$ **18.95**

Premium Quality all the way. Full 13/32" tread depth, Carved tread composed of long mileage Polybutadiene compounds.

Compare 13/32" tread depth with other leading tire companies and you'll see why Duralon tires last longer.

FULL 4 PLY POLYESTER .85" WHITE STRIPE TUBELESS

- FREE MOUNTING
- NO TRADE-IN



DURALON STEEL BELTED RADIAL

As Low As \$ **41.95**

TRI/BELT RADIAL 78

shields the tire body with three tough layers — steel backed by double fiberglass. Belts also steady the tread, reduce rubber-erasing squirm to boost mileage potential.

2 polyester cord plies
2 Fiberglass Cord Belts
1 Steel Belt
.75" White Strip Tubeless



WIDETRACK SUPER 70
FULL 4 PLY NYLON CORD
RAISED WHITE LETTERS
TUBELESS

SIZE	CATALOG	PRICE
C78-13	MB6FX	22.95
C78-14	MB6L1	23.60
E78-14	MB6L5	24.95
F78-14	MB6L7	25.95
G78-14	MB6L9	26.95
H78-14	MB6MB	28.95
G78-15	MB6UV	28.95
H78-15	MB6VX	28.95
J78-15	MB6V1	29.95
L78-15	MB6V3	30.80

A78-13 PLUS Ex. Tax

ALL TIRES PLUS F.E.T.
*Premium is our designation. No industry standard exists for premium tires.

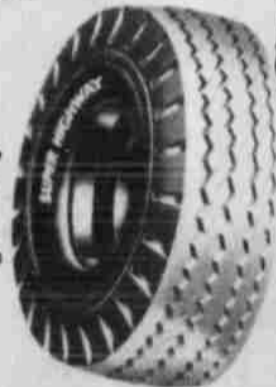
SIZE	CATALOG	PRICE
E70-14	15YPA5	\$26.50
F70-14	15YP57	\$27.95
G70-14	15YP28	\$29.50
G70-15	15YP36	\$29.50
H70-15	15YPA2	\$31.95

All tires plus F.E.T.

SUPER HIGHWAY

Super Traction Super Strength
Super Mileage — Super Protection

NYLON CORD
TUBELESS



FGR78-14 Plus F.E.T.

SIZE	CATALOG	PRICE
GR78-14	MDEMA	\$41.95
GR78-15	MDEWV	\$42.95
HR78-15	MDEVY	\$45.49
JR78-15	MDEV2	\$46.90
LR78-15	MDEV4	\$48.50

All tires plus F.E.T.

SIZE	PLY	RATING	CATALOG	PRICE
6.70-15	6		D2Y1V	\$21.95
7.00-15	6		D2Y1G	\$25.95
7.50-16	8		D2Y2L	\$32.95

All tires plus F.E.T.

STP OIL TREATMENT
ADD TO OIL
89¢

10% Off ALL WIX Oil and Air FILTERS

MAJOR BRAND MOTOR OILS
AT GEBO'S EVERYDAY LOW PRICES

Description	Qt.	Case
Pennzoil	\$.67	\$13.70
Pennzoil 20W40	.74	14.90
Navoline 30	.66	13.30
Navoline 10W40	.63	16.75
Quaker State HD30	.87	13.70
Amalie Reg. 30	.76	15.49
Amalie HD30	.63	12.80
Gulf Single G30	.72	12.90
Gulf Multi G10W40	.79	15.90

CHAMPION SPARK PLUGS
GEBO'S EVERYDAY LOW PRICE
64¢
RESISTORS AND SPECIALTY PLUGS SLIGHTLY HIGHER

GEBO'S THE NEW GENERAL STORE OF THE SOUTHWEST!

Anton captures 5-B track title

WHITHARRAL— Anton took the District 5-B track meet Wednesday night with 211 points to second-place Whitharral's 115.

In third place was Three Way with 87 points, while Pep followed with 53 and Bledsoe totaled 13.

Anton captured victories in four of the five field events and in seven of the nine running events.

Whitharral took victories in the long jump and the 120-yard high hurdles, while Three Way had the other individual victory, in the 100.

POLE VAULT—1. Bret Mills, Anton, 9-3; 2. Mitch Grant, Whitharral, 9-0; 3. Leslie Dockery, Whitharral, 9-0.

HIGH JUMP—1. Greg Couch, Anton, 5-8; 2. Brent Gage, Whitharral, 5-6; 3. Dockery, Whitharral, 5-6.

SHOT PUT—1. Scott Goen, Anton, 44-2½; 2. Marty Fea, Anton, 41-3; 3. Richard Rodriguez, Three Way, 38-9½.

LONG JUMP—1. Dockery, Whitharral, 20-6; 2. Danny Miller, Pep, 19-6¼; 3. Sidney Albus, Pep, 18-10½.

DISCUS—1. Fea, Anton, 138-6; 2. Goen, Anton, 121-4; 3. Jimmy Avery, Whitharral, 101-0.

440 RELAY—1. Anton 47.5;

2. Three Way 47.7; 3. Whitharral 48.2.

880—1. Couch, Anton, 2:11.2; 2. Ray Stone, Anton, 2:13.9; 3. Joe Ortiz, Whitharral, 2:19.4.

120 HIGH HURDLES—1. Dockery, Whitharral, 16.2; 2. John Dukatnik, Whitharral, 17.0; 3. Avery, Whitharral, 17.3.

100—1. Albert Rand, Three Way, 10.8; 2. Danny Miller, Pep, 10.9; Rex Jones, Anton, 11.2.

440—1. David Barnes, Anton, 55.7; 2. Mario Reyes, Whitharral, 60.1; 3. Timmy Albus, Pep, 60.2.

330 INTERMEDIATE HURDLES—1. Jones, Anton, 47.1; 2. Foy Mills, Anton, 47.2; 3. Avery, Whitharral, 47.3.

220—1. Willie Griggs, Anton, 25.0; 2. Rand, Three Way, 25.3; 3. Danny Miller, Pep, 25.6.

MILE—1. Wally Morales, Anton, 5:16.3; 2. Manuel Preeto, Three Way, 5:24.1; 3. Richard Alvarado, Anton, 5:34.8.

MILE RELAY—1. Anton 3:46.0; 2. Three Way 4:04.0; 3. Bledsoe 4:05.0.

TEAM TOTALS—1. Anton 211, Whitharral 115; Three Way 87, Pep 53, and Bledsoe 13.



ON THE FRESHMAN track team on the front row are Larry Heller, Jeff Lust, Danny Hinckley and Richard Soria. On the back row are Ben Davidson, Keith McCain, Eddie Elms, Wayne Lucas and Coach Buddy Comer. [Leader-News Photo]

Country music groups invited to 'Jamboree'

Country music groups from New Mexico and Texas have been invited to participate in the monthly "South Plains Jamboree," scheduled April 24 at the South Plains College Auditorium.

The 7:30 p.m. jamboree is sponsored by SPC's country music department. Admission is \$1 for adults and 50 cents for children.

SPC has mailed invitations to the Rest Home Playboys of Levelland, Cool Water Trio of Lubbock, Border Bandits of Causey, N.M., Mary Beth and the West Texas Travelers of Meador, and Tad and Tim Sinclair of Shallowater, plus individual performers from throughout the area.

Also featured on the program will be SPC's country and bluegrass bands, under direction of John Hartin. The SPC bluegrass band will play at the annual "Spring Fever"

Bluegrass Festival April 29-30 and May 1-2 at Cement, Okla. The group will back up Grand Ole Opry artists Mac Wiseman and Chubby Wise.

Proceeds from the jamboree will help provide scholarships for students enrolled in SPC's country music degree program.



OF THE WILDCAT 440 yard relay and mile relay teams are Danny Martinez, Sammy Raymond Baiza, Jimmy Durham and Bill Turner. Schlottman, Baiza and Durham run while Martinez runs on the 440 and Turner on the mile relay. [Leader-News Photo]

Beef producers protest

The Independent Cattlemen's Association of Texas recently protested supplements being paid European beef producers sending meat to the United States and called on the federal government to retaliate with offsetting duties on those imports.

The U.S. Treasury Department, which has authority to levy such protective countervailing duties has confirmed that supplemental "bounties" are being paid to exporters of frozen boneless beef by the

European Economic Community.

Frozen boneless beef worth \$3.6 million came into the United States from EEC countries in 1975.

Cattlemen's Association president T. A. Cunningham of Goliad said the EEC action is "disruptive of all fair trade practices and treaties" and that the American livestock industry "has a right to expect the fullest protection of coun-

tervaling duties."

"The American livestock industry has been in a state of disaster for three years," he said in a telegram to Assistant Treasury Secretary David McDonald. "We sadly need every ounce of help our government can extend."

I WANT TO BE
YOUR COUNTY JUDGE

Ruth Forbis Kirby

Political Advertising By Ruth Forbis Kirby

Spirit Of '76 Small Car Sale

Pintos
In Colors Of
Red, White
Or Blue

MPG RUNABOUT PINTOS
HAVE FOLD DOWN REAR
SEAT, 4 CYL. ENGINE,
AUTOMATIC TRANS.,
POWER STEERING, AIR
COND., RADIO &
TINTED GLASS.

List Price \$4350

Your Choice Of ONLY \$3995 Plus Taxes

PINTOS with the above accessories

-FREE 1976 LICENSE TAGS WITH ANY PINTO
PURCHASED DURING THIS SALE-

SPECIAL PRICES ALSO ON THESE SMALL CARS

-MUSTANG-MAVERICK-BOBCAT-
GRANADA-MONARCH-

EQUALLY
GOOD DEALS
ON ALL OTHER
DEALS. BUY
NOW &
SAVE!

Carlisle-Oldham
Ford

525 PHELPS AVENUE

385-5164

OFFERS GOOD THRU MAY 3, 1976

APRIL FOOD PRICES ARE RAINING DOWN! DOWN! DOWN!

Grade "A" Whole
FRYERS 49¢
Lb

Country Fresh
OLEO 39¢
1 Lb Tub

Gold Country
BISCUITS 10¢
10 Count Each

Russett's, All Purpose
POTATOES 77¢
10 Lb Bag

Vita-Pep
DOG FOOD 89¢
5 Lb Bag

Banquet, Frozen Apple-Peach
PIES 59¢
20 Oz, Each

DR PEPPER \$1.39
6 Bottle Crtn, 32 Oz

Tender Vittles
CAT FOOD 3 \$1
6 Oz Boxes

No. 11 THIS COUPON IS GOOD FOR
100 FREE GUNN BROS. STAMPS
AT MERLIN'S FOOD STORE
No Purchase Required
Please fill in your name and city
Only One Coupon Per Customer—Coupon Expires 4-25-76

No. 11 THIS COUPON IS GOOD FOR
10 EXTRA GUNN BROS. STAMPS
AT MERLIN'S FOOD STORE
With the Purchase of 1 Lb Bacon
Your Choice
Please fill in your name and city
Only One Coupon Per Customer—Coupon Expires 4-25-76

Country Fresh, Brown & Serve - Buns
BREAD 2 FOR 79¢

Joan of Arc
PEAS 4 \$1
No. 303 Cans

Borden's, Square Crtn
ICE CREAM 98¢
1/2 Gal

COCA COLA \$1.39
6 Bottle Crtn, 32 Oz

NEW STORE HOURS:
MON THRU SAT 8 A.M. - 7:30 P.M., SUN. 8 A.M. - 1 P.M.
QUALITY MEATS COST NO MORE AT

MERLIN'S FOOD

Double Gunn Bros. Stamps, Tuesday & Wednesday
9th & Levelland Highway

OPEN 7 DAYS-A WEEK PRICES GOOD MON, THRU SUN, WE REDEEM FOOD STAMPS



THE ROGER JONES family was among those who were served steaks Thursday night at the new K-Bob's Steak House, during a pre-opening courtesy. (Staff Photo)

Preserve winter clothing with careful storage

"Careful storage of winter clothing ensures wearable garments next season—and eliminates the cost of replacing the wardrobe," says County Extension Agent Dorothy Powell.

"Repair all torn or ripped clothing before cleaning and storing. Agitation in the washer and hanging in the closet can make tears and holes larger and impossible to repair when they are noticed next season," she noted.

"Never put away clothing that is soiled. Leaving stains in

the clothing will draw moth larvae which can make quick work of ruining a wardrobe.

NOISE ADAPTATION

Because man is adaptable to his environment, many persons have developed the ability to ignore the excessively loud noise levels that surround them. However, this does not mean that these people are immune to the hearing losses that can result from continuous or prolonged exposure to such sound levels.

"Time may also set stains that would be easily removed if they were treated promptly," she said.

Mrs. Powell recommended a cool, dry area for storage to prevent mold and mildew.

She said that many professional dry cleaners store clothes at a nominal fee in controlled temperature and humidity vaults. This works well if home storage space is

4-H awards planned for Bicentennial

Were you in 4-H as a youngster? Did you learn how to make mattresses as a Home

MAKE WAR

Researchers have established that rheumatoid arthritis involves a kind of civil war inside the body, in which the body's defense system mistakes its own friendly tissues for biological invaders. The West Texas Chapter of The Arthritis Foundation reports that prompt and proper medical care can help victims win their battle against arthritis, America's number one crippling disease.

Demonstration Club member years ago? Do you remember farming with a team or when two-row farming was only for big farmers? If so, you may be just the person we're looking for!

The Lamb County Program Building Committee of the County Extension Service is making plans to give some recognition awards at the Littlefield Bicentennial. The awards will be presented just before the barbeque on Saturday, May 1.

The Program Building Committee will present awards in these categories:

- Oldest 4-H Alumni
- Oldest farmer
- Oldest homemaker
- Oldest result demonstration
- Woman in Home Demonstration Club longest
- Family with most generations in 4-H

"We invite you to nominate your friends who might qualify for these awards," says Mrs. Dorothy Powell, County Extension Agent. "The awards are not limited to Littlefield residents—we want nominations from throughout the County," she emphasized.

Fill in the form and mail it to: County Extension Office, Box 432, Littlefield, Texas 79339 by April 25th.



BRUCE AND JOYCE DEAVOURES, managers of the K-Bob's Steak House, opened the establishment in Littlefield Plaza Friday morning. (Staff Photo)

Re-elect Jack A. Peel Commissioner Of Precinct 3



JACK A. PEEL

I, Jack A. Peel, am seeking re-election to the office of Commissioner of Precinct 3. I would appreciate your continued support. It has been a privilege and an honor to have served the people of Precinct 3 and Lamb County. If re-elected, I will continue to serve one and all the same regardless of race, creed, or color.

I have lived in Lamb County all my life except for three years I served in the U.S. Army.

I worked seven years for the county as a maintenance operator before going in to farming. I have served seven years as County Commissioner. With this experience, I feel I am fully qualified to serve as your Commissioner of Precinct 3.

My wife, Pearl, and I have two sons, Bruce who is married and is now attending Texas Tech, and Kenny, a senior at Littlefield High School.

We are active members of Parkview Baptist Church, and currently I am

serving as co-chairman of the Deaf Body, Training Union Director and church trustee.

"Let's keep working together in better community." Your vote and influence will be appreciated May 1976.

Thank you,
Jack A. Peel

Pol. ad paid by Jack A. Peel

**It's Time For A Change
Vote For**

NILAH RODGERS

**For
Tax Assessor Collector**

Pol. Ad Pd. By Friends Of Nilah Rodgers

NAME _____

ADDRESS _____ CITY _____

REASON FOR NOMINATION: _____

NUMBER OF YEARS: _____

PERSON NOMINATING: _____

1200 Hall Ave. Open Mon. - Sat. 10 a.m. - 9 p.m.

Phone 385-5346

CHARLIE'S MEAT MARKET

WHERE QUALITY & TRIM COMES FIRST!

DANISH BOILED HAMS	LB	\$3.69
CHUCK ROAST	WASTE FREE OVEN READY BONELESS, LB	\$1.49
SMOKED PICNICS	LONGHORN, LB	99¢
BEEF LIVER	SKINNED & VEINED CENTER CUT, LB	79¢
OX TAILS	LB	69¢
PIG FEET	LB	45¢
GREEN ONIONS	BUNCH	15¢
RADISHES	CELLO BAG	19¢
LETTUCE	POUND	29¢
70 LBS MEAT & 60 PKGS FROZEN VEGETABLES		\$89.99
BREAD	SUPER VALUE 1 1/2 LB LOAF	3/\$1
MILK	BORDEN, 1/2 GAL. PLASTIC CARTON	\$1.93
BOLOGNA	RANCH BRAND, LB	89¢
*BEEF FORE QUARTERS		
*1/2 BEEF	Cut, Wrapped, & Ready For Freezer Financing On Beefs Available, With Approved Credit.	
BEEF & VARIETY FREEZER PACKS AVAILABLE		
We Sell Only Top USDA Choice Or Better.		

Reduce The Price Of Your New Car

By Financing The Purchase With Security State Bank

Our Best Rates In Town Can Save You Up To \$200

SECURITY STATE BANK

MEMBER F.D.I.C.

YOUR COMMUNITY SERVICE BANK

Helping Make Better Things
Happen To You



SEEK

To place your
SEEK Classified Ad
Call **385-4481**
SEEK ads work!!!

on CLASSIFIED ADVERTISING are 10 per word 1st in (\$1.50 minimum) and 6 cents per line insertion (\$1.00 per line charge). Blind ads are \$1.00 ad.

DISPLAY RATES: per column inch first line and additional lines, \$1.15 per inch.

Help Wanted

APPLICATIONS for help at Charlie's Meat Market. Contact Charles Ary.

MAN for record keeping. Littlefield Feeders, see Plowman, apply in 4-15-L.

CAN Cotton Growers accepting applications for employment at the Textile Mill, 1 1/2 miles east of Littlefield, Spade Hwy. (54). Applications will be accepted 9 a.m. to 12 noon, 9 a.m. to 4 p.m. Tuesday, 5 p.m. to 7:30 p.m. Saturday, 9 a.m. to 12 noon. Equal opportunity employer. 4-22-A

body shop man. Some experience. Monday thru Friday. Good salary and chance for advancement. See C. A. Brown, Frontier Dodge, 106 H. Levelland. 4-25-F

APPLICATIONS for waitress at Cres. Clubs. Contact Charles Ary. TF-A

EMPLOYEE NEEDED in and Ranch store for and mounting tires, and general sales. Experience in tires and equipment needed. Reasonable plan, paid vacation. Apply in person, 508 Hall Ave., Littlefield. TF-G

FOR FEMALE: Director for women's residence hall director beginning May 10. Deadline for application May 10. For information contact Ms. Carole Blair, Dean of Women, South Plains College, Levelland, Texas 79336. Equal opportunity employer. 4-22-B

AND L.V.N.'S. GOOD WORKING CONDITIONS. EXTRA GOOD PAY. PHONE 385-3921 or 385-3978.

Director of Nursing New Nursing Home. Benefits. R. N. registered, experienced in supervision of charge nurses, staffing, and in-service training. Also needed, L.V.N.'s for charge nurse duty, free life insurance, openings for 3-11. Levelland Nursing Home, 210 W. Ave., Chris Phillips, administrator. 385-394-7011. An equal opportunity employer.

Clean furniture, and antiques. Will be piece or houseful. 385-5979 TF-Y

Milk goat, high Toggenburg or preferred. 385-3208 4-22-C

Personal.

Venus cosmetics. Stabilized Aloe contact Merri Kelton, 4-29-K

WEIGHT with Grapefruit plan with Diadax excess fluids with Britain Pharmacy. 5-18-0'

By Mary Kay

Freddie Duke 385-5064 18 W. 14th

Card Of Thanks

We can't begin to express our deepest appreciation and thanks to everyone for the prayers, visits, cards and flowers during our loved one's long illness. Then at our time of grief as his life passed away, you were still there with your comforting words and acts. Thank you and may God bless each of you. The family of Loyal Wooten.

Miscellaneous

WILL BUY, sell, trade or rent utility trailers. Phone 385-3590. TF-N

LITTLEFIELD Self Storage, 1/2 mile east of Littlefield on Spade Hwy. 24 hour self service, you keep key-night lights, economical personal and commercial storage, individual storage-7 x 12 to 10 x 24. Household good, merchandise, boats, campers, tools. Call 385-4533 or come by Littlefield Delinting Co. TF-S

NOTICE: Senior citizens mini bus, Littlefield area every Friday. Call 385-5425. Transportacion gratis para todas personas de 55 anos or mayor llame al numero 385-5425 para mas informacion. TF-S

Have you tried Mini-meal? 250 calories. 3 flavors. Vitamins and minerals added. Call Betty Lumsden, 385-4937.

Apts. For Rent

APARTMENT for rent in Littlefield. Call 246-3645. 4-11-K

Houses For Sale

THREE BEDROOM, Cannon Terrace, carpeted, built-ins, fenced in back yard. Call for appointment. 385-5746. TF-F

BRICK HOME with 3 bedrooms, living room, dining room, remodeled kitchen, 2 1/2 baths, double car garage, cellar, storm windows and doors, 1 1/2 lots. See owner at 201 E. 14th or call 385-5266. 4-11-M.

BRICK, 3 bedrooms, 1 1/2 baths, 2 corner lots. Fenced back yard. Cellar, 24 x 26 den, central heating, built-ins. 1101 E. 6th. 385-3282. 3-22-M

THREE bedroom home, 90 (percent) loan available of \$15,400 appraised loan value. Selling price \$16,000. 1224 W. 6th. Phone 385-5442. TF-R

MOBILE home for sale: 1970 model, 3 bedroom, 1 1/2 bath, 14 x 65. Call 262-5585. TF-B

12 ACRE Mobil home set up, with 2 1/2 car garage, carport, good well, septic system, gravel drives, walks, fences, many young fruit, shade trees and shrubs, \$17,000. Or will sell complete with new 14 x 84 3 bedroom, 2 bath, Solitaire Mobile home, central heat, ref. air., built-in electric kitchen over \$3,000. Below cost, \$35,000. 385-3515. TF

Three new, 3 bedroom, 2 bath homes under construction. One 3 bedroom, 2 bath home in Duggan. Paul Carmickle Real Estate, 385-5131.

For sale by owner. Large three bedroom home, choice corner lot, double garage, large den, large living room with fireplace, 3 baths. 125 E. 25th. Phone 385-5939.

73 acres, plenty of water under it, no improvements, no well. \$265 an acre.

80 acres, good 8' well, \$600 acre.

Need some houses for sale. 246-3648.

Rowell Real Estate Box 428 Amherst, Texas

Farm Equipment

PUMPS: 2-6 inch, 250 ft. and 280 ft. 3-submersible-7 1/2-15 and 25 horse power. All 180 ft. 385-3620. TF-B

YOUR neighbors trade at State Line Irrigation for all their irrigation needs. Why not you? Littlefield, Levelland, Muleshoe. TF-S;

MASSEY-ferguson 65 LP. Excellent condition. Call 246-3645. TF-F

NEW WATER WELL acid stick. For better water yields for summer irrigation, irrigation well's should be treated at end of pumping season while water table is lowest. Rex McFadden Co., 792-4446. 5-18-Mc

Pets For Sale

REGISTERED German Shepherd puppies. Will make excellent watch dog or show dogs. If interested call Randy or Greg Wade. 299-4264. TF-W

Misc For Sale

CONCRETE block service station at Bula. 933-2312. 4-11-M

GRAIN FED calves for sale. 246-3645. 4-11-K

HALE two horse trailer, excellent condition, \$800. Nearly new roping saddle, \$150. 385-3515.

CASH AND CARRY Save on groceries by the case at warehouse prices. THE OUTLET Opened Tuesday, Wednesday, Thursday, Friday, Saturday. Tue., Wed., Thurs., 10-5 Fri., and Sat. 10-6. 303 Main St. Anton, Texas.

CARPET SPECIALS

Commercials & Tweeds \$5.75 up
Kitchen Patterns \$8.00 up
Regular \$5.95 up
Hi Lows \$5.95 up
Short Shags \$7.00 up
Multicolor sculpture \$7.50 up
Shags \$7.50 up
Astro grass \$6.50 up

All 100% nylon installed on 1/2 inch foam pad. Samples & Free Estimates Call Jake or Bill Duncan 106 E. 14th St. 385-4953 or 385-6194

Autos For Sale

1974 BUICK Apollo, air conditioned, heater, power steering, almost new tires. Very good condition. Call 385-3430 or 385-5033. T.F.

1973 VEGA Station wagon GT, 28,000 miles, air., good car. 1130 W. 9th. 385-4259. TF-H

1950 WILLYS jeep pickup, 4 wheel drive with high low range. Contact Raymond Duval. 246-3247, Amherst. 4-18-p

1969 GRAND PRIX, am/fm, power windows and seats. Leather seats. \$1,000. Call 385-6046.

1964 CHEV. pickup. Can be seen at 917 W. 7th.

1974 Ford Thunderbird, \$4,495.

1974 Ford Custom 500, \$2,895.

1974 Monte Carlo Chev., 20,000 miles and nice, \$3,995.

1974 Ford Ranger XLT 1/2 ton pickup. LWB, \$3,850.

1970 Chev. Monte Carlo, \$895.

1970 Lincoln Contennental. Low miles and nice, \$1,495.

1972 Monte Carlo Chev. Loaded and nice. \$2,595. Carlisle-Oldham Ford, Inc. 525 Phelps 385-5164

Farm For Rent

50 ACRES irrigated, 1/2 mile north of Amherst. About 1/2 in bermuda. Good wells, fences and sprinkle system. Call 246-799-0200 3-TF

Real Estate

FOR RENT office space, approximately 900 sq. ft. Carpeted, air-cond. Downtown location. Call 385-5147 or 385-4860 TF-A

FARM for sale, 4 miles East of Spade, 104 irrigated acres. Contact 806-293-7120. TF-C

3 ACRES on Loop with 2 small barns, good fence, \$2,500. 385-3515.

LOT FOR SALE, 18th St. 62.7 ft. front, 164 ft. deep. Marlin Yarbrough at Merlin's Food. 385-4755. TF-Y

Country home on pavement. Within four miles of Littlefield. Five acres with 3 bedrooms, 2 baths, den, basement, central heating. Curtis Chisholm Real Estate, 385-6017 or 385-5102. 4-22-C

Lots #11 and #12 on W. 4th St.

Lumber yard in thriving town.

3 good frontage lots on E. 4th.

Mills Real Estate, 1106 Hall Ave. 385-3459.

WINGO REAL ESTATE

385-4684
143 N. WESTSIDE AVENUE
LITTLEFIELD, TEXAS 79339

Bus. Services

WE BUY old cars, trucks, tractors, scrap iron and metal. Ray Franklin, 905 W. Delano. Lamb Salvage, 385-5505/4-29-f

WHEAT- Mites, Cinch bugs, green bugs are killing your wheat. Not just dry weather. Don't lose irrigation investment. J. L. Cox Spraying, 933-2300. 4-29-C

WILL BUILD concrete cellars and basements. H. G. Ferguson, 385-5508. 5-30-F

KEEP carpet cleaning problems small—use Blue Lustre wall to wall. Rent electric shampooer \$1. (Nelson's Hardware)

MATTRESS-OWNERS cotton new spring and cover. Guaranteed 10 to 20 years. Price, \$44.50 to \$69.50. Call Mrs. Steffy 385-3386, agent for A&B Mattress, Lubbock. TF-A

TREWAX rug shampooer for \$2 per day. Harrell Building Supply, Anton. TF-H

JIMMIE GRAY roofing, painting, general carpentry. All work guaranteed. Call 385-5068. TF-G

SEWER stopped up? Let us unclog your sewer line with our Roto Rooter Service. Harrell Building Supply, Anton. 997-3621. TF-H

RENT CONVALESCENT equipment at Britain Pharmacy. Wheel chairs, crutches, hospital beds, other items. Complete line convalescent needs. TF-B

SAW sharpening, skill, chain and hand saws, work guaranteed. James E. Wood, 209 E. 16th. 385-4348. TF-W

CB Radio Service and Installation. Antenna SWR Home & Auto Radio Service Benny Goss 401 W. 4th 385-5636 KEZ-9804 Channel 22

Bus. Services

John's Nursery Bedding plants, hanging baskets, pot plants, tree pruning. 385-5661. 8th and Westside.

Jim's Plumbing Co. Plumbing, heating, and air conditioning. Sewer and sink service. 385-3704.

Duke Electric and Ditching Gaslines, Construction and repair underground wiring. 1112 E. 9th. 385-5064.

YOHNER'S Feed and Seed, Garden seed, Fertilizer, hanging baskets, concrete bird baths, Dekalb Seeds, fountains. 409 W. Delano.

LITTLEFIELD ROOFING

All types built-up asphalt roofs. Composition shingles. All work guaranteed. Call Ron Foshee, 385-5680, Littlefield, Texas.

Accoustical Spraying

Benny Goss 401 W. 4th 385-5636

Storm Shelters and All Kinds of Concrete Work
Phone 385-6144 Rosales Concrete

CONKLIN MAINTENANCE SUPPLIES

For the Farmer: fuel Conditioners, Lubrication Supplies. No order too small or too large. Thank you for your business. RAY REED SALES & SERVICE 385-4964 & 385-5122

MARTIN ROOFING

Roofing Specialists Roofing of all kinds Asphalts of all kinds Asphalt Built-up Roofs All Work Guaranteed

Littlefield 1115 W. 9th 385-3507

Tri-County SAVINGS AND LOAN

*Conventional Loans
*Home Impr. Loans
*Installment Loans

Littlefield Office 7th and XIT Ph. 385-5149

THE GALLERY

306 Phelps Ave. Littlefield Offers Custom Picture Framing Ready Made Picture Frames Art Prints Craft Materials Always Good Buys in Art Supplies Store Hours 9:30-5:30 Mon.-Sat. Phone 385-6262 Our Seventh Year

One-Billion Real Estate 500 W. 5th 385-4213 385-1375

Bus. Services

Industrial BEARING & BELTS Forney Welders & Supplies *Farm Equip. G & C AUTO SUPPLY 700 E. 14th 385-4431

Authorized Briggs-Stratton Service Center Small Engines Welding Tune Ups TERRY MOTOR SERVICE Mufflers—Tail Pipes Alternators—Generators General Repair JOHN TERRY Phone 385-5287 910 Delano Littlefield, Texas 79339

Miravel's Tortilla Factory Now open 603 W. Delano Tortillas, Tamales, Bar-b-que

Campbell's Plumbing Co. Heating Air Conditioning Sheet Metal Work Complete stock of repair parts for all major lines of plumbing, heating, air conditioning products. Service on all major lines heating and air conditioning equipment. Sales Service Installation. Bus. Phone 385-5020 1022 E. 9th

Real Estate

3 bedroom brick, 1 1/2 bath, utility area, storm windows and doors. Well insulated. 2 car garage, fenced yard. S. Sunset.

Large 3 bedroom, 3 bath, brick, den, 2 fireplaces, kitchen built-ins, including dishwasher. Good storage. Covered patio, 2 car garage, fenced corner lot. Cres. Dr.

Commercial building, 60 x 100 with 6 lots, fenced in.

5 acres with well, just off old Lubbock Hiway.

3 bedroom, living room and dining area, kitchen with breakfast nook, large corner lot, fenced, 2 car carport and storage house. With 2 bedroom rent house on same lot. Close to schools. South Westside. Equal Housing Opportunity

Over 1/2 acre with 2 bedroom house, own water well. Fruit trees, fenced. Just off of Loop yet in City. All For \$12,000.

3 bedroom, 1 bath, large den, carport. 708 E. 15th. \$12,600.

622 East 8th. 2 bedroom, 1 bath, den, corner lot. House needs repair. Only \$8,000.

409 West 2nd. 3 bedroom, 1 bath. New carpet and paneled. Plus small bedroom and bath at rear of house. Garage and long carport. \$11,500.

123 East 14th. 2 bedroom and garage. Stucco. Good carpet. Reduced price \$9,500.

125 East 15th. Nice corner lot, 3 bedroom, 1 bath. Carport and detached garage and large store room. \$13,600.

Down town business bldg. for sale or consider leasing.

4 bedroom brick, 3 baths, 2 car garage. Close to downtown. \$32,500.

List Your Property with Us

Robert Richards Real Estate 109 E. 4th 385-3293 Gilbert Lemmons 385-3292 Sandra Richards 385-5719 Robert Richards 385-5719 Equal Housing Opportunity

KIRBY VACUUM CLEANERS
SALES & SERVICE
PAT'S RECORD CENTER
APPLIANCE DEPARTMENT

Color Important In Daily Lives

When you look at a red light, chances are you don't stop and reflect on the lovely use of color. But, that color certainly grabs your attention. There are other practical uses of color too; for example, the color of certain foods tells you whether or not they're fresh.

But, of all the benefits of color, one of the most valuable is to make people and their clothing and homes more beautiful. Now the National Bureau of Standards has a new, multi-color, 32-page publication that explains and illustrates the use of color in each of these areas. For a copy of "Color In Our Daily Lives," send \$1.70 to Consumer Information Center, Dept. 81, Pueblo, Colo. 81009.

To appreciate color and use it to enrich your life, you don't need to understand the scientific principles of color. You just need to understand how colors relate to one another and how to use these relationships effectively.

Here are some tips for your personal color scheme: If your skin is light and your hair color is light (either blond or light grey) light or pastel colors, such as pink or pale yellow, with small amounts of stronger contrasting colors, perhaps purple or orange, will become you.

If you're thinking of doing some home decorating, the booklet says to create a room to relax in, you should avoid a lot of vivid color.

TO THE CREDITORS OF THE ESTATE OF ETTA E. TEMPLETON, DECEASED: On the 14th day of April, 1976, Letters Testamentary were issued to the undersigned as Executor of the Estate of Etta E. Templeton, Deceased, pursuant to an Order of the County Court of Lamb County, Texas, entered the same date in Probate Cause No. 2305; the undersigned hereby notifies all persons having claims against said estate to present them to his attorney, RICHARD A. BARRAS, within the time prescribed by law, at 216 Bank of the Southwest Building, P. O. Box 3400, Amarillo, Texas, 79106, which is his office mailing address.

WITNESS my hand this 14th day of April, 1976.

s/Elmer Eugene Templeton
Elmer Eugene Templeton,
Executor of the Estate of Etta E. Templeton, Deceased

Real Estate

Over 1/2 acre with 2 bedroom house, own water well. Fruit trees, fenced. Just off of Loop yet in City. All For \$12,000.

3 bedroom, 1 bath, large den, carport. 708 E. 15th. \$12,600.

622 East 8th. 2 bedroom, 1 bath, den, corner lot. House needs repair. Only \$8,000.

409 West 2nd. 3 bedroom, 1 bath. New carpet and paneled. Plus small bedroom and bath at rear of house. Garage and long carport. \$11,500.

123 East 14th. 2 bedroom and garage. Stucco. Good carpet. Reduced price \$9,500.

125 East 15th. Nice corner lot, 3 bedroom, 1 bath. Carport and detached garage and large store room. \$13,600.

Down town business bldg. for sale or consider leasing.

4 bedroom brick, 3 baths, 2 car garage. Close to downtown. \$32,500.

List Your Property with Us

Robert Richards Real Estate 109 E. 4th 385-3293 Gilbert Lemmons 385-3292 Sandra Richards 385-5719 Robert Richards 385-5719 Equal Housing Opportunity

A Very Limited Supply Of
MACHA
9173 and 2nd out
MILO SEED
Order Today For Your Supply Of This Profit Making Versatile Seed Bred Especially For This Area. See Your Seed Dealer Or Call MACHA SEED FARMS Box 248 385-6094

BEAUTY THAT UPLIFTS
Surrounds the visitor to our home. This atmosphere of serenity in our environment is a source of inspiration to the bereaved.
HAMMONS FUNERAL HOME

TFWC convention slated, local women to attend

"Hands Up," a national volunteer effort to halt crime will be the subject of a crime prevention seminar during the 79th Annual Convention of the Texas Federation of Women's Clubs at the South Park Inn in Lubbock, April 27-30, according to TFWC President Harriette Williford Whatley.

Attending from Littlefield will be Mrs. T. L. Dunlap and delegates from The Forum and the Woman's Club.

Darrell Joy, director of training, Texas Crime Prevention Institute, Southwest Texas State University and Fred McWhorter, Regional Coordinator, South Plains Association of governments will conduct the seminar. The meeting will assist representatives of clubs throughout the state in carrying out "Hands Up" crime reduction campaigns in their communities.

"Hands Up" is a cooperative endeavor between the General Federation of Women's Clubs and the Law Enforcement Assistance Administration, U.S. Department of Justice. As an official member of GFWC, the world's largest organization of women,

the Texas Federation has already demonstrated extensive participation and support of the national campaign.

Keynote speaker of the convention will be Sarah McClenon, noted Washington news correspondent and columnist. She will address delegates Thursday, April 29, at 7 p.m. on the topic "You and Government." Mrs. Don L. Shide, North Dakota, GFWC Second Vice President will speak on membership and Mrs. William R. Ross, West Virginia, GFWC Chairman of Alcoholism and Drug Abuse, will lead a workshop on Federation-sponsored projects focusing on this problem.

Clubs making outstanding contributions in their local communities will be recognized in ceremonies Wednesday, April 28, at 9 p.m. at the Patio West of the South Park Inn. Community Improvement Project contest winners will be announced by Mrs. Claude Riley, Victoria, and the awards presented by George Gray, III, Assistant Territorial Counselor for Sears' Southwestern Territory. Mrs. W. V. Wheeler, Albany, will announce winners of the Shell Environmental contest and Joe Horkey, President of the Horkey Oil Co., Lubbock, will present the awards. The CITGO Business For Beauty contest winners will be announced by Mrs. Howard Weant, Falfurrias and presented by Charles M. Hartwell, General Manager, Exploration and Production Division, Cities Service, Midland.

Mrs. Floyd Shumpert, Kaufman, will announce the name of the TFWC Outstanding Clubwoman and Gibson Discount Centers will present the winner's club a check for \$500. Nominees for the Outstanding Clubwoman must demonstrate leadership ability and lead a successful project during the two-year administration.

Executive Committee members, presidents of the Federation's 14 districts and chairmen of the organization's departments, divisions and projects will give reports and exchange ideas during the meeting.



LITTLEFIELD CITIZENS came about 150 strong to test taste the steaks at the Sagebrush Inn Wednesday night in a western atmosphere. In the far background is the salad bar, as Rex Gilstrap as he played organ music. [Staff Photo]



ABOUT 80 GIRLS from Girlstown USA were served steaks at a pre-opening trial run Wednesday night at the Sagebrush Inn. Owner Frank Sharp, right, welcomes their arrival as they get on the bus. [Staff Photo]

BE ARMED

The best way to win a battle is with plenty of ammunition. The revolution against arthritis can be won with proper medical care and self-help aids for daily living. To obtain the "Self-Help Manual for Arthritis," send one dollar to the West Texas Chapter of The Arthritis Foundation at 3701 North Big Spring, Midland, Texas 79701.

SHOP
LITTLEFIELD
FIRST

KIRBY SALES & SERVICE

385-3357 817 E. 9th

SANDSTORM SPECIAL

COME BY & CHECK OUT SANDSTORM SPECIAL

"Get Right-Call White-Day Or Night"



COOKS at the Sagebrush Inn got a workout Wednesday night during a pre-opening trial run in Cactus Square. [Staff Photo]

MR. COTTON PRODUCER . . .

When You Think Cotton—
Think Macha Cotton Seed!

There is a variety just for you regardless of your soil or water conditions. A limited amount of high germination seed is still available. Order today from your ginner or seed dealer.

—Or Call—

MACHA SEED FARMS

385-6094
Box 248, Littlefield, Tx. 79339

USE EAR PLUGS

With spring rapidly approaching, homeowners are reminded that some power lawnmowers produce noise levels that can be potentially hazardous if exposure is prolonged or continuous. Persons operating such mowers should also use ear plugs to protect their hearing ability.

CAN'T SEE IT

Even though hearing loss victims are suffering from a very real physical disability, they seldom are shown the concern extended to individuals with other types of handicaps. This is because there are no visible impairments connected with a hearing loss.

EARLY-IN-THE-WEEK FOOD SPECIALS

First Cuts

PORK CHOPS Lb \$1.19

Fresh Ground

BEEF Lb 69¢

Shurfine

BACON Lb \$1.39

Turbot

FISH FILLET Lb 98¢

Choice

T-BONES Lb \$1.79

Grisco

SHORTENING 3 Lb Can \$1.39

Shurfine

SUGAR 5 Lb Bag \$1.09

Pringle

POTATO CHIPS Twin Pak 79¢

COCA COLA 6 Bottle Crtn 32 Oz \$1.39

Shurfine

MELLORINE Assorted Flavors, 1/2 Gal 59¢

Best Maid

SALAD DRESSING Qt 59¢

TIDE Giant Size \$1.20

Shurfine, Cream Style or W. Kernel

CORN No. 303 Can 2/49¢

Gold Medal

FLOUR 5 Lb Bog 89¢

Food King

OLEO Lb Solid 33¢

Delicious, Imitation

PRESERVES 48 Oz 98¢

Grandma

COOKIES Reg. 39¢ 3/\$1

Shurfine, Red Sour

PITTED CHERRIES No. 303 Can 39¢

Golden Delicious

APPLES Lb 29¢

Texas

CABBAGE Lb 8¢

PINE SOL

28 Oz

\$1.15

GOOD OLD DAYS CANDY SALE!



6-pack
90¢ VALUE
only
69¢



CLIP THE COUPONS

IN OUR AD EACH WEEK!

REDEEM FOR 200 EXTRA

GUNN BROS. STAMPS

No. 11 THIS COUPON IS GOOD FOR
100 FREE GUNN BROS. STAMPS
AT Pioneer Super Mrkt
No Purchase Required

Please fill in your name and city
Only One Coupon Per Customer—Coupon Expires 4-24-76

No. 11 THIS COUPON IS GOOD FOR
100 EXTRA GUNN BROS. STAMPS
AT Pioneer Super Mrkt
With the Purchase of Shurfine, Catsup
32 Oz Jug

Please fill in your name and city
Only One Coupon Per Customer—Coupon Expires 4-24-76

No. 11 THIS COUPON IS GOOD FOR
100 FREE GUNN BROS. STAMPS
AT Pioneer Super Mrkt
Coral Bay
Fake Coconut, 14 Oz Pkg
While Supply Lasts

Only One Coupon Per Customer—Coupon Expires 4-24-76

We Reserve The Right To Limit Quantities. We Redeem
USDA Food Stamps. We Give Gunn Bros. Stamps. Double
Stamps On Tuesday & Wednesday With \$2.50 Purchase Or
More Excluding Cigarettes.

PIONEER SUPERMARKET



3 DAYS ONLY

COMPARE AT
UP TO \$8

\$2.99

BEAUTIFUL
COLORS

100%

Polyester

SOLIDS & PRINTS

SIZES 8-20

ELASTIC WAIST

OVER 200 PAIR IN STOCK

