

# LAMB COUNTY LEADER-NEWS

VOLUME 52 NUMBER 25 LITTLEFIELD, LAMB COUNTY, TEXAS, SUNDAY, JULY 21, 1974 3 SECTIONS 30 PAGES

15 CENTS  
TAX INCLUDED

## Anton Citizens Preparing For Golden Jubilee



By JOELLA LOVVORN  
Anton residents, including many of whom were there when the town was established Dec. 3, 1924, are excited about their Golden Jubilee Celebration, slated for Saturday, Aug. 3. The city's mayor, Olan Johnson, has proclaimed the day an official holiday for the city.

As early history recalls, the late Ed Hart came to Anton in 1924 to lay out the townsite from land which was used as grazing land for the herds of cattle belonging to the Spade Ranch. Hart has been quoted as saying he "first laid eyes on that land on Thanksgiving Day in 1923."

Hart was asked by his uncle, R. F. Duggan, to come to Danforth Station (later called Anton) to help lay out the town. On Dec. 3, 1924, the townsite was officially opened and the original property owners claimed their stakes for their homes.

Anton was named for J. F. Anton, division superintendent of the Santa Fe Railway, which played an important role in the town's beginning.

Saturday, Aug. 3, Anton residents are celebrating the 50th anniversary of their town's establishment four months early, because they feel the weather will be more congenial for such a celebration.

Several activities are being planned by the sponsoring organizations, the CIA (Community In Action) and merchants of the city.

Registration will begin at 10 a.m. at the museum, where several old pictures, antiques and other items for reminiscing will be displayed.

Also beginning at 10 a.m. will be games and events for everyone, including bicycle races, three-legged races, horseshoe pitching tournament, volleyball games, and others that are being planned.

At noon, lunch will be served from concession stands on the sidewalks, and shortly thereafter, class reunions will be held at the school. Thelma Pritchard is serving as chairman of the reunion committee, and classes wishing to arrange a reunion are asked to contact her at 997-2191.

The huge parade is to begin at 2 p.m., with decorated floats, antique cars, riding clubs, etc. included.

One highlight of the parade is to be a float with members of the original Gypsy Band of 1931 riding on it, Jimmie G. Thornhill, who now resides in Lubbock, was the original director of the band and plans to be on hand for the festivities.

That band was formerly designated as the official musical organization for the West Texas Chamber of Commerce for the years 1931 to 1933, with Thornhill as director. Several of the band members still reside in the area, and the band is being re-organized with younger citizens.

See JUBILEE, Page 4



VIRGINIA HART and Orville Williams look at Anton's first newspaper, The Anton News, which is framed and will be on display at the Museum in Anton during the Golden Jubilee Celebration. Other items to be on display will include a rub board, churn, food grinder, corn sheller and cowbell (shown here), as well as a quilt made from scraps of costumes of the original Gypsy Band, a Coleman gasoline lamp, syrup pitcher, paintings, old photos and other numerous items donated for display by Anton citizens. (Staff Photo)

JUDGES in several shapes and colors are being used for judging during the Golden Jubilee Celebration on Saturday, Aug. 3. Discussing the event are B.J. Stone, second from right, checks Don Stone's beard, and to the left, Alvin Swanson, Gordon Timms, Chester

Jones and Olan Johnson, mayor of Anton. Timms is president of the CIA (Citizens In Action) committee which is co-sponsoring the celebration with the community merchants.

(Staff Photo by Joella Lovvorn)

## Dry Spell No Joking Matter For Area Farmers, Ranchers

ALAN RODGERS  
Weather experts predict a major drought is overdue in this area. Other weather forecasters talk about the drought of 1975.

Farmers, already in the grip of the drought, frown and mutter under their breath.

Lamb County alone, hundreds of farmers have filed 1224 disaster forms during extreme drought conditions covering thousands of acres of crop land. And this county and many surrounding counties aren't even listed on the ASCS tabulations showing drought. Scurry, Lubbock, Nolan, Taylor, Gaines, Kent, Mitchell, and Oldham hardest hit county.

If a new dust bowl develops as predicted, it would continue a cycle that has occurred regularly every 30 to 40 years.

After this spring's dust storms, many around this area are convinced that such a condition is a reality already.

Bill McKinnon is one Littlefield farmer west of town who hasn't planted this year due to lack of moisture. Surrounded on all sides by farmers in a like predicament, he has an abundance of blow sand around his property.

Trying to take the edge off his plight, he jokes about his "beach."

"I've been trying to figure a way to make money from my beach," he said, "but it's too far from any water."

Since man first ventured onto the

Great Plains, he has been faced with major droughts of two or three years' duration or longer. Exploration parties who saw the Plains during the major drought of the 1850's designated this area the "Great American Desert." This observation stuck until settlement during the better rainfall years following the Civil War.

Years later, in the late spring of 1934, it was dry again. Withering heat, rushing out of the prairie furnace, seared crops, sucked up rivers and lakes, and drove people from their homes.

Bleating of sheep thinned into silence around dry water holes. Cattle staggered and fell, bells tolled imploringly for prayer.

Then, as now, worried farmers and merchants scanned the sky and saw nothing but heat lightning flickering on the horizon.

Eventually it passed, but the massive dust drifts often engulfed buildings. Farm machinery, covered by shifting dunes, stood idle in the fields.

Dust pneumonia (brown lung) was a common ailment that caused many deaths. This was neither the first nor the last of the great droughts. The 1930's drought persisted for more than seven years on the southern plains and for five in the north.

The "Big" Dust Bowl centered around Amarillo. Since then, fears of another Dust Bowl have surfaced. This was particularly true in the 1950s and is on the minds of farmers and ranchers again since the spring of 1971.

Climatologists say the basic weather force causing this phenomena is a massive high pressure ridge that clings to the west coast, blocking winter storms that usually sweep in from the Pacific.

They say this condition will occur again. That's why droughts will always be with us in one way or another.

The only encouraging note now is the fact that this dry period is backed by a very good harvest and payment from 1973 crops that will help prevent complete financial disaster.

Persons in all walks of life shudder at the prospect of additional dry years.

Major drought is usually declared when two or more dry years occur in succession and the dry condition extends over a sizable area. Rainfall during the

See DROUGHT, Page 4



WEEDS LIKE this white weed patch and sand piles spoil miles and miles of land west of Littlefield. This time last year this field was covered with green cotton crops with plenty of blooms and grain sorghum about to be harvested. Due to extreme drought, most of the dry land farmers have not planted crops this year. (Staff Photo)

## Cancer 'Swim-A-Thon' Scheduled Here Tuesday

The Lamb County Chapter of the American Cancer Society has scheduled two "Swim-A-Thons" for Lamb County, to raise funds for cancer research.

The fund-raising projects are scheduled for Littlefield Tuesday night, beginning at 7 p.m. and continuing until 10, and at Earth in the near future (possibly the first week in August).

Swimmers from throughout the county are invited to participate in either of the events, and may pick up "Swim-A-Thon" cards from Delinda Sohring, Loretta Mearns, or by going by the Leader-News, 511 E. 8th, or 309 E. 20th.

Swimmers interested in the Earth "Swim-A-Thon" may contact Mrs. Jody Ellis, 257-3868.

After the cards are secured, swimmers seek sponsors who pledge a certain amount of money per lap, then bring the card with them to the "Swim-A-Thon".

The card will be validated by an adult, who watches the swimmer and counts his or her laps. The swimmer later collects the money from the sponsors and then turn the money in to Gloria Jackson at the Security State Bank by Tuesday, July 30.

Swimmers at Earth will have another return date, and will turn their money to Jackie Freeman at Citizens State Bank.

"Special recognitions will be given to the swimmer who swims the most laps, the swimmer who has the most sponsors, and the swimmer who brings in the most money," states Miss Ernestine Lichte, special projects chairman for the Lamb County unit.

Qualified guards will be on duty at both pools.

Crescent Pool is donating their pool Tuesday, and only those "Swim-A-Thon" participants will be admitted for swimming.

## Officers Investigating Thefts

Lamb County sheriff's officers are investigating several battery thefts, the theft of two tape players, a trail bike, and air compressor.

P.A. Washington of Springlake

reported the theft of a Honda mini trail bike Saturday.

Scott Matlock of Earth reported the theft of a tape player taken from the Earth Pay & Save Grocery. At the same time, Mrs. Rayford Daniels of Earth had a tape player stolen.

Wednesday, Joe C. Embry reported the theft of an air compressor from his place northwest of Littlefield.

Four batteries were taken from three farmers' irrigation wells early Thursday.

Billy Guthrie reported the theft of two batteries taken from his wells south of Hart Camp.

D.L. Parkey reported a battery taken from an irrigation well south of Hart Camp.

Alva Pearson in the Fieldton Community reported a battery had been taken and the oil line as cut on a running motor. Sheriff E.D. McNeese said he had taken statements this week which cleared three of five burglaries at the Littlefield Country Club.

Burglaries occurring in April of 1973 and on July 28, 1973 were cleared, and the theft of money taken on April 2, 1973 was cleared with the statements.

## 'We The Women' To Meet Tuesday

Members of "We, The Women" will meet in regular business session Tuesday at noon in the Reddy Room of Southwestern Public Service Co.

Several items of business are scheduled for the agenda, and all members are urged to attend.

## Home Owners May File For Exemptions

Persons 65 years or older, who live in the Littlefield Independent School District and who desire to make application for residential homestead exemption of \$3,000 assessed taxable value for 1974 school taxes, may make application in person at the Littlefield School Tax Assessor-Collector's office at 410 LFD Drive in Littlefield.

Applications will be accepted now through Aug. 9.

Proof of age will be required.

## Lamb County Farmers Lead State In Castor, Sorghum Production

Lamb County farmers led the way in castorbean production in the state for 1973, produced the second largest crop of sorghum, and the third largest crop of corn in the state, according to Agriculture Commissioner John C. White.

Total castorbean production for the county was 4,940,000 pounds, total sorghum production was 16,800,000 bushels, and total corn production was 1,146,000 bushels.

Because 1973 had one of the latest freezes in recent history, harvest started several weeks behind schedule, with rapid progression until the end of the year. White said.

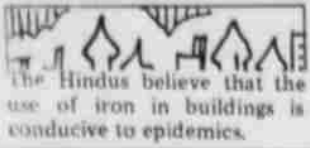
Other counties in the top five in castorbean production include Parmer, Bailey, Hale, and Castro.

Statewide, some 2,355,000 irrigated and 5,745,000 unirrigated acres were planted in sorghum.

Other counties in the top five in all sorghum production include Hale, Parmer, Hidalgo, and Swisher.

"The work of the Lamb County farmer provided a big boost to the total state production of 60,800,000 bushels of corn," White said.

Other counties in the top five in corn



**BEAUTY**  
that uplifts

surrounds the visitor to our home. This atmosphere of serenity in our environment is a source of inspiration to the bereaved.

**HAMMONS FUNERAL HOME**

## Chisholm-Jarrett Wedding Solemnized Friday Night

In a double ring wedding ceremony Friday night, July 19, in the Chapel of First Baptist Church in Littlefield, wedding vows were pledged between Beverly Kay Chisholm of Littlefield and Louis Arthur Jarrett of Chesterton, Ind.

Rev. A.J. Kennemer, pastor of First Baptist Church, officiated for the reading of the vows as the couple stood at the altar, centered with a wedding candle on a stand and a candle tree with a mum and gladiola arrangement. To each side were three candelabras holding blue candles and two candle trees entwined with greenery and tied with blue ribbon.

Parents of the couple are Coy and Wannell Piercey of Cordell, Okla., formerly of Littlefield; and H.E. and

Thelma Wilson of Chesterton, Ind.

Coy Piercey presented his step-daughter for marriage. She wore an A-line, empire, floor-length gown of white, trimmed with lace of white roses and pale green leaves; and white full-length, puffy sleeves of chiffon with cuffs trimmed with lace. The gown was designed with a square neckline, and made by Mrs. Gene Bartley of Littlefield. Her waist-length veil was attached to a white headpiece and highlighted with sequins and pearls.

She carried a bridal bouquet of stephanotis, white mums—some sprayed blue—and baby pink roses tied with blue and white ribbon.

Jan Hamblin of Amarillo was her matron of honor. Her blue floor-length A-line empire style gown was fashioned with short bell sleeves. The neckline and sleeves were trimmed in blue.

Monte Hamblin of Amarillo was best man.

Ushering the guests to their seats were Randy Parkman of Lubbock and Randy Haile of Clovis, N.M.

Lighting the candles was Craig Parker of Canyon.

Traditional musical selections were presented by Jean Parkman at the organ, and soloists, Kelly Jackson and Margaret Fain. Songs were "The Wedding Prayer" and "Here, There and Everywhere".

Following the ceremony, a reception was served in the reception room of First Baptist Church. Serving the traditional wedding cake and punch were Carol Haile, Patti Chisholm, Marsha Jones, Terri Stanley and Deborah Sue Glass.

For their wedding trip to Lubbock and the Dallas area, the new bride chose black flare pants with a black after-five shell, white jacket and black accessories.

They will reside at 4619 Lake

Ave., Mollycodde Apts. Number 128, in Dallas.

The bride graduated from West Texas State University, where she was a member of Delta Zeta Social Sorority, and Delta Psi Kappa professional Club for women in physical education. She was

on the faculty of the Littlefield school system this past year.

The groom graduated from WTSU at Canyon, where he was a member of Alpha Tau Omega Social Fraternity, and played quarterback for the West Texas Buffaloes on a scholarship.



MRS. LOUIS ARTHUR JARRETT

**PAM PARROTT**, 16-year-old daughter of Mr. and Mrs. Glenn W. Parrott of Littlefield, is working in both hospitals this summer as a candy stripper. She is working on a 50-hour pin and 100-hour bar. (Staff Photo)

## Texans Urged To Claim Undelivered Tax Refunds

More than 18,500 undelivered income tax refund checks are waiting for Texans to claim, the Internal Revenue Service says. The number grows annually. Of that figure 8,003 are from this year's crop of returns.

The most common reason for an undelivered check, A.W. McCannless, IRS District Director for North Texas explained, is that the taxpayer moves and leaves no forwarding address with the U.S. Postal Service.

The director said that a taxpayer who is due a refund from either 1972 or 1973 tax years should call IRS if he has not already recently contacted the Service on this subject.

In a case where the taxpayer suspects that his check may have been lost or stolen, the director urged the person to telephone IRS as soon as possible so that action can be taken to trace the missing

check. McCannless stressed that in all refund inquiries to the IRS, the taxpayer should provide the name and address as it appeared on the return, the actual name and address is different, the social security numbers, and the type of form filed.

IRS can usually remain an undelivered refund check within a few days to the new address, he said. However, after Oct. 1 all undelivered refund checks are cancelled. IRS must then follow a more time consuming procedure to issue checks in response to inquiries.

Dallas taxpayers who suspect that they have an undeliverable refund check due them should call 742-2440. Fort Worth residents should call 334-3811. All other North Texas residents can use the IRS toll-free number 800-492-4830.

## Lottie Moon Circle Meets

AMHERST-The Lottie Moon Circle of the Baptist WMU met at the church Monday afternoon for Bible study. The subject was the "Martyrs of the New Testament." Mrs. Floyd Rowell conducted the study.

Mrs. E.L. Schorajsa presided in the business meeting. A nominating committee, Mrs. Harry

Brantley, Mrs. Corine McSpadden and Mrs. Floyd Rowell was appointed.

Mrs. Johnny Smith led the closing prayer. Mmes. Myrtle Love, J.H. Brantley, McSpadden, Yarbrough, Schorajsa, Rowell, Buford, Thompson and Smith attended.

Mrs. Schorajsa and Mrs. Rowell served refreshments.

## Mrs. McGregor Hosts Meeting

The Fidelis Circle of The United Methodist Women met Monday night July 15, in the home of Mrs. Maurine McGregor at 1509 West 4th. Mrs. Ina Mae McQuatters presided.

There was a brief business session, then Mrs. Laverne Seay gave the devotional and Mrs. Maurine McGregor led a discussion program on "Changing Life Styles of Women."

Mrs. McGregor and her mother Mrs. Jewell Hall

served refreshments to the following members and guests, Mrs. Gladys Joplin, Ina Mae McQuatters, Laverne Seay, Hazel Stevens, Eros Caldwell, Jess Harlin, Bertha Arnold, Mattie Lou Clark, Cecil Lora Brown, Jewell Willet, Seretha Tisdale, Sybil Legate, Ruth Wade, Lois Pharris, Rachel Byrd, Miss Ethel Bundick, and Charlene Smiley.

## Arts, Artists Club Meets

The Arts and Artist Club met for their regular painting day, July 18th.

The meeting was called to order by the president, Eva McDonald.

The minutes were read and new by-laws were presented by the secretary-treasurer, Carolyn Mauldin and they were voted on and approved.

The club discussed participating in the Festivities Days, and hanging paintings in local restaurants.

Members present were Eva McDonald, Carolyn Mauldin, Pearl Roundtree, Hattie Street, Gwen Tucker, Myrtle Haire, Sandra Moorhead and Carol Wallace.

Two guests were present, Bradley and Tonya Haire, from Colorado Springs, Colo.

## Nancy Srygley To Receive Med Degree

Nancy Gill Srygley of Littlefield is among the 308 students at Southwestern State College at Weatherford, Okla. who have applied for graduation at the end of the summer session.

She is to receive her Master of Education Degree.

Well over half of the total candidates 184, are completing studies toward the master of education degree, while 15 are candidates for the bachelor of arts; 10, bachelor of arts in education; three, bachelor of music education; 46, bachelor of science; 32, bachelor of science in education; and 18 bachelor of science in pharmacy.

The degrees are to be awarded at Southwestern's 70th annual Summer Convocation at 8:30 p.m. Friday, July 26.

## Gospel Singing Set At Amherst

The second monthly Gospel Sing-along will be held in Amherst Thursday, July 25th, at 8 p.m. in the Amherst Community Center.

This community get-together and sing-along is planned for the last Thursday night each month.

Quartets, duets, sextets and all singers are cordially invited to attend the Amherst gospel singing this Thursday.

## Public Sale Set July 27 In Austin

Interested in a clean used car? Or, perhaps, a four-wheel drive jeep?

If not, and if used modes of transportation aren't included in your immediate plans, then how about business machines, miscellaneous shop equipment or even radio gear?

Texans will have a chance to bid on 100 surplus Department of Public Safety vehicles in

addition to various items of office equipment as the agency conducts a public auction in Austin July 27 at 10 a.m.

The auction, which will be conducted in cooperation with the State Board of Control, will be held at DPS Headquarters at the intersection of Guadalupe and Koenig Lane in Austin.

According to DPS officials, many of the automobiles are air conditioned and fully equipped.

Office equipment items include adding machines, typewriters, tape recorders, a dictating machine and others. Several items found in shops will be auctioned by Nelson International of Dallas and include torches, drills, jacks, air compressor, frequency meters, tube checker and power plant.

The DPS plans to auction two-way mobile radio units, station transceivers and base station cabinets in addition to other gear.

## Oklahoma Ave. HD Club Meets

The Oklahoma Avenue Home Demonstration Club met July 18 at the home of Lena Lewis.

Roll call was answered with "How does your garden grow?"

Zelda Helms, president presided at the business meeting. Club yearbooks were filled in with names of hostesses and program leaders.

Lena Lewis gave the program on flower preserving.

An ice cream supper will be held July 25th at the home of Ila Helms. A guest speaker will give a program on the importance of wills.

A family social will be held in August at the home of Beverly Trimmer.

Refreshments were served to members: Zelda Helms, Doris Waters, Mary Feagley, Ruth Trimmer, Pebble Roberts, Fern Bitner, Ila Helms, Beverly Trimmer and Calesta Myers, and children Brady Waters, Letitia Trimmer, Carrie Lewis, Dusty Lewis, Janey Starnes, Tracy Bishop, and Beth Mann.

The next regular meeting will be Sept. 5.

## AREA SERVICEMEN

QUENTIN HODGE JR., whose parents live in Littlefield, completed the maintenance management course at the U.S. Army Logistics Management Center, Ft. Lee, Va.

The six-week course provides professional development for selected military and civilian per-

sonnel in mid-management positions with the Army's maintenance system.

He is a production controller in the production planning and control division of the sub-assembly planning branch at Anniston Army Depot, Anniston, Ala.

He and his wife, Quine, live at 1717 Mulberry Ave., Anniston, Ala.

## Student Nurses Begin Clinical Training Here



Mrs. Helen Brown, coordinator of the vocational nursing program at South Plains College, made the presentation of caps Thursday afternoon to seven students in the school's vocational nursing program.

The students have now completed the academic phase of their training and will begin the clinical phase of their education Monday, July 22, in area hospitals, including the two in Littlefield. They are Mrs. Betty Anders of Acuff, Miss Glenda Anderson, Mrs. Linda Cockrell, Miss Linda Taylor and Mrs. Crescencia Garza, all of Levelland and Miss Susan Moreno of Mathis. The only male student in the

program, Randall Midland, received his cap. Candles carried by the student were lit by Barbara Bennett, coordinator of the vocational nursing

Members of the vocational nursing committee at South Plains College were special for the occasion. They are Kenneth Day, hospital administrator and Mrs. Douglass, R.N. director of nurses, both of Littlefield Hospital; Mrs. King, hospital administrator and Mrs. Martha R.N., director of nurses of Medical Arts Hospital, Littlefield.



**CORONADO**  
Mr. and Mrs. Leo Co of Littlefield are the parents of a baby girl born in Littlefield Hospital at 8:15 p.m. July 14, 1974. She weighed 8 lbs. and 12 oz. and is named Tanarosa Raquel Co.

**GOYNE**  
Born to Mr. and Mrs. Goyne a baby boy weighing 8 lbs. 8 oz. p.m.

**HERNANDEZ**  
Mr. and Mrs. Hernandez of Shallowford are the parents of a baby girl born in Medical Arts Hospital at 3:35 a.m. on July 18, 1974. She weighed 5 lbs., 8 oz. and is named Melinda Hernandez.

**ORTIZ**  
Born to Mr. and Mrs. Ortiz a baby girl weighing 8 lbs. 5 oz. July 15 at 10 p.m.

**TREVINO**  
Mr. and Mrs. J.F. Trevino of Littlefield are the parents of a baby boy born in Medical Arts Hospital at 7:21 a.m. on July 14, 1974. He weighed 8 lbs. 12 oz. and is named Michael Trevino.

**WRIGHT**  
Mr. and Mrs. Wright of Lubbock are the parents of a new baby girl, Anissa Juanice Howard, who was born Thursday, July 12, 1974, at 12:30 p.m. in St. Luke's Hospital in Lubbock. She weighed 6 pounds, 2 ounces, measured 18 inches and is named Anissa Wright.

## C-C Man Is Studying At Institute

Bill Payne, manager of Littlefield's Chamber of Commerce and Agriculture in Fort Worth this week is attending sessions at the Texas Christian University Institute for Organizational Management, held on the campus, July 21-28.

The institute is sponsored jointly by TCU and the Chamber of Commerce of the United States.

This will be Payne's second year to attend, and he is doing post-graduate work.

Courses he will be attending include "Effective Management By Objectives," "Model Constitution of the United States," "Social Intervention in a Democracy" and "Energy and the Future."

## Senior Citizens Conduct Meeting At Amherst

AMHERST-The Senior Citizens met July 9, in the Amherst Community Center for a business meeting.

Mr. and Mrs. Troy were hosts for the meeting, assisted by Mrs. Best and Jackie Edwards.

Soft drinks, sandwiches and cookies were served to persons who attended.

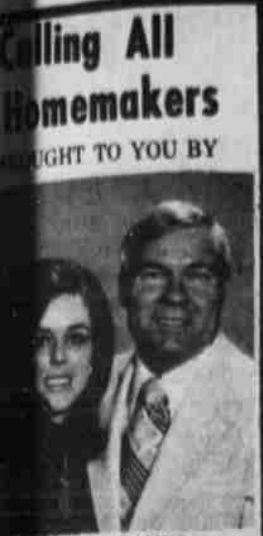
The next meeting will be held July 23 at the Community Center, where a coffee supper will be served. Senior citizens of the area are invited to attend, bringing a covered dish.



Use our 24-Hour Depository any time, any night, and day.



SECURITY IS OUR NAME, HELPING IS OUR BUSINESS



**Calling All Homemakers**  
RIGHT TO YOU BY  
AND CAKOL WALLACE  
SIGNS OR  
OLIDS FOR  
UR CHAIRS ?  
ny home makers ask  
er their sofa and  
should have solid  
-or designs, pat-  
-or stripes.  
answer that, a lot  
nds on the surround-  
in the room, and the  
of the room itself.  
erally, if you have  
atterned wallpaper,  
minent patterns on  
carpeting or  
ries, then some sofas  
-chairs would look  
either in solid colors  
h a small design.  
ur walls, drapes or  
are solid colors  
elves, you might  
designs on your  
nt pieces—but, here  
rd of caution: If the  
is small, patterns  
re big and powerful  
a room seem even  
er. Solid colors give a  
a feeling of more  
however, even in a  
room, you could use  
or widely spaced  
ns or the right  
s. In a large room,  
n't have to be as  
nt in using large,  
ul designs, or even a  
ation of different  
s.  
od rule to remember  
at patterns on fur-  
ns can be used well  
as long as they  
ompete with each  
they should be made  
rmonize to help a  
look its best. A  
n amount of colorful  
s and a mixture of  
ns and stripes can be  
ble, as long as you  
er the mixture and  
sure it's right.  
for any help—to  
any room in your  
look its best—stop in  
e us.  
**Wallace**  
**HOME**  
**FURNISHINGS**  
n Daily 9:00 to 6:00  
Phelps Box 365  
Phone 385-3888  
field, Texas 79237

## Debbie Burks Attending 22nd WTSU Music Camp

Junior and senior high school musicians are attending the 22nd West Texas Instrumental Music Camp at West Texas State University July 14-26.

Debbie Burks of Littlefield is among the 1,185 students from Arizona, Kansas, New Mexico, Oklahoma and Texas who are on the WTSU campus for the 13-day music camp.

The camp is "regarded as one of the largest of its kind in the United States," says Dr. George Umberson, head of the WTSU Music Department and camp director.

"Many directors have told me that students who attend are at least one semester ahead of where they would have been in the fall without the intense effort of two weeks" at camp, says Umberson.

The camp is of value to the students both "musically and personally."

Nine bands, a symphony orchestra, and twirling and drum majoring techniques are features of the summer workshop. Dr. Ralph Laycock of Brigham Young University conducts the Honors Band and

J.R. McEntyre of Odessa the Symphonic Orchestra.

The Honors and Symphonic Bands are made up of the most advanced instrumental players in camp, selected by audition.

Eighty-five string players make up the nucleus of the Symphony Orchestra. The most advanced wind and percussion players use orchestra as an elective class.

Harry Lantz of the Peabody Conservatory, Nashville, Tenn., leads the orchestra.

Campers spend from "five to six hours a day in work," says Umberson. In addition to required membership in one of the bands or orchestra, students may take instruction in choir, music theory, baton twirling, drum majoring, conducting, solo preparation, improvisation and beginning piano.

Other elective organizations are stage band, reading band, brass choir, marching band and various ensembles.

Friday, July 19, the camp presented a concert in the Branding Iron Theatre on campus. The Finale Concert is scheduled Friday, July 26.

## HOSPITALITY HOUSE NEWS

By JONNIE CHAPMAN

MR. AND MRS. W.E. Shultz of Clovis, N.M. were visiting with their son, Weldon, Tuesday.

NEW RESIDENTS of the home are Joe Wells, Bill Erwin, and Mrs. Edna McClure.

MRS. ROSA Ivey, LVN, has returned from a vacation of two weeks.

A BIRTHDAY cake and ice cream were served to Mrs. Edna Hanks, and her friends in the Hospitality House, Monday, July 15, by her son, Bill Banks and wife Rita. This was in honor of her 85th birthday.

MRS. RENA Kay Simmons, LVN, is a new employee of Hospitality House.

MRS. MINNIE Carrell had as visitors over the weekend, her nephew, Homer Thornton, of Beaumont, and his two daughters Debbie Thornton and Mrs. Steve McCleary of Lubbock.

MRS. SEVA ANN Ray was visiting her sister, Mrs. Sybil Ray Tuesday.

MR. AND MRS. George Bagwell of Dimmitt were visiting their aunt, Mrs. Madge Roberts, Saturday.

DON JEWELL, student nurse at South Plains College of Levelland is teaching a class of 12 in nurse's aide work at the Hospitality House. It is a six week course.

MRS. IRMA Brawley and Mrs. Ellen Yeary visited Mrs. Bertha Warner Sunday afternoon.

TOMMIE LOBAUGH was out for the regular singing Tuesday night, which always is an enjoyable occasion. Miss Ellen Massengill was at the piano.

MRS. LEON SMITH was visiting at the Hospitality House Wednesday.

MRS. GOLDIE Goolsby, Denise Johnson, and Ida Solas are new employees of the Hospitality House as nurses' aides.

MR. AND MRS. Troy Fields and three children from Boston, Mass. have returned home after spending two weeks visiting his mother, Mrs. Effie Fields, and other relatives in Littlefield and Sudan.

MRS. LENA LOGAN, and Mrs. W.D. Black were visiting in the Hospitality House Wednesday.

MR. AND MRS. Harley Fields and children from Goldsboro, N. Carolina are here this week visiting his grandmother, Mrs. Effie Fields, and other relatives.

MR. AND MRS. Carl Tapley and children of Oakland, Calif. are here visiting his mother, Mrs. Effie Tapley and other relatives.

## Peterman Family Holds Reunion In California

Mr. and Mrs. V.M. 'Pete' Peterman of Littlefield attended the Peterman Family Reunion in Concord, Calif. during the week of July 4.

The reunion is scheduled every four years in the San Francisco Bay area. This year approximately 75 members and friends of the family gathered at Leo Peterman's home in Concord July 6, the key day of the reunion.

Immediate family included five brothers, V.M. Peterman, Clarence Peterman, Leo Peterman, Harold Peterman and Tom Peterman; and two sisters, Grace and Fay; together with their children, grandchildren and other relatives.

Another sister, Ellen, of Pampa, was unable to attend. Six states of the union were represented: California, Hawaii, North Carolina, Oklahoma, Pennsylvania and Texas.

Highlights of the reunion were singing and other entertainment, along with visitation.

The next reunion will be at Pampa during the week of July 4 in 1976.

People once believed that a mixture of fig juice and hog fat would cure rabid dog bites.

**KIRBY VACUUM**  
SALES AND SERVICE  
**Pat's Record Center**

**FINDLEY'S JEWELRY**  
IS PLEASED TO PRESENT  
**OUR BRIDES-ELECT OF THE WEEK**  
SEE THEIR SELECTIONS ON DISPLAY IN OUR STORE

JAN GLAZENER  
Bride Elect Of  
ROY THOMPSON

SANDRA SMITH  
Bride Elect Of  
ROBBY NEWTON

News about our Lamb County Neighbors in

## OLTON

MRS. W. B. SMITH, JR. 285-2385

TWO OLTONITES have been named to the dean's honor list for the spring semester at Wayland Baptist College. Joe Price and Steve Culwell posted 4.0 grade-point averages for the semester.

Price, a May graduate, received a bachelor of science degree in math. He is the son of Mr. and Mrs. Duward Price. He and his family will be moving soon to Plains where he will teach this fall. Culwell is the son of Mr. and Mrs. Ray Culwell. He is a junior physical education major.

LARRY FARR, grandson of Mr. and Mrs. K. Trotter, is presently stationed in Kitling, Germany.

THURSDAY MORNING Mildred Smith's and Shirlene Caraway's Wednesday class of Main Street Church of Christ had a picnic and miniature golf outing at Plainview.

RECENT out-of-town guests at First United Methodist Church were Mr. and Mrs. Gene Townsend, Pasadena; Jan Zionkeof, Amarillo; Rev. and Mrs. Dan Amerson of Lubbock; Carlin and Sandra Lawrence of Cargenie, Okla.,

and Mrs. Joe Hoover of Lubbock.

MR. AND MRS. Raiford Daniel Sr. spent two days last week visiting in Clovis, N.M. in the home of their daughter and family, Mr. and Mrs. Richard Snell, Susan, Edwin and Samuel.

MISS KATHY AHRENS departed Lubbock Airport Friday as a member of a group making a seven-day tour of the Hawaiian Islands.

SATURDAY NIGHT and Sunday visitors of Mr. and Mrs. Jack Mitchell were her brother and his wife, Mr. and Mrs. Earl Stamps of Dickens and their grandson, Eric Rudd of Fort Stockton.

MRS. MARY Ashcraft and Mrs. Jimmie Jenkins were recent visitors of several relatives in Portales, N.M.

MRS. HARRY THOMAS is receiving treatment at Hi-Plains Hospital in Hale Center.

LUERA APOLONCO is reported to be improving at Hi-Plains Hospital in Hale Center.

MARK AND SCOTT Allen, sons of Mr. and Mrs. Joe Allen of Roswell, N.M., are here visiting in the home of their

grandmother, Mrs. Lily Mae Silcott and in the home of their uncle and aunt, Mr. and Mrs. R.V. Allcorn. Their parents plan to come for them in a few days.

GORDON THOMAS has been transferred from the Littlefield Hospital, where he received treatment several days, to a Lubbock hospital.

CLAUDE CAROTHERS underwent surgery Friday at University Hospital in Lubbock.

REV. AND MRS. John E. Lewis visited the first of this week in Houston in the home of their son, Mr. and Mrs. Johnny Lewis.

MONDAY AFTERNOON, the sixth graders of the Main Street Church of Christ participated in a bike ride and wiener roast at Faye Hulsey's. Teachers Jo McGill, Norma Smith and Faye Hulsey sponsored the event.

MR. AND MRS. Raymond Lewis are planning to hold Open House today. Friends and relatives are invited to call in the new home, located on Highway 70 west, after 8 p.m.

CURTIS JAY MASON of Houston is a guest in the home

of his grandmother, Mrs. Homer Worley.

MARSHA ANDERSON, bride-elect of Mike Trotter, will be feted Saturday, July 27, with a pre-nuptial courtesy in the home of Mrs. Louis Hair. Calling hours are 3 to 5 p.m. Friends and relatives are invited.

JO ELLEN SPAIN, bride elect of Barry Cowart, will be honored Friday, July 26, at a pre-nuptial bridal courtesy in the home of Mrs. Joe Harrell. Calling hours are 3 to 5 p.m. Friends and relatives are invited to attend.

KIRK CARSON of Dalhart visited last week with his grandparents, Mr. and Mrs. H.B. Carson and Mr. and Mrs. Owen Jones.

MRS. JACKIE Burkhalter of Stratford is here visiting her parents, Mr. and Mrs. Owen Jones, also in the home of her husband's parents, Mr. and Mrs. Jack Burkhalter.

MRS. D.W. Stockham Jr. and son of Tequesta, Fla. are visiting in the home of her parents, Mr. and Mrs. L.G. Elkins.

RECENT VISITORS of Mr. and Mrs. Jim Hyatt were their son and family, Mr. and Mrs. James Ray Hyatt, Ryan and Matt of Amarillo.

MR. AND MRS. Barton Prestridge attended the Prestridge reunion in Ballenger Saturday and Sunday. Among others present were the Prestridges' son and family, Dr. and Mrs. Barry Prestridge, Paige and Byron of Wichita Falls.

MR. AND MRS. Frank Adams were in Childress recently. They called on Mr. and Mrs. Bruck Hackler, Pat, Jeannetta and Debra, who had as house guests, Rev. and Mrs. Ronnie Travis and Lisa of Helena, Ark.

MICHELLE DORAN of Austin is here visiting in the home of her grandparents, Mr. and Mrs. Jim Hyatt.

## PIECE GOODS SPECIAL!

**NEW SHIPMENT ALL BOLTED POLYESTER DOUBLE KNITS SOLID KNITS - CREPE KNITS FALL COLORS**



NEW SHIPMENT 100% POLYESTER DOUBLE KNIT. LARGE SELECTION FALL SOLID CREPE KNITS & MORE. USE YOUR PENNEY CHARGE.

**\$2.44** YARD

### Claude Burnett Taking Course In Real Estate

Claude A. Burnett of Littlefield is among 11 area students now taking Part II of "Basic Principles and Practices of Real Estate" being taught this summer at South Plains College.

The two-week course, which partially meets requirements for a broker's license, will end Friday, July 26. The class began Monday, July 15.

OPEN A PENNEY CHARGE TODAY

OPEN A PENNEY CHARGE TODAY

## FRESH DAILY! QUALITY FOOD AT BUDGET PRICES!

|                     |        |                                |     |
|---------------------|--------|--------------------------------|-----|
| GRADE A EGGS DOZEN  | 49¢    | FRESH TOMATOES LB.             | 29¢ |
| MILK GALLON CARTON  | \$1.59 | SHURFRESH MELLORINE 1/2 GALLON | 49¢ |
| 2 GALLON            | 80¢    | FRESH CALIFORNIA PEACHES POUND | 29¢ |
| 2 GALLON BUTTERMILK | 69¢    |                                |     |

|                   |     |                                |        |
|-------------------|-----|--------------------------------|--------|
| GRADE A RYERS LB. | 39¢ | KRAFT VELVETTA CHEESE 2LB. BOX | \$1.59 |
|-------------------|-----|--------------------------------|--------|

FRESH BAR-B-Q MADE DAILY

QUALITY MEATS COST NO MORE AT

## MERLIN'S FOOD

Double Gunn Bros. Stamps, Tuesday & Wednesday

OPEN 7 DAYS A WEEK 9th & Levelland Highway WE REDEEM FOOD STAMPS

DOUBLE GUNN BROS. STAMPS TUES. & WED.

# To The EDITOR

July 17, 1974  
Dear Nihil,  
On behalf of the children who now need foster homes and those who will need foster homes in the future, may I say "Thanks" for the publicity and kind words in your article which appeared in the Leader News.  
We have received much favorable comment concerning you well written article and it appears to have stirred into a bit of positive action on the part of individuals and groups.  
We feel that the article will help other families to decide to "fill the gap" by becoming foster parents.  
Thanks for the picture, too!  
Benny & Wanda Goss and kids.

Dear Editor,  
I would like to say a special thank you to businessmen and individuals for making Little League possible in Littlefield.  
This year we had 185 boys involved in Little League action—including both the major and minor leagues.  
We'd like to thank Southwestern Public Service, Lamb County Electric Coop, City of Littlefield, Commissioner of Precinct 4 Jack Peel, General Telephone, Mr. and Mrs. Edwin Coffman, Birkelbach Machine Shop, B&C Pump Co., Coca Cola Bottling Co., the Green Thumbers (who annually help clean up the park and get it in shape for play), KZZN radio, the Leader-News, Gibson Products, Bill Clark, State Line Irrigation, Jim Jones Conoco, Cliff's Grocery and Delicatessen, Pierce Oil Co., Littlefield Federal Savings and Loans, Shook Tire Co., Littlefield Seed and Delinting, First National Bank, Armes Equipment Co., Case Power and Equipment, Prescription Shop, Dairy Queen, Littlefield Delinting, Pratt's Jewelry, Security State Bank, Ware's, Perry's Laundry and Car Wash, Carlisle-Oldham, Littlefield Butane, Littlefield Farmer's Co-op, Marcum

Olds-Cadillac, J.C. Penney Co., McAnally Jewelry, Pay-N-Save, Hammons Funeral Home, Byers Grain and Feed, G&C Auto Supply, Original Tasty Taco, Wallace Home Furnishings, Armes Chev., Fieldton Coop Gin, Irrigation, Inc., Furrs, Inc. and other individuals, managers coaches, concession stand workers, team sponsors, the Littlefield Umpire Association and statistician, Richard Rogers.  
Without them, it is not possible to have a successful Little League program.  
Bill Payne  
1974 L.L. president  
Joe D. Haynes,  
Delbert Smith,  
Bobby Brunson,  
vice presidents  
Rhea Bradley,  
treasurer  
Allen Bradley,  
player agent  
Jana Stehlik,  
concession manager

EDITOR'S NOTE: This letter was received at the Chamber of Commerce office, and personnel there feel the public should read it.

July 29, 1974  
4606 Lilac Lane  
Victoria, Texas 77901  
Littlefield Chamber of Commerce,  
Littlefield, Texas

Dear Sirs,  
We want to let you know how much we appreciate your trailer-parking facilities, which we used while in your town earlier this month.  
It is a very thoughtful thing for you to do. We truly enjoyed it.

Sincerely,  
Mr. and Mrs. Troy Harrell  
Austin, Texas  
Mr. and Mrs. Harold Culppepper  
Victoria, Texas

## DROUTH

Continued from Page 1  
Driest years is about 50 percent of normal. Although some rains occur, they are less frequent and smaller in amount.  
The lesser rains wet the soil to a shallower depth, more time occurs for evaporation to take place before the next rain, and soil water storage and storage efficiencies are reduced greatly.  
During major drouth years at the USDA Southwestern Great Plains Research Center at Bushland west of Amarillo, the soil was wet by rainfall only a few inches below the surface at any time during the year. Little or no grain yields were obtained from dryland wheat or grain sorghum.  
After a rain or short period of rainy weather, the dry condition tends to reestablish and persist. During such years, the climate shifts from semiarid to arid.  
A USDA engineer at the Bushland center said rainfall since last summer has been much below normal in the High Plains, with only 60 percent of normal at Bushland. In this part of the Plains, generally rainfall is about half the normal amount at this time.  
The longest and most widespread drouth period during the past century occurred during the 1930's. The drouth of the 1950's, the second most severe drouth of the past century, equalled the 1930 drouth in intensity in some area but was of shorter duration.  
The maximum accumulated rainfall deficits during major drouths are approximately equal to two years of annual rainfall. Since annual rainfall seldom drops below 50 percent of normal during major drouth years, experts say at least three more years of severe drouth are required for the present condition to approach the drouth severity of the 1930's and 1950's.  
They add that it is highly likely that there will be more frequent two-year

drouths, though a major drouth of a three-year intensity is low.  
Meantime, dryland farmers have missed a chance for any kind of cash crop this year, and farmers with limited irrigation water are spending so much making a crop that the outlook is bleak indeed.  
Grazing is very short, and ranchers are adding to their production costs with supplement feeding.  
At press time, Richard Newman at the ASCS office said his staff was so swamped with work from the many failed acreage reports, disaster forms, and extended certifying deadline, that there was no way he could tell exactly how many acres were affected in Lamb County.

★  
★  
WELCOME HOME  
ANTON'S 50th BIRTHDAY  
1924- AUG. 3rd - 1974  
★  
★  
TWO OF FOUR TWIRLERS for the re-organized Gypsy Band at Anton are Janette Bishop and Nancy Herrin. They are dressed as they did in 1931-33 when the band was the official musical organization for the West Texas Chamber of Commerce. (Photo by Orville Williams)



THIS IS THE ORIGINAL Anton Gypsy Band as it looked in 1932. If you'll look closely, several of the members are well-known citizens in our area today. Several will be riding on a float in the parade during Anton's 50th Anniversary Celebration Aug. 3, and the float will be pulled by a Model T. The picture is an official photo made by the West Texas Chamber of Commerce, designating it as the official musical organization for the WTCC. Director was Jimmie G. Thornhill, right front, who now resides in Lubbock.



## A Woman's View

By PEARL BRANDON

## Sunnydale Reunion

SUNDAY, Aug. 4th, is the date for the annual Sunnydale reunion at the Community Center in Littlefield.  
As usual, the building will be open at 10 a.m. for those who wish to come early and visit.  
A basket lunch will be served at 1 p.m. We will have music in the afternoon, election of officers, a white elephant sale—and much visiting.  
OFFICERS for this year are Mitchell Sisson, president; Mrs. Mitchell Sisson, secretary; and Bill Cope, Dale Pepper, Mrs. Joe Bilner and Mrs. Lyle Brandon, other officers.  
We do hope all of you who ever lived at Sunnyside will be there—and also want to extend our invitation to other friends to come. We would love to have you.  
If you live here, bring food enough for your family and a little to spare. If you live away from here just come. We always have more than enough for all.  
Please make a special effort to come this year.  
FOR THOSE of you who came here later and never heard of Sunnydale, it was a little community west of Littlefield where we all went through the depression together.  
We built a small community house where we had all kinds of gatherings such as literary programs, box suppers, candidate speakings, church and Sunday School and old time singing on Sunday nights.  
We also had a soft ball team and all of us would climb on a flat bed truck and come into Littlefield to yell for our team.  
WE ALSO entered exhibits at the county fair and had a Home Demonstration Club of our own.  
We didn't have much money, but we had a lot of fun.  
We surely hope you remember those good times and come this year to our reunion.  
SPEAKING of those days in the early thirties, there was very little irrigation in Lamb County.  
As some of the old timers will tell you, "It was a time when you could see as far as your eyes would let you. Where there was nothing between you and the North Pole, except a barbed wire fence—it was where the wind pumped the water and the cows cut the wood."  
IT WAS where a friend was a friend and a man was as good as his word.  
If you were in trouble your neighbor helped you out. Times were hard and people had to stand together to make it. You became closer to each other because you shared your sorrows as well as your joys.  
IF YOU remember those days, come to the reunion and let's talk about them.  
We will see you the first Sunday in August at the Community Center in Littlefield at the Sunnydale Reunion.

## JUBILEE

Continued from Page 1  
donning similar costumes to those of the past.  
Parade chairman is S. M. Monroe, and Mrs. Virginia Hart is overall chairman of the Jubilee Committee.  
At 4 p.m., judging will begin on the beard contest, sponsored by the CIA, and the "Most Authentic Dress" depicting the spirit of 1924 will be selected from several entries worn by the women.  
At 4:30, James Ellis of Amarillo, chief justice of the Court of Civil Appeals, and one of the members of the first graduating class of Anton High School, will speak.  
A queen's contest will be conducted, with the four high school classes sponsoring their entries, and voting is to be determined through penny votes.  
The evening meal, consisting of either barbecued beef or fried rabbit, will be served from 5 to 7 p.m. at the fire station behind city hall. The meal tickets are \$1.75 each to cover the costs of the meat.  
A drawing will be held every hour for gifts donated by Anton merchants.  
Musical talent will be presented throughout the day, and other entertainment is being considered.  
Sunday, some of the Anton churches will host special homecoming services, honoring those who return to the city for the celebration.

## THE ABUNDANT LIFE Less Difficult

IT SEEMS THAT some people want to be difficult. They are difficult to approach, and we prefer not to have any dealings with them; and will avoid doing so, if there is any possible way.  
They make it difficult to talk with them, and we hesitate to try to talk with them.  
THIS IS ONE METHOD of self-defense, and it works; but the attending loss is usually too great.  
We can keep most people away from us by being difficult to approach and difficult to talk with. In doing so, however, we create a personal situation in which we will deteriorate.  
IF WE ARE DIFFICULT to approach, and to talk with; we are missing much that would be good for us. We miss the help and encouragement which others can give. We miss many opportunities for service to others.  
There are many other good things we will miss. Of course, we will probably miss some unpleasant things; but this is very inadequate compensation for all of the beneficial things we miss.  
THE COMMUNICATION among the members of some families is much less than desirable, because one or more of the members has decided to be difficult. This is a condition that can be, and should be corrected.  
MAKING OURSELVES difficult, or letting ourselves be difficult, is a handicap; a handicap found in all segments of society.  
It should be remembered, however,

## OBITUARIES

JOHN COLE GORDON  
Services for John Cole Gordon, 68, who died Monday in Medical Arts Hospital, were conducted Wednesday afternoon at the Levelland Highway Church of Christ.  
Officiating was Luther Gregg. Burial was in Littlefield Cemetery under the direction of Hammons Funeral Home.  
Gordon was a native of Mitchell County and a resident of Littlefield eight years. He was a retired farmer and rancher.  
Survivors include his wife, Bethel; a son, Bill M. Gordon of Lubbock; three sisters, Alice Gordon and Mrs. Ann Boyd, both of Littlefield, and Mrs. Olene Sampson of Lubbock; and seven grandchildren.  
The family requests that memorial be given to the American Cancer Society at Security State Bank.  
CARI C. KEELING  
Graveside rites for Carl Conley Keeling, 56, who died at 5:15 p.m. Wednesday in University Hospital at Lubbock, following a lengthy illness, were conducted Saturday morning in Littlefield Memorial Park, with Hammons Funeral home in charge of arrangements.  
Rev. A.J. Kennemer, pastor of Littlefield First Baptist Church, officiated.  
Keeling was born at Muskogee, Okla., and had lived in the Lubbock and Littlefield area the past 25 years. He was retired and was a former owner of Hall and Keeling Butane Co. in Littlefield.  
Keeling was a member of the First Baptist Church in Littlefield. He was a U.S. Army veteran, having served during World War II.  
Survivors include his wife, Velma of the home; a daughter, Carletta Keeling of the home; a son, Paul Keeling of Lubbock; five brothers, Jiggs and Clyde, both of Reno, Nev., John and Tommy Davis, both of Wilson, Okla., and Jim Davis of Littlefield; six sisters, Lois Rogers of Wilson, Okla., Leonna Davis and Lizzie Mae Battle, both of Ardmore, Okla., Lois Davis of Dallas, Opal Bancroft of Monahans and Ruth Miller of Reno, Nev., and two grandchildren.



OTTO JONES  
Services for Otto Jones, 82, a former Littlefield mayor and a well-known automobile dealer, were conducted Thursday afternoon in the First Baptist Church.  
Officiating was Rev. A.J. Kennemer, pastor, and Bob Wear, Church of Christ minister.  
Burial was in Littlefield Memorial Park under the direction of Hammons Funeral Home.  
Jones died Tuesday in Lubbock Medical Center Hospital.  
Survivors include his wife, Lou; a son, Jodye of Lubbock; a daughter, Travis of Lubbock; two sisters, Emma Lou Brunell of Lubbock and Mrs. Nona Manley of Guatemala; six grandchildren.

LOU ELVIA TINNER  
Services for Mrs. Lou Elvia Tinner, 78, of Littlefield, who died Wednesday at Lubbock's Methodist Hospital, were conducted Friday afternoon at Littlefield First Baptist Church.  
Rev. A.J. Kennemer, pastor, officiated.  
Burial was in the Littlefield Cemetery with Hammons Funeral Home in charge of arrangements.  
She was born Nov. 14, in Missouri, and had no survivors.

## Prices Released On Commemorative Medal Combination

Chamber of Commerce members are urged to turn in their orders for the commemorative medals, because on Aug. 1, the coins will be offered to members of the C-C.  
Prices for the medals include: karat, \$50; 999 fine silver, \$25; brushed silver, \$5; not numbered brushed silver, \$4; numbered brushed silver, \$3.50; not numbered bronze, \$2.50; four medals, gold, silver, brushed and bronze encased in plastic, \$10; of three medals, silver, brushed and bronze, \$5; and set of two medals brushed silver and bronze, \$12.50.  
Contact the Littlefield Chamber of Commerce, 385-4451 to reserve medal you wish.

LAMB COUNTY LEADER-NEWS  
ESTABLISHED IN 1921  
Lamb County Leader and County High News  
Published by the Chamber of Commerce  
MAYNARD WARRREN  
JULIA L. DICKERSON  
NILAH ROGERS  
BILL KOTT  
Patron: Mrs. J. W. Hart  
Editor: Bill Kott  
Advertising: Bill Kott  
Second Class Postage Paid at Littlefield, Texas 79301  
Publication Office: 212 E. 1st St., Littlefield, Texas 79301  
Phone: 385-4451  
Subscription: \$2.00 per year in advance  
Single Copy: 10¢  
Copyright © 1974 by Chamber of Commerce  
Printed at the Littlefield Press, Littlefield, Texas



# A NEW CROP OF SAVINGS

**TOMATOES**  
 FANCY CALIF. SLICING SIZE, LB **39¢**

**BELL PEPPERS**  
 FANCY MEDIUM SIZE, LB **33¢**

**POTATOES**  
 ALL PURPOSE RUSSET, 10 LB BAG **89¢**

**PEACHES**  
 FANCY CALIFORNIA, LB **39¢**

**LETTUCE**  
 CALIFORNIA'S FINEST ICEBERG, LB **29¢**

**CUCUMBERS**  
 FANCY MEDIUM SIZE, LB **25¢**

**T-BONE STEAK** FURR'S PROTEN, LB ADV. SPECIAL **\$1.59**

**RANCH STEAK** FURR'S PROTEN SEVEN BONE CUT, LB ADV. SPECIAL **\$1.19**

**ARM ROAST** FURR'S PROTEN ROUND BONE CUT LB ADV. SPECIAL **\$1.19**

**CLUB STEAK** FURR'S PROTEN, LB ADV. SPECIAL **\$1.49**

**SIRLOIN STEAK** FURR'S PROTEN, LB ADV. SPECIAL **\$1.29**

**RIB STEAK** FURR'S PROTEN, LB ADV. SPECIAL **\$1.29**

**ROUND STEAK** Advertisd Special Furr's Proten, Lb **\$1.29**

**ROAST** Shoulder, 7 Bone, Lb **\$1.09**

**RUMP ROAST** Advertisd Special Furr's Proten, Lb **\$1.19**

**RIB ROAST** Advertisd Special Furr's Proten, Lb **\$1.29**

**CANNED HAMS** Food Club 3 Lb Can **\$3.99**

**CHEESE** Food Club Halfmoon, 8 Oz **71¢**

**HOT LINKS** Farm Pac Heat-Eat, Lb **\$1.09**

**STEAK** Patties & Fingers, Lb **99¢**

**POTATOES** CANTADINA 14 1/2 OZ CAN **3 FOR 69¢**

**BEEF STEW** AUSTEX 24 OZ CAN **89¢**

**FRUIT JUICE** FOOD CLUB QUART JAR **49¢**

**SPAGHETTI** VAN CAMP'S GRATED, NO. 1/2 CAN **39¢**

**GREEN BEANS** FOOD CLUB CUT, NO. 303 CAN **3 FOR 69¢**

**BLACK PEPPER** FOOD CLUB 4 OZ **39¢**

**SLICED CARROTS** GOLD TIP NO. 303 CAN **3 FOR 69¢**

**EGGS** FARM PAC, USDA GRADED A, MEDIUM, DOZEN **45¢**

**ALMON** HONEY BOY CHUM, NO. 1/2 CAN **89¢**

**ORANGE DRINK** Rich N Ready **89¢**

**DOUBLE GOLD BOND STAMPS**  
 TUESDAYS AND WEDNESDAYS

**INSTANT TEA** LIPTON **\$1.19**  
 3 OZ

**SAVE 20¢ FOLGER'S COFFEE**  
 1 LB CAN, With Coupon.. \$1.05  
 Without Coupon..... \$1.25  
 Expires 7-24-74  
 LIMIT ONE COUPON PER FAMILY

**FURNITURE POLISH** TOPCO 14 OZ AEROSOL CAN **58¢**

**GOLDEN CORN** Food Club Whole Kernel Or Cream Style Golden No. 303 Can **4 FOR \$1**

**PEANUT BUTTER** Peter Pan Smooth Or Crunchy, 3 Lb **\$2.15**

**DINNERS** Purina Dairy, Gravy, Sea Nip Or Ala Sea, 4 Lb **\$1.48**

**TOWELS** Chiffon, Assorted Colors Or Print, Large Roll **49¢**

**Frozen Food Favorites**

**DINNERS** TOP FROST, TURKEY, CHICKEN, MEAT LOAF OR SALISBURY, 11 OZ PACKAGE **49¢**

**EGG BEATERS** FLEISCHMANN'S PACKAGE **89¢**

**CUT OKRA** TOP FROST, FRESH FROZEN, 20 OZ PKG **74¢**

**CAULIFLOWER** GAYLORD, FRESH FROZEN, 8 OZ **29¢**

**VIENNA SAUSAGE** FOOD CLUB CAN **3 FOR \$1**

**TOPCO DIAPERS** DAYTIME 30'S **\$1.59**

**Adjustable PACKABLES** 3 SHELF UNIT **\$4.99**

**ELECTRIC EXTENSION CORD SET** 3 Pc. Set, White, 6'x9', 12' All For **\$1.39**

**DYMO LARGE LABEL MAKER** For Home Or Office, No. 1800 \$2.95 Retail, Ea **\$1.49**

**JUSTRITE SPONGE TOWELS** 12 Resuable Sponge Towels Hundreds Of Uses **69¢**

**BUBBLING BATH OIL** Beacon Pine Lavender Gold 32 Oz **2 \$1**

**SHAVE CREAM** Topco Reg Or Menthol 11 Oz **44¢**

**REVLON HAIR SPRAY** REG OR SUPER HOLD, EACH **77¢**

**NEW dial VERY DRY** ANTI-PERSPIRANT **\$1.19**

**FACE MAKE UP** Noxzema Cover Girl **\$1.29**

**SHOP Furr's MIRACLE PRICES**

# LITTLEFIELD NEWS

RHODA PRICE 385-4957

MR AND MRS. Bob Murdock returned last Thursday from a week's vacation spent at Lake Falcon.

MR AND MRS. Gaston Shaw had as their guests over the weekend, their son, Mr. and Mrs. James Gaston Shaw and children, Jim and Carla of Plano and the latter's parents, Mr. and Mrs. Dee McDaniel of Mesquite.

MR AND MRS. Frank Lehman had as their guest last week, his brother, Marvin Lehman of Berne, Ind. He returned home Monday and Lehman accompanied him to Berne where he is spending this week visiting in the homes of four other brothers, Mr. and Mrs. Chris Lehman, Mr. and Mrs. Orlando Lehman, Mr. and Mrs. Howard Lehman and Mr. and Mrs. Walter Lehman and his sister, Mrs. Martha Neuhauser. He plans to fly home tomorrow.

MRS. WAYNE Carlisle's two daughters, Mrs. Harry Bennett of Bownsville and Mrs. Quimby Self of Denton, who have a host of friends here, left Wednesday morning from Dallas on a two weeks tour of the Middle East and will visit many countries, including the Holy Land.

MRS. PAT BOONE SR., visited in the home of her granddaughter, Mr. and Mrs. Mike Aualls of Portales, N.M. the past week.

CHRIS EAGAN, son of Mr. and Mrs. J. Don Eagan of Lubbock visited in the home of his grandmother, Mrs. John A. Price several days last week.

MR AND MRS. W.D. Sanders and daughters, Patricia, Betty and Carla returned home the latter part of the week after spending several days visiting points of interest in Colorado.

MR AND MRS. Dick Westerfield and four daughters, Shari, Wendi,

Marcie and Lori, of San Saba, former local residents, visited friends here the first of last week and were houseguests of Mrs. Patsy Summers. Westerfield is engaged in ranching and has pecan orchards.

MR AND MRS. W.D. Hall returned home Saturday from their Brownwood Lake home where they had spent the past seven days and had as their guests, their daughter, Mr. and Mrs. Truitt Absher and Kelly of Saginaw. Over the weekend they had as their guests here, Hall's sisters, Mr. and Mrs. Jack Shipley of Sweetwater and Mrs. Al Pinnock of Ypsilanti, Mich., and also their daughter, Mr. and Mrs. Don Lane and children Kathy and Scott of Hereford.

MRS. ENLOE SMITH returned home Tuesday from a two weeks visit with her daughter, Mr. and Mrs. Virgil Zoth at Ovalo. Mrs. Zoth and

daughter, Lota, accompanied her home and spent until Thursday here.

GUESTS in the home of Mr. and Mrs. Howard Burks over the weekend were their daughter, Mr. and Mrs. Bobby Wayne Barker and children Stephanie and Brad of Amarillo. They were accompanied home by Will Burks, son of Mr. and Mrs. Bill Burks, who is spending several days with his aunt and uncle.

MR AND MRS. Allen Hilburn are spending this weekend at their home in Ruidosa, N.M. They will return home Monday.

GUESTS in the home of Mr. and Mrs. Jeff Perkins last Thursday were their daughter, Mrs. Douglas Perkins and children Kim and Sharla of Amarillo and their granddaughter, Mrs. Roy Rivers Jr., and her daughter, Stephanie of Springlake. Mrs. Douglas Perkins and children also visited in the home of her parents, Mr. and Mrs. Leonard Hill.

DEBBIE BURKS, daughter of Mr. and Mrs. Bill Burks attended a band and twiller school held on the Texas Tech University campus last week. She will be head twiller of the 9th grade in junior high school this fall.

MR AND MRS. Kenneth Carr and family who have made their home at Claude, where he was a member of the school faculty there, have recently moved to Shallowater where he has accepted a teaching position. He is the son of Mr. and Mrs. Donald Carr of near Littlefield.

THE BUS Ministry Mission Vacation Bible School of the First Baptist Church will begin July 22 and continue through to July 26. Miss Miriam Madison of Longview will be in charge and will be assisted by several members.

MR AND MRS. Larry Carter of Canyon were weekend guests in the home of his parents, Mr. and Mrs. H.A. Carter.

MISSES Tammy Rene, Darla D'Ann and Rayna K'Lynn Anderson children of Mr. and Mrs. Ray Anderson of Las Vegas, Nev. are visiting in the home of their grandparents, Mr. and Mrs. Paul Carmickle, and Mr. and Mrs. Harold Anderson and also their aunt and uncle, Mr. and Mrs. Charles Schroeder and family.

GUESTS in the home of Mr. and Mrs. Roy Wake Tuesday and Wednesday were her sisters, Mrs. John Frommer (Wilda Courtney) of Shreveport, La., and Mrs. W.M. Blackburn (Prudence Courtney) of Odessa.

MRS. ELOUISE Cox, accompanied by her son, Mr. and Mrs. Steven Cox are spending today (Sunday) in Monahans with her father, L.B. Stevenson Sr., and her brother, Dr. and Mrs. L.B. Stevenson Jr., and family.

BOBBY MURDOCK of Dimmitt spent last Sunday with his parents, Mr. and Mrs. Bob Murdock.

BILL MADDOX, news commentator on channel 28, Lubbock, will fill the pulpit at the First Baptist Church today in the absence of the pastor, rev. A.J. Kenner, who is in a revival service at Wolforth Baptist Church.

REPRESENTING the First United Methodist Church at Cota Canyon Elementary Camp last week were Angela Armes, Steve Ford, Lynette Spencer and Vicki Tunnell. Mr. and Mrs. Kenneth Evins were camp counselors.

MR AND MRS. Lonnie Perkins had as their weekend guests, Mr. and Mrs. Arthur McLelland and family of Pecos.

FORMER RESIDENTS, Mr. and Mrs. James Walker and family of Mid-West City, Okla., were in Littlefield over the weekend visiting friends. He is a pharmacist and is a former employee of Roden Drug.

# PEP NEWS

By MRS. CONRAD DEMEL 833-2222

THOSE ATTENDING a fish fry in the home of Mr. and Mrs. Norman Demel and family June 30 were: Mr. and Mrs. Don Shannon and daughter of Plainview, Mr. and Mrs. Doyle Hasteley, Mr. and Mrs. Ronnie Hardin and son, and Mr. and Mrs. Billy Demel of Littlefield, Mr. and Mrs. Charles Shannon of Lubbock, Mr. and Mrs. Leo Ruzicka and girls of Friona, Mrs. Valeria Shannon and son, Dave, Mr. and Mrs. Max Demel and family, Mr. and Mrs. Charles Burt and sons, Mr. and Mrs. Franklin Green and family, Mr. and Mrs. Conrad Demel and family and Roger Vick.

MR AND MRS. Eugene Demel and daughter of Littlefield were Sunday dinner guests in the home of Mr. and Mrs. Conrad Demel and family July 14. Mr. and Mrs. Eugene Demel had their daughter Christy Dawn baptized at St. Phillips Catholic Church that afternoon, with sponsors being Mr. and Mrs. Billy Demel of Littlefield, Mr. and Mrs. Conrad Demel attended the baptism of their grand daughter. Officiating for the ceremony was Rev. Kevin Clarke.

MR AND MRS. William Albus of Lubbock visited in the home of Mr. and Mrs. Leonard Albus over the weekend of July 13-14.

THE SIMNACHER Reunion was held at Pep Parish Hall July 14, with a basket lunch for relatives and friends from Artesia, Roswell, Clovis and Portales, N.M., Cheyene, Wyo., Beeville, Robstown, Hereford, Muleshoe, Brownfield, Baileyboro, Morton, Littlefield and Pep. Brothers and sister-in-law attending were Joe, Mathis,

Leo, Phillip, Frank, Tom and Mrs. Pat Riley. There were 80 who registered for the reunion.

MR AND MRS. Billy Gage and sons, Mike and Wesley, returned home July 12 after spending the past two weeks down on the coast near Corpus Christi fishing. They caught several fish and enjoyed themselves very much.

THOSE ATTENDING the Decker-Tilley Wedding at St. Philip Catholic Church July 13 were: Mr. and Mrs. C.M. Tilley, John, Pam and David, Mr. and Mrs. William Tilley of Midland, Grandmother Tilley of Orange, Grandmother Sue, Mrs. D.W. Boliver and Mrs. G.L. Moody of Temple, Mr. and Mrs. Fabian Mazurek of Boerne, Mr. and Mrs. Bill Labit and Mr. and Mrs. A.A. Homer, Brenda and Dana of Ft. Worth, Mr. and Mrs. Stephen Fallon, Mr. and Mrs. Gary Parker, Mr. and Mrs.

Robert Decker and Mrs. Burt Decker of Dallas, Mrs. Elliott of Renick, W. and Mrs. Leon Vetter of Falls, Mr. and Mrs. Cheryl Grip of Falls, Mr. and Mrs. Schilling and family of Mr. and Mrs. Jerry and family of Anton, Mrs. V.H. Divers of Graham, Mrs. Bill Myers and girls of Mr. Bud Henderson daughter of Paducah, Mrs. Johnny Johnson, Mrs. James Home family, Mr. and Mrs. Lattimer of Levelland, Mr. and Mrs. Louis Kuhnler, Kelly and Dana David Merrick and Freddy Lewis of Balkus of Las Cruces and relatives and friends of the bride and groom.

# ANTON NEWS

DOYLE SANDERS and Mrs. Gus Maynard were in Tom Bull, last week for a visit with Mrs. Maynard's son and family, Mr. and Mrs. Buddy Maynard. Her grandchildren, Phillip, Robin and Randy Maynard and a friend, Karl Fenstermacher, returned home with them for several weeks' visit. Visiting in the Maynard home Saturday night was Mr. and Mrs. R.F. Hollingsworth from Montrose, Colo. They are former residents. Hollingsworth was employed by the Anton school system when they lived here.

MR AND MRS. L.H. Williams visited in the home of her brother, Mr. and Mrs. Arthur Evtitt in Portales, N.M. last week. Visiting in the Williams home over the weekend were Mr. and Mrs. Roydell Bloyd of Comanche, and Mr. and Mrs. Dewey Dunlap of Levelland.

MRS. GENE WILLIAMS and Jeannetta from El Paso visited her mother, Mrs. Bryan Johnson, Sunday night.

MR AND MRS. Hoyt Cranfill, Amy and Alan, visited relatives in Houston and Sweetwater last week.

MRS. B. FOREMAN is in University Hospital being treated for a broken foot she received in a fall at her home. MRS. HERB NELSON had surgery in Methodist Hospital last Friday. She is reported to be in satisfactory condition. MRS. J.D. Gilbert of

Hereford visited in the home of her daughter, Mr. and Mrs. Jack Conkin over the weekend.

MRS. R.M. Newell her guest this week, nephew and wife, Mrs. Barry McDuff of Pecos.

MRS. ELLA JACKSON been transferred to Methodist Hospital, Littlefield.

GUEST IN the home of Mrs. Weldon Sawyer this week was his grandnephew, Mrs. Clyde Thomas Snyder. The Swans home Friday and relatives.

MRS. DELMER and Misty and Mrs. Wooten from Alvin, Mr. and Mrs. Len this week. Misty stayed longer visit with her parents.

MRS. FLOYD and Mrs. Stephenson attended a shower honoring Karen, bride-elect of Virgil in the home of Mrs. J.B. in Littlefield Saturday.

MR AND MRS. O. Hawks of Arlington, and Anton Wednesday with her mother, Mrs. Dee Wright. Hawks to Arlington Friday. Hawks stayed until Saturday when a group from came by and she accompanied them to Gloria who will attend "Music

# Amherst

MR AND MRS. Raymond Duvall, Eddie and Sandra are vacationing at points of interest in the west. One place they planned to visit is Grand Canyon.

MR AND MRS. Jimmy Garrison visited her sister, Mrs. Joe Chambers and family this week.

MR AND MRS. E.F. Nuttall was guest of her son Leroy and family in Friona early this week.

GUESTS of Mrs. George Harmon Monday were her friends, Mrs. Charles Holt of Amarillo, and her daughter, Mrs. John York of San Antonio.

MR AND MRS. V. Smathers flew to Los Angeles for a visit with their son last week. He is a Continental Air Lines employee.

JIM NIX is home following surgery at Methodist Hospital in Lubbock last week. He is reported to be recovering satisfactorily.

MRS. Loyce Ermis of Wichita Falls visited her parents, Mr. and Mrs. Lloyd Sturgis and aunt, Mrs. W.F. Taylor last week.

MR AND MRS. Dell Nicholson of Frederick, Okla. visited his brother Ed and family last weekend.

WEEKEND GUESTS of the I. B. Eady family were their son, Chris and family of Lubbock.

MR AND MRS. Homer Harper are in Rush Springs, Okla. due to the illness of his sister, Grace Harper.

GUESTS in the S.D. Pugh home last week were her sister, Mrs. Kyle Flippin and grandson Johnny Lockard of Lubbock.

MRS. MARY E. Britt, her brother and sisters had their

family the Yarbrough Amherst Community reunion last Sunday attending.

MRS. ADELE nephews, Jeffrey and Carlsbad visited her Mrs. Mary E. Britt weekend and attended Yarbrough family Sunday.

MRS. T.L. Benson sister and husband, Mrs. Gerald Sayle of went to Laredo Monday they received word brother-in-law, Frank had died.

# AREA SERVICES

LARRY D. GAGE, Larry D. Gage, and Mrs. Idus D. Gage Whitharral, was promoted specialist fourth with the 3rd Infantry in Germany.

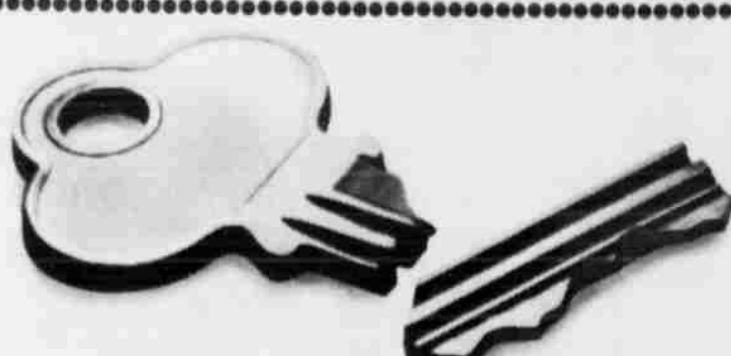
He is a company Headquarters Company, 64th Armored Division's 3rd Brigade, Aschaffenburg. His wife, Vicki, is in Germany.

# OLTON

MR AND MRS. Franks visited Saturday afternoon with Bob Hi-Plains Hospital Center.

MR AND MRS. V. have recently added patio to their home on Fourth Street.

MR AND MRS. Kevin and Scott of Falls visited over the of July in the home of Mrs. Angus Davis.



Pick a locksmith in the Yellow Pages

**SAVE \$41<sup>85</sup>**  
**ON TOTAL MUSIC SYSTEM**

**NO MONEY DOWN**  
**\$10.00 MONTHLY**  
See Page 8, Page 12 for details

**FREE 3 EIGHT TRACK TAPES AND 3 RECORDS**

**\$188**

- Built-in 8-Track Tape Player, FM/AM-FM Stereo Receiver & Auto. Record Changer!
- Matched and Balanced Speaker System!
- Dust Cover, Headphones & Deluxe Cart!

123-4326, 124-8013/1010-1020

**CATALINA TOTAL MUSIC SYSTEM**  
**All at one low, low price**

**SAVE \$30<sup>95</sup>**  
**3-PC. SYSTEM**

REG. \$129.95  
**NOW \$99**

- 8-Track Stereo Tape Player!
- FM/AM-FM Stereo Receiver!
- Matched & Balanced Speaker System! Slide Controls! 123-4119

**SENSATIONAL PORTABLE RADIO SALE**

**SAVE OVER 10%**

**AM/FM PORTABLE**

**1777**

- AC-DC Operations
- Slide Controls!
- Batteries & Earphone!

120-4220

**ONE LOW PRICE — DIGITAL CLOCK & RADIO**

**SAVE OVER 10%**

Reg. \$19.95  
**1777**

- Wake To Music, Alarm, Or Your Favorite Program!
- Walnut Finish! 120-4112

**WHITES**  
424 PHELPS 385-5959

SPECIALS GOOD  
7-22-74 THRU 7-28-74

GUNN BROS. STAMPS  
DOUBLE TUESDAY  
AND WEDNESDAY

# MAKE HAY WHILE THE SALE SHINES

## MARKET SPECIALS

### HAMS

|                           |        |
|---------------------------|--------|
| WHOLE LB.                 | 85¢    |
| SHANK LB.                 | 79¢    |
| BUTT LB.                  | 89¢    |
| CENTER CUT LB.            | \$1.29 |
| USDA CHOICE LB.           | \$1.59 |
| USDA CHOICE LB.           | \$1.49 |
| USDA CHOICE LB.           | \$1.29 |
| USDA CHOICE LB.           | \$1.19 |
| USDA CHOICE BLADE CUT LB. | \$1.09 |
| USDA CHOICE LB.           | 89¢    |
| USDA INSPECTED, LB        | 39¢    |

- T-BONE STEAK
- CLUB STEAK
- SIRLOIN STEAK
- RIB STEAK
- CHUCK ROAST
- GROUND BEEF
- FRYERS

**FRESH PRODUCE**

|            |                |     |
|------------|----------------|-----|
| POTATOES   | NO. 1 RUSSETTS | 99¢ |
|            | 10 LB. BAG     |     |
| TOMATOES   | VINE RIPE      | 39¢ |
|            | LARGE SIZE LB  |     |
| CANTALOUPE | CONCHO         | 15¢ |
|            | SWEET LB.      |     |
| NECTERINES | CALIFORNIA     | 39¢ |
|            | LB.            |     |
| CARROTS    | CELLO          | 19¢ |
|            | 1 LB. PKG.     |     |

## FROZEN FOOD

|                  |        |
|------------------|--------|
| PET 10 OZ.       | 49¢    |
| MEXICAN STYLE    | 59¢    |
| PATIO 12 OZ.     | 5/\$1  |
| FLAV-R PAK 6 OZ. | 5/\$1  |
| FREEZER QUEEN    | \$1.59 |
| 2 LB.            |        |

## GROCERY SPECIALS

- SHORTENING **BAKE RITE \$1.29**
- EGGS **GRADE A LARGE DOZEN 49¢**
- FLOUR **GOLD MEDAL ALL PURPOSE 5 LB. BAG 89¢**
- SUGAR **WHITE SWAN 5 LB. BAG 1.59**
- COFFEE **WHITE SWAN 1 LB. CAN 99¢**
- TEA **WHITE SWAN INSTANT 3 OZ. 89¢**
- NATURAL CEREAL **KELLOGG'S COUNTRY MORNING 16 OZ. 69¢**
- POTATO CHIPS **PRINGLE TWIN PACK 9 OZ. 81¢**
- DETERGENT **LAUNDRY JUMBO DASH \$2.67**
- VIENNA SAUSAGE **CANARY 4 OZ. 5/\$1**

- MELLORINE **BELL OR CLOVERLAKE 1/2 GAL. 49¢**
- MARGARINE **WHITE SWAN 1 LB. TUB 59¢**
- BUTTERMILK **BORDEN'S 1/2 GAL. 75¢**
- COTTAGE CHEESE **BORDEN'S 24 OZ. 89¢**
- SOUR CREAM **BORDEN'S 8 OZ. 49¢**
- SARDINES **CANADIAN IMPORTED 4 OZ. 5/\$1**
- COLA **WHITE SWAN CASE 24-12 OZ. CANS \$2.99**
- PECAN SHORTBREAD **14 OZ. 79¢**
- CHIPS AHOY **8/\$1**
- COCOANUT CHOC. CHIP **\$1.59**
- DOG FOOD **FULL DRESS 15 OZ. 8/\$1**
- RAZOR BLADES **GILLETTE PLATINUM PLUS 10 CT. \$1.59**
- FABRIC SOFTNER **WHITE SWAN 1/2 GAL. 59¢**

SAVE ■■■■■ VALUABLE COUPON ■■■■■ SAVE

3.16 GIANT SIZE

**TIDE 97¢ ONLY**

GOOD ONLY AT LFD. SUPER.

OFFER EXPIRES 7-28-74

LIMIT 1 COUPON PER PURCHASE

WITH THIS COUPON WITHOUT COUPON \$1.12

# LITTLEFIELD SUPER MARKET

HOME OWNED - HOME OPERATED

## Night's Rest Home News

**DOC ELKINS** with Mrs. Doc King returned home. **ING WITH F.W.** was Mrs. R.L. Mrs. F.W. Legate, Mrs. Glen Young, and Mrs. J.D.

**MARY** Giestman visitors, her great-nephews, Jennifer, and Donna Sue Dolle.

**AND MRS. John** of Dimmitt visited Mrs. Jephtha Williams Tuesday.

**VOLLIE** PERSON brought a beautiful flower arrangement to the home.

**CLAUDE** and Woods (pastor of New Baptist Church) in the home with Lizzie Jones, Lucy and several others some Monday. They brought several arrangements for patients to enjoy.

**EMPLOYEES** in the home are Mary Cook, evening L.V.N., and Anderson, nurses also Mrs. Bea Garvey, relief L.V.N.

**BESSIE** McGill has returned to the home from Littlefield where she was transferred from the hospital. She is feeling a letter.

**NEW** resident in the home is Mrs. Grace White Dimmitt. She is the wife of Frank White, Littlefield.

**LYNN** REAMS, with several of the

## BULA NEWS

**HAEL** CLAWSON spent the week visiting with his wife and nephews, Scott, Jeff and Montgomery, children of Mrs. Richard Monday at Lovington.

**J.R. TEAF** visited the home several times with Mrs. H.B. Berryhill of Littlefield. Mr. and Mrs. Berryhill lived in the Bula home before moving to Littlefield. Mrs. Berryhill fell ill this year and spent several weeks in the hospital, where she has to get around in a wheel chair to do her

**JANIE** THOMPSON, daughter of Knight's Rest, spent Sunday night in the home of her mother, Mr. and Mrs. Cecil

**AND MRS. J.C.** and children, Jackie, Jeff and Jarrod, had late Tuesday evening a few day's rest at Red

**ENDING** the singing afternoons at the water Church of Christ Mr. and Mrs. Gene and Mr. and Mrs. J.D. and. They enjoyed the singing.

**DENNIS** QUIRAM Jr., son of Dennis Quiram, has returned home from Minn. where he has spent the past two years with his wife and going to school

**AND MRS. E.O.** attended the funeral of Mrs. Perdie Beck. The funeral was held at the First Church.

**AND MRS. H.E. Tiller** from Batesville, Ark., is spending this week with his friend, Cliff DeSautel of Slaton, and both of them are here with Cliff's grandparents, Mr. and Mrs. John Latham.

**DEWITT** TILLER drove to El Paso Thursday to be with his mother, Mrs. H.E. Tiller, who underwent surgery there in the Province Hospital Thursday.

**MR. AND MRS. E.O.** Battles visited the past week with relatives. At Wellington they visited her brother, Mr. and Mrs. Wayne Estes and at Shamrock with his sister, Mr. and Mrs. Rayburn, and at Hollis with her brother, Mr. and Mrs. Raymond Estes and his sister, Mr. and Mrs. E.T. Holly.

**MR. AND MRS. G.O. Smith** spent Wednesday and Thursday visiting with friends at Maxwell and Springer, N.M. They attended Wednesday night services at the Springer Baptist Church.

Good Now. AT LITTLEFIELD SUPERMKT.

Redeemable Only By Driversalesman. Under no circumstances will Tony's Pizza redeem this coupon through a Redemption Center or Corporate Office.

WITH **\$1.19** REG. \$1.29

**10¢ OFF**

- WHIP TOPPING
- DINNERS
- ORANGE JUICE
- SALISBURY STEAK
- MEAT LOAF
- CHAR BROIL PATTIES

**NEW 1974 Logan GROUND COTTON HARVESTER**



**TRIPLE YOUR RECOVERY at HALF THE COST with**

**"Buy Back Guarantee"**

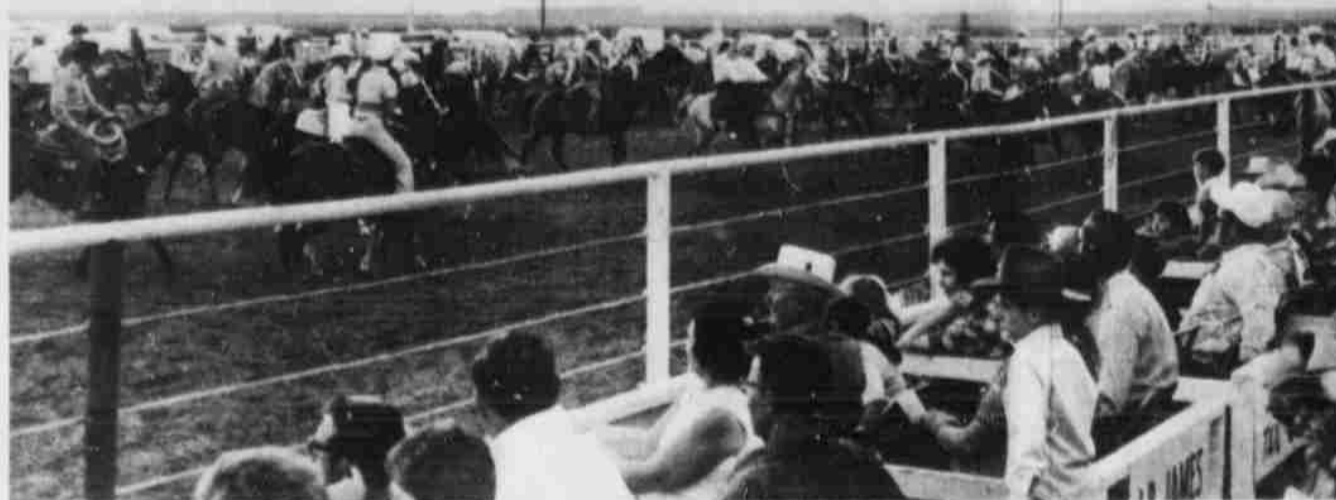
Today, the LOGAN ground cotton recovery cost per bale is the lowest ever achieved in the industry.

The LOGAN'S pickup efficiency and LOGAN'S 50% greater capacity coverage triples your recovery three rows at a time... in one pass.

The three row LOGAN harvests more acres, recovers more cotton, in less time and at the lowest cost per bale. LOGAN pays its own way and makes the cotton grower a profit, too.

Take no chances with a LOGAN. It is lowest in cost and highest in recovery and gives you the optional "Buy Back Guarantee" if it fails to do the job. Place your order promptly. It is most important to your delivery. Write or phone today.

**Logan INDUSTRIES**  
4929 REIGER  
DALLAS, TEXAS 75214  
214/827-6563



FOUR RIDING CLUBS and several other riders were featured in a grand entry Thursday night prior to opening night rodeo activities at Earth during their 30th Annual Amateur Rodeo. Riding clubs included were the Lamb County Sheriff's Posse, Hart Riding Club, Lubbock Rangers, and the Earth Roping Club. Following the

grand entry, special tribute was paid to Cecil Parrish, longtime Earth rodeo enthusiast who died since last year's rodeo. His horse and empty saddle were led around the arena as "Empty Saddles In The Old Corral" was sung and played over the speaker system. (Staff Photo)



LAMB COUNTY SHERIFF'S POSSE won the first place trophy for riding clubs in the senior division Thursday, July 11, during opening activities for Earth's 30th Annual Amateur Rodeo. Leading the Posse is the queen,

Michelle Phillips, and behind her with the Texas flag is V. M. 'Pete' Peterman. Monica Phillips and Lisa Berry carry the Posse flags. (Staff Photo)

**Cotton Inc President To Visit Market**

BULA-Duke Wooters, president of Cotton Inc., New York City, N.Y. along with seven of his top aides from Raleigh, N.C., will be in Lubbock, Wednesday evening, July 24, at the South Park Inn, on Loop 289 and Indiana. The meeting will start at 7:30 p.m.

Cotton producers with their wives from the west Texas area are invited to attend.

The High Plains Women's Cotton Promotion Association, composed of 10 county clubs are bringing the story of Cotton Inc.'s operation to Lubbock.

Mrs. Wanda Legan, district president of Women's Cotton Promotion and bookkeeper at Claunch gin at Bula, says "we want all producers to know how their money, (dollar a bale contribution) is being used to enhance the business of producing cotton."

The women of the organization will provide cookies, snacks and candy made from cotton seed, cotton seed oil and cotton seed flour.

There will also be individual discussion of agricultural research, economic research, marketing, advertising and textile research. Very few producers have had the

privilege of hearing hand, the things being cotton by Cotton Inc.

The Bailey-Lamb club is active in the Cotton Promotion Association and feels this is a good opportunity for all farmers' wives to get the hand information about the Inc.

**New Sorghum Disease Manual**

A new management manual entitled "Troublesome Grain Sorghum Diseases" is now available from Asgrow Seed Company, subsidiary of The Upjohn Company.

The manual discusses causes, symptoms and prevention of sorghum leaf diseases, Downy Mildew, Head Smut, Maise Dwarf Mosaic, the sorghum rots, and

other diseases in easy language

The 16-page manual illustrated with color photos simplify use by the farmer in identifying sorghum diseases.

A free copy of the manual may be obtained by writing Sorghum Disease Manual, Asgrow Seed Company, P. O. Box 200, Moines, Iowa 50316.

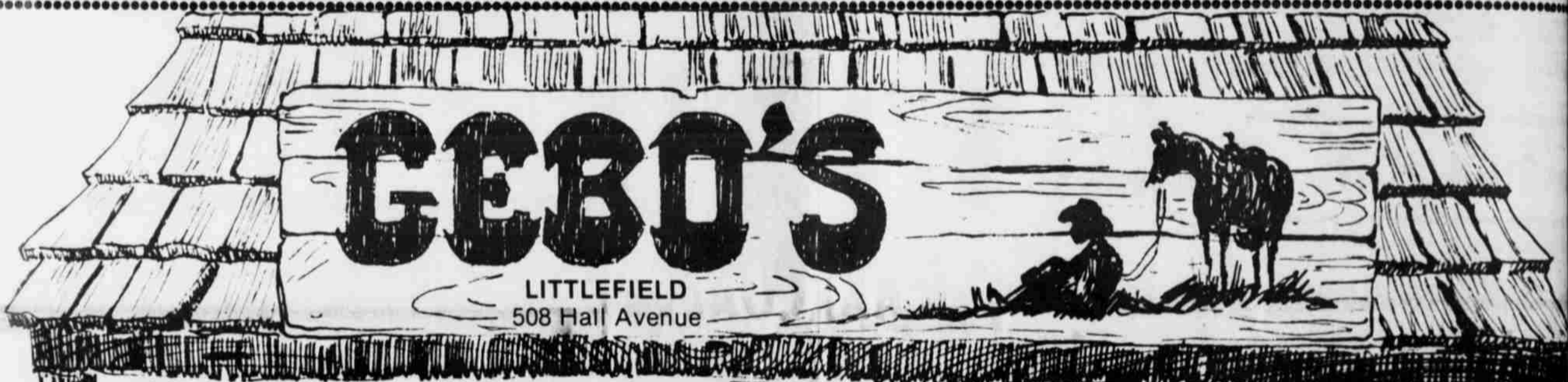
**Buy one pair shorts at regular price, buy second pair of same style and price for \$1.00.**



329 PHELPS AVE.

385-4

**PATCHES FREE WITH \$5.00 PURCHASE**



**JULY CLEARANCE**  
**WE NEED THE ROOM!**  
MANY NEW STYLES ARRIVING  
**PANTS**  
\$10.95 HOUNDSTOOTH CHECK FLARES AND  
\$10.35 DENIM STRAIGHT LEG & FLARES... **\$8<sup>99</sup>**  
\$8.99 SOLID FLARES & WINDOW PANE CHECK FLARES... **\$7<sup>69</sup>**  
LARGE SELECTION OF STYLES AND COLORS  
Compare at up to \$12.00 a pair

COMPLETE STOCK  
WESTERN STRAW HATS  
**25% OFF**  
SUMMER CAPS  
**20% OFF**



PRICES GOOD THRU SATURDAY  
MEN'S LONG SLEEVE  
**WESTERN DRESS SHIRTS**  
Stripes, checks, solids. Permanent Press and one group double knit.  
OUR REGULAR  
\$7.77 \$6.59  
\$8.30 \$7.19  
\$8.95 \$7.39  
\$9.90 \$8.59  
Compare these top-quality shirts from \$9 to \$12.

Watch For

**PRESTO Cast Aluminum PRESSURE COOKER**

Cooks many foods 3 to 10 times faster. Keeps natural flavors, vitamins, minerals. Includes exclusive pressure regulator.

|                    |               |
|--------------------|---------------|
| Harvest or Avocado | Aluminum Only |
| 4 Qt. \$13.98      | 4 Qt. \$11.69 |
| 6 Qt. \$16.49      | 6 Qt. \$14.49 |

No. 466 Avocado or harvest gold  
**NEW From HAMILTON BEACH Scovill**  
**Pantastic Skillet**  
**\$25<sup>95</sup>**  
Reg. \$28.95

- Versatile, large 11" x 16"
- Can be used as slow cooker; eliminates need for other pans
- Duralon III non-stick cooking
- Removable legs for easy storage and cleaning
- 1500 watts

**Always Reach for HAMILTON BEACH**

No. 694  
**NEW From HAMILTON BEACH Scovill**  
**Plus Three Blender**  
**\$19<sup>95</sup>**  
Reg. \$25.13

- 3 extra blend-ins, store-in-jars
- Powerful 14 speed
- 48 oz. family size; 16 oz. medium; 8 oz. compact blender plus jars
- Large 40 oz. regular glass container
- Avocado or harvest gold

**Always Reach for HAMILTON BEACH**

**WESTERN FORGE BARBECUE SET**  
3 pc. hardwood handled set. Extra-long tongs, hamburger turner & barbecue fork.  
**\$34<sup>9</sup>**

**WEST BEND STEAM 'N COOK**  
8 Qt. cooker perfect for blanching, cooking, sterilizing. Even-heating, easy-to-clean aluminum.  
**NEW \$74<sup>9</sup>**

**HAMILTON BEACH 3 SPEED HAND MIXER**  
• Chrome Beaters  
• Beater Ejector  
• Avocado or Harvest Gold No. 97  
**\$8<sup>79</sup>**

**SAVE MONEY CAN WITH KERR**  
Can fruits, vegetables now. Kerr jars available at GEBBO'S



YOU WANT FOOD SAVINGS?

**WE HAVE 'EM!**

WE GIVE GUNN BROS. STAMPS, DOUBLE TUESDAY & WEDNESDAY WITH \$2.50 PURCHASE OR MORE. WE REDEEM USDA FOOD STAMPS

**SUMMERTIME FRUITS-N-VEGETABLES**

**POTATOES** WHITE 10 LB BAG **89¢**

**BANANAS** GOLDEN RIPE, 2 LB FOR **29¢**

**TOMATOES** SLICERS, LB **39¢**

**PLUMS** SANTA ROSA, LB **39¢**

**FROZEN FOODS**

**LEMONADE** SHURFRESH, 12 OZ **4 FOR \$1**

**CHEESE PIZZA** JENO'S, EACH **79¢**

**POT PIES** MORTON ASSORTED **4 FOR \$1**

**STRAWBERRIES** TROPHY, 10 OZ **3 FOR 89¢**

**BARBECUE SAUCE**



KRAFT,

18 OZ

**49¢**

**BISCUITS** FOOD KING, LARGE CANS, EACH **10¢**

**ICE CREAM** SHURFRESH, 1/2 GALLON **79¢**

CONVENIENT LOCATIONS 332 E. DELANO AND 601 E. 10th



WE GIVE GUNN BROS STAMPS

DOUBLE STAMPS TUESDAY & WEDNESDAY WITH \$2.50 OR MORE PURCHASE (EXCLUDING CIGARETTES)

WE RESERVE THE RIGHT TO LIMIT QUANTITIES

WE REDEEM AND GIVE STAMPS ON FOOD STAMPS

WE SELL TRAVELERS EXPRESS MONEY ORDERS, PAYROLL CHECKS CASHED

**CHARCOAL**

ENERGY

10 LB BAG

**79¢**

**CHARCOAL LIGHTER**

GULF

32 OZ

**39¢**

**COKES**

32 OZ CARTON,

CHEAPEST IN TOWN

**\$1.69**

NOW ANOTHER SERVICE ADDED  
FAB MAGIC-CARPET CLEANER  
FOR ALL TYPES - PLUS - ALL  
TYPES MACHINES FOR RENT!!!

**FRUIT JARS** QUART REGULAR **\$2.19**

**PAPER TOWELS** STUDIO PRINT, JUMBO ROLL **39¢**

**COOKIES** SUMMERTIME MARSHMALLOW **3 FOR \$1**

**FLOUR** GOLD MEDAL, 5 LB BAG **89¢**

**BEANS** RANCH STYLE, 15 OZ CAN **3 FOR \$1**

**SHORTENING** BAKE RITE, 3 LB CAN **\$1.09**

**POTATO CHIPS** SHURFRESH, FAMILY SIZE **49¢**

**LIQUID DETERGENT** DAWN 32 OZ **89¢**

**TUNA** CARNATION, 6 1/2 OZ CAN **49¢**

**FRESH DATED MEATS**

**SMOKED PICNICS** LEAN, MEATY, LB **63¢**

**CHUCK ROAST** USDA, LB **83¢**

**STEAK** BEEF SHOULDER, LB **1.09**

**BEEF LIVER** FRESH, LB **59¢**

**SHORT RIBS** BEEF, EXTRA LEAN, LB **59¢**

PAY-N-SAVE WITH THIS COUPON

16-ounce Jar of Maryland Club Instant Coffee **\$1.79**

Without coupon **\$2.29**

Limit one per customer

COUPON EXPIRES 8-16-74



SAVE VALUABLE COUPON SAVE

2 1/2 lb GIANT SIZE **TIDE** ONLY **89¢**

PAY-N-SAVE WITH THIS COUPON \$6.98 WITHOUT COUPON **99¢**

OFFER EXPIRES 8-16-74

LIMIT 1 COUPON PER PURCHASE



LOOK!  
for the

# EXTRA CASH

"STORED" around the  
home!



**SELL YOUR  
LEFT-OVERS  
FROM SPRING  
CLEAN-UP**

**CALL  
TODAY!**

You can put a  
**WANT AD** to work  
for as little as...  
  
**\$1.50**  
  
**385-4481**



BE A FINANCIAL WIZARD... USE

# LEADER-NEWS WANT ADS

FIRST, LOOK AROUND THE BASEMENT, ATTIC, GARAGE, STORE ROOM AND MAKE A LIST OF EVERY WORTHWHILE THING YOU FIND THAT ISN'T BEING USED OR ENJOYED ANYMORE. THINGS LIKE APPLIANCES, DISHES, SPORTS EQUIPMENT OF ALL KINDS, TV, RADIOS, STEREO, POWER TOOLS, POWER MOWER, YARD AND PORCH FURNITURE, TYPEWRITERS, MUSICAL INSTRUMENTS, RUGS, DRAPES, GOOD OUT-GROWN TOYS AND CLOTHING. ALL OF THESE THINGS AND THE OTHERS YOU FIND ARE WORTH GOOD HARD CASH TO SOME OTHER FAMILY-----BUT REALLY, WORTH NOTHING TO YOU IF YOU NO LONGER USE OR ENJOY THEM.

LAMB COUNTY  
**LEADER-NEWS**

# Future 18-Year-Olds To Be Better Citizens

## Health Benefits Available To VA Survivors

"People always ask if I can save them money on car insurance. It's amazing how often my answer is, 'yes.'"

Maybe I can save money for you, too. Call or come in and see me.



F.L. NEWTON  
128 East 10th  
Littlefield, Texas  
385-3055

Like a good neighbor, State Farm is there.



SALE FROM HISTORY. ACCIDENTAL INSURANCE COMPANY. MEMBER OF THE STATE FARM GROUP.

18-year-old who gained responsibilities with a vote is likely to be a citizen in the future.

view was expressed today (July 3) by Texas University Chief of

Police Bill G. Daniels.

Daniels also made the prediction that streaking probably will survive the winter with sporadic forays across campuses next spring. Daniels' views are reinforced, he said, by talking with other campus security officers at the International

Association of College and University Security Directors, Inc., which met last week at Brandeis University in Waltham, Mass.

Daniels is a past president of the association, serves on its Executive and Nominating committees, and has been a member for 16 years. He also has the authority that comes with being a father of two college age children.

"Young people are smarter than they ever have been," he said. "Because the law giving 18-year-olds the right to vote also gave them the privileges of adults, they don't feel a need to slip around, hiding what they do."

"From what I've seen and others are seeing," Daniels said, "the 18-year-olds are responding to their responsibilities just as much as to their privileges and rights."

As society is changing, however, Daniels said, there are changes on campuses.

"The national trend is toward more crime on campuses," he said, "and this applies to both the small and the large institutions."

"It is a reflection of society in general," the chief said, "with most of the crime drifting in off the streets."

He said student committed crimes involve only about 1 to 3 per cent of student populations, and faculty and staff committed crimes involve much less than 1 per cent of those segments.

"These are very small percentages and involve misdemeanors for the most part," Daniels said, adding that Texas Tech percentages are among the lowest in the nation.

Campus security officers are dealing with a different kind of community than city police or other law enforcement officers, and the campus job requires very different responsibilities from the duties 16 years ago. "Then the problem was mainly one of security," Daniels said. "Now we are involved more with crime."

Officers at Texas Tech University, he said, have to be certified just as police officers are with 240 hours of training and a year of service.

In addition, they are encouraged to enroll in college level classes and some are close to receiving a bachelor's degree in law enforcement studies.

Looking at the future, Daniels said he expects the drug problem on campuses to decrease.

"Within the next few years," he said, "I believe we'll see very few drugs on campus. There is good evidence that there is a slacking off on drug use, particularly in hard drugs."

Daniels said that there is evidence also that more students may be using alcohol, but he feels there is considerable responsibility in the way in which students handle drinking.

Daniels said he believes students, talking among themselves has more to do with developing patterns of behavior than watching

parents' behavior or listening to parents' advice.

"They talk about drugs and drinking and other social behavior from junior high on up," he said. "By the time they go to college, most are knowledgeable and they behave pretty responsibly."

As for streaking, it has almost faded into history in Daniels' view.

"We'll have a little more of it next spring," he predicted, "but when it fades out completely there'll be something else to take its place. There always is."

Daniels is director of the international association's District 7 which includes Arizona, Utah, Montana, New Mexico, Texas, Wyoming, Alberta and Saskatchewan.

## News Office Set Up In Hereford

Market news reporter Jim Morrow has returned to the Hereford area and has geared up for reporting on the fruit and vegetable market in the Panhandle, according to Agriculture Commissioner John C. White.

Morrow set up his office July 1, moving from the Lower Rio Grande Valley to follow the seasonal harvest and keep buyers and sellers apprised of shipping point prices and other conditions.

Along with providing written reports, the TDA Hereford office will offer up-to-the-minute information on the fruit and vegetable market

\*\*\*\*\*

DID YOU KNOW... Drugs have been developed which congestive heart failure—a condition in which fluids accumulate in the body because the heart is unable to pump effectively. The American Heart Association has had a part in this program.

Families eligible for the Veterans Administration's Civilian Health and Medical Program (CHAMPVA) will soon be receiving in the mail a new VA pamphlet on these health benefits services for dependents and survivors, according to Jack Coker, VA Regional Office Director.

The just-published CHAMPVA pamphlet (VA Information Bulletin 13-6) furnishes detailed information on eligibility, medical services, and methods for filing claims.

Coker said copies are available at all VA hospitals,

clinics, domiciliarys, and regional offices, at the veterans' assistance centers, nationwide, and at U.S. embassies and consulates overseas.

Request for the pamphlet should be sent to the nearest VA hospital or regional office, not to the VA Central Office in Washington, D. C.

CHAMPVA provides partial VA payment for the health care of wives and children of veterans who are 100 percent disabled from service-connected causes and for the survivors of those who died of such causes after leaving military service.

through automatic telephone answering equipment.

Those interested in the latest market prices and volume of trading may dial direct 806-364-0121, on a 24-hour basis.

"Constantly changing weather conditions, labor difficulties, and other industry

problems make immediate information on the fruit and vegetable market more vital than for any other commodity," Commissioner White said.

The Hereford office will be in operation until the first heavy frost around the first of October.

# COX FURNITURE & APPLIANCE



YOUR CHOICE RACER OR TOURIST

WITH PURCHASE OF ANY FRIGIDAIRE APPLIANCE OR RCA TV.

IN ON THE SAVINGS ON RCA COLOR TV SETS DURING THE COX FURNITURE & APPLIANCE SUMMER SALE.



FREE! ICE MAKER WITH ANY FRIGIDAIRE REFRIGERATOR. Never Again Defrost! Family Size Refrigerator. Frigidaire! 17.0 cu. ft. Refrigerator 30" wide

Now! A huge refrigerator in a 30" cabinet, 17.0 cu. ft. with a 4.75 cu. ft. freezer that stores up to 60 lbs. 100% Frost-Proof. 66-On Automatic Ice Maker

**Cox** FURNITURE & APPLIANCE

**JULY CLEARANCE SALE**

**AMF**

**ONLY \$69.95**

ALL 1974 RCA MODELS REDUCED TO CLEAR STOCK. SAVE UP TO \$200.00

Bring a breath of Old Spain to your home decor with the Mallada. This ornate cabinet masterwork will be easy to fit into your room plan—it's only 37 1/2" wide, and moves easily on concealed casters. Super AccuColor black matrix picture tube—RCA's finest big screen color picture tube ever! RCA's most powerful XL-100, 100% solid state chassis, combined with RCA's Super AccuColor black matrix picture tube, for the most brilliant and crispily detailed big screen color TV in RCA history. AccuMatic IV brings color, tint, brightness and contrast within a normal pre-set range at the touch of a button. Automatic Fine Tuning electronically pinpoints and accurately holds the correct picture signal on each channel. RCA's 70-position solid state UHF tuner. (Model GS798 only.) Separate "click" positions and channel number identification for every UHF channel.



may be installed now or later at extra charge. Reverse-door hinge for right- or left-hand opening. Smooth-glide Rollers make it easy to move.

We Service Everything We Sell!

1804 Hall Ave. PH. 385-5883 LITTLEFIELD

## OPEN SEASON ON BUDGET STRETCHING FOOD BUYS...

WE RESERVE THE RIGHT TO LIMIT QUANTITIES.

**IT'S HOT!**  
FRESH DRESSED  
**FRYERS**  
LB. **39¢**

GOOCH'S  
**GERMAN SAUSAGE**  
12 OZ. **79¢**

|                     |                     |                       |              |
|---------------------|---------------------|-----------------------|--------------|
| HORMEL CURE 81      | <b>HAMS</b>         | HALF OR WHOLE LB.     | <b>1.69</b>  |
| FAMILY STYLE        | <b>STEAK</b>        | LB.                   | <b>89¢</b>   |
| ALL PURPOSE RUSSETT | <b>POTATOES</b>     | 10 LBS.               | <b>89¢</b>   |
| CALIFORNIA          | <b>PLUMS</b>        | SANTA ROSA LB.        | <b>29¢</b>   |
| FOOD KING           | <b>OLEO</b>         | SOLID POUND           | <b>39¢</b>   |
| DEL MONTE           | <b>SWEET PEAS</b>   | 303 CAN               | <b>29¢</b>   |
| SHURFINE            | <b>FRUIT DRINKS</b> | 46 OZ.                | <b>2/69¢</b> |
| BELL OR CLOVERLAKE  | <b>ICE CREAM</b>    | ROUND CARTON 1/2 GAL. | <b>99¢</b>   |
| ROYAL               | <b>GELATIN</b>      | 3 OZ.                 | <b>2/25¢</b> |
| SHURFINE            | <b>TUNA</b>         | CHUNK STYLE           | <b>53¢</b>   |
| SHURFRESH           | <b>POTATO CHIPS</b> | TWIN BAG              | <b>59¢</b>   |
| SOFLIN              | <b>PAPER TOWELS</b> | BIG ROLL              | <b>35¢</b>   |
| JEWEL PURE          | <b>SHORTENING</b>   | 42 OZ.                | <b>1.19</b>  |
| SHURFINE FROZEN     | <b>ORANGE JUICE</b> | 6 OZ CAN              | <b>2/49¢</b> |

**GET YOUR FREEZER BAGS  
FRUIT JARS & LIDS**

DOUBLE GUNN BROS. STAMPS TUES. & WED. WITH PURCHASE OF \$2.50 OR MORE EXCLUDING CIGARETTES. WE REDEEM USDA FOOD STAMPS

# PIONEER SUPERMARKET

# CLASSIFIED ADS



Rates on CLASSIFIED ADVERTISING are 10 cents per word 1st insertion (\$1.50 minimum charge) and 6 cents per word 2nd insertion (\$1.00 minimum charge). Blind box ads are \$1.00 additional. DISPLAY CLASSIFIED RATES: \$1.40 per column inch first insertion and additional insertions, \$1.15 per column inch.

Card Of Thanks — 1 time — maximum of 20 words, \$1.50. All cards of Thanks over 20 words are to be charged at regular classified rates.

## Houses For Sale

THREE bedroom house for sale by owner. Corner lot. Priced for quick sale. Call 318-868-8225. Frank M. Beauchamp, 5690 Thornhill, Shreveport, La. 8-8-B

3 bedroom house, 1 bath, central heat, single garage in Amherst. One block from school. 246-3648. 7-14-R

ROOMY 3 bedroom, den, 2 bath home. Central heat, refrigerated air and fireplace. Fenced back yard. 1 block from Crescent Park. Call 385-3789. 7-28-Z

3 bedroom, living room, all carpeted, tile bath, central heat, plumbed for washer and dryer. Wired for electric stove. To be moved, nice. 385-3198. TF-G

2 bedroom house a bargain. Owner leaving town. Contact L. Peyton Reese Real Estate, 385-3500. TF-R

1966 Pontiac. 1966 LDT Ford. Owner will finance. See at 701 E. 15th. TF-W

1971 C-50 Chevrolet truck, new engine with 1970 manure spreader. Call 227-1591. TF-B

1966 Ford Station wagon, standard with overdrive. Power & air. Good radial tires. Extra clean. 1966 Ford Galaxi. Automatic, power & air, Michelin tires, good. 1961 1/2 ton Ford pickup. Call 385-1447. 7-21-P

FOR SALE 1973 Toyota Corolla excellent shape. Call Jim Upton, 385-5188 or 385-3891. 7-25-U

CLEANEST USED CARS in town. Marcum-Olds-Cadillac, 8th and Hiway 385, Littlefield, 385-5171. TF-M

1970 Chevrolet long wheel base pickup, 6 cylinder motor, standard transmission. 262-4081. TF-S

QUICK MONEY crop. Pinto beans net \$1000. Per acre in 75 days. For seed call 364-0484, Hereford, Tex. 7-25-F

CALVES 7 to 14 days old. Healthy and started on bottle. Free delivery on ten or more. Call 214-223-5171 after 7 p.m. TF-D

3 lots in Littlefield Cemetery, front garden, east side. 227-4441, Sudan. TF-W

VACUUM tube cup system and 3 phase 1 1/2 HP electric motor. C.R. Anthony Co., Littlefield, Tex. TF-A

Singer Touchand Sew Delux models, these machines zig zag, blind hem, make button holes, fill bobbin in machine, etc. Desk cabinets with drawer space. Used only three months. Six left out of public school systems. Your choice, \$75.00 each. Fully guaranteed. Usualy home, 4313-A 53rd. Call first, 797-1867, if no answer, 747-9272.

COMMERCIAL building at 617 W. 8th. \$4500.00. Owner will carry note. \$500 down. \$64.36 per month for 7 years. Call 385-6113. TF-B

corner lots 12 and 1/2 of 11 on 17th St. across from First Christian Church and Crescent Park. A.O. Dickson, Amherst, 246-3250. TF-D

LARGE house on W. 3rd. Call 385-3053. 7-21-C

FURNISHED apartment. Bills paid. 385-3365, 385-3427. TF-W

Houses For Rent

Houses For Sale

Industrial BEARINGS & BELTS Forney Welders & Supplies

\*Farm Equip. \*Industrial Equip.

G & C AUTO SUPPLY 700 E. 14th 385-4431

OTIS BENNETT REAL ESTATE 385-4215 or 385-3575

## Bus. Services

ALL KINDS ALTERATIONS, covered button, buttonholes, belts. Mr. and Mrs. G.E. Scifres, 905 E. 6th St. Phone 385-3971. Former Drive In Cleaners. TF-5

RENT CONVALESCENT equipment at Brittain Pharmacy. Wheel chairs, crutches, hospital beds, other items. Complete line convalescent needs. TF-B

CLEAN expensive carpets with the best. Blue Lustre is America's favorite. Rent chamber, \$1. (Nelson's Hardware.)

WILL BUILD re-enforced concrete cellars. Redibuilt houses. H.G. Ferguson, 385-5508. 8-30-F

LITTLEFIELD Roofing specialist, built up asphalt roofs. All work guaranteed. 1115 W. 9th. Call 385-3507 or 385-5680. TF-L

C&O Cleaners guaranteed carpet & upholstery cleaning. 385-5211, 628 Farwell. 5-5-C

Reno's Poodle Parlor Professional Grooming By appointment only 997-4731

MARTIN ROOFING Roofing Specialists Roofing of all kinds Asphalts of All Kinds Asphalt Built-up Roofs All Work Guaranteed 1115 W. 9th 385-3507

KIRBY Sales & Service Call 385-3357 For a free demonstration on the Kirby Classic 1013 W. 9th

Peerless Pump Sales & Service HPC Submersible Pumps Gear Head Repair Roy's Blacksmith & Welding 1 mi north on 385 Ph. 385-5008

CARPET Shop at home and save. Hi lo plush shags, multicolor shags, hi lo shags, level loop tweeds, pattern and tweeds in bath and kitchen carpet and commercials. Installation guaranteed to satisfy. Call for samples and free estimates. 385-4953 or 385-6194. J.C. & Bill Duncan.

Farm & Ranch homes built to your specifications. Residential and commercial too.

Metroplex Construction Co. 2020 50th St. Lubbock, Texas Larry Thompson 806-745-3341

TRUCK SEATS EXCHANGED 15 MINUTE SERVICE McCORMICKS UPHOLSTERY CHARLES POWELL 227 PHELPS AVE. PH. 385-4555 Littlefield, Texas, 79339

FLORES UPHOLSTERY Large Selection Of Quality Fabrics... Free Estimate In Your Home Free Pick-Up and Delivery All Work Guaranteed 4th and Bell Avenue Littlefield, Texas Phone 385-4934

## PUBLIC NOTICE

NOTICE TO DEBTORS AND CREDITORS STATE OF TEXAS COUNTY OF LAMB

To those indebted to, or holding claims against the Estate of Tinnie C. Adams, Deceased:

The Undersigned having been duly appointed executrix of the Estate of Tinnie C. Adams, Deceased, late of Lamb County, Texas, by G.T. Sides, Judge of the County Court of Lamb County, Texas, on the 24th day of June, A.D. 1974, hereby notifies all persons indebted to said estate to come forward and make settlement, and those having claims against said estate to present them to her within the time prescribed by law at her residence, 614 East Third Street, Floydada, Texas, 79325, or at the office of Hall & Tollett, Attorneys at Law, 100 West Fourth Street, Littlefield, Texas, 79339, or Post Office Drawer 951, Littlefield, Texas, 79339, where she will receive her mail, this the 8th day of July, A.D. 1974.

s/Muri Adams Mayfield, Executrix of the Estate of Tinnie C. Adams, Deceased.

MRS. WILMA SWINDLE of Hart spent Wednesday night with her sister, Mrs. W.P. Holland.

MR. AND MRS. Joe Miller and Leesa are visiting relatives in Batesville, Ark. Jimmy Bitner of Littlefield flew them there in his plane, it was reported.

TIM GAGE joined the Bob Donnell family of Littlefield at Fufala Lake in Oklahoma for several days.

MR. AND MRS. Jim Gage and Michelle were in Charleston, Ark. this week. They were assisting his parents in getting their mobile home set up there. They visited the Jim Humphreys for a short visit while there in Boonville.

MRS. BILL STERR of Decatur, Ark., and Mr. and Mrs. John Sterr of Bentonville, Ark. returned home this week. They were here for her husband and their son, Bill Sterr's funeral services.

MRS. B.L. Burditt has returned home. Her father was seriously ill when she was called to Kerrville.

MR. AND MRS. David Lightner of Ralls visited his parents and sister, Mrs. Ronnie Schroeder and family Sunday.

MR. AND MRS. W. C. Lightsey are visiting their son, Billy Van Lightsey and family in California. They made the trip by air to Los Angeles Friday. Their son and family will bring them home by car from San Francisco the last of this week.

THE Amherst All-Stars baseball team is playing the Plainview All-Stars Monday, 6 p.m. at Anton. They are Mark Cantrell, Vic Read, Brad Enloe, Larry Young, Clinton Sawyer, Alvin Mills, Craig Thompson, Stephen Bearden and Benny Jones. Rodney Maxfield has served as coach for the boys.

MR. AND MRS. Gareid Henriks of San Bernardino, Calif. visited Amherst friends and relatives Saturday. They had spent some time in Manitou, Okla. due to the illness and death of his mother. They went to Fort Worth for a short visit with relatives before returning home.

Mrs. Rhodes and her brother visited their father, L. N. Atkinson in Fort Worth, who had been seriously ill. He has improved. Mr. and Mrs. Atkinson moved to Fort Worth a few months ago from Brownwood where they resided several years after many years as Amherst residents.

GUESTS in the J. C. Franks home are her sister, Mrs. Jim Abston and son Carl of Burleson.

MRS. B. L. Burditt was called to Kerrville last week due to the sudden illness of her father.

MRS. JOY HEDGES and Ann were recent guests of their daughter and sister, Mr. and Mrs. Elton Boyd in Albuquerque.

MR. AND MRS. Virgil Allen Hinds, Dara and Nathan of Ann Arbor, Mich. visited several days with his parents, Mr. and Mrs. V. A. Hinds. Other guests Sunday were Mr. and Mrs. Charles Hinds and Charlotte of Littlefield.

MRS. DONNA SEARS and son, Michael of Buena Vista, Va. are visiting Mrs. Herndon Pace and Mrs. Ethel Logan. During the weekend Mrs. Sears and her mother Mrs. Dan Heard of Littlefield visited Carlsbad Caverns, N.M.

MR. AND MRS. Noel Hayward of Alva, Okla. were guests in the George Harmon home two days last week.

MR. AND MRS. Donald Booth, John and David and Scott Harmon returned during the weekend from San Antonio where they attended the State FFA (Future Farmers of America) convention. The boys were delegates. Scott was voting delegate for the local chapter.

THOSE from Amherst joining the group for the showing of the show "Texas" in Palo Duro Canyon Thursday night were Mmes. Hazel Davis, Ivy Patton, C. A. Thomas, Lloyd Edwards, Jewel Enloe, J. H. Bradley, Buford Thompson, M. V. Cowen, Walton Macmanus and Lenore La Grange. The Littlefield Chamber of Commerce sponsored the chartered bus trip of forty-five. More than 1,600 attended the show.

THOSE ATTENDING the Methodist Elementary Camp, Ceta Canyon July 8-12 were Kammie Campbell, Holly Harmon, Scott Read, Kit Harmon, Dan Messamore, Joe E. Bellar, Mrs. Jomery Harmon and Mrs. Gene Campbell look them to Camp and Mrs. Bennie Harmon went for them Friday. Mrs. Truett Read served as a counselor all week.

THE SONS and daughter of Mr. and Mrs. Manuel De Leon Sr. entertained for their 25th wedding anniversary, at their home. Hosts for the occasion were Mr. and Mrs. Manuel DeLeon Jr., Mr. and Mrs. Randy Rogers and son, Israel and Romera Israel all of Erick, Okla., others of the home and Johnny DeLeon of Littlefield. Guests called throughout the afternoon.

WEEKEND GUESTS in the Tom Davis home were Mr. and Mrs. Johnny Patton of Artesia, N.M. and Mrs. Ted Davis of Albuquerque.

MRS. WILLIAM Artis of Freeport, Grand Bahama Island returned home Sunday after spending three weeks with her sister, Mrs. Erna Jeffrey. Her husband met her Miami, Fla.

GUEST of Mrs. Harvey Grigsby, Sr. last weekend was her sister Mrs. Clyde Curry of Amarillo. While here they visited their brother, Charles Coulson and family in Lubbock.

RIDING with the Lamb County Sheriff's Posse in the Earth Rodeo parade were Kathy and Mark Kelly and Both Duffy.

MRS. J.P. Brantley and Mrs. Glenn Willson were Mrs. James Holland's guests at their Tres Ritos, N.M. cabin.

MRS. CHARLES HENSLY and Paula of Big Spring visited her mother, Mrs. Gene Smith while her daughter and husband from Groton, Conn. and brother Carl and family were here from Houston.

EMERY BLUME continues to improve at his home following surgery in Lubbock last week.

NOTICE! New Phone Number At FARM BUREAU 385-4489 385-3444

## AMHERST

Mrs. Lester LaGrange

Ch. 11 KCBD

7:15 \* News Weather Sports  
7:30 \* Sacred Heart  
7:45 \* Ask the Minister  
8:00 \* Day of Discovery  
8:30 \* Get Together  
9:00 \* Rex Hubbard  
9:30 \* Oral Roberts  
10:00 \* Kathryn Kuhlman  
11:00 \* Living Your Religion  
11:30 \* A Better Life  
12:00 \* Old Time Gospel Hour  
1:00 \* American Outdoorsman  
1:30 \* Jaguar  
3:30 \* NBC Religious Special  
4:30 \* This is New Mexico Military Institute  
5:00 \* NFL Action '74  
5:30 \* NBC News  
6:00 \* Evening Report  
6:30 \* World of Disney  
7:30 \* "McMillon & Wife"  
9:00 \* NBC News: Special Report  
10:00 \* Weekend Wrap-Up  
10:30 \* Meet the Press  
11:00 \* 11 Questions  
11:30 \* Universal Startime  
12:30 \* News Weather Sports

Ch. 13 KLBK

7:00 \* This is the Life  
7:30 \* Around the World for Eighty Days  
8:00 \* Bailey's Comet  
8:30 \* Chan & the Chon Chan  
9:00 \* Bullwinkle  
9:30 \* Underdog  
10:00 \* Three Stooges  
10:30 \* Inquiry  
11:00 \* Kuleodocopia  
11:30 \* Face the Nation  
12:00 \* "Sea Hornet"  
1:30 \* CBS Sports Spectacular  
4:00 \* Eye On Sports  
4:30 \* Home Gun Will Travel  
5:00 \* CBS News  
6:00 \* Channel 13 News  
6:30 \* Apple's Way  
7:30 \* Mannix  
8:30 \* Sixty Minutes  
9:30 \* To Tell the Truth  
10:00 \* Channel 13 News  
10:30 \* CBS Evening News  
10:45 \* "I Wonder Who's Kissing Her Now"

Ch. 28 KSEL

8:00 \* Encounter  
8:30 \* Popeye & Pals  
9:00 \* Kid Power  
9:30 \* The Osmonds  
10:00 \* H.R. Pufnstuf  
10:30 \* Christopher Clouse  
11:45 \* Film Feature  
12:00 \* Let the Bible Speak  
12:30 \* Issues & Answers  
1:00 \* American Lifestyles  
1:30 \* Championship Wrestling  
2:30 \* Outdoors With Ken Callaway  
3:00 \* The Big Dance Show  
3:30 \* U.S. Women's Open  
5:00 \* Unlabeled World  
5:30 \* Lay Witness  
6:00 \* Anything Goes  
6:30 \* F.B.I.  
7:30 \* Project X  
9:30 \* "Never Wave at a WAC"

Ch. 11 KCBD

6:30 \* Gomer Ted Armstrong  
7:00 \* News & Weather  
7:10 \* Today in Texas  
7:25 \* New Mexico  
8:00 \* Today Show  
7:55 \* Weather  
8:00 \* Today Show  
8:25 \* News & Weather  
8:30 \* Today Show  
9:00 \* Dinah's Place  
9:30 \* Winning Streak  
10:00 \* High Rollers  
10:30 \* Hollywood Squares  
11:00 \* Jackpot  
11:30 \* Celebrity Sweepstakes  
11:55 \* NBC News  
12:00 \* Mid Day Report  
12:30 \* Jeopardy  
1:00 \* Days of Our Lives  
1:30 \* The Doctors  
2:00 \* Another World  
2:30 \* How To Survive A Marriage  
3:00 \* Somerset  
3:30 \* Daniel Boone  
4:30 \* I Dream of Jeannie  
5:00 \* Hopalong Cassidy  
5:30 \* NBC Nightly News  
6:00 \* Evening Report

Ch. 13 KLBK

6:30 \* Farm and Ranch  
7:00 \* CBS Morning News  
8:00 \* Captain Kangaroo  
9:00 \* Jack La Lanne  
9:30 \* Nat for Women Only  
10:00 \* New You See It  
10:30 \* Love of Life  
10:55 \* CBS Midday News  
11:00 \* Young and Restless  
11:30 \* Search for Tomorrow  
12:00 \* Channel 13 News  
12:30 \* As the World Turns  
1:00 \* Guiding Light  
1:30 \* Edge of Night  
2:00 \* Price is Right  
2:30 \* Match Game  
3:00 \* Tattletales  
3:30 \* Jaker's Wild  
4:00 \* Gambit  
4:30 \* Bonanza  
5:30 \* CBS Evening News  
6:00 \* Channel 13 News

Ch. 28 KSEL

8:00 \* Popeye & Pals  
9:00 \* Wilburn Brothers Country Carnival  
9:30 \* Cartoons  
10:00 \* Dennis the Menace  
10:30 \* The Brady Bunch  
11:00 \* Password  
11:30 \* Split Second  
12:00 \* KSEL A-1 News  
12:30 \* Bernie Howell Show  
1:00 \* The Newlywed Game  
1:30 \* Girl in My Life  
2:00 \* General Hospital  
2:30 \* One Life to Live  
3:00 \* 10,000 Pyramid  
3:30 \* All My Children  
4:00 \* Drawn in Stuff  
4:10 \* Admiral Foghorn  
4:30 \* The Lucy Show  
5:00 \* ABC Evening News  
5:30 \* KSEL 28 News

MONDAY EVENING

Ch. 11 KCBD

6:30 \* Sanford & Son  
7:00 \* A Tree Grows in Brooklyn  
10:00 \* Weekday Wrap-Up  
10:30 \* Tonight Show  
12:00 \* Tomorrow  
1:00 \* News Weather Sports

Ch. 13 KLBK

6:30 \* To Tell the Truth  
7:00 \* Gunsmoke  
8:00 \* Here's Lucy  
8:30 \* Dick Van Dyke  
9:00 \* "The Stockholders"  
10:00 \* Channel 13 News  
10:30 \* "The Girl Left Behind"

Ch. 28 KSEL

6:00 \* Star Trek  
7:00 \* The Rockies  
8:00 \* "Five Card Stud"  
10:00 \* KSEL 28 News  
10:30 \* Wide World Mystery

TUESDAY EVENING

Ch. 11 KCBD

6:30 \* Dragnet  
7:00 \* All Star Game  
7:30 \* Frigate Show  
7:15 \* All Star Baseball Game  
10:00 \* Weekday Wrap-Up  
10:30 \* Tonight Show  
12:00 \* Tomorrow  
1:00 \* News Weather Sports

Ch. 13 KLBK

6:30 \* To Tell the Truth  
7:00 \* Maudie  
7:30 \* Hawaii 5-0  
8:30 \* "The Cop Killing"  
10:00 \* Channel 13 News  
10:30 \* "Pretty Poison"

Ch. 28 KSEL

6:00 \* Star Trek  
7:00 \* The Happy Days  
7:30 \* "Third Girl From the Left"  
9:00 \* Marcus Welby  
10:00 \* KSEL 28 News  
10:30 \* Wide World Mystery

WEDNESDAY EVENING

Ch. 11 KCBD

6:30 \* Dragnet  
7:00 \* Chase  
8:00 \* "The Great Northfield Minnesota Raid"  
10:00 \* Weekday Wrap-Up  
10:30 \* Tonight Show  
12:00 \* Tomorrow  
1:00 \* News Weather Sports

Ch. 13 KLBK

6:30 \* To Tell the Truth  
7:00 \* Tony Orlando & Dawn  
8:00 \* Cannon  
9:00 \* Kojak  
10:00 \* Channel 13 News  
10:30 \* "The Corrupt Ones"

Ch. 28 KSEL

6:00 \* Star Trek  
7:00 \* The Cowboys  
7:30 \* "Screen, Pretty Peggy"  
9:00 \* Doc Elliot  
10:00 \* KSEL 28 News  
10:30 \* Wide World Special

THURSDAY EVENING

Ch. 11 KCBD

6:30 \* Dragnet  
7:00 \* Mac Davis Show  
7:00 \* Ironside  
8:00 \* Dean Martin  
10:00 \* Weekday Wrap-Up  
10:30 \* Tonight Show  
12:00 \* Tomorrow  
1:00 \* News Weather Sports

Ch. 13 KLBK

6:30 \* To Tell the Truth  
7:00 \* Watson's  
8:00 \* World Football League N.Y. at Philadelphia  
11:00 \* Channel 13 News  
11:30 \* Bonanza

Ch. 28 KSEL

6:00 \* Star Trek  
7:00 \* Temperatures Rising  
7:30 \* Firehouse  
8:00 \* Kung Fu  
9:00 \* Streets of San Francisco  
10:00 \* KSEL 28 News  
10:30 \* Wide World Special

FRIDAY EVENING

Ch. 11 KCBD

6:30 \* Emergency  
7:30 \* Brian Keith Show  
8:00 \* "Rex Harrison Presents Stories of Love"  
10:00 \* Weekday Wrap-Up  
10:30 \* Tonight Show  
12:00 \* Midnight Special  
1:30 \* News Weather Sports

Ch. 13 KLBK

6:30 \* To Tell the Truth  
7:00 \* "Around the World for Eighty Days"  
10:00 \* Channel 13 News  
10:30 \* "The Fall of the House of Usher"  
12:30 \* "Body & Soul"

Ch. 28 KSEL

6:00 \* Star Trek  
7:00 \* Brady Bunch  
7:30 \* Six Million Dollar Man  
8:30 \* College All Star Football  
11:30 \* KSEL 28 News

| SUNDAY   | SATURDAY   |
|--|--|
| <p>Ch. 11 KCBD</p> <p>7:15 * News Weather Sports<br/>7:30 * Sacred Heart<br/>7:45 * Ask the Minister<br/>8:00 * Day of Discovery<br/>8:30 * Get Together<br/>9:00 * Rex Hubbard<br/>9:30 * Oral Roberts<br/>10:00 * Kathryn Kuhlman<br/>11:00 * Living Your Religion<br/>11:30 * A Better Life<br/>12:00 * Old Time Gospel Hour<br/>1:00 * American Outdoorsman<br/>1:30 * Jaguar<br/>3:30 * NBC Religious Special<br/>4:30 * This is New Mexico Military Institute<br/>5:00 * NFL Action '74<br/>5:30 * NBC News<br/>6:00 * Evening Report<br/>6:30 * World of Disney<br/>7:30 * "McMillon &amp; Wife"<br/>9:00 * NBC News: Special Report<br/>10:00 * Weekend Wrap-Up<br/>10:30 * Meet the Press<br/>11:00 * 11 Questions<br/>11:30 * Universal Startime<br/>12:30 * News Weather Sports</p> | <p>Ch. 11 KCBD</p> <p>6:45 * News Weather Sports<br/>7:00 * Littleville<br/>7:30 * Address Family<br/>8:00 * Emergency Plus<br/>8:30 * Inch High Private Eye<br/>9:00 * The Pink Panther<br/>10:00 * Star Trek<br/>10:30 * Butch Cassidy<br/>11:00 * The Jetsons<br/>12:00 * Safari to Adventure<br/>12:30 * NFL Championship Game<br/>1:00 * Baseball Game of the Week<br/>4:00 * Other People<br/>4:30 * About World<br/>5:00 * Wild Kingdom<br/>5:30 * NBC News<br/>6:00 * Porter Waggoner<br/>6:30 * Lawrence Walk<br/>7:00 * Good Ole Nashville Music<br/>7:30 * The Tonight Show<br/>10:35 * Weekend Wrap-Up<br/>11:05 * "Wild Seed"<br/>12:45 * News Weather Sports</p>               |
| <p>Ch. 13 KLBK</p> <p>7:00 * This is the Life<br/>7:30 * Around the World for Eighty Days<br/>8:00 * Bailey's Comet<br/>8:30 * Chan &amp; the Chon Chan<br/>9:00 * Bullwinkle<br/>9:30 * Underdog<br/>10:00 * Three Stooges<br/>10:30 * Inquiry<br/>11:00 * Kuleodocopia<br/>11:30 * Face the Nation<br/>12:00 * "Sea Hornet"<br/>1:30 * CBS Sports Spectacular<br/>4:00 * Eye On Sports<br/>4:30 * Home Gun Will Travel<br/>5:00 * CBS News<br/>6:00 * Channel 13 News<br/>6:30 * Apple's Way<br/>7:30 * Mannix<br/>8:30 * Sixty Minutes<br/>9:30 * To Tell the Truth<br/>10:00 * Channel 13 News<br/>10:30 * CBS Evening News<br/>10:45 * "I Wonder Who's Kissing Her Now"</p>   | <p>Ch. 13 KLBK</p> <p>7:00 * Hair Bear Bunch<br/>7:30 * Sabrino<br/>8:00 * Scooby Doo Movies<br/>9:00 * My Favorite Martian<br/>9:30 * Jeopardy<br/>10:00 * Scooby Buggy<br/>10:30 * Josie &amp; The Pussycats<br/>11:00 * Pebbles &amp; Bon-Bon<br/>11:30 * Fat Albert<br/>12:00 * Children's Film Festival<br/>1:00 * Soul Train<br/>1:30 * Wrestling<br/>5:00 * "Little Eggs"<br/>4:30 * The Scene<br/>5:00 * Lassie<br/>5:30 * NBC News<br/>6:00 * Hee Haw<br/>7:00 * All in the Family<br/>7:30 * "M*A*S*H"<br/>8:00 * Mary Tyler Moore<br/>8:30 * Bob Newhart Show<br/>9:00 * Barney Jones<br/>10:00 * Channel 13 News<br/>10:30 * "The Family Guy"<br/>12:30 * "Prince of Lovers"</p> |
| <p>Ch. 28 KSEL</p> <p>8:00 * Encounter<br/>8:30 * Popeye &amp; Pals<br/>9:00 * Kid Power<br/>9:30 * The Osmonds<br/>10:00 * H.R. Pufnstuf<br/>10:30 * Christopher Clouse<br/>11:45 * Film Feature<br/>12:00 * Let the Bible Speak<br/>12:30 * Issues &amp; Answers<br/>1:00 * American Lifestyles<br/>1:30 * Championship Wrestling<br/>2:30 * Outdoors With Ken Callaway<br/>3:00 * The Big Dance Show<br/>3:30 * U.S. Women's Open<br/>5:00 * Unlabeled World<br/>5:30 * Lay Witness<br/>6:00 * Anything Goes<br/>6:30 * F.B.I.<br/>7:30 * Project X<br/>9:30 * "Never Wave at a WAC"</p>  | <p>Ch. 28 KSEL</p> <p>7:00 * Bugs Bunny Show<br/>7:30 * Yogi's Gang<br/>8:00</p>   |

# Rules of The Road Apply To Boaters

Although the road is a very busy one, boaters are faced with a set of "Rules of the Road" which are as essential to boating safety as traffic laws are to drivers of automobiles, according to an article in the July issue of "Texas Parks And Wildlife" magazine.

The article, which is reprinted from the Texas Boater's Course, makes the distinction between "privileged" boats and "burdened" boats.

"Privileged" boats have the right of way, while "burdened" boats have the burden of responsibility for taking

whatever action is best to avoid a collision.

Rules of the road are just common sense. Action should be taken when it is clear that a potentially dangerous situation exists. The action should be clear and decisive and should be taken early enough to be noticed and understood by the other boat.

Large vessels can't stop quickly, change course or generally maneuver as well as small boats. Also, large vessels in harbors and rivers must stay within the channels.

Consequently, they have the right of way and the burden to avoid collisions is on the

skipper of the small boat.

Sailboats under sail lack the means of control that may be required for decisive and timely action. Therefore, they have the right of way over a powered boat, except when passing, but not over large vessels in confined or narrow channels.

Since hand signals and signals with lights are impractical on water, boaters must communicate with other boaters by using either a whistle or horn.

There are three types of situations between two approaching vessels that require horn or whistle signals to be

given. These are: meeting, crossing and overtaking.

In meeting head-on or nearly so, just as in driving a car, stay to your right. One boat gives a single short blast; the other responds with the same signal, and each skipper knows what the other is going to do.

When two boats are well clear of each other, suddenly changing course in order to pass on the other boat's left side would create a dangerous situation. So, two short blasts will inform the other skipper that you intend to keep to his right.

If, at any time, there is confusion about signals or intent, four short blasts is the danger signal—each boat must come to a stop until the situation is clarified.

A crossing situation is similar to meeting another car at an intersection that has no stop signs.

As ashore, the vehicle to the right is privileged—in fact, he must continue his course and speed. Inland rules do not require signals in this situation, but common sense should prevail. The boat on the right (privileged) should signal his intent to maintain his course and speed with one short horn blast. The burdened vessel should reply with a short blast signaling his intent to slow down and/or change course to pass astern of the other boat.

Finally, there are the overtaking situations. Normally, you'd pass the privileged vessel on his left, as you would in a car, and signal his intent with two short blasts.

If it is safe to pass, the privileged vessel will respond with two short blasts. Then the burdened boat passes, keeping well clear of the privileged boat.

If it is more reasonable to pass on the privileged boat's right, signal your intent with one short blast. A one-short-blast reply gives the go-ahead.

Should the privileged vessel consider it unsafe for you to pass as you proposed, it must reply with four short blasts (the danger signal). The burdened vessel must then remain in position and make no further attempt to pass until the privileged vessel answers a one- or two-short-blast signal with one or two short blasts, respectively, or proposes a new signal.

When a boat is ready to leave a dock, slip or mooring, normally the boat is backed out in the regular traffic channel. Few boats maneuver well when going underway. The rules of the road require that you sound one long blast on the horn or whistle (eight to 10 seconds) as soon as you clear the dock or slip.

This signal must also be sounded when approaching a blind bend in a river or channel. It would warn any boat approaching the bend from the other direction.

Once in sight of each other, normal rules of the road and maneuvering signals apply.

## HOSPITAL REPORT

### Littlefield Hospital News

July 12  
ADMITTED: Mrs. Amidell Monroe, Cullen Hay, Mrs. Callie Williams  
DISMISSED: Dyrinda Tyson, Eugene Cain, Tina Ybarra, Mrs. Katie Greene, Mrs. Rhonda Kelton, Mrs. Bessie Massengill

July 13  
ADMITTED: Mrs. Maude Saunders  
DISMISSED: Tommy Twitty, Mrs. Addis Williams

July 14  
ADMITTED: Mrs. Ella Jackson, Mrs. Janie Ortiz, Cheryl Carter  
DISMISSED: None

July 15  
ADMITTED: Ricky Head, Leo Burnett, Galen Landrum, J.K. Barnett, Mrs. Virgie McCurry, Weldon Findley  
DISMISSED: Rory Jones, Mrs. Wanda Graham

July 16  
ADMITTED: Mrs. Elsie Kloiber, Mrs. Cassandra Waldrop, Mrs. Jo Ann Speakman  
DISMISSED: None

July 17  
ADMITTED: Misty Lea Haberer, Marvel Caruthers, Mrs. Brenda Goven, J.C. Hall  
DISMISSED: Mrs. Cassandra Waldrop, Mrs. Jo Ann Speakman, Ricky Head, Mrs. Elsie Kenney, Jerry Sue Brady, Mrs. Janie Ortiz & infant, Mrs. Iona Martin, Mrs. Louise Beavers, Cullen Hay, Cheryl Carter, Mrs. Alpha McCarty, Rick Hill

July 18  
ADMITTED: Otho Lewis  
DISMISSED: Leo Burnett, Garen Landrum, Mrs. Amidell Monroe

Medical Arts Hospital News  
July 12  
ADMITTED: John Gordon,

Lindsey Keys, Mrs. Lula Powell  
DISMISSED: Jannie Douglas and infant girl, Ascencion and infant son, Ray Peacock, Louis Peacock, Mrs. Francis Kitchens, Mrs. Effie Griffiths

July 13  
ADMITTED: Harrison Ballard, Janie Trevino  
DISMISSED: Clara Karvas, Lugenia Jeffers, Mrs. Jim Nella McDonald, Mrs. Theresa Smith

July 14  
ADMITTED: Sylvia Coronada, Bessie Whisenhunt  
DISMISSED: Sandra Jean Garcia

July 15  
ADMITTED: Luella Nabors, Nellie Hecky, Lawerance Minor  
DISMISSED: John Gordon, Teodora Campos, Virginia McDonald, Dell Phelps, John

Simmons  
July 16  
ADMITTED: Muriel Angel, Mollie David, Patsy Ann Williams, Calvin Presley, Martha Russell, Alice Gordon, Mave Randall  
DISMISSED: Morris Mathis, Carmen Wimberly

July 17  
ADMITTED: Barbara Ann Moody, Alice Hernandez, Zadie Beehler  
DISMISSED: Trevino and infant son, Sylvia Coronado and infant girl

July 18  
ADMITTED: Geneva Anderson  
DISMISSED: Barbara Ann Moody, Mollie David, Jose Leal, Arry McCuin, Martha Russell, Lula Powell, Gracie McEntire

\*\*\*\*\*  
About Those Jeans Prices  
The cost of raw cotton needed to make a pair of denim jeans usually amounts to less than one-tenth of the retail price for the finished product, according to USDA's Economic Research Service.

## FARM FACTS

**Caesar Craved Cucumbers**  
The forerunner of the modern greenhouse was built in Rome in the first century. It was constructed to provide Emperor Tiberius Caesar with cucumbers the year round.

**Hail Takes Crop Toll**  
Crop losses to hail average \$400 million annually in the United States. Biggest losses are in wheat, corn, soybeans, and cotton.

**U.S. Ag Imports Big**  
The United States is second only to West Germany as the largest importer of agricultural products.

**Catsup From California?**  
There's about a 3 to 1 chance that the processed tomato product you open comes from California. The state grows more than 4 million tons of canning tomatoes annually or about 75 per cent of U.S. production.

**YOU CAN'T BEAT THE SERVICE, SPEED AND SATISFACTION AT THE PRINT SHOP**

111 E 4th 385-4182  
QUICK COPY SERVICE  
FREE PICK-UP AND DELIVERY

OFFICE FORMS BULLETINS FORM LETTERS NEWS LETTERS  
PERSONALIZED SERVICE

PRICE LISTS CONTRACTS INSTRUCTION SHEETS PROGRAMS  
NAME SCRATCH PADS PERSONALIZED STATIONERY

BRING YOUR COPY "CAMERA READY" AND WHILE YOU WAIT WE WILL PRINT ON 20 LB. BOND PAPER OR WE WILL SET IT UP FOR YOU.

**SINGER SEWING MACHINE**

DISCONTINUED MODEL SALE WHILE QUANTITIES LAST.

**\$60.00 OFF REGULAR PRICE TOUCH AND SEW MODEL 756**

**FASHION MATE MODEL 257**  
\$79.95 A CARRYING CASE OR CABINET EXTRA. REGULAR PRICE \$109.95

**GENIE MODEL 353 PORTABLE \$129.95**  
REGULAR \$169.95 DISCONTINUED VACUUM CLEANERS AT BIG SAVINGS. ALSO SOME BEAUTIFUL CABINETS ON SALE

**ROBINSON UPHOLSTERY & SEWING MACHINE CENTER**  
308 W. 4TH PHONE 385-3621

**JEWELL'S HOSPITALITY NURSES AID SCHOOL**

APPROVED VOCATIONAL NURSES TRAINING. SIX WEEK COURSE WITH BOTH ACADEMIC AND PRACTICAL SKILLS. A DIPLOMA WILL BE AWARDED UPON COMPLETION OF THE COURSE.

JOB PLACEMENT SYSTEM FOR GRADUATES. NOW TAKING APPLICATIONS FOR QUALIFIED NURSES AIDS. THE RIGHT PERSONS WILL BE EMPLOYED IMMEDIATELY

FOR MORE INFORMATION PHONE 385-5112 BULA HWY

**SUMMER Festival of Food Values**

Cliff's Grocery & Deli Was Going Away But Is Here To Stay In A Bigger Way

**DR PEPPER** 6 PACK, 10 OZ LIMIT 2 **59¢**

**CORN** OUR DARLING 17 OZ **2 FOR 47¢** GOOD THRU 7-25-74

**QUICK OATS** 3 MINUTE BRAND 18 OZ **43¢**

**DELICATESSEN SPECIALS**

HICKORY SMOKED PIT COOKED BAR-B-QUE GOOD THRU 7-28-74

**SLICED BEEF** LB **\$2.99**

**HOT LINKS** LB **\$1.59**

**SLICED HAM** LB **\$3.39**

**PIZZAS**

MONDAY THRU THURSDAY: SANDWICHES, BEEF, HAM & HOT LINK  
FRIDAY: FRESH CATFISH AND TRIMMINGS  
FRIDAY THRU SUNDAY: FRIED CHICKEN, LIVERS, GIZZARDS, FRIED PIES, BURRITOS, CORN DOGS, POTATO SALAD, COLE SLAW, RED BEANS & SANDWICHES, COBBLER & FULL LINE OF PIZZAS.

STORE HOURS: 8:00 A.M. TO 9:00 P.M.  
DELI HOURS: 11:00 A.M. TO 7:00 P.M. SEVEN DAYS A WEEK  
INQUIRE ABOUT OUR CUSTOM COOKING CATERING

**CLIFF'S GROCERY & DELICATESSEN**  
1200 HALL AVE., LITTLEFIELD, TEXAS 385-3441

**ONE CALL DOES IT**

WE SELL... WE SERVICE... WE INSTALL... WE FINANCE... WE GUARANTEE...

**ELECTRIC Water Heaters**

ELECTRICITY-IT DOES SO MUCH GOOD

Modern ELECTRIC Water Heating FOR SO MANY PEOPLE

WE SELL 'EM - Call Us!

# Jr. Babe Ruthers Battle For Crown

The Junior Babe Ruth All-stars played Friday night in Olton for the district championship. Their opponent was to be decided earlier Friday afternoon when Dimmitt and Olton played. If Littlefield lost Friday, another game between the same teams was played Saturday, with the winner advancing to the state tournament in Plainview.

The All-stars gained a berth in the district finals by winning their first two tourney games. They swatted Muleshoe 5-2 Wednesday and clubbed Olton 10-0 Thursday.

Jerry Williams hurled the locals to their win over Muleshoe. Richard Tamplin

slugged a double and Rex Jones and Norva Simington added singles in the game that Littlefield led all the way.

Lonnie Tims' two hitter sparked Littlefield against Olton. A big five-run fourth inning provided Littlefield with all the runs they needed. Tims aided his own cause by blasting a triple. Williams popped a double, and Simington, Rudy Ayala and James Kemp contributed singles.

## All-Stars Blitzed In Tourney

The ALMO Senior Baby Ruth All-stars dropped both of

# LEADER NEWS Sports

## Littlefield To Host Semifinal Ballgame

The Littlefield Little League baseball park will be the scene of a semi-final district game Tuesday between a Plainview team and a squad from either Brownfield, Morton, Seminole

or Levelland.

The game begins at 8 p.m., and all proceeds from the game will go directly to the Littlefield Little League Association.

their games in the state tournament in Lubbock.

They were barely edged by San Antonio 2-1 in a Wednesday game, then fell to the hard-hitting South Plains squad 10-2 Thursday.

Scott Gossett and Kevin White drilled two singles each to pace San Antonio's batters. White's hit in the fifth inning drove in Gossett with the winning run. The winning pitcher was Darr Weeks, who allowed only one ALMO hit and struck out seven.

ALMO got their only run in the first inning, when Don Long crossed the plate following two errors. Donnie Noles handled the pitching. Travis Hampton slapped a single.

ALMO came back Thursday against South Plains in the loser's bracket of the double-elimination tournament. South Plains led 1-0 going into the second, then exploded for six runs in that inning to coast in with the win.

The locals got their runs in the fourth and seventh. Bill Turner slashed a triple in the fourth and came all the way in when the leftfielder overthrew third base. Carol Legg came home in the seventh following Dusty Davis' single.

Gary White started on the mound for ALMO, and was replaced in the second by Turner. Noles pitched the last inning. Dusty Davis had a single and a double to pace ALMO's attack. Legg, Hampton, Long, Alan, Carson and Billy Joyce all added singles.

## 1974-75 Hunting Seasons Released By Commission

With the exception of geese and ducks, the 1974-75 hunting seasons are set and here are how they shape up:

-White-tailed deer, in most regulatory counties, Nov. 16-Jan. 1, for the regular gun season; Oct. 1-31 for archery.

-Mule deer, Nov. 30-Dec. 15 in the Trans-Pecos; Nov. 23-Dec. 8 in the Panhandle.

-Antelope, by permit only, Sept. 28-Oct. 6 in the Trans-Pecos; Sept. 28-Oct. 1 in the Panhandle.

-Javelina, Oct. 1-Jan. 1, with the exception of Real, Kerr, Kinney, Edwards, Schleicher and Frio Counties where there is no closed season and no bag limit.

-Turkey, generally concurrent with the Nov. 16-Jan. 1 whitetail season.

-Quail, South Texas, Nov. 1-Feb. 2; Trans-Pecos, Nov. 16-Feb. 2; Possum Kingdom and Northeast, Dec. 1-Feb. 16; most other sections of the state, Nov. 16-Feb. 16.

-Mourning dove, North Zone, Sept. 1-Oct. 30; South Zone, Sept. 21-Nov. 3 and Jan. 4-19; exception are those counties with a whitewing season, fall segment closes Oct. 30.

-White-winged dove, Sept. 1-2 and 7-8, in those counties along the Rio Grande.

-Jacksnipe, Nov. 16-Jan. 19.

-Teal ducks, Sept. 14-22. Regular duck and goose seasons will be set by the Texas Parks and Wildlife Commission during their August meeting.

Complete listings of seasons and bag limits will soon be available in the department publication, "A Guide to Texas Hunting and Fresh Water Sport Fishing Regulations, 1974-75," to be found wherever hunting and fishing licenses are sold.

\*\*\*\*\*

**AIR CONDITIONING TIME**

With hot summer weather approaching, many homeowners' thoughts turn once again to room air conditioners. Such air conditioners should be selected in the proper size so that they perform their four functions correctly—cooling, dehumidifying, cleaning and circulating conditioned air. A unit that is either too large or too small will not provide the proper comfort conditions. The cooling capacity of a room air conditioner is expressed in British Thermal Units (BTUs)—the amount of heat the unit can remove from the air.

LITTLE LEAGUE BASEBALL



HUBERT HENRY

Life insurance can protect your business the same way it protects your family. Who can show you how?

A professional.

Southwestern Life  
Happiness is what we sell

514 E. 12th 385-4160

## MID SUMMER WATCH TRADE-IN SALE

Come Let's Talk Trade

Men's And Ladies

ALL TRADE-INS MUST BE 17 JEWEL

WATCH \$35.00 TO \$49.95

\$7.50 TRADE IN

WATCH \$40.00 TO \$65.00

\$12.50 TRADE IN

\$66.00 to \$85.00

\$17.50 TRADE IN

\$86.00 to \$99.50

\$22.50 TRADE IN

\$100 to \$125 27.50 TRADE IN

\$126.00 to \$200.00 TO BE NEGOTIATED

BRING IN ANY OLD TIMEX WATCH (Running Or Not) WE'LL GIVE YOU \$2.00 TRADE IN ON ANY WATCH BAND. REGULAR \$5.95. Limit One Per Watch Band



5TH & KIT

C. R. ANTHONY CO.

# DOORBUSTERS

LADIES CO-ORDINATE GROUPINGS BY DON-KENNY INCLUDES SKIRTS, PANTS, TOPS AND SHELLS

1/2 PRICE

FAMOUS BRAND NAME JUNIOR LOW RISE JEANS TIGHT FITTING BELLS PASTEL COLORS \$12 VALUE

\$6

LADIES & JUNIOR DRESSES

REG. \$16.00 REG. \$21.00

\$8.00 \$10.50

SPECIAL INTRODUCTORY OFFER LEVI DURANGO BELLS SUPER TOUGH DENIM BELLS NO IRONING NECESSARY

REG. \$14

INTRODUCTORY SPECIAL

\$12.00

REG. \$29.00

\$14.50

JUNIOR TOPS SEVERAL STYLES

VALUES TO \$12

\$4.00

CHILDREN'S SUMMER CLOTHING INCLUDING PANTS, DRESSES, SHIRTS, HALTER SETS AND MORE

1/2 PRICE

MEN'S ODDS & ENDS DRESS SHOES

1/2 PRICE

ONE GROUP OF ODDS & ENDS GIRLS SHOES IDEAL FOR SCHOOL

\$7.00

FAMOUS BRAND NAME BOOT JEANS FACTORY SECONDS, SMALL CHECKS, WINDOW PANE CHECKS AND SOLIDS

1/2 PRICE

REMAINING STOCK OF LADIES SANDALS

1/2 PRICE

1 SMALL GROUP OF CHILDREN'S SHOES

75% OFF

MEN'S FAMOUS BRAND NAME DOUBLE KNIT PANTS REGROUPED

1/2 PRICE

LADIES 1ST EDITION BLAZERS & VESTS BLUE & PINK ONLY

1/2 PRICE

LADIES 1ST EDITION & PYKE PANTS, BLOUSES & SHELLS

VALUES TO \$16

\$5.88

ONE GROUP OF BOYS BOOTS

REG. \$13.95

\$8.88

OPEN 8:30-6:00