



OUTSTANDING Farmer and Woman of the Year" for Littlefield are Mason Johnson and Flora Best Boone. Their plaques of special were presented to them during the Annual Chamber of Commerce Banquet here Friday night.

3-Year Resident Outstanding Woman

Flora Best Boone, a former school teacher and first lady of Littlefield, was named "Outstanding Woman Citizen" at the Chamber of Commerce Banquet held at the Littlefield Junior High School Friday night.

L. Dunlap said in making the presentation to Mrs. Boone. Mrs. Boone moved to Littlefield in 1918 and was one of four teachers for all 11 grades of the Littlefield schools. Most of Mrs. Boone's teaching was high school English, and she delights in telling how a former student tried to pay her a compliment by saying, "You learned me more English than anyone."

Johnson Named Top Farmer

Mason Johnson, a 1958 graduate of Littlefield High School and a 1962 graduate of Texas State University, accepted the Outstanding Farmer Award at the Friday night Chamber of Commerce Banquet.

Pat Boone Sr. was Littlefield's first Worthy Grand Patron and Mrs. Boone was the first Worthy Matron of the Littlefield chapter of the Order of Eastern Star and in 1951-52 was named Worthy Matron of Texas, the highest honor one can achieve in this organization.

Buddy Bingham, a farmer and a C-C president, presented the plaque. Johnson has been farming approximately 640 acres of his father's and mother's land near Littlefield since he received his degree in animal husbandry from the Canyon university. About 180 acres of Johnson's farmland is irrigated, and he has installed underground pipe lines, a waterway and a water recovery pit, plus other conservation measures including land leveling, diversions, terraces, and other farming.

Mrs. Boone has acted as foreman or manager of the Boone ranch at Elida, N. M. since her husband's death, and her main interests center around her son, Pat Boone Jr., his wife, and their two children, Betty and Pat.

Johnson is an active cooperator of the Lamb County Soil and Water Conservation District and has incorporated all the conservation practices necessary to control erosion and conserve soil moisture. Johnson took over farming where his grandfather left off and applies his knowledge and methods to the best of his ability, hoping that if he takes care of the land, the land will take care of him. Johnson is attending WTSU, Johnson met and married his wife, Joan, Mrs. Johnson is a school in the Littlefield system until the arrival of their daughter Amy. Johnson is a member of the Church of Christ and is active in church work. He is chairman of the crops committee and is a crops judge for the Lamb County Extension Service 4-H Fair, in addition to carrying out his own crop demonstrations on cotton, feed and other crops.

John Moody is the Community Action program director for Lamb and Bailey Counties, and John Villanueva is the local Center director. Moody said the primary purposes of the program is to help people in the poverty target area to get employment, to further educate them and to build up their image and help get them off welfare rolls and out of poverty.

WEATHER

	H	L
20	55	28
21	58	29
22	66	29
23	68	28
24	62	28
25	65	34
26	69	29
27	69	21
28	59	21

Outstanding Citizens Feted As 350 Attend C-C Event

Surprised Ray Learns Of Honor Saturday Morning

"It's a good thing I am lying down, or I'd faint," J. Pickett Ray said from his hospital bed Saturday morning when he learned that he had been named Littlefield's Outstanding Citizen by the Littlefield Chamber of Commerce. "And it's a good thing the doctor is here, too, or I'd have a heart attack," he quipped when his wife handed him the plaque she accepted at the Friday night banquet in his absence. Ray was cited for his service beyond the call of duty in his job as public works supervisor for the city of Littlefield. More than 350 persons present for the banquet gave a spontaneous standing ovation to this public servant of some 23 years when his wife accepted the honor for him. Littlefield Mayor J. E. Chisholm and a former "Outstanding Citizen" made the presentation, saying Ray had performed his duties of repairing city services beyond the call of duty, regardless of the hour, the pay, or the number of hours during his 23 years as a city employee.



J. PICKETT RAY was surprised Saturday morning in his hospital room when he heard he had been honored as Littlefield's "Outstanding Citizen of the Year" during the Annual Chamber of Commerce Banquet Friday night. His wife accepted the plaque for him at the banquet and made the presentation to him at the hospital the following morning.

Three Given Town's Awards

Sparked with wit and humor throughout the evening, the Annual Chamber of Commerce Banquet entertained and feted approximately 350 of Littlefield's citizens and her guests here Friday night in the Junior High School Cafeteria. Citizens "painted the town red" and let everyone know who their top citizens are, when presentations of the "Outstanding Citizen", "Outstanding Farmer" and "Outstanding Woman" of the year awards were made. Dave Hamblin, master of ceremonies, and Kenneth Wyatt, speaker for the night, are both Methodist ministers and kept the laughter rolling during the entire two hours of events. Out-of-town guests came from Brownfield, Clovis, N. M., Olton, Shallowater, Earth, Lubbock, Anton, Plainview, Levelland, Ft. Riley, Kans., Amarillo and Muleshoe. J. Pickett Ray, public works supervisor here for 23 years, was honored as "Outstanding Citizen" and was unable to receive his plaque personally because of being hospitalized with an illness. His wife accepted it for him and presented it to him in his room Saturday morning. Making the presentation was Mayor J. E. Chisholm, who lauded Ray in his untiring work for the city. Buddy Bingham presented the "Outstanding Farmer" award to Cecil Mason Johnson, a Lamb County native who farms near Littlefield. Mrs. Flora Best Boone received the top honors as "Outstanding Woman of the Year", and making the presentation to her was Mrs. T. L. Dunlap. Rev. Wyatt, the keynote speaker from Tulsa, spoke of the individual's responsibility to his community. He interspersed serious thinking with humor, sound effects

AREA GRAIN THEFT INVESTIGATION

Littlefield Trucker Charged

Gene Mixon, a 38-year-old Littlefield trucking fleet owner, was arrested in Littlefield Friday morning by Lamb County Sheriff E. D. McNeese and charged with felony theft of grain. Hereford sheriff's officers said the arrest was the latest development in their investigation of area grain losses that they believe has sapped more than a million dollars out of this area in the past eight years.

The warrant for Mixon's arrest was prepared by Deaf Smith Sheriff Travis McPherson and specifically charged Mixon with theft of grain over \$50 from Farmers' Corner Elevator on the night of Dec. 30, 1970, in the same incident that resulted in the Jan. 18 arrest of Wayne Richard Vaughn, 21, and Roy (Chip) Stewart, 30, truck drivers for Mixon Trucking and another firm out of Lubbock and Colorado.

Harold Wheeler, Deaf Smith deputy sheriff who headed the investigation, and a Texas highway patrolman brought the warrant for Mixon's arrest to Littlefield Thursday, after papers were prepared in Hereford by District Attorney Jerry Tucker. After the warrant was served, Mixon posted a \$10,000 bond. Deputy Wheeler said, "we are going after the top men in the several-state grain theft operation who instigated, planned and went along with the entire operation." Wheeler added that Deaf Smith officers believed that the first two arrested were involved only to the extent of working for other people, and that other arrests would be made.

Vaughn and Stewart were the drivers of two trucks that were stopped that night and Mixon was the owner of one of the truck-tractor semis, according to Wheeler. On Tuesday, Jan. 12, some persons apparently attempted to steal another truck load of grain from the elevator, Sheriff McPherson said, but when they pulled their truck under the hopper, the air conditioner wedged the truck under the elevator bin. McPherson said the driver apparently went after another truck and returned to pull the stuck truck away from the bin. The first truck was moved about 100 yards down the road and abandoned, because in the attempt to free it, the drive shaft was twisted so that it left the truck inoperable. Hereford officers put a surveillance on the abandoned truck, and when no one attempted to get the truck after five days, officers impounded the truck and prepared warrants for the arrests of Stewart and Vaughn.

Multi-Service Center Opens Here Tuesday

The Littlefield Center operates under a board of directors made up of elected officials, private interest parties such as church, civic and business groups, and citizens from the target poverty area. Charles Duval is president of the board here, and other members are G. T. Sides, See CENTER, Page 12

Simpson Files In School Vote

Arlen Simpson, a 33-year-old district sales manager for Pioneer Sorghum Company, filed for a position on the ballot for the Littlefield school trustee election that will be held here on April 3. The terms of Buddy Bingham, president of the Littlefield school board, and Flannery Newton expire this year, and both men signed up for re-election at the last regular meeting of the board members. Simpson added his name to the list late Friday afternoon when he filed at the school tax office. Simpson, his wife Doris, and their seven-year-old son Todd, live at 115 E. 20th. Others wishing to file as school board candidates have until March 4 to file with Sid Hopping at the school tax office on Lfd. Drive.

Kessler Appointed City Tax Officer

A native Georgian, H. Leon Kessler, who is already known in Littlefield, has been appointed to the city secretary-tax assessor-collector's office. City Manager Pat Bradley made the appointment here Friday and the city council approved the appointment the same day. Kessler begins his duties in that office Monday, and gave his official resignation as sanitation inspector for the Migrant Health Center Friday. Kessler remarked that he "presented my resignation, and the same guy hired me back the next minute." Kessler came to Littlefield in November of 1969 from Morton, where he was manager of the Chamber of Commerce. He has worked in the Migrant Health Center since that time. He was born in Savannah, Ga. and has lived in Texas since 1948. He and his wife, Janeria, have three sons and one daughter. Their sons are Gary, 18, who is attending South Plains College and is a pre-RN nursing major who is employed at Littlefield Hospital; David, 15, a freshman; and Daran, 11, a fourth grader. Their eight-year-old daughter, Lorie, is a second grader. The family attends the Ninth Street Church of Christ.



LEON KESSLER

Easter Seal Letters Go In Mail Soon

Patton Jr., will head the Easter Seal Appeal in county, according to P. J. Jr., of Fort Worth, of the Easter Seal for Crippled Children of Texas.

Special emphasis is being given in the 1971 Easter Seal Appeal to the disabled citizen or his family in Lamb County who may need assistance and not know where to obtain it.

Any disabled person can contact him at the Security State Bank in Littlefield, who will refer the request for services to the Easter Seal Society.

A determination of the extent and type of assistance needed and the most efficient means of obtaining that assistance will be made. Arrangements for needed treatment or service will be made by the Easter Seal Society.

Scouts Saluted By Marineworld

Sea-Arama Marineworld will salute the 61st birthday of Boy Scouting with the Galveston attraction's third annual "Salute to Boy Scouting" during the month of February.

More than 10,000 Scouts from Texas and Louisiana participated in 1970, and Sea-Arama officials are expecting between 13,000 and 15,000 Scouts to be involved this year.

A camporee slated for each Saturday during the month has been added to the event at the request of Scout officials.

During the month of February, Sea-Arama Marineworld will admit all Scouts, advisors, leaders, den mothers, and explorers, "in uniform" for the special reduced price of \$1.25, each Friday, Saturday and Sunday during February.

All Scouts visiting Sea-Arama during this special salute will receive a free, fully embroidered "Mamuk the Killer Whale" patch, at the attraction's main gate.



THIS PEN, INK and wash sketch is Benny Goss' concept of the old Yellow House Hotel that was built in Littlefield in 1912 and completed in 1913. It was moved from XIT Street to the 900 block of West Sixth where it still stands. This is the first of a series of artistic sketches by preacher-artist Goss of Littlefield landmarks that can still be seen in this area.

LITTLEFIELD LANDS, NO. 1

Hey Day Past For Hotel

When the Littlefield Lands Company established a demonstration farm in the early 1900's at the site where the commissioners' warehouse barns are located now, the land boom brought so many prospectors to see the new land that before long prospective buyers could not be accommodated at the ranch headquarters.

A hotel was needed because the 60-70 mile round-trip from Abernathy, Lubbock and other neighboring towns was more than could be made in one day and leave any time for prospective buyers to inspect land.

Arthur P. Duggan Sr. secured bids for an 18 room hotel and let the contract in December, 1912. Promptly eight carpenters were busy erecting the two-story frame building, using material from as far away as Roswell, N. M. Work was pushed through the snow, sands and cold of winter, and by the end of February, 1913, the hotel was far advanced, and was completed in March of that year.

On the March 5-6 opening, 40 prospectors filled the bright yellow Casa Amarillo Hotel, two to a bed, and overflowed onto pallets in the company office, the wagon yard, and the lumber company office.

On July 4, 1913, Littlefield staged its opening day. On that still, cloudless morning, over 1,400 people gathered to watch the official opening of Littlefield. A land auction, Littlefield's first passenger train, a big noon meal of chuck wagon dishes, a 15-piece band, a speech, rodeo and a big dance were enough to bring everyone in from miles around town.

A big dance ended the festive day, and that night the Casa Amarillo Hotel was filled and every building and home had overnight guests. Many others slept under wagons or out under the stars.

Until the land boom was over the hotel lodged many real estate men, new settlers and the area ranch hands who came into town. For many years it was the meeting place for the town's activities and many social and business functions were conducted in the dining room of the hotel.

The Yellow House Hotel

remained on XIT Street until a few years ago when it was moved to its present site in the 900 block of West Sixth.

South Plains Enrollment Is Increased

Spring enrollment at South Plains College increased 5.8 per cent over that of last Spring.

The number of students enrolled this Spring is 1,783 as compared with 1,536 last Spring, according to Registrar Dr. Charles Sylvester.

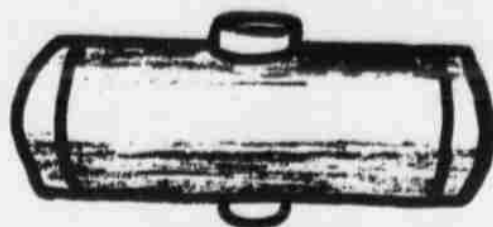
This number does not include approximately 100 persons who are enrolled in various short courses this semester.

Short courses now in progress include physical fitness for women, conversational Spanish, woodworking, oil painting, income tax procedures, flower arranging, pruning trees and shrubs, and wiglet styling.

HEARING LOSS

A loss of hearing because of aging-called presbycusis-affects many persons 55-years of age and older. The percentage of people who experience measurable hearing losses increases markedly with age.

FIBERGLASS REPAIRS TANKS and BOATS



PUMP IT ALL OUT BY INSTALLING A BUBBLE

ALSO SEE US ABOUT ALUMINUM PIPE WELDING

Fulton Radiator Shop

412 HALL AVE. Littlefield Phone 385-4545

BEAUTY

that uplifts

Hammons General Home

SMALL APPLIANCE SERVICE

BY VACUUM CLEANERS, OUR SPECIALITY

FAST SERVICE

REASONABLE PRICES

GUARANTEED WORK

PAT'S RECORD CENTER

HEY -- THESE ARE REAL GOOD!



MALTS & SHAKES

MONDAY ONLY

22¢

DAIRY QUEEN

DAIRY QUEEN

Mr. & Mrs. Frank Robinson
1001 9th Phone 385-3666

Cox FURNITURE & APPLIANCE

1804 HALL AVE. LITTLEFIELD, TEX. 722.385-5883

Frigidaire! re-invents the washer



From Frigidaire! The washer that faces up to the demands of change. With more flexible capacity... more control... tailored washing action... infinite water level control... a better way to fill and rinse... and much more. So many improvements, we say it's "re-invented." (Even a removable console for quick, easy servicing... if it's ever needed.)

Here are 6 good reasons to buy a Frigidaire Jet-Action 1-18 now!

- Exclusive Jet Circle Spray System**
A better way to fill... the most thorough rinse you can get. Rinses as it fills from not one, but 12 pressurized water jets around the tub. Sprays down from the top so clothes get under-water faster, get more rinse action.
- Patented Jet Cone Agitator**
Bladeless, up-and-down action keeps clothes under water. Plunges clothes deep into water and suds... circulating, turning every item top-to-bottom... over and over.
- Washes 1 piece to 18 pounds - or any size load in between**
No attachments to add or store. Does a large family wash, yet handles a piece of delicate lingerie easily, gently.
- Jet Flow Lint Filter**
Traps even the finest lint particles. Easy to get to, easy to clean. Out-of-the-way for loading and unloading clothes.

5 year nationwide protection plan
1-year Warranty for repair of any defect in the entire product, plus a 4-year Protection Plan (parts only) for furnishing replacement for any defective part in the complete Transmission (except belt), Drive Motor and Water Pumps.

\$259⁹⁵ W/T

BONUS: QUALIFIED SERVICE

Frigidaire re-invents the dryer, too.

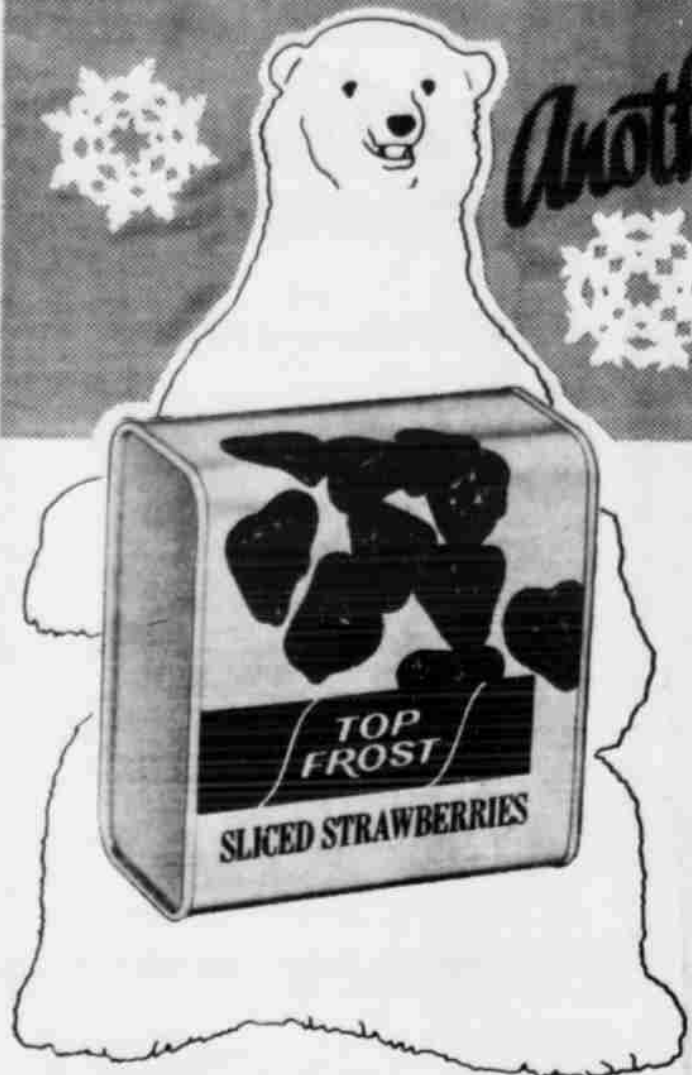
\$179⁹⁵

... re-designed to save space. Only 27" wide. Match it with a Frigidaire 1-18 Washer for the narrowest 18 lb. laundry pair anywhere. Even a removable console for simple, quick servicing.

Easier to load and unload. Less Stoop! Opening is a full 19" off the floor. Less grouch! Huge 240 sq. in. opening makes it easier to load and unload... see inside.

Cox FURNITURE & APPLIANCE

1804 HALL AVE. LITTLEFIELD, TEX. 722.385-5883



Another FURR'S TOP FROST freezer fiesta

WE GIVE DOUBLE GOLD BOND STAMPS STARTING AT 1 P.M. TUESDAY AFTERNOON AND ALL DAY WEDNESDAY.

FREE GOLD BOND STAMPS

80 FREE GOLD BOND STAMPS WHEN REDEEM YOUR MAILED COUPONS AT FURR'S. ALSO, RECEIVE 100 FREE STAMPS WITH PURCHASE OR MORE AND COUPON. COUPON GOOD THRU FEBRUARY 3.

CORN Food Club Whole Kernel 24 Oz. Cello Bag **39¢**

LEMONADE TOP FROST, FRESH FROZEN, 12 OZ. - CAN **5 FOR \$1**

STRAWBERRIES TOP FROST FRESH FROZEN, 10 OZ. PKG. **4 FOR \$1**

TOPPING TOP FROST 10 1/2 OZ. PKG. **49¢**

POTATOES GAYLORD FRENCH FRIES, REG. OR KRINKLE CUT, 2-LBS. **3 FOR \$1**

ORANGE JUICE TOP FROST 6 OZ. CAN. **8 FOR \$1**

BLACK EYE PEAS TOP FROST 10 OZ. PKG. **4 FOR \$1**

CAULIFLOWER TOP FROST 10 OZ. PKG. **4 FOR \$1**

PEAS TOP FROST, SWEET 10 OZ. PKG. **5 FOR \$1**

DINNERS TOP FROST, CHICKEN, BEEF, TURKEY, SALISBURY STEAK, OR MEAT LOAF, 11 OZ. **5 FOR \$1**

GRAPEFRUIT JUICE TOP FROST 6 OZ. CAN. **5 FOR \$1**

CORN TOP FROST, IN SAUCE 10 OZ. PKG. **6 FOR \$1**

SPINACH TOP FROST, CHOPPED OR LEAF, 10 OZ. **6 FOR \$1**

OKRA TOP FROST CUT 10 OZ. PKG. **4 FOR \$1**

POTATOES GAYLORD FRENCH FRIED, 5 LB. **4 FOR \$1**

PEAS & ONIONS TOP FROST, IN SAUCE 10 OZ. **5 FOR \$1**

COFFEE FOOD CLUB INSTANT 10 OZ. JAR. **5 FOR \$1**

TOMATOES FOOD CLUB SOLID PACK, NO. 303 CAN. **5 FOR \$1**

FRUIT PIES
Top Frost, Apple Peach, Cherry Or Blueberry,
39¢
24 Oz.

POT PIES
Top Frost, Chicken, Beef, Turkey Tuna Or Macaroni & Cheese,
6 FOR \$1
8 Oz.

GRAPE JUICE
Top Frost Fresh Frozen
39¢
12 Oz. Can

BROCCOLI SPEARS
TOP FROST, FRESH FROZEN
4 FOR \$1
10 OZ. PKG.

PEACHES FOOD CLUB SLICED OR HALVES, NO. 2 1/2 CAN **25¢**

SALAD OIL FOOD CLUB 48 OZ. BOTTLE **89¢**

GREEN BEANS FOOD CLUB, CUT NO. 303 CAN **5 FOR \$1**

BEEF STEW FOOD CLUB 24 OZ. CAN **59¢**

TOWELS TOPCREST 162 COUNT ROLL **25¢**

DETERGENT
PHOSPHATE FREE 10-LB. BOX **\$1.69**

CATSUP FOOD CLUB 26 OZ. BOTTLE **36¢**

TOMATO PASTE FOOD CLUB 6 OZ. CAN **14¢**

APPLE JUICE FOOD CLUB QT. JAR **3 FOR \$1**

PORK & BEANS FOOD CLUB NO. 303 CAN **8 FOR \$1**



TOMATO SAUCE
FOOD CLUB NO. 303 CAN **5 FOR \$1**

FLOUR FOOD CLUB 5-LB. BAG **39¢**

CORN FOOD CLUB, WHOLE KERNEL OR CREAM STYLE GOLDEN, NO. 303 CAN **6 FOR \$1**

CHERRIES FOOD CLUB, RED, SOUR, PITTED, NO. 303 CAN **4 FOR \$1**

TISSUE TOPCO, BABY SOFT, 4-ROLL PKG **39¢**

MAYONNAISE FOOD CLUB QT **59¢**

SUDS TIME DETERGENT LIQUID DETERGENT FOR DISHES, GT **49¢**

RAISINS FOOD CLUB 2-LB. PKG **69¢**

BLACK PEPPER FOOD CLUB 4 OZ. CAN **29¢**

MIXED VEGETABLES FOOD CLUB NO. 300 CAN **5 FOR \$1**

MARSHMALLOWS FOOD CLUB 16 OZ. **29¢**

PINEAPPLE CRUSHED OR SLICED IN JUICE, FOOD CLUB, NO. 2 CAN **39¢**

PICKLED BEETS FOOD CLUB SLICED 16 OZ. JAR **29¢**

POTATOES SHOESTRING FOOD CLUB, 7 1/2 OZ. CAN **36¢**

GREEN BEANS FOOD CLUB, WHOLE NO. 303 CAN **24¢**

CARROTS FOOD CLUB SLICED NO. 303 CAN **17¢**

TOASTER TOP FROST, FROSTED ASSORTED FLAVORS, 11 1/4 OZ. PKG. **39¢**

PEANUT BUTTER FOOD CLUB KRUNCHY 18 OZ. **59¢**

SWEET POTATOES FOOD CLUB NO. 303 CAN **4 FOR \$1**

INSTANT RICE FOOD CLUB 24 OZ. PKG. **69¢**

GELATIN FOOD CLUB ASSORTED FLAVORS, 3 OZ. **10¢**

DOG FOOD DOG CLUB, GOURMET, ASST FLAVORS, NO. 300 CAN **4 FOR \$1**

SNACK TIME CRACKERS FOOD CLUB 12 OZ. **29¢**

PANCAKE MIX FOOD CLUB 2-LB. PKG. **39¢**

APPLE SAUCE
FOOD CLUB NO. 303 CAN **19¢**

FRUITS & VEGETABLES

GRAPEFRUIT RUBY RED, TEXAS SWEET, LB. **10¢**

ORANGES CALIFORNIA SWEET NAVEL, LB. **22¢**

APPLES RED OR GOLDEN DELICIOUS WASH. STATE, LB. **19¢**

CABBAGE TEXAS FANCY GREEN, LB. **10¢**

CUCUMBERS LONG SLICERS LB. **22¢**

SWEET POTATOES
MARYLAND SWEET, LB. **15¢**

EGG PLANT FANCY, LB. **29¢**

GREEN BEANS FANCY, LB. **39¢**

POTATOES NEW REDS, FLORIDA, LB. **16¢**

TURNIPS FANCY, PURPLE TOP, LB. **17¢**

GREEN ONIONS FANCY ARIZONA **3 FOR 29¢**

RED RADISHES 8-OZ. CELLO PKG. **2 FOR 19¢**

CARROTS TOP FRESH 1-LB. CELLO BAG **2 FOR 29¢**

D'ANJOU PEARS WASH. STATE LB. **26¢**

SHOP Furr's MIRACLE PRICES

LOW PRICES ON TENDER FURR'S PROTEN BEEF

fresh dated



PRICES IN THIS AD ARE EFFECTIVE FOR ONE FULL WEEK, THRU FEBRUARY 7

ROAST ROUND STEAK FURR'S PROTEN, LB. **87¢**
ROAST TENDERLOIN STEAK FURR'S PROTEN, LB. **87¢**
ROAST RIB BONE **\$1.09**

ROAST ARM ROAST, FURR'S PROTEN, LB. **82¢**
ROAST RIB STEAK STEAK, FURR'S PROTEN' LB. **87¢**
ROAST CLUB STEAK FURR'S PROTEN, LB. **98¢**
ROAST STEW MEAT BONELESS LEAN, LB. **69¢**
ROAST LUMP ROAST FURR'S PROTEN' LB. **87¢**
ROAST SHORT RIBS FURR'S PROTEN, LB. **33¢**

CANNED HAM
 FOOD CLUB BONELESS 3-LB. CAN **\$2.69**

ROAST CHUCK FURR'S PROTEN, LB. 53¢

GOLD BOND STAMPS
GOLD BOND STAMPS
 DOUBLE ON WEDNESDAY

SLICED HAM
 DANOLA 4% OZ PKG **59¢**

ROAST DELUXE POT ROAST FURR'S PROTEN, LB. **87¢**
SHORT RIBS DELUXE BAR-B-CUE FURR'S PROTEN, LB. **49¢**
STEAK BONELESS FAMILY STYLE FURR'S PROTEN' LB. **88¢**
SWISS STEAK ROUND BONE ARM FURR'S PROTEN, LB. **87¢**
STEAK CUTLETS BONELESS LB. **\$1.19**
BACON FRONTIER SLICED, LB. **59¢**
FRANKS FARM PAC ALL MEAT, 12 OZ. **53¢**
BOLOGNA FARM PAC 12 OZ. PKG. **59¢**

FRYER PARTS
BREAST All white meat, Lb. **69¢**
THIGHS Juicy dark meat, Lb. **59¢**
LEGS Children's Choice choice, Lb. **59¢**
BACKS For dumplings Lb. **15¢**

SAUSAGE FARM PAC WHOLE HOG, 1 LB. **65¢**
SAUSAGE FARM PAC WHOLE HOG, 2 LB. **\$1.29**
PERCH PRE-COOKED HEAT-EAT, LB. **69¢**
CHEESE LONGHORN STYLE BLOCK, LB. **79¢**
STEAKS SHURTENDA, HEAT-EAT, 5 STEAKS, 14% OZ. PKG. **\$1**
STEAK FINGERS BREADED HEAT-EAT 14 STICKS, 13% OZ. PKG. **\$1**
CORN DOGS 8 COUNT PKG. 1 LB. 7 OZ. **\$1**
BEEF PATTIE 15 PATTIES 2 LB. 15 OZ. PKG. **\$1.79**

SAUSAGE FARM PAC SKINLESS LINKS 12 OZ. PKG. 53¢

TOILET COSMETIC PUFFS TOPCO VALIANT PACKAGE OF 300 **3 FOR \$1.00**
TOILET OLD CAPSULES TOPCO VALIANT 10 CT. **3 FOR \$1.00**
TOILET BABY SHAMPOO TOPCO VALIANT 16 OZ. **2 FOR \$1.00**
TOILET COTTON SWABS TOPCO VALIANT 90 COUNT **3 FOR \$1.00**
TOILET BABY OIL TOPCO VALIANT 16 OZ. **2 FOR \$1.00**

FLASHLIGHT BATTERIES
 BIG VALUE 10 FOR \$1
 "D" SIZE

Aspirin
 BEACON 5 GR.
 100 COUNT PKG. **5 FOR \$1.00**

Baby Pants
 TOPCO KIDDY KIN
 PLASTIC SNAP ON SMALL, MED. LRG. REG. 49¢ **3 FOR \$1.00**

Facial Tissue
 BABY SOFT
 2-PLY 200 COUNT **5 FOR \$1.00**

TOILET DEODORANT
 TOPCO VALIANT REGULAR OR DRY **2 FOR \$1.00**

SHAVE CREAM
 TOPCO VALIANT 14 OZ. CAN **2 FOR \$1.00**

Topco Socks
 FOR THE ENTIRE FAMILY

BOYS WHITE CREW SOCKS SIZES 6-11, PKG OF 3 PAIR **99¢**

GIRLS MORPUL CREW SOCKS, SIZES 6 TO 11 PKG. OF 2 OR 3 PR. **99¢**

MEN'S WHITE NYLON CUSHION CREW SOCKS 98¢ VALUE, SIZES 10-13 STRIPE OR PLAIN, PR. **69¢**

LADIES HOLEPROOF NYLON PARTY HOSE, REG. 99¢ 2 SIZES FITS ALL. PAIR. **67¢**

Milk of Magnesia
 TABLETS 250 COUNT TOPCO VALIANT **3 FOR \$1.00**

TOOTH PASTE
 VALIANT FAMILY SIZE TUBE **3 FOR \$1.00**

BABY POWDER
 TOPCO VALIANT 14 OZ. CAN **2 FOR \$1.00**



ANTON

C. D. NELSON 997-4261



ON FHA and the Home Demonstration Society participated in a canvas for the times for Hockey day, Jan. 25. Eight used their cars 16 girls on the 100 was collected in the McLarty was the FHA, under the of Mrs. Mary Jane

blackeyed peas, tossed salad, hush puppies, milk, raisin and carrot cake.

Wed. 3--Roast beef and gravy, mashed potatoes, buttered carrots, rolled wheat rolls, butter, milk and coconut cookies.

Thurs. 4--Turkey and dressing and giblet gravy, green beans, cranberry salad, hot rolls, milk and peaches.

Fri. 5--Pizza pie, baked beans, tossed vegetable salad, french dressing, milk and blackberry cobbler.

GUESTS IN the home of Mr. and Mrs. Ralph Lewis and Gene last weekend were Mr. and Mrs. Ford Copeland of Dimming, N. M.; Mrs. O. J. Hazleton and daughter Linda of Weatherford; D. E. Cline of Truth or Consequences, N. M.; Mr. and Mrs. Alton Wyly of Friona; and Miss Leta Wyly, Lubbock.

VISITING IN the home of Mrs. W. M. Alexander Saturday

was her cousin, W. C. McCeivey of Goodland.

MRS. K. W. WELLS is visiting relatives in Memphis, Texas.

MRS. EDNA LEVERETTE, who has been making her home in Anton, has moved to Portales, N. M.

MR. AND MRS. Melvin Booth, Mike and Mark from Clarendon visited here over the weekend with their mothers, Mrs. Joe Boothe and Mrs. H. C. Kesey and other relatives.

RAYMOND KESEY, student at West Texas State University, spent the weekend here with his parents, Mr. and Mrs. H. C. Kesey, Jr.

MISS JENNA MAYNARD of Seminole visited her parents, Mr. and Mrs. Gus Maynard over the weekend.

MRS. ERA HAGAN is visiting her daughter, Mrs. Yeulata Isler, in Hobbs, N. M. this week.

MRS. J. W. JACKSON of Ropesville visited her parents, Mr. and Mrs. B. Forman Tuesday.

MR. AND MRS. Doyce Woods and Gib of Snyder visited his parents, Mr. and Mrs. L. D. Woods over the weekend. Visiting in the Woods home Sunday was their daughter and family, Mr. and Mrs. Jim Dickey of Spade.

MR. AND MRS. O. D. Oakley visited relatives in Durant, Okla. over the weekend.

MRS. DELIA ABLES of Amarillo arrived in Anton Friday to spend several months with her sister, Mrs. Tom Ham. Visitors in Mrs. Ham's home Sunday was her brother, T. W. Moyer and Mrs. Millie Westland of Lubbock.

MR. AND MRS. L. L. Anderson were luncheon guests in the home of their granddaughter and family, Mr. and Mrs. Olen Finker in Petersburg, Sunday.

MRS. EVA BLEDSOE of Roswell, N. M. visited in the home of her daughter and family, Mr. and Mrs. Wayne Ware this week.

MRS. RUBY SHANNON visited her mother, Mrs. Ada Arnold at the Tulia Rest Home in Tulia Wednesday.

HOBE PARKER is in the Littlefield Hospital.

Homecoming Day Scheduled At LCC

Saturday, Feb. 20, will be the big day for Lubbock Christian College students, exes and high school visitors.

Counseling for high school students will be available throughout the day and they will be encouraged to participate in all the homecoming events.

Saturday evening, at the half-time ceremonies, the new homecoming queen, the Outstanding Alumni of 1970 and the winners of the float competition will be announced. The theme for the 1971 Homecoming is "We've Only Just Begun" as applied to the constant growth LCC has enjoyed since its founding in 1957.

Many exes will get to see the new Mabee Agriculture-Science Laboratory for the first time, when faculty members in chemistry, biology, physics and agriculture will be on hand to show off their respective labs and equipment to all visitors.

Larry Roberts, who attended LCC in 1963-65 and is presently serving as youth minister at the 6th & Izard congregation, Little Rock, Ark., will be the featured speaker at the Homecoming Chapel.

Roberts, originally from Lamesa, was in Koinonia and the Meistersinger Chorus at LCC and finished at Abilene Christian College.

FIELDTON

MRS. RAY MULLER 262-4203

VISITING WITH Rev. and Mrs. David Burum over the weekend were her parents, Mr. and Mrs. B. F. Wilson and her brother, Mr. and Mrs. Benny Wilson and children of Duncan, Okla.

REV. AND MRS. Gene Joplin and family of Madador spent Friday night visiting with Mr. and Mrs. Earl Phelan.

MR. AND MRS. Ray Muller and family spent Saturday visiting with her sister, Mr. and Mrs. Wilbur Hayse and family.

MR. AND MRS. Kenneth Phelan of Weatherford visited during the weekend with his uncle, Mr. and Mrs. Earl Phelan.

THE FIELDTON and Hart Camp Baptists Churches began their annual Bible study course Monday night at the Fieldton Baptist Church.

DONALD COWAN, Junior Niclos and Allen Yoakum returned home Monday from a fishing trip to Old Mexico.

LUCRETIA GOYNE, granddaughter of Mr. and Mrs. Royce Goyne underwent surgery Monday at the Methodist Hospital. She returned to her home on Tuesday.

MR. AND MRS. Elton Rose and family of Dimmitt spent Sunday with Mr. and Mrs. Dee Stamps and family.

DAVE DAILEY
HAS MOVED TO
500 PHELPS

AND WILL CONTINUE
OFFERING TO THE
PUBLIC

A-1 Service

GUNN BROS. STAMPS DOUBLE ON WED.

lete Auto Service Can Be Obtained From The
ne-up And Air Conditioning Specialist At

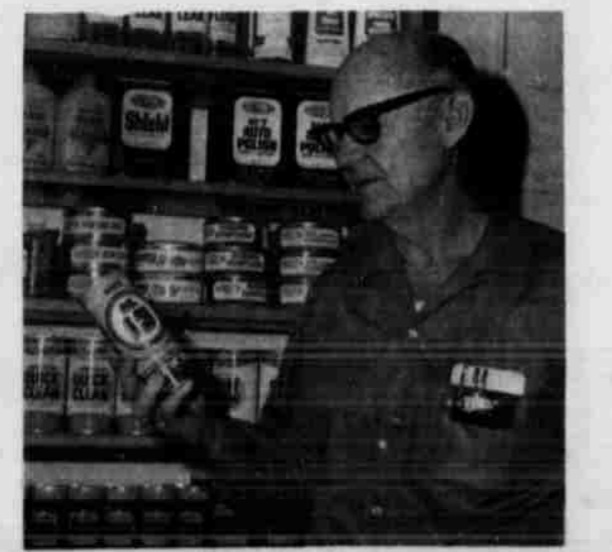
Dave Dailey's 66 Service

Phelps Phone 385-5685

**UNDER
NEW
OWNERSHIP**

A HEARTY WELCOME TO OUR FRIENDS
AND CUSTOMERS TO COME BY FOR A
VISIT AND SEE OUR COMPLETE LINE OF
AUTOMATIVE PARTS, ACCESSORIES AND
IRRIGATION MOTORS.

LITTLEFIELD MOTOR PARTS Is Now Home Owned.



BUCK OLDHAM
New Owner



JOE CARLISLE
Counter Man

RICHARD SHIPLEY
Counter Man

We carry a complete stock of brand named merchandise such as:

- McQuay AC Wagner Gates Stewart Warner Tri Co Fram Delco
Monroe Hasting Continental

LITTLEFIELD MOTOR PARTS

908 E 9th 385-5141

\$\$ SAVE \$\$
Gas For Less
ATEX SELF SERVICE

9th and HALL — LITTLEFIELD, TEXAS

YOU CAN PAY MORE. BUT WHAT FOR???

SPONSORED BY ATEX OIL CO. AMARILLO, TEXAS.

THRIFTY FOODS for THRIFTY SHOPPERS

WE GIVE DOUBLE GUNN BROS. STAMPS ON TUESDAY AND WEDNESDAY.

DEL MONTE WHOLE KERNEL **CORN** 303 CAN **2 FOR 49¢**

CLOVERLAKE **MELLORINE** 1/2 GALLON **39¢**

SHURFINE STEWED **TOMATOES** 303 CAN **27¢**

HOLSUM IMPORTED SPANISH **OLIVES** 7 OZ. **59¢**

SCOPE FAMILY SIZE **99¢**

COLGATE INSTANT SHAVE REG. 79¢ **39¢**

KRAFT VELVEETA CHEESE 2 POUND BOX **\$1.29**

VAN CAMP **PORK & BEANS** 300 CAN **2 FOR 29¢**

JUMBO SIZE **DASH** **\$1.99**

SHURFINE **FLOUR** 5 LB. **39¢**

MARKET SPECIALS

HORMEL BACON LB.	59¢	VINE RIPE TOMATOES LB.	30¢
FRESH GROUND HAMBURGER LB.	39¢	CABANA BANANAS LB.	12 1/2¢
PORK ROAST LB.	49¢	COLONIAL FROZEN CAKES	
RANCH STYLE STEAK LB.	59¢	German Chocolate	
PORK STEAK LB.	49¢	Coconut, Chocolate Fudge,	
		24 OZ.	79¢

LEE HAYNES 205 WEST 3rd. ALVIS TUBBS

PUBLIC RECORDS

JUDGE'S DOCKET
 Parks, charged with law violation, Jan. 25. Released on own bond.
 Wiley, charged with violation, Jan. 25. Entered plea of not guilty. Bond set at \$100.
 Treras, charged with violation, Jan. 25. Sentenced to fine of \$100 and court cost.
 Martinez was charged with law violation Jan. 25. Entered plea of guilty and fined \$100 fine plus costs.

REGISTRATION
 Mueza, Levelland pickup, Mitchell

over, Route 1, Anton, 2-door, Lubbock

McFerrin, Cotton 1971 Ford pickup, Ford, Inc.

Deep, Rt. 2 Anton, 1971 pickup, Mitchell Ford.

ing, Spade, 1970 Buick, Marcum Olds-Cadillac.

COURTS
 matter of the marriage of Ann Bolton and Ulyss D. divorce was granted

matter of the marriage of Lester Burnett and Mary Burnett, divorce was granted on Jan. 4.

matter of the marriage of Gary L. Wooten and Wooten, divorce was granted on Jan. 29.

COURT
 State of Texas versus Law and 1966 Chevrolet truck for forfeiture of cause of motor vehicle and in illegally transported alcoholic beverages, 7.

Perez versus Texas Insurance Commission, workmen's compensation, filed Jan. 8.

S. Gatewood and Ann Gatewood versus National Security Life Insurance Co., hospitalization claim, filed Jan. 12.

State Bank Earth, D. Adrian, suit on promissory notes, filed Jan. 25.

Real versus Joe Martin, injury, filed Jan. 26.

and Ivey, et al, versus Bryant and Gene Mixon, identity and doing as Gene Mixon Company, cause of wrongful death, filed

AF Program

Changed

United States Air Force changed the education requirements for women applicants for the USAF WAF program according to TSGT. A. Mason, local USAF representative from

Women who have completed requirements to be a school graduate by completion of the general national development test, may now apply for USAF WAF program.

Information may be obtained on the program by writing TSGT Robert A. USAF Recruiting Office, 13th St. Lubbock, or by POG-8541 Ext. 210 or 211.

SALE

100's of items going Public Auction.

Household Items

Clothing

Shoes

Veterinary Supplies

Hardware

New and Used

Open For Inspection

Feb. 5 8 to 5 p.m.

Feb. 6 at 10 A.M.

301 West 2nd

Littlefield, Texas.

COMING OR GOING RENFRO'S HAS THE BEST VALUES

MARKET SPECIALS



Register For Free Radio And Radio Record Player To Be Given Away Feb.

WE GIVE DOUBLE GUNN BROS. STAMPS ON TUESDAY AND WEDNESDAY.

DAIRY PRODUCTS

BUTTERMILK 49¢
 BELL 1/2 GALLON

WHIPPING CREAM BELL 8 OZ. 33¢

CHIP & DIP BELL 24 OZ. 33¢

COTTAGE CHEESE BELL 8 OZ. 57¢

HALF & HALF BELL PINT 39¢

SUGAR CURED HICKORY SMOKED
PICNICS LB 43¢

PORK CHOPS LB 79¢
 CENTER CUT

BACON \$1.38
 SLICED SLAB 2 LB PKG

ROAST LB 69¢
 CHUCK

FROZEN FOOD

STRAWBERRIES 10 OZ. PKG. 4 FOR \$1

FISH STICKS FISHER BOY 8 OZ. 3/\$1

BARBECUE LARGE SAUSAGE 99¢

PIZZA PIES UNDERWOODS 13 OZ. 89¢

SHRIMP COCKTAIL BRILLIANT 7 OZ. 99¢

CHILI WOLF BRAND 19 OZ. 59¢

PEPSI COLA 6 BTL. CARTON 39¢

CHEER EGGS GIANT SIZE 66¢

CAT FOOD X.I.T. LARGE DOZ. 47¢

PEACHES SHURFINE 2 1/2 SIZE 3 FOR \$1

Excluding Cigarettes
 With \$7.00 Purchase

COFFEE All Brands 69¢

COCONUT BAKERS 14 OZ. 59¢

SUGAR SHURFINE 10 LB. \$1.17

BREAD TENDERCRUST OR FOOD KING 2/47¢

SOS PADS 10 COUNT 39¢

PEANUT BUTTER BAMA 18 OZ. 69¢

NAPKINS NORTHERN 60 COUNT 2/35¢

TOILET TISSUE NORTHERN 4/39¢

PINTO BEANS 2 LB. PKG. 31¢

BEAN DIP FRITO 10 OZ. 29¢

ROLLS 4/\$1



GREEN ONIONS BUNCH 2 FOR 9¢

AVOCODOS LARGE SIZE 10¢

CARROTS 1 LB. 10¢

CABBAGE LB. 9¢

ORANGES SUNKIST NAVEL LB. 19¢

BANANAS GOLDEN RIPE LB. 10¢

LEMONS SUNKIST LB. 29¢

POTATOES RUSSET 10 LB. BAG 59¢

MORTON ASSORTED FLAVORS

CREAM PIES 4 FOR \$1

CRACKERS SHURFINE BOX 18¢

FLOUR GOLD MEDAL 5 LB. 59¢

FABRIC SOFTNER DOWNY GIANT 69¢

TOMATO SAUCE MOUNTAIN PASS 5¢

BEEF STEW ELLIS 24 OZ. 59¢

PINTO BEANS ELLIS 300 CAN 2/33¢

PRESERES BAMA PINEAPPLE OR PEACH 2/\$1

FLOOR FINISH FORMICA 22 OZ. 93¢

COSMETICS

ALCOHOL PINT SIZE 2 FOR 29¢

LISTERINE LARGE 20 OZ. 99¢

CREME RINSE SHURFINE 16 OZ. 49¢

BEAUTY LOTION 6 OZ. 89¢

THERA-BLEM IN TUBE 79¢

DEODORANT RIGHT GUARD 3 OZ. 67¢

ANACIN 50 COUNT 79¢

Renfro Bros SUPER MARKET

RIGHT ON THE CORNER **Raymond** ESTABLISHED IN 1929

RIGHT ON THE PRICE **Norman**

PHONE 385-3400

ALL ROADS LEAD TO
LITTLEFIELD

MONDAY, FEBRUARY 1

Ware's DOLLAR DAY

Ladies & Junior Dresses & Pant Suits

10.00 - 15.00 Values	\$6.00
16.00 - 18.00 Values	\$7.00
19.00 - 22.00 Values	\$8.00
23.00 - 26.00 Values	\$10.00
27.00 - 32.00 Values	\$14.00
33.00 - 40.00 Values	\$17.00
41.00 - 48.00 Values	\$20.00
49.00 - 60.00 Values	\$25.00
61.00 - 75.00 Values	\$30.00
76.00 - 85.00 Values	\$35.00
86.00 - 100.00 Values	\$45.00
101.00 Values	\$50.00

Ladies Coats & Suits
1/2 PRICE

Ladies and Junior Sportswear
1/2 PRICE

Children's Dresses

3 To 6X	7 To 14
10 To 10.00 Values	\$4.00
11.50 To 14.00 Values	\$5.00
15.00 To 18.00 Values	\$6.00
19.00 To 26.00 Values	\$8.00

Children's Sportswear
1/2 PRICE

Children's Coats

10.00 to 24.00 Values	\$9.00
25.00 To 30.00 Values	\$11.00
31.00 To 40.00 Values	\$12.00

Boy's Suits & Sport Coats
2 To 7

10.00 To 14.00 Values	\$5.00
15.00 To 18.00 Values	\$6.00

Infant & Toddler Wear
1/2 PRICE

LADIES SHOES

13.00 Values	\$5 ⁰⁰
14.00 Values	
15.00 Values	
16.00 Values	\$6 ⁰⁰
17.00 Values	
18.00 Values	
19.00 Values	\$7 ⁰⁰
20.00 Values	
21.00 Values	
22.00 Values	

PIECE GOODS DEPARTMENT

100% ACRYLIC
54 Inches Wide
Solid-Plaid-Stripe
Reg. 4.49 **\$2⁹⁸** Yd.

Dacron Knit
One Group
Values To 6.98 Yd. Now **\$2⁹⁸** Yd.

FALL PIECE GOODS FINAL CLEARANCE

1.49 To 1.98 Values	49c
2.49 To 3.98 Values	98c
4.98 To 5.98 Values	\$1.98
6.98 To 7.98 Values	\$2.98

PRIMA 64% Rayon - 36% Acetate
45 Inches Wide
Regular 1.98 **\$1²⁹** Yd.
Values Now

ONE TABLE
**SHEETS-TABLECLOTHS TOWELS
DECORATOR PILLOWS & GIFTS
DRASTICALLY REDUCED**

In Littlefield, It's
Ware's

MEN'S SHOES
ONE GROUP
Florsheim - Pedwin - Rand **1/2 PRICE**

Children's Shoes \$5⁰⁰
ONE GROUP
BOY'S and GIRLS
Values to 12.00

Nylon Hose 79^c
ONE GROUP
BERKSHIRE and HANES
1.50 To 1.75 Values

MEN'S DEPARTMENT

ONE GROUP MEN'S Suits

130.00 Values	\$50 ⁰⁰
125.00 Values	
120.00 Values	
95.00 Values	\$40 ⁰⁰
90.00 Values	
85.00 Values	\$35 ⁰⁰
80.00 Values	
75.00 Values	\$30 ⁰⁰
70.00 Values	
65.00 Values	\$25 ⁰⁰
60.00 Values	
55.00 Values	\$20 ⁰⁰
45.00 Values	

ONE GROUP MEN'S Sport Coats

85.00 Values	\$30.00
60.00 Values	\$20.00
35.00 Values	\$12 ⁵⁰
40.00 Values	

ONE GROUP MEN'S Sweaters

25.00 Values	\$10 ⁰⁰
23.00 Values	
22.00 Values	
21.00 Values	\$8 ⁰⁰
20.00 Values	
19.00 Values	
18.00 Values	\$6 ⁰⁰
17.00 Values	
16.00 Values	
15.00 Values	\$5 ⁰⁰
12.00 Values	
10.00 Values	

ONE GROUP MEN'S Sweater Sets

33.00 Values	\$15.00
30.00 Values	\$14.00
28.00 Values	\$12.00

ONE GROUP MEN'S Jackets
Values to 75.00 **1/2 PRICE**

ONE GROUP Sport Shirts
Long And Short Sleeve
Values to 8.00 **\$3⁰⁰**

ONE GROUP Boys Suits & Sport Coats
1/2 PRICE

ONE GROUP BOY'S Sport Shirts
LONG SLEEVES
Values To 5.50 **\$2⁰⁰**

ONE GROUP Boy's Sweaters
Values To 11.00 **\$4⁰⁰**

SAVE MONEY RODEN REXALL Specials FOR DOLLAR DAYS

All Prices Good Sun. - Mon. - Tues. - Wed.

NOXZEMA
SKIN CREAM
16 OZ REG. \$2.00 **99¢**

JERGEN'S
HAND LOTION
20 OZ SIZE WITH DISPENSER **99¢**

TONI HOME
PERMANENT
REG. \$2.29 **99¢**

THE 10 MINUTE SET BY TONI
LEKTRO SET
6.4 OZ REG. \$1.00 **19¢**

MINI MIST
SHAMPOO
AEROSOL DRY REG. \$1.75 **89¢**

CHAP-ANS
HAND CREAM
REG. 89c **39¢**

POLIDENT POWDER
ECONOMY SIZE REG. \$1.59 **69¢**

CHAP STICK
LIP BALM
REG. 49c 4 FOR **98¢**


Shampoo
FAMILY SIZE HEAD & SHOULDERS **89¢**

HAIR SPRAY

ADORN REG. \$2.25 **99¢**

ADORN REG. \$1.50 **59¢**

VO 5 17 OZ CAN **99¢**

MISS BRECK 13 OZ CAN **39¢**


Polaroid Camera
MODEL 330
REG. \$79.95 **\$49⁹⁵**

Tooth Paste
ULTRA BRIGHT
REG. \$1.05 FAMILY SIZE

39¢

Hair Dressing
KING SIZE BRYLCREEM

69¢

Aspirin
BAYER
REG. \$1.07 100 COUNT

59¢


Mouth Wash
24 OZ SUPER SIZE
79¢


Shampoo
PRELL LIQUID GIANT SIZE IMPERIAL
89¢

CHAP-ANS GLYCERIN & ROSE WATER
HAND CREAM
REG. 69c **39¢**

POLIDENT TABLETS
KING SIZE REG. \$1.59 **69¢**

SERGEANTS CAT OR DOG
FLEA COLLARS
REG. \$1.98 EACH **99¢**

FOR BRUNETTES ONLY
HAIR COLOR
REG. \$2.25 **99¢**

EUROPEAN NATURAL
HAIR COLOR
REG. \$2.25 **99¢**

ENFAMIL MILK
READY TO USE 32 OZ **\$2**

TAME
CREAM RINSE
PINT SIZE **99¢**

VICKS
NYQUIL
REG. \$1.50 **79¢**

VO5
HAIR DRESSING
TUBE REG. \$1.15 **59¢**

NEW DAWN 2 NEW IMPROVED FORMULA
HAIR COLOR
REG. \$2.25 **\$1**

BLONDES AMERICAN STYLE
HAIR COLOR
REG. \$2.25 **99¢**

COMMAND
HAIR SPRAY
FOR MEN 10 OZ REG. \$1.50 **69¢**

PAMPERS
DAYTIME 30'S **\$1**

ointment
PREPERATION H
10 OZ TUBE REG. \$1.35 **79¢**

RODEN REXALL DRUG
We Give Gold Bond Stamps Double On All Prescriptions
We Reserve The Right To Limit Quantities
We Deliver Prescriptions

School Bus In Wreck, 2 One Car Accidents

Texas Highway patrolmen investigated a rash of rural accidents this week, including a second car-school bus collision within a week.

A Spade school bus with 12 students on it was hit by a pickup about 8:30 Monday morning.

Darrell Wayne Sweatt, coach and Spade teacher was driving the 1970 bus on its regular route, and was three miles north and three miles east of Spade when Ernesto Torres Garza of Rt. 2 Abernathy came upon a blind intersection obscured by trees and failed to see the bus in time to avoid collision.

The 1965 Ford pickup hit the bus in the left side in the center of the intersection after skidding 16 feet, according to the investigating officer. Damages of \$300 were estimated on the pickup and \$150 to the bus.

There were no personal injuries to the drivers nor the passengers.

Earlier Monday, about 12:15 a.m., a 1965 Pontiac driven by Leo Alvin Culberson of Rt. 1 Anton was traveling about seven miles east of Littlefield on Highway 54 when the driver ran off on the right of the highway,

apparently lost control and came back across the highway and hit the bank on the left of the road. Damages of about \$400 were estimated to the right front of the car.

At 2 p.m. Monday, a pickup and fertilizer trailer-spreader owned by Anton Producers Co. Op turned over about seven miles east of Littlefield on FR 54. Jess Williamson of Anton was driving the pickup east when a wheel on the trailer came loose and the trailer started whipping. The 1970

Chevrolet pickup turned over on its top.

About 12,000 pounds of fertilizer spilled, and damages of \$1,000 were estimated to the pickup and trailer-spreader.

Highway Patrolman Bill Angel investigated the three accidents.

ARCHIVES

The national archives repository for all papers of President Lyndon B. Johnson is on the University of Texas campus at Austin.

Income tax

returns prepared for as little as \$5 guaranteed, no waiting

close personal attention, by professionals. Call, drop by now.

financial house **TAX MASTERS** INTERSTATE SECURITIES COMPANY

425 Phelps 385-5188

DOLLAR DAY AT THE FAIR DEPT. STORE

ALL MENS' SUITS REG. \$85.00 NOW **\$49.95**

ALL MENS' WESTERN BOOTS **25% OFF**

ALL MENS' DRESS SHOES **25% OFF**

ALL MENS' & BOYS JACKETS **20% OFF**

ENTIRE STOCK OF LADIES AND GIRLS

COATS **1/2 OFF** REGULAR PRICE!

LADIES BLOUSES & PANT TOPS **25% OFF**



PINS were presented to Mrs. Bob Boone, left, and Mrs. James Smith, center, both of the Springlake Home Demonstration Club, during the Annual HD Friendship Day here Monday. Making the presentation is Mrs. Clyde Davis of Littlefield, former chairman of the THDA.

Mrs. Boone, Mrs. Smith Receive THDA Honors

W. R. Boone and Mrs. Smith, both of the Springlake Home Demonstration Club, were presented with pins Monday during the Annual HD Friendship Day of the County HD Club Women at the Willy Room of the REA building.

Attended club all 18 times. Voted in all elections. Recreation leader for club, attended demonstration of new ways to prepare welfare foods. Attended Council Christmas party, and is a subscriber to the Messenger.

house, made curtains for bedroom, kitchen and utility room. Worked at Goodwill Center cleaning it and boxing clothes. Helped another club woman paint living room and hang drapes, also prepared brooder house for baby chicks.

Boone and Mrs. Smith received their pin awards as they went over and the requirements for the pins. Listed below their respective accomplishments.

MRS. JAMES SMITH President of Springlake Home Demonstration Club and member of the Yearbook Committee. Attended all council meetings. Constructed 49 garments, modeled at club meeting. Learned to crochet, made string of pearls, two vests and a bathroom set. Knitted three pairs of house shoes and two pillows. Aided in giving two club programs. Attended a training meeting on how to help low income people and later gave a demonstration as a result of this training.

ENOCHS NEWS MR. AND MRS. W. B. Peterson had their grandson, Scott Peterson, son of Mr. and Mrs. Morris Peterson of Brownfield here all of last week. He is also the grandson of Mr. and Mrs. Marion McDaniel. SUNDAY WAS Layman's day at Enochs Baptist Church, beginning with a breakfast of sausage, eggs, biscuits, and coffee, in the morning. Mr. C. C. Snitker, Junior Austin and Buford had charge of morning preaching services. A man choir and special in song, by Chester Petree, J. D. Bayless, C. C. Snitker and Buford Peterson conducted. H. B. King brought a short message, followed by the pastor, Rev. Tony McKinney. There were 27 men for breakfast including some men from Three-Way Baptist Church.

BIG SELECTION GREAT SAVINGS Dollar Day

ONE TABLE HEELS, FLATS Odds N Ends Values To \$22. \$1.99	JARMAN & NUNN-BUSH Shoes For Men Values To \$23.95 \$7.99 & \$11.99
HANDBAGS Values To 10.95 \$1.99 & \$2.99	HEELS AND STACKED HEELS 24.00 Values \$5.99 & \$6.99
MARY GRAY HOSE Reg. 1.50 \$1.29 OR 3 PAIR FOR \$3.25	

Moss Shoes

For The Entire Family

HEELS Values to 26.95 3.99	PANTY HOSE Reg. \$3.00 1.99
Stacked Heels And Flats Values to 17.95 5.99	Children's SHOES 2.99 & 5.99

\$ DAY SAVINGS

60-Inch New Spring Patterns
DACRON DOUBLE KNIT

- ★ MACHINE WASHABLE
- ★ LARGEST SELECTION IN TOWN
- ★ JACQUARDS, POPCORN AND OTHER ASSORTED WEAVES

Values To 5.99 **Now \$3.88 yd.**

45" Wide- 100% Polyester
Crepe A'Legante

Reg. 2.99 **Now 2 YDS. \$5.**

DOLLAR DAY SPECIALS

FAMOUS CHATHAM 72x90 BLANKETS REG. 4.99 Now 3 FOR \$10.
MEN'S PERM PRESS SPORT & DRESS SHIRTS VALUES TO 4.99 Now 2 FOR \$5.
LADIES CANTRECE PANTY HOSE ASSORT FASHION COLORS REG. \$2.00 Now 88¢
ENTIRE STOCK MEN'S BETTER SWEATERS VAL. TO \$25. Now 1/2 PRICE
ANCO SUPREME ELECTRIC BLANKETS REG. 14.99 Now \$13.
LADIES 100% NYLON STRETCH LACE PANTIES REG. 98c Now 2 FOR \$1.
ENTIRE STOCK LADIES FALL DRESS SHOES REG. TO 12.99 Now \$6.88
ENTIRE STOCK LADIES FALL DRESSES VAL. \$35.00 Now 1/2 PRICE
BARGAIN TABLE ODDS AND ENDS FROM ALL DEPARTMENTS VALUES \$8.99 Now \$1.

54" Wide Better
UPHOLSTERY FABRICS

Values to 7.99 **Now 2 YDS. \$5.**

LADIES
100% DACRON
PANT SUITS

Regular Values To 30.00
Now Only \$19.88

Anthony's

C R ANTHONY CO

ATTENTION SHOPPERS

LET US SOLVE YOUR BABY SITTING PROBLEMS WHEN YOU COME TO LITTLEFIELD TO DO YOUR SHOPPING.

JUST AROUND THE CORNER

NURSERY

311 S. Farwell

Phone 385-5442

70's: Farmers Facing Many Decisions

Farm families will face a multitude of management decisions in the 1970's. That's certainly an understatement if there ever was one. But wise management decisions hold the key to the continued survival of farming operations during this decade.

What decisions face farm families? Dr. William E. Black, economist in marketing and policy with the Texas Agricultural Extension Service,

discussed 13 issues at a Farm Family Management Conference recently in Lamesa.

TO FARM OR NOT
1. With the continued narrowing of profit margins per unit of farm production, farmers are motivated to do one of two things—enlarge their farming operation to more production units, or drop out of farming. For those who cannot expand and must quit farming, the major decision is when to drop out and what is the husband's alternative employment opportunity. Moving from farm to non-farm employment is more of an adjustment than many farm families realize or are willing to make.

2. "If the decision is to stay in farming, then the farmer should consider investing in marketing," says Black. The farmer will need to have his production locked into a marketing arrangement ahead of time, or he will not produce. This marketing arrangement can become the basis for financing his production.

RIGHT TO MANAGE
3. "Farmers must retain their identity so that they will be able to make management decisions," emphasizes the economist. "Whether farmers will fight for the type of marketing arrangements that will keep them as independent managers or not is one of the major decisions they will make in the 70's."

Agricultural producers will have to give up more of their vanity of traditional independence in production and marketing and bring about a system of greater internal cooperation and coordination. One goal will be greater disciplined control over output as to quality, quantity and timing. "If farmers rely upon nonagricultural business firms or the government to develop and operate these controls, they will lose their right to manage their farms."

4. "Farmers will need to decide between the political arena and the marketplace for their economic gains. The guarantee of income in agriculture is not without its

price. Until the treasury faucet is turned off, farmers will not become overly serious about their own supply management programs."

5. According to Black, the rising expectations of farm people is another management decision. Farm families today demand income and leisure time comparable to what people in most occupations have. Whether or not they can get and enjoy that kind of life will be another concern in the 70's.

NEW TECHNOLOGY TO CONTINUE

6. New technology will continue to pose new opportunities and new choices. Extensive investment in research and development will likely continue to pay off in more economical sources of power, highly automated systems and unique production techniques. How much investment the farmer will make to aid output—both in research and application—will be another decision.

7. Farmers will also be confronted with social programs that initially seem hard to swallow, such as the public concern about pesticides, nitrates and odors. These public concerns are bringing about restrictions on farm operations, and threats of further restrictions will influence the farmer's choices. Instead of remaining a part of the problem, Black suggests that farmers become a part of the solution.

8. Income taxes will increase. The economist cites two reasons for this—larger anticipated income per farm, and greater demand for public services and programs at the local, state and national levels. Thus, taxes will become increasingly important as a consideration in managing farms—particularly income and estate taxes.

LABOR PICTURE CHANGING

9. "The hired farm labor situation is changing. Farmers must now compete with the total economy in a more or less national market." As farmers expand in the labor-intensive enterprises, they become involved in new concepts for employing labor—employment and health insurance, minimum wages, pension plans and



SANDHILL CRANE breasts sliced thinly and chicken fried rivals steak for a tender and tasty dish and a budget stretcher for several. Whitharral boys attended Texas Tech this semester. The proof is in the eating here for Leroy, Johnny Tipton, Stan Sadler, Glenn Throckmorton and Terry Rodgers.

unionization rights. Part of these programs will be defrayed by the farmer directly.

10. "The geographic and cultural divisions between the farm and non-farm world will continue to fade," contends Black. "Farms will not be able to operate in an agrarian world. They will become a bigger part of the process that allows society to survive." Thus the farm public will be demanding educational assistance in a wide variety of subject matter in addition to that for commercial agriculture.

CONSUMER ORIENTATION NEEDED

11. "In order to compete with farm product substitutes, farmers must become more concerned with how the consumer accepts his product—and her desires regarding that product. They must relate their business to their customer rather than to themselves. Farmers must take a stronger hand in developing and maintaining markets for their products."

12. Agriculture will become more international. Thus far-

mers will need to relate to the worldwide dimensions of food and fiber, points out the economist. "International trade will continue to be one of the mainsprings of our agricultural economy."

13. Financial arrangements will change as the financial structure of farms and ranches changes and could become a part of the marketing arrangement. More reliable sources of credit will be sought and there will be changes in rental arrangements, consultant services, custom work and incorporation. "Farmers must become more and more concerned with the threat of agribusiness takeover."

"The management decisions facing farm families in the 70's constitute a continuing and intense challenge to those planning to succeed in farming," points out Black. "Many adjustments must be made now, and the pace will continue to pick up. For those who fail to adjust to critical changes, the opportunity to adjust to future changes can be lost."

A warning about "RAINBOWS" from your

pharmacist
Tuinal, a white powder in blue and red capsules, sometimes referred to as "Rainbows" is a barbiturate and is classified as a dangerous drug. It can be obtained legally only with a doctor's prescription. Drug laws are designed to protect you—Obey them!

WRIGHT PRESCRIPTION DRUG
331 Phelps Littlefield

perry's
308 PHELPS AVE. LITTLEFIELD, TEXAS
STORE HOURS: DAILY 9 TO 6, SAT 9 TO 7

Dollar Day Specials
FABRIC CLOSE-OUT

Large Shipment Just Arrived
Knitting Thread 99¢
Wool & Sayelle Reg. 1.19 Skein Mon. Tues. Wed.

ONE GROUP, REGULAR \$1.99.....**88¢ YD**
ONE GROUP, REGULAR \$1.29.....**67¢ YD**
ONE GROUP, REGULAR \$2.99.....**1.88 YD**
ONE GROUP, REGULAR 99c.....**57¢ YD**
ONE GROUP, REGULAR 79c.....**47¢ YD**

ONE END COUNTER FABRICS
VALUES TO **3 YARDS \$1.00**
59c YARD

JUST ARRIVED DOUBLE KNIT DACRON
REGULAR \$4.99 YD **\$3.88**
MON., TUES., WED.

perry's **BANKAMERICARD**
308 PHELPS AVE. LITTLEFIELD, TEXAS
STORE HOURS: DAILY 9 TO 6, SAT 9 TO 7

BUY Kelvinator
AND GET THE TOTAL CONVENIENCE APPLIANCE

SAVE NOW DURING OUR JANUARY CLEARANCE

30" GAS RANGE

- Removable Oven Door
- Chrome Door Handles and oven rack, self stop, non tilt
- Controls on safe, practical 30" slanted control panel. Easy to reach, easy to read.
- Removable and reversible cover stovetop drips cooking

\$167.95 W/T

30" ELECTRIC RANGE SELF CLEANING OVEN

Quality cooking benefits

- Infinite Heat Switches
- Automatic Oven Timer
- Even Heat Flow Oven
- Adjustable Broiling
- Convenient Recessed Top
- Fast Oven Pre-Heat

Quality Cleaning Benefit

- Plug-out Surface Units
- Removable Switch Knobs

Reg. \$309.95
\$219.95 W/T

Model RF33CP

NO-FROST TRIMWALL REFRIGERATOR-FREEZER

- 16.7 Cu. Ft.
- 151.6 Lb. Freezer
- Left Or Right Opening Doors
- Three Sliding Shelves
- Covered Meat Pan
- Dairy Chest
- Twin Crispers

Reg. \$359.95
\$299.95 WITH Working Trade

Model 167DW

AUTOMATIC DISHWASHER

Portable-Convertible

- Laminated Top
- Front Loading
- Pan Rack
- Large Silverware Basket
- Rinse Additive Dispenser
- Detergent Dispenser
- Drying Cycle
- Easy-to-use Controls

\$229.95 W/T

Model U970RC

AUTOMATIC WASHER

- HEAVY DUTY 2 SPEED
- 2-18 Pound Capacity
- Water Saver Indicator
- Recirculating Lint Filter
- Cycle Dial Selection
- Water Temperature Selection
- Two Speed Settings
- Three Step Rinsing Action

\$239.95 W/T

Model W620E

TWO CYCLE, TWO TEMPERATURE AUTOMATIC DRYER

- Permanent Press Tumble
- Two Temperatures
- Flexible Timer
- Automatic Timer
- Convenient Lint Trap
- Dual-Action Thermostat
- Large Blower
- Color Stylings

Reg. \$149.95
\$134.50 W/T

Model DE421C

LITTLEFIELD TV SERVICE
"WE SERVICE WHAT WE SELL"
Kennedy Veach 311 West 4th Phone 385-3522 Ed Hauk

FEBRUARY \$ DAY

ALL FALL & WINTER
Dresses-Suits
JR. MISSES JUNIOR PETITE

Reg. 15.00 **5.99**
Reg. 20.00 **7.99**
Reg. 30.00 **11.99**
Reg. 40.00 **15.99**
Reg. 50.00 **19.99**
Reg. 60.00 **23.99**

DRESS COATS
Regular \$70.00 Values
\$34.99

Coordinates
TOPS - SKIRTS - PANTS

Reg. 12.00 \$4.99
Reg. 15.00 \$5.99
Reg. 20.00 \$7.99
Reg. 25.00 \$9.99

CAR COATS

Reg. 28.00 **13.99**
Reg. 36.00 **17.99**
Reg. 75.00 **34.99**

Hand Bags
START AT **\$2.00**

Peasant Blouses
\$6—\$10

All Sales Final Please. Sale Starts Monday 9 A. M.

Norma's
Littlefield

 <p>PROTEIN 21 Shampoo 14 Oz. \$1.19</p>	 <p>BRECK Shampoo 15 Oz. 99¢</p>	 <p>JOHNSON Baby Powder 9 Oz. Size 59¢</p>	 <p>JOHNSON Baby Oil LARGE 10 Oz. 89¢</p>	 <p>JOHNSON Baby Shampoo LARGE 7 Oz. 79¢</p>	 <p>Femiron 60 Tablets \$1.09</p>	 <p>WORLD'S LARGEST SELLING HAIRDRESSING BRYLCREEM LARGE SIZE 59¢</p>
---	---	---	---	---	--	---

BAND-AID
plastic strips
\$6.49

PRAK-T-KAL VAPORIZER
24 Hr. 3 Yr. Guarantee
No. 9001
\$6.49

WHERE YOU ALWAYS BUY THE BEST FOR LESS

GIBSON'S DISCOUNT CENTER

311 EAST 8th LITTLEFIELD, TEXAS
HOURS: 9-6 Daily 1-6 On Sunday
Sale Starts Sunday Jan. 31, Thru Feb. 6.

BAND-AID
plastic strips
No. 5624, or 5626
2 FOR 88¢

BATH PALS
49¢

RENUZIT AIR FRESHNER
4 FOR \$1

soft COSMETIC PUFFS
soft absorbent
TRIPLE SIZE
Suggest Retail 79¢
Gibson Price **29¢**

LUCKY PIES
Chocolate or Bananas
29¢

LOMA HEAVY DUTY PLASTICS, YOUR CHOICE 88¢

 <p>AM AND DRY IRON \$7.88</p>	 <p>474 Utility Tub. Innumerable uses laundry, dishes, ice chest, carry all. Sturdy, rugged with built-in handles. Large capacity. White, Harvest Gold, Avocado.</p>	 <p>838 Rectangular Laundry Basket. Reinforced corners for added rigidity. Hand holds on each end. Large capacity saves extra trips with laundry. Avocado, Harvest Gold, Flame.</p>	 <p>493 Heavy Duty 16 Qt. Pail. Large capacity for home or industry. Bail handle for carrying ease. Functional pouring spout. Practical and attractive. Avocado, Harvest Gold, Flame.</p>	 <p>192 Diamond Basket. Large capacity for extra duty use. Diamond design for strength and durability. At home or office uses. Avocado, Harvest Gold, Flame.</p>
---	---	--	--	---

Adorn
self-adhesive decorating plastic
4 YDS.
18" WIDE
88¢

SOFT GOODS

<p>Pillow Cases 99¢</p>	<p>Window Curtain 60"x81" Permanent Press \$1.59 Pair</p>	<p>Bath Set 2 Pcs. Assorted Colors 100% Rayon 1.49</p>	<p>Women's Wool Pants 20% OFF OUR DISCOUNT PRICE</p>	<p>Ladies Sweaters & Coats 20% OFF OUR DISCOUNT PRICE</p>	<p>Men's Sweaters & Coats 20% OFF OUR DISCOUNT PRICE</p>	<p>Childrens Jackets 20% OFF OUR DISCOUNT PRICE</p>
---	---	--	--	---	--	---

MAHOIS
\$2.29

POSI-FIT REPLACEMENT RADIO ANTENNA
\$1.29

ALL MEN'S AND LADIES WATCHES
20% OFF OUR DISCOUNT PRICE
* Heilbrass * Gruen * Walthams

UNIVERSAL STEREO LOCK MOUNT
\$5.99

ARKAY DUAL WEDGE STEREO SPEAKERS
\$4.19

FULL LACED HUNTING BOOT RUBBER BOOTS
\$2.88

GUNRACKS for PICK-UP TRUCKS
99¢

MEN'S PARKAS RAINWEAR
\$2.99

BERNZ-O-MATIC FUEL
99¢

BERNZ-O-MATIC TORCH
\$4.29

LUCITE® CHEER-UP SALE



LUCITE® WALL PAINT
The Paint that Really covers
Whatever LUCITE covers wet stays covered when it dries. Fast drying, easy to use.
Mr. Sug. Retail Price \$7.97
SALE PRICE \$4.99 GALLON

If the "Winter Wearies" have you down cheer-up—brighten up your whole house with a fresh coat of LUCITE Paint.

SALE PRICE \$5.99 GALLON



LUCITE® HOUSE PAINT
Proven best by test
Most durable of the leading brands Du Pont tested. Built in primer, dries fast, water clean-up.
Mr. Sug. Retail Price \$8.98
SALE PRICE \$5.99 GALLON

Federal Land Bank Reduces Billing Rate

W. H. McCown, manager of the Federal Land Bank Association of Littlefield, received word that The Federal Land Bank of Houston has reduced the interest billing rate on variable rate loans to 1 per cent.

"This reduction affects more than 90 million dollars of

variable rate loans to more than 2000 farmers and ranchers throughout Texas," McCown stated.

The variable rate loan plan which was introduced by the Houston Bank in July 1969 lets the interest rate "float" over the variations in the money market.

In large measure, therefore, the rate in any specific year will reflect the changes in prices which the Bank must pay for the money it makes available for farm mortgage loans.

McCown pointed out that this action is in line with the bank's policy in providing farmers and ranchers credit at the lowest

possible cost consistent with sound business practices.

The local association makes and services loans in Lamb County.

Members of the local board of directors are Harry Brantley, president; Ray C. Hulse, vice-president; Drexel Lawson, Paul S. Chisholm and Elmer Hall.

VET ELIGIBILITY

Veterans who served between Feb. 1, 1950, and March 3, 1968, as well as Vietnam Era veterans are eligible for GI Bill educational benefits. Contact the VA.

ASSISTANTS

"Physician assistants" will be hired for VA hospital and clinical work to allow doctors to make more efficient use of their time.



Texas Will Draft 1,185 Men In Feb.

Colonel Melvin N. Glantz, the State Director of Selective Service for Texas, has announced the February draft call for Texas.

The state will induct 1,185 men, and all will be called from the Extended Priority Selection Group and the First Priority Selection Group for 1971.

Glantz explained that the Extended Priority Group includes all Selective Service registrants who were classified in Class I-A, I-A-O, or I-O on December 31, 1970 and whose lottery number was reached by their local boards in ordering men for induction in 1970, but who, for one reason or another, were not ordered to report for induction.

This group is made up of registrants who were born between 1944 and 1950 and who

have not reached their birthday.

The state director phrased that local boards call men from the 1971 Priority Selection Group on the call cannot be filled men from the Extended Priority Selection Group.

Colonel Glantz further explained that the 1971 Priority Group is made of registrants born in calendar year 1951 who are classified in Class I-A, I-A-O, or I-O.

Glantz noted that the February call of 1,185 men from the January call, was 905 men from Texas national call for February 17,000 men, all for the January call.

Local boards in Texas ordering 3,337 men to take pre-induction physical examinations in February.

FEBRUARY DOLLAR DAYS

PRICES GOOD ALL THIS WEEK WHILE QUANTITIES LAST!

Fabric sale!

3⁹⁹ yd.

Reg. 4.99 Penn-Prest polyester double knits. Whatever you're making, this is the fabric for it. Interesting surface textures, many colors, 58-60".



CATALOG CLOSEOUT DRESSES 200

- *POLYESTER/COTTON SHEERS
- *POLYESTER/COTTON BLENDS
- *POLYESTER WHIPPED CREAM
- *POLYESTER DOUBLE KNITS
- *ONE AND TWO PIECE STYLES
- *SIZES 12-20 AVERAGE & TALL

YOUR CHOICE \$2⁹⁹

P. S. LOTS OF SIZE 20 T

AIRMAN Danny G. Gowen, son of Mr. and Mrs. Pat E. Gowen of Littlefield, has completed basic training at Lackland AFB, Tex. He has been assigned to Keesler AFB, Miss., for training in the administrative field. Airman Gowen is a 1969 graduate of Littlefield High School and attended Texas Technological University.

AREA SERVICEMEN

JERRY J. FISHER

U. S. Air Force Sergeant Jerry J. Fisher, son of Mr. and Mrs. Norman Fisher of Anton, has arrived for duty at McChord AFB, Wash.

Sergeant Fisher is an aircraft maintenance specialist, assigned to a unit of the Aerospace Defense Command. He previously served at Takhli Royal Thai, AFB, Thailand.

A 1966 graduate of Anton High School, the sergeant attended Texas Technological University.

His wife, Ricki, is the daughter of Mrs. Bettie Herrin of Anton.

LITTLEFIELD SCHOOL LUNCH MENU!!

MONDAY: Tamale pie, cabbage salad, buttered hominy, milk, crackers and rice pudding.

TUESDAY: Fried chicken and gravy, creamed potatoes, carrot and peas, cranberries, rolls, milk and peanut butter cookies.

WEDNESDAY: Meat and spaghetti, spring salad, green beans, hot rolls, milk and cinnamon rolls.

THURSDAY: Fried ham and gravy, potatoes, blackeyed peas, hot rolls, milk and brownies.

FRIDAY: Enchiladas with cheese, Taco sauce, green salad, milk, crackers, applesauce and fruit cake.

ANTON NEWS

MRS. S. D. EVITT is visiting relatives in Lubbock and Levelland this week.

MRS. H. B. NEWTON, who has been in Medical Arts Hospital the past two weeks is reported to be improving.

FEBRUARY DOLLAR SAVING DAYS

PRICES GOOD SAT., MON. & TUES.

NEW SPRING COLORS

45" TO 50" WIDE 100%

Cotton 2⁹⁸ YD

50" TO 60" DOUBLE KNIT

Dacron REG. 5.98 4⁹⁸ YD

PRINTED 50" TO 60" ALL SPRING COLORS

DOUBLE KNIT Dacron 6⁹⁸ YD

Cotton & Polyester Blends

ONE GROUP VALUES TO 2.98 1⁷⁹ YD

"About Face"

JUST RIGHT FOR THAT PARTY DRESS OR BRIDE'S MAID DRESS 1⁹⁸ YD

45" FLOCKED

Voile 1⁹⁸ YD

85% TREVERIA POLYESTER 35% COTTON

100% COTTON STRETCH 66" TO 70" WIDE

Terry Velour 3⁴⁹ YD

MERCERIZED COTTON Thread 10⁰⁰ SPOOL

OTHER ITEMS THROUGHOUT THE STORE AT FABULOUS PRICES

H & M FABRICS

SINGER SALES & SERVICE

ALL WOMEN'S WINTER JACKETS
Krinkle Also Corduroy & More
Now \$13.88-\$19.88

ALL WOMEN'S WINTER GOWNS
Orig. \$5 & \$6
Now \$2.99

WOMEN'S 100% NYLON PANT SETS
Stripe Top-Solid Pants
Only \$8.00

WOMEN'S BETTER DRESS SUITS
Polyester D/K Orig. \$35
Now \$25.00

WOMEN'S LONG LEG GIRDLES
Soiled, Orig. \$7
Now \$4.99

WOMEN'S POLYESTER PANTS
100 Pairs
Only \$5.99

WOMEN'S STRETCH HOISERY
Suntan & Coffee
Special 2/\$1.00

PENN PREST POLYESTER DOUBLE KNIT \$3⁹⁹
ENTIRE STOCK \$4.99 THIS WEEK
NEW COLORS JUST ARRIVED

MEN'S STRIPE KNIT SHIRTS
Penn Prest
Only \$2.99

MEN'S YEAR ROUND SUITS
Dacron/Wool
Only 20 \$44.88-\$49.88

BOYS LONG SLEEVE SPORT SHIRTS
Orig. \$3.44-3.98
Now \$1.99

BOYS MAROON & WHITE JACKETS
Orig. \$12.98-13.98
Now \$8.99

100 COTTON THERMAL BLANKETS
Reg. \$6.99
20 Only \$3.99

100% DACRON BED PILLOWS
Orig. \$4
Now \$3.00

KING SIZE DACRON PILLOWS
Non Allergenic
Only \$5.00

COMING SOON...
A Chance
For A 'New You'

OPEN HOUSE
Saturday, Feb. 6, 1971
10 A.M. TO 5 P.M.

FREE!
Register For A Free
3-MONTH COURSE
Nothing To Buy-You Need Not Be Present To Win

*Sauna *Steam *Exercising
Sonya's Health Salon
8238 Lfd. Drive * Littlefield * Gene & Sonya Askew

CHARGE IT! Penneys CHARGE IT!
Value. It still means something at Penneys.