

LITTLEFIELD LEADER

Published in the Interest of Littlefield and Lamb County

VOL. 1

Littlefield, Lamb County, Texas. Thursday, August 16, 1923

No. 13

The Land Grabbing Game In Process Since the Dawn Of History is Still Continued

Nine hundred years ago an Arabian philosopher said: "The world will never be at peace until the Mediterranean dries up."

Adam Smith, the great English economist, 140 years ago, said: "An artificer is the servant of his customers, from whom he derives his subsistence but that a planter who cultivates his own land and derives his necessary subsistence from the labor of his own family, is really a master, and independent of all the world."

Since the earliest history of mankind there has been an all desire implanted in the human breast for the owning and controlling of land. Abraham felt the need of it when his flocks increased, and Lot, his nephew, soon made up his mind to have pastures of his own. The Israelites not content with their conditional citizenship in Egypt went forth for the conquest of new lands, and thus began the strife for land in Southern Asia which is still unsettled.

On the Mediterranean great sea powers were born, and people went forth for the conquest of other nations. In search of freedom a handful of men and women went out from Phoenicia and founded Carthage, which in time became a flourishing empire, and disputed with Greece and Rome for mastery. Mohammedanism swept the ruin of this great sea and threatened North Africa. The Saracens captured Sicily and got a footing in Southern Italy. The Turks came down from the roof of Asia, besieged Constantinople and pushed on to the Adriatic. Spain becomes a factor in the control of the sea and reached out for more territory on which to establish her rapidly increasing population. Christopher Columbus, John and Sebastian Cabot brought back the news of a new world on the other side of the globe, and immediately all nations looked the way. England, France, Germany, Holland and the people from the northern province unfurled sailed for this land, the western seas where freedom stood with outstretching arms of welcome. The recent World War, in its final analysis, was occasioned by the struggle of land-grabbing. Japan and China are still fussing over Manchuria. France and Germany will not let well enough alone. All the war dogs of rope are constantly at the of their leashes in anticipation of some power breaking in and getting more than its share of the disputed world. In the frozen regions of the Arctic circle, the sweltering in the torrid zone and the changing islands of the sea do escaped contention, so great the lure for land.

And while all this land-grabbing has been going on in various ways for centuries, it has been proportionally great in an international States and provinces, cities and parishes, towns and villages, and even individuals

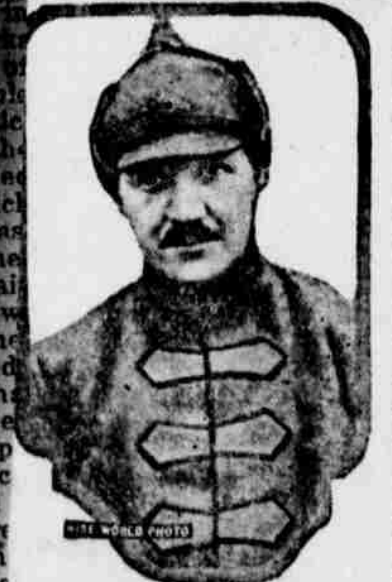
likewise, in proportion to their interests, carried on the life.

Disputes over boundaries, disputes over rivers and river fronts, disputes over surveys, disputes over deeds and property rights, disputes innuendable—each nation, state, municipality or individual seek to enforce the axiom that self-preservation is the first of nature."

While in many cases serious criticism is no doubt due for alleged or pretext causes of disputes and the modus operandi of such, yet the fact itself at all times been worthy. As a human instinct of the best order for man to seek benefit himself and those dear to him. Pick up a journal or a land magazine and you see advertisements set for the advantages of particular sections of country. On other pages may be found numerous questions from people not content with their present lot and seeking other lands and climes, sometimes the struggle for land being as fierce as the struggle in which a man lost her heart to the Trojans.

The United States is receiving multiplied thousands of immigrants every year. No land there, is being added to the present citizenship would be homeless it behooves it to get busy.

ADS SOVIET INFANTRY



General Vasilevich, commander in chief of the infantry of the new Red Army, stationed at Moscow, with the peaked helmet of the soviet army and the designation of his rank on his cuffs.

Some Prospectors

Among the prospectors in Littlefield this week were E. D. Chambers, Dickens county; Dr. G. H. Bryan, Grayson county; P. H. Hobbs and T. L. Lesley, Cottle county; J. C. Mitchell, Matador county; B. F. McCain, Cottle county; Chas. Sullivan and H. F. McClure, Lamar county; G. W. Scales and C. L. Adkins, Delta county; C. R. Pinkston, Tom Green county; G. O. Flourney, Dawson county.

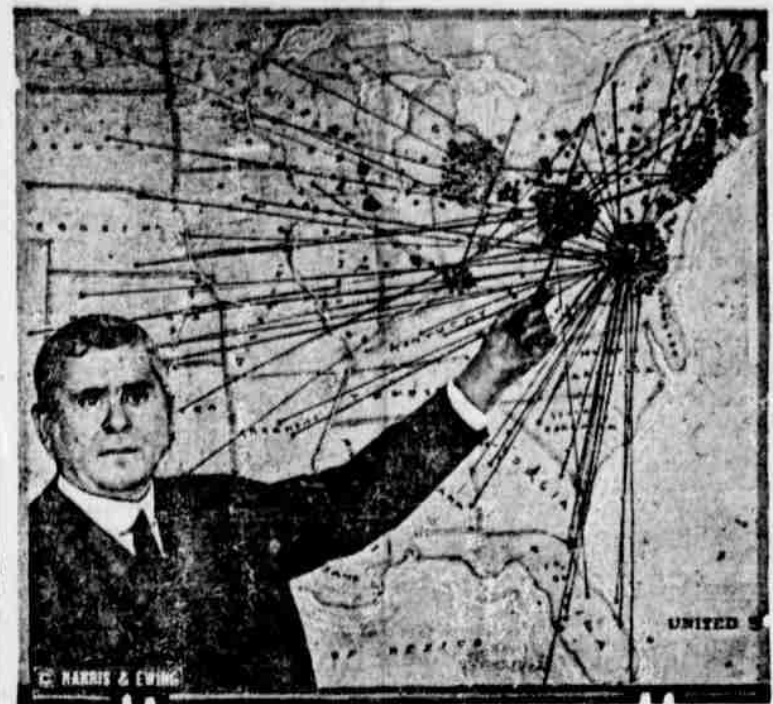
The above named persons were probably less than one fourth the number of people in our town during the past week looking for land.

Some Land Buyers

Among the land buyers reported the last week are the following:

C. E. Corbell and L. A. Corbell, of Concho county, 177 acres each; W. C. Kerley, Tom Greene county, 177 acres; O. W. Wright, Dawson county, 177 acres; W. W. Croner, Tarrant county, 177 acres.

Checks Up "Health by Radio" Talks



When you listen to health lectures over the radio telephone, such as, "Do You Sleep Well," and "How to Feed the Baby," they are checked up for accuracy by Dr. B. J. Lloyd of the United States public health service, who is seen in this photograph indicating on a map the extent of the service known as "Health by Radio."

STATE AID MAY BE GIVEN TO LITTLEFIELD FOR LOCAL SCHOOL

During the past few years interest has been aroused by educators over the State in the interest of consolidated schools. The inefficiency of the one-teacher school is well known, and the increased results accruing from community schools is winning its way every year.

Meeting the demand of educators and public opinion the 38th Legislature passed a rural school law which augers for considerable improvement in rural schools, where consolidation is effective. A perusal of the new law, effective September 1, of this year, reveals the fact that Littlefield is entitled to \$750 State Aid in maintenance of her local school; \$250 being for the economic and agricultural departments and \$500 for the transportation of children. Following are the sections under which Littlefield may receive aid:

Sec. 6. "State aid to the amount of not more than \$250 to an one school in a district which will provide for proper instruction and demonstration in farm mechanics and carpentry, gardening and agriculture, home economics and sanitation, sewing, cooking and canning, according to plans furnished and approved by the State Department of Education, may be granted from the appropriation authorized by this act.

Sec. 8. Consolidated rural schools formed in accordance with Section 7 of this act, which makes provisions for transportation of pupils to and from said schools at public expense, may be granted from this fund in addition to amount provided in Section 7 of this act, a sum equal to one-half the cost of transportation in amount not to exceed \$500 for an one school, provided the contract for said transportation be approved by the State Superintendent."

Town Lot Sales

The Littlefield Townsite Co., this week report the sale of a business lot to T. B. Shirley, of Nolan, Texas. The purchaser expects to return here within the next ten days and start his building which, when completed, will be occupied by a new line of business not yet represented in Littlefield.

Last week a lot was sold to David I. Fairly, who is this week putting up a building which, when completed, will be occupied by his harness and shoe repairing shop.

W. T. C. OF C. GETS REDUCTION ON WEST TEXAS FREIGHT RATES

Through the action of West Texas Chamber of Commerce reduction in freight rates to the southeastern group of states has been effected, beginning about October 10th.

Since wheat is the largest commodity shipped in that direction, it will necessarily be the most effected, tho the reductions apply also to maize and kaffir corn, and amounts to from 15.5 to 19.5 per hundred pounds, or a saving of about \$90 per 60,000 lb. car.

Heretofore West Texas has been shipping most of her sorghum grains in a northerly direction because of discriminatory freight rates toward the southeast. The new rates will doubtless open a larger range of territory to this section for these commodities, which will mean considerable to the farmers in the Littlefield section.

It is stated by local dealers that a readjustment of rates on common point state shipments is also greatly needed, and this will probably be taken up with the Interstate Commerce Commission at an early future date.

Baseball

The Littlefield Leaders played the Lubbock Laccoliths a snappy game Sunday afternoon, the final score hanging up 5-2 in favor of Lubbock. H. Mueller and G. Blackburn formed the battery for the locals, while Allen and L. Hunter represented the ordinance department of the Hubbers.

Mueller, as usual, did some fine work in the box, holding the central plainmen to six hits and striking out 10 men. Littlefield received the same number of hits off of Allen, but seemed to be weak in the pinch.

The score stood two and, until the fifth inning. Each team chalked up a score each in the second and fourth innings. In the fourth, Lubbock run in two more scores, and then another in the eighth inning.

It is generally poor policy for a losing team to put up an alibi, and Littlefield is not doing so, but from various reports it would seem that the breaks were mostly against the locals, and that Littlefield feels the game was not really a fair example of their playing ability. The locals are anxious for another game, when they feel confident they can put Lubbock down for the small end

Lubbock Will Celebrate the Coming of the Tech. College To South Plains August 28th

Already the death warrant for 150 beeves have been signed. Orders have been issued for digging a ditch a half mile long in which to barbecue the meat, and for three flat carloads of wood with which to cook it. The bakers are busy setting the yeast for a carload of bread, the wholesale dealers have ordered a truck load of pickles and a barrel of salt, the tanners are busy constructing huge boilers in which to make 5,000 gallons of coffee; knives, forks, spoons, pastboard plates and paper napkins have been ordered in great gross lots—to say nothing of the details of entertainment program, decorations, etc., that are being worked out in feverish haste. It is a monster job, but any city that can land a million dollar institution ought to be able to handle it in short order.

Invitations have gone out to the governors of four states. Governor Neff has accepted and will be there on the dot with a corking good speech on tap. If the others don't come they'll always wish they had. The Colorado City prize-winning band will be there, as well as other musical aggregations from surrounding cities.

It has generally been conceded that the Locating Board was entirely unbiased in its decision awarding the Tech. to Lubbock, but we don't mind telling Briggs, Keen and Dow,

HE CHOSE TO BE A COP



Nestor Montoya, representative of New Mexico, has been appointed a private in the Washington police department. Formerly he was his father's secretary.

of the count.

The game was well attended, perhaps 25 percent more Lubbock people attending than has been common during any of the league games this season. There was also a large number of Littlefield fans present, for which support the locals express their sincere appreciation.

Olton Game

Friday afternoon the locals played game with Olton, which was far from satisfactory on both sides. At the close of the 9th the game was tied in a score of 4-4, Olton running in one score (?) in the tenth.

From reports it seems the game was a pretty good one, both teams doing good work, but the inefficiency of the umpire was decidedly manifest. Olton boys were as much dissatisfied with the game as were the Littlefield lads, some of them suggested calling it off entirely, others agreeing to call it a draw.

Morton Game

Saturday afternoon, on the home grounds Morton played

and a few of the other wise-acres of that burg, if it had not been for Sophia Glutz and her nephew Bub Upperson, of Littlefield, the probabilities are that temple of learning would have landed somewhere below the cap rock. And Sophia will be there with her wooden leg and her nephew Bub and her chauffeur Gus and her domine Joe, expecting to occupy a place of honor and receive equal cheers with the representative who fought and Bled-so for the Hub of the South Plains.

Twenty thousand people are expected in Lubbock on this occasion, and we are sure that they will all be there, for Littlefield is coming in full force. Lubbock may have to knock out the front of a few of its buildings around the square, move the court house out into the suburbs and convert its residential section into parking space to accommodate our flivvers and ourselves, for by heck we'll be there to see that the job is done in proper style befitting the decorum and reputation of the South Plains.

Sunday School Picnic

The Presbyterian Sunday School classes of Arthur Mueller and Gus Shaw, with the Baptist juniors as their guests enjoyed an outing Tuesday afternoon and night. Comfortably seated in Sam Bell's truck the youngsters went to Lubbock and took in the movie, "Hunting Big Game in Africa," the management of the Lindsey theatre having made special reservations for them. After the show they were guests of the Martin Baking Company who served them with cold drinks.

Returning home late that night they camped in the big army tent stretched in Mr. Shaw's yard, arising with the sun the next morning for coffee and bacon over the camp fire. The boys had a fine trip.

N. B.—Mueller, Shaw and Jordan went along as coaches, but stuck to their beds that night.

Auxiliary Meeting

The regular meeting of the Presbyterian church will be held next Tuesday at the home of Mrs. Harry Wiseman. Members present are asked to respond to roll call with some item of interest from the Home Mission Monthly, or some verse of Scripture applicable to child life.

Editor to Preach

Editor Jess. Mitchell, of the Littlefield Leader, will occupy the pulpit of the Presbyterian church Sunday morning.

His sermon subject will be, "The Changing World vs. The Changeless Christ." You are invited.

With the Movies.

A Thrilling Romance of the Revolution entitled, "Daughters of War," will be the feature picture at the school house Saturday night. It is acted by an all star cast. Also, "Bobby's First Love," the fun-feast reel.

with a bunch of "pick-ups," the score being 11-2 in favor of Littlefield.



LITTLEFIELD LEADER

Published every Thursday afternoon at Littlefield, Texas.
Subscription: \$1.50 per year; 75 cents for six months.
Advertising rates given upon application.

No. Entered as second-class matter May 24, 1923, at the post office at Littlefield, Texas, under the Act of March 3, 1879.

JESS. MITCHELL,

Editor and Publisher

Subscribers who change their addresses or fail to get their paper, should immediately notify this office giving both new and old addresses. Communications of local interest are a benefit. They should be briefly written, on but one side of the paper, and must reach this office not later than Thursday noon of each week. The right of revision or rejection is reserved by the publisher. Advertising that does not show its text or typography that it is paid for must be marked as an advertisement. All local advertisements remain in this paper for the time specified or until ordered out. All notices, matters not by whom paid for what purpose, if the object is to raise money by advertising, are at advertising, is an advertisement and when sent to the publisher must be paid for at the regular advertising rate per line for each issue printed. Distances, cards of thanks, and resolutions of respect will also be charged for at the same rate. Any erroneous reflection upon the character, standing or reputation of any person, firm or corporation which may appear in the columns of the Littlefield Leader will be gladly corrected upon its being brought to the attention of the publisher.

It is much easier to carry a mortgage than to lift it.

Now Lubbock is saying, "No, we have the Tech College."

Marrying for "better or for worse," may mean marrying to settle a question or start an argument.

"Two-piece bathing suits 25 per cent off."—Amarillo News Ad. That's nothing, most of them are 75 per cent off.

We have often noticed that the faster a man lives the less likely he is to keep up with his running expenses.

Ever since Lubbock got the Tech the morning train coming this way has been late. These metropolitan centers always do hinder passenger traffic.

President Coolidge and this editor both married school teachers. And that's why Coolidge has so little to say and this editor writes out his thoughts.

Next thing Lubbock will be imitating Los Angeles and running a "shoe-string strip" up the Santa Fe taking in Shallowater and Round-up as suburbs.

It is estimated that the boll weevil damage to the cotton crop in the South this year amounts to a billion and a half dollars, but not a cent of it came out of the South Plains country. So far as we are concerned "there ain't no such critter."

The merchant who uses stationery decorated with patent medicine ads, pictures of farm machinery, hats, clothing shoes or other cheap advertising matter put out by wholesale houses, is to the home printer what the mail order houses are to the home merchant.

Last week another consignment of mail order catalogues came to our town. But it is a noticeable fact that the merchants of Littlefield are becoming alive to their own interests and the business of the cata-

logue houses is gradually falling in guff. The catalogue man is a persistent goer-after-business and business energy alone will counteract his efforts.

Broadcast Editorial

It may be of interest to local readers to learn that the front page editorial of the Littlefield Leader, published August 2nd, and entitled "The Nation's Bulwark," has been reproduced by the extension department of a leading farm machinery company, 6,000 copies being printed and broadcasted among their customers. Incidentally, the same article was reproduced in at least three of the Texas daily newspapers that come to our exchange table.

Careless Letter Writers

Several thousand letters are in the mail letter office each week with no addresses on the envelopes. "338" is stamped up and no place to go. "Has on Traveler."

WANTED: Pasture for about 30 head of cattle.—E. W. Lichte. 2 X P

Save an Hour a Day With a



2-Pass. Roadster \$510
f. o. b. Flint, Mich.



For further information See Littlefield Service Station Local Agents



HIGH MORTALITY OF CHICKS

Knowledge, Care and Good Judgment Required to Bring Little Fellows to Maturity.

There is no doubt about the statement that if the mortality among young chicks could be averted and the per cent that dies be brought to maturity, the poultry industry would be one of the largest, if not the largest,



Family of Sturdy Little Chicks, Well Cared For.

In the country. Thousands upon thousands die each year from improper attention to the youngsters after hatching, and thousands fall to hatch from inexperience in handling incubators. To begin with, all eggs should be tested before placing in an incubator or under hens. If this be done only good, strong germ eggs would be used, and those showing defects would be rejected and sent to market for table use. Special attention should be given incubators to see that the thermometer registers just right, and also note that you have the required moisture. Incubators should be started at 101 degrees, 102 second week, and if the hatch is good the thermometer will sometimes go as high as 105 degrees the third week. Those chicks which hatch on the night of the nineteenth day or early on the twentieth will be pretty apt to live, as they were good, strong, 100 per cent fertile eggs. Those that hatch later range in vitality from 50 per cent to 30 per cent. The 100 per cent birds thrive and mature to be standard weight. Those under that die beginning the third day, and sometimes string out for two or three months.

POULTRY SELECTION IS BEST

One of the Quickest and Surest Ways of Making Improvement in Flock—Quality Counts.

One of the quickest and surest ways of getting improvement in poultry is through selection. Too many people have quantity, to the exclusion of quality, in mind. If you want increased production, it would be much better to have six producing birds to a pen with a male from a high producing female than to have a breeding pen of 200 females mated to a bunch of males of unknown origin.

VITAMINES FINE FOR LAYERS

Milk and Green Succulent Plant Growths Are Essential for Hens—Sour Milk Also Good.

Laying hens need vitamins, undoubtedly, and other elements which are found in certain specific types of foods such as milk and green succulent plant growths. The use of sour milk has long been recognized as a splendid supplement to the grain and mash. Feed it in open pans, providing free access. If it can be secured at a reasonable price. Use sour-milk butterfat at the rate of 3 to 5 pounds to 100 hens per day.

POULTRY NOTES

A hungry hen is usually a good layer.

Environment is a great factor in egg production.

Extreme cold and extreme heat alike affect the flow of eggs.

A turkey five months old is as good as raised, but do not be in a hurry about fattening.

No flock of fowls can produce a high average egg yield per year per fowl unless there has been bred into that flock the capacity to use large amounts of food, respond to proper care and environment, and form eggs.

Nearly all the eggs are laid between the hours of nine o'clock in the morning and three o'clock in the afternoon.

The care of the newly hatched chicks is without question the most exacting task that devolves upon the poultryman or poultrywoman.

As the seasons vary, the time when chicks may be put on range will vary also. There is danger of getting the chicks out too early unless well protected.

Real Settlers Wanted.

The man who buys a league or labor of land in Lamb county is no more welcome than he who invests in a 40 or 80 acre tract for immediate settlement. In every new country the majority of large investors are land holders for speculation only—Lamb county is not looking for that class of people. The land companies may welcome them more gratefully than they do the smaller investors, but the people who are making this their home prefer the buyer who wants to come here to live.

Littlefield does not deny its need of capital in the least, but capital invested in land that remains idle benefits only the owner of that particular piece of land. The man who invests his money in land and then lets it lay idle, waiting for his surrounding neighbors to increase the valuation of his holdings by the increased valuation they put onto their own land, is merely a land leach and of no good whatever to the community.

There are thousands of farmers in the older and congested communities of the North and East who are anxious to come West where their children may have an opportunity to get hold of land; there are other thousands who are working from morn till late at night for the merest kind of subsistence, scarcely putting away a dollar a month, and with little to look forward to but work and worry—these are the people who need a home in this country; they are the kind of investors they want, and the kind the citizens of Littlefield and Lamb county welcome with wide open arms.

HALSELL LANDS

70,000 ACRES

Surrounding Amherst, a new town on the South Plains, in the center of Lamb county and on the main line of the Santa Fe Railroad.

Deep Rich Soil and Level Land No Rocks, Gravel nor Washes Pure Water at Shallow Depth Fine Climatic Conditions Above the Boll Weevil Belt Best Cotton Land in the State All-alfa and Diversified Farming PRICE: \$25 per acre, 15 yrs. time, only \$8 per cent interest.

R. C. HOPKINC General Agent Littlefield, Lamb Co., Texas

Messrs. M. B. Oats, agricultural agent for the Fort Worth and Denver railroad, was here from Wichita Falls last Tuesday. He was accompanied by I. H. Rankin, a farmer residing near Lockney. Both men are greatly interested in the agricultural virtues of this section and the bright prospects for Littlefield and to become one of the leading cities of the South Plains country.

PLAINVIEW NURSERY, Plainview, Texas. Our trees are bearing all over West Texas and Eastern New Mexico. After 15 years careful selection, we know the best varieties. Remember a few trees that bear are worth hundreds that are not suited to West Texas conditions. Send your order direct or send for catalogue. Local agent wanted.

131-10-25

Littlefield State Bank

A Guaranty Fund Bank



Solicits the business of all New Settlers

No account charge for us to handle. No account too small for us to appreciate.

Everything to build -Anything

If it is Building Material, we sell it and will be glad to make you an estimate on what you are needing.

No Bill too Small for Our Appreciation

Try us on your next order. We believe you will then become a regular customer.

BUILD NOW

F. A. BUTLER LUMBER CO.

We Hurry!

We Hurry!

LITTLEFIELD LANDS

The Best Farm Lands

WHERE You will find

- rich productive soil.
- abundance of pure water.
- healthful climate.
- sufficient rainfall.
- superior railway shipping facilities.
- the very best school advantages.
- churches and moral atmosphere.
- a very low tax rate.
- a bright future in a rapidly developing country.
- prices right, and terms so easy you may easily pay for your home.

NO BOLL WEEVIL HERE

A Safe Cotton Country Where One May Also Diversify Their Crops.

Littlefield Lands, "Stand the Test for the Best" Littlefield,

ARTHUR P. DUGGAN Sales Manager

Texas

"The Best is Cheapest"

SPECIAL

We are offering you a real bargain in Soaps.

This week: 16 bars of Crystal White Laundry Soap, 3 bars Creme Oil Soap, (best soap made) 1 box Borax Washing Powder. Total \$1.30. All for \$1.00 Do not miss the above offer. Lay in your supply of washing soaps now.

COFFEE

This week we received our first shipment of the famous Gold Plume Coffee. This coffee is strictly pure, and known the world over as the best coffee made. We have it in the following sizes: 1 pound can, 45 cents; 3 pound can, \$1.25.

We have the "Monogram" brand for 25 cents per pound. Call and get a sample; enough for four cups.

We have a line of another brand of coffee we are closing out, and will give reduced prices until it is gone.

We have strictly fresh Groceries arriving every day. Our butter, eggs, sliced bacon, cheese, pop, Bud, etc., are all kept ice cold.—Always insist on the best.

We still have a supply of Light Crust Flour that is moving nicely. One sack calls for another. We also have the grades of flour that are giving satisfaction.

Come to see us. You are welcome, always. Courteous treatment to all.

Brannen-Squires Cash Store

"Credit makes enemies; let's be friends"

Opening Model Farm

According to Stanley Watson, general sales manager for the Halsell Farms Co., at Amherst, the company will soon open a model farm in that vicinity. Forty acres of choice land have been set aside, a modern five room cottage, barns, chix houses, etc., will be constructed, and the farm land laid off according to scientific specifications.

The company reports the sale of 25 farms during the past week, with new prospectors arriving daily. The land is now completed and the sales force moved in Monday. Material is arriving for other buildings, and the new town is already beginning to assume real proportions indicative of its future prosperity.

Ft. Worth Man Impressed

Frank B. Wilcox, formerly of Kansas City, and an old time friend of Stanley Watson, sales manager of the Halsell Farms Co., arrived in Littlefield this morning. During the day he was driven over the country by Mr. Watson that he might get a

prospective view of some of our fine farm lands and the development now going on.

Mr. Wilcox stated to a Leader representative that the farther west he came on the train yesterday the better it looked, and when he began to climb up onto the cap rock the view was magnificent. Coming out of a section of torrid atmosphere, where crops are burning up daily, into a portion of the state filled with clear, cool air and flourishing crops was to this prospector an invigorating experience.

Mr. Wilcox is now located in Ft. Worth and will become one of the East Texas representatives of the Halsell farms.

Baileyboro Buzzings

H. McCarty, and children, Maggie and Clayton McCarty, of Ft. Texas, and Mrs. M. L. Pullen of McAdoo Texas have been visiting Mr. and Mrs. C. C. Raggs and family the past week. Mr. McCarty will probably move to this land in this section soon.

A large portion of the Baileyboro community people attended the big singing convention at Ft. N. Mex., Sunday. Every-

body reported an extra good time.

Prayer meeting Sunday night was well attended.

A number of the people from here have been attending the Methodist meeting now in progress at Circleback.

The singing at the home of Mr. and Mrs. G. L. Blackshear, Tuesday night, was enjoyed by an exceptionally large crowd of folks. The music rendered by Messrs. Willie and Henry McCarty was especially enjoyed. It was a rare treat to the people here.

W. Whitford and J. Barnett and families, of Wilbarger county have been visiting F. C. Whitford and family and prospecting this week.

Annie Mae and Sue Brannen of Littlefield are visiting with Mr. and Mrs. Blackshear and family.

The party at O. M. Long's Wednesday night was attended by the usual bunch and a fine time it was.

Mr. and Mrs. J. A. Baker and family and G. W. Hale of Circleback spent Thursday afternoon with Mr. and Mrs. Blackshear.

The branding of several Cross Bar cows at the store Thursday evening was an interesting and unusual sight to several of the spectators.

Jack Henderson returned home from Littlefield Friday with a fractured hand caused by his horse falling on him.

We are expecting to see every body at the singing at circleback August 19.

PERSONAL NEWS

The Leader should be a weekly visitor to your home.

The ladies of the Baptist church will have an ice cream social next Thursday night.

A. Holloway, is this week building a residence on his place west of town.

Mr. and Mrs. Pool Earnest and daughter, Miss Neil were here from the ranch Monday.

B. F. Cogdill left Monday for a week's vacation with friends at Moran, Texas.

J. C. Whicker made a business trip to Post Monday. He was accompanied by Mrs. Whicker.

Miss Tenola Erwin, of Weatherford is here to spend the winter in the home of her uncle, A. E. Logan and attend school.

Mr. and Mrs. James Douglass and baby and Miss Gladys Douglass, of Lubbock, spent Sunday here with home folks.

FOR SALE: Ford runabout, \$125; Ford Truck, \$225. Both big bargains if sold at once.

—Littlefield Service Station. If Hoekley and Cochran counties will have farm product exhibits at the South Plains fair to be held at Lubbock October 3-6.

Miss Goldie Chrisman and Miss Ola Langford, of Memphis, Texas are the guests of Mr. and Mrs. W. H. Heinen.

Mr. and Mrs. Victor Wharton and daughter, Miss Novatene, of Roscoe were the guests of Mr. and Mrs. J. E. Brannen Sunday.

Mr. and Mrs. Coleman Jones and family, from Running Water, and Mrs. Warren Ray, of Plainview, are visiting in the C. E. Barber home. Mrs. Jones is a sister to Mrs. Barber.

W. Donald, editor of the Sion Slantonicite, paid his respects to the Leader office Saturday while passing through enroute to Muleshoe.

Bernard Geuel, of Muenster, Texas was here Saturday making arrangements for more building on his farm 3 1-2 miles south of town, occupied by S. D. Honeycutt.

300 PEOPLE ATTEND BUFFALO BARBECUE HERE LAST WEEK

The buffalo barbecue given by the Texas Land Exchange, of Lubbock, on the lands of the Yellow House Land Co., on last Wednesday and Thursday, was attended by nearly 300 people, coming from all sections of Texas.

Buffalo for the occasion was furnished by J. P. White, out of his herd, and killed by Joab L. Alexander, 86 years of age, who brought the monster down in true pioneer style.

Following the barbecue dinner Wednesday, speeches were made by Rev. Frank Ledwig, priest of the Catholic church at Gonzales, Texas, also talks by M. H. Badger and Houston Brownlee, of Austin, Texas. Following which photographs were taken of the prospectors and a ride over the lands of the Yellow House Company was made.

One of the features of the occasion was the naming of the new colony. More than 200 names were suggested, the committee deciding upon the name of "Ledwig," in honor of the delegate from Gonzales. A prize of \$25.00 was given the one suggesting the lucky name.

Cotton Pickers.

The West Texas Chamber of Commerce is making arrangements to supply the various sections with cotton pickers. Farmers of this vicinity who will need pickers should at once community with Jess Mitchell, secretary of the local Chamber of Commerce.

Barbecue at Ligon

A big barbecue is scheduled to be held at Ligon August 27, everybody coming to be the guests of the Ligon Townsite & Improvement Co. A pavilion is now being erected for the occasion, and electric lights will be installed for the dance in the evening.

New Field Manager

J. C. Whicker has been appointed as field manager for the Yellow House Land Co. On account of the rapidly increasing business, A. P. Duggan, who previously has handled the field work, will devote the most of his time in the future to taking care of the office work.

Mr. Whicker is an experienced realtor has been a resident of Littlefield for the past ten years, is well acquainted with land and conditions in this vicinity, and the company should consider themselves fortunate in securing his services.

Open New League

The Yellow House Land Co., last week opened to the public another league of land lying close in to Littlefield. Seven labors were sold from it the first two days. It is of very desirable location and will doubtless be sold out within a few days time.

SPECIAL: Pennsylvania Vacuum Cup and Racine Multi-mile Cord Casings, 25 per cent off from list price. This week only.

At the executive meeting of the Chamber of Commerce last week all past indebtedness of the former organization was liquidated. The Chamber now has a clean slate.

Mesdames Howard, Street, Baze and Wiseman, Miss Catherine Anderson, Messrs. Street, Duggan Merrell, and little Misses Street and Wiseman enjoyed a delightful evening at Bull Dam Tuesday.

J. T. Street made a business trip to Houston this week. While away he will renovate his rubiginous corporeity in the limpid waters of the Gulf and ruminant old friendships while admonishing on balmy beeches.

BEISEL BROS. MACHINE SHOP

Disc Rolling
Boilers Reflued
Acetylene Welding
General Repair Work
Lathe Work of all kinds

Agents for Emerson Brantingham Implement Co., Alice-Chalmers and Rumley Tractors.

Beisel Bros

Littlefield, Texas

Miller Week In Our Baby Goods Department

You will find here articles of the highest quality, designed especially for your baby's health and comfort.

Just arrived!! The New Miller Nipple Applicator. Puts nipple on bottle without spilling. Sanitary, convenient.

You will also want a Miller Baby Comfort Kit—new, practical and attractive. A complete assortment necessary for the new baby's health.

Other Baby Specials

Nursery Kit	Crib Sheets	Water Bottle
Teddy Pants	Sponges	and Syringe
Nursery Aprons	Nipples	Balls and Dolls

Miller Rubber Goods for All of the Family

Black Beauty Water	Fancy and Household Aprons
Bottles and Sponges	Bathing Caps and Bathingwear
Douches	Sponges Belts

Visit Our Soda Fountain

Stokes & Alexander Drug Co.

The Rexall Store

"In Business for your Health."

Littlefield, Texas

SATURDAY SPECIALS



Unusual Offerings From Our GROCERY DEPARTMENT

10 lb. can Calumet Baking powder	\$1.98
3 cans Mississippi Sweet Potatoes	.25
10 cans No. 2 Hominy	.90
48 lb. sack Chrystal White flour	1.69
No. 2 Cedarburg sifted peas	.16
No. 2 Standard Corn 2 cans for	.25
Gallon Apples	.59
Gallon Preserves	1.89
Gallon Comb Honey	1.75
1-2 Gallon Extracted Honey	2.29
Full Quart Bluing	.22
Tall Can Gold Bar Slice Pine Apples	.23
16 oz. Pure Fruit Preserves	.27
12 oz. Pure Fruit Preserves	.21
5 Cans Coco (Baker's)	.25
1-4 lb. Can Ridgeways Tea	.22
22 Bars Waltkes Laundry Soap	1.00
6 Bars Hand Soap	.29
1 Can Hooker Lye	.10
No 2 special Kraut	.10
1 carton, 6 boxes, Staylit Matches	.34
1 package No 1 Bull Peaberry Coffee	.29
5 packages Star Washing Powder	.25
10 pounds Granulated Sugar	\$1.00

[Limit of 10 pounds Sugar per customer]

LAMB COUNTY MERCANTILE CO.

The Pioneer Store

Your County Paper—only \$1.50 a Year

Come to the Wonderful New Cotton Country

—Where Boll Weevil is Unknown

The Halsell Ranch, Lamb Co., Texas

HAVE you heard of the wonderful crop cotton farmers are raising in Lamb County, Texas?

Do you know that in Lamb County one-fourth to one-half bale to the acre can be raised and that one man can attend 100 acres?

A New Farming Country with Every Advantage Corn, Wheat, Stock-Raising and Dairying are very profitable—Plenty of good water shallow depth.

Lamb County is the place to raise money, for nowhere else are such returns from land that can be purchased at \$25 per acre on such easy terms as ours.

This Land Is On and Near Santa Fe Railroad The Halsell Ranch is being developed. First buyers secure choicest locations.

Write today for Descriptive Literature and Full Particulars

Halsell Farms Company
Lamb County, Texas

Address us at our General Office at Vinita, Oklahoma

66,000 ACRES

Fine Cat Claw Land

The noted Sod House Pasture is now on the market.

ONLY \$25 PER ACRE

15 YEARLY PAYMENTS

Only Six Per Cent Interest

There is no better water in Texas, at from 30 to 90 feet, and there are now 20 wells scattered over the entire tract with windmills pumping this pure, cold water, proving to you the supply is inexhaustible and that you don't have to pick a place to dig your well, but may locate your improvements to suit your desire.

REMEMBER: The Sod House Pasture is a part of the Halsell Lands.

The Neal Douglass Land Company of Littlefield will be glad to show you these lands. Write to them for further information.

NEAL DOUGLASS
LAND COMPANY
Littlefield, Texas

W. H. Anderson A. B. M. D.
OFFICE ROOMS AT RESIDENCE
Preferable Hours, 9 a. m. & 3 p. m.
Littlefield, Texas

E. S. Rowe
ATTORNEY AT LAW
See me for
LAND LOANS
Office in State Bank Bldg.
LITTLEFIELD, TEXAS

Dr. P. W. Pillans
Office at Drug Store
Residence Phone, No. 37
Littlefield Texas

Littlefield Lunch Room
Short Orders
Lunches at all Hours
Cold Drinks
Beds, 50 cents
W. H. Heinen, Prop.

Parker's Eats
Home Made Pies
Hamburgers
Pop and Bud
Milk, Coffee & Cereals
Call Us Over the Phone
and We will Deliver It to You

Restaurant & Meat Market
Short Orders at all hours of the day
Candy & Cold Drinks
Bread & Pastry
WHITE Restaurant

O. K. Transfer
Small or Big Hauls
Express, Freight or
Baggage
Phone 51, or leave order with
H.-B. Lumber Co.
O. K. Yantis
Littlefield, Texas

Fire & Tornado INSURANCE
J. T. STREET
Agent
The only loss this agency ever suffered was settled within thirty days.

COAL
We have plenty of new stock on hands.
Lay in your Winter Supply Now.
Littlefield Grain Co.
P. W. Walker

Truck Hauling
Ranch Hauling a Specialty
No Loads Too Large
Nor Too Far Away
Will Go Any Time and Any Place.
If you need hauling call
R. S. BELL
The Truck Man

Temple of Justice Is Nearly Completed Now

At the meeting of the County Commissioners on August 26, the new court house at Olton will be turned over by the contractors for acceptance.
The final estimate was allowed by the Commissioners last Monday, and the above named date set for the time of receiving the new building.
The cost of construction is \$23,500.

C. of C. Meeting
There will be a meeting of the Chamber of Commerce next Tuesday evening. Business of importance will be transacted. Every member will be expected.

Well Drilling Domestic and Irrigation
20 years successful experience on the Plains of West Texas.
See me for prices & date.
T. P. WRIGHT

SHAW Furniture Co.
Sell it for Less.

We carry in stock at all times a line of
Simmons Iron Beds
Simmons Springs
Dining Tables
Kitchen Tables
Dining Chairs
Kitchen Chairs
Refrigerators
Mattresses
Pillows
Baby Beds
Baby Chairs
We mean what we say when we say, "We sell it for less."
Shaw Furniture Co.
Littlefield

KEEP YOUR CLOTHES CLEAN
The Littlefield Tailor Shop is prepared to do all kinds of Cleaning and Pressing.
Ladies and Gents Clothing Altered and Repaired
Our Work Will Satisfy You.
Our Prices Will Please You.
LITTLEFIELD TAILOR SHOP
Clyde Willis, Prop.

"SPECIAL!" "SPECIAL!"
Six Days Every Week

3 lbs. Wapeo Coffee,	\$1.00
1 lb. fresh roasted Morning Pep Coffee,	.40
1 gallon Apples	.55
25 lb. sack, Pure Cane Sugar	2.65
100 lb. sack, Cane Sugar	9.95
6 cans best grade Pink Salmon	1.00
6 cans Maryland Tomatoes	.85
2 cans best grade Corn	.25
Hercules flour, every sack guaranteed,	2.00
1 gallon pure Apple Vinegar	.40
12 boxes Matches	.55
25 bars Walthes Laundry Soap	1.00
12 bars good Toilet Soap	.55
Binding Twine, per lb.	.13

These Are Just a Few of Our EVERY DAY PRICES
Limited space forbids our mentioning others. Call and price our entire lines. You will always find us right both in price and quality.
R. D. BOROUGH

Ford Opening

The new home of the Ford dealers will be opened Friday evening, August 24th with an informal ball, the public generally being the invited guests of are Littlefield Auto Co.
At that time the contractors will have finished their new \$15,000 building and turned it over to the owners.
Of brick construction, 50x120 feet in size, modern in every respect and equipped with up-to-the-minute machinery for handling all kinds of Ford repair work with a commodious show room in front and roomy storage capacity in the rear, this new building is a credit to the town and the progressive concern that will occupy it.

School Board Meeting
At a meeting of the local school board held Saturday evening a committee was appointed to close contract with all previous truck drivers to haul the children to and from school for the coming year.
It was also decided to make application for the visit of a state nurse to the local school, during the first term to examine and report upon any physical defects of the pupils needing correction.

Entertains at Forty-Two
Saturday night at the home of Mrs. A. E. Logan, Mrs. H. J. Jordan and Mrs. Logan entertained about forty young people, 42 games being the feature of the occasion. The evening was to the honor of Miss Tenola Erwin, who is visiting in the home of her aunt, Mrs. Logan. Following the games delicious refreshments of punch and angle food cake were served.

School Starts Sept. 10
It is announced by Prof. R. L. Speight that school proper will begin September 10, at which time all children of the consolidated district are expected to present themselves for enrollment.

The teachers institute will begin September 3, at Lubbock. The local teachers this year participating in the South Plains Institute embracing about 12 counties in this section.

Of Course You're Coming
Where?
To the Kitchen Warming in the basement of the Presbyterian Church tonight, at 8:30 o'clock, Aug. 16th.
This kitchen is to be open for all community needs.
Remember your admission but expect to be entertained and treated to eats.
Everyone is cordially invited to attend.

The Jug Club
Tillie the Toiler was hostess to the J. U. G. Club at her home Thursday afternoon.
After a business session, during which a surprise shower, in honor of Mrs. Katzenjammer, who is leaving for a visit to the north, was discussed and plans completed, sherbet and cake were served.
Mutt, Jeff, Helpful Henry, Abie the Agent, and Tillie the Toiler took the first degree of initiation at this meeting.
The next meeting will be held at the home of Jigs.—Skeezix

Minnie Veal
Morton ball team went to Clauene and played ball last Saturday. The score was 7-21 in favor of Morton.

The youngsters of the community enjoyed a surprise party at Mr. and Mrs. Gaz McCaa Saturday night.
Mr. and Mrs. S. K. McCasland and Mrs. J. P. McCasland were the dinner guests of Mr. and Miss Tom Bennett Sunday.

Mrs. Spickard and Lois Spickard were dinner guests of Mrs. Bessie Rowland Sunday.
Mr. Matthews and family from Bangs, Texas visited Mr. and Mrs. G. M. Matthews, of Morton Sunday.

Sunday afternoon was enjoyed by all as Mr. and Mrs. Zed Robinson were out from Littlefield to sing for us.

Baptist Social
The Baptist W. M. U. will give a social at the church Thursday night, August 23. Ice cream and cake will be sold. Proceeds go to Buckner's Orphans Home and for finishing the local church. Everyone invited.

Ligon
E. W. Green, foreman for the Bob Slaughter Cattle Co., has returned from the trail, leaving the herd at Carlsbad, New Mexico.
Mrs. D. P. Earnest and daughter, Miss Nell Ruth have been visiting with Mrs. E. W. Green.
The new gin building at Ligon is progressing nicely and will be ready to handle the crop.
Ex-Senator W. N. Adams, familiarly known as "Uncle Bill," formerly of Brownwood was here this week.
There will be an election at Ligon shortly for a special tax for the school district.
Miss Grace M. Anderson and father are visiting J. H. Gallamore and family.
R. J. Smith is visiting his mother in Jackson County, Okla.
After a visit to Colorado, Guy Pierce is now back on his Alamo farm.
Enel Hudson and Carl Yeary are working on the new gin.
Miss Maple Wilson has returned home from a visit with friends in the East.

MAGNOLIA GASOLINE
Magnolene Oils and Greases
The Dependable Lubricant
Real Quality Products
Demand them from your Dealer
Magnolia Petroleum Company
G. W. Hargrove, Agent. Littlefield, Texas

SABBATH - HOLY DAY
Sunday School, 10:00 A. M.
Morning Worship, 11:00 A. M.
Mr. Jess. Mchell will preach at the morning service.
Be on hand to enjoy a good sermon
Good Music A Civil Welcome Interesting Sermons
First Presbyterian Church
H. JORDAN, Minister

Here's a mill that Works When Others Stand Still



This new Demp Windmill is so perfectly balanced and matically oiled that it pumps when other stand still. Perfect Self-Oiling, accurate balance Improved Regulating Device and Ball Bearing turntable keeps it pumping steadily in the slight breeze or in strong gusty winds.

ew, Self-Oiling
DEMPSTER
Windmill

This is the windmill ever shown here. No squeaking rattling, no bother. Just fill the oil reservoir a year and then forget it. The Dempster regulates itself. Wood or steel wheel. One of these new Self-Oiling Dempsters on a Steel Tower and you will know complete satisfaction.
Also full of Dempster pumps, cylinders and general supplies.
If you prefer adien tower, we have in stock everything with whi build it.

Windmill Tbers and Posts
Windmill Board Cut-off Wire
Pump Cylirs, Water Tanks
Pipe anWell Casing
WE HAVE EVERY TO BUILD ANYTHING
Higginboth-Bartlett Co.
Seth A. Smith
Littlefield - Texas

F O D S

THE new of the Ford will be o the public with an hal ball, on the evening August 24th. We extend a invitation to all. Come enjoy yourselves as our g

Littlefield Co.