

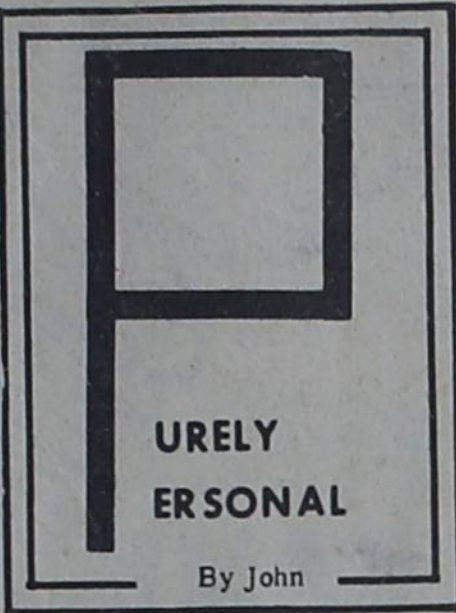
THE STATE LINE TRIBUNE

"OFFICIAL PUBLICATION OF FARMER COUNTY"

EIGHT PAGES

FIFTY-SEVENTH YEAR

10 CENTS



Pornography is a term hard to define. The United States Supreme Court has had a hard time explaining "pornography" in clear terms. It has issued definitions such as "appealing to prurient interests," and "without redeeming social significance," and other sometimes hard to understand terms.

You and I would not have much difficulty in recognizing filth and smut, but sadly enough a growing segment of our population is growing so morally blind that there has emerged a great gray area that the filth peddlers are waxing rich on. As a local problem, smut has been very minor and probably of little consequence but apparently even a small community such as ours is not remaining out of the scope of the vulgarians.

Recently the local Methodist minister came to our office with a paperback book. This book had been taken from a local teenager by his concerned parents who had been suspicious of the lurid cover. The book had been purchased openly on our local newsstands and was a publication by a nationally reputable book and magazine publishing company.

In our opinion it was the sheerest filth, unadulterated smut of no redeeming social significance and appealed to the most prurient of interests. We are no "lily whipers" in the coarse facts of life. We spent four years in the service during war time. We have worked in factories alongside of all social groups and have been to numerous "stag" parties where masculine entertainment has abounded.

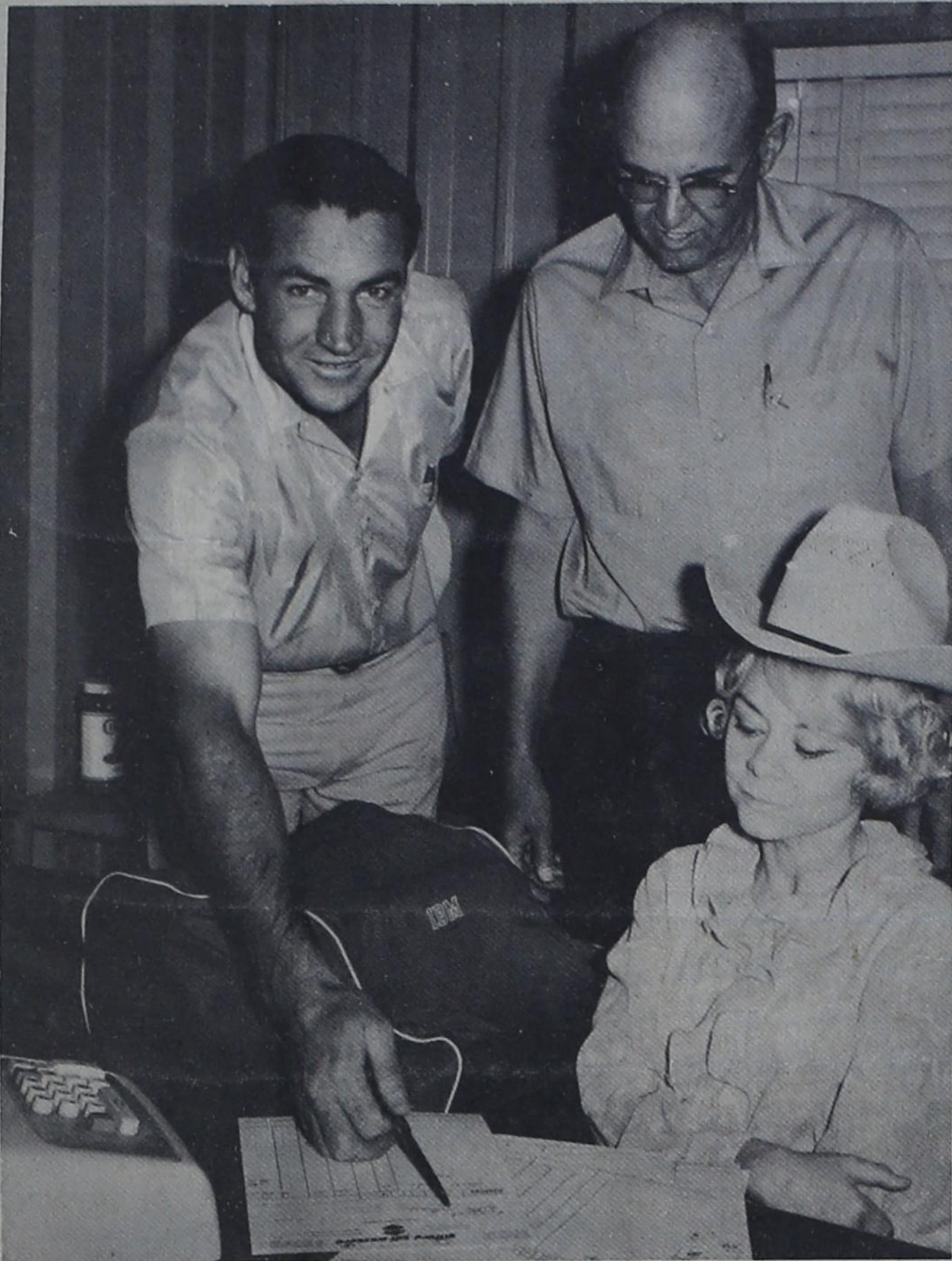
We are not easily shocked, repelled or embarrassed but this little "book" managed to do all of these to us. Our feelings were compounded when we learned that this was sold locally and over the counter to all comers who had the necessary money in hand.

We think the answer to this undesirable traffic is simple. Take the profit out of it and it will disappear. While the answer is simple, implementing it is not so simple. We must depend upon the decent people of this world to make their desires along this line not only known but evident. We must demand that this trash be removed from our newsstands and kept removed.

We must let our movie producers know that their vile offerings will not be attended by decent people. We must let sponsors of objectionable TV offerings know we do not support them in their entertainment material. In short, only the people can act and act effectively. We must be concerned enough to devote personal time and effort to our beliefs. We cannot let someone else fight our moral battles.

Locally, we have observed one vendor who does not display titillating material. We asked about this and were told that it is not necessary that this type of material be put on display or even handled by merchants.

To us, this was proof of one person's concern for his community. If his kind were multiplied nationwide, the problem of pornography would not need Supreme Court decisions. It would need only a personal decision to wipe it from the social face of our nation. We must each make our own decision.



FRED CHANDLER, parade marshal, uses a city map to point out the route of the Border Town Days parade to Mrs. JoAnn Liethen, ESA president, and Jim Wiman, president of Farwell Chamber of Commerce. The ESA Sorority are sponsors of the "Rodeo Queen Contest," and the Chamber of Commerce acts as a coordinating body for the annual celebration.

Border Town Days --

Celebration Plans Near Completion

Farwell Chamber of Commerce, the Roping Arena Association and ESA Sorority along with other civic organizations and individuals in the Twin Cities are completing final plans for one of the best celebrations the Twin Cities has ever held.

The annual Border Town Days celebration is slated to kick off with a gigantic parade on July 31. Each evening during the three-day affair, the AJRA rodeo is slated at 7:45 p.m., with the rodeo queen candidates to be introduced and a grand entry slated. On the final evening at the rodeo performance the queen will be crowned and awards will be made to the outstanding cowboy and cowgirl. Other awards will also be presented to outstanding boys and girls in each of the events.

Fred Chandler is parade marshal for the celebration. Parade participants are asked to assemble in the area west of the Burger Barn Drive in in Texico at 3 p.m. on July 31. The parade will move out promptly at 4 p.m. and make its way east through Texico and Farwell and disband at the Roping Arena.

That evening at 7:45 all rodeo queen candidates will be introduced and the first rodeo performance will get underway at 8 p.m. Friday, the only activities planned are the introduction of queen candidates and

the rodeo performance. However Saturday morning, August 2, at 9 o'clock queen candidates will be judged on horsemanship at the Roping arena. At 3 p.m., they will be judged on personality and appearance at the city park in Farwell.

The celebration will continue with musical entertainment and visiting among the oldtimers of the area at 4 p.m. and a barbecue meal will be served at 5 p.m., at the city park. The meal will be prepared by Henry and Adolph Haseloff and served by members of the Chamber of Commerce. A nominal fee will be charged for the meal.

Grand entry for the final performance of the rodeo is scheduled for 7:45 p.m. Saturday, August 2, after which the 1969 rodeo queen will be announced.

Carolyn Langford, 1968 Border Town Days Queen, will reign over the celebration activities until the new queen is named. She will also participate in the parade and other festivities of the celebration.

All business firms in the Twin Cities are encouraged to enter a float in the parade. Horsemen and area riding clubs are also invited to participate in the event.

All area residents are invited to get into the spirit of the celebration by dressing in western attire. Business firms are also encouraged to decorate their businesses in the fiesta colors of red, white and blue.

Mr. And Mrs. W. J. Matthews --

Homesteader Is Unsung Hero

By Chris Moss

The unsung heroes and heroines of this area are the homesteaders who came to the plains when it was a raw and barren area and stayed to watch it grow into the thriving agricultural area it now is. Many varied were their experiences

and many are the colorful tales they can relate about that era. Mr. and Mrs. W. J. Matthews are two of the hardy pioneers who came to this area before the land was open to homesteaders and have stayed to watch it grow. They came and took up squatter's rights and homesteaded when the territory became a state in 1912.

Mrs. Matthews (Ludie Harding) arrived in the Texico vicinity in 1909 and settled with her parents, the late Mr. and Mrs. D. L. Harding, south of Texico. The following year W. J. Matthews, who had been her "beau" back in Comanche County, Tex., arrived in the area and took up squatter's rights five miles south of Texico-Farwell on the New Mexico side of the state line, where the couple still reside.

In speaking of coming to New Mexico, W. J. said, "After Ludie left Comanche it was lonesome there without this young lass whom I was courting. Therefore, as soon as school was over and I had completed the 1910 federal census in that area I loaded up and headed west." He added, "I came out here to marry her and that's what I did."

The couple was married at Farwell by the late Rev. Sam Tipton (familarly known as Uncle Sam by early day residents), a Primitive Baptist preacher. They had obtained their marriage license from Sam Bratton, then Farmer County clerk, but who later became a United States Senator from New Mexico. W. J. had rented a buggy

to make the trip to town for the wedding and as the couple were driving back to their home Ludie remarked, "I'd sure hate to spend the rest of my life in this area fighting the sand." They recall that at that time the sand was piled high along any fences which existed and made traveling, even in a buggy, difficult.

They set up housekeeping in a one-room squatter's shack, with a dirt floor and later added a half-doughnut walled with lumber. It was in this home that they lived until 1916 when they built a part of their present day home which is one of the most modern in the area. Homesteaders in the area upon learning that W. J. was a school teacher immediately built a small frame structure as a school, five miles south and two miles east of Farwell, and employed him as teacher. He taught in this school known as the Plainview school for two years and later taught in the Locust Grove school, south of Texico. Some of his former pupils include Mrs. John Droke of Clovis, Ebb Randol and his wife the former Genevieve Bell, and Mrs. Matthews, who completed her studies under her husband.

The young couple had no water well on their place and therefore were forced to haul water for their use from a well located some two miles west of their home. Fuel was obtained by picking up "cow chips" from the open prairie and by digging up mesquite roots in the vicinity of where Muleshoe now

stands and hauling it by wagon to their farm.

The Matthews found their neighbors most helpful and borrowed a cow to provide milk and butter for their use, and a team of horses and equipment to begin their farming operations. They later bought cows and horses, and of course farming equipment, as cash became available. Of this era, Ludie tells the story of how one year they were in dire circumstances and had little to eat until a neighbor volunteered to let her pick peas on the halves. After picking peas all day in order to have enough for the neighbor and also to take home she found that the neighbor wanted her (Ludie) to take all of the peas. . . and in addition gave her a fat hen to go with them. Needless to say the couple feasted for some time after that.

At the time the Matthews and Harding families arrived in the area, Texico was a thriving town with 14 saloons, and at least three good drygoods stores and several mercantile stores. It was at the Triplett Brothers store in Texico that W. J. first met the late A. W. Skarda, a clerk in the store, who later became one of the best known bankers in this area. In 1910 Farwell had only a small business district but did have a nice hotel in which persons could stay who had come west to check on the opportunities. Clovis was only a whistle stop on the railroad.

In the early days Ludie milked cows and raised chickens to help the family finances. It was not

special thanks is also extended to them by the coaches, other umpires, players, and the sponsoring organizations.

Jim Pierce, who was in charge of the girls' league this summer, reports a successful season with six teams participating and plans for an eight-team league in 1970. He has released the following report on league standing. In first place with 8 1/2 games won and 1 1/2 games lost is State Line Grain coached by Mrs. Allen Pearce. Second place team with a win-loss record of 6 1/2-3 1/2 is Clara's Spur team coached by Irene Hammit. In third place is Golden West team with a win-loss record of 6-4; Mrs. Jerri Tharp is coach. Other teams in that league are Holiday's, Capitol Food and Mil and Mary's.

In the Little League, Aldridge Insurance with a win-loss record of 14-1 is winner. In second place is Kelly Green Seed with a record of 11-4 and in third place is Oklahoma Lane with 10-5 record. Other teams playing in the league are Tide Products, Worley Grain and Fireboys. Coach for the Aldridge Insurance team was Bill Brigham. Coaching the second place team was Lewis Foster and third place team coach was Ken Harrison.

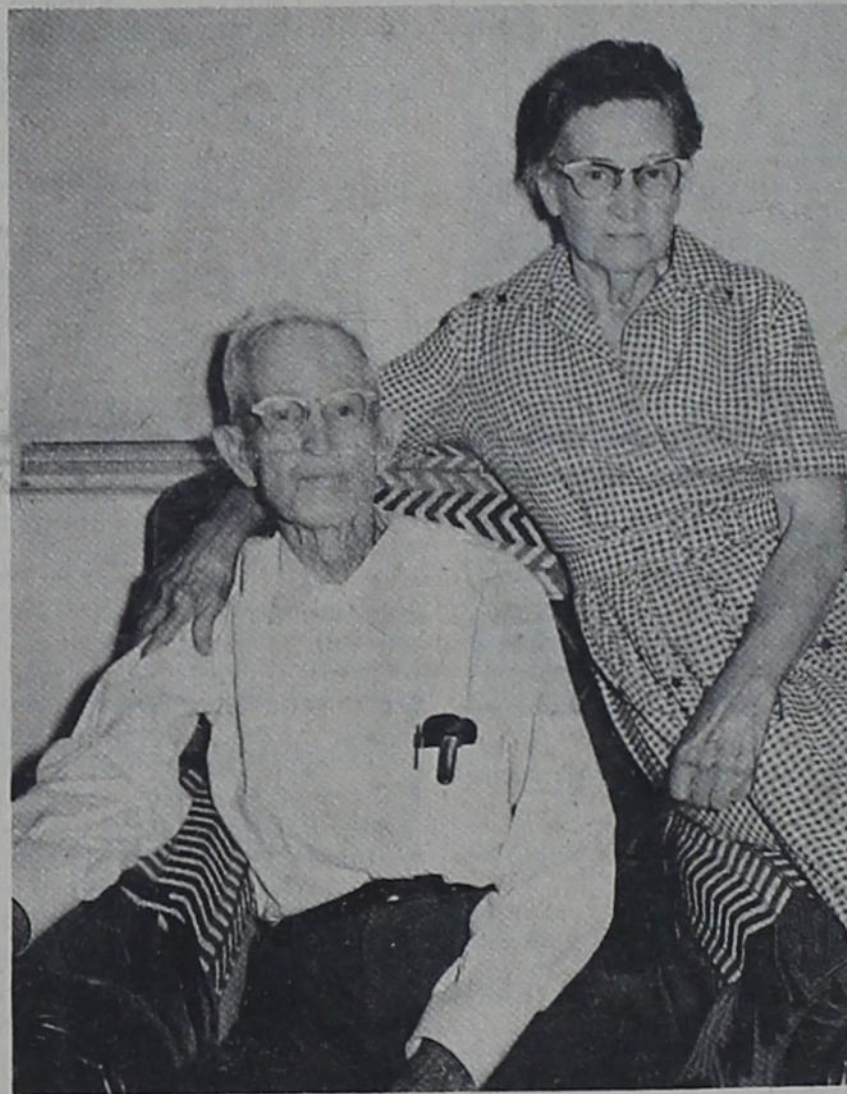
In the Pee Wee League, Gifford-Hill Western team, coached by Herman Chandler, with

a win and loss record of 7-2 came out in first place. Second place was Shirley-Anderson-Pitman coached by Vernon Scott. Other teams in the league were Piggly Wiggly and Citizens Bank.

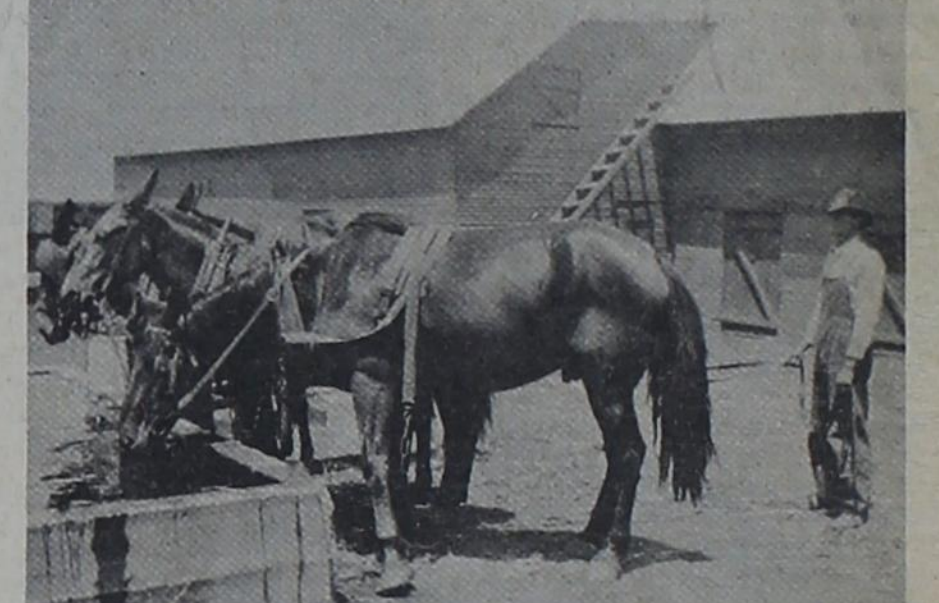
In the Pony League, the Bankers, coached by Jack Kirkland and sponsored by Security State Bank, won the championship with a record of seven wins and two losses. In second place was the Helton Oilers, coached by Vane Doshier and Bob Dollar. They sport a 5-4 record. Charles Oil of Bovina, coached by Wayne Spears, had a season record of 6-3 while the Shirley Grain team had a poor season losing all nine of its games. The team changed coaches several times during the season ending with Ted Graham and Mike Barraza as coaches.

Summing up the summer baseball season, Joe Jones said, "It has been a good season with lots of boys and girls participating. We wish to thank each person who has assisted in any way to make it such a huge success and we will be looking for your continued support next summer."

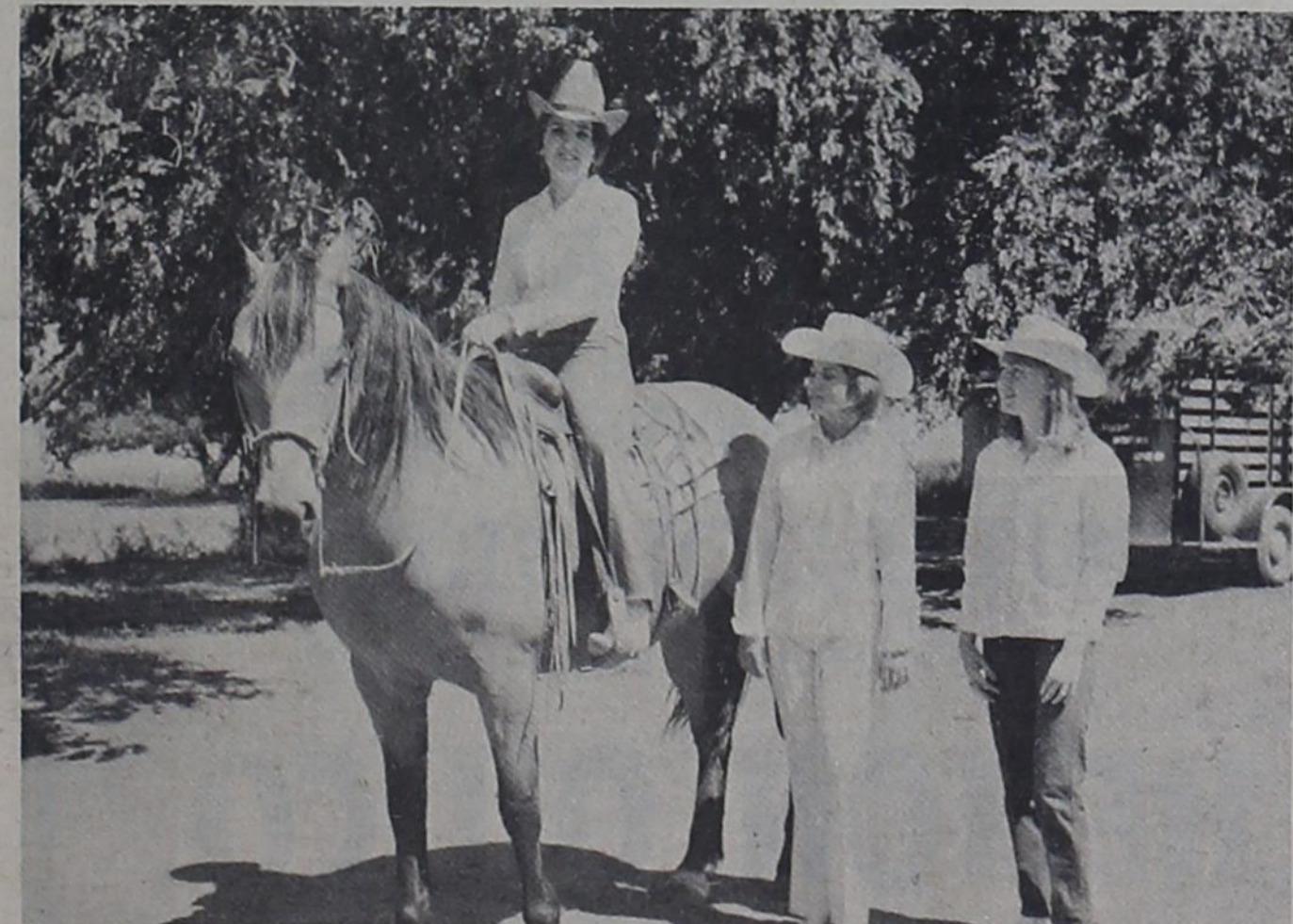
The Lions Club has been in charge of the concession stand at all games and were builders of the ball parks. The Youth Commission has donated money to buy equipment for use by the teams this summer.



RETIREMENT does not come easy to this couple, Mr. and Mrs. W. J. Matthews, who have always been busy. Therefore, they still do their own yard work and chores and stay active in political circles.



AFTER pausing at the water trough to let his animals drink from the cooling water, W. J. returns to the field to cultivate the crops which were hard to raise with little rain and high winds and dust storms.



1968 BORDER TOWN DAYS RODEO QUEEN Carolyn Langford gives a few pointers on "sitting a horse" to queen candidates Cella Trimble, daughter of Mr. and Mrs. G. H. Trimble, and Diane Kelley, daughter of Mr. and Mrs. J. D. Kelley. All queen candidates were invited to participate in horsemanship clinics at the Curry County Fair Grounds on July 1, and again on July 29. A personality clinic was held for the candidates on July 10.



FEEDING the chickens and gathering eggs was all a part of the day's activities for "young Ludie" during the homestead era.



Member
Panhandle Press
Association
1969

Entered as second class matter at Farwell, Texas, 79325, under the act of March 3rd, 1879. Published every Thursday.

SUBSCRIPTION RATES -- Farmer and adjoining counties, \$4.25 per year; elsewhere, \$5.25 per year. Payable in advance.

Homesteader --

(Continued from Page 1)

back and finally traveling by sled, since the car could not be moved out of the garage.

As the years passed in swift succession the Matthews added to their land holdings until at the present time they have 772 acres of fine farmland in Curry County. At one time the Matthews moved into Texico and lived for a ten-year period while W. J. was co-owner of Plains Grain and Seed Company with the late S. C. Hunter, and Ludie was employed as postmaster in Texico. However they liked the farm so much better that they moved back to their original homestead and plan to remain there "as long as we live."

While living in Texico, Matthews served six years as mayor and it was at this time that the town obtained the present building as city hall. He is also the "daddy" of the state line road project and has served as Curry County Democratic chairman and also as Texico precinct chairman. Through the years he has served on the Board of Trustees of the Methodist Church, has served a 20-year period on the Board of Stewards (official Board) of the church and also taught the Men's Bible class for many years. He is also a member of Eastern Star and Masonic Lodges.

While W. J. has been busy with his various undertakings, Ludie has not been idle for she has also served as Curry County Democratic Chairwoman, as Democratic precinct chairman, and as a member of the Eastern Star. In addition she also participated in church activities at Hamlin Memorial Methodist Church, where they still maintain their membership.

Although the couple never had children of their own they were always interested in children and through their efforts 12 deserving young people have received college educations. They also contribute generously to the Methodist Children's Home and to various Boys Ranches in New Mexico and Texas. Some of their "boys and girls" are in the education field, the ministry, and the electronics field. They are presently assisting other young people in obtaining higher educations saying, "We would rather see where our money is going and who it is helping than to leave it behind."

No Ludie and W. J. would not like to go back to the "good old days" but they said almost in unison, "Life has been good to us and we have enjoyed it to the fullest; we are happy so what more can one ask."

**Farwell 4-H Club
Has Busy Summer**

Although most organizations take a summer recess, the Farwell 4-H Club has been quite busy during the past two months.

New members in the club since summer began are Patty Martin and Penny Norton. "You are What You Eat," was a demonstration given by Mrs. Joyce Harding at the May meeting of the group. Miss Janice Muller, HD Agent, and Ronny McNutt, agricultural agent, gave pointers on completing record books at a recent meeting.

Plans have been made for a picnic and miniature golf game for the month of July for the group.

Jacquelyn Langford and Penny Norton were hostesses for the last meeting of the club.

**Attends State
4-H Conference**

Billy Wilson, president of Pleasant Hill 4-H Club, is attending the state 4-H conference in Las Cruces this week. He is a member of the Curry County Crops judging team which is entered in competition at the meet.



GARDEN BOUQUETS



Bouquets from the garden for use indoors are one of the rewards a gardener receives. There are many places in the house that a bouquet will beautifully.

One of the great joys of gardening is being able to pick flowers from the garden for use in the house.

The table in the entrance hall, the dining room table, the desk, the mantelpiece, all are places that would look better with the addition of a bouquet.

Some people like mixed bouquets — a medley of all the kinds of flowers that happen to be in bloom on a particular day.

If the many colors disturb you, consider a bouquet that is a mixture of flowers but only those of a single color or, perhaps, two colors that blend or contrast.

Thus you could make a bouquet of only yellow flowers (zinnias, marigolds, celosias, snapdragons) or one of yellow and orange flowers (blending colors). For contrast you might pick tall spikes of yellow snapdragons, then add bunches (made up in your hand and inserted that way into the container) of blue cornflowers.

The coloring of your bouquet will, of course, blend with the color scheme of the room in which you wish to place it. Working backwards from this means that the colors of at least some of the flowers you grow should be those that suit your indoor schemes.

The world of annual flowers is so vast, the possibilities of color combinations so enormous that you'll have no trouble at all finding varieties which you can grow from seeds to look well in both garden and house.

Strawberry Rhubarb Cobbler

- 2 cups sugar
- 1/2 cup quick-cooking tapioca
- 1/4 teaspoon salt
- 3 cups fresh rhubarb, cut into 1-inch pieces
- 3 cups halved fresh strawberries
- 2 tablespoons butter
- 1 1/2 cups sifted all-purpose flour
- 1 tablespoon sugar
- 3 teaspoons double-acting baking powder
- 1/2 teaspoon salt
- 1/4 teaspoon cream of tartar
- 1/2 cup shortening
- 1/2 cup milk

Combine 2 cups sugar, tapioca, 1/4 teaspoon salt, rhubarb, and strawberries in an 8-inch square baking dish. Let stand about 15 minutes. Dot with butter. Bake at 400° for 15 minutes. Meanwhile, sift together flour, 1 tablespoon sugar, baking powder, 1/4 teaspoon salt, and cream of tartar. Cut in shortening until mixture resembles coarse crumbs. Add milk, stirring until all particles are moistened and cling together when pressed into a ball. Pat or roll pastry on a lightly floured board into an 8-inch square; cut into 9 squares. Place on top of hot fruit. Bake at 400° for an additional 30 minutes or until browned. Serve warm with prepared whipped topping, if desired. Makes 9 servings.



DISCUSS RODEO PLANS ---- Delbert Garner, left, president of Farwell Arena Association, and Frank Doshier, Jr., secretary of the association and also secretary in charge of the AJRA Rodeo planning committee, discuss plans for the rodeo and what repairs need to be completed at the arena before that date. Present plans call for additional bleachers at the arena. During the past two years seating capacity has been limited for the over-flow crowds who attend the three-day affair. The AJRA rodeo will be held July 31 and August 1-2 in conjunction with annual Border Town Days celebration.

**On The Farm
In Palmer
County**

By RONNY McNUTT
County Agent

4-H'ERS TO ATTEND LEADERSHIP-ELECTRIC CAMP

Four Palmer County 4-H Club members will attend District I 4-H Leadership-Electric Camp July 21-25.

Those members who will attend are Deborah Harding and Darwin Green of the Farwell 4-H Club and Carrie Haseloff and Kevin Kaltwasser of the Oklahama Lane Club.

The camp will be held near Cloudercroft, N.M. Southwestern Public Service Company is sponsoring the camp. 4-H members will receive training in various phases of electricity which will be given by representatives of SWPS Co.

Approximately 150 4-H members from 22 counties in the Panhandle will attend the camp. Recreation activities along with educational activities is one of the highlights of the camp.

TEXAS HOG CHOLERA PROGRAM ADVANCES
Texas will advance to Phase

Hospital Notes

PARMER COUNTY COMMUNITY HOSPITAL
July 8-July 15

ADMISSIONS:
Cathy Middleton, Friona, surgery; Ella McDonald, Friona, accident; Julia Gamboa and son, Farwell; Modesta Gomez, Bovina; Cherith Randolph, Friona, surgery; Lee Blevins, Friona; Melissa Pruitt, Friona, surgery; Zora Gaede, Friona; William Beene, Friona, accident; Elvira Rodriguez, Hereford; Lucille Loabs, Friona; Deward Adams, Dimmitt; Ruth Brown, Friona; Pete Foster, Hereford; Ethel Johnson, Farwell; Nell Cox, Farwell; Edna Estes, Bovina; Thelma Heck, Abilene; Patricia Scott, Hereford; Amy Blankenship, Friona, surgery; Betty Cunningham, Friona; Maggie Barron, Bovina; Agnes Fuls, Friona, surgery; Pearl Johnson, Friona; Susan Mayfield and son, Hereford.

DISMISSALS:
Mrs. Lloyd Johnson and son, Hereford; Sue Proctor, Friona; J. O. Brannon, Farwell; Debbie Wylie, Friona; Henry G. White, Friona; Beverly Christian, Farwell; Laura Thompson, Friona; Janet Woodard, Friona; George Brock, Friona; Benito Castillo, Jr., Friona; June Rhodes, Friona; Clara Renner, Friona; Cathy Middleton Ella McDonald, Julia Gamboa and son, Modesta Gomez, Cherith Randolph, Melissa Pruitt, Zora Gaede, William Beene, Elvira Rodriguez, Lucille Loabs, Deward Adams, Pete Foster, Ethel Johnson, Nell Cox, Edna Estes, Thelma Heck, Patricia Scott.

3 of the National Hog Cholera Eradication Program August 1, the Texas Animal Health Commission has announced.

Dr. Don Hudman, Texas Agricultural Extension Service swine specialist at A&M University, said Phase 3 is a continuation of immediate reporting of hog cholera outbreaks and more vigorous inspection of garbage cooking and feeding facilities.

Infected herds will be quarantined and premises depopulated by marketing healthy animals in a federally inspected slaughter plant. Diseased animals will be eliminated on the premises by burying, burning or rendering under supervision of regulatory veterinarians.

Phase 3 also provides an indemnity payment due to an outbreak, Hudman added. The indemnity is shared equally by the state and the U. S. Department of Agriculture.

"Maximum indemnities for infected herds will be \$100 per head for purebred, inbred and hybrid swine and \$80 a head on grade swine," the specialist explained. "Payment will be limited to living swine present when a regulatory veterinarian arrives on the premises. Hog producers should report sick animals to local veterinarians to quality for payments if cholera is present."

Another important part of the program is the ban of interstate shipment of vaccines and vaccinated hogs, Hudman added. A change in shipping rules will halt interstate shipment of modified live virus and inactivated cholera vaccines after July 1.

Regulations do not affect use of anti-hog cholera serum. Interstate shipment of hogs vaccinated with modified live virus, or exposed to hogs vaccinated with modified live virus, will be prohibited after Jan. 1, 1970, unless the animals were vaccinated before July 1 of this year, Hudman said.

Johnny says



The younger generation will soon find out that the Man from Uncle is the tax collector.

JOHNNY WATFORD
At "Doc" Stewart
Buick-Chevrolet-Opel
2500 Mabry Dr.
Clovis
Johnny on the spot with the Best Deals in Eastern New Mexico and West

Duane Curtis from Big Fork, Mont., has been visiting in Farwell with his parents, Mr. and Mrs. H. S. Curtis, and attending to business in the area this week. He returned home Tuesday.

Mr. and Mrs. Odus Walser and daughter, Rene, attended the 60th wedding anniversary of Mr. and Mrs. R. S. Bearden, Mrs. Walser's parents, at the Yoakum County country club Sunday.

Mrs. Virgle Harrison attended the funeral of a cousin, James Kennedy, in Seminole last Wednesday. Mr. Kennedy was an employee of the Shell Oil Company at Seminole.

The CITIZENS BANK

STATEMENT OF CONDITION
June 30, 1969

RESOURCES

LOANS AND DISCOUNTS	\$15,705,558.47
C. C. C. CERTIFICATES OF INTEREST	1,300,000.00
BANKING PREMISES, EQUIPMENT, REAL ESTATE	484,735.50
U. S. AND OTHER BONDS	3,047,633.49
CASH AND EXCHANGE	3,964,651.85
	\$24,502,584.31

LIABILITIES

COMMON STOCK	402,500.00
SURPLUS	402,500.00
RESERVES	1,084,074.08
	1,889,074.08
TOTAL CAPITAL	1,889,074.08
DEPOSITS	22,613,510.23
	\$24,502,584.31

Serving
Clovis - Texico - Ft. Sumner

Each depositor insured to \$15,000
FDIC
FEDERAL DEPOSIT INSURANCE CORPORATION

WE ARE READY

TO FERTILIZE YOUR WHEATLAND

Get Higher Yields and Profits With
The Fertilizer That's Best By Test

SMITH-DOUGLASS
PELLEFORM WITH TREL

HELTON OIL CO.

TEXICO AND FARWELL
Phone 481-3222

STEED
A Name Of Service For 61 Years

STEED-TODD
FUNERAL HOME

Prince and Manana
Clovis

Phone 763-5541

Dexter Todd

The
John Deere
Implement Dealer
For YOU

Ingram Bros. Implement Company

MABRY CLOVIS



TEXICO CHEERLEADERS will be in Roswell July 20-25 attending a cheerleading school where they will study techniques in cheerleading. Cheerleaders are, front, Vicki Richardson; left to right back row: Patricia Smith, LaWanda Yell, Debbie Tharp. Other cheerleaders not present for the picture are Susan Murrell and Jan Chumley.

The Women's Page

Chris Moss, Society Editor ---- Phone 481-3681



ADORED AND ADORABLE is little Michelle Dee Armstrong, one-month-old daughter of Mr. and Mrs. James Armstrong of Texico and granddaughter of John Armstrong of Farwell. The infant is only the third girl in the family of John Armstrong's mother, Mrs. Florence (Nichols) Golladay, in 44 years. The infant is held by "Grandpa John" while adoring uncles, Robert of Farwell, and Johnny of Lubbock, look on with "pappa James." Other grandparents of the infant are Mr. and Mrs. Morgan Billington of Texico. Great-grandparents include in addition to Mrs. Golladay, Mr. and Mrs. C. F. Elliott of Farwell, and Mrs. Geneva Morgan of Energy, Tex. At time of arrival of the infant it was believed that she was the first girl in the family in 80 years, but after checking, the Armstrongs found that two other girls have been born into the Nichols family in the past 44 years.

Visit In Madison Home

Guests in the home of Mr. and Mrs. Don Madison in Lubbock on July 4th were her parents, Mr. and Mrs. Walter Kaltwasser, Vicki and Kevin, Mrs. Karl Cramer of Clovis, Mr. and Mrs. Gilbert Kaltwasser, Cheryl, Craig, Bruce and Stephen. Mrs. Bertha Kalt-

wasser, who had been a guest in the Madison home for the past week returned home with the group.

Guests in the home of Mr. and Mrs. Odus Walser and Rene last week were Mr. and Mrs. Ed Smith and children, Harold and Edwina, of Albuquerque. They were enroute to Houston where Harold Smith entered M. D. Anderson Hospital later in the week.

Mr. and Mrs. Mem Sprowles of Dallas, and former residents of Farwell, spent several days last week and early this week visiting with their daughter and son-in-law and grandchildren, Mr. and Mrs. Jerry Dee Owen, Mark and Kevin. They returned home Tuesday.

Locals

Mrs. John Lockhart and daughter, Kathy, who have been visiting in Houston with Mr. and Mrs. Jon Schroeder and children, Jerry and Kimberly Kay, have returned home.

Allan Rogers from Albuquerque was a guest in the B. A. Rogers home last week. He attended the local Methodist church on Sunday.

Portraying Area Homemakers

by Chris Moss

Hard work, a cheerful nature, and an inquiring mind have kept Mrs. Bertha Kaltwasser, 84, mentally alert and much younger than her years.

Mrs. Kaltwasser, born Bertha Haseloff, daughter of Mr. and Mrs. Carl Haseloff, in Fayette County, Tex., is of German descent. She says of her parents, "They spoke the language at home all of the time and I learned it as a child and can still speak, read and write German." She not only can speak the language but has also taught her children to speak and understand the language, although they are not as fluent as their mother.

Bertha is a self-educated woman since her formal schooling stopped at the fourth grade level. She says, "It was hard to get an education in those days since all children (boys and girls) had to work in the fields alongside their parents to make a livelihood. Some of her earliest memories are of planting cotton (one seed at a time by hand) following behind a one-row walking planter known as a Georgia Stock.

After the cotton was up the family was engaged in hoeing weeds from the fields and cultivating the crop, also with a one row plow. In the fall Bertha would attend school for a short period and then stop school to help harvest the crops. She says of this period in her life, "I loved arithmetic and none could beat me at the multiplication tables."

Bertha's family moved to Vernon, Tex., in 1901 and it was there she met and married John Kaltwasser. After marriage Bertha did little field work as she was busy learning about homemaking, cooking in particular. She says, "I had cooked very little prior to my marriage since I had always worked in the fields and also had spent many hours occupied with sewing, using sewing to add money to the family income."

After marriage Bertha learned to crochet and knit and at this time she still has in her possession a slip (petticoat) she made which has a crocheted yoke, two sets of crocheted insertion and crocheted sleeves. The slip is in perfect condition but Bertha says, "It is too wide for these narrow, short dresses we wear these days."

A special hobby for this white-haired lady is piecing and quilting quilts. At this time she has set a goal of one quilt for each of her children and grandchildren. Recently she has completed one for Vicki Kaltwasser, a granddaughter and daughter of Mr. and Mrs. Walter Kaltwasser. She has also made several dresses for her own use this spring, sewing on any type material and using her imagination to make the designs of the dresses.

Mrs. Kaltwasser taught her daughter-in-law, Gladys, an English girl who came to the States at the close of World War II as bride of her son Walter, how to sew and also how to cook the American way. She tells a humorous story of the time she attempted to teach Gladys to kill a chicken saying "Gladys tried real hard to wring

the chicken's neck off but when she put the chicken down he walked away and Gladys went into the house and was ill."

Several years ago, after the death of Mr. Kaltwasser, Bertha found their home too large for one person's use; therefore she designed a smaller house to live in, near the home of her son, Gilbert. The home, a modern two-bedroom house with all of the modern conveniences, is furnished with family heirlooms, including a solid oak handcarved bedroom suite and two hand carved chairs which have come down through the family. She also has a marble-topped wash stand which is also a family treasure. All of the articles will be handed down to other family members, she has tagged each article.

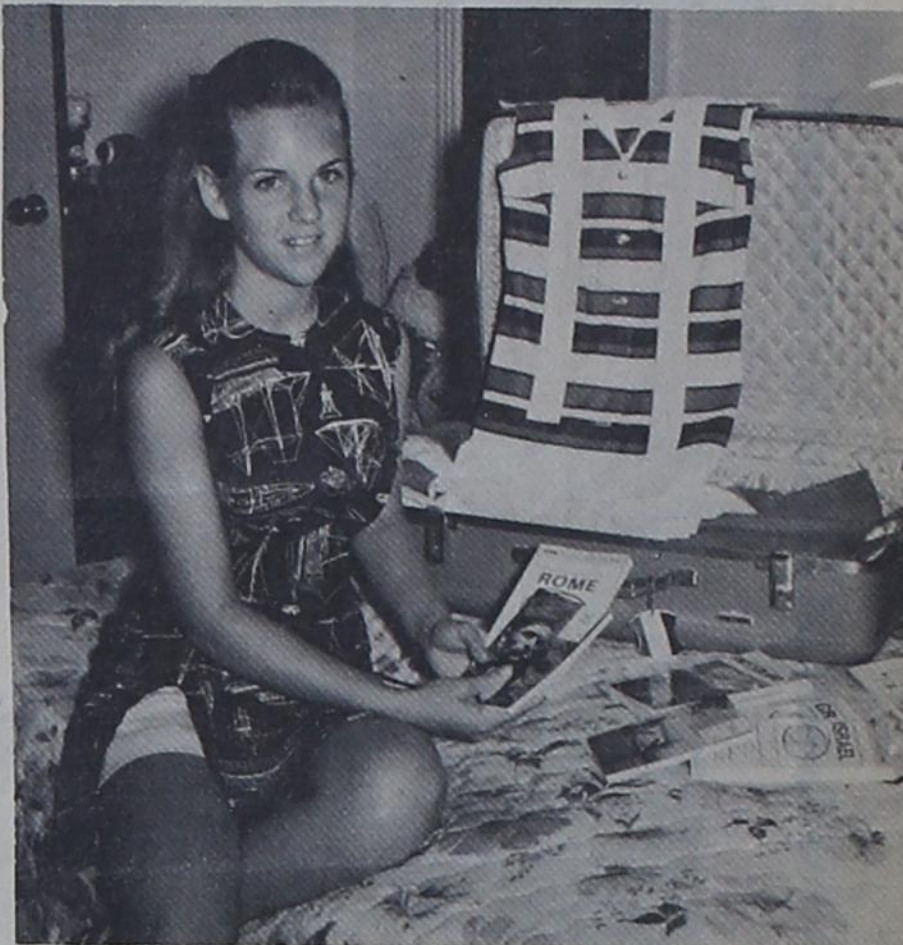
A piano, originally owned by Bertha and John, has been given to a granddaughter for her new home. Bertha relates that her

GERMAN COFFEE CAKE AND TOPPING

1 package dry yeast
1 cup lukewarm water
1/2 cup warm milk and 1 cup warm water
1/2 cup sugar
pinch of salt

1 stick Mazola oleomargarine
few drops of lemon extract
Dissolve the yeast in the warm water, add sugar, salt and extract. Melt margarine and add to the yeast mixture. Mix well; add enough flour to make a firm dough, making sure to keep it from being too stiff. Place in bowl and let rise until it is twice its original size. Grease a 13x9x2 cake pan and spread dough in the pan; let rise again until twice the original size.

STREUSEL TOPPING
Melt 2 oz. of oleo, add three or four tablespoons four, four tablespoons sugar; making a crumb mixture. Now brush



Rome, Paris and the Holy Land are only a few of the places to be visited by Kim Snider during the next three weeks. Packing for the trip has been almost as much fun as the trip itself.

Local Girl Leaves On European Tour

Kim Snider, daughter of Mr. and Mrs. M. A. Snider, Jr., will be among the seven young people accompanying Mr. and Mrs. Calvin Murray of Panhandle on a 22-day tour of Europe, the Middle East, the Holy Land and the Gook Islands this summer.

The tour will include one week in the major European cities of Lucerne, Paris, Rome, Venice and London; and a two-week Mediterranean cruise aboard the SS Regina, formerly the President Hoover. Among the places to be visited on the cruise are Athens, Dubrovnik, Jerusalem and the Isles of Cyprus and Crete.

The tour group left July 14 and will return August 5.



MORE than 1,000 small blocks are in this "Travel Around the World" quilt, which has recently been completed by Bertha Kaltwasser. However, 144 pieces can be cut from one yard of material. In the past several years, Mrs. Kaltwasser estimates that she has completed at least 35 quilts.

children and all of her grandchildren have learned to play on this instrument. Yes, Bertha plays the piano and organ, or did until her hands became a little stiff. She still drives her own car and many days she can be found visiting with sick friends and neighbors, taking a little gift to them of just visiting for the joy of seeing and being with others.

She is an active member of St. John Lutheran Church, the church in which she was reared. She serves as historian of the local Lutheran church and until 1935 she taught a Sunday School class at the church. She is also still quite active in the Lutheran Women's Missionary League. A pet project of this delightful person is visiting with residents of Muleshoe Nursing Home and taking them "coffee cake", one of her specialties.

Reading is also a special hobby of Bertha's and she says, "When I begin a book it is hard to put it down; I become so involved with the characters in the book."

Bertha stated, "My children, in-laws and grandchildren are all special and have made my life a full and happy one," to which the group replied, "Mother is a special person for she is first a mother, then our friend and companion."

This delightful person is generously sharing her coffee cake recipe and one for "Bertha's Meat Balls" with our readers. Both of the recipes are family favorites.

top of the dough with margarine, spread the streusel topping on the dough. Bake in a 400 degree oven 20 minutes. Remove from oven and serve while still warm. Delicious.

BERTHA'S MEAT BALLS

1 lb ground meat
2 slices bread
salt and pepper as desired
1/2 teaspoon minced onion
2 well beaten eggs
3-4 tablespoons bacon grease
Mix meat, cut up the bread in small pieces and add to meat; add salt, pepper and onion. Finally add eggs and bacon grease. Shape into patties and fry until brown on both sides. This is a quick and economical main dish for any meal.

My Neighbors



Vacation In Pecos Wilderness Area

Reverend and Mrs. Phil Baker and children, Sammy, Mary Jo and Phil, accompanied by Mr. and Mrs. Elwood Fisher from Montgomery, Tex., and Mr. and Mrs. Joe Fisher and family from San Leon, Tex., are spending a part of this week in the Pecos wilderness area.

Uncle Ray's "Hot Air"



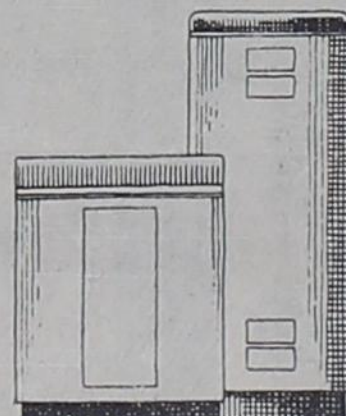
If you want to forget all your troubles, wear a tight pair of shoes.

Some people are so busy learning the tricks of the trade they haven't time to learn the trade.

It's no trick when you get Better Values at Uncle Ray's Store.

Ray Mears
Hwy 70-84
-FARWELL-

SERVICE WITH A **smile** ... you get it with an electric water heater



Modern electric water heaters are dependable, doing their jobs of providing plenty of hot water whenever you turn on the tap... and at a new low water heating rate. You not only forget water heater worries when your water heater is electric, but in those rare instances when service may be needed, you still have no worries. That's because your silent servant, Reddy Kilowatt, springs into action. He'll fix whatever's wrong... quick as a magician pulling a rabbit out of a hat!



Modern **ELECTRIC** Water Heating

SHOULD YOU EVER NEED SERVICE CALL PUBLIC SERVICE

Nelly Don
STYLE NO. 8340
COAT COSTUME,
SOLID SKIMMER

MATERIAL..
100% Dacron Polyester
Washable

COLORS: **DRESS COAT**
Grey Red

THE FASHION SHOP
6th and Main Clovis Ph. 763-5431

We Don't Sell A Policy:

COMPLETE INSURANCE PROGRAMS ARRANGED

Your Insurance Headquarters

ALDRIDGE INSURANCE AGENCY
Farwell



BASEBALL IN



PIGGLY WIGGLY

Coaches Bill Bolling and Donald Halle. Back row left to right: D. D. Foster, Mike Bolling, Peter Cantu, Clyde Biggs, Justus Gaddis, Herbert Bibbs, Tim Askew. Front row left to right: Blake Halle, Nell Halle, Terry Mc-Masters, Carrol Goldsmith, Brent Black, Tobin Roberts.



TIDE PRODUCTS

Back row left to right: Mike Deel, Richard Yuregas, George Garza, Mike Woods, Chris Eshleman. Front row left to right: Bruce Kaltwasser, Terry Miller, Albert Medina, Barry Lindley, Barry Goldsmith.



GIFFORD-HILL-WESTERN

Back Row left to right: Stanley Goldsmith, Rowdy Chandler, Mark Ancira, Randy Herrington, Steve Owens. Front Row left to right: Warren Sandvick, Scotty Edwards, Keith Herrington, Jack D. Wardlaw, Greg Howard, Clint Tharp, Coach-Herman Chandler.



FIRE BOYS

Coach Danny Pearce. Back row left to right: Henry Gibson, Sammie West, Richard Kelley, Kent Goldsmith. Front row left to right: Robbie Bradley, Jubal Blair, Rickey Gonzales, Joey West. Not pictured - Monte Leavell, Ricky Urioste, Luther Billington.



CITIZENS BANK

Assistant Coach Bill Stone. Back row left to right: Dwayne Obenshain, James Hadley, Morris Anderson, Allen Warren, Jerry Bradley, Lyndon Donahey. Front row left to right: Bobbie Anderson, James Castleberry, Henry Saiguero, Gary Stone, Keith Hadley, Gary Hardage. Not pictured - coach Jim Walker, team members, Jeff Christian, Bennie Yruegas.



WORLEY GRAIN

Back row left to right: Frank Galvan, assistant coach, Greg Taylor, David Turnbough, Clint Robertson, Terry McCully, Scotty Gillingham, Coach Kyle Sheets. Front row left to right: Jadan Sudderth, Deron Sudderth, Mark Howard, Larry Wardlaw, Mike McCully, Richard Hadley, not pictured is Thad Phillips.



SHERLEY-ANDERSON-PITMAN

Assistant coaches, Everado Arce, Rojello Arce, Coach Vernon Scott. Back row left to right: Kayle Watts, Josh Ensor, Roger Johnson, Vic Christian, Craig Kaltwasser, Mark Owens, Steve Doolittle, Phillip Hagler. Front row left to right: Steve Scott, Charles Johnson, John Scott, David Dell, Mark Miller, Kelly Deeds, Juan Arce. Not pictured: Michael Nance, Alan McCleskey.



OKLAHOMA LANE FARM SUPPLY

Coach Ken Harrison. Back row left to right: Danny Allen, Max Winkles, Robert Johnson, Gene Christian, Paul Brigham, Brad Jones, Tommy Galvan, Lesley Curtis. Front row left to right: William Rundell, Mike Goettsch, John Johnson, Stan Edwards. Not pictured - Frank Ortiz.



KELLY GREEN SEEDS

Coaches Lewis Foster and Richard Urioste. Back Row left to right: Bobby Urioste, Johnny Bland, David Cantu, Jerry Ancira, Ruben Castillo. Front Row left to right: Benito Rivas, Charles Castillo, Rudolph Sanchez, Kevin Stanley, Steve Askew, Billy Ray Autrey. Players not pictured: Jason Ensor, Jimmy Maltos.



ALDRIDGE INSURANCE AGENCY

Coach Bill Brigham. Back row left to right: Russ Jones, Gary Green, Bradley Owens, Gene Christian, Paul Brigham, Brad Jones, Tommy Galvan. Front row left to right: Dewitt Green, Travis Bibbs, Jeff Frederick, Arther Salguero, Kent Gast, David Harding.

THE TWIN CITIES



GOLDEN WEST SEED CO.

Back Row left to right: Coach Jerri Tharp, Ginger Trimble, Dianne Looper, Kathy Stanley, Caroline Anderson, Debbie Tharp, Othena Smith, Cheri Tharp, Hilda Rojas-assistant coach. Front Row left to right: Kay Whitson, Carol Vinton, Renee Johnson, Cindy Watts, Elizabeth Pierce, Virginia Rojas. Not pictured, Becky Potts.



HOLIDAY STORE

Back row left to right: Lynn Fought, Alice Coffman, Karol Goforth, Cindy Eshleman, Linda Cooper, Coach Judy Brunson. Front row left to right: April Coffman, Terry Cooper, Carol Eshleman, Debbie Tipton, Pam Erwin, Leigh Ann Kirkland. Other team members not available for the picture are: Betty and Carolyn Stewart.



STATE LINE GRAIN

Back row left to right: Jo Pearce, Jill Watkins, Sandra May, Alleen Pearce-coach. Middle row left to right: Kim Pearce, Sandra Watkins, Sue Hall, Coretta Askew, Jeanette Powell. Front row left to right: Natalie Dollar, Karen May, Jayme Berry, Deana Williams, Beth Black.



SECURITY STATE BANK

Back Row left to right: Bill Johnson, Jack Kirkland Coach, Larry Erwin, Kevin Hargrove, Freddy Dale. Middle Row: Jack Allan Kirkland, Mack McFarland, Brett Hargrove, Kirk McFarland. Front Row left to right: David Dannheim, Zeferino Villereal, Carl Kirkland, David Ancira.



CAPITOL FOODS

Back row left to right: Sharon Booth, Claire McFarland, Beverly Roberts, Leslie McFarland, Lynne White, LaShawn Sheets, Joyce White. Front row left to right: Teresa Dollar, Judy Hardage, Kim Harrison, Sheryl Woods, Kathy Booth, Peggy White, Dolla Dollar, Mascot David Woods, eight months old. Girls not available for picture were Donna Chumley and Jacquetta Crook. Coaches at back: Irene Woods and Yvonne Hardage.



HELTON OIL CO.

Back row left to right: Bob Dollar-coach, Terry Yell, Ronnie Winegear, Albert Stewart, Vane Doshier, coach. Front row: Kent Armstrong, Curtis Lindsey, Albert Galvan, Domingo Rojas, Clyde Dollar. Team members not pictured: Doug Harrison, Billy Baldrige, Johnny Boling.



CLARA'S SPUR RESTAURANT

Coach Janie Bowery; Back row left to right: Cheryl Boling, Dorothy Goforth, Bonnie Foster, Vickie Edwards, Terri Sue Boling, Bessie Bowery, Vickie Gilliam, Deb Foster, Coach Irene Hammit. Front row left to right: Deborah Harding, Mary Jo Baker, Carol Anderson, Karen Foster, Mary Medina, Deb Stevens, Odessa Anderson. Players not pictured - Betty Jo Peugh, Susie Martinez.



SHERLEY GRAIN BOVINA

Back row left to right: Mike Barraza-coach, Widdy Gromowsky, Allen Cockerham, Ted Graham-coach. Middle row left to right: Danny McKay, John Ortiz, Jose Bazaldua, Guadalupe Espinosa. Front row left to right: Jeff McCormick, Bennie McCain, David Vargas, Arty Kunselman.



MIL and MARY'S CAFE

Back Row left to right: Linda Dannheim, Josephine Morris, Mary Cantu, Judy Yell, Debbie Meeks, Glenda Rhodes, Coach Loraine Dannheim. Front Row left to right: Cary Marsh, Peggy Rhodes, Freda Leavell, Sherry McCully, Kathy Crume. Team members not pictured are Betty Autrey, Connie Autrey, and Debbie Milstead.



CHARLES OIL CO. BOVINA

Back row left to right: Wayne Spears, coach, Billy Shelby, Mike Spears, Bobby McMeans, Greg Hromas, Hugh Rogers, Tony Serra, Benny Shelby-assistant coach. Front row left to right: Roy Hartzog, Ronnie Stoss, Robert Tienda, Eddie Pesch, Robert Cardoza.

Legal Notice

CITATION BY PUBLICATION

THE STATE OF TEXAS
TO: William S. Hood and his wife Kathleen M. Hood, Erik Olson, Mrs. Erik Olson, E. Olson, Mrs. E. Olson, Hiram W. Yeager, Mrs. Hiram W. Yeager, Edmund L. Meyers, Mrs. Edmund L. Meyers, Carl M. Camp, Mrs. Carl M. Camp, all of the unknown wife or wives, and all of the unknown husband or husbands, of each of the above named persons, all of whose places of residence are unknown, and if deceased then their unknown heirs, assigns, devisees, and legal representatives, all of whom are unknown, and all unknown persons owning, having or claiming any lien or interest of any nature in the hereinafter described land, and all of the unknown heirs, assigns, devisees and legal representatives of all of the unknown owners and claimants, all of whose places of residence are unknown, Defendants, Greeting:
You are hereby commanded to appear by filing a written answer to the Plaintiff's Petition at or before ten o'clock A.M. of the first Monday after the expiration of forty-two days from the date of the issuance of this citation, same being Monday the 4th day of August, 1969, at or

before ten o'clock A.M. before the Honorable District Court of Parmer County, Texas, at the Court House of said County in Farwell, Texas.

Said Plaintiff's Petition was filed in said court on the 20th day of June, A.D. 1969, in this cause, numbered 2998 on the docket of said court, and styled, C. R. ELLIOTT, Plaintiff, vs. ERIK OLSON, ET AL, Defendants.

The names of the parties to the cause are as follows: C. R. Elliott is Plaintiff and William S. Hood and his wife Kathleen M. Hood, Erik Olson, Mrs. Erik Olson, E. Olson, Mrs. E. Olson, Hiram W. Yeager, Mrs. Hiram W. Yeager, Edmund L. Meyers, Mrs. Edmund L. Meyers, Carl M. Camp, Mrs. Carl M. Camp, all of the unknown wife or wives, and all of the unknown husband or husbands, of each of the above named persons, all of whose places of residence are unknown, and if deceased then their unknown heirs, assigns, devisees, and legal representatives, all of whom are unknown, and all unknown persons owning, having or claiming any lien or interest of any nature in the hereinafter described land, and all of the unknown heirs, assigns, devisees and legal representatives of all of the unknown owners and claimants, all of whose places of residence are unknown, Defendants.

A brief statement of the nature of this suit is as follows, to-wit:

Plaintiff brings this suit in trespass to try title, alleging that he is the owner in fee simple of:

All of lots 6, 13, 14, 15, 18, 19 and 20, of Block 14, of the Original Town of Bovina, Parmer County, Texas.

That on or about the first day of June, 1969, the Defendants entered unlawfully upon such land and ejected Plaintiff therefrom and wrongfully withheld possession from such Plaintiff, and Plaintiff further sets up and pleads the 5-year and 10-year statute of limitations as the same pertains to land titles in the State of Texas,

as is more fully shown by Plaintiff's Petition on file in this suit.

If this citation is not served within ninety days after the date of its issuance, it shall be returned unserved.

The officer executing this process shall promptly execute the same according to law, and make due return as the law directs.

Issued and given under my hand and the seal of said Court, at office in Farwell, Texas, this the 20th day of June, A.D. 1969.

ATTEST: Dorothy Quickel Clerk, District Court, Parmer County, Texas

SEAL Published in State Line Tribune June 27 and July 4, 11, 18, 1969.

CITATION BY PUBLICATION

THE STATE OF TEXAS TO: W. R. Shirley and his wife, Mrs. W. R. Shirley, and the unknown wife or wives and the unknown husband or husbands of each of the above named persons, all of whose places of residence are unknown, and if deceased, then their unknown heirs, assigns, devisees and legal representatives, all of whom are unknown, and all unknown persons owning, having or claiming any lien or interest of any nature in the hereinafter described lands, and all of the unknown heirs, assigns, devisees and legal representatives of all of the unknown owners and claimants, all of whose places of residence are unknown, Defendants, Greeting:

You are hereby commanded to appear by filing a written answer to the Plaintiff's Petition at or before ten o'clock A.M. of the first Monday after the expiration of forty-two days from the date of the issuance of this citation, same being Monday the 18th day of August, 1969, at or before ten o'clock A.M. before the Honorable District Court of Parmer County, Texas, at the Court House of said County in Farwell, Texas.

Said Plaintiff's Petition was filed in said court on the 1st day of July, A.D. 1969, in this cause, numbered 3001 on the docket of said court, and styled, DOROTHY WATSON, ET AL, Plaintiff, vs. W. R. SHIRLEY, ET AL, Defendants.

The names of the parties to the cause are as follows: Dorothy Watson and her husband, A. C. Watson, Mary Kathryn Cox, a feme sole, Helen E. Atkins and her husband, G. W. Atkins, and M. Jean Crawford, a feme sole, are plaintiffs, and

W. R. Shirley and his wife, Mrs. W. R. Shirley and the unknown wife or wives and the unknown husband or husbands of each of the above named persons, all of whose places of residence are unknown, and if deceased, then their unknown heirs, assigns, devisees and legal representatives, all of whom are unknown, and all unknown persons owning, having or claiming any lien or interest of any nature in the hereinafter described lands, and all of the unknown heirs, assigns, devisees and legal representatives of all of the unknown owners and claimants, all of whose places of residence are unknown, are defendants.

A brief statement of the nature of this suit is as follows, to-wit:

Plaintiffs bring this suit in trespass to try title, alleging that they are the owners in fee simple of:

All of Lots 9 and 10, of Block 72, of the Original Town of Friona, Parmer County, Texas.

That on or about the first day of June, 1969, the defendants entered unlawfully upon such land and ejected plaintiffs therefrom and wrongfully withheld possession from such plaintiffs, and plaintiffs further set up and plead the 5-year and 10-year statute of limitations as the same pertains to land titles in the State of Texas,

as is more fully shown by Plaintiff's Petition on file in this suit.

If this citation is not served within ninety days after the date of its issuance, it shall be returned unserved.

The officer executing this process shall promptly execute the same according to law, and make due return as the law directs.

Issued and given under my hand and the seal of said Court, at office in Farwell, Texas, this the 1st day of July, A.D. 1969.

ATTEST:

Classified Ads

WANT ADS PH. 481-3681 CLASSIFIED RATES

First insertion, per word - 6¢ Second and additional insertions - 4¢ Card of Thanks - \$1.00 Double rate for blind ads Classified Display - \$1.00 per col. inch Minimum charge - 65¢ on cash order, \$1 on account

DEADLINE FOR INSERTION

Friday's State Line Tribune - 10 a.m. Wednesday

The Tribune reserves the right to classify, revise or reject any classified ad.

Check advertisement and report any error immediately The Tribune is not responsible for error after ad has already run once.

Dorothy Quickel, Clerk, District Court, Parmer County, Texas

SEAL Published in the State Line Tribune July 4, 11, 18, 25, 1969.

CALLING CARDS, Business forms, invoices, statements, envelopes etc. See State Line Tribune, 404 Third St., Farwell, Phone 481-3681. 2-tnc

Need party with good credit in Farwell area to take over payments on 1968 Model Singer Sewing Machine in walnut console. Will zig zag, button hole, fancy patterns, etc. Five payments at \$5.55 or will discount for cash. Write Credit Dept., 1114 - 19th St., Lubbock, Texas 79401. 41-tnc

WANTED -- Job Printing, Can do all kinds, Quality work, State Line Tribune, 404 Third St., Farwell. Ph. 481-3681. 2-tnc

Need A Late Model Car Or Truck? Call Charles Seale At Friona 247-3571 Or Hereford, 364-2727. 33-tnc

Farm and Ranch Loans Long Term Low Interest Ethridge-Spring Agency - Friona Phone 247-2766

FOR SALE -- Large brick, three bedroom, one and three-quarter baths, carpet, a wealth of storage space. All this in the quiet community of Texico. Sold exclusively by Roy Gentry Real Estate. Call Leon Smith, phone 762-4590. 41-tnc

Boyd's Complete Brake and Bear Front End Service

TIRE TRUING, WHEEL BALANCING AND OVERLOAD SPRINGS, MONROMATIC SHOCKS, DRUM TURNING, BRAKE DRUMS, BRAKE SHOE EXCH. POWER BRAKES, UNITS, ETC.

BOYD'S BRAKE SHOP

Over 25 years in Clovis 221 W. Grand -- 763-4326 2-tnc

REWARD OFFERED for return of red leather billfold containing credit cards, wedding rings and other jewelry. Taken from swimming pool in Texico Tuesday. Contact Mrs. J. R. Castleberry - phone 481-3836. 42-2tc

Courthouse Notes

Instrument Report Ending July 10, 1969 filed in the County Clerk's Office by Bonnie Warren, County Clerk.

D.T., Emmitt Autrey, Farmers Home Adm., W/2 Lots 29, 30, 31 & 32 Blk 48 Farwell

WD, Secretary of Housing & Urban Dev., Emmitt Autrey, W/2 Lots 29, 30, 31 & 32 Blk 48 Farwell

DT, Severo Tey Telles, Gary K. Glasscock, Lots 16, 17, 18, 19 & 20 Blk 57 Bovina

WD, G. B. Buske, E. E. Kraus, part Sect. 5 NW of RR ROW in T4S R4E

WD, Gene F. Tomlinson, Jimmy Lee Wynn, E. 47 ft. Lot 3 & W. 26 ft. Lot 4 Blk 4 Mimo Add. Farwell

WD, Gorden Duncan, Ruby Duncan Green, NE/4 Sect. 97 Kelly "H"

DT, Gilbert Kaltwasser, Prudential Ins. Co., NW/4 Sect. 7 T1S R2E

Consolidated Report of Condition of SECURITY STATE BANK

of Farwell, Parmer, Texas 79325, and Domestic Subsidiaries at the close of business on June 30, 1969. State Bank No. 1434, Federal Reserve District No. 11

ASSETS (including \$ unposted debits) Schedule D, item 7 \$1,163,294.99 U. S. Treasury securities 978,001.25 Securities of other U. S. Government agencies and corporations 3,399,750.00 Obligations of States and political subdivisions 21,466.96 Other loans (Schedule A, item 8) 2,699,981.77 Bank premises, furniture and fixtures, and other assets representing bank premises 95,000.00 TOTAL ASSETS \$8,357,494.97

LIABILITIES Demand deposits of individuals, partnerships, and corporations (Schedule E, item 4) \$4,318,310.51 Time and savings deposits of individuals, partnerships, and corporations (Schedule F, item 6) 2,390,913.71 Deposits of United States Government (Schedule E, item 5 and Schedule F, item 7) 27,541.21 Deposits of States and political subdivisions (Schedule E, item 6 and Schedule F, item 8) 760,112.54 TOTAL DEPOSITS \$7,496,877.9 (a) Total demand deposits (Schedule E, item 11) 5,105,964.26 (b) Total time and savings deposits (Schedule F, item 12) 2,390,913.71 TOTAL LIABILITIES \$7,496,877.97

CAPITAL ACCOUNTS Capital notes and debentures \$ 850,617.00 Common stock-total par value 100,000.00 (No. shares authorized 1000) (No. shares outstanding 1000) 100,000.00 Surplus 205,830.59 Undivided profits 454,786.41 TOTAL CAPITAL ACCOUNTS (sum of items 34 and 35 above) 860,617.00 TOTAL LIABILITIES, RESERVES, AND CAPITAL ACCOUNTS (sum of items 28, 29, 33, and 41 above) \$8,357,494.97

MEMORANDA Average of total deposits for the 15 calendar days ending with call date \$7,392,600.00 Average of total loans for the 15 calendar days ending with call date 2,696,753.30

I, L. S. Pool, Cashier, of the above named bank do solemnly swear that this report of conditions is true and correct, to the best of my knowledge and belief.

/s/ L. S. Pool Correct -- Attest: /s/ G. D. Anderson /s/ Belva T. Anderson /s/ R. W. Anderson (Directors)

State of Texas, County of Parmer, ss:

Sworn to and subscribed before me this 8 day of July, 1969, My commission expires 6-1-71.

/s/ Joe W. Jones, Notary Public.

Treasurer's Report

REPORT of Mabel Reynolds County Treasurer of Parmer County, Texas, of Receipts and Expenditures from April 1, 1969 to June 30, 1969, inclusive:

JURY FUND, 1st Class Balance last Report, Filed March 31, 1969 \$1,654.08 To Amount received since last Report, 36.80 To Amount transferred from other Funds, since last Report, 3,000.00 By Amount paid out since last Report, Ex. "A" 1,468.00 BALANCE \$3,222.88

ROAD AND BRIDGE FUND, 2d Class Balance last Report, Filed March 31, 1969 \$7,404.72 To Amount received since last Report, 36.80 To Amount transferred from other Funds, since last Report 150.00 By Amount paid out since last Report, Ex. "B" 7,291.52 BALANCE \$7,291.52

GENERAL COUNTY FUND, 3d Class Balance last Report, Filed March 31, 1969 \$174,656.47 To Amount received since last Report, 21,522.39 By Amount paid out since last Report, Ex. "C" 42,330.54 By Amount transferred to other Funds, since last Report, 3,000.00 BALANCE \$150,848.32

PERMANENT IMPROVEMENT FUND 4th Class Balance last Report, Filed March 31, 1969 \$4,676.16 To Amount received since last Report, 36.80 BALANCE \$4,712.96

RIGHT OF WAY FUND 5th Class Balance last Report, Filed March 31, 1969 \$99,061.23 To Amount received since last Report, 525.19 By Amount paid out since last Report, 11,013.87 BALANCE \$88,572.55

LATERAL FUND 6th Class Balance last Report, Filed March 31, 1969 \$3,164.19 By Amount paid out since last Report, 3,164.19 BALANCE 00

SOCIAL SECURITY FUND 7th Class Balance last Report, Filed March 31, 1969 \$7,159.97 To Amount received since last Report, 2,612.09 By Amount paid out since last Report, 5,222.23 BALANCE \$4,549.83

FARM TO MARKET R. & B. FUND 8th Class Balance last Report, Filed March 31, 1969 \$114,248.36 To Amount received since last Report, 82,361.17 By Amount paid out since last Report, 49,667.06 BALANCE \$146,942.47

RECAPITULATION JURY FUND, Balance \$ 3,222.88 ROAD AND BRIDGE FUND, Balance 7,291.52 GENERAL COUNTY FUND, Balance 150,848.32 PERMANENT IMP. FUND, Balance 4,712.96 RIGHT OF WAY FUND, Balance 88,572.55 LATERAL FUND, Balance 0 SOCIAL SECURITY FUND, Balance 4,549.83 FARM TO MKT. FUND, Balance 146,942.47 TOTAL \$406,140.53

LIST OF BONDS AND OTHER SECURITIES ON HAND U. S. Government Bonds \$541,000.00 COUNTY INDEBTEDNESS: Machinery Time Warrants \$ 23,800.00

THE STATE OF TEXAS COUNTY OF PARMER

Before me, the undersigned authority, on this day personally appeared Mabel Reynolds, County Treasurer of Parmer County, who being by me duly sworn, upon oath, says that the within and foregoing report is true and correct.

Mabel Reynolds County Treasurer

Sworn to and subscribed before me, this 11 day of July, 1969

Bonnie Warren Clerk, County Court Parmer County, Texas.



The Church is God's appointed agency in this world for spreading the knowledge of His love for man and of His demand for man to respond to that love by loving his neighbor. Without this grounding in the love of God, no government or society or way of life will long persevere and the freedoms which we hold so dear will inevitably perish. Therefore, even from a selfish point of view, one should support the Church for the sake of the welfare of himself and his family. Beyond that, however, every person should uphold and participate in the Church because it tells the truth about man's life, death and destiny; the truth which alone will set him free to live as a child of God.

A grid of advertisements for various businesses including Farwell Hardware Zenith, WATTS MACHINE & PUMP CO., INC., CAPITOL FOODS, Claborn Funeral Home, STATE LINE GRAIN-CHEMICAL, B-W FEED YARDS, SHERLEY-ANDERSON-PITMAN, INC., W & J AUCTION, THE CITIZENS BANK, TEXACO INC., HOLIDAY The Family Store, ROSE Rexall DRUGS & Gift Shop, OKLAHOMA LANE FARM SUPPLY AND GIN, ALDRIDGE INSURANCE AGENCY, Texico-Farwell Cable TV, and HELP.

St. Joseph's Catholic Church

Uhl Myron - Pastor Confession, Sunday, 9:30 a.m. Sunday Mass - 10 a.m. Christian Doctrine after Ma

Hamlin Memorial Methodist Church

Philip Baker, Pastor Church School - 10:00 a.m. Morning Worship - 11:00 a.m. Evening Worship - 7:15 p.m.

Farwell Church of Christ

Dewey Fogerson - Minister Sunday School - 10 a.m. Morning Worship - 10:50 a.m. Evening Worship - 6 p.m.

Texico First Baptist Church

Leroy Looper - Pastor Sunday School - 10 a.m. Morning Worship - 11 a.m. Evening Worship - 7:30 p.m.

Oklahoma Par Methodist Church

O. W. Williams - Pastor Sunday School - 10 a.m. Morning Worship - 11 a.m. Evening Worship - 7 p.m.

St. John's Lutheran Church

Herbert F. Pelman - Pastor Sunday School - 9:30 a.m. Morning Worship - 10:30 a.m.

Assembly of God

Claude Walker - Pastor Sunday School - 10 a.m. Morning Worship - 11 a.m. Evening Worship - 7:30 p.m.

West Camp Baptist Church

Sunday School - 10 a.m. Morning Worship - 11 a.m. Evening Worship - 7 p.m.

Bottle Stretching, Making Knives --

Hobbies Keep Couple Busy



FINISHED PRODUCTS --- This is only a few sizes and shapes of bottles in various colors which Mrs. Leavell has completed since beginning the "bottle stretching hobby" in March of this year. She finds that she can make novel designs by allowing a little of the liquid to remain in the bottles or by painting the bottles various colors, using a glaze.

Bottle stretching is a hobby Mrs. Etta Leavell had never heard of until a year ago, when some of the lovely articles were presented to her son and daughter-in-law as gifts. Etta was so impressed with the bottles that she immediately began investigating the cost of getting into the operation. At one time, after she had checked on cost and necessary installation of electric wiring for the hobby, she almost gave up the idea. However she kept visualizing the beautiful bottles in assorted sizes and shapes she had seen at other such

hobbyists, and she had soon called an electrician to install the necessary wiring and had ordered a kiln, in which to "cook" the bottles. Since that time the hobby has almost become a business for this semi-retired lady who has stretched bottles of all colors and sizes for family and friends. The kiln, operated by electricity has six rods across the

top to hold the bottles, which are tied onto the rods with a special wire, Mrs. Leavell likes the wire she obtains by unraveling clothesline. She can put several bottles of the same general size into the kiln at one firing. Since each size bottle takes a different length of time for firing, the bottles must be of the same general size; colors may be mixed.

After the bottles have been placed in the kiln, they are "cooked" from one and one-half hours to two hours, depending on size of the bottles. After the first hour they must be watched closely since the bottles may become too hot and melt completely.

At the end of the required heating time the electricity is turned off, but the bottles are allowed to remain in the kiln for another four hours before removal. If they are removed sooner there is danger of bottles cracking or breaking. As the bottles are removed from the kiln they are immediately wrapped in towels to protect them from breaking from exposure to the outside air. Mrs. Leavell has found that clear

bottles and light green bottles break easier than the darker colors (which hardly break at all).

When she finds it necessary Mrs. Leavell can make three runs (firings) in one day, leaving the last run in the kiln until the following morning before removing. She has found that ginger ale bottles will not stand the firing as well as other types of bottles, therefore she hardly ever tries to "cook" one of the large ale bottles. After the bottles are removed from the kiln they must be filed around the top with an ordinary file to remove any sharp edges.

"Beautiful vases can be made from small baby food jars and small jugs as well as the larger

bottles," said Mrs. Leavell. Family and friends have helped to supply this industrious lady with bottles for her hobby. She sells the finished products for 50¢ and "up" depending on the size of the bottle. Some of her bottles have been bought by vacationers from Florida, some have been sent to friends and relatives in California, and some have gone to a lady in Greeley, Colo.

Not only are the bottles useful as vases for the home, but they can also be used as novel room decorations. Some of the more delightful shapes are those which resemble swans, in shades of blue, or those which have almost completely melted and are now in various designs and are usable as ash trays.

Mrs. Leavell stated "I can not recommend the hobby as a therapy since it is nerve-wracking, especially when trying to make more than one cooking per day . . . but it is interesting and I am always anxious to complete the next group and see what I come up with this time!"

Mrs. Leavell is not the only one in her family who has a delightful hobby since husband Homer, a wheel-chair patient for a number of years, also has a hobby. His hobby is making knives (butcher knives and paring knives) from old discarded hand saw and hack saw blades and also from the type

NFO Schedules Meeting Friday

A membership meeting will be held Friday in the Farwell High School cafeteria, for the area National Farmers Organization.

Slated at 8:30 p.m., the organization urges all farmers to attend.

Organized in Farmer County last year, the NFO is the largest active participating farm organization, both locally and nationally.

NFO asks farmers to join "in order to bargain collectively for a fair price."

Information about NFO may be obtained in the local office, Monday through Friday, 9 a.m. to 1 p.m., in the Blade Building.

Swimming Lessons Slated At Club

A series of swimming lessons for beginners has been completed recently at Farwell Country Club. A second series of lessons for beginners is scheduled to begin at the club on July 22 and continue through August 2. Children five years of age and up are invited to participate in the classes.

On August 5 a series of lessons for advanced swimmers will begin at the club. The advanced lessons will be completed on August 16.

Ted Glenn, Jr., lifeguard at the country club pool, will instruct all of the classes. Persons desiring additional information on the classes should contact him at his home or at the country club.

Visitors in the home of Mr. and Mrs. Ted Magness and children last week were Mrs. Magness' sister and brother-in-law, Mr. and Mrs. W. H. Williams, and son, William, and Miss Connie Williams. The Williams family was enroute from Waco to their new home at Colorado Springs.

Mr. and Mrs. Alan Teel and family from Carlsbad were guests in the home of Mr. and Mrs. Elmer Teel over the weekend. Mrs. Jerry Hill and sons from San Spring, Okla., are expected to arrive for a visit in the Teel home later this week.



HOMER LEAVELL displays some of his butcher knives and paring knives as he explains a little of the process by which they are made.

Now Available --

Hwy. Dept. Shows New Texas Film

Weldon Moody, Farmer County State Highway construction foreman, announces that a new film is available from the Texas Highway Department's Lubbock office.

Oscar L. Crain, District Engineer, District Five, says that the Highway Department will show the film to civic clubs, schools, or any group who would like to use it as a program.

The film, "Texas -- Amer-

ica's Fun-Tier" depicts recreation and fun--things to do and unusual events set against backdrops of the diversity of scenery found in the state, east to west, north to south.

"Texas -- America's Fun-Tier" is a half hour sound and color production with original music.

Moody may be contacted about the film at 238-3321, or 238-2832.



CHECKING THE KILN --- Mrs. Etta Leavell checks the bottles in the kiln to see if they are "coming along alright."



One fault with the human race is the number of people who know how to read but have not learned how to think. —Joseph M. Shaw, Jr., Cherokee County (Ala.) Herald.

Face powder may attract a man but baking powder will hold him. William Chaffee, The Walnut (Iowa) Bureau.

Truth reminds me of a cat —no matter how it is turned and twisted around, it will always land back on its feet. —George C. Keyes, The Oklahoma County News.



Examining physician: "You have a slight case of Dunlop's disease." Red: "Is it serious?" Physician: "Not very. Your stomach's done lopped over your belt."

Let Us Service Your Car With Fuel-Oil-Wash-Lube Job.

We Will Pick Up And Deliver.

Wheeler Avenue "66" Station Texico Ph. 482-9148 AND

RED'S "66" Red Prather 481-3662 Farwell



"You're walking on my latest work!"

- Rx for Mechanical Fitness: BRAKES ✓ TIRES ✓ ENGINE ✓ MUFFLER ✓ RADIATOR ✓ BATTERY ✓ ELECTRICAL SYSTEM ✓

Karl's Auto Clinic Smokey And Fred 481-3687 Farwell



UNLOADING MILLIONS — The United States has paid "port charges" totaling \$600 million to unload foreign aid cargoes at the ports of some 100 nations, according to Rep. John Dowdy (D-Tex.), even though there had been an agreement that there would be no charge. He said, "It seems to me, if we are going to give our resources to a country, it should not charge us for unloading it in their country. We are not buying any friends with our foreign aid."

FEDERAL PAYROLL — "I asked the Budget officials," said Sen. John J. Williams, (R-Del.), "how they reconcile a request for 46,000 extra employees when at the same time we are being told that they are carrying out a mandate of the Congress to reduce the number of employees by 2 per cent, and I got this amazing explanation. They said that the 2 per cent is taken off what they would have added if Congress had not acted."



Up; for this is the day —(Judges 4:14)

When we invite the powerful, loving action of God into our life, we can expect changes. We can expect movement and growth. When we are ready to become a part of a forward movement affirm this truth. Then throughout the day keep this invitation flowing out through positive thoughts, constructive works and orderly actions. Use this affirmation faithfully and open the door to the powerful loving action of God.

SEE The Latest In MINNEAPOLIS-MOLINE MM World's Finest Tractors At FARWELL EQUIPMENT CO. Farwell Ph. 481-3212

As cooks, some women are limited.

They lack certain advantages that women with gas ranges enjoy. For example: Cooking with gas, there is practically no limit to the number of heat selections between on and off. Boilovers can be prevented on a gas range merely by lowering the flame. There is absolutely no wait for heat reduction--no need to remove the pan from the burner! You can try even the trickiest recipes with confidence. Gas flame consumes smoke, so you can broil

with the door closed on any gas range. A gas oven gets hot fast. And the flames give you a true artist's touch for baking, roasting, browning and broiling. BONUS: Gas cooks for 1/2 the cost of electricity. For the sweet taste of success, hurry down to Southern Union or your appliance dealer's for a new gas range. You can add the payments to your gas bill. Southern Union Gas Company



If you want the job done right do it with gas.

By George!



Buy From George Long Get The Best Deals On The Best Cars and Trucks Pontiac, GMC, Rambler, And Better Used Cars Rierson Pontiac

Clovis, New Mexico Home Phone: 481-3876 Farwell, Texas

Sherwood Mortuary, Inc. Home of the DALE LEE SHERWOOD MEMORIAL CHAPEL CONSOLATION Clovis' Only 100% Home Owned Mortuary TROY SHERWOOD CHARLES V. SHERWOOD Tenth at Main - Clovis - Phone 762-4435



At Home In Farmer County

By JANICE MILLER
County HD Agent

Summer months are full of 4-H activities! Four Farmer County 4-H members will be attending District Electric Camp the week of July 21 through July 25. Carrie Hasehoff, Deborah Harding, Kevin Kaltwasser and Darwin Green will be going to this camp in Cloudercroft, N.M. They will be learning about electricity from Southwestern Public Service Co. employees. A new experience for the 4-H'ers will be to work with members from Oldham County in planning a party for the Thursday night of camp. Besides the night recreation, the 4-H'ers will be participating in table tennis and volleyball tournaments.

Men are stealing the scene in new knit apparel. Knit suits, slacks, shirts and even ties are getting in the show this season. The new knit suits hold their press, shed wrinkles, pack well, and most important -- they are cool and comfortable. Knits are still the leaders in leisure-time wear, but watch for other knit

wear, too. How does the man in your life like knits?

What's a summer favorite for cook-outs, picnics and barbecues and is easy to prepare, economical and versatile? Ground meat. But, ground beef, chuck and round are from different types of meat. Ground beef may be a mixture of meat from the neck, brisket, plate, flank, heel or round. It usually has a high percentage of fat and costs less than ground-to-order meat. Ground chuck is usually more tender, makes juicy patties and is less expensive than ground round. Ground round steak is high in lean meat, and shrinks less during cooking. It is best to use ground meat the day you buy it, or at least the day after. If you need to keep it longer than this, freeze it. For grilling, moisten both sides with a few drops of cold water just before cooking. This helps keep the meat moist and tender.

Safety Tips For Outdoor Barbecuing

Man's favorite outdoor summer sport is barbecuing and, like any other type of cooking, technique plays a major role.

According to the Structo Barbecue Institute and the National Safety Council, proper safety precautions can spell the difference between an enjoyable meal and potential disaster. As with any flame or fire, these experts say, respect for the grill should always be present, even when preparing something easy to fix like hot dogs.

Don't grill in an area where children are playing. A careless child may inadvertently run into the grill, tip it over, and be severely burned.

If any part of grilling were to be branded as particularly dangerous, it's lighting the fire. Many tragedies and near tragedies are caused every year by carelessness in lighting charcoal, according to the National Safety Council.

Gasoline, because of its explosive nature, should be avoided along with any flammable material not expressly designed for barbecuing. Electric charcoal lighters should be handled with care; their elements, if stored in dampness, may short out when used.

Follow the directions on the lighter fluid container which always say to let the liquid soak into the charcoal before lighting to reduce the hazard of a flash flame. Do not under any circumstances add lighter fluid once the grill is going.

For handling food on the grill, it's a good idea to have long-handled tools, preferably tongs that are sturdy with fire-proof grips, spokesmen for the Structo Barbecue Institute maintain. A pair of heavy gloves will keep hands safe when it's necessary to handle some hot item.

After you have finished grilling, extinguish the live charcoals by dousing them with a panfull of water.

A heavy apron to protect clothing from grease and sparks is a must for the chef. Roll up your sleeves and keep loose-fitting clothes away from the fire.

When cooking steaks that drip fat into the fire, a sprinkling bottle filled with water is helpful in curbing flames that can ruin a fine piece of meat.

Most outdoor chefs fail to realize the danger of charcoal fires which give off carbon monoxide. Charcoal should only be used outdoors or in well-ventilated indoor locations such as a fireplace with an open draft.

Report From The Sheriff's Office

Two men have been arrested and charged with felony theft in burglaries from farms in the area. Manuel Pargas has been charged with burglary of the farm home of Gene Welch. His bond has been set at \$5,000.

In the other incident, Tony Pena was charged with theft of tools from the farm of Ed Clark. Part of the tools have been recovered from a pawn shop in Hereford. Bond had not been set for Pena at press time.

In another incident on Friday night, Sherrill Lumber Co. in Bovina was burglarized. Taken in the burglary was approximately \$500 of merchandise, all of which was found hidden in weeds some two blocks away, and a small amount of cash (not recovered).



WELCOME TO ASTROWORLD -- Astroworld welcomes a trio of new animal characters to Astroworld, the family amusement center next to the Astrodome in Houston. The three new characters are a skunk (who carries an atomizer of perfume), a kangaroo with her baby in the pouch, and a lady gorilla, complete with a hair ribbon and a parasol. Astroworld is open daily from 10 to 10 all summer.

With Farmers --

SCS Contracts Developed

"Contracts are being developed by the County Soil Conservation Service office for anyone wanting to establish practices such as grass, diversion, parallel terraces, graded waterways, irrigation pipelines, and bench leveling on their farms or ranches," Soil Conservationist Glen Phillips says. Money for financing the program for the next 12 months is expected soon.

The Great Plains Program provides cost-share assistance to farmers and ranchers based upon a complete conservation plan for their operating unit. "The cost-share is set up in a contract over a scheduled period of three to 10 years, depending on needs of the farm or ranch operation and financial ability of the producer," Phillips said.

The plan of conservation operations developed with the

landowner or operator includes a schedule of land-use adjustment and conservation measures considered needed for the most efficient operation of the farm or ranch unit. Technical assistance is provided by the Soil Conservation Service for the planning and installation of the necessary conservation measures.

This program supplements and fits into other programs such as those of the Soil and Water Conservation District and the Agricultural Conservation Program.

Public Law 1021 enacted by the 84th Congress set up the Great Plains Conservation Program in 1957. The Soil Conservation Service was given the responsibility of administering the program. The present congress has voted to extend the Great Plains Program for another 10 years.

- BULK CLEANING 35¢ LB.
 - CLEANING & PRESSING
 - KNIT BLOCKING
- COIN OPERATED DRY CLEANING



1500 Thornton
Please Bring Hangers
Ask The Attendant
for Information

BACK

IN TOWN

LAYNE & BOWLER PUMP CO.

- READY TO SERVE
- YOUR PUMP AND WELL NEEDS
- COMPLETE STOCK OF LAYNE & BOWLER PUMPS AND PARTS
- PUMP MACHINE WORK
- RIG FOR PULLING and SETTING PUMPS

Ph. 481-3393

LAYNE & BOWLER

PUMP COMPANY

601 Ave. A Farwell

YOU ARE ENTITLED TO THE BEST TRADING STAMPS -- WE GIVE YOU S & H GREEN STAMPS

SAVINGS by the cartload

Shop PIGGLY WIGGLY

Golden West FLOUR 25 lb. bag **\$1.89**

CRISCO 3 lb. Tin **77¢**

USDA Grade A Small EGGS 3 Doz. **79¢**

Shurfine MILK 6 tall cans **99¢**

Shurfine ICE 25 lb. bag **65¢**

Shurfine PEAS 3 No. 303 cans **89¢**

Shurfine Red Plum PRESERVES 18 oz. 2 jars **69¢**

Shurfine Pineapple-Orange or Pineapple-Grapefruit DRINK 3 46 oz. cans **89¢**

Del Monte or Hunt's Tomato Sauce 4 8 oz. cans **49¢**

Shurfine Tomatoes 4 No. 303 cans **99¢**

Shurfine Sweet Peas 5 No. 303 cans **99¢**

Keebler Penguin Cookies or Krisp Kream Sugar Wafers Box **47¢**

Hormel Boneless Cure 81 Fully Cooked HAM lb. **\$1.29**

Hormel Black Label BACON lb. pkg. **79¢**

Korn Land BACON 2 lb. pkg. **\$1.19**

Market-Sliced All Meat Bologna lb. **59¢**

Swift's Brookfield American Cheese 8 oz. pkg. **39¢**

Swift's Proten Beef Ribs lb. **39¢**

Market Sliced Spiced Luncheon Meat lb. **65¢**

WE HAVE DISCOUNT SPECIALS ALL WEEK LONG

Shurfresh BISCUITS 10 ct. Can Limit 6 At This Low Price **7¢**

Food King BREAD 1 1/2 lb. Loaf **15¢**

Maryland Club COFFEE 1 lb. can **67¢**

Shurfresh Saltine Crackers 1 lb. pkg. **19¢**

Shurfine Vienna Sausage 4 4 oz. cans **99¢**

Nabisco Sugar Honey Grahams 1 lb. box **37¢**

Shurfine Salad Dressing qt. **39¢**

Sunshine Hi Ho CRACKERS 1 lb. box **39¢**

Minute RICE 14 oz. box **47¢**

Kraft Apple or Strawberry JELLY 3 jars **98¢**

Tabby - Fresh Flavor CAT FOOD 15 oz. 2 cans **33¢**

Hi Vi - Horsemeat - 100 Brand DOG FOOD 3 14 1/2 oz. **59¢**

Tender Crust BREAD 1 1/2 lb. 5 loaves **\$1.00**

Save Shurfresh & Tender Crust Coupons

Shurfresh MILK Tender Crust Coupons

Shurfine Tender Crust MILK FOR VALUABLE FREE PRIZES

Ask Your Grocer For Prize List

Best MEATS in Town

Proten BEEF

SUMMER STORE HOURS -- Mon.-Tues.-Thur.-Fri. 8 A.M. to 8 P.M. Wed. & Sat. 8 A.M. to 9 P.M.

WE ARE ALWAYS CLOSED ON SUNDAY

Shop & Save At Your Texico-Farwell PIGGLY WIGGLY Everyday-Mon. thru Sat., But If You Shop elsewhere At Night And On Sunday You Could Be Paying Quite A Bit More.

WE RESERVE THE RIGHT TO LIMIT QUANTITIES!

Shop the friendliest store in town!

PIGGLY WIGGLY

FARWELL, TEXAS "Farmer Counties Largest & Finest Super Market."

Prices Effective Thurs., Fri. & Sat., July 17, 18, & 19, With Most To Continue Through Wed., July 23rd 1969