

METHODISTS CONSECRATE SANCTUARY SUNDAY

See Stories, Advertisements On Pages 3-7

FARWELL, TEXAS

FRIDAY, JULY 30, 1965

NUMBER 44

THE STATE LINE TRIBUNE

"OFFICIAL PUBLICATION OF PARMER COUNTY"

10 PAGES

FIFTY FOURTH YEAR

10 CENTS

IN FARWELL--

Five Teachers Hired Faculty Almost Complete

Several teachers were hired at the last meeting of the Farwell School Board. Two teachers are now needed to complete the faculty. Thirty five teachers will be on the staff this year (two over last year).

Mrs. Raymond Thompson, a graduate of Eastern New Mexico University and a former resident of Albuquerque will fill one of the vacancies in the first grade. This will be her first teaching assignment. Her husband is a student at ENMU.

Lee Jarvis Brown, also a beginning teacher will fill the vacancy in the science department. He has a B.A. degree from Hardin-Simmons and will complete work for a masters degree at mid-term at ENMU.

Mrs. Billy (Frances) Boling

will fill the vacancy in the sixth grade. Mrs. Boling, a local resident for a number of years has a BBA degree from WTSU. She has two years teaching experience (one in high school and one in grade school) and has done substitute work for eight years. She has substituted in both of the local schools for the past six years.

Hoyt Scott will teach junior high school mathematics. He is a resident of Moriarty, N. M., is married and the father of five children, three of whom will attend school at Farwell. Two have completed their pub-

lic school work.

Fred Goff, a graduate of Alamo High School who received a B.A. degree from Eastern New Mexico University in 1962 will be teaching in the high school mathematics department. Goff is married and has two children. He has taught in the Roswell school for the past three years.

W.M. Roberts, superintendent of schools in Farwell is optimistic about filling the two remaining vacancies in the next few days. Opening day of school is August 30.



JIMMY MACE

Jimmy Mace To Attend Youth Conference

Jimmy Mace, 17, son of Mr. and Mrs. W. A. (Alvin) Mace and a senior in the Farwell High School has been selected to attend the third annual Attorney Generals Youth Conference in Austin August 20-22. The conference is sponsored by Waggoner Carr.

Delegates to the conference are selected from boys and girls in Texas high schools (grades 9-12) with proven records of scholastic accomplishments as well as extra-curricular leadership contributions in their respective schools.

Purpose of the conference is to stimulate Youth to devote more of their time and energies to promote projects designed to help youth meet the challenges of their generation--To provide a clearing house for ideas among Youth workers, Church youth leaders, Educators, Law Enforcement Officers, Recreation staffs and other interested agencies and organizations and to try to teach Texas youth new ideas for combating delinquency in their individual communities.

Mace served as junior class reporter last year, was a member of the annual staff, manager of the football team, was named boys' state delegate alternate, and has participated in band, track, basketball, tennis and FFA.

Mr. and Mrs. Jerry Johnson of Canadian were in Texico over the weekend to visit in the home of his father, Russell Johnson.

Mrs. Loree Hill, a former teacher in the Farwell school, is visiting in the home of her sister, Mrs. John Lockhart. She will also attend the wedding of her niece, Betty Ruth Lockhart and Jon Schroeder while in Texico.

Church Of Christ Schedules Meeting August 2-8

Speaker for the series of gospel meetings which will be held at the local Church of Christ, August 2-8 will be C. E. McGaughy, well known and beloved gospel preacher who has devoted the last few years to evangelistic work.



C. E. McGAUGHEY

17th Anniversary Sale

Roth Grocery in Texico is holding its 17th annual Anniversary sale this weekend. Special prices on grocery items will be good Friday and Saturday.

Mrs. Tena Roth, owner and manager of the business, invites all her customers and friends (old and new) to come in and visit and register for the free baskets of groceries which will be given away on both sale days. Three baskets of groceries will be given away at 6

p. m. on Friday; two at 11 a. m. Saturday, and three at 6 p. m. Saturday.

Budget Hearing Set

Budget hearing for the Farwell School has been set for August 9 (Monday) at 8 p. m. in the office of Supt. W.M. Roberts. All interested persons are invited to attend this meeting.

Texico Baptist Set Services For New Building Sunday

Plans are being made by members of the Texico Baptist church to hold both of the Sunday services in their new building August 1, according to the pastor Rev. Leroy Looper, who says there is still some doubt as to whether the building will be ready by that time.

Furniture was moved into the building on Tuesday and carpet was laid on Wednesday, however several minor details and finishing touches must be completed before the congregation can move in he says.

"If the building is completed in time the wedding of Betty Ruth Lockhart and Jon Schroeder will be solemnized there on Saturday evening" said the pastor.

Tentative date for dedication of the new building has been set for August 29, however a definite date will be announced next week.

Pioneer Resident J. I. Gober, Buried Saturday

Funeral services were conducted from the Oklahoma Lane Methodist Church Saturday afternoon for J. I. Gober, 77, pioneer Parmer county resident and prominent farmer. He passed away at Clovis Memorial Hospital Friday morning at 3 a. m. The Rev. Jimmy McGuire, pastor of the Abernathy Baptist Church and close family friend officiated at last rites. Interment was in the Bovina Cemetery with Steed Funeral Home directing.

Mr. Gober, who came from Oklahoma to Parmer County in 1925 settled in the Oklahoma Lane community and still made his home on the same farm at time of his death. During his 40 years as a resident of Parmer county he had served as a member of the Oklahoma Lane School board the Parmer County Draft board and a member of the ration board during World War II. He was always active in community affairs.

Survivors include his wife, Mrs. J. I. Gober, two daughters, Mrs. Frankie Carson; Friona; Mrs. Marie Roark, Amarillo, three sons, Webb Gober, Farwell; Scott and Lloyd Gober both of Bovina; one brother, F.S. Gober, Sanger, Tex., and 15 grandchildren and many friends.

Serving as pallbearers were Leon Billingsley, Tom Caldwell, Wendol Christian, Harold Carpenter, Donald Watkins, and Billie Sudderth.

Hootenanny Set For August 5

All Young people in the Texico-Farwell area who like to sing, are invited to attend a "Hootenanny" of fun and fellowship at the Farwell Baptist Church parking lot, August 5, 8 p. m. There will be no admission fee.

Any young person who wishes to participate in the special program should contact Ronnie Henson or Terry Lovett or any member of the Young People's group by August 5.

For further details on the planned program call Mrs. Bill Craft, young people's sponsor.

Assigned To Germany

Army PFC Walter L. Parker, son of W. W. Parker of Route 2, Muleshoe has recently been assigned to the 25th Artillery in Germany.

Parker, a radar crewman in the 25th Artillery's Battery D near Mohrings, entered the Army in November 1964 and completed basic training at Fort Hood.

Before entering the Army he attended Muleshoe High School.

ESA Nets \$100 For Cystic Fibrosis From Ice Cream Social

The ESA organization realized approximately \$100 from the ice cream social held on Saturday night. Funds raised from the event will go into the cystic fibrosis project fund. Cystic fibrosis is the state

project and the local chapter has been particularly interested in the project. This is the third year the local chapter has assisted in the project, with money going to research and patient aid.

Little League All Stars Enter Tourney

The local Little League All Stars will participate in the Portales tournament this weekend. First game for the locals is set for 2 p. m. (CST) today at the Portales Little League baseball park. Opponents for the team will be the Ft. Sumner All Stars.

The local Little League team placed third in the Elida tournament last weekend.

Teams members include Jimmie Meeks, Don Stone,

Greg and Brett Hargrove, Arturo Esparaza, Mitchell Turnbough, Stanley Milstead, Gary Johnson, Randy Chandler, Marty White and Terry Yell. Coach for the team is Larry Gregory. Assisting with coaching duties are Vernon Scott and Jerry Dee Owen.

Attend Camp At Ceta Glen

Rev. and Mrs. Herbert Peiman are scheduled to be at the Walther League Camp in Ceta Glen southeast of Canyon next week. They have been members of the camp staff since 1948. Campers from St. John Lutheran Church are Cheryl Kaltwasser and Wayne Kube. Pastor Peiman says "Holy Communion" will be celebrated at the 10:30 a. m. service this Sunday, August 1. Sermon text is "Beauty for Ashes."

Two Face Charges In Parmer County

Two men have been returned to Parmer county in the past few days to face charges of forgery and burglary. Suspected of forgery is Howard Briggs of Roswell who was arraigned early this week and had his bond set at \$1,000. He will face grand jury ##

Arraigned on the burglary charge was Garfield L. Nish from Oklahoma. He will possibly be tried in the next few days (if he should plead guilty). However, if he enters a plea of innocent to the charge he will face jury action at the August term of court.

Ruben Baldivia, 19, has been charged with attempted burglary of the Charlie Ross

home. He is awaiting grand jury action. In other news from the sheriff's department two DWI's have been arrested and fined. They were assessed with the maximum penalty (fine plus st).

Attend Laymen's Retreat

Four local men, John Getz, John Lovelace, Elmer Teel, and Johnny McDonald, attended the Methodist Laymen's Retreat at Sacramento, New Mex. over the past weekend. The camp is held annually for lay leaders in the Methodist Church.



SLAIN BY THE SHERIFF -- Noble Goldsmith, custodian at the Parmer County Courthouse and Guy Cox, commissioner of Precinct 4, display the size of the owls, killed in the county court yard by Sheriff Charlie Lovelace, Friday morning. Assisting the sheriff with the kill was John Aldridge. The owls (15 have been killed) have been destroying the squirrels which make their home in the trees in the court yard.

Lazbuddie School Names Sam Barnes Superintendent



SAM BARNES

Sam F. Barnes formerly of Dumas has accepted the superintendent's position at Lazbuddie High School. He and his family recently moved to Lazbuddie and he took over his duties on July 1.

Barnes attended high school at Anna, Tex., where he graduated in 1942. Following his graduation from high school he enlisted in the U.S. Air Force where he spent the next three years as staff sergeant. He received a B.S. degree, with majors in secondary education, social studies and physical education from North Texas State College. He received a masters degree in Public School Administration from the same school in 1950. In addition Barnes has taken

courses in modern mathematics and accounting from West Texas State University; Workshops sponsored by the Texas Education Agency from the University of Texas and Texas Tech on administrative problems of the school.

He has had 17 years experience in the teaching field; 1948-49-High School principal, assistant coach and teacher - Frisco; 1949-53-high school principal, coach and teacher-Gunter; 1953-55 high school principal, coach and teacher, Anna; 1955-61-superintendent of schools - Anna; 1961 - Assistant to superintendent and business manager, Dumas (new contract extended through 1967).

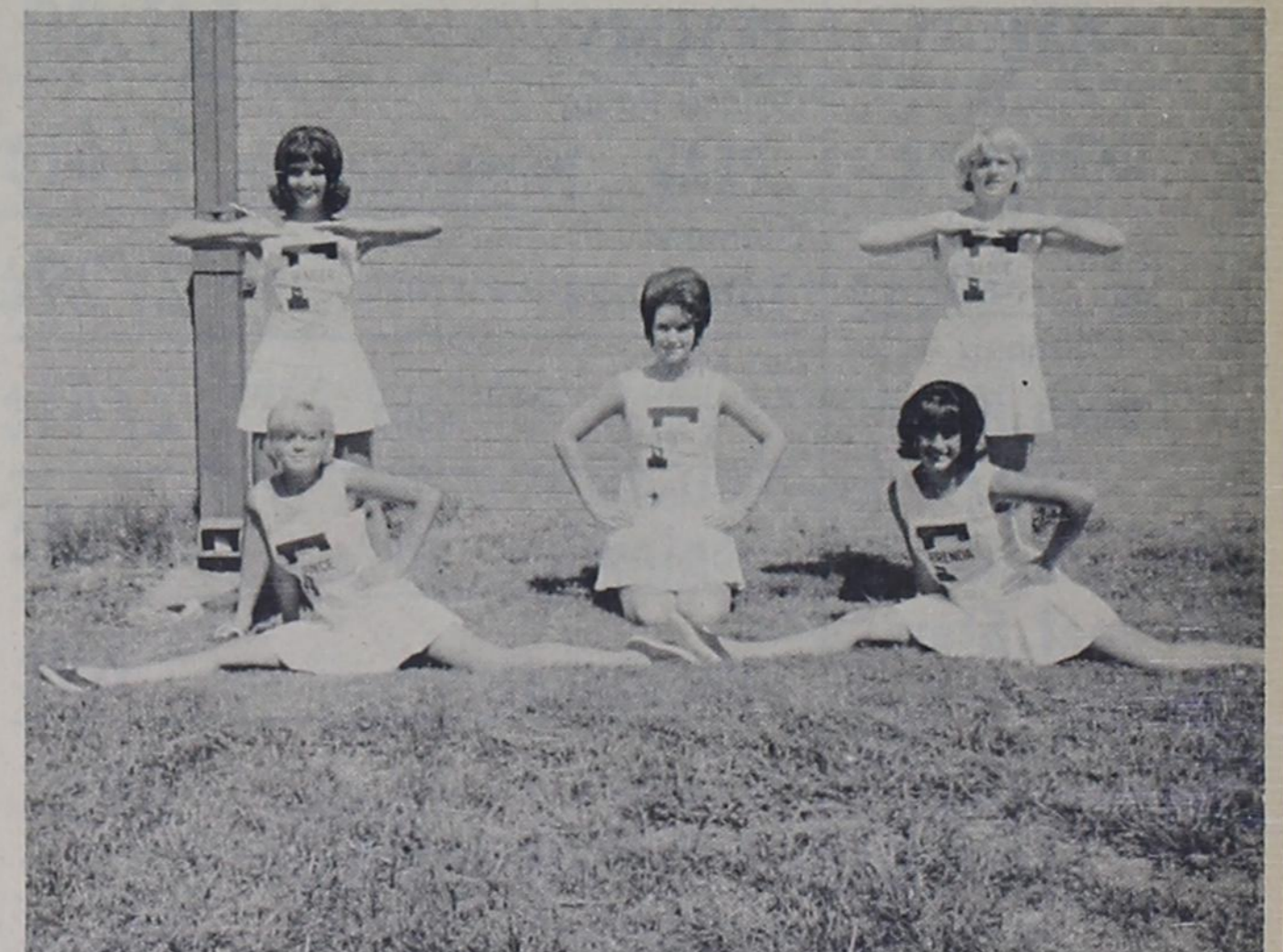
The new superintendent also is a member of many professional organizations and several civic groups. In addition he is a member of the Baptist Church and is currently teacher of a Men's Bible class.

He comes to the Lazbuddie school highly recommended.

The new superintendent is married and his wife, Hester (Estep) Barnes has accepted a position as teacher in the elementary school at Lazbuddie. They are parents of four children, Sammy Ronald, 20, sophomore at Baylor University, Marily Joy, 14, eighth grade; Monte Lee 12, seventh grade, and Mark Alan, 10, fourth grade.



FIRST WINNER -- First local winner in the Shurfine Royal Recipes event in which two local stores (Piggly Wiggly and Capitol Food Market) are participating was Mrs. J. A. Jones who is shown accepting \$100 from Carl Davis of the local Piggly Wiggly store. "I was surprised but not excited" said Mrs. Jones.



OFF TO CHEERLEADER CAMP -- These five lovely "misses" left Farwell Sunday for Texas Tech where they will attend cheerleader camp for the remainder of the week. They are expected to return home on Friday. Pictured are (front row) Joyce Kay Watts, head cheerleader, and Brenda Cathey; (standing) Ginger Hughes and Leslie Cooper; (kneeling) Edyth Walling. The quintet will lead the cheering section at the Steer Football games this fall.



Entered as second class matter at Farwell, Texas, under the act of March 3rd, 1879, Published every Thursday.

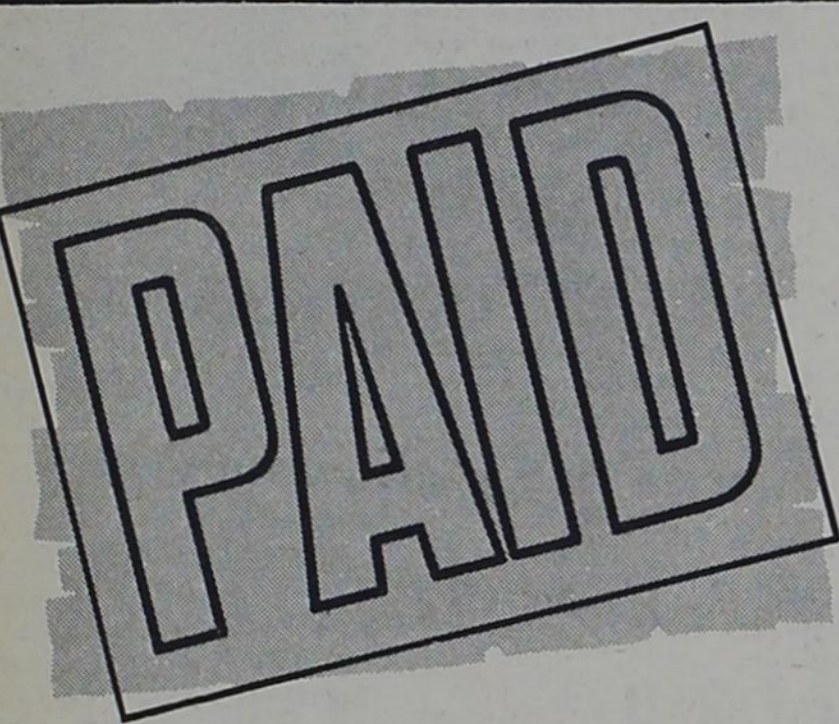
SUBSCRIPTION RATES -- Farmer and adjoining counties, \$3.00 per year; elsewhere, \$4.00 per year. Payable in advance.

The Tribune is a member of: TEXAS PRESS ASSOCIATION WEST TEXAS PRESS ASSOCIATION PANHANDLE PRESS ASSOCIATION

DRESS RIGHT... You Can't Afford Not To



304 MAIN CLOVIS



CHECKS ARE A DOUBLE CHECK

Cancelled checks are legal proof of payment. They become especially important at tax time, to back up deduction claims. But at any time of the year they can spell the difference between paying a bill once, and paying it twice! Open an account now!

A CHECKING ACCOUNT OFFERS SAFETY FOR YOUR MONEY AND MANY CONVENIENCES FOR YOU!

texico BRANCH CITIZENS BANK OF CLOVIS texico, new mexico

IT'S OUR 17th ANNIVERSARY

Friday, July 30 Thru Saturday, July 31, 1965

Table with 2 columns: Item Name and Price. Includes Beef Roast (45c), WIENERS (95c), GROUND BEEF (45c), HAMBURGER PATTIES (46c), Beef Stew (42c), DRINKS (29c), PEACHES (4/1.00), PINEAPPLE (5/1.00), PEAR (2/61c), Tomatoes (2/29c), Peas (2/41c), Spinach (2/29c), Deodorant (69c), Excedrin (59c), Bufferin (59c).

Roth Grocery

Texico, N.M. Tena & Bill Roth -- Phone 482-3206

Classified Ads

NOTICE Classified advertising rates are as follows: Three cents per word for the first insertion, two cents per word per insertion thereafter. Minimum rate, 50 cents on cash orders, \$1 on account.

The Lazbuddie Independent School District is accepting bids on gasoline for school transportation purposes. Bids must be in the superintendent's office by 4 p.m., August 9 or presented at the board meeting 8 p.m., August 9. Interested parties may contact the superintendent's office for specifications. 44-2tc

Want To Buy - lots anywhere in town. Call 894-5769 or write the Hightower Company, Box AA, Levelland, Texas. 42-3tp

PARTY Interested in buying a house with small acreage or house in town-small down payment. Call 481-9183 or write Box 613, Farwell, Texas. 44-2tc

PRIVATE PIANO LESSONS Will be given at Farwell school during school hours-Tuesdays and Thursdays. Room for 11 students. MRS. CASEY PERRY RT. 1, Farwell Phone 825-2646. 44-1tc

CARD OF THANKS We wish to extend our thanks to all our friends and neighbors for the many acts of kindness and thoughtfulness during our sorrow. The J.L. Gober Family 44-1tp

Lions To Hold Annual Broom Sale August 13-14

The annual broom sale by the Texico-Farwell Lions Club will be held in the Twin Cities on August 13-14. All proceeds from the sale will go into the sight conservation fund (Light-house for the Blind). Many children and some adults who would not be able to obtain glasses otherwise are provided with the necessary funds each year, through the efforts of the Lions Club members.

The items will be sold from several stations in town and a door to door canvass is planned.

James Reed from Rockville, Ill., a fraternity brother of Wayne Hudnall at Tulsa University spent Wednesday night in the Harvey Hudnall home.

FOR SALE: Two bedroom home with utility room and garage, on three lots with two adjoining lots, located 610 - 5th St. phone 481-9061 or see Mrs. Edie Smith. 43-2tc

HOMES 100% financed, one, two and three bedroom. Payments \$38 to \$89 monthly - built on your lot or will buy you one anywhere in Texas. Also for colored and Spanish. Good credit not required. Call 894-5769 Collect or write: HOMES, Box AA, Levelland, Texas. 42-3tp

WANTED: Baby sitting and housecleaning, phons 482-3208, 41-8tp

FOR SALE Fresh Roasting Ears And Black Eye Peas Call 481-3804 Bradley Beauty Shop 43-2tc

"HELLO MOTHER" Have you called Long Distance recently and said that? No? Then pick up your phone and go visiting soon! Mountain States Telephone

Jaycees Set Kick Off Drive On Bonds Sales For August 10

The kick off drive for the sale of bonds for the "Rodeo Arena" to be built in the near future under sponsorship of the local Jaycee organization has been set for August 10, according to Fred Chandler

secretary of the group. The bonds will be issued in the amount of \$25 and up and will be repaid on a 10 year basis, plus interest. The arena to be built at a cost of \$6,000 will be lo-

cated on the Farwell School property (leased for five years by the Jaycees) north of Nicke's Gin in east Farwell. The arena will be of all metal and cable construction and will have facilities for a top rated

rodeo performance. When the arena is completed Jaycees hope to hold at least one rodeo performance and two horse shows locally each year. The arena will be available for 4-H Club groups and other organizations to work with their horses.

PUBLIC NOTICE

Proposed CONSTITUTIONAL AMENDMENT NUMBER FIVE ON THE BALLOT

PROPOSED CONSTITUTIONAL AMENDMENT TO BE VOTED ON AT AN ELECTION TO BE HELD ON NOVEMBER 2, 1965. SENATE JOINT RESOLUTION NO. 27 proposing an Amendment to the Constitution of the State of Texas, amending Article III of the Constitution of the State of Texas by adding a new Section thereto to be designated Section 48b, so as to create an agency of the State of Texas the Teacher Retirement System of Texas, vesting the general administration and responsibility of the proper operation of said system in a state board of trustees to be known as the State Board of Trustees of the Teacher Retirement System of Texas, authorizing said Board to invest assets of said system in various obligations and subjects of investment, subject to certain restrictions stated therein and such other restrictions as may hereafter be provided by law; providing that such Amendment shall be self-enacting and shall not alter, amend or repeal Section 48a of Article III of the Constitution of Texas or any legislation passed pursuant thereto, except insofar as such legislation may limit or restrict the provisions of this Amendment; providing for the necessary election, form of ballot, proclamation, and publication.

administration and responsibility for the proper operation of said system are hereby vested in a State Board of Trustees, to be known as the State Board of Trustees of the Teacher Retirement System of Texas, which Board shall be constituted and shall serve as may now or hereafter be provided by the Legislature. Said Board shall exercise such powers as are herein provided together with such other powers and duties not inconsistent herewith as may be prescribed by the Legislature. All moneys from whatever source coming into the Fund to provide retirement, disability, and death benefits for persons employed in the public schools, colleges, and universities supported wholly or partly by the state and all other securities, moneys, and assets of the Teacher Retirement System of Texas shall be administered by said Board and said Board shall be the trustees thereof. The Treasurer of the State of Texas shall be custodian of said moneys and securities. Said Board is hereby authorized and empowered to acquire, hold, manage, purchase, sell, assign, trade, transfer, and dispose of any securities, evidences of debt, and other investments in which said securities, moneys, and assets have been or may hereafter be invested by said Board. Said Board is hereby authorized and empowered to invest and reinvest any of said moneys, securities, and assets, as well as the proceeds of any of such investments, in bonds, notes, or other evidences of indebtedness issued, or assumed or guaranteed in whole or in part, by the United States or any agency of the United States, or by the State of Texas, or by any county, city, school district, municipal corporation, or other political subdivision of the State of Texas, both general and special obligations; or in home office facilities to be used in administering the Teacher Retirement System including land,

PUBLIC NOTICE

Proposed CONSTITUTIONAL AMENDMENT NUMBER THREE ON THE BALLOT

PROPOSED CONSTITUTIONAL AMENDMENT TO BE VOTED ON AT AN ELECTION TO BE HELD ON NOVEMBER 2, 1965. HOUSE JOINT RESOLUTION NO. 81 proposing an Amendment to the Constitution of the State of Texas, amending Section 51-a and Subsections 51-a-1 and 51-a-2 of Article III so that the same shall consist of one section to be known as Section 51-a; providing that the Legislature shall enact appropriate legislation which will enable the State of Texas to cooperate with the Government of the United States in providing assistance to and/or medical care on behalf of needy aged persons over the age of sixty-five (65) who are citizens of the United States or non-citizens who shall have resided within the boundaries of the United States for at least 25 years, needy persons under the age of sixty-five (65) who are totally and permanently disabled and who are citizens of the United States, needy blind persons over the age of eighteen (18) who are citizens of the United States, and needy children under the age of twenty-one (21) years who are citizens of the United States and to the caretakers of such children; providing rehabilitation and any other services included in the Federal legislation providing matching funds to help such families and individuals attain or retain capability for independence or self-care; authorizing the Legislature to prescribe residence requirements; providing for the acceptance and expenditure of funds from the Government of the United States for such purposes; authorizing appropriations for such purposes out of State funds; providing that the maximum amount paid out of State funds to any individual recipient shall not exceed the amount that is matchable out of Federal funds; providing that the total amount of such payments for assistance and/or medical care out of State funds on behalf of such recipients shall not exceed the amount that is matchable out of Federal funds; providing that if the limitations and restrictions herein contained are found to be in conflict with the provisions of appropriate Federal statutes as they now are or as they may be amended, to the extent that Federal matching money is not available to the State for these purposes, then and in that event the Legislature is specifically authorized and empowered to prescribe such limitations and restrictions and enact such laws as may be necessary in order that such Federal matching money will be available for assistance and/or medical care for or on behalf of needy persons; providing further that the amounts ex-

ceeded out of State funds for assistance payments only shall not exceed Sixty Million Dollars (\$60,000,000); providing that nothing in the Amendment shall be construed to amend, modify, or repeal Section 31 of Article XVI of the Constitution; providing for the necessary election, form of ballot, proclamation, and publication. BE IT RESOLVED BY THE LEGISLATURE OF THE STATE OF TEXAS: Section 1. That Section 51-a and Subsection 51-a-1 and 51-a-2 of Article III of the Constitution of the State of Texas be amended, and the same are hereby amended, so that they shall hereafter consist of one section to be known as Section 51-a of Article III, which shall read as follows: "Section 51-a. The Legislature shall have the power, by General Laws, to provide, subject to limitations herein contained, and such other limitations, restrictions and regulations as may be by the Legislature be deemed expedient, for assistance to and/or medical care for, and for rehabilitation and any other services included in the Federal legislation providing matching funds to help such families and individuals attain or retain capability for independence or self-care, and for the payment of assistance to and/or medical care for, and for rehabilitation and other services for: "(1) Needy aged persons who are citizens of the United States or non-citizens who shall have resided within the boundaries of the United States for at least twenty-five (25) years and are over the age of sixty-five (65) years; "(2) Needy individuals who are citizens of the United States who shall have passed their sixtieth (60th) birthday but have not passed their sixty-fifth (65th) birthday and who are totally and permanently disabled by reason of a mental or physical handicap or a combination of physical and mental handicaps; "(3) Needy blind persons who are citizens of the United States and who are over the age of eighteen (18) years; "(4) Needy children who are citizens of the United States and who are under the age of twenty-one (21) years, and to the caretakers of such children. "The Legislature may define the residence requirements, if any, for participation in these programs. "The Legislature shall have authority to enact appropriate legislation which will enable the State of Texas to cooperate with the Government of the United States in providing assistance to and/or medical care on behalf of needy persons, and in providing rehabilitation and any other services thereon the following:

ices included in the Federal legislation providing matching funds to help such families and individuals attain or retain capability for independence or self-care, and to accept and expend funds from the Government of the United States for such purposes in accordance with the laws of the United States as they now are or as they may hereafter be amended, and to make appropriations out of State funds for such purposes; provided that the maximum amount paid out of State funds to or on behalf of any individual recipient shall not exceed the amount that is matchable out of Federal funds; provided that the total amount of such assistance payments and/or medical assistance payments included in the Federal legislation shall not exceed the amount that is matchable out of Federal funds; provided that if the limitations and restrictions herein contained are found to be in conflict with the provisions of appropriate Federal statutes as they now are or as they may be amended, to the extent that Federal matching money is not available to the State for these purposes, then and in that event the Legislature is specifically authorized and empowered to prescribe such limitations and restrictions and enact such laws as may be necessary in order that such Federal matching money will be available for assistance and/or medical care for or on behalf of needy persons; and provided further that the total amount of money to be expended out of State funds for assistance payments only to recipients of Old Age Assistance, Aid to the Permanently and Totally Disabled, Aid to the Blind, and Aid to Families with Dependent Children shall never exceed Sixty Million Dollars (\$60,000,000). "Nothing in this Section shall be construed to amend, modify or repeal Section 31 of Article XVI of the Constitution; provided, however, that such medical care, services or assistance shall also include the employment of objective or subjective means, without the use of drugs, for the purpose of ascertaining and measuring the powers of vision of the human eye, and fitting lenses or prisms to correct or remedy any defect or abnormal condition of vision. Nothing herein shall be construed to permit optometrists to treat the eyes for any defect whatsoever in any manner not to administer nor to prescribe any drug or physical treatment whatsoever, unless such optometrist is a regularly licensed physician or surgeon under the Laws of this State."

Sec. 2. The foregoing Constitutional Amendment shall be submitted to a vote of the qualified electors of this State at an election to be held on the first Tuesday after the first Monday in November, 1965, at which election all ballots shall have printed thereon the following: "FOR the Constitutional Amendment providing for assistance to and/or medical care for the: (1) needy aged; (2) needy individuals who are permanently and totally disabled; (3) needy blind; and (4) needy children and the caretakers of such children; authorizing the Legislature to cooperate with the Government of the United States in providing assistance to and/or medical care on behalf of such needy persons, and in providing rehabilitation and any other services included in the Federal legislation providing matching funds to help such families and individuals attain or retain capability for independence or self-care, and to accept and expend funds from the Government of the United States for such purposes, and to make appropriations out of State funds for such purposes; provided that the maximum amount paid out of State funds to any individual recipient shall not exceed the amount that is matchable out of Federal funds; provided that if the limitations and restrictions herein contained are found to be in conflict with the provisions of appropriate Federal statutes as they now are or as they may be amended, to the extent that Federal matching money is not available to the State for these purposes, then and in that event the Legislature is specifically authorized and empowered to prescribe such limitations and restrictions and enact such laws as may be necessary in order that such Federal matching money will be available for assistance and/or medical care for or on behalf of needy persons; and provided further that the total amount of money to be expended out of State funds for assistance payments only to recipients of Old Age Assistance, Aid to the Permanently and Totally Disabled, Aid to the Blind, and Aid to Families with Dependent Children shall never exceed Sixty Million Dollars (\$60,000,000). Providing that nothing in the Amendment shall be construed to amend, modify, or repeal Section 31 of Article XVI of the Constitution."

Sec. 3. The Governor of Texas shall issue the necessary Proclamation for the election and this Amendment shall be published in the manner and for the length of time required by the Constitution and laws of this state. "AGAINST the Constitutional Amendment providing for assistance to and/or medical care for the: (1) needy aged; (2) needy individuals who are permanently and totally disabled; (3) needy blind; and (4) needy children and the caretakers of such children; authorizing the Legislature to cooperate with the Government of the United States in providing assistance to and/or medical care on behalf of such needy persons, and in providing rehabilitation and any other services included in the Federal legislation providing matching funds to help such families and individuals attain or retain capability for independence or self-care, and to accept and expend funds from the Government of the United States for such purposes, and to make appropriations out of State funds for such purposes; provided that the maximum amount paid out of State funds to any individual recipient shall not exceed the amount that is matchable out of Federal funds; provided that if the limitations and restrictions herein contained are found to be in conflict with the provisions of appropriate Federal statutes as they now are or as they may be amended, to the extent that Federal matching money is not available to the State for these purposes, then and in that event the Legislature is specifically authorized and empowered to prescribe such limitations and restrictions and enact such laws as may be necessary in order that such Federal matching money will be available for assistance and/or medical care for or on behalf of needy persons; and provided further that the total amount of money to be expended out of State funds for assistance payments only to recipients of Old Age Assistance, Aid to the Permanently and Totally Disabled, Aid to the Blind, and Aid to Families with Dependent Children shall never exceed Sixty Million Dollars (\$60,000,000). Providing that nothing in the Amendment shall be construed to amend, modify, or repeal Section 31 of Article XVI of the Constitution."

"Let Us Go Into The House Of The Lord"

Congregation To March Into New Sanctuary Sunday

Open house for the new sanctuary of Hamlin Memorial Methodist Church has been set for Sunday, with official opening and consecration services planned at 10:50 Sunday morning. Dr. Ralph Seiler, district superintendent, will preside. Open house will then be held during the afternoon, from 2 until 6 p.m., and evening services are planned at 6:15. Participants in the morning consecration service will meet in the fellowship hall, where serv-

ices have been held for the past five years, with a processional to proceed to the new sanctuary. Rev. W.C. Strickland is pastor of the church. The sanctuary is the second phase of a building program begun six years ago, with the first phase, the large flat-roofed educational building dedicated in February of 1960. The sanctuary has been constructed north of the original building, with new construction also including a pastor's study and

church secretary's office, as well as a large vestibule which joins the new portion of the church plant with the old. A new parsonage was completed for the church and dedicated in December.

The exterior of the building features the buff brick matching the original plant, with narrow stained glass window insets and a tall sloping roof of cedar shakes. The entrance area at the south end of the building features the glassed vestibule of large window panels framed in silver aluminum and accented by four 12-inch ball light globes which illuminate the entrance area and provide decorative emphasis. The brick planter extends past the building proper and three silver crosses reach to the sky through the southeast roof, with spotlights accenting this area at night.

The vestibule covered with tile terrazzo features buff brick walls, connects the educational building with the new church sanctuary, and leads also to the church offices.

Black walnut doors open into the sanctuary, which is richly paneled in black walnut, accented by the vaulted ceiling of white and massive beams of black walnut. Stained glass windows shading from gold to deep red are emphasized by the brilliant red wool carpeting and the deep gold seat padding in the walnut pews. Marble window sills complete the window treatment. The sanctuary will seat 280 and with choir seating, will have facilities for over 300 worshippers.

The altar is centered with kneeling rail in an "A" design of white marble and gold aluminum, above which hangs an 8-foot cross in gold, with the communion table in the center. Choir seating is planned on the west of the building, with the organ at the right, and speaker's podiums on either side. Matching white brick planters holding artificial foliage complete the design.

All furniture is black walnut, matching the wall paneling, and side aisles are form-

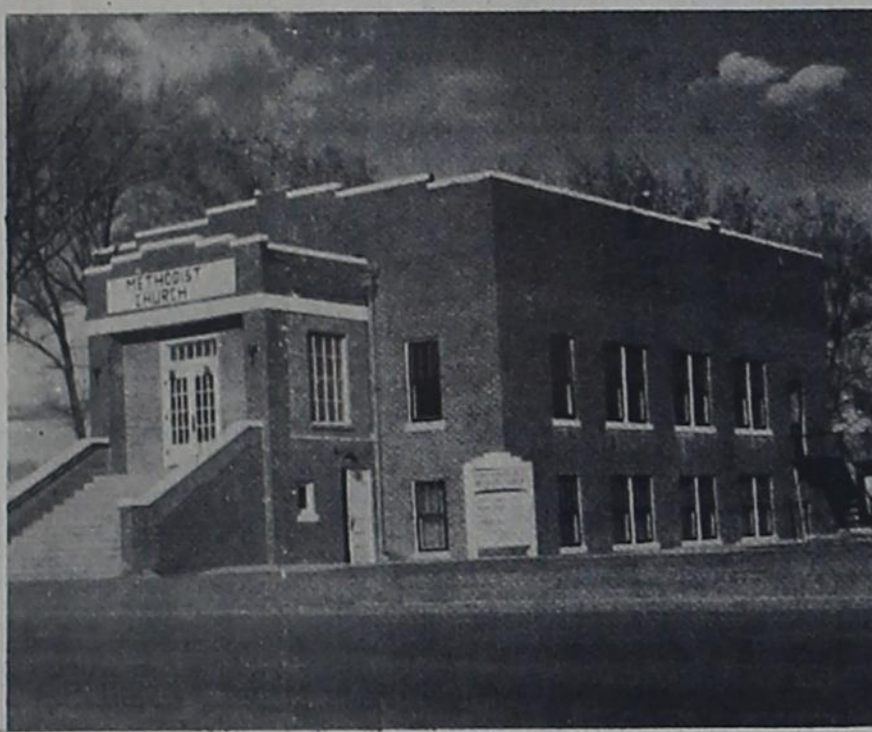
(Continued on page 5)



New facilities for Texico-Farwell Methodists were completed last week, with the addition of the new sanctuary to the existing education facilities which

were completed in 1960. This picture shows the east side of the plant.

Photo by Sass

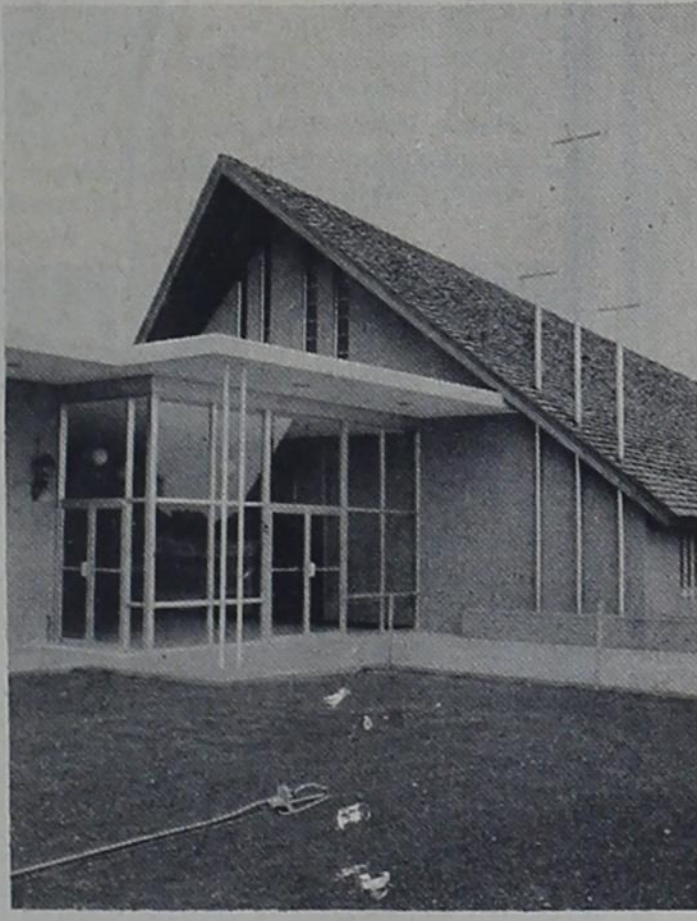


The top print is a picture of the old frame Methodist Church which burned in 1925. The structure was replaced with the brick building, (bottom picture) which served the community from 1926 until 1960, when the present educational facilities were constructed.



Dub Howard, left, who was chairman of the building committee, served many hours -- early and late -- in representing the church during construction period. This picture was made when the contract was signed. Rev. W. C. Strickland, minister, is seated.

The Congregation and Minister
OF
HAMLIN MEMORIAL METHODIST CHURCH
Texico, New Mexico - Farwell, Texas
CORDIALLY INVITES YOU TO
OFFICIAL OPENING AND CONSECRATION SERVICES
OR
THE NEW SANCTUARY
with the art of the new
Dr. Ralph Seiler, District Superintendent
Presiding Minister
August 1, 1965
10:55 A. M. CST
2:00 - 6:00 P. M. — OPEN HOUSE 6:15 P. M. — EVENING WORSHIP



Safe and secure under a leaway installed roof.

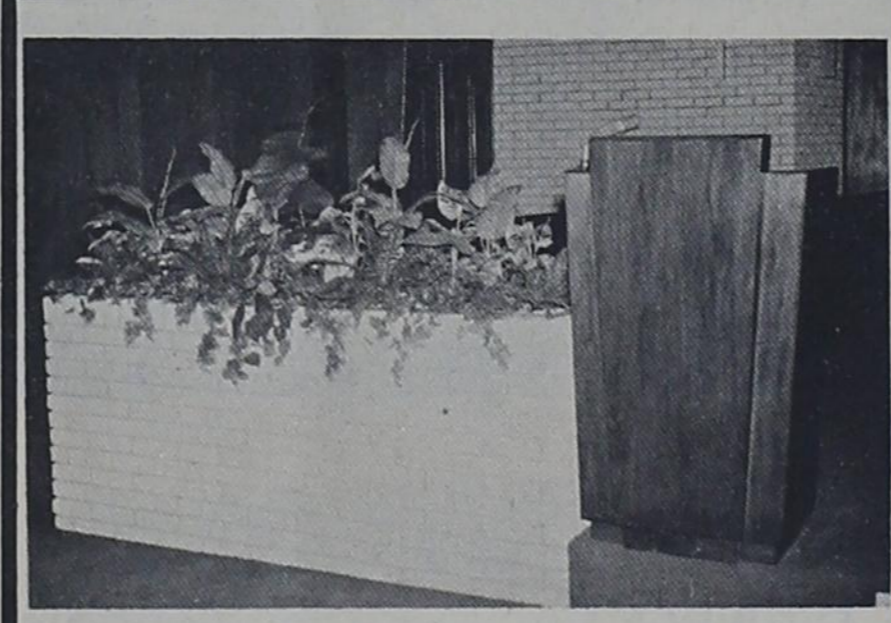
Beauty-durability are the two prerequisites of a modern roof. Beauty to harmonize with your design, and durability to give years of maintenance free service are the hallmarks of our roofs. For estimate on your next job, call or write

LEAWAY ROOFING CO.

Hereford, Texas

Box 901

Ph. EM4-1280

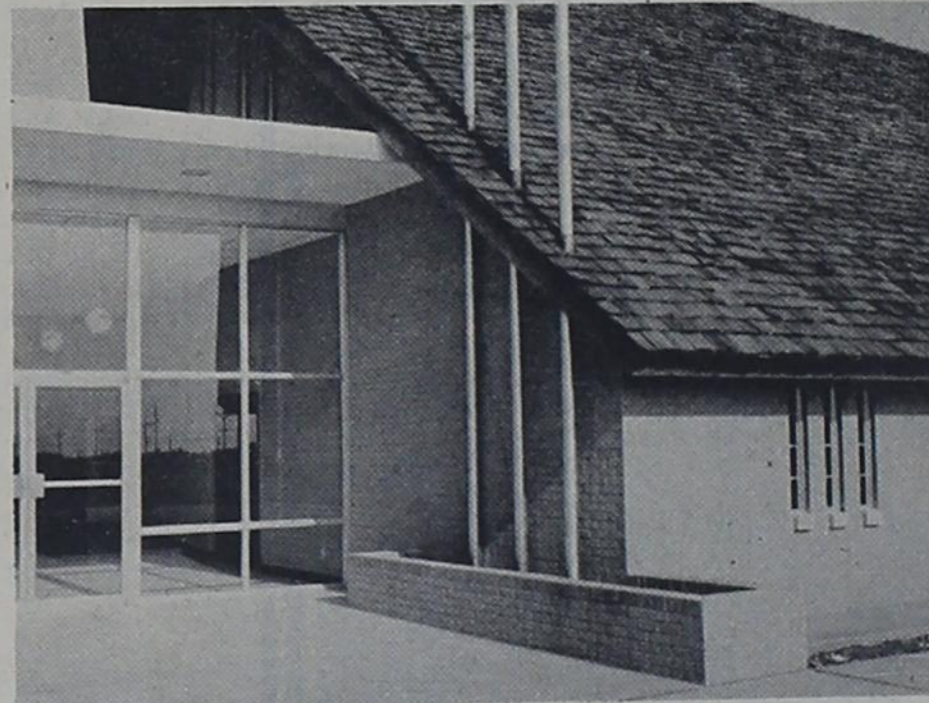


Congratulations to the Hamlin-Memorial Methodist Church on the dedication of their new sanctuary. We Are pleased that our floral arrangements will continue to add beauty and dignity to the services.

CLOVIS FLORAL CO.

Phone 763-5543

501 E. 5th Clovis



Attention to detail preserves the beauty of the design of a building. We are proud of our contribution to the Hamlin Memorial Methodist Church. For your next job of home, office, or other building call us for a free estimate

NEW MEXICO BRICK LAYING CO.

FRED MYERS

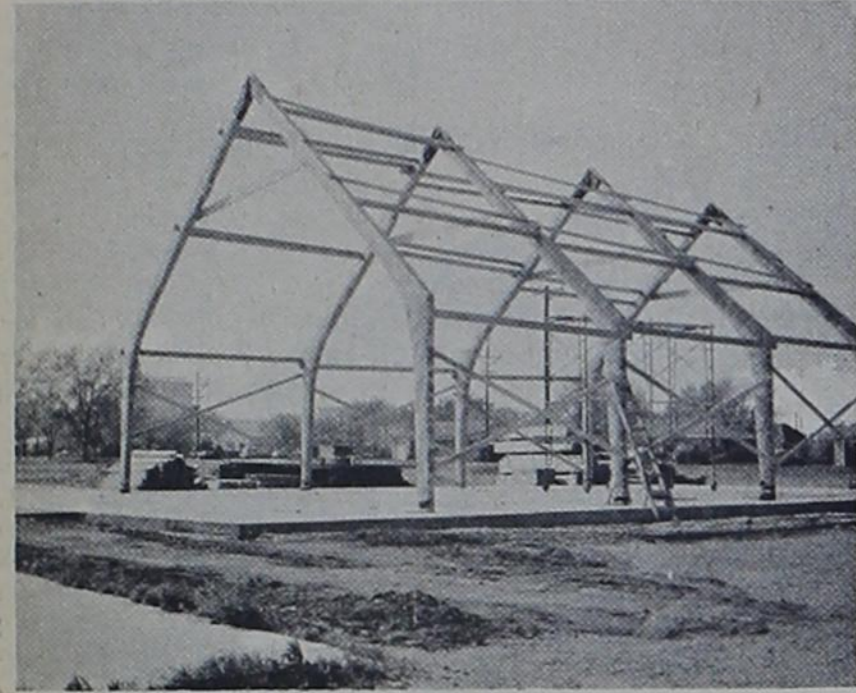
101 Manson Dr. Clovis, N. Mex.

Phone 763-9666

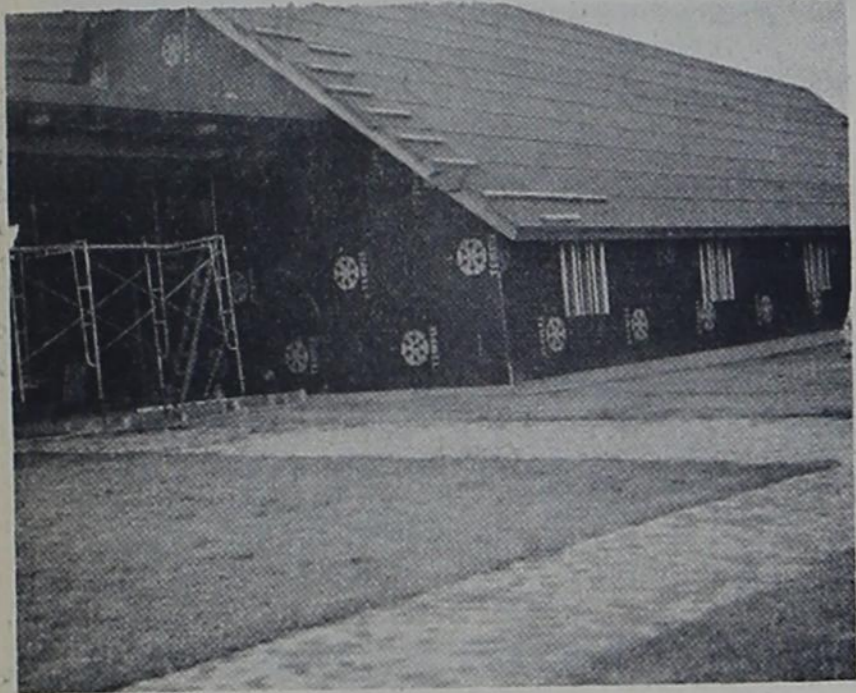
Groundingbreaking



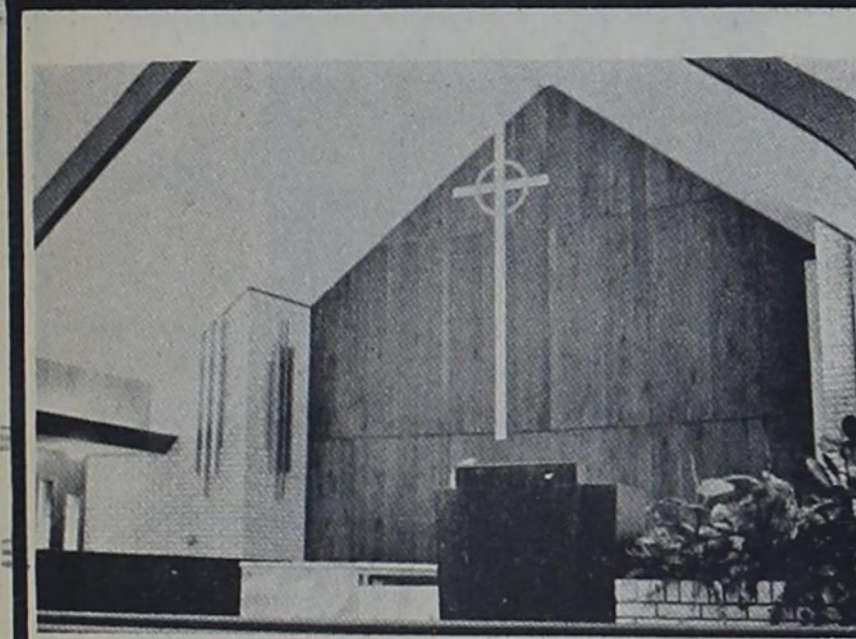
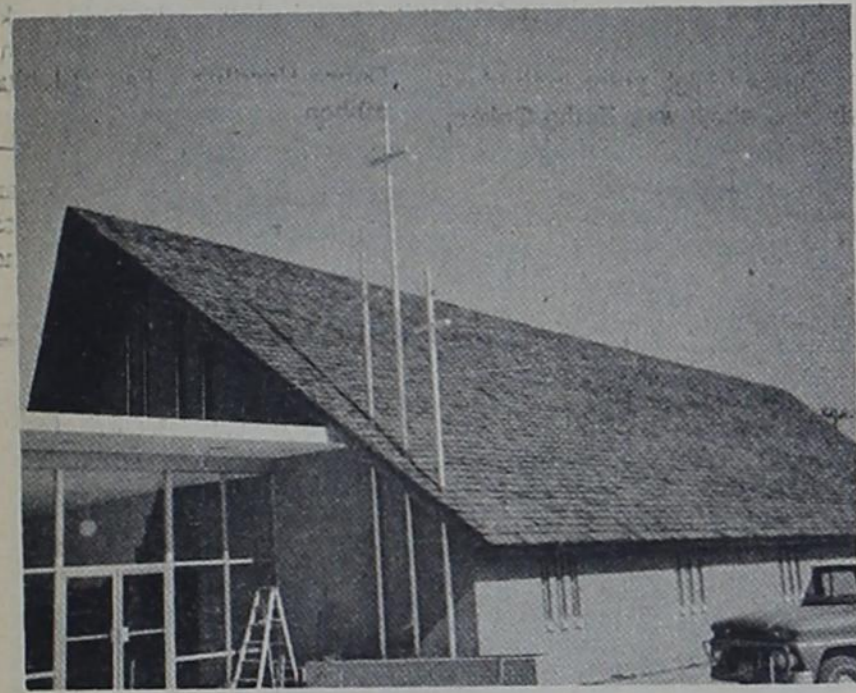
Arches Rise



Walls And Roof



Final Touches



We congratulate the Hamlin Memorial Methodist Church on the dedication of the new sanctuary.

Beautiful music adds depth and reverence to a devotion service.

We are proud of the organ in this new sanctuary.

Phillips
HOUSE OF MUSIC

118 Main Clovis

61 Years of Methodism

Methodism was established in Texico-Farwell in 1904 with Rev. Joe Hedgepeth as pastor, and the first church building located in Texico where Highway 84 and the Pleasant Hill road intersect. A frame building planked with rough lumber and stripped to keep out the wind and dust was 30 feet wide and 44 feet long with 29 pews to seat 100 people. The building was heated by a pot-bellied stove.

The two-room frame parsonage of rough lumber was located next door and was purchased for a cost of \$350. Problems developed a year later when a family claimed the property and it cost the church an additional \$450 for a quit claim deed, and total outlay for living quarters for the minister of \$800. During these first years, the church was the recipient of mission money from the section of church extension and the Women's Home Mission Board.

In 1908, church officials decided to move to a new location and two lots were purchased in eastern Texico for \$650, and the church was built at the location used to serve the congregation for over 50 years by the group until the first phase of the present building was completed in 1960.

In 1910, the church was known as Texico-Farwell Methodist Episcopal Church and was growing steadily. In 1909, a T-shaped room 14 x 28 and a 9 x 9 bell tower were added for \$499. The droughts from 1912 to 1920 changed the face of the area and many people moved away. Records of the church until 1928 are sparse. In 1922, two additional lots were given the church, however, and on a cold February morning in 1926, a faulty flue resulted in the total loss of the church building and equipment. The official board and the pastor, Rev. W. B. Gilliam, met amid the smoking ruins that afternoon and began the planning of the building of a new church.

The contract was let for \$10,450 on July 8, 1926. The contractor abandoned the project Nov. 1, 1926 and the building stood unused and uncompleted until the following March, when the building was completed at a total cost of \$12,326.25 and services held there in the sum-

mer of 1927. This building was in constant use by the congregation until the facilities were completed in 1960.

While constructing the facilities in the 1920's, worship was held in the district courtroom of Parmer County Courthouse.

The name was changed in 1929 to Hamlin Memorial Methodist Church in tribute to the leadership, service and influence of J. M. Hamlin. In 1930, Bishop H. A. Boaz dedicated the church while the Rev. J. L. Chunn was pastor.

The beginning of the present building program was the outgrowth of a sense of need for more adequate room and facilities for the church since the 1940 era and in 1957, Rev. R. C. Cantrell held a church conference and the congregation voted to build a new plant. In May of 1957, Rev. William Hardwick was appointed to Texico-Farwell and immediately plans were made for carrying out the church conference recommendations. The final authority was given in November of 1957 and plans crystallized rapidly after that time.

A building committee composed of J. H. McDonald, Jack Williams, Woodrow Lovelace, W. D. Howard Jr., Sam Aldridge, Elmer Teel, W. H. Graham, Joe Helton and Paul Wurster was elected.

A financial campaign was carried out with success and one-half of the 300 block on Fifth St. in Farwell was donated by H. Y. Overstreet, and plans were drawn from which to build. The contract for the first phase of the program was let on July 30, 1959 for \$67,744, for one-half of the total planned plant, with 8500 square feet of floor space. The building was then dedicated in February of 1960.

Last year, a fall quarterly conference approved the building of a new three-bedroom parsonage, which became the new home of the pastor and his family, the W. C. Stricklands in December. Both the old parsonage on First Street in Farwell and the old church building have now been sold.

The contract was let in April for the new \$57,000 sanctuary. Serving on the sanctuary and building and finance committees have been W. D. Howard Jr., W. H. Graham, Paul Wurster, Joel White, Woodrow Lovelace and Harold Travis, Joe Jones, Sam Aldridge, Joe Helton, Hamlin Overstreet, Buck Gregory, Joe Blair and Jack Williams.

Pastors who have served the church during its 61 year history include: Joe Hedgepeth, Rev. Woods, Rev. Woodbridge, Rev. Turner, Rev. G. W. Gardner, Rev. B. T. James, Rev. J. C. Jones, Rev. Franklin

Cramer, Rev. T. I. Beck, Rev. J. W. Hendrix, Rev. E. W. Morton, Rev. H. B. Ellis;

Rev. L. L. Thurston, Rev. H. W. Carter; Rev. C. O. Davis, Rev. W. B. Gilliam, Rev. D. D. Dennison, Rev. J. L. Evans, Rev. J. L. Chunn, Rev. R. L. Butler, Rev. W. W. Pitman, Rev. E. J. Sloan, Rev. Paul H. Tripp, Rev. Charles Walker, Rev. Harvey Carroll, Rev. Murphy Duncan, Rev. Lance Hurst, Rev. M. H. Stroup, Rev. R. C. Cantrell, Rev. W. H. Hardwick, Rev. Bob Tomlinson and Rev. W. C. Strickland, who is now pastor.

Two men from the local church have entered the full-time ministry, Walter Hadley, and J. J. Spurlin. The late B. N. Graham served as an ordained deacon during the latter part of his lifetime.

Through the cooperation of the contractors and workmen listed in advertisements on these four pages, this special section on the new Hamlin Memorial Methodist Church was made possible.

Before The 1960 Building Program



Beauty - Dignity - Comfort The Keynotes Of Church Furniture Design. Beauty And Dignity To Sustain The Reverent Atmosphere Of A Church Sanctuary. Comfort For The Welfare Of The Worshipping Congregation. For The Proper Church Furniture Let Us Plan And Install Your Church Furniture Requirements In A New Or Remodeled Church.

WARD FURNITURE CO.

Greenville, Texas

6000 Fale St.

Ph. GL 5-4651

TEXICO - FARWELL AREA CHURCH CALENDAR

"Let Us Go Into The House Of The Lord."

COME TO CHURCH

Use This Calendar To Guide Your Worship Practices

Assembly of God Robert Hutsall-pastor Sunday School-10 a. m. Morning Worship-11 a. m. Evening Worship-7:45 p. m.	Farwell First Baptist Church J. L. Bass-pastor Sunday School-10 a. m. Morning Worship-11 a. m. Evening Worship-7 p. m.
Texico-Farwell Methodist Church W. C. Strickland-pastor Church School-9:45 a. m. Morning Worship-10:55 a. m. Evening Worship-6:15 p. m.	Oklahoma Lane Baptist Wayne W. Baldwin, Pastor Sunday School - 10 a. m. Morning Worship - 11 a. m. Evening Worship - 7:00 p. m.
St. Johns Lutheran Church Herbert F. Pelman-Pastor Sunday School-9:30 a. m. Morning Worship-10:30 a. m.	Lariat Church of Christ Carroll Jackson-minister Sunday School-10 a. m. Morning Worship-11 a. m. Evening Worship-6 p. m.
Farwell Church of Christ Paul Wilkinson, Minister Sunday School-10 a. m. Morning Worship-10:50 a. m. Evening Worship-6 p. m.	United Pentecostal B. L. Barnes-pastor Sunday School-10 a. m. Morning Worship-11 a. m. Evening Worship-7:30 p. m.
Texico First Baptist Church Leroy Looper-pastor Sunday School-10 a. m. Morning Worship-11 a. m. Evening Worship-7:30 p. m.	Pleasant Hill Baptist Hugh Frazier-pastor Sunday School-9:30 a. m.(MST) Morning Worship-10:30 a. m.(MST) Evening Worship-7 p. m.(MST)
West Camp Baptist D. Casey Parry-Pastor Sunday School-10 a. m. Morning Worship-11 a. m. Evening Worship-7 p. m.	Calvary Baptist John Willson-Pastor Sunday School-10 a. m. Morning Worship-11 a. m. Evening Worship-7 p. m.
Oklahoma Lane Methodist Hardy Cole - Pastor Sunday School-10 a. m. Morning Worship-11 a. m. Evening Worship-7 p. m.	Texico St. Joseph's Catholic Church Rev. Uhl Myron, Pastor Confession, Sunday - 9:30 a. m. (CST) Sunday Mass - 10 a. m. Christian Doctrine After Mass.

SHUMAN HASELOFF INSURANCE

STATE LINE GRAIN AND STATE LINE CHEMICAL

SHERLEY-ANDERSON-PITMAN INC.

STERLYN & ESTELLENE BARBER AND BEAUTY SHOP

CAPITOL FOOD

FARWELL MOTOR CO.

ROSE DRUG AND GIFT SHOP

FARWELL EQUIPMENT COMPANY

PIGGLY WIGGLY

WORLEY GRAIN CO.

FARWELL HARDWARE

TEXACO INC.
Woodrow Lovelace

This Church Calendar Is Brought To You With The Above Merchants Compliment

Johnson Grass Control A Must For Parmer Farmers

Johnson grass is moving into much of the excellent Parmer County cropland, according to County Agent Joe VanZandt. Not only is it moving in, but in several cases, it is literally taking over and we could say "moving the farmer out." It is almost impossible to raise a profitable crop on heavy Johnson grass infested land, stated the county agent.

Johnson grass will keep increasing on cultivated land unless each farmer takes positive action to eradicate it. It will take several years in many cases, but there isn't much choice if one is to have a profitable farming operation in the future, says the county agent who has been visiting some of the heavily infested areas in the county in the past few days.

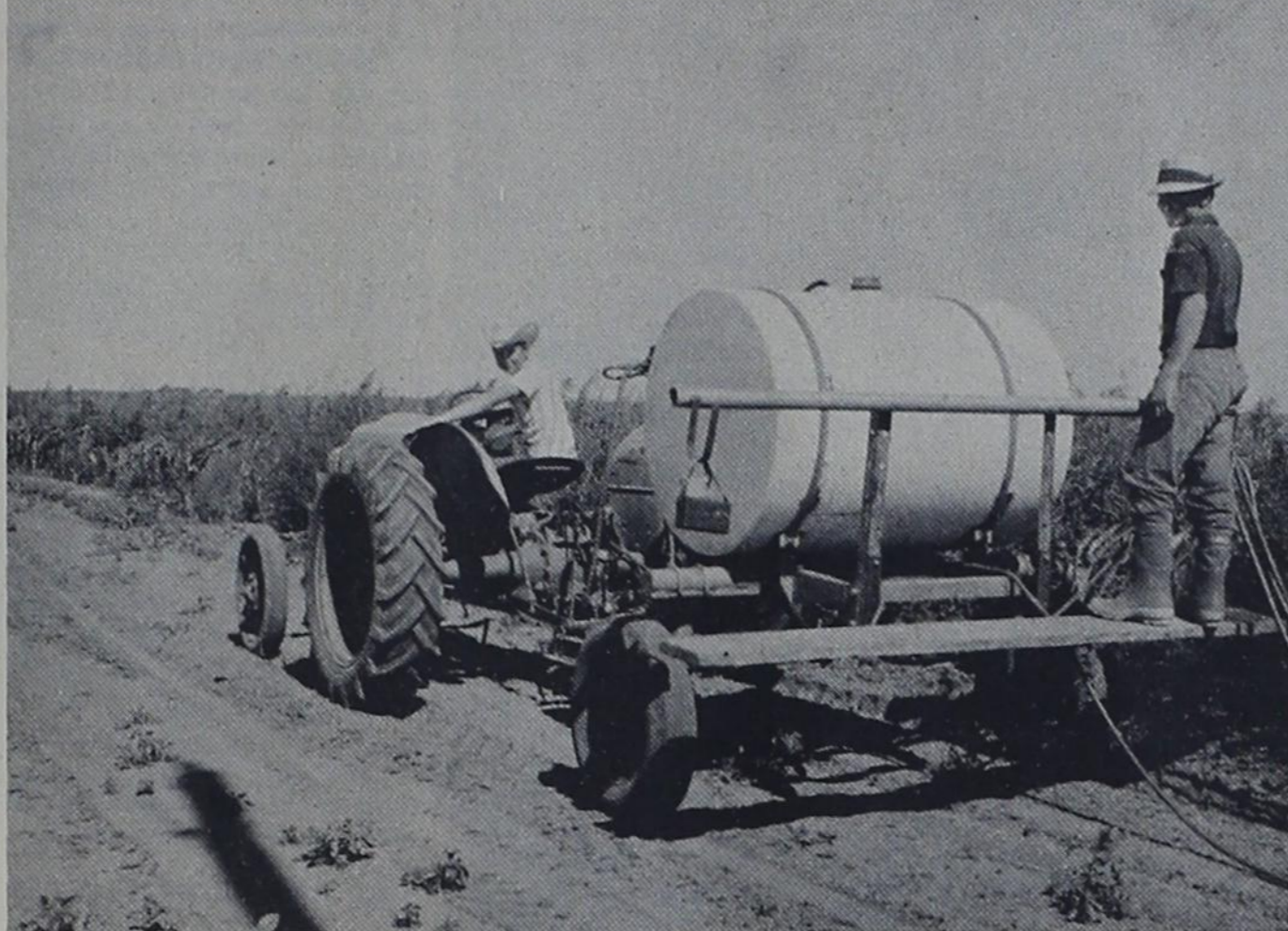
On fallow land Johnson grass may be eradicated by the judicious use of tillage. Implements in areas where rainfall is less than 30 inches per year, the summers are hot and dry and the soil freezes to a depth of several inches in winter. Plow the land in late May or early June to expose as many rhizomes as possible. Leave the soil rough. Two to four weeks later harrow the land as deeply as possible, crossing the land both ways, with a spring tooth or long tine harrow, again exposing as many rhizomes as possible. A second plowing in late July or early August followed by harrowing, then a third treatment beginning about the time of the first hard freeze should kill most of the Johnson grass rhizomes.

To increase the kill or when excessive rains or other climatic conditions reduce the effect of plowing, the Johnson grass may be sprayed with one of the Methyl arsonates (DSMA, MSMA) when the grass reaches a height of eight to 20 inches. The grass should be actively growing at the time of spraying. (Apply four pounds per acre active Methyl arsonate in 40 to 100 gallons of water; using 25-40 lbs. PSI pressure on the sprayer and spray to wet all grass foliage).

Spraying with a good quality weed oil, or 18-25 per cent



This field shows how the Johnson grass has not only moved in, but has virtually taken over, in areas where some method of control has not been used. It is almost virtually impossible to raise a profitable crop on land which is heavily infested with Johnson grass.



Rickey Kunselman, 16, and Danny Stanberry, 14, both of Bovina are spraying a field, infested with Johnson grass, with one of the new Methyl arsonates (MSMA, DSMA) one of the best eradicators known for the grass. Glendon Sudderth, on whose farm the boys were spraying says, he used the same type control in a field of cotton which was heavily infested by Johnson grass with excellent results.

naptha will give the same results. Both of these materials must be sprayed on actively growing grass and good coverage must be obtained for maximum kill. Spraying should be repeated three to five times per year, as the grass reaches the stage of growth noted above.

Following eradication of the original stand, seedling grass must be controlled to prevent reinfestation.

Dalapon, TCA and sodium chlorate are also effective killers of Johnson grass, but control based on these herbicides is more expensive than that described above. In addition TCA and sodium chlorate render the

soil sterile for varying periods and in areas of low rainfall this period may be too long for safe use. TCA is also highly corrosive to most metals and to the skin. Sodium chlorate is a fire hazard. Johnson grass seed most frequently gets into agricultural lands from non-cropped fence rows, roadsides, and right of way ditches. The seed are carried to the farm land by animals, equipment, birds or many times water. It is essential that any plan of Johnson grass control include these areas of seed sources.

Small patches of Johnson grass in non-cropped areas may be eradicated with three to five sprayings per year with Dalapon, Methyl arsonates or herbicidal oils. Precautions for the use of arsonates in areas that are to be grazed should be observed.

Because most farmers do a good job of controlling all grasses in cotton, Johnson grass is seldom a problem. However, the tillage method and Methyl arsonate, herbicide, or oil spraying are all quite effective in cotton land grass control. Spot spraying in cotton to kill small patches is widely practiced and quite effective.

Farmers are not advised to plant sorghum or corn on land infested with Johnson grass, since the chemicals which would kill the grass would also kill the crop. However, should the crops be planted on land which is believed to be free of Johnson grass and it appears later, spot spraying with one of the chemicals is recommended as treatment (with the understanding that the materials will kill the grain or forage crops as well as the grass).

Most of the pre-emergence chemicals cleared for use against grass in soybeans is effective against Johnson grass. Control of severe infestations of rhizome Johnson grass in soy-

beans is not practical. However, isolated spots of Johnson grass may be eradicated by spot treatment with Dalapon, TCA or methyl arsonate.

When spraying Johnson grass in any crop the following general rules should be followed to get satisfactory results.

1. Apply the chemical according to directions.
2. The use of a surfactant will aid in obtaining good coverage of the grass.
3. Do not spray Johnson grass unless it is actively growing. Grass that is semi-dormant as result of drought, already having seeded, or other stress is much more difficult to kill than is actively growing grass.
4. Observe precautions as to grazing sprayed areas or using crops from sprayed areas for feed or forage.
5. Use as much volume as practical. Assure that all foliage is wet with herbicide solution.
6. Do not spray crops. Direct the spray on the grass and avoid wetting crop foliage with the spray as much as possible.



A good example of what the new Methyl arsonates (DSMA, MSMA) will do in controlling the Johnson grass menace is shown by this fence row in the Oklahoma Lane vicinity, recently sprayed. Fields in the vicinity which had only small patches of Johnson grass have been spot sprayed for control with excellent results.

COURTHOUSE NOTES

INSTRUMENT REPORT

July 19 thru July 24, 1965
 DT - Joseph Samuel Talley - Prudential Ins. Co. - E/2 Sect 23 Harding Sub.
 ML - Noyle E. Wood - Parmer County Pump Co. - Part 320 a Sect 11 T3S R3E.
 WD - Bonnie Roe DuLaney - Joe Bob DuLaney - Sect 28 T2N R4E.

ML - Robert D. Williams - Mel Mac Prod. Inc. - Part Lot 45 Sect 31 T9S R1E.

ML & Assign - Don B. Light-William H. Nunn - HI-Plains Savings & Loan - Lot 6 Bk 3 First Add, West Loop Drive, Friona.

WD - T. W. Fuller et ux - Victor M. Ward et ux - Lot 3 Bk 88 OT Bovina.

DT - Emma Mears - Federal Land Bank - E/2 Sect 2 T1N R1E; & SE/4 of SE/4 Sect 35 T2N R1E.

WD - E. M. Rushing - William H. Sheehan - S. R.

WD - William H. Sheehan - R. L. Fleming - S. R.

DT - William H. Sheehan - E. M. Rushing - 10,72 a of NW/4 Sect 1 T3S R3E.

WD - Harland H. Frye - Geo. A. Frye - 0,68 a of Sect 30 T1N R5E.

WD - W. D. Prince - Billy G. Dollar - Lots 17 thru 20 Bk 30 OT Farwell.

DT - Billy G. Dollar - First Fed. Savings & Loan - Lots 17 thru 20 Bk 30 OT Farwell.

ML - Davis M. Thompson-Raymond Adams - Sect 17 Synd "C".

DT - E. R. Tharp - G. D. Anderson, Jr. Executor - Part Sect 38 Synd "A".

WD - Security State Bank - J. E. Randol - Part Lots 29 thru 32 Bk 1 OT Farwell.

DT - Albert H. Smith - Federal Land Bank - Lots 18 thru 21 Sect 44; Lot 9 Sect. 48 Synd "A".

DT - O. F. Barnett et al - American Amicable Life Ins. - NW/4 & W/2 of SW/4 Sect 9 T5S R4E.

WD - Dan Ethridge - George C. Taylor, Jr. - Lot 9 & W5 ft. Lot 10 Bk 6 Staley, Friona.

WD - First Nat'l Bank, Bovina - M. O. Spears - Lots 1 & 2 Bk 4 OT Bovina.

DT - M. O. Spears - First Federal Sav. & Loan - Lots 1 & 2 Bk 4 OT Bovina.

WD - Jane Overstreet Barclay - Ray McCullough - Lots 4, 5 & 6 Bk 10 OT Farwell.

WD - Alton Farr - George C. Taylor, Jr. - Lot 2 Bk 3 Staley Add, Friona.

DT - Alton Farr - First Fed.

Savings & Loan - Lot 2 Bk 2 Staley Add, Friona.

WD - George C. Taylor, Jr. - Alton Farr - Lot 2 Bk 2 Staley Add, Friona.

WD - Roy F. Melugin et ux - American Cyanamid Co. - 5a of Sect 10 Bk E Lea, 521.

WD - Clyde Magness - Joyce Haseloff - N 8,47 ft. of S, 68 ft. Lot 7 Bk 2 Ridgcrest Unit #1 Farwell.

DT - Joyce Haseloff - Tri-County Sav. & Loan - S 68 ft. Lot 8, N 32 ft. Lot 7 & N, 8,47 ft. of S 68 ft. Lot 7 Bk 2 Ridgcrest Unit #1 Farwell.

ML - Harry Ray Jesko - Jerry Bradshaw - All W/2 Garden Lot 27 Sect 31 T9S R1E.

THE HIGH PLAINS FARM AND HOME

On The Farm In Parmer County

By JOE VANZANDT County Agent

Now is the time to get your soil tested, (before wheat planting time arrives). The importance of testing your soil can be easily seen.

Recommendations from recent soil test for wheat in the county have varied from 80-0-0 to 100-50-0 for light grazing to 140-60-0 for heavy grazing. It doesn't take much fertilizer saved to pay for a \$2,00 soil test. We just can't look at soil and know what nutrients it contains and what it needs to produce a good crop.

At the present time the best reliable method we have available to determine fertilizer requirements is a soil test. It is hard for the farmer to calculate the amount of soil nutrients that remain in the soil after the previous crop.

For a \$2,00 investment, plus a little time, a farmer can easily cut his fertilizer cost. Plus knowing that he is applying the right kind and amount of fertilizer necessary to produce the yields he is shooting for.

Come by the County Agents office for any soil testing information and supplies you need.

CHECK FOR COTTON INSECTS

We continue to see and hear of scattered infestations of fleahoppers, lygus bugs, bollworms and square borers over the county.

This means everyone should be checking his own cotton fields to see what the insect situation is and how much damage has been done.

We recommend only spraying when damaging numbers of insects are present. This is about 5% on bollworms and 15% to

25% fleahoppers or this many bugs per 100 terminals over a field. Also, we recommend using the recommended amount of an insecticide that is listed in our Texas Guide for Controlling Cotton Insects available thru the County Agents office in Farwell.

COTTON AND 2-4-D
 Our rainy weather last month brought on too good a crop of weeds.

We have received several calls lately about suspected 2,4-D damage to cotton over the county. Careless use of herbicides we feel causes a lot of 2,4-D damage.

If you suspect 2,4-D damage on cotton, continue caring for the crop as most damage claims are based on yield reduction. You should contact Gene Cupp with the Texas Department of Agriculture at 1924-34th Street, Lubbock, Texas.

Herbicide drift can be minimized by using a large volume of carrier per acre (10 to 20 gallons) and a low spray

pressure (20 pounds per square inch). High pressure produces small spray droplets which are easily carried by wind.

Drift can also be minimized by keeping the spray boom as low as possible. This is usually about 20 inches above the top of the weeds. Sprays should be applied when the wind is less than 10 miles per hour and blowing away from sensitive crops.

2,4-D is very toxic to cotton and even when the best precautions are followed damage may result. Also it is not a good idea to spray Wheatland hybrid sorghums as up to 1000 pounds of yield may be lost.

Under the State Herbicide regulations persons spraying their own land or crops must get a permit and pay a fee of ten cents per acre if he applies herbicides on more than 10 acres. Everyone using herbicides must have access to a wind gauge and comply with the wind velocity as outlined in the regulations. Copies of the permit and regulations are available at the County Agents office.

VEGETABLE FIELD DAY

There will be a Vegetable Field Day at the South Plains Research & Extension Center, located just north of Lubbock on Thursday, August 5. All vegetable growers are invited to attend this event and learn about the current findings on vegetable production.

Jan Jamison Wins 4-H Bake Show

Jan Jamison, 14, daughter of Mr. and Mrs. Earl Jamison of Friona was named county winner of the county 4-H Bake Show, held at the community room in Friona State Bank on Friday.

Second high point individual in the show was Kathy Coker, daughter of Mr. and Mrs. Roy Miller of the Lazbuddie Club.

Miss Jamison will exhibit her products (angel food cake and sweet milk biscuits) at the district contest to be held at the Tri-State Fair in Amarillo in September. She will compete with 20 other county winners in district competition for a \$100 bond which goes to the district winner.

To be eligible for the award, members must have been enrolled in the Food and Nutrition project for the current year.

Participating in the Bake Show in addition to those named were Ann Blackstone-Lazbuddie, red ribbon; Patsine Broyles - Lazbuddie - red ribbon; Janis Billingsley, Oklahoma Lane-blue ribbon; and Debra Harding - Farwell, blue ribbon.

Circular masonry towers were built where native stone was too hard to be squared for corner construction.

Insurance
 SAVE MONEY ON ALL OF IT AT
RAYMOND EULER AGENCY
 715 Main Friona
 PH. 247-2230

Farm And Ranch Loans
 Long Term Low Interest
 ETHRIDGE-SPRING Agency, Friona
 Phone 247-2766

Dr. William Beene
 Optometrist
 Phone 247-3061 Friona, Texas
 13th & Cleveland (South Of Hospital)



When they build their real homes, we'll be here to help them with home loans. If you need a home loan now, talk it over with us today. We are home loan specialists.

MEMBER OF THE SAVINGS AND LOAN FOUNDATION SPONSOR OF THIS ADVERTISEMENT IN LOOK MAGAZINE

First Federal Savings & Loan
 HOME OFFICE 4th & PILE CLOVIS, N.M.
 BRANCH OFFICE 2nd & ABILENE PORTALES, N.M.

Maternity and Infants wear -EXCLUSIVELY-
The Stork Shop
 621 PILE CLOVIS

fresh from the home of quality!
 DIP-N-CHIP Sour Cream
 COTTAGE CHEESE
 VANILLA
 HOMOGENIZED MILK Plastic Cartons
CLARDY-CAMPBELL Quality Chkd DAIRY PRODUCTS

4-H is an investment in future through project work ranging from cooking and sewing to photography and electronics.

HAVE YOUR CAR SAFETY CHECKED NOW!
 TIRES - BRAKES - SUSPENSION - MUFFLERS - SHOCKS
 OIL FILTERS - ALIGNMENT - TRUE AND BALANCE.
 -Fast Service-
YOUR COMPLETE CAR CARE CENTER
 1121 W. 7th Clovis

WHY FUSS WITH WOOD?
NEW Panlframe GIVES YOU MORE FOR YOUR MONEY
 NO BULKY FRAMES NO TRUSSES
 The Panel is the Building
 If you're in the market for a low-cost, "do-it-yourself" farm building structure...
 You can draw up some plans, go down to the lumber yard, fiddle around with siding, rafters, poles - round up a crew - and then pound, cut, trim, hammer and paint until you're blue in the face. And still wind up with just an ordinary wooden building.
 Or you can buy a factory-made Butler Panl-Frame from us. An all-metal building that goes up fast and easy, because all the components are pre-cut and pre-punched to exact dimension. For about the same total cost.
 Panl-Frame is a brand new kind of metal building, with only a bare minimum of inside supports. How come? Because the panel is the building - big, strong wall and roof panels that function as both cover and frame. Panl-Frame suits almost any farm need. And you get a firesafe, weathersafe, practically maintenance-free building to boot - one that won't sag or rot.
 If you can put a nut on a bolt, you can build a Panl-Frame. We can build it for you, at a low turnkey price. Or we can do it together. Why not come in for some free Panl-Frame building plans now? Low-cost financing available.
SNEED SUPPLY CO.
 BUTLER AGRI-BUILDER 410 N. 1st. - MULESHOE Ph. 3-4260

American Consumers Will Decide Meat Industry's Future Growth

American consumers — 193 million today and more tomorrow — will decide if the beef industry is to grow and prosper, John B. Armstrong of Kingsville predicted here this week.

Armstrong, a livestock producer and an official of the Santa Gertrudis Breeders

International, told participants at the third coordinated Beef Improvement Conference at Texas A&M University that per capita consumption of beef has jumped 47 pounds per person since 1935 — up to an estimated 100.5 pounds in 1965.

Last year, per capita consumption of all meat hit a new record of 174 pounds, compared with 142 pounds in 1935, he added.

It has been estimated that about 85 per cent of the retail purchases of food in the United States are made by women. "It's comforting to beef producers to know that on both 'his' and 'her' food list, beef ranks first," Armstrong told the approximately 500 men and women attending the conference.

"There are now 41 per cent more people in the United States than there were 30 years ago. And we're producing 143 per cent more meat. Supplying that much more meat to 193 million Americans has resulted in an annual production of beef, veal, pork and lamb approaching 33 billion pounds. Beef production alone will reach nearly 19 billion pounds this year, or 4 billion pounds more than total meat production in 1935," he said.

While increased consumption of meat can be attributed in part to a higher standard of living plus the fact that Americans just plain like meat, it is present high degree of enthusiasm.

A major factor, Armstrong said, has been that more Americans have been learning more about how best to enjoy and utilize meat products — and why meat is essential to good health, Research and education programs for consumers will become increasingly important in the future, he predicted.



Cricket

At Home In Farmer County

By CRICKET B. TAYLOR
County HD Agent

4-H ACTIVITIES

Now that the Dress Revue and the County Bake Show are over, 4-H members turn their thoughts to completion of other projects.

The Oklahoma Lane 4-H girls and their leaders are in a workshop on refinishing furniture. They will be working on furniture arrangement this summer too. This is their 2nd year for Home Improvement project and

they hope to be ready for an achievement tour in middle part of September.

Kathryn Gober, high scoring girl in County Dress Revue scored 2nd in the District Dress Revue. She looked very nice in her 2 piece green wool dress and of course we thought should have scored as first place winner, but then we might be prejudiced.

Ann Blackstone, the Junior County winner modeled her garment along with 18 other Junior County winners. She was the most "unruffled," model there. She showed her garment with grace and poise.

The Bake Show winner on Friday was Jan Jamison of Friona. She will compete in the District Bake Show during the Tri-State Fair and from our view point she will give those other participants some stiff competition with her Angel Food Cake and Biscuits.

PROPER LAUNDERING METHODS HELP KNITS HOLD THEIR SHAPE AND SIZE

There is an art to laundering knit clothing, and you can become an expert in no time. Reading the labels carefully before laundering avoids wash day hazards.

When buying cotton knits, be sure they are made by a new process which compresses the fabric and makes it highly resistant to shrinkage. Wash in warm water to reduce shrinkage.

Select a low-to-moderate setting and do not allow the cotton knits to get completely dry, as this causes shrinkage, also. Remove the garments from the dryer, then gently pat and pull into shape.

Acrylic or nylon knits may be dried completely in the dryer with relatively little shrinkage. But don't leave them in a turn-off dryer as they are apt to wrinkle badly.

Because agitation has a tendency to felt wool fibers, the woolen knits should be hand washed by gently squeezing rather than rubbing and wringing. Wash them in lukewarm water or in cold water, using a

special cold-water detergent. Block them for drying, and dry flat.

MEATS FOR THE OUTDOOR GRILL

Outdoor meat cookery need not be limited to the expensive cuts of meat. With the barbecue season at hand, it's time to take inventory and consider all of the meat choices.

High quality chuck, ground beef and round are all good cooked on the grill. The chuck and round are improved by a tenderizer.

This renewal of interest in tender steaks for outdoor cooking comes when the supply of steaks begins to get short. Some beef prices are up slightly because fewer beef animals are being marketed.

This is also the time of year when pork prices usually rise. Add to this the fact that the pig population is down, and the natural result is that pork prices also are on a slight rise.

Indications are that plenty of chicken will continue to be available.

Attend Electric Leadership Camp

Monday morning six Farmer County 4-H members and two Adults left for the District 1 4-H Electric Leadership Camp. The camp is held at Camp Scott Able, near Cloudcroft, New Mexico and is sponsored by the Southwestern Public Service Company for the 5 day period, July 26-30.

Farmer County 4-H'ers attending the camp are: Charles Bowery, Farwell; Kathy Coker, Lazbuddie and from Friona, Jan Jamison, Dennis Fallwell, Linda McVey and Jody Fallwell, Mrs. Roy Miller, Lazbuddie 4-H adult leader, and Joe VanZandt, Farmer County Agent accompanied the group.

About 150 4-H'ers from the 22 county Panhandle area are attending the camp. Delegates to the camp must be 14 years of age. Each county has a quota of three boys and three girls plus two adults.

The Farmer County delegation is in charge of the recreation session for Thursday night at the camp and they plan to have a Birthday Party.

RIFEWAY JANITOR SERVICE
Clovis, N. M.
Carpet Shampooing. Free estimate. Cleaning is our only business - not a sideline. Phone 763-6361

ADAMS DRILLING CO.
WATER WELL DRILLING
LAYNE PUMPS, INC.
PUMP & GEAR HEAD REPAIRS ALL MAKES
Sales & Service Friona, Texas
DIAL 247-3101
Nights 247-2513



Latest reports from Washington on the new cotton program proposed in the omnibus farm bill by Congressman Harold Cooley (D-N.C.) and his House Agriculture Committee still indicate the possibility of its reaching the House floor sometime early in August.

And while it is thought that most Congressmen from cotton states will vote against the measure, prevailing opinion holds that the Administration either has or can muster the necessary votes in the House to pass it. Primarily, cotton belt Congressmen oppose the bill as a result of producer opposition to the low loan, direct payments provisions and the virtual certainty it would reduce U.S. cotton production by 30 per cent or more.

A projected analysis of the bill's cotton provisions, contained in Title IV of the omnibus bill (H. R. 9811), has been made by John Selbert, Area Extension Farm Management Specialist.

Aimed at defining probable effect on net income to the owner-operator of a High Plains irrigated cotton farm, the analysis assumes:

1. A loan price of 18 cents per pound (based on "average" High Plains grades and staple length);
2. Base cotton allotment of 100 acres;
3. Projected farm yield of 625 pounds lint per acre;
4. A "market price" of 18 cents per pound;
5. Specific production costs of \$80 per acre, and
6. Land retirement costs of \$5 per acre.

Under these conditions, Selbert's figures show a return above specific expenses of \$32.50 per acre for the farmer who elects to disregard the government program and plant all of his land to cotton, as he is permitted to do under the current writing of the bill. He emphasizes, however, that this is based purely on the assumption that cotton produced outside the program would sell for the loan value. It could sell for less; it could be more, depending on many unpredictable factors.

The other three choices which would be open to a cotton producer show a return above specific expenses of (a) \$86.20 per acre of cotton if the farmer planted 85 per cent of his 100 acre allotment, (b) \$101.46 per acre of cotton if he plants only 75 per cent, and (c) \$121.40 per acre if he plants only his domestic allotment, 65 per cent.

Selbert points out that this projection is based on proposals in the "Cooley Bill" as it was reported from committee, and that any change of its provisions could render the figures obsolete.

To make the complete analysis available to farmers in the area, Selbert has mailed a copy to all County Agents.

From the businessman's view, a recent editorial in the Leland Progress, Leland, Mississippi sums it up this way: "The plan would have a devastating effect on the entire agricultural community in cotton-producing areas. Especially hard hit would be farm equipment dealers, fuel, seed, fertilizer and farm chemical dealers, cotton gins, oil mills, cotton warehouses etc. Bank deposits would suffer and land values, tied to cotton production in many areas, would decline."

"In spite of all that's been done to prevent it, High Plains farmers this summer appear to be squarely 'behind the eight ball' where farm labor is concerned."

This was the unhappy but



HERBICIDES NOT 100% EFFECTIVE -- With the end of bracerio labor in this area farmers are finding it necessary to hire local laborers to rid the row crops of weeds which can not be entirely eliminated by herbicides. Laborers in this field of sugar beets

frank appraisal last week of Ed Dean, Field Service and Labor Relations Representative of Plains Cotton Growers, Inc. He went on to say: "We are facing our most critical period for irrigation and no satisfactory source of labor is in sight to do the job. In pre-plant irrigations, we have managed to get by in one way or another, often supplementing available farm hands with the wives and small children of the producer. But with the arrival of a hot and so far dry summer the need for sufficient workers to adequately irrigate growing crops is even more critical, with two or three workers required where one could do the job in the Spring."

The shortage follows the expiration December 31 of Public Law 78, the "Bracero Law" under which Mexican Nationals were imported for periods of peak labor needs. Since that time Dean, working with the National Council of Agricultural Employers in Washington, has presented reams of evidence to Secretary of Labor Willard Wirtz to show the need for these supplemental workers. But all to no avail.

The Secretary has the authority to permit the importation of foreign workers under another law, P. L. 414, but he has refused to use that authority except to a limited extent on highly perishable crops in California. Even there, growers claim millions of dollars in crop losses as the result of delays and limitations imposed by Secretary Wirtz.

Dean points out that the situation is complicated in Summer by the abundance of cotton chopping jobs and the fact that domestic workers prefer this work to that of irrigation. This is especially true in sprinkler irrigated sections, and these are the producers who will be most seriously hurt by the labor shortage.

The Secretary of Labor has taken the rigid position that before a farmer will even be considered for foreign workers he must first place orders and actively recruit domestic workers through the Texas Employment Commission, meeting all criteria prescribed by the Secretary. One of the solutions advanced by the Secretary is the use of twenty to thirty member "A-Teams" -- groups of high school athletes to be transported, fed, insured and supervised at farmer expense.

"But for purposes of irrigation," Dean says, "the average farmer in this area needs only two or three workers, not twenty or thirty. In our case the A-Team program proposed by the Secretary is completely impractical and unworkable. Yet Secretary Wirtz refuses to recognize these facts."

A tremendous amount of money, time and effort has been and is being spent by agricultural leaders and organizations across the United States in an effort to sway the Secretary toward a more reasonable and practical attitude. But there is no indication to date that a change is in the offing, Dean summed up by saying: "Even if a clearance order for foreign workers were issued today it would be several weeks before workers could actually be processed and brought to West Texas. In the meantime,

irrigation wells are idle and crops are burning for want of water. The farmer has been forced into a vicious, politically born and politically nursed plight from which he has no visible out. Consequently, there seems to be no way to avoid production losses on the High Plains for lack of irrigators just as there was no way to avoid crop losses in other sections of our country for want of harvest hands."

Plentiful Foods Spotlight Coolness For Hot-Weather

August usually is the key hot-weather month.

So it's especially nice that so many "cool" foods are plentiful during August, says the Texas Agricultural Extension Service. Leading the list are fresh plums, closely followed by grapes, frozen concentrated orange juice and broiler-fryers.

Think of how refreshing plums and grapes are when served for either appetizer or dessert nibbling. And fresh plum wedges, seedless green grapes, pineapple chunks and mandarin oranges along with miniature marshmallows, coconut and sour cream combine deliciously in Plum-Ambrosia Salad.

With USDA's Consumer and Marketing Service reporting such a plentiful supply of broilers this month, you'll find fried chicken the perfect hot-weather protein dish. For variety, try oven-baked Chicken Leggs Imperial, which features a well-flavored coating of bread crumbs, Romano cheese, chopped parsley, garlic, salt and pepper.

Corn-crisped chicken, also oven-baked, is first dipped in evaporated milk, then in seasoned corn flake crumbs. For added variety, use crushed potato chips as the breading for fried chicken.

Supplies of frozen concentrated orange juice may reach as high as 100 million gallons, and lowering prices favor budget costs.

Dedications for financing the wool and lamb producers' self-help promotion program to be made from payments for the 1965 marketing year under the National Wool Act will continue at the same rates as in the past, the U. S. Department of Agriculture has announced. The rates are 1 cent per pound from shorn wool payments and 5 cents per 100 pounds of liveweight from unshorn lamb payments.

NEW DU PONT MANZATE D
MANEB FUNGICIDE

Controls Cercospora leaf spot in sugar beets

FOR HIGHER SUGAR CONTENT AND INCREASED YIELDS

NOW TOPS MAY BE FED!

TIDE
Symbol of Quality
Only the BEST... is fit to be TIDE

Farwell 481-3346 Hereford 364-0712
Hart 938-3595 Littlefield 385-3735

THE FASHION SHOP
6th. and Main Ph. 763-5431 Clovis

ADVERTISED IN VOGUE
With a forward glance at early fall Justin McCarty designs an overblouse dress in a richly textured rayon, with the scalloped top gently detailed in tone with a narrow beaded belt. Golden glow autumn red, amber brown. Sizes 8 to 16.

BOYD'S COMPLETE BRAKE AND BEAR FRONT END Service
TIRE TRUING
WHEEL BALANCING AND OVERLOAD SPRINGS
MONRO-MATIC SHOCKS
MUFFLERS AND TAIL PIPES
FACTORY REBUILT POWER BRAKE UNITS-NEW UNIT
GUARANTEE-EXCHANGED
BOYD'S BRAKE SHOP
21 Years in Clovis
221 W. Grand - 763-4326

NEW COMFORT • NEW 50-GAL. FUEL TANK
NEW CASE 930
"COMFORT KING"

CASE 6-PLOW 930 COMFORT KING

The Case 930... world's fuel economy champion* of all current model 6-plov diesels, and equally as famous for low maintenance and brute lugging power... hardly needed added laurels. But now there's a new and greater 930... the 930 Comfort King... to give you new operating ease, new operating efficiency —

"CONTROL TOWER" VISIBILITY — you sit high and forward, well above the dust and heat zone. **COMPLETELY ADJUSTABLE SEAT** positioned ahead of the rear axle for a smoother ride. **BIG ROOMY UNCLUTTERED PLATFORM** with plenty of leg room to sit or stand in comfort. **15 HOURS WITHOUT A REFUEL** under average conditions — thanks to the new 50-gal. diesel (48-gal. LP-gas) rear-mounted fuel tank. We're ready to demonstrate!

OKLAHOMA LANE FARM SUPPLY
Phone Tharp 225-4386

Congregation--

(Continued from page 3)

ed of massive posts by the termination of the ceiling beams. Central heating and air condition control the temperature and microphones and acoustics

are designed for adequate sound in the sanctuary and the vestibule and also the fellowship hall. Indirect lighting is designed so the intensity of the illumination may be regulated. The pastor's study features matching decor, with blackwal-

nut book shelves and work area and red carpeting, with the secretary's office floored in the terrazzo tile matching the vestibule.

The east porch of the original building forms a covered walk-way between the newsanctuary and the fellowship hall. Other than the new addition the old building houses 8500 square feet with 8 classrooms, an audio-visual room, 2 equipment rooms, 4 restrooms, a parlor, kitchen and fellowship hall.

Hosts for the open house Sunday are members of the building committee and Women's Society of Christian Service will serve refreshments.

Church staff for Hamlin Memorial Methodist Church includes the minister, Rev. W. C. Strickland; Mrs. James Craig, director of music; Miss Diane Lovelace, church organist; Mr. and Mrs. H. R. Crook, custodial service; and Mrs. Elmer Teel, secretary.

Pastor's Role Is Dynamic, Effective

Rev. and Mrs. W. C. Strickland, Tommy and Diane, became a part of the community last summer, and he immediately began duties as new minister of Hamlin Memorial Methodist Church.

Since their arrival in Texico-Farwell, the church has launched and completed the building program which is terminated with the services Sunday for opening of the new sanctuary -- the second phase of the church plant which was begun five years ago.

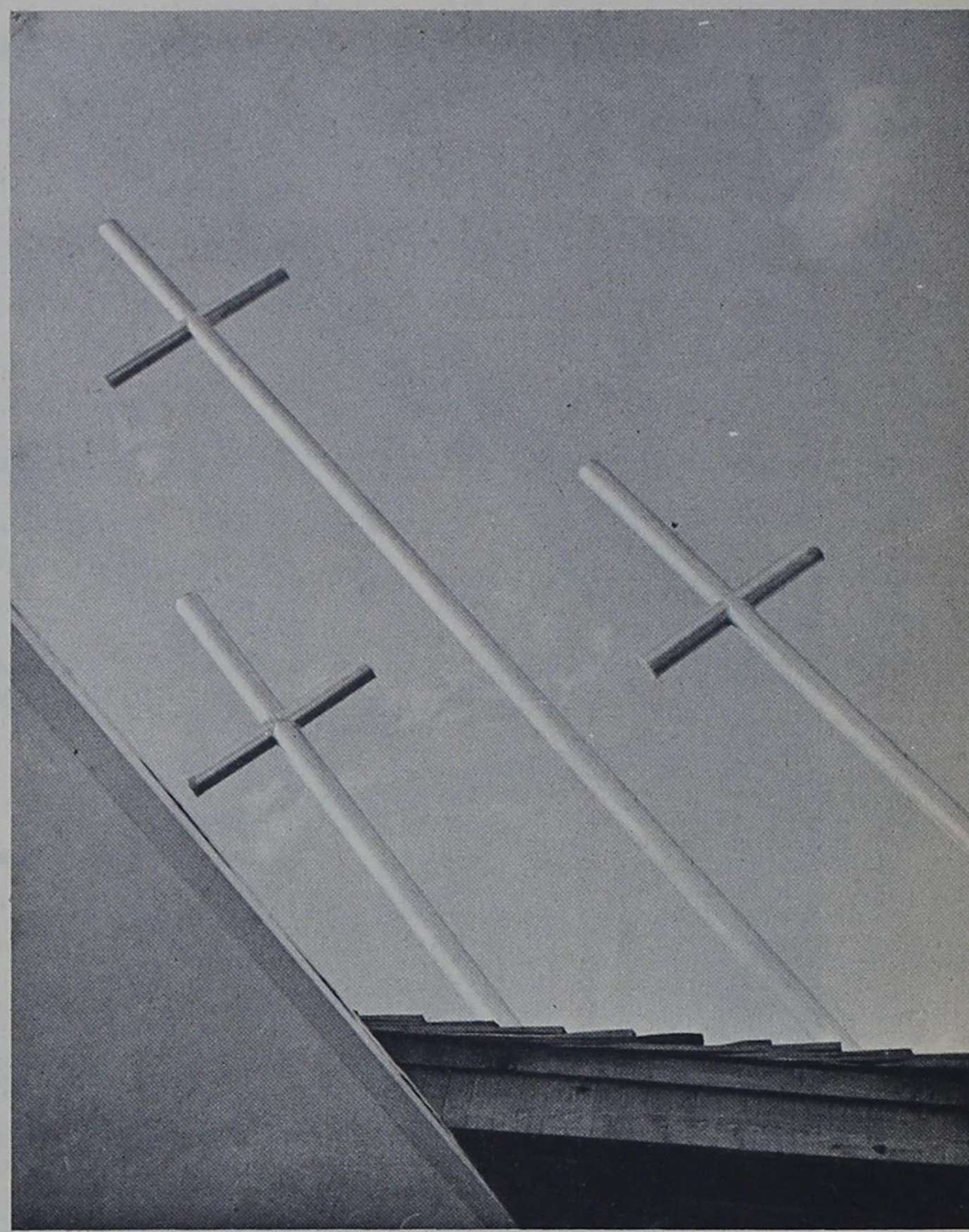
After approval of the building program, contracts were let and construction begun early this year. A parsonage was also included in the plans, and the new three - bedroom brick residence, was completed in December. A fund-raising dinner netted about \$4,000 toward paying off the old building debt in November -- and the old church and parsonage have been sold. A "Preacheration Day" was held before the annual confer-

ence, with the congregation expressing appreciation for the leadership of the minister and his family.



REV. W. C. STRICKLAND

The 31-year-old minister was born in Burkett, Texas and holds a BA from McMurry College and a BD from Perkins School of Theology, SMU, Dallas, class of 1958.



Illuminated by floodlights at night, these three crosses symbolize the Christian ministry and purpose of Hamlin Memorial Methodist Church to the community.

--- Photo by Sass

Several Three Generation Groups Serve Locally

A number of three-generation Methodists who at this time hold membership on the rolls of the Hamlin Memorial Methodist Church, are noted in the new church directory.

Among this group would be Mrs. Fred Barker of Texico whose three daughters, Mrs. Jim Moss, Mrs. E.R. Coffman and Mrs. Elmer Langford appear on the church rolls. Grandchildren who are members are Glendon Moss and Mrs. Jerry Henson of Clovis.

Choir robes which have been on order for several months with hopes of having the new robes for the Sunday services, have been delayed because of summer factory shutdowns, choir members learned this week. Twenty-one new robes are included in the order.

Joyce White. Mrs. N.L. Tharp has been a member of the local church for a number of years, and her daughter and husband, the Dub Howards, are active members. Their older son, Mark is a preparatory member.

Mrs. Kate Phillips and sons, A. F. and Glenn, and their families are long-standing members of the church, with Linda Connie, v. Al and Ty, and their cousins, Craig, Cindy and Penny, older children of Glenn, who have placed membership in the church.

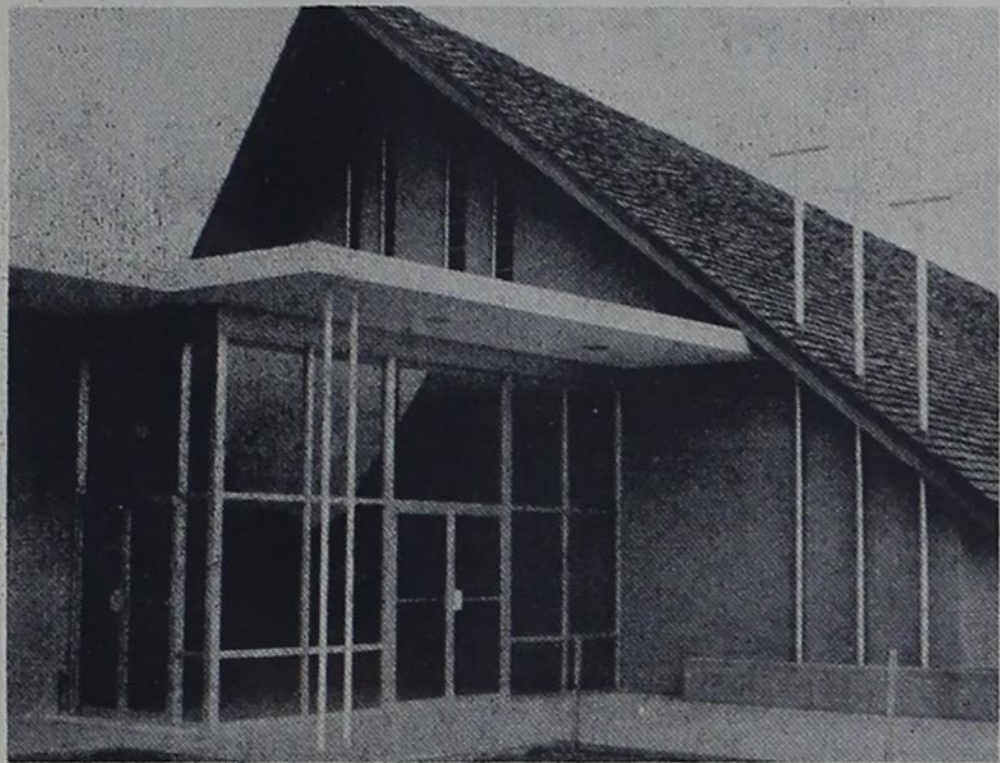
J.R. Thornton has served the church for a number of years, and one daughter, Mrs. Wilfred Quickel and family are active workers. Teresa and Bill, grandchildren, are also mem-

bers. Lt. Col. Julian Thornton also has membership here. M.A. Snider Sr., along with his son and family, M.A. Jr., John Charles, Kim and David, are active in the work of the church.

Mrs. Albert Thomas, her daughter and family, the Paul Wursters, and their son, Tommy, have been an integral part of the congregation.

Hamlin Memorial Methodist Church is a member of the New Mexico Annual Conference, presided over by Bishop W. Angle Smith.

Dr. Floyd Golden, former Eastern New Mexico University president was speaker for the Thanksgiving banquet of the Methodist Church.



We are proud of the grace and beauty that this glass and aluminum entrance adds to the Hamlin Memorial Methodist Church. Our congratulations to them on the dedication of this new sanctuary.

A-1 GLASS CO.

Lubbock, Texas

Ph. PO2-0449

ELECTRICAL And PLUMBING INSTALLATIONS

We Are Pleased To Have Been Chosen To Install The Electrical And Plumbing Needs Of The Methodist Church Sanctuary. It Is Difficult To Praise Our Type Of Work. . . But We And You Soon Know When It Is Not Working Satisfactorily. For Complete Satisfaction, From A Local Firm Equipped To Do It Right, On Your Residential Or Commercial Building Needs See Us First. Electrical Contracting - Whirlpool Built In Appliances, Ranges, Ovens, Dishwashers, Refrigerators For Central Heating & Cooling Systems, Ditch Digging- -Cabinet Work Or Building Call On

CAMPBELL ELECTRIC

Farwell



This beautiful church sanctuary will be a joy forever - - because it has the proper climate control for year around comfort. We are pleased to have been chosen to install the heating and air conditioning system for this beautiful new sanctuary. For proper design of your heating cooling systems in home, Church or office call or write - -

BROWND SHEET METAL CO.

P.O. Box 331



Phone EM4-3867



*WE ARE PLEASED TO HAVE BEEN CHOSEN AS THE
GENERAL CONTRACTOR FOR THIS BUILDING. WE
ARE PROUD TO PRESENT THE CONGREGATION,
AND THE COMMUNITY WITH THIS BEAUTIFUL
NEW CHURCH SANCTUARY.*

*WE SPECIALIZE IN CHURCH BUILDING. CHURCH DESIGN -
CHURCH CONSTRUCTION - CHURCH FURNISHING. WE ALSO
ARE ABLE TO MAKE AVAILABLE CHURCH FINANCING.*

KILLINGSWORTH

CONSTRUCTION COMPANY

BOX 715

DIMMITT, TEXAS

Ph. 647-3593

The rotary cylinder printing press was invented by Richard M. Hoe in 1846.

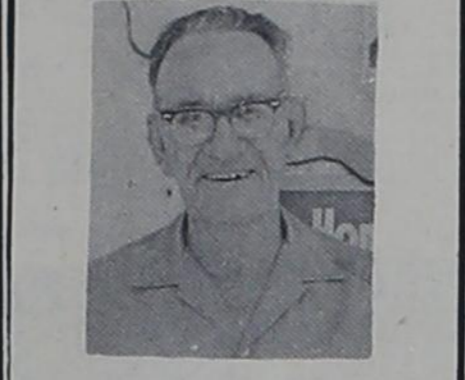
Shower To Honor Mrs. Barrett

Friends and relatives of Mrs. Monty Barrett are invited to a lullaby shower in her honor at the fellowship hall of Oklahoma Lane Baptist Church, Monday, August 2, 3 p.m.

PUBLIC NOTICE Proposed CONSTITUTIONAL AMENDMENT NUMBER TEN ON THE BALLOT

PROPOSED CONSTITUTIONAL AMENDMENT TO BE VOTED ON AT AN ELECTION TO BE HELD ON NOVEMBER 2, 1965. SENATE JOINT RESOLUTION NO. 47 proposing an Amendment to Section 4, Article III, Constitution of the State of Texas...

Uncle Ray's 'Hot Air'



The non-scheduled airline couldn't afford to show movies in flight, but it did show slides.

Some people grow with responsibility; others just swell.

You will swell with pride at your bargains from Uncle Ray's.

Ray Mears Hwy 70-84 -FAR WELL-

The Women's Page

Chris Moss, Society Editor --- Phone 481-3681

Impressive Ceremony Unites Alice Ramm-Carroll Huggins

Alice Marie Ramm, daughter of Mr. and Mrs. Eddie Ramm, Route 2, Muleshoe was united in marriage to Otis Carroll Huggins, U.S. Marine, son of Mr. and Mrs. Otis Huggins, Farwell in an impressive ceremony at St. John's Lutheran Church in Lariat on July 18.

The Rev. Herbert F. Peiman, pastor of the Lariat Church officiated at the double ring service. Vows were exchanged before an altar setting of seven branched candelabras, holding blue tapers, and baskets of blue and white mums adorned by huge ribbon bows of blue satin.



LANCE CORP. AND MRS. CARROL HUGGINS (PHOTO BY MYRTLES STUDIO)

young niece of the bride. She wore a dress of blue brocade satin designed with a full pleated skirt.

PUBLIC NOTICE Proposed CONSTITUTIONAL AMENDMENT NUMBER TWO ON THE BALLOT

PROPOSED CONSTITUTIONAL AMENDMENT TO BE VOTED ON AT AN ELECTION TO BE HELD ON NOVEMBER 2, 1965. HOUSE JOINT RESOLUTION NO. 5 proposing an Amendment to Section 49-b, Article III of the Constitution of Texas...

PUBLIC NOTICE Proposed CONSTITUTIONAL AMENDMENT NUMBER SIX ON THE BALLOT

PROPOSED CONSTITUTIONAL AMENDMENT TO BE VOTED ON AT AN ELECTION TO BE HELD ON NOVEMBER 2, 1965. HOUSE JOINT RESOLUTION NO. 11 proposing an Amendment to Article III of the Constitution of the State of Texas...

PUBLIC NOTICE Proposed CONSTITUTIONAL AMENDMENT NUMBER SEVEN ON THE BALLOT

PROPOSED CONSTITUTIONAL AMENDMENT TO BE VOTED ON AT AN ELECTION TO BE HELD ON NOVEMBER 2, 1965. SENATE JOINT RESOLUTION NO. 7 proposing an Amendment to the Constitution of the State of Texas...

PUBLIC NOTICE Proposed CONSTITUTIONAL AMENDMENT NUMBER EIGHT ON THE BALLOT

PROPOSED CONSTITUTIONAL AMENDMENT TO BE VOTED ON AT AN ELECTION TO BE HELD ON NOVEMBER 2, 1965. SENATE JOINT RESOLUTION NO. 8 proposing an Amendment to the Constitution of the State of Texas...

Condition Good W.D. Howard Jr., who underwent surgery at Scott and White hospital in Temple on Monday is in good condition, according to family members.

PUBLIC NOTICE Proposed CONSTITUTIONAL AMENDMENT NUMBER NINE ON THE BALLOT

PROPOSED CONSTITUTIONAL AMENDMENT TO BE VOTED ON AT AN ELECTION TO BE HELD ON NOVEMBER 2, 1965. HOUSE JOINT RESOLUTION NO. 9 proposing an Amendment to Article III of the Constitution of the State of Texas...

PUBLIC NOTICE Proposed CONSTITUTIONAL AMENDMENT NUMBER TEN ON THE BALLOT

PROPOSED CONSTITUTIONAL AMENDMENT TO BE VOTED ON AT AN ELECTION TO BE HELD ON NOVEMBER 2, 1965. SENATE JOINT RESOLUTION NO. 10 proposing an Amendment to the Constitution of the State of Texas...

MEET MR. WUNSTOP DUZZIT



When the psychiatrist asked the busy executive (who has brought his wife in for treatment) what her trouble was, the man replied, 'Well -- uh -- 'What's-her-name' here says I haven't been paying enough attention to her.'

RED'S '66' RED PRATHER 481-3682 -Farwell

Ramm-Huggins--

(Continued from page 9)
low necklines and no sleeves. Each attendant carried a cascading bouquet of blue and white ribbon bows.

Serving as bestman was Charles Phillips, a close friend of the groom from Amarillo. Groomsmen were Jimmy Clements, friend and former classmate of the groom, and D.J. Cla of the U.S. Marines. Ushers were Dave Lindop and Van Crume.

Mrs. Ramm, mother of the bride, wore a dress of blue silk shantung with beige accessories. Her corsage was of orchids.

Mrs. Huggins chose a navy blue dotted swiss dress with

white accessories. Her corsage was also of orchids. Gaye Ramm, niece of the bride presided at the guest register.

Immediately following the ceremony a reception was held in the Parish hall at St. John Lutheran Church. Serving table was covered with blue taffeta under white net and centered by the tiered wedding cake. The cake was decorated with blue and white flowers and lovebirds. Flanking the cake were blue candles in crystal and bronze cherub candleholders. The bride's bouquet and those of her attendants were used.

Presiding at the serving table were Mrs. Jesse Mullins and Mrs. Tom Lovelace, friends of the bride.

When the couple left for a wedding trip to Little Rock, Ark., the bride wore for travel a two piece suit of white lace lined with blue taffeta and white accessories. Her corsage was the orchid from her bridal bouquet.

The bride is a graduate of Farwell High School and attended WTSU one year. For the past five years she has been employed as cashier and service representative by Mountain States Telephone Co. in Clovis.

The groom is a graduate of Farwell High School and attended ENMU for two years before joining the U.S. Marines, where he has served with the 7th Fleet for the past year. He has been on duty on the U.S. Hancock in Viet Nam.

After August 4 the bride will be at home at 221-E-6th St. in Clovis and will resume work with the telephone company. The groom will report back to California for duty with the U. S. Marines and is scheduled to return to Viet Nam in October.

Mrs. Charles A. Braun of San Bernadino, Calif., is visiting in the home of her sister, Mrs. E.L. (Ed) Farmer in Texico this week. She has just returned from a vacation which took her to Mexico and Canada.



TO WED -- Mr. and Mrs. W. B. Brownlow of Clovis announce the engagement and approaching marriage of their daughter, Cheryl, to Bill Quicke, son of Mr. and Mrs. Wilfred Quicke of Farwell. An August 8 wedding is being planned.

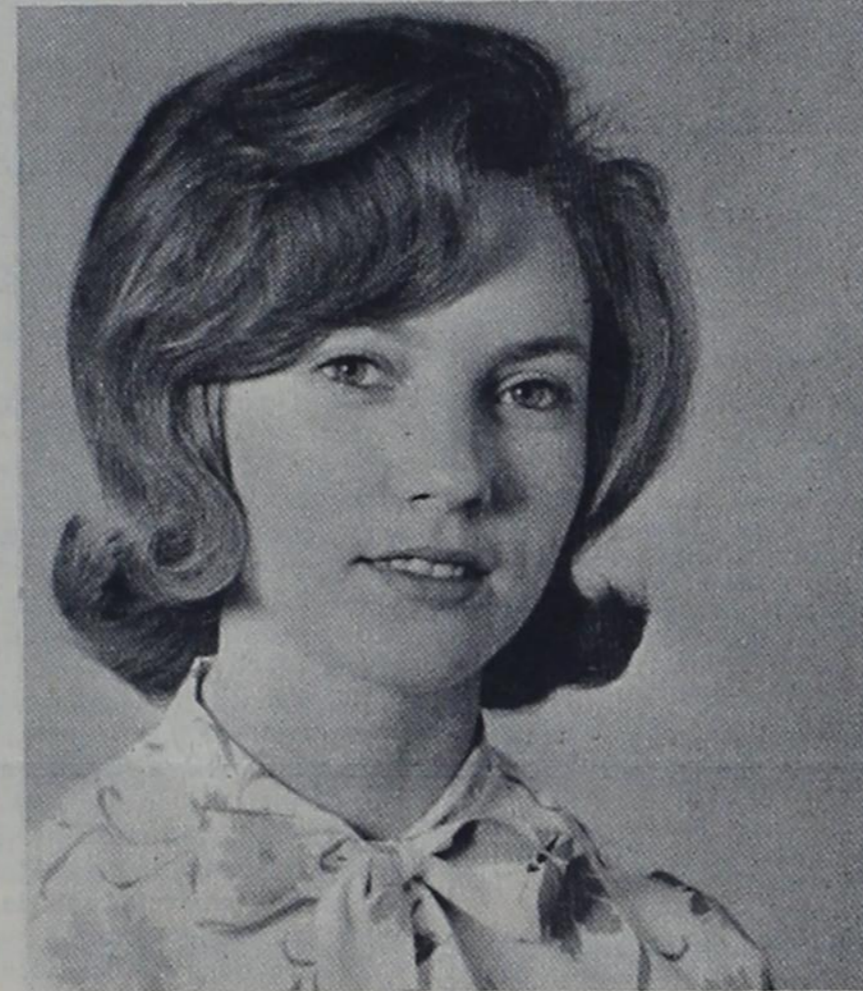
Announce Approaching Marriage

Mr. and Mrs. Anson Bowers of Texico announce the approaching marriage of their daughter, Christina, to Jack Walters, Cannon AFB, son of Rev. and Mrs. Clayton Walters of Westville, Okla.

Friends and relatives are invited to the August 7, 8 p. m. wedding at the Texico Baptist Church.

Miss Bowers is a graduate

of Texico High School, and holds a B.A. degree from Baylor University. She will receive a masters degree from Eastern New Mexico University on August 6. She has been an assistant in the English department at ENMU for the last year and will be teaching English in Farwell High School with the beginning of the fall school term.



ANNOUNCE ENGAGEMENT -- Mr. and Mrs. J. D. Terry announce the engagement and approaching marriage of their daughter, Ann Collins, to Joe White, son of Mr. and Mrs. D. L. White of House, former residents of Farwell. The couple will exchange vows at the West Camp Baptist Church September 5. Friends and relatives are invited.

C O F C ENCOURAGE WEED CONTROL

The Farwell Chamber of Commerce meeting in short session on Tuesday afternoon agreed to encourage civic pride in the city by calling absent members and other businessmen in the town to encourage them to eliminate the WEEDS in the alleys, streets and vacant lots around their places of business.

Bob Westphal, chairman of the planning committee for a harvest celebration was asked to call his committee together to make a decision on a celebration before time for the next meeting of the group.

EMBARRASSED?

KEEP THAT GET UP AND GO!



Does your engine keep stalling in traffic? You'd better come in for a complete motor tune-up.

Karl's Auto Clinic

Smokey and Fred
481-3687 Farwell

Red Sez



"How far down do you want to sit?" asked the usher.
"All the way," answered Red. "I'm very tired."

Let Us Service Your Car With Fuel-Oil-Wash Lube Job We Will Pick Up And Deliver

Wheeler Avenue "66" Station

If You're Satisfied Tell Your Friends, If Not Tell Red

Texico Ph. 482-9148

The John Deere

Implement Dealer

For YOU

Ingram Bros. Implement

COMPANY

CLOVIS

MABRY DRIVE

Doctor can't gamble with balky car...



As one of our dealers puts it: "When the doctor's in a hurry, he is in a hurry... and I make it my business to be sure his car is ready."

Maybe your business isn't as urgent as your doctor's. But you, too, will appreciate the smooth dependable performance that results from using Phillips 66 Service and Phillips 66 Products. A powerful Phillips 66 Trop-Artic® Battery for sure starting. Reliable Phillips 66 Super Action Tread Tires that end sudden roadside flats. Flite-Fuel and Trop-Artic® Motor Oil for easy starting, even on cold days.

Let us keep your car in the pink of condition. Drive in at any station displaying the Phillips 66 Shield.



Headquarters For Phillips, Tires, Tubes, Batteries And Accessories

HELTON OIL CO.

Texico - Farwell

WIN-FREE \$100. DURING THE Shurfine ROYAL RECIPE SWEEPSTAKES

\$25,000.00 CASH! FREE! OVER 140,000 SHURFINE FOOD PRODUCTS

HERE'S HOW IT WORKS!

Get your FREE Shurfine Royal Recipe card each time you shop. Collect coupons until you have all three words to complete the phrase "SHURFINE ROYAL RECIPE." Take the winning coupons to store manager and collect \$100. If the name of a Shurfine food product appears on a coupon present same to store manager for FREE product indicated. A blank or illegible card entitles you to another free card.

P.A.G. Affiliated Food Stores collectively and throughout the Golden Spread are offering FREE \$25,000.00 CASH and over 140,000 FREE Shurfine food products during this promotion. Shop the P.A.G. Affiliated Food Store displaying the Shurfine Royal Recipe Sweepstakes sign.



WONDERFUL RECIPES TOO!

Grade A Fresh Dressed FRYERS 29¢ Lb.	Shurfine FLOUR 5# 39¢
USDA Choice Beef T-BONE STEAK 98¢ Lb.	Bordens Glacier Club Ice Cream Half Gallon 49¢
Affiliated Food Sliced BACON 79¢ Lb.	16 Oz. Shurfine Strawberries 39¢
Armours Full Cream Chadder Longhorn CHEESE 49¢ Lb.	6 Oz. Welch Grape Juice 2/39¢
Fresh Ground HAMBURGER 3# 89¢	1 1/2 # Loaf Tender Crust BREAD 25¢
CENTER CUT PORK CHOPS Lb. 69¢	1# Shurfine COFFEE 69¢
FIRST CUTS Lb. 59¢	3# Snowdrift Shortening 69¢
Gold Brant Young Hen TURKEYS 39¢ Lb. 10-12# Avg.	Surfine TUNA Fat Can 4/1.00
GARDEN FRESH PRODUCE	Hunts #303 Pork/Beans 10¢
Texas POTATOES 10# Bag 69¢	4 Oz. Libbys Vienna Sausage 5/1.00
Texas CANTALOUPE 4¢ #	5# Holly SUGAR 49¢
Calif. Red Cardinal GRAPES 15¢ #	Liptons TEA 1/4# 37¢ 1 1/2 Oz. Inst. 49¢ 48 Oz. Bags 69¢
Home-Grown BLACKEYE PEAS 10¢ #	Soflin 2 Roll Pack PAPER TOWELS 29¢
CAPITOL FOOD Our Prices Consistently Low	Reynolds 25' Roll FOIL 29¢
Farwell, Texas	Giant Ajax Detergent 65¢
OPEN Till 9 O'Clock Every Night	Qt. Zestee SALAD DRESSING 29¢ Qt.