

Offering Young Men & Women A Chance For Growth



Kelly Green Seeds

We Grow For You



MORE THAN EVER THRIFT IN BUSINESS
AND HOME ARE ASSETS OF FFA INSTRUCTION
THANKS TO THE FFA OUR NATION
LEADS IN AGRICULTURAL ACHIEVEMENTS.

**Sherley-Anderson
Pitman**

Feb. 20-27



Rose Drug

Farwell

**We Salute
The FFA.**



Farwell Hardware

*We Salute
The
FFA Chapters
Of
Texico And Farwell*

Rip's Western Wear

Texico

NATIONAL FUTURE FARMERS OF AMERICA WEEK
★ ★ ★ ★ ★
Feb. 20-27, 1982

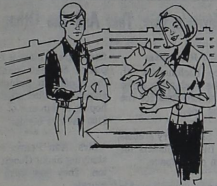
**FUTURE FARMERS
FEEDING AMERICA'S MILLIONS**

FFA MOTTO
"LEARNING TO DO . . .
DOING TO WORK . . .
EARNING TO LIVE . . .
LIVING TO SERVE."

**We Salute The
FFA
Working For A
Better
Tomorrow**

C & T Fertilizer & Equipment
Farwell Clovis

Achievement in
agriculture is
the aim of FFA

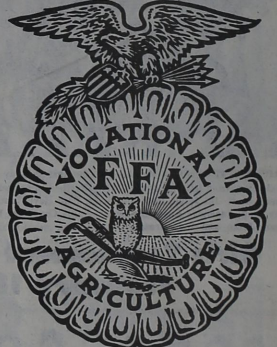


**Case Power and
Equipment Co.**

Mabry Drive - Clovis

**WE APPRECIATE
OUR
TEXICO AND FARWELL
FFA
CHAPTERS**

We Salute The



Franse Irrigation
Farwell

**FFA WEEK
Feb. 20-27**



Texico Branch

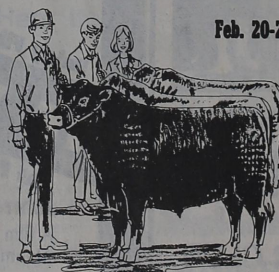


The FFA Motto
**Learning to Do
Doing to Learn
Earning to Live
Living to Serve**

**ENMR
TELEPHONE
COOPERATIVE**

National FFA Week

Feb. 20-27



Farwell Fertilizer

Ed - Gene - Kevin - Gerald

*America's Future
9s In Their Hands*



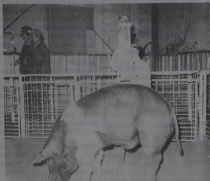
**FFA Week
Feb. 20-27**

Capitol Foods

Farwell



OUR CONGRATULATIONS TO THESE CHAMPIONS OF THE 1982 FARWELL JR. LIVESTOCK SHOW



JEFF RHODES

With His
**GRAND CHAMPION
BARROW**



KEVIN OWEN

With His
**RESERVE CHAMPION
BARROW**



KEVIN OWEN

With Her
**GRAND CHAMPION
GILT**



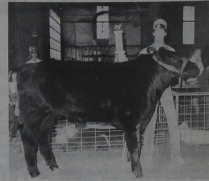
STEVE GERIES

With His
**RESERVE CHAMPION
GILT**



GARY HASELOFF

With His
**GRAND CHAMPION
STEER**



GARY HASELOFF

With His
**RESERVE CHAMPION
STEER**



COREY JONES

With His
**GRAND CHAMPION
LAMB**



JEREMY JONES

With His
**RESERVE CHAMPION
LAMB**

WORLEY MILLS INC.

FARWELL

MANUFACTURERS OF OKAY FEEDS FROM LOCAL GRAIN



Texico Jr. Varsity Basketball Results

Texico JV girls are following in their big sisters' foot-steps and boast an undefeated season record.

The girls had one of their closest games of the season last Thursday at Dora, but eventually pulled off the 38-31 victory. On Saturday the junior Lady Wolverines handed Melrose a sound 40-28 defeat, climaxing a perfect season for the young roundballers with a clean 10-0 slate.

At Dora Thursday, Texico got off to a slow start, falling behind in scoring 15-11 at the half. Things didn't improve too much in the third quarter as the Green and White managed to pitch in only 5 points compared to Dora's 10, staying behind a 25-16 score.

But the Wolverines finally came alive in the final quarter and pumped in a hefty 22 points, allowing Dora to hit with only 6, taking the game 38-31.

"We just didn't play well for the first three quarters," explained Coach Roy King. "But in the final quarter the girls decided to stay undefeated and really got after it," King said.

Posting points for Texico were Cassie Chavers with 13; Cheryl Scott with 8; Helen Boarman and Valda Cavallero, 4 each; Chary Jesko, 3; and Karen Snodgrass, Kelly Lynn and Elayne Horner, 2 each.

At the boards, Chavers led with 14 rebounds, followed by Snodgrass and Scott with 9 each; Lucia Jesko, 4; Helen Boarman, 3; Jesko, 2; and Coy Jo Burk, 1.

Against Melrose on Saturday, the junior Lady Wolverines never stopped moving and took the win 40-28.

"Our girls really wanted to win so that we could have an undefeated season," said King. "We didn't shoot a good percentage, but we never quit hustling."

Valda Cavallero and Helen Boarman were high pointers with 10 apiece, followed by Cheryl Scott, Cassie Chavers and Karen Snodgrass with 6 each and Chary Jesko with 2.

"Valda and Helen played well, as did Karen Snodgrass, even though she didn't shoot well, she did a good job of

rebounding and stealing the ball," King said.

For the season, King said, "I think we started playing better about the third game of the season when we started pressing. We make a lot of turnovers, but we usually steal the ball more times than we lose it."

Snodgrass led at the boards against Melrose with 13 rebounds, followed by Chavers who had 11. Also rebounding were Cavallero and Boarman with 6 each; Scott and Morris, 3; Jesko, 2; Lynn, K. Tubbs and E. Horner, 1 each.



Jumpin' Jimmy

Farwell junior varsity Steer Jimmy Bernal jumps high for two points in the bucket during last Friday's game against Springlake-Earth. The junior Steers suffered a heart-breaking two-point loss to the host

Wolverines, after just coming off another two-point loss to Bovina two nights before. The Springlake game ended the season for the junior roundballers. [Photo by Dr. J.R. Ivins.]

Texico Jr. High Basketball Results

Texico 7th-8th grade boys lost a 34-29 decision to the Melrose Buffalos in the second round of the Floyd Tournament. The Wolverines won

their first game of the tournament over San Jon 68-27.

Stanley Cross led the Wolverines in scoring with 8 points; Jimmy Edge and David Loera had 6 and 5 points, respectively; John Thomas and Mark Meeks canned 4 each; while Jimmy Thornton added 2.

The Wolverines defeated Dora Coyotes for a third place win in the tourney by a score of 35-34. Mark Meeks led the Wolverines to victory with 12 points, with Jimmy Edge coming through with 8. David Loera hit for 5; Stanley Cross, 3; while John Thomas, Brette Southard, and Jubal Pierce each chipped in 2; and Tim Harmon hit for 1 point.



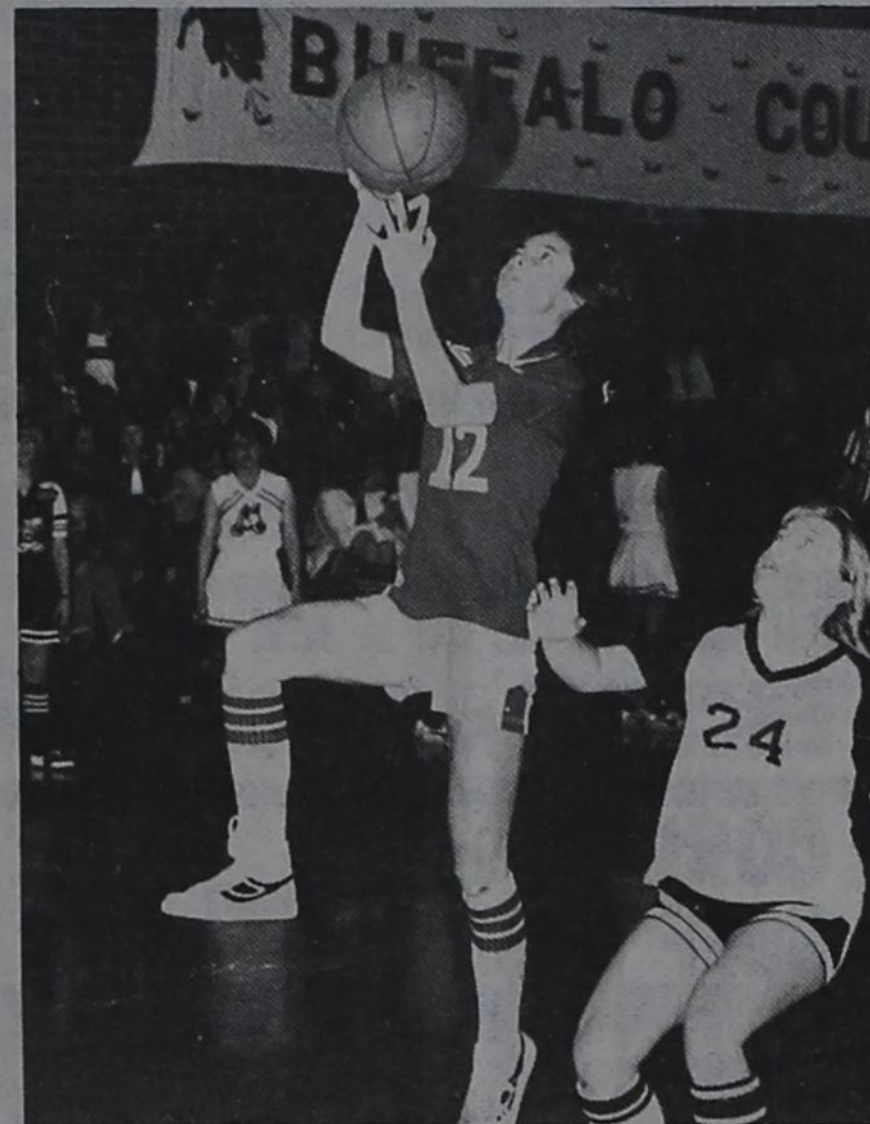
Lazbuddie Boosters Slate March Volleyball Tourney

Lazbuddie Band Boosters are sponsoring a volleyball tournament, March 18, 19, and 20 in the Lazbuddie High School gym.

Volleyball teams may contact Jerry or Louise Engelking, by the March 10 deadline.

Entry fee of \$20 may be mailed to Jerry Engelking, Route 3, Box 78, Muleshoe, Texas 79347.

The Band Boosters wish to make this the best tournament, so get entries in early.



One Step Ahead

Texico junior varsity player Helen Boarman is one step ahead of her Melrose opponent on this layup shot during last Saturday's clash with the junior Lady Buffs. The young Lady Wolverines finished their

season with a perfect 10-0 record, defeating hosting Melrose 40-28. [Texico School Photo By Connie Blue].

Farwell Jr. Varsity Basketball Results

Farwell JV girls handed county rival Bovina a 36-26 defeat last week playing on the Farwell court.

Jane Ward and Tammy Obenshain led the girls in scoring, pitching in 12 and 10, respectively. Cynthia Ancira had 6 and Sonya Chism and Norine Jones had 4 each. Farwell came out with an

early first quarter lead of 13-6, and never allowed the junior Mustangs to come near them in points.

The win over Bovina placed the Farwell girls with a 6-1 district record.

The JV boys lost a heart-breaker to Bovina, going down by a slim two points, 42-40. Farwell had the lead the

entire first half, but let their guests inch up and take the win in the last quarter of play. Scoring were Johnny Daniel with 16, Jimmy Bernal, 12; Paul Fulcher, 10; Todd Christian, 2; and Brian White and Steve Stancell, 1 each.

The JV girls closed out their season with an impressive 12-4 record, being 6-1 in district play, following their win over Springlake-Earth last Thursday under the Jr. Wolverette nets.

Jane Ward was leading point maker for the JV girls with 22 points, followed by Cynthia Ancira with 14. Also scoring were Cathy Gobble, 6; Norine Jones and Sonya Chism, 4 each; and Tammy Obenshain, 2.

The local girls came out with a fast paced game and took an early quarter lead of 18-10. Springlake wasn't able to do much better in the second quarter, pitching in only 7 points compared to Farwell's 12. In the third stanza scoring was equal for both teams with 12 points each, but Farwell still maintained their lead in the final quarter to win their 12th game of the season.

Farwell Jr. High Basketball Results

In junior high roundball action last week all four Farwell teams lost to the Bovina teams.

The 7th grade boys suffered a 38-11 defeat with Carey Stancell scoring 4 points; Jody Ketcherside, 3; and David Woods and Erik Burton, 2 each.

The 8th grade boys played a closer game against the visiting Mustangs losing only by 1 point in the final seconds of play.

Scoring were Steven Jaime, 10; Eric Williams, 9; Carlos Nichols, 7; and Kevin Owen and Blake Kelley, 1 each.

In junior high girls play, the 7th graders lost 20-11 and the 8th graders were defeated 46-3. No information on scoring was available at presstime.

Springlake-Earth junior high teams came to Farwell Monday afternoon, and three out of the four were handed defeats from the Blue and White roundballers.

The 8th grade boys game saw Farwell on top of a 34-18 score with Carlos Nichols pacing the Yearlings with 11 points. Also scoring were Kevin Owen and Steven Jaime, 8 each; Jesse Anzaldua, 4; Bobby Ford, 2; and David Rubio, 1.

In the 7th grade boys match, the Blue and White dumped the visiting Springlake team by a score of 24-9.

Jody Ketcherside hit for 8 points, followed by David Woods with 6; Erik Burton and Jason Schilling, 4 each; and David Rubio, 2.

The 7th grade girls were also victorious in their clash with the visiting Springlake team,

defeating their guests 16-5.

Camille Buchenau pitched in 6 points, followed by Shonda Foster with 5; and Sharon Myers and Suzanne Hardage, 1 each.

In the 8th grade girls game, Farwell lost 20-8.

Scoring for the Blue and White were Sherilyn Thigpen, 3; Rhonda Lingnau and Alma Nicholas, 2 each; and Trene George, 1.

The games with Springlake-Earth ended the roundball season for the junior high teams.

Long-term credit that's productive.

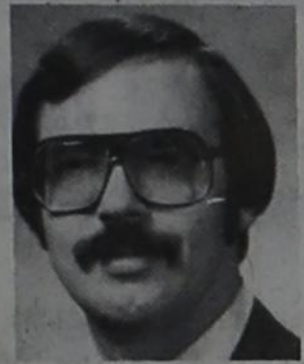
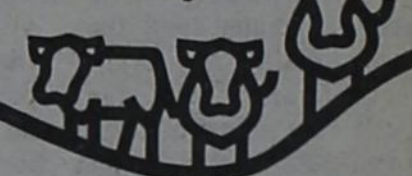
When you make the land your life... getting the most out of your inputs is crucial to your success. At your Federal Land Bank Association our loan officers are specialists. They know how to make long-term credit work for people who work the land.



Close to the land and the people who work it

FEDERAL LAND BANK ASSOCIATION
Muleshoe, Texas 79347

Bill Lites - Manager



See Me When You Are In Amarillo Shopping

CARL G. DAVIS
Sales Representative
New and Used Cars and Trucks
Sid Stout FORD-JEEP
GEORGIA AT 26TH
Office Phone: 355-7471

AMARILLO, TEXAS
Home Phone: 353-4698

NEW FROM PHILLIPS

Trop-Artic Fuel Economy Motor Oil!



For Gasoline Or Diesel Engine Vehicles Of 1981 and 1982 Model Years.

Save Fuel With New Fuel Economy Trop-Artic Motor Oil.

LOOK FOR THE NEW RED CAN ON YOUR SERVICE STATION SHELF.

HELTON OIL CO.

Serving the Texico and Farwell area.

Ph. 481-3222

NOTICE OF ANNUAL MEETING OF MEMBERS

The Annual Meeting of the Members of the BAILEY COUNTY ELECTRIC COOPERATIVE ASSOCIATION

will be held in the BAILEY COUNTY COLISEUM in Muleshoe, Texas

SATURDAY, FEBRUARY 27, 1982 - 1:00 P.M.

Free noon meal for Cooperative Members and their families. Registration opens at 11:30 a.m. You must register to get your meal tickets. Serving lines to begin at 12:00 noon.

TO TAKE ACTION UPON THE FOLLOWING

1. Give members a financial report, progress report, and general condition of the Cooperative.
2. Elect two (2) Directors for a term of three years.
3. Appoint a Nominating Committee for Annual Meeting to be held in 1983 for Districts 4, 5 and 7.
4. Consider and take action upon any other matters that might be presented or come before the meeting.

In connection with the election of two (2) Directors, the following members have been nominated.

DISTRICT 1	DISTRICT 2
J.W. Herington	Joe Embry
D.L. Redwine	Gary Hooten

Additional nominations for Directors may be made at the meeting.

There will be a drawing for door prizes.

Plus, a new feature this year, drawing for a Grand Prize.



We're Going To District!

Farwell varsity cheerleaders Lety Anzuldua and Cathy Gobble are pleased as punch that both the roundball squads from Farwell will be in the District 3-AA Tournament this weekend in Mulshoe. The

Steerettes enter the tourney seeded No. 1 after defeating Springlake-Earth Friday night at Springlake to take the round-robin championship. The Steers also won a berth in the tournament by soundly de-

feating their hosts 59-30 to earn the No. 4 slot on the tournament bracket. Tournament action gets underway Thursday with the Steerettes scheduled to play at 7 p.m. and the Steers to play at 8:30.

SPS To Seek Rate Increase

Southwestern Public Service Company has announced it will request a 12.7 percent increase in the retail price of electricity in Texas, ranging from \$5 to \$10 per month for the typical residential customer.

The proposed increases include \$19.2 million in rates within Texas city jurisdictions and \$22.3 million in rural area rates which are set by the Texas Public Utility Commission outside city jurisdictions.

Bert Ballengee, the electric utility's president, said "the increase is imperative later this calendar year because of the need to change to coal as the fuel source in the Company's power plants, because of high money costs, and because of inflation."

Ballengee pointed out that "although inflation has totaled 23 percent since the last electricity rate adjustment two years ago, SPS is able to hold its request to half that amount as a rate increase."

A significant portion of the new revenue will help pay for the first unit of the Company's second coal-fired power plant, Tokk Station, which is scheduled to go into service early

this summer. "We must change our system from gas to coal because coal will save our customers money," Ballengee said.

Ballengee said that "even with a rate increase, the typical Southwestern Public Service residential customer in Texas will spend about \$4 to \$5 per month less than he would have, if the Company had not made the decision to move to coal and away from natural gas as boiler fuel in new power plants. For all of the Company's customers, this amounts to a savings of about \$106 million a year when the new Tokk Station is fully operating."

SPS managers in the 68 Texas cities and towns served by the utility and affected by the rate increase are now providing city officials with details of the Company's need for a rate increase.

Ballengee explained that extensive analysis of all revenue data and customer electrical demands indicates a need to file for the increase with the Texas city commissions and the Public Utility Commission. When the new

rate is approved, a \$41.5 million annual revenue deficiency will be corrected.

The cost of electric service represents about two percent of the average family residential budget - the same as it was five years ago, Ballengee said. He added that the unit cost of electricity is now the same as it was in 1927, when most families used 500 units of energy each year. Now, most families use about 7,000 units a year, Ballengee said.

"We don't expect our customers to like the prospects of higher electric bills - but we believe they will understand the importance of keeping the increase to a minimum while maintaining a reliable electric system," Ballengee said.

Southwestern Public Service primarily provides electric utility service to a population of more than 1 million in a 45,000-square-mile area of the Panhandle and south plains of Texas, eastern and southeastern New Mexico, the Oklahoma Panhandle and southwestern Kansas.

Past Masters Banquet Slated In Melrose

The 35th Annual Past Masters Banquet of Melrose Lodge No. 39 is set to take place Saturday, Feb. 20, at 6:30 p.m.

Fire Safety Tips
by David Kubo

Portable gas or oil heaters present special hazards.

Children and elderly people can get too close and ignite their clothing or cause the heaters to tip over.

The heaters consume oxygen, and in a tightly closed room, they could suffocate sleeping occupants.

So make sure there is a fresh oxygen supply wherever they are used.

Always be sure the fire in the heater is out and the heater has cooled before refilling. Filling should be done with a funnel and in the open.

MST, and all area Masons are invited to attend.

A meal of steaks and trimmings will be served, and the speaker will be T.L. Smith, vice-president of Clovis First Federal Savings and Loan Association.

Twenty-five year pins will be presented and a short history of past masters given.

STARCRAFT STAMPEDE

BUY A NEW STARCRAFT AND GET UP TO \$210.00 OR 120,000 S & H GREEN STAMPS BISON CAMPERS CLOVIS 1200 East First

Doolittle's 66
Complete Service
Flats-Lube-Oil-Tires-Wash
504 Wheeler Ave - Ph 482-9047

LOOK At The Brand Names We Carry For YOU!

Fafnir - Champlin Oil - Roll A Cone - Ace Pumps - Wix Filters
Dayco Belts - Hamby - Tye - Nobles Cultimatic - Nickles Sweeps
- Peerless Chain - Prestolite Batteries - Niehoff Ignition -
Schrade Knives - Bingham Bros. Mfg. - Acme Roller Chain -
Wylie Sprayers - Caldwell - Thorsen - Big 12 - National - BCA
Cisco - Big Ox - Quest - Porter - Murphy - M & W

Oklahoma Lane Farm Supply
Ph 825-2345

MORE FOR YOUR MONEY!

BAR-B-QUED CHICKENS Smokaroma (Fresh Daily) \$4.49	CHICK'N PATTIES Tyson Quick Breast 12 Oz. Box \$2.09
BEEF LIVER Fresh Sliced lb. 69¢	PORK CHOPS Normal Family Pak 8 To 12 Chops \$1.39 lb.
BACON Wright's Sliced Slab lb. \$1.29	CHILI (No Beans) Ranch Style Big 19 Oz. Can 99¢
TIDE Family Size \$5.99	BROWNIE MIX Betty Crocker 23 Oz. Box \$1.29
GREEN BEANS Del Monte No 303 2/79¢	CRACKERS Fireside 1 Lb. Box 49¢
SPINACH Del Monte No. 303 2/79¢	COCOA MIX Swiss Miss 12 Count \$1.29
ENCHILADA SAUCE Del Monte 10 Oz. Hot or Mild 2/79¢	COTTAGE CHEESE Sharfresh Big 24 Oz. \$1.29
CORNEED BEEF HASH Armour's 15 Oz. 99¢	BUTTERMILK Sharfresh Half Gallon \$1.09

BIG BLUE BONUS SPECIALS
WITH FILLED BIG BLUE BONUS BOOKLETS

Folger's 13 Oz. Flaked COFFEE \$1.59
With each filled BIG BLUE BONUS BOOKLET

Heinz 32 Oz. Jug CATSUP 79¢
With each filled BIG BLUE BONUS BOOKLET

15 Oz. Bottle PINESOL 39¢
With each filled BIG BLUE BONUS BOOKLET

Kraft Qt. MIRACLE WHIP 79¢
With each filled BIG BLUE BONUS BOOKLET

3 Lb. Can CRISCO \$1.69
With each filled BIG BLUE BONUS BOOKLET

Normal 12 Oz. Pkg. LITTLE SIZZLERS 59¢
With each filled BIG BLUE BONUS BOOKLET

COCA COLA 32 Oz. 6 Pk. \$1.99
ORANGES Texas 5 Lb. Bag 99¢
POTATOES Colo. U.S. No. 1 10 Lb. Bag Russet \$1.19
CABBAGE Texas Firm Head lb. 19¢
PINEAPPLE Max. Fresh 69¢ Each
BEEF TACOS Sonor Blue 12 Oz. Pkg. 99¢
FIVE-ALIVE Snow Crop 12 Oz. Can (Reg. or Punch) 89¢
HONEY BUNS Morten 9 Oz. 69¢
CAKE Sara Lee Big 21 Oz. Black-Forest \$2.19

CAPITOL FOODS

We Redeem U.S.D.A. Food Stamps
Open Til 9 o'clock Every Night
Double Stamps On Wednesday

900 Ave. A Farwell
Ph. 481-3432