

THE STATE LINE TRIBUNE

"OFFICIAL PUBLICATION OF PARMER COUNTY"

NUMBER 21

SIXTY-SECOND YEAR

15 CENTS

In Friona - -

Steers To Begin District Playoff Action Tonight

Vega and Springlake will be the first two teams in action in the Friona gymnasium tonight (Friday) when the first of two games in District 3A playoffs begin. The 7 p.m. game will precede the Farwell-Hart game at 8:30 p.m. to determine who will play Saturday at 8 p.m. for district championship.

Undisputed champions of the district by virtue of an 11-1 district record for this year are the Farwell Steers, although they lost the final game of the regular season to Vega Tuesday night breaking a 14-game winning streak.

With only two varsity players, Mike Woods and Leslie Curtis, completely on their feet and without illness at game-time Tuesday night, the Steers shot a low 29 percent and lost the final game to Vega, 50-39.

"We had a poor game," commented Coach Vernon Scott. "And, 29 percent shoot-

ing for us is just awful."

On a more optimistic note, he added, "Our four post men got a total of 12 rebounds. This

must improve. But, we did not lose our advantage for the playoffs."

According to the record as

posted following the game, the Steers hit only 18 of 62 attempted field goals and three (Continued on Page 3)

Local & County - -

Livestock Shows Are Slated For Next Week

Records are expected to fall next weekend during the auction sale of more than 300 animals expected to be exhibited at the annual Parmer County Junior Livestock Show slated to get underway at Friona on Thursday, Feb. 14.

A record sale of \$52,846 marked the 1973 stock show in Friona and Parmer County Agent Mack Heald said that when the auction is over this year, that amount is expected to be surpassed.

Although the show has traditionally been at the Friona School bus barn, this year it is scheduled for the new Community Showbarn complex just north of Highway 60 and west of Highway 214 in Friona. Work is expected to be completed on the showbarn and convention complex prior to opening date of the annual livestock show.

Heald said animals will be weighed in on February 14, with 150 barrows, 80 lambs and 75 steers expected to be shown in the ring during the three day show and sale. Entries will

be coming in to the show from 4-H and FFA youths throughout the county.

With judging scheduled to get underway on Friday, Feb. 15, first through the ring will be lambs followed by barrows and winding up with the steer judging.

Trophies and rosettes will be awarded Grand Champion Steers and Barrows, with Breed Champion and Breed Reserve Lambs also receiving trophies and rosettes.

Locally, the Farwell FFA livestock show is slated at 1:30

p.m. on Monday, Feb. 11, at the Ag farm located just west of Nickels Gin in east Farwell, according to Danny Ivy, agriculture teacher at Farwell High School.

Farwell High School FFA students will show barrows during the afternoon followed by the lamb show and winding up with steers and heifers during the evening.

Judging the animals in the Farwell FFA livestock show will be Bob Middleton from Texas State Technical Institute in Amarillo.

Homecoming - -

Texico Royalty To Be Crowned

Highlight of the annual Texico Homecoming will be the crowning of the Homecoming King and Queen during the interval between the B and Varsity games against Tatum in the Texico gym Saturday night, tomorrow.

Candidates for the honor this year are Dwayne Kelley, Steve Harrington, Craig Chumley, Linda Autrey, Diane Luce and Regina Kelley.

The honors will be conferred on the chosen couple by the 1973 Homecoming King and Queen, Dusty Leatherwood and Kim Pearce. Junior attendants will be Karen Snodgrass, daughter of Mr. and Mrs. Roy Snodgrass and Steve Smith, son of Mr. and Mrs. Dean Smith. Both junior attendants are first grade students at Texico.

During halftime in the varsity game, several recognitions will be made, including, the Texico class with the largest attendance at the game; alumni from the earliest graduating class and the person or persons who traveled the farthest for the game.

Preceding activities in the

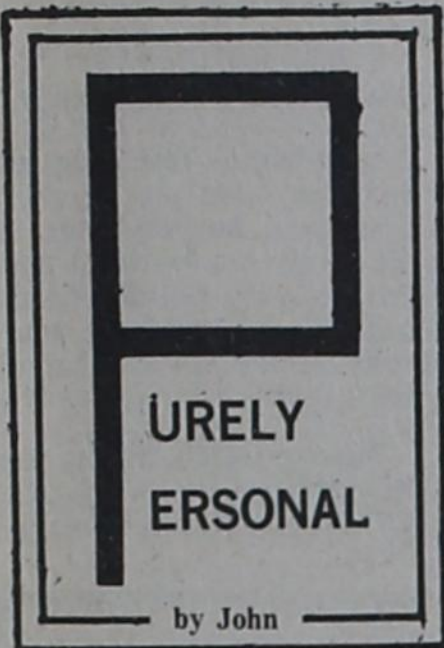
gymnasium will be a student-parent enchilada supper, sponsored by parents of the senior students. Scheduled from 4-6 p.m., the supper will provide a full enchilada supper, plus homemade pie available for only 15 cents above the basic \$1.50 ticket price.

Texico High School Principal Jim Pierce has urged everyone to participate in the homecoming activities and support the home team when the Texico Wolverines tip off against Tatum in the gym.

Co. Commissioners To Meet Monday

Members of the Parmer County Commissioners Court will meet at 11 a.m. Monday, Feb. 11, in the county courtroom in the Parmer County Courthouse in regular session.

No major items of business are shown on the released agenda, however, County Judge Archie Tarter has said that anyone wishing to appear on the agenda is welcome to do so.



By all rights, we can safely say that "spring hasn't sprung" and that we will probably have at least one or more real good snows to remind us of nature's vagaries. According to most folks we have talked to lately, they are ready for moisture in most any form.

In a recent publication, we noted a sub-soil moisture chart that indicated we now have the lowest sub-soil water supply in many a year. This will not be news to our farming friends who have been turning over hard clods for some time now. This moisture deficiency can become quite serious for the high plains as extra water will have to be pumped for pre-planting purposes. Pumping water has always been costly, but we are entering the time when it will continually be a rising cost factor in food production.

Hopefully, the farmers won't adopt the same attitude as the truckers are displaying, or by next fall, bread may be more precious than gold. We sympathize with the trucking fraternity, but think that lawlessness has no place in our American society.

Today, almost any line of endeavor is being hurt, so most people in all businesses are going to go under. If everyone took the law into their own hands to enforce their personal views, only anarchy and civil war would result.

Our country was founded on the energy and ingenuity of the individual. Now is no time to let nearly 200 years of history go down the drain. We must all think as AMERICANS as well as being individuals.

Pills, potions and hankies have been in great demand the last several weeks. It's of small comfort to the afflicted individual, but, if misery loves company, you can have a lot of companionship in the Twin Cities.

In our weekly activities, we see and call on most of the businesses in this area. We do not recall any business that has not had a below normal working force due to the cold and flu epidemic. However, our situation is not as serious as in the communities where even the schools have had to dismiss for several days in an attempt to break the flu cycle.

Modern science has accomplished miracles in many fields of medicine, but the common cold and sniffles seem to be unconquerable. Our doctors can mitigate the symptoms and ease the discomfort somewhat, but it just seems to take time for old mother nature to get the human body back into good health.

It has been said that if you treat a cold, it will get well in two weeks, if you don't treat it, it will get well in a fortnight.

We have been treating our code in the node this week and look forward to getting over it next week. AC-CHOO!!

Need Warehouse - -

Paper Drive Continues; Magazines Now Accepted

Parmer County Home Demonstration Agent Jana Pronger said the 4-H paper drive is still continuing, with a couple of added bonuses in recent days.

She said the 4-H members are now taking the paper to a recycling plant in Lubbock, who offered the group more money for the accumulated paper. Also, said Miss Pronger, they can now accept magazines, however, no carbon paper or plastic is acceptable, although they can collect cellophane window envelopes where they could not in the past.

The 4-H group still needs, as soon as possible, warehouse facilities to store the paper and magazines as they are accumulated, according to the home demonstration agent. Their present facility is a seed house which they are having to relinquish to the owner as spring planting time approaches. They could use a vacant house, building or any type of inside facility to store the papers for separation and to keep from the weather, added



A VALENTINE FOR TEACHER - Tonya Pruitt, 6, smiles as her first grade teacher, Mrs. Buttons (Judy) Howard, beams her pleasure at a "Valentine For My Favorite Teacher" as presented her this week. Tonya, the brown-eyed, black-haired daughter of Mr. and Mrs. Harold Pruitt, is a student in Mrs. Howard's class at Farwell Elementary School. Valentine Day is Thursday of next week and "favorites" are expected to be presented Valentines during the coming week.

PRPC Outlines Plans For Housing & Nursing Home

Billy Taylor, community services coordinator for the Texas Department of Community Affairs, Division of Rural Community Services; Bobby Palit, PRPC statistical analyst and Alva Fink, rural housing expert, were featured speakers at a meeting in the Security State Bank Wednesday morning. They are from Panhandle Regional Planning Commission in Amarillo.

Palit explained procedures necessary and feasible to build a nursing home in Farwell and complimented the industrial group which had already conducted a feasibility study on the possibility of the nursing home facility to be located here.

He suggested that the group submit an application to the Texas Health Council for approval, which he noted would help in the future with possible ease in acquiring necessary permits, accreditation and financing. Palit explained that Texas is the only state where anyone who wants to build a hospital or nursing home may do so without acquiring a certificate of need. However, he noted that the Governor may, at any time, sign a proposed bill limiting construction without the certificate as is required in all other states.

Rev. W. T. Perry cautioned the group to watch carefully in choosing the type of facility to be located here. He said that included should be an extended type care facility, with retirement facilities added, if feasible. Rev. Perry told the group of several nursing homes

throughout the area he has visited and briefly outlined benefits and drawbacks of the nursing homes he has visited.

Chamber of Commerce President Charles Aycock explained procedures already taken by the local group interested in constructing the nursing home, including the present formation of a non-profit corporation which will not only be utilized to construct

the nursing home facility, but to attract other industry to Farwell.

Another area covered during the meeting was the possibility of new rental housing units for Farwell. Taylor explained the procedures of acquiring such housing, including eligibility of potential renters and surveys to determine the need for additional rental housing in the area.

Much of the area covered by Taylor during the discussion was in the area of adequate housing for senior citizens and low to moderate income persons, and, along with Bill Boling, manager of the local Farmers Home Administration office, outlined steps necessary to acquire additional housing here.

Alva Fink, the housing expert, suggested a survey to determine initially, the need for additional housing and related several types of housing available in the area.

The Panhandle Regional Planning Commission representatives pledged their help to Farwell in order to help determine Farwell's needs for housing and a nursing home and help secure adequate financing and provide specific aid where necessary.

Community Workday Saturday

A community workday has been scheduled for Saturday at the Texico Community Center, all day, beginning at 9 a.m. MDT.

A bit of painting and just general clean-up is needed, says a spokesman for the Texico Woman's Club. All club members are urged to participate. Also, it is stressed that everyone in the community is urged to help. There will be a "job for everyone" throughout the day.

Briggs Runs For Commissioner

Jimmy C. Briggs, Lazbuddie area farmer, has authorized the State Line Tribune to announce his candidacy for County Commissioner, Precinct Four.

He said, "I am announcing my candidacy for County Commissioner, Precinct Four, Parmer County, on the Republican ticket.

"I moved to the Lazbuddie community in 1962 and have lived here with my wife, Jimmie Frank, and our two children since that time.

"I would like to have the opportunity to serve the people of Precinct 4 to the best of my ability.

"Your support, influence and vote will be sincerely appreciated."

Jimmy C. Briggs
Pd. Pol. Adv.



JIMMY C. BRIGGS



JENOYCE FORD

Mrs. Ford Seeks Treasurer Office

Jenoyce Ford has authorized the State Line Tribune to announce her candidacy for the office of County Treasurer of Parmer County, subject to the Democratic Primary.

Mrs. Ford said she moved to Parmer County when she was three years of age, and has been a resident of Farwell for the past 28 years. She and her husband, Ray, are the parents of six grown children. He is a local grain dealer. Mrs. Ford was an employee of the local ASC office for nine years.

Of her candidacy, Mrs. Ford said:

"I would like to be given the opportunity to serve the people of Parmer County as Treasurer for the county.

"Your influence and vote would be sincerely appreciated."

Jenoyce Ford
Pd. Pol. Adv.



PAUL FORTENBERRY

Fortenberry Joins Co. Judge Race

Voters of Parmer County were assured of a race for their top county office this week when Paul Fortenberry of Friona filed for the position of county judge, opposing the incumbent, Archie Tarter.

Fortenberry, 56, filed on Monday, the final filing date, with Democratic chairman Hollis Horton, Jr.

Fortenberry, a Parmer County businessman for the past 25 years, says he is looking forward to a serious bid for the position of county judge.

"I would like very much to have the opportunity to serve Parmer County as county judge. I feel that I have the qualifications necessary for the job and I will operate the office in an aggressive businesslike manner," Fortenberry says.

"I will appreciate everyone's consideration and support in the Democratic Primary," he continued.

A World War II veteran, Fortenberry spent five years in the Armored (tank) Command, serving in the European Theater.

A native of Happy (Swisher County), Fortenberry was associated with the Phillips Petroleum Company prior to and following his service in the armed forces. Following the war he moved to Friona, where he bought out H. T. (Tiny) Magness, the Phillips jobber.

He sold the Phillips business in 1951, and spent some time farming prior to becoming associated with Black Grain Company in 1954. He was with the grain company for almost 20 years, stepping down as manager of the concern at the end of 1973.

Fortenberry served on the Friona school board for six years (1953-59), and was a director on the city's Chamber of Commerce on two separate occasions.

"I feel that my business experience qualifies me for the duties of working with the county budget, and in working with people. I plan to study up on the other facets of the position, so as to discharge them in an efficient manner,"

Fortenberry says.

The longtime elevator manager served as president of the Panhandle Grain and Feed Dealers in 1970-71. He also had been a director and vice-president of the organization.

A member of the Baptist Church, Fortenberry has served as a church deacon for the past 22 years.

Fortenberry and his wife, Movelada, had three children, but their oldest son, Richard, was a Viet Nam casualty in 1970. A daughter, Paula (Mrs. Jay Sturm), is a former Friona Maize Queen and is now teaching in the Abernathy school system.

Another son, Don, is a junior at Texas Tech University, where he is majoring in Agriculture Economics.

Paul Fortenberry
Pd. Pol. Adv.



POTENTIAL ROYALTY AT TEXICO - During activities at Texico's Homecoming this Saturday night, a king and queen will be crowned from among these six high school students. Dusty Leatherwood and Kim Pearce, last year's king and queen will crown the chosen ones this year. They are from left, Regina Kelley, Dwayne Kelley, Linda Autrey, Steve Harrington, Diane Luce and Craig Chumley. Texico will tip off against Tatum in the Texico Gymnasium with the varsity game winding up the activities at 8:30 p.m. MDT.



Second-class postage paid at Farwell, Texas 79325. Published every Friday.

SUBSCRIPTION RATES -- Parmer and adjoining counties, \$5.50 per year; elsewhere, \$7.00 per year. Payable in advance.

John Getz, Publisher
Cleta Williams, News Editor

Two Games Scheduled - -

Texico Downs Grady, Now In Second Place

by Domingo Rojas

The Texico Wolverines moved up to second place in the district Friday night after outscoring the Grady Broncos, 57-47.

According to Head Coach Darryl Haley, "Texico never trailed in the game, but the Broncos were able to tie up the score in the last half, 37-37. "It was a fairly close game all the way," added the coach.

In the first quarter, the Wolverines pulled out a six point lead over Grady, 12-6. By the end of the first half, Texico was still clinching the lead at 25-20. Texico also had added more points on the scoreboard in the third quarter, 37-33. It was in the fourth quarter that Grady was able to tie the score at 37-37. The Wolverines soon racked up 20 points in the last quarter to defeat the Broncos in the District contest, 57-47.

Roger Pace dominated high point honors with 21 points followed by Curtis Lindley, who had 10 points.

According to Coach Haley, "Pace had three points in the first half and 18 points in the second half of the game."

Pace also took rebounding honors with 20. Lindley had 16

rebounds credited to him. Jim Harron was high point man for the Broncos with 14 points.

The Wolverines are scheduled to play in two District clashes this weekend. Friday (tonight) they will travel to Melrose to take on the Buffaloes.

Saturday night, Texico will play host to the Tatum Coyotes in the Wolverine homecoming game.

"These two District games are probably the most important games of the season," stated Coach Haley.

"Tatum beat us in the E.P.A.C. tournament in an over-time, so we're expecting a very tough game with them," added Haley.

Coach Haley and B team coach, Bucky Walters, urge everyone to come out and back the Wolverines in the District meeting with Melrose and also at the Homecoming game with Tatum.

Little Dribblers Play To Begin

Coach Vernon Scott has issued a reminder that the 1974 Little Dribbler season will get underway Monday, Feb. 11, with games in the Farwell gym. Leading the games will be the farm teams, with competition scheduled to begin at 6 p.m.

The coach urges everyone to support the Little Dribbler program in Farwell by coming out for the games which will be played twice a week.

About one in ten families with annual incomes over \$10,000 have diets that rate as fair to poor, according to the U.S. Department of Agriculture.

What's Cooking At Farwell School

MONDAY -- Steak fingers, potatoes and gravy, buttered corn, cole slaw, gelatin cake, bread and milk.

TUESDAY -- Pinto beans, buttered spinach, hot tamales, pickles and onions, chocolate cake, cornbread, butter and milk.

WEDNESDAY -- Burritos with chili, grated cheese, lettuce and tomatoes, peach cobbler, orange juice, bread and milk.

THURSDAY -- Corn dogs with mustard, potato chips, cole slaw, banana pudding, bread and milk.

FRIDAY -- Smothered steak, potatoes and gravy, green beans, tossed salad, peaches, bread and milk.

Whirlwinds Compete In District Tournament

The Texico High School Whirlwinds played in the District 6-A tournament Monday and Tuesday nights, winning over Floyd Monday but falling to the top seeded Clovis Wildcats Tuesday night.

The Whirlwinds played the opening game against Floyd and topped their opponents 42-40 in a very exciting ball game.

Floyd had command in the first half as they were in front of the Whirlwinds in the first quarter, 6-5, and 18-13 at the end of the first half.

Texico was able to tie the score at 40-40 in the fourth quarter and Diane Luce was fouled in the last seconds of the game.

Luce made the two free shots and the Whirlwinds were able to edge the Floyd team 42-40.

Diane Luce had 19 points in the game for high point honors. Linda Autrey had eight points and Charlotte Smith had six points.

Monday night's win over Floyd advanced the Whirlwinds to Tuesday night's game with the top seeded Clovis Wildcats. The Whirlwinds were

downed by the Wildcats 58-22.

According to Coach Charles Stockton, "We played good basketball, but the Wildcats are a very big team and they pressed very effectively all night. We didn't make as many shots as we are capable of doing."

Tuesday night's loss to the Wildcats put the Whirlwinds out of the District 6-A Tournament.

School Lunch Schedule At Texico

MONDAY -- Hamburger on bun, onions, pickles, lettuce, pork and beans, orange juice, cookie and milk.

TUESDAY -- Enchiladas, shredded lettuce, buttered corn, loaf bread, fruit salad and milk.

WEDNESDAY -- Vegetable stew, toasted cheese sandwiches, peach cobbler and milk.

THURSDAY -- Steak and gravy, creamed potatoes, tossed salad, hot rolls, cake and milk.

FRIDAY -- Fish sticks, macaroni and cheese, celery stick, cornbread, fruit cup and chocolate milk.

Bovina Damsite One Third Complete

The Parmer County SWCD in connection with the Soil Conservation Service has made the announcement that the Dam site at Bovina is one-third complete.

The dam site is on Catfish Draw, one and a half miles northwest of Bovina. This is the first flood prevention dam to be constructed on the High Plains.

Other dams on the Running Water Draw Watershed Project are in the final design stage.

If you have not seen this dam under construction you might like to go by, say SWCD spokesmen.

FARWELL LITTLE DRIBBLER'S 1974 SCHEDULE

FEB. 11	6:00 PM	COUGARS (F)	VS	STARS (F)
	6:30 PM	COUGARS	VS	STARS
	7:30 PM	NETS (F)	VS	PACERS (F)
	8:00 PM	NETS	VS	PACERS
FEB. 14	6:00 PM	COUGARS (F)	VS	NETS (F)
	6:30 PM	COUGARS	VS	NETS
	7:30 PM	STARS (F)	VS	PACERS (F)
	8:00 PM	STARS	VS	PACERS
FEB. 18	6:00 PM	PACERS (F)	VS	COUGARS (F)
	6:30 PM	PACERS	VS	COUGARS
	7:30 PM	STARS (F)	VS	NETS (F)
	8:00 PM	STARS	VS	NETS
FEB. 21	6:00 PM	NETS (F)	VS	PACERS (F)
	6:30 PM	NETS	VS	PACERS
	7:30 PM	STARS (F)	VS	COUGARS (F)
	8:00 PM	STARS	VS	COUGARS
FEB. 25	6:00 PM	STARS (F)	VS	PACERS (F)
	6:30 PM	STARS	VS	PACERS
	7:30 PM	NETS (F)	VS	COUGARS (F)
	8:00 PM	NETS	VS	COUGARS
FEB. 28	6:00 PM	NETS (F)	VS	STARS (F)
	6:30 PM	NETS	VS	STARS
	7:30 PM	COUGARS (F)	VS	PACERS (F)
	8:00 PM	COUGARS	VS	PACERS
MAR. 4	6:00 PM	COUGARS (F)	VS	STARS (F)
	6:30 PM	COUGARS	VS	STARS
	7:30 PM	NETS (F)	VS	PACERS (F)
	8:00 PM	NETS	VS	PACERS
MAR. 7	6:00 PM	STARS (F)	VS	PACERS (F)
	6:30 PM	STARS	VS	PACERS
	7:30 PM	NETS (F)	VS	COUGARS (F)
	8:00 PM	NETS	VS	COUGARS
MAR. 11	6:00 PM	STARS (F)	VS	NETS (F)
	6:30 PM	STARS	VS	NETS
	7:30 PM	PACERS (F)	VS	COUGARS (F)
	8:00 PM	PACERS	VS	COUGARS

F IS A FARM GAME
F GAMES HAVE 4 MINUTE QUARTERS
OTHER GAMES HAVE 6 MIN. QUARTERS

WORK OUTS BEGIN SAT. MORN. FEB. 2
10 AM COUGARS & STARS
11 AM NETS & PACERS

Terry Parr is Gifford-Hill in this area.

He's highly qualified to help you with any irrigation problems you may have and he's got the very best equipment available to do it with.

Gifford-Hill's 360.

Vanguard PVC Plastic Pipe and Aluminum Pipe. Plus a long list of accessories.

If you haven't already met our irrigation expert, drop by soon and get acquainted.

And while you're there, let him show you the latest additions to Gifford-Hill's line of irrigation equipment.

Check with us before you buy. We can save you money!

Gifford-Hill & Company, Inc.

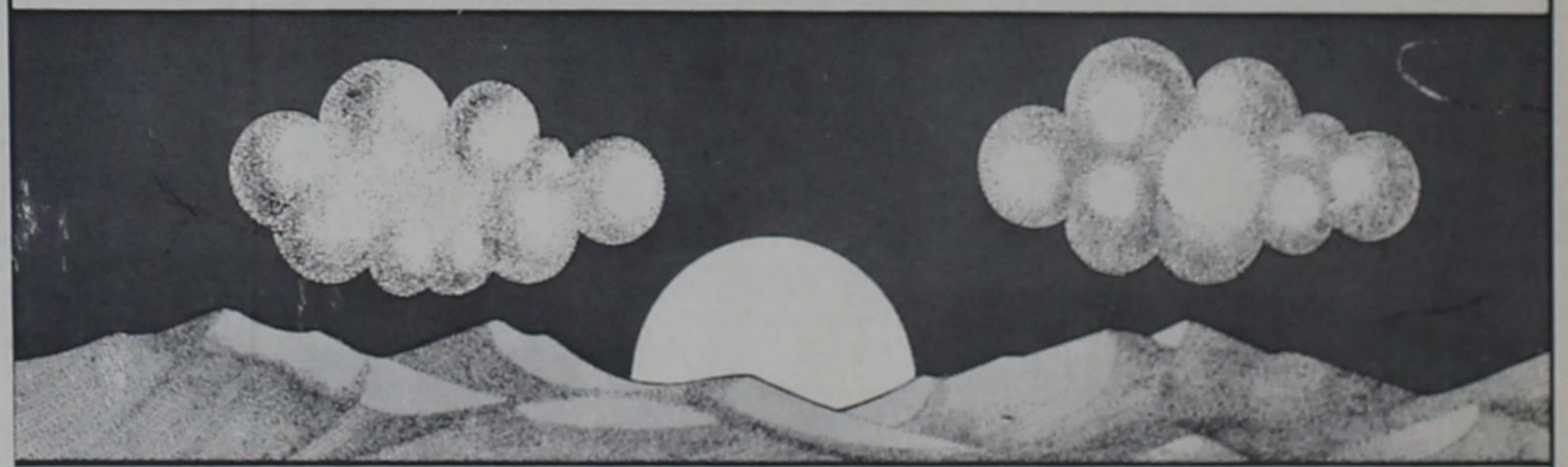
P.O. Box 177
Farwell, Tx 79325
(806) 481-3316



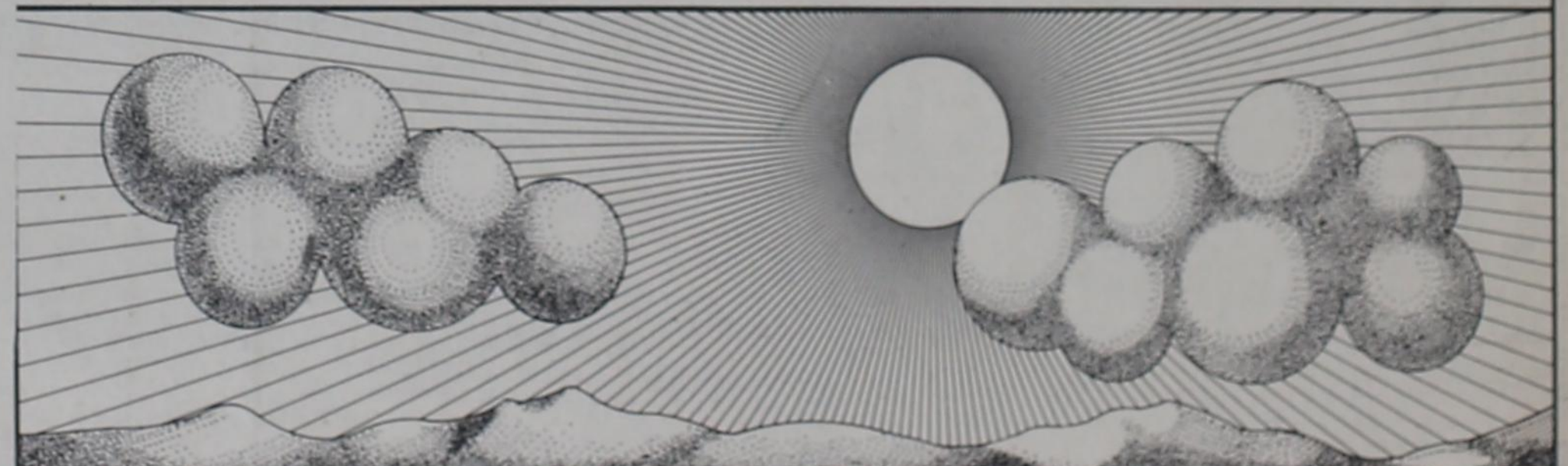
There are times when Long Distance costs less. So you can talk more.



Weekday Evenings When the sun goes down, so does the cost of Long Distance. Our rates are lower from 5 p.m. until 11 p.m.

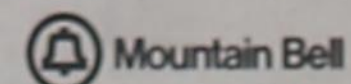


Weekday Mornings After 11 p.m., Long Distance rates are at their lowest, and don't go up again until 8 a.m.



Weekends To help you enjoy your weekend, Long Distance rates are at their lowest all day long on Saturday, and on Sunday until 5 p.m.

Of course, any time at all, you can dial direct. Your call will mean as much -- it just won't cost as much. Long Distance. One phone call can make you feel so good.



District

Playoffs . . .

(Continued from Page 1)

of eight attempted free shots for their 39 points. A low 36 rebounds were noted in the game.

Illness-plagued Steers were unable to bring the game out to make it a perfect district record for the year and ended the season 20-9 overall for the season and 11-1 in district play.

Leading scorer for the Steers was Kevin Hardage with 19 points and Kevin Hargrove added an additional eight points. Also scoring were Gene Christian and Leslie Curtis, each four points, Carl Kirkland, two points and Mike Woods and Gary Green with one point each.

On Friday, Feb. 1, the Steers downed the Sudan Hornets at Sudan, 66-42, hitting 42 percent on field goals and 75 percent on free throws.

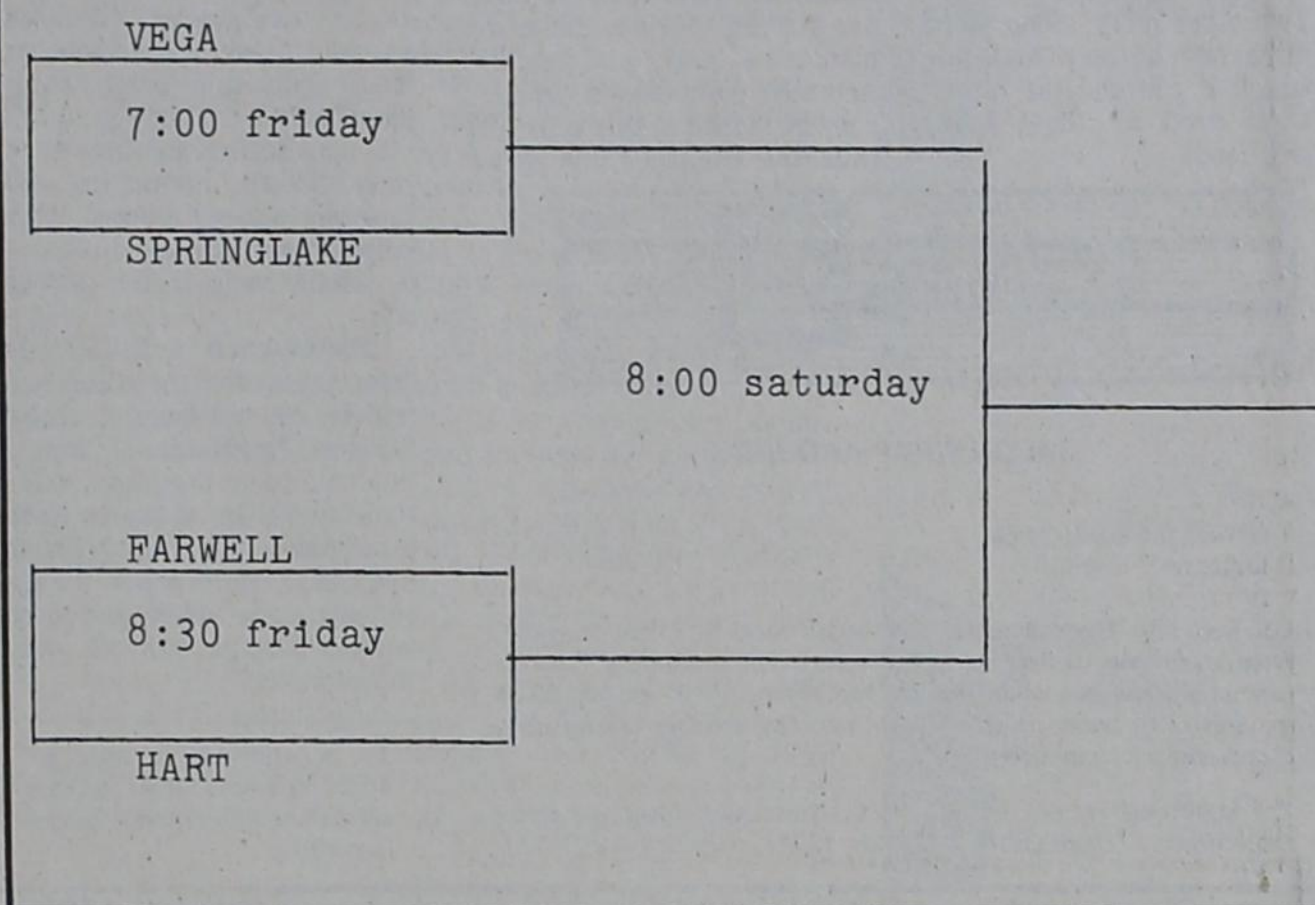
Leading scoring at Sudan was Kevin Hardage with 22 points followed by Brad Jones with 17 points. Others scoring were Kevin Hargrove, seven, Carl Kirkland and Gene Christian, each six points, Leslie Curtis, four points and Mike Woods, two points.

Coach Scott said that for the district playoffs Farwell and Vega fans will sit in the west stands while the east stands are reserved for Hart and Springlake fans.

DISTRICT 3A PLAYOFFS

FEBRUARY 8-9, 1974

FRIONA, TEXAS



Varsity Second - -

B Girls Win 17, Named District Champs

Widening a narrow 28-25 halftime lead, the Farwell Varsity girls, who trailed 12-15 after the first quarter of play, came back to down the Sudan Varsity girls 54-37 in action at Sudan last Friday night.

Kathy Booth led the high scoring Farwell team with 21 points, followed by Tami Haseloff, 15; Sharon Booth, 14 and Sheryl Woods, four. Rebounders were Tami Haseloff, forward, and Terri Boling, guard, each with six rebounds.

Coach Gayle Nicholas complimented her team for outstanding play during the game. Holding a 26-6 halftime lead, the Farwell B team girls won their game the same night by a score of 53-27, after holding the Sudan B team to four points in the first quarter and two points in the second.

At the end of the third quarter action, the scoreboard showed 39-15, but the Sudan B team got hotter during the

final quarter to put 12 points on the board.

Leading scorer for the team was Kathy White with 19; Lee Ann Williams and Missy Taylor each had 14 points, and Lee Ann had six rebounds; Karroll Rhodes had four points and Natalie Dollar, two.

With four rebounds each were guards Gaye Coffman, Mary Lou Roberts and Estelle Embry.

In their final game of the 1973-74 season, the Farwell Varsity Steerettes fell to their host Vega for their fourth district defeat, 52-38, Tuesday, Feb. 5.

Vega led by a one point margin at the end of the first quarter, 13-12, and was held to a one point margin at halftime, 24-23. During the third quarter of play, Farwell fell behind 34-30 and gave up 18 to their opponents while scoring only eight during the fourth quarter for the final tally, 52-38.

According to Coach Nicholas, "We only played three quarters and had problems during the fourth."

Kathy Booth led the scoring attack for Farwell with 20 being the only Steerette to score in double figures. Sharon Booth hit for eight, Joyce White and Tami Haseloff both hit for four and Cheryl Woods added two to Farwell's scoring efforts.

Jamye Craig led in the rebounding department with eight followed by Joyce White and Terri Boling, both with four, and Lori Norton was credited with two rebounds.

The Farwell Varsity Steerettes finished season play with a record of 14-13 and placed second in district competition with an 8-4 record behind Vega and above third place Springlake-Earth.

"Our senior starters, Jamye Craig and Joyce White, did a

real fine job in their last game," stated Coach Nicholas in commenting on the clash.

A 38-28 loss was handed to Vega when Farwell's B girls invaded Longhorn territory Tuesday, Feb. 5, with Lee Ann Williams leading the scoring with 17. Others scoring for Farwell were Kathy White with 16 and Missy Taylor with five.

Top rebounders for the B Steerettes were Cindy Watts with seven, Kathy White with six and Estelle Embry with five.

"We won our last 16 in a row and were 10-0 for district to become the Jr. Varsity District Champs," commented the coach. She concluded, "Our season record is 17-4 with our four losses being two to Friona, one to Dimmitt and one to the Springlake-Earth varsity."

Junior High Girls Compete In Tourney

Blasting the Bovina seventh and eighth grade girls in the first day of a district tournament for junior high at Springlake, the seventh grade girls won a first place while the eighth grade lost by two to the Springlake team.

In the first day of action, the Farwell seventh grade girls blasted the Bovina seventh grade, 32-7. Leading scorer for Farwell on Jan. 28 was April Coffman with 20 points.

Jamye Berry led scoring for the eighth grade with 15 points

in their victory over the Bovina eighth grade, 35-5 in the first day of tournament action.

On Monday, Jan. 31, in follow-up action at Springlake, the Farwell seventh grade eked out a 25-23 win over Springlake with Paula Christian leading the scoring with 14 points.

The same day, the Springlake eighth grade girls edged out the Farwell eighth grade girls 24-22, with Dana Ennen leading the scoring with 11 points.

Vega downed the Farwell seventh grade, 19-17, in action on Saturday, Feb. 2. April Coffman was leading scorer for Farwell with 10 points.

Prefinished Paneling
Several Patterns
Prefinished Moulding
6' Split Creosote Post
Latex Interior Wall Paint Gal.
Asphalt Shingles & Roof Coatings

FREE DELIVERY TO TEXICO & FARWELL

Home Lumber & Supply Co.

1201 E. First St. Clovis
763-4437

Brownies Plan Valentine Party

Plans for next week's Valentine party headed list of activities when Brownie Troop 143 met Monday, Feb. 4, in the fellowship hall of Hamlin Memorial United Methodist Church.

Following the flag ceremony and Brownie circle, Mrs. Gerry Sherrill, assistant leader, conducted the meeting.

Darla Sherrill served refreshments of cookies and soft drinks in decorative cups and napkins.

Attending the meeting were Dana Morris, Sandra Stanton, Audrey Autrey, Darla Sherrill, Stephanie Morris, Tammy Goldsmith and Jeanette Weems.

Marriage Licenses Issued

Only one marriage license was issued during the past week in the office of Parmer County Clerk Bonnie Warren. It was issued to Roy Gene Arnold and Sandra Kay Brewer.



NO DOUBT ABOUT IT NOW

Is The Best Time To See About
PUMP - GEARHEAD - WELL REPAIRS

We Have The Equipment And The Time

WATTS MACHINE & PUMP CO., Inc.

LAYNE-BOWLER PUMPS & REPAIR
GEARHEAD REPAIR — MACHINE WORK

PHONE 481-3239 BOX 685 FARWELL, TEXAS

SMITH-DOUGLAS PELLEFORM MAKES THE GROWING GREATER!



The 16 staves in this barrel represent 16 essential elements scientists know are necessary for plant growth. A deficiency of any one plant food will limit yields long before the deficiency is severe enough to be observed in your field. Could a deficiency of any one of the 16 plant foods be limiting your yields?

Give your crops all the plant food they need for abundant growth. Use PELLEFORM with TREL. Clean, green pellets of uniform size have maximum water solubility. TREL, Smith-Douglass' exclusive formula of trace elements, is added.

YOUR SMITH-DOUGLASS MAN IS READY TO HELP YOU.



HELTON OIL COMPANY

Ph. 481-3222

We're Holding the Line on Prices



Turkeys Young Hen

New Order Lb. **49¢**

Rath Cedar Farm
WEINERS Pkg. **69¢**

8-Track **TAPES**
\$1.99

BOLOGNA Lb. **69¢**

Chicken Of The Sea
TUNA 6 1/2 Oz. Can **49¢**

Coca-Cola

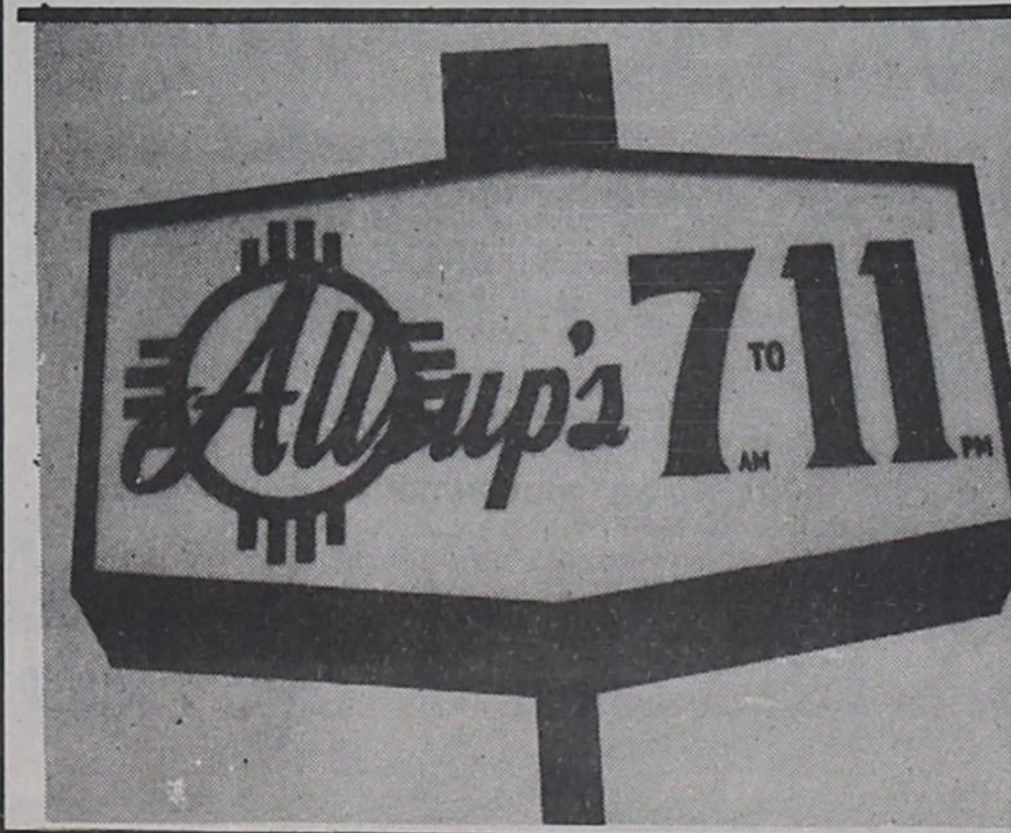
10 Oz. Bottles
2/99¢
Plus Deposit

Taster's Choice
COFFEE
8 Oz. Reg. \$2.39
\$1.88

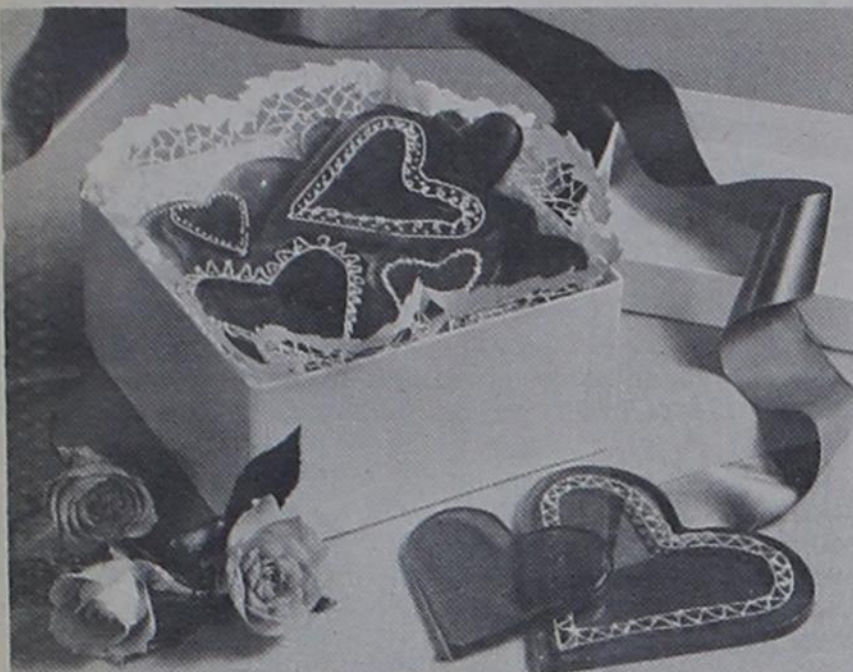
STA-PUFF Fabric Softener
1/2 Gal. **59¢**

SHURFINE
Fruit Cocktail 16 Oz. Can **3/89¢**
Corn W.K. Or C.S. **5/\$1**
Peanut Butter **2/89¢**
Tomatoes 16 Oz. **4/\$1**

Try **Allsup's Milk**



- HOT BAR-B-Q DAILY
- DONUTS
- ICEES
- POPCORN
- MONEY ORDERS
- CUBED ICE



CANDY FOR VALENTINE - A proper way to say "I love you" on Valentine's Day for years has been candy, but this candy is unusual. Hard candy hearts, colored with red food coloring, and decorated with a lacy looking edge made by writing with icing forced through a decorator's tube, are fun to give and fun to make.

It's Candy - - It's A Valentine

Old fashioned sentiment never goes out of style. And one of the sweetest ways of expressing it is with a gift of homemade candies. Candy making is much easier than it used to be for modern recipes are precise and surefire. Corn syrup helps to prevent the formation of unwanted crystals in cooked candies.

For Valentine's Day gift giving, make several varieties of candy. Begin by making large red hard candy hearts. Decorate each with a lacy looking edge made by writing with icing forced through a decorator's tube.

No gift of candy is complete without a fudge. A good not too sweet one is made with dairy sour cream. Include squares of fudge, a chewy peanut butter candy and easy to make Nutty Mocha Balls in your gift assortment.

Sheriff's Report

Sheriff Charles Lovelace reported checking a burglary reported at an unoccupied house on the Homer Linderman farm in the Lazbuddie-Hub community.

The theft apparently occurred sometime Saturday night when a Maytag washer and dryer and a chest of drawers were taken from the house which was used to store household furnishings owned by Rusty Linderman of Friona.

Sheriff Lovelace said he found the items nearly two miles from where they were taken at the home of Victor Fernandez, who is employed on the Doug Fry farm. He said Fernandez admitted taking the items of furniture and appliances because "he needed a washer and a dryer".

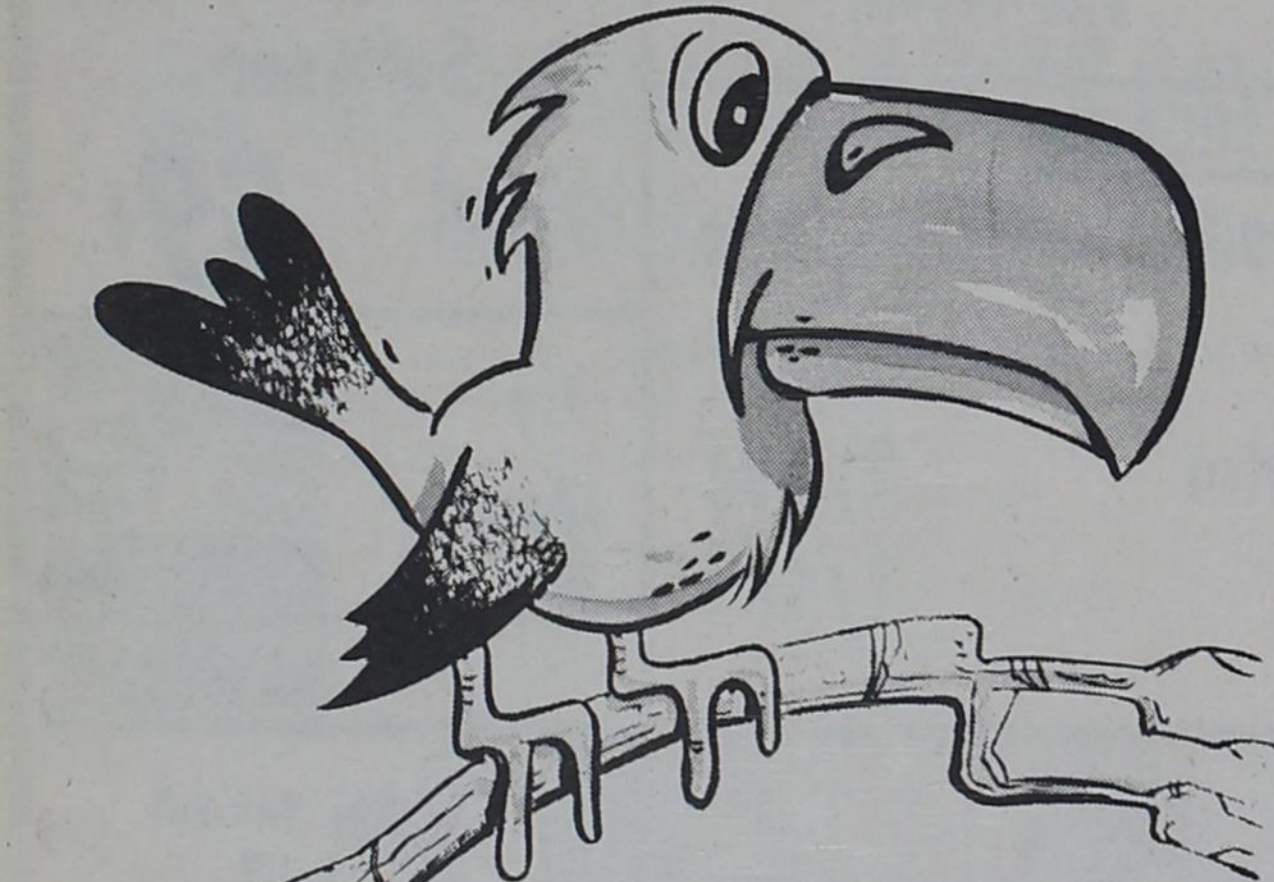
Fernandez was released on \$1,000 bond and bound over for grand jury action.

Henry Minter, Bovina deputy, and Tom Atkins, Farwell deputy, returned Sunday from Leesville, La., with Roy Sisk, who had been charged with theft of a saddle.

Sisk waived extradition and was released from the Parmer County jail after posting a \$2,500 bond.

The climate you live in can affect your growth.

Big Bills???



Some birds are stuck with big bills. But that doesn't mean you'll be. The way to find out? Call the "wise birds" at the electric company for a free personalized electric heat cost estimate for your home.



Consumer Market Report

COLLEGE STATION - Beef prices are edging upward this week, and the trend is likely to continue in the weeks ahead, one observer reports.

"Best beef values generally appear on arm and blade pot roasts and steaks, ground beef, round steaks, roasts and liver," Mrs. Gwendolyn Clyatt, consumer marketing information specialist with the Texas Agricultural Extension Service, Texas A&M University System, said.

"Pork prices remain at about the same level as the past several weeks--relatively high," she added.

"Best pork values include picnics, ham portions, shoulder roasts and steaks, end-cut loin roasts and chops."

At poultry counters, fryer

chickens show a good supply, and some markets are featuring turkey parts--in most cases, both offer attractive prices, the specialist said.

Eggs continue to be good protein-food choices, though prices are higher than a year ago, she added.

"Grade A large-size eggs offer the best combination of quality and economy for the money."

Turning to fresh fruit and vegetable items "in good supply at the most economical prices," Mrs. Clyatt listed oranges (Navel and Valencia) grapefruit, bananas and apples.

Also bulk turnips, potatoes, head lettuce, celery, cabbage, carrots, dry yellow onions, rutabagas, mustard, collard

and turnip greens. **CONSUMER WATCH-WORDS:** Review spending methods.

Watch store specials, and use them to substitute one vegetable, fruit or meat for another, if the family will accept the change.

Compare prices on various forms and sizes of food.

Take advantage of seasonal abundance, and try different brands in all price ranges. Also, check grades--a fancy whole pack tomato isn't needed in a soup or stew, for example.

Two other hints: Shop when you're not hungry and ask yourself if you and the family always need all those fancy snack foods.



BACON WRAP AROUNDS

1 lb. liver cut 1/2 inch thick
1/2 lb. bacon

Cut liver into 1 1/2 inch cubes. Cut bacon slices in thirds crosswise. Wrap bacon around liver cubes and secure with toothpicks. Place on rack in shallow pan or on broiler pan. Bake at 350 degrees 30-35 minutes until bacon is crisp. Turn half way through baking time. Makes about 48 appetizers.

For additional recipes, write John C. White, Commissioner, Texas Department of Agriculture, P.O. Box 12847, Austin, Texas 78711.

Watering Critical For House Plants

"Improper watering techniques probably cause the highest per cent of home plant failures," says Everett Janne, landscape horticulturist for the Texas Agricultural Extension Service.

"This is especially true during the winter months when plant growth is slow because of low light intensities. Frequently additional water and fertilizer are applied to try to make the plant grow larger and healthy. Actually, plant leaves produce very little food at this time and thus the plant cannot grow

rapidly. "If the soil is kept saturated with water, little or no oxygen can reach the roots," explains the Texas A&M University System specialist. "Roots need air as well as water. Lack of oxygen causes the plant's small feeder roots to die and eventually the plant succumbs."

"Never water plants by rule of thumb, such as every other day or twice a week," cautions Janne. "Once the soil is thoroughly moistened, water plants only when they need it."

Supply sufficient water so it runs through the potting soil into the saucer below. This helps prevent the accumulation of soluble salts in the potting soil.

"Experience will help in determining the moisture content of the soil from its color and feel," adds Janne. "Plants in a cold room need less water than those in a warm, dry atmosphere. Flowering plants and those with much foliage require more water than those without blooms or with very little foliage."

To a chemist, a ruby is nothing more than a red corundum with chromic oxide impurities.



Carl Matthews, Mgr.

All Brands Oil
Wash & Lube
Tire Service

Accessories
Batteries
Filters

Good Service

25 Yrs.
Experience

Ph. 481-9082

500 Ave. A - Farwell

nuts, broken
1 1/2 c. corn flakes

Mix corn syrup and sugar in large saucepan. Bring to full boil, stirring constantly. Remove from heat. Quickly stir in peanut butter. Add mixed nuts or peanuts and cereal, stirring to coat evenly. Turn into greased (13 1/2 x 9 x 2-inch) pan. Cool. Cut into squares. Makes 4 1/2 dozen (1 1/2 inch) squares.

SOUR CREAM FUDGE

2 c. sugar
1/2 c. light corn syrup
1/2 c. dairy sour cream
2 T. margarine
1/4 t. salt
1 t. almond extract
1 c. coarsely chopped pecans
1/4 c. candied cherry halves

Grease 8 x 8 x 2-inch pan. Mix together sugar, corn syrup, sour cream, margarine and salt in 3-quart saucepan. Cook over medium heat, stirring constantly, until mixture comes to boil. Cover and cook 1 minute. Remove cover. Boil, without stirring, over medium heat until mixture reaches 236 degrees F. or until syrup when dropped into very cold water, forms a soft ball which flattens on removal from water. Remove from heat and let stand 15 minutes. Add extract and beat until mixture begins to lose its gloss, about 5 minutes. Stir in nuts and cherries; turn into prepared pan. Cool; cut into 36 pieces.

NUTTY MOCHA BALLS

6 (1-oz.) squares semi-sweet chocolate
1/4 c. light corn syrup
2 c. confectioners sugar
2 T. instant coffee powder
1/2 c. hot milk
1 t. vanilla
1 1/2 c. graham cracker crumbs
1 c. chopped walnuts
Finely chopped walnuts

CANDY HEARTS

1 c. sugar
1/2 c. light corn syrup
1/4 c. water
Corn oil
1/4 t. peppermint extract (optional)
Red food coloring

Mix together sugar, corn syrup and water in saucepan. Cook over medium heat, stirring constantly until mixture boils and sugar is dissolved. Boil without stirring until temperature reaches 295 degrees F. or until small amount of mixture dropped into very cold water separates into threads which are hard. Meanwhile, grease two baking sheets with corn oil. Remove syrup from heat and stir in extract and food coloring. Arrange 12 greased heart shaped cutters on greased baking sheets. Pour hot candy mixture immediately into molds to depth of 1/8 inch. Remove cutters when candy is hard. Decorate with confectioners sugar frosting. Makes about 12 candy hearts.

CRUNCHY CHEWS

3/4 c. dark corn syrup
3/4 c. sugar
3/4 c. creamy or chunk style peanut butter
3/4 c. salted mixed nuts or pea-



Give a gift of Love



Remember the special girl in your life this Valentine's Day with lovely sleepwear. Choose from our Valentine collection of fresh white gowns and baby doll p.j.'s lightly touched with red. There's gingham checks, embroidered hearts and flowers, dainty tulips, or delicate lace and bows. These and other styles are also available in the freshest of spring colors. Add perky scuffs for a thoughtful touch. The Lucille's Look is a special look, and a Lucille's gift or gift certificate is the perfect way to say "I Love You".

HILLTOP PLAZA

Lucille's

smart shop

762-7750

Flournoy, Steinbock Wedding Vows Exchanged

In a candlelight ceremony on Saturday, Jan. 5, wedding vows were exchanged in San Antonio between Claire Lyle (Sissy) Flournoy of San Antonio and Troy Lee Steinbock of Lazbuddie. Performing the double ring ceremony in St. Peter's Prince of the Apostles Church was Monsignor Kevin Smith.

Sissy is the daughter of Mrs. Eugene Lewenthal of San Antonio and T. Roy Flournoy of Laredo and Troy is the son of Rex Steinbock of Lazbuddie.

Escorted and given in marriage by her father, Sissy was attired in a gown of pale ivory poie de soie, featuring an empire waist of ribbed satin ribbon and alecon lace offset a fitted bodice and sweeping chapel train. Rows of alecon lace covered a half toque veil. She carried a bouquet of yellow touncier roses, red roses and small carnations.

Trailing ivy was featured on

votive candles marking the pews and altar, with focal spot being two large candelabrum flanking the marble altar. Above the altar was a large arrangement of roses, carnations and baby's breath.

Attending the bride as maid of honor was Georgia Gay Newman of San Antonio and bridesmaids and matrons, Patti Turbeville of Scottsdale, Ariz., Diane Flournoy, sister of the bride, from Laredo; Elizabeth Webb of San Antonio; Mrs. Monte Barnes of Lazbuddie and Mrs. Steve Miller of San Antonio.

The female attendants were attired in gowns of pale pink organza, with deep wine velvet bodice and empire waists. Featured were v-necks and long sleeves, trimmed with ruffles of velvet and pink organza. They carried bouquets of pink carnations, sprinkled with deep red roses.

Candlelighters were Dennis, Charleson and Terri Steinbock. Best man was Steve Foster of Lubbock and groomsmen were Lance Lewenthal of San Antonio; Daryl Lowe, Tim Foster and John Elliot, all of Lubbock, and Thomas Roy Flournoy, brother of the bride from San Antonio.

Providing traditional wedding selections were Louis Zimmerman, organist and Lynn Moreland, soloist.

A reception followed the wedding in a tea room in San Antonio. The bride's table was

offset by a three-tier cake featuring fresh flowers, and used to cut the cake was a sterling silver knife, owned by a great-aunt of the family. The groom's cake was a double ring mocha featuring decorations of large doves. Both the bride and bridegroom's tables featured arrangements of pink carnations and roses.

Following a wedding trip to Mexico, the couple is at home at 4118 32nd Street in Lubbock where the bride is a student at Texas Tech University, and the bridegroom is employed.

Out of town guests attending the wedding included Mr. and Mrs. Rex Steinbock, Lazbuddie; Mr. and Mrs. Max Steinbock, Charleson, Dennis and Terry, all of Lazbuddie; Mr. and Mrs. Monte Barnes, Lazbuddie; Mrs. Myrtle Steinbock, Lazbuddie; Mr. and Mrs. Claude W. Burkett, Clovis, New Mex. and Mr. and Mrs. Bill Dawson of Garland.

**MADERY'S
FLOWERLAND**

Phone 763-3465

LONGER LASTING FLOWERS

... for ALL Occasions

Your F.T.D. Florist

1021 MAIN



MRS. TROY STEINBOCK

Elderberries Host Show And Tell

"No one around here has more fun than the Elderberries," says Mrs. Carrie Christian, of the unique organization. Initially formed to give several retired local women an outlet away from home, the Elderberries meet for fun and games each month.

Thursday morning, they met at Art 'N Such and hosted a Show and Tell session. "After all," added a laughing Mrs. Christian, "We are first graders, you know."

She added encouragement for all women from this area, including both Texico and Farwell, to plan to attend some of the meetings and join in their fun. "We sing and play

games, as well as doing arts and crafts," she continued, "And we would welcome anyone who wants to join us."

Meeting the last Thursday of each month, hours are 3-5 p.m.

Attending the meeting this week were Lindie Martin, Gertie Foster, Bonnie Williams, Edith Crawford, Carra Christian, Carrie Christian, Nettie Blair, Alvina Cox, Nina Glasscock, Gladys Armstrong, Betty Zimmerman, Lessie Tadlock, Sallie Chandler and Dickie Magness.

ESA Hosts Game Night For CF

Epsilon Sigma Alpha hosted a game night for Cystic Fibrosis at the Farwell Country Club on Monday, Feb. 4.

Contributions of \$178 were made by approximately 40 persons who attended game night for games of bridge and dummy bridge. All proceeds go to the CF Fund.

Refreshments of dips and chips, punch and coffee were served.

Pledges Sorority

Deborah Harding, daughter of Mr. and Mrs. Hurschel Harding of Farwell, has pledged the Phi Delta Sorority at Baylor University in Waco.

Deborah is a freshman and is majoring in Fashion Merchandising. Phi Delta is one of six social clubs on campus and thirteen young women are pledging the sorority.

At Home In Palmer County

By Jana Pronger
County HD Agent

Though being underweight isn't considered much of a problem by most people, there are those who really want to add pounds, and they can do it with dairy foods.

Dairy foods actually can come to the rescue for some people on any kind of weight-loss or weight-gain diet.

For weight gain, include dairy foods high in calories, such as ice cream, cheese or pudding. For weight loss, use skim milk. One tall milkshake means 520 calories, and a root beer float totals 455.

Cheese adds to daily menus as a snack on crackers or a topping on casseroles. A one-inch cube of cheddar cheese adds 70 calories.

Puddings made with whole milk also provide a good supply of calories. Chalk up a little over 100 calories per serving. On the other hand, puddings made with skim milk total just over 60 calories per serving.

In addition to offering a high or low calorie choice, dairy

foods feature another bonus -- nutritious calories, no matter what the total.

Finding it hard to stay within your budget -- regardless of income? Take a good look at what's bought at the grocery store.

Think back to the last visit. In addition to food items, did the family also buy pet foods, health-care items, laundry products, household supplies, tobacco products or magazines? These extra non-food items really add up.

To determine exactly how much is spent for food, check what's in the grocery sacks after the next shopping trip.

Place all non-food items together and add up their total cost -- including tax. Subtract this amount from the grocery bill to determine what was spent for food.

Out of \$20, food items may have cost just \$17. Quite a difference -- and it adds up. In a month's time, only \$68 out of \$80 may be for food items.

FLOWERS UNLIMITED

Valentine's Day Is Only A Heart Beat Away

Valentine's Day is a day when "lovely" things happen to people, especially when they're in love.

In the late 1700's, sweethearts began penning elaborate Valentine's Day cards for one another. Many of these still survive as precious museum treasures, but the floral arrangements that accompanied the cards, being as fragile and delicate as love itself, regrettably have not.

But it wasn't always love and kisses on St. Valentine's Day. Though the origin of Valentine's Day is shrouded in mystery, it's generally associated with two martyred saints named Valentine whose celebration day happens to fall on February 14.

However, according to one belief, Valentine's Day is the modern equivalent of the Roman Lupercalian celebration, a gay holiday once celebrated on February 15. According to another belief, the custom of sending "valentines" or love-tokens had most probably only an accidental connection with St. Valentine and owed its origin to the conventional belief that it was at the start of February 14 that the birds began to mate. "For this was on seynt Valentynes day," wrote the poet Geoffrey Chaucer, "w h a n every foul cometh ther to ches his make."

Through the years flowers have often expressed the inexpressible even more eloquently than the written word. Today, saying "Happy Valentine's" with flowers is as easy to do as sending a greeting card. For example, through local FTD florists, anybody can send a special "Love-Bundle" bouquet anywhere in the U.S. or Canada throughout the week preceding Valentine's Day.

The LoveBundle, designed in an exclusive Haeger con-

tainer, is a radiant arrangement of fresh tulips, carnations, pompons and greenery, which also features a red chenille heart and two white, ceramic angels.



As any Valentine's Day party-goer will tell you, he looks forward with a great deal of fluttering to the century-old tradition of e a c h blindfolded lass fishing in a Valentine Box for the name of the lad who would be her sweetheart until the next February 14. You don't know who you're going to get, but you cannot deny it's exciting!

The modern lass does have it easier because she usually knows who's sending her a valentine--a far cry from the old days when valentines were sent anonymously. And she's far better off than the 18th century Miss who kept her eyes shut tightly on February 14--out of a superstitious fear that she would fall hopelessly in love with the first man she chanced to see on Valentine's Day!

It may be true that most people marry on other days than February 14--but no lover will ever deny that it began on that day. To paraphrase the Romantic poet, Percy Shelley, "O love, if Valentine flowers come today, can marriage be far behind!"

Bobby Hammit Has Birthday

Bobby Hammit, son of Mr. and Mrs. Billy Hammit of Texico, was honored on his first birthday with a party in the home of his grandmother, Janie Bowery in Farwell on January 28.

His special birthday cake was chocolate decorated with yellow flowers and a large "1" candle. He received a green and white suit for his birthday from his parents.

Guests other than the honored young man were his parents, brother Chuckie, Mrs. Bowery and his paternal grandfather, D. E. Hammit Sr.

Mother Visits

Mrs. Lula Kistler of Muleshoe has been visiting her daughter, Mrs. Beulah Hobbs. The duo visited in Floydada recently with another daughter and family, Mr. and Mrs. J. A. Arwine. Mrs. Kistler stayed with the Arwines for a longer visit.

Last Saturday, Mrs. Hobb's children, Vickie Hobbs, and James, who are LCC students, visited their grandmother in Floydada along with another Hobbs daughter, Mrs. Greg (Camille) Carey, who is employed in the office of a Lubbock doctor.

Other recent visitors in the Hobbs' home in Farwell were another daughter, Mrs. Walt Moeller and five month old son of Laguna Niguel, Calif.

Ebb Randols Host Friends

Mr. and Mrs. Jack Sikes of Hollis, Okla., visited in the home of Mr. and Mrs. Ebb Randol last week. They are long time friends of the Randols', having formerly lived in the Clovis and Portales area.

Mr. Sikes is the Superintendent of Westview Boys Home at Hollis, which consists of three farms where the boys work and care for animals. They take many honors in their various projects.

Mr. Sikes has been superintendent for ten years, and recently the Sikes family was named "Family of the Year" by York College at York, Nebraska. The Sikes have twelve children.

Ralph Franse is Gifford-Hill in this area.

He's highly qualified to help you with any irrigation problems you may have and he's got the very best equipment available to do it with.

Gifford-Hill's 360.

Vanguard PVC Plastic Pipe and Aluminum Pipe. Plus a long list of accessories.

If you haven't already met our irrigation expert, drop by soon and get acquainted.

And while you're there, let him show you the latest additions to Gifford-Hill's line of irrigation equipment.

Check with us before you buy. We can save you money!

**Gifford-Hill
& Company, Inc.**

P.O. Box 572
Farwell, Tx 79325
(806) 481-9977



When it's warm, you won't be - in this cool pullover. The never-iron 50% Dacron [R] polyester, 50% cotton shirt is decorated with a breast pocket that's embroidered. You'll like this shirt for most of your casual spring and summer activities.

Turner's
Your Department Store

LOVE-LY GIFT IDEAS

her hearts desire



Lingerie
Jewelry

Dresses
Suits

Surprise her with a spring ensemble

from
Lerice's in farwell

BankAmericard

mastercharge



Water Inc. Members Set Lubbock Meeting

LUBBOCK—Rank and file members of Water, Inc., will flock to Lubbock Feb. 16 for the regional organization's 7th annual membership meeting. The daylong meeting featuring appearances by top water, planning and economic names in the field of water resource development will be conducted at the KoKo Palace Convention Center and is expected to attract upwards to 500 participants.

"Although this is our official annual meeting of members," said A. L. Black, Water, Inc. president, "we welcome participation by any person interested in the future of water for West Texas and Eastern New Mexico." Black noted that the five dollar registration fee for members and non-members alike, included the luncheon session.

Water, Inc., a non-profit corporation made up of more than 2,000 members who voluntarily contribute dues to

finance the organization's work, is building support for a supplemental water supply for the area it serves. "Interest during the membership meeting this year will center around the nation and world need for food and fiber and this area's ability to help meet these needs if we have sufficient water," said Duncan Ellison, executive director, Water, Inc. "Anyone having a stake in the future of the area will benefit from the program," he added.

Speakers appearing on the program include James Bradley, Amarillo, regional administrator, Bureau of Reclamation; John C. Ball, chief of the planning division, Corps of Engineers; Wayne Wyatt, manager, groundwater section, Texas Water Development Board; and Dr. James Osborne, agricultural economist and assistant dean, School of Agriculture, Texas Tech University.

Are You Interested?

What does the Future hold for you?
Does your Future mean enough to you
For you to invest \$25 in Farwell's
Development? If so, you have until
Feb. 15 to be a charter member of
Farwell Development Co.

NAME: _____

ADDRESS _____

TOWN _____ TELEPHONE _____

Mail \$25 check to:

Bob Anderson
Security State Bank
Farwell, Texas 79325

Probation Given Four In District Court

In District Court in Farwell last Thursday four year probation terms, plus court costs and restitution where necessary, were assessed four area men in two unrelated cases. Given four year probation terms and ordered to pay court costs for felony possession of a controlled substance, marijuana, were John Annen and Gregory Maschue, both of Cannon Air Force Base, Clovis. The duo was picked up in Friona early last September by

a former Friona city police officer. They were also ordered to make periodic reports to a Clovis probation officer who will be supervising them during the time of their probation. Also given four year probation terms, ordered to pay court costs and \$2,500 restitution were Roy Drennan

and Raymond Drager, both of Friona. They were charged with damaging a tractor owned by Cotton Renner last summer. No action was taken on motions to revoke the probation of four persons who had been previously tried and ordered to report regularly on probation. The four persons

were charged with failure to make reports or restitution as ordered by the court. They were reprimanded by District Judge Pat Boone and hearings were set for a later date if they do not conform to court regulations and orders. At least two other cases were continued during the term of court.

Hospital Notes

Kaci Stephens, 10-month-old daughter of Mr. and Mrs. Darrell Stephens of Farwell, is doing just fine now, reports her mother. Kaci was admitted to the Clovis hospital Tuesday, Jan. 29, with what was thought to be chest congestion. It was discovered that she had a penny lodged in her throat and she was sent to St. Anthony's Hospital in Amarillo. Minor surgery was performed to remove the coin and she was dismissed from the Amarillo hospital on Wednesday of last week.

G. P. Meissner of Farwell was still confined to Clovis Memorial Hospital on Wednesday, but was expected to be released soon. He is in satisfactory condition following surgery last week.

Texico School Board To Meet

Texico School Superintendent A. D. McDonald said the regular monthly meeting of the Texico Independent School District School Board is scheduled for Tuesday, Feb. 12, however, the board will not meet at the Texico School.

He said the school board will convene at Eastern Plains Vocational Schools in Clovis, on East Mabry Drive, at 7:30 p.m. MDT.

"We can blame the next fellow all we want and it won't put gas in our tank or fuel oil in the barrel; we better do something about it."—Donald Weaver, the Winnebago (Minn.) Enterprise.



MOBILE HOMES, INC.

P. O. Box 412 801 Wheeler Avenue
TEXICO, NEW MEXICO 88135 Phone: 505 482-9071

This Home Has To Go . . . New Dealer To Sacrifice
At His Cost To Reduce Inventory.

- New 14x72 El Conquistador
- 2-Bedrooms - Front & Rear
- 2-Full Baths with Glass Tub Enclosures
- Side by Side Freezer/Refrigerator with Ice Maker
- Garbage Disposal
- Double Oven - Self Cleaning
- Dishwasher
- Built-In Blender with Food Preparation Center
- Actual Woodburning Fireplace
- Heavy House type door
- Intercom - AM/FM Radio Throughout
- Door Bell
- Refrigerated 3-Ton Air Conditioner
- Storm Windows
- TV Jacks
- Plywood under metal
- Shag Carpet with Indoor/Outdoor in Kitchen
- Custom Drapes
- Wood Cabinets

We Invite You To Compare This Mobile Home To Any On The Market Today. It Will Be Worth Your Drive Over To Texico.

Highway 214 - -

THD Allocates Funds For Remodeling Highway

A total of \$1,913,800 in highway construction funds have been allocated for improvement to Parmer County roads according to a release by the Texas Highway Department. The funds are expected to be used in the 1957-77 consolidated program of work for District Five.

More than \$1.5 million was tabbed for use in reconstructing Highway 214 from Clay's Corner to Hub in northwest Parmer County, which is a distance of 9.5 miles. Already approved and with reconstruction pending signing a contract, are two segments on 214. One of the segments is from Friona to Hub and the other is from Clay's Corner south to the Parmer-Bailey County lines. They were first approved and are expected to be included in the 1973-74 work program for THD.

A possibility exists that the work on the long controversial Highway 214 project will be underway as early as March. Included will be an overpass at the south edge of Friona on the

highway. Since an allocation of \$254,900 was included for reconstruction from Friona South to Hub and from Clay's Corner south to the county line was not used in the program, and was used on earlier projects, a re-allocation was issued for the funds.

An additional total of \$114,000 was approved for purchase of rights-of-way on U.S. Highway 60 from Friona northwest to the Parmer County line for possible future widening of the highway to four lanes to complete a four lane process which extends west from Hereford at this time.

An additional \$32,000 was approved for the 2.4 mile

portion of Highway 60 in Castro County, also to be used for right of way purchase.

The Parmer County budget was a portion of a \$12,800,000 program of work for the district and included in a state budget of \$235 million.

During the past several years, a large number of bad accidents had been recorded on the narrow, rough stretch of Highway 214 from Friona south to the county line. Several of the accidents resulted in fatal injuries to the occupants of the vehicles involved, including one accident on the Running Water Draw crossing where two Texas Highway Department workmen were killed approximately two years ago.

DWI Fines Assessed During County Court

Three persons were convicted of driving while intoxicated by County Judge Archie Tarter and paid fines in county court Monday after a weekend

of action of members of the Texas Highway Patrol.

Paying a fine of \$100 and court costs and receiving a 30 day jail sentence for driving while intoxicated, subsequent offense, was Robert McCormick of Bovina.

Also ordered to serve a jail term of 60 days for driving while intoxicated, subsequent offense, was Jaun Gutierrez of Friona. He was also fined \$150 and ordered to pay court costs.

A third driving while intoxicated fine was levied against Branch Jones of Dimmitt. He was fined \$100 and court costs and received one year probation on the first time offense and was given a 60 day suspended sentence.

A passenger in the Jones car, Abilio Hinojosa, also of Dimmitt, paid a fine of \$22.50 in Farwell Justice of the Peace Ray Mears' court on a drunk charge.



IF YOU CAN AFFORD A LUXURY STATION WAGON, YOU CAN AFFORD THE NEW WINNIE WAGON.

The Station Wagon Vacation Home From Winnebago.

4 SEASONS RV CENTER, INC.

WEST OF CLOVIS ON U.S. 60-84 PHONE (505) 763-4650
"Small Enough to Know You - Large Enough to Serve You"

FARWELL INDEPENDENT SCHOOL DISTRICT -- 1974-75

CENSUS FORM

Please list all Children who will be 5 or 6 years old as of September 1, 1974.

Children's Full Name	Birthdate			Age Sept. 1, 1974
	Month	Day	Year	

Parent's Signature _____ Telephone No. _____

Address _____

Please give instructions on how to reach your house if your address is a route. If you live in town, please give your street address.

This is the only school census that will be taken this year and is for children who will be 5 or 6 years of age on September 1, 1974. It is important that all children in this age group be listed on the census form. If you have any questions about this census call Vernon Scott, Elementary Principal, at 481-9131, or W. M. Roberts, Superintendent, at 481-3682.

W. M. Roberts, Superintendent

Farwell Public Schools



Gas keeps the Texas Rangers in the ball park.

Especially when it comes to their laundry budget. Because they depend on gas dryers to help get the job done fast. And for less.

Drying with natural gas is economical because it's used directly in the most efficient manner. And that conserves the natural resources we've got here in the Southwest.

Gas dryers are a hit at home, too. Because gas dries your clothes cleanly, quickly. Permanent press and delicate items come out fluffy—ready to wear without ironing.

For the fastest clothes drying in any league... do it with gas.



If you want the job done right, do it with gas.

SOUTHERN UNION GAS COMPANY

Future Growth - -

February 15 Deadline Near To Join Company

"We still need charter members to sign up for the Farwell Development Co.," said Chairman Don Williams Tuesday afternoon. There is still one week to sign up, with a February 15 deadline set for persons who are interested in the growth and development of the Farwell area. Anyone who signs up as a charter member will indicate their interest in Farwell's future, he added.

First item to be considered by the Farwell Development Company will be the possible construction of a nursing home facility in Farwell, according to Don Williams. He said that an in-depth study proves such a facility is a definite need for the area and the future nursing home has top priority for the new corporation.

No personal liability beyond the initial \$25 investment in a share of stock in Farwell's future growth is perhaps the greatest drawing card for area residents.

On February 15 names of the initial members of Farwell Development Co will be submitted to Austin to receive a charter to incorporate the organization, which is being formed with the sole purpose of attracting industry to Farwell. The names of 25 potential corporate charter members will be required for the charter to be issued.

Immediately following the February 15 cutoff date, a preliminary organizational meeting will be scheduled to name the officers and initial board of directors for the corporation, and plans will be made for immediate action to attract various industries to this area.

Each person who purchases a share of stock at \$25 will have a vote in the corporation and the potential organizers expressed a hope that the organization will become a community affair with most of the community participating in the new corporation.

It was noted by the business people meeting at the Security State Bank to form the organization that if not enough interest is shown and the 25 initial members are not secured, the checks will be returned to the potential investors uncashed, as all checks are being held during the formative period of two weeks.

Emphasized was that no investor in the corporation would be personally liable nor would they be asked to co-sign a note or loan any money for industry or expansion through the corporation. It was discussed that the Farwell Development Co. will be authorized to enter into all things a corporation can do, or start to do, working with government agencies and private business to attract in-

dustry to this area, and arrange proper financing through government or private agencies.

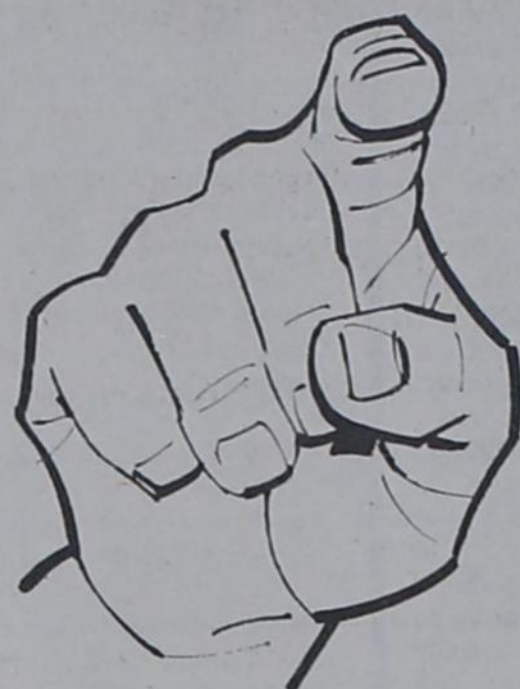
Although 75 percent of the potential members will be required to be from Farwell, it was also brought out that due to the close community relationship between Farwell-Texico, that Texico residents may also be interested as any growth in Farwell would also inevitably affect Texico, just across the state line in New Mexico.

Don Williams, who heads Farwell Community Development, and is presently leading the formation of the corporation, has suggested that the corporation be set up as quickly as possible, and while setting up the corporation, make it as flexible as possible, in order to be able to attract varied industries instead of just one type of industry to this area.

A small group of local business people have been meeting regularly during the past couple of weeks rehashing

steps necessary to obtain a charter and outlining step by step procedures for acquiring financing for business ventures. They now have a plan ready for the community and are actively seeking community support in the venture to bring industry to Farwell.

In this issue of The State Line Tribune is a coupon to be cut out and mailed, along with your \$25 check, to the Security State Bank, indicating your interest in the future of Farwell. Be sure you get the coupon and check into the mail where it will be received at the bank before Feb. 15.



You
Are
Invited - -
to the

7th ANNUAL Farwell Junior Livestock Show

Mon. Feb. 11
1:30 p.m.

Featuring
FFA and 4-H
Livestock



FARWELL EQUIP. CO.

**IS YOUR AUTO
AILING?**
FOR SMOOTHER,
SAFER DRIVING

Let Us Doctor
Your Car With
Our Expert
TUNE-UP
Reasonable Fees

**Karl's
Auto
Clinic**
Smokey And Fred
481-3687 Farwell

Home Of Fine Furniture

★ LA-Z-BOY	★ MADDOX
★ TOWN & COUNTRY	★ ENNIS
★ TELL CITY	★ SWIFT TEX
★ KAY CHAIR	★ BROYHILL
★ SMITH SLEEPERS	★ HOOKER
★ JONES	★ DIXIE
★ AMERICAN OF MARTINSVILLE	

No Tax On Furniture Delivered In Texas
FRED SHIPLEY FURNITURE CO.
1305 Main Clovis, N.M.
763-7534 763-4431

Fire Calls

It was quiet in both Texico and Farwell during the past week as far as fire calls or emergency calls were concerned. Neither Volunteer Fire Department nor Emergency Service received any calls.



WELCOME



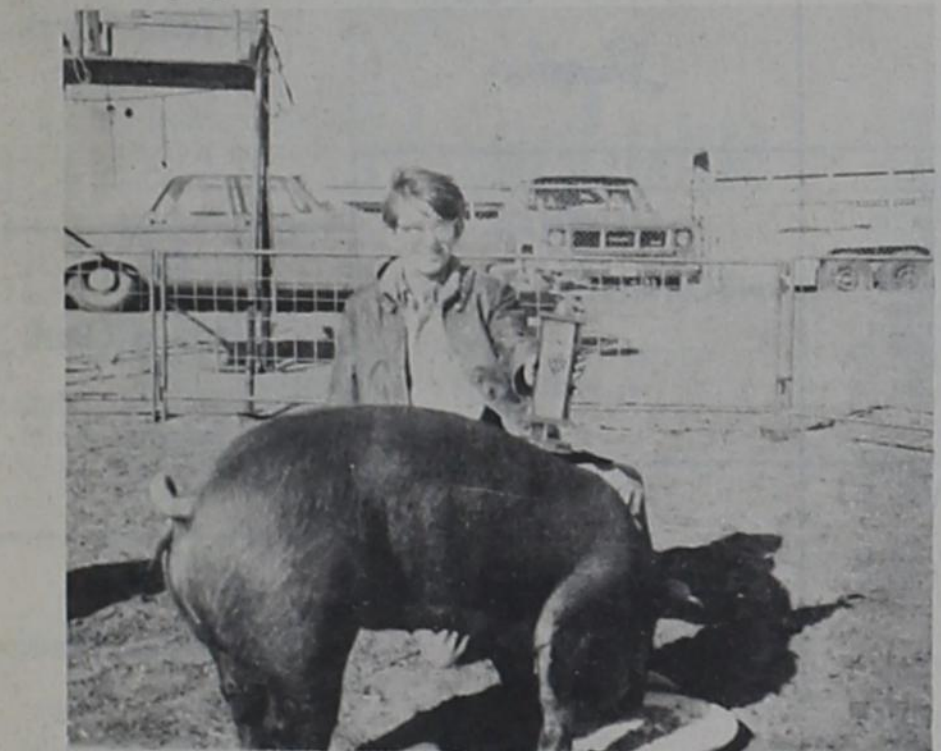
TO THE 7th ANNUAL FARWELL
JUNIOR LIVESTOCK SHOW

MONDAY, FEB. 11th 1:30 p.m.

FEATURING **FFA** and **4-H**

PROJECT LIVESTOCK

FARWELL SCHOOLS AG. FARM EAST OF TOWN



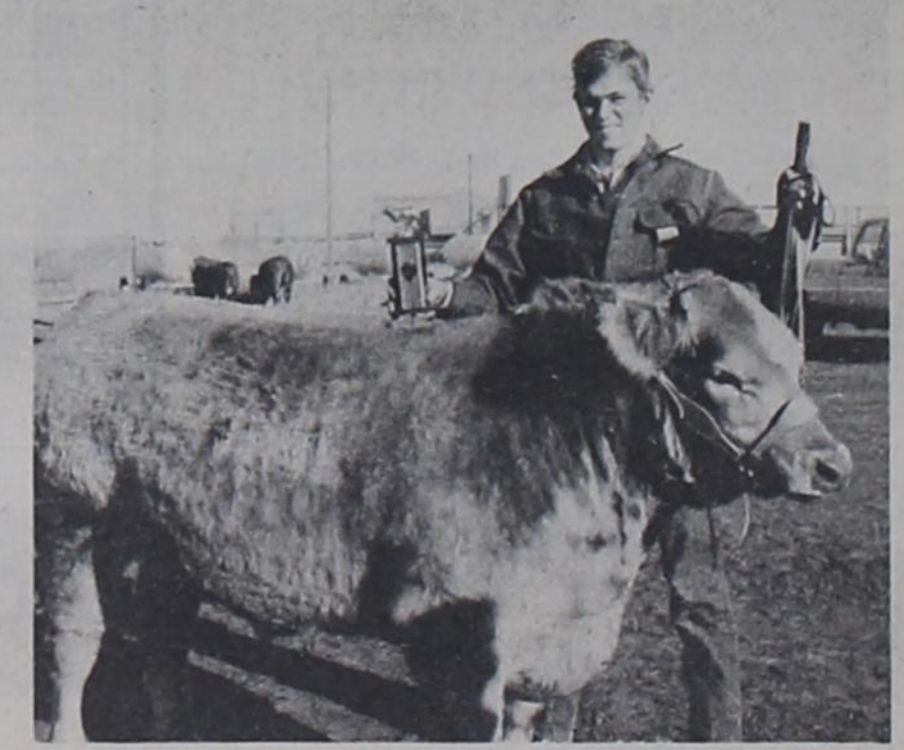
WELCOME TO

OUR BANK OF FRIENDLY
SERVICE

- ★ SAVINGS ACCOUNTS
- ★ LOAN SERVICES
- ★ CHECKING ACCOUNTS
- ★ TRUST SERVICES
- ★ SAFETY DEPOSIT BOXES

SECURITY STATE BANK

FARWELL



Legal Notice
NOTICE TO BIDDERS

Notice is hereby given that Farmer County will accept bids until 10 O'clock a.m. on February 25, 1974 at the office of the County Judge in Farwell, Texas for the purchase of



My Neighbors

"Now don't enjoy yourself into a state of utter exhaustion."

one pickup truck with the following specifications:
Crew Cab, Two-tone, 6900 GVW
360 CID V-8
Knitted Vinyl Seats
Oil & Temperature gages
Oil Bath Air Cleaner
Cruise-O-Matic
Swing-Lock Mirrors
High Output Heater
Radio
Super Cooling Radiator
Auxiliary Rear Springs
Hi-Rib 4-750x16 8 ply tires
The Commissioners Court will have the right to accept or reject all bids on the above vehicle.
Archie L. Tarter
County Judge
Farmer County, Texas

Published in State Line Tribune Feb. 1, 8, 15, 1974.

LEGAL NOTICE
The Deaf Smith Electric Cooperative, Inc P.O. Box 753, Hereford, Texas 79045 is making an application for a loan from Rural Electrification

Administration which provides for the construction of approximately 36 miles of 69 KV transmission line and two 7500 KVA substations. This line will be along a general point one mile South of Tam Anne in Castro County North about 9 miles thence West about 20 miles into Farmer County and back South 3 miles. The two substations will be located on this transmission line. The loan also provides for approximately 200 miles of distribution line to be constructed in Castro, Parmer, Oldham and Deaf Smith Counties.
These facilities will make it possible for the Cooperative to meet the increasing demands for electric power of the member owners. If there are any comments on the environmental aspects of the proposed construction, it should be submitted to the Cooperative on or before March 5, 1974. Additional information may be obtained at the Cooperative office at the above address.

HELP WANTED - Feed truck driver & Feed mill labor. Paid vacations, holidays, group insurance. Apply at Parmer County Cattle Co., Bovina, Tex. Bill Brigham, days 806-225-4400; nights 806-481-3811. 21-tfnc

CARD OF THANKS
Words cannot express our gratitude and appreciation to our many friends who have been so nice during our husband and father's death. Thank you very much for the money, flowers and food and special thanks to the Farwell Volunteer Fire Department for their assistance.

Inez Morris
Jackie D.
Charlie M.
Clara F. M.
Timothy Jr. M.
Velma M.
Kathleen Houston
Inetter Dannels
Ada Guidry 21-1tp

WILTON'S
Cake Decorating Supplies
Wedding, Birthday & Anniversary Tops
Have all supplies needed for decorating cakes.
Will bake and decorate cakes.
C & J HOBBIES
105 June Ave. Clovis
Ph. 762-5249 19-4tc

USED EQUIPMENT
1 - 1964 Dsl. JD 4020 Tractor
1 - Used #224 JD Baler
1 - 1968 Chevy Truck, Grain Bed, Hoist, Tandem Axle
1 - JD 7700 Combine, W/ Hydro Drive, Cab, Air
1 - Used Grain Cart
2 Sets Used 34" Dual Wheels for JD Tractors
1 - Used 1972 JD Model 140 Lawn and Garden Tractor, W/Roto-tiller and Center Mount Blade
1 - Set 16.9X34 Duals

SPECIAL
1 - Used 1973 AC Model 620 Small Tractor W/ Front Loader, Roto-tiller, Shredder and Rear blade. \$3800.00

"WE TRADE"
CAL JORDAN IMPLEMENTS
PH. 763-5517
201 S. Walnut-Clovis, N.M.

FOR SALE: Baled cane stalks. \$30 ton. Call 683-2513 or 683-2524. 20-2tc

\$300 REWARD
STOLEN: Myers brand roping saddle, hackamore, bridle and saddle blankets. Stolen in front of LaVista Lounge, Saturday, Jan. 26, between 6:30-8 p.m. Your name will be held strictly confidential. Contact R. B. Boney, 985-5782. 20-2tp

WANTED - Secretary-bookkeeper. Apply in person at Chuck's Spraying Service in Bovina. 18-tfnc

TO GIVE AWAY: Five pups. Mixed poodle and cocker spaniel. Call 481-9174 or see at 107 Manana, Farwell. 20-2tp

WANT ADS PH. 481-3681
CLASSIFIED & LEGAL RATES:
First insertion, per word - 8c
Second and additional insertions - 6c
Minimum charge - \$1.25 on cash order, \$1.50 on account
Card of Thanks - Same as classified word rate, minimum charge - \$1.25
Double rate for blind ads
Classified Display - \$1.50 per col. inch

DEADLINE FOR INSERTION
Friday's State Line Tribune - 10 a.m. Wednesday

The Tribune reserves the right to classify, revise or reject any classified ad.

Check advertisement and report any error immediately. The Tribune is not responsible for error after ad has already run once.

USED EQUIPMENT
1 - 1964 Dsl. JD 4020 Tractor
1 - Used #224 JD Baler
1 - 1968 Chevy Truck, Grain Bed, Hoist, Tandem Axle
1 - JD 7700 Combine, W/ Hydro Drive, Cab, Air
1 - Used Grain Cart
2 Sets Used 34" Dual Wheels for JD Tractors
1 - Used 1972 JD Model 140 Lawn and Garden Tractor, W/Roto-tiller and Center Mount Blade
1 - Set 16.9X34 Duals

SOUND EQUIPMENT - Wolensak, BSR, Sherwood, Kenwood and others, up to 10% discount. Write for quote. Jim Tabor, Audio Unlimited, Route 2, Farwell, Texas 79325. Call 225-6989. 18-4tc

FOR SALE: Barrels, removable top. For trash, feed troughs, storage. Used lumber. Several sizes plate glass. At rear of old Post Office building. Ebb Randol, Phone 481-3884. 19-tfnc

SPECIAL
1 - Used 1973 AC Model 620 Small Tractor W/ Front Loader, Roto-tiller, Shredder and Rear blade. \$3800.00

"WE TRADE"
CAL JORDAN IMPLEMENTS
PH. 763-5517
201 S. Walnut-Clovis, N.M.

FOR SALE: Baled cane stalks. \$30 ton. Call 683-2513 or 683-2524. 20-2tc

\$300 REWARD
STOLEN: Myers brand roping saddle, hackamore, bridle and saddle blankets. Stolen in front of LaVista Lounge, Saturday, Jan. 26, between 6:30-8 p.m. Your name will be held strictly confidential. Contact R. B. Boney, 985-5782. 20-2tp

WANTED - Secretary-bookkeeper. Apply in person at Chuck's Spraying Service in Bovina. 18-tfnc

TO GIVE AWAY: Five pups. Mixed poodle and cocker spaniel. Call 481-9174 or see at 107 Manana, Farwell. 20-2tp

Boyd's Complete Brake And Bear Front End Service
TIRE TRUING, WHEEL BALANCING AND OVERLOAD SPRINGS, MONROMATIC SHOCKS, DRUM TURNING, BRAKE DRUMS, BRAKE SHOE EXCH. POWER BRAKES, ELECTRIC BRAKES INSTALLED.
BankAmericard And master charge Welcome
Boyd's Brake Shop
2 Blks. off Main St. Leave Car Here and Do Your Shopping 1-tfnc

HOLIDAY STORE
Farwell
Store Hours
10 A.M. to 7 P.M.

KOSCOT KOSMETICS (Oil of Mink) Free Demonstrations. Fast Delivery. Call for specials before 2 p.m. Tinnie Doshier at 481-3657. 17-tfnc

ATTENTION CATTLEMEN
in the
TEXICO-FARWELL AREA:
Your local used cow dealer is friona bi-products
Seven days a week stock removal
CALL COLLECT 247-3032

ATTENTION LADIES - Will completely clean, oil and adjust any make or model sewing machine, \$4.95. Free pick up and delivery, Ph. 762-1991. 12-tfnc

NEED A HOME LOAN?
SEE **FIRST FEDERAL**
FIRST FEDERAL SAVINGS AND LOAN ASSOCIATION
801 Pile St.
762-4417
Clovis, New Mexico

FOR RENT - One bedroom carpeted apartment. Bills paid. 221 Anderson in Texico. 21-1tp

SAVE MONEY
On Vaccines, Antibiotics, Instruments and other livestock supplies.
AFFILIATED SUPPLY INC.
1005 Ave. A Farwell, Texas Ph. 481-9234

FOR RENT - Nice, small, unfurnished, 2 bedroom house on edge of Farwell. Call 763-4514. 21-tfc

Farwell First Baptist Church
Cliff Ennen - Pastor
Sunday School - 10 a.m.
Morning Worship - 11 a.m.
Evening Worship - 7 p.m.

Oklahoma Lane Baptist Church
Robert J. Roberts - Pastor
Sunday School - 10 a.m.
Morning Worship - 11:00 a.m.
Evening Worship - 7 p.m.

Lariat Church of Christ
Sunday School - 10 a.m.
Morning Worship - 11 a.m.
Evening Worship - 6 p.m.

United Pentecostal Church
E. R. Lanham - Pastor
Sunday School - 10 a.m.
Morning Worship - 11 a.m.
Evening Worship - 7:30 p.m.

Pleasant Hill Baptist Church
Tommy Farmer - Pastor
Sunday School - 9:30 a.m. (MDT)
Morning Worship - 10:30 a.m. (MDT)
Evening Worship - 7 p.m. (MDT)

Calvary Baptist Church
Lynn Ezell - Pastor
Sunday School - 10 a.m.
Morning Worship - 11 a.m.
Evening Worship - 7 p.m.

St. Joseph's Catholic Church
Chrysostom Partee - Priest
Confession - Sunday, 9:30 a.m.
Sunday Mass - 10 a.m.
Christian Doctrine after Mass

Hamlin Memorial Methodist Church
W. T. Perry - Pastor
Church School - 10 a.m.
Morning Worship - 11 a.m.
Evening Worship - 7:15 p.m.

Farwell Church of Christ
James Wilbanks - Minister
Sunday School - 10 a.m.
Morning Worship - 10:50 a.m.
Evening Worship - 6 p.m.

Texico First Baptist Church
John Summers - Pastor
Sunday School - 10 a.m.
Morning Worship - 11 a.m.
Evening Worship - 7:30 p.m.

Oklahoma Lane Methodist Church
Oran D. Smith - Pastor
Sunday School - 10 a.m.
Morning Worship - 11 a.m.
Evening Worship - 7 p.m.

St. John's Lutheran Church
Martin M. Platzer - Pastor
Sunday School - 9:30 a.m.
Morning Worship - 10:30 a.m.

Assembly of God
James Alexander - Pastor
Sunday School - 10 a.m.
Morning Worship - 11 a.m.
Evening Worship - 7 p.m.

West Camp Baptist Church
Glenn Harlin - Pastor
Sunday School - 10 a.m.
Morning Worship - 11 a.m.
Evening Worship - 7 p.m.

J.B. SUDDERTH REALTY
904 Third Street Box 627
Farwell, Texas
Ph. 481-3288 or
505/763-5575 Unit 5408
OFFICE HOURS
Monday - Friday, 10 a.m. to 6 p.m.
Saturday, by appointment.

WE NEED FARM LISTINGS NOW

3 bedroom, 1 bath, excellent location.
4 bedroom, 2 bath, brick with garage.
Nice 3 bdrm. brick house, near school in Farwell.
2 nice 3 bdrm. stucco houses in Bovina.
Nice 3 bdrm. 2 bath, brick, fenced back yard in Bovina.
1/2 section near Lazbuddie, irrigated.

NEED A FARM LOAN? CALL US.
160 A. dryland north of Bovina on highway.
320 A. dryland, lays good, north of Bovina, 1/2 mile from highway.
160 A. irrigated, 2 wells, 1 mile north of Muleshoe on highway.
For Sale - 3 bdrm., 2 bath, with fenced backyard. Has carport, near school in Farwell.

3 bdrm., 1 bath, sun room, garage, and 1 bdrm. apt. with cellar in Farwell.
Small 1 bdrm. bath house on 3 lots in Farwell.
2 bdrm., 1 bath with basement storage room in commercial area with 6 extra large lots. Possibilities - mobile home sites or commercial location, on highway.

THIS WEEK'S SPECIAL
Mr. Farmer Do you need a farm hand's house in Bovina? We have two left - 3 bdrm., 1 bath each with single car garages. 1 has new carpet.

320 A. irrigated, East of Bovina, near hiway.
528 A. irrigated, East of Bovina, on hiway.
409 A. irrigated, East of Bovina.
160 a. irrigated east of Lariat elevator, 2 miles.
Good quarter (1/4) and half (1/2) dryland, north of Bovina.

THIS WEEK'S SPECIAL
760 A. - 5 wells, 2 houses, 2 quonsets. Rhea Community.
3 bdrm., 2 bath, extra nice and clean; has garage, storm shelter, nice yard, good location.
240 A. irrigated northeast of Bovina. Small down payment.
160 A. irrigated, one mile north of Muleshoe on highway. Has 2 wells.
Good half (1/2) section of dryland, N.W. of Bovina.

148 A. irrigated. Nice brick home on highway south of Bovina.
840 A. - 6 wells. 2 good houses and quonset.
Small tracts: 1-10 A, 1-20 A, 1-44 A, all on Hiway near Lariat.
3 bdrm., 3 bath brick, excellent location, lots of extras.

Several good business locations: With railroad access on Amarillo Hiway.
LEARN TO SKATE. BUY A SKATING RING IN FARWELL.
2 bdrm., 1 bath, with carport, good location.

★ WE NEED LISTINGS NOW ★
"Sales and Loans Are Our Service"

CLOVIS SHOPPING DIRECTORY

STEREO CLOVIS ELECTRONICS 1440 MAIN	FABRIC MART Better Fabrics Make Better Fashions HILLTOP PLAZA
CROWN ELECTRIC CO. Electric Motor Sales & Serv. Browning Power Trans. Eq. 2nd and Oak Clovis, N. Mex.	Stork Shop Infants and Maternity Wear 1312 Main 763-7145
AUCTION SALES Thurs. 7:30 P.M. MENNEL'S AUCTION 2021 E. 2nd - 762-2581	ROTHWELL BODY SHOP 1814 West 7th (Behind Chief's Automotive) Clovis, N.M. CALL 763-3530 For Free Estimate On ALL AUTO BODY REPAIR & REPAINTING ALSO GLASS WORK
TYPEWRITER ADDING MACHINE REPAIR GOODMAN OFFICE SUPPLY 1212 Main - Dial 763-5589	Duffys PROMPT DEVELOPING SERVICE - ALL SIZES FILM - LARGE SELECTION PHOTO ACCESSORIES 617 Main Clovis Ph. 763-3834

TELEX HEARING AIDS
CLOVIS HEARING AID CENTER
★ Batteries ★ Molds ★ Free Hearing Tests
SERVICE ALL MAKES
416 Mitchell Ph. 763-6900

FARWELL HARDWARE ZENITH 305 Ave. A 481-3286	JOHNSON ABSTRACT COMPANY 481-3878 203 Ave. G - Box 88 Farwell, Texas	CAPITOL FOODS <i>Sunshine</i>	Hamlin Memorial Methodist Church W. T. Perry - Pastor Church School - 10 a.m. Morning Worship - 11 a.m. Evening Worship - 7:15 p.m.
MINNEAPOLIS-MOLINE World's Finest Tractors FARWELL EQUIP. CO. Phone - 481-3212	STATE LINE OFFICE SUPPLY Ph. 481-9235 105 3rd - Farwell IMPORTANT DOCUMENTS COPIED FREE	HUGHES INSURANCE AGENCY General Insurance 509 Ave. A, 481-3671	Farwell Church of Christ James Wilbanks - Minister Sunday School - 10 a.m. Morning Worship - 10:50 a.m. Evening Worship - 6 p.m.
Worley Mills, Inc. 802 11A Farwell, Texas	W & J AUCTION 108 Pile St. Ph. PO 3-7311 SALE EVERY TUES. James Priest & Associates, Auctioneers	SHERLEY-ANDERSON-PITMAN, INC.	Texico First Baptist Church John Summers - Pastor Sunday School - 10 a.m. Morning Worship - 11 a.m. Evening Worship - 7:30 p.m.
TEXACO INC. Woodrow Lovelace	HOLIDAY The Family Store 5th & Ave. A 481-9070	The CITIZENS BANK Texico Branch Complete Bank Service Member FDIC	Oklahoma Lane Methodist Church Oran D. Smith - Pastor Sunday School - 10 a.m. Morning Worship - 11 a.m. Evening Worship - 7 p.m.
ROSE DRUG & GIFT SHOP Prescriptions a Specialty 481-3281	OKLAHOMA LANE FARM SUPPLY AND GIN "Where Your Business Is Appreciated"	WATTS Machine and Pump Layne Bowler Pumps and Repair-Gearhead Repair Ph. 481-3239-Farwell, Tex.	St. John's Lutheran Church Martin M. Platzer - Pastor Sunday School - 9:30 a.m. Morning Worship - 10:30 a.m.
Snell's Bible Book Store GIFTS FOR ALL OCCASIONS PHONE 763-1691 104 W. 5TH STREET CLOVIS	Mid-West Video Ph. 763-4411 Ch. 2 Lubbock 13 CBS Ch. 3 Roswell 8 NBC Ch. 4 Clovis 12 CBS Ch. 5 Amarillo 7 ABC Ch. 6 Amarillo 4 NBC	Religious Music All Day Sunday On KZOL 1570 On Your Dial	West Camp Baptist Church Glenn Harlin - Pastor Sunday School - 10 a.m. Morning Worship - 11 a.m. Evening Worship - 7 p.m.



On The Farm In Palmer County

By R. MACK HEALD
County Agent

Livestock producers in Palmer County will have a definite interest in the 1974 Texas Brucellosis Eradication Program, which officially began Jan. 15.

Texas became "modified-certified" in August, 1973 which meant that less than 5 per cent of the cattle herds and less than 1 per cent of the cattle were infected. The new plan will make Texas a Brucellosis-free state.

Brucellosis, commonly called Bang's, is a costly, contagious disease of livestock that may also affect human beings. The disease in humans is known as undulant fever. Although it may attack most farm ani-

mals, it is more common in cattle, swine and goats. Herds with brucellosis may produce as much as 20 percent less milk and 40 percent fewer calves. Thus millions of dollars are lost across the state each year.

The new program is designed to locate the infection, contain it and assist the owner of infected animals to eliminate the disease. Three different methods are used to locate infections: Brucellosis Ring Test for dairy herds, Market Cattle Test of all breeding cattle slaughtered, and Blood Test of all breeding cattle, exchanging ownership.

All infected and exposed cattle are quarantined and their movement is limited to slaughter only. Blood testing procedures are used to assist owners of infected herds to free their cattle of the disease.

Here is an outline of the new Brucellosis Eradication Program.

All cattle, except steers, spayed heifers and vaccinated animals under two years old, must be tested within 30 days of any change of ownership.

A realtively simple "card" test has been developed that gives quick results - an improvement over the old system of sending blood samples to a laboratory. The cost of this initial test by a practicing veterinarian or other authorized person must be paid by the cattleman.

If a Brucellosis reactor is found at a sale yard or slaughterhouse, federal or state personnel trace the animal back to its herd of origin. Trace-back tools include registered back tags or ear tags that many sale facilities are routinely putting on consigned animals. Ear tags are required for interstate shipment of most cattle.

Other animals in consignment where the reactor was found can be handled any of three ways - sold immediately for slaughter, sent to a quarantined feedlot, or returned to the ranch for quarantine.

All members of the herd of origin are considered exposed to the disease and must be

Political Announcement

The Tribune is authorized to make the following political announcements, subject to the Primaries May 4, 1974.

DEMOCRATIC

COUNTY JUDGE
Archie Tarter (re-election)
Paul Fortenberry

COUNTY JUDGE
Archie Tarter (re-election)

COUNTY CLERK
Bonnie Warren (re-election)

DISTRICT CLERK
Dorothy Quickel (re-election)

COUNTY TREASURER
Benna Felts
Jenoyce Ford

COUNTY COMMISSIONER
PRECINCT 4

Raymond Teider (re-election)
Pete Jesko
Roy Miller

JUSTICE OF THE PEACE
PRECINCT 1
Raymond Mears (re-election)

REPUBLICAN

COUNTY COMMISSIONER
PRECINCT 4
Jimmy Briggs

tested at 30 and 120 days after the first reactor is found.

Government agencies conduct these additional tests and pay the direct costs. All reactor animals must be branded with a "B" on the jaw and sold immediately for slaughter. Meat from these animals is not tainted.

Final clearance on a state basis can be granted when no more than 1 percent of the herds in any one county and not more than 2 percent of the cattle in the county are confirmed reactors during an 18-month testing period.

The program is vital to Texas if we want to keep our interstate trade with Brucellosis-free states.

STEED - TODD Funeral Home

'Our Family Serving Your Family'

Dexter - Mary Kay - Diann

Mark - Stephen

Prince And Manana

Ph. 763-5541



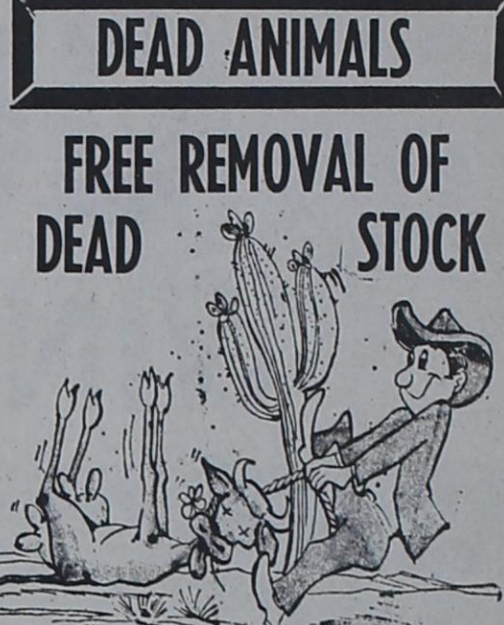
TEXICO CITY CONTESTANTS - Gathered at the Texico City Hall last Thursday afternoon to draw for places on the ballot for the Texico City election on Tuesday, March 5, were these six persons. Standing, from left, are Manford Turnbough, incumbent mayor; Howard Billingsley, a former mayor and mayor hopeful; Vane Doshier, incumbent Board of Trustee member; and C. A. Boulton, retired farmer and trustee hopeful. Seated are Mrs. Ruby Goforth, news editor of the Curry County Times and trustee hopeful and M. H. Pete Poteet, municipal judge, who is unopposed for election.

Some people may try to beat the energy shortage by storing large amounts of gasoline. But this may create other problems.

Gasoline stored on a farm or around a house becomes an expensive convenience if the storage period is longer than six months.

First, the fuel contains a blend of several parts, one of which is extremely volatile and provides engines with easy starting. It evaporates rapidly. When the storage tank is exposed to the sun or high temperatures, most of this ingredient is lost in about 60 days.

Secondly, gas becomes gummy - similar to shellac - after it "ages". This gum may stop up the carburetor and cause engine deposits. It also may cause damage when mixed in small amounts with fresh gasoline.



DEAD ANIMALS

FREE REMOVAL OF
DEAD STOCK

WHEN YOU HAVE DEAD STOCK,
WHY FUSS & CUSS?
FOR FREE REMOVAL CALL US!

TRI-STATE INDUSTRIES, Inc.

CLOVIS
505-763-5513

Amarillo

LOO-MIXERS



RECKON THE DEEP-
EST THINKER I
KNOW IS JED DIGBY
THE WELL DIGGER.

Featuring
TRI-CO FEED CO.

LOOMIX

LIQUID FEEDS

481-3339 - FARWELL

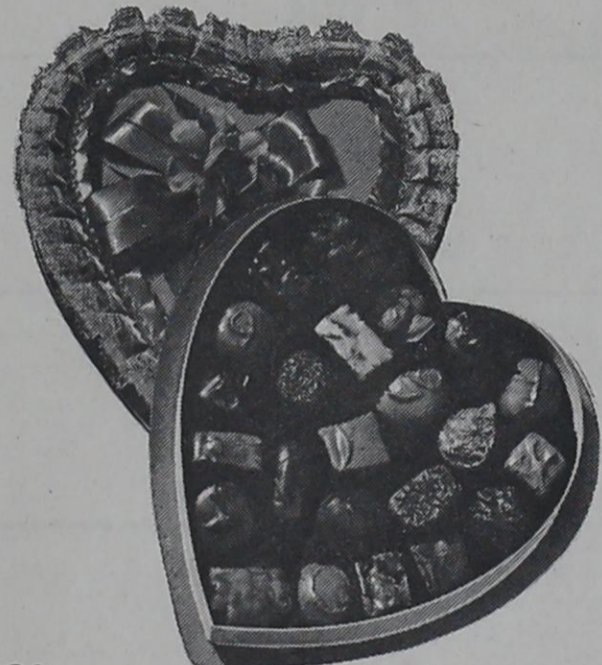
FOOD... Budget Choppers



Vegetole 3 lb. Shortening \$1.09	Gladiola 5 lb. Flour 89¢	Giant Size Tide 89¢	MC - 2 Half Gallon Bleach 29¢
Hunts 15 oz. Fruit Cocktail 3/89¢	Folgers 1 lb. Coffee 1.09	Holly 5 lb. Beet Sugar 85¢	County Kist 12 oz. W/K Corn 5/\$1.00
Hi-C 46 oz. Fruit Drinks 39¢	Texas Firm Head Cabbage 6¢ lb.	Hunts 13 1/2 oz. Spinach 5/\$1.00	Calif. Jumbo Tangerines 25¢ lb.
Shurfine 10 1/2 Chicken Noodle Soup 5/\$1.00	Fresh Frozen Grade "A" Baking Hens 69¢ lb.	Golden Ripe Bananas 10¢ lb.	Gorton Big 1 lb. pkg. Fish Sticks 89¢
U.S. no. 1 Red Potatoes 5 lb. Bag 59¢	Morton 11 oz. Franks - Beans Dinners 39¢	Shurfine 6 oz. Orange Juice 5/\$1.00	Smoked Picnic Hams 69¢ lb.
Water Added Picnic Hams 69¢ lb.	Pork Spare Ribs 89¢ lb.	U.S.D.A. Family Style Chuck Steak 89¢ lb.	Amours - Market Sliced All Meat Bologna 79¢ lb.

Valentine Candies

FROM
Pangburn



Our Selection Of
VALENTINE HEARTS

From \$1⁰⁹
To \$10²⁵

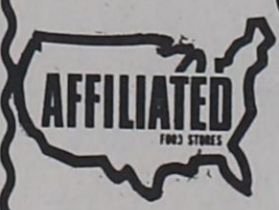
Plus Other Valentine Gift Ideas

See Our Complete Selection
VALENTINE CARDS

ROSE DRUG & GIFT

Farwell

CAPITOL FOODS



WE GIVE S & H GREEN STAMPS
DOUBLE ON WED. WITH \$2.50 PURCHASE
OPEN TILL 9 O'CLOCK EVERY NIGHT

We Redeem U.S. Government Foods Coupons

We Feature
Shurfresh
Milk

We Feature
Tender Crust
Bread

Clovis

GO STEERS GO

WIN DISTRICT TOURNAMENT

FEB - 8-9

FRIONA HIGH SCHOOL GYM



Friday - 7:00
Vega-Springlake

Saturday
Championship
Game
8:00

Friday - 8:30
Farwell-Hart

FARWELL STEERS DISTRICT CHAMPIONS

1959 - 61 - 62 - 63 - 64 - 65 - 67 - 69 - 70 - 71 - 72

Clara's Spur Restaurant	Farwell Automotive <small>Tom Lindop</small>	Texico Feed Lots <small>Charlie And Bill</small>	Citizens Bank Texico Branch
Sherley - Anderson Pitman Inc.	Karl's Auto Clinic <small>Smokey & Fred</small>	Oklahoma Lane Farm Supply	West Texas Pump Co.
Lee's Electric	Sheets And Sheets	Castor Farms And Feed Pens	Mid-West Video <small>Cable TV Ph. 763-4411</small>
Lou's Beauty Salon <small>Lou, Buzz, Katie, Mae</small>	City Cleaners	Beauty Box	State Line Food Mill
Carl's Exxon And Fina Products	Bob's Tv Service <small>RCA - Motorola</small>	State Line Office Supply	Clark's Fina Service
Farwell Hardware	Rose Drug And Gift	Farwell Builders Supply Inc.	Aldridge Insurance Agency
Worley Grain	Watts Oil And Tire Co.	Farwell Fertilizer	Capitol Foods
Hughes Insurance Agency	Texaco Inc. <small>"Woody" Lovelace</small>	Piggly Wiggly	Farwell Equipment Co.
Monsanto Agricultural Center	J. B. Sudderth Realty	Watts Machine And Pump Inc.	Kelly Green Seeds Inc.
S & B Motor Co. <small>Joe Stanton</small>	Interstate Fertilizer Inc.	Lerice's Of Farwell	Farwell Pipe And Iron