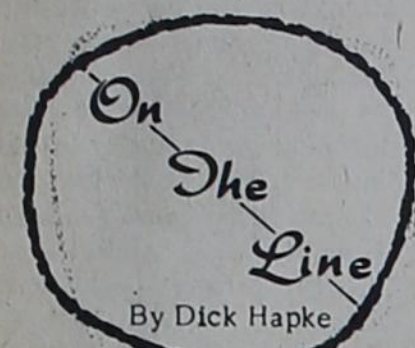


Plains Game "Bad Dream", Eyes On District



Trying to shake off the memory of the Plains game as just a "bad dream," the Farwell Steers this week have their eyes focused on Kress and the District 3-A competition ahead.

It will be homecoming at Farwell Friday night and the Steers will have an opportunity to regain some of their shattered prestige at the expense of a Kress team which hasn't fared too well in its six games this season.

Kress was Farwell's co-champion in District 3-A last season, but lost most of its team through graduation. This year the Kangaroos have won only two games while losing four.

The game will be a stiff test for Farwell's once highly-regarded team, however, as the Steers are still crippled and may have a hard time bouncing back after last week's demoralizing defeat to Plains, 67-8.

Still missing from the lineup this week will be Farwell's first and second string quarterbacks, Benji Dial and Leon Lovelace; Jim Cain, tackle; and possibly Carroll Huggins, who is still favoring a knee injury.

Coach Dempsey Alexander says that he will again utilize Tommy Williams at the quarterback slot but will make other changes in the backfield. Floyd Trantham, who last week was moved from tackle to fullback, will return to his tackle position and Jerry Lovelace will be the fullback.

If Huggins is unable to see action Friday, the two starting fullbacks will probably be William Dannheim and Danny Lindop.

The remainder of the probable starting lineup is as follows:

Ends, David Lindop and Bill Owen; tackles, Floyd Trantham and Bobby Atkinson; guards, Jerry McCuan

and Dick Gerles; and center, Jim Clements.

Nothing would go right for the Farwell team last Friday night in its game with Plains, as the Cowboys scored almost at will and stopped the Steer offense cold.

During the first half, the Steers were held to a net yardage of 29 yards, while the Cowboys ran wild, rolling up 300 yards and a 41-0 lead. The second half was almost the same story, as the Cowboys alternated the first and second units and toyed with the bewildered Steers until the final gun.

The Steers did finally muster one scoring drive late in the game, taking the ball on their own 25 yards and marching 75 yards for a TD. Jerry Lovelace went around left end for ten yards and the score with only 2 seconds remaining on the clock. The Steer

fullback also plunged over for the extra points to account for all of Farwell's scoring.

As far as Plains was concerned, it was an array of fleet backs who did all the scoring, and a stone-wall line that had the Farwell team figured out from the opening whistle they never let the Steers get close to the goal line until the final minutes.

The Steers fumbled 10 times in the game, losing the ball on six of the occasions and each time the powerful Plains offensive machine moved for a touchdown. Plains also intercepted two Farwell passes and turned them into touchdowns.

Plains utilized its passing game to good advantage, as time after time the Cowboy passers hit receivers far downfield over the heads of Farwell defenders.

All in all, the Cowboys could do no wrong and the Steers were never in the game.

There have been various reactions to the local option election in Clovis last week, in which our neighboring city to the west unexpectedly approved the legal sale of liquor for the first time in 17 years.

Over Portales way, Gordon Greaves of the Portales News-Tribune reported the day after the election that the first comment he heard was that Portales should start an immediate campaign for a four-lane highway to Clovis.

It was suggested that only one lane be built toward Clovis and three lanes be provided for returning traffic.

Here in the Twin Cities one of the first suggestions I heard was that steps be taken to set up a roadside traffic court, similar to that they have up near Albuquerque on Highway 66. It was pointed out that there would now be more traffic through town, and as a result, more speeders and probably more people driving under the influence of alcohol.

The man who made this suggestion said that Farwell might be able to raise enough revenue to pay the salary of the city law enforcement officer some people feel is so badly needed.

Since Texico-Farwell is located at the edge of a vast, predominantly "dry" region of West Texas, I'm sure that there will soon be an influx of traffic through here as a result of Clovis going wet.

Just how much of an increase in traffic there will be, however, and whether or not it will be good or bad for the Twin Cities, only time will tell.

Another reaction to the Clovis liquor situation was that the Twin Cities could now be referred to as "Gateway to the Sin City."

The comment was made in a light vein, and let's hope that it can always be passed off lightly.

This seems to be the season for political polls, and during the past couple of months one has been underway in Texico-Farwell.

Tom Finley, the Texico service station man, has been feeling the pulse of tourists in regard to the upcoming presidential election. He started taking the poll soon after the political conventions and continued it up through the end of the tourist season.

While the results may not be indicative of anything, they are interesting.

According to Tom's poll, Nixon is leading Kennedy by more than a 3 to 1 margin, probably one of the widest spreads of any of the polls. Most of them, as you know, show the two candidates running neck and neck.

The local straw poll wasn't a concentrated effort and Tom says that he and his station attendants asked only a small percentage of the out-of-town visitors who they were going to vote for. Nevertheless, they did poll 176 travellers and of that total Nixon received 127. Preferences were categorized according to states, and in all, 35 states are represented in the poll. More tourists were quizzed from Texas and California than from any other states and both of them gave Nixon a wide margin.

Texans who stopped at Tom's station favored the vice-president 33-10 and Californians went along with their native son, 12-3.

Since Tom's poll doesn't agree with most of them that have been making the papers, I'm going to make one of two suggestions after the election. Depending of course on what the outcome is, I'm either going to suggest that he give up the practice all together, or make it a full-time job and start showing the professionals how to take polls.

Farwell P-TA Meets Tuesday

The Farwell P-TA will meet Tuesday, Oct. 18, at 8 p. m. at the high school cafeteria. Mrs. R. B. Tucker will speak on "Basic Human Needs." There will also be a short skit put on by some of the parents. P-TA officials urge a good turnout.



ONE WILL BE CROWNED FOOTBALL QUEEN Friday night during homecoming activities at Farwell High School. The crowning will take place at 7:45, preceding the game between Farwell and Kress. Candidates for the honor, from left to right, are Jo Schell, Joan Potts, Jo Potts, Diane Fullerton and Janice Prince.

Pep Rally Kicks Off Homecoming

A giant pep rally will kick off the activities for the twelfth annual Farwell Homecoming. The pep rally and bonfire will be held tonight at 6:30 on the concrete slab just north of the Farwell Fire Department.

A pep band, the cheerleaders, and the members of the football team will all be present to insure a vigorous rally.

Mrs. Bill Engman, sponsor of the pep club, states that the public is invited to attend the pep rally and to participate in it. After the rally a snake dance will wind its way through town.

A chili supper will be served by the senior class Friday night prior to the football game. This will be held at the school cafeteria from 5:30 to 8 p.m.

The highlight of the pre-game activities will be the crowning of the football queen. Candidates for this honor are Jo Potts, senior; Joan Potts and Karen Schell, juniors, and Janice Prince and Diane Fullerton, sophomores.

All these activities, of course, will be leading up to the football game with Kress.

The queen and princesses will ride onto the field in 1961 convertibles donated by Frank Rierson Pontiac and Gateway Auto Co. of Clovis. They will be escorted onto the field by the senior letterman, Benji Dial, through a heart formed by the band and to the strains of "Let Me Call You Sweetheart."

Co-captains Jerry Lovelace and Floyd Trantham will reveal the identity of the queen and will have the honor of presenting her with flowers, an engraved football necklace and the coveted crown.

The Pep Club Beau will then be presented with his crown and a gift. Jean Reed, president of the pep club, will crown the beau and Zell Billingsley, vice-president, will present the gift.

All these activities, of course, will be leading up to the football game with Kress.



SIX CANDIDATES competing for the title of Pep Club Beau are, left to right, Jerry Lovelace, Jimmy Cain, Benji Dial, Tommy Williams, Leon Lovelace and Bobby Atkinson. The winner will be named and crowned during pre-game activities Friday night at Farwell's homecoming.

Smith Takes Contest Lead

Loyd Smith picked all 10 of the games correctly in last week's Farwell Businesses football contest and took the lead from all other contenders in the race for the two tickets to the Cotton Bowl game.

In spite of picking all 10 winners, though, Smith's effort was good for only second place in last week's contest. Also picking 10 winners and edging Smith out on the tie-breaker score was Maxine Williams. Maxine predicted the Farwell-Plains score to be 36-6 and Smith thought the Cowboys would win 26-19.

By winning last week's contest, Maxine retained her second place standing in the overall contest. With her score of 45, she is one game behind Smith's 46.

T. J. Kittrell, who has been one of the leaders since the contest began, picked nine winners to nail down third place last week, but he lost his first place position in the overall standings to Smith. Kittrell is tied

with Maxine for second.

Dempsey Alexander, who has shared the lead with Kittrell for several weeks, picked only seven games correctly last week and dropped to fourth place in the standings.

Besides Kittrell there were nine other contestants who named the winners in nine games, but Kittrell won the third place prize by being nearest to the actual score. He picked Plains to win 39-6.

Others who had nine right were Dale McCuan, Hal Ed Helton, John Getz, Fred Curtis, Dolph Moten, John Adams, Ysleta Kittrell, Mrs. Eugenia Murray and Calvin Murray.

Besides the four leaders in the contest, others who have scores of 40 or better are Bob Hart, James Norton and Calvin Murray, 42; Hal Ed Helton, Weldon Rundell, Milton Walling and Glen Phillips, 41; and John C. Green, Dale McCuan and Billie Phillips, 40.

FARWELL, TEXAS

THURSDAY, OCTOBER 13, 1960

NUMBER 2

THE STATE LINE TRIBUNE

"OFFICIAL PUBLICATION OF PARMER COUNTY"

14 PAGES

FIFTIETH YEAR

SECTION 1

Former Farwell Football Players To Meet At 5:30

All former football players of Farwell High School, who will be on hand for the homecoming game with Kress, are asked to gather at the City Cafe Friday between 5:30 and 7 p. m.

The group will meet for a coffee session and to "talk over old times" prior to the homecoming activities which get under way at the football field at 7:45.

Since there is no complete list of former Farwell football players, planners of this special get-together asked that those who will be on hand Friday night, be at the cafe or contact Dempsey Alexander, Farwell coach, or Dick Hapke at Tribune. "We want a complete list of former players who will be on hand, so that we can recognize them at halftime," Alexander says.

Special recognition will be made of the football player present who travelled the farthest distance and the one who represents the oldest team at Farwell.

The get-together for former players was originally scheduled at the Farwell School cafeteria but was moved to the downtown cafe because of another activity scheduled at the school.

Early Taxpayers Can Save Money

State and county taxes are now payable, announces Lee Thompson, tax assessor and collector. Persons making payments during the month of October will receive a 3 percent discount.

"Already payments are coming in pretty good for this time of year," Thompson says. They

are coming in a little better than was expected since normally few collections are made until after harvest.

The taxes aren't actually due until January 31, but discounts are allowed for payments during the months of October, November and December. The discount is 2 percent for November payments and 1 percent for December.

Total valuation of property for tax collection purposes in the county this year is \$13,202,444.68. The tax rate is \$1.72 per \$100 valuation. Of this total, \$1.30 is for county taxes and 42 cents goes into state funds.

A breakdown of where the county taxes will be spent this next year is as follows:

General fund, .57; jury fund, .03; road and bridge fund, .20; road and bridge special fund,

(Continued on page 8)

Linda Kaye's Formal Opening To Be Saturday

Linda Kaye's Ready-to-Wear, formerly Fern's will have its formal opening Saturday. Linda Robinson, manager of the store, invites the public to come by Saturday to get acquainted and register for six door prizes. An ad in this issue gives the details.



NUMBER ONE CAUSE OF FIRES in Texico-Farwell is open trash barrels like this one, says Otis Huggins, Farwell fire chief. The chief says that 75 percent of the fires locally are caused by flying sparks and burning particles from these barrels. Here, Huggins demonstrates how the department is always ready to answer a call, no matter what kind of fire it is, but he points out that a wire screen over these barrels could save firemen a lot of time and also lessen the chances of a serious, destructive fire.

Fire Prevention Week Observed

Members of the Texico and Farwell Fire Department are observing National Fire Prevention Week by inviting Twin City citizens to open houses.

The Ladies Auxiliary of the Texico Fire Department was host last night (Wednesday) to citizens at the Texico department. Spudnuts and coffee were served to the visitors.

Farwell will have its open house Sunday from 3 to 5 p. m. Otis Huggins, Farwell fire chief, invites all citizens to be on hand for a briefing of how the department functions and to see the facilities of the department.

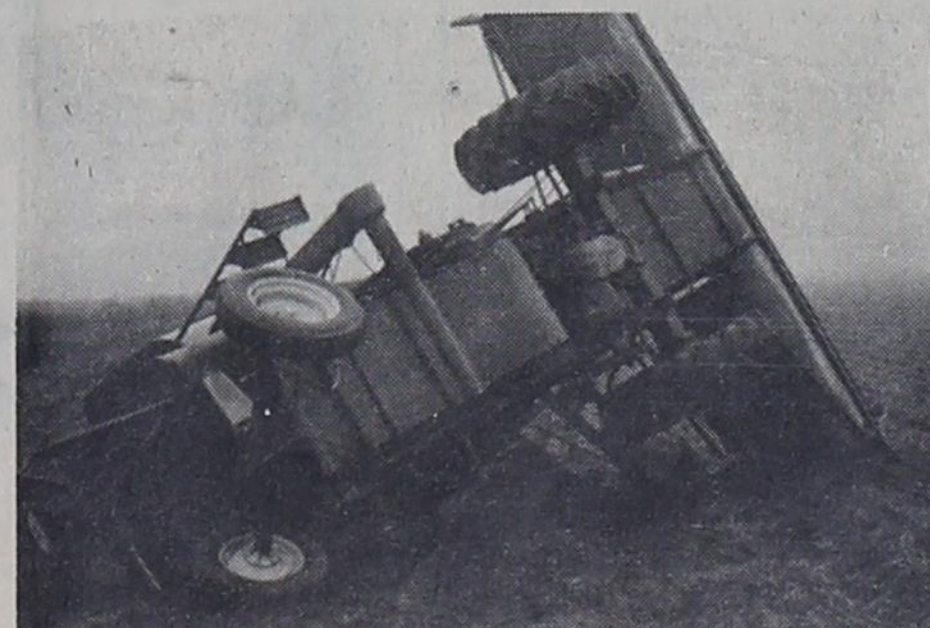
Coffee and doughnuts will be served to visitors.

Commenting on Fire Prevention Week and what the number one cause of fires in the Twin Cities is, Huggins says that open trash barrels cause about 75 percent of the fires the local departments are called on to put out.

Wind blows sparks and burning debris from these open barrels and causes many unnecessary fires, Huggins explains.

(Continued on page 8)

Tornado Hits At Winkles Farm



The big, black, destructive tornado that lashed its way across eastern Curry and Parmer Counties Tuesday afternoon did this damage to the Lowry Winkles farm near the Pleasant Hill community, 13 miles north of Texico-Farwell. At left is a combine that was picked up and carried 300 feet before being put down in this position. The picture at right shows how a 300-foot wide strip of this maize field was laid over.



According to eye witnesses, the funnel cloud was on the ground for about five minutes at this location before ascending back into the air and heading in the direction of Bovina and Friona. The tornado did most of its damage at Friona, levelling two drive-in theatres, turning over several mobile homes and wrecking several other structures. Damage at Friona was estimated at \$400,000.



THE STATE LINE TRIBUNE

RICHARD HAPKE, EDITOR

Entered as second class matter at Farwell, Texas, under the act of March 3rd, 1879. Published every Thursday.

SUBSCRIPTION RATES -- Farmer and adjoining counties, \$3.00 per year; elsewhere, \$4.00 per year. Payable in advance.

The Tribune is a member of:

- NATIONAL EDITORIAL ASSOCIATION
- TEXAS PRESS ASSOCIATION
- WEST TEXAS PRESS ASSOCIATION
- PANHANDLE PRESS ASSOCIATION

News From LAZBUDDIE
BY MRS. C. A. WATSON

sick at this time. Sunday guests in the Willie Steinbock home were Mr. and Mrs. John McGhee and Mr. and Mrs. Willie Waddle. Mrs. Lena Menefee and Mrs. Laura Trieder are at Corpus visiting relatives this week. Mrs. Nora McCurdy, Mrs. Ben Foster, and Mrs. May Mahau attended the motorcycle races near Texico Sunday afternoon. Mrs. John Bond, Mrs. Jack Smith, Sharon Parhams, John Agee, Beverly Smith, Ronnie Gustin, and Odis Bradshaw attended the football game in Canyon Saturday night. Visitors in the Jack Smith and Jack Finley home Sunday

were Mr. and Mrs. W. E. Pugh, Tim and Barbara, of Amarillo; Mr. and Mrs. Glen Scott, Karan and Terry; and Ronnie Gustin. Connie McDonald, daughter of the Don McDonalds, is a patient in the West Plains Hospital this week. Mr. and Mrs. Jack Black and children enjoyed the week-end at Carrizozo and Nogal Canyon. Mrs. N. M. McCurdy, Mrs. Jack Smith, and Mrs. Jack Finley attended the Reagen family reunion in Ardmore the past week-end. They were met there by Katherine Smith who is attending TCU at Ft. Worth. Sunday night they took Katherine back and spent the night there. Some of the "Who's Who" in Lazbuddie School are: most popular-Beverly Smith, Janice Darling, Gayle Robinson; Princess of friendship-Penny Grusendorf, Patsy Marrow, and Beverly Smith; Miss Success-Coretta Watkins, Brenda Mason, and Janice Darling; most attractive girl-Judy Brown, Gayle Robinson, Sharon Parham; cutest girl-Sharon Parham, Mary Faye Rigney, Penny Grusendorf; most popular boy-Jerry Don Glover, Norman Brantly, Billy Hardage; Prince of friendship-Jimmy Broadhurst, Jerry Smith, Norman Brantly; Mr. Success-David Tarter, Jimmy Broadhurst, Roy Max Miller; most attractive boy-R. L. Porter, Roy Max Miller, Freddie Savage; cutest boy-Roy Max Miller, James Brown, and Gary Mack Brown. Last Friday night the Lazbuddie Longhorns won the game over New Home 20-6. The Horns now have four wins and one loss. Fullback Freddie Savage scored for Lazbuddie from the six yard line after half-back Otis Bradshaw carried a punt return 65 yards. Roy Max Miller gained Lazbuddie a score with a quarter back sneak for two yards, and Jerry Don Glover scored on a 30 yard pass in the second quarter to give Lazbuddie their wins. All the boys made good plays and are to be congratulated. The Mid Way H. D. Club met Oct. 4 in the home of Mrs. Irene Watkins. Mrs. Elsa Foster was in charge of the meeting. Roll call was answered with "what I must do this month." Frances King gave the program on landscaping. Refreshments of sour cream apple pie were served to 14 members. The ladies of the Lazbuddie Church of Christ went to Portales last Thursday to work in the Orphan's Home. Funeral services for T. F. Tipton, 87, were held Oct. 7 at the Church of Christ at Tipton, Okla. Those attending from

here were his daughter, Mrs. Leland Ivy and family; his brother and wife, the Sol Tiptons; and Mr. and Mrs. Henry Ivy. Mr. and Mrs. Clyde Monk attended the funeral of their friend, Mrs. Bo Curise, in Tulia last Tuesday. Mrs. Curise was killed in a car accident on her way to church Sunday evening. Happy birthday this week to the following: Arvil Lawrence-10th; Garry Elliot-10th; Robert Salinas-11th; Gail Morris-11th; Debra Ann Bullock-11th; Judy Gail Parker-14th; J. C. Ward-14th; Mrs. Jack Smith-14th; Margaret Wilson-15th; Almeta Gulley-17th; and Lee Bond-17th. The Lazbuddie School Fair was held Monday. Results will be in next weeks news. The Lazbuddie girls will have a football game Thursday at 8 p. m. at the football ground. The boys will make up the pep squad.

erson, Betty Westberry, Pauline Servatius, Koleta Doshier, Terry Miller and Donald Callouet. Others receiving parts were Jeannene Campbell, Glenda Billingsley, Jean Shoemate, Bill Reid, Alfred Stover, Trudie Lambert, Lee Spears, Leslie Winsper, and Mike Trower. Fred Danforth and A. D. McDonald, senior sponsors, will direct the play.

Texico Band Concert Soon

Tuesday night, Oct. 18, at 7:30 p. m. in the Texico School Gym is the time and place for a concert by the Texico High School Band and the Intermediate Band. This concert is a kick off towards raising money for the purchase of new band uniforms. Although there will be no admission charged, donations will be accepted with the proceeds to be used to help reach this goal. The program will consist of marches and light selections by the bands and about five numbers by the chorus.

Cast Announced For Senior Play

November 4 is the date set for the Texico senior play, "Marrying Margaret." The play, a three-act comedy, deals with the efforts of two younger Hunter daughters to marry off their older sister, Margaret. The main characters are as follows: Glendon Moss, Pat Pat-

LEGAL NOTICE
STATEMENT REQUIRED BY THE ACT OF AUGUST 24, 1912, AS AMENDED BY THE ACTS OF MARCH 3, 1933, JULY 2, 1946 AND JUNE 11, 1960 (74 STAT. 208) SHOWING THE OWNERSHIP, MANAGEMENT, AND CIRCULATION OF THE STATE LINE TRIBUNE published weekly at Farwell, Texas, for October 13, 1960. 1. The names and addresses of the publisher, editor, managing editor, and business managers are: Publisher, W. H. Graham Jr., Farwell, Texas; Editor, Richard Hapke, Texico, N. M.; Managing editor, same; Business manager, same. 2. The owner is: (If owned by a corporation, its name and address must be stated and also immediately thereunder the names and addresses of stockholders owning or holding 1 percent or more of total amount of

stock. If not owned by a corporation, the names and addresses of the individual owners must be given. If owned by a partnership or other unincorporated firm, its name and address, as well as that of each individual member, must be given.) W. H. Graham Jr., Farwell, Texas. 3. The known bondholders, mortgages, and other security holders owning or holding 1 percent or more of total amount of bonds, mortgages, or other securities are: (If there are none, so state.) None. 4. Paragraphs 2 and 3 include, in cases where the stockholder or security holder appears upon the books of the company as trustee or in any other fiduciary relation, the name of the person or corporation for whom such trustee is acting; also the statements in the two paragraphs show the affiant's full knowledge and belief as to the circum-

stances and conditions under which stockholders and security holders who do not appear upon the books of the company as trustees, hold stock and securities in a capacity other than that of a bona fide owner. 5. The average number of copies of each issue of this publication sold or distributed, through the mails or otherwise, to paid subscribers during the 12 months preceding the date shown above was: (This information is required by the act of June 11, 1960, to be included in all statements regardless of frequency of issue.) 970. /s/ Richard Hapke, Editor. Sworn to and subscribed before me this 30 day of Sept., 1960. SEAL Jesse T. Landrum Notary Public, Farmer Co. Tex. (My commission expires 6/1/61)

- *FOR QUICK HANDLING
- *FOR GREATER SATISFACTION
- *FOR SALE OR STORAGE BRING YOUR GRAIN TO

Curry County Grain & Elevator Company

3,550,000 Bu. Bonded & Insured Storage

PO2-2946

Clovis, New Mexico

DEMOCRATS And REPUBLICANS AGREE!
When It's **TUNE-UP TIME!**
The Place To Go Is **Karl's Auto Clinic**
--Farwell--

Pierce Marine Sales & Service
Your Johnson & Scott Dealer
917 E. 1st St. Clovis

Pierce Marine Sales & Service
Your Johnson & Scott Dealer
917 E. 1st St. Clovis

Servis GYRO 140

This fall shred 4 rows at once - even the heaviest stalks!

Here's a real work horse. This 140" shredder and clipper - full 4 row size - gets work out of the way in a hurry. Shreds four rows of cotton, sorghum, or corn stalks... clips 140" swath of pasture... handling 1 1/2" brush and stalks with ease. Behind a 35-50 H.P. tractor it cuts from 60 to 100 acres a day, depending on field conditions.

All gear driven-heavy duty. The three sets of rotating blades are all gear driven, using the same type heavy-duty gears and gear boxes as the other famous Servis Gyro cutters. The Gyro 140 also carries the famous flywheel action, heavy blade assemblies for tremendous cutting power at economical, low RPM.

Offset for close work. Cutting swath offsets the 72" spaced wheels on both sides. You can cut under trees, close to fences and barns going in either direction. Though normal overall width exceeds 12', the slide shoes are easily removed, permitting the Gyro 140 to be pulled through a 12' gate.

Optional equipment. The patented Servis shredding attachment with its intermeshing blades is available. Also fan blades and suction skirt with deflector ribs for pick-up and finer shredding can be specified. Special hitch for tandem disk (where power is available), another optional, time-saver feature.

Cuts shredding time in half. Compared with a 5' shredder, you do the same job with half the labor and almost half the fuel cost.

You get the job done - at the time you need it done - fast!

Priced far lower than you would expect such a work horse to be. Come in this week for a demonstration.

FRANCIS IMPLEMENT CO.
Muleshoe Hi-Way 70 & 84 Tex.

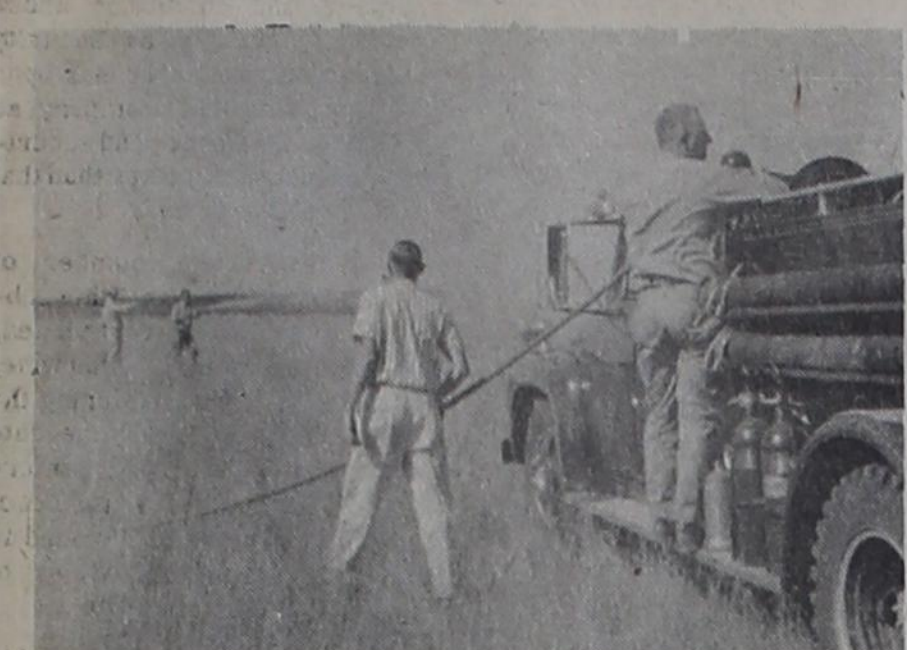
Progress Is Profit
When It's Time To Gin
CALL ON PROGRESS GIN
For Maximum Profit In 1960

With Most Modern Gin Machinery In Top Running Condition, We Stand Ready To Do A Ginning Job For You That Will Assure The Best Possible Grades And Good Turnout. Your Satisfaction Is An Important Part Of Our Business.



Good Ginning Can Help Your Farm Profit Picture.
You'll Get Good Ginning When You Bring Your Crop To The **PROGRESS GIN CO.**





PUTTING OUT A GRASS FIRE at the C. L. Mahaney farm south of Farwell last Friday afternoon were these firemen of the Farwell Fire Department. The blaze was apparently started by sparks from a nearby trash fire. The fire was extinguished after about two acres were burned.



THIS FIREMAN
Is One Of Your Best Friends
BUT — HE CAN'T
Write Insurance!
See Us Today!
GRAHAM-MAGNESS INSURANCE
"Oldest Farmer County Agency"
481-3671
Farwell

Mrs. Burnett Has Extension Club

Mrs. Tom Burnett was hostess to the Pleasant Hill Extension club for their Oct. 6 meeting. A covered dish luncheon was featured at noon.

"Entertaining Family and Friends" was the title of the talk given by Mrs. Lillie Mae Daughtrey in the afternoon. Members did embroidery work for the hostess.

Two visitors, Mrs. Daughtrey and Mrs. Pearl Duncan, attended. Members present were Mesdames Elmer Langford, Frank Meier, John Range, H. M. Hopper, Leonard Kimbrough, Pearl Singleberry, Mason Neely, Floyd Cox, Lowry Winkles, Alvis Clark, Eric Pierce, Maurice Clark, Joe Heinz, and the hostess.

Next meeting will be Oct. 20 in the home of Mrs. Bob Serfatius. Mrs. Eula Mae Madole will give a demonstration on Christmas decorations and gift wrapping.

WMS Meets Monday

The Woman's Missionary Society met Monday afternoon at the First Baptist Church in Farwell, with Mrs. Billy Dollar, president, calling the meeting to order.

Mrs. Lucille Franse, missionary chairman, was in charge of the program entitled "People and Realms of Every Tongue."

The calendar of prayer was led by Mrs. Dora Johnson, who also led the group in prayer for the missionaries with birthdays on that day.

Attending were Mesdames Dollar, James Terrell, Calvin Blain, Joe Reed, Joe McWilliams, Bruce Blair Jr., and R. T. Langston.

Birthday Party For Miss Boling

Cheryl Boling was honored Saturday on her eighth birthday with a wiener roast at her home.

The group enjoyed games in the back yard. After the gifts were opened, refreshments of hot dogs, potato chips, cake, and homemade ice cream were served to the following guests: Tina Rundell, Twila and Jana Lindsey, Cynthia Phillips, Meredith Anderson, Janie Watkins, Vicki Blain, Rhonda Robertson, Sharon Williams, Melody Roberts, Marsha Lovelace, Linda Dannheim, and the honoree, Cheryl Boling.

Local Study Club Sponsors Supper

Preceding the Farwell-Hale Center football game to be played here Oct. 21, the Farwell Study Club will hold their annual chuck wagon supper at the High School Cafeteria.

Tickets will be available from Mrs. Mose Glasscock at the Security State Bank or from any member of the Study Club.

Serving will begin at 4:30 p. m. The proposed menu will consist of ham, candied sweet potatoes, vegetable, green salad, rolls, pie and coffee.

Jr. G. A. Class Plans Party

The Junior GAs of the Texico Baptist Church met Monday afternoon for their regular meeting with Teresa Luce calling the business session to order.

The group decided to have a party every three months for the members who come regularly. Plans were made for the Halloween party which will be Oct. 28.

Wanda Burris led the group in singing "Standing On The Promises" and "Must Jesus Bear The Cross Alone." Marlene Bell, program chairman, was in charge of the program on "Portugese Spoken Here," in which all the girls took part.

Wanda Burris served pop to Sandy Tipton, Jana Lindsey, Marilyn Doshier, Marlene and Darlene Bell, Teresa Luce, Linda Hudson, and their teacher, Mrs. Allie Burris.

Dr. Willingham Speaks At Guild

Dr. R. L. Willingham, pastor of the First Methodist Church at Clovis, was guest speaker for the Wesleyan Guild at their regular meeting Tuesday, Oct. 4. His topic was "Catholics and the Election."

Mrs. Bob Anderson and Mrs. Joe Helton, hostesses, served coffee, ice cream and cookies for refreshments.

Members and guests present were Rev. and Mrs. Robert Tomlinson, Mr. and Mrs. J. R. Thornton, and Mmes. Cecil Dykes, Harold Travis, Bob Hines, Howard Crook, Donald Rolland, R. L. Willingham, Robert Morton, Glen Phillips, Bunk Phillips, Bill Garret, W. T. Magness, Joe White, Elmer Teel, Pike Jordan, Marilyn Edwards, Bill Prince, Joe Helton, Bob Anderson and Dr. Willingham.

GOVERNMENT SURPLUS SALES

NOW anyone can buy DIRECT from U.S. GOVERNMENT SURPLUS DEPOSITS, by mail for yourself or for resale. Cameras, binoculars, cars, jeeps, trucks, boats, hardware, office machines and equipment, tents, tools and tens-of-thousands of other items at a fraction of their original cost. Many items brand new. For list of hundreds of U.S. Government Surplus Depots, located in every State and overseas with pamphlet "How Government Can Ship Direct To You," plus procedures. HOW TO BUY and how to get FREE SURPLUS, mail \$2.00 to SURPLUS SALES INFORMATION SERVICES, P.O. Box No. 1818, Washington 5, D.C.

Local 4-H Club Has State Winners

There were five winners of ribbons at the New Mexico State Fair from the Pleasant Hill Pal 4-H Club.

In Embroidery I, Lynell Lovett took blue on a sampler, blue on dresser scarf, red on a set of place mats, and white on a pair of pillow cases.

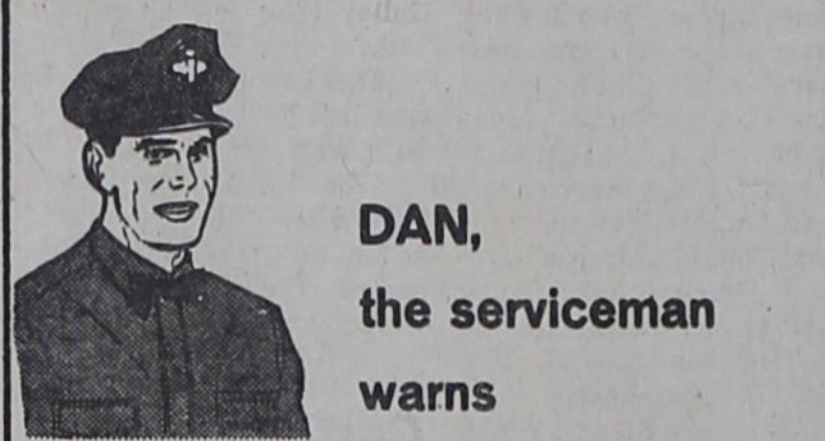
Veda Wilson won five ribbons, in Embroidery II the two blues were for cross stitch tablecloth and pillowcases, red for embroidery reference book

Sgt. Geries Home From Okinawa

Sgt. Bob Geries is home on thirty day leave after being stationed in Okinawa with the Third Marine Division for the past 16 months. He is the son of the Dick Geries, Farwell.

His wife, the former Charlene Rayl, and children live in Clovis. Sgt. Geries had never seen his son Bob, who is 11 months old. Their daughter, Dona, is 3 1/2 years of age.

After his leave, Sgt. Geries and his family will go to Camp Pendleton, Calif.



DAN, the serviceman warns

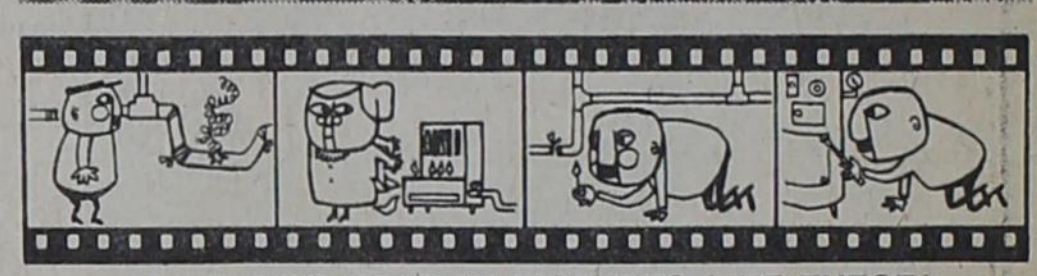
DON'T PUT YOURSELF IN THIS PICTURE!
Falls—the number one killer in the home—took the lives of 12,000 people last year. Home accidents, in all, killed more than 26,000, and injured 3,900,000 more. Make sure your home is checked against all potential dangers, such as household poisons within a child's reach... dark stairways or toys on stairs... and never smoke in bed or while lying on a couch. You may save your life or the life of someone in your family.

Your home is as safe as you make it!

Natural Gas is your safe, modern fuel... but like all sources of energy it must be used wisely. • Make sure your heating equipment is in good operating condition—that vent pipes are not broken nor clogged—that you keep clothing and curtains away from open flame heaters. • Never look for a gas leak with a match, call your gas company. • And for proper installation or adjustment of your heating equipment, call a licensed plumber, heating contractor or your gas company.

SPONSORED IN THE INTEREST OF HOME SAFETY BY

- Texico Public Schools
- Farwell Public Schools
- Southern Union Gas Company
- Texico-Farwell Lions Club
- Texico & Farwell Fire Dept.



AND DON'T STAR IN PICTURES LIKE THESE!

VOTE FOR TEXAS

RICHARD M. NIXON, candidate for President, is a Californian, but he thinks the Texas way. Richard Nixon stands for:

- A strong national economy and defense so that America will not have to apologize to Khrushchev for anything;
- A sensible farm program that will attack and solve the present problems.
- Texas retaining its tidelands, and a tax policy favorable to Texas.
- Local control of our schools.

If you will read and compare Nixon's platform to that of his opponent, you will agree that a vote for Nixon is a vote for the best interests of Texas.

TEXAS DEMOCRATS FOR NIXON & LODGE
ALLAN SHIVERS, Chairman
308 W. 15th, Austin
(Pd. Pol. Adv.)

Trade Now For A 830 SERIES CASE 5-6 PLOW TRACTOR

Case-o-matic Drive or Dual-Range Transmission

DUAL FRONT WHEEL* Front wheel treads 9 1/2, 12 1/2 and 15 1/2 inches. Rear wheel tread 52-88 inches... with Power-Shift wheels 52-96 inches. Extra wide 108-inch axle also available.

SINGLE FRONT WHEEL* with 9.00-10 (8-ply) or 7.50-16 (10-ply) tire. Rear wheel tread 52-88 inches... with Power-Shift wheels 52-96 inches. Extra wide 108-inch axle also available.

ADJUSTABLE FRONT AXLE* Three sizes available: 41 to 62, 48 to 73, and 53 to 82 inches. Rear wheel tread 52-88 inches... with Power-Shift wheels 52-96 inches. Extra wide 108-inch axle available.

A-T MACHINERY CO.
1548 Wallace Clovis PO 3-4251

Now...your Chevrolet dealer offers one-stop shopping for your new '61 car!

Here's a better way to choose your new '61 car. Now your Chevrolet dealer offers a range of models to suit almost any taste or need—in a range of prices to suit any budget. It's the greatest show on worth! A full crew of low, low-priced new Chevy Corvairs, including four wonderful new wagons. New Chevy Biscaynes—offering big-car comfort at small-car prices. Beautiful Bel Airs, elegant Impalas, and the incomparable Corvette. Shown below are just 5 of the 30 different models you can pick from. Come on in and make your '61 car-shopping rounds the easy way—all under one roof!

New '61 Chevrolet IMPALA SPORT SEDAN
You've got five Impalas to pick from—models that put the accent on luxury while offering all of Chevy's new ideas about comfort and convenience—like larger door openings, higher seats, and a low-loading deep-well trunk.

Presenting big-car beauty at small-car prices
NEW '61 CHEVY BISCAYNE 6
(2-Door Sedan, above) All Biscaynes, 6 or V8, give you a full measure of Chevy quality, comfort and proved performance. Yet they're priced right down with many smaller cars that give you a lot less!

New lower priced '61 CORVAIR 500 4-DOOR SEDAN
Like all Corvair coupes and sedans, this model costs less for '61. You get more spunk, space and savings—and now Corvair has wagons, too!

New '61 Chevrolet BROOKWOOD 9-PASSENGER STATION WAGON
All six Chevrolet wagons feature a cave-size cargo opening that's nearly five feet across!... plus a new concealed compartment (lock is optional at extra cost) for stowing valuables.

NEW '61 CORVETTE
New form and fineness for America's only true sports car. New '61 Corvette offers more performance and more luxury equipment than any car in its class.

See the greatest show on worth at your Chevrolet dealer's!

MEADORS - STEWART CO.
301 PILE CLOVIS, N. M. PO 3-4406



PRACTICING FOR THE PEP RALLY to be held tonight are the Farwell High School cheerleaders. From left to right, front row; are Dorris Donaldson and Bonnie Cochran, sophomores, back row; Jo Potts, senior and head cheerleader; Joan Potts, junior; and Carolyn Routon, junior. These girls were selected for this position last spring when try-outs were held with 11 participating. ENMU cheerleaders served as judges. These girls, along with the pep club, which is composed of 34 members, will participate in the giant pep rally which will inaugurate festivities for the Farwell Homecoming, and also to cheer at the Farwell-Kress football game Friday night.

New Officers Installed For Rebecca SS. Class

The Rebecca Sunday School Class of the First Baptist Church in Farwell met Oct. 3 in the home of Mrs. Johnnie Williams with Mrs. Clyde Magness as co-hostess. The meeting was called to order by Mrs. M. F. Green. Mrs. E. G. Williams led the opening prayer. New officers were installed by Mrs. Bruce Blair with the theme being "Doors." Those installed were: Mrs. W. W. Johnson, teacher; Mrs. Clyde Magness, assistant teacher; Mrs. Johnnie Williams, president; Mrs. Ed Hardage, vice-president; Mrs. Willie Roberts, secretary-treasurer; Mrs. Willie Hardage, assistant secretary-treasurer; Mrs. Elmer Scott, recording secretary and reporter; Mrs. Elbert Landrum and Mrs. O. C. Petree, group captains; and Mrs. Harry Whitley, class minister.

A short business meeting was held after which secret gifts were exchanged. Refreshments of spiced tea, sandwiches, brownies, mints and nuts were served by the hostesses. Those present other than the above mentioned were Mesdames Mabel Reynolds, Clay Henson, Asa Smith, Dick Gerles, Walter Hardage, Amos Tatum, Nathan, Harding, John Boling, Clytie Dial, and one visitor, Mrs. L. P. Green.

Study Club Meets Monday

The Farwell Study Club will meet Monday night, Oct. 17, at the Farwell High School Home Ec. building. Mrs. Claud Coffey will be hostess with Mrs. Mose Glasscock to serve as co-hostess.

Bridal Shower Fetes Mrs. Lesly

Mrs. Bobby Lesly, nee Reta Rose, was honored with a post-nuptial shower Thursday, at the Texico Woman's Club building. Hostesses for the afternoon affair were Mesdames Bob Hammonds, Grady Herington, W. E. Martin, Ted Sheets, Melvin Burns, Cecil Atchley, Leroy McDonald, Preston Martin, Bernard Nelson, Lexie Branscum, and Robert Calloway. Corsages made of kitchenware were presented to Mrs. Bobby Lesly, Mrs. Glen Lesly, and Mrs. Una Lesly. These were later presented to the bride.

The serving table was in pink overlaid with white organdy. It featured an arrangement of pink and white rosebuds in a fluted pink crystal bowl which was centered in a huge matching platter. This was flanked by matching candle holders with pink candles.

The white cake was served by Mrs. Robert Calloway, and Mrs. Lexie Branscum served the pink punch. Assorted nuts, pink and white mints, and white and silver napkins, the crystal serving dishes and silver service completed the table appointments.

Pink and white were carried throughout with the gift table being laid in white lace and centered with a pink lace basket which was filled with small grocery items which were later presented to the honoree.

A crystal vase filled with pink rosebuds decorated the table on which the guest book was placed. This too was a gift for the honoree.

Those attending were Mrs. Una Lesly and Mrs. Mattie Thorp of Ralls; Mrs. Darwood Marshall and Mrs. John Marshall of Whiteface; Mrs. T. O. Lesly, Lazbuddie; Mrs. J. C. Redwine, Bovina; Miss Susie Carpenter; Mrs. Miss White; Miss Carolyn Watts; Mrs. Glen Lesly; Mrs. Earl Routon; Miss Jeanette Lindop; Mrs. Phillip Crume; Miss Joan Potts; Mrs. U. L. Lesly; Miss Paula Martin; and the hostesses.

Many sent gifts who were unable to be present.

Mr. and Mrs. Claud Dyer, Jackie and Leslie, spent Sunday afternoon in Logan visiting with the Elmore Hendrix family. They were accompanied there by Sharon Hendrix, who had spent Saturday and part of Sunday in Texico with Glenda Billingsley.

YOUR TV SET WORN OUT?

TRADE IT FOR

Service On All Makes and Models

HUGHES ELECTRONICS

In Hughes Auto Parts Building

IV6-9083 Farwell

Of Interest To THE WOMEN

Coffee, Model Meeting Held Friday As Part Of ESA Rush

The third social function in a series of rush programs for Theta Rho chapter ESA was held Monday night, when the group met in the home of Mrs. Don Williams for the model meeting. Special guest was Mrs. John McFarland, who is a new member of the sorority Mrs. Marilyn Brooks of Clovis, also a new member, was unable to be present because of illness in her family. Other guests were Mesdames Walter Kaltwasser and Gilbert Kaltwasser, former members.

A chuck wagon supper in the Gilbert Watkins home began festivities, a coffee was held in the home of Mrs. Bill Prince Friday morning, and the formal initiation is slated October 24.

A fall motif was used for the informal coffee held Friday morning in the home of Mrs. Prince. The eggshell linen cloth covering the serving table was designed with brown cutwork. A brass compote held the unusual arrangement of Japanese lanterns and bronzed leaves centered with a yellow candle. Pineapple tidbits on toothpicks

Masons Honored

The members of the Eastern Star honored the Masons with a supper at their meeting at Bovina last week.

Those attending from here were Judge A. D. Smith, Mr. and Mrs. Nelson Smith, Mr. and Mrs. John Zahn, and Mr. and Mrs. Clyde Perkins.

were the focal point of the hors d'oeuvre tray, with fresh grapes surrounding the arrangement. Party cookies yellow, green, and chocolate and cinnamon rolls, yellow mints, and coffee were served from a milk glass service. Milk glass appointments were also used.

Mrs. Prince, vice-president, introduced the president, Mrs. John Getz, when the model meeting began Monday. Each officer gave a brief resume of

Thompsons Have New Grand-Baby

Mrs. Lee Thompson left Sunday for Abilene, where she will stay with her son and family, Mr. and Mrs. Loren Thompson, for about two weeks to help out with the new baby.

The Thompson's new daughter, Liesa Diane, was born about 9 p. m. Oct. 9. They have a boy, Phil, who will be five years old in December.

Maternal grandparents are Mr. and Mrs. Harry Thompson of Brunswick, Maine, and Mr. and Mrs. Lee Thompson, Farwell, are the paternal grandparents.

Loren Thompson was raised in this area and preached at Lariat for two and one-half years, leaving that post in September 1958. At present, he is a teacher at Abilene Christian College.

her duties before a brief business meeting was held.

The first fall rummage sale, planned for Saturday, was discussed and a committee was appointed to buy treats for the annual visit of Santa Claus. Initiation was planned for October 24, with the time and place to be set by the social committee.

"Kitty My Rib" was the title of the book reviewed by Mrs. Walter Kaltwasser. The book unraveled the story of the wife of the religious leader, Martin Luther, and told of the trials of her life in the 1500's.

Following the program, Mrs. Williams served coffee and caramel pie to members and guests.

A Complete Line of **INSURANCE**

- * FIRE
- * AUTO
- * LIFE
- * HOSPITAL
- * GROUP

JOHN GETZ
Insurance - Farwell -

Mrs. Roth Installs Class Officers

"Jewels" was the theme used for the installation service of the Companion Sunday School Class of the Texico Baptist Church when it met Thursday night, Oct. 6, in the home of Mrs. Frances Boling.

The teacher of the class, Mrs. Tena Roth, installed the officers. She compared Christian young women to jewels in that both are rare, precious and valuable. Both should be carefully protected. She also stated that a jewel and a Christian, to be valuable, must be polished and cut. "Jesus is our master diamond cutter," she emphasized.

Those installed as officers were: Mrs. Charlotte Pierce, president; Mrs. Audrey Kittrell, vice-president; Mrs. Joyce Byrd, secretary; Mrs. Pat Webb, treasurer and com-

Showing At The **BORDER**
Dial 481-3220

Friday & Saturday Oct. 14 & 15

MADE IN TEXAS
The ADVENTURES OF HUCKLEBERRY FINN
TONY RANDALL ARCHIE MOORE EDDIE HODGES

MADE IN TEXAS
GREATEST SHOW ON EARTH
LARRY MITCHELL - BOB WELLS - KETTER - LARRY MITCHELL - BOB WELLS - KETTER

Sunday & Monday Oct. 16 & 17

munity missions chairman; Mrs. Frances Boling, reporter; and Mrs. Mary Dell Brown, devotional chairman.

Mrs. Boling served refreshments of cherry Jello salad, wafers, nuts, spiced tea, and coffee to the above mentioned and Mesdames Alleen Pierce, Marjorie Fought, Betty Thornton, and Mary Lynn London.

CAR-TUNES

You came to the right place for that eulogy, lady! We knew your old battery so well! Checked and recharged it so often to add so many miles and months to its useful life. Our battery service is tops; our new batteries likewise.

"Very well! I'll buy one of your batteries if you'll throw in a eulogy for my dead battery."

PHILLIPS 66 **JONES 66 STATION**
Phone 481-3662 Farwell

FORMAL OPENING

Saturday, Oct. 15

We Invite You To Come By To See Our Wide Selection Of Women's Apparel And Take Advantage Of These Specials:

All Fall Dresses 20 % Off
(Good Saturday Only)

Close-Out On Men's Wear

Everything Goes At

1/2 Price

(This Special Good Until Stock Is Depleted)

Linda Kaye's

"Ready To Wear"

Farwell, Texas

Register Either Friday Or Saturday For These **DOOR PRIZES**

- 1st. Prize--\$35. Dress
- 2nd. Prize--\$20. Skirt and Sweater
- 3rd. Prize--\$15. Pants and Top Set
- 4th. Prize--\$6. Lingerie Set
- 5th. Prize--\$4. Jewelry Set

Drawings Will Be Saturday At 5:30 P.M. (You Do Not Have To Be Present To Win)



Linda Robinson, store manager, looks over some of the many beautiful fall dresses that will be on sale.

Lane Cedar Chests
Master Craft Living Room Furniture
Rockers-Suites Sectionals
SISEMORE FURNITURE
"We Cheat You For Less"

1305 N. Main Clovis PO 3-7534

Are you taking chances?

If trouble hits and you have insurance to fall back upon, we can assure you prompt, careful attention to your claim. When misfortune strikes, your agent is a friend you can turn to with utmost confidence.

ALDRIDGE Insurance Agency

-Farwell-



Miss Coffey Heads Austin Family Gathers Here Farwell 4-H Club

Officers were elected for the Farwell 4-H Club when the members met Wednesday evening, Oct. 5, at the home of Mrs. U. L. Lesley.

Mary Coffey was elected to serve as president. She will be assisted by Lucille Morris, vice-president; Janis Billingsley, secretary-treasurer; Peggy Sue Lesley, reporter; Reba Lesley, county delegate; Viane Lesley, parliamentarian; Linda Langston, program chairman; Martha Coffey, finance chairman; Susan Blair, song leader; Donna Dunn, recreation leader.

Rayma Lynn Lemons, Darlene Williams, and Linda Williams will serve on the recreation committee.

Junior leaders are Reba Lesley and Lucille Morris.

The 4-H aim, pledge, and prayer were led by Mary Coffey.

October 24 is the next meeting date and the program will be on "Manners in Public."

Austin Family Gathers Here

Brothers and sisters from Texas, Florida, California, and Minnesota gathered in another sister's home in Farwell last Wednesday and Thursday for a family reunion.

The home of Mrs. B. N. Graham was the scene for the Austin family reunion.

The Austin family moved to Lamesa in 1907, and there are five sisters and three brothers still living, all over fifty years of age.

Those attending were: Howard Austin, a dealer in livestock, and his wife who came from their home in Lubbock; Mr. and Mrs. Ross E. Gibson of Lamesa, where Mr. Gibson recently retired as rural carrier after 39 years of service; Mr. and Mrs. Cleve F. Austin, Minneapolis, Minn., where he is postmaster; Mrs. E. R. Coburn from Eagle Lake, Fla., where she and her husband operate a general store; Mrs. William M. White from Lynwood, Calif.; and Mr. and Mrs. Rupert Austin, Lamesa, where he is manager of the Pioneer Gas Co. Another sister, Mrs. Eugene Cox of Lamesa, arrived on Friday before the reunion to assist Mrs. Graham in the preparations.

Mrs. Graham, formerly Irene Austin, moved to Farwell with her husband in 1916, where he operated an insurance agency until his death.

The Austin family has had several reunions, one in Lamesa just fifty years after they moved there. Last year, they assembled in Minneapolis.

Mrs. Graham accompanied the group to Lamesa where they will all be together for a few days. Mrs. Graham plans to visit there for about a week before returning home.

Mr. and Mrs. Ralph Schultz of San Diego were visitors Thursday in the home of Mrs. B. N. Graham.

Mrs. Fred Danforth's parents, Mr. and Mrs. Howard Rogers of Morton, visited in the Danforth home Tuesday.

Cupid Visits Watkins Home

Cupid visited the Watkinses over the weekend.

Actually, Cupid visited the family years ago, but this was a return visit. Guests in the home of Mr. and Mrs. Gilbert Watkins recently were Mr. and Mrs. Donald McLean of Seattle, Wash. This was the first time the couple had visited the local family—a span of 17 years.

It was in the home of Mr. and Mrs. McLean that Mr. and Mrs. Watkins were introduced, and were later married. Mc-

Lean gave the bride away and she was pianist. A reception was held in the McLean home following the ceremony.

It was the policy of the McLeans to invite service people home from church for meals and a "home away from home." Gilbert and Sylvia were among the young guests. Incidentally, other weddings resulted from introduction of young people in the McLean home.

"Sure, I caught a fish," said the Texan. "But it was too small to fool with, so I just had a couple of guys help me throw it back in the lake."

Dr. I. D. Worrell Dr. Chesley Worrell
 OPTOMETRIST OPTOMETRIST
 112 East 4th Across from Post Office
 Clovis, New Mexico Clovis, New Mexico
 --SPECIALISTS IN HUMAN VISION--
 Phone PO 3-4722 Phone PO 3-6753

Many Gather Here For Maddox Family Reunion

This month is the first time in sixty years for seven brothers and two sisters of the Maddox family to be together. The home of Mr. and Mrs. N. L. Tharp was the scene for this first family reunion.

The Maddox family was originally from Chattanooga, Tenn. The youngest of this group is 67 years of age and four are in their eighties. Mrs. Tharp, the former Nettie Maddox, came to the Texico area in 1907, and she and her husband homesteaded northwest of Texico.

Mrs. Tharp's sisters and brothers and their husbands and wives started arriving Sept. 30 and stayed until Oct. 3. Ben Maddox, from Yucaipa, Calif., and Mrs. Beatrice Zimmerman, of Monte Bello, Calif., stayed the remainder of the week.

Others coming for the reunion were: W. H. Maddox, New Kirk, Okla.; Mr. and Mrs. J. H. Maddox, Gary, Okla.; Mr. and Mrs. Bob Maddox, Greeley, Colo.; and Mr. and Mrs. A. D. Maddox, Port, Okla.

One brother, Ed Maddox, from Arizona was unable to be present.

A family dinner was held at the Tharp home Sunday, Oct. 2, with approximately 44 in attendance. Those attending other than the above mentioned were Mr. and Mrs. Bert Maddox, Tucumcari; Mr. and Mrs. Jimmy Dorlin, Oklahoma; Mr. and Mrs. Ray Tharp and family, Texico; Mr. and Mrs. Lewis Tharp, Farwell; Mr. and Mrs. Lloyd Tharp and family, Clovis; Mr. and Mrs. Richard Snow and family, Texico; Mr. and Mrs. Gene Sterling and family, Farwell; and Mr. and Mrs. W. D. Howard Jr. and son, Texico.

The George Maddox and Joe Maddox families from Clovis, and Rev. and Mrs. R. O. Tomlinson, Farwell, called in the afternoon.

Maudline Barnes, daughter of Wesley Barnes of Lazbuddie, is enrolled as a freshman student at Hardin-Simmons University for the 1960 fall term.

Mr. and Mrs. Eura Rose and Kay, and Jimmy Wayne Taylor from Odessa were visitors this week-end in the home of Mr. and Mrs. Bobby Lesley.

You'll SEE RED at Piggly Wiggly!

FARWELL, TEXAS

You'll see red all over the place! Bright red tags, hanging over TOP FOOD VALUES in Piggly Wiggly's exciting RED TAG SALE! Another of Piggly Wiggly's fabulous savings events... each and every sale item plainly marked with a big red tag. You can't miss 'em! For a real shopping spree that won't even dent the budget, be SURE to shop Piggly Wiggly's "RED TAG SALE!"

Specials For Thur.- Fri.- Sat. Oct. 13, 14, 15th
 With Most To Continue Through Wed. Oct. 19, 1960



PHILLIPS 66

"Performance COUNTS"

A Complete Line Of Phillips 66 Products:

- Gasoline
- Oils & Greases
- Philgas
- Tires & Batteries
- Anhydrous Ammonia

Helton Oil Co.
 Texico - Farwell

Campbells Tomato Soup 10 1/2 oz. Can 10¢	Now science brings you this proven way to reduce— without "skipping" on vitamins and minerals you need. MinVitine weight control diet LARGE JAR 98¢
CRISCO 3 lb. Tin 79¢	Food King TOMATO JUICE 46 oz. Can 2 for 49¢
Mixed Nuts Fishers 14 oz. Can 89¢	Sliced Bacon Armour's Star 2 lb. Pkg. 99¢
Green Beans Libbys 303 Can 2 for 43¢	Bologna Pinkney's All Meat 1 lb. 49¢
Post "Top 3" Cereal 10 oz. Pkg. 29¢	Canned Hams 5 lb. Size Pre-cooked, Ready to Eat \$3.98
Cigarette Lighter With 1 Pkg. Camels, Winston, Or Salem Cigarettes. Both For 79¢	Sliced Ham Center Slices Hickory Smoked & Sugar Cured 1 lb. 98¢
Austex No 300 Can Beef & Gravy 39¢	CHARCOAL Kingsford "Smokeless & Odorless" 25" \$1.59
Comstock Pie Apples No. 2 Can 4" \$1.00	Betty Crocker PUDDING MIX 3 For 89¢ Carmel-Lemon, Orange
Scotties Facial Tissue 400 Pkg. 4" \$1.00	Bananas Large Yellow Ripe 1 lb. 10¢
Pop Com 3 Minute Yellow or White 2 lb. Bag. 3" \$1.00	Celery Crisp, Tender, Stalks 1 lb. 10¢
TUNA Starkist No 1/2 Flat Can Green Label Light Chunk or Red Label White Chunk 3" \$1.00	Sweet Potatoes Locally Grown 1 lb. 10¢
Maxwell House COFFEE 1 Lb. Can 65¢	Carrots Crisp & Crunchy 1 lb. Bag 10¢
Borden's Instant Dutch Chocolate "For Delicious Hot or Cold Drink"	- 25% Off - Close Out Sale Of Sand & Sage Hosiery Lines, MEN & Boys Socks, Girls and Childrens Anklets.
Sliced Pineapple Doles No. 1 Flat Can 2 for 39¢	- FROZEN FOOD -
Pan Dry Fry Reg. 79¢ for 49¢ "Fat Free Cooking Aid" Keeps Food From Sticking To Cookery Surfaces	Banquet Pot Pies Each 19¢ Sara Lee All Butter Beef-Chicken-Turkey
Aluminum Foil Reynolds 25 Ft x 12 in Roll 3" \$1.00	Coffee Cakes 11 1/2 oz. 79¢
EZ-Time Steam Iron Fluid Purchase 1 at 69¢, Mail in Attached Coupon With Label For Free 69¢ Refund 69¢	Lobellos Garlic Bread 7 1/2 oz. Tray 37¢
	Chun King Chow Mein Or Chun King Cantonese Dinner Per Pkg. 59¢

QUANTITY RIGHTS RESERVED Double Stamps on Wednesday

ACCEPT NO SUBSTITUTES

There's only **ONE** Democratic Party
 Only **ONE** Texan in the Race

John Kennedy and Lyndon Johnson are the men who get things done, who believe in strengthening small business, encouraging new ventures and greater industrial growth... and who believe a fair share of the national income is the right of every farmer.

Here is Texas' hope for the future... to put an end to GOP policies that have brought tight money, HIGH INTEREST rates, growing business failures, and the cost-price squeeze on the farmer.

Best For Our Nation — Best For Texas

VOTE KENNEDY - JOHNSON NOV. 8

(Pd. Pol. Adv.)
 Kennedy-Johnson Democratic Campaign, Gerald Mann, Director, Austin, Tex.

FALL SHOPPERS GUIDE

CLOVIS

TO BETTER MERCHANTS



FALL IS IN THE AIR -- STORE SELECTIONS ARE AT THEIR BEST -- BUY NOW FOR LATEST FALL STYLES. BUY NOW AND PUT YOUR CHRISTMAS GIFTS ON STORE LAY-A-WAYS.

SHOP NOW SHOP EARLY

The fall fashion scene . . . IN CLOVIS - - -

A For The FAMILY
FURNITURE
TELEVISION
APPLIANCES
TOYS

THE FRIENDLY STORE
 211 Main P03-6541

New Location 308 Main
 (Next Door To Sutters)
Outdoor Gifts For Men And Boys
 Use Our Lay-A-Way
 *Xtra Special On Baseball Gloves
M-M SPORTING GOODS CO.
 308 Main St. P0 2-1390

LATEST FALL STYLES
BOYS - GIRLS - TOTS
 Visit Us At Our New Location
502 MAIN
CHILDREN'S VOGUE
 "Where Parents Shop"

The Most **COMPLETE**
 Selection Of **GIFTS** And
APPLIANCES In Town

*For Gifts Of Satisfaction
 *For Appliances Of Quality

Use Our Charge Or Lay-A-Way

Barry Hardware Co.
THE STORE THAT STAYS.

CLOVIS, NEW MEXICO

Latest Fall Fashions
 *MEN'S SUITS
 *MEN'S COATS
 *MEN'S HATS
 Stetson and Stevens
BELL'S MENS STORE
 214 Main P03-4116

MOVED TO 116 E. 4TH.
 The Most Convenient Place To Eat
DOWN TOWN
PIONEER GRILL
 A.J. and Gertie Longo

To Enjoy A Gift
 The Year Around
 Give
FURNITURE
 Living - Dining
 Bedroom
 Complete Selection
MAY - BILT
 Ready To Paint
 Furniture

FEALY
FURNITURE
STORE
 209 Main P03-7121

AT CHRISTMAS
 A Wide Selection Of
TOYS & GIFTS

General Electric
TELEVISION
 For Year Around Family Fun

GOOD YEAR
 Service Store

1103 Main P03-8121

LOOK TO . . .

For
 *SHOES
 *COATS
 *DRESSES
 *SPORTS
 *ACCESSORIES

The Shop Where West
 Texas & Eastern New
 Mexico Women Like
 To Shop

CLOVIS' OLDEST
 READY-TO-WEAR STORE
 CLOVIS, NEW MEXICO

Give An **APPRECIATED** Gift

Sews On Buttons
 Appliques
 Darns
 Completely
 Automatically

Monograms
 Mends
 Makes Buttonholes
 Completely
 Automatically

Financing Terms Available
NECCHI - ELNA SEWING CIRCLE
 104 W. 5th P02-1013

*DRESSES *LINGERIE
 *COSTUME JEWELRY
 *HATS - COATS - GLOVES

Use Our Lay-A-Way

Celine's -In The Hotel

WESTERN WEAR

. LADIES
 . MENS
 . CHILDRENS

Buttercup's Western Supply
 311 Main

If You Don't Know Carpets Then See Us - We Do!

A Gift For The Family
 From
McClung's CARPET CO.
 "The Only Exclusive Carpet Store in Clovis"
 115 WEST 5TH DIAL PO 2-0990

Headquarters For
SCHWINN BICYCLES
 Shop Early - Use Our Lay-A-Way
Hugh Jones Firestone
 821 Main Tire Headquarters P03-4426

XMAS GIFTS
 *TOYS
 Largest Selection Ever
 *TOOLS
 Wizard
 *APPLIANCES
 \$1.00 Holds On Lay-A-Way

Western Auto
 the family store

Your Home Owned
 Family Store
WALTER HOSKINS
 (Owner)
 303 Main St.
 Phone P03-9210
 Clovis, New Mexico

LATEST HIT TUNES

ALBUMS
 HI-FI &
 STEREO

All Type
 Needles
VILLAGE RECORD SHOP
 113 E. 7th

See Our New Fall Selection
OF MEN'S & BOY'S - SUITS - COATS
ACCESSORIES

Johnson-Brock
 • The Men's and Boys' Store
 403 Main P02-0331

For Gifts Of Distinction
Bryson's
FURNITURE-CARPET-GIFTS
 516-518 Main PO 2-2931

A Complete
GIFT
 Selection

From All
 Price Levels

Gifts Wrapped
 For Mailing

Use Our Lay-A-Way

ALLENE'S
 Gift Shop
 1111 Main P03-5035

Ready **Ann-Lee's** To Wear

Where Mother And Daughter Shop Together

Ladies Junior Sub-Teens
 8's To 20's 5's To 15's 6's To 14's

#8 In The Village PO 3-6411

COMING OR GOING STOP & EAT

1112 E. 1st CLOVIS
 Phone **PO 3-4070**
Thunderbird
DRIVE-IN
 INSIDE SERVICE • WASHROOMS
 Open 9 AM till 12 PM
 BARBECUE BEEF, CHICKEN
 HAM, PORK & PORK RIBS

Lutheran Church News

Sunday evening, the Walther League met at the Lingneau home. Plans for a Halloween party were made and several neighboring Leagues are being invited. Plans for again doing repair on hymn books and Bibles was arranged. Recreation and refreshments were enjoyed after the business meeting and Bible study.

The L.W.M.L. met Thursday afternoon. Rev. Sander spoke on "The Reformation." The group will sponsor a family night on Oct. 16. This will be an ice cream social. Games will follow.

Election of officers will be held at the November meeting.

Oct. 17, there will be an all-day quilting party at the church with a covered dish luncheon.

Mrs. Walter Kaltwasser will be guest speaker at Odessa at the West Texas Rally of the L.W.M.L. Oct. 13.

There will be a meeting of the district council at the church on Oct. 14 at 7:30. The entire congregation is to attend. Dr. W. Riley, board member of the district finance com-

mittee, and Rev. Nuenaber, district counselor, will be here for this meeting.

Pastor Sander will be guest speaker at the Mission Festival at Tulla at 3 p.m. Oct. 16. Pastor Sander will attend the district conference at Amarillo on Oct. 18 and 19.

The sermon theme for Oct. 16 will be "The Imperishable Character of The Word of God."

OKLA. LANE
By Avis Carpenter

Sunday morning church attendance was 77. Lee Nickols of Ft. Worth discussed TANE (Texas Alcohol-Narcotics Education). Special music, "Some Bright Morning," was by Mrs. R. E. Blankenship and the choir. Visitors were the W. H. Branches of Louisville, Ky., parents of Mrs. Blankenship. Sunday evening, six members and one visitor were present for junior MYF and six were in the primary department.

MYF members attending the district meeting at Hale Center Sunday were Zell Billingsley, Paula Winegeart, Ricky Cooper, and the Lawrence Coopers.

Mrs. Donald Christian continued her study of "All the World Together" at WGS Monday. Twelve were present to learn of Southern Asia. On the program were Mesdames George Douglas, Merrill Rundell, T. L. Kent, Donald Christian, and Claude Primrose.

Ruth Circle met Tuesday morning with six present. Mrs. Don McMahan was in charge of the program and Mrs. Melborn Jones gave the closing meditation.

Sunday is Layman's Day. A new study is being conducted each Sunday at 6:45 p.m. on "Stewardship Enriches Life," led by Mrs. Blankenship.

THE TROUBLE WITH TROUBLE IS IT ALWAYS STARTS OUT JUST LIKE FUN.



IF YOU LIKE JIFFY-QUICK, heads-up service, you'll like the way we do things here. We'd like you for a customer. Drive in soon and let's get together!

Phillips 66 Products
Wheeler Avenue
Service Station
ED HALL
Texico - 482-9148

Hospital Notes

Karen, 13-month-old daughter of Mr. and Mrs. Frank Pritchett of Clovis, is in serious condition in Texas Children's Hospital in Houston. She was entered in the hospital Tuesday of last week and is receiving treatment for reaction to drugs. The Pritchetts are former residents of Texico.

Housework is something you do that nobody notices unless you don't do it.

CHARTER NO. 1434

BANK'S OFFICIAL STATEMENT
OF FINANCIAL CONDITION OF THE
SECURITY STATE BANK

at Farwell, Texas at the close of business on the 3rd day of October, 1960, pursuant to call made by the Banking Commissioner of Texas in accordance with the Banking Laws of this State.

RESOURCES

1. Loans and discounts, including overdrafts	\$2,016,093.39
2. United States Government Obligations, direct and guaranteed	1,251,796.87
3. Obligations of states and political subdivisions	66,023.00
4. Other bonds, notes, and debentures	7,000.00
6. Cash, balance due from other banks, including reserve balances, and cash items in process of collection (including exchanges for clearing house)	812,786.55
7. Banking house, or leasehold improvements	1.00
8. Furniture, fixtures, and equipment	1.00
11. Total Resources	\$4,153,701.81

LIABILITIES AND CAPITAL ACCOUNTS

1. Common Capital Stock	\$ 50,000.00
2. Surplus: Certified \$100,000.00	100,000.00
3. Undivided profits	236,750.37
4. Capital reserves	6,476.60
(Not to include specifically allocated reserve for expenses, or valuation allowances)	
5. Demand deposits of individuals, partnerships, and corporations	3,171,709.69
6. Time deposits of individuals, partnerships, and corporations	480,515.39
7. Public funds (Incl. U. S. Govt., states and political subdivisions)	108,249.76
10. Total all deposits \$3,760,474.84	
13. Total Liabilities and Capital Accounts	\$4,153,701.81

CORRECT--ATTEST
/s/ G. D. Anderson
/s/ Helva T. Anderson
/s/ R. W. Anderson
(Directors)

STATE OF TEXAS)
COUNTY OF PARMER)

I, L. S. Pool, being cashier of the above named bank, do solemnly swear that the foregoing statement of condition is true to the best of my knowledge and belief.
/s/ L. S. Pool

Subscribed and sworn to before me this 11 day of October, 1960.
/s/ Nina Glasscock
Notary Public, Parmer County, Texas
(SEAL)

Join The Farwell Businesses
COTTON BOWL

Here's the **KICK-OFF!**

FOOTBALL CONTEST

Your Car Deserves The Best!

Use Texaco Products!

Drive In Regularly For

Your Wholesale Distributor Is

THE TEXAS COMPANY
Woodrow Lovelace
Ph. 481-3209

Texaco Gasoline
Oil Change
Wash & Grease
Delco Batteries
B. F. Goodrich Tires

BILL'S TEXACO
Hwy. 70-84

1. Tulia Vs. Dalhart

We're New In Farwell
And Are Happy To Be
A Part Of The Community!

WE ARE READY TO HANDLE YOUR GRAIN.

McCarter Grain

2. Texas Tech Vs. Baylor

3. Friona Vs. Canyon

Bowling Is Fun

For Everyone... Bowl Often At...

AA Bowl Farwell

4. Texas Vs. Arkansas

Helton Oil Company
Texico-Farwell

*Gasoline
*Oils & Greases
*Philgas
*Anhydrous Ammonia
*Tires
*Batteries

PHILLIPS 66

5. Springlake Vs. Sudan

YOU May WIN Weekly Prizes PLUS GRAND PRIZE OF Expense-Paid* Trip For Two To COTTON BOWL New Year's Day

SECURITY STATE BANK
FARWELL, TEXAS

Member FDIC

6. Kansas Vs. Oklahoma

Low-Cost, Permanent, Post Free

Timberib Buildings

All Types Of Fertilizers
And All Your Farm Supply Needs

Okla. Lane Farm Supply
"Owned By Farmers Who Understand Your Problems"
Phone BA 5-4366

7. Olton Vs. Muleshoe

1. There are 10 high school and/or college football games listed in the ads on this page.

2. Pick the team you think will win in each game and place the WINNER'S NAME beside the same number in the Contest Entry Blank at bottom right of this ad.

3. PICK THE SCORE of the GAME OF THE WEEK and place your guess in the appropriate blank on the entry. Bring or mail the entry blank to The Tribune office by 7 p. m. Friday following this issue.

4. Winners will be named each Saturday. Cash prizes of \$5 for first, \$3 for second, and third prize of \$1 will be awarded.

5. Tabulations of individual entrants will be kept all season and at the end of the season a Grand Prize winner will be named. Grand Prize winner will receive 2 free tickets to Cotton Bowl game plus hotel, food, and traveling expenses to Dallas and the New Year's Day football classic.

6. There is nothing to buy. No requirements other than to bring the entry blank, filled out to The Tribune office by 7 p. m. Friday each week.

7. Only one entry blank may be submitted per individual. If more than one blank is submitted by any one individual, all but the first will be disqualified.

8. Tabulations will be available for public inspection.

9. Everyone is eligible to enter.

We Test It!

FARWELL GRAIN EXCHANGE

—Bill Prince—
Phone 981-9052

8. SMU Vs. Rice

WEEKLY PRIZES:

1st \$5
2nd \$3
3rd \$1

*Expenses include 2 Tickets To Cotton Bowl Game, Paid Reservations For Two At Statler-Hilton Hotel And \$55 For Food And Traveling Expenses

Clip this blank & turn it in to Tribune office by 7 p. m. Friday of this week.

Farwell Businesses Cotton Bowl Football Contest

OFFICIAL ENTRY BLANK

NAME _____

ADDRESS _____

Tie Breaker (Pick Score Of Game)

Farwell _____ Vs. Kress _____

NAME WINNERS ONLY OF THESE GAMES:

1. Texaco	6. Security State
2. McCarter	7. Farm Supply
3. S-A-P	8. Grain Exchange
4. AA Bowl	9. Tribune
5. Helton Oil	

Two Speakers For Texico Assembly

State Patrolman Bill Bullock was speaker for the assembly at Texico School Monday. He was accompanied by Sgt. Jim Syling.

Patrolman Bullock spoke on safe driving. He said, "You can't be too careful. Your first accident may be your last." He stated that the state of New Mexico is sending in reports and working with Cornell

University on program to improve the safety of passenger automobiles.

Among the things that they have perfected is the safety belt. He asked the students to mention to their parents that money spent on a safety belt is a good investment. He also told them that no matter how safe your car may be, it still takes horse sense to drive it.

Pat Patterson gave a report on Girl's State which met at Albuquerque this summer. She was elected to the post of supreme court judge. She also received one of the six special medals which were given to girls who were outstanding during their stay there.

Miss Patterson was also the defendant in the mock trial that they had in connection with county government.

Miss Patterson stated that in thinking about the values she received from Girl's State and something she could pass on to the students, she had decided that it could all be included in the statement, "American citizenship is my most priceless possession."

Fall Rummage Sales Begin

The first fall rummage sale of Theta Rho chapter of ESA is planned Saturday.

An annual project of the chapter, the rummage sales are scheduled to begin about the middle of the afternoon in the vacant building located next to Rose Drug.

"Household items, clothing and other miscellaneous goods will be for sale," says Mrs. John Getz, president. Sales are scheduled for four Saturdays.

JOTTIN'S By Jeanne

We want to thank all of you who helped us gather information on The Tribune in the early days. We would still appreciate any information that any of you might remember about the paper from 1910 until the present day.

Through an unfortunate incident, The Tribune lost all the early day files and only has complete records for the past 10 or 15 years. Some of our friends have given us copies of earlier papers that are truly priceless to us.

We enjoyed reading an early copy of the Farwell Times which was published in 1908. This issue belongs to Hamlin Overstreet and everyone in the shop has been reading it from cover to cover.

Mrs. Minnie B. Francis at Clovis, who was the first postmaster of Farwell, has given us some early day Tribunes that we plan to keep among our most treasured possessions.

E. F. Lokey tells us that he thinks he has some copies that would interest us.

Thanks to all of you for your interest and help.

Fire Prevention--

During the past year, brush fires caused by open barrels have been responsible for most of the fire departments activities.

Huggins says that one way to avoid this type of fire is to put a wire screen over the barrel before lighting a fire, or build an enclosed incinerator.

The Farwell fire chief also points out that carelessness is one of the biggest causes of fires. Faulty electrical wiring and the overloading of circuits are major hazards and householders can help to reduce these by making sure there are enough electrical outlets in a room and to avoid hooking too many appliances and lights to one outlet.

Also, frayed extension cords should be replaced, Huggins says.

AZTEC WHEAT SEED
1st year from registered seed. See--
DONALD WATKINS
Farwell, Ph. 825-2197

FOR SALE--TV antenna and mask. Contact Phillip Crume, Farwell. Phone-481-3863. 50-tfnc

FOR SALE: 5 - room house and 1 acre of land. Colored or Spanish are welcome. Phone 481-3804. 1-3tp

TWO BEDROOM HOME for sale or rent, newly decorated. Les Means, phone 482-3822. 2-ltc

Taxes Payable--

.30; courthouse repair fund, .05; right of way fund, .10; and High Plains water fund, .05.

Also payable now are poll taxes for next year, Thompson says. Payments may be made at the tax assessor's office in Farwell or Ethridge-Spring Agency in Friona.

NEED TO PLACE New Zenith TV Sets in Homes. Hughes Electronics. Phone IV 6-9083, Farwell. 40-tfnc

HOWARD GRIFFIN
General Contractor
Home Repairs
Paint Of All Kinds
Stucco - Dash
Bovina, Texas
Phone AD 8-4277

CARD OF THANKS
May we take this method of thanking our neighbors and friends for their kind expressions of sympathy in our bereavement. These expressions have been deeply appreciated.

Mrs. J. A. Guyer
Mr. and Mrs. Bill Guyer and family
Mr. and Mrs. Reeve Guyer and family
Mr. and Mrs. Charles Lovelace and family
Mr. and Mrs. Myron Bayless and family
Mrs. Kate Byers

AUCTIONEERS
HANEY TATE
Ph. YU 5-5139
WAYNE TATE
Ph. GL 6-2472 Broadview 25-tfnc

WANTED: Dishwasher and cook's helper for AA Bowl Cafe. See or call Mrs. Clark Billingsley. 2-ltc

Am interested in making loans on farms and ranches, also in buying first and second lien notes on land. J. J. Steele, Citizens Bank Building, Clovis, New Mexico. Dial PO 3-3521 or PO 3-6455. 2-4tc

FARMALL 560 TRACTORS-two butane models without TA and two diesel models with TA at old prices. \$350 below current prices.
COLLINS IMP. CO.
Clovis, N. M. 2-2tc

COTTON STRIPPERS-a few McCormick #21 left. Field-tested, sealed bearings, no chains or sprockets. Used strippers too.
COLLINS IMP. CO.
Clovis, N. M. 2-2tc

USED PLOWS - fast-hitch or pull-type. Two-way and one-way. Some late models.
COLLINS IMP. CO.
Clovis, N. M. 2-2tc

CARD OF THANKS
I wish to express my thanks to each one of the many friends whose cards, flowers, calls, visits, prayers, food and gifts helped me so much during my stay in the hospital and upon my return home. These expressions of your friendship and affection were truly appreciated.
Mrs. Guy Cox

FOR SALE--1947 Chevrolet Truck, has '54 motor used one year, in good shape. See U. L. Lesly, Farwell. 52-3tp

MUST SELL---'56 Olds 88, year old. Firestone 500 tires, and air conditioner. Going overseas. \$300 equity and owe \$662. Phone 481-3672. 52-3tp.

FOR SALE--3 bedroom house newly remodeled, 2 car garage, and rent apartment. Dale Berggren, Farwell, phone 481-3812 48-tfnc

REALTOR AUCTIONEER
LAND BUYERS
Go
To CLYDE A. BRAY REALTOR,
Looking For Ranches, And Land
With Irrigation Water. List Your
Property Where The Buyers Go.

Licensed In Texas
PO Box 243
Muleshoe, Texas
Phone 3-1910

Licensed In New Mexico
Burns Agency Bldg.
Clovis, New Mexico
Phone PO 3-5581

I AM your new Tupperware dealer. If you need Tupperware, would like to give a party, or become a Tupperware dealer, contact Carol Dean Huggins, Phone 481-3283, Farwell, Tex. 52-3tp

FOR RENT--3-room unfurnished house, bills paid. Phone 482-3815. 52-3tc

FOR SALE--Two bedroom home on pavement. Phone 481-3326. 52-tfnc

Farmers---

Make This Your
Headquarters During
The Harvest Season.
Worley Grain

Herb Potts, Mgr.

Farwell

ON DISPLAY---NOW '61 LARK

PERFORMABILITY

NEW O. H. V. SKYBOLT SIX

- *Liveliest Six Cylinder Engine Ever Put In A Compact Car
- *Quick Acceleration - Superb Passing Power
- *Amazing Economy



RONNY OLLIE

BLAIR MOTORS

LARK - RAMBLER

"Home Of The Teenie Weenie Gas Burners"

1st & Pile

PO3-4439

Life Is Worth Your Living

By Robert O. Tomlinson

When Christ our Lord was leaving this world to live no longer in the physical life, cut to remain in it in the spiritual life, He said, "Go share with all mankind everywhere whatsoever I have shared with you, and lo, I am with you always."

Here is the purpose of great living and the promise of divine presence to help us in that living. It is evangelism, or the sharing of our Christ, to bring all men into a living, active fellowship with God through Christ as Divine Savior and the regenerating power of the Holy Spirit, to gather them into the fellowship of the Church, and to lead them to express their Christian Discipleship in every area of human life that the Kingdom of God may be realized.

We belong to Christ and our supreme task in life is to win friends and influence people for Him. We are to help Him win the mind of the world to God, His father. If mankind is to find life worth living, it will be in fellowship with the Eternal God. In Christ we find the Eternal Father.

Then let us share our Christ, and all that he has shared with us, and we will find that the presence of the Divine is with us and that Christ's promise is true. The living Christ is present in our hearts to enable us to find that life is worth living.



SECURITY STATE BANK

FARWELL, TEXAS.

Condensed Statement Of Condition At The Close Of Business, Oct. 3, 1960

ASSETS	
Cash & Exchange	\$ 812,786.55
Loans & Discounts	1,748,606.76
Bonds & Warrants	1,324,819.87
C. C. Certificates of Int.	267,486.63
Building, Furniture & Fixtures	2.00
TOTAL ASSETS	\$4,153,701.81
LIABILITIES	
Capital Stock	\$ 50,000.00
Certified Surplus	100,000.00
Undivided Profits	236,750.37
Reserves	6,476.60
Deposits	3,760,474.84
TOTAL LIABILITIES	4,153,701.81

The Above Statement Is Correct -- L. S. Pool, Cashier

SECURITY STATE BANK

Member F.D.I.C. Farwell, Texas

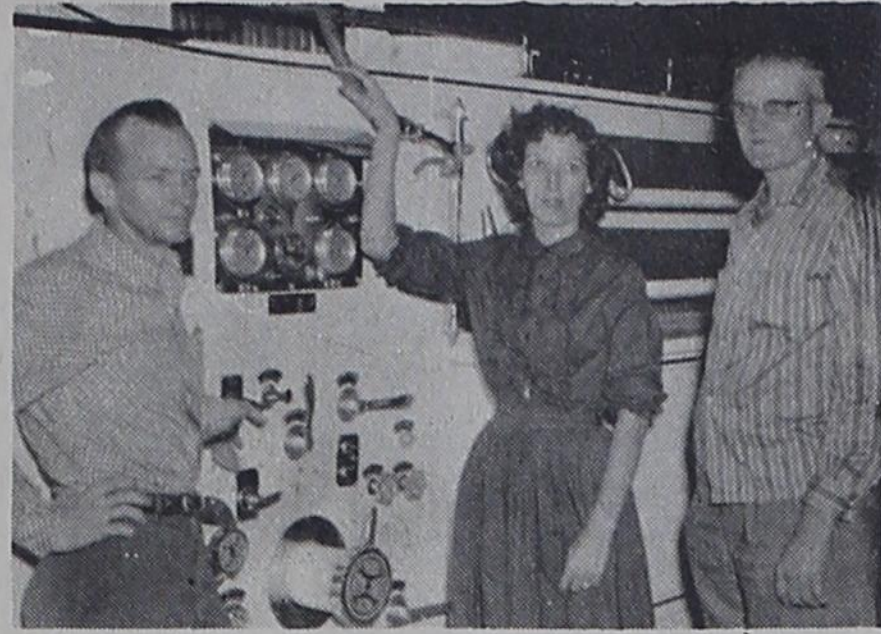
THE STATE LINE
TRIBUNE

"OFFICIAL PUBLICATION OF FARMER COUNTY"

14 PAGES

FIFTIETH YEAR

SECTION II



LOOKING OVER THE FIRE EQUIPMENT is one of the things which the public was treated to at the Texico Fire Station Wednesday night when the Ladies Auxillary sponsored open house as an observance of Fire Prevention Week. Approximately 60 were in attendance to view the modern fire equipment and learn about the latest measures being used to protect their homes and property. In the picture assistant Fire Chief Perry Winkles (left) and Fire Chief F. S. Thigpen explain the instrument panel on the new fire truck to Mrs. Alga D. Hahn.

JOHN AUTREY received this model fire truck as a prize for guessing closest to the number of beans in a jar. He was just two short of the correct number—7,637. The prize was given away at the open house held Wednesday night by the Ladies Auxillary of the Texico Fire Department. Mrs. Perry Winkles, president of the organization, is shown presenting the prize. In the background are Perry Winkles, C. H. Webb, Alga D. Hahn, Gale Hahn, and Doug Autrey. Mrs. Ola Moore won the door prize which was a three tiered tidbit tray.

Commissioners Pay Off Notes

The Parmer County Commissioners Court Monday paid off two notes in the amount of \$6,297.21 on two road maintainers for Precinct 1 (Friona). Interest paid on the notes was \$296.87.

Other business for the commissioners at their regular meeting Monday included the payment of two right-of-way claims for Highway 70-84. The payments were \$550 and \$2,965.

The commissioners also approved the bills for the month of September and approved the treasurer's quarterly financial report, which appears in the Farm and Home Section of this paper.

Oct. 14 Date For School Pictures

Amos Tatum, Farwell High School principal, wishes to call students' and parents' attention to the fact that school pictures will be made for the school annual on October 14.

He states that it will be better to wear neither black nor white, and also requests each student to be sure to try to be present that day.

Mike Trower Wins Talent Contest

Michael Trower represented the Texico Farm Bureau in the talent contest held in connection with the annual County Farm Bureau Convention Tuesday night at Grady. His reading won over three other entries. Donald Chandler represented Rosedale with a piano selection, and there were entries from Grady and Clovis. Michael will represent Curry County at the State Convention at Albuquerque which will be held at the Western Skies Motel Nov. 27-30.

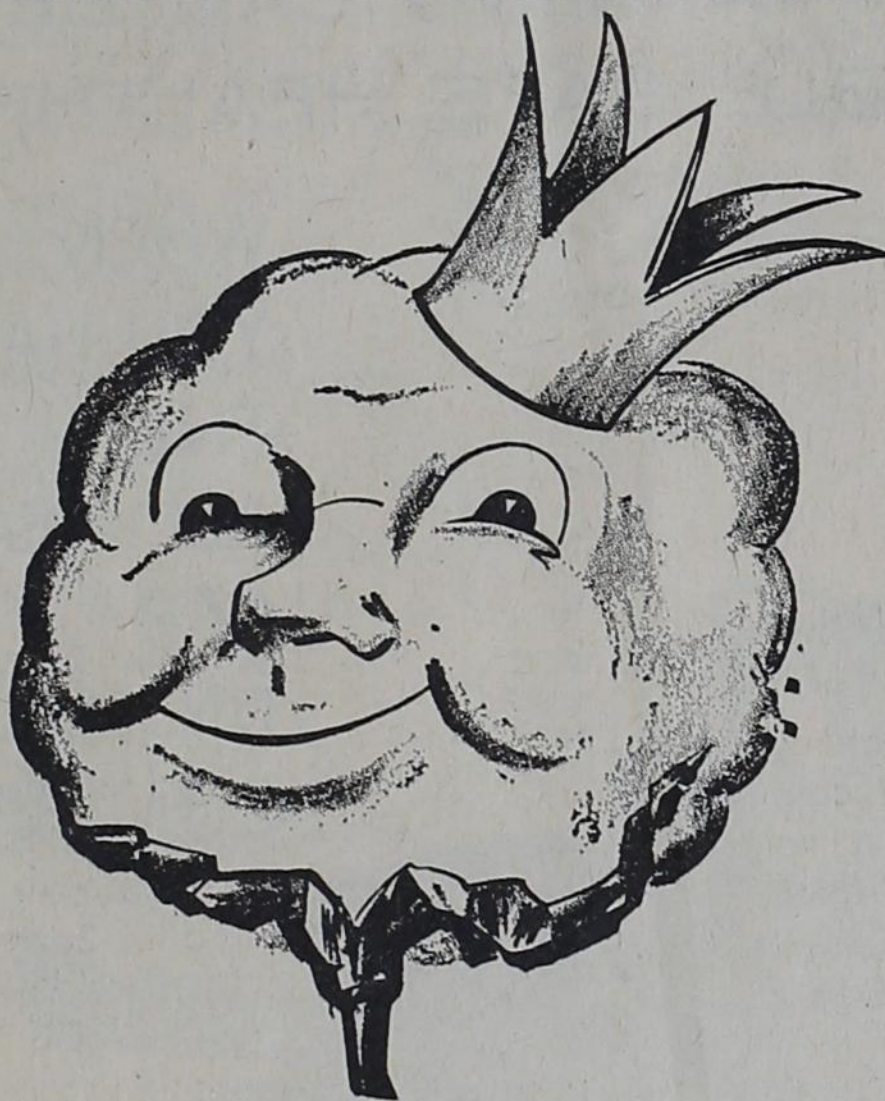
the bureau for the year. He also stated that Curry County won the attendance award at the State Fair on Farm Bureau Day.

Election of officers was held and resolutions which will be presented at the state meeting were adopted.

Lester Snyder, who is retiring as the insurance adjuster for Farm Bureau, introduced Bob Taylor who will take over in this capacity.

Those attending from Texico were Mr. and Mrs. Wesley Ingram, Olan Schlueter, B. A. Rogers, and John Hadley.

Following the business meeting, chairman Pete Davis presented the accomplishments of



A Modernly - Equipped Gin Ready To Serve You

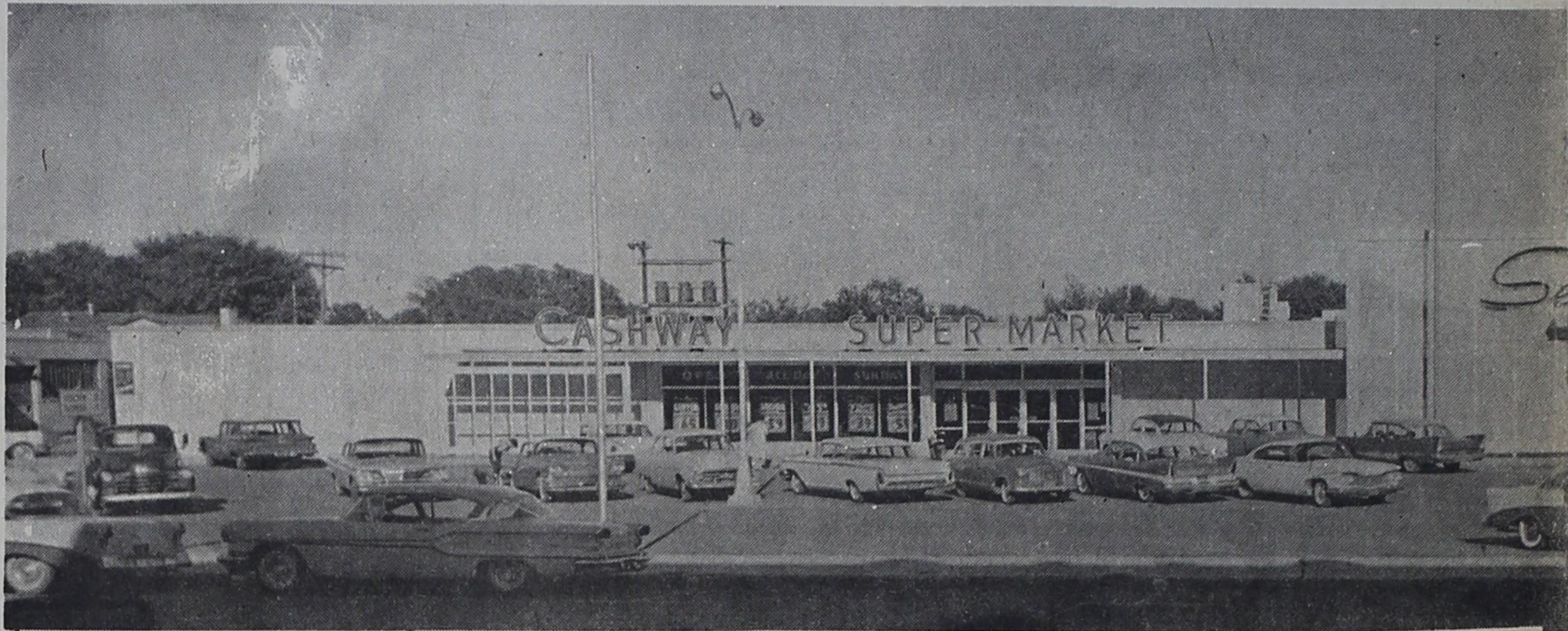
These sunny fall days mean it's harvest time for cotton once again, and you may rest assured that Cooper Gin is fully prepared to do you the finest job possible of ginning your cotton.

Although this is the first year we have ever owned a gin in the great Parmer County area of which we are a part, it is by no means the first year in the ginning business for us. Our experience in cotton ginning can mean money in your pocket, and we are anxious to show you what a fine job we can do. You can count on a good turn-out, with top grade assured.

COOPER GIN

L. L. Cooper, Manager

Farwell, Texas



PEOPLE'S CHOICE

TOOTIE'S CASHWAY FOOD MARKET
7TH & MAIN, CLOVIS, NEW MEXICO

FRANKS 1 Lb. Pkg. **59c** | **Lb. 49c**

FRYERS Cut-Up Swift Premium Lb. **39c**

BEEF LIVER Fresh Lb. **39c**

LINK SAUSAGE Swift Premium 1 Lb. Pkg. **59c**

PREM Swift's 12 Oz. Can **39c**

CHUCK ROAST Fully Cooked **49c**

TURKEY BUTTERBALL SWIFT'S PREMIUM 12 to 14 Lb. TURKEY HENS Lb. **49c**

SLICED BACON SWIFT'S PREMIUM 1 Lb. Pkg. **59c**

HAM SWIFT'S PREMIUM FULLY COOKED 1 Lb. Pkg. **49c**

VEAL CUTLETS SWIFT'S PREMIUM 1 Lb. Pkg. **89c**

SAUSAGE SWIFT'S PREMIUM FULLY COOKED Brown N Serve Patties 8 Oz. Pkg. **49c**

SIRLOIN STEAK Lb. **79c**

ARM ROAST Lb. **59c**

SWISS STEAK Lb. **69c**

CHUCK STEAK Lb. **59c**

FRYERS WHOLE POUND SWIFT'S PREMIUM **29c**

CHEESE FOOD SWIFT'S BROOKFIELD 2 Lb. Box **79c**

ALLSWEET MARGARINE Colored Quarters 1 Lb. Pkg. **25c**

Chopped Ham Swift's 12 Oz. Jar **49c**

Beef Steak Swift Premium 12 Oz. Can **59c**

CHICKEN Whole Swift Premium 3 Lb. 4 Oz. Can **99c**

VIENNA SAUSAGE SWIFT'S PREMIUM IN BARBECUE SAUCE 5 Oz. Can **239c**

DOG FOOD SWIFT'S PARD 7 FOR \$1.00 No. 300 Can

PEANUT BUTTER SWIFT'S 11 Oz. Decorated Tumbler Jar **25c**

CHOCOLATE CHERRIES 15 Oz. Box **49c**

FLOUR 10 lb. bag **89c**

CAKE MIX 17 Oz. Box **29c**

INSTANT COFFEE 6 Oz. Jar **69c**

COFFEE 8 Oz. Jar **59c**

POP-CORN 20 Oz. Can **33c**

SALAD DRESSING 8 Oz. Jar **29c**

LIPTON SOUP 2 for **29c**

Apples Washington Red Delicious Pound **19c**

ORANGES Texas New Crop Lb. **15c**

GRAPE-FRUIT Texas New Crop Lb. **15c**

YAMS Portales Jumbo Lb. **10c**

CARROTS Celis Package Each **10c**

LILT Push Button Home Permanent Reg. Price \$1.49 Plus Tax \$2.30 plus tax

Jewel Shortening PURE WHITE 3 LB. CAN **59c**

PRESERVES Ma Brown Peach-Apple Grape-Plum Blackberry 2 Lb. Jar **49c**

Patio ENCHILADA Dinners 11 Oz. Pkg. **39c**

Morton's Foods
POT PIES 25c
FRUIT PIES 39c
CREAM PIES 59c
Pumpkins Pies 49c
MINCE PIES 49c

THE HIGH PLAINS FARM AND HOME

Harvest Machines "Ain't What They Used To Be"

Herman Geris Re-Elected President Of Farm Bureau

A Farwell farmer, Herman Geris, was re-elected president of Farmer County Farm Bureau at the 12th annual county convention at the Oklahoma Lane Community Building Thursday evening.

Directors elected to serve with him were Ernest Kube, replacing M. T. Glasscock and Grady King, replacing John Agee. Glasscock represents the Farwell community and King represents the Lazbuddie community.

Other directors continuing to serve are Harry Hamilton, F. D. Carter, J. T. Jones, Claude Osborn, Joe Jesko, Vernon Symcox, Franklin Bauer and Raymond Schlabs.

The meeting, which was attended by about 50 persons, was opened with prayer directed by Harold Carpenter. Joe Holmes, field representative, was a special guest.

Minutes of the 1959 convention were read by Vernon Symcox, secretary-treasurer. He also gave a financial report. Donald Christian, vice-president and membership chairman, gave a membership report. A legislative report was given by Harry Hamilton.

Raymond Euler, service agent, presented a service report. Gilbert Kaltwasser, resolutions chairman, reported on resolutions being supported by the organization.

Refreshments of coffee and doughnuts were served during the social hour which followed the business session.

New HD Agent Here In December

Parmer County will have a new Home Demonstration Agent by December 1, according to information received last week by County Judge Loyde A. Brewer from Mrs. Edith L. Wilson, district agent at Amarillo.

Miss Ettie Musil, who has been the demonstration agent at Baylor County for the past four years, will be the replacement for Miss Jimmie Lou Wainscott, who resigned recently to accept a position at Hidalgo County.

Miss Musil is a graduate of the University of Texas and her home is in Stamford.

Courthouse

EDING OCTOBER 8, 1960
County Clerk's Office
Parmer County

W. D. -- O. M. Jennings, Nerine Malone, Part int. in S/2 Sec. 33, D&K

W. D.--O. M. Jennings, Elvie T. Jennings, Part int. in E/210 a. of S/2 Sec. 100, Blk. H, Kelly

W. D.--O. M. Jennings, Helen Carthel, part int. in S/224.20 a. of Sec. 101, Blk. H, Kelly

W. D.--O. M. Jennings, James H. Jennings, part int. in SE/4 Sec. 36, D&K and NW/4 Sec. 101, Blk. H, Kelly

W. D.--Sabas De La Cruz, Durward Hamby, Lot 11, Blk. 90, Friona

W. D. -- W. M. Stewart, et al, W. H. Jones, Lots 9 & 10, Blk. 65, Friona

MML--W. H. Jones, Raymond Jones--Lots 9 & 10, Blk. 65, Friona

D. T.--Hampton Rattan--Amicable Life Ins. Co., W/2 Sec. 12, Rhea "A"

Abst of Judg.--Vickers Petroleum Co., John Hartwell d/b/a Hartwell Mch. Co.

MML--Raymond K. Schueler, E. A. Sego, W/2 Sec. 33, T2N, R1E

W. D.--Wright Williams, Deon Awtry, Tract 2, W. L. D. Add., Friona

D. T. -- R. H. Schueler, Lot 1, Blk., 76 & Lots 1 through 12, Blk. 22, Friona

MMS--S. D. Rule, R. L. Fleming, Lot 4, Blk. 10, Staley Add., Friona



CUTTING A WIDE SWATH in a maize field is this late model combine, which represents one of the technological advancements in farm machinery. Complete with enclosed cab and power steering, today's modern self-propelled combines make grain sorghum harvesting much easier than it was a few short years ago.

Just about any way you look at it, technological advancements are changing almost entirely the mode of living today, both in the cities and on the farms.

And, naturally, in this modern space age, such things as intercontinental ballistic missiles, satellites, super-sonic jets, and atomic-powered submarines make the headlines in all the newspapers and magazines.

These technological developments pertaining to national defense and the conquest of space are of interest to every citizen, and they perhaps do represent the apex of achievement in a modern age which has brought about changes in every phase of human endeavor.

But, something probably equally as important, if not more so, are some of the advancements which have been taking place down on the farm, still the basic institution in any society or civilization.

Technology has been bringing about changes in farm machinery, too, and one of the most striking transformations has been in the machines used for harvesting grain. The self-propelled combines, complete with enclosed, air-conditioned cabs and power steering, which many High Plains farmers will be using to harvest their maize this year, represent a complete revolution from the type machine used by the previous generation.

For that matter, they are a great deal different from the machinery used only a few years ago.

Wanted--All Your Shoe Repair
SKINNER'S
Clovis Boot Shop
308 Pile Clovis, New Mex.

Panhandle Wheat Growers Advised On Streak Mosaic

The known presence of wheat streak mosaic virus in many Panhandle counties is causing concern among wheat growers. Harlan Smith, extension plant pathologist, reports that extensive surveys were made in the fall of 1959 and the spring of 1960 in northwest and north central producing areas to determine the extent of the virus disease.

He reports the disease was found to be widely distributed in the Panhandle but only scattered in Extension Districts 2 and 3, the South and Rolling Plains areas. It was not found in District 4, north central producing area.

Smith says the disease can only be a problem where the mite vector (carrier) and a reservoir of virus in native grasses or in volunteer wheat are found at the time winter wheat is planted; and when sufficient time is available for the infective mites to build up on planted wheat prior to the advent of cold weather. For the disease to be damaging to wheat, the plant must be infected in its early stage of development.

Early fall infection leads to severe yield reduction and results in the occurrence of much winter-kill-like, root-rot-like, and drought-like damage. Plants infected in the spring may show strong leaf symptoms of the disease but apparently suffer little or no loss in yielding abilities, Smith says.

Because of conditions, especially in northern and western Panhandle counties, Smith suggests that volunteer wheat be destroyed and that planting winter wheat be delayed for two or three weeks, or until the mid-part of the recommended planting season, September 20 to October 15. The mites which carry

producers check with their local county agents for details on the survey findings and for more information on the disease and its control. In other major wheat states, the disease causes multi-million dollar losses. Smith says an estimated 47 million bushels of wheat were lost to the disease in Kansas last year.

EYES EXAMINED GLASSES FITTED
Black Optometric Clinic
A. J. BLACK, O. D.
OFFICE HOURS: 9:00 to 5:00 -- Sat. 9:00 to 1:00 Phone 8240 -- Muleshoe, Texas

HENDERSON Grain And Seed Co., Inc.
FERTILIZER--FEED--SEED
James Harding FARWELL Heinie Henderson
Quality Pigs For Sale

"Sure Sign of Flavor"
QUALITY CHEK
DAIRY PRODUCTS
Butter Milk Cottage Cheese Sour Cream
In No-Wax. No-Leak Plastic-Coated Cartons
CARDY-CAMPBELL Quality Chek DAIRY PRODUCTS

La Zia
Mexican Food Steaks
Private Parties Can Be Arranged
U.S. Hwy. 70 "THE GORES" PO 2-2966

THE '61 PONTIAC IS OUT!

It's All Pontiac! on a new Wide-Track!

New track-to-body proportion! The track is the width between the wheels. Pontiac is the only Wide-Track car. Body width is reduced, shaving side overhang, balancing more weight between the wheels. Best relationship of body width to wheel width ever tailored. Lean and sway are ancient history.

Announcing the new Pontiac Trophy V-8 Engine! We've improved the engine the experts said was perfect. New fuel induction system saves gas by using more air in the gasoline mixture. This makes the engine breathe more efficiently, giving you better acceleration. Eleven versions to choose from. Horsepowers range from 215 to 348. For best economy, specify the Trophy Economy V-8. Its lower compression ratio lets you use regular gas.

More headroom, legroom, footroom for greater comfort! You'll take great comfort in the extra roominess we've built into the '61 Pontiac. Seats are higher, yet there's more clearance beneath the steering wheel and more hatroom over your head. There is more legroom, more footroom. Doors are wider and designed to swing open farther. The more highway you put behind you (Pontiac specializes in this) the more you'll appreciate the new room that's all around you in this sleek new '61.

THE ONLY WIDE-TRACK CAR! Body width trimmed to reduce side overhang. More weight balanced between the wheels. No other car hugs the road with such sure-footed stability and precision.

ISN'T THIS YOUR BIG YEAR FOR A WIDE-TRACK PONTIAC? IT'S ALL PONTIAC!
BONNEVILLE • STAR CHIEF • VENTURA • CATALINA
ON DISPLAY NOW AT YOUR LOCAL AUTHORIZED PONTIAC DEALER

Frank Rierson Pontiac
101 East 1st Clovis, N. Mex.
SEE THE VICTOR BORGE SHOW TONIGHT! ABC-TV!

EXPERT MACHINERY

Parmer County Pump Company
-Friona-

Arnel Combine Cabs
WORLD'S LARGEST MANUFACTURER OF COMBINE CABS

MODERN FARMING CAN BE COMFORTABLE, SAFE, HEALTHFUL

WHEN YOU HAVE THE ALL-WEATHER CAB ON YOUR COMBINE

TINTED WINDSHIELDS AND LIGHT BRACKETS STANDARD EQUIPMENT ON ALL COMBINE CABS

INGRAM BROS. IMPLEMENT CO.
On Texico Hi-Way Clovis

Machines

"I'd say that most of the changes on combines have been made in the last four years," said Duane Curtis, as he stepped down from the cab of his John Deere 95 combine Saturday morning. He and Don Gerles were cutting a field of maize on the W. T. Magness farm near Farwell and were getting ready to go to lunch.

"There's just no comparison between this combine and the old Clipper I first ran as an 11-year old boy," Curtis said. That was only 20 years ago, and oddly enough, Curtis has seen most of the changes which have been made on combines as well as other farm machinery.

The "Clipper" was one of the older, pull-type combines and harvesting with the machine was a slow process, in spite of the fact that each stalk of grain then produced only a small fraction of what today's hybrid varieties of maize do.

"We could only cut about 8,000 or 9,000 pounds of grain a day, then," the Farwell farmer said, "and today we cut as much as 200,000 or more."

Both Curtis and Gerles commented on the mobility and the operating simplicity of today's modern combines, as well as the cabs which give the operator protection from dirt and chaff.

"They're really easy to drive, and with these cabs, combining is not nearly as tiring," Gerles said. "You can stay at it much longer than you used to be able to and not be nearly so tired."

Gerles pointed out how today's modern combines move free and easy once you get the wheels set in the furrows.

Of the cabs, Curtis explained that they are real life savers for fellows who are bothered by dust and chaff. "With the cabs, the combines are much more pleasant to operate," he said.

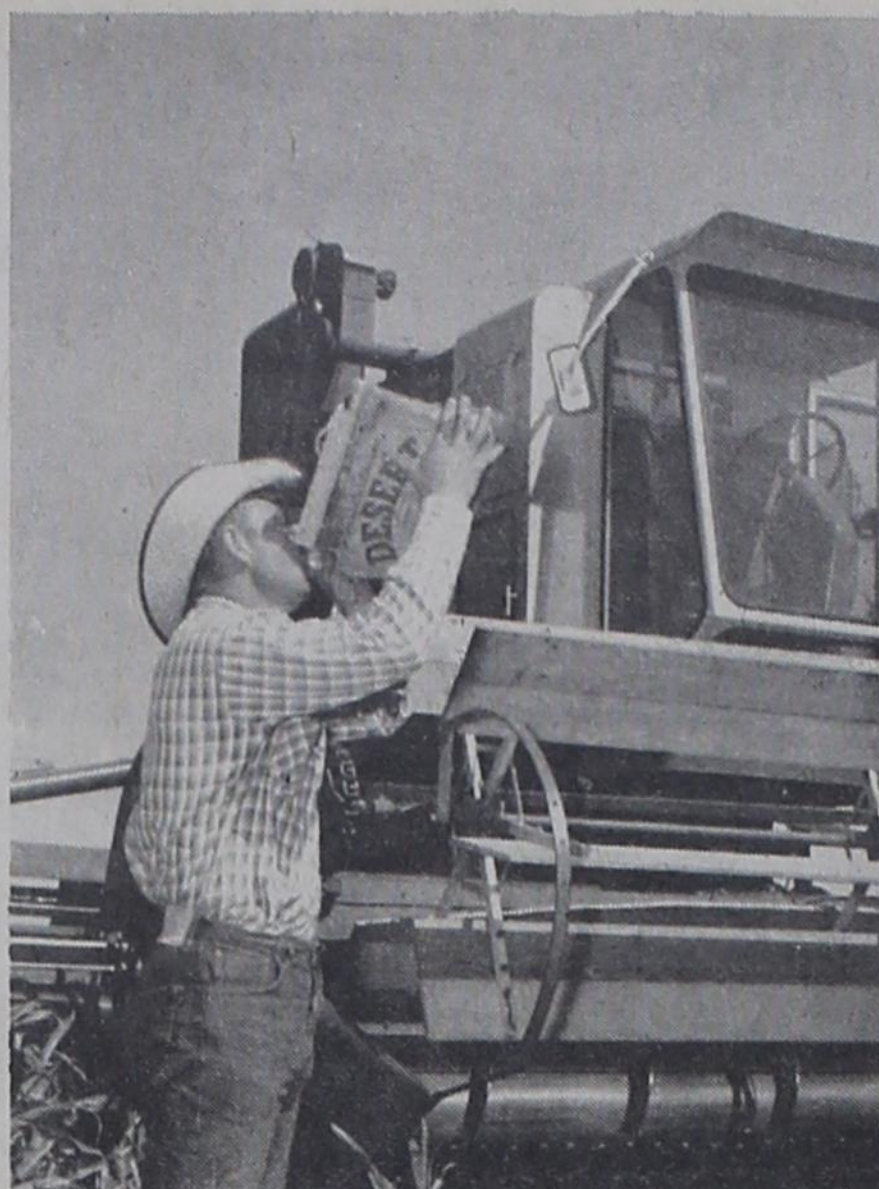
"This is especially so in maize, more so than wheat," Gerles added. The wheat is cleaner and not nearly so dusty.

Nearly all of the cabs come equipped with a window attachment which blows in fresh air, and it is also possible to get air conditioner units for the cabs. That's something that would really help in the summer time, because as Gerles pointed out, "In the summer it does get hot in there."

There have been many other changes made in the combines in recent years and a few that Curtis pointed out were power steering, having the motor located where you can get to it, and the reshaping of the straw delivery, so the machine can handle more straw and thus move faster in a field where the stalks are big and the heads are light.



ENTERING THE CAB OF HIS COMBINE as he gets ready to make another round in a field of maize is Don Gerles, who farms east of Farwell. The cab is one of the better features of today's modern combines, protecting the driver from all the dust and chaff which is so prevalent.



SOMETHING THAT HASN'T CHANGED in this modern, mechanical age is the canvas water bag, something the farmer has carried with him in the field for many years. Here, pausing to take a drink after stepping from the cab of his modern combine is Duane Curtis.



Dutch Quickel
MONY Now
Means
MONeY Later

FREE INSTALLATION
On all Monro-matic shocks & load levellers & Pryor overload springs
BOYD'S BRAKE SHOP
221 W. Grand PO3-4326

Treasurer's Report

REPORT OF Mabel Reynolds, County Treasurer of Parmer County, Texas, of Receipts and Expenditures from July 1 to September 30, 1960, inclusive:

JURY FUND 1st Class	
Balance last Report, Filed June 30, 1960	\$2,089.99
To Amount received since last Report	29.98
By Amount paid out since last Report, Ex. "A,"	520.00
BALANCE	\$1,599.97
ROAD AND BRIDGE FUND 2d Class	
Balance last Report, Filed June 30, 1960	\$23,370.71
To Amount received since last Report,	204.01
By Amount paid out since last Report, Ex. "B,"	0.00
BALANCE	\$23,574.72
GENERAL COUNTY FUND 3d Class	
Balance last Report, Filed June 30, 1960	\$ 5,695.28
To Amount received since last Report,	27,535.90
By Amount paid out since last Report, Ex. "C,"	24,200.86
BALANCE	\$9,030.32
PERMANENT IMPROVEMENT FUND 4th Class	
Balance last Report, Filed June 30, 1960	\$5,844.28
To Amount received since last Report,	51.25
By Amount paid out since last Report,	675.00
BALANCE	\$5,220.21
RIGHT OF WAY FUND 5th Class	
Balance last Report, Filed June 30, 1960	10,108.78
To Amount received since last Report,	8,447.02
By Amount paid out since last Report,	13,991.93
BALANCE	\$4,563.87
LATERAL FUND 6th Class	
Balance last Report, Filed June 30, 1960	\$0.00
To Amount received since last Report,	27,843.73
By Amount paid out since last Report,	761.94
BALANCE	27,081.79
SOCIAL SECURITY FUND 7th Class	
Balance last Report, Filed June 30, 1960	\$3,076.05
To Amount received since last Report,	946.38
By Amount paid out since last Report	1,897.11
BALANCE	\$2,125.32
FARM TO MARKET R. & B. FUND 8th Class	
Balance last Report, Filed June 30, 1960	\$127,909.39
To Amount received since last Report,	5,968.97
By Amount paid out since last Report,	34,610.60
BALANCE	\$ 99,267.76

RECAPITULATION

JURY FUND, Balance	\$ 1,599.97
ROAD AND BRIDGE FUND, Balance	23,574.72
GENERAL COUNTY FUND, Balance	9,030.32
PERMANENT IMPROVEMENT FUND, Balance	5,220.21
RIGHT OF WAY FUND, Balance	4,563.87
LATERAL FUND, Balance	27,081.79
SOCIAL SECURITY FUND, Balance	2,125.32
FARM TO MARKET FUND, Balance	99,267.76
TOTAL	\$172,463.96

LIST OF BONDS AND OTHER SECURITIES ON HAND

U. S. Government Bonds:	\$457,100.00
COUNTY INDEBTEDNESS:	
Road & Bridge Machinery Warrants	9,895.82
Right of Way Script Warrants	29,396.00
General Fund Time Warrants	20,000.00
TOTAL	\$49,291.82

THE STATE OF TEXAS)
COUNTY OF PARMER)
Before me, the undersigned authority, on this day personally appeared Mabel Reynolds, County Treasurer of Parmer County, who being by me duly sworn, upon oath, says that the within and foregoing report is true and correct.

Mabel Reynolds, County Treasurer
Sworn to and subscribed before me, this 7th day of October, 1960.

HUGH MOSELEY, Clerk
County Court, Parmer County, Texas
(SEAL)

When asked how many acres of maize they could cut in a day, both Curtis and Gerles said it depended on how good the grain was. "Naturally, in heavy grain it's slower than it is in light grain," they explained, "but in a field that's making 5,000 pounds we can cover from 35 to 40 acres a day."

It was not too many years ago that use of combines on grain sorghum was unheard of, because the feed was too tall and heavy for a combine to handle. Fifty years ago the feed crops were mowed, and wind rowed, shocked and fed chiefly as fodder.

If farmers fed only the grain to livestock they would clip the heads and feed them that way.

It was several years later before the row binder came into being. The binder did speed up the harvesting of grain sorghums and this method was used quite extensively until the development of shorter hybrid varieties, enabling the farmers to use the combine for harvesting.

The pull-type combine, which

had a motor on the machine to turn the reel and run other parts of the mechanism, was the only type used until the early 1940's when the self-propelled arrived on the scene.

Development of shorter, combine-type varieties was the first big step toward the harvesting of grain sorghums as it is done today, and the self-propelled combine was the next revolutionary step in that direction.

Since the end of the World War II era, each year has seen many new improvements made on the combines, and today, the combine is one of the bulwarks of the mechanized farming age.

FARM & RANCH LOANS
Long Term -- Low Interest
Ethridge-Spring Agency, Friona
Phone 881)

SHOP and SAVE

during our

Second Anniversary Sale

October 3 - 31

Register **FREE** Once Each Day For

Ethan Allen Dining Table

And Four Chairs To Be Given Away Oct. 31 At 6 P. M.

McGee Furniture

511 N. Main

Hereford

EM 4-2584

FROM ANY ANGLE

THE CO-OP WAY IS THE PROFIT WAY



Equipped With
Moss & Murray
Lint Cleaners
Automatic Samplers
Both Of Our Bins
Have Been Reconditioned And Are
Ready To Go.

Board Of Directors

E. W. BASS - President

D. B. HEAD - Vice Pres.

N. T. MILLEN - Secretary

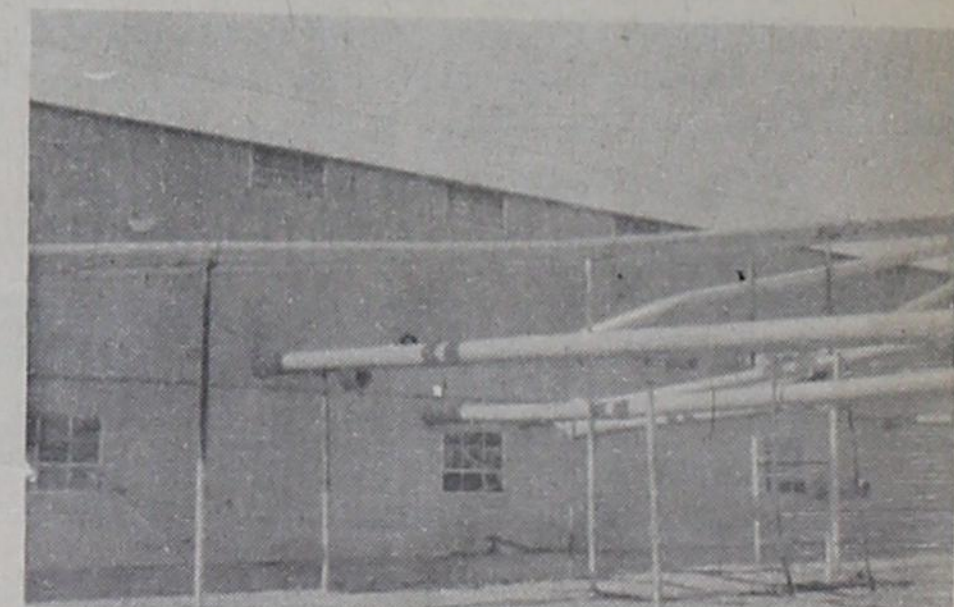
Members

W. B. LITTLE

E. W. GRAY

W. H. LEE

EDGAR BROYLES



MULESHOE CO-OP GINS

Earl Richards - Mgr.

Phone 7940

FOR FALL FASHIONS



- *HATS
- *COATS & SUITS
- *DRESSES
- *LINGERIE & JEWELRY

The Fashion Shop

On "The Fashion Corner Of Clovis"

521 Main

PO 3-5431

POWER

CO-OP Silver Cobalt BATTERIES

DIRECTOR

The miracle of silver cobalt on battery grids is the greatest improvement in battery materials and construction developed in fifty years. It provides such benefits as *Extra* starting power, *Extra* resistance to overcharge, *Extra* charge retention, *Extra* power reserve, and *Extra* life. Performance far above S. A. E. (Society of Automotive Engineers) standards.

CO-OP-Silver Cobalt Batteries available for cars, trucks and tractors.

HAVE YOUR BATTERY CHECKED NOW!

CO-OP Farm Supply Store

-MULESHOE-

Cotton Verticillium Wilt Serious Disease

Verticillium wilt is becoming more important in the cotton producing areas of West Texas. It is on the increase in the irrigated areas of the High Plains, Rolling Plains and the southwestern irrigated valleys. In recent years, the fungus disease has spread eastward to a line from Wichita Falls, Abilene and San Angelo. It has been found in a few fields near Greenville and Waxahachie.

also occur in the form of lower and spot grades and the production of immature fibers.

The disease is active only when the soil temperature is below 85 degrees. For this reason damage is usually higher during the early and the latter part of the growing season.

Affected plants may become stunted and the leaves turn yellow between the veins. These yellow leaf areas die and turn brown. Leaves are shed from the stalk. After cutting wilted stalks, one will see brownish

Lower production by this wilt disease may range up to 75 percent in some fields. Losses

Effects of different rates and ratios of nitrogen, phosphate, and potash on yield and net return per acre with two varieties of wheat.

Fertilizer Treatments and Costs	Yield per Acre	Gross Income @ \$1.68/Bu.	Adjusted 1/ Gross Income	Increase over Check	Profit Per Dollar Invested in Fertilizer
0-0-0	50.49	\$84.82	\$84.82	\$ ---	\$ ---
--- E. Triumph	25.08	42.13	42.13	---	---
Average	37.79	63.49	63.49	---	---
40-0-0	60.39	101.46	98.53	13.71	4.68
\$2.93 E. Triumph	52.80	88.70	85.77	43.64	14.89
Average	56.60	95.09	92.16	28.67	9.78
80-0-0	58.08	97.57	91.71	6.89	1.18
\$5.86 E. Triumph	52.80	88.70	82.84	40.71	6.95
Average	55.44	93.14	87.28	23.79	4.06
120-0-0	61.71	103.67	94.88	10.06	1.14
\$8.79 E. Triumph	55.44	93.14	84.35	42.22	4.80
Average	58.58	98.41	89.62	25.13	2.97
0-80-0	64.02	107.55	101.42	16.60	2.71
\$6.13 E. Triumph	44.88	75.40	69.27	27.14	4.43
Average	54.45	91.48	85.35	21.86	3.57
40-80-0	59.73	100.35	91.29	6.47	.71
\$9.06 E. Triumph	52.14	87.60	78.54	36.41	4.02
Average	55.94	93.98	84.92	21.43	2.37
80-80-0	60.06	100.90	88.91	4.09	.34
\$11.99 E. Triumph	54.78	92.03	80.04	37.91	3.16
Average	57.42	96.67	84.48	20.99	1.75
120-80-0	63.86	107.28	92.36	7.54	.51
\$14.92 E. Triumph	55.44	93.14	78.22	36.09	2.42
Average	59.65	100.21	89.29	21.80	1.46
40-80-40	61.05	102.56	91.50	6.68	.60
\$11.06 E. Triumph	52.14	87.60	76.54	34.41	3.11
Average	56.60	95.09	84.03	20.54	1.86
80-80-40	62.04	104.23	90.24	5.42	.39
\$13.99 E. Triumph	46.86	78.72	64.73	22.60	1.62
Average	54.45	91.48	77.49	14.00	1.00
120-80-40	64.68	108.66	91.74	6.92	.41
\$16.92 E. Triumph	54.45	91.48	74.56	32.43	1.92
Average	59.57	100.08	83.16	19.67	1.16

1/ Gross income less fertilizer cost per acre.

wood underneath the bark. The disease may be confused with root rot or fusarium wilt diseases.

Verticillium wilt is spread by the movement of old cotton trash within fields and from field to field. Gin trash and the movement of soil by cultivation can spread the disease.

The disease is best controlled by growing resistant varieties. Certain cultural practices also help to prevent serious losses. Local county agents can supply additional information. Ask for B-938, "Cotton Production in Texas."

A COTTON STRIPPER For Your MASSEY-FERGUSON TRACTOR

Now Available

1.20 Minute Hook-Up Time

2. Hi-Speed - Big Capacity Stripper

3. Saves Extra Man In The Trailer

4. Better Turnout. No Tags - No Barkies

Can Be Adapted To Fit ALL Makes Of Tractors

"Sure We'll Trade" Terms Available

PRUITT BROS. IMPLEMENT CO.

Local Owned Local Operated
Your Friendly Massey-Ferguson Dealers

On Highway 70--Just North Of The Tracks

Phone NE 7550 Muleshoe

The OLD RANCHER



I GET BETTER USE OF GRASS WITH FENCES TO CONTROL THE GRAZING

Visual Care DR. B. R. PUTMAN Contact Lenses OPTOMETRIST
Office Hours: 9-5 Sat. 9-12 111 East 3rd St. Muleshoe, Texas

This Line

FIRST FEDERAL SAVINGS AND LOAN ASSOCIATION

Clovis, New Mexico

can SAVE thousands of dollars

No HUSTLE, NO BUSTLE — just three short minutes is all it takes to save-by-mail with us. Here's how — first, sign a check or money order — seal it in an envelope along with your passbook* — and send it off to us. Your savings will be promptly credited and your passbook returned through the mail. Easy isn't it?

Why not get that check into the mail — open or add to a safe, higher-earning savings account with us now!

CURRENT DIVIDEND ON INSURED SAVINGS 4%



4th And Pile Clovis, N. Mex.

Decisions of vital importance to the Texas poultry industry are due to be made during the annual meeting of the Texas Poultry Industry Exposition, August 23-25, at Hotel Texas, Fort Worth. Ben Wormeli, extension poultry husbandman, says it will be the kind of a meeting that those interested in seeing the industry progress in the state can't afford to miss.

Texas A&M College System entomologists say that stored grain cannot be forgotten. Insects may be stored with the grain, and these insects could cause tremendous losses. To combat insect damage to stored grain, the storer should fumigate the grain according to recommendations of the local county agent.

Soil testing is a tool you can use on your farm to help determine the level of fertility of your soil. The recommendations which you will receive from the soil testing laboratory, based on the analysis of the soil samples you submit, will give the amounts of fertilizer needed for the most profitable crop or pasture production. Local county agents can supply information on soil testing.

Farmers and ranchers cannot afford to be dull and lazy during late summer and early fall. Extension range specialists say that winter is not very far away, and now is the time to make preparations for carrying the livestock until next spring.

Net income for a typical Southwestern sheep ranch was \$10,812 per ranch in 1959. This figure compares to \$8,181 for Northern Plains sheep ranches

FOR SALE:

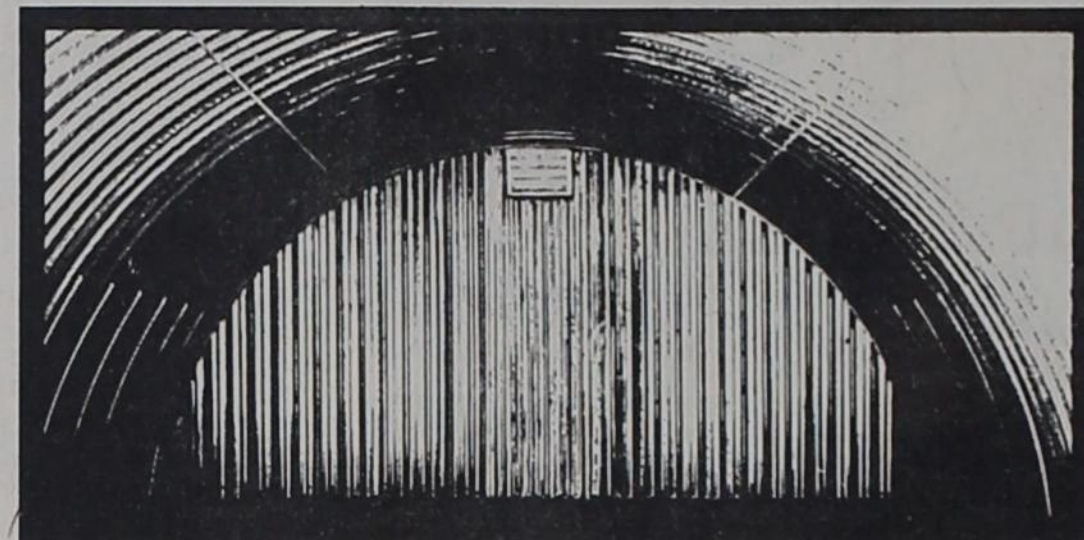
Monro-Matic shocks-Load Leveler-Air Lifts-Overload Springs-Factory rebuilt power brake units. Complete brake and front end alignment.

Boyd's Brake Shop 221 W. Grand PO 3-4326

Unusual Opportunity

\$450 monthly. Need help in local business? Man must be married, sober, 21 to 40, have own car, be able to boss himself and supervise others. Permanent position with opportunity to advance as fast as your ability and energy warrants. If you desire something secure with a future, write Personnel, 1559 Parr, Amarillo, giving phone and address.

NEW---40' CURVET



- ✓ NO TIE RODS
- ✓ EXTRA RUGGED WALL STRENGTH
- ✓ BOLTED SEAMS
- ✓ FRAMELESS CONSTRUCTION
- ✓ UNLIMITED ADAPTABILITY
- ✓ 18' RIDGE HEIGHT

Spra-Gro Steel Building Co.

2220 N. Prince Phone PO3-4416 Clovis, N. M.

County And State TAXES

Are Payable Now

PAY YOURS EARLY AND SAVE

DISCOUNT

- 3% IF PAID DURING OCTOBER
- 2% IF PAID DURING NOVEMBER
- 1% IF PAID DURING DECEMBER

This Discount is On All State And County Taxes Collected By The County Tax Collector.

Poll Taxes Now Due And Payable At Tax-Assessor's Office Or At Ethridge-Spring Agency In Friona

LEE THOMPSON

Tax Assessor And Collector Parmer County, Texas

JUST PLUG IN- I'm Reddy!

OF COURSE, it's ELECTRIC



... MAKE THE BIG CHANGE-NOW!

Eventually you'll cook electrically — because this is the electric age. Now is the best time yet to make the modern change. Ask your Reddy Kilowatt Dealer about the special wiring allowance — see his new models — talk to him about trade-ins and terms. Only when you buy an electric range can you make the big change to modern cooking — better cooking.

SEE YOUR REDDY KILOWATT APPLIANCE DEALER



SOUTHWESTERN PUBLIC SERVICE COMPANY

YOUR REDDY KILOWATT DEALERS IN PARMER COUNTY ARE:

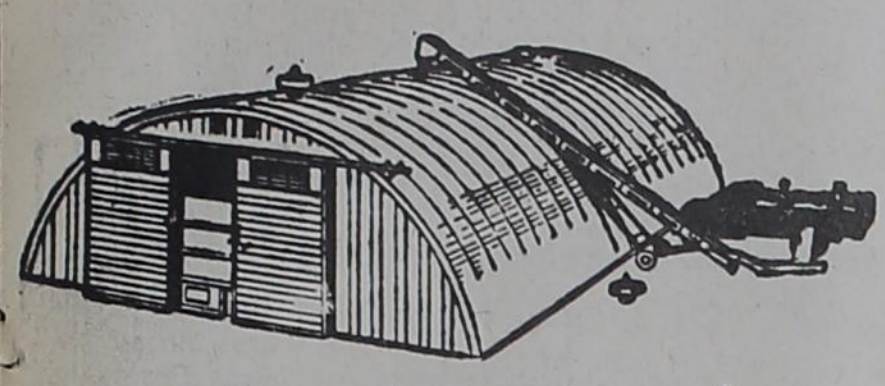
ROBERTS FURNITURE FRIONA

WHITE AUTO STORE FRIONA

FARWELL ELECTRIC FARWELL

REEVE CHEVROLET FRIONA

Earn Extra Profits On Grain



with a **LOK-RIB steel**
Grain Storage Building!

Let your LOK-RIB pay for itself in increased grain market earnings or resealing storage payments! You'll say you never made a better investment.

LOK-RIB's tight-fitting panels seal out moisture and vermin from your crop so you get better prices. Off-season, your LOK-RIB will save machinery repairs by providing weathertight quarters for your farm equipment.

Extended payment plan available with convenient terms up to five years — minimum down payment.

JOHN J. MOCK

BOX 476 Phone 2700 MULESHOE

When To Apply Defoliants

With Farmer County cotton now bearing fruit and the frost date not too far away, farmers will soon begin applying defoliants and desiccants to help their cotton along.

It's still a little early to be applying either defoliants or desiccants in the county, says Farmer County Agent Joe Jones, but it won't be long before farmers can start applying these chemicals to get the best quality cotton with stripping machines.

In planning the application of defoliants, Jones says a couple of things farmers should keep in mind are (1) true defoliants do not kill the plant, but if applied properly, will cause the shedding of leaves from plants that are ready to be defoliated, and (2) the application of a desiccant will kill the plant and stop all growth.

Jones released the following information on the best time to apply these chemicals:

Mature, well-fruited, active plants defoliate best. Premature application of defoliants or desiccants can damage grade and cause losses in yield and quality since boll development

NEWS FROM THE FARM BUREAU BY RAYMOND EULER

The Texas Farm Bureau convention will be held in the Adolphus Hotel in Dallas, beginning Wednesday, November 9th, and running the rest of the week, this year.

State conventions usually begin with registration and a vesper service on Sunday afternoon. It is because of the important election on November 8th, Tuesday, this year, that the latter part of the week was selected. Above all Farm Bureau urges you to cast your ballot on the eighth.

Then, if it is possible, we would urge you to attend the convention in Dallas the next three days. Farmer County is allowed six delegates in the business session, but we would like to see at least twice that many there from the county.

Herman Gerles was elected to serve as president of PCFB again this year, at the county convention held in the Oklahoma Lane Community Center last week. We know you farmers will appreciate this young man giving of his time to lead in administering the program of your farm organization.

New directors elected were: Ernest Kube, replacing M. T. Glasscock, and Grady King, replacing John Agee. M. T. Glasscock has served several years, and has been a very faithful and good worker with the other directors. We know he will be missed, but he needs a rest.

Grady King, although he has not previously served as a director, has been active in the organization since moving to the Lazbuddie community several years ago.

Others continuing to serve are: Harry Hamilton, F. D. Carter, J. T. Jones, Claude Osborn, Joe Jesko, Vernon Symcox, Franklin Bauer, and Raymond Schlabs.

We are sure that, as has always been the case, those retiring from the board will continue to work in the interest of themselves and other farmers through their organization. You, the member, are urged to keep your ideas before the board throughout the year, too. They will appreciate your suggestions for better service to you and your fellow farmer.

Consider this: "Divers weights are an abomination unto the Lord; and a false balance is not good." Proverbs 20:23.

stops with the chemical application.

The best timing of applications is to delay defoliants until about 50 percent of the bolls have opened, and to delay desiccants until 60 to 70 percent or more of the bolls are opened (preferably 80 or 90 percent).

An important rule is that the condition of the plants at the time of chemical application is the key to effective results, not some specific date on the calendar.

Weather conditions at the time of application are also important; forecasts for the area should be studied carefully before application. Day temperatures below 70 degrees or night temperatures below 55 degrees are not favorable for good results. The rate of leaf drop or desiccation slows drastically, and even the better

chemicals are ineffective during periods of low temperature.

Moderate to high humidity contributes to a leaf condition more reactive to chemicals; dusts require dew or high humidity for best results. High winds hinder proper distribution of chemicals and promote drift to adjacent crops and sensitive plants.

Jones points out that the use of true defoliants alone have not always given best results. Desiccants have been more effective in preparing cotton for stripping, but he warns that farmers should be careful how and when they apply them.

One method of application which has worked well in the past has been the application of a true defoliant first, followed by the use of a desiccant.

Cotton Looking Up For Plains As Whole

An all-time new cotton production record for the Texas High Plains appears to be in sight for the 1960 cotton year as officials of the Plains Cotton Growers, Inc. and the Lubbock Cotton Exchange today announced an October crop estimate of 2,038,000 bales for the 23 counties on the Plains.

Veteran cotton observers say that condition of both dryland and irrigated cotton is in good to excellent shape and if October weather continues with warm, sunshine and the first frost does not come before the average frost date of around November 5 for the Lubbock area, the new production total could easily be reached this year.

Receipts at the Lubbock Cotton Classing office, including totals for the Lamesa and Brownfield offices, as of today total approximately 100,000 bales. Records show this is approximately 50,000 bales less than was classed in 1959 on this date, indicating the area cotton

There are several mineral elements which a chick must have if he is to show normal growth and development. Dr. C. W. Deyoe of the Texas A&M College System Poultry Science Department says that a chick will not fulfill the poultryman's expectations if his ration does not contain the proper amounts of these elements.

Texas A&M College System entomologists say that stored grain cannot be forgotten. Insects may be stored with the grain, and these insects could cause tremendous losses. To combat insect damage to stored grain, the storer should fumigate the grain according to recommendations of the local county agent.

crop this year is a week to 10 days behind harvest of the 1959 crop.

If the 1960 crop estimate of 2,038,000 bales does materialize, it would top the new existing record production of 1958 when 2,025,000 bales were harvested and the other high year of 1956 when 1,650,000 bales were produced.

The 23-county by county production estimates are:

CO.	EST. BALES
Bailey	90,000
Borden	12,000
Briscoe	30,000
Castro	60,000
Cochran	55,000
Crosby	125,000
Dawson	150,000
Deaf Smith	10,000
Dickens	33,000
Floyd	120,000
Gaines	75,000
Garza	26,000
Hale	205,000
Hockley	160,000
Howard	36,000
Lamb	185,000
Lubbock	250,000
Lynn	130,000
Motley	14,000
Parmer	45,000
Swisher	60,000
Terry	140,000
Yoakum	27,000
TOTAL	2,038,000

Garden Notes

This is a good time of year to enjoy the last fruits of bloom, and the colorful Petunia is still the number one flower in the garden remaining in colorful clusters.

This is also a good time of year to pick tomatoes of all colors. The average date of frost in this general garden vicinity has seemed to have moved upward into the latter days of October instead of November 1 to 5, therefore it is wise to keep the pink and white ripe tomatoes picked—just in case of a quick frost that will ruin the green-ripe tomatoes.

This is also a good time of year to kill next year's crop of broadleaved weeds, crabgrass, and annual grasses in the lawns. It seems that oftentimes, during the maturing season of the fall, that 2,4-D and other post-emergence chemicals will kill weeds and grasses better than in the heat of summer or in the middle of the growing season. Chlordane is a good crabgrass killer.

Incidentally, on the subject of crabgrass killers, Dr. Tom Longnecker at High Plains Research Foundation, Halfway, said that a manufacturer and L-P gas dealer up in the Northeastern States read about the flame cultivation of field crops in this area during 1960, and is sending the Foundation an invention of his own to use on lawns to kill crabgrass and annual weeds by flame.

Dr. William Beene OPTOMETRIST

Regular Office Hours
Monday Through Friday

Box 546 Ph 4051
9th & Main
Frona Texas

Irrigation Systems

Concrete Pipe
Aluminum Pipe
Contact

PAUL A. HALL

Ph 2341 Frona

Or

BROWN SUPPLY CO.

Ph. 2700—Muleshoe

HARVEY'S - SURPLUS BUILDING SALE!

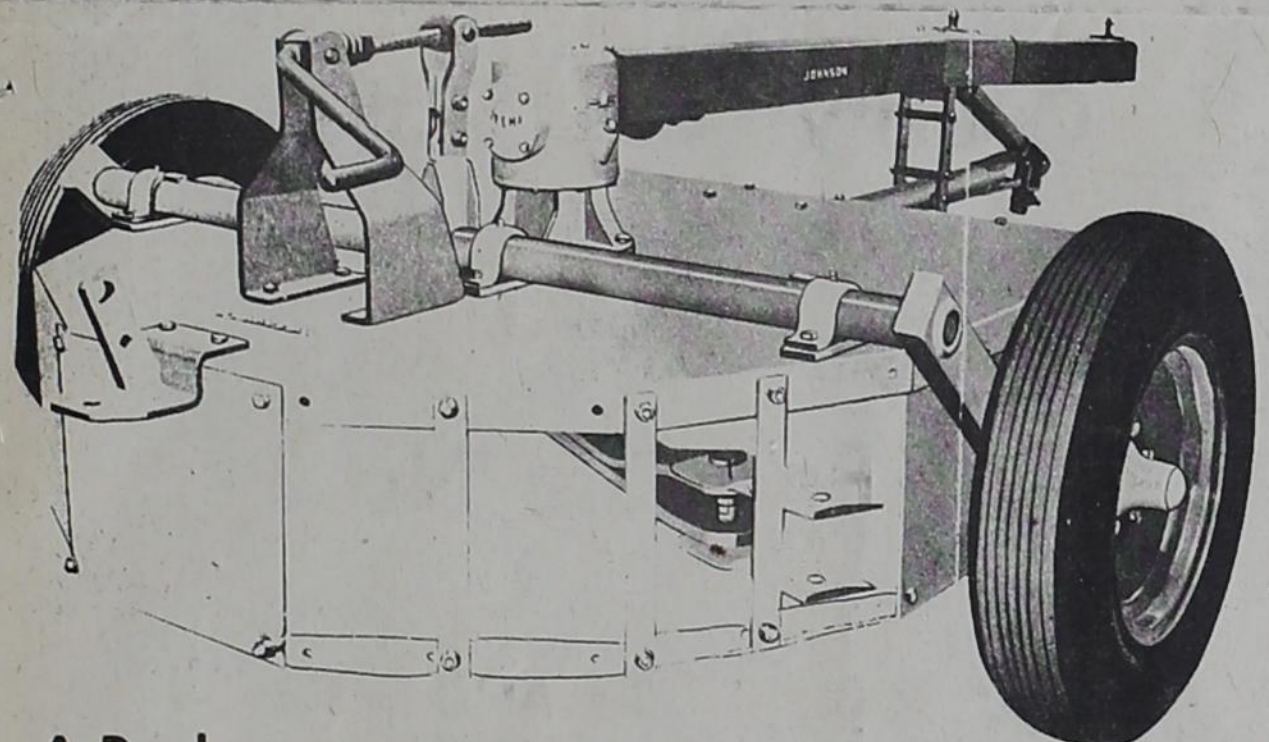
Buy a 20 Ft. X 100 Ft. building, move it fix it yourself, and see how cheap you can own 2000 sq. ft. of floor space. These buildings are sheetrocked and wired, and have good roofs.

20 x 100 \$700.00 To \$1200.00
20 x 50 (one end open) \$425.00
10 x 12 Ft. Electric overhead Doors \$325.00 In Place

OFFICE: 1/4 mile east of Cannon AFB on Hi-way 60, Clovis, New Mexico.

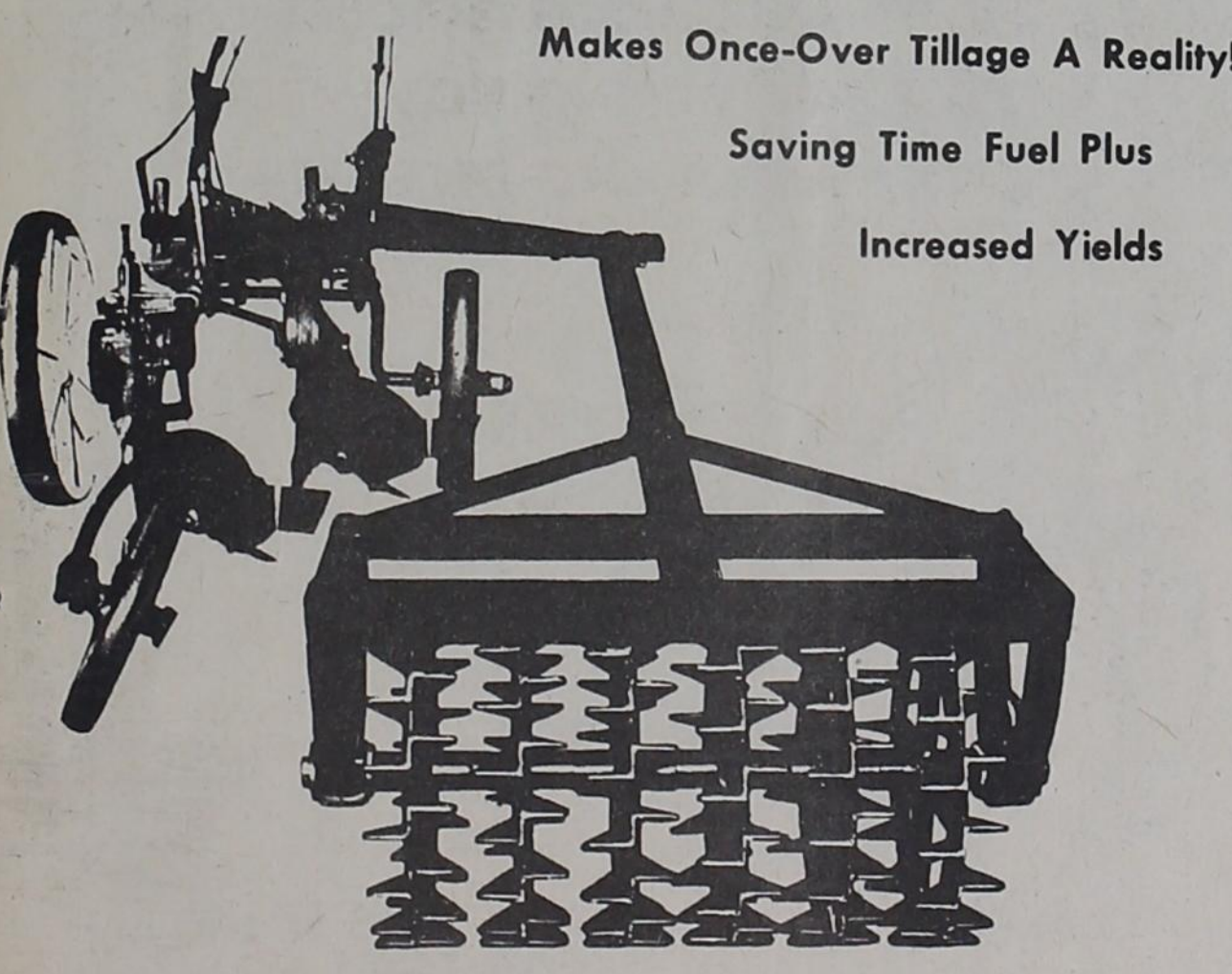
The RIGHT COMBINATION

For Plowing Under Maize Stubble
Johnson Model H-60 A Rotary Cutter



A Real **MODEL H-60 A**
Heavy-Duty Cutter Only **\$395.00**

And A
Brillion Plow Packer



Makes Once-Over Tillage A Reality!
Saving Time Fuel Plus Increased Yields

See Them Today At
Maurer Machinery Co.
Your Minneapolis-Moline Dealer

Phone 3261 Frona

ADAMS DRILLING CO.
WATER WELL DRILLING

LAYNE DIAL 2921 PUMP & GEAR PUMPS, INC. NIGHTS 2951 HEAD REPAIRS

Sales & Service Friona Texas

BONUS OFFER!

A MATCHING DIAMOND PENDANT

Your Bonus with the purchase of our Latest 14K Gold Diamond Bridal Set... A Flashing center diamond in the Engagement Ring highlighted by 3 lovely Diamonds in the Wedding Ring.

More Diamond Value than you thought you could afford!

Only Tax **\$79.00** Inc.

Wicker-Brooks Jewelers

7th and Main Clovis, N.M.

VALUE HARVEST

Shop at S&S Furniture in Texico today - and every day - during our Harvest Value Sale! Trade in that old furniture now on that new furniture you have been wanting for a long time. Easy terms to fit your budget.

Close-Out On Norge Appliances

13 Cu. Ft. Double Door Refrigerator, Slide-Out shelves, automatic defrost, Reg. \$429.95 -- Now (exchange) **\$329.95**

30" Custom Cp gas range, Full Lite, Thermo Top Burner, Electric Clock & Timer, glass in door- Reg. \$249.95 - Now (exchange) **\$189.95**

Automatic Washer, exclusive lint filter, time line control, Water Temp. Selector- Reg. \$229.95 - Now (exchange) **\$179.95**

Electric Dryer with Norge exclusive four-way drying, Dial-A-Heat Control, Reg. \$199.95- Now **\$169.95**

SWIVEL CHAIRS frieze covers, choice red, brown, aqua, green Reg. \$39.95 Now (exchange) **\$24.95**

Living Room Tables two step tables and 1 coffee table, walnut finish, plastic tops. Reg. \$19.95 ea. Now only **\$14.95**

2-Pc. Green Frieze Sectional Foam cushions, modern style, Reg. \$219.95 - Now (with old suite) **\$139.95**

One Group Table Lamps & Large Pictures— HALF PRICE

Dulaney's Special Innerspring **Mattresses & Box Springs** Full and twin size. Reg. \$39.95, Now (with old mattress) **\$27.50**

CLOSE-OUT Twin size Innerspring Mattress & Box Springs Reg. \$29.95 Now Only **\$19.95**

USED FURNITURE

Coffee Tables	\$5.00	Mahogany Coffee Table	\$7.50
Floor Lamps	\$5.00	Bathinette	\$7.50
Westinghouse Electric Range	\$35.00	Rose Studio Couch	\$79.50
Walnut Buffet	\$7.50	Stoway Haddock	\$10.00
Hideabed w/ mattress	\$69.50	2-pc Belge Studio	\$59.50
Unf. Corner Cabinet	\$20.00	Bench, Mhg. (Good)	\$40.00
120-Bass Accordion	\$150.00	10x10 Wool Rug and Pad	\$29.50
Occasional Chairs	\$7.50	2-pc Recovered Studio Suite	\$69.50
3/3 Metal beds	\$7.50	Full Size Baby Bed	\$29.50
Unfinished high chairs (new)	\$9.95	Crosley Refrigerator	\$89.50
Portable Washer	\$10.00	Upright Piano	\$99.50

JIM BOB SMART Owner

"Swap and Save at S & S"

S & S Furniture, Inc.

FREE DELIVERY Telephone 481 2-9150 TEXICO, NEW MEXICO STORE HOURS 8:00 A. M. - 5:30 P. M. (CST) EASY TERMS

County Teachers Association Has Meeting At Farwell Tuesday

The Parmer County Teachers Association held a banquet and meeting Oct. 11 at the High School Cafeteria in Farwell. During the business session, it was voted to send Fred Wilbanks, principal of the Lazbuddie Elementary School, to the state convention Oct. 20-22 at Corpus Christi. Mrs. Barbara Thompson, Bovina, was elected to fill the vacancy for vice-president. Raymond Cook, Friona principal invited the TSTA to meet there Nov. 8. A. H. Hooser, field representative for TSTA, was the guest speaker. He spoke on "Passing the Hale-Aikin Study in the election this November"

and also discussed the TSTA legislative program for 1961. Hooser stated that no improvements have been made in the Gilmer-Aikin school program since 1949 with the exception of two small increases in the minimum salary schedule. He said Texas ranks 32nd in the salary paid its teachers, 36th in the amount spent per child, and 50th in the amount of salary increase that has been provided since 1950. In 1958 more than fifty thousand Texas citizens recommended improvement in the foundation program. The new program, the Hale-Aikin study will be on the ballot for the November elections. Hooser also stated that Texas is short 10,000 teachers, that this many replacement teachers are hired annually and one out of every two of these does not qualify. He also said that out of five thousand teacher graduates this past year only 2,220 entered the teaching profession. The others went on to higher paying fields. "The educational needs of Texas children will be met when Texas citizens become aware of the educational crisis now existing and act to meet the emergency. The average layman takes the public school for granted. The schools won't be improved until the public demands, so there is a need to

get the information before the public," were some of the points he emphasized. Hooser is a graduate of the Plainview School system. Mrs. Winnie Bradley, who now teaches at Farwell, taught him at Plainview when he was in the seventh grade. Before joining the TSTA staff, he served ten years as classroom teacher, elementary principal, and junior high principal in the Plainview Public Schools. Entertainment was provided by the Farwell High School Stage Band which is composed of Director Jack Gray, Barry McCuan, Janice Prince, Emalee Tucker, Janie Bradshaw, Sherri Austin, Jimmie Terrell, Johnny Gray, Bobby Tomlinson, Jimmy Armstrong, and Sylvia Smith. A Columbus Day theme was used for the decorations which were made by pupils of the elementary grades of Farwell. Bradley Billingsley painted a mural as part of the decorations.

Bowling Head To Visit Here Sunday, Oct. 16

Mr. Mitchell, Southwest regional supervisor of the American Bowling Congress, will be here Sunday, October 16, for a meeting of the Farwell Bowling Association, says Wilfred Quickel, secretary. The meeting is set at 2:30 at the City Hall. Purpose of the session is to acquaint local members more fully with the services and desires of the American Bowling Congress. The ABC makes decisions concerning eligibility and suspensions, says Quickel. Officials of the Farwell group include Bob Anderson, president; Elmer Hargrove, first vice president; C. C. Christian, second vice president; and Quickel, secretary. Also during the visit of Mitchell, three live broadcasts are scheduled on KZOL.

Pleasant Hill

BY MRS. BUCK TAYLOR

Mrs. Charles McClure of San Diego is here for a week with her parents, the Weldon Danes. Mr. and Mrs. Marlon Walker and daughter spent the weekend in Las Cruces with their son, Bobby Joe, who is enrolled in college there. Bro. J. L. King of Crowley, has been visiting his daughters and families, the Roy Lovetts and the D. A. Badgetts. The Kirt Billingsleys of Folsom, Calif., are here visiting her brothers and their families, the Glenn Singleterrys and the Pearl Singleterrys. Other guests of the Pearl Singleterrys have been the Pat Saspers and children of Farmington. Mrs. Sasser is a daughter. Other Sunday visitors were Sasser's mother, Mrs. Kathryn Riddle; his grandmother, Mrs. Robertson; an aunt, all of Amarillo; and Hubert Singleterry of Friona. Mr. and Mrs. J. D. Kelley and children spent Sunday in the home of her parents, the Jim Owens of Bovina. Among those spending the weekend at Conchas were the E. J. Hodges, also Buck Taylor, Joe Vaughn and Robert Campbell. Mrs. E. J. Hodges and Mrs. Henry Johnke were in Lubbock Tuesday. Then Mr. and Mrs. Lewis Brosch and family of Lubbock spent the weekend with the Johnkes. Irby Range, Lubbock, spent the weekend with his parents, the John Ranges. Bud Anderson of Dumas visited Friday night with his cousin, Eugene Servatius. Mr. and Mrs. Amos Shockley and daughter, Myrtice, and the Robert Servatius were Sunday night supper guests in the Clarence Anderson home in Rhea. The Schockleys recently visited the W. T. Watsons in Lariat. Taylor news: Karen Osborne of Plainview spent the week with your correspondent and husband. She is a granddaughter. The Taylors visited the Bobby Nobblets in Muleshoe Sunday. Baptist Training Union classes will have a Halloween social

October 31. All church members are invited and refreshments of pie, coffee and cookies will be served. WMU met Monday for Bible study by Mrs. Glenn Lovett. Ten members were present. Mr. and Mrs. Bert Reimer and daughter of Clinton, Okla., visited Monday with her parents the Jim McCulloughs.

Church Of Christ

Farwell, Texas
Ebb Randol, Minister
The New Mexico Christian Children's Home, located seven miles northwest of Portales, will have open house Friday, Oct. 14, at 4:30 p. m. There will be a free barbecue at 6 p. m. (mst). You are invited to attend and see the work that is being done in caring for homeless children. Ebb Randol will be speaker for the occasion. Mesdames Lee Thompson, G. L. Medley, J. H. Stone, and Ebb Randol spent last Thursday, Oct. 6, at the home helping in the work there.

Texico Teams Split Games

Texico's high school boys and girls each picked up a win lost game in softball action Friday and Tuesday. Friday the girls had little trouble beating the Grady team, 17-8. Peggy Taylor handled the mound chores for Texico and set the Grady lasses down with only a few hits. All of the Texico girls got at least one hit as they scored seven runs in the second inning and added 10 more in the next four innings. It was a different story Tuesday as the Texico team ran into trouble against House. Texico used four pitchers in trying to stop the Cowgirls but it was to no avail and they trailed all the way. The Texico boys team lost its second game of the season Friday, bowing to Grady, 10-3. The Wolverines could never get on their feet as they could

muster only one run in the first inning and two in the fourth. Kwnneth Murdick went the route on the mound for the Texico team. Bounding back Tuesday at House, the Wolverines pounded out 17 hits in walloping the Cowboys, 25-3. Texico shelled three House pitchers, scoring in every inning but the sixth. Every Wolverine hit safely

and every player scored least once. Handling the mound chores for the Wolverines were Murdick and Skippy Tipton. Mr. and Mrs. Monty Parsons, Texico, visited in Lubbock Saturday with Mr. and Mrs. Weldon Greer and daughter.

Which Democratic Platform?

Which do you prefer: the socialistic, anti-Texas platform of Kennedy — or the Nixon Platform that more nearly conforms with Texas principles and ideals as expressed in the State Democratic platform?

The Kennedy platform is against nearly everything Texans are for—it is for nearly everything Texans are against.

What will be your choice? It is between a party label and the best interest of Texas and the Nation.

Allan Shivers says:

"I'LL TAKE TEXAS. I accept the Texas Democratic platform and will work for it. I repudiate the other—the Kennedy platform. I will join with my fellow Democrats to work and vote for men of maturity, experience, responsibility, and a fearless dedication to this country's best interests.

"I will vote for Richard M. Nixon and Henry Cabot Lodge."



TEXAS DEMOCRATS FOR NIXON - LODGE

ALLAN SHIVERS, Chairman
308 West 15th Street Austin, Texas



We Are Always Happy to be of Service to You
RALPH HUMBLE
Farwell, Texas

The MEN In The Family Prefer
JACK HOLT
"THE CLOTHIER"
Dress Right--You Can't Afford Not To
304 Main Clovis



Mr. Farmer

WE ARE NOW READY TO

SERVE YOU!

- * FAST SERVICE
- * EXPERT CREW
- * OUR GIN IS IN TOP F LIGHT CONDITION

WE GIVE YOU THE KIND OF SERVICE YOU WANT

CALVIN MEISSNER-MGR. → 

SHAFFER GIN CO.

Lariat 4464



Santa Fe

Ship and Travel Santa Fe

Longest railroad in the U. S. A.
... always on the move toward a better way!

