

THE STATE LINE TRIBUNE

"OFFICIAL PUBLICATION OF PARMER COUNTY"

NUMBER 19

SEVENTY-SECOND YEAR

25 CENTS

FFA, 4-H Club - -

Farwell Jr. Stock Show Scheduled January 19

ESA Donates \$10,000

Theta Rho chapter of Epsilon Sigma Alpha sorority this week presented a \$10,000 check to the Farwell Community Center Development Fund to be used for the Center's remodeling project. Due to the huge success of

ESA's Pheasant Hunt Preserve, the sorority was able to surpass its original pledge of \$3,000 to the community center, and Tuesday afternoon presented the \$10,000 check to Farwell Mayor Walter Kaltwasser, cen-

ter, who accepted the large sum on behalf of the City of Farwell. Sorority members pictured with the mayor are, from left, Joyce Williams, Leslie Lunsford, Terri Nichols, and Margaret Aycock.

Deadline Feb. 6 - -

Primary Election Filings Begin For County Offices

With the Primary Elections scheduled May 5, 1984, candidates for national, state, and county offices that are up for election have begun filing their applications for the offices. Opening date was January 7 and applications will be accepted until 6 p.m. on Monday, Feb. 6.

County offices which will be on the ballots for the 1984 Democratic and Republican Primaries include: County Sheriff, County Tax Assessor-

Collector, County Attorney, County Commissioner Pct. 1, Friona, and County Commissioner Pct. 3, Farwell.

Parmar County Democratic Chairman is Richard Collard of Friona, and the county Republican Chairman is Martin Kube of Farwell. All candidates must file their applications with their respective county chairman. Collard's office telephone number is 247-2716, and Kube may be reached at 481-3441.

The office of the District Attorney, 237th Judicial District, will also appear on the May 5 ballots.

Since 1984 is a presidential election year, much more interest is expected to be shown in the primaries as well as in the general election in November.

State offices which will appear on the primary ballots are State Senator, 31st District, and State Representative, 85th District.

Parmar Co. Sheriff - -

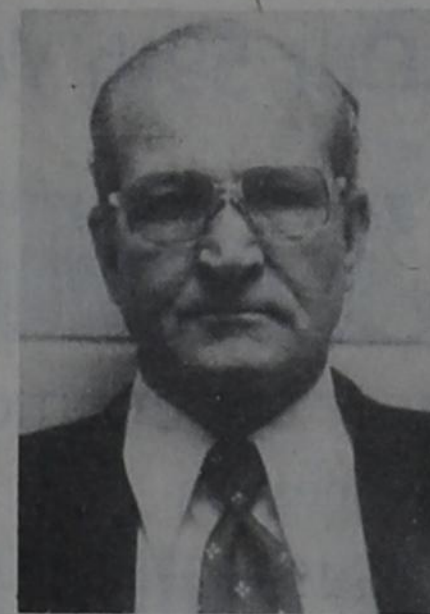
M. C. Morgan Seeks Re-election

M.C. "Bill" Morgan has authorized the State Line Tribune to announce his candidacy for re-election as Parmar County Sheriff.

In announcing his candidacy for another term to that office, Morgan said, "With over 25 years' experience in law enforcement, 12 years with the Parmar County Sheriff's Department, the last three years as your sheriff, I feel that I have shown the citizens of Parmar County that I am qualified, willing, and capable of serving them.

"For the last three years, the Parmar County Sheriff's Department has continually had a higher clearance rate, of all

crimes, than the state average. I feel this shows that we are



M.C. "BILL" MORGAN

qualified and capable.

"While serving as your sheriff, I have continued to keep the Parmar County Jail certified with the Texas Commission on Jail Standards at a minimum cost to the taxpayers, and actually cut the cost of the daily operation of the jail.

"I want to continue to be your sheriff, and if re-elected I will continue to serve the citizens of Parmar County to the best of my ability, and ask your support in the Democratic Primary."

M.C. "Bill" Morgan
Parmar County Sheriff

Pd. Political Adv.
Paid by M.C. "Bill" Morgan

For Sheriff's Post - -

Steven Hillock Announces Candidacy

Steven K. Hillock has authorized the State Line Tribune to announce his candidacy for election to the office of Parmar County Sheriff, subject to the May 5 primary elections.

In announcing his candidacy for the Sheriff's post, Hillock provided the following information:

Hillock was born February 11, 1946, and reared in Parmar County. He is the son of Vernon and Julia Symcox.

He served in the Navy and Army for 12½ years, and served as a military policeman for 2½ years. Before retiring honorably, he took courses in psychology and sociology.

Hillock has taken many courses given by the State of Texas in law enforcement, while he served as a police officer, city marshal, deputy

sheriff, and an undercover agent in cities in the Panhandle and south Texas.

Steven began his career working a short time with Charles Lovelace as a jailer and dispatcher at night.

James E. Morgan, District Judge of the 220th District, said this of Steven in a letter:

"Based upon my personal experience and observations of Mr. Hillock, I can give my wholehearted recommendation as to his ability as a peace officer and his dedication to his job. Additionally, I would advise that I have a great deal of respect for him as a person, and based upon communications I have had with other people who have known him longer, I feel that he generally enjoys a good reputation."

Steven and his wife, Mary Lou, have four children; Cherie,

15; Terri Ann, 13; Kevin, 8; and Mitchell, 4.

Steven K. Hillock

Pd. Political Adv.
Paid by Steven K. Hillock



STEVEN K. HILLOCK

Municipal Election Slated At Texico

The City of Texico has scheduled a municipal election to be held Tuesday, Mar. 6. Two councilmen for four-year terms and a municipal judge for a four-year term are to be elected.

Persons wishing to hold these public offices have only until

January 31 to decide to do so, according to Texico City Clerk Marie Christian.

Declarations for candidacy must be filed with Mrs. Christian on Tuesday, Jan. 31, between the hours of 8 a.m. and 5 p.m. MST. This will be the only day on which a person may file

for candidacy, Mrs. Christian said.

Those persons who have not registered and wish to do so in order to vote in the election have only until 5 p.m. MST Tuesday, Jan. 24, as the registration books will be closed at that time.

The annual Farwell Junior Livestock Show, featuring animals shown by Farwell FFA and Farwell 4-H Club members, will get underway Thursday, Jan. 19, at the Farwell Community Center beginning at 6 p.m.

This year's show will have divisions for steers, heifers, goats, sheep, and barrows and gilts.

Trophies will be awarded for grand champion, reserve champion, and showmanship in each division. Presenting the trophies will be Suzann Inman, FFA Sweetheart, and Sheryl Thigpen, FFA Plowgirl.

There will also be a PeeWee division for youngsters age nine years and under. "The PeeWee division gives the younger children a chance to show their lambs or pigs in a show, and it builds interest in the FFA and 4-H programs," said Richard Montgomery, FFA advisor and one of the show superintendents.

Montgomery expects the show to feature approximately 70-80 barrows and gilts, two steers, three heifers, ten goats, and ten sheep.

Animals may be weighed in Wednesday afternoon after the pens are set up, but all animals must be weighed in by Thursday noon. Montgomery said that anyone who can is urged to help set up the pens on Wednesday.

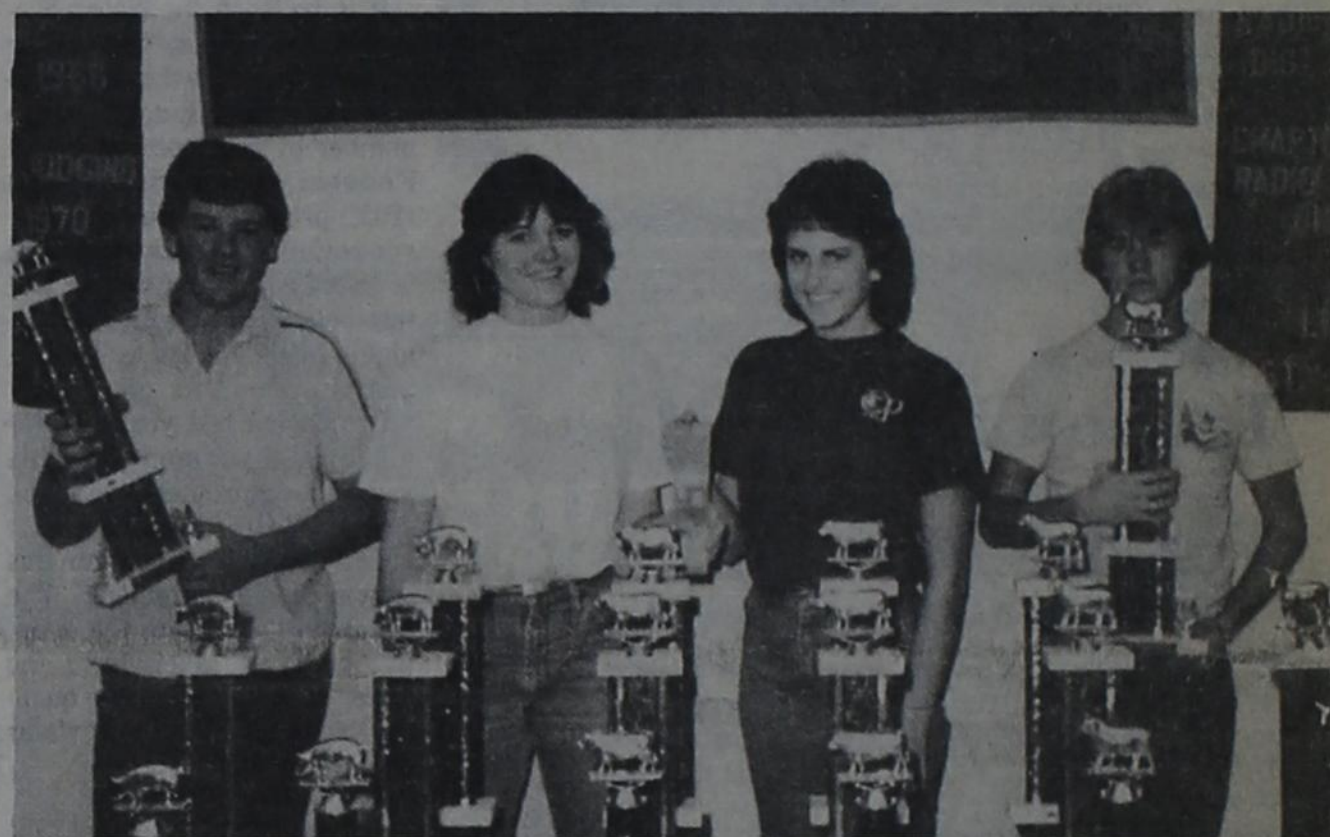
the shavings for the showroom floor.

Fred Chandler will be the announcer, Mack Heald will be the ring secretary, and Sam Drager will be the ring steward. Robert White will weigh the swine, sheep, and goats, and Mike Haseloff will weigh the steers and heifers.

"This show helps the kids and

their animals to get ready for the Parmar County Stock Show which will be held in February," said Montgomery.

Farwell 4-H Club will operate a concession stand, assisted by the Farwell Young Homemakers, for the convenience of the exhibitors and attendants. Everyone is urged and invited to attend this year's event.



Stock Show Trophies

Displaying the many trophies which will be presented at the Farwell Junior Livestock Show Thursday, Jan. 19, are, from left, FFA'ers Randy Davis, Suzann Inman, FFA Sweet-

heart, Sheryl Thigpen, FFA Plowgirl, and Rusty Stover. Trophies will be awarded for grand champion, reserve champion, and showmanship in each

division, and will be presented by the FFA Sweetheart and Plowgirl. Judging will begin at 6 p.m. at the Farwell Community Center.

Sheriff's Report

Only one arrest and one theft was reported from the Parmar County Sheriff's Department this week.

On January 9, Pilar Carrera, Friona, was arrested by Friona police officers and charged with DWI. He appeared before Parmar County Judge Porter Roberts on a plea of guilty and was fined \$250, court costs, and was given three days in jail.

Dean Stange of Tide Products in Farwell reported on January 7 the theft of gasoline from one of their vehicles while it was parked on their parking lot.

District Court Results

Four men entered guilty pleas to various charges in District Court conducted January 5 in Parmar County Courthouse, presided over by Judge Jack D. Young.

Robert Daniel Reyes, 17, of Friona, charged with burglary, was given three years probation.

Lazaro Cobrol, 48, of Friona, was charged with sexual abuse of a child and he was sentenced to three years in the Texas Department of Corrections.

Jerry Cooper, 35, of Muleshoe, charged with burglary of a building, was sentenced to six years in the Texas Department of Corrections.

Cobrol, James Cooper, and Jerry Cooper were transferred to the Texas Department of Corrections in Austin on January 9, by the Parmar County Sheriff's department.

Effective February - -

Farwell Approves Hike

In Gas And Water Rates

Farwell City Council approved an average 2.7 percent annual rate hike for Southern Union Gas Company when representatives of that utility requested the rate increase at the council's regular monthly meeting Monday night. Also approved by the council was an increase in the city's water rate. Both the gas and water increases will become effective at the next billing date, in February.

Clint Tidenberg, general manager of the utility company's Clovis operation, told the council that the 2.7 percent increase would generate about \$9000 yearly to the revenues of the company.

Tidenberg also requested to change the monthly billing from MCF (1000 cubic feet) billing to a CCF billing (100 cubic feet). "The conversion from MCF to CCF billing would be beneficial because monthly bills would more closely reflect actual consumption," Tidenberg said.

Under the current method of billing, a customer who uses 1.4 MCF (14 CCF) may be charged the same amount as a customer who only uses 1 MCF (10 CCF). The first customer pays less per CCF than the second. Alternatively, if the first customer uses just slightly more (1.5 MCF) and this amount is rounded upward, he would pay for 2 MCF even though he used only 1.5 MCF. He would then pay more per CCF of gas actually consumed than the customer using

1 MCF. The proposed conversion will result in more equitable rates for residential and small commercial users with relatively low consumption, where rounding to the nearest MCF is significant, Tidenberg explained.

Also included in the package was a request to the city for a \$5 monthly customer service charge. "Traditional justification for including the customer charge in a utility rate design is that such a charge is an appropriate means for recovering customer costs," Tidenberg said. "Now the customer charge is a monthly rate which the customer will be required to pay regardless of the amount of gas usage," he added.

Customer costs are largely fixed in nature, unaffected by day-to-day fluctuations in either gas sales or demands. Since the costs do not vary with load or MCF/CCF sales, they should be recovered through a fixed rate rather than an MCF/CCF consumption rate, said Tidenberg. It spreads these customer costs evenly through the year rather than have them concentrated in the months where consumption is the greatest and bills are the highest, according to Tidenberg.

Also discussed by Tidenberg was the removal of the Gas Cost from the tariff rate. "Removal of all cost of gas from the cost of service component of a customer's bill will allow the customer to easily identify the

actual cost of the gas which is consumed," Tidenberg said. "The removal of cost of gas from the tariff rate to the cost of gas component does not increase or decrease existing revenue. This amount shifts from one part of the bill to another to separate Cost of Service from the Cost of Gas," he added.

Farwell city fathers approved the rate increase to be effective with the utility company's February billing.

Also to increase in February will be the city's water rates. The water rate increase went to 4½ minimum residential (.45 cents a 1,000 up to 50,000, then to \$1.00 a thousand), commercial rates 4,000 minimum (.55 cents a 1,000 thereafter). "The water rate increase is due to not bringing in enough revenue the past year, in order to have a reserve," City Clerk Janie Bowery said.

In other business at the monthly session was the acceptance of the bid from Smallwood Insurance Agency in Muleshoe in the amount of \$5,437 for the City of Farwell blanket insurance policy. The policy covers the city buildings, equipment, etc., and liability.

Attending the Monday night session were Mayor Walter Kaltwasser, Councilmen Fred Chandler and Jerry Monk; city employees Janie Bowery, Dee Hammitt and Frank Ancira; and Joe Smallwood, Johnnie Rundell, and Tidenberg.



The jokesmiths have been giving the Aggies a rest lately and have turned their attention to the hapless Dallas Cowboys. Most are not printable in a family publication, but one of the milder jokes says that Danny White was out hunting and shot at a deer but the bullet got intercepted.

However, being a true football fan, we are already laying in a supply of the necessities for Super Bowl Sunday. Don't call us and we won't call you.

*** We have noticed a disturbing trend in the oil industry. The really big Companies seem to be prospecting for their oil reserves on Wall Street rather than in the Oil Patch. Apparently their philosophy is that it is cheaper to buy oil reserves than to go out and drill and prospect for them.

This bodes ill for the known reserve oil capacity in the future, and indicates that as time wears on pump prices will again begin going up and up. It also does not do states such as Texas and New Mexico much good in the revenue field. Both states depend on oil revenues, industry wide, for a substantial portion of their respective tax takes.

"This tax situation will get worse as both states are currently governed by "Big Spenders" who will not be able to adjust to a slackening of their tax tails. In fact, both Texas and New Mexico governors are even now looking for tax increases out of the long suffering public.

An old saw said that what goes up must come down. That was before the advent of our big spending politicians. Taxes go up but never seem to come down.

*** Say neighbor, when have you heard one of the double domes on TV pontificating about the disastrous results of "Reaganomics?" All seems to be strangely quiet on that front, but now we are besieged with "hunger" running rampant in the country.

The Presidential Commission on hunger issued its report this week and allowed that there was some hunger, but that it was not "running rampant." It also said that any statistics on the subject was hard to come by and substantiate. It remarked that those who might be truly "hungry" were that way because of a peculiar set of personal circumstances, and not the result of government policy.

We agree with this viewpoint. Hunger can in no way be considered as a major disaster in the USA. The federal and state programs are in place and the funds are available to feed all and everybody who are actually needy and hungry. Nothing is ever perfect, least of all the mechanics of any federal program.

Anyway, for the time being, hunger has replaced Reaganomics and we must remember that all is fair in love, war, politics - and TV news reporting.

*** As of Monday evening, the Yule season had departed Farwell. The Christmas lights were still up on main street.

*** We have never been an advocate of cut and run, but now, we are convinced that the best route for Reagan in the Middle East is to immediately pull the Marines out of Lebanon and give Israel a free hand in maintaining "peace." We now think the only way to get Syria's Assad to the conference table is the threat of letting Israel settle the hash in that area of the world. Assad is no dumbbell and must realize that without the USA's moderating influence, Israel would take the next weekend and annex the whole kit and kaboodle, Syria included.

*** My neighbor said the doctor told his cousin that the medicine he gave him would straighten him out soon. It did. They buried him last week.

TA MEMBER 1984
TEXAS PRESS ASSOCIATION

STATE LINE TRIBUNE
Box 255
Farwell, Texas 79325
Ph. 481-3681
USPS 520 220

Second-class postage paid at Farwell, Texas 79325.
Published weekly at 404 Third Street, Farwell, Texas 79325.

SUBSCRIPTION RATES - Parmer and adjoining counties,
\$10.00 per year; elsewhere, \$13.00 per year. Payable in
advance.

John Getz - Publisher

Funeral Rites Sunday For Alton Milstead

Funeral services for Alton A. Milstead, 70, of Clovis were conducted Sunday afternoon from Steed-Todd Chapel in Clovis, with Rev. J.L. Bass, pastor of First Baptist Church in Bovina, officiating. Interment was in the National Cemetery in Santa Fe, under the direction of Steed-Todd Funeral Home.

Also, a sister and brother-in-law, Lorine and Raymond White of Friona; and six grandchildren and three great-grandchildren.

Preceding him in death were one son, Robert Milstead; his parents, Arthur and Oma Milstead; and a brother, Floyd Milstead.

Mr. Milstead died Thursday, Jan. 5, at Cannon Air Force Base Hospital. He was born July 17, 1913, in Alba, Tex. He retired in 1955 after 21 years of military service. He married Mary Lucille Lee on July 9, 1950, in Jeffersonville, Ind.

The couple moved to Farwell in 1958, and they operated Mil & Mary's Truck Stop Cafe in Texico from 1958-1974.

Survivors include his wife, Mary, of the home; a daughter and son-in-law, Debra and James Shober of Clovis, a son and daughter-in-law, Stanley and Kim Milstead of England; and a daughter, JoAnn Reid of Clovis;



ALTON A. MILSTEAD

Texico Chamber Meets For Brief Session

Texico Chamber of Commerce met briefly in regular session Monday evening in the Citizens Bank building. A discussion was held on the immediate problem of getting the picnic tables in the city park cemented down as soon as possible.

A.D. McDonald gave the

group a brief summary on the new re-organization of the Region 3 Senior Citizens Group.

Plans for the Chamber Banquet were discussed and a tentative date for the banquet was set for April 3.

Members present were Bill Christian, Louise Tidwell, A.D. McDonald, and Ann Cooper.

Superintendent - -

W.M. Roberts' Contract Renewed For 1984-85

The contract of Farwell school superintendent W.M. Roberts was renewed for the 1984-85 school year by the Farwell School Board at its regular monthly meeting Monday night, Jan. 9.

In other business, the Board agreed to pay one-half the cost, not to exceed \$50 per teacher, for an on-campus computer course for Farwell teachers. The course, which will be held at the junior high school, will be taught by an instructor from Eastern New Mexico University. Cost for the course will be \$105 per teacher. By offering to

pay almost half the cost of the course, we're trying to give the teachers a little incentive," said Farwell junior high principal Jerry Dee Owen. He said the course will also add three undergraduate hours for the teachers.

Ronnie Teichelman, area supervisor for Vocational Agriculture, and Mrs. Ima Dora Haile, area supervisor for Homemaking Education, met with the Board and reviewed the vocational programs locally and gave insight on why regulations are the way they are. Student Bernie Mesman was

granted permission by the Board to leave school the last period to work for his father.

In final action, the Board accepted the financial reports and approved payment of bills.

School board members attending were Joe Hughes, Wilbert Kalbas, Maxine Williams, Floyd Coates, Steve Pierson, Richard Haseloff, and Edward Corn.

Others present were W.M. Roberts, Lynn Burton, Jerry Owen, Bruce Dollar, Richard Montgomery, Martha White, and Teichelman and Mrs. Haile.

Parmer County - -

Water Depletion Lowest In Years

The 1983 decline in the water level in the Ogallala aquifer in Parmer County is expected to be less than the past ten year average of .287 feet. The High Plains Underground Water Conservation District maintains a network of 97 wells it measures in January of each year in the county. All of the wells are privately owned and these landowners generously allow the Water District's staff to measure their wells to keep the public informed on changes in water storage.

It is believed by Water District officials that less water was pumped from the aquifer in 1983 due primarily to the large number of acres placed in the Federal Payment-In-Kind (PIK) program, reduced pumpage resulting from the high cost of energy to pump water, and the better conservation techniques being utilized by the farmers.

Comparing last year's water level measurement to this year's measurement could be compared to comparing last year's bank statement to this year's bank statement. The water levels indicate the quantity of water taken from the water bank as well as the quantity remaining in the water

bank. Historically more water has been withdrawn than has been deposited by nature each year. Fortunately, the rate of depletion has decreased in recent years due to an increase in conservation efforts by area farmers.

Conservation practices contributing to the decreased rate of decline include: furrow dikes, underground pipeline, tailwater return systems, drop-

line sprinkler systems, and general improvements in efficiency of all kinds of existing irrigation systems.

The Water District's staff will place a sticker with the current water-level measurements on each well in the network when it is measured, and will contact news services with its findings on water-level changes for the county when they are tabulated in mid-February.

Texico Kindergarten Enrolls 30 Students

Thirty students have enrolled in the Texico kindergarten for this year. Classes began for the youngsters January 4.

Enrollment for this year surpassed last year when 26 students enrolled in kindergarten. Instructing the classes will be Janice Jenkins and Glenda Horne of Texico.

Parents of kindergarten students are reminded to have the

necessary supplies for their children. These include a box of 16 crayons, box of Kleenex, two No. 2 pencils, set of water colors, bottle of glue, pair of rounded scissors, school supply box, and one rug or mat for rest time.

Texico kindergarten will be in session from 8:30 a.m. until 3:00 p.m., and will finish the school year at the same time as the other school students.



It's My Turn Now

The sunny, spring-like weather which arrived in the Twin Cities last week allowed the Farwell Kindergarten students to play outside during recess. One student remarked that the bad thing about winter is that you

have to stay inside and play during recess. Enjoying the 60 degree plus days and taking turns going down the slide on the playground are, front to back, Jason Dannheim, Jerry Landrum, and Karen Yruegas.

It's a good thing that the youngsters enjoyed the warm days as a norther arrived Monday dropping the temperature to the low 30s with very high winds, which kept them inside again during recess.

**ELEGANTLY
RAISED
PRINTED
BUSINESS
CARDS**

Choice of Styles
and Inks
at Low, Low Prices

They say success! Magnificent raised printing... low in cost yet they say "success". Many type styles and layout ideas to choose from

THE STATE LINE TRIBUNE

I'M BACK!

**I WOULD LIKE
TO INVITE MY
FRIENDS AND
CUSTOMERS TO**

**DOC STEWART'S
TO SEE ME.**

Bill Hagler
2500 Mabry Dr. Clovis

We Are Pleased To Begin Our 59th Year Of Service

BANK STATEMENT

CONDENSED STATEMENT OF CONDITION

At close of business on

December 30, 1983

ASSETS

Cash & Exchange	\$4,410,970.26
Bonds & Warrants	23,849,983.75
Loans & Discounts	4,399,924.75
Building, Furniture & Fixtures	20,001.00

TOTAL ASSETS 32,680,879.76

LIABILITIES

Capital Stock	500,000.00
Certified Surplus	500,000.00
Undivided Profits	100,001.00
Reserves	4,447,202.68
Deposits	27,133,676.08

TOTAL LIABILITIES \$32,680,879.76

OFFICERS

G.D. ANDERSON, Chairman
R. W. ANDERSON, President
JOE W. JONES, Vice-President
& Trust Officer
MARILYN EDWARDS, Vice-President
THOMAS E. NICHOLS, Vice-President
DOLLIE PORTER, Cashier

DIRECTORS

G. D. ANDERSON
BELVA T. ANDERSON
R. W. ANDERSON
CAROLINE L. ANDERSON
HOMER BRUMLEY
MARILYN EDWARDS
VIRGOL JOINER
JOE W. JONES
THOMAS E. NICHOLS

January
Clearance

SAVE 20% to 50%
On Selected
**Men - Women and
Childrens
Shoes & Apparel**

•Dresses • Gowns

•Mix N Match

•Purses

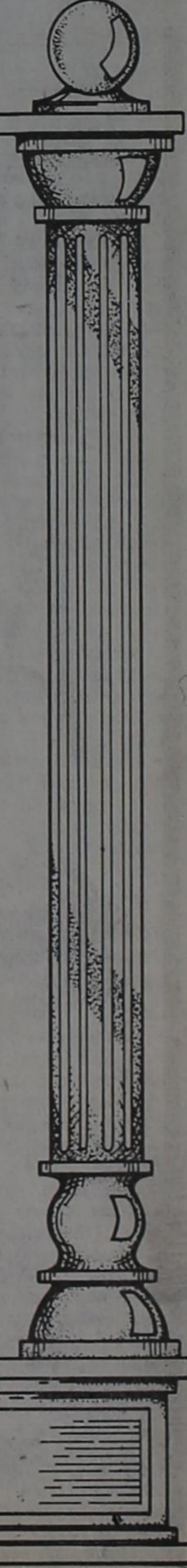
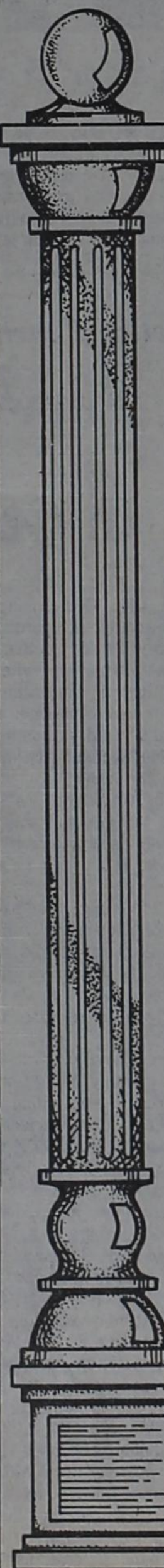
•Suits • Pants

•Sport Coats

No Refunds, Exchanges Or
Layaways. All Sales Final

TURNER'S

520 MAIN ST. MASTERCARD
TURNER CHARGE VISA
FREE PARKING IN REAR



SECURITY STATE BANK



FIRE CALLS

Texico Volunteer Fire Department received one fire call and one ambulance call since the last report.

On January 8, the fire truck was sent to Mildred Street where a trailer house was on fire. Extent of damage was not available.

Also on January 8, the ambulance answered a call to Anderson Street, where a woman had fallen. She was transported to the Clovis hospital.

Farwell Volunteer Fire Department answered two ambulance calls and one fire call last week.

On January 8, the ambulance was sent to a Sixth Street residence, where it transported a woman to the Friona hospital.

On January 9, the ambulance answered a call to an Avenue B residence where it transported a woman to the Clovis hospital.

January 10, the fire truck responded to a fire nine miles east on Highway 84 where some utilities poles on the railroad right-of-way were on fire.



Tail Feather Winner

Bob Harmon, left, of Portales won the Pheasant Tail Feather Contest in Farwell, with a tail feather measuring 26 3/8 inches, and he received the first place prize of \$30. Nell Stewart of Farwell Hardware, right, was the official measurer of the pheasant tail feathers for the Farwell area. Second place win-

ner was Robin Mahaney of Farwell who received \$15 for a tail feather measuring 26 3/16, and winning third place and \$10 was Lynn McDaniel of Texico with a tail feather measuring 22 1/4 inches. Sponsors of the local contest were Security State Bank, first place; Sherley-

Anderson-Pitman, second place; and Farwell Hardware, third place. The longest tail feather from the local area will be entered into the county competition, with the county winner receiving a belt buckle, courtesy of the Parmer County Game Management Association.

State Rep. Here Wed.

State Comptroller Bob Bullock announces that Phillip Land from his Lubbock field office will be at Parmer County Courthouse on Wednesday, Jan. 18, from 2 to 3:30 p.m.

A comptroller's representative is available to assist local residents at the courthouse the third Wednesday of each month.

Anyone with problems or questions concerning state taxes is urged to contact Land at the courthouse in person, or call the Lubbock field office at 795-0691.

A toll-free number, 1-800-252-5555, is also available to Texas taxpayers.

Weather Slows Progress On FM 3333 Construction

Due to inclement weather, very little progress has been made this month in construction work on FM 3333 from U.S. Highway 60, five miles northeast of Farwell, east to FM Highway 1731, according to Rhea E. Bradley, supervising resident engineer, State Department of Highways and Public Transportation of Littlefield.

Work of constructing grading and installing culverts is being done at present.

Other work will include flex-

ible base and two course surface treatment. The finished travel surface will be 28 ft. wide, which will include two 10 ft. driving lanes and two 4 ft.

shoulders. The public is urged to obey laws, watch for warning signs, barricades and speed limits through construction.

SALE STARTS

Sat. Jan. 14

8:30 a.m.

Highland YOUTH SHOP

No. 6 Highland Shopping Center

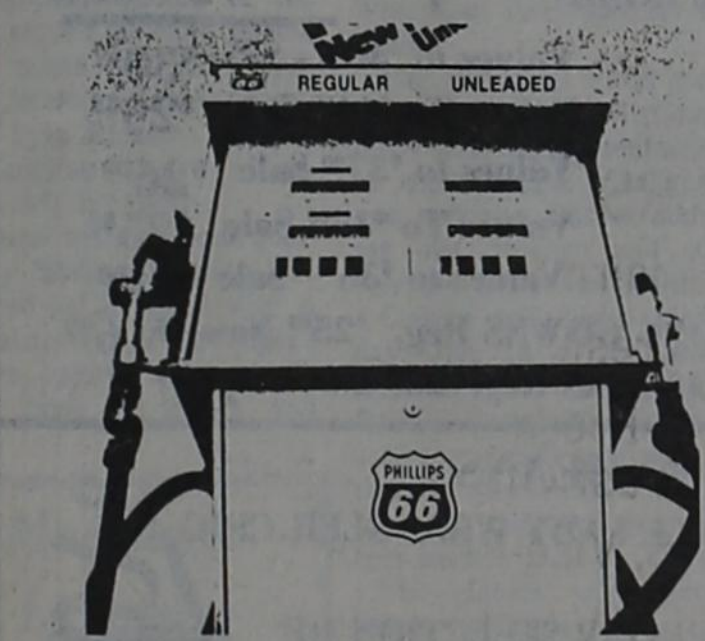
Cotton growing, which originated in India, was taken to Greece by Alexander the Great.

TELL OUR ADVERTISERS YOU SAW IT IN THE TRIBUNE!

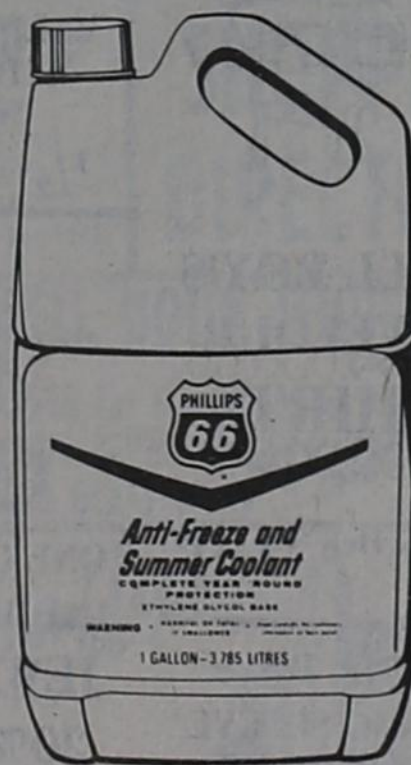
GREAT PERFORMERS



Phillips 66 Regular and Unleaded Gasolines



For fast starts on cold mornings try the PHILLIPS TEAM



From

Helton Oil, Inc.
Serving The Texico - Farwell Area
Ph. 481-3222

Tax Allowance - -

Water Level Maps Approved By IRS

Maps illustrating declines in water levels and saturated thickness and tables reflecting the percent of the cost of a parcel of land which can be attributed to water for tax year 1983 have been approved by Dallas-based Internal Revenue Service engineers.

These data will be used by local landowners when they file a cost-in-water income tax depletion allowance on ground water used from the Ogallala Formation in agricultural production for all or parts of the 15 counties served by the High Plains Underground Water Conservation District.

Area landowners who have a cost-basis in their ground water have reduced their federal income tax payments by \$3 to \$5 million annually in the Water District's service area since the depletion allowance was declared valid by the U.S. Courts in 1966 as a result of a lawsuit sponsored by the Water District.

The Water District measures depth-to-water changes in a network of approximately 950 wells each year to obtain area changes in water levels. The change-in-water level for each well for each tax year is plotted on a map at the well's location. The maps, contoured on one-foot intervals, are examined by IRS engineers for accuracy and adequacy.

Internal Revenue Service acceptable change-in-water levels for the tax year are taken from the contour maps for each tract of land by Water District's staff at the request of landowners in the area served by the Water

District.

The change-in-water level for the current tax year is all the data needed by those landowners who have previously filed for the allowance for their 1982 tax return.

Landowners who have recently acquired irrigated farm land (either through purchase, inheritance, or some other means which required revaluation) need additional data to establish a claim.

First, they need documented evidence of the amount of saturated formation under the tract at the date of purchase and the difference in dollars the land would have sold for if it had little or no ground water.

To determine the feet of saturated formation under each tract of land in the Water District's service area for each tax year, Water District geologists and hydrologists have been required to construct a series of maps.

The first set of maps was constructed by using data from approximately 45,000 water well drillers' logs on wells permitted by the District. The location at each well was plotted on a map. The elevation of the land surface at each well location was then determined and plotted.

The elevation of the base or bottom of the Ogallala Formation was obtained by subtracting the depth below land surface at which the base of the formation was encountered by the water well driller. These maps were then contoured in feet above sea level.

The second set of maps required that the Water District staff make special depth-to-

water in feet below land surface measurements in randomly located wells (two to three mile spacing) throughout the Water District's service area. These water-level measurements in feet below land surface were then corrected to reflect the elevation of the water table above sea level at the well site on maps which were also contoured.

A third set of maps was constructed which illustrated the difference in feet between the elevation of the water table and the elevation of the base of the formation. These maps illustrate the saturated thickness of the Ogallala Formation.

Saturated thickness maps are not made for each year due to the tremendous work effort involved. Saturated thickness values for years when the maps are not made are determined by subtracting annual decline values from the most recently constructed saturated thickness maps to obtain the feet of saturation for the year desired.

Percent of cost attributed to irrigation water is obtained for the Water District by certified land appraisers. They check actual land sales in select counties each year, visit each tract, and reduce the land sale value by estimating the value of the improvements.

Land with little or no water is considered dryland. These dry-

land sales' values are averaged to obtain an average dryland sales price for the county. The average selling price for land with ample ground water for irrigation is determined in the same manner.

The IRS engineers review these sales data and agree to a percent of cost which can be attributed to ground water by those wishing to claim a cost-in-water depletion allowance.

An example of the use of the data is as follows: The landowner purchased a 640-acre tract of land in January, 1983 at a cost of \$1,250 per acre. Average dryland sales were \$350 per acre in his county. His cost in the water would be \$900 per acre. The tract had 100 feet of saturated formation at the date of purchase. Each foot of saturated formation would then have a value of \$900 (\$900 ÷ 100 = \$9). He had two feet of decline in 1983; therefore, 2 feet x \$9 per foot would equal \$18 per acre or \$11,520 cost-in-water depletion allowance for the 640-acre tract.

Landowners in the Water District's service area who plan to claim their cost-in-water income tax depletion allowance on their 1983 tax return should request that their accountant obtain the necessary data from the Water District or if they prefer, the Water District will provide that data directly to the landowner.

STEED-TODD FUNERAL HOME

"When Understanding Is Needed Most"

Prince & Manana-Clovis
Ph. 763-5541

"The business of life is to go forwards." Samuel Johnson

FAST N' HOT OWENS SAUSAGE, SCRAMBLE EGGS, THICK TEXAS TOAST.
BREAKFAST SANDWICH SPECIAL REG. \$1.00 NOW **99¢**

ALLSUP'S NEW HOT **CHOCOLATE** 8 OZ. CUP **30¢** COME IN AND ENJOY FRESH HOT COFFEE ANY TIME

COOK FOOD SPECIAL AS FEATURED ON TV. **BURRITOS** FRESH-HOT & READY TO GO! **2 99¢** FOR

32 OZ. **FOUNTAIN DRINK** ALLSUP'S REUSABLE PLASTIC CUP **39¢**

BORDEN'S ASST. FLAVORS **ICE CREAM** 1/2 GAL. CTN. **\$1.69** FREEZE BEE WHILE SUPPLIES LAST

BORDEN'S ORANGE **JUICE** QT. CTN. **99¢** **ICE CREAM CONES** TRIAL SIZE **10¢**

Allsup's 1 1/2 lb. Loaf **BREAD** 2/\$1.00 **\$3.49 COKE** 12 PK. 12 OZ. Cans

RATH BOLOGNA, SALAMI, P & P LOAF, LUNCHEON LOAF

LUNCHEON MEATS 6 OZ. PKG. **69¢**

ALLSUP'S **MONEY ORDERS** EACH **29¢** UP TO \$299.00

ALLSUP'S CONVENIENCE STORES

- WHILE SUPPLIES LAST
- SELF SERV GAS
- OPEN 24 HOURS FOR YOUR CONVENIENCE
- PRICES EFFECTIVE JANUARY 12-14, 1984



The Creative Woman

BY SHERYL BORDEN

Topics to be presented on "The Creative Woman" show on January 14 include Silks - Part II, Kabob Cookery, and the second travel tip from Glamour. The segment on silks will be presented by sewing expert, Susan Pletsch from Palmer/Pletsch Associates in Portland, Ore. In this second segment, she will talk about seams for sheer fabrics, some suggestions for making buttonholes, and share ideas for hemming techniques. A quick review of last week's show will also be done to bring viewers up-to-date.

Mary Ellen Payne, Extension home economist from Carrizo, will discuss kabob cookery, share recipes for different marinades, and talk about different food combinations for kabobs. She suggests kabob cookery to turn ordinary food into something special.

The second travel tip segment will cover packing tips. Barbara Gillam, travel editor for Glamour Magazine, will talk about packing, suitcase selection, as well as discuss hair and skin care products for travel. Three additional segments on travel tips for the working woman will be presented on "The Creative Woman" later this month.

On January 15, the topics will be sewing tips from Stretch and Sew, Inc., caulking, and image consulting. Ann Person, president and founder of Stretch and Sew, will demonstrate making a Wallace Berry Neckline, which is a tab front closure.

Vickie Willis, home economist and marketing representative

for Southwestern Public Service Co. in Roswell, will discuss the importance of caulking for energy saving ideas in the home. Mrs. Willis will demonstrate how to caulk around doors and windows, and tell how to determine if our homes are airtight.

Finally, Sharon Boies, a color consultant and image specialist, from Costa Mesa, Calif., will tell what an image consultant does, what the client is expected to do and to achieve, and how important knowing our image is. Mrs. Boies is with a company called "Uniquely You."

Topics to be presented on January 17 and 21 include pies and pastries and travel tip number three. Joy Best, Extension home economist for Roosevelt County, will share some recipes and her expertise in making pastries and pies. She'll demonstrate a pie crust made in the food processor that's especially good to freeze and use later. Mrs. Best will have samples of the different varieties of pies available and discuss preparation tips.

Travel tip information will be on beauty tips, and guest Lee McCallum, who is the beauty editor for Glamour magazine, says that women should spend just as much time planning what she takes in the way of beauty items as she does her clothing for trips.

On January 19, viewers will learn how to decorate with sheets and how to successfully cook vegetables in the microwave oven. Jo Ann Emmel,

housing specialist with the Cooperative Extension Service in Las Cruces, will talk about some of the advantages, as well as drawbacks to using sheets in decorating. She'll have several examples of items decorated with sheets.

Marcia Schwall, home economist with Litton Co. in Dallas, will talk about selection of vegetables for microwave cooking, discuss the types of containers that work best, and talk about the importance of arrangement when cooking vegetables in the microwave oven.

"The Creative Woman" is produced and hosted by Sheryl Borden. The show airs on KENW-TV, Channel 3 at 12 noon MST on Tuesday and Thursday, at 2 p.m. on Saturday, and at 7 p.m. on Sunday.

Free Trees Given By Nat'l. Foundation

The National Arbor Day Foundation is giving ten free trees to people who become Foundation Members during January, 1984.

The free trees are part of the Foundation's effort to promote tree planting throughout America.

A Red Maple, Black Walnut, American Redbud, Norway Spruce, Red Oak, White Flowering Dogwood, European Mountain Ash, Flowering Crab, Shagbark Hickory, and Colorado Blue Spruce tree will be given to members joining during January.

These trees were selected to provide a wide range of benefits: flowers, shade, berries, nuts, and beautiful fall foliage, according to the Foundation. The six-to-12-inch trees will be shipped postage paid with enclosed planting instructions at the right time for planting this spring.

The Foundation makes its spring shipments between February 1 and May 31, depending on the local climate and this year's weather.

The National Arbor Day Foundation, a nonprofit organization, is working to improve the quality of life throughout the country by encouraging tree planting. The Foundation will give the ten free trees to members contributing \$10 during this month.

To become a member of the Foundation and to receive the free trees, a \$10 membership contribution should be sent to TEN TREES, National Arbor Day Foundation, 100 Arbor Avenue, Nebraska City, NE 68410, by January 31, 1984.

"We always like those who admire us." La Rochefoucauld



Sensible Living

by JoAnn Emmel
NMSU Extension
Housing Specialist

carded. This is especially true of upholstered furniture where the stuffing has picked up the odor.

Sometimes by discarding the padding or stuffing, as in the case of pillows or carpet, much of the odor may go away.

SL

Dear Sensible Living:

We recently had a fire in our home and some of the furnishings absorbed the smoke odor. Is there anything I can do to remove it?

O.D., Deming

Dear O.D.:

Many times fabrics act as sponges for smoke odor. If the smoke damage was only minor, perhaps a good washing or dry cleaning will do the trick. In many cases, however, the odor is so strong it may be impossible to remove. Even professional dry cleaners say little can be done with such articles.

I suggest you clean the article as best you can. Some fragrance sprays may help mask the odor. If the odor remains, the item may need to be dis-

Dear Sensible Living:

Someone told me I could check the gasket in my refrigerator by closing the door on a dollar bill and see if the bill would pull out. I did just that and the bill pulled out quite easily. Does that mean I need a new refrigerator gasket?

F.M., Portales

Dear F.M.:

Not necessarily! Up until the late '50s refrigerators had mechanical latches with firm rubber door gaskets. The latch held the door closed under pressure. The dollar bill test worked

fine on this type of door and gasket.

Because of federal regulations, today's refrigerators are designed to open with 15 pounds of pressure or less. This lower sealing pressure renders the dollar bill test obsolete.

The best way to check the new gaskets is to take a 150 watt flood lamp on an extension cord and place it on a shelf inside the refrigerator facing the edge of the door. With the room fairly dark check to see if any light is visible around the gasket. Move the light from one shelf to another. When light is visible the door is not sealing properly.

If a new gasket is needed, check into the possibility of adding a new one yourself.

SL

Send your questions to Sensible Living, Box 3AE, New Mexico State University, Las Cruces, NM 88003.

Arbor Day Observance In Texas January 20

Arbor Day, an observance which recognizes the importance of planting trees, will be celebrated in Texas on January 20 this year.

Beginning in a Swiss village more than 1500 years ago, Arbor Day symbolizes the need to plant trees in cities and towns, as well as for wood and paper products.

In the United States, Arbor Day began in a state which had at the time less than three percent of its land area covered with trees - Nebraska. Since that first Arbor Day in 1872, the idea has spread to 50 states and the Virgin Islands.

Temple was the site of the first Arbor Day in Texas in 1889. An Arbor Day resolution was passed shortly after that first ceremony by the Texas State Legislature. In 1949, the third Friday in January was designated as Arbor Day in Texas.

Because only 13.6 percent of Texas' total land area is in forest land, and this mostly in East Texas, many Texans are not aware that this amounts to an estimated 11.7 million acres, or 18,583.2 square miles. This, while perhaps a small portion of the entire state, nevertheless amounts to an area larger in size than the states of Maryland (10,577 sq. mi.) and New Jersey (7,836) combined.

It is also larger than the four New England states of Massachusetts, Connecticut, Delaware and Rhode Island, with a combined land area of 15,437 square miles.

Besides the obvious benefits of the timber industry in Texas, which generates 150,000 jobs, \$82 million in taxes, and \$5.1 billion in sales annually, urban tree planting can have a far-reaching effect on a community.

According to Larry Schaapveld, urban forester with the Texas Forest Service in Fort Worth, trees serve many functions in urban areas.

"Trees do much more in a town or city than provide color. They also provide residents with a variety of shapes, forms, and practical uses.

"In today's urban areas, trees are taking on a new importance in providing energy-saving shade," he said.

They can, if properly selected and located, protect a building or house from the hot Texas summer sun. Then, after losing leaves in the fall, allow the warm winter sun to penetrate to the structure, he added.

As the father of Arbor Day in America, J. Sterling Morton said, "Other holidays repose upon the past. Arbor Day proposes for the future."



Rhubarb is a native of Siberia, introduced to America in Revolutionary times.

Letter of Appreciation

We at the Farwell Convalescent Center, take this opportunity to thank all groups or individuals who have participated in in and/or helped in any way with activities at the center this past year. Your thoughtfulness and kindness is deeply appreciated.

The Staff & Residents of the Farwell Convalescent Center

Hurst Department Store

110 MAIN

Where The Customer Comes First, Always

272-5640

In Appreciation For Your Patronage From Muleshoe And The Surrounding Areas - We Want To Give You BIG Savings!

Thank You For Your Support! We Are Glad To Be In Muleshoe!

MEN'S WEAR CLEARANCE

ALL ARROW LONG-SLEEVE SHIRTS NOW ON SALE

Value \$23.00	Sale \$15.43
Value \$22.00	Sale \$14.67
Value \$21.00	Sale \$14.00
Value \$20.00	Sale \$13.33
Value \$19.00	Sale \$12.67



PLAID SPORT SHIRTS Reg. \$23.00 Now \$13.99

50% OFF ALL JAYMAR SANSABELT DRESS SLACKS

OLEG CASSINI - MEN'S SWEDISH KNIT PULLOVERS Values to \$29.00



Now \$18.99

ARROW MEN'S

SWEATERS V-Neck & Stripes

Values To \$29.00 Now Only \$17.99

JOCKEY BRAND CARDIGAN & V-NECK SOLID COLOR

SWEATERS

Up To \$33.00 For \$21.99



MEN'S JACKET SALE REVERSIBLE SWEATER LOOK

Values To \$75.00 Now \$54.99

MEN'S SHORT REVERSIBLE JACKET VARIOUS COLORS

Values To \$60.00 Now \$39.99

BOY'S ROB ROY CREW NECK PULLOVER

SWEATERS

Reg. \$24.00 Now Only \$14.99

GROUP MEN'S VELOUR SHIRTS Reg. \$23.00 Now Only \$16.98

ALL KEDS & ADIDAS TENNIS SHOES Ladies, Men, Children

\$3.00 OFF

ALL HEALTHTEX & GARANIMALS 6 MOS. THRU 14 YRS. Boys & Girls

1/3 OFF



RESISTOL HAT SALE

Value \$59.00 Now \$49.00

Value \$74.00 Now \$54.00

Value \$80.00 Now \$50.00



ALL BOY'S VELOUR SHIRTS Reg. \$23.00

Now Only \$14.99

ALL BOYS LONG SLEEVE DONMOOR & ROB ROY KNIT SHIRTS

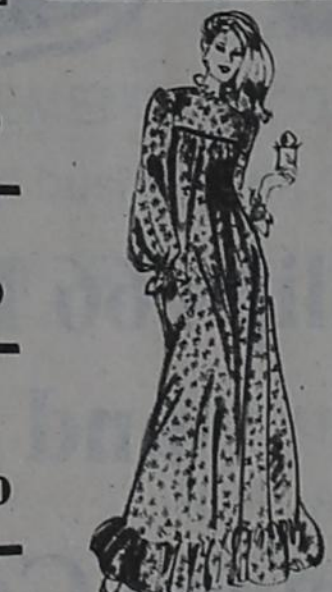
\$3.00 OFF REGULAR PRICE



LADIES EVENING WEAR-Beautiful Selection-- Values To \$100.00

Now 1/3 To 1/2 REDUCED

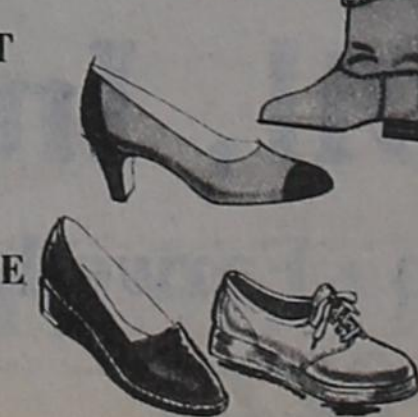
LITTLE GIRLS SLEEPWARE Reduced



ALL JUNIOR VICKY VAUGHN JUMP SUITS VALUES TO \$70.00 NOW 1/2 PRICE



ONE GROUP LADIES JEWELRY 20% OFF



SALE STARTS TUESDAY JANUARY 10 JANUARY Clearance SALE

LADIES READY TO WEAR

ALL LADIES TOTES REVERSIBLE COATS \$10.00 OFF Price

ACT III VELVET

BLAZERS, PANTS & SKIRTS

BLAZERS Reg. \$82.00 Now \$49.99

SKIRT Reg. \$40.00 Now \$25.99

PANTS Reg. \$40.00 Now \$25.99

BLOUSES Reg. \$43.00 to \$46.00 Now \$25.99

SPECIAL GROUP OF LADIES COORDINATES

SKIRTS BLAZERS PANTS NOW

1/2 PRICE

LINGERIE SALE ALL FLEECE ROBES

Values to \$46.00 - Sale \$30.67
Values To \$44.00 Sale \$29.33
Values to \$37.00 Sale \$26.00
Values To \$38.00 Sale \$25.33
Values to \$36.00 Sale \$24.00

FLEECE LONG GOWNS Reg. \$25.00 Now \$16.99
FLEECE PAJAMAS Reg. \$26.50 Now \$17.99

Ladies & Junior JEANS

\$3.00 OFF ALL LADY WRANGLER, CHIC

1/3 OFF SPECIAL SELECTION OF LADY WRANGLER & SASSOON OXFORD SHIRTS & LONG SLEEVE KNIT TOPS

SPECIAL GROUP OF PURSES

1/2 PRICE

COUNTRY SUBURBAN COORDINATES

BLAZERS Reg. \$79.00 Now \$49.99

PANTS Reg. \$58.00 Now \$34.98

SKIRTS Reg. \$58.00 Now \$34.98

BLOUSES Reg. \$42.00 Now \$25.99

Reg. \$36.00 Now \$23.98

LADIES SHOES First Lady Edition

Values To \$39.98 Now 1/2 PRICE
Gloria Vanderbilt Boots Reg. \$95.00 Now \$59.98

\$10.00 OFF All Gloria Vanderbilt Dress Shoes Special Group of Ladies Shoes PERSONALITY & CRAWDADS 1/2 PRICE



Frank Hinksons Celebrate 50th Wedding Anniversary

Despite the sub-zero weather, a large turnout was on hand to help celebrate the 50th Wedding Anniversary of Frank and Lavinne Hinkson of Lazbuddie.

The first day of the two-day affair was spent with family members who traveled from ten different states to attend the dinner and program Wednesday evening, Dec. 28, at the Lazbuddie Methodist Church fellowship hall.

After a buffet dinner, the 53 relatives enjoyed a program, with Mike Hinkson as master of ceremonies. Carolyn (Hinkson) Pilgrim played several musical selections on the organ, and Marilyn Hinkson sang favorite songs of the honored couple.

Barbara Lust gave a brief history of her mother's and father's 50 years together. Melinda Hinkson brought back memories of their 40th anniversary celebration in Hawaii by performing the traditional Hawaiian hula dances. Lucile Lade, sister of Lavinne, read an account of the couple's wedding.

Highlighting the evening was the grandchildren's part of the program, which consisted of four delightful skits portraying their "Ma Mo and Pa Pa" in humorous situations at home and on the farm. Comments from Frank and Lavinne were followed by each giving the other a special gift.

A special gift was given to Dean Hinkson, brother of Frank, who married the late Florence (Mecham) Hinkson, sister of Lavinne, in a double wedding with the honored couple.

Frank and Marilyn Hinkson were also congratulated on their 13th anniversary on the same date. Frank Hinkson II presented his parents with a gift from the four children and their families, and closed with prayer.

Thursday evening, the children and grandchildren of Frank and Lavinne hosted a reception in the fellowship hall of the Methodist Church for the couple's 50th anniversary.

Tables were decorated throughout with Christmas greenery and lighted candles in brass candlesticks. Poinsettias, wedding bells, and gold tinsel accented each window. The serving table was covered with a tiered ruffled, white lace cloth.

The three-tiered white cake, baked by Ellen Gallman, was decorated with gold-colored roses and white wedding bells with lily of the valley flowers and gold leaves. Atop the cake was a gold "50th" surrounded by net and two wedding bells. Gold silk flower arrangements surrounding brass candlesticks with gold votives added to the decor of the serving and registration tables.

Judy Cooper and Karen Pilgrim, granddaughters of the couple, served the cake, punch, coffee, mints and nuts from crystal, brass, and gold appointments. Tyla Hinkson, another granddaughter, registered approximately 125 guests.

A special memory book compiled by Marilyn Hinkson was displayed on an easel with a pictorial account of the couple's 50 years together. There was also a book of letters and

memories from numerous friends and relatives.

Guests from Dumas, Happy Canyon, Kress, Hereford, Farwell, Amarillo, Dimmitt, Friona, Muleshoe, and Lazbuddie shared in the happy occasion.

Relatives in attendance included Marion Mecham of Pleasant Hill, Va.; Mr. and Mrs. Paul Mecham of Topeka, Kan.; Mr. and Mrs. Lawrence Lade of Ravenna, Neb.; Mr. and Mrs. George Sundstrom and Gail of Huntsville, Mo.; Dean Hinkson of Willcox, Ariz.; Keith, Preston and Arnold Hinkson and Mrs. Hugh Hinkson of Cairo, Neb.; Mr. and Mrs. Maurice McKeag of Richmond, Calif.; Mr. and Mrs. Doyle Hendrickson and Julie of Se-

dalia, Mo.; Mrs. David Wortham and Kristi of Marshfield, Mo.; Dr. Jim Larson and Shelley Platt of Pensacola, Fla.; Roy McKeag of Santa Fe, N.M.; Michele McKeag of Las Cruces, N.M.; Mr. and Mrs. Doyle Taylor, Alicia and Jennifer of St. Louis, Mo.; Mr. and Mrs. Charles Pilgrim, Kurt and Karen of Baltimore, Md.; Mr. and Mrs. Jim Cooper of Spade, Tex.; Mr. and Mrs. Mike Hinkson and Landon of Turkey, Tex., and all of the local families.

Frank Hinkson and Lavinne Mecham were married December 28, 1933, in Grand Island, Neb. They moved to the Lazbuddie community in 1934, where Frank farmed and raised cattle.



Swinging In The Breeze

Farwell Kindergarten student Denise Ward seemed to be making the most of the warm, sunny weather last week during the kindergarten recess. Temperatures in the upper 60s allowed the youngsters to play outside, after the several weeks

of snow, ice and sub-freezing temperatures kept them inside during recess. The spring-like weather continued over the weekend, bringing out many youngsters on their bicycles, some trying out their new Christmas bikes for the first

time. But the Panhandle weather made a quick change and Monday morning brought high winds and temperatures plunged to the low 30s, and dropped to 23 degrees Tuesday morning.

Alpha Rho Lambda Has Joint Meeting, Social

During the month of December, Alpha Rho Lambda chapter of Beta Sigma Phi sorority combined its monthly meeting and annual Christmas party into one evening. The meeting was held December 13 in the home of Katherine White. Each member brought a covered dish for a potluck supper.

Gwen Hughes was guest speaker for the evening and, in keeping with the Christmas spirit, brought several Christmas centerpieces and gave tips on making arrangements.

For the party, each member brought a Christmas ornament which was numbered and then members drew for these. Also,

the Secret Sister gifts were exchanged and the monthly door prize, a miniature brass bathtub, was presented to Mrs. White for her hospitality. The evening ended with each sister telling of a past Christmas tradition observed in her family.

Members attending were Peggy Goettsch, Kendale Burch, Gloria Hutchins, Laura Jacobs, Kitty Johnson, Carla Kelley and daughter April, Rhonda Kirkland, Mary Ann Lingnau, Sheree Montgomery, Robin Palady, Anita Ralston, Gaye Roberts, Pam Smith, Cynthia Thigpen, and Nedda Travis.

ESA Reports Pheasant Hunt Is 'Big Success'

Theta Rho chapter of Epsilon Sigma Alpha sorority met for its business session Monday evening in the home of Dardanella Helton in Texico.

First item of business was the discussion of the tremendous success of the annual Pheasant Hunt which was sponsored by the group in December. From the expected proceeds of the hunt, the sorority had pledged \$3,000 to the Farwell Community Center.

Due to the large number of out-of-town hunters, the sorority was able to surpass its original pledge, and decided to pledge \$10,000 to the City of

Farwell for the Community Center remodeling and renovation.

Other business discussed was the further distribution of the chapter's proceeds from the pheasant hunt to various other charities and organizations.

Mrs. Helton served cheese and crackers and chocolate pie cake to members Robin Gregory, Terri Nichols, Rosa Roberts, Denise Christian, Lillie Christian, Susan Johnson, Joyce Williams, Leslie Lunsford, Kim Norton, Margaret Aycock, LaMoin Williams, Gwen Corn, Joyce Correll, Alta Herington, and Nell Walling.



W.T. Magness of Farwell suffered a heart attack last Saturday morning following intestinal surgery at Clovis High Plains Hospital and is listed in fair condition in the intensive care unit. Family members report that he is improving but they still do not know when he will be moved from intensive care.

Elva Whitesides of Farwell is reported to be improving following her two surgeries in the Muleshoe hospital. She is in Room 120 and is allowed visitors and phone calls. Her family is hopeful that she may return home within the next ten days.

Leatha Jo Roberts of Farwell was readmitted to the Friona hospital Saturday evening for medical treatment, but her husband reports that she is "doing fine" now.

Leatha Jo was first admitted to the Friona hospital on December 26, and then was transferred to High Plains Baptist Hospital in Amarillo for medi-

Hospital Notes

She was released from the Amarillo hospital Saturday morning and returned to her home, but had to return to the Friona hospital that evening.

Dorothy Quickel of Farwell was dismissed from St. Anthony's Hospital in Amarillo on Monday this week, following leg surgery. She is recuperating at home and is "doing well."

Grace Jones of Farwell is confined to the Clovis hospital following admittance on Monday. Mrs. Jones fell and broke her arm, but she is reported to be in satisfactory condition.



A bright new note for parties is to present a hot dip, set in a chafing dish or on a hot-tray.

Convalescent Center Auxiliary Plans Events

The first meeting of 1984 for Farwell Convalescent Center Auxiliary was held on Monday, Jan. 9, at the Center. Presiding over the meeting was Nan Preston, Auxiliary president.

Activities for the first quarter of the year were planned, and various fund-raising projects for the chapel renovation program were discussed. A goal of \$5,000 has been set for the chapel fund, 25 percent of which has already been raised.

The volunteer group is planning a cornbread and beans luncheon to be held on January 31. Committee members were selected to work out the details of the meal.

An all-day Valentine Party will be held at the Center on February 14. Cookies and punch will be served throughout the day to community residents who wish to come by and visit and enjoy a variety of entertainment provided by many talented local musicians.

Ron Feckner, administrator of the Convalescent Center,

stated that there is a need for people willing to aid the Center staff in conducting daily devotionals. Anyone wishing to help in this area or to be active members of the auxiliary are asked to please call the Center at 481-9027, or any auxiliary member.

All 1983 officers were re-elected to serve in the same capacities this year. They are Nan Preston, president; Liz Kaltwasser, first vice-president; Dora Verner, second vice-president; Mary Mesman, third vice-president and telephone committee chairman; and Martha Curtis, secretary-treasurer.

Study Club Meets Mon.

Farwell Study Club will meet Monday, Jan. 16, at 6:30 p.m. at the home of Eunice Crume in Farwell.

All members are urged to be present.

SALE STARTS

Sat. Jan. 14

8:30 a.m.

Highland YOUTH SHOP

No. 6 Highland Shopping Center

Weight Management Classes At ENMU

Nearly half of all adult Americans are overweight! What does this mean for their health?

The Roosevelt Field Health Office and the ENMU Counseling Center will present a series of eight weight management and nutrition classes addressing this question and others relevant to diet and health.

Classes will begin Wednesday, Jan. 18, at the Student Academic Services Building, ENMU, Room 107, Portales, at 3:30 p.m. MST, and will continue to meet twice a week on Mondays and Wednesdays for four weeks.

The classes will integrate sound nutritional information with the principles of weight management. Developing good eating habits and personal activity patterns will be emphasized. Group support and sharing will be encouraged. The classes will end with a potluck featuring low-calorie recipes on

February 13.

Patsy Sears, district nutritionist for the State of New Mexico, and Lucy Cook, Counselor, ENMU, will coordinate the eight classes. Everyone is invited to attend. There will be no charge.

For more information or to sign up for the classes, call the

Roosevelt Field Health Office at 505-356-4453 or Lucy Cook at 505-562-2441.

STOP!

Thanks! You have just proven the pulling power of a small Tribune ad.

CLOVIS SHOPPING DIRECTORY

Stork Shop

Infants and Maternity Wear
1312 Main 763-7145

ROTHWELL BODY SHOP

3100 La Fonda Rd. Clovis, N.M.
CALL 763-3530 For Free Estimate On ALL AUTO BODY REPAIR & REPAINTING ALSO GLASS WORK

Duffys

PROMPT DEVELOPING SERVICE — ALL SIZES FILM — LARGE SELECTION PHOTO ACCESSORIES
O.L. ANDERSON, PROPRIETOR
617 Main

HUDSON UPHOLSTERY

Custom Upholstery, Slip Covers, Bedspreads And Decorator Specialty Items
1325 S. Prince St. Clovis, New Mexico Ph. 505/763-4142

Marriage Licenses

Only one marriage license has been issued from the office of the Parmer County Clerk since the last report.

Receiving the license were Daniel B. Gillis and Pat Hatcher.

Charlie & Florence Jones

Cordially Invite You To Enjoy The Facilities Of The **Hotel Clovis**

★ Coffee Shop
★ Supper Club
★ Bottle Shop

HOTEL CLOVIS

201 Main - 763-4493



The ceiling fan has found new use.

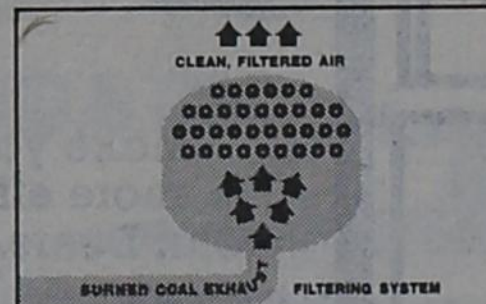


So has the coal we use.

Some folks don't realize that one of our oldest forms of energy has a new and improved use. Southwestern Public Service Company uses coal to make electricity.

Now, our coal-fueled plants produce more than half the electricity you use. Because coal is plentiful and less expensive than natural gas, which we've used for years.

We say coal is new and improved because it's more efficient cost-wise, and because we're preventing air pollution problems with filter systems we've helped develop. Coal helps us control your cost of electricity. And keeping your cost of electricity as low as possible is another way we're...



Improved use. Use of low sulphur coal and filter systems helps prevent air pollution problems.

Working to justify your trust



SOUTHWESTERN PUBLIC SERVICE COMPANY

Lady Wolverines Begin New Year With Victories

Texico Lady Wolverines totally dominated the Floyd Lady Broncos last Friday night at Texico gym, defeating them 42-13, in what Coach Roy King described as the "best all-around game of the year."

At the end of the first quarter, it was all even 6-6, but in the second quarter the Lady Wolverines started to dominate the court and at the end of the half led 16-8. The third quarter ended with Texico stretching the lead 26-11, and scoring 16 points to Floyd's 2 in the fourth period to take the win.

Leading the Wolverines in scoring was Valda Cavallero with 14 points, followed by Cheryl Scott with 10; Helen Jo Boorman and Kathy Harrison, 6 apiece; and Kelly Lynn, Lucia Jesko and Karen Snodgrass, 2 each.

Top rebounders were Cavallero, Scott, and Lynn, with 5 rebounds each, and Snodgrass with 4.

"We shot the ball a lot better and played super defense," Coach King said. "I thought our

press worked really well for the whole game and a game like this really helped our confidence," he added.

The Wolverines shot 43 percent from the field, and 50 percent on their free-throws.

"Floyd tried to double our inside players and we hit well from the outside, especially Cavallero," Coach King said.

The Lady Wolverines traveled to Elida on Saturday, and came away with another victory, 45-36, to up their district record to 2-0, and an 8-3 season record.

Texico led the entire game from the first quarter when the score was 14-5. Valda Cavallero and Cheryl Scott paced the Lady Wolverines, both scoring 15 points. Other scorers were Helen Jo Boorman 6, Kathy Harrison 4, Karen Snodgrass 3, and Kelly Lynn 2. Top rebounder was Cavallero with 10, followed by Boorman and Cheryl Scott with 7 apiece, Snodgrass 6, Harrison 4, Chary Jesko 3, and Lynn 2.

"The first half, with the exception of a few easy shots that we missed, was the best we've played all season," Coach King said. "Our defense was outstanding again, though I was a little disappointed in the second half. We had a 17 point lead and then started to make mental mistakes. We shot too quick, made silly fouls, and overall just got in a hurry. But I think we learned from this aspect of the game," he added.

"Valda Cavallero shot well for the third straight game, she was 4 of 8 from the field and 7 of 8 from the line. And Kathy Harrison did a good job in the passing department," Coach King said.

Having some time off for Christmas didn't effect the Lady Wolverines when they returned to school to face Logan at home January 3, winning 40-26.

"We played pretty well considering the lay off over Christmas," Coach King said, "even though we got a little tired in the

fourth quarter."

High scorer for the Lady Wolverines was Cheryl Scott who pumped in 20 points, followed by Valda Cavallero with 10, Kelly Lynn 5, Karen Snodgrass and Helen Jo Boorman 2 each, and Kathy Harrison 1.

Leading in the rebound department was Lynn with 10 followed by Scott with 7.

"It was a big win for us because we haven't been playing as well as we are capable of playing," Coach King said. "After the Farwell game we had to do a little soul searching to see if our minds and attitudes were heading in the right direction. By the way we played, I think we are. We played with a lot more hustle and determination. Everyone played well. Cheryl Scott had her best game of the year," the coach added.

Next game for the Lady Wolverines will be tonight (Friday) when they travel to Tatum. They will face Dora at home Saturday night.

Defeat Floyd & Elida - -

Texico Wolverines Win First 2 District Games

Texico Wolverines pushed their season record to 11-0 with wins over district rivals Floyd and Elida, giving them a 2-0 district record.

In Friday night's action with Floyd Broncos, the first quarter started out slowly with the Wolverines taking a 6-4 lead. Floyd came back in the second quarter outscoring the Wolverines 17-24, leading at half time, 21-20.

In the third quarter, the Wolverines surged ahead outscoring the Broncos, 12-9, taking the lead 32-30. In the fourth quarter, Texico began playing its style of basketball, racking up 23 points to Floyd's 13, to take the win, 55-43.

Terry Tubbs led the Wolverines in scoring and rebounding, hitting for 16 points, and grabbing 17 defensive and three offensive rebounds. Kevin West scored 14; Brad Steward 11; Regan Williams 8; and Joe Steward 6.

In the rebound department, the Wolverines outstretched the Broncos and outrebounded

them 41-30. Tubbs, leading the way with 20 rebounds was followed by Brad Steward with 5; Williams, West, and J. Steward, each had 4; Doug Thornton had 2; and Jeff Campbell and Billy Bibbs had 1.

"In the first quarter, Floyd was putting a lot of pressure on us, and our shots were being hurried," said Coach Scott Parker, "but we started shooting better in the second half."

Coach Parker gave Floyd a lot of credit because the Broncos were hitting the biggest percentage of their free throws. "They hit nine of 12 free throws in the first half and were 13 of 21 free throws for the game," he said.

"If we keep playing the way we have, we shouldn't have any problems," Coach Parker said, "but we're taking one game at a time."

The Wolverines hit on 23 of 42 field goal attempts for 55 percent, but only 9 of 23 free throw attempts for a low 39 percent.

Saturday night, the Wolverines traveled to Elida, defeating their opponents 87-50 in a second district tilt.

Texico led throughout the contest with the score at the end of the first period, 20-12, the second, 47-24, and the third, 69-30, to take the easy win.

Top scorers for the Wolverines were Terry Tubbs with 25 points and Kevin West with 24 points, followed by Joe Steward 12, Brad Steward 10, Regan Williams and Mark Meeks, 4 apiece, Doug Thornton and Danny Powell each with 2, and Ronnie Dunsouth 1.

Texico outrebounded Elida 66-22. Tubbs led the way grabbing 17 rebounds, B. Steward had 12, Regan Williams 10, Jeff Campbell, D. Powell and Thornton 4 apiece, Dunsouth, Billy Bibbs, Meeks and Bobby Steward each had 2, and Tommy Powell had 1.

The Wolverines hit 37 of 65 field goal attempts for 57 percent, and 13 of 27 free throw attempts for 48 percent.

"Last year we lost two out of three games to Elida, and I was a little concerned this year," Coach Scott Parker said. "We were a little sluggish in the first quarter, but our defense was good and we came out in the second quarter with a better attitude, and Elida started turning the ball over to us."

"I wanted the kids to play well, and overall for both nights we had a good showing offensively and defensively," Coach Parker added.

Next contest for the Wolverines will be tonight (Friday) when they travel to Tatum. "The players and coaches would like to thank all the fans, cheerleaders, faculty and students who attend each game, because it's a big boost to the kids out there playing, and we would like to see everybody at Tatum to cheer us on," said Coach Parker.

The Wolverines will face Dora at home Saturday night (Jan. 14) to continue their trek to the district title.

Texico JV Basketball

Texico junior varsity basketball girls carried on the winning tradition of their varsity counterparts by defeating Logan, 55-25, in their first game after returning from Christmas vacation.

"We played really well," Coach Roy King said. "This is the first game all year that we had four players score in the double figures."

Top scorer for Texico was Twilla Longo with 16 points followed by Loretta Gonzales with 12, Lucia Jesko and Coy Jo Burk, 10 apiece, Katie Tubbs 4, Robin Pierce 2, and Tracey McDonald 1.

Leading rebounder was Burk with 9, followed by Longo with 7, and Jesko and Tubbs with 5 each.

"This team is fun to watch because they hustle and are very aggressive," Coach King said. "We are gaining a lot of experience for our younger players, four eighth graders, three freshmen, and five sophomores," he added.

Texico hit 34 percent of field goals attempted and 71 percent of their free-throws.

"Our record is only 7-5 but we lot all five games to Clovis' JV and to Portales, but you learn through experience," Coach King said.

On January 4, Texico junior varsity boys hosted the Logan JV team, winning the game 34-24.

Leading the scoring attack for Texico was Billy Bibbs who scored 8 points, and also had two assists, five steals, and eight rebounds. Also scoring were Danny Powell, Stanley Cross, and Bobby Steward, 4 points each; and Tommy Powell, Jeff Campbell, John Thomas, Mark Meeks, Jim Thornton, Carroll Smith, and Charlie Bibbs, two points apiece.

January 6, Texico's JV boys hosted the Floyd JV team, losing the close game in over-

time, 59-51.
Leading scorer for Texico was Tommy Powell with 13 points, followed by Mark Meeks with 8, Bobby Steward 7, Danny Powell 6, and David Loera and Billy Bibbs 4 each, Lonnie Smith 3, Doug Thornton, John Thomas, and Carroll Smith, 2 apiece.

Leading rebounders were Bobby Steward and Mark Meeks with 16 each.

Traveling to Elida January 7, Texico JV won over Elida JV, 50-36.

Leading in the rebound department was David Loera with 7, followed by Bobby Steward with 6.

High scorer for Texico was Mark Meeks with 11 points. Other scorers were Jeff Campbell and Bobby Steward 8 each, Danny Powell and Tommy Powell 4 each, John Thomas 3, Carroll Smith, David Loera, Jim Thornton, Eric Harding, and Charlie Bibbs 2 apiece, Billy Bibbs and Kyle Snipes, 1 apiece.

Next game for the JV boys will be January 14 when they face Dora at Texico.

Texico Booster Club Sets Shooting Contest

Members of the Wolverine Booster Club voted Monday night to offer basketball fans at high school games a chance to "Shoot for Bucks." Prizes for successfully making a lay-up, free throw, or half-court shot will be awarded.

The way the game will be conducted will be as follows: First, each fan should purchase a program for only 50 cents. Each program will contain a "lucky number" on the roster page of the visiting team. At the halftimes of the junior varsity game, and each of the varsity games, one number will be drawn. The fan who has purchased the program with the "lucky number" will then get the opportunity to "Shoot for Bucks."

The fan may choose to attempt one of three styles of shots - the lay-up, the free throw, or the half-court shot. If the fan shoots and makes the type of shot he has selected, he will receive prize money. A lay-up shot will net only a \$1.00 prize; a free throw will earn \$3.00; and a successful half-

court shot would earn the lucky fan \$25.00.

"Since the fans will have three chances at every home game to be the person who gets to 'Shoot for Bucks' we certainly plan to be giving some money away," said James Holland, Booster Club president.

"The proceeds from the sale of the programs will go toward the purchase of trophies for our athletes to be awarded at our annual banquet, so, in reality, everyone comes out a winner," Holland added.

Upcoming Sport Events

FRIDAY, JAN. 13
Texico VB, JVB, JVG, at Tatum.
Farwell, VB, VG, JVB, at Kress.

SATURDAY, JAN. 14
Texico VB, JVB, VG, vs. Dora at Texico.
Texico 7-8-9 junior high boys at Ft. Sumner.
Texico 7-8-9 junior high girls vs. Ft. Sumner at Texico.

MONDAY, JAN. 16
Texico 7-8-9 junior high boys vs. Morton at Texico.
Texico 7-8-9 junior high girls at Morton.

Farwell 7-8-9 junior high boys vs. Kress at Farwell.
Farwell 7-8-9 junior high girls at Kress.

TUESDAY, JAN. 17
Farwell VB, VG, JVG, vs. Olton at Farwell.

WEDNESDAY, JAN. 18
Texico VB, VG, at EPAC Tournament, through Jan. 21.

FRIDAY, JAN. 20
Farwell VB, VG, JVB, play Bovina at Bovina.
Texico VB, VG at EPAC Tournament.

Texico Jr. High Results

Texico Junior High 7-8 graders hosted the Portales junior high team January 5, trouncing them 30-11.

Leading the scoring drive for Texico was Aaron Scott with 8 points. Other scorers were Bret Taylor, Cory McDaniel, Ronnie Autrey, Buck Autrey 4 points each, Michael Day, Jeff Horner, and Justin Barnes, 2 apiece.

Aaron Scott led in the rebound department with 12, followed by Cory McDaniel with 8, Bret Taylor 6, and Ronnie Autrey

and Buck Autrey 5 each.

Texico 9th graders also had no problem with Portales, winning the game 24-16.

Leading the scoring for Texico were Tex Looney and Aaron Scott, who both hit for 8 points. Other scorers were Dean Reid with 4, and Keith Harrison and Bret Taylor, 2 apiece.

Leading rebounder was Aaron Scott who came down with 12, followed by Tex Looney with 9, and Bret Taylor with 7.

News? Let Us Know About It! Call 481-3681

Honor Rolls Listed At Texico Jr. High

Students making the honor rolls at Texico Junior High School for the first and second nine weeks as well as for the first semester are as follows:

FIRST 9 WEEKS
6th Grade: Byron Martin, Tasha Rucker, Konni Warmuth, and Jennifer Williams.

7th Grade: Michael Day, Mary Griffin, Kristi Lovelace, June Ortiz, and Shannon Smith.

8th Grade: Codie Burch, Sarah Cavallero, Deborah Harris, Jeff Horner, Twilla Longo, Cory McDaniel, Robin Pierce, Aaron Scott, and Bret Taylor.

SECOND 9 WEEKS
6th Grade: Mark Barela, Todd Cash, Valerie Cavallero, Jason Christian, Leslie Cox, Esperanza Estrada, Vicki Hernandez, Karen Horner, Preston Hubby, Byron Martin, Larry Powell, Brian Rogers, Tasha Rucker, Konni Warmuth, Terry

Whitener, and Jennifer Williams.

7th Grade: Danielle Chumley, Michael Day, Kristi Lovelace, Dena McDaniel, June Ortiz, Paige Reid, Shannon Smith, Schree Thigpen, and Kayla Thornton.

8th Grade: Codie Burch, Patty Cavallero, Sarah Cavallero, Geneva Garcia, Judith Gonzales, Deborah Harris, Jeff Horner, Twilla Longo, Cory McDaniel, Robin Pierce, Aaron Scott, Martin Singleterry, Bret Taylor, and Terresa Thomas.

FIRST SEMESTER
6th Grade: Todd Cash, Valerie Cavallero, Jason Christian, Vicki Hernandez, Preston Hubby, Byron Martin, Larry Powell, Brian Rogers, Tasha Rucker, Konni Warmuth, Terry Whitener, and Jennifer Williams.

7th Grade: Michael Day, Mary Griffin, Kristi Lovelace, Dena McDaniel, June Ortiz, Paige Reid, Shannon Smith, Schree Thigpen, and Kayla Thornton.

8th Grade: Codie Burch, Patty Cavallero, Sarah Cavallero, Geneva Garcia, Deborah Harris, Jeff Horner, Twilla Longo, Cory McDaniel, Robin Pierce, Aaron Scott, Martin Singleterry, and Bret Taylor.



100- TO 190-HP TRACTORS



Make your operation more efficient with a John Deere 50 Series tractor

Your prime-power tractor is the keystone of your farm enterprise. If that tractor were more efficient, you could reduce the cost of all your field operations.

Our 50 Series offers a choice of ways to get more efficient: 100-hp 4050, 120-hp 4250, 140-hp 4450, 165-hp 4650 or 190-hp 4850.

One of these is just right to rebuild your operation around. You can use it to improve your efficiency in every pass over the field.

See us for advice on the right power and options for your operation.



Cal Jordan Implements
East Mabry Drive, Clovis

THANK YOU

\$10,000 has been added to the Farwell Community Center Fund by Theta Rho chapter of ESA Sorority, because the following farmers made the Pheasant Hunt possible:

- Jim Berry
- Orie Jones
- Gary Brown
- Doyle Johnson
- L. R. Capps
- Pike Jordan
- Jimmy Castleberry
- Wilbert Kalbas
- Bobby Chadwick
- Truman Kittrell
- Fred Chandler
- A. R. Mitzelfelt
- Gene Christian
- Carthon Phillips
- Weldon Embry
- Mitz Walling
- Barthell Ford
- Murray White
- Jimmie Heard
- Delton Wilhite
- Walter Hughes
- Barry Williams
- Ted Ingram
- Bert Williams
- Marlon Inman
- Mark Williams

To Subscribe Just Phone 481-3681

Your land is a productive commodity. And when you add to its value you add to its productivity.

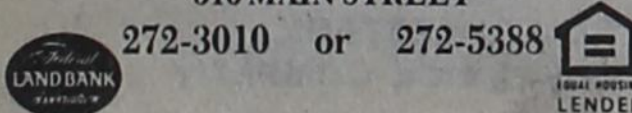
A few of the many farm and ranch improvements that can be made with a Land Bank loan include:

- ✓ Sprinkler Systems,
- ✓ New Barn Construction, and
- ✓ Drying/Storage Facilities

Let your agriculture credit specialists at the Federal Land Bank Association of Muleshoe show you how.

FEDERAL LAND BANK ASSOCIATION OF MULESHOE
316 MAIN STREET

272-3010 or 272-5388



Jal Takes Championship - -

Steers Second In Plains Tourney

Farwell Steers took second place honors in the three-day Plains Invitational Tournament the past weekend. Jal won the championship and Plains won third place.

The tournament got underway Thursday night with the Steers battling it out with Stanton in their first game, and coming out on top 44 to 33.

Coach Mike Martin said, "Although we played a sluggish first half, we played really well the second half."

Leading by only one point in the first quarter, and trailing by three at the half, the Steers pulled together and evened the score the third quarter, and pulled away in the fourth period to take the win.

Mark Cole was high scorer with 13 points, followed by Alan Eubank with 10, Roger Robertson and Manuel Cantu each with 8, Kevin Owen 3, and Johnny Daniel, 2.

The second night of tournament play saw the Steers undefeated as they squeezed by Plains, 49-45.

The Steers led the first quarter by one point and were tied up at the half. By the end of the third period, victory seemed at hand, but during the fourth quarter Plains came alive and made the Steers work for the win.

Top scorers were Alan Eubank with 14, Johnny Daniel with 13, and Mark Cole with 12, followed by Manuel Cantu 6, and Roger Robertson and Kevin Owen each with 2.

In commenting on Friday night's game, Coach Martin said, "We played inconsistent-

ly, but hit crucial free throws down the stretch."

The free throws weren't on for the Saturday night championship game, however, and the Steers fell to the hard-playing Jal team, 65-43.

The Steers trailed Jal from the start and couldn't seem to go ahead. By the end of the game, Farwell had handed first place honors over to Jal and took a respectable second place in the tourney.

Alan Eubank and Johnny Daniel each scored 10 points, Mark Cole had 7, Roger Robertson and Manuel Cantu each had 6, and Alan Wolfe and Kevin Owen each had 2.

Coach Martin praised the Jal team and said, "We did not play well at all. We shot very, very poorly from the free throw line. Free throws probably beat us, we 'shot ourselves' out of the game."

Coach Martin cited Alan Eubank and Johnny Daniel as having good tourney games. "All in all it was a good tourney for us," said Martin. "Our poor showing in the championship was discouraging, but the tourney should get us ready for district play."

In their first district game at Hart, the Steers proved they have what it takes to be winners when they downed the Hart Longhorns, 36-31.

Although the Steers were victorious, the game was hard fought and remained close throughout.

Alan Eubank led the scoring for the Steers with 13, and Kevin Owen hit for 7, followed by

Farwell Jr. Varsity Results

In exciting overtime play, the Farwell JV Steers fell prey to the Springlake-Earth JV Wolverines Monday evening losing their first district game of the season.

The JV Steers trailed by three at the end of the first quarter and led by two at the half. At the end of the third and fourth quarters the teams were tied up, allowing the game to go into overtime where the JV Steers lost 49-46.

The scoring was led by Eric Williams with 12 points, followed by Jesse Coburn and Todd

Davis each with 10, David Woods 9, Jody Ketcherside 4, and Roy Perales 2.

Coach Mike Martin commented, "We missed crucial free shots in the fourth quarter that allowed the game to go into overtime. Over all, the hustle was real good. These guys have played well all year."

The JV boys travel to Kress tonight (Friday) and play the Kangaroo JV.

District competition got off to a bad start Monday evening for the Farwell Jr. Varsity Steerettes, when they lost 44-26, to the Springlake-Earth JV.

Alma Nicolas and Dana White were leading scorers with 9 points each, followed by Trina George and Kim Routon, 2 apiece, and Suzanne Hardage, 1.

The JV Steerettes traveled to Hart Tuesday evening and were defeated, 58 to 29, by the JV Longhornettes.

Leading scorer for the JV Steerettes was Dana White with 11 points. Other scorers were Sheryl Stanton with 7, Alma Nicolas 6, DeAnn Curtis, Rhonda Lingnau, and Suzanne Hardage 2 each, and Monica Carpenter, 1.

The Junior Varsity Steerettes' next district game will be played at home against Olton, January 17.

Plains Invitational - -

Farwell Steerettes Take Tournament Championship

Farwell varsity Steerettes traveled to Plains last weekend to take top honors in the three-day Plains Invitational Tournament. Having drawn a bye the first game, the Steerettes did not go into action until Friday night against Stanton, winning the close game 39-36.

Leading scorer was Suzahn Inman with 19 points, followed by Leslie Castleberry with 12. Other scorers were Sonia Chisum 4, and Sheryl Thigpen and Camille Buchenau, each with 2.

Defeating Stanton in such a close game was all the incentive the Steerettes needed to get their power going and defeat Lubbock Christian High in the

championship game, 44-34. Suzahn Inman again led in the scoring department with 23 points and in the rebound department with 17. Leslie Castleberry followed with 20 points and Sonia Chisum with 1.

Farwell Steerettes won the tourney championship with Lubbock Christian High placing second and Stanton, placing third. Coach Larry Gregory said he was very pleased with the way the girls played both nights in the competition.

Tuesday night the Steerettes traveled to Hart to take on the Longhornettes in their first game of district play. After

winning the Plains tournament, the Steerettes were not going to be defeated, and trampled the Longhornettes, 46-29.

Suzahn Inman took top scoring honors with 12 points, followed by Elaine Vaughan with 7, Leslie Castleberry and Sheila Smith each with 6, and Camille Buchenau, 4.

Coach Gregory commented, "I am very pleased to win our first district game, especially away from home, and especially pleased with the way the two freshmen girls, Shonda Foster and Camille Buchenau, are playing."

The Steerettes travel to Kress tonight (Friday) to take on the Kangaroos in the second game of district play.

Farwell Jr. High Results

Both the 7th and 8th grade girls teams were defeated in round one of district competition Monday evening on their home court.

The 7th grade girls were defeated 33-11 by the Springlake-Earth team, with Andrea Chadwick the high scorer with 5 points.

The 8th grade girls also lost to the Springlake-Earth team here 25-9. DeAnn Ray was high scorer with 3 points. Michelle Stover, Robbie Fly, and Teresa Mitchell each had 2 points.

On commenting on his jr. high girls, Coach Larry Gregory said, "They are improving."

Next district game for the junior high girls will be January 16 when they travel to Kress.

In boys junior high basketball action, both the Farwell 7th and 8th grade teams lost to Springlake-Earth Monday afternoon at home.

Springlake-Earth 7th grade team downed the Farwell 7th graders by a score of 39-18.

GOTCHA!

You've just proven that people read small ads.

Leading scorer for Farwell was Donald Rubio with 8 points. Other points were scored by Nito Lovato with 4, Todd Thigpen 3, Jeff Actkinson 2, and Dustin Hardage 1.

Coach Rex Compton said, "We had a problem getting our defense going tonight. This was the first game for this bunch since coming back from the holidays and they were a little sluggish. We should look a lot better against Kress Monday night."

The 8th grade team also lost to Springlake-Earth Monday night with a final score of 32-13.

High scorer was Damon George with 5 points, followed by Bony Nicolas 4, David Moseley 2, and Ralph Galvan 2.

Coach Compton said, "We did not score many points here because we could not make any free throws. Had we done that, it would have been a lot closer. We hope to improve that going into the Bovina Tourney."

The 8th grade boys and girls were to participate in the Bovina Junior High Tournament January 12-14. On Monday, Jan. 16, 7th and 8th grade boys teams will host Kress, and the 7th and 8th grade girls teams will travel to Kress to continue district play.

FANCY TRAVEL!



ACCORDING TO LEGEND, PAEDALUS AND HIS SON, ICARUS, ESCAPED FROM CRETE WITH WINGS MADE OF WAX AND FEATHERS. WHEN ICARUS FLEW TOO CLOSE TO THE SUN, THE WAX MELTED AND HE FELL INTO THE SEA!

TODAY, MORE PRACTICAL AND SUCCESSFUL AVIATION CAREERS ARE AVAILABLE IN THE U.S. ARMY. QUALIFIED MEN AND WOMEN CAN LEARN AVIATION MAINTENANCE AND REPAIR IN THE ARMY!

Recreational Vehicle Life



by Dave & Betty Shober For all your R.V. needs in 1984 come by Bison R.V. Center, the place for expert service. An established R.V. business for the last 7 years, we would like to discuss your camping interests, what is practical for you based on family size and cost. We are a family business and have no salesmen on commission with high pressure selling techniques. We are concerned with the needs of your family. Happy camping from all of us here at Bison R.V. Center.



1200 E. 1st St., 762-9506

"Attention"

Farmers - Ranchers and Dealers

Ward Bros. Tractor Inc. now taking consignments for their Annual Farm Machinery Auction to be held March 1 & 2, 1984. This is the largest Farm Machinery Auction in the Southwest with buyers from several different states. Listings for consignments need to be in by Feb. 7, 1984.

For further information contact

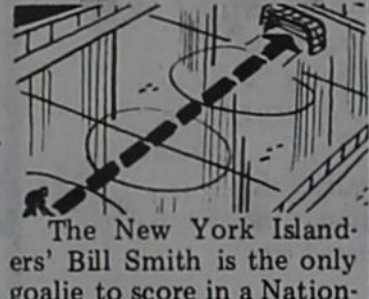
Ward Bros. Tractor Inc. Clovis, N.M. Phone 505-762-2612 or 505-762-1015

ICING THE PUCK!



Gordie Howe, a National Hockey League All-Star at age 52, had a career that covered part of five decades. He played from the 1940's to the 1980's.

In 1938, in a game against the New York Americans, the Toronto Maple Leafs scored eight goals in less than five minutes.



Goalie Glenn Hall, who played for Detroit and Chicago, played 502 consecutive complete games. His record began in 1955 and was ended by an injury in 1962.

The New York Islanders' Bill Smith is the only goalie to score in a National Hockey League game. According to Figgie International's Sherwood-Drolet division, he accomplished the feat in 1979 against the Colorado Rockies.

Oriental Stucco	\$9.95
Masonry Cement	\$4.25
Portland Cement	\$4.95
Storm Windows	\$30.00 & Up
Insulation - Fiberglass	\$.20 Per Sq. Ft.

Free Delivery To Texico & Farwell

HOME LUMBER & SUPPLY CO.

1201 E. First Clovis 763-4437



Only On The Cable! Complete Family Programming.

Midwest Video Corp. 600 Main - Clovis - Ph. 763-4411

ECONOMY SALE!

\$13804* 31 44
CITY YOUR MILEAGE MAY VARY HIGHWAY

\$16347** 30 41
CITY YOUR MILEAGE MAY VARY HIGHWAY

* 1984 CHEVETTE 2 DOOR

ALL STANDARD EQUIPMENT PLUS STEEL BELTED WHITE WALL TIRES AND PUSH BUTTON RADIO



SELLING PRICE 5571.04
DOWN PAYMENT 800.00
AMOUNT FINANCED 4771.04

138.04 PER MONTH, 14.9% A.P.R., 48 MONTHS, TOTAL CONTRACT 6625.92.

** NEW CAVALIER HATCHBACK

ST. NO. 4305

WITH TINTED GLASS, SPORT MIRRORS, STABILIZER BAR, WHITE WALL TIRES, SPECIAL INSTRUMENTATION, AM/FM RADIO, CLOTH SEATS, STRIPES.

SELLING PRICE 6550.00
DOWN PAYMENT 900.00
AMOUNT FINANCED 5650.00

163.47 PER MONTH, 14.9% A.P.R., 48 MONTHS, TOTAL CONTRACT 7846.56.



DOC STEWART CHEVROLET BUICK INC. 2500 MABRY DR.



GENERAL MOTORS CORPORATION



Senator Bill Sarpalius Reports



AUSTIN — Texas is such a giant state with geological, cultural and climatic variations that when we talk of strengths and weaknesses it is more practical to divide the state into sections.

That diversity can easily be seen in employment figures where Bryan-College Station has the lowest rate in the U.S. at 3.2 percent and Laredo has the highest percentage in the entire U.S. at 26.2 percent.

The Texas Comptroller's Office has divided the state into six regions for the purpose of better understanding the Texas economy. The Panhandle is most closely concerned with the Plains region, of which it is the major portion. The Plains region is more dependent both on agriculture and oil and gas production than any other region of the state. Eight percent of the Plains area's \$12.2 billion labor and proprietors' income in 1980 was for agriculture. The state average is 1.7 percent. Non-agriculture employment in the region was 680,000 in 1982, of which 12.5 percent was oil-gas related. Statewide, five percent of non-agriculture employment is oil and gas. Manufacturing makes up

only 14.3 percent of the Plains non-agriculture employment, ranking the area near the bottom of the scale. Statewide the average is 18 percent.

Our area's employment has followed the level of drilling activity. Employment increased in oil and gas by 60 percent between 1979 and 1981. Non-agriculture employment increased by 16.4 percent over the same period, second only to growth along the Gulf Coast.

When drilling activity collapsed, employment fell sharply. In 1982, oil and gas employment fell by 21 percent and total employment fell by 3.3 percent.

The agriculture sector in Texas and nationally has been undergoing an extended period of falling real income, brought about by falling food prices and rising production costs. The problem intensified as a world recession and the strength of the dollar cut U.S. agriculture exports. The cut in exports drove crop prices even lower. By 1982, real farm income stood at 60 percent of its 1979 level and about 33

percent of its 1972 level. The severe drought has only worsened matters.

Economists say the outlook for the Plains is dependent on the health of the petroleum and agriculture industries. If stability in oil prices and the drop in equipment costs continue, the Plains will benefit.

Any long-term improvement in agricultural income is in question because of the strong U.S. dollar and increases in interest rates. Forecasters say we can look for employment levels at 3 percent above the 1983 level. Our employment has been undergoing an adjustment since the overheating by the boom in 1979-82, but the stage is now set for a return to healthy economic growth.

COURTHOUSE NOTES

Instrument report ending January 4, 1984, in County Clerk office, Bonnie Warren, County Clerk.

WD - Big T Irrigation Ser. Co., Inc. - Bob Clark - Lots 1, 2, 3, Blk. 1, Buske Add. 60 ft. strip off Blk. 1 & 2.

WD - Big T Pump Co. - Bob Clark - Lots 1, 2, 3, Blk. 2, Buske Add., Friona.

Deed - Veterans Land Board - Ivy L. Holt - 80 ac. tr. in W 1/2 Sec. 28, Blk. C, Rhea Bro.

WD - Luther & Betty Edwards - Tom S. Breedlove - 80 ac. out W 1/2 Sec. 28, Blk. C, Rhea Bro.

WD - Ferne Todd - Tom S. Breedlove - 80 ac. out W 1/2 Sec. 28, Blk. C, Rhea Bro.

WD - Ivy L. Holt - Tom S. Breedlove - 80 ac. out W 1/2 Sec. 28, Blk. C, Rhea Bro.

WD - Emily Glickman - Juan Gigala - Lot 3, Blk. 61, OT Bovina.

WD - Gordon & Bernice Massey, Est. - Royce G. Welch - W 1/2 Sec. 12, T4S; R4E.

Deed - Kathleen Hoffpauir - E.O. Tunnell, Jr. - Part of Undiv. 1/4 int. in SE 1/4 Sec. 7 & S 1/2 Sec. 8, Blk. W, Warren #1.

Legal Notices

ELECTION OF RESOLUTION OF THE CITY OF TEXICO

BE IT RESOLVED by the Governing Body of the City of Texico that:

- A. A regular municipal election shall be held on Tuesday, March 6, 1984.
- B. The following offices shall be filled:
 - Two councilmen for a four year term.
 - One municipal judge for a four year term.
- C. The registration books for registering to vote at the regular municipal election shall be closed by the county clerk at 5:00 p.m. on Tuesday, January 24, 1984.
- D. Declarations for candidacy must be filed with the municipal clerk between the hours of 8:00 a.m. and 5:00 p.m. on Tuesday, January 31, 1984.

ADOPTED AND APPROVED THIS 13 day of December, 1983.

ATTEST:
/s/ Marie Christian
Clerk

/s/ John R. Hadley
Mayor

Published Jan. 6, 13, 1984 in State Line Tribune.

RESOLUCION DE ELECCION DE LA CIUDAD DE TEXICO

SEA RESUEL TO por el Cuerpo de Gobierno del City of Texico que:

- A. Una eleccion regular de municipio tendra lugar el martes, 6 de marzo de 1984.
- B. Los siguientes puestos se ocuparan:
 - Dos consejeros por un termino de cuatro anos.
 - Un juez municipal por un termino de cuatro anos.
- C. Los libros de registracion para registrarse para votar en la eleccion regular del municipio seran cerrados por la escribana del condado a las 5:00 p.m.

STERI STEAM

For cleaner carpeting:

Thomas Carpet
Cleaning Service
238-1640 - Bovina

CLASSIFIED & LEGAL RATES:

First insertion, per word - 12c
Second and additional insertions - 10c
Minimum charge - \$3.00 on cash order
Card of Thanks - Same as classified word rate
Legal Notices - Same as classified word rate

Double rate for blind ads
Classified Display - \$1.75 per col. inch

MINIMUM BILLING CHARGE \$4.00

Classified Insertion Deadline For
Friday's State Line Tribune - 10 a.m. Wednesday

On Your Payroll

U.S. Sen. Lloyd Bentsen, Room 240, Senate Office Building, Washington, D.C. 20510 Ph. 202-224-3121.

U.S. Sen. John Tower, Room 142, Old Senate Office Building, Washington, D.C. 20510 Ph. 202-224-3121.

U.S. Rep. Kent Hance, U.S. House of Representatives, 1610 Longworth Building, Washington, D.C. 20515. Ph. 202-225-4005.

State Sen. Bill Sarpalius, Texas Senate, P.O. Box 12068, Capitol Station, Austin, Tx. 78711.

State Rep. Pete Laney, House of Representatives, P.O. Box 2910, Austin, Texas 78769, or Route 2, Hale Center, TX 79041.

SCHOOL LUNCH MENUS

TEXICO FARWELL

MONDAY - Fish, macaroni and cheese, peas, cornbread, fruit, milk.

TUESDAY - Cheeseburgers, lettuce, pickles, onions, French fries, fruit gelatin, milk.

WEDNESDAY - Chili beans, macaroni and tomatoes, coleslaw, cornbread, fruit, milk.

THURSDAY - Ham, sweet potatoes, green beans, carrot stick, hot rolls, honey, milk.

FRIDAY - Chalupas, lettuce, tomatoes, buttered corn, cookie, milk.

MONDAY - Pizza, tossed salad, green beans, apple sauce, milk.

TUESDAY - Chicken fried steak w/gravy, buttered rice, green peas, hot rolls, honey, milk.

WEDNESDAY - Enchiladas, salad, pinto beans, tostadas, fruited gelatin, milk.

THURSDAY - Chalupas w/cheese, lettuce, tomatoes, buttered corn, chocolate cake, milk.

FRIDAY - Barbecue on a bun, French fries, catsup, cinnamon rolls, peach slices, milk.

el martes, 24 de enero de 1984.
D. Declaraciones para la candidatura seran hechas con la escribana del municipio entre las horas de las 8:00 a.m. y las 5:00 p.m. el martes, 31 de enero de 1984.

ACEPTADO Y APROBADO ESTE dia 13 de diciembre de 1983.

ATESTIGUA:

/s/ Marie Christian
Escribana

/s/ John R. Hadley
Alcalde

Published Jan. 6, 13, 1984 in State Line Tribune.

Political Announcements

The Tribune is authorized to make the following political announcements, subject to the Primaries May 5, 1984.

Democratic

COUNTY SHERIFF

M.C. "Bill" Morgan
(re-election)

Steven K. Hillock

WANT ADS

WHATEVER YOU NEED

ACCEPTING APPLICATIONS for deputy appraiser. Apply at Farmer County Tax Appraisal office. Send resume to Ron Proctor, Chief Appraiser, P.O. Box 56, Bovina, TX 79009. Ph. 806-238-1405. 19-1tc

FOR SALE—1982 Grand Prix Brougham, low mileage, A-1 condition, loaded with equipment, sun roof, \$8900. Call 481-3223. 18-2tc

POSITION OPENING

News editor with experience, or news writer with journalism experience and/or training. State Line Tribune, Farwell, Texas 481-3681 Days 481-9123 Nights

PORTABLE WELDING

For your welding needs, call HAROLD CHARLSON ASME Qualified 825-3901 42-fnc

CARD OF THANKS

Thank you to all who sent cards, the telephone calls, and especially for your prayers when I was in the hospital in Amarillo. I appreciate very much your concern.

Dorothy Quicquel 19-1tc

TREFLAN SALE

*120.50 For 2x2 1/2 Gallon Case
Will Deliver Large Order Or
Can Custom Aerial Apply
806/272-4737

Watson Chemical In Muleshoe

Classified Ads
Get Results

JBSudderth Realty, Inc.

Drawer 887 - 109 5th St., Farwell, Tx. 79325

Phone 806/481-3288

Licensed in Texas, New Mexico and Oklahoma

RESIDENTIAL AND COMMERCIAL

Nice 2 bedroom, 1 bath home, with fenced backyard, within walking distance of school.

Very neat 3 bedroom, 2 bath, double wide mobile home, garage, shop, and cellar. Just on edge of Farwell with city water, but not in city limits. Corrals, lots of extras. Would consider trade in Clovis or Texico area.

Handyman Special: Turn this house into your dream home. Very good location. 3 bedroom, 1 1/2 bath brick home with garage.

Spacious 3-2-2 brick home with fenced yard. Makes this ideal home for the young family.

Cowboy's dream location. 2 acres with 3-bedroom, 1 1/2 bath home with carport, 2 boxcars, corrals, concrete slabs with water hookups.

Like new. 1981 Nashuah 3-bedroom, 1 bath, 14 x 60 feet mobile home. \$1500 down and take over payments of \$274.87 per month.

Get the family out of town and into this 3 bedroom, 1 1/2 bath stucco house in Lariat. Has domestic well, central heat and air cond., insulated, garage, incinerator, corrals, and small feed shed. All on approximately 7/10 acres. Just \$20,000.

FOR SALE—Corn dryer and storage facility on highway in Bovina.

INVESTMENT PROPERTY

Brick Tri-Plex. Each unit 2-bedroom, 1-bath with carport. 100% occupancy. Very nice. Possible 9 1/4% loan assumption.

Welding shop with established reputation. Lots of space on large lot with very nice steel building and good equipment.

FARM AND RANCH

180 acres. One 8-inch electric well with circle sprinkler. Excellent water area in Oklahoma Lane. Owner says sell.

380 acres. Three 8-inch wells, tailwater return system. On highway in Oklahoma Lane area.

250 acres. Two 8-inch wells. Near Farwell, near highway. Good farm.

160 acres, irrigated, with sprinkler. Extra good water area near Oklahoma Lane.

160 acres irrigated, best water area, 1 mile north of Lariat.

Pleasant Hill Area. 700 acres, 4 irrigation wells, has spacious, lovely, prestigious, country brick home. 3 bedroom, 3 bath, 3-car garage, on highway, with barns and corrals.

460 acres, three wells. Priced to sell. Good terms.

We Specialize in Estates

SAVING IS GREAT
INVEST IN REAL ESTATE

*Sales and Loans Are Our Ser

TWO MINUTES WITH THE BIBLE

BY CORNELIUS R. STAM, PRES. BEREAN BIBLE SOCIETY CHICAGO, ILLINOIS 60633



Before you have placed your trust in Christ as your Lord and Saviour, there is nothing whatever you can do to please God and gain acceptance with Him. John 3:35 declares that "the Father loveth the Son" and cares what you think about Him and do with Him. This is why Verse 36 goes on to say:

"He that believeth on the Son hath everlasting life; and he that believeth not the Son shall not see life, but the wrath of God abideth on him."

But once you have received Christ as your Saviour and Lord, there is much you can do to please God. You can witness to His saving grace, you can please Him by living a godly life, you can work for Him, you can sacrifice of your means to further His cause, and yes, you can fight for Him.

"Fight for Him" you say? Yes, indeed, for this world system, our Adamic natures and Satan and his hosts, are all antagonistic toward the Christ who died for our sins. Satan's forces, especially, work behind the scenes to "blind the minds of them which believe not" (II Cor. 4:4). These fallen angels, we

read, are "the rules of the darkness of this world" (Eph. 6:12).

This is why God urges His children to be "strong in the Lord," putting on "the whole armour of God," so as to meet and defeat these evil forces (Vers. 10,11). This is why He puts a sword ("the Word of God") into our hands and bids us "stand . . . stand . . . stand!" (Vers. 11-14).

Ah, but a great veteran, who waged many battles in making Christ known to the lost, gives us an inkling of the thrill that goes with being "a good soldier of Jesus Christ."

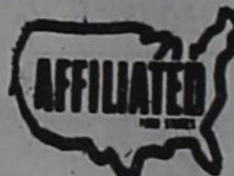
In his last words, just before his execution, the Apostle Paul declared triumphantly: "I have fought a good fight!" (II Tim. 4:7). Mark well, he did not claim to have fought well—though he had indeed been a valiant soldier. His point was rather that it was "a good fight" in which he had been engaged, a fight to bright light and salvation and blessing to benighted souls. And the reward: "Henceforth there is laid up for me a crown" (Ver. 8).

FARWELL INSURANCE AGENCY, INC.

AUTO-FIRE-CASUALTY
509 Ave. A - Ph. 481-3671

SHERLEY-ANDERSON-PITMAN, INC.

CAPITOL FOODS



LOVELACE OIL CO.

Woodrow Lovelace

CECIL'S



Ph. 481-9937



ROSE DRUG & GIFT SHOP

Prescriptions a Specialty
481-3281

THE CITIZENS BANK

Texico Branch
Complete Bank Service
Member FDIC

Farwell Church Of Christ

Ralph Gates - Minister
Sunday School - 10 a.m.
Morning Worship - 10:50 a.m.
Evening Worship - 6 p.m.

Texico
First Baptist Church
Joel Horne - Pastor
Sunday School - 9:30 a.m.
Morning Worship - 10:45 a.m.
Evening Worship - 7 p.m.

Farwell
First Baptist Church
Pat Riley - Pastor
Sunday School - 10 a.m.
Morning Worship - 11 a.m.
Evening Worship - 7 p.m.

Assembly Of God
Rev. A.W. Harris
Sunday School - 9:15 a.m.
Morning Worship - 10:30 a.m.
Evening Worship - 6:30 p.m.

San Jose Catholic Church
Father Charlie Martinez
Sunday Mass - 9 a.m.
Confessions
Sunday - 8:30 a.m.
Phone 505/763-4445

United Pentecostal Church
Rev. L.L. Harris - Pastor
Sunday School - 10 a.m.
Morning Worship - 11 a.m.
Evening Worship - 7 p.m.
Wednesday Worship 7 p.m.

Cabary Missionary Baptist Church
Les Dudley - Pastor
Sunday School - 10 a.m.
Morning Worship - 11 a.m.
Evening Worship - 7 p.m.

New Light Baptist Church
Thomas J. Spikes - Pastor
Sunday School - 9:45 a.m.
Morning Worship - 11 a.m.
Evening Services - 6:30 p.m.

Oklahoma Lane Methodist Church
Joel Ware - Pastor
Sunday School - 10 a.m.
Worship - 11 a.m. & 6 p.m.
Bible Study - Wed. 6 p.m.
[winter] 5 p.m.

Oklahoma Lane Baptist Church
Wyatt Carpenter - Pastor
Sunday School - 10 a.m.
Morning Worship - 11 a.m.
Evening Worship - 6 p.m.
Wednesday Eve. - 7 p.m.

Temple Baptist Church
FUNDAMENTAL INDEPENDENT
For Information
Call 481-9208

St. John's Lutheran Church
Herman J. Schelter - Pastor
Sunday School - 9:30 a.m.
Morning Worship - 10:30 a.m.

Goodwill Spanish Baptist Mission
Sunday School - 9:30 a.m.
Morning Worship - 10:45 a.m.
Church Training - 5:30 p.m.
Evening Worship - 6:30 p.m.
Wednesday Evenings - 7:00

Pleasant Hill Baptist Church
Sunday School - 9:30 a.m.
Morning Worship - 10:30 a.m.
Evening Worship - 6 p.m.

Lariat Church Of Christ
Sam Billingsley - Minister
Sunday School - 10 a.m.
Morning Worship - 11 a.m.
Evening Worship - 6 p.m.

Hamlin Memorial Methodist Church
Bob Ditterline - Pastor
Church School - 10 a.m.
Morning Worship - 11 a.m.
Evening Worship - 7 p.m.



Jr. Scouts Plant Tree

Farwell Jr. Girl Scout Troop No. 335 sponsored a live Christmas tree for the Farwell Convalescent Center which the Scouts decorated at Christmas-time for the Center residents and staff. Tuesday afternoon the girls planted the tree in the front yard of the Center. Trying to dig a hole deep enough to plant the tree are, from left, Scouts Amy Foster, Brandi Martin, and Joy Morton. Watching in the background is Michelle Foster. Assisting the girls in the digging and giving advice for planting and caring for the tree were Mr. and Mrs. George Page of Page's Bonsai-Bonkei Nursery in Farwell.

Safety Corner



Home Safety

- You spend much time in and around your home. Make it as safe as possible.
- Test your smoke detectors. If you do not have them, install one near each sleeping area.
 - Have a place for everything — avoid clutter.
 - Some house plants are toxic. Teach children not to handle or eat them.
 - Be sure the insulation you add to your home will not emit toxic smoke or gases if there is a fire in the house.

Southwestern Expo, Fat Stock Show Opens Jan. 25

The 88th Annual Southwestern Exposition and Fat Stock Show will set another record for the number of livestock entries, reports W.R. Watt Jr., show president/manager. He said that, while some entries are still being processed, the total estimate exceeds 17,500 head. The Stock Show is scheduled January 25-February 5, at the Will Rogers Memorial Complex, and will include 22 performances of the World's Original Indoor Rodeo. "Practically all divisions of our show this year are posting increases," Watt noted. "We are delighted over prospects of another record-breaking year." The previous peak year was 1982, when 16,935 head of livestock were exhibited.

The Stock Show official reminded exhibitors of poultry, pigeons, and rabbits that January 15 is the deadline for entries in the Small Stock Division. Rodeo tickets are on sale seven days a week from 9 a.m. until 5 p.m. in the Will Rogers Coliseum lobby box office. Tickets are priced from \$6 for Monday-Friday matinees, \$8 for Monday-Thursday nights, and \$10 for Friday nights and all weekend performances.

For tickets by mail, send cashier's check or money order to Stock Show Office, P.O. Box 150, Fort Worth, TX 76101. Include \$1 extra per order for postage and handling. With the planned dedication of the new Amon G. Carter Jr. Exhibits Hall and the prestigious Livestock Appreciation Day event, Watt said, "We look forward to a very exciting year." Special day activities are scheduled February 2 with the building dedication at 11 a.m., followed by the Livestock

Appreciation Day luncheon program in the Round Up Inn with special guest speaker, noted national news commentator, Paul Harvey. Applications are being accepted for participation in the show's All-Western Parade, January 27. The parade will include riding clubs, marching bands and horse-drawn vehicles. Motorized vehicles are prohibited, in keeping with the Western Heritage theme. The Stock Show Special Events Department has the applications.

News?
Let us know about it!
Call 481-3681

SALE STARTS
Sat. Jan. 14
8:30 a.m.
Highland YOUTH SHOP
No. 6 Highland Shopping Center

FARWELL INSURANCE AGENCY, INC.

We Work For You
Box 245 - Ph. 481-9372 Farwell, Texas

"The more a man possesses over and above what he uses, the more care-worn he becomes." George Bernard Shaw

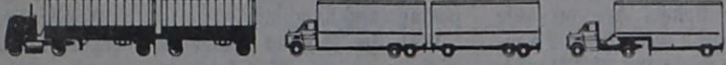

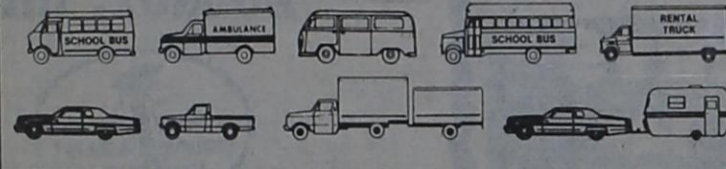
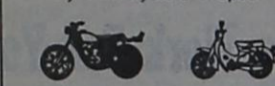


Support The Annual Farwell FFA and 4-H Junior Stock Show

Thursday, January 19th
Farwell Community Center
Beginning At 6:00 pm

<p>Rose Drug</p>	<p>Capitol Foods</p>	<p>SHERLEY-ANDERSON PITMAN</p>	<p>Farwell Fertilizer</p>
<p>Lunsford Auto Parts</p>	<p>HUGHES <i>True Value</i> HARDWARE</p>	<p>KELLY GREEN SEEDS</p>	<p>Case POWER AND EQUIPMENT Mabry Drive - Clovis</p>
<p> FRANSE IRRIGATION INC. Farwell, Texas</p>	<p>Farwell Insurance Agency</p>	<p>PIONEER BRAND SEEDS Gilbert Kaltwasser</p>	<p>Farwell Hardware</p>

SCHEMATIC OF TEXAS CLASSIFIED LICENSING PLAN

CLASS	Description
A	Any vehicle or combination of vehicles including all vehicles in Classes B and C, but excluding motorcycles or mopeds. 
B	Any single vehicle with a gross vehicle weight exceeding 24,000 pounds or any such vehicle towing a vehicle not in excess of 10,000 pounds gross vehicle weight or any bus, including all vehicles in Class C but excluding motorcycles or mopeds. 
C	Any two-axle single vehicle not in excess of 24,000 pounds gross vehicle weight or any such vehicle towing a vehicle not in excess of 10,000 pounds gross weight or a bus with a seating capacity of less than 24 passengers, but excluding motorcycles or mopeds. 
M	Any motorcycle or moped. 

Drivers Licenses To Bear New Classification Codes

Beginning January 1, 1984, those persons who renew their driver license, qualify for their first license, or apply for a duplicate permit will receive licenses bearing new codes signifying class of license.

This establishes a new group of license known as "M" for motorcycles. All operators of motorcycles, mopeds, motorbikes, etc., will be required to have this new license classification or an endorsement on their present license.

Colonel Jim Adams, director of the Texas Department of Public Safety, said the department is starting the conversion to a new classified driver licensing system in accordance with a law passed this year by the Texas Legislature.

"Licenses issued prior to 1984 will be valid until the expiration dates which appear on them," Adams said. "The new licenses will carry classifications designating the type and weight of vehicles which the holder may operate."

The new license classifications are "A", "B", "C" and "M".

The Class "C" license permits operation of single, two-axle vehicles with a gross weight of 24,000 pounds or less excluding motorcycles and mopeds. This designation also allows the towing of a vehicle not exceeding 10,000 pounds gross vehicle weight (GVW) or a farm trailer not exceeding 20,000 pounds GVW. In addition, the Class "C" designation permits the operation of a bus with a maximum seating capacity of 23 passengers not including the driver. Standard operator licenses issued under the old law will be converted automatically

to Class "C" permits upon renewal or issuance of a duplicate license.

The Class "B" license allows the holder to drive all Class "C" vehicles plus single vehicles with a GVW exceeding 24,000 pounds and buses with a capacity of 24 or more passengers. Motorcycles and mopeds are excluded.

Class "A" permits allow operation of any vehicle or combination of vehicles including those listed for classes "B" and "C". Mopeds and motorcycles are excluded. Commercial and full chauffeur licenses issued under the old statute will be converted automatically to Class "A" permits upon renewal or issuance of a duplicate license.

The Class "M" designation allows the holder to operate motorcycles, motor-driven cycles and mopeds.

The road test must be taken with a vehicle which meets the specific requirements of the license class for which the person is applying.

"All classes of licenses including renewals will be valid for four years," Adams said. "The fee for obtaining or renewing all license classes will be \$10. An examination fee of five dollars will be charged for those drivers seeking a higher license classification or a motorcycle endorsement for their current license."

Drivers who have no moving violation convictions over a four-year period and who also have no physical limitations are eligible to renew their licenses by mail. To qualify for mail-in renewal, a driver must first receive a DPS form in the mail. This application should be mail-

ed back to the department within one week after it is received. When the license is renewed, the driver will be sent a validation card which must be carried with the old license. A vision test and a new photograph will not be required for mail-in renewals. Drivers who receive mail-in renewal forms may also visit a driver license office and renew their licenses according to the standard procedure which will require them to be photographed and have their vision tested.

The fee for a provisional license is computed at \$2.50 per year until the driver's eighteenth birthday with a minimum fee of four dollars. The cost of a duplicate license is three dollars.

GOOD USED CARS!

'78 Cadillac Coupe \$4,575.

'79 Cordoba Coupe \$3,575.

'80 Monte Carlo \$4,975.

'80 Olds 98 4 D \$4,575.

'82 Toyota Pkup \$5,575.

'80 Chevy 3/4 T \$2,175.

ROBERT D. GREEN, INC.
2400 West American Blvd.
MULESHOE, TEXAS 79347

OLDSMOBILE — BUICK — PONTIAC — GMC

Ph. 762-2772

SMALLWOOD INSURANCE AGENCY

Successors to High Plains Insurance

AUTO · HOME · LIABILITY

Up to 30% deviation on Home Insurance policies. Call us to see if you qualify to save.

Ph. 806/272-4531

Muleshoe, Tx.

Winter Clearance SALE

Sat. Jan. 14, 8:30 a.m.

Highland YOUTH SHOP

No. 6 Highland Shopping Center - Clovis - 763-6914

BEST BUYS FOR JANUARY

U.S.D.A. Choice Beef Boneless Sirloin Tip

STEAK \$1.89 Lb.

ROAST \$1.79 Lb.

U.S.D.A. Choice Beef Boneless Round

ROAST \$1.69 Lb.

STEAK \$1.79 Lb.

Wright's Sliced Slab

BACON \$1.09 Lb.

Hormel Super Select 1/4 8 to 10 Chops

PORK LOINS \$1.39 Lb.

Shurfresh Longhorn 10 Oz. Pkg.

COLBY OR CHEDDAR CHEESE \$1.19

Nabisco 20 Oz. Pkg.

OREO'S \$1.49

Gold Medal 5 Lb. Bag

FLOUR 99¢

Bounty Jumbo Roll

TOWELS 79¢

Hunts Big 32 Oz. Jug

KETCHUP 99¢

Shurfine 5 Lb. Bag

SUGAR \$1.49

Heinz 32 Oz. Jug Processed

DILL PICKLES 79¢

42 Oz. Can Bake-Rite

SHORTENING \$1.29

Kleenex Huggie (All Sizes)

DIAPERS \$2.99 Box

Folger's 1 Lb. Can

COFFEE \$2.09

Peter Pan 18 Oz. Jar

PEANUT BUTTER \$1.39

32 Oz. 6 Pk.

COCA-COLA \$1.99

Del Monte No. 303 w/k c/s

CORN 2/99¢

Betty Crocker 23.5 Oz.

BROWNIE MIX \$1.29

Del Monte No. 303 Cut

GREEN BEANS 2/99¢

Swiss Miss (12 Count)

HOT COCA MIX \$1.29 Pkg.

Del Monte No. 303

SPINACH 2/99¢

Aunt Jemima 2 Lb. Box

PANCAKE MIX 89¢

Del Monte No. 303

SWEET PEAS 2/99¢

Maker's 5 Oz. Asstd.

BURRITOS 3/99¢

Del Monte No. 303

FRUIT COCKTAIL 69¢

Shurfresh Half Gallon

ICE CREAM \$1.49

Shurfine 2 Lb. Bag French Fried

POTATOES 99¢ Bag

Van-D-Kemp 7 1/2 Oz.

FISH STICKS 99¢ Pkg.

Colo. U.S. No. 1 10 Lb. Bag

RUSSETS \$1.29

Golden Ripe

BANANAS 29¢ Lb.

Calif. Sunkist

ORANGES 39¢ Lb.

Calif. 1 Lb. Bag

CARROTS 29¢ Bag

AFFILIATED FOODS INC. MEMBER STORE

CAPITOL FOODS

900 Ave. A Farwell Ph. 481-3432



Open Til 9 o'clock Every Night

We Redeem U.S.D.A. Food Stamps

