

School, Hospital Boards - -

Farwell Voters Go To Polls Saturday

Farwell voters will go to the polls Saturday, Apr. 1, to elect trustees for the Farwell Hospital District and the Farwell Independent School District. Other county voters will also be electing school trustees on that date.

Also to be voted on in each school district is the county school trustee-at-large post. Wendol Christian is running for re-election to this position. Polls will be open from 7 a.m. to 7 p.m. at the Parmer County Courtroom at Farwell

where persons may vote on both the school and hospital elections on the same ballot. In the school board election voters must vote for two candidates while in the hospital board election they will vote for four candidates.

The term of Hospital Board trustee Troy Christian is up for re-election. He is filling the unexpired term of W.T. Perry. Also on the ballot for election are Bert Williams, Gwen Hughes and Ralph Franse. Trustees not seeking re-election

are Carrie Anderson, Don Williams and Charles Aycock. Farwell School Board trustees seeking another term of office are Doyle Ford and Joe Hughes. Albert Smith will serve as presiding judge for the election.

Mrs. Albert Smith and Naomi Walls will be the clerks. Absentee voting, which began March 13, concluded Tuesday of this week with only one person having cast an absentee ballot.



Last week was a high water mark for the Southwest Conference in the world of college basketball. Texas won the prestigious National Invitational Tournament in Madison Square Garden and the Razorbacks of Arkansas made it to the final four of the NCAA tourney in St. Louis, and finished as number three.

Never before in Southwest Conference history has its basketball representatives made it so far in either tournament. In fact, it's probably the first time for the conference representatives to make it past the first or second round of these post season extravaganzas. The success of Texas and Arkansas on the roundball court ought to be a big plus for the entire conference in the recruiting wars for outstanding high school and junior college talent.

It also will put pressure on the other SWC schools to mount a massive effort aimed at bringing the rest of the conference up to decent national standards. With the added prospects of playing big time basketball in the SWC the high schools in Texas ought to respond with added emphasis on the game at their level.

Another outstanding Texas aggregation, the Wayland Flying Queens, also added a chapter to the progress of girls basketball in the state. However, we will have to wait to see if this will change the present girls game of half court ball.

Between Arkansas, Texas and Wayland the roundball game in the Southwest enjoyed great national publicity. We can't help but look forward to greater things and greater accomplishments out of the burgeoning sunbelt basketball squads.

We also understand that Bob Kirkley, Eastern New Mexico's scoring ace this past season played in the Texico Outsiders Tournament two weeks ago and that Bob has been selected to play in the Pizza Hut Basketball Classic that will be held in Las Vegas, Nevada, April 1. Good golly, from Texico to Las Vegas in two weeks is quite a hop in the sports world.

One chap recently visited Marineland of the Pacific while on a vacation in California and had a tour guide of considerable charm and wit, but who was unable to answer several questions about a particular shark.

The guide referred the visitor to an area where there were a number of profound and intelligent-looking people seated in individual booths, each with its own brightly colored canopy. The guide explained that these were the Marineland scholars-in-residence who studied the aquatic life, but earned their keep by answering difficult questions for visitors.

Which would be the most intelligent and wittiest scholar, the visitor asked the young guide.

"There can be no doubt about it," she responded as they approached one fellow. "This is the awning of the Sage of Aquarium."

To err is human, to forgive is against company policy.

Juniors Set Slave Day

Farwell Junior Class members have scheduled a "Slave Day" for Saturday, Apr. 8.

Class members will be available that day to wash cars, clean house, wash windows, babysit, do yardwork and handle other tasks. Fees charged will vary according to jobs.

For information or to enlist the aid of the workers call 481-9981.



Signs Of Spring (Fever)

It's a sure sign of spring when birds begin chirping, temperatures warm up and Eugene Smith of Farwell galavants around town on his horsepowered tractor. On any given day the local man can be seen pulling a trailer full of gardening paraphernalia en route to a yard in need of mowing or trimming.

Farwell Council Schedules Second Variance Hearing

Farwell City Council met in regular session Monday night at City Hall. Paul Haden met with the Council to request - for a second time - a variance to allow the parking of a mobile home on lots 31 and 32 of block 41. The area in question is the southwest corner of Avenue F and Fifth Street.

Haden said he was asking for a second variance hearing because he felt the original petition - which was turned down - was misunderstood. "Too many people thought I wanted to park several mobile homes," he said. "But all I want is to have my parents, Henry and Gertrude Haden, park their mobile home next to my home."

According to Haden, a mobile home would be parked there only so long as his parents needed the space.

A public hearing to discuss

the variance was set for Monday, Apr. 10, at 5:15 p.m. CST at the City Hall.

In other action Carrell Watkins was hired as the municipal judge and Joyce Ketcherside was employed as part time office help. John Johnson was also hired as a part time sanitation department employee.

The Council conducted an executive session from 5:30 to

6:30 to discuss a personnel problem.

Attending the meeting were Mayor Walter Kaltwasser, Commissioners Fred Chandler, and Johnny Curtis; city employees Janie Bowery, Jack Landrum, Doug Landrum, Dee Hammit and Ronnie Mitchell. Also present were Lee Hutchins, fire chief; Haden, Johnson, and Watkins.

County Commissioners Discuss Revenue Sharing

The many facets of revenue sharing were discussed Monday at the Parmer County Commissioners Court meeting. A general update on the subject was also given.

The Court was informed that \$1,740,000.00 was pledged to

secure county funds and permanent school funds. The amount was determined to be sufficient.

A lengthy discussion was held relative to a letter written by Bill Clayton and forwarded to the Court by George Louder regarding indigent hospital bills. It was mutually agreed that a letter be written to Bill Clayton expressing the Court's decision and that the letter be mailed after the next Commissioners meeting.

County Judge Paul Fortenberry said he will draft the letter to Clayton, subject to the approval of the Court, in which they will request that the legislature consider a bill whereby the state will assume the cost of indigent hospital care.

He said they do not feel that the counties can stand this financial burden. According to Fortenberry the Texas Department of Health Resources has the facilities to determine which people really need financial help with hospital bills.

He said Parmer County pays for indigent hospital care when it is able to, adding that they do not have the resources necessary to assume the total hospital costs for those who are unable to pay.

As much as possible we try to encourage people to work out a financial arrangement with the hospital whereby they will assume their own bill," Fortenberry said.

Laura Jacobs, assistant county agent, reported that 25 persons attended the demonstrations on crockpot cookery. In the future she will offer programs in decorating and clothing.

The Commissioners agreed to reimburse Miss Jacobs \$13.97 for materials used in the crockpot demonstrations.



BILL CLAYTON

Pd. Pol. Adv.

FARWELL, TEXAS

FRIDAY, MARCH 31, 1978

10 PAGES

THE STATE LINE TRIBUNE

"OFFICIAL PUBLICATION OF PARMER COUNTY"

NUMBER 29

SIXTY-SIXTH YEAR

20 CENTS

Questions, Answers - -

1978 Grain Program Explained By ASCS

Farmers in Parmer County are reminded that May 1 is the final date for signing-up in the 1978 Set-Aside Program. There have been a number of questions asked about this program, according to Prentice Mills, executive director of Parmer County Agricultural Conservation and Stabilization Service. The most common ones asked (with answers) are as follows:

1. Q: As a farmer, must I participate in the set-aside program? A: Participation in the set-aside program is strictly voluntary. However, participation is a requirement for eligibility for several program benefits.

2. Q: What are the benefits of participating in these programs? A: By participating in these programs, you become eligible for: (1) commodity loans; (2) deficiency payments; and (3) disaster payments. This applies not only to corn, sorghum and barley (the three feed grains) and wheat, but also to all crops included in the normal crop acreage (NCA) except sugar beets and sugar cane.

3. Q: What are the feed grains? A: For the 1978 crop year, the designated feed grains are corn, sorghum and barley.

4. Q: What are the set-aside requirements? A: For wheat, the set-aside requirement is 20 percent; for feed grains, it is 10 percent.

5. Q: Does this mean I set-aside some of my wheat and feed grain allotments in order to participate in the program? A: No. There are no acreage allotments in 1978. To participate in the set-aside

program, a producer need only set-aside 1 acre for every 10 acres planted to feed grains for harvest and 2 acres for every 10 acres planted to wheat in 1978. This includes any volunteer acreage harvested for grain.

6. Q: So my 1978 acreage really doesn't have to be less than my 1977 acreage, does it? A: That's right. Your 1978 acres of wheat and the three feed grains can be as much or more than last year's as long as you meet set-aside and normal crop acreage requirements.

7. Q: Wheat is the "normal crop acreage" (NCA) and what crops are included in it? A: A farm's NCA consists of

the number of acres normally planted to the following crops: barley, corn, dry edible beans, flax, oats, rice, rye, sorghum, soybeans, sugar beets, sugar cane, sunflowers, upland cotton and wheat. Other crops

may be included as recommended by the State Agricultural Stabilization and Conservation (ASC) committee and approved by the ASCS Deputy Administrator for (Continued on Page 2)

Texico City Council Has Routine Meet

Texico City Council conducted a short business meeting Tuesday night. Due to the absence of Lee Hutchins, Farwell fire chief who was out-of-town, the issue of the radio which the Farwell fire department has apparently borrowed from the City of Texico was tabled until next Tuesday night's meeting.

The matter of the radio surfaced during last week's Council meeting in which several trustees said they thought the radio had been taken in as Texico's payment for the undercover narcotics investigation which was conducted several months ago.

However, it was reported at last night's meeting that a check for \$156 - Texico's share of the investigation cost

- had been delivered to Farwell last week. The issue of the radio will apparently be solved when Hutchins meets with the Texico Council next week.

In other business, it was decided that the trustees would wait for additional applications for the city clerk's job before making a final decision. Trustee Marie Christian has taken over the responsibilities temporarily.

Other routine business included approving bills for payment.

Attending were Mayor Manfred Turnbough, Trustees Lewis Cooper, Vane Doshier, Bill Thigpen and Mrs. Christian, and city employee Mickey Fenn.

Final Rabies Clinic

The final rabies clinic for dogs and cats was to be Thursday at Texico City Hall from 1 to 5 p.m. MST. Dr. G.H. Kendall, a Clovis veterinarian, was to be in charge.

Cost of the rabies vaccine is \$4. A three-way shot for distemper, hepatitis, and leptospirosis costs \$5 and four-way shot for distemper, hepatitis, leptospirosis and pneumonia costs \$6.

Texico and Farwell both have ordinances requiring that pets be registered. Texico dog tags cost \$1 each and may be purchased at the City Hall.

Dogs and cats must be registered in Farwell. Tags cost \$2 each at the City Hall.

Pranks, Tricks, Capers: Elements Of April Fool

by Shriley Gorman

April Fool's Day, a time for madcap merriment - usually at the expense of others - is nearly upon us again. That one day of the year when even the most dignified are given an excuse to play tricks and pranks dawn tomorrow (Saturday).

The first day of April is usually an "anything goes" day in which well meaning but impish adults and youngsters alike perpetrate such acts as tying someone's shoe laces together and "scaring" friends with imaginary spiders.

On April Fool's Day it is best to always be on guard and to take what is said with more than one grain of salt. But the neatest trick of all is to successfully play an April Fool's prank on someone else.

Counterparts of the American April Fool's Day are the Huli festival of India and Persia and the Roman spring ritual. Historically it is thought to be related to the vernal equinox when nature fools mankind with sudden changes from showers to sunshine.

The cuckoo is the emblem of the simpleton, therefore in Scotland the victim of an April Fool's prank is called a cuckoo or gowk as in the verse: "On the first of April, Hunt the gowk another mile."

Hunting the gowk was a useless errand as was hunting for hen's teeth, a square circle or for stirrup oil, which proves to be several strokes from a leather strap.

Oh, by the way, a late breaking weather announcement forecasts a 12-inch snow for the Texico-Farwell area.



Walking Their Dogs

Walking your dogs is always fun, but for these two Farwell youngsters it was even more fun since they were out of school for spring break this week. Darrell Goldsmith, 13, son of Mr. and Mrs. Doyle Goldsmith, and Shelley Smith, 7, daughter of Mr. and Mrs. Glenn Marsh, enjoyed exercising their dogs, Coyote and Shultz, respectively, Wednesday morning. Because of the excellent weather local residents enjoyed early in the week, thoughts were turned to typical spring activities such as dog walking, fun in the park and gardening - just to name a few.

MEMBER
TEXAS PRESS ASSOCIATION

STATE LINE TRIBUNE
 Box 255
 Farwell, Texas 79325
 Ph. 481-3681

Second-class postage paid at Farwell, Texas 79325. Published weekly at 404 Third Street, Farwell, Texas 79325.

SUBSCRIPTION RATES— Farmer and adjoining counties, \$6.30 per year; elsewhere, \$8.40 per year. Payable in advance.

John Getz- Publisher

1978 Grain Program . . .

(Continued from Page 1)

State and County Operations (DASCO). In the 1978 wheat and feed grain set-aside programs, the total acres of these crops planted on a farm plus acres set-aside can not exceed a farm's NCA.

8. Q: Will I be notified by the county ASCS office what my NCA is? A: Yes. You will receive a notice giving both your farm's NCA and the yield established for your farm.

9. Q: When is the sign-up period for set-aside? A: Sign-up for the set-aside program began March 1 and will continue until May 1.

10. Q: How will this program reduce wheat and feed grain production? A: The program will result in fewer acres planted in 1978. Farmers will look closely at market prices and make their decisions based on which crops should provide the best return for their investments. At least some of the acreage reduction will be in wheat and feed grains.

11. Q: What's an "allocation factor"? A: The Secretary of Agriculture will announce a national wheat program acreage and a national feed grain program acreage the number of harvested acres needed to produce enough wheat and feed grains for domestic use, for export, and for any necessary carryover.

The allocation factor is determined by dividing the national program acreage by the number of acres that were harvested. This figure cannot be less than 80 percent nor more than 100 percent.

12. Q: When will the allocation factors for 1978 be announced? A: They will be announced after the first five months of the marketing year for the crop involved. For wheat and barley, the first five months of the marketing year are June-October; for corn and sorghum, October-February.

13. Q: What type of land must I designate for set-aside acreage? A: Acreage designated as set-aside must be cropland that was tilled within one of the last three years in the production of a crop other than hay or pasture (unless the hay was in normal rotation with small grain or row crops). Excluded are orchards and vineyards, strips in skip-row planting patterns—and other areas of abnormal shape or small size.

14. Q: What about the corners of fields where circular irrigation is a regular practice? A: The corners of those fields will satisfy set-aside requirements provided they are normally planted to a crop. They will not be considered as being of "abnormal shape" or "small size."

15. Q: Will I receive any payments for setting aside my land? A: No. There will be no land diversion payments made under this program.

16. Q: Can I use the set-aside land for any purpose? A: No. Neither haying nor harvesting is permitted on land designated as set-aside for these programs.

17. Q: Will I be allowed to graze the set-aside land? A: Grazing will be permitted on set-aside land except during the six principal growing months determined by the State ASC committee. In Parmer County, set-aside acreage may be grazed from September 15 to March 15.

18. Q: If I grow both wheat and feed grains, must I participate in both the wheat and feed grain set-aside programs? A: There is a cross compliance provision in all set-aside programs to require participation in every set-aside as a condition for eligibility for deficiency and disaster payments and for commodity loans. This applies to all crops included in the NCA (except for sugar beets and sugar cane). For example, a farmer who failed to comply with the wheat set-aside would be ineligible for loans on his soybeans and upland cotton.

19. Q: Can I set-aside the same acreage under both programs? A: No. The set-aside requirements apply to each crop individually. Thus, if you set-aside 20 acres under the wheat program and 10 acres under the feed grain program, you will be setting-aside a total of 30 acres.

20. Q: How do I determine my NCA if I double-crop? A: When determining a farm's NCA, land that is double-cropped will be counted only once. So if you double-crop small grains and soybeans on 100 acres, you have an NCA of 100 acres, not 200 acres.

21. Q: How do I determine my set-aside acreage if I double-crop? A: When determining a farm's set-aside, a farmer who double-crops wheat and feed grains must

set-aside land under both the wheat and feed grain programs. The same acreage cannot satisfy the requirements of both programs.

A farmer who double-crops 100 acres of wheat and 100 acres of corn must set-aside 20 acres for the wheat and 20 acres for the corn for a total of 30 acres set-aside.

22. Q: If I have more than one farm, can I participate on one farm and not on the other? A: Yes. Persons owning and/or operating two or more farms will be eligible for program benefits on participating farms, provided the NCA is not exceeded on non-participating farms when a crop subject to set-aside is planted on the nonparticipating farm(s).

23. Q: How are deficiency payments figured? A: If deficiency payments are made in 1978, they will be based on the producer's share of the national farm wheat program acreage as expressed by the allocation factor. Deficiency payments, when applicable, must be made on not less than 80 percent of the total harvested acreage.

The deficiency payment rate is the difference between the target price and the higher of (1) the national average market price received for the first 5 months of the marketing year for the crop involved or (2) the national average loan rate. For wheat and barley, the first five months of the marketing year are June-October; for corn and sorghum, October-February.

24. Q: If I'm eligible, how will ASCS compute my deficiency payment? A: If you are eligible for a payment, ASCS will multiply the payment rate times your farm's established yield times the number of acres you planted for harvest. If you didn't reduce your 1978 plantings, this figure will then be multiplied by the allocation factor. Again, payments are based on the number of acres planted for harvest in 1978, not on an acreage allotment.

25. Q: Has the disaster program been changed? A: There are still two types of disaster payments: prevented planting and low yield. This year, however, they will be figured differently.

26. Q: How will the disaster programs be different? A: They will be different in four

ways: (1) payments will be computed on the number of acres you actually plant (or intended to plant) for harvest; (2) you will qualify when your yields are reduced 40 percent or more; (3) payments will be limited to losses that exceed 40 percent and (4) low yield payment rates will be 50 percent of the target price. (In the past, (1) payments were based on allotments; (2) yields had to be reduced at

(Continued on Page 3)

ERNE PARO
 Manager

WALCO INTERNATIONAL, INC.

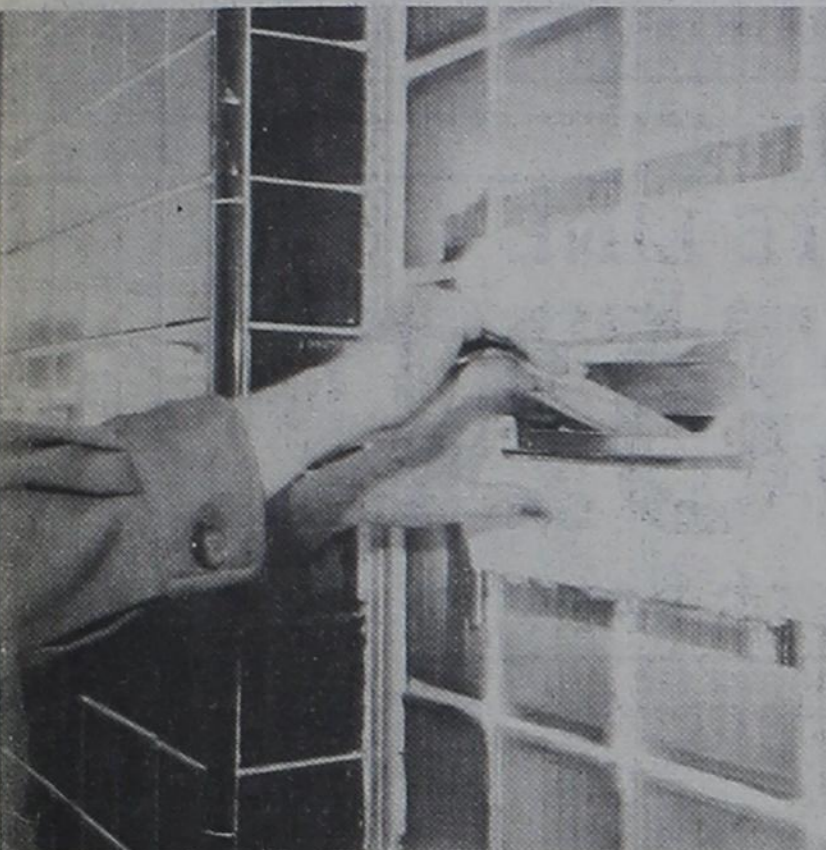
"serving the animal industry"

CLOVIS DIVISION
 801 S. HULL
 CLOVIS, NEW MEXICO 88101

OFFICE PHONE
 805-762-0731

P. O. BOX 259
 CLOVIS, NEW MEXICO

HOME PHONE
 762-0787



New Mail Drop

Farwell City Hall has a new mail drop which residents may use for paying bills when the office is closed. The mail chute was installed this week in the front window on the west side of the entrance to City Hall. The hands pictured belong to Janie Bowery, city clerk, who demonstrates how to drop mail into the window. The new feature was installed by City Marshal Ronnie Mitchell.

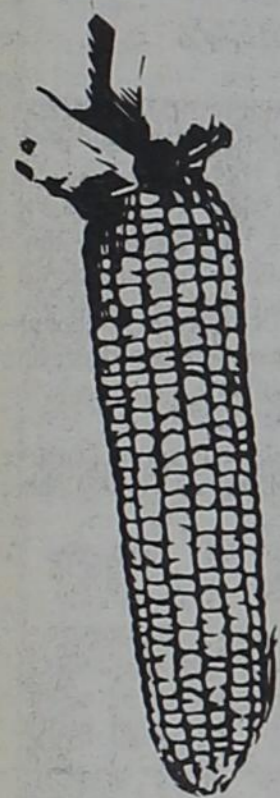
Texico High School Releases Honor Roll

The following students were named to the Texico High School third nine weeks honor roll:

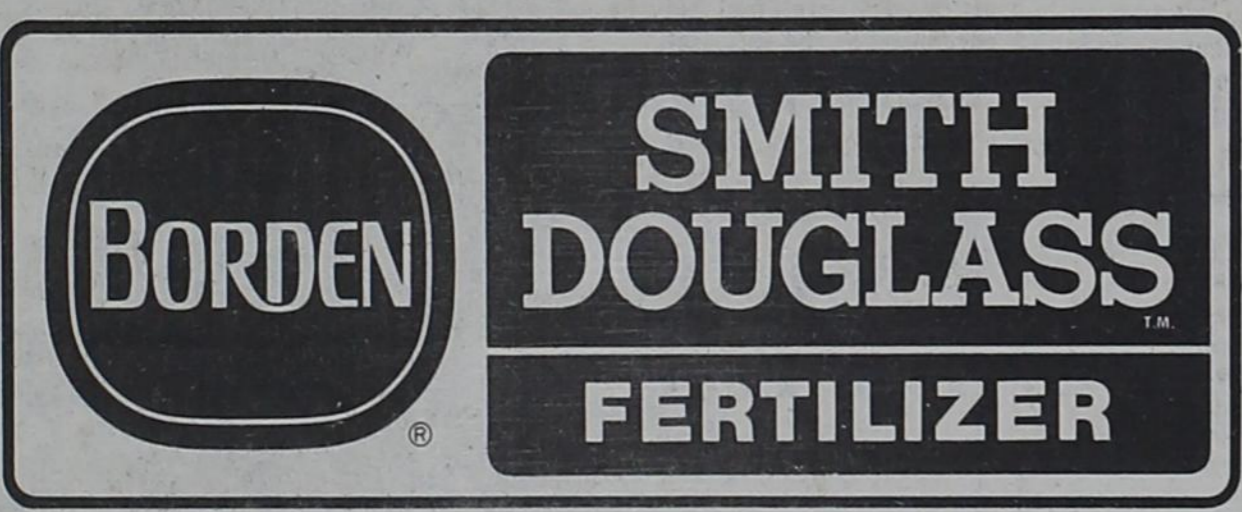
- 9th Grade: Lisa Coffey, Rebecca Eshleman, Carletta Fitz, Teresa Golledge, John Kelley, Nikie McDaniel, Ruthann Rickert, Schree Rucker and Rhonda Tharp.
- 10th Grade: Roxanne Cherry, Kerri Donahay, Cindy Taylor and Robert Thornton.
- 11th Grade: Georgia Eshleman, Debbie Flowers, Tonye

Harrington, Duwain Hill, Barbara Holley, Celia Johnson, Elizabeth Rojas, Mike Scott, Pam Southard and Teresa Turner.

12th Grade: Debra Coffey, Lyndon Donahay, Don Duncan, Josie Flores, Nickie Flores, Karen Hadley, Blake Haile, Christi Harrington, Richard Kelley, Sabrina Kittrell, Robert Lacy, Monty Leavell, Marcella Loya, Terry Rucker, Raynette Shankles and Steve Turner.



For Higher Yields
 And Profits . . .
 This Combination
 Is Hard To Beat . . .
 Mother Nature

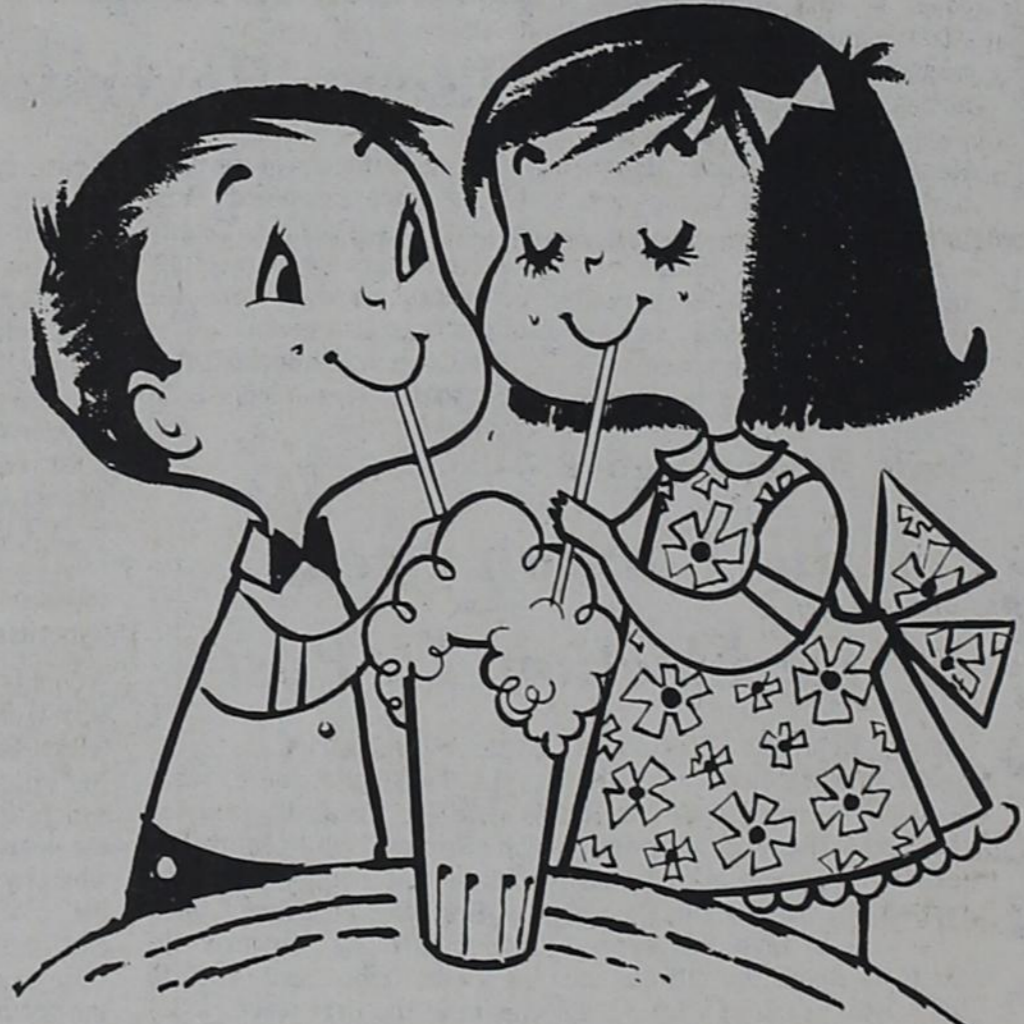


And You!

Smith-Douglass Fertilizer
 From
HELTON OIL CO.

Serving The Texico-Farwell Area
 Ph. 481-3222

THERE IS SOMEONE "SPECIAL"
 FOR EVERYONE . . .



At The Security State Bank You Are Always Treated As That Someone "Special." Let Us Do Your Banking Business With That "Special" Care And Personal Attention.

SECURITY STATE BANK
 FARWELL



Two Win All-Expense Trip To Washington

Winners of the 14th Annual Government in Action Youth Tour Speech Contest, sponsored by Deaf Smith Electric Cooperative, were announced this week by James Hull, manager of the Cooperative.

High school students whose speeches qualified them for an all-expense paid trip to Washington, D.C. are Evey Wilhelm of Nazareth and John Carson of Friona.

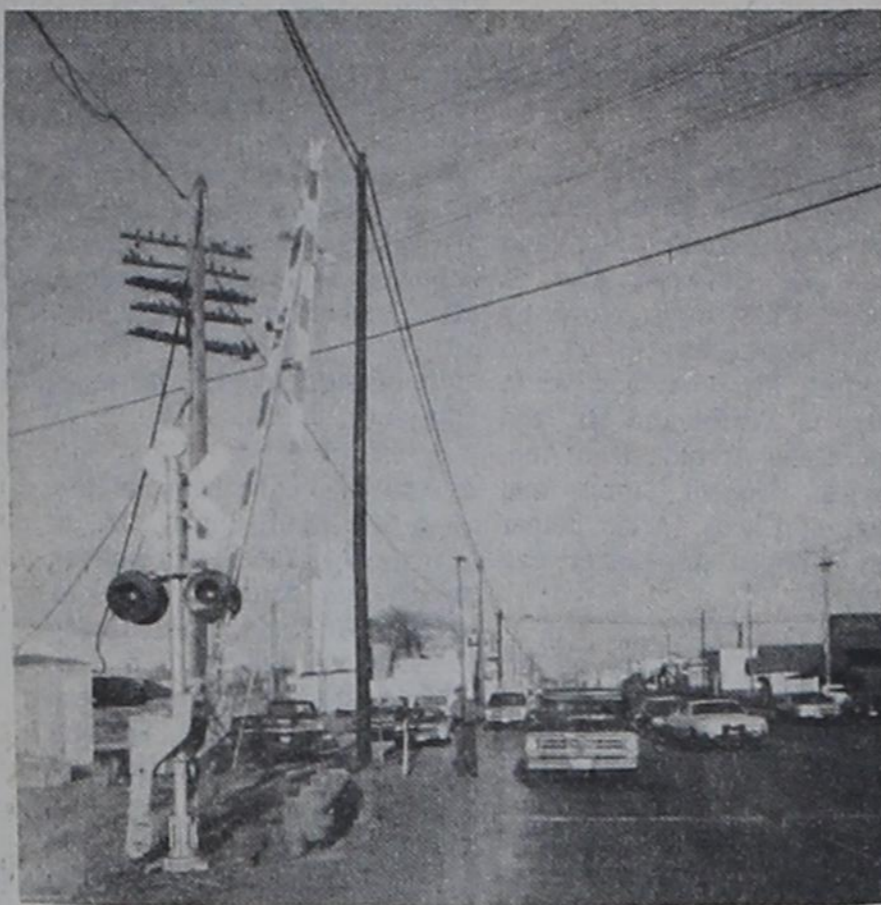
Evey is the daughter of Mr. and Mrs. James Wilhelm. She is active on the Nazareth Girls' Basketball C Team and Track Teams, as well as serving as Junior Class treasurer; Historian for FHA; a member of the Pep Club, and has competed in UIL under persuasive speaking.

John is the son of Mr. and

Mrs. D.H. Carson. He is president of the Forensic Club; a member of the Friona High School Debating Team; active in Thespians, Student Council, National Honor Society, and a member of the golf team.

The Washington Rural Electric Youth Tour winners were among six high school students from the area served by Deaf Smith Electric Cooperative who presented speeches on "The Energy Crisis," Hull explained.

John and Evey will join approximately 35 young people from across Texas who have won similar contests for a 12-day trip. They will travel by bus to Washington D.C. to meet with winners from other sections of the United States.



Accident Breaks Crossing Arm

Early Monday evening a one vehicle accident in Farwell resulted in a cracked pickup windshield and a broken Santa Fe Railroad crossing arm. Milton Walling of Farwell was driving west on Highway 84 approaching the railroad crossing when the sun apparently blinded him temporarily, causing him to ram into the crossing arm, snapping it in half. DPS Trooper Glenn Fant, who investigated the incident, said no citations were issued.

1978 Grain Program . . .

(Continued from Page 2)

least 33 percent: (3) payments were on losses below the allotment times the established yield; and (4) the payment rate was one-third of the target price.)

27. Q: So what you've done is make it harder for me to qualify for low yield payments but you've increased the payment rate when I do qualify. A: That's right. And if you do qualify, you'll be paid based on the number of acres you actually planted for harvest, not on an allotment.

28. Q: What about prevented planting payments? A: A producer who is prevented from planting wheat or feed grain may be eligible for a payment based on the smaller of (1) the acreage intended for wheat or feed grain that could not be planted to wheat, feed grain or any other nonconserving crop or (2) the amount that the acreage planted to wheat or feed grains in 1977 exceeds 1978's acreage. If the producer was also prevented from planting some acres of wheat or feed grains in 1977, the county ASC committee may adjust the 1977 planted acreage figure to reflect this.

29. Q: So eligibility and payments are not based on an allotment, are they? A: That's right. In 1978, prevented planting disaster payments are based either on the number of acres you intend to plant or the number of acres you planted in 1977 rather than on an allotment.

30. Q: What about low yield payments? A: Program participants will be eligible for payment on their loss below 60 percent of the established farm yield times the acreage planted for harvest.

31. Q: So low yield payments aren't figured on allotments either, are they? A: Right.

Low yield payments are based on the established yield for your farm and the number of acres you actually plant for harvest.

32. Q: How does ASCS compute deficiency payments if I also get disaster payments? A: Before computing deficiency payments, ASCS will first subtract the number of bushels for which you have already received a disaster payment. You cannot receive both a disaster and a deficiency payment on the same bushel.

33. Q: Is there any limit on the payments I can receive? A: There is a limit of \$40,000.00 that a person can receive under the wheat, feed grain and upland cotton programs combined. This excludes disaster payments.

For more information on the 1978 wheat, feed grain and set-aside programs contact your county ASCS office.

Farwell City Marshal's Report

Farwell City Marshal Ronnie Mitchell reported that several articles of clothing were taken from a dryer at the Hughes washeteria several days ago. He said that damages have been paid but the clothes were not recovered. No charges have been filed because restitution was made, Mitchell said.

Mitchell was in Amarillo March 13-17 to attend an advanced criminal investigation school for which he received 40 classroom hours credit. Classes were conducted daily from 8 to 5.

He explained that the hours will count toward the requirements necessary for advanced

SHERIFF'S REPORT

Parmer County Sheriff Charles Lovelace reports that a suspect is being held by Dell City, Okla., authorities in connection with the theft of a 1977 Ford pickup owned by Johnny Tannahill of Friona. Lovelace said if the man does not waive extradition he will be extradited within the next few days. He will be charged with theft in Parmer County.

Treider Electric of Lazbuddie was burglarized this week and approximately \$500 in CB radios, tape decks, speakers and pocket knives were taken. The sheriff's department is still investigating the incident.

A CB radio and a box of tools were taken from the Herman Gerries farm north-west of Bovina.

Culprits apparently tried to break into the Bovina Post Office but were scared away before getting inside, Lovelace

School Lunch Schedule At Texico

MONDAY - Sloppy Joes, carrot stick, fruit cup, cinnamon rolls, milk.

TUESDAY - Corn dogs, lima beans, pineapple and orange gelatin, peanut butter cookie, milk.

WEDNESDAY - Beef and cheese tacos, lettuce and tomato salad, buttered corn, chocolate cake, peaches, milk.

THURSDAY - Turkey and dressing, giblet gravy, creamed potatoes, loaf bread, cranberry sauce, pears, milk.

FRIDAY - Enchiladas, lettuce salad, buttered corn, loaf bread, mixed fruit, chocolate milk.

Letter To The Editor

March 25, 1978

STATE LINE TRIBUNE
Mr. John Getz, Editor
Farwell, Texas 79325

Dear Mr. Getz:

VETERANS ARE MEN WITHOUT A COUNTRY! I am a Veteran who served in active duty in Korea. And I was proud to have honorably served your country until I had to take a back-seat to the draft dodgers, flag burners and those who skipped the country. We as Veterans didn't demonstrate, in your country. We didn't think we had to. We demonstrated over-seas. Had we not demonstrated over-seas, make no mistake about it America, you would not be free.

I am one out of four in my family who served in active duty for your country. What for? To get slapped in the face by an ungrateful society! I am one Veteran that is sick of what has happened. I am tired of always taking a back seat while the misfits take a front row. Yes, I said misfits. When

I was inducted into the military service, you had to have a clean record and be an up-standing citizen, or you were rejected. What does that mean? It means your country picked the best men to do your fighting.

So if you are not a Veteran or had an active part in preserving freedom in your country, you are a misfit, and should be the one without a country, instead of the Veterans. I was told we had no voice because we were a minority group. This shouldn't be so, because they sent plenty of men to battle. There

just wasn't enough that came back. I wonder if they died in vain.

As a Veteran, I believe that Veterans Day should be the most honored day in this country. (Whenever it is - it has been so diminished, I couldn't even find it on my calendar). It should be an honored day because of the living Veterans and the ones who died in action, you are still free, Americans!

Sincerely,
Truman Kittrell
Box 71
Texico, New Mexico 88135

CofC To Meet

The Farwell Chamber of Commerce meeting regularly scheduled for Tuesday has been postponed until Tuesday, Apr. 4, due to the fact that several officers and directors were out of town this week. The meeting will be at Clara's Restaurant at noon.

BILL HAGLER



FOR ALL YOUR NEW & USED CAR, TRUCK & PICK UP NEEDS

'DOC' STEWART INC.
2400 MABRY DR.

CATCH YOUR FAVORITE PROGRAM ON OUR 10 CHANNELS



CABLE TV IS THE BEST TV
MIDWEST VIDEO CORP.



1602 MITCHELL, CLOVIS

Ph. 763-4411

OPEN 24 HOURS

ALLSUP'S CONVENIENCE STORES

OPEN 24 HOURS

PRICES GOOD (MAR. 30-APR. 2, 78)

CHECK OUT AT ALLSUP'S

<p>BORDEN'S HIGH PROTEIN MILK 89¢ 1/2 GAL. CTN.</p>	<p>Basket Full 1/2 Price Items</p>
<p>Shurfine or Carnation TUNA 6 1/2 oz. 3/\$1.00</p>	<p>BORDEN'S PURE ORANGE JUICE 59¢ QT. BTL.</p>
<p>BORDEN'S PREMIUM ICE CREAM \$1.29 RD. CTN.</p>	<p>Van Camp or Shurfine PORK & BEANS 16 oz. 5/\$1.00</p>
<p>Shurfine 60 Pk. NAPKINS 4/\$1.00</p>	<p>FOLGER'S ALL GRINDS COFFEE \$3.29 1 LB.</p>
<p>PEPSI 32 Oz. Plus Deposit \$1.49</p>	<p>Shurfine SAUERKRAUT 16 oz. 5/\$1.00</p>
<p>Shurfine PINEAPPLE Crushed or Sliced 15 1/4 oz. 3/\$1.00</p>	<p>Shurfine TOMATOES 303 Size 5/\$1.00</p>
<p>HOT LINKS 3/\$1.00 HOT COOKED FOODS</p>	<p>Borden's WESTERN DRINK Orange, Grape, Tropical Fruit Punch 64 oz. 2/\$1.00</p>
<p>• BBQ CHICKEN • HOT LINKS • BURRITOS • GERMAN SAUSAGE • BBQ BEEF SANDWICHES</p>	<p>• BBQ RIBS • MILD LINKS • CORN DOGS • BULK BBQ BEEF SANDWICHES</p>

This I Know . . .

by Leonard Harper
Minister
Farwell Church of Christ

MACHINERY CAN BE DESTROYED by the wear and tear of the friction generated by its moving parts. It is wonderful that we know ways to reduce motor friction, and thus improve the service of our machines. In fact, it seems that we have done better with machinery than we have been able to do with our social machinery and our personal lives.

FRICION IN ONE'S LIFE and in human relationships dissipates individual strength and collective human strength, too. There is individual and group inefficiency and ineffectiveness wherever there is friction.

CHRIST SAID, "Every kingdom divided against itself is brought to desolation; and every city or house divided against itself shall not stand." (Matt. 12:55).

HUMAN INTERACTIONS IS LIKE A MACHINE; the greater the friction, the greater the degree of damage. We know that there are ways to reduce motor friction, and we must know that there are effective ways to reduce the friction in human associations.

"IF POSSIBLE, as much as lies in you (as much as it depends upon you), live peaceably with all men." (Rom. 12:18)

"LET NOTHING BE DONE THROUGH STRIFE or vainglory; but in lowliness of mind let each esteem other better than themselves." (Phil. 2:3).

"LET ALL THAT YOU DO be done with love." (1 Cor. 15:14).

CLOVIS SHOPPING DIRECTORY

545678901123456789012

CRIBS and NURSERY FURNITURE
Little Tyke
412 Mitchell 762-4550

STEREO
CLOVIS ELECTRONICS
TELEVISION
1440 Main Clovis

Stork Shop
Infants and Maternity Wear
1312 Main 763-7145

AUCTION SALES
Thurs. 7:30 P.M.
MENNELL'S AUCTION
108 Sycamore - 762-2581

ROTHWELL BODY SHOP
1814 West 7th (Behind Chief's Automotive) Clovis, N.M.
CALL 763-3530 For Free Estimate On ALL AUTO BODY REPAIR & REPAINTING ALSO GLASS WORK

Duffys
PROMPT DEVELOPING SERVICE - ALL SIZES FILM - LARGE SELECTION PHOTO ACCESSORIES
O. L. ANDERSON, PROPRIETOR
617 MAIN STREET CLOVIS, NEW MEXICO

PRINCE FURNITURE
New & Used Furniture
Water Beds
Ph. 762-0892 1511 N. Prince Clovis, N.M.

Convalescent Center Chit Chat

Rev. Carrell Watkins, pastor of Calvary Baptist Church, held services at the Center Sunday. Floe Copeland, activity director, issued the following statement concerning all the ministers who conduct services at the Center:

"We appreciate all the local pastors who give so freely of their time so that we may have church services each Sunday afternoon. Our residents look forward to this each week as most of them are unable to go to church otherwise."

The residents were surprised Thursday of last week when instead of the usual bingo session, they colored Easter eggs. All the paraphernalia was waiting for them including boiled eggs and plenty of dye. An egg was made for each resident and their names and birthdates were written on them. Some of the eggs were plain, others fancy. Some were decorated with Easter bunnies and others were "just plain weird."

Almost all the residents joined in the fun of coloring and decorating Easter eggs and afterwards they enjoyed a large glass of juice and several eggs which had been cracked. Several claimed this was the best part of all. Everyone agreed that it brought back fond memories of their own childhood and helping their children and grandchildren with Easter preparations.

Assisting Mrs. Copeland with this special project was Martha Curtis, Auxiliary volunteer, and Jean Brown, the usual bingo helper.

New admissions are Willie Shields of Portales, Velma Robertson and Ed Abbott, both of Clovis. This is Velma's second stay at the Center. She is recuperating from a broken arm.

Farwell Young Homemakers will begin furnishing monthly birthday cakes for the residents next month. They also brought a large supply of apples and oranges for the residents to enjoy for the Easter holidays.

Cecil and Annie Goode are

visiting relatives for a few days.

Jennifer Williams and Kenda Hager, both Farwell seventh graders, recently came to the Center to talk with W.W. Vinyard about his early days in this area. It was all part of a history class assignment. Mrs. Copeland assisted the girls with the interview.

Vinyard said he came to this area in 1914 and went to work for the Santa Fe Railroad as a telegrapher. He added that he had completed all 12 grades in a small county school in Duncannon, Tex. They all thought that was a remarkable achievement since Vinyard is 97 years old.

According to Vinyard he would have learned more "if I hadn't been the teacher's pet." Mrs. Copeland said the project is very interesting, adding, "I hope we can do it again with other residents."

Mrs. Copeland attended a Texas Nursing Home Association Chapter meeting in Amarillo last week. The Convalescent Center is in the Golden Spread Chapter.

The Golden Spread Chapter is entering Maud Wilson in the 1978 Mrs. Texas Nursing Home competition. The crew of the "Love Boat," the number three rated television show, will select the winner and two runners-up. The winner will be crowned April 28 during the awards luncheon of the Texas Nursing Home Association spring meeting in Fort Worth. This activity will be well publicized in the weeks ahead. Mrs. Copeland is currently getting all the necessary information together in order to enter Mrs. Wilson in the queen contest. All say "good luck" to her.

David Kube has been busy preparing the Center's garden for planting in the near future.

Lorene Venable, Auxiliary member, has been working in the crafts room on Friday afternoon for the past few weeks. Residents working with her are Maud Wilson, Bob Hix, Nora Edens and Cecil Goode.



MR. AND MRS. RAY HUNGATE

Hungates To Observe 60th Anniversary

Mr. and Mrs. Ray Hungate, 117 Prairieview, Clovis, will observe their 60th wedding anniversary at a reception Sunday afternoon, April 2.

The commemoration of the event will be at Fellowship Hall of the First Baptist Church in Clovis from 2 to 4 p.m. MST with the couples' four children serving as hosts.

They include Mr. and Mrs. D. Ray Hungate, Los Angeles; Mr. and Mrs. J.W. Hungate, Denver, Colo.; Mr. and Mrs. Melvin Hatchett, Tulsa, Okla.; and Mr. and Mrs. Gail Hungate, Las Cruces, N.M. The couple has requested no gifts, please.

Ray Hungate and Prudence Schlueter were married April 4, 1918, in the parsonage of First Baptist Church, Clovis, by Rev. S.B. Culpepper who was pastor there at that time. The Hungates have retained their membership at the church from 1921-24 and from 1931 to the present.

Hungate retired from work in the post office in 1968. The couple has nine grandchildren and three great-grandchildren.

Mrs. Hungate lived for many years in the Texico-Farwell area and is a sister of Olan Schlueter of Texico.



Easter Goodies

Farwell Convalescent Center residents had a busy time last week preparing Easter goodies for the weekend. Early in the week they colored eggs and on Friday these two ladies put eggs into Easter baskets in preparation for the holiday. Annie Callahan, left, shows some of the colored eggs while Minnie Nelson holds a stuffed Easter bunny. The bunny was a gift to the Center from Mrs. H.C. Whitener. Mrs. Nelson, who is 88 years of age, says this was her first time ever to color eggs.

STEED-TODD FUNERAL HOME

"When Understanding Is Needed Most"
Prince & Manana-Clovis-Ph. 763-5541

Visits And Visitors

Mr. and Mrs. Lewis Cooper of Texico spent Easter Sunday with her parents, Mr. and Mrs. Joe Caywood also of Texico. They were joined by Mrs. Cooper's two sisters and families, Mr. and Mrs. Alvin Rolan of Texico and Mr. and Mrs. Gene Arnold, Jean Ann, Warren, Donald, Junie and Terri of Clovis. After dinner they enjoyed an Easter egg hunt.

Visiting in the home of Mr. and Mrs. Harvey Hudnall of Farwell last week were three grandchildren, Renee and J.W. Warrick of Lubbock and Brenda Harmon of Portales. On Thursday Hudnall and the children went to the Russell Harmon Ranch in the House Community to brand cattle. It was a new experience for the Warricks.

Mr. and Mrs. Joe Helton of Texico spent the weekend in Amarillo visiting her mother,

Mrs. J.E. Whatley.

Easter visitors in the home of Mr. and Mrs. Woodrow Lovelace of Farwell were their daughter and family, Mr. and Mrs. Robert Mayes and Maggie.

Visiting in the home of Mr. and Mrs. M.A. Snider, Jr., of Farwell for the Easter holiday were their daughter and husband, Mr. and Mrs. Grady Newton of Lubbock; a son, David, student at Texas Tech University, and Mrs. Snider's father, Howard Mayfield of Friona.

Mr. and Mrs. Donald Christian enjoyed an Easter Sunday dinner in Lubbock with her sister and husband, Mr. and Mrs. B.J. Foster. They were joined by Mr. and Mrs. Steve Foster and daughters of Muleshoe and Mrs. Christian's parents, Mr. and Mrs. T.L. Kent of Muleshoe.

Mrs. Claud Heath Has 80th Birthday

Mrs. Claud Heath of Farwell celebrated her 80th birthday Sunday with a dinner party and reception at the home of her daughter and husband, Mr. and Mrs. Harvey Hudnall of Farwell.

After the noon meal pictures were taken and the smaller children who attended dyed Easter eggs and conducted an Easter egg hunt.

Later in the afternoon cake

and ice cream and strawberries were served during the reception. The cake - made by a granddaughter, Sue Harmon of Portales - was decorated in pink and orchid colors with rose, gold and orchid flowers. "Happy Birthday Ma" and the number 80 were written in orchid.

The cake was served from a table covered with a white knit and lace cloth. The white napkins were decorated with pink, orchid and gold printed flowers.

Later Mrs. Heath opened her gifts and cards. She also received a telephone call from her sister and husband, Mr. and Mrs. M.A. Cox of Farmington, N.M. Also calling was Mrs. Ethel Harding of Farwell and Mrs. Tom Seib of Lubbock. Some of the guests and activities were a surprise to Mrs. Heath.

Those attending besides the honoree and her husband and the host couple were Mr. and Mrs. Johnny Warrick, Renee and J.W. of Lubbock; Mr. and Mrs. Robert Harmon, Bob, Brenda and Bryce of Portales; Dr. and Mrs. Wayne Hudnall and Eric of Canyon; and Mr. and Mrs. John Lockhart of Texico.



Lady Godiva made her famous bare-skinned ride through the streets to protest an oppressive tax imposed on the people by her husband, Earl Leofric.



Plan June Wedding

Mr. and Mrs. Frank C. Ancira of Farwell announce the engagement and approaching marriage of their daughter, Corine, to Dwight Green, son of Mr. and Mrs. Doyle Green, also of Farwell. The couple will be married Saturday, June 24, at 3 p.m. CDT in the First Baptist Church in Texico. No local invitations will be sent but all friends and relatives are invited to attend the ceremony and reception to follow. The bride-elect will graduate from Farwell High School in May and the prospective bridegroom is a 1976 graduate of Farwell High School.

Briggs Elected Vice-President

Jimmy Briggs of Lazbuddie, Parmer County Commissioner, served as chairman of the nominating committee for the West Texas Judges and Commissioners Conference March 18.

He was accompanied to the conference by his wife, Jim-

mie, and County Judge and Mrs. Paul Fortenberry and Mr. and Mrs. Earnest Anthony.

During the conference, Briggs was elected vice-president of the 124-county Association.



IMPERVO SPAR VARNISH

Reg. \$19.60 **\$12.50** Now

VARATHANE SATIN STAIN

50% off

SOUTHWEST

Paint & Wallpaper

New Hours: Open 7 a.m. - 5 p.m.
Saturday 8 a.m. - 4 p.m.
1902 N. Prince Clovis, N.M.

Prefinished Paneling	\$3.97 & Up
PREFINISHED MOULDING & COLORED NAILS	
4x8 1/2 Sheetrock	\$2.88
Masonry Cement	\$3.30
Storm Windows	\$21.50
Portland Cement	\$3.60

FREE DELIVERY TO TEXICO & FARWELL

HOME LUMBER & SUPPLY CO.

1201 E. First Clovis 763-4437

THE NATURAL FOOD CENTER has

- ENERGO • FATIGABAN • GO • DESI-CATES
- BEE POLLEN • PROTEINS • GINSENG & MORE!

STRENGTH, ENERGY & ENDURANCE

763-6609 620 COMMERCE WAY

OPEN HOUSE

SAT. APRIL 1st
8 a.m.-6 p.m.

SUN. APRIL 2nd
10 a.m.-5 p.m.

NOMAD TRAVEL TRAILERS AND 5th WHEEL

FREE GIFTS

15% Off On All Care Free Awnings (Cash Only)

Door Prizes Awarded Every 2 Hours!

Free Ice Cream For The Kids

EVERYONE INVITED

BISON CAMPERS

MITCHELL TRUCK CAMPERS
Larger Units With Their Own Unique One Man Loading System

1200 East 1st Clovis N.M.

Larry Bentons Have Son

Mr. and Mrs. Larry Benton of Clovis are parents of their first child, a boy, born March 14 at Clovis Memorial Hospital. The new arrival, who has been named Bryan Lee, weighed nine pounds, five ounces and was 23 inches long at birth.

Bryan's grandparents are Mr. and Mrs. Milton Autrey of Texico and Mr. and Mrs. Charles Benton of Las Cruces, N.M. The great-grandparents are Mr. and Mrs. Clarence Moore of Clovis and Mr. and Mrs. O.W. Pair of Shallowater, Tex.

Has Birthday

Harvey Hudnall of Farwell celebrated his 59th birthday last Thursday with a dinner at home. Attending besides the honoree and his wife were their son and family, Dr. and Mrs. Wayne Hudnall and Eric of Canyon; three grandchildren, Renee and J.W. Warrick of Lubbock and Brenda Harmon of Portales.

Another daughter and family, Mr. and Mrs. Jimmy Jordan and Justin of Farmington, N.M., called Thursday to wish Hudnall a happy birthday.



MR. AND MRS. STEVE MEEKS

Cindy Cooper, S. Meeks Wedding Vows Exchanged

Cindy Cooper and Steve Meeks were united in marriage recently in the Oklahoma Lane Baptist Church.

The bride is the daughter of Mr. and Mrs. Truitt Hardage. Her grandparents are Opal Jackson and Bill Jones of Clovis and Mr. and Mrs. Willie Hardage of Farwell. The bridegroom is the son of Mr. and Mrs. Leon Meeks, Farwell. His grandparents are Mae Goldsmith and Mae Meeks, both of Farwell.

They repeated vows before an altar centered with yellow and white gladioli and yellow carnations. A seven branch candelabra with yellow candles and green palms were on each side. Rev. Moody Smith officiated the double ring ceremony.

Proceeding down the aisle, the bride presented her mother with a long stemmed red rose and a love kiss. As they left the altar, she presented Mrs. Meeks with a red rose and a love kiss.

The bride, given in marriage by her father, was presented at the altar in a long flowing beige satin gown with scalloped lace accenting her train. The one-tier veil lay softly around her face.

She carried a bridal bouquet of yellow and white carnations.

Keeping tradition, the bride wore a pearl necklace belonging to her aunt, Mrs. Darrell Bailey, as something old; her gown, made by Mrs. Bailey, as something new; matching pearl earrings, belonging to her cousin, Tammie Bailey, as something borrowed; and she wore a blue garter trimmed with white lace.

The bride's sister-in-law, Mrs. Kevin Cooper, was matron of honor. She wore a full length yellow dress with a matching flower in her hair and carried three long stemmed carnations with streamers. Tori Hardage, sister of the bride, and Matt Meeks,

brother of the bridegroom, lighted the candles.

Suzanne Hardage, sister of the bride, and Mark Meeks, brother of the bridegroom, carried the rings on satin pillows. Kandie Bailey, cousin of the bride, registered the guests.

Sammy Merritt attended the bridegroom. Ushers were Jamie Cooper, brother of the bride, and Tim Meeks, brother of the bridegroom.

Following the wedding the couple was honored at a reception in fellowship hall of the church.

The table held a white three-tiered wedding cake trimmed with white and yellow roses and topped with a miniature bride and groom. Yellow punch was served from a white punch service. Presiding at the table were Toby Curtis, April Coffman and Debbie Burch.

The couple is at home near Farwell where Meeks is engaged in farming.

Coston-Treider Vows Read In Afternoon Ceremony

Debbie Coston and Brad Treider were united in marriage recently in an afternoon ceremony at the House Baptist Church. The bride is the daughter of Mr. and Mrs. T.J. Coston of McAlister, N.M., and the bridegroom is the son of Mr. and Mrs. Ted Treider of Lazbuddie.

Rev. Jim Standridge of Lazbuddie performed the double-ring ceremony.

Centering the altar were two seven-branch candelabra, flanked on each side with baskets of white carnations.

Pre-nuptial music was provided by Gary and Alba Wilcox, Laura Burnette and Debbie Smith, all of Lazbuddie. Gary played alternately the piano and guitar. Laura and Debbie sang as the wedding party entered the church.

The bride was escorted to the altar by her father. As they entered, the bride presented her mother with a red rose.

Her gown was floor length, of white miramist and lace. The fitted bodice of lace formed a "V" at the waist in the front and back, featuring a scalloped neck and fitted sleeves with pettipoint at the wrists. The hooped skirt was fashioned with tiers of lace down the front. A ruffle of lace around the entire skirt set off the Cathedral train. The gown was designed and made by the bride's sister and mother. The sister, Annette Johnston, wore the gown for her wedding six years ago. The veil was floor-length with a layer of fingertip. It was attached to a cap applied with roses and small pearls. She carried a bouquet of white roses, carnations and baby's breath, on a white Mother of Pearl covered Bible, a gift from the bridegroom's mother. Her bouquet contained a corsage of white roses, which she wore on her going away dress.

Mrs. Tom Johnston was her sister's matron of honor. Her dress was floor length of burgundy, crepe-backed satin, featuring a fitted bodice, with a cowl neck. She wore an off-white picture hat trimmed with a burgandy satin ribbon. She wore a white carnation corsage and carried a single silk pink rose. Stacy and Jamie Coston, brothers of the bride, were the candlelighters.

Karen Coston, niece of the bride was flower girl. Her dress was floor length and was made of pink crepe-backed satin. She carried a basket filled with carnation petals. Tommy Coston, nephew of the bride, served as ring bearer.

Best man was Stan Treider of Lazbuddie, brother of the bridegroom. Ushers were Terry Coston, brother of the bride, and Don Hunt, Henryetta, Okla., college friends of the bridegroom.

Deana Hargrove, Plainview, cousin of the bridegroom, registered guests as they arrived at the church. She wore a pink crepe-back satin dress identical to those worn by the girls who sang.

At the conclusion of the ceremony, the couple lighted a unity candle, and the bridegroom sang, "We Will Climb The Hill Together," with the bride joining him in the last phrases. They were accompanied with guitars by Gary Wilcox, Rick Terrell and Stan Treider. As the couple started back down the aisle, they paused for the bride to present a red rose to the bridegroom's mother. The bride's mother chose a yellow and burgandy floral print floor-length gown. The bridegroom's mother wore a floor-length gown of coral floral print. Both wore white carnation corsages.

A reception was held at the House Community Center immediately following the cere-

mony. Hostesses for the event were Mrs. Elmer Heine, Mrs. Carl Jackson, Mrs. Bruce Runyan, Mrs. Glen Franklin, Mrs. Terry Coston and Laura Creek.

A white lace cloth over burgandy covered the serving table. A centerpiece of roses in shades from pink to burgandy with white daisies was flanked by burgandy tapers. The three tiered wedding cake, decorated by Mrs. Heine, was served by Miss Nancy Young, Miss Monte Creek served the punch. Both girls are students at NMSU, Las Cruces, and lifelong schoolmates and friends of the bride.

For her traveling ensemble, the bride wore an apricot crepe peasant blouse with long sleeves, tiered skirt with dark brown boots. Following a wedding trip to Santa Fe, the couple will be at home at Lazbuddie where the bridegroom is an electrician.

The bride is a graduate of House High School and attended a year at Wayland Baptist College at Plainview. Treider graduated from Lazbuddie High School and attended Oklahoma State Tech in Okmulgee, Okla.

The rehearsal dinner was hosted by the bridegroom's parents after rehearsal.

Out-of-town guests present for the wedding and reception were: Tina Primrose and Mr. and Mrs. M.L. Griggs, Tucumcari; Mr. and Mrs. Bill Gore, and Keith, Tenessa and Tim Baldwin, Clovis; Mr. and Mrs. Bob Smith, and Kathy Dye, Portales; Mr. and Mrs. Kevin Walker, Grady; Nadine and Christy Downey, Melrose;

Also Rev. and Mrs. Harvey Hudnall, Mr. and Mrs. Charles Lovelace, Farwell; Mr. and Mrs. J.M. Pruitt, and Fontella and Koleon Lewis, Muleshoe; Aubrey, Ina, Sharon and Greg Altum, Abilene; Imogene Cox, Bovina; Mr. and Mrs. Jerry Osborn, Hereford; Mr. and Mrs. Jimmy Caudle, Dallas; Tom and Laura Johnston, Midland;

And Janet Bacon, Topeka, Kansas; Mr. and Mrs. Robert Johnston, Linda and Andre Garnica, and Carolyn and Patricia Willis of Lubbock; and from the Lazbuddie area, Mrs. Bobby Smith, Mrs. Jim Standridge, Mr. and Mrs. Gary Hicks and family, Mr. and Mrs. Windham and Beth, Mr. and Mrs. Bobby Redwine, Mr. and Mrs. Tim Smith, Mr. and Mrs. Chuck Smith, Mr. and Mrs. Orville Burnette, and Mr. and Mrs. Dan Smith; and from Plainview WBC, attending were Ney Orbison, Kirk Hofer, Lea Jackson, Larry Zamora, Curtis Bostick, Valerie Fitz, Steve Bamda, and Bart Burnette.



MR. AND MRS. BRAD TREIDER

Reception To Honor The John Lockharts

Mr. and Mrs. John Lockhart of Texico will be honored at a going-away reception Sunday, Apr. 2, from 2 to 4 p.m. MST at the home of Allie Burris in Texico.

The reception is being host-

ed by the Ruth Sunday School Class of First Baptist Church in Texico. Mrs. Lockhart is the teacher of the class. The Lockharts are moving to Waco, Tex.

Everyone is invited to attend.

Hospital Notes

Oscar Hubbell of Farwell was admitted to Clovis Memorial Hospital Monday of last week for medical treatment. He was released Sunday and is reported to be "doing fine" now.

Eva Ancira of Farwell was admitted to Clovis Memorial Hospital Monday for surgery. She is said to be "doing okay" and was expected to be released this week.



The lilac, a native of the Orient, was not introduced into Europe until the 16th century.

Both his hometown weekly and Texas' largest newspaper agree...

JOHN POERNER
Railroad Commissioner

Poerner is a solid, competent individual with a record of 10 years of dedicated public service. The Chronicle urges his election.

John Poerner is a fair-minded man. He is an honest man. He is a man of high integrity and straight-forwardness. He is a strong, forthright leader.

Pd. Pol. Ad. to elect John H. Poerner - Railroad Commission, Ed Ingram, Treas. 1037 Brown Bldg. Austin, Texas 78701

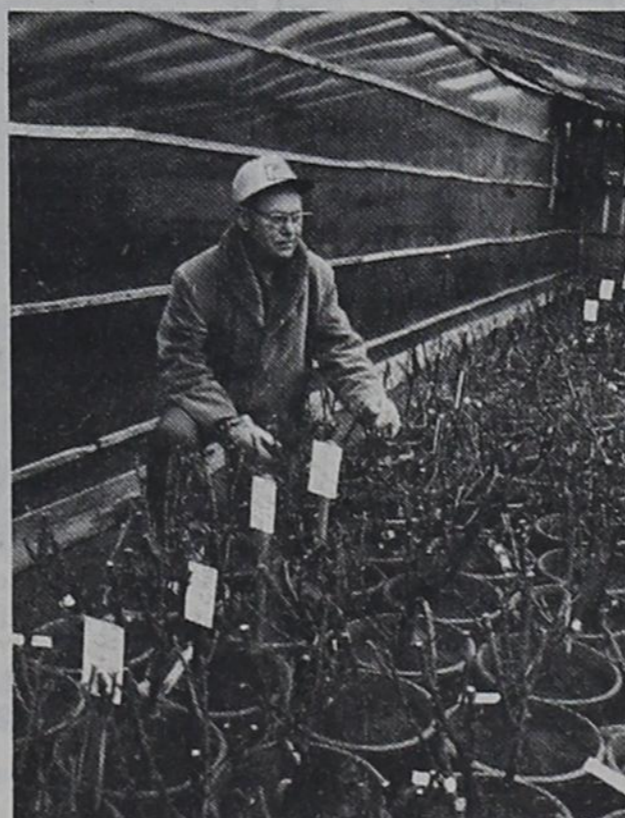
Clovis Jr. Women's Clubs Sets Art Show

Clovis Junior Women's Club will sponsor its annual art show on April 23 in the showroom at Doc Stewart, Inc., 2500 Mabry Drive, Clovis. The show will be from 12:30 to 5 p.m. MST.

All area artists are invited to participate and may regis-

ter their work between 8:30 and 11 a.m. on April 23. Competition will be in painting and sculpture only, says a spokesman for the show. Refreshments will be served.

Roses - Roses



93 Varieties Of
Rose Bushes

Plant Container & All

Come In Early For Best Selection

GUTHALS CO.

"OURS ARE BETTER"

1001 EAST 1 st CLOVIS, N.M.

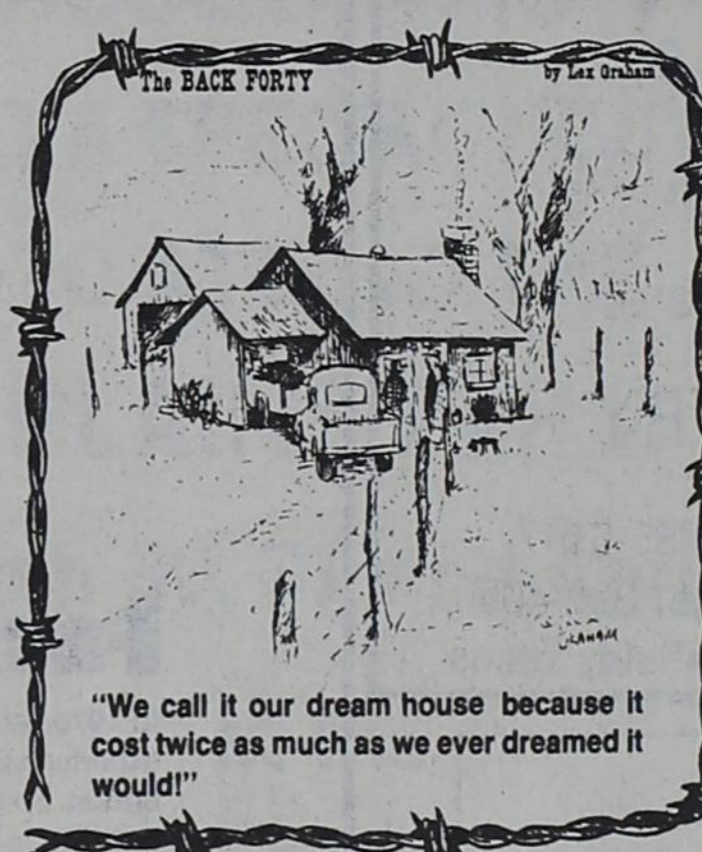
1978 Ford
F-100 Pickup \$9980 MO.



V-8, auto., P.S., P.B., radio,
chrome front bumper,

Cash Selling Price \$4185.00 Down Payment of 500.00 Plus T-T-T-With Approved Credit Your Monthly Payment Will Be \$99.80 . . . Apr. 13.51% Total Amount of Your Payments Will Be \$4790.40 48 Months

THE PERFORMERS
HAGELGANTZ
BIG COUNTRY FORD
2400 MABRY DR.



"We call it our dream house because it cost twice as much as we ever dreamed it would!"

Special This Week!
10% To 50%
SAVINGS

Ladies & Men's
Suits

30% - 1/2 OFF

Levi Big Bell

Or

Dura Plus

Jeans \$11.95

Men & Ladies & Boys Girls

Shirts Blouse

ALL 30% OFF

All Styles

Felt Hats

30% OFF

All Men's Ladies Childrens

Coats 50% OFF

Boots

Sanders

Tony Lama

Nocona Texas

Justin

Mustang

Acme

Wrangler

Levi

Sedgefield

Western & Fashion

10% OFF
All Boots And
Merchandise
Not On Sale

No Layaway Or Refund
On Sale Merchandise



ee's WESTERN WEAR

1910 W. Amer. Blvd. Muleshoe 272-4663

Plenty of Parking

Open Mon.-Sat. 9 a.m.-6 p.m.

Farwell Girls Schedule District Tennis Matches

District tennis matches for the Farwell High School and Junior High School girls is slated for Saturday, Apr. 8, at Hart and Kress, respectively. Steerettes entered in the district competition at Hart include Lori Turner, Jana Berry, Karyn Blain, Gina Eubank, Lisa Howard, April Coffman, Janye Berry, and D'Lynn Eubank.

Junior high entrants are Janene Berry, Tracy Williams, Lana Turner, Karen Magness, Ginger Ellison, Kay Geuther, Polly Turner, Kenda Hager and Jennifer Williams.

Farwell High Students To Enter UIL Contests

Several Farwell High School students will compete in District UIL contests next week.

The one-act play competition is slated for next Tuesday in Vega. Farwell's play, entitled "Dawn Will Come" centers around a group of people who have lived in caves all their lives. The plot revolves around two brothers and their wives who defy the priest and leave the caves. In doing so they discover that the God of Light is also the God of Beauty and Love. They return to their people to share this knowledge.

Cast members include Radney Robertson, Robin Roberts, Vicki Vinton, Bruce Mayfield, Randy Geries, Betsy Black, Deanna Hager, Brent Black, Carole Perkins, Kayle Watts; Also, Vick Christian, Rich-

ard Yruegas, Benny Yruegas, Lisa Hughes, Leonel Jaime, Roy Lovelady, Rowdy Chandler and Max Lonsdale.

District UIL literary events are scheduled for next Friday, Apr. 7 at West Texas State University in Canyon.

Entrants in the contest include Lisa Howard, Dondra Geries, Jana Berry, Lisa Darby, Sandra McMillan, Brenda Jones, Corine Ancira, Blaine Buchenau, Dwayne Shults, Traci Watkins, Keith Martin, Tim Bartley, Linda Gohlke, Peggy White, Shawn Smith, Russ Jones;

Also, Radney Robertson, Toby Curtis, Clay Williams, Jan Bradshaw, Delia Dollar, Clay Williams, Penny Hughes, Janell Garrett, Rhonda Walls, Michael Boling, Val Bass, Jack Rose, Scott Bass, Janye Berry and Carole Perkins.

All-District Honorees



PAULA CHRISTIAN

RHONDA WALLS

Paula Christian, left, daughter of C.E. Christian, Farwell, was recently named to the All-District 3-A basketball team. The All-District forward is a junior at Farwell High. She scored in double figures in almost every game during the past season. At right is Rhonda Walls who received honorable mention to the All-District team as a guard. Rhonda, the daughter of Mr. and Mrs. Mitchell Walls, is a senior.

Track Teams To Compete At S-E

Even though Farwell Schools are out this week for spring break, the Steer and Steerette track teams will see action this weekend at Springlake-

Earth. Competition begins today (Friday) and concludes tomorrow. Both teams were open last week.

Little League Tryouts Set

Tryouts for the Texico-Farwell Little League teams are slated for April 13 at 4 p.m. and April 15 at 10 a.m. CST at the Little League Ball Park.

All youth who are interested in participating in the summer baseball program are asked to bring either a parent or guardian to the tryouts. They are also asked to bring their birth certificates and \$1 to cover the cost of insurance.

Boys and girls must be eight years of age by August 1 to participate on the Pee Wee teams. Those trying out for Little League teams must not reach their 13th birthday before Aug. 1.

A spokesman for the local Little League association requests that anyone who can help to prepare the field for the coming season to please meet at the ball park any afternoon or this coming Saturday. Any and all help will be appreciated, and persons wishing to help out are asked to bring shovels and hoes to help with the clean-up and field preparation project.

"Old wine and an old friend are good provisions." George Herbert



Next to the sun and the moon, the planet Venus is the brightest object in the sky.

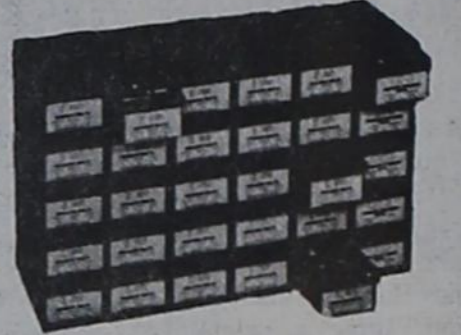
ATTENTION
"MR. FARMER"
"MR. REPAIRMAN"

"I'm Gonna Get A Supply Of Nuts & Bolts"

HOW MANY TIMES DID YOU SAY THAT LAST YEAR?

NOW IS THE TIME

- ASSORTMENTS LARGE & SMALL
- STORAGE TRAYS & CABINETS
- PACKAGED NUTS, BOLTS & WASHERS
- GRADE NO. 5
- BUY DIRECT — SAVE!



Call (no obligation)
TRANS CONTINENTAL BOLT CO.

Dealer Address: Box 161
Texico, N.M. 88135

Dealer Phone: 482-3857

PLEASE SEND FREE BROCHURE

NAME _____ STREET OR ROAD _____

CITY _____ STATE _____ ZIP _____

PHONE _____

Love to fish?



The Texas Fisherman covers ALL Texas fishing. We show and tell you where to go, what lures to use, how to catch the big ones! Monthly!

Subscribe now. Mail coupon with check to:

The TEXAS FISHERMAN

5314 Bingle Road Houston, Texas 77092

YES! Start my subscription.

Enclosed is: \$5 for 12 months \$8 for 24 months

Please print:

Name _____

Address _____

City _____ State _____ Zip _____

Dept. FARW

B. W. Armistead, O.D.

Proudly announces the association of

Steven D. Smith, O.D.

in the practice of
OPTOMETRY

Phones: Littlefield 385-5147

Lubbock (no toll charge) 832-4050

406 LFD Drive Littlefield, Texas

Public Notice

Southwestern Bell, in accordance with the rules of the Public Utility Commission of Texas, hereby gives notice of the company's intent to implement a new schedule of telephone rates in Texas effective April 14, 1978.

It is expected that the requested rate schedule will furnish an increase of 11.4 percent in the company's intrastate revenues.

A complete copy of the new rate schedule is on file with the Public Utility Commission at Austin, Texas, and with each affected municipality, and is available for inspection in each of the Company's public business offices.

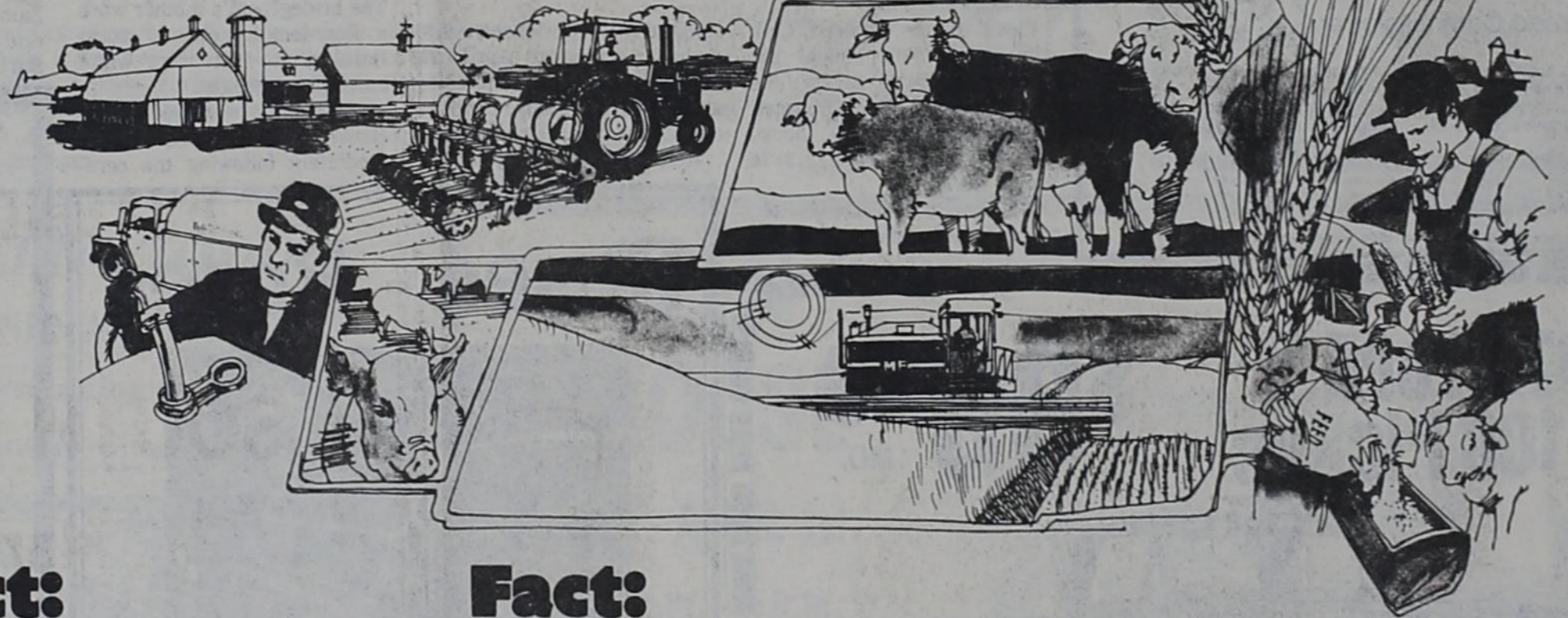
Southwestern Bell

The future of the dollar may be down on the farm.

The American dollar has been under tremendous pressure for some time, and recently has been losing ground to strong foreign currencies at an alarming rate.

The reason, of course, is simple: an ever-increasing balance of payments deficit, which can be blamed on an ever-increasing need for oil. There are only two ways to ease the problem — either reduce imports, which we probably can't, or increase exports, which we absolutely must.

And that's where the farm comes in.



Fact:

In 1976, \$23 billion in farm products was exported against agricultural imports of \$10.5 billion. So agriculture contributed a surplus of over \$12 billion to our balance of trade. In the early 1950's, the U.S. exported less than 5 percent of our feed grains, and now we're exporting 20 to 25 percent. In fact, the U.S. ships about half of the world's grain exports.

Fact:

We are the world's largest users of petroleum, and we're running out of it. We are also the world's largest producer of food, and the rest of the world is running short. We have to find better ways to market what we have, to pay for what we need, and get a fair price for it in the process.

Fact:

In 1978, U.S. expenditures will amount to \$23.5 million to promote a hoped-for \$24 billion in farm exports. That's only one tenth of one percent. Australia, on the other hand, will invest about \$50 million — twice as much as the U.S. — to sell one-fifth as much as we do.

Fact:

Farm income rose 50 percent from 1972 to 1977, but production expenses rose 65 percent during the same period. So, despite world markets for our farm products being at an all-time high, the farmer-producer is experiencing great difficulty realizing a profit on his production.

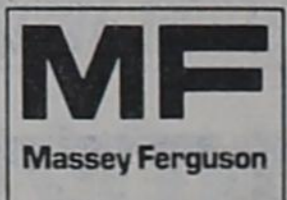
Fact:

No business, including a family farm, can continue to produce and sell at a loss, or at best a break-even point. And a continued high rate of investment in such a business cannot be expected.

If the farmer is to continue to invest in higher productivity, to assure our domestic food supply and alleviate our all-important balance of trade situation, ways must be found to give that farmer a reasonable return on his risk capital and his considerable labor. Otherwise the American dollar will drown in a river of imported oil.

In the interest of better understanding about the American farmer and his impact on our lives and our economic future, as individuals and as a nation, this message is brought to you by

Massey-Ferguson Inc., and your Massey-Ferguson farm machinery dealer.



The American farm has a lot to do with your bread and butter.

CLOVIS FARM CENTER

North On The Grady Highway

13 Teams Entered - -

Invitational Meet Slated Saturday In Texico

Texico Invitational Track Meet will get underway tomorrow (Saturday) at 8 a.m. MST. Competition is divided into four divisions including high school boys and girls and junior high boys and girls.

Besides Texico, 12 other teams will participate in the meet. These are Grady, Corona, Logan, Mosquera, Dora, Melrose, San Jon, Elida, House, Floyd, Roy and Tatum.

First and second place trophies will be awarded in each division. First place medals for individuals and relay teams will also be presented in each division.

Ribbons will be awarded in each division for second through fifth places.

Trophies will be presented immediately following the conclusion of the track meet.

The schedule of events is as follows:

- Field Events**
 8:00-8:30 - scratch meeting
 8:30-10:00 - shot put, javelin, pole vault, high jump, discus, long jump
 10:00-11:30 - shot put, softball, pole vault, high jump, discus, long jump
 1:00-2:30 - shot put, softball, high jump, discus, long jump
 2:30-4:00 - shot put, high

- jump, discus, long jump
Preliminaries
 9:00 - 110 yard hurdles
 9:20 - 70 yard high hurdles, 120 yard high hurdles
 9:45 - 50 yard dash
 10:00 - 100 yard dash
 10:25 - 80 yard hurdles
 10:40 - 120 yard low hurdles, 180 yard low hurdles
 11:10 - 220 yard dash
 11:30 - 660 yard run
Finals
 1:00 - 440 yard relay
 1:30 - 110 yard hurdles
 1:40 - 70 yard high hurdles
 1:50 - 120 yard high hurdles
 2:00 - 50 yard dash
 2:10 - 100 yard dash
 2:30 - mile run
 2:50 - 880 yard relay
 3:20 - 440 yard dash
 3:40 - 80 yard hurdles, 120 yard hurdles, 180 yard hurdles

- 4:15 - 880 yard run
 4:30 - 880 yard medley relay, 220, 110 and 440; mile medley relay 220, 440, 880
 4:50 - 220 yard dash
 5:10 - mile relay

A.D. McDonald will be announcer for the track meet. Raymond Hadley and Herman Gerles will fill the starter and assistant starter slots. Robert Lacy will serve as clerk with Becky Topliff as assistant clerk.

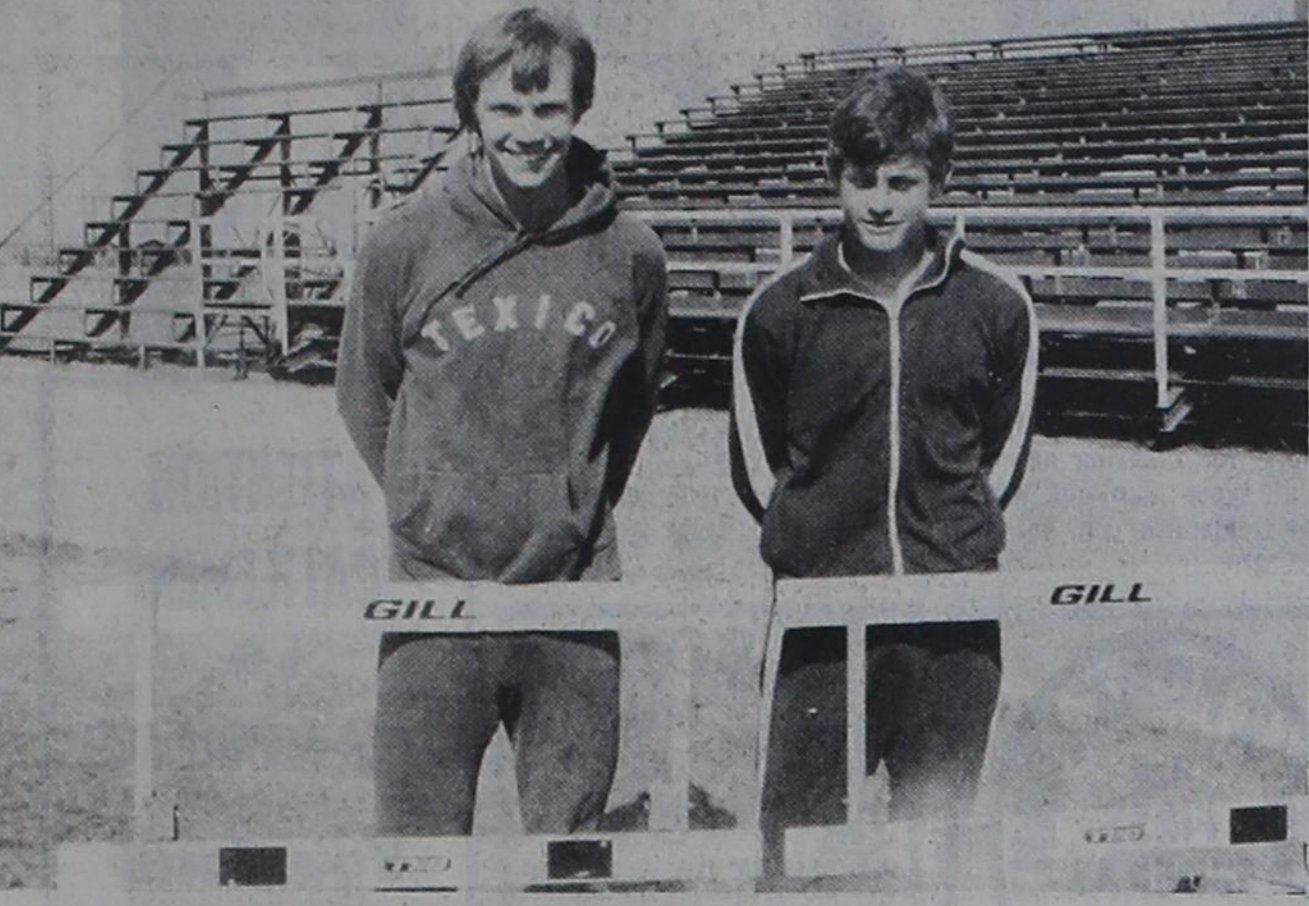
David Turner will be the head timer and assistant timers will be Ronnie Curry, Mary Lacy, Arlye Crooks and John Hadley.

The catchers will be Eddie Harrington, Bill Christian, O.B. Coffey, Bob Hoyl and Jim Pierce.

Anna Southard and Carol Brock will be the recorders.

Judges for the events include Max Carter, long jump; Sam Lee, discus; Marie Floersheim and Charlene Whitener, shot put; J.D. Kelley, high jump; Pete Wilt, softball; W.B. Walters and George Harrington, curve judges; Pete Wilt, javelin; and Truman Kittrell, pole vault.

The rules committee will consist of Kenneth Shaw, James Harding and Dale Severson. Workers will include Greg Martin, Ray Dobbs, Johnny Rucker, Eddie Harrington, Doug Harrison, Mike Spearman, Joel Horne, Lonnie Curry, J.D. Kelley, Glenn Kelley, Howard Leavell and Pete Harrison. Jerry Sadberry, band director, and Texico band students and boosters will operate the concession stand.



Ready For Track Meet

Texico Wolverines Steve Turner, senior, left, and Ron Kirby, sophomore, have been hard at work this week preparing for the hurdles events in Saturday's Texico Invitational. All of the Wolverine track squads have been getting in shape this week following spring break. Saturday's track meet is divided into four divisions: high school and junior high boys and girls.

At Texico - -

Winners, Scores Announced In Outsiders Tournament

The Texico Outsiders Basketball Tournament concluded March 18 with First National Bank, Cannon Over 30 and Morton capturing first place honors in Divisions I, II and III.

Captain's Table and First Place finished second in Division I followed by J.J.'s Mobile Homes, Division II; and Tatum, Division III. Third place honors went to East Side Connection, Division I; Muleshoe Mules, Division II; and Abernathy, Division III.

Consolation trophies were awarded to Cannon #4, Division III; Guy's Electric, Division II; and Cannon Air Force Base, Division I.

Scores for the March 16 games were as follows: Division I: First National Bank 107, East Side Connection 77; Captain's Table 88, West Side Knights 87.

Division II: Cannon Over 30 66, Farwell Equipment 61;

J.J.'s Mobile Homes 57, Muleshoe 55. Division III: Cannon #4 99, Texico Citizens Bank 55.

Winners in the March 17 games were: Division II: Floyd 92, Melrose 61; Guy's Electric 93, Kelly Green 72.

Division III: Three Way 67, Mariah 66. Division I: Central Baptist 90, Cannon #2 62; Cannon #1 54, Grady 52.

March 18 game results were: Division I - Cannon #1 54, Central Baptist 52; East Side Connection, Clovis Knights forfeit; First National Bank 102, Captain's Table and First Place 80.

Division II - Melrose 83, Kelly Green 74; Guy's Electric 66, Floyd 63; Muleshoe Mules 67, Farwell Equipment 62; Cannon Over 30 65, J.J.'s Mobile Homes 46.

Division III - Abernathy 67, Capitol Foods 66; Morton 64, Tatum 54.

Honor Roll

Texico Junior High principal Kenneth Shaw has released the following third nine weeks honor roll:

Sixth grade: Ronnie Duns- worth, Kevin West.

Seventh grade: Rebekah Schwarz, Ruth Ann Scott, Sharlet Taylor.

Eighth grade: Alan Bal- dridge, Tony Bradley, Lisa Crooks, Jeffrey Day, Tracy Dobbs, Jeff Duns- worth, Todd Gerles, Kent Harding, Jo Beth Hill, Sandra Holley, Craig Horne, Jill Jesko, James Kelley, Patty Rojas and Carey Ruszenas.

Texico's This, That And The Other

Junior class play practice is starting this week. The play is to be April 20. The juniors also sent out banquet invitations. The banquet and prom will be May 2.

The following students from Mrs. Carol Brock's 8th grade math class will be going to ENMU April 15 for a Math Science College Bowl: Lisa Crooks, Tracy Dobbs, Jeff Day, Alan Baldrige; and alternates: James Kelley, Tony Bradley, Jill Jesko, and Kent Harding. Mrs. Maben and Mr. Wilt will be taking some of their students, but their names have not been released.

Mrs. Anna Southard's class will be writing poems each week for the remainder of this school year.

The National Honor Society sponsored a Book Fair in the Library March 28, 29, and 30. They also have received membership pins and cowls for graduating honor students.

The first place winners of the Texico Science fair go to Roswell for Regional Science Fair on April 1. Those

attending are Schree Rucker, Carleta Fitz, Montie Powell, Richard Flowers, Ricky Fore- man, Mark Powell, Billy Joe Potts, and Raymond Autrey.

On April 7, all elementary students are going to ENMU to an Indian Pow Wow. There will be various demonstrations including sand painting, jewel- ry making, and rug weaving.

Mrs. Paula Leighton's junior and senior classes will begin a mini-course dealing with ca- reer education activities such as: personal data sheets, personal resumes, filling out applications and various forms, telephone etiquette, role-playing, field trips, and guest speakers.

Sheryl Day was dismissed from the hospital last Friday after having her tonsils re- moved.

Mr. and Mrs. G.D. Anderson of Farwell donated four new copies of "Circle of Light," a book written by Niel Hancock, their grandson and a son-in- law of Mrs. Mary Peyton of Texico. The Hancocks (she is the former Beth Ellen Peyton) live in St. Thomas, Virgin

Islands, and will live there for two more years while he completes four new books for the company, "Popular Li- brary, New York City."

Hancock is a graduate of West Texas State and attended Texas Tech. His latest book is entitled "Dragon Winter" and can be purchased at Rose Drug.

Many Texico families took advantage of the spring break to travel. The Gary Singletery family visited Mexico; the Eddie West family went to Nashville, Tenn., and Ken- tucky; the Eddie Harrington family also traveled to Ken- tucky and Tennessee; the Chuck Bradley family visited in North Carolina; the Ronnie Curry family went to Juarez, Mexico; the O.B. Coffey family visited in the mountain area by Las Vegas, N.M.; Miss Kathy Culshaw and her student teacher, Marie Flore- sheim, visited New Orleans.

Texico FHA was one of the twelve chapters that were nominated for Honor Chapter of the year in Albuquerque last week at the State meet- ing.

"Take a future, Miss Jones."



And get those pretty hands on a Perpetual Money Wheel.

Most working gals live on a budget. But here's a bud- get item you may have overlooked. Your future! Our free Perpetual Money Wheel shows how less than \$12 a week for 15 years in our Perpetual Money Plan can return \$59.89 a month for you . . . month after month . . . indefinitely! And you have over \$13,719 to call your own besides!

And that's only one of 296 fascinating ideas on our Perpetual Money Wheel. Where can you get it? Only in our lobby. How much will it cost you? Nothing. Come in and see!

The Perpetual Money Plan is an exclusive copyrighted program. Figures are based on current interest rate of 5 1/4% compounded daily, which is subject to change.



FIRST FEDERAL
 SAVINGS & LOAN ASSOCIATION of CLOVIS
 Understanding A Growing Community

HOME OFFICE
 801 Pile Street
 Clovis
 762-4417

BRANCH OFFICE
 Prince & Parkland
 Clovis
 762-4417

BRANCH OFFICE
 2nd & Abilene
 Portales
 356-4465



CLOVIS FARM EQUIPMENT DEALERS ASSOCIATION

EXTEND A SPECIAL INVITATION TO ATTEND THE SOUTH PLAINS FARM SHOW

March 30, 31 and April 1

at the

LUBBOCK MEMORIAL CIVIC CENTER

Schedule of Events

Thursday, March 30

- 10:00-6:00 p.m. Farm Show Exhibits Open
- 10:00-2:00 p.m. Farm Forum (Ticket Re- quired.)
- 2:00 p.m. Natural Fibers Fashion Re- view (Free)

Friday, March 31

- FFA Field Day
- 10:00-9:00 p.m., Farm Show Exhibits Open
- 2:00 p.m. "Micro-Mini" Tractor Pull (Free)
- 6:00 p.m. "Micro-Mini" Tractor Pull (Free)

Saturday, April 1

- 10:00-6:00 p.m. Farm Show Exhibits Open
- 11:00 a.m. "Micro-Mini" Tractor Pull (Free)

Too, you'll want to register for hundreds of dollars of door prizes given away each day. Make your plans to visit us at the BIG South Plains Farm Show, March 30, 31 and April 1 in Lubbock.

Free Admission



Legal Notice

NOTICE

therein are hereby invited to be present.

A public hearing will be held at City Hall, 101 Ave A, in the City of Farwell, Texas, on April 10, 1978, at 5:15 p.m. regarding a variance to the zoning of said city to allow the parking of a mobile home upon lots 31 & 32, Block 41, for the exclusive use of Henry and Gertrude Haden, so long as they or either of them shall live.

CITY OF FARWELL
s/Walter Kaltwasser
Mayor

Attest:
Mamie Jane Bowery
City Clerk

Published in State Line Tribune Mar. 31, 1978.

All persons having an interest

FOR FRUIT TREE SPRAYING

Contact
Ronnie Mitchell,
481-3620
Kelly Mitchell,
481-3297 29-tfnc

RABIES CLINIC

March 30
1-5 p.m. MST
Texico
City Hall

Farwell Senior Class
RUMMAGE SALE

April 7-8
9-5 p.m. CST
Posters Will Give Location

STERI STEAM

For cleaner carpeting
Thomas Carpet
Cleaning Service
238-1640 Bovina

STEEL BUILDINGS

AGRA STEEL CORP., A LEADER IN FARM BUILDINGS,
WILL APPOINT A LEADER FOR THIS AREA. BIG EARNINGS POSSIBLE, COMPANY TRAINING. FOR INFORMATION CALL MR. FRANK 800-821-7310 OR WRITE, AGRA STEEL, BOX 10310, KANSAS CITY, MO. 64111.

J.B. SUDDERTH REALTY, INC.

Box 627
Farwell, Texas
Ph. 481-3288

New Location - 109 Fifth Street

OFFICE HOURS
Monday - Friday, 9 a.m. to 5 p.m.
Saturday, by appointment

★ **HAVE BUYERS - NEED FARM LISTINGS** ★

SPECIALS OF THE WEEK

- South of Farwell: 520 A. irrigated, 3 circles, 2 with hay, good water area. 4 wells. *****
- 320 A. irrigated, 3 miles south of Friona on highway. Tailwater return system. Lays nearly perfect. *****
- 257 A. irrigated, 1 well. Lays real good. Very nice 4-bedroom house near highway. Good water area. *****
- 720 A., 7 wells, good water, lays good, Friona area. *****
- 160 A. irrigated. Excellent water area. Lays nearly perfect. Northeast of Farwell. *****

Investment property. Two three unit apartments. Excellent condition, well located in Farwell. *****

160 A. irrigated. One 8-inch well. Good water. Oklahoma Lane area. *****

3 bedroom, 2 bath, stucco house, fenced back yard, garage, storage building, basement, good location in Farwell. *****

160 A. irrigated, two miles north of Muleshoe on highway. *****

A unique 2-story, 5 bedroom, 2-bath home with carport. With small house in back. *****

Lovely 3-bedroom, 1 1/2 bath home, double garage, low maintenance yard with sprinkler system. Excellent location. Lots of goodies. *****

2 bedroom, 1 bath, stucco house with garage. Nice yard. Very good location in Farwell. *****

On farm living, extra nice 3 bedroom brick, 1 and 1/2 bath, with 40 X 80 quonset barn on 3 A. *****

160 A. irrigated, fully tilled, lays real good. Good water area, priced right. *****

Several nice 2 bedroom, 1 bath houses. Good locations. Some have fenced back yards and garages. One has a fireplace. *****

181 A. on highway 70-84 near Progress. *****

Spacious three-bedroom, central heat and air conditioning. Storm cellar. Nice yard near school. *****

SAVING IS GREAT
INVEST IN REAL ESTATE

"Sales and Loans Are Our Service"

WANTED - yards to mow
Curtis Birchfield, 481-9193. 28-2tc

FOR SALE - Baled alfalfa hay in the barn. \$75 ton. Call 481-9977. 29-2tc

GARAGE SALE

Saturday, Apr. 1
9 a.m.-5 p.m. CST
Clothing, Dishes, Pots & Pans, Small Appliances, Bedspreads, Linens, Pillows, Box Springs & Many, Many Other Items.
404 Third St.
Tribune Building
Farwell

FOR SALE - Gas cook stove. Good as new. Late model. Large oven. See at 911 South Second Street, Farwell. 29-1tp

LOST - Four keys on small ring. Reward offered. Return to Tribune office. 29-1tp

TAKING APPLICATIONS for car hops and cooks. Apply in person to Mike Burns at the Burger Barn in Texico. 29-1tc

GARAGE SALE - Sat., Apr. 8, 907 3rd St., Farwell. 9:30-5:30. 29-2tc

NEED A SLAVE FOR A DAY? Call 481-9981 for help on April 8. Yardwork, housecleaning, wash cars, windows etc. 29-2tc

NEW EQUIPMENT
AC Tractors
On Hand
7000-7040
7060-7080

USED EQUIPMENT
1 - IHC Tractor
1 - 180 MF Tractor
W/Cab
2 - 1968 "G" Combines
W/20 ft. Headers
1 - 1974 "L" Combine
W/20 ft. Headers
1 - 1969 "C" Combine
W/20 ft. Head.

PLAINS EQUIPMENT
1730 Wallace - Clovis

NEW EQUIPMENT

1 - JD 4440 Tractor Power Shift Trans. Loaded
1 - JD 8630 Tractor 4WD, Quad Range Trans. Duals.
1 - JD 4640 Tractors Power Shift Trans. Loaded, W/Duals.
1 - JD 4630 Tractor Power Shift Trans. Loaded, W/Duals.
JD 737 Shredders
1508 Flexi Shredders
JD 7100 Maxi Merge Planters 6 - 8 - 12 Row
#71 Flexi Planters

USED EQUIPMENT
1 - JD 4020 Tractor
1 - JD 4630 Tractor, Heater and Air.
1 - JD 4430 Tractor Low Hours, Real Nice.
2 - JD 4520 Tractors With Cab.
#71 Flexi Planters

"WE TRADE"
CAL JORDAN IMPLEMENTS
Ph. 763-5517
East Mabry Drive
Clovis, N.M.

WANT ADS PH. 481-3681

CLASSIFIED & LEGAL RATES:
First insertion, per word - 10c
Second and additional insertions - 8c
Minimum charge - \$1.25 on cash order, \$1.50 on account
Card of Thanks - Same as classified word rate

Double rate for blind ads
Classified Display - \$1.50 per col. inch

MINIMUM BILLING CHARGE \$3.00

Classified Insertion Deadline For Friday's State Line Tribune - 10 a.m. Wednesday

INSULATE NOW!
Save On Summer Air Conditioning Energy Bills!
LEE'S ELECTRIC
Ph. 481-3380 Farwell

Wanted Ads

FOR CORN, COTTON, MILO or other field crop or grass seed, see Earl Plank, Clovis, or phone 985-2417 or 769-0778. 28-2tc

FOR SALE - 1973 Nova Hatchback, 402 V-8, four speed, many extras. Call 482-9310 any time. 28-2tc

CUSTOM FARMING
•Discing
•Chiseling
•Listing
•Fertilizing
Call
J.R. SEWELL
481-9369
Farwell, Tx. 27-4tp

ROOT CONTROL - Have machine for clearing sewers. Also all types plumbing work. Doyle Goldsmith. Ph. 481-3457 or 482-3279. 8-tfnc

HIGHEST PRICES paid for junk cars and tractors. Farwell Pipe and Iron, 601 Avenue A, Farwell. Phone 481-3287. 28-tfnc

NEED A HOME LOAN?
888 FIRST FEDERAL
FIRST FEDERAL SAVINGS
801 Pile St.
762-4417
Clovis, New Mexico.

BOYD'S
BRAKE AND ALIGNMENT
1605 MABRY DR. 763-4326
IF YOU CAN'T STOP DON'T START
BRAKES REPAIRED
DISC-DRUM-ELECTRIC FOR CARS & LIGHT TRUCKS
ALIGNMENT
ALL MAKES & MODELS U.S. & FOREIGN

ATTENTION CATTLEMEN

in the **TEXICO-FARWELL AREA:**

Your local used cow dealer is Friona bi-products

Seven days a week stock removal

CALL COLLECT 247-3032

Farwell Church Of Christ
Leonard Harper - Minister
Sunday School - 10 a.m.
Morning Worship - 10:50 a.m.
Evening Worship - 7 p.m.

Texico
First Baptist Church
Joel Horne - Pastor
Sunday School - 9:30 a.m.
Morning Worship - 10:45 a.m.
Evening Worship - 6:30 p.m.

Farwell
First Baptist Church
Dudley Bristow - Pastor
Sunday School - 10 a.m.
Morning Worship - 11 a.m.
Evening Worship - 7 p.m.

Assembly Of God
J.M. Hutson - Pastor
Sunday School - 9:15 a.m.
Morning Worship - 10:30 a.m.
Evening Worship - 6:30 p.m.

St. Joseph's Catholic Church
Chrysostom Partee - Priest
Sunday School - 9:45 a.m.
Sunday Mass - 10 a.m.
Christian Doctrine after Mass

New Light Baptist Church
Thomas J. Spikes - Pastor
Sunday School - 9:45 a.m.
Morning Worship - 11:00 a.m.
Evening Services - 6:30 p.m.

Calvary Baptist Church
Carrell Watkins - Pastor
Sunday School - 10 a.m.
Morning Worship - 11 a.m.
Evening Worship - 7 p.m.

United Pentecostal Church
B. Schwarz - Pastor
Sunday School - 10 a.m.
Morning Worship - 11 a.m.
Evening Worship - 7:30 p.m.

Oklahoma Lane Methodist Church
Harvey Whittenburg - Pastor
Sunday School - 10 a.m.
Morning Worship - 11 a.m.
Evening Worship - 7 p.m.

Oklahoma Lane Baptist Church
Moody Smith - Pastor
Sunday School - 10 a.m.
Morning Worship - 11 a.m.
Evening Worship - 6 p.m.

West Camp Baptist Church
Lewis Johnson - Pastor
Sunday School - 10 a.m.
Morning Worship - 11 a.m.
Evening Worship - 6 p.m.

St. Jaku's Lutheran Church
Herman J. Schelter - Pastor
Sunday School - 9:30 a.m.
Morning Worship - 10:30 a.m.
Evening Worship - 7 p.m.

Lariat Church Of Christ
L.L. Ginning - Minister
Sunday School - 10 a.m.
Morning Worship - 11 a.m.
Evening Worship - 6 p.m.

Pleasant Hill Baptist Church
Sunday School - 9:30 a.m.
Morning Worship - 10:30 a.m.
Evening Worship - 7 p.m.

TWO MINUTES WITH THE BIBLE
BY CORNELIUS R. STAM, PRES. BEREAN BIBLE SOCIETY CHICAGO, ILLINOIS 60635

A FAMOUS YOUNG MAN

Has it ever occurred to you how Timothy became such a famous young man?
H. L. Hastings tells of a group of British archeologists who, years ago, came upon a huge marble slab, evidently very ancient, high atop a mountain where no one would be apt to find it - or remove it.
Experts were called upon to decipher the hieroglyphics which covered the marble monument. They found them to be a declaration by an ancient ruler as to his great exploits, and an explanation that he had used these means of recording his deeds so as to secure to himself everlasting fame.
The trouble was that no one could find any historical account of a king who bore this name or who had accomplished the glorious exploits recorded on the marble slab! Thus the archeologists had found, engraved in marble, a glowing self-tribute to - whom? It might as well have been to nobody!
By striking contrast, young Timothy has been well known by Christian people all over the world for nearly two thousand years! During all this time, without interruption, he has been read about, written about, preached about and used as an example of consistent Christian conduct.
Yet, have you ever read of one great deed done by Timothy? Have you ever read of one great sermon from his lips, one brilliant book of letter from his pen, one great exploit of any kind? No, you hardly know more than that he was a young preacher, a friend of Paul, who had been taught the Scriptures in early life by his grandmother, Lois, and his mother, Eunice (II Tim. 1:5), so that Paul could now write to him:
"FROM A CHILD THOU HAST KNOWN THE HOLY SCRIPTURES, WHICH ARE ABLE TO MAKE THEE WISE UNTO SALVATION, THROUGH FAITH WHICH IS IN CHRIST JESUS" (II Tim. 3:15).

FARWELL INSURANCE AGENCY, INC.
AUTO-FIRE-CASUALTY
509 Ave. A - Ph. 481-3361

PLAINS EQUIPMENT CO.
Sales - Service
769-1936
1730 Wallace, Clovis

CAPITOL FOODS
Shur's Fine

FINA TEXICO FINA
312 WHEELER
Ph. 482-9915

Garden Of Eden Florist
Weddings & Funerals
762-0500
1904 N. Prince
Clovis, New Mexico

SHERLEY-ANDERSON-PITMAN, INC.

WORLEY MILLS INC.
P. O. BOX 426
FARWELL, TEXAS 79125

The CITIZENS BANK
Texico Branch
Complete Bank Service
Member FDIC

TEXACO INC.
Woodrow Lovelace

OK Tire Co. of Farwell

Religious Music All Day Sunday On KZOL
1570 On Your Dial

ROSE DRUG & GIFT SHOP
Prescriptions a Specialty
481-3281

CECIL'S
Ph. 481-9937

WATTS Machine and Pump
Layne Bowler Pumps and Repair - Gearhead Repair
Ph. 481-3239 - Farwell, Tx.

Temple Baptist Church
FUNDAMENTAL INDEPENDENT
For Information
Call 481-9208

Hamlin Memorial Methodist Church
Russell Martin - Pastor
Church School - 10 a.m.
Morning Worship - 11 a.m.
Evening Worship - 7 p.m.

Pleasant Hill Baptist Church
Sunday School - 9:30 a.m.
Morning Worship - 10:30 a.m.
Evening Worship - 7 p.m.

Texico FHA Members Attend State Meet

Fifteen Texico FHA members and four sponsors attended the State FHA Convention in Albuquerque before Spring break.

During the convention, the Texico chapter was one of 12 chapters from the 54 chapters across the state nominated for the Honor Chapter-of-the-Year award. "We didn't receive the award, but it is a tremendous honor to even be nominated, so we were quite pleased," said Mrs. Kendale Burch, FHA advisor.

Delegates attended several workshops and general sessions and also shopped in shopping centers and visited "Old Town."

On Saturday morning the Texico chapter participated in

a March-of-Dimes Walkathon, and that afternoon the delegates were able to see themselves on KOB-TV News marching in the parade. On Saturday evening, the girls attended the State FHA Banquet.

Members attending included Debra Coffey, Sabrina Kittrell, Barbara Holley, Kerri Donahue, Roxanne Cherry, Schree Rucker, Lisa Coffey, Delinda Duncan, Darlene Duncan, Judi Robinson, Leslie Elliott, Beth Kelly, Rhonda Tharp, Nickie McDaniel, and Laura Horne.

Sponsors were Mrs. Burch, Mrs. Danalee Cherry, Mrs. Audrey Kittrell, and Mrs. Sue Robertson, student teacher in home economics.



Show Certificates

Lyra Holland, left, and Thelma Kittrell, residents of Farwell Convalescent Center, proudly display the certificates they received from the American Heart Association for their participation in the recent jamboree at the Center. The other Center residents also received certificates for helping out with the fund-raising drive which netted over \$600 for the heart association.

Theta Rho ESA Has Program On Beauty

Theta Rho Chapter of Epsilon Sigma Alpha met Monday night in the home of Dickie Chandler. Judy Jones, vice-president, called the meeting to order with the opening ritual.

Mrs. Georgia Jean Turner of Artesia, N.M., presented a program on beauty secrets for today's women. Besides showing various illustrations she also spoke about relaxation exercises, nutrition, diet, hair styling and wardrobes.

During the business session plans were made to decorate for the Chamber of Commerce banquet. All members were asked to help.

Refreshments were served to Wessie Edwards, Dot Christian, Betty Jean Castleberry, Ann Liethen, Dardanella Hel-

ton, Barbie Clayton, Jeannine Roanhaus, Robin Gregory, Jeannie Norris, Leslie Lunsford, Doris Ford, Debbie Williams, Dickie Chandler, Judy Jones, Maxine Williams, Margaret Aycock, LaMoin Williams and Joyce Williams.

The next meeting will be April 10 in the home of Dot Christian. Officers will be installed and the ritual of jewels will be performed.

CHINA Inn

- DAILY SPECIALS**
- CHINA INN SPECIAL CUT STEAK . . \$3.55
 - CHICKEN FRIED STEAK \$2.95
 - MERCHANT STEAK \$2.75
 - SALAD BAR, BAKED POTATO & CORN
 - PORK CHOW MEIN w/EGG FOO YUNG . . . \$2.95
- BANQUET FACILITIES**
- CHINESE, AMERICAN, MEXICAN FOOD
- HIWAY 60-70-84 PHONE 763-4823 CLOVIS, N.M.

Muleshoe Art Assn. Sets Annual Exhibit

Muleshoe Art Association's Annual Spring Exhibit will be held Saturday, April 8, through Saturday, April 15, at The Art Loft, 1529 W. American Blvd., Muleshoe.

Entries should be hand delivered to The Art Loft between 10 a.m. and 3 p.m. Thursday, April 6, and will remain on view until April 15.

Cash and merchandise awards totaling \$1,480.00 will be awarded. Presentation of awards will be at 3 p.m. Saturday, April 15. Entries must be original and done without supervision. Each entry must have a card attached to the back stating the name and address of the artist, media, title, and price. Also, if the work is not available for Purchase Award it should be so designated.

While reasonable care will be taken with work submitted, neither The Art Association nor The Art Loft will be responsible for any damage to the entries. NO WET PAINT, PLEASE!

Juror for the show will be Gerald Roberts of South Plains College, Levelland.

Awards and Citations are:

- Best of show - \$150; Muleshoe State Bank Purchase Award - \$200; Tri-County Savings and Loan Purchase Award - \$200; Mackey McCarty Purchase Award, and Poor Boy Purchase Award - \$200.
- Oils: First - \$75, Second - \$50, Third - \$25. Watercolor: First - \$75, Second - \$50, Third - \$25. Sculpture, Graphics, Photography, etc.: First - \$50, Second and Third - Ribbons.

Merchants Awards: Art Loft Framing Award - \$40, Higginbotham-Bartlett Framing Award - \$25, St. Clair's - \$15, Cobb's - \$20, Williams Bros. - \$15, First National Bank - \$35, Bobo Insurance public opinion award - \$10.

For further information contact Jerry Wheatley, 965-2448, or Cara Juan Schuster, 946-3626.

RELAXATION ODDITIES-HELPFUL TIPS

By Joy Miller

The popularity of bridge spans to the 1880's. The game was then known as "Biritch" or "Russian Whist." Auction bridge (highest bidder names trump) was introduced in 1904, but was swamped when contract bridge was devised by Harold S. Vanderbilt on a Caribbean voyage in 1925.

While we all hope for that perfect hand (all 13 cards in one suit) the mathematical odds against this are 158,753,389,899 to 1.

If you win the bid and are playing the hand, a good general rule to follow is to start playing your trump early. This is known as "dumping your trump" and will force your opponents to discard their trumps, too, leaving you in a better position during the game.

MONITOR, THE NEWEST PRODUCT FROM HOLIDAY RAMBLER CORP.



Monitor

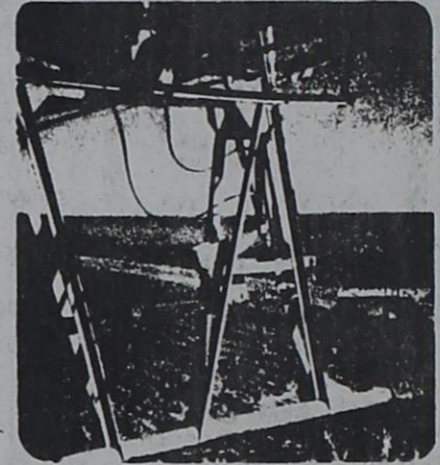
A recreational product of Holiday Rambler Corporation

8 Units In Stock
6 Different Floor Plans

4 SEASONS RV
CENTER, INC.

WEST OF CLOVIS ON U.S. 60-84 CLOVIS, N.M. 88101 (505) 763-4850

ATTENTION! VALLEY WATER DRIVE OWNERS



We Can

- SAVE YOU UP TO 30% FUEL
- SAVE YOU UP TO 30% WATER
- SAVE YOU UP TO 40% LABOR
- UPDATE YOUR PRESENT SYSTEM INSTEAD OF TRADING
- IMPROVE YOUR WATER PATTERN
- IMPROVE THE ALIGNMENT ON YOUR VALLEY
- REDUCE ENGINE, PUMP AND GEARHEAD WEAR

SEE US FOR ALL YOUR VALLEY NEEDS, SALES & SERVICE

AMERICAN
AVI VALLEY
INC.

**AUTHORIZED VALLEY
DEALER**

CLOVIS AREA CONTACT:
Clyde Johnson 763-4417
MULESHOE 806-272-4266

Yellow coloring in the left eye of the famous painting "Mona Lisa" has led experts to suggest she may have suffered from high cholesterol.

Ford Motor Company Announces New Name And Ownership For Friona Motors.

FRIONA FORD SALES, INC.

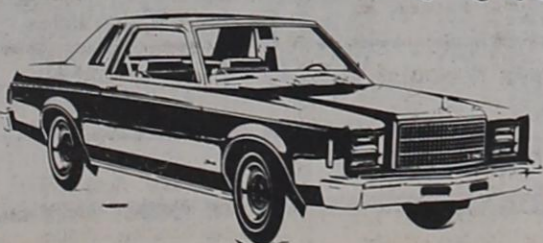
YOUR AUTHORIZED FORD DEALER FOR
PARMER COUNTY

The Management Of Friona Ford Sales, Inc.
Wishes To Extend A Cordial Invitation To All
The Citizens Of Parmer County To Come By And
Test Drive A New Ford Pickup Or Car.

All Friends And Patrons Of Friona Motors And Oscar And
John Baxter Are Invited To Come In And Visit John In His
New Endeavor With Friona Ford.

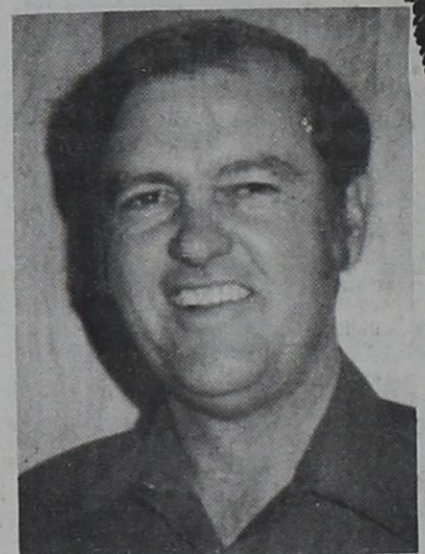
FRIONA FORD SALES INC.

SALES and SERVICE
V.R. WILCOX - ROGER WILCOX - JOHN BAXTER



★ Ford Wants To Be Your
Car Company
★ Friona Ford Wants To Be
Your Car Dealer

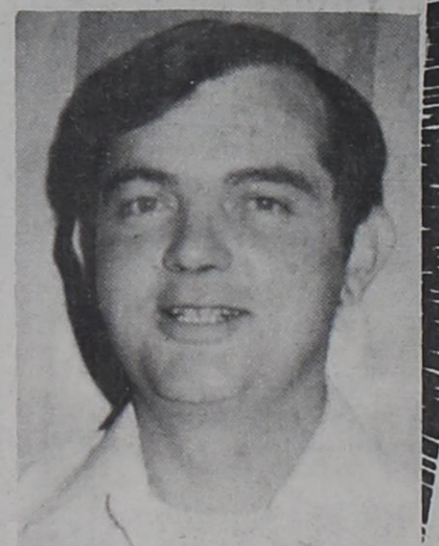
OUR
NEW
OWNERS



V.R. WILCOX



JOHN BAXTER



ROGER WILCOX

Texico Band Enjoys Trip To Six Flags

Texico High School Band members and sponsors enjoyed a visit to Six Flags over Texas last week. The group left Texico by bus Monday morning of last week, arriving at their destination that evening. En route to Six Flags, they stopped at Post for a picnic lunch.

According to Jerry Sadberry, band director, they stayed at a motel with an indoor swimming pool. "It was a nice feature and we certainly took advantage of it

Monday night," he said.

The following day was reserved for touring Six Flags, experimenting with the various rides, and enjoying shows and presentations. High on the list of favorites were the "Log Ride," "Runaway Mine Train" and the "Big Bend," Sadberry said.

The band students and sponsors also took a canoe ride and saw a nostalgic 1920's musical at the Southern Palace and also witnessed a western gun fight.

The group left their motel Wednesday morning for the return journey. En route home they ate lunch at the Westgate Mall in Abilene and had dinner at the South Plains Mall in Lubbock.

Sadberry said they all enjoyed the trip very much, adding it was the first spring trip for the senior high band. "The weather was ideal which made it even nicer," he said.

Sponsors included Cecil Davis, who drove the bus, Mr. and Mrs. Herman Gerles, Anna Southard, Pat Cavallero, Mr. and Mrs. Eddie Duns-worth, and Sadberry.

Students taking the trip were Pam Southard, Tina Gerles, Liz Cavallero, Becky Eshleman, Nikie McDaniel, Kerri Gaddis, Janice Stephens, Angela Nabours, Doug Osborn, Clyde Bibbs, Willie Bibbs, Joe Martinez, Javier Esparza, Gary Cain, Jeff Day, Todd Gerles, James Kelley, Kent Harding, Alan Baldrige, Jeff Duns-worth and Johnny Cantu.



Pretty Picnickers

These three girls were among the 21 Texico High School band students who enjoyed a trip to Six Flags near Arlington last week. Pictured at a picnic site near Post where the group stopped en route to their destination are Tonya Duns-worth, back; Becky Eshleman, front left, and Pam Southard. (Texico School Photo)

a good reason to **INSURE** with US..



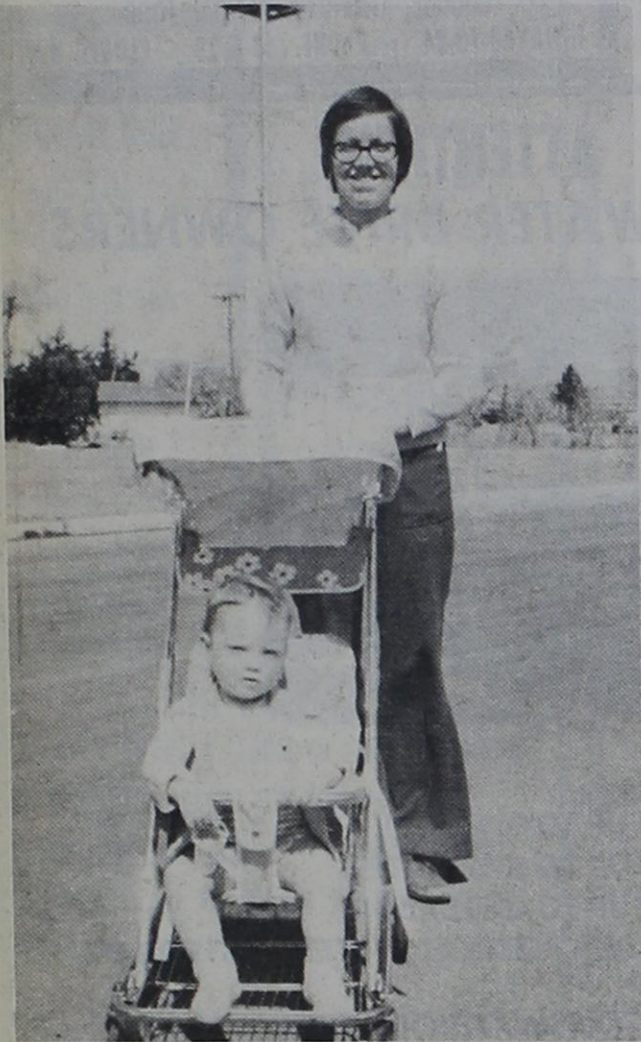
It costs less than others.

Let us advise you on insurance plans. One of our agents can review insurance you may now carry and tell you how you might benefit by consolidating present policies . . . thus saving you money. Let us lower your costs.

For additional information, call us!

FARWELL INSURANCE AGENCY

509 Ave A - Ph. 481-9372



A Spring Walk

Mrs. Russell Martin of Farwell and her 16-month-old son, Justin, enjoyed a typical spring walk Wednesday morning. The excellent weather was an added pleasure for the duo who can usually be seen walking to or from some destination in town. Mrs. Martin says she has been walking Justin since he was a baby, adding "he really loves it."

COURTHOUSE NOTES

Instrument report ending March 15, 1978 in County Clerk office Bonnie Warren, County Clerk.

WD - Calvin R. Talley - Bill Simpson - Sec. 14, T1N; R3E.

WD - Daniel K. Hunn - Larry D. Fallwell - lot 21, Blk. 3, Staley Add. Friona.

WD - Leo R. Berend - Lester L. Roth - tract out NW/cor. Sec. 10, T1N; R3E.

WD - Johnnie Floyd Morris - Roy E. Williams - lots 19 & 20 Blk. 20, Farwell.

WD - W. Doyle Elliott - Midoy Inc. - lots 1 & 2, Blk. 21 Friona.

WD - Glen Hromas - Velma Willard - N 70 ft. lot 2, Blk. 113, Bovina.

WD - Travis Coburn - E.L. Robinson - W 100 ft. lots 17, 18, 19, Blk. 10, Farwell.

WD - Anna Hastings & Aletha H. Wilson - R. Kregg Wilson - 5 ac. tract out SW 1/4 Sec. 25, Blk. C, Synd.

Redeemer Evangelical Lutheran Ch. - Delton Lewellen - lots 1, 2, 3, 4, - N29' lot 5, Blk. 4, Drake Rev. Sub. & Add. Friona.

WD - Joe W. Fallwell - Joe W. Fallwell, Jr. - lots 11, 12, Blk. 71 Friona.

WD - Glen Dixon - J. Harold Branham - lot 6, Blk. 39, Friona.

WD - Grace J. Jones - Raymond E. Turner - lots 23, 24, 25, Blk. 42 Farwell.

WD - Dan Ethridge - Billy Gene Zachary - lot 1 & W 40' lot 2 Blk. 8, 3rd. Insta. Stale #3, Friona.

... ITS NOW Spring Savings Time

SHURFRESH

BACON

2 Lb. Pkg.

\$2.59

Country Pride
Grade A
BAKING HENS Lb. **59¢**

Hills Bros.
COFFEE
1 Lb. **\$2.79**

32 Oz. 6 Pk. **COCA COLA** **\$1.39**

15 Oz. Betty Crocker
SNACKIN CAKE **69¢**

SPAGHETTI Shurfine
SAUCE 32 Oz. **79¢**

2 Lb. Box Nestles
QUIK **\$1.79**

9 Oz. Morton
HONEY BUNS **59¢**

1 Lb. Quarters Food King
OLEO **3/\$1.00**

Food King Frozen French Fries
POTATOES 2 Lb. Bag **39¢**

No. 2 1/2 Can Ellis
TAMALES **69¢**

Texas 5 Lb. Bag
GRAPEFRUIT **79¢**

1 Lb. Box Koobler
CRACKERS **49¢**

3 Lb. Bag Wash. Rod Del.
APPLES Bag **89¢**

Shurfine
CATSUP qt. **89¢**

Colo. U.S. No. 1 Russet 10 Lb. Bag
POTATOES **89¢**

First Cut
PORK CHOPS
Lb. **98¢**

Wilson Cert. Market Sliced
All Meat
BOLOGNA
Lb. **89¢**

Grade A Med.
EGGS Doz. **69¢**

Shurfine
DOG FOOD
5Lb. **89¢**

Nabisco
OREO COOKIES
19 Oz. **95¢**

Ellis
BEEF STEW
24 Oz. **79¢**

Calif. Firm Pink
TOMATOES
2 Lbs. **49¢**

Shortening
CRISCO
3 Lb. Can **\$1.69**

U.S.D.A. CHOICE

ROUND STEAK

\$1.39 Lb.

SPECIAL 7 DAY SALE
April 1st thru April 8th
\$50 off on any Water Bed

Which one is the **waterbed**?



Both of them!
Try Before You Buy!
Get A Glorious Night's Sleep
At A Local Motel.

Come See Us For Details.

MORNING SURF

It's making quite a splash...but it's like sleeping in a safe harbor

Prince Furniture

1511 N. PRINCE - CLOVIS

PHONE 743-6892

Credit Terms Available

Military Accounts Welcome

Visa

MasterCard

Discover



Shurfresh
ICE CREAM
Sq. Half Gallon **99¢**



FARWELL CLOVIS

CAPITOL FOODS

DOUBLE STAMPS ON WEDNESDAY

OPEN TIL 9 O'CLOCK EVERY NIGHT

We Redeem U.S.D.A. Food Stamps



WE FEATURE SHURFRESH MILK

WE FEATURE TENDER CRUST BREAD