

The State Line Tribune

W. H. GRAHAM, Editor and Owner

Entered as a second class mail matter at Farwell, Texas, under the Act of March 3, 1879.

ISSUED EVERY THURSDAY

Subscription Rates Per Year
Farmer and Adjoining Counties.....\$2.00
Outside this Area.....2.50

Health Notes
By Texas Department of Health

AUSTIN—"Although we may not be sick, we may be far from being well. There is a great and vital difference between high and buoyant health and the health of the average person, or of one who is only well enough to be out of bed," Dr. Geo. W. Cox, State Health Officer, said today.

"Unless we have the essentials of health in our daily habits of living, we are as sure to pay the penalty of impaired health, sickness and early death as we are of cause and effect in other situations," Dr. Cox continued. "We should ask ourselves, 'How long do I expect to live?' 'How long can I retain my efficiency, both in work and play?' and 'Do I want to become incapacitated soon after middle life?'"

The alternative, according to Dr. Cox's statement, is to adjust one's program of living to insure the fundamentals of health and thus, barring accidents, keep young and retain active efficiency to an age of 70 to 80, or more.

The essentials of health are simple: sufficient fresh air and sunlight, good food and food habits, regular exercise and adequate rest. Yet, in checking the health of thousands of individuals who considered their health good, it has been rare indeed to find a single person who did not habitually disregard one or more of these essentials. Therefore, no matter how good or poor or health, we should check our daily program of living for health habits that are essentially faulty but of which we may be unaware.

FEW WAR WORLD I VETS

Only 32 million persons of the 142 million now in the United States had any adult experience with World War I—Santa Fe Almanac.

POLITICAL ANNOUNCEMENTS

The State Line Tribune is authorized to announce the following candidates for the respective offices subject to the action of the Democratic primary election in July:

For Sheriff-Assessor-Collector:
WILFRED QUICKEL
EARL BOOTH
(Re-election)
CHARLIE LOVELACE

For County Treasurer:
ROY B. EZELL
(Re-election)

For County and District Clerk:
LOYDE BREWER
(Re-election)

For County Judge:
A. D. SMITH
(Re-election)

For District Attorney, 64th Judicial District:
JOE SHARP of Plainview.

For County Commissioner, Pct. 2:
C. L. CALAWAY
(Re-election)

For County Commissioner, Pct. 4:
W. S. MENEFFEE
(Re-election).
JIMMIE SEATON
ALEX STEINBOCK

For County Commissioner, Pct. 3:
E. F. BILLINGSLEY
FRANK PHILLIPS

Farm Cash Income In State Edges Down

AUSTIN—Texas farm cash income edged fractionally downward from February to March to \$48,402,000, The University of Texas Bureau of Business Research reported. Compared to March 1947, farm income was down 37 per cent.

Edwards Plateau registered a 51-per cent rise over February farm cash income; Southern Texas Prairies, 16 per cent; Southern High Plains, 15 per cent; and Trans-Pecos district, 13 per cent. On the other hand, February-to-March decreases occurred in Coastal Prairies, 40 per cent; East Texas Timbered Plains, 16 per cent; and South Texas Plains, 13 per cent.

Increased livestock marketings pushed farm incomes in the Trans-Pecos district and Edwards Plateau

32 per cent above March 1947. Declines ranged from 3 per cent in the East Texas Timbered Plains to 72 per cent in the Northern High Plains.

DEGREES TO BE CONFERRED

DENTON—Degrees will be conferred on approximately 350 North Texas State College students in commencement exercises to be held on June 2 at 8 p. m., in the college main auditorium.

Baccalaureate services are scheduled for May 30 at 11 a. m. in the college auditorium with Dr. William C. Jones, pastor of the Central Christian Church, Dallas, as speaker. Robert G. Storey, prominent Dallas attorney, will deliver the commencement address.

If she gets all the water she wants a cow will give 8 to 15% more milk.

SAVE USED FATS!

HELP YOUR COUNTRY... HELP YOURSELF!

There is still a very real need for every ounce of used fats we can salvage. The world-wide shortage is greater today than ever before. Please... keep saving and turning in your used kitchen fats. P. S. Yes! you do get paid for them... and you know how ready cash counts today.

Keep Turning in Used Fats!
American Fat Salvage Committee, Inc.

BEFORE YOU BUY Wall Paper

Come in and look over our large stock.

Paints of All Kinds

G. C. WILLIAMS PAINT STORE

119 East 5th St.

Bus. Ph. 462-M—Res. Ph. 438-W

CLOVIS, N. M.

Your Paper Stops When Your Time Expires



Picture of Perfection

Tranquil: * 59.⁵⁰

SMOOTH-QUILTED INNERSPRING MATTRESS

THE Tranquil is a Square Brand mattress... latest addition to a line where quality has been a tradition during 4 generations. It is the answer for people who want the ultimate in luxurious sleeping comfort.

Tranquil is really a "mattress within a mattress". Its premier wire Hinged-Action spring unit is insulated with finest sisal and highest quality upholstery felt, inner tufted to prevent shifting. Over this inner unit quilted comforters are sewn in place, giving you smooth, firm sleep support without bumps or sags. Sheets look neater and stay in place, too.

Trying is believing. See us today for a demonstration.

*Registered U.S. Pat. Off.

Authorized **Square Brand** Dealer

Vorenberg's

YOUR BETTER HOMES STORE
819 Main Street Clovis, N. M.

STANTON FEEDS

WES-TEX FEEDS

DR. SALSBUARY'S POULTRY REMEDIES

RUSSELL POULTRY REMEDIES

BABY CHICKS

REFRIGERATED ICE

BROODERS

PICNIC COOLERS

DELIVERY ANY TIME

Marcus Ice & Produce Co.

CASH BUYERS OF CREAM, POULTRY, AND EGGS

Farwell, Texas

GENE AUTRY

STARRING WITH EVERETT COLBORN'S MADISON SQUARE GARDEN

RODEO

NEW TEXAS TECH JONES STADIUM LUBBOCK, TEXAS

You may secure box seat tickets at the ABC Rodeo Ticket Office, Hilton Hotel, Lubbock, Texas. Box seats are \$3.00, tax included. Checks or money orders should be included; with requests sent through the mail.

BOX SEATS \$3.00 TAX INCL.
GENERAL ADMISSION 2.00 TAX INCL.
CHILDREN \$1.00

Sponsored by the Lubbock A B C's for the benefit of the capital fund of LUBBOCK

BOYS' CLUB

APPEARING IN PERSON JUNE 9, 10, 11, 12

Ayers



SUPREME FEEDS

"EXCEPTIONAL RESULTS AT NO EXTRA COST"

POULTRY FEEDS

- CHICKS
Chick Starter
Broiler All-Mash
Grow Mash
- LAYERS
Breeder Egg Mash
20% Protein Egg Mash
18% Protein Egg Mash
Poultry Mash Feed for Growing and Laying Flocks
36% Protein Egg Mash Supplement
RCA Double-Five 20% Protein Egg Mash
RCA Double-Five 18% Protein Egg Mash
Poultry Fattener
- SCRATCH FEEDS
Chick Scratch
Grow Scratch
Hen Scratch

TURKEYS

- Turkey Starter
Turkey Grow Mash
Turkey Breeder Egg Mash

DAIRY CATTLE FEEDS

- FOR THE DAIRY COW
24% Protein Dairy Feed
20% Protein Dairy Feed
16% Protein Dairy Feed
RCA 24% Protein Dairy Feed
RCA 20% Protein Dairy Feed
RCA 18% Protein Dairy Feed
10% Protein Sweet Feed
9% Protein Sweet Feed
Dry and Freshening Feed
Grain Ration for Breeding and Growing Cattle.

RANGE FEEDS

- FOR CATTLE AND SHEEP
20% Protein Range Cubes
30% Protein Range Cubes
- BEEF CATTLE AND SHEEP
20% Protein Grain Supplement for Fattening
30% Protein Grain Supplement for Fattening
Grain Rationing for Breeding and Growing Stock
Protein Supplement and Conditioner for Show Animals
- PIG AND SOW
30% Protein Supplement
Pig and Sow Ration Pellets
- HOGS
40% Protein Supplement
- HORSE AND MULE
Horse and Mule Feed
Horse and Mule Feed Cubes

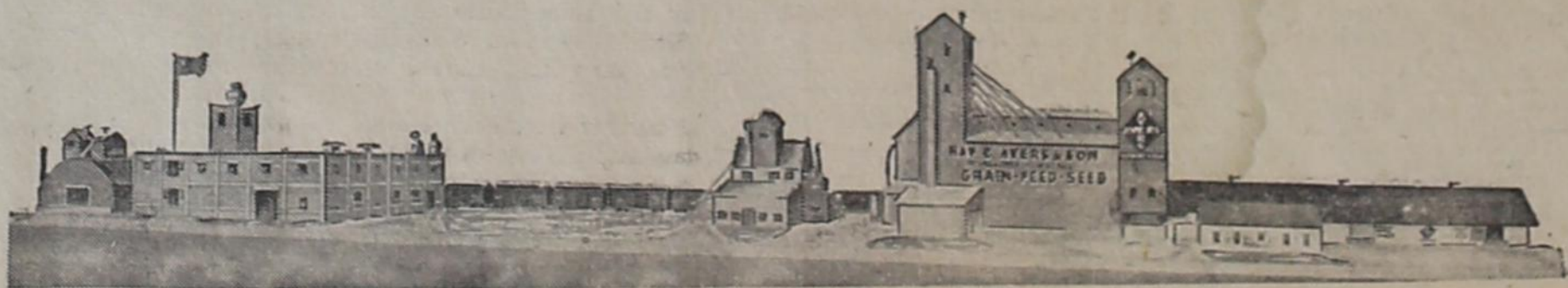
S. E. Cone, Feed & Seed

BOVINA, TEXAS

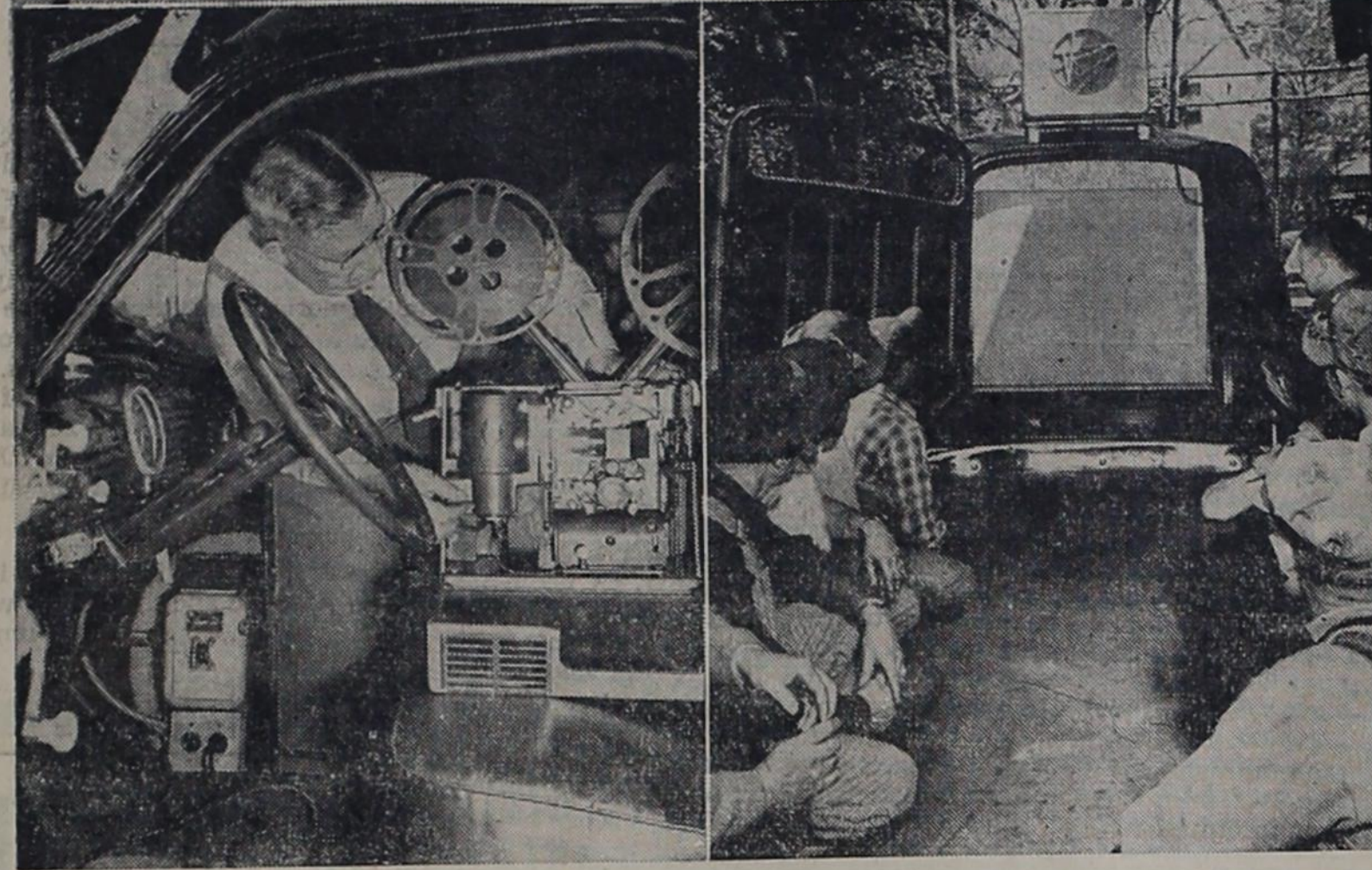
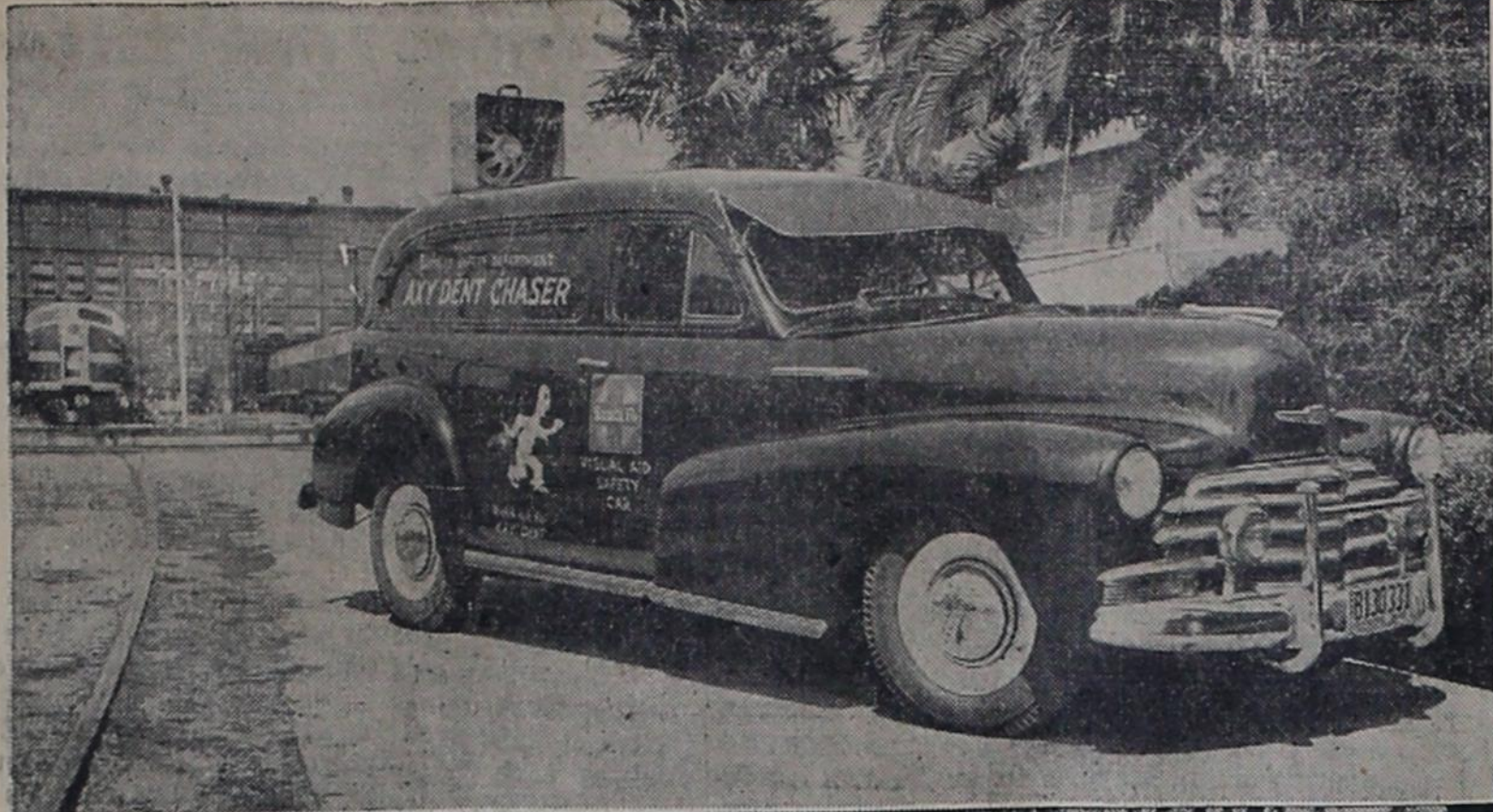
Farmer's Produce

FRIONA, TEXAS

A Free Feed Scoop For Every Ayers Customer



RAY C. AYERS AND SON
GRAIN - FEED - SEED SLATON, TEXAS



ANOTHER SAFETY "FIRST" FOR SANTA FE—In order to carry its safety messages to desert track workers and other employes at outlying points where facilities for motion picture showings are not available, the Santa Fe Railway on May 15 will place in operation its "Axy Dent Chaser" (top photo), a panel truck converted into a self-contained mobile visual aid unit. Constructed under direction of E. L. Duggan of Chicago, system superintendent of safety, the unit is the only one of its kind in use by a railroad. It is equipped with a generator capable of developing 1500 watts to provide power for operation of 16-millimeter sound projector (photo bottom left), flood lamps, public address system and record player. Projector mounted in cab throws image on opaque screen mounted in rear end of truck (bottom right) for viewing by workers grouped behind unit. The black-and-yellow "Chaser," easily operable by one man, will travel the entire Santa Fe system, making the company's extensive safety film library available to thousands of employes heretofore inaccessible to this medium of "accident prevention" education.

2 per cent. Electric power consumption decreased 8 per cent to 302 in March. The index of crude runs to stills slipped 2 per cent to 175.

All components registered substantial gains over March 1947; department and apparel store sales, 31 per cent; crude runs to stills, 19 per cent; electric power consumption, 14 per cent; pay rolls, 13 per cent. The composite index of business activity rose 13 per cent over March 1947.

After decreasing two consecutive months, the volume of retail trade made a strong recovery in March. The condition of retail trade appears to be one of the strongest elements in the current business situation. After adjustment for seasonal variations, the Bureau's estimate of sales was 23 per cent over February. Dr. Stockton said an unusual feature of retail sales for March was the fact that both durable and non-durable goods stores increased sales at the same rate. The recent trend has been for durable goods stores to account for most of the increase. However, the late spring and the early date of Easter probably have had an effect on the total sales of nondurable goods stores. In comparison with March 1947, total sales were up 20 per cent; sales of durable goods store, 33 per cent; nondurable goods stores, 14 per cent.

The weakest part of the business picture in March was in industrial activity. The Bureau's index of industrial power consumption fell 4 per cent from February. Since the variations in the amount of industrial power consumed reflect the rate of operations in industrial plants, it appears conclusive that industrial activity slowed down in March, Dr. Stockton said.

Throughout the last seven months of 1947 building permits were more than four times the 1935-39 level, and for the first quarter of 1948 the index of building permits compiled by the Bureau soared 563 percent above the prewar base period.

The Bureau's seasonally-adjusted index of farm cash income declined 3 per cent in March, despite the slight rise in farm prices. The March index was 202 per cent of the prewar base, or 40 per cent less than a year earlier.

URGES CITIZEN FORCE

WASHINGTON—Creation of a citizen's unified military force of 16,000,000 men was recommended to the Gray Board by Col. William H. Neblett, president of the Reserve Officers' Association. He would begin organizing veterans of World War II who are not yet 45 years old.

Business Situation Is Reviewed in Texas

AUSTIN—The volume of Texas business declined 1 per cent from February to March, the University of Texas Bureau of Business Research reports.

According to Dr. John R. Stockton, statistician of the bureau, Texas business has appeared to be in a state of uncertain balance for three consecutive months. Although the Bureau's seasonally-adjusted index of business activity decreased to 212 per cent of the prewar base period the drop was not decisive enough to be considered a significant turn in the index. Business in March was at approximately the same level as in February.

In March, as in February, three of the components rose and three fell. Miscellaneous freight carloadings in the Southwestern district moved up 2 per cent, after adjustment for seasonal variation, to the highest point since December 1947. Sales of department and apparel stores rose 7 per cent to 361, the highest level since August 1946. The index of employment gained fractionally. On the other hand, pay rolls declined

To set a woman's heart to humming, say her new fall hat's becoming.

A good deed gets about as much attention these days as a homely face.



CREAMY RICH

Our ice cream is richer by actual test . . . more satisfying and wholesome. It's good for kiddies . . . and for adults, too. Take home a quart for dinner today!

Kimbrow Drug Store
BOVINA, TEXAS

S. E. Cone Grain & Seed Co.

PHONE 2252
BOVINA, TEXAS

- | | |
|-----------------------------|----------------------------|
| Ayers 16% Dairy Feed | RCA 20% Egg Mash |
| RCA 24% Dairy Feed | Ayers 18% Egg Mash Pellets |
| RCA 18% Dairy Feed | Chick Scratch |
| 9% Protein Sweet Feed | Hen Scratch |
| Reg-N-Hog Supplement | RCA Egg Mash Pellets |
| Hog Fattener | Show Animal Supplement |
| Horse And Mule Feed | RCA Egg Mash Supplement |
| Rolled Barley | 25-lb. Bags Chick Starter |
| Ground Barley | 25-lb. bags Growing Mash |
| Yellow Corn | 25-lb. Bags Ayers |
| Yellow Corn Steel-Cut Chops | 18% Egg Mash |
| Whole Oats | 25-lb. Bags RCA |
| Cottonseed Meal | 20% Egg Mash |
| Shorts (Gray) | 25-lb. Bags Chick Scratch |
| Wheat Bran | 25-lb. Bags RCA |
| Chick Starter | Hen Scratch |
| Growing Mash | |
| Ayers 18% Egg Mash | |

Your Business Is Appreciated



Howdy, folks: Jimmy's telling Daddy what he learned in school that day.

"Dad, they say that animals get a new fur coat every winter."

"Shut up, son, your mother's in the next room."

The visitor was talking to the old resident. "I think it's wonderful that you have lived here for forty years and raised a family on \$15 a week."

"Shh, lady, the old woman thinks I've been only getting \$14."

A customer drove in the other day and asked me if I had any of that gas that stops knocking. I says sure. "Then," he says, "Give my wife a glass."

ESTES & CHARLES OIL COMPANY
Bovina, Texas



Special WEEK-END Food Values!

Bring your market basket along, and stock up on our saving week-end specials! Why spend precious time shopping every day? One trip here does it . . . and you'll save money, too!

VENABLE GROCERY
Bovina, Texas

"You just can't beat Electric Cooking"



For good cooking, and cooler cooking, you just can't beat an electric range...it's the easy and low cost way to prepare better meals with less effort.

Electric cooking is best because you can control the heat you're using exactly, make sure that every dish gets just the right amount of heat for the right amount of time.

Better still, you'll have more time to "get out," for the new electric ranges require no watching...cooking is practically automatic.

Plan now on doing better cooking... electrically... You'll get more and more enjoyment from cheap electricity in the Panhandle Plains, Pecos Valley Area.



We have nothing to sell but good electric service. You'll find a choice of electric ranges, and other electric cooking equipment at a nearby appliance dealer's.

SOUTHWESTERN PUBLIC SERVICE COMPANY

23 YEARS OF GOOD CITIZENSHIP AND PUBLIC SERVICE

VETERAN'S QUESTION BOX

Q—May I work while I am enrolled for rehabilitation and training under Public Law 16?

A—A disabled veteran, while pursuing vocational rehabilitation training, should not engage in employment except with approval of the training officer, and in cases of serious disability, only as approved by medical authority.

Q—I am a World War II veteran and plan to go to school under the G-I Bill for the first time next fall. When should I arrange for my entrance into school?

A—You should arrange for your entrance into college or other institution of learning at the earliest possible moment.

Q—What benefits, other than sub-

sistence allowance, is a veteran entitled to while pursuing a course of instruction under the G-I Bill?

A—Veterans Administration will pay for his tuition, books, supplies, fees, and other authorized expenses within certain limitations.

Q—May I take graduate work under the Servicemen's Readjustment Act?

A—Yes, if eligible, you may take work under the Servicemen's Readjustment Act (G-I Bill).

HERD SIRE IS SOLD

LUBBOCK—El Dean's Lad D, Aberdeen Angus herd sire in service at Texas Technological college for four years, has been sold to Crede Gore and Money Price of Brownfield as an addition to their purebred registered herd recently started. The herd sire is six years old.

Keep An Eye On Those Social Security Cards

In 1947 the Amarillo office issued almost as many duplicate social security cards as originals in the 26 counties of the Panhandle.

Last year, 5978 duplicate cards were issued to persons who reported the originals lost or destroyed, John R. Sanderson, manager of the Amarillo Field Office, said.

During the same period, 7305 original cards were issued to persons added to the labor force of the Panhandle area.

Out of 5978 people filing for duplicate social security account numbers there were doubtless several hundred employees who were delayed on going to work on new jobs because of having lost their account number card.

The only time a person needs to have his social security card with him is when he is going to work on a new job. "After the employer has a record of the name and account number on his card, the employee should put his account number card away in a safe place," Sanderson said.

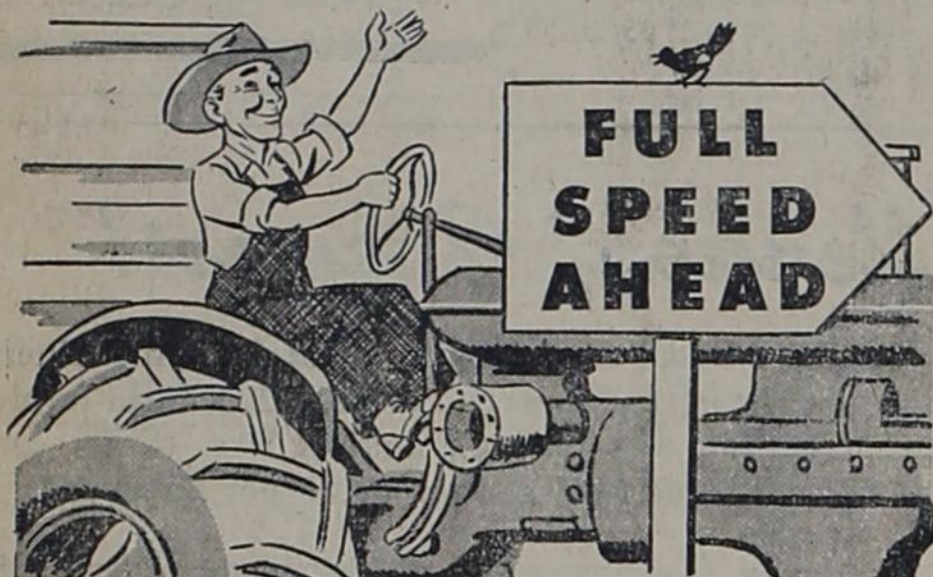
Tech To Participate In TB Control Program

LUBBOCK — Preparations for Texas Technological college participation in the tuberculosis control program are complete with arrangements for mass chest X-ray tests on the campus next fall, Sept. 20-25, Dr. E. R. Rose, director of student health at the college, announces.

All students, faculty and employees on the campus will be requested to have the chest X-ray while the State and United States Public Health Service TB unit is on the campus.

Philip W. Gauss, from the Texas State Department of Health who made arrangements with Dr. Rose for the campus TB survey, said that had the same program been instituted 10 years ago, TB could be completely eliminated this year.

666 GIVES when cold miseries strike FAST RELIEF
LIQUID OR TABLETS



More Power--Less Fuel

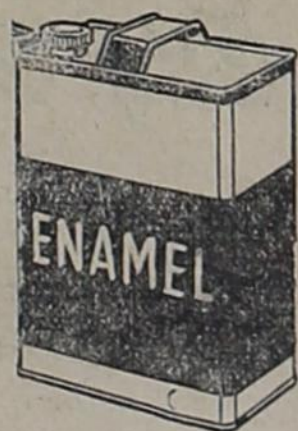
Yessir, you farmers can really turn on the steam and go full speed ahead . . . when your machinery is in peak condition! For lower operating costs and better performance, let our experts service your equipment and make needed replacements. You're assured of new pep, power and pull . . . and you'll save fuel and oil, too. Call us today for an estimate.

Hardage Hudson Co.

FARWELL, TEXAS

SPECIAL Close-Out

ON **Paint & Enamel**



Think of it! In just ONE DAY you can turn unattractive furniture, kitchen drain boards, cabinets and other articles into gleaming, satin-smooth beauties . . .

AND AT SAVINGS YOU NEVER THOUGHT POSSIBLE

Until the present stock is completely sold out, we are offering a list of standard brand varnishes, enamels, and Millard Gloss Paint at reductions that range from

25 to 50%

Most of these items are in small containers and discontinued colors, just the thing for the little odd jobs that need touching up about the place. Get them now at great savings.

Kemp Lumber Co.

Phone 2141

Farwell, Texas

**Don't Cuss . . . !
See Us!**

When Your Irrigation Engine Goes "On The Blink". We Service Engines in the Field.

Karl's Auto Clinic

Buster Gast — Smokey Gast

Phone 3941

Farwell, Texas

The Importance of "Stepping Down"

Here is the story of a new principle of design that has rocked the industry and given Hudson unique beauty not possible in any other type of car.

THE recessed floor in the new Hudson—now widely known as the "step-down" feature—is the talk of the automobile world. And rightly so! This interesting development is the key to a new kind of motor-car beauty never before obtainable.

People everywhere are attracted by Hudson's low, streamlined silhouette and free-flowing lines.

Only Hudson, because of its exclusive recessed floor that you step down onto, is able to offer streamlined, low-built beauty without asking you to give up interior head room.

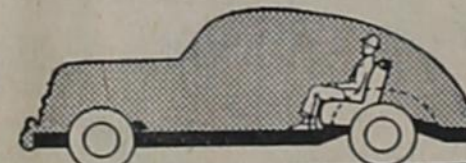
Let's take a frank look at the motor-car designer's problem. Since streamlining an automobile reduces available head room for rear-seat passengers, to achieve a low silhouette and maintain adequate head room, both floor and seats must be lowered to compensate for the lowered roof. The recessed floor is a necessity.

But it is difficult to lower floors and seats, because in all cars, except Hudson, they are built on top of a frame. Only

Hudson has a new, all steel Monobilt body-and-frame*, part of which is a rugged base structure that permits lowering floors and seats down within the frame. The sketches below illustrate this design problem and show how Hudson's recessed floor provides a low, streamlined silhouette, yet preserves head room.



OTHER CARS
The car above cannot be streamlined because the need for head room above the rear seat (which is built on top of a frame) makes it impossible to lower the roof.



OTHER CARS
Of course, it is possible to adopt free-flowing lines without recessing the floor, as sketched in the car above, but over-all height must be raised, and this destroys the possibility of a low silhouette, which is the mark of the modern motor car.



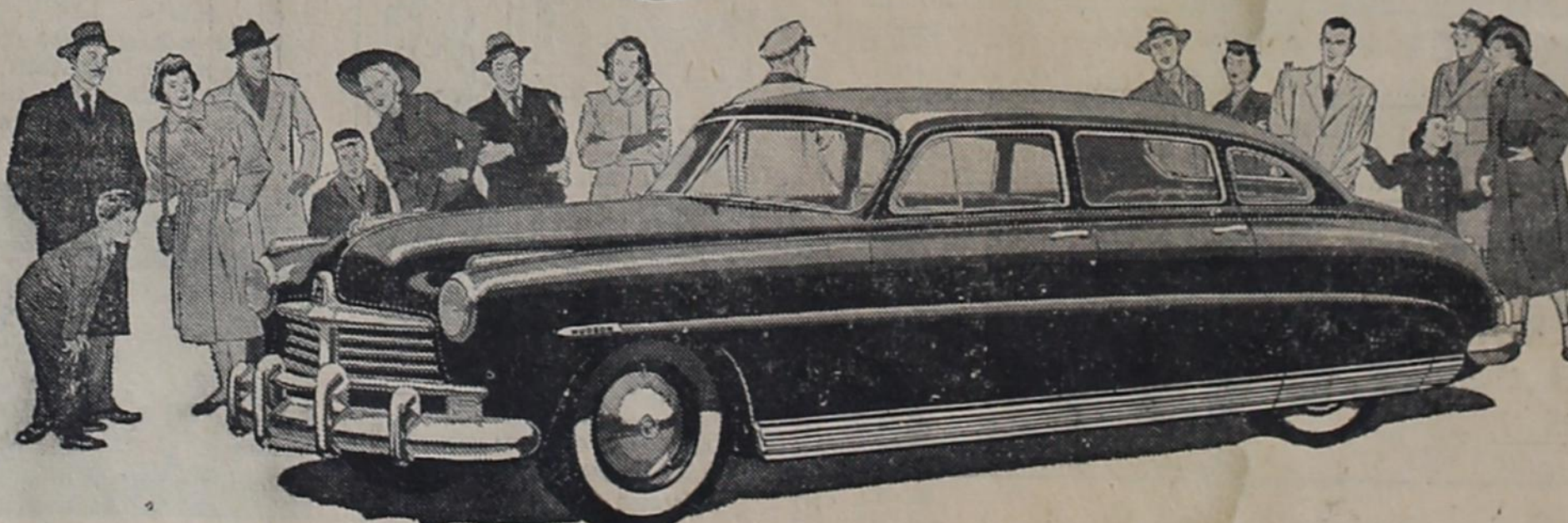
NEW HUDSON
Here is the long, low, gracefully streamlined Hudson—only five feet from ground to top. You can see how the streamlined roof comes down sharply over the rear-seat portion of the car, as compared to the other types of roof lines shown in sketches to the left. But Hudson floors are recessed down within the frame, seats are lowered, so you get more than ample head room.

The "step-down" principle requires years of engineering work, the development of new production techniques and equipment, and millions of dollars of highly specialized new plant investment. Perhaps this explains why Hudson alone offers this vital new design principle today.

You'll probably expect the motor car that is the talk of the nation to offer you even more than beauty and comfort. And it does! Your nearby Hudson dealer will show you The Importance of "Stepping Down"—also its results in riding and driving ease, performance and safety. Hudson Motor Car Company, Detroit 14.

*Trade-mark and patents pending

This time it's **Hudson**



Come in and get the full story of The Importance of "Stepping Down"

Hardage Hudson Co.

FARWELL, TEXAS

COFFEE Red & White In 3-lb. cookie jar \$1.47	SHORTENING Red & White, 3-lb. can \$1.15
ORANGE JUICE Brimfull, 46 oz. can 23c	TOMATO JUICE Red & White, 46 oz. can 21c
SUGAR C. & H., pure cane, 10 lbs. 92c	APPLE JELLY Brimfull, pure, 2-lb. jar 39c

SILVER DUST—2 boxes for.....69c
IVORY SNOW—per box only.....35c
PEACHES—Brimfull, halves or sliced, No. 2 1/2.....27c
FLY SWATTERS—Cello, 2 for.....19c
BACON—Best grade, sliced, per lb.....69c
SAUSAGE—Pure pork, per lb.....49c

Home Grocery & Mkt.
YOUR LOCAL RED & WHITE STORE
Texico, N. M.

SCHOOL DAYS

By DWIG



fashion, but Miss Roberson says the very tall, slender woman might wear her skirt 13½ inches while 10½ inches from the floor might be more becoming to the very short woman and yet both be fashionably correct.

WINS SCHOLARSHIP

LUBBOCK—K. Carter Wheelock, foreign language major from Lubbock, has won the Roscoe Wilson Memorial scholarship at the college for the school year 1948-49, Dr. C. B. Qualia, foreign languages department head, announces.

The scholarship was established in 1948 by Mrs. Roscoe Wilson in memory of the late Mr. Wilson, a former college director.

The scholarship provides for assistance one year to a student majoring in foreign language chosen by the foreign languages faculty.

The United States and the United Kingdom purchased over three-fourths of Candaa's exports for the first half of 1947.

When Your Back Hurts -

And Your Strength and Energy Is Below Par

It may be caused by disorder of kidney function that permits poisonous waste to accumulate. For truly many people feel tired, weak and miserable when the kidneys fail to remove excess acids and other waste matter from the blood.

You may suffer nagging backache, rheumatic pains, headaches, dizziness, getting up nights, leg pains, swelling. Sometimes frequent and scanty urination with smarting and burning is another sign that something is wrong with the kidneys or bladder.

There should be no doubt that prompt treatment is wiser than neglect. Use Doan's Pills. It is better to rely on a medicine that has won countrywide approval than on something less favorably known. Doan's have been tried and tested many years. Are at all drug stores. Get Doan's today.

DOAN'S PILLS

CERTIFIED Planting Seed

Now is a good time to get your planting seed so you will be ready when the ground warms up.

ALL OUR SEED ARE CERTIFIED VARIETIES

Sherley

Grain Company

Bovina, Texas

"Where Your Business Is Appreciated"



Cars, just like people, get all tired out from a long, hard winter! So bring yours over here for a thorough going-over, guaranteed to restore its youth. We'll take all the kinks out of its motor . . . replace any worn parts . . . and show you just how much smoother and safer driving can be. Get set for Spring and Summer—Come in today!

WE HAVE THOSE SUN VISORS FOR COOL SUMMER DRIVING

PACE BROS.

Texico Hotel Bldg.

Texico, N. M.

Tips On Remodeling Last Year's Dresses

COLLEGE STATION—The dress you thought too long last summer may still be too short for the current style, but there are ways of making it longer, and more stylish, too. "Study the styles in newspaper ads and fashion magazines to see how materials are combined in dresses, and you'll be surprised to see how many ways you can make your last summer's dress look like new," advises Nena Roberson, associate extension clothing specialist for Texas A. & M. College.

She says you'll find eyelet embroidered pique used in many ways. A skirt can be lengthened from 2 to 6 inches by using one or more bands of the pique.

Bands of contrasting color, bias plaids or striped material will not only lengthen the skirt, but bring life and color to a discarded dress. A yoke added to the top of a skirt is a good way to get the "new look" in length and hip style, too, says the specialist.

A bias fold or a "petticoat ruffle" added to the bottom of a full skirt can add 2 inches and fit into the current styles as well.

The specialist suggests that all

clothes made this summer have a depends upon the woman and her good hem, and all new clothing height for there is no definite number of inches from the floor for all women in addition to being the proper length. This proper length from 11 to 13 inches is within the

INCREASES THE LIFE OF YOUR CAR—DECREASES REPAIR BILLS SWAY SQUEAKS AWAY WITH

AUTO-ROCK

This Amazing New Service is Invaluable to Every Lubrication Job . . . DRIVE IN - SEE IT WORK . . .

AT NO EXTRA COST

GULF SERVICE STATION

Farwell, Texas

GARDEN AND LAWN TOOLS

The drudgery of garden and yard work can be turned into a real pleasure when you have the proper tools and equipment.

Drop in and see the line of hand tools we have that will make your work a real pleasure during the gardening and yard season.

How about a new garden hose and lawn spray for the yard? Come in and let us fit you out.

Our appliance stock is full of handy items that you will find useful about the home every day in the year. Come in and pick up the items you are always need about home.

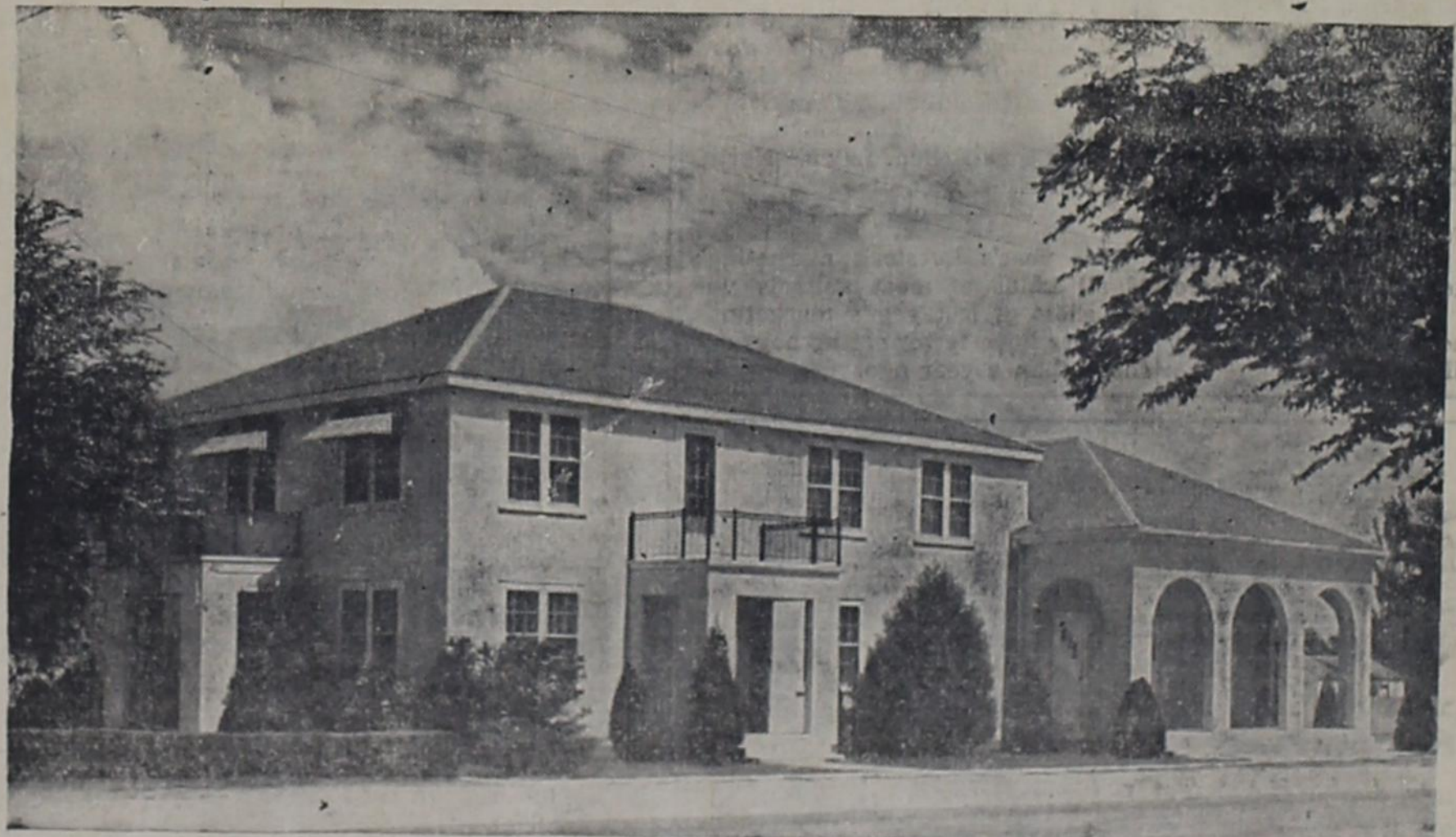
Houston Lumber Co.

E. M. Roop, Mgr.

Phone 3721

Texico, New Mexico

STEED FUNERAL HOME



Serving Clovis and Trade Territory for More Than 30 Years

FUNERAL SERVICE

AMBULANCE SERVICE

Phone 14 Phone

STEED FUNERAL HOME

End of North Main Street, Clovis, New Mexico

L. V. SPARKS, Co-Owner and Manager

WARNING!

DON'T LET EXCESSIVE CLUTCH WEAR ROB YOUR CAR OF ITS FINE PERFORMANCE

HAS YOUR CLUTCH LOST FACE?

LET US DOUBLE CHECK YOUR CLUTCH TODAY!



Sikes Motor Co.

Farwell, Texas

Trippers Return Home Monday From Outing

Members of the Farwell junior and senior classes and their sponsors returned home Monday from the yearly spring outing, which this year included points in Texas, New Mexico and Old Mexico.

The group left here on Tuesday, May 18th, and went to Carlsbad, where they visited the famous Caverns. In El Paso they were escorted by a representative of the Chamber of Commerce to various points of interest in the city, and into Juarez, Old Mexico, where, among other things, they visited a Mexican school.

Leaving El Paso, the classes next stopped at Alamogordo's White Sands, and then spent the weekend in Ruidoso, near Roswell.

On the trip were Bobby Hart, Maxine Ford, Jo Ann Williams, Velma Threet, Harry Sheets, Sonny Graham, Junior Robertson, Willie Joe Carpenter, Charles Felts, Talma Randol, Leonard Watkins, seniors; Toby Booth, Warlick Thomas, Alta Martin, Theda Branscum, Mildred Meissner, Herman Gerles, A. C. Henneman, Jackie Holland, R. A. Cassidy, Rosamond Booth, Mary Ruth Petree, juniors; Mr. and Mrs. Jack Williams, Mrs. Earl Booth, Mrs. Willie Williams, sponsors.

MOVING TO ABILENE

Mr. and Mrs. J. O. Nix are planning to move to Abilene this week. Asked what he intended to do there, J. O. replied that he was going to go fishing and "let the other boy feed us a while".

Seniors Get Diplomas At Friona, Thursday

The end of high school work was reached for the twenty-three Friona seniors, last Thursday night, when diplomas were presented to them by George Messenger, at the conclusion of commencement exercises held in the school auditorium.

Special speaker of the evening was Dr. Noble Armstrong, of West Texas State College, Canyon, who developed a theme of "Keeping Your Windows Clean" for the seniors. Patti Southall was the class valedictorian, and Billy Ray Jones was the salutatorian.

Music was provided by Tim Magness, in a saxophone solo, and Dorothy Guinn, who sang. Special awards were presented by Lester Eines, member of the high school faculty. Mrs. Roy Miller was at the piano for the class marches; the invocation was given by Rev. North and the benediction by Minister Sol Morgan.

Class members included Lloyd Messenger, Grace Jo Moody, Marcia Luttrell, Billy Ray Jones, Robert Lloyd, Betty Jo Lawson, Jean Horner, John Smith, Ernest Brown, Wanda Wallace, Duane Wyly, Harry C. Weis, Joyce Taylor, Ollie Pearl Strickland, Lloyd Brannon, David Smith, Patti Southall, Lillian Schuele, Johnny Nazareth, Floyd Messenger, Cissie Roden, Latrice Northcutt and E. R. Day, Jr.

This year's livestock marketing's of all kinds of meat animals will fall short of last year's marketings. Farmers have fewer cattle, hogs and sheep than a year ago.



Gene Autry To Appear At Lubbock Rodeo

LUBBOCK—West Texans by the thousands will have their second opportunity in as many years to see the famous cowboy movie star, Gene Autry, with a personal appearance in Lubbock four nights, beginning June 9. Autry stars in the World's Championship Rodeo, opening on that date and continuing through June 12, with nightly performances starting at 8 p. m. in the new Clifford and Audrey Jones Stadium at Texas Tech. The American Business Club will again sponsor the show, proceeds of which will be placed in the capital fund of the Lubbock Boys Club.

The four days of rodeo action will be launched with a huge parade, headed by state dignitaries and other notables. Vehicles of the old West, and appropriate floats will be included in the procession.

Gene Autry's appearance will be his second in Lubbock, and one of a number to be made outside California this year. The western star's famous horse, Champion, Junior, will also perform.

There will be authentic western flavor for each night's rodeo performance. Everett Colburn, manager, is well known in rodeo circles as a producer of top-notch shows. Stock from the Lightning C Ranch in Dublin, Texas, will be featured. This World's Championship Rodeo is the same that has attracted thousands of spectators at Ft. Worth, Houston, and Madison Square Garden.

The nightly shows will highlight raw-boned action, for Colburn matches some of the most able cowboys and riders in the business, with some of the fleetest horses, meanest Mexican steers, and toughest brah-

ma bulls in the U. S.

The Lightning C Ranch in Dublin is not only rodeo headquarters; it is the home of the largest herd of Texas longhorn steers in existence. These prized steers will appear in one of the rodeo round-up scenes.

A number of new acts are included in this year's program. Tickets can be obtained from the ABC Rodeo Ticket Office, Hilton Hotel, Lubbock, Texas.

Special Meetings Are Announced By Liner

County Agent Ollie Liner today announced two special meetings that will be of interest to Parmer county residents.

The first is a locker plant operators clinic, which will be held at Texas Tech in Lubbock next Monday, May 31st.

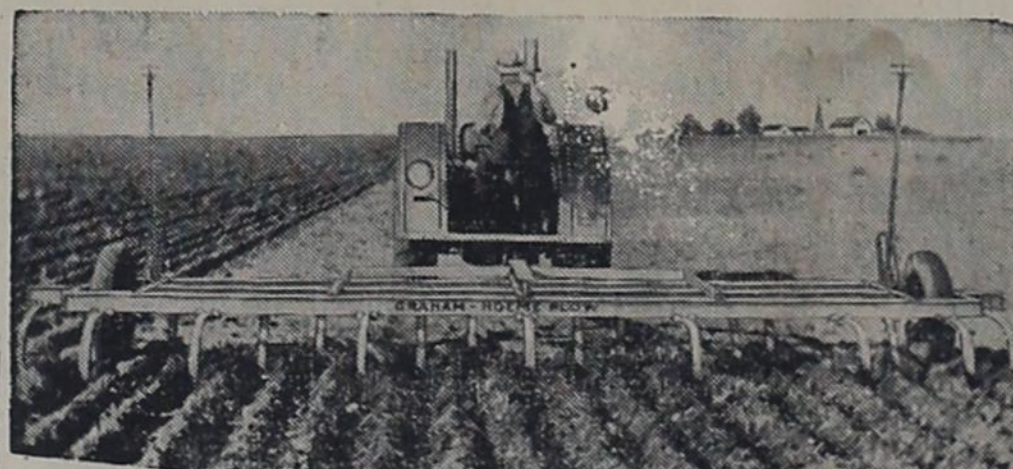
On Friday, June 4th, Ivan Wood, irrigation specialist, will be in Plainview for all-day sessions on irrigation problems.

Persons interested in either of the meetings are invited to contact the agent for further particulars.

Artificial Breeding Is Discussed At Meeting

At a meeting held in the county show barns in Friona, Tuesday evening, Casey Fine and W. M. Williamson, both dairy specialists of the Extension Service discussed the artificial breeding program for dairy herds.

A good crowd of interested herd owners was on hand, and pertinent questions were taken up by the visiting specialists.



Find Out About The REVOLUTIONARY GRAHAM PLOW



CHISEL THE SOIL AND KNIFE WEEDS IN ONLY ONE OPERATION With the Exclusive, Patented Graham Combination Chisel and Knife Attachment. Fully adjustable to any depth. Knives overlap enough to cut all vegetation.

Manufactured by **The GRAHAM-HOEME PLOW CO., INC.** P. O. Box 2050 Amarillo, Texas

ASK FOR FREE FOLDER AND DEMONSTRATION SOLD BY

- Prevents Erosion
- Lowers Plowing Cost
- Gives You Higher Yields

10 Ft. Plow 34 Ft. Plow
All Sizes... 8 to 34 Feet
THE PLOW THAT SAVES THE SOIL

10 BIG ADVANTAGES

1. Doubles Sub-Soil Moisture
2. Prevents Soil Blowing
3. Prevents Erosion by Water
4. Built to Last a Lifetime
5. Self-Sharpening Chisels
6. No side Draft
7. Extra Light Draft
8. Noching to Grass
9. Cuts Plowing Costs in Half
10. Plows all Types of Land without Adjustments

Frank Seale Equipment Co.

FARWELL, TEXAS

TREAT YOUR PLANTING SEED

See us for Ceresan and Copper Carbonate, the two recognized top seed treatment preparations.

FOX DRUG STORE

Club Boys Take Beef Calves As Projects

Five Parmer County 4-H club boys are already looking forward to fat stock shows next spring, having recently acquired beef calves which will be fed out as projects during the moing months.

Feeding calves are Tommy Johnson of Black, Donald Barron of Bovina, Ross Miller and Wayne Massey of Friona, and Darrell Norton of Farwell, County Agent Ollie Liner said today.

It is likely that other boys will acquire beef animals for feeding in the near future.

The wise man buys two lawn mowers—one for his home and one for the neighbors.

HERE ON BUSINESS

Mrs. Paul Johnston of Albuquerque, the former Mrs. Florence Wallace of this city, and her son, Jack Wallace of Torrence, Calif., have been here this week looking after property interests they have in Farwell. They formerly operated the City Cleaners here.

MERGER IS DEFEATED

An election to consolidate the Messenger school district with the Friona school district was defeated the past Saturday, reports here say. According to information received in Farwell, the voters turned down the proposal by only nine ballots.

The worst March wind we ever saw was telling about his golf score.

SPECIALS

FRIDAY AND SATURDAY

COFFEE	52¢
Schilling's, per pound.....	
VIENNA SAUSAGE	35¢
2 cans for.....	
FLOUR	\$1.68
Packard's Best, 25 lbs. for.....	
PORK CHOPS	59¢
Per pound.....	
TEA	28¢
Lipton's, 1/4 pound box.....	
PRESSED HAM	55¢
Sliced, per pound.....	
OLEO 40¢	BOLOGNA 39¢
Per pound.....	Sliced, per pound.....

STATE Grocery Market LINE

Certified Seed

THE FOLLOWING CERTIFIED FIELD SEEDS

- | | |
|-------------------|------------------|
| DOUBLE DWARF MILO | MIDLAND MILO |
| SWEET SUDAN | WESTLAND MILO |
| ATLAS SARGO | ARIZONA HEGARI |
| RED TOP CANE | COMBINE HEGARI |
| MARTIN MILO | BLACK HULL KAFIR |
| CAPROCK MILO | PLAINS MAN MILO |

We have selected seed grown from Certified Parent stock, and shall appreciate a chance to trade with you.

A Few Sows And Gilts For Sale

Henderson Grain & Seed Co.

Phone 3501

Farwell, Texas

Do you want your seed money to do the most?

THEN SEE US BEFORE YOU BUY

We guarantee to save you money

We will also clean your seed in any quantity

SERVING AGRICULTURE

Farwell Elevator Co.

Ray Ford, Manager



FOR FIELD, GARDEN AND LAWN

Robert's
TEXICO BRAND FEEDS



TEXICO, N. M.