

# SPECIAL SALE

## ENDS NOVEMBER 30th

on

## I. E. S. FLOOR LAMPS

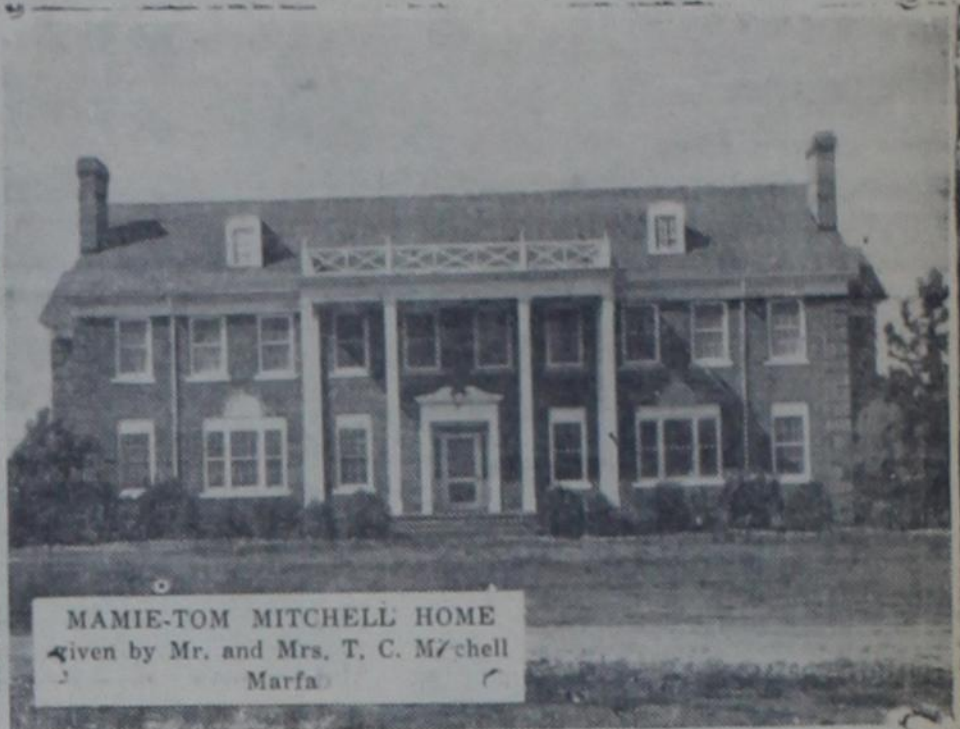
We are fortunate in having a number of I.E.S. Floor Lamps that were bought before price increases took effect. During the month of November we are passing this saving on to our customers. May we suggest that you call at our office early in order that you may have a complete assortment to select from. Prices start from \$6.95 and for the convenience of our customers may be purchased for as little as 95c down and \$1.00 per month.

Ask any employee about a free over-night trial.

### Texas-New Mexico Utilities Company



Shown above is Miss Kate Adele Hill, district home demonstration supervisor, who visited in this county on Monday with Miss Elsie Cunningham, local agent. Miss Hill recently took over the supervisor's duties in this district, succeeding Miss Lida Cooper.



MAMIE-TOM MITCHELL HOME Given by Mr. and Mrs. T. C. Mitchell Marfa

WACO, Texas—Culminating the most outstanding year of more than half a century and launching the drive for funds to finance next year's \$125,000 budget, the Methodist Home here will dedicate five new buildings on its campus Friday, November 23. Bishops A. Frank Smith of Houston and Ivan Lee Holt, Dallas, will take leading parts on the program, and more than 2000 out-of-town visitors are expected from the six conferences of Texas and New Mexico which support the home.

The affair begins with a barbecue on the Home campus at noon, the dedicatory service following at 1:30. Each new building will then be opened, its donors and the boys and girls who are to live in it serving as welcoming committee and guides. Four of the new structures are residences, furthering Supt. Hubert Johnson's long-time dream of doing away with dormitories and transferring the orphanage into a group of homes, each with its own house mother, its own dining room, kitchen and bedrooms, so that children may be brought up in an atmosphere as near like actual home life as possible. Half the Home's 400 children are now living in cottages. The fifth building is an infirmary.

Donors are Mr. and Mrs. J. J. Perkins of Wichita Falls, who are giving a second cottage for girls after two years ago giving a home for senior girls; Mr. and Mrs. J. S. Bridwell of Wichita Falls, a boys' home; Mr. and Mrs. T. C. Mitchell of Marfa, a girls' home; the late Mr. and Mrs. H. A. Williams of Fort Worth, who will be represented by relatives, a boys' home; R. P. Willis Sr. of Atlanta and the late Mrs. Willie Willis, who gave the infirmary. This building has been furnished by W. T. Penn of Wichita Falls, and the late Mrs. Penn.

After the dedication, there will be an evening session of the 48 district superintendents of the Texas and New Mexico conferences. They will discuss the budget campaign, due to be held in all Methodist churches during the month of December. The Home, existing for more than half a century without endowment, has relied on free will offerings for support during its entire history. Because of the limited

budget, all buildings have been donated by private individuals, 1941 marking an all-time high in gifts of this nature to the Home.

### PLEASANT HILL

Miss Ida Bell, who is staying with Maggie Bell, and is a sister of Joe Bell, sustained a broken bone just below the knee from a result of a fall. Mrs. Ruth James has been down from Amarillo visiting a few days. Rev. Powers has moved into the Hayes house, near the church. Paul Barnes and son, Carl, took Thanksgiving dinner in Clovis with Mr. and Mrs. C. E. Barnes. Miss Hillis, one of the high school teachers, resigned and left for Washington, D. C., last Tuesday. Evelyn and Billy Parker spent last week with their grandmother, Mrs. R. Snoderly. Betty Jo and Dorothy Ann Mooreman spent part of Thanksgiving Day with Evelyn Parker. The women's club met with Mrs. Mamie Hightower last Thursday and elected officers for the coming year.

Just as a suggestion, buy two snow shovels right now and be done with it—one for your neighbors.

### FOR SALE

Lots 1, 2, 3, 4, Block 1 G. Clark Smith Addition, Texico.  
Lots 7, 8, 9, 10, 11, 12, Block 7.  
Lots 8, 9, 10, 11, 12, Block 8.  
Lots 1, 2, 3, 4, 5, 6, 7, 8, 9, 10, 11, 12, Block 10.  
Lots 1, 2, 3, 4, 5, 6, 7, 8, 9, 10, 11, 12, Block 13.  
Lots 1, 2, 3, 4, 5, 6, 7, 8, 9, 10, 11, 12, Block 15. G. Clark Smith Second Addition.  
Single Lots \$10.00 each.  
Any two or more lots at \$7.50 each.

If interested in entire group of lots, write for prices and terms.  
**Box 127**  
Carrizozo, N. M.

### Dressed Turkey Show At Plainview, Dec. 3

The eighth annual Southwestern Dressed Turkey Show will open in Plainview on Wednesday, Dec. 3, for a two-day exposition of prize birds from flocks in several states. The show will be officially opened at 10 a. m. Dec. 3, and judging of dressed birds will begin 30 minutes later. During the two days there will be demonstrations on latest turkey dishes, as well as the traditional serving; a banquet for growers, special program for breeders and the show will close with the annual auction of dressed birds.

In addition to the dressed show, there will be an exhibit of live birds. Prize money for the two exhibits totals \$400, and entries are eligible from anywhere in the United States. Miss Lucille Shultz, Hale county home demonstration agent, with assistance of club women, will contribute to the show program with an exhibit "Starring Turkey" showing how the bird is transformed from "turkey in the straw" to "turkey on the table", Miss Shultz said. The first demonstration will show a bird properly dressed, the next the fow, stuffed and skewered and the final step will show the turkey baked and ready to serve.

W. A. Painter, president of the High Plains Turkey Improvement Association which, with the Plainview Board of City Development, sponsors the turkey show, said fewer turkeys would be marketed on the Plains this fall, but that the crop was of higher quality and a larger percent of the flocks would top the market this year than in the past. The Baby Beef type of turkey, developed on the Plains during the past several years, is the rule among flocks of this section and will be displayed in all his form and pride in the dressed and live divisions.

George McCarthy, poultry husbandman of the A. & M. Extension Service, will judge the show. McCarthy has urged turkey growers to "ride herd" on their flocks and cut out the properly developed and most marketable birds, such as livestockmen cut out their cattle for market. Well fleshed birds with a proper amount of fat and the absence of pin feathers are among the points largely determining the grade a judge will mark on a turkey, McCarthy said. Only turkeys rating U. S. Prime will be accepted for exhibition at the Southwestern show.

The annual auction sale, scheduled this year at 1:30 p. m. on the last day of the show, in past years has attracted buyers from many points and hundreds of orders for one or more turkeys have come from all over the country. H. S. Hilburn is chairman of the sales committee. The growers banquet is scheduled at 7:30

Wednesday night.

M. C. Vineyard of Kress exhibited the grand champion turkey at last year's show, a 22-pound old hen which sold at \$2 a pound to the Central Plains A. & M. club, which presented the bird to the Aggies for their Christmas dinner.

Persons desiring information on the show should write to Pete H. Smith, secretary of the Plainview Chamber of Commerce, and manager of the show, and a catalogue will be mailed immediately.

### Cotton Farmers Vote In Fifth Referendum

COLLEGE STATION—For the fifth consecutive year, Texas cotton farmers will vote in a cotton marketing quota referendum, Fred Rennels, assistant administrative officer of the AAA in Texas, has announced. The voting date has been set for Saturday, December 13, and quotas will not be in effect on the 1942 crop unless approved by two-thirds of the eligible producers who vote in the referendum, he said.

If quotas are in effect, farmers planting within acreage allotments may market all cotton grown on their allotments. Regardless of whether quotas are approved, conservation phases of the AAA program will remain the same, he explained. "Cotton is one of the surplus crops for which no increase is asked in the Food-For-Freedom campaign," Rennels said in explaining that with restricted world markets the United States has on hand a supply of about twice the size of recent crops. Approval of marketing quotas to help adjust the surplus will make possible continued use of loans, the AAA official said. Under provisions of the AAA Act of 1938, as amended, loans are prohibited when quotas are rejected by producers.

Collapse of foreign markets and the consequent drop in American exports from 6.2 million bales to 1.1 million bales, together with the fact that there is already enough cotton on hand to fill an extra year's needs, highlight the cotton situation. Since the slump is due primarily to war and naval blockades, cotton exports probably will not increase any great extent during the present season, he pointed out.

President Lincoln made the first of the Presidential proclamations under which Thanksgiving has been celebrated annually since as a national holiday.

### NEW MARKET FOR COTTON

COLLEGE STATION—There is a new, almost untouched market for cotton that will use around 750,000 bales a year if only 10 percent of the potential market is captured. The field is that of insulation.

Use of cotton for this purpose is apparently past the experimental stage.

Most cotton insulation to date has been used in home construction. Tests, however, show that the lightness and cohesiveness of cotton insulation make it a natural where settling by vibration is a factor.

For this reason manufacturers are turning to cotton insulation in refrigerator cars and trucks and in household refrigerators. The product is now being tested for use in marine and airplane construction.

Cotton insulation material is impregnated with a fire resistant and houses insulated against cold, heat, and sound with cotton treated in this manner are actually more fireproof than non-insulated structures.

These comments come from H. H. Williamson, director of the Texas A. & M. Extension Service. He pointed out that interest in the use of cotton as insulation had been stimulated by the U. S. D. A.'s search for new uses of cotton.

The Department recently announced that its Surplus Marketing Administration would provide payments of nine cents per pound to holders of approved applications who manufacture and sell insulation made of cotton, cotton card strips, and cotton comber waste. This payment takes the place of industry's "introductory offer". The 1941-42 payments are limited to the equivalent of 27,600 bales of cotton.

### HINTS ON MEAT BROILING

COLLEGE STATION—The secret of successful meat broiling lies in moderate temperatures, says Hazel Phipps, specialist in food preparation for the A. & M. College Extension Service.

Then, too, the meat itself has a lot to do with that thick, tender, juicy perfection in meat. For broiling, steaks and chops cut at least an inch and one-half or more from the loin and rib sections of beef and lamb are best. The meat should have plenty of fat, some of it distributed in marbling through the lean. If less tender cuts are broiled they should be ground with suet.

Here is the method Miss Phipps recommends: "Preheat the oven, setting the control at 500 degrees F. and allow 10 minutes for heating. Cut down temperature to 350 degrees F. Prepare the steak, cutting through the fat and connective tissue on the outside edges about every inch. Oil the broiler rack and place the meat on it. Adjust the height of the broiler so that the upper surface of the meat is three inches from the source of heat.

"Keep the oven door closed when broiling at this low contact heat. Cook the meat without turning for slightly more than half the time. Then turn and broil the other side. Season and serve on a hot platter." The time required to broil steaks depends on the thickness of the cut, the temperature used in broiling and the degree of doneness desired. A one inch beefsteak would require about 30 to 40 minutes to broil at 300 to 350 degrees F. to the medium-well-done stage.

Steaks broiled at lower temperatures (300 to 350 degrees F.) are more tender. The low temperature gives a more uniformly cooked product and keeps the steak more juicy.

### EVERY MEMBER OF THE FAMILY SHOULD READ

## The Dallas Morning News

DAILY AND SUNDAY  
(365 Days a Year)

The latest news is not all! The Dallas News is full of special features that every member of the family will read and enjoy after he is through with the headlines and news items . . . Comic strips—"Facts and Features," a popular column for boys and girls—the helpful food and fashion pages—complete agriculture, sport, and financial pages make The News the ideal family newspaper.

- And in THE BIG SUNDAY NEWS is even more
- "This Week Colorgrave Magazine, a big comic section in full colors, also Dr. Gallup's weekly poll of public opinion.

CLIP THIS COUPON AND MAIL TODAY

THE DALLAS NEWS,  
Dallas, Texas.

Gentlemen:

Herewith is my remittance \$..... to cover subscription to

The Dallas News.....months by mail.

Name .....

Post Office .....

R. F. D. .... State .....

Subscription Rates: By mail, daily and Sunday, one year, \$10.00; six months, \$5.50; three months, \$2.75; one month, \$1.00. These prices effective in Texas only.



Gas and Butane Ranges  
Electrical Appliances -- Radios  
Chinaware - Glassware  
Fiesta Ware  
Rifles & Guns - - - Clothes Hampers  
Aluminum Ware

SEE OUR GIFT ASSORTMENT BEFORE BUYING!

**Barry Hardware Co**  
THE STORE THAT STAYS

Clovis,

New Mexico

*Talk of the Town!*  
**CLEARANCE SALE**



HERE IS THE OPPORTUNITY you have been looking for! We are closing out our entire stock of groceries to the bare walls. We have decided to move this stock in the shortest time possible, and to accomplish this we have cut the prices to cost and far below present day replacements. Soon we stock a complete line of Hardware and Household Utilities. Watch for our opening announcement. In the meantime SAVE while you may by attending our grocery close-out!

**FLOUR**

Portales Best or Golden Chain  
24 lb. SACK

**79c**

**SUGAR**

10 cloth bag

**59c**

**Sale Starts Thursday, Nov. 27, Continues Until Our Grocery Stock Is Sold Out to the Bare Walls!**

<b>Coffee</b> SCHILLING 1 lb. can <b>25c</b>	<b>Syrup</b> All Kinds Gallon can <b>59c</b>	<b>Soap</b> Toilet, Hardwater, 7 bars for <b>25c</b>	<b>Corn Flks</b> Kellog's, Giant Pkg., 2 pkgs. for <b>25c</b>	<b>Hylo</b> Washing Powder, Large 25c pkg. <b>14c</b>
---	---	---	--	--



**Your Dollars Will Do Double During this Close-Out SALE!**

<b>Canned Vegetables</b>	All kinds, No. 2 can 3 for	<b>20c</b>
<b>Canned Beans</b>	Regular 5c cans 7 cans for	<b>25c</b>

<b>SODA CRACKERS</b> 2 lb. box	<b>14c</b>
<b>GRAHAM CRACKERS</b> 2 lb. box	<b>19c</b>
<b>RITZ or HI-HO CRAX</b> 1 lb. box	<b>19c</b>
<b>MARSHMALLOWS</b> 1 lb. pkg.	<b>12c</b>
<b>CONCENTRATED LYE</b> 4 cans for	<b>25c</b>
<b>COOKING SPICES</b> All kinds, 4 boxes	<b>25c</b>
<b>EXTRACTS</b> All kinds, regular 15c bottle, 2 for	<b>20c</b>
<b>VINEGAR</b> Quart bottle, 2 for	<b>35c</b>
<b>MATCHES</b> Per carton	<b>25c</b>
<b>ENGLISH WALNUTS</b> Per pound	<b>15c</b>
<b>BRAZIL NUTS</b> Per pound	<b>12c</b>
<b>PITTED CHERRIES</b> No. 2 can, each	<b>12c</b>

**Kellog's Bran**  
40% Bran, 2 large pkgs.  
**22c**

**Pinto Beans**  
10 pounds . **45c**

**CANDY**  
All Kinds  
Per pound . . . **10c**

<b>SWAN'S DOWN</b> Cake Flour, per pkg.	<b>25c</b>
<b>BORDEN'S MILK</b> 3 tall cans for	<b>25c</b>
<b>BACON SQUARES</b> Per pound	<b>21c</b>
<b>NAVY BEANS</b> 6 pounds for	<b>25c</b>
<b>GRAPE FRUIT JUICE</b> Half gallon can	<b>19c</b>
<b>APRICOTS</b> No. 2 can, 2 for	<b>25c</b>
<b>TOILET TISSUE</b> 4 rolls for	<b>25c</b>
<b>FLY SPRAY</b> Quart can	<b>25c</b>
<b>POP CORN</b> Jolly Time, per can	<b>10c</b>
<b>NOTIONS</b> All kinds, your pick, 4 for	<b>25c</b>
<b>NECK TIES</b> 50c values, your choice	<b>25c</b>
<b>SUEDE GLOVES</b> For ladies, per pair	<b>39c</b>



**OSBORNE MERCANTILE COMPANY**

Farwell, Texas













# THE WOLVERINE

Publication of Texico High School

## SIXTH AND SEVENTH

The sixth and seventh grades will start practice on the Christmas program this week.

In athletics, we have chosen the grade team, which is: Gerald, Harry, Billy Joe, George, Herman, Marvin, Belvin, and Carl. We think we have a fair team and a fair chance at the basketball trophy.

## FOURTH AND FIFTH

Our room gave \$3.20 for Red Cross. We were glad to be able to do our little bit for a good cause.

Last week we weighed and found that every child in the room had gained, most of us at least four pounds. We think that the hot lunches at noon have helped us to do this.

The fourth grade is glad to welcome a new pupil, Bobby Suglar.

The fifth grade is making maps in New Mexico History. Some of the pupils are using oil cloth and having good results.

## SECOND AND THIRD GRADE

Those with perfect attendance for the six-weeks were: Allan Wassom, Donald Ray Selman, Duane Martin, Emory Dale Baker, Gayle Doolittle, Jimmie Ray Powers, Vernon Lewis, Billie Nadine Kleeman, Dorothy Harrison, Delores Goldsmith, Margie Reid, Ruth Maxey, Wilma Smith, Glen Smith, Roy Threet, W. O. Reid, Alpha Mae Harrison, Myrtle Wiggs.

The two classes gave about \$2 for the Red Cross fund, with 28 pupils participating.

The second grade gladly welcomes three new members: Jacqueline Sims from Nowater, Okla.; Bennie Seigler from Friona; and Jimmie Rex Thomas from Blacktower, N. M.

## TELEPHONE HOUR

Edna Earle what about that plate heaped so high, the other night at the banquet? James really knows what you like!

Lila, what about that good-looking boy from Georgia?

Billy Bob is really "that way" about Dorothy. It seems he asked her way ahead of time for the FFA party.

It seems Calvin wants all the girls to go with him to the FFA party. We

hear he has asked two girls. Calvin, you'd better be careful!

We wonder who those boys were that were passing around the ginger ale Tuesday night. Eugene really likes it, he drank a bottle.

We have our curiosity aroused 'cause we want to know who James Orval is going to take to the FFA party. It seems he wants a date, but who will be the lucky girl?

"What has Pleasant Hill got that we haven't?" said a certain boy the other day. What about that, Betty Lou?

Just why can't Lila and Edna Earle go with two certain sophomore boys to the FFA party? ? ?

What is this we hear about two girls in high school taking hats from these boys and not letting them have their hats until the boys kiss them? You girls better watch out!

## MUSIC AND DRAMATICS

The Music and Dramatics Class has begun work on music for a Christmas pageant. This will be presented at the annual Christmas program, the date to be announced later. The class and Mrs. Arnold are happy to have Mary Lee Moss, a freshman, as accompanist.

## HOME EC NEWS

The Homemaking classes have been getting practical experience the last two weeks, in preparation of the annual Mother-Daughter banquet. It seemed to be quite a success and everyone reported a good time. The girls appreciated the nice job of serving the boys did at the banquet.

This week we are making whole wheat ginger cake, rolled wheat casserole, and whole wheat cookies, used in a demonstration given at Farwell by the Parmer County Home Economics Association, under the direction of Miss Elsie Cunningham, Mrs. Ermon Miller, and Mrs. Wesley Osborne.

## SOCIAL NEWS

Mr. and Mrs. Lee Richards visited Mr. and Mrs. Willie McCormick, and Mr. Richards' parents, Mr. and Mrs. J. R. Richards, over the weekend.

Misses Wanda and Lila Boss visited in Clovis, Saturday, with Mr. and Mrs. O. Purselley.

Rupert Paul returned from Kan-

sas, Tuesday night, where he had been with his mother, Mrs. G. Paul, who is undergoing medical treatment.

Mr. and Mrs. Coleman and family and Mrs. Earl Morris of Delhi, California, visited in the home of Mrs. R. E. Williams last week.

Miss Sadie Burns visited with her sister, Mrs. Billingsley, in Clovis, over the weekend.

## FFA

The FFA boys served and washed dishes for the FHA girls last week. We are expecting them to do the same for us. Serving were Billy Bob Drace, Calvin Blain, James Orval, Frances, and Billy White. The kitchen maids were James Box, Duane Howard, Clarence Summers, Leonard Lewis and the old general himself, Mr. Richards.

## SENIOR REVIEW

Dorothy Paul was born January 26, 1925, at Texico. She began her schooling at Texico, where she will finish. Dorothy had the comedy parts in the junior and senior plays. She is a member of the Home Ec club, plays volleyball and basketball. Her favorite food is banana spit; her hobby, photography.

## AG. ONE NEWS

The ag boys have just finished studying swine and how to judge them. We are beginning in shop work; some are building desks, shoe boxes, tables, and book racks. We intend to complete these things in about two weeks.

## SENIOR NEWS

The senior play cast is recuperating now from the presentation of "Aaron Slick From Punkin Creek". We had success in presenting it, and wish to thank everyone who cooperated with us.

## FRESHMAN NEWS

The freshmen have finished all the tests, and everyone came out OK. We would like to have some one on the honor roll this six weeks. Some of the freshmen went on trips over the Thanksgiving holidays.

## EIGHTH GRADE NEWS

The eighth grade had six weeks tests last week and did very good. So far, it looks like the class will have quite a few on the honor roll.

## MY DUTY AND MY RESPONSIBILITY IN THE DEFENSE OF OUR COUNTRY

My duty and responsibility to my country in the work of our Defense Program is as much for me to do as it is for anyone else to do. Of course, you can look around and see that some people will naturally say, "Well, he's going to work for the Defense Program. What's the use for me to worry? He'll do as much for it as I would." Yes, this person may do as much as the other one would, but he still is not doing his duty and responsibility as he should.

There is some difference between duty and responsibility; yet people class them together but for one thing, everyone has a duty to their country, whether they have a responsibility in it or not.

My duty to my country means as much to me as it does to anyone. I should naturally love my country and aid it in all the ways I can. Such as is said in the American Creed: "I therefore believe it is my duty to my country to love it, to support its constitution, obey its laws and to respect its flag and defend it from all enemies!" The part of defending it from all enemies is quite a large job for one person but we can help in keeping the people, such as the Fifth Columnists, from ruining our country and changing it from a democracy to a government of Nazism. Some of my other duties would be to respect the flag and protect it from destruction if possible.

A responsibility to my country can be a job that has been assigned to you by the government or some government official, or some people in government work. Such as or many of the jobs today. Some men that are working for the government are to collect aluminum for the defense program. The collection of aluminum is for the people of the United States to learn to use other products and less of the things that are scarce in the products of the United States.

No only in our defense program are we learning to do without aluminum, but we are learning to invest our money in defense stamps or defense bonds. This investment is a sure investment if we work to keep the Nazis from taking over our government.

Even at our own school, there has been a defense class working, so if they should be called into the army they can specialize in one thing. This defense class will be a great help to the Army if they are called to join.

Some of the other people that are a great help to our defense work are the boys in the Army. These boys are the ones who will do most of the protection of our government if we



...as **AMERICAN**  
**as the Stars**  
**and Stripes...**

## THANKSGIVING

We're Thankful for Thanksgiving



Thanksgiving Day is a traditional reminder of the many things which we in America have to be thankful for, so we of the Santa Fe take this pleasant season to express our sincere appreciation of your friendly cooperation and of your patronage of our freight and passenger service.

Let's work together and be thankful for this great country and the support we can give each other. Your patronage of Santa Fe services enables us to pay wages and taxes that help you and your community.



Send your soldier boy a ticket home for the holidays...

If your boy in Army Camp is being furloughed for the holidays—surprise him by sending him his ticket home. Your Santa Fe Agent will gladly arrange all details.



**JOIN AMERICAN RED CROSS**

### Health Notes

by Texas Department of Health

**AUSTIN**—Fulfilling a prediction made several months ago by the State Department of Health, an epidemic of influenza in Texas is represented by the 1932 cases reported for the week just ending, according to Dr. Geo. W. Cox, State Health Officer. This total is 6 times greater than that shown for the same week in the preceding 7 years.

"Neglecting proper treatment of influenza, or allowing the patient to up too soon may have disastrous results," Doctor Cox warned, "since persons suffering from influenza are particularly susceptible to other infections."

Doctor Cox emphasized the importance of guarding against "flu"; drinking plenty of water, eating simple, nourishing foods, outdoor exercise, plenty of sleep in a well-ventilated room, and sensible dress according to the weather were stressed as best precautions.

"Pneumonia, frequently resulting from influenza, is a very dangerous complication," Doctor Cox stated, and advised that a patient go to bed immediately upon first appearance of a cold and place himself under competent medical care.

Tahiti is on the side of "Free France".

**DR. LEWIS**  
DENTIST  
MULESHOE, TEXAS



**OPPORTUNITY KNOCKS ONCE**

## ...but Kemp Lumber Company goes further!

By maintaining a stock of Lumber, Paints and Hardware to meet your improving needs...

### AT ALL TIMES!

Why not join our ever-growing family of satisfied customers by letting us furnish your next order... whether it be large or small?

OUR 1942 CALENDARS ARE HERE... GET ONE

## Kemp Lumber Co.

Roy W. Bobst, Mgr.  
Phone 2141 Farwell, Texas.

To Relieve Misery of

## COLDS

Take **666**

LIQUID, TABLETS, SALVE, NOSE DROPS

---

## All kinds of PRINTING



**DONE BY EXPERTS AT LOW PRICES**

**G**OOD PRINTING is an essential to most business men and to many private individuals. The State Line Tribune, equipped with modern printing machinery manned by experienced printers, is in a position to offer good printing at unusually low prices. You'll find printing done to the most exacting standards when it's done in our job department... and you'll find also that it's done economically!

# State Line Tribune



FOR THESE COLD DAYS

Let us install a heater and defroster in your car for winter driving comfort.

COMPLETE STOCK OF BATTERIES

SIKES MOTOR COMPANY

Ford Dealers

Farwell, Texas

Demonstration Club Notes

By Special Staff Reporters

Rhea Club

The Rhea demonstration club met in the home of Mrs. C. L. Calloway on the afternoon of the 18th. Some very interesting reports of the Achievement Day at Bovina were given. Further plans were made for the Thanksgiving supper, which is to be held at the school house, on Thursday night, Nov. 27. The club also decided to have a food booth at the school carnival, and to help furnish cakes for the "cake walk". Delicious refreshments were served to Mrs. L. H. Hoffman, Floyd Schlenker, C. W. Dixon, Elmo Dean, Chas. Schlenker, Ralph Wilson, Bernice Moyer, Tom Hurst, Wayne Parker, Herman Scheuler, Boye Taylor, Roy Beardain, Cordie Potts, Mamie Wilson, Charlie Rogers, H. T. Reynolds, Miss Wana Vestal and the hostess.

The next meeting will be on Dec. 2nd, with Mrs. F. T. Schlenker, in her home.

Plan Christmas Party

Members of the Parmer county demonstration council met the past Saturday in Friona, with the principal business being the planning of the annual Christmas party, to be held on December 13th, at the Oklahoma Lane school, at 2 o'clock.

The recreation committee, composed of Mrs. Will Nittler, Mrs. E. L. Fairchild and Miss Helen Potts, will be in charge of decorating and arranging the program, and a gift exchange will be observed.

Oklahoma Lane Club

There will be an evening's entertainment of dominoes, bingo and forty-two at the Oklahoma Lane club room, Thursday evening, Nov. 27, sponsored by the demonstration club ladies. Admission will be 20 cents, and pie and coffee will be furnished free by the club ladies.

Buy U. S. defense bonds and stamps.



SHOPPING MONEY

is the least of this lady's worries. She's learned to market her cream and eggs every week at our place and get the cash—and then she can make her purchases where she chooses.

FORD PRODUCE COMPANY

Floyd Team Topples Locals By 12 Points

The Texico senior boys lost their first cage encounter of the year, last Friday night, when the Floyd team defeated them 25-13 on that court.

Coach A. D. McDonald reported this week that his boys were no match for their hosts of the evening in size, but despite this handicap, reported that he was pleased with the showing his group made.

Playing a zone defense, the large Floyd boys threw up practically an impenetrable front to the visitors, with the majority of Texico's scores coming via the long shot route, as they were unable to get under the basket for crisp tries. Floyd, on the other hand, stood plenty tall for the short shots, but missed a number of tries. Texico's notable weakness was the inability of the locals to sink the excessive number of free shots allotted them.

Box was the outstanding player for the locals, with Bowers as high point man. Harrigan, standing over six feet, led the Floyd scoring.

Junior Team Wins

The junior high team brought home a victory, outscoring Floyd 18-12.

Playing a fast man-to-man defense in the last half, the locals fumbled the Floyd boys to the point that Floyd was unable to work the ball down into scoring territory, with Texico intercepting a large number of passes and turning them into goals.

Summers, of the locals, and Griffith, of Floyd, led the scoring.

Basketball Season To Open in Farwell, 2nd

The 1941-42 cage schedule will officially be opened by the Farwell squads on Tuesday evening of next week, when the Amherst delegations visit here, it was learned today from Coaches Jeff Hooper and Verna Sheriff.

Both coaches this year are faced with the problem of developing winning clubs from players composed mostly of recruits, they admitted to-



MERRY CHRISTMAS

What could be finer for the family member with failing eyesight than a pair of glasses fitted for their particular need?

Come in now and make plans to have them ready for Christmas morning.

J. R. DENHOF  
Opposite Post Office  
CLOVIS, N. M.

day, but both added that the groups were shaping up "fairly well".

A. G. Acker and Arlin Lovelace are the two returning letter-men for the boys, bolstered by such newcomers as Bulger Dycus, Junior Crume, Scott Billingsley, Smokey Gast, A. J. Hamm, James Martin, Jim Bob Dow, Lynn Smith, and others, Coach Hooper remarked.

For the girls, Miss Sheriff listed Truda White, Joyce Alexander, Joan Booth, Maxine Hughes, Jane Lokey and Ruby Ezell as prospective forwards, while guard aspirants are Lenora Birchfield, Ella Bee and Tommie Ruth Shelley, Juanita Billington, Norma Jean Thomas and Estelle Cole. Hughes is the only returning regular.

After the games here on next Tuesday evening, the Farwell teams will play a return engagement with Amherst on that court, Friday evening, December 6th.

Games Slated With Rogers, Wheatland

Rogers and Wheatland are on the basketball schedule for the Texico Loys' teams this weekend, Coach A. D. McDonald announced, with the first home game of the season on Friday night, with Rogers as the visitors.

This opens the season for the Rogers squad, consequently, little information is available. The Texico boys dropped their opener to Floyd last Saturday, but turned in a good account of themselves against a much larger team, and prospects appeared "not too dark" for Friday.

It is likely that Rogers will also be represented by a junior high team. Coach McDonald added, Game time is 7:30 with the customary admission charge being made.

Play Wheatland There

On Saturday night, the senior boys will journey to Wheatland, to contest practically the same team that placed fourth in the state meet last spring—leaving Texico very much the underdogs.

The locals show indications of developing a nice squad, but lack of height and experience handicap them at present.

Get Farm Machines In Good Condition

"Get your farm machinery in A-1 condition now and be ready for next year's food production pledge," W. S. Menefee, chairman of the Parmer county USDA Defense Board, said this week.

"Getting farm machinery in good condition now will be a safeguard against unnecessary delays and breakdown of machinery during the busy farming season," Menefee said, in pointing out that defense produc-

tion will probably overload railroads, truck lines, express companies and parcel post system next spring.

OPM has asked for a drastic reduction of steel for civilian needs because of the unprecedented quantities needed in the manufacture of guns, planes, tanks and bombers. Sufficient steel has been set aside for repair parts of farm machinery, the chairman explained.

All farmers of Parmer county are asked to check their machinery and order all necessary parts by Jan. 1. By this method, manufacturers will have a sound, practical idea of the quantities needed for repair parts.

If parts are not available, farmers should notify the county defense board, he said.

Department of Agriculture scientists have invented a machine which will cut two tons of staple-length cotton into small pieces hourly. The chopped-up staple is used as a substitute for linters in making smokeless powder.



For plumbing see Lovett. 20tf

FOR SALE—12 head high-grade Jersey milk cows; also registered Poland-China brood cows. C. E. Foster, Farwell. 1-3tp.

MAGAZINE SUBSCRIPTION for all popular magazines, also Christmas cards of all kinds. See Mrs. Minnie Leftwich, Farwell. 48-4tf

FARM AND RANCH LOANS  
New loans annual interest rates convenient options to pay, quick service. See, phone or write J. G. Evans & Sons, phone 260J, P. O. box 169, Hereford, Texas. 49-9tp

FARM LOANS  
The Federal Housing offers you money at 4 1/2% to buy farms, ranches, improve or refinance. Consult your local lumber yard or write Henry Bickle, box 434, Lubbock, Texas. 51-8tp.

FOR SALE—At a bargain, 45 Paper ensilage cutter, in good condition A. J. Jesko, 14 miles south of Friona. 1-3tp

FOR RENT—Five-room modern house in Texico. See Les Means, Clovis. 2-1tc.

BUTTON HOLES or other sewing, at reasonable rates. Norma Lee Clements, telephone building, Bovina. 2-1tp.



Christmas goods that have not been purchased far in advance will be hard to obtain this year. Fortunately we were alert to this condition many months ago and as a result of our foresight we have the most complete line of Christmas merchandise we have ever shown.

Come in now . . . shop our lay-away plan and you won't be disappointed at the last minute.

Fox Drug Store

STILL IN JAIL

Two Negroes, charged with burglarizing the Sikes Motor Company three weeks ago in an attempt to steal three used cars, are being held in the Parmer county jail. Local officers expressed the opinion they would be held here till the forthcoming session of district court in January.

SANTA FE CARLOADINGS

The Santa Fe System carloadings for the week ending Nov. 22, 1941, were 22,624 compared with 19,687 for the same week in 1940. Received from connections were 8,055 compared with 7,480 for the same week in 1940. The total cars moved were 30,679 compared with 27,167 for the same week in 1940. The Santa Fe handled a total of 32,319 cars during the preceding week of this year.

(ACTION) use a Tribune want ad

At Your Service

Drive up, honk your horn . . . and leave the rest to us!

Your check for your cream, eggs and chickens will be ready in a jiffy.

- Accurate Weights
- Honest Tests
- Top Prices

GOLDSMITH PRODUCE

SPECIALS!

- |   |     |
|---|-----|
| WHITE SWAN PORK & BEANS<br>24 oz. can, each | 10c |
| RANCH STYLE BEANS<br>3 cans for             | 25c |
| FRESH BLACK EYED PEAS<br>White Swan, 3 for  | 25c |
| W. SWAN CRANBERRY SAUCE<br>Per can          | 16c |
| WHITE SWAN SALAD DRESSING<br>Quart jar      | 33c |
| CAMAY TOILET SOAP<br>3 bars for             | 21c |
| CONCHO DILL PICKLES<br>Quart jar            | 15c |
| GRAHAM CRACKERS<br>2 lb. box, each          | 25c |
| PURE APPLE BUTTER<br>32 oz. jar             | 22c |
| FRUIT COCKTAIL<br>Tall can, 2 for           | 35c |
| THRIFT SALAD DRESSING<br>Quart jar          | 25c |
| PACKARD'S SEA FOAM FLOUR<br>24 lb. sack     | 85c |
| GRAPE JAM<br>Pure, 32 oz. jar               | 25c |
| BABY FOOD<br>Heinz, 3 cans for              | 25c |
| V. WAFERS<br>Per pound                      | 15c |
| E. WALNUTS<br>No. 1 quality, lb.            | 25c |
| NAPKINS<br>80 count, 3 for                  | 25c |
| CAKE FLOUR<br>Swan's Down, pkg.             | 25c |
| MACKERAL<br>Tall can, each                  | 15c |
| Concho PEAS<br>No. 2 can, 2 for             | 25c |

Pascal Celery, Lettuce, Apples, Oranges and Everything to make your Thanksgiving Dinner complete.

HALL'S GROCERY & MARKET

MAY BROS.

AMERICA'S LOWEST PRICES ON NATIONALLY ADVERTISED watches

EASY TERMS COST NOTHING EXTRA

BULOVA

"NITE HAWK" \$24.75 15. JEWEL	"PRISCILLA" \$24.75 17. JEWEL
-------------------------------------	-------------------------------------

ELGIN

ROSE GOLD \$24.75 15. JEWEL	ROSE GOLD \$24.75 15. JEWEL
-----------------------------------	-----------------------------------

GRUET

"DOUGLAS" \$24.75 A. JEWEL	"VERI-THIN JOAN" 24.75 15. JEWELS
----------------------------------	---

LIBERAL ALLOWANCE FOR YOUR OLD WATCH IN TRADE

MAY BROS.  
Clovis' Oldest, Largest and Finest Jewelers

WANTED GRAIN AND SEEDS

Don't sell your grain and seeds until you have seen us. We are always in the market for your products.

Roberts Seed Co.

Texico, N. M.