

PERSONAL



INVESTIGATE --

Sheriff Charlie Lovelace, right, and Deputy Sheriff Henry Minter, look over the clutter left at Holiday Store by the burglar or burglars who entered at least seven local business firms Monday night. Several hundred dollars were taken, and also watches, rings, cameras, radios, a pair of boots, and cigarettes from the firms. In addition to the Holiday Store, other firms entered were State Line Food Mill, Watts Tire Store, Suttle's Enco Station, Bus-bico Texaco Station, Carl Matthews Fina Station and the Fina Station on Ave. A (now closed). Entry to the buildings was gained by breaking door glasses and at the Holiday Store by breaking a window. The sheriff and his deputies have been busy this week checking for leads into the burglaries while operators of the businesses have been checking their stock for additional losses.

28-6 --

Buffs Gore Wolverines

The Texico Wolverines played their first home game of the season and only their second football game in over 30 years as they hosted the Melrose Buffaloes last Friday evening, losing the game, 28-6. The local fans showed their appreciation of the new sport as they turned out in record numbers and the "Standing Room Only" sign was up for the night.

The new field looked good with its first year stand of grass. The stadium boasts both home bleachers and visitor stands. The new lighting system is one of the most modern and a concession stand is also available for the hungry and thirsty.

The excellent stadium and player equipment are the result of long and successful efforts of the Texico Boosters Club, which was formed last spring to promote football in Texico. Melvin Burns is the club president and Bill Christian is secretary-treasurer. The club is still accepting donations and is planning other fund raising activities for the benefit of the new sport for Texico.



Church Has New Pastor

The Rev. John Summers arrived last week to assume duties as pastor of Texico First Baptist Church. The church had been without the services of a regular pastor since the resignation of Rev. Leroy Looper early in the summer.

Reverend Summers came to Texico from Questa, N. M., near Red River, where he had been pastor for several years. He has pastored churches at Logan, Roy, Ranchvale and Tucumcari since entering the ministry some 18 years ago. Prior to

(Continued on Page 9)

(Continued on Page 3)

Army Worms Damage Wheat

During the past ten days or two weeks army worms have been reported in the Parmer County area. The worms have been doing severe damage to lawns in the towns and to young wheat crops in the area. The worms also are attacking grain sorghum foliage and cotton leaves.



Only a few blades of wheat are now visible where once a thriving field of wheat was growing. The wheat has been demolished by Army Worms, which in the past two weeks have wrought much damage to young wheat and grain sorghum crops. The worms have also done some damage to the foliage on the area cotton crops.

THE STATE LINE TRIBUNE

"OFFICIAL PUBLICATION OF PARMER COUNTY"

TEN PAGES FIFTY-EIGHTH YEAR 10 CENTS

Over Plains --

Steers Take Easy Win

By Steve Blair
The Farwell Steers bombed the Plains Cowboys 61-20 in the first home contest of the 1969 grid season. The first half action saw the Steers establish a 47-6 margin and coast the rest of the way to a seemingly easy victory. The aerial antics of QB Greg Hargrove provided the majority of the Steer's scoring punch as Hargrove connected on seven of eight passes for five touchdowns before relinquishing control of the helm to backup quarterback Gene Sheets at half. Dean Stovall grabbed three Hargrove missiles for 93 yards and two touch-

downs and also returned a punt 70 yards and a kickoff 81 yards for two extra tallies.
Danny Prince also found himself a busy receiver as he snagged four passes for 55 yards and three TD's. Gary Erwin again proved his abilities as an able runner as he picked up 119 yards and a touchdown, averaging 6.3 yards per carry. Light but lethal Carl Goettsch provided the Steers with a bit of extra infantry as he averaged 7.6 yards, netting 61 yards for his evening's work. Mark Williams proved to be a thorn in the side of the Cowboy's passing attack as he intercepted two passes, returning one 57 yards and the other an even 100 yards for a touchdown.
Plains received the opening kickoff and went to work from their 32. They didn't retain control for long as Gene Sheets picked off a Gary Livesay pass to give the Steers custody on their own 43. Farwell moved to the Plains two in eight plays behind the running of Gary Erwin and a 19-yard pass play to Stovall. Erwin plunged in for the score and Bob Wiman added the point, giving the Steers a 7-0 edge with 9:43 left in the first period.
The Steer defense allowed Plains only four yards in three downs following the kick and forced Jimmy Taylor to punt. Erwin punched through the Plains defense for 11 yards in two carries to the Cowboy's 44. Hargrove then hit Dean Stovall who went all the way. Wiman again toed up the PAT and Farwell led 14-0.
It took the Steers less than four minutes to repeat the performance as the defense again denied Plains a first down and forced the punt. The Blue and White went 23 yards in six plays and Hargrove found Prince for the remaining 23 and the score. Wiman booted the extra to increase the margin to 21-0.
Like watching a rerun for the fourth time, a fabulously stinky

(Continued on Page 9)

Tonight In Morton --

Steers Meet Indians

The Farwell Steers travel to Morton tonight (Friday), October 3, to play the Morton Indians. Coach Toby Booth says, "We will be in good shape with all members of the Steer squad able and willing to play, if necessary. The Indians are a larger team, outweighing the Steers approximately 15 pounds per man."
In play this season, the Steers and Morton have each played Friona and Plains. Morton was defeated by the Friona Chieftains 10-0; and defeated Plains 34-0. They have also taken a 13-3 win over Sudan. The Steers took a 34-0 win over Friona and a 61-14 win over Plains. They have also lost one game, losing to the Dimmitt Bobcats 41-20.
Coach Booth said, "Morton's finest point is its speedy, large backs."
Gamenime in Morton is 8 o'clock.



"GOT CHA" A FEW MORE -- Carl Goettsch, No. 30, added over 60 yards to the potent Farwell Steer attack in Friday's game with Plains. This fine run came in the third quarter of last week's contest as Carl made consistent yardage with his fleet running.

Wolverines, Tucumcari 'B' Squad Play Tonight

Texico Wolverines play the Tucumcari B team tonight, (Thursday) Oct. 2, at 7:30 p.m. (MDT) in Tucumcari, according to Coach Jimmy Wynne. Coach Wynne states that he knows little or nothing about the Tucumcari team except that it is made up primarily of high school juniors.

Elementary School To Sponsor Christmas Greetings

Jack Williams, principal of Farwell Elementary School, announces that the school will sponsor the annual Christmas Card Project in the State Line Tribune this year. The school feels that it needs some equipment over and above the budgeted items and is willing to revive the mass greeting idea, which has been sponsored by other organizations of the school in the past.
Details of the greeting will be announced later.

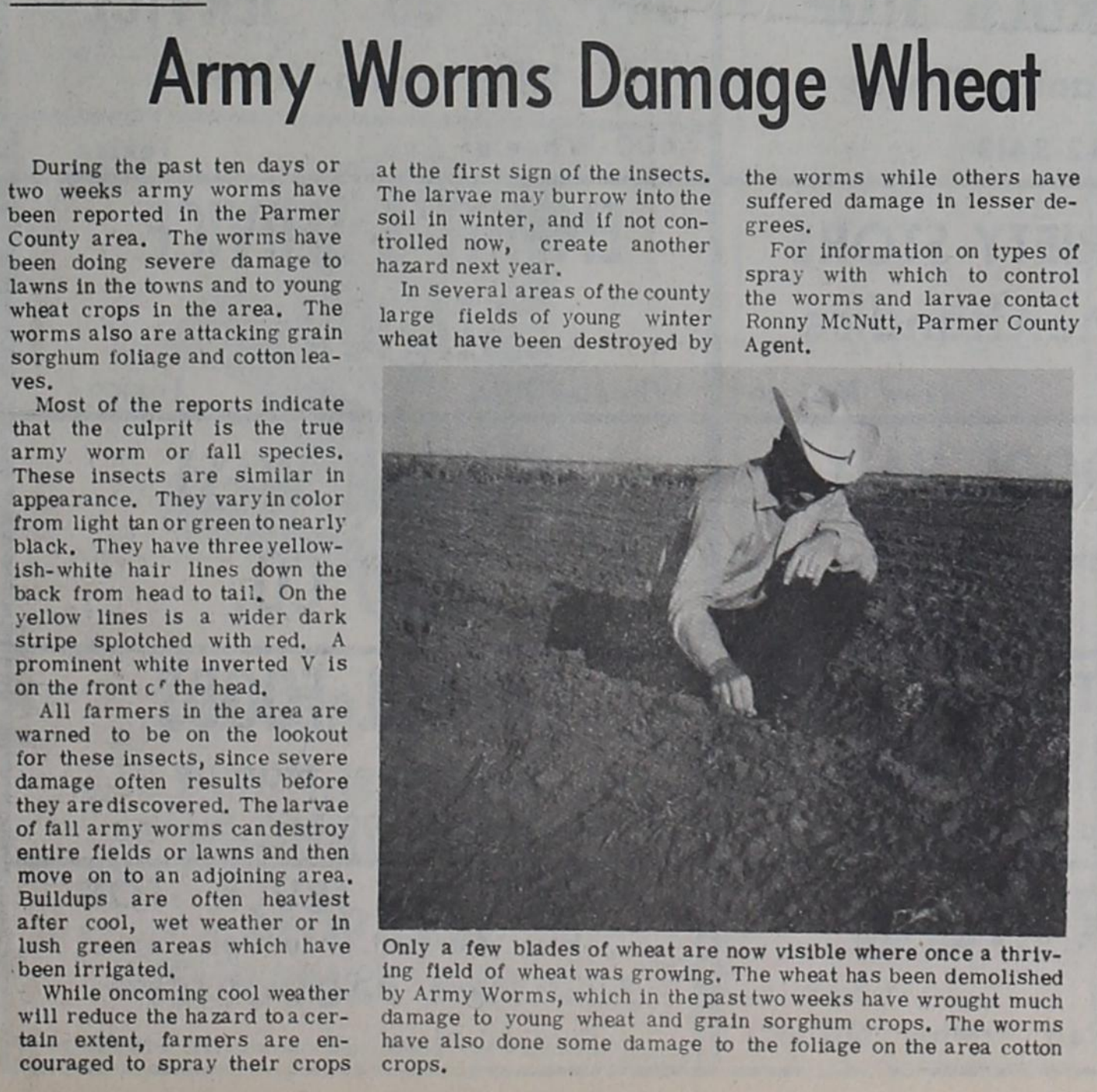
Farwell School Slates Homecoming, Oct. 10

Homecoming festivities at Farwell High School will be observed Friday night, Oct. 10, when the Farwell-Sundown teams meet in a football game at Steer Stadium.

During halftime activities, a "homecoming queen and pep club bea" will be crowned. The queen will be crowned by members of the football squad and the pep club bea will be crowned by members of the Pep Club. The royalty will be presented with gifts and the queen will be escorted to a special float to watch the remainder of the football game. The band will also present a halftime show in addition to participating in the coronation.

Queen candidates include LaShawn Sheets, freshman; Kristy Taylor, sophomore; Jean Kirk, junior; Nancy Patschke, senior; Melody Roberts, over-all; Pep Club Beau candidates are Ty Phillips, freshman; Mickey Lunsford, sophomore; Gene Sheets, junior; Bob Wiman, senior; and Dean Stovall, over-all.
The Pep Club is now taking orders for "homecoming mums." Persons who would like to place an order for one of the flowers should call either Cheryl Boling at 481-9046 or Cheryl Kaltwasser at 825-2733. All orders for the mums must be placed by Wednesday, Oct. 8.
Price for a large mum with the letter "F" is \$2.75. Mums with a name or number on the ribbon are \$3.00. There is an additional charge of 25c for each additional name or number on ribbons.

In County --



MELODY ROBERTS, NANCY PATSCHKE, JEAN KIRK, KRISTY TAYLOR, LASHAWN SHEETS, DEAN STOVALL, BOB WIMAN, GENE SHEETS, MICKEY LUNSFORD, TY PHILLIPS



Member
Panhandle Press
Association
1969

Entered as second class matter at Farwell, Texas, 79325, under the act of March 3rd, 1879. Published every Thursday.

SUBSCRIPTION RATES -- Farmer and adjoining counties, \$4.25 per year; elsewhere, \$5.25 per year Payable in advance.



On The Farm In Parmer County

By RONNY MCNUTT
County Agent

USE OF ANTIBIOTICS IN FOOD PRODUCING ANIMALS - RESTRICTED

Regulations restricting the use of injectable antibiotics in food producing animals have been issued by the Food and Drug Administration effective June 16, 1969. The FDA proposed the restrictions on the use of antibiotics in food producing animals in April 1968 because of the potential human health hazard from residues of these drugs in meat, milk and eggs. The regulations prohibit the use in food producing animals of injectable tetracycline hydrochloride, chloramphenicol, some forms of penicillin and bacitracin. The FDA said that it will continue to permit the use of injectable streptomycin and dehydrostreptomycin, either alone or in combination with certain forms of penicillin, provided there is a 30 day withdrawal period before treated animals are slaughtered.

Veterinarians and livestock producers continue to use streptomycin and dehydrostreptomycin while studies are being made to determine whether a safe tolerance can be established for residues of those drugs, the FDA said. Revised labeling for streptomycin and dehydrostreptomycin, specifying the 30 day withdrawal period was to be submitted to FDA by August 15, 1969.

Antibiotics used in food producing animals that are not authorized for use by food additive regulation will be subject to regulatory action after November 13, 1969.

PRUSSIC ACID IN SORGHUMS MAY POISON LIVESTOCK

Recent rains over much of the area have brought on re-growth of sorghums, sudangrass, sudan, sorghum hybrids and Johnsongrass that suffered from the dry weather this summer or that was recently harvested. And this situation may pose a threat to grazing livestock.

New growth on sorghums sometimes develops a high prussic acid content and becomes a hazard to grazing animals. The same situation develops when the growth of these sorghums is stopped by a freeze or frost. So farmers are urged to keep an eye on their stock for the next few months if their animals are grazing any of the different sorghum types.

Prussic acid acts quickly in the digestive tract of an animal. Death results from suffocation, since the poison prevents the exchange of oxygen from the blood to the tissue.

Forage containing prussic acid can be fed safely if it is cut and allowed to cure completely in the field, or if it is put up as silage and not fed for several months. Mature plants with few suckers are seldom dangerous if growth has been normal. Grain sorghums or sudan stubble regrowth grazed in late fall can be very dangerous.

ARMYWORMS ATTACKING CROPS, LAWNS

During the past several days armyworms have been reported on lawns and certain crops on

Wolverines Of Week

Coach Jimmy Wynne has cited four members of Texico Wolverine football team for their fine performances in the Melrose-Texico game of last Friday. Listed as "Wolverines of the

Week" are Albert Steward, offensive back; Randy Skaggs, lineman; Mike Casey, defensive back; Ricky Ketcherside, cornerback.



RANDY SKAGGS



MIKE CASEY



RICKY KETCHERSIDE



ALBERT STEWARD



FIRST LOAD of milo was brought to Sherley-Anderson-Pitman elevator in Farwell Wednesday, Sept. 24, by Darrell Nowell who farms the land owned by Mrs. Barney Harding. The milo had a moisture content of 14 and a test weight of 57%. Nowell accepts a \$25 bonus from Johnnie Williams, manager of the elevator as his four-year-old son, Larry, looks on.

Bowling League Standings

Mrs. Betty Castleberry states that several of the Thursday morning bowling teams can still use another member of tow. Therefore, if any lady is interested in bowling, she should plan to be at AA Bowl Thursday morning at 9 a.m.

Standings in the Tuesday Night Mixed Couples League are:

- Torres and Yruegos
- Luce's Burger Barn
- Parsons and Hammonds
- Jouett's and Hudsons
- Helton Oil Company
- Willett and McGill
- AA Bowl
- Williams and Robinson

High Individual Game Score - Ramond Torres, 199
High Individual Scratch Score - B. C. Yruegos, 560
High Team Game Score - Torres and Yruegos, 684
High Team Scratch Score - AA Bowl, 785

THURSDAY NIGHT GADABOUTS

- W.-L
8-4 Security State Bank-1st
8-4 Piggly Wiggly-2nd
7-5 Team 4-3rd
6-6 Patzer Clinic - Muleshoe-4th
1-11 Team 3-6th

SCRATCH

- H.I.G.S. - Ozell Higginbotham, 187
H.I.S.S. - Ozell Higginbotham, 469
H.T.G.S. - Patzer Clinic, 603
H.T.S.S. - Patzer Clinic, 1678

HANDICAP

- H.I.G.H. - Ozell Higginbotham, 241
H.I.S.H. - Lillian Clark, 624
H.T.G.H. - Patzer Clinic, 824
H.T.S.H. - Patzer Clinic, 2341

THURSDAY MORNING EARLYBIRDS

- W.L.
6-2 Oklahoma Lane Farm Supply
6-2 Kelly Green Seeds
5-3 Hughes Insurance
5-3 Sherley-Anderson-Pitman
5-3 Team No. 10
4-4 A. A. Bowl
4-4 S.I.B. Gin
3-5 Rockwell Bros.
2-6 Sondra's Beauty Shop
0-8 3-D Drive In

SCRATCH

- H.I.G.H. - Irene Gober, 187
H.I.S.S. - Dot Looney, 479
H.T.G.S. - Oklahoma Lane Farm Supply, 606
H.T.S.S. - Oklahoma Lane Farm Supply

HANDICAP

- H.I.G.H. - Betty Renner, 234
H.I.S.H. - Dot Looney
H.T.G.H. - Oklahoma Lane Farm Supply, 795
H.T.S.H. - Oklahoma Lane Farm Supply, 2343



by MARY LEE

If you're over 45 and feeling like the forgotten man or woman, cheer up. Somebody out there cares! The head of a leading advertising agency (McManus, John and Adams) told a recent Newspaper Advertising Executives Conference that the over-45 age group is still the most desirable group for them to consider.

The over-45 people spend 50 percent of our U.S. dollars, while the under-30 market accounts for only 25 percent. In spite of all the advertising and publicity given the young,

it's the older generation that travels more, lives better, and buys higher quality products.

Now, if more retail stores would only confirm that fact with more products and fashion geared to the mature side of the generation gap, it would make a good many people happy.

A good listener is not only popular everywhere, but after a while he knows a few things.—Lucille Thies, The Manteno (Ill.) News.

Bulk Cleaning 35¢ LB.
Cleaning & Pressing
Knit Blocking
Coin Operated Dry Cleaning

Barnes Cleaners

1500 Thornton

Please Bring Hangers Ask The Attendant for Information

SUPPORT

THE TEXICO WOLVERINES NEXT GAME

Tucumcari "B" At Tucumcari

Thurs. Oct. 2nd 8:00 P.M. CDST

Texico Junior Varsity Vs. Melrose Junior Varsity

Texico - Sat. Oct. 4th - 11 A.M. CDST



<p>HELTON OIL Company</p>	<p>TIDE PRODUCTS INC.</p> <p>Ph. 481-3346</p>	<p>TEXACO TRUCK STOP</p> <p>Horace Eubanks, Owner</p> <p>Ph. 482-3413</p>	<p>JIM'S "66" SERVICE</p> <p>Effie Young-Owner</p> <p>400 Wheeler Ave. Texico</p>
<p>RIP'S WESTERN WEAR</p>	<p>CUMMINS RIO GRANDE</p> <p>Sales and Service</p> <p>Ph. 482-3321</p>	<p>DIAL'S VARIETY STORE</p> <p>General Merchandise</p> <p>Texico New Mexico</p>	<p>EMMITT'S SERVICE STATION</p> <p>Wheeler Ave. Texico</p>
<p>TWIN CITY MACHINE WORKS</p> <p>Vane and Howard</p>	<p>LUCE'S BURGER BARN</p>	<p>TEXICO POOL HALL</p> <p>H.L. Selman, Manager</p> <p>Texico New Mexico</p>	<p>GOLDEN WEST SEED CO.</p>
<p>CITIZENS BANK</p> <p>Texico Branch</p>	<p>L.J. SPEARS and SON</p> <p>Complete Harvest Service Combining and Hauling</p>	<p>TEXICO HOTEL and CAFE</p> <p>MARTIN GARAGE</p> <p>Delbert and Eva Martin, Owners</p>	<p>CAPITOL FOODS</p> <p>Buccaneer Stamps</p> <p>Open Until 9:00 Each Evening</p>
<p>STUCKEY'S</p>	<p>MIL and MARY'S TRUCK STOP CAFE</p>	<p>WHEELER AVE. 66</p> <p>RED'S 66 "Red" Prather, Owner</p>	<p>STATE LINE TRUCK STOP</p> <p>Hwy. 60 East - Farwell, Tex.</p> <p>FINA PRODUCTS</p> <p>Carl Matthen - Curtis Smith</p>

Steers Of The Week



MARK WILLIAMS



DANNY PRINCE



BOB WIMAN



GREG MEEKS

Four members of the Steer football squad have been listed by Coach Toby Booth as "Steers of the Week," for their fine performances in the Plains-Farwell game last Friday night. Listed

as linemen of the week are Bob Wiman, tackle, and Greg Meeks, center. Backs of the week are Danny Prince and Mark Williams.

Industrial Relations --

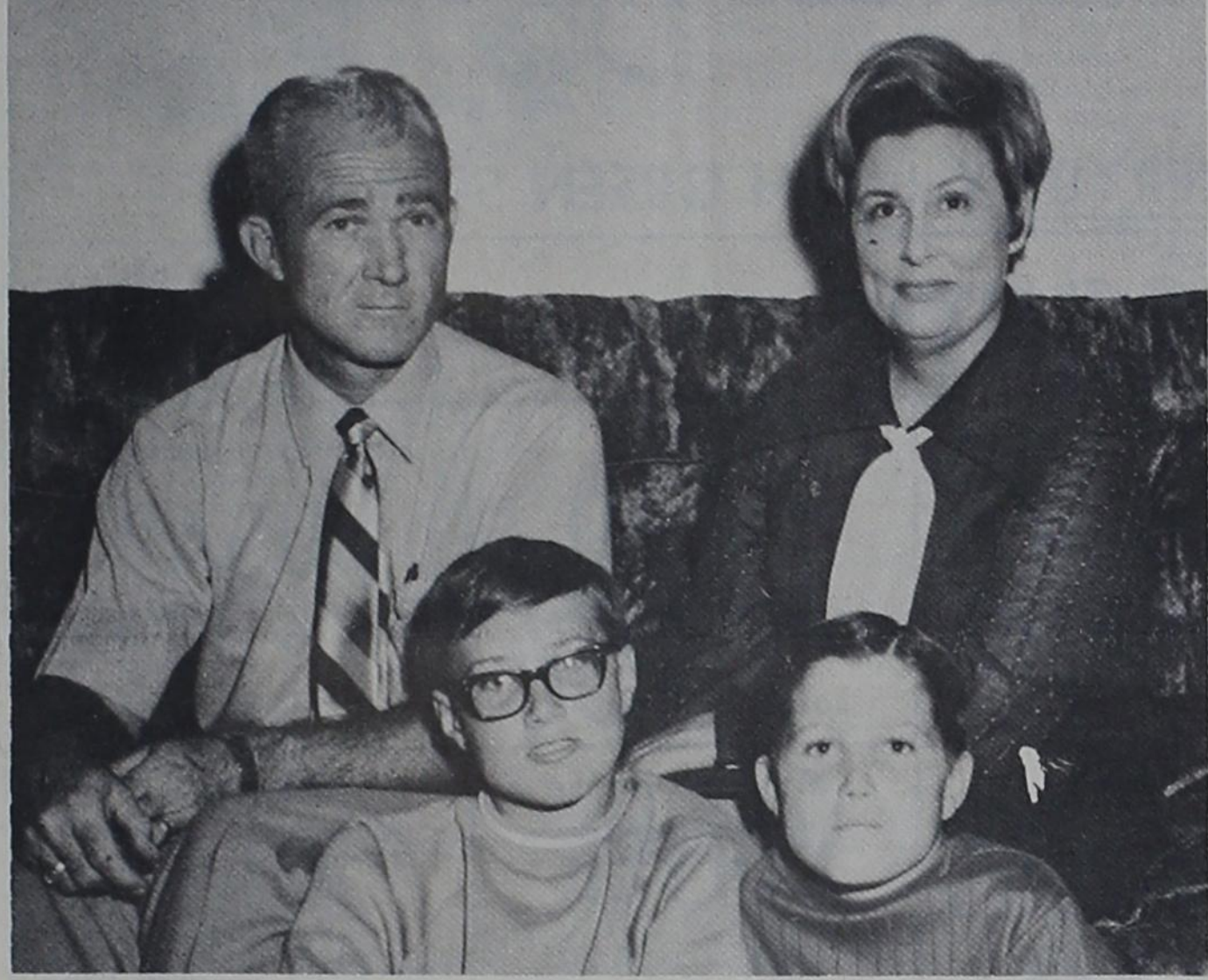
Name Montgomery REC Director

R. G. "Dick" Montgomery recently began duties as the Director of Industrial Relations for the Dear Smith County Rural Electric Coop in Hereford. He will be calling on and servicing commercial and industrial consumers for the cooperative.

Montgomery was previously associated with the Farmland Industries in Amarillo and was engaged in marketing of petrol-

eum products and public relations work. He had also worked as a wire-line service engineer and is a veteran of the Korean War.

He and his wife, Patricia, are natives of Altus, Okla., and both attended Oklahoma State University. They reside at 137 Mimosa in Hereford, with their sons, Mauri and Jay.



MR. AND MRS. DICK MONTGOMERY, MAURI AND JAY

'Mixed-Up' Is Look For Fall

For the carefully planned "mixed-up" look for fall, be inventive in combining plaids with prints, herringbones and tweeks with prints or stripes, suggests Fannie Brown Eaton, Extension clothing specialist.

She gives guidelines which may help with this difficult aspect of fashion:

- work with three basic colors.
- use one dominant patterned fabric - others in subdued designs.
- draw patterned fabrics together by using a solid fabric which repeats one color in each fabric.
- choose small designs in printed fabric when used with a plaid or stripe.

Fire Calls Answered

Both of the local volunteer fire departments remained idle again last week. Neither of the departments has received a call to a fire in the past several weeks.

Has Eye Surgery

Joel P. White was hospitalized in Clovis for several days early this week after undergoing eye surgery. The eye was injured in an accident on the White farm. White was repairing a plow when a piece of steel broke loose and stuck into his eye. He underwent surgery on the eye Saturday afternoon to remove the steel. He is still under observation by his physician, but is recuperating at home.

Locals

Susan Patrick, a student at Texas Tech, was a guest in the home of her parents, Mr. and Mrs. James W. Patrick, during the weekend.

Red Sez



Tax collector: "You should pay your taxes with a smile."
Red: "I would, but you insist on money."

Let Us Service Your Car With Fuel-Oil-Wash-Lube Job.
We Will Pick Up And Deliver.
Wheeler Avenue "66" Station
Texico Ph. 482-9148
AND
RED'S "66"
Red Prather 481-3662 Farwell

Counselor Comments

By Charles Turner

College -- "to be or not to be" to coin a phrase from Will Shakespeare, "that is the question."

Our young people are faced today with myriad decisions to make concerning whether to go to college or attend some other kind of training school.

The answer ultimately lies with the student, even though he is often faced with pressure from parents, friends, and teachers to make the old "college try." Unfortunately, college is not for everyone, and many young people under stress often make unrealistic and unhappy decisions to go to a four year senior college when they would be better suited academically, interest and ability-wise, attending a two-year technical-vocational school or a junior college terminal program.

Our society has somewhat "stereotyped" the technical-vocational programs as "catchalls" for college drop-outs. This philosophy is fallacious in that the training received in most technical-vocational departments is as rigid and exacting as some liberal arts curricula in a four-year institution.

No changes are planned in the activities at the church at the present time.

four-year liberal arts colleges prepare one for the "professional" occupations. Examples of technical school curricula are welding, auto mechanics, food service technology, agri-business, and many other fields that can be prepared for in two or three years of intensive training.

Examples of the senior college curricula are the teaching profession, law theology, engineering, pre-med, pre-vet, accounting and other fields that would take a four or more year stint in a senior institution.

Although many factors may affect a decision, these three should be taken into consideration when a choice is to be made: interests, ability-aptitude, and incentive. All factors should be weighed carefully and investigation into the various

occupational areas should be made. Help can be obtained from the counseling service in the high school and should be utilized before the final decision is made.

Summarily, the decision as to a training institution is the student's, but should be arrived at carefully and realistically through exploration, contemplation, and examination of his goals.

Seventh Grade Wins, 8th Grade Ties Hart

Farwell Junior High football teams came away from their weekend games with one win and a tie. The seventh grade defeated Hart while the eighth grade tied the Hart eighth grade team. In commenting on the seventh grade game, Coach Jerry Owen said, "The team looks good for their first regular game." His comment on the eighth grade squad was, "We still have scoring problems but we are working them out."

Christian, Clint Robertson, William Rundell and Lesly Curtis for their fine defensive work. Final score in the eighth grade game was 16-16. Halftime score saw Hart leading 16-0. Halfway into the third quarter, Farwell finally got its offense working and scored on a play by Rodney Herington. Herington later scored another TD and plunged across the extra points to tie the game.

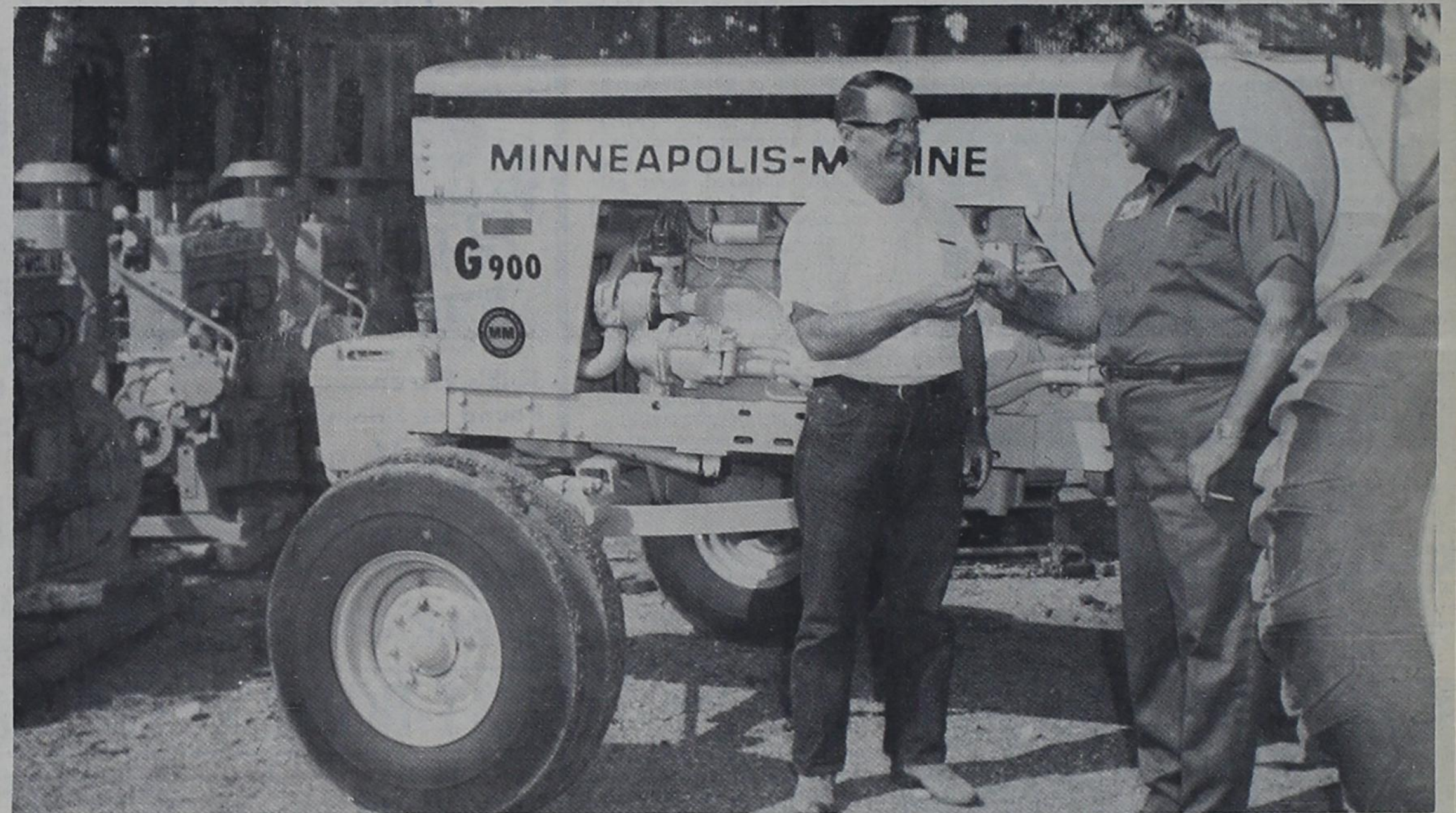
Along with Herington, Coach Owen cited Kevin Hargrove, Kevin Hardage, Carl Kirkland, Andy Bowers, Darry Hargett, Larry Wardlaw, Bill Johnson, Ricky Williams and Winfred Long for their fine performances.

Had the game been a district contest the Farwell team would have been declared the winner since they scored more penetrations than did their opponents.

Next game for the teams is Thursday, Oct. 2, when they host Morton seventh and eighth grade teams. Game time is 5:30 p.m. at Steer Stadium.

District play begins October 16 when the seventh and eighth grades travel to Springlake-Earth for games.

YOU BUY WE PAY!



Allen Rogers Who Farms North Of Texico Receives The Keys To His New G 900 Tractor From John Dempster.

Rogers Recently Bought His G 900 And Also Received A Refund Check Direct From Minneapolis Moline Company.

TRADE NOW And Receive Up To **\$500⁰⁰** From Minneapolis-Moline. This Is A Limited Offer So See John Dempster Now For The Tractor Deal Of A Lifetime.

FARWELL EQUIP. CO.

You Can Trust... Your Insurance Headquarters
ALDRIDGE INSURANCE AGENCY
Farwell

Grain Sorghum Disease And Insect Research Told

With a favorable vote on the grain sorghum referendum, some of the problems that grain farmers and the Grain Sorghum Producers Association would hope to find solutions to through a stepped up research program are:

Greenbugs: Help may be on the way for the greenbug problem. They were serious again this year and some producers

used as many as three applications of insecticides in order to get control. Dr. Bill Ross, USDA sorghum breeder at Hays, Kansas, released a sorghum line that is resistant to greenbugs. Other resistance has been found in the World Collection of Sorghum. If the biotype of the greenbug does not change again, resistant hybrids could be available in the future. According to Dr. Jerry Johnson, sorghum breeder, Texas Agriculture Experiment Station, Lubbock, "It will take time, special equipment, and a team approach if we are to succeed." When you consider the cost of spraying, it will be well worth the effort.

Downy Mildew: Downy Mildew is present on sorghum on the High Plains again this year. It has been found mainly on sorghum - sudans and some silage types. While it has never been serious in this region, it has become an economically serious disease in South and Southeast Texas. The disease has also been reported in Oklahoma and Kansas. The development of resistant hybrids is the only means of control. At the present time no hybrids are completely resistant, but degrees of tolerance are available. Producers should watch their fields for this disease.

Maize Dwarf Mosaic Virus: Maize Dwarf Mosaic Virus is still being found on the High Plains. The disease was first observed in 1962 on a few corn plants growing along the Ohio River. Since that time, the virus has spread rapidly

throughout most of the sorghum producing area of the United States. Distribution varies within areas depending upon the presence of the virus and the availability of the perennial host plant, Johnsongrass. Little is known about this disease. How serious it will be is still not known. It is difficult to measure losses and as a result a more basic approach is required to study the full effects of MDMV. The problem is complicated, since greenbugs can transmit the virus and Johnsongrass is an ideal host.

Some hybrids are tolerant to the disease and producers should keep this in mind when selecting hybrids. This is just one more problem that faces sorghum producers. It should be remembered that other diseases in the past have also been serious, but through research resistances have been developed in new hybrids.

Head Smut: Head Smut of sorghum is again becoming a major disease problem. A new race of Head Smut is now attacking sorghum hybrids in South Texas which were previously resistant. The new race was observed last year, identified last winter, and caused economic damage in 1969. Another new race is suspected in Kansas, but to date has not been verified. It is not all bad news, new smut resistant hybrids are already being sold and more will be available next year. However, there has been two new races of Head Smut in two years and more can be expected. In order to prevent losses in the future a contin-

ous program of identification of potential new races must be maintained. The development of resistant hybrids appears to be the only control and as more new races are identified the development of resistant hybrids will become more complicated.

Grain Quality: Grain quality is becoming more important on the High Plains as feed operations continue to expand. Dr. Raymond Hinders, Animal Nutritionist with PGC explained, "Increased costs means that feeders must receive maximum efficiency from grain fed to animals." He continued by saying, "The value of sorghum can be increased." Dr. Hinders speaks with authority since he has been a leader in the development of improved quality grain. Most of his work has been on sorghums from India, and was instrumental in

the development of a new grain sorghum hybrid. Why these characters improve sorghum quality are not known, but before all the hybrids planted on the High Plains in the future carry the quality that will be so important these characters must be identified.

The grain farmers are voting on a program to help solve some of these programs. It is the grain sorghum referendum. The referendum ballots have been distributed. The average cost per farmer within the 29 county area is only 9 cents per acre. Elbert Harp, Executive Director of GSPA said, "If only one spraying could be eliminated through a stepped-up research program, this would be a 2700% return for the average farmer. This is only one of the smaller possibilities. We hope every grain producer will vote."



PROUD HUNTER -- Donald Callouet of Texico killed this 100-pound antelope in the first few minutes of a hunt near Tolar, N. M., Saturday. The season (special permit) opened at noon on Saturday, and by 6 p.m. all four members of the Callouet party had brought down their animals.

KEEPING HERBICIDES PUT --

A team of Texas A&M University scientists is working to improve brush and weed control by trying to find ways of making herbicides stay where they are put. A variety of substances is being tried in the herbicide carriers to overcome such problems of too rapid evaporation, or allowing sunlight to break down the herbicide before it can be completely effective or drift into areas where susceptible crops are growing. The project is being carried out under a grant from the U. S. Department of Agriculture and covers a four-year period.

ON FEEDING LOW QUALITY FORAGES --

The use of low quality forages in the dairy ration increases grain feeding requirements and may increase the dairyman's feed cost by as much as 30 percent or even more, says A. M. Meekma, Extension dairy specialist. If the animal's nutritional requirements are not met, production may drop so sharply as to cause a serious financial bind, adds the specialist.

Troop 200 Studies Compass During Carlsbad Camp-Out

"Lunches 750 feet below ground surface are better than ever," reported Texico-Farwell Boy Scout Troop 200, after eating fried chicken in Carlsbad Caverns' underground lunchroom Saturday afternoon. Following the caverns tour, Troop

200 set up camp at "Rattlesnake Springs" near White City. "Rattlesnake Springs," maintained by the National Park Service, provided an ideal place for camping and hiking. Not living up to its name, the area produced only a small water

snake during the two-day camping experience.

Following instruction in compass usage by Scoutmaster Gene Bitner, troop members had to search for prizes hidden about a mile from camp by Senior Patrol Leader Mitchell Turnbough. Boys were given compass readings only and were hampered by fences, creeks, cactus, and brush. Patrol Leader Kent Blain, armed with previously prepared water balloons, provided encouragement for boys to take and check their compass readings as quickly as possible.

While the activity was a review for most of the Scouts, official Second Class compass requirements were passed by David Snider, Alan McCleskey, and Terry Williams.

Although Troop 200's new bus has bunk bed sleeping facilities, intended for travel-comfort and emergency use, all Scouts slept under their tents and were held responsible for individual cooking needs.

Hikes were made into surrounding vicinities, led by Randy Stovall and Donnie Garner. Also camping with Troop 200 was Jackie Hitson, who has maintained his membership since moving to Roswell.

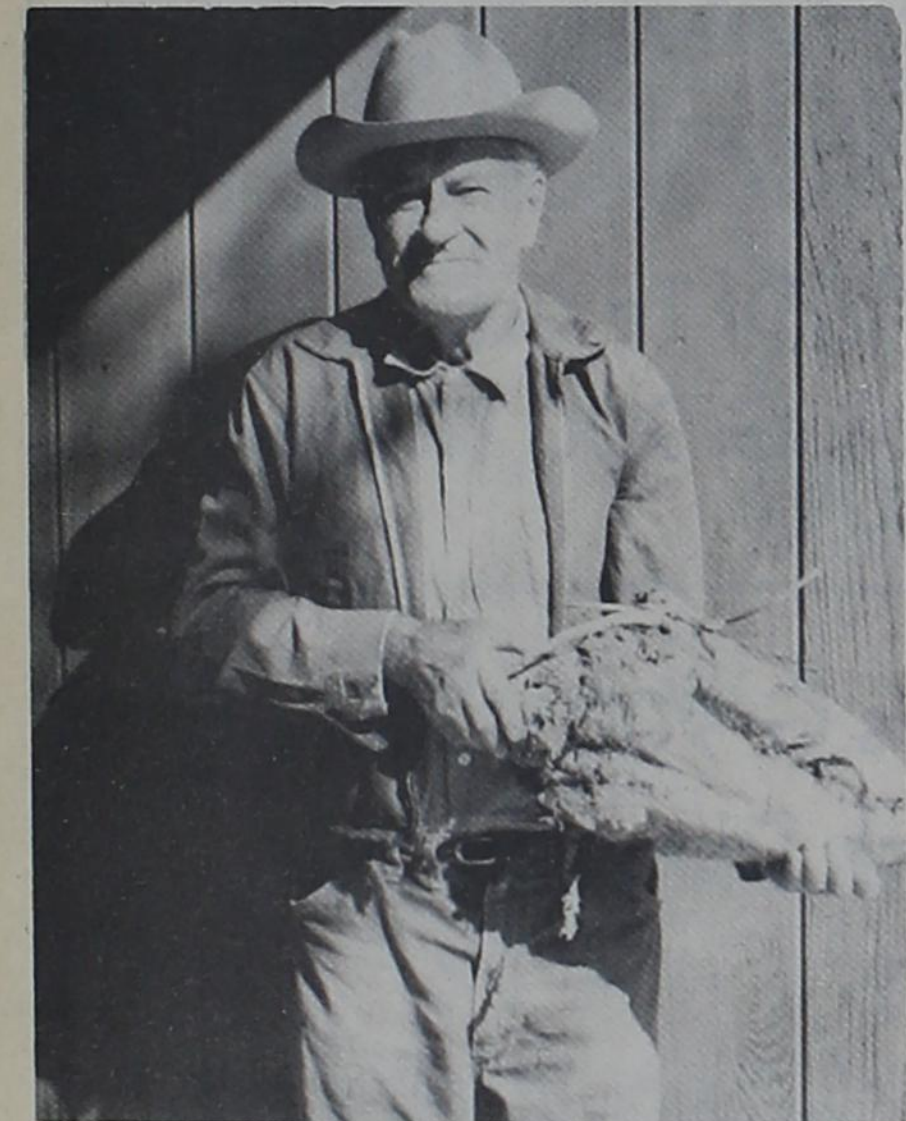
Relative Dies

Mrs. J. B. Benderman has received word of the death of her brother-in-law, Herman Benderman, in Cincinnati, Ohio. Mr. Benderman, brother of the late J. B. Benderman, died following a heart attack. He had visited in Farwell many times. He was a retired employee of the Ford Company.

Automobiles continue to be driven at only two speeds—lawful and awful.—Fred W. Grown, The Bergen (N. J.) Citizen.

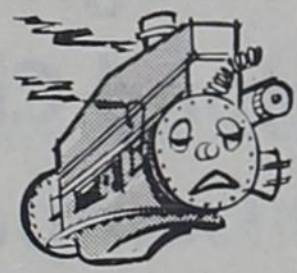


VISIT CARLSBAD CAVERNS -- Those members of Texico-Farwell Troop 200 who were not detained at home by illness and school activities were treated to a weekend in Southeastern New Mexico Sept. 27-28. Touring Carlsbad Caverns were (l. to r.) Randy Stovall, David Snider, Kent Blain, Jackie Hitson, Mitchell Turnbough, Terry Williams, Donnie Garner, and Alan McCleskey. Troop 200 has an out-of-town camp-out or other activity each month except December, including annual visits to Corona, N.M., and Lawton, Okla.



LOTS OF SWEETENING -- If the beet held by B. A. Rogers is any indication of the size of the beets raised on the 45 acres farmed to beets, there should be plenty of "sweetening" on that farm. The Rogers land, farmed by J. D. Kelley, is located in Curry County, 11 miles north and two miles west of Texico.

WANTED!



SLUGGISH ENGINES

Pep-up that engine now. See us for the expert tune-up you need.

Karl's Auto Clinic

Smokey And Fred
481-3687 Farwell



PIGGLY WIGGLY'S

HARVEST

OF FALL FOOD VALUES




DISCOUNT SPECIALS EVERYDAY + S&H GREEN STAMPS

We Redeem Government Food Stamps		Shurfresh		BISCUITS		8 oz. Can	6 For	49¢
 		Golden West		Food King		Holly Granulated		
Swift's Proten Round or Sirloin STEAK lb.		95¢		FLOUR		BREAD		SUGAR
Swift's Proten RIB STEAK lb.		89¢		25 lb. Bag \$1.89		1/2 lb. Loaf 15¢		10 lb. Bag \$1.15
Swift's T-BONE lb.		\$1.09		Shurfresh		Maxwell House		Shurfine
Swift's Proten Rump Roast lb.		89¢		CRACKERS		COFFEE		MILK
Fresh Center Cut 98¢ Northern Pork Chops		79¢		1 lb. Box 19¢		2 lb. - - \$1.29		Tall Cans \$1.00
Korn Land Smoked BACON lb. Pk.		69¢		Ajax		LIQUID CLEANSER		4 oz. Bt. 89¢
Whiting Fish lb.		25¢		Chiffon		TOILET TISSUE		2 Roll Pk. 25¢
PRODUCE		Chiquita BANANAS lb.		10¢		Morton's Honey Buns		Pinkney's Pure LARD 3 lb. Can 59¢
New Mexico YAMS lb.		19¢		3 Pks. \$1.00		Purina Assorted Flavors CAT FOOD		Gold or Avocado COFFEE MUGS
Cello #1 CARROTS 2 For		25¢		Kraft's Macaroni Dinners 7 1/4 oz. Box 19¢		8 For \$1.00		Roxy Tall Can DOG FOOD
SUMMER STORE HOURS -- Mon.-Tues.-Thur.-Fri. 8 A.M. to 8 P.M. Wed. & Sat. 8 A.M. to 9 P.M.		WE ARE ALWAYS CLOSED ON SUNDAY		Tender Crust BREAD 5 For \$1.00		Brown Beauty BEANS 2 For 25¢		12 For \$1.00
Shop & Save At Your Texico-Farwell PIGGLY WIGGLY Everyday-Mon. thru Sat. But If You Shop elsewhere At Night And On Sunday You Could Be Paying Quite A Bit More.		Patio Combination or Beef Enchilada DINNERS 39¢		Morton's CREAM PIES \$1.00 4 For				Kraft's Apple or Grape JELLY 18 oz. Jar 35¢
						<p>WE RESERVE THE RIGHT TO LIMIT QUANTITIES!</p> <p>Shop the friendliest store in town!</p> <h1>PIGGLY WIGGLY</h1> <p>FARWELL, TEXAS "Parmer Counties Largest & Finest Super Market."</p> <p>Prices Effective Thurs., Fri. & Sat. Oct. 2-3-4, With Most To Continue Through Wed., Oct. 8, 1969</p>		

The **John Deere** Implement Dealer For YOU

Ingram Bros. Implement Company

MABRY CLOVIS



MANY AWARDS have been received by Cheryl, left, and Linda, daughters of Mr. and Mrs. Hubert Gohlke, since they became members of Oklahoma Lane 4-H Club. Cheryl, who has been a 4-H club member for a year and one-half, has received a total of three blue ribbons, five red ribbons and three white ribbons on her projects. Linda, who only became a 4-H club member last month has already received a blue ribbon, a red ribbon and a white ribbon on some of her projects. Any boy or girl age nine to 19 is eligible to participate in 4-H work and is invited to any of the meetings of the group.

Courthouse Notes

Instrument report ending September 27, 1969 in County Clerk Office Bonnie Warren, County Clerk.
WD, First Fed. Sav. & Loan, Florian E. Jareski, Lots 1 & 2, Blk. 41, Friona
DT, Florian E. Jareski, First Fed. Sav. & Loan, Lots 1 & 2, Blk. 41 Friona
WD, Gil DeLeon, Jr., Ismael R. Rodriguez, Southeastly 70' of Lot 1, Blk. 101 Bovina
DT, Ismael R. Rodriguez, F. H.A., Southeastly 70' of Lot 1, Blk. 101 Bovina
WD, E. A. Sheek, Bill J. Benham, 2.5 ac out E/side SE 1/4 of Sect. 20 T55
DT, Bill J. Benham, E. A. Sheek, 2.5 ac out E/side SE 1/4 of Sect. 20 T55
WD, Ben Foster, Jr., Foster Fertilizer Co., Part of SE 1/4 Sect. 73 Kelly H.
WD, H. A. Hyde, Maxine Bolding, Und. 1/2 int in NW 1/4 NE 1/4 Sect. 6, Blk. H. Kelly
WD, H. A. Hyde, Trunell W. Hyde, Und. 1/2 int. in E 1/2 SE 1/4 Sect. 10, Sullivar
WD, H. A. Hyde, Evan Den Kimbrough, Und. 1/2 int. in SW 1/4 NW 1/4 Sect. 10, Sullivar
WD, H. A. Hyde, Omer E. Hyde, Und. 1/2 int in SE 1/4 SW 1/4 Sect. 6, Blk. H. Kelly
WD, Rodney James Klemke, Jimmie B. Hughes, Lot 2 & N 20' Lot 3 Blk. 9, Drake, Friona
WD, Veterans' Affairs, Jack D. Moseley, S 1/2 Lot 5 & Lot 6, Blk. 4, Lakeside Add Friona
DT, Jack D. Moseley, Hi-Plains Sav. & Loan, S 1/2 Lot 5 & Lot 6, Blk. 4, Lakeside Add Friona
DT, Delvin Langford, First Fed. Sav. & Loan, Lots 26, 27, 28, 29, Blk. 21, OT Farwell Abst. Judg., Lucile Bergner, et al vs Sam Sudderth, SR

Classified Ads
WANT ADS PH. 481-3681
CLASSIFIED RATES
First insertion, per word - 6¢
Second and additional insertions - 4¢
Card of Thanks - \$1.00
Double rate for blind ads
Classified Display - \$1.00 per col. inch
Minimum charge - 65¢ on cash order, \$1 on account
DEADLINE FOR INSERTION
Friday's State Line Tribune - 10 a.m. Wednesday
The Tribune reserves the right to classify, revise or reject any classified ad.
Check advertisement and report any error immediately
The Tribune is not responsible for error after ad has already run once.

Need A Late Model Car Or Truck? Call Charles Seale At Friona 247-3571 Or Hereford, 364-2727. 33-tfnc
NEED extra Christmas money? Stanley Home Products has openings for two ladies with cars, \$50 part time, \$100 full time, weekly. No investment. Write or call 806-364-0176, Betty Wilcox, 905-16th, Hereford. 2-4tp
FOR SALE -- Nice 2-bedroom home at 104 Sandia Drive in Farwell. I will take \$600.00 for \$3000.00 equity and let you assume low interest rate loan. Will consider anything of equal value in trade. Call 482-3445. 50-4tc
Farm and Ranch Loans Long Term Low Interest Ethridge - Spring Agency - Friona Phone 247-2766

FOR SALE to settle estate -- 320 acres; irrigated, cement tile, improved, 6 mi. southeast of Farwell. Orle Jones, 825-2477. 51-4tp
WANTED -- Job Printing. Can do all kinds. Quality Work. State Line Tribune, 404 Third St., Farwell. Ph. 481-3681. 2-tfnc
Reduce safe & fast with GoBese tablets & E-Vap "water pills". Rose Drug. 51-4tc
Need party with good credit in Farwell area to take over payments on 1968 Model Singer Sewing Machine in walnut console. Will zig zag, button hole, fancy patterns, etc. Five payments at \$5.55 or will discount for cash. Write Credit Dept., 1114 - 19th St., Lubbock, Texas 79401. 41-tfnc

BOYD'S COMPLETE Brake and Bear Front End Service TIRE TRUING, WHEEL BALANCING AND OVERLOAD SPRINGS, MONROMATIC SHOCKS, DRUM TURNING, BRAKE DRUMS, BRAKE SHOE EXCH. POWER BRAKES, UNITS, ETC. BankAmericard And Master Charge Welcome BOYD'S BRAKE SHOP 2 Blk. off Main St. Leave Car Here and Do Your Shopping. 1-tfnc
DIRT MOVING, TAIL WATER PITS TERRACES, HAND LEVELING & WATER WAYS
FREE ESTIMATES & ENGINEERING
ED LIVELY HARVEY JORDAN
FARWELL CLOVIS
Ph. 481-3280 Ph. 763-6783

Longhorn Roundup by Mike Casey

The Bovina Mustangs handed the Lazbuddie Longhorns their first regular season loss in two years, Friday night. The Mustangs defeated the Longhorns by a score of 32-26. The loss for Lazbuddie was disheartening as they had to come from behind twice. The winning TD for Bovina came with just 28 seconds left on the clock.
Monte Barnes, Lazbuddie quarterback, has this comment about the game, "From my point of view, I think we played below average and at different stages of the game, tried to outguess them at the wrong time. We keyed McMeans too much and didn't worry enough about Beauchamp and Sisk."
Derrell Mathews got Lazbuddie on the scoreboard first with a four-yard sweep. Bovina's Royce Sisk countered with a 14-yard run. Sisk came right back and got his second TD of the night on an 80-yard gallop to the end zone. The Longhorns came right back with a yard plunge by Derrell Mathews in the second quarter. Mathews kicked the conversion and the Horns had a halftime lead of 13-12.
In the third stanza, Bovina rambled to a 25-13 lead on Stuart McMeans four-yard run and Phil Sorley's 66-yard pass reception from Roy Ramariz. Lazbuddie battled back to narrow the margin to 25-20 in the fourth quarter on Monte Barnes two-yard blast.
Again in the fourth quarter, Lazbuddie fought back and recaptured the lead 26-25 on Derrell Mathews two-yard run. However, Bovina wasn't through yet. With just 28 seconds left in the game, Mike Beauchamp skirted the right end for 11 yards and the winning touchdown.
Statistic-wise, Lazbuddie outgained the Mustangs 293 yards rushing to 260 yards. The Longhorns also had 366 yards total offense to Bovina's 360. Derrell Mathews was the leading rusher for the Horns picking

Whats Cooking At Farwell School

MONDAY: salmon croquettes, catsup, blackeyed peas, buttered corn, cabbage slaw, peaches, milk, bread.
TUESDAY: pinto beans, hot tamales, buttered spinach, pickles, onions, cornbread, butter, chocolate pudding with cream, milk.
WEDNESDAY: steak fingers with catsup, potato salad, green peas, orange juice, bread, cherry cobbler, milk.
THURSDAY: hamburgers, lettuce, tomatoes, pickles, onions, potato chips, baked beans, iced cake, gelatin, milk.
FRIDAY: meat loaf, catsup, buttered corn, tossed salad, cranberry sauce, bread, ice cream sticks, milk.
Mr. and Mrs. Charles Roberts from Fort Stockton spent the weekend visiting in the homes of their respective parents, Mr. and Mrs. W. M. Roberts and Mrs. Edith Blair.

School Lunch Schedule AT TEXICO

MONDAY: hamburger on bun, pickles, lettuce, tomato, onion, buttered peas, chocolate cake, milk.
TUESDAY: pizza, buttered potatoes, lettuce wedge, loaf bread, fruit gelatin, milk.
WEDNESDAY: corny dogs w/mustard, lima beans, pineapple & orange gelatin, loaf bread, peanut butter logs, chocolate milk.
THURSDAY: hamburger casserole, blackeyed peas, carrot sticks, cornbread, sweet potato pie, whipped topping, milk.
FRIDAY: fried chicken, cream gravy, whipped potatoes, tossed salad, hot rolls, peanut butter spread, milk.

Rummage Sale Slated

The Texico Assembly of God Church Ladies Auxillary has slated a rummage sale for Friday, Oct. 3, from 4 - 6 p.m. and all day Saturday, Oct. 4. The sale will be held at the Texico Community Center (former woman's club building).
A spokesman for the group stated, "We will have clothing of all kinds, odd pieces of furniture, pots and pans and many other household items for sale."

A move to worship GOD in His HOUSE is a MOVE in the RIGHT DIRECTION
To attend Church is the first step in finding God. To attend regularly is to continue in the right direction. and gives one an opportunity to understand God's will in his life. Now is the time to make your move. Choose the way that will lead you to God
Attend Church
The Church is God's appointed agency in this world for spreading the knowledge of His love for man and of His demand for man to respond to that love by loving his neighbor. Without this grounding in the love of God, no government or society or way of life will long persevere and the freedoms which we hold so dear will inevitably perish. Therefore, even from a selfish point of view, one should support the Church for the sake of the welfare of himself and his family. Beyond that, however, every person should uphold and participate in the Church because it tells the truth about man's life, death and destiny; the truth which alone will set him free to live as a child of God.
EVERYONE IN THE CHURCH... THE CHURCH IN EVERY HOME

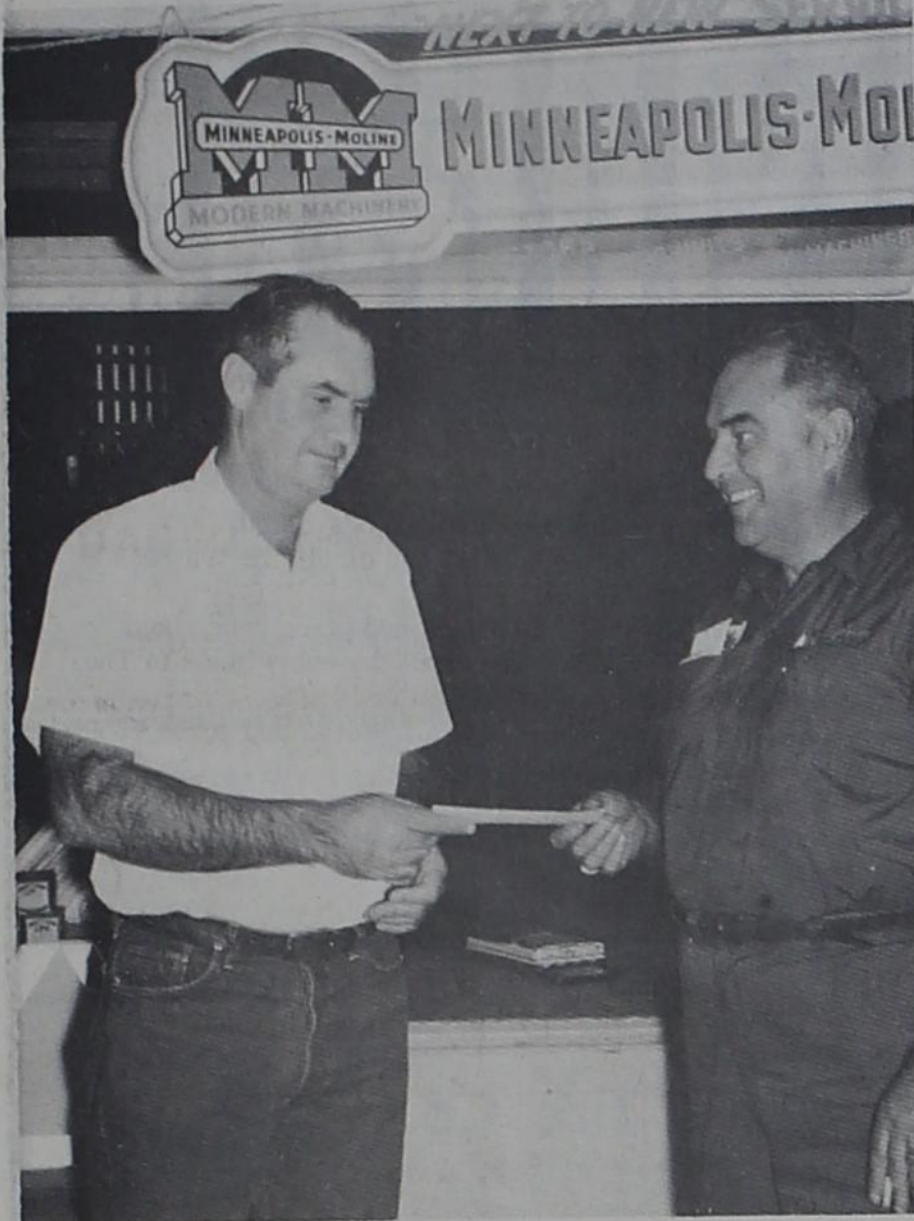
PHILLIPS 66
The Shield Of Quality
• Butane
• Gasoline
• Diesel
• Tires
• Lubricants
• Batteries
• Fertilizers
HELTON OIL CO.
Fast Delivery phone 481-3222
You LONG For A New 1970 Pontiac See George For The Best Deal In Town. Pontiac, GMC, Rambler, and Better Used Cars Rierson Pontiac
Clovis, New Mexico Home Phone: 481-3876 Farwell, Texas

FARWELL HARDWARE ZENITH 305 Ave. A 481-3286
WATTS MACHINE & PUMP CO., Inc. 481-3301
CAPITOL FOODS Sharpline
HUGHES INSURANCE AGENCY General Insurance 509 Ave. A. 481-3671
Claborn Funeral Home Phone 247-2801 Friona, Texas
Benny & Wilma Bud & Maude B-W FEED YARDS Clovis Branding-Dipping-Feeding Buy or Sell - Stocker & Feeder Cattle
SHERLEY-ANDERSON-PITMAN, INC.
W & J AUCTION 108 Pile St. Pho. PO 3-7311 SALE EVERY TUES. James Priest & Associates, Auctioneers
The CITIZENS BANK Texico Branch Complete Bank Service Member FDIC
TEXACO INC. Woodrow Lovelace
HOLIDAY The Family Store 5th & Ave. A 481-9070
ROSE Rexall DRUGS & Gift Shop Prescriptions a Specialty 481-3281
OKLAHOMA LANE FARM SUPPLY AND GIN "Where Your Business Is Appreciated"
ALDRIDGE INSURANCE AUTO-FIRE-CASUALTY 402 3rd. Ph. 481-3361
Mid-West Video Ph. 763-3300
Religious Music All Day Sunday On KZOL 1570 On Your Dial
Hamlin Memorial Methodist Church Philip Baker, Pastor Church School - 10:00 a.m. Morning Worship - 11:00 a.m. Evening Worship - 7:15 p.m.
Farwell Church of Christ Deway Fogerson - Minister Sunday School - 10 a.m. Morning Worship - 10:50 a.m. Evening Worship - 6 p.m.
Texico First Baptist Church Leroy Looper - Pastor Sunday School - 10 a.m. Morning Worship - 11 a.m. Evening Worship - 7:30 p.m.
Oklahoma Lane Methodist Church O. W. Williams - Pastor Sunday School - 10 a.m. Morning Worship - 11 a.m. Evening Worship - 7 p.m.
St. John's Lutheran Church Herbert F. Palman - Pastor Sunday School - 9:30 a.m. Morning Worship - 10:30 a.m.
Assembly of God Claude Walker - Pastor Sunday School - 10 a.m. Morning Worship - 11 a.m. Evening Worship - 7:30 p.m.
West Camp Baptist Church David Owings - Pastor Sunday School - 10 a.m. Morning Worship - 11 a.m. Evening Worship - 7 p.m.

Gwen Hughes Leads --

Dargin Kirk Calls Nine Right To Win Weekly Prize

Only one person called nine games correctly in the weekly merchant's football contest last week and no one called all of the games right. Dargin Kirk won the weekly first place prize



PRIZE WINNER --- Dargin Kirk accepts a check for \$5,000 from John Dempster of Farwell Equipment Company, one of the sponsors of the merchant's football contest, for his prize winning first place entry in the contest last week. Kirk was the only person calling nine of the games right, missing only the Happy-Vega game which ended in a tie.

Suffers Heart Attack

Word has been received by the Gene Deeds family that Trilyn Deeds of Booker, Tex., father of Gene Deeds, suffered a heart attack last Thursday. He is presently hospitalized in Beaver Hospital in Beaver, Okla. His condition is described as "good." However, he must remain hospitalized for several more weeks and must take it easy for at least six months.

Marriage Licenses Issued

Three marriage licenses were issued from the office of Parmer County Clerk Bonnie Warren last week.

The permits to wed went to Melvin Oland Allen and Dollie Luetta Rhodes, Sept. 23; Darell Eugene Reader and Bobbie Jo

Reader, Sept. 24; and David Lee Ellis and Susan Lynette Joplin, Sept. 25.

by missing only the game in which Vega and Happy tied. Several persons succeeded in calling eight of the games correctly, including Bill Moss and Randy Stewart, second and third place winners, respectively. Other persons calling eight games right were Fred Chandler, Fern Christian, Jacquetta Crook, W. H. Flowers, Johnny Franse, Mrs. Bill Moss, Ty Phillips, Bill Prince, Pete Run-

Texico Junior Girls Win Another Game

Texico Junior High School girls' softball team continued their winning ways Tuesday when they downed Floyd Junior High 17-1. Kim Pearce was winning pitcher for Texico; however, she was relieved on the mound in the fourth inning by Judy Yell. Catcher was Betty Steward.

Judy Yell and Carla Richardson contributed home runs in the game. Outstanding play of the game was a triple play from Diane Kelley, who caught a fly ball in the field, to Carla Richardson on first base, and from Richardson to Jo Pearce, shortstop, covering second base.

Dr. Jarvis Accepts Engagement

At the noon meeting of Farwell Chamber of Commerce and Agriculture Tuesday, Dutch Quikel gave a report indicating that Dr. Charles Jarvis has accepted a speaking engagement for the annual Chamber banquet. The banquet will be held at the Farwell school cafeteria on March 19.

Dr. Jarvis spoke at the banquet two years ago. Those who heard him at that time will not want to miss this chance to hear him again, and those who did not hear him on his first appearance have a special treat in store.

The Chamber will again underwrite the Christmas lighting project for the downtown area.

dell, Dean Stovall and Sis Deeds. Moss missed the tiebreaker score by 24 points and Stewart missed the tiebreaker score 25 points.

Fifty-seven persons called seven games right, 102 persons called six games right, and an additional 77 persons called five games right. The remainder of the contestants called four or less games right.

The third week in the contest

Coach C. B. Stockton stated, "The girls are playing a fine brand of ball."

The girls' varsity softball team lost a game to Floyd 9-7. Vickie Richardson was pitcher for Texico and LaWanda Yell was catcher. LaWanda Yell contributed the only Texico homerun.

Coach Stockton said, "Floyd only earned two runs in the game -- all of their other runs came on infield errors by our team." Coach Stockton cited Donna Chumley for her fine playing in the field, stating, "she made several one hand catches while running at full speed."

"The high school team is playing pretty fair, but needs to show more hustle," commented Coach Stockton.

Next game for the girls is Tuesday, Oct. 7, when they meet Grady at Grady.

Hospital Notes

Mrs. Dorothy Lovelace, who underwent surgery at Clovis Memorial Hospital recently, has returned to her home in Farwell. She is recuperating nicely.

Mrs. H. R. Crook is confined to Clovis Memorial Hospital receiving medical treatment. She was admitted to the hospital Saturday evening.

H. R. Crook, who was hospitalized in Clovis for several

saw a total of 22 new entries, bringing the grand total during the three weeks to 350, an all time high for the event. The contest has been an annual event for the past ten years.

Gwen Hughes jumped into an undisputed first place lead last week in the overall contest. She has a total of 25 games called right in the three weeks the contest has been in progress. In second place in the overall contest are Fred Chandler and Deb Norton. They have each called 24 correct games.

Ten persons including Elva Ruth Davis, Mike Flowers, Peggy Hargrove, Joe Hughes, Melborn Jones, Virginia Kirk, Jerry Mathis, Vernon Scott, Barbara Spears and Elaine Wardlaw, have called 23 games correctly. Another 23 persons have called 22 games right.

The contest is still young, NOW is the time to get in your entry.

Rummage Sales Continue In New Location

The rummage sales which have been in progress in the Ford building in Farwell for the

past month, sponsored by Theta Rho Chapter of ESA Sorority, will continue this week in a new

location. The sales will be held throughout the month of October and November in the building next door to Rose Drug in downtown Farwell (former location for the sales).

Sales are held each Saturday afternoon from 2-5 p.m.

Persons who have items to

donate to the sorority for the sale are asked to contact any member of the group and the

items will be picked up. Items for the sales may also be left at the Tribune office.

weeks following a heart attack, has returned home. He is in satisfactory condition, but is still confined indoors.



ISSUES PROCLAMATION --- Parmer County Judge Archie Tarter, seated, signs a proclamation declaring the week of October 5-11, as 4-H Club Week in the county. The local observance will concur with the National 4-H Week activities. During the week, county clubs will hold special activities and display some of their work in various areas of the county. Miss Janice Miller, Parmer County Home Demonstration Agent, and Darwin Green, a member of the Lucky Clover 4-H Club, give their stamp of approval as Judge Tarter signs the official paper.

Bookmobile Is Coming

THURSDAY OCT. 9
Progress, 8:30-9:15; Okla. Lane, 9:35-10:20; Rhea Community, 11:45-12:00; Friona #1, 1:15-1:45; Black, 2:00-3:00.

FRIDAY OCT. 10
Hub, 8:45-9:45; White's Elevator, 10:00-11:00; Lazbuddie, 12:00-1:00; Clay's Corner, 1:15-2:15.

SATURDAY OCT. 11
Farwell, 8:45-11:45; Friona II, 1:00-4:00.

STEED

A Name Of Service For 61 Years

STEED-TODD FUNERAL HOME

Prince and Manana
Clovis

Phone 763-5541



Dexter Todd

PEOPLE JOIN HANDS TO BRING PROGRESS A VITAL LINK IN THE CHAIN OF GROWTH IS THE COOPERATIVE MOVEMENT

OCTOBER IS
COOPERATIVE
MONTH



OCTOBER IS
COOPERATIVE
MONTH

60 MILLION OWN CO-OPS

More than 60 million Americans share ownership in cooperatives. City, town, and rural people use these co-ops to get housing, food, health care, credit, insurance, drugs, furniture, and petroleum products. Rural people use cooperatives to get electricity and telephone service, chemicals, and steel products. All of this cooperative business totals \$20 billion dollars a year.

The distinctive mark of a co-op is that it serves the people who own it: its customers. It's locally-owned, not-for-profit, serving its member-owners at approximate cost. They have a voice in determining the quality of goods and services they get and the prices they pay through their co-ops.

A rural electric cooperative is a private, non-profit enterprise, locally owned and managed, and incorporated under State law. It is owned by the members it serves, and each member has one vote in its affairs.

Under the by-laws of practically all cooperatives, there is one annual membership meeting each year, at which consumers elect a board of directors from among their membership. The directors elect their own officers and employ a manager to run the Co-op. Employees are responsible to the manager, the manager is responsible to the board, and the board is responsible to the membership at large.

HISTORY OF DEAF SMITH COUNTY ELECTRIC COOPERATIVE

This locally-owned business sprang to life in November of 1938 when 50 miles of line were first energized to serve 120 members. Since that time, 2269 miles of line have been built, and today the Cooperative is serving 4543 meters.

To date the Deaf Smith County Electric Cooperative has borrowed \$7,138,380.20 from the government. A total of \$4,177,530.56 in principal has been paid back, of which \$2,229,630.58 has been paid in advance ahead of schedule. Interest payments have amounted to \$1,202,329.54.

This Cooperative has a direct effect on this area's economic condition. Last year, 1968, the Cooperative paid a total of \$30,821.96 in direct taxes. The total annual payroll was \$265,487.86 for 35 employees. This money is spent in this area for food and clothing and all the rest of the things the employees must have to live.

In addition to this, the system itself spends substantial amounts of money for the goods and services necessary to operate a good sized business. Things that must be bought range from paper clips to legal representation and from typewriters to substations. Where ever possible, these things are bought locally.

DEAF SMITH COUNTY ELECTRIC COOPERATIVE

Headquarters In Hereford, Texas

THE FARWELL MERCHANTS 11th ANNUAL COTTON BOWL FOOTBALL CONTEST

Weekly Prizes

- \$5.00 - 1st Place
- \$3.00 - 2nd Place
- \$1.00 - 3rd Place

GRAND PRIZE

2 Tickets To The Cotton Bowl And **\$50⁰⁰** Expenses

Second Prize

Tickets To **2** The **\$25⁰⁰** SUN BOWL Expenses At El Paso

RULES

1. There are 10 high school and/or college football games listed.
2. Pick the team you think will win in each game and circle the WINNER'S NAME.
3. PICK THE SCORE of the GAME OF THE WEEK and place your guess in the appropriate blank on the entry. Bring or mail the entry blank to The Tribune office by 5 p.m., Friday of this issue.
4. Tabulations of individual entrants will be kept all season and at the end of the season a Grand Prize winner will be named.
5. Only one entry blank may be submitted per individual.
6. Tabulations will be available for public inspection.
7. Contestants must be 12 years old or over.
8. Game of the Week used as the tie breaker only.

WEST TEXAS DRILLING INC.



FARWELL Jack Kirkland Ph. 481-3807
HEREFORD J.D. Kirkland Ph. EM 4-2020

LOOMIX

LIQUID STOCK FEEDS

- *Research and Farm Laboratory
- *Nutritional Services Available
- *Custom Formulation
- *Ranch *Feed Lot *Dairy

Ph. 481-3339 Box 577 Farwell, Tex.



Watts Oil & Tire Co.

"Where you can Retire at any age"

BILLY WATTS, Owner
P. O. Box 398 FARWELL, TEXAS 79325 Ph. 481-3395



- ☆ MUFFLERS
- ☆ SHOCKS
- ☆ TRUEING
- ☆ BALANCING

CAPITOL FOODS

WE GIVE BUCCANEER STAMPS
Double On Wednesday

Open Until 9 p.m. Evenings 901 Ave. A Farwell



Olin CHEMICALS DIVISION

Ammo-Phos Dry Fertilizers
Anhydrous Ammonia

Farwell Fertilizer

Ed and Gene Ph. 481-3844



PIGGY WIGGLY

We Give S & H Green Stamps

FARWELL

FARWELL HARDWARE



The quality goes in before the name goes on

TV - Radio - Stereo

In Farwell
Sherley - Anderson
Pitman Inc.
John Williams, Mgr.

In Lariat
Sherley - Anderson
Grain
Asa Smith, Mgr.

"Serving Farmer County
Farmers The Year 'Round"

Hughes Insurance Agency

GENERAL INSURANCE

"Local Service From A Local Agent"

"Shorty" Hughes

Farwell, Tex.

NICKELS GIN AND CENTRAL COMPRESS

And Warehouse
For BETTER GINNING
And COTTON MARKETING
"Experience Counts"

ENTRY BLANK

NAME _____
ADDRESS _____

Tiebreaker - Pick Score

Farwell _____ at Morton _____

1. Borger at Dumas
2. Phillips at Hereford
3. Happy at Kress
4. Seagraves at Sudan
5. Lazbuddie at Whiteface
6. Michigan St. at Notre Dame
7. Texas Tech at Oklahoma St.
8. West Texas at Wichita St.
9. Kansas City at Denver
10. Packers at Minnesota

SECURITY STATE

Member
F.D.I.C.



Farwell, Texas



Farwell Equipment Co.

106 3rd. S.E. Farwell

There's a **MINNEAPOLIS-MOLINE** tractor just right for bigger profits on your farm!



LARIAT GIN

Latest High Capacity
Equipment

Experienced Ginners
Calvin Meissner, Mgr.

Ph. 925-3110



STATE LINE GRAIN And STATE LINE FERTILIZER

Phone 481-3301

Heston Beet Harvesters
and
Top Savers

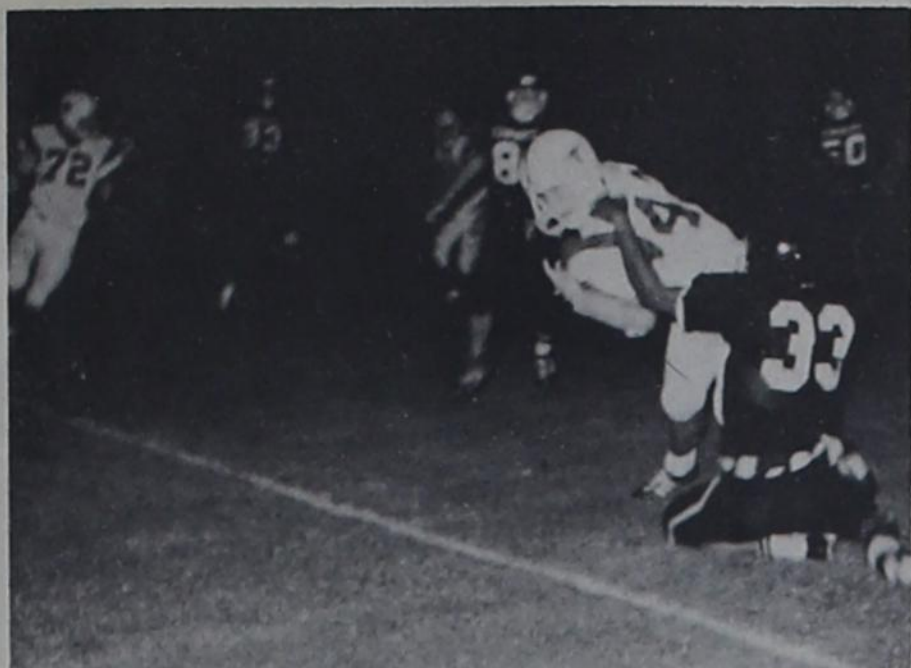
Oklahoma Lane Farm Supply
Ph. Tharp 225-4386

WORLEY GRAIN CO.

Home Of Okay Feeds

Farwell

Herb Potts, Mgr.



PART OF THE AVERAGE -- Gary Erwin, Farwell back, averaged over six yards per carry in last Friday night's big win over the Plains Cowboys. A late hit by Plains added 15 yards to this fine run by Gary. Final score was Farwell 61, Plains 20.

Steers Take --

(Continued from Page 1)

Farwell defense forced the punt, having held the Cowboys to 23 yards and denying them a first down during the first quarter of action. Hargrove kept the attack on the ground as the Steers moved from their 46 to the Plains 30 in five tries on the running of Erwin and Goetsch. Hargrove tried the airways and again found Stovall who went in to score. The Cowboys finally got a chance to retaliate as Livesay took the kickoff 74 yards for Plains' first score. The PAT attempt failed and Farwell led 28-6.

The Steers moved to the Cowboy's 12 in six tries from their own 45 following a 25-yard kickoff return by Stovall. It appeared for a moment that Plains might hold, but on fourth and four, Hargrove again hit Prince in the end zone for six. Wiman's kick was blocked and the scoreboard read 34-6.

On the third play from scrimmage following the kick, Robert Haseloff pounced on a fumble to give Farwell custody on the Plains 38. The Steers moved to the eight but Plains dug in and held at that point and the ball went over on downs. The Cowboys then mounted their first sustained drive of the evening moving to the Steers 39 in 11 plays, only to have their scoring hopes dashed as Mark Williams picked off a John Lowe option pass and returned it 57 yards to the Plains 13. Three plays later, Hargrove again threw to Prince for 11 yards and Danny's third TD reception of the game. Wiman added his fifth extra point and the score stood 41-6.

But not for long. The stolid Steer defensive unit again forced the Cowboys to punt, which Stovall promptly returned 70 yards to paydirt. The kick went wide and Farwell went to the dressing room sitting on a 47-6 halftime lead.

Stovall wasn't content to leave it at that, as he returned the second half kickoff 81 yards for his fourth touchdown of the evening.

Plains took the kick and marched to the Steers 31 where they were brought to a screeching halt. Gene Sheets came in to direct the attack. He moved the club nearly to midfield before Mike Nugent pounced on a fumble to give Plains another try. They moved to the Farwell 17 before Mark Williams picked off

his second interception on the goal line and raced the length of the field for the Steers ninth TD. Wiman added the extra: Farwell 61-Plains 6.

Johnny says



Mother rabbit to her small bunny: "A magician pulled you out of a hat. Now stop asking questions."

JOHNNY WATFORD
At

"Doc" Stewart
Buick-Chevrolet-Opel
2500 Mabry Dr.
Clovis

Johnny on the spot
with the Best Deals
in Eastern New
Mexico and West
Texas



ADDING TO THE YARDAGE -- Albert Steward, No. 42, is lugging the ball for a sizable gain in last week's Texico-Melrose game played at Wolverine Stadium. Aiding Steward are Johnny Dane, Kenneth Askew, Jerry Askew, and Ricky Pace. Even though Texico lost the game, 28-6, they led in first downs and pass completions.



DEAN, DEAN, THE SCORING MACHINE -- Dean Stovall, No. 81, one of the leading Farwell Steer scorers, races a punt back for 70 yards to notch the third of his four touchdowns in last week's 61-20 rout of the Plains Cowboys at Steer Stadium.

Ten Persons Take Spanish Course

Ten persons took the course in speaking Spanish at Farwell Country Club during the past month. The course was taught by Dr. H. E. Loree, Clovis physician and surgeon. He directed the group in a comprehensive study of the language origin, pronunciation, and customs of the Mexican population, as well as telling something of the class system in that country.

At the final session, soft drinks and cookies were served to class members.

Mrs. J. E. Whatley of Amarillo is spending this week visiting in Texico in the home of her daughter and son-in-law, Mr. and Mrs. Joe Helton.

Ten Persons Take Spanish Course
Mr. and Mrs. Raymond Martin visited in Spur with Mr. and Mrs. Bobby Atkinson over the weekend.



RAPPING AT THE DOOR -- On the following play, the Texico Wolverines punched over for their initial touchdown of the school's new football era. In on this pre-touchdown play are Texico players, Ricky Ketchersides, Loren Gibbs, Ken Farmer and Terry Yell. Farmer plunged over from about the one-yard line in the waning minutes of the game.

Bufs Gore --

(Continued from Page 1)

Mike Casey, Albert Steward, Ken Farmer and Monty Lambert. The offense made good gains throughout the evening and pushed over a fourth quarter score to break the ice. It was Ken Farmer who plunged over for the Texico tally. Farmer's stab came in the waning minutes of the game and from less than one yard out. The PAT failed and the Green and White marched off the field a stronger, more experienced team.

Texico had 19 first downs to 16 for Melrose. The Wolves also completed four of 11 passes to the visitors three of five. The Green and White defense limited the Buffaloes to 231 offensive yards while the Texico

offense was able to come up with 171 yards. Coach Jimmy Wynne commented, "We have to get the offense going. We're playing good defensive ball and experience will aid our offense."

The Wolverines are playing Thursday (tonight), Oct. 2, at Tucumcari against the Tucumcari B squad. Coach Wynne stated that Tucumcari is short of B team members and Texico will probably face some of the Rattlers varsity players. Coach Wynne says, "Our team is rapidly gaining football 'savvy' and Coach Navidomskis and myself are proud of the spirit and determination displayed by these young players. Support by the local fans is very encouraging to us and to the team as a whole."

Cub Scouts To Organize

W. K. Belknap of Cub Scouts met with parents and boys who are interested in becoming Cub Scouts at the Farwell School Tuesday evening.

Seventeen boys signed up to become Cubs and eight mothers volunteered to serve as den mothers or mother assistants. However, a Cub Master is still needed for the group.

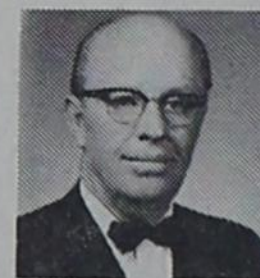
Uncle Ray's "Hot Air"



It used to take two bales of cotton to make a woman's dress. Now a silk worm can do it on his day off. Don't worry about finding your proper station in life. Sometime, somewhere along the way, somebody will tell you where to get off. Get off the high priced wagon and trade at Uncle Ray's for better values.

Ray Mears
Hwy 70-84
-FARWELL-

Sherwood Mortuary, Inc.
"Home of the DALE LEE SHERWOOD MEMORIAL CHAPEL"



TROY SHERWOOD

Clovis' Only 100% Home Owned Mortuary



CHARLES V. SHERWOOD

Tenth at Main - Clovis - Phone 762-4435

TAX DISCOUNT TAX PAYERS OF PARMER COUNTY TAKE ADVANTAGE OF YOUR DISCOUNT

3% IF PAID DURING OCTOBER
2% IF PAID DURING NOVEMBER
1% IF PAID DURING DECEMBER

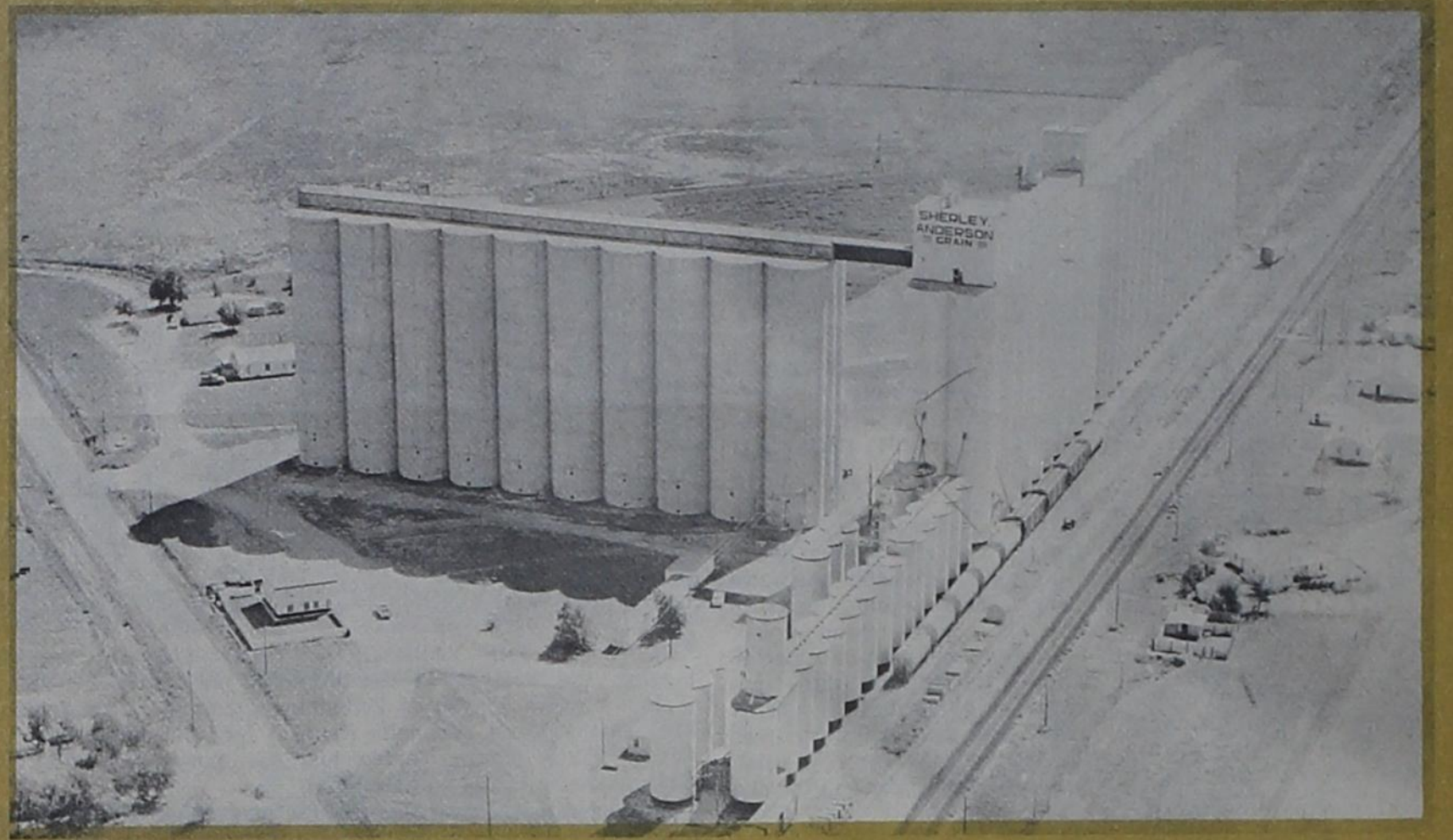
This Discount Is On All State And County Taxes Collected By The County Tax Collector

Applications Now Being Accepted For Voter Registration Certificates.

Hugh Moseley
Tax Assessor And Collector
Parmer County, Texas

GOOD NEWS!
PAULA'S TRANSPORT CAFE
Now Open - 24 Hrs. 7 Days
FEATURING
Sour Dough Biscuits For Breakfast
Home Style Cooking At Popular Prices

FABULOUS FALL FESTIVAL
Anniversary SALE
ONE BIG WEEK
Come In And Help Us Celebrate
TREMENDOUS STOREWIDE SAVINGS -- 25% to 50% off
Register For Free Gift Certificate to be given away each day
A Cordial Invitation Is Extended To All Our Customers & Newcomers
Sale Ends Saturday
Lucille's Smart Shop!
Hilltop Plaza
Clovis, N. M.



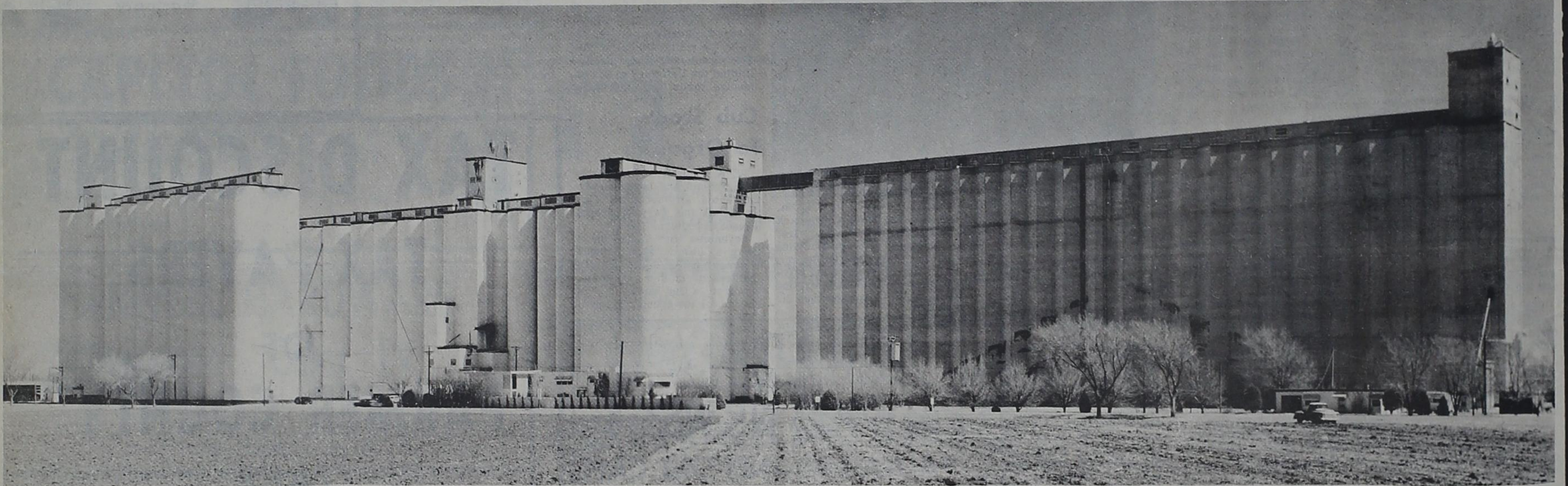
Sherley-Anderson-Pitman, Inc. - Farwell

Sherley-Anderson Grain Co. - Lariat

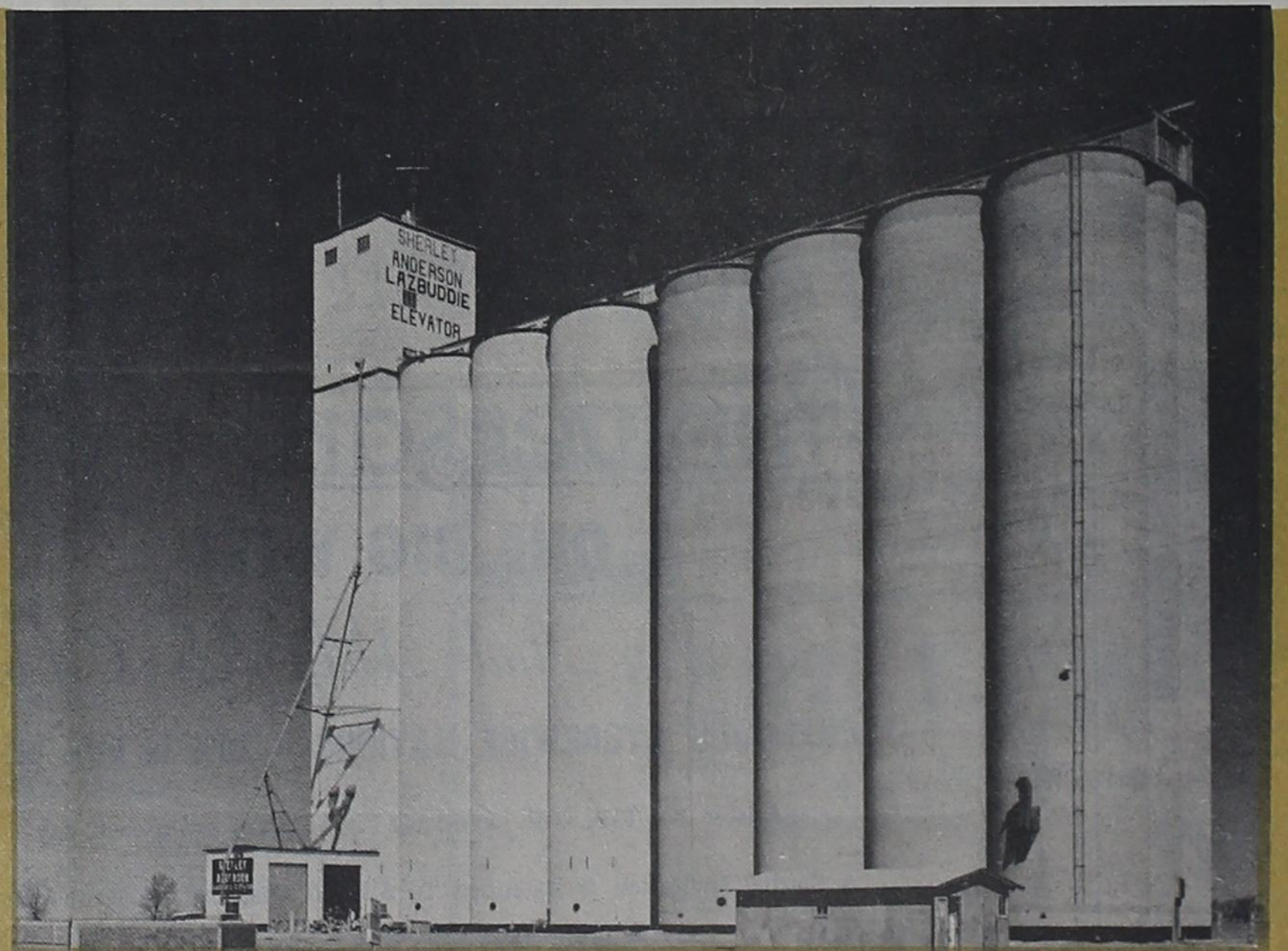
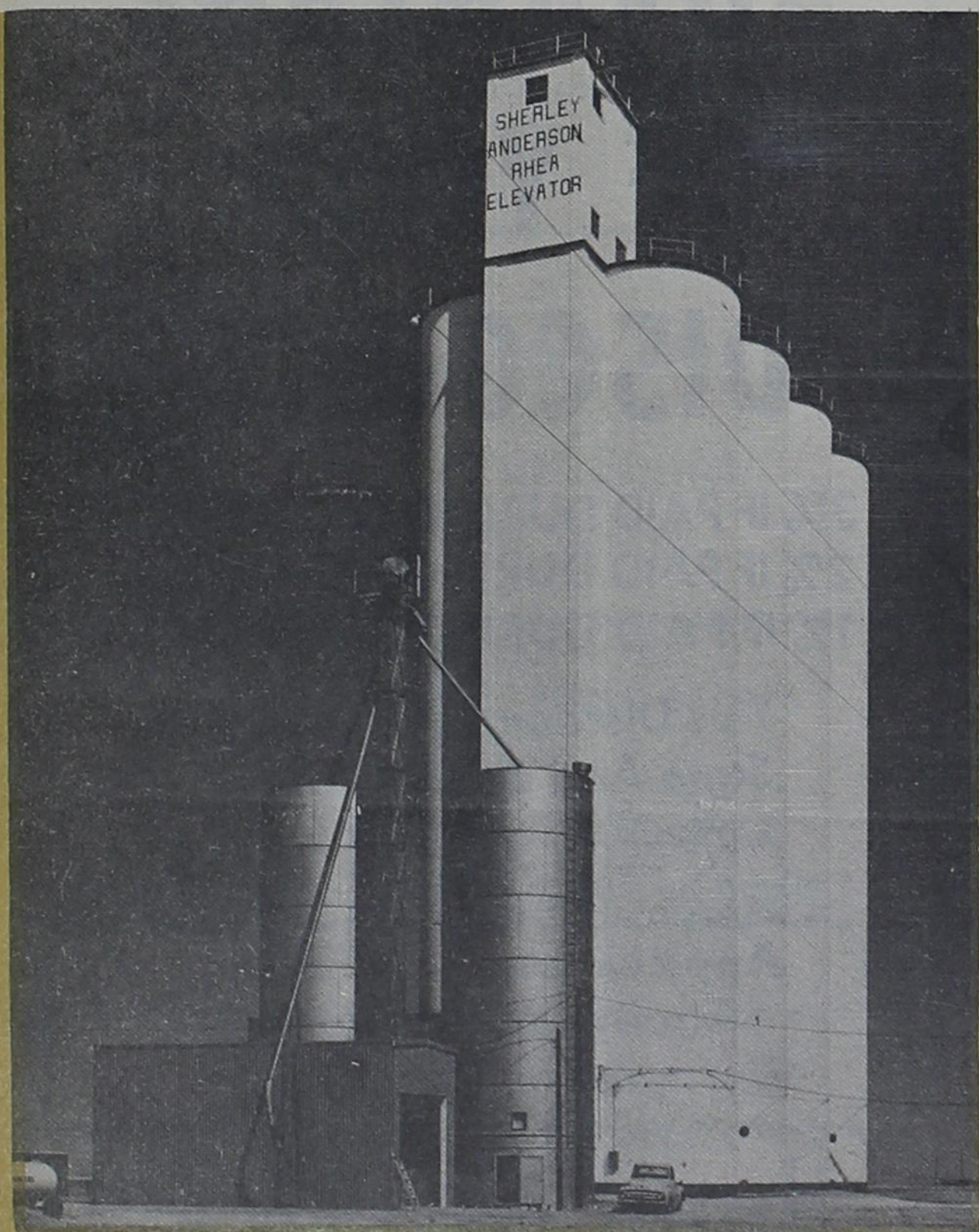
JOHNIE WILLIAMS--FRED CHANDLER--SUSIE HAMMONDS

ASA SMITH - BUIL DOLLAR

SERVING FARMERS THE YEAR 'ROUND



Sherley Grain Co. - Bovina



SHERLEY-ANDERSON RHEA ELEVATOR
JOE ALLEN - RICHARD MORRIS

Sherley - Anderson LAZBUDDIE ELEVATOR

JOE MOORE