



# BAILEY COUNTY JOURNAL

'The Community of Opportunity-Where Water Makes the Difference'

Weather		
	HIGH	LOW
APRIL 17	68	51
APRIL 18	81	47
APRIL 19	85	40
APRIL 20	81	31

Rainfall year to date 1.36"

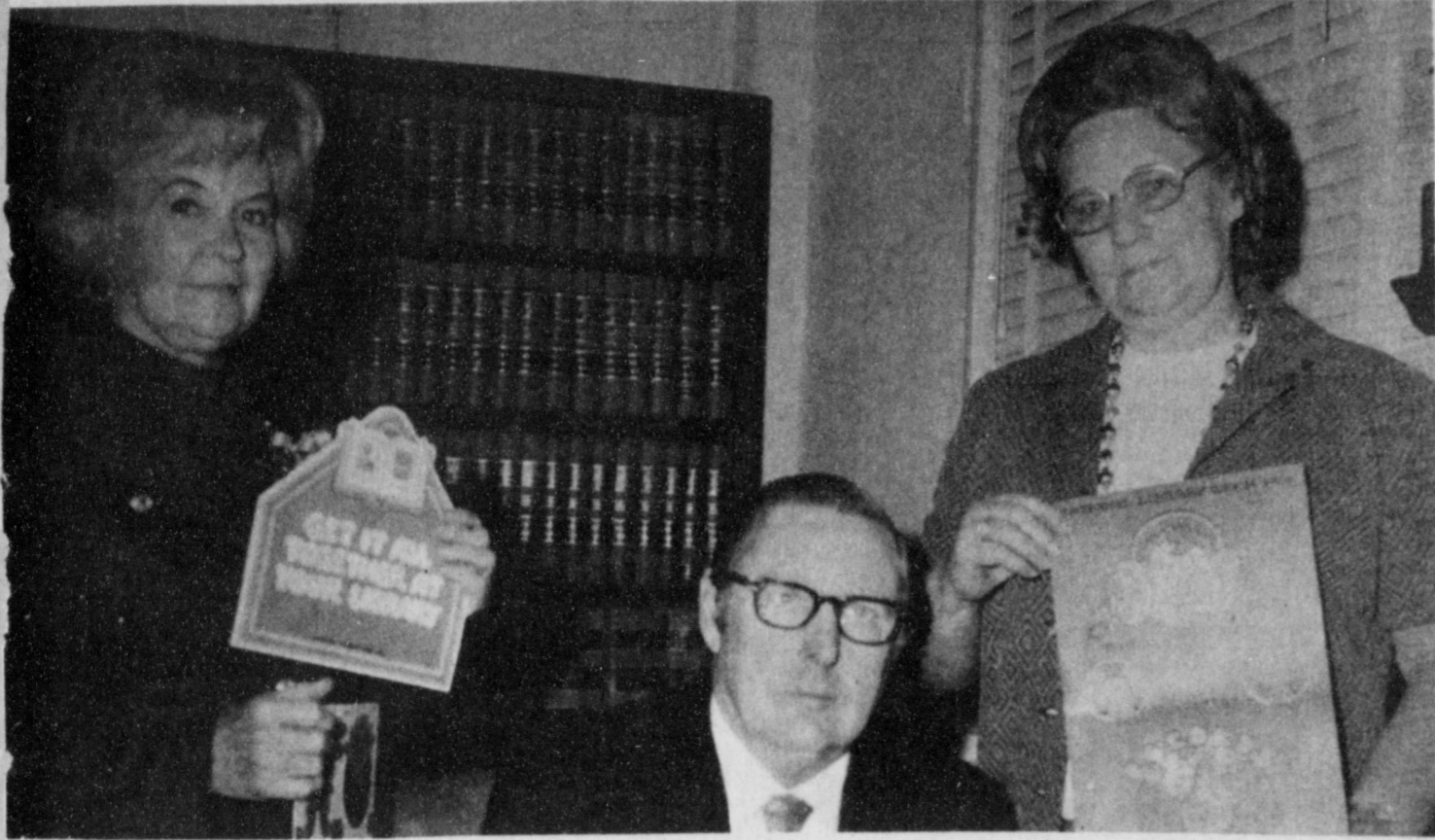
Vol. 11 No. 16

10 PAGES

Published Every Sunday at Muleshoe, Bailey County, Texas 79347

10 CENTS

Sunday, April 21, 1974



**LIBRARY WEEK DECLARED...** Bailey County Judge Glen Williams proclaimed April 21-27 as Library Week in Muleshoe. National Library Week is also being observed this week. A full week of activity is being planned at the Muleshoe Area Public Library this coming week. One of the highlights of the week will be a big

book sale Wednesday from 1 to 5 p.m. sponsored by the Muleshoe Study Club. The Library Family of the Year will also be named Wednesday. Pictured with the judge are Mrs. J.W. Witherspoon, president of the Muleshoe Study Club and Mrs. Bernis Camp, Muleshoe Area Public Library Librarian.

## National Library Week Begins Here

### Generous Citizens Hear Hospital Plea

Muleshoe and the surrounding area were threatened with a tragic situation, stated Mrs. J.E. McVickers of the Citizens' Committee. The town's only hospital was threatened with being closed by June 1. A way had to be found to keep it open. That was found and the people of this area responded in a generous, heart warming way that makes one proud to live in such a town, said Mrs. McVicker.

most generous, she stated, Mary Moore reports that as of Friday evening \$274,469.70, has been donated to the hospital fund.

The Citizens' Committee wants to thank everyone for their support and the plan is to go forward until the goals are accomplished.

Donations may be mailed P.O. Box 683, or take it by the Muleshoe State Bank or the First National Bank.

### County Criminal Docket

Cases appearing on the County Criminal Docket recently include six for worthless checks; three for theft; seven for DWI; one for possession of beer for sale; and one for shop-lifting.

### School Board Announces Special Meeting

There will be a special meeting of the Muleshoe Independent School District Board of Trustees on Monday evening April 22, at 8:30 p.m.

The board will consider accepting the resignation of Fred Hedgecock, football coach and Athletic Director, Muleshoe High School.

They will also consider the

Cont. on Page 2, col. 3

### Week Of Activities Planned At Library

National Library Week will be observed in Muleshoe April 21-27 with the dual themes, "Get it all Together at the Library" and "Grow with Books-something for Everyone."

Anne Camp, librarian stated that everyone is cordially invited to visit the library during this special week. Several events are planned for the enjoyment of the public.

All week the library will feature an art exhibit in the main area of the library. The public will have an opportunity to see paintings done by local artists, and arranged by the Muleshoe Art Association.

Several interesting exhibits will be on display at the library and 100 new books will go on the shelf this week. National Library Week book-markers will be given away all week and there will also be No Fines Week, where anyone may come and get their record cleared.

On Monday and Tuesday, the new High Plains Library Bookmobile will be parked in front of the library and everyone will be welcome to go through it and see what a modern library on wheels the rural residents now enjoy.

At 10 a.m. on Monday a special children's storyhour and tour of the library and bookmobile will be held. The children from the Goodwill Kindergarten will be brought to the library by their teachers.

On Tuesday at 2 p.m., "Calling all Senior Citizens" will be held at the library and all senior citizens are urged to attend. Refreshments will be served and a gift will be presented to the oldest person present. Penny Malone has volunteered to bring all the peo-

ple from the Muleshoe Nursing Home who are able.

The big book sale will be held Wednesday from 1 to 5 p.m. in the basement of the library. All kinds of books will be sold at a fraction of their original cost. Big books, little books, paperbacks, sets of books old books, new books, all kinds will be offered for sale.

This sale is sponsored by the Muleshoe Study Club and members will be on hand to help with selections.

At 4:15 p.m. Wednesday the Library Family of the Year will be named and honored, and the Study Club will present them with a gift.

Mrs. Camp reminds local people of some of the services provided by the library that maybe you had not thought of: We are again making copies at five cents a page; you can check out a giant map of the world; you may call in your reference questions; special books to rev-up for high school equivalency tests; records,

Cont. on Page 2, col. 1

### Absentee Voting Underway For Primaries

Absentee voting for the Democratic Primary and the La Raza Unida Primary, both scheduled for May 4, began Monday at the County Clerk's office in the Bailey County Courthouse.

The last day to vote absentee will be April 30, at 5 p.m. To date 14 ballots have been cast in the Democratic Primary and none in the La Raza Unida Primary.

There will not be a Republican Primary in Bailey County this year.

### Local TSTA Schedules Banquet

The Local Chapter of Texas State Teachers Association will hold its annual Public Relations Banquet Tuesday, April 23, at 7:30 p.m. in the Muleshoe High School Cafeteria.

The speaker will be Kinnett Hobbs, a Lubbock attorney associated in the law firm with Roy Bass who is the mayor of Lubbock. Hobbs was the campaign manager for Roy Bass. Food for the banquet will be catered by Underwood's of Lubbock.

All TSTA members are urged to attend.

### around muleshoe With The Journal Staff

Lindal Murry returned Friday evening from Oklahoma City where he attended fall merchandise sale

James Glaze Insurance has been purchased by Joan and John Lowery of Muleshoe.

Lowery is formerly of Amarillo. James Glaze will continue to be associated with the firm.

Terrie Lee Simmons, daughter of Mr. and Mrs. M. M. Simmons of Robie, and grand daughter of Mrs. J.M. Moore of Muleshoe, was recently accepted into the Society of Outstanding American High School Students, "the nation's leading high school honorary"

She will be featured in the 1974 volume of "The Society of Outstanding American High School Students", and will be eligible for a scholarship.

Miss Simmons is a 16 year old junior at Robie High School. She was an exchange student in Brazil last summer and expects to go back to Brazil again this summer.

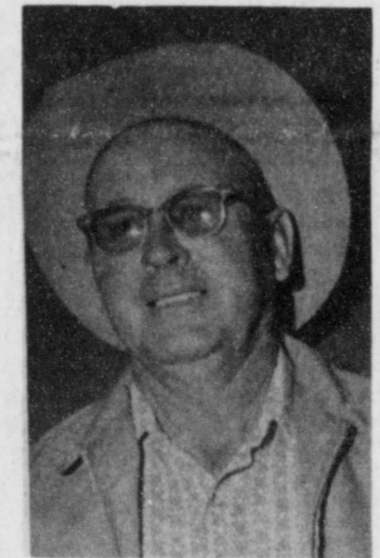
DeVona Bradley, 1701 West Avenue D, Muleshoe, is a candidate for the bachelor of science degree in Business Administration from Oklahoma Christian College. Commencement exercises are set for 3:30 p.m. April 19, in the Hardeman auditorium.

Honorary doctorate of law degrees will be given to Robert

Cont. on Page 2, col. 3

## Three Jury Trials Held Here This Week

Three jury trials were heard this week in district court with Judge Pat Boone, Jr., presiding.



### Roy Miller Announces For Commissioner

Roy M. Miller of Lazbuddie has authorized the Journal to announce his candidacy for Commissioner Precinct 4, Farmer County, in the May 4, Democratic Primary.

Miller has lived in Lazbuddie for the past 22 years. He served on the Lazbuddie School Board

Cont. on Page 2, col. 4

Clifford Butler was convicted Tuesday of DWI and was sentenced to 90 days in jail and received a \$250 fine.

The jury for the Butler trial consisted of Robert Hooten, foreman, J.W. Coppedge, James W. Crane, Jerry Lee, Mrs. Roger Albertson, Boddy Fudge, S.M. Ethridge, Mrs. Maldean Maston, Mrs. L.H. Medlin, Jr., O.A. Warren, Jr., Mrs. Clarence Kube and Archie Sowder.

On Tuesday the case of H.R. Nichols, et al versus Jim Claunch, et al, for farm rental was heard. The jury found in favor of the Claunches in farming the land for the 1974 farm

year and awarded title to and possession of farm land to the Claunchs.

Jury for his trial included: D.W. Puckett, Mrs. J.H. Ewins, Jodie Barrett, Chester Embry, Juan Madrid, Roland McCormick, Allen Davis, Mrs. Leland Jones, Mrs. K.K. Krebs, Mrs. Earl Ladd, Eugene Black, foreman and Mrs. McVicker.

Cont. on Page 2, col. 1

### National Guild Piano Playing Audition Set

The annual National Guild Piano Playing Auditions for students of this area will begin in Muleshoe Tuesday, April 30, and will close on May 4. The Auditions will be held at the McKinstry Studio at 318 West Avenue J with Miss Mayrne H. Porter of Salina, Kansas serving as adjudicator.

Miss Porter is a native of Salina, Kansas and was graduated

from Kansas Wesleyan University in Salina. Her post graduate work was done at Northwestern University where she received a master's degree with a major in piano. Additional piano study was in workshops and several courses with such greats as Josef and Rosina Lhevinne, Haus Barth, Ernest Hutcheson, Bernice Frost, Bilbek and others.



MISS MAYRNE PORTER

### Local Band Will Compete At Wayland

Fourteen AAA AND AAAA schools will compete in concert and sight reading contests during the University Interscholastic League Region 16 band contests at Wayland Baptist College on April 24, according to R.C. "Chief" Davidson, executive secretary of the region.

Contest Chairman for the event will be M.E. Rodman, assistant professor of music at Wayland and director of Wayland Band.

Judges for the affair will be Tim Jones, Hamlin High School; Gene Griffin, Enid, Okla. High School; Tom Rhodes, Fredricksburg High School; and Wayne Maxwell, McCollum High School, San Antonio.

The Muleshoe High School band will be competing, directed by Tony Clines.

Cont. on Page 2, col. 1

## Growing Of Grapes Is Possible In Area

The Agriculture Committee of the Muleshoe Chamber of Commerce Agriculture, Harmon Elliott, Chairman, has contacted Dr. W.M. Lipe, assistant professor Research Extension Center at Lubbock, to reveal what information was available on the increasing interest of growing grapes on a commercial basis in this area.

The following is a report to Harmon Elliott on the work being done in Lubbock and other places in the state. If additional interest in this area continues to generate, this committee will be in a position to help secure professional information for parties concerned.

"The Texas Agricultural Experiment Station has been involved in grape research since 1968 and with wine types since 1971. However, we are not at the point at present to make firm recommendations on wine type grapes.

"In spite of this fact, a great deal of interest has been generated throughout the South Plains and several groups have begun plantings of wine grapes and are making plans to construct wineries.

"One group in Lubbock has chartered a corporation called "Llano Estacado" and are in the process of planting 20,000 to 30,000 vines this year."

"Another group is located at Seagraves and intends to call themselves "Finolio."

"The third group that I am aware of is just south of Muleshoe and calls themselves the "Sandy Land Grape Growers Association of Morton." I understand there are 20 men involved and they intend to construct a winery as production nears. They planted 15,000 to 20,000 vines this year.

"I have cautioned all these groups that sufficient research has not been conducted and that a great deal of risk regarding varieties is involved. We can only suggest possible varieties based on similar climatic conditions elsewhere at this stage. Perhaps in two years we can speak with confidence."

"The reason for the rush to grapes is that the wine industry is growing at a tremendous rate and prices are good. No one can predict with certainty how long this growth will continue in view of heavy plantings all

across the country.

"We believe grapes will grow and produce on the South Plains and the major questions are:

"Varieties - French - American Hybrids will withstand our cold winters but do not produce the quality of wine made from Vinifera. Vinifera (French Grapes) are known for best quality but may be killed at sub-zero weather.

"Wine Quality - Until vines are made from West Texas grapes we will not know how good they can be or what place they will find in the market.

"Hail Loss of the entire crop is possible. Since installation of a vineyard costs \$1,200 to \$1,500 per acre and annual costs are \$300 to \$400 per acre, hail becomes a serious question in certain areas.

"On the plus side for our area is: We have no cotton root rot, Downy Mildew and Pierce Disease. These diseases are devastating to grapes in other areas of the state.

"Our climate is dry and begins to cool off in August

Cont. on Page 2, col. 1

### Pickup Kills Sudan Youth On Dirt Road

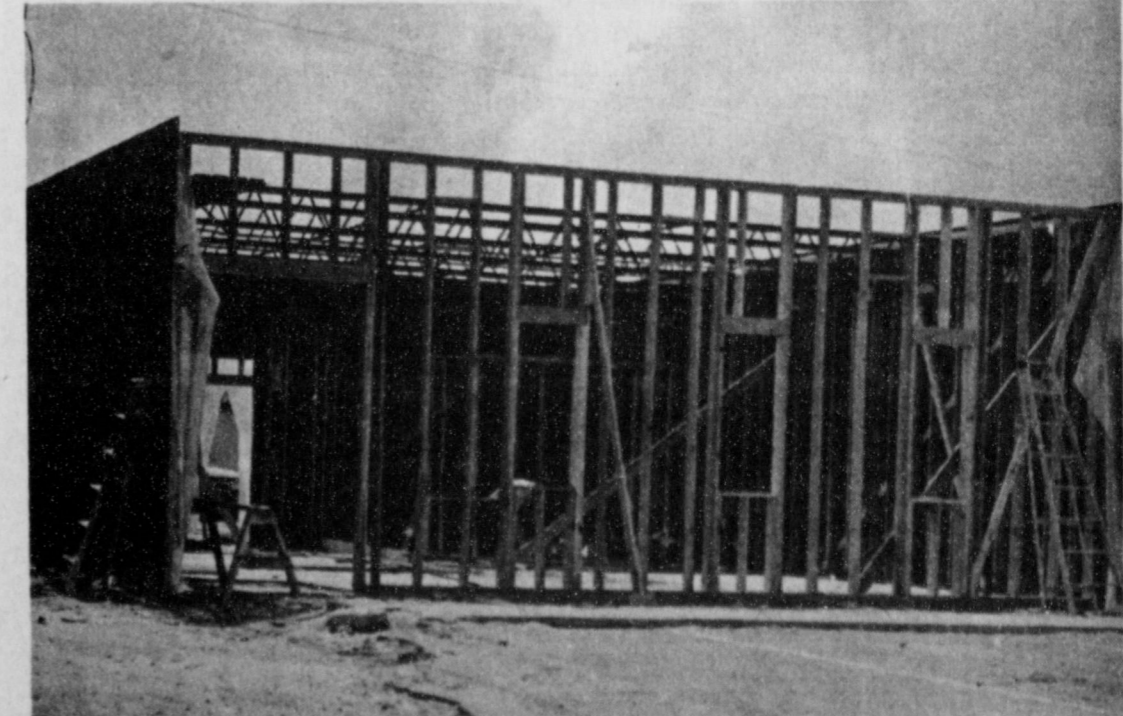
Lester J. Price, eight year old son of Mr. and Mrs. Willie Price Sr., of Sudan, was dead on arrival at 7:15 p.m. Monday at West Plains Memorial Hospital. He had been struck by a pickup about nine miles southeast of Muleshoe on a dirt road in front of his home.

A Bailey County sheriff's deputy said no charges were filed in the case.

A Bailey County resident two years, the child moved with his parents from Bovina. He was a student at Sudan Elementary School and a member of Tri-Angle Baptist Church in Clovis N.M. He was born in Floydada. Funeral services were held at 2:30 p.m. Thursday, April 18, in the St. Matthews Baptist Church at Muleshoe. Officiating was Rev. F. R. Williams of Clovis, and Rev. I.S. Anstley of Friona.

Burial was in the Muleshoe Cemetery under the direction

Cont. on Page 2, col. 1



**NEW OFFICE BEING CONSTRUCTED...**The new office for Henry Insurance Agency is now under construction in the 200 block of West Avenue B in Muleshoe. Construction is moving at a rapid pace at this time. Kenneth Henry is owner of Henry Insurance Agency. The building will be located directly behind Jim's Pay N' Save and beside Dr. Charles Lewis' office.

### Grapes...

Cont. from Page 1  
and September which allows for quality potential.

"We have an abundance of relatively inexpensive land with adequate water.

"Wine consumption in the State of Texas has grown 800 per cent in four to five years and our West Texas Market is 30,000 to 40,000 gallons per month.

"I have three acres at Abernathy with some 250 varieties under trial. I also have a planting here at Lubbock and one at Welch. I am increasing my planting here at Lubbock to include 50 additional wine types on three rootstocks.

### Library...

Cont. from Page 1  
magazines, pamphlets, pictures, all circulate; stock market reports from the New York Stock Exchange, American Stock Exchange, Mid-west Stock Exchange, all current books and encyclopedias in Spanish, large print books; etiquette books, self-improvement by tape cassette; landscaping and house plans by the hundreds; gardening, organic or regular; hobbies, quilting, embroidery, swimming bowling and billiards; inter-library loans, want to join the Army or Air Force; or see a 100 year old newspaper, or a genuine long horned steer skull?  
Try the local library. you'll be glad you did!"

### Trials...

Cont. from Page 1  
Lewis Henderson.  
The third trial of the week was held on Wednesday. Jerry Wayne Bogle was charged with theft but the trial resulted in a hung jury.

Members of jury were J.W. Coppedge, foreman, Bernis Camp, A.C. Archer, Mrs. Suzie Hamblin, Larry Don Flowers, Charles Latimer, J.L. Partlow, James W. Crane, Jerry Lee Mrs. Roger Albertson, Mrs. Maldean Maston and Mrs. L.H. Medlin, Jr.

Charges of breaking into coin machines were dismissed against Jimmie Lambert, Larry Edler and Harold Crable due to insufficient evidence.

### Price...

Cont. from Page 1  
of Singleton - Ellis Funeral Home.  
Survivors include his parents a sister, Rita Robinson of Sudan; and eight brothers, Troy Campbell of Amarillo, Mike and Luther Robinson, both of the home, and Mark, Bobby, Lenon, Willie Lee Jr., and Willie Roy Price, all of the home.

"I am conducting research on weed control, irrigation systems and hail protection in addition to variety work.  
"Our current work has been financially supported by the Abernathy Chamber of Commerce for five years and the new planting is part of a state wide effort supported by group in Houston and Galveston. These plantings will be in Lubbock, Junction and El Paso."  
Other activities of the Agriculture Committee has been a contact March 22 with Congressman George Mahon regarding the movement that has been underway for quite some time moving the ASCS, FHA and ASC offices out of Muleshoe.



**The  
Muleshoe  
& Bailey  
County Journal**

Rate for listings in The Journals Political Column is \$35 for state, district, county and precinct offices and \$25 for city offices and school board positions. This fee includes a front page announcement article and a one-column photograph at the time the announcement is made, in addition to the listing in the Political Column from date of the announcement until the final election.  
Charges for announcements are cash in advance, and this same policy applies to all political advertising carried in the columns of this newspaper.

Names for each office will be listed in the Political Column in the order they are received at the newspaper office.

The Journal has been authorized to announce the following candidates for public office:

- FOR COUNTY TREASURER**  
**EDITH WILT**
- FOR COUNTY CLERK**  
**HAZEL GILBREATH**  
**FOR DISTRICT CLERK**  
**PAULETTA CRAWFORD**  
**NELDA MERRIOTT** (Re-election)  
**COUNTY JUDGE & EX-OFFICIO COUNTY SCHOOL SUPERINTENDENT**  
**GLEN WILLIAMS** (Re-election)  
**COMMISSIONER, Precinct No. 2**  
**LOYD STEPHENS** (Re-election)  
**COMMISSIONER, Precinct No. 4**  
**RUDOLPH MORAW** (Re-election)

- PARMER COUNTY COMMISSIONER, Precinct No. 4**  
**JIMMY BRIGGS** REPUBLICAN  
**PETE JESKO**  
**ROY M. MILLER**

- FOR TEXAS HOUSE OF REPRESENTATIVES 74th DISTRICT**  
**HARVEY FLOYD** DEMOCRAT  
**BILL CLAYTON** (Re-election) DEMOCRAT

The committee is working with Dr. Lloyd Sherrod of the Kilgore Beef Center at Texas Tech University on a program to be presented later utilizing crop residue and are working through the direction of Dr. Gene Cope, area veterinarian, on grazing and the use of alfalfa.

The purpose of the committee is to advance the agriculture potential of the Muleshoe area and members are available to help contact or research any program that farmers or any other agriculture related group might have.

### Miller...

Cont. from Page 1  
for nine years and served six years at Lazbuddie Cooperative Supply.

Miller stated, "I will try to represent all the people and do the best job to my ability. Your vote and influence will be greatly appreciated."

### Muleshoe...

Cont. from Page 1  
L. Thornton, Jr., chairman of the Board of Mercantile National Bank and John H. Williams, chairman of the Board and Chief Executive Officer of the Williams Companies, Thornton will be the commencement speaker.

### Board...

Cont. from Page 1  
procedure and method of selecting a new athletic director and head football coach. The board will also consider members of the present high school football coaching staff for the position.

Oklahoma Christian College is a four year private liberal arts college now in its 24th year of operation. OCC offers degrees in forty different areas of study.

\*\*\*\*\*  
Winners of the recent anniversary Celebration of XIT Steak

House were Mrs. Raymond Gage, 12 - 10 oz. Sirloins, and John Fisher of Clovis, 12 - 6 oz. Sirloins.

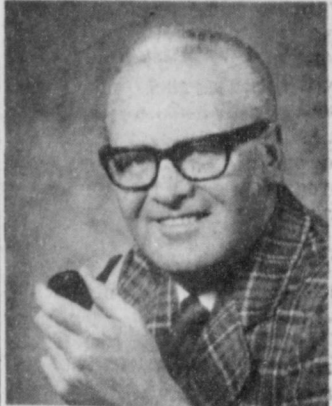
Frank Wueflein, Curtis Didway, Sherrell Rasco, Willie Reeder.

Mark Long, Louise Cardinal, Mrs. Douglas Gardner, June Northcutt, Marie Lamb, Arturo Acosta, of Clovis won a free dinner for two which were the third prizes.

**PLEASE CHECK !!**  
Browning  
**5 SHOT AUTOMATIC 20 GAUGE SHOTGUN**  
SERIAL NUMBER 70Z251511  
IF YOU HAVE THIS GUN CALL:  
**505-763-4114**  
Charles Wade formerly of Wade's Sporting of Clovis.  
"I WILL GIVE YOU A NEW GUN FOR IT"  
Box 777, 88101 Clovis, N.M.

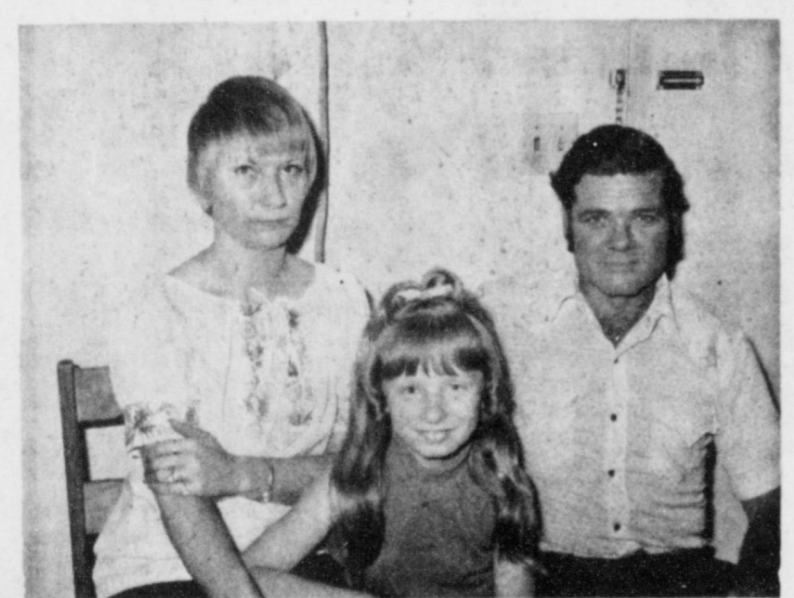
**74TH DISTRICT**

Oldham	
Deaf Smith	
Parmer	Castro
Bailey	Lamb
Cochran	



**DEMOCRAT FOR TEXAS HOUSE OF REPRESENTATIVES 74TH DISTRICT**  
**HARVEY FLOYD**  
Your Vote & Support Appreciated  
Published by Muleshoe Publishing Co. Subject to Democrat Primary May 4, 1974  
Muleshoe, Texas  
PAID FOR BY HARVEY FLOYD, VEGA, TEXAS

**Welcome To Muleshoe**



**MR. AND MRS. WILLIAM BRAZEE AND KANDI**

We are proud to welcome Mr. and Mrs. William Brazee and daughter Kandi, formerly of Lubbock, to Muleshoe. Brazee is employed by Harvey Bass as a TV Technician. Kandi their eight year old daughter is a third grader at Mary DeShazo. The Brazee are Baptist.

THE FOLLOWING FIRMS WELCOME THE BRAZEE TO MULESHOE:

<b>James Crane Tire Co.</b> GOODYEAR	<b>MULESHOE STATE BANK</b> MEMBER FDIC
<b>DAMRON DRUG CO.</b> REXALL 308 MAIN	<b>James Glaze Co.</b> INSURANCE REAL ESTATE LOANS YOUR Independent Agent

**CANVAS CORNER**



**Anthony's**  
C. R. ANTHONY CO.

**Men's and Boys' Track Shoes**

Race to a winning finish in these track shoes! Designed for comfort and action. Men's sizes 6 1/2 to 12; youths' sizes 11 to 2; boys' sizes 2 1/2 to 6. Black with white stripes only.

Reg. 5.39  
**2 FOR \$9**

**Men's and Boys' Surfer Sole Oxford**

Trim and sporty, the popular deck shoe for all-around casual wear. Men's sizes 6 1/2 to 12; youths' sizes 10 to 2; boys' sizes 2 1/2 to 6. Available in white or navy.

Reg. 5.99  
**2 FOR \$9**

**Men's and Boys' Basketball Oxford**

(Illustrated below)

Fast moving basketball shoes for the court. Lace to toe, white duck upper, full cushioned, shopped insole, special cushioned arch, suctioned molded sole. Sizes: men's 6 1/2-12, youths' 11-2, boys' 1-5. White only.

Reg. 5.99  
**2 FOR \$9**

**Women's and Children's Circular Vamp Oxford**

Get set for a fun summer in comfortable canvas shoes. Four eyelet tie, full cushioned insole, cushioned arch, crepe-type outsole, oval toe. Sizes: women's 4-10M and 5-10S, misses' 12 1/2-3M, children's 5-12M. Comes in white, navy, black, red, and red, white, and blue.

Reg. 3.99 and 4.19  
**2 FOR \$7**

**Store Hours**  
9 a.m. - 6 p.m.



CONGRESSMAN

**Bob Price**

18th Congressional District

This week, the House of Representatives voted to create a new bureaucracy to insure stricter regulation of one of the free enterprise institutions left in our society -- the commodities markets, which do some \$400 billion worth of business annually, and which help to provide market stability to producers and adequate supply for consumers.

The bill creates a new bureaucracy to perform the duties that the present Commodities Exchange Authority, under USDA, could more effectively and more efficiently do if given ample authority and staff. A new Commission with a staff

of 1,000 isn't needed and I opposed the bill.

The bill could destroy the futures market. It gives sweeping government control over nearly every aspect of futures trading. If it becomes law, bureaucrats in Washington will run the market that heretofore has been an accurate reflector of economic conditions run by private enterprise.

In the futures market, someone willing to take the production and market risk which otherwise is borne by the farmer buys the farmer's crop before it is harvested. The buyer agrees to pay the farmer a certain price for his pro-

duct. In turn for assuming the risk, the buyer is speculating that the price for the product is going to be more in the future than he paid for it in advance to the farmer and that he, the buyer, will make a profit. In exchange for ridding himself of the risk of production and future market fluctuations, which might go down instead of up, the farmer gets a set price which will assure him a profit.

But the new limitations which this bill would place on the

free enterprise speculative buyers may simply cause them to stop buying in the futures market. In that case, the farmer will not be able to find a buyer for his crop in the futures market and will have to carry on with the burden of risk he would normally carry right through to harvest and sale time.

In other words, the legislation might effectively close off an opinion every agricultural producer now has to take a guaranteed profit in advance of

his actual production, instead of a possibly greater price at harvest time or an equally possibly greater price at harvest time or an equally possible lower market price.

**BANKS MAY INCREASE CREDIT** flow into rural areas as the result of a new ruling by the Office of the Comptroller of the Currency regarding loans insured through the Farmers Home Administration. The law authorizes FHA to reimburse private lenders for up to 90 percent of any loss

sustained on FHA insured loans for rural development.

The new ruling permits national banks, and state banks insured through the Federal Reserve System, to count only the unguaranteed portion of such loans against the banks' lending limits, rather than the full amount of the loan outstanding. This means some banks may be able to lend more of their funds at any given time.

FHA can guarantee loans to develop rural business and industry. It also can guarantee

loans for irrigation and drainage systems, flood prevention, farm ownership, and farm operating costs for those unable to obtain regular commercial credit.

**MORE ON MILK MONEY**  
The Republican National Committee says Democrats got \$36,000 more in contributions from the milk industry last year than Republicans received.

The Lonely Heart



**Farm-facts**  
A Weekly Report Of Agri Business News  
Compiled From Sources Of The Texas Department of Agriculture  
John C. White, Commissioner

Onions on the Way... Poultry Production Down, Income Up... Lamb Prices Increase... More Credit?... Dry in Some Places.

**TEXAS' ONION** crop may not be a bumper one, but it's expected to be 18 per cent above last year's crop, reaching 3,675,000 hundred-pounds, compared to 3,120,000 cwt. in 1973. That's about 175 cwt. per acre from 21,000 acres. Onion supplies from Texas fields are expected to peak from now until about mid-May.

The harvest is in full swing in the Rio Grande Valley, and was expected to begin in the San Antonio-Winter Garden area in late April, according to the Texas Crop and Livestock Reporting Service.

**FIGURES ARE IN** on the 1973 production of broilers, chickens and eggs. Texans' income from these three categories of the poultry business was \$268 million, 54 per cent more than during the 1972 marketing year.

Broiler production in 1973 was 173,330,000, down three per cent from 1972, but prices were better in 1973 and broiler income was up 56 per cent over 1972.

Egg production in Texas during 1973 was 2,496 million eggs, down seven per cent from 1972; but income was up 53 per cent in 1973 over a year earlier, reaching \$113 million. The average price for eggs in 1973 was 55.5 cents a dozen compared to 33.7 cents in 1972.

Texans raised 10 million head of chickens (excluding broilers) in 1973, compared to 11 million in 1972. Cash receipts from chickens totaled \$5.9 million, 26 per cent more than a year earlier.

**PROSPECTS IN THE** poultry business show there may be fewer broilers going to the market. Broilers placed in the State during the week ending April 6 totaled 3,872,000 chicks, three per cent fewer than a year ago and two per cent lower than a week earlier. Eggs put in incubators numbered 4,683,000 in the same week, six per cent below the same period in 1973 and two per cent below a week before.

**FOR THE FIRST** time since January, the press reported lamb prices increased sharply during the week ending April 11. Texas springers were up to \$41-44 a hundred, and oldcrop lambs in feedlots were up to \$39 a hundred. There were 89,000 sheep and lambs for slaughter on feed in lots with capacity of 2,000 head or more in Texas. That was four per cent fewer than were on feed April 1, 1973. Placement of sheep and lambs during March totaled 31,000 head.

**MORE CREDIT** may be available in rural areas under provisions of the Rural Development Act, according to the U.S. Department of Agriculture.

Farmers Home Administration is authorized to guarantee private lenders that they will be repaid for up to 90 percent of any loss they take on loans for a variety of rural development purposes. That may increase the flow of rural credit from private banks according to the USDA.

**SOME RAIN** fell recently over sections of the State, but it is still dry in many areas. Cotton planting is about 11 per cent complete over the State, but some farmers from the Blacklands south are reported wanting rain before planting.

Seedbed preparation is underway on the High Plains... Sorghum planting is reported about 40 per cent complete in the state, compared to about 30 per cent at the same time last year... Peaches are reported developing well in Gillespie County, and trees are beginning to leaf in Gaines County where a good crop is expected.

**JAMES GLAZE CO.**  
**NEW LOCATION**  
**230 MAIN**  
Formerly Tri-County Building  
**MAY 1**

**STREET-GH**  
**YOUR FOOD DOLLAR**



**"SHOP SHURFINE DOLLAR SPECIALS!"**

<b>produce DISCOUNTS</b>	<b>CORN WHOLE KERNEL</b> .....	<b>5</b>	303 CANS
<b>AVOCADOS</b>	<b>SPINACH</b> .....	<b>5</b>	303 CANS
<b>2 for 39c</b>	<b>BEANS CUT GREEN</b> .....	<b>4</b>	303 CANS
<b>ORANGES</b>	<b>PEAS EARLY HARVEST</b> .....	<b>4</b>	303 CANS
<b>12c</b>			
<b>ONIONS</b>			
<b>9c</b>			

**COFFEE**..... Lb. Can **89c**

**HI-C DRINKS**..... 46 oz. Can **39c**

**TOMATO SAUCE**..... 8 oz. Can **8 FOR \$1**

**HAIRSPRAY**..... 13 oz. Can **59c**

**DR. PEPPER**..... 8 Btl. Ctn. **69c**

**PINTO BEANS 69c**

**"SHURFINE FRUIT SPECIALS"**

<b>FRUIT COCKTAIL</b>	303 CAN	<b>31</b>
<b>PEAR HALVES</b>	303 CAN	
<b>APRICOT HALVES</b>	303 CAN	
<b>PINEAPPLE</b>	15 1/2 OZ. CAN	

**ORANGE JUICE** 6 oz. Can **5 for 88c**

**save!**  
RATH RACORN  
**BACON**  
**49c**

SHURFRESH GRADE "A" MEDIUM  
**EGGS 49c**

Specials Good April 14th. Thru 27th. Both Stores Open 8 am to 10 pm 7 Days a Week.  
GUNN BROS.  
STAMPS DOUBLE ON WED

**Pay-n-Save**  
QUALITY AND SERVICE

MEMBER AFFILIATED

STORES LOCATED AT 201 S. 1st STREET, and 515 W. AMER. Blvd. PH. 272-3348 or 272-4406.



MRS. RANDALL LEE FIELD

## Miss Douglass Weds Field

Miss Andra Kay Douglass became the bride of Randall Lee Field, Friday, April 19, at 8:00 p.m. in the First United Methodist Church Chapel. Rev. Bill Hart officiated in the double ring ceremony.

Parents of the couple are Mr. and Mrs. H.A. Douglass of Muleshoe and Mr. and Mrs. Albert L. Field of Palestine, Texas.

The chapel was decorated with spiral candleabra with pink candles, pink calla lilies, killion daisies, shades of pink renuncias and bridal roses. The focal point was her memory candle used on the altar with the bride's selected flowers and alter candles. The pew makers were of the same. Organist was Marcella Jennings and Pianist was Leland Ferris. Ann Ferris served as soloist.

Given in marriage by her father the bride wore a traditional gown of ivory silken chiffon. Brussels lace edged with pink french roses and pink ribbon formed the trim. The empire bodice was fashioned with a yoke of petite pleats edged in the Brussels lace and pink french roses and ribbon. The long gibbon sleeves were of the petite pleated chiffon and were caught at the cuffs. The entire hemline and train was encircled with a border of the petite pleated chiffon. She wore a gibbon hat enriched with tole to full brim and sprinkled with flourets and illusion veil gracefully fell below the waist line. The bride carried the bouquet of "Symphonia," a cascading arrangement of pink pinocchio and pink bridal roses being accented with camellia and procorpus, enhanced by pink velvet tuling. Something old was the brides

grandmother's wedding ring, something borrowed was pearl and diamond earrings, some thing new was her dress and hat and something blue was her garter.

Mrs. Andy Douglass, sister-in-law, served the bride as Matron of Honor. She was wearing a floor length gown of pink chiffon, with a high ruffled neck, sheer long sleeves and ruffled botton. She carried the bouquet "Princess of Camelot" a mixture of the brides' chosen flowers. Flowers also accented her hat.

Terry Field served his brother as best man.

Drew Douglass, nephew of the bride attended as ring bearer. Ushers were Mike Riley and Hugh Young.

The mother of the bride was

a floor length blue gown with long sleeves and blue matching cape and a corsage of Jack Frost roses and gardenias.

The grooms mother also wore a floor length gown of blue and a corsage of Jack Frost roses and gardenias.

A reception followed the ceremony in the First United Methodist Fellowship hall. The table was laid with an elegant cloth of white nylon accented with pearlized sequins of wedding bells. The white layered cake was a pyramid topped with bridal pink roses, pinlichio roses, dianthus carnations and babys' breath. The cake was trimmed in the same fresh flowers. Nosegays were used from each to the length of the cloth.

The bride graduated from Muleshoe High School and attended Amarillo hair design school. The groom is a 1972 graduate of Muleshoe High School and attended West Texas State University his freshman year. He is presently attending Texas Tech University.



MRS. JOHN COPLEY

## Shower Honors Mrs John Copley

Mrs. John Copley the former Miss Vickie Stovall was honored at a bridal shower Tuesday April 16, at the Muleshoe State Bank.

Helping the Honoree greet guests were Mrs. Bill Stovall mother of the bride; Mrs. W.T. Copley, mother of the groom and Mrs. N.S. Stovall, grandmother of the bride.

The table was covered with a white lace cloth over blue. Blue candles in crystal candleholders centered the table. Blue thumbprint cookies and strawberry punch was served from silver and crystal appointments. Miss Tonya Janes presided at the table.

Corsages of household utensils were given to the honoree and special guests.

Miss Vickie Kemp registered packages.

Hostess gifts were a Sunbeam toaster, presto cooker, and a Sunbeam percolator.

Hostesses were Mrs. Bob

Glass, Mrs. Elmer Davis, Mrs. Marshall Head, Lawanda Lee, Nancy Nolan, Mrs. Frank Lee, Mrs. John Blackwell, Mrs. Bill Lambert, Mrs. Claude Wilemon, Mrs. June Northcutt, Mrs. David Beckett and Bernice Holderman.

## Mrs. Martin TOPS Queen

TOPS Chapter No. 34, met Thursday evening at 6:30 p.m. in the meeting room of Bailey County Electric with 23 members weighing in.

Weekly queen was Mrs. Don Martin, First runner-up was Mrs. Raleigh Mason and a tie for second runner-up was between Mrs. Bobby Newman and Ruth Miller.

Mrs. Luther Hall received a gift from the birthday box.



MRS. BILL SHIPMAN

## Mrs. Bill Shipman Honored At Shower

Mrs. Gary Shipman, nee Miss Sherry Fitzgerald, was honored at a bridal shower Tuesday evening, April 16, in the home of Mrs. Ed Nichols.

Special guests were the honoree's mother, Mrs. Melvin Fitzgerald of Clovis; the groom's mother, Mrs. Joe Shipman and grandmother, Mrs. Starns of Portales, N.M.

Mrs. Danny Shipman, sister-in-law, registered guests.

The table was laid in a white net cloth over yellow and centered with a yellow and white arrangement of bells and a bride and groom. Muffins and pineapple punch were served from crystal appointments. Miss Pattie Nichols served the

guests. The hostess gifts were an electric skillet, can opener, and a coffee pot.

Hostesses were Mrs. A.D. Stancell, Mrs. Ruby Atkins, Mrs. Gerald Pepper, Mrs. Finis Kimbrough, Mrs. R.L. Kimbrough, Mrs. Jimmy Shafer, Mrs. R.T. Atchins, Mrs. Jake Tunnel, Mrs. S.P. Stockard, Mrs. Bob Gree, Mrs. J.T. Eubanks and Mrs. Ed Nichols.

### Lucky

Waiter-How did you find your steak, sir?

Diner-It was just luck, I happened to move that piece of parsley, and there it was!

## Two Programs Presented To Progress Club

The Progress Home Demonstration Club met Tuesday, April 16, in the home of Mrs. Gary Murrach. Roll call was answered by time saving ideas. President

Mrs. George Gross, presided over the business meeting with ten members present.

Mrs. Gross presented a program on "Managing your Time" followed by Mrs. C.L. Taylor, who spoke on "Effects of Mass Media."

Recreation was presented by Mrs. Gary Murrach. Mrs. Manuel Self received the hostess gift. Those attending were Mrs. D.L. Redwine, Mrs. Maneul Self, Mr. W.E. Myers, Mrs. Eunice Brune, Mrs. Elbert Davis, Mrs. C.L. Taylor, Mrs. Gordon Murrach, Mrs. Clayton Wells, Mrs. George Cross and Mrs. Davis Gully.

The club's next meeting will be Tuesday, April 30, in the home of Mrs. D.L. Redwine.

### Know Her?

Two things make a woman happy--a husband and someone to compare him with.

## SCHEDULE OF EVENTS

SUNDAY APRIL 21 - MAY 5  
City Golf Tournament, Muleshoe Country Club.  
MONDAY APRIL 22  
4:00 p.m. Rainbow Masonic Hall  
10:00 a.m. Special Childrens Storyhour Library  
TUESDAY APRIL 23  
2:00 p.m. Senior Citizens Library  
7:30 p.m. - AA-AA Meeting Room  
8:00 p.m. - Rebekahs-Oddfellows Hall  
7:30 p.m. - OES - Masonic Hall  
WEDNESDAY APRIL 24  
1:00 to 5:00 p.m. Book sale Library  
4:14 p.m. Library family honored  
7:30 p.m. - DeMolay - Masonic Hall  
THURSDAY, APRIL 25 1974.  
6:30 p.m. TOPS - Bailey County Electric Community Room  
5:30 - Weight Watchers 1st Pres. Church

Compliments of:  
**MULESHOE STATE BANK**  
Member FDIC

In Honor Of The Marriage of  
**Gereta Davenport and Calvin Meissner**

Friends and relatives of the couple are invited to attend a Bridal Shower

Monday April 22, 1974

8 to 10 o'clock

St. John's Lutheran Church

Parrish Hall,

Lariat

## Hobby Club Plans To Tour Museum

The Muleshoe Hobby Club met in the community room of the Muleshoe State Bank with Ola Pesch as hostess.

Members there but not showing items were Allie Barbour, Mrs. Zula Carlyle, Mrs. Verna Dement, Mrs. Bernice Amerson, Mrs. George Chamberless, Mrs. Florene Mills, Barbara Burton, Mrs. Ola Pesch, Mrs. C.E. Briscoe, and Mrs. Effie Williams.

Those showing items were Mrs. Charlie Phipps, needlepoint picture; Mrs. Bub Shafer, city and country toilet plaques;

Mabel Caldwell, bread dough beads and brass windmill and Levina Pitts, arrangement in Big Dipper.

The club will meet Thursday May 2, at the Muleshoe State Bank at 8:30 a.m. to go to Lubbock to make the tour of Ranch Headquarters at the Museum.

On May the tenth the club will meet at 10:30 to go to the craft and arts show at Friona, Texas.

The next regular meeting will be May 16, at 2:00 p.m.

### Very Clear

Two women were standing in the snow discussing the fuel shortage.

"Yes, that's it," said one. "If we'd have got the cold winter in the summer when it's warmer instead of in the winter, we'd be able to do without a fire and save fuel."

## DIPLOMA DILEMMA?

Have you got the gift problem again this year?

Well don't let dilemma defeat!

ST. CLAIR keeps a file on sizes, and preferred gifts of most of the graduates- and you will find both here.

So be wise and do as Freddy Locker is doing shopping ST. CLAIRS first!



# St. Clair's

272-4453

## \* SPRING BLOOMIN' BARGAINS \*

ENTIRE STOCK \$3.99  
**DOUBLE KNIT**

**POLYESTER**  
BEAUTIFUL SPRING COLORS IN



SOLIDS  
PLAIDS  
CHECKS  
STRIPES  
DOTS

**\$ 2<sup>88</sup>**  
yd.

**perry's**

128 MAIN

MULESHOE

MEN'S ORLON

**SOCKS**

DARKS AND FASHION COLORS

**\$ 1<sup>77</sup>**

LADIES & GIRLS

**CANVAS SHOES**

WHITE LIGHT BLUE PAIR

60 COUNT  
**PEEWEE**  
DISPOSABLE DAYTIME DIAPERS

**\$ 2<sup>99</sup>**  
PACKAGE



WITH TAPES

# Christmas In May

Plans are underway for the county-wide, "Christmas in May" arts and crafts show and bazaar to be held in the Community Center-Showbarn on Friday and Saturday, May 10 and 11.

Organizations and individuals who would like to have a booth at the show are asked to send an entry fee of \$5.00 to Jana Pronger, Box 683, Farwell, Texas, before May 1. Proceeds from the rental of booths will go to benefit the Community Center Building Fund.

Any sale from items at individual booths will go directly to that individual or group with no commission being charged. A table will be furnished for the \$5.00 entry fee, but each individual is asked to cover their own table.

Artists and craftsmen from the surrounding area are cordially invited to participate in this show, which is being sponsored by a committee made up of women from various organizations throughout the county. The Palmer County Family Living Council is the co-ordinating body.

Store owners, craft shops, antique stores, etc., are also invited to participate. Anyone who has ideas for unusual Christmas Gifts would be a likely candidate for a booth at the show.

The show will be open from 10 a.m. to 8 p.m. each day and those having booths are asked to have someone stationed at their table during these hours. The building will be open on Thursday, May 9 from 4 p.m. to 8 p.m. for setting up displays. This can also be done on Friday morning from 8 - 10 a.m.

Home economists from the two major utility companies will be on hand to demonstrate Christmas Cooking Ideas. Times for these demonstrations are tentatively set for 10:30 a.m. and 2 p.m. Other types of demonstrations are now in the planning stages and will be announced later.

The show and bazaar will be open to the public free of charge both days and a concession stand will be open

open to the public free of charge both days and a concession stand will be open on the premises.

Among those women who are currently working on the project are Mrs. A.H. Boatman, Mrs. Ellis Tatus, Mrs. Charles Russell, Mrs. Diane Tatum, Mrs. Troy White, Mrs. Cordie Potts, Mrs. Walter Schueler, Mrs. Ralph Wilson, Mrs. Irene Sherley, Mrs. Danny Black and Linda Barker, all from Friona.

Those from Bovina are Mrs. Kleith Garner, Mrs. Betty Garza, Mrs. Pearl Cervantez and Mrs. Cordie Vargas.

Those from Farwell are Mrs. Gilbert Gilliam and Mrs. Hubert Gohlke.

## West Plains Hospital Hospital Briefs

### ADMISSIONS:

Oscar Allison, Mrs. Raul Rangel and baby boy, Mrs. Henry Tamplin, Mrs. Angelita Gutierrez, John W. Watson, Carey B. Stancell, Steven P. Stancell, Teresa Shoemaker, Pearl Haskins, Michael Green, Donny Dee Taylor, Billy Finch, Mrs. Jere Taylor, Donald Leak, Lupe Flores, Germin Roses, Mrs. Margaret White, Mrs. Rex Lowery, Mrs. Lawrence Jaramillo, Miss Jerene Murrach, Mrs. Robie Sterling, Bret Hanks, Mrs. Terry Kemp, Mrs. Betha King, and Mrs. Oberrita Leveque.

### DISMISSALS:

Mrs. Winnie O. Davis, Fred Trujillo, Mrs. Rubie Sterling, Mrs. Lillie Simkins, John R. Harris, Buck Ragsdale, Bill Taylor, Jr., Mrs. Raul Rangel, baby boy Rangel, Mrs. Henry Tampline, Mrs. Viola Layne, Mrs. Pearl Haskins, Mrs. Rex Lowery, Miss Sharon Bevers, Billy Finch, Mrs. Jere Taylor, John Watson, Steven Stancell, Cary Stancell, Teresa Gall Shoemaker, Donny Dee Taylor, Michael Green, Bret Hanks, Fermin Rosas, M. Steve Flores, Brian Dwayne Lowery, Mrs. Antonio Gutierrez, Donald Leak, Mrs. Lawrence Jaramillo and baby boy.

### Martha Garza

Mr. and Mrs. Norberto Alonzo Garza of Muleshoe are the proud parents of a new baby girl born April 4, at 5:17 a.m. in the West Plains Memorial Hospital of Muleshoe. The baby weighed seven pounds and ten ounces and was named Martha Angelina. She is the couple's second child.

## NEW ARRIVALS



### Brian Dwayne Lowery

Mr. and Mrs. Rex Dwane Lowery of Littlefield are the proud parents of a new baby boy born April 16, at 5:55 a.m. in the West Plains Memorial Hospital of Muleshoe. The baby weighed eight pounds and four ounces and was named Brian Dwayne. He is the couple's third child.

### Raul Rangel

Mr. and Mrs. Raul Rangel of Muleshoe are the proud parents of a new baby boy born April 11 at 10:45 a.m. in the West Plains Memorial Hospital of Muleshoe. The baby weighed six pounds and eight ounces and was named Raul. He is the couple's first child.

### Soledad Orozco

Mr. and Mrs. Elias Orozco of Texico are the proud parents of a new baby girl born April 5 at 7:03 p.m. in the West Plains Memorial Hospital of Muleshoe. The baby weighed seven pounds and one ounce and was named Soledad Guzman. She is the couple's second child.

### Lynnetta Jo Rogers

Mr. and Mrs. Joe Lynn Rogers of Muleshoe are the proud



SPRING IS THE TIME FOR BABIES.....The Muleshoe Young Homemakers sponsored the story hour Wednesday, April 17, at the Muleshoe Public Library. The children enjoyed a program on "Spring and Baby Animals." There were puppies, kittens, chicks and a baby rabbit on hand for the children to hold and see. A film was shown and favors were handed out by Mrs. Jim Parrish and Mrs. Kenneth Powell.

parents of a new baby girl born April 7, at 12:34 p.m. in the West Plains Memorial Hospital of Muleshoe. The baby weighed seven pounds and no ounces and was named Lynnetta Jo. She is the couple's first child.

### William Lex Frazier

Mr. and Mrs. Milton Hue Frazier of Muleshoe are the

proud parents of a new baby boy born April 6 at 2:26 p.m. in the West Plains Memorial Hospital of Muleshoe. The baby weighed six pounds and four ounces and was named William Lex. He is the couple's first child.

Mr. and Mrs. Thomas Zamora of Muleshoe are the proud parents of a new baby girl born April 17 in the Clovis Memorial Hospital in Clovis. The baby weighed seven pounds and 13 ounces.

## ATTENTION

Applications for irrigation well permits for Bailey County now being accepted by Mrs. Doris Wedel at 306 W. Second Muleshoe. Effective April 3  
HOURS: 9-5 Monday thru Friday  
PHONE: 272-3283  
**High Plains Underground Water Conservation District No. 1**



PLANS ANNOUNCED.....Mr. and Mrs. Billy Chester of Sudan announce the engagement and approaching marriage of their daughter, Tanya Kay, to Mark Hanna, son of Mr. and Mrs. Dale Hanna, also of Sudan. The couple plans a double ring ceremony Friday, June 21, in the First Baptist Church of Sudan. The bride-elect graduated from Sudan High School in 1973 and presently attends Texas Tech University. She is the granddaughter of Mr. and Mrs. Charlie Glover of Muleshoe. The prospective bridegroom is a candidate for graduation from Sudan High School in May. He is the grandson of Mr. and Mrs. Raymond Hanna of Maple and Mr. and Mrs. Raymond Gage of Circle Back.



HAPPY BIRTHDAY TO YOU.....Mrs. Pearl Seaton of the Muleshoe Nursing Home celebrated her 84th birthday Tuesday, April 16, when the Joyce Hill Circle Hosted the monthly birthday party. Earl Robert of Farwell furnished the entertainment by singing and accompanying Cecil Rundale, Mrs. Floyd Gaffard and Mrs. Gil Lamb on the piano.

Protect eyes by using proper lighting for reading and studying. Also schedule regular eye examinations with an ophthalmologist, advises Dr. Barbara Sears, health specialist, Texas Agricultural Extension Service; The Texas A&M University System.

Mrs. Mae Provence visited her mother, Mrs. Sein on Tuesday afternoon.

## Nursing Home News by Myrtle Guinn

Mrs. Lillian Fulcher who is 100 1/2 years old, had five generations of her family here to visit with her and have pictures taken on Friday, April 12. Those who were present to be with her were Dell Hardy, her daughter of Sudan; Tommie Teeters of Paris, Texas; Candy Estes of Nowata, Oklahoma and Jennifer Lynn Estes, also of Nowata, Oklahoma.

Mrs. Lottie Hall went to Plainview with Mrs. Veach to spend the week-end with Mrs. Veach's son and family.

Mrs. Martin and her mother visited Marie Engram Sunday afternoon.

Mr. Cross visited his mother Mrs. Cross, Sunday afternoon and he visited Mrs. Lewis also.

The Pastor and people from Calvary Baptist Church came and sang for us Sunday and Rev. Harvey spoke on the resurrection of Christ, which we call Easter Sunday.

Miss Jerene Murrach's brother and wife, Mr. and Mrs. Dalton Murrach returned to their home in Colorado Springs, Colo. Saturday.

Miss Mildred Davis visited her mother Mrs. Davis on Sunday and also stopped for a chat with me and Mrs. Hall. Mrs. Weners also visited us and Mrs. Lewis Sunday afternoon.

Miss Jerene Murrach was taken to the hospital Tuesday morning.

Mrs. Seaton was honored with a birthday party Tuesday afternoon. The ladies from the First United Methodist Church were in charge of the program of music and singing and refreshments of punch and angel food cake.

Those visiting Mrs. Lewis and Jerene were Joe and Mary Smith of Arizona, Marie Dickinson of Albuquerque, Myron Pool and Mrs. Lewis' son and family.

Mrs. Duke had a lot of out of town visitors over the Easter weekend.

# Welcome Spring

SHOP IN ELEGANT SPLENDOR AT . . .

**The RED DOOR**  
416 MAIN  
Clovis

VORA HARTLEY OWNER- A WELL KNOWN  
FIGURE IN CLOVIS

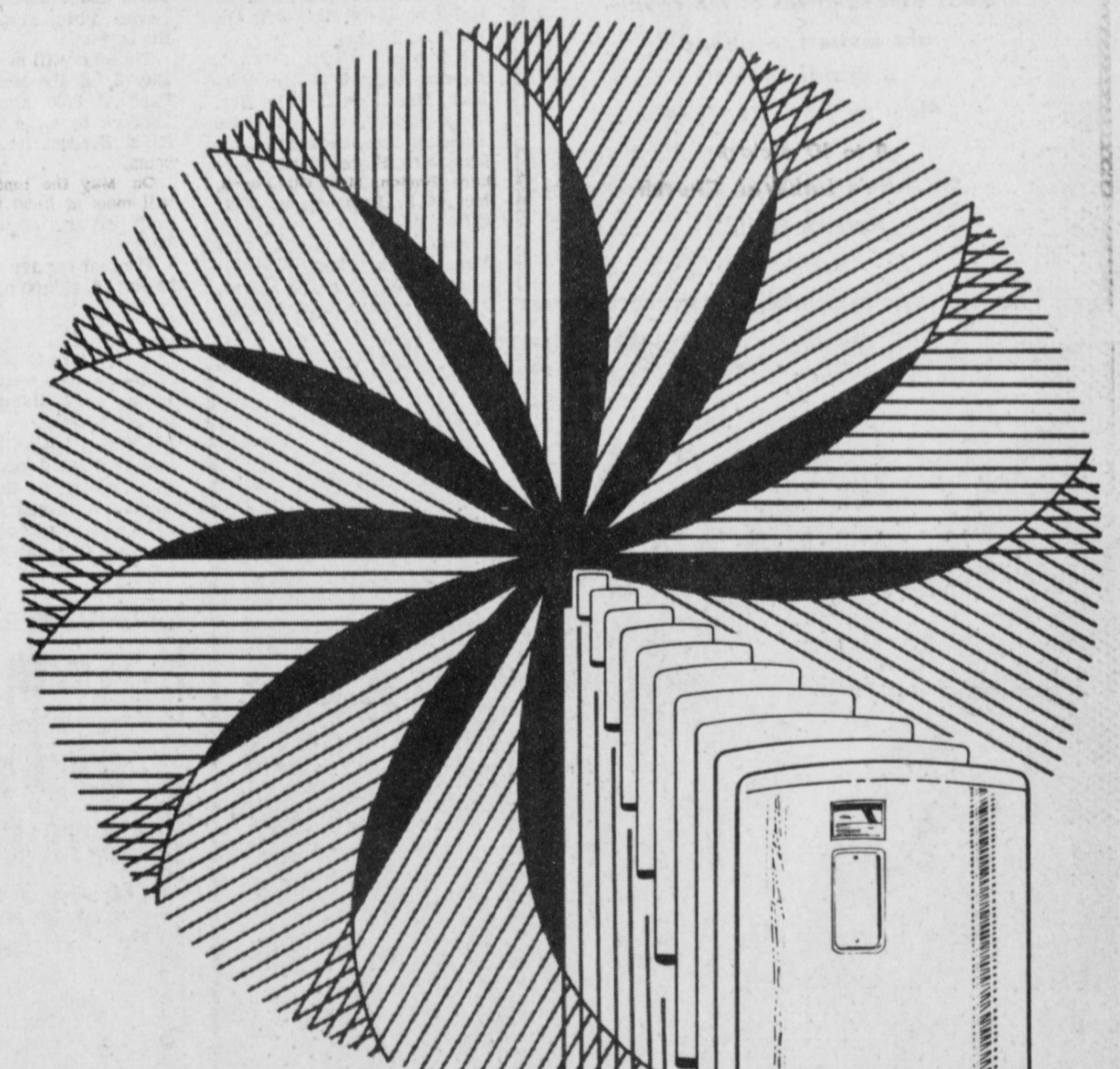
Come by and meet the personnel that will help you at the Red Door.  
Helen Grandy, Manager, Kathy Ent, Accessory & Jewelry Expert and Glen Ray Klebold, Fashion Consultant.

- Jack Winter
- Parade
- Lingerie
- Jewelry
- Windy Winter
- Don Sophisticates

Watch For The  
Opening Of The Back  
Door For Juniors  
IN BACK OF  
**The RED DOOR**



416 MAIN CLOVIS 762-7134



## Worry Free

... is a great description for people who own electric water heaters. They don't worry about things like waiting for hot water when they want to do the laundry, or wash the dishes or things like that, because they know their electric water heater is fast recovery. They don't worry about service either, because they know we have over 100 trained people to provide any service that may be needed. Why don't you find out how great it is to be worry-free and how you can own an ELECTRIC water heater!

EQUAL OPPORTUNITY EMPLOYER

## ELECTRIC Water Heaters



**WE SELL, SERVICE, INSTALL, FINANCE & GUARANTEE 'EM!**

Call Us!



# MULE'S TALE



Official Publication of Muleshoe High School Written and Edited by Students of the Muleshoe Schools

VOL 9 NO 10

EDITOR Gene Rogers

SUNDAY APRIL, 21, 1974

## National Library Week Designated

### ★★★ MHS Students Win UIL Honors

Muleshoe High School students participated in the Regional UIL events in the Regional UIL events in Odessa Friday and Saturday, April 19 through the 20th. Those representing Speech and Drama were; Steve Block, Richard Meyers, Ronnie Bullock, Larry Torres, Jana Oyler, Lauren Hall, Sharon Wrinkle, Denette Mann, Kelly Chahk, Larry Mills, Bill Durham, Nick Black, Johnny Dean, Mike Hunt, Mark Burden, Janet Hopper and Belinda Nickels.

### ★★★ DECA Club Has Meeting

The following boys are in the Regional Track Meet Saturday April 20th. Ruben Gonzales, Larry Sexton, Victor Lopez, Randy Norman, and Jeff Skipworth.

### ★★★ MHS Authorized To Give GED Tests

The Muleshoe Independent School District has recently been authorized to administer the GED Testing Program for non-high school graduates wishing to receive their high school certificates. The program was established primarily to serve those students in the Adult Basic Education classes, but attendance at these classes is not a requirement. To be eligible for the tests the student must be 17 years of age or older and have been out of school for one year or more. Persons wishing to register to take the tests may contact Mr. Gramling at the high school.

### Rose Chapter Has Meeting

On April 18, the FHA Rose Chapter met in room 14 to discuss upcoming affairs. Each member present was asked to take at least one bottle of vanilla and one can of pepper to sell because the money is badly needed.

Also discussed was the party for the Secret Grandmothers on May 3. Those in charge are Vicky Griffin and Carol Brown. Also Family Night will be May 6, and in charge of this is Connie Johnson and Prisca Young. People will be informed about the time, refreshments, etc for these parties.

The 4 girls with the most points will be eligible to attend the state FHA meeting in Dallas. They will catch a chartered bus from Lubbock on Thursday, April 25, and will be gone through April 27. The cost of the room will be about \$12 plus money for her meals.

Auto layoffs spread to whitecollar group.

Bethlehem Steel increases its prices.

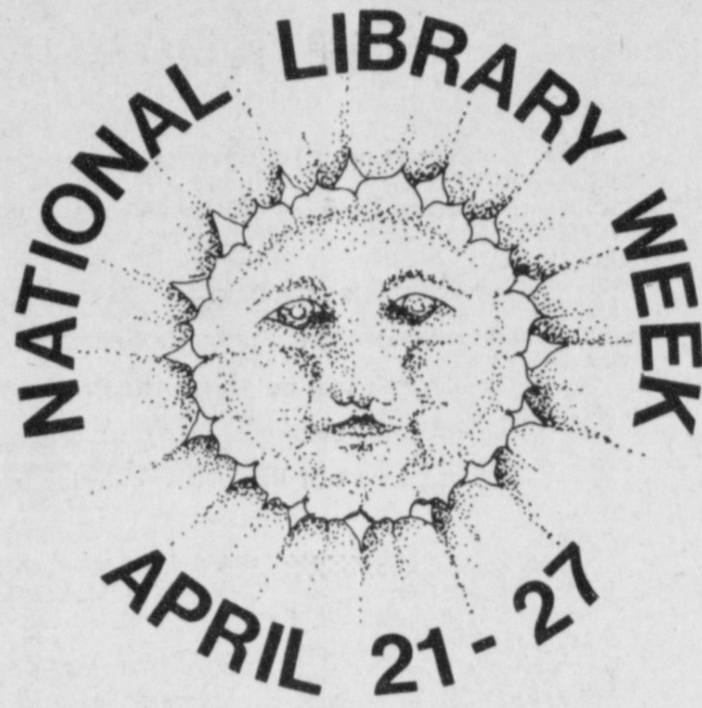
Gold rush is beginning in Canada.

American visitors report no hostility in China.

DECA met Friday, April 19, in room 14 to listen to the speeches of those students running for President and Treasurer for next year. Following the roll call, Beverly McCamish appointed a committee for finding another money making project.

A screening committee was also appointed to inform the candidates of their duties if they get the office. Members of the committee are Vicki Redwine, Jim Ella Norman, Debra Glass, and Anna Castorena. Speeches were given by the candidates and they were asked to submit to the screening committee, a written statement of why they wanted to run for an office. Those running for President are Beverly McCamish, Roy Bara, and Steve Reed. Running for Treasurer are Tonya Hardaway and Pam Vinson.

Prices of farm products rise 1.5 per cent.



Soviet assails U.S. Indian Ocean plan.

North Vietnam putting stress on economy.

### Calendar Of Events

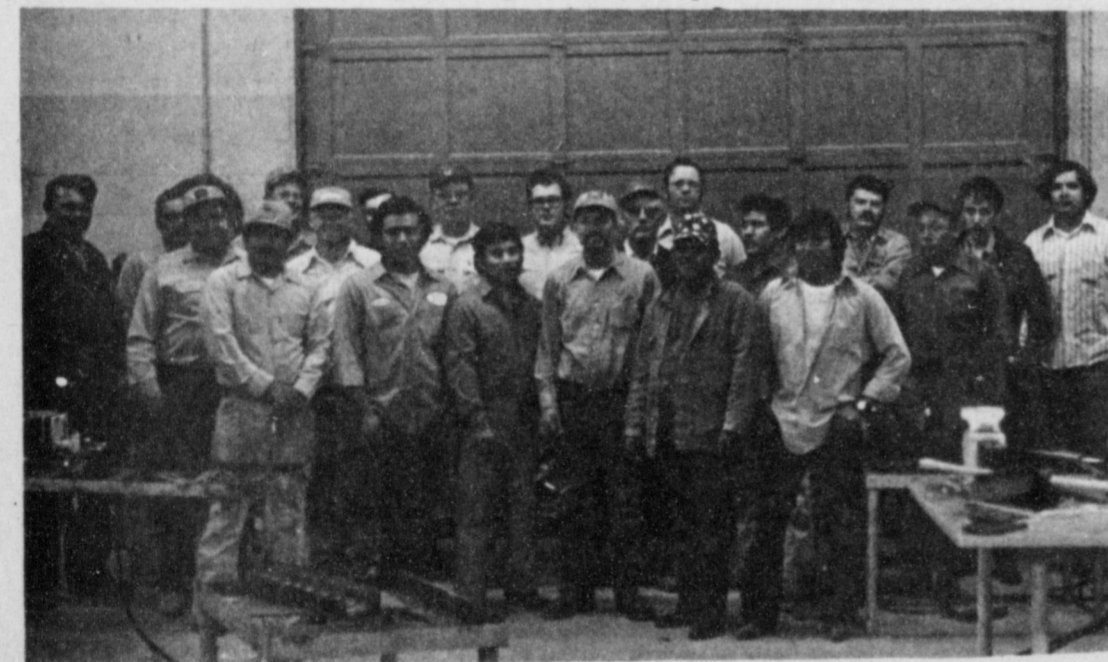
- Monday, April 22 Student Council Speeches-orientation
- Tuesday, April 23 Choir Clinic-All Day
- Wednesday, April 24 Art Club Meeting-orientation
- Student Council Convention-Dallas
- UIL Concert and Sight Reading-Band-Plainview
- Thursday, April 25 Student Council Convention-Dallas
- Band Contest-Amarillo
- FHA State Meeting-Dallas
- Friday, April 26 Student Council Convention-Dallas
- FHA State Meeting-Dallas
- Band Contest-Amarillo
- Saturday, April 27 FFA State Judging Contest-Texas A&M
- FHA State Meeting-Dallas
- Band Contest-Amarillo

NROTC Navy-Marine Scholarship Program, Iowa City, Iowa. Scores must be released by 3 November in order to insure receipt by the score receipt deadline date of 15 December. Apply for the NROTC Navy-Marine Scholarship Program between 1 March 1974 and 15 November 1974 in accordance with the 1975 NROTC bulletins containing the eligibility requirements and applications are available from Mr. Gramling or the U.S. Navy or Marine Corps recruiting Station listed in your telephone directory or from the Commander, Navy Recruiting Command (Code 314), 4015 Wilson Blvd., Arlington, Virginia 22203.

## Applications Being Accepted For NROTC Scholarship

Applications for the program will be considered based on scores obtained on either the Scholastic Aptitude Test (SAT) of the College Entrance Examination Board (CEEB), Princeton, New Jersey, or the American College Test (ACT) of the American College Testing Program, Iowa City, Iowa.

The purpose of the program is to provide civilian-educated career officers to serve the American people in the U.S. Navy and Marine Corps. Upon successfully completing baccalaureate degree requirements and completing summer training periods, students are commissioned officers in the regular Navy or Marine Corps.



MR. BICKEL AND STUDENTS. . . . Mr. Bickel and students of the Basic Welding Course sponsored by MHS in cooperation with South Plains.



MRS. BLACK IS THE INSTRUCTOR. . . . Mrs. Black is the instructor for the Freehand Drawing class held at MHS in cooperation with South Plains Junior College.

## Adult Education Courses Being Taught

Adult education classes started in October in Muleshoe and run through April. Adult Basic courses are offered for people who have not finished high school and who would like to obtain a GED Certificate. On Tuesdays, Mr. Roy Alexander teaches Child Psychology. Mr. Wayland Ethridge teaches Freshman English on Thursday. On Tuesdays and Thursdays, Mrs. Elizabeth Black instructs a Freehand Drawing Class. Mrs. Jean Butler, Conversational Spanish, and Mr. Bill Bickel, a course in Basic Welding. There is an average of about 20 in each class.

In High School, College Credit courses in cooperation with

South Plains College are offered. Requirements for taking these college credit courses are high school graduation or GED Certificate. On Tuesdays, Mr. Roy Alexander teaches Child Psychology. Mr. Wayland Ethridge teaches Freshman English on Thursday. On Tuesdays and Thursdays, Mrs. Elizabeth Black instructs a Freehand Drawing Class. Mrs. Jean Butler, Conversational Spanish, and Mr. Bill Bickel, a course in Basic Welding. There is an average of about 20 in each class. Welding is a 21-hour course

from 7 until 10 p.m. Due to the interest in the Welding Course, another 21-hour course will be offered starting April 16.

Increasing interest has been demonstrated up to this point and sound courses will be offered as interests indicate. Mr. Ben Gramling is qualified to administer the GED exams to people who would like to have the GED certificate in lieu of high school graduation.

For further information on any of these programs, contact Mr. Tom Jinks at the Administration Office.



MR. BICKEL AND STUDENTS. . . . Mr. Bill Bickel and students of the Basic Welding Course sponsored by MHS in cooperation with South Plains Junior College seem to be very busy.

### ★★★ College Days

The deadline for Seniors to take their college days was Friday, April 5. Several students have taken advantage of being able to visit the college of their choice.

San Angelo State was visited by; David Wheat, Don Long, Perry Stockard, Fred Locker, Brenda St. Clair, Donna Howard, Brenda Weeks, Glenda Harlin, and Kelly St. Clair.

Texas Tech was visited by; Ricky Mata, Mike Jones, Brenda St. Clair, Donna Howard, Brenda Weeks, Glenda Harlin, Don Long, David Wheat, Danita Throckmorton, Ronnie Parker, Mark Bruns, Rogelio Puente, Larry Torres, and Larry Vaughn.

West Texas State University was visited by; Donna Lambert, Patti Nickels, Rogelio Puente, Daniel Guzman, Daniel Gonzales, and Richard Garcia.

South Plains was visited by; James Kinard, Rick Magby, David Saylor, Troy Scott, and Laticia Harris.

Sammye Mardis visited TSTI in Waco. Denette Mann attended McMurry. Troy Scott, Danny Waggoner, and David Saylor visited TSTI in Amarillo. Terri Bryant, Susan Head, and Loretta Flores visited the Northwest Texas Hospital School of Nursing where they also attended a workshop for future nurses.

Steve Beneke and Joe Elizarrarez visited an Air Force Recruiting Office.

Roxanne Street visited Draughts Business College in Lubbock.

Trudeau presents a record spending program.

Italy urges Israeli pullout as peace price.

House panel rejects pay-rise plan.

Food prices found up 16 per cent in year.

Stocks of metals companies show declines.

### ★★★ Theme Will Be Libraries Let It Be

April 21 through April 27 has been designated as National Library Week. The theme of this year's National Library Week is "Libraries Let It Be." It is hoped that all students will take advantage of opportunities to visit their school and public libraries.

The Muleshoe High School library is always buzzing with activity. We have a modern well-equipped and comfortable

library with entertaining and educational literature. If you want to go to the moon, travel to foreign lands or just learn about different places and things the Muleshoe High School library "Lets It Be" and lets "You Be You!"

### Invitations Received

Seniors were called to the cafeteria Thursday morning for their invitations. The students exchanged their personal cards for sometime and then had a short class meeting, during which they discussed what they wanted to leave the school. The Seniors of '74' are beginning to realize their graduation is not far away. Some of the seniors are very excited with the upcoming event while others are experiencing nostalgia.

U.S. trade surplus shrank in January.

Kennan calls disunity Europe's own product.

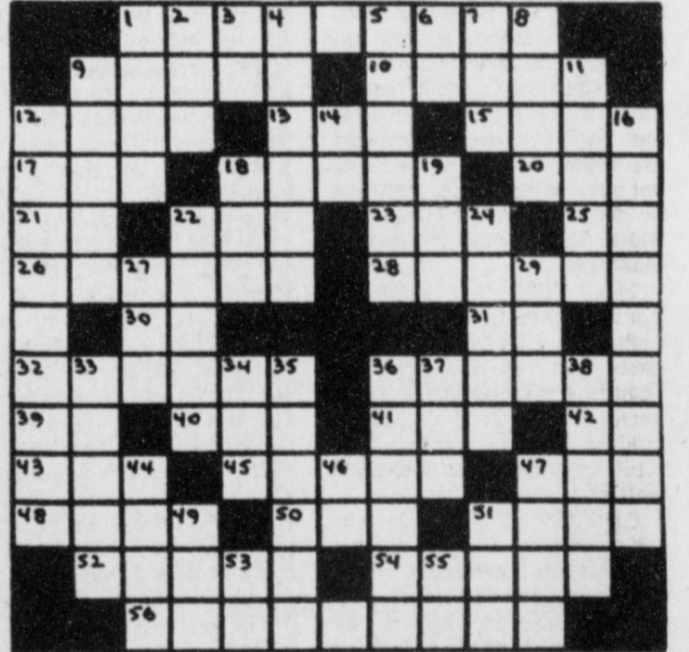
U.S. won't insist on parity in arms talks.

Connally critical of Nixon and Congress.

### School Menu

- MONDAY Milk Meat Loaf--Catsup Green Beans Creamed Potatoes Corn Bread Apricot Cobbler
- TUESDAY Milk Hamburger Lettuce and Tomato Salad Pickles-Onions French Fries Orange Juice Cookies
- WEDNESDAY Milk Chicken Salad Sandwich Veg. Soup French Fries Whip and Chill
- THURSDAY Milk Hot Dog with Chili Sauce Veg. Beef Soup Lemon Pudding
- FRIDAY Milk Fish Portions-Catsup Glazed Carrots Cole Slaw Hot Rolls Orange Juice

### CROSSWORD By A. C. Gordon



- ACROSS
  - 1 - Aware
  - 9 - Wood joint
  - 10 - Office furniture
  - 12 - An ancient Asiatic
  - 13 - Anger
  - 15 - Old age (Scottish)
  - 17 - To uncover (poetical)
  - 18 - To address
  - 20 - Sailor
  - 21 - Music note
  - 22 - Have being
  - 23 - Meadow
  - 25 - Parent
  - 26 - Newspaperman
  - 28 - Employment of cruelty
  - 30 - Either
  - 31 - Roman 1100
  - 32 - Loose-fitting garments
  - 36 - Far East
  - 39 - Preposition
  - 40 - Cooking vessel
  - 41 - Large container for liquids
  - 42 - Sloth
  - 43 - American Indian
  - 45 - Color
  - 47 - Girl's nickname
- DOWN
  - 1 - To transfer
  - 2 - Unit
  - 3 - Negative
  - 4 - Surprised marksman
  - 5 - Standard of excellence
  - 6 - Old English (abb.)
  - 7 - Employ
  - 8 - Short comic play
  - 9 - Lukewarm animal
  - 11 - Closes forcibly
  - 12 - Very important
  - 14 - In reference to
  - 16 - Put into form of a play
  - 18 - Sign of a theatrical fall house
  - 19 - New Zealand parrot
  - 22 - Anchor position
  - 24 - Acknowledge
  - 27 - Electrically-charged atom
  - 29 - To freeze
  - 33 - Join
  - 34 - Toothed gear
  - 35 - Rock layers
  - 36 - Exaggerate
  - 37 - Sped
  - 38 - Wood fasteners
  - 44 - Therefore
  - 46 - This or that (abb.)
  - 47 - To soothe
  - 49 - Dry, of wind
  - 51 - Sheep talk
  - 53 - Thoroughfare (abb.)
  - 55 - Preposition

## Band B Contest To Be Held On April 24

Band will leave at 7:15 Wednesday April 24 for UIL concert and sightreading contest at Wayland Baptist College in Plainview. The band will play "Gallito" by S. Lope, "The Marriage of Figaro" by Mozart, and "Scenes From the Louvre" by Norman Dello Joio.

In Plainview the band will be in competition with area AAA bands. The band will travel from

Plainview to Amarillo for the Greater Southwest Music Festival, April 25, 26, and 27. This is one of the outstanding spring festivals in the state. Bands from all over the state and other states will be in competition for outstanding band awards.

In addition to the contest, the band will visit Wonderland Park and Palo Duro Canyon.

### Courthouse News

New Cars: Protein Processors, Inc., 1974 Chevrolet ckup, Crow Chevrolet, Kenneth Precure, 1974 Dodge ckup, Trader Horn Motor Co., Oather Dale, 1974 GMC pick-up, Town and Country Auto, Joe Ferris, 1974 Ford pick-up, Muleshoe Motor Co., Margie L. Moore, 1974 Chevrolet, Crow Chevrolet, M.D. Locker, 1974 Ford pick-

### Mary DeShazo Six Weeks Honor Roll

Mary DeShazo fifth six weeks honor roll include: Thirdgrade, Scott Campbell; Cecil Chavez; Rhonda Dunham; Stacy Elder; Eddie Flowers; Party Garcia; Amara Gilliland; Sandra Iaght; Susan Harris; Sharla Hawkins; Ervin Howell; Tori Iunt; Abbye Kennedy; Jackueina Leyva; Christina Ruiz; Stacy Schroeder; Jonette Sudluth; Sandra Speck; Lori Stroud; Martina Valdez and Cathi Williams.

Fourth grade: Cara Bass, Eddie Black, Michelle Bryant, Robin Burgess, Stacey Campbell, Jamey Chancey, Damon Cooper, Shelly Davis, Diane Henry, Kevin Howard, Kevin Huckabee, Joe Neal, Susie Pierce, Lavon Rhodes, Cindy Turner, Jill Turner, Kristi White, Jan Whit, and Curtis Wheeler.

Fifth grade: Michelle Agee, Larry Beene, Curly Brantley, Leslie Cowan, Gary Cox, Angela Davis, Casey Farmer, Paul Faver, Nancy Garcia, Benton Glaze, Shelle Hawkins, Greg Harrison, Bruce Hernandez, Tammy Huckabee, Tena Larders, Sally Lunsford, Richard Orozco, Mary Mata, Minerva Martinez, Larry Nowell, Benny Pena, Brad Poyner, Felix Reyes, Sandy Rojas, Keva Roming, Diana Saldana, Brenda Stevens, Tyree Wagon, Leslie Wagon, Clifford, Watson and Brenda Woodruff.

up, Johnson Ford Co. B & S Irrigation, 1974 GMC pickup, Blaha GMC Jeep Inc. H.D. Rammage, 1974 Chevrolet, Crow Chevrolet, J. D. Hodges Farms, 1974 Chevrolet pickup, Crow Chev. W. R. Adams, 1974 Chevrolet pickup, Grayson-Wells Chev



M.T. SIMMONS

### Services Held Friday For M.T. Simmons

Marion T. Simmons, 94, died at 11:15 p.m. Tuesday in the Retirement Ranch Nursing Home in Clovis, N. M. Services were held at 2 p.m. Friday in the Primitive Baptist Church with the Elder Afton Richards of Ralls officiating. Burial was in the Muleshoe Cemetery under the direction of Singleton - Ellis Funeral Home.

He had been a Curry County N. M. resident since 1966 moving there from Muleshoe, where he had resided 14 years. He was a native of Williamson County.

He was a member of the Primitive Baptist Church and was a retired farmer.

Survivors include a son, Thomas of National City, Calif; three daughters, Mrs. T.J. Cox of Clovis; Mrs. Ruby Lewis of Redwood City, Calif; and Mrs. Ethel May of Steigler, Okla.; 15 grandchildren and 35 great-grandchildren.

Jim Hartline, 1974, Buick, Town and Country Auto. Jim Claunch and Sons, 1974 Chevrolet pickup, Armes Chevrolet. MARRIAGE LICENSES Pablo Sanches Lira, Muleshoe and Alicia Ceballos Infante, Muleshoe. Stephen Lee Fletcher, Temple, Okla., and Marilynn Yvonne Fred, Muleshoe, Billy Don Jones, Muleshoe.

and Robertta Gayetta Gable, Smyer. WARRANTY DEEDS Myrtle Lee Tatum and husband, Fred M. Tatum to Matt Nix, Jr. and wife, Lena Mae Nix, two tracts: Tract 1 - the southeast quarter of Section No. 50, Edward K. Warren Subdivision No. 1, Block W, Bailey and Lamb County, Tract 2 - the southwest quarter of the west half of the southeast quarter of

Section No. 5 of the Edward K. Warren Subdivision No. 1 Block W, Lamb County. Wendell Speck and wife, Maudie Speck to Lester Ray Haney and wife, Wilma Jean Haney, all of Lots Nos. 2 and 3 in Block No. 4, Harvey Addition to the city of Muleshoe. Leslie Harris and wife Alice Harris to Joe Lynn Copley and

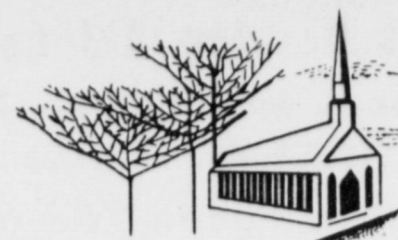
wife Lela Copley, the south half of Tract No. 4, Aylesworth Acres. Gary Miller to Byron M. Gunter all of Lot 184, Richland Hills addition, Muleshoe. Johnny Freid and wife Velma Freid, to Jerrell Robert Otwell and wife Polly Ann Tapp Otwell, all of Lot No. 6, Block No. 24, Country Club Addition Muleshoe.

British Liberals get huge vote but few seats.

Search for oil is pressed in Amazon region.

**Singleton-Ellis Funeral Home**  
24 Hour Ambulance Service  
Ph. 272-4574 Muleshoe

# An investment in Your Future ATTEND CHURCH



"For where your treasure is, there will your heart be also"

## The Knowledge of the Lord

Habakkuk 2:14. "For the earth shall be filled with the knowledge of the glory of the Lord, as the waters cover the sea."

The Church is chosen of God to spread the good news that God has a plan to redeem men and reconcile them unto Himself through the vicarious sacrifice of Jesus Christ our Lord. The Church will be so successful in spreading this glorious knowledge in the world that God says the earth will be as full of it as the waters that fill the ocean. Attend church and become a part of this great undertaking.



The Church is God's appointed agency in this world for spreading the knowledge of His love for man and of His demand for man to respond to that love by loving his neighbor. Without this grounding in the love of God, no government or society or way of life will long persevere and the freedoms which we hold so dear will inevitably perish. Therefore, even from a selfish point of view, one should support the Church for the sake of the welfare of himself and his family. Beyond that, however, every person should uphold and participate in the Church because it tells the truth about man's life, death and destiny; the truth which alone will set him free to live as a child of God.

Coleman Adv. Ser.



SPANISH BAPTIST MISSION E. 3rd and Ave. E John Jaquez, Pastor

PROGRESS SECOND BAPTIST CHURCH Arthur Hayes, Pastor 1st and 3rd Sundays

MULESHOE BAPTIST CHURCH 8th Street & Ave. G Rev. Bob Dodd, Pastor

ST. JOHN LUTHERAN Lariat, Texas Rev. Martin M. Platzer, Pastor

FIRST BAPTIST CHURCH 220 W. Ave. E Douglas DuBoise, Pastor

SPANISH ASSEMBLY OF GOD East 6th and Ave. F Rev. Hipolito Pecina

ST. MATTHEW BAPTIST CHURCH W. Third E. McFrazier, Pastor

NORTHSIDE CHURCH OF CHRIST 117 E. Birch Street

PROGRESS BAPTIST CHURCH Progress, Texas Murrell Johns, Pastor

SIXTEENTH & D CHURCH OF CHRIST Sunday - 10:30 a.m. Evening - 6 p.m. Wednesday - 8 p.m. Ivan Woodard, Minister

IMMACULATE CONCEPTION CATHOLIC CHURCH Father Timothy Schwertner Northeast of City in Morrison Edition

MULESHOE CHURCH OF CHRIST Clovis Highway Royce Clay, Minister

**On Wall Street**  
By Bob Hill  
Lentz, Newton & Co.

FEDERAL NO-FAULT AUTO INSURANCE COMING. Congress has decided to get into the middle of the controversial no-fault auto insurance issue. The Democratic side of both the Senate and the House is sponsoring legislation, already approved by the Senate Commerce Committee, to establish federal no-fault insurance standards and to make those standards mandatory in states which do not have no-fault insurance laws or which have no-fault laws in which do not meet the federal standard.

The proposed legislation would eliminate fault-finding in just about all automobile accidents which occur and it would require direct payments by insurance companies to policyholders for all medical, hospital, and rehabilitation costs as well as for lost wages.

Clearance is still needed on the question of whether the proposed federal legislation encroaches on the traditional right of the states to regulate the insurance activities within their borders.

The insurance industry is pretty much in agreement over the need for no-fault insurance

but it is badly divided over whether the states or Congress should be responsible for the legislation creating it. A major factor sparking the current Federal legislation is the snail-like pace of the states in passing no-fault bills. Only twelve states have no-fault insurance and another six or eight states are expected to pass it this year. The governors of Illinois, New Hampshire and New Mexico vetoed no-fault legislation. Arkansas, Oregon and Texas have passed no-fault bills but have not taken away the right to the injured party to sue.

However, none of the states have passed no-fault legislation that meets the proposed federal standards. In Massachusetts, the pioneer promoter of no-fault insurance, and in Florida where no-fault limits for bodily injury are held to a maximum of \$1,000 significant reductions in premiums for bodily injury insurance have resulted.

The primary opposition to the whole concept of no-fault insurance comes mostly from the trial lawyers who would lose income from any plan which would reduce the number of lawsuits arising from auto accident.

**Learn to Twirl**  
In addition to Tutu's school of Ballet. Baton twirling classes have been added.  
Enrollment for these and others are being taken on Saturday Apr. 27, between 2 & 6 p.m.  
Ages 3 yrs. and up at 405 Main.  
Instructor will be Debbie Stough. Classes will be held every Wednesday & Saturday afternoons.  
Private classes can be arranged.

### West Planes Repair

Benger Air Park--Frona 247-3101

### The Holiday Restaurant

Hwy. 60--Frona 247-8811

### First National Bank

"Home Owned" 224 South First

### Bratcher Motor Supply

107 E. Avenue B. 272-4288

### San Francisco Cafe

"Tortilla Factory" 121 Main Street, 272-3502

### James Glaze Co.

Insurance, Real Estate & Farm Loans 215 A. First 272-4549

### Lambert Cleaners

Steam Carpet Cleaning Drapery Cleaning 123 Main Street. 272-4726

### Main Street Beauty Salon

115 Main 272-3448

### Muleshoe Motor Co.

West American Blvd.

### Spudnut Shop

Special Order On Cakes 328 Main 272-3542

### L.A. Hobbies & Gifts

Clovis Road 272-3864

### Merle Norman Cosmetic Studio

118 E. Avenue B 272-3541

### Nickles Ginning Co.

307 W. Sixth Street 272-4669

### Parmer Co. Spraying Service

1-806-225-4990 Junior Lambert, Owner 1-806-238-1410

### Ranch House Cafe

American Blvd. Mr. & Mrs. Delbert Martin, Owners

### Western Drug

114 Main

### Toro Grain

Oilton, Texas Division of Oilton Feed Yards, Inc.

### St. Clairs

110 Main



1723 West American Blvd. 272-4306

### Beavers Flowerland

"Flowers for all occasions" 272-3116 or 272-3024

### Muleshoe Co-Op Gins

### Fry & Cox

401 S. First



Margie Hawkins, Manager 272-3412

### Howard I. Watson

Alfalfa - Hay 272-3552 272-4038

### White's Cashway Grocery

"Where Friends Meet and Prices Talk" 402 Main

### Whit-Watts & Rempe Implement

"John Deere Dealers" Muleshoe, Texas 272-4297

### Ranch House Motel

Highway 70 & 84 West 272-4261

# Quality Planting Seed Vital To High Cotton Production

Lubbock--"How well we get our crop off to a fast start is often determined by the quality of seed we put in the ground," says an Extension area agronomist here.

Robert B. Metzger of the Texas Agricultural Extension Service says that all components that make up quality seed are important.

"To an oil mill operator," he says, "it means a high grade which involves oil content, moisture, inert matter, and such. In planting seed, quality is determined by such factors as germination ability, varietal purity, foreign matter and weed seed content. So seed quality means several different things depending on their end use."

Pointing to germinating seed, or highly vigorous seed, Metzger

says that many times a high germination count from a standard test does not indicate that seed are strong or possess high vigor.

"We must remember," he adds, "that an official germination test is conducted under warm, moist conditions in a germinator. These conditions rarely occur in the field. A number of seed laboratories will conduct germination tests under less optimum conditions, using a lower temperature to get a more realistic picture of how these seed will perform in the field."

What are some of the plus factors in using high germinating, vigorous cotton seed?

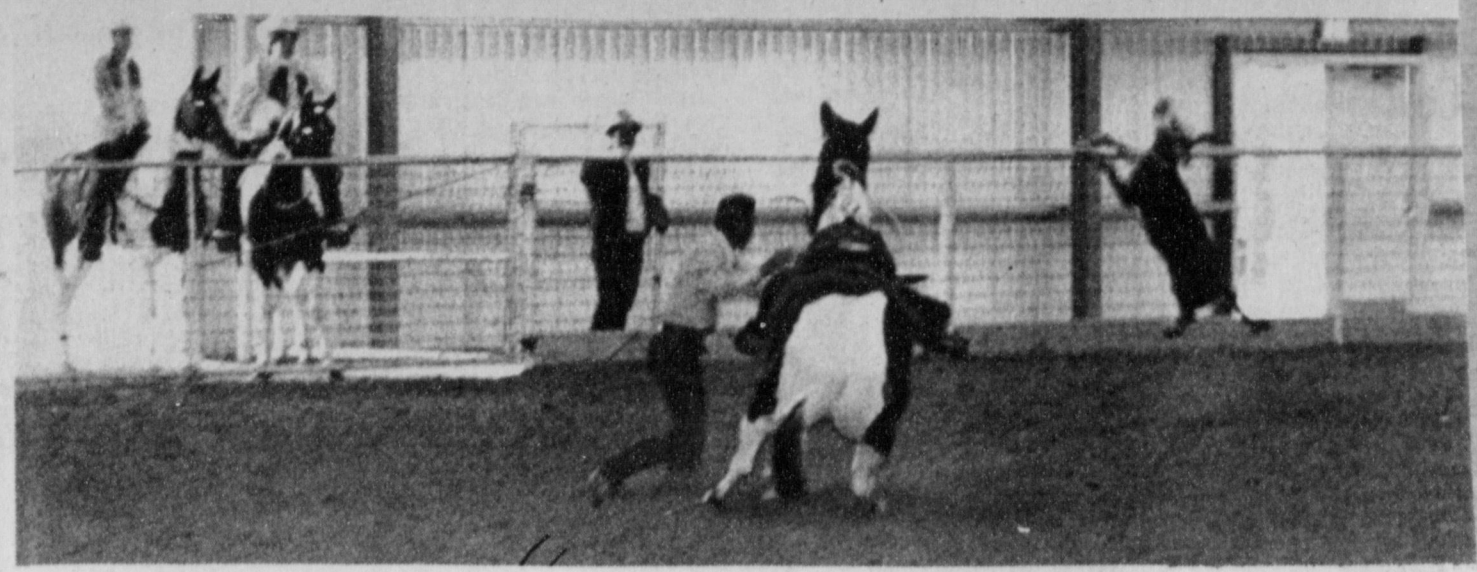
Says the agronomist, first, the farmer can expect more rapid emergence and seedling growth. Second, these seed will be more tolerant to cold, wet soil conditions that frequently occur early in the spring.

In other words, vigorous seed resist seed decay and seedling disease associated with adverse planting conditions.

Other attributes of these seed are uniform seedling growth and low percentage of abnormal seedlings.

"The ability of seedlings to emerge from deeper soil depths also is associated with seed quality," he says. "Frequently, a washing rain or improperly adjusted planter will cause seed to be covered too deep. Under these conditions only seedlings from most vigorous seed will likely emerge."

"Low quality, weak seed cannot tolerate deep planting, crusting soils or low temperatures," Metzger declared. "I



WINS TOP HONORS.....Q. Ton Puddin H won top honors at Clovis, N.M. on April 7. The horse is owned by M.O. and Star Simpson of Oracle, Arizona. He is pictured in action, winning the open ring, ridden by Jim Pearson.

have often observed seedlings that take the big shank or may curl around for several inches beneath the soil but never reach the surface. This condition usually is associated with damaged or deteriorated seed."

Many farmers may not realize the lint yields are associated with seed quality, the extension specialist says. A study by USDA engineers at the Texas A & M University Agricultural Research and Extension Center at Lubbock which involved tagging of the earliest emerging seedlings produced from high quality seed were followed through to maturity. Metzger notes that these rapid emerging plants produced the bulk of the lint yield.

"This study also showed that the earliest emerging seedlings were the most vigorous throughout the season along with the highest percentage of survival," he adds.

Frequently, a farmer knows he has poor germinating seed, but due to limited seed supply of a certain variety or for other reasons, he has little choice but to plant this seed. What can he do to help him assure a stand?

First, Metzger advised, he should delay planting until the soil is warm.

"On the High Plains we recommend planting cotton when the soil temperature reaches 60 degrees Fahrenheit for a 10 day average at the 8-inch depth. This is for average to good quality seed. Under no condition should poor quality seed be planted until this temperature level is reached."

"Fairly good stands can be obtained from relatively weak seed in late May or early June when germination conditions become more favorable."

"Other points that help us get up weak seed is to prepare a good seed bed, prevent soil crusting and avoid planting too deep."

Increasing the planting rate to compensate for poor quality seed also helps, if not carried to extremes, Metzger says. Too high planting rate, especially with weak seed, will often cause seedling decay organisms to build up in the soil, he warned.

We repeatedly marvel at the ingenuity of those who wish to borrow.

## Bula News

By Mrs. John Blackman

WMU met Tuesday afternoon at 2:30, this being day for bible study scripture for study was taken from Luke, 4th chapter. Mrs. Williams having charge of the lesson, with all present taking part in the discussion. Mrs. Richardson read the prayer calendar with Mrs. Battles offering the opening prayer and prayer for the missionaries. Attending were Mrs. P.R. Pierce, Mrs. E.O. Battles, Mrs. C.A. Williams, Mrs. Rowena Richardson and Miss Vina Tugman.

Miss Catherine Pierce and friend Miss Geniva Stewart, both of Lubbock spent Easter with Mrs. Ben Pierce and son Jack.

Mr. and Mrs. Tom Bogard accompanied by their daughters Mrs. Ray Kennison of Olton, and Mrs. Delbert Roberts of Junction attended the funeral Wednesday April 10, for Mr. Neal Bogard, brother of Tom. Funeral was held in the Mausoleum Chapel of Llano Cemetery in Amarillo. Mr. Bogard had been in ill health for some time and had made his home in the Golden Spread Nursing Home in Amarillo for several years.

Visiting Friday with Mrs. Rowena Richardson and her sister Vina Tugman were Mrs. John Richardson and son Jack and a daughter, Connie, of Lovington. Miss Connie Richardson was a teacher last year in the Bula school system. She is now teaching in Arizona.

Company over the Easter holidays for the Eddie Rileys and small son, Mike, were her parents Mr. and Mrs. Etchell Griffin of Childress and also a brother Earl Griffin from Fort Worth.

Mrs. Leon Jones and daughter Mickey of Wilcox, Arizona came

Thursday and spent until Monday with Mrs. Loria Jones and Wendell. Mrs. Jones returned home with them to spend a few days also Mrs. Earl Shields and daughter Rosslyn of Lelia Lak came Thursday for a visit with her mother Mrs. Jones and also with Mrs. Leon Jones, Patricia Shields returned home with her mother Sunday after spending the week with her grandmother and uncle.

Mr. and Mrs. Charles Powell and children Carrol Ann, Bart and Amy, from Brownwood, were Easter holiday guests in the homes of their parents the Jim Clauches of Bula and the Olin Powells of Littlefield.

Bro. Carlton Thomason, District Superintendent from Plainview spoke Sunday morning at the Bula Methodist church. He also introduced Bob Stone, who will be preaching for the Enochs and Bula congregations. Mr. Stone is a student at ENMU, he will continue with his studies at Eastern but will move into the Bula parsonage and commute to school. Mr. Stone was accompanied by a friend Miss Sherri McCommus, also a student at Eastern. Following the morning services a short business meeting was held and ladies of the church spread a bountiful dinner which was enjoyed by all. Several members of the Enochs Methodist church were visitors.

Mr. and Mrs. J.C. Withrow enjoyed having all their children home for Easter dinner and attend church with them. Jodie, a student at WTSU Canyon, Jackie from SPJC Levelland, Mr. and Mrs. Joe Price and small son, Timmy, from Olton, Mr. and Mrs. Jerry Smith of Lubbock, Jeff, Jarrod and Carla of the home. Friends also present were Allan Black, Freddie Maxwell, Randy Pierce, and Berry Wiseman. In the afternoon an Easter egg hunt was enjoyed by the younger group, John David Harlan, and mother Mrs. Nolan Harlan and Mrs. Cecil Jones joined them for the hunt which was held in the green wheat field.

**TELEX.** Hearing Aids  
**Clovis Hearing Aid Center**  
 Batteries & Molds. Free Tests.  
 Service All Makes.  
 416 Mitchell Phone 763-6900  
 Clovis, N.M.

**ATTENTION MULESHOE AREA CATTLEMEN**

.....In regard to dead stock removal.....  
 If you have had a problem with service....whether in the feedyard or on the farm....please give us a chance! Thank You

**Your local used cow dealer is muleshoe-bi-products**

Phone-965-2903 Mobil Phone 965-2429

**DEMOCRAT PARTY FIRST PRIMARY ELECTION**  
 Bailey County, Texas  
 May 4, 1974

**OFFICIAL BALLOT**

No.  **Gregg**

**DEMOCRAT PARTY FIRST PRIMARY ELECTION**  
 Bailey County, Texas  
 May 4, 1974

Note: Voter's Signature To Be Affixed on the Reverse Side.

**INSTRUCTION NOTE:**  
 Vote for the candidate of your choice in each race by placing an "X" in the square beside the candidate's name.

I am a Democrat and pledge myself to support the nominees of this primary.

<p><b>For United States Representative</b>                  19th Congressional District:  <input type="checkbox"/> George H. Mahon of Lubbock Co.</p> <p><b>For Governor:</b>  <input checked="" type="checkbox"/> Dolph Briscoe of Uvalde Co.  <input type="checkbox"/> Frances Tarlton (Sissy) Farenthold of Harris Co.  <input type="checkbox"/> W. H. (Bill) Posey of Harris Co.  <input type="checkbox"/> Steve S. Alexander of McLennan Co.</p> <p><b>Lieutenant Governor:</b>  <input type="checkbox"/> Bill Hobby of Harris Co.</p> <p><b>Attorney General:</b>  <input type="checkbox"/> John Hill of Travis Co.</p> <p><b>State Treasurer:</b>  <input type="checkbox"/> Jesse James of Travis Co.  <input type="checkbox"/> Donald B. Yarbrough of Harris Co.</p> <p><b>Comptroller of Public Accounts:</b>  <input type="checkbox"/> Bob Bullock of Travis Co.  <input type="checkbox"/> Hugh Edburg of Travis Co.</p> <p><b>Commissioner of the General Land Office:</b>  <input type="checkbox"/> Bob Armstrong of Travis Co.</p> <p><b>Commissioner of Agriculture:</b>  <input type="checkbox"/> John C. White of Travis Co.  <input type="checkbox"/> Herbert A. (Peanut) Schroeder of Colorado Co.</p> <p><b>Railroad Commissioner [Unexpired Term]:</b>  <input type="checkbox"/> Mack Wallace of Travis Co.  <input type="checkbox"/> C. A. Kelly of Bexar Co.</p> <p><b>Railroad Commissioner [Full Term]:</b>  <input type="checkbox"/> Jim C. Langdon of Hood Co.</p> <p><b>Associate Justice, Supreme Court of Texas [Place 1]:</b>  <input type="checkbox"/> Sears McGee of Travis Co.</p>	<p><b>Associate Justice, Supreme Court of Texas [Place 2]:</b>  <input type="checkbox"/> Thomas M. Reavley of Travis Co.</p> <p><b>Associate Justice, Supreme Court of Texas [Place 3]:</b>  <input type="checkbox"/> Zollie Steakley of Travis Co.</p> <p><b>Judge of the Court of Criminal Appeals [Place 1]:</b>  <input type="checkbox"/> W. A. Morrison of Milam Co.</p> <p><b>Judge of the Court of Criminal Appeals [Place 2]:</b>  <input type="checkbox"/> Leon Douglas of Wilbarger Co.</p> <p><b>State Board of Education:</b>  <input type="checkbox"/> James H. Whiteside of Lubbock Co.  <input type="checkbox"/> Dorothy McLarty of Lubbock Co.</p> <p><b>State Representative, District 74:</b>  <input type="checkbox"/> Harvey R. Floyd of Oldham Co.  <input type="checkbox"/> Bill Clayton of Lamb Co.</p> <p><b>Court of Civil Appeals Associate Justice, District 7 [Full Term]:</b>  <input type="checkbox"/> Mary Lou Robinson of Potter Co.</p> <p><b>District Judge, 154th District:</b>  <input type="checkbox"/> Pat Boone, Jr. of Lamb Co.</p> <p><b>District Clerk, 154th District Court of Bailey Co.:</b>  <input type="checkbox"/> Nelda Merriott  <input type="checkbox"/> Pauletta Crawford</p> <p><b>County Judge, Bailey County:</b>  <input type="checkbox"/> Glen Williams</p> <p><b>County Clerk, Bailey County:</b>  <input type="checkbox"/> Hazel Gilbreath</p> <p><b>County Treasurer, Bailey County:</b>  <input type="checkbox"/> Edith Wilt</p>	<p><b>Justice of the Peace, Precinct 1 Bailey County:</b>  <input type="checkbox"/> Morris Nowlin</p> <p><b>County Commissioner, Precinct 2 [Voting Boxes 2 and 3]:</b>  <input type="checkbox"/> Loyd Stephens</p> <p><b>County Commissioner, Precinct 4 [Voting Boxes 6, 7 and 8]:</b>  <input type="checkbox"/> Rudolph Moraw</p> <p><b>County Chairman:</b>  <input type="checkbox"/> Harvey Bass</p> <p><b>Precinct Chairman At Large:</b>  <input type="checkbox"/> Kenneth Powell</p> <p><b>Chairman, Precinct No. 1 [Voting Box 1]:</b>  <input type="checkbox"/> R. L. Scott</p> <p><b>Chairman, Precinct 2 [Voting Boxes 2 and 3]:</b>  <input type="checkbox"/> Joe Costen</p> <p><b>Chairman, Precinct 3 [Voting Boxes 4 and 5]:</b>  <input type="checkbox"/> Jack Furgeson</p> <p><b>Chairman, Precinct 4 [Voting Box 6]:</b>  <input type="checkbox"/> John Hubbard</p> <p><b>Chairman, Precinct 5 [Voting Box 7]:</b>  <input type="checkbox"/> Fred Beene</p>
---	--	--

**REFERENDUM**

For For the Proposition that the 64th Legislature shall enact a law to permit pari-mutuel wagering on horse races by local option.

Against Against the Proposition that the 64th Legislature shall enact a law to permit pari-mutuel wagering on horse races by local option.

Presented in Public Interest By  
**FIRST NATIONAL BANK**  
 Member FDIC

**A GOOD COTTON TO TRY**

So far, those who have planted Gregg 35W on the worst wilt ground, find its tolerance and performance highly satisfactory. We have received not ONE complaint about its wilt resistance, which is very pleasing to us.

In the year 1973, 35W has been impressive in staple lengths, when staples were generally shorter.

Gregg 35W is a good cotton to TRY —  
 it's a good cotton to PLANT.

**GREG SEED FARMS**  
 Plainview, Texas (806)296-7902

**CROW MEAT CO.**  
 SOUTH HIWAY 214  
 806-247-3333  
 FRIONA, TEXAS

Custom Processing TO YOUR SPECIFICATIONS

<b>HALF BEEF</b> LB. 89¢	<b>ALL BEEF FREEZER PAC</b> 24.95 EA. 25 LBS.
<b>ROAST</b> LB. 79¢	<b>PORK &amp; BEEF FREEZER PAC</b> 23.95 EA. 25 LBS.
<b>FAMILY STEAK</b> LB. 79¢	<b>LEAN GROUND BEEF</b> LB. 89¢
<b>HAMS</b> \$1.29 LB.	<b>FORE-QUARTER BEEF</b> 79¢ Processed Lb. ON Packaged Weight

PRICES IN THIS ADV. GOOD THRU SAT., APRIL 27



**WANT...  
TO BUY?  
TO SELL?  
RESULTS?**

**WANT ADS**

**...WILL  
WORK  
FOR YOU!**

**OPEN RATES**  
1st insertion, per word-9¢  
2nd and add., per word-6¢  
**NATIONAL RATES**  
1st insertion, per word-11¢  
2nd & add., per word-7¢  
Minimum Charge-50¢  
**CARD OF THANKS - \$2.00**  
Classified Display-\$1.12 per  
column inch  
Double Rate for Blind Ads--  
\$1.15 per col inch for Rev.  
**DEADLINE FOR INSERTION**  
Noon Tuesday for Thursday  
Noon Friday for Sunday

**WE RESERVE**  
Right to classify, revise or  
reject any ad.  
**NOT RESPONSIBLE**  
For any error after ad  
has run once.

**3.HELP WANTED**

**WANTED:** Experienced welder  
and shop hand. Call 272-3145  
or 272-4878 after 7.

**WANTED:** Beautician needed  
at once, call 272-3448. Main  
Street Beauty Shop.

**WANTED:** Typist, must type  
50 words per minute at least.  
Inquire in person at Journal.

**5.APTS. FOR RENT**

**FOR RENT:** 2 bedroom unfurnished  
apartment. Phone 272-  
4838. Smallwood Real Estate,  
5-474-tfc

**FOR RENT:** Furnished apart-  
ment. Bills paid. Call 272-  
3465.

**FRONA APTS.** now have a-  
vailable 1, 2, & 3 bedrooms.  
Call 247-3666 or come by 1300  
Walnut Street Friona.

**FOR RENT:** New unfurnished  
2 bedroom, 2 bath apartment.  
Central heat & refrigerated air.  
Carpeted. Extra Nice. No chil-  
dren or pets. Call for appoint-  
ment 806-272-4462 or 806-272-  
4210.

**8. REAL ESTATE FOR SALE**

**KREBBS REAL ESTATE**  
THIRTY YEARS  
IN BAILEY COUNTY  
**2105.1st PH272-3197**

**FOR SALE:** 3 bedroom house,  
\$12,500.00. Carpet, paneling,  
drapes, utility room. 915 W.  
Ave D. Call 806-272-3266.

**FOR SALE:** 67 acres with good  
3" well high pressure pipe line  
and side-roll sprinkler system.  
\$575 per acre with terms or  
will trade, call 272-3819.

**FOR SALE BY OWNER:** Call  
Joan Gaston, 272-3232 or Ev-  
elyn Riley, 272-4775 or Ber-  
tie Nickels, 272-4669 for ap-  
pointment to see house at 307  
W. 6th. Guy Nickels residence,  
8-425-tfc

**FOR SALE BY OWNER:** 3  
bedroom house, 2 bath, den &  
living room, fully carpeted,  
fireplace, double garage with  
automatic door. Call 272-3121.

**FOR SALE:** 2 bedroom house  
& garage. 4 1/2% interest.  
Phone 806/272-3687 days only.

**FOR SALE BY OWNER:** 3 bed-  
room house, fully carpeted, cen-  
tral heating, 1 3/4 bath, fenced  
yard. All electric, close to  
schools. Call 272-3484.

**FOR SALE OR TRADE:** Layne  
apartments. See Mrs. C.E.  
Layne or call 806-272-4496.

**JAMES GLAZE  
COMPANY**  
**REAL ESTATE AND  
FARM & RANCH  
LOANS**  
Phone 272-4549 219 S.1st.  
421-tfc

**WE PAY CASH** for tractor  
and equipment of all kinds.  
Tom Flowers Auction, Inc.  
Day 272-4154 Night  
10-2s-tfc

**FOR YOUR Stanley Home Pro-  
ducts,** Jewell Broyles, call 965-  
2481  
1-16t-8tp

**POOL REAL ESTATE**  
214 E American Blvd  
Phone 806-272-4716

We need your listings.  
We have the buyers.

164 acre dryland \$150.00 per  
acre. 324 acres \$125.00 per  
acre. 22 miles southwest of  
Muleshoe. See Curtis Walker  
or call 272-3162.

LAND FOR SALE: Approx.  
320 acres, 11 1/2 miles west,  
2 wells ready for circle sprink-  
lers.

Approx. 277 acres 6 miles  
west, 2 wells and one circle  
sprinkler. Crop ready to graze  
now.

Approx. 191 acres, 2 wells,  
4 side roll sprinklers. Crop  
ready to graze now. Call Har-  
old or Max King 806-272-4541.

**9 AUTOMOBILES FOR SALE**

**FOR SALE:** 1969 and 1970  
Chevy pickups. 350 engines,  
power and air. Call 806-965-  
2471 or 806-272-4718. Ken-  
neth Hanks.

**10.FARM EQUIP. FOR SALE**

**FOR SALE:** 8" 230 Peerless  
water lubricated pump. No  
repairs needed, call 385-5816  
or 385-3620, Littlefield, Texas.

**10-11s-tfc**

**VALLEY.  
SELEPROPELLED**

**SPRINKER SYSTEMS**  
standard and reversing. Let  
us talk with you about our  
new 6-8-10 year lease. Pro-  
grams which now include  
PVC plastic pipe. AVI, Inc.  
1534 W. American Blvd,  
Muleshoe, Tex. Phone 806-  
272-3565.

**FOR SALE:** 4" sprinkler irri-  
gation pipe. 44 joints. Phone  
806-825-3107.

**FOR SALE:** 720 John Deere  
tractor. Tricycle front end,  
good condition. Call 385-5816  
or 385-3620, Littlefield, Texas.

PVC plastic underground pipe,  
A.V.I. Inc. Phone 272-3565,  
10-48s-tfc

**15.MISCELLANEOUS**

I will be responsible for no  
debts other than my own. 4-  
18-74. Gerald Vaughn,  
15-16s-3tc

**Bailey County Journal**  
Established March 31, 1945  
Published by Muleshoe Publishing Co., Inc.  
Every Sunday at 304 W. Second Box 449  
Muleshoe, Texas 79347  
Second class postage paid at Muleshoe, Texas  
Muleshoe, Texas, 79347.

**TEXAS PRESS ASSOCIATION**  
Member 1974

L.B. Hall, President  
James P. Hall, Sec.-Treas.  
L.B. Hall - Managing Editor  
Katie Beckett, News Reporter  
Tom Kiehl, Sports Reporter  
Cathy McCornick, Advertising  
Tully O'Neill, Office

**SUBSCRIPTIONS:**  
Zone 1 - Bailey-Parmer-Cochran-Lamb  
counties: \$4.00 per year, \$4.50 per year by  
carrier. With Thursday Muleshoe Journal,  
both papers \$5.50 per year; \$6.00 per year  
by carrier.  
Zone 2 - Out-of-Territory (all  
with Thursday Muleshoe Journal, both  
papers, \$6.50 per year.  
Monthly, by carrier-\$6; single copies-10¢  
Advertising rate card on application

**USED "TRADED IN" ITEMS  
FOR SALE**

- Refrigerator Freezer  
(with ice-maker) .....\$219.00
- Automatic Washer .....\$49.95
- Gas Range .....\$79.95
- Wringer Washer .....\$59.95
- Color T.V. 18" Portable.....\$119.95
- Lawn Mower.....\$37.95
- 20" Childs Bicycle.....\$19.00
- Recliner Chair (Brown).....\$54.95
- Air Conditioner 4400CFM.....\$139.95
- 21" Color T.V. (Real Nice).....\$219.00
- Record Player-Portable.....\$24.95
- Refrigerator Freezer  
(real nice) .....\$149.95

**Western Auto Assoc.  
Store**  
320 Main Street Muleshoe, Texas

**\*Expert and Colorful  
Weddings  
\*Family Groups  
Anywhere, Anytime  
PHOTOGRAPHY  
by Oecia  
CALL 385-6083  
Littlefield 409 W. 2nd**

MILLIONS of rugs have been  
cleaned with Blue Lustre. It's  
America's finest. Rent our  
Blue Lustre electric shampoo  
machine, Higginbotham-Bartlett  
215 Main

**FOR SALE:** 18' Shasta Trailer  
house, self contained. See 302  
E. Date,  
11-16t-4tc

**FOR SALE:** Pickup Camper, 10  
foot cabover sleeps 4, 3 burner  
stove & oven. 15 gal water tank  
& icebox. Call C. J. Tiller,  
806/946-2627 before 9 a.m. or  
after 6 p.m.

15-14s-tfc

**FOR SALE:** Parakeets, all  
colors. M.H. Laney 218 W.  
5th. Phone 806-272-3390.  
15-12s-10tc

**Cess Pool  
Cleaning**

Do you own a Septic Tank?  
Did you know that a sep-  
tic tank needs yearly main-  
tenance? Bacteria treatment  
twice a year and a yearly  
cleaning for maximum effi-  
ciency. For information on  
why call CESSPOOL PUMP-  
ING 272-3677 or 272-3467  
or write Box 71. Let me ex-  
plain why.

**Cess Pool  
Cleaning**

Cesspools pumped with a  
MUD-PUMP & treated with  
bacteria & enzymes to li-  
quidize solids & loosen sides  
for better drainage. Dipping  
vats drained and liquids hauled  
to your disposal pit.  
Grease pits drained & treat-  
ed. Mollasses pits drained.  
Phone 272-3677 or 272-3467  
ELMER DAVIS

**Public Notice**

The Lazbuddie School Board  
will be accepting bids on three  
school buses. A 1969 Dodge--  
54 passenger; a 1970 GMC--  
60 passenger and a 1971 Inter-  
national--54 passenger. All are  
in good condition. The Board  
reserves the right to accept or  
reject any or all bids. Bids  
will be accepted in the Super-  
intendent's office until 8:00 p.m.,  
June 10, 1974. Bids will be  
opened at the regular Board  
meeting at 8:00 p.m., on June 10  
1974. Buses can be inspected  
at the Lazbuddie School Gar-  
age.

**BE THE BEST BOSS YOU EVER  
HAD.** Schedule your own  
hours. Make good money. Meet  
interesting neighbors. It all  
begins to happen when you be-  
come an Avon Representative.  
Learn more about it by calling  
**COLLECT: NORMA MCGRATH**  
806-296-6904.  
15-17t-2tc

**FOR SALE PAINT** gelding.  
Call 806-965-2211 or 806-965-  
2941.  
16-15t-3tc

**Services Held  
In Lubbock For  
Mrs. Singleton**

Mrs. C.V. (Fay) Singleton,  
an active member in many  
Lubbock civic organizations,  
died about 2 p.m. Thursday,  
April 18, in Methodist Hospi-  
tal.

Her husband, C.V. Singleton,  
is president of Resthaven  
Singleton-Wilson Funeral Home  
and other South Plains murtu-  
reries. He is also co-owner of  
Muleshoe's Singleton - Ellis  
Funeral Home.

Services for Mrs. Singleton,  
69, were held at 2 p.m. Sat.,  
in Resthaven-Singleton-Wilson  
Funeral Chapel with Dr. Jaroy  
Weber, pastor of the First Bapt-  
tist Church officiating. Rev. J.T.  
Bolding, retired Baptist minis-  
ter, assisted.

Entombment was in the Rest-  
haven Mausoleum.

Born in Comanche County,  
Mrs. Singleton moved to Lub-  
bock in 1967 from Seminole.  
She lived at 3724 64th Drive.

Mrs. Singleton was a mem-  
ber of the First Baptist Church  
and of the Winsome Sunday  
School class there, serving as  
president one year. She was a

**Public Notice**

Notice of the Names of Per-  
sons Appearing as the Owners  
of Unclaimed Amounts Held By:  
First National Bank, Box 565,  
Muleshoe, Texas. This notice  
is given and published pursuant  
to Section 3, Article 3272b,  
Revised Civil Statutes of the  
State of Texas, in an effort to  
locate persons who are the de-  
positors or owners of amounts  
in accounts that have remained  
inactive or dormant according  
to the provisions of Article  
3272b for more than seven (7)  
years.

The unclaimed amounts due  
the depositors or owners listed  
herein will be paid upon proof  
of ownership at the office of  
the named depository within nine  
(9) months, and if unclaimed  
thereafter they may be subject  
to report to and conservation by  
the State Treasurer in accor-  
dance with said Article 3272b.  
Item No. of this report is one.  
Names of Missing Depositors  
are Ernestine Phillips or  
Tommy Dennis. Last Known Ad-  
dress Box 752, Muleshoe, Tex.  
15-16t-1tc

**17. SEED AND FEED**

For Triticale straw call Ted  
Millen, day 806-272-3864, night  
806-965-2891.  
17-13t-tfc

past president of the Lubbock  
Garden Club and past treasurer  
of the Lubbock Council of Gar-  
den Clubs.

Mrs. Singleton taught school  
in Seminole for 17 years and  
taught one year at McWhorter's  
School in Lubbock. She attended  
Hardin Simmons University  
University of California at Los  
Angeles, the University of Colo-

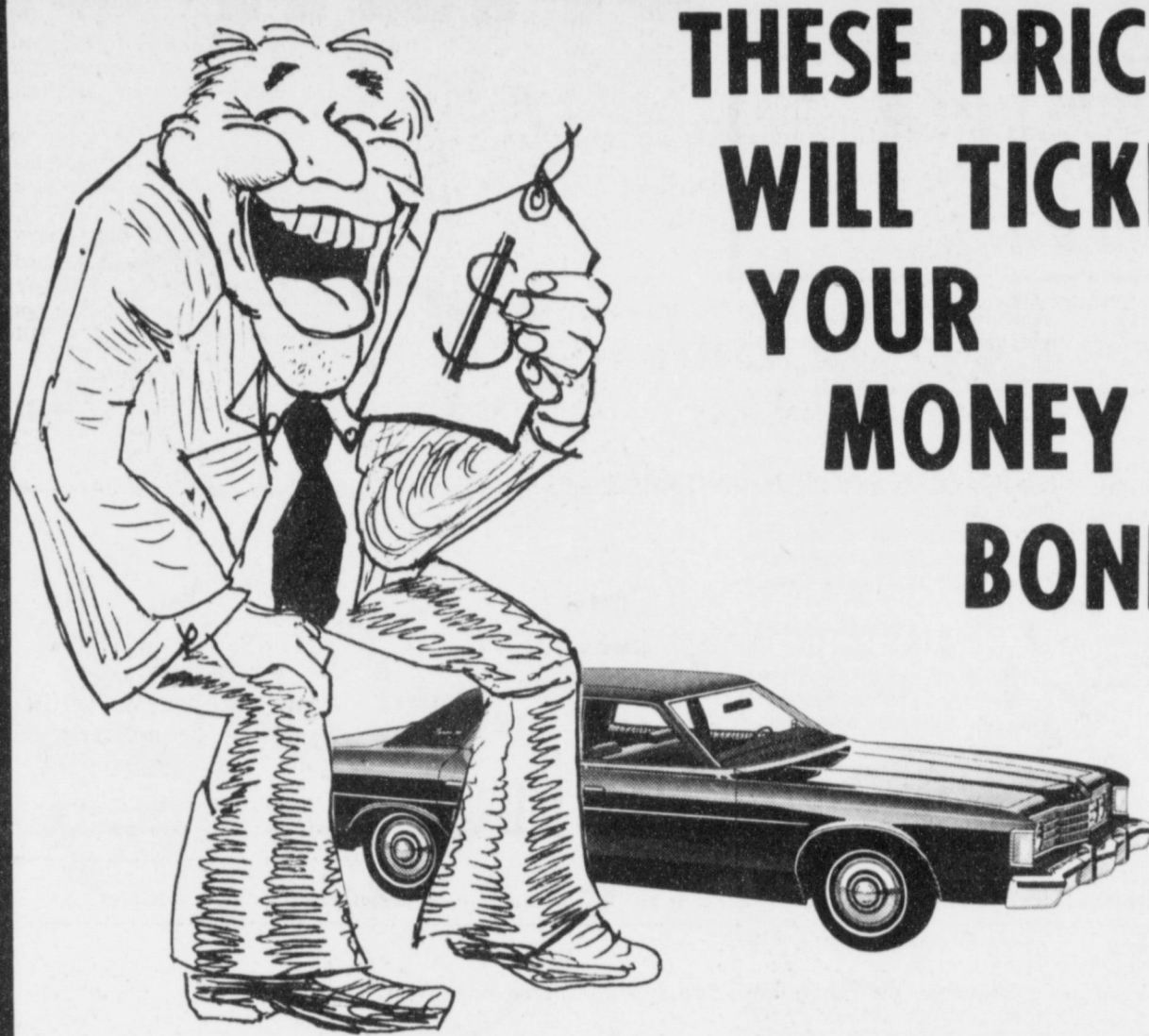
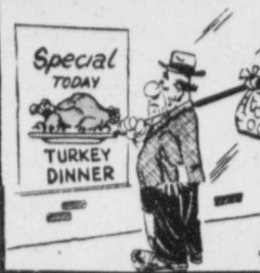
rado and graduated from Texas  
Tech University.

Survivors include her hus-  
band; a daughter, Mrs. Charles  
Sherrill of Fort Stockton; a  
brother, Fred C. Rollins of  
El Paso; Two sisters, Mrs.  
John Garrison and Mrs. Pat  
Daugherty, both of Truth or  
Consequences, N.M.; and three  
granddaughters.

Pallbearers were Frank  
Ellis, Louis Miller, Roger Pool,  
Sam Eudy, Jerry Hley and Tom  
Weaver.

\*\*\*\*  
Never postpone until to-  
morrow what you can post-  
pone until the day after to-  
morrow.

The Lonely Heart



**THESE PRICES  
WILL TICKLE  
YOUR  
MONEY  
BONE !!!**

**That's Right. Muleshoe Motor Company now  
offers GREAT buys on their '74' Fords at  
such low prices that it's sure to tickle  
your "money bone"!**

Come in any time. Our friendly salesmen  
will be glad to show you our long line  
of new and used cars

**Muleshoe Motor Co.**  
"Car Capital Of The West Plains" Phone 272-4251 1225 West Am. Blvd.

BIGGER  
YIELDS  
MEANS  
BIGGER  
PROFITS

GROW  
WITH  
GROWERS

Growers  
BRAND

ML-136

Growers Brand ML-136  
is recommended for  
full irrigation.  
Where water and ferti-  
lity is limited, we  
recommend Growers  
Brand ML-135.

Company or Brand Name	Hybrid	Maturity Rating*	Yield**	Moisture percent	Test Weight	Days to		Plant Height	Lodging percent	Ex-panc***	Appear-ance***
						Half Bloom	Plant				
Growers	ML-136	ML	9476	17.0	56.4	86	54	7.5	9	4	
	ML	8958	15.8	55.3	87	61	22.5	8	5		
	ML	8934	16.8	57.5	89	55	22.5	8	4		
	ML	8723	15.4	57.3	87	56	10.0	11	4		
	L	8709	18.5	56.7	92	49	0.0	8	3		

\*Seed company maturity designation: E is early, M is medium, and L is late.  
\*\*Yield adjusted to 14.0 percent moisture.  
\*\*\*Scale: 1 = very good, 9 = very poor.

For further information: Contact  
your GROWERS SEED DEALER,  
FARMERS COOPERATIVE ELAVOTOR  
Ph. 272-4335 Muleshoe.

GROWERS SEED ASSOCIATION  
LUBBOCK, TEXAS (806) 747 4125

# The Consumer Alert

By John L. Hill Attorney General

AUSTIN—Consumers shopping for furniture may have encountered some confusion in the past few years, what with plastics that seem to be wood, vinyl that appears to be leather, and marble dust that looks like slate.

In addition, there's pressure-sensitive paper that simulates just about anything. All of these have given consumers a wide range of choices between natural and synthetic furniture materials, but sometimes it has been difficult to tell at a glance exactly what you're getting for your money.

Some unscrupulous dealers have taken advantage of the proliferation of terms for furniture materials to deliberately mislead the public.

For example, attorneys in our Consumer Protection Division recently settled a complaint from a woman who purchased a bedroom suite advertised as "all wood" only to find out when it was delivered that just the visible parts were constructed of wood. The rest were of glazed fiberboard.

But furniture-buying consumers should find it less confusing to shop for what they want

since new Federal Trade Commission guide-lines for the furniture industry went into effect in March.

Advances in technology have greatly changed the types of materials used by furniture manufacturers since the previous FTC guidelines were set out in 1963. This plus what the FTC terms "misleading advertising and other deceptive practices" among a few members of the furniture industry were the reasons for the revision of the guidelines.

One major change is that "affirmative disclosure" is required. My assistants say this means when any material is used to simulate a more expensive one it now must be identified on the furniture tags and in catalogs, brochures, and advertising.

And if furniture has a veneer, the term used when a more expensive wood is glued to another type of wood, this fact must also be disclosed. So now if you buy a "maple captain's chair" you can be sure it's

maple through and through, not maple veneer on oak or some other wood.

Terms such as "French", (or Italian) Provincial" or "Mediterranean" can still be used, since most people realize such phrases describe the style of the furniture, rather than its origin. But terms such as "Danish" or "Spanish" cannot be used to indicate style. Instead, "Spanish style" or "Danish design" or some other phrase must be used if the item doesn't actually come from

that particular country. The new guidelines tend to discourage the widespread practice many retail furniture stores followed of removing the manufacturer's tags and substituting their own. Now, if the manufacturer's tag is removed, it must be replaced with one that provides the same information about materials and construction.

FTC guidelines also state that results of tests made on upholstery fabrics must be clearly disclosed in language the lay

person can understand. Our Consumer Protection attorneys say that while these guidelines will not prevent every misleading or deceptive trade practice encountered in shopping for furniture, they will be of great assistance not only to consumers but to the large majority of reputable furniture manufacturers and retailers. They remind mobile home purchasers that furniture sold with mobile homes should also carry labels that give information about its construction

and composition. And they suggest that consumers always ask to see product labels, that they check carefully on warranties, and that they inquire about how to care for the fabric on any upholstered furniture they purchase. In this way, they may avoid consumer problems later. For assistance with consumer complaints call our Consumer Protection Division, your county or district attorney, or your local Better Business Bureau.

## Lt. Governor's Report

By Bill Hobby

AUSTIN--One of the major criticisms which has been made about our present Constitution regards the very limited nature of the power it grants to the Executive Branch, particularly the Governor. In 1875, when our Constitution was drafted; the reaction against the oppressive Reconstruction governor prevailed and led to the structuring of an extremely weak governorship.

Many feel that the complex nature of the business conducted by the State requires a stronger governor. This viewpoint was expressed in debate on the Executive Article and, as tentatively approved, the governor is given somewhat more power than is his at present.

As does our Constitution today, the new Article provides for an executive department composed of the Governor, Lt. Governor, Attorney General, Secretary of State, Comptroller of Public Accounts, Treasurer and Commissioner of the General Land Office. All of these, except the Secretary of State are to be elected.

The new Article also parallels the existing Constitution in calling for four-year terms for state-wide elected officials. A new provision limits the governor to two four-year terms.

New authority is given the governor in several areas. He is empowered to designate the Chairman of each state board or commission and to remove appointed officers for cause, with the proviso that the Senate can refuse the removal by a majority vote.

The "midnight" appointments which have been made in the past by lame duck governors will no longer be possible due to provision which states that the terms of officials appointed to state boards and commissions will expire between February 1 and May 1 of odd-numbered years. This provision insures that a new governor will have an opportunity, during his first four months in office, to appoint at least one-third of the members of each board or commission.

For the first time, the Legislature is mandated to provide appropriations to the governor-elect, prior to his inauguration, so that, he can proceed with organizing his office.

The governor can still call the Legislature into special session and can veto line items in appropriation bills.

The governor is newly designated Chief Planning Officer of state governmental activities. He is provided a clearer authority than at present to prepare and submit a budget to the Legislature.

The governor's authority is

significantly broadened in two additional areas. The Legislature can provide, by statute, for the governor to exercise specific fiscal controls on the administration of the state budget. A regular review of the organization and efficiency of the executive branch is required and the governor can submit reorganization plans to the Legislature which must bring them to a vote.

Provisions calling for a Board of Pardons and Paroles and giving the governor the power, on the Board's recommendation, to grant clemency are similar but more complex than in the present Constitution.

A final new provision states that all government agencies, except institutions of higher education, will have a life of no longer than ten years unless the statutes creating them are renewed for another period of ten years or less.

Delegates will be in their home districts during the next few weeks while the Convention is in recess. I would urge each citizen to take this opportunity to visit personally with his representatives to discuss with them questions still to be considered by the Convention.

### Lazbuddie School Menu

- MONDAY  
Milk  
Western Burger  
Buttered Corn  
Sweet Relish  
Mixed Green Salad  
Peach Cobbler  
TUESDAY  
Milk  
Tacos  
Hot Sauce  
Pinto Beans  
Spinach - Turnips  
Apricots  
Cornbread - Butter  
Peanut Butter Cookies  
WEDNESDAY  
Milk  
Turkey & Dressing  
Giblet Gravy  
Cranberry Sauce  
Apple & Celery Salad  
Jell-o with Topping  
THURSDAY  
Milk  
Hamburger Patties & Sloppy Joes  
French Fries  
Lettuce & Tomatoes  
Pickles & Relishes  
Cinnamon Rolls  
FRIDAY  
Milk  
Tuna Salad  
Oven Brown Potatoes  
Green Beans  
Tossed Salad  
Rolls  
Butter - Jelly

# WHAT CAN YOU BUY FOR 10¢ TODAY?



## Come find out at Piggly Wiggly.

- |  |   |  |
|--|---|--|
| Cal Ida, Frozen, French Fried Potatoes 9-oz. Pkg. <b>10¢</b> | Assorted, Soft Ply. Paper Napkins 60-Ct. Pkg. <b>10¢</b>          | Curtiss, 10" Size, Butterfingers or Baby Ruth Bar <b>10¢</b> |
| Mt. Pass Tomato Sauce 8-oz. Can <b>10¢</b>                   | Heinz, All Varieties, Strained Baby Food 4 1/2-oz. Jar <b>10¢</b> | Piggly Wiggly Mustard 6-oz. Jar <b>10¢</b>                   |
| Treesweet, Frozen Lemonade 6-oz. Can <b>10¢</b>              | Piggly Wiggly, All Flavors, Canned Drinks 12-oz. Can <b>10¢</b>   | Dawn, Fresh, Mushroom Sauce 5 1/2-oz. Can <b>10¢</b>         |
| Piggly Wiggly, Iodized or Plain Salt 26-oz. Box <b>10¢</b>   | Pre-Sweetened, Makes 1 Quart Kool-Aid Pkg. <b>10¢</b>             | Q & Q Vermicelli 5-oz. Pkg. <b>10¢</b>                       |
- Prices good thru April 24, 1974.

Last Two Weeks to get  
Flower & Garden Book **39¢**  
Each Chapter  
Fresh, Crisp  
**Carrots 10¢**  
Lb.  
Fresh Green Onions each **10¢**  
Delicious Yellow Onions lb **10¢**  
Anjou Pears 1 lb. **39¢**  
**CABBAGE 10¢**  
Lb.

Superb Valu Trim, Heavy Aged Beef, Full Cut  
**Round Steak 98¢**  
Lb.  
Superb Valu Trim Rump Roast **98¢**  
Lb.  
USDA Choice Superb Valu Trim, Heavy Aged Beef, Full Cut, Boneless **Round Steak \$1.09**  
USDA Choice Superb Valu Trim, Heavy Aged Beef **Eye of Round Roast \$1.69**  
USDA Choice Superb Valu Trim, Heavy Aged Beef, Top or Bottom Cut **Round Steak \$1.48**  
Piggly Wiggly, Uncooked **Catfish Fillets 99¢**  
16-oz. Pkg.

Piggly Wiggly, 3 Lb. Chub Pack, Fresh  
**Ground Beef 79¢**  
Lb.  
USDA Choice Superb Valu Trim, Heavy Aged Beef, Heel of **Round Roast \$1.18**  
Lb.  
USDA Choice Superb Valu Trim, Heavy Aged Beef, in Cry-O-Vac, **Trimmed Beef Loin 98¢**  
Lb.  
Armour Pan Size **Sliced Bacon 89¢**  
12-oz. Pkg.  
Farmer Jones, Tender & Juicy **Franks 69¢**  
12-oz. Pkg.

Bean w/Bacon, Cr. of Chicken, Chicken Noodle, Chic. w/Rice, Chic. w/Stars  
**Campbell's Soups 6 \$1**  
10 1/2-oz. Cans  
Scouring Pad **Chore Girl 10¢**  
Ea.  
Nabisco **Animal Cookies 10¢**  
2-oz. Box  
Vegetable Juice **V-8 Juice 10¢**  
6-oz. Can  
Wagner, All Varieties **Fruit Drinks 29¢**  
32-oz. Btl.

VALIDABLE COUPON  
Piggly Wiggly **All Grinds Coffee 79¢**  
Lb. Can  
Limit one (1) with this coupon & \$7.50 or more purchase. Regular price without coupon. Offer good thru April 24, 1974.  
Borden's **Instant Potatoes 59¢**  
16-oz. Box  
Pride **Saltine Crackers 39¢**  
Lb. Box  
All Flavors Bell **Fresh Yogurt \$1.00**  
3 8-oz. Ctns.  
Betty Crocker, All Varieties **Hamburger Helpers 49¢**  
5 1/2 to 8-oz. Box

Piggly Wiggly, All Flavors  
**Ice Cream 79¢**  
1/2-Gal. Ctn.  
Pillsbury **Buttermilk Biscuits 10¢**  
4 1/2-oz. Can  
Hamburger Chips, Whole Kasher, or Polish Dills **Heinz Pickles 79¢**  
48-oz. Jar  
Lipton, Sugar & Lemon Flavored **Iced Tea Mix 99¢**  
24-oz. Jar  
Piggly Wiggly, Grade A Med. **Fresh Eggs 47¢**  
Large 55¢ Doz.

Piggly Wiggly, Cut Green Beans, and Cream or Whole Kernel  
**Golden Corn 5 \$1**  
16-oz. Cans  
Creamy Jif **Peanut Butter \$1.23**  
28-oz. Jar  
Schilling's **Black Pepper 59¢**  
4-oz. Can  
Mrs. Fibbert Golden Quarters **Margarine 51¢**  
Lb. Pkg.  
Johnson **Baby Shampoo 89¢**  
7-oz. Btl.

Trophy, Frozen  
**Strawberries 3 89¢**  
10-oz. Pkgs.  
VALIDABLE COUPON  
New Cologne Scent Only, Palmolive  
Rapid **Shave 10¢**  
6.75-oz. Can  
With this coupon. Limit one coupon per customer. Prices good thru April 24, 1974.

**PRIVATE STORAGE**  
RANCH HOUSE MOTEL  
**YOU LOCK IT YOU KEEP KEY**  
SECURED STORAGE FOR  
FURNITURE-MERCHANDISE-BOATS-CAMPERS-  
CARS-MISCELLANEOUS PRODUCTS  
SIZES 10'x13' & 10'x26'  
LOCATED AT  
**RANCH HOUSE MOTEL**  
Highway 84 West Ph.272-4261

We Welcome Food Stamps Customers

