



# BAILEY COUNTY JOURNAL

The Community of Opportunity-Where Water Makes the Difference

## Weather

	HIGH	LOW
December 14	58	20
December 13	57	20
December 12	50	23

Rainfall to Date: 19.20

Vol. 11, No. 50

16 PAGES

Published Every Sunday at Muleshoe, Bailey County, Texas 79347

10 CENTS

Sunday, December 15, 1974

# Cotton Production Estimate Down

## 4-H Members Will Give Away Sculpture

## Shortest Production Expected Since 1950

The Bailey County 4-H Clubs are selling tickets on a unique metal sculpture by Bob Green. They are asking a one dollar donation on each ticket.

The drawing for this sculpture will be held Tuesday, December 24, at 2 p.m. in Cobb's Department Store. You need not be present to win. Deadline for purchasing tickets is December 18.

Tickets are available from any 4-H member or from the County Agent's office. Sculpture can be seen at Cobb's Department Store.

Bob Green was born and raised at Earth, Texas and has spent all his adult years as a farmer. He worked whenever he could on ranches in the area. The observations and experiences of those years have proved themselves worthwhile, as he sets his ideas to form a piece of art. Most of his works begin by taking a torch and a piece of iron, which he shapes into a sculpture portraying life

such as it really is . . . a small boy chasing his dog with a rope . . . a little girl lying in the grass daydreaming . . . or a western flavored scene with cattle watering around an old eclipse windmill.

Because of the realistic detail of his work, Green is fast becoming one of the southwest's leading metal sculptors.

Bailey County 4-H members are working toward a goal of \$3500, to be used in the construction of the State 4-H Center, located near Brownwood, Texas. The center will be of great value to area 4-H members, leaders, and families as an educational and recreational facility. It will also provide the convenience and space needed for State and National 4-H conventions and workshops for leadership training.

Donations will be greatly appreciated by 4-H members and their parents.



ROAD CONSTRUCTION . . . Motorists traveling from Muleshoe to Friona can expect to drive on some tore up roads. During the process of widening Highway 214, construction workers have the highway in quite a mess. This drop-off just beyond

the Bailey County line proves to be hazardous to any motorist traveling at a high speed. Motorists are urged to use caution while driving on this highway and to bear with the construction because the improvement will be well worth the bother.

Bailey County farmers are now in the midst of harvesting cotton in the area. The snow earlier this week did not keep farmers out of the fields except for approximately one day.

Bailey County's cotton production estimate is set at 33,000 bales compared with the 34,000 November 1 estimate.

The joint December estimate of the Lubbock Cotton Exchange and the Plains Cotton Growers, Inc. pegged the expected output in the 25 county cotton area a 1,082,800, down 106,000 bales from the November projection.

The cotton crop in the area, down from an all-time high output of 2,888,700 bales in 1973, is expected to be the shortest production since ginings of only 856,480 bales in 1950, prior to a major surge in the development of irrigation.

A spring drought, which prevented the planting of an estimated 800,000 to one million acres in dryland farming areas, and a lack of subsoil moisture, followed by excessive rains and cool temperatures late in the growing season, are to blame for the light crop.

Now, the yield per acre is estimated at only 273 pounds of lint, compared with 498 last

year and the record of 513 in 1955.

The world economic situation also submarined demand and prices for cotton this year.

The milo crop in the Muleshoe area is virtually completed for the season. There is no new official milo estimates made, but it has been reported that there now is doubt that tonnage in the 39 county sorghum area will reach the standing projection of 121,170,000 bushels.

The sorghum production estimate is 96,115,000 bushels below last year's near record crop of 217,235,000 bushels.

The indicated production would make this the smallest milo crop since 1956, when the farmers harvested only 87,313,000 bushels.

## Attention

### All 4-H'ers

This is a reminder that all tickets and money that have been sold for the western sculpture is due in the County Agent's office by Wednesday, December 18.

Con't on Page 2, Col. 6

## Texas Conservation Sponsor Essay Contest

The Texas Conservator Board and the Ft. Worth Area Chamber of Commerce are sponsoring an essay contest for boys and girls, 18 years and under. The essay is to be up to 300 words on the subject "Conservation - Key to the Future."

The prizes are \$100 cash and a trophy to the State champion, and three trophies in each of the five State regions. The entry deadline is January 15, 1975, and essays will be judged in the local district. Each district champion's essay will

be sent to Ft. Worth for selecting the State and Regional champions. This contest does not jeopardize Texas Inter-scholastic League eligibility.

The Blackwater Valley and Water Conservation District is adding the following cash prizes for the local winners: first place, \$5; second place, \$4; third place, \$3; fourth place, \$2; and fifth place, \$1.

Doug Bales is the local chairman for the contest, and he encourages any boy or girl under 18 to take advantage of this opportunity.

## Project Christmas Card Benefits Local Hospital

December 18 is the deadline set for Project Christmas Card, sponsored for the fourth consecutive year by the Hospital and Nursing Home Auxiliary.

The public is encouraged to give the amount normally spent on Christmas cards and postage to the Auxiliary and on Sunday, December 22, a page in the Journal will be printed with all the names of those people who have donated to the project extending Christmas greetings to everyone.

This year, the proceeds will be used to buy a very important piece of equipment for the hospital, a life saving blood gas machine that is very important in the treatment of diarrhea in children.

The Hospital Auxiliary has made many contributions to both the hospital and the Nursing Home since their organization eight years ago. They purchased all the vending machines in 1970 and that money is turned back to the hospital for needed equipment. They bought two Bennett machines, wheel chairs, a microwave oven, islette incubator for the nursery, a set of bathroom scales, high blood pressure

equipment, pictures and curtains for all the patient's rooms in the hospital.

Three years ago the Christmas card proceeds were used to enlarge and carpet the day room. Since then, much of the furniture has been replaced with platform rockers and a love seat, and a cabinet was built to accommodate a large color television in the Nursing Home.

In the home for the patient's comfort and the nurses convenience, six overbed tables, a bed that raises to different levels, electric heaters, hospital scales, commode chairs, four wheel chairs, two small refrigerators, a stainless steel 30 cup coffee maker, wall heaters installed in the day room, pictures for the walls of the dining room, rubber bath mats and bath stools, utility tables, new fireproof drapes for the east wing, long hoses for the shower head in one bathroom, have all been bought by the Auxiliary and put to appreciated use in the Nursing Home.

Besides raising money to buy so many needed items, the Auxiliary ladies volunteer their time and fill every day in the week shampooing and setting Nursing Home residents' hair, pushing the juice cart around from room to room giving a choice of juices, a new magazine and a few cheerful words for each one. This service also goes over into the hospital. The Auxiliary also decorates the Nursing Home for Christmas every year. This year they were assisted by the Muleshoe Young Homemakers.

The Auxiliary offers a variety of services in both the Nursing Home and the hospital and many that are important. Membership is open to any interested person and new members are certainly needed.

The Auxiliary encourages all the people of the Muleshoe area to donate to Project Christmas

Card. The Auxiliary encourages all the people of the Muleshoe area to donate to Project Christmas

Card. The Auxiliary encourages all the people of the Muleshoe area to donate to Project Christmas

Card. The Auxiliary encourages all the people of the Muleshoe area to donate to Project Christmas

Card. The Auxiliary encourages all the people of the Muleshoe area to donate to Project Christmas

Card. The Auxiliary encourages all the people of the Muleshoe area to donate to Project Christmas

Card. The Auxiliary encourages all the people of the Muleshoe area to donate to Project Christmas

Card. The Auxiliary encourages all the people of the Muleshoe area to donate to Project Christmas

Card. The Auxiliary encourages all the people of the Muleshoe area to donate to Project Christmas

Card. The Auxiliary encourages all the people of the Muleshoe area to donate to Project Christmas

Card. The Auxiliary encourages all the people of the Muleshoe area to donate to Project Christmas

Card. The Auxiliary encourages all the people of the Muleshoe area to donate to Project Christmas

Card. The Auxiliary encourages all the people of the Muleshoe area to donate to Project Christmas

Card. The Auxiliary encourages all the people of the Muleshoe area to donate to Project Christmas

Card. The Auxiliary encourages all the people of the Muleshoe area to donate to Project Christmas

Card. The Auxiliary encourages all the people of the Muleshoe area to donate to Project Christmas

Card. The Auxiliary encourages all the people of the Muleshoe area to donate to Project Christmas

Card. The Auxiliary encourages all the people of the Muleshoe area to donate to Project Christmas

Card. The Auxiliary encourages all the people of the Muleshoe area to donate to Project Christmas

Card. The Auxiliary encourages all the people of the Muleshoe area to donate to Project Christmas

Card. The Auxiliary encourages all the people of the Muleshoe area to donate to Project Christmas

Card. The Auxiliary encourages all the people of the Muleshoe area to donate to Project Christmas

Card. The Auxiliary encourages all the people of the Muleshoe area to donate to Project Christmas

Card. The Auxiliary encourages all the people of the Muleshoe area to donate to Project Christmas

Card. The Auxiliary encourages all the people of the Muleshoe area to donate to Project Christmas

Card. The Auxiliary encourages all the people of the Muleshoe area to donate to Project Christmas

Card. The Auxiliary encourages all the people of the Muleshoe area to donate to Project Christmas

Card. The Auxiliary encourages all the people of the Muleshoe area to donate to Project Christmas

Card. The Auxiliary encourages all the people of the Muleshoe area to donate to Project Christmas

Card. The Auxiliary encourages all the people of the Muleshoe area to donate to Project Christmas

Card. The Auxiliary encourages all the people of the Muleshoe area to donate to Project Christmas

Card. The Auxiliary encourages all the people of the Muleshoe area to donate to Project Christmas

Card. The Auxiliary encourages all the people of the Muleshoe area to donate to Project Christmas

Card. The Auxiliary encourages all the people of the Muleshoe area to donate to Project Christmas

Card. The Auxiliary encourages all the people of the Muleshoe area to donate to Project Christmas

Card. The Auxiliary encourages all the people of the Muleshoe area to donate to Project Christmas

Card. The Auxiliary encourages all the people of the Muleshoe area to donate to Project Christmas

Card. The Auxiliary encourages all the people of the Muleshoe area to donate to Project Christmas

Card. The Auxiliary encourages all the people of the Muleshoe area to donate to Project Christmas

Card. The Auxiliary encourages all the people of the Muleshoe area to donate to Project Christmas

Card. The Auxiliary encourages all the people of the Muleshoe area to donate to Project Christmas

Card. The Auxiliary encourages all the people of the Muleshoe area to donate to Project Christmas

Card. The Auxiliary encourages all the people of the Muleshoe area to donate to Project Christmas

Card. The Auxiliary encourages all the people of the Muleshoe area to donate to Project Christmas

Card. The Auxiliary encourages all the people of the Muleshoe area to donate to Project Christmas

Card. The Auxiliary encourages all the people of the Muleshoe area to donate to Project Christmas

Card. The Auxiliary encourages all the people of the Muleshoe area to donate to Project Christmas

Card. The Auxiliary encourages all the people of the Muleshoe area to donate to Project Christmas

## Mistrial Declared In Friona Murder Trial

A six men, six women jury split its decision 8-4 and was unable to render a unanimous verdict after deliberating almost six hours in a Friona murder case Wednesday being tried in Farwell. District Judge Pat Boone Jr. declared a mistrial late Wednesday in the murder trial of James Leroy Lambert 33, of Friona who was on trial for murder in connection with the shotgun slaying of John Frazier last May. Frazier was a co-worker of Lambert's at the Farmer County Implement Co. in Friona.

The judge returned the jury to the courtroom about 9 p.m. Wednesday after receiving a note from jury foreman Deon Autry indicating the jury was hung.

The judge then declared a mistrial and dismissed the jury after conferring with District Attorney Jack Young of Muleshoe and defense attorneys, Tom Kendrick and Ken Tarlton of Hereford.

The District Attorney reported that he could not say precisely when the case will be re-tried but said he hoped a new trial will be scheduled next spring.

During the three day trial,

the defense tried to show that Frazier could have been killed by another man Marvin Lolmaugh of Amarillo who had shot Frazier in 1972 in a dispute over Lolmaugh's wife. Lolmaugh is now serving a prison term for murdering his father-in-law but was out on appeal bond when Frazier was killed.

## Mrs. Watson Wins TCTA Award

Mrs. Elizabeth McCrea Watson, curriculum director in the Muleshoe Independent School District, has been named Category I winner of the Texas Classroom Teachers Association Administrator of the Year Award.

Category I is for districts with fewer than 4,000 students. TCTA names three administrators each year as recipients of the award. The awards are presented in three

award. The awards are presented in three

award. The awards are presented in three

award. The awards are presented in three

award. The awards are presented in three

award. The awards are presented in three

award. The awards are presented in three

award. The awards are presented in three

award. The awards are presented in three

award. The awards are presented in three

award. The awards are presented in three

award. The awards are presented in three

award. The awards are presented in three

award. The awards are presented in three

award. The awards are presented in three

award. The awards are presented in three

award. The awards are presented in three

award. The awards are presented in three

award. The awards are presented in three

award. The awards are presented in three

award. The awards are presented in three

award. The awards are presented in three

award. The awards are presented in three

award. The awards are presented in three

award. The awards are presented in three

award. The awards are presented in three

award. The awards are presented in three

award. The awards are presented in three

award. The awards are presented in three

award. The awards are presented in three

award. The awards are presented in three

award. The awards are presented in three

award. The awards are presented in three

award. The awards are presented in three

award. The awards are presented in three

award. The awards are presented in three

award. The awards are presented in three

award. The awards are presented in three

award. The awards are presented in three

award. The awards are presented in three

award. The awards are presented in three

award. The awards are presented in three

award. The awards are presented in three

award. The awards are presented in three

award. The awards are presented in three

## S.E. Goucher Recalls Jamaica

The following is another article written by S.E. Goucher of Muleshoe who recently returned from a tour of the Caribbean and the Panama Canal. This article is on the island of Jamaica.

Jamaica, a very beautiful tropical island in the center of the Caribbean sea, is of great commercial value to the United States. There is lots of bauxite, an ore we need to make aluminum.

Columbus discovered it on his second voyage to America in 1494. He fell in love with the Arawak Indians that lived on the island and stayed there with them for more than a year.

The island is about 140 miles long and 40 miles wide, plenty of rain and the temperature ranges between 60 and 80 degrees. Over two million people live on the island, mostly negroes. Agriculture employees most of them. Sugar cane and bananas are the principle crops. The banana plantations were a marvel to me, so different and lovely. A banana tree grows up maybe to ten feet, one stem of bananas is harvested, the tree dies and a new sprout comes up

from the roots, grows a new tree, another stem of bananas, etc.

When the people from Europe came to live on the island they brought smallpox and other European diseases with them. Those diseases nearly wiped out the Indians. The white man needed labor, lots of it to handle their big plantations. A great number of Slaves were purchased from the Slave Traders.

All the valleys and plains were soon developed. There was a thriving business with foreign lands and the settlers became rich. The climate agreed with the Slaves and there was plenty of food. They raised large families and the plantation owners soon found out they had more Slaves than they could handle. The Slaves became unhappy and had bitter arguments with their masters, some were killed. In 1831 they resolved the problem in a rather unfriendly way. The Slaves with their sheer power in numbers held the upper hand. They traded places with the owners, took the big houses, sugar mills and all. The owners could work in the cane fields or be fed to the sharks.

Jamaica has two modern cities, Montego Bay and Kingston. Several American businessmen have built and are building more hotels and amusement centers for American tourists that come in large numbers.

I like the country best. It is under developed, the houses are built rather cheap with galvanized roofs to keep the rain out. No need for strong walls as it is not cold. The water comes from a well or a stream nearby and there are no electric lines. The many hills and small mountains are covered with lush tropical vegetation. Hibiscus and bougainvillea flowers are plentiful. All kinds of citrus fruit, bananas, coconuts, breadfruit, paw paw and others I can't think of, also lots of game for the hunters and in the many streams, fish for the fishermen.

The government does not have a welfare program for the lazy. But they do give some help to the old and crippled. I was there only a short time, but I talked to a lot of people and asked a lot of questions. They appear to be happy with the government, the island and their way of life.

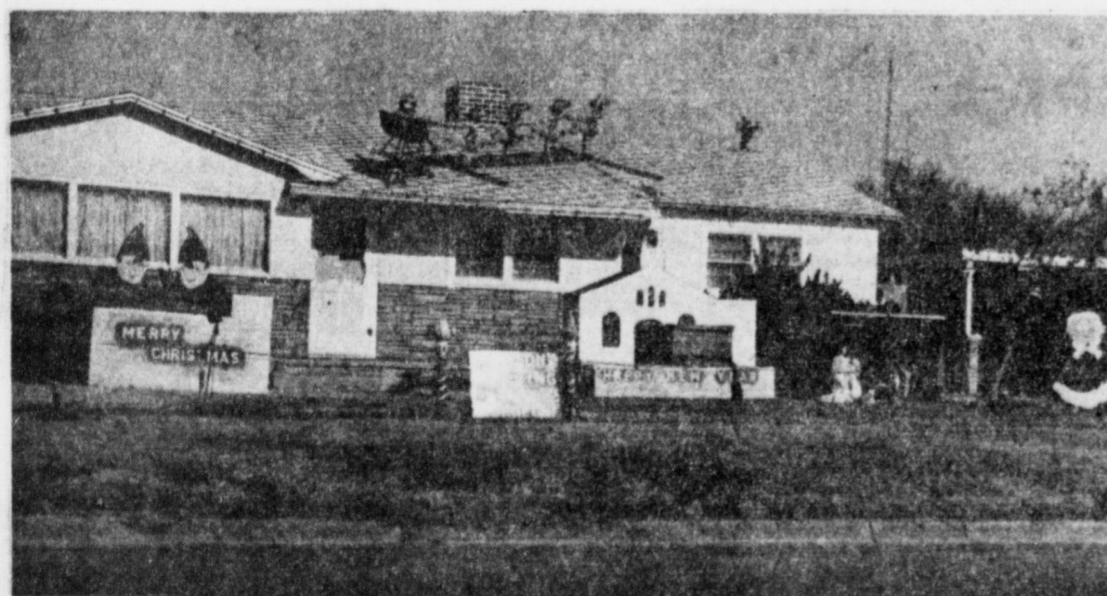
## Heart Association To Train Rescuers

This year more than 50,000 Texans will die from some form of cardiovascular disease. Many of these deaths are needless and can be prevented. The Texas Affiliate of the American Heart Association, through its cardiopulmonary resuscitation training, proposes to alleviate many of these deaths by training rescuers in this vital area. Currently, the Texas Affiliate trains or re-trains approximately 10,000 persons each year. Last year, 644 cardiopulmonary resuscitation training programs were conducted to train an additional 22,000 rescuers. With additional materials, 25,000 medical and paramedical personnel can be trained in this lifesaving technique.

One of the vital elements in this training is the resuscitator manikin. This life-size manikin is designed for individual rescuers to practice the technique of CPR. Studies

have shown that every individual over the age of 13, if trained, is capable of effectively administering CPR. This is our target group: to provide training in every industry, school and hospital in Texas; to certify policemen, firemen and ambulance personnel. Having a trained individual who can reach a victim within the first four minutes of his initial attack can significantly reduce the mortality rate caused by the stoppage of breath.

The Texas Affiliate urgently needs 100 of these manikins today. The cost per manikin is \$280 ---- a small price for such a large service. Individuals or companies interested in helping to purchase this equipment may contact Mary Johnson, Regional Director, American Heart Association, 6701 Indiana, Lubbock. All gifts made to the American Heart Association are tax deductible.



CHRISTMAS SCENE . . . This decorated home belonging to Mr. and Mrs. J.D. Spurgeon is on'y one of the many residences in Muleshoe that have been decorated for the holidays. At the Spurgeon home, several figures are present on the lawn as well as Santa on the roof.



JAYCEES ATTEND MORTON BANQUET . . . Several Muleshoe Jaycees attended the Morton Jaycee Charter Night Banquet held December 12 at Morton. Guest speaker was Frank Ziebell of Richardson, State President. Local dignitaries attending included John Dugan, Administrative National Director for this area; Bill Blackburn, National Director from Amarillo; and Bill Dale, State Vice President from Muleshoe. Pictured left to right are John Dugan, Frank Ziebell, Mike Nichols, Morton president, Ed Akin, Morton secretary, Ed Pruitt, Morton first vice president; Rick Galt, Morton Director, Bill Dale, Bill Blackburn, Ray Luper, Morton treasurer; Wayne Hollingshead of Lubbock, and Jim St. Clair, Morton State Director.

# Man Takes Drink, Drink Takes Drink, Drink Takes Man

A Chinese proverb has that "The man takes a drink, the drink takes a drink and then the drink takes the man."  
How true—often tragically true—that is. But because this seemingly hopeless cry of despair can be accepted as a warning and does not have to proceed to a frightful death or confinement, the Alcoholism Council has been formed. An active branch is now at Central

Plains MH/MR Center—Alcoholism alcoholism.  
In an effort to help keep "the drinker from taking the drink" and to "take the man from the drink," the Muleshoe Journal is printing a series of articles on progression toward chronic alcoholism. This article continues pointing up symptoms during the acute stage. The problem drinker reaches the point where, once the first

drink is taken he always winds up drunk. Guilt during a return to sobriety prompts excuses. He knows it is not his fault. He often admits to himself he has become a drunk but he'll deny it to others. Self-esteem diminishes and he must devise ways to bolster his waning ego. This leads to extravagant behavior.  
The chronic alcoholic needs to buy good will. Since he has

learned to drink to excess, his gestures to family or friends are bombastic. He may buy a set of luxurious furs for a wife whose dresses are shabby and who cannot afford visits to hair-dressers.  
He will seek to see his children's eyes sparkle at a new television set while they are badly in need of denistry or even proper food. The gift may be practical, such as the best

washing machine available—which eventually is reclaimed for non-payment.  
The drinker who abuses the use of alcohol feels that being a "big wheel" makes up for what his drinking is doing to others and himself. Liquor makes this man feel he really is somebody. He exults in the riding in taxis, dialing long distance. The elaborate buying of drinks 'for everyone' in a bar

is common.  
Comes sobriety and he knows self-incrimination and self-punishment. He is aware that a "couple of drinks" has done to him. He sets about to 'make it up' to others by denying and depriving himself. Recipients of his generosity briefly appreciate his efforts. Some may take advantage.  
But the end is revulsion at the simple and childish attempts to buy good will. Their reaction, their criticism, has to get through to the drinker who backlashes normally—a build of inner anger which smolders before eruption.

Believes has stirred up his ill-will.  
Feeling deeply offended, the alcoholic too often strikes back by doing such things as kicking in the window of an innocent bystander or charging down a street slashing the tires on automobiles of strangers. Both have been done many times. The drinker whose actions are less flamboyant is not less sick. Kicking dogs and throwing things are relatively just as violent.  
Because of the intensity of his actions, the alcoholic at this stage seeks isolation. He will walk out on family, friends and employers, usually to avoid embarrassment at them deserting him.

## Jerry Inman Promoted To Vice President

Jerry Dale Inman, branch manager at 4329 Montana in El Paso for SIC Credit Company, a wholly owned subsidiary of Southwestern Investment Company, has been designated a vice president of the company.  
The advancement was announced by R. Earl O'Keefe, board chairman and president of Southwestern Investment Company.

In the new post, Inman will continue to manage the SIC Credit Company office at 4329 Montana in El Paso.

Inman joined SIC in 1960. He served with the company in El Paso, and then Tucson before being promoted to branch manager in 1965.

The new vice president active in the First Baptist Church acting as Deacon and 4th grade Sunday School Teacher. A native of Crosbyton, Texas, he attended Muleshoe High School and Hardin Simmons University, and is a veteran of the Army with a rank of 2nd Lieutenant and served with the Reserve with a rank of Captain.

Inman and his wife Helen, have two children. The family home is at 10321 Suez in El Paso.

\*\*\*\*  
Every minority has a tendency to blame the majority for its own mistakes.

\*\*\*\*  
Work may be a great blessing to man, but there are times when we have doubts.

\*\*\*\*  
Opinions are necessary in life, but it's not necessary that anyone else agree with yours.

## LET US TELL YOU ABOUT OUR FORD IRRIGATION ENGINES AND WE JUST MIGHT GIVE YOU ONE.

### FREE.

But getting an engine free isn't the only reason for talking to us. We want to tell you why right now is the best time to buy one.

**GUARANTEED PRICE.** There's no telling what inflation is going to do to the price of irrigation engines this spring. With our plan, however, you pay 10% down and you don't have to worry about the price going up in the spring.

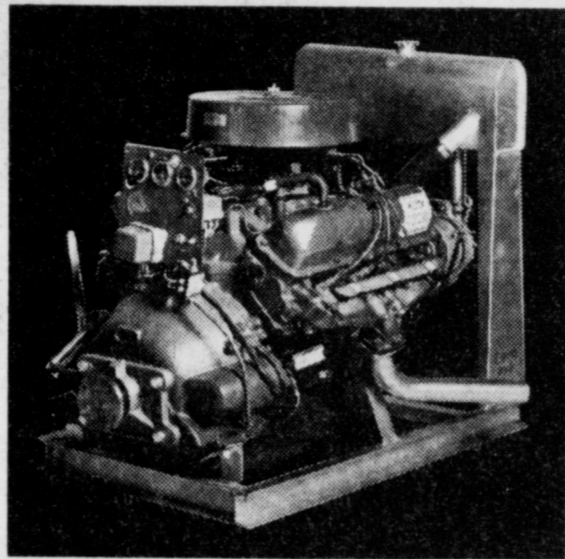
**PAY FOR IT ON DELIVERY.** We don't tell you when to take delivery. You tell us. You can take delivery any time. January, February, March. So, you also get a guaranteed delivery date and you don't have to pay for it until then.

**GET THE IRRIGATION ENGINE YOU NEED.** We have the 300 CID 6-cylinder and the 428 and 534 CID 8-cylinder engines. This is the best part. Because you get the best irrigation engine on the market. Ford. Unlike most irrigation engines, ours have been modified for irrigating. Not for cars and trucks. Because of that, they're more durable so they're more economical to operate. Very simply, they're designed to save you time and money. And these days, that's exactly what you need.

**WE JUST MIGHT GIVE YOU A 428 CID. FREE.** Come by right now. Let us tell you about our irrigation engines and register for a free 428 CID. There's no purchase necessary and you don't have to be present at the drawing to win. Registration ends January 31, 1975.

But don't let that keep you from booking your engine early. If you go ahead and buy one, and your name is drawn, we'll give you your money back.

Come by right now. Any way you go, you're a winner with Ford.



**MULESHOE MOTOR CO.**  
**CAR CAPITAL OF THE SOUTH PLAINS**  
**1225 W. AMERICAN BLVD.**  
**MULESHOE**

## Watson...

Cont. from Page 1

categories according to the scholastic population of the school district.

## Card...

Cont. from Page 1

mas Card and help them in their efforts to place a much needed piece of equipment in the hospital.

## 4-H...

Cont. from Page 1

In order to be eligible for the prize to be awarded to the one who sells the most tickets, tickets and money must be in by this date.

No tickets or money will be taken the day of the drawing which will be Tuesday, December 24 at Cobb's Department Store.

**Bailey County Journal**  
Established March 31, 1945  
Published by Muleshoe Publishing Co., Inc.  
Every Sunday at 304 W. Second Box 449  
Muleshoe, Texas 79247  
Second class postage paid at Muleshoe, Texas, 79247.

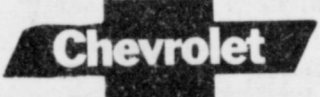
**TEXAS PRESS ASSOCIATION**  
Member Since 1974

L. B. Hall, President  
Jensson P. Hall, Sec.-Treas.  
L. B. Hall - Managing Editor  
Katie Buckett-News Reporter  
Dorothy Mary, Society Reporter  
Polly Owens, Office  
Shorty Russell-Advertising

**SUBSCRIPTIONS:**  
The Muleshoe Journal and Bailey County Journal  
Daily and Advertising Combined \$8.50  
The Muleshoe Journal and Bailey County Journal  
Advertisers in Texas \$10.00  
The Muleshoe Journal and Bailey County Journal  
Outside of Texas \$11.50  
Monthly by carrier \$8.50  
Monthly by carrier \$10.00

Advertising rate card on application

**We Now Have In Stock 1/2 Ton Pickups That Will Burn Leaded Fuel.**

**CROW Muleshoe** 

# TAX DEDUCTION-SAVING DEPOSITS

**BEFORE IT'S TOO LATE SEE US ABOUT YOUR PENSION PLAN AND SAVE ON THIS YEARS INCOME TAX ...**

**TO QUALIFY FOR THE 1974 TAX YEAR, YOUR SELF-EMPLOYED PENSION PLAN MUST BE OPENED ON OR BEFORE DECEMBER 31, 1974**

*Join now. New Federal provisions let you set aside 15% of ind income, tax-deductible, up to \$7,500 annually.*

If you're in business for yourself, you can put 15% of income, up to \$7,500 a year, into our Pension Plan, and it's 100% tax-deductible (You may set aside up to \$750 a year even if this exceeds the 15% limit!)

Your contribution can earn from 5.25 percent to 7.50 percent per annum.

In addition your contribution is 100% tax-deductible when deposited and the interest is tax-free when earned. Your funds will not be taxed until withdrawn after retirement, when you'll probably be in a lower tax bracket.

Ask about our Self-Employed Pension Plan. It'll answer a lot of questions about your future.



MULESHOE

304 MAIN --- Phone 272-5527

**If you're self-employed, the sooner you set up your pension plan, the better.**

# A TIME FOR FEASTING

SALE  
GOES THRU  
CHRISTMAS  
EVE  
DEC. 24



SHURFRESH  
SELF BASTING WITH  
AUTOMATIC TIMER

## TURKEYS

10 TO 14 LBS. **55¢**  
LB.

16 TO 20 LBS. **51¢**  
LB.

FRESH DRESSED  
**FRYERS**  
LB. **39¢**

CHRISTMAS WRAPED  
**HAMS** **99¢**  
14 TO 17 LBS.

SUREFRESH CAN  
**HAMS** \$ **4<sup>09</sup>** \$ **6<sup>69</sup>**  
3 LBS 5 LBS

MRS. TUCKERS OR FOOD KING  
**SHORTENING**  
3 LB CAN **\$1.59**

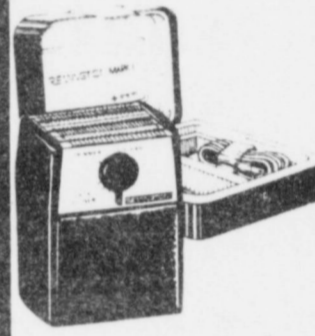
ALL WEEK  
**HOT HAMBURGERS**  
AT PAY AND SAVE #2  
**3 FOR \$1**



The  
**REMINGTON™**  
850 Hair  
Dryer.

**A powerful family hand-held hair dryer!**  
With 850 watts of power, the Remington 850 Hair Dryer offers a powerful combination of heat and air flow to dry hair fast. It features two speeds and heats for effective drying and styling. Attachments include styling brush, wide and fine toothed combs... all in a light-weight blue contemporary design.

**\$17.88**



The  
**REMINGTON™**  
MARK I™  
Economy Cord  
Shaver.

**A close, comfortable shave at an economical price.**

An economy priced cord shaver featuring the COMFORT HEAD SHAVING SYSTEM with super-sharp replaceable blades. The comfort dial adjusts to 4 individual shave positions - plus sideburn trimmer and power cleaning settings. Handsomely packaged in functional compact travel case. Coupon good for free set of replacement blades included.

**\$23.88**

11 OZ CAN  
SUREFINE  
MANDRIN  
ORANGES  
**3/\$1**



WASHINGTON RED DELICIOUS FANCY  
**APPLES** LB. **25¢**  
TEXAS 5 LB BAG

**ORANGES** **49¢**  
ICEBERG

**LETTUCE** LB. **19¢**  
USDA 1 RUSSETS

**POTATOES**  
10 LB BAG **79¢**

GOLDEN RIPE  
**BANANAS** LB. **10¢**

RED  
**GRAPES** LB. **29¢**

CRISP PASCAL  
**CELERY** STALK **19¢**

**BELL PEPPERS** **29¢**

SWANSON  
**CHICKEN BROTH** 14 OZ CAN **19¢**  
SUREFINE CUT #303 CAN

**GREEN BEANS** **3/\$1**  
SUREFINE 46 OZ CAN

**GRAPEFRUIT JUICE** **2/89¢**

SUREFINE  
**SALT** 26 OZ BOX **10¢**

SUREFINE  
**CRANBERRY SAUCE** 15 OZ **2/79¢**

SUREFINE  
**BLACK PEPPER** 4 OZ BOX **39¢**

**COOL WHIP** 9 OZ **59¢**  
**TENDER CRUST BROWN-N-SERVE ROLLS** **3/\$1**

**NESTEA** 20Z JAR **99¢**  
**BAKERS ANGLE FLAKE**

**COCONUT** 3 1/2 OZ **35¢**  
SUREFINE OR GOLD MEDAL

**FLOUR** 5 LB. BAG **69¢**

JOHNSON FROZEN  
**PIE SHELLS**  
2 PAK **49¢**

SUREFINE  
ALL GRINDS  
**COFFEE**  
1 LB CAN **98¢**

MULESHOE HIGH SCHOOL  
FFA ORANGES & GRAPEFRUITS LB. **29¢**

AFFILIATED  
**Pay-n-Save**  
QUALITY AND SERVICE

WE GIVE GUNN BROS STAMPS

DOUBLE STAMPS WEDNESDAY WITH \$2.50 OR MORE PURCHASE  
WE REDEEM AND GIVE STAMPS ON FOOD STAMPS  
WE SELL TRAVELERS EXPRESS MONEY ORDERS, PAYROLL CHECKS CASHIER  
515 W. AMERICAN OPEN 8 A.M. TILL 10pm  
201 S. FIRST 8 A.M. TILL 10 P.M. 7 DAYS

SUREFINE  
**SALAD DRESSING**  
QT JAR **89¢**  
ELLIS HALVES OR PIECES  
**PECANS**  
6 OZ BAG **79¢**

SAVINGS FOR THEE





MR. & MRS. T. A. MILLER

Expect little and you will spare yourself disappointments.

No man has ever been called a liar by the object of his flattery.

Minorities easily assume that majorities owe them a living.

Education is a process that either never begins or never ends.

## Mr., Mrs. Miller To Have 50th Anniversary

Mr. and Mrs. T.A. Miller of Muleshoe will be honored at

### CFW Has Regular Meeting

The Christian Women's Fellowship of the First Christian Church had their Christmas dinner at the Corral Restaurant Tuesday, December 10 at 6:30 p.m.

Mrs. Walter Bartholf gave the blessing and Mrs. R.F. Wright gave the worship. A collection was taken for the Christmas gift for the child CWF sponsors at the Juliette Fowler Home in Fort Worth. Guests present were Mrs. Mae Witterding, Mrs. E.W. Johnson and Mrs. Velma Davis. Members present were Mrs. Walter Bartholf, Sr., Mrs. Bobby McGee, Mrs. Charles Long, Mrs. R.F. Wright, Mrs. Levina Pitts, and Mrs. Joe Costen.

their 50th Wedding Anniversary, Sunday, December 22 in the Oklahoma Lane Community Center from 2:00 to 5:00 p.m.

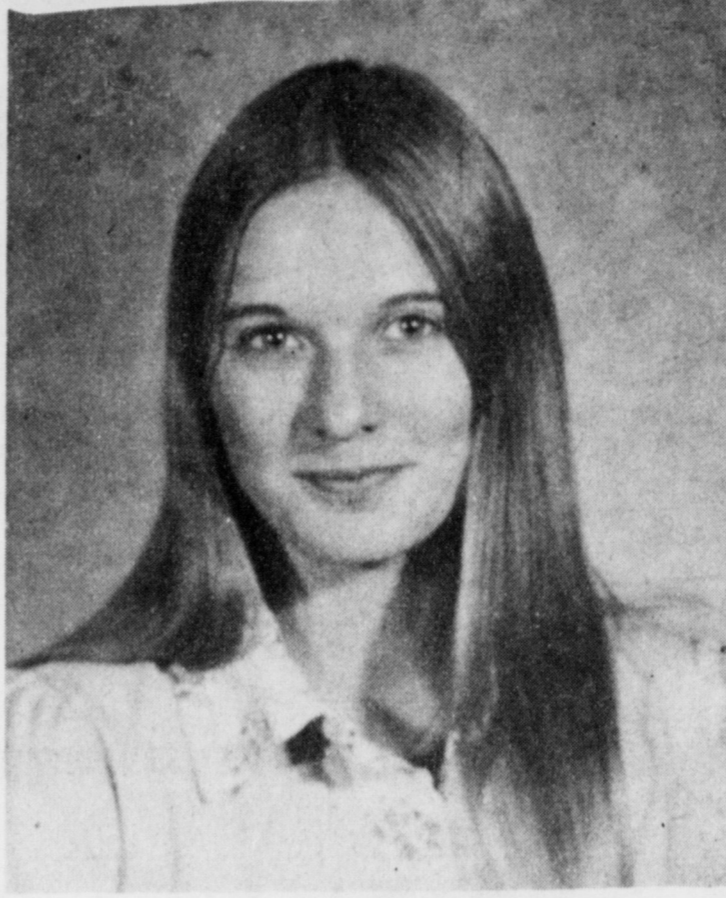
Hostesses for this occasion are the Miller's two daughters, Mrs. L.E. Vaughan of Alamogordo, N.M. and Mrs. Gene Coburn of Clovis, N.M. Mr. and Mrs. Miller were married December 17, 1924 in Vashti, Texas. They lived near Newport, Texas six years before moving 12 miles northwest of Muleshoe where Miller has been a farmer.

They have six grandchildren and four great grandchildren. Friends are invited to attend Mr. and Mrs. T.A. Miller's reception.

A match is a little thing but it can start a big fire.

The neighbor who borrows should be willing to lend.

When two people think exactly alike one is not thinking.



COUPLE PLANS DECEMBER WEDDING . . . Mr. and Mrs. Sam Barden of Springlake, Texas announce the engagement and approaching marriage of their daughter, Dawn to Roger Williams, son of Mr. and Mrs. Wayne Williams of Muleshoe. The couple will exchange vows Friday, December 27 at 2:00 p.m. in the First Baptist Church of Earh.

## Mrs. Campbell Receives Door Prize

The Christmas Parade of Homes was termed a success by the sponsoring Xi Omicron Xi Chapter of Beta Sigma Phi. Included on the tour were the homes of Mr. and Mrs. Jim Young, Mr. and Mrs. Lee Kimbrough, Mr. and Mrs. Kenneth Henry, Mr. and Mrs. Clem Peden, and Mr. and Mrs. Charles Isaac. Homes were decorated in the Christmas motif by Muleshoe Floral. Refreshments were served to the approximately 165 people who attended the tour on Sunday, December 8.

A Christmas arrangement was the door prize, and it was presented to Mrs. Tim Campbell who held the winning ticket.

The members of Xi Omicron Xi appreciate the cooperation of the home owners in opening their homes for the

An optimist is usually an individual who feels good.

Nature is a great teacher, if you care to take lessons.

tour and to those who made the tour a success by their attendance. This is to be an annual event.



MRS. CAMPBELL WINS DOOR PRIZE . . . Mrs. Doyce Turner is presenting the door prize to Mrs. Tim Campbell of Muleshoe. This arrangement was drawn at the Xi Omicron Xi Home Tour, Sunday, December 8.

## Camp Honored At Reception

Bernis Camp was honored with a Come and Go Reception, Sunday December 8, at the Tri-County Community Room in appreciation of 30 years service to Bailey County and the ASCS office.

Special guests were Mrs. Bernis Camp, Mr. and Mrs. Woody Keith, Trey and Kecia of Odessa; Mr. and Mrs. Randy Cornelison of Borger; Mr. and Mrs. Joe Camp of Clovis; Mr. and Mrs. Marvin Drake of Bula; Mr. and Mrs. Jimmy Drake of Bula; and Mr. and Mrs. Jimmy Drake of Bula; and Mr. and Mrs. Loyd Pryor of Amherst. Approximately 70 others in-town and out-of-town guests registered.

The serving table was set with a crystal punch bowl and appointments on a yellow lace

cloth. The centerpiece was a fall arrangement of dried flowers with two quails.

Camp was presented a Bulova calendar automatic wrist watch which was engraved, "Enochs and Bula Farmers-1974." He was also presented a SR slide rule calculator by the hosts and hostesses and many other friends. A fellow ASCS worker, Prentice Mills presented him with Jumbo dominoes.

Hosts and hostesses were Mr. and Mrs. Henry Stomeham, Mr. and Mrs. Bobby Nickels, Mr. and Mrs. Howard Watson, Mr. and Mrs. Beryl Wingo, Mr. and

Mrs. Monty Dollar, Mr. and Mrs. Bill Taylor. Mr. and Mrs.

Jack Roberts, Mr. and Mrs. Charlie Hall and Mr. and Mrs. Jack Young.

## Young Homemakers Have Meeting

The Muleshoe Young Homemakers met Tuesday, December 10 at 3:00 p.m. in the Home Economics lab at Muleshoe High School.

Mrs. Vivian Liner presented a program on party foods. She made several quick party dishes and distributed all recipes to those who attended.

The business discussed was the bake sale which was held Saturday, December 7. They cleared \$100.00 and this is to be used to give their little sis, Cindy Hall for a scholar-

ship for college. Also they discussed the Storyhour they will provide at the Muleshoe Public Library December 18 at 10:00 a.m.

Those attending the meeting were Mrs. John Mann, Mrs. Gary Elliott, Mrs. Carroll Kelson, and daughter Laurie, Mrs. Terry Kemp, Mrs. Randall Copley and Mrs. Wayne Copley.

Few people have the courage to resist the crowd, even when they know the crowd is off base.

## Holiday Specials

PANTS, BLOUSES & KNIT TOPS  
SPORTS COORDINATES

30% OFF

One Rack Of

JUNIOR FASHIONS 40% OFF

COATS

1/2 PRICE

Nice selection of dresses for all occasions

LERGCE'S

On Hwy. 84 in Farwell

**Cobb's**

**A MERRY CHRISTMAS VARIETY Of Gifts!**

Will Be Open Till 8p.m. From Dec. 18 through Dec. 23

### DECEMBER

1 Purses	2	3 Shop Early SAVE	4	5 Dresses	6	7 
8	9 Shoes	10	11 Jewelry	12	13 Ties	14
15 	16	17 Billfolds	18	19 Robes	20	21 Infant Wear
22	23 Sweaters	24 LAST Shopping Day	25	26 	27 Colognes	28 



**GIFTS THAT KEEP ON GIVING**



Patio Cart or Patio Stand **\$112.50** Plus Tax

There are two Electro-Grills . . . and each is three cookers in one! Flame barbecue with hood up, roaster or smoker with hood closed. Whether you choose the patio stand model or the patio cart model, you get a large stainless steel cooking grill with bun warming section and storage shelf to keep cooked foods hot. And either model moves easily so there's no need to change your plans to cook out just because the weather changes.

See Electro-Grill at The Electric Company office . . . and put it on your electric bill!

ELECTRICITY-IT DOES SO MUCH GOOD



FOR SO MANY PEOPLE

LAWN-GLO  
Black or White

**\$79.50**  
Plus Tax  
Installed

A READY-LITE KNOWS DAY  
FROM NIGHT,  
AUTOMATICALLY



**GUADALUPE DAY QUEEN . . .** The queen Maria Teresa Orozco is shown the middle with her court on her left and right Maria Magdalena Espinoza and Romano Orozco. The queen was crowned during the Guadalupe Day Celebration held December 12th.

## Lady Of Guadalupe Celebrated Thursday

The day was Thursday, December 12th; the time was 8:00 p.m.; the location was The Immaculate Conception Church Center. The auditorium area was filled to capacity with happy faces and the dark, bright curious eyes of children.

The celebration began with the 'Guitarristas' entoning and the people joining in "Aqui vengo a saludarte Virgen Santa

Madre mia, mi bella Guadalupe, causa de nuestra alegria" (Here I come to praise you, my Holy Virgin Mother, my beautiful Guadalupe, cause of our joy).

The occasion, December 12th, is a very special day to the ancestors of the earliest North Americans, the Mexicans. The day celebrates the event when the Virgin

Mary appeared to Juan Diego in 1531 in Tepeyac Mexico, leaving an image of herself imprinted on his tilma (sarapi). That image can be viewed in the Basilica of Our Lady of Guadalupe in Mexico City.

That event and the picture was instrumental in the converting of Pagan Mexico to Christianity.

During the celebration, the

Guadalupe Day queen Maria Teresa Orozco was crowned, attended by Magdalena Espinoza and Ramona Orozco, the runners up. There was also a native dance in honor of the Virgin presented by Jessie Gauna, Robert Orozco Jr., Eddie Perez, Hector Orozco, Charlie Mata, Gino Gauna, Smiley Orozco and Lape Rejino Jr. under the direction of Benita Gauna. This was followed by the presentation of roses to honor the Virgin by the Guadalupe Society.

After the celebration of the Eucharist, Father Tim Schwertner talked on the The-

ology of Our Lady of Guadalupe. He was emotional in his talk stating that the Mexican is indeed special, honored as no other race and must be of the Faith brought by the Virgin of Guadalupe in order

to be whole people, true to their culture and their origin. Father ended by expressing that he is honored to be a pastor among the Mexican Americans.

The evening continued with celebrating as the Guadalupe Society had prepared native food for all who wished to stay. The day will be remembered and hopefully celebrated again next year.



**FIFTH GRADERS PRESENT PROGRAM TO PTA . . .** The fifth graders present the Christmas program to the PTA Monday, December 9 at Mary DeShazo Cafeteria.

### P.T.A. Has Regular Meeting

The Muleshoe Elementary P.T.A. met Monday, December 9, 1974 in the Mary DeShazo Cafeteria. The colors were presented by Cub Scouts Kevin Harris and Cheyenne Bickel. The opening prayer was led by Mrs. Jimmy White.

After the business meeting the program was presented by approximately 90 fifth grade students under the direction of Mrs. Lois Killingsworth. The choir, dressed in white capes with red bows, sang several Christmas carols. They were led by Miss Pat Brown and accompanied by Mrs. George

Mitchell at the piano. Choral readings of Luke 2 were given by students dressed in white capes with black bows, lead by Mrs. Wilma Smith. Other students in costume acted out the Christmas Story. At the close of the program the audience joined the students in singing "Silent Night".

At the close of the meeting Mrs. Robert Hunt presented past president, Mrs. Jimmy White with a pair of plaster Lady Bug figurines as a going away gift, as she and her family are moving from Muleshoe after Christmas.



**GOODWILL KINDERGARTEN ATTENDS STORYHOUR . . .** The Goodwill Kindergarten attended the Storyhour at the Muleshoe Public Library, Wednesday, December 11.

### Storyhour Held For Goodwill Kindergarten

The children from the Goodwill kindergarden were special guests of the library for a Christmas Storyhour, Wednesday, December 11.

Mrs. Virginia Valle and Tommie Bratcher, brought the children. It was a sunny morning so the flags were raised outside, and the pledge of alleg-

iance given.

The children sang Rudolph the Red-nosed reindeer, then Anne Camp did a flannelboard story of Santa and the little mouse, and led the children in a snowball game.

Two filmstrips were shown by Holly Millsap "Paddy's Christmas," in which a little

bear tried to find the real meaning of Christmas; and "The Little Engine That Could". The program ended with the children singing "Silent Night" by candlelight and each child was given a Christmas treat as they left.

### Young Homemakers Have Christmas Party

The Muleshoe Young Homemakers had the Christmas Party, Tuesday, December 3 at the Church of Christ.

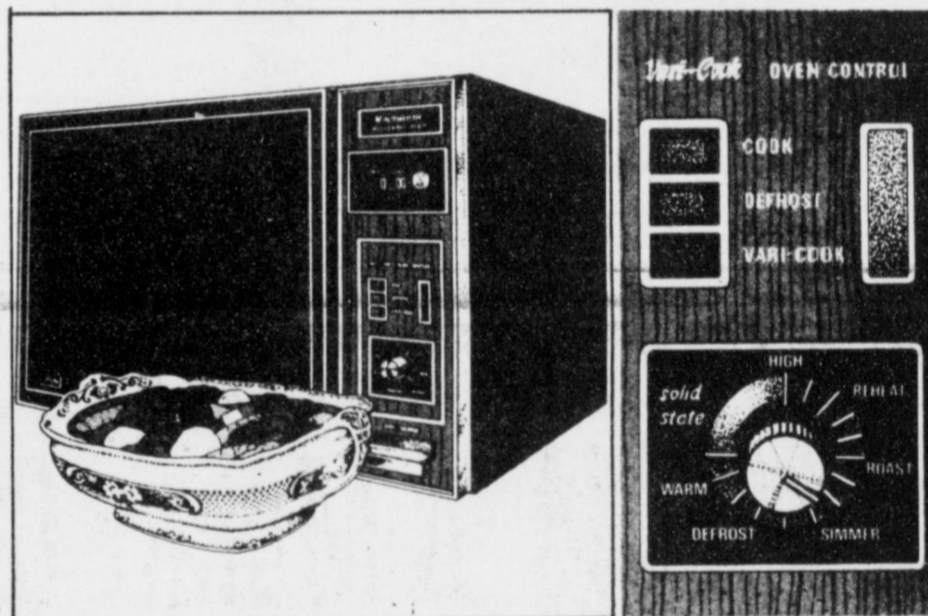
After everyone had arrived they went to the Nursing Home and decorated it. Then they exchanged secret pal gifts. After the exchange of gifts Mrs. Doreen Harbin provided the refreshments.

Those who attended the party were Mrs. Randy Bush, Mrs. Mike Richardson, Mrs. Bryon Noble, Mrs. Brett Gregory, Mrs. Gary Elliott, Mrs. Raymond Davenport, Mrs. Jerry Ruthardt, Mrs. Dan Smith, Mrs. Jim Parrish, Mrs. Jerry Lee, Mrs. John Mann, Mrs. Richard Warren, Mrs. Dennis Bush, Mrs. Terry Demp, Mrs. Wayne Copley and Mrs. Randall Copley.

\*\*\*\*

If you sacrifice your principles for friendship, you lose something and gain nothing worth having.

**Introducing old-fashioned slow-cooked goodness at microwave speeds.**



**New Litton solid-state Vari-Cook™ oven control makes it possible. In up to one-fourth the time.**

For the first time, the new Litton Minutemaster® "416" microwave oven lets you set the cooking speed. With Vari-Cook infinite oven control, you change speeds as you change foods: Cook, reheat, roast, simmer, warm, defrost—or any microwave speed in between.

#### Check these Litton features:

- 60-minute Micro-Timer™ digital control
  - Vari-Cook oven control with separate "Cook," "Defrost" and "Vari-Cook" switches
  - Automatic defroster
  - Extra large 1.2 cubic ft. usable oven interior
  - Easy-clean acrylic interior
  - Intrusion-proof, tempered glass door with safety latch door release
  - Sealed-in ceramic shelf for easy cleaning
  - Vari-Cook oven control indicator light
  - Oven interior light
  - End-of-cycle bell
  - Simulated rosewood styling
  - 168-page cookbook
  - Plugs into any standard 110 volt outlet
  - Vari-Cook cooking guide
- OPTIONAL: Micro Booster™, steak grill and Micro-Temp food thermometer
- Litton Minutemaster™ "416"

**Litton... changing the way America Cooks.**

Make the change to microwave. Taste a Litton microwave cooking demonstration.

# WILSON APPLIANCE

117 MAIN

272-5531 OR 272-5532

## Season's Greetings

*Start the holiday season off right by shopping with us for all your gift needs.*

Dresses  
Shoes  
Blouses  
Lingerie

Coats  
Jewelry  
Accessories

# St. Clair's

110 MAIN 272-4453

### SCHEDULE OF EVENTS

**MONDAY, DECEMBER 16:**  
12 noon: Jaycees - XIT

**TUESDAY, DECEMBER 17:**  
7:30 p.m.: Rebekahs Oddfellows Lodge Hall.  
7:30 p.m.: OES, Masonic Hall  
8:30 a.m.: City Commissioners at City Hall.

**WEDNESDAY, DEC. 18:**  
7:30: DeMolay, Masonic Hall

**THURSDAY, DEC. 19:**  
6:00: TOPS, Bailey Co. Electric Meeting Room.

**FRIDAY, DECEMBER 20:**

**saturday, december 21:**  
9:00 till 12:00: Youth Center (Cross Roads South)

**MULESHOE STATE BANK**  
Member FDIC

## Don't Wait!

**NOW IS THE TIME TO SEE US ABOUT YOUR PENSION PLAN AND SAVE ON THIS YEARS INCOME TAX...**

TO QUALIFY FOR THE 1974 TAX YEAR, YOUR SELF-EMPLOYED PENSION PLAN MUST BE OPENED THIS CALENDER YEAR.

**INCOME TAX DEDUCTIBLE SAVINGS DEPOSITS**

**If you're self-employed, the sooner you set up your pension plan, the better.**

Join Now.

**New Federal provisions let you set aside 15% of income, tax-deductible, up to 7,500 annually.**

If you're in business for yourself, you can put 15% of income, up to \$7,500 a year, into our Pension Plan, and it's 100% tax-deductible (You may set aside up to \$750 a year even if this exceeds the 15% limit!)

Your contribution can earn from 5.25 percent to 7.50 percent per annum.

In addition, your contribution is 100% tax-deductible when deposited, and the interest is tax-free when earned. Your funds will not be taxed until withdrawn after retirement, when you'll probably be in a lower tax bracket.

Ask about our Self-Employed Pension Plan. It'll answer a lot of questions about your future.

## LITTLEFIELD FEDERAL SAVINGS AND LOAN ASSOCIATION

P.O. Box 301 XIT Drive  
Phone 806 385-5197

Littlefield, Texas 79339



MRS. CONNY MARTIN

## Art Association Has Meeting

The Mulshoe Art Association met Tuesday, December 10 at 2:00 p.m. in the Mulshoe State Bank Community Room. Guest Artist for this month was Conny Martin of Lubbock. She gave a brief constructive criticism on each painting brought to the meeting by the members.

Mrs. Martin has taught at the Garden and Arts Center in Lubbock in the past, and will be there in the near future. She had a workshop here three years ago and has her own studio in her home. She has two daughters who are both artists and her husband is a building contractor. He built the Mulshoe State Bank.

Those present for the meeting were Mildred Neely, Mrs. Wayland Ethridge, J. Sigman Smith, Mrs. Sam Fox, Dana Arnold, Bertha Beane, Mrs. C.E. Roark, Erald L. Goss, Mrs. Jack Smith, Velma Davis, Mrs. Tommy Merritt, Mrs. Pat Bobo, L.W. Chapman, Mrs. John McGehee, Mrs. Leslie John McGehee, Mrs. Lesli Smith, Mrs. Tice Hugg, Mrs. Conrad Williams, Mrs. Elbert

Nowell, Mrs. Delbert Watson, Mrs. Donnie Carpenter, Mrs. Andrew J. Lenderson, Mrs. Joe Smallwood, Mrs. Jack Schuster and the guests were Jan Mullins and Bill Loyd.

## SMILES

### Flowers

"Has the new florist any children?"

"Yes, a girl who is a shrinking violet and two boys—one a budding genius and the other a blooming nuisance."

### Kept His Wits

"Why did you jump from in front of Green's car directly in the path of Barton's?"

"Well, I saw I was bound to be hit by one of them, and Barton has the most money."

**PIONEER PHOTOS**  
MOUNTAIN VIEW, CALIF.  
--The Pioneer II space craft has returned photographs of Jupiter as it zoomed at more than 24,000 miles an hour towards the big planet.

**WALLACE UNDECIDED**  
MONTGOMERY, ALA. -- Gov. George C. Wallace says he still was undecided on whether he will run for president in 1976 and has made no plans to run in any Democratic primaries.

**EARLY DRAFT LETTER**  
ABERDEEN, S.D.--Ernie Hoff got a government letter recently telling him to register with his draft board. Ernie's mother called local draft officials and they apologized for the trouble--Ernie is 8 years old.

## HOLIDAY GIFT VALUES

<b>DOUBLE DRESSMAKER</b> \$1 <sup>99</sup> LENTHS & ON BOLTS VALUES TO \$4.99	<b>SNUGGLES SOFTINA DOLL</b> THE MIRACLE SOFT FOAM DOLL REG \$10.88 \$7 <sup>47</sup>
<b>RIDE 'M' TOYS</b> REG \$5.99 CARS TRUCKS HORSES WORMS <b>\$3<sup>22</sup></b>	<b>BASKET BALL &amp; GOAL SET</b> REG \$11.88 \$8 <sup>88</sup>
<b>ENTIRE STOCK STUFFED ANIMALS</b> <b>1/3 OFF</b>	<b>CHOCOLATE COVERED CHERRIES</b> BY BROCKS REG 88¢ \$1 <sup>37</sup>

OPEN EVERY NIGHT TILL 9:00 PM

# perry's

128 MAIN MULESHOE

## PUBLIC AUCTION

Mon. Dec. 16, 1974— 10:AM Texas

Owner— Mrs. John Laing & Others

LOCATED 3 1/2 MILES WEST OF EARTH, TEXAS ON HWY 70  
OR 15 MILES EAST OF MULESHOE ON US 70

- |   |   |  |
|---|---|--|
| <p><b>TRACTORS &amp; COMBINES</b><br/>                 1-1964 806 Diesel, Cab, Radio, Fully Weighted, Good Condition<br/>                 1-1965 806 Diesel, Cab, Radio, Fully Weighted, Good Condition<br/>                 2-JD 730s, LP, Excellent, Good Power Steering<br/>                 1-9-N Ford, LP<br/>                 1-JD 720, Single Front, Has Front End Loader, Good Power Steering<br/>                 1-LJ Moline<br/>                 1-1969 JD 95, Gasoline, 4-row McEacherns Header, Cab, Extra Nice<br/>                 1-1969 JD 95, Diesel, 20' Header, Air, Excellent Condition<br/>                 1-Case 2470, Diesel, 4-wheel drive, 8 Valve Hydraulic, Cab Air, Power Shift, 800 Hours, Like New<br/>                 1-Massey Ferguson 183, Diesel Low Hours, Multipower Shift<br/>                 1-1973-7700-JD Turbo Hydrastat Drive, 24' Header, Cab, Air, Heat, Ben Ext., Real Good.<br/>                 1-4010 JD, LP, New Overhaul</p> <p><b>MACHINERY</b><br/>                 2-JD 6-row Lister Planters, w/Row Bars<br/>                 1-Double Bar 6-row 185 Flex Planter<br/>                 22-Rows 185 Flex Planters<br/>                 2-9-row Sand Fighters<br/>                 1-JD No. 6 Rotary Hoe, 5x7 Bar<br/>                 1-Ford Cultivator<br/>                 1-Ford 2-row Planter<br/>                 1-Ford 2-bottom Breaking Plow<br/>                 1-10' Tandem Disc<br/>                 1-FW Shredder, 4-row<br/>                 1-JD 7-row Lister, Double Bar<br/>                 1-Howard Rollivator<br/>                 1- Lilliston 6-row Rolling Cultivator, S.C. B.<br/>                 1-6-row Seed Packer<br/>                 2-IHC No. 39 Roll Over<br/>                 1-JD, 1610 Grain drill or Rubber<br/>                 1-60' Stratford land flote 14' Bucket Excellent condition<br/>                 1-Stock trailer<br/>                 1-2 wheel tractor, Light signal, Ball Switch<br/>                 4-JD. Lister and Beam Couplers</p> | <p>1-JD 3-bottom Breaking Plow, Pull Type<br/>                 1-JD 2-bottom Breaking Plow, Pull Type<br/>                 1-4-gang Rotary Hoe<br/>                 1-3 Point Blade<br/>                 2-Reynolds 12-yard Hydraulic Scrapers, In Tandem<br/>                 1-Hesston Swather, Universal Reel, Ideal For Hay or Grass<br/>                 1-1-9 row 4x1 1/2 Toolbar with 2 1/4 Back Bar; Heavy Hitch &amp; Gauge Wheels<br/>                 1-6-row Toolbar<br/>                 1-6-row Disc Lister with 2 1/4 Bar; Discs and Bearings in Top Shape<br/>                 1-IHC 610 Offset; 24" Discs, Notched Front Gang<br/>                 1-Towner Bording Discs<br/>                 1-Mohawk Shredder, 3 Pt, 5'<br/>                 1-Kneib Pop-up Bale Loader<br/>                 1-New Holland Baler, Super Hayliner 78, Engine Drive<br/>                 1-6-row Bed Roller, Sealed Bearings &amp; Hangers<br/>                 2-Taylor Evans Liquid Feeder, On Skids<br/>                 1-Liquid Storage Tank, 5000 Gallon<br/>                 1-Eversman V Ditcher<br/>                 1-7-section Harrow<br/>                 1-3 Point Shredder<br/>                 1-6-row Rod Weeder<br/>                 3-5-row Stalk Cutters<br/>                 1-14' Krause Tandem Disc<br/>                 1-8' Hoeme, New<br/>                 1-4-row Crust Buster<br/>                 1-5-row Knife<br/>                 1-3 Point Blade<br/>                 1-6 Gang Rotary Hoe<br/>                 1-4-section IHC Harrow, New<br/>                 1-8-section JD Hoe 3 Point<br/>                 1-4-section Harrow<br/>                 3-Clod Busters For 3-bottom Plow<br/>                 1-Great Ben Front Mount Cotton Loader</p> <p><b>IRRIGATION EQUIPMENT</b><br/>                 2-478 GMC Motors, Good<br/>                 8"-Aluminum Flo Line, Good<br/>                 -800'<br/>                 6"-Aluminum Flo Line, Good<br/>                 -500'<br/>                 1-605-M.M. Irrigation Motor, Good</p> | <p><b>TRUCKS, PICKUP, BOAT</b><br/>                 1-1968 Chevy, 2-ton 900 Rubber, 366 Engine, w/Lift; Real Good<br/>                 1-1962 Ford F600, Steel Grain Bed w/Hoist; 2 Speed<br/>                 1-1/2 ton 1967 Chevy Long-N-Bed<br/>                 1-1958 Chevy Truck, Good Grain Bed<br/>                 1-1961 In-board, Out-board Hydra Dyne, 6 Cylinder Motor, Mercury Drive, also Trailer Equipped With Brakes, Real Good Condition<br/>                 1-1975 Chevy 18' May Bar Bed Big Twin Hoist, 900 Rubber<br/>                 1-1968 Chevy 16' Grain Bed 825 Rubber<br/>                 1-1964 Chevy Tractor 10.00-805, Full, Air, Good<br/>                 1-33' Built well Tractor with Dollies 10.00 Rubber<br/>                 1-1956 Ford, 2 Ton, Runs Good</p> <p><b>MISCELLANEOUS</b><br/>                 3-500-gallon Propane Tanks<br/>                 1-1000-gallon Propane Tank<br/>                 1-100-gallon Gas Tank &amp; Pump<br/>                 1-4-row Roller<br/>                 1-2-section Spring Tooth Harrow<br/>                 1-Old Land Plane, 7' Bucket<br/>                 3-Sets of Markers<br/>                 6-JD Rotary Fenders<br/>                 1-Let Sweeps<br/>                 1-Lot Junk Iron<br/>                 1-Lot Shanks<br/>                 1-Lot of Lister &amp; Orchard Shanks M.M.<br/>                 1-53.5 Gallon LP Tank, Converted to Gasoline<br/>                 1-Electric Light, Swivel Around for P.V. Comps<br/>                 1-Air, Motor, Wind Mill, Complete has to be taken down</p> |
|---|---|--|

**AUCTIONEER'S NOTE:** This Is A Good Clean Line of Equipment Only a Partial List of Equipment at This Time. We Are Expecting Several Consignments by Sale Date. See You There.....L.D.

TERMS: CASH

BRING YOUR OWN CHECKBOOK.

## L.D. HENDERSON AUCTION SERVICE

Phone 806/965-2446  
806/385-5813

P.O. Box 125

Earth, Texas 79031

Tex Watson talks about

## The West Texas Gas Supply

You hear a great deal about the competition for the natural gas in West Texas these days. It is rightfully a matter of interest and concern to every citizen of this area. It has some serious implications.

Natural gas has been an important factor in building West Texas and will continue to be. Most of the businesses and industries in our area depend, directly or indirectly, on a continuing supply of natural gas. A lot of people's jobs depend on it. So, we must see that they have it.

We will have to pay more for it than in the past... the competition for gas has never been so fierce. But by working together, and without outside interference, we'll have the gas energy we need today and in the future. Gas will still be your best energy buy.

PIONEER NATURAL GAS COMPANY

K. Bert (Tex) Watson, president of Pioneer Natural Gas Company, is a native of West Texas, a chemical engineer and lawyer by training and in his 20th year with your gas company.

Earl Nightingale, internationally known lecturer and broadcast personality



# MULE'S TALE



Official Publication of Muleshoe High School Written and Edited by Students of the Muleshoe Schools

VOL. 9 No. 30

EDITOR STEVE VAN ZANDT

Sunday, December 15, 1974

## Band Students Named To All-Region

### Six MHS Students Selected For Honor

Saturday, December 7, twelve members of the 'Mighty M' band traveled to Lubbock to audition for the ALL-REGION Band. The auditions were held in Texas Tech in the Music building. Those who tried out were required to play parts of three tunes, one of which was an all-state selection.

The following six students made the ALL-REGION Band: Patricia Grogan, first chair clarinet; Susan Murray, fourth chair saxophone; Gari Richardson, ninth chair tuba; Sheryl Brown, third chair bass clarinet; Judy Precure, seventh chair French Horn; and Merrill Watson, second chair Alto Clarinet.

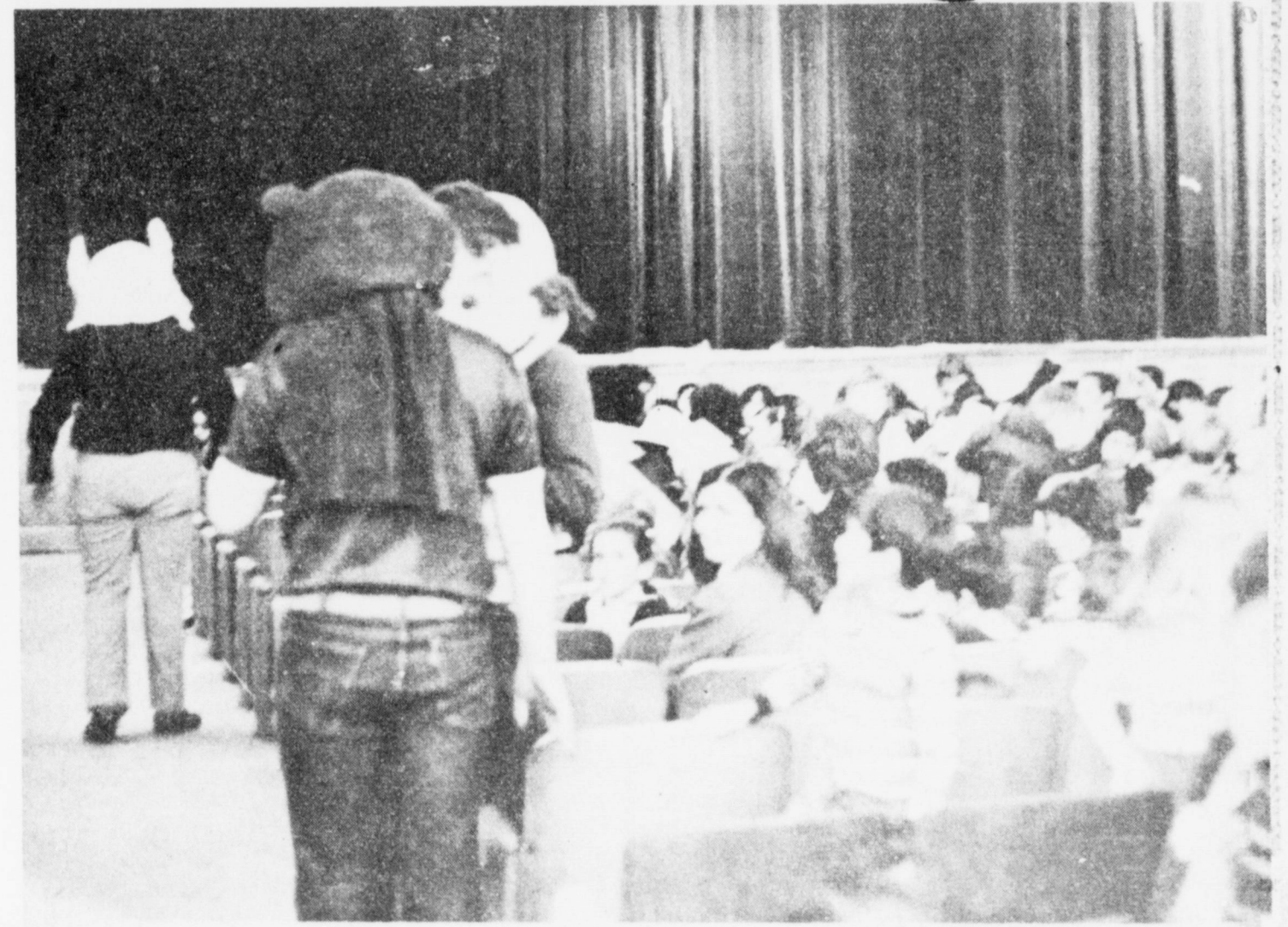
The students of MHS and the other band students are very proud of those who made the All-Region Band. Congratulations also go to MHS Band director, Tony Clines, who helped so much by staying for extra practices and also giving private lessons.

Other students who participated in the try-outs were Tim

Jinks, Maribeth Dillman, James Cook, Patty Pena, Tracy Buhman, and Debbie Dillard. Even though these students did not make the band, they showed tremendous spirit and pride along with their fine playing ability. Thanks go to all participants who went to help represent MHS in such a fine way.

All-Region Band practice will be held in Lubbock for those who made the band. Then a final concert will be given Saturday night after practice for a week in Coronado High School Auditorium. This will take place in January.

Students from the MHS Band who are planning to participate in the All-State try-outs Saturday, December 14, 1974 were Sheryl Brown, Patricia Grogan, Tim Jinks, Gari Richardson, and James Cook. The tryouts will be held in Coronado High School at Lubbock.



CHILDREN'S THEATRE ..... Animal characters greet elementary students at the Children's Theatre.

### Drama Department Stage Production

Richland Hills, De Shazo, and Junior High students were entertained this past Tuesday by Muleshoe High School Drama Department's production of 'The Dancing Donkey.' Child-

ren's Theater is part of the elementary and junior high school's curriculum program each year.

Cast members were Denny Smith, Tracy Buhman, Patricia Lee, Kathy Hughes, Larry Mills and Bill Durham. Stage crew was Kip Garth, and animal characters were Kim Helker, De-waine Mullins, Tim Jinks, Bryan Nickels, and Billy Barry.

The Children's Theater is sponsored each year by the Muleshoe Chapter of the American Association of University Women. The production was presented to K-3 at 9:00 a.m., and students in Grades 4-8 saw the play at 10:30 a.m.

Only an intelligent man has sense enough to recognize his own limitations.

### Freshmen Select Class Favorites

The 'class of 78' (now Freshmen) held a regular meeting Monday, December 9. They met in the auditorium to conduct business of paying class dues and selecting class favorites.

Those two students who became class favorites were Evelyn Grace and Brent Maddox. Congratulations to these students!

### Mulette Maneuvers

The Mulette Varsity, J.V. and Freshmen teams played in the finals of tournaments at Friona, Amherst and Muleshoe, December 5, 6 and 7 and they all placed second. Farwell defeated the Varsity Girls 55-45 in the finals. Slaton defeated the J.V. Girls 36-31, and Canyon defeated the Freshmen Girls 45-50.

The Varsity Girls played Farwell Thursday in the Spring-lake Tournament and defeated them 44-37. All of the Mullettes played well in the last Farwell game and played Hart Friday at 4:00 p.m. The Varsity girls now have a record of 7 wins and 3 losses. The J.V. Girls have won six and lost two. The Freshmen girls are three and three.

### Student Council Discusses Party

The Muleshoe High School Student Council had a meeting, Tuesday, December 10, 1974, at 7:45 in Room 14. The opening prayer was given by Perri Poyner.

Mike Bland, president, told the Council that they could have a Christmas Party, and at the same time they would put up and decorate a Christmas tree for the school. Some of the girls volunteered to make cookies and bring refreshments for the party. Others volunteered to bring cranberries and popcorn to decorate the tree. Dusty Davis was appointed to be Santa Claus. The date will be announced later.

### Band Concert Scheduled December 16

The Muleshoe 'Mighty M' Band will present the annual Christmas Concert Monday night, December 16. The concert will be held at 7:30 p.m. in the High School Auditorium. Songs which will be played are: "Winter Wonderland," "Carol of the Drum," "Parade of the Wooden Soldiers," "Sleigh Ride," "Overture to the Messiah," and "Christmas Music for Winds."

The Junior High Band will perform before the High School Band at 7:00 p.m.

Public speaking is easy. It's the thinking before speaking that's hard.

Schoolboy question: What difference would it make if everyone was dumb?

### Rose Chapter Has Meeting

The Rose Chapter met Monday, December 9, in room 13. The meeting was called to order by president Prisca Young. Discussed was that there would be a Christmas Party, Sunday, December 15, at 4:00 p.m. for

the people in the Nursing Home. Monday, December 16, the annual Christmas card party will be held and the chair will be 25¢. It will be held at the 16th and Avenue D Church of Christ.

### DECA, FHA And FFA Have Party

The Deca, FHA and FFA chapters of MHS met Friday, December 13, in the High School gym for a Christmas party. Recreation was directed by DECA. Refreshments of chips, dips and cokes were provided by FFA. Rose and Rosebud FHA brought sandwiches, and the HERO chapter brought brownies and cookies. The party was from 7 to 9, and everyone thoroughly enjoyed themselves.

The president of DECA is Steve Reed, and their sponsor is Mark Gist. HERO's president is Ruth Ramm, and their sponsor is Mrs. Wanda Gramling. The Rose Chapter is sponsored by Mrs. Dorine Harbin, and their president is Prisca Young. Rosebud FHA is sponsored by Miss Paula Norris. Rosebud president is Connie Harmon. FFA is sponsored by Bill Bickel and Keith Bray. The president is Gene Rogers.

### National Guard Presents Program

An Army National Guard member came to Muleshoe High School Monday, December 9, to speak to students, both boys and girls, interested in joining the National Guard. He stated that if one joins the National Guard now, he would not have to go through active duty training for six months.

Twenty-five students attended the program. Some were very interested and the recruiter will return in the near future to talk individually to those interested. Interesting literature was left in Counselor Ben Gramling's office.

Students in Muleshoe High School are given the opportunity to interview persons concerning careers from time to time.

### Throckmorton Named Best of MHS

Belinda Throckmorton has been selected by the Thespians as Best of MHS for this week. Belinda is 17 and is a Senior at MHS. She is involved in Basketball and FFA.

When asked for her comment on Basketball, Belinda replied "I am so proud to be a member of the team we have this year! Everyone is so determined and devoted. Everybody also pulls for one another."

Belinda was chosen as Best of MHS because of her outstanding accomplishments in Basketball the last four years. CONGRATULATIONS FOR A FINE JOB!!!!!!

### FFA Float Wins Third

The Muleshoe FFA Chapter won third place in the Christmas Parade. Their float had the theme "Cowboy Christmas." Many boys were involved, and riding on the float were the FFA Sweetheart Jana Bruns and Plovergirl Janice Killough.

The FFA boys have also been busy delivering fruit from their Annual Fruit Sales. There have been compliments on how delicious the fruit is this year.

Monday, December 16: 1:10- High School Choir Christmas Program. F.H.A. Christmas Party- Church of Christ (16th and Ave. D) High School Band Christmas Concert - 7:30 p.m.

Tuesday, December 17: Muleshoe A B Boys and Girls Basketball games vs. Friona --Here 4:00 p.m.

Thursday, December 19: Muleshoe A B Boys and Girls Basketball games vs. Littlefield --Here 4:00 p.m.

Friday, December 20: School dismissed at 3:15 p.m. for Christmas Holidays. Happy Holidays!!!



FFA WINS THIRD ..... The Muleshoe FFA float won third place in the Christmas Parade held Saturday in Muleshoe. The theme was "Cowboy Christmas".



### Reminder.....

## SUBSCRIPTIONS MAKE GOOD CHRISTMAS GIFTS!

MAIL THIS COUPON TODAY!

SIGN GREETING CARD FROM:

Box 449  
Muleshoe, Texas 79347  
Phone 806-272-4536

DEAR SIR:

PLEASE SEND THE FOLLOWING GIFT SUBSCRIPTION

ENCLOSED IS MY CHECK FOR \$ \_\_\_\_\_ FOR PERIOD STARTING \_\_\_\_\_

NAME \_\_\_\_\_ ADDRESS \_\_\_\_\_

CITY-STATE-ZIP \_\_\_\_\_

The Muleshoe Journal and Bailey County Journal...\$8.50  
(Bailey and Surrounding Counties, Home Delivery)  
The Muleshoe Journal and Bailey County Journal...\$10.95  
(Elsewhere in Texas)  
The Muleshoe Journal and Bailey County Journal...\$11.95  
(Outside of Texas)

## MULESHOE AND BAILEY COUNTY JOURNAL



**FATHER, DAUGHTER BANQUET . . .** The Girl Scouts had their Father, Daughter Banquet, Monday, December 9 at the Richland Hill Cafeteria. Pictured above are the Dad's and Girl Scouts visiting one another.

\*\*\*\*  
Our advice to those who are making more money than ever before is: Save some of it.  
\*\*\*\*

**Cheerful**  
It's better to give than to receive. Also it's deductible.  
-News, Curtis Bay, Md.

## Girl Scouts Have Father, Daughter Night

The Girl Scouts had their Father and Daughter Banquet, Monday December 9 in the Richland Hills Cafeteria.

The girls decorated their tables with decorations they had made earlier in the day. Each girl also decorated a box in which she brought food for her and her Dad.

The Cadets, Troup 375 led the group in the Johnnie Appleseed Prayer. Then they

### Rebekah Lodge

#### Has Meeting

Muleshoe Rebekah Lodge, Number 14 met in regular session, Tuesday, December 10 with Noble Grand, Mrs. Bill Hennexson presiding.

Mrs. L. A. Green held an informative school of instruction. After this instruction they discussed taking fruit baskets to some of the people in the community during the Christmas days. Also, they will take food and canned foods to several needy families. The members were asked to bring any of foods or canned foods to their next regular meeting.

The Rebekah's will serve a Circle Seven Supper, Thursday night December 12.

## West Plains Hospital Hospital Briefs

**ADMITTANCE:**  
December 9: R.L. Hobbs and Mrs. John Purdy.

December 10: Carroll Goss, Julian Dominquez and Mrs. J.R. Carpenter.

December 11: Mrs. Mateo Sanchez, Mrs. Romalo Toscano, Mrs. John Blackwell and Mrs. Ysmael Madrid.

December 12: Mrs. Victor Arzola and Mrs. Rudolph Moraw.

**DISMISSALS:**  
December 9: Victoria Cuevas, Isabel Rodriguez, Bertha Duarte, Terri Smith, Charles Green, Henry Tomplin and Ronald Bruns.

December 10: Mrs. Ruben Gloria and daughter, Vertie Norman and Artis Ivy.

December 11: Mrs. John Purdy and Mrs. Bill Hall.

December 12: Mrs. J.R. Carpenter, R.L. Hobbs and Mrs. Mateo Sanchez and daughter.

served their Dad's dinner.

After dinner the Brownie Troup, 217 gave a short program consisting of the Brownie Promise, Brownie Circle, Hello Song, I'm A Brownie In A Beanie and the Brownie Smile Song. The Leaders in this Troup are Mrs. Joe Dan Jones and Mrs. Gaylon Baldwin. The Assistant Leaders are Mrs. Wayne Hardage and Mrs. Donald Harrison.

The Cadets then gave a program of songs and games for their Dad's and Brownie friends to sing and play.



### Rosemarie Gloria

Mr. and Mrs. Ruben Gloria of Muleshoe are the proud parents of a new baby girl born December 9 at 11:29 a.m. in the West Plains Memorial Hospital of Muleshoe. The baby weighed six pounds and 15 ounces and was named Rosemarie Gloria. She is the couple's first child.

### Josephine Ann

Mr. and Mrs. Mateo Sanchez, Jr. of Friona are the proud parents of a new baby girl born December 11 at 1:12 p.m. in the West Plains Memorial Hospital of Muleshoe. The baby weighed eight pounds and nine ounces and was named Josephine Ann Sanchez. She is the couple's fifth child.

### Hector Hugo

Mr. and Mrs. Victor Arzola of Muleshoe are the proud parents of a new baby boy born December 12 at 8:18 a.m. in the West Plains Memorial Hospital of Muleshoe. The baby weighed seven pounds and ten ounces and was named

Hector Hugo Arzola. He is the couple's fourth child.

# CHRISTMAS

# MISS MERRY



Join Miss Merry Christmas, Terri Crane as she takes a Christmas shopping tour through downtown Muleshoe and tours local merchants. Checking off her enormous shopping list for Christmas is quite a job this year, but local merchants make the chore an easy one with many ideas for Christmas gifts.



An ideal gift for any dad, uncle, brother, grandfather or husband would be the large toolbox available at Plains Auto in Muleshoe. The roomy tool box would hold any man's tools in fine style. Clarence Jones can offer many other suggestions for the men on your shopping list. Automobile parts and accessories are also available at Plains Auto.

at... **PLAINS AUTO PARTS**

BANQUET TABLES  
AND CHAIRS  
FOR RENT  
WILLIAMS BROS.  
OFFICE SUPPLY  
Muleshoe,  
272-3113

Do you have an old water softener?

**WE'LL TAKE IT!**

Yes, we'll take it in on trade for a new Culligan water softener—No matter what condition it's in. Your water softener may be worth \$5-\$10-\$25-\$50 or more in trade.

Call now and say

**HEY CULLIGAN MAN!**

Call collect  
806-894-7251  
or  
806-894-3054

**CULLIGAN WATER CONDITIONING**  
208 COLLEGE

## WELCOME TO MULESHOE



MR. AND MRS. M.T. HUKILL

We would like to welcome to Muleshoe, Mr. and Mrs. M. T. Hukill who are originally from Littlefield, and both attended high school in Amherst, Texas. They enjoy traveling and seeing the United States, camping and fishing. She enjoys all kinds of hand-work such as making things for her home. They have two daughters, Mrs. Melvin Griffin of Muleshoe and Mrs. Mary Alice Long of Ft. Smith, Arkansas. They also have five grand children and two great-grand children. They are members of the First United Methodist Church in Muleshoe.

James Crane Tire Co. 	<b>MULESHOE STATE BANK</b> MEMBER FDIC
<b>DAMRON DRUG CO.</b> REXALL 308 MAIN	<b>HENRY INS. AGENCY</b> 111 W. AVE. B.





Shaving accessories and cologne are perfect gifts for every man on your shopping list. Miss Merry Christmas finds a wide selection of men's gifts at Western Drug in Muleshoe. Western Drug also has gift ideas for every member of the family including mother, father, brother, sister, husband and wife.

at... WESTERN DRUG



What girl wouldn't want a new car for Christmas? Town and Country Auto offers a car for every size stocking. From this little economy car to a big luxury car, Town and Country features Oldsmobiles, Buicks, Pontiacs and GMC pickups.

at... TOWN AND COUNTRY AUTO INC.



Miss Merry Christmas finds just the coat she wants from Santa at St. Clair's Department Store in Muleshoe. Assisting her with the selection is Dorothy Matthiessen. St. Clair's offers a wide variety of gifts for everyone on Santa's shopping list. Gifts for men, women, boys and girls can be found at St. Clair's.

at... ST. CLAIRS DEPARTMENT STORE



Old Santa would deserve a big hug from Miss Merry Christmas if he left a new Ford or Mercury under her tree on Christmas Day. Robert Hooten and his staff at Muleshoe Motor Company offers Ford, Mercury and Lincoln.

at... MULESHOE MOTOR COMPANY



A candle makes a perfect Christmas gift and Miss Merry Christmas finds a large selection of candles, candle holders and candelings at Higginbotham - Bartlett in Muleshoe. The store also has a wide array of other gift selections for the entire family. Miss Merry Christmas is pictured with Mrs. Leaman Stancell.



Joe Damron points out the wide selection of candy at Damron Drug to Miss Merry Christmas. Candy, a truly personal gift, is a much appreciated present for that special someone on Christmas. Damron's also offers a large array of gifts that will delight anyone on your shopping list.

at... HIGGINBOTHAM BARTLETT CO. at... DAMRON DRUG CO.



For a truly lasting gift, open a savings account for that special person at Christmas. Miss Merry Christmas knows that security is a gift worth giving as she discusses opening a savings account at Tri-County Savings & Loan with Mrs. Don Harmon. A savings account started now will come in very handy next year for Christmas shopping.



The First National Bank of Muleshoe extends Christmas greetings to Miss Merry Christmas and all of their customers. The First National Bank offers many services for all your banking needs. The competent staff welcomes the opportunity to serve you.

at... TRI-COUNTY SAVINGS & LOAN at... FIRST NATIONAL BANK

# Food, Fiber Situation In Texas

COLLEGE STATION—“No new cropland will be added in Texas during 1975 although 1.1 million acres of former reserve cropland will be returned to production,” says Charles K. Baker, marketing economist for the Texas Agricultural Extension Service, in taking a look at the coming year.

The economist predicts some shifts in acreage of major crops, causing an increase in planting of sorghum, wheat and corn and a decrease in cotton acreage.

The situation is not optimistic for beef cattle prices, contends Baker. “Fed cattle prices should improve in December and prices of feeder animals should increase toward spring, but there are still large

numbers of feeder animals available. Pork production for 1975 may be down 10-15 per cent from 1974 levels, says the Texas A&M University System economist. “Because of higher feed prices and increasing production costs, Texas pork producers are cutting farrowings by 6 per cent.”

Baker says that lamb slaughter in the coming year should also run below 1973 levels, with commercial sheep and lamb slaughter down 7 per cent.

Prices for poultry and poultry products should increase during the last part of 1974 and into the coming year, but net income from poultry products will be lower due to decreased production and higher feed costs.

“The range situation is good in Texas at present,” notes Baker. “Because of the high cost of feed, there will be more reliance on range grasses.” Turning back to the crop outlook, Baker points out that many

cotton farmers will be switching to alternative crops such as sorghum in 1975 due to low cotton prices. Cotton acreage will be about one million acres below the available acreage. Due to the shift from cotton

to sorghum, sorghum acreage should be up substantially in 1975, contends the economist, while wheat acreage should increase about 10 per cent. Texas peanut production will

be down this year with average yields about 25 pounds per acre lower than 1973 levels

says the economist. Plantings in 1975 should equal or exceed those of 1974.

## Fry & Cox Have Party

The employees of Fry & Cox Inc. met Thursday evening at the Fellowship Hall of the First United Methodist Church for a Christmas Party.

The children all received presents and the teenagers received several silver dollars after they followed instructions on where to find them. After gifts were exchanged between employees and employers, all present played bingo for a variety of gifts. The young people had an opportunity to burst a Santa Claus Pinata, filled with candy, gum and toys.

Those present were Mr. and Mrs. Ed Cox, Mr. and Mrs. Jim Cox, Mr. and Mrs. George Tompkins, Mr. and Mrs. John Harris, Kevin and Jayna, Mr. and Mrs. W.W. Mullins and Dewaine, Mr. and Mrs. John Maddox and Jane and Brent, Mr. and Mrs. R. A. Bradley, Mr. and Mrs. Ed Garner, Mr. and Mrs. Al Henderson, Mr. and Mrs. R.L. Matthiesen, Mr. and Mrs. Butch Duncan, Gary and J.B. Duncan, Mr. and Mrs. Lee Roy Hughes, Sandra and Dale, Mr. and Mrs. Jim Burgess, LaRri, Robbin, and Trisha.

The world owes a great deal to the men of medicine, and some of it will, no doubt, be paid.

Today's puzzle is how the old folks managed to raise their children without modern psychology.

- MONDAY**  
Barbecued Pork  
Baked Potato  
Battered Corn  
Sliced Apples  
Hot Rolls  
Butter-Jelly  
1/2 pt. Milk
- TUESDAY**  
Beef Tacos with  
Hot Sauce  
Pinto Beans  
Green Salad  
Apricot halves  
Cornbread-Butter  
1/2 pt. Milk
- WEDNESDAY**  
Fried Chicken  
Cream Gravy  
Mashed Potatoes  
Green Beans  
Yeast Biscuits  
Butter-Jelly  
1/2 pt. Milk
- THURSDAY**  
Hamburgers &  
Sloppy Joes  
French Fries  
Lettuce-Pickles  
Apple Crisp  
1/2 pt. Milk
- FRIDAY**  
Beef Stew  
Crackers  
cheese Sticks  
Buttered Rice  
Peanut Butter Cookies  
1/2 pt. Milk  
1/2 oz. peanut butter with each lunch.  
Menu subject to change.

## Services Set Monday For Lewis Infant


Graveside services for Anthony Ray Lewis who died shortly after birth Thursday in West Plains Memorial Hospital, will be held at 2 p.m. Monday, December 16, at the Muleshoe Cemetery. Officiating will be Rev. Mac Frazier of Littlefield.

Survivors include the parents, Mr. and Mrs. Emmet Lewis of Muleshoe; grandparents, Mrs. Celestina Lewis, Sr. of Muleshoe and Emmet Lewis, Sr. of Coolidge, Texas; and three sisters, Alemda Lewis, Shirley Lewis and Margaret Lewis, all of the home.

**ATTENTION MULESHOE AREA CATTLEMEN**

.....In regard to dead stock removal.....  
If you have had a problem with service.....  
whether in the feed yard or on the farm.....  
Please give US a chance! Thank you.

**Your local used cow dealer is muleshoe-bi-products**  
Phone-965-2903 Mobil Phone 965-2429



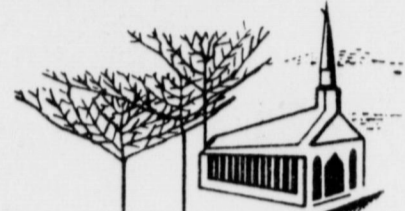
**GRAZING WANTED**

**PHONE 647-5566**  
**OR NIGHT 647-3496**  
**647-5102**

**KEMP FARMS**  
**BOX 139** **DIMMITT TEXAS**

## An investment in Your Future

# ATTEND CHURCH



"For where your treasure is, there will your heart be also"

## Who is at the Helm?

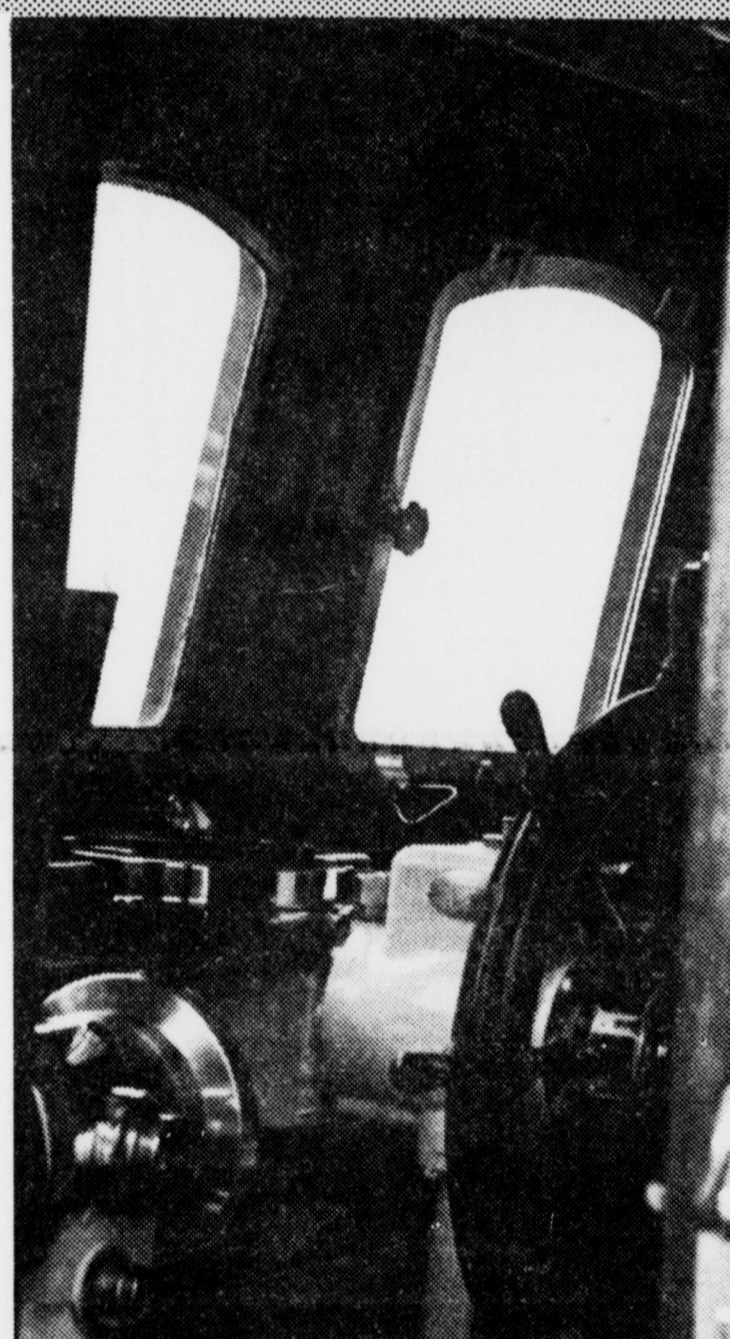
Who guides our lives? Are we a ship without a helmsman? Are we adrift, going no place?

Thanks be to God, who loves us so, He is willing to guide us, to show us the way over all manner of seas. How glorious to know there is such a One! All of us follow someone, some standard, but the true standard is God and His Word.

Let Him take over the wheel. He doesn't promise smooth sailing all the time, but He promises to guide us through the storm, and show us the way over calm and sweet but sometimes marker-less seas.

*"And the Lord shall guide thee continually, and satisfy thy soul in drought, and make fat thy bones; and thou shalt be like a watered garden, and like a spring of water whose waters fail not."*

Isaiah 58:11



The Church is God's appointed agency in this world for spreading the knowledge of His love for man and of His demand for man to respond to that love by loving his neighbor. Without this grounding in the love of God, no government or society or way of life will long persevere and the freedoms which we hold so dear will inevitably perish. Therefore, even from a selfish point of view, one should support the Church for the sake of the welfare of himself and his family. Beyond that, however, every person should uphold and participate in the Church because it tells the truth about man's life, death and destiny, the truth which alone will set him free to live as a child of God.



Coleman Auld Ser.

**FIRST UNITED METHODIST CHURCH**  
MULESHOE-YL PARISH  
C. B. Mellon - Pastor  
Russel Byard - Minister & Training  
YL, Route 1, Muleshoe  
507 West Second, Muleshoe

**ZION WEST PRIMITIVE BAPTIST CHURCH**  
207 E. Ave. G  
Glen Williams, Elder

**PRIMITIVE BAPTIST CHURCH**  
621 S. First  
Afton Richards, Elder

**FIRST CHRISTIAN CHURCH**  
130 W. Ave. G  
Rev. Walter Bartboof  
Sunday School 9:45  
Worship 11:00

**LATIN AMERICAN METHODIST MISSION**  
Ave. D & 5th Street  
Esteban Lara, Pastor

**FIRST PRESBYTERIAN**  
Morton Highway  
Edwin L. Manning, Pastor  
Sunday Morning Service

**CHURCH OF THE NAZARENE**  
Ninth & Ave. C

**CALVARY BAPTIST CHURCH**  
1733 W. Ave. C  
Charles Kenneth Harvey, Pastor

**TRINITY BAPTIST CHURCH**  
314 E. Ave. B  
V. L. Huggins, Pastor

**MULESHOE ASSEMBLY OF GOD**  
517 S. First  
H. D. Hunter, Pastor

**JEHOVAH'S WITNESS**  
Frona Highway  
Boyd Lowery, Minister

**RICHLAND HILLS BAPTIST CHURCH**  
17th & West Ave. D  
Gerald Pepper, Pastor



Margie Hawkins 272-3412

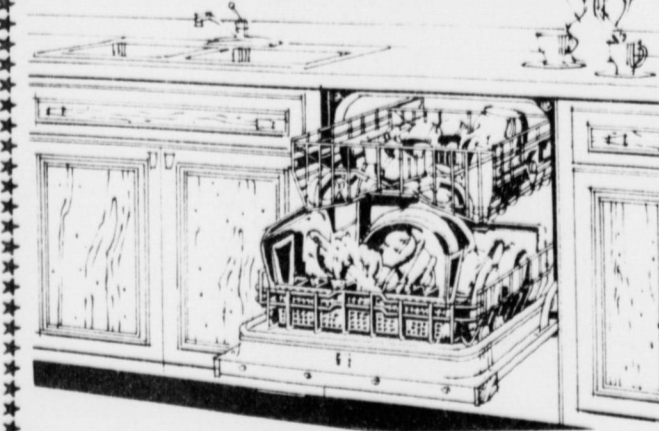
## Out of Orbit



"PERSONALLY I PREFER A STROLL IN THE PARK"

**BE A SMART SANTA**

GIVE A **KitchenAid** energy saver dishwasher



**INSTALL IT YOURSELF**  
New Kit makes it easy to replace your old dishwasher  
No running for parts. Saves time. Saves gas

**WILSON APPLIANCE**  
117 MAIN ST. PHONE 5531

**St. Clair's**  
110 Main

**Western Drug**  
114 Main

**Dari-Delite Drive-In**  
210 N. First  
Take-Out Orders 272-4482

**Bratcher Motor Supply**  
107 E. Avenue B  
272-4288

**Beavers Flowerland**  
"Flowers for all Occasions"  
272-3116 or 272-3024

**Toro Grain**  
Olton, Texas  
Division of Olton Feed Yards, Inc.

**GIBSON'S DISCOUNT CENTER**  
1723 West American Blvd.  
272-4306

**San Francisco Cafe**  
"Tortilla Factory"  
121 Main Street 272-3502

**Howard I. Watson**  
Alfalfa - Hay  
272-3552 272-4038

**Black Insurance Agency**  
105 West Avenue D  
272-3292

**Art Craft Printing Co.**  
105 E. Avenue "D"

**White's Cashway Grocery**  
"Where friends meet and prices talk"  
402 Main

**Bailey County Memorial Park**  
"Every Service a Sacred Trust"

**West Planes Repair**  
Benger Air Park--Frona  
247-3101

**Muleshoe Co-Op Gins**

**Lambert Cleaners**  
Steam Carpet Cleaning  
Drapery Cleaning  
123 Main Street 272-4726

**Bob's Safety Center**  
Wheel Aligning, Brakework &  
Automotive Air Conditioning  
272-3044

**Whitt-Watts & Rempe Implement Co.**  
"John Deere Dealers"  
Muleshoe, Texas 272-4297



**Dear Santa Claus,**  
I want an airplane.  
Love,  
Marvin Arredondo

**Dear Santa,**  
I want some dishes and a  
Love,

refrigerator and a stove and  
a doll.  
Love,  
Pamela Ibarra

**Dear Santa,**  
I want a horse and some  
cowboys.  
Love,  
Raben Solis

**Dear Santa Claus,**  
Please bring me a little stove  
that cooks cakes and a doll  
that makes pudding and a baby  
alive.  
Love,

Joey Kramer

**Dear Santa,**  
Happy Christmas! I want a  
truck with a trailer with 2 black  
horses and a hood that comes  
off and a tailgate that comes  
open. Then 2 little cars.  
Love,  
Jarrett Seagraves

**Dear Santa,**  
I want a baby and a purse,  
and some books and some gloves  
and a hat, and a chair, some  
colors and some shoes.  
Love,

Margarita Navejar

**Dear Santa,**  
I want some presents.  
Love,  
Mary Jane Recio

**DEAR SANTA**  
CLAUSE—  
PLEASE  
BRING—ME—BARBIES  
TOWNHOUSE  
KATHY QUICK CURL  
AND BABY (BUNK BEDS TO  
SHARE)  
WITH MY SISTER DARNA  
DAYNA ALSO WANTS  
SWEET SOUNDS TENDER—  
LOVE AND A PIN BALL  
MACHINE—  
I AM 5 YEARS OLD  
AND DAYNA IS 2  
WE HAVE BEEN  
GOOD GIRLS  
LOVE  
LISA  
HAMILTON

**Dear Santa,**  
Please bring some cars and  
a truck.  
Love,  
Benjamin Gonzales

**Dear Santa,**  
Please give me some things.  
I want a bike and a car and  
a tractor and a horse. That's  
all.  
Love,  
Billy Pierce

**Dear Santa Claus**  
I want a truck.  
Love,  
Ernesto Infante

**Dear Santa,**  
Please bring me a doll.  
Love,  
Irene Rosas

**Dear Santa,**  
Please bring me a doll and  
dishes, and a bicycle.  
Love,  
Jeardean Lewis

**Dear Santa Claus,**  
I want a car and a truck.  
I want gloves.  
Love,  
Aaron Lopez

**Dear Santa Claus,**  
I want a car and a truck  
and some toys. Bring my sis-  
ters a doll and a chair for my  
sister and a purse.  
Love,  
Alex Telles

**Dear Santa,**  
I want some shoes, and socks,  
a bicycle, some clothes. Could  
you bring a big stove and a  
T.V. and me a great big doll  
and a little table and 3 chairs  
and a doll house and a pan and

a purse and gloves and a cap  
and a coat and clay and a  
broom.  
Love,  
Toy Pena

**Hi Santa Claus,**  
I want a joll and a bike,  
a bed and a dog.  
Love,  
Rosemary Ramos

**Dear Santa Claus,**  
I want a sentence spin, a  
bike and a doll.  
Love,  
Stephanie Reed

**Dear Santa,**  
Please give me a B-B gun.  
Love,  
Ben Muniz

**Dear Santa Claus,**  
I want a little car that you  
put together. You can bring  
anything else you want to.  
Love,  
Jeff Silger

**Dear Santa:**  
I have been a good boy this  
year. I did want a new alu-  
minum step ladder. But I got  
one awhile back. So now all I  
want is a watermelon. Also  
some new locks for my pick-  
up so the coil wire won't get  
lost.  
Thanks and Merry Christmas  
Wayne Holmes

**Dear Santa:**  
I would like to have some  
desk top re-finisher and a new  
radio antenna to replace the one  
I lost. Also I will need some  
intelligence this year for my  
new promotion.  
Don't bring Forist anything  
because he ran away with my  
Bulldog.  
Thank-You,  
Jimmy Barnes

**Dear Santa:**  
Please bring me some "Mud-  
Grip" tires so my car won't  
get stuck in the sand, a First  
Aid Kit so I won't have to spend  
so much time at the Hospital.  
Also I want to trade my  
partner for one like Pepper  
Anderson on Police Woman.  
And please bring Louis a  
large bottle of Tums to help  
with his stomach problem.  
Merry Christmas,  
Joel Young.

**HEW & ANIT-INFLATION**  
Caspar W. Weinberger,  
Secretary of Health Educa-  
tion and Welfare has refused  
to endorse the anti-inflation  
recommendations made by  
180 delegates to a White  
House economic summit  
conference.

**Livestock  
Feeding Still  
Under Pressure**

COLLEGE STATION--"Feed  
supplies and prices will remain  
the critical concerns of the  
livestock industry in the com-  
ing months," says Dr. Ed Uvacek,  
livestock marketing special-  
ist for the Texas Agricultural  
Extension Service.  
Reduced grain and soybean  
production has resulted in ris-  
ing feed prices and cutbacks  
in livestock feeding, points  
out the Texas A&M University  
System economist.  
"Hog producers this fall are  
planning to farrow the fewest  
number of sows since 1965,  
number of cattle on feed are the  
lowest in six years, and poul-  
try production is being cut a  
tenth from last year," notes  
Uvacek.  
Hog prices are expected to

go down this fall with the in-  
creased seasonal slaughter, but  
smaller supplies and higher  
prices can be expected next  
year.  
"There has been a decrease  
in the slaughter of grain-fed  
cattle this fall, while the slaugh-  
ter of non-fed cattle and calves  
has increased substantial-  
ly," points out the specialist.  
"Fed cattle prices should in-  
crease during the first half of  
1975 as the market for cows  
and non-fed steers and heifers  
decreases.  
Although feeder cattle sup-  
plies will continue large into  
next year, prices should im-  
prove over this fall, believes  
Uvacek. Feeder prices are ex-  
pected to show some strength  
as the spring season ap-  
proaches.  
Slaughter lamb prices may  
average above those of last  
year due to a drop in slaugh-  
ter, but rising feed costs will  
keep the price of feeder lambs  
down," says the specialist.  
"Lamb prices early next year  
will continue under pressure."

**BIBLE VERSE**  
"Rebellion is as the sin  
of witchcraft, and stubborn-  
ness is an iniquity and idol-  
atry."  
1. Who made the above state-  
ment?  
2. To whom was he speak-  
ing?  
3. Upon what occasion?  
4. Where may this statement  
be found?  
**Answers to Bible Verse**  
1. The Prophet Samuel.  
2. To King Saul, and through  
him to the Israelites.  
3. Upon the occasion of  
Saul's sin in not destroy-  
ing Agag, the king of the  
Amelekites.  
4. I Samuel 15, part of the  
23rd verse.  
\*\*\*\*  
The people of the world  
will never agree unanimausly.  
What we must learn to do  
is disagree harmoniously.



The famous support bras, firm control girdles and All-in-Ones that are comfortable for hours.

**SAVE \$1.45 on 18 HOUR BRAS.**  
Style #20—Stretch Straps—Reg. \$6.95\* NOW ONLY \$5.50\*  
Style #21—Tricot Straps—Reg. \$6.95 NOW ONLY \$5.50\*  
Style #220—Longline, Stretch Straps—Reg. \$9.95\*  
NOW ONLY \$8.50\*  
Style #201—Front Closure Longline, Tricot Straps—Reg. \$10.95\*  
NOW ONLY \$9.50\*  
\*10 Cups \$1.00 more DD Cups \$1.55 more

**SAVE up to \$3.45 on 18 HOUR GIRDLES**  
Brief—Reg. \$9.95 NOW ONLY \$8.95  
Shortie—Reg. \$12.95 NOW ONLY \$9.95  
Average Leg—Reg. \$13.95 NOW ONLY \$10.50  
Long Leg—Reg. \$14.95 NOW ONLY \$11.95  
Regular Girdle—Reg. \$12.95 NOW ONLY \$9.95

High Waist Average Leg—  
Reg. \$15.95 NOW ONLY \$13.50  
High Waist Long Leg—  
Reg. \$16.95 NOW ONLY \$13.95  
High Waist Girdle—Reg. \$14.95  
NOW ONLY \$11.95  
(All XL and XXL \$1.00 more;  
XXXL and XXXXL \$2.00 more)

**On sale for the first time ever!**  
Style #23—Fiberfill Cups, Stretch Straps—Reg. \$7.50 NOW ONLY \$5.95  
Style #24—Underwire, Tricot Straps—Reg. \$8.95\* NOW ONLY \$6.50\*  
**SAVE \$3.00 on 18 HOUR ALL-IN-ONE**  
Open Style—Reg. \$19.95 NOW ONLY \$16.95\*  
Brief Style—Reg. \$20.95 NOW ONLY \$17.95\*  
(Now in 34D)

**CASH LAWAY** Anthony's C.R. ANTHONY CO. Sale Ends January 11, 1975

*The Essence Off Elegance In Interior Design*

**Monday, Dec.16, Thru Tuesday Dec. 24, There Will Be A 10% CASH & CARRY ON CHRISTMAS ITEMS.**

**DECORATORS "216" FLORAL**

616 S. 1st 806-272-4340

Thanks To Our Many Customers State Line Irrigation Co. Inc. Is Able To Celebrate Its

# Ninth Successful Anniversary

To Show Our Appreciation For Your Past Business, We Are Offering To Pass Some Good Savings On To You

- \*180 Buckner Sprinklers Less Nozzles \$3.75 Each
- \* 4 Inch Flex Hose 125 Lb. Pressure Rated \$2.25 Per Foot
- \*10" Waterman Hydrants \$95 \*12" Waterman Hydrants \$100 As Long As They Last
- \*3/4" "Through 2" PVC Plastic Pipe & Fittings 10% Discount
- \*All Brands Of Valve Openers 10% Discount As Long As They Last
- \*A Big 10% Discount On All Items In The Store Except Underground Systems, Side-Roll Sprinklers And Aluminum Pipe

Free Coffee & Donuts - So Come By And See Us - We Are Thankful For Our Many Customers & Friends. "Old Stupid" Timmons And Employees Says, "Thanks."

## STATE LINE IRRIGATION

Mulshoe & Littlefield

Specials Good Through December 31, 1974

**Bula News**  
Mrs John Blackman

Bula Lions met Thursday morning for their breakfast. Lions, Gene Pickard and O.V. Jacobs, prepared the good meal of bacon, sausage and biscuits. Guest for the breakfast was Darlene Hering, from the Blood service of Lubbock. She showed a film on how they go about handling blood, and spoke of the needs for blood in this area.

Next meeting will be on December 19, Tom Tollett, Littlefield attorney will be a guest, and he will speak to the Lions and also other interested people on estate planning and making a will.

John Crockett, underwent open heart surgery at the Lubbock Methodist Hospital, this past Monday. He is still hospitalized, but is doing real good. The Crocketts live in Morton but formerly lived in the Bula-Enoch community.

Several from the community attended the reception given Sunday afternoon at the Tri-County Savings and Loan Community Room, Muleshoe, in observance of 30 years of service with the ASC work for Bernice Camp. Camp is well known in our community and we appreciate his concern for the farmer over his period of years with the ASCS.

Bula school will dismiss December 20th for Christmas holidays, and both students and teachers will have two weeks to enjoy the holidays. Their mid-term exams will be 18, 19, and 20.

Bula girls basketball team beat out Sundown, Saturday evening for first place in the Whiteface tournament. This week both boys and girls are playing in the Whitharrel tournament.

Mr. and Mrs. John McCormack and children, Heather and Cornell drove to Lubbock, Saturday afternoon and spent until Sunday afternoon with her sister and family, Mr. and Mrs. Ken Gray.

Mr. and Mrs. Bryan Noble and son, Steven of Muleshoe spent Saturday and Sunday with her parents, Mr. and Mrs. I. L. Clawson.

Mrs. Pauline McCall of Lubbock was visiting with relatives and friends in the Bula-Enoch community recently. Her daughter and family, Mr. and Mrs. Burley Roberts live in the Enochs community.

Mr. and Mrs. J. C. Withrow drove to Levelland Friday night for the dress rehearsal for the play "Ethan Frome", given by the drama department at SPJC. This was given in the college fine arts building. Their daughter, Jackie was one of the cast, she is a sophomore speech and drama major at SPJC.

Mr. and Mrs. F. L. Simmons drove to Littlefield after church, Sunday and enjoyed dinner with their grandson and family, Mr. and Mrs. Lee Carroll Simmons and boys, Gary Lee and Todd.

Mr. and Mrs. Robert Silhan and daughter, Stephni from Monahans, have been recent visitors with her parents, the E. M. Autry's.

Mr. and Mrs. Gulon Clawson were guests Sunday evening of his sister, Mr. and Mrs. J. D. Rowland. Mr. and Mrs. Clawson have been visiting in this area and at Lovington with relatives and friends, and they also have visited around Fort Worth and Dallas with relatives and are on their return home to Visalia, Calif, where they are to be back at work on the 17th.

District Superintendent, Dr. Carlton Thompson from Plainview, will be the speaker Sunday morning at the Enochs Methodist Church. Both Bula and Enochs will meet together for the sermon and conference afterwards. The pastor is Rev. Bob Stone, for both Enochs and Bula.

Friday January 3, crew with the Mobile Blood Lab from the Blood Service Center in Lubbock, will be at the Bula school, for the purpose of securing blood, for the blood bank, in Lubbock.

Mr. and Mrs. John Blackman attended the funeral Wednesday for Charles Didway, held at 10:00 a.m. in the Catholic Church at Post. Didway's wife is a cousin of Blackman's.

It is better to begin doing our duty late than never. -Dionysius.

**ON CRIME**  
Att. Gen. William B. Saxbe and FBI Director Clarence M. Kelley, the nation's top two law enforcement officials, have criticized criminal justice procedures that permit hard-core criminals to escape imprisonment.

**OPEN DAILY 9am-9pm CLOSED SUNDAY**

**GIBSON'S DISCOUNT CENTER**

"WHERE YOU ALWAYS BUY THE BEST FOR LESS"

1723 WEST AMERICAN BLVD

**WHITE RAIN SHAMPOO**

14 OZ LOTION CRYSTAL CLEAR, LEMON AND HERBAL

REG 89¢

**69¢**

**CORN HUSKERS LOTION**

7 OZ

OUR REG 83¢

**69¢**

**UNIVERSAL IRONING BOARD PAD AND COVER**

TEFLON OR SILICONE

OUR REG \$2.19

**\$1.19**

**MISS BREAK HAIRSPRAY**

13 OZ

OUR REG 89¢

**59¢**

**TWEENS KNIT COORDINATES**

FOR PRE-TEENS

**SLEEVELESS V-NECK VESTS**

OUR REG \$4.29

**\$2.66**

**POLKA-DOT AND STRIPE PULL-OVERS**

OUR REG \$4.79

**\$2.99**

**LONG SLEEVE TURTLE NECK DENIM LOOK AND SOLIDS PANTS IN SOLID COLORS**

OUR REG \$7.79

**\$2.99**

**MEN-BOYS COATS**

ALL ON SALE AT

**1/3 OFF**

**SUNBEAM TODAY IRON**

**\$14.88**

REG \$17.49

Use as a hand steamer - ideal travel companion for on-the-spot freshening of garments. Switch to dry setting to iron modern synthetics.

**SNUGGLY SOFTINA**

#799

OUR REG \$9.99

**\$4.99**

**LADIES-GIRLS COATS**

ALL ON SALE

**1/3 OFF**

**DOLL CANDICE**

OUR REG \$4.39

**\$2.77**

**MONDAY NIGHT FOOTBALL**

#5516

OUR REG \$12.97

**\$6.88**

**TRACS PLUS CASSETTE TAPES**

BUY 1 60 MIN FOR GET 1 30 MIN BLANK TAPE FREE

**99¢**

Tracs Plus 60

**NOVUS 820 PERSONAL CALCULATOR**

OUR REG \$34.97

**\$25.97**

**PRICES GOOD DEC. 16 THRU DEC 18**

**CHRISTMAS IN THE AIR**

**LAY-A-WAY**

master charge THE INTERBANK CARD

OR CASH

**DREAMFLOWER PERFUMED DUSTING POWDER**

5 OZ

REG \$1.05

**79¢**

**MIGRIN PLUS GARGLE AND RINCE**

32 OZ

OUR REG \$1.89

**88¢**

**LADIES BIKINI PANTIES**

**2/\$1**

**Kodak Pocket Instamatic 30**

Lowest priced pocket model with electric eye. Shutter speeds from 1/160 second to 5 sec. No focusing required #A30RAE

REG \$49.97

**\$36.97**

**TOY BROOMS AND MOPS**

#8032

REG \$1.69

**99¢**

**MENS Dickies KNIT PANTS**

\$12.97 \$7.99

\$10.97 \$6.99

\$9.97 \$5.99

**CASCADE**

50 OZ KING SIZE OUR REG \$1.45

**99¢**

**MARK TIME BELL TIMER**

60 MIN TIMER DECORATOR COLORS \$4.99 VALUE

**\$2.99**

**CRISOLD DOMINO SETS**

IN LEATHERETTE CASE BLACK OR WHITE

OUR REG \$5.49

**3.79**

**KODAK POCKET CLIP**

CLIP ON CASE FOR POCKET INSTAMATIC CAMERAS FITS POCKETS 20-30-OR 40

OUR REG \$2.49

**\$1.89**

**TONKA FUN BUGGY**

#1010

OUR REG \$2.79

**\$1.77**

**ALL BICYCLES, TRICYCLES AND WHEEL GOODS ON SALE**

**25% OFF**

**WE Will CUSTOM PROCESS  
YOUR BEEF TO YOUR SPECIFICATIONS**



CALL OR COME IN TODAY!

**CROW MEAT CO.**

So. Hwy. 214

Friona, Texas

Phone 247-3333

**Nursing  
Home News**  
by Myrtle Guinn

Mrs. Harding's daughters come nearly every day to visit her.

Mr. and Mrs. Ben Williams had their two sons, one from Stinette and the other one from Clovis to visit Sunday.

Mrs. Hall's son, Murry and wife Shirley of Dimmitt visited her Sunday afternoon.

Mr. and Mrs. Leon Lewis visited his mother, Mrs. Lewis on Tuesday to celebrate his birthday.

Mrs. Mae Provence and Mrs. Nan Gatlin come every day to be with their mother, Mrs. Sein who is bedfast.

Mrs. Lavada Lassiter of Whiteface came Monday to be with her mother, Mrs. Newton part of the day, she brought Mrs. Guinn a cake which Mrs. Hall and Mrs. Guinn enjoyed.

Wilman son's wife and their daughter visited him on Monday.

Mrs. Artie Faye of Bovina came to see her mother, Mrs. Miller, Friday.

On Tuesday, December 10 the ladies of the Auxilliary served the residents a dinner consisting of turkey, ham, salads, vegetables, pie and cake. It was planned by Otis Epperly who furnished the ham and turkey

and members of the families here brought in the other foods. The auxilliary and nurses also helped. This was honoring the people in the home of the LVN and other nurses aids.

Mr. and Mrs. J.T. Glasscock spent most of the day, Tuesday with her brother, Mr. Gilbreath.

Several people came in Tuesday afternoon to play '42' with others.

Mrs. Jackson visits Mrs. Lewis nearly every afternoon.

Visiting Mrs. Guinn Saturday were friends, Mr. and Mrs. Dean Blackburn of Friona, who have been close friends of Mrs. Guinn's since they were children.

Carpenters are working nights to exchange our doors to those of solid wood and the Muleshoe Auxilliary put up Christmas decorations and

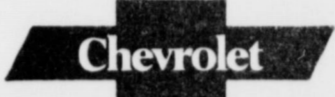
flowers and a Christmas tree.

Mrs. Perry is about the same, but not well at all, her daughter, Mrs. Martin of Littlefield and Mrs. Timmons comes every day to be with her.

Mrs. Pete Guinn came to see Mrs. Guinn Thursday at noon.

As we think back over this nearly past 1974 we think also of this little poem I want to share with others. It follows, "It isn't your years, But how you have spent them, It isn't the cares that life may bring It's the joys and dreams and friendships, these are worth remembering." I have found this to be true in my life and I so much appreciate my friends and loved ones. Let us not fall as Christmas draws near to not forget and leave "Christ" our Savior out of "Christmas" of whose birth we celebrate and praise God for his wonderful gift of his son, Jesus Christ to us to Thank God for each day of our lives.

**DEMO SALE**  
3 WITH FACTORY WARRANTY  
2, 1974 MODELS  
1, 1975 MODEL

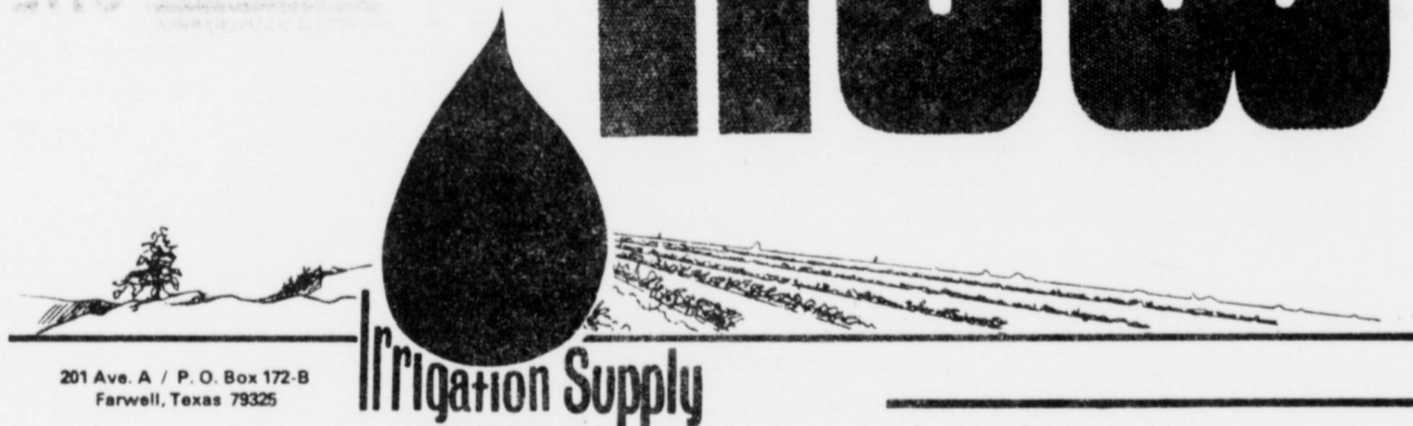
**CROW**   
Muleshoe

**On Wall Street**  
By Bob Hill  
Lentz, Newton & Co.



**here  
now**

★ 'BO' BARTLEY, MANAGER



201 Ave. A / P. O. Box 172-B  
Farwell, Texas 79325

**COMPLETE IRRIGATION  
HEADQUARTERS**

- ★ PIVOT SPRINKLING SYSTEMS
- ★ SIDE ROLL SYSTEMS
- ★ ALUMINUM PIPE — GAS PIPE
- ★ UNDERGROUND PLASTIC PIPE OF ALL SIZES

WE WILL BE YOUR COMPLETE IRRIGATION STORE WITH SALES PERSONAL — INSTALLATION AND REPAIR FACILITIES-COMplete IN STORE INVENTORY OF ALL NECESSARY IRRIGATION PARTS AND EQUIPMENT.

**IRRIGATION SUPPLY**

2nd. and Ave. A FARWELL Ph. 481-3393

In 1971 President Nixon, without warning, slapped a 10% import surcharge on all Canadian goods sold in the U.S. Only two years ago Canadian oil producers were pleading with Washington to increase U.S. imports of Canadian oil and gas. But, just two weeks ago the Canadian Minister of Energy, Donald D. Macdonald, announced a plan to cut Canadian oil exports to the U.S. by 250,000 barrels per day by next July. This means Canadian shipments of oil to the U.S. will drop to 650,000 barrels per day compared to 1,100,000 barrels per day last year. The flow of Canadian oil will shrink further when a pipeline from Alberta to Eastern Canada is completed and plans now call for a complete shutoff of Canadian oil to the U.S. by 1982.

Although less than 5% of our total oil consumption comes

from Canada, American authorities are disturbed by the cutoff trend. Canada has also cut imports of U.S. beef an estimated \$100 million annually and the Canadian Radio-Television Commission has ordered Canadian cable networks to delete commercials from American programs they pickup. That affects an estimated \$20 million in advertising on U.S. television aimed at Canadian audiences by Canadian advertisers.

The purpose of the Canadian oil cutoff is to protect Canadian oil reserves from being depleted by the heavy demand of U.S. consumers. But, the cutoff is having a negative effect on the Canadian oil industry. In the past two weeks, five large oil companies have announced major cutbacks in their Canadian exploration programs. Ottawa has issued harsh tax-

**Beef--- Good  
Buys For Gifts**

COLLEGE STATION--Looking for a good buy on a practical Christmas gift?

Then consider beef as a top choice, says a meats specialist for the Texas Agricultural Extension Service.

"Excellent buys are abundant in the 'light' beef section of today's markets," points out Dr. Frank Orts. "This beef might be merchandised as calf light beef, budget beef or baby beef, just to mention a few of the more common names in use today."

Orts suggests buying beef either by the piece in the market or by the side or quarter from many different sources such as meat markets, locker plants or any plant selling beef.

"Many grocers and supermarkets are promoting the giving of Texas agricultural products for Christmas gifts, and beef offers an excellent choice," believes Orts.

ation policies aimed at taking over partial control of Canada's resources from the provinces (Canada's provinces have control over their own natural resources.) The result is a sharply curtailed exploration program which is beginning to show up in declining Canadian oil reserves. The Canadians may wind up buying oil from the U.S. some day.

**BETTER MILEAGE**  
The Environmental Protection Agency reports that 1975 automobiles would get about 13.5 per cent better gasoline mileage, on the average, than 1974 models.

**ON AEROSOL GASES**  
ATLANTIC CITY--Dr. F. S. Rowland, professor of chemistry at the University of California, said the earth's radiation screen may be damaged within a few decades by millions of pounds of gases escaping into the environment each year from aerosol cans and refrigeration units.

**MOBILEHOME Sales**

Make This A Special Christmas With This Beauty!

**14x70- 3 Bedroom**

**MOBILE HOME  
1 1/2 BATH-AIR  
CONDITIONED &  
FURNISHED  
ONLY \$7300**

PAYMENTS LESS THAN RENT  
CALL US TODAY

**JG's** MOBILE HOMES, Inc.  
TEXICO, N.M.  
482-9071



# WANTS

**OPEN RATES**  
1st insertion, per word - 9¢  
2nd and add., per word - 6¢  
**NATIONAL RATES**  
1st insertion, per word - 11¢  
2nd and add., per word - 7¢  
Minimum Charge - 50¢  
**CARD OF THANKS - \$3.00**  
Classified Display \$1.25 per column inch.  
Double Rate for Blind Ads -  
**DEADLINE FOR INSERTION**  
Noon Tuesday for Thursday  
Noon Friday for Sunday  
**WE RESERVE THE**  
Right to classify, revise or  
reject any ad.  
**NOT RESPONSIBLE**  
For any error after ad has  
run once.

**PERSONALS**  
**FOR YOUR** Stanley Home Products,  
Jewel Broyles, call  
965-2481.  
1-16t-tfc

\$100 reward offered for information leading to conviction of anyone damaging Journal news paper stands.  
21s-1-tfp

**HELP WANTED**  
**WANTED:** 2 mechanics. Excellent opportunity and working conditions. Apply in person, Town & Country Auto Inc. Clovis Highway.  
3-32t-tfc

**ACCEPTING Applications** for R.N. at Plains Memorial Hospital at Dimmitt, Texas. Call 647-2191 and ask for Verle West, Administrator or A'Llan Bradley. Shift preference will be considered.  
3-25s-tfc

**BUILDING SUPERINTENDENT:** Good pay---Excellent Working Conditions. Requirements: high moral standards, ability to supervise and accept supervision, knowledge and experience in electrical and plumbing work, experience in floor care and building maintenance, ability to get along with the public. Call 806-296-6318 or write Business manager, 205 W. 8th Plainview, Texas, 79072.  
3-49s-4tc

**WANTED:** A rough, tough, loud-mouthed bully of about 23 years. Should be red-headed, short-tempered, and possess pugilistic ability and experience. To serve as a bill-collector. Board, room, brass knuckles and pistol ammunition furnished. Also, a small wage. Apply in person at Central Texas, See Ray.  
3-49s-4tc

**WANTED:** Still taking applications for workers at Allsup's 7-11.  
3-46s-tfc

**FRIONA APTS.** now have available 1,2, and 3 bedroom, \$145.00. Call 247-3666 or come by 1300 Walnut Street, Friona. Sorry no pets.  
5-24s-tfc

**FOR RENT:** 2 bedroom unfurnished apartment, Phone 272-4838. Smallwood Real Estate, 5-47s-tfc

**WANTED TO RENT**  
**WANTED TO RENT** or lease irrigated land, Call 806-965-2160. John Mitchell.  
7-38s-tfc

**REAL ESTATE FOR SALE**  
**LAND FOR SALE:** Approx 320 acres, 11 1/2 miles west, 2 wells ready for circle sprinklers.  
Approx. 277 acres 6 miles west, 2 wells and one circle sprinkler. Crop ready to graze now.  
Approx. 191 acres, 2 wells, 4 side roll sprinklers. Crop ready to graze now. Call Harold or Max King 806-272-4541.  
8-10s-tfc

**FOR SALE:** One labor dry land 12 miles from Muleshoe.  
8-50s-6tc

**FOR CASH LEASE, \$3,000** 80 acres irrigated land with house. Pump belongs to lessee, but willing to sell for \$900. Phone 806-965-2623.  
8-49t-4tp

The average American wants inflation of his income and deflation of everything else.

For sale by owner: Clean 2 bedroom living room, den, 1 1/2 bath, carpeted, built-in stove, oven, dishwasher, lots of storage. Plumbed for washer and dryer, fenced, garage with storage room. Assume low interest F.H.A. loan. Owner will finance part of equity. Call 806-272-4338 or 806-272-4655 after 6:00.  
8-50t-8tp

**FOR SALE:** 3 bedroom, 1 3/4 bath, brick home with fenced backyard, located in Richland Hills near school. Call 806-272-4375.  
8-42t-tfc

**FOR SALE OR RENT:** 3 bedroom, 1 bath, garage, large backyard, 2 storage buildings, patio with gas grill, 225 Elm. Call 806-272-3179 after 6 p.m. or 505-356-3944.  
8-45t-tfc

For sale by owner: 80 acres 6 miles N. E. of Muleshoe, Call June Burham 272-4794 or 965-2756 or Eugene Burham 272-4797.  
8-50t-tfc

**FOR SALE:** by owner \$450 per acre 1 section land in Pleasant Hill, N.M. 440 acres farm, irrigated, two 7' wells, 1 six inch. Soil conservation approval for tail water pit, 220 acres, native grass. Good two bedroom house, double garage with apartment, one large quartzite barn small barn, hay shed, carrols, 140 acres wheat. Possible good terms on 40 head second calf cows. Call 806-247-3998.  
8-49s-4tc

For Sale by owner-216 acres irrigated land. Fair improvements, lays perfect. 1/2 mile underground pipe, 1973 produced 9400 lbs. dry corn per acre. 1974 produced 7054 lbs. \$600 per acre. Terms, 5 miles N.E. of Muleshoe, Harlan Reese, Call 806-965-2760.  
8-50s-tfc

For Sale: 290 acres 7 miles E. of Muleshoe, 2 8" wells, 1/4 mile underground line, 40 acres pecans, 1 Valley Circular Sprinkler on Alfalfa 138 acres Trifoliate with 2 sideroll sprinkler and 2 1/4 mile drag lines. Natural gas.  
Phone 806-965-2696  
8-50s-6tc

For Sale: 2 acres, 5 room house at Needmore, barn, cellar, Call 806-946-2567.  
8-50s-6tp

For Sale: 1/4 section good land. Waters well, on natural gas, underground pipe. Phone day or night 806-272-3293.  
E.E. Holland Real Estate, 113 W. Ave. D  
8-50s-tfc

For Sale: 160 acres 4 miles N.W. of Muleshoe, 2 10' irrigation wells on electricity, 40' x 70' hay barn, 3 bedroom stucco house, 1/4 minerals, \$650. per acre, 29% down, 10 years on balance at 8% interest, O.C. Kirk. Phone 806-272-3536 or 806-272-3657.  
8-50s-4tp

**MULFARM EQUIP. FOR SALE**  
**FOR SALE:** Irrigation hoods, 42X48 \$49.50, 42X36 \$39.50. Call 806-272-4945.  
10-50t-16tc

**FOR SALE:** 3/4" through 10" PVC plastic pipe & fittings. State Line Irrigation. 806-272-3450.  
10-47t-tfc

**FOR SALE:** Bailing wire. \$33.50 per roll. 16" well casing, 1/4 wall, new, \$12.50 per foot. Farwell Pipe & Iron, Farwell, Texas. Phone 806-481-3287.  
10-49t-tfc

**FOR SALE OR TRADE**  
**FOR SALE:** 4 apartment complex, 300 block west 20th, good income, good tax possibilities. Phone 272-4284 after five 272-4491.  
11-20t-tfc

**HOUSEHOLD GOODS**  
A perfect gift, and a bargain too. 33 inch Catalina Hi-fidelity stereo. Looks great, plays great. Also 50 foot roll 43 inch picket fence, new. Can be seen at 402 Austin after 6 or call 272-4738.  
12-50t-2tc

Pianos, organs, band instruments, new and used. Professional repairs, sheet music, rentals, terms.  
Phillips House of Music 118 Main, Clovis, N.M. Phone 505-763-5041  
12-34s-tfc

**14. FARM PROPERTY TO RENT**  
For rent, 1/2 section, North of highway between Earth & Muleshoe. Call 806-795-6154. 14-49s-3tp

**MISCELLANEOUS**  
**FOR SALE:** 1973 12X65 Mobile Home, 3 bedrooms. Call 272-4870, after 5 p.m. 15-49s-8tp

**FOR SALE:** Mesquite firewood. Phone 806-272-4842  
15-43t-tfc

I will not be responsible for any debts made by anyone but myself, 12-12-1974  
Jerry Roberts  
15-50s-3tp

**ATTENTION FARMERS**  
**FOR SALE:** 16" casing, 1/4" wall, good condition. \$10.00 per foot. Call 505-763-5501.  
10-49t-4tc

**WANTED, SAW FILING:** Call or see Morris Nowlin or Buck Creamer, or leave saws at Lemau Lumber Co., Higginbotham Lumber Co., or Heathington Lumber Co. I will pick them up there, sharpen & return them. Buck Creamer, phone 806-272-3265.  
15-48s-4stp

**MARTIN ROOFING--** Roofing, SPECIALISTS. Asphalt and built-up roofs. OWNER - Mr. Martin. 115 W. 19th. 806-385-3507, Littlefield, Texas.  
**'ALL WORK GUARANTEED'**.  
15-50t-tfc

**CORN FARMERS**  
We just received an extra allotment of VALLEY Sprinklers with corn extensions for the taller varieties of corn. These are available for Nov. & Dec. delivery. Check our lease plan out. Call:  
**AVI INC**  
272-3565  
Muleshoe, Texas

**Cess Pool Cleaning**  
Cesspools pumped with a MUD-PUMP & treated with bacteria & enzymes to liquefy solids & loosen sides for better drainage. Dipping vats drained and liquids hauled to your disposal pit. Grease pits drained & treated. Mollasses pits drained.  
Phone 272-3677 or 272-3467  
ELMER DAVIS

**FOR SALE**  
Used Circle, sprinkler systems AVI Inc. Call 806-272-3565.  
10-49t-4tc

**FOR SALE**  
Several good tracts of land for sale. Some at 29% down. Good water.  
8-37s-tfc

**POOL REAL ESTATE**  
214 E. AMERICAN BLVD  
PHONE 806-272-4716

**FOR SALE:** 320 A Dryland, lays nearly perfect, beautiful wheat, N. W. of Bovina; 160 A irrigated, 5 miles N. W. of Sudan, 2 wells; 160 A irrigated, 3 miles S. E. of Farwell; 180 A touches Bovina city limits, 2 6" wells; 640 A 3 3" well, W. of Friona, 280 A farmland, balance in grassland; 320 A 3 wells, 5 miles S. E. of Farwell; 280 A, 5 wells, Well improved on highway, 5 miles W. of Muleshoe; 640 A, 4 wells, Carrol & feeding equipment, house & barn, near Friona, 170 A, 1 well, nearly perfect, near Bovina; 150 A irrigated, well improved, near Muleshoe; 726 A, 5 wells, 2 houses, 2 quonsets, Rhea Community; 245 A, 2 wells, sprinklers, W. of Muleshoe; 200 A irrigated, lays good, alfalfa & sprinklers, touches Farwell city limits.  
Call 806-481-3288 or 505-763-5375, unit 5408.  
8-48s-tfc

**LIVESTOCK**  
**FOR SALE:** 2 young, good Charolais bulls. Call 806-925-3510  
16-49t-tfc

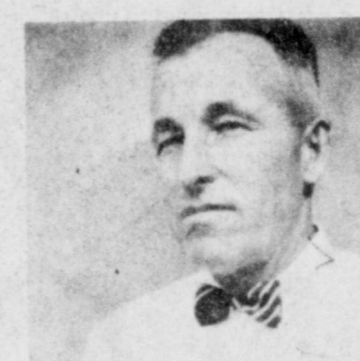
Calves 7 to 14 days old, Healthy and started on bottle. Free delivery of 10 or more. Call 214-223-5171 after 7 p.m.  
16-28s-24tc

## Services For Ashby Askew Held Saturday

Ashby Askew, 81, died Wednesday, December 11, at 5 p.m. in the Veterans Hospital in Big Springs. He had been a resident of Bailey County for 30 years, moving from Turkey, Texas.

He was born December 28, 1892 in McCaskill, Arkansas and married Ethel Brewer on November 21, 1920 in Turkey. Askew was a member of the Church of Christ and a veteran of World War I. Funeral services were conducted at 10:30 a.m. Saturday, December 14, in the Northside Church of Christ with L.F. McCormick of Muleshoe and Van McCormick of Clovis officiating. Burial was in the Muleshoe Cemetery.

Survivors include his wife; two sons, Travis of Albuquerque, N.M., and Lennis of Dallas; six sisters, Mrs. Leona Stephens of Blythe, California, Miss Pearl Askew and Mrs. Ethel Clarys of Globe, Arizona.



ASHBY ASKEW

**GRIMES KAWASAKI**  
Complete line of parts & accessories. Factory trained mechanics. New and used motorcycles. South 385, Littlefield, Texas. Phone 806-385-3043  
15-50s-tfc

**All type roofing & building repair. FREE ESTIMATES**  
Phone 806-272-3756  
**DON'S ROOFING CO.**  
15-32s-tfc

**VALLEY**  
SELF-PROPELLED Sprinklers, Available for delivery NOW  
**AVI INC.**  
Clovis Hwy West

**PHOTOGRAPHY by Oacia**  
PHONE 272-3747  
113 E. AVE D  
Muleshoe  
CALL 385-6083  
Littlefield 409 W. 2nd

**\*Expert and Colorful Weddings**  
**\*Family Groups Anywhere, Anytime**  
**PHOTOGRAPHY by Oacia**  
PHONE 272-3747  
113 E. AVE D  
Muleshoe  
CALL 385-6083  
Littlefield 409 W. 2nd

**SPECIAL**  
Every Sunday evening 5 To 9  
**Shrimp Dinner \$1.95**

**XIT STEAK HOUSE**  
**YA'LL COME - AND BRING A FRIEND**

**D-L PLUMBING**  
920 HICKORY  
272-4769

zona, Mrs. Mary Stevenson of Lubbock, Mrs. Snow Stokes of Mountain View, Arkansas and Mrs. Esther Magby of Muleshoe; three brothers, Arthur of Muleshoe, Noah of Springdale, Arkansas and Pete of Globe, Arizona; 10 grandchildren and four great-grandchildren.

Progress? It seems incredible--35,000,000 laws and improvements on the Ten Commandments.  
-Livestock Feeder.

**"THE DEALER WHO CARES"**  
Sooner or later you'll buy a New or Used Car FROM  
D.B. GULLEY



**Glen's BACKHOE SERVICE**  
806/272-3443  
GLEN WATRINS

**Pat's Photo**  
218 W. SECOND  
PHONE 806/272-3287  
PAT SHAFER  
MULSHOE, TEXAS

## Services Held Friday For Mrs. Guerrero

Carlota J. Guerrero, 76, died Wednesday, December 11, at 2:30 p.m. in Northwest Texas

She had been an Amarillo resident for six years moving there from Muleshoe. Her husband, Geronimo Guerrero was pastor of the Spanish Methodist Mission in Muleshoe until his death in 1963. Mrs. Guerrero was born December 8, 1898 in Merkel, Texas and was a member of the Spanish Methodist Mission. Funeral services were held

at 1:30 p.m. Friday in the Spanish Methodist Mission in Muleshoe. Officiating was Rev. Steven Lara of Amarillo. Interment was in the Muleshoe Cemetery under the direction of Singleton-Ellis Funeral Home. Survivors include one daughter, Mary Raybol of Clovis and four grandchildren.

**REAL ESTATE TOONS**  
BY K.K. KREBBS  
Are You Sleeping On A BOUGH? Wake Up And Live "The Time Is NOW".  
Acres- 2, 4, 12, 15, 20, 30, 40, 80, 320, 1500.  
Service Beyond The Contract  
Phone 272-3191  
210 So. 1st Muleshoe

**GRIMES KAWASAKI**  
Complete line of parts & accessories. Factory trained mechanics. New and used motorcycles. South 385, Littlefield, Texas. Phone 806-385-3043  
15-50s-tfc

**Pat's Photo**  
218 W. SECOND  
PHONE 806/272-3287  
PAT SHAFER  
MULSHOE, TEXAS

She had been an Amarillo resident for six years moving there from Muleshoe. Her husband, Geronimo Guerrero was pastor of the Spanish Methodist Mission in Muleshoe until his death in 1963. Mrs. Guerrero was born December 8, 1898 in Merkel, Texas and was a member of the Spanish Methodist Mission. Funeral services were held

at 1:30 p.m. Friday in the Spanish Methodist Mission in Muleshoe. Officiating was Rev. Steven Lara of Amarillo. Interment was in the Muleshoe Cemetery under the direction of Singleton-Ellis Funeral Home. Survivors include one daughter, Mary Raybol of Clovis and four grandchildren.

Survivors include one daughter, Mary Raybol of Clovis and four grandchildren.

**OVERWEIGHT**  
No Drugs No Exercises  
No Starvation No Hunger Pains  
Diets  
Provides most needed daily nutrients  
Helps tighten skin  
Promotes better nerve condition  
Helps increase energy  
Exclusive and guaranteed  
If I am not in on your first call, please try again.  
**GET SLIM INC.**  
POLLY OTWELL  
Ph- 272-3163

**Going home for the holidays?**  
**Drive one of these Values**  
1973 Imp. 4Dr HT Blue - Loaded \$2795  
1972 Gal 500 4Dr HT Green - Loaded \$2195  
1972 Imp. 4Dr HT Tan - Loaded \$2195  
1972 Malibu Cpo Red - Loaded \$2495  
1972 Imp 4Dr Sedan Brown-Loaded \$1995  
1972 Imp Cust Cpo Brown Loaded \$2695

**CROW CHEVROLET**  
MULSHOE, TEXAS

**Can-O-Cash**  
TO: Julie  
FROM: Grandma

**Can-O-Cash** is more than a great Christmas gift...  
We charge 50¢ per can for this service  
We think that's a nice way to say Merry Christmas, to both you...

**Muleshoe State Bank**  
MEMBER FDIC

We'll seal money or any small gift you bring us in our brightly labeled Christmas Can-O-Cash. The only way to remove the contents is with a can opener. Can-O-Cash is a really fun gift and is an instant success. The opened can then converts into a year 'round savings bank with its own slotted plastic lid.

# Butchering Coming Back

COLLEGE STATION--Folks yearning for the return of the 'good ole days' may be seeing their wishes come true. Home butchering of livestock, once popular in many areas, is making a comeback.

"We've had numerous requests to demonstrate the proper slaughtering of cattle for home consumption," points out Woodrow Bailey, livestock and

meat specialist for the Texas Agricultural Extension Service. "These requests have come from county Extension agents whose clientele are interested in home slaughtering and processing."

In the demonstrations Bailey shows the entire operation, from slaughtering to wrapping the meat for the home freezer. "Crowds at several demon-

strations have reached past the 100 mark. Due to the current cattle market situation, interest in selling and butchering beef for the home freezer has really mushroomed," notes Bailey. "Slaughtering plants are booked for several months ahead, and people are concerned about waiting that long to process their animals."

According to the Texas A&M

University System specialist, a family can slaughter and process an animal on-the-farm in four to six hours. Home slaughtering and processing can save 30 to 50 per cent on the price of retail beef. Also, locker plant charges for slaughtering and processing a 600-pound calf normally run about \$50.

What about the legality of home slaughtering as far as meat inspection laws are concerned?

"As long as the individual is butchering the animal for his own use, he is free to do so,"

explains Bailey. "However it is illegal to custom slaughter or cut beef for other people unless the operation is properly inspected and meets all legal requirements."

According to Bailey, the last butchering demonstrations con-

ducted by the Extension Service date back to 1939. Maybe the 'good ole days' are really returning!!

\*\*\*\*

If in doubt, do a favor for the person who refused to do one for you.

\*\*\*\*

The greatest producer of real work is necessity.

\*\*\*\*

Memory is the product of intelligence and work.

**TELEX** Hearing Aids

**Clovis Hearing Aid Center**

Batteries & Molds. Free Tests. Service All Makes.

416 Mitchell Phone 763-6900  
Clovis, N.M.

**Singleton-Ellis Funeral Home**

24 Hour Ambulance Service

Ph. 272-4574 Muleshoe



## NEW PRICING POLICY

We Will Not Increase the Price of Food Once Placed on our Shelves for Sale

When we are forced to increase a price, items on our shelves marked at the lower price will be sold at the lower price.

Whip Inflation Now

**WIN**

**USDA Choice, Heavy Aged Beef, Blade Cut**

**Chuck Roast 69¢** Lb.

Fresh Pork Steak Lb. \$1.09

Whole Smoked Picnic Lb. 79¢

Quarter Pork Loin. Sliced into 9 to 11 Chops

**Pork Chops 98¢** Lb.

3 Varieties Frozen Swanson Dinners 69¢

10-oz. Pkg.

Kraft Chilled Orange Juice 1/2-Gal. 99¢

Fields Frozen Pecan Pie 32-oz. Pkg. \$1.99

Piggly Wiggly Cut Corn, Cut Green Beans Mixed Vegetables & Green Peas

**Frozen Vegetables 4 \$1** MIX OF MATCH 10-oz. Pkgs.

Johnson & Johnson Baby Shampoo 16-oz. Btl. \$1.69

Vaseline Lotion Intensive Care 10-oz. Btl. 79¢

Gillette Deodorant Right Guard 7-oz. Bronze Can \$1.19

Miracle Fit. One Size Fits All Elite Pantyhose 89¢ Pair

We Welcome Federal Food Stamp Customers

We Redeem FEDERAL FOOD COUPONS

Prices good thru December 18, 1974. We reserve the right to limit quantities. None sold to dealers.

**3-Lbs. or More, Fresh Ground Beef 79¢** Lb.

**USDA Choice, Heavy Aged Beef Rib Steak \$1.08** Lb.

Lean Ground Beef Lb. 99¢

USDA Choice, Heavy Aged Beef Boneless Rib Steak Lb. \$1.59

USDA Choice Heavy Aged Beef, Boneless

**Chuck Roast \$1.07** Lb.

3-Lbs. or More FROZEN Fresh Roasting Chickens Lb. 59¢

Piggly Wiggly, Sliced American Cheese 12-oz. Pkg. 93¢

Lean and Meaty Beef

**Short Ribs 49¢** Lb.

Boneless Stewing Beef Lb. \$1.19

Peeled & Deveined Fresh Calf Liver Lb. 99¢

USDA Choice, Heavy Aged Beef

**Chuck Steak 88¢** Lb.

Farmer Jones - 2-Lb. Pkg. 1.95

Roll Sausage Lb. 98¢

Kraft Cracker Barrel Mild Cheese 10-oz. Pkg. 99¢

Farmer Jones Tender

**Juicy Franks 69¢** 12-oz. Pkg.

We Redeem FEDERAL FOOD COUPONS

Breakfast Treat

**Ruby Red Grapefruit 15¢**

For The Fruit Bowl

Red Grapes Lb. 49¢

King of Bakers Rome Apples Lb. 45¢

To Go With Your Holiday Dinner

**Cran-Berries 49¢** 1-Lb. Pkg.

Favorite For Any Meal

High-Quality Pears Lb. 49¢

Boosts Flavors of Other Foods

Refreshing Limes Lb. 49¢

Festive

**Bulk Nuts 88¢** Lb.

Packed with Vitamin C

Red Ripe Tomatoes Ctn. 55¢

For Tasty Stuffed Peppers

Bell Peppers Lb. 49¢

Nutritious Garnish

**Creamy Avocados 4 \$1** For

Great for Snacks.

Bulk Roasted Peanuts Lb. 79¢

Great for Parties

Bag Ice 10 Lb. 75¢

MILD FLAVOR

**Yellow Onions 10¢** Lb.

**Tide Detergent \$1.59** 84-oz. Box

Piggly Wiggly

**Potato Chips 59¢** 8-oz. Twin Pak Pkg.

Piggly Wiggly, Assorted Colors

**Paper Towels 39¢** 1 Ply 175-Ct. Roll

Piggly Wiggly,

**Ice Cream 88¢** 1/2-Gal. Ctn.

Piggly Wiggly, Frozen

**Whole Strawberries 73¢** 16-oz. Ctn.

**Gold Medal Flour 69¢** 5-Lb. Bag

Enriched

LIMIT ONE WITH \$7.50 PURCHASE OR MORE

**Crisco Shortning \$1.79** 3 Lb. Can

Piggly Wiggly, Grade A Large

**Fresh Eggs 69¢** Doz.

Nation Brand

**Coca Cola \$1.59** 32 OZ. Size

Piggly Wiggly, Regular Quarters

**Margarine 49¢** 1-Lb. Pkg.

Looking For A Convenient Holiday Gift Idea?

Give Piggly Wiggly Gift Certificates to friends, employees, and business acquaintances