

DID YOU EVER STOP TO THINK?

By EDSON R. WAITE
Shawnee, Okla.

That a city must plan wisely if it is to occupy its proper place in the world.

That in the development it must consider not only the present, but the future as well.

That a city must build upon a firm foundation in order that its institutions, industries and its population shall continue to grow.

That a city must have faith in its present and its future, and must keep alive its faith in a spirit of friendly cooperation.

That every effort must be made to develop the industries a city now has, as well as developing the resources of the city and its surrounding country to the fullest extent.

That a better understanding among citizens always makes a better city.

That nothing helps as much as helpful cooperation.

That most cities live in relation to the surrounding country, so the closest cooperation should be had between the city and the country—what helps one helps both.

That the more a city grows in the present day, the more does industrial promotion become an important factor in its growth.

The growth of industries means community growth. Help your city grow!

Twins, Born in Different States



Phyllis and Dolores Snyder are twins, though they were born in different states. Phyllis, left, was born to the mother, Mrs. William Snyder, near Hiawatha, Kas., and Dolores, right, was born after Mrs. Snyder had been taken to the hospital in Falls City, Neb., where the three are pictured above, and all doing nicely.

GEMS RECOVERED

By United Press.
ATTLEBORO, Mass.—Becoming accidentally mixed with rubbish, three diamonds, valued at nearly \$1,000, were tossed into the incinerator at a local manufacturing plant.

When the loss had become known, employees were ordered to search the ashes, and the gems, undamaged, were recovered.

Philadelphia is considering placing a memorial tablet in honor of General Smedley D. Butler, who was ousted as head of the police force by politicians because he tried to clean up the town. Adding insult to injury.

Newspaper agencies complain of a scarcity of good news pictures. Aren't there any more 106-year-old people to ride in airplanes?

Instruments Filed

Deed of trust, Vana W. Collins to Continental Savings & Loan association, 50x115 feet third subdivision, lot 1, block 0, Cisco, \$700.

Deed of trust, Sue Gracey Martin et vir. to Continental Savings & Loan association, part of block 1, Cisco, \$1,718.58.

Warranty deed, Hugh C. Mahaffey, part of northeast 1-4 section 27, block 4, H. & T. C. Ry. Co., H. C. Mahaffey and wife, 1-2 interest in same, \$10.

Assignment of oil and gas lease, C. M. Root to C. & S. corporation, south 1-2 of southwest 1-4 section 61, block 4, H. & T. C. Ry. Co., \$1.

Oil and gas lease, Claud McCauley et al. to C. & S. corporation et al., northeast 1-4 section 45, block 3, H. & T. C. Ry. Co., \$10.

Assignment of oil and gas lease, F. L. Smith et al. to Atlantic Oil Production Co., volume 3, page 186 surveyors record, Eastland county, \$1.

Assignment of oil and gas lease, F. L. Smith et al. to Atlantic Oil Producing Co., volume 293, page 297, \$1.

Abstract of judgment, A. M. Cross et al. vs. Montex corporation et al., \$19,713.41.

Abstract of judgment, Fakes & Co. vs. T. E. Brown.

Warranty deed, J. Z. Phillips to W. S. Self, lot 6, block 1, West Heights addition, Gorman, \$550.

Assignment, Texas company to Humble Oil & Refining Co., various leases in Eastland county.

Assignment, Ira J. Eley to Jas. W. Eley, southeast 1-4 section 1, block 4, H. & T. C. Ry. Co.

Deed of trust, A. C. Harrelson et ux. to the Federal Land Bank of Houston, north 1-2 of south-

west 1-4 section 33, block 3, H. & T. C. Ry. Co., \$800.

\$5,000 Damage Suit is Filed

In a suit filed in the 88th district court by B. L. Hargus against the Texas Electric Service Company, Hargus seeks to collect \$5000 for alleged damages to his land, a portion of which is covered with a pecan orchard. The construction of the Oil Belt Power Company Lake dam, Hargus contends, caused water in the Leon river to back up on his land and damage his pecan trees.



Why, It is Just as

New as the Day I Bought It!

Our drivers are accustomed to hearing this remark. For no matter how light the color, how soft the fabric, how deep the stain, we restore your summer clothes to their original freshness.

We clean sweaters, scarves, gloves, felt hats, pleated skirts, coats and sport jackets.

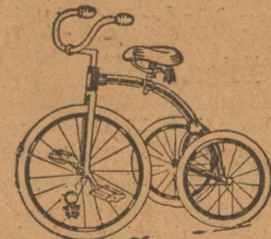
PHONE 498
for a driver.

Bill's Dry
Cleaning Plant

Headquarters for Santa Claus



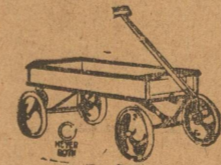
Toys—going fast, only a few more days, and then the fireworks.



Velocipedes, rubber pedal and ball bearing.



Pioneer Scooters. Foot brakes.



Bull Dog all steel wagons. Junior Wagons, rubber tires.



Baby Dolls, special price, 98c

VARIETY STORE
& FIXIT SHOP

203 Main Street



SPECIAL PRICES

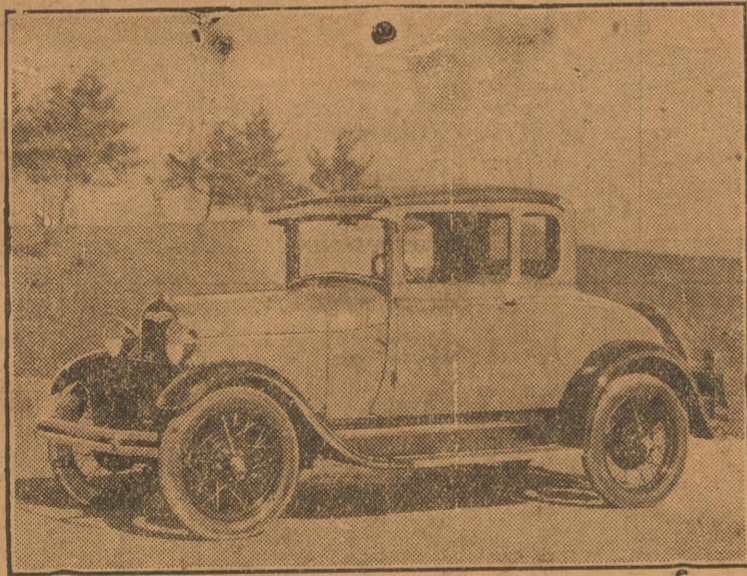
POTATOES	Ten pounds	18c
FLOUR	Golden Harvest, 24 lbs. 48 pounds79c \$1.57
Every Sack Guaranteed		
COFFEE	Maxwell House, 3 lb. can	\$1.43
ORANGES	Medium size, doz.	38c
TOMATOES	Full pack, 3 No. 2 cans	25c
MEAL	Fancy Cream, 5 pound sack	19c
DATES, DROMEDARY, PKG.	19c
PINEAPPLE—Sunkist Sliced No. 2, 22c; or Libby's Crushed No. 2		19c
PEACHES—Sunkist, Libby's, Del Monte, No. 2 1-2 can		19c
MIXED NUTS, pound		2c
EGGS, strictly number ones, doz.		43c
PEAS, Templar, early June, 2 No. 2 cans		25c
CORN—Templar, Extra Standard, 2 No. 2 cans		25c
RAISINS—Market Day, Seedless, 4-lb. bag		32c
COMET RICE 1 lb. package		11c
Comet Macaroni, spaghetti, vermicelli, 2 pkgs.		15c
SOAP, P. and G., Crystal white, 5 bars		18c
WALDORF TOILET TISSUE, 3 rolls		19c
PUMPKIN, No. 2 1-2		14c
PORK ROAST	Lean Shoulders, lb.	19c
SLICED BACON	Our special, 3 lbs.	98c
SALT PORK, LB.		18c
HAM	Country cured, half or whole, pound	33c
FAT MACKEREL, each		15c
DRESSED TURKEYS		

This year give the family a new model A



IMMEDIATE DELIVERY
ANY MODEL

What gift could bring more joy . . . more contentment . . . and to every member of the family than the new Model A Ford?



WE HAVE arranged whereby we can deliver to you anytime between now and Christmas or on Christmas morning itself, if you prefer, any body type of the new Model A Ford Coupe, Sedan, Roadster or Touring Car, on the easiest terms in Texas and we will be glad to accept your old car in trade.

PHONE now for our salesman to give you a demonstration or visit our show room and inspect the new models. Then make your wife, mother or sweetheart happy with a Ford Christmas gift.

AUTHORIZED FORD AND
LEVEILLE-MAHER MOTOR CO.
 FORDSON DEALERS
 RANGER, TEXAS PHONE 217

