

Bailey County Journal

"The Community of Opportunity — Where Water Makes the Difference."

VOL. 3 — NO. 47

8 PAGES

Published Every Sunday At Muleshoe, Bailey County, Texas — 79347

TEMPERATURES		
	High	Low
Nov. 17	73	36
Nov. 18	56	36
Nov. 19	72	39
Nov. 20	77	35
	Sunrise	Sunset
Nov. 21	7:25	5:42
Nov. 22	7:35	5:41
Nov. 23	7:26	5:41
Nov. 24	7:27	5:41

Hurry! Money for US 84 Apportioned

Our Road Gets \$1.2 Million in New Funds



Richland Hills Parent-Teacher Association at its meeting this past week voted to sponsor a drive for greater caution on the part of motorists operating in the area of school buses. The P-TA recommended "that the Muleshoe patrol check the traffic on our highways during the loading and unloading of students and use publicity... to caution drivers on the enforcement of state laws on this matter."

J. A. Cox of Fry & Cox, Inc., Muleshoe, attended the 1966 preview of Minneapolis-Moline tractors and farm machinery in Plainview recently.

Oscar L. Crain, district engineer of the Texas Highway Department, Lubbock, informed The Journal Saturday that THD now has a new film which is available for loan to clubs, schools and other groups. The film, running 28 1/2 minutes, is entitled "Texas — the Land of Contrast" and is the first of a series of films which will be produced to advertise tourism and travel in Texas.

Victor Cox, Muleshoe horse and mule fancier, has acquired two new blooded animals, he said Saturday. They are Speeding Goddess, an English Thoroughbred imported from England, and an Appaloosa stallion, Chief Joseph.

Most Muleshoe firms will close for Thanksgiving Day next Thursday, a check made by the Journal Saturday revealed. Drygoods, hardware and auto stores all plan to close, and most groceries, also will not be opened, an early check revealed. All government offices — city, county, state and federal — will be closed and no mail delivery is planned. Box patrons, however, will receive their mail at the post office as usual. Schools will be closed until the following Monday.

Muleshoe's Christmas lights will be turned on with ceremonies next Friday night as the Christmas season officially gets under way. The lights are being put in place by city employees.

Murray Lemons, owner of Murray's Jewelry here, has bought Muleshoe Jewelry. It was announced this past week.

Southwest Irrigation Co., a newly-organized Texas Corp. has acquired the business and assets of Brown Irrigation Supply Co., and will conduct the business under the Southwest name.

Muleshoe Rebecca Lodge are — See MULESHOE, Page 5 —

Jaycees to See Atomic Movie

Muleshoe Jaycees at their luncheon tomorrow will view a film on atomic explosions and how they effect buildings, according to Kenneth Henry, president.

The Elmore Terry Construction Co., Lubbock, will exhibit film. The company has had much experience in construction of public buildings, including community buildings. The Jaycees here are promoting a community center structure for Muleshoe.

THIS HWY. IS KNOWN AS

KILLER

BUILT BY BAILEY CO. & STATE

DON'T BE ITS NEXT VICTIM

"information by Jaycees"



SOON IT CAN COME DOWN! — Muleshoe Jaycee member Terrell Johnson is just trying out the ax for size in this picture, but it won't be too long until the "Killer 84" sign west of Muleshoe can be eliminated — money to widen the sneaky road has been appropriated. The

killer sign was erected last year by Muleshoe Jaycees, and of it District Highway Engineer Oscar L. Crain said Saturday. "Well, if the Jaycee sign saved one traveler's life, it was worth the embarrassment."

Cotton Farmers May Buy, Sell Cotton Allotments If Proposed Cotton Program is Approved Tuesday

When Bailey county cotton farmers trek to the polls next Tuesday to vote in a nationwide cotton referendum they will vote on two yes-no-issues:

1. Are you in favor of marketing quotas for the 1966 crop?
2. Are you in favor of transferring upland cotton allotments by sale or lease to farmers in another county in this state during 1966, 1967 and 1968?

Oldsters Ready For First Party; 150 Expected

Older folk in Bailey county who are getting together next Saturday by Charles Daniel, ASCS office manager here, who announced voting places for next Tuesday's referendum. He said that the Bailey county allotment, if approved, will be 95,297 acres during 1966, or approximately 1 percent less than last year. This does not, however, include sale or leasing of county which will be possible if the second provision on the referendum ballot is approved.

Here's where voting will take place Tuesday:
At the ASCS office on Ave. D, the Beck Gin, the West Camp-Maple Co-op Gin, the Bailey County Gin Co. at Baileyboro; Young Bros. at Bala and the Gates Gin Co., Orce-

back.
Average totals have been announced for the entire cotton production area of the United States by Secretary of Agriculture Freeman, Plains Cotton Growers, Inc. pointed out that the total acreage for its 23 county territory will be 2,122,770 for 1966 as compared with 2,135,624 this season.

Total acreage for Texas has been announced earlier at 6,833,432 acres, almost the same as the 6,835,945 for 1966.

The slight 12,854-acre cut in

the Plains allotment (just over one-half of one percent) was the result of a different acreage-reserve formula used in dividing the state allotment among counties. In past years, the state ASCS committee has held 10 percent of the state's total allotments, then reapportioned those allotments to counties which had planted all of their acreage. The previous year, consequently, the High Plains was allocated a part of this 10 percent.

This year, the state commit-

tee simply divided the entire state allotment among counties on the basis of cotton history. However, the small reduction will have very little effect when spread to individual farms, PCG pointed out.

— See FARMERS, Page 5 —

It All Started Back In 1961

(Editor's Note: The cut is in sight for a five-year drive to widen U. S. 84-70 west here to the Farmer county line. The THD has announced allocation of \$1.2 million for construction of the road. The Journal asked County Judge Glen Williams to recall the history of the project. The article below is presented in answer to that request.)

By Glen Williams
County Judge

Following a series of accidents in which several people

were killed and several injured, the citizens of Bailey County on April 3, 1961, voted bonds in the amount of \$250,000 to provide funds to acquire and clear right-of-way for widening and four-laning Highway 84, northwest of Muleshoe to the Bailey-Parmer County line. On April 5th, following the election on April 3rd, the State was officially notified by the county judge that funds were then available which also urged that said work be commenced immediately.

A period of approximately two years elapsed before the survey

work was completed by the state and easements furnished the county. Easements were received in February of 1963. Because the right-of-way is being obtained under the 50-50 Right-of-Way Bill, in which the State to participate in 50 percent of the cost, based on approved values, it was necessary that the County have each parcel appraised by a state approved appraiser. The commissioner's court employed a Dan Naughton of Plainview in April of 1963 to do this work and he completed it in May of 1963.

— See 1961, Page 5 —

There's 'Medicare' Now for Everybody 65 or Over, But Only One-Fourth of Eligible Folk Sign Up Here

There's medical aid for persons 65 years of age or older if they want it — and for near-free.

However, Bailey county folk, apparently, are not too interested; only one-fourth of Bailey county's 65-plus bracket has filed for the newest medical help.

Which prompted Jim Latimer Saturday to remind Bailey county folk that "every American citizen and alien with permanent residence in the United States, who is 65 or will be 65 within the next three months is urged to file a claim for the government's new medical care program."

Latimer, field representative for the Lubbock Social Security Administration office, was in Muleshoe this past week, checking on such matters.

The field representative of Social Security said that many persons in this county need to sign up to get their claims processed in time to receive their insurance cards for "medicare." He was speaking of those men or women who are just coming up 65 or will be doing so within the next quarter-year.

He said that those who are

already age 65 and have received Social Security checks or old age assistance checks, should not get into any sweat; "they should delay their questions until later," he explained, "because those who are getting Social Security or old age assistance from the state will be contacted anyway."

But Latimer expressed concern, however, for those persons who are age 65 and do not draw either type of benefit — old age assistance or Social Security.

"Only one-fourth of the persons eligible for the govern-

ment's new medical care program have signed up for it in this county," he told The Journal Saturday.

Here's how the situation can be corrected: Persons who are 65 can write the district SS office, 3428 Ave. H., Lubbock, or they can drop by the office there.

Or, persons may contact Latimer when he is in Muleshoe every second and fourth Wednesday in the month. He sets up his temporary office in the commissioner's room in the courthouse.



CHRISTMAS AGAIN? — While the thermometer bumped into a warmish 70 Thursday, Muleshoe city employees started putting up Christmas decorations in downtown Muleshoe. The "turn-on" is slated for next Friday night, Nov. 26. (Journal Photo)

Arts Boosters Selling Cakes

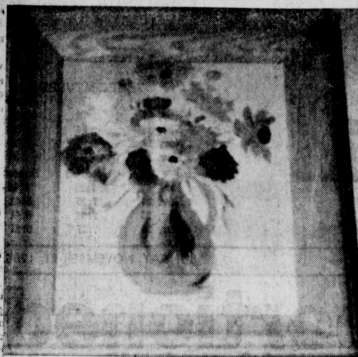
The bumpy little stretch of road had inspired much sarcasm, and a newsman had journeyed here to find out why area folk branded it "Killer 84". In fact, the Muleshoe Jaycees some time ago erected a road sign, warning travelers of the road's "killer" reputation.

But, Crain pointed out, all that appears to be nearing an end, and he added: "If that Jaycee sign, for instance, caused any traveler to exercise caution which he might not otherwise have shown, then I'm glad the sign was put up."

Widening of U. S. 84 (which

also doubles as the route for U. S. 70 from here to Clovis) will leave only one little stretch of 84 between Lubbock and Clovis as two-lane.

— See MONEY, Page 5 —



NINE YEAR OLD — Lessa Sandelin has this particular painting hanging in the hall-way of the Green Memorial Hospital. Leese is 9 years old and is a student of Mrs. Leonard Evans. (JP)



BIRD SCENE — Mike Glover, 7 years old and a student at Richland Hills Elementary School, has this painting hanging in the hall at the Green Memorial Hospital. Mike is a student of Mrs. Leonard Evans. (JP)

P-TA Requests Highway Check

Mrs. Elizabeth Watson presented a film "If These Were Your Children" and discussed the topic "Developing a Community Climate for Education." The invocation was given by the Rev. Troy Walker at the Monday meeting of the Richland Hills P-TA.

Mrs. Jack Young and Mrs. Don Chahk, third grade representatives, served coffee during hospitality time.

The unit voted to recommend that the highway patrol check the traffic on our highways during the loading and unloading of students and use publicity in the newspaper and on the radio to caution drivers on the enforcement of state laws on this matter.

There was a three-way tie between Mr. Sparks, Mrs. Lambert and Mrs. Witherspoon on room count.

Next meeting for the Richland Hills P-TA will be Jan. 17 in the Cafatorium with Mrs. Eugene Black as director. The program will feature Joe Adams, Carol Haire and Connie Connell.



STUDY CLUB DINNER — Members of the Muleshoe Study Club and their guests enjoyed a Thanksgiving dinner at Mr. and Mrs. Rufus Gilbreath's home Thursday night. Here the guest speaker,

the Rev. Robert Beck, Lubbock, is shown talking with Mrs. Gilbreath, and Mrs. Ray Martin, the club president; Mrs. Cecil Cole and Mrs. O. N. Jennings (JP)

Successful Cake For Bakers 5

The Bakers 5 prepared a two-layer cake at their meeting Tuesday. The meeting held in the home of their adult leader, Mrs. Clarence Mason proved to be good at baking cakes, as their cake was successful.

Present for the meeting were Kathy Pena, Charlotte Wedde, Linda Mason, Tam Murrah and Andrea Hicks.

Next meeting for the girls will be Dec. 7 in Mrs. Mason's home.

Sonja Bass Aids In Conferring Rainbow Rite

Annual observance of the Grand Cross of Color, an honorary degree in the Order of the Rainbow for Girls, was held in Plainview Tuesday evening with an attendance of approximately 45 members.

Grand officers assisting were Sonja Bass, Muleshoe, Grand Fidelity; Mrs. Mary Walden Grand Worthy Advisor, Mrs. Ben Quebe, Plainview, Grand Visitor; and Linda Langston,

Pauline Jamison Circle President

Pauline Jamison will serve as president of the morning circle of the First Baptist Church W. M.U. for the new year. The Circle met in the home of Mrs. Horace Blackburn Tuesday morning at 9:30 to organize for the new year.

Beatrice Blackburn will serve as secretary, Wanda Lewis, program and publications; Mildred McDaniel, prayer; Ruth Williams, mission study and publicity; Ethel Alison, enlistment; Beatrice Inman, social and Sadie Howard, community missions.

"The Ray Buster Circle" was chosen as the circle name.

The group decided to find twin missionaries with the same birthdays and to correspond with them.

Mrs. B. O. McDaniel was in charge of the circle program entitled "My Church - Hearing and Obeying." She was assisted by Pauline Jamison, Wanda Lewis, Ethel Alison and Ruth Williams.

Vickie Hendricks Is New Hobby Club President

Vickie Hendricks was elected president of the Hobby Club for the new year at their club meeting Tuesday in the club house here. Ola Pesch was elected vice-president; Edith St. Clair, secretary; Zora Mae Beller, assistant secretary; Zora Mae Beller, treasurer; Ola B. Jones, assistant treasurer; Dora Phipps, reporter and Mae Pattie, assistant reporter.

Vickie Hendricks displayed mosaic glass lamp globe and girls shoe bag at the meeting. Edith St. Clair showed porcelized flowers and bottles, Ethel Harding displayed a lunch cloth and check wagon apron; Vada Bartlett, net and felt tablecloth; Ruth Bass, cup towels; Mabel Caldwell pine cone decoration and antiques flowers.

The Christmas party will be held at the club house Dec. 21. Plans were made for this.

Hallie Briscoe received the hostess gift. Euna Mae Oswalt and Eva Dell Gillis led the group in two games.

Next meeting for the club will be Dec. 7 in the club house.

Present for the meeting were Lou Matthews, Zula Carlyle, Eva Dell, Gillis, Ollie Barbour, Hallie Briscoe, Ola Jones, Mae Pattie, Vickie Hendricks, Edith St. Clair, Kirk Kirk, Ethel Harding, Vada Bartlett, Verma Dement, Euna Mae Oswalt, Myrtle Chambliss, Mae Adkins, Ola Pesch, Ruth Bass, Mabel, Caldwell and Altha Hanks.

H.D. Council Re-elects Ada Murrah President

Ada Murrah was re-elected chairman of the Bailey Co. H. D. Council Wednesday in the First National Bank Community room. Patsy Shaffer was elected vice-president; Jaquita White, secretary-treasurer; and Delores Gaddy, reporter.

"Healing Hands" was read by chairman Ada Murrah for opening exercise.

A game was directed by Delores Gaddy with Jean Martin winning the prize.

Club reports were given by Lauretta Baker of Progress and Mary Presley for the new Muleshoe Club.

The agent reminded the council chairman, sec-tres, and THDA chairman of a training meeting Jan. 25 in Lubbock.

The club are asked to help with the senior citizen entertainment Monday at 2 p.m. in Methodist Fellowship Hall.

The THDA chairman reported the district meeting for 1966 will be in Seminole.

Present for the meeting were Ada Murrah, Lela Marlin, Delores Gaddy, Mary Presley, Phebe Gray, Myrtle Wells, Lauretta Baker and agent, Jean Martin.



Mrs. R. Taylor the former Elva Kelton

Mrs. R. Taylor Feted at Shower

Mrs. Russell Taylor was feted with a wedding shower at the First National Bank Community Room Monday from 7 to 9 p.m.

Mrs. Taylor is the former Elva Kelton, daughter of Mr. and Mrs. Omer Kelton. She was recently married to Russell Taylor of Smyer.

Mrs. Foster Creamer registered approximately 30 guests in a guest book off a table decorated with blue under white lace.

Kay Tiller and Donna Kelton served blue cake and fruit punch from a serving table carrying out the bride's chosen colors of blue and white and featuring a centerpiece of blue and white chrysanthemum.

In the receiving line was the bride and her mother who were presented corsages of blue and white chrysanthemums. The groom's mother was also presented a corsage.

The bride received many lovely gifts of which was the hostess gift of conning ware.

Hostesses for the shower were Rosalee Julian, Lena Kenney, Flo Mills, Alpha Neely, Zella Crenshaw, Opal Ruthards, Melba Copley, Caracian Hamilton, Edith St. Clare, Gladys Herman, Lucille Harper and Clara Mounts.

The bride attended Muleshoe High School and graduated from Isbell Pwells Beauty School in Lubbock. Taylor is a student at Texas Tech.

LCC Associates Hear Ann Little

Special guest, Ann Little, showed slides and gave an interesting talk on her trip to Europe last spring at the Lubbock Christian College Associates meeting. The group met Thursday at 7:30 p.m. in the Muleshoe State Bank Community Room.

A short business meeting was presided over by the president, Alma Monk.

Sixteen women were present, guests, Mrs. Little, Ruth Roberts and Banche Lenderson.

Refreshments were served to Mrs. Ernest Holland, Mrs. Jim Milner and Mrs. Gary Dale.

SHOP MULESHOE FIRST

AUCTION
Property of L. W. RHODES
OFFERED IN 3 TRACTS
— YOU SET PRICE!
Wed., Dec. 1 - 10 A.M.

On busy US 84, just 8 miles northwest of LUBBOCK, TEXAS, at Shallowater.

Go N.W. on US 84 to Shallowater. Property is at intersection of 4-lane expressway and Hwy. 179. In the heart of rich farm, oil, and industrial country. 110 mi. to Amarillo; 142 to Odessa; 110 to Big Spring; 90 to Clovis, N.M.

1. RHODES FLYING SERVICE
Many cash sources. Income from aircraft sales and service, hanger rental, crop dusting, charter service, pilot instruction. 2,000' paved East-West runway, 20' wide; 1,900' North-South strip, plus 2,600' NW-SW strip. Steel hangers, shops, office-lounge, etc. Tools, equipment offered separately.

2. PRIZE 110-ACRE IRRIGATED FARM
Bonus yields from fertile land. 59-acre cotton allotment; 10-acre wheat allotment. 67-acre grain and sorghum base. Good home plus storage facilities. Well and lake site. Preferred location. Great industrial & residential potential. Rolling stock, farm equipment going!

3. 700' ON US 84 — Commercial Sites.
(Offered in 3 Separate Tracts)
Prize highway frontage ready to develop for motel, service station, etc. Many gain factors. Buy this choice property, hold for increasing value. Capitalize on airport, highways, etc. Check this property now, then come to the auction.

BROCHURE shows pictures, gives full details. Call or write.
G. C. WALTERS, Jr. & Assocs.
Auctioneers - Appraisers - Liquidators
3707 Rawlins (Suite 325) Ph. LA 8-5710
DALLAS 19, TEXAS
INSURED - LICENSED — BONDED
NOTICE: If You Have Property You'd Like To Sell, Contact Our Office!

SHOP MULESHOE FIRST

\$100.00 FOR YOUR OLD HEATING SYSTEM WHERE YOU SEE THIS SIGN

SOUTHWESTERN PUBLIC SERVICE COMPANY
REDDY KILOWATT RECOMMENDED

ELECTRIC HOME HEATING DEALER

See your Reddy Kilowatt Recommended Electric Heating Dealer NOW and ask him about this exciting trade-in offer. You'll find the ideal way to heat your home is with clean, quiet, dependable electricity. Individual room control gives you comfort at your fingertips and the cost is less than you think, thanks to Reddy's low electric heating rate

★ ★ THESE DEALERS WILL SHOW YOU HOW YOUR HOME CAN QUALIFY ★ ★

- | | | | |
|---|--|--|---|
| <p>IN AMARILLO
Brooks Electric
121 South Bonham
Frost Air Conditioning & Heating Co.
2008 West 1st</p> <p>IN ARTESIA
Al's Electric Company
205 North 8th
Artesia Electric
208 West Main
Swift Service Company
1109 Hermosa Drive</p> <p>IN BOISE CITY
B & D Supply
Boise City, Oklahoma
Fincher Appliance & TV
Boise City, Oklahoma</p> <p>IN CANYON
Wayne Wirt Electric
Canyon, Texas</p> <p>IN CARLSBAD
Beaver's Neal Pump Electric
2011 West Texas
Carlsbad Electric
1004 West Pierce
The Electric Shop
622 West Mermod
Hammer Town and Country
Estates
607 North Canal
Mermod Electric
212 S. Main
Pecos Valley Mechanical
Contractors
327 S. Canyon</p> | <p>Service Electric
Hobbs Highway
Yeager Plumbing Company
3082 Tenthill</p> <p>IN CLOVIS
Clovis Electrical Engineering
2321 Mandell Circle
Insel-Guard Products Co.
215 Curry Avenue
Myers Electric Company
613 West 18th Street</p> <p>IN DALHART
Delano Refrigeration & Appliances
Dalhart, Texas
Moon Plumbing & Heating Co.
Dalhart, Texas</p> <p>IN DEXTER
Dexter Electric Shop
Dexter, New Mexico</p> <p>IN DUMAS
Sanders Electric Company
Dumas, Texas</p> <p>IN FARWELL
Crume Electric Company
608 3rd</p> <p>IN FLOYDADA
Hammond Sheet Metal
205 N. 5th Street</p> <p>IN GUYMON
Air Comfort Company
Guymon, Oklahoma
Guymon Sheet Metal Company
607 East 4th
Sparks Electric Company
Guymon, Oklahoma</p> <p>IN HALE CENTER
White Auto Store
229 W. Cleveland</p> | <p>IN HERFORD
Brown Sheet Metal
191 Windsor
Owens & Hollingsworth
Herford, Texas</p> <p>IN LEVELAND
Chamberlain Electric Company
2503 Brownfield Highway
Jackson Electric Company
309 8th Street
Sinclair Electric Company
1212 9th Street</p> <p>IN LITTLEFIELD
Cox Tin & Plumbing
314 E. 12th St.
Littlefield, Texas</p> <p>IN LUBBOCK
Anderson-Young Electric
Company
2902 Clovis Road
Del-Mar Heating & Air
Conditioning Equipment
Brownfield Highway
A. V. Geary
2082 Avenue A
Wayne's Heating & Air
Conditioning
6289 34th Street
Wayne Taylor Company, Inc.
2414 Avenue E
Wayne's Heating & Air
Conditioning
508 Avenue N
Joe Rushing Plumbing Company
2405 1st Street</p> <p>IN MULESHOE
Given's General Construction & Appliance Company
123 W. American Blvd.</p> | <p>Thomas Electric
230 W. 2nd St.
Muleshoe, Texas</p> <p>IN PAMPA
Brooks Electric Company
Pampa, Texas</p> <p>IN PLAINVIEW
Hodges Electric Company
2009 8th St.
Kelly Refrigeration & Electric Company
402 Broadway
Finney Sheet Metal Company
2113 N. Chicago
Perry Electric Company
P. O. Box 745</p> <p>IN ROSWELL
Burnworth-Coff
609 N. Virginia
Halo Electric Company
619 N. Main</p> <p>IN SEMINOLE
Forest Lumber Company
201 Avenue B Southeast</p> <p>IN SLATON
Slaton Electric Company
Slaton, Texas</p> <p>IN STRATFORD
Beall's Refrigeration Service
Stratford, Texas</p> |
|---|--|--|---|

YOUR HEATING DEALER WILL GIVE YOU AN ESTIMATE BEFORE DOING THE WORK. • INSTALL A TURKEY JOB! • ARRANGE EASY FINANCING! • GUARANTEE EQUIPMENT AND WORKSMANSHIP! • GUARANTEE OPERATING COST.

Total ELECTRIC Living

654

New Industry Is Study Theme For Sudan Club

By Evelyn M Scott
 SUDAN — Charles Hollis, manager of the Rals Tex Mill Inc., of Rals was guest speaker at the meeting of the 1965 Sudan Club Monday evening in the home of Mrs. J. W. Olds.

"New Industry" was the subject topic for the program and the motto was "In Every Rank, both great and small, it is industry that supports us all".

Mrs. Sara Woods, program director, introduced Mr. Hollis.

The Thanksgiving motif was used and refreshments of pumpkin pie and coffee were served.

Present were Mrs. Woods, Mrs. Weaver Barnett, Mrs. R. S. Gatewood, Mrs. W. E. Hancock, Mrs. Wesley Hargessheimer, Mrs. C. E. Nichols, Mrs. R. D. Nix, Mrs. J. S. Smith, Mrs. F. M. Smith, Mrs. Gordon Taylor, Mrs. F. W. Watts, Mrs. S. D. Hay.

Among those from Sudan attending homecoming at Abilene Christian College were Mr. and Mrs. Weaver Barnett, who visited their daughter Kathy. Also going were Mr. and Mrs. E. B. Hutchinson. While there the Barnetts and Hutchinsons were the homecoming game between Trinity University and ACC, and also attended the musical, "Camelot". Mr. and Mrs. Barnett visited in Ballinger, with his sister and husband, Dr. and Mrs. Charles Bailey.

Mrs. Jean Crouch, Travis and Carla, visited during the weekend in the home of her parents, Mr. and Mrs. W. T. Verren. Mrs. Crouch was here to attend the homecoming activities.

Mrs. Don Goodyear of Arlington, who was here to attend homecoming activities, visited her mother, Mrs. Muriel Crouch, during the weekend.

Mr. and Mrs. E. A. Jenkins of Levelland visited during the weekend with Mrs. W. E. Shaffer.

Mr. and Mrs. R. S. Wilkinson and children of Friona visited during the weekend in the home of Mr. and Mrs. Glyn Williams.

Mrs. Jack Riley led the continued study from the Book of Acts at the meeting of the WSCS held Monday morning at the First Methodist Church. Her topic was "Who the Church? What the church? Where is the Church? and to Thank it as Fellowship and Institute".

Those appearing on the program were Mrs. Bruce Newman and Mrs. Matt Nix.

Present were Mrs. Riley, Mrs. Newman, Mrs. Nix, Mrs. Jay House, Mrs. Weldon Shaffer, Mrs. Shelby Morris, Mrs. C. M. Furneaux, Mrs. F. W. Watts, Mrs. J. S. Smith, Mrs. A. Pin-

keaton, Mrs. Tray Gaston, Mrs. J. E. Dryden, Mrs. T. B. Ader, Mrs. Radney Nichols, Mrs. Ralph May, Mrs. Gladys Glenn. Mrs. Sara Woods was in Midland during the weekend to attend a Women Bankers meeting.

Mr. and Mrs. Harlon Reese visited relatives in Comanche recently. They accompanied Mr. and Mrs. E. L. Martin of Los Angeles and while there were at Lake Proctor.

J. W. Olds and Ed Williams were at Lake Proctor this week fishing.

Mr. and Mrs. Jim Eddins and son have returned to Crosbyton, and Mr. and Mrs. Bill Eddins have returned to their home in Hurst after being here during the illness and death of their mother, Mrs. W. O. Eddins. Luncheon guests Sunday in the home of Mr. and Mrs. C. E. Nichols were Mr. and Mrs. R. S. Gatewood, Mr. and Mrs. Joe Foster, Mrs. J. S. Smith.

A luncheon meeting was held Monday when the WMU met at the First Baptist church for the Community Missions project, preparation of cloths for community Missions; also a Missions program was presented.

Mrs. R. E. DeLoach, Missions Study Chairman, led the afternoon program "Which Way Brazil?".

A luncheon meeting will be held by the group next Monday and the Missions program will be held in the morning, with work in the Community Missions room conducted in the afternoon.

Those present were Mrs. Max Bulloch, Mrs. DeLoach, Mrs. J. P. Arnold, Sr., Mrs. Halbert Harvey, Mrs. Robert Harvey, Mrs. Oscar Vinson, Mrs. Lester Shanks, Mrs. L. F. Meeks. Members of the TEL Sunday School Class, First Baptist church, were entertained with a Thanksgiving Dinner and business meeting Tuesday evening, Nov. 9, in the home of Mrs. Clovis Bridwell. Co-hostesses were Mrs. Clyde Chappell, Mrs. Curtis Savage.

Mrs. Frank Rome gave the devotional theme "Thanksgiving".

Others present were Mrs. James P. Arnold Sr., Mrs. Tommy Cate, Mrs. O. D. Chester, Mrs. T. W. Dunaway, Mrs. Wayman Gordon, Mrs. W. E. Hancock, Mrs. J. C. Jones, Mrs. Nolan Parrish, Mrs. Gann Rork, Mrs. Luma Snow, Mrs. J. A. Williams, Mrs. Halbert Harvey, Mrs. John Barnett, Mrs. Moses Padillo, Mrs. Oscar Vinson, and a guest, Mrs. Percy Harlin, Springlake.

Mr. and Mrs. J. W. Olds were in Lubbock Friday afternoon to attend the Monterey-Plainview High school football game.

Charles Radney Nichols, student at West Texas State University, was home during the weekend to visit his parents, Mr. and Mrs. Radney Nichols, Mr. and Mrs. Joe Price and family visited during the weekend in the homes of their parents, Mr. and Mrs. Tray Gaston and Mr. and Mrs. L. B. Price.

The Rev. and James P. Arnold Jr., and son visited Saturday in the homes of their parents, Mr. and Mrs. J. P. Arnold Sr. and Mr. and Mrs. L. F. Meeks. They were dinner guests in the Meeks home.

Mrs. A. K. Boyd of Seymour, who was here to attend Sudan Ex-students and teachers homecoming Saturday, was a house



45 SMITH
JIMMIE C.

ASSIGNED — Airman Jimmie C. Smith, son of Mr. and Mrs. Herman C. Smith, Mulleshoe, has been selected for training at Amarillo AFB as an Air Force supply specialist. He is a 1963 graduate of Springlake High school and attended Lubbock Christian College. He recently completed basic training at Lackland AFB. (Air Force Photo)

guest in the home of Mr. and Mrs. W. V. Terry.

Mr. and Mrs. R. D. Nix entertained with a fish fry Thursday evening when those present were Mr. and Mrs. W. E. Terry, Mr. and Mrs. L. E. State, Mr. and Mrs. Matt Nix and Debbie, Mrs. W. H. Lyle, Mrs. S. D. Hay, Mrs. C. M. Furneaux, Bill Nix, Tim and Nancy Nix.

Among those in Lubbock Saturday afternoon to attend the Tech-Baylor game were Mr. and Mrs. Guy Walden, Mr. and Mrs. W. V. Terry, Mr. and Mrs. Doyle Watkins, Mrs. Jacky Van Ness, Mr. and Mrs. F. M. Smith, Mr. and Mrs. Radney Nichols, Mrs. W. H. Lyle.

Mr. and Mrs. Dennis Jones of Littlefield were dinner guests Wednesday evening in the home of Mr. and Mrs. W. V. Terry.

Mr. and Mrs. Guy Walden returned Friday from Quanah where he attended a bank directors meeting.

Edward Fisher, Robert DeLoach and Jacky Van Ness were in South Texas last week on a hunting trip.

Judi West, daughter of Mr. and Mrs. Richard West, was ill and confined to the hospital in Amherst last week.

Mrs. Lorene Gallman and children of Lazbuddie visited Saturday in the home of Mr. and Mrs. Joe Rome.

Frank Lane was named president of the Ex-students and Teachers organization at the annual homecoming held Saturday evening in the school cafeteria. Others named to serve with him were Buddy Joe Wiseman, vice president; Mrs. Bobbie Jack Markham, secretary.

Outgoing officers are Waymon Belar, president; W. B. Jones, vice president; Betty Masten, secretary.

Something new this year was the crowning of a homecoming queen. Mrs. Mildred Lynch Hevern of the graduating class of 1943 was crowned homecoming queen at the ePop Rally Friday afternoon. Miss Leta Warren was named homecoming queen of Sudan high school.

Honor classes at the meeting were the 1942 and 1943 classes.

Those present from the 1942 class were Evelyn Verren Hines, Littlefield; Mary Lena Parmer Maxwell, Betty Joe Withrow, Betty Hardy Milton, Littlefield.

LATE WANT ADS

FOR SALE: Nice three bed room, 2 baths and den. Well located. Close to schools, town and church. Brand new. See Paul Ins. or call 272-4331 or 272-3139. 8-47s-4fc

FOR SALE — 69½ acres irrigated land approx. 40 miles SE of Mulleshoe. 1 - 6" well — full pipe. Located on U. S. Highway 84. 32 acres of cotton allotment. Production Credit Assoc., 512 Hall Ave., Littlefield, Texas. 8-47s-4fc

FOR RENT: Unfurnished apartment. Adults only. 319 West Ave. E. 5-47s-4fc

FOR SALE: Three bedroom home. Eleven apartments — or will sell seven apartments. All this is on one block North Mulleshoe. Pays 15 percent. Better look this over. Call C. E. Briscoe. 272-3465. 8-47s-4fc

Ranch in N. Mexico, will trade or sell. Irr. and dry land farms to sell or trade. Priced right. Nice brick homes and others. Appreciate your listings. Ernest E. Holland Real Estate, 121 American Blvd. Phone day or night 272-3293. 8-47s-4fc

Large 3 room and bath, furnished or unfurnished apartment for rent. Call 272-3465. 5-47s-4fc

For Rent — Trailer house. Bills paid. Forbes, 306 W. 2nd. 4-47s-4fc

From wall to wall, no soil at all, on carpets cleaned with Blue Lustre. Rent electric shampoer \$1. Higginbotham — Bartlett. 15-47s-3tc

field. The class of '42 had as their guest, Mrs. Sylvia Smith Listen of Lorena, a class teacher. Mrs. Hinson read the class prophecy and Mrs. Melton read the class will.

Present from the '43 class were Bonnie Qualls Mann, Littlefield; Frank Lane, Ellowita; Rudd Ridgell, Odessa; Mildred Lynch Hevern, Honor guest for this class was Mrs. Inez Boyd of Seymour who served as teacher in the Sudan Schools from 1929-43.

Reading the class of '43 will and prophecy was Bonnie Qualls Mann.

Edna Crouch Goodyear of Arlington was recognized as coming the farthest distance to attend the event.

Visiting during the weekend and the first of the week in the home of Mr. and Mrs. Jinks Dent were her brother and wife, Mr. and Mrs. M. K. Rector of Stamford; Mr. and Mrs. John Marcum of Mammoth, Ariz. Mr. and Mrs. Dent were guests last Thursday night in the home of Mr. and Mrs. J. V. Boudin in Friona.

Members of the Sudan sewing Club were in Clovis Thursday for a Thanksgiving luncheon.

Members of the Sudan sewing Club were in Clovis Thursday for a Thanksgiving luncheon.

LEGAL NOTICE

NOTICE TO BIDDERS
 THE STATE OF TEXAS,
 COUNTY OF BAILEY.

NOTICE IS HEREBY GIVEN that the Commissioners' Court of Bailey County, Texas, will receive bids until 11:00 o'clock A.M. on the 2nd day of December, 1965, at the Courthouse in Mulleshoe, Texas, for the purchase of the following described road machinery and equipment:

One (1) used diesel powered tandem drive motor grader, a 1961 or later model, to be equipped with not less than a 115 horsepower motor, 14 foot blade, cab heater and lights.

AS PART PAYMENT Bailey County offers to trade-in: One (1) used Caterpillar, Number 12 motor grader, serial number 80C8007.

Said machinery and equipment to be delivered properly serviced in Bailey County, Texas.

The balance of the purchase price of the above mentioned road machinery and equipment will be paid for in cash out of the Bailey County Precinct No. 1, Road and Bridge Fund.

A cashier's or certified check, issued by a Texas Bank, payable without recourse to the order of Glen Williams, County Judge of Bailey County, Texas, in the amount of five (5 percent) per cent of the amount of the bid must accompany each bid as a guarantee that if awarded the contract the bidder will promptly enter into contract and execute bonds in the amount and the form required by law.

The Court reserves the right to reject any or all bids.

(5) Glen Williams, Glen Williams, County Judge, Bailey County, Texas 46s-24c

Gilbert H. Grosvenor, whose lifetime of work with National Geographic earned him the title "Geographer to Millions," was 90 on Oct. 28. He retired in 1954 as president and editor of the National Geographic Society but remains active as chairman of the board of trustees.

Present from the '43 class were Bonnie Qualls Mann, Littlefield; Frank Lane, Ellowita; Rudd Ridgell, Odessa; Mildred Lynch Hevern, Honor guest for this class was Mrs. Inez Boyd of Seymour who served as teacher in the Sudan Schools from 1929-43.

Reading the class of '43 will and prophecy was Bonnie Qualls Mann.

Edna Crouch Goodyear of Arlington was recognized as coming the farthest distance to attend the event.

Visiting during the weekend and the first of the week in the home of Mr. and Mrs. Jinks Dent were her brother and wife, Mr. and Mrs. M. K. Rector of Stamford; Mr. and Mrs. John Marcum of Mammoth, Ariz. Mr. and Mrs. Dent were guests last Thursday night in the home of Mr. and Mrs. J. V. Boudin in Friona.

Members of the Sudan sewing Club were in Clovis Thursday for a Thanksgiving luncheon.

Dinner Enjoyed By Study Club

A traditional Thanksgiving dinner with all the trimmings was held at the home of Mr. and Mrs. Rufus Gilbreath Thursday, with Mrs. Les Bruns as co-hostess. The Study Club and their guests were present along with special guests, Mrs. Don Glass, Mrs. Glenn Chisum and daughter, Gil and Maggan Lamb, Roy Davis, Rev. and Mrs. Robert Beck, and Mrs. Effie Bray, honorary life member.

Tables were carried out in the Thanksgiving theme with orchid and yellow used for colors. Arrangements of orchid and yellow mums and candles on tables were used. On the head table was a gold and white corded cloth from Jordan.

The Rev. Beck gave the invocation and was introduced by Mrs. Gilbreath who gave a talk on what Americans should be thankful and showed colored slides on beauties of our country; family Thanksgiving and other Thanksgiving scenes. Rev. Beck gave appropriate narration as he showed the slides.

Approximately 30 members with their husbands and guests enjoyed the dinner.

Ruby Ward, TOPS Queen

Ruby Ward was given a gift and the crown for the week at Thursday night's TOPS meeting. The club met in the Bailey County Community Room with the leader, Cecile Cunningham in charge of the meeting.

Countesses for the week were Bobbie Mimms and Anna McDonald.

The pledge and fellowship song were observed and a new member was welcomed into the club, Nina Rian.

The regular Thursday night meeting will probably be changed until Friday night, according to Frieda Foss, if the room can be reserved. Mrs. Foss points out that the meeting is a very important one as officers for the new year are to be elected by secret ballot and all members are to be present.

Side one is ahead in the salad

Leland Ferris Will Perform In Piano Solos

Mrs. A. M. Bradley will be presenting 16 of her piano pupils in "rythm" at Tuesday night's monthly class meeting. The meeting will be in Mrs. Bradley's studio.

Solos, ensembles, piano numbers of solos and ensemble playing and Thanksgiving singing will be featured.

Guest pianist will be a junior high student, Leland Ferris. He will perform at the piano with "Dear Heart" and "Exodus".

All interested persons are invited to attend according to Mrs. A. M. Bradley.

WMS Discusses Indonesia

By Mrs. H. W. Gary
 THREE WAY — The Woman's Missionary Society of Maple Baptist Church met in the home of Mrs. E. M. Lowe Tuesday for a mission program led by Mrs. C. A. Petree. The theme was on Indonesia.

Prayer calendar was read by Mrs. D. L. Tucker and Mrs. Tucker led the prayer.

Coffee and cookies were served to Mrs. A. E. Robinson, Mrs. Denzie Heard, Mrs. C. A. Petree, Mrs. D. L. Tucker and Mrs. E. A. Wright.

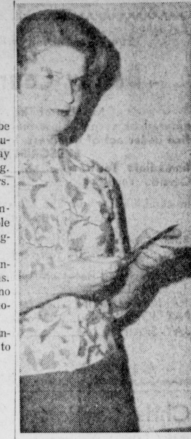
A products party was held Friday afternoon at the Paul Powell home when Mrs. Sikes, Lubbock, was the demonstrator. Mrs. Rayford Masten is the representative in this area.

Mrs. Dess Stafford, county treasurer, Mulleshoe, visited in the Paul Powell home Friday afternoon.

Mr. and Mrs. Carroll Fleming and son, Littlefield, and Mr. and Mrs. Elvia Fleming Morton were Sunday guests in the H. W. Garvin home.

Mrs. Bush Toombs had her guests this past week her contest.

Games were played and the goodnight song was observed.



\$100 WINNER — Mrs. George Washington Mulleshoe, was winner of the \$100 Piggy-Wiggly Cash Club card last week.

brother and his wife, Mr. and Mrs. W. G. Burns, Austin, Mr. and Mrs. Carl Miller and daughter spent the weekend visiting her father, Gravin Long, at Maple, and her mother, Bonnie Long at the Methodist Nursing Home.

Mr. and Mrs. Jack Reeves and children visited her parents' Mr. and Mrs. Joe Hodges in Whiteface Sunday.

Mr. and Mrs. R. L. Reeves visited with their daughter and the Dutch Harrisons, in Arch, N.M. Sunday.

Mrs. Johanne Wheeler is spending a few days with her grandchildren at West Camp where the Joe Wheelers are in Dallas.

Halloween note: Correct specifications for a witch's broomstick call for a handle of ash to protect the witch from drowning; a brush of birch twigs to harbor evil spirits, and abiding of willow in honor of Hecate, the Goddess of Magic.

— SHOP MULLESHOE FIRST —



Time for a KitchenAid dishwasher

There are for more important things to do than dishes. Now is the time to buy a KITCHENAID PORTABLE DISHWASHER.

- No installation. Use it right now.
- Automatic Lift Top Rack.
- Three push button cycles.
- Porcelain enamel inside and out.
- Exclusive KitchenAid 4-Way Wash and Flip-Thru drying performance.
- Proven KitchenAid dependability.
- Edged Colomation or White.

PUS MANY MORE OUTSTANDING FEATURES Don't be latched from the best... KitchenAid.

JOHNSON-POOL FURNITURE and APPLIANCE

IRRIGATED FARM LAND WITH FUTURE
 640 or 2 -- 320 Acres. 4 Miles West of Mulleshoe... 7 full 8" Wells with pumps. \$360. PER ACRE

480 Acres West of Mulleshoe City
 Limits with One Mile Frontage on Clovis Highway. Lays Perfect with 3 Full 8" Wells and Pumps. 180 Acres Alfalfa... 195 Acres Ready For Development Next to Town and Hwy. \$675. PER ACRE

WANTED: "Farmers Who Want to Rent Irrigated Land to Move Their COTTON ACREAGE On."

20% DOWN — 15 YEARS ON BALANCE
 6% INTEREST

Call Owner—806-PO 3-5323 or 806-PO 3-7807, Lubbock

Available Now! AT OUR DEALERSHIP

Big 16" motorized model 1966 Ford Mustang GT

- FULLY ASSEMBLED BATTERIES INCLUDED READY TO GO
- Headlights, taillights and instrument lights operate
 - Runs straight or in circles, forward and reverse
 - Knock-off hubs
 - Opening hood and simulated V-8 engine
 - Rugged poppy red plastic body
 - Steel chassis

INDOOR OR OUTDOOR FUN FOR ALL!
 Get your Motorized Mustang GT right away, and get in on the fun with your friends! Great for kids and adults alike. There's nothing else like it! It's big—a full 16" long, and it's battery-powered. We have it at our dealership, but hurry—the supply is limited!

Racing conversion kit (gasoline engine and slicks) and remote control throttle may also be ordered.

Get yours NOW



ONLY \$495

MULLESHOE MOTOR CO.
 American Blvd at 1st Street "Car Capital of the West Plains" At The Crossroads

Published each Sunday by the Muleshoe Publishing Co. 304 West Second Street, Muleshoe, Texas

Bailey County Journal

Member of The Associated Press
Entered as second class matter at the Muleshoe Post Office under act of Congress, March 3, 1897.

SUBSCRIPTION RATES
Immediate Territory \$4.00
Outside Territory \$4.50

In combination with the Muleshoe Journal (Published each Thursday) the following rates apply

Both papers in territory \$5.50
Both papers outside territory \$6.21

(Advertising Rates on Application)
L. B. HALL Publisher
RAMON MARTIN Editor
PAT JOHNSON Woman's Editor
JAY SPAIN Mech. Supt.



Christmas Party Planned By Club

The Progress H. D. Club voted Tuesday afternoon at their meeting to buy a Christmas gift for Anna Sue Knight of Girls Town and each member will bring her a gift.

In absence of the president and vice-president, Fern Davis presided for the business meeting.

Christmas party will be Dec. 14. The group will meet at El Monterey for lunch and then go to Betty Williams home at 2 p.m. for exchange of secret pal presents for the meeting were Fern Davis, Mary Ramm, Myrtle Wells, Gertrude Myers, Ada Murrah, Judy Roming, Lela Mardis, Betty Williams, Clavis and Bilyee Doty, Sulan.

So hot is the core of the sun — 16 million degrees Centigrade — that a pinhead of its material would emit enough heat to kill a man 100 miles away.

First baseman Ed Kraneppol led the New York Mets in hitting last season with 253.



CONTRAST IN GRAZING—Cows graze in a field of grass in a field which was once covered with cactus and brush like that in the foreground on the other side of the fence. Ranchers in Starr County are ripping out the blanket of mesquite and cactus that covers most of Kern earth and replacing it with a cover of grass. (AP Wirephoto)

Hospital Notes

Green Memorial Admitted

Billy D. Bell
Mrs. Barbara Bell
Mrs. Lous Madsen
Lee Gable
Mrs. J. A. Harris
Mrs. James A. Rowe
Mrs. R. J. Klump
Mrs. J. E. Sullivan
H. V. Snyder

Dismissed

Frankie Sarland
Esmuel Mandragon
C. B. Hallum
J. E. Lewallen
Keith Bray
Mrs. J. D. Klent
Mrs. W. S. Maserang
Mrs. J. W. Jennings
Jay Dean Harper
Mrs. Lois Shook
W. E. Meyers
Ceci Osborn
Aice Davis
Mrs. Skeet Bliss
Ray Paente
O. D. Weaver
Salvador Villarreal

West Plains Admitted

Selvin Weber
Wm. C. Cook
J. C. Ashley
Mrs. L. C. Pollard
Mrs. Tommy Tomez and baby girl
Geronima Rosas
Mrs. Ray Howard
Mrs. John Faust
DG. B. Frazier
Mrs. Dewey Moore
Mrs. J. L. Harris
Brigida Villanueva
Mrs. B. O. McDaniel

Dismissed

Mrs. S. D. Stiggart
Mrs. Santos Rivas
Baby Girl Rivas
John L. Latham
Mrs. Jodie Barrett
Jack Obenhaus
Carol Kendrick
Kim Williams
Mrs. B. A. Dalton
Juan Ruiz
Mrs. Telforo Toscano
Mrs. Ramon Vasquez
Kevin Mick
Francisco Toscano
Dan Anzaldia
Mrs. Joe E. Tipton
Mrs. Bonnie Shaffer
Joe Martinez
Mrs. Frances Whiteside
Baby Boy Whiteside
Mrs. Mack Hernandez

Johnnie Felts Is 4-H President

Johnnie Ruth Felts was elected president at last Thursday's meeting of the Young cooks, Lela Hughes, secretary, Karen Hamilton, reporter, Thesa Howard and Ella Jo Myers, food leaders.

The girls made fudge at their meeting and set their next meeting date.

Enochs Youth Is Recovering From Pneumonia

By Mrs. Jerome Cash
ENOCHS — Dennis Newton, son of Mrs. and Mr. Bob Newton, spent several days in the Memorial Hospital at Morton suffering from pneumonia. He was able to return home Saturday.

Others sick are Doloris McCall, Susan Lagon, Diane Williams, Kenneth Turner and Miss several days. He will be able to return to school the last of the week.

Mrs. J. D. Bayless, Mr. and Mrs. Clyde Coffman, Morton, all spent Thursday in Levelland visiting a sister of Mrs. Bayless and Mr. Coffman, Mrs. Grace Swanner and son, Arnold Archer and his sister, Mrs. Lorene Cox, Bula, were called to Cleburn, Texas last week to the bedside of their father who is very sick. Word was received he wasn't doing any better.

Those visiting in the Jerome Cash home Sunday were Mr. and Mrs. H. H. Snow, Muleshoe, and their daughter, Mr. and Mrs. Norvell Roberts, Jerry and Cheryl, Lubbock.

Mr. and Mrs. T. A. Thomas are at Midland over the weekend with their daughter, Mrs. Gale Pugh, who is seriously ill.

It's a girl for Mr. and Mrs.

Wallace Theatre

GENERAL ADMISSION 75c Adult 25c Child
Sun., Mon.,
NOV. 21-22

WED., NOV. 24
FLUFFY
"FREE TURKEYS"
PLUS
GUEST WHO

THURS., FRI., NOV. 25-26
"FREE TURKEYS"
PLUS
GUEST WHO

SAT., NOV. 27
MORNING SHOW
THE TIN STAR
EVENING SHOW

HIGH ADVENTURE!
M-G-M STEVE REEVES
PRESENTS
SANDAKAN
THE GREAT
TECHNISCOPE • TECHNICOLOR

COURTHOUSE NEWS

Vehicle Registrations
Maple Co-op Gin, GMC 1966 Truck Tra. — Skippy Olds, Co. Whitts & Watts Implement Co., Wayne Wallace Inc. Whitt & Watts Implement Co. — 1966 Olds. "88" Hol. Sdn.
Carrie Shirley, 966 Ford T-bird Tudor — Muleshoe Motor Co.

James Warren, 1966 Chev Pickup — Crow Chev. Co.
R. G. Bennett, Crow Chev. Co. — 1965 Chev. Pickup Feet Side.
W. H. Jones — Brock Implement — 1965 Buick.

Muleshoe Co-op Gin — Ladd Pontiac — 1966 GMC Tractor.
James Gable and Dewayne Gable, 1966 Chev. Tudor Cpe—Crow Chev. Co.
Clayton Meyers, 1966 Cadillac Sdn. DeVille — Wayne—Wallace Inc.

M. T. Glasscock, 1965 Ford Pickup — Muleshoe Motor Co.
Mrs. Eva Murrah, Wagner Motors, Inc. Clovis, N.M. — 1966 Plymouth Fordor.

Marriage Licenses
Tsidoro DeLeon to Marcia Vera

Charles Nathen Hutsen to Phyllis Jones Forenz
Frances Leon Wilson to Anita June Wilson
Cecelino Hernandez to Delvia Zapata.
George Clifton Kelly to Irene Keeton.

County Court
Muleshoe Fertilizer, Inc. vs. D. G. Ivy, Atty. Norman Bays Suit on promissory note.

Muleshoe Fertilizer, Inc. vs. L. B. Harrison, Atty. Norman Bays, suit on account.

Arthur R. Rose, et ux vs. Tideland Life Ins. Co., Atty. Young & Cihak, Suit to collect claim.

Warranty Deeds
Dale Allen, et ux to W. L. Miller "Beginning at the S. W. corner of Tract No. 5, John De Pauu Subdivision out of a part of Sections Nos. 38, 39, 54 and 55, Block "Y", W. D. & F. W. Johnson's" subdivision, No. 2, Bailey County, Texas; Thence North 275.5 feet to a point for a corner; Thence east 2640 feet to a point for a corner; Thence South 379.5 feet to the S. E. Corner of Tract No. 5, Thence West 2640 feet to the place of beginning and containing 23 acres of land."

Estate of Clyde A. Bray to Keith Bray et ux rectangular tract of land, 50x rectangular parkland Place Company to E. V. Bartlett et ux; all of the East 9.58 feet of lot Number One

Central States News Views

SKILLED INSPECTOR looks for imperfections in roll of coated printing paper racing past bright inspection light at 60 miles an hour in Kimberly-Clark's new California paper mill which uses once-useless sawmill scrap as sole source of fibre for pulpmaking.



PERSISTENCE must pay off for this beggar in the Great Smoky Mountains National Park.



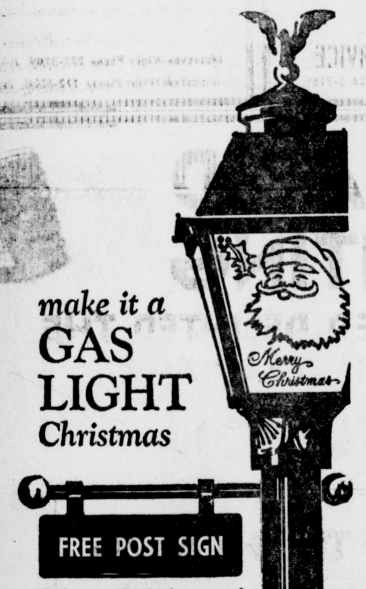
ONE LOOK will tell you which of the Sibba brothers is the Michigan State Pat's new blueberry pie eating champion.

Hundred Thirty Five (135) Richard Hills addition to the town of Muleshoe, Bailey County, Texas.

C. W. Wilhite et ux to Bulah A. Harper, a widow, a tract One Hundred Forty (140) acres by Seventy (70) feet long in the corner of a rectangle and being all of the Northwesteery Thirty (30) Feet of lot Number Sixty-one (61) and all of the Southwesteery Forty (40) feet of lot Number Sixty-Two, Richard Hills Addition to Muleshoe, Bailey County, Texas as shown by plat recorded in Volume 89, page 5; Deed Records of Bailey County, Texas.

Tom runs batted in man on the Kansas City Athletics last season was first baseman Ken Harrelson. He drove in 66 runs while hitting 238. He also led the team in homers with 23.

The Kansas City Athletics drew 528,344 fans last season. It was the low figure in both leagues.



Order your Gas Light now and you will receive this matching post sign, free, imprinted with the name or address of your choice (up to 13 letters and spaces)! Plus, you get an extra glass etched with the colorful Santa Claus theme, shown above, for your Gas Light. A Gas Light is a charming way to friends and family. It is a gift that will be shared by everyone for years to come. Make this a memorable Christmas... make it a Gas Light Christmas.

Choose From Four Models as low as... **\$49.95**
NOTHING DOWN
24 MONTHS TO PAY
CONTACT ANY EMPLOYEE OF
Pioneer Natural Gas Company

That's what I call Turkey!

Let's talk turkey — a prolonged illness means loss of earnings, added suffering and expense. Get a prompt prescription at the first sign of illness.

Western DRUG
Your Walgreen Agency
PHONE 3-1060 MULESHOE, TEXAS

DON'T PANIC!

JUST BECAUSE YOU HAVE A NEW TELEPHONE NUMBER . . .

LET US OVERPRINT YOUR LETTERHEADS ENVELOPES CARDS, ETC.

SEE US FOR ALL YOUR PRINTING NEEDS

Muleshoe Publishing Co.

304 WEST SECOND PHONE 272-4536

Patty Duke "Billie"
TECHNICOLOR • UNITED ARTISTS

SAT., NOV. 27
MORNING SHOW
THE TIN STAR
EVENING SHOW

HIGH ADVENTURE!
M-G-M STEVE REEVES
PRESENTS
SANDAKAN
THE GREAT
TECHNISCOPE • TECHNICOLOR

Money

Continued from Page One

engineer Rhea Bradley, stationed at Littlefield. Crain said that when the plans are completed, they will go to Austin for final approval, and then moving of utilities to new locations will be started. However, some of the utilities have already been moved from part of the route, and others are expected to be re-located early next year, long before actual construction gets under way.

The Bailey county project specifically is listed as: U.S. 84 from Farmer county line to Muleshoe, 9.4 miles of grading, structures and surfacing for two additional lanes, \$1,250,000.

It's all a part of a two-year \$350 million consolidated highway program for Texas. Of this amount set aside, Crain said that \$13,249,700 was approved for construction and \$70,000 for purchase of right of way in district 5 on U. S. and state highways; \$443,200 for farm to market road improvements.

Other roads in this area listed on the new schedule included:

U. S. 84 in Lamb county, 3 miles northwest of Littlefield to southeast of Littlefield, 6.7 high-type surfacing, \$180,000. Also Lamb county, FM 54 from U. S. 84 at Littlefield to Spade, 9.6 reconstruction, grading, straighten and surface \$275,000. Among betterments were these allocations:

In Lamb county: seal coat three roads, for \$13,800, \$20,000 and \$340,000.

In Bailey County: Farm to market 54, from Enochs to Lamb County Line, 10.9 miles seal coat, \$13,200. Castro County: FM 145 from Farmer county line to U. S. 385, 12.8 miles of

seal coat, \$17,200. Lamb County: From Bailey county line to U. S. 84 in Littlefield, 2.6 miles seal coat, \$3500; Lamb 54, from Bailey county line to U. S. 84 in Littlefield, 17.4 seal coat, \$27,300.

Farmers

Continued from Page One

greater toll of bales from 1966 production will be taken by the new cotton program. In 1966 producers will be required to reduce plantings by at least 12.5 percent to participate in the government program, and are offered a strong incentive: to reduce up to 25 percent.

Observers are estimating that this program may take as much as 25 percent of cotton acreage out of production with a resultant drop in bale numbers of about 20 percent.

The new farm bill provides for the sale and lease of allotments between farmers, and some are in hopes that acreage will be bought or leased from South and West Texas for movement to the Plains to help offset lost production. But such transfers cannot be made until after the marketing quota referendum is held on November 23, and none will be permitted between January 1 and June 1 of the next year.

This leaves only from November 23 until January 1, a little over five weeks, for leases or sales of allotments to be transacted. Both sellers and buyers of acreage will be traveling an uncharted path, and most feel it will be difficult to complete arrangements for the transfer of many acres during that short period.

In an attempt to help interested producers under this section of the program, Plains Cot-



ASCS OFFICE MANAGER — L. D. Aten, Littlefield ASCS office manager, was one of the speakers Thursday night at the appreciation dinner held at the Pleasant Valley Community Center. The social club served a Thanksgiving dinner, paid for by Tide Fertilizer at Littlefield. (J.P.)

ton Growers, Inc. is supplying gunners and other cotton leaders with a list of counties from which cotton acreage would most likely be for sale.

Listed below are the 23 High Plains member counties of Plains Cotton Growers along with the 1965 and 1966 allotment for each.

Acreages for other counties in this area with 1966 allotments first and present allotments se-

1961

Continued from Page One

pleted it on the 20th day of November, 1963.

There were more than 70 parcels involved in the total project and the first deed was obtained on the 25th day of February, 1964.

During the following months the county was constantly negotiating with property owners, working with the lawyers on the legal problems, and trying to expedite the program every way possible. This work was finally finished November 16, 1965, when the last four cases were heard in condemnation proceedings before special commissioners. It was necessary to condemn 13 tracts, the others were settled by negotiations. Some of the ones condemned were condemned because of title problems. One case is on appeal, and is set for trial before a jury December 16, 1965, but the State already has possession of the right-of-way. So this will not cause any delay.

The original \$250,000 has earned some interest since the bonds were voted. And of this amount, with the reimbursements we have received to date we have a balance on hand, after being settled by negotiations, of approximately \$300,000, the approximate amount of \$39,000 is still owing and should be received soon. Public utility lines are yet to be re-located, but contracts for that are being processed for all the right-of-way within the right-of-way will be sold and removed soon. And unofficial word from the state is that they hope to get underway with construction next year.

cond, included: Castro 52,205; 52,732; Cochran 72,396; 73,312; Deal Smith, 10,518; 10,473; Hale 135,873; 137,629; Hockley 177,879; 178,683; Lamb 185,298; 186,102; Lubbock 215,376; 216,198; Parmer 43,026; 43,347; Swisher, 50,872; 51,073.

If you use a meat thermometer when you are roasting leg of lamb, be sure to insert the thermometer so that the bulb reaches the center of the thickest part of the leg.

Ever fry cucumbers? Pare the cucumbers and cut into 1/4 inch rounds. Dip in slightly beaten egg mixed with salt and pepper, then roll in fine cracker crumbs. Fry the coated cucumber slices in butter in a skillet.

Personally, we on the county level are aware that it has been a long tedious process and it has been terribly involved at times, or example we tried to settle two tracts, in which there were about 15 interested parties involved, by negotiation, every person, scattered over several states, originally agreed to a settlement. So the long tedious work of preparing papers was begun by the lawyers, but then finally after the signing up was about complete one or two of the parties had changed their minds and would not sign. So we had to start over and go through the long expensive process of condemnation and serve all these people with citations. In another case there were more than 30 heirs and interested parties, plus their husbands and wives, these too were scattered throughout the western part of the United States.

Muleshoe

Continued from Page One

inviting the Odd Fellows to their annual Thanksgiving dinner. The dinner will be held in the IOOF Hall here at 7:30 p.m. Tuesday.

Muleshoe high school's first basketball games for the new gymnasium have been moved to Springlake, it was announced Saturday after Ralph Stevenson, principal, said the new gym here will not be finished in time for the opener. The games instead will be played at Springlake, starting at 5:15. Varsity boys and girls teams and B boy will see action at Springlake. The boys are coached by Charlie Beaston, and Derrel Oliver is girls' coach.

Oldsters

Continued from Page One

for Senior Citizens by its Committee of Sixteen.

He said the first party will be strictly informal with games, musical numbers and visiting

tes, and they all had to be served. There were many other cases, not quite so extreme, but of similar nature, and they all took time to work out. But we have done everything humanly possible to move it along in an orderly, courteous and business-like manner. We sincerely appreciate the splendid co-operation of all who were involved. And we, as much as any other people, are happy that it finally is about over. May we say also that our records and correspondence relative to this whole program are open to the public and if anyone wants to see them or ask any questions we will be happy for you to come to us with them.

making up the program. Mr. Peery said. He said the group may form a permanent organization at this initial meeting, but this is not certain. "We'll leave it up to the folk who attend," he explained. The entire event is free, and persons needing transportation should contact Mr. Peery 272-4847.

Cakes

Continued from Page One

or they may be bought through the fine arts department at the school.

Buyers were advised that they could secure cakes from these: St. Clair's, Fry & Cox, Hazel West at the Credit Bureau; Bailey County Electric Coop; Ernest Kerr at Federal Land Bank; Francis Implement, Western 99 at Needmore or at Piggy Wiggly, Cashway, Red's or Wag-nons.

Classifieds Get Results!

FOR SALE
IRRIGATION SYSTEMS

Fully Guaranteed — Prompt Service

- PLASTIC
- CONCRETE
- ASBESTOS-CEMENT
- PORTABLE ALUMINUM

CONTACT THE FRIENDLY FOLKS
AT
STATE LINE IRRIGATION
1916 W. 7th — Phone 762-4557
Clovis, New Mexico

Muleshoe-Night Phone 272-3109, John Hammock
Muleshoe-Night Phone 272-3270, James Mocha

WANTED!
MACHINIST TO OPERATE
IRRIGATION PUMP
REPAIR SHOP

CARROLL PUMP SERVICE
Box 1744 Plainview, Texas Ph. CA 3-2155

BETTER START THINKING OF CHRISTMAS

OUR NEW SHIPMENT OF Greeting Card CATALOGUES HAVE ARRIVED!

IT'S TIME TO SELECT YOUR CHRISTMAS CARDS NOW!

HOLIDAY MASTERPIECE CHAPEL ARTS (FOR BUSINESS)

- EXCITING NEW DESIGNS
- EXACTING WORKMANSHIP
- FINE QUALITY PAPERS

IMAGINE YOUR FRIENDS' DELIGHT ON RECEIVING GREETING CARDS THAT FEATURE LOVELY CHRISTMAS SCENES OR COLORFUL DESIGNS WITH YOUR NAME BEAUTIFULLY IMPRINTED.

CHOOSE FROM OUR WIDE SELECTION NOW!

Muleshoe Publishing Co.
304 W. 2nd PHONE 2350

WET ACID DELINTING

HAVE YOUR SEED DELINTED THE SAFE WAY THIS YEAR FOR . . .

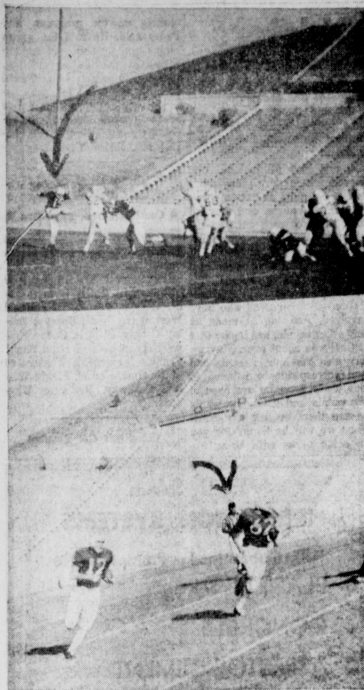
\$45 PER TON

- Picked Up At The Gin At No Charge
- Treated With Panogen At No Additional Cost
- Gravity Graded To Remove Light Weight Seed
- All Seed Lots Germinated

FOR THE BEST IN SERVICE AND QUALITY DELINTING . . . CALL 272-4613

BAKER FARM SUPPLY, INC.

HIGHWAY 84 WEST NIGHTS:
JACQUE BAKER, 272-3065 BOONE ALLISON, 272-3417
MULESHOE, TEXAS



COLLEGE 'MULES' — Arrows in the pictures above point to two former Mulshoe High School football players who are now playing freshman ball at the University of New Mexico, Albuquerque. The two shots were made during the recent NMU-WTSU freshman battle, nose-out for the New Mexicans 13-12. At bottom 190-pound Bill Harbin (No. 62) is running interference as an offensive guard, while in the top picture, Scott Oliver (No. 15) gets off one of his famous bare-foot punts.

Think 'Future,' Lawmaker Tells Area CC Group

State Representative Jesse T. George, principal speaker at the first quarterly membership dinner meeting of the Anton Chamber of Commerce and Agriculture, challenged his listeners to "catch a glimpse of the future and begin thinking on ways to achieve its many promises."

He pointed out that since 1930, the population of Texas had increased from less than 6 million persons to almost 11 million.

Mulshoe Women Attend Dinner

Dorothy Beddingfield and Joylene Costen attended the dinner meeting of the Plains American Heritage Program last Monday evening at Wayne's Restaurant in Plainview. Charles Ogilvie of Wayland Baptist College Social Science Department presented Lewis F. Newton, Superintendent of Clyde school system who discussed the administration of the American Heritage Program in his school.

Newton then presented Naoma Hugg, a high school English and speech teacher in Clyde School system. She spoke on effective procedures of American Heritage in the classroom.

Plains American Heritage Program is sponsoring an essay contest in which any teacher is qualified to enter. The subject of the essay is "The Major Concept of the Preamble to the Constitution of the United States." The essay should consist of two to five thousand words and is due Feb. 22, 1966.

tion, and that Texas was becoming an industrialized state whose economy "is bound by our initiative, imagination, and our willingness to work."

George continued by citing what he termed as "weaknesses in our society." "Our weaknesses must become our challenges. The education and training of our young people has become of vital importance. We have seen waste of our natural resources and pollution of the air and water around us. We have seen an apathy and complacency seemingly engulf a large number of our Texas citizens. We have seen 75 percent of our voting age citizens fail to exercise their franchise in the recent constitutional amendments election. It is time for us to strengthen society where it is weak, and to turn our failures into successes," George stressed.

Lawmaker George commended the Anton community for its foresightedness in organizing a local chamber of commerce. "Your future and the future of Anton is exactly what you make it. The activities of all the committees of the Anton Chamber of Commerce and Agriculture are geared toward improvement of existing programs and aid in instigating new programs beneficial to the Anton area. Your membership in your local Chamber of Commerce and Agriculture makes you a member of the construction gang, and not the wrecking crew," George emphasized.

Representative George, who is also manager of the Morton Area Chamber of Commerce, concluded by saying, "We must all become soldiers on the battlefield of progress, not forgetting that work which built everything we have, can build everything we WANT."

Out of town guests were Dr. Marvin Baker, Melvin Kunkle, and the Youngs of Levelland. Approximately \$5 were in attendance.

Droopy Plants? It's Environment, Expert Says

Many ailments of house plants, usually attributed to diseases or insects, actually result from the environment in which they are forced to live, says E. E. Janne, Extension landscape horticulturist at Texas A&M University.

Some of the more common causes of improper growth of house plants are listed by the horticulturist. Burned or brown leaf tips and leaf edges can be caused by exposure to low temperatures; by applying too much fertilizer; allowing the plants to become too dry for short periods or by applying liquid fertilizer to dry soil, says Janne.

When leaves turn yellow and drop from the plant at the slightest touch, overwatering is usually the cause. Poor drainage, light soil mixture of keeping the plants too dry over long periods can cause leaves to be smaller than normal. Small leaves and long internodes between them usually result from low light intensities and/or high room temperatures, explains Janne.

The yellowing or drooping of leaves at various stem levels can be caused from overwatering, poor drainage and aeration, chilling, or gas fumes in the air. Weak growth, light green or yellowish green foliage may result from too much light, a poor root system or damaged roots, explains the specialist.

Many times plants fail to make proper growth regardless of the care or treatment provided. Janne says this may be due to the high salt content of the water available in the area. This condition can be partially overcome, he advises, by providing good soil drainage

and overwatering. The excess water will move through the soil, and drain into the container after each watering and never be left to evaporate, he says.

Janne suggests to persons interested in more details on how to care for house plants, a visit with the local county agent or home demonstration agent for a copy of TAP-369, "Indoor Landscaping with Live Foliage Plants."

Discussions Resume

LONDON (AP) — Full-scale theological discussions between the Anglican Communion and the Orthodox Church, which were dropped in 1922, will be resumed with approval of the leaders of both churches.

The special envoys from the Ecumenical Patriarch — the Metropolitan Meliton of Helepolis, Chrysostom of Myra and Athenagoras of Thyateira — have been in London to convey to the Archbishop of Canterbury (Dr. Michael Ramsey) the decision of the Third Pan-Orthodox Conference, held in Rhodes last November, to resume the joint doctrinal discussions.

The Archbishop, in reply, said that all the Metropolitan of the Anglican Communion throughout the world were agreed on the resumption of the theological discussions.

"Plans are being made," he told the Orthodox churchman, "for the construction of a Pan-Anglican theological commission of learned theologians drawn from many parts of the world, who will be ready in due course to meet and engage in discussion with the commission appointed in the name of every part of the Holy Orthodox Church."

When talks were last held in 1922, the Ecumenical Patriarch (Patriarch of Constantinople) recognized that Anglican orders had the same validity as those of the Roman, Old Catholic and Armenian Churches. This recognition was later affirmed by the Patriarchs of Jerusalem, Alexandria and Romania and by the Church of Cyprus.

Having a fall party? Count on a quart of spirited punch serving six to eight portions.

Bob Allison led the Minnesota Twins in bases on balls last season with 72. He ranked second in strikeouts with 114. Zoilo Versalles fanned 122 times.



COMPLETE SERVICE — Pictured above are the Berrys, Tom, Ona, and Allen, who provide complete service and supplies in the electrical field. Their firm is Berry's Electric, located at 104 East Avenue B.

Berry Electric Has Complete Service

Mr. and Mrs. T. W. Berry, present address 104 East Avenue B, since Jan. 1, 1945. "Tom and Ona" as most people know them, and son Robert Allen are the three who greet you at Berry Electric each day. They started business in Sept. 1944 — and have been at the

Youngsters love pink lemonade any time of year! To make it for a small fry party, reconstitute a couple of cans of frozen lemonade according to directions on the can; now stir in a quarter cup of grenadine. Pour over ice cubes in a big pitcher and serve in pretty paper cups.

For hot egg sandwiches, spread egg salad on bread slices making sure edges are covered. Top with partly cooked bacon slices and broil until the bacon is crisp. Serve at once.

French and Italian miners gouged out enough rock to build a sidewalk from Paris to Baghdad in boring the 7.2-mile highway tunnel beneath Mont Blanc.

The New York Mets had the longest losing streak in the National League last season. It carried through 11 games.

Allen and his wife, Barbara, have two sons, they are Bob and Jimmie. Another son, Glen, and his wife, Pat, live in Dallas. They have a son, Larry.

BUSINESS SERVICES DIRECTORY

"FIRST IN FASHIONS"

Permanents — Styling
Tinting — Shaping
Revlon Cosmetics

MAIN STREET BEAUTY SALON

Bernice Holdeman
115 Main — Mulshoe
Dial 272-3448

E. R. HART CO.

DOMESTIC PUMPS & SMALL IRRIGATION WELLS

COLMAN HEATING EQUIPMENT

FARM SUPPLIES

212 E 3rd
Phone 272-4907

COTTONSEED DELINTED

Phone 272-3231 — Mulshoe

WILLIAMS SEED CLEANING CO.

Filter Queen Sales - Service
Call 272-3163 after 6:00 p.m.

J. R. Otwell
Mulshoe, Texas

INSURANCE COMPLETE INSURANCE SERVICE

AUTO
 LIFE
 FIRE
 INSURANCE

Jennings Ins.
115 E Ave. D. - 272-3491

MULSHOE COVER SHOP SEAT COVERS

All Types Furniture Work
All Types Auto Work
All Types Canvas Work

CLOVIS ROAD
Phone 272-3586
MULSHOE, TEXAS

BEAVER'S FLOWERLAND

Real and Artificial Flowers — Corsages
Pot Plants — Banquets
Funeral Designs
520 S. First St.
Ph. 272-3116—Mulshoe

MULSHOE MOTEL

— 22 UNITS
— APARTMENTS WITH KITCHEN
— TV
— PHONES

Rates DAY or WEEK
2105 W. Amer. Blvd.
Phone 272-4440
Mulshoe

HEATHINGTON LUMBER COMPANY

Lumber, Paint, Builders Hardware
Clovis Rd.—Ph. 272-4777

Dial 272-4536
For Classified Ads

BERRY ELECTRIC CO.

ELECTRIC WIRING and REPAIRS

REFRIGERATION SERVICE

104 E. AVE. B
Phone 272-3375

LOWE DRILLING CO.

HOUSE WELL SERVICE

- DRILLING
- PULLING & SETTING
- SUBMERSIBLE PUMPS

EXPERIENCED CREW

CLOVIS HWY.
PHONE 272-4397

Phone 272-3078

— the number to call to save money on your new office, store, warehouse

Headquarters for attractive Inland steel buildings. Pre-engineered in any length, any width. Enclosed with colorful metal wall panels, glass, or other materials. Fast erection saves money.

B & C BUILDERS, INC.

217 E. Ave. B Mulshoe, Texas

MULSHOE MACHINE AND WELDING

- GENERAL MACHINE AND REPAIR WORK
- IRRIGATION SERVICES... PUMPS AND GEAR HEADS
- 15 YRS. EXPERIENCE

DALE BURDEN
Plainview Hwy. & N. Fir
PHONE 272-3145

SHOP MULSHOE FIRST

Save Money On Auto Parts!

BOVELL MOTOR SUPPLY
107 East Ave. B — Dial 272-4288
W. T. BOVELL, Owner

SINGLETON FUNERAL HOME

24 HOUR AMBULANCE SERVICE
PHONE 272-4574 — MULSHOE

FOR FHA., GI and FARM LOANS AND THE

BEST INSURANCE

SEE—
POOL INSURANCE COMPANY

Phone 272-4531 — Mulshoe
W. M. POOL, JR. — LEE R POOL

A & B PLUMBING

WE DO ALL TYPES OF PLUMBING

- * INSTALLATION
- * REPAIR
- * FREE ESTIMATES
- * 24 HOUR SERVICE

WE ARE DEALERS FOR **PAYNE HEATING & AIR CONDITIONERS**
CALL 272-3734

202 E. CEDAR AVE.

W. O. CASEY GENERAL INSURANCE

Let Our Complete Coverage Take Care of All Your Insurance Problems

Mulshoe State Bank Bldg. — Ph. 272-4571

WELCOME TO MULSHOE



MRS. E. E. HARPER

We welcome Mrs. E. E. Harper of 1915 W. Ave. E to Mulshoe. Mrs. Harper is living in her new home which was recently completed. Her son, Jack, who farms at Circleback, lives with her. The Harpers moved from Circleback. They attend the Church of Christ. Mrs. Harper has a daughter, Mrs. C. G. Williams, of Colorado and a son, Leaburn, who farms north of Mulshoe. Another son, Thomas, lives at Circleback. The following merchants extend a cordial welcome to the Harpers:

CASHWAY GROCERY

402 Main Phone 272-4244

DAMRON DRUG CO. REXALL

308 Main Phone 272-4210

James B. Glaze Insurance - Real Estate - Loans

MULSHOE STATE BANK

304 Main Phone 272-4571

MULSHOE MOTOR CO.
"At The Crossroads"

POOL INSURANCE AGENCY
114 E Ave C Ph. 272-4531

TRADE CLASSIFIED ADVERTISEMENTS BUY SELL LEASE

WANT ADS - PH. 272-4536

1 time per word ... 4c
2 times per word ... 7c
After 1st issue, 3c per word each additional time.
Minimum charge 50c
Card of Thanks \$1.00

3 times per word ... 10c
4 times per word ... 13c

DEADLINE FOR CLASSIFIED ADVERTISING PAGE:

For Thursday's Issue: Monday, 12 Noon

For Friday's Issue: Thursday, 12 Noon

TO LATE TO CLASSIFY

Thursday Issue — Friday 5 P. M.

Friday Issue — Saturday 3 p.m.

Double Rate for Blind Ads.

1. Personals

FOR RENT: 15 ft. camper by day or week, call 272-3163. 1-53a-tfc

Be an artist on fabric. Washable permanent quick drying. Tri-Chem, Liquid Embroidery — Jeanne Coker. Box 901 — Phone 247-2586. Phone 1-441-89c

AVON. Phone 3510 1-461-tfc

WANTED: Baby sitting in my home nights. Will do ironing. Day call 3960, after 6:30 p.m. call 4606. 1-475-tfc

LOSE WEIGHT SAFELY with DEX-A-DIET TABLETS. Only 82 cents. Damron Drug. 1-495-121sp

2. LOST & FOUND

Lost in Lazbuddie vicinity: Two white face heifers, weight 450 lbs. branded black on left hip. Call James Glaze, Muleshoe. 2-461-81c

Lost Whiteface Hereford that will freshen soon. Weighing 700 lbs. has horns and no brand. Ph. 946-2316. 2-438-8tp

4. Houses for Rent

FOR RENT: Large 2 bedroom house. Phone 272-4357. 1-468-36c

House for rent — 4 room and bath, 902 South Main. Call 965-2738, Lazbuddie. 1-461-21p

FOR RENT: 3 bedroom house 6 1/2 miles north east of Muleshoe. Phone 965-2281. 1-475-21c

5. Apts. for Rent

Trailer space for rent. Also three room unfurnished apartment. 14th St. Trailer Park. Mrs. J. L. Redwine. 272-4937. 1-548-81p

Space for 3 trailers, and small apartment for rent. Call 272-3465. 1-504-01c

FOR RENT: 3 room furnished apartment, trailer space. 2323 West Ave. E. Phone 272-4212. 1-531-51c

For Rent: 3 room and bath furnished house. See Sam Ghossein or Sam's Auto Store. 1-544-11c

6. Rooms for Rent

Bedroom for rent — See Ida Tapp. Last house north of Calvert's grocery. 1-645-11c

8. Real Estate for Sale

For Sale: Southside Gulf Service Station. Call 272-3571. 506 South First. 1-485-01c

3 bedroom stucco home, carpeted throughout, been re-done recently wired for washer well located, priced \$7,500 with \$700.00 down. 2 bedroom and den, carpet, high back fence, priced to sell, \$1800.00 down. FHA loan commitment. 3 bedroom stucco home, close to town, school, church, priced \$7,000.00. Small down payment. 2 bedroom and bath, fenced back yard, fruit trees, priced \$9000. Low down payment. CLARA CROSS CROSS REAL ESTATE Phone No. 272-4379 1-471-21c

HOUSES FOR SALE

Redi-Built or BRICK, 3-BEDROOMS, 2-BATHS, 90-FT. LOT APARTMENTS FOR RENT Licensed Plumber for all your needs

CALL — BILLY MORRISON

Ph 272-3121 or 272-3212

160 A. dry land, 2 bedroom home, good allotments \$175.00 acre. 198 A. heavy Farmer County land, good improvements, allotted. 10' well with underground pipe, \$500.00 per acre. 4 Sections of development land, underground water guaranteed \$80.00 per acre. 80 A. with 8" well, 2 bedroom house, close in \$500.00. Choice North Plains listings priced from \$195.00 per acre. Strong water. 2 and 3 bedroom homes well located. Sale or trade. EDDIE LANE REAL ESTATE PHONE 272-4139

Residence Eddie Lane 272-4358 Buddy Lane 272-3774 Jimmie Pitcock 272-4154

Wanted low cost lots, phone 272-3191 or 272-3853. 1-831-11c

FOR SALE: Approx. 194 acres irrigated land, 114 acre cultivation, 35 cotton, 100 grain, 40 alfalfa, 40 Midland Bermuda grass. Two 8" wells, 1/4 mile underground pipe, one mile sprinkler system. Low down payment will handle. Write 121 Ave. B. Muleshoe, Texas or call 272-4282. 1-468-81c

For Sale: Brick 2 bedroom and den — 3 bedroom frame house — 2 bedroom frame house. All close to school. Call 272-3365. 1-841-11c

640 A. dry land, Bailey Co., good allot. Lays good. 8,000 A. ranch — 4,000 deeded, Roswell Area. sell or trade. \$85. 480 A. Irrigated area, \$125, \$10,000 down, sell or trade. 160 A. near Muleshoe, 2 1/2 wells, improved, excel. allot. \$500, 29 percent, sell or trade. 177 A. dryland, good allot. Bailey Co., \$160. 480 A. dryland, N.M., Trade for irrig., sell. Listings Wanted Krebs Real Estate Co. Phone 272-3191 1-844-51c

FOR SALE: Immediate possession for our 3 bedroom home, 413 East Dallas. Carpets, drapes, and built-in electric stove. 1-3/4 baths; central air-conditioning and heating; back yard fenced, plenty of closets. G.I. 4 1/2 percent loan covering purchase price. A good buy for quick sale. Contact or phone L. B. Hall at 272-4749 or 272-4538. 1-841-11c

For Sale — good 160 acres near Muleshoe. Improved, all cultivated. Possession Jan. 1966. Terms if desired. Owner James W. Jennings. Route 2, Phone 925-3327. 1-845-11c

For Sale: 40 acres, 15 acres cotton allotments, 8 in. well with carrier pipe. 3 bedroom house. Ph. 272-3758. 1-461-81p

FOR SALE: Lot 168, Richland Hills addition. Write Bobby Myers, 859 E. 4th Place, Mesa, Ariz. 1-845-61c

15. Miscellaneous

Wanted: Cotton stripping: Have stripper with green boll attachment. Call 272-4191 after 5 p.m. 15-431-tfc

3 large bedrooms, 2 full baths. Large living room. Lots of cabinets. O'Keefe and Merritt Range on pavement. Double garage. Phone 272-4485 or come to Billy's Supperette and see D. L. Morrison or Billy. 1-841-51c

Ask for information on Retirement Income, Family Income, Educational Plans, Mortgage Cancellation, Life, Hospitalization and Funeral Ins. Contact — C. D. GILBERT 1714 Ave. F., Muleshoe, Chone 272-4908. 15-288-261p

Wanted responsible party to take over payments on late model Singer sewing machine in Muleshoe area. Will zig-zag, fancy stitching, etc. 5 payments \$4.96 or \$25.00 cash. Write Credit Department, 1114 19th Street, Lubbock, Texas. 12-341-tfc

Maise Cutting and Hauling wanted. Leave word at Ray Griffiths elevator or call Porter 3-8175, Clovis, Collect. C. P. Johnson. 15-371-tfc

FOR SALE: 320 acres near Lazbuddie, 2 x 8" wells. Not gas, good allotments, \$500.00 per acre. A. H. Kunkel, Olney, Texas, Ph. 873-2125. 1-846-31c

BETTER THAN A RUSTY MULE SHOE You'll find yourself feeling luckier each day you live in this home. It's not new, but extra fine construction. 2 bedroom and den or 3 bedrooms, carport, fenced in back yard and shrubs. Would carry a good loan. FHA appraised. Located at 206 Chicago Street Lenau Addition. W. B. McADAMS 1-842-81c

9. Autos for Sale

1962 Pontiac Catalina 4 Door. All power, factory air. Consider trade. \$1395. Call 272-4170. 1-947-11c

10. Farm Equip for sale

For Sale: Good 1959 International tractor on bulane for stripper. Good tires and has been taken good care of. No. 15 John Deere stripper ready to run. Contact Weldon Slayton 965-2140. Can see equipment 6 miles N. of Muleshoe. 10-441-tfc

Used 77 John Deere Stripper for sale. C. W. Calhoun Phone 965-2677. 10-455-61p

NEW 1965 GMC PICKUP DELIVERED \$1749.00 LADY PONTIAC Muleshoe, Tex. Ph. 272-3308 10-341-tfc

FOR SALE: Four 4 bale cotton trailers. Good condition, priced reasonable. Call Bala 933-2372. 10-475-31c

John Deere cotton stripper 77 also a John Deere 60 tractor with four row equipment. Call 272-4616 after 6 p.m. 10-475-11p

11. For Sale or Trade

FOR SALE 1 — twin barrel Taylor Freezer 1 — Polar Chips Slush machine 1 — fountain 1 — Phone 272-4766. See Harold Freeman at Cue and Cushion Club, Muleshoe, Texas. 11-464-41p

12. Household Goods

Rely on Rheem Plumbing fixtures, heating and air conditioning. See your local dealer. Mid-Tex Supply Co., Plainsville, Texas 19-438-101c

Farm for sale, to settle the Burlsmith Estate. Sealed bids will be accepted until Dec. 15 on choice 80 acres 12 miles N. W. of Muleshoe. Good allotments. Also nice 2 bedroom house, double garage, pressure pump. Good 8" well. This place has paved road on the side. Inside house will be shown by appointment. The rights to accept or reject all bids is reserved. Call D. O. Burlsmith, 925-3252. Rt. 2, Muleshoe, Texas. 8-39-104sp

Akin Exterminating Co. GUARANTEED SCIENTIFIC PEST CONTROL Call 272-3365 15-441-tfc

Good Merchandise Buena Mercancia Economar Main Street Mayur Calle Muleshoe, Texas — 272-4738 15-271-tfc

BETTER STEEL BUILDINGS 30' x 40' x 10' with 10' x 12' sliding doors erected on your location. \$2,310.00 Horace Henley Jr. Phone 647-3501 Dimmitt, Texas 15-455-tfc

THE STATE OF TEXAS COUNTY OF BAILEY TO WHOM IT MAY CONCERN: This is notice to all business people, located in Morton, Texas, and Muleshoe, Texas, and surrounding territory, that I will not be responsible for any debts contracted by anyone, unless I have given approval for same in writing. Dated at Muleshoe, Texas, this 25th day of October A. D. 1965. S.S. Garvin Long Route 1 Morton, Texas. 431-81p

Wanted cotton stripping. Call Jene Fox, 965-2140. 13-441-tfc

Wanted responsible party to take over payments on late model Singer sewing machine in Muleshoe area. Will zig-zag, fancy stitching, etc. 5 payments \$4.96 or \$25.00 cash. Write Credit Department, 1114 19th Street, Lubbock, Texas. 12-341-tfc

Maise Cutting and Hauling wanted. Leave word at Ray Griffiths elevator or call Porter 3-8175, Clovis, Collect. C. P. Johnson. 15-371-tfc

FOR SALE: 320 acres near Lazbuddie, 2 x 8" wells. Not gas, good allotments, \$500.00 per acre. A. H. Kunkel, Olney, Texas, Ph. 873-2125. 1-846-31c

BETTER THAN A RUSTY MULE SHOE You'll find yourself feeling luckier each day you live in this home. It's not new, but extra fine construction. 2 bedroom and den or 3 bedrooms, carport, fenced in back yard and shrubs. Would carry a good loan. FHA appraised. Located at 206 Chicago Street Lenau Addition. W. B. McADAMS 1-842-81c

9. Autos for Sale 1962 Pontiac Catalina 4 Door. All power, factory air. Consider trade. \$1395. Call 272-4170. 1-947-11c

10. Farm Equip for sale For Sale: Good 1959 International tractor on bulane for stripper. Good tires and has been taken good care of. No. 15 John Deere stripper ready to run. Contact Weldon Slayton 965-2140. Can see equipment 6 miles N. of Muleshoe. 10-441-tfc

Used 77 John Deere Stripper for sale. C. W. Calhoun Phone 965-2677. 10-455-61p

NEW 1965 GMC PICKUP DELIVERED \$1749.00 LADY PONTIAC Muleshoe, Tex. Ph. 272-3308 10-341-tfc

FOR SALE: Four 4 bale cotton trailers. Good condition, priced reasonable. Call Bala 933-2372. 10-475-31c

John Deere cotton stripper 77 also a John Deere 60 tractor with four row equipment. Call 272-4616 after 6 p.m. 10-475-11p

11. For Sale or Trade FOR SALE 1 — twin barrel Taylor Freezer 1 — Polar Chips Slush machine 1 — fountain 1 — Phone 272-4766. See Harold Freeman at Cue and Cushion Club, Muleshoe, Texas. 11-464-41p

12. Household Goods Rely on Rheem Plumbing fixtures, heating and air conditioning. See your local dealer. Mid-Tex Supply Co., Plainsville, Texas 19-438-101c

Farm for sale, to settle the Burlsmith Estate. Sealed bids will be accepted until Dec. 15 on choice 80 acres 12 miles N. W. of Muleshoe. Good allotments. Also nice 2 bedroom house, double garage, pressure pump. Good 8" well. This place has paved road on the side. Inside house will be shown by appointment. The rights to accept or reject all bids is reserved. Call D. O. Burlsmith, 925-3252. Rt. 2, Muleshoe, Texas. 8-39-104sp

INSURANCE Farms — Homeowners — Auto — Crop Hail Let us be your Insurance Man Lane Insurance Agency 113 Ave D Phone 272-4439 15-411-tfc

17. Seed & Feed FOR SALE: Early Sumac Cane Seed. Phone 965-2675, Morris McKillip. 17-225-tfc

For sale: Cane Bundles, Call Jene Fox, 965-2141. 17-451-tfc

Wanted cotton stripping. Call Jene Fox, 965-2140. 13-441-tfc

Wanted responsible party to take over payments on late model Singer sewing machine in Muleshoe area. Will zig-zag, fancy stitching, etc. 5 payments \$4.96 or \$25.00 cash. Write Credit Department, 1114 19th Street, Lubbock, Texas. 12-341-tfc

Maise Cutting and Hauling wanted. Leave word at Ray Griffiths elevator or call Porter 3-8175, Clovis, Collect. C. P. Johnson. 15-371-tfc

FOR SALE: 320 acres near Lazbuddie, 2 x 8" wells. Not gas, good allotments, \$500.00 per acre. A. H. Kunkel, Olney, Texas, Ph. 873-2125. 1-846-31c

BETTER THAN A RUSTY MULE SHOE You'll find yourself feeling luckier each day you live in this home. It's not new, but extra fine construction. 2 bedroom and den or 3 bedrooms, carport, fenced in back yard and shrubs. Would carry a good loan. FHA appraised. Located at 206 Chicago Street Lenau Addition. W. B. McADAMS 1-842-81c

9. Autos for Sale 1962 Pontiac Catalina 4 Door. All power, factory air. Consider trade. \$1395. Call 272-4170. 1-947-11c

10. Farm Equip for sale For Sale: Good 1959 International tractor on bulane for stripper. Good tires and has been taken good care of. No. 15 John Deere stripper ready to run. Contact Weldon Slayton 965-2140. Can see equipment 6 miles N. of Muleshoe. 10-441-tfc

Used 77 John Deere Stripper for sale. C. W. Calhoun Phone 965-2677. 10-455-61p

NEW 1965 GMC PICKUP DELIVERED \$1749.00 LADY PONTIAC Muleshoe, Tex. Ph. 272-3308 10-341-tfc

FOR SALE: Four 4 bale cotton trailers. Good condition, priced reasonable. Call Bala 933-2372. 10-475-31c

John Deere cotton stripper 77 also a John Deere 60 tractor with four row equipment. Call 272-4616 after 6 p.m. 10-475-11p

11. For Sale or Trade FOR SALE 1 — twin barrel Taylor Freezer 1 — Polar Chips Slush machine 1 — fountain 1 — Phone 272-4766. See Harold Freeman at Cue and Cushion Club, Muleshoe, Texas. 11-464-41p

12. Household Goods Rely on Rheem Plumbing fixtures, heating and air conditioning. See your local dealer. Mid-Tex Supply Co., Plainsville, Texas 19-438-101c

Farm for sale, to settle the Burlsmith Estate. Sealed bids will be accepted until Dec. 15 on choice 80 acres 12 miles N. W. of Muleshoe. Good allotments. Also nice 2 bedroom house, double garage, pressure pump. Good 8" well. This place has paved road on the side. Inside house will be shown by appointment. The rights to accept or reject all bids is reserved. Call D. O. Burlsmith, 925-3252. Rt. 2, Muleshoe, Texas. 8-39-104sp

Wanted cotton stripping. Call Jene Fox, 965-2140. 13-441-tfc

Wanted responsible party to take over payments on late model Singer sewing machine in Muleshoe area. Will zig-zag, fancy stitching, etc. 5 payments \$4.96 or \$25.00 cash. Write Credit Department, 1114 19th Street, Lubbock, Texas. 12-341-tfc

Maise Cutting and Hauling wanted. Leave word at Ray Griffiths elevator or call Porter 3-8175, Clovis, Collect. C. P. Johnson. 15-371-tfc

FOR SALE: 320 acres near Lazbuddie, 2 x 8" wells. Not gas, good allotments, \$500.00 per acre. A. H. Kunkel, Olney, Texas, Ph. 873-2125. 1-846-31c

BETTER THAN A RUSTY MULE SHOE You'll find yourself feeling luckier each day you live in this home. It's not new, but extra fine construction. 2 bedroom and den or 3 bedrooms, carport, fenced in back yard and shrubs. Would carry a good loan. FHA appraised. Located at 206 Chicago Street Lenau Addition. W. B. McADAMS 1-842-81c

9. Autos for Sale 1962 Pontiac Catalina 4 Door. All power, factory air. Consider trade. \$1395. Call 272-4170. 1-947-11c

10. Farm Equip for sale For Sale: Good 1959 International tractor on bulane for stripper. Good tires and has been taken good care of. No. 15 John Deere stripper ready to run. Contact Weldon Slayton 965-2140. Can see equipment 6 miles N. of Muleshoe. 10-441-tfc

Used 77 John Deere Stripper for sale. C. W. Calhoun Phone 965-2677. 10-455-61p

NEW 1965 GMC PICKUP DELIVERED \$1749.00 LADY PONTIAC Muleshoe, Tex. Ph. 272-3308 10-341-tfc

FOR SALE: Four 4 bale cotton trailers. Good condition, priced reasonable. Call Bala 933-2372. 10-475-31c

John Deere cotton stripper 77 also a John Deere 60 tractor with four row equipment. Call 272-4616 after 6 p.m. 10-475-11p

11. For Sale or Trade FOR SALE 1 — twin barrel Taylor Freezer 1 — Polar Chips Slush machine 1 — fountain 1 — Phone 272-4766. See Harold Freeman at Cue and Cushion Club, Muleshoe, Texas. 11-464-41p

12. Household Goods Rely on Rheem Plumbing fixtures, heating and air conditioning. See your local dealer. Mid-Tex Supply Co., Plainsville, Texas 19-438-101c

Farm for sale, to settle the Burlsmith Estate. Sealed bids will be accepted until Dec. 15 on choice 80 acres 12 miles N. W. of Muleshoe. Good allotments. Also nice 2 bedroom house, double garage, pressure pump. Good 8" well. This place has paved road on the side. Inside house will be shown by appointment. The rights to accept or reject all bids is reserved. Call D. O. Burlsmith, 925-3252. Rt. 2, Muleshoe, Texas. 8-39-104sp

SCHOOL MENUS

Wednesday Milk Turkey and Dressing With Cranberry Sauce Green Beans Lettuce and Tomato Salad White Bread Apple Cobbler

Monday Milk Cup-O-Pie Cabbage and Apple Salad Buttered corn Buttered peas White bread Spiced prune cake

Tuesday Milk Steak Fingers Black-eyed peas Lettuce and Carrot Salad Creamed Potatoes Butter and rolls Apricot Halves

Shortstop Zoilo Versalles of the Minnesota Twins paced the American League in runs scored last year with 126. He also led in total bases with 306 and tied for the lead in doubles (45) and triples (12).

American League batting champion Pedro Oliva of the Minnesota Twins led his team in runs batted in last season with 98. Jimmie Hall was next with 86.

OTWELL'S VACUUM CLEANER REPAIR

Filter Queen Distributor Disposable Bags For All Makes

SALES All Vacuum Cleaners Repaired After 6 p.m. or before 8 a.m. Phone 272-3163

NEW and Used Cleaners 918 East Hickory

Television Schedule For Muleshoe Area

Station	Channel	Daytime	Evening
KGNC-TV (4)	Amarillo Muleshoe Cable 4	Mon. thru Fri. Daytime Viewing	6:30 - Am. College 7:00 - Today 8:00 - Today 9:00 - Frac. Phrases 9:25 - News 9:30 - Concentration 10:00 - Morn. Star 10:30 - Para Bay 11:00 - Jeopardy 11:30 - NBC Office 11:55 - NBC News 12:00 - News 12:10 - Weather 12:30 - Ruth Brent 12:55 - News 1:00 - Days of 1:30 - The Doctors 2:00 - Another World 2:10 - C-Don't Say 3:00 - Match Game 3:25 - NBC News 3:30 - Sheriff Bill 4:30 - Laramie 5:30 - Hunt-Brink 6:00 - News 6:15 - Weather 6:25 - Sports
KVII-TV (7)	Amarillo Muleshoe Cable 5	Mon. thru Fri. Daytime Viewing	6:30 - Wake-up 7:00 - Crop-Stock 7:15 - Weather 7:20 - News 7:30 - Wells Fargo 8:00 - Matinee 10:00 - Young Set 11:00 - Donna Reed 11:30 - Father Know 12:00 - Ben Casey 1:00 - Nurses 1:30 - Time 1:55 - News 2:00 - Gen. Hospitl 2:30 - Young Marrie 3:00 - Tom Young 3:30 - Action 4:00 - Beaver 4:30 - H. Patrol 5:00 - P. Jennings 5:15 - B. Masteron 5:45 - Rifleman 6:15 - News 6:25 - Weather
KFDA-TV (10)	Amarillo Muleshoe Cable 6	Mon. thru Fri. Daytime Viewing	6:25 - Sign On 6:27 - Meditation 6:30 - College 7:00 - Farm and Ranc 7:20 - News 7:30 - News 8:15 - Cap. Kangi 8:25 - News 9:20 - McCoy's 10:00 - Andy 10:30 - D. Dyke 11:00 - Love of Life 11:25 - CBS News 11:30 - Search Tomo 11:45 - Guiding Light 12:00 - News 12:10 - Weather 12:20 - Farm and Ranc 12:30 - As World Tu 1:00 - Password 1:30 - Houseparty 2:00 - Cl. Truth 2:25 - CBS News 2:30 - Edge of Nigh 3:00 - Secret Storm 3:30 - Variety 4:00 - Proft Eagle 4:30 - Superman 5:00 - Another Worl 5:30 - C-Don't Say 6:00 - News 6:00 - News 6:20 - Weather
KCBD-TV (11)	Lubbock Muleshoe Cable 2	Mon. thru Fri. Daytime Viewing	7:00 - News 7:05 - Farm Report 7:25 - Weather 7:30 - Today 8:25 - News 8:30 - Today 9:00 - Fr. Phrases 9:25 - News 9:30 - Concentration 10:00 - Morn. Star 10:30 - Para Bay 11:00 - Jeopardy 11:30 - P. Office 11:55 - News 12:00 - Noon Report 12:15 - C. Closeup 12:30 - C-Make Deal 12:55 - Early Report 1:00 - Days of 1:30 - The Doctors 2:00 - Another Worl 2:30 - C-Don't Say 3:00 - Match Game 3:25 - Afternoon R 3:30 - News 4:00 - Father Know 4:30 - Superman 5:00 - Woody Woodpe 5:30 - Huntley Brink 6:00 - Six Report
KBLK-TV (13)	Lubbock Muleshoe Cable 3	Mon. thru Fri. Daytime Viewing	5:55 - Sign On 6:00 - S. Semester 6:30 - Cart. Circus 7:00 -

THANKSGIVING

These prices good Nov. 22-24, 1965 in Muleshoe, Tex. We reserve the right to limit quantities!

HEN TURKEYS

39¢

SUNCO, 10 to 14 lb. Avg., USDA Grade A

Pound

TOM TURKEYS

37¢

FAIRVIEW, 16 to 20 lb. Average

Pound

USDA Choice, Aged, Heavy Beef, Valu-Trimmed **49¢**
CHUCK ROAST, pound

PHILADELPHIA

Cream Cheese 29¢ 8 oz. Pkg.

Lean, Dated to Assure Your Freshness **69¢**
GROUND ROUND, pound

HORMEL'S RANGE BRAND,

BACON \$1.59 SLICED 2 lb. pkg.

Rose Brand, USDA, Grade A Turkeys, 8 to 10 lb. avg. lb. 49¢

Loin Cut, Lean Northern Pork PORK ROAST, lb. 69¢

For your giblet gravy, 8 oz. pkg. CHICKEN LIVERS 43¢

Haines, Fresh, 12 oz. can OYSTERS 79¢

Tradewind Brand, 4 oz. jars Cocktail SHRIMP 3 for \$1.09

Mahawk, Boneless, Fully Cooked Canned HAMS, 10 lb. can \$9.39

Hormel's Boneless Fully Cooked 1/2 or Whole CURE 81 HAMS, lb. \$1.39



Mission, Cut, In Syrup YAMS, 2 1/2 cans 19¢

Marshmallow Creme HIP-O-LITE, pint 19¢

Doumak, Miniatures Marshmallows, 10 1/2 oz. 19¢

Durkee Flaked COCONUT, 14 oz. pkg. 39¢

Karo Red Label SYRUP, 3 lb. jar 59¢

Summitt in syrup, 11 oz. can MADARIN ORANGES 25¢

Towie Stuffed Manz OLIVES, 6 oz. jar 39¢

Towie Maraschino CHERRIES, 8 oz. jar 33¢

None-Such MINCEMEAT, 9 oz. pkg. 29¢

Betty Crocker, 6c off PIE CRUST, 20 oz. pkg. 39¢

Stokely, Golden Cream Style or Whole Kernel, CORN, 303 cans 2 for 39¢

Ocean Spray, Quart CRANBERRY JUICE 49¢



WIN UP TO \$1000.00
IN PIGGLY WIGGLY'S CASH CLUB!
EVERYONE WINS!
GET YOUR FREE CARD TODAY!

ALL CARDS GOOD FOR FREE GREEN STAMPS.

\$1000 CASH CLUB

HEALTH AND BEAUTY AIDS!

Electric Knife

Chef Mate, Serrated Twin Stainless Steel Blades, Removable, Guaranteed 1 yr., reg. \$19.95 **\$7.99**

Secret, 8c off, Reg. 98c DEODORANT, reg. size **69¢**

Hidden Magic, 15c off, reg. \$1.35 HAIR SPRAY, 7 oz. can **99¢**

FROZEN FOODS!

BANQUET, PUMPKIN AND MINCE PIES Family Size 29¢

HOLSUM PARKERHOUSE ROLLS 24 Count Bag 19¢

TOPPING Rich's Whipped 10 oz. can 39¢

Broccoli SPEARS Seabrook 10 oz. pkg. 27¢

YAMS-HILL-O-HOME, 14 oz. 29¢

Produce At It's Best! Always From PIGGLY WIGGLY!

OCEAN SPRAY, 1 POUND CELLO BAG

CRANBERRIES EACH **25¢**



CENTRAL AMERICAN, GOLDEN RIPE

BANANAS lb. **10¢**

CALIF. GREEN, PASCAL, LARGE STALKS

CELERY 2 for **25¢**

Salad Dressing, Kraft

MIRACLE WHIP Quart **49¢**

Azar, Halves and Pieces

PECANS 10 oz. pkg. **69¢**

Hunt's, In Heavy Syrup

FRUIT COCKTAIL No. 2 1/2 Can **19¢**

Ideal, Grade A, Medium

EGGS Dozen **39¢**

Betty Baker, Pitted

DATES 8 oz. pkg. **19¢**

DOUBLE

S&H GREEN STAMPS
TUESDAY and WEDNESDAY, NOV. 23 & 24

Bonnebelle, Sweet Cream BUTTER Pound **69¢**

Ocean Spray, Strained or Whole CRANBERRY SAUCE No. 300 Can **19¢**

Shortening, All Vegetable 4c off SNOWDRIFT 3 lb. can **59¢**

Del Monte, Fancy Cut GREEN BEANS 303 Cans **2 FOR 49¢**

Gold Coast, In Heavy Syrup SPICED PEACHES 2 1/2 Can **25¢**

Gold Medal Kitchen Tested FLOUR 5 lb. bag **49¢**

Del Monte, Fancy PUMPKIN 303 can **12 1/2¢**

Goodhope, Sliced In Heavy Syrup PINEAPPLE 300 can **19¢**

Del Monte, Garden Sweet GREEN BEANS 303 cans **3 FOR 69¢**

Nestle Semi-Sweet, 5c off MORSELS 12 oz. pkg. **39¢**

Lowest Prices... Greatest Variety... always at...

Piggly Wiggly