



DEAD ANIMAL SERVICE
— Hamilton Rendering Co. —
Free and Sure — Call Collect
Phone 303, Hamilton, Texas. 6-12nc

We stock Sylvania Silver Screen
85 TV Picture Tubes; Philco TV
and Radios. Authorized factory
service man for Philco. Phone 4
for service. Todd's Variety Store,
Gorman. 6-12nc

NOTICE - We do first class renovat-
ing on mattresses. We make new cot-
ton and innerspring mattresses. Prit-
chard Mattress Factory; Phone 5841,
De Leon. Free Pick-up & Delivery. 6-12nc

MATTRESSES REBUILT - Have your
old mattress made like a new beau-
tiful innerspring mattress. Prices are
reasonable, work guaranteed. Eppler's
Furniture Store of Gorman represent-
ing Summers & Son Mattress Co. of
Stephenville, Texas. 6-12nc

MONUMENTS FOR SALE
Guaranteed Monument Co.
ARNOLD BUTLER, Rep.

MATTRESSES RENOVATED -
Save up to 50%. Guaranteed.
Choice size, firmness. Matching
box springs made by Western
Mattress Company. Write Box
5288, San Angelo, or phone Del-
ma's Beauty Shop, 229W2, Gor-
man. 1-14nc

HOMES FOR SALE

One six-room house, modern con-
veniences, 50x100 ft. lot.
One four-room house, bath and
wash porch, 45x180 ft. lot.
Both houses located one block
east of school with south fronts.
Priced to sell.

J. C. Seaton, 1 1/2 miles north on
Desdemona Hwy. or see W. G.
Baker at feed store and he will
give directions. 3-31nc

SEWING MACHINES - Sales
and Service - Will have experi-
enced sewing machine repairman
at our store on Tuesday of each
week. Parts and service for all
makes - Also New and Used
Machines of all kinds for sale at
reasonable prices. Eppler's Fur-
niture - Army & Navy Surplus,
Gorman. 4-5-26c

SEWING MACHINE PARTS -
We now stock needles, belts, light
bulbs, etc. for Singer, Necchi,
Pfaff and other makes. See us
for new and used machines and
parts and service. Eppler Furni-
ture, Army & Navy Surplus, Gor-
man. 2-5-26

FOR SALE - Sweet Potato
Plants. Mrs. Ike Grisham, Gor-
man. 2-5-26p

WANT TO BUY - 2 and 3 inch
construction pipe. See J. H. Bar-
ham at Gorman Hotel or write
Box 21, Seymour, Texas. 2-6-2p



Borden's Dairy Products
Jack Boyd,
SALESMAN
We Appreciate Your Patronage

FOR SALE - Two-Story mason-
ry building - 3 small rent
houses - all located in Gorman.
Opportunity for good investment.
See Henry or Joe Collins at Col-
lins & Sons Agency. Phone 241
or write P. O. Box 133, Gorman,
Texas. 1tc

FOR SALE - Potato Slips and
Beets. L. R. McDonald. 2-6-2p
BERRIES FOR SALE - Mrs.
Luther Cunningham, Rt. 2. 1tp

WANTED - Good farm with ir-
rigation water in the Gorman
area. Have G. I. Loan AVAIL-
ABLE NOW. Pink Hailey, Phone
2451, Olden, Texas. 3-6-9p

FOR SALE - 1 Used Westing-
house Refrigerator - 1 Servel Re-
frigerator - 1 Used G. E. Auto-
matic Washer. Ranger Farm
Store. 3-6-9c

FOR SALE - The Jones Place,
both beautifully and conveniently
located. Just south of Chevrolet
sales, with plenty of room and is
a place you can enjoy. See C. E.
Sims. 3-6-9c

FOR SALE - 2 Used John Deere
Combines, Model 12A, one with
engine and new canvas. One power
take-off. Both in good condi-
tion. Ranger Farm Store. 3-6-9c

FARM WIVES
Although you live in a rural area,
you can realize fine earnings by
making Avon Cosmetics available
to your neighbors. Write Avon
Manager, Mrs. Ellis, 1641 Bridge
Ave., Abilene, Texas 1tp

FOR SALE - Chinese Red Pea
Seed. Tag and Tested. Bob Hud-
leston. Phone 3904 or 4594, De
Leon. 6-2

FOR SALE - Rock Veneer
House: three rooms, bath, and
utility porch. Lot 100x150. See
James Brown at Brown's Feed
Store. 4-6-9c

1860 ft. 5, 4, 3 in. pipe, 30 sprink-
lers, International Motor & pump.
Excellent condition. B John
Deere - 1950; planter, cultivator,
7 disc oneway, tandem. Trade for
smaller tractor. Call after 5 p. m.
or weekend. Carl Jones, 1 1/2
miles NE of Victor. 6-2p

Nuclear Fusion Program Extended Four More Years

The world's first and largest privately-financed program aimed at harnessing the H-bomb's tremendous power for the generation of electricity has been extended for an additional 4 years, it was announced this week by J. B. Thomas, president of Texas Electric Service Company.

Texas Electric Service Company is a member of the Texas Atomic Energy Research Foundation, composed of 11 investor-owned electric utility companies operating in Texas. Thomas is a director of the Foundation.

The directors voted at their annual meeting in Houston this week to continue their joint sponsorship of the nuclear research program underway since 1957 at the laboratories of General Dynamics Corporation's General Atomic Division which has as its goal the control of the nuclear fusion reaction for power generation. Nuclear fusion is the process responsible for the energy of the sun and stars, and of the hydrogen bomb.

Other member companies of the research foundation are: Central Power & Light Company, Community Public Service Company, Dallas Power & Light Company, El Paso Electric Company, Gulf States Utilities Company, Houston Lighting & Power Company, Southwestern Electric Power Company, Southwestern Public Service Company, Texas Power & Light Company, and West Texas Utilities Company.

The jointly sponsored research is being conducted at General Atomic's John Jay Hopkins Laboratory for Pure and Applied Science in San Diego, Calif., and includes both theoretical and experimental work in plasma phenomena, directed toward ultimately controlling and sustaining a man-made fusion reaction.

Dr. Frederic de Hoffman, senior vice president of General Dynamics and president of General Atomic Division, hailed the T-ERF decision as "a further impressive demonstration of the vision and vitality of the pioneering spirit in American enterprise, in the best tradition of technological progress."

"General Dynamics is delighted that we are to continue our association in this venture with such a forward-looking group of utilities," he said.

Dr. de Hoffman said the new experimental facilities now com-

Desdemona Study Club Elect Officers

The Desdemona Study Club met Saturday evening, May 14 at 8 o'clock with Mrs. W. H. Davis as hostess. This was the final meeting of the club year.

Mrs. C. S. Eldridge presided and members read the Club Collect as opening prayer.

During the business session the Welfare Chairman, Mrs. Fein, announced that a box of clothing had been sent to Good Will Industries in Dallas. This was our project for the month of May.

Officers were elected for the new club year of 1960-1961 as follows: Miss Frances Worden, President; Mrs. W. H. Davis, Vice President; Mrs. A. E. Henslee, Treasurer; Mrs. J. L. Burleson, Secretary; Mrs. Wade, Parliamentarian; and Mrs. Joe Owens, Reporter.

Roll Call was a memory verse from the Bible.

Mrs. Eldridge brought a most interesting program using as her subject, "Flowers of the Bible." She made her program more realistic by using illustrations of hand-painted drawings of plants and flowers from the Holy Land.

Conversation pieces were arrangements of red roses which centered the coffee table and dining table in the Davis home.

ing into operation result largely from an enlargement of interest in shock wave plasma generation and injection.

Indicative of the growth of the joint program, he said, is the fact that more than 50 scientists and other technical personnel are now engaged in its theoretical and experimental activities. In addition, the program has access to the talents of more than 1,100 scientists, engineers and others who make up the personnel of the John Jay Hopkins Laboratory. A large atomic beam laboratory, because of the nature of its research (the study of atomic scattering phenomena) is closely associated with the controlled fusion program.

The program is under the direction of Dr. Donald W. Kerst, inventor and developer of the betatron nuclear accelerator. Dr. Marshall N. Rosenbluth, internationally known physicist, heads the theoretical research in plasma stability at General Atomic.

JOHN W. ASKEW JR. RECEIVES GRADUATE ASSISTANTSHIP AT NTSC

John W. Askew, Jr., son of Mr. and Mrs. J. W. Askew of Gorman, who will graduate from North Texas State College on May 31, 1960 with a B. A. Degree in English, first minor in Art, has been offered a graduate assistantship in the English Department at NTSC.

Mrs. James Williams was responsible for this artistry.

To close the meeting the club sang "Blest Be The Tie" with Mrs. Henslee at the piano.

The hostess served a refreshment plate consisting of sandwiches, potato chips, pickles, strawberry cake with whipped cream topping, and fruit punch.

Those present were Mmes. Wade, J. L. Burleson, Eldridge, Fein, Duke, James Williams, Joe Owens, Henslee, Miss Worden, and the hostess.

HIGGINBOTHAM'S AMBULANCE SERVICE
Night Phone 24J Day Ph. 11

CRANES - DRAGLINES DOZERS - CLAMSHELL
Bridges - Building
Steel Erections
Supervisors - Consultants
General Construction

Circuit Construction Co.

H. Leonard Power, Owner
PHONE HI 2-1490
Hwy 80 W. CISCO, TEXAS
John Willingham, Supt.

The Gorman Progress

Entered as Second Class Mail at the Post Office in Gorman, Texas under the Act of March 3, 1878. Published on Thursday at Gorman, Eastland County, Texas.
KERNEL EUGENE BAKER, Owner-Publisher
JOE BENNETT, Assistant Publisher
MRS. CARROLL BECKLEY, Editor-Office Mgr.
Herman Bennett, Apprentice
SUBSCRIPTION RATES:
Eastland, Comanche Counties \$2.00 per year
All other subscriptions, \$3.00 per year
Service Men, Complimentary
ADVERTISING RATES
Display, per Column inch - 45c
National, less agency disc. - 56c
Classified Advertising 3c per word
Minimum charge 50¢
TEXAS PRESS ASSOCIATION
Member 1960

He will teach two classes of English for eight months, beginning with the Fall Semester of 1960, while he is working on his Masters Degree in English.
John is a graduate of Gorman High School.

Dr. Fehrman H. Lund
Optometrist
Eye Examinations -
Prescribing of Lenses
- Visual Rehabilitation
Main 9-1177 405-6 Exchange Bg
EASTLAND, TEXAS

President McKinley Once Said -

... "I do not prize the word CHEAP. It's not a word of hope, nor cheer, nor inspiration. To the contrary, it is a badge of dishonesty, the sign of distress. Cheap merchandise means cheap men and cheap men a cheap country." The quotation reminds us of a friend who bought a ranch in another state, demanded a cheap abstract and got it. He's busted now and the abstractor who accommodated him died of a broken heart. The moral is, don't do it!

Earl Bender & Company
EASTLAND (Abstracts Since 1923) TEXAS

YOU JUST CAN'T BUY BETTER PEANUT SEED THAN TEXAS RANGER BRAND

Carefully Selected for Uniformity
Carefully Selected for Quality
and Germination

Treated with Arasan or Panogen

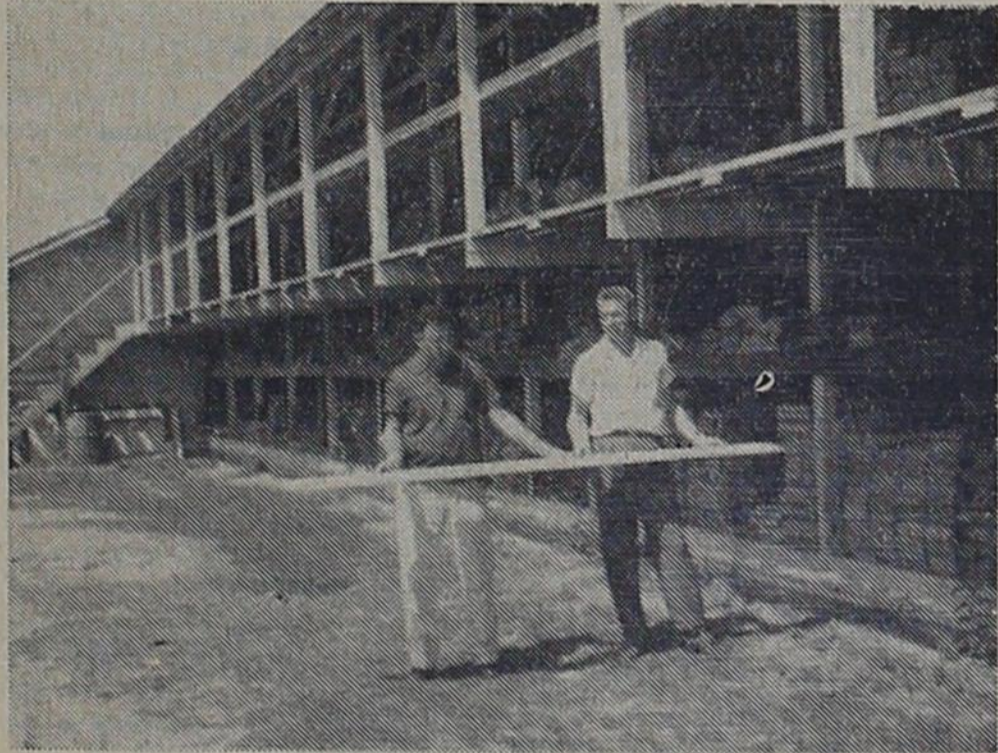
Be sure and see our seed before you buy - - Visit our dealers at the following places:

- TROY JOHNSON - Gorman
- CARROL HOGAN - Carbon
- Jones Feed Store - Rising Star
- or contact
- Jim Hogan - Orvel Treadway
- and J. R. Rogers
- our Field Salesmen

Get the best - Get TEXAS RANGER BRAND PEANUT SEED

RANGER PEANUT CO., INC.
Ranger, Texas Phone MI 7-3286

Helping Gorman Grow



"Preach" Horton and Lowell Rawls checking lumber in Higginbotham's yard.

For many years Higginbotham's have played a major part in the building and development of our town.

We appreciate the work they have done and wish them many years of continued success.



The First National Bank GORMAN TEXAS
"Oldest Bank In Eastland County"

NOW LOOK WHAT CORVAIR'S GONE AND DONE!

The same Corvaire that tallied a thumping 27.03 miles per gallon* in the Mobilgas Economy Run . . . went right on to climb Pikes Peak earlier in the spring than any car has ever tried!

We wanted to show you what the fabulous traction of Corvaire's rear-engine design and the sure-footedness of four-wheel independent suspension really mean. So the identical Economy Run car went right on to 14,110-foot Pikes Peak—and right up to the top of that savage mountain, on April 15, still deep in winter's snow and ice. No other car—even specially equipped—had ever been able to conquer that nightmare alpine road so early in the spring. But Corvaire (with United States Auto Club officials aboard to certify that not one nut or bolt was changed) purred right to the summit without chains or even snow tires! That just underscores the fact that Corvaire is totally unique. But you'll find that out the first five minutes you're at the wheel!



See The Chevy Show in color Sundays NBC-TV—the Pat Boone Chevy Showroom weekly ABC-TV.



Try the remarkable Corvaire at your local authorized Chevrolet dealer's

SMITH BROS. CHEVROLET CO.

Phone 26 Gorman, Texas

Donations Asked State Chapel For Retarded Youths

There are eight children from Eastland County at Austin State School, a 45-year-old State institution for retarded children. There are more than 2,000 children at the school, and they have come from 198 counties. There is no house of worship on the grounds, and, of course, it isn't practical to take very many of the children to churches off the campus.

Three years ago a group of volunteer men, women, and min-

isters began the work of raising \$95,000 to build a Chapel for the Children. Only \$25,000 remains to be raised. Contributions have gone in from 123 counties, but at \$45.00 per child, our county is still \$315 short of its quota.

There may be those among our readers who will want to have a part in doing for these children who cannot do for themselves.

Contributions are fully deductible. Checks or money orders should be made to:

Chapel for the Children
Austin State School
and mailed to:
Mrs. Homer Leonard, Secy.
Volunteer Council,
Austin State School
3222 Gilbert Street
Austin 3, Texas.

OLIVER SPRINGS NEWS

By Florence Richardson

Our thought for the week: "We shall prosper as we learn to do the common things of life in an uncommon way."

Nice showers fell here early this morning (Monday).

The Willie Hendersons have been visiting in Albany with their daughter and family.

The R. H. Watsons spent last weekend in Ft Worth visiting the Vernon and Kenneth Watsons.

The L. F. Mears were in De Leon this past week visiting the E. K. and Clarence Mears families.

The Travis Wallis family of Borger spent the weekend here with the A. D. Bryans.

Rev. and Mrs. Buel Bryan and

Linda of Swenson were here Friday and Saturday visiting friends and relatives.

The Jesse Atchisons were visiting in Goldthwaite last week with his mother and sister.

Mrs. Cleo Jenkins and Mrs. Charlie Atchison were in San Antonio last weekend visiting the Harvey Parkers. Mrs. Harvey Parker has been critically ill.

Mrs. Melvin Daniels is spending this week in Ft Worth with her sister and family.

Mr. and Mrs. Dean Bennett

visited the Rex Kinsers Sunday afternoon.

Visiting in our home Sunday were Bro. Arlin Clement and wife, the B. A. Hirsts and R. H. Watson families.

The Loyd Glassons, Homer Richardsons, Rob and Roy Kinser all enjoyed ice cream and music Friday night in the Rex Kinser home.

Sorry we did not have any news last week, but was so busy catching up on weed cutting and gardening.

BANK NOTES by Malcolm

DID YOU KNOW...

MARCO POLO RETURNING FROM CHINA IN THE 13th CENTURY REPORTED THE EMPEROR KUBLAI KHAN PRINTED HIS MONEY ON MULBERRY BARK.



BY 1970, ITS PREDICTED BANKS WILL PROCESS 22 BILLION CHECKS A YEAR. AUTOMATION WILL HANDLE THE VOLUME.



NO FORMAL EDUCATION MADE A BUILDING-TRADE WORKER HESITATE TO START HIS OWN BUSINESS. BUT A LOCAL BANK ENCOURAGED AND GUIDED HIM. AND TODAY, THE MAN OWNS A PROSPEROUS CONTRACTING FIRM EMPLOYING MORE THAN 100 PEOPLE.

Peanut Snacks OK For Teens

Tween-agers -- youngsters who insist on eating between meals -- should be allowed to eat more than three meals a day, Texas nutritionists say.

And when they get hungry, let them eat peanuts or peanut butter.

The Texas State Nutrition Council held a symposium in Fort Worth, February 11 on "Nutrition for Youth." It was headed by Dr. Mina W. Lamb, chairman of the council and head of the food and nutrition department at Texas Technological College, Lubbock, Texas.

The group wants the between meal snack planned to contribute to the over-all nutritional needs of the individual.

Heading the list of recommended foods for snacks was the peanut - salted or in peanut butter.

Peanuts are high in protein, a substance the food experts want distributed in all meals of the day, not concentrated when the main meat dish is served at night.

The group also said:

1. There has been no improvement in the American diet since 1949 in spite of abundant food and money.

2. Standards for attractiveness in food frequently are superficial and not for best health or nutrition.

3. The young child eats well at the school lunch. He accepts a plate lunch and eats what is on it until he approaches the fifth grade. Then he prefers a cafeteria style meal, and often selects his menu unwisely.

4. Muscular pains frequently are caused by a dietary deficiency.

5. Nutrition during childhood affects a person throughout his life.



We have a Homeowners Policy to fit every home... every budget

We'll be glad to show you a Homeowners Policy that'll fit your home... your budget. It'll give you broad financial protection against losses from fire, theft, liability claims and judgments. And you pay only one premium. Call us for the details.

Gorman Insurance Agency

W. G. Kirk Berenice Jeffs
Phone 134 Gorman, Texas

Representing the HARTFORD FIRE INSURANCE COMPANY GROUP
HARTFORD 15, CONN.

WEeping OAK DRIVE IN THEATRE

DE LEON, TEXAS

THURSDAY & FRIDAY — MAY 27 - 28

Metro-Goldwyn-Mayer Presents

ROBERT MITCHUM - ELEANOR PARKER In

"Home from the Hill"

In Cinemascope and Metro-Color

SUNDAY - MONDAY - TUESDAY — MAY 29-30-31

SAM SPIEGEL PRESENTS
ELIZABETH TAYLOR MONTGOMERY CLIFT KATHARINE HEPBURN

SUDDENLY LAST SUMMER
A COLUMBIA PICTURES RELEASE
Based on the play by TENNESSEE WILLIAMS • Directed by JOSEPH L. MANKIEWICZ • Produced by SAM SPIEGEL
Written for the screen by GORE VIDAL and TENNESSEE WILLIAMS • Production Designer—OLIVER MESSELL

Accuracy is our Watchword

Your Registered Pharmacist Fills Every Prescription With Professional Precision

MEHAFFEY DRUG

"Where Friends Meet"

Phone 55

Gorman

SWANNER LOCKER PLANT

MR. & MRS. D. C. SWANNER

PHONE 125

GORMAN



RIDING CLOUD NO. 9...

It Takes A Down-To-Earth Approach To Make It Possible - - -

Let us service your Car — With a Proper Grease Job and the Correct Air Pressure in your Tires - - You will think your are on that CLOUD 9 - gliding along.



JOHNSON TEXACO SERVICE STATION

WESLEY SPIVEY, Operator

We Give B & B Stamps

Phone 225

Hwy. 6

Gorman

ATTENTION PEANUT FARMERS

We Have Ample Stocks of Select, High Quality

TOPPER BRAND SEED PEANUTS

--- READY FOR PLANTING!

• All Seed Treated with A Complete Dust Free Method

- All Our Seed are Hand-Picked Graded No. 1 Peanuts
- We Offer Seed in Large, Medium, Small Medium, and Pee Wee Sizes
- All Seed Are Graded For Uniformity

All our seed are produced from high grade, well matured farmers stock peanuts, purchased in Texas and Oklahoma by this company — and properly stored during the buying season. Each bag of seed peanuts bears a State tag — showing excellent germination results.

Plant TOPPER Peanut Seed for Best Results

We Are Proud of Our Reputation For Quality Built Over A Period of 34 Years

See Your Local Dealers:

W. G. BAKER FEED & SEED

ED BROWN'S FEED STORE

JOHNSON'S TRADING CENTER

DURHAM PEANUT CO.

COMANCHE, TEXAS

ELECTRICITY

Your efficient way to cook...because it saves you so much time



You'll spend less time in the kitchen . . . have more time for other things . . . when you cook the efficient electric way.

Automatic electric surface cooking units prevent boil-overs and burned foods . . . make pot-watching unnecessary. The clock-controlled electric oven cooks a complete meal to perfection while you're away from the kitchen. And when you cook with clean electricity, your kitchen stays fresh and bright with a minimum of cleaning and care. See your electric range dealer soon. Efficient electric cooking is another of the many ways in which your dependable low-cost electric service helps you live better . . . electrically.



Efficient electric cooking is a feature of all "Live Better Electrically" Medallion Homes

TEXAS ELECTRIC SERVICE COMPANY

T. J. HALLMARK, Manager

Phone 121



PAUL BRASHEAR, your State Representative, 76th. District, has been instrumental in keeping the 91st District Court in Eastland County, and has prevented the introduction of legislation that would have tried to move the Court of Civil Appeals from Eastland County.

THE GORMAN PROGRESS, Eastland Co., TEXAS, MAY 26, 1960

CARPENTRY & PAINTING

Our Specialty
Sheetrock - Bedding Tape - Roofing
Contract Jobs - Guaranteed To Please

SHUPP CABINET SHOP

Billy Shupp Phone 3113 DE LEON

THONGS
(BEACH SANDALS)

New Shipment Unpacked
and Now on Display

ALL SIZES
Children - 49c - Adults - 59c



DESDEMONA NEWS

ETHEL KEITH, Reporter

Mrs. Buna Abernathy has been to Ft Worth for a visit with her daughter, Mr. and Mrs. Leon Alread. She returned home Sunday.

Mrs. C. H. May is a patient at this writing in the Gorman hospital.

Mrs. Della Ryan had the misfortune to get snake bit Thursday evening while hoeing weeds. She was rushed to the Gorman hospital. The snake was a Copper Head.

Mrs. Margie Caudle and daughter, Sherril, left Sunday with a son, Ray Caudle, for Ft Stockton for a prolonged visit. Mrs. Caudle and Sherril will be back here in time for school this fall.

Mrs. Mack Keith and sons, Mike and Stevie of Monahans, and Judy Wilcoxson of Odessa spent the weekend here with relatives.

Young Miss Ann Rainey left Sunday with Mrs. Mack Keith for an extended visit with them in Monahans.

The Wayne Bakers of Ft Worth were here on the weekend visiting her mother, Mrs. Eva Williams.

Mr. and Mrs. Billy Jack Hare and daughter of Ft Worth were here the past weekend visiting relatives.

The J. T. Wilsons of Eastland were here on the weekend visiting the Neldon Shipman family.

Mr. and Mrs. Tommie Irwin and Mr. Jr. Moore left early Sunday morning with Mr. and Mrs. J. T. Scarlet of Breckenridge to attend the memorial services in Beville held for a nephew and cousin, Mr. Morris Rogers, son of

KEEPING UP WITH FRIENDS

Mrs. Glenn Jordan, Kokomo correspondent, was unable to get the news this week due to illness. We wish her a speedy recovery.

Mr. and Mrs. C. D. Iley, Mrs.

Mr. and Mrs. Hughie Rogers, who was killed in a plane crash. Rev. and Mrs. Buel Bryan and Linda of Swenson were here Friday night to attend graduation. Bro. Bryan was the guest speaker.

Mr. and Mrs. Jimmy Burleson and son of Ft Worth were here the past weekend visiting the R. G. Lewis and Leroy Burleson families.

Mr. and Mrs. Rob Guthery and children and Mr. and Mrs. Chubbie Foreman, all of Irving, were Sunday visitors with their parents, the Roy Gutherys.

Mrs. Myrt Reed left Tuesday morning with Mrs. Eddie William son to spend a week in Wichita Falls with relatives.

Mrs. B. E. Belyeu is in Abilene for an indefinite stay with her daughter, Mrs. John Grisham, and family.

HIGGINBOTHAM'S AMBULANCE SERVICE

Night Phone 24J Day 11

LOVELACE TRANSFER & STORAGE
STORAGE - CRATING - PACKING



LONG DISTANCE & LOCAL HAULING
Service to and from All 48 States and Canada

Mary Miles and Mrs. Ella Hancock were visitors in the home of Mr. and Mrs. J. W. Askew and Henry Iley of De Leon last Thursday and Friday.

Mr. and Mrs. Jan Acrea left their home in Pasadena last week for Ft. Belvoir, Virginia where he will be stationed for six months.

Visiting Mrs. A. B. Rankin, in the home of Mr. and Mrs. Carroll Bickle, over the weekend were Mr. R. O. Rankin, his daughter and husband, Mr. and Mrs. Fred Cockrell of Post, Robert Rankin of Fort Worth, Mr. and Mrs. A. C. Files and sons Brawner Lee and Dale and Mr. and Mrs. Ray Rankin and daughter Carole, all of Gorman.

Billy Gene Alsbrook and family of Dallas visited his mother, Mrs. Myrtle Alsbrook and other relatives last week.

Mrs. George Snyder was home

GROUND TANKS Dugout with Dragline - Wet or Dry Bottom Fair Price - Fast Service

Bridges - Building
Steel Erections

CRANES - DRAGLINES
DOZERS - CLAMHELL
General Construction

Circuit Construction Co.

H. Leonard Power, Owner
Call Collect - HI2-1490
Hwy 80 W. CISCO, TEXAS

for the weekend. She is staying in the home of her son, Merle, whose wife is critically ill.

Mr. C. O. Huff has received word that his nephew, F. C. Bishop died on Sunday, May 15 in the Taylor Hospital at Lubbock.

Mrs. Huff has been notified of the death of an aunt, Mrs. Jerome Squires, 83, of Gatesville.

Mrs. Mary Harviston, daughter of Mrs. Squires, and her husband visited the Huffs and other relatives last Sunday.

Mrs. Joe Ormsby returned from Plainview where she has been staying with her father, Mr. Odie Brightwell. Her sister, Mrs. Delbert Smith and son of Big Spring accompanied her home.

WEEKEND SPECIALS

ALL-MEAT DECKER'S WEINERS 1 LB. 49c

SUPREME COOKIES 1 LB. 49c
GIANT DEVIL'S FOOD

SWIFT'S VIENNA SAUSAGE NO. 1/2 CAN 2 - 35c

VELVEETA 2 lb. pkg. 79c

JUMBO PIES 12 count 39c

BLUE PLATE SALAD DRESSING 1 QT. 39c

NEW P'APPLE-APRICOT JUICE 29 OZ. CAN 25c

WITH THE PURCHASE OF 10 lbs. Light Crust Flour for - 89c YOU MAY BUY

5 lbs. Light Crust Meal for - 1c

SURE-JELL 2 pkgs. - 29c

We Have EVERYTHING Needed For Home-Canning And Freezing.

This Store Will Be Closed On MONDAY, MAY 30 - MEMORIAL DAY

JAY'S GROCERY & MARKET

We Deliver Phone 40



WINDSHIELDS

INSTALLED

In All Makes of Automobiles



All Work Guaranteed

We Give Free Estimates

BEGGS PAINT & BODY SHOP

110 Gonzales St. DE LEON Phone 3851

PRE- INVENTORY SALE

OUR GIGANTIC SALE
begins as soon as you read this ad - and continues thru June

CHAIRS

	List Price	Sale Price
1 - OCCASIONAL CHAIR	\$16.95	\$11.50
1 - BASE ROCKER	28.50	21.50
1 - SWIVEL ROCKER	59.50	39.50
2 - SWIVEL ROCKERS	37.50	30.00
3 - HIGH BACK ROCKERS	16.50	13.95
2 - LOW BACK ROCKERS	12.50	10.95

1 - Platform Rocker



LIST PRICE

\$38.50

SALE PRICE

\$23.95

1 - Full Size Foam Rubber Mattress - Box Springs



List Price

\$74.75

Sale Price

\$62.50

	List Price	Sale Price
3 - GOSSIP BENCHES	\$ 13.95	\$ 11.50
1 - DINING ROOM SUITE	219.50	179.50
1 - Drop-Leaf Harvest Dinette	179.50	154.50
1 - HAMMOCK	17.95	15.00
1 - DESK Stain & Burn Resistant Top	67.50	52.25
1 - DESK CHAIR	13.95	10.00



3 pc. Sectional Suite

list price 300.00 - Sale Price \$218.12

LIVINGROOM SUITES	List Price	Sale Price
2 - PIECE SUITE	\$211.50	\$153.77
2 - PIECE SUITE	234.00	172.67
2 - PIECE SUITE	204.00	148.87
9-PIECE STUDIO SUITE	168.00	121.60
SLEEPER STUDIO SUITE	205.00	150.00
1 - SOFA BED SUITE	99.50	85.00
1 - SLEEPER	264.50	214.50

BEDROOM SUITES

1 - CHAIR-BACK BED - EXTRA LARGE 12 DRAWER DRESSER
ROCKWOOD MAPLE - CHERRY FINISH
list price 229.50 - Sale Price \$169.50

1 - PANEL BED - TRIPLE DRESSER - NITE STAND
list price 162.50 - Sale Price \$121.88

1 - POSTER BED - DOUBLE DRESSER - NITE STAND
MAPLEWOOD - CHERRY FINISH
list price 234.00 - Sale Price \$186.96

1 - BEDROOM SUITE
list price 104.50 - Sale Price \$85.00

Higginbotham's