

SANTA ANNA NEWS

VOLUME 52

SANTA ANNA, COLEMAN COUNTY, TEXAS, FRIDAY DECEMBER 10, 1937

NUMBER 50

"He Profits Most Who Serves Best"

SMOKE

FROM THE MOUNTAIN

Owing to the weather, the smoke just about froze up along with us, the water pipes, etc. We do know that despite the cold weather, one certain young business man acts mighty like he might let someone else have his name for a Christmas present or anyway sometime in the near future. Anyone who would venture out Wednesday night all dolled up for a date — on a night like that — must be serious.

Don't forget your Santa Claus letters, kiddies, when you come to town Saturday. Bring them in here by Monday, Dec. 13 so we can print them and let Santa see them in time to get you what you want. Santa Claus is going to be in town Saturday afternoon but he wants you to bring the letter to the News so we can print it.

"They really cut down the old pine tree" this week at the cedar brakes to decorate the town. George Johnson and a crew of helpers turned woodcutters and then distributed the trees where they are now gracing the sidewalks of the business district.

We welcome our new correspondents from the following communities: L. C. Dunn of Plainview and Gwendolyn Hodges of Cleveland. We failed to mention in our list last week that we desire a correspondent from Gouldbusk, Coleman Junction, Watts Creek, Concho Peak and Liberty. Remember we give you a subscription, paper and stamps and envelopes — all you have to do is write the news down. If your subscription is out or if you have not been getting the paper, come to see us NOW.

Recreation Dept. Begins Practice For Basketball

New Director Announces Plans For Teams, Improved Courts

The Recreation Department has arranged for basketball courts on two of its playgrounds, the Westside Park and Grammar School playground. The one at Westside Park has already been completed and is in use and the other will be ready in the next few days.

Everyone is invited to come out and take part in this sport, according to the director. Plans are being made to light the court at Westside Park so that when weather permits, games can be played at night.

A junior league has been organized and the directors invite all boys under sixteen years of age to come out and join. A county adult league has also been organized with one Santa Anna team already entered.

Anyone wishing to enter a team should see Mitchell Moore, project manager, or one of the playground directors. Other teams in the league are teams from Burkett, Coleman, Mozelle.

Plans are being made to organize an adult ladies team. All ladies wishing to play should see Mrs. Veda Fulton, director at Weaver Park.

The sponsors of the project have secured the Simpson building just north of the Justice of the Peace Office and on days when weather does not permit work out of doors, the directors will meet their groups there.

Ragsdale Bakery Plans New Design On Bread Wrapper

Ragsdale Bakery has announced that the firm will be using a new type wrapper for its bread. The new design on the bread wrapper will make a better looking and more attractive package.

The old design has been used for 15 years. According to Mr. Ragsdale, the new design on the bread wrapper is keeping with the more modern new wrapper.

Advertisement

Seniors To Give First Play Friday Of Next Week

"Miss Jimmy," Three Act Comedy, Directed By Miss Pinney and Mr. Mathews

The senior class of the Santa Anna High School will present their first play of the year next Friday night, Dec. 17 at the high school auditorium. The play, entitled "Miss Jimmy" will begin promptly at 7:45 o'clock.

The three act comedy takes place in a setting of a girls school, where "Jimmy," played by T. L. Reid, a student from a nearby university, breaks into the dormitory to secure a dress in which he must appear for a fraternity initiation. The plot centers around his difficulties when caught in the dormitory and promises the audience laughs throughout the entire drama.

Characters besides the hero are "Louise," Elizabeth Morris; "Florence," Gene Adams; "Catherine," Louise Oakes; "Doris," Clara Ruth Mathews; "Harriet," Ruth Laverne Irick; "Droopy," the colored man, Ben Parker Jr.; "Mrs. Watkins," Gale Collier; "Frazier," Frank McGonagill.

Miss Kathryn Rose Pinney and Charles Mathews, senior class sponsors, are directing the play.

Burton-Lingo Is Added to Members Trades Day Assn.

Burton-Lingo Lumber Co. has been added to the list of members of the Santa Anna Trades Day Association. Charles Berry, manager, entered the association during the first enrollment two weeks ago, but due to an unintentional oversight, the name of the company was omitted from the list turned in to the News.

Santa Claus To Visit Here This Saturday, Dec. 11

Will Greet Kiddies Each Saturday Until Christmas and On Other Special Days

Santa Claus will come to Santa Anna this Saturday, Dec. 11 at 2:30 p. m. and will remain to greet the kiddies throughout the afternoon. He can be seen in the stores and on the streets of the business district and will be pleased to talk to the grown folks and children.

Santa Claus will be in town each Saturday through Christmas and will also be here on the day before Christmas, Dec. 24 and probably on several other days just before Christmas.

Texas A-M Club To Give Dance at Brownwood Dec. 22

The Texas A and M Oil-Belt Club will give a dance Wednesday night, Dec. 22 at the Roof Garden of Hotel Brownwood in honor of the A and M ex-students of this section of the state. Jack Amlog and his orchestra from Mineral Wells will play for the entertainment which will begin at 9:30 p. m.

The Oil-Belt Club members are residents of Brown, Coleman, Comanche, Eastland, Erart, Mills and Callahan counties, who are now students or ex-students of Texas A and M. All of these are invited to come to this reunion and the public is also invited to attend the dance. A special invitation has been made to all college students to attend.

CARD OF THANKS

I want to thank the fire department for their good work in putting out the fire at the Magnolia Warehouse this week. Your promptness and efficiency saved much property.

Advertisement

Coaches, Writers, List Choices For District Teams

Several Local Boys Mentioned In Selections

Sports writers and coaches of District 25-B are making selections for the all-conference football teams. Santa Anna boys have been mentioned in several of the district teams; prominent in the selections are Arnold Richards, H. L. Lackey and Bo Brewer.

Below are given the lists turned in by Coaches Hunter of Rising Star, White of Cross Plains and Rudder of Brady. Newspaper men giving their selections are Smith of Brady Standard, Scott of the Cross Plains Review and Sellers of the Rising Star Record.

When all selections have been tabulated an all-district team will be made up of the ones playing on the most teams.

'Smitty' Smith, Brady Standard First Team:

Hampton, Brady, end Sheffield, Brady, tackle Bellitz, Winters, guard Julian Parker, Brady, center Welhausen, Ballinger, guard C. Woods, Winters, tackle Arnold, Coleman, end Dye, Brady, quarterback Smith, Rising Star, halfback Childs, Cross Plains, halfback Hodge, Winters, fullback Second Team Bridwell, Winters, end Alley, Brady, tackle Gressett, Ballinger, guard Lee, Winters, center Ussery, Cross Plains, guard Thompson, Coleman, tackle Kirklin, Brady, end Hopper, Rising Star, quarter Smith, Brady, halfback May, Ballinger, halfback Flahie, Cross Plains, fullback

Coach Rudder, Brady Hampton, Brady, end Sheffield, Brady, tackle Bellitz, Winters, guard Julian Parker, Brady, center Gressett, Ballinger, guard C. Woods, Winters, tackle Arnold, Coleman, end Dye, Brady, quarterback

(continued on page four)

Hill Store Is Bought Friday

Business transactions last Friday turned over the ownership of the store of D. R. Hill and Brother twice during the morning, the final owner of the stock, Mr. Winkle of Fort Worth remaining in Santa Anna to sell out the stock damaged in the fire several days ago which destroyed Porters Grocery.

The stock was first bought by Jewell Hill and W. H. Thate, local business men, who later sold to Mr. Winkle, who is continuing the fire sale planned by the Hill management.

Mr. Hill has made no definite plans to re-enter business at the present time.

Ward PTA Will Meet On Tuesday

The Ward School Parent Teachers Association will meet for a Christmas program Tuesday, Dec. 21 at 3:30 p. m. at the Ward School.

Leader for the day will be Mrs. Charles Bruce who will lead the study topic, "An Educator Looks at Home Work." A Christmas program will be given by the first grade.

The mothers are urged to be in attendance to help their child's room win the attendance banner. The public is invited to attend.

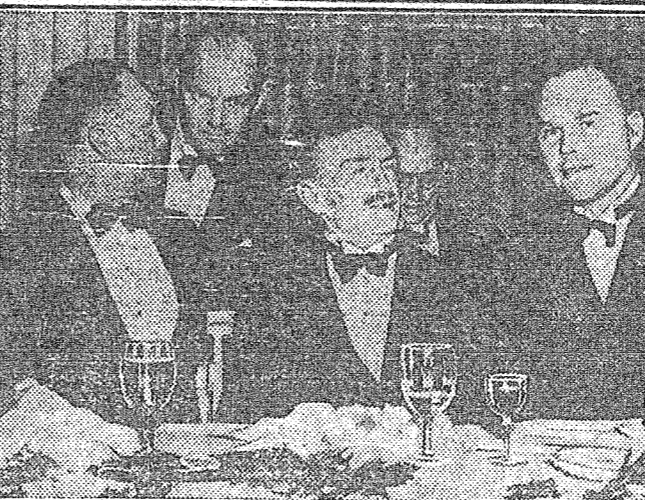
Pat Hosh Awarded Trip to Indiana By Electrolux Company

Pat Hosh returned to Santa Anna Friday night from Evansville, Indiana where he went Monday, Nov. 29 on a special train to the Electrolux factory.

Mr. Hosh was one of the 125 Electrolux dealers in Texas who was awarded a free trip to the factory because of the large number of sales made during the year.

Advertisement

Airmen Honor Publisher-Flyer



In celebration of his completion of 1,000 hours of flying, the Air Service Post of the American Legion honored 69-year-old publisher Bernarr Macfadden at a banquet, in New York recently. Mr. Macfadden is the oldest licensed pilot in the country. Pictured at the function, left to right: Commander Charles E. Rosendahl, of Lakehurst Naval Air Station; Major Gil Robb Wilson (standing), State Aviation Commissioner of New Jersey; Colonel Bernarr Macfadden, and Major E. E. Aldrin.

Students Attend Lions Club Tues. As Honor Guests

Wilyne Ragsdale, Dorothy Sumner, and Ada Lois Newman were honor guests of the Lions Club Tuesday in recognition of their high scholastic work during the second six weeks at the local high school.

Business discussed during the meeting included reports from the decoration committee, who reported erecting of Christmas lights on main street and placing of evergreens in front of each store; the committee investigating possibility of machinery firm being located here reported that terms asked could not be met by the business men; the banquet committee announced plans for at least 125 guests at the annual entertainment to be next Tuesday night, Dec. 14 at 7:30 in honor of football boys, pep squad and band and club members wives.

Those present for the meeting besides the honor guests were A. D. Pettit, J. T. Garrett, John Franklin Turner, Jim Bob Gregg, Geo. M. Johnson, R. L. Hunter, Loyd Burris, D. L. Pierard, F. C. Woodward, J. C. Scarborough, M. L. Womack, J. V. Davis, R. R. Lovelady O. A. Etherege, Chas. Berry, Rex Golston, W. H. Thate, W. H. Ragsdale, J. W. Riley, Hardy Blue, W. M. Bell.

Tom Wallis was the guest of Lion Turner.

The club also learned that the District Group meeting scheduled for Thursday of this week at Richland Springs has been postponed to January.

Contributions To Iron Lung Fund Still Coming

The Iron Lung Fund reached a total of \$1578.93 this week with the closing of the campaign. Names of all donors are given on another page in this issue.

Those contributing since the paper last week are: Mrs. J. W. Wise, Rockwood \$2.00 Mr. and Mrs. Fred Rollins 1.00

Although the fund for the Lung was raised about two weeks ago, surplus donations will be placed in a bank fund to be used for repair of the equipment when it is needed.

FRANCINE MERRITT STARS IN PLAY AT HARDIN-SIMMONS U.

Word from Hardin-Simmons at Abilene states that Miss Francine Merritt, daughter of Mr. and Mrs. E. J. Merritt, is one of the main characters in a melodrama to be presented there Thursday and Friday nights of this week.

Miss Merritt, who will portray the part of Marchioness Muddie in "Winsome Winnie," is a senior speech major at the college. The play will be conducted as the plays in the 1890's with tables reserved for the audience who will be served sandwiches and drinks throughout the entertainment.

Mrs. Griffin Parker of Novice, Mrs. W. G. Ferguson and son of Tye spent Tuesday night visiting Mr. and Mrs. Loyd Burris.

Mr. and Mrs. Charles Berry and son visited in Wichita Falls Sunday.

Mrs. Stafford Baxter

Funeral Services Held Saturday for Mrs. W. McCarrell

Rockwood Resident Dies Saturday After Long Illness

Funeral services for Mrs. William McCarrell of Rockwood were held in Rockwood at the Baptist Church Saturday afternoon, Dec. 4. Mrs. McCarrell died Saturday morning at the age of 61 after an illness of seven months. Rev. Luther Nelson of Rockwood officiated.

Mrs. McCarrell had lived in Coleman County 30 years. She was married to William McCarrell in 1893 and to this union were born five sons and two daughters who survive. She was a member of the Baptist Church.

Survivors include her husband, William McCarrell of Rockwood; five sons, Arthur McCarrell, Olney; Towery McCarrell, Olney; Wilbert McCarrell, Abilene; Robby McCarrell, Graham; and Andy McCarrell, Woodson; two daughters, Mrs. W. F. Gardner, Eldorado; and Mrs. Paul Morland, Graham and Rockwood; three brothers, Lewis Hallford, San Antonio; Eva Hallford, San Antonio; and Eli Hallford, Bangs; thirteen grandchildren and two great grandchildren.

Pallbearers were A. C. Craig, Roy Stafford, William L. Livingston, Harold McCarrell, Edgar McCarrell, Loyd Hallford.

Flower ladies were Janie Stafford, Bert Johnson, Dorothy McSwain, Mrs. William L. Livingston, Judy Kline, Mrs. C. B. Cheaney, Willie Marie Kline and Mrs. Carl Buttry.

Hosch Undertakers were in charge of arrangements.

Relatives Contest Will Bequeathing Fund to Hospital

A jury in the 119th District Court at Ballinger Tuesday afternoon found that S. V. Payne, deceased, was sane when he bequeathed an estate valued at \$7,000 to Mrs. Lizzie Orr, a sister, and the Sealy Hospital of Santa Anna.

At the same time Judge W. R. Chapman of Abilene, who presided, took under advisement another attack on the will regarding its structure. He must decide whether or not it was legally drawn.

Contesting the will were Johnnie McNally, a nephew and other relatives, who claimed the late Mr. Payne was of unsound mind when the will was executed and that it was not legally drawn. Mr. Payne died Dec. 31, 1936.

The will stated that \$8-be paid monthly to Mrs. Orr as long as she lived and that the remainder be given the hospital. The estate included about \$3,000 in cash and a farm in South Ballinger, valued at about \$4,000.

Turkey Prices About 15 Cents

Coleman County turkey market on the whole has been sluggish since the beginning of the Christmas turkey market although the price is 15 cents a pound for top birds, a little higher than the Thanksgiving market price in this section.

Several dealers in near-by points have predicted the market will probably close Saturday night.

S. A. BEAUTY SHOP INSTALLS ENTIRELY NEW FIXTURES

The Santa Anna Beauty Shop has installed entirely new furniture and equipment for beauty service this week and invites patrons to come inspect the modernistic Calo-Rex fixtures.

New tables, chairs, and decorations have been placed in the waiting lobby and new equipment has also been placed for all beauty work. Everything in the shop is new and of the most modern design.

Coleman Area C Farmers Elected On Committee

J. P. Hodges, Ed Featherston, and Herman Glibreath were elected community committeemen, and Homer Hill alternate, in a meeting of District C of the Coleman County Agricultural Conservation Association conducted by County Agent C. V. Robinson and Assistant County Agent S. E. Rosenberg at Rockwood Monday.

Communities composing this district are: Featherston, Concho Peak, Elliott, Brown Ranch, Red Bank, Rockwood, Shield, and Whion. Forty farmers attended the meeting.

District "B" committeemen, representing Buffalo, Cleveland, Junction, Leedy, Liberty, Line, Mukewater, Plainview, Santa Anna and Trickham were elected Tuesday night at the Santa Anna High School as follows: Ozro Eubank, Fred McCormick, W. J. Curry and alternates Louis Newman and Bill Stiles.

District "A" committee for Coleman and western part of the county was chosen Tuesday night. District "D" for the communities of Gouldbusk, Hardin, Hill, Leaday, Starkweather, Talpa, Valera and Voss was scheduled to meet Wednesday night but the report of the meeting could not be reached in time for this week's paper.

The community committeemen are key men in the local administration of the law program, responsible for keeping informed on the regulations of the program and advising with farmers cooperating with the farm program and ranchers in the range program.

Each group of committeemen elected in the five districts this week are to hold separate meeting this week and elect a chairman. The five chairmen become members automatically of the county board of directors, who in turn elect the county committeemen, who work with the County Agent in the administration of the county's farm and range programs.

Present members of the board of directors are T. J. Allen, president, Ward Evans of C district, Garland Abbey of E district, Ozro Eubank of Santa Anna, and George Pauley of Valera.

Present members of the county committee are T. J. Allen, Garland Abbey, Ward Evans, and Ozro Eubank, alternate. These directors and this committee are the administrative bodies for the farmers and ranchmen co-operating with the government's program.

QUEEN THEATRE

PHONE 44
Fri., Dec. 10
ONE DAY ONLY
"Damaged Lives"
Sat., Dec. 11
TEX RITTER in
"Sing Cowboy Sing"
"Vigilantes Are Coming"
Episode 11
Sun.-Mon., Dec. 12-13
FRED MACMURRAY in
"Swing High
Swing Low"
With CAROLE LOMBARD
Tues., Dec. 14
BARGAIN NIGHT 5c & 10c
BARBARA STANWYCK in
"Internes Can't
Take Money"
With JOEL MCCREA
Wed.-Thurs., Dec. 15-16
VAN HEFLIN in
"Saturday's Heroes"
With MARIAN MARSH
Coming Soon: Gene Autry in
"Springtime in the Rockies"

If you find your name in this paper marked thus "Mrs. Byron Joiner" cut it out and present it to the Queen Theatre for one free pass. LOOK FOR YOUR NAME EACH WEEK.

THE SANTA ANNA NEWS

ESTABLISHED 1886

ISSUED FRIDAYS AT SANTA ANNA, TEXAS

Friday, December 10, 1937

James R. Gregg Editor & Business Manager
Mrs. Elizabeth Gregg Associate Editor
J. J. Gregg Owner

MEMBER

Texas Press Association
South Texas Press Association
Heart of Texas Press Association

Notices of entertainments where a charge of admission is made, obituaries, cards of thanks, resolutions of respect, and all matter not published as news items will be charged for at the regular rates.

Entered at the post office at Santa Anna, Texas as second class mail matter. Subscriptions Rates: Coleman County ... year \$1.00 Outside County year \$1.50

Do Your Christmas Shopping Early

It is probably old advise and you may be tired of it, but nevertheless it is wise to do your Christmas shopping early right here in Santa Anna where merchants are putting on extra special Christmas bargains pleasing to all local and community shoppers.

The merchants are sponsoring a Trades Day each Saturday until after the holiday season so that many bargains can be had for that reason besides the many values due to Christmas reductions.

Christmas shopping has been on the increase within the last few days and customers are urged to buy your purchases now and get your choice of gifts. More than ever before it seems, the merchants have stocked gifts and other stock that would be a credit to any town so that there is no need to shop out of town unless for very special or peculiar needs.

Read the advertisements, do your shopping early, and be ready for a happy Christmas.

Presby'rian Church

M. L. Womack, Minister
Sunday School, 10 a. m., J. T. Oakes, Supt.
Services at 11:00 a. m. and 8 p. m.
Christian Endeavor 7:30 p. m.
Vesper Bible Hour first and third Tuesdays in each month.
Mother's Club third Thursday in each month.
Women's Missionary Society Mondays after second and fourth Sundays.

LIGHTFOOT CALLED TO TRICKHAM CHURCH

Rev. Augustus Lightfoot, part time pastor of the Calvary Church, has been called as pastor of the Trickham Church, and has accepted.
He will preach each first Sunday at Trickham, each second and fourth at Calvary and will be at Line Sunday School each third Sunday.

Assembly of God

Sunday School 9:45.
Preaching at 11 o'clock.
Christ Ambassadors at 6:30 p. m.
Evangelistic service at 7:30 p. m.
Preaching on Wednesday and Saturday evenings at 7:30.
R. V. Boatright, Pastor.
Christ Ambassador Program Sunday, Dec. 12, 6:30 p. m.
Sword Drill: Sis Boatright.
Song: Mr. and Mrs. Melvin Baker.
Bible Character: Mrs. Beatrice Maroney.
Song: Mrs. Ruby Evans and Miss Marie Evans.
Sermonette: Mrs. Melvin Baker.
Song: "I Ain't A Gonna Let Satan Turn Me Round." Roy and N. C. Baker.
Scripture Reading: Ora Lee Niell.
Christ Ambassador Song: Directed by Marie Evans.

Baptist Column

R. Elmer Dunham, Pastor
9:45 a. m. Sunday School.
Roy F. Reid, Gen. Supt.
11 a. m. and 7:15 p. m. Preaching Services.
6:15 p. m. Training Union.
Lester Newman, Gen. Director.
We Welcome Our 99th Member

Miss LaVerne Bissett was baptized into church membership Sunday night, making the 99th member the Church has received this calendar year. Miss La Verne is also the last member of her family to make a public acceptance of Christ and indeed it was a joyous occasion when she was "Buried with Christ in Baptism" as the Scripture says. May we not be prayerfully hopeful that our goal of 100 new members for the year may be reached by the last of this month?

Three Talpa Men To Speak
Sunday evening, at the regular preaching hour, Messrs. C. L. Williams, Roy Smith and George Sewell of Talpa Men's Brotherhood will speak in a special service emphasizing the work of men. The Brotherhood men are filling pulpits all over the County during December. Mr. Louis Newman last Sunday spoke at Eureka, the week before at Talpa. A large attendance is expected Sunday night.

Mrs. B. L. Lockett Speaks
Friday evening of last week, Mrs. Basil Lee Lockett, missionary of Nigeria, Africa spoke in connection with the Lottie Moon foreign mission week of prayer. She showed movies of work on their field and greatly inspired and informed our people.

Success Crowns W. M. U. Effort
Mrs. J. Ed Bartlett, president of the W. M. U., is happy to report that the offering for foreign missions in memory of Miss Lottie Moon went well beyond the goal set. A total of more than \$125.00 has been pledged and paid in this offering, a portion of which is to be used to bring mothers and children of our missionary families in China to safety zones. Congratulations on this fine achievement.

Board of Training Union Meets
The Executive Board of the

Texas Baptist Training Union met in Dallas Tuesday of this week. Among other plans made for the next convention, which will be held in Wichita Falls, the local Baptist pastor was elected to lead the Oratorical Contests. The subject is to be "Christ in the Home" or "The Christian Home," or some subject connected with these.

Methodist Church

J. Virgil Davis, Pastor
Sunday School 9:45 A. M.
Morning worship at eleven o'clock. Sermon topic "The Safe Side of Life."
The young people meet in Devotional hour at 6:00 P. M. Erwin Selman, President.
The W. M. S. meets Monday at 3:00 P. M. in the home of Mrs. Sealy in a social and business meeting. Mrs. Tom M. Hays, President.

There will be no service at night, as this is the last service of Gypsy Smith revival, and our people will want to go to Brownwood to hear this world famous evangelist. All who have gone have been helped, and want to go hear him again. This will be the last time we will give way, or at least for a long time, for anything, unless very unusual. So we urge all our people to go to Brownwood Sunday night to be in that great meeting.

Our First Quarterly Conference will be Wednesday night, December 22 at 7:00 P. M. Let us make preparation as fast as possible for this important Conference. We should have a meeting of the official Board as soon as possible and elect the various officers and chairmen of boards and committees. Also since the office of General Sunday School Supt. has been made vacant by Mr. C. B. Verner moving to Big Spring, it will be necessary for us to find and elect another Supt. Let us try to discover the proper person to fill this very important place.

Missionary Society
Hostess: Mrs. T. R. Sealy
Time: Monday at 3 o'clock
Leader: Mrs. O. A. Etheredge
"The Missionary Imperative for the Church Today"—Mrs. Le-man Brown
Business
Social Hour

Epworth League, Dec. 12
Subject: "To Grow in Prayer."
Call to Worship: "Lord Teach Us to Pray."
Hymn: "I Need Thee Every Hour."
Leader's Introduction: Erwin Selman.
Scripture: John 17.
Hymn.
Talk: "Making the Most of Prayer." Lenora Oakes.
Poem: Mary Frances Talley.
Meditation: "Jesus At Prayer." La Rue Curry.
Prayer.
Closing Hymn.
Gladhand Class

The Gladhand Class moved into their new room Sunday and received many compliments on the new curtains, varnished floor, rugs and chair cushions and covers which the members bought or made during an all day meeting at the church last Friday.

The class enjoyed a covered-dish luncheon during that day while planning for the room.

Mrs. Chester Hamilton of Brady was a visitor in the class Sunday, a guest of Mrs. Harry Caton. We were glad to welcome her and hope she may visit us again.

Mrs. Arlie Welch, our secretary during the past year and a half, notified the class of her

departure for Big Spring to make her home and Mrs. Jim Bob Gregg was elected secretary to fill her unexpired term.

Read the advertisements.

The only country in which regular slave markets still exist is Arabia. At Midl Ber, and Talf, hundreds of slaves brought from Africa are sold weekly. *Joe Spencer*



Finer FINISH FOR YOUR LINENS

Every piece sent to us is given individual attention.

You can send in your finest linens and finest clothes with the assurance that they will receive the finest care.

Santa Anna Steam Laundry

"Service That Satisfies" Phone 32

Get A Good Position

Get your business training in a large nationally known school that issues more diplomas and places more graduates than any other Business College in the Southwest. Save half the time and cost of securing a thorough business education by attending a college using modern systems, methods and equipment. Prepare now to begin receiving nice pay checks in three to five months.

Don't be content to stay where you are and what you are. Find a way or make one to enter Byrne College, and train for a place in big business. Realize your ambition for success and happiness. Investigate how quickly and for what a small outlay of money we can train and place you. If you know of a Byrne graduate unemployed kindly send us his name and address as we are receiving more calls for Byrne graduates than we can fill. Fill in and mail the attached mailing card for free catalogue.

YOUNG FRIEND BIG BUSINESS WANTS YOU BUT IT WANTS YOU TRAINED FOR BUSINESS

ENTER ANY TIME POSITIONS SECURED

BYRNE COMMERCIAL COLLEGE AND SCHOOL OF COMMERCE
Dallas, Texas
H. E. Byrne, President

SECOND SLAUGHTER

OF THE

FIRE STOCK OF D. R. HILL & BRO. STARTS FRIDAY 9 A. M.

The Entire Stock Will Be Closed Out FAST and FURIOUS

NOW

DON'T MISS IT

In Fact You Can't Afford, In Justice To Your Pocket Book, To Miss It

ALL PRICES SLASHED AGAIN

YOU KNOW THE PLACE — THE OLD STAND OF

D. R. HILL & BRO. - SANTA ANNA SAVE-SUM STORES *In Charge*

Practical GIFTS FOR EVERY HOME

Our Line of Christmas Gifts Is Useful and Lasting.

FOR MEN
POCKET KNIVES 25c to \$2.00
WATCHES \$1.25 and up
HAND SAWS \$1.25 to \$3.75
FLASHLIGHTS 69c to \$3.25

FOR LADIES
DINNER SETS, 32 pieces \$3.95
PRESSURE COOKERS \$10.50 and up
RUGS, 9 x 12 \$4.75
PYREX COOKING WARE
ALUMINUM WARE
GIFT CHINA

FOR CHILDREN
BOYS WAGONS \$1.00 and up
VELOCIPEDES \$1.50 and up
AIR RIFLES and TOY GUNS
FOOTBALLS
CHINA NOVELTIES FOR THE GIRLS

DON'T FAIL TO SEE OUR LINE OF GAS HEATING STOVES

Blue Hardware Co.

SOCIETY - CLUBS

Many Guests Attend Achievement Event

The handwork of the local Home Demonstration Club members was on display Friday, Dec. 3 at the Achievement Event held two doors north of the old State Bank Building. Decorations for the building were in Christmas colors.

Included among the display which was visited by a large group of guests, considering the cold weather, were pillow cases, bed spreads, quilts, embroidery and many other samples of handwork.

Refreshments of sandwiches of orange bread with pineapple filling and coffee were served to the following visitors:

Mrs. A. D. Donham, Mrs. Lola Lightfoot, Mr. and Mrs. Clinton Lowe, Mrs. M. F. Reasoner of Concho Peak, Mrs. J. E. Richardson of Concho Peak, Mrs. Lemman Brown, Mrs. Jack Woodward, Mrs. J. B. Lowe, Mrs. Harry Wilson of Trickham, Miss Christine Trowbridge, Mrs. Corinne Watson, Mrs. W. A. Standly, Mrs. B. W. Mitchell, Mrs. J. F. Williams, Mrs. Joe Harvey, Mrs. Connie Lowe, Mrs. Carl Ashmore, Miss Ellen Richards, Mrs. W. E. Vandervord, Mrs. C. B. Hardy, Mrs. R. C.

West, Mr. and Mrs. Roy Wilson, Mrs. Bud Laughlin of Trickham, Mrs. J. H. Aarrant of Shield, Miss Josie Baxter, Mrs. J. L. Burden, Mrs. Carl Williams of Shield, Mrs. Emzy Brown, Mr. and Mrs. Curtis Collins, Miss Grace Mitchell, Mrs. J. E. Watkins, Mrs. Seth Risinger, Mrs. T. T. Perry, W. I. Mitchell, Ruth Vandervord, Ruth Folk, Mrs. Leroy Stockard, Mrs. Belle Caldwell, Mrs. J. L. Harris and Rebecca Jane, Mrs. Emma Poe Ratliff.

Large Audience Hears Review By Mrs. J. R. Perkins

"The American desire to press forward to new worlds and the desire to carry out the plans of early pioneers was the underlying theme of the book, 'American Dream' by Michael Foster, which was reviewed Saturday by Mrs. Joseph R. Perkins of Eastland at the invitation of the Santa Anna Self Culture Club. Mrs. Perkins, state secretary of Women's Clubs, was welcomed by a large gathering of club women from Santa Anna, Coleman and high school students.

The book dealt with three generations of the Thrall fam-

ily, whose early members were sea-going pioneers and whose dreams for pioneering into new fields of business and happiness were evidenced in the new generations of Thralls.

The realistic, yet colorful descriptions made the story interesting for literary style as well as for the unusual plot treatment.

Mrs. R. C. Gay of Santa Anna, Mrs. Chester A. Bannowsky of Menard and Mrs. Myers of Coleman, all members of the District Board for Federated Club Women, were presented at the opening of the program by the president of the local Self Culture Club, Mrs. C. D. Bruce.

Mrs. Perkins Honored At Friday Luncheon

Mrs. W. R. Kelley and Mrs. Charles Bruce were hostesses last Friday at a luncheon given at the home of Mrs. Kelley, honoring Mrs. Joseph R. Perkins of Eastland, who gave a book review sponsored by the Self Culture Club immediately following the luncheon.

Another honor guest was Mrs. Chester Bannowsky of Menard, district chairman on Community Service. Other guests were members of the local Self Culture Club.

The home was beautifully decorated with red Verberna which formed a centerpiece also for the table, laid with a lace embroidered cloth.

A luncheon plate of creamed chicken, black eyed peas, stuffed potatoes, cranberry sauce, and rolls with pear salad was served. The dessert course consisted of mince pie with whipped cream, tea and coffee.

Those present included besides Mrs. Perkins and Mrs. Bannowsky, Mesdames Hardy Blue, C. B. Verner, Harold Knappe, R. C. Gay, J. R. Banister, Allison Weaver, and the hostesses.

Achievement Event Held for Shield Club Dec. 2

Achievement Day for the Shield Home Demonstration Club was held Thursday night, Dec. 2 but owing to the bad weather many were unable to attend. Those present at the home of Mrs. Hardy Stewardson, bedroom demonstrator, received much pleasure from the evening.

The rooms of the home were decorated throughout with autumn leaves. One room was well filled with the club work for this year. The display included pieced pillow tops, dresser scarves and a few pillow cases, bed spreads, tufted and crocheted. Mrs. Stewardson also showed the model bedroom. Games were played and stunts and jokes were pulled throughout the evening.

Refreshments of cookies, hot chocolate and coffee were served to about 50 guests and club members.

The Senior Prep Union of the Baptist Church had a gala party last Thursday evening in the Church basement.

Sixteen members and guests assembled intending to go "possum" hunting, but due to bad weather changed to an indoor party. The young people all had a delightful evening playing interesting games. Refreshments as planned originally for the hunting party, consisting of fruits, candy and roasted peanuts were served.

SENIOR PREP UNION HAS SOCIAL

Aline Harper
Scientists say bees have a sign language. Yes, when you sit on one he always comes back with a pointed remark.

Trickham Club To Have Xmas Party

The Trickham Home Demonstration Club met Thursday, Dec. 2 at 2 p. m. in the club room. Mrs. A. H. Dean, president for the club next year, gave a list of the committees who will work with her in the club during the year.

Plans were made and committees appointed for the club Christmas tree and party which will be held on the night of Dec. 16 at the club room.

The families of each club member are invited guests on this occasion.

The following members and guests were present: Mesdames Bud Laughlin, Harry Wilson, Ben James, Jess York, Charlie Bowden, A. H. Dean. The club welcomed Miss Agnes James as a visitor.

SELF CULTURE CLUB MEETS DECEMBER 10

Hostess: Mrs. J. L. Harris
Program on Health.
Cancer—Mrs. J. R. Banister
Maternity and Infant Death—Mrs. C. D. Bruce
Pellagra—Mrs. W. R. Kelley

Church of Christ

Come and hear Bro. Frank Lilly of Graham preach Monday, Tuesday and Wednesday nights of next week. Those who have heard him know how important his message will be. Those who have not heard him have a treat in store and will want to take advantage of this opportunity.

All services will start promptly at 7 p. m. The public is cordially invited to worship with us.

A good attendance heard Bro.

George Hughes of Desdemona Drive carefully; save a life last Sunday. Mrs. Roger Hunter



Can Be Selected Here

We have the most complete line of Christmas gifts this year that we have ever had and all are of the highest quality merchandise.

Select GIFTS from these Items:

- All Types OVENWARE, With or Without Stands
- DRESSER and TABLE LAMPS, All Colors
- STATIONERY IN GIFT BOXES
- BEAUTIFUL DRESSER SETS IN GIFT BOXES
- BOOK ENDS IN CHROMIUM, TABLE ORNAMENTS
- CIGARETTE CASES, NOVELTY LIGHTERS
- COSMETIC GIFT PACKAGES
- PERFUMES, BEAUTIFUL PERFUME BOTTLES

Many Other Gifts for Men and Women, For Every One in the Family

A Complete Jewelry Department

Diamond Rings, Bracelets, all types Necklaces, Rings, Locketts, Tie Clasps, Pen and Pencil Sets and many other beautiful gifts.

Buy On Our Lay-Away Plan Now

PHILLIPS DRUG CO.
PHONES 1 and 5



For Christmas Festivity You'll Need An Evening Dress

You'll have more fun at your parties in a new, stylish evening dress that we have ordered specially for the Christmas fun. See our beautiful selections.

SPECIALY PRICED Afternoon and Street Dresses

Are also new in our store. Give yourself, your mother or friend a dress for Christmas. In crepes, silks, satins, velvets, and cottons, you'll find just what you want.

SPECIALY PRICED



LINGERIE A Perfect Gift

Slips, Brassieres, Panties, Gowns, Pajamas — All in the best crepes and satins, lace trimmed. Beautiful after washings. So soft and rich looking you can't resist buying them.

Hose, Gloves, Bath Robes, Bed Jackets, House Coats, Scarfs, Bags, Purses, Hats and Novelties all specially priced for the Christmas shopper. For the best in ladies wear visit us.

GIFTS FOR MEN

BILLFOLDS, MILITARY SETS, SHAVING SETS, HANDKERCHIEF and TIE SETS, TIE CHAINS and CLASPS.

Mrs. G. A. Shockley



Be Prepared for the Winter Social Events

Let us design a new permanent for you. No matter how fine your hair or how coarse, we'll give you the type of permanent you like best. For a limited time only we offer our

CHRISTMAS SPECIALS

\$3.50 Permanent Wave for \$2.50
\$5.00 Permanent Wave for \$4.00

Other Prices In Proportion

Only High Grade Materials Used In All Our Work

Mrs. G. A. Shockley Beauty Shop
PHONE 57

MRS. NICKENS WILL ENTERTAIN H. D. CLUB

Mrs. D. W. Nickens will be hostess for the Santa Anna Home Demonstration Club for a Christmas party on Thursday, Dec. 16 at 3 p. m.

Inexpensive gifts will be exchanged among the members and the entertainment will include singing of carols, and playing of games, contests and stunts.

Missionary Group Elects Officers Last Week

The ladies of the Methodist Missionary Society drove to the home of Mrs. W. T. Wheatley last Monday for a combined business and social program.

The rooms were made attractive with decorations carrying out the Christmas theme and a wood fire burning in the open fireplace added to the Christmas atmosphere.

Mrs. T. M. Hays Jr. led the program assisted by Mrs. C. B. Verner and Mrs. Hardy Blue.

Officers for the ensuing year were elected as follows: Mrs. T. M. Hays Jr., president; Miss Elsie Lee Harper, vice president; Mrs. Harold O. Knappe, recording secretary; Mrs. O. A. Etheredge, corresponding secretary; Mrs. Lemman Brown, local treasurer; Mrs. Hardy Blue, connectional treasurer; Mrs. J. Virgil Davis, secretary of baby's work; Mrs. W. H. Thate, superintendent of study; Mrs. W. B. Griffin, superintendent of publicity; Mrs. Roger Hunter, superintendent of world outlook; Mrs. W. T. Wheatley, superintendent of Christian social relations; Mrs. Rex Golston, superintendent of supplies; Mrs. R. C. West, superintendent of local work; Mrs. T. R. Sealy, Spiritual Life leader.

The society voted to give a baby life membership to little Elizabeth Sealy Knowles, granddaughter of Dr. and Mrs. Sealy. Refreshments of fruit cake, coffee and Christmas candles were served to about twenty members.

Trickham 4-H Club Meet Dec. 4

The Trickham 4-H club met Thursday, Dec. 2 at the club room. The sponsor, Mrs. Jess York, met with the club during the program on planning and making simple Christmas gifts. Plans were made for a Christmas party for Thursday night, Dec. 16.

The following members were present: Mildred Wagner, Betty Douglas, Ruby Mae Bowden, Tary Marie Stacy, Doris Goodgoin, Edith James, Frances Eudier, Frances James, Hazel Rodgers and Jean Wilson.

Announcing

TWO NEW FORD V-8 CARS FOR 1938

THE DE LUXE

85 HORSEPOWER

DE LUXE FORD V-8... 112" wheelbase; 85-horsepower engine; Improved Easy-Action Safety Brakes; Center-Poise Ride; All-steel body; Mohair or Broadcloth upholstery; Walnut-finished trim; Twin horns, tail lights, sun visors; Clock; 6.00" black tires; white side-walls are extra; 8 body types; 6 colors.

THE STANDARD

60 OR 85 HORSEPOWER

STANDARD FORD V-8... 112" wheelbase; 85 or 60 horsepower engine; Improved Easy-Action Safety Brakes; Center-Poise Ride; All-steel body; Broadcloth or Mohair upholstery; Mohair extra in "60"; Mahogany-finished trim; One tail light, sun visor; Twin horns; 3 body types; 3 colors.

Ford offers two new cars for 1938—the Standard Ford V-8 and the De Luxe Ford V-8. They are different in appearance—but built to the same high standard of mechanical excellence—on the same chassis.

Because people liked our 1937 car so well, they bought more than of any other make. They liked its looks, its smooth performance, and the way it handled. We have improved on that car in the newly styled Standard Ford V-8.

But some folks wanted still more size and style, with the same Ford advantages. For them, we designed a new De Luxe line. The De Luxe Ford V-8 Sedans are longer with more room, larger luggage space, and finer appointments all around.

De Luxe cars are equipped with the 85-horsepower engine only.

The Standard is even lower priced than the De Luxe. It has graceful new lines and well-tailored interiors—with a choice of engine sizes—85 or 60 horsepower.

Before Ford made V-type 8-cylinder engines available to every one, they were used only in expensive cars. Since then, four million Ford owners have learned the genuine enjoyment of driving an eight-cylinder car with all-around economy. The thrifty "60" engine, especially, makes possible in Standard models a very low first cost and equally low operating cost. With two distinct designs, two engine sizes and two price ranges, you'll find a 1938 Ford car to fit your needs exactly.

PRICES FOR CARS DELIVERED IN DETROIT—TAXES EXTRA

Standard Ford V-8 (60 hp.)—Coupe, \$599; Tudor, \$644; Fordor, \$689. Standard Ford V-8 (85 hp.)—Coupe, \$629; Tudor, \$669; Fordor, \$714. De Luxe Ford V-8 (85 hp. only)—Coupe, \$689; Tudor, \$729; Fordor, \$774; Convertible Coupe, \$774; Club Coupe, \$749; Convertible Club Coupe, \$804; Phaeton, \$824; Convertible Sedan, \$904.

Standard and De Luxe cars equipped with bumpers, bumper guards, spare wheel, tire, tube, tire lock and band, cigar lighter, twin horns, and headlight beam indicator on instrument panel, at no extra charge.

In addition, De Luxe cars are equipped with extra tail light, windshield wiper, sun visor, also de lux steering wheel, glove compartment lock, clock, and chrome wheel bands, at no extra charge.

Story of Cyclone in 1892 Told By Resident Living Through Experience

By Miss Luella Chambers

March 31, 1892 was a gray afternoon and grew thicker toward night and later was a pitch black night. Dr. Mathews had gone to the old Ashley place to see a man who was very low with pneumonia. After seeing him he sent a 14-year-old boy to tell Mrs. Mathews to spend the night with us.

It grew so sultry and hot we had to open doors and windows then after a very cold hail. I had a caller. We heard a body fall against the door. It was Mr. M. T. Stephenson, Bob's uncle. He wanted Dr. Mathews to go to the place where the 18 people and house were blown away and some killed and injured. They had blown out into the cemetery. The 14 year old boy was killed, an old lady received a broken hip and others were injured.

One of the men told Mama that while he was lying in the cemetery he could see lights in near-by houses and wondered why he was there.

A Mr. Land had a two room house near the little live oak tree north of the gas station on the Simpson place when they heard the wind they all

sat in the middle of the room with their arms tight around each other. He said the house was spinning around over the tree, set them down easy. No one was hurt, but not a thing was left but the floor and the chairs they occupied.

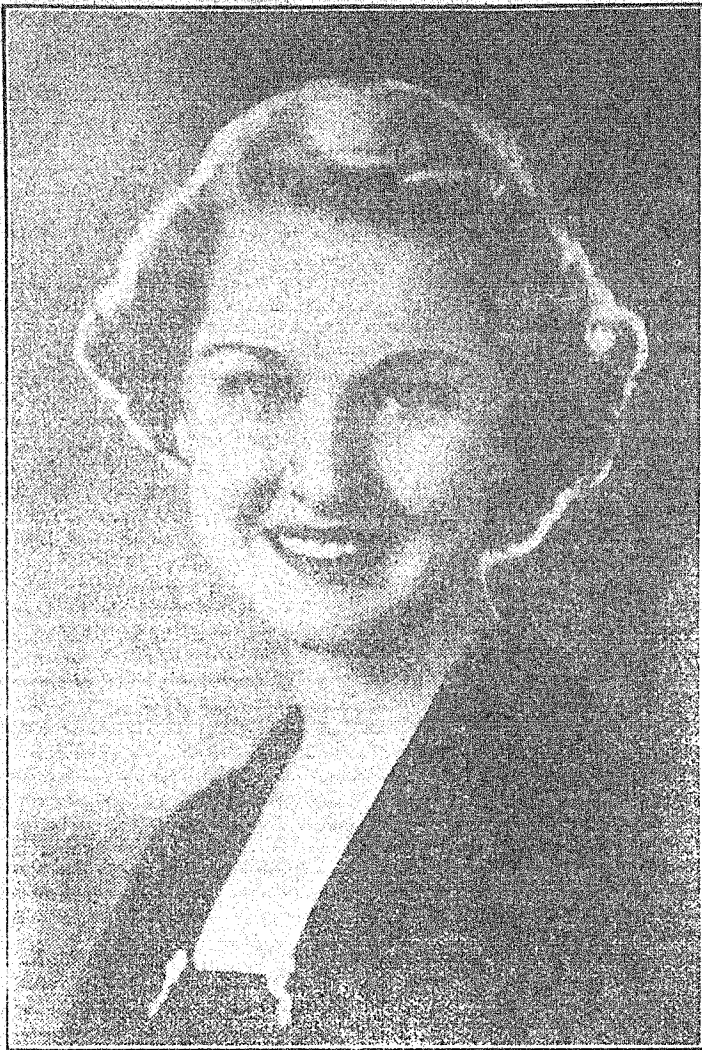
Brother Hall, Will's uncle, had a house finished that day and it and the Heath residence were blown away. The people were brought to town and cared for.

The newspapers over the country had long articles about it. My brother Ben, who was stopping in Cincinnati, Ohio, sent us the paper from there with two columns in it about the storm.

One paper somewhere said the storm brought the dead man to life and he walked up the hill. We heard it wiped out water in the tanks. Our windows on the east side of the house were spattered with mud.

I saw a hen under a bush and she looked cold with no feathers. People all went to building storm houses and when they saw a dark cloud in the southwest and hail coming down they made a bee line for the cellar.

1100 Freshmen Can't Be Wrong



Not content with being elected president of 1100 freshmen at Texas State College for Women, Marguerite Walling of Childress also walked away with the majority honors of her class. Although she's a demure little thing, she has had no trouble in leading her classmates through first year difficulties.

Arnold, Coleman, left end
Sheffield, Brady, left tackle
Ussery, Cross Plains, left guard
Parker, Brady, center
Belitz, Winters, right guard
Welhausen, Ballinger, right tackle
Hall, Cross Plains, right end
Hopper, Rising Star, quarter
Dye, Brady, left half
Childs, Cross Plains, right half
Smith, Rising Star, full
Honorable Mention: Backs—Gideon, Coleman; May, Hodge, Ballinger; Flahie, Cross Plains; Schill, Brady; Partain, Winters; Lackey, Santa Anna. Linemen—Watkins, Coleman; Henderson, Cross Plains; L. White, Rising Star; Roach, Rising Star; Thompson, Coleman; Strahan, Cross Plains.

CARD OF THANKS

We wish to express our deep appreciation to our many friends for their sympathy and kindness during our recent bereavement in the death of our mother and grandmother.

We also wish to thank each one for the beautiful floral offerings. May God bless you for your kindness.

Mrs. A. E. Campbell and family

DOSH T. MCCREARY JOINS HONOR SOCIETY

LUBBOCK, Tex., Dec. 9.—Dosh T. McCreary, son of Mrs. Rheba McCreary, Santa Anna, is one of 49 juniors at Texas Technological College who this week was initiated into Alpha Chi, national honorary scholastic fraternity.

Membership is composed of junior and senior students whose scholastic rating places them in the upper ten percent of all enrollees of the college. McCreary is a student in the school of Engineering.

CARD OF THANKS

We desire to thank our friends who so generously aided us during the last sickness and death of our beloved wife, mother and sister, Mrs. William McCarrell.

William McCarrell
W. F. Gardner and family
Arthur McCarrell and family
Towery McCarrell and family
Wilbert McCarrell and family
Paul Morland and family
Andy McCarrell and family
Robby McCarrell and family
Lewis Hallford and family
Eva Hallford
Eli Hallford and family

Say you saw it in the News.

Middle age is that period a man's life when his wars and revolutions make long for a little rain in the backwoods.

And the rains descended and the floods came and the house whose house was on the ground took care of his neighbor from the low water, usual.

DR. SALSBUARY'S CAM-PHO-SAL

FOR QUICK RELIEF FROM RHOE & COLDS

Griffin Hatchery
Santa Anna, Texas

STURGES-GIBBS Burning Up With Excitement

THINK OF IT! ONLY 13 DAYS UNTIL CHRISTMAS
We Must Unload Thousands of Dollars of Merchandise NOW
WINTER DRESSES 1-2 Price — COATS 1-2 Price — SUITS 1-2 Price
WATCH FOR YOUR DOUBLE PAGE CIRCULAR
Thousands of beautiful and useful gifts on SALE
A BIG SURPRISE for Some One on CHRISTMAS EVE if you shop at

STURGES - GIBBS Coleman, Texas



A Gift of Beauty

To Yourself or To Your Friends

Is a lovely gift to give for Christmas. It is something every woman will appreciate and should have to enjoy during the Yuletide parties.

WE HAVE DRESSED UP OUR SHOP FOR YOU WITH MODERNISTIC CALO-REX FURNISHINGS

We are proud of our new interior decorations and furnishings in the new modernistic designs, including brand new furniture and completely new equipment. We can now give even better service and make you more comfortable.

SANTA ANNA BEAUTY SHOP

PHONE 99

Coaches, Writers —

(continued from page one)
Shill, Brady, halfback
Childs, Cross Plains, halfback
Hodge, Winters, fullback

Coach White, Cross Plains

First Team:
Arnold, Coleman, left end
Flahie, Cross Plains, left tackle

Woods, Winters, left guard
Parker, Brady, center
Ussery, Cross Plains, right guard
Welhausen, Ballinger, right tackle

Hall, Cross Plains, right end
Hopper, Rising Star, quarter
Dye, Brady, left half
Childs, Cross Plains, right half

Smith, Rising Star, full
Second Team:

Elliott, Cross Plains, left end
Carter, Ballinger, left tackle
Sheffield, Brady, left guard
Lackey, Cross Plains, center
Belitz, Winters, right guard
Henderson, Cross Plains, right tackle

Hampton, Brady, right end
Partain, Winters, quarter
Gideon, Coleman, left half
Schill, Brady, right half
Hodge, Winters, full

Coach Hunter, Rising Star

First Team:
Arnold, Coleman, left end
Woods, Winters, left tackle
Ussery, Cross Plains, left guard
Parker, Brady, center
Thompson, Coleman, right guard
Welhausen, Ballinger, right tackle

Hall, Cross Plains, right end
Hopper, Rising Star, center
Dye, Brady, left half
Childs, Cross Plains, right half
Smith, Rising Star, full

Hampton, Brady, left end
Second Team:

Sheffield, Brady, left tackle
Richards, Santa Anna, left guard
Carter, Ballinger, center
Belitz, Winters, right guard
Henderson, Cross Plains, right tackle

L. White, Rising Star, right end
Gideon, Coleman, quarter
Hodge, left half, Winters
Schill, Brady, left half
Flahie, Cross Plains, full

Jack Scott, Cross Plains

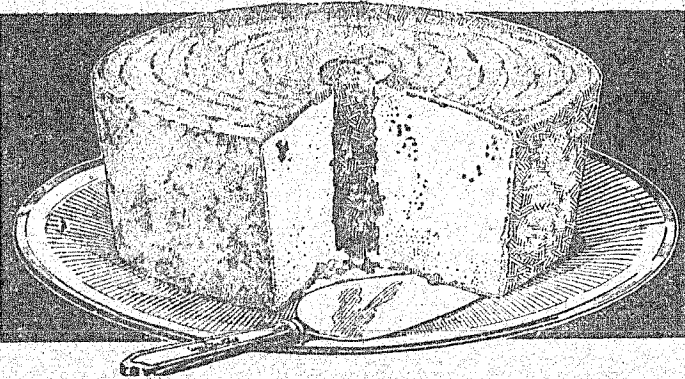
Review
Arnold, Coleman, left end
Gressett, Coleman, left tackle
Ussery, Cross Plains, left guard
Parker, Brady, end
Richards, Santa Anna, right guard
C. Woods, Winters, right tackle

Barnett, Ballinger, right end
Dye (c), Brady, left half
Childs, Cross Plains, left half
Hopper, Rising Star, quarter
Hodge, Winters, fullback
Honorable mention: Backs—Flahie, Cross Plains; May, Ballinger; Rahsel, Winters; Gideon, Coleman; Smith, Rising Star; Brewer, Santa Anna; Schill, Brady; Hall, Cross Plains; Kelley, Bangs; Partain, Winters; Lackey, Santa Anna; Hemphill, Coleman; Huff, Brady. Linemen—Thompson, Coleman; Lovelady, Santa Anna; Elliott, Cross Plains; Dillard, Rising

Star; Weems, Bangs; Strahan, Cross Plains; Belitz, Winters; Henderson, Cross Plains; McCord, Coleman; Thompson, Bangs.

M. S. Sellers, Rising Star
Record
All-District Selections 25-B

RAGSDALE'S BAKERY Will Make Your Xmas Cake



Ragsdale's Will Have All Kinds of Cakes and Will Make Any Shape, Kind or Size on **SPECIAL ORDER** If You Give It In Time

Why bake your cakes at home when you can get them baked as cheap and cheaper and just as good. Save yourself some work by giving the order for your cakes now.

Ragsdale's Bakery will also have a nice assortment of cakes in all Grocery Stores in town. There is now no need to work hard making cakes and perhaps end up in failure, because we guarantee our cakes to be fresh and good from your home baker and save all that worry.

Don't forget that Ragsdale's Good Bread is the best. All Grocery Stores handle it so don't fail to call for

RAGSDALE'S GOOD BREAD

Ragsdale Bakery

PHONE 120

FOR 27 YEARS
CHEVROLET
THE SYMBOL OF SAVINGS

CHECK CHEVROLET'S LOW DELIVERED PRICES

- ✓ Check Chevrolet's low gas consumption...
- ✓ Check Chevrolet's low oil consumption...
- ✓ Check Chevrolet's low upkeep costs.....
- ✓ Then check the many exclusive features of THE CAR THAT IS COMPLETE and you'll know

"You'll be AHEAD with a CHEVROLET!"

CHEVROLET MOTOR DIVISION, General Motors Sales Corporation, DETROIT, MICHIGAN

SPEER MOTOR COMPANY

SANTA ANNA, TEXAS

First Editor of Santa Anna News Retires To Make Home in Brownwood

The first editor of the Santa Anna News, Charles Dickens Spann, who founded the local newspaper in 1886, retired recently from active business, but with the desire still present to help edit a "good Texas magazine."

Mr. Spann recently moved to Brownwood to make his home after many years in newspaper work and in the practice of law.

Born in Alabama, he came to Texas with his parents when about seven years old. His father, Maj. S. G. Spann, established a paper at Brenham, where the young son got his first taste of journalistic life as a printer's devil.

In 1888 Mr. Spann came to Santa Anna and established the News which has been published without interruption ever since, with several changes in editors. While he was here Mr. Spann, then 17, issued the paper alone. In 1887 the bad drought made business look bad and he sold out and moved to Brownwood, where he secured a position as foreman with his father who was then editor of the Brownwood Appeal.

In 1890 Mr. Spann moved to Rising Star with a small printing press and began publication of the Record. He quit newspaper business in 1892 when he was elected attorney for Eastland County and later became county judge and district attorney.

For a short time about 1908 Spann again edited a paper, the Chronicle at Eastland, but in the main the last 36 years has been devoted to the practice of law.

Ask the Merchants for your Trades Day Tickets.

B. T. U. ASSOCIATION MEETS AT COLEMAN ON SUNDAY, DECEMBER 12

The Associational B. T. U. will have a meeting Sunday, Dec. 12 at the Coleman Baptist Church at 2:30 p. m., according to the associational B. T. U. director, Rev. Augustus Lightfoot.

Those on the program include: Collins Webb of Camp Colorado, who will speak on "What Is the Glory of God?"; Rev. Shepherd of Coleman, who will lead the devotional; Lamar Williams of Talpa who will speak on "The B. T. U. Year Is Done;" and Rev. R. Elmer Dunham of Santa Anna who will address the group, his subject being "Doing Training Union Work to the Glory of God."

Mrs. Arlie Welch left Sunday with her husband who came from Big Spring to take her to their new home there.

Mr. and Mrs. Chester Hamilton of Brady were guests of Mrs. Harry Caton and Mr. and Mrs. T. T. Perry Sunday.

Rev. R. Elmer Dunham attended the meeting of the Executive Board of the Baptist B. T. U. in Dallas Tuesday. Rev. Dunham is a member of the board.

Louis Boli, president of the Guarantee Reserve Life Insurance Co. of Dallas visited friends in Santa Anna Tuesday.

Mr. and Mrs. Calvin Campbell are now at home in their new residence, formerly the home of Mr. and Mrs. C. A. Walker.

Another thing worth remembering is that troubles are like ugly dogs—they look worse coming than going.

Watch Model Poses for Christmas Cover of a National Magazine



Brandshaw Crandell, nationally known artist, painting Jessie Simpson, watch model, for a Christmas cover of a national magazine.

NEW YORK, N. Y., Dec. 10—Jessie Simpson's smile outshines the Christmas star. And rightly so.

Less than nine months ago a fall beneath the wheels of a moving train cost her the legs that had made her Miss New Jersey of 1936. Now at the Christmas season she walks on strong new legs, and from the cover of a national magazine her star-bright eyes speak to the world of hope and heartfelt cheer.

In late April the accident that might have disheartened the bravest of men befell Jessie, but she was blessed with what Howard Chandler Christy has called "good American spunk." Like the shepherds guided by the Eastern star, she looked always ahead.

The very nature of her accident made news the country over. Still, it was the bravery so rarely coupled with beauty that turned the tide of her misfortune. It was this quality in her that made Brandshaw Crandell ask her to pose for the Christmas cover of Cosmopolitan.

"Artists are attracted by surface perfection," he said, "but there must be depth of character beneath it to make a work of art."

In Jessie he found both, but he was not the first to discover them. In May officials of the Gruen Watch Company, attracted by her courage and the expressive grace of her

hands, gave her a contract to model their curvex wrist watches. Even before she was out of bed Hal Phyo, distinguished New York photographer, came to her home in Hackensack to photograph her dark loveliness.

To Jessie Simpson her face was truly her fortune, and had she not lost her prize-winning legs, she might never have known it. When she graduated from the Hackensack High School in 1936, she went to work as a receptionist for twelve dollars a week. But for tragedy she would be there still, and the gift she had for the artists would never have been given.

Now she has many requests to pose, and she is able to accept them. In September, with the aid of crutches, she stood for the first time on her new legs with a wondering, happy pride in them. By November she was walking with a cane. On Christmas she stands alone.

"I can't look back," she said to Brandshaw Crandell, "I must keep right on going forward."

Inspired by his little model's strength of spirit, Mr. Crandell has created what he says is his finest work of art. He has captured in pastels all the radiant happiness of her smile, giving to the world a new Christmas star, its brilliance beckoning to the future.

CLASSIFIED COLUMN

25c CLASSIFIED ADS GET RESULTS 25c

Classified Rates
All Ads Cash With Order
Classified 25c for minimum 15 words.
Ads will be accepted until 5 p. m. Wednesday.
Ads sent by mail will receive prompt attention when remittance is received.
To discontinue an ad, notice should be in office by 7 p. m. Wednesday.
Phone 45 to place classified ads.

Posted
POSTED—All lands owned or controlled by us are posted according to the law. No trespassing, fishing or hunting allowed. S. E. and L. M. Weaver. 31m

Miscellaneous
DON'T SCRATCH! Paracide Ointment is guaranteed to relieve any form of Itch, Eczema, Athletes Foot or other itching skin irritation or purchase price promptly refunded. Large 2 oz. Jar only 60c at Phillips Drug Store. 1-7-38

"My Skin Was Full of Pimples and Blemishes"
Says Verna Schlepp: "Since using Adlerika the pimples are gone. My skin is smooth and glows with health." Adlerika washes BOTH bowels, rids you of poisons that aggravate a bad complexion. Phillips Drug Co.

"Leto's" for the Gums
Do your gums itch, burn or cause you discomfort, drugists will return your money if the first bottle of "LETO'S" fails to satisfy. Turner Drug Store. 11-1-38

For Sale
Underwood Typewriter No. 5 Size \$30.00 cash. On Display at News Office.
One 1929 Chevrolet Six Motor including Clutch, transmission, starter and generator. W. C. Ford & Co.
Two Choice Jersey heifers, fresh. T. B. and abortion tested. H. J. Parker. 50-54p
Milk Cow for sale. Ben Herrings, Trichham Route. 50-50p

FOR BEST RESULTS USE THE NEWS CLASSIFIED SECTION

Real Estate
List your buying, selling, and trading of real estate, leases, live stock, etc with State Representative James M. Simpson, Jr. of Eden, Texas. Cover a wide territory. In a position to make or save you money.

My Farm to Lease for another year. Have nice bunch of cattle. Could arrange to raise on shares or milk. If interested write 233 Santa Anna, Texas. 50-50p

Nursery
TIME TO PLANT
Stock is thoroughly dormant and ready to plant. To encourage fall planting we will sell on last year's prices until December 15th, after which prices will advance 25 to 40 per cent. We have more and better stock than ever before. Coleman 40-50c

Man Wanted
Man with car to take profitable Rawleigh Route. Good customers. Sales up this year. Must be satisfied. Write Rawleigh's, Memphis.

COURTHOUSE NEWS

Marriage Licenses
Alton Younglove and Thelma Baker.
John M. Thwing and Mrs. Annie E. Whitehead.
Eldon Jowers and Loretta Davidson.

Warranty Deeds
Coleman Office Co. to Harold S. Well, et al. of New Orleans, La., tract of land 60 feet east and west by 90 feet north and south out of south part of lot No. 13, block No. 4 of original town of Coleman. For \$10 and surrender and cancellation of bonds aggregating in principal amount of \$67,000.

Ellen M. Richardson et al to W. Ford Barnes, undivided 60-360 interest to tract of land in Coleman county known as L. T. Pearce survey No. 369, Abstract No. 550, containing 1279.6 acres of land. For \$2,127.60.

Sherman T. Collins of Broome county, N. Y., to W. Ford Barnes, undivided 60-360 interest in tract of land known as L. T. Pearce survey, abstract No. 550, containing 1279.6 acres of land. For \$2,127.60.

Sara R. Copeland and husband, George W. Coleland, of Ottawa county, Michigan, et al. to W. Ford Barnes, undivided 60-360 interest in tract of land in Coleman county known as L. T. Pearce Survey No. 369, Abstract No. 550, containing 1279.6 acres of land. For \$2,127.60.

Mrs. Annie G. Robinson, District of Columbia, U. S., to W. Ford Barnes, undivided 60-360 interest to tract of land in

Annual Red and White COFFEE SALE

DATES R & W, Pitted 10 oz. size	15c	Sunspun Salad Dressing, Pint Jar	25c
Marshmallows R & W 1/2 lb.	9c	COFFEE EARLY RISER, Fresh Ground, 1 lb.	17c
Marshmallows R & W 1 lb.	15c	SOAP Crystal White 6 giant bars	25c
Grape Juice R & W, pint	18c	Super Suds concentrated, large box	20c
Baking Powder G. L. 2 lb.	19c	Crystal White Toilet Soap Bar	5c
MILK Red & White, 4 small cans	15c	COFFEE R & W, Vacuum Packed, 2 lb. tin	59c
FLOUR Red & White 24 lb. sack	89c	Kraut Standard, No. 2 1/2 can, 2 for	23c
FLOUR Red & White 48 lb. Sack	1.69	Pickles Del Dixi, Sour or Dills, quart jar	15c
Peaches Choice Evap., 2 lbs.	27c	Catsup R & W, None Better Large Bottle	15c
Dog Food Red Heart, Three for	25c	OATS R & W, Quick or Regular, large pkg.	18c
SYRUP Ribbon Cane, No. 10 can	63c	Mince Meat Red & White, Delicious, pkg.	9c
LYE R & W, Full Weight, Full Strength, 3 for	25c	Super Suds Regular, Med. pkg.	9c
Quality Meat - Good Values		Fruits and Vegetables	
ROAST Fancy Chuck, Per Pound	15c	BANANAS Golden Fruit, per lb.	4c
BACON Dexter Sliced, per lb.	29c	LETTUCE Firm and Crisp, 2 for	9c
CHILI per lb.	18c	Coconuts FRESH, Two for	15c
FRANKS Armour's Kiro Brand, lb.	17c	SPUDS Smooth White, 10 lbs.	21c

THE RED & WHITE STORES

Coleman county known as L. T. Pearce survey No. 369, Abstract No. 550, containing 1279.6 acres of land. For \$2,132.40.

S. W. Babston and wife, Dosa Babston, to Linnie Babston, land in Runnels and Coleman county, described as: first tract, 20 1-2 acres of land, being north one-half of block No. 29, subdivision of San Augustine university survey No. 510; second tract, 103 1-2 acres land out of Hamilton Kegans survey No. 520. For \$3720.

Mrs. Linnie C. Culp et al to W. H. Williams, parcel of land in Coleman county, being south 57 1-2 feet of lot No. 11 of Sanders, Taylor and Curry's subdivision of block No. 17 of Clow's second addition, farm to town of Coleman. For \$300.

New Cars Registered
Stanley Corrigan, Coleman.

Plymouth sedan.
W. M. Wheat, Coleman. Ford fordor.
Christyene Trowbridge, Coleman. Ford tudor.
E. L. Crow, Coleman, Buick 41.
Archer Underwood, Coleman. Chevrolet town sedan.
W. B. Baker, Coleman. Oldsmobile touring sedan.
Coleman Ice & Cold Storage Co. Coleman, Chevrolet truck.

It was one of the boys at the hobo convention who remarked that money didn't bother him—it was the lack of it that hurt. The turning point in life is old days when the people had so much money they could afford to buy a gold brick once in awhile?

SMOKE DAMAGED SALE

NO FIRE - NO WATER - NO HEAT

JUST DAMAGED BY SMOKE

OUR BIG STOCK IS GOING FAST. YOU HAD BETTER GET YOUR PART OF THE WONDERFUL BARGAINS BEFORE THEY ARE ALL GONE. WE ARE GOING TO SELL OUT OUR ENTIRE STOCK AND MAKE ROOM FOR A BRAND NEW STOCK OF SPRING GOODS.

Purdy Mercantile Company

"The Store That Saves You Money"

Expert
Watch, Spectacle and Jewelry Repairing
SEE
John T. Payne
Jeweler
Phillips Drug Co.

Sufferers of STOMACH ULCERS HYPERACIDITY
DEFINITE RELIEF OR MONEY BACK
THE WILLARD TREATMENT has brought prompt, definite relief to thousands of cases of stomach and intestinal ulcers, due to hyperacidity, and other forms of stomach distress due to excess acid. SOLD OUT IN MANY PLACES. For complete information write to Willard Treatment, 1111 Broadway, New York, N. Y.

DR. R. A. ELLIS
Optometrist
Brownwood, Texas

TO THOSE THAT MADE A CONTRIBUTION:

No matter how large or how small, we wish to express our deepest appreciation for your assistance in the Iron Lung Fund Campaign to help save lives of people of this territory and any part of the state needing this equipment.

Each of you should feel a particular pride in the fact that you were a participant in this drive. We all hope the lung will never have to be used, but if it does and saves a life, you will find joy in the fact that you assisted in this charitable work, for which \$1578.93 was raised.

In behalf of the News, the Lions Club and the Sealy Hospital we wish to thank the following citizens for their generosity.

Tom Wallis	5.00	L. M. Cole	2.50	R. B. Stearns	1.00	Mr. and Mrs. J. Ed Bartlett	2.50	Mrs. J. P. Richardson	2.50	Mrs. F. C. McDermott	1.00
George May	5.00	John A. Williams	1.00	Homer Goodglon	.25	Mrs. Roy Stockard	1.00	Mrs. Bob Dunn	.50	Edwin Baum	.50
Jim Bob Gregg	5.00	W. F. Talley	.25	Mr. and Mrs. Jake Walters	2.00	Mrs. Lewis Evans	1.00	Miss Roxie Lane	1.00	Whon School	
J. T. Williamson	5.00	W. E. Ferguson	2.00	Mr. and Mrs. M. A. Richardson	10.00	L. H. Blevins	1.00	High School P. T. A.	21.30	Billie Black	.25
Mrs. W. E. Wood	1.00	W. B. Watson	2.50	Rockwood P. T. A.	5.00	Mrs. R. A. Lucksinger	1.50	J. T. Newman	1.00	Neland Black	.25
W. E. Smith	1.00	Lester Newman	1.00	Mr. and Mrs. Glen Williamson	2.00	Ed Cothren	1.00	Plainview School		L. J. Holmes	.25
Mrs. J. B. Joiner	1.00	A. L. Irby	.25	J. L. Jackson	1.00	Louis Pittard	1.00	Jodie E. Baker	1.00	Elder Smith	.25
D. D. Byrne	5.00	D. W. Griffith	.06	Uless Maness	1.00	C. M. Jackson	1.50	Ernestine England	.25	Blouse and Luther	
H. M. McCulloch	1.00	Henry Smith	1.00	Red Barrington	5.00	Mrs. M. T. Armstrong	1.00	Freda Heallen	.25	Callaway	.25
S. B. Lawson	1.00	John Dillingham	2.50	Tom DeArmond	1.00	Homer Schulze	1.00	F. A. Jackson	.10	J. B. Shannon	1.00
Mr. and Mrs. J. C. Scarborough	10.00	J. W. Barton	2.50	W. R. Stacy, Trickham	.50	Mrs. J. W. Richardson	1.00	J. D. Jackson	.10	Cora Mable Tennyson	.10
Mr. and Mrs. W. H. Thate	50.00	Louis Newman	1.00	Mrs. W. D. Mathews, Trickham	.50	Mr. and Mrs. W. A. Weaver, Dallas	5.00	Billie Bob Jackson	.10	Eula Mae Tennyson	.10
Margaret Schultz	2.50	Jeff Farris	1.00	Mr. and Mrs. Dennis Smith	1.00	Mrs. R. L. Newman	1.00	Murrel Menges	.10	Opal Smith	.10
Othella Croft	2.50	Hays Hefner, Mrs. Earl Hardy		Maurice Bell	2.50	Boss Estes and Family	2.50	W. H. Ragsdale	5.00	Maxie Gene Black	.10
Mr. and Mrs. Horace Tabor	2.00	Martha Bell Harvey, Allene Hardy, Zelda Miller, Mrs. Paul Arnold, Ruby Davis, Mrs. Farr, Santa Anna Steam Laundry Employees	2.00	J. R. Pearce	2.00	Mr. and Mrs. G. A. Shockley	2.00	William Ragsdale	1.00	Mary Frances Herring	.10
Mrs. S. L. Blanton	1.00	Mrs. Frank Schattel	1.00	B. G. Brown	1.00	C. C. Gilbert	5.00	F. C. Woodward	5.00	Edith Bible	.10
Clinton Lowe	5.00	Ward School P. T. A.	25.00	Miss Ruby Harper	12.50	Mrs. F. W. Turner	1.00	J. W. Riley, Jr.	5.00	Mary Frances Herring	.10
Mrs. James L. Harris	1.00	Bond and Collier	5.00	Miss Elsie Lee Harper	10.00	Freshman Class, Santa Anna	5.00	L. R. Laughlin	2.50	Edith Bible	.10
C. E. Phillips	1.00	Amos Taylor	1.00	S. D. Harper	12.50	Junior Class	2.00	Cash (Jar at Phillips)	1.89	Patricia Turney	.10
Mrs. W. O. Garrett	1.00	Christian Ladies Aid Society	5.00	Miss Ruby Freeman, Buffalo	.50	Sophomore Class	4.15	Mrs. Weaver	1.00	Eugene Smith	.25
Santa Anna Home Demonstration Club	5.00	Cook Sheffield	2.50	Nella Derrington	1.00	Senior Class	2.25	Bill Lord	1.00	Corine Traweck	.50
Roy Richardson	2.50	Mr. and Mrs. John Buse	1.00	George Stewardson	5.00	A. B. Hamilton	1.00	Mr. Driscoll, Coleman	1.00	A. J. Farris	.10
Maurice Kirkpatrick	2.00	B. B. Wallace	5.00	W. T. Stewardson	5.00	Ada Brusenhan	1.00	W. H. Hudgins Station	1.00	W. T. Cargill	.05
J. E. Howard	2.00	W. A. Buse	1.00	J. W. Parker	1.00	Mrs. A. B. Hamilton	.25	Alpheus Boardman	2.00	Ima Smith	.10
J. E. Lewellen	.50	Mrs. S. L. Blanton	5.00	P. E. Laughlin	1.00	E. G. Adams	10.00	Elton Ferguson	1.00	Allyn Gill	.05
Otto Simpson, et al	2.00	T. J. McCaughan	5.00	Mrs. C. C. Burk	2.50	Mr. and Mrs. S. C. Stewardson	5.00	Mr. and Mrs. Colin Price	1.00	Ina Smith	.50
T. N. Evans	5.00	John Haynes	1.00	Doss Smith	1.00	Mr. and Mrs. A. H. Schreiber	2.50	H. C. Goodwin	1.00	Gene Deal	.25
J. S. Brewer	1.00	Curtis Collins	5.00	Mrs. S. Farrell	1.00	Mr. and Mrs. Frank Leedy	2.00	Hunter Bros.	2.00	Rolan Deal	.25
Darlin Brewer	1.00	Queen Theatre	2.50	J. E. Ford	2.00	Mr. and Mrs. W. L. Stafford	10.00	Mr. and Mrs. V. W. McClure	2.50	Joe Deal	.25
Bo Brewer	1.00	Mrs. J. B. Crutchfield	1.00	San Antonio	5.00	Shield School Children and Shield Community Citizens		Lola Heilman	1.00	Claude Conally and family	.50
Mrs. Audrey Brewer	1.00	Shield Baptist Sunday School	7.49	Mr. and Mrs. A. W. Hardy	2.00	Juakana Vercher	.25	Lucy Cozart	1.10	Santa Anna Gas Co.	25.00
Mrs. J. F. Williams	2.50	Mr. and Mrs. D. P. Wheatley	2.00	Mr. and Mrs. John West	1.50	Zelda Jones	.25	Jess Cozart	1.00	Lula Verner Wesley Class	
E. D. McDonald	10.00	Mr. and Mrs. J. A. Estes	5.00	Mrs. T. J. Lancaster	.50	Velma Stewardson	.25	Rockwood Methodist Sunday School Class	5.00	Methodist Church	5.00
J. L. McCaughan	5.00	Woodrow Estes	1.00	Miss Lottie Porter	1.00	Verna Joyce Vance	.25	C. C. Vance	1.50	Mrs. Owen Wise	1.00
Cecil Eugene Talley	.25	Mrs. F. B. Fletcher	2.00	Mr. and Mrs. George Johnson and Mrs. D. J. Johnson	25.00	Paul Nelson Vercher	.25	Little Mary Jane Turner	1.00	Mrs. T. Culverwell	25.00
Vadena Frances Talley	.25	Mr. and Mrs. C. L. Eeds	9.50	W. O. Moseley	10.00	Emma Ruth Tatum	.25	Woodmen of the World	7.00	Mr. and Mrs. Joe C. Barnes	1.00
Vada Oleta Talley	.25	Ward School	19.50	W. R. Roberts, Burkett	10.00	Billie Swaringin	.25	Ladies Advisory Board of Hospital	15.00	Mrs. S. H. Brooks	1.00
Shield H. D. Club	5.00	Mrs. C. M. Wood	5.00	Mrs. Myrtle Brown, Burkett	1.00	Virgil Stewardson	.25	Mrs. M. T. Kight	2.00	Mrs. R. M. Bouchillon	1.00
A. B. Carroll	2.50	Mrs. Alice Aldridge	1.00	Mrs. Harriett Porter, Burkett	1.00	Floyd Shelton	.40	Dink Snider	2.00	Mr. and Mrs. J. C. Morris and family	4.00
J. D. Howard	1.25	Mrs. J. M. Bishop	1.00	Mrs. Vera Porter, Burkett	1.00	Walter Yancy	.25	Mr. and Mrs. Will F. Holt, Bangs, Rt. 2	2.00	Mr. and Mrs. H. B. Bouchillon	1.00
Mrs. W. P. Fletcher	1.50	E. H. Tucker	2.00	Grannie Stanley, Burkett	1.00	Lucille McIntire	.27	W. T. Verner	1.00	Mr. Godwin, Farmer's Produce	1.00
A. E. Dalton	1.00	Milford Harris	1.00	Mrs. Ethel Tabor, Burkett	1.00	Ben Gene Tatum	.25	Kenneth Folk, Shield School	1.00	Theola Stewardson, Shield School	.50
Mr. and Mrs. Jess Griffith	5.00	Mr. and Mrs. W. B. Griffin	1.00	A. L. Godwin, Burkett	2.00	O. C. Yancy	.25	Mr. and Mrs. Walter Newman	1.00	Elmer Daniell	1.00
Gouldbusk Baptist Church	5.00	Lovell Richardson	1.00	Mrs. J. E. Burkett and Miss Carrie Cross, Burkett	1.25	Mildred Yancy	.25	Mr. and Mrs. Jud Porter	5.00	J. O. Daniell	2.00
Jim McCulloch	5.00	J. Y. Stricklan	2.50	J. J. Harris, Burkett	1.00	Mary Frances Reasoner	.25	Mr. and Mrs. J. T. Oakes	1.00	Liberty School	
D. V. Smith, Jr.	2.50	Mrs. Walter Ferguson	1.00	Mr. and Mrs. Vernon Helms, Burkett	1.00	Kenneth Seymour	.50	Leola Christie Barnes	1.00	Mrs. S. H. Duggins, Jr.	2.00
Monroe Forehand	2.50	H. W. Berry	1.00	Mrs. F. L. Harris, Burkett	1.00	Delia Seymour	.50	W. E. Wallace	5.00	Ivan Reynolds	.10
David Rowe	1.00	Carroll Kingsbery	1.00	Mrs. E. L. Harris, Burkett	1.00	John Will Vance	5.00	Line School		George Lee Moran	.25
Sam Huskinson	1.00	R. C. Gay	5.00	Mrs. Tilley Burkett, Burkett	1.00	Jo Frances Richardson	.25	Mrs. Alma McNutt	1.00	Roland Day	.05
Lee Smith	1.00	Henry Ratliff	1.00	Mrs. R. M. Lowe	1.00	Billy Gay Arrant	.25	Nelda Fletcher	.50	Billy Day	.05
Roy Blanton	1.00	A. E. Gilbert	1.00	S. A. Millard	1.00	Ida Ellen Arrant	.25	Carl and Wanda Lunsford	.50	Wanda Duggins	.25
W. F. Machen	1.00	Robert Smith	1.00	J. C. Raper	2.00	Garland Arrant	.25	Edwina Schrader	.25	Freda Fields	.10
J. H. Myers	1.00	Jess Keefer	.50	Purdy Merc. Co.	5.00	Powers Bros.	1.00	Darwin Schrader	.25	Margaret Fleming	.10
Mrs. J. H. Myers	1.00	J. D. Martin	.50	Santa Anna Fire Dept.	10.00	C. H. Vercher	1.00	Charles K. Duggins	.25	Sammie Joe Powers	.25
C. B. Cheney	1.00	Dena Franklin	2.00	Liberty H. D. Club	5.00	Dr. and Mrs. L. O. Garrett	5.00	James Estes	.10	Lenora Mell Powers	.25
Methodist Church, Gouldbusk	5.00	A Friend	.25	Mrs. James Smedley	1.00	Mrs. John Simmon	1.00	Betty June Estes	.10	Charles K. Duggins	.25
Mrs. T. E. Harris	1.00	Fred Watkins	1.00	Mr. and Mrs. E. W. Gober	2.00	Thomas Hallford, Shield	1.00	Luther Studdard	.05	James Estes	.10
Donor, name not given	1.00	Mrs. Taylor Wheeler	5.00	J. H. Arrant	1.00	Trickham Sunday School	10.00	Jo Ella Smith	.05	Iva Jewel Fletcher	.50
Mrs. W. F. Machen	1.00	J. A. Baucom	1.00	Mr. and Mrs. R. B. Archer	2.00	Rockwood School and Community		Mr. and Mrs. J. V. Davis	1.00	Verna Jean Edington	1.00
Dan Shuford	5.00	Clint Davis	.50	Mr. and Mrs. E. S. Haynes	2.00	E. L. Allison	1.00	Herman Jr. Constable	.50	Herman Jr. Constable	.50
Mr. and Mrs. Byron Hawthorne	1.00	Charley Jones	1.00	Mrs. J. Z. Vercher	1.00	Miss Myrtle Tate	1.00	Mozelle and Lovelle Manley	.30	Arthur Jr. Switzer	.25
Mrs. J. O. Brown	.50	Mary Lee Ford	.25	Mr. and Mrs. Grady McIver, Trickham	2.00	Miss Myrtle McGregor	1.00	Nell Switzer	.25	Mr. and Mrs. J. T. Oakes	1.00
Mr. and Mrs. Gordon Monsey	1.00	L. J. Adkins	2.50	Rockwood H. D. Club	10.00	Miss Curtiss Gregory	1.00	Jane Switzer	.25	Leola Christie Barnes	1.00
Mrs. C. A. Kilmer	.25	L. F. Fry	1.00	Mr. and Mrs. Paul Van Dalsen	1.00	Mrs. Curtis Carter	1.00	Jessie Lee and Wilburn Townsley	.25	W. E. Wallace	5.00
D. L. Davis	1.00	Mr. and Mrs. Jas. Gill	2.50	Robert Stewardson	2.50	Frank McCreary, Jr.	1.00	Adena Townsley	.25	Line School	
H. O. Norris	5.00	Mrs. C. A. Yarborough	.11	Mrs. A. D. Donham and Mrs. E. J. Merritt	5.00	Curtiss Bryan	.25	Mrs. John Fletcher	1.00	Mrs. Alma McNutt	1.00
Mr. and Mrs. J. W. Tabor	5.00	D. W. Nickens	2.00	Miss May Blue	5.00	Howard Blackwell	.25	Carl and Wanda Lunsford	.50	Nelda Fletcher	.50
Mrs. Arthur Yates	1.00	Mr. and Mrs. B. T. Vinson	2.00	Alvis Cammack	1.00	Billie Maness	.25	Edwina Schrader	.25	John Will Vance	5.00
V. D. Fulton	1.00	Sandwich and Watkins	.50	Mrs. M. E. Chambers and Miss Luella Chambers	2.00	James Ashmore	.10	Edwina Schrader	.25	John Will Vance	5.00
Mrs. J. A. Churchwell, San Saba	2.00	J. W. Lewis	1.00	Mrs. J. P. Pearce	2.00	Williams family	1.25	Edwina Schrader	.25	John Will Vance	5.00
J. W. Barr and wife, Concho	11.00	R. L. Mobley	.50	Ernest Wright	1.00	Stafford family	2.00	Darwin Schrader	.25	John Will Vance	5.00
Masonic Lodge	10.00	Mrs. Julia McGonagill	3.00	J. H. Bostick	.50	Vera Fay Tisdal	.50	Charles K. Duggins	.25	John Will Vance	5.00
Gladhand Class, M. E. Church	5.00	Mrs. J. R. Gipson	5.00	Lee Vaughn, Trickham	.50	Aleiece McCutchen	.05	James Estes	.10	John Will Vance	5.00
Mrs. J. J. Kirkpatrick	2.00	John Franklin Turner	3.00	Bill Price	.75	Pauline Walters	.10	Betty June Estes	.10	John Will Vance	5.00
J. Fox Casey	10.00	Burton-Lingo Lumber Co.	15.00	Artie Jean King	.05	Billie Velma Wise	.15	Luther Studdard	.05	John Will Vance	5.00
J. M. Stewardson	1.00	Chas. Berry	5.00	Frank Wise	.10	Ed Bostick	.10	Jo Ella Smith	.05	John Will Vance	5.00
L. Zweig, Coleman	25.00	W. M. Bell	2.00	Colleen Wise	.50	Alvin Bostick	.10	Darel Studdard	.05	John Will Vance	5.00
Mrs. J. P. Hodge, Sr., Rockwood	1.00	Rev. R. E. Dunham	2.50	Minta Jean Bryan	.25	Artie Bostick	.10	Gerald Studdard	.05	John Will Vance	5.00
Thomas Bowden	5.00	Mr. and Mrs. R. E. Johnson	2.00	Sammie McIlvain	1.00	Joe Eviline French	.07	Ruby Helen Jones	.05	John Will Vance	5.00
E. R. Tucker	5.00	R. A. Modawell	.50	Elton Butry	.25	Bryan Hodges	.50	E. H. Weatherby	.05	John Will Vance	5.00
C. D. Parmer	1.00	W. C. Sharp	1.00	Nita Wise	.10	Cathryn West	.10	J. H. Myers and children	.25	John Will Vance	5.00
Mrs. Hugh Phillips	1.00	Tom J. Johnson	1.00	Kelley Wise	.50	June Moreland	.10	J. W. Johnson	2.00	John Will Vance	5.00
Arthur Talley	5.00	W. E. Vanderford	1.00	Lavinia Snider	.15	Donnie Estes	.25	E. M. Whitley	.50	John Will Vance	5.00
Leaday Community	21.50	Aline Harper	1.00	Tim Barron	.25	Dorris Deal	.08	J. C. Fletcher	1.00	John Will Vance	5.00
C. A. Malcom, Dallas	2.00	Mrs. Lula Harvey	1.00	Annie Marie Farris	.25	Robert Daniels	.10	Cash Jar at Piggly Wigly	2.25	John Will Vance	5.00
A. H. Dean	1.00	Lions Club	10.00	LeRoy Farris	.25	Jesse Daniels	.10	Mr. and Mrs. J. D. Henderson	1.50	John Will Vance	5.00
R. W. Balke, Ballinger	1.00	Mr. and Mrs. O. A. Etheredge	2.00	Joe Eviline French	.07	Olive Daniels	.10	Mr. and Mrs. O. C. Wallace	2.50	John Will Vance	5.00
Chas. L. Smith, Coleman	5.00	Emmett Day, Kaufman	2.50	Bryan Hodges	.50	Jean McCreary	.05	Mr. and Mrs. S. L. Cannon	2.00	John Will Vance	5.00
D. P. Rockmaker, San Antonio	50.00	Nehi Bottling Co.	10.00	Cathryn West	.10	Wendell Rutherford	.50	Sealy Hospital Nurses Alumni	5.00	John Will Vance	5.00
W. H. Thompson, Mayor of Brownwood	25.00	Mrs. H. W. Kingsbery	2.50	June Moreland	.10	Mavis Box	.25	Belle, Maude and Emma Bowers	2.50	John Will Vance	5.00
Jim Phillips	1.00	J. H. Bostick	1.00	Donnie Estes	.25	Barney Ashmore	.25	Mr. and Mrs. C. A. Crump	7.50	John Will Vance	5.00
Eunice Wheeler	2.00	R. E. Wood	1.00	Dorris Deal	.08	Edward Bell	.25	Cash in Jars and Cash Without Donors Name	16.00	John Will Vance	5.00
Mrs. Matt Estes, Rockwood	1.00	Mrs. W. R. Stuart	1.00	Robert Daniels	.10	R. D. Bell	.25	Mr. and Mrs. H. O. Knappe	2.00	John Will Vance	5.00
Sam McCrary	5.00	Mrs. S. A. Niell	1.00	Jesse Daniels	.10	Fern McCreary	.10	Miss Bessie Bull	1.00	John Will Vance	5.00
Joe Phillips	1.00	Hunter Woodruff	10.00	Olive Daniels	.10	Wanda Woods	.50	Banner Ice Co.	5.00	John Will Vance	5.00
Mr. and Mrs. Reginald Owen	2.50	Oscar Eiland	1.00	Jean McCreary	.05	Douglas Estes	.25	Church of Christ, Burkett	13.60	John Will Vance	5.00
Ozro Eubank	.25	Cleveland Sunday School	5.00	Wendell Rutherford	.50	Mrs. Tom Newman	1.00	Mrs. T. A. Burns, Burkett	5.00	John Will Vance	5.00
Carl Jameson	1.00	B. F. McIntire	1.00	Mavis Box	.25	Mr. and Mrs. W. R. Mulroy	2.50	Orien Welch, Bangs	1.00	John Will Vance	5.00
Hunter Bros.	2.50	J. E. Hunter and wife	1.00	Barney Ashmore	.25	West Texas Utilities Co.	10.00	Buffalo School		John Will Vance	5.00
Chas. Evans	1.00	J. E. Richardson	1.00	Edward Bell	.25	Mr. and Mrs. Neal Oakes	2.50	Jewel Lee Preas	.25	John Will Vance	5.00
Dennis Hays	1.00	Mrs. W. L. Moseley	10.00	R. D. Bell	.25	Mr. and Mrs. T. H. Upton	1.00	Ruth Michaels	.15	John Will Vance	5.00
J. O. Baugh	.50	Paul Fluger	10.00	Fern McCreary	.10	Walter Wallace	1.00	Hazel Marie Evans	.50	John Will Vance	5.00
W. L. Baugh	1.00	Trickham H. D. Club	5.00	Wanda Woods	.50	Mr. and Mrs. E. G. Overby	2.50	Leon Earls	.06	John Will Vance	5.00
Dave Hagar	.50	Mrs. J. H. Griffith	1.00</								

THE MOUNTAINEER

Page 1

OFFICIAL PUBLIC SCHOOL NEWSPAPER

Friday, December 10, 1937



The Mountaineer Staff

Editor-in-Chief Gale Collier
Assistant Editor Emma Sue McCain
Sponsor Miss Mattie Ella McCreary
Reporters
 Elizabeth Morris
 Ima Niell
 Willyne Ragsdale
 Mary Feld Mathews

Behave Yourself

Students of psychology can give various reasons for misbehavior. Most of us do not study that science, consequently we do many queer things without knowing the reason "why."

One theory advanced by a noted scientist may be explained by using a scale thus: plus 100—0—minus 100. Zero represents normality. A boy, Jim, was used for the illustration. It seemed that in his opinion he was an excellent ball player, and while on the diamond was inclined to be rather "bossy" toward the other boys and when they gave in to him, he concluded that it was because of his superiority as a ball player, rather than his unconscious "bossing."

However one afternoon as he entered the gym for his shoes, he overheard some of the boys talking about him. He was rather crestfallen and his disposition might be represented as minus 100. In order to inflate his deflated ego he began to torment his younger sister on his return home. Her joy and exuberant spirit departed him. Accordingly reduced her to a minus condition. She in turn returned the "spite" on a play-by-play basis she returned to her normal disposition.

Analyze your actions. You may find some hidden truth about yourself which you might be able to correct.

Angry Guide: Why didn't you shoot that tiger?
A. L. McGahey (timid hunter): He -- he didn't have the right kind of an expression for a tiger.

Honor Roll Second Six Weeks

Eighth Grade
 Thomas Myron Hays
 Ruth Lovelady
 Mary Feld Mathews
 Lily Pearl Niell
 Tom Robin
 Mary John Wade
Ninth Grade
 Bettie Ruth Blue
 O. L. Cheaney
 J. T. Garrett
 Margaret Mobley
 H. W. Norris
 Vernon Oakes
 Mickie Parker
 Willyne Ragsdale
 Betty Jo Reid
 Dorothy Ross
 Betty Sue Turner
 Walter Verner
Tenth Grade
 Mary Louise Curry
 Joyce Hensley
 Roxie Lane
 Ima Niell
 Helen Oakes
 Jo Mae Payne
 Dorothy Pettit
 Billie Burke Pope
 Ara Belle Ragsdale
 Clem Shelton
 Voncille Taylor
 Dorothy Sumner
 Glenda Williamson
Eleventh Grade
 Ruth Erick
 Ida Lois Newman
 Louise Oakes
 T. L. Reid
 Dorothy Tillery

Students, Teachers Attend Meeting Held By Gypsy Smith

Friday night, Dec. 3, several of our students and teachers went to Brownwood to hear Gypsy Smith, world renowned evangelist, who is holding a meeting at Brownwood. Those attending were Lenora Oakes, Billie Burk Pope, Helen Oakes, Betty Ruth Blue, Wilma Jeanette Mills, Oran Henderson, A. L. McGahey, Erwin Selman, Ford Holt, Virginia Holt, Doris Moore, Coy Casey, Lucille Genz, Kathlene McCormick, Mary Louise Curry, Miss Mattie Ella McCreary and Miss Kathryn Rose Pinney.

Spanish Club Meets

The Spanish Club held its regular meeting last Wednesday, Dec. 1. After a discussion about getting club pins, a committee was appointed to make the selection.

The club voted to give a Spanish dinner some time in the near future.

T. L. Reid (In late hours): How can I ever leave you?
 Tired Mr. Pettit (poking his head around the door): Bus No. 7, train No. 40 or any taxicab.

Banquet Date Set

The date for the annual football banquet given by the Lions Club and pep squad has been set for December 14. It is to be the largest banquet in the history of this school. Around 200 pupils, including the band, the faculty, the Lions and their wives, the football boys and pep squad girls, will attend the banquet.

Mrs. Burrow Donates Books

The high school library has been enriched by a generous donation from Mrs. J. M. Burrow. The gift included a set of New Cabinet Encyclopedias, eight volumes, and Headley's "Washington and His Generals."

Mrs. Burrow expressed a very high regard for Santa Anna schools and having had a daughter at one time on the Ward School faculty has always watched the progress of the schools with an intense interest. The faculty and student body are deeply appreciative of Mrs. Burrow's interest and generosity.

Homemaking Club Plans Box Supper

The Home Making Club has planned a box supper for Thursday, Dec. 9. It will be held in the high school auditorium at 7:30 o'clock. The public is cordially invited to attend. The money received is to be used for club pins and to improve the department.

Mrs. Stafford Baxter Entertains Pep Squad and Football Boys

Friday evening, Nov. 25, Mrs. Stafford Baxter honored her daughter, Marilyn, who is attending school at John Tarleton, by entertaining with an informal reception.

Upon arriving the guests registered in a "School Day Book" and then were served fruit punch.

The centerpiece on the table was marigolds, lace fern and small sprigs of mistletoe.

Guests for the evening included the 1937 football squad, the pep squad girls, the band and others.

Seniors Working On Play

The seniors are working real hard on their play, "Miss Jimmy," in order that they may present it at the high school auditorium on Dec. 17.

Lions Club Honors Highest Ranking Students

The four high school students whom the Lions Club honor for making the highest grades this six weeks are: freshman, Mary Feld Mathews; sophomore, Willyne Ragsdale; junior, Dorothy Sumner; senior, Ada Lois Newman.

These students will dine with the Lions at one of their regular meetings. This custom was started by the Lions last six weeks to promote high scholarship.

Boys' Basketball Team Organized

The boys who are interested in basketball have organized a team and are already working out each afternoon. The team went to Buffalo to a boys' basketball tournament Friday afternoon, Dec. 3. They played Buffalo and were defeated 19-8. The team has not elected a captain, so H. L. Lackey acted as captain at the Buffalo game.

Everyone should boost the basketball team and show more interest in this sport. Basketball is a grand game and easily understood. Support the basketball team.

Pep Leaders For Next Year Elected

Pep leaders for next year have been elected. Dorothy Pettit has been elected leader and her assistants are Loraine Parsons, Mickie Parker and Betty Jo Reid.

Helen Oakes and Wanda Sanders will serve as drummers.

Band Attends Open House at Coleman

Coleman High School held open house Friday, Dec. 3. The Santa Anna High School band attended and enjoyed it very much.

The Coleman band had on display over three hundred instruments covering a wide range of instrumentation. This band is considered one of the best equipped bands in the state.

They had a very interesting program including a violin solo by Jack Gordon and a number of pieces by their orchestra.

Elizabeth's pa: Say it's past midnight. Do you think you can stay here all night?
 J. W.: Gosh, I'll have to telephone mother first.

Mrs. Haynes: Why are you making faces at the bulldog?
 Elsie: He started it.

Ward School News

Ward School honor roll for the second six weeks period is as follows:

First Grade
 Billy Voss
 Reginald Owen, Jr.
 Jim Tom Simpson
 Earl Halmon
 Betty Sue Weatherman
 Wanda Price
Second Grade
 Doretha Fay Casey
 Era Lee Ingram
 Sarah Frances Moseley
 Betty Ann McCaughan
 Patsy Price
 Ruby Joyce Willis
 John Hardy Blue
 Jerry Fulton
Third Grade
 Hubert Brandstetter
 Irene Ellis
 Violet Lane
 Allene Talley
 Newman Parish
 Jackie Pruitt
 Calice Jane Overby
 Allie Anna Guthrie
 W. H. Blake
 Sybil Simpson
 Dixie Lee Dunham
 Evelyn Bruce
Fourth Grade
 Faye Boyd
 Donald Ray Howard
 Oran Wellen
 Gerald Rost
 Betty Pritchard
 Betty Lyn Willis
 Millie Ruth Wilson
 Billie Louise Weatherman
Fifth Grade
 Oma Dean McDonald
 Jo Ann Baker
Sixth Grade
 Ruth Morris
 Maude K. Ashmore
 Allie Cille Garrett
 Jean Mobley

the Young People's service conducted by Gypsy Smith at Brownwood Friday night. This community was saddened Saturday morning by the death of Mrs. Billy McCarrell. Funeral services were held at the Baptist Church by Rev. Nelson. Interment was in the Rockwood Cemetery.

Nancy and Anita Sue McCreary spent Sunday with Vera Faye Tisdal of Whon.

The supervisor, Mr. Murdock, visited our school Tuesday at 1 p. m.

The characters for the play "The Girl in the Fur Coat" are as follows: Mrs. Lee, Mildred Eppler; Mr. Lee, A. W. Box; Hettie Lee, Hearthal King; Bob Lee, Wilburn Bible; Nifty Nan Nacroft, Robbie Lee Avant; Mrs. Nails, Mary Cooper; Maggie Nalle, Cloella Black; Pete Denny, Marshall Williams; Roger Devoke, Jack Rutherford; Mrs. Devoke, Frances Walton; Judge Maynard, Billy Maness.

Mrs. Bailey Hull entertained with a bridge party Tuesday night.

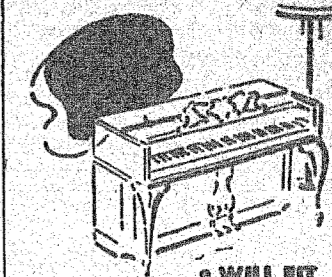
Rockwood basketball girls were defeated at Buffalo by Mozelle Saturday by ten points.

Thomas Johnson has returned home from Sanitarium, Texas.

Mrs. J. D. Williamson
 Mr. and Mrs. Charlie Brown of Brady spent Sunday with Mrs. Brown's parents, Mr. and Mrs. Byron Holland.

Mr. and Mrs. Arthur King and family visited Mr. and Mrs. C. A. Crump of Santa Anna Saturday.

Mr. and Mrs. W. W. McDonald of Dallas, visited in Santa Anna Tuesday and Wednesday. Mr. and Mrs. McDonald are the parents of Dr. E. D. McDonald, formerly of this city. "Robert Curry"



WILL FIT IN ANY LIVING ROOM

THE NEW Acrosonic Piano A PRODUCT OF BALDWIN

The greatest forward step in piano design in this generation. Standard 88 note scale — yet a compact design of distinguished charm and beauty. See this sensational piano... thrill to the perfected tone balance of the exclusive Acrosonic scale. Learn how it fits your budget as well as your living-room.

Lane Music Store
 Distributor
 Coleman, Texas

Give Yourself or Friend A Christmas Gift

And the gift that will please you most is a new permanent or other beauty services. You will want to look your best during the coming holiday festivities.

Make your appointments early to avoid the rush before the holidays. Our beauty parlor is comfortable and warm and you will be served by expert operators.

For Beauty Work You Will Be Proud To Show Visit Us

Hall Beauty Shop
 PHONE 137

Christmas Specials For MEN and BOYS



SHIRTS FOR DRESS OR WORK

White or patterned shirts, that will wear long and will not fade when washed, are always gifts that can be used.

Special 69c to \$1.95

TIES and SOCK SETS TO MATCH

Bright Christmas ties and socks in gift boxes make practical presents. Patterns of stripes, checks, solid colors. All lined.

Special 50c to \$1.00

BATH AND HOUSE ROBES

Warm bathrobes of cotton or part wool and silk dressing robes for lounging in the cold evenings will make ideal gifts for men or boys.

Priced at \$3.95 to \$5.95

SPECIAL ON SUEDE JACKETS

Heavy Suede and leather jackets are good for school, play and work. Wear well. In all sizes.

Special \$5.95 Jacket for \$4.50

MANY OTHER NOVELTY GIFTS AND OTHER MEN'S WEAR. WE DEAL EXCLUSIVELY IN MEN'S NEEDS.

THE MAN'S STORE

Trickham News

By Mrs. A. H. Dean
 Mr. and Mrs. Tom Lindley have moved back into our community. They have lived this year with their daughter in Mills Co.

Mrs. C. F. Shield and Mr. and Mrs. Oscar Boenicke returned Monday from a visit with Mrs. Shield's daughter, Mrs. Leo Driskell and family of near Houston.

The attendance at Sunday School and church Sunday was not as good as usual, due to the cold weather and quite a lot of sickness.

Mr. and Mrs. Carroll Bowden of Cherokee are here to be with their daughter, Mrs. Fred Haynes, who is in the Sealy Hospital.

Mrs. R. D. Glassey of Waka and Mrs. W. B. Phillips and daughter of Canadian were week-end guests in the home of their brother, A. H. Dean and family.

Mr. and Mrs. Harry Wilson are back at home in Trickham after spending several months in Coleman where Mr. Wilson had work.

Mr. and Mrs. Roy Casey and children have moved to Santa Anna.

Mrs. Jess York, Mrs. Sud Laughlin and Mrs. Harry Wilson were in Coleman Saturday afternoon to attend a council meeting of the Demonstration clubs of Coleman County.

Mr. and Mrs. Ben James and children are back at home after working for two months at Littlefield.

Mrs. Lee Dockery, Thomas Bowden, J. E. Haynes and Albert Dean were marketing turkeys in Brownwood Monday.



SPECIAL CHRISTMAS SALE

REDUCTION ON COATS AND DRESSES

\$22.50 Coats	\$16.50
\$16.50 Coats	\$12.75
\$10.75 Coats	\$7.95
\$7.95 Dresses	\$4.95
\$5.95 Dresses	\$3.95
\$3.95 Dresses	\$2.95

Ladies Sweaters Greatly Reduced Famous Hercules Brand

Ladies Sweater, \$4.95 value	\$3.95
Ladies Sweater, \$3.95 value	\$2.49
Ladies and Misses Sweaters, \$1.95 value	\$1.69
\$1.95 AND \$2.50 SCHOOL OXFORDS	\$1.69



PIECE GOODS SPECIALS

COTTON SUITINGS		WOOLENS	
25c - 29c Values	19c	54 inch Woolens	\$1.69
35c - 39c Values	29c	40 inch Woolens	.79
SILKS: \$1.00 Silks79			

Many Lovely Christmas Gifts Such as House Coats, Silk Underwear, Hose, Purses, Bags, Gloves, etc. A Very Nice Assortment to Pick From.

Gehrett Dry Goods Co.

Laws To Blame In Session Failure Of Legislature, Says Worker

BY C. A. JAY
Executive Vice-President,
Industrial, Commercial and
Agricultural Conference
Taken from The Dallas
Morning News

Much of the present discussion concerning the fiscal affairs of Texas, it seems to me, is shedding more heat than light on the fundamental problem which faces the average citizen. What the average citizen wants to know is, Does the State have enough money out of taxes already levied to meet its obligations? The citizen also wants to know if the State actually has enough money for the construction and maintenance of its public schools and its various social services? He wants to know if it is a fact that the present Legislature has been unmindful of the State's obligations toward any of these agencies. If any one of these fundamental services is not provided for, the citizen wants to know whether it is because we do not have enough taxes or if it is because we are not using the funds we have at the best advantage. Was there any need so much controversy, much of it partisan, that probably the best way to approach the problem would be to separate the known from the unknown.

Here are some things that we know about provision now being made for these fundamental governmental services out of taxes already levied:

1. During the coming biennium we will have more money for the construction of State highways in Texas than we ever have had.

2. The State will be able to pay more country road bonds out of its highway fund than ever before.

Pension Is 43 Per Cent
3. Texas will contribute more out of State funds for the maintenance of public school system than any State except North Carolina and Delaware.

4. Legislative appropriations for rural aid are the highest ever made in the history of the State.

5. Appropriations made for the maintenance of the Judiciary in Texas exceeds those of any State except New York.

6. We are paying pensions to more persons than any other State. Texas, with a population of 5,800,000 in August, 1937, had 116,000 pensioners; New York, with a population in excess of 12,000,000, had only 99,000 on its old-age pension roll. If Texas were paying pensions to the same proportion of those 65 years of age as the average American State it would have 59,580 of its pension roll and not 116,000.

7. Texas pays a pension to 43 per cent of its population over 65, while in the country as a whole pensions are paid to only 18.5 per cent of persons over 65.

8. Texas has on its pension rolls 116,000 pensioners to whom the State is paying approximately \$10,000,000 annually. The other States pay their old-age pensioners at the rate of \$5,500,000 for a population equal to Texas.

9. For the biennium which ended in 1935 the Legislature appropriated for those which collectively would be regarded as social services \$8,112,023. For the current biennium appropriations exceed \$27,000,000. In the biennium ending August, 1935, Texas taxpayers paid no pay roll taxes. During the current biennium they will pay \$55,000,000.

10. The total revenue the State will receive during the next biennium, not including pay roll taxes, will be greater by more than \$70,000,000 than the revenue received for the biennium which ended in 1935.

11. The deficit in the general fund at the end of this biennium if no new taxes are levied and no additional appropriations are authorized will, in round figures, be \$14,000,000.

Enough Money Put Up
Now everything said thus far falls in the category of what we know, and when you look at the whole picture I do not think you will find any information to substantiate the charge that John Q. Taxpayer is not putting up enough money to run the State with all its various departments, agencies and services.

If there be particular services which the State is not caring for, what are these services? Why are they not provided for? The controversy over the question seems to center around old-age pensions primarily and incidentally aid for the blind and for the dependent children.

First let us take a look at the old-age pension controversy. On this it would be fair to divide the Legislature into three groups:

1. Those who believe all we need is an enforcement of the restrictions of the present law. If these were enforced, they believe, the number on the pension roll would be so reduced that larger payments could be made to those left on the roll and the present funds would be adequate for for the purpose.

2. Another school of thought is represented by those who believe more money should be provided for old-age pensions by reducing other expenditures in the State which they deem excessive.

3. A third group believes more taxes should be levied and the restrictions removed to increase the number who would be eligible for pensions. It was primarily from these three viewpoints the called session of the Legislature which has just ended considered the pension problem.

With reference to the matter of putting into effect the constitutional amendments authorizing the State further to extend aid to the blind and to the dependent children at a cost of \$2,000,000, there is a group of the Legislature which looked at the unsatisfactory results of the hastily enacted old-age pension law and pointed out it is desirable to move more slowly in setting up plans to aid the blind and dependent children. They believe we should not attempt to make these services effective during the coming year, which is, of course, a State-wide campaign year. Others in the Legislature are willing to make them effective now but felt the funds to pay this amount should come from some governmental economies rather than from new tax levies. A third group desired to make them immediately effective and to levy additional taxes for the purpose.

Not Bad Faith
Now, I think that this represents an approximate grouping of the Legislature according to their opinions on these questions. And with this background and some other incidental facts is it not possible to portray more accurately the motives which impelled these various groups to act during the recent session of the Legislature? And, in light of these facts, is it not pertinent to try to find the answer to some of the questions raised?

If you are looking for an opportunity to charge the government or the members of the Legislature with bad faith, with inconsistency, and controlled by ulterior motives, you probably can assemble enough information, if you take only one side of the case, to satisfy you that you have reached the correct conclusion. The government criticizes the Legislature for wanting economy now and not wanting it when it was passing the appropriation bills. I will agree that in the matter the position taken by a majority of the members of the House and by a majority of the members of the Senate in their demand to reduce appropriations was not consistent with the votes they gave at the time they voted these appropriations, but I think it is unfair to charge them with bad faith.

What are some of the contributing causes which led the Legislature to make sum total appropriations which exceeded by \$23,000,000 the appropriations for the previous biennium and then at the recent called session of the Legislature decided these appropriations should be lowered? I think the obvious answer is this: The Legislature did not realize at the time it was passing this legislation the tremendous increase it was making in the total. They were viewing each bill as it came up and not all bills as a unit. Why did this condition prevail? Certainly one of the main reasons why it prevailed was the failure of the Legislature to take a complete look at the whole picture before they undertook to deal with each as separate factors.

Government in Error
Why did the Legislature not consider the need of all agencies of the State before appropriating for each agency? The budget law provides that within thirty days of the convening of the Legislature the Governor shall submit to the Legislature five budget bills itemizing in detail for what he believes the taxpayer's money should be expended. The governor did not do this at this session of the Legislature, nor did he do it at the preceding session of the Legislature, and his failure to do it left the Legislature without his specific recommendations at the time it was considering these appropriations. If he had submitted these budget bills as the law provided would it have held

the appropriations down? I do not know. But I do know that when this law went into effect the then Governor did submit five budget bills to the Legislature, that these bills called for a cut of \$14,000,000 in appropriations and that the Legislature did respond by cutting appropriations \$13,000,000.

Just as I think the Governor is in error in charging the Legislature with bad faith in wanting to revise its work after it got a complete picture, likewise I think it would be unfair to charge the Governor with purposely failing to comply with the plain provisions of the budget law. It is a fact that he did not comply with this law but it is also a fact that there is a fundamental defect in the portion of the budget law in that it puts a responsibility on the Governor but does not at the same time create a budget department through which the Governor can work to discharge his responsibility. So I think the fair way to look at this situation is to say both the Governor and the Legislature were motivated by the right purposes during the regular session of the Legislature, that the lack of a proper budget system and financial control of the State caused the Legislature to hold different views when they were making these appropriations from the views they had once the cumulative results of all their labors were placed before them. Certainly, justice to the taxpayer demands that waste of public funds be eliminated at the earliest possible date and it is far more helpful to him to accomplish this than to enter into an academic discussion as to who was responsible for the original mistake.

What information is there, if any, to justify charges that the members of the Forty-Fifth Legislature, as a whole, are unmindful of human needs? As has already been pointed out, if Texas were seeking only to provide an average national standard of liberality in paying old-age pensions, it would have on its pension roll only 49,580, whereas it actually has 116,000. It is providing, in round figures \$10,000,000 each year to pay old-age pensions, when an average based on national standards would require only \$5,515,270. It is true the Legislature has been unmindful of the blind and of the dependent children?

Has it overlooked the problem of general social welfare? This has been charged because the Legislature has not made direct appropriations to make effective the two constitutional amendments adopted on August 23, to extend further aid to the blind and the dependent children.

The Whole Picture
In making this criticism, I think we forget there is not a line nor a syllable in either these amendments they were to put into effect immediately. The people did not give the Legis-

lature a mandate to make these amendments effective immediately; they gave the Legislature permission to extend further aid to the blind and to dependent children when in such a manner as the Legislature might provide it. In speaking of these services as being overlooked, we forget the Legislature already had appropriated \$3,701,000 to aid children and adult blind during the coming biennium. There may be a difference of opinion as to whether it is desirable immediately to expand both of these services as permitted by the Constitution, but certainly there is no warrant for the charge the State is not already making very definite provision for the blind and the dependent children. I think the general expressed opinion of the Legislature would show a desire to extend this to the full limit provided in the recent constitutional amendments in the immediate future.

When you look at the whole picture, does it indicate the Legislature should pass additional tax bills or does it indicate we have taxes enough? It is my opinion the existing tax levies of the State Government could be so reallocated that this, together with obvious economies which could be effected, would enable the State to make maximum appropriations to care for dependent children and to aid the blind, as well as to effect a substantial reduction in the general fund deficit. If there is need for additional taxes, then that need must be created by a law liberalizing old-age pensions.

(Continued on Page 9)

Mrs. J. G. Richards and little son of Ingleside are visiting Mrs. Richards' parents, Mr. and Mrs. J. W. Jordan.

BRADY COUPLE WEDS HERE SATURDAY

BRADY, Dec. 8. Miss Vera Tomlinson, daughter of Mr. and Mrs. S. P. Tomlinson, became the bride of W. T. Archer, son of Enoch Archer, in a ceremony read by the Rev. R. E. Dunham at Santa Anna Saturday afternoon.

The bride was graduated from Brady High School in 1936, and has been employed at Evridge's store for several months. Prior to that, she assisted her father for several years in the operation of Brady Creamery. She reigned as queen of the Brady-

July Jubilee and Race Meet last summer.

The bridegroom is a graduate of Richland Springs High School, and attended Texas A. & M. College. He is now associated with his father in contracting business.

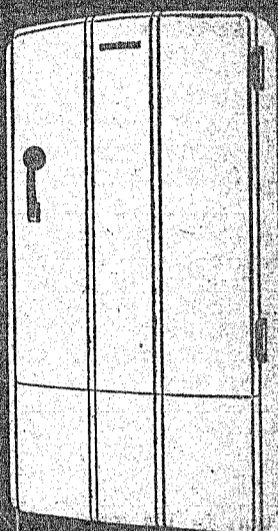
Mrs. Archer's wedding dress was a coronation blue affair with black accessories. The couple's wedding trip included Fort Worth and other points of interest in North Texas.

An optimist is a fellow who hopes to make enough money next month to pay last month's bills.

GOOD NEWS FOR SANTA CLAUS!

GENERAL ELECTRIC'S NEW 1938 MODELS ARE READY FOR CHRISTMAS GIVING!

America's Finest and Thriftiest Refrigerator... First Choice of Millions... Now Popularly Priced!



More beautiful than ever! More convenient than ever! More thrifty than ever! And at prices and terms that will not blast Santa's budget to bits. Come in and see! Help yourself to health and happiness... and save three wars! Here's the bonnie gift that will please the lady no end... and save money, too.

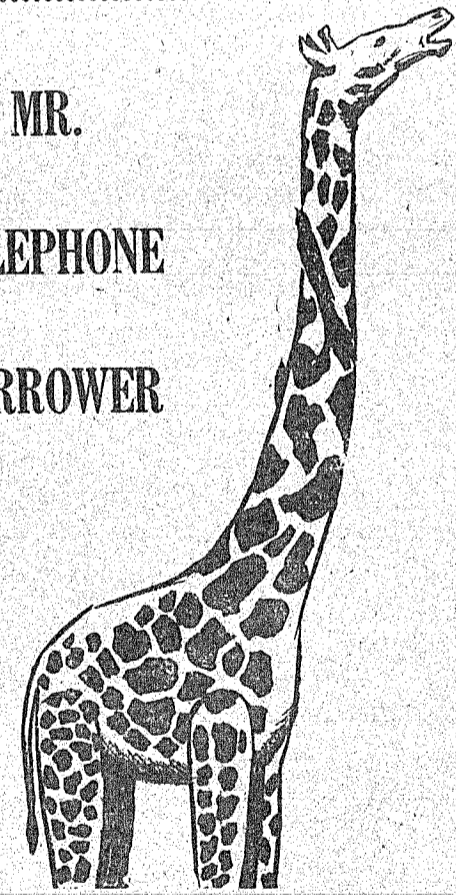
\$5.00 DOWN \$3.00 PER MONTH

No Interest or Carrying Charges Until... When Regular Monthly Payment Begins

Radio Electric Shop

Geo. M. Johnson, Mgr.

Phone 24



MR.

TELEPHONE

BORROWER

HOW FAR DO YOU

Stretch Your Friendship

And how would you feel if you were bothered continually with "May I borrow your telephone a minute?" Your friends like to see you but get tired of hearing that. It is the same as borrowing money which you never return.

The Telephone

A Business Necessity - -

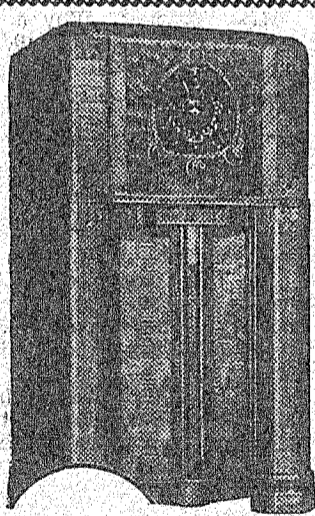
- - A Social Distinction

Have a telephone installed now and get the benefit of it through the Yuletide season and get a listing in the January Telephone Directory.

YOUR TELEPHONE WILL COST LITTLE MORE THAN A DRINK A DAY.

Santa Anna Telephone Co.

Phone 34



ZENITH: American and Foreign Broadcasts, 12" Speaker, "Robot" Dial, Electric Automatic Tuning, Tell-Tale Controls, Acoustic Adapter.

\$137.50 less \$40.00 for your Radio

\$97.50

Model 6J230

Farm and ranch homes need not wait for the hiline for a Zenith, as this model works on battery or line.

\$49.50



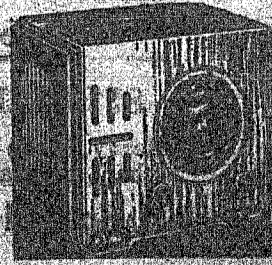
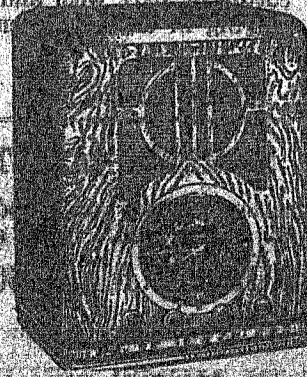
it's unanimous



ZENITH: Beautiful console with massive effect. Times American, Ocean, police, amateur, ships at sea. Spinner tuning, split second station selector.

\$84.50 less \$20.00 for your old Radio

\$64.50



Model 8J214

An especially attractive cabinet model, curved top, walnut finish.

RADIO ELECTRIC SHOP

Geo. M. Johnson, Mgr.

Phone 24

To Blame -

Continued from Page 8)
It will be recalled that in 1935 the Governor sent a message to the Legislature in which he urged the passage of a law now on the statute books which would limit the payment of old age pensions. It throws much light on the question under consideration to refer to the provisions of this law. I quote from section 1:
In order that the needy aged be cared for it is necessary that the State have funds on hand to meet the accruing obligations therefor in order to accomplish this purpose the Legislature declares that it is necessary to accomplish two incidental objectives, namely: (1) the number of persons receiving old-age assistance benefits must be decreased and (2) in addition, more revenue must be provided for the purpose of paying such benefits."
Roll Wasn't Decreased
Now, this bill which the Gov-

ernor recommended and which a majority of both houses of the Legislature passed, made the clear statement: the number of persons receiving old-age assistance benefits must be decreased." At that time there were 81,269 persons on the old-age pension roll. As I have already said, if you were to apply the average national standard, we would have 49,580 on the pension roll in Texas. In other words, at the time the present law was passed we then had on the pension roll almost twice as many pensioners as the national average for a State of similar population. It was, of course, this fact which impelled the Governor to send his message and which impelled the Legislature to pass the bill. But, was this 81,269 pension roll reduced? It was not reduced but increased. The fact is that in August of this year, about one year later, we had 116,000 on the pension roll— 35,000 more than we had at the time this delimiting pension act was passed. It is obvious the provisions of

this law have not been carried out. Those responsible for administering the old-age pension law have not reduced the number on the roll. If the present law were enforced, we would have almost twice as much money for old age pensions in Texas as we need. Therefore, in talking about money to finance old-age pensions in Texas, it is not a question of raising money to finance those entitled to pensions under the present law, but it is a question of determining whether the present law should be repealed and a more liberal pension law enacted, and certainly if the restrictions of the present law are going to be ignored in its administration, then it should be repealed.

I am not seeking to make an argument either for or against liberalizing pensions. I have tried to give the uncontroverted facts as to how Texas ranks with other States in its pension payments, the restrictions the present law provides, and the results obtained by the administration of the present law. Obviously, it is unfair to those who believe the present law is right to ask them to raise more money to make up for the loose administration of the law. On the other hand, if the principles set down in this law are unsound, if the law should be more liberal, then it is unfair to those advocates of more liberal pensions to put them in the position that the only opportunity they have to liberalize it, is by tying an amendment to a tax bill. It was a battle between these two conflicting opinions which was the major factor in finally preventing the passage of any tax bill at the recent called session of the Legislature.

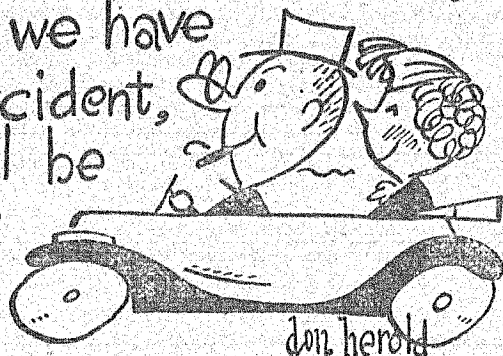
If there is to be any further effort made at the present time to provide more money for old-age pensions, then the whole question ought to be submitted to the Legislature. The tax base to support the present law was designed to support the law administered as written. It simply does not make sense to say you want more money to pay old-age pensions in Texas but you are opposed to liberalizing the provisions of the old-age pension law—because if the law is not liberalized, you do not need the money.

It is easy to understand how the Governor and how the members of the House and Senate, each fighting with enthusi-

1-MINUTE SAFETY TALKS

By Don Herold

We'll drive moderately, and if we have an accident, it will be a nicer one



How to Have More Trivial Accidents

If we are going to have automobile accidents, let's have little ones. It is not such a serious matter when we dent a fender. What we don't want to dent is a skull.

How shall we select for ourselves the smaller or more insignificant or skin-deep or grade "C" accidents?

I have a book in my lap, compiled by The Travelers Insurance Company on last year's smashes and crashes. It tells us which kind of accidents are the deadliest. Let's get a line on 'em and avoid THAT kind.

About the surest way to cinch your death in an automobile accident is to mix in a little alcohol. With an intoxicated driver (you or somebody else) at the wheel, your chance of death is greater than with a sober man at the wheel. I mean if you take 1,000 drunk accidents and 1,000 sober accidents there'll be more deaths in the drunk accidents.

Even an intoxicated pedestrian has

a better chance of being killed than a sober pedestrian—per accident.

There has been a lot of loose talk about the safety of driving fast. A lot of people think that it is all right to drive fast if they drive "careful". But the figures show that the rate of death per accident which involves exceeding the speed limit is much worse than the average death rate for all accidents due to improper driving practices.

Places, too, have a lot to do with the violence of your accident. The rate of death per accident on highways and at rural intersections is more than 200 per cent greater than on city streets.

Time plays a part, also. The death rate per accident after dark is about 60 per cent worse than during daylight.

May all your accidents be little ones, and they're more apt to be little if you know about and avoid these deadlier spots and practices.

asm for his particular ideas, may conscientiously say those who hold divergent views sometimes are motivated by selfish reasons. But I see no reason why the average citizen should become excited over these family quarrels. There is nothing new the Governor disagreeing with the Legislature. In the history of Texas it has been the exception rather than the rule when the Governor and the Legislature did agree, and frequently out of their disagreements the best interest of the average citizen has been served.

The financial condition in Texas unquestionably is sound, there is no emergency demanding the passage of new tax laws unless it be decided the pension law should be liberalized. In that event, new revenue would have to be provided. When viewed as a whole, it is probable that the results of the regular session of the Forty-Fifth Legislature and both called sessions have rendered much genuine service to the citizens of this State. Granting to the Governor and to the rank and file of both houses of the Legislature sincerity and honesty of purpose, and I do accord this to them, it is my opinion that they have done a pretty good job for Mr. John Q. Taxpayer. They appropriated too much money but they showed a willingness to correct this fault and I think this error probably will result in some constructive legislation coming at the next regular session which will definitely and permanently improve the whole fiscal setup of the State Government.

Big Business Lobby
While I am on this phase of the subject I am reminded of the oft-repeated assertion that the Legislature is controlled by a vicious lobby representing big business. Again let us look at the facts. The facts are these: Ninety per cent of the new revenue raised by the omnibus tax bill passed in 1936 comes from big corporations; and a larger per cent was assessed against them in the bill which passed the Senate at the last called session. The Legislature consistently has killed every sales tax measure and opponents of sales taxes assert such taxes increase the burden of the average citizen. This Legislature provided 300 per cent more money for social security than ever before was provided, increased the amount of money for schools and provided the State Government with \$7,000,000 more than was available in the two years ending in 1935.

On the basis of these figures, just how powerful is this big bad lobby? If it controls the Legislature, it must be credited with humanitarian motives. The fact is the lobby is not entitled to the credit for the constructive work done by the Legislature for the simple reason it does not control this Legislature nor any Legislature in the past. The contention that the Legislature is controlled by anything except its own views is not borne out by the facts. The most powerful lobby in Austin is the one composed of State employees who are on the State pay roll and they probably do more good than harm. The main trouble at Austin is that the taxpayers' lobby is too weak.

When you consider the fact

Now that the world's most powerful bomber has been built, the ranking military brains will complete the vicious cycle by rigging up the most powerful anti-aircraft gun to bring it down.

Doctors say breathing thru the mouth is harmful. Quite a few people have also found out that talking thru it also results seriously at times.

Mrs. Emmett Stiles

Santa Fe Pays TAXES of \$150,453,714.00 in 10 years

The Santa Fe, during the past ten years, has paid more than 150 million dollars in taxes in support of the national government and state and local governments in the various states in which it operates.

The exact amount in accrued taxes paid out by the Santa Fe from 1927 to 1936, inclusive, was \$150,453,714. Of this sum, \$30,720,799 went to the federal government. Of the balance, \$119,686,876 was paid to the state, county, and city governments of Illinois, Iowa, Missouri, Kansas, Nebraska, Oklahoma, Texas, Louisiana, Colorado, Arizona, New Mexico and California. To other states and countries went \$46,039.

Of the \$119,686,876 paid by the Santa Fe to the state, county and city governments, over \$50,000,000 went to support public schools which provide educational facilities for more than 7 million elementary and high school students in the states served by the Santa Fe.

The payment of so vast a sum in taxes by the Santa Fe is just another phase of the benefits accruing to the nation at large from an institution whose aim is to serve all to the best of its ability.

A. T. Bledsoe President

Santa Fe Santa Fe System Lines

Make Your Beauty Dates Now For The Xmas Social Season



It is just as important for you to have a new permanent or wave for Christmas festivities as a new dress or other clothing because every one admires beautiful hair well taken care of.

Be sure to plan for one of our permanents that look just the way you want them to. Only expert operators wait on you. We make a specialty in pleasing our customers.

Steven's Beauty Shop

PHONE 381

TOY TOWN IS OPEN! AND SANTA CLAUS IS COMING TO TOWN, KIDDIES. HE WILL BE HERE SATURDAY, SATURDAY WEEK AND CHRISTMAS EVE AT 2:30 P. M. COME IN TO SEE HIM AND TELL HIM WHAT YOU WANT FOR CHRISTMAS.

WETTING DOLL And 11 Piece Layette \$7.00

GUN AND HOLSTER SET .25 TARGET SET .25 JAZZ SWING SET \$1.00 CITY OF DENVER TRAIN \$1.00

Other Toys From 5c Up

IT'S HERE Best Business Deal

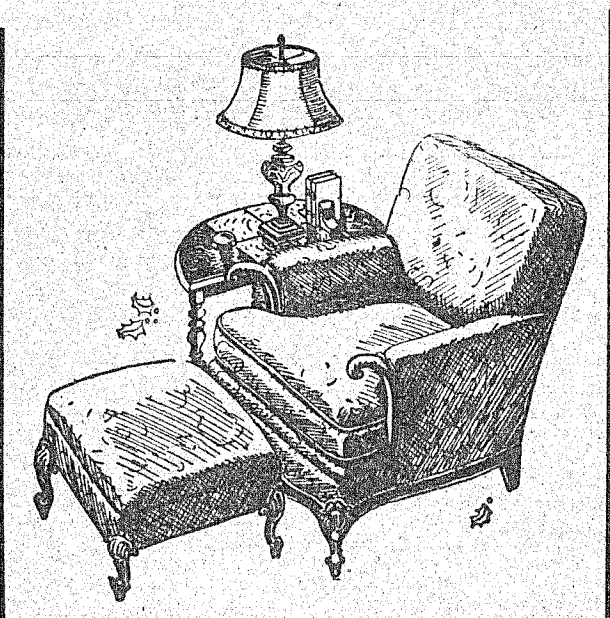
GIFTS FOR THE ENTIRE FAMILY In a price range you want to pay. Come to Reid's and solve all your gift problems.

Reid Variety Store

Santa Anna - Texas

If you want your Gift to last GIVE FURNITURE!

SPECIAL PRICES ON ALL FURNITURE SOLD From Now Until XMAS



A GIFT FOR EACH MEMBER OF THE FAMILY

HERE IS A GIFT HINT

DEPOSIT WILL HOLD ANY ARTICLE TILL CHRISTMAS

- Platform Rockers, Cedar Chests, Tables, Wool Rugs, Beautyrest Mattresses, Foot Stools, Smokers, Feather Pillows, Luggage, Occasional Chairs and Rockers

LARGE Selection of 9 x 12 RUGS Special \$4.65

And Many Other Beautiful Gifts for Your Selection.

HOSCH Furniture & Undertaking Co. Santa Anna - Texas

"Damaged Lives" Sensational Story

Occasionally a picture comes along that, through some new twist or some novel method of treatment, causes the jaded movie fans to sit up and take notice. Such a picture is "DAMAGED LIVES" which opens at the QUEEN Theatre, Friday, Dec. 10th.

In addition to being wonderful entertainment and a story of compelling interest, "Damaged Lives" deals with a subject that is close to the heart of every normal American—the welfare of our girls and boys—and as such, it has been endorsed by Juvenile Authorities and Police all over the country.

From the moment the picture opens until the final fadeout, there is not one uninteresting moment and the audiences sit spellbound.

Rarely in the history of the screen has a picture been so beautifully cast and perhaps never has a subject dealing with such a delicate topic been so clearly handled. The thrill seeker will get his full quota of emotion; the sensation seeker will not be disappointed; yet the thoughtful will leave the theatre feeling that they have seen a masterly presentation of the most serious problem facing the American people today. "DAMAGED LIVES" is well worth while.

Mrs. Herman Estes

Hospital Notes

Miss Ruth Jones of Novice is a surgical patient.

C. J. Crawford of Mullin was a patient in the hospital Monday and Tuesday.

Mrs. W. B. Gilbreath and baby girl, Shield, are patients. The baby was born Dec. 3.

Mrs. A. B. Lightfoot and baby boy, Santa Anna, were patients in the hospital. Baby was born Dec. 2.

S. B. Turner of Goldthwaite is a surgical patient.

J. W. McCarty of Anson was a patient in the hospital Saturday and Sunday.

Mrs. Vede Cowan of Burkett, is a surgical patient.

Wayne Wilcox of Mullin, a patient in the hospital, was able to go home Sunday.

Dr. John Campbell of Santa Anna is a patient in the hospital.

Mrs. Fred Haynes of Santa Anna is a surgical patient.

Louis Martin of Talpa is a surgical patient.

B. W. Ryan of Lometa is a patient in the hospital.

J. J. Lewellan of Shield is a patient in the hospital Sunday and Monday.

Mrs. Elton Ferguson and baby boy of Santa Anna are patients. Baby was born Dec. 5.

Mrs. J. P. Barnes and baby boy of Bangs are patients. The baby was born Dec. 5.

J. W. Byrd of May is a surgical patient.

Mrs. Major Willis and baby boy, Goldsboro, are patients. Baby was born Dec. 5.

Robert A. Young, Fort Worth, is a surgical patient.

Miss Emma Jo Newton, Burkett, is a surgical patient.

Mrs. W. A. Billings and baby girl, Coleman, are patients. Baby was born Dec. 6.

Leonard Simms Johnson of Santa Anna is a patient in the hospital.

Mrs. Floyd Gray and baby boy, Cross Plains, are patients. Baby was born Dec. 7.

L. M. Bushby of Brownwood is a patient in the hospital.

Mrs. W. P. Phillips, Goldsboro, is a patient in the hospital.

Mrs. W. L. Livingston, Gouldbusk, is a surgical patient.

Mrs. C. A. Walker visited her sister in Cross Plains last weekend.

Eureka News

By Mrs. G. A. Brinson

Large crowds attended the preaching services Sunday morning. Bro. Colson filled his regular appointment Saturday night and Sunday.

There are several on the sick list this week. We hope they will soon be better.

Mrs. G. A. Brinson spent Monday night with her sister, Mrs. C. E. Brinson of Bangs.

Mr. and Mrs. C. J. McKown and daughter visited Mr. McKown's parents at San Saba Saturday night and Sunday.

Mrs. R. N. Bouchillon and Claude Bouchillon visited Mr. and Mrs. S. M. Robinett of Brownwood last Wednesday.

Mrs. Bob Metcalf of Coleman is staying with the Tom Metcalf family while they are sick. Bill Carr returned home from the plains last Tuesday.

She reported good singing and plenty to eat.

Mrs. Warren Gill has returned from Brownwood.

The Whon School wishes to announce that they are planning to have a Christmas tree and program Dec. 23 at 1:30. The tree is for the school children, but all parents are invited. The program is to be a P. T. A. Christmas, program presented by the pupils.

Plainview News

By L. C. Dunn

Mr. and Mrs. Paul Rowe and children spent Sunday with Mr. and Mrs. A. L. Rowe.

Mr. and Mrs. Moe Davis and children of Coleman visited Mr. and Mrs. C. S. Taylor and family.

We are sorry to report that little J. D. Jackson is in bed with asthma.

Marvin Crye spent Sunday and Sunday night with A. L. Dunn.

Mr. and Mrs. O. M. Heallen and family were guests in the Paul Bivins home Sunday.

Mr. and Mrs. Howard Bivins and Mrs. C. A. Bivins visited Mr. and Mrs. O. M. Heallen and family.

Mr. and Mrs. Otis Bivins and baby, Duane, Mr. and Mrs. J. D. Williamson and son, Rex, Mr. and Mrs. Everett Hickman, Marvin Crye and A. L. Dunn were guests of Mr. and Mrs. Ernest

England and family.

Mr. and Mrs. O. S. Taylor and children visited in the Griffin home Saturday.

Leroy, Irene and Paul were visitors in C. Dunn home Sunday.

Etta Sue and L. C. spent Sunday afternoon at Ernest Carpenter home.

Mr. and Mrs. E. W. Taylor and children visited Mr. and Mrs. Tucker Newman and family Sunday.

Mr. and Mrs. O. M. Heallen and sons spent Sunday with Mr. and Mrs. Elmo Eubank and family.

Mr. and Mrs. W. O. Taylor visited Mr. and Mrs. Leady and family Sunday.

Andrew Schreiber

Whon News

By Corine Traweck

Mrs. Max Prater of Coleman, visited Mrs. Bert Turney last week-end.

Buford Teal of McCamey is spending several days with O. O. Turner and family.

A large crowd attended our community singing Sunday afternoon.

The Young People of our community presented a program on China Sunday evening at the Nazarene Church. Although it was a Missionary program, it was educational and inspirational. Rev. Howard Cummins delivered a sermon entitled "The Lost Christ" after the program. All the seats were filled and everyone seemed to enjoy the services.

A P. T. A. program is to be given by the parents Tuesday evening.

Rev. Cecil Strickland will preach at the Baptist Church Sunday morning and evening. Come and be fed by a real gospel message.

Miss Ina Smith attended the "Fifty Mile" singing convention that met in the Grosvenor High School auditorium last Sunday.

QUEEN THEATRE
Friday, December 10
20c ONE DAY ONLY 20c

Tensely Dramatic, Fearlessly Frank
"DAMAGED LIVES"

Far out of the beaten path of motion picture entertainment.

More absorbing than a thousand dramas—it is Life itself.

Due to the unusual daring scenes "Damaged Lives" must be shown to **ADULTS ONLY** UNDER 14 NOT ADMITTED

EXTRA ADDED ATTRACTION
NEW 1937 EDITION
POSITIVELY THE FIRST TIME SHOWN HERE

Complete, Modern Shows at the
"ROAD TO RIO" and "CASINO"
GAY NITE CLUBS
at the great PAN-AMERICAN EXPOSITION
See the Sensational
FLAME, FAN, VEIL, UMBRELLA, and APPLE DANCERS
AND THE PARADE OF THE NUDES
NO CHILDREN ADMITTED UNDER 14 YEARS OF AGE

FLOUR

PIGGLY WIGGLY
TURN TO
QUALITY & ECONOMY

FLOUR 48 lb Everlite \$1.59
48 lb Gold Crown \$1.49

Xmas Trees - - See Piggly Wiggly

PECANS SHELLED BIG SPECIAL LB .35

Fruit Cake Ingredients, Buy in Bulk. Everything For the Fruit Cakes.

COCOANUT For Xmas Cooking LB .19

PINTO BEANS New Crop 20 lbs .99

WALNUTS Cheaper than Pecans LB .18

VANILLA WAFERS POUND .15

GINGER SNAPS POUND .10

FRUIT CAKES SPECIAL PRICE

APPLE CIDER For Fruit Cakes

SMALL PEANUTS TWO POUNDS .15

CANDY CHERRY CENTER LB .19

OLEOMARGARINE All Kinds LB .17

PORK SAUSAGE COUNTRY MADE LB .22

PORK ROAST Delicious Served with Apple Sauce LB .22

- Home Made Chili -
Fresh Water Catfish & Oysters
Children, Look for Santa Claus Saturday

- Gifts For Him -

Bath Robes:
Warm, comfy robes make excellent gifts and are always useful. All colors and sizes.
PRICED \$3.00 TO \$7.95
SEE OUR COMFY HOUSE SLIPPERS

Pajamas:
Broadcloth, Fast Color Pajamas in All Colors. Good Brands, Well Made, Styled to Fit. All Sizes
PRICED \$1.00 TO \$3.00

Men's and Boys Coats, Sweaters and Twin Sweaters, from \$1.00 to \$3.75

Shirts and Ties:
Something any man needs and appreciates. New stock just arrived in beautiful new materials and patterns for both Shirts and Ties. Buy them together.
SHIRTS \$1.00 - \$1.50
TIES 35c - 50c - 1.00

SCARFS, GLOVES, SOCKS, HANDKERCHIEFS, BELTS - All Here for His Xmas Gift.

Blue Merc. Co.
QUALITY MERCHANDISE

SILENT
at
SANTA

New 1938 SERVEL
ELECTROLUX
THE Gas REFRIGERATOR
Prepares with no moving parts

● CONTINUED LOW RUNNING COST
● MORE YEARS OF SATISFACTION
● SAVINGS THAT PAY FOR IT

THERE'S never a noise with Servel Electrolux. For this different refrigerator freezes with no moving parts. Servel Electrolux can't make noise—now or years from now. This simplicity means you save more, too. See the new 1938 models today at our showroom.

Hosch Furniture & Undertaking Co.
Santa Anna, Texas