

Santa Anna News

"He Profits Most Who Serves Best"

VOLUME LXVII

SANTA ANNA, COLEMAN COUNTY, TEXAS, FRIDAY, APRIL 25, 1952

NUMBER 17

Thoughts

OF A COUNTRY EDITOR

BY JOHN C. GREGG

WHAT ARE WE IN FOR?

When President Truman announced on March 29 that he would not be a candidate for reelection, he became the most powerful man in the United States. He is even more powerful than Congress itself. He has recently shown some of his powers by taking over the huge steel industries and indicating that, if he saw a need for it, he could take over all the newspapers, radio and television stations in the United States. Even before he made his announcement that he would not run, he took it upon himself to overpower our Congress. Apparently our President has no respect for the Constitution of the United States.

When he declared war in Korea, he strictly violated our Constitution. The Constitution makes no provision for anyone other than Congress to declare war. Truman calls his war in Korea a police action and said it is being conducted by the United Nations. However, he seems to have the authority to do what he pleases about it. He also apparently violated the Constitution when he took over the operation of the steel industries.

It seems to this writer that our entire liberty as citizens of the United States is at stake. Our Constitution guarantees citizens of the United States the right of freedom of speech and freedom of the press. Truman is not so gradually taking all our freedom from us and it seems he wants all the power under his guidance.

In the case of the steel industries, the President has indicated that he favors an increase of some 26 cents per hour to the 650,000 workers. It looks like he is going to use his power as President to grant this increase. When he does, the cost of steel will increase, just how much is hard to say, but it will increase. When steel prices increase, every commodity in the United States will eventually increase, including the necessities of life that you and I purchase right here in Santa Anna. An increase in the cost of living is going to demand an increase in salaries the country over and the American dollar will drop in value again. Taxes paid to the Federal Government will likely also increase. Is there no end to the cycle?

Even while our Congress is making every attempt to cut unnecessary spending from the Federal Budget, Truman calls it "A lot of hooey" and said that if the Congress does not restore cuts they have made in the defense budget, he will keep them in special session until January, or until they do restore the money he wants. Personally, I do not think our Congress would cut any money from the defense budget that they see any need for, but where they can see an opportunity to save several million (or billion) dollars of the tax payer's money, and at the same time not interrupt the defense plans, they should not be threatened by our President in any such manner. It seems that the President cares little for where the money comes from, or how much longer he can drain the nation in the manner in which he is doing. Because of the high taxes, private enterprise is suffering the heavy burden now and the future does not look any better for the establishment of any more private concerns. It appears to be another manner for the government to control business as well as the people, which is not the fundamental principles that this great nation was founded on.

A move is on foot this week to (Continued on Back Page)

Eisenhower, Daniel and Fisher Still Hold Big Majority In "Straw Vote"

Very few votes were cast in the Santa Anna News "straw vote" poll during the past week. Eleven votes were cast with candidates receiving the following count:

For President: Kefauver 4; Eisenhower 4; Barkley 1.

For U. S. Senator: Daniel 10; Connally 1.

For U. S. Representative: Gallaway 7; Fisher 4.

Totals for all candidates to date, with 87 votes being cast is:

For President: Eisenhower 41; Taft 17; Kefauver 13; Russell 6; MacArthur 3; Stevenson 2; and Barkley, McMahon, Kerr, Stassen and W. Lee O'Daniel one each.

Price Daniel holds a 78 to 8 lead over Connally in the Senatorial Race and Fisher holds a 69 to 18 lead over Gallaway in the Representative Race.

TO END SATURDAY
Our "straw vote" poll will come to an end Saturday, April 26, at 5:00 p. m. The ballot is again being printed elsewhere in the paper this week and ballots can still be mailed to the Santa Anna News, Santa Anna, Texas, through Saturday, however, to be counted they must have a post mark not later than Saturday midnight.

We would like to urge more people to voice your opinion in this "straw vote". There is nothing binding about it and if you want to change your mind before the primaries in the summer or the General Election in the Fall, you are free to do so. All this "straw vote" poll is — is just to get the general opinion of the voters in our area now. There is a good possibility that we will have another one in a few weeks before the first primary in July.

The final tabulation of votes will be published next week. As we had Senator Connally's name printed on the ballot before his decision not to run, we are going to continue carrying his name on the ballot.

Band Takes Honors In Regional Meet

Sandra Shields took a First Division rating in the Class I vocal solo contest held in Brownwood last Friday. She was the only entry from Santa Anna in the vocal division of the Regional Interscholastic League meet. The solo and ensemble divisions were held in San Angelo on Saturday, with Santa Anna students receiving a number of honor places.

The saxophone ensemble, composed of Annette Johnson, Mary Jane Turner, Joan McClellan and Frances McClellan took a 1st Division rating. Barbara House, Evelyn Oakes, Carolyn Foster and Bobbie Rehm took a 2nd Division rating in the clarinet ensemble.

In the solo division winners were: Harriett Wigger, clarinet, 1st; Annette Johnson, saxophone, 1st; Jimmy Priest, trombone, 1st; Jerry Thompson, cornet, 2nd; Don Davis, Trombone, 1st; and Dennis Farmer, trombone, 2nd.

In the twirling division, winners were: Susie Renegar, 1st; Mary Jane Turner, 2nd; and DeLores Wise, 2nd.

In the solo division all students played Class I solos, except Jerry Thompson and Harriett Wigger, who entered Class II. Class I and Class II solos are comparable to Senior and Junior League events.

Mr. and Mrs. C. D. Bruce visited from Sunday until Tuesday with their daughter and son-in-law, Mr. and Mrs. Jack Kingsbery at Batesville.

Mrs. M. L. Womack, who has had quite a siege of flu in recent weeks is somewhat improved.

Rural Mailbox Improvement Week April 27 to May 3

The Post Office Department has designated April 27 to May 3 as Rural Mailbox Improvement Week this year. In continuation of the valuable work in previous seasons to repair and improvement of the rural mailboxes of the nation, a vigorous campaign is to be launched again this spring, to carry on this worthwhile project.

Here are a few pointers for R. M. I. Week:

(1) See that posts are securely erected — are not leaning badly — and that box is fastened securely.

(2) Replace obsolete box if it is hard to get mail into or if it is hard to see into for letters you want mailed.

(3) Name should be painted on side of box which carrier approaches (or can be on front of box if several boxes are closely grouped together.)

(4) It is a big help if several boxes are neatly and closely placed on a plank extending between two posts.

(5) Bottom of box should be 42 inches above roadway, and should be on an arm extending out away from the post, in such a manner that it can be easily reached, with all obstructions (including parked cars) promptly removed.

(6) Fill ruts with crushed rock or broken brick or cement.

(7) Drive your own car up to your box. If you can easily reach your mail from behind the wheel of your car, reaching out the right hand side as the carrier is required to do, then the chances are that your box is pretty well located. But better yet, talk to your carrier about the proper location, and the correct setting.

(8) Your carrier serves this box 305 days every year. If it is correctly set, it lightens his work and saves him time so that he can move more quickly serve other patrons farther along his route (and saving his time can save the Government money.)

(9) Your mailbox is the front door to your home. Since it is usually in front of your house, its neat appearance will add considerably to the neat appearance of your home. Ruts filled — box and post painted white — possibly a few flowers planted behind it.

Local Bank In Good Condition

The condition of the Santa Anna National Bank shows an increase in deposits of \$127,014.88 since January of this year. Total resources of the bank amount to \$2,032,645.33.

A statement published April 20, 1951 showed the total resources of the bank to be \$1,841,779.02 with deposits being \$1,678,091.92.

Considering the climatic conditions this part of the country has been through, our bank is in the best of financial conditions.

Christian Church Revival In June

A Revival Meeting with the Rev. Lawrence Bridges of Mt. Vernon doing the preaching is scheduled to begin at the First Christian Church on Sunday, June 8th. He held a good meeting for the church some years ago. Members of the congregation and others are asked to keep this date in mind.

Patricia Ann Davis and Norma Jean Sheffield of Breckenridge, spent the week end in College Station.

\$110.75 To Be Awarded In City Beautification

The Community Chamber of Commerce announces this week that a total of \$110.75 in cash and prizes will be presented to winners in the 1952 City Beautification Contest. The prizes will be divided into three divisions with \$10.00 cash as the first prize in each division.

Divisions and awards are:

BEST KEPT LAWN
First Prize \$10.00 cash, City of Santa Anna; 2nd Prize, \$9.95 lawn sprinkler from Griffin Hatchery; 3rd Prize, \$7.95 lawn sprinkler from Piggly Wiggly; 4th Prize, \$5.75 set garden tools from Santa Anna Hardware; 5th Prize, \$5.00 cash from City of Santa Anna; 6th Prize, \$3.50 set yard tools from Western Auto Store; and 7th Prize, \$3.00 set flower bulbs from Mrs. J. R. Gipson.

LAWN SHOWING GREATEST AMOUNT OF IMPROVEMENT

First Prize, \$10.00 cash from City of Santa Anna; 2nd Prize, \$9.85 garden hose from Parker Auto Supply; 3rd Prize, \$8.50 lawn sprinkler from Burton-Lingo Co.; 4th Prize, \$5.00 cash from the City of Santa Anna; 5th Prize, \$5.00 bag of Vigro from Vinson Grocery; 6th Prize, \$4.50 set hedge clippers from South Texas Lumber Co.; and 7th Prize, \$2.50 set grass clippers from Blue Hardware Co.

BEST KEPT VACANT LOT IN RESIDENTIAL AREA

First Prize, \$10.00 cash from City of Santa Anna; 2nd Prize, \$3.00 cash from City of Santa Anna; 3rd Prize, \$2.00 cash from City of Santa Anna; and 4th Prize, \$1.75 ladder from Goodgion Lumber Co.

All these prizes are on display in the Hays building in the Post Office block. The contest is now under way and every citizen of Santa Anna is invited to participate. The city has raised the amount of water from 3,000 gallons to 5,000 gallons for the minimum charge in order to give the citizens a better opportunity to beautify their property.

Tom Cobb Buried Here Wednesday

Tom Cobb, about 80, retired Melvin cotton buyer, died there Monday afternoon, following a long illness. Funeral services will be conducted at the Baptist Church in Melvin Wednesday afternoon at 2:00 p. m., with interment at Santa Anna.

The deceased is a brother of Mrs. Nellie Howell and S. T. Cobb, both of Coleman.

Mr. Cobb operated a gin at Doole for many years in the early 1900's.

Other survivors include his wife, three sons and one daughter.

Service Stations Have Bad Week

Three service stations in Santa Anna suffered damage last week.

First, the Humble Station suffered about a \$3,000 loss in a fire that gutted the inside of the building; then Ray Owen gets one of his big plate glass front windows broken out and Friday afternoon a fire broke out in one of the pumps at the Truck Harbor service station.

The damage was light in the last two instances.

Pfc. Richard L. Humphries, an employee of the Santa Anna News during the time he was attending school here, was a visitor in Santa Anna this week. Dick stated that he had been in the Japan-Korea area for the last 18 months, arriving back in the U. S. the latter part of March. He will be stationed at Scott Air Force Base, Illinois, after his return to duty.

Mrs. Shorty Ellis of Brownwood, has been visiting Mrs. Claude Hodges.

Rain-Increasing Generators In Operation; Good Rains Cover Wide Area

About 4 inches of rain has fallen over a wide area in Central Texas since last Friday afternoon. Reports from over Coleman County indicate that from 3½ to over 5 inches rain has covered the county. The report from the gauge at the Coleman Gas Company office shows a total of 3.95 inches to Tuesday at noon and prospects are good for more in the next few days.

In discussing the rain-increasing program now underway in the area of the water shed of the Colorado River, Ted Stewardson, director, said Tuesday

that about 18 generators were in operation in the general area covered by the rain fall. He said there was no doubt but what these generators increased the amount of rain that fell in this area.

It appears that the long drought is possibly broken. It would be hard to estimate the value of the rain fall. Farmers and ranchers alike are preparing to get crops in the ground and a number who have "dry" planted report some crops are up and the prospects look very encouraging.

Rain-Increasing Meeting To Be Held Tuesday Night, April 29, At Coleman

Lions Den

W. T. Stewardson, one of four directors in this area to get a rain-increasing program under way, spoke to the Lions Club this week and told them of the possibilities of increasing the amount of moisture that falls in the area. Stewardson explained the process and invited everyone to participate in the program. He was a guest of the weekly program committee, composed of Ford Barnes and O. J. Albro. Other guests present were: Henry Newman, guest of Ben Yarborough, Lester Newman, guest of Emzy Brown, R. G. Hollingsworth of Coleman, guest of O. L. Cheaney and Jerry Steffey of Coleman, guest of Bill Cupps.

Jack Shields was accepted into the club as a re-instated member. The nominating committee met Tuesday morning and nominated the following for election as officers and directors for the 1952-53 year: President, Tom Stewardson; First Vice President, T. J. McCaughan; 2nd Vice President, R. K. Green; 3rd Vice President, Harry Crews; Secretary-Treasurer, Aubrey Brewer; Tail Twister, Neal Oakes; Lion Tamer, D. W. McBride; Directors, John Gregg and F. Z. Payne, Jr.

Elections will be held at the next meeting. All members are urged to be present to participate. The program committee for next week is Richard D. Bass and Sidney Blanton.

The cost for the entire area on the water shed of the Colorado River has been estimated at \$180,000. This cost is to be raised through contributions from interested parties, with the Coleman County cost being set at about \$7,000. Cost of the operation for the first year is to be approximately one cent per acre.

The Santa Anna National Bank and the two Coleman banks, the First Coleman National and the Coleman County State Banks are to be receivers for the contributions. Those who are interested in the program and think it worthwhile are requested to leave money at either of the three banks.

A number of the generators discussed in the rain-increasing program have already been put in operation throughout this area. They were in operation during the rains we received the last few days. This company has set these generators in operation in an effort to show what they can do.

There is no doubt but what the generators played a large role in the amount of rain we received.

In order that each may get a clear idea of the how and why of the rain-increasing program, everyone is urged to attend the Tuesday meeting. Regardless of how you feel concerning the program now, they want you to hear what there is to be said.

Two One-Act Plays At High School Monday Night

Two one-act comedy plays will be presented at the high school auditorium Monday night April 28, beginning at 8:00 p. m. No admission will be charged, as these plays are presented as a part of the school activities.

The first play, "The Day After Tomorrow" by Charles Emery, produced by special arrangements with the Samuel French Co., is a comedy wedding with the actors as follows: Billie Mathews, Ollie Fellers, Ann Blanton, Venita Joye Smith and Billy Ray Robbins.

The second play, "The Kieptomania" by Margaret Cameron has a list of actors as follows: Jo Ann Morris, Janie Bryan, Bobra Garrett, Carolyn Lovelady, Mary Jane Turner, Evelyn Shields and Mary Frances Irick.

The contract for the present Capitol in Austin, Texas required thirty-two sheets of legal cap paper.

GO TO CHURCH SUNDAY

Cloud Seeding Program

(The following article, prepared by Dr. Irving P. Krick, President of the Water Resources Development Corp., Denver, Colo., explains the process of seeding clouds in an attempt to increase rainfall. This program is being planned for the 24-county area on the Colorado River water shed. — Editors Note)

The term "rain maker" is not entirely accurate in the description of the meteorologist engaged in cloud seeding or artificial nucleation. No one can make it rain when it isn't going to rain anyway. What the meteorological trained scientist can do is to help nature along by increasing the volume of rainfall available from any cloud formation. The scientist cannot, however, make rainfall occur unless conditions are such that some rain would have fallen from the clouds without his help. The scientist can increase the volume of rain that will fall during a given storm in ratios ranging from 50% up to 500%. He should be called a "rain increaser" rather than a "rain maker".

Cloud seeding from ground generators can best be explained by first undertaking a description of how rainfall occurs in nature. Every raindrop that falls from the clouds during a storm has been formed around a tiny particle of solid substance. This could be a tiny speck of dust drawn from the earth's surface by gusts of wind. It could be a minuscule piece of loam or quartz or any one of hundreds of other minute particles invisible to the eye but constantly floating through the atmosphere. Before any such particles can function to make rain it must encounter a super-cooled cloud whose temperatures are below freezing.

These various particles are able to cause the crystallization of moisture drawn to them at varying temperatures depending

upon the character of the particle. As they float through the sky and enter clouds of considerable moisture content, these tiny particles are ready to go to work provided the temperature of the cloud is adaptable to their particular nucleating needs. Minute, very cold water droplets that have been floating inside the cloud are drawn about these nuclei setting up a "chain reaction" which attracts additional moisture. When the particle has surrounded itself with sufficient moisture it becomes a small ice crystal or snowflake of sufficient weight to fall from the sky toward the ground. If the temperatures below the clouds are below freezing then it reaches the earth as a snowflake. If the temperatures are above freezing it melts and falls as a raindrop. In any rain or snow storm this process is repeated literally billions of times.

Now let us see what is involved in the process of introducing silver iodide particles into the clouds to supplement and aid the work done by nature in supplying those clouds with tiny particles which will ultimately become, first, ice crystals, then either snowflakes or raindrops.

The silver iodide generator is a simple device. Small quarter inch particles of foundry coke are soaked in a liquid solution of silver iodide carefully prepared and weighed so that the volume of silver iodide in each pound of coke is definitely known to the supervising meteorologist. These small pieces of coke are then put into a fiery crucible equipped with a blower and heated to a temperature of between 2500 and 3000 degrees, Fahrenheit. At that temperature silver iodide is expelled from the crucible as a gas. Immediately upon reaching the colder outside air this gas, which is invisible, is transformed into literally billions upon billions of tiny particles of solid silver iodide crystals. Experiments indicate that 10,000,000,000,000 (ten quadrillion) tiny particles can be produced from each gram of silver iodide, each one of which will be a potential ice crystal when it reaches the super-cooled cloud toward which it is projected.

Because the generator is used only during times of likely storm when there is natural turbulence, coupled with abnormal updrafts in the air, these

particles are quickly swept aloft and into the clouds.

It has already been mentioned that the particles introduced by nature into the clouds attract moisture and become ice crystals at varying temperatures. Some of them function at temperatures of near zero degrees Fahrenheit or considerably below. The great advantage of silver iodide is that its particles begin to attract moisture at a temperature of approximately 25 degrees Fahrenheit thereby nucleating at much higher temperatures than most of nature's particles. In nature, the lower temperatures adaptable for nucleation by natural particles exist normally only at high atmospheric levels. Because silver iodide functions at higher temperatures it is thus able to wring more water out of clouds than would fall naturally by acting upon the moisture in lower portions of a cloud mass.

It is important to remember that raindrops of snowflakes in the areas in which this method is practical always begin first as ice crystals in super-cooled clouds. A silver iodide particle will form an ice crystal at a temperature of 25 degrees F., whereas a particle of clay dust will not draw moisture to it unless the temperature of the cloud is at zero F. Thus, the advantage of silver iodide. It operates in creating ice crystals within that part of the cloud where temperatures are between 0 degrees F. and 25 degrees F. and where nature would not have been able to work at all.

That in brief, is the story of artificial nucleation through the projection of silver iodide particles into the air from ground generators. Although this explanation has been somewhat oversimplified all the essential facts are here. It would be a perfectly normal question for you to ask, "If it's as simple as that, why must the work be undertaken under the supervision of a meteorologist experienced in this technique. Why couldn't a rancher build a generator himself, buy some silver iodide, then take a chance on any cloud on almost any day until he succeeds in making the volume of rain falling on his land increase?"

The answer is that the work

must be attempted under the guidance of an experienced meteorologist because unsupervised seeding can actually decrease the volume of normal rainfall that would have occurred. By overseeding, for example, with too many particles of silver iodide for the available moisture of a given cloud, so many billions of minute ice crystals are formed that all moisture of the cloud is transformed into ice crystals so small with no additional moisture available for continued growth that they do not have enough weight to fall from the sky. A meteorologist trained in the technique of cloud seeding can measure this moisture potential and is able to judge how much silver iodide should be projected. Furthermore, the most advantageous sites for the generator can vary from storm to storm and the trained meteorologist's knowledge of surface and upper air wind currents is important in choosing the sites best suited at exactly the correct time for actual seeding operations under any given condition.

Floyd Goodgion and Miss Gay Outlaw of Clovis, New Mexico, and Ruby Goodgion of Abilene were week end visitors in the Homer Goodgion home. Floyd and Miss Outlaw both teach in the Clovis schools.

Mr. and Mrs. Ernest Richards, after spending the winter here with her mother, Mrs. E. K. Blewett, have returned to their home at Stambaugh, Michigan. Mrs. Blewett accompanied them for an indefinite stay. The three spent Tuesday night with the Alpheus Boardmans in Coleman, and left from there on their journey Wednesday morning.

Mr. E. L. Brown of Goodlet, came last Friday for a visit with his son-in-law and daughter, Mr. and Mrs. Lee Hunter. On Sunday they and Mr. and Mrs. Edwin Hunter and Edd Lee

of Coleman, visited with Brownlee Hunter and wife in Austin. While there they also visited with the N. R. Boyles family, with Mr. and Mrs. Roger Hunter and with Robert and family.

Mr. and Mrs. Wendell Campbell of Slaton, came Sunday night for a visit of several days with his mother, Mrs. A. E. Campbell.

Mr. and Mrs. W. P. Aldridge and Van visited in Lawn Sunday.

Dr. A. J. Black
OPTOMETRIST
Office Bldg. - Suite 303-4
Coleman, Texas
Eyes Examined
Glasses Scientifically Fitted
OFFICE HOURS
9:00 - 12:00 and 1:00 - 5:30
Evenings By Appointment
Phone 7641

Weah McCulloch, Sec.-Treas.
Bettie McCulloch, Mgr.
Standard Abstract Co.
City & County Maps For Sale
405 Bank Bldg. - Coleman

Charter No. 13854 Reserve District No. 11
REPORT OF CONDITION OF THE
SANTA ANNA NATIONAL BANK
OF SANTA ANNA IN THE STATE OF TEXAS
AT THE CLOSE OF BUSINESS ON MARCH 31, 1952
(Published in response to call made by Comptroller of the Currency, under section 5211, U. S. Revised Statutes)

—ASSETS—	
1. Cash, balances with other banks, including reserve balance, and cash items in process of collection	\$731,653.84
2. United States Government obligations, direct and guaranteed	785,581.00
3. Obligations of States and political subdivisions	17,274.91
5. Corporate stocks (including \$4,500.00 stock of Federal Reserve bank)	4,500.00
6. Loans and discounts (including \$3,307.13 overdrafts)	487,735.58
7. Bank premises owned \$4,200.00, furniture and fixtures \$1,700.00	5,900.00
12. TOTAL ASSETS	\$2,032,645.33
—LIABILITIES—	
13. Demand deposits of individuals, partnerships, and corporations	\$1,628,364.00
15. Deposits of United States Government (including postal savings)	17,000.72
16. Deposits of States and political subdivisions	214,614.24
17. Deposits of banks	3,615.37
19. TOTAL DEPOSITS	\$1,863,594.33
24. TOTAL LIABILITIES	1,863,594.33
—CAPITAL ACCOUNTS—	
25. Capital Stock:	
(c) Common stock, total par \$50,000.00	50,000.00
26. Surplus	100,000.00
27. Undivided profits	19,051.00
29. TOTAL CAPITAL ACCOUNTS	169,051.00
30. TOTAL LIABILITIES AND CAPITAL ACCOUNTS	\$2,032,645.33
—MEMORANDA—	
31. Assets pledged or assigned to secure liabilities and for other purposes	76,000.00

State of Texas, County of Coleman, ss:
I, T. J. McCaughan, cashier of the above-named bank, do solemnly swear that the above statement is true to the best of my knowledge and belief.
T. J. McCAUGHAN, Cashier
Sworn to and subscribed before me this 18th day of April, 1952.
Leroy V. Stockard, Notary Public.
(SEAL)
CORRECT — ATTEST:
W. T. Stewardson
J. W. Riley
Ozro Eubank
Directors

Condensed Statement of the Condition of
THE SANTA ANNA NATIONAL BANK
Santa Anna, Texas
AT THE CLOSE OF BUSINESS ON MARCH 31, 1952

RESOURCES	LIABILITIES
Loans & Discounts .. \$483,014.45	Capital Stock .. \$50,000.00
Overdrafts .. 3,307.13	Surplus .. 100,000.00
Stock Fed. Res. Bank .. 4,500.00	Undivided Profits .. 19,051.00
Banking House F. & F. .. 5,900.00	Deposits .. 1,863,594.33
QUICK ASSETS:	
C. C. C. Loans .. 1,414.00	
Bonds and War-rants .. 802,855.91	
Cash and Due from Banks .. 731,653.84	
	1,535,923.75
	\$2,032,645.33

I, T. J. McCaughan, Cashier, Certify the above to be correct.
OFFICERS
W. T. Stewardson, President
V. L. Grady, Chairman of Board
O. L. Cheaney, Executive Vice President
Mrs. B. Weaver, Vice President
T. J. McCaughan, Cashier
Glen Copeland, Ass't. - Cashier
Ethel W. Davis, Ass't. - Cashier
Dawson Ees, Ass't. - Cashier
DIRECTORS
W. T. Stewardson
V. L. Grady
O. L. Cheaney
Mrs. B. Weaver
J. W. Riley
C. H. Wise
Ozro Eubank
J. L. Hoggus
Clinton Love

Cole-Anna

DRIVE-IN THEATRE

In South Coleman Shows Start at Dusk
First Run In Coleman

Friday and Saturday
APRIL 25 and 26

LAWRENCE TIERNEY
—IN—

"The Hoodlum"
● 2 COLOR CARTOONS

Sunday, Monday and Tuesday
APRIL 27, 28 and 29

GROUCHO MARX
MARIE WILSON
WILLIAM HENDIX
—IN—

"A Girl In Every Port"
● 2 COLOR CARTOONS

Wednesday and Thursday
APRIL 30 - MAY 1

GEORGE RAFT
COLEEN GRAY
—IN—

"Lucky Nick Cain"
● 2 COLOR CARTOONS

OAK

DRIVE-IN THEATRE

Friday and Saturday
APRIL 25 and 26

RONALD REAGAN
RHONDA FLEMING
—IN—

"THE LAST OUTPOST"
Color by Technicolor

Sunday and Monday
APRIL 27 and 28

Ray Milland - Gene Tierney
—IN—
"CLOSE TO MY HEART"

TUESDAY
APRIL 29

John Barrymore, Jr.
Corinne Calvet - Barbara Rush
Patric Knowles
—IN—
"QUEBEC"

Color by Technicolor
Wednesday - Thursday
APRIL 30 - MAY 1

Shelly Winters - Richard Conte
Stephen McNally - Alex Nicol
Charles Bickford
—IN—
"THE RAGING TIDE"

● 2 Color Cartoons On Each Program

Straw Hat Day

Saturday, April 26th



Men See
GRAMMER'S
Selection of Nationally Advertised
Stevens STRAW HATS
Select Yours Today

A wide variety of Leghorn, Milam, Panama and Plastic.
ALL SIZES AND COLORS

Priced To Fit Your Needs

\$1.98 UP



Grammer's Dept. Store

Oil Activities IN COLEMAN COUNTY

E. A. Gillespie, Trustee, of Coleman No. 1 Sealy & Smith is to be drilled as a wildcat five miles southeast of Talpa.

Contracted for 3,500 feet with rotary, site is 487 feet from the south and 1,780 feet from the west lines of Section 103, Block 1, GH&H Survey.

Dunn, Walter & White of Dallas No. 1 J. E. Estes, Section 23, J. Martin Survey 752, has been completed as a gas well five and one-half miles east of Santa Anna.

No. 1 Estes was completed for a daily gauge of five million cubic feet of gas. Completion was from an open hole at 2,005-84 feet, treated with 4,000 gallons of acid.

Louis Franklin, et al, No. 2-B Ozro Eubank, Block 7, Manuel Martinez Survey 751, two and one-half miles southeast of Santa Anna, was completed for a daily potential of 51.04 barrels of 40 gravity oil, plus 25 per cent water.

It is producing from an open hole at 1,462-82 feet with the pay section topped at 1,466 feet.

J. H. Blackwell, et al, of Coleman No. 1 Fayette Cooley, Charles Shank Survey 243, wildcat 17 miles southeast of Santa Anna, has been plugged at 1,269 feet.

L. H. Choate & Bankline Oil Co. No. 1-24 Mrs. Josephine Ballard, Section 24, J. F. Gordon Survey, has been plugged at 3,167 feet. It was a wildcat seven miles north of Coleman.

Western Petroleum Co. & United North & South Development Co. No. 1 R. E. Copen, J. H. Gib-

son Survey 8, wildcat three and one-half miles northeast of Glen Cove, has been plugged and abandoned at 3,601 feet.

J. W. King and others of Ballinger No. 1 E. Williams is to be drilled as a wildcat one mile north of Rock Crusher.

Contracted for 3,500 feet with rotary, drillsite is 330 feet from the north and 1,820 feet from the west lines of Joseph Lavine Survey 696.

Five miles northeast of Santa Anna, Daltex No. 1 Floyd Price was spotted as a wildcat.

Site for No. 1 Price, contracted for 2,800 feet with rotary, is 2,032 feet from the north and 1,961 feet from the east lines of Section 46, T&NO Survey.

E. F. White, Jr., of Abilene No. 2 Edith Anson Boulevard, et al, is to be drilled one-fourth mile southeast of Valera.

Slated for 3,000 feet with rotary, site is 1,650 feet from the north and 990 feet from the west lines of Section 16, Block 1, GH&H Survey. Site is 933 feet southeast of No. 1 Boulevard, prospective Fry Sand discovery well.

Andrew M. Howsley, and others of Albany have completed two wells in the Glen Cove Jennings South Field.

No. 3 Duncan Heirs, Section 12, T&NO Survey, was completed two miles south of Glen Cove for a daily potential of 376.1 barrels of 43 gravity oil.

Completion was on a 24-64-inch choke with 600 pounds casing and 200 pounds tubing pressures with production from 112 perforations at 3,430-48 feet. Operator set casing at 3,484 feet, while total depth was 3,512 feet.

Ratio of the gas-oil was 375-1. No. 1 J. F. Vincent, Section 42, BBB&C Survey, was completed two and one-half miles south of Glen Cove.

On the daily potential test No. 1 Vincent gauged 134.1 barrels of 43 gravity oil, flowing through a 1-4-inch choke with packer on casing and 240 pounds pressure on the tubing. It is producing from 88 perforations at 3,506-17 feet with the casing set on the bottom of the hole at 3,550 feet. Gas-oil ratio was 650-1.

In the Coleman County Regular Field Brannon Murray of Coleman No. 26 J. C. Dibrell, J. W. Hicks Survey, was potential.

During the 24-hour test it pumped 30.8 barrels of 42 gravity oil from an open hole at 1,925-35 feet. Formation was ruptured. Location is nine miles northeast of Coleman.

Anzac Oil Corp., et al, of Coleman No. 1 Doris Miller is to be a regular field project 10 miles northeast of Coleman.

Slated for 1,990 feet with cable tools, site is 283 feet from the south and 150 feet from the east lines of S. Blythe Survey 263.

The Bay Petroleum Corp., No. 3 Dunman Unit 1, Section 47, GRR Survey, six miles north of Novice, is preparing to perforate the Morris Sand in the vicinity of 3,096-3,102 feet and dually complete.

Operator perforated opposite the Gardner at 3,470-78 feet, treated with 100 gallons of acid and ruptured formation. The well flowed at the rate of three barrels of oil an hour for eight hours after formation was ruptured.

Tri-M Production Co. Morris Mizel of Midland staked location for No. 2-H Mrs. Mary I. Dunman, slated for 3,800 feet with rotary.

Location is five miles north of Novice in the Dunman Field, 1,263 feet from the south and 330 feet from the east lines of D. F. Roddan Survey 76.

In the Santa Anna Field, five miles southeast of Santa Anna, Lone Star Producing Co. of Dallas No. 2 Mary Agnes Wallace is to be drilled.

Site for the 3,000-foot rotary project is 660 feet from the north and west lines of J. Martin Survey 752.

Anzac Oil Corp. & A. G. Hill, et al, No. 16-C J. P. Morris was spotted 10 miles northeast of Coleman in the Anzac-Morris Field.

Drillsite is 1,760 feet east and 1,650 feet south of the southwest corner of HT&B Survey 74, but in D. Breeding Survey 728, No. 16-C Morris has contract depth of 2,500 feet with cable tools.

E. F. White, Jr., No. 1 Edith Anson Boulevard, Section 16, Block 1, GH&H Survey, prospective Fry Sand discovery well one-quarter mile southeast of Valera, has set pipe at 2,927 feet, and was reported waiting on cement.

Total depth was 2,975 feet. Operator had a show of oil in the Fry on a drillstem test at 2,601-07 feet. Recovery in two hours was 420 feet of oil and 540 feet of salt water.

The Chicago Corp., Abilene, staked location for a wildcat five miles west of Coleman.

It is to be No. 1 Hayden Hargett, and will be 330 feet from the north and west lines of E. Garcia Survey 676. Proposed depth is 3,200 feet with rotary.

Luling Oil & Gas Co. No. 8 I. G. Whittington, Section 11, T&NO Survey, Glen Cove Jennings project, has been completed for a gauge of 68.57 barrels of 42 gravity oil in 24 hours.

Production was through 6-64 choke with packer on casing and 35 pounds on tubing from 262 perforations at 3,424-46 feet. Total depth was 3,454 feet, with casing set at total depth. Gas-oil ratio was 1809-1.

B. H. Nolen, Coleman, staked three locations in the Glen Cove Fry Sand Field. All are scheduled for 3,600 feet with rotary.

No. 1 I. C. Whittington is to be 936 feet from the west and 330 feet from the south lines of the northeast quarter of Section 4, T&NO Survey.

No. 5 Whittington is to be 330 feet from the north and 1,460 feet from the west lines of the northeast quarter of Section 4, T&NO Survey.

No. 6 Whittington is to be 800 feet from the south and 964 feet from the east lines of the northeast quarter of same section.

OIL AND GAS LEASES
Thomas J. Hudson, Jr., et ux to Bells Wells Oil Co., \$10.00, 17 acres out of the Georgetown R. Co. Sur. No. 47 and W. B. Rodden Sur. No. 48.

J. S. Hill et al to French M. Robertson, \$10.00, 160 acres out of the T&NO Sec. No. 16.

Camilla Durrenberger to L. L. Shell, Jr., \$10.00, 170 acres out of the Samuel Sprague Sur. No.

604 and 14 1/2 acres out of E. A. Lindsey Sur. No. 153.

Powell Hart et al to W. R. Francisco, \$10.00, 211 1/2 acres out of the R. Perry Sur. No. 95.

Sidney D. Cupps et al to W. R. Francisco, \$10.00, 80 acres out of the R. Perry Sur. No. 95.

Sidney D. Cupps to W. R. Francisco, \$10.00, 134 acres out of the R. Perry Sur. No. 95.

Sealy & Smith Foundation to E. A. Gillespie, \$10.00, E 1/2 of the SW 1/4 of GH&H Sec. No. 103, containing 80 acres.

Sealy & Smith Foundation to E. A. Gillespie, \$10.00, E 1/2 of the NE 1/4 of Sec. No. 113, GH&H, containing 80 acres.

Sealy & Smith Foundation to E. A. Gillespie, \$10.00, W 1/2 of the NE 1/4 of GH&H Sec. No. 113, containing 80 acres.

Sealy & Smith Foundation to E. A. Gillespie, \$10.00, E 1/2 of the NW 1/4 of GH&H Sec. No. 113, containing 80 acres.

Sealy & Smith Foundation to E. A. Gillespie, \$10.00, E 1/2 of the SW 1/4 of GH&H Sec. No. 113, containing 80 acres.

Sealy & Smith Foundation to E. A. Gillespie, \$10.00, W 1/2 of the SW 1/4 of GH&H Sec. No. 113, containing 80 acres.

Sealy & Smith Foundation to E. A. Gillespie, \$10.00, W 1/2 of the SW 1/4 of GH&H Sec. No. 113, containing 80 acres.

SW 1/4 of GH&H Sec. No. 113, containing 80 acres.

Mrs. Maggie M. Davenport et vir to E. A. Gillespie, \$10.00, 80 acres and being all of the E 1/2 of the SE 1/4 of GH&H Co. Sec. 104.

Mrs. Maggie M. Davenport et vir to E. A. Gillespie, \$10.00, 80 acres and being all of the W 1/2 of the SE 1/4 of GH&H Co. Sec. 104.

Mrs. Maggie M. Davenport et vir to E. A. Gillespie, \$10.00, 80 acres and being all of the E 1/2 of the SE 1/4 of GH&H Co. Sec. 104.

Mrs. Maggie M. Davenport et vir to E. A. Gillespie, \$10.00, 80 acres and being all of the W 1/2 of the SW 1/4 of GH&H Co. Sec. 104.

Leon Morgan of Brownfield was here at the week end. He took Mrs. Morgan through here on Friday to be with their daughter, Mrs. Mack Ross and husband, who had been in a car wreck Thursday night. It is thought their injuries are not serious but they were considerably bruised and shaken up.

Longview, Texas, is the southern terminus of the "big inch" pipe line extending into Illinois.

**24 Month Guaranteed
CAR BATTERIES
\$12.95**
EXCHANGE
Phone No. 4 For Quick Service
—Rent Batteries—
Santa Anna Hardware Co.

Time To Render Your 1952 Property Taxes Final Notice

Your Personal Property In The City Limits Of Santa Anna, Texas, Should Be Rendered For Taxation Immediately.

All Property Must Be Rendered Not Later Than April 30, 1952.

If Your Property Is Not Rendered For Taxation In The City, It Goes On The Unrendered Roll And Is Then Rendered By A Board Of Equalization.

It Will Be To Your Advantage To Render Your Property Now — Before The Dead-line.

By Order of the City Council
C. E. Flint, Mayor, Pro-Tem

it's NEW it's NEWS!

BENDIX Snow White WASHING MACHINE
Automatic

Makes Wash Water Hotter and keeps it HOT!
Gets Clothes Cleaner with the exclusive MAGIC HEATER

Keeps Water HOT

Every woman knows "The Hotter the Water, the Cleaner the Clothes" ... but only Bendix has done something about it! Bendix's new built-in Magic Heater makes water HOTTER and KEEPS IT HOTTER all during the washing period.

Your WORK-FREE Washday starts with the snap of a Dial

Bendix "Snow White" Washer launders a big 9-lb. load, rinses, damp-dries, drains, cleans itself and stops... all automatically. Hotter water plus exclusive Tumble Action gets clothes brighter, cleaner.

You are invited to see this wonderful new Bendix Washer! It washes clothes clean... the way you want them! See it today!

Product of BENDIX HOME APPLIANCES Division AVCO Manufacturing Corp.

West Texas Utilities Company

Santa Anna News
ESTABLISHED 1886

J. J. GREGG
Owner and Publisher
JOHN C. GREGG
Editor and Business Manager
HENRY P. LEVERETT
Mechanical

PUBLISHED EVERY FRIDAY
AT SANTA ANNA, COLEMAN COUNTY, TEXAS

SUBSCRIPTION RATES
IN COLEMAN COUNTY
1 Year \$1.50
6 Months \$1.00
OUTSIDE COLEMAN COUNTY
1 Year in Texas \$2.00
6 Months in Texas \$1.25
1 Year outside Texas \$2.50
6 Months outside Texas \$1.50
1 Year outside U. S. A. \$3.00

The Publisher is not responsible for copy omissions, typographical errors that may occur further than to correct it in the next issue. All advertising orders are accepted on this basis only.

Entered at the Post Office at Santa Anna, Texas, as second class mail matter under the Act of Congress of March 3, 1879.

Advertising Rates on Request



Political Announcements

The Santa Anna News is authorized to announce the candidacy of the following for elective offices, subject to action of the democratic primaries in July and August, 1952.

All political announcements are accepted as advertising matter and must be paid in full in advance of publication. Cooperation of all concerned will be appreciated.

U. S. CONGRESSMAN
21ST CONGRESSIONAL DIST.

O. C. FISHER, San Angelo
(Re-election)

IRA GALLAWAY, Coleman

FOR STATE SENATOR
25th SENATORIAL DISTRICT

DORSEY B. HARDEMAN
San Angelo, Texas
Re-election

FOR STATE REPRESENTATIVE
77th DISTRICT

R. W. SHYTTLES
Winters, Texas

FOR DISTRICT CLERK
COLEMAN COUNTY

NEWT-MELL HUGHES
BECKER

T. H. (Sticks) CORDER
Re-election

FOR COUNTY TREASURER

W. E. (Bill) BURNEY
(Re-election)

FOR COUNTY TAX ASSESSOR-COLLECTOR

BERNICE JOHNSON
(Re-election)

FOR COUNTY ATTORNEY

W. E. (Billy) ALLEN
Re-election

FOR COUNTY JUDGE

WALTER K. BOYD

FOR COUNTY SHERIFF:

H. F. FENTON, Jr.
(Re-election)

W. J. (John) SMITH

FOR COUNTY CLERK

MRS. JEWELL HARLLEE
MRS. JACK DURHAM
LEE F. CRAIG

FOR COUNTY COMMISSIONER
PRECINCT 2:

EARL HARDY
(Re-election)

Use the News want ads. They get results

Read The
ABILENE REPORTER-NEWS
See Your Local Agents
Phillips Drug Store
and Bobby Jo Densman

CLASSIFIED ADS.

FOR RENT

SMALL HOUSE for sale or rent. See Talley at Sinclair Station.

FOR SALE OR TRADE

FOR SALE OR TRADE: Good 1949 Service Cycle. Dick Bass. 17tc

FOR SALE: Refrigerator, stove, dinette set, bedroom suite and miscellaneous household furniture. Carl A. Walker, 1005 Wallis Ave. 15tc

CREEK BED GRAVEL: Easy to get to. 1/2 mile north of Buffalo in rock house. Bill Archer. 15-17c

FOR USED Furniture call W. M. Morgan, phone 390, 602 South Houston. We buy and sell.

FOR SALE: 4 1/2 room house, well located, convenient to both schools, indoor toilet facilities, newly painted inside and out. A good value at \$2,500. Would consider some trade and can arrange terms if desired. J. J. Gregg. 15tc

HELP WANTED - WOMEN

WANTED: Waitress. Apply to Santa Anna Hotel Coffee Shop

MISCELLANEOUS

FAMILY STYLE MEALS served at noon, first house west of Humble Station. Rooms for rent. Mrs. C. T. Conley, phone Black 239. 11tc

EXPERT auto repair. Ignition, brakes, and general repair. Talley's Service Station. 7tc

MAKE OLD FLOORS look like new - Rent our high-speed floor sander and edger - low rates. Santa Anna Hardware Co. 15-22c

FOR ATHLETE'S FOOT Use T-4-L for 3 to 5 days. If not pleased, your 40c back. Watch the old, tainted skin slough off to be replaced by healthy skin. Get instant-drying T-4-L from any druggist. Now at Phillips Drug. 14-17c

LOST AND FOUND

LOST: Missed from my farm about April 13, one Brahman cow with round "A" brand on left hip and calf following her. If whereabouts is known, please notify E. J. Crowder, Route 2, Santa Anna, Texas. p

CARD OF THANKS

To my friends and good neighbors who have been to see me or sent cards and messages of cheer and comfort during my illness, I would like to express my great appreciation, though words seem so inadequate to do so.
Mrs. G. F. Bartlett. 17p

I wish to express my sincere appreciation to my friends, both white and colored, and both Missionary Societies, for your remembrances and prayers during my recent illness.
Pearl (Collins) Wilson. p

Self Culture Club To Meet Friday

The Self Culture Club will meet Friday afternoon at 3:30, with Mrs. Ted Stewardson. Mrs. Preston Bailey will direct a discussion on National Affairs.

Mrs. Ida Miller and Mrs. Eula Childress of Bangs, visited Miss Mollie Lowe Sunday. Sam I. Lowe of Brooksmith, visited his sister, Miss Mollie, briefly Friday.

Get PENIVET®

For Treating Many Cattle Diseases



Phillips Drug
Authorized CUTTER Distributor

Mrs. A. E. Genz Has Family Get-To-Gether

Mrs. A. E. Genz was delighted to have a phone message Saturday noon that members of her family were coming from Houston. They visited from Saturday night until Monday, coming and going in the fine rain. They were: Mr. and Mrs. Gilbreath, Hazel Gene, and two children, Mrs. Ernest Genz, and three children, and her mother, Mrs. Routh. Members of the family living near that visited with them were: Mr. and Mrs. R. W. Cupps and three children, Mr. and Mrs. Jack Banta and two children, Mrs. Sid Blanton and two boys. Missed from the happy circle were Marie and husband and little girls, who will be home from Japan in May, and Reba Ann of San Francisco, who will come later.

Mrs. Genz and the Gilbreaths visited the Genz farm at Bangs Sunday afternoon, and found plenty of moisture and seemingly a good fruit crop.

Woman's Council Met Monday

The Womens Council of the Christian Church met Monday afternoon for the regular mission study. The subject was Mexico, our nearest Foreign Mission field. Some had special parts and there was a general discussion as the topics were developed.

Much was learned of our churches, schools and missions. Churches are very active. It is said of one Christian minister at San Louis Potosi, that he knows how to organize churches, give every member something to do, and have the pleasure of seeing everyone do their part. We would like to have his recipe.

After the lesson, some plans

for future work were "put to soak". Members present were: Mrs. J. R. Gipson, Mrs. E. H. Wylie, Mrs. J. B. Scott, Mrs. Clifford Stephenson, Mrs. L. O. Garrett, Mrs. Tom Simpson, Mrs. A. L. Oder and Mrs. George Richardson. The organization continues to meet on the 1st and 3rd Monday afternoons, and all the women of the church are urged to attend.

Eastern Star Has April Meeting

The Santa Anna Chapter No. 247, Order of the Eastern Star, held its regular meeting Monday, April 21 in the Masonic Hall. Twenty-one members were present.

The meeting was opened in regular form, Allegiance to the flag was given by the members, led by sister Doris Jane Bell. The minutes of the last meeting were read and approved. The correspondence, including W. G. M. bulletin, was read. Thank you notes were read from Sisters Fannie Gober, Lora Rollins and Bernice Parmer.

The Chapter extended their thanks to Carmen and A. D. Donham for their efforts in obtaining the coffee urn. The urn was Sister Donham's project when she was Worthy Matron. The Memorial Program was given by the officers with Sister Sylvia McBride, Martha, as leader.

Sister Retta Bartlett and Bro. Ed Bartlett served coffee and cookies.

-Reporter

Mrs. Marshall Wallace is quite ill in the Coleman hospital.

Tyler, Texas raises more than two-thirds of the commercial rose bushes grown in the United States.

Local Band To McMurry For Contest

Abilene - Members of the Santa Anna High School Band will be one of the 36 junior high and high school bands at McMurry College April 25, 26 for the annual University Interscholastic League Music Competition Festival of Region 11.

About 3,000 are expected to be on the McMurry campus during the two-day festival, while an equal number is anticipated at Hardin-Simmons University, who is also helping to co-host the meet.

The festival will be divided into three divisions, concert, sight reading and marching. All bands will be judged and given a rating, from one to five. Members of the Santa Anna Band will be in concert at 9:15 a. m., April 26, at the Radford Memorial Student Life Center

at McMurry. They will participate in the marching division at HSU at 9:00 p. m.

Both the concert and marching performances will be open to the public. Admission to the concerts is 25 cents, while fee for the marching is fifty cents.

Mrs. John Dawson, who has been quite ill lately, is now in a Rest Home at Bangs, where she will probably remain a month or more. She is improving. Her daughter, Mrs. S. W. Ogle and son Jerry of Fresno, California, came last Friday to be with Mrs. Dawson for a while. Mrs. Jim Newman is also a patient in the home and seems to be getting along very well. A number of Santa Anna friends of these good ladies, have been visiting them. Mrs. Newman is having a birthday this week, Thursday the 24. She will be 82 years old.

GUARANTEED USED FRIGIDAIRE'S FOR SALE
As Low As \$5.00 Down and \$5.00 a Month
Gray Mercantile Co.
Over 40 Years in Coleman

"IT'S A GREAT LIFE WHEN YOU FEEL GOOD"

Dr. A. M. Fischer
Chiropractor
SPINAL X-RAY EXAMINATION
413 - 415 State Bank Building, Coleman Office Phone 2421

5,639,034
Eyes of Texans

... are on your message when it appears in the columns of TEXAS' KEY-TOWN NEWSPAPERS

These dailies and weeklies, some 500 strong, and with more than 2,800,000 paid-in-advance subscriptions, cover the vast areas of Texas from the flowing wheat fields in the Northwest, to the great shipping centers of the Gulf coast; and from the tall timberlands of the Northeast to the rich citrus areas of the Magic Valley in the Southwest.

It's a market to behold!

For a successful advertising campaign, at a minimum of cost and a maximum of coverage - use the KEY-TOWN NEWSPAPERS OF TEXAS - a GRADE-A LIST compiled by The Texas Press Association, a list whose circulation is attested to by The Texas Press Association, and a group whose coverage and quality is unequalled.

Truly, "The Eyes of Texans" are on your ad when it appears in the columns of TEXAS' KEY-TOWN NEWSPAPERS.



TEXAS PRESS ASSOCIATION
INTERNATIONAL BLDG. BUILDING
AUSTIN, TEXAS

Whon Home Dem. Club Met With Mrs. Besse Gill

The Whon Home Demonstration Club met Wednesday, April 9, in the home of Mrs. Besse Gill. With Mrs. George Rutherford as hostess. Roll call was answered with "A Food Fact". Mrs. Gill was in charge of the recreation.

The club has called a meeting for Friday, April 18, at the Whon School House to discuss taking care of the cemetery. Also it is planned to have a visitor present who will show slides on cancer control.

A demonstration was given on "Hot Rolls" by Mrs. Hettye Turney and Mrs. Gill.

Refreshments carrying out the Easter theme were served to: Mmes. Louise Gill, Hettye Turney, Tincy Turney, Lula Rutherford, Besse Gill, Janie Morris, Trudy Abernathy, Eye Gamble and six children.

Blue Bonnet Club Met Last Thursday

Miss Marialice Smith, H D Agent, visited with the Blue Bonnet Club at the meeting Thursday in the home of Mrs. Willie Lobstein. Mrs. S. D. Wilson called the meeting to order, recognized the visitors: Mrs. Nevie Parsons, Mrs. Dodson and Miss Smith. Mrs. C. R. Lowe led the



Leaving the Makalapa Chapel at Pearl Harbor, T. H., after their recent wedding ceremony are Eugene G. Richards, storekeeper, first class, USN, son of Mr. and Mrs. Elsie Richards of 1103 North Rodgers St., Springfield, Mo., and his bride, the former Miss Marilyn Lafferty, seaman, WAVES, USN, daughter of Mr. and Mrs. Willard Lafferty of Santa Anna, Texas. Richards is stationed at the U. S. Naval Training Center, Great Lakes, Ill., and his wife is serving in the Personnel Office of Commander, Service Force, Pacific, Hawaii. (Official U. S. Navy Photograph—1087299)

song. Mrs. John Lauder led the pledge and prayer and Mrs. W. W. Wilson led the recreation.

During the business session Mrs. W. W. Wilson reminded the members of the 4-H Girls dress revue to be held in Coleman on the 26th of April, and Mrs. Lowe read the letter of thanks that she received from the county Red Cross for the cooperation extended by the Buffalo community in the recent drive for funds.

Miss Smith gave some valuable points on landscaping. Since every farm-stead has different problems Miss Smith talked on basic rules of landscaping. One point she brought out was — don't underestimate that small shrub. Be sure that you know how big it will be when full grown and allow plenty of room when planting. She suggested planting shrubs 3 feet from the foundation.

The hostess served refreshments to Mmes. J. D. Williamson, S. D. Wilson, Rube Lobstein, Nevie Parsons, Dodson, W. W. Wilson, E. D. Bouchillon, J. C. Lauder, C. R. Lowe and Miss Thelma Casey and Miss Smith.

The next meeting will be April 26 at 2 o'clock in the home of Miss Thelma Casey. The program will be a demonstration on Hot Rolls.

Trickham Home Dem. Club Met With Mrs. Bond Featherston

Mrs. Bond Featherston was hostess when the Trickham Home Demonstration Club met at her home Wednesday, April 9 at 2:00 p. m. Mrs. Harry Wilson had charge of the meeting and gave the THDA Marketing Recommendations.

The program was on "Landscaping", and was conducted by Maryalice Smith, county home demonstration agent. A very in-

teresting demonstration was given.

The hostess carried out the Easter theme in her refreshment to the seven members present and Miss Smith.

The next club meeting will be April 23, at the home of Mrs. Oscar Boenicke. A demonstration will be given on "Hot Rolls" by Mrs. Boenicke and Mrs. Lige Lancaster. Visitors are always welcome.

—Reporter.

North Side Baptists Have Open House

A large number of people called between the hours of 2:30 and 5 o'clock Sunday afternoon at the newly completed North Side Baptist Church, which was holding open house. They were there to offer congratulations to Bro. C. L. Carroll, the pastor, and his congregation, upon their achievement.

Upon entering the sanctuary, visitors were soon aware they had been a little modest in publicizing its beauty. The edifice wainscoting of knotty pine, has hard wood floors and high which with all the other woodwork has a natural finish. The walls are of textone planking in tones of brown, beige and rose.

Nice comfortable pews, pulpit furniture and communion table complete the furnishing ensemble. Sunday School rooms beautifully decorated are also well equipped.

There was a profusion of lovely flowers attractively arranged decorating the pulpit area, and overflowing into other spaces. These were gifts of members of the congregation and friends.

The University of Texas has a permanent fund which is increasing by approximately \$17 million a year.

"Where The Best Pictures Play" HOWELL

COLEMAN, TEXAS

THURSDAY, FRIDAY and SATURDAY

APRIL 24, 25 and 26

Jeff Chandler, John Lund and Beverly Tyler

—IN—

"Battle Apache Pass"

Color by Technicolor
Cartoon and Comedy

SUNDAY and MONDAY

APRIL 27 and 28

Richard Widmark and Constance Smith

—IN—

"Red Skies Of Montana"

COLOR BY TECHNICOLOR
Cartoon and Latest News

TUESDAY and WEDNESDAY

APRIL 29 and 30

James Mason and Ava Gardner

—IN—

"Pandora And The Flying Dutchman"
Cartoon and Comedy

THURSDAY, FRIDAY and SATURDAY

MAY 1, 2 and 3

Frank Lovejoy and Anita Louise

—IN—

"Retreat Hell"
Cartoon and Comedy

VALUES YOU CAN COUNT ON

RED & WHITE FOOD STORES

SAVINGS YOU CAN COUNT UP

Pinto Beans Select Brand 2 lb. Cello	28c	OLEO Sun Spun 1 Pound	19c
Peaches R&W, in heavy syrup, Sliced or halves, No. 303 Can	22c	TUNA Chicken of the Sea, bite size light meat, Reg. can	39c
Potatoes Shoestring, Uncle William No. 303 Can	14c	JUICE Tomato, Joan of Arc 6 Oz. Can	7c
Beans Mexican style, Sun Spun, they are delicious No. 300 Can	12c	JUICE Orange, Adams 6 Oz. Can	7c
Dog Food Scrappy Tall Can — 3 FOR	25c	Potatoes Sweet, Pine Grove, They're a bargain 2 1/2 Lb. Can	29c
Prunes Sugar Ripe, packed in moisture proof ploffilm 1 Pound Package	26c	Spinach Red & White No. 2 Can	16c
Gloves Fleece Palms Pair	49c	JUICE Grape, Churches 24 Oz. Bottle	40c
Lettuce Iceburg, Crisp Pound	12c	MEAL Aunt Jemima 5 Pound Sack	48c
Onions Yellow Bermuda Pound	12c	Frankfurters Star, Cello Pack, Lb.	59c
Tomatoes Carton	23c	Pressed Ham Pound	55c
Lemons Sun Kist Pound	15c	Cheese Kraft American Sliced — Pound	59c
Bananas Golden Yellow Pound	15c	Steak Pork — Lean Semi-boneless, Pound	55c
		Dry Salt Streaked lean and fat, Pound	29c

Hunter Bros.—Pho. 48

Hosch Gro.—Pho. 56

Downey - Wristen

Mrs. Alice Louvena Downey became the bride of Max Glenn Wristen, when Rev. E. H. Wylie performed the single ring ceremony at his home. The marriage took place on April 16th, at 7:00 p. m.

Several friends were present for the ceremony. The newly weds are making their home in Abilene.

Home Dem Club Has Fine Meeting Friday

Landscaping was the topic of discussion when the Santa Anna Home Demonstration Club met

Friday, April 18th, in the home of Mrs. Louis Zachary.

"There are several important steps to be taken in landscaping your home", stated Miss Marialyce Smith, County H. D. Agent.

Important points to remember are the public, private, and service parts, making plans as to stationary buildings and additions.

Consideration should also be given to what shrubs and plants you want and where to put them. Beauty, comfort, and convenience, and what to plan each year should also be considered. Mrs. John Perry, exhibit chairman, had an Easter centerpiece on display. It consisted of rabbits made of Easter eggs and green grass around an arrangement of gladiola and tulips.

The lovely Zachary home was decorated throughout with a profusion of flowers, iris, tulips, sweet peas, and other seasonal blossoms, also pot plants.

Plans are being made for a window display during Home Demonstration Week, April 27th through May 3rd.

Refreshments were served to twelve members and four visi-

tors, Miss Smith, Mrs. Dan Blake, Mrs. E. W. Parker, and Mrs. Lovell Richardson.

After the meeting adjourned, a display of pillow cases was shown. The next meeting will be a Mother's Day program in the home of Mrs. D. H. Moore, May 2nd.

Banquet Honors Band Members On April 14

The Santa Anna Band Boosters Club honored the Santa Anna Bands with a banquet at the high school gym Monday night, April 14. About 150 members and students were present.

The program consisted of talks by R. K. Green and J. L. Harris; a cornet solo by Jerry Thompson; two solos by Wallie Foster; and a clarinet solo by Harriett Wigger.

After the program a business session was held.

Mrs. Ethel Davis, treasurer for the Band Boosters Club, reports they have \$720.35 in the band uniform fund at the present time. This money has been raised since school started last fall.

Saturday, April 26th IS STRAW HAT DAY

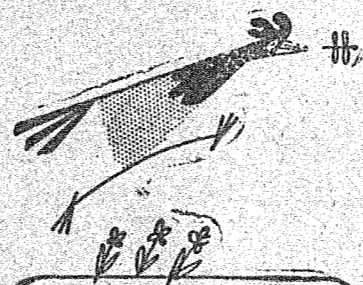


We have a nice line of the latest style Straw Hats in all shapes and colors and priced to suit you . . .

\$1.98 To \$5.00

PURDY MERC. CO.

Santa Anna, Texas



Talk about fast starts

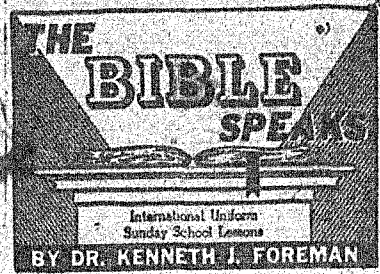
Now that I'm on Dr. Salsbury's Ren-O-Sal, stand back! Watch Ren-O-Sal's G.S. (growth stimulation) factor shoot me ahead. Look for faster growth, better coloring, and earlier maturity. I'll have it with Ren-O-Sal in my drinking-water. Ren-O-Sal controls cecal coccidiosis, too.

When you need poultry medicines ask for

DR. SALSBUARY'S GRIFFIN HATCHERY

If You Need FURNITURE or APPLIANCES For Your Home Watch The Bargain Window —At— Hosch Furniture Co.

Santa Anna, Texas



SCRIPTURE: Exodus 20:1-6; Luke 14:16-20; 23-27; 16:13-15.
DEVOTIONAL READING: Psalm 100.

Idols Up-to-Date

Lesson for April 27, 1952

SOME PEOPLE THINK Jesus somehow did away with the Ten Commandments. Nothing of the sort. He showed them in new lights, showed them in a depth and height few if any had suspected; but he had no intention of abolishing them. One thing he seldom did—merely repeat the Commandments. That was hardly necessary, as most of his hearers knew them by heart. We fall not so much because we don't know what they mean.



Dr. Foreman

To the First Commandment, "Thou shalt have no other gods before me, Jesus gave a startling new meaning. Readers of the Gospels will observe (and not only in this week's Scripture by any means) that Jesus demanded supreme loyalty, absolutely without exception. Christians take this seriously, when they are serious Christians, and we accept the tremendous claim sounding through such words as "if any man hate not... he cannot be my disciple." In short, Christians understand that loyalty to God means loyalty to Christ. Taking orders from God means taking orders from Christ. We do not believe this to be idolatry because when we worship and honor Christ we do not pay tribute to a mere man but to the One God who was one with his Son, and in him.

The "Almighty Dollar"

THE KIND of idols the ancient Israelites worshipped are no more. At least we see no more gilded calves, no more sacred pillars or brass snakes.

But modern man worships idols still, and even Christians are tempted to do so, just as much as any ancient Israelite. One of these perennial idols, of course, is money.

We measure success with a dollar yardstick; a man will do almost anything, not only not to be poor but even in order not to seem to be a little worse off than his neighbor. We should never forget Martin Luther's definition of a god: Whatever a man hangs his heart on and depends on, that is his god.

How many people hang their heart on property? It is not that money and what it will buy are evil things; the evil begins when we take a good thing and look at it as if it were the best thing.

The Crowd

ANOTHER POPULAR IDOL goes by various names. The most common name for this many-headed idol is "everybody." When we let "everybody" make our minds up for us; when we feel we just must do something, or have something, that "every one" else has or does; when we decide on what's right and what's wrong by taking a poll, or counting noses, then we are putting people in the place of God.

You can't get "ought" out of "is." You can't find what is right to be done merely by looking at what is done.

It is very poor arithmetic that adds up a million wrong acts and concludes that if a million people act that way it must be right! Everybody may be right, everybody may be wrong; but in either case it is God who is Judge; not man, not a million men. "One with God is a majority."

The Last Idol

ABOUT THE LAST IDOL a man ever throws away is one that is hardest to see, because to see it you have to look at yourself. The idol to which each of us bows down—far too often; the idol that takes God's place over and over again; this is none other than a man's own self.

"I am the master of my fate," he says. "I am the captain of my soul." Most sins come about in this way. Don't they? Essentially that is what sin means, saying to God, "Get out of my way, let me by. Stop giving me orders, let me run my own affairs as I see fit."

Not that a sinning man consciously says such a thing, but when a man siders by his own strength, he is saying to God's

eternal Light, he has the wrong pilot in the cockpit. Perhaps the most foolish of all things is to try to use God, in such a way that these idols may smile upon us!

We want God to bless us so that we can become rich; we want God to make us popular with the crowd; we demand that God help us in our own selfish plans. So even our prayers may be idolatrous.

(Copyright 1951 by the Division of Christian Education, National Council of the Churches of Christ in the United States of America. Released by WNU Features.)

Held Over From Last Week

Mrs. A. R. Brown returned home from Dallas Monday night where she had visited since last Thursday with her niece, Mrs. H. B. Thompson and husband. Sunday morning she attended services at a church where they had three separate services to accommodate the crowds.

Mr. and Mrs. Odell Box and their three sons from Crane were week end visitors here with her parents, Mr. and Mrs. Sam Moore.

Mr. and Mrs. A. L. Goree and Linda from Edconch, visited last week end with Mr. and Mrs. W. B. Stovall.

Mr. and Mrs. J. R. Compton of Houston, the latter a sister of Mrs. Ed Jones, and Allene Jones of Austin, were week end visitors in the Jones home. On Monday they were with Mrs. Jones when she had major surgery in a Brownwood hospital. Mr. Jones reported on Tuesday morning that she was getting along real well.

Sgt. Audrey Robbins and a friend, Sgt. Dale Phillips from Lackland Air Force Base in San Antonio, were here for the Easter holidays visiting with Audrey's parents, Mr. and Mrs. Jasper Robbins.

A daughter named Linda Carol, and weighing 7 lbs., was born in a Brownwood hospital on Easter morning, April 13th at 5 o'clock to Mr. and Mrs. A. L. Matthews of Santa Anna.

Mr. and Mrs. James Price and daughters, Sharon and Sheila, left Monday for their home in Minnesota, after a stay here since December in the home of his parents, Mr. and Mrs. Bill Price.

Mr. and Mrs. Bob Henderson and children of Sweetwater were week end visitors with their parents, Mr. and Mrs. T. J. McCaughan and Mrs. Lois Henderson.

Joe Cochran visited from Friday until Sunday with a sister, Mrs. Lucy Gordon at Erick, Oklahoma, and with another sister visiting there from California.

Sarah Frances Moseley was home for the week end from Ft. Worth visiting with the home folks, Mr. and Mrs. C. M. Moseley and Charlotte.

Mr. and Mrs. I. V. Spann and Rebecca Ann from Abilene were week end visitors with her parents, Mr. and Mrs. Buster Woodard.

Miss Mary Mills who teaches at Seminole, Texas, was home for the Easter holidays visiting with her parents, Mr. and Mrs. Tom Mills.

Miss Kathryn Baxter was home for the Easter holidays from Waco. Mrs. Ann Kulp went as far as Temple with her Monday morning, to visit indefinitely with her daughter, Mrs. Charles Zenor and family.

Mr. and Mrs. J. Edd Bartlett and Mrs. Frances Everett were in Merkel Saturday night April 11th to attend the wedding of Miss Mona Madolyn Robertson to Dewain Jones. The ceremony was performed in the Baptist Church at 8:45 o'clock.

They also attended the reception which followed in the home of the bride's parents, Mr. and Mrs. Clyde Bartlett, where Mrs. Edd Bartlett was in the receiving line. The visitors returned home Sunday afternoon.

Mrs. Billy Joe Harvey and son

DR. PEBBLE PURCELL
CHIROPRACTOR
Phone 5951 — 407 Llano St.
COLEMAN, TEXAS

Roy Joe of Lamesa were week end visitors with Mr. and Mrs. Joe Harvey.

Mrs. Hardy Blue and Mrs. Tom Mills were in Brownwood Tuesday on business.

Rodney Balke from Texas Tech, Lubbock, visited during the Easter holidays with his uncle and aunt, Mr. and Mrs. Clifford Lowe.

Mrs. W. L. Campbell received a telephone call Wednesday morning, telling of the death of an uncle, M. R. McGahey aged 74, at Warner Oklahoma. He was quite well known here among the oldtimers.

Mr. and Mrs. H. B. Monroe, took Mrs. Pat Patterson to Sidney Sunday afternoon where they visited with her parents, Mr. and Mrs. Zeb May.

EASTER VISITORS

Mr. and Mrs. Amos Taylor had most of their family with them on Easter Sunday. The Occasion also marked the birthday of Mrs. Taylor.

Those present were: Mrs. Dottie Jophie and her two children from Lovington, New Mexico; Ray Taylor and family from Lincoln, New Mexico; Mrs. Cliff Williams and Wanda from Eastland, and her son-in-law and daughter, Mr. and Mrs. Lee Miller and son of Abilene; Mr. and Mrs. Woodrow Estes and children of Rockwood and Alton Taylor and family of Santa Anna.

Those visiting Sunday with Mrs. R. F. Miller, and Hayes, were Mr. and Mrs. Marshall Cornelius of Abilene; Mr. and Mrs. J. D. Whetstone; Mr. and Mrs. Jim Lovelady, Carolyn and Alice Anna, and Mr. and Mrs. Bill Day all of Santa Anna. Also Mrs. Jasper McClellan and Mrs. Sam Collier were afternoon callers. Hays is looking well and seems to be getting along very well.

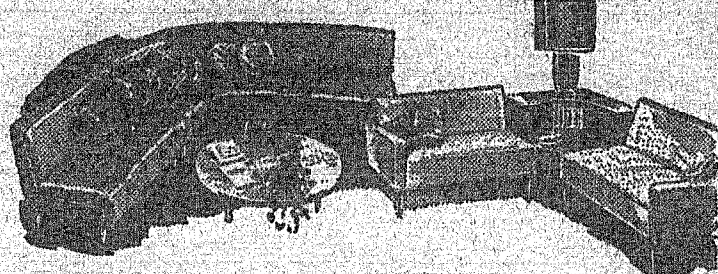
Mr. and Mrs. Lyle Pearce, Mar-

gle and Upton of Louisville, Ky., visited from Saturday until Tuesday with his mother, Mrs. John Pearce. Their son David, a ministerial student at Baylor University visited them here.

Jimmy Swope, partner in Willson Grain & Feed Co. has returned from Austin, where he attended a Feed Advisory Conference. The next session will be in June.

Mr. and Mrs. A. B. Little and daughters, and Mrs. M. A. Pritchard spent the week end in Granbury with the M. F. Blantons. Mrs. Blanton is a daughter of Mrs. Pritchard.

SAVE AT GORDON'S



All Your Life Is Spent



In Your Home

- You awaken to it every morning; You look at it all day; You see it the last thing every night.
- Your furnishings represent a major investment. Be sure they are outstanding in style, in quality and value.
- Choose them carefully... you will be seeing a lot of them! Your home is the most important thing in your life.

YOU GET MORE FOR YOUR FURNITURE DOLLAR HERE THAN ANY DOLLAR YOU SPEND

● STOP IN TODAY ●

GORDON'S Furniture & Hardware

Coleman

Texas

Million \$ Rain

There is still plenty of time for crop planting—and if you have the equipment we advise getting your crops in the ground as soon as possible.

IF YOU NEED EQUIPMENT WE HAVE IT IN STOCK

John Deere Tractors

A, B and G Models With All Needed Accessories

We also have some USED TRACTORS that are in excellent mechanical condition

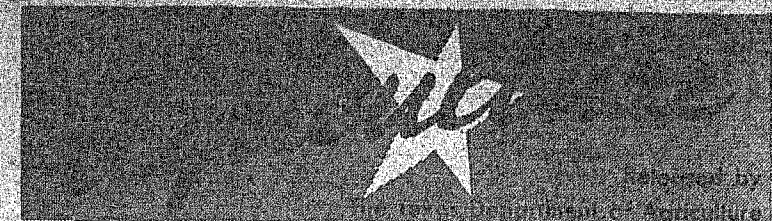
Discuss Your Equipment Needs With Us--Today

Delma Johnson Implement Company

JOHN WATERS, Mgr.

Phone 3241

COLEMAN



THE TEXAS ROSE INDUSTRY

California may have the Rose Parade, the Rose Bowl and all the fanfare. But Texas is the leading rose-producing state in the nation. Texas producers are shipping up to 20,000,000 rose plants a year — or two-thirds of all roses used in outdoor planting in America.

one of the leading East Texas growers takes pride in his 3 bale-per-acre cotton yield. During the blooming season one can see some 15,000,000 rose plants flowering 2,000,000,000-odd roses — which go to waste as they fade and die and drop off the bush, for it is the plant, not the bloom, that is marketed. Shipments average 200 to 300 cars annually to big cities in the East and Middlewest. Up to 14,000,000 plants move in refrigerated cars; the remainder go by parcel post and truck.



IT'S THE LAW
in Texas
A public service feature of the State Bar of Texas

SOCIAL SECURITY TAX ON HOUSEHOLD WORKERS EXPLAINED
April 30th is the deadline on which social security payments for household workers for the first quarter of 1952 are due at the office of your Collector of Internal Revenue.

The federal law bringing household workers under the old age and survivors insurance system went into effect January 1, 1951. However, lawyers say that many persons who employ help in their homes are still in the dark about requirements of the law. Here are some provisions

Texas producers take as much pride in the development of fine rose stock as our cattle breeders take in their Hereford White-faces. Growers are known to have paid as much as \$10,000 for a single parent plant.

They grow many varieties developed by cross-pollination by breeders in other parts of the country and Europe. But they also develop their own varieties from "sports" which occur when a plant suddenly develops characteristics unlike those of its parent. One sport may never develop into anything worthwhile. Another may become a valuable new patented variety from which a grower can collect thousands of dollars annually in royalties.

Until recent years, Texas growers shipped their plants to distributors out of the state, but they are now beginning to do some of their own distributing, going in for fancy root packing for department stores. The plant is displayed in colorful moisture-proof packages, and the roots are packed in sphagnum moss — which conserves moisture up to six weeks and allows the plant to continue growing and even to bloom on the sales counter.

Growers now store large quantities of bushes for late shipment to retail trade. Cold storage facilities can handle 2,000,000 bushes.

In marketing rose plants, much depends on the pull of the name. A few of the most popular varieties grown in Texas are Radiance, Peace, Talisman, Briarcliff, Gay Lady, Big Daddy, Festival, Summer Snow, Texas Centennial and General MacArthur — an old variety named for Douglas' father.

One of the best-sellers is an old variety which has no place among the newer and finer plants. The secret of its popularity is in the name: "American Beauty".

everyone should know. Household workers covered by the law include maids, laundresses, housekeepers, cooks, nursemaids, gardeners, handymen, valets, footmen, grooms, chauffeurs of privately owned cars, practical nurses, and others.

Whether or not a household worker is included in the law depends on how many days she works and how much money she is paid. If the person works 24 days and earns \$50 during any one of the three month periods into which the calendar year has been divided, a tax report must be filed and payment made.

Only cash wages are considered, which includes bus fare if paid in cash, but does not include bus tokens, clothing, room and board, or other noncash items furnished the employee. A domestic worker does not have to put in a full day to count on the 24 day rule — any portion of the day worked counts as a full day.

The rule is different for domestic workers on farms operated for profit. In such cases the domestic is considered a farm worker and is covered only if he or she meets the test for farm labor.

The tax in all amounts to 3% of the cash wages paid. You, as an employer, must deduct 1 1/2% from your household worker's cash wages if the person meets the 24 day, fifty dollar test. You then include another 1 1/2% which is the employer's contribution. After the close of each specified three-month period you should send the tax, with a report of the wages paid, to the Collector of Internal Revenue.

These three-month periods, or quarters, and on March 31st, June 30th, September 30th and December 31st. Reports and payments are due by the last day of the month following the close of each quarter. During any quarterly period that a household worker does not work 24 days or earn \$50, the employer need not be concerned. You need not consider the work your employee performs for any other employer.

The Bureau of Internal Revenue has a special household report form, printed on the back of a return envelope, which can be obtained from your Collector upon request. Just ask for Form 942.

(This column, based on Texas law, is written to inform — not to advise. No person should ever apply or interpret any law without the aid of an attorney who knows the facts, because the facts may change the application of the law.)

Children's Health Day To Be Observed May 1

Children's Health Day will be observed throughout the nation on May 1, in the hope of insuring that tomorrow's children will be sturdier than those of yesterday.

In Texas, state health officials are shooting for a record of benefiting an even greater number of handicapped children than the 4,320 which were cared for under the state's crippled

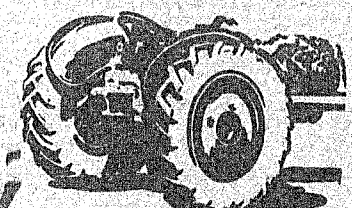
SHOP
Here And SAVE Daily

GLADIVIA BISCUIT MIX

CEDERGREEN FROZEN FRESH

MEATS — FRUITS — VEGETABLES
Bland Grocery
ON ROCKWOOD HIGHWAY
Ernest Bland Phone 70

Wasn't That Rain WONDERFUL?



Makes a fellow want to get into the field and start planting. **HOW ARE YOUR TRACTOR TIRES?** We ENJOY Fixing Tractor Flats. Bring them to us and we will promptly fix them so you can get into the field and start putting your seed in the ground.

C. R. (Ray)
Owen Service Station
—ROAD SERVICE—
PHONE 75

Going Fishing?



THEN GET THE **BIG ONES**
By Using Our **Famous Boogie-Woogie Lures!**

Rods and Reels For Fly or Bass Casting

FISHING is a sport that wins the approval of all sport fans, young and old, man or woman. And naturally the fisherman wants the very best tackle he can get . . . and here is where they find just what they want. Our complete stocks include everything from the smallest casting fly to the largest tackle used in our waters of the Southwest.



Top Running Boogie-Woogie
Deep Running **Baby Boogie-Woogie Lures** that really **Attract the Big Ones**

HOWELL HOME & AUTO SUPPLY
Coleman Texas

For A Complete Motor Overhaul

That Will Completely Satisfy You, Bring Your Car To Us

Let us help you keep wear and repair at a minimum; eliminate costly delays and inconvenience; keep your car operating with peak performance and economy.

Have Your Car Safety Inspected Before The Deadline

L. A. Welch GARAGE

children program in 1951. It will mean new hope for the child with the club foot, a cleft palate or harelip, a crippling burn, bow legs, or a curved spine. State Health Officer Geo. W. Cox, whose department has administered the program since 1945, said many people "don't realize they can get state financial assistance for the physical restoration of many crippling conditions."

Eligibility for help is set by legislative statute. The law says any person of normal mentality under 21 years old whose physical functions or movements are impaired by reason of a joint, bone, or muscle defect — is eligible for care, providing the county judge where the child resides certifies that the parents cannot finance the needed care and treatment.

Physical restoration is the purpose of the program. Some of the conditions which are accepted for treatment are infantile paralysis, osteomyelitis, club feet, harelip, cleft palate, arthritis, rickets, tuberculosis of the bone, flat feet, congenitally dis-

located hip, muscular dystrophy, supernumerary fingers and toes, webbed fingers, amputation, Pott's disease, and many others. If the attending physician recommends prosthetics, the appliances are supplied.

The program does not include such handicapping ailments as rheumatic fever, hearing and visual deficiencies, or epilepsy. Crippled children of indigent parents have been available for state aid since 1933. Formed first under the Department of Education, the program was transferred to the State Department of Health in May, 1945. Since the transfer, a total of 12,589 handicapped children have been returned to normalcy or near-normalcy.

Mr. and Mrs. W. E. Vanderford were pleasantly surprised to have her brother, J. B. Biggs of Austin visit them a few hours Sunday. A nephew, Mr. and Mrs. O. B. Biggs and family of Austin and Cpl. Eddie Cook of Eugene, Oregon also visited them. They were all dinner guests of the W. A. Pritchards.

It Staples . . . It Tacks . . . It Pins . . .

—THE—

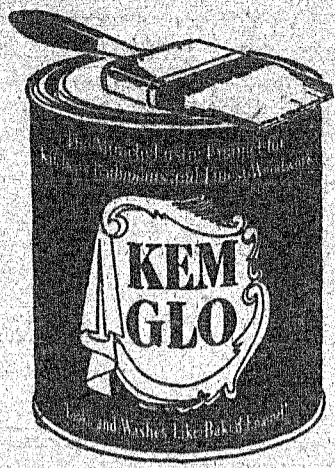
Markwell "SX" Pacemaker

STAPLER

Deluxe Model ONLY

\$3.00

AT THE **Santa Anna News**



Big Trial Offer

on **KEM-GLO Enamel!**
BUY SEVERAL UNITS AT THIS BARGAIN...

1 Quart KEM-GLO Enamel \$2.39
2 1/4" Nylon Bristle Brush 1.69
TOTAL REGULAR PRICE \$4.08 **SPECIAL \$3.29**

SAVE 79c WITH THIS KEM-GLO COUPON

NAME _____

ADDRESS _____

(LIMIT—THIS WEEK ONLY)

Santa Anna Hardware Co.

Whom News

Mrs. Tom Rutherford

Rev. Music of Brownwood preached at the Baptist Church here Sunday. He and Mrs. Music were dinner guests of Mr. and Mrs. Warren Gill.

Sorry to report Mrs. Charles Benge a patient in the Coleman hospital. We all hope her condition isn't serious and she soon has a complete recovery.

Mrs. Bert Turney went to Dallas last week to visit her daughter and family there. She was accompanied by her sister, Mrs. Lily Fox. Mrs. Fox was to leave for her home in California Sunday.

Mr. T. J. Adkins was transacting business in and around Ft.

Worth several days last week. He was accompanied by Mr. Carl Sheffield of Brooksmith.

Mrs. Nick Buse and daughter spent Friday with her mother, Mrs. Marie Walner of Bangs.

The Tom Rutherfords and Sammy Shields attended services at the First Nazarene Church in Brownwood last Tuesday night.

Mr. Granvil Hext of Mason spent last week with his mother, Mr. and Mrs. Babe Gardainer. His family joined him here over the week end.

Mr. and Mrs. Pleas Williamson were dinner guests of Mrs. Ann Bryan and Francis last Thursday.

Thomas Ray Rutherford of Abilene spent Saturday night and Sunday with his parents

here. Hilton Sherrod of A. C. C. in Abilene spent Saturday night with his mother, Mr. and Mrs. Wimpy Watson.

Mrs. Wimpy Watson, Mrs. Floyd Morris and son, John David, completed the First Aid Course that was taught at Shield by Mrs. J. B. Weathers.

Mr. and Mrs. Earl Cozart visited with Mr. and Mrs. Babe Gardainer Monday night.

Joe Gilbert Barnes spent Sunday visiting Dwan Cozart.

Faye Watson spent Friday night with Ruth Radle. Her parents, Mr. and Mrs. Leonard Watson came for her during the week end.

Mr. Tom Williams and son of Coleman visited Saturday in the Mr. and Mrs. Nick Buse home.

Those to visit in the home of Mr. and Mrs. Riley McFarlin last week were: Mr. and Mrs. Arthur Smith of San Angelo, Mr. and Mrs. Lee Smith of Bangs, and Mr. and Mrs. Carl Smith of Cayuga, Texas. Mr. and Mrs. George Daniel Wheatly were week end guests. The group was enjoying fishing.

Rev. and Mrs. Howard Smith and girls, and Mr. and Mrs. Don Bury and boys of Hamlin spent Friday night with Mr. and Mrs. Henry Smith. Other guests in the Smith home over the week end were their children, Pfc. and Mrs. Don Gray, formally of Coleman and Frank and Miss Genece Thurman a friend of Iraan. Pfc. and Mrs. Don Gray will be leaving this week for Ocean Side California, where he is stationed.

Mrs. Wimpy Watson attended a Home Demonstration Convention at Colorado City Thursday.

Mr. and Mrs. Allyn Gill and son were transacting business in Coleman Monday.

Mrs. Babe Gardainer is on the sick list this week. We wish her a speedy recovery.

Mr. and Mrs. Oscar Lovelady spent Sunday with their son, Mr. and Mrs. Darwin Lovelady at Brady.

Trickham News

By Mrs. Buck Mitchell

There was no church here last Sunday. A few were out for Sunday School. Next Sunday will be Rev. Allen's day to preach.

Misses Louise Constable and Joyce Smith of Santa Anna spent last Tuesday night with Winona and Wilma Bradley.

Mr. and Mrs. Marvin Whitley moved to Big Spring last Saturday. We regret losing them from our community.

Rainfall here during the past few days has been almost 2 1/2 inches, and prospects are good

for more.

Mrs. Harry Wilson attended a Home Demonstration Council meeting in Coleman last Saturday afternoon.

Mr. and Mrs. Leo Driskill and children of Brownwood visited her sister, Mrs. Oscar Boenicke Sunday afternoon. Leota and family of Houston were with them.

Mrs. Buck Mitchell and Betty visited with Lea Sunday afternoon.

Mrs. Petree of San Antonio, is here visiting her sister, Mrs. A. J. Martin and other relatives.

Those from here who attended the singing at Buffalo Sunday afternoon were: Mr. and Mrs. Walter Stacy, Mrs. Beula Kingston and Mrs. Zona Stacy.

There is still plenty of well drilling in and around. Mr. and Mrs. John Pentecost are getting a well down on their place. Here is hoping they get a gusher.

Mrs. Lee Vaughn was a bedtime visitor with Mrs. Kingston Monday night.

Felton Martin carried some of his stock to the stock show being held in Abilene this week. Here is hoping he comes back with some blue ribbons. Junior Bradley is attending the stock show also.

Miss Elwana Hawthorne of Brownwood spent the week end with Winona Bradley.

Other visitors with Mr. and Mrs. Oscar Boenicke and Mrs. Shield during the week were: Mr. and Mrs. Bernice McIver, Mr. and Mrs. Carl Harris of Mt. View, Mrs. Kingston, Mrs. Stacy, Mr. Charlie Shield, Mr. and Mrs. Marion Ford and children, Mr. and Mrs. Johnny McIver and baby, and Mrs. Grady Banister. A cousin, Mr. and Mrs. Gordon Newton of Lohn also visited them.

Mrs. Boenicke has received word that she won first place in the district in a contest sponsored by the Fort Worth Press. This is a "Save the Soil and Save Texas Conservation Award."

Mrs. Boenicke's title was "Accomplishments of a Conservative Homemaker." Congratulations go to her.

Mrs. Avis E. Hays Honor Student At Howard Payne

Brownwood, — Mrs. Avis E. Hays, Santa Anna, is listed on the honor roll for the first half of the spring semester at Howard Payne College.

Mrs. Hays, who made thirty-six honor points, is a junior elementary education major.

Mr. and Mrs. Nelson Doan of Houston came with Mr. and Mrs. Winston Conley and Sherry Lynn, and visited Sunday with Mrs. C. T. Conley.

Mrs. S. E. Blanton and her two sons, Mrs. G. C. McCullough and Mrs. A. E. Genz were in Coleman shopping Friday.

Mrs. R. C. Gay and Mrs. Kittie Walker are expecting their sister, Mrs. J. L. Westerman of Albuquerque, New Mexico, to arrive this week for several days visit.

Mr. and Mrs. C. O. Bragg of Anson came Saturday and brought her mother, Mrs. Willie Vinson home from a visit of several weeks in their home.

"Enchanted Rock", between Fredericksberg, Texas and Llano, Texas is a piece of granite covering about a square mile and is 500 feet high.

FOUNTAIN DRINKS

DUPER DOGS — HAMBURGERS
Milk Shakes - Malts - Sodas - Root Beer
All Kinds of Sandwiches and Milk Drinks
SPECIAL: Buttered Pecan Ice Cream

LIME DRINKS DAIRY KING

Coleman

Texas

Pianos ★ Records

White's Music Store

COLEMAN

SEED! SEED! SEED!

BLOOD TESTED BROAD BREAST BRONZE

POULTS

BLOOD TESTED CHICKS
White Leghorns and New Hampshires

FOLKS, the only sure profit this year, rain or shine, is to raise our Broad Breasted Bronze Poults into strong, healthy toms and hens with our new formula 1028 Turkey Startena, Growena and Layena.

Start 'em — Grow 'em — Make 'em Pay
FEED PURINA ALL THE WAY

ALFALFA, \$3.25 Per 100 Pounds — \$62.50 Per Ton
PRAIRIE HAY, \$45.00 PER TON
Minimum — 1/2 Ton at Ton Prices

Wilson Grain and Feed Co., Ltd
The Store With The Checkerboard Front
COLEMAN — TEXAS

—SEE OUR—
NEW PLASTIC FLOOR COVERINGS
NEW AND USED
FURNITURE BARGAINS
—AND—
REAL ESTATE

Marrs & Lewis Furniture Co.

West of the Court House

Coleman



Burned Clay BUILDING MATERIALS

Hollow Tile

Common and Face Brick

Martin Brick Company

1110 Cottonwood

Coleman, Texas

—USE OUR—
A. B. C. BUDGET PLAN
ON ANY OF THE FOLLOWING
WORK AND MATERIALS

ASBESTOS SIDING — RE-ROOFING
PAPERING and PAINTING
ADDING ANOTHER ROOM
Any Non-Residential Work Such As
Brooders or Other Farm Buildings

Payments Up To 36 Months
With No Down Payment Required

South Texas Lbr. Co.

PHONE 26

"Straw Vote"

Santa Anna News BALLOT

FOR PRESIDENT
(Vote for One)

ALDAI E. STEVENSON

ESTES KEFAUVER

ALBEN W. BARKLEY

BRIEN McMAHON

RICHARD B. RUSSELL

ROBERT S. KERR

EARL WARREN

DOUGLAS MacARTHUR

HAROLD E. STASSEN

ROBERT A. TAFT

DWIGHT D. EISENHOWER

Any Other Choice

FOR U. S. SENATOR
(Vote for One)

PRICE DANIEL

TOM CONNALLY

Any Other Choice

FOR CONGRESSMAN,
21ST DISTRICT
(Vote for One)

IRA GALLAWAY

O. C. FISHER

Any Other Choice



Bill Hinds

- Would you like a salary when too old to work?
- Would you like to have your hospital bills paid?
- Will your widow be able to pay the mortgage?
- What kind of home could your widow afford?
- Do you want college training for your children?
- Will your "Uncle" get a big part of your estate?
- What about something nice for your grandchild?



Curtis Lindsey

In Addition To Life, Hospitalization, Accident, Polio and Burial, we are now equipped to handle Your ...

FIRE, AUTOMOBILE and CASUALTY INSURANCE
SEE US FOR ALL YOUR INSURANCE NEEDS

Your Business Appreciated. Office Over Bowen Drug

HINDS & LINDSEY INSURANCE AGENCY

Coleman, Texas

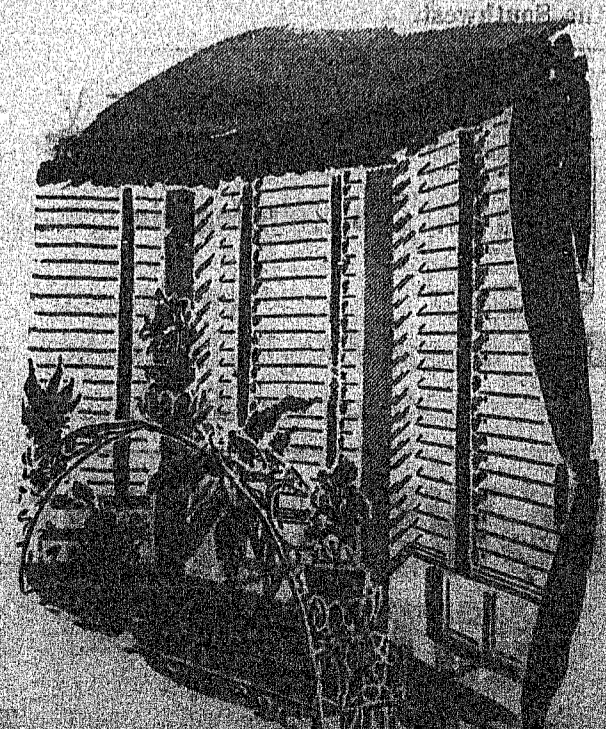
Phone 9-2829

Venetian Blinds

MADE TO ORDER
PRICED FROM
30c to 60c Sq. Ft.
FREE ESTIMATES

Coleman Venetian Blind Company

413 W. Liveoak - Coleman
Phone 8106



Rockwood News
By Mrs. John C. Hunter

Bro. Harold Parker preached at the Church of Christ at the Sunday Services.
Sunday Services at the Methodist Church were conducted by the Rev. Don Jopling, pastor. Tom Bryan was a patient in Coleman hospital Sunday and Monday and went to San An-

gelo Tuesday for further treatment. Mrs. Bryan is also on the sick list.
Mr. and Mrs. E. D. Black and children of San Angelo spent the week end in the Bryan home.
Mr. and Mrs. Carl Buttry were in Ft. Worth Saturday to attend the Ice Capades. They came home by Stephenville Sunday and attended the State Singing Convention.
David, son of Mr. and Mrs. Elec Cooper was ill last week with measles.
Harold Parker visited Sunday afternoon in the R. L. Steward home.
Mrs. Mary Avants of Odessa, came Saturday to visit with her son J. T. and family.
Mr. and Mrs. J. A. Hunter and Don spent the week end in Austin with their little daughter, Mrs. Tony Glass and family.
Mr. Bob Steward visited Sunday afternoon with Mr. Charlie McCarrell.
Mr. and Mrs. Clyde Box and Don spent the week end with Mrs. J. W. Box and Miss Linnie.
Mrs. Bill Steward and daughter, Kay, spent the week end in Ft. Worth visiting Mr. and Mrs. Miller Box and Jerry, and attending the Ice Capades.
Miss Billie Wise of San Angelo and Mrs. Jake McCreary visited in Ft. Worth with Misses Colleen and Kelly Wise and attended the Ice Capades.
Mr. and Mrs. Norman Hardy, Freddy and Bill of San Saba, spent Sunday with Mr. and Mrs. C. F. Nevans.
Mr. and Mrs. Marshall Campbell of Santa Anna and Mrs. Claud Box were among those going to Ft. Worth for the Ice Capades.
Week end guests with Mr. and Mrs. Dave Ellis were Mr. and Mrs. Doc Ellis of Colorado City, Mr. and Mrs. Denver Ellis of Junction, Mr. and Mrs. Erceil Ellis of Dallas, Mr. and Mrs. Dillard Ellis and Mr. and Mrs. Sherman Hellman and family.
Barbara Jane McIntire is home after spending 10 days in a Brownwood hospital.
Mrs. Sam Estes, Mrs. Ernest Heilman and Mr. Hyatt Moore were in Coleman Monday morning with Mrs. Bruce Snodgrass who received surgery at the Coleman hospital.
Roy Foreman of Abilene and Mrs. Cleveland of Balrd spent Saturday night with Mr. and Mrs. Hyatt Moore. Miss Lizzie Fowler of Coleman is spending the week in the Moore home.
The women of the W. M. S. met at the Baptist Church Monday afternoon in a Royal Service program.

Miss Alta Lovelady of Santa Anna and Mrs. Lon Gray were Sunday afternoon guests in the F. E. McCreary home.
Mr. George Ryan has been visiting his daughter, Mr. and Mrs. Roy Blackwell. They spent the week end in Stephenville with Mr. and Mrs. Roland Caudle.
Mr. and Mrs. S. H. Estes and Sunny Ann of Sweetwater spent the week end with Mr. and Mrs. Sam Estes and Raymond.
Week end guests with Mr. and Mrs. A. L. King and Mrs. J. C. King were: Mr. and Mrs. Brian Harden of Ft. Worth and Mr. and Mrs. Gerald Sitterle and Susan Kay of San Antonio.
The 4-H girls were in Coleman Saturday for the Judging Contest.
The Jim De Leon family are grateful to the ones who gave them cash contributions after all their household things were burned when a fire destroyed the house owned by Carl Buttry.

Mr. and Mrs. Claude Phillips S. E. Blanton and boys.
Mr. and Mrs. Danye Bryant and boys of Abilene visited Sunday with Mr. and Mrs. Ben Herring.
Mr. and Mrs. Lewis Jordan and Dawn of Brownwood, Mr. and Mrs. R. I. White, Bobby and Carolyn of Ft. Worth, Cpl. and Mrs. Gene Griffin and Anne of Ft. Hood were week end visitors with Mrs. H. M. Smith.
Mr. and Mrs. L. V. Cupps from New Mexico spent the week end with Mr. and Mrs. William Cupps.
Mrs. James Ford and son visited Sunday evening with Mrs.

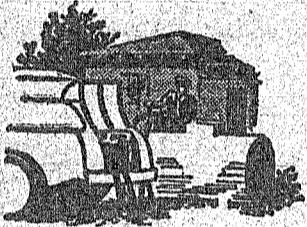
Mr. and Mrs. O. L. McGahey of Ballinger, Mr. and Mrs. Glenn Sullivan of Brownwood and Mr. and Mrs. A. L. McGahey and Mrs. Marvin Green and Terry of Santa Anna, were visitors in the W. L. Campbell home Sunday.
Mr. and Mrs. C. L. Avery and children of Abilene visited Sunday with her parents, Mr. and Mrs. John L. Williams.

Mr. and Mrs. O. L. McGahey of Ballinger, Mr. and Mrs. Glenn Sullivan of Brownwood and Mr. and Mrs. A. L. McGahey and Mrs. Marvin Green and Terry of Santa Anna, were visitors in the W. L. Campbell home Sunday.
Mr. and Mrs. C. L. Avery and children of Abilene visited Sunday with her parents, Mr. and Mrs. John L. Williams.

USE



- Clean and Safe
- Best For Heating
- Higher BTU Rating
- Best For Cooking
- Approved By Architects
- No Muss
- No Fuss



Prompt Delivery
PHONE 8371

Coleman
Butane Gas Co.

Cleveland News
By Mrs. M. F. Blanton

The nice rain was wonderful, guess we can go to work now.
Mr. and Mrs. Will Campbell from Floyada visited Saturday night and Sunday with Mr. and Mrs. M. F. Blanton and Ann. Mrs. Campbell is Mrs. Blanton's sister. They went on to San Angelo Sunday to visit Mr. and Mrs. Steve Scott.
Bro. Jimmy Cantwell of Blanket preached at the Church of Christ at Cleveland Sunday.
Mr. and Mrs. Virgil Lancaster visited Sunday with Mr. and Mrs. Fred Haynes.
Mr. and Mrs. Emmet Terry and Sharrie attended church at Cleveland Sunday and took dinner with Mr. and Mrs. Elmer Cupps.
Mr. and Mrs. M. F. Blanton and Ann visited Sunday evening with Mr. and Mrs. Mace Blanton in Santa Anna.
Mr. and Mrs. Vernon Herring and children of Santa Anna, visited Sunday with Mr. and Mrs. Ben Herring.
Mrs. Drisco Woods and daughter were shopping in Brownwood Saturday morning.
Mr. and Mrs. J. D. Howard visited Friday night with Mr. and Mrs. Virgil Lancaster.

Notice To Parents

With Reference To City Ordinance No. 19, Section 2, We Call Your Attention To The Following:

It has been brought to our attention that in recent weeks some of the boys of our town have been shooting out street lights and otherwise destroying Private Property. This is a violation of the law and parties caught in the act, or proven guilty of such actions, will be prosecuted to the limit of the law.

These Violations Must Cease At Once!

We Urgently Request The Co-operation Of Parents In This Matter

BY ORDER OF THE CITY COUNCIL
C. E. Flint, Mayor Pro-tem

Let's get down to brass tacks and the PLAIN HARD FACTS

Here's why a Chevrolet truck means dollars-and-cents savings!

Size up the four facts why a Chevrolet truck cuts down your hauling or delivery costs.

But there's more to it than that. It's the greatest truck to drive you ever got your hands on. Easier Ball-Gear Steering. Clutch smooth

and easy. Fast, quiet Synchro-Mesh transmission that eliminates double clutching. Roomy cab with five feet of hip room, ventipane windows, and seats with double-deck springs.

Come in and let us show you.

FACT No. 1

You pay less to buy!

FACT No. 2

You save on cost per mile!

FACT No. 3

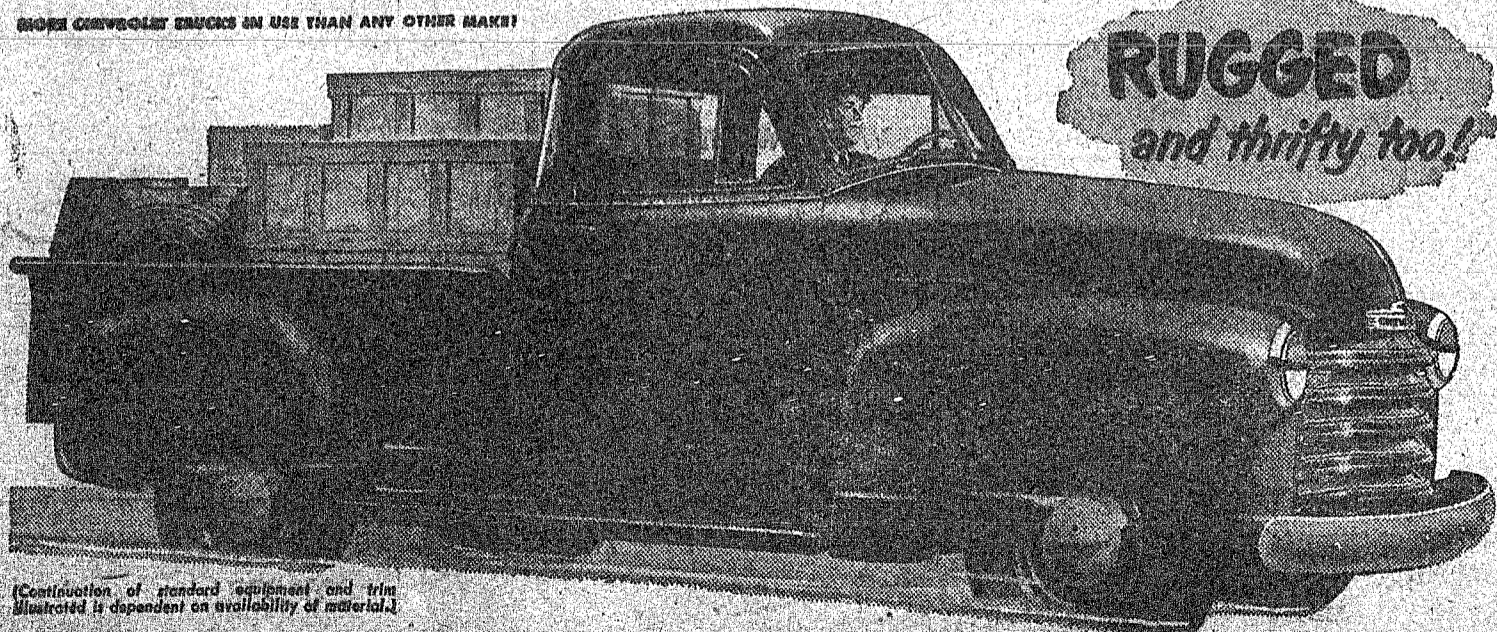
You get the right truck for the job!

FACT No. 4

Your truck investment is safer!



HIGHER CHEVROLET TRUCKS IN USE THAN ANY OTHER MAKE!



RUGGED
and thrifty too!

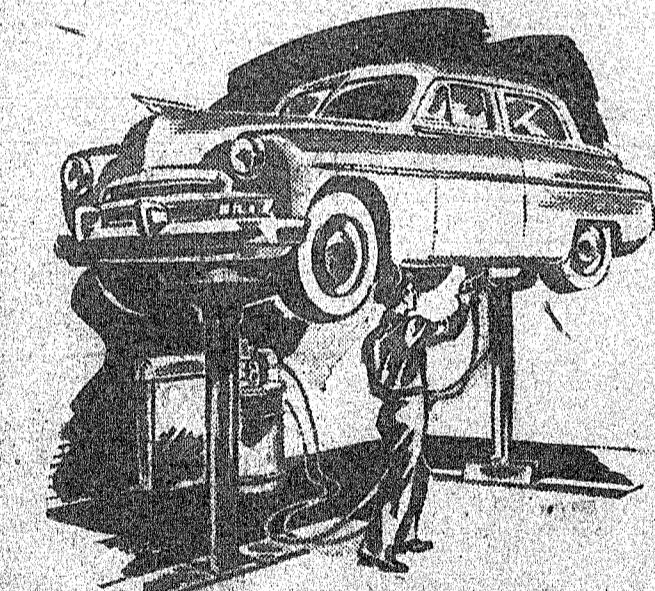
Configuration of standard equipment and trim illustrated is dependent on availability of material.

EARL MORRIS CHEVROLET COMPANY

114 East College

TELEPHONE 9161

Coleman, Texas



It's Time We Gave Your Car A Lift!

... And a complete Spring inspection and servicing. First, we'll wash the car and lubricate the chassis ... drain and refill the transmission and differential and repack front wheel bearings and rear springs. Then we'll drain the crankcase, lower the car, check battery, lubricate generator, and distributor, refill the crankcase and check tires.
YOU drive out in a car that runs like NEW. Cost, surprisingly moderate. Come in today.

WE HAVE ALL KINDS OF OIL MECHANIC ON DUTY



Goodyear Tires and Tubes

TALLEY'S

SINCLAIR SERVICE STATION

Thoughts

(Continued from Page One)

take impeachment proceedings against the President. This is a very complicated process and in the course of history of our nation has only been attempted one time and was not successful then. It is very doubtful that proceedings will get very far. This is the second time impeachment talk has been started against President Truman.

We would hate to see our President impeached, but at the same time we would like to see the man act a little more in line with his Constitutional privileges and with the guarantees to the people that this nation was founded on.

CITY ASKS HELP OF PARENTS

During the past few weeks some of the younger boys of our town have been shooting light bulbs out of street lights and damaging other private property. This is a strict violation of the law and the city officials are requesting the cooperation of parents in the matter of getting the violations stopped. Fines for violations of this nature can run as high as \$200 and if the violations are not stopped, violators will be apprehended and prosecuted.

BOARD OF EQUALIZATION TO MEET IN MAY

Dick Bass, City Manager, said the Board of Equalization will meet in May and all property not rendered for taxation by the end of April will be rendered by this board. The city is requesting all property owners to render their property before the end of this month. It will save the Board a lot of time and there is a possibility of it saving the property owner some money also.

Our WASHINGTON Letter



Note: This weekly Newsletter is being written this week by Miss Pat Capps of Brownwood, a Secretary in Congressman Fisher's office.

This is about my first experience in newspaper reporting. Congressman Fisher is in Texas this week while the Congress is in recess. Every year during the Easter period the Congress takes a 10 day recess. So Mr. Fisher asked me if I would like to fill in for him with his weekly column while he is away. So this is my chance.

Perhaps it would be of interest to report to you something

about what it is like to work in a Congressman's office in Washington. I like it very much. It being the seat of the government, there is a lot going on all the time. Because Mrs. Fisher did not arrive here until about the middle of January, I was able to use the pass issued for her to listen to the President when he delivered his annual State of the Union message to a joint session of the Congress. It was very impressive, sitting in the gallery and watching the Senators march in, then the Diplomats, Supreme Court Justices, and others. The gallery was packed, as I understand it always is on occasions like that. Cameras, radio microphones, television machines, etc. are grinding away, as the spotlight is directed at the President, the Speaker and the Vice President.

In the office we are kept very busy. A good many visitors from Texas come in to see us, and that is always a special pleasure to all of us. It gives us a chance to talk with our friends, and many times Mr. Fisher is able to make appointments for them and often accompanies them when they have engagements to talk with various people connected with the government.

Some of our work is routine, but what I think I enjoy most is opening the mail in the mornings. Every letter is different, and they are all very interesting. After the mail is opened it is placed on the Congressman's desk, and then he goes to work answering, obtaining information requested, or otherwise trying to help the constituent solve his problem. We get a good many letters from veterans or their families regarding rights, problems and other things. We are able to help out in many of these, send copies of laws, rulings, find out about the status of bills the letters refer to, and check with the Veterans Administration on appeals, etc. We also get a good many letters regarding farm and ranch problems.

Mr. Fisher spends about two hours each day in committee hearings. He is on the Armed Services committee, and has done a lot of work the past year on a subcommittee known as a Procurement Watchdog Committee, of which he is vice-Chairman. That committee investigates reports of waste and improper methods of contracting. I think the committee has been able to save the Taxpayers many millions of dollars. It has received a lot of praise in the press here in Washington.

Then, when the House meets, usually at 12 o'clock noon, the Congressman attends, where he often takes part in debates on subjects in which he has an interest. That has been particularly true this year when most of the sessions have dealt with appropriations. And, as every one knows, Mr. Fisher is a strong believer in strict economy. He spends quite a bit of time working with other Members in obtaining cuts on unnecessary spending that are proposed.

Miss Gay Turner left last week on an extended visit with a friend, Mrs. Era McClellan, in Washington D. C. and a sister, Mrs. Ross Mitchell in New York. Returning home she will visit with Buster Turner in Indiana.

First Baptist Church News

Intermediate Day has been planned for Sunday, April 27, at the First Baptist Church. The youth will help in the services and the pastor will bring the message, "Youth for Christ."

A Training Union Revival will be conducted April 28 to May 1. There will be a place for every age group. The services will be nightly at 7:30 p. m. This will be followed with a Week-end Youth Revival, May 2-4.

George Havins will be the speaker for the Week-end Youth Revival. George is well known around here and he has a message for young and old. Everybody is invited.

The Sunday School Superintendent, Artie Irby, and Pastor, Harry C. Wiegler, attended the Sunday School Convention at Longview last week, along with Mrs. Irby and Mr. and Mrs. Vernon Rowe. Mrs. Irby is the Supt. of the Extension Dept., Mr. Rowe is the Associate Supt., and Mrs. Rowe is Supt. of the Junior Dept. of the local Sunday School. Plans are being formulated to do more extensive Bible Teaching.

The women of the church have been engaged in Cottage Prayer Meetings this week under the direction of the Community Missions Chairman, Mrs. Vernon Rowe, and the Circle Chairmen: Mrs. Dovie Chapman, Mrs. Ed Bartlett, and Mrs. Richard Horner.

Most of the world's supply of helium is produced around Amarillo, Texas.

LETTERS TO THE EDITOR

THE TIDELANDS ISSUE

I am in an exact mood to sound off to the old home town paper feeling that I might be instrumental in enlightening you who may not have had the opportunity of seeing the physiological picture as it really exists geographically.

I live in a country that has more water as per size of square area than any country in our great and unexcelled State. Part of this water is marshy and unfit land, or has been.

But now comes oil. Our country had none. The State of Texas leased this marshy or unworthy land to the oil companies. Now there are derricks every direction of the compass from where I live. The lease was cheap and they have gone for this tidelands to a greater advantage than to drill on good land, because of the greater pooling of acreage, than to drill on mine or my neighbor's land. They don't have to worry about arguments and lawsuits of ownership. I can stand at one point and count hundreds of wells out in this water called tidelands and I mean hundreds from one major point with many many others wildcatting for the same goal (a field).

Speaking from the angle of taxes is now where you, the reader comes in, just as authentic as I the resident adjoining a small part (very small) of this tidelands. Maybe you had never thought of the enormous amount of tax your state takes on one of these oil wells (just one). Your take as a land owner in

Coleman County is just the same as mine, per tax dollar, in Arkansas County.

I don't see our people of Texas as being the type people to sit idly by and allow the Federal Government to steal this Texas valuation that by right of Charter and Constitution is ours.

We elect Senators and Representatives to Washington to handle our business. All truly those inland states will take all the Federal Government will hand them. Our Federal Govern-

ment is gradually taking over private enterprise inch by inch. Our country boundary has over half water. It is ours and does not belong to the Federal Government. The State has always been qualified to handle its own business and pays its bill to the Federal Government.

I, as one little cog of this great wheel, feel that we, the people of Texas, should be in courts from now on or let the Federal Government know they earned those tidelands before

they were relinquished. The Federal Government gets a tax on those wells, so why take ours as a booty.

If the Federal Government takes the tidelands, we the people of Texas lose millions and millions of tax dollars. Your Congressman likes to have you let him know you are wholeheartedly behind this tidelands move.

Thanking you for this visit, Guy Epps, Rockport, Texas.

<p>ADAMS ORANGE JUICE 46 Oz. Can 25¢</p>	<p>Jell-O Assorted Flavors 3 Packages 25¢</p>	<p>Tea Garden GRAPE JUICE 46 Oz. Can 49¢</p>
--	---	--

DINNER WINNERS EVERY TIME...

OUR HOME PLATE Specials!

PIGGY WIGGLY

Kimbells — Peach or Apricot Preserves ² lbs. **.49**

Curtiss Miracle-Aid 6 Pkgs. **.25**

CRISCO
3 Pound Can
79c

Fine For Baking **BEEF RIBS**, Pound **.39**

Wilson's Sliced **BACON**, Pound **.35**

Wilson's — Ready To Eat **PICNIC HAMS**, Pound **.39**

Fresh Ground **Hamburger Meat**, Lb. **.55**

ARMOUR'S
Peanut Butter
9 1/2 Oz. Glass,
19c

DIAMOND
Pork & Beans
3 CANS
25c

Gooch Macaroni & Spaghetti **Foods** 12 oz. pkg. **.15**

Florida **ORANGES**, Pound **.07**

Pascal Lge Stalk **CELERY**, **.19**

CARROTS ONIONS RADISHES Bunch **.05**

PIGGY WIGGLY
FIRST CHOICE OF HOUSEWIVES EVERYWHERE!

Double S. & H. Green Stamps Every Wednesday With \$3.00 Or More Purchase

Queen Theatre

Friday and Saturday
APRIL 25 and 26
LUM and ABNER

—IN—

"So This Is Washington"

Sunday - Monday
And Tuesday
APRIL 27, 28 and 29
Bob Hope - Hedy Lamarr

—IN—

"My Favorite Spy"

Wednesday - Thursday
APRIL 30 - MAY 1
Van Johnson - Dorothy McGuire
Ruth Roman

—IN—

"Invitation"

OPPORTUNITY

To parents who wonder...

Are you wondering what your high school son is to become?

Is he headed for the overcrowded professions?

If these questions bother you, consider this:

PRINTING, one of the world's oldest crafts and one of the greatest industries, needs trained men.

Your boy doubtless can be trained for this interesting and profitable calling. It offers the greatest opportunity of any industry, the highest pay, and a wonderful opportunity for advancement to executive positions.

Write for information.

SOUTHWEST SCHOOL OF PRINTING