

The chairman of the House Naval Affairs committee reports that, after thorough investigation, only 5 percent of the war contractors were found making excessive profits. These can be automatically sifted out by the Department of Internal Revenue in computing income taxes, so why employ an army of thousands to examine the books of the 95 percent who are honest.

95%

Profits of 95 percent of war contractors do not exceed 2 percent after taxes.

Only 5 percent of war contractors are found to make more than 2 percent after taxes.

5%

YOUR STAKE IN THE COST OF WAR

Profits on war contracts... The chairman of the House Naval Affairs committee reports that, after thorough investigation, only 5 percent of the war contractors were found making excessive profits.

Time, the chairman has been... Congressmen... The chairman of the House Naval Affairs committee reports that, after thorough investigation, only 5 percent of the war contractors were found making excessive profits.

TRIM SHIP FOR ACTION!

Are there any ways to save... Every individual is allowed a credit against his net income which varies with his domestic status, that is, whether he is (a) a single person, (b) a married person living with husband or wife, or (c) a head of family.

PERSONAL EXEMPTION FEDERAL INCOME TAX

Every individual is allowed a credit against his net income which varies with his domestic status, that is, whether he is (a) a single person, (b) a married person living with husband or wife, or (c) a head of family.

NATIONAL SOCIAL HYGIENE DAY FEB. 3rd.

Austin, Texas, Jan 16: The Seventh National Social Hygiene Day will be observed in Texas on Wednesday, February 3, 1943, Dr. Geo. W. Cox, State Health Officer and Chairman on Health and Emergency Medical Service, announced in Austin today.

Stores Urged to Keep Advertising

"The store that keeps up a running fire of cheerful, helpful advertising during the public's trials and tribulations is the store that will have the first dance when the music begins to play again," Bernard F. Gimbel said today in discussing how to advertise in war time.

ATTENTION

We Repair All Sizes - CAR TIRES - TRUCK TIRES - TRACTOR TIRES OK RUBBER WELDERS 301 East Broadway BROWNWOOD

WANTED---to Buy Your PRODUCE OFF WOOL, Etc.

Our Policy---Harry to receive as much as Tom and Dick. JONES PRODUCE Phone 30

R. E. L. ZIMMERMAN

Income Tax Accountant and Consultant. 409 Office Building Coleman, Texas

Money For Cotton Equities

There is a good demand for 1941-2-1942-3 Cotton Equities at SIMPSON GIN OFFICE PHONE 289

Planting Seed

We have garden and field seed in bulk, also seed potatoes. See us for your feed. Watkins Feed & Seed Store

PLANT YOUR VICTORY GARDEN, NOW!

Buy Certified Seed - CALL your local seed merchant or your County and Home Demonstration Agent for Planting Information and CALL Your Bowen Bus Agent for the New WAR TIME Bus Schedules

USELESS SPENDING

Senator Harry F. Byrd, in a recent press release, said in part: "The United States Civil Service Commission reports as of August 31, 1942, that there were 2,000,000 employees of the United States government. On Armistice Day, November 11, 1918, there was a total of 917,700 civilian federal employees. We have three times that many now.

to mean in the tax burden of the next generation. Curtail Civic Spending No one wants to limit a single activity necessary to win the war, but just ordinary common sense and economy indicate that every unnecessary civic expenditure should wait until the emergency of war has passed.

WE ARE AMERICANS

Our United States is a government by all, conceived and dedicated by and with the consent of the governed. It constantly promotes individual dignity, worth and opportunity; guarantees to every citizen freedom of religion, speech, assembly, press and petition; safeguards private property; maintains equal justice before the law; provides free schools for all, and constantly seeks social and economic security and the blessings of liberty for young and old.

Of 270 ex-students mentioned in the latest news letter of the department of petroleum engineering at the University of Texas, 108 were serving in the armed forces, most of them as commissioned officers in the Navy.

Texas is the greatest food raw materials producing state in the union, Dr. A. B. Cox, director of the University of Texas Bureau of Business Research, has discovered, but it lags far behind in food manufacturing, ranking only 15th among the states in this field.

Spread and save meat flavor with sauces. Give and get more servings with gravy. Treasure all tidbits of meat, scraps of fat, and drippings. Scrape the serving platter clean--and the cooking pan too. Some of the finest meat flavor for sauce and gravy may be "browned on" the bottom of the pan. Don't make the mistake of washing it away in the dishpan. And remember that the secret of making a smooth thickened sauce or gravy is to blend flour with fat in equal quantity, then add cool or lukewarm liquid gradually while stirring the mixture over low heat. Proportions are: 1 1/2 to 2 tablespoons each of flour and fat with 1 cup of liquid. Several different liquids may be used in making sauce or gravy. The Juice that cooks out of roasted or braised meat or broth make by stewing bones is best for a brown gravy. Tomato juice may also be used, or the liquid, drained off cooked vegetables.

When you're number's called you've got to go. We're calling you now to give your scrap metal to the Army.

4-H Club Girls Improve Landscapes

COLLEGE STATION, Feb. 18.—The scrap salvage drive during 1942 had other good results than rounding up the waste iron and rubber on the farms. Sadie Hatfield of the A. and M. College Extension Service staff says that during the year 4,011 members of girls' 4-H clubs in 72 counties reported improved landscapes. She's the specialist in landscape gardening.

All of these girls took an active part in collecting cast-off materials sought to help the war effort, and disposal of it led to improvement of farm-home sanitation. After completing these basic jobs the girls were ready for the next step. Some of them succeeded in getting fences, gates and steps repaired. Others helped to put up neat clotheslines and repair outbuildings. Usually the girls liked to have their meetings held out of doors, and many requested their county home demonstration agents to hold them at the home of the landscape demonstrator.

Many other useful things were learned by these 4-H Club members and their families, Miss Hatfield observes. County home demonstration agents and club sponsors arranged tours to nurseries and woods so that members of the clubs might learn to identify grasses, shrubs, and trees suitable for home landscaping. They bought some of these with money received from sale of salvage, and also learned how to grow them from seeds and cuttings.

The girls showed much interest in arranging and furnishing outdoor living rooms and open air areas for playing games. Most of the furniture and equipment for games were made by the girls and members of their families. The girls also proved themselves good neighbors, and displayed qualities of leadership by teaching other persons to identify shrubs, and by sharing with them their knowledge of landscaping.

Mrs. Bill Earnhart left Friday night for Oklahoma to join her husband who is stationed there.

Leaday Girls 4-H Club

One of the best tonics for spring and every other season is food providing plenty of B vitamins, stated Miss Jewell Hipp, County Home Demonstration Agent, at a meeting of the Leaday Girls 4-H club, February 9.

This group of vitamins in your food can give you a lift without a let down—may change just fair health to buoyant health—may steady the nerves—even improve a frayed disposition, further stated Miss Hipp. The importance of vitamin B was illustrated in a salad made by the Agent and served to the girls. The 4-H girls are to make and style their aprons at the meeting in March following the demonstration by the Agent. The girls will also prepare and serve salads and fruit dishes for their food production work this month. The Leaday girls each will carry poultry demonstrations and most will have gardens. The following captains were appointed by Annette Stephenson: War Activities—Wanda Jean Allen, Poultry—Lucille Calder, Food—Frances Mosley, Clothing—Sue Wilson.

The next meeting will be February 23, at which time Miss Dorothy Sparks will help the girls with making Waste Paper Baskets.

Austin, Texas, Feb. — A naval training program started at the University of Texas when the first graduates of the Naval R. O. T. C. here receive their commissions as active service immediately.

Through a speed-up program which was started last fall, 12 selected men in the junior class were allowed to take both their junior and senior work in a single year. They will receive their college degrees and navy commissions in June. Thirty-three other men who enrolled in the first R. O. T. C. class will be commissioned at the end of next year.

You will be able to get second helpings of horse meat. A new daily double.

THE GALS BACK HOME

A petition is circulating back home asking the War Department to prohibit the marriage of American soldiers and foreign girls. The woman who sent us a copy explained that it has at least 200,000 signatures, and said that unless some such measure is taken "American girls must face barren lives of spinsterhood after the war."

If this petition proves anything, it is that the girls are getting anxious. That's news since some of us had the idea a lot of babes weren't waiting for us. But we'll let that pass. If such a regulation were imposed preventing our marriage overseas, then we'd have a perfect right to demand a law at home preventing the gals from hitching up in our absence. It certainly ought to work both ways.

Anyway, the girls who have fixed up this petition are off the beam. Many of us haven't seen a marriageable woman in months. Religious and racial differences complicate matters in most overseas areas, providing there are any women around at all. And plenty of red tape has been thrown in the way of foreign alliances by the CO.

Statistics show that in the last war when 1,971,000 men were overseas, some for as long as 18 months only 6,000 married foreign girls and after a year of this war there have been only about 1,000 overseas weddings involving our troops.

The gals wouldn't need to worry about spinsterhood if they wrote us often that the sweet things they said before we left still count, and that they're waiting for the day when we'll be home again.

If they'd do that, they wouldn't need any WD orders, and there wouldn't be a foreign woman alive who could compete against them.

—YANK, The Army Weekly

4-H Club and FFA Boys Are Doing Good Work.

SEE THE CLUB'S

FAT STOCK SHOW

SATURDAY, FEBRUARY 20, 1943

at Wool Warehouse
Santa Anna

Show Opens at 10 a.m. Judging at 1 p.m.

AUCTION SALE

Of Grand and Reserve Champions
After the Judging

YOU'LL MISS IT----IF YOU MISS IT

All are invited to come and see the show
---encourage the boys and get an inspiration yourselves by attending.

Sponsored By The
Santa Anna Chamber of Commerce

This Ad of Publicity Made Possible
By the Following Firms:

- Santa Anna News
- Santa Anna National Bank
- Loyd Burris Dry Goods
- Purdy Mercantile Co.
- Grammer's Department Store
- Abernathy Texaco Station
- Coleman Gas and Oil Co.
- Magnolia Service Station
- Santa Anna Beauty Shop
- Santa Anna Gas Co.
- Phillips Drug Co.
- Williamson Shoe Hospital
- Western Auto Associate Store
- Dennis Hays Market
- Lowery Pharmacy

- Vinson Grocery Store
- Chamber of Commerce
- Hosch Furn. and Undertaking
- Griffin Hatchery
- Boardman Service Station
- Leeper Curd Lumber Co.
- Santa Anna Produce Co.
- Watkins Feed and Seed Store
- Burton Lingo Co.
- Evalyn's Cafe
- Service Cafe
- Blue Bonnet Cafe
- Santa Anna Telephone Co.
- Radio Electric Shop
- Speck and Lewis

School Children!

There will be a

Special Announcement

for you in our next week's ad

Be sure to watch for it

COLEMAN COUNTY STATE BANK

Member F. D. I. C.

WANTED

Fifty Men and Women to enroll in a course in **Victory Home Gardens**

This course will be taught at the **HIGH SCHOOL**

each afternoon from 3 to 5 for ten days **BEGINNING**

Monday, February 22

THIS COURSE IS FREE

If you know how, Come!
If you don't know how, Come!

Join the Nation's Army of Food Producers

The Santa Anna News

ESTABLISHED 1886

J. J. GREGG Editor and Owner
PUBLISHED EVERY FRIDAY
AT SANTA ANNA, COLEMAN COUNTY, TEXAS

No of entertainments where a charge of admission is made... and all news published as news items will be charged for at the regular rates.

Advertising Rates on Application

Any erroneous reflection upon the character of any person or firm, or misstatement of facts, appearing in these columns will be edited and promptly corrected upon the matter being called to the attention of the management.

SUBSCRIPTION RATES:

In Coleman County \$1.00 Per Annum
Outside Coleman County \$1.50 Per Annum

Entered at the Post Office at Santa Anna, Texas, as second class mail matter under the Act of Congress of Mar. 3, 1879

SUNDAY SCHOOL

LESSON

IMPROVED INTERNATIONAL LESSON

Lesson for February 21

Lesson subject and Scripture texts of lesson prepared by the International Board of Christian Education, used by 1,000,000.

JESUS THE GOOD SHEPHERD

GOLDEN TEXT: John 10:11, 27-30. I am the good shepherd and my sheep know my voice and follow me...

Important and meaningful as they are, most of the other figures or types of our Lord's redemptive work have a story or special truth that the good shepherd. Even those who have never tended sheep nor yet seen them under the shepherd's care...

The center of the picture is the Good Shepherd, and it is around Him that we group our thoughts.

I. He Knows His Sheep (vv. 15). At night, whenever possible, the sheep were brought into a fold, a wall-enclosed enclosure with shelters and with a single gate. Many different folds were kept under the shepherd's charge.

When the shepherd called, his own sheep responded. We are told that they would not come at the call of a stranger—not being ready to trust him.

The application is obvious, and yet a word is in order. We ought to examine ourselves and see whether we do indeed know our Lord's voice. Do we respond when He calls us? Then, too, let us be on the lookout against those who profess to be shepherds, who call themselves "pastor" or "reverend," and have only one purpose—to discredit the sheep. They are "thieves and robbers"—Jesus said so. They are not shepherds at all.

II. He Protects His Sheep (vv. 10, 11). Not only thieves, but wild animals would attack sheep, and it is said that often the shepherd died to protect them from harm. But the hiring, striving for what he can get out of it, is not interested any longer. When danger appears, he flees. He has not the real shepherd heart and does not if the sheep be destroyed. Hiring a man to enrich himself, he will not defend them at the cost of his own life.

Note the sharp contrast of "I am the good shepherd" with the dark picture of the faithless hirelings. Not only does it magnify His goodness, but it deepens the blackness of their treachery.

We should recall that the Good Shepherd is able to protect His sheep, for while He lays down His life for them, He takes it again in victory over sin and death (see vv. 17, 18). The sheep, so, seemed to have been defeated at Calvary, but He arose again, and ever liveth to make intercession on our behalf (Heb. 7:25).

III. He Seeks Other Sheep (v. 16). The other sheep Jesus had in mind were probably the Gentiles. The believers He then had were Jews, but the day was to come when the Gentiles were to hear and believe. His desire for them may well stir in our hearts an eagerness to go out and bring all, both Jew and Gentile—who win, by believing in Christ, become members of His one fold.

Note the word "must" in verse 16. It does not say "if convenient," nor "when we can raise enough money," nor "after our legal debts are paid," we will go out and seek others. There is a duty imperative here—it "must" be done.

Let us not fail to gather the full significance of the expression "one flock, one shepherd." We are not interested in any manufactured unity of man-made organizations. Certainly we will not accept union which means compromise of essential truth. But unity under Christ, the one great Shepherd, that we want—yes and will have. He makes that certain—"they shall be one flock."

IV. He Keeps All His Sheep (vv. 27-30). These words (said after a period of weeks had elapsed) stress the blessed assurance which comes to those who follow Christ. Jesus rebuked the Jews for their unbelief, telling them that they were not His sheep.

Those who are His have been given to Him by the Father—an eternal gift to Him—and He gives to them eternal life.

The power back of this whole matter is evident in verse 30. Christ is God. He who is in Christ's hand is also in the Father's hand, "and no man is able to pluck them out of the Father's hand." Instead of trying to modify that statement, or to quarrel with those who believe it, every Christian ought to accept it and shout "Hallelujah!"

Church Notices

CHRISTIAN CHURCH

Bible School 10 A. M. Geo. P. Richardson, Supt. Communion and preaching service 11 A. M. Ernest H. Wylie, Pastor.

Methodist Church

Next Sunday at 11:00 A. M. February 21, our Service Flag with star for each of our men now in war service will be dedicated. The Honor Roll will be called and appropriately placed in the church.

All members and friends are requested to be present, and especially all families of the men now in war service.

This will be an impressive and helpful service for all present.

—H. C. Bowman, Pastor

First Baptist Church

Sunday School 9:45 a. m. Preaching services 11: a. m. and 8 p. m.

Training Union 7 p. m. W.M.S. meets Monday, 3:00 p. m.

Prayer meeting Wednesday night at 8 p. m. S. R. Smith, pastor.

Valera Girls 4-H Club

At a regular meeting of the Valera Girls 4-H club February 9, Joyce Titsworth presided over the business meeting. Lorena Peck, Vice-President and program chairman presented the following program: Leta Pearl Horne-Suitable apron Styles for Different Occasions and Fay Marie Marie-Suitable Materials for aprons. Miss Jewell Hipp, County Home Demonstration Agent, showed the girls an apron display and gave them information on making simple aprons. One frilly apron was shown made with 3 handkerchiefs.

The girls reported the following articles and production demonstrations started: Leta Pearl Horne-Chickens; Agnes Deanda-doll dress; Laverne Titsworth-doll dress and garden; Fay Marie-Mignon and garden; Mozelle Mosser-doll dress and poultry and garden; Joyce Titsworth-doll dress, poultry and apron; Micky Huggins-doll dress, poultry and garden; Dorothy Deanda-doll dress, poultry and garden and Lorena May Peck-garden.

A vegetable salad was prepared by the agent and served the girls and Mrs. Cecil Horne and the Agent.

Voss 4-H Girls Club

The Voss 4-H Club had a regular meeting February 9 with Ellen Pate conducting the business meeting. A short recreation period led by Juanell Guthrie was followed by the making of different types of aprons, by Miss Jewell Hipp, County Home Demonstration Agent. A joint session of the boys and girls was held stressing mobilization and expansion of 4-H work to help win the war was given by the Extension Agent. The club plans to present a 4-H play in the near future stressing the importance of 4-H club work in the youth movement. There are one half million 4-H boys and girls in the United States with a slogan "Two million or more by '44."

Boys and girls of the Voss club and all Coleman County are working to increase their membership and produce food for Victory.

Attending the meeting were 8 girls, Mrs. Jewell McMinn, sponsor and the Agents.

The next meeting will be February 23, at which time a program will be given on Waste Paper Baskets.

Talpa Girls 4-H Club

Lois Whitley presided over a meeting of the Talpa 4-H club February 5. Other officers of the club include Vice President-Jane West; Secretary-Peggy Rush; Treasure Gay Norris; Reporter-Gayle Smith; Recreation leader-Lora C. Estes and Frances

Joyce. The girls selected their production demonstrations consisting mainly of gardens, poultry, dairy and pig raising. Miss Jewell Hipp, Home Demonstration Agent showed the girls how to cut out their doll dresses and also gave them instructions on making simple aprons pointing out that each girl should wear an apron while preparing food. The importance of producing food at home was stressed and a lecture on well balanced diets was given.

There were 24 members attending the meeting and the sponsor Miss Faye Stone and the Agent.

The next meeting will be

February 19 at which time Miss Stone will give a demonstration on Making Waste Paper Baskets.

Whon Boys and Girls 4-H Club

A boys and girls 4-H club was organized at Whon school February 10 by Miss Jewell Hipp, County Home Demonstration Agent. In order for a boy or girl to become a member each must have a production demonstration which can be a victory garden, poultry, sheep, pig, or a beef calf. The following officers were elected: President-Gene Deal; Vice President, Ima Smith; Secretary, Leona May; Treasurer, Alpha Rutherford; Reporter,

Charles Blackwell and Recreation leader, Fern Bengé. Others enrolling in the club are: Billie Ruth Wallace, Leona Mae Gill, Vera Williams, David Williams, Wanda Williams, Oral Stuart, Dorothy Tennyson, Charles Bengé, Thomas Rae Rutherford, Gus Terryson and Jimmie F. Smith.

Tired of giving? You don't know what it is to be tired. The Army needs your scrap metal now.

What d'yuh know, Joe? They say the Texans are putting on a heck of a scrap metal show.

—For Victory: Buy Bonds—

Attend The FFA and 4-H Club FAT STOCK SHOW Saturday, Feb. 20 Wool Warehouse - Santa Anna, Texas Under Auspices the Santa Anna CHAMBER of COMMERCE Directed By R. B. THOMAS Vocational Ag. Teacher—Assisted By His Vocational Ag. Glass The boys have some good calves and lambs to enter in this show, and they feel proud of their accomplishments in attention and experimental feeding. The public is urged to visit the show, inspect the exhibits and ask any questions you desire about the care and management of these animals. The Show Will Be On All Day Judging Will Begin At 1 P M. Help to encourage your home boys by attending their show and manifesting an interest in their work. Any one with good animals wishing to show them is urged to bring them in for show, no awards and no judging for prizes, but for show purposes only in this class. Grand and Reserve Champions will be offered for sale at auction following the judging. EVERYBODY COME! COMMITTEE

Rockwood Girls 4-H Club Food is ammunition for fighting the war, states Miss Jewell Hipp, County Home Demonstration Agent at a meeting of the Rockwood 4-H Girls club February 10. Every effort should be put forth by each 4-H girl to produce as much food as possible. Reports show that the girls are starting on their poultry work. Rene Steward reports that she has 200 Rhode Island Red Eggs which she placed early in January and so far has only lost three. Poultry captain of the club, Jerry Box gave a report of the clothing work being done by the girls and the majority of the girls exhibited doll dresses made from the pattern given them by the Agent at the last meeting. Neta Wise, president appointed Betty Louise Rains health captain. The following new members were welcomed into the club: Marjorie Adams, Mary Ann Taylor, Wanda Williams, Leona Mae Gill, Vera Williams and Katie Mae Deane.

Attend the Club Boys' FAT STOCK SHOW and Auction Sale SATURDAY We wish to announce the Gulf Warehouse will be in charge of Mrs. Calvin Campbell for the duration of the war and she is thoroughly familiar with the business and will carry on in the same efficient manner during my absence as if I were here in person. To all especially those I might not see in person, I wish to announce the Gulf Oil Corporation will continue same as before. Personally I am leaving this week to enter training and will be out for the duration of the war. CALVIN CAMPBELL, Distributor for Gulf Products

REID Ben Franklin Store National Sew and Save Week—Feb. 20 to 27. Sew and Save and Buy War Stamps. Be sure and see our line of Flowers and Shrubbery before you buy. They were grown by Naughton's Nursery at Waxahachie, Texas. Large two year old Rose Bushes (several varieties) 25c 3 sizes Arborvitae 69c to \$1.98 All Garden and Flower Seeds 5c pkg Be Sure and Come to the Stock Show Saturday

Federal Income Tax

Credit For Dependents

A taxpayer is entitled to a credit for each person other than husband or wife, whether related to him or not, and whether living with him or not, who during the taxable year was dependent upon and received the chief support from the taxpayer...

The credit for dependents is based upon ACTUAL FINANCIAL DEPENDENCY and not mere legal dependency. It is not necessary that the dependent be related to the taxpayer, but the taxpayer must have provided more than one-half of the support...

A person may not acquire a credit for dependent by reason of support of a person qualifying as a dependent if, as a result of such support, he acquires a head-of-family exemption...

Credit for dependents may not be divided between two persons filing separate returns, but must be taken by the one contributing the chief support...

A Week of The War

The battle for Guadalcanal which ended at sundown Wednesday February 10, represents a complete American victory. Just six months after the Marine's initial invasion of the island, American forces surrounded the last remaining Japanese...

The strategy which forestalled Japanese capitulation was described by Secretary of War Stimson. A flanking movement was carried out at sea with naval support...

The value of this victory was outlined recently by Secretary of the Navy Knox. Complete American domination of Guadalcanal, said Mr. Knox, has both negative and positive value...

But Guadalcanal is not the only victory. The U. S. has won in the South Pacific. A little better than two weeks ago, Gen. MacArthur announced the crushing of the last organized enemy resistance in Papuan New Guinea...

and Navy planes attacking Munda on New Georgia group and Kiska in the Aleutians. A new Dutch Squadron is now operating with Gen. MacArthur's air forces...

Eisenhower Assumes Command

Consolidating Allied forces on the North African front, Lt. Gen. Dwight Eisenhower formally assumed his new post as commanding general of the African theatre...

Although there has been little report from allied ground forces on the Tunisian front, U. S. planes have covered wide areas of the African-Mediterranean theater...

Health Talk: Austin, Texas. That the inclusion of proper foods in the daily diet plays a very important part in the maintenance of good health was stressed in a statement issued this week by Dr. Geo. W. Cox, State Health Officer...

WASTE NONE

It's a wartime duty to see that no fat goes to waste. Here are quick tips from the Home Demonstration Agent.

Every bit of fat left from cooking may be saved and used again unless it has scorched or is too strong in flavor, says Miss Hipp.

Keep any fat from scorching and smoking. For once a fat reaches the smoking point it gets rancid and it doesn't taste good.

Save all fat drippings. Use them "as is" as seasoning.

is danger of pellagra striking at any age and either sex when the diet is consistently faulty.

To make sure that the diet contains the proper pellagra-preventive elements, it should include plenty of milk daily...

"It is not the amount of food you prepare for your table, but the kind of food included in their daily diet which will protect your family from the appearance of pellagra," Dr. Cox declared.

for vegetables and in other cooking. Or—

Use drippings as clarified fat in cooking, and mix several kinds together, if you like. Use them in pastry, hot breads, and in some cakes and cookies...

Store saved fats as carefully as you store new fats—in clean containers with tight covers. Put them where it is cool and dark and use as soon as you can.

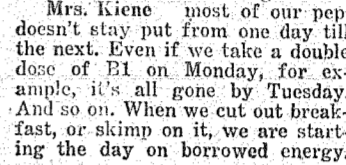
And, lastly, when there's any fat you can't use as food, save it for the fat salvage campaign. If there's a Jack Spratt in the family, save the plate waste. Render it and keep for salvage...

If you have not brought in your waste fat according to plans do so at once as the county still needs 2 lbs. per family to reach the quota of 1,000 lbs. Fat is being picked up every 3rd Thursday by a rendering plant representative.

The Home Front By Mrs. Julia Kiene Westinghouse Home Economist

Importance of A Good Breakfast

It was an almost poverty-stricken young mother who first proved to me the importance of a good breakfast. She didn't always know where the other two meals a day were coming from, but she knew that her little family was properly fed each morning...



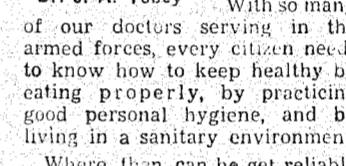
Mrs. Kiene most of our people don't stay put from one day to the next. Even if we take a double dose of B1 on Monday, for example, it's all gone by Tuesday. And so on. When we cut out breakfast, or skimp on it, we are starting the day on borrowed energy.

And fathers is more a matter of a copy stomach than of tired muscles. It's a fact that one third more work can be done directly after a meal than several hours later. Or, if only the same amount of work is done, it can be done with correspondingly less effort and the task seems easier. So if it makes it any "easier" for our growing children and hard-working menfolk to do their jobs, that just about clinches the argument in favor of a nourishing breakfast, doesn't it? Like this one:

- MENU Sliced Orange, Crisp Bacon, Griddle Cakes with Syrup, Milk, Coffee, Griddle Cakes Recipe: 1 1/2 cups sifted flour, 1 egg, beaten, 1 cup milk, 3 tablespoons sugar, 1/2 teaspoon baking powder, 1/2 teaspoon salt, 1/2 cup shortening, 1/2 cup oil, 1/2 cup raisins, 1/2 cup nuts.

PRACTICAL HEALTH HINTS Reliable Sources of Health Information By Dr. James A. Tobey

COLUMNISTS who write on health have a duty to present only reliable, accurate, impartial facts, free from bias, opinions, or propaganda. The same is true of magazine writers, radio commentators, motion picture producers, and others who offer health information to the public.



Dr. J. A. Tobey With so many of our doctors serving in the armed forces, every citizen needs to know how to keep healthy by eating properly, by practicing good personal hygiene, and by living in a sanitary environment.

State and local health departments also issue excellent free booklets on health, which are sent on request to any citizen. Write for them. Similar authoritative material can be obtained from national and local tuberculosis and health associations, child welfare societies, cancer societies, dairy councils, and the like.

The Home Front By Mrs. Julia Kiene Westinghouse Home Economist

Inbetween Meal Snacks

CHILDREN will be children, and so this question is always with us—is eating between meals harmful? Personally, I think there is a happy medium.

For example, milk, soup or cocoa with peaches, a toasted peanut butter and honey sandwich, a whole-wheat cookie or two, or toast spread with honey butter.

What's more, children love to "help themselves" and when they're old enough, can prepare such snacks as I've mentioned without any assistance.

just make a cocoa syrup ahead of time, put it in a Mason jar and it will keep for months if stored in the refrigerator. A tablespoon or more of the syrup is added to a cup of hot milk, and this also can be heated in the coffee maker.

School-age or otherwise, children "go" for honey butter spread on bread or toast. Blend 2 1/2 cups of honey with 2 1/2 cup of butter. Let butter stand at room temperature until soft enough to blend.

- MENU Cream Style Corn Soup, Layered Salad, Cream Style Corn Soup Recipe: 3 1/2 cups cream style corn, 1/2 cup corn oil, 1/2 cup milk, 1/2 cup sugar, 1/2 cup butter, 1/2 cup raisins, 1/2 cup nuts.

PRACTICAL HEALTH HINTS Home-Baked Beans Are Nourishing By Dr. James A. Tobey

WHEN I was a boy in Boston we always enjoyed savory baked beans and brown bread every Saturday night. If any were left over, which was rare, they were served cold or warmed-over on Sunday morning.

Preparations for this commendable New England custom began the night before. The beans were soaked overnight, then carefully cooked in a large stone crock the next day. The result was a homemade meal as nourishing as it was satisfying.

When dry navy beans are cooked, salt pork and molasses are always worthy additions. Both contribute pleasing flavor and good nutrition. The molasses adds food-energy and the food-minerals, iron and calcium, being a most economical and convenient source of iron. Unsulphured molasses also has small amounts of vitamin B.

Here is a practical recipe for home-baked beans from a leading manufacturer of old-fashioned molasses: Soak 1 1/2 pounds of navy beans overnight; drain, cover with fresh water. Boil 1/2 hour. Drain, save water. Put 1/2 inch slice salt pork in pot. Add layers of beans and slices of pork. To 2 cups of the water saved, add 2 teaspoonfuls of salt, 1/2 cup molasses, and 2 tablespoonfuls prepared mustard. Cover with water. Cover pot and bake in slow oven (250° F.) for 10 to 12 hours. Uncover during last hour.

Form 1040-A Individual Income Tax Return 1942. Includes fields for name, address, dependents, and a table for calculating tax liability based on gross income.

Table with columns for income levels and corresponding tax amounts. Includes instructions for using the table to determine tax liability based on marital status and number of dependents.

NOVICE 4-H CLUB GIRLS

The Novice 4-H Girls met in regular session February 1 at the school house, Miss Jewell Hipp, County Home Demonstration Agent explained the production goals to the girls and stressed how important it was to produce our own vegetables at home. She encouraged each girl to have a victory garden or help her mother as well as produce poultry for the defense.

Use the Simplified form 1040 A-You can get it NOW from your Employer or Your Local INTERNAL REVENUE OFFICE

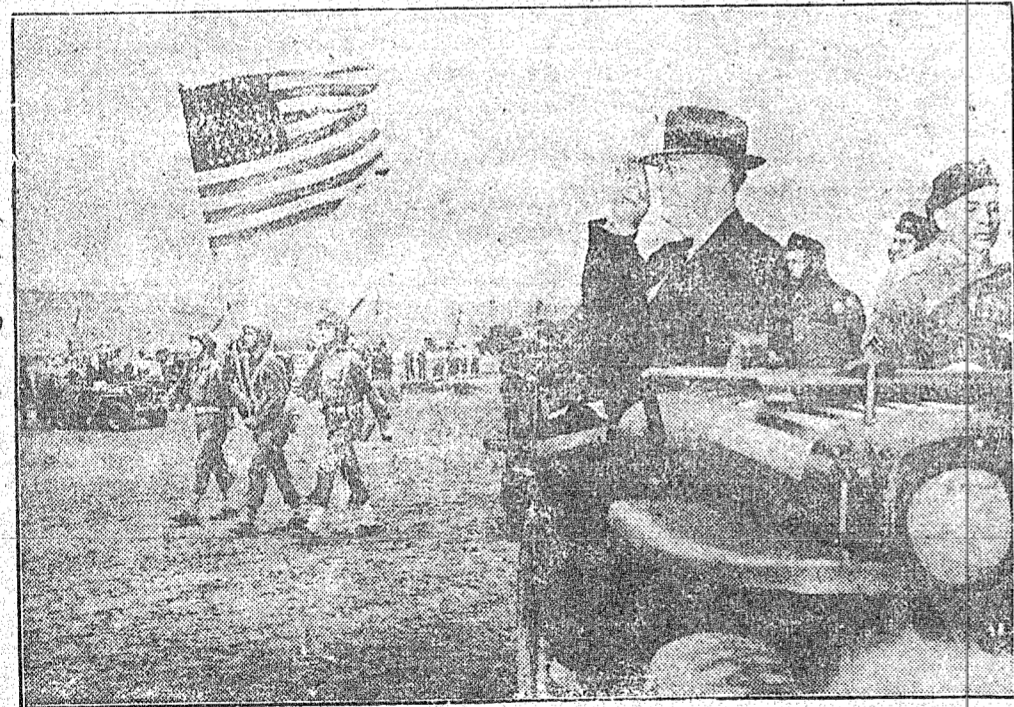
Commander-In-Chief Meets American Soldiers On The Embattled Plains Of North Africa



CASABLANCA CONFERENCE—President Roosevelt and Prime Minister Churchill with high-ranking Army and Navy officers of America and Britain. Here were worked out plans to bring the Axis to unconditional surrender.



PRESENT—ARMS!—American soldiers in North Africa were taken by surprise when President Roosevelt rode by in a jeep driven by young Sgt. Oran Lass, who joined the Army in Kansas City. In the rear seat is Lieut. Gen. Mark Clark whose secret landing in Algeria from a submarine was one of the high adventures in the campaign.



REVIEW IN FRENCH MOROCCO—This is a composite photograph. The President is not saluting the flag—yet. When it passes he uncovers and gives the civilian's salute with his hat held over his heart. Here he greets American soldiers who are standing on the side lines among parked jeeps.



MEETS FRENCH CHIEF—Gen. Henri Honoré Giraud, North African high commander, with President Roosevelt at Casablanca conference.



PROUD CORPORAL—While in North Africa a number of enlisted men were among those commended by the President. A Easy Corporal who had distinguished himself in the landing operation is presented to his Commander-in-Chief.



CHIEF OF STAFF—General George G. Marshall, highest ranking American officer attending the Casablanca conference.

LICE ALWAYS SHOULD BE SUSPECTED

Winter or summer, lice always present a problem to poultry raisers. This is the conclusion of W. A. Griffin of Griffin Hatchery who says that lice are much more prevalent on chickens in this area than farmers and poultry raisers realize.

"People who have this 'pest problem' have various ways available to kill lice, one being to lay a louse on a block of wood, then smack it hard with a second block. I'm not an advocate of this method. It is too primitive.

"Lice on chickens often run into the hundreds in number, and many others are being hatched constantly. You've got to get these all at once, before damage to the chickens is done. The presence of an over abundance of lice on chickens usually explains why they are unthrifty and lay few eggs.

"Lice can be observed readily by parting the feathers beneath the vent, beneath the wings, through the upper thigh, and around the head. If present, treat the entire flock at once, but don't just look over one chicken and not find lice, conclude that the flock has none. Examine at least six birds.

"The roost paint method of killing lice is a very convenient one. The roost application is applied to the clean roosts just before roosting time. The heat generated by the birds sitting on the roosts volatilizes the drug compound, and the rising fumes permeate the feathers and kill the lice. The principle here is the same as steam rising from water.

"The use of a louse powder is an old, reliable way to kill lice. The most common method of application is the 'inch' method. The bird is held by the neck in a pan or newspaper, and the powder is dropped on the whole or half blood from the birds as it is worked into his neck, under his wings, and into the feathers. This dip method may be used for the types of louse powder that are soluble, but it should be used only on warm days or in rooms in which the temperature is 80 degrees or higher while the birds are drying.

"The following ways for promoting the expansion program were listed by the group:

1. Posters.
2. Community Councils or Club exhibits.
3. 4-H Programs.
4. Help of Victory Council.
5. Publicity through newspapers and circular letters.
6. Educational meetings.
7. Scrap Book Contests.
8. 4-H Demonstrations.
9. 4-H Competitive Contests.
10. Livestock Shows.
11. Recreational Activities.
12. 4-H Club Tours.

War work activities were discussed for the club members. The following means were outlined where by club members and groups could greatly help in promoting the victory program:

1. Purchase of War Bonds and Stamps.
2. Victory Gardens.
3. Proper preparation and evaluation of food.
4. Increased livestock and poultry production.
5. Practice health and safety measures.
6. Salvage Collection.
7. Care and repair of machinery.
8. Farm Labor.

Scraps may come and scraps may go but metal is needed for the duration. Give it now.

FEDERAL INCOME TAX

Head of Family Exemption

A single person, or a married person not living with husband or wife, is entitled to a personal exemption of \$1200 for the year if he can qualify as head of a family. A head of family is "an individual who actually supports and maintains in one household one or more individuals who are closely connected with him by blood relationship, relationship by marriage or by adoption, and whose right to exercise family control and provide for these dependent individuals is based upon some moral or legal obligation."

Examples of head of family status would be a widow who maintained a home for a dependent child, or a son who supported and maintained a household for a dependent father or mother. In order to test the actual supplies of a family, the benefactor must furnish more than half of the support and maintenance.

The term "in one household" ordinarily means under one roof, but if a father is absent on business or a child is away at school, or on a visit, the household for a dependent is maintained elsewhere. The head of family exemption would still apply.

Where a parent is obliged to maintain his dependent child with relatives or in a boarding house while he lives elsewhere, the additional expense may still apply. If, however, the dependent continuously makes his home elsewhere, his benefactor is not the head of a family irrespective of the amount of support.

The term "closely connected by blood relationship" applies to a person's progenitors and his or her descendants, to his or her spouse, and to other relatives by blood, and cousins of the first degree, but not to step-relatives. A moral obligation to support such relatives exists, and if the individual is actually supporting and maintaining in his household relatives of this degree, he is entitled to head of family exemption.

A taxpayer is considered to be "closely connected by marriage" with his step-sisters and step-brothers, but whether or his right to exercise family control and provide for these individuals is based upon some moral or legal obligation must be decided upon the facts in the particular case. The same consideration apply to the status of a taxpayer because of support furnished to his father-in-law, mother-in-law, brother-in-law, and sister-in-law. First cousins by blood, and cousins of the lesser degree, are not regarded as "closely connected by blood relationship" as to give a head of family exemption.

A head of family who may maintain and support in his home a dependent ward is not entitled to the personal exemption as head of a family, if the ward was not connected with him by relationship of blood marriage, or adoption; nor is a taxpayer entitled to exemption as head of a family by virtue of maintenance and support of a child not legally adopted.

War work activities were discussed for the club members. The following means were outlined where by club members and groups could greatly help in promoting the victory program:

1. Purchase of War Bonds and Stamps.
2. Victory Gardens.
3. Proper preparation and evaluation of food.
4. Increased livestock and poultry production.
5. Practice health and safety measures.
6. Salvage Collection.
7. Care and repair of machinery.
8. Farm Labor.

Scraps may come and scraps may go but metal is needed for the duration. Give it now.

CARD OF THANKS

We wish to express our thanks to all who assisted us during our bereavement following the death of our mother, Mrs. Cuba Hemphill. Your thoughtfulness and deeds of kindness are greatly appreciated. Her children

SANTA FE NEWS

Galveston, Tex., (Spl)—Santa Fe's net railway operating income for December was \$9,334,575 according to a statement released by President E. J. Engel today. This is an increase of \$5,110,880 compared with December 1941. Gross for the system was \$35,944,542, an increase over December 1941, of \$14,486,465. Operating expenses were \$18,306,840, an increase of \$3,031,165 over the same month of 1941. Railway tax accruals were \$7,896,149, an increase

of \$5,916,451 over the same month last year. Comparative figures for the past three years: December gross: \$35,944,542 in 1942; \$21,458,077 in 1941; and \$15,844,924 in 1940. December net railway operating income: \$9,334,575 in 1942; \$4,223,695 in 1941; and \$3,431,666 in 1940. Twelve months net railway operating income: \$83,547,609 in 1942; \$40,546,790 in 1941; and \$24,017,625 in 1940. Railway tax accruals for 12 months ending December 31, 1942, include \$55,547,638 federal

income tax compared with \$10,959,000 federal income tax in 1941. Santa Fe system carloadings for the week ending January 23 were 19,216 compared with 22,847 for the same week in 1942. Cars received from connections totaled 10,872 compared with 8,989 for the same week last year. Total cars moved were 30,088 compared with 31,836 for the same week in 1942. Santa Fe handled a total of 34,401 cars in the preceding week of this year.

